



<https://www.trick-project.eu/>

DRAFT

## IMPLEMENTATION GUIDE TRANSACTION "TEXTILE INVOICE"

Version: draft

Date of release: 26/6/2023

Document code: G011

technical Documentation: <http://www.ebiz.enea.it>

XML Schemas repository: <http://www.ebiz.enea.it/moda-ml/repository/schema/draft/default.asp>

Guides repository: <http://www.ebiz.enea.it/moda-ml/repository/guide/draft/default.asp>

Guide filename: G011-TRICK-TextileInvoice.pdf

## 0. PREMISE

This document contains a proposal for the updating and extension of eBIZ specifications starting from the eBIZ version 2018. Under the name of 'Draft version' it is reported the result of an extensive work of analysis and consultation aimed at developing and maintaining eBIZ specifications.

In particular, the content of this proposal is the result of various activities, mainly those carried out within the framework of the **TRICK project** funded by the European Commission: grant agreement 958352, call H2020-LOW-CARBON-CIRCULAR-INDUSTRIES-2020 / H2020-LCCI-2020-EASME-twostage.

The technical contents are backwards compatible with the latest official published version, with the exclusion of the totally new concepts added explicitly for the version that are thought as incremental evolution of the knowledge base.

## 1. BUSINESS DESCRIPTION

### 1.1 Scope

The present guide has been issued to assist the companies of the Textile-Clothing sector in the implementation of the standard XML document type "Textile INVOICE", providing all the instruction required for its use in any context of e-commerce between Apparel Producers and their partners.

All the rules required for the construction and validation of the document are embedded into the specific XML-Schema, which is detailed in section "Implementation guide".

### 1.2 Generalities

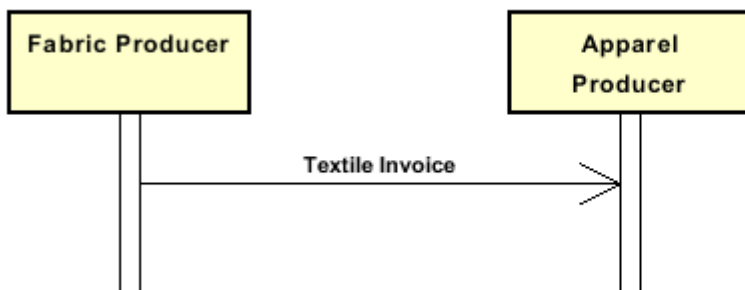
The document "Textile invoice" can be used to debit the Client for any kind of supply or service.

This document can be used to debit standard supply using the option "textItem", and additional goods or services using the option "prodServItem", even in the same invoice.

The use of quantity and unit price is mandatory only with "textItem".

### 1.3. Possible scenario

Invoicing of fabrics



## 2. IMPLEMENTATION GUIDE

### 2.1 General structure of XML document

All the business data that can be exchanged through this class of documents are shown in the following "document structure", that provides a simplified vision of the Schema.

In particular:

- the two numbers following each element define its "cardinality" (minimum and maximum number of occurrences); the minimum equal zero indicates that the element is optional, the minimum greater than zero indicates that is mandatory;
- the bold character denotes the complex elements (aggregates of simple elements) that were built for the sake of functionality and re-usability of some complex informations sets. The child elements in each parent element are easily spotted as "indented";
- the symbol "@" denotes an attribute of the preceding element; here "the usage indicator (optional, required, ...) is shown in square brackets.

### Structure

#### TEXInvoice

```
@invoiceType [Optional] [Default= STD]
@msgfunction [Optional] [Default= OR]
@version [Optional] [Default= draft]
@useProfile [Optional]
| Tlheader 1-1
| | msgN 1-1
| | - choose -
| | | docID 0-1
| | | @numberingOrg [Optional]
| | - or -
| | | msgID 0-1
| | - end choose -
| | | msgDate 1-1
| | | @dateForm [Optional]
| | | taxDate 0-1
| | | @dateForm [Optional]
| | | msgCurrency 0-1
| | | otherCurrency 0-9
| | | @currencyUseQualifier [Required]
| | | @exchangeRate [Optional]
| | refDoc 0-9
| | | @docType [Required]
| | | | docID 1-2
| | | | | @numberingOrg [Optional]
| | | | | docDate 0-1
| | | | | @dateForm [Optional]
| | | | | season 0-1
| | | | | @numberingOrg [Optional]
| | | | | @codeList [Optional]
| | | | | @listName [Optional]
| | | | | @listVersion [Optional]
| | | | itemID 0-1
| | | attachment 0-1
| | | | @uid [Optional]
| | | | | fileName 0-1
| | | | | | @numberingOrg [Optional]
| | | | | | binaryObject 0-1
| | | | | | @format [Optional]
| | | | | | @mime [Optional]
| | | | | | @encoding [Optional]
| | | | | | @characterSet [Optional]
| | | | externalReference 0-99
| | | | | uri 1-1
| | | | | | @isURL [Optional] [Default= true]
| | | | | | mimeTypeCode 0-1
| | | | | | formatCode 0-1
| | | | | | encodingCode 0-1
| | | | | | characterSetCode 0-1
```

- | hashFootprint 0-1
- | @schemeID [Optional]
- | @hashMethod [Required]
- | **blockChainReference 0-9**
- | | uri 1-1
- | | @isURL [Optional] [Default= true]
- | transactionReceipt 1-9

**buyer 1-1**

- @logo [Optional]
- @sender [Optional]
- | id 1-1
- | @numberingOrg [Optional]
- | additionalIdentifier 0-9
- | @numberingOrg [Optional]
- | @idQualifier [Optional]
- | legalName 0-1
- | dept 0-1
- | subDept 0-1
- | person 0-1
- | @email [Optional]
- | @phone [Optional]
- | @fax [Optional]
- | street 0-1
- | city 0-1
- | subCountry 0-1
- | country 0-1
- | postCode 0-1
- | **geoCoordinates 0-1**
- | @um [Optional] [Default= DEGD]
- | @geoRefSystem [Optional]
- | | xGeoCoord 1-1
- | | yGeoCoord 1-1
- | | zGeoCoord 0-1

**supplier 1-1**

- @logo [Optional]
- @sender [Optional]
- | id 1-1
- | @numberingOrg [Optional]
- | additionalIdentifier 0-9
- | @numberingOrg [Optional]
- | @idQualifier [Optional]
- | legalName 0-1
- | dept 0-1
- | subDept 0-1
- | person 0-1
- | @email [Optional]
- | @phone [Optional]
- | @fax [Optional]
- | street 0-1
- | city 0-1
- | subCountry 0-1
- | country 0-1
- | postCode 0-1
- | **geoCoordinates 0-1**
- | @um [Optional] [Default= DEGD]
- | @geoRefSystem [Optional]
- | | xGeoCoord 1-1
- | | yGeoCoord 1-1
- | | zGeoCoord 0-1

**thirdParty 0-5**

- @VAT [Optional]
- @role [Required]
- @sender [Optional]
- | id 1-1
- | @numberingOrg [Optional]
- | legalName 0-1
- | dept 0-1
- | subDept 0-1

```

| | | person 0-1
| | |   @email [Optional]
| | |   @phone [Optional]
| | |   @fax [Optional]
| | | street 0-1
| | | city 0-1
| | | subCountry 0-1
| | | country 0-1
| | | postCode 0-1
| | | | geoCoordinates 0-1
| | | |   @um [Optional] [Default= DEGD]
| | | |   @geoRefSystem [Optional]
| | | |     xGeoCoord 1-1
| | | |     yGeoCoord 1-1
| | | |     zGeoCoord 0-1
| | | terms 1-1
| | | | payment 0-5
| | | |   @finDiscount [Optional]
| | | |   @finSurcharge [Optional]
| | | | - choose -
| | | |   | payTerm 1-1
| | | | - or -
| | | |   | payTermText 1-1
| | | | - end choose -
| | | |   | payMode 0-1
| | | | | insPayment 0-5
| | | | |   @part [Required]
| | | | | - choose -
| | | | |   | payTerm 1-1
| | | | | - or -
| | | | |   | payTermText 1-1
| | | | | - end choose -
| | | | |   | payMode 0-1
| | | | | trade 0-1
| | | | | - choose -
| | | | |   | incoTermText 1-1
| | | | | - or -
| | | | |   | incoTerm 1-1
| | | | | - end choose -
| | | | | - choose -
| | | | | tradeLocation 0-1
| | | | |   | location 0-1
| | | | |   |   @LRI [Optional]
| | | | |   |   legalName 0-1
| | | | |   |   dept 0-1
| | | | |   |   subDept 0-1
| | | | |   |   person 0-1
| | | | |   |   @email [Optional]
| | | | |   |   @phone [Optional]
| | | | |   |   @fax [Optional]
| | | | |   |   street 0-1
| | | | |   |   city 0-1
| | | | |   |   subCountry 0-1
| | | | |   |   country 0-1
| | | | |   |   postCode 0-1
| | | | |   |   geoCoordinates 0-1
| | | | |   |   @um [Optional] [Default= DEGD]
| | | | |   |   @geoRefSystem [Optional]
| | | | |   |     xGeoCoord 1-1
| | | | |   |     yGeoCoord 1-1
| | | | |   |     zGeoCoord 0-1
| | | | - or -
| | | |   | location 0-1
| | | |   |   @LRI [Optional]
| | | | - end choose -
| | | | | transInfo 0-5
| | | | |   @transReason [Optional]
| | | | |   @progr [Optional]

```

```

| | | | transMode 1-1
| | | | carrier 0-1
| | | | - choose -
| | | | | deliveryLocation 0-1
| | | | | location 0-1
| | | | | | @LRI [Optional]
| | | | | legalName 0-1
| | | | | dept 0-1
| | | | | subDept 0-1
| | | | | person 0-1
| | | | | | @email [Optional]
| | | | | | @phone [Optional]
| | | | | | @fax [Optional]
| | | | | street 0-1
| | | | | city 0-1
| | | | | subCountry 0-1
| | | | | country 0-1
| | | | | postCode 0-1
| | | | | | geoCoordinates 0-1
| | | | | | @um [Optional] [Default= DEGD]
| | | | | | @geoRefSystem [Optional]
| | | | | | xGeoCoord 1-1
| | | | | | yGeoCoord 1-1
| | | | | | zGeoCoord 0-1
| | | | | - or -
| | | | | deliveryPlace 0-1
| | | | | - end choose -
| | | | | grossWeight 0-1
| | | | | | @um [Required]
| | | | | netWeight 0-1
| | | | | | @um [Required]
| | | | | transMeans 0-1
| | | | | | @propulsionSystemCode [Optional]
| | | | | transCondition 0-3
| | | | | transConditionText 0-1
| | | | | - choose -
| | | | | despatchPlace 0-1
| | | | | - or -
| | | | | | despatchLocation 0-1
| | | | | | location 0-1
| | | | | | | @LRI [Optional]
| | | | | | legalName 0-1
| | | | | | dept 0-1
| | | | | | subDept 0-1
| | | | | | person 0-1
| | | | | | | @email [Optional]
| | | | | | | @phone [Optional]
| | | | | | | @fax [Optional]
| | | | | | street 0-1
| | | | | | city 0-1
| | | | | | subCountry 0-1
| | | | | | country 0-1
| | | | | | postCode 0-1
| | | | | | | geoCoordinates 0-1
| | | | | | | @um [Optional] [Default= DEGD]
| | | | | | | @geoRefSystem [Optional]
| | | | | | | xGeoCoord 1-1
| | | | | | | yGeoCoord 1-1
| | | | | | | zGeoCoord 0-1
| | | | | - end choose -
| | | | | despatchDate 0-1
| | | | | | @dateForm [Optional]
| | | | | delEffectiveDate 0-1
| | | | | | @dateForm [Optional]
| | | | | routeLength 0-1
| | | | | | @um [Required]
| | | | | allowanceCharge 0-9
| | | | | | @um [Optional]

```

```

| | | @VAT [Optional]
| | | @minQty [Optional]
| | | @currency [Optional]
| | | @maxQty [Optional]
| | | @isCharge [Optional]
| | | - choose -
| | | | AC_category 1-1
| | | - or -
| | | | AC_categoryText 1-1
| | | - end choose -
| | | - choose -
| | | | AC_percent 1-1
| | | - or -
| | | | AC_amount 1-1
| | | | @currency [Optional]
| | | - end choose -
| | | | dtScheme 0-1
| | | | @taxType [Required]
| | | | taxCategory 0-1
| | | | taxRate 0-1
| | | | legalRef 0-1
| | | | @numberingOrg [Optional]
| | | | @codeList [Optional]
| | | | @listName [Optional]
| | | | @listVersion [Optional]
| | | | note 0-99
| | | | @numberingOrg [Optional]
| | | | @codeList [Optional]
| | | | @noteLabel [Optional]
| | finInfo 0-1
| | | accountName 0-1
| | | bank 0-1
| | | | legalName 0-1
| | | | dept 0-1
| | | | subDept 0-1
| | | | person 0-1
| | | | @email [Optional]
| | | | @phone [Optional]
| | | | @fax [Optional]
| | | | street 0-1
| | | | city 0-1
| | | | subCountry 0-1
| | | | country 0-1
| | | | postCode 0-1
| | | | geoCoordinates 0-1
| | | | @um [Optional] [Default= DEGD]
| | | | @geoRefSystem [Optional]
| | | | | xGeoCoord 1-1
| | | | | yGeoCoord 1-1
| | | | | zGeoCoord 0-1
| | | - choose -
| | | | iban 1-1
| | | - or -
| | | | bankIT 1-1
| | | | | legalName 0-1
| | | | | cin 0-1
| | | | | abi 1-1
| | | | | cab 1-1
| | | | | accountN 1-1
| | | - end choose -
| | | | swift 0-1
| | | | note 0-99
| | | | @numberingOrg [Optional]
| | | | @codeList [Optional]
| | | | @noteLabel [Optional]
| | packageQty 0-1
| | packageN 0-unbounded
| | @numberingOrg [Optional]

```

- | | @packageContainerN [Optional]
- | | note 0-99
- | | @numberingOrg [Optional]
- | | @codeList [Optional]
- | | @noteLabel [Optional]

**Tlbody 1-1**

**Tlitem 1-unbounded**

- | | @VAT [Optional]
- | | @sale [Optional] [Default= 1]

- | | lineN 1-1
- | | | @VAT [Optional]

**refDoc 0-9**

- | | | @docType [Required]
- | | | docID 1-2
- | | | | @numberingOrg [Optional]
- | | | docDate 0-1
- | | | | @dateForm [Optional]
- | | | season 0-1
- | | | | @numberingOrg [Optional]
- | | | | @codeList [Optional]
- | | | | @listName [Optional]
- | | | | @listVersion [Optional]
- | | | itemID 0-1

**attachment 0-1**

- | | | @uid [Optional]
- | | | | fileName 0-1
- | | | | | @numberingOrg [Optional]
- | | | | binaryObject 0-1
- | | | | | @format [Optional]
- | | | | | @mime [Optional]
- | | | | | @encoding [Optional]
- | | | | | @characterSet [Optional]

**externalReference 0-99**

- | | | | uri 1-1
- | | | | | @isURL [Optional] [Default= true]
- | | | | mimeTypeCode 0-1
- | | | | formatCode 0-1
- | | | | encodingCode 0-1
- | | | | characterSetCode 0-1

- | | | hashFootprint 0-1
- | | | | @schemeID [Optional]
- | | | | @hashMethod [Required]

**blockChainReference 0-9**

- | | | | uri 1-1
- | | | | | @isURL [Optional] [Default= true]
- | | | | transactionReceipt 1-9

- choose -

**prodServItem 1-1**

- | | | prodServName 1-1
- | | | prodServ 0-1
- | | | servMea 0-1
- | | | note 0-99
- | | | | @numberingOrg [Optional]
- | | | | @codeList [Optional]
- | | | | @noteLabel [Optional]

- or -

**textItem 1-1**

- | | | **invCode 1-2**
- | | | | @numberingOrg [Required]
- | | | | @percCond [Optional]
- | | | | art 1-1
- | | | | | @numberingOrg [Optional]
- | | | | | @codeList [Optional]
- | | | | | @listName [Optional]
- | | | | | @listVersion [Optional]
- | | | | color 0-1
- | | | | | @numberingOrg [Optional]



```

| | | | @codeList [Optional]
| | | | @listName [Optional]
| | | | @listVersion [Optional]
| | | | added 0-9
| | | | @numberingOrg [Optional]
| | | | @addType [Optional]
| | | | description 0-unbounded
| | | | @ln [Optional]
| | | | fabricCompos 0-1
| | | | | percCompos 1-9
| | | | | @fibre [Required]
| | | | | @materialSource [Optional]
| | | | | @recyclingProcessMethod [Optional]
| | | | | @percSourcesRenewable [Optional]
| | | | | @validationMethod [Optional]
| | | | | @recyclingProcessEfficiency [Optional]
| | | | customsStat 0-1
| | | | @schemeID [Optional] [Default= TARIC]
| | | | customsAuth 0-1
| | | | made 0-1
| | | | grossQty 0-1
| | | | @um [Required]
| | | | grossWeight 0-1
| | | | @um [Required]
- end choose -
| | | | qty 0-2
| | | | @um [Required]
| | | | otherConventionalQty 0-9
| | | | @um [Required]
| | | | @quantityConvention [Required]
| | | | price 0-2
| | | | @um [Optional]
| | | | @priceQualifier [Optional] [Default= NET]
| | | | @currency [Optional]
| | | | amount 1-1
| | | | @currency [Optional]
| | | | dtScheme 0-1
| | | | @taxType [Required]
| | | | | taxCategory 0-1
| | | | | taxRate 0-1
| | | | | legalRef 0-1
| | | | | @numberingOrg [Optional]
| | | | | @codeList [Optional]
| | | | | @listName [Optional]
| | | | | @listVersion [Optional]
| | | | | note 0-99
| | | | | @numberingOrg [Optional]
| | | | | @codeList [Optional]
| | | | | @noteLabel [Optional]
| | | | note 0-99
| | | | @numberingOrg [Optional]
| | | | @codeList [Optional]
| | | | @noteLabel [Optional]

```

**Tltotals 1-1**

```

| | | | totQty 0-1
| | | | @um [Required]
| | | | goodsAmount 1-1
| | | | @currency [Optional]
| | | | comDiscount 0-1
| | | | goodsAmountDisc 0-1
| | | | @currency [Optional]
| | | | VATinfo 0-9
| | | | @VAT [Optional]
| | | | | dtScheme 0-1
| | | | | @taxType [Required]
| | | | | | taxCategory 0-1
| | | | | | taxRate 0-1

```

```

| | | legalRef 0-1
| | | @numberingOrg [Optional]
| | | @codeList [Optional]
| | | @listName [Optional]
| | | @listVersion [Optional]
| | | note 0-99
| | | @numberingOrg [Optional]
| | | @codeList [Optional]
| | | @noteLabel [Optional]
| taxAmount 1-1
| @currency [Optional]
| VATamount 0-1
| @currency [Optional]
| anticipDeduct 0-9
| @VAT [Required]
| taxAmount 1-1
| @currency [Optional]
| VATamount 0-1
| @currency [Optional]
| dtScheme 0-1
| @taxType [Required]
| taxCategory 0-1
| taxRate 0-1
| legalRef 0-1
| @numberingOrg [Optional]
| @codeList [Optional]
| @listName [Optional]
| @listVersion [Optional]
| note 0-99
| @numberingOrg [Optional]
| @codeList [Optional]
| @noteLabel [Optional]
| msgAmount 1-1
| @currency [Optional]
| msgVATamount 1-1
| @currency [Optional]

```

## 2.2 Detailed description of document elements

Following tables show all elements (complex and simple) used in this document. Description includes: 1) element's information: xml tag, name, brief description, data type and syntax constraints; 2) information about use of the element in a particular position in the document: xpath and possible associated notes.

### 2.2.1 Complex elements (Aggregate Business Information Entities)

Complex elements are those elements whose content is composed of other elements (childs).Complex elements are alphabetically ordered.

<b>allowanceCharge</b>	Allowances and Charges related to an Order or a contract (XPath <a href="#">TEXInvoice/TIheader/terms/allowanceCharge</a> ) 0-9
<b>anticipDeduct</b>	anticipated amount deducted in the present message (invoice), subdivided into taxable amount and tax (XPath <a href="#">TEXInvoice/TItotals/anticipDeduct</a> ) 0-9
<b>attachment</b>	an attached document. An attachment can refer to an external document or be included with the document being exchanged (XPath <a href="#">TEXInvoice/TIheader/refDoc/attachment</a> ) 0-1 (XPath <a href="#">TEXInvoice/TIbody/TIitem/refDoc/attachment</a> ) 0-1
<b>bank</b>	details of the financial institution - base type: Nad, (XPath <a href="#">TEXInvoice/TIheader/finInfo/bank</a> ) 0-1
<b>bankIT</b>	Italian bank operations code (DEPRECATED, use IBAN) (XPath <a href="#">TEXInvoice/TIheader/finInfo/bankIT</a> ) 1-1
<b>blockChainReference</b>	blockchain reference - base type: string, max length: 80, (XPath <a href="#">TEXInvoice/TIbody/TIitem/refDoc/attachment/blockChainReference</a> ) 0-9 (XPath <a href="#">TEXInvoice/TIheader/refDoc/attachment/blockChainReference</a> ) 0-9
<b>buyer</b>	details of the Buyer (party that buys the good or service that is object of the current collaborative process) - base type: Nad, (XPath <a href="#">TEXInvoice/TIheader/buyer</a> ) 1-1
<b>deliveryLocation</b>	data relating to a place of delivery(indicate at least element location or address, city and country) - base type: Nad, (XPath <a href="#">TEXInvoice/TIheader/terms/transInfo/deliveryLocation</a> ) 0-1 - note: <i>use to represent addresses in a structured way or with geographical coordinates</i>
<b>despatchLocation</b>	data relating to a place of despatch (indicate at least element location or address, city and country) - base type: Nad, (XPath <a href="#">TEXInvoice/TIheader/terms/transInfo/despatchLocation</a> ) 0-1 - note: <i>use to represent addresses in a structured way</i>
<b>dtScheme</b>	set of data usable to declare the duty or tax applied (XPath <a href="#">TEXInvoice/TItotals/anticipDeduct/dtScheme</a> ) 0-1 (XPath <a href="#">TEXInvoice/TItotals/VATinfo/dtScheme</a> ) 0-1 - note: <i>these data are alternative to the attribute @VAT and preferable; they must be used whenever tax or duty other than VAT</i> (XPath <a href="#">TEXInvoice/TIheader/terms/allowanceCharge/dtScheme</a> ) 0-1 (XPath <a href="#">TEXInvoice/TIbody/TIitem/dtScheme</a> ) 0-1 - note: <i>recommended alternative to the attribute @VAT</i>
<b>externalReference</b>	details about an external object, such as a document stored at a remote location (XPath <a href="#">TEXInvoice/TIheader/refDoc/attachment/externalReference</a> ) 0-99 (XPath <a href="#">TEXInvoice/TIbody/TIitem/refDoc/attachment/externalReference</a> ) 0-99
<b>fabricCompos</b>	percent of composition of the fabric according to the Directive 97/37/CE (XPath <a href="#">TEXInvoice/TIbody/TIitem/textItem/fabricCompos</a> ) 0-1
<b>finInfo</b>	bank details relevant for the payment: bank coordinates, SWIFT code, account

	(XPath TEXInvoice/TIheader/finInfo) 0-1
<b>geoCoordinates</b>	geographical coordinates (XPath TEXInvoice/TIheader/terms/transInfo/deliveryLocation/geoCoordinates) 0-1 (XPath TEXInvoice/TIheader/supplier/geoCoordinates) 0-1 (XPath TEXInvoice/TIheader/thirdParty/geoCoordinates) 0-1 (XPath TEXInvoice/TIheader/finInfo/bank/geoCoordinates) 0-1 (XPath TEXInvoice/TIheader/terms/transInfo/despatchLocation/geoCoordinates) 0-1 (XPath TEXInvoice/TIheader/terms/trade/tradeLocation/geoCoordinates) 0-1 (XPath TEXInvoice/TIheader/buyer/geoCoordinates) 0-1
<b>insPayment</b>	payment details for payment by installments (XPath TEXInvoice/TIheader/terms/insPayment) 0-5 - note: <i>excluded the case of offers, this set of data is alternative to payment set and must be iterated for each payment installment</i>
<b>invCode</b>	full codification of a general textile product usable for invoicing (XPath TEXInvoice/TIbody/TIitem/textItem/invCode) 1-2
<b>payment</b>	payment details for payment all in one (XPath TEXInvoice/TIheader/terms/payment) 0-5 - note: <i>excluded the case of offers, this set of data is alternative to insPayment, it can be iterated to specify alternative terms of payment (e.g.: 60 days or 30 days with 3% discount)</i>
<b>prodServItem</b>	line item "textile product" of the document TEXTILES INVOICE, to be used for invoicing services or occasional goods (XPath TEXInvoice/TIbody/TIitem/prodServItem) 1-1
<b>refDoc</b>	identification of a document and of an item thereof, to which the message makes reference (XPath TEXInvoice/TIheader/refDoc) 0-9 (XPath TEXInvoice/TIbody/TIitem/refDoc) 0-9 - note: <i>here the line number of the Order specified with "refDoc" can be indicated</i>
<b>supplier</b>	details of the Supplier (party that supplies the good or service that is object of the current collaborative process) - base type: Nad, (XPath TEXInvoice/TIheader/supplier) 1-1
<b>terms</b>	details of the commercial obligations for payment and delivery (XPath TEXInvoice/TIheader/terms) 1-1 - note: <i>a payment term must always be specified</i>
<b>textItem</b>	line item "textile product" of the document TEXTILES INVOICE, to be used for invoicing normal textiles supplies (XPath TEXInvoice/TIbody/TIitem/textItem) 1-1
<b>thirdParty</b>	identification and details of the Third Party, different from Sender and Receiver of the document - base type: Nad, (XPath TEXInvoice/TIheader/thirdParty) 0-5 - note: <i>here the Agent credited of the sale can be identified</i>
<b>TIbody</b>	body of the document TEXTILES INVOICE (XPath TEXInvoice/TIbody) 1-1 - note: <i>this document body has two line types: a) textItem for regular textiles articles b) prodServItem for other goods (stocks, batch rest,..) and services or for anticipations</i>
<b>TIheader</b>	header of the document TEXTILES INVOICE (XPath TEXInvoice/TIheader) 1-1
<b>TIitem</b>	line item of the document TEXTILES INVOICE (XPath TEXInvoice/TIbody/TIitem) 1-unbounded
<b>TItotals</b>	details of the monetary and quantity totals of the Invoice (XPath TEXInvoice/TItotals) 1-1
<b>trade</b>	general terms of trade for the specified supply (XPath TEXInvoice/TIheader/terms/trade) 0-1
<b>tradeLocation</b>	data relating to the place to which the trade conditions refer (indicate at least element I

	ocation or address, city and country) - base type: Nad, (XPath TEXInvoice/TIheader/terms/trade/tradeLocation) 0-1 - note: address of the place to which the INCOTERM applies
<b>transInfo</b>	details of transport: mode, carrier and delivery place (XPath TEXInvoice/TIheader/terms/transInfo) 0-5
<b>VATInfo</b>	details related to the duty or tax (VAT or other) application: rate (exemption code); taxable amount; tax amount (XPath TEXInvoice/TItotals/VATInfo) 0-9

## 2.2.2 Simple elements (Basic Business Information Entities)

Simple elements are those elements whose content is characterized by a data type plus a domain of possible values. Simple elements are alphabetically ordered.

abi	ABI code - base type: string, length: 5, (XPath TEXInvoice/TIheader/finInfo/bankIT/abi) 1-1
AC_amount	amount of an Allowance or Charge - base type: decimal, fraction digits: 2, (XPath TEXInvoice/TIheader/terms/allowanceCharge/AC_amount) 1-1
AC_category	coded specification of an Allowance or Charge - base type: string, cod. table: T41 <a href="http://www.ebiz.enea.it/moda-ml/repository/codelist/draft/gc_T41.xml">http://www.ebiz.enea.it/moda-ml/repository/codelist/draft/gc_T41.xml</a> (XPath TEXInvoice/TIheader/terms/allowanceCharge/AC_category) 1-1
AC_categoryText	free text description of an Allowance or Charge - base type: string, max length: 250, (XPath TEXInvoice/TIheader/terms/allowanceCharge/AC_categoryText) 1-1
AC_percent	amount of an Allowance or Charge as a percentage (always non negative value) - base type: decimal, max inclusive: 100, fraction digits: 2, (XPath TEXInvoice/TIheader/terms/allowanceCharge/AC_percent) 1-1
accountN	account number - base type: string, max length: 15, (XPath TEXInvoice/TIheader/finInfo/bankIT/accountN) 1-1
accountName	account name - base type: string, max length: 250, (XPath TEXInvoice/TIheader/finInfo/accountName) 0-1
added	additional code of the product (complementing the formers) - base type: string, max length: 80, (XPath TEXInvoice/TIbody/TIitem/textItem/invCode/added) 0-9
additionalIdentifier	additional identification code of a Party, for example customs registries or others - base type: string, max length: 15, (XPath TEXInvoice/TIheader/buyer/additionalIdentifier) 0-9 - note: identifiers for example for exports, such as MID (Manufacturer Identification Code), REX (identifier in Registered Exporter system) (XPath TEXInvoice/TIheader/supplier/additionalIdentifier) 0-9 - note: identifiers for example for exports, such as MID (Manufacturer Identification Code), REX (identifier in EU Registered Exporter system)
@addType	qualifier of the additional coding of a product - base type: string, cod. table: T44 <a href="http://www.ebiz.enea.it/moda-ml/repository/codelist/draft/gc_T44.xml">http://www.ebiz.enea.it/moda-ml/repository/codelist/draft/gc_T44.xml</a> (XPath TEXInvoice/TIbody/TIitem/textItem/invCode/added/@addType) [Optional] - nota: addType allows the clarification of the meaning of the added element content; it is strongly suggested to use it always.
amount	total monetary value of the goods and services considered in the message line (usually net price x quantity) - base type: decimal, min inclusive: 0, fraction digits: 2,

	(XPath TEXInvoice/TIbody/TIitem/amount) 1-1
art	article number of the product - base type: string, max length: 80, (XPath TEXInvoice/TIbody/TIitem/textItem/invCode/art) 1-1
binaryObject	a binary large object containing an attached document, Coding 'base64Binary' is recommended. - base type: base64Binary, (XPath TEXInvoice/TIbody/TIitem/refDoc/attachment/binaryObject) 0-1 (XPath TEXInvoice/TIheader/refDoc/attachment/binaryObject) 0-1
cab	CAB code - base type: string, length: 5, (XPath TEXInvoice/TIheader/finInfo/bankIT/cab) 1-1
carrier	identification of the transport carrier - base type: string, max length: 40, (XPath TEXInvoice/TIheader/terms/transInfo/carrier) 0-1
@characterSet	the character set of the binary object (examples UTF-8, UTF-16, Windows-1252, ISO-8859-7,..) - base type: normalizedString, (XPath TEXInvoice/TIheader/refDoc/attachment/binaryObject/@characterSet) [Optional] (XPath TEXInvoice/TIbody/TIitem/refDoc/attachment/binaryObject/@characterSet) [Optional]
characterSetCode	the character set of an external document (examples UTF-8, UTF-16, Windows-1252, ISO-8859-7,..) - base type: normalizedString, (XPath TEXInvoice/TIheader/refDoc/attachment/externalReference/characterSetCode) 0-1 (XPath TEXInvoice/TIbody/TIitem/refDoc/attachment/externalReference/characterSetCode) 0-1
cin	CIN code - base type: string, length: 5, (XPath TEXInvoice/TIheader/finInfo/bankIT/cin) 0-1
city	name of the city (town, village) - base type: string, max length: 40, (XPath TEXInvoice/TIheader/terms/transInfo/despatchLocation/city) 0-1 (XPath TEXInvoice/TIheader/supplier/city) 0-1 (XPath TEXInvoice/TIheader/terms/trade/tradeLocation/city) 0-1 (XPath TEXInvoice/TIheader/finInfo/bank/city) 0-1 (XPath TEXInvoice/TIheader/thirdParty/city) 0-1 (XPath TEXInvoice/TIheader/terms/transInfo/deliveryLocation/city) 0-1 (XPath TEXInvoice/TIheader/buyer/city) 0-1
@codeList	it specifies the URL where the list of codes used to make an instance of the element can be found - base type: string, max length: 255, (XPath TEXInvoice/TIbody/TIitem/prodServItem/note/@codeList) [Optional] - nota: <i>must be used to provide (URL) the list of codes used in "noteLabel"</i> (XPath TEXInvoice/TItotals/VATinfo/dtScheme/note/@codeList) [Optional] - nota: <i>must be used to provide (URL) the list of codes used in "noteLabel"</i> (XPath TEXInvoice/TIheader/terms/allowanceCharge/dtScheme/legalRef/@codeList) [Optional] (XPath TEXInvoice/TIbody/TIitem/dtScheme/note/@codeList) [Optional] - nota: <i>must be used to provide (URL) the list of codes used in "noteLabel"</i> (XPath TEXInvoice/TItotals/anticipDeduct/dtScheme/legalRef/@codeList) [Optional] (XPath TEXInvoice/TIbody/TIitem/dtScheme/legalRef/@codeList) [Optional] (XPath TEXInvoice/TItotals/VATinfo/dtScheme/legalRef/@codeList) [Optional] (XPath TEXInvoice/TIbody/TIitem/note/@codeList) [Optional] - nota: <i>must be used to provide (URL) the list of codes used in "noteLabel"</i> (XPath TEXInvoice/TIbody/TIitem/textItem/invCode/color/@codeList) [Optional] - nota: <i>this attribute should be used either single or coupled with "listName" and "listVersion"</i> (XPath TEXInvoice/TIbody/TIitem/textItem/invCode/art/@codeList) [Optional]

	<p>- nota: <i>at least one out of this attribute and "numberingOrg" should be set</i> (XPath <code>TEXInvoice/TLheader/note/@codeList</code>) [Optional]</p> <p>- nota: <i>must be used to provide (URL) the list of codes used in "noteLabel"</i> (XPath <code>TEXInvoice/Tlbody/Tlitem/refDoc/season/@codeList</code>) [Optional]</p> <p>- nota: <i>this attribute should be used either single or coupled with "listName" and "listVersion"</i> (XPath <code>TEXInvoice/TLheader/terms/allowanceCharge/dtScheme/note/@codeList</code>) [Optional]</p> <p>- nota: <i>must be used to provide (URL) the list of codes used in "noteLabel"</i> (XPath <code>TEXInvoice/TLheader/refDoc/season/@codeList</code>) [Optional]</p> <p>- nota: <i>this attribute should be used either single or coupled with "listName" and "listVersion"</i> (XPath <code>TEXInvoice/TLheader/finInfo/note/@codeList</code>) [Optional]</p> <p>- nota: <i>must be used to provide (URL) the list of codes used in "noteLabel"</i> (XPath <code>TEXInvoice/Tltotals/anticipDeduct/dtScheme/note/@codeList</code>) [Optional]</p> <p>- nota: <i>must be used to provide (URL) the list of codes used in "noteLabel"</i></p>
color	<p>colour number of the product, when not included in the model or fabric code</p> <p>- base type: string, max length: 15, (XPath <code>TEXInvoice/Tlbody/Tlitem/textItem/invCode/color</code>) 0-1</p>
comDiscount	<p>percent discount applied to the related unit price or amount</p> <p>- base type: decimal, min inclusive: 0, max inclusive: 100, fraction digits: 2, (XPath <code>TEXInvoice/Tltotals/comDiscount</code>) 0-1</p>
country	<p>code of the nation</p> <p>- base type: string, cod. table: T10 <a href="http://www.ebiz.enea.it/moda-ml/repository/codelist/draft/gc_T10.xml">http://www.ebiz.enea.it/moda-ml/repository/codelist/draft/gc_T10.xml</a> (XPath <code>TEXInvoice/TLheader/supplier/country</code>) 0-1 (XPath <code>TEXInvoice/TLheader/terms/trade/tradeLocation/country</code>) 0-1 (XPath <code>TEXInvoice/TLheader/terms/transInfo/deliveryLocation/country</code>) 0-1 (XPath <code>TEXInvoice/TLheader/terms/transInfo/despatchLocation/country</code>) 0-1 (XPath <code>TEXInvoice/TLheader/buyer/country</code>) 0-1 (XPath <code>TEXInvoice/TLheader/thirdParty/country</code>) 0-1 (XPath <code>TEXInvoice/TLheader/finInfo/bank/country</code>) 0-1</p>
@currency	<p>currency in which a specified monetary data is expressed</p> <p>- base type: string, cod. table: T9 <a href="http://www.ebiz.enea.it/moda-ml/repository/codelist/draft/gc_T9.xml">http://www.ebiz.enea.it/moda-ml/repository/codelist/draft/gc_T9.xml</a> (XPath <code>TEXInvoice/Tltotals/VATinfo/VATamount/@currency</code>) [Optional] (XPath <code>TEXInvoice/Tltotals/goodsAmountDisc/@currency</code>) [Optional] (XPath <code>TEXInvoice/Tlbody/Tlitem/price/@currency</code>) [Optional]</p> <p>- nota: <i>Currency referred by the price.</i> (XPath <code>TEXInvoice/Tltotals/VATinfo/taxAmount/@currency</code>) [Optional] (XPath <code>TEXInvoice/TLheader/terms/allowanceCharge/@currency</code>) [Optional] (XPath <code>TEXInvoice/TLheader/terms/allowanceCharge/AC_amount/@currency</code>) [Optional] (XPath <code>TEXInvoice/Tltotals/msgVATamount/@currency</code>) [Optional] (XPath <code>TEXInvoice/Tltotals/anticipDeduct/VATamount/@currency</code>) [Optional] (XPath <code>TEXInvoice/Tltotals/anticipDeduct/taxAmount/@currency</code>) [Optional] (XPath <code>TEXInvoice/Tlbody/Tlitem/amount/@currency</code>) [Optional] (XPath <code>TEXInvoice/Tltotals/goodsAmount/@currency</code>) [Optional] (XPath <code>TEXInvoice/Tltotals/msgAmount/@currency</code>) [Optional]</p>
@currencyUseQualifier	<p>qualification of another currency used in the document</p> <p>- base type: string, cod. table: NT19 <a href="http://www.ebiz.enea.it/moda-ml/repository/codelist/draft/gc_NT19.xml">http://www.ebiz.enea.it/moda-ml/repository/codelist/draft/gc_NT19.xml</a> (XPath <code>TEXInvoice/TLheader/otherCurrency/@currencyUseQualifier</code>) [Required]</p>
customsAuth	<p>number of the customs authorisation for import/export of a specified product (MRN)</p> <p>- base type: string, max length: 80, (XPath <code>TEXInvoice/Tlbody/Tlitem/textItem/customsAuth</code>) 0-1</p>
customsStat	<p>statistic code assigned by Customs to a specified product (TARIC code)</p> <p>- base type: string, max length: 15, (XPath <code>TEXInvoice/Tlbody/Tlitem/textItem/customsStat</code>) 0-1</p>
@dateForm	<p>format used for the date</p> <p>- base type: string, cod. table: NT29 <a href="http://www.ebiz.enea.it/moda-ml/repository/codelist/draft/gc_NT29.xml">http://www.ebiz.enea.it/moda-ml/repository/codelist/draft/gc_NT29.xml</a> (XPath <code>TEXInvoice/TLheader/terms/transInfo/despatchDate/@dateForm</code>) [Optional] (XPath <code>TEXInvoice/TLheader/msgDate/@dateForm</code>) [Optional]</p>

	(XPath TEXInvoice/TIheader/taxDate/@dateForm) [Optional] (XPath TEXInvoice/TIbody/TIitem/refDoc/docDate/@dateForm) [Optional] (XPath TEXInvoice/TIheader/refDoc/docDate/@dateForm) [Optional] (XPath TEXInvoice/TIheader/terms/transInfo/delEffectiveDate/@dateForm) [Optional]
delEffectiveDate	actual delivery date (estimated or occurred in case of receipt docs), it might be different from what agreed between the parties. Format according to one of the patterns indicated by the dateForm attribute: YYYY-MM-DD, YYYY-MM-DD:HH-MM or YYYY-WW. - base type: string, (XPath TEXInvoice/TIheader/terms/transInfo/delEffectiveDate) 0-1
deliveryPlace	place of delivery of goods, ultimate or related to a given leg - base type: string, max length: 250, (XPath TEXInvoice/TIheader/terms/transInfo/deliveryPlace) 0-1 - note: use to represent addresses with a unique text string
dept	name or code of a department - base type: string, max length: 40, (XPath TEXInvoice/TIheader/terms/trade/tradeLocation/dept) 0-1 (XPath TEXInvoice/TIheader/terms/transInfo/deliveryLocation/dept) 0-1 (XPath TEXInvoice/TIheader/supplier/dept) 0-1 (XPath TEXInvoice/TIheader/terms/transInfo/despatchLocation/dept) 0-1 (XPath TEXInvoice/TIheader/finInfo/bank/dept) 0-1 (XPath TEXInvoice/TIheader/buyer/dept) 0-1 (XPath TEXInvoice/TIheader/thirdParty/dept) 0-1
description	free text description. The content of the element must be unique, it might be translated and repeated into more languages (thus no more than one instance for each language). - base type: string, max length: 250, (XPath TEXInvoice/TIbody/TIitem/textItem/invCode/description) 0-unbounded - note: Product description
despatchDate	date of despatch of goods, requested or promised in the purchase process, according to one of the patterns YYYY-MM-DD, YYYY-MM-DD:HH-MM or YYYY-WW. - base type: string, (XPath TEXInvoice/TIheader/terms/transInfo/despatchDate) 0-1
despatchPlace	place of despatch of goods, origin or related to a given leg - base type: string, max length: 250, (XPath TEXInvoice/TIheader/terms/transInfo/despatchPlace) 0-1 - note: use to represent addresses with a unique text string
docDate	date of issue of the referenced document, according to one of the patterns YYYY-MM-DD, YYYY-MM-DD:HH-MM or YYYY-WW. - base type: string, (XPath TEXInvoice/TIbody/TIitem/refDoc/docDate) 0-1 (XPath TEXInvoice/TIheader/refDoc/docDate) 0-1
docID	identification number of the referenced document - base type: string, max length: 80, (XPath TEXInvoice/TIbody/TIitem/refDoc/docID) 1-2 Best Practice (XPath TEXInvoice/TIheader/docID) 0-1 - note: Its use in HEADER elements is discouraged (use msgID) (XPath TEXInvoice/TIheader/refDoc/docID) 1-2 Best Practice
@docType	type or class to which the referenced document belongs - base type: string, cod. table: T21 <a href="http://www.ebiz.enea.it/moda-ml/repository/codelist/draft/gc_T21.xml">http://www.ebiz.enea.it/moda-ml/repository/codelist/draft/gc_T21.xml</a> (XPath TEXInvoice/TIbody/TIitem/refDoc/@docType) [Required] (XPath TEXInvoice/TIheader/refDoc/@docType) [Required]
@email	electronic mail address of the contact person within a Party - base type: string, max length: 250, (XPath TEXInvoice/TIheader/terms/transInfo/despatchLocation/person/@email) [Optional] (XPath TEXInvoice/TIheader/buyer/person/@email) [Optional] (XPath TEXInvoice/TIheader/finInfo/bank/person/@email) [Optional] (XPath TEXInvoice/TIheader/supplier/person/@email) [Optional]



	(XPath <code>TEXInvoice/THheader/terms/trade/tradeLocation/person/@email</code> ) [Optional] (XPath <code>TEXInvoice/THheader/thirdParty/person/@email</code> ) [Optional] (XPath <code>TEXInvoice/THheader/terms/transInfo/deliveryLocation/person/@email</code> ) [Optional]
@encoding	specifies the decoding algorithm of the binary object - base type: normalizedString, (XPath <code>TEXInvoice/Tlbody/Tlitem/refDoc/attachment/binaryObject/@encoding</code> ) [Optional] (XPath <code>TEXInvoice/THheader/refDoc/attachment/binaryObject/@encoding</code> ) [Optional]
encodingCode	the encoding/decoding algorithm used with the external object (example is 'base64Binary') - base type: normalizedString, (XPath <code>TEXInvoice/Tlbody/Tlitem/refDoc/attachment/externalReference/encodingCode</code> ) 0-1 (XPath <code>TEXInvoice/THheader/refDoc/attachment/externalReference/encodingCode</code> ) 0-1
@exchangeRate	Currency exchange rate - base type: decimal, min inclusive: 0, (XPath <code>TEXInvoice/THheader/otherCurrency/@exchangeRate</code> ) [Optional] - nota: <i>Set the exchange rate of this currency to be applied on the message currency (msgCurrency) to obtain the final value in this currency.</i>
@fax	fax number of the contact person within a Party - base type: string, max length: 35, (XPath <code>TEXInvoice/THheader/terms/trade/tradeLocation/person/@fax</code> ) [Optional] (XPath <code>TEXInvoice/THheader/terms/transInfo/despatchLocation/person/@fax</code> ) [Optional] (XPath <code>TEXInvoice/THheader/buyer/person/@fax</code> ) [Optional] (XPath <code>TEXInvoice/THheader/finInfo/bank/person/@fax</code> ) [Optional] (XPath <code>TEXInvoice/THheader/terms/transInfo/deliveryLocation/person/@fax</code> ) [Optional] (XPath <code>TEXInvoice/THheader/thirdParty/person/@fax</code> ) [Optional] (XPath <code>TEXInvoice/THheader/supplier/person/@fax</code> ) [Optional]
@fibre	type of fibre used in a textile product - base type: string, cod. table: T19 <a href="http://www.ebiz.enea.it/moda-ml/repository/codelist/draft/gc_T19.xml">http://www.ebiz.enea.it/moda-ml/repository/codelist/draft/gc_T19.xml</a> (XPath <code>TEXInvoice/Tlbody/Tlitem/textItem/fabricCompos/percCompos/@fibre</code> ) [Required]
fileName	unique identifier (name) of the file - base type: string, max length: 255, (XPath <code>TEXInvoice/Tlbody/Tlitem/refDoc/attachment/fileName</code> ) 0-1 (XPath <code>TEXInvoice/THheader/refDoc/attachment/fileName</code> ) 0-1
@finDiscount	financial discount rate applied for payment by the date specified - base type: decimal, min inclusive: 0, max inclusive: 100, fraction digits: 2, (XPath <code>TEXInvoice/THheader/terms/payment/@finDiscount</code> ) [Optional]
@finSurcharge	financial surcharge rate applied for payment after the date specified - base type: decimal, min inclusive: 0, max inclusive: 100, fraction digits: 2, (XPath <code>TEXInvoice/THheader/terms/payment/@finSurcharge</code> ) [Optional]
@format	the format of the binary content (examples xml, pdf, doc,...) - base type: string, (XPath <code>TEXInvoice/THheader/refDoc/attachment/binaryObject/@format</code> ) [Optional] (XPath <code>TEXInvoice/Tlbody/Tlitem/refDoc/attachment/binaryObject/@format</code> ) [Optional]
formatCode	the format of the external object (examples xml, pdf, doc,...) - base type: normalizedString, (XPath <code>TEXInvoice/THheader/refDoc/attachment/externalReference/formatCode</code> ) 0-1 (XPath <code>TEXInvoice/Tlbody/Tlitem/refDoc/attachment/externalReference/formatCode</code> ) 0-1

@geoRefSystem	georeference system adopted for the coordinate (in example wgs84 with decimal degree 0 degree with minute and seconds) - base type: string, (XPath <a href="#">TEXInvoice/TIheader/terms/transInfo/despatchLocation/geoCoordinates/@geoRefSystem</a> ) [Optional] (XPath <a href="#">TEXInvoice/TIheader/terms/trade/tradeLocation/geoCoordinates/@geoRefSystem</a> ) [Optional] (XPath <a href="#">TEXInvoice/TIheader/thirdParty/geoCoordinates/@geoRefSystem</a> ) [Optional] (XPath <a href="#">TEXInvoice/TIheader/terms/transInfo/deliveryLocation/geoCoordinates/@geoRefSystem</a> ) [Optional] (XPath <a href="#">TEXInvoice/TIheader/buyer/geoCoordinates/@geoRefSystem</a> ) [Optional] (XPath <a href="#">TEXInvoice/TIheader/supplier/geoCoordinates/@geoRefSystem</a> ) [Optional] (XPath <a href="#">TEXInvoice/TIheader/finInfo/bank/geoCoordinates/@geoRefSystem</a> ) [Optional]
goodsAmount	total monetary value of the goods and services considered in the message - base type: decimal, min inclusive: 0, fraction digits: 2, (XPath <a href="#">TEXInvoice/TItotals/goodsAmount</a> ) 1-1
goodsAmountDisc	total monetary value of the goods and services considered in the message, after the discount has been applied - base type: decimal, min inclusive: 0, fraction digits: 2, (XPath <a href="#">TEXInvoice/TItotals/goodsAmountDisc</a> ) 0-1
grossQty	gross quantity of the article or object specified in the message line - base type: decimal, min inclusive: 0, fraction digits: 2, (XPath <a href="#">TEXInvoice/TIbody/TIitem/textItem/grossQty</a> ) 0-1
grossWeight	the gross weight, declared for transport or customs purpose - base type: decimal, min inclusive: 0, fraction digits: 2, (XPath <a href="#">TEXInvoice/TIheader/terms/transInfo/grossWeight</a> ) 0-1 (XPath <a href="#">TEXInvoice/TIbody/TIitem/textItem/grossWeight</a> ) 0-1
hashFootprint	footprint obtained by applying an hashing algorithm - base type: string, max length: 80, (XPath <a href="#">TEXInvoice/TIheader/refDoc/attachment/hashFootprint</a> ) 0-1 (XPath <a href="#">TEXInvoice/TIbody/TIitem/refDoc/attachment/hashFootprint</a> ) 0-1
@hashMethod	type of used hashing algorithm - base type: string, max length: 80, cod. table: NT333 <a href="http://www.ebiz.enea.it/moda-ml/repository/codelist/draft/gc_NT333.xml">http://www.ebiz.enea.it/moda-ml/repository/codelist/draft/gc_NT333.xml</a> (XPath <a href="#">TEXInvoice/TIbody/TIitem/refDoc/attachment/hashFootprint/@hashMethod</a> ) [Required] (XPath <a href="#">TEXInvoice/TIheader/refDoc/attachment/hashFootprint/@hashMethod</a> ) [Required]
iban	international bank and account identifier, used for fund transfer - base type: string, max length: 35, (XPath <a href="#">TEXInvoice/TIheader/finInfo/iban</a> ) 1-1
id	primary identification code of a Party; it is recommended to use an EORI number (with @numberingOrg= "EO") or the format: nation code (ISO 3166) + national tax code (i.e. VAT identification number ) with @numberingOrg= "MF" - base type: string, max length: 15, (XPath <a href="#">TEXInvoice/TIheader/supplier/id</a> ) 1-1 (XPath <a href="#">TEXInvoice/TIheader/thirdParty/id</a> ) 1-1 (XPath <a href="#">TEXInvoice/TIheader/buyer/id</a> ) 1-1
@idQualifier	Qualification of the identifier. - base type: string, (XPath <a href="#">TEXInvoice/TIheader/supplier/additionalIdentifier/@idQualifier</a> ) [Optional] - nota: <i>this attribute should be used when the numberingOrg attribute is not enough to declare the type of identifier</i> (XPath <a href="#">TEXInvoice/TIheader/buyer/additionalIdentifier/@idQualifier</a> ) [Optional] - nota: <i>this attribute should be used when the numberingOrg attribute is not enough to declare the type of identifier</i>
incoTerm	specification of the terms of trade (INCOTERMS) - base type: string, cod. table: T3 <a href="http://www.ebiz.enea.it/moda-ml/repository/codelist/draft/gc_T3.xml">http://www.ebiz.enea.it/moda-ml/repository/codelist/draft/gc_T3.xml</a> (XPath <a href="#">TEXInvoice/TIheader/terms/trade/incoTerm</a> ) 1-1

incoTermText	free text specifying the terms of trade (incoterm, location) - base type: string, max length: 250, (XPath <code>TEXInvoice/THheader/terms/trade/incoTermText</code> ) 1-1
@invoiceType	type of Invoice - base type: string, cod. table: T18 <a href="http://www.ebiz.enea.it/moda-ml/repository/codelist/draft/gc_T18.xml">http://www.ebiz.enea.it/moda-ml/repository/codelist/draft/gc_T18.xml</a> (XPath <code>TEXInvoice/@invoiceType</code> ) [Optional] [Default= STD]
@isCharge	Indicates if the element to which it refers is a charge (true = charge, false = allowance) - base type: boolean, (XPath <code>TEXInvoice/THheader/terms/allowanceCharge/@isCharge</code> ) [Optional]
@isURL	it indicates if the referred element is an URL (true) or not (false) - base type: boolean, (XPath <code>TEXInvoice/TIbody/TIitem/refDoc/attachment/externalReference/uri/@isURL</code> ) [Optional] [Default= true] - nota: <i>usage of URLs is recommended</i> (XPath <code>TEXInvoice/TIbody/TIitem/refDoc/attachment/blockChainReference/uri/@isURL</code> ) [Optional] [Default= true] - nota: <i>usage of URLs is recommended</i> (XPath <code>TEXInvoice/THheader/refDoc/attachment/externalReference/uri/@isURL</code> ) [Optional] [Default= true] - nota: <i>usage of URLs is recommended</i> (XPath <code>TEXInvoice/THheader/refDoc/attachment/blockChainReference/uri/@isURL</code> ) [Optional] [Default= true] - nota: <i>usage of URLs is recommended</i>
itemID	number of the line/item of the referenced document - base type: string, max length: 40, (XPath <code>TEXInvoice/THheader/refDoc/itemID</code> ) 0-1 (XPath <code>TEXInvoice/TIbody/TIitem/refDoc/itemID</code> ) 0-1
legalName	legal name - base type: string, max length: 250, (XPath <code>TEXInvoice/THheader/finInfo/bankIT/legalName</code> ) 0-1 (XPath <code>TEXInvoice/THheader/terms/transInfo/despatchLocation/legalName</code> ) 0-1 (XPath <code>TEXInvoice/THheader/buyer/legalName</code> ) 0-1 (XPath <code>TEXInvoice/THheader/supplier/legalName</code> ) 0-1 (XPath <code>TEXInvoice/THheader/finInfo/bank/legalName</code> ) 0-1 (XPath <code>TEXInvoice/THheader/terms/transInfo/deliveryLocation/legalName</code> ) 0-1 (XPath <code>TEXInvoice/THheader/thirdParty/legalName</code> ) 0-1 (XPath <code>TEXInvoice/THheader/terms/trade/tradeLocation/legalName</code> ) 0-1
legalRef	legal reference of the duty or tax or fee category - base type: string, (XPath <code>TEXInvoice/THheader/terms/allowanceCharge/dtScheme/legalRef</code> ) 0-1 (XPath <code>TEXInvoice/TItotals/anticipDeduct/dtScheme/legalRef</code> ) 0-1 (XPath <code>TEXInvoice/TItotals/VATInfo/dtScheme/legalRef</code> ) 0-1 (XPath <code>TEXInvoice/TIbody/TIitem/dtScheme/legalRef</code> ) 0-1
lineN	number of the line item of the present message (xml document); it is set by the role that produces the document. Usually it is a progressive number, but not always. - base type: positiveInteger, min inclusive: 1, max inclusive: 9999, (XPath <code>TEXInvoice/TIbody/TIitem/lineN</code> ) 1-1
@listName	the name of the list of codes used to make an instance of the element (it might be thought as descriptive element, i.e. 'fabric printing technologies', or not, i.e. "T264") - base type: string, max length: 40, (XPath <code>TEXInvoice/TIbody/TIitem/refDoc/season/@listName</code> ) [Optional] - nota: <i>this attribute should always be used coupled with "numberingOrg"</i> (XPath <code>TEXInvoice/TIbody/TIitem/dtScheme/legalRef/@listName</code> ) [Optional] - nota: <i>this attribute should always be used coupled with "numberingOrg"</i> (XPath <code>TEXInvoice/TIbody/TIitem/textItem/invCode/color/@listName</code> ) [Optional] - nota: <i>this attribute should always be used coupled with "numberingOrg"</i> (XPath <code>TEXInvoice/TIbody/TIitem/textItem/invCode/art/@listName</code> ) [Optional] - nota: <i>this attribute should always be used coupled with "numberingOrg"</i> (XPath <code>TEXInvoice/THheader/refDoc/season/@listName</code> ) [Optional] - nota: <i>this attribute should always be used coupled with "numberingOrg"</i>

	<p>(XPath <code>TEXInvoice/Tltotals/anticipDeduct/dtScheme/legalRef/@listName</code>) [Optional]</p> <p>- nota: <i>this attribute should always be used coupled with "numberingOrg"</i></p> <p>(XPath <code>TEXInvoice/Tlheader/terms/allowanceCharge/dtScheme/legalRef/@listName</code>) [Optional]</p> <p>- nota: <i>this attribute should always be used coupled with "numberingOrg"</i></p> <p>(XPath <code>TEXInvoice/Tltotals/VATinfo/dtScheme/legalRef/@listName</code>) [Optional]</p> <p>- nota: <i>this attribute should always be used coupled with "numberingOrg"</i></p>
@listVersion	<p>it specifies the version of the list of codes used to make an instance of the element</p> <p>- base type: string, max length: 6,</p> <p>(XPath <code>TEXInvoice/Tlbody/Tlitem/dtScheme/legalRef/@listVersion</code>) [Optional]</p> <p>- nota: <i>this attribute should always be used coupled with "numberingOrg" and "listName"</i></p> <p>(XPath <code>TEXInvoice/Tlheader/terms/allowanceCharge/dtScheme/legalRef/@listVersion</code>) [Optional]</p> <p>- nota: <i>this attribute should always be used coupled with "numberingOrg" and "listName"</i></p> <p>(XPath <code>TEXInvoice/Tlbody/Tlitem/refDoc/season/@listVersion</code>) [Optional]</p> <p>- nota: <i>this attribute should always be used coupled with "numberingOrg" and "listName"</i></p> <p>(XPath <code>TEXInvoice/Tlbody/Tlitem/textitem/invCode/color/@listVersion</code>) [Optional]</p> <p>- nota: <i>this attribute should always be used coupled with "numberingOrg" and "listName"</i></p> <p>(XPath <code>TEXInvoice/Tlheader/refDoc/season/@listVersion</code>) [Optional]</p> <p>- nota: <i>this attribute should always be used coupled with "numberingOrg" and "listName"</i></p> <p>(XPath <code>TEXInvoice/Tltotals/anticipDeduct/dtScheme/legalRef/@listVersion</code>) [Optional]</p> <p>- nota: <i>this attribute should always be used coupled with "numberingOrg" and "listName"</i></p> <p>(XPath <code>TEXInvoice/Tlbody/Tlitem/textitem/invCode/art/@listVersion</code>) [Optional]</p> <p>- nota: <i>this attribute should always be used coupled with "numberingOrg" and "listName"</i></p> <p>(XPath <code>TEXInvoice/Tltotals/VATinfo/dtScheme/legalRef/@listVersion</code>) [Optional]</p> <p>- nota: <i>this attribute should always be used coupled with "numberingOrg" and "listName"</i></p>
@ln	<p>Language code.</p> <p>- base type: string, cod. table: NT60</p> <p><a href="http://www.ebiz.enea.it/moda-ml/repository/codelist/draft/gc_NT60.xml">http://www.ebiz.enea.it/moda-ml/repository/codelist/draft/gc_NT60.xml</a></p> <p>(XPath <code>TEXInvoice/Tlbody/Tlitem/textitem/invCode/description/@ln</code>) [Optional]</p>
location	<p>specification of a location. It can be represented by an identification code (preferable) or a short text (not recommended). For example a GLN code that requires to assign the value "GLN" to the attribute @LRI.</p> <p>- base type: string, max length: 128,</p> <p>(XPath <code>TEXInvoice/Tlheader/terms/trade/tradeLocation/location</code>) 0-1</p> <p>- note: <i>Use this element to specify a numeric ID of the location, for example a GLN code (in this case @SchemeID='LRI='GLN')</i></p> <p>(XPath <code>TEXInvoice/Tlheader/terms/transInfo/deliveryLocation/location</code>) 0-1</p> <p>- note: <i>Use this element only to indicate an identification code of this place.</i></p> <p>(XPath <code>TEXInvoice/Tlheader/terms/transInfo/despatchLocation/location</code>) 0-1</p> <p>- note: <i>Use this element to specify a numeric ID of the location, for example a GLN code (in this case @SchemeID='GS1 GLN')</i></p> <p>(XPath <code>TEXInvoice/Tlheader/terms/trade/location</code>) 0-1</p> <p>- note: <i>code number of the place to which the INCOTERM applies</i></p>
@logo	<p>company logo (URL of the image jpeg or gif). It is recommended that the width of the image does not exceed 640 pixel.</p> <p>- base type: string, max length: 255,</p> <p>(XPath <code>TEXInvoice/Tlheader/buyer/@logo</code>) [Optional]</p> <p>(XPath <code>TEXInvoice/Tlheader/supplier/@logo</code>) [Optional]</p>
@LRI	<p>issuer of the identifier (or identification system) of a location.</p> <p>- base type: string, cod. table: NT3</p> <p><a href="http://www.ebiz.enea.it/moda-ml/repository/codelist/draft/gc_NT3.xml">http://www.ebiz.enea.it/moda-ml/repository/codelist/draft/gc_NT3.xml</a></p> <p>(XPath <code>TEXInvoice/Tlheader/terms/trade/tradeLocation/</code></p>

	<p>location/@LRI) [Optional]  (XPath TEXInvoice/TIheader/terms/trade/location/@LRI) [Optional]  (XPath  TEXInvoice/TIheader/terms/transInfo/despatchLocation/location/@LRI) [Optional]  (XPath  TEXInvoice/TIheader/terms/transInfo/deliveryLocation/location/@LRI) [Optional]</p>
made	<p>specifies the country where the product has been manufactured  - base type: string, cod. table: T10  <a href="http://www.ebiz.enea.it/moda-ml/repository/codelist/draft/gc_T10.xml">http://www.ebiz.enea.it/moda-ml/repository/codelist/draft/gc_T10.xml</a>  (XPath TEXInvoice/TIbody/TIitem/textitem/made) 0-1</p>
@materialSource	<p>Indicates whether the material is virgin or comes from recycling or reuse processes  - base type: string, cod. table: T306  <a href="http://www.ebiz.enea.it/moda-ml/repository/codelist/draft/gc_T306.xml">http://www.ebiz.enea.it/moda-ml/repository/codelist/draft/gc_T306.xml</a>  (XPath TEXInvoice/TIbody/TIitem/textitem/fabricCompos/  percCompos/@materialSource) [Optional]</p>
@maxQty	<p>maximum product quantity  - base type: decimal, min inclusive: 0, fraction digits: 2,  (XPath TEXInvoice/TIheader/terms/allowanceCharge/@maxQty) [Optional]  - nota: <i>maximum quantity of product for the application of this allowance or charge</i></p>
@mime	<p>the mime type of the binary object  - base type: normalizedString,  (XPath TEXInvoice/TIbody/TIitem/refDoc/attachment/  binaryObject/@mime) [Optional]  (XPath TEXInvoice/TIheader/refDoc/attachment/binaryObject/@mime) [Optional]</p>
mimeCode	<p>mime type of the external object  - base type: normalizedString,  (XPath TEXInvoice/TIbody/TIitem/refDoc/attachment/  externalReference/mimeCode) 0-1 Best Practice  (XPath  <b>TEXInvoice/TIheader/refDoc/attachment/externalReference/mimeCode) 0-1</b>  <b>1 Best Practice</b></p>
@minQty	<p>minimum product quantity  - base type: decimal, min inclusive: 0, fraction digits: 2,  (XPath TEXInvoice/TIheader/terms/allowanceCharge/@minQty) [Optional]  - nota: <i>minimum quantity of product for the application of this allowance or charge</i></p>
msgAmount	<p>total monetary amount of the message  - base type: decimal, min inclusive: 0, fraction digits: 2,  (XPath TEXInvoice/TItotals/msgAmount) 1-1</p>
msgCurrency	<p>currency used to express the monetary amounts of the message  - base type: string, cod. table: T9  <a href="http://www.ebiz.enea.it/moda-ml/repository/codelist/draft/gc_T9.xml">http://www.ebiz.enea.it/moda-ml/repository/codelist/draft/gc_T9.xml</a>  (XPath TEXInvoice/TIheader/msgCurrency) 0-1</p>
msgDate	<p>date of issue of the present message (xml document), according to one of the patterns  YYYY-MM-DD, YYYY-MM-DD:HH-MM or YYYY-WW.  - base type: string,  (XPath TEXInvoice/TIheader/msgDate) 1-1</p>
@msgfunction	<p>function performed by the present message with regards to the transmission  - base type: string, cod. table: NT18  <a href="http://www.ebiz.enea.it/moda-ml/repository/codelist/draft/gc_NT18.xml">http://www.ebiz.enea.it/moda-ml/repository/codelist/draft/gc_NT18.xml</a>  (XPath TEXInvoice/@msgfunction) [Optional] [Default= OR]</p>
msgID	<p>key identifier of the business document in the information system of the issuing Party. In case of more despatches of the same business document, it is unchanged.  - base type: string, max length: 35,  (XPath TEXInvoice/TIheader/msgID) 0-1</p>
msgN	<p>identification number given to the message (xml document) by its issuer. In case of more despatches of the same business document, it changes.  - base type: string, max length: 35,  (XPath TEXInvoice/TIheader/msgN) 1-1</p>

msgVATamount	total payable VAT of an invoice - base type: decimal, min inclusive: 0, fraction digits: 2, (XPath TEXInvoice/Tltotals/msgVATamount) 1-1
netWeight	the net weight declared for transport or customs purpose - base type: decimal, min inclusive: 0, fraction digits: 2, (XPath TEXInvoice/Tlheader/terms/transInfo/netWeight) 0-1
note	free text or structured (computer processing) note. For note structuring use the attributes "noteLabel" and "codelist" - base type: string, max length: 350, (XPath TEXInvoice/Tlbody/Tlitem/note) 0-99 (XPath TEXInvoice/Tlheader/finInfo/note) 0-99 (XPath TEXInvoice/Tlbody/Tlitem/prodServItem/note) 0-99 (XPath TEXInvoice/Tlbody/Tlitem/dtScheme/note) 0-99 (XPath TEXInvoice/Tlheader/note) 0-99 (XPath TEXInvoice/Tltotals/VATInfo/dtScheme/note) 0-99 (XPath TEXInvoice/Tltotals/anticipDeduct/dtScheme/note) 0-99 (XPath TEXInvoice/Tlheader/terms/allowanceCharge/dtScheme/note) 0-99
@noteLabel	subject qualifier of a note - base type: string, max length: 35, (XPath TEXInvoice/Tlheader/note/@noteLabel) [Optional] - nota: <i>must be used to qualify the subject of the note</i> (XPath TEXInvoice/Tlbody/Tlitem/prodServItem/note/@noteLabel) [Optional] - nota: <i>must be used to qualify the subject of the note</i> (XPath TEXInvoice/Tlheader/finInfo/note/@noteLabel) [Optional] - nota: <i>must be used to qualify the subject of the note</i> (XPath TEXInvoice/Tlbody/Tlitem/note/@noteLabel) [Optional] - nota: <i>must be used to qualify the subject of the note</i> (XPath TEXInvoice/Tlheader/terms/allowanceCharge/dtScheme/note/@noteLabel) [Optional] - nota: <i>must be used to qualify the subject of the note</i> (XPath TEXInvoice/Tltotals/VATInfo/dtScheme/note/@noteLabel) [Optional] - nota: <i>must be used to qualify the subject of the note</i> (XPath TEXInvoice/Tltotals/anticipDeduct/dtScheme/note/@noteLabel) [Optional] - nota: <i>must be used to qualify the subject of the note</i> (XPath TEXInvoice/Tlbody/Tlitem/dtScheme/note/@noteLabel) [Optional] - nota: <i>must be used to qualify the subject of the note</i>
@numberingOrg	code specifying the organisation who has created or owns the coding or numbering system - base type: string, cod. table: NT6 <a href="http://www.ebiz.enea.it/moda-ml/repository/codelist/draft/gc_NT6.xml">http://www.ebiz.enea.it/moda-ml/repository/codelist/draft/gc_NT6.xml</a> (XPath TEXInvoice/Tlbody/Tlitem/prodServItem/note/@numberingOrg) [Optional] - nota: <i>must be used to specify the organization that created the list of codes used in "noteLabel"</i> (XPath TEXInvoice/Tlheader/note/@numberingOrg) [Optional] - nota: <i>must be used to specify the organization that created the list of codes used in "noteLabel"</i> (XPath TEXInvoice/Tltotals/VATInfo/dtScheme/note/@numberingOrg) [Optional] - nota: <i>must be used to specify the organization that created the list of codes used in "noteLabel"</i> (XPath TEXInvoice/Tlheader/packageN/@numberingOrg) [Optional] (XPath TEXInvoice/Tltotals/anticipDeduct/dtScheme/note/@numberingOrg) [Optional] - nota: <i>must be used to specify the organization that created the list of codes used in "noteLabel"</i> (XPath TEXInvoice/Tlbody/Tlitem/refDoc/docID/@numberingOrg) [Optional] - nota: <i>here can be specified whose document numbering is used (e.g.: Client, Supplier, ..)</i> (XPath TEXInvoice/Tlheader/supplier/id/@numberingOrg) [Optional] (XPath TEXInvoice/Tlbody/Tlitem/refDoc/season/@numberingOrg) [Optional] - nota: <i>this attribute should be used either single or coupled with "listName" and "listVersion"</i> (XPath TEXInvoice/Tltotals/anticipDeduct/dtScheme/legalRef/@numberingOrg) [Optional] - nota: <i>this attribute should be used either single or coupled with "listName" and "listVersion"</i> (XPath TEXInvoice/Tlheader/thirdParty/id/@numberingOrg) [Optional] (XPath TEXInvoice/Tlbody/Tlitem/refDoc/attachment/fileName/@numberingOrg) [Optional] (XPath TEXInvoice/Tlbody/Tlitem/dtScheme/note/@numberingOrg) [Optional]



	<p>- nota: must be used to specify the organization that created the list of codes used in "noteLabel"</p> <p>(XPath TEXInvoice/TIheader/docID/@numberingOrg) [Optional]</p> <p>- nota: here can be specified whose document numbering is used (e.g.: Client, Supplier, ...)</p> <p>(XPath TEXInvoice/TIbody/TIitem/dtScheme/legalRef/@numberingOrg) [Optional]</p> <p>- nota: this attribute should be used either single or coupled with "listName" and "listVersion"</p> <p>(XPath TEXInvoice/TIheader/supplier/additionalIdentifier/@numberingOrg) [Optional]</p> <p>- nota: here the issuer of the identifier must be specified</p> <p>(XPath TEXInvoice/TItotals/VATInfo/dtScheme/legalRef/@numberingOrg) [Optional]</p> <p>- nota: this attribute should be used either single or coupled with "listName" and "listVersion"</p> <p>(XPath TEXInvoice/TIheader/buyer/id/@numberingOrg) [Optional]</p> <p>(XPath TEXInvoice/TIheader/buyer/additionalIdentifier/@numberingOrg) [Optional]</p> <p>- nota: here the issuer of the identifier must be specified</p> <p>(XPath TEXInvoice/TIheader/refDoc/attachment/fileName/@numberingOrg) [Optional]</p> <p>(XPath TEXInvoice/TIheader/terms/allowanceCharge/dtScheme/note/@numberingOrg) [Optional]</p> <p>- nota: must be used to specify the organization that created the list of codes used in "noteLabel"</p> <p>(XPath TEXInvoice/TIheader/terms/allowanceCharge/dtScheme/legalRef/@numberingOrg) [Optional]</p> <p>- nota: this attribute should be used either single or coupled with "listName" and "listVersion"</p> <p>(XPath TEXInvoice/TIbody/TIitem/textItem/invCode/added/@numberingOrg) [Optional]</p> <p>- nota: this attribute should be used either single or coupled with "listName" and "listVersion"</p> <p>(XPath TEXInvoice/TIbody/TIitem/note/@numberingOrg) [Optional]</p> <p>- nota: must be used to specify the organization that created the list of codes used in "noteLabel"</p> <p>(XPath TEXInvoice/TIbody/TIitem/textItem/invCode/@numberingOrg) [Required]</p> <p>(XPath TEXInvoice/TIheader/finInfo/note/@numberingOrg) [Optional]</p> <p>- nota: must be used to specify the organization that created the list of codes used in "noteLabel"</p> <p>(XPath TEXInvoice/TIheader/refDoc/docID/@numberingOrg) [Optional]</p> <p>- nota: here can be specified whose document numbering is used (e.g.: Client, Supplier, ...)</p> <p>(XPath TEXInvoice/TIbody/TIitem/textItem/invCode/color/@numberingOrg) [Optional]</p> <p>- nota: this attribute should be used either single or coupled with "listName" and "listVersion"</p> <p>(XPath TEXInvoice/TIheader/refDoc/season/@numberingOrg) [Optional]</p> <p>- nota: this attribute should be used either single or coupled with "listName" and "listVersion"</p> <p>(XPath TEXInvoice/TIbody/TIitem/textItem/invCode/art/@numberingOrg) [Optional]</p> <p>- nota: this attribute should be used either single or coupled with "listName" and "listVersion"</p>
otherConventionalQty	<p>conventional quantity calculated on the basis of a convention or agreement</p> <p>- base type: decimal, min inclusive: 0,</p> <p>(XPath TEXInvoice/TIbody/TIitem/otherConventionalQty) 0-9</p>
otherCurrency	<p>other currency used in the document</p> <p>- base type: string, cod. table: T9</p> <p><a href="http://www.ebiz.enea.it/moda-ml/repository/codelist/draft/gc_T9.xml">http://www.ebiz.enea.it/moda-ml/repository/codelist/draft/gc_T9.xml</a></p> <p>(XPath TEXInvoice/TIheader/otherCurrency) 0-9</p>
@packageContainerN	<p>reference usable to indicate the outer package containing this package</p> <p>- base type: string, max length: 40,</p> <p>(XPath TEXInvoice/TIheader/packageN/@packageContainerN) [Optional]</p>
packageN	<p>serial number used to identify a transport package</p> <p>- base type: string, max length: 40,</p> <p>(XPath TEXInvoice/TIheader/packageN) 0-unbounded</p> <p>- note: here the packages corresponding to the invoice can be identified</p>
packageQty	<p>quantity of the specified transport packages</p> <p>- base type: positiveInteger,</p> <p>(XPath TEXInvoice/TIheader/packageQty) 0-1</p>
@part	<p>percent fraction</p> <p>- base type: decimal, min inclusive: 1, max inclusive: 100, fraction digits: 2,</p>

	(XPath <code>TEXInvoice/TIheader/terms/insPayment/@part</code> ) [Required] - nota: <i>here the % value of each installment must be indicated</i>
payMode	way or means of payment - base type: string, cod. table: T2 <a href="http://www.ebiz.enea.it/moda-ml/repository/codelist/draft/gc_T2.xml">http://www.ebiz.enea.it/moda-ml/repository/codelist/draft/gc_T2.xml</a> (XPath <code>TEXInvoice/TIheader/terms/insPayment/payMode</code> ) 0-1 (XPath <code>TEXInvoice/TIheader/terms/payment/payMode</code> ) 0-1
payTerm	code specifying the terms or time by which the payment must be done - base type: string, cod. table: T1 <a href="http://www.ebiz.enea.it/moda-ml/repository/codelist/draft/gc_T1.xml">http://www.ebiz.enea.it/moda-ml/repository/codelist/draft/gc_T1.xml</a> (XPath <code>TEXInvoice/TIheader/terms/payment/payTerm</code> ) 1-1 (XPath <code>TEXInvoice/TIheader/terms/insPayment/payTerm</code> ) 1-1
payTermText	free text specifying the terms by which the payment must be done (time/mode or means) - base type: string, max length: 250, (XPath <code>TEXInvoice/TIheader/terms/payment/payTermText</code> ) 1-1 (XPath <code>TEXInvoice/TIheader/terms/insPayment/payTermText</code> ) 1-1
percCompos	fiber percentage in the product composition - base type: decimal, min inclusive: 0, max inclusive: 100, fraction digits: 2, (XPath <code>TEXInvoice/TIbody/TIitem/textItem/fabricCompos/percCompos</code> ) 1-9 - note: <i>fiber % in the product composition</i>
@percCond	percentage of conditioning to be applied to the payment of a yarn supply - base type: decimal, min inclusive: 0, max inclusive: 100, fraction digits: 2, (XPath <code>TEXInvoice/TIbody/TIitem/textItem/invCode/@percCond</code> ) [Optional]
@percSourcesRenewable	indicates the percentage of renewable sources - base type: decimal, (XPath <code>TEXInvoice/TIbody/TIitem/textItem/fabricCompos/percCompos/@percSourcesRenewable</code> ) [Optional] - nota: <i>use only for virgin material</i>
person	name of a person (e.g. contact person within an organization) - base type: string, max length: 40, (XPath <code>TEXInvoice/TIheader/buyer/person</code> ) 0-1 (XPath <code>TEXInvoice/TIheader/thirdParty/person</code> ) 0-1 (XPath <code>TEXInvoice/TIheader/terms/transInfo/deliveryLocation/person</code> ) 0-1 (XPath <code>TEXInvoice/TIheader/terms/trade/tradeLocation/person</code> ) 0-1 (XPath <code>TEXInvoice/TIheader/terms/transInfo/despatchLocation/person</code> ) 0-1 (XPath <code>TEXInvoice/TIheader/supplier/person</code> ) 0-1 (XPath <code>TEXInvoice/TIheader/finInfo/bank/person</code> ) 0-1
@phone	phone number of the contact person within a Party - base type: string, max length: 35, (XPath <code>TEXInvoice/TIheader/buyer/person/@phone</code> ) [Optional] (XPath <code>TEXInvoice/TIheader/thirdParty/person/@phone</code> ) [Optional] (XPath <code>TEXInvoice/TIheader/terms/transInfo/despatchLocation/person/@phone</code> ) [Optional] (XPath <code>TEXInvoice/TIheader/terms/trade/tradeLocation/person/@phone</code> ) [Optional] (XPath <code>TEXInvoice/TIheader/finInfo/bank/person/@phone</code> ) [Optional] (XPath <code>TEXInvoice/TIheader/terms/transInfo/deliveryLocation/person/@phone</code> ) [Optional] (XPath <code>TEXInvoice/TIheader/supplier/person/@phone</code> ) [Optional]
postCode	code defining the postal zone - base type: string, max length: 10, (XPath <code>TEXInvoice/TIheader/supplier/postCode</code> ) 0-1 (XPath <code>TEXInvoice/TIheader/terms/transInfo/deliveryLocation/postCode</code> ) 0-1 (XPath <code>TEXInvoice/TIheader/terms/trade/tradeLocation/postCode</code> ) 0-1 (XPath <code>TEXInvoice/TIheader/thirdParty/postCode</code> ) 0-1 (XPath <code>TEXInvoice/TIheader/finInfo/bank/postCode</code> ) 0-1 (XPath <code>TEXInvoice/TIheader/buyer/postCode</code> ) 0-1 (XPath



	TEXInvoice/TIheader/terms/transInfo/despatchLocation/postCode) 0-1
price	unit price of the article, object or service specified - base type: decimal, min inclusive: 0, fraction digits: 4, (XPath TEXInvoice/TIbody/TIitem/price) 0-2
@priceQualifier	type of price with reference to discount and taxes - base type: string, cod. table: NT20 <a href="http://www.ebiz.enea.it/moda-ml/repository/codelist/draft/gc_NT20.xml">http://www.ebiz.enea.it/moda-ml/repository/codelist/draft/gc_NT20.xml</a> (XPath TEXInvoice/TIbody/TIitem/price/@priceQualifier) [Optional] [Default= NET]
prodServ	Supplier's code which identifies an accessory product or a service - base type: string, max length: 35, (XPath TEXInvoice/TIbody/TIitem/prodServItem/prodServ) 0-1
prodServName	description of the product or service that either complements or substitutes its coding - base type: string, max length: 100, (XPath TEXInvoice/TIbody/TIitem/prodServItem/prodServName) 1-1
@progr	progressive number in the sequence - base type: positiveInteger, min inclusive: 1, (XPath TEXInvoice/TIheader/terms/transInfo/@progr) [Optional] - nota: <i>Indicates the position of the leg in a sequence of transport legs. If it is declared it must be in all the transInfo elements.</i>
@propulsionSystemCode	propulsion system type - base type: string, cod. table: NT324 <a href="http://www.ebiz.enea.it/moda-ml/repository/codelist/draft/gc_NT324.xml">http://www.ebiz.enea.it/moda-ml/repository/codelist/draft/gc_NT324.xml</a> (XPath TEXInvoice/TIheader/terms/transInfo/transMeans/@propulsionSystemCode) [Optional] - nota: <i>indicates the type of propulsion of the means of transport</i>
qty	net quantity of the article or object correlated, qualified by the function of the document (ordering, delivering, ..) and by the context - base type: decimal, min inclusive: 0, fraction digits: 2, (XPath TEXInvoice/TIbody/TIitem/qty) 0-2 Best Practice
@quantityConvention	convention or agreement on the basis of which the calculation of the conventional quantity (for example a weight) to which it refers is made (for example "IWTOconditioned FibreWeight") - base type: string, (XPath TEXInvoice/TIbody/TIitem/otherConventionalQty/@quantityConvention) [Required]
@recyclingProcessEfficiency	recycling process efficiency rate (percentage by weight). - base type: decimal, min inclusive: 0, max inclusive: 100, (XPath TEXInvoice/TIbody/TIitem/textItem/fabricCompos/percCompos/@recyclingProcessEfficiency) [Optional] - nota: <i>process efficiency declared by the fibre supplier</i>
@recyclingProcessMethod	recycling process method - base type: string, cod. table: T307 <a href="http://www.ebiz.enea.it/moda-ml/repository/codelist/draft/gc_T307.xml">http://www.ebiz.enea.it/moda-ml/repository/codelist/draft/gc_T307.xml</a> (XPath TEXInvoice/TIbody/TIitem/textItem/fabricCompos/percCompos/@recyclingProcessMethod) [Optional] - nota: <i>use only for non virgin material</i>
@role	Third Party role qualifier - base type: string, cod. table: NT2 <a href="http://www.ebiz.enea.it/moda-ml/repository/codelist/draft/gc_NT2.xml">http://www.ebiz.enea.it/moda-ml/repository/codelist/draft/gc_NT2.xml</a> (XPath TEXInvoice/TIheader/thirdParty/@role) [Required]
routeLength	length of a route - base type: decimal, min inclusive: 0, fraction digits: 2, (XPath TEXInvoice/TIheader/terms/transInfo/routeLength) 0-1
@sale	indicates whether the item is sold (sale = "1") or omaged (sale = "0") - base type: boolean, (XPath TEXInvoice/TIbody/TIitem/@sale) [Optional] [Default= 1] - nota: <i>the default value (1) indicates "sale"</i>
@schemeID	identifier of an identification scheme - base type: string, (XPath TEXInvoice/TIbody/TIitem/refDoc/attachment/hashFootprint/@schemeID) [Optional]

	<p>- nota: specify for which system this hash footprint might be used as identifier (for example HDFS system..)</p> <p>(XPath <code>TEXInvoice/TIbody/TIitem/textItem/customsStat/@schemeID</code>) [Optional] [Default= TARIC]</p> <p>- nota: By default the value is TARIC, other different coding schemes must be indicated</p> <p>(XPath <code>TEXInvoice/TIheader/refDoc/attachment/hashFootprint/@schemeID</code>) [Optional]</p> <p>- nota: specify for which system this hash footprint might be used as identifier (for example HDFS system..)</p>
season	<p>sale season; defined as: season (1 crt) + year (4 crt) - season: S/S=1 AW=2 Spring=3 Summer=4 Autumn=5 Winter=6: for more than four seasons use alphabetic sequence: 1st season=A 2nd season=B etc.etc.</p> <p>- base type: string, max length: 15,</p> <p>(XPath <code>TEXInvoice/TIbody/TIitem/refDoc/season</code>) 0-1</p> <p>- note: here indicates the season to which the referenced document belongs</p> <p>(XPath <code>TEXInvoice/TIheader/refDoc/season</code>) 0-1</p> <p>- note: here indicates the season to which the referenced document belongs</p>
@sender	<p>qualifier that specifies the Party issuing of the document</p> <p>- base type: boolean,</p> <p>(XPath <code>TEXInvoice/TIheader/supplier/@sender</code>) [Optional]</p> <p>- nota: This attribute is mandatory when the STYLESHEET must be used</p> <p>(XPath <code>TEXInvoice/TIheader/thirdParty/@sender</code>) [Optional]</p> <p>- nota: This attribute is mandatory when the STYLESHEET must be used</p> <p>(XPath <code>TEXInvoice/TIheader/buyer/@sender</code>) [Optional]</p> <p>- nota: This attribute is mandatory when the STYLESHEET must be used</p>
servMea	<p>mode used to measure the quantity of service provided (e.g.: weight, volume, time duration, ....)</p> <p>- base type: string, cod. table: T36</p> <p><a href="http://www.ebiz.enea.it/moda-ml/repository/codelist/draft/gc_T36.xml">http://www.ebiz.enea.it/moda-ml/repository/codelist/draft/gc_T36.xml</a></p> <p>(XPath <code>TEXInvoice/TIbody/TIitem/prodServItem/servMea</code>) 0-1</p>
street	<p>street and building number identifying a location</p> <p>- base type: string, max length: 80,</p> <p>(XPath <code>TEXInvoice/TIheader/terms/trade/tradeLocation/street</code>) 0-1</p> <p>(XPath <code>TEXInvoice/TIheader/finInfo/bank/street</code>) 0-1</p> <p>(XPath <code>TEXInvoice/TIheader/buyer/street</code>) 0-1</p> <p>(XPath <code>TEXInvoice/TIheader/terms/transInfo/deliveryLocation/street</code>) 0-1</p> <p>(XPath <code>TEXInvoice/TIheader/supplier/street</code>) 0-1</p> <p>(XPath <code>TEXInvoice/TIheader/thirdParty/street</code>) 0-1</p> <p>(XPath <code>TEXInvoice/TIheader/terms/transInfo/despatchLocation/street</code>) 0-1</p>
subCountry	<p>short name or code of the sub-country entity</p> <p>- base type: string, max length: 9,</p> <p>(XPath <code>TEXInvoice/TIheader/terms/trade/tradeLocation/subCountry</code>) 0-1</p> <p>(XPath <code>TEXInvoice/TIheader/thirdParty/subCountry</code>) 0-1</p> <p>(XPath <code>TEXInvoice/TIheader/terms/transInfo/deliveryLocation/subCountry</code>) 0-1</p> <p>(XPath <code>TEXInvoice/TIheader/supplier/subCountry</code>) 0-1</p> <p>(XPath <code>TEXInvoice/TIheader/buyer/subCountry</code>) 0-1</p> <p>(XPath <code>TEXInvoice/TIheader/terms/transInfo/despatchLocation/subCountry</code>) 0-1</p> <p>(XPath <code>TEXInvoice/TIheader/finInfo/bank/subCountry</code>) 0-1</p>
subDept	<p>name or code of a department</p> <p>- base type: string, max length: 40,</p> <p>(XPath <code>TEXInvoice/TIheader/finInfo/bank/subDept</code>) 0-1</p> <p>(XPath <code>TEXInvoice/TIheader/terms/trade/tradeLocation/subDept</code>) 0-1</p> <p>(XPath <code>TEXInvoice/TIheader/terms/transInfo/despatchLocation/subDept</code>) 0-1</p> <p>(XPath <code>TEXInvoice/TIheader/terms/transInfo/deliveryLocation/subDept</code>) 0-1</p> <p>(XPath <code>TEXInvoice/TIheader/supplier/subDept</code>) 0-1</p> <p>(XPath <code>TEXInvoice/TIheader/buyer/subDept</code>) 0-1</p> <p>(XPath <code>TEXInvoice/TIheader/thirdParty/subDept</code>) 0-1</p>
swift	<p>swift code relevant to the financial transaction</p> <p>- base type: string, max length: 15,</p> <p>(XPath <code>TEXInvoice/TIheader/finInfo/swift</code>) 0-1</p>

taxAmount	taxable amount related to the VAT rate or exemption code attributed - base type: decimal, min inclusive: 0, fraction digits: 2, (XPath TEXInvoice/Tltotals/anticipDeduct/taxAmount) 1-1 (XPath TEXInvoice/Tltotals/VATinfo/taxAmount) 1-1
taxCategory	duty or tax or fee category - base type: string, cod. table: T62 <a href="http://www.ebiz.enea.it/moda-ml/repository/codelist/draft/gc_T62.xml">http://www.ebiz.enea.it/moda-ml/repository/codelist/draft/gc_T62.xml</a> (XPath TEXInvoice/Tltotals/anticipDeduct/dtScheme/taxCategory) 0-1 (XPath TEXInvoice/Tltotals/VATinfo/dtScheme/taxCategory) 0-1 (XPath TEXInvoice/Tlbody/Tlitem/dtScheme/taxCategory) 0-1 (XPath TEXInvoice/Tlheader/terms/allowanceCharge/dtScheme/taxCategory) 0-1
taxDate	date on which the supply of goods or services was made or completed, if preceding the date of the invoice, according to one of the patterns YYYY-MM-DD, YYYY-MM-DD:HH-MM or YYYY-WW. - base type: string, (XPath TEXInvoice/Tlheader/taxDate) 0-1
taxRate	duty or tax or fee percent rate - base type: string, (XPath TEXInvoice/Tlbody/Tlitem/dtScheme/taxRate) 0-1 (XPath TEXInvoice/Tltotals/anticipDeduct/dtScheme/taxRate) 0-1 (XPath TEXInvoice/Tltotals/VATinfo/dtScheme/taxRate) 0-1 (XPath TEXInvoice/Tlheader/terms/allowanceCharge/dtScheme/taxRate) 0-1
@taxType	duty or tax or fee type - base type: string, cod. table: T61 <a href="http://www.ebiz.enea.it/moda-ml/repository/codelist/draft/gc_T61.xml">http://www.ebiz.enea.it/moda-ml/repository/codelist/draft/gc_T61.xml</a> (XPath TEXInvoice/Tlheader/terms/allowanceCharge/dtScheme/@taxType) [Required] (XPath TEXInvoice/Tltotals/anticipDeduct/dtScheme/@taxType) [Required] (XPath TEXInvoice/Tltotals/VATinfo/dtScheme/@taxType) [Required] (XPath TEXInvoice/Tlbody/Tlitem/dtScheme/@taxType) [Required]
totQty	total quantity of the articles related to the whole document - base type: decimal, min inclusive: 0, fraction digits: 2, (XPath TEXInvoice/Tltotals/totQty) 0-1
transactionReceipt	transaction receipt on blockchain - base type: string, max length: 80, (XPath TEXInvoice/Tlbody/Tlitem/refDoc/attachment/blockChainReference/transactionReceipt) 1-9 (XPath TEXInvoice/Tlheader/refDoc/attachment/blockChainReference/transactionReceipt) 1-9
transCondition	special condition of transport or special service requested to the Forwarder - base type: string, cod. table: T38 <a href="http://www.ebiz.enea.it/moda-ml/repository/codelist/draft/gc_T38.xml">http://www.ebiz.enea.it/moda-ml/repository/codelist/draft/gc_T38.xml</a> (XPath TEXInvoice/Tlheader/terms/transInfo/transCondition) 0-3
transConditionText	free text description of the special condition of transport or special service requested to the Forwarder - base type: string, max length: 250, (XPath TEXInvoice/Tlheader/terms/transInfo/transConditionText) 0-1
transMeans	means of transport, in general or referred to a specific leg - base type: string, cod. table: T40 <a href="http://www.ebiz.enea.it/moda-ml/repository/codelist/draft/gc_T40.xml">http://www.ebiz.enea.it/moda-ml/repository/codelist/draft/gc_T40.xml</a> (XPath TEXInvoice/Tlheader/terms/transInfo/transMeans) 0-1
transMode	way of transport, in general or referred to the specified leg - base type: string, cod. table: T8 <a href="http://www.ebiz.enea.it/moda-ml/repository/codelist/draft/gc_T8.xml">http://www.ebiz.enea.it/moda-ml/repository/codelist/draft/gc_T8.xml</a> (XPath TEXInvoice/Tlheader/terms/transInfo/transMode) 1-1
@transReason	reason for the transport - base type: string, cod. table: NT11 <a href="http://www.ebiz.enea.it/moda-ml/repository/codelist/draft/gc_NT11.xml">http://www.ebiz.enea.it/moda-ml/repository/codelist/draft/gc_NT11.xml</a> (XPath TEXInvoice/Tlheader/terms/transInfo/@transReason) [Optional]
@uid	unique element identifier within the xml document - base type: string, (XPath TEXInvoice/Tlheader/refDoc/attachment/@uid) [Optional]

	(XPath TEXInvoice/TIbody/TIitem/refDoc/attachment/@uid) [Optional]
@um	<p>specification of the unit of measure</p> <ul style="list-style-type: none"> <li>- base type: string, cod. table: NT7 <a href="http://www.ebiz.enea.it/moda-ml/repository/codelist/draft/gc_NT7.xml">http://www.ebiz.enea.it/moda-ml/repository/codelist/draft/gc_NT7.xml</a></li> <li>(XPath TEXInvoice/TItotals/totQty/@um) [Required]</li> <li>(XPath TEXInvoice/TIheader/buyer/geoCoordinates/@um) [Optional] [Default= DEGD]</li> <li>- nota: <i>when not specified assume decimal DEGREES</i></li> <li>(XPath TEXInvoice/TIheader/terms/transInfo/despatchLocation/geoCoordinates/@um) [Optional] [Default= DEGD]</li> <li>- nota: <i>when not specified assume decimal DEGREES</i></li> <li>(XPath TEXInvoice/TIheader/terms/transInfo/routeLength/@um) [Required]</li> <li>(XPath TEXInvoice/TIheader/finInfo/bank/geoCoordinates/@um) [Optional] [Default= DEGD]</li> <li>- nota: <i>when not specified assume decimal DEGREES</i></li> <li>(XPath TEXInvoice/TIheader/terms/allowanceCharge/@um) [Optional]</li> <li>(XPath TEXInvoice/TIheader/terms/transInfo/netWeight/@um) [Required]</li> <li>(XPath TEXInvoice/TIheader/thirdParty/geoCoordinates/@um) [Optional] [Default= DEGD]</li> <li>- nota: <i>when not specified assume decimal DEGREES</i></li> <li>(XPath TEXInvoice/TIheader/terms/trade/tradeLocation/geoCoordinates/@um) [Optional] [Default= DEGD]</li> <li>- nota: <i>when not specified assume decimal DEGREES</i></li> <li>(XPath TEXInvoice/TIheader/terms/transInfo/deliveryLocation/geoCoordinates/@um) [Optional] [Default= DEGD]</li> <li>- nota: <i>when not specified assume decimal DEGREES</i></li> <li>(XPath TEXInvoice/TIheader/terms/transInfo/grossWeight/@um) [Required]</li> <li>(XPath TEXInvoice/TIheader/supplier/geoCoordinates/@um) [Optional] [Default= DEGD]</li> <li>- nota: <i>when not specified assume decimal DEGREES</i></li> <li>(XPath TEXInvoice/TIbody/TIitem/qty/@um) [Required]</li> <li>(XPath TEXInvoice/TIbody/TIitem/textItem/grossWeight/@um) [Required]</li> <li>(XPath TEXInvoice/TIbody/TIitem/textItem/grossQty/@um) [Required]</li> <li>(XPath TEXInvoice/TIbody/TIitem/otherConventionalQty/@um) [Required]</li> <li>(XPath TEXInvoice/TIbody/TIitem/price/@um) [Optional]</li> <li>- nota: <i>Unit of measure of the product to which the price is referred (price per meter)</i></li> </ul>
uri	<p>Uniform Resource Identifier (URI) that identifies the external object as an Internet resource</p> <ul style="list-style-type: none"> <li>- base type: normalizedString,</li> <li>(XPath TEXInvoice/TIbody/TIitem/refDoc/attachment/externalReference/uri) 1-1</li> <li>(XPath TEXInvoice/TIbody/TIitem/refDoc/attachment/blockChainReference/uri) 1-1</li> <li>- note: <i>reference to the used blockchain ( example: url https://etherscan.io/ of ethereum)</i></li> <li>(XPath TEXInvoice/TIheader/refDoc/attachment/blockChainReference/uri) 1-1</li> <li>- note: <i>reference to the used blockchain ( example: url https://etherscan.io/ of ethereum)</i></li> <li>(XPath TEXInvoice/TIheader/refDoc/attachment/externalReference/uri) 1-1</li> </ul>
@useProfile	<p>use profile to which the present document is compliant if it was agreed by the parties. It is suggested a URI with reference to the firms or the URL of the profile.</p> <ul style="list-style-type: none"> <li>- base type: string,</li> <li>(XPath TEXInvoice/@useProfile) [Optional]</li> </ul>
@validationMethod	<p>type of method used to validate the quantity to which it refers. For example, it indicates whether it was measured in the field, estimated indirectly, approved by an expert or taken from the literature</p> <ul style="list-style-type: none"> <li>- base type: string, cod. table: NT329 <a href="http://www.ebiz.enea.it/moda-ml/repository/codelist/draft/gc_NT329.xml">http://www.ebiz.enea.it/moda-ml/repository/codelist/draft/gc_NT329.xml</a></li> <li>(XPath TEXInvoice/TIbody/TIitem/textItem/fabricCompos/percCompos/@validationMethod) [Optional]</li> </ul>
@VAT	<p>VAT rate or code (DEPRECATED, use dtScheme element)</p> <ul style="list-style-type: none"> <li>- base type: string, cod. table: NT16 <a href="http://www.ebiz.enea.it/moda-ml/repository/codelist/draft/gc_NT16.xml">http://www.ebiz.enea.it/moda-ml/repository/codelist/draft/gc_NT16.xml</a></li> <li>(XPath TEXInvoice/TIheader/terms/allowanceCharge/@VAT) [Optional]</li> <li>(XPath TEXInvoice/TIheader/thirdParty/@VAT) [Optional]</li> <li>(XPath TEXInvoice/TItotals/VATInfo/@VAT) [Optional]</li> <li>(XPath TEXInvoice/TItotals/anticipDeduct/@VAT) [Required]</li> <li>(XPath TEXInvoice/TIbody/TIitem/@VAT) [Optional]</li> </ul>

	<p>- nota: VAT rate of the product or service specified in the line (XPath TEXInvoice/Tlbody/Tlitem/lineN/@VAT) [Optional] - nota: <i>Deprecated, prefer dtScheme when available.</i></p>
VATamount	<p>duty or tax amount for the specified tax rate - base type: decimal, min inclusive: 0, fraction digits: 2, (XPath TEXInvoice/Tltotals/anticipDeduct/VATamount) 0-1 (XPath TEXInvoice/Tltotals/VATinfo/VATamount) 0-1 - note: <i>when tax or duty other than VAT is the amount of the tax</i></p>
@version	<p>Dictionary version from which the instance has been created - base type: string, cod. table: NT100 <a href="http://www.ebiz.enea.it/moda-ml/repository/codelist/draft/gc_NT100.xml">http://www.ebiz.enea.it/moda-ml/repository/codelist/draft/gc_NT100.xml</a> (XPath TEXInvoice/@version) [Optional] [Default= draft]</p>
xGeoCoord	<p>geographical coordinate x , corresponding to latitude - base type: decimal, (XPath TEXInvoice/Tlheader/buyer/geoCoordinates/xGeoCoord) 1-1 (XPath TEXInvoice/Tlheader/supplier/geoCoordinates/xGeoCoord) 1-1 (XPath TEXInvoice/Tlheader/thirdParty/geoCoordinates/xGeoCoord) 1-1 (XPath TEXInvoice/Tlheader/terms/transInfo/despatchLocation/geoCoordinates/xGeoCoord) 1-1 (XPath TEXInvoice/Tlheader/terms/transInfo/deliveryLocation/geoCoordinates/xGeoCoord) 1-1 (XPath TEXInvoice/Tlheader/finInfo/bank/geoCoordinates/xGeoCoord) 1-1 (XPath TEXInvoice/Tlheader/terms/trade/tradeLocation/ geoCoordinates/xGeoCoord) 1-1</p>
yGeoCoord	<p>geographical coordinate y , corresponding to longitude - base type: decimal, (XPath TEXInvoice/Tlheader/buyer/geoCoordinates/yGeoCoord) 1-1 (XPath TEXInvoice/Tlheader/terms/transInfo/deliveryLocation/geoCoordinates/yGeoCoord) 1-1 (XPath TEXInvoice/Tlheader/finInfo/bank/geoCoordinates/yGeoCoord) 1-1 (XPath TEXInvoice/Tlheader/terms/transInfo/despatchLocation/geoCoordinates/yGeoCoord) 1-1 (XPath TEXInvoice/Tlheader/thirdParty/geoCoordinates/yGeoCoord) 1-1 (XPath TEXInvoice/Tlheader/terms/trade/tradeLocation/ geoCoordinates/yGeoCoord) 1-1 (XPath TEXInvoice/Tlheader/supplier/geoCoordinates/yGeoCoord) 1-1</p>
zGeoCoord	<p>geographical coordinate z , corresponding to altitude - base type: decimal, (XPath TEXInvoice/Tlheader/terms/transInfo/despatchLocation/geoCoordinates/zGeoCoord) 0-1 - note: <i>altitude might be omitted</i> (XPath TEXInvoice/Tlheader/finInfo/bank/geoCoordinates/zGeoCoord) 0-1 - note: <i>altitude might be omitted</i> (XPath TEXInvoice/Tlheader/thirdParty/geoCoordinates/zGeoCoord) 0-1 - note: <i>altitude might be omitted</i> (XPath TEXInvoice/Tlheader/buyer/geoCoordinates/zGeoCoord) 0-1 - note: <i>altitude might be omitted</i> (XPath TEXInvoice/Tlheader/terms/transInfo/deliveryLocation/geoCoordinates/zGeoCoord) 0-1 - note: <i>altitude might be omitted</i> (XPath TEXInvoice/Tlheader/terms/trade/tradeLocation/ geoCoordinates/zGeoCoord) 0-1 - note: <i>altitude might be omitted</i> (XPath TEXInvoice/Tlheader/supplier/geoCoordinates/zGeoCoord) 0-1 - note: <i>altitude might be omitted</i></p>

## 2.3 Suggested best practices

**TEXInvoice/TIbody/TIitem/refDoc/docID (identification number of the referenced document)**

numberingOrg indicates the role that produced the document identifier (it is allowed to declare two different ones -e.g. customer and supplier - with two docID with different numberingOrg)

**TEXInvoice/TIheader/refDoc/docID (identification number of the referenced document)**

numberingOrg indicates the role that produced the document identifier (it is allowed to declare two different ones -e.g. customer and supplier - with two docID with different numberingOrg)

**TEXInvoice/TIbody/TIitem/refDoc/attachment/  
externalReference/mimeCode (mime type of the external object)**

Use coding from IANA <http://www.iana.org/assignments/media-types/media-types.xml>

**TEXInvoice/TIheader/refDoc/attachment/externalReference/mimeCode (mime type of the external object)**

Use coding from IANA <http://www.iana.org/assignments/media-types/media-types.xml>

**TEXInvoice/TIbody/TIitem/qty (net quantity of the article or object correlated, qualified by the function of the document (ordering, delivering, ..) and by the context)**

this element can have two instances only if the units of measure are different

## 2.4 Enumeration tables

List of enumeration tables used in the XML document. You can find all the tables with the corresponding codes at:  
<http://www.ebiz.enea.it/eBIZ/imple/eBIZTCU-draft.asp?lingua=en&pag=6>

NT100 - eBIZ TCFUpstream version  
NT11 - transport causal  
NT16 - VAT rate or code  
NT18 - message function  
NT19 - currency use qualifier  
NT2 - third party qualifier  
NT20 - price qualifier  
NT29 - format of a date  
NT3 - issuer of the identifier (or identification system) of a location.  
NT324 - propulsion system type  
NT329 - type of validation method of the value  
NT333 - type of hashing algorithm  
NT6 - coding system owner/issuer  
NT60 - language, codes from ISO 639-1 (subset)  
NT7 - unit of measure  
T1 - terms of payment  
T10 - ISO3166 - Country  
T18 - Invoice type  
T19 - fibre type  
T2 - Modes of payment  
T21 - type of document  
T3 - terms of delivery - IncoTerms  
T306 - material circularity attribute  
T307 - recycling process method  
T36 - service measure mode  
T38 - transport conditions  
T40 - type of transport means  
T41 - type of Allowance or Charge  
T44 - additional code type  
T61 - duty or tax or fee type  
T62 - duty or tax or fee category  
T8 - Modes of Transport  
T9 - ISO4217 - Currency

(the most relevant tables are detailed in the following Annexes too)

## ACKNOWLEDGEMENT



This action is part of the TRICK project, which has received funding from Horizon 2020 research and innovation programme under grant agreement No. 958352 of the European Union.

## DISCLAIMER

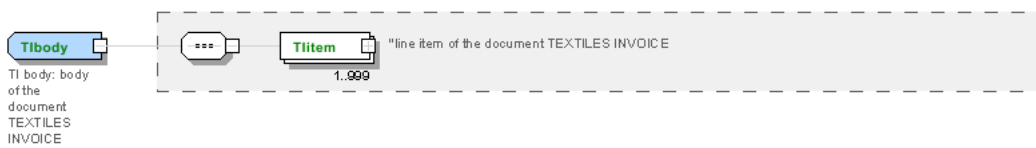
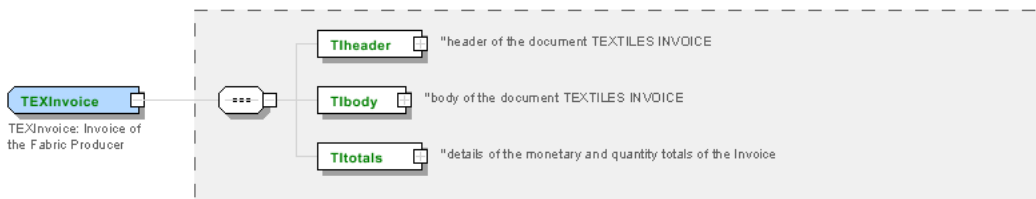
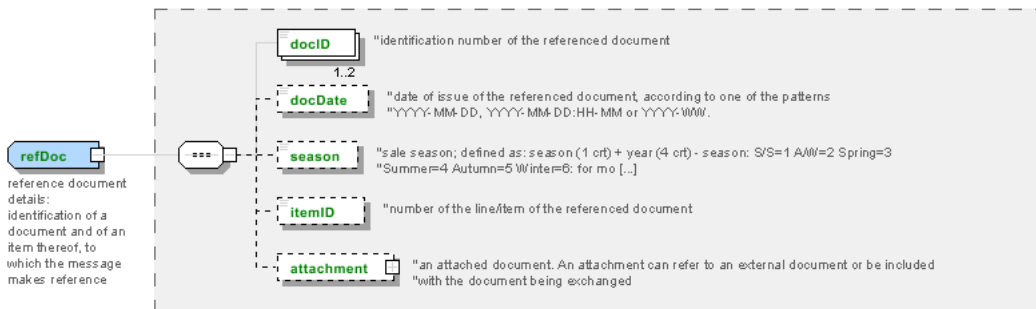
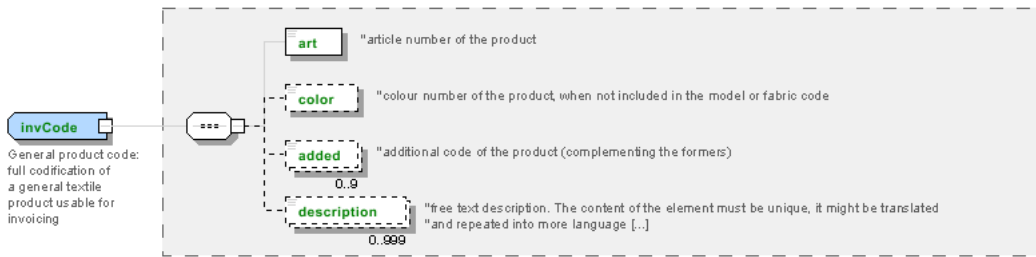
The content of this document represents the views of the authors only and is their sole responsibility; it cannot be considered to reflect the views of the European Commission or any other body of the European Union.

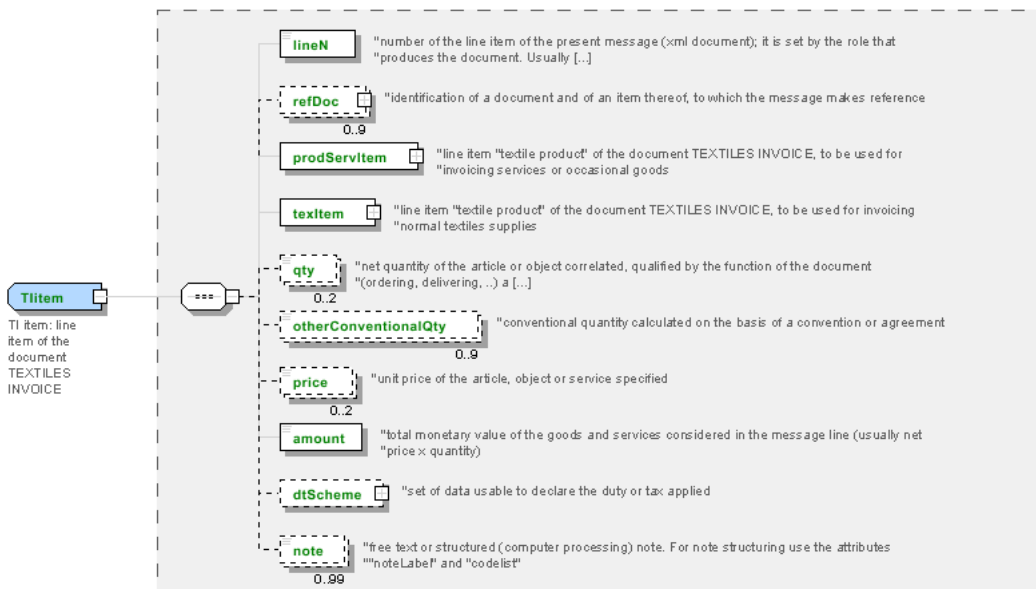
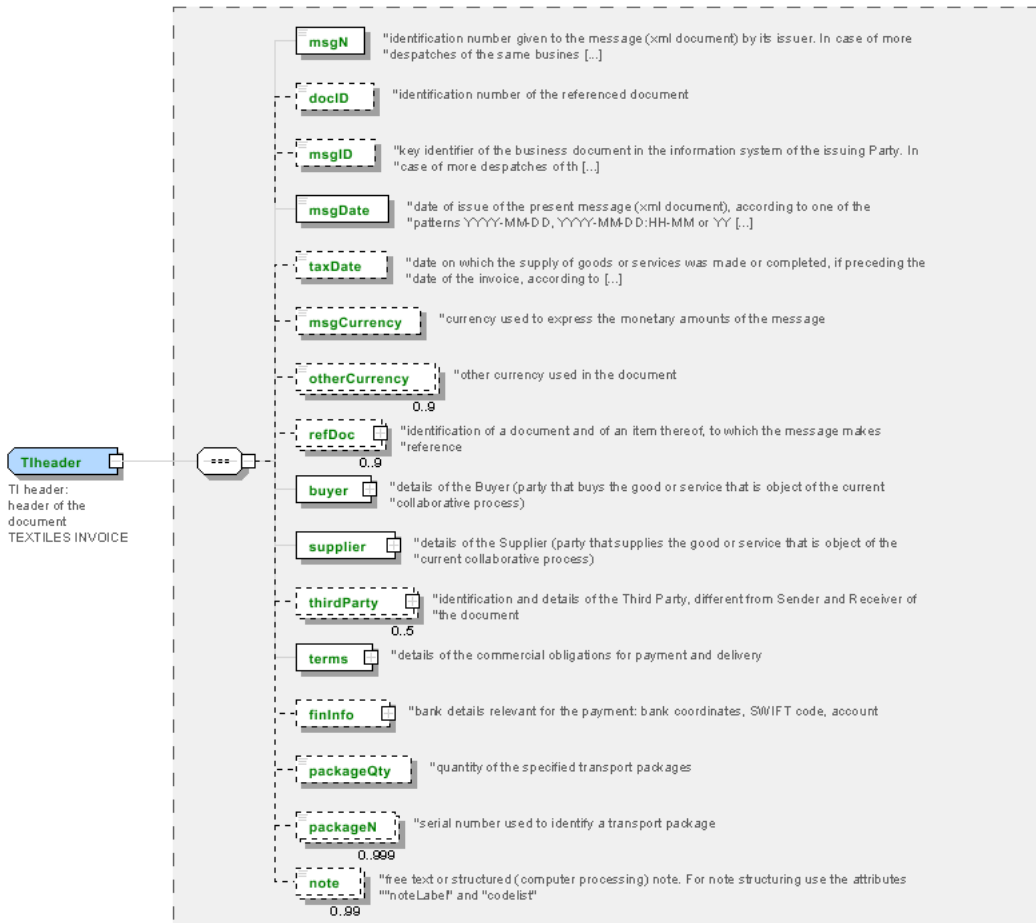
The European Commission does not accept any responsibility for use that may be made of the information it contains.

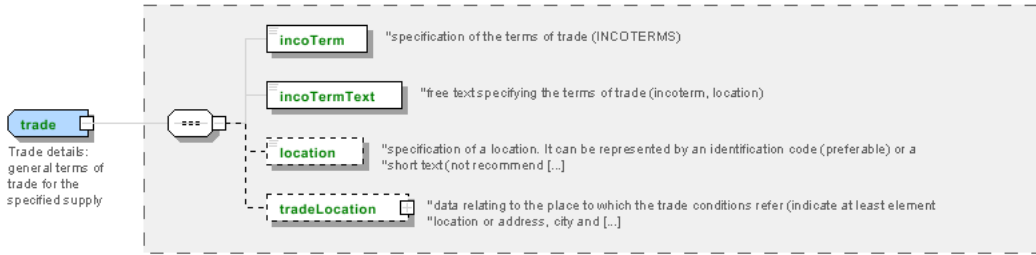


# Annex A

Representative images of the principal complex elements' structure.









## Annex B

### NT100 - eBIZ TCFUpstream version

dictionary version

Agency name: eBIZ

Decoding table: NT100

File codes list (Generic code): [http://www.ebiz.enea.it/moda-ml/repository/codelist/draft/gc\\_NT100.xml](http://www.ebiz.enea.it/moda-ml/repository/codelist/draft/gc_NT100.xml)

Code	Description	Adoption note	Date of insertion
2013-1	v2013-1		01/07/2013
2018-1	v2018-1		04/11/2018
draft	draft		08/09/2017

### NT11 - transport causal

reason for the transport

Agency name: eBIZ

Decoding table: NT11

File codes list (Generic code): [http://www.ebiz.enea.it/moda-ml/repository/codelist/draft/gc\\_NT11.xml](http://www.ebiz.enea.it/moda-ml/repository/codelist/draft/gc_NT11.xml)

Code	Description	Adoption note	Date of insertion
FOC	free of charge		
FRW	return from re-works		
FST	return from storage		
FVW	return from view		
FWK	return from works		
IST	in storage		
NWK	return non-worked		
RJC	return from rejection		
SEL	to sell		
STO	to storage		
VEW	to view		
WRK	to works		

### NT16 - VAT rate or code

VAT rate or code ( DEPRECATED, use dtScheme element )

Decoding table: NT16

File codes list (Generic code): [http://www.ebiz.enea.it/moda-ml/repository/codelist/draft/gc\\_NT16.xml](http://www.ebiz.enea.it/moda-ml/repository/codelist/draft/gc_NT16.xml)

### NT18 - message function

function performed by the present message with regards to the transmission

Agency name: eBIZ

Decoding table: NT18

File codes list (Generic code): [http://www.ebiz.enea.it/moda-ml/repository/codelist/draft/gc\\_NT18.xml](http://www.ebiz.enea.it/moda-ml/repository/codelist/draft/gc_NT18.xml)

Code	Description	Adoption note	Date of insertion
CA	delete this document		01/07/2013
CP	copy		
OR	original		
RC	re-transmission for data correction		
RT	re-transmission		

### NT19 - currency use qualifier

qualification of another currency used in the document

Agency name: eBIZ

Decoding table: NT19

File codes list (Generic code): [http://www.ebiz.enea.it/moda-ml/repository/codelist/draft/gc\\_NT19.xml](http://www.ebiz.enea.it/moda-ml/repository/codelist/draft/gc_NT19.xml)

Code	Description	Adoption note	Date of insertion
CAT	pricelist currency		
INV	invoicing currency		
ORD	order currency		
PAY	payment currency		
SAL	sales currency		

### NT2 - third party qualifier

Third Party role qualifier

Agency name: eBIZ

Decoding table: NT2

File codes list (Generic code): [http://www.ebiz.enea.it/moda-ml/repository/codelist/draft/gc\\_NT2.xml](http://www.ebiz.enea.it/moda-ml/repository/codelist/draft/gc_NT2.xml)

Code	Description	Adoption note	Date of insertion
AG	Sales Agent		

AU	Auditor		08/04/2019
BU	Buyer		13/06/2022
CE	Certification authority		08/04/2019
CM	Commissioner		13/06/2022
CO	Quality Controller		
CU	Customs authority		13/06/2022
DC	Response to		
DF	Invoicee		
DI	Copy to (CC)		28/10/2014
DM	Consignee		
DP	Consignment address (Delivery Party)		
EX	Expert		13/06/2022
IM	Importer		
OR	Originator		10/09/2014
SC	Sub contractor		10/04/2019
SM	Service/ePlatform manager		08/04/2019
SP	Forwarder		
SU	Supplier		13/06/2022
TL	Test or analysis laboratory		13/06/2022
TX	Tax Representative		

#### NT20 - price qualifier

type of price with reference to discount and taxes

Agency name: eBIZ

Decoding table: NT20

File codes list (Generic code): [http://www.ebiz.enea.it/moda-ml/repository/codelist/draft/gc\\_NT20.xml](http://www.ebiz.enea.it/moda-ml/repository/codelist/draft/gc_NT20.xml)

Code	Description	Adoption note	Date of insertion
GET	gross excluding taxes		
GIT	gross including taxes		
NET	net excluding taxes		
NIT	net including taxes		

#### NT29 - format of a date

format used for the date

Agency name: eBIZ

Decoding table: NT29

File codes list (Generic code): [http://www.ebiz.enea.it/moda-ml/repository/codelist/draft/gc\\_NT29.xml](http://www.ebiz.enea.it/moda-ml/repository/codelist/draft/gc_NT29.xml)

Code	Description	Adoption note	Date of insertion
D	YYYY-MM-DD		
M	YYYY-MM-DD:HH-MM (date and time)		
S	AAAA-MM-GG:HH-MM-SS (date and time with seconds)		13/06/2022
W	YYYY-WW		

### NT3 - issuer of the identifier (or identification system) of a location.

List of possible issuers of the identifier (or identification system) of a location.

Agency name: eBIZ

Decoding table: NT3

File codes list (Generic code): [http://www.ebiz.enea.it/moda-ml/repository/codelist/draft/gc\\_NT3.xml](http://www.ebiz.enea.it/moda-ml/repository/codelist/draft/gc_NT3.xml)

Code	Description	Adoption note	Date of insertion
EN4	GS1-GLN	obsolete	01/07/2013
GLN	GS1-GLN	equivalent to EN4	25/04/2023
MD	mutually agreed		
NCA	National custom authority	identifier of a bonded warehouse assigned by the custom authority	19/05/2023
PLA	Platform	internal coding of the involved platform	14/05/2023
TRI	TRICK		14/05/2023

### NT324 - propulsion system type

propulsion system type adopted, for example, by a transport mean

Agency name: eBIZ for TRICK

Decoding table: NT324

File codes list (Generic code): [http://www.ebiz.enea.it/moda-ml/repository/codelist/draft/gc\\_NT324.xml](http://www.ebiz.enea.it/moda-ml/repository/codelist/draft/gc_NT324.xml)

Code	Description	Adoption note	Date of insertion
ALC	Alcohol		05/07/2022
BDIE	Bio diesel		05/07/2022
BEV	Battery Electric Vehicle		05/07/2022
BFUE	Biofuels	biodiesel excluded	02/09/2022
DIE	Diesel		05/07/2022
FCEV	Hydrogen Fuel cell		05/07/2022



GAS	GAS		05/07/2022
GPL	LPG		05/07/2022
HEV	Full hybrid (Hybrid Electric Vehicle)		05/07/2022
HUM	Human force		05/07/2022
HYB	Hybrid		05/07/2022
MHY	Mild hybrid		05/07/2022
NUC	Nuclear		05/07/2022
PET	Petrol		05/07/2022
PHEV	plug-in Hybrid Electric Vehicle		05/07/2022
STEAM	Steam		05/07/2022
WIND	Wind		05/07/2022

### NT329 - type of validation method of the value

indicates the type of method used to validation and calculate the quantity to which it refers; used to express the data faithfulness

Agency name: eBIZ

Decoding table: NT329

File codes list (Generic code): [http://www.ebiz.enea.it/moda-ml/repository/codelist/draft/gc\\_NT329.xml](http://www.ebiz.enea.it/moda-ml/repository/codelist/draft/gc_NT329.xml)

Code	Description	Adoption note	Date of insertion
CER	third party certification		11/06/2023
EST	estimate		12/05/2023
EXP	confirmed by an expert		19/05/2023
LAB	laboratory test		11/06/2023
LIT	literature	refer to a literature analysis outcome	12/05/2023
MON	monitoring	refer to continuous measurement in field	12/05/2023
REV	confirmed by review		11/06/2023
SAM	sampling	refer to a sample measurement in field	12/05/2023
SUP	supplier declaration		11/06/2023

### NT333 - type of hashing algorithm

type of hashing algorithm

Decoding table: NT333

File codes list (Generic code): [http://www.ebiz.enea.it/moda-ml/repository/codelist/draft/gc\\_NT333.xml](http://www.ebiz.enea.it/moda-ml/repository/codelist/draft/gc_NT333.xml)

Code	Description	Adoption note	Date of insertion
ADLER32	ADLER32		26/05/2023

HMAC	HMAC		26/05/2023
MD2	MD2		26/05/2023
MD4	MD4		26/05/2023
MD5	MD5		26/05/2023
MDC-2	MDC-2		26/05/2023
PANAMA	PANAMA		26/05/2023
RIPEMD-160	RIPEMD-160		26/05/2023
SHA-1	SHA-1		26/05/2023
SHA-2 256	SHA-2 256		26/05/2023
SHA-2 384	SHA-2 384		26/05/2023
SHA-2 512	SHA-2 512		26/05/2023
TIGER	TIGER		26/05/2023

#### NT6 - coding system owner/issuer

code specifying the organisation who has created or owns the registers of the present coding or numbering system

Agency name: eBIZ

Decoding table: NT6

File codes list (Generic code): [http://www.ebiz.enea.it/moda-ml/repository/codelist/draft/gc\\_NT6.xml](http://www.ebiz.enea.it/moda-ml/repository/codelist/draft/gc_NT6.xml)

Code	Description	Adoption note	Date of insertion
CBR	National customs brokers registry		12/06/2023
CL	Customer/buyer		
CO	Quality Controller		
DU	D-U-N-S registry (Data Universal Numbering System)		04/05/2023
EB	eBIZ	replaces 'ML'	18/03/2019
EN	GS1 ( ex-EAN International )		
EO	Registro EORI (Economic Operators Registration and Identification number)		04/03/2023
ES	e-Stockflow	DEPRECATED	
FO	Supplier		
GS	GS1		01/07/2013
MF	national taxation authority (i.e. VAT codes registry)		
ML	Moda-ML	DEPRECATED	
PL	Application Platform		13/06/2022
REX	Registered Exporter system (REX)		19/05/2023
SP	Service Provider		
SU	Enterprise Identification Number UID	Only switzerland	04/03/2023

**NT60 - language, codes from ISO 639-1 (subset)**

Agency name: eBIZ / ISO

Decoding table: NT60

File codes list (Generic code): [http://www.ebiz.enea.it/moda-ml/repository/codelist/draft/gc\\_NT60.xml](http://www.ebiz.enea.it/moda-ml/repository/codelist/draft/gc_NT60.xml)

<b>Code</b>	<b>Description</b>	<b>Adoption note</b>	<b>Date of insertion</b>
af	Afrikaans		31/01/2019
ar	Arabic		31/01/2019
be	Belarusian		31/01/2019
bg	Bulgarian		31/01/2019
bn	Bengali		31/01/2019
bo	Tibetan		31/01/2019
bs	Bosnian		31/01/2019
ca	Catalan, Valencian		31/01/2019
cs	Czech		31/01/2019
da	Danish		31/01/2019
de	German		31/01/2019
el	Greek, Modern (1453-)		31/01/2019
en	English		31/01/2019
eo	Esperanto		31/01/2019
es	Spanish, Castilian		31/01/2019
et	Estonian		31/01/2019
eu	Basque		31/01/2019
F	Female		15/04/2019
fa	Persian		31/01/2019
fi	Finnish		31/01/2019
fr	French		31/01/2019
ga	Irish		31/01/2019
gd	Gaelic, Scottish Gaelic		31/01/2019
gn	Guarani		31/01/2019
he	Hebrew		31/01/2019
hr	Croatian		31/01/2019
ht	Haitian, Haitian Creole		31/01/2019
hu	Hungarian		31/01/2019
hy	Armenian		31/01/2019
ia	Interlingua (International Auxiliary Language Association)		31/01/2019
id	Indonesian		31/01/2019

is	Icelandic		31/01/2019
it	Italian		31/01/2019
ja	Japanese		31/01/2019
jv	Javanese		31/01/2019
ka	Georgian		31/01/2019
km	Central Khmer		31/01/2019
ko	Korean		31/01/2019
ku	Kurdish		31/01/2019
lb	Luxembourgish, Letzeburgesch		31/01/2019
lo	Lao		31/01/2019
lt	Lithuanian		31/01/2019
lv	Latvian		31/01/2019
mg	Malagasy		31/01/2019
mk	Macedonian		31/01/2019
mn	Mongolian		31/01/2019
mt	Maltese		31/01/2019
nl	Dutch, Flemish		31/01/2019
no	Norwegian		31/01/2019
pl	Polish		31/01/2019
pt	Portuguese		31/01/2019
ro	Romanian, Moldavian, Moldovan		31/01/2019
ru	Russian		31/01/2019
se	Northern Sami		31/01/2019
sk	Slovak		31/01/2019
sl	Slovenian		31/01/2019
sm	Samoan		31/01/2019
so	Somali		31/01/2019
sq	Albanian		31/01/2019
sr	Serbian		31/01/2019
sv	Swedish		31/01/2019
sw	Swahili		31/01/2019
ta	Tamil		31/01/2019
th	Thai		31/01/2019
tr	Turkish		31/01/2019
uk	Ukrainian		31/01/2019
ur	Urdu		31/01/2019
uz	Uzbek		31/01/2019
vi	Vietnamese		31/01/2019

zh	Chinese		31/01/2019
----	---------	--	------------

## NT7 - unit of measure

specification of the unit of measure, it is a sub set of table Unit of Measure Code - UN/ECE REC 20 delivered by United Nations Economic Commission for Europe (UN/ECE)

Agency name: eBIZ / UN/ECE

Decoding table: NT7

File codes list (Generic code): [http://www.ebiz.enea.it/moda-ml/repository/codelist/draft/gc\\_NT7.xml](http://www.ebiz.enea.it/moda-ml/repository/codelist/draft/gc_NT7.xml)

Other link: <http://docs.oasis-open.org/ubl/os-UBL-2.1/cl/gc/default/UnitOfMeasureCode-2.1.gc#>

Code	Description	Adoption note	Date of insertion
CMK	square centimetre		20/12/2017
CMQ	cubic centimetre		20/12/2017
CMT	centimetre		
CNE	centiNewton		
CO2TON	ton of CO2		10/09/2014
COUPLES	couples		
DAY	day		22/08/2022
DEGD	decimal degrees		04/07/2022
DEGMS	degrees with minutes and seconds		01/07/2022
DMQ	cubic decimetre		
E37	pixel		11/04/2018
GRM	gram		
HUR	hour		
INH	inch		
KGM	kilogram		
KMT	kilometer		
KWH	kilowatthours		10/09/2014
LBR	pound		
MCG	microgram		23/08/2022
MG	milligram		23/08/2022
MIN	minute		
MMK	square millimetre		20/12/2017
MONTH	month		22/08/2022
MSEC	millisecond (time)		22/08/2022
MTK	square metre		20/12/2017
MTQ	cubic metre		
MTR	metre		

NMB	numero		
ONZ	ounce		
P1	percent		
PPM	parts per milion		
PZ	piece		
RPM	rounds per metre		
SEC	second (time)		22/08/2022
YEAR	year		22/08/2022
YRD	yard		

### T1 - terms of payment

code specifying the terms or time by which the payment must be done

Agency name: eBIZ

Decoding table: T1

File codes list (Generic code): [http://www.ebiz.enea.it/moda-ml/repository/codelist/draft/gc\\_T1.xml](http://www.ebiz.enea.it/moda-ml/repository/codelist/draft/gc_T1.xml)

Code	Description	Adoption note	Date of insertion
ANTICIP	PAYMENT IN ADVANCE		
BLCOLLECT/120D	BILL OF LADING 120 DD		
BLCOLLECT/30D	BILL OF LADING 30 DD		
BLCOLLECT/60D	BILL OF LADING 60 DD		
BLCOLLECT/90D	BILL OF LADING 90 DD		
CASH	PAYMENT ON DELIVERY		
CASHINV	PAYMENT ON RECEIPT OF INVOICE		
CREDOC/0D	DOCUMENTARY CREDIT FOR PAYM. AT SIGHT		
CREDOC/120	DOCUMENTARY CREDIT FOR PAYM. AT 120 DD		
CREDOC/150	DOCUMENTARY CREDIT FOR PAYM. AT 150 DD		
CREDOC/180	DOCUMENTARY CREDIT FOR PAYM. AT 180 DD		
CREDOC/30D	DOCUMENTARY CREDIT FOR PAYM. AT 30 DD		
CREDOC/45D	DOCUMENTARY CREDIT FOR PAYM. AT 45 DD		
CREDOC/60	DOCUMENTARY CREDIT FOR PAYM. AT 60 DD		
CREDOC/90	DOCUMENTARY CREDIT FOR PAYM. AT 90 DD		
DEL/10	PAYMENT AT 10 DD AFTER DELIVERY		
DOCOLLECT/120D	DOCUMENTARY COLLECTION AT 120 DD		
DOCOLLECT/30D	DOCUMENTARY COLLECTION AT 30 DD		
DOCOLLECT/60D	DOCUMENTARY COLLECTION AT 60 DD		
DOCOLLECT/90D	DOCUMENTARY COLLECTION AT 90 DD		

INV/120D	PAYMENT AT 120 DD AFTER RECEIPT OF INVOICE		
INV/150D	PAYMENT AT 150 DD AFTER RECEIPT OF INVOICE		
INV/180D	PAYMENT AT 180 DD AFTER RECEIPT OF INVOICE		
INV/30D	PAYMENT AT 30 DD AFTER RECEIPT OF INVOICE		
INV/45D	PAYMENT AT 45 DD AFTER RECEIPT OF INVOICE		
INV/60D	PAYMENT AT 60 DD AFTER RECEIPT OF INVOICE		
INV/90D	PAYMENT AT 90 DD AFTER RECEIPT OF INVOICE		
INVULTIMO	PAYMENT AT END MONTH RECEIPT INVOICE		
INVULTIMO/10D	PAYMENT 10 DD AFTER END MONTH RECEIPT INVOICE		
INVULTIMO/120D	PAYMENT 120 DD AFTER END MONTH RECEIPT INVOICE		
INVULTIMO/150D	PAYMENT 150 DD AFTER END MONTH RECEIPT INVOICE		
INVULTIMO/180D	PAYMENT 180 DD AFTER END MONTH RECEIPT INVOICE		
INVULTIMO/240D	PAYMENT 240 DD AFTER END MONTH RECEIPT INVOICE		
INVULTIMO/30D	PAYMENT 30 DD AFTER END MONTH RECEIPT INVOICE		
INVULTIMO/45D	PAYMENT 45 DD AFTER END MONTH RECEIPT INVOICE		
INVULTIMO/60D	PAYMENT 60 DD AFTER END MONTH RECEIPT INVOICE		
INVULTIMO/90D	PAYMENT 90 DD AFTER END MONTH RECEIPT INVOICE		
NOPAY	WITHOUT PAYMENT		
RECREDOC/0D	IRREVOC. DOCUMENTARY CREDIT FOR PAYM. AT SIGHT		
RECREDOC/120D	IRREVOC. DOCUMENTARY CREDIT FOR PAYM. AT 120 DD		
RECREDOC/150D	IRREVOC. DOCUMENTARY CREDIT FOR PAYM. AT 150 DD		
RECREDOC/180D	IRREVOC. DOCUMENTARY CREDIT FOR PAYM. AT 180 DD		
RECREDOC/30D	IRREVOC. DOCUMENTARY CREDIT FOR PAYM. AT 30 DD		
RECREDOC/45D	IRREVOC. DOCUMENTARY CREDIT FOR PAYM. AT 45 DD		
RECREDOC/60D	IRREVOC. DOCUMENTARY CREDIT FOR PAYM. AT 60 DD		
RECREDOC/90D	IRREVOC. DOCUMENTARY CREDIT FOR PAYM. AT 90 DD		
ULTIMO	PAYMENT BY END MONTH OF DELIVERY		
ULTIMO/10	PAYMENT AT 10 DD AFTER END MONTH OF DELIVERY		

### T10 - ISO3166 - Country

code of the nation

Agency name: ISO

Decoding table: T10

File codes list (Generic code): [http://www.ebiz.enea.it/moda-ml/repository/codelist/draft/gc\\_T10.xml](http://www.ebiz.enea.it/moda-ml/repository/codelist/draft/gc_T10.xml)

Table not printed: there are 240 elements, more than the maximum specified for printing: 99.

### T18 - Invoice type

type of Invoice (standard or anticipated)

Agency name: eBIZ

Decoding table: T18

File codes list (Generic code): [http://www.ebiz.enea.it/moda-ml/repository/codelist/draft/gc\\_T18.xml](http://www.ebiz.enea.it/moda-ml/repository/codelist/draft/gc_T18.xml)

Code	Description	Adoption note	Date of insertion
ANT	anticipation		
CRN	Credit note		08/09/2017
STD	goods and services		

### T19 - fibre type

type of fibre used in a textile product

Agency name: eBIZ

Decoding table: T19

File codes list (Generic code): [http://www.ebiz.enea.it/moda-ml/repository/codelist/draft/gc\\_T19.xml](http://www.ebiz.enea.it/moda-ml/repository/codelist/draft/gc_T19.xml)

Code	Description	Adoption note	Date of insertion
AB	abaca		20/08/2018
AC	acetate		
AF	other fibres		
AG	alginic fibre		
AL	alfa		20/08/2018
AR	aramid		25/04/2022
CA	hemp		
CC	coir (coconut)		20/08/2018
CL	chlorofibre		
CO	cotton		
CU	cuprous		
EA	elastan		
EF	elastolefin		25/04/2022
EL	Elastodiene		20/08/2018
EM	elastomultiester		25/04/2022
FL	fluorofibre		
GI	broom		20/08/2018
GL	textile glass		
HA	hair		20/08/2018
HE	henequen		20/08/2018



HL	mixed linen		
JU	jute		
KE	kenaf		20/08/2018
KP	kapoc		20/08/2018
LI	linen		
LY	lyocell		20/08/2018
MA	modacrylic		
MD	modal		
ME	metallized		
MG	maguey		20/08/2018
MM	melamine		25/04/2022
PA	polyamide		
PB	polyureic		
PC	acrylic		
PE	polyethylene		
PI	paper		20/08/2018
PL	polyester		
PM	polyimide		
PO	polilactyd		25/04/2022
PP	polypropylene		
PR	proteic		
PU	polyurethane		
RA	ramie		20/08/2018
SE	silk		
SI	sisal		20/08/2018
SN	sun		20/08/2018
TA	triacetate		
TR	textile residues or unspecified composition		20/08/2018
TV	trivinyll		
VI	viscose		
VY	vinylal		
WA	angora		
WB	beaver		20/08/2018
WC	cashgora		
WG	vicuna		
WK	camel		
WL	llama		
WM	mohair		

WN	lapin		20/08/2018
WO	wool		
WP	alpaca		
WS	cashmere		
WT	Oteer		20/08/2018
WU	guanaco		
WV	virgin wool		
WY	yack		

## T2 - Modes of payment

way or means of payment

Agency name: eBIZ

Decoding table: T2

File codes list (Generic code): [http://www.ebiz.enea.it/moda-ml/repository/codelist/draft/gc\\_T2.xml](http://www.ebiz.enea.it/moda-ml/repository/codelist/draft/gc_T2.xml)

Code	Description	Adoption note	Date of insertion
BB	bank transfer		
IA	collection through Agent		
IS	collection through Forwarder		
RB	bank receipt		
RD	remittance		
SW	bank SWIFT		
TR	bank draft		

## T21 - type of document

type or class to which the referenced document belongs

Agency name: eBIZ

Decoding table: T21

File codes list (Generic code): [http://www.ebiz.enea.it/moda-ml/repository/codelist/draft/gc\\_T21.xml](http://www.ebiz.enea.it/moda-ml/repository/codelist/draft/gc_T21.xml)

Code	Description	Adoption note	Date of insertion
BIL	Bill of lading		07/03/2023
BOR	Blanket order		01/02/2018
CAT	Price catalogue - tech sheet		
CEO	Certificate of origin		13/04/2018
CER	Certificate		13/04/2018

CMR	CMR consignment note		07/03/2023
COC	Colour card		
CRN	Credit note		08/09/2017
CTO	Checking order		01/07/2013
CTR	Contract		
CXF	CxF3 file		01/07/2013
DAD	Darn order		
DDT	Delivery note (transport document)		
DEA	Despatch advise		
DER	Despatch request		
DR	Document Request		02/12/2014
EAD	Export Accompanying Document	adopted by European customs	12/05/2023
ECMR	electronic CMR consignment note		07/03/2023
ECUS	EXPORT Custom Declaration		07/03/2023
FOR	Forecast		02/12/2014
GSO	Garment stock offer		
GSX	Garment stock offer change		
ICUS	IMPORT Custom Declaration		07/03/2023
INV	Invoice		
KCC	Knitting-Clothing Commission Order		02/12/2014
KCI	Garment in Work Inventory Report		02/12/2014
LCA	LCA study		28/08/2022
LCAD	LCA study dataset		28/08/2022
M2M	Made to Measure Production Order		02/12/2014
MAS	Master marker		
MCI	Visual merchandising instruction		13/04/2018
OCH	Order change		
OFF	Offer		
ORD	Purchase order		
ORP	Order response		
OSR	order status request		
OSS	Offer status		02/12/2014
OST	Order status		
OUR	our reference		
PCO	Preferential certificate of origin		07/03/2023
PEF	PEF study		28/08/2022
PEFD	PEF study dataset		28/08/2022
PEFP	PEF environmental profile		07/03/2023

QR	Quality Report		02/12/2014
RAI	Raw Material in Work Inventory Report		02/12/2014
RDC	Raw dyeing commission order		
RDH	Raw dyeing order change		
RDR	Raw dyeing order response		
REA	Receiving advise		
REQ	Request for Offer		
RET	Return		02/12/2014
RSC	Spinning commission order		
RSH	Spinning order change		
RSR	Spinning order response		
SAD	Single Administrative Document	adopted by European customs	12/05/2023
SCL	Process sheet		
SDE	Self-declaration		07/03/2023
SDS	SDS - Safety data sheet		07/03/2023
SLCA	S-LCA Study		07/03/2023
SLCAD	S-LCA Study documentation		07/03/2023
TFC	Textile dyeing-finishing commission order		
TFX	Textile Dyeing-Finishing Order Change		02/12/2014
TPC	Textile printing commission order		
TPX	Textile Printing Order Change		02/12/2014
TWI	Textile in work inventory		
VMI	visual merchandising instructions		01/02/2018
WAC	Warping commission order		
WAYB	Waybill		07/03/2023
WEC	Weaving commission order		
YDC	Yarn dyeing commission order		
YDH	Yarn dyeing order change		
YDR	Yarn dyeing order response		
YTC	Twisting commission order		
YWI	Yarn in work inventory		

### T3 - terms of delivery - Incoterms

specification of the terms of trade (INCOTERMS)

Agency name: Incoterms

Decoding table: T3

File codes list (Generic code): [http://www.ebiz.enea.it/moda-ml/repository/codelist/draft/gc\\_T3.xml](http://www.ebiz.enea.it/moda-ml/repository/codelist/draft/gc_T3.xml)

Other link: <https://iccwbo.org/resources-for-business/incoterms-rules/incoterms-2020/#>

Code	Description	Adoption note	Date of insertion
CFR	COST AND FREIGHT (named port of destination)		
CIF	COST, INSURANCE AND FREIGHT (named port of destination)		
CIP	CARRIAGE AND INSURANCE PAID (named place of destination)		
CP	CARRIAGE PAID (named place of destination)		
DAF	DELIVERED AT FRONTIER (named place)	according to Incoterms® 2010, since 2020 it is OBSOLETE.	08/12/2017
DAP	Delivered at Place of destination (named place of destination)	according to Incoterms® 2010	08/12/2017
DAT	Delivered at Terminal (named place of destination)	according to Incoterms® 2010, since 2020 it is OBSOLETE.	08/12/2017
DDP	DELIVERED DUTY PAID (named place of destination)		
DDU	DELIVERED DUTY UNPAID (named place of destination)	according to Incoterms® 2010 it is OBSOLETE, use DAP	08/12/2017
DEQ	DELIVERED EX-QUAY (named port of destination)	according to Incoterms® 2010 it is OBSOLETE	08/12/2017
DES	DELIVERED EX-SHIP (named port of destination)	according to Incoterms® 2010 it is OBSOLETE	08/12/2017
DDU	DELIVERED AT PLACE UNLOADED	according to Incoterms® 2020	25/04/2022
EXW	EX WORKS (named place)		
FAS	FREE ALONGSIDE SHIP (named port of shipment)		
FC	FREE CARRIER (named place)		
FOB	FREE ON BOARD (named port of shipment)		

### T306 - material circularity attribute

Indicates whether the material is virgin or comes from recycling or reuse processes

Agency name: eBIZ for TRICK

Decoding table: T306

File codes list (Generic code): [http://www.ebiz.enea.it/moda-ml/repository/codelist/draft/gc\\_T306.xml](http://www.ebiz.enea.it/moda-ml/repository/codelist/draft/gc_T306.xml)

Code	Description	Adoption note	Date of insertion
REU	Reused material		30/08/2022

SCL	Secondary raw materials	adopt this for any secondary raw material when information about the first or following loop is not available	22/07/2022
SCL1	Secondary raw materials - first loop		22/07/2022
SCLx	Secondary raw materials - loop following the first one		22/07/2022
VRG	Virgin raw material	adopt this for any virgin raw material when biobased information is not available	22/07/2022
VRGB	Virgin raw material - biobased		23/03/2023
VRGN	Virgin raw material - not biobased		23/03/2023

### T307 - recycling process method

Agency name: eBIZ for TRICK

Decoding table: T307

File codes list (Generic code): [http://www.ebiz.enea.it/moda-ml/repository/codelist/draft/gc\\_T307.xml](http://www.ebiz.enea.it/moda-ml/repository/codelist/draft/gc_T307.xml)

Code	Description	Adoption note	Date of insertion
CHMD	chemical recycling (dissolution)		28/07/2022
CHMP	chemical recycling (depolymerization)		28/07/2022
ENZ	enzymatic recycling		01/09/2022
MEC	mechanical recycling		28/07/2022
THE	thermal recycle		31/08/2022
THMC	thermo-mechanical recycling		01/09/2022

### T36 - service measure mode

mode used to measure the quantity of service provided (e.g.: weight, volume, time duration, ....)

Agency name: eBIZ

Decoding table: T36

File codes list (Generic code): [http://www.ebiz.enea.it/moda-ml/repository/codelist/draft/gc\\_T36.xml](http://www.ebiz.enea.it/moda-ml/repository/codelist/draft/gc_T36.xml)

Code	Description	Adoption note	Date of insertion
DIS	milage		
NUM	units number		
TIM	time duration		
VOL	volume		
WGH	weight		

### T38 - transport conditions

special condition of transport or special service requested to the Forwarder

Decoding table: T38

File codes list (Generic code): [http://www.ebiz.enea.it/moda-ml/repository/codelist/draft/gc\\_T38.xml](http://www.ebiz.enea.it/moda-ml/repository/codelist/draft/gc_T38.xml)

Code	Description	Adoption note	Date of insertion
ACC	arrange customs clearance		
CAL	Carrier loads		
CAU	Carrier unloads		
CMR	CMR carnet		
FFN	freight forwarders national conditions		
FLD	special agreement for full loading		
NCC	do not arrange customs clearance		
PPB	packaging paid by Buyer		
PPS	packaging paid by Supplier		
PRO	proof of delivery		
RFR	return container free		
RPC	return container paid by Customer		
RPS	return container paid by Supplier		
SHL	Shipper loads		
SHU	Consignee unloads		

### T40 - type of transport means

means of transport, in general or referred to a specific leg

Agency name: eBIZ

Decoding table: T40

File codes list (Generic code): [http://www.ebiz.enea.it/moda-ml/repository/codelist/draft/gc\\_T40.xml](http://www.ebiz.enea.it/moda-ml/repository/codelist/draft/gc_T40.xml)

Code	Description	Adoption note	Date of insertion
AIR	aircraft		
SHP	ship		
TRU	truck		
VAN	van		

### T41 - type of Allowance or Charge

coded specification of an Allowance or Charge (elaborated from UNECE 4465)

Agency name: eBIZ

Decoding table: T41

File codes list (Generic code): [http://www.ebiz.enea.it/moda-ml/repository/codelist/draft/gc\\_T41.xml](http://www.ebiz.enea.it/moda-ml/repository/codelist/draft/gc_T41.xml)

Code	Description	Adoption note	Date of insertion
1	Agreed settlement		19/08/2018
10	Costs for draft		19/08/2018
11	Bank charges	DEPRECATED, use CBK	19/08/2018
12	Agent commission		19/08/2018
14	Wrong delivery		19/08/2018
15	Goods returned to agent		19/08/2018
16	Goods partly returned		19/08/2018
17	Transport damage		19/08/2018
19	Trade discount		19/08/2018
2	Below specification goods		19/08/2018
20	Deduction for late delivery	DEPRECATED, use CWB	19/08/2018
21	Advertising costs		19/08/2018
22	Customs duties		19/08/2018
23	Telephone and postal costs		19/08/2018
24	Repair costs		19/08/2018
25	Attorney fees		19/08/2018
26	Taxes		19/08/2018
3	Damaged goods		19/08/2018
30	Direct payment to seller		19/08/2018
32	Goods not delivered		19/08/2018
33	Late delivery		19/08/2018
35	Goods returned		19/08/2018
36	Invoice not received		19/08/2018
37	Credit note to debtor/not to us		19/08/2018
38	Deducted bonus		19/08/2018
39	Deducted discount		19/08/2018
4	Short delivery		19/08/2018
40	Deducted freight costs		19/08/2018
41	Deduction against other invoices		19/08/2018
42	Credit balance(s)		19/08/2018
45	Debit note to seller		19/08/2018
46	Discount beyond terms		19/08/2018
48	Allowance/charge error		19/08/2018



49	Substitute product		19/08/2018
50	Terms of sale error		19/08/2018
52	Wrong invoice		19/08/2018
53	Duplicate invoice		19/08/2018
54	Weight error		19/08/2018
55	Additional charge not authorized		19/08/2018
56	Incorrect discount		19/08/2018
57	Price change		19/08/2018
58	Variation		19/08/2018
59	Chargeback		19/08/2018
65	Settlement to agent		19/08/2018
66	Cash discount		19/08/2018
7	Payment on account		19/08/2018
70	Wrong monetary amount resulting from incorrect free goods quantity		19/08/2018
72	Temporary special promotion		19/08/2018
73	Difference in tax rate		19/08/2018
74	Quantity discount		19/08/2018
75	Promotion discount		19/08/2018
76	Cancellation deadline passed		19/08/2018
77	Pricing discount		19/08/2018
78	Volume discount		19/08/2018
79	Sundry discount		19/08/2018
8	Returnable container charge included		19/08/2018
9	Invoice error		19/08/2018
AWA	bonus for works ahead of schedule		
CBK	bank charges		
CCR	servizio di corriere		
CIN	insurance		
CLB	labelling		
CPK	packing		
CSP	special packing		
CWB	penalty for works behind schedule		

#### T44 - additional code type

qualifier of the additional coding of a product

Agency name: eBIZ

Decoding table: T44

File codes list (Generic code): [http://www.ebiz.enea.it/moda-ml/repository/codelist/draft/gc\\_T44.xml](http://www.ebiz.enea.it/moda-ml/repository/codelist/draft/gc_T44.xml)

Code	Description	Adoption note	Date of insertion
CC	colour card		
CL	sales collection		
CO	company identification code		08/09/2017
DY	dye number		
LT	lot number		
MDI	Made in		08/09/2017
MS	manufacturing state		
PKG	packaging		09/09/2014
PL	product line		
RGB	RGB value		
SE	selvedge code		

#### T61 - duty or tax or fee type

duty or tax or fee type

Agency name: eBIZ

Decoding table: T61

File codes list (Generic code): [http://www.ebiz.enea.it/moda-ml/repository/codelist/draft/gc\\_T61.xml](http://www.ebiz.enea.it/moda-ml/repository/codelist/draft/gc_T61.xml)

Code	Description	Adoption note	Date of insertion
BOL	stamp duty		01/07/2013
CUD	customs duty		01/07/2013
ENV	environmental tax		01/07/2013
FRE	no tax		01/07/2013
OTH	other tax charges		01/07/2013
VAT	value added tax		01/07/2013

#### T62 - duty or tax or fee category

duty or tax or fee category

Agency name: eBIZ

Decoding table: T62

File codes list (Generic code): [http://www.ebiz.enea.it/moda-ml/repository/codelist/draft/gc\\_T62.xml](http://www.ebiz.enea.it/moda-ml/repository/codelist/draft/gc_T62.xml)

Code	Description	Adoption note	Date of insertion
------	-------------	---------------	-------------------

AA	lower than standard rate		01/07/2013
E	tax not applicable		01/07/2013
H	higher than standard rate		01/07/2013
O	outside scope of tax		01/07/2013
S	standard rate		01/07/2013
Z	zero rate goods		01/07/2013

### T8 - Modes of Transport

way of transport, in general or referred to the specified leg. Derived from UNECE Recommendation 28 (see link)

Agency name: eBIZ

Decoding table: T8

File codes list (Generic code): [http://www.ebiz.enea.it/moda-ml/repository/codelist/draft/gc\\_T8.xml](http://www.ebiz.enea.it/moda-ml/repository/codelist/draft/gc_T8.xml)

Other link: <https://fig.unece.org/contents/recommendation-28.htm#>

Code	Description	Adoption note	Date of insertion
1	MARITIME TRANSPORT		
10	Courier	DEPRECATED	01/07/2013
2	RAIL TRANSPORT		
3	ROAD TRANSPORT		
4	AIR TRANSPORT		
5	MAIL		
6	MULTIMODAL TRANSPORT	example ship + truck. Not used for custom declarations.	13/06/2023
8	INLAND WATER TRANSPORT		
9	MODE UNKNOWN	Includes Own propulsion	13/06/2023

### T9 - ISO4217 - Currency

currency code

Agency name: ISO

Decoding table: T9

File codes list (Generic code): [http://www.ebiz.enea.it/moda-ml/repository/codelist/draft/gc\\_T9.xml](http://www.ebiz.enea.it/moda-ml/repository/codelist/draft/gc_T9.xml)

Table not printed: there are 205 elements, more than the maximum specified for printing: 99.