



TRICK



<https://www.trick-project.eu/>

DRAFT

IMPLEMENTATION GUIDE TRANSACTION "TRACEABILITY DESPATCHING ADVICE"

Version: draft

Date of release: 26/6/2023

Document code: TRC003

technical Documentation: <http://www.ebiz.enea.it>

XML Schemas repository: <http://www.ebiz.enea.it/moda-ml/repository/schema/draft/default.asp>

Guides repository: <http://www.ebiz.enea.it/moda-ml/repository/guide/draft/default.asp>

Guide filename: TRC003-TRICK-TraceabilityDespatchingAdvice.pdf

0. PREMISE

This document contains a proposal for the updating and extension of eBIZ specifications starting from the eBIZ version 2018. Under the name of 'Draft version' it is reported the result of an extensive work of analysis and consultation aimed at developing and maintaining eBIZ specifications.

In particular, the content of this proposal is the result of various activities, mainly those carried out within the framework of the **TRICK project** funded by the European Commission: grant agreement 958352, call H2020-LOW-CARBON-CIRCULAR-INDUSTRIES-2020 / H2020-LCCI-2020-EASME-twostage.

The technical contents are backwards compatible with the latest official published version, with the exclusion of the totally new concepts added explicitly for the version that are thought as incremental evolution of the knowledge base.

1. BUSINESS DESCRIPTION

1.1 Scope

This guide aims to illustrate to fashion companies the standard XML format of the document type "TRACEABILITY DESPATCHING ADVISE", providing instructions for its use in the context of a TRACEABILITY SYSTEM involving Fashion Manufacturers, their customers, third parties and in case customs authorities, eBusiness and eCommerce platforms.

All the rules necessary for the construction and validation of the document are expressed through a specific XML schema, which is presented in detail in the paragraph "Implementation Guide".

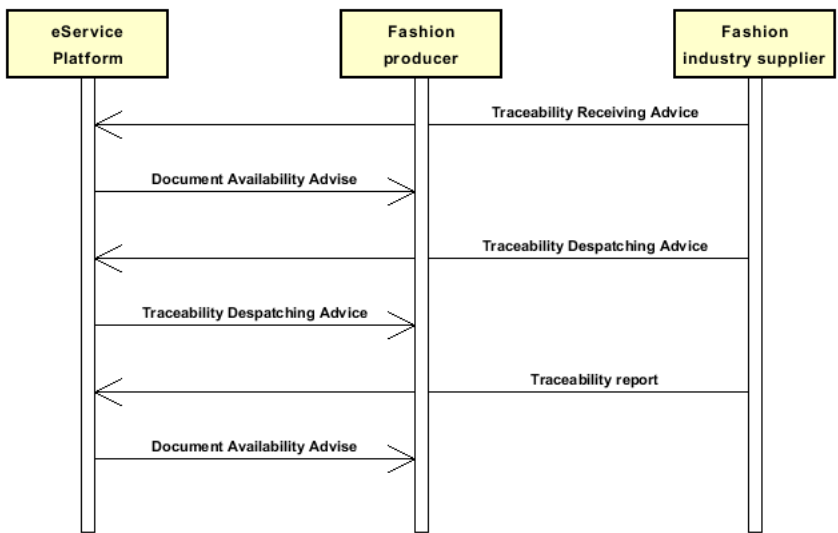
1.2 Generalities

The message is issued to record in the traceability system and anticipate to the destinationparty the information of the shipment of the product (it does not indicate the 'ready to send' condition, for this purpose use a normal despatch Advise); it may contain information such as transaction certificates relating to the goods shipped.

Each line of Traceability Despatch Advice must indicate the product with a unique code and can specify the Order line or other document to which it refers.

1.3. Possible scenario

P1.A2 Incoming material



2. IMPLEMENTATION GUIDE

2.1 General structure of XML document

All the business data that can be exchanged through this class of documents are shown in the following "document structure", that provides a simplified vision of the Schema.

In particular:

- the two numbers following each element define its "cardinality" (minimum and maximum number of occurrences); the minimum equal zero indicates that the element is optional, the minimum greater than zero indicates that is mandatory;
- the bold character denotes the complex elements (aggregates of simple elements) that were built for the sake of functionality and re-usability of some complex informations sets. The child elements in each parent element are easily spotted as "indented";
- the symbol "@" denotes an attribute of the preceding element; here "the usage indicator (optional, required, ...) is shown in square brackets.

Structure

TRCDesAdvise

@TAtype [Optional]

@version [Optional] [Default= draft]

@useProfile [Optional]

```
| TRCHeader 1-1
| | msgN 1-1
| | msgID 0-1
| | msgDate 1-1
| |   @dateForm [Optional]
| | refDoc 0-9
| |   @docType [Required]
| |   | docID 1-2
| |   |   @numberingOrg [Optional]
| |   | docDate 0-1
| |   |   @dateForm [Optional]
| |   | season 0-1
| |   |   @numberingOrg [Optional]
| |   |   @codeList [Optional]
| |   |   @listName [Optional]
| |   |   @listVersion [Optional]
| |   | itemID 0-1
| |   | attachment 0-1
| |   |   @uid [Optional]
| |   |   | fileName 0-1
| |   |   |   @numberingOrg [Optional]
| |   |   | binaryObject 0-1
| |   |   |   @format [Optional]
| |   |   |   @mime [Optional]
| |   |   |   @encoding [Optional]
| |   |   |   @characterSet [Optional]
| |   |   | externalReference 0-99
| |   |   |   | uri 1-1
| |   |   |   |   @isURL [Optional] [Default= true]
| |   |   |   | mimeCode 0-1
| |   |   |   | formatCode 0-1
| |   |   |   | encodingCode 0-1
| |   |   |   | characterSetCode 0-1
| |   |   | hashFootprint 0-1
| |   |   |   @schemeID [Optional]
| |   |   |   @hashMethod [Required]
| |   |   | blockChainReference 0-9
| |   |   |   | uri 1-1
| |   |   |   |   @isURL [Optional] [Default= true]
| |   |   |   | transactionReceipt 1-9
| |   | certificate 0-9
| |   |   @docStatusCode [Required]
| |   |   @docValidity [Required]
| |   |   | docID 1-1
| |   |   |   @numberingOrg [Optional]
```

| certificateID 1-1
 | @schemeID [Optional]
 | certificationStandardName 1-1
 | @standardOwner [Required]
 | docDate 1-1
 | @dateForm [Optional]
 | title 0-unbounded
 | @ln [Optional]
 | description 0-unbounded
 | @ln [Optional]
 | validityStart 0-1
 | @dateForm [Optional]
 | validityEnd 0-1
 | @dateForm [Optional]
 | validityExtensionDate 0-1
 | @dateForm [Optional]
 | sustainabilityCharacteristicText 0-99
 | @ln [Optional]
 | **issuerParty 1-1**
 | id 0-1
 | @numberingOrg [Optional]
 | legalName 0-1
 | dept 0-1
 | subDept 0-1
 | person 0-1
 | @email [Optional]
 | @phone [Optional]
 | @fax [Optional]
 | street 0-1
 | city 0-1
 | subCountry 0-1
 | country 0-1
 | postCode 0-1
 | **geoCoordinates 0-1**
 | @um [Optional] [Default= DEGD]
 | @geoRefSystem [Optional]
 | | xGeoCoord 1-1
 | | yGeoCoord 1-1
 | | zGeoCoord 0-1
 | issuerAccreditationInfo 0-1
 | **certifiedParty 1-1**
 | id 0-1
 | @numberingOrg [Optional]
 | legalName 0-1
 | dept 0-1
 | subDept 0-1
 | person 0-1
 | @email [Optional]
 | @phone [Optional]
 | @fax [Optional]
 | street 0-1
 | city 0-1
 | subCountry 0-1
 | country 0-1
 | postCode 0-1
 | **geoCoordinates 0-1**
 | @um [Optional] [Default= DEGD]
 | @geoRefSystem [Optional]
 | | xGeoCoord 1-1
 | | yGeoCoord 1-1
 | | zGeoCoord 0-1
 | **certifiedEntity 0-unbounded**
 | entityID 1-3
 | @schemeID [Required]
 | entityTypeCode 1-1
 | description 0-9
 | @ln [Optional]
 | **attachment 0-1**

```

| @uid [Optional]
| | fileName 0-1
| | | @numberingOrg [Optional]
| | binaryObject 0-1
| | | @format [Optional]
| | | @mime [Optional]
| | | @encoding [Optional]
| | | @characterSet [Optional]
| | externalReference 0-99
| | | uri 1-1
| | | | @isURL [Optional] [Default= true]
| | | | mimeTypeCode 0-1
| | | | formatCode 0-1
| | | | encodingCode 0-1
| | | | characterSetCode 0-1
| | | hashFootprint 0-1
| | | | @schemeID [Optional]
| | | | @hashMethod [Required]
| | | blockChainReference 0-9
| | | | uri 1-1
| | | | | @isURL [Optional] [Default= true]
| | | | transactionReceipt 1-9
| note 0-99
| | @numberingOrg [Optional]
| | @codeList [Optional]
| | @noteLabel [Optional]
| externalRefDoc 0-9
| | docID 1-1
| | | @numberingOrg [Optional]
| | docDate 0-1
| | | @dateForm [Optional]
| | title 0-unbounded
| | | @ln [Optional]
| | description 0-unbounded
| | | @ln [Optional]
| | validityStart 0-1
| | | @dateForm [Optional]
| | validityEnd 0-1
| | | @dateForm [Optional]
| | documentType 0-1
| | issuerParty 0-1
| | | id 0-1
| | | | @numberingOrg [Optional]
| | | | legalName 0-1
| | | | dept 0-1
| | | | subDept 0-1
| | | | person 0-1
| | | | @email [Optional]
| | | | @phone [Optional]
| | | | @fax [Optional]
| | | | street 0-1
| | | | city 0-1
| | | | subCountry 0-1
| | | | country 0-1
| | | | postCode 0-1
| | | geoCoordinates 0-1
| | | | @um [Optional] [Default= DEGD]
| | | | @geoRefSystem [Optional]
| | | | | xGeoCoord 1-1
| | | | | yGeoCoord 1-1
| | | | | zGeoCoord 0-1
| | | issuerAccreditationInfo 0-1
| signatureInformation 0-1
| | signatureTypeCode 1-1
| | signatoryParty 0-unbounded
| | | id 0-1
| | | | @numberingOrg [Optional]
| | | | legalName 0-1

```

```

| | | | dept 0-1
| | | | subDept 0-1
| | | | person 0-1
| | | | @email [Optional]
| | | | @phone [Optional]
| | | | @fax [Optional]
| | | | street 0-1
| | | | city 0-1
| | | | subCountry 0-1
| | | | country 0-1
| | | | postCode 0-1
| | | | geoCoordinates 0-1
| | | | @um [Optional] [Default= DEGD]
| | | | @geoRefSystem [Optional]
| | | | | xGeoCoord 1-1
| | | | | yGeoCoord 1-1
| | | | | zGeoCoord 0-1
| | attachment 0-1
| | @uid [Optional]
| | | fileName 0-1
| | | | @numberingOrg [Optional]
| | | binaryObject 0-1
| | | | @format [Optional]
| | | | @mime [Optional]
| | | | @encoding [Optional]
| | | | @characterSet [Optional]
| | | externalReference 0-99
| | | | uri 1-1
| | | | | @isURL [Optional] [Default= true]
| | | | mimeCode 0-1
| | | | formatCode 0-1
| | | | encodingCode 0-1
| | | | characterSetCode 0-1
| | | hashFootprint 0-1
| | | | @schemeID [Optional]
| | | | @hashMethod [Required]
| | | | blockChainReference 0-9
| | | | | uri 1-1
| | | | | @isURL [Optional] [Default= true]
| | | transactionReceipt 1-9
| note 0-99
| | @numberingOrg [Optional]
| | @codeList [Optional]
| | @noteLabel [Optional]
| senderParty 1-1
| @role [Optional]
| @sender [Optional]
| | id 1-1
| | | @numberingOrg [Optional]
| | legalName 0-1
| | dept 0-1
| | subDept 0-1
| | person 0-1
| | | @email [Optional]
| | | @phone [Optional]
| | | @fax [Optional]
| | street 0-1
| | city 0-1
| | subCountry 0-1
| | country 0-1
| | postCode 0-1
| | geoCoordinates 0-1
| | | @um [Optional] [Default= DEGD]
| | | @geoRefSystem [Optional]
| | | | xGeoCoord 1-1
| | | | yGeoCoord 1-1
| | | | zGeoCoord 0-1
| receiverParty 1-1

```

```

| | @role [Optional]
| | @sender [Optional]
| | | id 1-1
| | | | @numberingOrg [Optional]
| | | legalName 0-1
| | | dept 0-1
| | | subDept 0-1
| | | person 0-1
| | | | @email [Optional]
| | | | @phone [Optional]
| | | | @fax [Optional]
| | | street 0-1
| | | city 0-1
| | | subCountry 0-1
| | | country 0-1
| | | postCode 0-1
| | | | geoCoordinates 0-1
| | | | | @um [Optional] [Default= DEGD]
| | | | | @geoRefSystem [Optional]
| | | | | | xGeoCoord 1-1
| | | | | | yGeoCoord 1-1
| | | | | | zGeoCoord 0-1
| | | thirdParty 0-5
| | | | @VAT [Optional]
| | | | @role [Required]
| | | | @sender [Optional]
| | | | | id 1-1
| | | | | | @numberingOrg [Optional]
| | | | | legalName 0-1
| | | | | dept 0-1
| | | | | subDept 0-1
| | | | | person 0-1
| | | | | | @email [Optional]
| | | | | | @phone [Optional]
| | | | | | @fax [Optional]
| | | | | street 0-1
| | | | | city 0-1
| | | | | subCountry 0-1
| | | | | country 0-1
| | | | | postCode 0-1
| | | | | | geoCoordinates 0-1
| | | | | | | @um [Optional] [Default= DEGD]
| | | | | | | @geoRefSystem [Optional]
| | | | | | | | xGeoCoord 1-1
| | | | | | | | yGeoCoord 1-1
| | | | | | | | zGeoCoord 0-1
| | | note 0-99
| | | | @numberingOrg [Optional]
| | | | @codeList [Optional]
| | | | @noteLabel [Optional]

```

| **trade 0-1**

```

| | - choose -
| | | incoTermText 1-1
| | - or -
| | | incoTerm 1-1
| | - end choose -
| | - choose -

```

| | **tradeLocation 0-1**

```

| | | location 0-1
| | | | @LRI [Optional]
| | | legalName 0-1
| | | dept 0-1
| | | subDept 0-1
| | | person 0-1
| | | | @email [Optional]
| | | | @phone [Optional]
| | | | @fax [Optional]

```



```

| | | street 0-1
| | | city 0-1
| | | subCountry 0-1
| | | country 0-1
| | | postCode 0-1
| | | geoCoordinates 0-1
| | |   @um [Optional] [Default= DEGD]
| | |   @geoRefSystem [Optional]
| | |     | xGeoCoord 1-1
| | |     | yGeoCoord 1-1
| | |     | zGeoCoord 0-1
- or -
| | | location 0-1
| | |   @LRI [Optional]
- end choose -

```

TRCshipInfo 0-1

```

| | | businessStepCode 1-1
| | |   @numberingOrg [Optional]
| | |   @codeList [Optional]
| | |   @listName [Optional]
| | |   @listVersion [Optional]
| | | transInfo 1-9
| | |   @transReason [Optional]
| | |   @progr [Optional]
| | |     | transMode 1-1
| | |     | carrier 0-1
- choose -
| | |   deliveryLocation 0-1
| | |     | location 0-1
| | |     |   @LRI [Optional]
| | |     |   legalName 0-1
| | |     |   dept 0-1
| | |     |   subDept 0-1
| | |     |   person 0-1
| | |     |   @email [Optional]
| | |     |   @phone [Optional]
| | |     |   @fax [Optional]
| | |     |   street 0-1
| | |     |   city 0-1
| | |     |   subCountry 0-1
| | |     |   country 0-1
| | |     |   postCode 0-1
| | |     |   geoCoordinates 0-1
| | |     |     @um [Optional] [Default= DEGD]
| | |     |     @geoRefSystem [Optional]
| | |     |       | xGeoCoord 1-1
| | |     |       | yGeoCoord 1-1
| | |     |       | zGeoCoord 0-1
- or -
| | |   deliveryPlace 0-1
- end choose -
| | |   grossWeight 0-1
| | |     @um [Required]
| | |   netWeight 0-1
| | |     @um [Required]
| | |   transMeans 0-1
| | |     @propulsionSystemCode [Optional]
| | |   transCondition 0-3
| | |   transConditionText 0-1
- choose -
| | |   despatchPlace 0-1
- or -
| | |   despatchLocation 0-1
| | |     | location 0-1
| | |     |   @LRI [Optional]
| | |     |   legalName 0-1
| | |     |   dept 0-1

```

```

| | | | subDept 0-1
| | | | person 0-1
| | | | @email [Optional]
| | | | @phone [Optional]
| | | | @fax [Optional]
| | | | street 0-1
| | | | city 0-1
| | | | subCountry 0-1
| | | | country 0-1
| | | | postCode 0-1
| | | | geoCoordinates 0-1
| | | | @um [Optional] [Default= DEGD]
| | | | @geoRefSystem [Optional]
| | | | | xGeoCoord 1-1
| | | | | yGeoCoord 1-1
| | | | | zGeoCoord 0-1
- end choose -
| | | | despatchDate 0-1
| | | | @dateForm [Optional]
| | | | delEffectiveDate 0-1
| | | | @dateForm [Optional]
| | | | routeLength 0-1
| | | | @um [Required]
| | eventSourceParty 0-1
| | | | id 0-1
| | | | @numberingOrg [Optional]
| | | | legalName 0-1
| | | | dept 0-1
| | | | subDept 0-1
| | | | person 0-1
| | | | @email [Optional]
| | | | @phone [Optional]
| | | | @fax [Optional]
| | | | street 0-1
| | | | city 0-1
| | | | subCountry 0-1
| | | | country 0-1
| | | | postCode 0-1
| | | | geoCoordinates 0-1
| | | | @um [Optional] [Default= DEGD]
| | | | @geoRefSystem [Optional]
| | | | | xGeoCoord 1-1
| | | | | yGeoCoord 1-1
| | | | | zGeoCoord 0-1
| | | | traceabilityPartyRole 0-1
| | | | @numberingOrg [Optional]
| | | | @codeList [Optional] [Default= http://www.ebiz.enea.it/moda-ml/repository/codelist/Draft/gc\_TRKR1.xml]
| | | | @listName [Optional]
| | | | @listVersion [Optional]
| | eventDestinationParty 0-1
| | | | id 0-1
| | | | @numberingOrg [Optional]
| | | | legalName 0-1
| | | | dept 0-1
| | | | subDept 0-1
| | | | person 0-1
| | | | @email [Optional]
| | | | @phone [Optional]
| | | | @fax [Optional]
| | | | street 0-1
| | | | city 0-1
| | | | subCountry 0-1
| | | | country 0-1
| | | | postCode 0-1
| | | | geoCoordinates 0-1
| | | | @um [Optional] [Default= DEGD]
| | | | @geoRefSystem [Optional]
| | | | | xGeoCoord 1-1

```

```

| | | | yGeoCoord 1-1
| | | | zGeoCoord 0-1
| | | | traceabilityPartyRole 1-1
| | | | @numberingOrg [Optional]
| | | | @codeList [Optional] [Default= http://www.ebiz.enea.it/moda-ml/repository/codelist/Draft/gc_TRKR1.xml]
| | | | @listName [Optional]
| | | | @listVersion [Optional]
| | | eventDateTime 1-1
| | | @dateForm [Required]
| | | actualPackageUnit 0-unbounded
| | | @packageLevel [Optional]
| | | | packageIdentification 1-1
| | | | | packageN 1-1
| | | | | | @numberingOrg [Optional]
| | | | | | @packageContainerN [Optional]
| | | | | serialN 0-9
| | | | | | @numberingOrg [Optional]
| | | | | | @idQualifier [Optional]
| | | - choose -
| | | | packageText 0-1
| | | - or -
| | | | package 0-1
| | | - end choose -
| | | | packageModelCode 0-1
| | | | | @numberingOrg [Optional]
| | | | volume 0-1
| | | | | @um [Required]
| | | | netWeight 0-1
| | | | | @um [Required]
| | | | grossWeight 0-1
| | | | | @um [Required]
| | | | packageDim 0-1
| | | | | length 1-1
| | | | | | @um [Required]
| | | | | width 0-1
| | | | | | @um [Required]
| | | | | height 0-1
| | | | | | @um [Required]
| | | | actualItemsPerPackage 0-1
| | | | packagesList 0-1
| | | | | packageIdentification 1-unbounded
| | | | | | packageN 1-1
| | | | | | | @numberingOrg [Optional]
| | | | | | | @packageContainerN [Optional]
| | | | | | serialN 0-9
| | | | | | | @numberingOrg [Optional]
| | | | | | | @idQualifier [Optional]
| | | | | itemsList 0-1
| | | | | | qualityLevel 0-1
| | | | | | | @numberingOrg [Optional]
| | | | | | | @codeList [Optional]
| | | | | | | @listName [Optional]
| | | | | | | @listVersion [Optional]
| | | | | | itemIdentification 1-unbounded
| | | | | | | serialN 1-9
| | | | | | | | @numberingOrg [Optional]
| | | | | | | | @idQualifier [Optional]
| | | | note 0-99
| | | | | @numberingOrg [Optional]
| | | | | @codeList [Optional]
| | | | | @noteLabel [Optional]

| TRCbody 1-1
| | TRCitem 1-unbounded
| | | lineN 1-1
| | | | @VAT [Optional]
| | | lineID 0-1
| | | refDoc 0-9

```

```

| | | @docType [Required]
| | | | docID 1-2
| | | | | @numberingOrg [Optional]
| | | | docDate 0-1
| | | | | @dateForm [Optional]
| | | | season 0-1
| | | | | @numberingOrg [Optional]
| | | | | @codeList [Optional]
| | | | | @listName [Optional]
| | | | | @listVersion [Optional]
| | | | itemID 0-1
| | | | | attachment 0-1
| | | | | | @uid [Optional]
| | | | | | | fileName 0-1
| | | | | | | | @numberingOrg [Optional]
| | | | | | | binaryObject 0-1
| | | | | | | | @format [Optional]
| | | | | | | | @mime [Optional]
| | | | | | | | @encoding [Optional]
| | | | | | | | @characterSet [Optional]
| | | | | | | | externalReference 0-99
| | | | | | | | | uri 1-1
| | | | | | | | | | @isURL [Optional] [Default= true]
| | | | | | | | | mimeCode 0-1
| | | | | | | | | formatCode 0-1
| | | | | | | | | encodingCode 0-1
| | | | | | | | | characterSetCode 0-1
| | | | | | | | hashFootprint 0-1
| | | | | | | | | @schemeID [Optional]
| | | | | | | | | @hashMethod [Required]
| | | | | | | | | blockChainReference 0-9
| | | | | | | | | | uri 1-1
| | | | | | | | | | | @isURL [Optional] [Default= true]
| | | | | | | | | | transactionReceipt 1-9
| | | | - choose -
| | | | | uniqueProductID 1-2
| | | | | | @schemeID [Required]
| | | | - or -
| | | | | yarnCode 1-2
| | | | | | @numberingOrg [Optional] [Default= CL]
| | | | | | | art 1-1
| | | | | | | | @numberingOrg [Optional]
| | | | | | | | @codeList [Optional]
| | | | | | | | @listName [Optional]
| | | | | | | | @listVersion [Optional]
| | | | | | | color 0-1
| | | | | | | | @numberingOrg [Optional]
| | | | | | | | @codeList [Optional]
| | | | | | | | @listName [Optional]
| | | | | | | | @listVersion [Optional]
| | | | | | | added 0-9
| | | | | | | | @numberingOrg [Optional]
| | | | | | | | @addType [Optional]
| | | | | | | description 0-unbounded
| | | | | | | | @ln [Optional]
| | | | - or -
| | | | | texCode 1-2
| | | | | | @numberingOrg [Optional]
| | | | | | | art 1-1
| | | | | | | | @numberingOrg [Optional]
| | | | | | | | @codeList [Optional]
| | | | | | | | @listName [Optional]
| | | | | | | | @listVersion [Optional]
| | | | | | | pattern 0-1
| | | | | | | | @numberingOrg [Optional]
| | | | | | | | @codeList [Optional]
| | | | | | | | @listName [Optional]
| | | | | | | | @listVersion [Optional]

```

| | | | color 0-1
| | | | @numberingOrg [Optional]
| | | | @codeList [Optional]
| | | | @listName [Optional]
| | | | @listVersion [Optional]
| | | | added 0-9
| | | | @numberingOrg [Optional]
| | | | @addType [Optional]
| | | | description 0-unbounded
| | | | @ln [Optional]

- or -

| | | | **acsCode 1-2**
| | | | @numberingOrg [Optional]
| | | | art 1-1
| | | | @numberingOrg [Optional]
| | | | @codeList [Optional]
| | | | @listName [Optional]
| | | | @listVersion [Optional]
| | | | pattern 0-1
| | | | @numberingOrg [Optional]
| | | | @codeList [Optional]
| | | | @listName [Optional]
| | | | @listVersion [Optional]
| | | | color 0-1
| | | | @numberingOrg [Optional]
| | | | @codeList [Optional]
| | | | @listName [Optional]
| | | | @listVersion [Optional]
| | | | added 0-9
| | | | @numberingOrg [Optional]
| | | | @addType [Optional]
| | | | description 0-unbounded
| | | | @ln [Optional]

- or -

| | | | **garmentPartCode 1-2**
| | | | @numberingOrg [Optional]
| | | | gPart 1-1
| | | | mod 1-1
| | | | @numberingOrg [Optional]
| | | | @codeList [Optional]
| | | | @listName [Optional]
| | | | @listVersion [Optional]
| | | | fabric 0-1
| | | | @numberingOrg [Optional]
| | | | @codeList [Optional]
| | | | @listName [Optional]
| | | | @listVersion [Optional]
| | | | color 0-1
| | | | @numberingOrg [Optional]
| | | | @codeList [Optional]
| | | | @listName [Optional]
| | | | @listVersion [Optional]
| | | | added 0-19
| | | | @numberingOrg [Optional]
| | | | @addType [Optional]
| | | | size 0-1
| | | | @numberingOrg [Optional]
| | | | @codeList [Optional]
| | | | @listName [Optional]
| | | | @listVersion [Optional]
| | | | description 0-unbounded
| | | | @ln [Optional]

- or -

| | | | **garmentCode 1-2**
| | | | @numberingOrg [Optional]

- choose -

| | | | **garmentCodeB 1-1**
| | | | @numberingOrg [Optional]

```

| | | | mod 1-1
| | | |   @numberingOrg [Optional]
| | | |   @codeList [Optional]
| | | |   @listName [Optional]
| | | |   @listVersion [Optional]
| | | | fabric 0-1
| | | |   @numberingOrg [Optional]
| | | |   @codeList [Optional]
| | | |   @listName [Optional]
| | | |   @listVersion [Optional]
| | | | color 0-1
| | | |   @numberingOrg [Optional]
| | | |   @codeList [Optional]
| | | |   @listName [Optional]
| | | |   @listVersion [Optional]
| | | | garmentVariant 0-9
| | | |   variantType 1-1
| | | |     @numberingOrg [Optional]
| | | |     @codeList [Optional]
| | | |     @listName [Optional]
| | | |     @listVersion [Optional]
| | | |   variantCode 1-1
| | | |     @numberingOrg [Optional]
| | | |     @codeList [Optional]
| | | |     @listName [Optional]
| | | |     @listVersion [Optional]
| | | | drop 0-1
| | | |   @numberingOrg [Optional]
| | | |   @codeList [Optional]
| | | |   @listName [Optional]
| | | |   @listVersion [Optional]
| | | | size 0-1
| | | |   @numberingOrg [Optional]
| | | |   @codeList [Optional]
| | | |   @listName [Optional]
| | | |   @listVersion [Optional]
| | | | artGroup 0-1
| | | |   @numberingOrg [Optional]
| | | |   @codeList [Optional]
| | | |   @listName [Optional]
| | | |   @listVersion [Optional]
| | | | added 0-9
| | | |   @numberingOrg [Optional]
| | | |   @addType [Optional]
| | | | description 0-unbounded
| | | |   @ln [Optional]
| | | | - or -
| | | | garmentCodeA 1-1
| | | |   art 1-1
| | | |     @numberingOrg [Optional]
| | | |     @codeList [Optional]
| | | |     @listName [Optional]
| | | |     @listVersion [Optional]
| | | |   description 0-unbounded
| | | |   @ln [Optional]
| | | | - end choose -
- end choose -
| | | | phaseCode 0-1
| | | |   @numberingOrg [Optional]
| | | |   @codeList [Optional]
| | | |   @listName [Optional]
| | | |   @listVersion [Optional]
| | | | qty 1-2
| | | |   @um [Required]
| | | | acceptQty 0-1
| | | |   @um [Required]
| | | | qtyVariance 0-9
| | | |   @um [Optional]

```

```

| @varReason [Optional]
| csRange 0-99
| @numberingOrg [Optional]
| @sizeSystemNat [Optional]
| @sizeSystemSeg [Optional]
| @sizeSystemBase [Optional]
| @sizeSystemID [Optional]
|   color 0-1
|   @numberingOrg [Optional]
|   @codeList [Optional]
|   @listName [Optional]
|   @listVersion [Optional]
|   garmentVariant 0-9
|   variantType 1-1
|   @numberingOrg [Optional]
|   @codeList [Optional]
|   @listName [Optional]
|   @listVersion [Optional]
|   variantCode 1-1
|   @numberingOrg [Optional]
|   @codeList [Optional]
|   @listName [Optional]
|   @listVersion [Optional]
|   drop 0-1
|   @numberingOrg [Optional]
|   @codeList [Optional]
|   @listName [Optional]
|   @listVersion [Optional]
|   sizeMatrix 1-1
|   sizeRow 1-99
|   additionalComponentCode 0-9
|   @numberingOrg [Optional]
|   @codeList [Optional]
|   @listName [Optional]
|   @listVersion [Optional]
|   drop 0-1
|   @numberingOrg [Optional]
|   @codeList [Optional]
|   @listName [Optional]
|   @listVersion [Optional]
|   size 1-1
|   @numberingOrg [Optional]
|   @codeList [Optional]
|   @listName [Optional]
|   @listVersion [Optional]
|   qty 0-1
|   @um [Required]
|   itemsList 0-1
|   qualityLevel 0-1
|   @numberingOrg [Optional]
|   @codeList [Optional]
|   @listName [Optional]
|   @listVersion [Optional]
|   itemIdentification 1-unbounded
|   serialN 1-9
|   @numberingOrg [Optional]
|   @idQualifier [Optional]
| lotN 0-2
| @numberingOrg [Optional]
| packageN 0-unbounded
| @numberingOrg [Optional]
| @packageContainerN [Optional]
| note 0-99
| @numberingOrg [Optional]
| @codeList [Optional]
| @noteLabel [Optional]

```

2.2 Detailed description of document elements

Following tables show all elements (complex and simple) used in this document. Description includes: 1) element's information: xml tag, name, brief description, data type and syntax constraints; 2) information about use of the element in a particular position in the document: xpath and possible associated notes.

2.2.1 Complex elements (Aggregate Business Information Entities)

Complex elements are those elements whose content is composed of other elements (childs).Complex elements are alphabetically ordered.

acsCode	full codification identifying an accessory product usually coupled with garment or other fashion product (XPath TRCDesAdvise/TRCbody/TRCitem/acsCode) 1-2 - note: <i>this element can have two instances only if the numbering organisations are different</i>
actualPackageUnit	description and identification of a single transport package (XPath TRCDesAdvise/TRCshipInfo/actualPackageUnit) 0-unbounded - note: <i>this element might be repeated for listing each single package of the shipment</i>
attachment	an attached document. An attachment can refer to an external document or be included with the document being exchanged (XPath TRCDesAdvise/TRCbody/TRCitem/refDoc/attachment) 0-1 (XPath TRCDesAdvise/TRCheader/externalRefDoc/attachment) 0-1 - note: <i>indicates where to find the document or contains it as a binary object (the second option is not recommended for practical reasons)</i> (XPath TRCDesAdvise/TRCheader/certificate/attachment) 0-1 - note: <i>indicates where to find the document or contains it as a binary object (the second option is not recommended for practical reasons)</i> (XPath TRCDesAdvise/TRCheader/refDoc/attachment) 0-1
blockChainReference	blockchain reference - base type: string, max length: 80, (XPath TRCDesAdvise/TRCbody/TRCitem/refDoc/attachment/blockChainReference) 0-9 (XPath TRCDesAdvise/TRCheader/externalRefDoc/attachment/blockChainReference) 0-9 (XPath TRCDesAdvise/TRCheader/certificate/attachment/blockChainReference) 0-9 (XPath TRCDesAdvise/TRCheader/refDoc/attachment/blockChainReference) 0-9
certificate	Reference and details relating to a document containing a certification issued by a third party who is entitled to issue it - base type: , (XPath TRCDesAdvise/TRCheader/certificate) 0-9
certifiedEntity	The entity (organisation, process, product..) for which the certification is valid. - base type: , (XPath TRCDesAdvise/TRCheader/certificate/certifiedEntity) 0-unbounded
certifiedParty	identification and details of the party to whom the certificate has been issued - base type: Nad, (XPath TRCDesAdvise/TRCheader/certificate/certifiedParty) 1-1
csRange	range of color-size for a fashion article (XPath TRCDesAdvise/TRCbody/TRCitem/csRange) 0-99 - note: <i>Use only in case of garments, components and accessories or accessories</i>
deliveryLocation	data relating to a place of delivery(indicate at least element location or address, city and country) - base type: Nad, (XPath TRCDesAdvise/TRCshipInfo/transInfo/deliveryLocation) 0-1 - note: <i>use to represent addresses in a structured way or with geographical coordinates</i>
despatchLocation	data relating to a place of despatch (indicate at least element location or address, city and country) - base type: Nad, (XPath TRCDesAdvise/TRCshipInfo/transInfo/despatchLocation) 0-1 - note: <i>use to represent addresses in a structured way</i>

eventDestinationParty	identification and details of the party to whom an event is addressed - base type: Nad, (XPath TRCDesAdvise/TRCshipInfo/eventDestinationParty) 0-1 - note: <i>Destination party of the despatch event</i>
eventSourceParty	identification and details of the party that triggered an event - base type: Nad, (XPath TRCDesAdvise/TRCshipInfo/eventSourceParty) 0-1 - note: <i>Party that originated the despatch event</i>
externalRefDoc	external document, used to refer generic office documents (like pdf, docx, xls, for example shop window instructions) - base type: , (XPath TRCDesAdvise/TRCheader/externalRefDoc) 0-9 - note: <i>reference to a document produced by or towards third parties (e.g. customs declarations, waybills, etc.) In case of Despatch or Receive, any logistic documents (e.g. CMR) must be indicated here.</i>
externalReference	details about an external object, such as a document stored at a remote location (XPath TRCDesAdvise/TRCheader/refDoc/attachment/externalReference) 0-99 (XPath TRCDesAdvise/TRCheader/externalRefDoc/attachment/externalReference) 0-99 (XPath TRCDesAdvise/TRCbody/TRCitem/refDoc/attachment/externalReference) 0-99 (XPath TRCDesAdvise/TRCheader/certificate/attachment/externalReference) 0-99
garmentCode	codification of the garment product (XPath TRCDesAdvise/TRCbody/TRCitem/garmentCode) 1-2 - note: <i>this element can have two instances only if the numbering organisations are different</i>
garmentCodeA	codification of the garment product- type A (XPath TRCDesAdvise/TRCbody/TRCitem/garmentCode/garmentCodeA) 1-1 - note: <i>here the barcode EAN-13 or EAN-8 should be specified</i>
garmentCodeB	codification of the garment product - type B (XPath TRCDesAdvise/TRCbody/TRCitem/garmentCode/garmentCodeB) 1-1
garmentPartCode	codification of the component or part of a fashion article (XPath TRCDesAdvise/TRCbody/TRCitem/garmentPartCode) 1-2 - note: <i>this element can have two instances only if the numbering organisations are different</i>
garmentVariant	garment product variant (XPath TRCDesAdvise/TRCbody/TRCitem/garmentCode/garmentCodeB/garmentVariant) 0-9 (XPath TRCDesAdvise/TRCbody/TRCitem/csRange/garmentVariant) 0-9 - note: <i>used only if not already specified in the article code</i>
geoCoordinates	geographical coordinates (XPath TRCDesAdvise/TRCshipInfo/eventSourceParty/geoCoordinates) 0-1 (XPath TRCDesAdvise/TRCshipInfo/transInfo/despatchLocation/geoCoordinates) 0-1 (XPath TRCDesAdvise/TRCshipInfo/eventDestinationParty/geoCoordinates) 0-1 (XPath TRCDesAdvise/TRCheader/certificate/issuerParty/geoCoordinates) 0-1 (XPath TRCDesAdvise/TRCheader/certificate/certifiedParty/geoCoordinates) 0-1 (XPath TRCDesAdvise/TRCheader/receiverParty/geoCoordinates) 0-1 (XPath TRCDesAdvise/TRCheader/externalRefDoc/signatureInformation/signatoryParty/geoCoordinates) 0-1 (XPath TRCDesAdvise/TRCheader/senderParty/geoCoordinates) 0-1 (XPath TRCDesAdvise/TRCheader/thirdParty/geoCoordinates) 0-1 (XPath TRCDesAdvise/TRCshipInfo/transInfo/deliveryLocation/geoCoordinates) 0-1 (XPath TRCDesAdvise/TRCheader/externalRefDoc/issuerParty/geoCoordinates) 0-1 (XPath TRCDesAdvise/trade/tradeLocation/geoCoordinates) 0-1
issuerParty	Details of the party that issued the document. - base type: Nad, (XPath TRCDesAdvise/TRCheader/certificate/issuerParty) 1-1 (XPath TRCDesAdvise/TRCheader/externalRefDoc/issuerParty) 0-1
itemIdentification	serial identification of a product unit (XPath TRCDesAdvise/TRCbody/TRCitem/csRange/sizeMatrix/sizeRow/itemsList/itemIdentification) 1-unbounded

	<p>- note: <i>identification of the single product unit contained in the list</i> (XPath TRCDesAdvise/TRCshipInfo/actualPackageUnit/itemsList/itemIdentification) 1-unbounded</p> <p>- note: <i>identification of the single product unit contained in the list</i></p>
itemsList	<p>list of the single product units (XPath TRCDesAdvise/TRCbody/TRCitem/csRange/sizeMatrix/sizeRow/itemsList) 0-1</p> <p>- note: <i>the usage in this position is alternative to its usage within the document line element</i> (XPath TRCDesAdvise/TRCshipInfo/actualPackageUnit/itemsList) 0-1</p>
packageDim	<p>dimensions of a transport package (XPath TRCDesAdvise/TRCshipInfo/actualPackageUnit/packageDim) 0-1</p>
packageIdentification	<p>serial identification of a package (XPath TRCDesAdvise/TRCshipInfo/actualPackageUnit/packageIdentification) 1-1 (XPath TRCDesAdvise/TRCshipInfo/actualPackageUnit/packagesList/packageIdentification) 1-unbounded</p> <p>- note: <i>identification of the single package contained in the list</i></p>
packagesList	<p>list of single packages (XPath TRCDesAdvise/TRCshipInfo/actualPackageUnit/packagesList) 0-1</p> <p>- note: <i>list of packages contained within the actual package (thus with lower level). All the packages in the list should preferably have the same level.</i></p>
receiverParty	<p>Details of the party receiving the document. - base type: Nad, (XPath TRCDesAdvise/TRCheader/receiverParty) 1-1</p>
refDoc	<p>identification of a document and of an item thereof, to which the message makes reference (XPath TRCDesAdvise/TRCbody/TRCitem/refDoc) 0-9</p> <p>- note: <i>reference to a document produced as part of the collaboration activities between the parties (e.g. order, catalog, price list, etc.)</i> (XPath TRCDesAdvise/TRCheader/refDoc) 0-9</p> <p>- note: <i>reference to a document produced in the framework of the collaboration activities between the parties (e.g. order, catalog, price list, etc.)</i></p>
senderParty	<p>Details of the party sending the document. - base type: Nad, (XPath TRCDesAdvise/TRCheader/senderParty) 1-1</p>
signatoryParty	<p>Details of the party that signed the document. - base type: Nad, (XPath TRCDesAdvise/TRCheader/externalRefDoc/signatureInformation/signatoryParty) 0-unbounded</p>
signatureInformation	<p>information about the document signature (XPath TRCDesAdvise/TRCheader/externalRefDoc/signatureInformation) 0-1</p>
sizeMatrix	<p>size matrix of an apparel product (XPath TRCDesAdvise/TRCbody/TRCitem/csRange/sizeMatrix) 1-1</p>
sizeRow	<p>size matrix row of an apparel product (XPath TRCDesAdvise/TRCbody/TRCitem/csRange/sizeMatrix/sizeRow) 1-99</p>
texCode	<p>full codification of the textile product (XPath TRCDesAdvise/TRCbody/TRCitem/texCode) 1-2</p> <p>- note: <i>this element can have two instances only if the numbering organisations are different</i></p>
thirdParty	<p>identification and details of the Third Party, different from Sender and Receiver of the document - base type: Nad, (XPath TRCDesAdvise/TRCheader/thirdParty) 0-5</p>
trade	<p>general terms of trade for the specified supply (XPath TRCDesAdvise/trade) 0-1</p>
tradeLocation	<p>data relating to the place to which the trade conditions refer (indicate at least element location or address, city and country)</p>

	- base type: Nad, (XPath TRCDesAdvise/trade/tradeLocation) 0-1 - note: <i>address of the place to which the INCOTERM applies</i>
transInfo	details of transport: mode, carrier and delivery place (XPath TRCDesAdvise/TRCshipInfo/transInfo) 1-9 - note: <i>this data group can be iterated for each transport leg. They have to be in ordered sequence from initial place up to the final delivery place.</i>
TRCbody	body of the documents "Traceability Receiving Advise" and "Traceability Despatching Advise" (XPath TRCDesAdvise/TRCbody) 1-1
TRCheader	header of the Traceability documents ("Traceability Receiving Advise", "Traceability Despatching Advise", "Traceability Report", "Transparency and Sustainability Report") (XPath TRCDesAdvise/TRCheader) 1-1
TRCitem	line item of the documents "Traceability Receiving Advise" and "Traceability Despatching Advise" (XPath TRCDesAdvise/TRCbody/TRCitem) 1-unbounded - note: <i>each line of the document can refer to a maximum of one lot if you intend to specify its identifier</i>
TRCshipInfo	various information on transport and on transport packages referring to the content of the entire Traceability document (XPath TRCDesAdvise/TRCshipInfo) 0-1
yarnCode	full codification of a yarn product (XPath TRCDesAdvise/TRCbody/TRCitem/yarnCode) 1-2 - note: <i>this element can have two instances only if the numbering organisations are different</i>

2.2.2 Simple elements (Basic Business Information Entities)

Simple elements are those elements whose content is characterized by a data type plus a domain of possible values. Simple elements are alphabetically ordered.

acceptQty	net quantity of a product received and accepted by the Receiving Party - base type: decimal, min inclusive: 0, fraction digits: 2, (XPath TRCDesAdvise/TRCbody/TRCitem/acceptQty) 0-1 - note: <i>Use only in case of receiving</i>
actualItemsPerPackage	the quantity of items actually contained in the package - base type: decimal, (XPath TRCDesAdvise/TRCshipInfo/actualPackageUnit/actualItemsPerPackage) 0-1
added	additional code of the product (complementing the formers) - base type: string, max length: 80, (XPath TRCDesAdvise/TRCbody/TRCitem/yarnCode/added) 0-9 - note: <i>here an additional codification (see table T44) can be specified</i> (XPath TRCDesAdvise/TRCbody/TRCitem/garmentCode/garmentCodeB/added) 0-9 (XPath TRCDesAdvise/TRCbody/TRCitem/acsCode/added) 0-9 - note: <i>here an additional codification (see table T44) can be specified</i> (XPath TRCDesAdvise/TRCbody/TRCitem/garmentPartCode/added) 0-19 (XPath TRCDesAdvise/TRCbody/TRCitem/texCode/added) 0-9 - note: <i>here an additional codification (see table T44) can be specified</i>
additionalComponentCode	an additional code to identify a fashion product or a part of it (it is a way to codify the item, but it is not one of the codes to identify it). It is not a serial identifier. - base type: string, (XPath TRCDesAdvise/TRCbody/TRCitem/csRange/sizeMatrix/sizeRow/additionalComponentCode) 0-9
@addType	qualifier of the additional coding of a product - base type: string, cod. table: T44 http://www.ebiz.enea.it/moda-ml/repository/codelist/draft/gc_T44.xml (XPath TRCDesAdvise/TRCbody/TRCitem/garmentPartCode/added/@addType) [Optional] - note: <i>addType allows the clarification of the meaning of the added element content; it</i>

	<p><i>is strongly suggested to use it always.</i> (XPath TRCDesAdvise/TRCbody/TRCitem/texCode/added/@addType) [Optional] - nota: <i>addType</i> allows the clarification of the meaning of the added element content; it is strongly suggested to use it always. (XPath TRCDesAdvise/TRCbody/TRCitem/yarnCode/added/@addType) [Optional] - nota: <i>addType</i> allows the clarification of the meaning of the added element content; it is strongly suggested to use it always. (XPath TRCDesAdvise/TRCbody/TRCitem/acsCode/added/@addType) [Optional] - nota: <i>addType</i> allows the clarification of the meaning of the added element content; it is strongly suggested to use it always. (XPath TRCDesAdvise/TRCbody/TRCitem/garmentCode/garmentCodeB/added/@addType) [Optional] - nota: <i>addType</i> allows the clarification of the meaning of the added element content; it is strongly suggested to use it always.</p>
art	<p>article number of the product - base type: string, max length: 80, (XPath TRCDesAdvise/TRCbody/TRCitem/acsCode/art) 1-1 (XPath TRCDesAdvise/TRCbody/TRCitem/garmentCode/garmentCodeA/art) 1-1 (XPath TRCDesAdvise/TRCbody/TRCitem/texCode/art) 1-1 - note: <i>can be used either for the base-article (excluding pattern/colour) or for the SKU</i> (XPath TRCDesAdvise/TRCbody/TRCitem/yarnCode/art) 1-1</p>
artGroup	<p>code identifying a class of products - base type: string, max length: 40, (XPath TRCDesAdvise/TRCbody/TRCitem/garmentCode/garmentCodeB/artGroup) 0-1</p>
binaryObject	<p>a binary large object containing an attached document, Coding 'base64Binary' is recommended. - base type: base64Binary, (XPath TRCDesAdvise/TRCheader/certificate/attachment/binaryObject) 0-1 (XPath TRCDesAdvise/TRCbody/TRCitem/refDoc/attachment/binaryObject) 0-1 (XPath TRCDesAdvise/TRCheader/externalRefDoc/attachment/binaryObject) 0-1 (XPath TRCDesAdvise/TRCheader/refDoc/attachment/binaryObject) 0-1</p>
businessStepCode	<p>It is the code that indicates an action in the business process. It is recommended to declare the codeList or at least the numberingOrg - base type: string, (XPath TRCDesAdvise/TRCshipInfo/businessStepCode) 1-1 - note: <i>business step to which the despatch event refers</i></p>
carrier	<p>identification of the transport carrier - base type: string, max length: 40, (XPath TRCDesAdvise/TRCshipInfo/transInfo/carrier) 0-1</p>
certificateID	<p>Identifier of the certificate assigned by the issuer - base type: string, (XPath TRCDesAdvise/TRCheader/certificate/certificateID) 1-1</p>
certificationStandardName	<p>it indicates the specification that has been used as normative basis of the certificate. (examples: 'GRS–global recycling standard' or 'Standard 100 OEKO-TEX') - base type: string, (XPath TRCDesAdvise/TRCheader/certificate/certificationStandardName) 1-1</p>
@characterSet	<p>the character set of the binary object (examples UTF-8, UTF-16, Windows-1252, ISO-8859-7,...) - base type: normalizedString, (XPath TRCDesAdvise/TRCheader/refDoc/attachment/binaryObject/@characterSet) [Optional] (XPath TRCDesAdvise/TRCheader/certificate/attachment/binaryObject/@characterSet) [Optional] (XPath TRCDesAdvise/TRCbody/TRCitem/refDoc/attachment/binaryObject/@characterSet) [Optional] (XPath TRCDesAdvise/TRCheader/externalRefDoc/attachment/binaryObject/@characterSet) [Optional]</p>
characterSetCode	<p>the character set of an external document (examples UTF-8, UTF-16, Windows-1252, ISO-8859-7,...) - base type: normalizedString, (XPath TRCDesAdvise/TRCheader/externalRefDoc/attachment/</p>

	<p>externalReference/characterSetCode) 0-1 (XPath TRCDesAdvise/TRCbody/TRCitem/refDoc/attachment/externalReference/characterSetCode) 0-1 (XPath TRCDesAdvise/TRCheader/certificate/attachment/externalReference/characterSetCode) 0-1 (XPath TRCDesAdvise/TRCheader/refDoc/attachment/externalReference/characterSetCode) 0-1</p>
city	<p>name of the city (town, village) - base type: string, max length: 40, (XPath TRCDesAdvise/TRCshipInfo/eventSourceParty/city) 0-1 (XPath TRCDesAdvise/TRCheader/receiverParty/city) 0-1 (XPath TRCDesAdvise/TRCheader/senderParty/city) 0-1 (XPath TRCDesAdvise/trade/tradeLocation/city) 0-1 (XPath TRCDesAdvise/TRCheader/externalRefDoc/signatureInformation/signatoryParty/city) 0-1 (XPath TRCDesAdvise/TRCheader/thirdParty/city) 0-1 (XPath TRCDesAdvise/TRCshipInfo/transInfo/despatchLocation/city) 0-1 (XPath TRCDesAdvise/TRCheader/externalRefDoc/issuerParty/city) 0-1 (XPath TRCDesAdvise/TRCshipInfo/transInfo/deliveryLocation/city) 0-1 (XPath TRCDesAdvise/TRCheader/certificate/issuerParty/city) 0-1 (XPath TRCDesAdvise/TRCshipInfo/eventDestinationParty/city) 0-1 (XPath TRCDesAdvise/TRCheader/certificate/certifiedParty/city) 0-1</p>
@codeList	<p>it specifies the URL where the list of codes used to make an instance of the element can be found - base type: string, max length: 255, (XPath TRCDesAdvise/TRCbody/TRCitem/garmentCode/garmentCodeB/fabric/@codeList) [Optional] - nota: at least one out of this attribute and "numberingOrg" should be set (XPath TRCDesAdvise/TRCheader/note/@codeList) [Optional] - nota: must be used to provide (URL) the list of codes used in "noteLabel" (XPath TRCDesAdvise/TRCbody/TRCitem/phaseCode/@codeList) [Optional] - nota: at least one out of this attribute and "numberingOrg" should be set (XPath TRCDesAdvise/TRCbody/TRCitem/yarnCode/art/@codeList) [Optional] - nota: at least one out of this attribute and "numberingOrg" should be set (XPath TRCDesAdvise/TRCbody/TRCitem/csRange/garmentVariant/variantCode/@codeList) [Optional] - nota: at least one out of this attribute and "numberingOrg" should be set (XPath TRCDesAdvise/TRCbody/TRCitem/garmentCode/garmentCodeB/artGroup/@codeList) [Optional] - nota: at least one out of this attribute and "numberingOrg" should be set (XPath TRCDesAdvise/TRCbody/TRCitem/csRange/garmentVariant/variantType/@codeList) [Optional] - nota: always at least one out of this attribute and "numberingOrg" should be set (XPath TRCDesAdvise/TRCheader/refDoc/season/@codeList) [Optional] - nota: this attribute should be used either single or coupled with "listName" and "listVersion" (XPath TRCDesAdvise/TRCheader/certificate/note/@codeList) [Optional] - nota: must be used to provide (URL) the list of codes used in "noteLabel" (XPath TRCDesAdvise/TRCbody/TRCitem/csRange/sizeMatrix/sizeRow/itemsList/qualityLevel/@codeList) [Optional] - nota: at least one out of this attribute and "numberingOrg" should be set (XPath TRCDesAdvise/TRCheader/externalRefDoc/note/@codeList) [Optional] - nota: must be used to provide (URL) the list of codes used in "noteLabel" (XPath TRCDesAdvise/TRCbody/TRCitem/acsCode/art/@codeList) [Optional] - nota: at least one out of this attribute and "numberingOrg" should be set (XPath TRCDesAdvise/TRCbody/TRCitem/acsCode/color/@codeList) [Optional] - nota: this attribute should be used either single or coupled with "listName" and "listVersion" (XPath TRCDesAdvise/TRCbody/TRCitem/acsCode/pattern/@codeList) [Optional] - nota: at least one out of this attribute and "numberingOrg" should be set (XPath TRCDesAdvise/TRCbody/TRCitem/csRange/color/@codeList) [Optional] - nota: this attribute should be used either single or coupled with "listName" and "listVersion" (XPath TRCDesAdvise/TRCbody/TRCitem/texCode/art/@codeList) [Optional] - nota: at least one out of this attribute and "numberingOrg" should be set</p>

	<p>(XPath TRCDesAdvise/TRCbody/TRCitem/yarnCode/color/@codeList) [Optional] - nota: this attribute should be used either single or coupled with "listName" and "listVersion"</p> <p>(XPath TRCDesAdvise/TRCbody/TRCitem/texCode/pattern/@codeList) [Optional] - nota: at least one out of this attribute and "numberingOrg" should be set</p> <p>(XPath TRCDesAdvise/TRCbody/TRCitem/texCode/color/@codeList) [Optional] - nota: this attribute should be used either single or coupled with "listName" and "listVersion"</p> <p>(XPath TRCDesAdvise/TRCbody/TRCitem/note/@codeList) [Optional] - nota: must be used to provide (URL) the list of codes used in "noteLabel"</p> <p>(XPath TRCDesAdvise/TRCbody/TRCitem/refDoc/season/@codeList) [Optional] - nota: this attribute should be used either single or coupled with "listName" and "listVersion"</p> <p>(XPath TRCDesAdvise/TRCbody/TRCitem/csRange/drop/@codeList) [Optional] (XPath TRCDesAdvise/TRCshipInfo/eventDestinationParty/traceabilityPartyRole/@codeList) [Optional] [Default= http://www.ebiz.enea.it/moda-ml/repository/codelist/Draft/gc_TRKR1.xml] - nota: recommended value is http://www.ebiz.enea.it/moda-ml/repository/codelist/Draft/gc_TRKR1.xml</p> <p>(XPath TRCDesAdvise/TRCbody/TRCitem/csRange/sizeMatrix/sizeRow/additionalComponentCode/@codeList) [Optional] - nota: at least one out of this attribute and "numberingOrg" should be set</p> <p>(XPath TRCDesAdvise/TRCbody/TRCitem/csRange/sizeMatrix/sizeRow/drop/@codeList) [Optional] (XPath TRCDesAdvise/TRCbody/TRCitem/garmentCode/garmentCodeB/garmentVariant/variantType/@codeList) [Optional] - nota: always at least one out of this attribute and "numberingOrg" should be set</p> <p>(XPath TRCDesAdvise/TRCbody/TRCitem/garmentCode/garmentCodeB/drop/@codeList) [Optional] (XPath TRCDesAdvise/TRCbody/TRCitem/garmentPartCode/size/@codeList) [Optional] (XPath TRCDesAdvise/TRCshipInfo/eventSourceParty/traceabilityPartyRole/@codeList) [Optional] [Default= http://www.ebiz.enea.it/moda-ml/repository/codelist/Draft/gc_TRKR1.xml] - nota: recommended value is http://www.ebiz.enea.it/moda-ml/repository/codelist/Draft/gc_TRKR1.xml</p> <p>(XPath TRCDesAdvise/TRCbody/TRCitem/garmentPartCode/color/@codeList) [Optional] - nota: this attribute should be used either single or coupled with "listName" and "listVersion"</p> <p>(XPath TRCDesAdvise/TRCbody/TRCitem/garmentCode/garmentCodeB/garmentVariant/variantCode/@codeList) [Optional] - nota: at least one out of this attribute and "numberingOrg" should be set</p> <p>(XPath TRCDesAdvise/TRCbody/TRCitem/garmentCode/garmentCodeA/art/@codeList) [Optional] - nota: at least one out of this attribute and "numberingOrg" should be set</p> <p>(XPath TRCDesAdvise/TRCbody/TRCitem/garmentCode/garmentCodeB/size/@codeList) [Optional] (XPath TRCDesAdvise/TRCbody/TRCitem/csRange/sizeMatrix/sizeRow/size/@codeList) [Optional] (XPath TRCDesAdvise/TRCbody/TRCitem/garmentPartCode/mod/@codeList) [Optional] - nota: at least one out of this attribute and "numberingOrg" should be set</p> <p>(XPath TRCDesAdvise/TRCshipInfo/actualPackageUnit/itemsList/qualityLevel/@codeList) [Optional] - nota: at least one out of this attribute and "numberingOrg" should be set</p> <p>(XPath TRCDesAdvise/TRCbody/TRCitem/garmentCode/garmentCodeB/mod/@codeList) [Optional] - nota: at least one out of this attribute and "numberingOrg" should be set</p> <p>(XPath TRCDesAdvise/TRCshipInfo/businessStepCode/@codeList) [Optional] (XPath TRCDesAdvise/TRCshipInfo/actualPackageUnit/note/@codeList) [Optional] - nota: must be used to provide (URL) the list of codes used in "noteLabel"</p> <p>(XPath TRCDesAdvise/TRCbody/TRCitem/garmentPartCode/fabric/@codeList) [Optional] - nota: at least one out of this attribute and "numberingOrg" should be set</p> <p>(XPath TRCDesAdvise/TRCbody/TRCitem/garmentCode/garmentCodeB/color/@codeList) [Optional] - nota: this attribute should be used either single or coupled with "listName" and "listVersion"</p>
color	<p>colour number of the product, when not included in the model or fabric code - base type: string, max length: 15, (XPath TRCDesAdvise/TRCbody/TRCitem/acsCode/color) 0-1 (XPath TRCDesAdvise/TRCbody/TRCitem/garmentCode/</p>

	<p>garmentCodeB/color) 0-1 (XPath TRCDesAdvise/TRCbody/TRCitem/garmentPartCode/color) 0-1 - note: <i>when a garment component, it should be the code assigned to the garment article</i> (XPath TRCDesAdvise/TRCbody/TRCitem/yarnCode/color) 0-1 (XPath TRCDesAdvise/TRCbody/TRCitem/csRange/color) 0-1 - note: <i>used only if not already specified in the article code</i> (XPath TRCDesAdvise/TRCbody/TRCitem/texCode/color) 0-1</p>
country	<p>code of the nation - base type: string, cod. table: T10 http://www.ebiz.enea.it/moda-ml/repository/codelist/draft/gc_T10.xml (XPath TRCDesAdvise/TRCheader/externalRefDoc/signatureInformation/signatoryParty/country) 0-1 (XPath TRCDesAdvise/TRCshipInfo/transInfo/despatchLocation/country) 0-1 (XPath TRCDesAdvise/TRCshipInfo/transInfo/deliveryLocation/country) 0-1 (XPath TRCDesAdvise/TRCshipInfo/eventDestinationParty/country) 0-1 (XPath TRCDesAdvise/TRCshipInfo/eventSourceParty/country) 0-1 (XPath TRCDesAdvise/TRCheader/receiverParty/country) 0-1 (XPath TRCDesAdvise/TRCheader/senderParty/country) 0-1 (XPath TRCDesAdvise/trade/tradeLocation/country) 0-1 (XPath TRCDesAdvise/TRCheader/thirdParty/country) 0-1 (XPath TRCDesAdvise/TRCheader/externalRefDoc/issuerParty/country) 0-1 (XPath TRCDesAdvise/TRCheader/certificate/certifiedParty/country) 0-1 (XPath TRCDesAdvise/TRCheader/certificate/issuerParty/country) 0-1</p>
@dateForm	<p>format used for the date - base type: string, cod. table: NT29 http://www.ebiz.enea.it/moda-ml/repository/codelist/draft/gc_NT29.xml (XPath TRCDesAdvise/TRCshipInfo/eventDateTime/@dateForm) [Required] (XPath TRCDesAdvise/TRCshipInfo/transInfo/despatchDate/@dateForm) [Optional] (XPath TRCDesAdvise/TRCheader/externalRefDoc/validityEnd/@dateForm) [Optional] (XPath TRCDesAdvise/TRCheader/externalRefDoc/validityStart/@dateForm) [Optional] (XPath TRCDesAdvise/TRCshipInfo/transInfo/delEffectiveDate/@dateForm) [Optional] (XPath TRCDesAdvise/TRCheader/certificate/validityExtensionDate/@dateForm) [Optional] (XPath TRCDesAdvise/TRCheader/certificate/docDate/@dateForm) [Optional] (XPath TRCDesAdvise/TRCheader/msgDate/@dateForm) [Optional] (XPath TRCDesAdvise/TRCheader/externalRefDoc/docDate/@dateForm) [Optional] (XPath TRCDesAdvise/TRCheader/certificate/validityStart/@dateForm) [Optional] (XPath TRCDesAdvise/TRCheader/refDoc/docDate/@dateForm) [Optional] (XPath TRCDesAdvise/TRCbody/TRCitem/refDoc/docDate/@dateForm) [Optional] (XPath TRCDesAdvise/TRCheader/certificate/validityEnd/@dateForm) [Optional]</p>
delEffectiveDate	<p>actual delivery date (estimated or occurred in case of receipt docs), it might be different from what agreed between the parties. Format according to one of the patterns indicated by the dateForm attribute: YYYY-MM-DD, YYYY-MM-DD:HH-MM or YYYY-WW. - base type: string, (XPath TRCDesAdvise/TRCshipInfo/transInfo/delEffectiveDate) 0-1</p>
deliveryPlace	<p>place of delivery of goods, ultimate or related to a given leg - base type: string, max length: 250, (XPath TRCDesAdvise/TRCshipInfo/transInfo/deliveryPlace) 0-1 - note: <i>use to represent addresses with a unique text string</i></p>
dept	<p>name or code of a department - base type: string, max length: 40, (XPath TRCDesAdvise/TRCheader/externalRefDoc/issuerParty/dept) 0-1 (XPath TRCDesAdvise/TRCheader/certificate/issuerParty/dept) 0-1 (XPath TRCDesAdvise/TRCheader/certificate/certifiedParty/dept) 0-1 (XPath TRCDesAdvise/TRCshipInfo/transInfo/deliveryLocation/dept) 0-1 (XPath TRCDesAdvise/TRCshipInfo/transInfo/despatchLocation/dept) 0-1 (XPath TRCDesAdvise/trade/tradeLocation/dept) 0-1 (XPath TRCDesAdvise/TRCheader/thirdParty/dept) 0-1 (XPath TRCDesAdvise/TRCshipInfo/eventDestinationParty/dept) 0-1</p>

	<p>(XPath TRCDesAdvise/TRCHeader/senderParty/dept) 0-1 (XPath TRCDesAdvise/TRCHeader/receiverParty/dept) 0-1 (XPath TRCDesAdvise/TRCshipInfo/eventSourceParty/dept) 0-1 (XPath TRCDesAdvise/TRCHeader/externalRefDoc/signatureInformation/signatoryParty/dept) 0-1</p>
description	<p>free text description. The content of the element must be unique, it might be translated and repeated into more languages (thus no more than one instance for each language).</p> <ul style="list-style-type: none"> - base type: string, max length: 250, (XPath TRCDesAdvise/TRCbody/TRCitem/texCode/description) 0-unbounded - note: <i>Product description</i> (XPath TRCDesAdvise/TRCbody/TRCitem/garmentPartCode/description) 0-unbounded - note: <i>Product part description</i> (XPath TRCDesAdvise/TRCHeader/externalRefDoc/description) 0-unbounded - note: <i>Only one instance of this element for each different value of 'ln' attribute (language)</i> (XPath TRCDesAdvise/TRCbody/TRCitem/yarnCode/description) 0-unbounded - note: <i>Product description</i> (XPath TRCDesAdvise/TRCHeader/certificate/certifiedEntity/description) 0-9 - note: <i>Name or short textual description of the entity. Only one instance of this element for each different value of 'ln' attribute (language)</i> (XPath TRCDesAdvise/TRCbody/TRCitem/garmentCode/garmentCodeB/description) 0-unbounded - note: <i>Product description</i> (XPath TRCDesAdvise/TRCbody/TRCitem/garmentCode/garmentCodeA/description) 0-unbounded - note: <i>Product description</i> (XPath TRCDesAdvise/TRCbody/TRCitem/acsCode/description) 0-unbounded - note: <i>Product description</i> (XPath TRCDesAdvise/TRCHeader/certificate/description) 0-unbounded - note: <i>Only one instance of this element for each different value of 'ln' attribute (language)</i>
despatchDate	<p>date of despatch of goods, requested or promised in the purchase process, according to one of the patterns YYYY-MM-DD, YYYY-MM-DD:HH-MM or YYYY-WW.</p> <ul style="list-style-type: none"> - base type: string, (XPath TRCDesAdvise/TRCshipInfo/transInfo/despatchDate) 0-1
despatchPlace	<p>place of despatch of goods, origin or related to a given leg</p> <ul style="list-style-type: none"> - base type: string, max length: 250, (XPath TRCDesAdvise/TRCshipInfo/transInfo/despatchPlace) 0-1 - note: <i>use to represent addresses with a unique text string</i>
docDate	<p>date of issue of the referenced document, according to one of the patterns YYYY-MM-DD, YYYY-MM-DD:HH-MM or YYYY-WW.</p> <ul style="list-style-type: none"> - base type: string, (XPath TRCDesAdvise/TRCHeader/certificate/docDate) 1-1 (XPath TRCDesAdvise/TRCHeader/externalRefDoc/docDate) 0-1 (XPath TRCDesAdvise/TRCbody/TRCitem/refDoc/docDate) 0-1 (XPath TRCDesAdvise/TRCHeader/refDoc/docDate) 0-1
docID	<p>identification number of the referenced document</p> <ul style="list-style-type: none"> - base type: string, max length: 80, (XPath TRCDesAdvise/TRCHeader/refDoc/docID) 1-2 Best Practice (XPath TRCDesAdvise/TRCHeader/certificate/docID) 1-1 - note: <i>reference to the internal certificate to the systems of the participants in the supply chain</i> (XPath TRCDesAdvise/TRCbody/TRCitem/refDoc/docID) 1-2 Best Practice (XPath TRCDesAdvise/TRCHeader/externalRefDoc/docID) 1-1
@docStatusCode	<p>current status of the document</p> <ul style="list-style-type: none"> - base type: decimal, cod. table: NT313 http://www.ebiz.enea.it/moda-ml/repository/codelist/draft/gc_NT313.xml (XPath TRCDesAdvise/TRCHeader/certificate/@docStatusCode) [Required]
@docType	<p>type or class to which the referenced document belongs</p> <ul style="list-style-type: none"> - base type: string, cod. table: T21 http://www.ebiz.enea.it/moda-ml/repository/codelist/draft/gc_T21.xml (XPath TRCDesAdvise/TRCHeader/refDoc/@docType) [Required] (XPath TRCDesAdvise/TRCbody/TRCitem/refDoc/@docType) [Required]
documentType	<p>type or class to which the document belongs</p>

	<p>- base type: string, cod. table: T21 http://www.ebiz.enea.it/moda-ml/repository/codelist/draft/gc_T21.xml (XPath TRCDesAdvise/TRCHeader/externalRefDoc/documentType) 0-1</p>
@docValidity	<p>document current validity indicator - base type: boolean, (XPath TRCDesAdvise/TRCHeader/certificate/@docValidity) [Required]</p>
drop	<p>drop number of the garment - base type: string, max length: 15, (XPath TRCDesAdvise/TRCbody/TRCitem/garmentCode/garmentCodeB/drop) 0-1 - note: <i>Fill this element if the drop is the same for all the sizes of the model. Otherway specify it within the csRange element</i> (XPath TRCDesAdvise/TRCbody/TRCitem/csRange/drop) 0-1 - note: <i>used only if not already specified in the article code</i> (XPath TRCDesAdvise/TRCbody/TRCitem/csRange/sizeMatrix/sizeRow/drop) 0-1 - note: <i>DEPRECATED, anyhow it is used only if not already specified in the article code or csRange</i></p>
@email	<p>electronic mail address of the contact person within a Party - base type: string, max length: 250, (XPath TRCDesAdvise/TRCHeader/thirdParty/person/@email) [Optional] (XPath TRCDesAdvise/TRCHeader/externalRefDoc/signatureInformation/signatoryParty/person/@email) [Optional] (XPath TRCDesAdvise/TRCHeader/senderParty/person/@email) [Optional] (XPath TRCDesAdvise/TRCHeader/receiverParty/person/@email) [Optional] (XPath TRCDesAdvise/TRCshipInfo/transInfo/despatchLocation/person/@email) [Optional] (XPath TRCDesAdvise/TRCshipInfo/transInfo/deliveryLocation/person/@email) [Optional] (XPath TRCDesAdvise/TRCshipInfo/eventDestinationParty/person/@email) [Optional] (XPath TRCDesAdvise/TRCshipInfo/eventSourceParty/person/@email) [Optional] (XPath TRCDesAdvise/TRCHeader/certificate/issuerParty/person/@email) [Optional] (XPath TRCDesAdvise/TRCHeader/certificate/certifiedParty/person/@email) [Optional] (XPath TRCDesAdvise/trade/tradeLocation/person/@email) [Optional] (XPath TRCDesAdvise/TRCHeader/externalRefDoc/issuerParty/person/@email) [Optional]</p>
@encoding	<p>specifies the decoding algorithm of the binary object - base type: normalizedString, (XPath TRCDesAdvise/TRCbody/TRCitem/refDoc/attachment/binaryObject/@encoding) [Optional] (XPath TRCDesAdvise/TRCHeader/certificate/attachment/binaryObject/@encoding) [Optional] (XPath TRCDesAdvise/TRCHeader/refDoc/attachment/binaryObject/@encoding) [Optional] (XPath TRCDesAdvise/TRCHeader/externalRefDoc/attachment/binaryObject/@encoding) [Optional]</p>
encodingCode	<p>the encoding/decoding algorithm used with the external object (example is 'base64Binary')</p> <p>- base type: normalizedString, (XPath TRCDesAdvise/TRCHeader/externalRefDoc/attachment/externalReference/encodingCode) 0-1 (XPath TRCDesAdvise/TRCbody/TRCitem/refDoc/attachment/externalReference/encodingCode) 0-1 (XPath TRCDesAdvise/TRCHeader/refDoc/attachment/externalReference/encodingCode) 0-1 (XPath TRCDesAdvise/TRCHeader/certificate/attachment/externalReference/encodingCode) 0-1</p>
entityID	<p>unique identification number assigned to an entity. - base type: string, (XPath TRCDesAdvise/TRCHeader/certificate/certifiedEntity/entityID) 1-3</p>

	- note: <i>Identifier of the entity. More values are allowed as long as they refer to the same entity according to different identification schemes (different schemeID value)</i>
entityTypeCode	code that indicates the type of entity to which we refer - base type: string, cod. table: NT201 http://www.ebiz.enea.it/moda-ml/repository/codelist/draft/gc_NT201.xml (XPath TRCDesAdvise/TRCHeader/certificate/certifiedEntity/entityTypeCode) 1-1
eventDateTime	The date or date time value at which this event occurred. Formatted according to the pattern indicated by the dateForm attribute. - base type: string, (XPath TRCDesAdvise/TRCshipInfo/eventDateTime) 1-1 - note: <i>date and time when the despatching event happened</i>
fabric	fabric number of the garment - base type: string, max length: 15, (XPath TRCDesAdvise/TRCbody/TRCitem/garmentCode/garmentCodeB/fabric) 0-1 (XPath TRCDesAdvise/TRCbody/TRCitem/garmentPartCode/fabric) 0-1 - note: <i>when a garment component, it should be the code assigned to the garment article</i>
@fax	fax number of the contact person within a Party - base type: string, max length: 35, (XPath TRCDesAdvise/trade/tradeLocation/person/@fax) [Optional] (XPath TRCDesAdvise/TRCHeader/receiverParty/person/@fax) [Optional] (XPath TRCDesAdvise/TRCHeader/senderParty/person/@fax) [Optional] (XPath TRCDesAdvise/TRCHeader/certificate/certifiedParty/person/@fax) [Optional] (XPath TRCDesAdvise/TRCHeader/externalRefDoc/signatureInformation/signatoryParty/person/@fax) [Optional] (XPath TRCDesAdvise/TRCshipInfo/transInfo/despatchLocation/person/@fax) [Optional] (XPath TRCDesAdvise/TRCshipInfo/transInfo/deliveryLocation/person/@fax) [Optional] (XPath TRCDesAdvise/TRCHeader/certificate/issuerParty/person/@fax) [Optional] (XPath TRCDesAdvise/TRCHeader/thirdParty/person/@fax) [Optional] (XPath TRCDesAdvise/TRCshipInfo/eventSourceParty/person/@fax) [Optional] (XPath TRCDesAdvise/TRCshipInfo/eventDestinationParty/person/@fax) [Optional] (XPath TRCDesAdvise/TRCHeader/externalRefDoc/issuerParty/person/@fax) [Optional]
fileName	unique identifier (name) of the file - base type: string, max length: 255, (XPath TRCDesAdvise/TRCHeader/externalRefDoc/attachment/fileName) 0-1 (XPath TRCDesAdvise/TRCHeader/refDoc/attachment/fileName) 0-1 (XPath TRCDesAdvise/TRCbody/TRCitem/refDoc/attachment/fileName) 0-1 (XPath TRCDesAdvise/TRCHeader/certificate/attachment/fileName) 0-1
@format	the format of the binary content (examples xml, pdf, doc,...) - base type: string, (XPath TRCDesAdvise/TRCHeader/certificate/attachment/binaryObject/@format) [Optional] (XPath TRCDesAdvise/TRCHeader/refDoc/attachment/binaryObject/@format) [Optional] (XPath TRCDesAdvise/TRCHeader/externalRefDoc/attachment/binaryObject/@format) [Optional] (XPath TRCDesAdvise/TRCbody/TRCitem/refDoc/attachment/binaryObject/@format) [Optional]
formatCode	the format of the external object (examples xml, pdf, doc,...) - base type: normalizedString, (XPath TRCDesAdvise/TRCHeader/certificate/attachment/externalReference/formatCode) 0-1 (XPath TRCDesAdvise/TRCHeader/externalRefDoc/attachment/externalReference/formatCode) 0-1 (XPath TRCDesAdvise/TRCbody/TRCitem/refDoc/attachment/

	<p>externalReference/formatCode) 0-1 (XPath TRCDesAdvise/TRCHeader/refDoc/attachment/ externalReference/formatCode) 0-1</p>
@geoRefSystem	<p>georeference system adopted for the coordinate (in example wgs84 with decimal degree or degree with minute and seconds) - base type: string, (XPath TRCDesAdvise/TRCHeader/certificate/certifiedParty/ geoCoordinates/@geoRefSystem) [Optional] (XPath TRCDesAdvise/TRCHeader/certificate/issuerParty/ geoCoordinates/@geoRefSystem) [Optional] (XPath TRCDesAdvise/TRCHeader/thirdParty/geoCoordinates/@geoRefSystem) [Optional] (XPath TRCDesAdvise/TRCHeader/externalRefDoc/signatureInformation/signatoryParty/geoCoordinates/@geoRefSystem) [Optional] (XPath TRCDesAdvise/TRCHeader/externalRefDoc/issuerParty/ geoCoordinates/@geoRefSystem) [Optional] (XPath TRCDesAdvise/trade/tradeLocation/geoCoordinates/@geoRefSystem) [Optional] (XPath TRCDesAdvise/TRCshipInfo/transInfo/despatchLocation/geoCoordinates/@geoRefSystem) [Optional] (XPath TRCDesAdvise/TRCHeader/receiverParty/geoCoordinates/@geoRefSystem) [Optional] (XPath TRCDesAdvise/TRCshipInfo/transInfo/deliveryLocation/geoCoordinates/@geoRefSystem) [Optional] (XPath TRCDesAdvise/TRCshipInfo/eventSourceParty/ geoCoordinates/@geoRefSystem) [Optional] (XPath TRCDesAdvise/TRCshipInfo/eventDestinationParty/ geoCoordinates/@geoRefSystem) [Optional] (XPath TRCDesAdvise/TRCHeader/senderParty/geoCoordinates/@geoRefSystem) [Optional]</p>
gPart	<p>code specifying the type of component or part of a fashion product (sleeve, neck, ...) - base type: string, cod. table: T48 http://www.ebiz.enea.it/moda-ml/repository/codelist/draft/gc_T48.xml (XPath TRCDesAdvise/TRCbody/TRCitem/garmentPartCode/gPart) 1-1</p>
grossWeight	<p>the gross weight, declared for transport or customs purpose - base type: decimal, min inclusive: 0, fraction digits: 2, (XPath TRCDesAdvise/TRCshipInfo/transInfo/grossWeight) 0-1 (XPath TRCDesAdvise/TRCshipInfo/actualPackageUnit/grossWeight) 0-1</p>
hashFootprint	<p>footprint obtained by applying an hashing algorithm - base type: string, max length: 80, (XPath TRCDesAdvise/TRCbody/TRCitem/refDoc/attachment/hashFootprint) 0-1 (XPath TRCDesAdvise/TRCHeader/externalRefDoc/attachment/hashFootprint) 0-1 (XPath TRCDesAdvise/TRCHeader/certificate/attachment/hashFootprint) 0-1 (XPath TRCDesAdvise/TRCHeader/refDoc/attachment/hashFootprint) 0-1</p>
@hashMethod	<p>type of used hashing algorithm - base type: string, max length: 80, cod. table: NT333 http://www.ebiz.enea.it/moda-ml/repository/codelist/draft/gc_NT333.xml (XPath TRCDesAdvise/TRCHeader/externalRefDoc/attachment/ hashFootprint/@hashMethod) [Required] (XPath TRCDesAdvise/TRCHeader/refDoc/attachment/ hashFootprint/@hashMethod) [Required] (XPath TRCDesAdvise/TRCbody/TRCitem/refDoc/attachment/ hashFootprint/@hashMethod) [Required] (XPath TRCDesAdvise/TRCHeader/certificate/attachment/ hashFootprint/@hashMethod) [Required]</p>
height	<p>effective height of a specified object - base type: decimal, min inclusive: 0, fraction digits: 2, (XPath TRCDesAdvise/TRCshipInfo/actualPackageUnit/ packageDim/height) 0-1</p>
id	<p>primary identification code of a Party; it is recommended to use an EORI number (with @numberingOrg= "EO") or the format: nation code (ISO 3166) + national tax code (i.e. VAT identification number) with @numberingOrg= "MF" - base type: string, max length: 15, (XPath</p>

	<p>TRCDesAdvise/TRCheader/externalRefDoc/signatureInformation/signatoryParty/id) 0-1 (XPath TRCDesAdvise/TRCheader/externalRefDoc/issuerParty/id) 0-1 (XPath TRCDesAdvise/TRCshipInfo/eventSourceParty/id) 0-1 (XPath TRCDesAdvise/TRCheader/senderParty/id) 1-1 (XPath TRCDesAdvise/TRCshipInfo/eventDestinationParty/id) 0-1 (XPath TRCDesAdvise/TRCheader/certificate/certifiedParty/id) 0-1 (XPath TRCDesAdvise/TRCheader/receiverParty/id) 1-1 (XPath TRCDesAdvise/TRCheader/thirdParty/id) 1-1 (XPath TRCDesAdvise/TRCheader/certificate/issuerParty/id) 0-1</p>
@idQualifier	<p>Qualification of the identifier. - base type: string, (XPath TRCDesAdvise/TRCbody/TRCitem/csRange/sizeMatrix/sizeRow/itemsList/itemIdentification/serialN/@idQualifier) [Optional] - nota: <i>this attribute should be used when the numberingOrg attribute is not enough to declare the type of serial identifier</i> (XPath TRCDesAdvise/TRCshipInfo/actualPackageUnit/packagesList/packageIdentification/serialN/@idQualifier) [Optional] - nota: <i>this attribute should be used when the numberingOrg attribute is not enough to declare the type of serial identifier</i> (XPath TRCDesAdvise/TRCshipInfo/actualPackageUnit/packageIdentification/serialN/@idQualifier) [Optional] - nota: <i>this attribute should be used when the numberingOrg attribute is not enough to declare the type of serial identifier</i> (XPath TRCDesAdvise/TRCshipInfo/actualPackageUnit/itemsList/itemIdentification/serialN/@idQualifier) [Optional] - nota: <i>this attribute should be used when the numberingOrg attribute is not enough to declare the type of serial identifier</i></p>
incoTerm	<p>specification of the terms of trade (INCOTERMS) - base type: string, cod. table: T3 http://www.ebiz.enea.it/moda-ml/repository/codelist/draft/gc_T3.xml (XPath TRCDesAdvise/trade/incoTerm) 1-1</p>
incoTermText	<p>free text specifying the terms of trade (incoterm, location) - base type: string, max length: 250, (XPath TRCDesAdvise/trade/incoTermText) 1-1</p>
issuerAccreditationInfo	<p>accrediting information of the issuer of the document - base type: string, (XPath TRCDesAdvise/TRCheader/certificate/issuerParty/issuerAccreditationInfo) 0-1 (XPath TRCDesAdvise/TRCheader/externalRefDoc/issuerParty/issuerAccreditationInfo) 0-1</p>
@isURL	<p>it indicates if the referred element is an URL (true) or not (false) - base type: boolean, (XPath TRCDesAdvise/TRCheader/certificate/attachment/blockChainReference/uri/@isURL) [Optional] [Default= true] - nota: <i>usage of URLs is recommended</i> (XPath TRCDesAdvise/TRCheader/refDoc/attachment/externalReference/uri/@isURL) [Optional] [Default= true] - nota: <i>usage of URLs is recommended</i> (XPath TRCDesAdvise/TRCheader/externalRefDoc/attachment/externalReference/uri/@isURL) [Optional] [Default= true] - nota: <i>usage of URLs is recommended</i> (XPath TRCDesAdvise/TRCbody/TRCitem/refDoc/attachment/blockChainReference/uri/@isURL) [Optional] [Default= true] - nota: <i>usage of URLs is recommended</i> (XPath TRCDesAdvise/TRCheader/certificate/attachment/externalReference/uri/@isURL) [Optional] [Default= true] - nota: <i>usage of URLs is recommended</i> (XPath TRCDesAdvise/TRCbody/TRCitem/refDoc/attachment/externalReference/uri/@isURL) [Optional] [Default= true] - nota: <i>usage of URLs is recommended</i> (XPath TRCDesAdvise/TRCheader/externalRefDoc/attachment/blockChainReference/uri/@isURL) [Optional] [Default= true] - nota: <i>usage of URLs is recommended</i> (XPath TRCDesAdvise/TRCheader/refDoc/attachment/blockChainReference/uri/@isURL) [Optional] [Default= true] - nota: <i>usage of URLs is recommended</i></p>
itemID	<p>number of the line/item of the referenced document</p>

	<p>- base type: string, max length: 40, (XPath TRCDesAdvise/TRCbody/TRCitem/refDoc/itemID) 0-1 (XPath TRCDesAdvise/TRCheader/refDoc/itemID) 0-1</p>
legalName	<p>legal name - base type: string, max length: 250, (XPath TRCDesAdvise/TRCheader/externalRefDoc/issuerParty/legalName) 0-1 (XPath TRCDesAdvise/TRCshipInfo/transInfo/deliveryLocation/legalName) 0-1 (XPath TRCDesAdvise/TRCheader/certificate/certifiedParty/legalName) 0-1 (XPath TRCDesAdvise/TRCheader/thirdParty/legalName) 0-1 (XPath TRCDesAdvise/TRCshipInfo/eventSourceParty/legalName) 0-1 (XPath TRCDesAdvise/trade/tradeLocation/legalName) 0-1 (XPath TRCDesAdvise/TRCheader/receiverParty/legalName) 0-1 (XPath TRCDesAdvise/TRCshipInfo/transInfo/despatchLocation/legalName) 0-1 (XPath TRCDesAdvise/TRCheader/certificate/issuerParty/legalName) 0-1 (XPath TRCDesAdvise/TRCheader/senderParty/legalName) 0-1 (XPath TRCDesAdvise/TRCshipInfo/eventDestinationParty/legalName) 0-1 (XPath TRCDesAdvise/TRCheader/externalRefDoc/signatureInformation/signatoryParty/legalName) 0-1</p>
length	<p>effective length of a specified object - base type: decimal, min inclusive: 0, fraction digits: 2, (XPath TRCDesAdvise/TRCshipInfo/actualPackageUnit/packageDim/length) 1-1 - note: here the maximum dimension must also be specified</p>
lineID	<p>unique identifier of the line item of the business document; it is set by the role that produces the document. - base type: string, max length: 30, (XPath TRCDesAdvise/TRCbody/TRCitem/lineID) 0-1</p>
lineN	<p>number of the line item of the present message (xml document); it is set by the role that produces the document. Usually it is a progressive number, but not always. - base type: positiveInteger, min inclusive: 1, max inclusive: 9999, (XPath TRCDesAdvise/TRCbody/TRCitem/lineN) 1-1</p>
@listName	<p>the name of the list of codes used to make an instance of the element (it might be thought as descriptive element, i.e. 'fabric printing technologies', or not, i.e. "T264") - base type: string, max length: 40, (XPath TRCDesAdvise/TRCbody/TRCitem/acsCode/color/@listName) [Optional] - nota: this attribute should always be used coupled with "numberingOrg" (XPath TRCDesAdvise/TRCbody/TRCitem/texCode/art/@listName) [Optional] - nota: this attribute should always be used coupled with "numberingOrg" (XPath TRCDesAdvise/TRCbody/TRCitem/acsCode/art/@listName) [Optional] - nota: this attribute should always be used coupled with "numberingOrg" (XPath TRCDesAdvise/TRCbody/TRCitem/texCode/pattern/@listName) [Optional] - nota: this attribute should always be used coupled with "numberingOrg" (XPath TRCDesAdvise/TRCbody/TRCitem/garmentPartCode/size/@listName) [Optional] - nota: this attribute should always be used coupled with "numberingOrg" (XPath TRCDesAdvise/TRCbody/TRCitem/garmentPartCode/fabric/@listName) [Optional] - nota: this attribute should always be used coupled with "numberingOrg" (XPath TRCDesAdvise/TRCbody/TRCitem/garmentPartCode/mod/@listName) [Optional] - nota: this attribute should always be used coupled with "numberingOrg" (XPath TRCDesAdvise/TRCbody/TRCitem/garmentCode/garmentCodeB/mod/@listName) [Optional] - nota: this attribute should always be used coupled with "numberingOrg" (XPath TRCDesAdvise/TRCbody/TRCitem/texCode/color/@listName) [Optional] - nota: this attribute should always be used coupled with "numberingOrg" (XPath TRCDesAdvise/TRCbody/TRCitem/acsCode/pattern/@listName) [Optional] - nota: this attribute should always be used coupled with "numberingOrg" (XPath TRCDesAdvise/TRCbody/TRCitem/garmentPartCode/color/@listName) [Optional] - nota: this attribute should always be used coupled with "numberingOrg" (XPath TRCDesAdvise/TRCbody/TRCitem/garmentCode/garmentCodeB/fabric/@listName) [Optional] - nota: this attribute should always be used coupled with "numberingOrg" (XPath TRCDesAdvise/TRCbody/TRCitem/yarnCode/color/@listName) [Optional] - nota: this attribute should always be used coupled with "numberingOrg" (XPath TRCDesAdvise/TRCbody/TRCitem/yarnCode/art/@listName) [Optional]</p>

	<ul style="list-style-type: none"> - nota: <i>this attribute should always be used coupled with “numberingOrg”</i> (XPath TRCDesAdvise/TRCbody/TRCitem/csRange/color/@listName) [Optional] - nota: <i>this attribute should always be used coupled with “numberingOrg”</i> (XPath TRCDesAdvise/TRCbody/TRCitem/csRange/garmentVariant/variantType/@listName) [Optional] - nota: <i>this attribute should always be used coupled with “numberingOrg”</i> (XPath TRCDesAdvise/TRCbody/TRCitem/csRange/garmentVariant/variantCode/@listName) [Optional] - nota: <i>this attribute should always be used coupled with “numberingOrg”</i> (XPath TRCDesAdvise/TRCbody/TRCitem/garmentCode/garmentCodeA/art/@listName) [Optional] - nota: <i>this attribute should always be used coupled with “numberingOrg”</i> (XPath TRCDesAdvise/TRCbody/TRCitem/phaseCode/@listName) [Optional] - nota: <i>this attribute should always be used coupled with “numberingOrg”</i> (XPath TRCDesAdvise/TRCheader/refDoc/season/@listName) [Optional] - nota: <i>this attribute should always be used coupled with “numberingOrg”</i> (XPath TRCDesAdvise/TRCshipInfo/actualPackageUnit/itemsList/qualityLevel/@listName) [Optional] - nota: <i>this attribute should always be used coupled with “numberingOrg”</i> (XPath TRCDesAdvise/TRCbody/TRCitem/csRange/sizeMatrix/sizeRow/size/@listName) [Optional] - nota: <i>this attribute should always be used coupled with “numberingOrg”</i> (XPath TRCDesAdvise/TRCbody/TRCitem/csRange/sizeMatrix/sizeRow/itemsList/qualityLevel/@listName) [Optional] - nota: <i>this attribute should always be used coupled with “numberingOrg”</i> (XPath TRCDesAdvise/TRCshipInfo/eventDestinationParty/traceabilityPartyRole/@listName) [Optional] - nota: <i>this attribute should always be used coupled with “numberingOrg”</i> (XPath TRCDesAdvise/TRCbody/TRCitem/csRange/drop/@listName) [Optional] - nota: <i>this attribute should always be used coupled with “numberingOrg”</i> (XPath TRCDesAdvise/TRCbody/TRCitem/csRange/sizeMatrix/sizeRow/additionalComponentCode/@listName) [Optional] - nota: <i>this attribute should always be used coupled with “numberingOrg”</i> (XPath TRCDesAdvise/TRCbody/TRCitem/csRange/sizeMatrix/sizeRow/drop/@listName) [Optional] - nota: <i>this attribute should always be used coupled with “numberingOrg”</i> (XPath TRCDesAdvise/TRCbody/TRCitem/garmentCode/garmentCodeB/artGroup/@listName) [Optional] - nota: <i>this attribute should always be used coupled with “numberingOrg”</i> (XPath TRCDesAdvise/TRCbody/TRCitem/garmentCode/garmentCodeB/drop/@listName) [Optional] - nota: <i>this attribute should always be used coupled with “numberingOrg”</i> (XPath TRCDesAdvise/TRCshipInfo/eventSourceParty/traceabilityPartyRole/@listName) [Optional] - nota: <i>this attribute should always be used coupled with “numberingOrg”</i> (XPath TRCDesAdvise/TRCbody/TRCitem/garmentCode/garmentCodeB/garmentVariant/variantCode/@listName) [Optional] - nota: <i>this attribute should always be used coupled with “numberingOrg”</i> (XPath TRCDesAdvise/TRCbody/TRCitem/garmentCode/garmentCodeB/garmentVariant/variantType/@listName) [Optional] - nota: <i>this attribute should always be used coupled with “numberingOrg”</i> (XPath TRCDesAdvise/TRCbody/TRCitem/garmentCode/garmentCodeB/color/@listName) [Optional] - nota: <i>this attribute should always be used coupled with “numberingOrg”</i> (XPath TRCDesAdvise/TRCbody/TRCitem/refDoc/season/@listName) [Optional] - nota: <i>this attribute should always be used coupled with “numberingOrg”</i> (XPath TRCDesAdvise/TRCbody/TRCitem/garmentCode/garmentCodeB/size/@listName) [Optional] - nota: <i>this attribute should always be used coupled with “numberingOrg”</i> (XPath TRCDesAdvise/TRCshipInfo/businessStepCode/@listName) [Optional]
<p>@listVersion</p>	<p>it specifies the version of the list of codes used to make an instance of the element</p> <ul style="list-style-type: none"> - base type: string, max length: 6, (XPath TRCDesAdvise/TRCshipInfo/eventDestinationParty/traceabilityPartyRole/@listVersion) [Optional] (XPath TRCDesAdvise/TRCbody/TRCitem/texCode/color/@listVersion) [Optional] - nota: <i>this attribute should always be used coupled with “numberingOrg” and “listName”</i> (XPath TRCDesAdvise/TRCbody/TRCitem/yarnCode/color/@listVersion) [Optional] - nota: <i>this attribute should always be used coupled with “numberingOrg” and “listName”</i>

(XPath TRCDesAdvise/TRCshipInfo/eventSourceParty/traceabilityPartyRole/@listVersion) [Optional]
 (XPath TRCDesAdvise/TRCbody/TRCitem/refDoc/season/@listVersion) [Optional]
 - nota: *this attribute should always be used coupled with “numberingOrg” and “listName”*

(XPath TRCDesAdvise/TRCbody/TRCitem/texCode/art/@listVersion) [Optional]
 - nota: *this attribute should always be used coupled with “numberingOrg” and “listName”*

(XPath TRCDesAdvise/TRCbody/TRCitem/texCode/pattern/@listVersion) [Optional]
 - nota: *this attribute should always be used coupled with “numberingOrg” and “listName”*

(XPath TRCDesAdvise/TRCbody/TRCitem/yarnCode/art/@listVersion) [Optional]
 - nota: *this attribute should always be used coupled with “numberingOrg” and “listName”*

(XPath TRCDesAdvise/TRCshipInfo/actualPackageUnit/itemsList/qualityLevel/@listVersion) [Optional]
 - nota: *this attribute should always be used coupled with “numberingOrg” and “listName”*

(XPath TRCDesAdvise/TRCbody/TRCitem/garmentCode/garmentCodeB/size/@listVersion) [Optional]
 - nota: *this attribute should always be used coupled with “numberingOrg” and “listName”*

(XPath TRCDesAdvise/TRCbody/TRCitem/garmentCode/garmentCodeB/drop/@listVersion) [Optional]
 - nota: *this attribute should always be used coupled with “numberingOrg” and “listName”*

(XPath TRCDesAdvise/TRCbody/TRCitem/garmentCode/garmentCodeB/artGroup/@listVersion) [Optional]
 - nota: *this attribute should always be used coupled with “numberingOrg” and “listName”*

(XPath TRCDesAdvise/TRCbody/TRCitem/garmentCode/garmentCodeA/art/@listVersion) [Optional]
 - nota: *this attribute should always be used coupled with “numberingOrg” and “listName”*

(XPath TRCDesAdvise/TRCshipInfo/businessStepCode/@listVersion) [Optional]
 (XPath TRCDesAdvise/TRCbody/TRCitem/garmentCode/garmentCodeB/fabric/@listVersion) [Optional]
 - nota: *this attribute should always be used coupled with “numberingOrg” and “listName”*

(XPath TRCDesAdvise/TRCbody/TRCitem/garmentCode/garmentCodeB/mod/@listVersion) [Optional]
 - nota: *this attribute should always be used coupled with “numberingOrg” and “listName”*

(XPath TRCDesAdvise/TRCbody/TRCitem/garmentCode/garmentCodeB/color/@listVersion) [Optional]
 - nota: *this attribute should always be used coupled with “numberingOrg” and “listName”*

(XPath TRCDesAdvise/TRCbody/TRCitem/garmentCode/garmentCodeB/garmentVariant/variantCode/@listVersion) [Optional]
 - nota: *this attribute should always be used coupled with “numberingOrg” and “listName”*

(XPath TRCDesAdvise/TRCbody/TRCitem/garmentCode/garmentCodeB/garmentVariant/variantType/@listVersion) [Optional]
 - nota: *this attribute should always be used coupled with “numberingOrg” and “listName”*

(XPath TRCDesAdvise/TRCbody/TRCitem/csRange/sizeMatrix/sizeRow/additionalComponentCode/@listVersion) [Optional]
 - nota: *this attribute should always be used coupled with “numberingOrg” and “listName”*

(XPath TRCDesAdvise/TRCbody/TRCitem/csRange/drop/@listVersion) [Optional]
 - nota: *this attribute should always be used coupled with “numberingOrg” and “listName”*

(XPath TRCDesAdvise/TRCbody/TRCitem/csRange/sizeMatrix/sizeRow/drop/@listVersion) [Optional]
 - nota: *this attribute should always be used coupled with “numberingOrg” and “listName”*

(XPath TRCDesAdvise/TRCbody/TRCitem/csRange/sizeMatrix/sizeRow/itemsList/qualityLevel/@listVersion) [Optional]
 - nota: *this attribute should always be used coupled with “numberingOrg” and “listName”*

	<p>(XPath TRCDesAdvise/TRCbody/TRCitem/csRange/sizeMatrix/sizeRow/size/@listVersion) [Optional] - nota: this attribute should always be used coupled with “numberingOrg” and “listName”</p> <p>(XPath TRCDesAdvise/TRCheader/refDoc/season/@listVersion) [Optional] - nota: this attribute should always be used coupled with “numberingOrg” and “listName”</p> <p>(XPath TRCDesAdvise/TRCbody/TRCitem/phaseCode/@listVersion) [Optional] - nota: this attribute should always be used coupled with “numberingOrg” and “listName”</p> <p>(XPath TRCDesAdvise/TRCbody/TRCitem/csRange/color/@listVersion) [Optional] - nota: this attribute should always be used coupled with “numberingOrg” and “listName”</p> <p>(XPath TRCDesAdvise/TRCbody/TRCitem/csRange/garmentVariant/variantCode/@listVersion) [Optional] - nota: this attribute should always be used coupled with “numberingOrg” and “listName”</p> <p>(XPath TRCDesAdvise/TRCbody/TRCitem/csRange/garmentVariant/variantType/@listVersion) [Optional] - nota: this attribute should always be used coupled with “numberingOrg” and “listName”</p> <p>(XPath TRCDesAdvise/TRCbody/TRCitem/garmentPartCode/fabric/@listVersion) [Optional] - nota: this attribute should always be used coupled with “numberingOrg” and “listName”</p> <p>(XPath TRCDesAdvise/TRCbody/TRCitem/garmentPartCode/mod/@listVersion) [Optional] - nota: this attribute should always be used coupled with “numberingOrg” and “listName”</p> <p>(XPath TRCDesAdvise/TRCbody/TRCitem/acsCode/art/@listVersion) [Optional] - nota: this attribute should always be used coupled with “numberingOrg” and “listName”</p> <p>(XPath TRCDesAdvise/TRCbody/TRCitem/garmentPartCode/color/@listVersion) [Optional] - nota: this attribute should always be used coupled with “numberingOrg” and “listName”</p> <p>(XPath TRCDesAdvise/TRCbody/TRCitem/acsCode/pattern/@listVersion) [Optional] - nota: this attribute should always be used coupled with “numberingOrg” and “listName”</p> <p>(XPath TRCDesAdvise/TRCbody/TRCitem/garmentPartCode/size/@listVersion) [Optional] - nota: this attribute should always be used coupled with “numberingOrg” and “listName”</p> <p>(XPath TRCDesAdvise/TRCbody/TRCitem/acsCode/color/@listVersion) [Optional] - nota: this attribute should always be used coupled with “numberingOrg” and “listName”</p>
@ln	<p>Language code. - base type: string, cod. table: NT60 http://www.ebiz.enea.it/moda-ml/repository/codelist/draft/gc_NT60.xml (XPath TRCDesAdvise/TRCbody/TRCitem/garmentCode/garmentCodeB/description/@ln) [Optional] (XPath TRCDesAdvise/TRCbody/TRCitem/acsCode/description/@ln) [Optional] (XPath TRCDesAdvise/TRCheader/certificate/title/@ln) [Optional] (XPath TRCDesAdvise/TRCbody/TRCitem/texCode/description/@ln) [Optional] (XPath TRCDesAdvise/TRCheader/externalRefDoc/title/@ln) [Optional] (XPath TRCDesAdvise/TRCbody/TRCitem/garmentCode/garmentCodeA/description/@ln) [Optional] (XPath TRCDesAdvise/TRCheader/certificate/description/@ln) [Optional] (XPath TRCDesAdvise/TRCbody/TRCitem/garmentPartCode/description/@ln) [Optional] (XPath TRCDesAdvise/TRCheader/certificate/certifiedEntity/description/@ln) [Optional] (XPath TRCDesAdvise/TRCbody/TRCitem/yarnCode/description/@ln) [Optional] (XPath TRCDesAdvise/TRCheader/externalRefDoc/description/@ln) [Optional] (XPath TRCDesAdvise/TRCheader/certificate/sustainabilityCharacteristicText/@ln) [Optional] - nota: Indicates the language of the text</p>
location	<p>specification of a location. It can be represented by an identification code (preferable) or a short text (not recommended). For example a GLN code that requires to assign th</p>

	<p>e value "GLN" to the attribute @LRI. - base type: string, max length: 128, (XPath TRCDesAdvise/TRCshipInfo/transInfo/despatchLocation/location) 0-1 - note: Use this element to specify a numeric ID of the location, for example a GLN code (in this case @SchemeID='GS1 GLN') (XPath TRCDesAdvise/TRCshipInfo/transInfo/deliveryLocation/location) 0-1 - note: Use this element only to indicate an identification code of this place. (XPath TRCDesAdvise/trade/tradeLocation/location) 0-1 - note: Use this element to specify a numeric ID of the location, for example a GLN code (in this case @SchemeID='LRI='GLN') (XPath TRCDesAdvise/trade/location) 0-1 - note: code number of the place to which the INCOTERM applies</p>
lotN	<p>lot number of a product or batch number of the raw material - base type: string, max length: 15, (XPath TRCDesAdvise/TRCbody/TRCitem/lotN) 0-2 - note: this element can have two instances only if the numbering organisations are different</p>
@LRI	<p>issuer of the identifier (or identification system) of a location. - base type: string, cod. table: NT3 http://www.ebiz.enea.it/moda-ml/repository/codelist/draft/gc_NT3.xml (XPath TRCDesAdvise/TRCshipInfo/transInfo/deliveryLocation/location/@LRI) [Optional] (XPath TRCDesAdvise/trade/tradeLocation/location/@LRI) [Optional] (XPath TRCDesAdvise/TRCshipInfo/transInfo/despatchLocation/location/@LRI) [Optional] (XPath TRCDesAdvise/trade/location/@LRI) [Optional]</p>
@mime	<p>the mime type of the binary object - base type: normalizedString, (XPath TRCDesAdvise/TRCheader/refDoc/attachment/binaryObject/@mime) [Optional] (XPath TRCDesAdvise/TRCbody/TRCitem/refDoc/attachment/binaryObject/@mime) [Optional] (XPath TRCDesAdvise/TRCheader/certificate/attachment/binaryObject/@mime) [Optional] (XPath TRCDesAdvise/TRCheader/externalRefDoc/attachment/binaryObject/@mime) [Optional]</p>
mimeCode	<p>mime type of the external object - base type: normalizedString, (XPath TRCDesAdvise/TRCbody/TRCitem/refDoc/attachment/externalReference/mimeCode) 0-1 Best Practice (XPath TRCDesAdvise/TRCheader/externalRefDoc/attachment/externalReference/mimeCode) 0-1 Best Practice (XPath TRCDesAdvise/TRCheader/refDoc/attachment/externalReference/mimeCode) 0-1 Best Practice (XPath TRCDesAdvise/TRCheader/certificate/attachment/externalReference/mimeCode) 0-1 Best Practice</p>
mod	<p>model number of the garment - base type: string, max length: 15, (XPath TRCDesAdvise/TRCbody/TRCitem/garmentCode/garmentCodeB/mod) 1-1 (XPath TRCDesAdvise/TRCbody/TRCitem/garmentPartCode/mod) 1-1 - note: when a garment component, it should be the code assigned to the garment article</p>
msgDate	<p>date of issue of the present message (xml document), according to one of the patterns YYYY-MM-DD, YYYY-MM-DD:HH-MM or YYYY-WW. - base type: string, (XPath TRCDesAdvise/TRCheader/msgDate) 1-1</p>
msgID	<p>key identifier of the business document in the information system of the issuing Party. In case of more despatches of the same business document, it is unchanged. - base type: string, max length: 35, (XPath TRCDesAdvise/TRCheader/msgID) 0-1</p>

msgN	<p>identification number given to the message (xml document) by its issuer. In case of more despatches of the same business document, it changes.</p> <p>- base type: string, max length: 35, (XPath TRCDesAdvise/TRCHeader/msgN) 1-1</p> <p>- note: <i>in the case of Traceability Report or Transparency Report this identifier corresponds to a UNIQUE identifier assigned by the platform (for example TRRN)</i></p>
netWeight	<p>the net weight declared for transport or customs purpose</p> <p>- base type: decimal, min inclusive: 0, fraction digits: 2, (XPath TRCDesAdvise/TRCshipInfo/transInfo/netWeight) 0-1 (XPath TRCDesAdvise/TRCshipInfo/actualPackageUnit/netWeight) 0-1</p>
note	<p>free text or structured (computer processing) note. For note structuring use the attributes "noteLabel" and "codelist"</p> <p>- base type: string, max length: 350, (XPath TRCDesAdvise/TRCHeader/note) 0-99 (XPath TRCDesAdvise/TRCbody/TRCitem/note) 0-99 (XPath TRCDesAdvise/TRCHeader/externalRefDoc/note) 0-99 (XPath TRCDesAdvise/TRCshipInfo/actualPackageUnit/note) 0-99 (XPath TRCDesAdvise/TRCHeader/certificate/note) 0-99</p>
@noteLabel	<p>subject qualifier of a note</p> <p>- base type: string, max length: 35, (XPath TRCDesAdvise/TRCHeader/certificate/note/@noteLabel) [Optional]</p> <p>- nota: <i>must be used to qualify the subject of the note</i> (XPath TRCDesAdvise/TRCshipInfo/actualPackageUnit/note/@noteLabel) [Optional]</p> <p>- nota: <i>must be used to qualify the subject of the note</i> (XPath TRCDesAdvise/TRCHeader/externalRefDoc/note/@noteLabel) [Optional]</p> <p>- nota: <i>must be used to qualify the subject of the note</i> (XPath TRCDesAdvise/TRCbody/TRCitem/note/@noteLabel) [Optional]</p> <p>- nota: <i>must be used to qualify the subject of the note</i> (XPath TRCDesAdvise/TRCHeader/note/@noteLabel) [Optional]</p> <p>- nota: <i>must be used to qualify the subject of the note</i></p>
@numberingOrg	<p>code specifying the organisation who has created or owns the coding or numbering system</p> <p>- base type: string, cod. table: NT6 http://www.ebiz.enea.it/moda-ml/repository/codelist/draft/gc_NT6.xml (XPath TRCDesAdvise/TRCbody/TRCitem/garmentCode/@numberingOrg) [Optional] (XPath TRCDesAdvise/TRCbody/TRCitem/garmentPartCode/@numberingOrg) [Optional] (XPath TRCDesAdvise/TRCHeader/externalRefDoc/attachment/fileName/@numberingOrg) [Optional] (XPath TRCDesAdvise/TRCbody/TRCitem/acsCode/color/@numberingOrg) [Optional]</p> <p>- nota: <i>this attribute should be used either single or coupled with "listName" and "listVersion"</i> (XPath TRCDesAdvise/TRCbody/TRCitem/acsCode/added/@numberingOrg) [Optional]</p> <p>- nota: <i>this attribute should be used either single or coupled with "listName" and "listVersion"</i> (XPath TRCDesAdvise/TRCHeader/certificate/docID/@numberingOrg) [Optional]</p> <p>- nota: <i>here can be specified whose document numbering is used (e.g.: Client, Supplier, ...)</i> (XPath TRCDesAdvise/TRCbody/TRCitem/garmentPartCode/mod/@numberingOrg) [Optional] (XPath TRCDesAdvise/TRCbody/TRCitem/garmentPartCode/fabric/@numberingOrg) [Optional]</p> <p>- nota: <i>this attribute should be used either single or coupled with "listName" and "listVersion"</i> (XPath TRCDesAdvise/TRCbody/TRCitem/garmentPartCode/color/@numberingOrg) [Optional]</p> <p>- nota: <i>this attribute should be used either single or coupled with "listName" and "listVersion"</i> (XPath TRCDesAdvise/TRCbody/TRCitem/garmentPartCode/size/@numberingOrg) [Optional]</p> <p>- nota: <i>this attribute should be used either single or coupled with "listName" and "listVersion"</i> (XPath TRCDesAdvise/TRCbody/TRCitem/garmentPartCode/added/@numberingOrg) [Optional]</p> <p>- nota: <i>this attribute should be used either single or coupled with "listName" and "listVersion"</i> (XPath TRCDesAdvise/TRCbody/TRCitem/texCode/@numberingOrg) [Optional] (XPath TRCDesAdvise/TRCbody/TRCitem/yarnCode/added/@numberingOrg) [Optional]</p> <p>- nota: <i>this attribute should be used either single or coupled with "listName" and "listVersion"</i> (XPath TRCDesAdvise/TRCHeader/receiverParty/id/@numberingOrg) [Optional] (XPath TRCDesAdvise/TRCbody/TRCitem/texCode/art/@numberingOrg) [Optional]</p> <p>- nota: <i>this attribute should be used either single or coupled with "listName" and "listVersion"</i></p>

	<p><i>rsion</i>"</p> <p>(XPath TRCDesAdvise/TRCbody/TRCitem/yarnCode/@numberingOrg) [Optional] [Default= CL]</p> <p>(XPath TRCDesAdvise/TRCheader/externalRefDoc/issuerParty/id/@numberingOrg) [Optional]</p> <p>(XPath TRCDesAdvise/TRCbody/TRCitem/yarnCode/color/@numberingOrg) [Optional]</p> <p>- nota: <i>this attribute should be used either single or coupled with "listName" and "listVersion"</i></p> <p>(XPath TRCDesAdvise/TRCbody/TRCitem/yarnCode/art/@numberingOrg) [Optional]</p> <p>- nota: <i>this attribute should be used either single or coupled with "listName" and "listVersion"</i></p> <p>(XPath TRCDesAdvise/TRCshipInfo/eventSourceParty/id/@numberingOrg) [Optional]</p> <p>(XPath TRCDesAdvise/TRCbody/TRCitem/acsCode/art/@numberingOrg) [Optional]</p> <p>- nota: <i>this attribute should be used either single or coupled with "listName" and "listVersion"</i></p> <p>(XPath TRCDesAdvise/TRCbody/TRCitem/acsCode/@numberingOrg) [Optional]</p> <p>(XPath TRCDesAdvise/TRCbody/TRCitem/acsCode/pattern/@numberingOrg) [Optional]</p> <p>- nota: <i>this attribute should be used either single or coupled with "listName" and "listVersion"</i></p> <p>(XPath TRCDesAdvise/TRCheader/certificate/attachment/fileName/@numberingOrg) [Optional]</p> <p>(XPath TRCDesAdvise/TRCbody/TRCitem/texCode/color/@numberingOrg) [Optional]</p> <p>- nota: <i>this attribute should be used either single or coupled with "listName" and "listVersion"</i></p> <p>(XPath TRCDesAdvise/TRCbody/TRCitem/texCode/pattern/@numberingOrg) [Optional]</p> <p>- nota: <i>this attribute should be used either single or coupled with "listName" and "listVersion"</i></p> <p>(XPath TRCDesAdvise/TRCbody/TRCitem/texCode/added/@numberingOrg) [Optional]</p> <p>- nota: <i>this attribute should be used either single or coupled with "listName" and "listVersion"</i></p> <p>(XPath TRCDesAdvise/TRCheader/certificate/issuerParty/id/@numberingOrg) [Optional]</p> <p>(XPath TRCDesAdvise/TRCheader/certificate/note/@numberingOrg) [Optional]</p> <p>- nota: <i>must be used to specify the organization that created the list of codes used in "noteLabel"</i></p> <p>(XPath TRCDesAdvise/TRCbody/TRCitem/csRange/drop/@numberingOrg) [Optional]</p> <p>- nota: <i>this attribute should be used either single or coupled with "listName" and "listVersion"</i></p> <p>(XPath TRCDesAdvise/TRCbody/TRCitem/csRange/sizeMatrix/sizeRow/additionalComponentCode/@numberingOrg) [Optional]</p> <p>- nota: <i>this attribute should be used either single or coupled with "listName" and "listVersion"</i></p> <p>(XPath TRCDesAdvise/TRCheader/refDoc/docID/@numberingOrg) [Optional]</p> <p>- nota: <i>here can be specified whose document numbering is used (e.g.: Client, Supplier, ..)</i></p> <p>(XPath TRCDesAdvise/TRCheader/refDoc/season/@numberingOrg) [Optional]</p> <p>- nota: <i>this attribute should be used either single or coupled with "listName" and "listVersion"</i></p> <p>(XPath TRCDesAdvise/TRCbody/TRCitem/csRange/color/@numberingOrg) [Optional]</p> <p>- nota: <i>this attribute should be used either single or coupled with "listName" and "listVersion"</i></p> <p>(XPath TRCDesAdvise/TRCbody/TRCitem/csRange/garmentVariant/variantCode/@numberingOrg) [Optional]</p> <p>- nota: <i>this attribute should be used either single or coupled with "listName" and "listVersion"</i></p> <p>(XPath TRCDesAdvise/TRCbody/TRCitem/csRange/garmentVariant/variantType/@numberingOrg) [Optional]</p> <p>- nota: <i>this attribute should be used either single or coupled with "listName" and "listVersion"</i></p> <p>(XPath TRCDesAdvise/TRCbody/TRCitem/csRange/sizeMatrix/sizeRow/drop/@numberingOrg) [Optional]</p> <p>- nota: <i>this attribute should be used either single or coupled with "listName" and "listVersion"</i></p> <p>(XPath TRCDesAdvise/TRCbody/TRCitem/lotN/@numberingOrg) [Optional]</p> <p>(XPath TRCDesAdvise/TRCheader/externalRefDoc/docID/@numberingOrg) [Optional]</p> <p>- nota: <i>here can be specified whose document numbering is used (e.g.: Client, Supplier, ..)</i></p> <p>(XPath TRCDesAdvise/TRCbody/TRCitem/note/@numberingOrg) [Optional]</p> <p>- nota: <i>must be used to specify the organization that created the list of codes used in "noteLabel"</i></p> <p>(XPath TRCDesAdvise/TRCbody/TRCitem/packageN/@numberingOrg) [Optional]</p>
--	--

	<p>(XPath TRCDesAdvise/TRCbody/TRCitem/csRange/sizeMatrix/sizeRow/size/@numberingOrg) [Optional]</p> <p>- nota: <i>this attribute should be used either single or coupled with "listName" and "listVersion"</i></p> <p>(XPath TRCDesAdvise/TRCheader/note/@numberingOrg) [Optional]</p> <p>- nota: <i>must be used to specify the organization that created the list of codes used in "noteLabel"</i></p> <p>(XPath TRCDesAdvise/TRCbody/TRCitem/csRange/sizeMatrix/sizeRow/itemsList/itemIdentification/serialN/@numberingOrg) [Optional]</p> <p>- nota: <i>here the issuer of the serial number must be specified (when different from the Supplier)</i></p> <p>(XPath TRCDesAdvise/TRCbody/TRCitem/csRange/sizeMatrix/sizeRow/itemsList/qualityLevel/@numberingOrg) [Optional]</p> <p>- nota: <i>this attribute should be used either single or coupled with "listName" and "listVersion"</i></p> <p>(XPath TRCDesAdvise/TRCbody/TRCitem/garmentCode/garmentCodeB/garmentVariant/variantCode/@numberingOrg) [Optional]</p> <p>- nota: <i>this attribute should be used either single or coupled with "listName" and "listVersion"</i></p> <p>(XPath TRCDesAdvise/TRCbody/TRCitem/garmentCode/garmentCodeB/garmentVariant/variantType/@numberingOrg) [Optional]</p> <p>- nota: <i>this attribute should be used either single or coupled with "listName" and "listVersion"</i></p> <p>(XPath TRCDesAdvise/TRCbody/TRCitem/garmentCode/garmentCodeB/size/@numberingOrg) [Optional]</p> <p>- nota: <i>this attribute should be used either single or coupled with "listName" and "listVersion"</i></p> <p>(XPath TRCDesAdvise/TRCbody/TRCitem/garmentCode/garmentCodeB/drop/@numberingOrg) [Optional]</p> <p>- nota: <i>this attribute should be used either single or coupled with "listName" and "listVersion"</i></p> <p>(XPath TRCDesAdvise/TRCbody/TRCitem/garmentCode/garmentCodeB/mod/@numberingOrg) [Optional]</p> <p>(XPath TRCDesAdvise/TRCbody/TRCitem/garmentCode/garmentCodeB/@numberingOrg) [Optional]</p> <p>(XPath TRCDesAdvise/TRCbody/TRCitem/garmentCode/garmentCodeB/color/@numberingOrg) [Optional]</p> <p>- nota: <i>this attribute should be used either single or coupled with "listName" and "listVersion"</i></p> <p>(XPath TRCDesAdvise/TRCbody/TRCitem/garmentCode/garmentCodeB/fabric/@numberingOrg) [Optional]</p> <p>- nota: <i>this attribute should be used either single or coupled with "listName" and "listVersion"</i></p> <p>(XPath TRCDesAdvise/TRCheader/thirdParty/id/@numberingOrg) [Optional]</p> <p>(XPath TRCDesAdvise/TRCheader/refDoc/attachment/fileName/@numberingOrg) [Optional]</p> <p>(XPath TRCDesAdvise/TRCbody/TRCitem/garmentCode/garmentCodeA/art/@numberingOrg) [Optional]</p> <p>- nota: <i>this attribute should be used either single or coupled with "listName" and "listVersion"</i></p> <p>(XPath TRCDesAdvise/TRCbody/TRCitem/csRange/@numberingOrg) [Optional]</p> <p>(XPath TRCDesAdvise/TRCbody/TRCitem/phaseCode/@numberingOrg) [Optional]</p> <p>- nota: <i>this attribute should be used either single or coupled with "listName" and "listVersion"</i></p> <p>(XPath TRCDesAdvise/TRCbody/TRCitem/garmentCode/garmentCodeB/added/@numberingOrg) [Optional]</p> <p>- nota: <i>this attribute should be used either single or coupled with "listName" and "listVersion"</i></p> <p>(XPath TRCDesAdvise/TRCbody/TRCitem/garmentCode/garmentCodeB/artGroup/@numberingOrg) [Optional]</p> <p>- nota: <i>this attribute should be used either single or coupled with "listName" and "listVersion"</i></p> <p>(XPath TRCDesAdvise/TRCheader/externalRefDoc/signatureInformation/signatoryParty/id/@numberingOrg) [Optional]</p> <p>(XPath TRCDesAdvise/TRCshipInfo/businessStepCode/@numberingOrg) [Optional]</p> <p>(XPath TRCDesAdvise/TRCshipInfo/actualPackageUnit/packagesList/packageIdentification/packageN/@numberingOrg) [Optional]</p> <p>(XPath TRCDesAdvise/TRCshipInfo/actualPackageUnit/packagesList/packageIdentification/serialN/@numberingOrg) [Optional]</p> <p>- nota: <i>here the issuer of the serial number must be specified (when different from the</i></p>
--	---

	<p><i>Supplier</i> (XPath TRCDesAdvise/TRCshipInfo/eventDestinationParty/id/@numberingOrg) [Optional] (XPath TRCDesAdvise/TRCshipInfo/eventSourceParty/traceabilityPartyRole/@numberingOrg) [Optional] (XPath TRCDesAdvise/TRCbody/TRCitem/refDoc/attachment/fileName/@numberingOrg) [Optional] (XPath TRCDesAdvise/TRCheader/externalRefDoc/note/@numberingOrg) [Optional] - nota: <i>must be used to specify the organization that created the list of codes used in "noteLabel"</i> (XPath TRCDesAdvise/TRCshipInfo/actualPackageUnit/itemsList/qualityLevel/@numberingOrg) [Optional] - nota: <i>this attribute should be used either single or coupled with "listName" and "listVersion"</i> (XPath TRCDesAdvise/TRCshipInfo/actualPackageUnit/itemsList/itemIdentification/serialN/@numberingOrg) [Optional] - nota: <i>here the issuer of the serial number must be specified (when different from the Supplier)</i> (XPath TRCDesAdvise/TRCshipInfo/actualPackageUnit/note/@numberingOrg) [Optional] - nota: <i>must be used to specify the organization that created the list of codes used in "noteLabel"</i> (XPath TRCDesAdvise/TRCbody/TRCitem/refDoc/docID/@numberingOrg) [Optional] - nota: <i>here can be specified whose document numbering is used (e.g.: Client, Supplier, ..)</i> (XPath TRCDesAdvise/TRCheader/certificate/certifiedParty/id/@numberingOrg) [Optional] (XPath TRCDesAdvise/TRCbody/TRCitem/refDoc/season/@numberingOrg) [Optional] - nota: <i>this attribute should be used either single or coupled with "listName" and "listVersion"</i> (XPath TRCDesAdvise/TRCheader/senderParty/id/@numberingOrg) [Optional] (XPath TRCDesAdvise/TRCshipInfo/actualPackageUnit/packageModelCode/@numberingOrg) [Optional] (XPath TRCDesAdvise/TRCshipInfo/actualPackageUnit/packageIdentification/packageN/@numberingOrg) [Optional] (XPath TRCDesAdvise/TRCshipInfo/eventDestinationParty/traceabilityPartyRole/@numberingOrg) [Optional] (XPath TRCDesAdvise/TRCshipInfo/actualPackageUnit/packageIdentification/serialN/@numberingOrg) [Optional] - nota: <i>here the issuer of the serial number must be specified (when different from the Supplier)</i></p>
package	<p>code specifying the type of transport package - base type: string, cod. table: T11 http://www.ebiz.enea.it/moda-ml/repository/codelist/draft/gc_T11.xml (XPath TRCDesAdvise/TRCshipInfo/actualPackageUnit/package) 0-1</p>
@packageContainerN	<p>reference usable to indicate the outer package containing this package - base type: string, max length: 40, (XPath TRCDesAdvise/TRCshipInfo/actualPackageUnit/packagesList/packageIdentification/packageN/@packageContainerN) [Optional] (XPath TRCDesAdvise/TRCbody/TRCitem/packageN/@packageContainerN) [Optional] (XPath TRCDesAdvise/TRCshipInfo/actualPackageUnit/packageIdentification/packageN/@packageContainerN) [Optional]</p>
@packageLevel	<p>level used to indicate the hierarchical structure of the packages (from outer to inner levels) - base type: positiveInteger, min inclusive: 1, max inclusive: 9, (XPath TRCDesAdvise/TRCshipInfo/actualPackageUnit/@packageLevel) [Optional]</p>
packageModelCode	<p>a code (eg a barcode) identifying the type of packaging - base type: string, (XPath TRCDesAdvise/TRCshipInfo/actualPackageUnit/packageModelCode) 0-1</p>
packageN	<p>serial number used to identify a transport package - base type: string, max length: 40, (XPath TRCDesAdvise/TRCbody/TRCitem/packageN) 0-unbounded - note: <i>identifiers of the packages containing the items of this line</i> (XPath TRCDesAdvise/TRCshipInfo/actualPackageUnit/packageIdentification/packageN) 1-1 (XPath TRCDesAdvise/TRCshipInfo/actualPackageUnit/packagesList/packageIdentification/packageN) 1-1</p>

packageText	denomination of the type of transport package (text) - base type: string, max length: 80, (XPath TRCDesAdvise/TRCshipInfo/actualPackageUnit/packageText) 0-1
pattern	pattern/design number of the product, when not included in the article code - base type: string, max length: 15, (XPath TRCDesAdvise/TRCbody/TRCitem/acsCode/pattern) 0-1 (XPath TRCDesAdvise/TRCbody/TRCitem/texCode/pattern) 0-1
person	name of a person (e.g. contact person within an organization) - base type: string, max length: 40, (XPath TRCDesAdvise/TRCheader/certificate/issuerParty/person) 0-1 (XPath TRCDesAdvise/TRCshipInfo/transInfo/despatchLocation/person) 0-1 (XPath TRCDesAdvise/TRCshipInfo/eventDestinationParty/person) 0-1 (XPath TRCDesAdvise/TRCheader/externalRefDoc/issuerParty/person) 0-1 (XPath TRCDesAdvise/TRCheader/receiverParty/person) 0-1 (XPath TRCDesAdvise/TRCheader/certificate/certifiedParty/person) 0-1 (XPath TRCDesAdvise/TRCshipInfo/eventSourceParty/person) 0-1 (XPath TRCDesAdvise/TRCheader/senderParty/person) 0-1 (XPath TRCDesAdvise/TRCheader/thirdParty/person) 0-1 (XPath TRCDesAdvise/TRCshipInfo/transInfo/deliveryLocation/person) 0-1 (XPath TRCDesAdvise/TRCheader/externalRefDoc/signatureInformation/signatoryParty/person) 0-1 (XPath TRCDesAdvise/trade/tradeLocation/person) 0-1
phaseCode	Code that identifies a production phase of a fashion product. - base type: string, (XPath TRCDesAdvise/TRCbody/TRCitem/phaseCode) 0-1
@phone	phone number of the contact person within a Party - base type: string, max length: 35, (XPath TRCDesAdvise/TRCheader/receiverParty/person/@phone) [Optional] (XPath TRCDesAdvise/TRCheader/senderParty/person/@phone) [Optional] (XPath TRCDesAdvise/trade/tradeLocation/person/@phone) [Optional] (XPath TRCDesAdvise/TRCshipInfo/transInfo/despatchLocation/person/@phone) [Optional] (XPath TRCDesAdvise/TRCheader/thirdParty/person/@phone) [Optional] (XPath TRCDesAdvise/TRCshipInfo/eventDestinationParty/person/@phone) [Optional] (XPath TRCDesAdvise/TRCheader/externalRefDoc/signatureInformation/signatoryParty/person/@phone) [Optional] (XPath TRCDesAdvise/TRCshipInfo/transInfo/deliveryLocation/person/@phone) [Optional] (XPath TRCDesAdvise/TRCshipInfo/eventSourceParty/person/@phone) [Optional] (XPath TRCDesAdvise/TRCheader/certificate/issuerParty/person/@phone) [Optional] (XPath TRCDesAdvise/TRCheader/certificate/certifiedParty/person/@phone) [Optional] (XPath TRCDesAdvise/TRCheader/externalRefDoc/issuerParty/person/@phone) [Optional]
postCode	code defining the postal zone - base type: string, max length: 10, (XPath TRCDesAdvise/TRCheader/receiverParty/postCode) 0-1 (XPath TRCDesAdvise/TRCshipInfo/eventDestinationParty/postCode) 0-1 (XPath TRCDesAdvise/TRCshipInfo/transInfo/despatchLocation/postCode) 0-1 (XPath TRCDesAdvise/TRCheader/thirdParty/postCode) 0-1 (XPath TRCDesAdvise/TRCheader/senderParty/postCode) 0-1 (XPath TRCDesAdvise/trade/tradeLocation/postCode) 0-1 (XPath TRCDesAdvise/TRCheader/externalRefDoc/issuerParty/postCode) 0-1 (XPath TRCDesAdvise/TRCheader/certificate/certifiedParty/postCode) 0-1 (XPath TRCDesAdvise/TRCshipInfo/transInfo/deliveryLocation/postCode) 0-1 (XPath TRCDesAdvise/TRCheader/externalRefDoc/signatureInformation/signatoryParty/postCode) 0-1

	(XPath TRCDesAdvise/TRCheader/certificate/issuerParty/postCode) 0-1 (XPath TRCDesAdvise/TRCshipInfo/eventSourceParty/postCode) 0-1
@progr	progressive number in the sequence - base type: positiveInteger, min inclusive: 1, (XPath TRCDesAdvise/TRCshipInfo/transInfo/@progr) [Optional] - nota: Indicates the position of the leg in a sequence of transport legs. If it is declared it must be in all the transInfo elements.
@propulsionSystemCode	propulsion system type - base type: string, cod. table: NT324 http://www.ebiz.enea.it/moda-ml/repository/codelist/draft/gc_NT324.xml (XPath TRCDesAdvise/TRCshipInfo/transInfo/transMeans/@propulsionSystemCode) [Optional] - nota: indicates the type of propulsion of the means of transport
qty	net quantity of the article or object correlated, qualified by the function of the document (ordering, delivering, ..) and by the context - base type: decimal, min inclusive: 0, fraction digits: 2, (XPath TRCDesAdvise/TRCbody/TRCitem/qty) 1-2 - note: indicates the quantity shipped (shipping notice) or received (receipt notice). This element can have two instances only in the case of different unit of measure (XPath TRCDesAdvise/TRCbody/TRCitem/csRange/sizeMatrix/sizeRow/qty) 0-1
qtyVariance	difference between two quantities qualified by the context (e.g.: delivered vs. ordered; received vs. despatched etc..) - base type: decimal, fraction digits: 2, (XPath TRCDesAdvise/TRCbody/TRCitem/qtyVariance) 0-9 - note: Use only in case of receiving. It indicates both the quantity and the reasons for the discrepancy from the initial value. Multiple instances indicate quantities not accepted for different specific reasons.
qualityLevel	the product quality level (first choice, second choice,...). - base type: string, (XPath TRCDesAdvise/TRCbody/TRCitem/csRange/sizeMatrix/sizeRow/itemsList/qualityLevel) 0-1 (XPath TRCDesAdvise/TRCshipInfo/actualPackageUnit/itemsList/qualityLevel) 0-1
@role	Third Party role qualifier - base type: string, cod. table: NT2 http://www.ebiz.enea.it/moda-ml/repository/codelist/draft/gc_NT2.xml (XPath TRCDesAdvise/TRCheader/thirdParty/@role) [Required] (XPath TRCDesAdvise/TRCheader/senderParty/@role) [Optional] - nota: The use of this attribute is mandatory when the element to which it is associated has TRCHeader as its parent. (XPath TRCDesAdvise/TRCheader/receiverParty/@role) [Optional] - nota: The use of this attribute is mandatory when the element to which it is associated has TRCHeader as its parent.
routeLength	length of a route - base type: decimal, min inclusive: 0, fraction digits: 2, (XPath TRCDesAdvise/TRCshipInfo/transInfo/routeLength) 0-1
@schemeID	identifier of an identification scheme - base type: string, (XPath TRCDesAdvise/TRCheader/externalRefDoc/attachment/hashFootprint/@schemeID) [Optional] - nota: specify for which system this hash footprint might be used as identifier (for example HDFS system..) (XPath TRCDesAdvise/TRCheader/refDoc/attachment/hashFootprint/@schemeID) [Optional] - nota: specify for which system this hash footprint might be used as identifier (for example HDFS system..) (XPath TRCDesAdvise/TRCheader/certificate/certifiedEntity/entityID/@schemeID) [Required] (XPath TRCDesAdvise/TRCheader/certificate/attachment/hashFootprint/@schemeID) [Optional] - nota: specify for which system this hash footprint might be used as identifier (for example HDFS system..) (XPath TRCDesAdvise/TRCbody/TRCitem/uniqueProductID/@schemeID) [Required] (XPath TRCDesAdvise/TRCheader/certificate/certificateID/@schemeID) [Optional]

	<p>(XPath TRCDesAdvise/TRCbody/TRCitem/refDoc/attachment/hashFootprint/@schemeID) [Optional]</p> <p>- nota: specify for which system this hash footprint might be used as identifier (for example HDFS system..)</p>
season	<p>sale season; defined as: season (1 crt) + year (4 crt) - season: S/S=1 A/W=2 Spring=3 Summer=4 Autumn=5 Winter=6: for more than four seasons use alphabetic sequence: 1st season=A 2nd season=B etc.etc.</p> <p>- base type: string, max length: 15,</p> <p>(XPath TRCDesAdvise/TRCbody/TRCitem/refDoc/season) 0-1</p> <p>- note: here indicates the season to which the referenced document belongs</p> <p>(XPath TRCDesAdvise/TRCheader/refDoc/season) 0-1</p> <p>- note: here indicates the season to which the referenced document belongs</p>
@sender	<p>qualifier that specifies the Party issuing of the document</p> <p>- base type: boolean,</p> <p>(XPath TRCDesAdvise/TRCheader/thirdParty/@sender) [Optional]</p> <p>- nota: This attribute is mandatory when the STYLESHEET must be used</p> <p>(XPath TRCDesAdvise/TRCheader/receiverParty/@sender) [Optional]</p> <p>- nota: This attribute is mandatory when the STYLESHEET must be used.</p> <p>(XPath TRCDesAdvise/TRCheader/senderParty/@sender) [Optional]</p> <p>- nota: This attribute is mandatory when the STYLESHEET must be used.</p>
serialN	<p>serial number used for the identification of a physical unit</p> <p>- base type: string, max length: 250,</p> <p>(XPath TRCDesAdvise/TRCshipInfo/actualPackageUnit/itemsList/itemIdentification/serialN) 1-9 Best Practice</p> <p>- note: multiple values of serialN are allowed for different representations of the serial identifier of the same product unit. Instances of serialN must differ at least for one value of numberingOrg and idQualifier.</p> <p>(XPath TRCDesAdvise/TRCbody/TRCitem/csRange/sizeMatrix/sizeRow/itemsList/itemIdentification/serialN) 1-9 Best Practice</p> <p>- note: multiple values of serialN are allowed for different representations of the serial identifier of the same product unit. Instances of serialN must differ at least for one value of numberingOrg and idQualifier.</p> <p>(XPath TRCDesAdvise/TRCshipInfo/actualPackageUnit/packagesList/packageIdentification/serialN) 0-9</p> <p>- note: multiple values of serialN are allowed in order to provide different representations of the serial identifier of the same package unit. Different instances of serialN must differ at least for one value of idQualifier or numberingOrg</p> <p>(XPath TRCDesAdvise/TRCshipInfo/actualPackageUnit/packageIdentification/serialN) 0-9</p> <p>- note: multiple values of serialN are allowed in order to provide different representations of the serial identifier of the same package unit. Different instances of serialN must differ at least for one value of idQualifier or numberingOrg</p>
signatureTypeCode	<p>indicator of existing and type of signature</p> <p>- base type: string,</p> <p>(XPath TRCDesAdvise/TRCheader/externalRefDoc/signatureInformation/signatureTypeCode) 1-1</p>
size	<p>size number of a fashion product (knitwear, clothing, ..)</p> <p>- base type: string, max length: 15,</p> <p>(XPath TRCDesAdvise/TRCbody/TRCitem/csRange/sizeMatrix/sizeRow/size) 1-1</p> <p>(XPath TRCDesAdvise/TRCbody/TRCitem/garmentPartCode/size) 0-1</p> <p>(XPath TRCDesAdvise/TRCbody/TRCitem/garmentCode/garmentCodeB/size) 0-1</p>
@sizeSystemBase	<p>base of the size system</p> <p>- base type: string, cod. table: T423</p> <p>http://www.ebiz.enea.it/moda-ml/repository/codelist/draft/gc_T423.xml</p> <p>(XPath TRCDesAdvise/TRCbody/TRCitem/csRange/@sizeSystemBase) [Optional]</p>
@sizeSystemID	<p>the identifier of the size system.</p> <p>- base type: string,</p> <p>(XPath TRCDesAdvise/TRCbody/TRCitem/csRange/@sizeSystemID) [Optional]</p>
@sizeSystemNat	<p>nation or agency identifying the size system</p> <p>- base type: string, cod. table: T421</p> <p>http://www.ebiz.enea.it/moda-ml/repository/codelist/draft/gc_T421.xml</p> <p>(XPath TRCDesAdvise/TRCbody/TRCitem/csRange/@sizeSystemNat) [Optional]</p>
@sizeSystemSeg	<p>market segment identifying the size system</p>

	<p>- base type: string, cod. table: T422 http://www.ebiz.enea.it/moda-ml/repository/codelist/draft/gc_T422.xml (XPath TRCDesAdvise/TRCbody/TRCitem/csRange/@sizeSystemSeg) [Optional]</p>
@standardOwner	<p>standard owner is the organisation that owns and manages the standard specifications (for example Textile exchange or OEKO-TEX) - base type: string, (XPath TRCDesAdvise/TRCheader/certificate/certificationStandardName/@standardOwner) [Required]</p>
street	<p>street and building number identifying a location - base type: string, max length: 80, (XPath TRCDesAdvise/TRCheader/senderParty/street) 0-1 (XPath TRCDesAdvise/TRCheader/externalRefDoc/issuerParty/street) 0-1 (XPath TRCDesAdvise/TRCshipInfo/transInfo/despatchLocation/street) 0-1 (XPath TRCDesAdvise/TRCheader/thirdParty/street) 0-1 (XPath TRCDesAdvise/trade/tradeLocation/street) 0-1 (XPath TRCDesAdvise/TRCheader/externalRefDoc/signatureInformation/signatoryParty/street) 0-1 (XPath TRCDesAdvise/TRCheader/certificate/issuerParty/street) 0-1 (XPath TRCDesAdvise/TRCheader/certificate/certifiedParty/street) 0-1 (XPath TRCDesAdvise/TRCshipInfo/eventSourceParty/street) 0-1 (XPath TRCDesAdvise/TRCshipInfo/transInfo/deliveryLocation/street) 0-1 (XPath TRCDesAdvise/TRCheader/receiverParty/street) 0-1 (XPath TRCDesAdvise/TRCshipInfo/eventDestinationParty/street) 0-1</p>
subCountry	<p>short name or code of the sub-country entity - base type: string, max length: 9, (XPath TRCDesAdvise/TRCshipInfo/transInfo/deliveryLocation/subCountry) 0-1 (XPath TRCDesAdvise/TRCshipInfo/transInfo/despatchLocation/subCountry) 0-1 (XPath TRCDesAdvise/TRCshipInfo/eventDestinationParty/subCountry) 0-1 (XPath TRCDesAdvise/trade/tradeLocation/subCountry) 0-1 (XPath TRCDesAdvise/TRCshipInfo/eventSourceParty/subCountry) 0-1 (XPath TRCDesAdvise/TRCheader/certificate/certifiedParty/subCountry) 0-1 (XPath TRCDesAdvise/TRCheader/receiverParty/subCountry) 0-1 (XPath TRCDesAdvise/TRCheader/certificate/issuerParty/subCountry) 0-1 (XPath TRCDesAdvise/TRCheader/externalRefDoc/issuerParty/subCountry) 0-1 (XPath TRCDesAdvise/TRCheader/senderParty/subCountry) 0-1 (XPath TRCDesAdvise/TRCheader/thirdParty/subCountry) 0-1 (XPath TRCDesAdvise/TRCheader/externalRefDoc/signatureInformation/signatoryParty/subCountry) 0-1</p>
subDept	<p>name or code of a department - base type: string, max length: 40, (XPath TRCDesAdvise/TRCheader/thirdParty/subDept) 0-1 (XPath TRCDesAdvise/TRCshipInfo/eventSourceParty/subDept) 0-1 (XPath TRCDesAdvise/TRCshipInfo/eventDestinationParty/subDept) 0-1 (XPath TRCDesAdvise/TRCheader/externalRefDoc/signatureInformation/signatoryParty/subDept) 0-1 (XPath TRCDesAdvise/TRCshipInfo/transInfo/despatchLocation/subDept) 0-1 (XPath TRCDesAdvise/TRCheader/certificate/issuerParty/subDept) 0-1 (XPath TRCDesAdvise/TRCheader/receiverParty/subDept) 0-1 (XPath TRCDesAdvise/TRCheader/externalRefDoc/issuerParty/subDept) 0-1 (XPath TRCDesAdvise/trade/tradeLocation/subDept) 0-1 (XPath TRCDesAdvise/TRCheader/certificate/certifiedParty/subDept) 0-1 (XPath TRCDesAdvise/TRCheader/senderParty/subDept) 0-1 (XPath TRCDesAdvise/TRCshipInfo/transInfo/deliveryLocation/subDept) 0-1</p>
sustainabilityCharacteristicText	<p>text that describes a single sustainability characteristic (for example a claim). The content of the element must be unique, it might be translated and repeated into more languages (thus no more than one instance for each language). - base type: string, min length: 1, (XPath TRCDesAdvise/TRCheader/certificate/sustainabilityCharacteristicText) 0-99</p>

@TAtype	<p>type of Despatch advise</p> <p>- base type: string, cod. table: NT10</p> <p>http://www.ebiz.enea.it/moda-ml/repository/codelist/draft/gc_NT10.xml</p> <p>(XPath TRCDesAdvise/@TAtype) [Optional]</p>
title	<p>document title</p> <p>- base type: string,</p> <p>(XPath TRCDesAdvise/TRCHeader/externalRefDoc/title) 0-unbounded</p> <p>- note: Only one instance of this element for each different value of 'In' attribute (language)</p> <p>(XPath TRCDesAdvise/TRCHeader/certificate/title) 0-unbounded</p> <p>- note: Only one instance of this element for each different value of 'In' attribute (language)</p>
traceabilityPartyRole	<p>role that the party plays in the process covered by the traceability process. It is recommended the list https://www.ebiz.enea.it/eBIZ/imple/eBIZTCU-Draft.asp?lingua=en&pag=6&modo=d&tabe=136&contestoscelto=TexWeave&nomenu=2</p> <p>- base type: string,</p> <p>(XPath TRCDesAdvise/TRCshipInfo/eventDestinationParty/traceabilityPartyRole) 1-1</p> <p>(XPath TRCDesAdvise/TRCshipInfo/eventSourceParty/traceabilityPartyRole) 0-1</p>
transactionReceipt	<p>transaction receipt on blockchain</p> <p>- base type: string, max length: 80,</p> <p>(XPath TRCDesAdvise/TRCbody/TRCitem/refDoc/attachment/blockChainReference/transactionReceipt) 1-9</p> <p>(XPath TRCDesAdvise/TRCHeader/certificate/attachment/blockChainReference/transactionReceipt) 1-9</p> <p>(XPath TRCDesAdvise/TRCHeader/refDoc/attachment/blockChainReference/transactionReceipt) 1-9</p> <p>(XPath TRCDesAdvise/TRCHeader/externalRefDoc/attachment/blockChainReference/transactionReceipt) 1-9</p>
transCondition	<p>special condition of transport or special service requested to the Forwarder</p> <p>- base type: string, cod. table: T38</p> <p>http://www.ebiz.enea.it/moda-ml/repository/codelist/draft/gc_T38.xml</p> <p>(XPath TRCDesAdvise/TRCshipInfo/transInfo/transCondition) 0-3</p>
transConditionText	<p>free text description of the special condition of transport or special service requested to the Forwarder</p> <p>- base type: string, max length: 250,</p> <p>(XPath TRCDesAdvise/TRCshipInfo/transInfo/transConditionText) 0-1</p>
transMeans	<p>means of transport, in general or referred to a specific leg</p> <p>- base type: string, cod. table: T40</p> <p>http://www.ebiz.enea.it/moda-ml/repository/codelist/draft/gc_T40.xml</p> <p>(XPath TRCDesAdvise/TRCshipInfo/transInfo/transMeans) 0-1</p>
transMode	<p>way of transport, in general or referred to the specified leg</p> <p>- base type: string, cod. table: T8</p> <p>http://www.ebiz.enea.it/moda-ml/repository/codelist/draft/gc_T8.xml</p> <p>(XPath TRCDesAdvise/TRCshipInfo/transInfo/transMode) 1-1</p>
@transReason	<p>reason for the transport</p> <p>- base type: string, cod. table: NT11</p> <p>http://www.ebiz.enea.it/moda-ml/repository/codelist/draft/gc_NT11.xml</p> <p>(XPath TRCDesAdvise/TRCshipInfo/transInfo/@transReason) [Optional]</p>
@uid	<p>unique element identifier within the xml document</p> <p>- base type: string,</p> <p>(XPath TRCDesAdvise/TRCHeader/refDoc/attachment/@uid) [Optional]</p> <p>(XPath TRCDesAdvise/TRCHeader/externalRefDoc/attachment/@uid) [Optional]</p> <p>(XPath TRCDesAdvise/TRCbody/TRCitem/refDoc/attachment/@uid) [Optional]</p> <p>(XPath TRCDesAdvise/TRCHeader/certificate/attachment/@uid) [Optional]</p>
@um	<p>specification of the unit of measure</p> <p>- base type: string, cod. table: NT7</p> <p>http://www.ebiz.enea.it/moda-ml/repository/codelist/draft/gc_NT7.xml</p> <p>(XPath TRCDesAdvise/TRCbody/TRCitem/qty/@um) [Required]</p> <p>(XPath TRCDesAdvise/TRCHeader/externalRefDoc/issuerParty/geoCoordinates/@um) [Optional] [Default= DEGD]</p> <p>- nota: when not specified assume decimal DEGREES</p> <p>(XPath TRCDesAdvise/TRCbody/TRCitem/csRange/sizeMatrix/sizeRow/qty/@um) [Required]</p>

	<p>(XPath TRCDesAdvise/trade/tradeLocation/geoCoordinates/@um) [Optional] [Default= DEGD] - nota: <i>when not specified assume decimal DEGREES</i> (XPath TRCDesAdvise/TRCHeader/certificate/issuerParty/geoCoordinates/@um) [Optional] [Default= DEGD] - nota: <i>when not specified assume decimal DEGREES</i> (XPath TRCDesAdvise/TRCshipInfo/eventSourceParty/geoCoordinates/@um) [Optional] [Default= DEGD] - nota: <i>when not specified assume decimal DEGREES</i> (XPath TRCDesAdvise/TRCshipInfo/actualPackageUnit/netWeight/@um) [Required] (XPath TRCDesAdvise/TRCshipInfo/actualPackageUnit/grossWeight/@um) [Required] (XPath TRCDesAdvise/TRCHeader/certificate/certifiedParty/geoCoordinates/@um) [Optional] [Default= DEGD] - nota: <i>when not specified assume decimal DEGREES</i> (XPath TRCDesAdvise/TRCbody/TRCitem/acceptQty/@um) [Required] (XPath TRCDesAdvise/TRCshipInfo/actualPackageUnit/volume/@um) [Required] (XPath TRCDesAdvise/TRCbody/TRCitem/qtyVariance/@um) [Optional] (XPath TRCDesAdvise/TRCshipInfo/actualPackageUnit/packageDim/height/@um) [Required] (XPath TRCDesAdvise/TRCshipInfo/transInfo/routeLength/@um) [Required] (XPath TRCDesAdvise/TRCshipInfo/actualPackageUnit/packageDim/width/@um) [Required] (XPath TRCDesAdvise/TRCHeader/senderParty/geoCoordinates/@um) [Optional] [Default= DEGD] - nota: <i>when not specified assume decimal DEGREES</i> (XPath TRCDesAdvise/TRCshipInfo/transInfo/deliveryLocation/geoCoordinates/@um) [Optional] [Default= DEGD] - nota: <i>when not specified assume decimal DEGREES</i> (XPath TRCDesAdvise/TRCshipInfo/transInfo/despatchLocation/geoCoordinates/@um) [Optional] [Default= DEGD] - nota: <i>when not specified assume decimal DEGREES</i> (XPath TRCDesAdvise/TRCshipInfo/transInfo/grossWeight/@um) [Required] (XPath TRCDesAdvise/TRCHeader/receiverParty/geoCoordinates/@um) [Optional] [Default= DEGD] - nota: <i>when not specified assume decimal DEGREES</i> (XPath TRCDesAdvise/TRCshipInfo/transInfo/netWeight/@um) [Required] (XPath TRCDesAdvise/TRCshipInfo/eventDestinationParty/geoCoordinates/@um) [Optional] [Default= DEGD] - nota: <i>when not specified assume decimal DEGREES</i> (XPath TRCDesAdvise/TRCHeader/thirdParty/geoCoordinates/@um) [Optional] [Default= DEGD] - nota: <i>when not specified assume decimal DEGREES</i> (XPath TRCDesAdvise/TRCHeader/externalRefDoc/signatureInformation/signatoryParty/geoCoordinates/@um) [Optional] [Default= DEGD] - nota: <i>when not specified assume decimal DEGREES</i> (XPath TRCDesAdvise/TRCshipInfo/actualPackageUnit/packageDim/length/@um) [Required]</p>
uniqueProductID	<p>Unique product identifier. It identifies the product completely, differentiating any variants, sizes, colors, etc. It should be unique throughout the whole value chain. (It can be the GTIN) - base type: string, max length: 80, (XPath TRCDesAdvise/TRCbody/TRCitem/uniqueProductID) 1-2 - note: <i>this element can have two instances only if the schemeID values are different</i></p>
uri	<p>Uniform Resource Identifier (URI) that identifies the external object as an Internet resource - base type: normalizedString, (XPath TRCDesAdvise/TRCHeader/certificate/attachment/externalReference/uri) 1-1 (XPath TRCDesAdvise/TRCbody/TRCitem/refDoc/attachment/externalReference/uri) 1-1 (XPath TRCDesAdvise/TRCHeader/externalRefDoc/attachment/blockChainReference/uri) 1-1 - note: <i>reference to the used blockchain (example: url https://etherscan.io/ of ethereum)</i> (XPath TRCDesAdvise/TRCbody/TRCitem/refDoc/attachment/</p>

	<p>blockChainReference/uri 1-1</p> <p>- note: reference to the used blockchain (example: url https://etherscan.io/ of ethereum)</p> <p>(XPath TRCDesAdvise/TRCHeader/refDoc/attachment/blockChainReference/uri) 1-1</p> <p>- note: reference to the used blockchain (example: url https://etherscan.io/ of ethereum)</p> <p>(XPath TRCDesAdvise/TRCHeader/externalRefDoc/attachment/externalReference/uri) 1-1</p> <p>(XPath TRCDesAdvise/TRCHeader/refDoc/attachment/externalReference/uri) 1-1</p> <p>(XPath TRCDesAdvise/TRCHeader/certificate/attachment/blockChainReference/uri) 1-1</p> <p>- note: reference to the used blockchain (example: url https://etherscan.io/ of ethereum)</p>
@useProfile	<p>use profile to which the present document is compliant if it was agreed by the parties. It is suggested a URI with reference to the firms or the URL of the profile.</p> <p>- base type: string,</p> <p>(XPath TRCDesAdvise/@useProfile) [Optional]</p>
validityEnd	<p>date by which the validity ends, according to one of the patterns YYYY-MM-DD, YYYY-MM-DD:HH-MM or YYYY-WW.</p> <p>- base type: string,</p> <p>(XPath TRCDesAdvise/TRCHeader/certificate/validityEnd) 0-1</p> <p>(XPath TRCDesAdvise/TRCHeader/externalRefDoc/validityEnd) 0-1</p>
validityExtensionDate	<p>end date of validity resulting from extension, according to one of the patterns YYYY-MM-DD, YYYY-MM-DD:HH-MM or YYYY-WW.</p> <p>- base type: string,</p> <p>(XPath TRCDesAdvise/TRCHeader/certificate/validityExtensionDate) 0-1</p>
validityStart	<p>date by which the validity starts, according to one of the patterns YYYY-MM-DD, YYYY-MM-DD:HH-MM or YYYY-WW.</p> <p>- base type: string,</p> <p>(XPath TRCDesAdvise/TRCHeader/certificate/validityStart) 0-1</p> <p>(XPath TRCDesAdvise/TRCHeader/externalRefDoc/validityStart) 0-1</p>
variantCode	<p>Code of variant used for fashion product.</p> <p>- base type: string,</p> <p>(XPath TRCDesAdvise/TRCbody/TRCitem/csRange/garmentVariant/variantCode) 1-1</p> <p>(XPath TRCDesAdvise/TRCbody/TRCitem/garmentCode/garmentCodeB/garmentVariant/variantCode) 1-1</p>
variantType	<p>Type of variant used for fashion product (examples: 'treatment', 'washing type', 'size class',...)</p> <p>- base type: string,</p> <p>(XPath TRCDesAdvise/TRCbody/TRCitem/csRange/garmentVariant/variantType) 1-1</p> <p>(XPath TRCDesAdvise/TRCbody/TRCitem/garmentCode/garmentCodeB/garmentVariant/variantType) 1-1</p>
@varReason	<p>reason for the difference between the two quantities specified by the context</p> <p>- base type: string, cod. table: T46</p> <p>http://www.ebiz.enea.it/moda-ml/repository/codelist/draft/gc_T46.xml</p> <p>(XPath TRCDesAdvise/TRCbody/TRCitem/qtyVariance/@varReason) [Optional]</p>
@VAT	<p>VAT rate or code (DEPRECATED, use dtScheme element)</p> <p>- base type: string, cod. table: NT16</p> <p>http://www.ebiz.enea.it/moda-ml/repository/codelist/draft/gc_NT16.xml</p> <p>(XPath TRCDesAdvise/TRCHeader/thirdParty/@VAT) [Optional]</p> <p>(XPath TRCDesAdvise/TRCbody/TRCitem/lineN/@VAT) [Optional]</p> <p>- nota: <i>Deprecated, prefer dtScheme when available.</i></p>
@version	<p>Dictionary version from which the instance has been created</p> <p>- base type: string, cod. table: NT100</p> <p>http://www.ebiz.enea.it/moda-ml/repository/codelist/draft/gc_NT100.xml</p> <p>(XPath TRCDesAdvise/@version) [Optional] [Default= draft]</p>
volume	<p>effective volume of a specified object</p> <p>- base type: decimal, min inclusive: 0, fraction digits: 2,</p>

	(XPath TRCDesAdvise/TRCshipInfo/actualPackageUnit/volume) 0-1
width	effective width of a specified object - base type: decimal, min inclusive: 0, fraction digits: 2, (XPath TRCDesAdvise/TRCshipInfo/actualPackageUnit/ packageDim/width) 0-1
xGeoCoord	geographical coordinate x , corresponding to latitude - base type: decimal, (XPath TRCDesAdvise/trade/tradeLocation/geoCoordinates/xGeoCoord) 1-1 (XPath TRCDesAdvise/TRCheader/externalRefDoc/signatureInformation/signatoryPart y/geoCoordinates/xGeoCoord) 1-1 (XPath TRCDesAdvise/TRCheader/receiverParty/geoCoordinates/xGeoCoord) 1-1 (XPath TRCDesAdvise/TRCshipInfo/eventSourceParty/ geoCoordinates/xGeoCoord) 1-1 (XPath TRCDesAdvise/TRCheader/certificate/certifiedParty/ geoCoordinates/xGeoCoord) 1-1 (XPath TRCDesAdvise/TRCshipInfo/transInfo/deliveryLocation/geoCoordinates/xGeo Coord) 1-1 (XPath TRCDesAdvise/TRCshipInfo/transInfo/despatchLocation/geoCoordinates/xGeo Coord) 1-1 (XPath TRCDesAdvise/TRCheader/senderParty/geoCoordinates/xGeoCoord) 1-1 (XPath TRCDesAdvise/TRCheader/thirdParty/geoCoordinates/xGeoCoord) 1-1 (XPath TRCDesAdvise/TRCheader/externalRefDoc/issuerParty/ geoCoordinates/xGeoCoord) 1-1 (XPath TRCDesAdvise/TRCheader/certificate/issuerParty/ geoCoordinates/xGeoCoord) 1-1 (XPath TRCDesAdvise/TRCshipInfo/eventDestinationParty/ geoCoordinates/xGeoCoord) 1-1
yGeoCoord	geographical coordinate y , corresponding to longitude - base type: decimal, (XPath TRCDesAdvise/TRCheader/thirdParty/geoCoordinates/yGeoCoord) 1-1 (XPath TRCDesAdvise/TRCshipInfo/eventDestinationParty/ geoCoordinates/yGeoCoord) 1-1 (XPath TRCDesAdvise/TRCshipInfo/transInfo/deliveryLocation/geoCoordinates/yGeo Coord) 1-1 (XPath TRCDesAdvise/TRCheader/certificate/certifiedParty/ geoCoordinates/yGeoCoord) 1-1 (XPath TRCDesAdvise/TRCheader/senderParty/geoCoordinates/yGeoCoord) 1-1 (XPath TRCDesAdvise/TRCheader/externalRefDoc/signatureInformation/signatoryPart y/geoCoordinates/yGeoCoord) 1-1 (XPath TRCDesAdvise/TRCshipInfo/eventSourceParty/ geoCoordinates/yGeoCoord) 1-1 (XPath TRCDesAdvise/TRCheader/externalRefDoc/issuerParty/ geoCoordinates/yGeoCoord) 1-1 (XPath TRCDesAdvise/TRCshipInfo/transInfo/despatchLocation/geoCoordinates/yGeo Coord) 1-1 (XPath TRCDesAdvise/TRCheader/receiverParty/geoCoordinates/yGeoCoord) 1-1 (XPath TRCDesAdvise/TRCheader/certificate/issuerParty/ geoCoordinates/yGeoCoord) 1-1 (XPath TRCDesAdvise/trade/tradeLocation/geoCoordinates/yGeoCoord) 1-1
zGeoCoord	geographical coordinate z , corresponding to altitude - base type: decimal, (XPath TRCDesAdvise/TRCheader/certificate/issuerParty/ geoCoordinates/zGeoCoord) 0-1 - note: <i>altitude might be omitted</i> (XPath TRCDesAdvise/TRCshipInfo/eventDestinationParty/ geoCoordinates/zGeoCoord) 0-1 - note: <i>altitude might be omitted</i> (XPath TRCDesAdvise/TRCheader/senderParty/geoCoordinates/zGeoCoord) 0-1 - note: <i>altitude might be omitted</i> (XPath TRCDesAdvise/TRCshipInfo/eventSourceParty/

	<p style="color: red;">geoCoordinates/zGeoCoord) 0-1</p> <p>- note: <i>altitude might be omitted</i> (XPath</p> <p style="color: red;">TRCDesAdvise/TRCshipInfo/transInfo/despatchLocation/geoCoordinates/zGeoCoord) 0-1</p> <p>- note: <i>altitude might be omitted</i> (XPath TRCDesAdvise/trade/tradeLocation/geoCoordinates/zGeoCoord) 0-1</p> <p>- note: <i>altitude might be omitted</i> (XPath TRCDesAdvise/TRCheader/externalRefDoc/issuerParty/geoCoordinates/zGeoCoord) 0-1</p> <p>- note: <i>altitude might be omitted</i> (XPath TRCDesAdvise/TRCheader/thirdParty/geoCoordinates/zGeoCoord) 0-1</p> <p>- note: <i>altitude might be omitted</i> (XPath</p> <p style="color: red;">TRCDesAdvise/TRCshipInfo/transInfo/deliveryLocation/geoCoordinates/zGeoCoord) 0-1</p> <p>- note: <i>altitude might be omitted</i> (XPath</p> <p style="color: red;">TRCDesAdvise/TRCheader/externalRefDoc/signatureInformation/signatoryParty/geoCoordinates/zGeoCoord) 0-1</p> <p>- note: <i>altitude might be omitted</i> (XPath TRCDesAdvise/TRCheader/certificate/certifiedParty/geoCoordinates/zGeoCoord) 0-1</p> <p>- note: <i>altitude might be omitted</i> (XPath</p> <p style="color: red;">TRCDesAdvise/TRCheader/receiverParty/geoCoordinates/zGeoCoord) 0-1</p> <p>- note: <i>altitude might be omitted</i></p>
--	--

2.3 Suggested best practices

TRCDesAdvise/TRCheader/refDoc/docID (identification number of the referenced document)

numberingOrg indicates the role that produced the document identifier (it is allowed to declare two different ones -e.g. customer and supplier - with two docID with different numberingOrg

TRCDesAdvise/TRCbody/TRCitem/refDoc/docID (identification number of the referenced document)

numberingOrg indicates the role that produced the document identifier (it is allowed to declare two different ones -e.g. customer and supplier - with two docID with different numberingOrg

**TRCDesAdvise/TRCbody/TRCitem/refDoc/attachment/
externalReference/mimeCode (mime type of the external object)**

Use coding from IANA <http://www.iana.org/assignments/media-types/media-types.xml>

**TRCDesAdvise/TRCheader/externalRefDoc/attachment/
externalReference/mimeCode (mime type of the external object)**

Use coding from IANA <http://www.iana.org/assignments/media-types/media-types.xml>

**TRCDesAdvise/TRCheader/refDoc/attachment/
externalReference/mimeCode (mime type of the external object)**

Use coding from IANA <http://www.iana.org/assignments/media-types/media-types.xml>

**TRCDesAdvise/TRCheader/certificate/attachment/
externalReference/mimeCode (mime type of the external object)**

Use coding from IANA <http://www.iana.org/assignments/media-types/media-types.xml>

**TRCDesAdvise/TRCshipInfo/actualPackageUnit/
itemsList/itemIdentification/serialN (serial number used for the identification of a physical unit)**

in the case of garment with RFID for anti-counterfeiting, RFID EPCGlobal for logistics and NFC for the customer experience there should be three serial elements with pairs of attributes numberingOrg/idQualifier: "CL"/"RFID", "GS1"/"RFID", "CL"/"NFC".

**TRCDesAdvise/TRCbody/TRCitem/csRange/sizeMatrix/
sizeRow/itemsList/itemIdentification/serialN (serial number used for the identification of a physical unit)**

in the case of garment with RFID for anti-counterfeiting, RFID EPCGlobal for logistics and NFC for the customer experience there should be three serial elements with pairs of attributes numberingOrg/idQualifier: "CL"/"RFID", "GS1"/"RFID", "CL"/"NFC".

2.4 Enumeration tables

List of enumeration tables used in the XML document. You can find all the tables with the corresponding codes at:
<http://www.ebiz.enea.it/eBIZ/imple/eBIZTCU-draft.asp?lingua=en&pag=6>

NT10 - Despatch Advise type
NT100 - eBIZ TCFUpstream version
NT11 - transport causal
NT16 - VAT rate or code
NT2 - third party qualifier
NT201 - entity type
NT29 - format of a date
NT3 - issuer of the identifier (or identification system) of a location.
NT313 - status of the document
NT324 - propulsion system type
NT333 - type of hashing algorithm
NT6 - coding system owner/issuer
NT60 - language, codes from ISO 639-1 (subset)
NT7 - unit of measure
T10 - ISO3166 - Country
T11 - transport package type
T21 - type of document
T3 - terms of delivery - IncoTerms
T38 - transport conditions
T40 - type of transport means
T421 - size system: nationality
T422 - size system: market segment
T423 - size system: base
T44 - additional code type
T46 - quantity variance reason
T48 - garment part type
T8 - Modes of Transport

(the most relevant tables are detailed in the following Annexes too)

ACKNOWLEDGEMENT



This action is part of the TRICK project, which has received funding from Horizon 2020 research and innovation programme under grant agreement No. 958352 of the European Union.

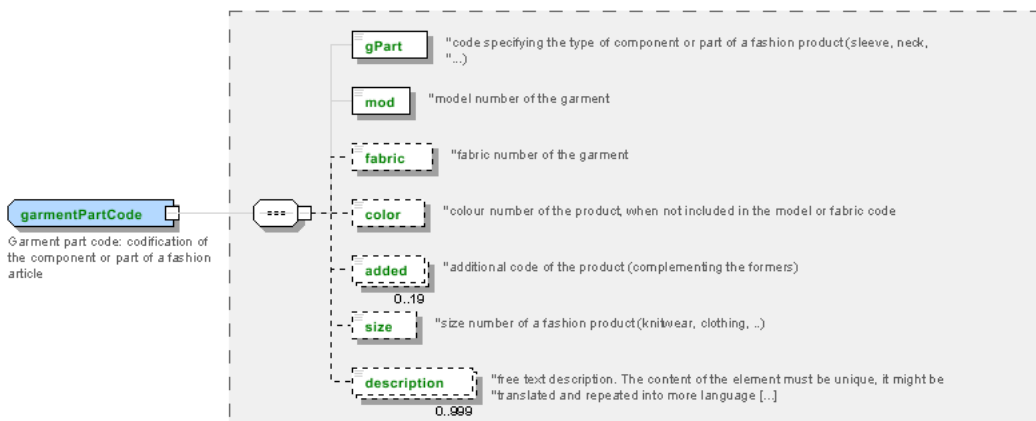
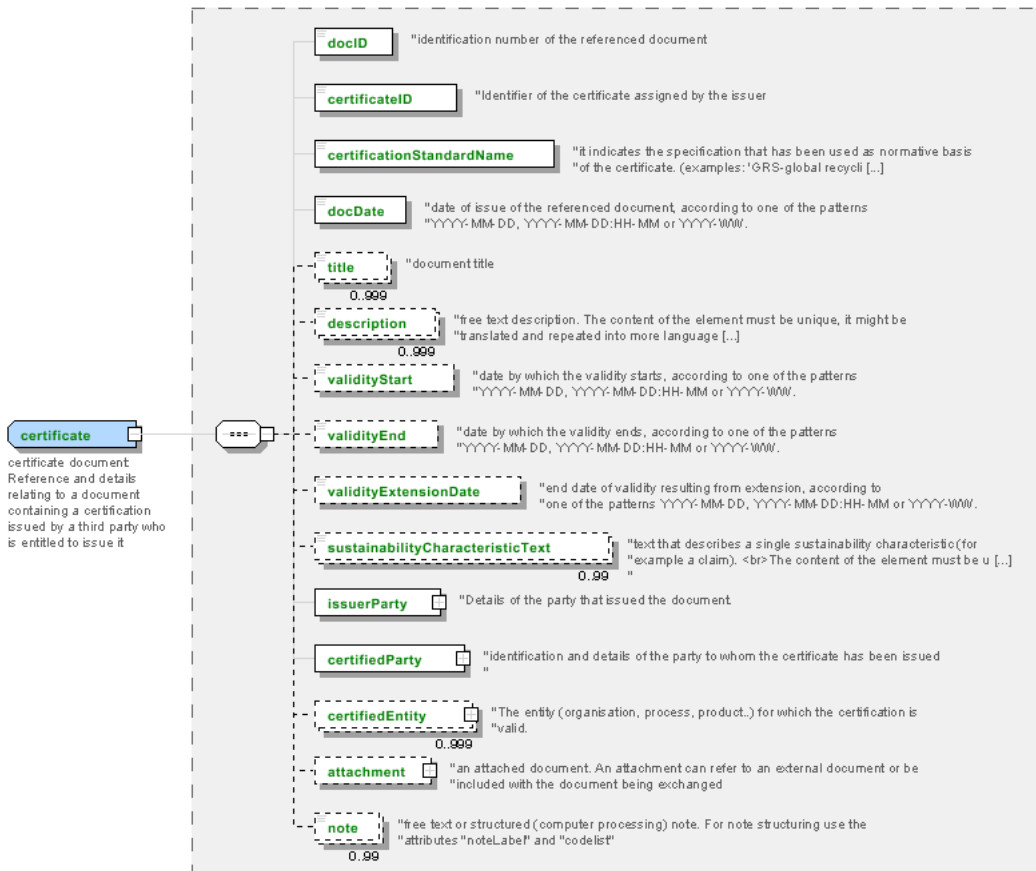
DISCLAIMER

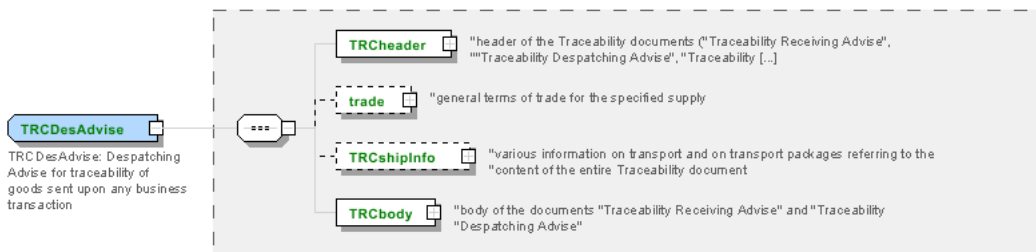
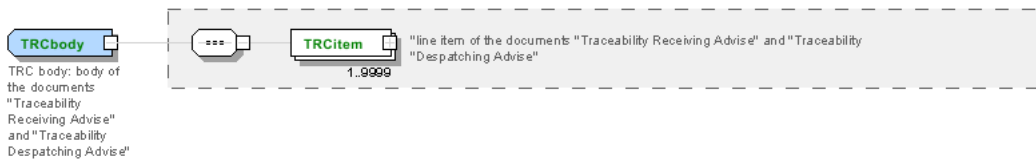
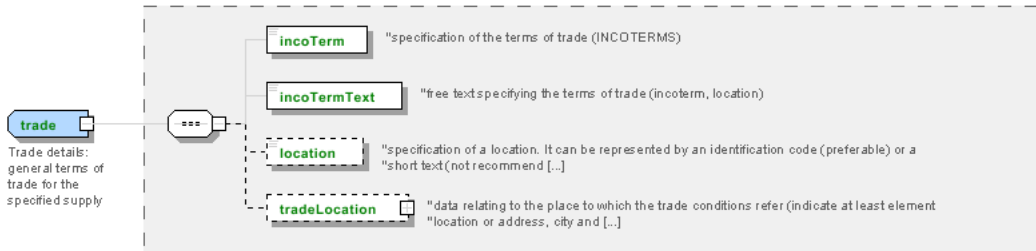
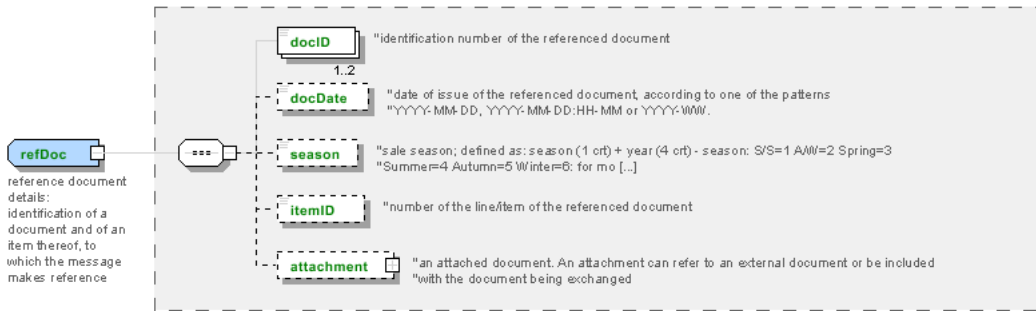
The content of this document represents the views of the authors only and is their sole responsibility; it cannot be considered to reflect the views of the European Commission or any other body of the European Union.

The European Commission does not accept any responsibility for use that may be made of the information it contains.

Annex A

Representative images of the principal complex elements' structure.

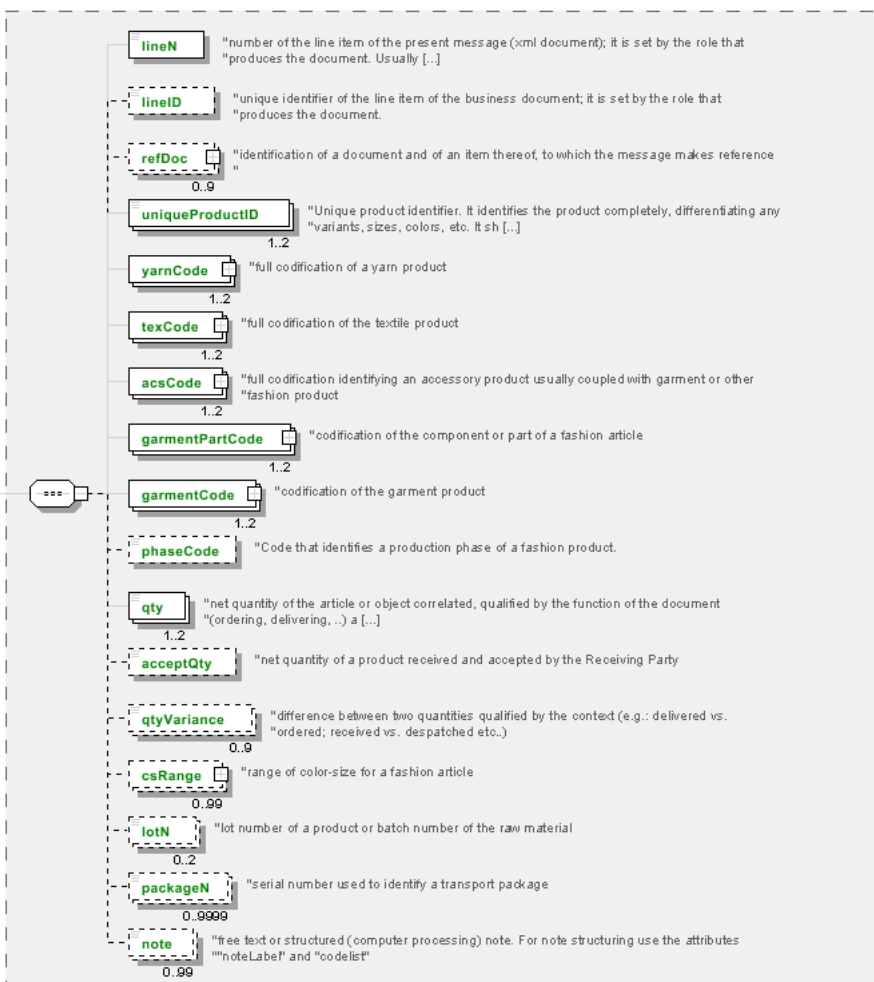




TRCheader
 TRC header: header of the Traceability documents ("Traceability Receiving Advice", "Traceability Despatching Advice", "Traceability Report", "Transparency and Sustainability Report")

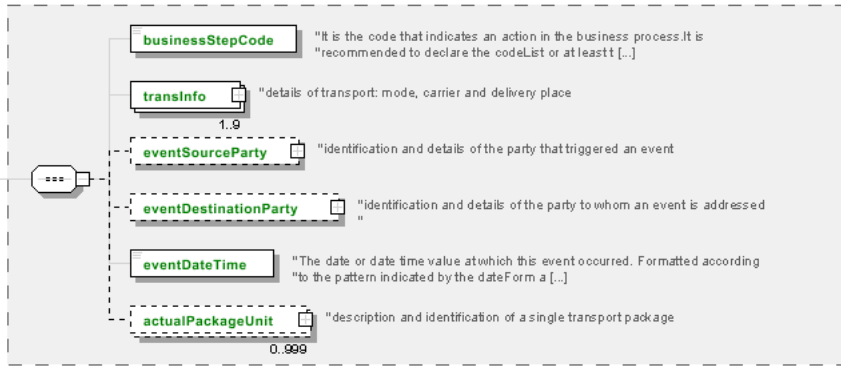


TRCitem
 TRC item: line item of the documents "Traceability Receiving Advice" and "Traceability Despatching Advice"



TRCshipInfo

TRC shipping information: various information on transport and on transport packages referring to the content of the entire Traceability document



Annex B

NT10 - Despatch Advise type

type of Despatch advise

Agency name: eBIZ

Decoding table: NT10

File codes list (Generic code): http://www.ebiz.enea.it/moda-ml/repository/codelist/draft/gc_NT10.xml

Code	Description	Adoption note	Date of insertion
BRG	re-worked no-charge		01/07/2013
CLP	for work		05/12/2013
DDT	return from work		01/07/2013
DDV	for demonstration		01/07/2013
PKL	packing list		05/02/2018
PRE	pre-advise		
RCD	storage return		01/07/2013
RDV	return from demonstration		05/12/2013
RNL	not worked return		01/07/2013
RRG	return from re-worked no-charge		05/12/2013
RSB	return from sale		05/12/2013
SBT	for sale		01/07/2013
SCD	for storage		05/12/2013
STD	standard		

NT100 - eBIZ TCFUpstream version

dictionary version

Agency name: eBIZ

Decoding table: NT100

File codes list (Generic code): http://www.ebiz.enea.it/moda-ml/repository/codelist/draft/gc_NT100.xml

Code	Description	Adoption note	Date of insertion
2013-1	v2013-1		01/07/2013
2018-1	v2018-1		04/11/2018
draft	draft		08/09/2017

NT11 - transport causal

reason for the transport

Agency name: eBIZ

Decoding table: NT11

File codes list (Generic code): http://www.ebiz.enea.it/moda-ml/repository/codelist/draft/gc_NT11.xml

Code	Description	Adoption note	Date of insertion
FOC	free of charge		
FRW	return from re-works		
FST	return from storage		
FVW	return from view		
FWK	return from works		
IST	in storage		
NWK	return non-worked		
RJC	return from rejection		
SEL	to sell		
STO	to storage		
VEW	to view		
WRK	to works		

NT16 - VAT rate or code

VAT rate or code (DEPRECATED, use dtScheme element)

Decoding table: NT16

File codes list (Generic code): http://www.ebiz.enea.it/moda-ml/repository/codelist/draft/gc_NT16.xml

NT2 - third party qualifier

Third Party role qualifier

Agency name: eBIZ

Decoding table: NT2

File codes list (Generic code): http://www.ebiz.enea.it/moda-ml/repository/codelist/draft/gc_NT2.xml

Code	Description	Adoption note	Date of insertion
AG	Sales Agent		
AU	Auditor		08/04/2019
BU	Buyer		13/06/2022
CE	Certification authority		08/04/2019
CM	Commissioner		13/06/2022

CO	Quality Controller		
CU	Customs authority		13/06/2022
DC	Response to		
DF	Invoicee		
DI	Copy to (CC)		28/10/2014
DM	Consignee		
DP	Consignment address (Delivery Party)		
EX	Expert		13/06/2022
IM	Importer		
OR	Originator		10/09/2014
SC	Sub contractor		10/04/2019
SM	Service/ePlatform manager		08/04/2019
SP	Forwarder		
SU	Supplier		13/06/2022
TL	Test or analysis laboratory		13/06/2022
TX	Tax Representative		

NT201 - entity type

indicates the type of entity to which we refer

Agency name: eBIZ for TRICK

Decoding table: NT201

File codes list (Generic code): http://www.ebiz.enea.it/moda-ml/repository/codelist/draft/gc_NT201.xml

Code	Description	Adoption note	Date of insertion
FAC	Facility		03/06/2022
INS	Single product instance		03/06/2022
LOT	Lot		03/06/2022
ORG	Organisation		03/06/2022
PRC	Production process		03/06/2022
PRD	Product		03/06/2022
PRO	Organisational procedure		03/06/2022
SHP	Shipment		25/04/2023

NT29 - format of a date

format used for the date

Agency name: eBIZ

Decoding table: NT29

File codes list (Generic code): http://www.ebiz.enea.it/moda-ml/repository/codelist/draft/gc_NT29.xml

Code	Description	Adoption note	Date of insertion
D	YYYY-MM-DD		
M	YYYY-MM-DD:HH-MM (date and time)		
S	AAAA-MM-GG:HH-MM-SS (date and time with seconds)		13/06/2022
W	YYYY-WW		

NT3 - issuer of the identifier (or identification system) of a location.

List of possible issuers of the identifier (or identification system) of a location.

Agency name: eBIZ

Decoding table: NT3

File codes list (Generic code): http://www.ebiz.enea.it/moda-ml/repository/codelist/draft/gc_NT3.xml

Code	Description	Adoption note	Date of insertion
EN4	GS1-GLN	obsolete	01/07/2013
GLN	GS1-GLN	equivalent to EN4	25/04/2023
MD	mutually agreed		
NCA	National custom authority	identifier of a bonded warehouse assigned by the custom authority	19/05/2023
PLA	Platform	internal coding of the involved platform	14/05/2023
TRI	TRICK		14/05/2023

NT313 - status of the document

subset of the values from the United Nations Code List (UNCL) 4405 code list from UNCEFACT

Agency name: eBIZ for TRICK (elaboration on UNECE)

Decoding table: NT313

File codes list (Generic code): http://www.ebiz.enea.it/moda-ml/repository/codelist/draft/gc_NT313.xml

Other link: <https://service.unece.org/trade/untddid/d21b/tred/tred4405.htm#>

Code	Description	Adoption note	Date of insertion
112	Incomplete		22/07/2022
21	Temporary		22/07/2022
39	Approved		22/07/2022
40	Withdrawn		22/07/2022
41	Rejected		22/07/2022
45	No status		22/07/2022

67	Preliminary		22/07/2022
70	Issued		22/07/2022
73	Confirmed (by reviewer)		30/08/2022
74	Expiry date exceeded		22/07/2022
97	Pending		22/07/2022

NT324 - propulsion system type

propulsion system type adopted, for example, by a transport mean

Agency name: eBIZ for TRICK

Decoding table: NT324

File codes list (Generic code): http://www.ebiz.enea.it/moda-ml/repository/codelist/draft/gc_NT324.xml

Code	Description	Adoption note	Date of insertion
ALC	Alcohol		05/07/2022
BDIE	Bio diesel		05/07/2022
BEV	Battery Electric Vehicle		05/07/2022
BFUE	Biofuels	biodiesel excluded	02/09/2022
DIE	Diesel		05/07/2022
FCEV	Hydrogen Fuel cell		05/07/2022
GAS	GAS		05/07/2022
GPL	LPG		05/07/2022
HEV	Full hybrid (Hybrid Electric Vehicle)		05/07/2022
HUM	Human force		05/07/2022
HYB	Hybrid		05/07/2022
MHY	Mild hybrid		05/07/2022
NUC	Nuclear		05/07/2022
PET	Petrol		05/07/2022
PHEV	plug-in Hybrid Electric Vehicle		05/07/2022
STEAM	Steam		05/07/2022
WIND	Wind		05/07/2022

NT333 - type of hashing algorithm

type of hashing algorithm

Decoding table: NT333

File codes list (Generic code): http://www.ebiz.enea.it/moda-ml/repository/codelist/draft/gc_NT333.xml

Code	Description	Adoption	Date of
------	-------------	----------	---------

		note	insertion
ADLER32	ADLER32		26/05/2023
HMAC	HMAC		26/05/2023
MD2	MD2		26/05/2023
MD4	MD4		26/05/2023
MD5	MD5		26/05/2023
MDC-2	MDC-2		26/05/2023
PANAMA	PANAMA		26/05/2023
RIPEMD-160	RIPEMD-160		26/05/2023
SHA-1	SHA-1		26/05/2023
SHA-2 256	SHA-2 256		26/05/2023
SHA-2 384	SHA-2 384		26/05/2023
SHA-2 512	SHA-2 512		26/05/2023
TIGER	TIGER		26/05/2023

NT6 - coding system owner/issuer

code specifying the organisation who has created or owns the registers of the present coding or numbering system

Agency name: eBIZ

Decoding table: NT6

File codes list (Generic code): http://www.ebiz.enea.it/moda-ml/repository/codelist/draft/gc_NT6.xml

Code	Description	Adoption note	Date of insertion
CBR	National customs brokers registry		12/06/2023
CL	Customer/buyer		
CO	Quality Controller		
DU	D-U-N-S registry (Data Universal Numbering System)		04/05/2023
EB	eBIZ	replaces 'ML'	18/03/2019
EN	GS1 (ex-EAN International)		
EO	Registro EORI (Economic Operators Registration and Identification number)		04/03/2023
ES	e-Stockflow	DEPRECATED	
FO	Supplier		
GS	GS1		01/07/2013
MF	national taxation authority (i.e. VAT codes registry)		
ML	Moda-ML	DEPRECATED	
PL	Application Platform		13/06/2022
REX	Registered Exporter system (REX)		19/05/2023
SP	Service Provider		

SU	Enterprise Identification Number UID	Only switzerland	04/03/2023
----	--------------------------------------	------------------	------------

NT60 - language, codes from ISO 639-1 (subset)

Agency name: eBIZ / ISO

Decoding table: NT60

File codes list (Generic code): http://www.ebiz.enea.it/moda-ml/repository/codelist/draft/gc_NT60.xml

Code	Description	Adoption note	Date of insertion
af	Afrikaans		31/01/2019
ar	Arabic		31/01/2019
be	Belarusian		31/01/2019
bg	Bulgarian		31/01/2019
bn	Bengali		31/01/2019
bo	Tibetan		31/01/2019
bs	Bosnian		31/01/2019
ca	Catalan, Valencian		31/01/2019
cs	Czech		31/01/2019
da	Danish		31/01/2019
de	German		31/01/2019
el	Greek, Modern (1453-)		31/01/2019
en	English		31/01/2019
eo	Esperanto		31/01/2019
es	Spanish, Castilian		31/01/2019
et	Estonian		31/01/2019
eu	Basque		31/01/2019
F	Female		15/04/2019
fa	Persian		31/01/2019
fi	Finnish		31/01/2019
fr	French		31/01/2019
ga	Irish		31/01/2019
gd	Gaelic, Scottish Gaelic		31/01/2019
gn	Guarani		31/01/2019
he	Hebrew		31/01/2019
hr	Croatian		31/01/2019
ht	Haitian, Haitian Creole		31/01/2019
hu	Hungarian		31/01/2019
hy	Armenian		31/01/2019

ia	Interlingua (International Auxiliary Language Association)		31/01/2019
id	Indonesian		31/01/2019
is	Icelandic		31/01/2019
it	Italian		31/01/2019
ja	Japanese		31/01/2019
jv	Javanese		31/01/2019
ka	Georgian		31/01/2019
km	Central Khmer		31/01/2019
ko	Korean		31/01/2019
ku	Kurdish		31/01/2019
lb	Luxembourgish, Letzeburgesch		31/01/2019
lo	Lao		31/01/2019
lt	Lithuanian		31/01/2019
lv	Latvian		31/01/2019
mg	Malagasy		31/01/2019
mk	Macedonian		31/01/2019
mn	Mongolian		31/01/2019
mt	Maltese		31/01/2019
nl	Dutch, Flemish		31/01/2019
no	Norwegian		31/01/2019
pl	Polish		31/01/2019
pt	Portuguese		31/01/2019
ro	Romanian, Moldavian, Moldovan		31/01/2019
ru	Russian		31/01/2019
se	Northern Sami		31/01/2019
sk	Slovak		31/01/2019
sl	Slovenian		31/01/2019
sm	Samoan		31/01/2019
so	Somali		31/01/2019
sq	Albanian		31/01/2019
sr	Serbian		31/01/2019
sv	Swedish		31/01/2019
sw	Swahili		31/01/2019
ta	Tamil		31/01/2019
th	Thai		31/01/2019
tr	Turkish		31/01/2019
uk	Ukrainian		31/01/2019
ur	Urdu		31/01/2019

uz	Uzbek		31/01/2019
vi	Vietnamese		31/01/2019
zh	Chinese		31/01/2019

NT7 - unit of measure

specification of the unit of measure, it is a sub set of table Unit of Measure Code - UN/ECE REC 20 delivered by United Nations Economic Commission for Europe (UN/ECE)

Agency name: eBIZ / UN/ECE

Decoding table: NT7

File codes list (Generic code): http://www.ebiz.enea.it/moda-ml/repository/codelist/draft/gc_NT7.xml

Other link: <http://docs.oasis-open.org/ubl/os-UBL-2.1/cl/gc/default/UnitOfMeasureCode-2.1.gc#>

Code	Description	Adoption note	Date of insertion
CMK	square centimetre		20/12/2017
CMQ	cubic centimetre		20/12/2017
CMT	centimetre		
CNE	centiNewton		
CO2TON	ton of CO2		10/09/2014
COUPLES	couples		
DAY	day		22/08/2022
DEGD	decimal degrees		04/07/2022
DEGMS	degrees with minutes and seconds		01/07/2022
DMQ	cubic decimetre		
E37	pixel		11/04/2018
GRM	gram		
HUR	hour		
INH	inch		
KGM	kilogram		
KMT	kilometer		
KWH	kilowatthours		10/09/2014
LBR	pound		
MCG	microgram		23/08/2022
MG	milligram		23/08/2022
MIN	minute		
MMK	square millimetre		20/12/2017
MONTH	month		22/08/2022
MSEC	millisecond (time)		22/08/2022
MTK	square metre		20/12/2017

MTQ	cubic metre		
MTR	metre		
NMB	numero		
ONZ	ounce		
P1	percent		
PPM	parts per milion		
PZ	piece		
RPM	rounds per metre		
SEC	second (time)		22/08/2022
YEAR	year		22/08/2022
YRD	yard		

T10 - ISO3166 - Country

code of the nation

Agency name: ISO

Decoding table: T10

File codes list (Generic code): http://www.ebiz.enea.it/moda-ml/repository/codelist/draft/gc_T10.xml

Table not printed: there are 240 elements, more than the maximum specified for printing: 99.

T11 - transport package type

code specifying the type of package used for transport and delivery (subset of UN/ECE 8053 and UBL TransportEquipmentTypeCode-2.1)

Agency name: eBIZ

Decoding table: T11

File codes list (Generic code): http://www.ebiz.enea.it/moda-ml/repository/codelist/draft/gc_T11.xml

Other link: <http://docs.oasis-open.org/ubl/os-UBL-2.1/cl/default/TransportEquipmentTypeCode-2.1.gc#>

Code	Description	Adoption note	Date of insertion
4A	box, steel		
4C	box, wood		
4G	Box, fibreboard		01/08/2018
4H	Box, plastic		01/08/2018
5H	Bag, woven plastic		01/08/2018
5L	Bag, textile		01/08/2018
5M	Bag, paper		
AJ	Cone		01/08/2018
BL	Bale, compressed		01/08/2018

BN	Bale, non-compressed		01/08/2018
BX	Box		
CI	Canister		01/08/2018
CL	Coil		01/08/2018
CN	Container, not otherwise specified as transport equipment		01/08/2018
CS	Case		01/08/2018
CT	Carton		01/08/2018
EC	Bag, plastic		01/08/2018
ED	Case, with pallet base		01/08/2018
EE	Case, with pallet base, wooden		01/08/2018
EF	Case, with pallet base, cardboard		01/08/2018
EG	Case, with pallet base, plastic		01/08/2018
EH	Case, with pallet base, metal		01/08/2018
FX	Bag, flexible container		01/08/2018
HN	Hanger		01/08/2018
NE	unpacked		
NF	Unpacked or unpackage, single unit		01/08/2018
NG	Unpacked or unpackage, multiple units		01/08/2018
OA	Pallet, CHEP 40 cm x 60 cm		01/08/2018
OB	Pallet, CHEP 80 cm x 120 cm		01/08/2018
OC	Pallet, CHEP 100 cm x 120 cm		01/08/2018
OD	Pallet, AS 4068-1993		01/08/2018
OE	Pallet, ISO T11		01/08/2018
PE	europallet (80x120)		
PX	pallet		
QS	box, plastic, solid		
RJ	Rack, clothing hanger		01/08/2018
RL	Reel		01/08/2018
SO	Spool		01/08/2018
TU	tube		
XD	bag, plastics film		
XK	bag,paper, multi-wall, water resistant		
ZZ	Mutually defined		01/08/2018

T21 - type of document

type or class to which the referenced document belongs

Agency name: eBIZ

Decoding table: T21

File codes list (Generic code): http://www.ebiz.enea.it/moda-ml/repository/codelist/draft/gc_T21.xml

Code	Description	Adoption note	Date of insertion
BIL	Bill of lading		07/03/2023
BOR	Blanket order		01/02/2018
CAT	Price catalogue - tech sheet		
CEO	Certificate of origin		13/04/2018
CER	Certificate		13/04/2018
CMR	CMR consignment note		07/03/2023
COC	Colour card		
CRN	Credit note		08/09/2017
CTO	Checking order		01/07/2013
CTR	Contract		
CXF	CxF3 file		01/07/2013
DAD	Darn order		
DDT	Delivery note (transport document)		
DEA	Despatch advise		
DER	Despatch request		
DR	Document Request		02/12/2014
EAD	Export Accompanying Document	adopted by European customs	12/05/2023
ECMR	electronic CMR consignment note		07/03/2023
ECUS	EXPORT Custom Declaration		07/03/2023
FOR	Forecast		02/12/2014
GSO	Garment stock offer		
GSX	Garment stock offer change		
ICUS	IMPORT Custom Declaration		07/03/2023
INV	Invoice		
KCC	Knitting-Clothing Commission Order		02/12/2014
KCI	Garment in Work Inventory Report		02/12/2014
LCA	LCA study		28/08/2022
LCAD	LCA study dataset		28/08/2022
M2M	Made to Measure Production Order		02/12/2014
MAS	Master marker		
MCI	Visual merchandising instruction		13/04/2018
OCH	Order change		
OFF	Offer		
ORD	Purchase order		

ORP	Order response		
OSR	order status request		
OSS	Offer status		02/12/2014
OST	Order status		
OUR	our reference		
PCO	Preferential certificate of origin		07/03/2023
PEF	PEF study		28/08/2022
PEFD	PEF study dataset		28/08/2022
PEFP	PEF environmental profile		07/03/2023
QR	Quality Report		02/12/2014
RAI	Raw Material in Work Inventory Report		02/12/2014
RDC	Raw dyeing commission order		
RDH	Raw dyeing order change		
RDR	Raw dyeing order response		
REA	Receiving advise		
REQ	Request for Offer		
RET	Return		02/12/2014
RSC	Spinning commission order		
RSH	Spinning order change		
RSR	Spinning order response		
SAD	Single Administrative Document	adopted by European customs	12/05/2023
SCL	Process sheet		
SDE	Self-declaration		07/03/2023
SDS	SDS - Safety data sheet		07/03/2023
SLCA	S-LCA Study		07/03/2023
SLCAD	S-LCA Study documentation		07/03/2023
TFC	Textile dyeing-finishing commission order		
TFX	Textile Dyeing-Finishing Order Change		02/12/2014
TPC	Textile printing commission order		
TPX	Textile Printing Order Change		02/12/2014
TWI	Textile in work inventory		
VMI	visual merchandising instructions		01/02/2018
WAC	Warping commission order		
WAYB	Waybill		07/03/2023
WEC	Weaving commission order		
YDC	Yarn dyeing commission order		
YDH	Yarn dyeing order change		
YDR	Yarn dyeing order response		

YTC	Twisting commission order		
YWI	Yarn in work inventory		

T3 - terms of delivery - Incoterms

specification of the terms of trade (INCOTERMS)

Agency name: Incoterms

Decoding table: T3

File codes list (Generic code): http://www.ebiz.enea.it/moda-ml/repository/codelist/draft/gc_T3.xml

Other link: <https://iccwbo.org/resources-for-business/incoterms-rules/incoterms-2020/#>

Code	Description	Adoption note	Date of insertion
CFR	COST AND FREIGHT (named port of destination)		
CIF	COST, INSURANCE AND FREIGHT (named port of destination)		
CIP	CARRIAGE AND INSURANCE PAID (named place of destination)		
CPA	CARRIAGE PAID (named place of destination)		
DAF	DELIVERED AT FRONTIER (named place)	according to Incoterms® 2010, since 2020 it is OBSOLETE.	08/12/2017
DAP	Delivered at Place of destination (named place of destination)	according to Incoterms® 2010	08/12/2017
DAT	Delivered at Terminal (named place of destination)	according to Incoterms® 2010, since 2020 it is OBSOLETE.	08/12/2017
DDP	DELIVERED DUTY PAID (named place of destination)		
DDU	DELIVERED DUTY UNPAID (named place of destination)	according to Incoterms® 2010 it is OBSOLETE , use DAP	08/12/2017
DEQ	DELIVERED EX-QUAY (named port of destination)	according to Incoterms® 2010 it is OBSOLETE	08/12/2017
DES	DELIVERED EX-SHIP (named port of destination)	according to Incoterms® 2010 it is OBSOLETE	08/12/2017
DDPU	DELIVERED AT PLACE UNLOADED	according to Incoterms® 2020	25/04/2022
EXW	EX WORKS (named place)		
FAS	FREE ALONGSIDE SHIP (named port of shipment)		
FCA	FREE CARRIER (named place)		
FOB	FREE ON BOARD (named port of shipment)		

T38 - transport conditions

special condition of transport or special service requested to the Forwarder

Decoding table: T38

File codes list (Generic code): http://www.ebiz.enea.it/moda-ml/repository/codelist/draft/gc_T38.xml

Code	Description	Adoption note	Date of insertion
ACC	arrange customs clearance		
CAL	Carrier loads		
CAU	Carrier unloads		
CMR	CMR carnet		
FFN	freight forwarders national conditions		
FLD	special agreement for full loading		
NCC	do not arrange customs clearance		
PPB	packaging paid by Buyer		
PPS	packaging paid by Supplier		
PRO	proof of delivery		
RFR	return container free		
RPC	return container paid by Customer		
RPS	return container paid by Supplier		
SHL	Shipper loads		
SHU	Consignee unloads		

T40 - type of transport means

means of transport, in general or referred to a specific leg

Agency name: eBIZ

Decoding table: T40

File codes list (Generic code): http://www.ebiz.enea.it/moda-ml/repository/codelist/draft/gc_T40.xml

Code	Description	Adoption note	Date of insertion
AIR	aircraft		
SHP	ship		
TRU	truck		
VAN	van		

T421 - size system: nationality

nation or agency identifying the size system

Agency name: eBIZ

Decoding table: T421

File codes list (Generic code): http://www.ebiz.enea.it/moda-ml/repository/codelist/draft/gc_T421.xml

Code	Description	Adoption note	Date of insertion
DE	Germany		
ES	Spain		
EU	Europe		
FR	France		
IT	Italy		
UK	United Kingdom		
US	USA		
XX	International		

T422 - size system: market segment

market segment identifying the size system

Agency name: eBIZ

Decoding table: T422

File codes list (Generic code): http://www.ebiz.enea.it/moda-ml/repository/codelist/draft/gc_T422.xml

Code	Description	Adoption note	Date of insertion
B	baby		
C	child		
K	kid		
M	man		
U	unisex		
W	woman		

T423 - size system: base

base of the size system

Agency name: eBIZ

Decoding table: T423

File codes list (Generic code): http://www.ebiz.enea.it/moda-ml/repository/codelist/draft/gc_T423.xml

Code	Description	Adoption note	Date of insertion
1	arab numbers		
2	latin numbers		

3	symbols		
4	letters		
H	height		
L	length		
U	unique		
W	weight		

T44 - additional code type

qualifier of the additional coding of a product

Agency name: eBIZ

Decoding table: T44

File codes list (Generic code): http://www.ebiz.enea.it/moda-ml/repository/codelist/draft/gc_T44.xml

Code	Description	Adoption note	Date of insertion
CC	colour card		
CL	sales collection		
CO	company identification code		08/09/2017
DY	dye number		
LT	lot number		
MDI	Made in		08/09/2017
MS	manufacturing state		
PKG	packaging		09/09/2014
PL	product line		
RGB	RGB value		
SE	selvedge code		

T46 - quantity variance reason

reason for the difference between the two quantities specified by the context

Agency name: eBIZ

Decoding table: T46

File codes list (Generic code): http://www.ebiz.enea.it/moda-ml/repository/codelist/draft/gc_T46.xml

Code	Description	Adoption note	Date of insertion
DAM	damaged on receipt		
DIF	different article		
NAC	not acceptable for quality or conformance		

NRC	not received		
-----	--------------	--	--

T48 - garment part type

code specifying the type of component or part of a garment (sleeve, neck, ...)

Agency name: eBIZ

Decoding table: T48

File codes list (Generic code): http://www.ebiz.enea.it/moda-ml/repository/codelist/draft/gc_T48.xml

Code	Description	Adoption note	Date of insertion
BB	bottom back		01/08/2018
BF	bottom fore/front		01/08/2018
CO	collar		01/08/2018
CU	cuff		01/08/2018
DV	fore		
EM	embroidery		01/08/2018
OC	other component		01/08/2018
PO	pocket		01/08/2018
SC	back		
SL	sleeve		01/08/2018
TB	top back		01/08/2018
TF	top fore/front		01/08/2018

T8 - Modes of Transport

way of transport, in general or referred to the specified leg. Derived from UNECE Recommendation 28 (see link)

Agency name: eBIZ

Decoding table: T8

File codes list (Generic code): http://www.ebiz.enea.it/moda-ml/repository/codelist/draft/gc_T8.xml

Other link: <https://fig.unece.org/contents/recommendation-28.htm#>

Code	Description	Adoption note	Date of insertion
1	MARITIME TRANSPORT		
10	Courier	DEPRECATED	01/07/2013
2	RAIL TRANSPORT		
3	ROAD TRANSPORT		
4	AIR TRANSPORT		
5	MAIL		

6	MULTIMODAL TRANSPORT	example ship + truck. Not used for custom declarations.	13/06/2023
8	INLAND WATER TRANSPORT		
9	MODE UNKNOWN	Includes Own propulsion	13/06/2023