



<http://www.ebiz-tcf.eu>

DRAFT

## IMPLEMENTATION GUIDE TRANSACTION "TEXTILE DARNING RETURN"

Version: draft

Date of release: 26/6/2023

Document code: G013

technical Documentation: <http://www.ebiz.enea.it>

XML Schemas repository: <http://www.ebiz.enea.it/moda-ml/repository/schema/draft/default.asp>

Guides repository: <http://www.ebiz.enea.it/moda-ml/repository/guide/draft/default.asp>

Guide filename: G013-eBIZ-TextileDarningReturn.pdf

## 0. PREMISE

This document contains a proposal for the updating and extension of eBIZ specifications starting from the eBIZ version 2018. Under the name of 'Draft version' it is reported the result of an extensive work of analysis and consultation aimed at developing and maintaining eBIZ specifications.

In particular, the content of this proposal is the result of various activities, mainly those carried out within the framework of the **TRICK project** funded by the European Commission: grant agreement 958352, call H2020-LOW-CARBON-CIRCULAR-INDUSTRIES-2020 / H2020-LCCI-2020-EASME-twostage.

The technical contents are backwards compatible with the latest official published version, with the exclusion of the totally new concepts added explicitly for the version that are thought as incremental evolution of the knowledge base.

## 1. BUSINESS DESCRIPTION

### 1.1 Scope

The present guide has been issued to assist the companies of the Textile-Clothing sector in the implementation of the standard XML document type "Textile DARN RETURN", providing all the instruction required for its use in any context of e-commerce between Fabric Producers and Darn Subcontractors.

All the rules required for the construction and validation of the document are embedded into the specific XML-Schema, which is detailed in section "Implementation guide".

### 1.2 Generalities

The document "Textile Darn Return" is used by the Darn Subcontractor to specify the darning operations performed on each fabric piece and possibly the worktimes invoiced.

The document can refer to one or more pieces and can be used either in conjunction with the "Textile Despatch Advise" (1 DA : 1 Return) or independently.

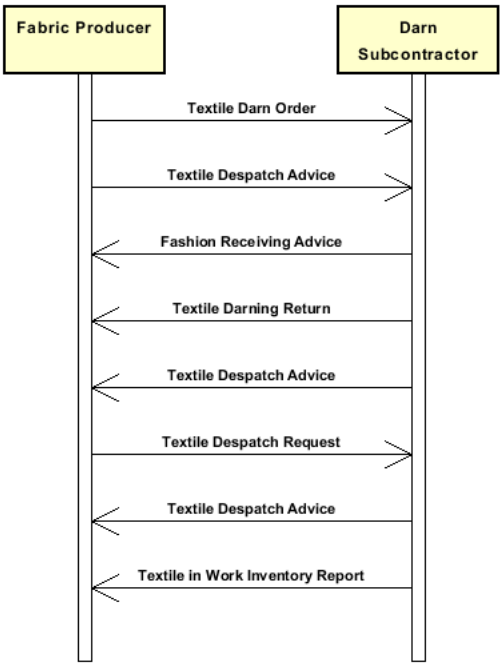
In the first instance the reference to the Despatch Advise must be given in the Header; in the second each piece can have at item level its reference to the transport document with which was returned to the Client.

EACH ITEM CONTAINS A JOB REPORTING FOR ONE OR MORE PIECES OF THE SAME TEXTILE ARTICLE.

The Job cost reporting can be calculated from a metre rate or from an hourly rate times a given operation time or from a combination of both.

### 1.3. Possible scenario

Subcontracted fabric darning



## 2. IMPLEMENTATION GUIDE

### 2.1 General structure of XML document

All the business data that can be exchanged through this class of documents are shown in the following "document structure", that provides a simplified vision of the Schema.

In particular:

- the two numbers following each element define its "cardinality" (minimum and maximum number of occurrences); the minimum equal zero indicates that the element is optional, the minimum greater than zero indicates that is mandatory;
- the bold character denotes the complex elements (aggregates of simple elements) that were built for the sake of functionality and re-usability of some complex informations sets. The child elements in each parent element are easily spotted as "indented";
- the symbol "@" denotes an attribute of the preceding element; here "the usage indicator (optional, required, ...)" is shown in square brackets.

### Structure

#### TEXDarnReturn

*@msgfunction [Optional] [Default= OR]*

*@version [Optional] [Default= draft]*

*@useProfile [Optional]*

```
| DRheader 1-1  
| | msgN 1-1  
| | - choose -  
| | | msgID 0-1  
| | | - or -  
| | | docID 0-1  
| | | @numberingOrg [Optional]  
| | - end choose -  
| | | msgDate 1-1  
| | | @dateForm [Optional]  
| | refDoc 0-9  
| | | @docType [Required]  
| | | | docID 1-2  
| | | | | @numberingOrg [Optional]  
| | | | | docDate 0-1  
| | | | | @dateForm [Optional]  
| | | | | season 0-1  
| | | | | @numberingOrg [Optional]  
| | | | | @codeList [Optional]  
| | | | | @listName [Optional]  
| | | | | @listVersion [Optional]  
| | | | itemID 0-1  
| | | attachment 0-1  
| | | | @uid [Optional]  
| | | | | fileName 0-1  
| | | | | | @numberingOrg [Optional]  
| | | | | | binaryObject 0-1  
| | | | | | @format [Optional]  
| | | | | | @mime [Optional]  
| | | | | | @encoding [Optional]  
| | | | | | @characterSet [Optional]  
| | | | externalReference 0-99  
| | | | | uri 1-1  
| | | | | | @isURL [Optional] [Default= true]  
| | | | | | mimeTypeCode 0-1  
| | | | | | formatCode 0-1  
| | | | | | encodingCode 0-1  
| | | | | | characterSetCode 0-1  
| | | | | hashFootprint 0-1  
| | | | | | @schemeID [Optional]  
| | | | | | @hashMethod [Required]  
| | | | blockChainReference 0-9  
| | | | | uri 1-1  
| | | | | | @isURL [Optional] [Default= true]  
| | | | | transactionReceipt 1-9
```

**buyer 1-1**

*@logo [Optional]*  
*@sender [Optional]*  
id 1-1  
| *@numberingOrg [Optional]*  
| additionalIdentifier 0-9  
| *@numberingOrg [Optional]*  
| *@idQualifier [Optional]*  
| legalName 0-1  
| dept 0-1  
| subDept 0-1  
| person 0-1  
| *@email [Optional]*  
| *@phone [Optional]*  
| *@fax [Optional]*  
| street 0-1  
| city 0-1  
| subCountry 0-1  
| country 0-1  
| postCode 0-1  
| **geoCoordinates 0-1**  
| *@um [Optional] [Default= DEGD]*  
| *@geoRefSystem [Optional]*  
| | xGeoCoord 1-1  
| | yGeoCoord 1-1  
| | zGeoCoord 0-1

**subContractor 1-1**

*@sender [Optional]*  
id 1-1  
| *@numberingOrg [Optional]*  
| legalName 0-1  
| dept 0-1  
| subDept 0-1  
| person 0-1  
| *@email [Optional]*  
| *@phone [Optional]*  
| *@fax [Optional]*  
| street 0-1  
| city 0-1  
| subCountry 0-1  
| country 0-1  
| postCode 0-1  
| **geoCoordinates 0-1**  
| *@um [Optional] [Default= DEGD]*  
| *@geoRefSystem [Optional]*  
| | xGeoCoord 1-1  
| | yGeoCoord 1-1  
| | zGeoCoord 0-1

**thirdParty 0-5**

*@VAT [Optional]*  
*@role [Required]*  
*@sender [Optional]*  
id 1-1  
| *@numberingOrg [Optional]*  
| legalName 0-1  
| dept 0-1  
| subDept 0-1  
| person 0-1  
| *@email [Optional]*  
| *@phone [Optional]*  
| *@fax [Optional]*  
| street 0-1  
| city 0-1  
| subCountry 0-1  
| country 0-1  
| postCode 0-1  
| **geoCoordinates 0-1**  
| *@um [Optional] [Default= DEGD]*

- | | | @geoRefSystem [Optional]
- | | | | xGeoCoord 1-1
- | | | | yGeoCoord 1-1
- | | | | zGeoCoord 0-1
- | | qualityLevel 0-1
- | | @numberingOrg [Optional]
- | | @codeList [Optional]
- | | @listName [Optional]
- | | @listVersion [Optional]
- | | note 0-99
- | | @numberingOrg [Optional]
- | | @codeList [Optional]
- | | @noteLabel [Optional]

**DRbody 1-1**

**DRitem 1-unbounded**

@transReason [Optional]

| lineN 1-1

| | @VAT [Optional]

| | **texCode 0-2**

| | | @numberingOrg [Optional]

| | | | art 1-1

| | | | | @numberingOrg [Optional]

| | | | | @codeList [Optional]

| | | | | @listName [Optional]

| | | | | @listVersion [Optional]

| | | | pattern 0-1

| | | | | @numberingOrg [Optional]

| | | | | @codeList [Optional]

| | | | | @listName [Optional]

| | | | | @listVersion [Optional]

| | | | color 0-1

| | | | | @numberingOrg [Optional]

| | | | | @codeList [Optional]

| | | | | @listName [Optional]

| | | | | @listVersion [Optional]

| | | | added 0-9

| | | | | @numberingOrg [Optional]

| | | | | @addType [Optional]

| | | | description 0-unbounded

| | | | | @ln [Optional]

| | qty 1-2

| | | @um [Required]

- choose -

| | | **pieceChain 1-1**

| | | | serialN 1-9

| | | | | @numberingOrg [Optional]

| | | | | @idQualifier [Optional]

| | | | pieceLength 0-1

| | | | | @um [Optional] [Default= MTR]

| | | | pieceWidth 0-1

| | | | | @um [Optional] [Default= CMT]

| | | | pieceWeight 0-1

| | | | | @um [Optional] [Default= KGM]

| | | | lotN 0-1

| | | | | @numberingOrg [Optional]

| | | | dyeN 0-1

| | | | | @numberingOrg [Optional]

| | | | packageN 0-1

| | | | | @numberingOrg [Optional]

| | | | | @packageContainerN [Optional]

| | | | **piecePack 0-1**

| | | | - choose -

| | | | | piecePackText 1-1

| | | | - or -

| | | | | pieceInnWrap1 1-1

| | | | | pieceInnWrap2 0-1

| | | | | pieceOutWrap 0-1

```

- end choose -
| | | | pieceCut 0-99
| | | | serialN 1-9
| | | | @numberingOrg [Optional]
| | | | @idQualifier [Optional]
| | | | pieceLength 0-1
| | | | @um [Optional] [Default= MTR]
| | | | pieceWeight 0-1
| | | | @um [Optional] [Default= KGM]
- or -
| | | | piece 1-1
| | | | @endUse [Optional]
| | | | serialN 0-9
| | | | @numberingOrg [Optional]
| | | | @idQualifier [Optional]
| | | | EPC 0-1
| | | | @numberingOrg [Optional]
| | | | @TID [Optional]
| | | | totFault 0-1
| | | | pieceStatus 0-1
| | | | pieceLength 0-1
| | | | @um [Optional] [Default= MTR]
| | | | pieceWidth 0-1
| | | | @um [Optional] [Default= CMT]
| | | | pieceCutWidth 0-1
| | | | @um [Optional] [Default= CMT]
| | | | pieceWeight 0-1
| | | | @um [Optional] [Default= KGM]
| | | | pieceWeightM 0-1
| | | | @um [Optional] [Default= GRM]
| | | | grossWeight 0-1
| | | | @um [Required]
| | | | pieceAllow 0-1
| | | | @um [Required]
| | | | lotN 0-2
| | | | @numberingOrg [Optional]
| | | | dyeN 0-1
| | | | @numberingOrg [Optional]
| | | | mixMatch 0-1
| | | | @numberingOrg [Optional]
| | | | packageN 0-1
| | | | @numberingOrg [Optional]
| | | | @packageContainerN [Optional]
| | | | piecePack 0-1
| | | | - choose -
| | | | | piecePackText 1-1
| | | | | - or -
| | | | | pieceInnWrap1 1-1
| | | | | pieceInnWrap2 0-1
| | | | | pieceOutWrap 0-1
| | | | | - end choose -
- end choose -
| | | | pieceMap 0-1
| | | | @source [Required]
| | | | totFault 1-1
| | | | | pieceFault 0-99
| | | | | @faultRank [Required]
| | | | | @faultShape [Optional]
| | | | | - choose -
| | | | | | fabricFaultText 1-1
| | | | | | - or -
| | | | | | fabricFault 1-1
| | | | | | - end choose -
| | | | | warpStart 1-1
| | | | | @um [Optional] [Default= MTR]
| | | | | warpEnd 0-1
| | | | | @um [Optional] [Default= MTR]
| | | | | weftStart 0-1

```

```

| | | | @um [Optional] [Default= CMT]
| | | | weftEnd 0-1
| | | | @um [Optional] [Default= CMT]
| | | | pieceAllow 0-1
| | | | @um [Required]
| | | | note 0-99
| | | | @numberingOrg [Optional]
| | | | @codeList [Optional]
| | | | @noteLabel [Optional]
| | | | refDoc 0-9
| | | | @docType [Required]
| | | | docID 1-2
| | | | @numberingOrg [Optional]
| | | | docDate 0-1
| | | | @dateForm [Optional]
| | | | season 0-1
| | | | @numberingOrg [Optional]
| | | | @codeList [Optional]
| | | | @listName [Optional]
| | | | @listVersion [Optional]
| | | | itemID 0-1
| | | | attachment 0-1
| | | | @uid [Optional]
| | | | fileName 0-1
| | | | @numberingOrg [Optional]
| | | | binaryObject 0-1
| | | | @format [Optional]
| | | | @mime [Optional]
| | | | @encoding [Optional]
| | | | @characterSet [Optional]
| | | | externalReference 0-99
| | | | uri 1-1
| | | | @isURL [Optional] [Default= true]
| | | | mimeTypeCode 0-1
| | | | formatCode 0-1
| | | | encodingCode 0-1
| | | | characterSetCode 0-1
| | | | hashFootprint 0-1
| | | | @schemeID [Optional]
| | | | @hashMethod [Required]
| | | | blockChainReference 0-9
| | | | uri 1-1
| | | | @isURL [Optional] [Default= true]
| | | | transactionReceipt 1-9
| | | | darnJobReport 0-9
| | | | job 1-1
| | | | jobTime 0-1
| | | | jobTimeBasis 0-1
| | | | @um [Required]
| | | | darnJobPrice 0-2
| | | | jobPrice 0-1
| | | | @currency [Optional]
| | | | priceBasis 0-1
| | | | @um [Required]
| | | | note 0-99
| | | | @numberingOrg [Optional]
| | | | @codeList [Optional]
| | | | @noteLabel [Optional]
| | | | MOtotals 0-1
| | | | totQty 2-2
| | | | @um [Required]

```



## 2.2 Detailed description of document elements

Following tables show all elements (complex and simple) used in this document. Description includes: 1) element's information: xml tag, name, brief description, data type and syntax constraints; 2) information about use of the element in a particular position in the document: xpath and possible associated notes.

### 2.2.1 Complex elements (Aggregate Business Information Entities)

Complex elements are those elements whose content is composed of other elements (childs).Complex elements are alphabetically ordered.

<b>attachment</b>	an attached document. An attachment can refer to an external document or be included with the document being exchanged (XPath TEXDarnReturn/DRbody/DRitem/refDoc/attachment) 0-1 (XPath TEXDarnReturn/DRheader/refDoc/attachment) 0-1
<b>blockChainReference</b>	blockchain reference - base type: string, max length: 80, (XPath TEXDarnReturn/DRbody/DRitem/refDoc/attachment/blockChainReference) 0-9 (XPath TEXDarnReturn/DRheader/refDoc/attachment/blockChainReference) 0-9
<b>buyer</b>	details of the Buyer (party that buys the good or service that is object of the current collaborative process) - base type: Nad, (XPath TEXDarnReturn/DRheader/buyer) 1-1
<b>darnJobPrice</b>	pricing of a darn work (XPath TEXDarnReturn/DRbody/DRitem/darnJobReport/darnJobPrice) 0-2
<b>darnJobReport</b>	job report for the execution of a darn work (XPath TEXDarnReturn/DRbody/DRitem/darnJobReport) 0-9 - note: <i>here is the job report for the fabric pieces identified by its serial number (serialIN)</i>
<b>DRbody</b>	body of the document TEXTILES DARN RETURN (XPath TEXDarnReturn/DRbody) 1-1
<b>DRheader</b>	header of the TEXTILES DARN RETURN (XPath TEXDarnReturn/DRheader) 1-1
<b>DRitem</b>	line item of the document TEXTILES DARN RETURN (XPath TEXDarnReturn/DRbody/DRitem) 1-unbounded
<b>externalReference</b>	details about an external object, such as a document stored at a remote location (XPath TEXDarnReturn/DRheader/refDoc/attachment/externalReference) 0-99 (XPath TEXDarnReturn/DRbody/DRitem/refDoc/attachment/externalReference) 0-99
<b>geoCoordinates</b>	geographical coordinates (XPath TEXDarnReturn/DRheader/buyer/geoCoordinates) 0-1 (XPath TEXDarnReturn/DRheader/subContractor/geoCoordinates) 0-1 (XPath TEXDarnReturn/DRheader/thirdParty/geoCoordinates) 0-1
<b>MOtotals</b>	monetary and quantity totals of the Order (XPath TEXDarnReturn/MOtotals) 0-1
<b>piece</b>	Identification data and measurement of the fabric piece. (XPath TEXDarnReturn/DRbody/DRitem/piece) 1-1
<b>pieceChain</b>	identification data and measurements of a chain of pieces still to be cut (XPath TEXDarnReturn/DRbody/DRitem/pieceChain) 1-1
<b>pieceCut</b>	identification data and measurements of a fabric piece belonging to a chain still to be cut (XPath TEXDarnReturn/DRbody/DRitem/pieceChain/pieceCut) 0-99 - note: <i>here the data of the pieces making up the chain should be specified</i>
<b>pieceFault</b>	classification, position and allowance of the piece faults. The reference point (0,0) for the position is the lower left corner of the piece (selvedge excluded) (XPath TEXDarnReturn/DRbody/DRitem/pieceMap/pieceFault) 0-99

<b>pieceMap</b>	mapping of the piece faults: type, rank and location (XPath <a href="#">TEXDarnReturn/DRbody/DRitem/pieceMap</a> ) 0-1
<b>piecePack</b>	type of wrapping or packing of the fabric pieces (XPath <a href="#">TEXDarnReturn/DRbody/DRitem/pieceChain/piecePack</a> ) 0-1 (XPath <a href="#">TEXDarnReturn/DRbody/DRitem/piece/piecePack</a> ) 0-1
<b>refDoc</b>	identification of a document and of an item thereof, to which the message makes reference (XPath <a href="#">TEXDarnReturn/DRheader/refDoc</a> ) 0-9 (XPath <a href="#">TEXDarnReturn/DRbody/DRitem/refDoc</a> ) 0-9 - note: <i>here the transport document can be identified</i>
<b>subContractor</b>	details of the Sub-contractor - base type: Nad, (XPath <a href="#">TEXDarnReturn/DRheader/subContractor</a> ) 1-1
<b>texCode</b>	full codification of the textile product (XPath <a href="#">TEXDarnReturn/DRbody/DRitem/texCode</a> ) 0-2
<b>thirdParty</b>	identification and details of the Third Party, different from Sender and Receiver of the document - base type: Nad, (XPath <a href="#">TEXDarnReturn/DRheader/thirdParty</a> ) 0-5 - note: <i>it can be used to specify the Party to whom the subcontractor has sent the goods (role="DM")</i>

## 2.2.2 Simple elements (Basic Business Information Entities)

Simple elements are those elements whose content is characterized by a data type plus a domain of possible values. Simple elements are alphabetically ordered.

<b>added</b>	additional code of the product (complementing the formers) - base type: string, max length: 80, (XPath <a href="#">TEXDarnReturn/DRbody/DRitem/texCode/added</a> ) 0-9 - note: <i>here an additional codification (see table T44) can be specified</i>
<b>additionalIdentifier</b>	additional identification code of a Party, for example customs registries or others - base type: string, max length: 15, (XPath <a href="#">TEXDarnReturn/DRheader/buyer/additionalIdentifier</a> ) 0-9 - note: <i>identifiers for example for exports, such as MID (Manufacturer Identification Code), REX (identificatier in Registered Exporter system)</i>
<b>@addType</b>	qualifier of the additional coding of a product - base type: string, cod. table: T44 <a href="http://www.ebiz.enea.it/moda-ml/repository/codelist/draft/gc_T44.xml">http://www.ebiz.enea.it/moda-ml/repository/codelist/draft/gc_T44.xml</a> (XPath <a href="#">TEXDarnReturn/DRbody/DRitem/texCode/added/@addType</a> ) [Optional] - nota: <i>addType allows the clarification of the meaning of the added element content; it is strongly suggested to use it always.</i>
<b>art</b>	article number of the product - base type: string, max length: 80, (XPath <a href="#">TEXDarnReturn/DRbody/DRitem/texCode/art</a> ) 1-1 - note: <i>can be used either for the base-article (excluding pattern/colour) or for the SKU</i>
<b>binaryObject</b>	a binary large object containing an attached document, Coding 'base64Binary' is recommended. - base type: base64Binary, (XPath <a href="#">TEXDarnReturn/DRheader/refDoc/attachment/binaryObject</a> ) 0-1 (XPath <a href="#">TEXDarnReturn/DRbody/DRitem/refDoc/attachment/binaryObject</a> ) 0-1
<b>@characterSet</b>	the character set of the binary object (examples UTF-8, UTF-16, Windows-1252, ISO-8859-7,..) - base type: normalizedString, (XPath <a href="#">TEXDarnReturn/DRbody/DRitem/refDoc/attachment/binaryObject/@characterSet</a> ) [Optional] (XPath <a href="#">TEXDarnReturn/DRheader/refDoc/attachment/binaryObject/@characterSet</a> ) [Optional]

characterSetCode	<p>the character set of an external document (examples UTF-8, UTF-16, Windows-1252, ISO-8859-7,..)</p> <p>- base type: normalizedString,  (XPath TEXTarnReturn/DRheader/refDoc/attachment/  externalReference/characterSetCode) 0-1  (XPath TEXTarnReturn/DRbody/DRitem/refDoc/attachment/  externalReference/characterSetCode) 0-1</p>
city	<p>name of the city (town, village)</p> <p>- base type: string, max length: 40,  (XPath TEXTarnReturn/DRheader/thirdParty/city) 0-1  (XPath TEXTarnReturn/DRheader/buyer/city) 0-1  (XPath TEXTarnReturn/DRheader/subContractor/city) 0-1</p>
@codeList	<p>it specifies the URL where the list of codes used to make an instance of the element can be found</p> <p>- base type: string, max length: 255,  (XPath TEXTarnReturn/DRbody/DRitem/texCode/pattern/@codeList) [Optional]</p> <p>- nota: <i>at least one out of this attribute and "numberingOrg" should be set</i>  (XPath TEXTarnReturn/DRbody/DRitem/texCode/art/@codeList) [Optional]</p> <p>- nota: <i>at least one out of this attribute and "numberingOrg" should be set</i>  (XPath TEXTarnReturn/DRbody/DRitem/pieceMap/pieceFault/  note/@codeList) [Optional]</p> <p>- nota: <i>must be used to provide (URL) the list of codes used in "noteLabel"</i>  (XPath TEXTarnReturn/DRbody/DRitem/texCode/color/@codeList) [Optional]</p> <p>- nota: <i>this attribute should be used either single or coupled with "listName" and "listVersion"</i>  (XPath TEXTarnReturn/DRheader/qualityLevel/@codeList) [Optional]</p> <p>- nota: <i>at least one out of this attribute and "numberingOrg" should be set</i>  (XPath TEXTarnReturn/DRbody/DRitem/refDoc/season/@codeList) [Optional]</p> <p>- nota: <i>this attribute should be used either single or coupled with "listName" and "listVersion"</i>  (XPath TEXTarnReturn/DRheader/refDoc/season/@codeList) [Optional]</p> <p>- nota: <i>this attribute should be used either single or coupled with "listName" and "listVersion"</i>  (XPath TEXTarnReturn/DRheader/note/@codeList) [Optional]</p> <p>- nota: <i>must be used to provide (URL) the list of codes used in "noteLabel"</i>  (XPath TEXTarnReturn/DRbody/DRitem/note/@codeList) [Optional]</p> <p>- nota: <i>must be used to provide (URL) the list of codes used in "noteLabel"</i></p>
color	<p>colour number of the product, when not included in the model or fabric code</p> <p>- base type: string, max length: 15,  (XPath TEXTarnReturn/DRbody/DRitem/texCode/color) 0-1</p>
country	<p>code of the nation</p> <p>- base type: string, cod. table: T10  <a href="http://www.ebiz.enea.it/moda-ml/repository/codelist/draft/gc_T10.xml">http://www.ebiz.enea.it/moda-ml/repository/codelist/draft/gc_T10.xml</a>  (XPath TEXTarnReturn/DRheader/buyer/country) 0-1  (XPath TEXTarnReturn/DRheader/subContractor/country) 0-1  (XPath TEXTarnReturn/DRheader/thirdParty/country) 0-1</p>
@currency	<p>currency in which a specified monetary data is expressed</p> <p>- base type: string, cod. table: T9  <a href="http://www.ebiz.enea.it/moda-ml/repository/codelist/draft/gc_T9.xml">http://www.ebiz.enea.it/moda-ml/repository/codelist/draft/gc_T9.xml</a>  (XPath TEXTarnReturn/DRbody/DRitem/darnJobReport/  darnJobPrice/jobPrice/@currency) [Optional]</p> <p>- nota: <i>Currency referred by the price.</i></p>
@dateForm	<p>format used for the date</p> <p>- base type: string, cod. table: NT29  <a href="http://www.ebiz.enea.it/moda-ml/repository/codelist/draft/gc_NT29.xml">http://www.ebiz.enea.it/moda-ml/repository/codelist/draft/gc_NT29.xml</a>  (XPath TEXTarnReturn/DRheader/msgDate/@dateForm) [Optional]  (XPath TEXTarnReturn/DRheader/refDoc/docDate/@dateForm) [Optional]  (XPath TEXTarnReturn/DRbody/DRitem/refDoc/docDate/@dateForm) [Optional]</p>
dept	<p>name or code of a department</p> <p>- base type: string, max length: 40,  (XPath TEXTarnReturn/DRheader/thirdParty/dept) 0-1  (XPath TEXTarnReturn/DRheader/buyer/dept) 0-1  (XPath TEXTarnReturn/DRheader/subContractor/dept) 0-1</p>
description	<p>free text description. The content of the element must be unique, it might be translated and repeated into more languages (thus no more than one instance for each language)</p>

	<p>).</p> <p>- base type: string, max length: 250, (XPath <code>TEXDarnReturn/DRbody/DRitem/texCode/description</code>) 0-unbounded</p> <p>- note: <i>Product description</i></p>
docDate	<p>date of issue of the referenced document, according to one of the patterns YYYY-MM-DD, YYYY-MM-DD:HH-MM or YYYY-WW.</p> <p>- base type: string, (XPath <code>TEXDarnReturn/DRbody/DRitem/refDoc/docDate</code>) 0-1 (XPath <code>TEXDarnReturn/DRheader/refDoc/docDate</code>) 0-1</p>
docID	<p>identification number of the referenced document</p> <p>- base type: string, max length: 80, (XPath <code>TEXDarnReturn/DRheader/refDoc/docID</code>) 1-2 Best Practice (XPath <code>TEXDarnReturn/DRheader/docID</code>) 0-1</p> <p>- note: <i>Its use in HEADER elements is discouraged (use msgID)</i> (XPath <code>TEXDarnReturn/DRbody/DRitem/refDoc/docID</code>) 1-2 Best Practice</p>
@docType	<p>type or class to which the referenced document belongs</p> <p>- base type: string, cod. table: T21 <a href="http://www.ebiz.enea.it/moda-ml/repository/codelist/draft/gc_T21.xml">http://www.ebiz.enea.it/moda-ml/repository/codelist/draft/gc_T21.xml</a> (XPath <code>TEXDarnReturn/DRbody/DRitem/refDoc/@docType</code>) [Required] (XPath <code>TEXDarnReturn/DRheader/refDoc/@docType</code>) [Required]</p>
dyeN	<p>number of the dying batch of a textile product</p> <p>- base type: string, max length: 15, (XPath <code>TEXDarnReturn/DRbody/DRitem/piece/dyeN</code>) 0-1 (XPath <code>TEXDarnReturn/DRbody/DRitem/pieceChain/dyeN</code>) 0-1</p>
@email	<p>electronic mail address of the contact person within a Party</p> <p>- base type: string, max length: 250, (XPath <code>TEXDarnReturn/DRheader/thirdParty/person/@email</code>) [Optional] (XPath <code>TEXDarnReturn/DRheader/subContractor/person/@email</code>) [Optional] (XPath <code>TEXDarnReturn/DRheader/buyer/person/@email</code>) [Optional]</p>
@encoding	<p>specifies the decoding algorithm of the binary object</p> <p>- base type: normalizedString, (XPath <code>TEXDarnReturn/DRbody/DRitem/refDoc/attachment/binaryObject/@encoding</code>) [Optional] (XPath <code>TEXDarnReturn/DRheader/refDoc/attachment/binaryObject/@encoding</code>) [Optional]</p>
encodingCode	<p>the encoding/decoding algorithm used with the external object (example is 'base64Binary')</p> <p>- base type: normalizedString, (XPath <code>TEXDarnReturn/DRheader/refDoc/attachment/externalReference/encodingCode</code>) 0-1 (XPath <code>TEXDarnReturn/DRbody/DRitem/refDoc/attachment/externalReference/encodingCode</code>) 0-1</p>
@endUse	<p>specifies the final use of the fabric</p> <p>- base type: string, cod. table: NT4 <a href="http://www.ebiz.enea.it/moda-ml/repository/codelist/draft/gc_NT4.xml">http://www.ebiz.enea.it/moda-ml/repository/codelist/draft/gc_NT4.xml</a> (XPath <code>TEXDarnReturn/DRbody/DRitem/piece/@endUse</code>) [Optional]</p>
EPC	<p>serial identifier used for tracing a physical item with RFID technology</p> <p>- base type: string, (XPath <code>TEXDarnReturn/DRbody/DRitem/piece/EPC</code>) 0-1</p> <p>- note: <i>the use of this element is DEPRECATED, use the appropriate elements (serial N)</i></p>
fabricFault	<p>code specifying the type or class of fabric fault</p> <p>- base type: string, cod. table: T12 <a href="http://www.ebiz.enea.it/moda-ml/repository/codelist/draft/gc_T12.xml">http://www.ebiz.enea.it/moda-ml/repository/codelist/draft/gc_T12.xml</a> (XPath <code>TEXDarnReturn/DRbody/DRitem/pieceMap/pieceFault/fabricFault</code>) 1-1</p> <p>- note: <i>here the MODA-ML codelist must be used.</i></p>
fabricFaultText	<p>free text describing the type or class of the fabric fault</p> <p>- base type: string, max length: 250, (XPath <code>TEXDarnReturn/DRbody/DRitem/pieceMap/pieceFault/fabricFaultText</code>) 1-1</p> <p>- note: <i>here the text or proprietary code mutually agreed must be used</i></p>
@faultRank	<p>ranking class of the fabric fault</p>

	<p>- base type: string, cod. table: NT13  <a href="http://www.ebiz.enea.it/moda-ml/repository/codelist/draft/gc_NT13.xml">http://www.ebiz.enea.it/moda-ml/repository/codelist/draft/gc_NT13.xml</a>  (XPath TEXTarnReturn/DRbody/DRitem/pieceMap/pieceFault/@faultRank) [Required]</p>
@faultShape	<p>shape classification of the fabric fault  - base type: string, cod. table: NT14  <a href="http://www.ebiz.enea.it/moda-ml/repository/codelist/draft/gc_NT14.xml">http://www.ebiz.enea.it/moda-ml/repository/codelist/draft/gc_NT14.xml</a>  (XPath TEXTarnReturn/DRbody/DRitem/pieceMap/pieceFault/@faultShape) [Optional]</p>
@fax	<p>fax number of the contact person within a Party  - base type: string, max length: 35,  (XPath TEXTarnReturn/DRheader/thirdParty/person/@fax) [Optional]  (XPath TEXTarnReturn/DRheader/subContractor/person/@fax) [Optional]  (XPath TEXTarnReturn/DRheader/buyer/person/@fax) [Optional]</p>
fileName	<p>unique identifier (name) of the file  - base type: string, max length: 255,  (XPath TEXTarnReturn/DRbody/DRitem/refDoc/attachment/fileName) 0-1  (XPath TEXTarnReturn/DRheader/refDoc/attachment/fileName) 0-1</p>
@format	<p>the format of the binary content (examples xml, pdf, doc,...)  - base type: string,  (XPath TEXTarnReturn/DRheader/refDoc/attachment/binaryObject/@format) [Optional]  (XPath TEXTarnReturn/DRbody/DRitem/refDoc/attachment/binaryObject/@format) [Optional]</p>
formatCode	<p>the format of the external object (examples xml, pdf, doc,...)  - base type: normalizedString,  (XPath TEXTarnReturn/DRheader/refDoc/attachment/externalReference/formatCode) 0-1  (XPath TEXTarnReturn/DRbody/DRitem/refDoc/attachment/externalReference/formatCode) 0-1</p>
@geoRefSystem	<p>georeference system adopted for the coordinate (in example wgs84 with decimal degree or degree with minute and seconds)  - base type: string,  (XPath TEXTarnReturn/DRheader/buyer/geoCoordinates/@geoRefSystem) [Optional]  (XPath TEXTarnReturn/DRheader/subContractor/geoCoordinates/@geoRefSystem) [Optional]  (XPath TEXTarnReturn/DRheader/thirdParty/geoCoordinates/@geoRefSystem) [Optional]</p>
grossWeight	<p>the gross weight, declared for transport or customs purpose  - base type: decimal, min inclusive: 0, fraction digits: 2,  (XPath TEXTarnReturn/DRbody/DRitem/piece/grossWeight) 0-1  - note: <i>gross Weight is related to the weight of the piece after packing.</i></p>
hashFootprint	<p>footprint obtained by applying an hashing algorithm  - base type: string, max length: 80,  (XPath TEXTarnReturn/DRbody/DRitem/refDoc/attachment/hashFootprint) 0-1  (XPath TEXTarnReturn/DRheader/refDoc/attachment/hashFootprint) 0-1</p>
@hashMethod	<p>type of used hashing algorithm  - base type: string, max length: 80, cod. table: NT333  <a href="http://www.ebiz.enea.it/moda-ml/repository/codelist/draft/gc_NT333.xml">http://www.ebiz.enea.it/moda-ml/repository/codelist/draft/gc_NT333.xml</a>  (XPath TEXTarnReturn/DRbody/DRitem/refDoc/attachment/hashFootprint/@hashMethod) [Required]  (XPath TEXTarnReturn/DRheader/refDoc/attachment/hashFootprint/@hashMethod) [Required]</p>
id	<p>primary identification code of a Party; it is recommended to use an EORI number (with @numberingOrg= "EO") or the format: nation code (ISO 3166) + national tax code (i.e. VAT identification number ) with @numberingOrg= "MF"  - base type: string, max length: 15,  (XPath TEXTarnReturn/DRheader/buyer/id) 1-1  (XPath TEXTarnReturn/DRheader/subContractor/id) 1-1  (XPath TEXTarnReturn/DRheader/thirdParty/id) 1-1</p>
@idQualifier	<p>Qualification of the identifier.  - base type: string,  (XPath TEXTarnReturn/DRbody/DRitem/pieceChain/pieceCut/serialN/@idQualifier) [Optional]</p>

	<p>- nota: <i>this attribute should be used when the numberingOrg attribute is not enough to declare the type of serial identifier</i>  (XPath TEXDarnReturn/DRheader/buyer/additionalIdentifier/@idQualifier) [Optional]</p> <p>- nota: <i>this attribute should be used when the numberingOrg attribute is not enough to declare the type of identifier</i>  (XPath TEXDarnReturn/DRbody/DRitem/piece/serialN/@idQualifier) [Optional]</p> <p>- nota: <i>this attribute should be used when the numberingOrg attribute is not enough to declare the type of serial identifier</i>  (XPath TEXDarnReturn/DRbody/DRitem/pieceChain/serialN/@idQualifier) [Optional]</p> <p>- nota: <i>this attribute should be used when the numberingOrg attribute is not enough to declare the type of serial identifier</i></p>
@isURL	<p>it indicates if the referred element is an URL (true) or not (false)</p> <p>- base type: boolean,  (XPath TEXDarnReturn/DRheader/refDoc/attachment/externalReference/uri/@isURL) [Optional] [Default= true]</p> <p>- nota: <i>usage of URLs is recommended</i>  (XPath TEXDarnReturn/DRheader/refDoc/attachment/blockChainReference/uri/@isURL) [Optional] [Default= true]</p> <p>- nota: <i>usage of URLs is recommended</i>  (XPath TEXDarnReturn/DRbody/DRitem/refDoc/attachment/externalReference/uri/@isURL) [Optional] [Default= true]</p> <p>- nota: <i>usage of URLs is recommended</i>  (XPath TEXDarnReturn/DRbody/DRitem/refDoc/attachment/blockChainReference/uri/@isURL) [Optional] [Default= true]</p> <p>- nota: <i>usage of URLs is recommended</i></p>
itemID	<p>number of the line/item of the referenced document</p> <p>- base type: string, max length: 40,  (XPath TEXDarnReturn/DRbody/DRitem/refDoc/itemID) 0-1  (XPath TEXDarnReturn/DRheader/refDoc/itemID) 0-1</p>
job	<p>element of a work cycle</p> <p>- base type: string, cod. table: T20  <a href="http://www.ebiz.enea.it/moda-ml/repository/codelist/draft/gc_T20.xml">http://www.ebiz.enea.it/moda-ml/repository/codelist/draft/gc_T20.xml</a>  (XPath TEXDarnReturn/DRbody/DRitem/darnJobReport/job) 1-1</p>
jobPrice	<p>price of a hired job operation</p> <p>- base type: decimal, min inclusive: 0, fraction digits: 4,  (XPath TEXDarnReturn/DRbody/DRitem/darnJobReport/darnJobPrice/jobPrice) 0-1</p>
jobTime	<p>worktime of the elementary operation of a work cycle in hours and minutes (nnnHnnM)</p> <p>- base type: duration,  (XPath TEXDarnReturn/DRbody/DRitem/darnJobReport/jobTime) 0-1</p>
jobTimeBasis	<p>reference basis for the time of an operation (e.g.: 1 metre, 50 metres, 30 kilos, etc...)</p> <p>- base type: positiveInteger, min inclusive: 1,  (XPath TEXDarnReturn/DRbody/DRitem/darnJobReport/jobTimeBasis) 0-1</p> <p>- note: <i>this element must not be used when the time (jobTime) is a forfeit</i></p>
legalName	<p>legal name</p> <p>- base type: string, max length: 250,  (XPath TEXDarnReturn/DRheader/thirdParty/legalName) 0-1  (XPath TEXDarnReturn/DRheader/subContractor/legalName) 0-1  (XPath TEXDarnReturn/DRheader/buyer/legalName) 0-1</p>
lineN	<p>number of the line item of the present message (xml document); it is set by the role that produces the document. Usually it is a progressive number, but not always.</p> <p>- base type: positiveInteger, min inclusive: 1, max inclusive: 9999,  (XPath TEXDarnReturn/DRbody/DRitem/lineN) 1-1</p>
@listName	<p>the name of the list of codes used to make an instance of the element (it might be thought as descriptive element, i.e. 'fabric printing technologies', or not, i.e. "T264")</p> <p>- base type: string, max length: 40,  (XPath TEXDarnReturn/DRheader/refDoc/season/@listName) [Optional]</p> <p>- nota: <i>this attribute should always be used coupled with "numberingOrg"</i>  (XPath TEXDarnReturn/DRheader/qualityLevel/@listName) [Optional]</p> <p>- nota: <i>this attribute should always be used coupled with "numberingOrg"</i>  (XPath TEXDarnReturn/DRbody/DRitem/texCode/color/@listName) [Optional]</p> <p>- nota: <i>this attribute should always be used coupled with "numberingOrg"</i>  (XPath TEXDarnReturn/DRbody/DRitem/texCode/pattern/@listName) [Optional]</p>

	<p>- nota: <i>this attribute should always be used coupled with “numberingOrg”</i> (XPath <code>TEXDarnReturn/DRbody/DRitem/texCode/art/@listName</code>) [Optional]</p> <p>- nota: <i>this attribute should always be used coupled with “numberingOrg”</i> (XPath <code>TEXDarnReturn/DRbody/DRitem/refDoc/season/@listName</code>) [Optional]</p> <p>- nota: <i>this attribute should always be used coupled with “numberingOrg”</i></p>
@listVersion	<p>it specifies the version of the list of codes used to make an instance of the element</p> <p>- base type: string, max length: 6, (XPath <code>TEXDarnReturn/DRbody/DRitem/texCode/art/@listVersion</code>) [Optional]</p> <p>- nota: <i>this attribute should always be used coupled with “numberingOrg” and “listName”</i> (XPath <code>TEXDarnReturn/DRheader/refDoc/season/@listVersion</code>) [Optional]</p> <p>- nota: <i>this attribute should always be used coupled with “numberingOrg” and “listName”</i> (XPath <code>TEXDarnReturn/DRbody/DRitem/texCode/pattern/@listVersion</code>) [Optional]</p> <p>- nota: <i>this attribute should always be used coupled with “numberingOrg” and “listName”</i> (XPath <code>TEXDarnReturn/DRheader/qualityLevel/@listVersion</code>) [Optional]</p> <p>- nota: <i>this attribute should always be used coupled with “numberingOrg” and “listName”</i> (XPath <code>TEXDarnReturn/DRbody/DRitem/refDoc/season/@listVersion</code>) [Optional]</p> <p>- nota: <i>this attribute should always be used coupled with “numberingOrg” and “listName”</i> (XPath <code>TEXDarnReturn/DRbody/DRitem/texCode/color/@listVersion</code>) [Optional]</p> <p>- nota: <i>this attribute should always be used coupled with “numberingOrg” and “listName”</i></p>
@ln	<p>Language code.</p> <p>- base type: string, cod. table: NT60 <a href="http://www.ebiz.enea.it/moda-ml/repository/codelist/draft/gc_NT60.xml">http://www.ebiz.enea.it/moda-ml/repository/codelist/draft/gc_NT60.xml</a> (XPath <code>TEXDarnReturn/DRbody/DRitem/texCode/description/@ln</code>) [Optional]</p>
@logo	<p>company logo (URL of the image jpeg or gif). It is recommended that the width of the image does not exceed 640 pixel.</p> <p>- base type: string, max length: 255, (XPath <code>TEXDarnReturn/DRheader/buyer/@logo</code>) [Optional]</p>
lotN	<p>lot number of a product or batch number of the raw material</p> <p>- base type: string, max length: 15, (XPath <code>TEXDarnReturn/DRbody/DRitem/piece/lotN</code>) 0-2</p> <p>- note: <i>The lotN instances must differ by value of the numberingOrg attribute</i> (XPath <code>TEXDarnReturn/DRbody/DRitem/pieceChain/lotN</code>) 0-1</p>
@mime	<p>the mime type of the binary object</p> <p>- base type: normalizedString, (XPath <code>TEXDarnReturn/DRbody/DRitem/refDoc/attachment/binaryObject/@mime</code>) [Optional] (XPath <code>TEXDarnReturn/DRheader/refDoc/attachment/binaryObject/@mime</code>) [Optional]</p>
mimeCode	<p>mime type of the external object</p> <p>- base type: normalizedString, (XPath <code>TEXDarnReturn/DRbody/DRitem/refDoc/attachment/externalReference/mimeCode</code>) 0-1 Best Practice (XPath <code>TEXDarnReturn/DRheader/refDoc/attachment/externalReference/mimeCode</code>) 0-1 Best Practice</p>
mixMatch	<p>colour hue used for the match of garments</p> <p>- base type: string, max length: 15, (XPath <code>TEXDarnReturn/DRbody/DRitem/piece/mixMatch</code>) 0-1</p>
msgDate	<p>date of issue of the present message (xml document), according to one of the patterns YYYY-MM-DD, YYYY-MM-DD:HH-MM or YYYY-WW.</p> <p>- base type: string, (XPath <code>TEXDarnReturn/DRheader/msgDate</code>) 1-1</p>
@msgfunction	<p>function performed by the present message with regards to the transmission</p> <p>- base type: string, cod. table: NT18 <a href="http://www.ebiz.enea.it/moda-ml/repository/codelist/draft/gc_NT18.xml">http://www.ebiz.enea.it/moda-ml/repository/codelist/draft/gc_NT18.xml</a> (XPath <code>TEXDarnReturn/@msgfunction</code>) [Optional] [Default= OR]</p>
msgID	<p>key identifier of the business document in the information system of the issuing Party. I</p>

	<p>n case of more despatches of the same business document, it is unchanged.</p> <ul style="list-style-type: none"> <li>- base type: string, max length: 35,</li> </ul> <p>(XPath TEXDarnReturn/DRheader/msgID) 0-1</p>
msgN	<p>identification number given to the message (xml document) by its issuer. In case of more despatches of the same business document, it changes.</p> <ul style="list-style-type: none"> <li>- base type: string, max length: 35,</li> </ul> <p>(XPath TEXDarnReturn/DRheader/msgN) 1-1</p>
note	<p>free text or structured (computer processing) note. For note structuring use the attributes "noteLabel" and "codelist"</p> <ul style="list-style-type: none"> <li>- base type: string, max length: 350,</li> </ul> <p>(XPath TEXDarnReturn/DRbody/DRitem/note) 0-99  (XPath TEXDarnReturn/DRheader/note) 0-99  (XPath TEXDarnReturn/DRbody/DRitem/pieceMap/pieceFault/note) 0-99</p>
@noteLabel	<p>subject qualifier of a note</p> <ul style="list-style-type: none"> <li>- base type: string, max length: 35,</li> </ul> <p>(XPath TEXDarnReturn/DRbody/DRitem/pieceMap/pieceFault/note/@noteLabel) [Optional]</p> <ul style="list-style-type: none"> <li>- nota: <i>must be used to qualify the subject of the note</i> (XPath TEXDarnReturn/DRheader/note/@noteLabel) [Optional]</li> <li>- nota: <i>must be used to qualify the subject of the note</i> (XPath TEXDarnReturn/DRbody/DRitem/note/@noteLabel) [Optional]</li> <li>- nota: <i>must be used to qualify the subject of the note</i></li> </ul>
@numberingOrg	<p>code specifying the organisation who has created or owns the coding or numbering system</p> <ul style="list-style-type: none"> <li>- base type: string, cod. table: NT6</li> </ul> <p><a href="http://www.ebiz.enea.it/moda-ml/repository/codelist/draft/gc_NT6.xml">http://www.ebiz.enea.it/moda-ml/repository/codelist/draft/gc_NT6.xml</a>  (XPath TEXDarnReturn/DRheader/refDoc/docID/@numberingOrg) [Optional]</p> <ul style="list-style-type: none"> <li>- nota: <i>here can be specified whose document numbering is used (e.g.: Client, Supplier, ..)</i> (XPath TEXDarnReturn/DRbody/DRitem/note/@numberingOrg) [Optional]</li> <li>- nota: <i>must be used to specify the organization that created the list of codes used in "noteLabel"</i> (XPath TEXDarnReturn/DRbody/DRitem/pieceChain/packageN/@numberingOrg) [Optional]  (XPath TEXDarnReturn/DRheader/buyer/id/@numberingOrg) [Optional]  (XPath TEXDarnReturn/DRbody/DRitem/piece/dyeN/@numberingOrg) [Optional]  (XPath TEXDarnReturn/DRheader/buyer/additionalIdentifier/@numberingOrg) [Optional]</li> <li>- nota: <i>here the issuer of the identifier must be specified</i> (XPath TEXDarnReturn/DRbody/DRitem/piece/serialN/@numberingOrg) [Optional]</li> <li>- nota: <i>here the issuer of the serial number must be specified (when different from the Supplier)</i> (XPath TEXDarnReturn/DRheader/refDoc/attachment/fileName/@numberingOrg) [Optional]  (XPath TEXDarnReturn/DRbody/DRitem/piece/EPC/@numberingOrg) [Optional]  (XPath TEXDarnReturn/DRbody/DRitem/piece/lotN/@numberingOrg) [Optional]  (XPath TEXDarnReturn/DRbody/DRitem/piece/packageN/@numberingOrg) [Optional]  (XPath TEXDarnReturn/DRheader/note/@numberingOrg) [Optional]</li> <li>- nota: <i>must be used to specify the organization that created the list of codes used in "noteLabel"</i> (XPath TEXDarnReturn/DRbody/DRitem/pieceChain/pieceCut/serialN/@numberingOrg) [Optional]</li> <li>- nota: <i>here the issuer of the serial number must be specified (when different from the Supplier)</i> (XPath TEXDarnReturn/DRheader/subContractor/id/@numberingOrg) [Optional]  (XPath TEXDarnReturn/DRbody/DRitem/piece/mixMatch/@numberingOrg) [Optional]  (XPath TEXDarnReturn/DRbody/DRitem/pieceChain/dyeN/@numberingOrg) [Optional]  (XPath TEXDarnReturn/DRbody/DRitem/refDoc/docID/@numberingOrg) [Optional]</li> <li>- nota: <i>here can be specified whose document numbering is used (e.g.: Client, Supplier, ..)</i> (XPath TEXDarnReturn/DRbody/DRitem/texCode/pattern/@numberingOrg) [Optional]</li> <li>- nota: <i>this attribute should be used either single or coupled with "listName" and "listVersion"</i> (XPath TEXDarnReturn/DRbody/DRitem/texCode/added/@numberingOrg) [Optional]</li> <li>- nota: <i>this attribute should be used either single or coupled with "listName" and "listVersion"</i> (XPath TEXDarnReturn/DRbody/DRitem/pieceChain/serialN/@numberingOrg) [Optional]</li> <li>- nota: <i>here the issuer of the serial number must be specified (when different from the Supplier)</i> (XPath TEXDarnReturn/DRheader/thirdParty/id/@numberingOrg) [Optional]  (XPath TEXDarnReturn/DRheader/docID/@numberingOrg) [Optional]</li> </ul>



	<p>- nota: here can be specified whose document numbering is used (e.g.: Client, Supplier, ...)</p> <p>(XPath <code>TEXDarnReturn/DRbody/DRitem/texCode/@numberingOrg</code>) [Optional]</p> <p>(XPath <code>TEXDarnReturn/DRbody/DRitem/refDoc/season/@numberingOrg</code>) [Optional]</p> <p>- nota: this attribute should be used either single or coupled with "listName" and "listVersion"</p> <p>(XPath <code>TEXDarnReturn/DRbody/DRitem/texCode/art/@numberingOrg</code>) [Optional]</p> <p>- nota: this attribute should be used either single or coupled with "listName" and "listVersion"</p> <p>(XPath <code>TEXDarnReturn/DRheader/qualityLevel/@numberingOrg</code>) [Optional]</p> <p>- nota: this attribute should be used either single or coupled with "listName" and "listVersion"</p> <p>(XPath <code>TEXDarnReturn/DRheader/refDoc/season/@numberingOrg</code>) [Optional]</p> <p>- nota: this attribute should be used either single or coupled with "listName" and "listVersion"</p> <p>(XPath <code>TEXDarnReturn/DRbody/DRitem/texCode/color/@numberingOrg</code>) [Optional]</p> <p>- nota: this attribute should be used either single or coupled with "listName" and "listVersion"</p> <p>(XPath <code>TEXDarnReturn/DRbody/DRitem/refDoc/attachment/fileName/@numberingOrg</code>) [Optional]</p> <p>(XPath <code>TEXDarnReturn/DRbody/DRitem/pieceChain/lotN/@numberingOrg</code>) [Optional]</p> <p>(XPath <code>TEXDarnReturn/DRbody/DRitem/pieceMap/pieceFault/note/@numberingOrg</code>) [Optional]</p> <p>- nota: must be used to specify the organization that created the list of codes used in "noteLabel"</p>
@packageContainerN	<p>reference usable to indicate the outer package containing this package</p> <p>- base type: string, max length: 40,</p> <p>(XPath <code>TEXDarnReturn/DRbody/DRitem/piece/packageN/@packageContainerN</code>) [Optional]</p> <p>(XPath <code>TEXDarnReturn/DRbody/DRitem/pieceChain/packageN/@packageContainerN</code>) [Optional]</p>
packageN	<p>serial number used to identify a transport package</p> <p>- base type: string, max length: 40,</p> <p>(XPath <code>TEXDarnReturn/DRbody/DRitem/piece/packageN</code>) 0-1</p> <p>- note: here the transport package containing the piece can be identified</p> <p>(XPath <code>TEXDarnReturn/DRbody/DRitem/pieceChain/packageN</code>) 0-1</p>
pattern	<p>pattern/design number of the product, when not included in the article code</p> <p>- base type: string, max length: 15,</p> <p>(XPath <code>TEXDarnReturn/DRbody/DRitem/texCode/pattern</code>) 0-1</p>
person	<p>name of a person (e.g. contact person within an organization)</p> <p>- base type: string, max length: 40,</p> <p>(XPath <code>TEXDarnReturn/DRheader/buyer/person</code>) 0-1</p> <p>(XPath <code>TEXDarnReturn/DRheader/subContractor/person</code>) 0-1</p> <p>(XPath <code>TEXDarnReturn/DRheader/thirdParty/person</code>) 0-1</p>
@phone	<p>phone number of the contact person within a Party</p> <p>- base type: string, max length: 35,</p> <p>(XPath <code>TEXDarnReturn/DRheader/subContractor/person/@phone</code>) [Optional]</p> <p>(XPath <code>TEXDarnReturn/DRheader/buyer/person/@phone</code>) [Optional]</p> <p>(XPath <code>TEXDarnReturn/DRheader/thirdParty/person/@phone</code>) [Optional]</p>
pieceAllow	<p>allowance required or accorded for the piece</p> <p>- base type: decimal, fraction digits: 2,</p> <p>(XPath <code>TEXDarnReturn/DRbody/DRitem/piece/pieceAllow</code>) 0-1</p> <p>(XPath <code>TEXDarnReturn/DRbody/DRitem/pieceMap/pieceFault/pieceAllow</code>) 0-1</p> <p>- note: this is the allowance estimated for the fault by the same "source" responsible for the other measurements</p>
pieceCutWidth	<p>effective usable width of the fabric piece (for garment manufacturing)</p> <p>- base type: decimal, min inclusive: 0, fraction digits: 2,</p> <p>(XPath <code>TEXDarnReturn/DRbody/DRitem/piece/pieceCutWidth</code>) 0-1</p>
pieceInnWrap1	<p>code specifying the type of inner wrapping/packing used for the fabric piece</p> <p>- base type: string, cod. table: T4</p> <p><a href="http://www.ebiz.enea.it/moda-ml/repository/codelist/draft/gc_T4.xml">http://www.ebiz.enea.it/moda-ml/repository/codelist/draft/gc_T4.xml</a></p> <p>(XPath <code>TEXDarnReturn/DRbody/DRitem/pieceChain/piecePack/pieceInnWrap1</code>) 1-1</p> <p>(XPath <code>TEXDarnReturn/DRbody/DRitem/piece/piecePack/pieceInnWrap1</code>) 1-1</p>
pieceInnWrap2	<p>code sub-specifying the type of inner wrapping/packing used for the fabric piece</p> <p>- base type: string, cod. table: T5</p> <p><a href="http://www.ebiz.enea.it/moda-ml/repository/codelist/draft/gc_T5.xml">http://www.ebiz.enea.it/moda-ml/repository/codelist/draft/gc_T5.xml</a></p>

	(XPath TEXDarnReturn/DRbody/DRitem/pieceChain/piecePack/pieceInnWrap2) 0-1 (XPath TEXDarnReturn/DRbody/DRitem/piece/piecePack/pieceInnWrap2) 0-1
pieceLength	length of the piece - base type: decimal, min inclusive: 0, fraction digits: 2, (XPath TEXDarnReturn/DRbody/DRitem/pieceChain/pieceCut/pieceLength) 0-1 (XPath TEXDarnReturn/DRbody/DRitem/pieceChain/pieceLength) 0-1 (XPath TEXDarnReturn/DRbody/DRitem/piece/pieceLength) 0-1
pieceOutWrap	code specifying the type of outer wrapping or packing used for the fabric piece - base type: string, cod. table: T6 <a href="http://www.ebiz.enea.it/moda-ml/repository/codelist/draft/gc_T6.xml">http://www.ebiz.enea.it/moda-ml/repository/codelist/draft/gc_T6.xml</a> (XPath TEXDarnReturn/DRbody/DRitem/pieceChain/piecePack/pieceOutWrap) 0-1 (XPath TEXDarnReturn/DRbody/DRitem/piece/piecePack/pieceOutWrap) 0-1
piecePackText	free text specifying the type of wrapping or packing used for the fabric piece - base type: string, max length: 250, (XPath TEXDarnReturn/DRbody/DRitem/pieceChain/piecePack/piecePackText) 1-1 (XPath TEXDarnReturn/DRbody/DRitem/piece/piecePack/piecePackText) 1-1
pieceStatus	code used to describe the status of a fabric piece after the control - base type: string, cod. table: T52 <a href="http://www.ebiz.enea.it/moda-ml/repository/codelist/draft/gc_T52.xml">http://www.ebiz.enea.it/moda-ml/repository/codelist/draft/gc_T52.xml</a> (XPath TEXDarnReturn/DRbody/DRitem/piece/pieceStatus) 0-1
pieceWeight	effective total weight of the fabric piece - base type: decimal, min inclusive: 0, fraction digits: 2, (XPath TEXDarnReturn/DRbody/DRitem/piece/pieceWeight) 0-1 - note: <i>It is the net weight of the piece.</i> (XPath TEXDarnReturn/DRbody/DRitem/pieceChain/pieceWeight) 0-1 (XPath TEXDarnReturn/DRbody/DRitem/pieceChain/pieceCut/pieceWeight) 0-1
pieceWeightM	effective weight per metre of the fabric piece - base type: decimal, min inclusive: 0, fraction digits: 2, (XPath TEXDarnReturn/DRbody/DRitem/piece/pieceWeightM) 0-1
pieceWidth	effective width of the fabric piece - base type: decimal, min inclusive: 0, fraction digits: 2, (XPath TEXDarnReturn/DRbody/DRitem/piece/pieceWidth) 0-1 (XPath TEXDarnReturn/DRbody/DRitem/pieceChain/pieceWidth) 0-1
postCode	code defining the postal zone - base type: string, max length: 10, (XPath TEXDarnReturn/DRheader/buyer/postCode) 0-1 (XPath TEXDarnReturn/DRheader/thirdParty/postCode) 0-1 (XPath TEXDarnReturn/DRheader/subContractor/postCode) 0-1
priceBasis	reference basis for the price (e.g.: 1 metre, 1 hour, 1 minute, etc...) - base type: positiveInteger, min inclusive: 1, (XPath TEXDarnReturn/DRbody/DRitem/darnJobReport/ darnJobPrice/priceBasis) 0-1 - note: <i>this element must not be used when the price (jobPrice) is a forfeit</i>
qty	net quantity of the article or object correlated, qualified by the function of the document (ordering, delivering, ..) and by the context - base type: decimal, min inclusive: 0, fraction digits: 2, (XPath TEXDarnReturn/DRbody/DRitem/qty) 1-2 Best Practice
qualityLevel	the product quality level (first choice, second choice,...). - base type: string, (XPath TEXDarnReturn/DRheader/qualityLevel) 0-1
@role	Third Party role qualifier - base type: string, cod. table: NT2 <a href="http://www.ebiz.enea.it/moda-ml/repository/codelist/draft/gc_NT2.xml">http://www.ebiz.enea.it/moda-ml/repository/codelist/draft/gc_NT2.xml</a> (XPath TEXDarnReturn/DRheader/thirdParty/@role) [Required]
@schemeID	identifier of an identification scheme - base type: string, (XPath TEXDarnReturn/DRheader/refDoc/attachment/ hashFootprint/@schemeID) [Optional] - nota: <i>specify for which system this hash footprint might be used as identifier (for example HDFS system..)</i> (XPath TEXDarnReturn/DRbody/DRitem/refDoc/attachment/

	<p><b>hashFootprint/@schemeID) [Optional]</b>  - nota: specify for which system this hash footprint might be used as identifier (for example HDFS system..)</p>
season	<p>sale season; defined as: season (1 crt) + year (4 crt) - season: S/S=1 A/W=2 Spring=3 Summer=4 Autumn=5 Winter=6: for more than four seasons use alphabetic sequence: 1st season=A 2nd season=B etc.etc.  - base type: string, max length: 15,  (XPath TEXDarnReturn/DRbody/DRitem/refDoc/season) 0-1  - note: here indicates the season to which the referenced document belongs  (XPath TEXDarnReturn/DRheader/refDoc/season) 0-1  - note: here indicates the season to which the referenced document belongs</p>
@sender	<p>qualifier that specifies the Party issuing of the document  - base type: boolean,  (XPath TEXDarnReturn/DRheader/thirdParty/@sender) [Optional]  - nota: This attribute is mandatory when the STYLESHEET must be used  (XPath TEXDarnReturn/DRheader/buyer/@sender) [Optional]  - nota: This attribute is mandatory when the STYLESHEET must be used  (XPath TEXDarnReturn/DRheader/subContractor/@sender) [Optional]  - nota: This attribute is mandatory when the STYLESHEET must be used</p>
serialN	<p>serial number used for the identification of a physical unit  - base type: string, max length: 250,  (XPath TEXDarnReturn/DRbody/DRitem/pieceChain/serialN) 1-9  - note: multiple values of serialN are allowed in order to provide different representations of the serial identifier of the same piece chain. Different instances of serialN must differ at least for one value of idQualifier or numberingOrg  (XPath TEXDarnReturn/DRbody/DRitem/pieceChain/pieceCut/serialN) 1-9  - note: multiple values of serialN are allowed in order to provide different representations of the serial identifier of the same piece. Different instances of serialN must differ at least for one value of idQualifier or numberingOrg  (XPath TEXDarnReturn/DRbody/DRitem/piece/serialN) 0-9 Best Practice  - note: multiple values of serialN are allowed for different representations of the serial identifier of the same piece. Instances of serialN must differ at least for one value of numberingOrg and idQualifier.</p>
@source	<p>party who has provided the data  - base type: string, cod. table: NT12  <a href="http://www.ebiz.enea.it/moda-ml/repository/codelist/draft/gc_NT12.xml">http://www.ebiz.enea.it/moda-ml/repository/codelist/draft/gc_NT12.xml</a>  (XPath TEXDarnReturn/DRbody/DRitem/pieceMap/@source) [Required]</p>
street	<p>street and building number identifying a location  - base type: string, max length: 80,  (XPath TEXDarnReturn/DRheader/buyer/street) 0-1  (XPath TEXDarnReturn/DRheader/subContractor/street) 0-1  (XPath TEXDarnReturn/DRheader/thirdParty/street) 0-1</p>
subCountry	<p>short name or code of the sub-country entity  - base type: string, max length: 9,  (XPath TEXDarnReturn/DRheader/thirdParty/subCountry) 0-1  (XPath TEXDarnReturn/DRheader/buyer/subCountry) 0-1  (XPath TEXDarnReturn/DRheader/subContractor/subCountry) 0-1</p>
subDept	<p>name or code of a department  - base type: string, max length: 40,  (XPath TEXDarnReturn/DRheader/thirdParty/subDept) 0-1  (XPath TEXDarnReturn/DRheader/buyer/subDept) 0-1  (XPath TEXDarnReturn/DRheader/subContractor/subDept) 0-1</p>
@TID	<p>serial number wired into the RFID chip  - base type: string,  (XPath TEXDarnReturn/DRbody/DRitem/piece/EPC/@TID) [Optional]</p>
totFault	<p>total number of faults: the 1st/2nd digit count the "Large faults", the 3rd/4th the "Medium faults" and the 5th/6th the "Small faults"  - base type: positiveInteger,  (XPath TEXDarnReturn/DRbody/DRitem/piece/totFault) 0-1  (XPath TEXDarnReturn/DRbody/DRitem/pieceMap/totFault) 1-1</p>
totQty	<p>total quantity of the articles related to the whole document  - base type: decimal, min inclusive: 0, fraction digits: 2,  (XPath TEXDarnReturn/MOtotals/totQty) 2-2  - note: used to specify the number of pieces (um="PZ") and the quantity of metres (um</p>

	= <i>"MTR"</i> ) relative to the document
transactionReceipt	transaction receipt on blockchain - base type: string, max length: 80, (XPath TEXDarnReturn/DRheader/refDoc/attachment/ blockChainReference/transactionReceipt) 1-9 (XPath TEXDarnReturn/DRbody/DRitem/refDoc/attachment/ blockChainReference/transactionReceipt) 1-9
@transReason	reason for the transport - base type: string, cod. table: NT11 <a href="http://www.ebiz.enea.it/moda-ml/repository/codelist/draft/gc_NT11.xml">http://www.ebiz.enea.it/moda-ml/repository/codelist/draft/gc_NT11.xml</a> (XPath TEXDarnReturn/DRbody/DRitem/@transReason) [Optional]
@uid	unique element identifier within the xml document - base type: string, (XPath TEXDarnReturn/DRheader/refDoc/attachment/@uid) [Optional] (XPath TEXDarnReturn/DRbody/DRitem/refDoc/attachment/@uid) [Optional]
@um	specification of the unit of measure - base type: string, cod. table: NT7 <a href="http://www.ebiz.enea.it/moda-ml/repository/codelist/draft/gc_NT7.xml">http://www.ebiz.enea.it/moda-ml/repository/codelist/draft/gc_NT7.xml</a> (XPath TEXDarnReturn/DRbody/DRitem/piece/grossWeight/@um) [Required] (XPath TEXDarnReturn/DRbody/DRitem/darnJobReport/ darnJobPrice/priceBasis/@um) [Required] (XPath TEXDarnReturn/DRheader/subContractor/geoCoordinates/@um) [Optional] [D efault= DEGD] - nota: <i>when not specified assume decimal DEGREES</i> (XPath TEXDarnReturn/DRbody/DRitem/piece/pieceWeightM/@um) [Optional] [Default= GRM] (XPath TEXDarnReturn/DRbody/DRitem/piece/pieceAllow/@um) [Required] (XPath TEXDarnReturn/DRheader/buyer/geoCoordinates/@um) [Optional] [Default= DEGD] - nota: <i>when not specified assume decimal DEGREES</i> (XPath TEXDarnReturn/DRbody/DRitem/darnJobReport/ jobTimeBasis/@um) [Required] (XPath TEXDarnReturn/DRbody/DRitem/pieceChain/pieceWidth/@um) [Optional] [Default= CMT] (XPath TEXDarnReturn/DRbody/DRitem/pieceMap/pieceFault/ weftEnd/@um) [Optional] [Default= CMT] (XPath TEXDarnReturn/DRbody/DRitem/pieceMap/pieceFault/ pieceAllow/@um) [Required] (XPath TEXDarnReturn/DRbody/DRitem/pieceChain/pieceLength/@um) [Optional] [Default= MT R] (XPath TEXDarnReturn/DRbody/DRitem/piece/pieceLength/@um) [Optional] [Default= MTR] (XPath TEXDarnReturn/DRbody/DRitem/pieceMap/pieceFault/ weftStart/@um) [Optional] [Default= CMT] (XPath TEXDarnReturn/DRbody/DRitem/pieceChain/pieceCut/ pieceLength/@um) [Optional] [Default= MTR] (XPath TEXDarnReturn/DRbody/DRitem/pieceChain/pieceCut/ pieceWeight/@um) [Optional] [Default= KGM] (XPath TEXDarnReturn/DRbody/DRitem/pieceChain/pieceWeight/@um) [Optional] [Default= KG M] (XPath TEXDarnReturn/DRbody/DRitem/pieceMap/pieceFault/ warpEnd/@um) [Optional] [Default= MTR] (XPath TEXDarnReturn/DRbody/DRitem/pieceMap/pieceFault/ warpStart/@um) [Optional] [Default= MTR] (XPath TEXDarnReturn/MOtals/totQty/@um) [Required] (XPath TEXDarnReturn/DRbody/DRitem/piece/pieceCutWidth/@um) [Optional] [Default= CMT] (XPath TEXDarnReturn/DRbody/DRitem/piece/pieceWeight/@um) [Optional] [Default= KGM] (XPath TEXDarnReturn/DRheader/thirdParty/geoCoordinates/@um) [Optional] [Default= DEGD] - nota: <i>when not specified assume decimal DEGREES</i> (XPath TEXDarnReturn/DRbody/DRitem/piece/pieceWidth/@um) [Optional] [Default= CMT] (XPath TEXDarnReturn/DRbody/DRitem/qty/@um) [Required]
uri	Uniform Resource Identifier (URI) that identifies the external object as an Internet resource - base type: normalizedString, (XPath TEXDarnReturn/DRheader/refDoc/attachment/ externalReference/uri) 1-1 (XPath TEXDarnReturn/DRbody/DRitem/refDoc/attachment/ externalReference/uri) 1-1 (XPath TEXDarnReturn/DRheader/refDoc/attachment/ blockChainReference/uri) 1-1 - note: <i>reference to the used blockchain ( example: url <a href="https://etherscan.io/">https://etherscan.io/</a> of ethereu</i>

	<p><i>m)</i>  (XPath <a href="#">TEXDarnReturn/DRbody/DRitem/refDoc/attachment/blockChainReference/uri</a>) 1-1  - note: <i>reference to the used blockchain ( example: url <a href="https://etherscan.io/">https://etherscan.io/</a> of ethereum)</i></p>
@useProfile	<p>use profile to which the present document is compliant if it was agreed by the parties. It is suggested a URI with reference to the firms or the URL of the profile.  - base type: string,  (XPath <a href="#">TEXDarnReturn/@useProfile</a>) [Optional]</p>
@VAT	<p>VAT rate or code (DEPRECATED, use dtScheme element)  - base type: string, cod. table: NT16  <a href="http://www.ebiz.enea.it/moda-ml/repository/codelist/draft/gc_NT16.xml">http://www.ebiz.enea.it/moda-ml/repository/codelist/draft/gc_NT16.xml</a>  (XPath <a href="#">TEXDarnReturn/DRheader/thirdParty/@VAT</a>) [Optional]  (XPath <a href="#">TEXDarnReturn/DRbody/DRitem/lineN/@VAT</a>) [Optional]  - nota: <i>Deprecated, prefer dtScheme when available.</i></p>
@version	<p>Dictionary version from which the instance has been created  - base type: string, cod. table: NT100  <a href="http://www.ebiz.enea.it/moda-ml/repository/codelist/draft/gc_NT100.xml">http://www.ebiz.enea.it/moda-ml/repository/codelist/draft/gc_NT100.xml</a>  (XPath <a href="#">TEXDarnReturn/@version</a>) [Optional] [Default= draft]</p>
warpEnd	<p>end point of the fabric fault in the warp direction  - base type: decimal, min inclusive: 0, fraction digits: 2,  (XPath <a href="#">TEXDarnReturn/DRbody/DRitem/pieceMap/pieceFault/warpEnd</a>) 0-1</p>
warpStart	<p>start point of the fabric fault in the warp direction  - base type: decimal, min inclusive: 0, fraction digits: 2,  (XPath <a href="#">TEXDarnReturn/DRbody/DRitem/pieceMap/pieceFault/warpStart</a>) 1-1</p>
weftEnd	<p>end point of the fabric fault in the weft direction  - base type: decimal, min inclusive: 0, fraction digits: 2,  (XPath <a href="#">TEXDarnReturn/DRbody/DRitem/pieceMap/pieceFault/weftEnd</a>) 0-1</p>
weftStart	<p>start point of the fabric fault in the weft direction  - base type: decimal, min inclusive: 0, fraction digits: 2,  (XPath <a href="#">TEXDarnReturn/DRbody/DRitem/pieceMap/pieceFault/weftStart</a>) 0-1</p>
xGeoCoord	<p>geographical coordinate x , corresponding to latitude  - base type: decimal,  (XPath <a href="#">TEXDarnReturn/DRheader/thirdParty/geoCoordinates/xGeoCoord</a>) 1-1  (XPath <a href="#">TEXDarnReturn/DRheader/subContractor/geoCoordinates/xGeoCoord</a>) 1-1  (XPath <a href="#">TEXDarnReturn/DRheader/buyer/geoCoordinates/xGeoCoord</a>) 1-1</p>
yGeoCoord	<p>geographical coordinate y , corresponding to longitude  - base type: decimal,  (XPath <a href="#">TEXDarnReturn/DRheader/thirdParty/geoCoordinates/yGeoCoord</a>) 1-1  (XPath <a href="#">TEXDarnReturn/DRheader/subContractor/geoCoordinates/yGeoCoord</a>) 1-1  (XPath <a href="#">TEXDarnReturn/DRheader/buyer/geoCoordinates/yGeoCoord</a>) 1-1</p>
zGeoCoord	<p>geographical coordinate z , corresponding to altitude  - base type: decimal,  (XPath <a href="#">TEXDarnReturn/DRheader/thirdParty/geoCoordinates/zGeoCoord</a>) 0-1  - note: <i>altitude might be omitted</i>  (XPath <a href="#">TEXDarnReturn/DRheader/subContractor/geoCoordinates/zGeoCoord</a>) 0-1  - note: <i>altitude might be omitted</i>  (XPath <a href="#">TEXDarnReturn/DRheader/buyer/geoCoordinates/zGeoCoord</a>) 0-1  - note: <i>altitude might be omitted</i></p>

## 2.3 Suggested best practices

**TEXDarnReturn/DRheader/refDoc/docID (identification number of the referenced document)**

numberingOrg indicates the role that produced the document identifier (it is allowed to declare two different ones -e.g. customer and supplier - with two docID with different numberingOrg)

**TEXDarnReturn/DRbody/DRitem/refDoc/docID (identification number of the referenced document)**

numberingOrg indicates the role that produced the document identifier (it is allowed to declare two different ones -e.g. customer and supplier - with two docID with different numberingOrg)

**TEXDarnReturn/DRbody/DRitem/refDoc/attachment/  
externalReference/mimeCode (mime type of the external object)**

Use coding from IANA <http://www.iana.org/assignments/media-types/media-types.xml>

**TEXDarnReturn/DRheader/refDoc/attachment/  
externalReference/mimeCode (mime type of the external object)**

Use coding from IANA <http://www.iana.org/assignments/media-types/media-types.xml>

**TEXDarnReturn/DRbody/DRitem/qty (net quantity of the article or object correlated, qualified by the function of the document (ordering, delivering, ..) and by the context)**

this element can have two instances only if the units of measure are different

**TEXDarnReturn/DRbody/DRitem/piece/serialN (serial number used for the identification of a physical unit)**

This element might contain also codes for RFID devices.

## 2.4 Enumeration tables

List of enumeration tables used in the XML document. You can find all the tables with the corresponding codes at:  
<http://www.ebiz.enea.it/eBIZ/imple/eBIZTCU-draft.asp?lingua=en&pag=6>

NT100 - eBIZ TCFUpstream version  
NT11 - transport causal  
NT12 - data source  
NT13 - fabric fault category  
NT14 - fabric fault shape  
NT16 - VAT rate or code  
NT18 - message function  
NT2 - third party qualifier  
NT29 - format of a date  
NT333 - type of hashing algorithm  
NT4 - end use  
NT6 - coding system owner/issuer  
NT60 - language, codes from ISO 639-1 (subset)  
NT7 - unit of measure  
T10 - ISO3166 - Country  
T12 - fabric faults  
T20 - type of darning operation  
T21 - type of document  
T4 - fabric piece inner packing (wrapping) 1  
T44 - additional code type  
T5 - fabric piece inner packing (wrapping) 2  
T52 - fabric piece status  
T6 - fabric piece outer packing  
T9 - ISO4217 - Currency

(the most relevant tables are detailed in the following Annexes too)

## ACKNOWLEDGEMENT



This action is part of the TRICK project, which has received funding from Horizon 2020 research and innovation programme under grant agreement No. 958352 of the European Union.

## DISCLAIMER

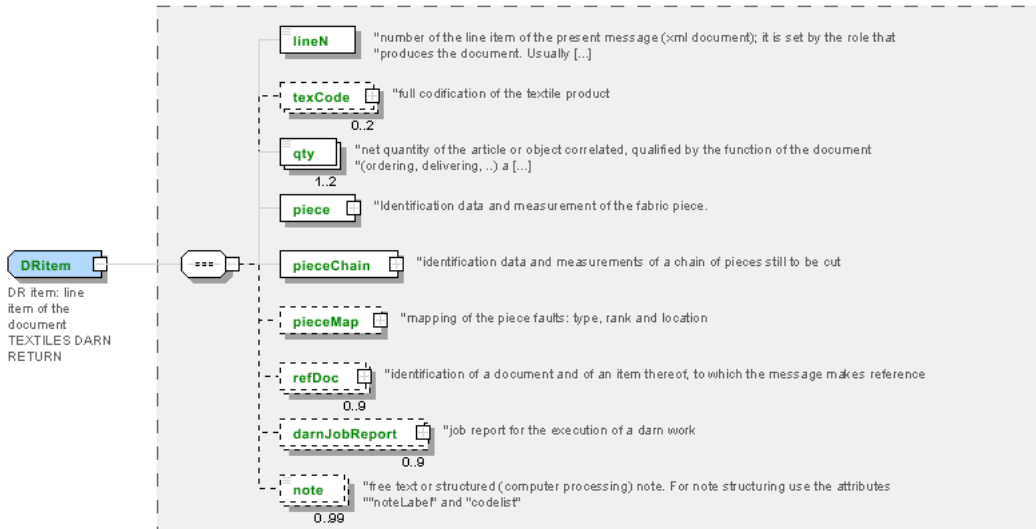
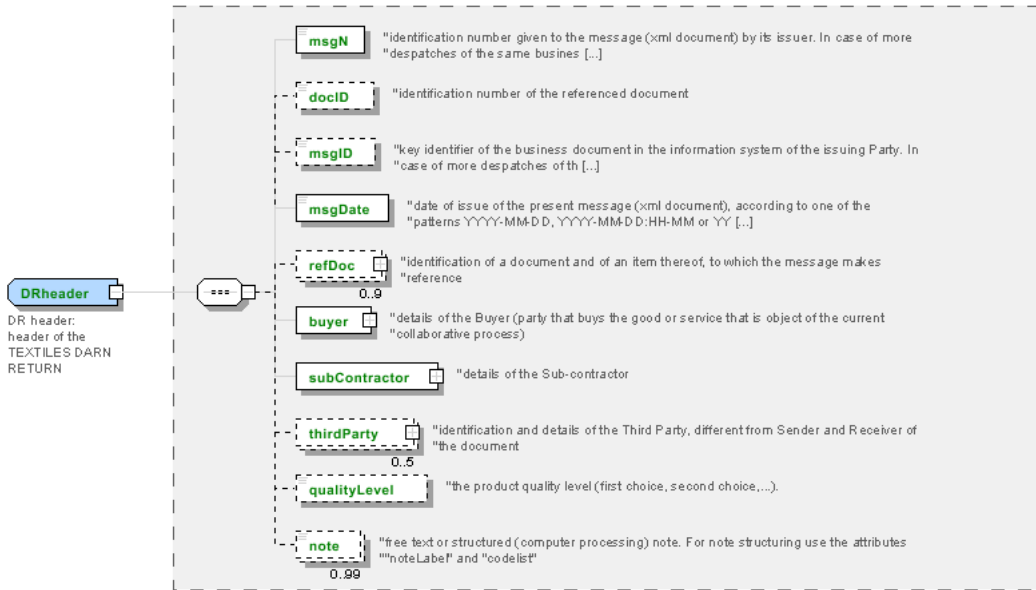
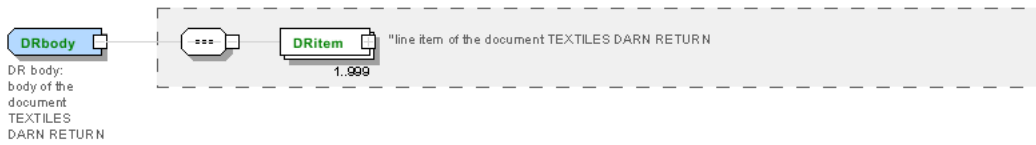
The content of this document represents the views of the authors only and is their sole responsibility; it cannot be considered to reflect the views of the European Commission or any other body of the European Union.

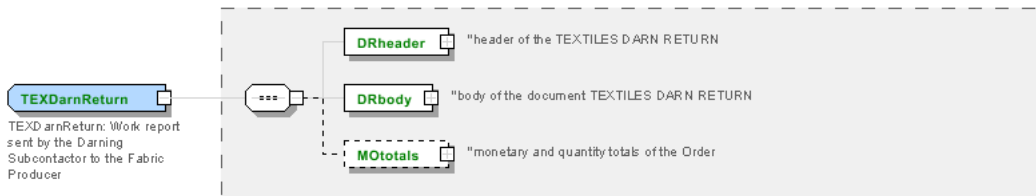
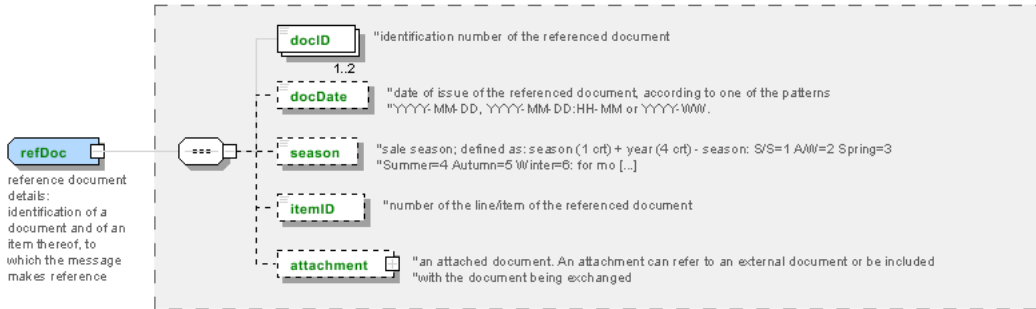
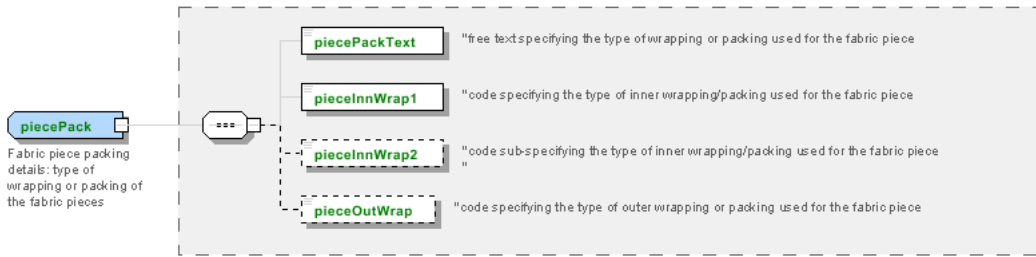
The European Commission does not accept any responsibility for use that may be made of the information it contains.



# Annex A

Representative images of the principal complex elements' structure.







## Annex B

### NT100 - eBIZ TCFUpstream version

dictionary version

Agency name: eBIZ

Decoding table: NT100

File codes list (Generic code): [http://www.ebiz.enea.it/moda-ml/repository/codelist/draft/gc\\_NT100.xml](http://www.ebiz.enea.it/moda-ml/repository/codelist/draft/gc_NT100.xml)

Code	Description	Adoption note	Date of insertion
2013-1	v2013-1		01/07/2013
2018-1	v2018-1		04/11/2018
draft	draft		08/09/2017

### NT11 - transport causal

reason for the transport

Agency name: eBIZ

Decoding table: NT11

File codes list (Generic code): [http://www.ebiz.enea.it/moda-ml/repository/codelist/draft/gc\\_NT11.xml](http://www.ebiz.enea.it/moda-ml/repository/codelist/draft/gc_NT11.xml)

Code	Description	Adoption note	Date of insertion
FOC	free of charge		
FRW	return from re-works		
FST	return from storage		
FVW	return from view		
FWK	return from works		
IST	in storage		
NWK	return non-worked		
RJC	return from rejection		
SEL	to sell		
STO	to storage		
VEW	to view		
WRK	to works		

### NT12 - data source

party who has provided the data

Agency name: eBIZ

Decoding table: NT12

File codes list (Generic code): [http://www.ebiz.enea.it/moda-ml/repository/codelist/draft/gc\\_NT12.xml](http://www.ebiz.enea.it/moda-ml/repository/codelist/draft/gc_NT12.xml)

Code	Description	Adoption note	Date of insertion
AC	internal test		
CO	external test		
CV	test after steaming		

### NT13 - fabric fault category

ranking class of the fabric fault

Agency name: eBIZ

Decoding table: NT13

File codes list (Generic code): [http://www.ebiz.enea.it/moda-ml/repository/codelist/draft/gc\\_NT13.xml](http://www.ebiz.enea.it/moda-ml/repository/codelist/draft/gc_NT13.xml)

Code	Description	Adoption note	Date of insertion
CL1	class 1		
CL2	class 2		
CL3	class 3		
CL4	class 4		
CL5	class 5		
CL6	class 6		
G	large		
L	small		
M	medium		

### NT14 - fabric fault shape

shape classification of the fabric fault

Agency name: eBIZ

Decoding table: NT14

File codes list (Generic code): [http://www.ebiz.enea.it/moda-ml/repository/codelist/draft/gc\\_NT14.xml](http://www.ebiz.enea.it/moda-ml/repository/codelist/draft/gc_NT14.xml)

Code	Description	Adoption note	Date of insertion
C	continuous		
P	point		
S	stretch		

### NT16 - VAT rate or code

VAT rate or code ( DEPRECATED, use dtScheme element )

Decoding table: NT16

File codes list (Generic code): [http://www.ebiz.enea.it/moda-ml/repository/codelist/draft/gc\\_NT16.xml](http://www.ebiz.enea.it/moda-ml/repository/codelist/draft/gc_NT16.xml)

### NT18 - message function

function performed by the present message with regards to the transmission

Agency name: eBIZ

Decoding table: NT18

File codes list (Generic code): [http://www.ebiz.enea.it/moda-ml/repository/codelist/draft/gc\\_NT18.xml](http://www.ebiz.enea.it/moda-ml/repository/codelist/draft/gc_NT18.xml)

Code	Description	Adoption note	Date of insertion
CA	delete this document		01/07/2013
CP	copy		
OR	original		
RC	re-transmission for data correction		
RT	re-transmission		

### NT2 - third party qualifier

Third Party role qualifier

Agency name: eBIZ

Decoding table: NT2

File codes list (Generic code): [http://www.ebiz.enea.it/moda-ml/repository/codelist/draft/gc\\_NT2.xml](http://www.ebiz.enea.it/moda-ml/repository/codelist/draft/gc_NT2.xml)

Code	Description	Adoption note	Date of insertion
AG	Sales Agent		
AU	Auditor		08/04/2019
BU	Buyer		13/06/2022
CE	Certification authority		08/04/2019
CM	Commissioner		13/06/2022
CO	Quality Controller		
CU	Customs authority		13/06/2022
DC	Response to		
DF	Invoicee		
DI	Copy to (CC)		28/10/2014
DM	Consignee		

DP	Consignment address (Delivery Party)		
EX	Expert		13/06/2022
IM	Importer		
OR	Originator		10/09/2014
SC	Sub contractor		10/04/2019
SM	Service/ePlatform manager		08/04/2019
SP	Forwarder		
SU	Supplier		13/06/2022
TL	Test or analysis laboratory		13/06/2022
TX	Tax Representative		

### NT29 - format of a date

format used for the date

Agency name: eBIZ

Decoding table: NT29

File codes list (Generic code): [http://www.ebiz.enea.it/moda-ml/repository/codelist/draft/gc\\_NT29.xml](http://www.ebiz.enea.it/moda-ml/repository/codelist/draft/gc_NT29.xml)

Code	Description	Adoption note	Date of insertion
D	YYYY-MM-DD		
M	YYYY-MM-DD:HH-MM (date and time)		
S	AAAA-MM-GG:HH-MM-SS (date and time with seconds)		13/06/2022
W	YYYY-WW		

### NT333 - type of hashing algorithm

type of hashing algorithm

Decoding table: NT333

File codes list (Generic code): [http://www.ebiz.enea.it/moda-ml/repository/codelist/draft/gc\\_NT333.xml](http://www.ebiz.enea.it/moda-ml/repository/codelist/draft/gc_NT333.xml)

Code	Description	Adoption note	Date of insertion
ADLER32	ADLER32		26/05/2023
HMAC	HMAC		26/05/2023
MD2	MD2		26/05/2023
MD4	MD4		26/05/2023
MD5	MD5		26/05/2023
MDC-2	MDC-2		26/05/2023
PANAMA	PANAMA		26/05/2023

RIPEMD-160	RIPEMD-160		26/05/2023
SHA-1	SHA-1		26/05/2023
SHA-2 256	SHA-2 256		26/05/2023
SHA-2 384	SHA-2 384		26/05/2023
SHA-2 512	SHA-2 512		26/05/2023
TIGER	TIGER		26/05/2023

#### NT4 - end use

specifies the final use of the product

Agency name: eBIZ

Decoding table: NT4

File codes list (Generic code): [http://www.ebiz.enea.it/moda-ml/repository/codelist/draft/gc\\_NT4.xml](http://www.ebiz.enea.it/moda-ml/repository/codelist/draft/gc_NT4.xml)

Code	Description	Adoption note	Date of insertion
PC	test piece		
PR	production		
SA	Sample		10/09/2014
SC	samples card		
TI	patch		
TP	(test cut)		

#### NT6 - coding system owner/issuer

code specifying the organisation who has created or owns the registers of the present coding or numbering system

Agency name: eBIZ

Decoding table: NT6

File codes list (Generic code): [http://www.ebiz.enea.it/moda-ml/repository/codelist/draft/gc\\_NT6.xml](http://www.ebiz.enea.it/moda-ml/repository/codelist/draft/gc_NT6.xml)

Code	Description	Adoption note	Date of insertion
CBR	National customs brokers registry		12/06/2023
CL	Customer/buyer		
CO	Quality Controller		
DU	D-U-N-S registry (Data Universal Numbering System)		04/05/2023
EB	eBIZ	replaces 'ML'	18/03/2019
EN	GS1 ( ex-EAN International )		
EO	Registro EORI (Economic Operators Registration and Identification number)		04/03/2023
ES	e-Stockflow	DEPRECATED	



FO	Supplier		
GS	GS1		01/07/2013
MF	national taxation authority (i.e. VAT codes registry)		
ML	Moda-ML	DEPRECATED	
PL	Application Platform		13/06/2022
REX	Registered Exporter system (REX)		19/05/2023
SP	Service Provider		
SU	Enterprise Identification Number UID	Only switzerland	04/03/2023

### NT60 - language, codes from ISO 639-1 (subset)

Agency name: eBIZ / ISO

Decoding table: NT60

File codes list (Generic code): [http://www.ebiz.enea.it/moda-ml/repository/codelist/draft/gc\\_NT60.xml](http://www.ebiz.enea.it/moda-ml/repository/codelist/draft/gc_NT60.xml)

Code	Description	Adoption note	Date of insertion
af	Afrikaans		31/01/2019
ar	Arabic		31/01/2019
be	Belarusian		31/01/2019
bg	Bulgarian		31/01/2019
bn	Bengali		31/01/2019
bo	Tibetan		31/01/2019
bs	Bosnian		31/01/2019
ca	Catalan, Valencian		31/01/2019
cs	Czech		31/01/2019
da	Danish		31/01/2019
de	German		31/01/2019
el	Greek, Modern (1453-)		31/01/2019
en	English		31/01/2019
eo	Esperanto		31/01/2019
es	Spanish, Castilian		31/01/2019
et	Estonian		31/01/2019
eu	Basque		31/01/2019
F	Female		15/04/2019
fa	Persian		31/01/2019
fi	Finnish		31/01/2019
fr	French		31/01/2019
ga	Irish		31/01/2019

gd	Gaelic, Scottish Gaelic		31/01/2019
gn	Guarani		31/01/2019
he	Hebrew		31/01/2019
hr	Croatian		31/01/2019
ht	Haitian, Haitian Creole		31/01/2019
hu	Hungarian		31/01/2019
hy	Armenian		31/01/2019
ia	Interlingua (International Auxiliary Language Association)		31/01/2019
id	Indonesian		31/01/2019
is	Icelandic		31/01/2019
it	Italian		31/01/2019
ja	Japanese		31/01/2019
jv	Javanese		31/01/2019
ka	Georgian		31/01/2019
km	Central Khmer		31/01/2019
ko	Korean		31/01/2019
ku	Kurdish		31/01/2019
lb	Luxembourgish, Letzeburgesch		31/01/2019
lo	Lao		31/01/2019
lt	Lithuanian		31/01/2019
lv	Latvian		31/01/2019
mg	Malagasy		31/01/2019
mk	Macedonian		31/01/2019
mn	Mongolian		31/01/2019
mt	Maltese		31/01/2019
nl	Dutch, Flemish		31/01/2019
no	Norwegian		31/01/2019
pl	Polish		31/01/2019
pt	Portuguese		31/01/2019
ro	Romanian, Moldavian, Moldovan		31/01/2019
ru	Russian		31/01/2019
se	Northern Sami		31/01/2019
sk	Slovak		31/01/2019
sl	Slovenian		31/01/2019
sm	Samoan		31/01/2019
so	Somali		31/01/2019
sq	Albanian		31/01/2019
sr	Serbian		31/01/2019

sv	Swedish		31/01/2019
sw	Swahili		31/01/2019
ta	Tamil		31/01/2019
th	Thai		31/01/2019
tr	Turkish		31/01/2019
uk	Ukrainian		31/01/2019
ur	Urdu		31/01/2019
uz	Uzbek		31/01/2019
vi	Vietnamese		31/01/2019
zh	Chinese		31/01/2019

### NT7 - unit of measure

specification of the unit of measure, it is a sub set of table Unit of Measure Code - UN/ECE REC 20 delivered by United Nations Economic Commission for Europe (UN/ECE)

Agency name: eBIZ / UN/ECE

Decoding table: NT7

File codes list (Generic code): [http://www.ebiz.enea.it/moda-ml/repository/codelist/draft/gc\\_NT7.xml](http://www.ebiz.enea.it/moda-ml/repository/codelist/draft/gc_NT7.xml)

Other link: <http://docs.oasis-open.org/ubl/os-UBL-2.1/cl/gc/default/UnitOfMeasureCode-2.1.gc#>

Code	Description	Adoption note	Date of insertion
CMK	square centimetre		20/12/2017
CMQ	cubic centimetre		20/12/2017
CMT	centimetre		
CNE	centiNewton		
CO2TON	ton of CO2		10/09/2014
COUPLES	couples		
DAY	day		22/08/2022
DEGD	decimal degrees		04/07/2022
DEGMS	degrees with minutes and seconds		01/07/2022
DMQ	cubic decimetre		
E37	pixel		11/04/2018
GRM	gram		
HUR	hour		
INH	inch		
KGM	kilogram		
KMT	kilometer		
KWH	kilowatthours		10/09/2014
LBR	pound		

MCG	microgram		23/08/2022
MG	milligram		23/08/2022
MIN	minute		
MMK	square millimetre		20/12/2017
MONTH	month		22/08/2022
MSEC	millisecond (time)		22/08/2022
MTK	square metre		20/12/2017
MTQ	cubic metre		
MTR	metre		
NMB	numero		
ONZ	ounce		
P1	percent		
PPM	parts per milion		
PZ	piece		
RPM	rounds per metre		
SEC	second (time)		22/08/2022
YEAR	year		22/08/2022
YRD	yard		

#### T10 - ISO3166 - Country

code of the nation

Agency name: ISO

Decoding table: T10

File codes list (Generic code): [http://www.ebiz.enea.it/moda-ml/repository/codelist/draft/gc\\_T10.xml](http://www.ebiz.enea.it/moda-ml/repository/codelist/draft/gc_T10.xml)

Table not printed: there are 240 elements, more than the maximum specified for printing: 99.

#### T12 - fabric faults

code specifying the type or class of fabric fault

Agency name: eBIZ

Decoding table: T12

File codes list (Generic code): [http://www.ebiz.enea.it/moda-ml/repository/codelist/draft/gc\\_T12.xml](http://www.ebiz.enea.it/moda-ml/repository/codelist/draft/gc_T12.xml)

Code	Description	Adoption note	Date of insertion
AA	defective weft		
AA1	warpway thick end		
AA2	weftway thick pick		

AA3	thin end/pick		
AA4	warpway thin end		
AA5	weftway thin pick		
AA6	tight end/pick		
AA7	warpway tight end		
AB	weftway tight pick		
AB1	slack end/pick		
AB2	warpway slack end		
AB3	weftway slack pick		
AB4	missing end/pick		
AB5	warpway missing end		
AB6	weftway missing pick		
AC	knots/slubs		
AE	stripes/bars		
AE1	stripes/bars in the warp		
AE2	stripes/bars in the weft		
AG	bowing		
AG1	bowing in the warp		
AG2	bowing in the weft		
AI	skew		
AJ	difference in tension: body-selvedge		
AK	stepped or shuttered appearance		
AL	stick effect		
AM	tears,cuts,holes		
AN	abrasions		
AO	faulty mending		
AP	creases		
AQ	disagreeable odour		
AR1	foreign matter (fibres)		
AR3	stains		
AS	variation in shade: weftway		
AT	variation in shade: warpway		
AU	difference in shade (vs. sample)		
AV	difference in look (vs. sample)		
AW	difference in handle (vs. sample)		
AX	asymmetry of design		
AY	irregularity of checks		
AZ	footprint left by K.D. process		

AZA	out of print register		
-----	-----------------------	--	--

### T20 - type of darning operation

element of a work cycle

Agency name: eBIZ

Decoding table: T20

File codes list (Generic code): [http://www.ebiz.enea.it/moda-ml/repository/codelist/draft/gc\\_T20.xml](http://www.ebiz.enea.it/moda-ml/repository/codelist/draft/gc_T20.xml)

Code	Description	Adoption note	Date of insertion
301	clamp		
302	fine darn		
303	gross darn		

### T21 - type of document

type or class to which the referenced document belongs

Agency name: eBIZ

Decoding table: T21

File codes list (Generic code): [http://www.ebiz.enea.it/moda-ml/repository/codelist/draft/gc\\_T21.xml](http://www.ebiz.enea.it/moda-ml/repository/codelist/draft/gc_T21.xml)

Code	Description	Adoption note	Date of insertion
BIL	Bill of lading		07/03/2023
BOR	Blanket order		01/02/2018
CAT	Price catalogue - tech sheet		
CEO	Certificate of origin		13/04/2018
CER	Certificate		13/04/2018
CMR	CMR consignment note		07/03/2023
COC	Colour card		
CRN	Credit note		08/09/2017
CTO	Checking order		01/07/2013
CTR	Contract		
CXF	CxF3 file		01/07/2013
DAD	Darn order		
DDT	Delivery note (transport document)		
DEA	Despatch advise		
DER	Despatch request		
DR	Document Request		02/12/2014

EAD	Export Accompanying Document	adopted by European customs	12/05/2023
ECMR	electronic CMR consignment note		07/03/2023
ECUS	EXPORT Custom Declaration		07/03/2023
FOR	Forecast		02/12/2014
GSO	Garment stock offer		
GSX	Garment stock offer change		
ICUS	IMPORT Custom Declaration		07/03/2023
INV	Invoice		
KCC	Knitting-Clothing Commission Order		02/12/2014
KCI	Garment in Work Inventory Report		02/12/2014
LCA	LCA study		28/08/2022
LCAD	LCA study dataset		28/08/2022
M2M	Made to Measure Production Order		02/12/2014
MAS	Master marker		
MCI	Visual merchandising instruction		13/04/2018
OCH	Order change		
OFF	Offer		
ORD	Purchase order		
ORP	Order response		
OSR	order status request		
OSS	Offer status		02/12/2014
OST	Order status		
OUR	our reference		
PCO	Preferential certificate of origin		07/03/2023
PEF	PEF study		28/08/2022
PEFD	PEF study dataset		28/08/2022
PEFP	PEF environmental profile		07/03/2023
QR	Quality Report		02/12/2014
RAI	Raw Material in Work Inventory Report		02/12/2014
RDC	Raw dyeing commission order		
RDH	Raw dyeing order change		
RDR	Raw dyeing order response		
REA	Receiving advise		
REQ	Request for Offer		
RET	Return		02/12/2014
RSC	Spinning commission order		
RSH	Spinning order change		
RSR	Spinning order response		

SAD	Single Administrative Document	adopted by European customs	12/05/2023
SCL	Process sheet		
SDE	Self-declaration		07/03/2023
SDS	SDS - Safety data sheet		07/03/2023
SLCA	S-LCA Study		07/03/2023
SLCAD	S-LCA Study documentation		07/03/2023
TFC	Textile dyeing-finishing commission order		
TFX	Textile Dyeing-Finishing Order Change		02/12/2014
TPC	Textile printing commission order		
TPX	Textile Printing Order Change		02/12/2014
TWI	Textile in work inventory		
VMI	visual merchandising instructions		01/02/2018
WAC	Warping commission order		
WAYB	Waybill		07/03/2023
WEC	Weaving commission order		
YDC	Yarn dyeing commission order		
YDH	Yarn dyeing order change		
YDR	Yarn dyeing order response		
YTC	Twisting commission order		
YWI	Yarn in work inventory		

#### T4 - fabric piece inner packing (wrapping) 1

code specifying the type of inner wrapping/packing used for the fabric piece

Agency name: eBIZ

Decoding table: T4

File codes list (Generic code): [http://www.ebiz.enea.it/moda-ml/repository/codelist/draft/gc\\_T4.xml](http://www.ebiz.enea.it/moda-ml/repository/codelist/draft/gc_T4.xml)

Code	Description	Adoption note	Date of insertion
A	Folded, whole width		
B	Folded, doubled		
C	Folded, tube products		
D	Spoiled, whole width		
E	Spoiled, doubled, pli: left		
F	Spoiled, doubled, pli: right		
G	Rolled, whole width, single item		
H	Rolled, whole width, several items		
I	Rolled, doubled		



J	Rolled, tube products		
---	-----------------------	--	--

#### T44 - additional code type

qualifier of the additional coding of a product

Agency name: eBIZ

Decoding table: T44

File codes list (Generic code): [http://www.ebiz.enea.it/moda-ml/repository/codelist/draft/gc\\_T44.xml](http://www.ebiz.enea.it/moda-ml/repository/codelist/draft/gc_T44.xml)

Code	Description	Adoption note	Date of insertion
CC	colour card		
CL	sales collection		
CO	company identification code		08/09/2017
DY	dye number		
LT	lot number		
MDI	Made in		08/09/2017
MS	manufacturing state		
PKG	packaging		09/09/2014
PL	product line		
RGB	RGB value		
SE	selvedge code		

#### T5 - fabric piece inner packing (wrapping) 2

code specifying the sub-type of inner wrapping/packing used for the fabric piece

Agency name: eBIZ

Decoding table: T5

File codes list (Generic code): [http://www.ebiz.enea.it/moda-ml/repository/codelist/draft/gc\\_T5.xml](http://www.ebiz.enea.it/moda-ml/repository/codelist/draft/gc_T5.xml)

Code	Description	Adoption note	Date of insertion
A	Open		
B	Folded once, not looped		
C	Folded twice, not looped		
H	Folded once, looped		
I	Folded twice, looped		
J	Without inner object, right side inside		
K	On carton or spooling plank, right side inside		
L	On spool (for pressure sensitive products), right side inside		

M	Without inner object, left side inside		
N	On carton or spooling plank, left side inside		
O	On spool (for pressure sensitive products), left side inside		
P	Without inner object, right side inside (deprecated code)		
Q	On carton, right side inside		
R	On wooden stick, right side inside		
S	Without inner object, left side inside (deprecated code)		
T	On carton, left side inside		
U	On wooden stick, left side inside		

### T52 - fabric piece status

code used to describe the status of a fabric piece with reference to the control

Agency name: eBIZ

Decoding table: T52

File codes list (Generic code): [http://www.ebiz.enea.it/moda-ml/repository/codelist/draft/gc\\_T52.xml](http://www.ebiz.enea.it/moda-ml/repository/codelist/draft/gc_T52.xml)

Code	Description	Adoption note	Date of insertion
0	first registration		
C	registration from return		
F	stopped		
H	handling		
R	returned		
S	held		
T	deliverable		

### T6 - fabric piece outer packing

code specifying the type of outer wrapping or packing used for the fabric piece

Agency name: eBIZ

Decoding table: T6

File codes list (Generic code): [http://www.ebiz.enea.it/moda-ml/repository/codelist/draft/gc\\_T6.xml](http://www.ebiz.enea.it/moda-ml/repository/codelist/draft/gc_T6.xml)

Code	Description	Adoption note	Date of insertion
0	Not wrapped		
1	Totally wrapped		
2	Wrapped, one side open		
3	Wrapped, both sides open		

4	Wrapped, one side open, with show corner		
5	Wrapped in cartons		
6	Double wrapped		

**T9 - ISO4217 - Currency**

currency code

Agency name: ISO

Decoding table: T9

File codes list (Generic code): [http://www.ebiz.enea.it/moda-ml/repository/codelist/draft/gc\\_T9.xml](http://www.ebiz.enea.it/moda-ml/repository/codelist/draft/gc_T9.xml)

Table not printed: there are 205 elements, more than the maximum specified for printing: 99.