



<http://www.ebiz-tcf.eu>

DRAFT

IMPLEMENTATION GUIDE
TRANSACTION "TEXTILE DYEING-FINISHING ORDER"

Version: draft

Date of release: 26/6/2023

Document code: G017

technical Documentation: <http://www.ebiz.enea.it>

XML Schemas repository: <http://www.ebiz.enea.it/moda-ml/repository/schema/draft/default.asp>

Guides repository: <http://www.ebiz.enea.it/moda-ml/repository/guide/draft/default.asp>

Guide filename: G017-eBIZ-TextileDyeing-finishingOrder.pdf

0. PREMISE

This document contains a proposal for the updating and extension of eBIZ specifications starting from the eBIZ version 2018. Under the name of 'Draft version' it is reported the result of an extensive work of analysis and consultation aimed at developing and maintaining eBIZ specifications.

In particular, the content of this proposal is the result of various activities, mainly those carried out within the framework of the **TRICK project** funded by the European Commission: grant agreement 958352, call H2020-LOW-CARBON-CIRCULAR-INDUSTRIES-2020 / H2020-LCCI-2020-EASME-twostage.

The technical contents are backwards compatible with the latest official published version, with the exclusion of the totally new concepts added explicitly for the version that are thought as incremental evolution of the knowledge base.

1. BUSINESS DESCRIPTION

1.1 Scope

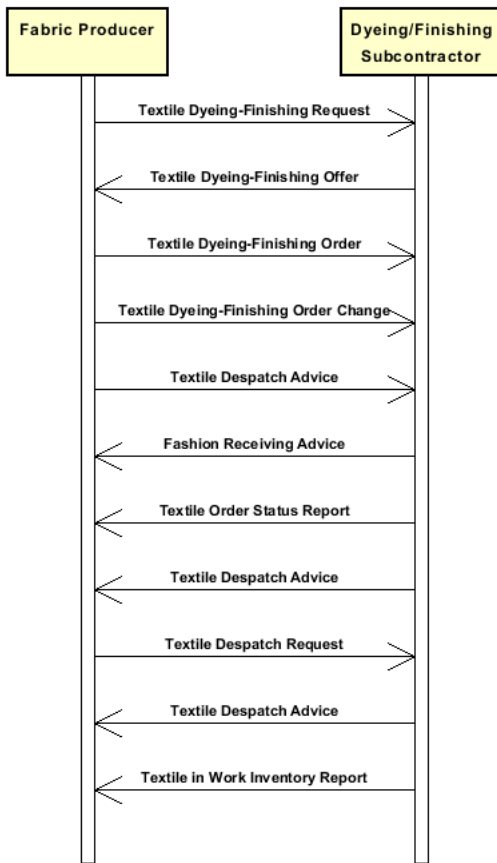
The present guide has been issued to assist the companies of the Textile-Clothing sector in the implementation of the standard XML document type "TEXTILE DYEING-FINISHING ORDER", providing all the instruction required for its use in the context of e-commerce between Fabric Producers and their Subcontractors shown in the enclosed diagram. All the rules required for the construction and validation of the document are embedded into the specific XML-Schema, which is detailed in section "Implementation guide".

1.2 Generalities

The Textile Dyeing-Finishing Order is issued when a Contractor commits to a Subcontractor a work required to transform a fabric material into something usable for apparel production. This work Order can include one or several operations of the fabric manufacturing cycle specifying their sequence.

1.3. Possible scenario

Subcontracted fabric dyeing-finishing



1.4. Best practices

Textile Dyeing-Finishing Order can be used instead of Textile Printing Order when printing is associated to finishing operations and these are prevalent.

2. IMPLEMENTATION GUIDE

2.1 General structure of XML document

All the business data that can be exchanged through this class of documents are shown in the following "document structure", that provides a simplified vision of the Schema.

In particular:

- the two numbers following each element define its "cardinality" (minimum and maximum number of occurrences); the minimum equal zero indicates that the element is optional, the minimum greater than zero indicates that is mandatory;
- the bold character denotes the complex elements (aggregates of simple elements) that were built for the sake of functionality and re-usability of some complex informations sets. The child elements in each parent element are easily spotted as "indented";
- the symbol "@" denotes an attribute of the preceding element; here "the usage indicator (optional, required, ...)" is shown in square brackets.

Structure

TEXDyFinOrder

```
@msgfunction [Optional] [Default= OR]
@TFCOtype [Required]
@version [Optional] [Default= draft]
@useProfile [Optional]
| TFCOheader 1-1
| | msgN 1-1
| | - choose -
| | | msgID 0-1
| | | - or -
| | | docID 0-1
| | | @numberingOrg [Optional]
| | | - end choose -
| | | msgDate 1-1
| | | @dateForm [Optional]
| | | season 0-1
| | | @numberingOrg [Optional]
| | | @codeList [Optional]
| | | @listName [Optional]
| | | @listVersion [Optional]
| | | msgCurrency 0-1
| | | refDoc 0-9
| | | @docType [Required]
| | | | docID 1-2
| | | | @numberingOrg [Optional]
| | | | docDate 0-1
| | | | @dateForm [Optional]
| | | | season 0-1
| | | | @numberingOrg [Optional]
| | | | @codeList [Optional]
| | | | @listName [Optional]
| | | | @listVersion [Optional]
| | | | itemID 0-1
| | | | attachment 0-1
| | | | @uid [Optional]
| | | | | fileName 0-1
| | | | | @numberingOrg [Optional]
| | | | | binaryObject 0-1
| | | | | @format [Optional]
| | | | | @mime [Optional]
| | | | | @encoding [Optional]
| | | | | @characterSet [Optional]
| | | | | externalReference 0-99
| | | | | | uri 1-1
| | | | | | @isURL [Optional] [Default= true]
| | | | | | mimeTypeCode 0-1
| | | | | | formatCode 0-1
| | | | | | encodingCode 0-1
| | | | | | characterSetCode 0-1
```

- | hashFootprint 0-1
- | @schemeID [Optional]
- | @hashMethod [Required]
- | **blockChainReference 0-9**
- | | uri 1-1
- | | @isURL [Optional] [Default= true]
- | transactionReceipt 1-9

buyer 1-1

- @logo [Optional]
- @sender [Optional]
- | id 1-1
- | @numberingOrg [Optional]
- | additionalIdentifier 0-9
- | @numberingOrg [Optional]
- | @idQualifier [Optional]
- | legalName 0-1
- | dept 0-1
- | subDept 0-1
- | person 0-1
- | @email [Optional]
- | @phone [Optional]
- | @fax [Optional]
- | street 0-1
- | city 0-1
- | subCountry 0-1
- | country 0-1
- | postCode 0-1
- | **geoCoordinates 0-1**
- | @um [Optional] [Default= DEGD]
- | @geoRefSystem [Optional]
- | | xGeoCoord 1-1
- | | yGeoCoord 1-1
- | | zGeoCoord 0-1

subContractor 1-1

- @sender [Optional]
- | id 1-1
- | @numberingOrg [Optional]
- | legalName 0-1
- | dept 0-1
- | subDept 0-1
- | person 0-1
- | @email [Optional]
- | @phone [Optional]
- | @fax [Optional]
- | street 0-1
- | city 0-1
- | subCountry 0-1
- | country 0-1
- | postCode 0-1
- | **geoCoordinates 0-1**
- | @um [Optional] [Default= DEGD]
- | @geoRefSystem [Optional]
- | | xGeoCoord 1-1
- | | yGeoCoord 1-1
- | | zGeoCoord 0-1

thirdParty 0-5

- @VAT [Optional]
- @role [Required]
- @sender [Optional]
- | id 1-1
- | @numberingOrg [Optional]
- | legalName 0-1
- | dept 0-1
- | subDept 0-1
- | person 0-1
- | @email [Optional]
- | @phone [Optional]
- | @fax [Optional]

| street 0-1
 | city 0-1
 | subCountry 0-1
 | country 0-1
 | postCode 0-1
 | **geoCoordinates 0-1**
 | @um [Optional] [Default= DEGD]
 | @geoRefSystem [Optional]
 | | xGeoCoord 1-1
 | | yGeoCoord 1-1
 | | zGeoCoord 0-1
 | note 0-99
 | @numberingOrg [Optional]
 | @codeList [Optional]
 | @noteLabel [Optional]

| **terms 0-1**

| | **payment 0-5**
 | | @finDiscount [Optional]
 | | @finSurcharge [Optional]
 | | - choose -
 | | | payTerm 1-1
 | | - or -
 | | | payTermText 1-1
 | | - end choose -
 | | | payMode 0-1

| | **insPayment 0-5**
 | | @part [Required]
 | | - choose -
 | | | payTerm 1-1
 | | - or -
 | | | payTermText 1-1
 | | - end choose -
 | | | payMode 0-1

| | **trade 0-1**
 | | - choose -
 | | | incoTermText 1-1
 | | - or -
 | | | incoTerm 1-1
 | | - end choose -
 | | - choose -

| | | **tradeLocation 0-1**
 | | | location 0-1
 | | | @LRI [Optional]
 | | | legalName 0-1
 | | | dept 0-1
 | | | subDept 0-1
 | | | person 0-1
 | | | @email [Optional]
 | | | @phone [Optional]
 | | | @fax [Optional]
 | | | street 0-1
 | | | city 0-1
 | | | subCountry 0-1
 | | | country 0-1
 | | | postCode 0-1
 | | | **geoCoordinates 0-1**
 | | | @um [Optional] [Default= DEGD]
 | | | @geoRefSystem [Optional]
 | | | | xGeoCoord 1-1
 | | | | yGeoCoord 1-1
 | | | | zGeoCoord 0-1

| | - or -
 | | | location 0-1
 | | | @LRI [Optional]
 | | - end choose -

| | **transInfo 0-5**
 | | @transReason [Optional]

```

| | @progr [Optional]
| | | transMode 1-1
| | | carrier 0-1
| | - choose -
| | | deliveryLocation 0-1
| | | | location 0-1
| | | | | @LRI [Optional]
| | | | | legalName 0-1
| | | | | dept 0-1
| | | | | subDept 0-1
| | | | | person 0-1
| | | | | @email [Optional]
| | | | | @phone [Optional]
| | | | | @fax [Optional]
| | | | | street 0-1
| | | | | city 0-1
| | | | | subCountry 0-1
| | | | | country 0-1
| | | | | postCode 0-1
| | | | | geoCoordinates 0-1
| | | | | | @um [Optional] [Default= DEGD]
| | | | | | @geoRefSystem [Optional]
| | | | | | | xGeoCoord 1-1
| | | | | | | yGeoCoord 1-1
| | | | | | | zGeoCoord 0-1
| | - or -
| | | deliveryPlace 0-1
| | - end choose -
| | | grossWeight 0-1
| | | | @um [Required]
| | | | netWeight 0-1
| | | | | @um [Required]
| | | | transMeans 0-1
| | | | | @propulsionSystemCode [Optional]
| | | | transCondition 0-3
| | | | | transConditionText 0-1
| | - choose -
| | | despatchPlace 0-1
| | - or -
| | | despatchLocation 0-1
| | | | location 0-1
| | | | | @LRI [Optional]
| | | | | legalName 0-1
| | | | | dept 0-1
| | | | | subDept 0-1
| | | | | person 0-1
| | | | | @email [Optional]
| | | | | @phone [Optional]
| | | | | @fax [Optional]
| | | | | street 0-1
| | | | | city 0-1
| | | | | subCountry 0-1
| | | | | country 0-1
| | | | | postCode 0-1
| | | | | geoCoordinates 0-1
| | | | | | @um [Optional] [Default= DEGD]
| | | | | | @geoRefSystem [Optional]
| | | | | | | xGeoCoord 1-1
| | | | | | | yGeoCoord 1-1
| | | | | | | zGeoCoord 0-1
| | - end choose -
| | | despatchDate 0-1
| | | | @dateForm [Optional]
| | | | delEffectiveDate 0-1
| | | | | @dateForm [Optional]
| | | | routeLength 0-1
| | | | | @um [Required]
| | allowanceCharge 0-9

```

```

| | @um [Optional]
| | @VAT [Optional]
| | @minQty [Optional]
| | @currency [Optional]
| | @maxQty [Optional]
| | @isCharge [Optional]
| | - choose -
| | | AC_category 1-1
| | - or -
| | | AC_categoryText 1-1
| | - end choose -
| | - choose -
| | | AC_percent 1-1
| | - or -
| | | AC_amount 1-1
| | | @currency [Optional]
| | - end choose -
| | | dtScheme 0-1
| | | @taxType [Required]
| | | taxCategory 0-1
| | | taxRate 0-1
| | | legalRef 0-1
| | | @numberingOrg [Optional]
| | | @codeList [Optional]
| | | @listName [Optional]
| | | @listVersion [Optional]
| | | note 0-99
| | | @numberingOrg [Optional]
| | | @codeList [Optional]
| | | @noteLabel [Optional]

```

TFCObody 1-1

TFCOitem 1-unbounded

```

| | @productLevel [Optional] [Default= END]
| | lineN 1-1
| | @VAT [Optional]
| | fabricProd 1-1
| | @CTest [Optional]
| | | texCode 1-1
| | | @numberingOrg [Optional]
| | | art 1-1
| | | @numberingOrg [Optional]
| | | @codeList [Optional]
| | | @listName [Optional]
| | | @listVersion [Optional]
| | | pattern 0-1
| | | @numberingOrg [Optional]
| | | @codeList [Optional]
| | | @listName [Optional]
| | | @listVersion [Optional]
| | | color 0-1
| | | @numberingOrg [Optional]
| | | @codeList [Optional]
| | | @listName [Optional]
| | | @listVersion [Optional]
| | | added 0-9
| | | @numberingOrg [Optional]
| | | @addType [Optional]
| | | description 0-unbounded
| | | @ln [Optional]
| | | fabricCompos 0-1
| | | percCompos 1-9
| | | @fibre [Required]
| | | @materialSource [Optional]
| | | @recyclingProcessMethod [Optional]
| | | @percSourcesRenewable [Optional]
| | | @validationMethod [Optional]
| | | @recyclingProcessEfficiency [Optional]

```



```

| | | | fabricWidth 0-1
| | | | @um [Optional] [Default= CMT]
| | | | fabricSpecs 0-99
| | | | - choose -
| | | | | fabricCharText 1-1
| | | | | - or -
| | | | | fabricChar 1-1
| | | | | - end choose -
| | | | | specValue 0-1
| | | | | @um [Optional]
| | | | | @source [Optional]
| | | | | @method [Optional]
| | | | | @application [Optional]
| | | | | @CV [Optional]
| | | | | - choose -
| | | | | tolerance 0-2
| | | | | @um [Required]
| | | | | - or -
| | | | | pcTolerance 0-2
| | | | | @um [Optional]
| | | | | - end choose -
| | | | - choose -
| | | | | pieceChain 0-99
| | | | | serialN 1-9
| | | | | @numberingOrg [Optional]
| | | | | @idQualifier [Optional]
| | | | | pieceLength 0-1
| | | | | @um [Optional] [Default= MTR]
| | | | | pieceWidth 0-1
| | | | | @um [Optional] [Default= CMT]
| | | | | pieceWeight 0-1
| | | | | @um [Optional] [Default= KGM]
| | | | | lotN 0-1
| | | | | @numberingOrg [Optional]
| | | | | dyeN 0-1
| | | | | @numberingOrg [Optional]
| | | | | packageN 0-1
| | | | | @numberingOrg [Optional]
| | | | | @packageContainerN [Optional]
| | | | | piecePack 0-1
| | | | | - choose -
| | | | | | piecePackText 1-1
| | | | | | - or -
| | | | | | pieceInnWrap1 1-1
| | | | | | pieceInnWrap2 0-1
| | | | | | pieceOutWrap 0-1
| | | | | - end choose -
| | | | | pieceCut 0-99
| | | | | serialN 1-9
| | | | | @numberingOrg [Optional]
| | | | | @idQualifier [Optional]
| | | | | pieceLength 0-1
| | | | | @um [Optional] [Default= MTR]
| | | | | pieceWeight 0-1
| | | | | @um [Optional] [Default= KGM]
| | | | | - or -
| | | | | piece 0-99
| | | | | @endUse [Optional]
| | | | | serialN 0-9
| | | | | @numberingOrg [Optional]
| | | | | @idQualifier [Optional]
| | | | | EPC 0-1
| | | | | @numberingOrg [Optional]
| | | | | @TID [Optional]
| | | | | totFault 0-1
| | | | | pieceStatus 0-1
| | | | | pieceLength 0-1
| | | | | @um [Optional] [Default= MTR]

```

```

| | | | pieceWidth 0-1
| | | | | @um [Optional] [Default= CMT]
| | | | pieceCutWidth 0-1
| | | | | @um [Optional] [Default= CMT]
| | | | pieceWeight 0-1
| | | | | @um [Optional] [Default= KGM]
| | | | pieceWeightM 0-1
| | | | | @um [Optional] [Default= GRM]
| | | | grossWeight 0-1
| | | | | @um [Required]
| | | | pieceAllow 0-1
| | | | | @um [Required]
| | | | lotN 0-2
| | | | | @numberingOrg [Optional]
| | | | dyeN 0-1
| | | | | @numberingOrg [Optional]
| | | | mixMatch 0-1
| | | | | @numberingOrg [Optional]
| | | | packageN 0-1
| | | | | @numberingOrg [Optional]
| | | | | @packageContainerN [Optional]
| | | | piecePack 0-1
| | | | - choose -
| | | | | piecePackText 1-1
| | | | - or -
| | | | | pieceInnWrap1 1-1
| | | | | pieceInnWrap2 0-1
| | | | | pieceOutWrap 0-1
| | | | - end choose -
| | | | - end choose -
| | | | note 0-99
| | | | | @numberingOrg [Optional]
| | | | | @codeList [Optional]
| | | | | @noteLabel [Optional]
| | | | qty 1-3
| | | | | @um [Required]
| | | | price 0-1
| | | | | @um [Optional]
| | | | | @priceQualifier [Optional] [Default= NET]
| | | | | @currency [Optional]
| | | | | deliveryDate 0-1
| | | | | @dateForm [Optional]
| | | | thirdParty 0-3
| | | | | @VAT [Optional]
| | | | | @role [Required]
| | | | | @sender [Optional]
| | | | | id 1-1
| | | | | | @numberingOrg [Optional]
| | | | | | legalName 0-1
| | | | | | dept 0-1
| | | | | | subDept 0-1
| | | | | | person 0-1
| | | | | | | @email [Optional]
| | | | | | | @phone [Optional]
| | | | | | | @fax [Optional]
| | | | | | street 0-1
| | | | | | city 0-1
| | | | | | subCountry 0-1
| | | | | | country 0-1
| | | | | | postCode 0-1
| | | | | geoCoordinates 0-1
| | | | | | @um [Optional] [Default= DEGD]
| | | | | | @geoRefSystem [Optional]
| | | | | | | xGeoCoord 1-1
| | | | | | | yGeoCoord 1-1
| | | | | | | zGeoCoord 0-1
| | | | fabricComponent 1-9
| | | | | texCode 1-1

```

```

| | | | @numberingOrg [Optional]
| | | | | art 1-1
| | | | | @numberingOrg [Optional]
| | | | | @codeList [Optional]
| | | | | @listName [Optional]
| | | | | @listVersion [Optional]
| | | | | pattern 0-1
| | | | | @numberingOrg [Optional]
| | | | | @codeList [Optional]
| | | | | @listName [Optional]
| | | | | @listVersion [Optional]
| | | | | color 0-1
| | | | | @numberingOrg [Optional]
| | | | | @codeList [Optional]
| | | | | @listName [Optional]
| | | | | @listVersion [Optional]
| | | | | added 0-9
| | | | | @numberingOrg [Optional]
| | | | | @addType [Optional]
| | | | | description 0-unbounded
| | | | | @ln [Optional]
| | | | | qty 1-3
| | | | | @um [Required]
- choose -
| | | | | serialN 0-unbounded
| | | | | @numberingOrg [Optional]
| | | | | @idQualifier [Optional]
- or -
| | | | | itemsList 0-unbounded
| | | | | | qualityLevel 0-1
| | | | | | @numberingOrg [Optional]
| | | | | | @codeList [Optional]
| | | | | | @listName [Optional]
| | | | | | @listVersion [Optional]
| | | | | | itemIdentification 1-unbounded
| | | | | | | serialN 1-9
| | | | | | | @numberingOrg [Optional]
| | | | | | | @idQualifier [Optional]
- end choose -
| | | | | refDoc 0-9
| | | | | | @docType [Required]
| | | | | | | docID 1-2
| | | | | | | @numberingOrg [Optional]
| | | | | | | docDate 0-1
| | | | | | | @dateForm [Optional]
| | | | | | | season 0-1
| | | | | | | @numberingOrg [Optional]
| | | | | | | @codeList [Optional]
| | | | | | | @listName [Optional]
| | | | | | | @listVersion [Optional]
| | | | | | | itemID 0-1
| | | | | | | attachment 0-1
| | | | | | | | @uid [Optional]
| | | | | | | | | fileName 0-1
| | | | | | | | | @numberingOrg [Optional]
| | | | | | | | | binaryObject 0-1
| | | | | | | | | @format [Optional]
| | | | | | | | | @mime [Optional]
| | | | | | | | | @encoding [Optional]
| | | | | | | | | @characterSet [Optional]
| | | | | | | | | externalReference 0-99
| | | | | | | | | | uri 1-1
| | | | | | | | | | | @isURL [Optional] [Default= true]
| | | | | | | | | | | mimeTypeCode 0-1
| | | | | | | | | | | formatCode 0-1
| | | | | | | | | | | encodingCode 0-1
| | | | | | | | | | | characterSetCode 0-1
| | | | | | | | | | | hashFootprint 0-1

```

```

| | | | | @schemeID [Optional]
| | | | | @hashMethod [Required]
| | | | | blockChainReference 0-9
| | | | | | uri 1-1
| | | | | | @isURL [Optional] [Default= true]
| | | | | | transactionReceipt 1-9
| | | | | location 0-1
| | | | | | @LRI [Optional]
| | | | | | note 0-99
| | | | | | @numberingOrg [Optional]
| | | | | | @codeList [Optional]
| | | | | | @noteLabel [Optional]
| | | | | fabMnfrOperation 1-9
| | | | | - choose -
| | | | | | | jobName 1-1
| | | | | - or -
| | | | | | | texJob 1-1
| | | | | - end choose -
| | | | | | | texJobTech 0-9
| | | | | | | refDoc 0-9
| | | | | | | | @docType [Required]
| | | | | | | | | docID 1-2
| | | | | | | | | | @numberingOrg [Optional]
| | | | | | | | | | docDate 0-1
| | | | | | | | | | | @dateForm [Optional]
| | | | | | | | | | | season 0-1
| | | | | | | | | | | | @numberingOrg [Optional]
| | | | | | | | | | | | @codeList [Optional]
| | | | | | | | | | | | @listName [Optional]
| | | | | | | | | | | | @listVersion [Optional]
| | | | | | | | | | | itemID 0-1
| | | | | | | | | | | attachment 0-1
| | | | | | | | | | | | @uid [Optional]
| | | | | | | | | | | | | fileName 0-1
| | | | | | | | | | | | | | @numberingOrg [Optional]
| | | | | | | | | | | | | | binaryObject 0-1
| | | | | | | | | | | | | | | @format [Optional]
| | | | | | | | | | | | | | | @mime [Optional]
| | | | | | | | | | | | | | | @encoding [Optional]
| | | | | | | | | | | | | | | @characterSet [Optional]
| | | | | | | | | | | | | | | externalReference 0-99
| | | | | | | | | | | | | | | uri 1-1
| | | | | | | | | | | | | | | | @isURL [Optional] [Default= true]
| | | | | | | | | | | | | | | | mimeTypeCode 0-1
| | | | | | | | | | | | | | | | formatCode 0-1
| | | | | | | | | | | | | | | | encodingCode 0-1
| | | | | | | | | | | | | | | | characterSetCode 0-1
| | | | | | | | | | | | | | | | hashFootprint 0-1
| | | | | | | | | | | | | | | | | @schemeID [Optional]
| | | | | | | | | | | | | | | | | @hashMethod [Required]
| | | | | | | | | | | | | | | | | blockChainReference 0-9
| | | | | | | | | | | | | | | | | uri 1-1
| | | | | | | | | | | | | | | | | @isURL [Optional] [Default= true]
| | | | | | | | | | | | | | | | | transactionReceipt 1-9
| | | | | | | | | | | | | | | | | texMachine 0-1
| | | | | | | | | | | | | | | | | texMachineSpecs 0-9
| | | | | | | | | | | | | | | | | | texMachineParam 1-1
| | | | | | | | | | | | | | | | | | | specValue 0-1
| | | | | | | | | | | | | | | | | | | | @um [Optional]
| | | | | | | | | | | | | | | | | | | | @source [Optional]
| | | | | | | | | | | | | | | | | | | | @method [Optional]
| | | | | | | | | | | | | | | | | | | | @application [Optional]
| | | | | | | | | | | | | | | | | | | | @CV [Optional]
| | | | | | | | | | | | | | | | | - choose -
| | | | | | | | | | | | | | | | | | | pcTolerance 0-2
| | | | | | | | | | | | | | | | | | | | @um [Optional]
| | | | | | | | | | | | | | | | | - or -
| | | | | | | | | | | | | | | | | | | tolerance 0-2

```

```

| | | | @um [Required]
| | | | - end choose -
| | | | note 0-99
| | | | @numberingOrg [Optional]
| | | | @codeList [Optional]
| | | | @noteLabel [Optional]
| | | | dtScheme 0-1
| | | | @taxType [Required]
| | | | taxCategory 0-1
| | | | taxRate 0-1
| | | | legalRef 0-1
| | | | @numberingOrg [Optional]
| | | | @codeList [Optional]
| | | | @listName [Optional]
| | | | @listVersion [Optional]
| | | | note 0-99
| | | | @numberingOrg [Optional]
| | | | @codeList [Optional]
| | | | @noteLabel [Optional]

```

2.2 Detailed description of document elements

Following tables show all elements (complex and simple) used in this document. Description includes: 1) element's information: xml tag, name, brief description, data type and syntax constraints; 2) information about use of the element in a particular position in the document: xpath and possible associated notes.

2.2.1 Complex elements (Aggregate Business Information Entities)

Complex elements are those elements whose content is composed of other elements (childs). Complex elements are alphabetically ordered.

allowanceCharge	Allowances and Charges related to an Order or a contract (XPath TEXDyFinOrder/terms/allowanceCharge) 0-9
attachment	an attached document. An attachment can refer to an external document or be included with the document being exchanged (XPath TEXDyFinOrder/TFCObody/TFCOitem/fabricComponent/refDoc/attachment) 0-1 (XPath TEXDyFinOrder/TFCObody/TFCOitem/fabMnfrOperation/refDoc/attachment) 0-1 (XPath TEXDyFinOrder/TFCOheader/refDoc/attachment) 0-1
blockChainReference	blockchain reference - base type: string, max length: 80, (XPath TEXDyFinOrder/TFCOheader/refDoc/attachment/blockChainReference) 0-9 (XPath TEXDyFinOrder/TFCObody/TFCOitem/fabricComponent/refDoc/attachment/blockChainReference) 0-9 (XPath TEXDyFinOrder/TFCObody/TFCOitem/fabMnfrOperation/refDoc/attachment/blockChainReference) 0-9
buyer	details of the Buyer (party that buys the good or service that is object of the current collaborative process) - base type: Nad, (XPath TEXDyFinOrder/TFCOheader/buyer) 1-1
deliveryLocation	data relating to a place of delivery(indicate at least element location or address, city and country) - base type: Nad, (XPath TEXDyFinOrder/terms/transInfo/deliveryLocation) 0-1 - note: <i>use to represent addresses in a structured way or with geographical coordinates</i>
despatchLocation	data relating to a place of despatch (indicate at least element location or address, city and country) - base type: Nad, (XPath TEXDyFinOrder/terms/transInfo/despatchLocation) 0-1 - note: <i>use to represent addresses in a structured way</i>
dtScheme	set of data usable to declare the duty or tax applied (XPath TEXDyFinOrder/TFCObody/TFCOitem/dtScheme) 0-1 (XPath TEXDyFinOrder/terms/allowanceCharge/dtScheme) 0-1
externalReference	details about an external object, such as a document stored at a remote location (XPath TEXDyFinOrder/TFCOheader/refDoc/attachment/externalReference) 0-99 (XPath TEXDyFinOrder/TFCObody/TFCOitem/fabMnfrOperation/refDoc/attachment/externalReference) 0-99 (XPath TEXDyFinOrder/TFCObody/TFCOitem/fabricComponent/refDoc/attachment/externalReference) 0-99
fabMnfrOperation	details of a manufacturing operation used for fabric production (XPath TEXDyFinOrder/TFCObody/TFCOitem/fabMnfrOperation) 1-9 - note: <i>this block of data can be used to specify either a subcontracted operation or an operation assigned to a shop owned by the issuer of the Manufacturing Order. In this latter case the specifications can be completed with "machine data"</i>
fabricComponent	identification details of a fabric used in a sub-contracted manufacturing operation (XPath TEXDyFinOrder/TFCObody/TFCOitem/fabricComponent) 1-9
fabricCompos	percent of composition of the fabric according to the Directive 97/37/CE

	(XPath TEXDyFinOrder/TFCObody/TFCOitem/fabricProd/fabricCompos) 0-1
fabricProd	manufacturing specifications of the product to be obtained from an operation of the sub-contracted production of fabric (XPath TEXDyFinOrder/TFCObody/TFCOitem/fabricProd) 1-1
fabricSpecs	technical characteristics of fabric, linked either to an operation of subcontracted production or to the purchase (XPath TEXDyFinOrder/TFCObody/TFCOitem/fabricProd/fabricSpecs) 0-99
geoCoordinates	geographical coordinates (XPath TEXDyFinOrder/terms/transInfo/deliveryLocation/geoCoordinates) 0-1 (XPath TEXDyFinOrder/terms/transInfo/despatchLocation/geoCoordinates) 0-1 (XPath TEXDyFinOrder/TFCObody/TFCOitem/thirdParty/geoCoordinates) 0-1 (XPath TEXDyFinOrder/terms/trade/tradeLocation/geoCoordinates) 0-1 (XPath TEXDyFinOrder/TFCOheader/subContractor/geoCoordinates) 0-1 (XPath TEXDyFinOrder/TFCOheader/thirdParty/geoCoordinates) 0-1 (XPath TEXDyFinOrder/TFCOheader/buyer/geoCoordinates) 0-1
insPayment	payment details for payment by installments (XPath TEXDyFinOrder/terms/insPayment) 0-5 - note: <i>excluded the case of offers, this set of data is alternative to payment set and must be iterated for each payment installment</i>
itemIdentification	serial identification of a product unit (XPath TEXDyFinOrder/TFCObody/TFCOitem/fabricComponent/itemsList/itemIdentification) 1-unbounded - note: <i>identification of the single product unit contained in the list</i>
itemsList	list of the single product units (XPath TEXDyFinOrder/TFCObody/TFCOitem/fabricComponent/itemsList) 0-unbounded - note: <i>it may be used to identify the pieces/chains that the Subcontractor must use for the commissioned work with multiple serial ids for each one</i>
payment	payment details for payment all in one (XPath TEXDyFinOrder/terms/payment) 0-5 - note: <i>excluded the case of offers, this set of data is alternative to insPayment, it can be iterated to specify alternative terms of payment (e.g.: 60 days or 30 days with 3% discount)</i>
piece	Identification data and measurement of the fabric piece. (XPath TEXDyFinOrder/TFCObody/TFCOitem/fabricProd/piece) 0-99
pieceChain	identification data and measurements of a chain of pieces still to be cut (XPath TEXDyFinOrder/TFCObody/TFCOitem/fabricProd/pieceChain) 0-99
pieceCut	identification data and measurements of a fabric piece belonging to a chain still to be cut (XPath TEXDyFinOrder/TFCObody/TFCOitem/fabricProd/pieceChain/pieceCut) 0-99 - note: <i>here the data of the pieces making up the chain should be specified</i>
piecePack	type of wrapping or packing of the fabric pieces (XPath TEXDyFinOrder/TFCObody/TFCOitem/fabricProd/piece/piecePack) 0-1 (XPath TEXDyFinOrder/TFCObody/TFCOitem/fabricProd/pieceChain/piecePack) 0-1
refDoc	identification of a document and of an item thereof, to which the message makes reference (XPath TEXDyFinOrder/TFCOheader/refDoc) 0-9 (XPath TEXDyFinOrder/TFCObody/TFCOitem/fabMnfrOperation/refDoc) 0-9 - note: <i>here a Process Sheet transmitted to the Subcontractor can be referenced</i> (XPath TEXDyFinOrder/TFCObody/TFCOitem/fabricComponent/refDoc) 0-9 - note: <i>here the delivery documents can be specified</i>
subContractor	details of the Sub-contractor - base type: Nad, (XPath TEXDyFinOrder/TFCOheader/subContractor) 1-1
terms	details of the commercial obligations for payment and delivery (XPath TEXDyFinOrder/terms) 0-1
texCode	full codification of the textile product (XPath TEXDyFinOrder/TFCObody/TFCOitem/fabricComponent/texCode) 1-1

	(XPath TEXDyFinOrder/TFCObody/TFCOitem/fabricProd/texCode) 1-1
texMachineSpecs	technical specifications of a machine used in an operation of a work cycle for fabric (type and settings) (XPath TEXDyFinOrder/TFCObody/TFCOitem/fabMnfrOperation/texMachineSpecs) 0-9
TFCObody	body of the document TEXTILES DYEING-FINISHING ORDER (XPath TEXDyFinOrder/TFCObody) 1-1
TFCOheader	header of the document TEXTILE DYEING-FINISHING ORDER (XPath TEXDyFinOrder/TFCOheader) 1-1
TFCOitem	line item of the document TEXTILE DYEING-FINISHING ORDER (XPath TEXDyFinOrder/TFCObody/TFCOitem) 1-unbounded
thirdParty	identification and details of the Third Party, different from Sender and Receiver of the document - base type: Nad, (XPath TEXDyFinOrder/TFCOheader/thirdParty) 0-5 - note: <i>here the Party to whom the Subcontractor must send the semi-finished products for subsequent operations can be specified</i> (XPath TEXDyFinOrder/TFCObody/TFCOitem/thirdParty) 0-3 - note: <i>here the Party to whom the Subcontractor must send the semi-finished product for subsequent operations can be specified</i>
trade	general terms of trade for the specified supply (XPath TEXDyFinOrder/terms/trade) 0-1
tradeLocation	data relating to the place to which the trade conditions refer (indicate at least element location or address, city and country) - base type: Nad, (XPath TEXDyFinOrder/terms/trade/tradeLocation) 0-1 - note: <i>address of the place to which the INCOTERM applies</i>
transInfo	details of transport: mode, carrier and delivery place (XPath TEXDyFinOrder/terms/transInfo) 0-5

2.2.2 Simple elements (Basic Business Information Entities)

Simple elements are those elements whose content is characterized by a data type plus a domain of possible values. Simple elements are alphabetically ordered.

AC_amount	amount of an Allowance or Charge - base type: decimal, fraction digits: 2, (XPath TEXDyFinOrder/terms/allowanceCharge/AC_amount) 1-1
AC_category	coded specification of an Allowance or Charge - base type: string, cod. table: T41 http://www.ebiz.enea.it/moda-ml/repository/codelist/draft/gc_T41.xml (XPath TEXDyFinOrder/terms/allowanceCharge/AC_category) 1-1
AC_categoryText	free text description of an Allowance or Charge - base type: string, max length: 250, (XPath TEXDyFinOrder/terms/allowanceCharge/AC_categoryText) 1-1
AC_percent	amount of an Allowance or Charge as a percentage (always non negative value) - base type: decimal, max inclusive: 100, fraction digits: 2, (XPath TEXDyFinOrder/terms/allowanceCharge/AC_percent) 1-1
added	additional code of the product (complementing the formers) - base type: string, max length: 80, (XPath TEXDyFinOrder/TFCObody/TFCOitem/fabricComponent/texCode/added) 0-9 - note: <i>here an additional codification (see table T44) can be specified</i> (XPath TEXDyFinOrder/TFCObody/TFCOitem/fabricProd/texCode/added) 0-9 - note: <i>here an additional codification (see table T44) can be specified</i>
additionalIdentifier	additional identification code of a Party, for example customs registries or others - base type: string, max length: 15, (XPath TEXDyFinOrder/TFCOheader/buyer/additionalIdentifier) 0-9

	- note: identifiers for example for exports, such as MID (Manufacturer Identification Code), REX (identificatier in Registered Exporter system)
@addType	qualifier of the additional coding of a product - base type: string, cod. table: T44 http://www.ebiz.enea.it/moda-ml/repository/codelist/draft/gc_T44.xml (XPath TEXDyFinOrder/TFCObody/TFCOitem/fabricComponent/ texCode/added/@addType) [Optional] - nota: addType allows the clarification of the meaning of the added element content; it is strongly suggested to use it always. (XPath TEXDyFinOrder/TFCObody/TFCOitem/fabricProd/ texCode/added/@addType) [Optional] - nota: addType allows the clarification of the meaning of the added element content; it is strongly suggested to use it always.
@application	force or similar condition (e.g. no. of revolutions) applied in a test as specified within the standard - base type: string, max length: 15, (XPath TEXDyFinOrder/TFCObody/TFCOitem/fabMnfrOperation/ texMachineSpecs/specValue/@application) [Optional] (XPath TEXDyFinOrder/TFCObody/TFCOitem/fabricProd/ fabricSpecs/specValue/@application) [Optional]
art	article number of the product - base type: string, max length: 80, (XPath TEXDyFinOrder/TFCObody/TFCOitem/fabricComponent/ texCode/art) 1-1 - note: can be used either for the base-article (excluding pattern/colour) or for the SKU (XPath TEXDyFinOrder/TFCObody/TFCOitem/fabricProd/texCode/art) 1-1 - note: can be used either for the base-article (excluding pattern/colour) or for the SKU
binaryObject	a binary large object containing an attached document, Coding 'base64Binary' is recommended. - base type: base64Binary, (XPath TEXDyFinOrder/TFCObody/TFCOitem/fabMnfrOperation/ refDoc/attachment/binaryObject) 0-1 (XPath TEXDyFinOrder/TFCObody/TFCOitem/fabricComponent/ refDoc/attachment/binaryObject) 0-1 (XPath TEXDyFinOrder/TFCOheader/refDoc/attachment/binaryObject) 0-1
carrier	identification of the transport carrier - base type: string, max length: 40, (XPath TEXDyFinOrder/terms/transInfo/carrier) 0-1
@characterSet	the character set of the binary object (examples UTF-8, UTF-16, Windows-1252, ISO-8859-7,..) - base type: normalizedString, (XPath TEXDyFinOrder/TFCObody/TFCOitem/fabricComponent/ refDoc/attachment/binaryObject/@characterSet) [Optional] (XPath TEXDyFinOrder/TFCObody/TFCOitem/fabMnfrOperation/ refDoc/attachment/binaryObject/@characterSet) [Optional] (XPath TEXDyFinOrder/TFCOheader/refDoc/attachment/ binaryObject/@characterSet) [Optional]
characterSetCode	the character set of an external document (examples UTF-8, UTF-16, Windows-1252, ISO-8859-7,..) - base type: normalizedString, (XPath TEXDyFinOrder/TFCOheader/refDoc/attachment/ externalReference/characterSetCode) 0-1 (XPath TEXDyFinOrder/TFCObody/TFCOitem/fabMnfrOperation/ refDoc/attachment/externalReference/characterSetCode) 0-1 (XPath TEXDyFinOrder/TFCObody/TFCOitem/fabricComponent/ refDoc/attachment/externalReference/characterSetCode) 0-1
city	name of the city (town, village) - base type: string, max length: 40, (XPath TEXDyFinOrder/TFCOheader/thirdParty/city) 0-1 (XPath TEXDyFinOrder/TFCOheader/subContractor/city) 0-1 (XPath TEXDyFinOrder/TFCObody/TFCOitem/thirdParty/city) 0-1 (XPath TEXDyFinOrder/terms/trade/tradeLocation/city) 0-1 (XPath TEXDyFinOrder/terms/transInfo/deliveryLocation/city) 0-1 (XPath TEXDyFinOrder/terms/transInfo/despatchLocation/city) 0-1

	(XPath TEXDyFinOrder/TFCOheader/buyer/city) 0-1
@codeList	<p>it specifies the URL where the list of codes used to make an instance of the element can be found</p> <ul style="list-style-type: none"> - base type: string, max length: 255, (XPath TEXDyFinOrder/TFCObody/TFCOitem/fabricProd/ texCode/art/@codeList) [Optional] - nota: at least one out of this attribute and "numberingOrg" should be set (XPath TEXDyFinOrder/TFCObody/TFCOitem/fabMnfrOperation/ note/@codeList) [Optional] - nota: must be used to provide (URL) the list of codes used in "noteLabel" (XPath TEXDyFinOrder/TFCObody/TFCOitem/fabricComponent/ texCode/pattern/@codeList) [Optional] - nota: at least one out of this attribute and "numberingOrg" should be set (XPath TEXDyFinOrder/TFCObody/TFCOitem/fabMnfrOperation/ refDoc/season/@codeList) [Optional] - nota: this attribute should be used either single or coupled with "listName" and "listVersion" (XPath TEXDyFinOrder/TFCObody/TFCOitem/fabricProd/ texCode/pattern/@codeList) [Optional] - nota: at least one out of this attribute and "numberingOrg" should be set (XPath TEXDyFinOrder/terms/allowanceCharge/dtScheme/ legalRef/@codeList) [Optional] (XPath TEXDyFinOrder/TFCObody/TFCOitem/fabricProd/ texCode/color/@codeList) [Optional] - nota: this attribute should be used either single or coupled with "listName" and "listVersion" (XPath TEXDyFinOrder/TFCOheader/season/@codeList) [Optional] - nota: this attribute should be used either single or coupled with "listName" and "listVersion" (XPath TEXDyFinOrder/TFCObody/TFCOitem/fabricComponent/ refDoc/season/@codeList) [Optional] - nota: this attribute should be used either single or coupled with "listName" and "listVersion" (XPath TEXDyFinOrder/TFCObody/TFCOitem/fabricComponent/ texCode/color/@codeList) [Optional] - nota: this attribute should be used either single or coupled with "listName" and "listVersion" (XPath TEXDyFinOrder/TFCOheader/refDoc/season/@codeList) [Optional] - nota: this attribute should be used either single or coupled with "listName" and "listVersion" (XPath TEXDyFinOrder/TFCObody/TFCOitem/dtScheme/note/@codeList) [Optional] - nota: must be used to provide (URL) the list of codes used in "noteLabel" (XPath TEXDyFinOrder/TFCOheader/note/@codeList) [Optional] - nota: must be used to provide (URL) the list of codes used in "noteLabel" (XPath TEXDyFinOrder/TFCObody/TFCOitem/fabricComponent/ note/@codeList) [Optional] - nota: must be used to provide (URL) the list of codes used in "noteLabel" (XPath TEXDyFinOrder/terms/allowanceCharge/dtScheme/note/@codeList) [Optional] - nota: must be used to provide (URL) the list of codes used in "noteLabel" (XPath TEXDyFinOrder/TFCObody/TFCOitem/fabricComponent/ itemsList/qualityLevel/@codeList) [Optional] - nota: at least one out of this attribute and "numberingOrg" should be set (XPath TEXDyFinOrder/TFCObody/TFCOitem/dtScheme/legalRef/@codeList) [Optional] (XPath TEXDyFinOrder/TFCObody/TFCOitem/fabricComponent/ texCode/art/@codeList) [Optional] - nota: at least one out of this attribute and "numberingOrg" should be set (XPath TEXDyFinOrder/TFCObody/TFCOitem/fabricProd/note/@codeList) [Optional] - nota: must be used to provide (URL) the list of codes used in "noteLabel"
color	<p>colour number of the product, when not included in the model or fabric code</p> <ul style="list-style-type: none"> - base type: string, max length: 15, (XPath TEXDyFinOrder/TFCObody/TFCOitem/fabricComponent/ texCode/color) 0-1 (XPath TEXDyFinOrder/TFCObody/TFCOitem/fabricProd/texCode/color) 0-1
country	<p>code of the nation</p> <ul style="list-style-type: none"> - base type: string, cod. table: T10 http://www.ebiz.enea.it/moda-ml/repository/codelist/draft/gc_T10.xml (XPath TEXDyFinOrder/TFCOheader/subContractor/country) 0-1 (XPath TEXDyFinOrder/TFCOheader/thirdParty/country) 0-1

	<p>(XPath TEXTDyFinOrder/terms/transInfo/despatchLocation/country) 0-1 (XPath TEXTDyFinOrder/TFCObody/TFCOitem/thirdParty/country) 0-1 (XPath TEXTDyFinOrder/terms/transInfo/deliveryLocation/country) 0-1 (XPath TEXTDyFinOrder/terms/trade/tradeLocation/country) 0-1 (XPath TEXTDyFinOrder/TFCOheader/buyer/country) 0-1</p>
@CTest	<p>indicates the need to execute a colour test before the operation - base type: string, cod. table: NT38 http://www.ebiz.enea.it/moda-ml/repository/codelist/draft/gc_NT38.xml (XPath TEXTDyFinOrder/TFCObody/TFCOitem/fabricProd/@CTest) [Optional]</p>
@currency	<p>currency in which a specified monetary data is expressed - base type: string, cod. table: T9 http://www.ebiz.enea.it/moda-ml/repository/codelist/draft/gc_T9.xml (XPath TEXTDyFinOrder/TFCObody/TFCOitem/price/@currency) [Optional] - nota: <i>Currency referred by the price.</i> (XPath TEXTDyFinOrder/terms/allowanceCharge/AC_amount/@currency) [Optional] (XPath TEXTDyFinOrder/terms/allowanceCharge/@currency) [Optional]</p>
@CV	<p>coefficient of variation (CV) of a measurement - base type: decimal, (XPath TEXTDyFinOrder/TFCObody/TFCOitem/fabMnfrOperation/ texMachineSpecs/specValue/@CV) [Optional] (XPath TEXTDyFinOrder/TFCObody/TFCOitem/fabricProd/ fabricSpecs/specValue/@CV) [Optional]</p>
@dateForm	<p>format used for the date - base type: string, cod. table: NT29 http://www.ebiz.enea.it/moda-ml/repository/codelist/draft/gc_NT29.xml (XPath TEXTDyFinOrder/TFCOheader/refDoc/docDate/@dateForm) [Optional] (XPath TEXTDyFinOrder/terms/transInfo/delEffectiveDate/@dateForm) [Optional] (XPath TEXTDyFinOrder/TFCObody/TFCOitem/fabMnfrOperation/ refDoc/docDate/@dateForm) [Optional] (XPath TEXTDyFinOrder/TFCObody/TFCOitem/deliveryDate/@dateForm) [Optional] (XPath TEXTDyFinOrder/TFCObody/TFCOitem/fabricComponent/ refDoc/docDate/@dateForm) [Optional] (XPath TEXTDyFinOrder/TFCOheader/msgDate/@dateForm) [Optional] (XPath TEXTDyFinOrder/terms/transInfo/despatchDate/@dateForm) [Optional]</p>
delEffectiveDate	<p>actual delivery date (estimated or occurred in case of receipt docs), it might be different from what agreed between the parties. Format according to one of the patterns indicated by the dateForm attribute: YYYY-MM-DD, YYYY-MM-DD:HH-MM or YYYY-WW. - base type: string, (XPath TEXTDyFinOrder/terms/transInfo/delEffectiveDate) 0-1</p>
deliveryDate	<p>date of delivery of goods, requested or promised in the purchase process, according to one of the patterns YYYY-MM-DD, YYYY-MM-DD:HH-MM or YYYY-WW. - base type: string, (XPath TEXTDyFinOrder/TFCObody/TFCOitem/deliveryDate) 0-1</p>
deliveryPlace	<p>place of delivery of goods, ultimate or related to a given leg - base type: string, max length: 250, (XPath TEXTDyFinOrder/terms/transInfo/deliveryPlace) 0-1 - note: <i>use to represent addresses with a unique text string</i></p>
dept	<p>name or code of a department - base type: string, max length: 40, (XPath TEXTDyFinOrder/terms/transInfo/despatchLocation/dept) 0-1 (XPath TEXTDyFinOrder/terms/transInfo/deliveryLocation/dept) 0-1 (XPath TEXTDyFinOrder/terms/trade/tradeLocation/dept) 0-1 (XPath TEXTDyFinOrder/TFCOheader/thirdParty/dept) 0-1 (XPath TEXTDyFinOrder/TFCObody/TFCOitem/thirdParty/dept) 0-1 (XPath TEXTDyFinOrder/TFCOheader/buyer/dept) 0-1 (XPath TEXTDyFinOrder/TFCOheader/subContractor/dept) 0-1</p>
description	<p>free text description. The content of the element must be unique, it might be translated and repeated into more languages (thus no more than one instance for each language). - base type: string, max length: 250, (XPath TEXTDyFinOrder/TFCObody/TFCOitem/fabricProd/texCode/description) 0-unbounded - note: <i>Product description</i> (XPath TEXTDyFinOrder/TFCObody/TFCOitem/fabricComponent/ texCode/description) 0-unbounded</p>

	- note: <i>Product description</i>
despatchDate	date of despatch of goods, requested or promised in the purchase process, according to one of the patterns YYYY-MM-DD, YYYY-MM-DD:HH-MM or YYYY-WW. - base type: string, (XPath TEXTDyFinOrder/terms/transInfo/despatchDate) 0-1
despatchPlace	place of despatch of goods, origin or related to a given leg - base type: string, max length: 250, (XPath TEXTDyFinOrder/terms/transInfo/despatchPlace) 0-1 - note: <i>use to represent addresses with a unique text string</i>
docDate	date of issue of the referenced document, according to one of the patterns YYYY-MM-DD, YYYY-MM-DD:HH-MM or YYYY-WW. - base type: string, (XPath TEXTDyFinOrder/TFCOheader/refDoc/docDate) 0-1 (XPath TEXTDyFinOrder/TFCObody/TFCOitem/fabMnfrOperation/refDoc/docDate) 0-1 (XPath TEXTDyFinOrder/TFCObody/TFCOitem/fabricComponent/refDoc/docDate) 0-1
docID	identification number of the referenced document - base type: string, max length: 80, (XPath TEXTDyFinOrder/TFCOheader/docID) 0-1 - note: <i>Its use in HEADER elements is discouraged (use msgID)</i> (XPath TEXTDyFinOrder/TFCObody/TFCOitem/fabMnfrOperation/refDoc/docID) 1-2 Best Practice (XPath TEXTDyFinOrder/TFCObody/TFCOitem/fabricComponent/refDoc/docID) 1-2 Best Practice (XPath TEXTDyFinOrder/TFCOheader/refDoc/docID) 1-2 Best Practice
@docType	type or class to which the referenced document belongs - base type: string, cod. table: T21 http://www.ebiz.enea.it/moda-ml/repository/codelist/draft/gc_T21.xml (XPath TEXTDyFinOrder/TFCObody/TFCOitem/fabricComponent/refDoc/@docType) [Required] (XPath TEXTDyFinOrder/TFCOheader/refDoc/@docType) [Required] (XPath TEXTDyFinOrder/TFCObody/TFCOitem/fabMnfrOperation/refDoc/@docType) [Required]
dyeN	number of the dying batch of a textile product - base type: string, max length: 15, (XPath TEXTDyFinOrder/TFCObody/TFCOitem/fabricProd/piece/dyeN) 0-1 (XPath TEXTDyFinOrder/TFCObody/TFCOitem/fabricProd/pieceChain/dyeN) 0-1
@email	electronic mail address of the contact person within a Party - base type: string, max length: 250, (XPath TEXTDyFinOrder/terms/transInfo/deliveryLocation/person/@email) [Optional] (XPath TEXTDyFinOrder/TFCOheader/buyer/person/@email) [Optional] (XPath TEXTDyFinOrder/TFCOheader/thirdParty/person/@email) [Optional] (XPath TEXTDyFinOrder/TFCOheader/subContractor/person/@email) [Optional] (XPath TEXTDyFinOrder/TFCObody/TFCOitem/thirdParty/person/@email) [Optional] (XPath TEXTDyFinOrder/terms/trade/tradeLocation/person/@email) [Optional] (XPath TEXTDyFinOrder/terms/transInfo/despatchLocation/person/@email) [Optional]
@encoding	specifies the decoding algorithm of the binary object - base type: normalizedString, (XPath TEXTDyFinOrder/TFCOheader/refDoc/attachment/binaryObject/@encoding) [Optional] (XPath TEXTDyFinOrder/TFCObody/TFCOitem/fabMnfrOperation/refDoc/attachment/binaryObject/@encoding) [Optional] (XPath TEXTDyFinOrder/TFCObody/TFCOitem/fabricComponent/refDoc/attachment/binaryObject/@encoding) [Optional]
encodingCode	the encoding/decoding algorithm used with the external object (example is 'base64Binary') - base type: normalizedString, (XPath TEXTDyFinOrder/TFCObody/TFCOitem/fabMnfrOperation/refDoc/attachment/externalReference/encodingCode) 0-1 (XPath TEXTDyFinOrder/TFCObody/TFCOitem/fabricComponent/

	<p>refDoc/attachment/externalReference/encodingCode) 0-1 (XPath TEXTDyFinOrder/TFCOheader/refDoc/attachment/ externalReference/encodingCode) 0-1</p>
@endUse	<p>specifies the final use of the fabric - base type: string, cod. table: NT4 http://www.ebiz.enea.it/moda-ml/repository/codelist/draft/gc_NT4.xml (XPath TEXTDyFinOrder/TFCObody/TFCOitem/fabricProd/piece/@endUse) [Optional]</p>
EPC	<p>serial identifier used for tracing a physical item with RFID technology - base type: string, (XPath TEXTDyFinOrder/TFCObody/TFCOitem/fabricProd/piece/EPC) 0-1 - note: <i>the use of this element is DEPRECATED, use the appropriate elements (serial N)</i></p>
fabricChar	<p>code of the physical or mechanical parameter used to define a "technical characteristic of the fabric" (see Fabric technical sheet) - base type: string, cod. table: T13 http://www.ebiz.enea.it/moda-ml/repository/codelist/draft/gc_T13.xml (XPath TEXTDyFinOrder/TFCObody/TFCOitem/fabricProd/ fabricSpecs/fabricChar) 1-1</p>
fabricCharText	<p>free text describing the physical or mechanical parameter used to define a "technical characteristic of the fabric" - base type: string, max length: 80, (XPath TEXTDyFinOrder/TFCObody/TFCOitem/fabricProd/ fabricSpecs/fabricCharText) 1-1</p>
fabricWidth	<p>width of the fabric as technical specification - base type: decimal, min inclusive: 0, fraction digits: 2, (XPath TEXTDyFinOrder/TFCObody/TFCOitem/fabricProd/fabricWidth) 0-1</p>
@fax	<p>fax number of the contact person within a Party - base type: string, max length: 35, (XPath TEXTDyFinOrder/terms/transInfo/despatchLocation/ person/@fax) [Optional] (XPath TEXTDyFinOrder/TFCOheader/subContractor/person/@fax) [Optional] (XPath TEXTDyFinOrder/TFCOheader/thirdParty/person/@fax) [Optional] (XPath TEXTDyFinOrder/terms/transInfo/deliveryLocation/ person/@fax) [Optional] (XPath TEXTDyFinOrder/TFCObody/TFCOitem/thirdParty/person/@fax) [Optional] (XPath TEXTDyFinOrder/TFCOheader/buyer/person/@fax) [Optional] (XPath TEXTDyFinOrder/terms/trade/tradeLocation/person/@fax) [Optional]</p>
@fibre	<p>type of fibre used in a textile product - base type: string, cod. table: T19 http://www.ebiz.enea.it/moda-ml/repository/codelist/draft/gc_T19.xml (XPath TEXTDyFinOrder/TFCObody/TFCOitem/fabricProd/ fabricCompos/percCompos/@fibre) [Required]</p>
fileName	<p>unique identifier (name) of the file - base type: string, max length: 255, (XPath TEXTDyFinOrder/TFCOheader/refDoc/attachment/fileName) 0-1 (XPath TEXTDyFinOrder/TFCObody/TFCOitem/fabMnfrOperation/ refDoc/attachment/fileName) 0-1 (XPath TEXTDyFinOrder/TFCObody/TFCOitem/fabricComponent/ refDoc/attachment/fileName) 0-1</p>
@finDiscount	<p>financial discount rate applied for payment by the date specified - base type: decimal, min inclusive: 0, max inclusive: 100, fraction digits: 2, (XPath TEXTDyFinOrder/terms/payment/@finDiscount) [Optional]</p>
@finSurcharge	<p>financial surcharge rate applied for payment after the date specified - base type: decimal, min inclusive: 0, max inclusive: 100, fraction digits: 2, (XPath TEXTDyFinOrder/terms/payment/@finSurcharge) [Optional]</p>
@format	<p>the format of the binary content (examples xml, pdf, doc,...) - base type: string, (XPath TEXTDyFinOrder/TFCObody/TFCOitem/fabMnfrOperation/ refDoc/attachment/binaryObject/@format) [Optional] (XPath TEXTDyFinOrder/TFCOheader/refDoc/attachment/ binaryObject/@format) [Optional] (XPath TEXTDyFinOrder/TFCObody/TFCOitem/fabricComponent/ refDoc/attachment/binaryObject/@format) [Optional]</p>

	refDoc/attachment/binaryObject/@format) [Optional]
formatCode	<p>the format of the external object (examples xml, pdf, doc,...)</p> <p>- base type: normalizedString,</p> <p>(XPath TEXTDyFinOrder/TFCObody/TFCOitem/fabricComponent/refDoc/attachment/externalReference/formatCode) 0-1</p> <p>(XPath TEXTDyFinOrder/TFCOheader/refDoc/attachment/externalReference/formatCode) 0-1</p> <p>(XPath TEXTDyFinOrder/TFCObody/TFCOitem/fabMnfrOperation/refDoc/attachment/externalReference/formatCode) 0-1</p>
@geoRefSystem	<p>georeference system adopted for the coordinate (in example wgs84 with decimal degree or degree with minute and seconds)</p> <p>- base type: string,</p> <p>(XPath TEXTDyFinOrder/TFCOheader/subContractor/geoCoordinates/@geoRefSystem) [Optional]</p> <p>(XPath TEXTDyFinOrder/TFCObody/TFCOitem/thirdParty/geoCoordinates/@geoRefSystem) [Optional]</p> <p>(XPath TEXTDyFinOrder/terms/transInfo/despatchLocation/geoCoordinates/@geoRefSystem) [Optional]</p> <p>(XPath TEXTDyFinOrder/TFCOheader/thirdParty/geoCoordinates/@geoRefSystem) [Optional]</p> <p>(XPath TEXTDyFinOrder/TFCOheader/buyer/geoCoordinates/@geoRefSystem) [Optional]</p> <p>(XPath TEXTDyFinOrder/terms/trade/tradeLocation/geoCoordinates/@geoRefSystem) [Optional]</p> <p>(XPath TEXTDyFinOrder/terms/transInfo/deliveryLocation/geoCoordinates/@geoRefSystem) [Optional]</p>
grossWeight	<p>the gross weight, declared for transport or customs purpose</p> <p>- base type: decimal, min inclusive: 0, fraction digits: 2,</p> <p>(XPath TEXTDyFinOrder/TFCObody/TFCOitem/fabricProd/piece/grossWeight) 0-1</p> <p>- note: <i>gross Weight is related to the weight of the piece after packing.</i></p> <p>(XPath TEXTDyFinOrder/terms/transInfo/grossWeight) 0-1</p>
hashFootprint	<p>footprint obtained by applying an hashing algorithm</p> <p>- base type: string, max length: 80,</p> <p>(XPath TEXTDyFinOrder/TFCObody/TFCOitem/fabMnfrOperation/refDoc/attachment/hashFootprint) 0-1</p> <p>(XPath TEXTDyFinOrder/TFCObody/TFCOitem/fabricComponent/refDoc/attachment/hashFootprint) 0-1</p> <p>(XPath TEXTDyFinOrder/TFCOheader/refDoc/attachment/hashFootprint) 0-1</p>
@hashMethod	<p>type of used hashing algorithm</p> <p>- base type: string, max length: 80, cod. table: NT333</p> <p>http://www.ebiz.enea.it/moda-ml/repository/codelist/draft/gc_NT333.xml</p> <p>(XPath TEXTDyFinOrder/TFCOheader/refDoc/attachment/hashFootprint/@hashMethod) [Required]</p> <p>(XPath TEXTDyFinOrder/TFCObody/TFCOitem/fabricComponent/refDoc/attachment/hashFootprint/@hashMethod) [Required]</p> <p>(XPath TEXTDyFinOrder/TFCObody/TFCOitem/fabMnfrOperation/refDoc/attachment/hashFootprint/@hashMethod) [Required]</p>
id	<p>primary identification code of a Party; it is recommended to use an EORI number (with @numberingOrg= "EO") or the format: nation code (ISO 3166) + national tax code (i.e. VAT identification number) with @numberingOrg= "MF"</p> <p>- base type: string, max length: 15,</p> <p>(XPath TEXTDyFinOrder/TFCOheader/buyer/id) 1-1</p> <p>(XPath TEXTDyFinOrder/TFCOheader/thirdParty/id) 1-1</p> <p>(XPath TEXTDyFinOrder/TFCObody/TFCOitem/thirdParty/id) 1-1</p> <p>(XPath TEXTDyFinOrder/TFCOheader/subContractor/id) 1-1</p>
@idQualifier	<p>Qualification of the identifier.</p> <p>- base type: string,</p> <p>(XPath TEXTDyFinOrder/TFCObody/TFCOitem/fabricComponent/serialN/@idQualifier) [Optional]</p> <p>- nota: <i>this attribute should be used when the numberingOrg attribute is not enough to declare the type of serial identifier</i></p> <p>(XPath TEXTDyFinOrder/TFCObody/TFCOitem/fabricProd/pieceChain/serialN/@idQualifier) [Optional]</p> <p>- nota: <i>this attribute should be used when the numberingOrg attribute is not enough to declare the type of serial identifier</i></p> <p>(XPath</p>

	<p>TEXDyFinOrder/TFCOheader/buyer/additionalIdentifier/@idQualifier) [Optional]</p> <p>- nota: this attribute should be used when the numberingOrg attribute is not enough to declare the type of identifier (XPath TEXDyFinOrder/TFCObody/TFCOitem/fabricProd/piece/serialN/@idQualifier) [Optional]</p> <p>- nota: this attribute should be used when the numberingOrg attribute is not enough to declare the type of serial identifier (XPath TEXDyFinOrder/TFCObody/TFCOitem/fabricComponent/itemsList/itemIdentification/serialN/@idQualifier) [Optional]</p> <p>- nota: this attribute should be used when the numberingOrg attribute is not enough to declare the type of serial identifier (XPath TEXDyFinOrder/TFCObody/TFCOitem/fabricProd/pieceChain/pieceCut/serialN/@idQualifier) [Optional]</p> <p>- nota: this attribute should be used when the numberingOrg attribute is not enough to declare the type of serial identifier</p>
incoTerm	<p>specification of the terms of trade (INCOTERMS)</p> <p>- base type: string, cod. table: T3 http://www.ebiz.enea.it/moda-ml/repository/codelist/draft/gc_T3.xml (XPath TEXDyFinOrder/terms/trade/incoTerm) 1-1</p>
incoTermText	<p>free text specifying the terms of trade (incoterm, location)</p> <p>- base type: string, max length: 250, (XPath TEXDyFinOrder/terms/trade/incoTermText) 1-1</p>
@isCharge	<p>Indicates if the element to which it refers is a charge (true = charge, false = allowance)</p> <p>- base type: boolean, (XPath TEXDyFinOrder/terms/allowanceCharge/@isCharge) [Optional]</p>
@isURL	<p>it indicates if the referred element is an URL (true) or not (false)</p> <p>- base type: boolean, (XPath TEXDyFinOrder/TFCObody/TFCOitem/fabMnfrOperation/refDoc/attachment/externalReference/uri/@isURL) [Optional] [Default= true]</p> <p>- nota: usage of URLs is recommended (XPath TEXDyFinOrder/TFCObody/TFCOitem/fabricComponent/refDoc/attachment/externalReference/uri/@isURL) [Optional] [Default= true]</p> <p>- nota: usage of URLs is recommended (XPath TEXDyFinOrder/TFCObody/TFCOitem/fabricComponent/refDoc/attachment/blockChainReference/uri/@isURL) [Optional] [Default= true]</p> <p>- nota: usage of URLs is recommended (XPath TEXDyFinOrder/TFCObody/TFCOitem/fabMnfrOperation/refDoc/attachment/blockChainReference/uri/@isURL) [Optional] [Default= true]</p> <p>- nota: usage of URLs is recommended (XPath TEXDyFinOrder/TFCOheader/refDoc/attachment/externalReference/uri/@isURL) [Optional] [Default= true]</p> <p>- nota: usage of URLs is recommended (XPath TEXDyFinOrder/TFCOheader/refDoc/attachment/blockChainReference/uri/@isURL) [Optional] [Default= true]</p> <p>- nota: usage of URLs is recommended</p>
itemID	<p>number of the line/item of the referenced document</p> <p>- base type: string, max length: 40, (XPath TEXDyFinOrder/TFCObody/TFCOitem/fabricComponent/refDoc/itemID) 0-1 (XPath TEXDyFinOrder/TFCOheader/refDoc/itemID) 0-1 (XPath TEXDyFinOrder/TFCObody/TFCOitem/fabMnfrOperation/refDoc/itemID) 0-1</p>
jobName	<p>description of the elementary job</p> <p>- base type: string, max length: 40, (XPath TEXDyFinOrder/TFCObody/TFCOitem/fabMnfrOperation/jobName) 1-1</p>
legalName	<p>legal name</p> <p>- base type: string, max length: 250, (XPath TEXDyFinOrder/terms/trade/tradeLocation/legalName) 0-1 (XPath TEXDyFinOrder/terms/transInfo/despatchLocation/legalName) 0-1 (XPath TEXDyFinOrder/TFCOheader/thirdParty/legalName) 0-1 (XPath TEXDyFinOrder/TFCObody/TFCOitem/thirdParty/legalName) 0-1 (XPath TEXDyFinOrder/TFCOheader/buyer/legalName) 0-1 (XPath TEXDyFinOrder/TFCOheader/subContractor/legalName) 0-1 (XPath TEXDyFinOrder/terms/transInfo/deliveryLocation/legalName) 0-1</p>

legalRef	<p>legal reference of the duty or tax or fee category</p> <ul style="list-style-type: none"> - base type: string, (XPath TEXTDyFinOrder/TFCObody/TFCOitem/dtScheme/legalRef) 0-1 (XPath TEXTDyFinOrder/terms/allowanceCharge/dtScheme/legalRef) 0-1
lineN	<p>number of the line item of the present message (xml document); it is set by the role that produces the document. Usually it is a progressive number, but not always.</p> <ul style="list-style-type: none"> - base type: positiveInteger, min inclusive: 1, max inclusive: 9999, (XPath TEXTDyFinOrder/TFCObody/TFCOitem/lineN) 1-1
@listName	<p>the name of the list of codes used to make an instance of the element (it might be thought as descriptive element, i.e. 'fabric printing technologies', or not, i.e. "T264")</p> <ul style="list-style-type: none"> - base type: string, max length: 40, (XPath TEXTDyFinOrder/TFCObody/TFCOitem/fabricComponent/itemsList/qualityLevel/@listName) [Optional] - nota: <i>this attribute should always be used coupled with "numberingOrg"</i> (XPath TEXTDyFinOrder/TFCObody/TFCOitem/fabricComponent/texCode/art/@listName) [Optional] - nota: <i>this attribute should always be used coupled with "numberingOrg"</i> (XPath TEXTDyFinOrder/TFCObody/TFCOitem/fabricComponent/refDoc/season/@listName) [Optional] - nota: <i>this attribute should always be used coupled with "numberingOrg"</i> (XPath TEXTDyFinOrder/TFCObody/TFCOitem/fabMnfrOperation/refDoc/season/@listName) [Optional] - nota: <i>this attribute should always be used coupled with "numberingOrg"</i> (XPath TEXTDyFinOrder/TFCObody/TFCOitem/fabricComponent/texCode/pattern/@listName) [Optional] - nota: <i>this attribute should always be used coupled with "numberingOrg"</i> (XPath TEXTDyFinOrder/terms/allowanceCharge/dtScheme/legalRef/@listName) [Optional] - nota: <i>this attribute should always be used coupled with "numberingOrg"</i> (XPath TEXTDyFinOrder/TFCObody/TFCOitem/dtScheme/legalRef/@listName) [Optional] - nota: <i>this attribute should always be used coupled with "numberingOrg"</i> (XPath TEXTDyFinOrder/TFCOheader/refDoc/season/@listName) [Optional] - nota: <i>this attribute should always be used coupled with "numberingOrg"</i> (XPath TEXTDyFinOrder/TFCObody/TFCOitem/fabricProd/texCode/art/@listName) [Optional] - nota: <i>this attribute should always be used coupled with "numberingOrg"</i> (XPath TEXTDyFinOrder/TFCObody/TFCOitem/fabricProd/texCode/color/@listName) [Optional] - nota: <i>this attribute should always be used coupled with "numberingOrg"</i> (XPath TEXTDyFinOrder/TFCOheader/season/@listName) [Optional] - nota: <i>this attribute should always be used coupled with "numberingOrg"</i> (XPath TEXTDyFinOrder/TFCObody/TFCOitem/fabricProd/texCode/pattern/@listName) [Optional] - nota: <i>this attribute should always be used coupled with "numberingOrg"</i> (XPath TEXTDyFinOrder/TFCObody/TFCOitem/fabricComponent/texCode/color/@listName) [Optional] - nota: <i>this attribute should always be used coupled with "numberingOrg"</i>
@listVersion	<p>it specifies the version of the list of codes used to make an instance of the element</p> <ul style="list-style-type: none"> - base type: string, max length: 6, (XPath TEXTDyFinOrder/TFCObody/TFCOitem/fabricProd/texCode/art/@listVersion) [Optional] - nota: <i>this attribute should always be used coupled with "numberingOrg" and "listName"</i> (XPath TEXTDyFinOrder/TFCOheader/refDoc/season/@listVersion) [Optional] - nota: <i>this attribute should always be used coupled with "numberingOrg" and "listName"</i> (XPath TEXTDyFinOrder/TFCObody/TFCOitem/fabricComponent/itemsList/qualityLevel/@listVersion) [Optional] - nota: <i>this attribute should always be used coupled with "numberingOrg" and "listName"</i> (XPath TEXTDyFinOrder/TFCObody/TFCOitem/fabricProd/texCode/pattern/@listVersion) [Optional] - nota: <i>this attribute should always be used coupled with "numberingOrg" and "listName"</i> (XPath TEXTDyFinOrder/TFCObody/TFCOitem/fabricComponent/refDoc/season/@listVersion) [Optional] - nota: <i>this attribute should always be used coupled with "numberingOrg" and "listName"</i>

	<p>(XPath TEXDyFinOrder/TFCObody/TFCOitem/fabricComponent/texCode/color/@listVersion) [Optional]</p> <p>- nota: <i>this attribute should always be used coupled with "numberingOrg" and "listName"</i></p> <p>(XPath TEXDyFinOrder/TFCObody/TFCOitem/fabricComponent/texCode/pattern/@listVersion) [Optional]</p> <p>- nota: <i>this attribute should always be used coupled with "numberingOrg" and "listName"</i></p> <p>(XPath TEXDyFinOrder/TFCObody/TFCOitem/fabricProd/texCode/color/@listVersion) [Optional]</p> <p>- nota: <i>this attribute should always be used coupled with "numberingOrg" and "listName"</i></p> <p>(XPath TEXDyFinOrder/TFCObody/TFCOitem/dtScheme/legalRef/@listVersion) [Optional]</p> <p>- nota: <i>this attribute should always be used coupled with "numberingOrg" and "listName"</i></p> <p>(XPath TEXDyFinOrder/TFCOheader/season/@listVersion) [Optional]</p> <p>- nota: <i>this attribute should always be used coupled with "numberingOrg" and "listName"</i></p> <p>(XPath TEXDyFinOrder/terms/allowanceCharge/dtScheme/legalRef/@listVersion) [Optional]</p> <p>- nota: <i>this attribute should always be used coupled with "numberingOrg" and "listName"</i></p> <p>(XPath TEXDyFinOrder/TFCObody/TFCOitem/fabMnfrOperation/refDoc/season/@listVersion) [Optional]</p> <p>- nota: <i>this attribute should always be used coupled with "numberingOrg" and "listName"</i></p> <p>(XPath TEXDyFinOrder/TFCObody/TFCOitem/fabricComponent/texCode/art/@listVersion) [Optional]</p> <p>- nota: <i>this attribute should always be used coupled with "numberingOrg" and "listName"</i></p>
@ln	<p>Language code.</p> <p>- base type: string, cod. table: NT60</p> <p>http://www.ebiz.enea.it/moda-ml/repository/codelist/draft/gc_NT60.xml</p> <p>(XPath TEXDyFinOrder/TFCObody/TFCOitem/fabricProd/texCode/description/@ln) [Optional]</p> <p>(XPath TEXDyFinOrder/TFCObody/TFCOitem/fabricComponent/texCode/description/@ln) [Optional]</p>
location	<p>specification of a location. It can be represented by an identification code (preferable) or a short text (not recommended). For example a GLN code that requires to assign the value "GLN" to the attribute @LRI.</p> <p>- base type: string, max length: 128,</p> <p>(XPath TEXDyFinOrder/terms/trade/location) 0-1</p> <p>- note: <i>code number of the place to which the INCOTERM applies</i></p> <p>(XPath TEXDyFinOrder/terms/transInfo/deliveryLocation/location) 0-1</p> <p>- note: <i>Use this element only to indicate an identification code of this place.</i></p> <p>(XPath TEXDyFinOrder/TFCObody/TFCOitem/fabricComponent/location) 0-1</p> <p>- note: <i>it may be used to specify the location where lie the pieces that the Subcontract or must use for the commissioned work operation</i></p> <p>(XPath TEXDyFinOrder/terms/trade/tradeLocation/location) 0-1</p> <p>- note: <i>Use this element to specify a numeric ID of the location, for example a GLN code (in this case @SchemeID='LRI='GLN')</i></p> <p>(XPath TEXDyFinOrder/terms/transInfo/despatchLocation/location) 0-1</p> <p>- note: <i>Use this element to specify a numeric ID of the location, for example a GLN code (in this case @SchemeID='GS1 GLN')</i></p>
@logo	<p>company logo (URL of the image jpeg or gif). It is recommended that the width of the image does not exceed 640 pixel.</p> <p>- base type: string, max length: 255,</p> <p>(XPath TEXDyFinOrder/TFCOheader/buyer/@logo) [Optional]</p>
lotN	<p>lot number of a product or batch number of the raw material</p> <p>- base type: string, max length: 15,</p> <p>(XPath TEXDyFinOrder/TFCObody/TFCOitem/fabricProd/piece/lotN) 0-2</p> <p>- note: <i>The lotN instances must differ by value of the numberingOrg attribute</i></p> <p>(XPath TEXDyFinOrder/TFCObody/TFCOitem/fabricProd/pieceChain/lotN) 0-1</p>
@LRI	<p>issuer of the identifier (or identification system) of a location.</p> <p>- base type: string, cod. table: NT3</p>

	http://www.ebiz.enea.it/moda-ml/repository/codelist/draft/gc_NT3.xml (XPath TEXDyFinOrder/terms/transInfo/despatchLocation/location/@LRI) [Optional] (XPath TEXDyFinOrder/terms/trade/tradeLocation/location/@LRI) [Optional] (XPath TEXDyFinOrder/terms/transInfo/deliveryLocation/location/@LRI) [Optional] (XPath TEXDyFinOrder/terms/trade/location/@LRI) [Optional] (XPath TEXDyFinOrder/TFCObody/TFCOitem/fabricComponent/location/@LRI) [Optional]
@materialSource	Indicates whether the material is virgin or comes from recycling or reuse processes - base type: string, cod. table: T306 http://www.ebiz.enea.it/moda-ml/repository/codelist/draft/gc_T306.xml (XPath TEXDyFinOrder/TFCObody/TFCOitem/fabricProd/fabricCompos/percCompos/@materialSource) [Optional]
@maxQty	maximum product quantity - base type: decimal, min inclusive: 0, fraction digits: 2, (XPath TEXDyFinOrder/terms/allowanceCharge/@maxQty) [Optional] - nota: <i>maximum quantity of product for the application of this allowance or charge</i>
@method	standard protocol or method employed in a test to evaluate a characteristic or a parameter - base type: string, max length: 80, (XPath TEXDyFinOrder/TFCObody/TFCOitem/fabricProd/fabricSpecs/specValue/@method) [Optional] (XPath TEXDyFinOrder/TFCObody/TFCOitem/fabMnfrOperation/texMachineSpecs/specValue/@method) [Optional]
@mime	the mime type of the binary object - base type: normalizedString, (XPath TEXDyFinOrder/TFCObody/TFCOitem/fabMnfrOperation/refDoc/attachment/binaryObject/@mime) [Optional] (XPath TEXDyFinOrder/TFCOheader/refDoc/attachment/binaryObject/@mime) [Optional] (XPath TEXDyFinOrder/TFCObody/TFCOitem/fabricComponent/refDoc/attachment/binaryObject/@mime) [Optional]
mimeCode	mime type of the external object - base type: normalizedString, (XPath TEXDyFinOrder/TFCOheader/refDoc/attachment/externalReference/mimeCode) 0-1 Best Practice (XPath TEXDyFinOrder/TFCObody/TFCOitem/fabricComponent/refDoc/attachment/externalReference/mimeCode) 0-1 Best Practice (XPath TEXDyFinOrder/TFCObody/TFCOitem/fabMnfrOperation/refDoc/attachment/externalReference/mimeCode) 0-1 Best Practice
@minQty	minimum product quantity - base type: decimal, min inclusive: 0, fraction digits: 2, (XPath TEXDyFinOrder/terms/allowanceCharge/@minQty) [Optional] - nota: <i>minimum quantity of product for the application of this allowance or charge</i>
mixMatch	colour hue used for the match of garments - base type: string, max length: 15, (XPath TEXDyFinOrder/TFCObody/TFCOitem/fabricProd/piece/mixMatch) 0-1
msgCurrency	currency used to express the monetary amounts of the message - base type: string, cod. table: T9 http://www.ebiz.enea.it/moda-ml/repository/codelist/draft/gc_T9.xml (XPath TEXDyFinOrder/TFCOheader/msgCurrency) 0-1
msgDate	date of issue of the present message (xml document), according to one of the patterns YYYY-MM-DD, YYYY-MM-DD:HH-MM or YYYY-WW. - base type: string, (XPath TEXDyFinOrder/TFCOheader/msgDate) 1-1
@msgfunction	function performed by the present message with regards to the transmission - base type: string, cod. table: NT18 http://www.ebiz.enea.it/moda-ml/repository/codelist/draft/gc_NT18.xml (XPath TEXDyFinOrder/@msgfunction) [Optional] [Default= OR]
msgID	key identifier of the business document in the information system of the issuing Party. In case of more despatches of the same business document, it is unchanged.

	<p>- base type: string, max length: 35, (XPath TEXTDyFinOrder/TFCOheader/msgID) 0-1</p>
msgN	<p>identification number given to the message (xml document) by its issuer. In case of more despatches of the same business document, it changes.</p> <p>- base type: string, max length: 35, (XPath TEXTDyFinOrder/TFCOheader/msgN) 1-1</p>
netWeight	<p>the net weight declared for transport or customs purpose</p> <p>- base type: decimal, min inclusive: 0, fraction digits: 2, (XPath TEXTDyFinOrder/terms/transInfo/netWeight) 0-1</p>
note	<p>free text or structured (computer processing) note. For note structuring use the attributes "noteLabel" and "codelist"</p> <p>- base type: string, max length: 350, (XPath TEXTDyFinOrder/terms/allowanceCharge/dtScheme/note) 0-99 (XPath TEXTDyFinOrder/TFCObody/TFCOitem/fabricComponent/note) 0-99 (XPath TEXTDyFinOrder/TFCObody/TFCOitem/dtScheme/note) 0-99 (XPath TEXTDyFinOrder/TFCObody/TFCOitem/fabricProd/note) 0-99 (XPath TEXTDyFinOrder/TFCOheader/note) 0-99 (XPath TEXTDyFinOrder/TFCObody/TFCOitem/fabMnfrOperation/note) 0-99</p>
@noteLabel	<p>subject qualifier of a note</p> <p>- base type: string, max length: 35, (XPath TEXTDyFinOrder/TFCObody/TFCOitem/fabMnfrOperation/note/@noteLabel) [Optional]</p> <p>- nota: <i>must be used to qualify the subject of the note</i> (XPath TEXTDyFinOrder/TFCObody/TFCOitem/fabricProd/note/@noteLabel) [Optional]</p> <p>- nota: <i>must be used to qualify the subject of the note</i> (XPath TEXTDyFinOrder/TFCObody/TFCOitem/dtScheme/note/@noteLabel) [Optional]</p> <p>- nota: <i>must be used to qualify the subject of the note</i> (XPath TEXTDyFinOrder/TFCObody/TFCOitem/fabricComponent/note/@noteLabel) [Optional]</p> <p>- nota: <i>must be used to qualify the subject of the note</i> (XPath TEXTDyFinOrder/terms/allowanceCharge/dtScheme/note/@noteLabel) [Optional]</p> <p>- nota: <i>must be used to qualify the subject of the note</i> (XPath TEXTDyFinOrder/TFCOheader/note/@noteLabel) [Optional]</p> <p>- nota: <i>must be used to qualify the subject of the note</i></p>
@numberingOrg	<p>code specifying the organisation who has created or owns the coding or numbering system</p> <p>- base type: string, cod. table: NT6 http://www.ebiz.enea.it/moda-ml/repository/codelist/draft/gc_NT6.xml (XPath TEXTDyFinOrder/TFCObody/TFCOitem/fabricComponent/serialN/@numberingOrg) [Optional]</p> <p>- nota: <i>here the issuer of the serial number must be specified (when different from the Supplier)</i> (XPath TEXTDyFinOrder/TFCObody/TFCOitem/fabricProd/piece/EPC/@numberingOrg) [Optional] (XPath TEXTDyFinOrder/TFCObody/TFCOitem/fabricComponent/texCode/added/@numberingOrg) [Optional]</p> <p>- nota: <i>this attribute should be used either single or coupled with "listName" and "listVersion"</i> (XPath TEXTDyFinOrder/TFCObody/TFCOitem/fabricComponent/itemsList/qualityLevel/@numberingOrg) [Optional]</p> <p>- nota: <i>this attribute should be used either single or coupled with "listName" and "listVersion"</i> (XPath TEXTDyFinOrder/TFCObody/TFCOitem/fabricProd/piece/lotN/@numberingOrg) [Optional] (XPath TEXTDyFinOrder/TFCObody/TFCOitem/dtScheme/legalRef/@numberingOrg) [Optional]</p> <p>- nota: <i>this attribute should be used either single or coupled with "listName" and "listVersion"</i> (XPath TEXTDyFinOrder/TFCObody/TFCOitem/fabricProd/piece/serialN/@numberingOrg) [Optional]</p> <p>- nota: <i>here the issuer of the serial number must be specified (when different from the Supplier)</i> (XPath TEXTDyFinOrder/TFCObody/TFCOitem/fabricComponent/texCode/art/@numberingOrg) [Optional]</p> <p>- nota: <i>this attribute should be used either single or coupled with "listName" and "listVersion"</i> (XPath TEXTDyFinOrder/TFCObody/TFCOitem/dtScheme/note/@numberingOrg) [Optional]</p> <p>- nota: <i>must be used to specify the organization that created the list of codes used in "</i></p>

	<p><i>noteLabel"</i> (XPath TEXDyFinOrder/TFCObody/TFCOitem/fabricComponent/ texCode/color/@numberingOrg) [Optional] - nota: <i>this attribute should be used either single or coupled with "listName" and "listVersion"</i> (XPath TEXDyFinOrder/TFCObody/TFCOitem/fabricComponent/ texCode/@numberingOrg) [Optional] (XPath TEXDyFinOrder/TFCObody/TFCOitem/fabricComponent/ texCode/pattern/@numberingOrg) [Optional] - nota: <i>this attribute should be used either single or coupled with "listName" and "listVersion"</i> (XPath TEXDyFinOrder/TFCObody/TFCOitem/fabricComponent/ itemsList/itemIdentification/serialN/@numberingOrg) [Optional] - nota: <i>here the issuer of the serial number must be specified (when different from the Supplier)</i> (XPath TEXDyFinOrder/TFCObody/TFCOitem/fabricComponent/ note/@numberingOrg) [Optional] - nota: <i>must be used to specify the organization that created the list of codes used in "</i> <i>noteLabel"</i> (XPath TEXDyFinOrder/TFCObody/TFCOitem/thirdParty/id/@numberingOrg) [Optional] (XPath TEXDyFinOrder/TFCObody/TFCOitem/fabricProd/note/@numberingOrg) [Optional] - nota: <i>must be used to specify the organization that created the list of codes used in "</i> <i>noteLabel"</i> (XPath TEXDyFinOrder/TFCObody/TFCOitem/fabMnfrOperation/ refDoc/season/@numberingOrg) [Optional] - nota: <i>this attribute should be used either single or coupled with "listName" and "listVersion"</i> (XPath TEXDyFinOrder/TFCObody/TFCOitem/fabMnfrOperation/ refDoc/attachment/fileName/@numberingOrg) [Optional] (XPath TEXDyFinOrder/TFCObody/TFCOitem/fabMnfrOperation/ refDoc/docID/@numberingOrg) [Optional] - nota: <i>here can be specified whose document numbering is used (e.g.: Client, Supplier, ..)</i> (XPath TEXDyFinOrder/TFCObody/TFCOitem/fabricComponent/ refDoc/attachment/fileName/@numberingOrg) [Optional] (XPath TEXDyFinOrder/TFCObody/TFCOitem/fabricComponent/ refDoc/season/@numberingOrg) [Optional] - nota: <i>this attribute should be used either single or coupled with "listName" and "listVersion"</i> (XPath TEXDyFinOrder/TFCObody/TFCOitem/fabricProd/ piece/dyeN/@numberingOrg) [Optional] (XPath TEXDyFinOrder/TFCObody/TFCOitem/fabricComponent/ refDoc/docID/@numberingOrg) [Optional] - nota: <i>here can be specified whose document numbering is used (e.g.: Client, Supplier, ..)</i> (XPath TEXDyFinOrder/TFCObody/TFCOitem/fabMnfrOperation/ note/@numberingOrg) [Optional] - nota: <i>must be used to specify the organization that created the list of codes used in "</i> <i>noteLabel"</i> (XPath TEXDyFinOrder/TFCObody/TFCOitem/fabricProd/ piece/packageN/@numberingOrg) [Optional] (XPath TEXDyFinOrder/TFCObody/TFCOitem/fabricProd/ piece/mixMatch/@numberingOrg) [Optional] (XPath TEXDyFinOrder/TFCObody/TFCOitem/fabricProd/ pieceChain/serialN/@numberingOrg) [Optional] - nota: <i>here the issuer of the serial number must be specified (when different from the Supplier)</i> (XPath TEXDyFinOrder/TFCOheader/refDoc/attachment/ fileName/@numberingOrg) [Optional] (XPath TEXDyFinOrder/TFCObody/TFCOitem/fabricProd/ texCode/added/@numberingOrg) [Optional] - nota: <i>this attribute should be used either single or coupled with "listName" and "listVersion"</i> (XPath TEXDyFinOrder/TFCOheader/buyer/id/@numberingOrg) [Optional] (XPath TEXDyFinOrder/TFCObody/TFCOitem/fabricProd/ pieceChain/lotN/@numberingOrg) [Optional] (XPath TEXDyFinOrder/TFCOheader/refDoc/season/@numberingOrg) [Optional] - nota: <i>this attribute should be used either single or coupled with "listName" and "listVersion"</i> (XPath TEXDyFinOrder/TFCOheader/refDoc/docID/@numberingOrg) [Optional]</p>
--	---

	<p>- nota: here can be specified whose document numbering is used (e.g.: Client, Supplier, ..)</p> <p>(XPath TEXDyFinOrder/TFCObody/TFCOitem/fabricProd/pieceChain/dyeN/@numberingOrg) [Optional]</p> <p>(XPath TEXDyFinOrder/TFCObody/TFCOitem/fabricProd/pieceChain/packageN/@numberingOrg) [Optional]</p> <p>(XPath TEXDyFinOrder/TFCObody/TFCOitem/fabricProd/texCode/color/@numberingOrg) [Optional]</p> <p>- nota: this attribute should be used either single or coupled with "listName" and "listVersion"</p> <p>(XPath TEXDyFinOrder/TFCOheader/subContractor/id/@numberingOrg) [Optional]</p> <p>(XPath TEXDyFinOrder/terms/allowanceCharge/dtScheme/legalRef/@numberingOrg) [Optional]</p> <p>- nota: this attribute should be used either single or coupled with "listName" and "listVersion"</p> <p>(XPath TEXDyFinOrder/TFCOheader/thirdParty/id/@numberingOrg) [Optional]</p> <p>(XPath TEXDyFinOrder/TFCOheader/note/@numberingOrg) [Optional]</p> <p>- nota: must be used to specify the organization that created the list of codes used in "noteLabel"</p> <p>(XPath TEXDyFinOrder/terms/allowanceCharge/dtScheme/note/@numberingOrg) [Optional]</p> <p>- nota: must be used to specify the organization that created the list of codes used in "noteLabel"</p> <p>(XPath TEXDyFinOrder/TFCObody/TFCOitem/fabricProd/texCode/art/@numberingOrg) [Optional]</p> <p>- nota: this attribute should be used either single or coupled with "listName" and "listVersion"</p> <p>(XPath TEXDyFinOrder/TFCObody/TFCOitem/fabricProd/texCode/pattern/@numberingOrg) [Optional]</p> <p>- nota: this attribute should be used either single or coupled with "listName" and "listVersion"</p> <p>(XPath TEXDyFinOrder/TFCOheader/buyer/additionalIdentifier/@numberingOrg) [Optional]</p> <p>- nota: here the issuer of the identifier must be specified</p> <p>(XPath TEXDyFinOrder/TFCObody/TFCOitem/fabricProd/texCode/@numberingOrg) [Optional]</p> <p>(XPath TEXDyFinOrder/TFCOheader/docID/@numberingOrg) [Optional]</p> <p>- nota: here can be specified whose document numbering is used (e.g.: Client, Supplier, ..)</p> <p>(XPath TEXDyFinOrder/TFCObody/TFCOitem/fabricProd/pieceChain/pieceCut/serialN/@numberingOrg) [Optional]</p> <p>- nota: here the issuer of the serial number must be specified (when different from the Supplier)</p> <p>(XPath TEXDyFinOrder/TFCOheader/season/@numberingOrg) [Optional]</p> <p>- nota: this attribute should be used either single or coupled with "listName" and "listVersion"</p>
@packageContainerN	<p>reference usable to indicate the outer package containing this package</p> <p>- base type: string, max length: 40,</p> <p>(XPath TEXDyFinOrder/TFCObody/TFCOitem/fabricProd/pieceChain/packageN/@packageContainerN) [Optional]</p> <p>(XPath TEXDyFinOrder/TFCObody/TFCOitem/fabricProd/piece/packageN/@packageContainerN) [Optional]</p>
packageN	<p>serial number used to identify a transport package</p> <p>- base type: string, max length: 40,</p> <p>(XPath TEXDyFinOrder/TFCObody/TFCOitem/fabricProd/pieceChain/packageN) 0-1</p> <p>(XPath TEXDyFinOrder/TFCObody/TFCOitem/fabricProd/piece/packageN) 0-1</p> <p>- note: here the transport package containing the piece can be identified</p>
@part	<p>percent fraction</p> <p>- base type: decimal, min inclusive: 1, max inclusive: 100, fraction digits: 2,</p> <p>(XPath TEXDyFinOrder/terms/insPayment/@part) [Required]</p> <p>- nota: here the % value of each installment must be indicated</p>
pattern	<p>pattern/design number of the product, when not included in the article code</p> <p>- base type: string, max length: 15,</p> <p>(XPath TEXDyFinOrder/TFCObody/TFCOitem/fabricComponent/texCode/pattern) 0-1</p> <p>(XPath TEXDyFinOrder/TFCObody/TFCOitem/fabricProd/texCode/pattern) 0-1</p>

payMode	way or means of payment - base type: string, cod. table: T2 http://www.ebiz.enea.it/moda-ml/repository/codelist/draft/gc_T2.xml (XPath TEXTDyFinOrder/terms/payment/payMode) 0-1 (XPath TEXTDyFinOrder/terms/insPayment/payMode) 0-1
payTerm	code specifying the terms or time by which the payment must be done - base type: string, cod. table: T1 http://www.ebiz.enea.it/moda-ml/repository/codelist/draft/gc_T1.xml (XPath TEXTDyFinOrder/terms/insPayment/payTerm) 1-1 (XPath TEXTDyFinOrder/terms/payment/payTerm) 1-1
payTermText	free text specifying the terms by which the payment must be done (time/mode or means) - base type: string, max length: 250, (XPath TEXTDyFinOrder/terms/insPayment/payTermText) 1-1 (XPath TEXTDyFinOrder/terms/payment/payTermText) 1-1
pcTolerance	percent deviation tolerated on the value of a measurement (it must have a plus or minus sign) - base type: decimal, min inclusive: 0, max inclusive: 100, total digits: 2, (XPath TEXTDyFinOrder/TFCObody/TFCOitem/fabMnfrOperation/ texMachineSpecs/pcTolerance) 0-2 (XPath TEXTDyFinOrder/TFCObody/TFCOitem/fabricProd/ fabricSpecs/pcTolerance) 0-2
percCompos	fiber percentage in the product composition - base type: decimal, min inclusive: 0, max inclusive: 100, fraction digits: 2, (XPath TEXTDyFinOrder/TFCObody/TFCOitem/fabricProd/ fabricCompos/percCompos) 1-9 - note: <i>fiber % in the product composition</i>
@percSourcesRenewable	indicates the percentage of renewable sources - base type: decimal, (XPath TEXTDyFinOrder/TFCObody/TFCOitem/fabricProd/ fabricCompos/percCompos/@percSourcesRenewable) [Optional] - nota: <i>use only for virgin material</i>
person	name of a person (e.g. contact person within an organization) - base type: string, max length: 40, (XPath TEXTDyFinOrder/terms/trade/tradeLocation/person) 0-1 (XPath TEXTDyFinOrder/TFCOheader/subContractor/person) 0-1 (XPath TEXTDyFinOrder/TFCOheader/thirdParty/person) 0-1 (XPath TEXTDyFinOrder/terms/transInfo/deliveryLocation/person) 0-1 (XPath TEXTDyFinOrder/TFCObody/TFCOitem/thirdParty/person) 0-1 (XPath TEXTDyFinOrder/terms/transInfo/despatchLocation/person) 0-1 (XPath TEXTDyFinOrder/TFCOheader/buyer/person) 0-1
@phone	phone number of the contact person within a Party - base type: string, max length: 35, (XPath TEXTDyFinOrder/TFCOheader/thirdParty/person/@phone) [Optional] (XPath TEXTDyFinOrder/terms/transInfo/despatchLocation/ person/@phone) [Optional] (XPath TEXTDyFinOrder/TFCObody/TFCOitem/thirdParty/person/@phone) [Optional] (XPath TEXTDyFinOrder/terms/transInfo/deliveryLocation/ person/@phone) [Optional] (XPath TEXTDyFinOrder/TFCOheader/buyer/person/@phone) [Optional] (XPath TEXTDyFinOrder/terms/trade/tradeLocation/person/@phone) [Optional] (XPath TEXTDyFinOrder/TFCOheader/subContractor/person/@phone) [Optional]
pieceAllow	allowance required or accorded for the piece - base type: decimal, fraction digits: 2, (XPath TEXTDyFinOrder/TFCObody/TFCOitem/fabricProd/piece/pieceAllow) 0-1
pieceCutWidth	effective usable width of the fabric piece (for garment manufacturing) - base type: decimal, min inclusive: 0, fraction digits: 2, (XPath TEXTDyFinOrder/TFCObody/TFCOitem/fabricProd/piece/pieceCutWidth) 0-1
pieceInnWrap1	code specifying the type of inner wrapping/packing used for the fabric piece - base type: string, cod. table: T4 http://www.ebiz.enea.it/moda-ml/repository/codelist/draft/gc_T4.xml (XPath TEXTDyFinOrder/TFCObody/TFCOitem/fabricProd/ piece/piecePack/pieceInnWrap1) 1-1

	(XPath TEXDyFinOrder/TFCObody/TFCOitem/fabricProd/pieceChain/piecePack/pieceInnWrap1) 1-1
pieceInnWrap2	code sub-specifying the type of inner wrapping/packing used for the fabric piece - base type: string, cod. table: T5 http://www.ebiz.enea.it/moda-ml/repository/codelist/draft/gc_T5.xml (XPath TEXDyFinOrder/TFCObody/TFCOitem/fabricProd/pieceChain/piecePack/pieceInnWrap2) 0-1 (XPath TEXDyFinOrder/TFCObody/TFCOitem/fabricProd/piece/piecePack/pieceInnWrap2) 0-1
pieceLength	length of the piece - base type: decimal, min inclusive: 0, fraction digits: 2, (XPath TEXDyFinOrder/TFCObody/TFCOitem/fabricProd/pieceChain/pieceLength) 0-1 (XPath TEXDyFinOrder/TFCObody/TFCOitem/fabricProd/pieceChain/pieceCut/pieceLength) 0-1 (XPath TEXDyFinOrder/TFCObody/TFCOitem/fabricProd/piece/pieceLength) 0-1
pieceOutWrap	code specifying the type of outer wrapping or packing used for the fabric piece - base type: string, cod. table: T6 http://www.ebiz.enea.it/moda-ml/repository/codelist/draft/gc_T6.xml (XPath TEXDyFinOrder/TFCObody/TFCOitem/fabricProd/pieceChain/piecePack/pieceOutWrap) 0-1 (XPath TEXDyFinOrder/TFCObody/TFCOitem/fabricProd/piece/piecePack/pieceOutWrap) 0-1
piecePackText	free text specifying the type of wrapping or packing used for the fabric piece - base type: string, max length: 250, (XPath TEXDyFinOrder/TFCObody/TFCOitem/fabricProd/pieceChain/piecePack/piecePackText) 1-1 (XPath TEXDyFinOrder/TFCObody/TFCOitem/fabricProd/piece/piecePack/piecePackText) 1-1
pieceStatus	code used to describe the status of a fabric piece after the control - base type: string, cod. table: T52 http://www.ebiz.enea.it/moda-ml/repository/codelist/draft/gc_T52.xml (XPath TEXDyFinOrder/TFCObody/TFCOitem/fabricProd/piece/pieceStatus) 0-1
pieceWeight	effective total weight of the fabric piece - base type: decimal, min inclusive: 0, fraction digits: 2, (XPath TEXDyFinOrder/TFCObody/TFCOitem/fabricProd/piece/pieceWeight) 0-1 - note: <i>It is the net weight of the piece.</i> (XPath TEXDyFinOrder/TFCObody/TFCOitem/fabricProd/pieceChain/pieceCut/pieceWeight) 0-1 (XPath TEXDyFinOrder/TFCObody/TFCOitem/fabricProd/pieceChain/pieceWeight) 0-1
pieceWeightM	effective weight per metre of the fabric piece - base type: decimal, min inclusive: 0, fraction digits: 2, (XPath TEXDyFinOrder/TFCObody/TFCOitem/fabricProd/piece/pieceWeightM) 0-1
pieceWidth	effective width of the fabric piece - base type: decimal, min inclusive: 0, fraction digits: 2, (XPath TEXDyFinOrder/TFCObody/TFCOitem/fabricProd/piece/pieceWidth) 0-1 (XPath TEXDyFinOrder/TFCObody/TFCOitem/fabricProd/pieceChain/pieceWidth) 0-1
postCode	code defining the postal zone - base type: string, max length: 10, (XPath TEXDyFinOrder/terms/transInfo/deliveryLocation/postCode) 0-1 (XPath TEXDyFinOrder/terms/trade/tradeLocation/postCode) 0-1 (XPath TEXDyFinOrder/TFCOheader/subContractor/postCode) 0-1 (XPath TEXDyFinOrder/TFCOheader/buyer/postCode) 0-1 (XPath TEXDyFinOrder/TFCObody/TFCOitem/thirdParty/postCode) 0-1 (XPath TEXDyFinOrder/terms/transInfo/despatchLocation/postCode) 0-1 (XPath TEXDyFinOrder/TFCOheader/thirdParty/postCode) 0-1
price	unit price of the article, object or service specified - base type: decimal, min inclusive: 0, fraction digits: 4, (XPath TEXDyFinOrder/TFCObody/TFCOitem/price) 0-1
@priceQualifier	type of price with reference to discount and taxes

	<p>- base type: string, cod. table: NT20 http://www.ebiz.enea.it/moda-ml/repository/codelist/draft/gc_NT20.xml (XPath TEXDyFinOrder/TFCObody/TFCOitem/price/@priceQualifier) [Optional] [Default= NET]</p>
@productLevel	<p>level of the product (end or intermediate) yielded by an operation in a work cycle - base type: string, cod. table: NT22 http://www.ebiz.enea.it/moda-ml/repository/codelist/draft/gc_NT22.xml (XPath TEXDyFinOrder/TFCObody/TFCOitem/@productLevel) [Optional] [Default= END] - nota: <i>this qualifier "intermediate" must be used when the product is also a component in an other line of the same Commission Order</i></p>
@progr	<p>progressive number in the sequence - base type: positiveInteger, min inclusive: 1, (XPath TEXDyFinOrder/terms/transInfo/@progr) [Optional] - nota: <i>Indicates the position of the leg in a sequence of transport legs. If it is declared it must be in all the transInfo elements.</i></p>
@propulsionSystemCode	<p>propulsion system type - base type: string, cod. table: NT324 http://www.ebiz.enea.it/moda-ml/repository/codelist/draft/gc_NT324.xml (XPath TEXDyFinOrder/terms/transInfo/transMeans/@propulsionSystemCode) [Optional] - nota: <i>indicates the type of propulsion of the means of transport</i></p>
qty	<p>net quantity of the article or object correlated, qualified by the function of the document (ordering, delivering, ..) and by the context - base type: decimal, min inclusive: 0, fraction digits: 2, (XPath TEXDyFinOrder/TFCObody/TFCOitem/qty) 1-3 (XPath TEXDyFinOrder/TFCObody/TFCOitem/fabricComponent/qty) 1-3 - note: <i>quantity to be consumed in the transformation. This element can have more instances only if the units of measure are different</i></p>
qualityLevel	<p>the product quality level (first choice, second choice,...). - base type: string, (XPath TEXDyFinOrder/TFCObody/TFCOitem/fabricComponent/itemsList/qualityLevel) 0-1</p>
@recyclingProcessEfficiency	<p>recycling process efficiency rate (percentage by weight). - base type: decimal, min inclusive: 0, max inclusive: 100, (XPath TEXDyFinOrder/TFCObody/TFCOitem/fabricProd/fabricCompos/percCompos/@recyclingProcessEfficiency) [Optional] - nota: <i>process efficiency declared by the fibre supplier</i></p>
@recyclingProcessMethod	<p>recycling process method - base type: string, cod. table: T307 http://www.ebiz.enea.it/moda-ml/repository/codelist/draft/gc_T307.xml (XPath TEXDyFinOrder/TFCObody/TFCOitem/fabricProd/fabricCompos/percCompos/@recyclingProcessMethod) [Optional] - nota: <i>use only for non virgin material</i></p>
@role	<p>Third Party role qualifier - base type: string, cod. table: NT2 http://www.ebiz.enea.it/moda-ml/repository/codelist/draft/gc_NT2.xml (XPath TEXDyFinOrder/TFCObody/TFCOitem/thirdParty/@role) [Required] (XPath TEXDyFinOrder/TFCOheader/thirdParty/@role) [Required]</p>
routeLength	<p>length of a route - base type: decimal, min inclusive: 0, fraction digits: 2, (XPath TEXDyFinOrder/terms/transInfo/routeLength) 0-1</p>
@schemeID	<p>identifier of an identification scheme - base type: string, (XPath TEXDyFinOrder/TFCObody/TFCOitem/fabricComponent/refDoc/attachment/hashFootprint/@schemeID) [Optional] - nota: <i>specify for which system this hash footprint might be used as identifier (for example HDFS system..)</i> (XPath TEXDyFinOrder/TFCObody/TFCOitem/fabMnfOperation/refDoc/attachment/hashFootprint/@schemeID) [Optional] - nota: <i>specify for which system this hash footprint might be used as identifier (for example HDFS system..)</i> (XPath TEXDyFinOrder/TFCOheader/refDoc/attachment/hashFootprint/@schemeID) [Optional] - nota: <i>specify for which system this hash footprint might be used as identifier (for example HDFS system..)</i></p>

	<p>multiple HDFS system..)</p>
season	<p>sale season; defined as: season (1 crt) + year (4 crt) - season: S/S=1 A/W=2 Spring=3 Summer=4 Autumn=5 Winter=6: for more than four seasons use alphabetic sequence: 1st season=A 2nd season=B etc.etc.</p> <p>- base type: string, max length: 15, (XPath TEXTDyFinOrder/TFCOheader/season) 0-1 (XPath TEXTDyFinOrder/TFCOheader/refDoc/season) 0-1</p> <p>- note: here indicates the season to which the referenced document belongs (XPath TEXTDyFinOrder/TFCObody/TFCOitem/fabMnfrOperation/refDoc/season) 0-1</p> <p>- note: here indicates the season to which the referenced document belongs (XPath TEXTDyFinOrder/TFCObody/TFCOitem/fabricComponent/refDoc/season) 0-1</p> <p>- note: here indicates the season to which the referenced document belongs</p>
@sender	<p>qualifier that specifies the Party issuing of the document</p> <p>- base type: boolean, (XPath TEXTDyFinOrder/TFCOheader/subContractor/@sender) [Optional]</p> <p>- nota: This attribute is mandatory when the STYLESHEET must be used (XPath TEXTDyFinOrder/TFCObody/TFCOitem/thirdParty/@sender) [Optional]</p> <p>- nota: This attribute is mandatory when the STYLESHEET must be used (XPath TEXTDyFinOrder/TFCOheader/buyer/@sender) [Optional]</p> <p>- nota: This attribute is mandatory when the STYLESHEET must be used (XPath TEXTDyFinOrder/TFCOheader/thirdParty/@sender) [Optional]</p> <p>- nota: This attribute is mandatory when the STYLESHEET must be used</p>
serialN	<p>serial number used for the identification of a physical unit</p> <p>- base type: string, max length: 250, (XPath TEXTDyFinOrder/TFCObody/TFCOitem/fabricProd/piece/serialN) 0-9 Best Practice</p> <p>- note: multiple values of serialN are allowed for different representations of the serial identifier of the same piece. Instances of serialN must differ at least for one value of numberingOrg and idQualifier. (XPath TEXTDyFinOrder/TFCObody/TFCOitem/fabricProd/pieceChain/serialN) 1-9</p> <p>- note: multiple values of serialN are allowed in order to provide different representations of the serial identifier of the same piece chain. Different instances of serialN must differ at least for one value of idQualifier or numberingOrg (XPath TEXTDyFinOrder/TFCObody/TFCOitem/fabricComponent/itemsList/itemIdentification/serialN) 1-9 Best Practice</p> <p>- note: multiple values of serialN are allowed for different representations of the serial identifier of the same product unit. Instances of serialN must differ at least for one value of numberingOrg and idQualifier. (XPath TEXTDyFinOrder/TFCObody/TFCOitem/fabricComponent/serialN) 0-unbounded</p> <p>- note: it may be used to identify the pieces/chains that the Subcontractor must use for the commissioned work (XPath TEXTDyFinOrder/TFCObody/TFCOitem/fabricProd/pieceChain/pieceCut/serialN) 1-9</p> <p>- note: multiple values of serialN are allowed in order to provide different representations of the serial identifier of the same piece. Different instances of serialN must differ at least for one value of idQualifier or numberingOrg</p>
@source	<p>party who has provided the data</p> <p>- base type: string, cod. table: NT12 http://www.ebiz.enea.it/moda-ml/repository/codelist/draft/gc_NT12.xml (XPath TEXTDyFinOrder/TFCObody/TFCOitem/fabMnfrOperation/texMachineSpecs/specValue/@source) [Optional] (XPath TEXTDyFinOrder/TFCObody/TFCOitem/fabricProd/fabricSpecs/specValue/@source) [Optional]</p>
specValue	<p>value requested for a property or a parameter that is measured</p> <p>- base type: decimal, (XPath TEXTDyFinOrder/TFCObody/TFCOitem/fabricProd/fabricSpecs/specValue) 0-1 (XPath TEXTDyFinOrder/TFCObody/TFCOitem/fabMnfrOperation/texMachineSpecs/specValue) 0-1</p>
street	<p>street and building number identifying a location</p> <p>- base type: string, max length: 80, (XPath TEXTDyFinOrder/TFCOheader/thirdParty/street) 0-1 (XPath TEXTDyFinOrder/TFCObody/TFCOitem/thirdParty/street) 0-1 (XPath TEXTDyFinOrder/terms/trade/tradeLocation/street) 0-1 (XPath TEXTDyFinOrder/terms/transInfo/deliveryLocation/street) 0-1 (XPath TEXTDyFinOrder/TFCOheader/buyer/street) 0-1 (XPath TEXTDyFinOrder/terms/transInfo/despatchLocation/street) 0-1 (XPath TEXTDyFinOrder/TFCOheader/subContractor/street) 0-1</p>

subCountry	<p>short name or code of the sub-country entity</p> <p>- base type: string, max length: 9,</p> <p>(XPath TEXTDyFinOrder/TFCOheader/subContractor/subCountry) 0-1 (XPath TEXTDyFinOrder/terms/trade/tradeLocation/subCountry) 0-1 (XPath TEXTDyFinOrder/TFCObody/TFCOitem/thirdParty/subCountry) 0-1 (XPath TEXTDyFinOrder/TFCOheader/thirdParty/subCountry) 0-1 (XPath TEXTDyFinOrder/TFCOheader/buyer/subCountry) 0-1 (XPath TEXTDyFinOrder/terms/transInfo/deliveryLocation/subCountry) 0-1 (XPath TEXTDyFinOrder/terms/transInfo/despatchLocation/subCountry) 0-1</p>
subDept	<p>name or code of a department</p> <p>- base type: string, max length: 40,</p> <p>(XPath TEXTDyFinOrder/terms/trade/tradeLocation/subDept) 0-1 (XPath TEXTDyFinOrder/TFCOheader/thirdParty/subDept) 0-1 (XPath TEXTDyFinOrder/terms/transInfo/deliveryLocation/subDept) 0-1 (XPath TEXTDyFinOrder/TFCOheader/buyer/subDept) 0-1 (XPath TEXTDyFinOrder/terms/transInfo/despatchLocation/subDept) 0-1 (XPath TEXTDyFinOrder/TFCOheader/subContractor/subDept) 0-1 (XPath TEXTDyFinOrder/TFCObody/TFCOitem/thirdParty/subDept) 0-1</p>
taxCategory	<p>duty or tax or fee category</p> <p>- base type: string, cod. table: T62</p> <p>http://www.ebiz.enea.it/moda-ml/repository/codelist/draft/gc_T62.xml (XPath TEXTDyFinOrder/TFCObody/TFCOitem/dtScheme/taxCategory) 0-1 (XPath TEXTDyFinOrder/terms/allowanceCharge/dtScheme/taxCategory) 0-1</p>
taxRate	<p>duty or tax or fee percent rate</p> <p>- base type: string,</p> <p>(XPath TEXTDyFinOrder/TFCObody/TFCOitem/dtScheme/taxRate) 0-1 (XPath TEXTDyFinOrder/terms/allowanceCharge/dtScheme/taxRate) 0-1</p>
@taxType	<p>duty or tax or fee type</p> <p>- base type: string, cod. table: T61</p> <p>http://www.ebiz.enea.it/moda-ml/repository/codelist/draft/gc_T61.xml (XPath TEXTDyFinOrder/TFCObody/TFCOitem/dtScheme/@taxType) [Required] (XPath TEXTDyFinOrder/terms/allowanceCharge/dtScheme/@taxType) [Required]</p>
texJob	<p>operation of a work cycle for fabric</p> <p>- base type: string, cod. table: T202</p> <p>http://www.ebiz.enea.it/moda-ml/repository/codelist/draft/gc_T202.xml (XPath TEXTDyFinOrder/TFCObody/TFCOitem/fabMnfrOperation/texJob) 1-1</p>
texJobTech	<p>operation technology for fabric</p> <p>- base type: string, cod. table: T262</p> <p>http://www.ebiz.enea.it/moda-ml/repository/codelist/draft/gc_T262.xml (XPath TEXTDyFinOrder/TFCObody/TFCOitem/fabMnfrOperation/texJobTech) 0-9</p>
texMachine	<p>machine used in an operation of a work cycle for fabric</p> <p>- base type: string, cod. table: T272</p> <p>http://www.ebiz.enea.it/moda-ml/repository/codelist/draft/gc_T272.xml (XPath TEXTDyFinOrder/TFCObody/TFCOitem/fabMnfrOperation/texMachine) 0-1</p>
texMachineParam	<p>setting parameter of a machine used in an operation of a work cycle for fabric</p> <p>- base type: string, cod. table: T282</p> <p>http://www.ebiz.enea.it/moda-ml/repository/codelist/draft/gc_T282.xml (XPath TEXTDyFinOrder/TFCObody/TFCOitem/fabMnfrOperation/ texMachineSpecs/texMachineParam) 1-1</p>
@TFCOtype	<p>type of "Textile Dyeing-Finishing commission order". This element is mandatory to declare reworking of pieces.</p> <p>- base type: string, cod. table: NT24</p> <p>http://www.ebiz.enea.it/moda-ml/repository/codelist/draft/gc_NT24.xml (XPath TEXTDyFinOrder/@TFCOtype) [Required]</p>
@TID	<p>serial number wired into the RFID chip</p> <p>- base type: string,</p> <p>(XPath TEXTDyFinOrder/TFCObody/TFCOitem/fabricProd/ piece/EPC/@TID) [Optional]</p>
tolerance	<p>deviation tolerated on the value of a measurement (it must have a plus or minus sign)</p> <p>- base type: decimal,</p> <p>(XPath TEXTDyFinOrder/TFCObody/TFCOitem/fabricProd/ fabricSpecs/tolerance) 0-2 (XPath TEXTDyFinOrder/TFCObody/TFCOitem/fabMnfrOperation/</p>

	texMachineSpecs/tolerance) 0-2
totFault	total number of faults: the 1st/2nd digit count the "Large faults", the 3rd/4th the "Medium faults" and the 5th/6th the "Small faults" - base type: positiveInteger, (XPath TEXDyFinOrder/TFCObody/TFCOitem/fabricProd/piece/totFault) 0-1
transactionReceipt	transaction receipt on blockchain - base type: string, max length: 80, (XPath TEXDyFinOrder/TFCObody/TFCOitem/fabricComponent/refDoc/attachment/blockChainReference/transactionReceipt) 1-9 (XPath TEXDyFinOrder/TFCObody/TFCOitem/fabMnfrOperation/refDoc/attachment/blockChainReference/transactionReceipt) 1-9 (XPath TEXDyFinOrder/TFCOheader/refDoc/attachment/blockChainReference/transactionReceipt) 1-9
transCondition	special condition of transport or special service requested to the Forwarder - base type: string, cod. table: T38 http://www.ebiz.enea.it/moda-ml/repository/codelist/draft/gc_T38.xml (XPath TEXDyFinOrder/terms/transInfo/transCondition) 0-3
transConditionText	free text description of the special condition of transport or special service requested to the Forwarder - base type: string, max length: 250, (XPath TEXDyFinOrder/terms/transInfo/transConditionText) 0-1
transMeans	means of transport, in general or referred to a specific leg - base type: string, cod. table: T40 http://www.ebiz.enea.it/moda-ml/repository/codelist/draft/gc_T40.xml (XPath TEXDyFinOrder/terms/transInfo/transMeans) 0-1
transMode	way of transport, in general or referred to the specified leg - base type: string, cod. table: T8 http://www.ebiz.enea.it/moda-ml/repository/codelist/draft/gc_T8.xml (XPath TEXDyFinOrder/terms/transInfo/transMode) 1-1
@transReason	reason for the transport - base type: string, cod. table: NT11 http://www.ebiz.enea.it/moda-ml/repository/codelist/draft/gc_NT11.xml (XPath TEXDyFinOrder/terms/transInfo/@transReason) [Optional]
@uid	unique element identifier within the xml document - base type: string, (XPath TEXDyFinOrder/TFCObody/TFCOitem/fabMnfrOperation/refDoc/attachment/@uid) [Optional] (XPath TEXDyFinOrder/TFCOheader/refDoc/attachment/@uid) [Optional] (XPath TEXDyFinOrder/TFCObody/TFCOitem/fabricComponent/refDoc/attachment/@uid) [Optional]
@um	specification of the unit of measure - base type: string, cod. table: NT7 http://www.ebiz.enea.it/moda-ml/repository/codelist/draft/gc_NT7.xml (XPath TEXDyFinOrder/TFCObody/TFCOitem/fabMnfrOperation/texMachineSpecs/tolerance/@um) [Required] (XPath TEXDyFinOrder/TFCOheader/buyer/geoCoordinates/@um) [Optional] [Default= DEGD] - nota: <i>when not specified assume decimal DEGREES</i> (XPath TEXDyFinOrder/TFCObody/TFCOitem/fabMnfrOperation/texMachineSpecs/pcTolerance/@um) [Optional] - nota: <i>to be used when it has to be soecified if the declared percentage is by weight, volume, etc...</i> (XPath TEXDyFinOrder/TFCObody/TFCOitem/fabMnfrOperation/texMachineSpecs/specValue/@um) [Optional] (XPath TEXDyFinOrder/TFCOheader/subContractor/geoCoordinates/@um) [Optional] [Default= DEGD] - nota: <i>when not specified assume decimal DEGREES</i> (XPath TEXDyFinOrder/TFCObody/TFCOitem/fabricProd/fabricSpecs/tolerance/@um) [Required] (XPath TEXDyFinOrder/TFCObody/TFCOitem/fabricProd/fabricSpecs/specValue/@um) [Optional] (XPath TEXDyFinOrder/TFCObody/TFCOitem/price/@um) [Optional] - nota: <i>Unit of measure of the product to which the price is referred (price per meter)</i> (XPath TEXDyFinOrder/TFCObody/TFCOitem/fabricProd/

	<p style="text-align: center;">fabricSpecs/pcTolerance/@um) [Optional]</p> <p>- nota: <i>to be used when it has to be soecified if the declared percentage is by weight, v olume, etc...</i></p> <p>(XPath TEXTDyFinOrder/TFCObody/TFCOitem/qty/@um) [Required] (XPath TEXTDyFinOrder/TFCObody/TFCOitem/fabricProd/ fabricWidth/@um) [Optional] [Default= CMT] (XPath TEXTDyFinOrder/terms/transInfo/despatchLocation/ geoCoordinates/@um) [Optional] [Default= DEGD]</p> <p>- nota: <i>when not specified assume decimal DEGREEs</i> (XPath TEXTDyFinOrder/TFCObody/TFCOitem/fabricComponent/ qty/@um) [Required] (XPath TEXTDyFinOrder/terms/transInfo/routeLength/@um) [Required] (XPath TEXTDyFinOrder/TFCObody/TFCOitem/thirdParty/ geoCoordinates/@um) [Optional] [Default= DEGD]</p> <p>- nota: <i>when not specified assume decimal DEGREEs</i> (XPath TEXTDyFinOrder/terms/allowanceCharge/@um) [Optional] (XPath TEXTDyFinOrder/TFCObody/TFCOitem/fabricProd/ pieceChain/pieceLength/@um) [Optional] [Default= MTR] (XPath TEXTDyFinOrder/TFCObody/TFCOitem/fabricProd/ piece/pieceWidth/@um) [Optional] [Default= CMT] (XPath TEXTDyFinOrder/TFCObody/TFCOitem/fabricProd/ piece/pieceCutWidth/@um) [Optional] [Default= CMT] (XPath TEXTDyFinOrder/TFCObody/TFCOitem/fabricProd/ piece/pieceLength/@um) [Optional] [Default= MTR] (XPath TEXTDyFinOrder/TFCObody/TFCOitem/fabricProd/ pieceChain/pieceCut/pieceLength/@um) [Optional] [Default= MTR] (XPath TEXTDyFinOrder/TFCObody/TFCOitem/fabricProd/ pieceChain/pieceCut/pieceWeight/@um) [Optional] [Default= KGM] (XPath TEXTDyFinOrder/TFCObody/TFCOitem/fabricProd/ piece/pieceWeight/@um) [Optional] [Default= KGM] (XPath TEXTDyFinOrder/TFCObody/TFCOitem/fabricProd/ pieceChain/pieceWeight/@um) [Optional] [Default= KGM] (XPath TEXTDyFinOrder/TFCObody/TFCOitem/fabricProd/ pieceChain/pieceWidth/@um) [Optional] [Default= CMT] (XPath TEXTDyFinOrder/TFCObody/TFCOitem/fabricProd/ piece/pieceAllow/@um) [Required] (XPath TEXTDyFinOrder/TFCObody/TFCOitem/fabricProd/ piece/pieceWeightM/@um) [Optional] [Default= GRM] (XPath TEXTDyFinOrder/TFCObody/TFCOitem/fabricProd/ piece/grossWeight/@um) [Required] (XPath TEXTDyFinOrder/terms/transInfo/netWeight/@um) [Required] (XPath TEXTDyFinOrder/terms/transInfo/deliveryLocation/ geoCoordinates/@um) [Optional] [Default= DEGD]</p> <p>- nota: <i>when not specified assume decimal DEGREEs</i> (XPath TEXTDyFinOrder/terms/trade/tradeLocation/ geoCoordinates/@um) [Optional] [Default= DEGD]</p> <p>- nota: <i>when not specified assume decimal DEGREEs</i> (XPath TEXTDyFinOrder/TFCOheader/thirdParty/geoCoordinates/@um) [Optional] [Default= DEG D]</p> <p>- nota: <i>when not specified assume decimal DEGREEs</i> (XPath TEXTDyFinOrder/terms/transInfo/grossWeight/@um) [Required]</p>
uri	<p>Uniform Resource Identifier (URI) that identifies the external object as an Internet resource</p> <p>- base type: normalizedString, (XPath TEXTDyFinOrder/TFCObody/TFCOitem/fabricComponent/ refDoc/attachment/externalReference/uri) 1-1 (XPath TEXTDyFinOrder/TFCOheader/refDoc/attachment/ externalReference/uri) 1-1 (XPath TEXTDyFinOrder/TFCOheader/refDoc/attachment/ blockChainReference/uri) 1-1</p> <p>- note: <i>reference to the used blockchain (example: url https://etherscan.io/ of etherium)</i> (XPath TEXTDyFinOrder/TFCObody/TFCOitem/fabMnfrOperation/ refDoc/attachment/externalReference/uri) 1-1 (XPath TEXTDyFinOrder/TFCObody/TFCOitem/fabMnfrOperation/ refDoc/attachment/blockChainReference/uri) 1-1</p> <p>- note: <i>reference to the used blockchain (example: url https://etherscan.io/ of etherium)</i> (XPath TEXTDyFinOrder/TFCObody/TFCOitem/fabricComponent/ refDoc/attachment/blockChainReference/uri) 1-1</p>

	- note: <i>reference to the used blockchain (example: url https://etherscan.io/ of ethereum)</i>
@useProfile	use profile to which the present document is compliant if it was agreed by the parties. It is suggested a URI with reference to the firms or the URL of the profile. - base type: string, (XPath TEXTDyFinOrder/@useProfile) [Optional]
@validationMethod	type of method used to validate the quantity to which it refers. For example, it indicates whether it was measured in the field, estimated indirectly, approved by an expert or taken from the literature - base type: string, cod. table: NT329 http://www.ebiz.enea.it/moda-ml/repository/codelist/draft/gc_NT329.xml (XPath TEXTDyFinOrder/TFCObody/TFCOitem/fabricProd/fabricCompos/percCompos/@validationMethod) [Optional]
@VAT	VAT rate or code (DEPRECATED, use dtScheme element) - base type: string, cod. table: NT16 http://www.ebiz.enea.it/moda-ml/repository/codelist/draft/gc_NT16.xml (XPath TEXTDyFinOrder/TFCOheader/thirdParty/@VAT) [Optional] (XPath TEXTDyFinOrder/TFCObody/TFCOitem/thirdParty/@VAT) [Optional] (XPath TEXTDyFinOrder/TFCObody/TFCOitem/lineN/@VAT) [Optional] - nota: <i>Deprecated, prefer dtScheme when available.</i> (XPath TEXTDyFinOrder/terms/allowanceCharge/@VAT) [Optional]
@version	Dictionary version from which the instance has been created - base type: string, cod. table: NT100 http://www.ebiz.enea.it/moda-ml/repository/codelist/draft/gc_NT100.xml (XPath TEXTDyFinOrder/@version) [Optional] [Default= draft]
xGeoCoord	geographical coordinate x , corresponding to latitude - base type: decimal, (XPath TEXTDyFinOrder/terms/trade/tradeLocation/geoCoordinates/xGeoCoord) 1-1 (XPath TEXTDyFinOrder/TFCOheader/thirdParty/geoCoordinates/xGeoCoord) 1-1 (XPath TEXTDyFinOrder/TFCOheader/subContractor/geoCoordinates/xGeoCoord) 1-1 (XPath TEXTDyFinOrder/TFCObody/TFCOitem/thirdParty/geoCoordinates/xGeoCoord) 1-1 (XPath TEXTDyFinOrder/TFCOheader/buyer/geoCoordinates/xGeoCoord) 1-1 (XPath TEXTDyFinOrder/terms/transInfo/despatchLocation/geoCoordinates/xGeoCoord) 1-1 (XPath TEXTDyFinOrder/terms/transInfo/deliveryLocation/geoCoordinates/xGeoCoord) 1-1
yGeoCoord	geographical coordinate y , corresponding to longitude - base type: decimal, (XPath TEXTDyFinOrder/terms/transInfo/deliveryLocation/geoCoordinates/yGeoCoord) 1-1 (XPath TEXTDyFinOrder/terms/transInfo/despatchLocation/geoCoordinates/yGeoCoord) 1-1 (XPath TEXTDyFinOrder/TFCOheader/subContractor/geoCoordinates/yGeoCoord) 1-1 (XPath TEXTDyFinOrder/TFCOheader/buyer/geoCoordinates/yGeoCoord) 1-1 (XPath TEXTDyFinOrder/terms/trade/tradeLocation/geoCoordinates/yGeoCoord) 1-1 (XPath TEXTDyFinOrder/TFCOheader/thirdParty/geoCoordinates/yGeoCoord) 1-1 (XPath TEXTDyFinOrder/TFCObody/TFCOitem/thirdParty/geoCoordinates/yGeoCoord) 1-1
zGeoCoord	geographical coordinate z , corresponding to altitude - base type: decimal, (XPath TEXTDyFinOrder/TFCOheader/thirdParty/geoCoordinates/zGeoCoord) 0-1 - note: <i>altitude might be omitted</i> (XPath TEXTDyFinOrder/TFCOheader/buyer/geoCoordinates/zGeoCoord) 0-1 - note: <i>altitude might be omitted</i> (XPath TEXTDyFinOrder/TFCObody/TFCOitem/thirdParty/geoCoordinates/zGeoCoord) 0-1 - note: <i>altitude might be omitted</i> (XPath TEXTDyFinOrder/terms/transInfo/despatchLocation/geoCoordinates/zGeoCoord) 0-1 - note: <i>altitude might be omitted</i> (XPath

	<p>TEXDyFinOrder/TFCOheader/subContractor/geoCoordinates/zGeoCoord) 0-1</p> <ul style="list-style-type: none">- note: <i>altitude might be omitted</i> (XPath TEXDyFinOrder/terms/trade/tradeLocation/ geoCoordinates/zGeoCoord) 0-1- note: <i>altitude might be omitted</i> (XPath TEXDyFinOrder/terms/transInfo/deliveryLocation/ geoCoordinates/zGeoCoord) 0-1- note: <i>altitude might be omitted</i>
--	---

2.3 Suggested best practices

**TEXDyFinOrder/TFCObody/TFCOitem/fabMnfrOperation/
refDoc/docID (identification number of the referenced document)**

numberingOrg indicates the role that produced the document identifier (it is allowed to declare two different ones -e.g. customer and supplier - with two docID with different numberingOrg

**TEXDyFinOrder/TFCObody/TFCOitem/fabricComponent/
refDoc/docID (identification number of the referenced document)**

numberingOrg indicates the role that produced the document identifier (it is allowed to declare two different ones -e.g. customer and supplier - with two docID with different numberingOrg

TEXDyFinOrder/TFCOheader/refDoc/docID (identification number of the referenced document)

numberingOrg indicates the role that produced the document identifier (it is allowed to declare two different ones -e.g. customer and supplier - with two docID with different numberingOrg

**TEXDyFinOrder/TFCOheader/refDoc/attachment/
externalReference/mimeCode (mime type of the external object)**

Use coding from IANA <http://www.iana.org/assignments/media-types/media-types.xml>

**TEXDyFinOrder/TFCObody/TFCOitem/fabricComponent/
refDoc/attachment/externalReference/mimeCode (mime type of the external object)**

Use coding from IANA <http://www.iana.org/assignments/media-types/media-types.xml>

**TEXDyFinOrder/TFCObody/TFCOitem/fabMnfrOperation/
refDoc/attachment/externalReference/mimeCode (mime type of the external object)**

Use coding from IANA <http://www.iana.org/assignments/media-types/media-types.xml>

TEXDyFinOrder/TFCObody/TFCOitem/fabricProd/piece/serialN (serial number used for the identification of a physical unit)

This element might contain also codes for RFID devices.

**TEXDyFinOrder/TFCObody/TFCOitem/fabricComponent/
itemsList/itemIdentification/serialN (serial number used for the identification of a physical unit)**

in the case of garment with RFID for anti-counterfeiting, RFID EPCGlobal for logistics and NFC for the customer experience there should be three serial elements with pairs of attributes numberingOrg/idQualifier: "CL"/"RFID", "GS1"/"RFID", "CL"/"NFC".

2.4 Enumeration tables

List of enumeration tables used in the XML document. You can find all the tables with the corresponding codes at:
<http://www.ebiz.enea.it/eBIZ/imple/eBIZTCU-draft.asp?lingua=en&pag=6>

NT100 - eBIZ TCFUpstream version
NT11 - transport causal
NT12 - data source
NT16 - VAT rate or code
NT18 - message function
NT2 - third party qualifier
NT20 - price qualifier
NT22 - product type of an operation
NT24 - Textile Dyeing-Finishing Order type
NT29 - format of a date
NT3 - issuer of the identifier (or identification system) of a location.
NT324 - propulsion system type
NT329 - type of validation method of the value
NT333 - type of hashing algorithm
NT38 - colour test
NT4 - end use
NT6 - coding system owner/issuer
NT60 - language, codes from ISO 639-1 (subset)
NT7 - unit of measure
T1 - terms of payment
T10 - ISO3166 - Country
T13 - CFM properties of fabric
T19 - fibre type
T2 - Modes of payment
T202 - type of job on fabric
T21 - type of document
T262 - type of job technology for fabric
T272 - machine type for fabric operation
T282 - parameter type for fabric operation
T3 - terms of delivery - IncoTerms
T306 - material circularity attribute
T307 - recycling process method
T38 - transport conditions
T4 - fabric piece inner packing (wrapping) 1
T40 - type of transport means
T41 - type of Allowance or Charge
T44 - additional code type
T5 - fabric piece inner packing (wrapping) 2
T52 - fabric piece status
T6 - fabric piece outer packing
T61 - duty or tax or fee type
T62 - duty or tax or fee category
T8 - Modes of Transport
T9 - ISO4217 - Currency

(the most relevant tables are detailed in the following Annexes too)

ACKNOWLEDGEMENT



This action is part of the TRICK project, which has received funding from Horizon 2020 research and innovation programme under grant agreement No. 958352 of the European Union.

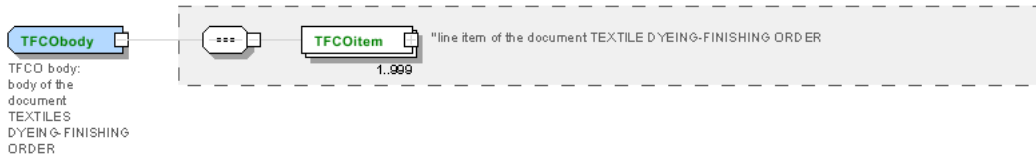
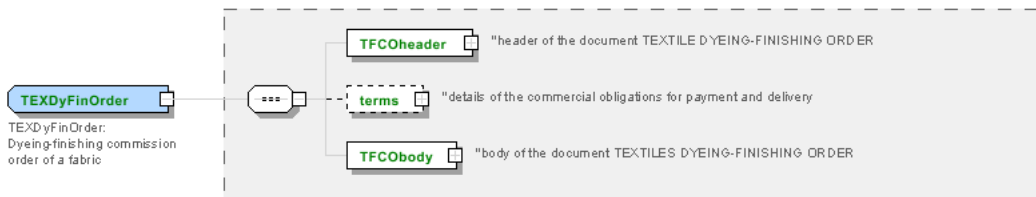
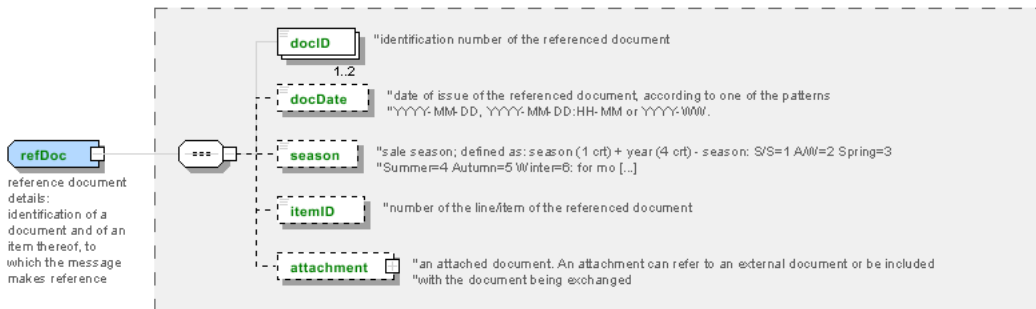
DISCLAIMER

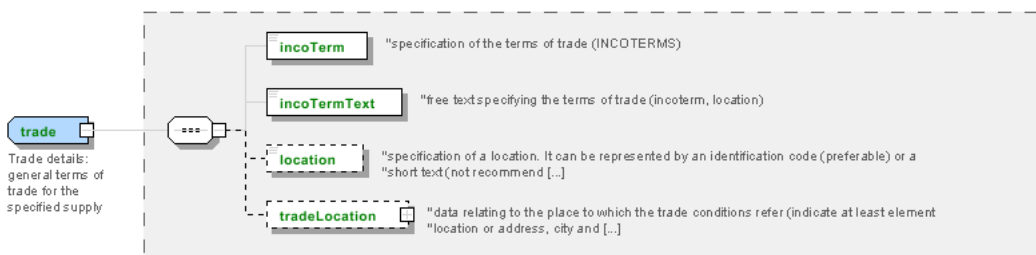
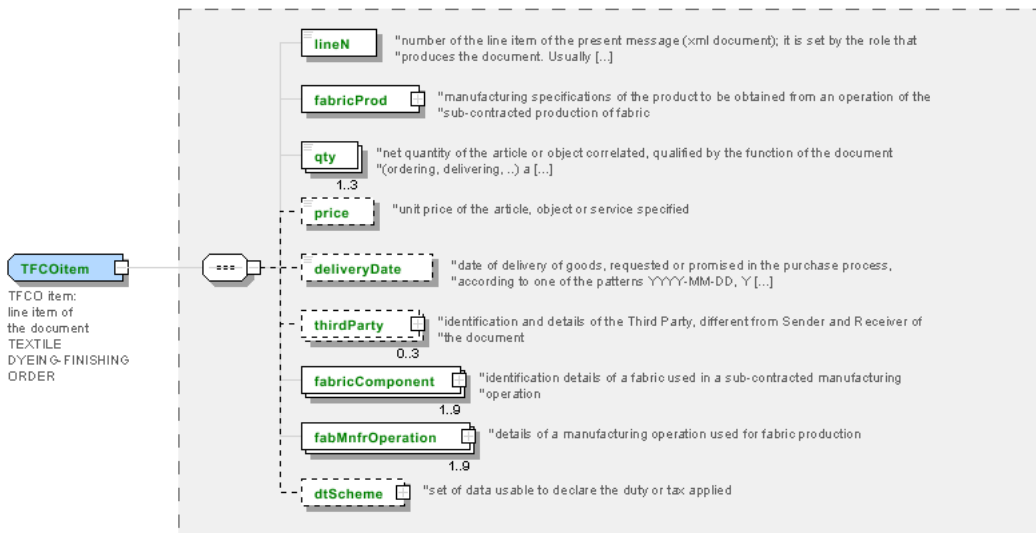
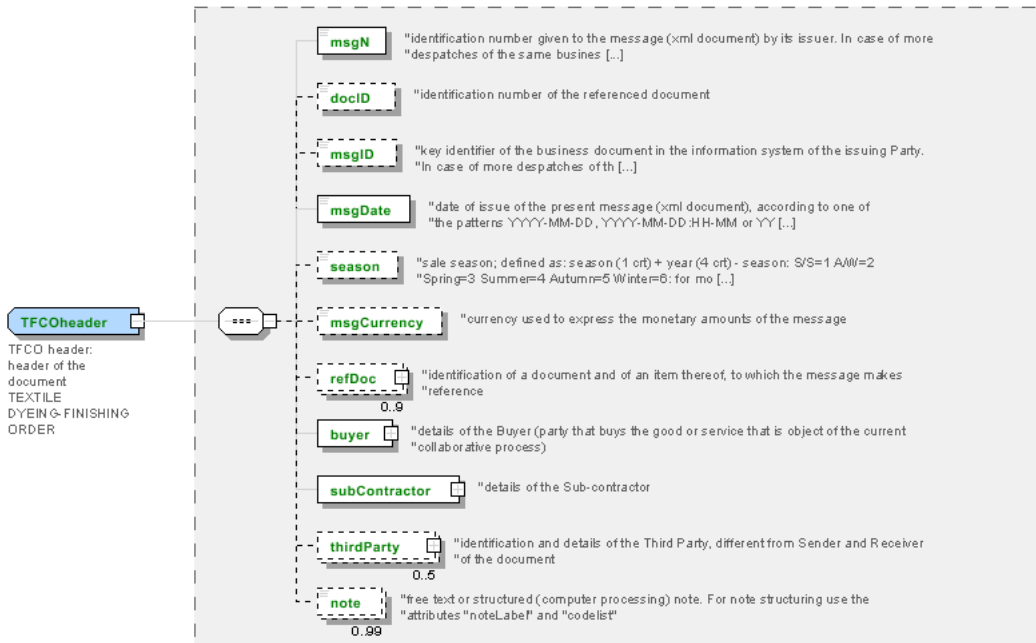
The content of this document represents the views of the authors only and is their sole responsibility; it cannot be considered to reflect the views of the European Commission or any other body of the European Union.

The European Commission does not accept any responsibility for use that may be made of the information it contains.

Annex A

Representative images of the principal complex elements' structure.





Annex B

NT100 - eBIZ TCFUpstream version

dictionary version

Agency name: eBIZ

Decoding table: NT100

File codes list (Generic code): http://www.ebiz.enea.it/moda-ml/repository/codelist/draft/gc_NT100.xml

Code	Description	Adoption note	Date of insertion
2013-1	v2013-1		01/07/2013
2018-1	v2018-1		04/11/2018
draft	draft		08/09/2017

NT11 - transport causal

reason for the transport

Agency name: eBIZ

Decoding table: NT11

File codes list (Generic code): http://www.ebiz.enea.it/moda-ml/repository/codelist/draft/gc_NT11.xml

Code	Description	Adoption note	Date of insertion
FOC	free of charge		
FRW	return from re-works		
FST	return from storage		
FVW	return from view		
FWK	return from works		
IST	in storage		
NWK	return non-worked		
RJC	return from rejection		
SEL	to sell		
STO	to storage		
VEW	to view		
WRK	to works		

NT12 - data source

party who has provided the data

Agency name: eBIZ

Decoding table: NT12

File codes list (Generic code): http://www.ebiz.enea.it/moda-ml/repository/codelist/draft/gc_NT12.xml

Code	Description	Adoption note	Date of insertion
AC	internal test		
CO	external test		
CV	test after steaming		

NT16 - VAT rate or code

VAT rate or code (DEPRECATED, use dtScheme element)

Decoding table: NT16

File codes list (Generic code): http://www.ebiz.enea.it/moda-ml/repository/codelist/draft/gc_NT16.xml

NT18 - message function

function performed by the present message with regards to the transmission

Agency name: eBIZ

Decoding table: NT18

File codes list (Generic code): http://www.ebiz.enea.it/moda-ml/repository/codelist/draft/gc_NT18.xml

Code	Description	Adoption note	Date of insertion
CA	delete this document		01/07/2013
CP	copy		
OR	original		
RC	re-transmission for data correction		
RT	re-transmission		

NT2 - third party qualifier

Third Party role qualifier

Agency name: eBIZ

Decoding table: NT2

File codes list (Generic code): http://www.ebiz.enea.it/moda-ml/repository/codelist/draft/gc_NT2.xml

Code	Description	Adoption note	Date of insertion
AG	Sales Agent		
AU	Auditor		08/04/2019
BU	Buyer		13/06/2022

CE	Certification authority		08/04/2019
CM	Commissioner		13/06/2022
CO	Quality Controller		
CU	Customs authority		13/06/2022
DC	Response to		
DF	Invoicee		
DI	Copy to (CC)		28/10/2014
DM	Consignee		
DP	Consignment address (Delivery Party)		
EX	Expert		13/06/2022
IM	Importer		
OR	Originator		10/09/2014
SC	Sub contractor		10/04/2019
SM	Service/ePlatform manager		08/04/2019
SP	Forwarder		
SU	Supplier		13/06/2022
TL	Test or analysis laboratory		13/06/2022
TX	Tax Representative		

NT20 - price qualifier

type of price with reference to discount and taxes

Agency name: eBIZ

Decoding table: NT20

File codes list (Generic code): http://www.ebiz.enea.it/moda-ml/repository/codelist/draft/gc_NT20.xml

Code	Description	Adoption note	Date of insertion
GET	gross excluding taxes		
GIT	gross including taxes		
NET	net excluding taxes		
NIT	net including taxes		

NT22 - product type of an operation

level of the product (end or intermediate) yielded by an operation in a work cycle

Agency name: eBIZ

Decoding table: NT22

File codes list (Generic code): http://www.ebiz.enea.it/moda-ml/repository/codelist/draft/gc_NT22.xml

Code	Description	Adoption note	Date of insertion
END	end-product		
INT	intermediate		

NT24 - Textile Dyeing-Finishing Order type

type of "Textile Dyeing-Finishing commission order" or its Change.

Agency name: eBIZ

Decoding table: NT24

File codes list (Generic code): http://www.ebiz.enea.it/moda-ml/repository/codelist/draft/gc_NT24.xml

Code	Description	Adoption note	Date of insertion
DYE	dyeing		
DYERC	dyeing reworking paid by customer		01/07/2013
DYERS	dyeing reworking paid by supplier		01/07/2013
FIN	finishing		
FINRC	finishing reworking paid by customer		01/07/2013
FINRS	finishing reworking paid by supplier		01/07/2013

NT29 - format of a date

format used for the date

Agency name: eBIZ

Decoding table: NT29

File codes list (Generic code): http://www.ebiz.enea.it/moda-ml/repository/codelist/draft/gc_NT29.xml

Code	Description	Adoption note	Date of insertion
D	YYYY-MM-DD		
M	YYYY-MM-DD:HH-MM (date and time)		
S	AAAA-MM-GG:HH-MM-SS (date and time with seconds)		13/06/2022
W	YYYY-WW		

NT3 - issuer of the identifier (or identification system) of a location.

List of possible issuers of the identifier (or identification system) of a location.

Agency name: eBIZ

Decoding table: NT3

File codes list (Generic code): http://www.ebiz.enea.it/moda-ml/repository/codelist/draft/gc_NT3.xml

Code	Description	Adoption note	Date of insertion
EN4	GS1-GLN	obsolete	01/07/2013
GLN	GS1-GLN	equivalent to EN4	25/04/2023
MD	mutually agreed		
NCA	National custom authority	identifier of a bonded warehouse assigned by the custom authority	19/05/2023
PLA	Platform	internal coding of the involved platform	14/05/2023
TRI	TRICK		14/05/2023

NT324 - propulsion system type

propulsion system type adopted, for example, by a transport mean

Agency name: eBIZ for TRICK

Decoding table: NT324

File codes list (Generic code): http://www.ebiz.enea.it/moda-ml/repository/codelist/draft/gc_NT324.xml

Code	Description	Adoption note	Date of insertion
ALC	Alcohol		05/07/2022
BDIE	Bio diesel		05/07/2022
BEV	Battery Electric Vehicle		05/07/2022
BFUE	Biofuels	biodiesel excluded	02/09/2022
DIE	Diesel		05/07/2022
FCEV	Hydrogen Fuel cell		05/07/2022
GAS	GAS		05/07/2022
GPL	LPG		05/07/2022
HEV	Full hybrid (Hybrid Electric Vehicle)		05/07/2022
HUM	Human force		05/07/2022
HYB	Hybrid		05/07/2022
MHY	Mild hybrid		05/07/2022
NUC	Nuclear		05/07/2022
PET	Petrol		05/07/2022
PHEV	plug-in Hybrid Electric Vehicle		05/07/2022
STEAM	Steam		05/07/2022
WIND	Wind		05/07/2022

NT329 - type of validation method of the value

indicates the type of method used to validation and calculate the quantity to which it refers; used to express the data faithfulness

Agency name: eBIZ

Decoding table: NT329

File codes list (Generic code): http://www.ebiz.enea.it/moda-ml/repository/codelist/draft/gc_NT329.xml

Code	Description	Adoption note	Date of insertion
CER	third party certification		11/06/2023
EST	estimate		12/05/2023
EXP	confirmed by an expert		19/05/2023
LAB	laboratory test		11/06/2023
LIT	literature	refer to a literature analysis outcome	12/05/2023
MON	monitoring	refer to continuous measurement in field	12/05/2023
REV	confirmed by review		11/06/2023
SAM	sampling	refer to a sample measurement in field	12/05/2023
SUP	supplier declaration		11/06/2023

NT333 - type of hashing algorithm

type of hashing algorithm

Decoding table: NT333

File codes list (Generic code): http://www.ebiz.enea.it/moda-ml/repository/codelist/draft/gc_NT333.xml

Code	Description	Adoption note	Date of insertion
ADLER32	ADLER32		26/05/2023
HMAC	HMAC		26/05/2023
MD2	MD2		26/05/2023
MD4	MD4		26/05/2023
MD5	MD5		26/05/2023
MDC-2	MDC-2		26/05/2023
PANAMA	PANAMA		26/05/2023
RIPMD-160	RIPMD-160		26/05/2023
SHA-1	SHA-1		26/05/2023
SHA-2 256	SHA-2 256		26/05/2023
SHA-2 384	SHA-2 384		26/05/2023
SHA-2 512	SHA-2 512		26/05/2023
TIGER	TIGER		26/05/2023

NT38 - colour test

specification of colour test before the operation

Decoding table: NT38

File codes list (Generic code): http://www.ebiz.enea.it/moda-ml/repository/codelist/draft/gc_NT38.xml

Code	Description	Adoption note	Date of insertion
1	only colour test		
2	with colour test		

NT4 - end use

specifies the final use of the product

Agency name: eBIZ

Decoding table: NT4

File codes list (Generic code): http://www.ebiz.enea.it/moda-ml/repository/codelist/draft/gc_NT4.xml

Code	Description	Adoption note	Date of insertion
PC	test piece		
PR	production		
SA	Sample		10/09/2014
SC	samples card		
TI	patch		
TP	(test cut)		

NT6 - coding system owner/issuer

code specifying the organisation who has created or owns the registers of the present coding or numbering system

Agency name: eBIZ

Decoding table: NT6

File codes list (Generic code): http://www.ebiz.enea.it/moda-ml/repository/codelist/draft/gc_NT6.xml

Code	Description	Adoption note	Date of insertion
CBR	National customs brokers registry		12/06/2023
CL	Customer/buyer		
CO	Quality Controller		
DU	D-U-N-S registry (Data Universal Numbering System)		04/05/2023
EB	eBIZ	replaces 'ML'	18/03/2019
EN	GS1 (ex-EAN International)		
EO	Registro EORI (Economic Operators Registration and Identification number)		04/03/2023
ES	e-Stockflow	DEPRECATED	

FO	Supplier		
GS	GS1		01/07/2013
MF	national taxation authority (i.e. VAT codes registry)		
ML	Moda-ML	DEPRECATED	
PL	Application Platform		13/06/2022
REX	Registered Exporter system (REX)		19/05/2023
SP	Service Provider		
SU	Enterprise Identification Number UID	Only switzerland	04/03/2023

NT60 - language, codes from ISO 639-1 (subset)

Agency name: eBIZ / ISO

Decoding table: NT60

File codes list (Generic code): http://www.ebiz.enea.it/moda-ml/repository/codelist/draft/gc_NT60.xml

Code	Description	Adoption note	Date of insertion
af	Afrikaans		31/01/2019
ar	Arabic		31/01/2019
be	Belarusian		31/01/2019
bg	Bulgarian		31/01/2019
bn	Bengali		31/01/2019
bo	Tibetan		31/01/2019
bs	Bosnian		31/01/2019
ca	Catalan, Valencian		31/01/2019
cs	Czech		31/01/2019
da	Danish		31/01/2019
de	German		31/01/2019
el	Greek, Modern (1453-)		31/01/2019
en	English		31/01/2019
eo	Esperanto		31/01/2019
es	Spanish, Castilian		31/01/2019
et	Estonian		31/01/2019
eu	Basque		31/01/2019
F	Female		15/04/2019
fa	Persian		31/01/2019
fi	Finnish		31/01/2019
fr	French		31/01/2019
ga	Irish		31/01/2019

gd	Gaelic, Scottish Gaelic		31/01/2019
gn	Guarani		31/01/2019
he	Hebrew		31/01/2019
hr	Croatian		31/01/2019
ht	Haitian, Haitian Creole		31/01/2019
hu	Hungarian		31/01/2019
hy	Armenian		31/01/2019
ia	Interlingua (International Auxiliary Language Association)		31/01/2019
id	Indonesian		31/01/2019
is	Icelandic		31/01/2019
it	Italian		31/01/2019
ja	Japanese		31/01/2019
jv	Javanese		31/01/2019
ka	Georgian		31/01/2019
km	Central Khmer		31/01/2019
ko	Korean		31/01/2019
ku	Kurdish		31/01/2019
lb	Luxembourgish, Letzeburgesch		31/01/2019
lo	Lao		31/01/2019
lt	Lithuanian		31/01/2019
lv	Latvian		31/01/2019
mg	Malagasy		31/01/2019
mk	Macedonian		31/01/2019
mn	Mongolian		31/01/2019
mt	Maltese		31/01/2019
nl	Dutch, Flemish		31/01/2019
no	Norwegian		31/01/2019
pl	Polish		31/01/2019
pt	Portuguese		31/01/2019
ro	Romanian, Moldavian, Moldovan		31/01/2019
ru	Russian		31/01/2019
se	Northern Sami		31/01/2019
sk	Slovak		31/01/2019
sl	Slovenian		31/01/2019
sm	Samoan		31/01/2019
so	Somali		31/01/2019
sq	Albanian		31/01/2019
sr	Serbian		31/01/2019

sv	Swedish		31/01/2019
sw	Swahili		31/01/2019
ta	Tamil		31/01/2019
th	Thai		31/01/2019
tr	Turkish		31/01/2019
uk	Ukrainian		31/01/2019
ur	Urdu		31/01/2019
uz	Uzbek		31/01/2019
vi	Vietnamese		31/01/2019
zh	Chinese		31/01/2019

NT7 - unit of measure

specification of the unit of measure, it is a sub set of table Unit of Measure Code - UN/ECE REC 20 delivered by United Nations Economic Commission for Europe (UN/ECE)

Agency name: eBIZ / UN/ECE

Decoding table: NT7

File codes list (Generic code): http://www.ebiz.enea.it/moda-ml/repository/codelist/draft/gc_NT7.xml

Other link: <http://docs.oasis-open.org/ubl/os-UBL-2.1/cl/gc/default/UnitOfMeasureCode-2.1.gc#>

Code	Description	Adoption note	Date of insertion
CMK	square centimetre		20/12/2017
CMQ	cubic centimetre		20/12/2017
CMT	centimetre		
CNE	centiNewton		
CO2TON	ton of CO2		10/09/2014
COUPLES	couples		
DAY	day		22/08/2022
DEGD	decimal degrees		04/07/2022
DEGMS	degrees with minutes and seconds		01/07/2022
DMQ	cubic decimetre		
E37	pixel		11/04/2018
GRM	gram		
HUR	hour		
INH	inch		
KGM	kilogram		
KMT	kilometer		
KWH	kilowatthours		10/09/2014
LBR	pound		

MCG	microgram		23/08/2022
MG	milligram		23/08/2022
MIN	minute		
MMK	square millimetre		20/12/2017
MONTH	month		22/08/2022
MSEC	millisecond (time)		22/08/2022
MTK	square metre		20/12/2017
MTQ	cubic metre		
MTR	metre		
NMB	numero		
ONZ	ounce		
P1	percent		
PPM	parts per milion		
PZ	piece		
RPM	rounds per metre		
SEC	second (time)		22/08/2022
YEAR	year		22/08/2022
YRD	yard		

T1 - terms of payment

code specifying the terms or time by which the payment must be done

Agency name: eBIZ

Decoding table: T1

File codes list (Generic code): http://www.ebiz.enea.it/moda-ml/repository/codelist/draft/gc_T1.xml

Code	Description	Adoption note	Date of insertion
ANTICIP	PAYMENT IN ADVANCE		
BLCOLLECT/120D	BILL OF LADING 120 DD		
BLCOLLECT/30D	BILL OF LADING 30 DD		
BLCOLLECT/60D	BILL OF LADING 60 DD		
BLCOLLECT/90D	BILL OF LADING 90 DD		
CASH	PAYMENT ON DELIVERY		
CASHINV	PAYMENT ON RECEIPT OF INVOICE		
CREDOC/0D	DOCUMENTARY CREDIT FOR PAYM. AT SIGHT		
CREDOC/120	DOCUMENTARY CREDIT FOR PAYM. AT 120 DD		
CREDOC/150	DOCUMENTARY CREDIT FOR PAYM. AT 150 DD		
CREDOC/180	DOCUMENTARY CREDIT FOR PAYM. AT 180 DD		

CREDOC/30D	DOCUMENTARY CREDIT FOR PAYM. AT 30 DD		
CREDOC/45D	DOCUMENTARY CREDIT FOR PAYM. AT 45 DD		
CREDOC/60	DOCUMENTARY CREDIT FOR PAYM. AT 60 DD		
CREDOC/90	DOCUMENTARY CREDIT FOR PAYM. AT 90 DD		
DEL/10	PAYMENT AT 10 DD AFTER DELIVERY		
DOCOLLECT/120D	DOCUMENTARY COLLECTION AT 120 DD		
DOCOLLECT/30D	DOCUMENTARY COLLECTION AT 30 DD		
DOCOLLECT/60D	DOCUMENTARY COLLECTION AT 60 DD		
DOCOLLECT/90D	DOCUMENTARY COLLECTION AT 90 DD		
INV/120D	PAYMENT AT 120 DD AFTER RECEIPT OF INVOICE		
INV/150D	PAYMENT AT 150 DD AFTER RECEIPT OF INVOICE		
INV/180D	PAYMENT AT 180 DD AFTER RECEIPT OF INVOICE		
INV/30D	PAYMENT AT 30 DD AFTER RECEIPT OF INVOICE		
INV/45D	PAYMENT AT 45 DD AFTER RECEIPT OF INVOICE		
INV/60D	PAYMENT AT 60 DD AFTER RECEIPT OF INVOICE		
INV/90D	PAYMENT AT 90 DD AFTER RECEIPT OF INVOICE		
INVULTIMO	PAYMENT AT END MONTH RECEIPT INVOICE		
INVULTIMO/10D	PAYMENT 10 DD AFTER END MONTH RECEIPT INVOICE		
INVULTIMO/120D	PAYMENT 120 DD AFTER END MONTH RECEIPT INVOICE		
INVULTIMO/150D	PAYMENT 150 DD AFTER END MONTH RECEIPT INVOICE		
INVULTIMO/180D	PAYMENT 180 DD AFTER END MONTH RECEIPT INVOICE		
INVULTIMO/240D	PAYMENT 240 DD AFTER END MONTH RECEIPT INVOICE		
INVULTIMO/30D	PAYMENT 30 DD AFTER END MONTH RECEIPT INVOICE		
INVULTIMO/45D	PAYMENT 45 DD AFTER END MONTH RECEIPT INVOICE		
INVULTIMO/60D	PAYMENT 60 DD AFTER END MONTH RECEIPT INVOICE		
INVULTIMO/90D	PAYMENT 90 DD AFTER END MONTH RECEIPT INVOICE		
NOPAY	WITHOUT PAYMENT		
RECREDOC/0D	IRREVOC. DOCUMENTARY CREDIT FOR PAYM. AT SIGHT		
RECREDOC/120D	IRREVOC. DOCUMENTARY CREDIT FOR PAYM. AT 120 DD		
RECREDOC/150D	IRREVOC. DOCUMENTARY CREDIT FOR PAYM. AT 150 DD		
RECREDOC/180D	IRREVOC. DOCUMENTARY CREDIT FOR PAYM. AT 180 DD		
RECREDOC/30D	IRREVOC. DOCUMENTARY CREDIT FOR PAYM. AT 30 DD		
RECREDOC/45D	IRREVOC. DOCUMENTARY CREDIT FOR PAYM. AT 45 DD		
RECREDOC/60D	IRREVOC. DOCUMENTARY CREDIT FOR PAYM. AT 60 DD		
RECREDOC/90D	IRREVOC. DOCUMENTARY CREDIT FOR PAYM. AT 90 DD		
ULTIMO	PAYMENT BY END MONTH OF DELIVERY		
ULTIMO/10	PAYMENT AT 10 DD AFTER END MONTH OF DELIVERY		

T10 - ISO3166 - Country

code of the nation

Agency name: ISO

Decoding table: T10

File codes list (Generic code): http://www.ebiz.enea.it/moda-ml/repository/codelist/draft/gc_T10.xml

Table not printed: there are 240 elements, more than the maximum specified for printing: 99.

T13 - CFM properties of fabric

code of the physical or mechanical parameter used to define a "technical characteristic of the fabric" (see Fabric technical sheet)

Decoding table: T13

File codes list (Generic code): http://www.ebiz.enea.it/moda-ml/repository/codelist/draft/gc_T13.xml

Code	Description	Adoption note	Date of insertion
CMA	resistance to pilling (UNI.E.1512434)		
CMB	seam slippage - warp (NFG7117)		
CMC	seam slippage - weft (NFG7117)		
CMD	breaking strength - warp (ISO 1394-1)		
CME	breaking strength - weft (ISO 1394-1)		
CMF	resistance to abrasion (EN 12947)		
CMH	tear strength (ISO 9290)		
CMI	crease recovery (ISO 9867)		
CMJ	elongation - warp (BS 4294/68)		
CMK	elongation - weft (BS 4294/68)		
CML	tear resistance - warp		
CMM	tear resistance - weft		
CMN	resistance to bending		
CMP	spray test		
SLA	colour fastness to light (ISO 105-B02)		
SLB	colour fastness to washing (ISO 105-C06)		
SLC	colour fastness to dry cleaning (ISO 105-D01)		
SLD	colour fastness to spotting water (ISO 105-E07)		
SLG	colour fastness to alkaline perspiration (ISO 105-E04)		
SLH	colour fastness to acid perspiration (ISO 105-E04)		
SLI	colour fastness to dry rubbing (ISO 105-X12)		
SLJ	colour fastness to wet rubbing (ISO 105-X12)		
SLK	colour fastness to dry ironing (ISO 105-X11)		

SLM	colour fastness to wet ironing (ISO 105-X11)		
SLW	colour fastness to water (ISO 105-E01)		
SLX	colour fastness to Xeno-light		
SLZ	colour fastness to rubbing org. Solv. (ISO 105-D02)		
STA	dimensional stability to steaming press - length (DIN 53894-2)		
STB	dimensional stability to steaming press - width (DIN 53894-2)		
STC	dimensional stability to washing - length (ISO 5077+6330)		
STD	dimensional stability to washing - width (ISO 5077+6330)		
STE	dimensional stability to dry cleaning - length (ISO 3175)		
STF	dimensional stability to dry cleaning - width (ISO 3175)		

T19 - fibre type

type of fibre used in a textile product

Agency name: eBIZ

Decoding table: T19

File codes list (Generic code): http://www.ebiz.enea.it/moda-ml/repository/codelist/draft/gc_T19.xml

Code	Description	Adoption note	Date of insertion
AB	abaca		20/08/2018
AC	acetate		
AF	other fibres		
AG	alginic fibre		
AL	alfa		20/08/2018
AR	aramid		25/04/2022
CA	hemp		
CC	coir (coconut)		20/08/2018
CL	chlorofibre		
CO	cotton		
CU	cuprous		
EA	elastan		
EF	elastolefin		25/04/2022
EL	Elastodiene		20/08/2018
EM	elastomultiester		25/04/2022
FL	fluorofibre		
GI	broom		20/08/2018
GL	textile glass		
HA	hair		20/08/2018

HE	henequen		20/08/2018
HL	mixed linen		
JU	jute		
KE	kenaf		20/08/2018
KP	kapoc		20/08/2018
LI	linen		
LY	lyocell		20/08/2018
MA	modacrylic		
MD	modal		
ME	metallized		
MG	maguey		20/08/2018
MM	melamine		25/04/2022
PA	polyamide		
PB	polyureic		
PC	acrylic		
PE	polyethylene		
PI	paper		20/08/2018
PL	polyester		
PM	polyimide		
PO	polilactyd		25/04/2022
PP	polypropylene		
PR	proteic		
PU	polyurethane		
RA	ramie		20/08/2018
SE	silk		
SI	sisal		20/08/2018
SN	sun		20/08/2018
TA	triacetate		
TR	textile residues or unspecified composition		20/08/2018
TV	trivinyll		
VI	viscose		
VY	vinylal		
WA	angora		
WB	beaver		20/08/2018
WC	cashgora		
WG	vicuna		
WK	camel		
WL	llama		

WM	mohair		
WN	lapin		20/08/2018
WO	wool		
WP	alpaca		
WS	cashmere		
WT	Oteer		20/08/2018
WU	guanaco		
WV	virgin wool		
WY	yack		

T2 - Modes of payment

way or means of payment

Agency name: eBIZ

Decoding table: T2

File codes list (Generic code): http://www.ebiz.enea.it/moda-ml/repository/codelist/draft/gc_T2.xml

Code	Description	Adoption note	Date of insertion
BB	bank transfer		
IA	collection through Agent		
IS	collection through Forwarder		
RB	bank receipt		
RD	remittance		
SW	bank SWIFT		
TR	bank draft		

T202 - type of job on fabric

operation of a work cycle for fabric

Agency name: eBIZ

Decoding table: T202

File codes list (Generic code): http://www.ebiz.enea.it/moda-ml/repository/codelist/draft/gc_T202.xml

Code	Description	Adoption note	Date of insertion
50	to warp		
51	to weave		
52	to dye		
53	to print		

54	to finish		
56	stain resistant		
57	decolorizing		
58	flame resistant		
59	waterproofing		
60	protolan		
61	lavatex		
62	chlorination		
63	bleaching		
64	caustic soda treatment		
65	thermo-setting		
66	lucido superjet		
67	natural stretch		
68	softisuper		
69	stragar		
70	anti-crease		
71	anti-pilling		
72	anti-slipping		
73	anti-static		
80	printing preparation		01/07/2013
81	check		01/07/2013
99	other, see note if any		01/07/2013

T21 - type of document

type or class to which the referenced document belongs

Agency name: eBIZ

Decoding table: T21

File codes list (Generic code): http://www.ebiz.enea.it/moda-ml/repository/codelist/draft/gc_T21.xml

Code	Description	Adoption note	Date of insertion
BIL	Bill of lading		07/03/2023
BOR	Blanket order		01/02/2018
CAT	Price catalogue - tech sheet		
CEO	Certificate of origin		13/04/2018
CER	Certificate		13/04/2018
CMR	CMR consignment note		07/03/2023
COC	Colour card		

CRN	Credit note		08/09/2017
CTO	Checking order		01/07/2013
CTR	Contract		
CXF	CxF3 file		01/07/2013
DAD	Darn order		
DDT	Delivery note (transport document)		
DEA	Despatch advise		
DER	Despatch request		
DR	Document Request		02/12/2014
EAD	Export Accompanying Document	adopted by European customs	12/05/2023
ECMR	electronic CMR consignment note		07/03/2023
ECUS	EXPORT Custom Declaration		07/03/2023
FOR	Forecast		02/12/2014
GSO	Garment stock offer		
GSX	Garment stock offer change		
ICUS	IMPORT Custom Declaration		07/03/2023
INV	Invoice		
KCC	Knitting-Clothing Commission Order		02/12/2014
KCI	Garment in Work Inventory Report		02/12/2014
LCA	LCA study		28/08/2022
LCAD	LCA study dataset		28/08/2022
M2M	Made to Measure Production Order		02/12/2014
MAS	Master marker		
MCI	Visual merchandising instruction		13/04/2018
OCH	Order change		
OFF	Offer		
ORD	Purchase order		
ORP	Order response		
OSR	order status request		
OSS	Offer status		02/12/2014
OST	Order status		
OUR	our reference		
PCO	Preferential certificate of origin		07/03/2023
PEF	PEF study		28/08/2022
PEFD	PEF study dataset		28/08/2022
PEFP	PEF environmental profile		07/03/2023
QR	Quality Report		02/12/2014
RAI	Raw Material in Work Inventory Report		02/12/2014

RDC	Raw dyeing commission order		
RDH	Raw dyeing order change		
RDR	Raw dyeing order response		
REA	Receiving advise		
REQ	Request for Offer		
RET	Return		02/12/2014
RSC	Spinning commission order		
RSH	Spinning order change		
RSR	Spinning order response		
SAD	Single Administrative Document	adopted by European customs	12/05/2023
SCL	Process sheet		
SDE	Self-declaration		07/03/2023
SDS	SDS - Safety data sheet		07/03/2023
SLCA	S-LCA Study		07/03/2023
SLCAD	S-LCA Study documentation		07/03/2023
TFC	Textile dyeing-finishing commission order		
TFX	Textile Dyeing-Finishing Order Change		02/12/2014
TPC	Textile printing commission order		
TPX	Textile Printing Order Change		02/12/2014
TWI	Textile in work inventory		
VMI	visual merchandising instructions		01/02/2018
WAC	Warping commission order		
WAYB	Waybill		07/03/2023
WEC	Weaving commission order		
YDC	Yarn dyeing commission order		
YDH	Yarn dyeing order change		
YDR	Yarn dyeing order response		
YTC	Twisting commission order		
YWI	Yarn in work inventory		

T262 - type of job technology for fabric

operation technology for fabric

Agency name: eBIZ

Decoding table: T262

File codes list (Generic code): http://www.ebiz.enea.it/moda-ml/repository/codelist/draft/gc_T262.xml

Code	Description	Adoption note	Date of insertion
------	-------------	---------------	-------------------

50	fractional warping		
51	sectional warping		
52	samples warping		
53	air-jet loom		
54	projectile loom		
55	negative rapier loom		
56	positive rapier loom		
57	verdol		
58	electronic jacquard		
59	trough dyeing		
60	jet dyeing		
61	pad dyeing		
62	overflow dyeing		
63	jiggers dyeing		
64	beam dyeing		
68	wet finishing		
69	dry finishing		
70	direct		
71	discharge printing		
72	reserve printing		
73	thermo printing		
74	devorè		
80	cylinder printing		01/07/2013
81	inkjet printing		01/07/2013
99	other, see note if any		01/07/2013

T272 - machine type for fabric operation

machine used in an operation of a work cycle for fabric

Agency name: eBIZ

Decoding table: T272

File codes list (Generic code): http://www.ebiz.enea.it/moda-ml/repository/codelist/draft/gc_T272.xml

Code	Description	Adoption note	Date of insertion
01	DORNIER		
02	SULZER		
03	TSUD DAKOMA		
04	VAMATEX		

05	SOMET		
06	N. VAMATEX		
07	BONAS		
08	GROSSE		
09	STAUBLI		
99	other, see note if any		01/07/2013

T282 - parameter type for fabric operation

setting parameter of a machine used in an operation of a work cycle for fabric

Agency name: eBIZ

Decoding table: T282

File codes list (Generic code): http://www.ebiz.enea.it/moda-ml/repository/codelist/draft/gc_T282.xml

Code	Description	Adoption note	Date of insertion
01	reed width		
02	number of blades		
03	number of warp beams		
04	laid-in selvedge		
05	written selvedge		
99	other, see note if any		01/07/2013

T3 - terms of delivery - IncoTerms

specification of the terms of trade (INCOTERMS)

Agency name: Incoterms

Decoding table: T3

File codes list (Generic code): http://www.ebiz.enea.it/moda-ml/repository/codelist/draft/gc_T3.xml

Other link: <https://iccwbo.org/resources-for-business/incoterms-rules/incoterms-2020/#>

Code	Description	Adoption note	Date of insertion
CF R	COST AND FREIGHT (named port of destination)		
CIF	COST, INSURANCE AND FREIGHT (named port of destination)		
CIP	CARRIAGE AND INSURANCE PAID (named place of destination)		
CP T	CARRIAGE PAID (named place of destination)		
DA F	DELIVERED AT FRONTIER (named place)	according to Incoterms® 2010, since 2020 it is OBSOLETE.	08/12/2017

DA P	Delivered at Place of destination (named place of destination)	according to Incoterms® 2010	08/12/2017
DA T	Delivered at Terminal (named place of destination)	according to Incoterms® 2010, since 2020 it is OBSOLETE.	08/12/2017
DD P	DELIVERED DUTY PAID (named place of destination)		
DD U	DELIVERED DUTY UNPAID (named place of destination)	according to Incoterms® 2010 it is OBSOLETE, use DAP	08/12/2017
DE Q	DELIVERED EX-QUAY (named port of destination)	according to Incoterms® 2010 it is OBSOLETE	08/12/2017
DE S	DELIVERED EX-SHIP (named port of destination)	according to Incoterms® 2010 it is OBSOLETE	08/12/2017
DP U	DELIVERED AT PLACE UNLOADED	according to Incoterms® 2020	25/04/2022
EX W	EX WORKS (named place)		
FAS	FREE ALONGSIDE SHIP (named port of shipment)		
FC A	FREE CARRIER (named place)		
FO B	FREE ON BOARD (named port of shipment)		

T306 - material circularity attribute

Indicates whether the material is virgin or comes from recycling or reuse processes

Agency name: eBIZ for TRICK

Decoding table: T306

File codes list (Generic code): http://www.ebiz.enea.it/moda-ml/repository/codelist/draft/gc_T306.xml

Code	Description	Adoption note	Date of insertion
RE U	Reused material		30/08/2022
SCL	Secondary raw materials	adopt this for any secondary raw material when information about the first or following loop is not available	22/07/2022
SCL 1	Secondary raw materials - first loop		22/07/2022
SCL x	Secondary raw materials - loop following the first one		22/07/2022
VR G	Virgin raw material	adopt this for any virgin raw material when biobased information is not available	22/07/2022
VR GB	Virgin raw material - biobased		23/03/2023
VR GN	Virgin raw material - not biobased		23/03/2023

T307 - recycling process method

Agency name: eBIZ for TRICK

Decoding table: T307

File codes list (Generic code): http://www.ebiz.enea.it/moda-ml/repository/codelist/draft/gc_T307.xml

Code	Description	Adoption note	Date of insertion
CHMD	chemical recycling (dissolution)		28/07/2022
CHMP	chemical recycling (depolymerization)		28/07/2022
ENZ	enzymatic recycling		01/09/2022
MEC	mechanical recycling		28/07/2022
THE	thermal recycle		31/08/2022
THMC	thermo-mechanical recycling		01/09/2022

T38 - transport conditions

special condition of transport or special service requested to the Forwarder

Decoding table: T38

File codes list (Generic code): http://www.ebiz.enea.it/moda-ml/repository/codelist/draft/gc_T38.xml

Code	Description	Adoption note	Date of insertion
ACC	arrange customs clearance		
CAL	Carrier loads		
CAU	Carrier unloads		
CMR	CMR carnet		
FFN	freight forwarders national conditions		
FLD	special agreement for full loading		
NCC	do not arrange customs clearance		
PPB	packaging paid by Buyer		
PPS	packaging paid by Supplier		
PRO	proof of delivery		
RFR	return container free		
RPC	return container paid by Customer		
RPS	return container paid by Supplier		
SHL	Shipper loads		
SHU	Consignee unloads		

T4 - fabric piece inner packing (wrapping) 1

code specifying the type of inner wrapping/packing used for the fabric piece

Agency name: eBIZ

Decoding table: T4

File codes list (Generic code): http://www.ebiz.enea.it/moda-ml/repository/codelist/draft/gc_T4.xml

Code	Description	Adoption note	Date of insertion
A	Folded, whole width		
B	Folded, doubled		
C	Folded, tube products		
D	Spoiled, whole width		
E	Spoiled, doubled, pli: left		
F	Spoiled, doubled, pli: right		
G	Rolled, whole width, single item		
H	Rolled, whole width, several items		
I	Rolled, doubled		
J	Rolled, tube products		

T40 - type of transport means

means of transport, in general or referred to a specific leg

Agency name: eBIZ

Decoding table: T40

File codes list (Generic code): http://www.ebiz.enea.it/moda-ml/repository/codelist/draft/gc_T40.xml

Code	Description	Adoption note	Date of insertion
AIR	aircraft		
SHP	ship		
TRU	truck		
VAN	van		

T41 - type of Allowance or Charge

coded specification of an Allowance or Charge (elaborated from UNECE 4465)

Agency name: eBIZ

Decoding table: T41

File codes list (Generic code): http://www.ebiz.enea.it/moda-ml/repository/codelist/draft/gc_T41.xml

Code	Description	Adoption note	Date of insertion
1	Agreed settlement		19/08/2018

10	Costs for draft		19/08/2018
11	Bank charges	DEPRECATED, use CBK	19/08/2018
12	Agent commission		19/08/2018
14	Wrong delivery		19/08/2018
15	Goods returned to agent		19/08/2018
16	Goods partly returned		19/08/2018
17	Transport damage		19/08/2018
19	Trade discount		19/08/2018
2	Below specification goods		19/08/2018
20	Deduction for late delivery	DEPRECATED, use CWB	19/08/2018
21	Advertising costs		19/08/2018
22	Customs duties		19/08/2018
23	Telephone and postal costs		19/08/2018
24	Repair costs		19/08/2018
25	Attorney fees		19/08/2018
26	Taxes		19/08/2018
3	Damaged goods		19/08/2018
30	Direct payment to seller		19/08/2018
32	Goods not delivered		19/08/2018
33	Late delivery		19/08/2018
35	Goods returned		19/08/2018
36	Invoice not received		19/08/2018
37	Credit note to debtor/not to us		19/08/2018
38	Deducted bonus		19/08/2018
39	Deducted discount		19/08/2018
4	Short delivery		19/08/2018
40	Deducted freight costs		19/08/2018
41	Deduction against other invoices		19/08/2018
42	Credit balance(s)		19/08/2018
45	Debit note to seller		19/08/2018
46	Discount beyond terms		19/08/2018
48	Allowance/charge error		19/08/2018
49	Substitute product		19/08/2018
50	Terms of sale error		19/08/2018
52	Wrong invoice		19/08/2018
53	Duplicate invoice		19/08/2018
54	Weight error		19/08/2018
55	Additional charge not authorized		19/08/2018

56	Incorrect discount		19/08/2018
57	Price change		19/08/2018
58	Variation		19/08/2018
59	Chargeback		19/08/2018
65	Settlement to agent		19/08/2018
66	Cash discount		19/08/2018
7	Payment on account		19/08/2018
70	Wrong monetary amount resulting from incorrect free goods quantity		19/08/2018
72	Temporary special promotion		19/08/2018
73	Difference in tax rate		19/08/2018
74	Quantity discount		19/08/2018
75	Promotion discount		19/08/2018
76	Cancellation deadline passed		19/08/2018
77	Pricing discount		19/08/2018
78	Volume discount		19/08/2018
79	Sundry discount		19/08/2018
8	Returnable container charge included		19/08/2018
9	Invoice error		19/08/2018
AWA	bonus for works ahead of schedule		
CBK	bank charges		
CCR	servizio di corriere		
CIN	insurance		
CLB	labelling		
CPK	packing		
CSP	special packing		
CWB	penalty for works behind schedule		

T44 - additional code type

qualifier of the additional coding of a product

Agency name: eBIZ

Decoding table: T44

File codes list (Generic code): http://www.ebiz.enea.it/moda-ml/repository/codelist/draft/gc_T44.xml

Code	Description	Adoption note	Date of insertion
CC	colour card		
CL	sales collection		
CO	company identification code		08/09/2017

DY	dye number		
LT	lot number		
MDI	Made in		08/09/2017
MS	manufacturing state		
PKG	packaging		09/09/2014
PL	product line		
RGB	RGB value		
SE	selvedge code		

T5 - fabric piece inner packing (wrapping) 2

code specifying the sub-type of inner wrapping/packing used for the fabric piece

Agency name: eBIZ

Decoding table: T5

File codes list (Generic code): http://www.ebiz.enea.it/moda-ml/repository/codelist/draft/gc_T5.xml

Code	Description	Adoption note	Date of insertion
A	Open		
B	Folded once, not looped		
C	Folded twice, not looped		
H	Folded once, looped		
I	Folded twice, looped		
J	Without inner object, right side inside		
K	On carton or spooling plank, right side inside		
L	On spool (for pressure sensitive products), right side inside		
M	Without inner object, left side inside		
N	On carton or spooling plank, left side inside		
O	On spool (for pressure sensitive products), left side inside		
P	Without inner object, right side inside (deprecated code)		
Q	On carton, right side inside		
R	On wooden stick, right side inside		
S	Without inner object, left side inside (deprecated code)		
T	On carton, left side inside		
U	On wooden stick, left side inside		

T52 - fabric piece status

code used to describe the status of a fabric piece with reference to the control

Agency name: eBIZ

Decoding table: T52

File codes list (Generic code): http://www.ebiz.enea.it/moda-ml/repository/codelist/draft/gc_T52.xml

Code	Description	Adoption note	Date of insertion
0	first registration		
C	registration from return		
F	stopped		
H	handling		
R	returned		
S	held		
T	deliverable		

T6 - fabric piece outer packing

code specifying the type of outer wrapping or packing used for the fabric piece

Agency name: eBIZ

Decoding table: T6

File codes list (Generic code): http://www.ebiz.enea.it/moda-ml/repository/codelist/draft/gc_T6.xml

Code	Description	Adoption note	Date of insertion
0	Not wrapped		
1	Totally wrapped		
2	Wrapped, one side open		
3	Wrapped, both sides open		
4	Wrapped, one side open, with show corner		
5	Wrapped in cartons		
6	Double wrapped		

T61 - duty or tax or fee type

duty or tax or fee type

Agency name: eBIZ

Decoding table: T61

File codes list (Generic code): http://www.ebiz.enea.it/moda-ml/repository/codelist/draft/gc_T61.xml

Code	Description	Adoption note	Date of insertion
BOL	stamp duty		01/07/2013

CUD	customs duty		01/07/2013
ENV	environmental tax		01/07/2013
FRE	no tax		01/07/2013
OTH	other tax charges		01/07/2013
VAT	value added tax		01/07/2013

T62 - duty or tax or fee category

duty or tax or fee category

Agency name: eBIZ

Decoding table: T62

File codes list (Generic code): http://www.ebiz.enea.it/moda-ml/repository/codelist/draft/gc_T62.xml

Code	Description	Adoption note	Date of insertion
AA	lower than standard rate		01/07/2013
E	tax not applicable		01/07/2013
H	higher than standard rate		01/07/2013
O	outside scope of tax		01/07/2013
S	standard rate		01/07/2013
Z	zero rate goods		01/07/2013

T8 - Modes of Transport

way of transport, in general or referred to the specified leg. Derived from UNECE Recommendation 28 (see link)

Agency name: eBIZ

Decoding table: T8

File codes list (Generic code): http://www.ebiz.enea.it/moda-ml/repository/codelist/draft/gc_T8.xml

Other link: <https://fig.unece.org/contents/recommendation-28.htm#>

Code	Description	Adoption note	Date of insertion
1	MARITIME TRANSPORT		
10	Courier	DEPRECATED	01/07/2013
2	RAIL TRANSPORT		
3	ROAD TRANSPORT		
4	AIR TRANSPORT		
5	MAIL		
6	MULTIMODAL TRANSPORT	example ship + truck. Not used for custom declarations.	13/06/2023
8	INLAND WATER TRANSPORT		

9	MODE UNKNOWN	Includes Own propulsion	13/06/2023
---	--------------	-------------------------	------------

T9 - ISO4217 - Currency

currency code

Agency name: ISO

Decoding table: T9

File codes list (Generic code): http://www.ebiz.enea.it/moda-ml/repository/codelist/draft/gc_T9.xml

Table not printed: there are 205 elements, more than the maximum specified for printing: 99.