



<http://www.ebiz-tcf.eu>

DRAFT

IMPLEMENTATION GUIDE
TRANSACTION "GARMENT STOCK OFFER"

Version: draft

Date of release: 26/6/2023

Document code: G029

technical Documentation: <http://www.ebiz.enea.it>

XML Schemas repository: <http://www.ebiz.enea.it/moda-ml/repository/schema/draft/default.asp>

Guides repository: <http://www.ebiz.enea.it/moda-ml/repository/guide/draft/default.asp>

Guide filename: G029-eBIZ-GarmentStockOffer.pdf

0. PREMISE

This document contains a proposal for the updating and extension of eBIZ specifications starting from the eBIZ version 2018. Under the name of 'Draft version' it is reported the result of an extensive work of analysis and consultation aimed at developing and maintaining eBIZ specifications.

In particular, the content of this proposal is the result of various activities, mainly those carried out within the framework of the **TRICK project** funded by the European Commission: grant agreement 958352, call H2020-LOW-CARBON-CIRCULAR-INDUSTRIES-2020 / H2020-LCCI-2020-EASME-twostage.

The technical contents are backwards compatible with the latest official published version, with the exclusion of the totally new concepts added explicitly for the version that are thought as incremental evolution of the knowledge base.

1. BUSINESS DESCRIPTION

1.1 Scope

The document Garment Stock Offer can be used for the electronic transmission of stock data from the Trade organisation or the Garment company into the e-Stockflow service.

1.2 Generalities

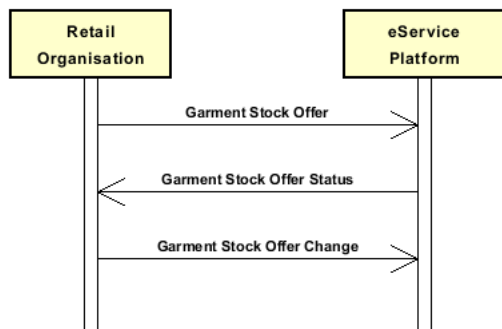
The document is issued by the Trade organisation or the Garment company to create an offer of garment stock through the e-Stockflow service.

Each document line must deal with one stock item in one definite location.

The description of the stock item includes the classification per category and sex and the assortment of color/sizes.

1.3. Possible scenario

On-line stocks offer



2. IMPLEMENTATION GUIDE

2.1 General structure of XML document

All the business data that can be exchanged through this class of documents are shown in the following "document structure", that provides a simplified vision of the Schema.

In particular:

- the two numbers following each element define its "cardinality" (minimum and maximum number of occurrences); the minimum equal zero indicates that the element is optional, the minimum greater than zero indicates that is mandatory;
- the bold character denotes the complex elements (aggregates of simple elements) that were built for the sake of functionality and re-usability of some complex informations sets. The child elements in each parent element are easily spotted as "indented";
- the symbol "@" denotes an attribute of the preceding element; here "the usage indicator (optional, required, ...)" is shown in square brackets.

Structure

GARStockOffer

@msgfunction [Optional] [Default= OR]

@version [Optional] [Default= draft]

@useProfile [Optional]

```
| GSOheader 1-1  
| | msgN 1-1  
| | msgID 0-1  
| | msgDate 1-1  
| | @dateForm [Optional]  
| | refDoc 0-9  
| | @docType [Required]  
| | | docID 1-2  
| | | @numberingOrg [Optional]  
| | | docDate 0-1  
| | | @dateForm [Optional]  
| | | season 0-1  
| | | @numberingOrg [Optional]  
| | | @codeList [Optional]  
| | | @listName [Optional]  
| | | @listVersion [Optional]  
| | | itemID 0-1  
| | | attachment 0-1  
| | | @uid [Optional]  
| | | | fileName 0-1  
| | | | @numberingOrg [Optional]  
| | | | binaryObject 0-1  
| | | | @format [Optional]  
| | | | @mime [Optional]  
| | | | @encoding [Optional]  
| | | | @characterSet [Optional]  
| | | | externalReference 0-99  
| | | | | uri 1-1  
| | | | | @isURL [Optional] [Default= true]  
| | | | | mimeTypeCode 0-1  
| | | | | formatCode 0-1  
| | | | | encodingCode 0-1  
| | | | | characterSetCode 0-1  
| | | | hashFootprint 0-1  
| | | | @schemeID [Optional]  
| | | | @hashMethod [Required]  
| | | | blockChainReference 0-9  
| | | | | uri 1-1  
| | | | | @isURL [Optional] [Default= true]  
| | | | transactionReceipt 1-9  
| | supplier 1-1  
| | @logo [Optional]  
| | @sender [Optional]  
| | | id 1-1  
| | | @numberingOrg [Optional]
```

| additionalIdentifier 0-9
 | @numberingOrg [Optional]
 | @idQualifier [Optional]
 | legalName 0-1
 | dept 0-1
 | subDept 0-1
 | person 0-1
 | @email [Optional]
 | @phone [Optional]
 | @fax [Optional]
 | street 0-1
 | city 0-1
 | subCountry 0-1
 | country 0-1
 | postCode 0-1
 | **geoCoordinates 0-1**
 | @um [Optional] [Default= DEGD]
 | @geoRefSystem [Optional]
 | xGeoCoord 1-1
 | yGeoCoord 1-1
 | zGeoCoord 0-1
buyer 0-1
 | @logo [Optional]
 | @sender [Optional]
 | id 1-1
 | @numberingOrg [Optional]
 | additionalIdentifier 0-9
 | @numberingOrg [Optional]
 | @idQualifier [Optional]
 | legalName 0-1
 | dept 0-1
 | subDept 0-1
 | person 0-1
 | @email [Optional]
 | @phone [Optional]
 | @fax [Optional]
 | street 0-1
 | city 0-1
 | subCountry 0-1
 | country 0-1
 | postCode 0-1
 | **geoCoordinates 0-1**
 | @um [Optional] [Default= DEGD]
 | @geoRefSystem [Optional]
 | xGeoCoord 1-1
 | yGeoCoord 1-1
 | zGeoCoord 0-1
thirdParty 0-5
 | @VAT [Optional]
 | @role [Required]
 | @sender [Optional]
 | id 1-1
 | @numberingOrg [Optional]
 | legalName 0-1
 | dept 0-1
 | subDept 0-1
 | person 0-1
 | @email [Optional]
 | @phone [Optional]
 | @fax [Optional]
 | street 0-1
 | city 0-1
 | subCountry 0-1
 | country 0-1
 | postCode 0-1
 | **geoCoordinates 0-1**
 | @um [Optional] [Default= DEGD]
 | @geoRefSystem [Optional]

- | | | xGeoCoord 1-1
- | | | yGeoCoord 1-1
- | | | zGeoCoord 0-1
- | note 0-99
- | | @numberingOrg [Optional]
- | | @codeList [Optional]
- | | @noteLabel [Optional]

GSObody 1-1

GSOitem 1-unbounded

- | | @currency [Optional]
- | | lineN 1-1
- | | | @VAT [Optional]
- | | lineID 0-1
- | | **refDoc 0-9**
- | | | @docType [Required]
- | | | docID 1-2
- | | | | @numberingOrg [Optional]
- | | | docDate 0-1
- | | | | @dateForm [Optional]
- | | | season 0-1
- | | | | @numberingOrg [Optional]
- | | | | @codeList [Optional]
- | | | | @listName [Optional]
- | | | | @listVersion [Optional]
- | | | itemID 0-1
- | | | **attachment 0-1**
- | | | | @uid [Optional]
- | | | | fileName 0-1
- | | | | | @numberingOrg [Optional]
- | | | | binaryObject 0-1
- | | | | | @format [Optional]
- | | | | | @mime [Optional]
- | | | | | @encoding [Optional]
- | | | | | @characterSet [Optional]
- | | | | **externalReference 0-99**
- | | | | | uri 1-1
- | | | | | | @isURL [Optional] [Default= true]
- | | | | | mimeTypeCode 0-1
- | | | | | formatCode 0-1
- | | | | | encodingCode 0-1
- | | | | | characterSetCode 0-1
- | | | | hashFootprint 0-1
- | | | | | @schemeID [Optional]
- | | | | | @hashMethod [Required]
- | | | | **blockChainReference 0-9**
- | | | | | uri 1-1
- | | | | | | @isURL [Optional] [Default= true]
- | | | | | transactionReceipt 1-9

garmentCategory 1-1

- | | @numberingOrg [Optional]
- | | artGroup 0-1
- | | | @numberingOrg [Optional]
- | | | @codeList [Optional]
- | | | @listName [Optional]
- | | | @listVersion [Optional]
- | | artSubGroup 0-1
- | | | @numberingOrg [Optional]
- | | | @codeList [Optional]
- | | | @listName [Optional]
- | | | @listVersion [Optional]
- | | artSex 0-1
- | | | @numberingOrg [Optional]
- | | | @codeList [Optional]
- | | | @listName [Optional]
- | | | @listVersion [Optional]
- | | season 0-1
- | | | @numberingOrg [Optional]

```

| | | | @codeList [Optional]
| | | | @listName [Optional]
| | | | @listVersion [Optional]
| | | | goodsClassification 0-9
| | | | | macroClass 0-1
| | | | | | @numberingOrg [Optional]
| | | | | | @codeList [Optional]
| | | | | | @listName [Optional]
| | | | | | @listVersion [Optional]
| | | | | class 0-1
| | | | | | @numberingOrg [Optional]
| | | | | | @codeList [Optional]
| | | | | | @listName [Optional]
| | | | | | @listVersion [Optional]
| | | | | subclass 0-1
| | | | | | @numberingOrg [Optional]
| | | | | | @codeList [Optional]
| | | | | | @listName [Optional]
| | | | | | @listVersion [Optional]
| | | | | note 0-99
| | | | | | @numberingOrg [Optional]
| | | | | | @codeList [Optional]
| | | | | | @noteLabel [Optional]
| | | | tradeMark 0-1
| | | | commerceText 0-unbounded
| | | | | @ln [Optional]
| | | | garmentCode 1-1
| | | | | @numberingOrg [Optional]
| | | | - choose -
| | | | | garmentCodeB 1-1
| | | | | | @numberingOrg [Optional]
| | | | | | mod 1-1
| | | | | | | @numberingOrg [Optional]
| | | | | | | @codeList [Optional]
| | | | | | | @listName [Optional]
| | | | | | | @listVersion [Optional]
| | | | | | fabric 0-1
| | | | | | | @numberingOrg [Optional]
| | | | | | | @codeList [Optional]
| | | | | | | @listName [Optional]
| | | | | | | @listVersion [Optional]
| | | | | | color 0-1
| | | | | | | @numberingOrg [Optional]
| | | | | | | @codeList [Optional]
| | | | | | | @listName [Optional]
| | | | | | | @listVersion [Optional]
| | | | | | garmentVariant 0-9
| | | | | | | variantType 1-1
| | | | | | | | @numberingOrg [Optional]
| | | | | | | | @codeList [Optional]
| | | | | | | | @listName [Optional]
| | | | | | | | @listVersion [Optional]
| | | | | | | variantCode 1-1
| | | | | | | | @numberingOrg [Optional]
| | | | | | | | @codeList [Optional]
| | | | | | | | @listName [Optional]
| | | | | | | | @listVersion [Optional]
| | | | | | drop 0-1
| | | | | | | @numberingOrg [Optional]
| | | | | | | @codeList [Optional]
| | | | | | | @listName [Optional]
| | | | | | | @listVersion [Optional]
| | | | | | size 0-1
| | | | | | | @numberingOrg [Optional]
| | | | | | | @codeList [Optional]
| | | | | | | @listName [Optional]
| | | | | | | @listVersion [Optional]
| | | | | | artGroup 0-1

```

```

| | | | @numberingOrg [Optional]
| | | | @codeList [Optional]
| | | | @listName [Optional]
| | | | @listVersion [Optional]
| | | | added 0-9
| | | | @numberingOrg [Optional]
| | | | @addType [Optional]
| | | | description 0-unbounded
| | | | @ln [Optional]
| | | - or -
| | | | garmentCodeA 1-1
| | | | art 1-1
| | | | @numberingOrg [Optional]
| | | | @codeList [Optional]
| | | | @listName [Optional]
| | | | @listVersion [Optional]
| | | | description 0-unbounded
| | | | @ln [Optional]
| | | - end choose -
| | | qty 1-1
| | | @um [Required]
| | | readyToSendDate 0-1
| | | @dateForm [Optional]
| | | price 1-1
| | | @um [Optional]
| | | @priceQualifier [Optional] [Default= NET]
| | | @currency [Optional]
| | | csRange 1-99
| | | @numberingOrg [Optional]
| | | @sizeSystemNat [Optional]
| | | @sizeSystemSeg [Optional]
| | | @sizeSystemBase [Optional]
| | | @sizeSystemID [Optional]
| | | color 0-1
| | | @numberingOrg [Optional]
| | | @codeList [Optional]
| | | @listName [Optional]
| | | @listVersion [Optional]
| | | garmentVariant 0-9
| | | variantType 1-1
| | | @numberingOrg [Optional]
| | | @codeList [Optional]
| | | @listName [Optional]
| | | @listVersion [Optional]
| | | variantCode 1-1
| | | @numberingOrg [Optional]
| | | @codeList [Optional]
| | | @listName [Optional]
| | | @listVersion [Optional]
| | | drop 0-1
| | | @numberingOrg [Optional]
| | | @codeList [Optional]
| | | @listName [Optional]
| | | @listVersion [Optional]
| | | sizeMatrix 1-1
| | | sizeRow 1-99
| | | additionalComponentCode 0-9
| | | @numberingOrg [Optional]
| | | @codeList [Optional]
| | | @listName [Optional]
| | | @listVersion [Optional]
| | | drop 0-1
| | | @numberingOrg [Optional]
| | | @codeList [Optional]
| | | @listName [Optional]
| | | @listVersion [Optional]
| | | size 1-1
| | | @numberingOrg [Optional]

```

```

| | | | | @codeList [Optional]
| | | | | @listName [Optional]
| | | | | @listVersion [Optional]
| | | | | qty 0-1
| | | | | @um [Required]
| | | | | itemsList 0-1
| | | | | | qualityLevel 0-1
| | | | | | @numberingOrg [Optional]
| | | | | | @codeList [Optional]
| | | | | | @listName [Optional]
| | | | | | @listVersion [Optional]
| | | | | | itemIdentification 1-unbounded
| | | | | | | serialN 1-9
| | | | | | | @numberingOrg [Optional]
| | | | | | | @idQualifier [Optional]
| | | | | stockAddress 1-1
| | | | | | @numberingOrg [Optional]
| | | | | | | city 1-1
| | | | | | | subCountry 1-1
| | | | | | | country 1-1
| | | | | | dtScheme 0-1
| | | | | | | @taxType [Required]
| | | | | | | taxCategory 0-1
| | | | | | | taxRate 0-1
| | | | | | | legalRef 0-1
| | | | | | | @numberingOrg [Optional]
| | | | | | | @codeList [Optional]
| | | | | | | @listName [Optional]
| | | | | | | @listVersion [Optional]
| | | | | | | note 0-99
| | | | | | | @numberingOrg [Optional]
| | | | | | | @codeList [Optional]
| | | | | | | @noteLabel [Optional]
| | | | | note 0-99
| | | | | | @numberingOrg [Optional]
| | | | | | @codeList [Optional]
| | | | | | @noteLabel [Optional]

```


2.2 Detailed description of document elements

Following tables show all elements (complex and simple) used in this document. Description includes: 1) element's information: xml tag, name, brief description, data type and syntax constraints; 2) information about use of the element in a particular position in the document: xpath and possible associated notes.

2.2.1 Complex elements (Aggregate Business Information Entities)

Complex elements are those elements whose content is composed of other elements (childs).Complex elements are alphabetically ordered.

attachment	an attached document. An attachment can refer to an external document or be included with the document being exchanged (XPath GARStockOffer/GSObody/GSOitem/refDoc/attachment) 0-1 (XPath GARStockOffer/GSOheader/refDoc/attachment) 0-1
blockChainReference	blockchain reference - base type: string, max length: 80, (XPath GARStockOffer/GSOheader/refDoc/attachment/blockChainReference) 0-9 (XPath GARStockOffer/GSObody/GSOitem/refDoc/attachment/blockChainReference) 0-9
buyer	details of the Buyer (party that buys the good or service that is object of the current collaborative process) - base type: Nad, (XPath GARStockOffer/GSOheader/buyer) 0-1
csRange	range of color-size for a fashion article (XPath GARStockOffer/GSObody/GSOitem/csRange) 1-99
dtScheme	set of data usable to declare the duty or tax applied (XPath GARStockOffer/GSObody/GSOitem/dtScheme) 0-1 - note: <i>recommended alternative to the attribute @VAT</i>
externalReference	details about an external object, such as a document stored at a remote location (XPath GARStockOffer/GSObody/GSOitem/refDoc/attachment/externalReference) 0-99 (XPath GARStockOffer/GSOheader/refDoc/attachment/externalReference) 0-99
garmentCategory	classification of a garment article (XPath GARStockOffer/GSObody/GSOitem/garmentCategory) 1-1
garmentCode	codification of the garment product (XPath GARStockOffer/GSObody/GSOitem/garmentCode) 1-1
garmentCodeA	codification of the garment product- type A (XPath GARStockOffer/GSObody/GSOitem/garmentCode/garmentCodeA) 1-1 - note: <i>here the barcode EAN-13 or EAN-8 should be specified</i>
garmentCodeB	codification of the garment product - type B (XPath GARStockOffer/GSObody/GSOitem/garmentCode/garmentCodeB) 1-1
garmentVariant	garment product variant (XPath GARStockOffer/GSObody/GSOitem/garmentCode/garmentCodeB/garmentVariant) 0-9 (XPath GARStockOffer/GSObody/GSOitem/csRange/garmentVariant) 0-9 - note: <i>used only if not already specified in the article code</i>
geoCoordinates	geographical coordinates (XPath GARStockOffer/GSOheader/buyer/geoCoordinates) 0-1 (XPath GARStockOffer/GSOheader/supplier/geoCoordinates) 0-1 (XPath GARStockOffer/GSOheader/thirdParty/geoCoordinates) 0-1
goodsClassification	goods classification of the item. (XPath GARStockOffer/GSObody/GSOitem/garmentCategory/goodsClassification) 0-9
GSObody	body of the document GARMENT STOCK OFFER (XPath GARStockOffer/GSObody) 1-1
GSOheader	Header of a document for on-line FASHION STOCK management (XPath GARStockOffer/GSOheader) 1-1

GSOitem	line item of the document GARMENT STOCK OFFER (XPath GARStockOffer/GSObody/GSOitem) 1-unbounded
itemIdentification	serial identification of a product unit (XPath GARStockOffer/GSObody/GSOitem/csRange/sizeMatrix/sizeRow/itemsList/itemIdentification) 1-unbounded - note: <i>identification of the single product unit contained in the list</i>
itemsList	list of the single product units (XPath GARStockOffer/GSObody/GSOitem/csRange/sizeMatrix/sizeRow/itemsList) 0-1 - note: <i>the usage in this position is alternative to its usage within the document line element</i>
refDoc	identification of a document and of an item thereof, to which the message makes reference (XPath GARStockOffer/GSOheader/refDoc) 0-9 (XPath GARStockOffer/GSObody/GSOitem/refDoc) 0-9
sizeMatrix	size matrix of an apparel product (XPath GARStockOffer/GSObody/GSOitem/csRange/sizeMatrix) 1-1
sizeRow	size matrix row of an apparel product (XPath GARStockOffer/GSObody/GSOitem/csRange/sizeMatrix/sizeRow) 1-99
stockAddress	physical location of a stock (XPath GARStockOffer/GSObody/GSOitem/stockAddress) 1-1
supplier	details of the Supplier (party that supplies the good or service that is object of the current collaborative process) - base type: Nad, (XPath GARStockOffer/GSOheader/supplier) 1-1
thirdParty	identification and details of the Third Party, different from Sender and Receiver of the document - base type: Nad, (XPath GARStockOffer/GSOheader/thirdParty) 0-5 - note: <i>might be the ePlatform manager</i>

2.2.2 Simple elements (Basic Business Information Entities)

Simple elements are those elements whose content is characterized by a data type plus a domain of possible values. Simple elements are alphabetically ordered.

added	additional code of the product (complementing the formers) - base type: string, max length: 80, (XPath GARStockOffer/GSObody/GSOitem/garmentCode/garmentCodeB/added) 0-9
additionalComponentCode	an additional code to identify a fashion product or a part of it (it is a way to codify the item, but it is not one of the codes to identify it). It is not a serial identifier. - base type: string, (XPath GARStockOffer/GSObody/GSOitem/csRange/sizeMatrix/sizeRow/additionalComponentCode) 0-9
additionalIdentifier	additional identification code of a Party, for example customs registries or others - base type: string, max length: 15, (XPath GARStockOffer/GSOheader/buyer/additionalIdentifier) 0-9 - note: <i>identifiers for example for exports, such as MID (Manufacturer Identification Code), REX (identifier in Registered Exporter system)</i> (XPath GARStockOffer/GSOheader/supplier/additionalIdentifier) 0-9 - note: <i>identifiers for example for exports, such as MID (Manufacturer Identification Code), REX (identifier in EU Registered Exporter system)</i>
@addType	qualifier of the additional coding of a product - base type: string, cod. table: T44 http://www.ebiz.enea.it/moda-ml/repository/codelist/draft/gc_T44.xml (XPath GARStockOffer/GSObody/GSOitem/garmentCode/garmentCodeB/added/@addType) [Optional]

	- nota: <i>addType</i> allows the clarification of the meaning of the added element content; it is strongly suggested to use it always.
art	article number of the product - base type: string, max length: 80, (XPath GARStockOffer/GSObody/GSOitem/garmentCode/ garmentCodeA/art) 1-1
artGroup	code identifying a class of products - base type: string, max length: 40, (XPath GARStockOffer/GSObody/GSOitem/garmentCategory/artGroup) 0-1 (XPath GARStockOffer/GSObody/GSOitem/garmentCode/ garmentCodeB/artGroup) 0-1
artSex	code identifying the sex for which a fashion product is intended - base type: string, max length: 15, (XPath GARStockOffer/GSObody/GSOitem/garmentCategory/artSex) 0-1
artSubGroup	code identifying a sub-class of products - base type: string, max length: 40, (XPath GARStockOffer/GSObody/GSOitem/garmentCategory/artSubGroup) 0-1
binaryObject	a binary large object containing an attached document, Coding 'base64Binary' is recommended. - base type: base64Binary, (XPath GARStockOffer/GSObody/GSOitem/refDoc/attachment/binaryObject) 0-1 (XPath GARStockOffer/GSOheader/refDoc/attachment/binaryObject) 0-1
@characterSet	the character set of the binary object (examples UTF-8, UTF-16, Windows-1252, ISO-8859-7,..) - base type: normalizedString, (XPath GARStockOffer/GSObody/GSOitem/refDoc/attachment/ binaryObject/@characterSet) [Optional] (XPath GARStockOffer/GSOheader/refDoc/attachment/ binaryObject/@characterSet) [Optional]
characterSetCode	the character set of an external document (examples UTF-8, UTF-16, Windows-1252, ISO-8859-7,..) - base type: normalizedString, (XPath GARStockOffer/GSOheader/refDoc/attachment/ externalReference/characterSetCode) 0-1 (XPath GARStockOffer/GSObody/GSOitem/refDoc/attachment/ externalReference/characterSetCode) 0-1
city	name of the city (town, village) - base type: string, max length: 40, (XPath GARStockOffer/GSObody/GSOitem/stockAddress/city) 1-1 (XPath GARStockOffer/GSOheader/supplier/city) 0-1 (XPath GARStockOffer/GSOheader/buyer/city) 0-1 (XPath GARStockOffer/GSOheader/thirdParty/city) 0-1
class	a code indicating the category (macro-class, class or sub-class) of a commodity classification system the article belongs to. - base type: string, (XPath GARStockOffer/GSObody/GSOitem/garmentCategory/ goodsClassification/class) 0-1
@codeList	it specifies the URL where the list of codes used to make an instance of the element can be found - base type: string, max length: 255, (XPath GARStockOffer/GSObody/GSOitem/csRange/sizeMatrix/ sizeRow/drop/@codeList) [Optional] (XPath GARStockOffer/GSObody/GSOitem/garmentCode/ garmentCodeB/garmentVariant/variantCode/@codeList) [Optional] - nota: <i>at least one out of this attribute and "numberingOrg" should be set</i> (XPath GARStockOffer/GSObody/GSOitem/csRange/garmentVariant/variantCode/@codeList) [Optional] - nota: <i>at least one out of this attribute and "numberingOrg" should be set</i> (XPath GARStockOffer/GSOheader/note/@codeList) [Optional] - nota: <i>must be used to provide (URL) the list of codes used in "noteLabel"</i> (XPath GARStockOffer/GSObody/GSOitem/csRange/sizeMatrix/

	<p>sizeRow/size/@codeList) [Optional] (XPath GARStockOffer/GSObody/GSOitem/csRange/color/@codeList) [Optional] - nota: <i>this attribute should be used either single or coupled with "listName" and "listVersion"</i> (XPath</p> <p>GARStockOffer/GSObody/GSOitem/csRange/garmentVariant/variantType/@codeList) [Optional] - nota: <i>always at least one out of this attribute and "numberingOrg" should be set</i> (XPath GARStockOffer/GSObody/GSOitem/refDoc/season/@codeList) [Optional] - nota: <i>this attribute should be used either single or coupled with "listName" and "listVersion"</i> (XPath GARStockOffer/GSObody/GSOitem/csRange/sizeMatrix/sizeRow/additionalComponentCode/@codeList) [Optional] - nota: <i>at least one out of this attribute and "numberingOrg" should be set</i> (XPath GARStockOffer/GSObody/GSOitem/garmentCode/garmentCodeB/size/@codeList) [Optional] (XPath GARStockOffer/GSObody/GSOitem/garmentCode/garmentCodeB/drop/@codeList) [Optional] (XPath GARStockOffer/GSObody/GSOitem/garmentCode/garmentCodeA/art/@codeList) [Optional] - nota: <i>at least one out of this attribute and "numberingOrg" should be set</i> (XPath GARStockOffer/GSObody/GSOitem/garmentCode/garmentCodeB/artGroup/@codeList) [Optional] - nota: <i>at least one out of this attribute and "numberingOrg" should be set</i> (XPath GARStockOffer/GSObody/GSOitem/csRange/drop/@codeList) [Optional] (XPath GARStockOffer/GSObody/GSOitem/garmentCategory/goodsClassification/subClass/@codeList) [Optional] - nota: <i>at least one out of this attribute and "numberingOrg" should be set</i> (XPath GARStockOffer/GSObody/GSOitem/dtScheme/note/@codeList) [Optional] - nota: <i>must be used to provide (URL) the list of codes used in "noteLabel"</i> (XPath GARStockOffer/GSObody/GSOitem/garmentCategory/artSex/@codeList) [Optional] - nota: <i>at least one out of this attribute and "numberingOrg" should be set</i> (XPath GARStockOffer/GSObody/GSOitem/garmentCategory/goodsClassification/macroClass/@codeList) [Optional] - nota: <i>at least one out of this attribute and "numberingOrg" should be set</i> (XPath GARStockOffer/GSObody/GSOitem/garmentCode/garmentCodeB/mod/@codeList) [Optional] - nota: <i>at least one out of this attribute and "numberingOrg" should be set</i> (XPath GARStockOffer/GSObody/GSOitem/garmentCategory/note/@codeList) [Optional] - nota: <i>must be used to provide (URL) the list of codes used in "noteLabel"</i> (XPath GARStockOffer/GSObody/GSOitem/garmentCategory/season/@codeList) [Optional] - nota: <i>this attribute should be used either single or coupled with "listName" and "listVersion"</i> (XPath GARStockOffer/GSObody/GSOitem/garmentCategory/goodsClassification/class/@codeList) [Optional] - nota: <i>at least one out of this attribute and "numberingOrg" should be set</i> (XPath GARStockOffer/GSObody/GSOitem/garmentCode/garmentCodeB/fabric/@codeList) [Optional] - nota: <i>at least one out of this attribute and "numberingOrg" should be set</i> (XPath GARStockOffer/GSObody/GSOitem/garmentCategory/artGroup/@codeList) [Optional] - nota: <i>at least one out of this attribute and "numberingOrg" should be set</i> (XPath GARStockOffer/GSObody/GSOitem/garmentCode/garmentCodeB/color/@codeList) [Optional] - nota: <i>this attribute should be used either single or coupled with "listName" and "listVersion"</i> (XPath GARStockOffer/GSObody/GSOitem/garmentCode/garmentCodeB/garmentVariant/variantType/@codeList) [Optional] - nota: <i>always at least one out of this attribute and "numberingOrg" should be set</i> (XPath GARStockOffer/GSOheader/refDoc/season/@codeList) [Optional] - nota: <i>this attribute should be used either single or coupled with "listName" and "listVersion"</i> (XPath GARStockOffer/GSObody/GSOitem/dtScheme/legalRef/@codeList) [Optional] (XPath GARStockOffer/GSObody/GSOitem/garmentCategory/artSubGroup/@codeList) [Optional] - nota: <i>at least one out of this attribute and "numberingOrg" should be set</i> (XPath GARStockOffer/GSObody/GSOitem/note/@codeList) [Optional] - nota: <i>must be used to provide (URL) the list of codes used in "noteLabel"</i> (XPath GARStockOffer/GSObody/GSOitem/csRange/sizeMatrix/</p>
--	--

	<p>sizeRow/itemsList/qualityLevel/@codeList [Optional] - nota: <i>at least one out of this attribute and "numberingOrg" should be set</i></p>
color	<p>colour number of the product, when not included in the model or fabric code - base type: string, max length: 15, (XPath GARStockOffer/GSObody/GSOitem/garmentCode/ garmentCodeB/color) 0-1 (XPath GARStockOffer/GSObody/GSOitem/csRange/color) 0-1 - note: <i>used only if not already specified in the article code</i></p>
commerceText	<p>text usable for the full commercial description of a product - base type: string, max length: 400, (XPath GARStockOffer/GSObody/GSOitem/commerceText) 0-unbounded - note: <i>Only one instance of this element for each different value of 'In' attribute (language)</i></p>
country	<p>code of the nation - base type: string, cod. table: T10 http://www.ebiz.enea.it/moda-ml/repository/codelist/draft/gc_T10.xml (XPath GARStockOffer/GSOheader/thirdParty/country) 0-1 (XPath GARStockOffer/GSOheader/buyer/country) 0-1 (XPath GARStockOffer/GSObody/GSOitem/stockAddress/country) 1-1 (XPath GARStockOffer/GSOheader/supplier/country) 0-1</p>
@currency	<p>currency in which a specified monetary data is expressed - base type: string, cod. table: T9 http://www.ebiz.enea.it/moda-ml/repository/codelist/draft/gc_T9.xml (XPath GARStockOffer/GSObody/GSOitem/@currency) [Optional] - nota: <i>this is the currency of the offer price of the specified stock. DEPRECATED: when possible refer currency to the whole document (msgCurrency), otherwise use the currency attribute of the price element of the line</i> (XPath GARStockOffer/GSObody/GSOitem/price/@currency) [Optional] - nota: <i>Currency referred by the price.</i></p>
@dateForm	<p>format used for the date - base type: string, cod. table: NT29 http://www.ebiz.enea.it/moda-ml/repository/codelist/draft/gc_NT29.xml (XPath GARStockOffer/GSObody/GSOitem/readyToSendDate/@dateForm) [Optional] (XPath GARStockOffer/GSObody/GSOitem/refDoc/docDate/@dateForm) [Optional] (XPath GARStockOffer/GSOheader/refDoc/docDate/@dateForm) [Optional] (XPath GARStockOffer/GSOheader/msgDate/@dateForm) [Optional]</p>
dept	<p>name or code of a department - base type: string, max length: 40, (XPath GARStockOffer/GSOheader/supplier/dept) 0-1 (XPath GARStockOffer/GSOheader/buyer/dept) 0-1 (XPath GARStockOffer/GSOheader/thirdParty/dept) 0-1</p>
description	<p>free text description. The content of the element must be unique, it might be translated and repeated into more languages (thus no more than one instance for each language).</p> <p>- base type: string, max length: 250, (XPath GARStockOffer/GSObody/GSOitem/garmentCode/ garmentCodeA/description) 0-unbounded - note: <i>Product description</i> (XPath GARStockOffer/GSObody/GSOitem/garmentCode/ garmentCodeB/description) 0-unbounded - note: <i>Product description</i></p>
docDate	<p>date of issue of the referenced document, according to one of the patterns YYYY-MM-DD, YYYY-MM-DD:HH-MM or YYYY-WWW. - base type: string, (XPath GARStockOffer/GSOheader/refDoc/docDate) 0-1 (XPath GARStockOffer/GSObody/GSOitem/refDoc/docDate) 0-1</p>
docID	<p>identification number of the referenced document - base type: string, max length: 80, (XPath GARStockOffer/GSOheader/refDoc/docID) 1-2 Best Practice (XPath GARStockOffer/GSObody/GSOitem/refDoc/docID) 1-2 Best Practice</p>
@docType	<p>type or class to which the referenced document belongs - base type: string, cod. table: T21 http://www.ebiz.enea.it/moda-ml/repository/codelist/draft/gc_T21.xml</p>

	(XPath GARStockOffer/GSOheader/refDoc/@docType) [Required] (XPath GARStockOffer/GSObody/GSOitem/refDoc/@docType) [Required]
drop	drop number of the garment - base type: string, max length: 15, (XPath GARStockOffer/GSObody/GSOitem/garmentCode/ garmentCodeB/drop) 0-1 - note: <i>Fill this element if the drop is the same for all the sizes of the model. Otherway specify it within the csRange element</i> (XPath GARStockOffer/GSObody/GSOitem/csRange/drop) 0-1 - note: <i>used only if not already specified in the article code</i> (XPath GARStockOffer/GSObody/GSOitem/csRange/sizeMatrix/ sizeRow/drop) 0-1 - note: <i>DEPRECATED, anyhow it is used only if not already specified in the article code or csRange</i>
@email	electronic mail address of the contact person within a Party - base type: string, max length: 250, (XPath GARStockOffer/GSOheader/buyer/person/@email) [Optional] (XPath GARStockOffer/GSOheader/thirdParty/person/@email) [Optional] (XPath GARStockOffer/GSOheader/supplier/person/@email) [Optional]
@encoding	specifies the decoding algorithm of the binary object - base type: normalizedString, (XPath GARStockOffer/GSOheader/refDoc/attachment/ binaryObject/@encoding) [Optional] (XPath GARStockOffer/GSObody/GSOitem/refDoc/attachment/ binaryObject/@encoding) [Optional]
encodingCode	the encoding/decoding algorithm used with the external object (example is 'base64Binary') - base type: normalizedString, (XPath GARStockOffer/GSObody/GSOitem/refDoc/attachment/ externalReference/encodingCode) 0-1 (XPath GARStockOffer/GSOheader/refDoc/attachment/ externalReference/encodingCode) 0-1
fabric	fabric number of the garment - base type: string, max length: 15, (XPath GARStockOffer/GSObody/GSOitem/garmentCode/ garmentCodeB/fabric) 0-1
@fax	fax number of the contact person within a Party - base type: string, max length: 35, (XPath GARStockOffer/GSOheader/buyer/person/@fax) [Optional] (XPath GARStockOffer/GSOheader/thirdParty/person/@fax) [Optional] (XPath GARStockOffer/GSOheader/supplier/person/@fax) [Optional]
fileName	unique identifier (name) of the file - base type: string, max length: 255, (XPath GARStockOffer/GSObody/GSOitem/refDoc/attachment/fileName) 0-1 (XPath GARStockOffer/GSOheader/refDoc/attachment/fileName) 0-1
@format	the format of the binary content (examples xml, pdf, doc,...) - base type: string, (XPath GARStockOffer/GSObody/GSOitem/refDoc/attachment/ binaryObject/@format) [Optional] (XPath GARStockOffer/GSOheader/refDoc/attachment/ binaryObject/@format) [Optional]
formatCode	the format of the external object (examples xml, pdf, doc,...) - base type: normalizedString, (XPath GARStockOffer/GSOheader/refDoc/attachment/ externalReference/formatCode) 0-1 (XPath GARStockOffer/GSObody/GSOitem/refDoc/attachment/ externalReference/formatCode) 0-1
@geoRefSystem	georeference system adopted for the coordinate (in example wgs84 with decimal degree or degree with minute and seconds) - base type: string, (XPath GARStockOffer/GSOheader/thirdParty/geoCoordinates/@geoRefSystem) [Optional] (XPath GARStockOffer/GSOheader/supplier/geoCoordinates/@geoRefSystem) [Optional] (XPath GARStockOffer/GSOheader/buyer/geoCoordinates/@geoRefSystem) [Optional]

hashFootprint	<p>footprint obtained by applying an hashing algorithm</p> <ul style="list-style-type: none"> - base type: string, max length: 80, (XPath GARStockOffer/GSOheader/refDoc/attachment/hashFootprint) 0-1 (XPath GARStockOffer/GSObody/GSOitem/refDoc/attachment/hashFootprint) 0-1
@hashMethod	<p>type of used hashing algorithm</p> <ul style="list-style-type: none"> - base type: string, max length: 80, cod. table: NT333 http://www.ebiz.enea.it/moda-ml/repository/codelist/draft/gc_NT333.xml (XPath GARStockOffer/GSOheader/refDoc/attachment/hashFootprint/@hashMethod) [Required] (XPath GARStockOffer/GSObody/GSOitem/refDoc/attachment/hashFootprint/@hashMethod) [Required]
id	<p>primary identification code of a Party; it is recommended to use an EORI number (with @numberingOrg= "EO") or the format: nation code (ISO 3166) + national tax code (i.e. VAT identification number) with @numberingOrg= "MF"</p> <ul style="list-style-type: none"> - base type: string, max length: 15, (XPath GARStockOffer/GSOheader/buyer/id) 1-1 (XPath GARStockOffer/GSOheader/supplier/id) 1-1 (XPath GARStockOffer/GSOheader/thirdParty/id) 1-1
@idQualifier	<p>Qualification of the identifier.</p> <ul style="list-style-type: none"> - base type: string, (XPath GARStockOffer/GSOheader/supplier/additionalIdentifier/@idQualifier) [Optional] - nota: <i>this attribute should be used when the numberingOrg attribute is not enough to declare the type of identifier</i> (XPath GARStockOffer/GSObody/GSOitem/csRange/sizeMatrix/sizeRow/itemsList/itemIdentification/serialN/@idQualifier) [Optional] - nota: <i>this attribute should be used when the numberingOrg attribute is not enough to declare the type of serial identifier</i> (XPath GARStockOffer/GSOheader/buyer/additionalIdentifier/@idQualifier) [Optional] - nota: <i>this attribute should be used when the numberingOrg attribute is not enough to declare the type of identifier</i>
@isURL	<p>it indicates if the referred element is an URL (true) or not (false)</p> <ul style="list-style-type: none"> - base type: boolean, (XPath GARStockOffer/GSOheader/refDoc/attachment/externalReference/uri/@isURL) [Optional] [Default= true] - nota: <i>usage of URLs is recommended</i> (XPath GARStockOffer/GSObody/GSOitem/refDoc/attachment/externalReference/uri/@isURL) [Optional] [Default= true] - nota: <i>usage of URLs is recommended</i> (XPath GARStockOffer/GSObody/GSOitem/refDoc/attachment/blockChainReference/uri/@isURL) [Optional] [Default= true] - nota: <i>usage of URLs is recommended</i> (XPath GARStockOffer/GSOheader/refDoc/attachment/blockChainReference/uri/@isURL) [Optional] [Default= true] - nota: <i>usage of URLs is recommended</i>
itemID	<p>number of the line/item of the referenced document</p> <ul style="list-style-type: none"> - base type: string, max length: 40, (XPath GARStockOffer/GSOheader/refDoc/itemID) 0-1 (XPath GARStockOffer/GSObody/GSOitem/refDoc/itemID) 0-1
legalName	<p>legal name</p> <ul style="list-style-type: none"> - base type: string, max length: 250, (XPath GARStockOffer/GSOheader/thirdParty/legalName) 0-1 (XPath GARStockOffer/GSOheader/supplier/legalName) 0-1 (XPath GARStockOffer/GSOheader/buyer/legalName) 0-1
legalRef	<p>legal reference of the duty or tax or fee category</p> <ul style="list-style-type: none"> - base type: string, (XPath GARStockOffer/GSObody/GSOitem/dtScheme/legalRef) 0-1
lineID	<p>unique identifier of the line item of the business document; it is set by the role that produces the document.</p> <ul style="list-style-type: none"> - base type: string, max length: 30, (XPath GARStockOffer/GSObody/GSOitem/lineID) 0-1
lineN	<p>number of the line item of the present message (xml document); it is set by the role tha</p>

	<p>t produces the document. Usually it is a progressive number, but not always. - base type: positiveInteger, min inclusive: 1, max inclusive: 9999, (XPath GARStockOffer/GSObody/GSOitem/lineN) 1-1</p>
@listName	<p>the name of the list of codes used to make an instance of the element (it might be thought as descriptive element, i.e. 'fabric printing technologies', or not, i.e. "T264") - base type: string, max length: 40, (XPath GARStockOffer/GSObody/GSOitem/garmentCode/garmentCodeB/fabric/@listName) [Optional] - nota: <i>this attribute should always be used coupled with "numberingOrg"</i> (XPath GARStockOffer/GSObody/GSOitem/garmentCategory/artGroup/@listName) [Optional] - nota: <i>this attribute should always be used coupled with "numberingOrg"</i> (XPath GARStockOffer/GSObody/GSOitem/garmentCode/garmentCodeB/color/@listName) [Optional] - nota: <i>this attribute should always be used coupled with "numberingOrg"</i> (XPath GARStockOffer/GSObody/GSOitem/csRange/garmentVariant/variantType/@listName) [Optional] - nota: <i>this attribute should always be used coupled with "numberingOrg"</i> (XPath GARStockOffer/GSObody/GSOitem/garmentCategory/artSubGroup/@listName) [Optional] - nota: <i>this attribute should always be used coupled with "numberingOrg"</i> (XPath GARStockOffer/GSObody/GSOitem/csRange/sizeMatrix/sizeRow/itemsList/qualityLevel/@listName) [Optional] - nota: <i>this attribute should always be used coupled with "numberingOrg"</i> (XPath GARStockOffer/GSObody/GSOitem/csRange/color/@listName) [Optional] - nota: <i>this attribute should always be used coupled with "numberingOrg"</i> (XPath GARStockOffer/GSObody/GSOitem/garmentCategory/goodsClassification/macroClass/@listName) [Optional] - nota: <i>this attribute should always be used coupled with "numberingOrg"</i> (XPath GARStockOffer/GSObody/GSOitem/garmentCategory/goodsClassification/class/@listName) [Optional] - nota: <i>this attribute should always be used coupled with "numberingOrg"</i> (XPath GARStockOffer/GSObody/GSOitem/dtScheme/legalRef/@listName) [Optional] - nota: <i>this attribute should always be used coupled with "numberingOrg"</i> (XPath GARStockOffer/GSOheader/refDoc/season/@listName) [Optional] - nota: <i>this attribute should always be used coupled with "numberingOrg"</i> (XPath GARStockOffer/GSObody/GSOitem/garmentCode/garmentCodeB/mod/@listName) [Optional] - nota: <i>this attribute should always be used coupled with "numberingOrg"</i> (XPath GARStockOffer/GSObody/GSOitem/garmentCategory/artSex/@listName) [Optional] - nota: <i>this attribute should always be used coupled with "numberingOrg"</i> (XPath GARStockOffer/GSObody/GSOitem/garmentCategory/goodsClassification/subClass/@listName) [Optional] - nota: <i>this attribute should always be used coupled with "numberingOrg"</i> (XPath GARStockOffer/GSObody/GSOitem/garmentCategory/season/@listName) [Optional] - nota: <i>this attribute should always be used coupled with "numberingOrg"</i> (XPath GARStockOffer/GSObody/GSOitem/csRange/drop/@listName) [Optional] - nota: <i>this attribute should always be used coupled with "numberingOrg"</i> (XPath GARStockOffer/GSObody/GSOitem/garmentCode/garmentCodeB/garmentVariant/variantCode/@listName) [Optional] - nota: <i>this attribute should always be used coupled with "numberingOrg"</i> (XPath GARStockOffer/GSObody/GSOitem/garmentCode/garmentCodeA/art/@listName) [Optional] - nota: <i>this attribute should always be used coupled with "numberingOrg"</i> (XPath GARStockOffer/GSObody/GSOitem/csRange/sizeMatrix/sizeRow/drop/@listName) [Optional] - nota: <i>this attribute should always be used coupled with "numberingOrg"</i> (XPath GARStockOffer/GSObody/GSOitem/garmentCode/garmentCodeB/artGroup/@listName) [Optional] - nota: <i>this attribute should always be used coupled with "numberingOrg"</i> (XPath GARStockOffer/GSObody/GSOitem/refDoc/season/@listName) [Optional] - nota: <i>this attribute should always be used coupled with "numberingOrg"</i> (XPath GARStockOffer/GSObody/GSOitem/csRange/sizeMatrix/sizeRow/additionalComponentCode/@listName) [Optional] - nota: <i>this attribute should always be used coupled with "numberingOrg"</i> (XPath GARStockOffer/GSObody/GSOitem/garmentCode/garmentCodeB/size/@listName) [Optional]</p>

	<p>- nota: <i>this attribute should always be used coupled with “numberingOrg”</i> (XPath GARStockOffer/GSObody/GSOitem/garmentCode/ garmentCodeB/drop/@listName) [Optional]</p> <p>- nota: <i>this attribute should always be used coupled with “numberingOrg”</i> (XPath GARStockOffer/GSObody/GSOitem/csRange/sizeMatrix/ sizeRow/size/@listName) [Optional]</p> <p>- nota: <i>this attribute should always be used coupled with “numberingOrg”</i> (XPath GARStockOffer/GSObody/GSOitem/garmentCode/ garmentCodeB/garmentVariant/variantType/@listName) [Optional]</p> <p>- nota: <i>this attribute should always be used coupled with “numberingOrg”</i> (XPath GARStockOffer/GSObody/GSOitem/csRange/garmentVariant/variantCode/@li stName) [Optional]</p> <p>- nota: <i>this attribute should always be used coupled with “numberingOrg”</i></p>
@listVersion	<p>it specifies the version of the list of codes used to make an instance of the element</p> <p>- base type: string, max length: 6, (XPath GARStockOffer/GSObody/GSOitem/garmentCode/ garmentCodeB/size/@listVersion) [Optional]</p> <p>- nota: <i>this attribute should always be used coupled with “numberingOrg” and “listName”</i> (XPath GARStockOffer/GSObody/GSOitem/csRange/sizeMatrix/ sizeRow/additionalComponentCode/@listVersion) [Optional]</p> <p>- nota: <i>this attribute should always be used coupled with “numberingOrg” and “listName”</i> (XPath GARStockOffer/GSObody/GSOitem/garmentCode/ garmentCodeB/garmentVariant/variantCode/@listVersion) [Optional]</p> <p>- nota: <i>this attribute should always be used coupled with “numberingOrg” and “listName”</i> (XPath GARStockOffer/GSObody/GSOitem/csRange/sizeMatrix/ sizeRow/size/@listVersion) [Optional]</p> <p>- nota: <i>this attribute should always be used coupled with “numberingOrg” and “listName”</i> (XPath GARStockOffer/GSObody/GSOitem/garmentCategory/ goodsClassification/subClass/@listVersion) [Optional]</p> <p>- nota: <i>this attribute should always be used coupled with “numberingOrg” and “listName”</i> (XPath GARStockOffer/GSObody/GSOitem/csRange/garmentVariant/variantType/@li stVersion) [Optional]</p> <p>- nota: <i>this attribute should always be used coupled with “numberingOrg” and “listName”</i> (XPath GARStockOffer/GSObody/GSOitem/garmentCode/ garmentCodeB/drop/@listVersion) [Optional]</p> <p>- nota: <i>this attribute should always be used coupled with “numberingOrg” and “listName”</i> (XPath GARStockOffer/GSObody/GSOitem/dtScheme/legalRef/@listVersion) [Optional]</p> <p>- nota: <i>this attribute should always be used coupled with “numberingOrg” and “listName”</i> (XPath GARStockOffer/GSObody/GSOitem/garmentCode/ garmentCodeB/color/@listVersion) [Optional]</p> <p>- nota: <i>this attribute should always be used coupled with “numberingOrg” and “listName”</i> (XPath GARStockOffer/GSOheader/refDoc/season/@listVersion) [Optional]</p> <p>- nota: <i>this attribute should always be used coupled with “numberingOrg” and “listName”</i> (XPath GARStockOffer/GSObody/GSOitem/garmentCode/ garmentCodeB/fabric/@listVersion) [Optional]</p> <p>- nota: <i>this attribute should always be used coupled with “numberingOrg” and “listName”</i> (XPath GARStockOffer/GSObody/GSOitem/csRange/sizeMatrix/ sizeRow/drop/@listVersion) [Optional]</p> <p>- nota: <i>this attribute should always be used coupled with “numberingOrg” and “listName”</i> (XPath GARStockOffer/GSObody/GSOitem/garmentCode/ garmentCodeB/garmentVariant/variantType/@listVersion) [Optional]</p> <p>- nota: <i>this attribute should always be used coupled with “numberingOrg” and “listName”</i> (XPath GARStockOffer/GSObody/GSOitem/garmentCode/ garmentCodeA/art/@listVersion) [Optional]</p>

	<p>- nota: <i>this attribute should always be used coupled with “numberingOrg” and “listName”</i> (XPath GARStockOffer/GSObody/GSOitem/csRange/color/@listVersion) [Optional]</p> <p>- nota: <i>this attribute should always be used coupled with “numberingOrg” and “listName”</i> (XPath GARStockOffer/GSObody/GSOitem/garmentCode/garmentCodeB/artGroup/@listVersion) [Optional]</p> <p>- nota: <i>this attribute should always be used coupled with “numberingOrg” and “listName”</i> (XPath GARStockOffer/GSObody/GSOitem/csRange/drop/@listVersion) [Optional]</p> <p>- nota: <i>this attribute should always be used coupled with “numberingOrg” and “listName”</i> (XPath GARStockOffer/GSObody/GSOitem/csRange/sizeMatrix/sizeRow/itemsList/qualityLevel/@listVersion) [Optional]</p> <p>- nota: <i>this attribute should always be used coupled with “numberingOrg” and “listName”</i> (XPath GARStockOffer/GSObody/GSOitem/garmentCode/garmentCodeB/mod/@listVersion) [Optional]</p> <p>- nota: <i>this attribute should always be used coupled with “numberingOrg” and “listName”</i> (XPath GARStockOffer/GSObody/GSOitem/csRange/garmentVariant/variantCode/@listVersion) [Optional]</p> <p>- nota: <i>this attribute should always be used coupled with “numberingOrg” and “listName”</i> (XPath GARStockOffer/GSObody/GSOitem/garmentCategory/season/@listVersion) [Optional]</p> <p>- nota: <i>this attribute should always be used coupled with “numberingOrg” and “listName”</i> (XPath GARStockOffer/GSObody/GSOitem/garmentCategory/artSubGroup/@listVersion) [Optional]</p> <p>- nota: <i>this attribute should always be used coupled with “numberingOrg” and “listName”</i> (XPath GARStockOffer/GSObody/GSOitem/garmentCategory/artSex/@listVersion) [Optional]</p> <p>- nota: <i>this attribute should always be used coupled with “numberingOrg” and “listName”</i> (XPath GARStockOffer/GSObody/GSOitem/garmentCategory/artGroup/@listVersion) [Optional]</p> <p>- nota: <i>this attribute should always be used coupled with “numberingOrg” and “listName”</i> (XPath GARStockOffer/GSObody/GSOitem/refDoc/season/@listVersion) [Optional]</p> <p>- nota: <i>this attribute should always be used coupled with “numberingOrg” and “listName”</i> (XPath GARStockOffer/GSObody/GSOitem/garmentCategory/goodsClassification/macroClass/@listVersion) [Optional]</p> <p>- nota: <i>this attribute should always be used coupled with “numberingOrg” and “listName”</i> (XPath GARStockOffer/GSObody/GSOitem/garmentCategory/goodsClassification/class/@listVersion) [Optional]</p> <p>- nota: <i>this attribute should always be used coupled with “numberingOrg” and “listName”</i> (XPath GARStockOffer/GSObody/GSOitem/garmentCategory/goodsClassification/class/@listVersion) [Optional]</p> <p>- nota: <i>this attribute should always be used coupled with “numberingOrg” and “listName”</i> (XPath GARStockOffer/GSObody/GSOitem/garmentCategory/goodsClassification/class/@listVersion) [Optional]</p>
@ln	<p>Language code. - base type: string, cod. table: NT60 http://www.ebiz.enea.it/moda-ml/repository/codelist/draft/gc_NT60.xml (XPath GARStockOffer/GSObody/GSOitem/garmentCode/garmentCodeB/description/@ln) [Optional] (XPath GARStockOffer/GSObody/GSOitem/garmentCode/garmentCodeA/description/@ln) [Optional] (XPath GARStockOffer/GSObody/GSOitem/commerceText/@ln) [Optional]</p>
@logo	<p>company logo (URL of the image jpeg or gif). It is recommended that the width of the image does not exceed 640 pixel. - base type: string, max length: 255, (XPath GARStockOffer/GSOheader/buyer/@logo) [Optional] (XPath GARStockOffer/GSOheader/supplier/@logo) [Optional]</p>
macroClass	<p>a code indicating the category (macro-class, class or sub-class) of a commodity classification system the article belongs to. - base type: string,</p>

	(XPath GARStockOffer/GSObody/GSOitem/garmentCategory/goodsClassification/macroClass) 0-1
@mime	the mime type of the binary object - base type: normalizedString, (XPath GARStockOffer/GSOheader/refDoc/attachment/binaryObject/@mime) [Optional] (XPath GARStockOffer/GSObody/GSOitem/refDoc/attachment/binaryObject/@mime) [Optional]
mimeCode	mime type of the external object - base type: normalizedString, (XPath GARStockOffer/GSObody/GSOitem/refDoc/attachment/externalReference/mimeCode) 0-1 Best Practice (XPath GARStockOffer/GSOheader/refDoc/attachment/externalReference/mimeCode) 0-1 Best Practice
mod	model number of the garment - base type: string, max length: 15, (XPath GARStockOffer/GSObody/GSOitem/garmentCode/garmentCodeB/mod) 1-1
msgDate	date of issue of the present message (xml document), according to one of the patterns YYYY-MM-DD, YYYY-MM-DD:HH-MM or YYYY-WW. - base type: string, (XPath GARStockOffer/GSOheader/msgDate) 1-1
@msgfunction	function performed by the present message with regards to the transmission - base type: string, cod. table: NT18 http://www.ebiz.enea.it/moda-ml/repository/codelist/draft/gc_NT18.xml (XPath GARStockOffer/@msgfunction) [Optional] [Default= OR]
msgID	key identifier of the business document in the information system of the issuing Party. In case of more despatches of the same business document, it is unchanged. - base type: string, max length: 35, (XPath GARStockOffer/GSOheader/msgID) 0-1
msgN	identification number given to the message (xml document) by its issuer. In case of more despatches of the same business document, it changes. - base type: string, max length: 35, (XPath GARStockOffer/GSOheader/msgN) 1-1
note	free text or structured (computer processing) note. For note structuring use the attributes "noteLabel" and "codelist" - base type: string, max length: 350, (XPath GARStockOffer/GSObody/GSOitem/garmentCategory/note) 0-99 (XPath GARStockOffer/GSOheader/note) 0-99 (XPath GARStockOffer/GSObody/GSOitem/dtScheme/note) 0-99 (XPath GARStockOffer/GSObody/GSOitem/note) 0-99
@noteLabel	subject qualifier of a note - base type: string, max length: 35, (XPath GARStockOffer/GSOheader/note/@noteLabel) [Optional] - nota: <i>must be used to qualify the subject of the note</i> (XPath GARStockOffer/GSObody/GSOitem/dtScheme/note/@noteLabel) [Optional] - nota: <i>must be used to qualify the subject of the note</i> (XPath GARStockOffer/GSObody/GSOitem/note/@noteLabel) [Optional] - nota: <i>must be used to qualify the subject of the note</i> (XPath GARStockOffer/GSObody/GSOitem/garmentCategory/note/@noteLabel) [Optional] - nota: <i>must be used to qualify the subject of the note</i>
@numberingOrg	code specifying the organisation who has created or owns the coding or numbering system - base type: string, cod. table: NT6 http://www.ebiz.enea.it/moda-ml/repository/codelist/draft/gc_NT6.xml (XPath GARStockOffer/GSObody/GSOitem/csRange/sizeMatrix/sizeRow/itemsList/qualityLevel/@numberingOrg) [Optional] - nota: <i>this attribute should be used either single or coupled with "listName" and "listVersion"</i> (XPath GARStockOffer/GSObody/GSOitem/garmentCode/garmentCodeB/added/@numberingOrg) [Optional] - nota: <i>this attribute should be used either single or coupled with "listName" and "listVersion"</i>

	<p>rsion” (XPath GARStockOffer/GSObody/GSOitem/csRange/sizeMatrix/sizeRow/itemsList/itemIdentification/serialN/@numberingOrg) [Optional] - nota: here the issuer of the serial number must be specified (when different from the Supplier) (XPath GARStockOffer/GSOheader/note/@numberingOrg) [Optional] - nota: must be used to specify the organization that created the list of codes used in "noteLabel" (XPath GARStockOffer/GSOheader/refDoc/season/@numberingOrg) [Optional] - nota: this attribute should be used either single or coupled with "listName" and "listVersion" (XPath GARStockOffer/GSObody/GSOitem/csRange/color/@numberingOrg) [Optional] - nota: this attribute should be used either single or coupled with "listName" and "listVersion" (XPath GARStockOffer/GSObody/GSOitem/garmentCode/garmentCodeB/artGroup/@numberingOrg) [Optional] - nota: this attribute should be used either single or coupled with "listName" and "listVersion" (XPath GARStockOffer/GSObody/GSOitem/csRange/sizeMatrix/sizeRow/additionalComponentCode/@numberingOrg) [Optional] - nota: this attribute should be used either single or coupled with "listName" and "listVersion" (XPath GARStockOffer/GSOheader/buyer/additionalIdentifier/@numberingOrg) [Optional] - nota: here the issuer of the identifier must be specified (XPath GARStockOffer/GSObody/GSOitem/csRange/garmentVariant/variantType/@numberingOrg) [Optional] - nota: this attribute should be used either single or coupled with "listName" and "listVersion" (XPath GARStockOffer/GSObody/GSOitem/csRange/garmentVariant/variantCode/@numberingOrg) [Optional] - nota: this attribute should be used either single or coupled with "listName" and "listVersion" (XPath GARStockOffer/GSObody/GSOitem/csRange/drop/@numberingOrg) [Optional] - nota: this attribute should be used either single or coupled with "listName" and "listVersion" (XPath GARStockOffer/GSObody/GSOitem/csRange/@numberingOrg) [Optional] (XPath GARStockOffer/GSObody/GSOitem/csRange/sizeMatrix/sizeRow/size/@numberingOrg) [Optional] - nota: this attribute should be used either single or coupled with "listName" and "listVersion" (XPath GARStockOffer/GSObody/GSOitem/garmentCode/garmentCodeA/art/@numberingOrg) [Optional] - nota: this attribute should be used either single or coupled with "listName" and "listVersion" (XPath GARStockOffer/GSOheader/refDoc/docID/@numberingOrg) [Optional] - nota: here can be specified whose document numbering is used (e.g.: Client, Supplier, ..) (XPath GARStockOffer/GSOheader/thirdParty/id/@numberingOrg) [Optional] (XPath GARStockOffer/GSOheader/buyer/id/@numberingOrg) [Optional] (XPath GARStockOffer/GSObody/GSOitem/csRange/sizeMatrix/sizeRow/drop/@numberingOrg) [Optional] - nota: this attribute should be used either single or coupled with "listName" and "listVersion" (XPath GARStockOffer/GSObody/GSOitem/refDoc/docID/@numberingOrg) [Optional] - nota: here can be specified whose document numbering is used (e.g.: Client, Supplier, ..) (XPath GARStockOffer/GSObody/GSOitem/garmentCode/garmentCodeB/fabric/@numberingOrg) [Optional] - nota: this attribute should be used either single or coupled with "listName" and "listVersion" (XPath GARStockOffer/GSObody/GSOitem/garmentCategory/season/@numberingOrg) [Optional] - nota: this attribute should be used either single or coupled with "listName" and "listVersion" (XPath GARStockOffer/GSObody/GSOitem/garmentCode/garmentCodeB/mod/@numberingOrg) [Optional] (XPath GARStockOffer/GSObody/GSOitem/garmentCategory/artSex/@numberingOrg) [Optional]</p>
--	---

- nota: *this attribute should be used either single or coupled with "listName" and "listVersion"*
(XPath GARStockOffer/GSObody/GSOitem/garmentCategory/artGroup/@numberingOrg) [Optional]

- nota: *this attribute should be used either single or coupled with "listName" and "listVersion"*
(XPath GARStockOffer/GSObody/GSOitem/garmentCode/garmentCodeB/color/@numberingOrg) [Optional]

- nota: *this attribute should be used either single or coupled with "listName" and "listVersion"*
(XPath GARStockOffer/GSObody/GSOitem/garmentCategory/artSubGroup/@numberingOrg) [Optional]

- nota: *this attribute should be used either single or coupled with "listName" and "listVersion"*
(XPath GARStockOffer/GSObody/GSOitem/garmentCategory/goodsClassification/class/@numberingOrg) [Optional]

- nota: *this attribute should be used either single or coupled with "listName" and "listVersion"*
(XPath GARStockOffer/GSObody/GSOitem/garmentCategory/note/@numberingOrg) [Optional]

- nota: *must be used to specify the organization that created the list of codes used in "noteLabel"*
(XPath GARStockOffer/GSObody/GSOitem/garmentCategory/goodsClassification/subClass/@numberingOrg) [Optional]

- nota: *this attribute should be used either single or coupled with "listName" and "listVersion"*
(XPath GARStockOffer/GSObody/GSOitem/note/@numberingOrg) [Optional]

- nota: *must be used to specify the organization that created the list of codes used in "noteLabel"*
(XPath GARStockOffer/GSObody/GSOitem/garmentCode/garmentCodeB/@numberingOrg) [Optional]
(XPath GARStockOffer/GSObody/GSOitem/garmentCode/@numberingOrg) [Optional]
(XPath GARStockOffer/GSObody/GSOitem/garmentCategory/goodsClassification/macroClass/@numberingOrg) [Optional]

- nota: *this attribute should be used either single or coupled with "listName" and "listVersion"*
(XPath GARStockOffer/GSObody/GSOitem/garmentCategory/@numberingOrg) [Optional]
(XPath GARStockOffer/GSObody/GSOitem/garmentCode/garmentCodeB/size/@numberingOrg) [Optional]

- nota: *this attribute should be used either single or coupled with "listName" and "listVersion"*
(XPath GARStockOffer/GSObody/GSOitem/refDoc/season/@numberingOrg) [Optional]

- nota: *this attribute should be used either single or coupled with "listName" and "listVersion"*
(XPath GARStockOffer/GSObody/GSOitem/refDoc/attachment/fileName/@numberingOrg) [Optional]
(XPath GARStockOffer/GSObody/GSOitem/stockAddress/@numberingOrg) [Optional]

- nota: *to be use when city and sub-country are specified with a proprietary code*
(XPath GARStockOffer/GSOheader/supplier/additionalIdentifier/@numberingOrg) [Optional]

- nota: *here the issuer of the identifier must be specified*
(XPath GARStockOffer/GSObody/GSOitem/garmentCode/garmentCodeB/drop/@numberingOrg) [Optional]

- nota: *this attribute should be used either single or coupled with "listName" and "listVersion"*
(XPath GARStockOffer/GSObody/GSOitem/garmentCode/garmentCodeB/garmentVariant/variantType/@numberingOrg) [Optional]

- nota: *this attribute should be used either single or coupled with "listName" and "listVersion"*
(XPath GARStockOffer/GSObody/GSOitem/dtScheme/note/@numberingOrg) [Optional]

- nota: *must be used to specify the organization that created the list of codes used in "noteLabel"*
(XPath GARStockOffer/GSOheader/refDoc/attachment/fileName/@numberingOrg) [Optional]
(XPath GARStockOffer/GSObody/GSOitem/garmentCode/garmentCodeB/garmentVariant/variantCode/@numberingOrg) [Optional]

- nota: *this attribute should be used either single or coupled with "listName" and "listVersion"*
(XPath GARStockOffer/GSObody/GSOitem/dtScheme/legalRef/@numberingOrg) [Optional]

- nota: *this attribute should be used either single or coupled with "listName" and "listVersion"*

	(XPath GARStockOffer/GSOheader/supplier/id/@numberingOrg) [Optional]
person	name of a person (e.g. contact person within an organization) - base type: string, max length: 40, (XPath GARStockOffer/GSOheader/supplier/person) 0-1 (XPath GARStockOffer/GSOheader/buyer/person) 0-1 (XPath GARStockOffer/GSOheader/thirdParty/person) 0-1
@phone	phone number of the contact person within a Party - base type: string, max length: 35, (XPath GARStockOffer/GSOheader/buyer/person/@phone) [Optional] (XPath GARStockOffer/GSOheader/supplier/person/@phone) [Optional] (XPath GARStockOffer/GSOheader/thirdParty/person/@phone) [Optional]
postCode	code defining the postal zone - base type: string, max length: 10, (XPath GARStockOffer/GSOheader/buyer/postCode) 0-1 (XPath GARStockOffer/GSOheader/thirdParty/postCode) 0-1 (XPath GARStockOffer/GSOheader/supplier/postCode) 0-1
price	unit price of the article, object or service specified - base type: decimal, min inclusive: 0, fraction digits: 4, (XPath GARStockOffer/GSObody/GSOitem/price) 1-1
@priceQualifier	type of price with reference to discount and taxes - base type: string, cod. table: NT20 http://www.ebiz.enea.it/moda-ml/repository/codelist/draft/gc_NT20.xml (XPath GARStockOffer/GSObody/GSOitem/price/@priceQualifier) [Optional] [Default= NET]
qty	net quantity of the article or object correlated, qualified by the function of the document (ordering, delivering, ..) and by the context - base type: decimal, min inclusive: 0, fraction digits: 2, (XPath GARStockOffer/GSObody/GSOitem/csRange/sizeMatrix/sizeRow/qty) 0-1 (XPath GARStockOffer/GSObody/GSOitem/qty) 1-1
qualityLevel	the product quality level (first choice, second choice,...). - base type: string, (XPath GARStockOffer/GSObody/GSOitem/csRange/sizeMatrix/sizeRow/itemsList/qualityLevel) 0-1
readyToSendDate	date of goods ready to despatch, according to one of the patterns YYYY-MM-DD, YYYY-MM-DD:HH-MM or YYYY-WW. - base type: string, (XPath GARStockOffer/GSObody/GSOitem/readyToSendDate) 0-1
@role	Third Party role qualifier - base type: string, cod. table: NT2 http://www.ebiz.enea.it/moda-ml/repository/codelist/draft/gc_NT2.xml (XPath GARStockOffer/GSOheader/thirdParty/@role) [Required]
@schemeID	identifier of an identification scheme - base type: string, (XPath GARStockOffer/GSOheader/refDoc/attachment/hashFootprint/@schemeID) [Optional] - nota: specify for which system this hash footprint might be used as identifier (for example HDFS system..) (XPath GARStockOffer/GSObody/GSOitem/refDoc/attachment/hashFootprint/@schemeID) [Optional] - nota: specify for which system this hash footprint might be used as identifier (for example HDFS system..)
season	sale season; defined as: season (1 crt) + year (4 crt) - season: S/S=1 A/W=2 Spring=3 Summer=4 Autumn=5 Winter=6: for more than four seasons use alphabetic sequence: 1st season=A 2nd season=B etc.etc. - base type: string, max length: 15, (XPath GARStockOffer/GSObody/GSOitem/refDoc/season) 0-1 - note: here indicates the season to which the referenced document belongs (XPath GARStockOffer/GSOheader/refDoc/season) 0-1 - note: here indicates the season to which the referenced document belongs (XPath GARStockOffer/GSObody/GSOitem/garmentCategory/season) 0-1
@sender	qualifier that specifies the Party issuing of the document

	<ul style="list-style-type: none"> - base type: boolean, (XPath GARStockOffer/GSOheader/supplier/@sender) [Optional] - nota: <i>This attribute is mandatory when the STYLESHEET must be used</i> (XPath GARStockOffer/GSOheader/thirdParty/@sender) [Optional] - nota: <i>This attribute is mandatory when the STYLESHEET must be used</i> (XPath GARStockOffer/GSOheader/buyer/@sender) [Optional] - nota: <i>This attribute is mandatory when the STYLESHEET must be used</i>
serialN	<p>serial number used for the identification of a physical unit</p> <ul style="list-style-type: none"> - base type: string, max length: 250, (XPath GARStockOffer/GSObody/GSOitem/csRange/sizeMatrix/sizeRow/itemsList/itemIdentification/serialN) 1-9 Best Practice - note: <i>multiple values of serialN are allowed for different representations of the serial identifier of the same product unit. Instances of serialN must differ at least for one value of numberingOrg and idQualifier.</i>
size	<p>size number of a fashion product (knitwear, clothing, ..)</p> <ul style="list-style-type: none"> - base type: string, max length: 15, (XPath GARStockOffer/GSObody/GSOitem/csRange/sizeMatrix/sizeRow/size) 1-1 (XPath GARStockOffer/GSObody/GSOitem/garmentCode/garmentCodeB/size) 0-1
@sizeSystemBase	<p>base of the size system</p> <ul style="list-style-type: none"> - base type: string, cod. table: T423 http://www.ebiz.enea.it/moda-ml/repository/codelist/draft/gc_T423.xml (XPath GARStockOffer/GSObody/GSOitem/csRange/@sizeSystemBase) [Optional]
@sizeSystemID	<p>the identifier of the size system.</p> <ul style="list-style-type: none"> - base type: string, (XPath GARStockOffer/GSObody/GSOitem/csRange/@sizeSystemID) [Optional]
@sizeSystemNat	<p>nation or agency identifying the size system</p> <ul style="list-style-type: none"> - base type: string, cod. table: T421 http://www.ebiz.enea.it/moda-ml/repository/codelist/draft/gc_T421.xml (XPath GARStockOffer/GSObody/GSOitem/csRange/@sizeSystemNat) [Optional]
@sizeSystemSeg	<p>market segment identifying the size system</p> <ul style="list-style-type: none"> - base type: string, cod. table: T422 http://www.ebiz.enea.it/moda-ml/repository/codelist/draft/gc_T422.xml (XPath GARStockOffer/GSObody/GSOitem/csRange/@sizeSystemSeg) [Optional]
street	<p>street and building number identifying a location</p> <ul style="list-style-type: none"> - base type: string, max length: 80, (XPath GARStockOffer/GSOheader/thirdParty/street) 0-1 (XPath GARStockOffer/GSOheader/supplier/street) 0-1 (XPath GARStockOffer/GSOheader/buyer/street) 0-1
subClass	<p>a code indicating the category (macro-class, class or sub-class) of a commodity classification system the article belongs to.</p> <ul style="list-style-type: none"> - base type: string, (XPath GARStockOffer/GSObody/GSOitem/garmentCategory/goodsClassification/subClass) 0-1
subCountry	<p>short name or code of the sub-country entity</p> <ul style="list-style-type: none"> - base type: string, max length: 9, (XPath GARStockOffer/GSObody/GSOitem/stockAddress/subCountry) 1-1 (XPath GARStockOffer/GSOheader/supplier/subCountry) 0-1 (XPath GARStockOffer/GSOheader/thirdParty/subCountry) 0-1 (XPath GARStockOffer/GSOheader/buyer/subCountry) 0-1
subDept	<p>name or code of a department</p> <ul style="list-style-type: none"> - base type: string, max length: 40, (XPath GARStockOffer/GSOheader/thirdParty/subDept) 0-1 (XPath GARStockOffer/GSOheader/buyer/subDept) 0-1 (XPath GARStockOffer/GSOheader/supplier/subDept) 0-1
taxCategory	<p>duty or tax or fee category</p> <ul style="list-style-type: none"> - base type: string, cod. table: T62 http://www.ebiz.enea.it/moda-ml/repository/codelist/draft/gc_T62.xml (XPath GARStockOffer/GSObody/GSOitem/dtScheme/taxCategory) 0-1
taxRate	<p>duty or tax or fee percent rate</p> <ul style="list-style-type: none"> - base type: string,

	(XPath GARStockOffer/GSObody/GSOitem/dtScheme/taxRate) 0-1
@taxType	duty or tax or fee type - base type: string, cod. table: T61 http://www.ebiz.enea.it/moda-ml/repository/codelist/draft/gc_T61.xml (XPath GARStockOffer/GSObody/GSOitem/dtScheme/@taxType) [Required]
tradeMark	name of the official trademark of a specified product (DEPRECATED, use Brand or Product Line). - base type: string, max length: 50, (XPath GARStockOffer/GSObody/GSOitem/tradeMark) 0-1
transactionReceipt	transaction receipt on blockchain - base type: string, max length: 80, (XPath GARStockOffer/GSOheader/refDoc/attachment/blockChainReference/transactionReceipt) 1-9 (XPath GARStockOffer/GSObody/GSOitem/refDoc/attachment/blockChainReference/transactionReceipt) 1-9
@uid	unique element identifier within the xml document - base type: string, (XPath GARStockOffer/GSObody/GSOitem/refDoc/attachment/@uid) [Optional] (XPath GARStockOffer/GSOheader/refDoc/attachment/@uid) [Optional]
@um	specification of the unit of measure - base type: string, cod. table: NT7 http://www.ebiz.enea.it/moda-ml/repository/codelist/draft/gc_NT7.xml (XPath GARStockOffer/GSOheader/thirdParty/geoCoordinates/@um) [Optional] [Default= DEGD] - nota: <i>when not specified assume decimal DEGREES</i> (XPath GARStockOffer/GSOheader/supplier/geoCoordinates/@um) [Optional] [Default= DEGD] - nota: <i>when not specified assume decimal DEGREES</i> (XPath GARStockOffer/GSObody/GSOitem/qty/@um) [Required] (XPath GARStockOffer/GSOheader/buyer/geoCoordinates/@um) [Optional] [Default= DEGD] - nota: <i>when not specified assume decimal DEGREES</i> (XPath GARStockOffer/GSObody/GSOitem/price/@um) [Optional] - nota: <i>Unit of measure of the product to which the price is referred (price per meter)</i> (XPath GARStockOffer/GSObody/GSOitem/csRange/sizeMatrix/sizeRow/qty/@um) [Required]
uri	Uniform Resource Identifier (URI) that identifies the external object as an Internet resource - base type: normalizedString, (XPath GARStockOffer/GSOheader/refDoc/attachment/externalReference/uri) 1-1 (XPath GARStockOffer/GSObody/GSOitem/refDoc/attachment/externalReference/uri) 1-1 (XPath GARStockOffer/GSObody/GSOitem/refDoc/attachment/blockChainReference/uri) 1-1 - note: <i>reference to the used blockchain (example: url https://etherscan.io/ of ethereum)</i> (XPath GARStockOffer/GSOheader/refDoc/attachment/blockChainReference/uri) 1-1 - note: <i>reference to the used blockchain (example: url https://etherscan.io/ of ethereum)</i>
@useProfile	use profile to which the present document is compliant if it was agreed by the parties. It is suggested a URI with reference to the firms or the URL of the profile. - base type: string, (XPath GARStockOffer/@useProfile) [Optional]
variantCode	Code of variant used for fashion product. - base type: string, (XPath GARStockOffer/GSObody/GSOitem/garmentCode/garmentCodeB/garmentVariant/variantCode) 1-1 (XPath GARStockOffer/GSObody/GSOitem/csRange/garmentVariant/variantCode) 1-1
variantType	Type of variant used for fashion product (examples: 'treatment', 'washing type', 'size class',...) - base type: string, (XPath GARStockOffer/GSObody/GSOitem/garmentCode/garmentCodeB/garmentVariant/variantType) 1-1

	(XPath GARStockOffer/GSObody/GSOitem/csRange/garmentVariant/variantType) 1-1
@VAT	VAT rate or code (DEPRECATED, use dtScheme element) - base type: string, cod. table: NT16 http://www.ebiz.enea.it/moda-ml/repository/codelist/draft/gc_NT16.xml (XPath GARStockOffer/GSOheader/thirdParty/@VAT) [Optional] (XPath GARStockOffer/GSObody/GSOitem/lineN/@VAT) [Optional] - nota: <i>Deprecated, prefer dtScheme when available.</i>
@version	Dictionary version from which the instance has been created - base type: string, cod. table: NT100 http://www.ebiz.enea.it/moda-ml/repository/codelist/draft/gc_NT100.xml (XPath GARStockOffer/@version) [Optional] [Default= draft]
xGeoCoord	geographical coordinate x , corresponding to latitude - base type: decimal, (XPath GARStockOffer/GSOheader/supplier/geoCoordinates/xGeoCoord) 1-1 (XPath GARStockOffer/GSOheader/buyer/geoCoordinates/xGeoCoord) 1-1 (XPath GARStockOffer/GSOheader/thirdParty/geoCoordinates/xGeoCoord) 1-1
yGeoCoord	geographical coordinate y , corresponding to longitude - base type: decimal, (XPath GARStockOffer/GSOheader/supplier/geoCoordinates/yGeoCoord) 1-1 (XPath GARStockOffer/GSOheader/thirdParty/geoCoordinates/yGeoCoord) 1-1 (XPath GARStockOffer/GSOheader/buyer/geoCoordinates/yGeoCoord) 1-1
zGeoCoord	geographical coordinate z , corresponding to altitude - base type: decimal, (XPath GARStockOffer/GSOheader/thirdParty/geoCoordinates/zGeoCoord) 0-1 - note: <i>altitude might be omitted</i> (XPath GARStockOffer/GSOheader/buyer/geoCoordinates/zGeoCoord) 0-1 - note: <i>altitude might be omitted</i> (XPath GARStockOffer/GSOheader/supplier/geoCoordinates/zGeoCoord) 0-1 - note: <i>altitude might be omitted</i>

2.3 Suggested best practices

GARStockOffer/GSOheader/refDoc/docID (identification number of the referenced document)

numberingOrg indicates the role that produced the document identifier (it is allowed to declare two different ones -e.g. customer and supplier - with two docID with different numberingOrg

GARStockOffer/GSObody/GSOitem/refDoc/docID (identification number of the referenced document)

numberingOrg indicates the role that produced the document identifier (it is allowed to declare two different ones -e.g. customer and supplier - with two docID with different numberingOrg

**GARStockOffer/GSObody/GSOitem/refDoc/attachment/
externalReference/mimeCode (mime type of the external object)**

Use coding from IANA <http://www.iana.org/assignments/media-types/media-types.xml>

**GARStockOffer/GSOheader/refDoc/attachment/
externalReference/mimeCode (mime type of the external object)**

Use coding from IANA <http://www.iana.org/assignments/media-types/media-types.xml>

**GARStockOffer/GSObody/GSOitem/csRange/sizeMatrix/
sizeRow/itemsList/itemIdentification/serialN (serial number used for the identification of a physical unit)**

in the case of garment with RFID for anti-counterfeiting, RFID EPCGlobal for logistics and NFC for the customer experience there should be three serial elements with pairs of attributes numberingOrg/idQualifier: "CL"/"RFID", "GS1"/"RFID", "CL"/"NFC".

2.4 Enumeration tables

List of enumeration tables used in the XML document. You can find all the tables with the corresponding codes at:
<http://www.ebiz.enea.it/eBIZ/imple/eBIZTCU-draft.asp?lingua=en&pag=6>

NT100 - eBIZ TCFUpstream version
NT16 - VAT rate or code
NT18 - message function
NT2 - third party qualifier
NT20 - price qualifier
NT29 - format of a date
NT333 - type of hashing algorithm
NT6 - coding system owner/issuer
NT60 - language, codes from ISO 639-1 (subset)
NT7 - unit of measure
T10 - ISO3166 - Country
T21 - type of document
T421 - size system: nationality
T422 - size system: market segment
T423 - size system: base
T44 - additional code type
T61 - duty or tax or fee type
T62 - duty or tax or fee category
T9 - ISO4217 - Currency

(the most relevant tables are detailed in the following Annexes too)

ACKNOWLEDGEMENT



This action is part of the TRICK project, which has received funding from Horizon 2020 research and innovation programme under grant agreement No. 958352 of the European Union.

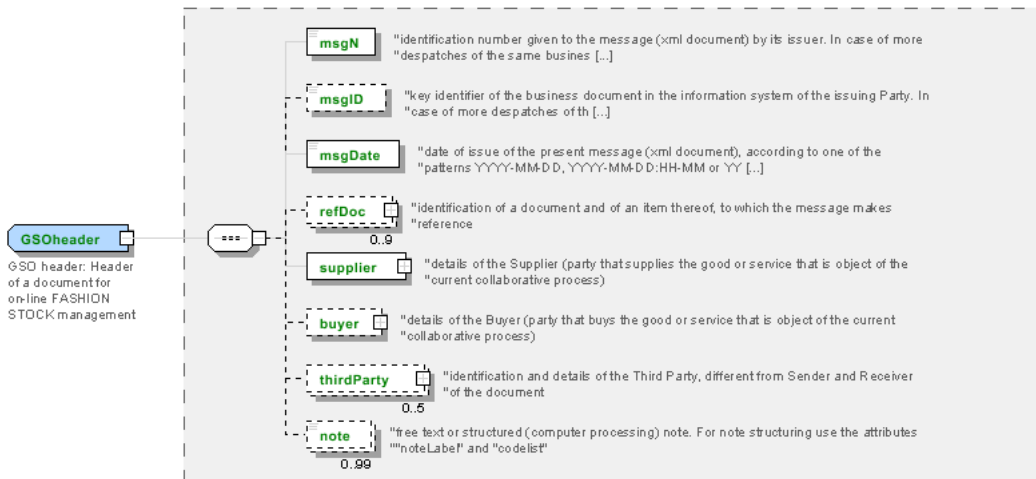
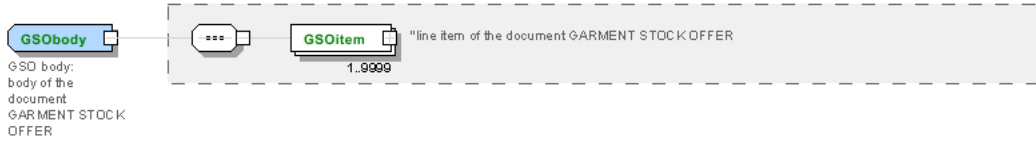
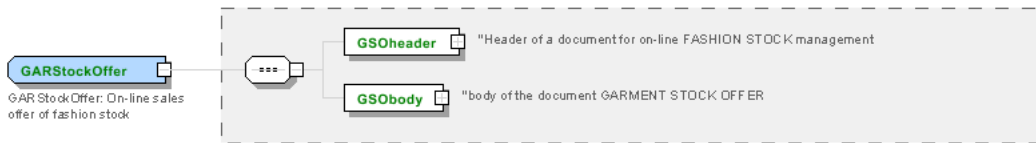
DISCLAIMER

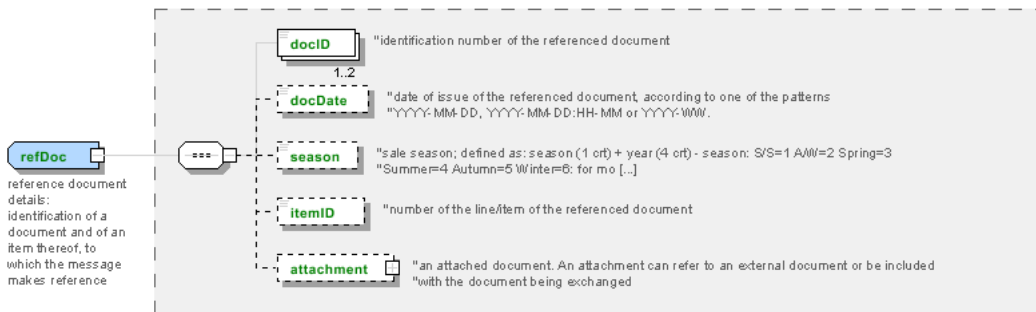
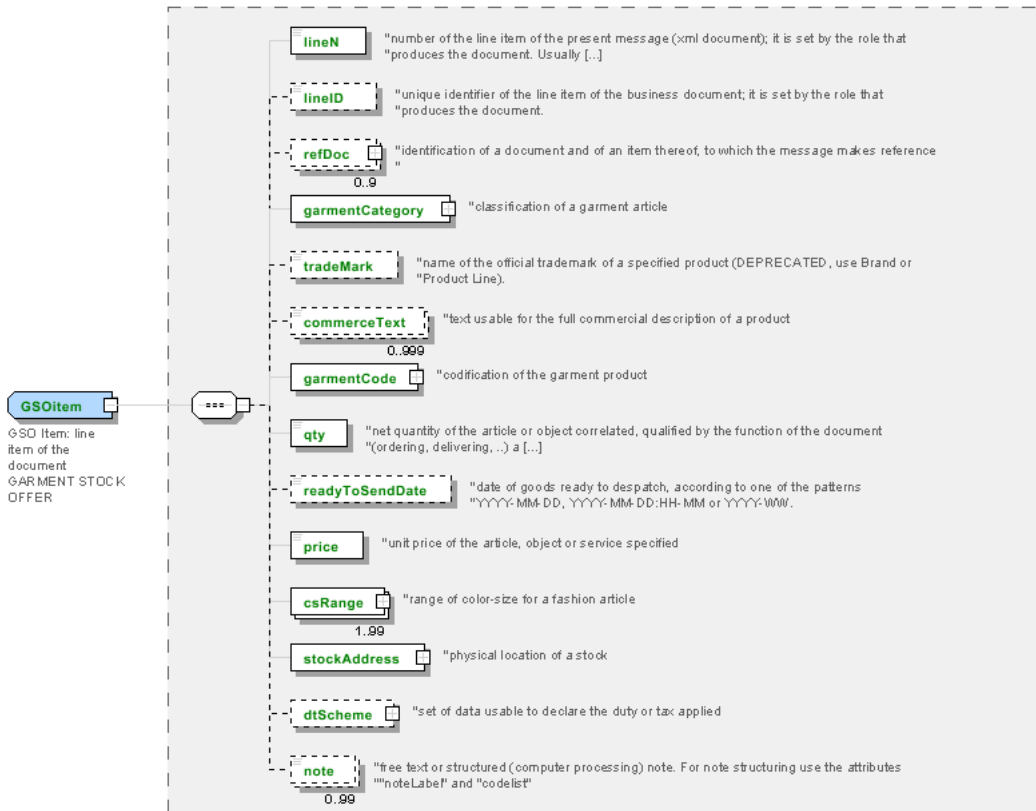
The content of this document represents the views of the authors only and is their sole responsibility; it cannot be considered to reflect the views of the European Commission or any other body of the European Union.

The European Commission does not accept any responsibility for use that may be made of the information it contains.

Annex A

Representative images of the principal complex elements' structure.





Annex B

NT100 - eBIZ TCFUpstream version

dictionary version

Agency name: eBIZ

Decoding table: NT100

File codes list (Generic code): http://www.ebiz.enea.it/moda-ml/repository/codelist/draft/gc_NT100.xml

Code	Description	Adoption note	Date of insertion
2013-1	v2013-1		01/07/2013
2018-1	v2018-1		04/11/2018
draft	draft		08/09/2017

NT16 - VAT rate or code

VAT rate or code (DEPRECATED, use dtScheme element)

Decoding table: NT16

File codes list (Generic code): http://www.ebiz.enea.it/moda-ml/repository/codelist/draft/gc_NT16.xml

NT18 - message function

function performed by the present message with regards to the transmission

Agency name: eBIZ

Decoding table: NT18

File codes list (Generic code): http://www.ebiz.enea.it/moda-ml/repository/codelist/draft/gc_NT18.xml

Code	Description	Adoption note	Date of insertion
CA	delete this document		01/07/2013
CP	copy		
OR	original		
RC	re-transmission for data correction		
RT	re-transmission		

NT2 - third party qualifier

Third Party role qualifier

Agency name: eBIZ

Decoding table: NT2

File codes list (Generic code): http://www.ebiz.enea.it/moda-ml/repository/codelist/draft/gc_NT2.xml

Code	Description	Adoption note	Date of insertion
AG	Sales Agent		
AU	Auditor		08/04/2019
BU	Buyer		13/06/2022
CE	Certification authority		08/04/2019
CM	Commissioner		13/06/2022
CO	Quality Controller		
CU	Customs authority		13/06/2022
DC	Response to		
DF	Invoicee		
DI	Copy to (CC)		28/10/2014
DM	Consignee		
DP	Consignment address (Delivery Party)		
EX	Expert		13/06/2022
IM	Importer		
OR	Originator		10/09/2014
SC	Sub contractor		10/04/2019
SM	Service/ePlatform manager		08/04/2019
SP	Forwarder		
SU	Supplier		13/06/2022
TL	Test or analysis laboratory		13/06/2022
TX	Tax Representative		

NT20 - price qualifier

type of price with reference to discount and taxes

Agency name: eBIZ

Decoding table: NT20

File codes list (Generic code): http://www.ebiz.enea.it/moda-ml/repository/codelist/draft/gc_NT20.xml

Code	Description	Adoption note	Date of insertion
GET	gross excluding taxes		
GIT	gross including taxes		
NET	net excluding taxes		
NIT	net including taxes		

NT29 - format of a date

format used for the date

Agency name: eBIZ

Decoding table: NT29

File codes list (Generic code): http://www.ebiz.enea.it/moda-ml/repository/codelist/draft/gc_NT29.xml

Code	Description	Adoption note	Date of insertion
D	YYYY-MM-DD		
M	YYYY-MM-DD:HH-MM (date and time)		
S	AAAA-MM-GG:HH-MM-SS (date and time with seconds)		13/06/2022
W	YYYY-WW		

NT333 - type of hashing algorithm

type of hashing algorithm

Decoding table: NT333

File codes list (Generic code): http://www.ebiz.enea.it/moda-ml/repository/codelist/draft/gc_NT333.xml

Code	Description	Adoption note	Date of insertion
ADLER32	ADLER32		26/05/2023
HMAC	HMAC		26/05/2023
MD2	MD2		26/05/2023
MD4	MD4		26/05/2023
MD5	MD5		26/05/2023
MDC-2	MDC-2		26/05/2023
PANAMA	PANAMA		26/05/2023
RIPEMD-160	RIPEMD-160		26/05/2023
SHA-1	SHA-1		26/05/2023
SHA-2 256	SHA-2 256		26/05/2023
SHA-2 384	SHA-2 384		26/05/2023
SHA-2 512	SHA-2 512		26/05/2023
TIGER	TIGER		26/05/2023

NT6 - coding system owner/issuer

code specifying the organisation who has created or owns the registers of the present coding or numbering system

Agency name: eBIZ

Decoding table: NT6

File codes list (Generic code): http://www.ebiz.enea.it/moda-ml/repository/codelist/draft/gc_NT6.xml

Code	Description	Adoption note	Date of insertion
CBR	National customs brokers registry		12/06/2023
CL	Customer/buyer		
CO	Quality Controller		
DU	D-U-N-S registry (Data Universal Numbering System)		04/05/2023
EB	eBIZ	replaces 'ML'	18/03/2019
EN	GS1 (ex-EAN International)		
EO	Registro EORI (Economic Operators Registration and Identification number)		04/03/2023
ES	e-Stockflow	DEPRECATED	
FO	Supplier		
GS	GS1		01/07/2013
MF	national taxation authority (i.e. VAT codes registry)		
ML	Moda-ML	DEPRECATED	
PL	Application Platform		13/06/2022
REX	Registered Exporter system (REX)		19/05/2023
SP	Service Provider		
SU	Enterprise Identification Number UID	Only switzerland	04/03/2023

NT60 - language, codes from ISO 639-1 (subset)

Agency name: eBIZ / ISO

Decoding table: NT60

File codes list (Generic code): http://www.ebiz.enea.it/moda-ml/repository/codelist/draft/gc_NT60.xml

Code	Description	Adoption note	Date of insertion
af	Afrikaans		31/01/2019
ar	Arabic		31/01/2019
be	Belarusian		31/01/2019
bg	Bulgarian		31/01/2019
bn	Bengali		31/01/2019
bo	Tibetan		31/01/2019
bs	Bosnian		31/01/2019
ca	Catalan, Valencian		31/01/2019
cs	Czech		31/01/2019
da	Danish		31/01/2019
de	German		31/01/2019

el	Greek, Modern (1453-)		31/01/2019
en	English		31/01/2019
eo	Esperanto		31/01/2019
es	Spanish, Castilian		31/01/2019
et	Estonian		31/01/2019
eu	Basque		31/01/2019
F	Female		15/04/2019
fa	Persian		31/01/2019
fi	Finnish		31/01/2019
fr	French		31/01/2019
ga	Irish		31/01/2019
gd	Gaelic, Scottish Gaelic		31/01/2019
gn	Guarani		31/01/2019
he	Hebrew		31/01/2019
hr	Croatian		31/01/2019
ht	Haitian, Haitian Creole		31/01/2019
hu	Hungarian		31/01/2019
hy	Armenian		31/01/2019
ia	Interlingua (International Auxiliary Language Association)		31/01/2019
id	Indonesian		31/01/2019
is	Icelandic		31/01/2019
it	Italian		31/01/2019
ja	Japanese		31/01/2019
jv	Javanese		31/01/2019
ka	Georgian		31/01/2019
km	Central Khmer		31/01/2019
ko	Korean		31/01/2019
ku	Kurdish		31/01/2019
lb	Luxembourgish, Letzeburgesch		31/01/2019
lo	Lao		31/01/2019
lt	Lithuanian		31/01/2019
lv	Latvian		31/01/2019
mg	Malagasy		31/01/2019
mk	Macedonian		31/01/2019
mn	Mongolian		31/01/2019
mt	Maltese		31/01/2019
nl	Dutch, Flemish		31/01/2019
no	Norwegian		31/01/2019

pl	Polish		31/01/2019
pt	Portuguese		31/01/2019
ro	Romanian, Moldavian, Moldovan		31/01/2019
ru	Russian		31/01/2019
se	Northern Sami		31/01/2019
sk	Slovak		31/01/2019
sl	Slovenian		31/01/2019
sm	Samoan		31/01/2019
so	Somali		31/01/2019
sq	Albanian		31/01/2019
sr	Serbian		31/01/2019
sv	Swedish		31/01/2019
sw	Swahili		31/01/2019
ta	Tamil		31/01/2019
th	Thai		31/01/2019
tr	Turkish		31/01/2019
uk	Ukrainian		31/01/2019
ur	Urdu		31/01/2019
uz	Uzbek		31/01/2019
vi	Vietnamese		31/01/2019
zh	Chinese		31/01/2019

NT7 - unit of measure

specification of the unit of measure, it is a sub set of table Unit of Measure Code - UN/ECE REC 20 delivered by United Nations Economic Commission for Europe (UN/ECE)

Agency name: eBIZ / UN/ECE

Decoding table: NT7

File codes list (Generic code): http://www.ebiz.enea.it/moda-ml/repository/codelist/draft/gc_NT7.xml

Other link: <http://docs.oasis-open.org/ubl/os-UBL-2.1/cl/gc/default/UnitOfMeasureCode-2.1.gc#>

Code	Description	Adoption note	Date of insertion
CMK	square centimetre		20/12/2017
CMQ	cubic centimetre		20/12/2017
CMT	centimetre		
CNE	centiNewton		
CO2TON	ton of CO2		10/09/2014
COUPLES	couples		
DAY	day		22/08/2022

DEGD	decimal degrees		04/07/2022
DEGMS	degrees with minutes and seconds		01/07/2022
DMQ	cubic decimetre		
E37	pixel		11/04/2018
GRM	gram		
HUR	hour		
INH	inch		
KGM	kilogram		
KMT	kilometer		
KWH	kilowatthours		10/09/2014
LBR	pound		
MCG	microgram		23/08/2022
MG	milligram		23/08/2022
MIN	minute		
MMK	square millimetre		20/12/2017
MONTH	month		22/08/2022
MSEC	millisecond (time)		22/08/2022
MTK	square metre		20/12/2017
MTQ	cubic metre		
MTR	metre		
NMB	numero		
ONZ	ounce		
P1	percent		
PPM	parts per milion		
PZ	piece		
RPM	rounds per metre		
SEC	second (time)		22/08/2022
YEAR	year		22/08/2022
YRD	yard		

T10 - ISO3166 - Country

code of the nation

Agency name: ISO

Decoding table: T10

File codes list (Generic code): http://www.ebiz.enea.it/moda-ml/repository/codelist/draft/gc_T10.xml

Table not printed: there are 240 elements, more than the maximum specified for printing: 99.

T21 - type of document

type or class to which the referenced document belongs

Agency name: eBIZ

Decoding table: T21

File codes list (Generic code): http://www.ebiz.enea.it/moda-ml/repository/codelist/draft/gc_T21.xml

Code	Description	Adoption note	Date of insertion
BIL	Bill of lading		07/03/2023
BOR	Blanket order		01/02/2018
CAT	Price catalogue - tech sheet		
CEO	Certificate of origin		13/04/2018
CER	Certificate		13/04/2018
CMR	CMR consignment note		07/03/2023
COC	Colour card		
CRN	Credit note		08/09/2017
CTO	Checking order		01/07/2013
CTR	Contract		
CXF	CxF3 file		01/07/2013
DAD	Darn order		
DDT	Delivery note (transport document)		
DEA	Despatch advise		
DER	Despatch request		
DR	Document Request		02/12/2014
EAD	Export Accompanying Document	adopted by European customs	12/05/2023
ECMR	electronic CMR consignment note		07/03/2023
ECUS	EXPORT Custom Declaration		07/03/2023
FOR	Forecast		02/12/2014
GSO	Garment stock offer		
GSX	Garment stock offer change		
ICUS	IMPORT Custom Declaration		07/03/2023
INV	Invoice		
KCC	Knitting-Clothing Commission Order		02/12/2014
KCI	Garment in Work Inventory Report		02/12/2014
LCA	LCA study		28/08/2022
LCAD	LCA study dataset		28/08/2022
M2M	Made to Measure Production Order		02/12/2014
MAS	Master marker		

MCI	Visual merchandising instruction		13/04/2018
OCH	Order change		
OFF	Offer		
ORD	Purchase order		
ORP	Order response		
OSR	order status request		
OSS	Offer status		02/12/2014
OST	Order status		
OUR	our reference		
PCO	Preferential certificate of origin		07/03/2023
PEF	PEF study		28/08/2022
PEFD	PEF study dataset		28/08/2022
PEFP	PEF environmental profile		07/03/2023
QR	Quality Report		02/12/2014
RAI	Raw Material in Work Inventory Report		02/12/2014
RDC	Raw dyeing commission order		
RDH	Raw dyeing order change		
RDR	Raw dyeing order response		
REA	Receiving advise		
REQ	Request for Offer		
RET	Return		02/12/2014
RSC	Spinning commission order		
RSH	Spinning order change		
RSR	Spinning order response		
SAD	Single Administrative Document	adopted by European customs	12/05/2023
SCL	Process sheet		
SDE	Self-declaration		07/03/2023
SDS	SDS - Safety data sheet		07/03/2023
SLCA	S-LCA Study		07/03/2023
SLCAD	S-LCA Study documentation		07/03/2023
TFC	Textile dyeing-finishing commission order		
TFX	Textile Dyeing-Finishing Order Change		02/12/2014
TPC	Textile printing commission order		
TPX	Textile Printing Order Change		02/12/2014
TWI	Textile in work inventory		
VMI	visual merchandising instructions		01/02/2018
WAC	Warping commission order		
WAYB	Waybill		07/03/2023

WEC	Weaving commission order		
YDC	Yarn dyeing commission order		
YDH	Yarn dyeing order change		
YDR	Yarn dyeing order response		
YTC	Twisting commission order		
YWI	Yarn in work inventory		

T421 - size system: nationality

nation or agency identifying the size system

Agency name: eBIZ

Decoding table: T421

File codes list (Generic code): http://www.ebiz.enea.it/moda-ml/repository/codelist/draft/gc_T421.xml

Code	Description	Adoption note	Date of insertion
DE	Germany		
ES	Spain		
EU	Europe		
FR	France		
IT	Italy		
UK	United Kingdom		
US	USA		
XX	International		

T422 - size system: market segment

market segment identifying the size system

Agency name: eBIZ

Decoding table: T422

File codes list (Generic code): http://www.ebiz.enea.it/moda-ml/repository/codelist/draft/gc_T422.xml

Code	Description	Adoption note	Date of insertion
B	baby		
C	child		
K	kid		
M	man		
U	unisex		
W	woman		

T423 - size system: base

base of the size system

Agency name: eBIZ

Decoding table: T423

File codes list (Generic code): http://www.ebiz.enea.it/moda-ml/repository/codelist/draft/gc_T423.xml

Code	Description	Adoption note	Date of insertion
1	arab numbers		
2	latin numbers		
3	symbols		
4	letters		
H	height		
L	length		
U	unique		
W	weight		

T44 - additional code type

qualifier of the additional coding of a product

Agency name: eBIZ

Decoding table: T44

File codes list (Generic code): http://www.ebiz.enea.it/moda-ml/repository/codelist/draft/gc_T44.xml

Code	Description	Adoption note	Date of insertion
CC	colour card		
CL	sales collection		
CO	company identification code		08/09/2017
DY	dye number		
LT	lot number		
MDI	Made in		08/09/2017
MS	manufacturing state		
PKG	packaging		09/09/2014
PL	product line		
RGB	RGB value		
SE	selvedge code		

T61 - duty or tax or fee type

duty or tax or fee type

Agency name: eBIZ

Decoding table: T61

File codes list (Generic code): http://www.ebiz.enea.it/moda-ml/repository/codelist/draft/gc_T61.xml

Code	Description	Adoption note	Date of insertion
BOL	stamp duty		01/07/2013
CUD	customs duty		01/07/2013
ENV	environmental tax		01/07/2013
FRE	no tax		01/07/2013
OTH	other tax charges		01/07/2013
VAT	value added tax		01/07/2013

T62 - duty or tax or fee category

duty or tax or fee category

Agency name: eBIZ

Decoding table: T62

File codes list (Generic code): http://www.ebiz.enea.it/moda-ml/repository/codelist/draft/gc_T62.xml

Code	Description	Adoption note	Date of insertion
AA	lower than standard rate		01/07/2013
E	tax not applicable		01/07/2013
H	higher than standard rate		01/07/2013
O	outside scope of tax		01/07/2013
S	standard rate		01/07/2013
Z	zero rate goods		01/07/2013

T9 - ISO4217 - Currency

currency code

Agency name: ISO

Decoding table: T9

File codes list (Generic code): http://www.ebiz.enea.it/moda-ml/repository/codelist/draft/gc_T9.xml

Table not printed: there are 205 elements, more than the maximum specified for printing: 99.

