



<http://www.ebiz-tcf.eu>

DRAFT

IMPLEMENTATION GUIDE

TRANSACTION "ACCESSORY PURCHASE ORDER RESPONSE"

Version: draft

Date of release: 26/6/2023

Document code: G035

technical Documentation: <http://www.ebiz.enea.it>

XML Schemas repository: <http://www.ebiz.enea.it/moda-ml/repository/schema/draft/default.asp>

Guides repository: <http://www.ebiz.enea.it/moda-ml/repository/guide/draft/default.asp>

Guide filename: G035-eBIZ-AccessoryPurchaseOrderResponse.pdf

0. PREMISE

This document contains a proposal for the updating and extension of eBIZ specifications starting from the eBIZ version 2018. Under the name of 'Draft version' it is reported the result of an extensive work of analysis and consultation aimed at developing and maintaining eBIZ specifications.

In particular, the content of this proposal is the result of various activities, mainly those carried out within the framework of the **TRICK project** funded by the European Commission: grant agreement 958352, call H2020-LOW-CARBON-CIRCULAR-INDUSTRIES-2020 / H2020-LCCI-2020-EASME-twostage.

The technical contents are backwards compatible with the latest official published version, with the exclusion of the totally new concepts added explicitly for the version that are thought as incremental evolution of the knowledge base.

1. BUSINESS DESCRIPTION

1.1 Scope

The present guide has been issued to assist the companies of the Textile-Clothing sector in the implementation of the standard XML document type "GARMENT ACCESSORY PURCHASE ORDER RESPONSE ", providing all the instruction required for its use in any context of e-commerce between Apparel or Fabric Producers and Garment Accessory Producer.

All the rules required for the construction and validation of the document are embedded into the specific XML-Schema, which is detailed in section "Implementation guide".

1.2 Generalities

The message is issued by the Garment Accessory Producer (Supplier) in response to a purchase order.

The Producer must, in any case, return an Order Response for any Order received, where, for each item, he notifies the acceptance as it is (C), the variation (V) or the cancellation (A).

Basic function of the message is to notify acceptance or to request modifications or cancellations concerning:

- 1) suppliable quantities
- 2) dates and places of delivery
- 3) prices

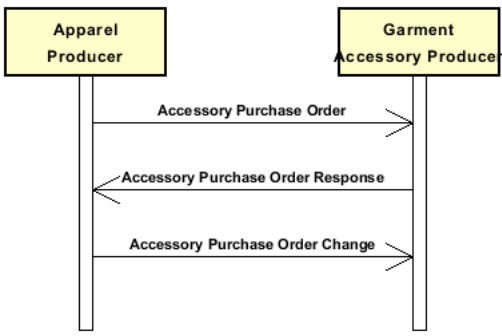
The Order Response can show a number of lines different from the related Purchase Order, when variations/cancellations have occurred so as to create the splitting of an Order Line.

However the sum of the quantities of the lines in the Order Change (confirmed + varied + cancelled) must always not less than the sum of the quantities in the original Order.

When the quantity is change the original line must be splitted and the confimed amount and canceled amount should be explicited through the 'act' flag.

1.3. Possible scenario

Purchase of garment accessories



2. IMPLEMENTATION GUIDE

2.1 General structure of XML document

All the business data that can be exchanged through this class of documents are shown in the following "document structure", that provides a simplified vision of the Schema.

In particular:

- the two numbers following each element define its "cardinality" (minimum and maximum number of occurrences); the minimum equal zero indicates that the element is optional, the minimum greater than zero indicates that is mandatory;
- the bold character denotes the complex elements (aggregates of simple elements) that were built for the sake of functionality and re-usability of some complex informations sets. The child elements in each parent element are easily spotted as "indented";
- the symbol "@" denotes an attribute of the preceding element; here "the usage indicator (optional, required, ...)" is shown in square brackets.

Structure

ACSOrdResponse

@Totype [Optional]

@msgfunction [Optional] [Default= OR]

@version [Optional] [Default= draft]

@useProfile [Optional]

| TXheader 1-1

| | msgN 1-1

| - choose -

| | msgID 0-1

| - or -

| | docID 0-1

| | @numberingOrg [Optional]

| - end choose -

| | msgDate 1-1

| | @dateForm [Optional]

| | validityEnd 0-1

| | @dateForm [Optional]

| | msgCurrency 0-1

| | otherCurrency 0-9

| | @currencyUseQualifier [Required]

| | @exchangeRate [Optional]

| refDoc 1-9

| | @docType [Required]

| | docID 1-2

| | @numberingOrg [Optional]

| | docDate 0-1

| | @dateForm [Optional]

| | season 0-1

| | @numberingOrg [Optional]

| | @codeList [Optional]

| | @listName [Optional]

| | @listVersion [Optional]

| | itemID 0-1

| attachment 0-1

| | @uid [Optional]

| | fileName 0-1

| | @numberingOrg [Optional]

| | binaryObject 0-1

| | @format [Optional]

| | @mime [Optional]

| | @encoding [Optional]

| | @characterSet [Optional]

| externalReference 0-99

| | uri 1-1

| | @isURL [Optional] [Default= true]

| | mimeTypeCode 0-1

| | formatCode 0-1

| | encodingCode 0-1

| | characterSetCode 0-1

- | hashFootprint 0-1
- | @schemeID [Optional]
- | @hashMethod [Required]
- | **blockChainReference 0-9**
- | | uri 1-1
- | | | @isURL [Optional] [Default= true]
- | | transactionReceipt 1-9

buyer 1-1

- | @logo [Optional]
- | @sender [Optional]
- | | id 1-1
- | | | @numberingOrg [Optional]
- | | additionalIdentifier 0-9
- | | | @numberingOrg [Optional]
- | | | @idQualifier [Optional]
- | | legalName 0-1
- | | dept 0-1
- | | subDept 0-1
- | | person 0-1
- | | | @email [Optional]
- | | | @phone [Optional]
- | | | @fax [Optional]
- | | street 0-1
- | | city 0-1
- | | subCountry 0-1
- | | country 0-1
- | | postCode 0-1
- | | **geoCoordinates 0-1**
- | | | @um [Optional] [Default= DEGD]
- | | | @geoRefSystem [Optional]
- | | | | xGeoCoord 1-1
- | | | | yGeoCoord 1-1
- | | | | zGeoCoord 0-1

supplier 1-1

- | @logo [Optional]
- | @sender [Optional]
- | | id 1-1
- | | | @numberingOrg [Optional]
- | | additionalIdentifier 0-9
- | | | @numberingOrg [Optional]
- | | | @idQualifier [Optional]
- | | legalName 0-1
- | | dept 0-1
- | | subDept 0-1
- | | person 0-1
- | | | @email [Optional]
- | | | @phone [Optional]
- | | | @fax [Optional]
- | | street 0-1
- | | city 0-1
- | | subCountry 0-1
- | | country 0-1
- | | postCode 0-1
- | | **geoCoordinates 0-1**
- | | | @um [Optional] [Default= DEGD]
- | | | @geoRefSystem [Optional]
- | | | | xGeoCoord 1-1
- | | | | yGeoCoord 1-1
- | | | | zGeoCoord 0-1

thirdParty 0-5

- | @VAT [Optional]
- | @role [Required]
- | @sender [Optional]
- | | id 1-1
- | | | @numberingOrg [Optional]
- | | legalName 0-1
- | | dept 0-1
- | | subDept 0-1

- | | | person 0-1
- | | | | @email [Optional]
- | | | | @phone [Optional]
- | | | | @fax [Optional]
- | | | street 0-1
- | | | city 0-1
- | | | subCountry 0-1
- | | | country 0-1
- | | | postCode 0-1
- | | | | **geoCoordinates 0-1**
- | | | | | @um [Optional] [Default= DEGD]
- | | | | | @geoRefSystem [Optional]
- | | | | | | xGeoCoord 1-1
- | | | | | | yGeoCoord 1-1
- | | | | | zGeoCoord 0-1
- | | | note 0-99
- | | | | @numberingOrg [Optional]
- | | | | @codeList [Optional]
- | | | | @noteLabel [Optional]

| **terms 0-1**

| | **payment 0-5**

- | | | @finDiscount [Optional]
- | | | @finSurcharge [Optional]

| | - choose -

- | | | payTerm 1-1

| | - or -

- | | | payTermText 1-1

| | - end choose -

- | | | payMode 0-1

| | **insPayment 0-5**

- | | | @part [Required]

| | - choose -

- | | | payTerm 1-1

| | - or -

- | | | payTermText 1-1

| | - end choose -

- | | | payMode 0-1

| | **trade 0-1**

| | - choose -

- | | | incoTermText 1-1

| | - or -

- | | | incoTerm 1-1

| | - end choose -

| | - choose -

| | | **tradeLocation 0-1**

- | | | | location 0-1

- | | | | | @LRI [Optional]

- | | | | legalName 0-1

- | | | | dept 0-1

- | | | | subDept 0-1

- | | | | person 0-1

- | | | | | @email [Optional]

- | | | | | @phone [Optional]

- | | | | | @fax [Optional]

- | | | | street 0-1

- | | | | city 0-1

- | | | | subCountry 0-1

- | | | | country 0-1

- | | | | postCode 0-1

- | | | | | **geoCoordinates 0-1**

- | | | | | | @um [Optional] [Default= DEGD]

- | | | | | | @geoRefSystem [Optional]

- | | | | | | | xGeoCoord 1-1

- | | | | | | | yGeoCoord 1-1

- | | | | | | zGeoCoord 0-1

| | - or -

- | | | location 0-1

```

| | | @LRI [Optional]
| | | - end choose -
| | | transInfo 0-5
| | | @transReason [Optional]
| | | @progr [Optional]
| | | | transMode 1-1
| | | | carrier 0-1
| | | | - choose -
| | | | deliveryLocation 0-1
| | | | | location 0-1
| | | | | @LRI [Optional]
| | | | | legalName 0-1
| | | | | dept 0-1
| | | | | subDept 0-1
| | | | | person 0-1
| | | | | @email [Optional]
| | | | | @phone [Optional]
| | | | | @fax [Optional]
| | | | | street 0-1
| | | | | city 0-1
| | | | | subCountry 0-1
| | | | | country 0-1
| | | | | postCode 0-1
| | | | | geoCoordinates 0-1
| | | | | @um [Optional] [Default= DEGD]
| | | | | @geoRefSystem [Optional]
| | | | | | xGeoCoord 1-1
| | | | | | yGeoCoord 1-1
| | | | | | zGeoCoord 0-1
| | | | - or -
| | | | | deliveryPlace 0-1
| | | | | - end choose -
| | | | | grossWeight 0-1
| | | | | @um [Required]
| | | | | netWeight 0-1
| | | | | @um [Required]
| | | | | transMeans 0-1
| | | | | @propulsionSystemCode [Optional]
| | | | | transCondition 0-3
| | | | | transConditionText 0-1
| | | | | - choose -
| | | | | | despatchPlace 0-1
| | | | | - or -
| | | | | despatchLocation 0-1
| | | | | | location 0-1
| | | | | | @LRI [Optional]
| | | | | | legalName 0-1
| | | | | | dept 0-1
| | | | | | subDept 0-1
| | | | | | person 0-1
| | | | | | @email [Optional]
| | | | | | @phone [Optional]
| | | | | | @fax [Optional]
| | | | | | street 0-1
| | | | | | city 0-1
| | | | | | subCountry 0-1
| | | | | | country 0-1
| | | | | | postCode 0-1
| | | | | | geoCoordinates 0-1
| | | | | | @um [Optional] [Default= DEGD]
| | | | | | @geoRefSystem [Optional]
| | | | | | | xGeoCoord 1-1
| | | | | | | yGeoCoord 1-1
| | | | | | | zGeoCoord 0-1
| | | | | - end choose -
| | | | | | despatchDate 0-1
| | | | | | @dateForm [Optional]
| | | | | | delEffectiveDate 0-1

```

```

| | | @dateForm [Optional]
| | | routeLength 0-1
| | | @um [Required]
| | allowanceCharge 0-9
| | | @um [Optional]
| | | @VAT [Optional]
| | | @minQty [Optional]
| | | @currency [Optional]
| | | @maxQty [Optional]
| | | @isCharge [Optional]
| | | - choose -
| | | | AC_category 1-1
| | | | - or -
| | | | AC_categoryText 1-1
| | | | - end choose -
| | | | - choose -
| | | | AC_percent 1-1
| | | | - or -
| | | | AC_amount 1-1
| | | | @currency [Optional]
| | | - end choose -
| | | dtScheme 0-1
| | | | @taxType [Required]
| | | | | taxCategory 0-1
| | | | | taxRate 0-1
| | | | | legalRef 0-1
| | | | | @numberingOrg [Optional]
| | | | | @codeList [Optional]
| | | | | @listName [Optional]
| | | | | @listVersion [Optional]
| | | | | note 0-99
| | | | | @numberingOrg [Optional]
| | | | | @codeList [Optional]
| | | | | @noteLabel [Optional]

```

```

| acsComInfo 0-1
| | @endUse [Optional] [Default= PR]
| | | season 0-1
| | | | @numberingOrg [Optional]
| | | | @codeList [Optional]
| | | | @listName [Optional]
| | | | @listVersion [Optional]
| | | brand 0-1
| | | | @numberingOrg [Optional]
| | | | @codeList [Optional]
| | | | @listName [Optional]
| | | | @listVersion [Optional]
| | | productLine 0-1
| | | | @numberingOrg [Optional]
| | | | @codeList [Optional]
| | | | @listName [Optional]
| | | | @listVersion [Optional]
| | | collection 0-1
| | | project 0-1
| | | operationalCode 0-19
| | | | @numberingOrg [Optional]
| | | | @codeList [Optional]
| | | | @listName [Optional]
| | | | @listVersion [Optional]
| | | | @codeQualifier [Optional]
| | | deliveryDate 0-1
| | | | @dateForm [Optional]
| | | specDate 0-1
| | | | @dateForm [Optional]
| | | acsPack 0-1
| | | - choose -
| | | | acsPackCode 1-1
| | | | @numberingOrg [Optional]

```


- | | | @codeList [Optional]
- | | | @listName [Optional]
- | | | @listVersion [Optional]
- | - or -
- | | | acsPackText 1-1
- | - end choose -
- | | note 0-99
- | | | @numberingOrg [Optional]
- | | | @codeList [Optional]
- | | | @noteLabel [Optional]

AXbody 1-1

AXitem 1-unbounded

@act [Required]

| lineN 1-1

| | @VAT [Optional]

| lineID 0-1

refDoc 1-9

| @docType [Required]

| | docID 1-2

| | | @numberingOrg [Optional]

| | docDate 0-1

| | | @dateForm [Optional]

| | season 0-1

| | | @numberingOrg [Optional]

| | | @codeList [Optional]

| | | @listName [Optional]

| | | @listVersion [Optional]

| | itemID 0-1

attachment 0-1

| | @uid [Optional]

| | | fileName 0-1

| | | | @numberingOrg [Optional]

| | | binaryObject 0-1

| | | | @format [Optional]

| | | | @mime [Optional]

| | | | @encoding [Optional]

| | | | @characterSet [Optional]

externalReference 0-99

| | | uri 1-1

| | | | @isURL [Optional] [Default= true]

| | | | mimeTypeCode 0-1

| | | | formatCode 0-1

| | | | encodingCode 0-1

| | | | characterSetCode 0-1

| | | hashFootprint 0-1

| | | | @schemeID [Optional]

| | | | @hashMethod [Required]

blockChainReference 0-9

| | | uri 1-1

| | | | @isURL [Optional] [Default= true]

| | | transactionReceipt 1-9

acsCode 0-2

| | @numberingOrg [Optional]

| | | art 1-1

| | | | @numberingOrg [Optional]

| | | | @codeList [Optional]

| | | | @listName [Optional]

| | | | @listVersion [Optional]

| | | pattern 0-1

| | | | @numberingOrg [Optional]

| | | | @codeList [Optional]

| | | | @listName [Optional]

| | | | @listVersion [Optional]

| | | color 0-1

| | | | @numberingOrg [Optional]

| | | | @codeList [Optional]

| | | | @listName [Optional]

```

| | | @listVersion [Optional]
| | | added 0-9
| | | @numberingOrg [Optional]
| | | @addType [Optional]
| | | description 0-unbounded
| | | @ln [Optional]
| | | qty 0-2
| | | @um [Required]
| | | csRange 0-99
| | | @numberingOrg [Optional]
| | | @sizeSystemNat [Optional]
| | | @sizeSystemSeg [Optional]
| | | @sizeSystemBase [Optional]
| | | @sizeSystemID [Optional]
| | | | color 0-1
| | | | @numberingOrg [Optional]
| | | | @codeList [Optional]
| | | | @listName [Optional]
| | | | @listVersion [Optional]
| | | | garmentVariant 0-9
| | | | | variantType 1-1
| | | | | @numberingOrg [Optional]
| | | | | @codeList [Optional]
| | | | | @listName [Optional]
| | | | | @listVersion [Optional]
| | | | | variantCode 1-1
| | | | | @numberingOrg [Optional]
| | | | | @codeList [Optional]
| | | | | @listName [Optional]
| | | | | @listVersion [Optional]
| | | | drop 0-1
| | | | @numberingOrg [Optional]
| | | | @codeList [Optional]
| | | | @listName [Optional]
| | | | @listVersion [Optional]
| | | | sizeMatrix 1-1
| | | | | sizeRow 1-99
| | | | | | additionalComponentCode 0-9
| | | | | | @numberingOrg [Optional]
| | | | | | @codeList [Optional]
| | | | | | @listName [Optional]
| | | | | | @listVersion [Optional]
| | | | | | drop 0-1
| | | | | | @numberingOrg [Optional]
| | | | | | @codeList [Optional]
| | | | | | @listName [Optional]
| | | | | | @listVersion [Optional]
| | | | | | size 1-1
| | | | | | @numberingOrg [Optional]
| | | | | | @codeList [Optional]
| | | | | | @listName [Optional]
| | | | | | @listVersion [Optional]
| | | | | | qty 0-1
| | | | | | @um [Required]
| | | | | | itemsList 0-1
| | | | | | | qualityLevel 0-1
| | | | | | | @numberingOrg [Optional]
| | | | | | | @codeList [Optional]
| | | | | | | @listName [Optional]
| | | | | | | @listVersion [Optional]
| | | | | | | itemIdentification 1-unbounded
| | | | | | | serialN 1-9
| | | | | | | @numberingOrg [Optional]
| | | | | | | @idQualifier [Optional]
| | | | price 0-1
| | | | @um [Optional]
| | | | @priceQualifier [Optional] [Default= NET]
| | | | @currency [Optional]

```

```

| | | comDiscount 0-1
| | | thirdParty 0-3
| | |   @VAT [Optional]
| | |   @role [Required]
| | |   @sender [Optional]
| | |     | id 1-1
| | |     |   @numberingOrg [Optional]
| | |     | legalName 0-1
| | |     | dept 0-1
| | |     | subDept 0-1
| | |     | person 0-1
| | |     |   @email [Optional]
| | |     |   @phone [Optional]
| | |     |   @fax [Optional]
| | |     | street 0-1
| | |     | city 0-1
| | |     | subCountry 0-1
| | |     | country 0-1
| | |     | postCode 0-1
| | |     | geoCoordinates 0-1
| | |     |   @um [Optional] [Default= DEGD]
| | |     |   @geoRefSystem [Optional]
| | |     |     | xGeoCoord 1-1
| | |     |     | yGeoCoord 1-1
| | |     |     | zGeoCoord 0-1
| | | acsComInfo 0-1
| | |   @endUse [Optional] [Default= PR]
| | |     | season 0-1
| | |     |   @numberingOrg [Optional]
| | |     |   @codeList [Optional]
| | |     |   @listName [Optional]
| | |     |   @listVersion [Optional]
| | |     | brand 0-1
| | |     |   @numberingOrg [Optional]
| | |     |   @codeList [Optional]
| | |     |   @listName [Optional]
| | |     |   @listVersion [Optional]
| | |     | productLine 0-1
| | |     |   @numberingOrg [Optional]
| | |     |   @codeList [Optional]
| | |     |   @listName [Optional]
| | |     |   @listVersion [Optional]
| | |     | collection 0-1
| | |     | project 0-1
| | |     | operationalCode 0-19
| | |     |   @numberingOrg [Optional]
| | |     |   @codeList [Optional]
| | |     |   @listName [Optional]
| | |     |   @listVersion [Optional]
| | |     |   @codeQualifier [Optional]
| | |     | deliveryDate 0-1
| | |     |   @dateForm [Optional]
| | |     | specDate 0-1
| | |     |   @dateForm [Optional]
| | |     | acsPack 0-1
| | |     | - choose -
| | |     |   | acsPackCode 1-1
| | |     |   |   @numberingOrg [Optional]
| | |     |   |   @codeList [Optional]
| | |     |   |   @listName [Optional]
| | |     |   |   @listVersion [Optional]
| | |     | - or -
| | |     |   | acsPackText 1-1
| | |     | - end choose -
| | |     | note 0-99
| | |     |   @numberingOrg [Optional]
| | |     |   @codeList [Optional]
| | |     |   @noteLabel [Optional]

```

```

| | | finInfo 0-1
| | | | accountName 0-1
| | | | bank 0-1
| | | | | legalName 0-1
| | | | | dept 0-1
| | | | | subDept 0-1
| | | | | person 0-1
| | | | | @email [Optional]
| | | | | @phone [Optional]
| | | | | @fax [Optional]
| | | | | street 0-1
| | | | | city 0-1
| | | | | subCountry 0-1
| | | | | country 0-1
| | | | | postCode 0-1
| | | | | geoCoordinates 0-1
| | | | | @um [Optional] [Default= DEGD]
| | | | | @geoRefSystem [Optional]
| | | | | | xGeoCoord 1-1
| | | | | | yGeoCoord 1-1
| | | | | | zGeoCoord 0-1
| | | - choose -
| | | | iban 1-1
| | | - or -
| | | | bankIT 1-1
| | | | | legalName 0-1
| | | | | cin 0-1
| | | | | abi 1-1
| | | | | cab 1-1
| | | | | accountN 1-1
| | | - end choose -
| | | | swift 0-1
| | | | note 0-99
| | | | | @numberingOrg [Optional]
| | | | | @codeList [Optional]
| | | | | @noteLabel [Optional]
| | | note 0-99
| | | | @numberingOrg [Optional]
| | | | @codeList [Optional]
| | | | @noteLabel [Optional]
| | | | dtScheme 0-1
| | | | | @taxType [Required]
| | | | | taxCategory 0-1
| | | | | taxRate 0-1
| | | | | legalRef 0-1
| | | | | | @numberingOrg [Optional]
| | | | | | @codeList [Optional]
| | | | | | @listName [Optional]
| | | | | | @listVersion [Optional]
| | | | | note 0-99
| | | | | | @numberingOrg [Optional]
| | | | | | @codeList [Optional]
| | | | | | @noteLabel [Optional]
| | | totals 0-1
| | | | totQty 0-1
| | | | | @um [Required]
| | | | goodsAmount 1-1
| | | | | @currency [Optional]

```

2.2 Detailed description of document elements

Following tables show all elements (complex and simple) used in this document. Description includes: 1) element's information: xml tag, name, brief description, data type and syntax constraints; 2) information about use of the element in a particular position in the document: xpath and possible associated notes.

2.2.1 Complex elements (Aggregate Business Information Entities)

Complex elements are those elements whose content is composed of other elements (childs). Complex elements are alphabetically ordered.

acsCode	full codification identifying an accessory product usually coupled with garment or other fashion product (XPath ACSOrdResponse/AXbody/AXitem/acsCode) 0-2
acsComInfo	miscellaneous trade information, that can be specified in a garment accessories Order, referred either to the whole document or to the single item (XPath ACSOrdResponse/acsComInfo) 0-1 (XPath ACSOrdResponse/AXbody/AXitem/acsComInfo) 0-1
acsPack	type of wrapping or packing of the accessory (XPath ACSOrdResponse/AXbody/AXitem/acsComInfo/acsPack) 0-1 (XPath ACSOrdResponse/acsComInfo/acsPack) 0-1
allowanceCharge	Allowances and Charges related to an Order or a contract (XPath ACSOrdResponse/terms/allowanceCharge) 0-9
attachment	an attached document. An attachment can refer to an external document or be included with the document being exchanged (XPath ACSOrdResponse/TXheader/refDoc/attachment) 0-1 (XPath ACSOrdResponse/AXbody/AXitem/refDoc/attachment) 0-1
AXbody	body of the document ACCESSORY ORDER RESPONSE and CHANGE (XPath ACSOrdResponse/AXbody) 1-1
AXitem	line item of the message ACCESSORY ORDER RESPONSE and ORDER CHANGE (XPath ACSOrdResponse/AXbody/AXitem) 1-unbounded
bank	details of the financial institution - base type: Nad, (XPath ACSOrdResponse/AXbody/AXitem/finInfo/bank) 0-1
bankIT	Italian bank operations code (DEPRECATED, use IBAN) (XPath ACSOrdResponse/AXbody/AXitem/finInfo/bankIT) 1-1
blockChainReference	blockchain reference - base type: string, max length: 80, (XPath ACSOrdResponse/AXbody/AXitem/refDoc/attachment/blockChainReference) 0-9 (XPath ACSOrdResponse/TXheader/refDoc/attachment/blockChainReference) 0-9
buyer	details of the Buyer (party that buys the good or service that is object of the current collaborative process) - base type: Nad, (XPath ACSOrdResponse/TXheader/buyer) 1-1
csRange	range of color-size for a fashion article (XPath ACSOrdResponse/AXbody/AXitem/csRange) 0-99
deliveryLocation	data relating to a place of delivery(indicate at least element location or address, city and country) - base type: Nad, (XPath ACSOrdResponse/terms/transInfo/deliveryLocation) 0-1 - note: use to represent addresses in a structured way or with geographical coordinates
despatchLocation	data relating to a place of despatch (indicate at least element location or address, city and country) - base type: Nad, (XPath ACSOrdResponse/terms/transInfo/despatchLocation) 0-1 - note: use to represent addresses in a structured way

dtScheme	set of data usable to declare the duty or tax applied (XPath ACSOrdResponse/AXbody/AXitem/dtScheme) 0-1 - note: <i>recommended alternative to the attribute @VAT</i> (XPath ACSOrdResponse/terms/allowanceCharge/dtScheme) 0-1
externalReference	details about an external object, such as a document stored at a remote location (XPath ACSOrdResponse/AXbody/AXitem/refDoc/attachment/externalReference) 0-99 (XPath ACSOrdResponse/TXheader/refDoc/attachment/externalReference) 0-99
finInfo	bank details relevant for the payment: bank coordinates, SWIFT code, account (XPath ACSOrdResponse/AXbody/AXitem/finInfo) 0-1
garmentVariant	garment product variant (XPath ACSOrdResponse/AXbody/AXitem/csRange/garmentVariant) 0-9 - note: <i>used only if not already specified in the article code</i>
geoCoordinates	geographical coordinates (XPath ACSOrdResponse/AXbody/AXitem/thirdParty/geoCoordinates) 0-1 (XPath ACSOrdResponse/TXheader/buyer/geoCoordinates) 0-1 (XPath ACSOrdResponse/AXbody/AXitem/finInfo/bank/geoCoordinates) 0-1 (XPath ACSOrdResponse/terms/transInfo/despatchLocation/geoCoordinates) 0-1 (XPath ACSOrdResponse/TXheader/supplier/geoCoordinates) 0-1 (XPath ACSOrdResponse/TXheader/thirdParty/geoCoordinates) 0-1 (XPath ACSOrdResponse/terms/transInfo/deliveryLocation/geoCoordinates) 0-1 (XPath ACSOrdResponse/terms/trade/tradeLocation/geoCoordinates) 0-1
insPayment	payment details for payment by installments (XPath ACSOrdResponse/terms/insPayment) 0-5 - note: <i>excluded the case of offers, this set of data is alternative to payment set and must be iterated for each payment installment</i>
itemIdentification	serial identification of a product unit (XPath ACSOrdResponse/AXbody/AXitem/csRange/sizeMatrix/sizeRow/itemsList/itemIdentification) 1-unbounded - note: <i>identification of the single product unit contained in the list</i>
itemsList	list of the single product units (XPath ACSOrdResponse/AXbody/AXitem/csRange/sizeMatrix/sizeRow/itemsList) 0-1 - note: <i>the usage in this position is alternative to its usage within the document line element</i>
payment	payment details for payment all in one (XPath ACSOrdResponse/terms/payment) 0-5 - note: <i>excluded the case of offers, this set of data is alternative to insPayment, it can be iterated to specify alternative terms of payment (e.g.: 60 days or 30 days with 3% discount)</i>
refDoc	identification of a document and of an item thereof, to which the message makes reference (XPath ACSOrdResponse/AXbody/AXitem/refDoc) 1-9 - note: <i>Use to link the line of the present document to the line of the order, use refDoc element; numberingOrg indicates the role that produced the document and such reference, customer or supplier (both might be reported through two instances of refDoc)</i> (XPath ACSOrdResponse/TXheader/refDoc) 1-9 - note: <i>At least one occurrence should contain a reference to the order it responds to (for example docType=ORD or OCH or BOR)</i>
sizeMatrix	size matrix of an apparel product (XPath ACSOrdResponse/AXbody/AXitem/csRange/sizeMatrix) 1-1
sizeRow	size matrix row of an apparel product (XPath ACSOrdResponse/AXbody/AXitem/csRange/sizeMatrix/sizeRow) 1-99
supplier	details of the Supplier (party that supplies the good or service that is object of the current collaborative process) - base type: Nad, (XPath ACSOrdResponse/TXheader/supplier) 1-1
terms	details of the commercial obligations for payment and delivery (XPath ACSOrdResponse/terms) 0-1
thirdParty	identification and details of the Third Party, different from Sender and Receiver of the d

	ocument - base type: Nad, (XPath ACSOrdResponse/TXheader/thirdParty) 0-5 (XPath ACSOrdResponse/AXbody/AXitem/thirdParty) 0-3
totals	monetary and quantity totals of the Order (XPath ACSOrdResponse/totals) 0-1
trade	general terms of trade for the specified supply (XPath ACSOrdResponse/terms/trade) 0-1
tradeLocation	data relating to the place to which the trade conditions refer (indicate at least element location or address, city and country) - base type: Nad, (XPath ACSOrdResponse/terms/trade/tradeLocation) 0-1 - note: <i>address of the place to which the INCOTERM applies</i>
transInfo	details of transport: mode, carrier and delivery place (XPath ACSOrdResponse/terms/transInfo) 0-5
TXheader	header of the TEXTILES ORDER RESPONSE and TEXTILES ORDER CHANGE (XPath ACSOrdResponse/TXheader) 1-1

2.2.2 Simple elements (Basic Business Information Entities)

Simple elements are those elements whose content is characterized by a data type plus a domain of possible values. Simple elements are alphabetically ordered.

abi	ABI code - base type: string, length: 5, (XPath ACSOrdResponse/AXbody/AXitem/finInfo/bankIT/abi) 1-1
AC_amount	amount of an Allowance or Charge - base type: decimal, fraction digits: 2, (XPath ACSOrdResponse/terms/allowanceCharge/AC_amount) 1-1
AC_category	coded specification of an Allowance or Charge - base type: string, cod. table: T41 http://www.ebiz.enea.it/moda-ml/repository/codelist/draft/gc_T41.xml (XPath ACSOrdResponse/terms/allowanceCharge/AC_category) 1-1
AC_categoryText	free text description of an Allowance or Charge - base type: string, max length: 250, (XPath ACSOrdResponse/terms/allowanceCharge/AC_categoryText) 1-1
AC_percent	amount of an Allowance or Charge as a percentage (always non negative value) - base type: decimal, max inclusive: 100, fraction digits: 2, (XPath ACSOrdResponse/terms/allowanceCharge/AC_percent) 1-1
accountN	account number - base type: string, max length: 15, (XPath ACSOrdResponse/AXbody/AXitem/finInfo/bankIT/accountN) 1-1
accountName	account name - base type: string, max length: 250, (XPath ACSOrdResponse/AXbody/AXitem/finInfo/accountName) 0-1
acsPackCode	code specifying the type of wrapping or packing used for the accessory - base type: string, (XPath ACSOrdResponse/acsComInfo/acsPack/acsPackCode) 1-1 (XPath ACSOrdResponse/AXbody/AXitem/acsComInfo/acsPack/acsPackCode) 1-1
acsPackText	free text specifying the type of wrapping or packing used for the accessory - base type: string, max length: 250, (XPath ACSOrdResponse/acsComInfo/acsPack/acsPackText) 1-1 (XPath ACSOrdResponse/AXbody/AXitem/acsComInfo/acsPack/acsPackText) 1-1
@act	status that the current line assigns to the line addressed in the reference document; if it is already canceled it maintains the status. - base type: string, cod. table: NT5

	http://www.ebiz.enea.it/moda-ml/repository/codelist/draft/gc_NT5.xml (XPath ACSOrdResponse/AXbody/AXitem/@act) [Required]
added	additional code of the product (complementing the formers) - base type: string, max length: 80, (XPath ACSOrdResponse/AXbody/AXitem/acsCode/added) 0-9 - note: here an additional codification (see table T44) can be specified
additionalComponentCode	an additional code to identify a fashion product or a part of it (it is a way to codify the item, but it is not one of the codes to identify it). It is not a serial identifier. - base type: string, (XPath ACSOrdResponse/AXbody/AXitem/csRange/sizeMatrix/sizeRow/additionalComponentCode) 0-9
additionalIdentifier	additional identification code of a Party, for example customs registries or others - base type: string, max length: 15, (XPath ACSOrdResponse/TXheader/supplier/additionalIdentifier) 0-9 - note: identifiers for example for exports, such as MID (Manufacturer Identification Code), REX (identifier in EU Registered Exporter system) (XPath ACSOrdResponse/TXheader/buyer/additionalIdentifier) 0-9 - note: identifiers for example for exports, such as MID (Manufacturer Identification Code), REX (identifier in Registered Exporter system)
@addType	qualifier of the additional coding of a product - base type: string, cod. table: T44 http://www.ebiz.enea.it/moda-ml/repository/codelist/draft/gc_T44.xml (XPath ACSOrdResponse/AXbody/AXitem/acsCode/added/@addType) [Optional] - note: addType allows the clarification of the meaning of the added element content; it is strongly suggested to use it always.
art	article number of the product - base type: string, max length: 80, (XPath ACSOrdResponse/AXbody/AXitem/acsCode/art) 1-1
binaryObject	a binary large object containing an attached document, Coding 'base64Binary' is recommended. - base type: base64Binary, (XPath ACSOrdResponse/TXheader/refDoc/attachment/binaryObject) 0-1 (XPath ACSOrdResponse/AXbody/AXitem/refDoc/attachment/binaryObject) 0-1
brand	A brand name. - base type: string, (XPath ACSOrdResponse/AXbody/AXitem/acsComInfo/brand) 0-1 (XPath ACSOrdResponse/acsComInfo/brand) 0-1
cab	CAB code - base type: string, length: 5, (XPath ACSOrdResponse/AXbody/AXitem/finInfo/bankIT/cab) 1-1
carrier	identification of the transport carrier - base type: string, max length: 40, (XPath ACSOrdResponse/terms/transInfo/carrier) 0-1
@characterSet	the character set of the binary object (examples UTF-8, UTF-16, Windows-1252, ISO-8859-7,..) - base type: normalizedString, (XPath ACSOrdResponse/TXheader/refDoc/attachment/binaryObject/@characterSet) [Optional] (XPath ACSOrdResponse/AXbody/AXitem/refDoc/attachment/binaryObject/@characterSet) [Optional]
characterSetCode	the character set of an external document (examples UTF-8, UTF-16, Windows-1252, ISO-8859-7,..) - base type: normalizedString, (XPath ACSOrdResponse/AXbody/AXitem/refDoc/attachment/externalReference/characterSetCode) 0-1 (XPath ACSOrdResponse/TXheader/refDoc/attachment/externalReference/characterSetCode) 0-1
cin	CIN code - base type: string, length: 5, (XPath ACSOrdResponse/AXbody/AXitem/finInfo/bankIT/cin) 0-1

city	<p>name of the city (town, village)</p> <ul style="list-style-type: none"> - base type: string, max length: 40, (XPath ACSOrdResponse/terms/trade/tradeLocation/city) 0-1 (XPath ACSOrdResponse/TXheader/supplier/city) 0-1 (XPath ACSOrdResponse/terms/transInfo/despatchLocation/city) 0-1 (XPath ACSOrdResponse/AXbody/AXitem/finInfo/bank/city) 0-1 (XPath ACSOrdResponse/AXbody/AXitem/thirdParty/city) 0-1 (XPath ACSOrdResponse/terms/transInfo/deliveryLocation/city) 0-1 (XPath ACSOrdResponse/TXheader/buyer/city) 0-1 (XPath ACSOrdResponse/TXheader/thirdParty/city) 0-1
@codeList	<p>it specifies the URL where the list of codes used to make an instance of the element can be found</p> <ul style="list-style-type: none"> - base type: string, max length: 255, (XPath ACSOrdResponse/acsComInfo/acsPack/acsPackCode/@codeList) [Optional] - nota: at least one out of this attribute and "numberingOrg" should be set (XPath ACSOrdResponse/AXbody/AXitem/csRange/garmentVariant/variantType/@codeList) [Optional] - nota: always at least one out of this attribute and "numberingOrg" should be set (XPath ACSOrdResponse/AXbody/AXitem/acsCode/pattern/@codeList) [Optional] - nota: at least one out of this attribute and "numberingOrg" should be set (XPath ACSOrdResponse/TXheader/note/@codeList) [Optional] - nota: must be used to provide (URL) the list of codes used in "noteLabel" (XPath ACSOrdResponse/AXbody/AXitem/acsComInfo/brand/@codeList) [Optional] - nota: at least one out of this attribute and "numberingOrg" should be set (XPath ACSOrdResponse/AXbody/AXitem/csRange/color/@codeList) [Optional] - nota: this attribute should be used either single or coupled with "listName" and "listVersion" (XPath ACSOrdResponse/AXbody/AXitem/acsComInfo/acsPack/acsPackCode/@codeList) [Optional] - nota: at least one out of this attribute and "numberingOrg" should be set (XPath ACSOrdResponse/AXbody/AXitem/dtScheme/note/@codeList) [Optional] - nota: must be used to provide (URL) the list of codes used in "noteLabel" (XPath ACSOrdResponse/acsComInfo/note/@codeList) [Optional] - nota: must be used to provide (URL) the list of codes used in "noteLabel" (XPath ACSOrdResponse/AXbody/AXitem/acsComInfo/note/@codeList) [Optional] - nota: must be used to provide (URL) the list of codes used in "noteLabel" (XPath ACSOrdResponse/AXbody/AXitem/acsComInfo/operationalCode/@codeList) [Optional] - nota: at least one out of this attribute and "numberingOrg" should be set (XPath ACSOrdResponse/AXbody/AXitem/acsCode/color/@codeList) [Optional] - nota: this attribute should be used either single or coupled with "listName" and "listVersion" (XPath ACSOrdResponse/AXbody/AXitem/csRange/garmentVariant/variantCode/@codeList) [Optional] - nota: at least one out of this attribute and "numberingOrg" should be set (XPath ACSOrdResponse/AXbody/AXitem/finInfo/note/@codeList) [Optional] - nota: must be used to provide (URL) the list of codes used in "noteLabel" (XPath ACSOrdResponse/AXbody/AXitem/acsComInfo/productLine/@codeList) [Optional] - nota: at least one out of this attribute and "numberingOrg" should be set (XPath ACSOrdResponse/AXbody/AXitem/dtScheme/legalRef/@codeList) [Optional] (XPath ACSOrdResponse/terms/allowanceCharge/dtScheme/note/@codeList) [Optional] - nota: must be used to provide (URL) the list of codes used in "noteLabel" (XPath ACSOrdResponse/acsComInfo/season/@codeList) [Optional] - nota: this attribute should be used either single or coupled with "listName" and "listVersion" (XPath ACSOrdResponse/AXbody/AXitem/csRange/drop/@codeList) [Optional] (XPath ACSOrdResponse/acsComInfo/brand/@codeList) [Optional] - nota: at least one out of this attribute and "numberingOrg" should be set (XPath ACSOrdResponse/acsComInfo/productLine/@codeList) [Optional] - nota: at least one out of this attribute and "numberingOrg" should be set (XPath ACSOrdResponse/AXbody/AXitem/refDoc/season/@codeList) [Optional] - nota: this attribute should be used either single or coupled with "listName" and "listVersion" (XPath ACSOrdResponse/AXbody/AXitem/acsCode/art/@codeList) [Optional] - nota: at least one out of this attribute and "numberingOrg" should be set (XPath ACSOrdResponse/AXbody/AXitem/acsComInfo/season/@codeList) [Optional] - nota: this attribute should be used either single or coupled with "listName" and "listVersion"

	<p>(XPath ACSOrdResponse/TXheader/refDoc/season/@codeList) [Optional] - nota: <i>this attribute should be used either single or coupled with "listName" and "listVersion"</i></p> <p>(XPath ACSOrdResponse/AXbody/AXitem/csRange/sizeMatrix/sizeRow/additionalComponentCode/@codeList) [Optional] - nota: <i>at least one out of this attribute and "numberingOrg" should be set</i></p> <p>(XPath ACSOrdResponse/terms/allowanceCharge/dtScheme/legalRef/@codeList) [Optional] - nota: <i>must be used to provide (URL) the list of codes used in "noteLabel"</i></p> <p>(XPath ACSOrdResponse/AXbody/AXitem/note/@codeList) [Optional] - nota: <i>at least one out of this attribute and "numberingOrg" should be set</i></p> <p>(XPath ACSOrdResponse/AXbody/AXitem/csRange/sizeMatrix/sizeRow/itemsList/qualityLevel/@codeList) [Optional] - nota: <i>at least one out of this attribute and "numberingOrg" should be set</i></p> <p>(XPath ACSOrdResponse/AXbody/AXitem/csRange/sizeMatrix/sizeRow/size/@codeList) [Optional] (XPath ACSOrdResponse/AXbody/AXitem/csRange/sizeMatrix/sizeRow/drop/@codeList) [Optional] (XPath ACSOrdResponse/acsComInfo/operationalCode/@codeList) [Optional] - nota: <i>at least one out of this attribute and "numberingOrg" should be set</i></p>
@codeQualifier	<p>operational code qualifier: it states if the code is related to a project, an event, an initiative, a sales channel, a management type (eg CITES),</p> <p>- base type: string, cod. table: NT43 http://www.ebiz.enea.it/moda-ml/repository/codelist/draft/gc_NT43.xml (XPath ACSOrdResponse/acsComInfo/operationalCode/@codeQualifier) [Optional] (XPath ACSOrdResponse/AXbody/AXitem/acsComInfo/operationalCode/@codeQualifier) [Optional]</p>
collection	<p>identifier of collection (i.e.a clothing)</p> <p>- base type: string, max length: 250, (XPath ACSOrdResponse/acsComInfo/collection) 0-1 (XPath ACSOrdResponse/AXbody/AXitem/acsComInfo/collection) 0-1</p>
color	<p>colour number of the product, when not included in the model or fabric code</p> <p>- base type: string, max length: 15, (XPath ACSOrdResponse/AXbody/AXitem/acsCode/color) 0-1 (XPath ACSOrdResponse/AXbody/AXitem/csRange/color) 0-1 - note: <i>used only if not already specified in the article code</i></p>
comDiscount	<p>percent discount applied to the related unit price or amount</p> <p>- base type: decimal, min inclusive: 0, max inclusive: 100, fraction digits: 2, (XPath ACSOrdResponse/AXbody/AXitem/comDiscount) 0-1</p>
country	<p>code of the nation</p> <p>- base type: string, cod. table: T10 http://www.ebiz.enea.it/moda-ml/repository/codelist/draft/gc_T10.xml (XPath ACSOrdResponse/terms/transInfo/despatchLocation/country) 0-1 (XPath ACSOrdResponse/AXbody/AXitem/finInfo/bank/country) 0-1 (XPath ACSOrdResponse/terms/trade/tradeLocation/country) 0-1 (XPath ACSOrdResponse/TXheader/supplier/country) 0-1 (XPath ACSOrdResponse/TXheader/thirdParty/country) 0-1 (XPath ACSOrdResponse/AXbody/AXitem/thirdParty/country) 0-1 (XPath ACSOrdResponse/terms/transInfo/deliveryLocation/country) 0-1 (XPath ACSOrdResponse/TXheader/buyer/country) 0-1</p>
@currency	<p>currency in which a specified monetary data is expressed</p> <p>- base type: string, cod. table: T9 http://www.ebiz.enea.it/moda-ml/repository/codelist/draft/gc_T9.xml (XPath ACSOrdResponse/terms/allowanceCharge/AC_amount/@currency) [Optional] (XPath ACSOrdResponse/AXbody/AXitem/price/@currency) [Optional] - nota: <i>Currency referred by the price.</i> (XPath ACSOrdResponse/totals/goodsAmount/@currency) [Optional] (XPath ACSOrdResponse/terms/allowanceCharge/@currency) [Optional]</p>
@currencyUseQualifier	<p>qualification of another currency used in the document</p> <p>- base type: string, cod. table: NT19 http://www.ebiz.enea.it/moda-ml/repository/codelist/draft/gc_NT19.xml (XPath ACSOrdResponse/TXheader/otherCurrency/@currencyUseQualifier) [Required]</p>
@dateForm	<p>format used for the date</p> <p>- base type: string, cod. table: NT29 http://www.ebiz.enea.it/moda-ml/repository/codelist/draft/gc_NT29.xml (XPath ACSOrdResponse/acsComInfo/deliveryDate/@dateForm) [Optional] (XPath ACSOrdResponse/AXbody/AXitem/refDoc/docDate/@dateForm) [Optional]</p>

	(XPath ACSOrdResponse/TXheader/validityEnd/@dateForm) [Optional] (XPath ACSOrdResponse/TXheader/msgDate/@dateForm) [Optional] (XPath ACSOrdResponse/acsComInfo/specDate/@dateForm) [Optional] (XPath ACSOrdResponse/TXheader/refDoc/docDate/@dateForm) [Optional] (XPath ACSOrdResponse/AXbody/AXitem/acsComInfo/specDate/@dateForm) [Optional] (XPath ACSOrdResponse/AXbody/AXitem/acsComInfo/deliveryDate/@dateForm) [Optional] (XPath ACSOrdResponse/terms/transInfo/despatchDate/@dateForm) [Optional] (XPath ACSOrdResponse/terms/transInfo/delEffectiveDate/@dateForm) [Optional]
delEffectiveDate	actual delivery date (estimated or occurred in case of receipt docs), it might be different from what agreed between the parties. Format according to one of the patterns indicated by the dateForm attribute: YYYY-MM-DD, YYYY-MM-DD:HH-MM or YYYY-WW. - base type: string, (XPath ACSOrdResponse/terms/transInfo/delEffectiveDate) 0-1
deliveryDate	date of delivery of goods, requested or promised in the purchase process, according to one of the patterns YYYY-MM-DD, YYYY-MM-DD:HH-MM or YYYY-WW. - base type: string, (XPath ACSOrdResponse/acsComInfo/deliveryDate) 0-1 (XPath ACSOrdResponse/AXbody/AXitem/acsComInfo/deliveryDate) 0-1
deliveryPlace	place of delivery of goods, ultimate or related to a given leg - base type: string, max length: 250, (XPath ACSOrdResponse/terms/transInfo/deliveryPlace) 0-1 - note: <i>use to represent addresses with a unique text string</i>
dept	name or code of a department - base type: string, max length: 40, (XPath ACSOrdResponse/AXbody/AXitem/thirdParty/dept) 0-1 (XPath ACSOrdResponse/terms/transInfo/despatchLocation/dept) 0-1 (XPath ACSOrdResponse/terms/transInfo/deliveryLocation/dept) 0-1 (XPath ACSOrdResponse/AXbody/AXitem/finInfo/bank/dept) 0-1 (XPath ACSOrdResponse/TXheader/supplier/dept) 0-1 (XPath ACSOrdResponse/TXheader/thirdParty/dept) 0-1 (XPath ACSOrdResponse/TXheader/buyer/dept) 0-1 (XPath ACSOrdResponse/terms/trade/tradeLocation/dept) 0-1
description	free text description. The content of the element must be unique, it might be translated and repeated into more languages (thus no more than one instance for each language). - base type: string, max length: 250, (XPath ACSOrdResponse/AXbody/AXitem/acsCode/description) 0-unbounded - note: <i>Product description</i>
despatchDate	date of despatch of goods, requested or promised in the purchase process, according to one of the patterns YYYY-MM-DD, YYYY-MM-DD:HH-MM or YYYY-WW. - base type: string, (XPath ACSOrdResponse/terms/transInfo/despatchDate) 0-1
despatchPlace	place of despatch of goods, origin or related to a given leg - base type: string, max length: 250, (XPath ACSOrdResponse/terms/transInfo/despatchPlace) 0-1 - note: <i>use to represent addresses with a unique text string</i>
docDate	date of issue of the referenced document, according to one of the patterns YYYY-MM-DD, YYYY-MM-DD:HH-MM or YYYY-WW. - base type: string, (XPath ACSOrdResponse/TXheader/refDoc/docDate) 0-1 (XPath ACSOrdResponse/AXbody/AXitem/refDoc/docDate) 0-1
docID	identification number of the referenced document - base type: string, max length: 80, (XPath ACSOrdResponse/TXheader/docID) 0-1 - note: <i>Its use in HEADER elements is discouraged (use msgID)</i> (XPath ACSOrdResponse/AXbody/AXitem/refDoc/docID) 1-2 Best Practice (XPath ACSOrdResponse/TXheader/refDoc/docID) 1-2 Best Practice
@docType	type or class to which the referenced document belongs - base type: string, cod. table: T21 http://www.ebiz.enea.it/moda-ml/repository/codelist/draft/gc_T21.xml (XPath ACSOrdResponse/TXheader/refDoc/@docType) [Required] (XPath ACSOrdResponse/AXbody/AXitem/refDoc/@docType) [Required]

drop	<p>drop number of the garment</p> <ul style="list-style-type: none"> - base type: string, max length: 15, (XPath ACSOrdResponse/AXbody/AXitem/csRange/drop) 0-1 - note: <i>used only if not already specified in the article code</i> (XPath ACSOrdResponse/AXbody/AXitem/csRange/sizeMatrix/sizeRow/drop) 0-1 - note: <i>DEPRECATED, anyhow it is used only if not already specified in the article code or csRange</i>
@email	<p>electronic mail address of the contact person within a Party</p> <ul style="list-style-type: none"> - base type: string, max length: 250, (XPath ACSOrdResponse/AXbody/AXitem/thirdParty/person/@email) [Optional] (XPath ACSOrdResponse/terms/trade/tradeLocation/person/@email) [Optional] (XPath ACSOrdResponse/TXheader/thirdParty/person/@email) [Optional] (XPath ACSOrdResponse/TXheader/supplier/person/@email) [Optional] (XPath ACSOrdResponse/AXbody/AXitem/finInfo/bank/person/@email) [Optional] (XPath ACSOrdResponse/terms/transInfo/despatchLocation/person/@email) [Optional] (XPath ACSOrdResponse/TXheader/buyer/person/@email) [Optional] (XPath ACSOrdResponse/terms/transInfo/deliveryLocation/person/@email) [Optional]
@encoding	<p>specifies the decoding algorithm of the binary object</p> <ul style="list-style-type: none"> - base type: normalizedString, (XPath ACSOrdResponse/AXbody/AXitem/refDoc/attachment/binaryObject/@encoding) [Optional] (XPath ACSOrdResponse/TXheader/refDoc/attachment/binaryObject/@encoding) [Optional]
encodingCode	<p>the encoding/decoding algorithm used with the external object (example is 'base64Binary')</p> <ul style="list-style-type: none"> - base type: normalizedString, (XPath ACSOrdResponse/TXheader/refDoc/attachment/externalReference/encodingCode) 0-1 (XPath ACSOrdResponse/AXbody/AXitem/refDoc/attachment/externalReference/encodingCode) 0-1
@endUse	<p>specifies the final use of the fabric</p> <ul style="list-style-type: none"> - base type: string, cod. table: NT4 http://www.ebiz.enea.it/moda-ml/repository/codelist/draft/gc_NT4.xml (XPath ACSOrdResponse/AXbody/AXitem/acsComInfo/@endUse) [Optional] [Default= PR] - nota: <i>When used for accessory, use only PR: Production or SA: Sample codes.</i> (XPath ACSOrdResponse/acsComInfo/@endUse) [Optional] [Default= PR] - nota: <i>When used for accessory, use only PR: Production or SA: Sample codes.</i>
@exchangeRate	<p>Currency exchange rate</p> <ul style="list-style-type: none"> - base type: decimal, min inclusive: 0, (XPath ACSOrdResponse/TXheader/otherCurrency/@exchangeRate) [Optional] - nota: <i>Set the exchange rate of this currency to be applied on the message currency (msgCurrency) to obtain the final value in this currency.</i>
@fax	<p>fax number of the contact person within a Party</p> <ul style="list-style-type: none"> - base type: string, max length: 35, (XPath ACSOrdResponse/TXheader/thirdParty/person/@fax) [Optional] (XPath ACSOrdResponse/TXheader/buyer/person/@fax) [Optional] (XPath ACSOrdResponse/TXheader/supplier/person/@fax) [Optional] (XPath ACSOrdResponse/terms/transInfo/deliveryLocation/person/@fax) [Optional] (XPath ACSOrdResponse/terms/trade/tradeLocation/person/@fax) [Optional] (XPath ACSOrdResponse/AXbody/AXitem/thirdParty/person/@fax) [Optional] (XPath ACSOrdResponse/terms/transInfo/despatchLocation/person/@fax) [Optional] (XPath ACSOrdResponse/AXbody/AXitem/finInfo/bank/person/@fax) [Optional]
fileName	<p>unique identifier (name) of the file</p> <ul style="list-style-type: none"> - base type: string, max length: 255, (XPath ACSOrdResponse/TXheader/refDoc/attachment/fileName) 0-1 (XPath ACSOrdResponse/AXbody/AXitem/refDoc/attachment/fileName) 0-1
@finDiscount	<p>financial discount rate applied for payment by the date specified</p> <ul style="list-style-type: none"> - base type: decimal, min inclusive: 0, max inclusive: 100, fraction digits: 2, (XPath ACSOrdResponse/terms/payment/@finDiscount) [Optional]

@finSurcharge	financial surcharge rate applied for payment after the date specified - base type: decimal, min inclusive: 0, max inclusive: 100, fraction digits: 2, (XPath ACSOrdResponse/terms/payment/@finSurcharge) [Optional]
@format	the format of the binary content (examples xml, pdf, doc,...) - base type: string, (XPath ACSOrdResponse/TXheader/refDoc/attachment/binaryObject/@format) [Optional] (XPath ACSOrdResponse/AXbody/AXitem/refDoc/attachment/binaryObject/@format) [Optional]
formatCode	the format of the external object (examples xml, pdf, doc,...) - base type: normalizedString, (XPath ACSOrdResponse/AXbody/AXitem/refDoc/attachment/externalReference/formatCode) 0-1 (XPath ACSOrdResponse/TXheader/refDoc/attachment/externalReference/formatCode) 0-1
@geoRefSystem	georeference system adopted for the coordinate (in example wgs84 with decimal degree o degree with minute and seconds) - base type: string, (XPath ACSOrdResponse/terms/transInfo/deliveryLocation/geoCoordinates/@geoRefSystem) [Optional] (XPath ACSOrdResponse/TXheader/supplier/geoCoordinates/@geoRefSystem) [Optional] (XPath ACSOrdResponse/TXheader/thirdParty/geoCoordinates/@geoRefSystem) [Optional] (XPath ACSOrdResponse/terms/trade/tradeLocation/geoCoordinates/@geoRefSystem) [Optional] (XPath ACSOrdResponse/terms/transInfo/despatchLocation/geoCoordinates/@geoRefSystem) [Optional] (XPath ACSOrdResponse/TXheader/buyer/geoCoordinates/@geoRefSystem) [Optional] (XPath ACSOrdResponse/AXbody/AXitem/thirdParty/geoCoordinates/@geoRefSystem) [Optional] (XPath ACSOrdResponse/AXbody/AXitem/finInfo/bank/geoCoordinates/@geoRefSystem) [Optional]
goodsAmount	total monetary value of the goods and services considered in the message - base type: decimal, min inclusive: 0, fraction digits: 2, (XPath ACSOrdResponse/totals/goodsAmount) 1-1
grossWeight	the gross weight, declared for transport or customs purpose - base type: decimal, min inclusive: 0, fraction digits: 2, (XPath ACSOrdResponse/terms/transInfo/grossWeight) 0-1
hashFootprint	footprint obtained by applying an hashing algorithym - base type: string, max length: 80, (XPath ACSOrdResponse/TXheader/refDoc/attachment/hashFootprint) 0-1 (XPath ACSOrdResponse/AXbody/AXitem/refDoc/attachment/hashFootprint) 0-1
@hashMethod	type of used hashing algorithym - base type: string, max length: 80, cod. table: NT333 http://www.ebiz.enea.it/moda-ml/repository/codelist/draft/gc_NT333.xml (XPath ACSOrdResponse/AXbody/AXitem/refDoc/attachment/hashFootprint/@hashMethod) [Required] (XPath ACSOrdResponse/TXheader/refDoc/attachment/hashFootprint/@hashMethod) [Required]
iban	international bank and account identifier, used for fund transfer - base type: string, max length: 35, (XPath ACSOrdResponse/AXbody/AXitem/finInfo/iban) 1-1
id	primary identification code of a Party; it is recommended to use an EORI number (with @numberingOrg= "EO") or the format: nation code (ISO 3166) + national tax code (i.e. VAT identification number) with @numberingOrg= "MF" - base type: string, max length: 15, (XPath ACSOrdResponse/TXheader/buyer/id) 1-1 (XPath ACSOrdResponse/TXheader/supplier/id) 1-1 (XPath ACSOrdResponse/TXheader/thirdParty/id) 1-1 (XPath ACSOrdResponse/AXbody/AXitem/thirdParty/id) 1-1
@idQualifier	Qualification of the identifier. - base type: string, (XPath ACSOrdResponse/TXheader/supplier/additionalIdentifier/@idQualifier) [Option]

	<p>a)]</p> <p>- nota: <i>this attribute should be used when the numberingOrg attribute is not enough to declare the type of identifier</i> (XPath ACSOrdResponse/AXbody/AXitem/csRange/sizeMatrix/sizeRow/itemsList/itemIdentification/serialN/@idQualifier) [Optional]</p> <p>- nota: <i>this attribute should be used when the numberingOrg attribute is not enough to declare the type of serial identifier</i> (XPath ACSOrdResponse/TXheader/buyer/additionalIdentifier/@idQualifier) [Optional]</p> <p>- nota: <i>this attribute should be used when the numberingOrg attribute is not enough to declare the type of identifier</i></p>
incoTerm	<p>specification of the terms of trade (INCOTERMS)</p> <p>- base type: string, cod. table: T3 http://www.ebiz.enea.it/moda-ml/repository/codelist/draft/gc_T3.xml (XPath ACSOrdResponse/terms/trade/incoTerm) 1-1</p>
incoTermText	<p>free text specifying the terms of trade (incoterm, location)</p> <p>- base type: string, max length: 250, (XPath ACSOrdResponse/terms/trade/incoTermText) 1-1</p>
@isCharge	<p>Indicates if the element to which it refers is a charge (true = charge, false = allowance)</p> <p>- base type: boolean, (XPath ACSOrdResponse/terms/allowanceCharge/@isCharge) [Optional]</p>
@isURL	<p>it indicates if the referred element is an URL (true) or not (false)</p> <p>- base type: boolean, (XPath ACSOrdResponse/TXheader/refDoc/attachment/blockChainReference/uri/@isURL) [Optional] [Default= true]</p> <p>- nota: <i>usage of URLs is recommended</i> (XPath ACSOrdResponse/AXbody/AXitem/refDoc/attachment/blockChainReference/uri/@isURL) [Optional] [Default= true]</p> <p>- nota: <i>usage of URLs is recommended</i> (XPath ACSOrdResponse/AXbody/AXitem/refDoc/attachment/externalReference/uri/@isURL) [Optional] [Default= true]</p> <p>- nota: <i>usage of URLs is recommended</i> (XPath ACSOrdResponse/TXheader/refDoc/attachment/externalReference/uri/@isURL) [Optional] [Default= true]</p> <p>- nota: <i>usage of URLs is recommended</i></p>
itemID	<p>number of the line/item of the referenced document</p> <p>- base type: string, max length: 40, (XPath ACSOrdResponse/TXheader/refDoc/itemID) 0-1 (XPath ACSOrdResponse/AXbody/AXitem/refDoc/itemID) 0-1</p>
legalName	<p>legal name</p> <p>- base type: string, max length: 250, (XPath ACSOrdResponse/TXheader/buyer/legalName) 0-1 (XPath ACSOrdResponse/AXbody/AXitem/finInfo/bankIT/legalName) 0-1 (XPath ACSOrdResponse/AXbody/AXitem/finInfo/bank/legalName) 0-1 (XPath ACSOrdResponse/TXheader/thirdParty/legalName) 0-1 (XPath ACSOrdResponse/terms/transInfo/deliveryLocation/legalName) 0-1 (XPath ACSOrdResponse/terms/transInfo/despatchLocation/legalName) 0-1 (XPath ACSOrdResponse/TXheader/supplier/legalName) 0-1 (XPath ACSOrdResponse/AXbody/AXitem/thirdParty/legalName) 0-1 (XPath ACSOrdResponse/terms/trade/tradeLocation/legalName) 0-1</p>
legalRef	<p>legal reference of the duty or tax or fee category</p> <p>- base type: string, (XPath ACSOrdResponse/AXbody/AXitem/dtScheme/legalRef) 0-1 (XPath ACSOrdResponse/terms/allowanceCharge/dtScheme/legalRef) 0-1</p>
lineID	<p>unique identifier of the line item of the business document; it is set by the role that produces the document.</p> <p>- base type: string, max length: 30, (XPath ACSOrdResponse/AXbody/AXitem/lineID) 0-1</p>
lineN	<p>number of the line item of the present message (xml document); it is set by the role that produces the document. Usually it is a progressive number, but not always.</p> <p>- base type: positiveInteger, min inclusive: 1, max inclusive: 9999, (XPath ACSOrdResponse/AXbody/AXitem/lineN) 1-1</p>
@listName	<p>the name of the list of codes used to make an instance of the element (it might be thought as descriptive element, i.e. 'fabric printing technologies', or not, i.e. "T264")</p>

	<ul style="list-style-type: none"> - base type: string, max length: 40, (XPath ACSOrdResponse/acsComInfo/season/@listName) [Optional] - nota: <i>this attribute should always be used coupled with “numberingOrg”</i> (XPath ACSOrdResponse/AXbody/AXitem/acsCode/art/@listName) [Optional] - nota: <i>this attribute should always be used coupled with “numberingOrg”</i> (XPath ACSOrdResponse/acsComInfo/brand/@listName) [Optional] - nota: <i>this attribute should always be used coupled with “numberingOrg”</i> (XPath ACSOrdResponse/AXbody/AXitem/acsComInfo/productLine/@listName) [Optional] - nota: <i>this attribute should always be used coupled with “numberingOrg”</i> (XPath ACSOrdResponse/acsComInfo/productLine/@listName) [Optional] - nota: <i>this attribute should always be used coupled with “numberingOrg”</i> (XPath ACSOrdResponse/AXbody/AXitem/csRange/garmentVariant/variantType/@listName) [Optional] - nota: <i>this attribute should always be used coupled with “numberingOrg”</i> (XPath ACSOrdResponse/acsComInfo/acsPack/acsPackCode/@listName) [Optional] - nota: <i>this attribute should always be used coupled with “numberingOrg”</i> (XPath ACSOrdResponse/AXbody/AXitem/acsCode/pattern/@listName) [Optional] - nota: <i>this attribute should always be used coupled with “numberingOrg”</i> (XPath ACSOrdResponse/AXbody/AXitem/acsCode/color/@listName) [Optional] - nota: <i>this attribute should always be used coupled with “numberingOrg”</i> (XPath ACSOrdResponse/AXbody/AXitem/acsComInfo/brand/@listName) [Optional] - nota: <i>this attribute should always be used coupled with “numberingOrg”</i> (XPath ACSOrdResponse/acsComInfo/operationalCode/@listName) [Optional] - nota: <i>this attribute should always be used coupled with “numberingOrg”</i> (XPath ACSOrdResponse/AXbody/AXitem/csRange/garmentVariant/variantCode/@listName) [Optional] - nota: <i>this attribute should always be used coupled with “numberingOrg”</i> (XPath ACSOrdResponse/TXheader/refDoc/season/@listName) [Optional] - nota: <i>this attribute should always be used coupled with “numberingOrg”</i> (XPath ACSOrdResponse/AXbody/AXitem/acsComInfo/season/@listName) [Optional] - nota: <i>this attribute should always be used coupled with “numberingOrg”</i> (XPath ACSOrdResponse/AXbody/AXitem/dtScheme/legalRef/@listName) [Optional] - nota: <i>this attribute should always be used coupled with “numberingOrg”</i> (XPath ACSOrdResponse/AXbody/AXitem/acsComInfo/acsPack/acsPackCode/@listName) [Optional] - nota: <i>this attribute should always be used coupled with “numberingOrg”</i> (XPath ACSOrdResponse/AXbody/AXitem/csRange/color/@listName) [Optional] - nota: <i>this attribute should always be used coupled with “numberingOrg”</i> (XPath ACSOrdResponse/terms/allowanceCharge/dtScheme/legalRef/@listName) [Optional] - nota: <i>this attribute should always be used coupled with “numberingOrg”</i> (XPath ACSOrdResponse/AXbody/AXitem/csRange/sizeMatrix/sizeRow/itemsList/qualityLevel/@listName) [Optional] - nota: <i>this attribute should always be used coupled with “numberingOrg”</i> (XPath ACSOrdResponse/AXbody/AXitem/refDoc/season/@listName) [Optional] - nota: <i>this attribute should always be used coupled with “numberingOrg”</i> (XPath ACSOrdResponse/AXbody/AXitem/csRange/sizeMatrix/sizeRow/additionalComponentCode/@listName) [Optional] - nota: <i>this attribute should always be used coupled with “numberingOrg”</i> (XPath ACSOrdResponse/AXbody/AXitem/csRange/sizeMatrix/sizeRow/drop/@listName) [Optional] - nota: <i>this attribute should always be used coupled with “numberingOrg”</i> (XPath ACSOrdResponse/AXbody/AXitem/acsComInfo/operationalCode/@listName) [Optional] - nota: <i>this attribute should always be used coupled with “numberingOrg”</i> (XPath ACSOrdResponse/AXbody/AXitem/csRange/sizeMatrix/sizeRow/size/@listName) [Optional] - nota: <i>this attribute should always be used coupled with “numberingOrg”</i> (XPath ACSOrdResponse/AXbody/AXitem/csRange/drop/@listName) [Optional] - nota: <i>this attribute should always be used coupled with “numberingOrg”</i>
@listVersion	<p>it specifies the version of the list of codes used to make an instance of the element</p> <ul style="list-style-type: none"> - base type: string, max length: 6, (XPath ACSOrdResponse/AXbody/AXitem/acsCode/color/@listVersion) [Optional] - nota: <i>this attribute should always be used coupled with “numberingOrg” and “listName”</i> (XPath ACSOrdResponse/AXbody/AXitem/csRange/garmentVariant/variantType/@listVersion) [Optional]

Version) [Optional]

- nota: this attribute should always be used coupled with "numberingOrg" and "listName"

(XPath ACSOrdResponse/AXbody/AXitem/dtScheme/legalRef/@listVersion) [Optional]

- nota: this attribute should always be used coupled with "numberingOrg" and "listName"

(XPath ACSOrdResponse/AXbody/AXitem/acsComInfo/brand/@listVersion) [Optional]

- nota: this attribute should always be used coupled with "numberingOrg" and "listName"

(XPath ACSOrdResponse/AXbody/AXitem/acsCode/pattern/@listVersion) [Optional]

- nota: this attribute should always be used coupled with "numberingOrg" and "listName"

(XPath ACSOrdResponse/AXbody/AXitem/csRange/sizeMatrix/sizeRow/additionalComponentCode/@listVersion) [Optional]

- nota: this attribute should always be used coupled with "numberingOrg" and "listName"

(XPath ACSOrdResponse/AXbody/AXitem/refDoc/season/@listVersion) [Optional]

- nota: this attribute should always be used coupled with "numberingOrg" and "listName"

(XPath ACSOrdResponse/AXbody/AXitem/csRange/sizeMatrix/sizeRow/size/@listVersion) [Optional]

- nota: this attribute should always be used coupled with "numberingOrg" and "listName"

(XPath ACSOrdResponse/AXbody/AXitem/acsComInfo/season/@listVersion) [Optional]

- nota: this attribute should always be used coupled with "numberingOrg" and "listName"

(XPath ACSOrdResponse/acsComInfo/acsPack/acsPackCode/@listVersion) [Optional]

- nota: this attribute should always be used coupled with "numberingOrg" and "listName"

(XPath ACSOrdResponse/AXbody/AXitem/csRange/sizeMatrix/sizeRow/drop/@listVersion) [Optional]

- nota: this attribute should always be used coupled with "numberingOrg" and "listName"

(XPath ACSOrdResponse/AXbody/AXitem/csRange/sizeMatrix/sizeRow/itemsList/qualityLevel/@listVersion) [Optional]

- nota: this attribute should always be used coupled with "numberingOrg" and "listName"

(XPath ACSOrdResponse/AXbody/AXitem/acsComInfo/productLine/@listVersion) [Optional]

- nota: this attribute should always be used coupled with "numberingOrg" and "listName"

(XPath ACSOrdResponse/acsComInfo/brand/@listVersion) [Optional]

- nota: this attribute should always be used coupled with "numberingOrg" and "listName"

(XPath ACSOrdResponse/acsComInfo/productLine/@listVersion) [Optional]

- nota: this attribute should always be used coupled with "numberingOrg" and "listName"

(XPath ACSOrdResponse/AXbody/AXitem/acsCode/art/@listVersion) [Optional]

- nota: this attribute should always be used coupled with "numberingOrg" and "listName"

(XPath ACSOrdResponse/acsComInfo/season/@listVersion) [Optional]

- nota: this attribute should always be used coupled with "numberingOrg" and "listName"

(XPath ACSOrdResponse/AXbody/AXitem/csRange/drop/@listVersion) [Optional]

- nota: this attribute should always be used coupled with "numberingOrg" and "listName"

(XPath ACSOrdResponse/terms/allowanceCharge/dtScheme/legalRef/@listVersion) [Optional]

- nota: this attribute should always be used coupled with "numberingOrg" and "listName"

(XPath ACSOrdResponse/AXbody/AXitem/acsComInfo/operationalCode/@listVersion) [Optional]

- nota: this attribute should always be used coupled with "numberingOrg" and "listName"

(XPath ACSOrdResponse/AXbody/AXitem/csRange/garmentVariant/variantCode/@listVersion) [Optional]

- nota: this attribute should always be used coupled with "numberingOrg" and "listName"

(XPath ACSOrdResponse/AXbody/AXitem/acsComInfo/

	<p>acsPack/acsPackCode/@listVersion) [Optional]</p> <p>- nota: <i>this attribute should always be used coupled with "numberingOrg" and "listName"</i></p> <p>(XPath ACSOrdResponse/AXbody/AXitem/csRange/color/@listVersion) [Optional]</p> <p>- nota: <i>this attribute should always be used coupled with "numberingOrg" and "listName"</i></p> <p>(XPath ACSOrdResponse/TXheader/refDoc/season/@listVersion) [Optional]</p> <p>- nota: <i>this attribute should always be used coupled with "numberingOrg" and "listName"</i></p> <p>(XPath ACSOrdResponse/acsComInfo/operationalCode/@listVersion) [Optional]</p> <p>- nota: <i>this attribute should always be used coupled with "numberingOrg" and "listName"</i></p>
@ln	<p>Language code.</p> <p>- base type: string, cod. table: NT60</p> <p>http://www.ebiz.enea.it/moda-ml/repository/codelist/draft/gc_NT60.xml</p> <p>(XPath ACSOrdResponse/AXbody/AXitem/acsCode/description/@ln) [Optional]</p>
location	<p>specification of a location. It can be represented by an identification code (preferable) or a short text (not recommended). For example a GLN code that requires to assign the value "GLN" to the attribute @LRI.</p> <p>- base type: string, max length: 128,</p> <p>(XPath ACSOrdResponse/terms/transInfo/deliveryLocation/location) 0-1</p> <p>- note: <i>Use this element only to indicate an identification code of this place.</i></p> <p>(XPath ACSOrdResponse/terms/transInfo/despatchLocation/location) 0-1</p> <p>- note: <i>Use this element to specify a numeric ID of the location, for example a GLN code (in this case @SchemeID='GS1 GLN')</i></p> <p>(XPath ACSOrdResponse/terms/trade/location) 0-1</p> <p>- note: <i>code number of the place to which the INCOTERM applies</i></p> <p>(XPath ACSOrdResponse/terms/trade/tradeLocation/location) 0-1</p> <p>- note: <i>Use this element to specify a numeric ID of the location, for example a GLN code (in this case @SchemeID='LRI='GLN')</i></p>
@logo	<p>company logo (URL of the image jpeg or gif). It is recommended that the width of the image does not exceed 640 pixel.</p> <p>- base type: string, max length: 255,</p> <p>(XPath ACSOrdResponse/TXheader/supplier/@logo) [Optional]</p> <p>(XPath ACSOrdResponse/TXheader/buyer/@logo) [Optional]</p>
@LRI	<p>issuer of the identifier (or identification system) of a location.</p> <p>- base type: string, cod. table: NT3</p> <p>http://www.ebiz.enea.it/moda-ml/repository/codelist/draft/gc_NT3.xml</p> <p>(XPath ACSOrdResponse/terms/transInfo/deliveryLocation/location/@LRI) [Optional]</p> <p>(XPath ACSOrdResponse/terms/transInfo/despatchLocation/location/@LRI) [Optional]</p> <p>(XPath ACSOrdResponse/terms/trade/tradeLocation/location/@LRI) [Optional]</p> <p>(XPath ACSOrdResponse/terms/trade/location/@LRI) [Optional]</p>
@maxQty	<p>maximum product quantity</p> <p>- base type: decimal, min inclusive: 0, fraction digits: 2,</p> <p>(XPath ACSOrdResponse/terms/allowanceCharge/@maxQty) [Optional]</p> <p>- nota: <i>maximum quantity of product for the application of this allowance or charge</i></p>
@mime	<p>the mime type of the binary object</p> <p>- base type: normalizedString,</p> <p>(XPath ACSOrdResponse/AXbody/AXitem/refDoc/attachment/binaryObject/@mime) [Optional]</p> <p>(XPath ACSOrdResponse/TXheader/refDoc/attachment/binaryObject/@mime) [Optional]</p>
mimeCode	<p>mime type of the external object</p> <p>- base type: normalizedString,</p> <p>(XPath ACSOrdResponse/AXbody/AXitem/refDoc/attachment/externalReference/mimeCode) 0-1 Best Practice</p> <p>(XPath ACSOrdResponse/TXheader/refDoc/attachment/externalReference/mimeCode) 0-1 Best Practice</p>
@minQty	<p>minimum product quantity</p> <p>- base type: decimal, min inclusive: 0, fraction digits: 2,</p> <p>(XPath ACSOrdResponse/terms/allowanceCharge/@minQty) [Optional]</p> <p>- nota: <i>minimum quantity of product for the application of this allowance or charge</i></p>

msgCurrency	<p>currency used to express the monetary amounts of the message</p> <p>- base type: string, cod. table: T9 http://www.ebiz.enea.it/moda-ml/repository/codelist/draft/gc_T9.xml (XPath ACSOrdResponse/TXheader/msgCurrency) 0-1</p>
msgDate	<p>date of issue of the present message (xml document), according to one of the patterns YYYY-MM-DD, YYYY-MM-DD:HH-MM or YYYY-WW.</p> <p>- base type: string, (XPath ACSOrdResponse/TXheader/msgDate) 1-1</p>
@msgfunction	<p>function performed by the present message with regards to the transmission</p> <p>- base type: string, cod. table: NT18 http://www.ebiz.enea.it/moda-ml/repository/codelist/draft/gc_NT18.xml (XPath ACSOrdResponse/@msgfunction) [Optional] [Default= OR]</p>
msgID	<p>key identifier of the business document in the information system of the issuing Party. In case of more despatches of the same business document, it is unchanged.</p> <p>- base type: string, max length: 35, (XPath ACSOrdResponse/TXheader/msgID) 0-1</p>
msgN	<p>identification number given to the message (xml document) by its issuer. In case of more despatches of the same business document, it changes.</p> <p>- base type: string, max length: 35, (XPath ACSOrdResponse/TXheader/msgN) 1-1</p>
netWeight	<p>the net weight declared for transport or customs purpose</p> <p>- base type: decimal, min inclusive: 0, fraction digits: 2, (XPath ACSOrdResponse/terms/transInfo/netWeight) 0-1</p>
note	<p>free text or structured (computer processing) note. For note structuring use the attributes "noteLabel" and "codelist"</p> <p>- base type: string, max length: 350, (XPath ACSOrdResponse/AXbody/AXitem/finInfo/note) 0-99 (XPath ACSOrdResponse/TXheader/note) 0-99 (XPath ACSOrdResponse/AXbody/AXitem/acsComInfo/note) 0-99 (XPath ACSOrdResponse/AXbody/AXitem/note) 0-99 (XPath ACSOrdResponse/terms/allowanceCharge/dtScheme/note) 0-99 (XPath ACSOrdResponse/AXbody/AXitem/dtScheme/note) 0-99 (XPath ACSOrdResponse/acsComInfo/note) 0-99</p>
@noteLabel	<p>subject qualifier of a note</p> <p>- base type: string, max length: 35, (XPath ACSOrdResponse/AXbody/AXitem/dtScheme/note/@noteLabel) [Optional]</p> <p>- nota: <i>must be used to qualify the subject of the note</i> (XPath ACSOrdResponse/terms/allowanceCharge/dtScheme/note/@noteLabel) [Optional]</p> <p>- nota: <i>must be used to qualify the subject of the note</i> (XPath ACSOrdResponse/AXbody/AXitem/acsComInfo/note/@noteLabel) [Optional]</p> <p>- nota: <i>must be used to qualify the subject of the note</i> (XPath ACSOrdResponse/AXbody/AXitem/finInfo/note/@noteLabel) [Optional]</p> <p>- nota: <i>must be used to qualify the subject of the note</i> (XPath ACSOrdResponse/TXheader/note/@noteLabel) [Optional]</p> <p>- nota: <i>must be used to qualify the subject of the note</i> (XPath ACSOrdResponse/AXbody/AXitem/note/@noteLabel) [Optional]</p> <p>- nota: <i>must be used to qualify the subject of the note</i> (XPath ACSOrdResponse/acsComInfo/note/@noteLabel) [Optional]</p> <p>- nota: <i>must be used to qualify the subject of the note</i></p>
@numberingOrg	<p>code specifying the organisation who has created or owns the coding or numbering system</p> <p>- base type: string, cod. table: NT6 http://www.ebiz.enea.it/moda-ml/repository/codelist/draft/gc_NT6.xml (XPath ACSOrdResponse/AXbody/AXitem/acsCode/added/@numberingOrg) [Optional]</p> <p>- nota: <i>this attribute should be used either single or coupled with "listName" and "listVersion"</i> (XPath ACSOrdResponse/AXbody/AXitem/dtScheme/legalRef/@numberingOrg) [Optional]</p> <p>- nota: <i>this attribute should be used either single or coupled with "listName" and "listVersion"</i> (XPath ACSOrdResponse/AXbody/AXitem/finInfo/note/@numberingOrg) [Optional]</p> <p>- nota: <i>must be used to specify the organization that created the list of codes used in "noteLabel"</i> (XPath ACSOrdResponse/AXbody/AXitem/note/@numberingOrg) [Optional]</p> <p>- nota: <i>must be used to specify the organization that created the list of codes used in "noteLabel"</i></p>

	<p>(XPath ACSOrdResponse/AXbody/AXitem/dtScheme/note/@numberingOrg) [Optional] - nota: must be used to specify the organization that created the list of codes used in "noteLabel"</p> <p>(XPath ACSOrdResponse/AXbody/AXitem/csRange/sizeMatrix/sizeRow/size/@numberingOrg) [Optional] - nota: this attribute should be used either single or coupled with "listName" and "listVersion"</p> <p>(XPath ACSOrdResponse/AXbody/AXitem/csRange/sizeMatrix/sizeRow/drop/@numberingOrg) [Optional] - nota: this attribute should be used either single or coupled with "listName" and "listVersion"</p> <p>(XPath ACSOrdResponse/AXbody/AXitem/csRange/sizeMatrix/sizeRow/itemsList/itemIdentification/serialN/@numberingOrg) [Optional] - nota: here the issuer of the serial number must be specified (when different from the Supplier)</p> <p>(XPath ACSOrdResponse/AXbody/AXitem/csRange/sizeMatrix/sizeRow/itemsList/qualityLevel/@numberingOrg) [Optional] - nota: this attribute should be used either single or coupled with "listName" and "listVersion"</p> <p>(XPath ACSOrdResponse/AXbody/AXitem/csRange/garmentVariant/variantType/@numberingOrg) [Optional] - nota: this attribute should be used either single or coupled with "listName" and "listVersion"</p> <p>(XPath ACSOrdResponse/AXbody/AXitem/csRange/garmentVariant/variantCode/@numberingOrg) [Optional] - nota: this attribute should be used either single or coupled with "listName" and "listVersion"</p> <p>(XPath ACSOrdResponse/AXbody/AXitem/csRange/sizeMatrix/sizeRow/additionalComponentCode/@numberingOrg) [Optional] - nota: this attribute should be used either single or coupled with "listName" and "listVersion"</p> <p>(XPath ACSOrdResponse/AXbody/AXitem/csRange/drop/@numberingOrg) [Optional] - nota: this attribute should be used either single or coupled with "listName" and "listVersion"</p> <p>(XPath ACSOrdResponse/AXbody/AXitem/thirdParty/id/@numberingOrg) [Optional] (XPath ACSOrdResponse/AXbody/AXitem/acsComInfo/acsPack/acsPackCode/@numberingOrg) [Optional] - nota: this attribute should be used either single or coupled with "listName" and "listVersion"</p> <p>(XPath ACSOrdResponse/AXbody/AXitem/acsComInfo/operationalCode/@numberingOrg) [Optional] - nota: this attribute should be used either single or coupled with "listName" and "listVersion"</p> <p>(XPath ACSOrdResponse/AXbody/AXitem/csRange/@numberingOrg) [Optional] (XPath ACSOrdResponse/AXbody/AXitem/acsComInfo/note/@numberingOrg) [Optional] - nota: must be used to specify the organization that created the list of codes used in "noteLabel"</p> <p>(XPath ACSOrdResponse/AXbody/AXitem/acsComInfo/brand/@numberingOrg) [Optional] - nota: this attribute should be used either single or coupled with "listName" and "listVersion"</p> <p>(XPath ACSOrdResponse/AXbody/AXitem/acsComInfo/season/@numberingOrg) [Optional] - nota: this attribute should be used either single or coupled with "listName" and "listVersion"</p> <p>(XPath ACSOrdResponse/AXbody/AXitem/acsComInfo/productLine/@numberingOrg) [Optional] - nota: this attribute should be used either single or coupled with "listName" and "listVersion"</p> <p>(XPath ACSOrdResponse/AXbody/AXitem/csRange/color/@numberingOrg) [Optional] - nota: this attribute should be used either single or coupled with "listName" and "listVersion"</p> <p>(XPath ACSOrdResponse/AXbody/AXitem/refDoc/season/@numberingOrg) [Optional] - nota: this attribute should be used either single or coupled with "listName" and "listVersion"</p> <p>(XPath ACSOrdResponse/acsComInfo/season/@numberingOrg) [Optional] - nota: this attribute should be used either single or coupled with "listName" and "listVersion"</p> <p>(XPath ACSOrdResponse/acsComInfo/brand/@numberingOrg) [Optional] - nota: this attribute should be used either single or coupled with "listName" and "listVersion"</p>
--	--

	<p><i>rsion</i>"</p> <p>(XPath ACSOrdResponse/terms/allowanceCharge/dtScheme/note/@numberingOrg) [Optional]</p> <p>- nota: <i>must be used to specify the organization that created the list of codes used in "noteLabel"</i></p> <p>(XPath ACSOrdResponse/AXbody/AXitem/refDoc/attachment/fileName/@numberingOrg) [Optional]</p> <p>(XPath ACSOrdResponse/TXheader/buyer/additionalIdentifier/@numberingOrg) [Optional]</p> <p>- nota: <i>here the issuer of the identifier must be specified</i></p> <p>(XPath ACSOrdResponse/acsComInfo/acsPack/acsPackCode/@numberingOrg) [Optional]</p> <p>- nota: <i>this attribute should be used either single or coupled with "listName" and "listVersion"</i></p> <p>(XPath ACSOrdResponse/acsComInfo/productLine/@numberingOrg) [Optional]</p> <p>- nota: <i>this attribute should be used either single or coupled with "listName" and "listVersion"</i></p> <p>(XPath ACSOrdResponse/acsComInfo/operationalCode/@numberingOrg) [Optional]</p> <p>- nota: <i>this attribute should be used either single or coupled with "listName" and "listVersion"</i></p> <p>(XPath ACSOrdResponse/AXbody/AXitem/refDoc/docID/@numberingOrg) [Optional]</p> <p>- nota: <i>here can be specified whose document numbering is used (e.g.: Client, Supplier, ..)</i></p> <p>(XPath ACSOrdResponse/TXheader/buyer/id/@numberingOrg) [Optional]</p> <p>(XPath ACSOrdResponse/acsComInfo/note/@numberingOrg) [Optional]</p> <p>- nota: <i>must be used to specify the organization that created the list of codes used in "noteLabel"</i></p> <p>(XPath ACSOrdResponse/terms/allowanceCharge/dtScheme/legalRef/@numberingOrg) [Optional]</p> <p>- nota: <i>this attribute should be used either single or coupled with "listName" and "listVersion"</i></p> <p>(XPath ACSOrdResponse/AXbody/AXitem/acsCode/art/@numberingOrg) [Optional]</p> <p>- nota: <i>this attribute should be used either single or coupled with "listName" and "listVersion"</i></p> <p>(XPath ACSOrdResponse/AXbody/AXitem/acsCode/@numberingOrg) [Optional]</p> <p>(XPath ACSOrdResponse/TXheader/thirdParty/id/@numberingOrg) [Optional]</p> <p>(XPath ACSOrdResponse/AXbody/AXitem/acsCode/color/@numberingOrg) [Optional]</p> <p>- nota: <i>this attribute should be used either single or coupled with "listName" and "listVersion"</i></p> <p>(XPath ACSOrdResponse/AXbody/AXitem/acsCode/pattern/@numberingOrg) [Optional]</p> <p>- nota: <i>this attribute should be used either single or coupled with "listName" and "listVersion"</i></p> <p>(XPath ACSOrdResponse/TXheader/docID/@numberingOrg) [Optional]</p> <p>- nota: <i>here can be specified whose document numbering is used (e.g.: Client, Supplier, ..)</i></p> <p>(XPath ACSOrdResponse/TXheader/refDoc/season/@numberingOrg) [Optional]</p> <p>- nota: <i>this attribute should be used either single or coupled with "listName" and "listVersion"</i></p> <p>(XPath ACSOrdResponse/TXheader/supplier/id/@numberingOrg) [Optional]</p> <p>(XPath ACSOrdResponse/TXheader/refDoc/attachment/fileName/@numberingOrg) [Optional]</p> <p>(XPath ACSOrdResponse/TXheader/supplier/additionalIdentifier/@numberingOrg) [Optional]</p> <p>- nota: <i>here the issuer of the identifier must be specified</i></p> <p>(XPath ACSOrdResponse/TXheader/note/@numberingOrg) [Optional]</p> <p>- nota: <i>must be used to specify the organization that created the list of codes used in "noteLabel"</i></p> <p>(XPath ACSOrdResponse/TXheader/refDoc/docID/@numberingOrg) [Optional]</p> <p>- nota: <i>here can be specified whose document numbering is used (e.g.: Client, Supplier, ..)</i></p>
operationalCode	<p>operational code: it is the code of a project, an event, an initiative, a sales channel, a management type (eg CITES), ... the document, or product, is connected with.</p> <p>- base type: string,</p> <p>(XPath ACSOrdResponse/acsComInfo/operationalCode) 0-19</p> <p>(XPath ACSOrdResponse/AXbody/AXitem/acsComInfo/operationalCode) 0-19</p>
otherCurrency	<p>other currency used in the document</p> <p>- base type: string, cod. table: T9</p> <p>http://www.ebiz.enea.it/moda-ml/repository/codelist/draft/gc_T9.xml</p> <p>(XPath ACSOrdResponse/TXheader/otherCurrency) 0-9</p>
@part	<p>percent fraction</p> <p>- base type: decimal, min inclusive: 1, max inclusive: 100, fraction digits: 2,</p>

	(XPath ACSOrdResponse/terms/insPayment/@part) [Required] - nota: here the % value of each installment must be indicated
pattern	pattern/design number of the product, when not included in the article code - base type: string, max length: 15, (XPath ACSOrdResponse/AXbody/AXitem/acsCode/pattern) 0-1
payMode	way or means of payment - base type: string, cod. table: T2 http://www.ebiz.enea.it/moda-ml/repository/codelist/draft/gc_T2.xml (XPath ACSOrdResponse/terms/insPayment/payMode) 0-1 (XPath ACSOrdResponse/terms/payment/payMode) 0-1
payTerm	code specifying the terms or time by which the payment must be done - base type: string, cod. table: T1 http://www.ebiz.enea.it/moda-ml/repository/codelist/draft/gc_T1.xml (XPath ACSOrdResponse/terms/insPayment/payTerm) 1-1 (XPath ACSOrdResponse/terms/payment/payTerm) 1-1
payTermText	free text specifying the terms by which the payment must be done (time/mode or means) - base type: string, max length: 250, (XPath ACSOrdResponse/terms/insPayment/payTermText) 1-1 (XPath ACSOrdResponse/terms/payment/payTermText) 1-1
person	name of a person (e.g. contact person within an organization) - base type: string, max length: 40, (XPath ACSOrdResponse/TXheader/supplier/person) 0-1 (XPath ACSOrdResponse/TXheader/thirdParty/person) 0-1 (XPath ACSOrdResponse/terms/transInfo/despatchLocation/person) 0-1 (XPath ACSOrdResponse/TXheader/buyer/person) 0-1 (XPath ACSOrdResponse/AXbody/AXitem/finInfo/bank/person) 0-1 (XPath ACSOrdResponse/AXbody/AXitem/thirdParty/person) 0-1 (XPath ACSOrdResponse/terms/transInfo/deliveryLocation/person) 0-1 (XPath ACSOrdResponse/terms/trade/tradeLocation/person) 0-1
@phone	phone number of the contact person within a Party - base type: string, max length: 35, (XPath ACSOrdResponse/terms/transInfo/deliveryLocation/person/@phone) [Optional] (XPath ACSOrdResponse/terms/transInfo/despatchLocation/person/@phone) [Optional] (XPath ACSOrdResponse/AXbody/AXitem/thirdParty/person/@phone) [Optional] (XPath ACSOrdResponse/TXheader/thirdParty/person/@phone) [Optional] (XPath ACSOrdResponse/terms/trade/tradeLocation/person/@phone) [Optional] (XPath ACSOrdResponse/AXbody/AXitem/finInfo/bank/person/@phone) [Optional] (XPath ACSOrdResponse/TXheader/supplier/person/@phone) [Optional] (XPath ACSOrdResponse/TXheader/buyer/person/@phone) [Optional]
postCode	code defining the postal zone - base type: string, max length: 10, (XPath ACSOrdResponse/terms/trade/tradeLocation/postCode) 0-1 (XPath ACSOrdResponse/terms/transInfo/deliveryLocation/postCode) 0-1 (XPath ACSOrdResponse/TXheader/thirdParty/postCode) 0-1 (XPath ACSOrdResponse/AXbody/AXitem/thirdParty/postCode) 0-1 (XPath ACSOrdResponse/terms/transInfo/despatchLocation/postCode) 0-1 (XPath ACSOrdResponse/TXheader/supplier/postCode) 0-1 (XPath ACSOrdResponse/TXheader/buyer/postCode) 0-1 (XPath ACSOrdResponse/AXbody/AXitem/finInfo/bank/postCode) 0-1
price	unit price of the article, object or service specified - base type: decimal, min inclusive: 0, fraction digits: 4, (XPath ACSOrdResponse/AXbody/AXitem/price) 0-1
@priceQualifier	type of price with reference to discount and taxes - base type: string, cod. table: NT20 http://www.ebiz.enea.it/moda-ml/repository/codelist/draft/gc_NT20.xml (XPath ACSOrdResponse/AXbody/AXitem/price/@priceQualifier) [Optional] [Default= NET]
productLine	the product line name of a fashion product. - base type: string, (XPath ACSOrdResponse/acsComInfo/productLine) 0-1 (XPath ACSOrdResponse/AXbody/AXitem/acsComInfo/productLine) 0-1
@progr	progressive number in the sequence

	<p>- base type: positiveInteger, min inclusive: 1, (XPath ACSOrdResponse/terms/transInfo/@progr) [Optional]</p> <p>- nota: Indicates the position of the leg in a sequence of transport legs. If it is declared it must be in all the transInfo elements.</p>
project	<p>code used to assign the items ordered (fabric pieces, accessories, garments...) to a specific project of the Client</p> <p>- base type: string, max length: 40, (XPath ACSOrdResponse/acsComInfo/project) 0-1 (XPath ACSOrdResponse/AXbody/AXitem/acsComInfo/project) 0-1</p>
@propulsionSystemCode	<p>propulsion system type</p> <p>- base type: string, cod. table: NT324 http://www.ebiz.enea.it/moda-ml/repository/codelist/draft/gc_NT324.xml (XPath ACSOrdResponse/terms/transInfo/transMeans/@propulsionSystemCode) [Optional]</p> <p>- nota: indicates the type of propulsion of the means of transport</p>
qty	<p>net quantity of the article or object correlated, qualified by the function of the document (ordering, delivering, ..) and by the context</p> <p>- base type: decimal, min inclusive: 0, fraction digits: 2, (XPath ACSOrdResponse/AXbody/AXitem/csRange/sizeMatrix/sizeRow/qty) 0-1 (XPath ACSOrdResponse/AXbody/AXitem/qty) 0-2 Best Practice</p>
qualityLevel	<p>the product quality level (first choice, second choice,...).</p> <p>- base type: string, (XPath ACSOrdResponse/AXbody/AXitem/csRange/sizeMatrix/sizeRow/itemsList/qualityLevel) 0-1</p>
@role	<p>Third Party role qualifier</p> <p>- base type: string, cod. table: NT2 http://www.ebiz.enea.it/moda-ml/repository/codelist/draft/gc_NT2.xml (XPath ACSOrdResponse/AXbody/AXitem/thirdParty/@role) [Required] (XPath ACSOrdResponse/TXheader/thirdParty/@role) [Required]</p>
routeLength	<p>length of a route</p> <p>- base type: decimal, min inclusive: 0, fraction digits: 2, (XPath ACSOrdResponse/terms/transInfo/routeLength) 0-1</p>
@schemeID	<p>identifier of an identification scheme</p> <p>- base type: string, (XPath ACSOrdResponse/AXbody/AXitem/refDoc/attachment/hashFootprint/@schemeID) [Optional]</p> <p>- nota: specify for which system this hash footprint might be used as identifier (for example HDFS system..) (XPath ACSOrdResponse/TXheader/refDoc/attachment/hashFootprint/@schemeID) [Optional]</p> <p>- nota: specify for which system this hash footprint might be used as identifier (for example HDFS system..)</p>
season	<p>sale season; defined as: season (1 crt) + year (4 crt) - season: S/S=1 AW=2 Spring=3 Summer=4 Autumn=5 Winter=6: for more than four seasons use alphabetic sequence: 1st season=A 2nd season=B etc.etc.</p> <p>- base type: string, max length: 15, (XPath ACSOrdResponse/AXbody/AXitem/acsComInfo/season) 0-1 (XPath ACSOrdResponse/AXbody/AXitem/refDoc/season) 0-1</p> <p>- note: here indicates the season to which the referenced document belongs (XPath ACSOrdResponse/acsComInfo/season) 0-1 (XPath ACSOrdResponse/TXheader/refDoc/season) 0-1</p> <p>- note: here indicates the season to which the referenced document belongs</p>
@sender	<p>qualifier that specifies the Party issuing of the document</p> <p>- base type: boolean, (XPath ACSOrdResponse/TXheader/buyer/@sender) [Optional]</p> <p>- nota: This attribute is mandatory when the STYLESHEET must be used (XPath ACSOrdResponse/TXheader/thirdParty/@sender) [Optional]</p> <p>- nota: This attribute is mandatory when the STYLESHEET must be used (XPath ACSOrdResponse/AXbody/AXitem/thirdParty/@sender) [Optional]</p> <p>- nota: This attribute is mandatory when the STYLESHEET must be used (XPath ACSOrdResponse/TXheader/supplier/@sender) [Optional]</p> <p>- nota: This attribute is mandatory when the STYLESHEET must be used</p>

serialN	<p>serial number used for the identification of a physical unit</p> <p>- base type: string, max length: 250, (XPath ACSOrdResponse/AXbody/AXitem/csRange/sizeMatrix/sizeRow/itemsList/itemIdentification/serialN) 1-9 Best Practice</p> <p>- note: multiple values of serialN are allowed for different representations of the serial identifier of the same product unit. Instances of serialN must differ at least for one value of numberingOrg and idQualifier.</p>
size	<p>size number of a fashion product (knitwear, clothing, ..)</p> <p>- base type: string, max length: 15, (XPath ACSOrdResponse/AXbody/AXitem/csRange/sizeMatrix/sizeRow/size) 1-1</p>
@sizeSystemBase	<p>base of the size system</p> <p>- base type: string, cod. table: T423 http://www.ebiz.enea.it/moda-ml/repository/codelist/draft/gc_T423.xml (XPath ACSOrdResponse/AXbody/AXitem/csRange/@sizeSystemBase) [Optional]</p>
@sizeSystemID	<p>the identifier of the size system.</p> <p>- base type: string, (XPath ACSOrdResponse/AXbody/AXitem/csRange/@sizeSystemID) [Optional]</p>
@sizeSystemNat	<p>nation or agency identifying the size system</p> <p>- base type: string, cod. table: T421 http://www.ebiz.enea.it/moda-ml/repository/codelist/draft/gc_T421.xml (XPath ACSOrdResponse/AXbody/AXitem/csRange/@sizeSystemNat) [Optional]</p>
@sizeSystemSeg	<p>market segment identifying the size system</p> <p>- base type: string, cod. table: T422 http://www.ebiz.enea.it/moda-ml/repository/codelist/draft/gc_T422.xml (XPath ACSOrdResponse/AXbody/AXitem/csRange/@sizeSystemSeg) [Optional]</p>
specDate	<p>date by which the referenced blanket order must receive full product specifications (e.g. : colour), according to one of the patterns YYYY-MM-DD, YYYY-MM-DD:HH-MM or YYY-WW.</p> <p>- base type: string, (XPath ACSOrdResponse/AXbody/AXitem/acsComInfo/specDate) 0-1 (XPath ACSOrdResponse/acsComInfo/specDate) 0-1</p>
street	<p>street and building number identifying a location</p> <p>- base type: string, max length: 80, (XPath ACSOrdResponse/terms/trade/tradeLocation/street) 0-1 (XPath ACSOrdResponse/AXbody/AXitem/finInfo/bank/street) 0-1 (XPath ACSOrdResponse/TXheader/supplier/street) 0-1 (XPath ACSOrdResponse/TXheader/thirdParty/street) 0-1 (XPath ACSOrdResponse/TXheader/buyer/street) 0-1 (XPath ACSOrdResponse/AXbody/AXitem/thirdParty/street) 0-1 (XPath ACSOrdResponse/terms/transInfo/deliveryLocation/street) 0-1 (XPath ACSOrdResponse/terms/transInfo/despatchLocation/street) 0-1</p>
subCountry	<p>short name or code of the sub-country entity</p> <p>- base type: string, max length: 9, (XPath ACSOrdResponse/terms/trade/tradeLocation/subCountry) 0-1 (XPath ACSOrdResponse/AXbody/AXitem/thirdParty/subCountry) 0-1 (XPath ACSOrdResponse/AXbody/AXitem/finInfo/bank/subCountry) 0-1 (XPath ACSOrdResponse/terms/transInfo/deliveryLocation/subCountry) 0-1 (XPath ACSOrdResponse/TXheader/supplier/subCountry) 0-1 (XPath ACSOrdResponse/TXheader/thirdParty/subCountry) 0-1 (XPath ACSOrdResponse/terms/transInfo/despatchLocation/subCountry) 0-1 (XPath ACSOrdResponse/TXheader/buyer/subCountry) 0-1</p>
subDept	<p>name or code of a department</p> <p>- base type: string, max length: 40, (XPath ACSOrdResponse/TXheader/thirdParty/subDept) 0-1 (XPath ACSOrdResponse/TXheader/supplier/subDept) 0-1 (XPath ACSOrdResponse/terms/transInfo/despatchLocation/subDept) 0-1 (XPath ACSOrdResponse/TXheader/buyer/subDept) 0-1 (XPath ACSOrdResponse/AXbody/AXitem/finInfo/bank/subDept) 0-1 (XPath ACSOrdResponse/terms/trade/tradeLocation/subDept) 0-1 (XPath ACSOrdResponse/terms/transInfo/deliveryLocation/subDept) 0-1 (XPath ACSOrdResponse/AXbody/AXitem/thirdParty/subDept) 0-1</p>
swift	<p>swift code relevant to the financial transaction</p> <p>- base type: string, max length: 15, (XPath ACSOrdResponse/AXbody/AXitem/finInfo/swift) 0-1</p>

taxCategory	<p>duty or tax or fee category</p> <p>- base type: string, cod. table: T62</p> <p>http://www.ebiz.enea.it/moda-ml/repository/codelist/draft/gc_T62.xml</p> <p>(XPath ACSOrdResponse/terms/allowanceCharge/dtScheme/taxCategory) 0-1</p> <p>(XPath ACSOrdResponse/AXbody/AXitem/dtScheme/taxCategory) 0-1</p>
taxRate	<p>duty or tax or fee percent rate</p> <p>- base type: string,</p> <p>(XPath ACSOrdResponse/AXbody/AXitem/dtScheme/taxRate) 0-1</p> <p>(XPath ACSOrdResponse/terms/allowanceCharge/dtScheme/taxRate) 0-1</p>
@taxType	<p>duty or tax or fee type</p> <p>- base type: string, cod. table: T61</p> <p>http://www.ebiz.enea.it/moda-ml/repository/codelist/draft/gc_T61.xml</p> <p>(XPath ACSOrdResponse/AXbody/AXitem/dtScheme/@taxType) [Required]</p> <p>(XPath ACSOrdResponse/terms/allowanceCharge/dtScheme/@taxType) [Required]</p>
totQty	<p>total quantity of the articles related to the whole document</p> <p>- base type: decimal, min inclusive: 0, fraction digits: 2,</p> <p>(XPath ACSOrdResponse/totals/totQty) 0-1</p>
@TOtype	<p>type of Order</p> <p>- base type: string, cod. table: NT1</p> <p>http://www.ebiz.enea.it/moda-ml/repository/codelist/draft/gc_NT1.xml</p> <p>(XPath ACSOrdResponse/@TOtype) [Optional]</p>
transactionReceipt	<p>transaction receipt on blockchain</p> <p>- base type: string, max length: 80,</p> <p>(XPath ACSOrdResponse/AXbody/AXitem/refDoc/attachment/blockChainReference/transactionReceipt) 1-9</p> <p>(XPath ACSOrdResponse/TXheader/refDoc/attachment/blockChainReference/transactionReceipt) 1-9</p>
transCondition	<p>special condition of transport or special service requested to the Forwarder</p> <p>- base type: string, cod. table: T38</p> <p>http://www.ebiz.enea.it/moda-ml/repository/codelist/draft/gc_T38.xml</p> <p>(XPath ACSOrdResponse/terms/transInfo/transCondition) 0-3</p>
transConditionText	<p>free text description of the special condition of transport or special service requested to the Forwarder</p> <p>- base type: string, max length: 250,</p> <p>(XPath ACSOrdResponse/terms/transInfo/transConditionText) 0-1</p>
transMeans	<p>means of transport, in general or referred to a specific leg</p> <p>- base type: string, cod. table: T40</p> <p>http://www.ebiz.enea.it/moda-ml/repository/codelist/draft/gc_T40.xml</p> <p>(XPath ACSOrdResponse/terms/transInfo/transMeans) 0-1</p>
transMode	<p>way of transport, in general or referred to the specified leg</p> <p>- base type: string, cod. table: T8</p> <p>http://www.ebiz.enea.it/moda-ml/repository/codelist/draft/gc_T8.xml</p> <p>(XPath ACSOrdResponse/terms/transInfo/transMode) 1-1</p>
@transReason	<p>reason for the transport</p> <p>- base type: string, cod. table: NT11</p> <p>http://www.ebiz.enea.it/moda-ml/repository/codelist/draft/gc_NT11.xml</p> <p>(XPath ACSOrdResponse/terms/transInfo/@transReason) [Optional]</p>
@uid	<p>unique element identifier within the xml document</p> <p>- base type: string,</p> <p>(XPath ACSOrdResponse/AXbody/AXitem/refDoc/attachment/@uid) [Optional]</p> <p>(XPath ACSOrdResponse/TXheader/refDoc/attachment/@uid) [Optional]</p>
@um	<p>specification of the unit of measure</p> <p>- base type: string, cod. table: NT7</p> <p>http://www.ebiz.enea.it/moda-ml/repository/codelist/draft/gc_NT7.xml</p> <p>(XPath ACSOrdResponse/terms/allowanceCharge/@um) [Optional]</p> <p>(XPath ACSOrdResponse/terms/transInfo/deliveryLocation/geoCoordinates/@um) [Optional] [Default= DEGD]</p> <p>- nota: <i>when not specified assume decimal DEGREES</i></p> <p>(XPath ACSOrdResponse/AXbody/AXitem/thirdParty/geoCoordinates/@um) [Optional] [Default= DEGD]</p> <p>- nota: <i>when not specified assume decimal DEGREES</i></p> <p>(XPath ACSOrdResponse/terms/trade/tradeLocation/</p>

	<p>geoCoordinates/@um [Optional] [Default= DEGD] - nota: <i>when not specified assume decimal DEGREES</i> (XPath ACSOrdResponse/TXheader/buyer/geoCoordinates/@um) [Optional] [Default= DEGD] - nota: <i>when not specified assume decimal DEGREES</i> (XPath ACSOrdResponse/AXbody/AXitem/finInfo/bank/geoCoordinates/@um) [Optional] [Default= DEGD] - nota: <i>when not specified assume decimal DEGREES</i> (XPath ACSOrdResponse/totals/totQty/@um) [Required] (XPath ACSOrdResponse/terms/transInfo/routeLength/@um) [Required] (XPath ACSOrdResponse/AXbody/AXitem/csRange/sizeMatrix/sizeRow/qty/@um) [Required] (XPath ACSOrdResponse/terms/transInfo/grossWeight/@um) [Required] (XPath ACSOrdResponse/TXheader/supplier/geoCoordinates/@um) [Optional] [Default= DEGD] - nota: <i>when not specified assume decimal DEGREES</i> (XPath ACSOrdResponse/terms/transInfo/netWeight/@um) [Required] (XPath ACSOrdResponse/AXbody/AXitem/price/@um) [Optional] - nota: <i>Unit of measure of the product to which the price is referred (price per meter)</i> (XPath ACSOrdResponse/TXheader/thirdParty/geoCoordinates/@um) [Optional] [Default= DEGD] - nota: <i>when not specified assume decimal DEGREES</i> (XPath ACSOrdResponse/terms/transInfo/despatchLocation/geoCoordinates/@um) [Optional] [Default= DEGD] - nota: <i>when not specified assume decimal DEGREES</i> (XPath ACSOrdResponse/AXbody/AXitem/qty/@um) [Required]</p>
uri	<p>Uniform Resource Identifier (URI) that identifies the external object as an Internet resource - base type: normalizedString, (XPath ACSOrdResponse/TXheader/refDoc/attachment/externalReference/uri) 1-1 (XPath ACSOrdResponse/TXheader/refDoc/attachment/blockChainReference/uri) 1-1 - note: <i>reference to the used blockchain (example: url https://etherscan.io/ of ethereum)</i> (XPath ACSOrdResponse/AXbody/AXitem/refDoc/attachment/externalReference/uri) 1-1 (XPath ACSOrdResponse/AXbody/AXitem/refDoc/attachment/blockChainReference/uri) 1-1 - note: <i>reference to the used blockchain (example: url https://etherscan.io/ of ethereum)</i></p>
@useProfile	<p>use profile to which the present document is compliant if it was agreed by the parties. It is suggested a URI with reference to the firms or the URL of the profile. - base type: string, (XPath ACSOrdResponse/@useProfile) [Optional]</p>
validityEnd	<p>date by which the validity ends, according to one of the patterns YYYY-MM-DD, YYYY-MM-DD:HH-MM or YYYY-WW. - base type: string, (XPath ACSOrdResponse/TXheader/validityEnd) 0-1</p>
variantCode	<p>Code of variant used for fashion product. - base type: string, (XPath ACSOrdResponse/AXbody/AXitem/csRange/garmentVariant/variantCode) 1-1</p>
variantType	<p>Type of variant used for fashion product (examples: 'treatment', 'washing type', 'size class',...) - base type: string, (XPath ACSOrdResponse/AXbody/AXitem/csRange/garmentVariant/variantType) 1-1</p>
@VAT	<p>VAT rate or code (DEPRECATED, use dtScheme element) - base type: string, cod. table: NT16 http://www.ebiz.enea.it/moda-ml/repository/codelist/draft/gc_NT16.xml (XPath ACSOrdResponse/TXheader/thirdParty/@VAT) [Optional] (XPath ACSOrdResponse/AXbody/AXitem/thirdParty/@VAT) [Optional] (XPath ACSOrdResponse/AXbody/AXitem/lineN/@VAT) [Optional] - nota: <i>Deprecated, prefer dtScheme when available.</i> (XPath ACSOrdResponse/terms/allowanceCharge/@VAT) [Optional]</p>
@version	<p>Dictionary version from which the instance has been created</p>

	<p>- base type: string, cod. table: NT100 http://www.ebiz.enea.it/moda-ml/repository/codelist/draft/gc_NT100.xml (XPath ACSOrdResponse/@version) [Optional] [Default= draft]</p>
xGeoCoord	<p>geographical coordinate x , corresponding to latitude - base type: decimal, (XPath ACSOrdResponse/terms/trade/tradeLocation/ geoCoordinates/xGeoCoord) 1-1 (XPath ACSOrdResponse/TXheader/thirdParty/geoCoordinates/xGeoCoord) 1-1 (XPath ACSOrdResponse/AXbody/AXitem/thirdParty/ geoCoordinates/xGeoCoord) 1-1 (XPath ACSOrdResponse/terms/transInfo/despatchLocation/ geoCoordinates/xGeoCoord) 1-1 (XPath ACSOrdResponse/terms/transInfo/deliveryLocation/ geoCoordinates/xGeoCoord) 1-1 (XPath ACSOrdResponse/TXheader/buyer/geoCoordinates/xGeoCoord) 1-1 (XPath ACSOrdResponse/AXbody/AXitem/finInfo/bank/ geoCoordinates/xGeoCoord) 1-1 (XPath ACSOrdResponse/TXheader/supplier/geoCoordinates/xGeoCoord) 1-1</p>
yGeoCoord	<p>geographical coordinate y , corresponding to longitude - base type: decimal, (XPath ACSOrdResponse/TXheader/buyer/geoCoordinates/yGeoCoord) 1-1 (XPath ACSOrdResponse/terms/transInfo/deliveryLocation/ geoCoordinates/yGeoCoord) 1-1 (XPath ACSOrdResponse/terms/transInfo/despatchLocation/ geoCoordinates/yGeoCoord) 1-1 (XPath ACSOrdResponse/AXbody/AXitem/finInfo/bank/ geoCoordinates/yGeoCoord) 1-1 (XPath ACSOrdResponse/TXheader/thirdParty/geoCoordinates/yGeoCoord) 1-1 (XPath ACSOrdResponse/TXheader/supplier/geoCoordinates/yGeoCoord) 1-1 (XPath ACSOrdResponse/AXbody/AXitem/thirdParty/ geoCoordinates/yGeoCoord) 1-1 (XPath ACSOrdResponse/terms/trade/tradeLocation/ geoCoordinates/yGeoCoord) 1-1</p>
zGeoCoord	<p>geographical coordinate z , corresponding to altitude - base type: decimal, (XPath ACSOrdResponse/AXbody/AXitem/thirdParty/ geoCoordinates/zGeoCoord) 0-1 - note: <i>altitude might be omitted</i> (XPath ACSOrdResponse/terms/trade/tradeLocation/ geoCoordinates/zGeoCoord) 0-1 - note: <i>altitude might be omitted</i> (XPath ACSOrdResponse/terms/transInfo/despatchLocation/ geoCoordinates/zGeoCoord) 0-1 - note: <i>altitude might be omitted</i> (XPath ACSOrdResponse/terms/transInfo/deliveryLocation/ geoCoordinates/zGeoCoord) 0-1 - note: <i>altitude might be omitted</i> (XPath ACSOrdResponse/AXbody/AXitem/finInfo/bank/ geoCoordinates/zGeoCoord) 0-1 - note: <i>altitude might be omitted</i> (XPath ACSOrdResponse/TXheader/buyer/geoCoordinates/zGeoCoord) 0-1 - note: <i>altitude might be omitted</i> (XPath ACSOrdResponse/TXheader/thirdParty/geoCoordinates/zGeoCoord) 0-1 - note: <i>altitude might be omitted</i> (XPath ACSOrdResponse/TXheader/supplier/geoCoordinates/zGeoCoord) 0-1 - note: <i>altitude might be omitted</i></p>

2.3 Suggested best practices

ACSOrdResponse/AXbody/AXitem/refDoc/docID (identification number of the referenced document)

numberingOrg indicates the role that produced the document identifier (it is allowed to declare two different ones -e.g. customer and supplier - with two docID with different numberingOrg

ACSOrdResponse/TXheader/refDoc/docID (identification number of the referenced document)

numberingOrg indicates the role that produced the document identifier (it is allowed to declare two different ones -e.g. customer and supplier - with two docID with different numberingOrg

**ACSOrdResponse/AXbody/AXitem/refDoc/attachment/
externalReference/mimeCode (mime type of the external object)**

Use coding from IANA <http://www.iana.org/assignments/media-types/media-types.xml>

**ACSOrdResponse/TXheader/refDoc/attachment/
externalReference/mimeCode (mime type of the external object)**

Use coding from IANA <http://www.iana.org/assignments/media-types/media-types.xml>

ACSOrdResponse/AXbody/AXitem/qty (net quantity of the article or object correlated, qualified by the function of the document (ordering, delivering, ..) and by the context)

this element can have two instances only if the units of measure are different

**ACSOrdResponse/AXbody/AXitem/csRange/sizeMatrix/
sizeRow/itemsList/itemIdentification/serialN (serial number used for the identification of a physical unit)**

in the case of garment with RFID for anti-counterfeiting, RFID EPCGlobal for logistics and NFC for the customer experience there should be three serial elements with pairs of attributes numberingOrg/idQualifier: "CL"/"RFID", "GS1"/"RFID", "CL"/"NFC".

2.4 Enumeration tables

List of enumeration tables used in the XML document. You can find all the tables with the corresponding codes at:
<http://www.ebiz.enea.it/eBIZ/imple/eBIZTCU-draft.asp?lingua=en&pag=6>

NT1 - Order type
NT100 - eBIZ TCFUpstream version
NT11 - transport causal
NT16 - VAT rate or code
NT18 - message function
NT19 - currency use qualifier
NT2 - third party qualifier
NT20 - price qualifier
NT29 - format of a date
NT3 - issuer of the identifier (or identification system) of a location.
NT324 - propulsion system type
NT333 - type of hashing algorithym
NT4 - end use
NT43 - operational code qualifier
NT5 - action code
NT6 - coding system owner/issuer
NT60 - language, codes from ISO 639-1 (subset)
NT7 - unit of measure
T1 - terms of payment
T10 - ISO3166 - Country
T2 - Modes of payment
T21 - type of document
T3 - terms of delivery - IncoTerms
T38 - transport conditions
T40 - type of transport means
T41 - type of Allowance or Charge
T421 - size system: nationality
T422 - size system: market segment
T423 - size system: base
T44 - additional code type
T61 - duty or tax or fee type
T62 - duty or tax or fee category
T8 - Modes of Transport
T9 - ISO4217 - Currency

(the most relevant tables are detailed in the following Annexes too)

ACKNOWLEDGEMENT



This action is part of the TRICK project, which has received funding from Horizon 2020 research and innovation programme under grant agreement No. 958352 of the European Union.

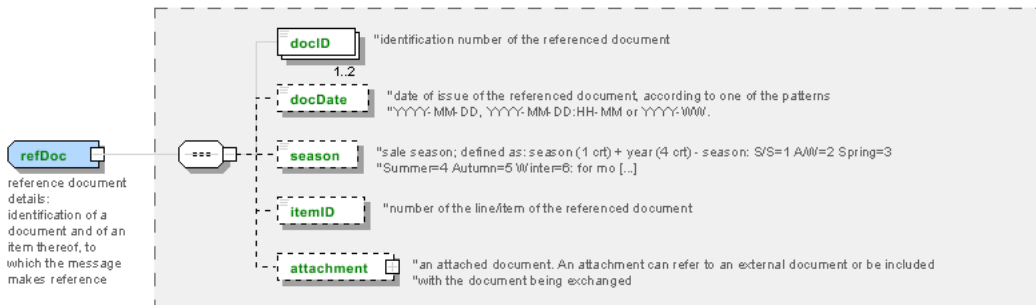
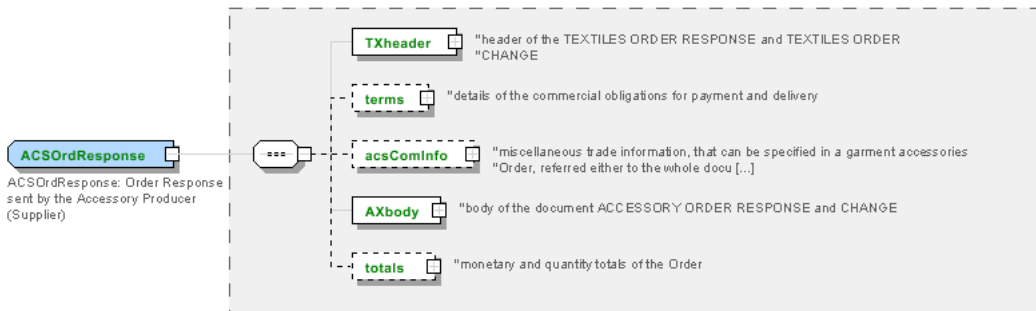
DISCLAIMER

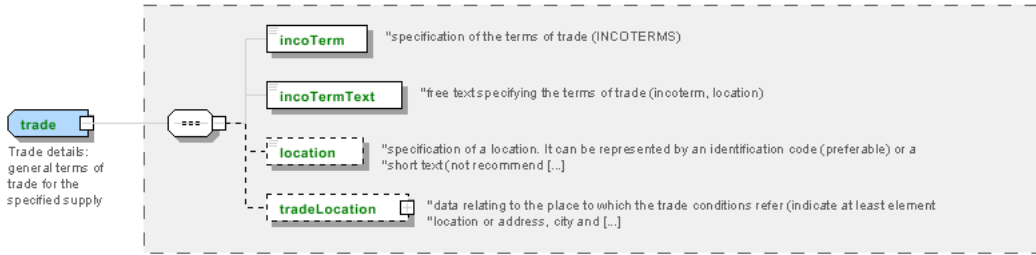
The content of this document represents the views of the authors only and is their sole responsibility; it cannot be considered to reflect the views of the European Commission or any other body of the European Union.

The European Commission does not accept any responsibility for use that may be made of the information it contains.

Annex A

Representative images of the principal complex elements' structure.





Annex B

NT1 - Order type

type of Order

Agency name: eBIZ

Decoding table: NT1

File codes list (Generic code): http://www.ebiz.enea.it/moda-ml/repository/codelist/draft/gc_NT1.xml

Code	Description	Adoption note	Date of insertion
A	blanket	the order is open without a concrete delivery of product; it establishes an amount of goods to be produced in a future	
D	call-off	orders an amount of goods to be delivered (and invoiced and produced if necessary); it is important that it is clear that this amount should be subtracted from the amount of the blanket order referred in the refDoc element	
P	reservation		
STD	standard		

NT100 - eBIZ TCFUpstream version

dictionary version

Agency name: eBIZ

Decoding table: NT100

File codes list (Generic code): http://www.ebiz.enea.it/moda-ml/repository/codelist/draft/gc_NT100.xml

Code	Description	Adoption note	Date of insertion
2013-1	v2013-1		01/07/2013
2018-1	v2018-1		04/11/2018
draft	draft		08/09/2017

NT11 - transport causal

reason for the transport

Agency name: eBIZ

Decoding table: NT11

File codes list (Generic code): http://www.ebiz.enea.it/moda-ml/repository/codelist/draft/gc_NT11.xml

Code	Description	Adoption note	Date of insertion
------	-------------	---------------	-------------------

FOC	free of charge		
FRW	return from re-works		
FST	return from storage		
FVW	return from view		
FWK	return from works		
IST	in storage		
NWK	return non-worked		
RJC	return from rejection		
SEL	to sell		
STO	to storage		
VEW	to view		
WRK	to works		

NT16 - VAT rate or code

VAT rate or code (DEPRECATED, use dtScheme element)

Decoding table: NT16

File codes list (Generic code): http://www.ebiz.enea.it/moda-ml/repository/codelist/draft/gc_NT16.xml

NT18 - message function

function performed by the present message with regards to the transmission

Agency name: eBIZ

Decoding table: NT18

File codes list (Generic code): http://www.ebiz.enea.it/moda-ml/repository/codelist/draft/gc_NT18.xml

Code	Description	Adoption note	Date of insertion
CA	delete this document		01/07/2013
CP	copy		
OR	original		
RC	re-transmission for data correction		
RT	re-transmission		

NT19 - currency use qualifier

qualification of another currency used in the document

Agency name: eBIZ

Decoding table: NT19

File codes list (Generic code): http://www.ebiz.enea.it/moda-ml/repository/codelist/draft/gc_NT19.xml

Code	Description	Adoption note	Date of insertion
CAT	pricelist currency		
INV	invoicing currency		
ORD	order currency		
PAY	payment currency		
SAL	sales currency		

NT2 - third party qualifier

Third Party role qualifier

Agency name: eBIZ

Decoding table: NT2

File codes list (Generic code): http://www.ebiz.enea.it/moda-ml/repository/codelist/draft/gc_NT2.xml

Code	Description	Adoption note	Date of insertion
AG	Sales Agent		
AU	Auditor		08/04/2019
BU	Buyer		13/06/2022
CE	Certification authority		08/04/2019
CM	Commissioner		13/06/2022
CO	Quality Controller		
CU	Customs authority		13/06/2022
DC	Response to		
DF	Invoicee		
DI	Copy to (CC)		28/10/2014
DM	Consignee		
DP	Consignment address (Delivery Party)		
EX	Expert		13/06/2022
IM	Importer		
OR	Originator		10/09/2014
SC	Sub contractor		10/04/2019
SM	Service/ePlatform manager		08/04/2019
SP	Forwarder		
SU	Supplier		13/06/2022
TL	Test or analysis laboratory		13/06/2022
TX	Tax Representative		

NT20 - price qualifier

type of price with reference to discount and taxes

Agency name: eBIZ

Decoding table: NT20

File codes list (Generic code): http://www.ebiz.enea.it/moda-ml/repository/codelist/draft/gc_NT20.xml

Code	Description	Adoption note	Date of insertion
GET	gross excluding taxes		
GIT	gross including taxes		
NET	net excluding taxes		
NIT	net including taxes		

NT29 - format of a date

format used for the date

Agency name: eBIZ

Decoding table: NT29

File codes list (Generic code): http://www.ebiz.enea.it/moda-ml/repository/codelist/draft/gc_NT29.xml

Code	Description	Adoption note	Date of insertion
D	YYYY-MM-DD		
M	YYYY-MM-DD:HH-MM (date and time)		
S	AAAA-MM-GG:HH-MM-SS (date and time with seconds)		13/06/2022
W	YYYY-WW		

NT3 - issuer of the identifier (or identification system) of a location.

List of possible issuers of the identifier (or identification system) of a location.

Agency name: eBIZ

Decoding table: NT3

File codes list (Generic code): http://www.ebiz.enea.it/moda-ml/repository/codelist/draft/gc_NT3.xml

Code	Description	Adoption note	Date of insertion
EN4	GS1-GLN	obsolete	01/07/2013
GLN	GS1-GLN	equivalent to EN4	25/04/2023
MD	mutually agreed		
NCA	National custom authority	identifier of a bonded warehouse assigned by the custom authority	19/05/2023

PLA	Platform	internal coding of the involved platform	14/05/2023
TRI	TRICK		14/05/2023

NT324 - propulsion system type

propulsion system type adopted, for example, by a transport mean

Agency name: eBIZ for TRICK

Decoding table: NT324

File codes list (Generic code): http://www.ebiz.enea.it/moda-ml/repository/codelist/draft/gc_NT324.xml

Code	Description	Adoption note	Date of insertion
ALC	Alcohol		05/07/2022
BDIE	Bio diesel		05/07/2022
BEV	Battery Electric Vehicle		05/07/2022
BFUE	Biofuels	biodiesel excluded	02/09/2022
DIE	Diesel		05/07/2022
FCEV	Hydrogen Fuel cell		05/07/2022
GAS	GAS		05/07/2022
GPL	LPG		05/07/2022
HEV	Full hybrid (Hybrid Electric Vehicle)		05/07/2022
HUM	Human force		05/07/2022
HYB	Hybrid		05/07/2022
MHY	Mild hybrid		05/07/2022
NUC	Nuclear		05/07/2022
PET	Petrol		05/07/2022
PHEV	plug-in Hybrid Electric Vehicle		05/07/2022
STEAM	Steam		05/07/2022
WIND	Wind		05/07/2022

NT333 - type of hashing algorithm

type of hashing algorithm

Decoding table: NT333

File codes list (Generic code): http://www.ebiz.enea.it/moda-ml/repository/codelist/draft/gc_NT333.xml

Code	Description	Adoption note	Date of insertion
ADLER32	ADLER32		26/05/2023
HMAC	HMAC		26/05/2023

MD2	MD2		26/05/2023
MD4	MD4		26/05/2023
MD5	MD5		26/05/2023
MDC-2	MDC-2		26/05/2023
PANAMA	PANAMA		26/05/2023
RIPEMD-160	RIPEMD-160		26/05/2023
SHA-1	SHA-1		26/05/2023
SHA-2 256	SHA-2 256		26/05/2023
SHA-2 384	SHA-2 384		26/05/2023
SHA-2 512	SHA-2 512		26/05/2023
TIGER	TIGER		26/05/2023

NT4 - end use

specifies the final use of the product

Agency name: eBIZ

Decoding table: NT4

File codes list (Generic code): http://www.ebiz.enea.it/moda-ml/repository/codelist/draft/gc_NT4.xml

Code	Description	Adoption note	Date of insertion
PC	test piece		
PR	production		
SA	Sample		10/09/2014
SC	samples card		
TI	patch		
TP	(test cut)		

NT43 - operational code qualifier

Agency name: eBIZ

Decoding table: NT43

File codes list (Generic code): http://www.ebiz.enea.it/moda-ml/repository/codelist/draft/gc_NT43.xml

Code	Description	Adoption note	Date of insertion
1	event		08/09/2017
2	sales channel		08/09/2017
3	goods management type		08/09/2017
4	special initiative		08/09/2017

NT5 - action code

action performed by the present line upon the referenced document line

Agency name: eBIZ

Decoding table: NT5

File codes list (Generic code): http://www.ebiz.enea.it/moda-ml/repository/codelist/draft/gc_NT5.xml

Code	Description	Adoption note	Date of insertion
A	CANCELLED		
C	CONFIRMED		
N	NEW ORDER LINE (created by an order change)		
R	PROVISIONAL CONFIRMATION		
S	DEFINITIVE CONFIRMATION		
SA	suspension accepted		
SN	suspension not accepted		
SR	suspension request		
V	AMENDED		

NT6 - coding system owner/issuer

code specifying the organisation who has created or owns the registers of the present coding or numbering system

Agency name: eBIZ

Decoding table: NT6

File codes list (Generic code): http://www.ebiz.enea.it/moda-ml/repository/codelist/draft/gc_NT6.xml

Code	Description	Adoption note	Date of insertion
CBR	National customs brokers registry		12/06/2023
CL	Customer/buyer		
CO	Quality Controller		
DU	D-U-N-S registry (Data Universal Numbering System)		04/05/2023
EB	eBIZ	replaces 'ML'	18/03/2019
EN	GS1 (ex-EAN International)		
EO	Registro EORI (Economic Operators Registration and Identification number)		04/03/2023
ES	e-Stockflow	DEPRECATED	
FO	Supplier		
GS	GS1		01/07/2013
MF	national taxation authority (i.e. VAT codes registry)		
ML	Moda-ML	DEPRECATED	

PL	Application Platform		13/06/2022
REX	Registered Exporter system (REX)		19/05/2023
SP	Service Provider		
SU	Enterprise Identification Number UID	Only switzerland	04/03/2023

NT60 - language, codes from ISO 639-1 (subset)

Agency name: eBIZ / ISO

Decoding table: NT60

File codes list (Generic code): http://www.ebiz.enea.it/moda-ml/repository/codelist/draft/gc_NT60.xml

Code	Description	Adoption note	Date of insertion
af	Afrikaans		31/01/2019
ar	Arabic		31/01/2019
be	Belarusian		31/01/2019
bg	Bulgarian		31/01/2019
bn	Bengali		31/01/2019
bo	Tibetan		31/01/2019
bs	Bosnian		31/01/2019
ca	Catalan, Valencian		31/01/2019
cs	Czech		31/01/2019
da	Danish		31/01/2019
de	German		31/01/2019
el	Greek, Modern (1453-)		31/01/2019
en	English		31/01/2019
eo	Esperanto		31/01/2019
es	Spanish, Castilian		31/01/2019
et	Estonian		31/01/2019
eu	Basque		31/01/2019
F	Female		15/04/2019
fa	Persian		31/01/2019
fi	Finnish		31/01/2019
fr	French		31/01/2019
ga	Irish		31/01/2019
gd	Gaelic, Scottish Gaelic		31/01/2019
gn	Guarani		31/01/2019
he	Hebrew		31/01/2019
hr	Croatian		31/01/2019

ht	Haitian, Haitian Creole		31/01/2019
hu	Hungarian		31/01/2019
hy	Armenian		31/01/2019
ia	Interlingua (International Auxiliary Language Association)		31/01/2019
id	Indonesian		31/01/2019
is	Icelandic		31/01/2019
it	Italian		31/01/2019
ja	Japanese		31/01/2019
jv	Javanese		31/01/2019
ka	Georgian		31/01/2019
km	Central Khmer		31/01/2019
ko	Korean		31/01/2019
ku	Kurdish		31/01/2019
lb	Luxembourgish, Letzeburgesch		31/01/2019
lo	Lao		31/01/2019
lt	Lithuanian		31/01/2019
lv	Latvian		31/01/2019
mg	Malagasy		31/01/2019
mk	Macedonian		31/01/2019
mn	Mongolian		31/01/2019
mt	Maltese		31/01/2019
nl	Dutch, Flemish		31/01/2019
no	Norwegian		31/01/2019
pl	Polish		31/01/2019
pt	Portuguese		31/01/2019
ro	Romanian, Moldavian, Moldovan		31/01/2019
ru	Russian		31/01/2019
se	Northern Sami		31/01/2019
sk	Slovak		31/01/2019
sl	Slovenian		31/01/2019
sm	Samoan		31/01/2019
so	Somali		31/01/2019
sq	Albanian		31/01/2019
sr	Serbian		31/01/2019
sv	Swedish		31/01/2019
sw	Swahili		31/01/2019
ta	Tamil		31/01/2019
th	Thai		31/01/2019

tr	Turkish		31/01/2019
uk	Ukrainian		31/01/2019
ur	Urdu		31/01/2019
uz	Uzbek		31/01/2019
vi	Vietnamese		31/01/2019
zh	Chinese		31/01/2019

NT7 - unit of measure

specification of the unit of measure, it is a sub set of table Unit of Measure Code - UN/ECE REC 20 delivered by United Nations Economic Commission for Europe (UN/ECE)

Agency name: eBIZ / UN/ECE

Decoding table: NT7

File codes list (Generic code): http://www.ebiz.enea.it/moda-ml/repository/codelist/draft/gc_NT7.xml

Other link: <http://docs.oasis-open.org/ubl/os-UBL-2.1/cl/gc/default/UnitOfMeasureCode-2.1.gc#>

Code	Description	Adoption note	Date of insertion
CMK	square centimetre		20/12/2017
CMQ	cubic centimetre		20/12/2017
CMT	centimetre		
CNE	centiNewton		
CO2TON	ton of CO2		10/09/2014
COUPLES	couples		
DAY	day		22/08/2022
DEGD	decimal degrees		04/07/2022
DEGMS	degrees with minutes and seconds		01/07/2022
DMQ	cubic decimetre		
E37	pixel		11/04/2018
GRM	gram		
HUR	hour		
INH	inch		
KGM	kilogram		
KMT	kilometer		
KWH	kilowatthours		10/09/2014
LBR	pound		
MCG	microgram		23/08/2022
MG	milligram		23/08/2022
MIN	minute		
MMK	square millimetre		20/12/2017

MONTH	month		22/08/2022
MSEC	millisecond (time)		22/08/2022
MTK	square metre		20/12/2017
MTQ	cubic metre		
MTR	metre		
NMB	numero		
ONZ	ounce		
P1	percent		
PPM	parts per milion		
PZ	piece		
RPM	rounds per metre		
SEC	second (time)		22/08/2022
YEAR	year		22/08/2022
YRD	yard		

T1 - terms of payment

code specifying the terms or time by which the payment must be done

Agency name: eBIZ

Decoding table: T1

File codes list (Generic code): http://www.ebiz.enea.it/moda-ml/repository/codelist/draft/gc_T1.xml

Code	Description	Adoption note	Date of insertion
ANTICIP	PAYMENT IN ADVANCE		
BLCOLLECT/120D	BILL OF LADING 120 DD		
BLCOLLECT/30D	BILL OF LADING 30 DD		
BLCOLLECT/60D	BILL OF LADING 60 DD		
BLCOLLECT/90D	BILL OF LADING 90 DD		
CASH	PAYMENT ON DELIVERY		
CASHINV	PAYMENT ON RECEIPT OF INVOICE		
CREDOC/0D	DOCUMENTARY CREDIT FOR PAYM. AT SIGHT		
CREDOC/120	DOCUMENTARY CREDIT FOR PAYM. AT 120 DD		
CREDOC/150	DOCUMENTARY CREDIT FOR PAYM. AT 150 DD		
CREDOC/180	DOCUMENTARY CREDIT FOR PAYM. AT 180 DD		
CREDOC/30D	DOCUMENTARY CREDIT FOR PAYM. AT 30 DD		
CREDOC/45D	DOCUMENTARY CREDIT FOR PAYM. AT 45 DD		
CREDOC/60	DOCUMENTARY CREDIT FOR PAYM. AT 60 DD		
CREDOC/90	DOCUMENTARY CREDIT FOR PAYM. AT 90 DD		

DEL/10	PAYMENT AT 10 DD AFTER DELIVERY		
DOCOLLECT/120D	DOCUMENTARY COLLECTION AT 120 DD		
DOCOLLECT/30D	DOCUMENTARY COLLECTION AT 30 DD		
DOCOLLECT/60D	DOCUMENTARY COLLECTION AT 60 DD		
DOCOLLECT/90D	DOCUMENTARY COLLECTION AT 90 DD		
INV/120D	PAYMENT AT 120 DD AFTER RECEIPT OF INVOICE		
INV/150D	PAYMENT AT 150 DD AFTER RECEIPT OF INVOICE		
INV/180D	PAYMENT AT 180 DD AFTER RECEIPT OF INVOICE		
INV/30D	PAYMENT AT 30 DD AFTER RECEIPT OF INVOICE		
INV/45D	PAYMENT AT 45 DD AFTER RECEIPT OF INVOICE		
INV/60D	PAYMENT AT 60 DD AFTER RECEIPT OF INVOICE		
INV/90D	PAYMENT AT 90 DD AFTER RECEIPT OF INVOICE		
INVULTIMO	PAYMENT AT END MONTH RECEIPT INVOICE		
INVULTIMO/10D	PAYMENT 10 DD AFTER END MONTH RECEIPT INVOICE		
INVULTIMO/120D	PAYMENT 120 DD AFTER END MONTH RECEIPT INVOICE		
INVULTIMO/150D	PAYMENT 150 DD AFTER END MONTH RECEIPT INVOICE		
INVULTIMO/180D	PAYMENT 180 DD AFTER END MONTH RECEIPT INVOICE		
INVULTIMO/240D	PAYMENT 240 DD AFTER END MONTH RECEIPT INVOICE		
INVULTIMO/30D	PAYMENT 30 DD AFTER END MONTH RECEIPT INVOICE		
INVULTIMO/45D	PAYMENT 45 DD AFTER END MONTH RECEIPT INVOICE		
INVULTIMO/60D	PAYMENT 60 DD AFTER END MONTH RECEIPT INVOICE		
INVULTIMO/90D	PAYMENT 90 DD AFTER END MONTH RECEIPT INVOICE		
NOPAY	WITHOUT PAYMENT		
RECREDOC/0D	IRREVOC. DOCUMENTARY CREDIT FOR PAYM. AT SIGHT		
RECREDOC/120D	IRREVOC. DOCUMENTARY CREDIT FOR PAYM. AT 120 DD		
RECREDOC/150D	IRREVOC. DOCUMENTARY CREDIT FOR PAYM. AT 150 DD		
RECREDOC/180D	IRREVOC. DOCUMENTARY CREDIT FOR PAYM. AT 180 DD		
RECREDOC/30D	IRREVOC. DOCUMENTARY CREDIT FOR PAYM. AT 30 DD		
RECREDOC/45D	IRREVOC. DOCUMENTARY CREDIT FOR PAYM. AT 45 DD		
RECREDOC/60D	IRREVOC. DOCUMENTARY CREDIT FOR PAYM. AT 60 DD		
RECREDOC/90D	IRREVOC. DOCUMENTARY CREDIT FOR PAYM. AT 90 DD		
ULTIMO	PAYMENT BY END MONTH OF DELIVERY		
ULTIMO/10	PAYMENT AT 10 DD AFTER END MONTH OF DELIVERY		

T10 - ISO3166 - Country

code of the nation

Agency name: ISO

Decoding table: T10

File codes list (Generic code): http://www.ebiz.enea.it/moda-ml/repository/codelist/draft/gc_T10.xml

Table not printed: there are 240 elements, more than the maximum specified for printing: 99.

T2 - Modes of payment

way or means of payment

Agency name: eBIZ

Decoding table: T2

File codes list (Generic code): http://www.ebiz.enea.it/moda-ml/repository/codelist/draft/gc_T2.xml

Code	Description	Adoption note	Date of insertion
BB	bank transfer		
IA	collection through Agent		
IS	collection through Forwarder		
RB	bank receipt		
RD	remittance		
SW	bank SWIFT		
TR	bank draft		

T21 - type of document

type or class to which the referenced document belongs

Agency name: eBIZ

Decoding table: T21

File codes list (Generic code): http://www.ebiz.enea.it/moda-ml/repository/codelist/draft/gc_T21.xml

Code	Description	Adoption note	Date of insertion
BIL	Bill of lading		07/03/2023
BOR	Blanket order		01/02/2018
CAT	Price catalogue - tech sheet		
CEO	Certificate of origin		13/04/2018
CER	Certificate		13/04/2018
CMR	CMR consignment note		07/03/2023
COC	Colour card		
CRN	Credit note		08/09/2017
CTO	Checking order		01/07/2013
CTR	Contract		

CXF	CxF3 file		01/07/2013
DAD	Darn order		
DDT	Delivery note (transport document)		
DEA	Despatch advise		
DER	Despatch request		
DR	Document Request		02/12/2014
EAD	Export Accompanying Document	adopted by European customs	12/05/2023
ECMR	electronic CMR consignment note		07/03/2023
ECUS	EXPORT Custom Declaration		07/03/2023
FOR	Forecast		02/12/2014
GSO	Garment stock offer		
GSX	Garment stock offer change		
ICUS	IMPORT Custom Declaration		07/03/2023
INV	Invoice		
KCC	Knitting-Clothing Commission Order		02/12/2014
KCI	Garment in Work Inventory Report		02/12/2014
LCA	LCA study		28/08/2022
LCAD	LCA study dataset		28/08/2022
M2M	Made to Measure Production Order		02/12/2014
MAS	Master marker		
MCI	Visual merchandising instruction		13/04/2018
OCH	Order change		
OFF	Offer		
ORD	Purchase order		
ORP	Order response		
OSR	order status request		
OSS	Offer status		02/12/2014
OST	Order status		
OUR	our reference		
PCO	Preferential certificate of origin		07/03/2023
PEF	PEF study		28/08/2022
PEFD	PEF study dataset		28/08/2022
PEFP	PEF environmental profile		07/03/2023
QR	Quality Report		02/12/2014
RAI	Raw Material in Work Inventory Report		02/12/2014
RDC	Raw dyeing commission order		
RDH	Raw dyeing order change		
RDR	Raw dyeing order response		

REA	Receiving advise		
REQ	Request for Offer		
RET	Return		02/12/2014
RSC	Spinning commission order		
RSH	Spinning order change		
RSR	Spinning order response		
SAD	Single Administrative Document	adopted by European customs	12/05/2023
SCL	Process sheet		
SDE	Self-declaration		07/03/2023
SDS	SDS - Safety data sheet		07/03/2023
SLCA	S-LCA Study		07/03/2023
SLCAD	S-LCA Study documentation		07/03/2023
TFC	Textile dyeing-finishing commission order		
TFX	Textile Dyeing-Finishing Order Change		02/12/2014
TPC	Textile printing commission order		
TPX	Textile Printing Order Change		02/12/2014
TWI	Textile in work inventory		
VMI	visual merchandising instructions		01/02/2018
WAC	Warping commission order		
WAYB	Waybill		07/03/2023
WEC	Weaving commission order		
YDC	Yarn dyeing commission order		
YDH	Yarn dyeing order change		
YDR	Yarn dyeing order response		
YTC	Twisting commission order		
YWI	Yarn in work inventory		

T3 - terms of delivery - IncoTerms

specification of the terms of trade (INCOTERMS)

Agency name: Incoterms

Decoding table: T3

File codes list (Generic code): http://www.ebiz.enea.it/moda-ml/repository/codelist/draft/gc_T3.xml

Other link: <https://iccwbo.org/resources-for-business/incoterms-rules/incoterms-2020/#>

Code	Description	Adoption note	Date of insertion
CFR	COST AND FREIGHT (named port of destination)		
CIF	COST, INSURANCE AND FREIGHT (named port of		

	destination)		
CIP	CARRIAGE AND INSURANCE PAID (named place of destination)		
CP T	CARRIAGE PAID (named place of destination)		
DA F	DELIVERED AT FRONTIER (named place)	according to Incoterms® 2010, since 2020 it is OBSOLETE.	08/12/2017
DA P	Delivered at Place of destination (named place of destination)	according to Incoterms® 2010	08/12/2017
DA T	Delivered at Terminal (named place of destination)	according to Incoterms® 2010, since 2020 it is OBSOLETE.	08/12/2017
DD P	DELIVERED DUTY PAID (named place of destination)		
DD U	DELIVERED DUTY UNPAID (named place of destination)	according to Incoterms® 2010 it is OBSOLETE, use DAP	08/12/2017
DE Q	DELIVERED EX-QUAY (named port of destination)	according to Incoterms® 2010 it is OBSOLETE	08/12/2017
DE S	DELIVERED EX-SHIP (named port of destination)	according to Incoterms® 2010 it is OBSOLETE	08/12/2017
DP U	DELIVERED AT PLACE UNLOADED	according to Incoterms® 2020	25/04/2022
EX W	EX WORKS (named place)		
FAS	FREE ALONGSIDE SHIP (named port of shipment)		
FC A	FREE CARRIER (named place)		
FO B	FREE ON BOARD (named port of shipment)		

T38 - transport conditions

special condition of transport or special service requested to the Forwarder

Decoding table: T38

File codes list (Generic code): http://www.ebiz.enea.it/moda-ml/repository/codelist/draft/gc_T38.xml

Code	Description	Adoption note	Date of insertion
ACC	arrange customs clearance		
CAL	Carrier loads		
CAU	Carrier unloads		
CMR	CMR carnet		
FFN	freight forwarders national conditions		
FLD	special agreement for full loading		
NCC	do not arrange customs clearance		
PPB	packaging paid by Buyer		

PPS	packaging paid by Supplier		
PRO	proof of delivery		
RFR	return container free		
RPC	return container paid by Customer		
RPS	return container paid by Supplier		
SHL	Shipper loads		
SHU	Consignee unloads		

T40 - type of transport means

means of transport, in general or referred to a specific leg

Agency name: eBIZ

Decoding table: T40

File codes list (Generic code): http://www.ebiz.enea.it/moda-ml/repository/codelist/draft/gc_T40.xml

Code	Description	Adoption note	Date of insertion
AIR	aircraft		
SHP	ship		
TRU	truck		
VAN	van		

T41 - type of Allowance or Charge

coded specification of an Allowance or Charge (elaborated from UNECE 4465)

Agency name: eBIZ

Decoding table: T41

File codes list (Generic code): http://www.ebiz.enea.it/moda-ml/repository/codelist/draft/gc_T41.xml

Code	Description	Adoption note	Date of insertion
1	Agreed settlement		19/08/2018
10	Costs for draft		19/08/2018
11	Bank charges	DEPRECATED, use CBK	19/08/2018
12	Agent commission		19/08/2018
14	Wrong delivery		19/08/2018
15	Goods returned to agent		19/08/2018
16	Goods partly returned		19/08/2018
17	Transport damage		19/08/2018
19	Trade discount		19/08/2018

2	Below specification goods		19/08/2018
20	Deduction for late delivery	DEPRECATED, use CWB	19/08/2018
21	Advertising costs		19/08/2018
22	Customs duties		19/08/2018
23	Telephone and postal costs		19/08/2018
24	Repair costs		19/08/2018
25	Attorney fees		19/08/2018
26	Taxes		19/08/2018
3	Damaged goods		19/08/2018
30	Direct payment to seller		19/08/2018
32	Goods not delivered		19/08/2018
33	Late delivery		19/08/2018
35	Goods returned		19/08/2018
36	Invoice not received		19/08/2018
37	Credit note to debtor/not to us		19/08/2018
38	Deducted bonus		19/08/2018
39	Deducted discount		19/08/2018
4	Short delivery		19/08/2018
40	Deducted freight costs		19/08/2018
41	Deduction against other invoices		19/08/2018
42	Credit balance(s)		19/08/2018
45	Debit note to seller		19/08/2018
46	Discount beyond terms		19/08/2018
48	Allowance/charge error		19/08/2018
49	Substitute product		19/08/2018
50	Terms of sale error		19/08/2018
52	Wrong invoice		19/08/2018
53	Duplicate invoice		19/08/2018
54	Weight error		19/08/2018
55	Additional charge not authorized		19/08/2018
56	Incorrect discount		19/08/2018
57	Price change		19/08/2018
58	Variation		19/08/2018
59	Chargeback		19/08/2018
65	Settlement to agent		19/08/2018
66	Cash discount		19/08/2018
7	Payment on account		19/08/2018
70	Wrong monetary amount resulting from incorrect free goods quantity		19/08/2018

72	Temporary special promotion		19/08/2018
73	Difference in tax rate		19/08/2018
74	Quantity discount		19/08/2018
75	Promotion discount		19/08/2018
76	Cancellation deadline passed		19/08/2018
77	Pricing discount		19/08/2018
78	Volume discount		19/08/2018
79	Sundry discount		19/08/2018
8	Returnable container charge included		19/08/2018
9	Invoice error		19/08/2018
AWA	bonus for works ahead of schedule		
CBK	bank charges		
CCR	servizio di corriere		
CIN	insurance		
CLB	labelling		
CPK	packing		
CSP	special packing		
CWB	penalty for works behind schedule		

T421 - size system: nationality

nation or agency identifying the size system

Agency name: eBIZ

Decoding table: T421

File codes list (Generic code): http://www.ebiz.enea.it/moda-ml/repository/codelist/draft/gc_T421.xml

Code	Description	Adoption note	Date of insertion
DE	Germany		
ES	Spain		
EU	Europe		
FR	France		
IT	Italy		
UK	United Kingdom		
US	USA		
XX	International		

T422 - size system: market segment

market segment identifying the size system

Agency name: eBIZ

Decoding table: T422

File codes list (Generic code): http://www.ebiz.enea.it/moda-ml/repository/codelist/draft/gc_T422.xml

Code	Description	Adoption note	Date of insertion
B	baby		
C	child		
K	kid		
M	man		
U	unisex		
W	woman		

T423 - size system: base

base of the size system

Agency name: eBIZ

Decoding table: T423

File codes list (Generic code): http://www.ebiz.enea.it/moda-ml/repository/codelist/draft/gc_T423.xml

Code	Description	Adoption note	Date of insertion
1	arab numbers		
2	latin numbers		
3	symbols		
4	letters		
H	height		
L	length		
U	unique		
W	weight		

T44 - additional code type

qualifier of the additional coding of a product

Agency name: eBIZ

Decoding table: T44

File codes list (Generic code): http://www.ebiz.enea.it/moda-ml/repository/codelist/draft/gc_T44.xml

Code	Description	Adoption note	Date of insertion
CC	colour card		

CL	sales collection		
CO	company identification code		08/09/2017
DY	dye number		
LT	lot number		
MDI	Made in		08/09/2017
MS	manufacturing state		
PKG	packaging		09/09/2014
PL	product line		
RGB	RGB value		
SE	selvedge code		

T61 - duty or tax or fee type

duty or tax or fee type

Agency name: eBIZ

Decoding table: T61

File codes list (Generic code): http://www.ebiz.enea.it/moda-ml/repository/codelist/draft/gc_T61.xml

Code	Description	Adoption note	Date of insertion
BOL	stamp duty		01/07/2013
CUD	customs duty		01/07/2013
ENV	environmental tax		01/07/2013
FRE	no tax		01/07/2013
OTH	other tax charges		01/07/2013
VAT	value added tax		01/07/2013

T62 - duty or tax or fee category

duty or tax or fee category

Agency name: eBIZ

Decoding table: T62

File codes list (Generic code): http://www.ebiz.enea.it/moda-ml/repository/codelist/draft/gc_T62.xml

Code	Description	Adoption note	Date of insertion
AA	lower than standard rate		01/07/2013
E	tax not applicable		01/07/2013
H	higher than standard rate		01/07/2013
O	outside scope of tax		01/07/2013

S	standard rate		01/07/2013
Z	zero rate goods		01/07/2013

T8 - Modes of Transport

way of transport, in general or referred to the specified leg. Derived from UNECE Recommendation 28 (see link)

Agency name: eBIZ

Decoding table: T8

File codes list (Generic code): http://www.ebiz.enea.it/moda-ml/repository/codelist/draft/gc_T8.xml

Other link: <https://fig.unece.org/contents/recommendation-28.htm#>

Code	Description	Adoption note	Date of insertion
1	MARITIME TRANSPORT		
10	Courier	DEPRECATED	01/07/2013
2	RAIL TRANSPORT		
3	ROAD TRANSPORT		
4	AIR TRANSPORT		
5	MAIL		
6	MULTIMODAL TRANSPORT	example ship + truck. Not used for custom declarations.	13/06/2023
8	INLAND WATER TRANSPORT		
9	MODE UNKNOWN	Includes Own propulsion	13/06/2023

T9 - ISO4217 - Currency

currency code

Agency name: ISO

Decoding table: T9

File codes list (Generic code): http://www.ebiz.enea.it/moda-ml/repository/codelist/draft/gc_T9.xml

Table not printed: there are 205 elements, more than the maximum specified for printing: 99.