



<http://www.ebiz-tcf.eu>

DRAFT

IMPLEMENTATION GUIDE
TRANSACTION "GARMENT IN WORK INVENTORY REPORT"

Version: draft

Date of release: 26/6/2023

Document code: G044

technical Documentation: <http://www.ebiz.enea.it>

XML Schemas repository: <http://www.ebiz.enea.it/moda-ml/repository/schema/draft/default.asp>

Guides repository: <http://www.ebiz.enea.it/moda-ml/repository/guide/draft/default.asp>

Guide filename: G044-eBIZ-GarmentInWorkInventoryReport.pdf

0. PREMISE

This document contains a proposal for the updating and extension of eBIZ specifications starting from the eBIZ version 2018. Under the name of 'Draft version' it is reported the result of an extensive work of analysis and consultation aimed at developing and maintaining eBIZ specifications.

In particular, the content of this proposal is the result of various activities, mainly those carried out within the framework of the **TRICK project** funded by the European Commission: grant agreement 958352, call H2020-LOW-CARBON-CIRCULAR-INDUSTRIES-2020 / H2020-LCCI-2020-EASME-twostage.

The technical contents are backwards compatible with the latest official published version, with the exclusion of the totally new concepts added explicitly for the version that are thought as incremental evolution of the knowledge base.

1. BUSINESS DESCRIPTION

1.1 Scope

The present guide has been issued to assist the companies of the Textile-Clothing sector in the implementation of the standard XML document type "GARMENT IN WORK INVENTORY REPORT", providing all the instruction required for its use in the context of e-commerce in the Textile industry, as shown in the enclosed diagrams.

All the rules required for the construction and validation of the document are embedded into the specific XML-Schema, which is detailed in section "Implementation guide".

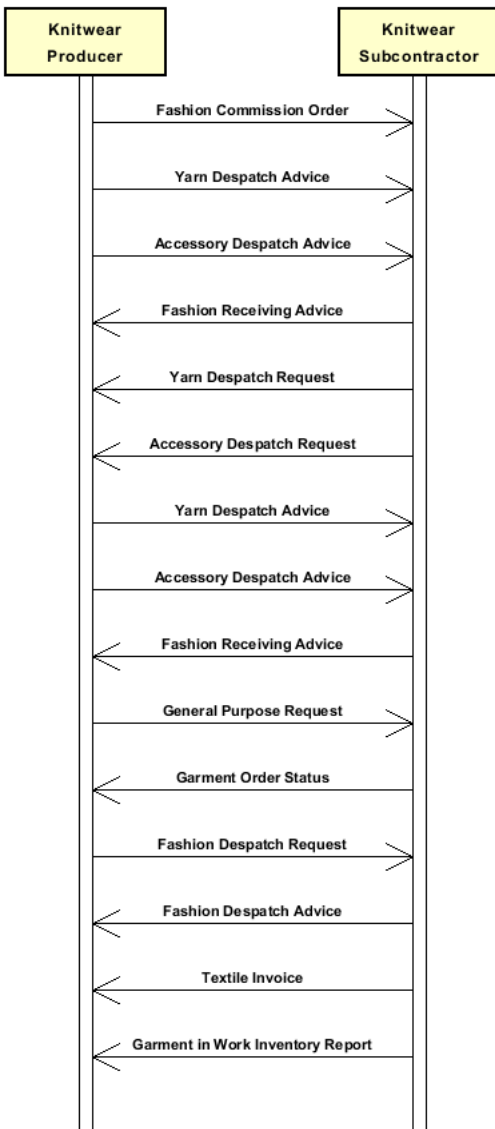
1.2 Generalities

The present document can be used by a Knitwear or Clothing Subcontractor to inform his Client (Commission issuer), periodically or on demand, about the quantity of pre-works or in-work Textile items (Client's property) stocked at the Subcontractor's premises.

This inventory may refer to all the goods of one Commission issuer or just to those related to one Commission order; item quantities may be subdivided by type of stock and physical location.

1.3. Possible scenario

Knitting and assembling



2. IMPLEMENTATION GUIDE

2.1 General structure of XML document

All the business data that can be exchanged through this class of documents are shown in the following "document structure", that provides a simplified vision of the Schema.

In particular:

- the two numbers following each element define its "cardinality" (minimum and maximum number of occurrences); the minimum equal zero indicates that the element is optional, the minimum greater than zero indicates that is mandatory;
- the bold character denotes the complex elements (aggregates of simple elements) that were built for the sake of functionality and re-usability of some complex informations sets. The child elements in each parent element are easily spotted as "indented";
- the symbol "@" denotes an attribute of the preceding element; here "the usage indicator (optional, required, ...)" is shown in square brackets.

Structure

GARWorkInv

@msgfunction [Optional] [Default= OR]

@version [Optional] [Default= draft]

@useProfile [Optional]

| GWIheader 1-1

| msgN 1-1

- choose -

| msgID 0-1

- or -

| docID 0-1

| *@numberingOrg [Optional]*

- end choose -

| msgDate 1-1

| *@dateForm [Optional]*

| inventoryDate 1-1

| *@dateForm [Optional]*

| refDoc 0-9

| *@docType [Required]*

| docID 1-2

| *@numberingOrg [Optional]*

| docDate 0-1

| *@dateForm [Optional]*

| season 0-1

| *@numberingOrg [Optional]*

| *@codeList [Optional]*

| *@listName [Optional]*

| *@listVersion [Optional]*

| itemID 0-1

| attachment 0-1

| *@uid [Optional]*

| fileName 0-1

| *@numberingOrg [Optional]*

| binaryObject 0-1

| *@format [Optional]*

| *@mime [Optional]*

| *@encoding [Optional]*

| *@characterSet [Optional]*

| externalReference 0-99

| uri 1-1

| *@isURL [Optional] [Default= true]*

| mimeTypeCode 0-1

| formatCode 0-1

| encodingCode 0-1

| characterSetCode 0-1

| hashFootprint 0-1

| *@schemeID [Optional]*

| *@hashMethod [Required]*

| blockChainReference 0-9

| uri 1-1

```

| | | | @isURL [Optional] [Default= true]
| | | | transactionReceipt 1-9
|
| buyer 1-1
| @logo [Optional]
| @sender [Optional]
| | id 1-1
| | | @numberingOrg [Optional]
| | additionalIdentifier 0-9
| | | @numberingOrg [Optional]
| | | @idQualifier [Optional]
| | legalName 0-1
| | dept 0-1
| | subDept 0-1
| | person 0-1
| | | @email [Optional]
| | | @phone [Optional]
| | | @fax [Optional]
| | street 0-1
| | city 0-1
| | subCountry 0-1
| | country 0-1
| | postCode 0-1
| | geoCoordinates 0-1
| | | @um [Optional] [Default= DEGD]
| | | @geoRefSystem [Optional]
| | | | xGeoCoord 1-1
| | | | yGeoCoord 1-1
| | | | zGeoCoord 0-1
|
| subContractor 1-1
| @sender [Optional]
| | id 1-1
| | | @numberingOrg [Optional]
| | legalName 0-1
| | dept 0-1
| | subDept 0-1
| | person 0-1
| | | @email [Optional]
| | | @phone [Optional]
| | | @fax [Optional]
| | street 0-1
| | city 0-1
| | subCountry 0-1
| | country 0-1
| | postCode 0-1
| | geoCoordinates 0-1
| | | @um [Optional] [Default= DEGD]
| | | @geoRefSystem [Optional]
| | | | xGeoCoord 1-1
| | | | yGeoCoord 1-1
| | | | zGeoCoord 0-1
|
| thirdParty 0-5
| @VAT [Optional]
| @role [Required]
| @sender [Optional]
| | id 1-1
| | | @numberingOrg [Optional]
| | legalName 0-1
| | dept 0-1
| | subDept 0-1
| | person 0-1
| | | @email [Optional]
| | | @phone [Optional]
| | | @fax [Optional]
| | street 0-1
| | city 0-1
| | subCountry 0-1
| | country 0-1
| | postCode 0-1

```

geoCoordinates 0-1
 | @um [Optional] [Default= DEGD]
 | @geoRefSystem [Optional]
 | | xGeoCoord 1-1
 | | yGeoCoord 1-1
 | | zGeoCoord 0-1
 | note 0-99
 | @numberingOrg [Optional]
 | @codeList [Optional]
 | @noteLabel [Optional]

GWlbody 1-1

GWlitem 1-unbounded

| lineN 1-1
 | | @VAT [Optional]
 | lineID 0-1
 | **refDoc 0-9**
 | | @docType [Required]
 | | | docID 1-2
 | | | | @numberingOrg [Optional]
 | | | docDate 0-1
 | | | | @dateForm [Optional]
 | | | season 0-1
 | | | | @numberingOrg [Optional]
 | | | | @codeList [Optional]
 | | | | @listName [Optional]
 | | | | @listVersion [Optional]
 | | itemID 0-1
 | | **attachment 0-1**
 | | | @uid [Optional]
 | | | | fileName 0-1
 | | | | | @numberingOrg [Optional]
 | | | | binaryObject 0-1
 | | | | | @format [Optional]
 | | | | | @mime [Optional]
 | | | | | @encoding [Optional]
 | | | | | @characterSet [Optional]
 | | | **externalReference 0-99**
 | | | | uri 1-1
 | | | | | @isURL [Optional] [Default= true]
 | | | | | mimeTypeCode 0-1
 | | | | | formatCode 0-1
 | | | | | encodingCode 0-1
 | | | | | characterSetCode 0-1
 | | | | hashFootprint 0-1
 | | | | | @schemeID [Optional]
 | | | | | @hashMethod [Required]
 | | | **blockChainReference 0-9**
 | | | | uri 1-1
 | | | | | @isURL [Optional] [Default= true]
 | | | | transactionReceipt 1-9

- choose -

| **garmentPartCode 1-1**
 | | @numberingOrg [Optional]
 | | | gPart 1-1
 | | | | mod 1-1
 | | | | | @numberingOrg [Optional]
 | | | | | @codeList [Optional]
 | | | | | @listName [Optional]
 | | | | | @listVersion [Optional]
 | | | fabric 0-1
 | | | | @numberingOrg [Optional]
 | | | | | @codeList [Optional]
 | | | | | @listName [Optional]
 | | | | | @listVersion [Optional]
 | | | color 0-1
 | | | | @numberingOrg [Optional]
 | | | | | @codeList [Optional]

```

| | | | @listName [Optional]
| | | | @listVersion [Optional]
| | | | added 0-19
| | | | @numberingOrg [Optional]
| | | | @addType [Optional]
| | | | size 0-1
| | | | @numberingOrg [Optional]
| | | | @codeList [Optional]
| | | | @listName [Optional]
| | | | @listVersion [Optional]
| | | | description 0-unbounded
| | | | @ln [Optional]
- or -
| | | | garmentCode 1-1
| | | | @numberingOrg [Optional]
- choose -
| | | | garmentCodeB 1-1
| | | | @numberingOrg [Optional]
| | | | mod 1-1
| | | | @numberingOrg [Optional]
| | | | @codeList [Optional]
| | | | @listName [Optional]
| | | | @listVersion [Optional]
| | | | fabric 0-1
| | | | @numberingOrg [Optional]
| | | | @codeList [Optional]
| | | | @listName [Optional]
| | | | @listVersion [Optional]
| | | | color 0-1
| | | | @numberingOrg [Optional]
| | | | @codeList [Optional]
| | | | @listName [Optional]
| | | | @listVersion [Optional]
| | | | garmentVariant 0-9
| | | | variantType 1-1
| | | | @numberingOrg [Optional]
| | | | @codeList [Optional]
| | | | @listName [Optional]
| | | | @listVersion [Optional]
| | | | variantCode 1-1
| | | | @numberingOrg [Optional]
| | | | @codeList [Optional]
| | | | @listName [Optional]
| | | | @listVersion [Optional]
| | | | drop 0-1
| | | | @numberingOrg [Optional]
| | | | @codeList [Optional]
| | | | @listName [Optional]
| | | | @listVersion [Optional]
| | | | size 0-1
| | | | @numberingOrg [Optional]
| | | | @codeList [Optional]
| | | | @listName [Optional]
| | | | @listVersion [Optional]
| | | | artGroup 0-1
| | | | @numberingOrg [Optional]
| | | | @codeList [Optional]
| | | | @listName [Optional]
| | | | @listVersion [Optional]
| | | | added 0-9
| | | | @numberingOrg [Optional]
| | | | @addType [Optional]
| | | | description 0-unbounded
| | | | @ln [Optional]
- or -
| | | | garmentCodeA 1-1
| | | | art 1-1
| | | | @numberingOrg [Optional]

```

```

| | | | @codeList [Optional]
| | | | @listName [Optional]
| | | | @listVersion [Optional]
| | | | description 0-unbounded
| | | | @ln [Optional]
| | | - end choose -
| | - end choose -
| | | inventory 1-9
| | | | @invType [Required]
| | | | | qty 1-2
| | | | | @um [Required]
| | | | | location 0-1
| | | | | @LRI [Optional]
| | | - choose -
| | | | serialN 0-unbounded
| | | | | @numberingOrg [Optional]
| | | | | @idQualifier [Optional]
| | | - or -
| | | | itemsList 0-1
| | | | | qualityLevel 0-1
| | | | | @numberingOrg [Optional]
| | | | | @codeList [Optional]
| | | | | @listName [Optional]
| | | | | @listVersion [Optional]
| | | | | itemIdentification 1-unbounded
| | | | | | serialN 1-9
| | | | | | @numberingOrg [Optional]
| | | | | | @idQualifier [Optional]
| | | - end choose -
| | | | actualPackageUnit 0-unbounded
| | | | | @packageLevel [Optional]
| | | | | packageIdentification 1-1
| | | | | | packageN 1-1
| | | | | | | @numberingOrg [Optional]
| | | | | | | @packageContainerN [Optional]
| | | | | | serialN 0-9
| | | | | | | @numberingOrg [Optional]
| | | | | | | @idQualifier [Optional]
| | | | - choose -
| | | | | packageText 0-1
| | | | - or -
| | | | | package 0-1
| | | | - end choose -
| | | | | packageModelCode 0-1
| | | | | | @numberingOrg [Optional]
| | | | | | volume 0-1
| | | | | | | @um [Required]
| | | | | | netWeight 0-1
| | | | | | | @um [Required]
| | | | | | grossWeight 0-1
| | | | | | | @um [Required]
| | | | | packageDim 0-1
| | | | | | length 1-1
| | | | | | | @um [Required]
| | | | | | width 0-1
| | | | | | | @um [Required]
| | | | | | height 0-1
| | | | | | | @um [Required]
| | | | | actualItemsPerPackage 0-1
| | | | | packagesList 0-1
| | | | | | packageIdentification 1-unbounded
| | | | | | | packageN 1-1
| | | | | | | | @numberingOrg [Optional]
| | | | | | | | @packageContainerN [Optional]
| | | | | | | serialN 0-9
| | | | | | | | @numberingOrg [Optional]
| | | | | | | | @idQualifier [Optional]
| | | | | itemsList 0-1

```


					qualityLevel 0-1
					@numberingOrg [Optional]
					@codeList [Optional]
					@listName [Optional]
					@listVersion [Optional]
					itemIdentification 1-unbounded
					serialN 1-9
					@numberingOrg [Optional]
					@idQualifier [Optional]
					note 0-99
					@numberingOrg [Optional]
					@codeList [Optional]
					@noteLabel [Optional]
					EPCList 0-1
					EPC 1-unbounded
					@numberingOrg [Optional]
					@TID [Optional]
					note 0-99
					@numberingOrg [Optional]
					@codeList [Optional]
					@noteLabel [Optional]

2.2 Detailed description of document elements

Following tables show all elements (complex and simple) used in this document. Description includes: 1) element's information: xml tag, name, brief description, data type and syntax constraints; 2) information about use of the element in a particular position in the document: xpath and possible associated notes.

2.2.1 Complex elements (Aggregate Business Information Entities)

Complex elements are those elements whose content is composed of other elements (childs). Complex elements are alphabetically ordered.

actualPackageUnit	description and identification of a single transport package (XPath GARWorkInv/GWlbody/GWlitem/inventory/actualPackageUnit) 0-unbounded
attachment	an attached document. An attachment can refer to an external document or be included with the document being exchanged (XPath GARWorkInv/GWlheader/refDoc/attachment) 0-1 (XPath GARWorkInv/GWlbody/GWlitem/refDoc/attachment) 0-1
blockChainReference	blockchain reference - base type: string, max length: 80, (XPath GARWorkInv/GWlbody/GWlitem/refDoc/attachment/blockChainReference) 0-9 (XPath GARWorkInv/GWlheader/refDoc/attachment/blockChainReference) 0-9
buyer	details of the Buyer (party that buys the good or service that is object of the current collaborative process) - base type: Nad, (XPath GARWorkInv/GWlheader/buyer) 1-1
EPCList	list of identifiers used for tracing a physical item with RFID technology (XPath GARWorkInv/GWlbody/GWlitem/inventory/EPCList) 0-1 - note: <i>DEPRECATED, use serialN or itemsList</i>
externalReference	details about an external object, such as a document stored at a remote location (XPath GARWorkInv/GWlbody/GWlitem/refDoc/attachment/externalReference) 0-99 (XPath GARWorkInv/GWlheader/refDoc/attachment/externalReference) 0-99
garmentCode	codification of the garment product (XPath GARWorkInv/GWlbody/GWlitem/garmentCode) 1-1
garmentCodeA	codification of the garment product- type A (XPath GARWorkInv/GWlbody/GWlitem/garmentCode/garmentCodeA) 1-1 - note: <i>here the barcode EAN-13 or EAN-8 should be specified</i>
garmentCodeB	codification of the garment product - type B (XPath GARWorkInv/GWlbody/GWlitem/garmentCode/garmentCodeB) 1-1
garmentPartCode	codification of the component or part of a fashion article (XPath GARWorkInv/GWlbody/GWlitem/garmentPartCode) 1-1
garmentVariant	garment product variant (XPath GARWorkInv/GWlbody/GWlitem/garmentCode/garmentCodeB/garmentVariant) 0-9
geoCoordinates	geographical coordinates (XPath GARWorkInv/GWlheader/thirdParty/geoCoordinates) 0-1 (XPath GARWorkInv/GWlheader/subContractor/geoCoordinates) 0-1 (XPath GARWorkInv/GWlheader/buyer/geoCoordinates) 0-1
GWlbody	body of the document GARMENT IN WORK INVENTORY REPORT (XPath GARWorkInv/GWlbody) 1-1
GWlheader	header of the document GARMENT IN WORK INVENTORY REPORT (XPath GARWorkInv/GWlheader) 1-1
GWlitem	line item of the document GARMENT IN WORK INVENTORY REPORT (XPath GARWorkInv/GWlbody/GWlitem) 1-unbounded
inventory	details of a stock of goods with reference to the manufacturing process: item quantity p

	<p>er class of stock (XPath GARWorkInv/GWlbody/GWlitem/inventory) 1-9</p>
itemIdentification	<p>serial identification of a product unit (XPath GARWorkInv/GWlbody/GWlitem/inventory/itemsList/itemIdentification) 1-unbounded - note: <i>identification of the single product unit contained in the list</i> (XPath GARWorkInv/GWlbody/GWlitem/inventory/actualPackageUnit/itemsList/itemId entification) 1-unbounded - note: <i>identification of the single product unit contained in the list</i></p>
itemsList	<p>list of the single product units (XPath GARWorkInv/GWlbody/GWlitem/inventory/actualPackageUnit/itemsList) 0-1 (XPath GARWorkInv/GWlbody/GWlitem/inventory/itemsList) 0-1 - note: <i>Use this element when reporting serial numbers referring to different coding me thods for the same article</i></p>
packageDim	<p>dimensions of a transport package (XPath GARWorkInv/GWlbody/GWlitem/inventory/actualPackageUnit/packageDim) 0- 1</p>
packageIdentification	<p>serial identification of a package (XPath GARWorkInv/GWlbody/GWlitem/inventory/actualPackageUnit/packagesList/pa ckageIdentification) 1-unbounded - note: <i>identification of the single package contained in the list</i> (XPath GARWorkInv/GWlbody/GWlitem/inventory/actualPackageUnit/packageIdentific ation) 1-1</p>
packagesList	<p>list of single packages (XPath GARWorkInv/GWlbody/GWlitem/inventory/actualPackageUnit/packagesList) 0- 1 - note: <i>list of packages contained within the actual package (thus with lower level). All t he packages in the list should preferably have the same level.</i></p>
refDoc	<p>identification of a document and of an item thereof, to which the message makes refer ence (XPath GARWorkInv/GWlbody/GWlitem/refDoc) 0-9 (XPath GARWorkInv/GWlheader/refDoc) 0-9</p>
subContractor	<p>details of the Sub-contractor - base type: Nad, (XPath GARWorkInv/GWlheader/subContractor) 1-1</p>
thirdParty	<p>identification and details of the Third Party, different from Sender and Receiver of the d ocument - base type: Nad, (XPath GARWorkInv/GWlheader/thirdParty) 0-5</p>

2.2.2 Simple elements (Basic Business Information Entities)

Simple elements are those elements whose content is characterized by a data type plus a domain of possible values.
Simple elements are alphabetically ordered.

actualItemsPerPackage	<p>the quantity of items actually contained in the package - base type: decimal, (XPath GARWorkInv/GWlbody/GWlitem/inventory/actualPackageUnit/actualItemsPerP ackage) 0-1</p>
added	<p>additional code of the product (complementing the formers) - base type: string, max length: 80, (XPath GARWorkInv/GWlbody/GWlitem/garmentPartCode/added) 0-19 (XPath GARWorkInv/GWlbody/GWlitem/garmentCode/garmentCodeB/added) 0-9</p>

additionalIdentifier	<p>additional identification code of a Party, for example customs registries or others</p> <ul style="list-style-type: none"> - base type: string, max length: 15, (XPath GARWorkInv/GWlheader/buyer/additionalIdentifier) 0-9 - note: identifiers for example for exports, such as MID (Manufacturer Identification Code), REX (identificatier in Registered Exporter system)
@addType	<p>qualifier of the additional coding of a product</p> <ul style="list-style-type: none"> - base type: string, cod. table: T44 http://www.ebiz.enea.it/moda-ml/repository/codelist/draft/gc_T44.xml (XPath GARWorkInv/GWlbody/GWlitem/garmentPartCode/added/@addType) [Optional] - nota: addType allows the clarification of the meaning of the added element content; it is strongly suggested to use it always. (XPath GARWorkInv/GWlbody/GWlitem/garmentCode/garmentCodeB/added/@addType) [Optional] - nota: addType allows the clarification of the meaning of the added element content; it is strongly suggested to use it always.
art	<p>article number of the product</p> <ul style="list-style-type: none"> - base type: string, max length: 80, (XPath GARWorkInv/GWlbody/GWlitem/garmentCode/garmentCodeA/art) 1-1
artGroup	<p>code identifying a class of products</p> <ul style="list-style-type: none"> - base type: string, max length: 40, (XPath GARWorkInv/GWlbody/GWlitem/garmentCode/garmentCodeB/artGroup) 0-1
binaryObject	<p>a binary large object containing an attached document, Coding 'base64Binary' is recommended.</p> <ul style="list-style-type: none"> - base type: base64Binary, (XPath GARWorkInv/GWlbody/GWlitem/refDoc/attachment/binaryObject) 0-1 (XPath GARWorkInv/GWlheader/refDoc/attachment/binaryObject) 0-1
@characterSet	<p>the character set of the binary object (examples UTF-8, UTF-16, Windows-1252, ISO-8859-7,..)</p> <ul style="list-style-type: none"> - base type: normalizedString, (XPath GARWorkInv/GWlbody/GWlitem/refDoc/attachment/binaryObject/@characterSet) [Optional] (XPath GARWorkInv/GWlheader/refDoc/attachment/binaryObject/@characterSet) [Optional]
characterSetCode	<p>the character set of an external document (examples UTF-8, UTF-16, Windows-1252, ISO-8859-7,..)</p> <ul style="list-style-type: none"> - base type: normalizedString, (XPath GARWorkInv/GWlbody/GWlitem/refDoc/attachment/externalReference/characterSetCode) 0-1 (XPath GARWorkInv/GWlheader/refDoc/attachment/externalReference/characterSetCode) 0-1
city	<p>name of the city (town, village)</p> <ul style="list-style-type: none"> - base type: string, max length: 40, (XPath GARWorkInv/GWlheader/thirdParty/city) 0-1 (XPath GARWorkInv/GWlheader/subContractor/city) 0-1 (XPath GARWorkInv/GWlheader/buyer/city) 0-1
@codeList	<p>it specifies the URL where the list of codes used to make an instance of the element can be found</p> <ul style="list-style-type: none"> - base type: string, max length: 255, (XPath GARWorkInv/GWlbody/GWlitem/garmentPartCode/fabric/@codeList) [Optional] - nota: at least one out of this attribute and "numberingOrg" should be set (XPath GARWorkInv/GWlbody/GWlitem/garmentPartCode/mod/@codeList) [Optional] - nota: at least one out of this attribute and "numberingOrg" should be set (XPath GARWorkInv/GWlbody/GWlitem/refDoc/season/@codeList) [Optional] - nota: this attribute should be used either single or coupled with "listName" and "listVersion" (XPath GARWorkInv/GWlbody/GWlitem/garmentPartCode/color/@codeList) [Optional] - nota: this attribute should be used either single or coupled with "listName" and "listVersion" (XPath

	<p>GARWorkInv/GWlbody/GWlitem/inventory/actualPackageUnit/note/@codeList) [Optional]</p> <p>- nota: <i>must be used to provide (URL) the list of codes used in "noteLabel"</i> (XPath GARWorkInv/GWlbody/GWlitem/garmentPartCode/size/@codeList) [Optional] (XPath</p> <p>GARWorkInv/GWlbody/GWlitem/garmentCode/garmentCodeB/artGroup/@codeList) [Optional]</p> <p>- nota: <i>at least one out of this attribute and "numberingOrg" should be set</i> (XPath GARWorkInv/GWlheader/note/@codeList) [Optional]</p> <p>- nota: <i>must be used to provide (URL) the list of codes used in "noteLabel"</i> (XPath</p> <p>GARWorkInv/GWlbody/GWlitem/garmentCode/garmentCodeB/drop/@codeList) [Optional] (XPath</p> <p>GARWorkInv/GWlbody/GWlitem/garmentCode/garmentCodeB/size/@codeList) [Optional] (XPath</p> <p>GARWorkInv/GWlbody/GWlitem/inventory/actualPackageUnit/itemsList/qualityLevel/@codeList) [Optional]</p> <p>- nota: <i>at least one out of this attribute and "numberingOrg" should be set</i> (XPath GARWorkInv/GWlbody/GWlitem/inventory/itemsList/qualityLevel/@codeList) [Optional]</p> <p>- nota: <i>at least one out of this attribute and "numberingOrg" should be set</i> (XPath GARWorkInv/GWlbody/GWlitem/note/@codeList) [Optional]</p> <p>- nota: <i>must be used to provide (URL) the list of codes used in "noteLabel"</i> (XPath</p> <p>GARWorkInv/GWlbody/GWlitem/garmentCode/garmentCodeA/art/@codeList) [Optional]</p> <p>- nota: <i>at least one out of this attribute and "numberingOrg" should be set</i> (XPath GARWorkInv/GWlheader/refDoc/season/@codeList) [Optional]</p> <p>- nota: <i>this attribute should be used either single or coupled with "listName" and "listVersion"</i> (XPath</p> <p>GARWorkInv/GWlbody/GWlitem/garmentCode/garmentCodeB/color/@codeList) [Optional]</p> <p>- nota: <i>this attribute should be used either single or coupled with "listName" and "listVersion"</i> (XPath</p> <p>GARWorkInv/GWlbody/GWlitem/garmentCode/garmentCodeB/fabric/@codeList) [Optional]</p> <p>- nota: <i>at least one out of this attribute and "numberingOrg" should be set</i> (XPath</p> <p>GARWorkInv/GWlbody/GWlitem/garmentCode/garmentCodeB/mod/@codeList) [Optional]</p> <p>- nota: <i>at least one out of this attribute and "numberingOrg" should be set</i> (XPath</p> <p>GARWorkInv/GWlbody/GWlitem/garmentCode/garmentCodeB/garmentVariant/variantType/@codeList) [Optional]</p> <p>- nota: <i>always at least one out of this attribute and "numberingOrg" should be set</i> (XPath</p> <p>GARWorkInv/GWlbody/GWlitem/garmentCode/garmentCodeB/garmentVariant/variantCode/@codeList) [Optional]</p> <p>- nota: <i>at least one out of this attribute and "numberingOrg" should be set</i></p>
color	<p>colour number of the product, when not included in the model or fabric code</p> <p>- base type: string, max length: 15, (XPath</p> <p>GARWorkInv/GWlbody/GWlitem/garmentCode/garmentCodeB/color) 0-1 (XPath GARWorkInv/GWlbody/GWlitem/garmentPartCode/color) 0-1</p> <p>- note: <i>when a garment component, it should be the code assigned to the garment article</i></p>
country	<p>code of the nation</p> <p>- base type: string, cod. table: T10</p> <p>http://www.ebiz.enea.it/moda-ml/repository/codelist/draft/gc_T10.xml (XPath GARWorkInv/GWlheader/buyer/country) 0-1 (XPath GARWorkInv/GWlheader/thirdParty/country) 0-1 (XPath GARWorkInv/GWlheader/subContractor/country) 0-1</p>
@dateForm	<p>format used for the date</p> <p>- base type: string, cod. table: NT29</p>

	<p>http://www.ebiz.enea.it/moda-ml/repository/codelist/draft/gc_NT29.xml (XPath GARWorkInv/GWlheader/msgDate/@dateForm) [Optional] (XPath GARWorkInv/GWlbody/GWlitem/refDoc/docDate/@dateForm) [Optional] (XPath GARWorkInv/GWlheader/inventoryDate/@dateForm) [Optional] (XPath GARWorkInv/GWlheader/refDoc/docDate/@dateForm) [Optional]</p>
dept	<p>name or code of a department - base type: string, max length: 40, (XPath GARWorkInv/GWlheader/buyer/dept) 0-1 (XPath GARWorkInv/GWlheader/thirdParty/dept) 0-1 (XPath GARWorkInv/GWlheader/subContractor/dept) 0-1</p>
description	<p>free text description. The content of the element must be unique, it might be translated and repeated into more languages (thus no more than one instance for each language). - base type: string, max length: 250, (XPath GARWorkInv/GWlbody/GWlitem/garmentCode/garmentCodeA/description) 0-unbounded - note: <i>Product description</i> (XPath GARWorkInv/GWlbody/GWlitem/garmentPartCode/description) 0-unbounded - note: <i>Product part description</i> (XPath GARWorkInv/GWlbody/GWlitem/garmentCode/garmentCodeB/description) 0-unbounded - note: <i>Product description</i></p>
docDate	<p>date of issue of the referenced document, according to one of the patterns YYYY-MM-DD, YYYY-MM-DD:HH-MM or YYYY-WW. - base type: string, (XPath GARWorkInv/GWlheader/refDoc/docDate) 0-1 (XPath GARWorkInv/GWlbody/GWlitem/refDoc/docDate) 0-1</p>
docID	<p>identification number of the referenced document - base type: string, max length: 80, (XPath GARWorkInv/GWlheader/refDoc/docID) 1-2 Best Practice (XPath GARWorkInv/GWlbody/GWlitem/refDoc/docID) 1-2 Best Practice (XPath GARWorkInv/GWlheader/docID) 0-1 - note: <i>Its use in HEADER elements is discouraged (use msgID)</i></p>
@docType	<p>type or class to which the referenced document belongs - base type: string, cod. table: T21 http://www.ebiz.enea.it/moda-ml/repository/codelist/draft/gc_T21.xml (XPath GARWorkInv/GWlheader/refDoc/@docType) [Required] (XPath GARWorkInv/GWlbody/GWlitem/refDoc/@docType) [Required]</p>
drop	<p>drop number of the garment - base type: string, max length: 15, (XPath GARWorkInv/GWlbody/GWlitem/garmentCode/garmentCodeB/drop) 0-1 - note: <i>Fill this element if the drop is the same for all the sizes of the model. Otherway specify it within the csRange element</i></p>
@email	<p>electronic mail address of the contact person within a Party - base type: string, max length: 250, (XPath GARWorkInv/GWlheader/subContractor/person/@email) [Optional] (XPath GARWorkInv/GWlheader/thirdParty/person/@email) [Optional] (XPath GARWorkInv/GWlheader/buyer/person/@email) [Optional]</p>
@encoding	<p>specifies the decoding algorithm of the binary object - base type: normalizedString, (XPath GARWorkInv/GWlheader/refDoc/attachment/binaryObject/@encoding) [Optional] (XPath GARWorkInv/GWlbody/GWlitem/refDoc/attachment/binaryObject/@encoding) [Optional]</p>
encodingCode	<p>the encoding/decoding algorithm used with the external object (example is 'base64Binary') - base type: normalizedString, (XPath GARWorkInv/GWlheader/refDoc/attachment/externalReference/encodingCode) 0-1</p>

	(XPath GARWorkInv/GWlbody/GWlitem/refDoc/attachment/externalReference/encodingCode) 0-1
EPC	serial identifier used for tracing a physical item with RFID technology - base type: string, (XPath GARWorkInv/GWlbody/GWlitem/inventory/EPClist/EPC) 1-unbounded
fabric	fabric number of the garment - base type: string, max length: 15, (XPath GARWorkInv/GWlbody/GWlitem/garmentPartCode/fabric) 0-1 - note: <i>when a garment component, it should be the code assigned to the garment article</i> (XPath GARWorkInv/GWlbody/GWlitem/garmentCode/garmentCodeB/fabric) 0-1
@fax	fax number of the contact person within a Party - base type: string, max length: 35, (XPath GARWorkInv/GWlheader/thirdParty/person/@fax) [Optional] (XPath GARWorkInv/GWlheader/subContractor/person/@fax) [Optional] (XPath GARWorkInv/GWlheader/buyer/person/@fax) [Optional]
fileName	unique identifier (name) of the file - base type: string, max length: 255, (XPath GARWorkInv/GWlheader/refDoc/attachment/fileName) 0-1 (XPath GARWorkInv/GWlbody/GWlitem/refDoc/attachment/fileName) 0-1
@format	the format of the binary content (examples xml, pdf, doc,...) - base type: string, (XPath GARWorkInv/GWlbody/GWlitem/refDoc/attachment/binaryObject/@format) [Optional] (XPath GARWorkInv/GWlheader/refDoc/attachment/binaryObject/@format) [Optional]
formatCode	the format of the external object (examples xml, pdf, doc,...) - base type: normalizedString, (XPath GARWorkInv/GWlheader/refDoc/attachment/externalReference/formatCode) 0-1 (XPath GARWorkInv/GWlbody/GWlitem/refDoc/attachment/externalReference/formatCode) 0-1
@geoRefSystem	georeference system adopted for the coordinate (in example wgs84 with decimal degree or degree with minute and seconds) - base type: string, (XPath GARWorkInv/GWlheader/buyer/geoCoordinates/@geoRefSystem) [Optional] (XPath GARWorkInv/GWlheader/thirdParty/geoCoordinates/@geoRefSystem) [Optional] (XPath GARWorkInv/GWlheader/subContractor/geoCoordinates/@geoRefSystem) [Optional]
gPart	code specifying the type of component or part of a fashion product (sleeve, neck, ...) - base type: string, cod. table: T48 http://www.ebiz.enea.it/moda-ml/repository/codelist/draft/gc_T48.xml (XPath GARWorkInv/GWlbody/GWlitem/garmentPartCode/gPart) 1-1
grossWeight	the gross weight, declared for transport or customs purpose - base type: decimal, min inclusive: 0, fraction digits: 2, (XPath GARWorkInv/GWlbody/GWlitem/inventory/actualPackageUnit/grossWeight) 0-1
hashFootprint	footprint obtained by applying an hashing algorithm - base type: string, max length: 80, (XPath GARWorkInv/GWlheader/refDoc/attachment/hashFootprint) 0-1 (XPath GARWorkInv/GWlbody/GWlitem/refDoc/attachment/hashFootprint) 0-1
@hashMethod	type of used hashing algorithm - base type: string, max length: 80, cod. table: NT333 http://www.ebiz.enea.it/moda-ml/repository/codelist/draft/gc_NT333.xml (XPath GARWorkInv/GWlbody/GWlitem/refDoc/attachment/hashFootprint/@hashMethod) [Required] (XPath GARWorkInv/GWlheader/refDoc/attachment/hashFootprint/@hashMethod) [Required]

height	<p>effective height of a specified object</p> <p>- base type: decimal, min inclusive: 0, fraction digits: 2,</p> <p>(XPath GARWorkInv/GWlbody/GWlitem/inventory/actualPackageUnit/packageDim/height) 0-1</p>
id	<p>primary identification code of a Party; it is recommended to use an EORI number (with @numberingOrg= "EO") or the format: nation code (ISO 3166) + national tax code (i.e. VAT identification number) with @numberingOrg= "MF"</p> <p>- base type: string, max length: 15,</p> <p>(XPath GARWorkInv/GWlheader/buyer/id) 1-1</p> <p>(XPath GARWorkInv/GWlheader/subContractor/id) 1-1</p> <p>(XPath GARWorkInv/GWlheader/thirdParty/id) 1-1</p>
@idQualifier	<p>Qualification of the identifier.</p> <p>- base type: string,</p> <p>(XPath GARWorkInv/GWlheader/buyer/additionalIdentifier/@idQualifier) [Optional]</p> <p>- nota: <i>this attribute should be used when the numberingOrg attribute is not enough to declare the type of identifier</i></p> <p>(XPath GARWorkInv/GWlbody/GWlitem/inventory/actualPackageUnit/itemsList/itemIdentification/serialN/@idQualifier) [Optional]</p> <p>- nota: <i>this attribute should be used when the numberingOrg attribute is not enough to declare the type of serial identifier</i></p> <p>(XPath GARWorkInv/GWlbody/GWlitem/inventory/itemsList/itemIdentification/serialN/@idQualifier) [Optional]</p> <p>- nota: <i>this attribute should be used when the numberingOrg attribute is not enough to declare the type of serial identifier</i></p> <p>(XPath GARWorkInv/GWlbody/GWlitem/inventory/actualPackageUnit/packagesList/packageIdentification/serialN/@idQualifier) [Optional]</p> <p>- nota: <i>this attribute should be used when the numberingOrg attribute is not enough to declare the type of serial identifier</i></p> <p>(XPath GARWorkInv/GWlbody/GWlitem/inventory/actualPackageUnit/packageIdentification/serialN/@idQualifier) [Optional]</p> <p>- nota: <i>this attribute should be used when the numberingOrg attribute is not enough to declare the type of serial identifier</i></p> <p>(XPath GARWorkInv/GWlbody/GWlitem/inventory/serialN/@idQualifier) [Optional]</p> <p>- nota: <i>this attribute should be used when the numberingOrg attribute is not enough to declare the type of serial identifier</i></p>
inventoryDate	<p>date in which the inventory was done, according to one of the patterns YYYY-MM-DD, YYYY-MM-DD:HH-MM or YYYY-WW.</p> <p>- base type: string,</p> <p>(XPath GARWorkInv/GWlheader/inventoryDate) 1-1</p>
@invType	<p>code classifying a stock of goods with reference to the manufacturing process</p> <p>- base type: string, cod. table: T47</p> <p>http://www.ebiz.enea.it/moda-ml/repository/codelist/draft/gc_T47.xml</p> <p>(XPath GARWorkInv/GWlbody/GWlitem/inventory/@invType) [Required]</p>
@isURL	<p>it indicates if the referred element is an URL (true) or not (false)</p> <p>- base type: boolean,</p> <p>(XPath GARWorkInv/GWlbody/GWlitem/refDoc/attachment/externalReference/uri/@isURL) [Optional] [Default= true]</p> <p>- nota: <i>usage of URLs is recommended</i></p> <p>(XPath GARWorkInv/GWlbody/GWlitem/refDoc/attachment/blockChainReference/uri/@isURL) [Optional] [Default= true]</p> <p>- nota: <i>usage of URLs is recommended</i></p> <p>(XPath GARWorkInv/GWlheader/refDoc/attachment/blockChainReference/uri/@isURL) [Optional] [Default= true]</p> <p>- nota: <i>usage of URLs is recommended</i></p> <p>(XPath GARWorkInv/GWlheader/refDoc/attachment/externalReference/uri/@isURL) [Optional] [Default= true]</p> <p>- nota: <i>usage of URLs is recommended</i></p>
itemID	<p>number of the line/item of the referenced document</p> <p>- base type: string, max length: 40,</p>

	(XPath GARWorkInv/GWlbody/GWlitem/refDoc/itemID) 0-1 (XPath GARWorkInv/GWlheader/refDoc/itemID) 0-1
legalName	legal name - base type: string, max length: 250, (XPath GARWorkInv/GWlheader/subContractor/legalName) 0-1 (XPath GARWorkInv/GWlheader/buyer/legalName) 0-1 (XPath GARWorkInv/GWlheader/thirdParty/legalName) 0-1
length	effective length of a specified object - base type: decimal, min inclusive: 0, fraction digits: 2, (XPath GARWorkInv/GWlbody/GWlitem/inventory/actualPackageUnit/packageDim/length) 1-1 - note: <i>here the maximum dimension must also be specified</i>
lineID	unique identifier of the line item of the business document; it is set by the role that produces the document. - base type: string, max length: 30, (XPath GARWorkInv/GWlbody/GWlitem/lineID) 0-1
lineN	number of the line item of the present message (xml document); it is set by the role that produces the document. Usually it is a progressive number, but not always. - base type: positiveInteger, min inclusive: 1, max inclusive: 9999, (XPath GARWorkInv/GWlbody/GWlitem/lineN) 1-1
@listName	the name of the list of codes used to make an instance of the element (it might be thought as descriptive element, i.e. 'fabric printing technologies', or not, i.e. "T264") - base type: string, max length: 40, (XPath GARWorkInv/GWlbody/GWlitem/garmentCode/garmentCodeB/color/@listName) [Optional] - nota: <i>this attribute should always be used coupled with "numberingOrg"</i> (XPath GARWorkInv/GWlbody/GWlitem/garmentPartCode/mod/@listName) [Optional] - nota: <i>this attribute should always be used coupled with "numberingOrg"</i> (XPath GARWorkInv/GWlbody/GWlitem/garmentCode/garmentCodeB/mod/@listName) [Optional] - nota: <i>this attribute should always be used coupled with "numberingOrg"</i> (XPath GARWorkInv/GWlbody/GWlitem/garmentPartCode/fabric/@listName) [Optional] - nota: <i>this attribute should always be used coupled with "numberingOrg"</i> (XPath GARWorkInv/GWlbody/GWlitem/garmentPartCode/size/@listName) [Optional] - nota: <i>this attribute should always be used coupled with "numberingOrg"</i> (XPath GARWorkInv/GWlbody/GWlitem/garmentPartCode/color/@listName) [Optional] - nota: <i>this attribute should always be used coupled with "numberingOrg"</i> (XPath GARWorkInv/GWlbody/GWlitem/garmentCode/garmentCodeB/fabric/@listName) [Optional] - nota: <i>this attribute should always be used coupled with "numberingOrg"</i> (XPath GARWorkInv/GWlbody/GWlitem/garmentCode/garmentCodeB/size/@listName) [Optional] - nota: <i>this attribute should always be used coupled with "numberingOrg"</i> (XPath GARWorkInv/GWlheader/refDoc/season/@listName) [Optional] - nota: <i>this attribute should always be used coupled with "numberingOrg"</i> (XPath GARWorkInv/GWlbody/GWlitem/garmentCode/garmentCodeB/drop/@listName) [Optional] - nota: <i>this attribute should always be used coupled with "numberingOrg"</i> (XPath GARWorkInv/GWlbody/GWlitem/garmentCode/garmentCodeB/artGroup/@listName) [Optional] - nota: <i>this attribute should always be used coupled with "numberingOrg"</i> (XPath GARWorkInv/GWlbody/GWlitem/garmentCode/garmentCodeA/art/@listName) [Optional] - nota: <i>this attribute should always be used coupled with "numberingOrg"</i> (XPath GARWorkInv/GWlbody/GWlitem/refDoc/season/@listName) [Optional] - nota: <i>this attribute should always be used coupled with "numberingOrg"</i> (XPath GARWorkInv/GWlbody/GWlitem/inventory/actualPackageUnit/itemsList/quality

	<p>Level/@listName) [Optional] - nota: <i>this attribute should always be used coupled with “numberingOrg”</i> (XPath GARWorkInv/GWlbody/GWlitem/garmentCode/garmentCodeB/garmentVariant/variantType/@listName) [Optional] - nota: <i>this attribute should always be used coupled with “numberingOrg”</i> (XPath GARWorkInv/GWlbody/GWlitem/garmentCode/garmentCodeB/garmentVariant/variantCode/@listName) [Optional] - nota: <i>this attribute should always be used coupled with “numberingOrg”</i> (XPath GARWorkInv/GWlbody/GWlitem/inventory/itemsList/qualityLevel/@listName) [Optional] - nota: <i>this attribute should always be used coupled with “numberingOrg”</i></p>
@listVersion	<p>it specifies the version of the list of codes used to make an instance of the element - base type: string, max length: 6, (XPath GARWorkInv/GWlbody/GWlitem/inventory/itemsList/qualityLevel/@listVersion) [Optional] - nota: <i>this attribute should always be used coupled with “numberingOrg” and “listName”</i> (XPath GARWorkInv/GWlbody/GWlitem/garmentPartCode/size/@listVersion) [Optional] - nota: <i>this attribute should always be used coupled with “numberingOrg” and “listName”</i> (XPath GARWorkInv/GWlbody/GWlitem/garmentCode/garmentCodeA/art/@listVersion) [Optional] - nota: <i>this attribute should always be used coupled with “numberingOrg” and “listName”</i> (XPath GARWorkInv/GWlbody/GWlitem/garmentPartCode/color/@listVersion) [Optional] - nota: <i>this attribute should always be used coupled with “numberingOrg” and “listName”</i> (XPath GARWorkInv/GWlheader/refDoc/season/@listVersion) [Optional] - nota: <i>this attribute should always be used coupled with “numberingOrg” and “listName”</i> (XPath GARWorkInv/GWlbody/GWlitem/garmentCode/garmentCodeB/garmentVariant/variantCode/@listVersion) [Optional] - nota: <i>this attribute should always be used coupled with “numberingOrg” and “listName”</i> (XPath GARWorkInv/GWlbody/GWlitem/garmentCode/garmentCodeB/fabric/@listVersion) [Optional] - nota: <i>this attribute should always be used coupled with “numberingOrg” and “listName”</i> (XPath GARWorkInv/GWlbody/GWlitem/garmentCode/garmentCodeB/color/@listVersion) [Optional] - nota: <i>this attribute should always be used coupled with “numberingOrg” and “listName”</i> (XPath GARWorkInv/GWlbody/GWlitem/garmentCode/garmentCodeB/garmentVariant/variantType/@listVersion) [Optional] - nota: <i>this attribute should always be used coupled with “numberingOrg” and “listName”</i> (XPath GARWorkInv/GWlbody/GWlitem/garmentCode/garmentCodeB/size/@listVersion) [Optional] - nota: <i>this attribute should always be used coupled with “numberingOrg” and “listName”</i> (XPath GARWorkInv/GWlbody/GWlitem/garmentCode/garmentCodeB/artGroup/@listVersion) [Optional] - nota: <i>this attribute should always be used coupled with “numberingOrg” and “listName”</i> (XPath GARWorkInv/GWlbody/GWlitem/garmentCode/garmentCodeB/drop/@listVersion) [Optional] - nota: <i>this attribute should always be used coupled with “numberingOrg” and “listName”</i> (XPath</p>

	<p>GARWorkInv/GWlbody/GWlitem/garmentCode/garmentCodeB/mod/@listVersion) [Optional]</p> <p>- nota: <i>this attribute should always be used coupled with "numberingOrg" and "listName"</i></p> <p>(XPath GARWorkInv/GWlbody/GWlitem/garmentPartCode/fabric/@listVersion) [Optional]</p> <p>- nota: <i>this attribute should always be used coupled with "numberingOrg" and "listName"</i></p> <p>(XPath GARWorkInv/GWlbody/GWlitem/inventory/actualPackageUnit/itemsList/qualityLevel/@listVersion) [Optional]</p> <p>- nota: <i>this attribute should always be used coupled with "numberingOrg" and "listName"</i></p> <p>(XPath GARWorkInv/GWlbody/GWlitem/garmentPartCode/mod/@listVersion) [Optional]</p> <p>- nota: <i>this attribute should always be used coupled with "numberingOrg" and "listName"</i></p> <p>(XPath GARWorkInv/GWlbody/GWlitem/refDoc/season/@listVersion) [Optional]</p> <p>- nota: <i>this attribute should always be used coupled with "numberingOrg" and "listName"</i></p>
@ln	<p>Language code.</p> <p>- base type: string, cod. table: NT60</p> <p>http://www.ebiz.enea.it/moda-ml/repository/codelist/draft/gc_NT60.xml</p> <p>(XPath GARWorkInv/GWlbody/GWlitem/garmentCode/garmentCodeA/description/@ln) [Optional]</p> <p>(XPath GARWorkInv/GWlbody/GWlitem/garmentCode/garmentCodeB/description/@ln) [Optional]</p> <p>(XPath GARWorkInv/GWlbody/GWlitem/garmentPartCode/description/@ln) [Optional]</p>
location	<p>specification of a location. It can be represented by an identification code (preferable) or a short text (not recommended). For example a GLN code that requires to assign the value "GLN" to the attribute @LRI.</p> <p>- base type: string, max length: 128,</p> <p>(XPath GARWorkInv/GWlbody/GWlitem/inventory/location) 0-1</p>
@logo	<p>company logo (URL of the image jpeg or gif). It is recommended that the width of the image does not exceed 640 pixel.</p> <p>- base type: string, max length: 255,</p> <p>(XPath GARWorkInv/GWlheader/buyer/@logo) [Optional]</p>
@LRI	<p>issuer of the identifier (or identification system) of a location.</p> <p>- base type: string, cod. table: NT3</p> <p>http://www.ebiz.enea.it/moda-ml/repository/codelist/draft/gc_NT3.xml</p> <p>(XPath GARWorkInv/GWlbody/GWlitem/inventory/location/@LRI) [Optional]</p>
@mime	<p>the mime type of the binary object</p> <p>- base type: normalizedString,</p> <p>(XPath GARWorkInv/GWlheader/refDoc/attachment/binaryObject/@mime) [Optional]</p> <p>(XPath GARWorkInv/GWlbody/GWlitem/refDoc/attachment/binaryObject/@mime) [Optional]</p>
mimeCode	<p>mime type of the external object</p> <p>- base type: normalizedString,</p> <p>(XPath GARWorkInv/GWlheader/refDoc/attachment/externalReference/mimeCode) 0-1 Best Practice</p> <p>(XPath GARWorkInv/GWlbody/GWlitem/refDoc/attachment/externalReference/mimeCode) 0-1 Best Practice</p>
mod	<p>model number of the garment</p> <p>- base type: string, max length: 15,</p> <p>(XPath GARWorkInv/GWlbody/GWlitem/garmentCode/garmentCodeB/mod) 1-1</p> <p>(XPath GARWorkInv/GWlbody/GWlitem/garmentPartCode/mod) 1-1</p> <p>- note: <i>when a garment component, it should be the code assigned to the garment article</i></p>
msgDate	<p>date of issue of the present message (xml document), according to one of the patterns YYYY-MM-DD, YYYY-MM-DD:HH-MM or YYYY-WW.</p>

	- base type: string, (XPath GARWorkInv/GWlheader/msgDate) 1-1
@msgfunction	function performed by the present message with regards to the transmission - base type: string, cod. table: NT18 http://www.ebiz.enea.it/moda-ml/repository/codelist/draft/gc_NT18.xml (XPath GARWorkInv/@msgfunction) [Optional] [Default= OR]
msgID	key identifier of the business document in the information system of the issuing Party. In case of more despatches of the same business document, it is unchanged. - base type: string, max length: 35, (XPath GARWorkInv/GWlheader/msgID) 0-1
msgN	identification number given to the message (xml document) by its issuer. In case of more despatches of the same business document, it changes. - base type: string, max length: 35, (XPath GARWorkInv/GWlheader/msgN) 1-1
netWeight	the net weight declared for transport or customs purpose - base type: decimal, min inclusive: 0, fraction digits: 2, (XPath GARWorkInv/GWlbody/GWlitem/inventory/actualPackageUnit/netWeight) 0-1
note	free text or structured (computer processing) note. For note structuring use the attributes "noteLabel" and "codelist" - base type: string, max length: 350, (XPath GARWorkInv/GWlbody/GWlitem/inventory/actualPackageUnit/note) 0-99 (XPath GARWorkInv/GWlbody/GWlitem/note) 0-99 (XPath GARWorkInv/GWlheader/note) 0-99
@noteLabel	subject qualifier of a note - base type: string, max length: 35, (XPath GARWorkInv/GWlbody/GWlitem/inventory/actualPackageUnit/note/@noteLabel) [Optional] - nota: <i>must be used to qualify the subject of the note</i> (XPath GARWorkInv/GWlheader/note/@noteLabel) [Optional] - nota: <i>must be used to qualify the subject of the note</i> (XPath GARWorkInv/GWlbody/GWlitem/note/@noteLabel) [Optional] - nota: <i>must be used to qualify the subject of the note</i>
@numberingOrg	code specifying the organisation who has created or owns the coding or numbering system - base type: string, cod. table: NT6 http://www.ebiz.enea.it/moda-ml/repository/codelist/draft/gc_NT6.xml (XPath GARWorkInv/GWlbody/GWlitem/inventory/actualPackageUnit/itemsList/itemId/identification/serialN/@numberingOrg) [Optional] - nota: <i>here the issuer of the serial number must be specified (when different from the Supplier)</i> (XPath GARWorkInv/GWlbody/GWlitem/garmentCode/garmentCodeB/added/@numberingOrg) [Optional] - nota: <i>this attribute should be used either single or coupled with "listName" and "listVersion"</i> (XPath GARWorkInv/GWlbody/GWlitem/garmentPartCode/mod/@numberingOrg) [Optional] (XPath GARWorkInv/GWlbody/GWlitem/garmentCode/garmentCodeA/art/@numberingOrg) [Optional] - nota: <i>this attribute should be used either single or coupled with "listName" and "listVersion"</i> (XPath GARWorkInv/GWlbody/GWlitem/note/@numberingOrg) [Optional] - nota: <i>must be used to specify the organization that created the list of codes used in "noteLabel"</i> (XPath GARWorkInv/GWlheader/refDoc/attachment/fileName/@numberingOrg) [Optional] (XPath GARWorkInv/GWlbody/GWlitem/refDoc/docID/@numberingOrg) [Optional] - nota: <i>here can be specified whose document numbering is used (e.g.: Client, Supplier, ..)</i> (XPath GARWorkInv/GWlbody/GWlitem/inventory/actualPackageUnit/packageIdentification/serialN/@numberingOrg) [Optional]

	<p>- nota: here the issuer of the serial number must be specified (when different from the Supplier) (XPath GARWorkInv/GWlbody/GWlitem/refDoc/season/@numberingOrg) [Optional]</p> <p>- nota: this attribute should be used either single or coupled with "listName" and "listVersion" (XPath GARWorkInv/GWlheader/buyer/id/@numberingOrg) [Optional] (XPath GARWorkInv/GWlheader/buyer/additionalIdentifier/@numberingOrg) [Optional]</p> <p>- nota: here the issuer of the identifier must be specified (XPath GARWorkInv/GWlbody/GWlitem/garmentCode/@numberingOrg) [Optional] (XPath GARWorkInv/GWlbody/GWlitem/garmentCode/garmentCodeB/artGroup/@numberingOrg) [Optional]</p> <p>- nota: this attribute should be used either single or coupled with "listName" and "listVersion" (XPath GARWorkInv/GWlbody/GWlitem/inventory/actualPackageUnit/packageIdentification/packageN/@numberingOrg) [Optional] (XPath GARWorkInv/GWlheader/note/@numberingOrg) [Optional]</p> <p>- nota: must be used to specify the organization that created the list of codes used in "noteLabel" (XPath GARWorkInv/GWlbody/GWlitem/inventory/serialN/@numberingOrg) [Optional]</p> <p>- nota: here the issuer of the serial number must be specified (when different from the Supplier) (XPath GARWorkInv/GWlbody/GWlitem/garmentPartCode/fabric/@numberingOrg) [Optional]</p> <p>- nota: this attribute should be used either single or coupled with "listName" and "listVersion" (XPath GARWorkInv/GWlbody/GWlitem/garmentPartCode/added/@numberingOrg) [Optional]</p> <p>- nota: this attribute should be used either single or coupled with "listName" and "listVersion" (XPath GARWorkInv/GWlheader/refDoc/docID/@numberingOrg) [Optional]</p> <p>- nota: here can be specified whose document numbering is used (e.g.: Client, Supplier, ..) (XPath GARWorkInv/GWlbody/GWlitem/inventory/itemsList/qualityLevel/@numberingOrg) [Optional]</p> <p>- nota: this attribute should be used either single or coupled with "listName" and "listVersion" (XPath GARWorkInv/GWlheader/docID/@numberingOrg) [Optional]</p> <p>- nota: here can be specified whose document numbering is used (e.g.: Client, Supplier, ..) (XPath GARWorkInv/GWlbody/GWlitem/garmentPartCode/size/@numberingOrg) [Optional]</p> <p>- nota: this attribute should be used either single or coupled with "listName" and "listVersion" (XPath GARWorkInv/GWlbody/GWlitem/inventory/itemsList/itemIdentification/serialN/@numberingOrg) [Optional]</p> <p>- nota: here the issuer of the serial number must be specified (when different from the Supplier) (XPath GARWorkInv/GWlbody/GWlitem/inventory/actualPackageUnit/itemsList/qualityLevel/@numberingOrg) [Optional]</p> <p>- nota: this attribute should be used either single or coupled with "listName" and "listVersion" (XPath GARWorkInv/GWlbody/GWlitem/inventory/actualPackageUnit/packagesList/packageIdentification/packageN/@numberingOrg) [Optional] (XPath GARWorkInv/GWlheader/thirdParty/id/@numberingOrg) [Optional] (XPath GARWorkInv/GWlheader/refDoc/season/@numberingOrg) [Optional]</p> <p>- nota: this attribute should be used either single or coupled with "listName" and "listVersion" (XPath GARWorkInv/GWlbody/GWlitem/garmentCode/garmentCodeB/mod/@numberingOrg) [Optional] (XPath GARWorkInv/GWlbody/GWlitem/inventory/EPClist/EPC/@numberingOrg) [Optional] (XPath GARWorkInv/GWlbody/GWlitem/garmentPartCode/color/@numberingOrg) [Optional]</p> <p>- nota: this attribute should be used either single or coupled with "listName" and "listVersion" (XPath GARWorkInv/GWlbody/GWlitem/garmentCode/garmentCodeB/garmentVariant/variantCode/@numberingOrg) [Optional]</p> <p>- nota: this attribute should be used either single or coupled with "listName" and "listVersion"</p>
--	---

	<p>(XPath GARWorkInv/GWlbody/GWlitem/garmentCode/garmentCodeB/garmentVariant/variantType/@numberingOrg) [Optional] - nota: <i>this attribute should be used either single or coupled with "listName" and "listVersion"</i> (XPath GARWorkInv/GWlheader/subContractor/id/@numberingOrg) [Optional] (XPath GARWorkInv/GWlbody/GWlitem/garmentPartCode/@numberingOrg) [Optional] (XPath GARWorkInv/GWlbody/GWlitem/inventory/actualPackageUnit/packageModelCode/@numberingOrg) [Optional] (XPath GARWorkInv/GWlbody/GWlitem/garmentCode/garmentCodeB/color/@numberingOrg) [Optional] - nota: <i>this attribute should be used either single or coupled with "listName" and "listVersion"</i> (XPath GARWorkInv/GWlbody/GWlitem/garmentCode/garmentCodeB/size/@numberingOrg) [Optional] - nota: <i>this attribute should be used either single or coupled with "listName" and "listVersion"</i> (XPath GARWorkInv/GWlbody/GWlitem/garmentCode/garmentCodeB/fabric/@numberingOrg) [Optional] - nota: <i>this attribute should be used either single or coupled with "listName" and "listVersion"</i> (XPath GARWorkInv/GWlbody/GWlitem/garmentCode/garmentCodeB/@numberingOrg) [Optional] (XPath GARWorkInv/GWlbody/GWlitem/garmentCode/garmentCodeB/drop/@numberingOrg) [Optional] - nota: <i>this attribute should be used either single or coupled with "listName" and "listVersion"</i> (XPath GARWorkInv/GWlbody/GWlitem/inventory/actualPackageUnit/note/@numberingOrg) [Optional] - nota: <i>must be used to specify the organization that created the list of codes used in "noteLabel"</i> (XPath GARWorkInv/GWlbody/GWlitem/inventory/actualPackageUnit/packagesList/packageIdentification/serialN/@numberingOrg) [Optional] - nota: <i>here the issuer of the serial number must be specified (when different from the Supplier)</i> (XPath GARWorkInv/GWlbody/GWlitem/refDoc/attachment/fileName/@numberingOrg) [Optional]</p>
package	<p>code specifying the type of transport package - base type: string, cod. table: T11 http://www.ebiz.enea.it/moda-ml/repository/codelist/draft/gc_T11.xml (XPath GARWorkInv/GWlbody/GWlitem/inventory/actualPackageUnit/package) 0-1</p>
@packageContainerN	<p>reference usable to indicate the outer package containing this package - base type: string, max length: 40, (XPath GARWorkInv/GWlbody/GWlitem/inventory/actualPackageUnit/packageIdentification/packageN/@packageContainerN) [Optional] (XPath GARWorkInv/GWlbody/GWlitem/inventory/actualPackageUnit/packagesList/packageIdentification/packageN/@packageContainerN) [Optional]</p>
@packageLevel	<p>level used to indicate the hierarchical structure of the packages (from outer to inner levels) - base type: positiveInteger, min inclusive: 1, max inclusive: 9, (XPath GARWorkInv/GWlbody/GWlitem/inventory/actualPackageUnit/@packageLevel) [Optional]</p>
packageModelCode	<p>a code (eg a barcode) identifying the type of packaging - base type: string, (XPath</p>

	GARWorkInv/GWlbody/GWlitem/inventory/actualPackageUnit/packageModelCode) 0-1
packageN	serial number used to identify a transport package - base type: string, max length: 40, (XPath GARWorkInv/GWlbody/GWlitem/inventory/actualPackageUnit/packagesList/packageIdentification/packageN) 1-1 (XPath GARWorkInv/GWlbody/GWlitem/inventory/actualPackageUnit/packageIdentification/packageN) 1-1
packageText	denomination of the type of transport package (text) - base type: string, max length: 80, (XPath GARWorkInv/GWlbody/GWlitem/inventory/actualPackageUnit/packageText) 0-1
person	name of a person (e.g. contact person within an organization) - base type: string, max length: 40, (XPath GARWorkInv/GWlheader/thirdParty/person) 0-1 (XPath GARWorkInv/GWlheader/buyer/person) 0-1 (XPath GARWorkInv/GWlheader/subContractor/person) 0-1
@phone	phone number of the contact person within a Party - base type: string, max length: 35, (XPath GARWorkInv/GWlheader/subContractor/person/@phone) [Optional] (XPath GARWorkInv/GWlheader/thirdParty/person/@phone) [Optional] (XPath GARWorkInv/GWlheader/buyer/person/@phone) [Optional]
postCode	code defining the postal zone - base type: string, max length: 10, (XPath GARWorkInv/GWlheader/subContractor/postCode) 0-1 (XPath GARWorkInv/GWlheader/buyer/postCode) 0-1 (XPath GARWorkInv/GWlheader/thirdParty/postCode) 0-1
qty	net quantity of the article or object correlated, qualified by the function of the document (ordering, delivering, ..) and by the context - base type: decimal, min inclusive: 0, fraction digits: 2, (XPath GARWorkInv/GWlbody/GWlitem/inventory/qty) 1-2 Best Practice
qualityLevel	the product quality level (first choice, second choice,...). - base type: string, (XPath GARWorkInv/GWlbody/GWlitem/inventory/actualPackageUnit/itemsList/qualityLevel) 0-1 (XPath GARWorkInv/GWlbody/GWlitem/inventory/itemsList/qualityLevel) 0-1
@role	Third Party role qualifier - base type: string, cod. table: NT2 http://www.ebiz.enea.it/moda-ml/repository/codelist/draft/gc_NT2.xml (XPath GARWorkInv/GWlheader/thirdParty/@role) [Required]
@schemeID	identifier of an identification scheme - base type: string, (XPath GARWorkInv/GWlheader/refDoc/attachment/hashFootprint/@schemeID) [Optional] - nota: specify for which system this hash footprint might be used as identifier (for example HDFS system..) (XPath GARWorkInv/GWlbody/GWlitem/refDoc/attachment/hashFootprint/@schemeID) [Optional] - nota: specify for which system this hash footprint might be used as identifier (for example HDFS system..)
season	sale season; defined as: season (1 crt) + year (4 crt) - season: S/S=1 A/W=2 Spring=3 Summer=4 Autumn=5 Winter=6: for more than four seasons use alphabetic sequence: 1st season=A 2nd season=B etc.etc. - base type: string, max length: 15, (XPath GARWorkInv/GWlbody/GWlitem/refDoc/season) 0-1 - note: here indicates the season to which the referenced document belongs (XPath GARWorkInv/GWlheader/refDoc/season) 0-1

	- note: here indicates the season to which the referenced document belongs
@sender	qualifier that specifies the Party issuing of the document - base type: boolean, (XPath GARWorkInv/GWlheader/subContractor/@sender) [Optional] - nota: This attribute is mandatory when the STYLESHEET must be used (XPath GARWorkInv/GWlheader/thirdParty/@sender) [Optional] - nota: This attribute is mandatory when the STYLESHEET must be used (XPath GARWorkInv/GWlheader/buyer/@sender) [Optional] - nota: This attribute is mandatory when the STYLESHEET must be used
serialN	serial number used for the identification of a physical unit - base type: string, max length: 250, (XPath GARWorkInv/GWlbody/GWlitem/inventory/actualPackageUnit/packagesList/packageIdentification/serialN) 0-9 - note: multiple values of serialN are allowed in order to provide different representations of the serial identifier of the same package unit. Different instances of serialN must differ at least for one value of idQualifier or numberingOrg (XPath GARWorkInv/GWlbody/GWlitem/inventory/actualPackageUnit/packageIdentification/serialN) 0-9 - note: multiple values of serialN are allowed in order to provide different representations of the serial identifier of the same package unit. Different instances of serialN must differ at least for one value of idQualifier or numberingOrg (XPath GARWorkInv/GWlbody/GWlitem/inventory/serialN) 0-unbounded - note: Use this element if the coding method is only one and is the same for each article (XPath GARWorkInv/GWlbody/GWlitem/inventory/itemsList/itemIdentification/serialN) 1-9 Best Practice - note: multiple values of serialN are allowed for different representations of the serial identifier of the same product unit. Instances of serialN must differ at least for one value of numberingOrg and idQualifier. (XPath GARWorkInv/GWlbody/GWlitem/inventory/actualPackageUnit/itemsList/itemIdentification/serialN) 1-9 Best Practice - note: multiple values of serialN are allowed for different representations of the serial identifier of the same product unit. Instances of serialN must differ at least for one value of numberingOrg and idQualifier.
size	size number of a fashion product (knitwear, clothing, ..) - base type: string, max length: 15, (XPath GARWorkInv/GWlbody/GWlitem/garmentPartCode/size) 0-1 (XPath GARWorkInv/GWlbody/GWlitem/garmentCode/garmentCodeB/size) 0-1
street	street and building number identifying a location - base type: string, max length: 80, (XPath GARWorkInv/GWlheader/thirdParty/street) 0-1 (XPath GARWorkInv/GWlheader/buyer/street) 0-1 (XPath GARWorkInv/GWlheader/subContractor/street) 0-1
subCountry	short name or code of the sub-country entity - base type: string, max length: 9, (XPath GARWorkInv/GWlheader/thirdParty/subCountry) 0-1 (XPath GARWorkInv/GWlheader/subContractor/subCountry) 0-1 (XPath GARWorkInv/GWlheader/buyer/subCountry) 0-1
subDept	name or code of a department - base type: string, max length: 40, (XPath GARWorkInv/GWlheader/buyer/subDept) 0-1 (XPath GARWorkInv/GWlheader/thirdParty/subDept) 0-1 (XPath GARWorkInv/GWlheader/subContractor/subDept) 0-1
@TID	serial number wired into the RFID chip - base type: string, (XPath GARWorkInv/GWlbody/GWlitem/inventory/EPClist/EPC/@TID) [Optional]
transactionReceipt	transaction receipt on blockchain - base type: string, max length: 80, (XPath GARWorkInv/GWlbody/GWlitem/refDoc/attachment/blockChainReference/transactionReceipt) 1-9 (XPath

	GARWorkInv/GWlheader/refDoc/attachment/blockChainReference/transaction Receipt) 1-9
@uid	unique element identifier within the xml document - base type: string, (XPath GARWorkInv/GWlbody/GWlitem/refDoc/attachment/@uid) [Optional] (XPath GARWorkInv/GWlheader/refDoc/attachment/@uid) [Optional]
@um	specification of the unit of measure - base type: string, cod. table: NT7 http://www.ebiz.enea.it/moda-ml/repository/codelist/draft/gc_NT7.xml (XPath GARWorkInv/GWlbody/GWlitem/inventory/actualPackageUnit/packageDim/width/@um) [Required] (XPath GARWorkInv/GWlbody/GWlitem/inventory/actualPackageUnit/packageDim/length/@um) [Required] (XPath GARWorkInv/GWlbody/GWlitem/inventory/actualPackageUnit/packageDim/height/@um) [Required] (XPath GARWorkInv/GWlheader/subContractor/geoCoordinates/@um) [Optional] [Default= DEGD] - nota: <i>when not specified assume decimal DEGREES</i> (XPath GARWorkInv/GWlheader/thirdParty/geoCoordinates/@um) [Optional] [Default= DEGD] - nota: <i>when not specified assume decimal DEGREES</i> (XPath GARWorkInv/GWlbody/GWlitem/inventory/actualPackageUnit/netWeight/@um) [Required] (XPath GARWorkInv/GWlbody/GWlitem/inventory/actualPackageUnit/grossWeight/@um) [Required] (XPath GARWorkInv/GWlbody/GWlitem/inventory/actualPackageUnit/volume/@um) [Required] (XPath GARWorkInv/GWlbody/GWlitem/inventory/qty/@um) [Required] (XPath GARWorkInv/GWlheader/buyer/geoCoordinates/@um) [Optional] [Default= DEGD] - nota: <i>when not specified assume decimal DEGREES</i>
uri	Uniform Resource Identifier (URI) that identifies the external object as an Internet resource - base type: normalizedString, (XPath GARWorkInv/GWlheader/refDoc/attachment/blockChainReference/uri) 1-1 - note: <i>reference to the used blockchain (example: url https://etherscan.io/ of ethereum)</i> (XPath GARWorkInv/GWlheader/refDoc/attachment/externalReference/uri) 1-1 (XPath GARWorkInv/GWlbody/GWlitem/refDoc/attachment/externalReference/uri) 1-1 (XPath GARWorkInv/GWlbody/GWlitem/refDoc/attachment/blockChainReference/uri) 1-1 - note: <i>reference to the used blockchain (example: url https://etherscan.io/ of ethereum)</i>
@useProfile	use profile to which the present document is compliant if it was agreed by the parties. It is suggested a URI with reference to the firms or the URL of the profile. - base type: string, (XPath GARWorkInv/@useProfile) [Optional]
variantCode	Code of variant used for fashion product. - base type: string, (XPath GARWorkInv/GWlbody/GWlitem/garmentCode/garmentCodeB/garmentVariant/variantCode) 1-1
variantType	Type of variant used for fashion product (examples: 'treatment', 'washing type', 'size class',...) - base type: string, (XPath GARWorkInv/GWlbody/GWlitem/garmentCode/garmentCodeB/garmentVariant/variantType) 1-1

@VAT	VAT rate or code (DEPRECATED, use dtScheme element) - base type: string, cod. table: NT16 http://www.ebiz.enea.it/moda-ml/repository/codelist/draft/gc_NT16.xml (XPath GARWorkInv/GWlbody/GWlitem/lineN/@VAT) [Optional] - nota: <i>Deprecated, prefer dtScheme when available.</i> (XPath GARWorkInv/GWlheader/thirdParty/@VAT) [Optional]
@version	Dictionary version from which the instance has been created - base type: string, cod. table: NT100 http://www.ebiz.enea.it/moda-ml/repository/codelist/draft/gc_NT100.xml (XPath GARWorkInv/@version) [Optional] [Default= draft]
volume	effective volume of a specified object - base type: decimal, min inclusive: 0, fraction digits: 2, (XPath GARWorkInv/GWlbody/GWlitem/inventory/actualPackageUnit/volume) 0-1
width	effective width of a specified object - base type: decimal, min inclusive: 0, fraction digits: 2, (XPath GARWorkInv/GWlbody/GWlitem/inventory/actualPackageUnit/packageDim/width) 0-1
xGeoCoord	geographical coordinate x , corresponding to latitude - base type: decimal, (XPath GARWorkInv/GWlheader/thirdParty/geoCoordinates/xGeoCoord) 1-1 (XPath GARWorkInv/GWlheader/buyer/geoCoordinates/xGeoCoord) 1-1 (XPath GARWorkInv/GWlheader/subContractor/geoCoordinates/xGeoCoord) 1-1
yGeoCoord	geographical coordinate y , corresponding to longitude - base type: decimal, (XPath GARWorkInv/GWlheader/subContractor/geoCoordinates/yGeoCoord) 1-1 (XPath GARWorkInv/GWlheader/thirdParty/geoCoordinates/yGeoCoord) 1-1 (XPath GARWorkInv/GWlheader/buyer/geoCoordinates/yGeoCoord) 1-1
zGeoCoord	geographical coordinate z , corresponding to altitude - base type: decimal, (XPath GARWorkInv/GWlheader/thirdParty/geoCoordinates/zGeoCoord) 0-1 - note: <i>altitude might be omitted</i> (XPath GARWorkInv/GWlheader/buyer/geoCoordinates/zGeoCoord) 0-1 - note: <i>altitude might be omitted</i> (XPath GARWorkInv/GWlheader/subContractor/geoCoordinates/zGeoCoord) 0-1 - note: <i>altitude might be omitted</i>

2.3 Suggested best practices

GARWorkInv/GWIheader/refDoc/docID (identification number of the referenced document)

numberingOrg indicates the role that produced the document identifier (it is allowed to declare two different ones -e.g. customer and supplier - with two docID with different numberingOrg

GARWorkInv/GWIbody/GWIitem/refDoc/docID (identification number of the referenced document)

numberingOrg indicates the role that produced the document identifier (it is allowed to declare two different ones -e.g. customer and supplier - with two docID with different numberingOrg

GARWorkInv/GWIheader/refDoc/attachment/externalReference/mimeType (mime type of the external object)

Use coding from IANA <http://www.iana.org/assignments/media-types/media-types.xml>

GARWorkInv/GWIbody/GWIitem/refDoc/attachment/externalReference/mimeType (mime type of the external object)

Use coding from IANA <http://www.iana.org/assignments/media-types/media-types.xml>

GARWorkInv/GWIbody/GWIitem/inventory/qty (net quantity of the article or object correlated, qualified by the function of the document (ordering, delivering, ..) and by the context)

this element can have two instances only if the units of measure are different

GARWorkInv/GWIbody/GWIitem/inventory/itemsList/itemIdentification/serialN (serial number used for the identification of a physical unit)

in the case of garment with RFID for anti-counterfeiting, RFID EPCGlobal for logistics and NFC for the customer experience there should be three serial elements with pairs of attributes numberingOrg/idQualifier: "CL"/"RFID", "GS1"/"RFID", "CL"/"NFC".

GARWorkInv/GWIbody/GWIitem/inventory/actualPackageUnit/itemsList/itemIdentification/serialN (serial number used for the identification of a physical unit)

in the case of garment with RFID for anti-counterfeiting, RFID EPCGlobal for logistics and NFC for the customer experience there should be three serial elements with pairs of attributes numberingOrg/idQualifier: "CL"/"RFID", "GS1"/"RFID", "CL"/"NFC".

2.4 Enumeration tables

List of enumeration tables used in the XML document. You can find all the tables with the corresponding codes at:
<http://www.ebiz.enea.it/eBIZ/imple/eBIZTCU-draft.asp?lingua=en&pag=6>

NT100 - eBIZ TCFUpstream version
NT16 - VAT rate or code
NT18 - message function
NT2 - third party qualifier
NT29 - format of a date
NT3 - issuer of the identifier (or identification system) of a location.
NT333 - type of hashing algorithm
NT6 - coding system owner/issuer
NT60 - language, codes from ISO 639-1 (subset)
NT7 - unit of measure
T10 - ISO3166 - Country
T11 - transport package type
T21 - type of document
T44 - additional code type
T47 - stock type
T48 - garment part type

(the most relevant tables are detailed in the following Annexes too)

ACKNOWLEDGEMENT



This action is part of the TRICK project, which has received funding from Horizon 2020 research and innovation programme under grant agreement No. 958352 of the European Union.

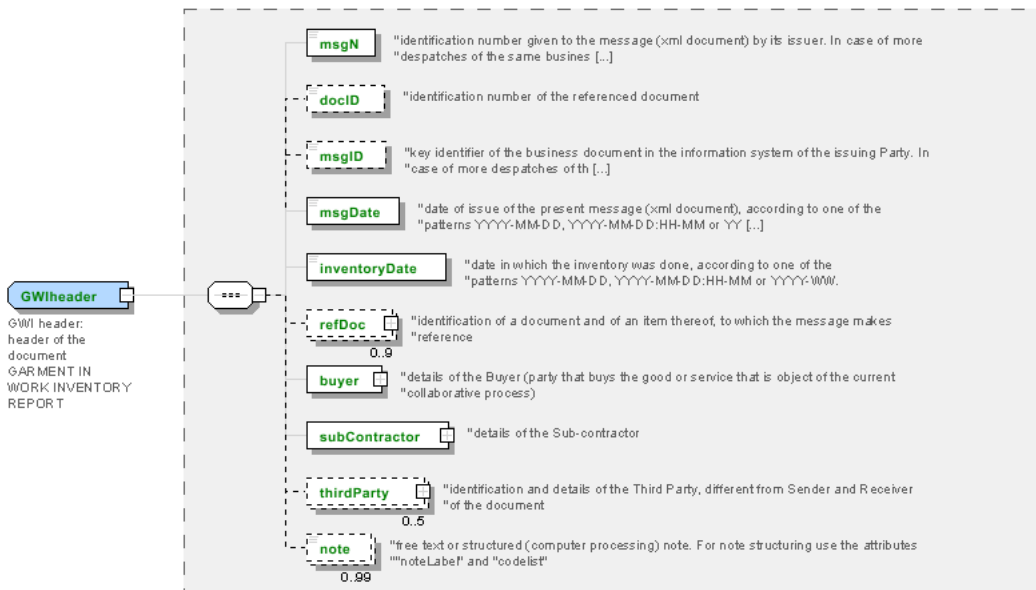
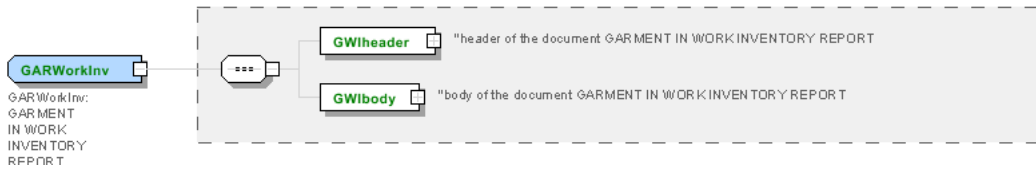
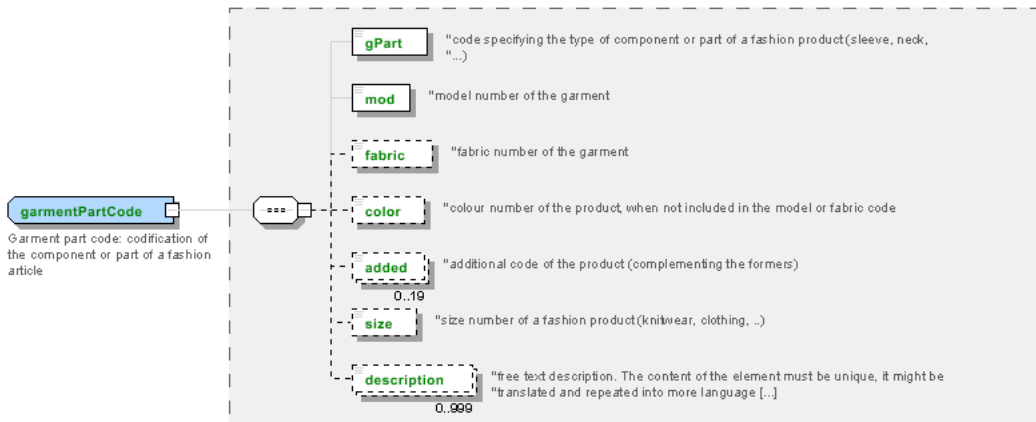
DISCLAIMER

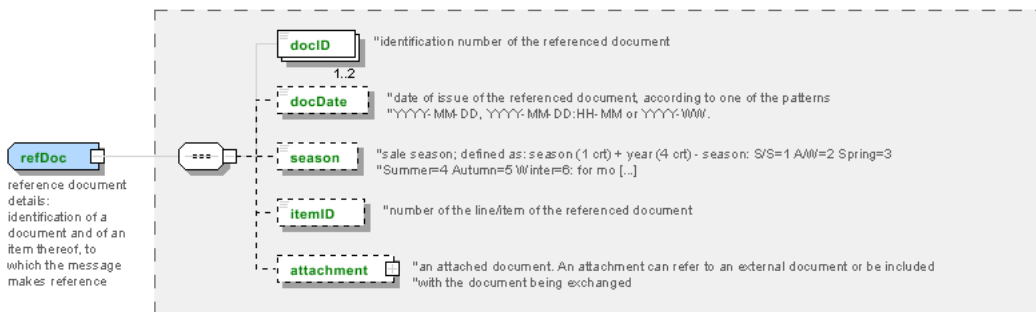
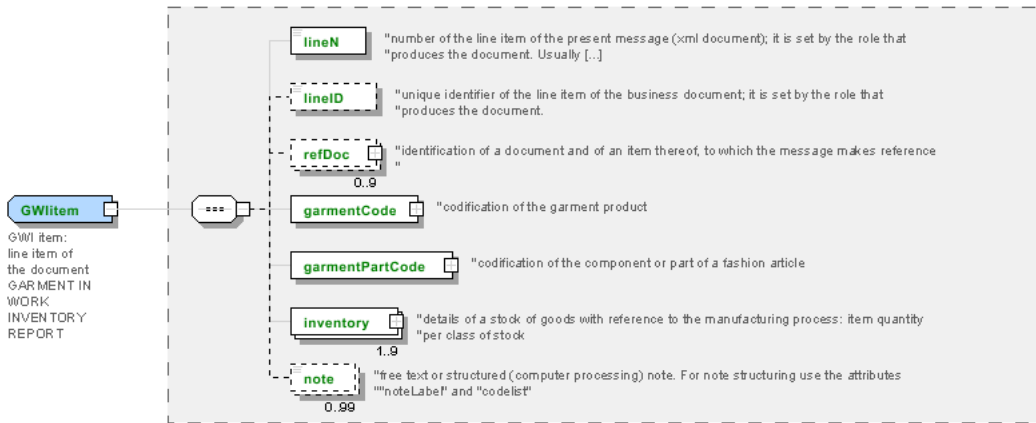
The content of this document represents the views of the authors only and is their sole responsibility; it cannot be considered to reflect the views of the European Commission or any other body of the European Union.

The European Commission does not accept any responsibility for use that may be made of the information it contains.

Annex A

Representative images of the principal complex elements' structure.





Annex B

NT100 - eBIZ TCFUpstream version

dictionary version

Agency name: eBIZ

Decoding table: NT100

File codes list (Generic code): http://www.ebiz.enea.it/moda-ml/repository/codelist/draft/gc_NT100.xml

Code	Description	Adoption note	Date of insertion
2013-1	v2013-1		01/07/2013
2018-1	v2018-1		04/11/2018
draft	draft		08/09/2017

NT16 - VAT rate or code

VAT rate or code (DEPRECATED, use dtScheme element)

Decoding table: NT16

File codes list (Generic code): http://www.ebiz.enea.it/moda-ml/repository/codelist/draft/gc_NT16.xml

NT18 - message function

function performed by the present message with regards to the transmission

Agency name: eBIZ

Decoding table: NT18

File codes list (Generic code): http://www.ebiz.enea.it/moda-ml/repository/codelist/draft/gc_NT18.xml

Code	Description	Adoption note	Date of insertion
CA	delete this document		01/07/2013
CP	copy		
OR	original		
RC	re-transmission for data correction		
RT	re-transmission		

NT2 - third party qualifier

Third Party role qualifier

Agency name: eBIZ

Decoding table: NT2

File codes list (Generic code): http://www.ebiz.enea.it/moda-ml/repository/codelist/draft/gc_NT2.xml

Code	Description	Adoption note	Date of insertion
AG	Sales Agent		
AU	Auditor		08/04/2019
BU	Buyer		13/06/2022
CE	Certification authority		08/04/2019
CM	Commissioner		13/06/2022
CO	Quality Controller		
CU	Customs authority		13/06/2022
DC	Response to		
DF	Invoicee		
DI	Copy to (CC)		28/10/2014
DM	Consignee		
DP	Consignment address (Delivery Party)		
EX	Expert		13/06/2022
IM	Importer		
OR	Originator		10/09/2014
SC	Sub contractor		10/04/2019
SM	Service/ePlatform manager		08/04/2019
SP	Forwarder		
SU	Supplier		13/06/2022
TL	Test or analysis laboratory		13/06/2022
TX	Tax Representative		

NT29 - format of a date

format used for the date

Agency name: eBIZ

Decoding table: NT29

File codes list (Generic code): http://www.ebiz.enea.it/moda-ml/repository/codelist/draft/gc_NT29.xml

Code	Description	Adoption note	Date of insertion
D	YYYY-MM-DD		
M	YYYY-MM-DD:HH-MM (date and time)		
S	AAAA-MM-GG:HH-MM-SS (date and time with seconds)		13/06/2022
W	YYYY-WW		

NT3 - issuer of the identifier (or identification system) of a location.

List of possible issuers of the identifier (or identification system) of a location.

Agency name: eBIZ

Decoding table: NT3

File codes list (Generic code): http://www.ebiz.enea.it/moda-ml/repository/codelist/draft/gc_NT3.xml

Code	Description	Adoption note	Date of insertion
EN4	GS1-GLN	obsolete	01/07/2013
GLN	GS1-GLN	equivalent to EN4	25/04/2023
MD	mutually agreed		
NCA	National custom authority	identifier of a bonded warehouse assigned by the custom authority	19/05/2023
PLA	Platform	internal coding of the involved platform	14/05/2023
TRI	TRICK		14/05/2023

NT333 - type of hashing algorithm

type of hashing algorithm

Decoding table: NT333

File codes list (Generic code): http://www.ebiz.enea.it/moda-ml/repository/codelist/draft/gc_NT333.xml

Code	Description	Adoption note	Date of insertion
ADLER32	ADLER32		26/05/2023
HMAC	HMAC		26/05/2023
MD2	MD2		26/05/2023
MD4	MD4		26/05/2023
MD5	MD5		26/05/2023
MDC-2	MDC-2		26/05/2023
PANAMA	PANAMA		26/05/2023
RIPEMD-160	RIPEMD-160		26/05/2023
SHA-1	SHA-1		26/05/2023
SHA-2 256	SHA-2 256		26/05/2023
SHA-2 384	SHA-2 384		26/05/2023
SHA-2 512	SHA-2 512		26/05/2023
TIGER	TIGER		26/05/2023

NT6 - coding system owner/issuer

code specifying the organisation who has created or owns the registers of the present coding or numbering system

Agency name: eBIZ

Decoding table: NT6

File codes list (Generic code): http://www.ebiz.enea.it/moda-ml/repository/codelist/draft/gc_NT6.xml

Code	Description	Adoption note	Date of insertion
CBR	National customs brokers registry		12/06/2023
CL	Customer/buyer		
CO	Quality Controller		
DU	D-U-N-S registry (Data Universal Numbering System)		04/05/2023
EB	eBIZ	replaces 'ML'	18/03/2019
EN	GS1 (ex-EAN International)		
EO	Registro EORI (Economic Operators Registration and Identification number)		04/03/2023
ES	e-Stockflow	DEPRECATED	
FO	Supplier		
GS	GS1		01/07/2013
MF	national taxation authority (i.e. VAT codes registry)		
ML	Moda-ML	DEPRECATED	
PL	Application Platform		13/06/2022
REX	Registered Exporter system (REX)		19/05/2023
SP	Service Provider		
SU	Enterprise Identification Number UID	Only switzerland	04/03/2023

NT60 - language, codes from ISO 639-1 (subset)

Agency name: eBIZ / ISO

Decoding table: NT60

File codes list (Generic code): http://www.ebiz.enea.it/moda-ml/repository/codelist/draft/gc_NT60.xml

Code	Description	Adoption note	Date of insertion
af	Afrikaans		31/01/2019
ar	Arabic		31/01/2019
be	Belarusian		31/01/2019
bg	Bulgarian		31/01/2019
bn	Bengali		31/01/2019
bo	Tibetan		31/01/2019
bs	Bosnian		31/01/2019
ca	Catalan, Valencian		31/01/2019
cs	Czech		31/01/2019

da	Danish		31/01/2019
de	German		31/01/2019
el	Greek, Modern (1453-)		31/01/2019
en	English		31/01/2019
eo	Esperanto		31/01/2019
es	Spanish, Castilian		31/01/2019
et	Estonian		31/01/2019
eu	Basque		31/01/2019
F	Female		15/04/2019
fa	Persian		31/01/2019
fi	Finnish		31/01/2019
fr	French		31/01/2019
ga	Irish		31/01/2019
gd	Gaelic, Scottish Gaelic		31/01/2019
gn	Guarani		31/01/2019
he	Hebrew		31/01/2019
hr	Croatian		31/01/2019
ht	Haitian, Haitian Creole		31/01/2019
hu	Hungarian		31/01/2019
hy	Armenian		31/01/2019
ia	Interlingua (International Auxiliary Language Association)		31/01/2019
id	Indonesian		31/01/2019
is	Icelandic		31/01/2019
it	Italian		31/01/2019
ja	Japanese		31/01/2019
jv	Javanese		31/01/2019
ka	Georgian		31/01/2019
km	Central Khmer		31/01/2019
ko	Korean		31/01/2019
ku	Kurdish		31/01/2019
lb	Luxembourgish, Letzeburgesch		31/01/2019
lo	Lao		31/01/2019
lt	Lithuanian		31/01/2019
lv	Latvian		31/01/2019
mg	Malagasy		31/01/2019
mk	Macedonian		31/01/2019
mn	Mongolian		31/01/2019
mt	Maltese		31/01/2019

nl	Dutch, Flemish		31/01/2019
no	Norwegian		31/01/2019
pl	Polish		31/01/2019
pt	Portuguese		31/01/2019
ro	Romanian, Moldavian, Moldovan		31/01/2019
ru	Russian		31/01/2019
se	Northern Sami		31/01/2019
sk	Slovak		31/01/2019
sl	Slovenian		31/01/2019
sm	Samoan		31/01/2019
so	Somali		31/01/2019
sq	Albanian		31/01/2019
sr	Serbian		31/01/2019
sv	Swedish		31/01/2019
sw	Swahili		31/01/2019
ta	Tamil		31/01/2019
th	Thai		31/01/2019
tr	Turkish		31/01/2019
uk	Ukrainian		31/01/2019
ur	Urdu		31/01/2019
uz	Uzbek		31/01/2019
vi	Vietnamese		31/01/2019
zh	Chinese		31/01/2019

NT7 - unit of measure

specification of the unit of measure, it is a sub set of table Unit of Measure Code - UN/ECE REC 20 delivered by United Nations Economic Commission for Europe (UN/ECE)

Agency name: eBIZ / UN/ECE

Decoding table: NT7

File codes list (Generic code): http://www.ebiz.enea.it/moda-ml/repository/codelist/draft/gc_NT7.xml

Other link: <http://docs.oasis-open.org/ubl/os-UBL-2.1/cl/gc/default/UnitOfMeasureCode-2.1.gc#>

Code	Description	Adoption note	Date of insertion
CMK	square centimetre		20/12/2017
CMQ	cubic centimetre		20/12/2017
CMT	centimetre		
CNE	centiNewton		
CO2TON	ton of CO2		10/09/2014

COUPLES	couples		
DAY	day		22/08/2022
DEGD	decimal degrees		04/07/2022
DEGMS	degrees with minutes and seconds		01/07/2022
DMQ	cubic decimetre		
E37	pixel		11/04/2018
GRM	gram		
HUR	hour		
INH	inch		
KGM	kilogram		
KMT	kilometer		
KWH	kilowatthours		10/09/2014
LBR	pound		
MCG	microgram		23/08/2022
MG	milligram		23/08/2022
MIN	minute		
MMK	square millimetre		20/12/2017
MONTH	month		22/08/2022
MSEC	millisecond (time)		22/08/2022
MTK	square metre		20/12/2017
MTQ	cubic metre		
MTR	metre		
NMB	numero		
ONZ	ounce		
P1	percent		
PPM	parts per milion		
PZ	piece		
RPM	rounds per metre		
SEC	second (time)		22/08/2022
YEAR	year		22/08/2022
YRD	yard		

T10 - ISO3166 - Country

code of the nation

Agency name: ISO

Decoding table: T10

File codes list (Generic code): http://www.ebiz.enea.it/moda-ml/repository/codelist/draft/gc_T10.xml

Table not printed: there are 240 elements, more than the maximum specified for printing: 99.

T11 - transport package type

code specifying the type of package used for transport and delivery (subset of UN/ECE 8053 and UBL TransportEquipmentTypeCode-2.1)

Agency name: eBIZ

Decoding table: T11

File codes list (Generic code): http://www.ebiz.enea.it/moda-ml/repository/codelist/draft/gc_T11.xml

Other link: <http://docs.oasis-open.org/ubl/os-UBL-2.1/cl/gc/default/TransportEquipmentTypeCode-2.1.gc#>

Code	Description	Adoption note	Date of insertion
4A	box, steel		
4C	box, wood		
4G	Box, fibreboard		01/08/2018
4H	Box, plastic		01/08/2018
5H	Bag, woven plastic		01/08/2018
5L	Bag, textile		01/08/2018
5M	Bag, paper		
AJ	Cone		01/08/2018
BL	Bale, compressed		01/08/2018
BN	Bale, non-compressed		01/08/2018
BX	Box		
CI	Canister		01/08/2018
CL	Coil		01/08/2018
CN	Container, not otherwise specified as transport equipment		01/08/2018
CS	Case		01/08/2018
CT	Carton		01/08/2018
EC	Bag, plastic		01/08/2018
ED	Case, with pallet base		01/08/2018
EE	Case, with pallet base, wooden		01/08/2018
EF	Case, with pallet base, cardboard		01/08/2018
EG	Case, with pallet base, plastic		01/08/2018
EH	Case, with pallet base, metal		01/08/2018
FX	Bag, flexible container		01/08/2018
HN	Hanger		01/08/2018
NE	unpacked		
NF	Unpacked or unpackageged, single unit		01/08/2018
NG	Unpacked or unpackageged, multiple units		01/08/2018

OA	Pallet, CHEP 40 cm x 60 cm		01/08/2018
OB	Pallet, CHEP 80 cm x 120 cm		01/08/2018
OC	Pallet, CHEP 100 cm x 120 cm		01/08/2018
OD	Pallet, AS 4068-1993		01/08/2018
OE	Pallet, ISO T11		01/08/2018
PE	europallet (80x120)		
PX	pallet		
QS	box, plastic, solid		
RJ	Rack, clothing hanger		01/08/2018
RL	Reel		01/08/2018
SO	Spool		01/08/2018
TU	tube		
XD	bag, plastics film		
XK	bag,paper, multi-wall, water resistant		
ZZ	Mutually defined		01/08/2018

T21 - type of document

type or class to which the referenced document belongs

Agency name: eBIZ

Decoding table: T21

File codes list (Generic code): http://www.ebiz.enea.it/moda-ml/repository/codelist/draft/gc_T21.xml

Code	Description	Adoption note	Date of insertion
BIL	Bill of lading		07/03/2023
BOR	Blanket order		01/02/2018
CAT	Price catalogue - tech sheet		
CEO	Certificate of origin		13/04/2018
CER	Certificate		13/04/2018
CMR	CMR consignment note		07/03/2023
COC	Colour card		
CRN	Credit note		08/09/2017
CTO	Checking order		01/07/2013
CTR	Contract		
CXF	CxF3 file		01/07/2013
DAD	Darn order		
DDT	Delivery note (transport document)		
DEA	Despatch advise		

DER	Despatch request		
DR	Document Request		02/12/2014
EAD	Export Accompanying Document	adopted by European customs	12/05/2023
ECMR	electronic CMR consignment note		07/03/2023
ECUS	EXPORT Custom Declaration		07/03/2023
FOR	Forecast		02/12/2014
GSO	Garment stock offer		
GSX	Garment stock offer change		
ICUS	IMPORT Custom Declaration		07/03/2023
INV	Invoice		
KCC	Knitting-Clothing Commission Order		02/12/2014
KCI	Garment in Work Inventory Report		02/12/2014
LCA	LCA study		28/08/2022
LCAD	LCA study dataset		28/08/2022
M2M	Made to Measure Production Order		02/12/2014
MAS	Master marker		
MCI	Visual merchandising instruction		13/04/2018
OCH	Order change		
OFF	Offer		
ORD	Purchase order		
ORP	Order response		
OSR	order status request		
OSS	Offer status		02/12/2014
OST	Order status		
OUR	our reference		
PCO	Preferential certificate of origin		07/03/2023
PEF	PEF study		28/08/2022
PEFD	PEF study dataset		28/08/2022
PEFP	PEF environmental profile		07/03/2023
QR	Quality Report		02/12/2014
RAI	Raw Material in Work Inventory Report		02/12/2014
RDC	Raw dyeing commission order		
RDH	Raw dyeing order change		
RDR	Raw dyeing order response		
REA	Receiving advise		
REQ	Request for Offer		
RET	Return		02/12/2014
RSC	Spinning commission order		

RSH	Spinning order change		
RSR	Spinning order response		
SAD	Single Administrative Document	adopted by European customs	12/05/2023
SCL	Process sheet		
SDE	Self-declaration		07/03/2023
SDS	SDS - Safety data sheet		07/03/2023
SLCA	S-LCA Study		07/03/2023
SLCAD	S-LCA Study documentation		07/03/2023
TFC	Textile dyeing-finishing commission order		
TFX	Textile Dyeing-Finishing Order Change		02/12/2014
TPC	Textile printing commission order		
TPX	Textile Printing Order Change		02/12/2014
TWI	Textile in work inventory		
VMI	visual merchandising instructions		01/02/2018
WAC	Warping commission order		
WAYB	Waybill		07/03/2023
WEC	Weaving commission order		
YDC	Yarn dyeing commission order		
YDH	Yarn dyeing order change		
YDR	Yarn dyeing order response		
YTC	Twisting commission order		
YWI	Yarn in work inventory		

T44 - additional code type

qualifier of the additional coding of a product

Agency name: eBIZ

Decoding table: T44

File codes list (Generic code): http://www.ebiz.enea.it/moda-ml/repository/codelist/draft/gc_T44.xml

Code	Description	Adoption note	Date of insertion
CC	colour card		
CL	sales collection		
CO	company identification code		08/09/2017
DY	dye number		
LT	lot number		
MDI	Made in		08/09/2017
MS	manufacturing state		

PKG	packaging		09/09/2014
PL	product line		
RGB	RGB value		
SE	selvedge code		

T47 - stock type

code classifying a stock of goods with reference to the manufacturing status

Agency name: eBIZ

Decoding table: T47

File codes list (Generic code): http://www.ebiz.enea.it/moda-ml/repository/codelist/draft/gc_T47.xml

Code	Description	Adoption note	Date of insertion
ALL	overall stock		
DMG	damaged stock		
FIW	finished (post-works) stock		
PRW	pre-works stock		
WIP	work in progress stock		

T48 - garment part type

code specifying the type of component or part of a garment (sleeve, neck, ...)

Agency name: eBIZ

Decoding table: T48

File codes list (Generic code): http://www.ebiz.enea.it/moda-ml/repository/codelist/draft/gc_T48.xml

Code	Description	Adoption note	Date of insertion
BB	bottom back		01/08/2018
BF	bottom fore/front		01/08/2018
CO	collar		01/08/2018
CU	cuff		01/08/2018
DV	fore		
EM	embroidery		01/08/2018
OC	other component		01/08/2018
PO	pocket		01/08/2018
SC	back		
SL	sleeve		01/08/2018
TB	top back		01/08/2018

TF	top fore/front		01/08/2018
----	----------------	--	------------