



<http://www.ebiz-tcf.eu>

DRAFT

IMPLEMENTATION GUIDE TRANSACTION "SPINNING OFFER"

Version: draft

Date of release: 26/6/2023

Document code: G056

technical Documentation: <http://www.ebiz.enea.it>

XML Schemas repository: <http://www.ebiz.enea.it/moda-ml/repository/schema/draft/default.asp>

Guides repository: <http://www.ebiz.enea.it/moda-ml/repository/guide/draft/default.asp>

Guide filename: G056-eBIZ-SpinningOffer.pdf

0. PREMISE

This document contains a proposal for the updating and extension of eBIZ specifications starting from the eBIZ version 2018. Under the name of 'Draft version' it is reported the result of an extensive work of analysis and consultation aimed at developing and maintaining eBIZ specifications.

In particular, the content of this proposal is the result of various activities, mainly those carried out within the framework of the **TRICK project** funded by the European Commission: grant agreement 958352, call H2020-LOW-CARBON-CIRCULAR-INDUSTRIES-2020 / H2020-LCCI-2020-EASME-twostage.

The technical contents are backwards compatible with the latest official published version, with the exclusion of the totally new concepts added explicitly for the version that are thought as incremental evolution of the knowledge base.

1. BUSINESS DESCRIPTION

1.1 Scope

The present guide has been issued to assist the companies of the Textile-Clothing sector in the implementation of the standard XML document type "SPINNING OFFER", providing all the instruction required for its use in the context of e-commerce between Subcontractors and their Customers shown in the enclosed diagram

All the rules required for the construction and validation of the document are embedded into the specific XML-Schema, which is detailed in section "Implementation guide".

1.2 Generalities

The Offer is used by a Subcontractor to respond to the Request of a Yarn Producer for the spinning of a raw material.

The Offer is structured in four levels:

Macro-type of Work offered = document root (7 types of Request)

Product Family = document qualifier (type of product with reference to the manufacturing process; e.g.: combed yarn, jacquard weaved fabric, ..)

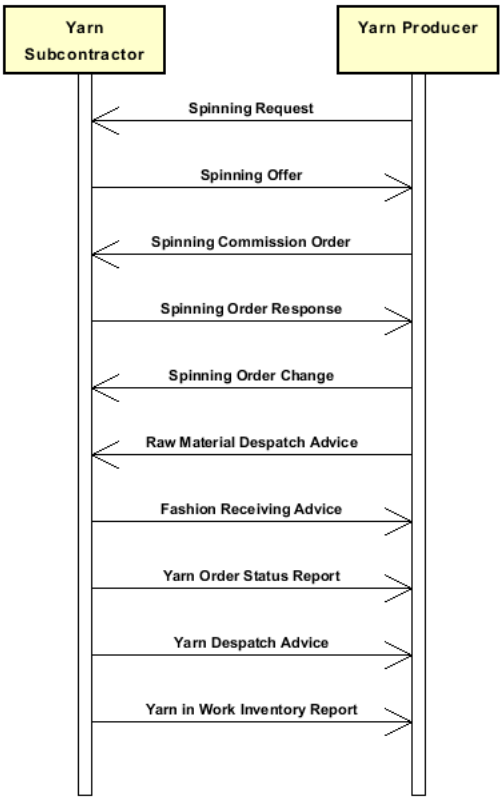
Product Specifications = "xxxSpecs" (technical characteristics and properties of the product)

Operations offered = "XXXMnfrOperation" (details of the works requested)

Quantities, unit measures and prices must be referred to the third level (Line Item)

1.3. Possible scenario

Subcontracted spinning of raw material



2. IMPLEMENTATION GUIDE

2.1 General structure of XML document

All the business data that can be exchanged through this class of documents are shown in the following "document structure", that provides a simplified vision of the Schema.

In particular:

- the two numbers following each element define its "cardinality" (minimum and maximum number of occurrences); the minimum equal zero indicates that the element is optional, the minimum greater than zero indicates that is mandatory;
- the bold character denotes the complex elements (aggregates of simple elements) that were built for the sake of functionality and re-usability of some complex informations sets. The child elements in each parent element are easily spotted as "indented";
- the symbol "@" denotes an attribute of the preceding element; here "the usage indicator (optional, required, ...)" is shown in square brackets.

Structure

RAWSpinOffer

```
@msgfunction [Optional] [Default= OR]
@yarnProcQualifier [Required]
@version [Optional] [Default= draft]
@useProfile [Optional]
| OFheader 1-1
| | msgN 1-1
| | - choose -
| | | msgID 0-1
| | | - or -
| | | docID 0-1
| | | @numberingOrg [Optional]
| | | - end choose -
| | | msgDate 1-1
| | | @dateForm [Optional]
| | | season 0-1
| | | @numberingOrg [Optional]
| | | @codeList [Optional]
| | | @listName [Optional]
| | | @listVersion [Optional]
| | | validityStart 0-1
| | | @dateForm [Optional]
| | | validityEnd 1-1
| | | @dateForm [Optional]
| | | refDoc 0-9
| | | @docType [Required]
| | | | docID 1-2
| | | | @numberingOrg [Optional]
| | | | docDate 0-1
| | | | @dateForm [Optional]
| | | | season 0-1
| | | | @numberingOrg [Optional]
| | | | @codeList [Optional]
| | | | @listName [Optional]
| | | | @listVersion [Optional]
| | | | itemID 0-1
| | | | attachment 0-1
| | | | @uid [Optional]
| | | | | fileName 0-1
| | | | | @numberingOrg [Optional]
| | | | | binaryObject 0-1
| | | | | @format [Optional]
| | | | | @mime [Optional]
| | | | | @encoding [Optional]
| | | | | @characterSet [Optional]
| | | | | externalReference 0-99
| | | | | | uri 1-1
| | | | | | @isURL [Optional] [Default= true]
| | | | | | mimeTypeCode 0-1
```

- | | | | formatCode 0-1
- | | | | encodingCode 0-1
- | | | | characterSetCode 0-1
- | | | hashFootprint 0-1
- | | | | @schemeID [Optional]
- | | | | @hashMethod [Required]
- | | | **blockChainReference 0-9**
- | | | | uri 1-1
- | | | | | @isURL [Optional] [Default= true]
- | | | | transactionReceipt 1-9

buyer 1-1

- | | @logo [Optional]
- | | @sender [Optional]
- | | | id 1-1
- | | | | @numberingOrg [Optional]
- | | | additionalIdentifier 0-9
- | | | | @numberingOrg [Optional]
- | | | | @idQualifier [Optional]
- | | | legalName 0-1
- | | | dept 0-1
- | | | subDept 0-1
- | | | person 0-1
- | | | | @email [Optional]
- | | | | @phone [Optional]
- | | | | @fax [Optional]
- | | | street 0-1
- | | | city 0-1
- | | | subCountry 0-1
- | | | country 0-1
- | | | postCode 0-1
- | | | **geoCoordinates 0-1**
- | | | | @um [Optional] [Default= DEGD]
- | | | | @geoRefSystem [Optional]
- | | | | | xGeoCoord 1-1
- | | | | | yGeoCoord 1-1
- | | | | | zGeoCoord 0-1

- choose -

subContractor 0-1

- | | @sender [Optional]
- | | | id 1-1
- | | | | @numberingOrg [Optional]
- | | | legalName 0-1
- | | | dept 0-1
- | | | subDept 0-1
- | | | person 0-1
- | | | | @email [Optional]
- | | | | @phone [Optional]
- | | | | @fax [Optional]
- | | | street 0-1
- | | | city 0-1
- | | | subCountry 0-1
- | | | country 0-1
- | | | postCode 0-1
- | | | **geoCoordinates 0-1**
- | | | | @um [Optional] [Default= DEGD]
- | | | | @geoRefSystem [Optional]
- | | | | | xGeoCoord 1-1
- | | | | | yGeoCoord 1-1
- | | | | | zGeoCoord 0-1

- or -

supplier 0-1

- | | @logo [Optional]
- | | @sender [Optional]
- | | | id 1-1
- | | | | @numberingOrg [Optional]
- | | | additionalIdentifier 0-9
- | | | | @numberingOrg [Optional]
- | | | | @idQualifier [Optional]

```

| | | legalName 0-1
| | | dept 0-1
| | | subDept 0-1
| | | person 0-1
| | | @email [Optional]
| | | @phone [Optional]
| | | @fax [Optional]
| | | street 0-1
| | | city 0-1
| | | subCountry 0-1
| | | country 0-1
| | | postCode 0-1
| | | geoCoordinates 0-1
| | | @um [Optional] [Default= DEGD]
| | | @geoRefSystem [Optional]
| | | | xGeoCoord 1-1
| | | | yGeoCoord 1-1
| | | | zGeoCoord 0-1

```

- end choose -

```

| | thirdParty 0-5
| | @VAT [Optional]
| | @role [Required]
| | @sender [Optional]
| | | id 1-1
| | | @numberingOrg [Optional]
| | | legalName 0-1
| | | dept 0-1
| | | subDept 0-1
| | | person 0-1
| | | @email [Optional]
| | | @phone [Optional]
| | | @fax [Optional]
| | | street 0-1
| | | city 0-1
| | | subCountry 0-1
| | | country 0-1
| | | postCode 0-1
| | | geoCoordinates 0-1
| | | @um [Optional] [Default= DEGD]
| | | @geoRefSystem [Optional]
| | | | xGeoCoord 1-1
| | | | yGeoCoord 1-1
| | | | zGeoCoord 0-1
| | note 0-99
| | @numberingOrg [Optional]
| | @codeList [Optional]
| | @noteLabel [Optional]

```

terms 0-1

```

| | payment 0-5
| | @finDiscount [Optional]
| | @finSurcharge [Optional]
| | - choose -
| | | payTerm 1-1
| | - or -
| | | payTermText 1-1
| | - end choose -
| | | payMode 0-1
| | insPayment 0-5
| | @part [Required]
| | - choose -
| | | payTerm 1-1
| | - or -
| | | payTermText 1-1
| | - end choose -
| | | payMode 0-1
| | trade 0-1
| | - choose -

```

```

| | | incoTermText 1-1
| | - or -
| | | incoTerm 1-1
| | - end choose -
| | - choose -
| | | tradeLocation 0-1
| | | | location 0-1
| | | | | @LRI [Optional]
| | | | | legalName 0-1
| | | | | dept 0-1
| | | | | subDept 0-1
| | | | | person 0-1
| | | | | | @email [Optional]
| | | | | | @phone [Optional]
| | | | | | @fax [Optional]
| | | | | street 0-1
| | | | | city 0-1
| | | | | subCountry 0-1
| | | | | country 0-1
| | | | | postCode 0-1
| | | | | geoCoordinates 0-1
| | | | | | @um [Optional] [Default= DEGD]
| | | | | | @geoRefSystem [Optional]
| | | | | | | xGeoCoord 1-1
| | | | | | | yGeoCoord 1-1
| | | | | | | zGeoCoord 0-1
| | - or -
| | | location 0-1
| | | | @LRI [Optional]
| | - end choose -
| | | transInfo 0-5
| | | | @transReason [Optional]
| | | | | @progr [Optional]
| | | | | | transMode 1-1
| | | | | | carrier 0-1
| | | - choose -
| | | | deliveryLocation 0-1
| | | | | location 0-1
| | | | | | @LRI [Optional]
| | | | | | legalName 0-1
| | | | | | dept 0-1
| | | | | | subDept 0-1
| | | | | | person 0-1
| | | | | | | @email [Optional]
| | | | | | | @phone [Optional]
| | | | | | | @fax [Optional]
| | | | | | street 0-1
| | | | | | city 0-1
| | | | | | subCountry 0-1
| | | | | | country 0-1
| | | | | | postCode 0-1
| | | | | | geoCoordinates 0-1
| | | | | | | @um [Optional] [Default= DEGD]
| | | | | | | @geoRefSystem [Optional]
| | | | | | | | xGeoCoord 1-1
| | | | | | | | yGeoCoord 1-1
| | | | | | | | zGeoCoord 0-1
| | - or -
| | | deliveryPlace 0-1
| | - end choose -
| | | grossWeight 0-1
| | | | @um [Required]
| | | | netWeight 0-1
| | | | | @um [Required]
| | | | transMeans 0-1
| | | | | @propulsionSystemCode [Optional]
| | | | transCondition 0-3
| | | | transConditionText 0-1

```

```

- choose -
| | | despatchPlace 0-1
- or -
| | | despatchLocation 0-1
| | | | location 0-1
| | | | | @LRI [Optional]
| | | | | legalName 0-1
| | | | | dept 0-1
| | | | | subDept 0-1
| | | | | person 0-1
| | | | | @email [Optional]
| | | | | @phone [Optional]
| | | | | @fax [Optional]
| | | | | street 0-1
| | | | | city 0-1
| | | | | subCountry 0-1
| | | | | country 0-1
| | | | | postCode 0-1
| | | | | geoCoordinates 0-1
| | | | | | @um [Optional] [Default= DEGD]
| | | | | | @geoRefSystem [Optional]
| | | | | | | xGeoCoord 1-1
| | | | | | | yGeoCoord 1-1
| | | | | | | zGeoCoord 0-1
- end choose -
| | | | despatchDate 0-1
| | | | | @dateForm [Optional]
| | | | | delEffectiveDate 0-1
| | | | | | @dateForm [Optional]
| | | | | routeLength 0-1
| | | | | | @um [Required]
| | | | allowanceCharge 0-9
| | | | | @um [Optional]
| | | | | | @VAT [Optional]
| | | | | | @minQty [Optional]
| | | | | | @currency [Optional]
| | | | | | @maxQty [Optional]
| | | | | | @isCharge [Optional]
- choose -
| | | | | AC_category 1-1
- or -
| | | | | | AC_categoryText 1-1
- end choose -
- choose -
| | | | | AC_percent 1-1
- or -
| | | | | | AC_amount 1-1
| | | | | | @currency [Optional]
- end choose -
| | | | | dtScheme 0-1
| | | | | | @taxType [Required]
| | | | | | | taxCategory 0-1
| | | | | | | taxRate 0-1
| | | | | | | legalRef 0-1
| | | | | | | @numberingOrg [Optional]
| | | | | | | @codeList [Optional]
| | | | | | | @listName [Optional]
| | | | | | | @listVersion [Optional]
| | | | | | | note 0-99
| | | | | | | @numberingOrg [Optional]
| | | | | | | @codeList [Optional]
| | | | | | | @noteLabel [Optional]

| RSOFbody 1-1
| | RSOFitem 1-unbounded
| | | @act [Required]
| | | | lineN 1-1
| | | | @VAT [Optional]

```


refDoc 0-9*@docType [Required]*

docID 1-2

@numberingOrg [Optional]

docDate 0-1

@dateForm [Optional]

season 0-1

*@numberingOrg [Optional]**@codeList [Optional]**@listName [Optional]**@listVersion [Optional]*

itemID 0-1

attachment 0-1*@uid [Optional]*

fileName 0-1

@numberingOrg [Optional]

binaryObject 0-1

*@format [Optional]**@mime [Optional]**@encoding [Optional]**@characterSet [Optional]***externalReference 0-99**

uri 1-1

@isURL [Optional] [Default= true]

mimeType 0-1

formatCode 0-1

encodingCode 0-1

characterSetCode 0-1

hashFootprint 0-1

*@schemeID [Optional]**@hashMethod [Required]***blockChainReference 0-9**

uri 1-1

@isURL [Optional] [Default= true]

transactionReceipt 1-9

yarnCompos 0-1

percCompos 1-9

*@fibre [Required]**@materialSource [Optional]**@recyclingProcessMethod [Optional]**@percSourcesRenewable [Optional]**@validationMethod [Optional]**@recyclingProcessEfficiency [Optional]***yarnSpecs 0-99***- choose -*

| yarnCharText 1-1

- or -

| yarnChar 1-1

- end choose -

| experimValue 0-1

*@um [Optional]**@method [Optional]**@application [Optional]**@idCO [Optional]*

| specValue 0-1

*@um [Optional]**@source [Optional]**@method [Optional]**@application [Optional]**@CV [Optional]**- choose -*

| tolerance 0-2

*@um [Required]**- or -*

| pcTolerance 0-2

*@um [Optional]**- end choose -*

| qty 1-2

```

| | | @um [Required]
| | | price 1-1
| | | @um [Optional]
| | | @priceQualifier [Optional] [Default= NET]
| | | @currency [Optional]
| | | deliveryDate 1-1
| | | @dateForm [Optional]
| | | notBeforeDate 0-1
| | | @dateForm [Optional]
| | | thirdParty 0-3
| | | @VAT [Optional]
| | | @role [Required]
| | | @sender [Optional]
| | | | id 1-1
| | | | @numberingOrg [Optional]
| | | | legalName 0-1
| | | | dept 0-1
| | | | subDept 0-1
| | | | person 0-1
| | | | @email [Optional]
| | | | @phone [Optional]
| | | | @fax [Optional]
| | | | street 0-1
| | | | city 0-1
| | | | subCountry 0-1
| | | | country 0-1
| | | | postCode 0-1
| | | | geoCoordinates 0-1
| | | | @um [Optional] [Default= DEGD]
| | | | @geoRefSystem [Optional]
| | | | | xGeoCoord 1-1
| | | | | yGeoCoord 1-1
| | | | | zGeoCoord 0-1
| | | | yarnMnfrOperation 1-9
| | | | - choose -
| | | | | jobName 1-1
| | | | - or -
| | | | | yarnJob 1-1
| | | | - end choose -
| | | | | yarnJobTech 0-1
| | | | | refDoc 0-9
| | | | | @docType [Required]
| | | | | | docID 1-2
| | | | | | @numberingOrg [Optional]
| | | | | | docDate 0-1
| | | | | | @dateForm [Optional]
| | | | | | season 0-1
| | | | | | @numberingOrg [Optional]
| | | | | | @codeList [Optional]
| | | | | | @listName [Optional]
| | | | | | @listVersion [Optional]
| | | | | | itemID 0-1
| | | | | | attachment 0-1
| | | | | | @uid [Optional]
| | | | | | | fileName 0-1
| | | | | | | @numberingOrg [Optional]
| | | | | | | binaryObject 0-1
| | | | | | | @format [Optional]
| | | | | | | @mime [Optional]
| | | | | | | @encoding [Optional]
| | | | | | | @characterSet [Optional]
| | | | | | | externalReference 0-99
| | | | | | | | uri 1-1
| | | | | | | | @isURL [Optional] [Default= true]
| | | | | | | | mimeTypeCode 0-1
| | | | | | | | formatCode 0-1
| | | | | | | | encodingCode 0-1
| | | | | | | | characterSetCode 0-1

```

```

| | | | | hashFootprint 0-1
| | | | |   @schemeID [Optional]
| | | | |   @hashMethod [Required]
| | | | |   blockChainReference 0-9
| | | | |     uri 1-1
| | | | |     @isURL [Optional] [Default= true]
| | | | |     transactionReceipt 1-9
| | | | | yarnMachine 0-1
| | | | | yarnMachineSpecs 0-9
| | | | |   yarnMachineParam 1-1
| | | | |   specValue 0-1
| | | | |   @um [Optional]
| | | | |   @source [Optional]
| | | | |   @method [Optional]
| | | | |   @application [Optional]
| | | | |   @CV [Optional]
| | | | | - choose -
| | | | |   tolerance 0-2
| | | | |   @um [Required]
| | | | | - or -
| | | | |   pcTolerance 0-2
| | | | |   @um [Optional]
| | | | | - end choose -
| | | | |   note 0-99
| | | | |   @numberingOrg [Optional]
| | | | |   @codeList [Optional]
| | | | |   @noteLabel [Optional]
| | | | | rawMnfrOperation 0-9
| | | | | - choose -
| | | | |   rawJob 1-1
| | | | | - or -
| | | | |   jobName 1-1
| | | | | - end choose -
| | | | | refDoc 0-9
| | | | |   @docType [Required]
| | | | |   docID 1-2
| | | | |   @numberingOrg [Optional]
| | | | |   docDate 0-1
| | | | |   @dateForm [Optional]
| | | | |   season 0-1
| | | | |   @numberingOrg [Optional]
| | | | |   @codeList [Optional]
| | | | |   @listName [Optional]
| | | | |   @listVersion [Optional]
| | | | |   itemID 0-1
| | | | |   attachment 0-1
| | | | |   @uid [Optional]
| | | | |   fileName 0-1
| | | | |   @numberingOrg [Optional]
| | | | |   binaryObject 0-1
| | | | |   @format [Optional]
| | | | |   @mime [Optional]
| | | | |   @encoding [Optional]
| | | | |   @characterSet [Optional]
| | | | |   externalReference 0-99
| | | | |     uri 1-1
| | | | |     @isURL [Optional] [Default= true]
| | | | |     mimeTypeCode 0-1
| | | | |     formatCode 0-1
| | | | |     encodingCode 0-1
| | | | |     characterSetCode 0-1
| | | | |     hashFootprint 0-1
| | | | |     @schemeID [Optional]
| | | | |     @hashMethod [Required]
| | | | |     blockChainReference 0-9
| | | | |       uri 1-1
| | | | |       @isURL [Optional] [Default= true]
| | | | |       transactionReceipt 1-9

```

```

| | | | note 0-99
| | | | @numberingOrg [Optional]
| | | | @codeList [Optional]
| | | | @noteLabel [Optional]
| | | | dtScheme 0-1
| | | | @taxType [Required]
| | | | taxCategory 0-1
| | | | taxRate 0-1
| | | | legalRef 0-1
| | | | @numberingOrg [Optional]
| | | | @codeList [Optional]
| | | | @listName [Optional]
| | | | @listVersion [Optional]
| | | | note 0-99
| | | | @numberingOrg [Optional]
| | | | @codeList [Optional]
| | | | @noteLabel [Optional]
| | | | note 0-99
| | | | @numberingOrg [Optional]
| | | | @codeList [Optional]
| | | | @noteLabel [Optional]

```

2.2 Detailed description of document elements

Following tables show all elements (complex and simple) used in this document. Description includes: 1) element's information: xml tag, name, brief description, data type and syntax constraints; 2) information about use of the element in a particular position in the document: xpath and possible associated notes.

2.2.1 Complex elements (Aggregate Business Information Entities)

Complex elements are those elements whose content is composed of other elements (childs). Complex elements are alphabetically ordered.

| | |
|----------------------------|--|
| allowanceCharge | Allowances and Charges related to an Order or a contract (XPath RAWSpinOffer/terms/allowanceCharge) 0-9 |
| attachment | an attached document. An attachment can refer to an external document or be included with the document being exchanged (XPath RAWSpinOffer/RSOFbody/RSOFitem/refDoc/attachment) 0-1 (XPath RAWSpinOffer/OFheader/refDoc/attachment) 0-1 (XPath RAWSpinOffer/RSOFbody/RSOFitem/yarnMnfrOperation/refDoc/attachment) 0-1 (XPath RAWSpinOffer/RSOFbody/RSOFitem/rawMnfrOperation/refDoc/attachment) 0-1 |
| blockChainReference | blockchain reference - base type: string, max length: 80, (XPath RAWSpinOffer/RSOFbody/RSOFitem/refDoc/attachment/blockChainReference) 0-9 (XPath RAWSpinOffer/RSOFbody/RSOFitem/rawMnfrOperation/refDoc/attachment/blockChainReference) 0-9 (XPath RAWSpinOffer/RSOFbody/RSOFitem/yarnMnfrOperation/refDoc/attachment/blockChainReference) 0-9 (XPath RAWSpinOffer/OFheader/refDoc/attachment/blockChainReference) 0-9 |
| buyer | details of the Buyer (party that buys the good or service that is object of the current collaborative process) - base type: Nad, (XPath RAWSpinOffer/OFheader/buyer) 1-1 |
| deliveryLocation | data relating to a place of delivery(indicate at least element location or address, city and country) - base type: Nad, (XPath RAWSpinOffer/terms/transInfo/deliveryLocations) 0-1 - note: <i>use to represent addresses in a structured way or with geographical coordinates</i> |
| despatchLocation | data relating to a place of despatch (indicate at least element location or address, city and country) - base type: Nad, (XPath RAWSpinOffer/terms/transInfo/despatchLocation) 0-1 - note: <i>use to represent addresses in a structured way</i> |
| dtScheme | set of data usable to declare the duty or tax applied (XPath RAWSpinOffer/terms/allowanceCharge/dtScheme) 0-1 (XPath RAWSpinOffer/RSOFbody/RSOFitem/dtScheme) 0-1 - note: <i>recommended alternative to the attribute @VAT</i> |
| externalReference | details about an external object, such as a document stored at a remote location (XPath RAWSpinOffer/RSOFbody/RSOFitem/refDoc/attachment/externalReference) 0-99 (XPath RAWSpinOffer/RSOFbody/RSOFitem/yarnMnfrOperation/refDoc/attachment/externalReference) 0-99 (XPath RAWSpinOffer/OFheader/refDoc/attachment/externalReference) 0-99 (XPath RAWSpinOffer/RSOFbody/RSOFitem/rawMnfrOperation/refDoc/attachment/externalReference) 0-99 |
| geoCoordinates | geographical coordinates (XPath RAWSpinOffer/OFheader/buyer/geoCoordinates) 0-1 (XPath RAWSpinOffer/RSOFbody/RSOFitem/thirdParty/geoCoordinates) 0-1 (XPath RAWSpinOffer/OFheader/thirdParty/geoCoordinates) 0-1 (XPath RAWSpinOffer/terms/trade/tradeLocation/geoCoordinates) 0-1 (XPath RAWSpinOffer/terms/transInfo/despatchLocation/geoCoordinates) 0-1 |

| | |
|-------------------------|---|
| | (XPath RAWSpinOffer/OFheader/supplier/geoCoordinates) 0-1 (XPath RAWSpinOffer/OFheader/subContractor/geoCoordinates) 0-1 (XPath RAWSpinOffer/terms/transInfo/deliveryLocation/geoCoordinates) 0-1 |
| insPayment | payment details for payment by installments (XPath RAWSpinOffer/terms/insPayment) 0-5 - note: <i>excluded the case of offers, this set of data is alternative to payment set and must be iterated for each payment installment</i> |
| OFheader | header of the document OFFER (XPath RAWSpinOffer/OFheader) 1-1 |
| payment | payment details for payment all in one (XPath RAWSpinOffer/terms/payment) 0-5 - note: <i>excluded the case of offers, this set of data is alternative to insPayment, it can be iterated to specify alternative terms of payment (e.g.: 60 days or 30 days with 3% discount)</i> |
| rawMnfrOperation | details of a manufacturing operation on raw material used for manufacturing a yarn product (XPath RAWSpinOffer/RSOFFbody/RSOFFitem/rawMnfrOperation) 0-9 |
| refDoc | identification of a document and of an item thereof, to which the message makes reference (XPath RAWSpinOffer/RSOFFbody/RSOFFitem/refDoc) 0-9 - note: <i>At least one occurrence should contain a reference to the line of the corresponding Request for Offer (docType=REQ)</i> (XPath RAWSpinOffer/RSOFFbody/RSOFFitem/yarnMnfrOperation/refDoc) 0-9 - note: <i>here a Process Sheet transmitted to the Subcontractor can be referenced</i> (XPath RAWSpinOffer/RSOFFbody/RSOFFitem/rawMnfrOperation/refDoc) 0-9 (XPath RAWSpinOffer/OFheader/refDoc) 0-9 - note: <i>At least one occurrence should contain a reference to the corresponding Request for Offer (docType=REQ)</i> |
| RSOFFbody | body of the document OFFER OF SPINNING (XPath RAWSpinOffer/RSOFFbody) 1-1 |
| RSOFFitem | line of the document OFFER OF SPINNING (XPath RAWSpinOffer/RSOFFbody/RSOFFitem) 1-unbounded |
| subContractor | details of the Sub-contractor - base type: Nad, (XPath RAWSpinOffer/OFheader/subContractor) 0-1 - note: <i>At least one out of Supplier and Subcontractor must be indicated.</i> |
| supplier | details of the Supplier (party that supplies the good or service that is object of the current collaborative process) - base type: Nad, (XPath RAWSpinOffer/OFheader/supplier) 0-1 - note: <i>At least one out of Supplier and Subcontractor must be indicated.</i> |
| terms | details of the commercial obligations for payment and delivery (XPath RAWSpinOffer/terms) 0-1 |
| thirdParty | identification and details of the Third Party, different from Sender and Receiver of the document - base type: Nad, (XPath RAWSpinOffer/RSOFFbody/RSOFFitem/thirdParty) 0-3 (XPath RAWSpinOffer/OFheader/thirdParty) 0-5 - note: <i>In the Offer case it might give reference to the Originator of the request.</i> |
| trade | general terms of trade for the specified supply (XPath RAWSpinOffer/terms/trade) 0-1 |
| tradeLocation | data relating to the place to which the trade conditions refer (indicate at least element location or address, city and country) - base type: Nad, (XPath RAWSpinOffer/terms/trade/tradeLocation) 0-1 - note: <i>address of the place to which the INCOTERM applies</i> |
| transInfo | details of transport: mode, carrier and delivery place (XPath RAWSpinOffer/terms/transInfo) 0-5 |

| | |
|--------------------------|--|
| yarnCompos | fibrous composition of a yarn product (XPath RAWSpinOffer/RSOFFbody/RSOFFitem/yarnCompos) 0-1 |
| yarnMachineSpecs | technical specifications of a machine used in an operation of a work cycle for yarn (type and settings) (XPath RAWSpinOffer/RSOFFbody/RSOFFitem/yarnMnfrOperation/yarnMachineSpecs) 0-9 |
| yarnMnfrOperation | details of a manufacturing operation used for manufacturing a yarn product (XPath RAWSpinOffer/RSOFFbody/RSOFFitem/yarnMnfrOperation) 1-9 |
| yarnSpecs | technical properties of a yarn product linked to an operation of the sub-contracted production of yarn or to the purchase of yarn (XPath RAWSpinOffer/RSOFFbody/RSOFFitem/yarnSpecs) 0-99 |

2.2.2 Simple elements (Basic Business Information Entities)

Simple elements are those elements whose content is characterized by a data type plus a domain of possible values. Simple elements are alphabetically ordered.

| | |
|----------------------|---|
| AC_amount | amount of an Allowance or Charge - base type: decimal, fraction digits: 2, (XPath RAWSpinOffer/terms/allowanceCharge/AC_amount) 1-1 |
| AC_category | coded specification of an Allowance or Charge - base type: string, cod. table: T41 http://www.ebiz.enea.it/moda-ml/repository/codelist/draft/gc_T41.xml (XPath RAWSpinOffer/terms/allowanceCharge/AC_category) 1-1 |
| AC_categoryText | free text description of an Allowance or Charge - base type: string, max length: 250, (XPath RAWSpinOffer/terms/allowanceCharge/AC_categoryText) 1-1 |
| AC_percent | amount of an Allowance or Charge as a percentage (always non negative value) - base type: decimal, max inclusive: 100, fraction digits: 2, (XPath RAWSpinOffer/terms/allowanceCharge/AC_percent) 1-1 |
| @act | status that the current line assigns to the line addressed in the reference document; if it is already canceled it maintains the status. - base type: string, cod. table: NT5 http://www.ebiz.enea.it/moda-ml/repository/codelist/draft/gc_NT5.xml (XPath RAWSpinOffer/RSOFFbody/RSOFFitem/@act) [Required] |
| additionalIdentifier | additional identification code of a Party, for example customs registries or others - base type: string, max length: 15, (XPath RAWSpinOffer/OFFheader/supplier/additionalIdentifier) 0-9 - note: identifiers for example for exports, such as MID (Manufacturer Identification Code), REX (identifier in EU Registered Exporter system) (XPath RAWSpinOffer/OFFheader/buyer/additionalIdentifier) 0-9 - note: identifiers for example for exports, such as MID (Manufacturer Identification Code), REX (identifier in Registered Exporter system) |
| @application | force or similar condition (e.g. no. of revolutions) applied in a test as specified within the standard - base type: string, max length: 15, (XPath RAWSpinOffer/RSOFFbody/RSOFFitem/yarnSpecs/specValue/@application) [Optional] (XPath RAWSpinOffer/RSOFFbody/RSOFFitem/yarnSpecs/experimValue/@application) [Optional] (XPath RAWSpinOffer/RSOFFbody/RSOFFitem/yarnMnfrOperation/yarnMachineSpecs/specValue/@application) [Optional] |
| binaryObject | a binary large object containing an attached document, Coding 'base64Binary' is recommended. - base type: base64Binary, (XPath RAWSpinOffer/RSOFFbody/RSOFFitem/yarnMnfrOperation/refDoc/attachment/binaryObject) 0-1 (XPath RAWSpinOffer/OFFheader/refDoc/attachment/binaryObject) 0-1 (XPath RAWSpinOffer/RSOFFbody/RSOFFitem/refDoc/attachment/binaryObject) 0-1 (XPath RAWSpinOffer/RSOFFbody/RSOFFitem/rawMnfrOperation/refDoc/attachment/binaryObject) 0-1 |

| | |
|------------------|--|
| carrier | <p>identification of the transport carrier</p> <p>- base type: string, max length: 40, (XPath RAWSpinOffer/terms/transInfo/carrier) 0-1</p> |
| @characterSet | <p>the character set of the binary object (examples UTF-8, UTF-16, Windows-1252, ISO-8859-7,...)</p> <p>- base type: normalizedString, (XPath RAWSpinOffer/OFheader/refDoc/attachment/binaryObject/@characterSet) [Optional] (XPath RAWSpinOffer/RsoFbody/RsoFitem/rawMnfrOperation/refDoc/attachment/binaryObject/@characterSet) [Optional] (XPath RAWSpinOffer/RsoFbody/RsoFitem/yarnMnfrOperation/refDoc/attachment/binaryObject/@characterSet) [Optional] (XPath RAWSpinOffer/RsoFbody/RsoFitem/refDoc/attachment/binaryObject/@characterSet) [Optional]</p> |
| characterSetCode | <p>the character set of an external document (examples UTF-8, UTF-16, Windows-1252, ISO-8859-7,...)</p> <p>- base type: normalizedString, (XPath RAWSpinOffer/RsoFbody/RsoFitem/yarnMnfrOperation/refDoc/attachment/externalReference/characterSetCode) 0-1 (XPath RAWSpinOffer/OFheader/refDoc/attachment/externalReference/characterSetCode) 0-1 (XPath RAWSpinOffer/RsoFbody/RsoFitem/rawMnfrOperation/refDoc/attachment/externalReference/characterSetCode) 0-1 (XPath RAWSpinOffer/RsoFbody/RsoFitem/refDoc/attachment/externalReference/characterSetCode) 0-1</p> |
| city | <p>name of the city (town, village)</p> <p>- base type: string, max length: 40, (XPath RAWSpinOffer/terms/transInfo/deliveryLocation/city) 0-1 (XPath RAWSpinOffer/OFheader/subContractor/city) 0-1 (XPath RAWSpinOffer/OFheader/supplier/city) 0-1 (XPath RAWSpinOffer/OFheader/thirdParty/city) 0-1 (XPath RAWSpinOffer/OFheader/buyer/city) 0-1 (XPath RAWSpinOffer/terms/trade/tradeLocation/city) 0-1 (XPath RAWSpinOffer/terms/transInfo/despatchLocation/city) 0-1 (XPath RAWSpinOffer/RsoFbody/RsoFitem/thirdParty/city) 0-1</p> |
| @codeList | <p>it specifies the URL where the list of codes used to make an instance of the element can be found</p> <p>- base type: string, max length: 255, (XPath RAWSpinOffer/OFheader/note/@codeList) [Optional]</p> <p>- nota: <i>must be used to provide (URL) the list of codes used in "noteLabel"</i> (XPath RAWSpinOffer/RsoFbody/RsoFitem/dtScheme/legalRef/@codeList) [Optional] (XPath RAWSpinOffer/OFheader/refDoc/season/@codeList) [Optional]</p> <p>- nota: <i>this attribute should be used either single or coupled with "listName" and "listVersion"</i> (XPath RAWSpinOffer/RsoFbody/RsoFitem/refDoc/season/@codeList) [Optional]</p> <p>- nota: <i>this attribute should be used either single or coupled with "listName" and "listVersion"</i> (XPath RAWSpinOffer/terms/allowanceCharge/dtScheme/note/@codeList) [Optional]</p> <p>- nota: <i>must be used to provide (URL) the list of codes used in "noteLabel"</i> (XPath RAWSpinOffer/OFheader/season/@codeList) [Optional]</p> <p>- nota: <i>this attribute should be used either single or coupled with "listName" and "listVersion"</i> (XPath RAWSpinOffer/terms/allowanceCharge/dtScheme/legalRef/@codeList) [Optional] (XPath RAWSpinOffer/RsoFbody/RsoFitem/dtScheme/note/@codeList) [Optional]</p> <p>- nota: <i>must be used to provide (URL) the list of codes used in "noteLabel"</i> (XPath RAWSpinOffer/RsoFbody/RsoFitem/rawMnfrOperation/refDoc/season/@codeList) [Optional]</p> <p>- nota: <i>this attribute should be used either single or coupled with "listName" and "listVersion"</i> (XPath RAWSpinOffer/RsoFbody/RsoFitem/note/@codeList) [Optional]</p> <p>- nota: <i>must be used to provide (URL) the list of codes used in "noteLabel"</i> (XPath RAWSpinOffer/RsoFbody/RsoFitem/yarnMnfrOperation/note/@codeList) [Optional]</p> <p>- nota: <i>must be used to provide (URL) the list of codes used in "noteLabel"</i> (XPath RAWSpinOffer/RsoFbody/RsoFitem/yarnMnfrOperation/refDoc/season/@codeList) [Optional]</p> <p>- nota: <i>this attribute should be used either single or coupled with "listName" and "listVersion"</i></p> |

| | |
|------------------|--|
| | <p><i>rsion"</i> (XPath RAWSpinOffer/RSOFFbody/RSOFFitem/rawMnfrOperation/ note/@codeList) [Optional] - nota: <i>must be used to provide (URL) the list of codes used in "noteLabel"</i></p> |
| country | <p>code of the nation - base type: string, cod. table: T10 http://www.ebiz.enea.it/moda-ml/repository/codelist/draft/gc_T10.xml (XPath RAWSpinOffer/terms/trade/tradeLocation/country) 0-1 (XPath RAWSpinOffer/terms/transInfo/deliveryLocation/country) 0-1 (XPath RAWSpinOffer/RSOFFbody/RSOFFitem/thirdParty/country) 0-1 (XPath RAWSpinOffer/terms/transInfo/despatchLocation/country) 0-1 (XPath RAWSpinOffer/OFFheader/thirdParty/country) 0-1 (XPath RAWSpinOffer/OFFheader/supplier/country) 0-1 (XPath RAWSpinOffer/OFFheader/subContractor/country) 0-1 (XPath RAWSpinOffer/OFFheader/buyer/country) 0-1</p> |
| @currency | <p>currency in which a specified monetary data is expressed - base type: string, cod. table: T9 http://www.ebiz.enea.it/moda-ml/repository/codelist/draft/gc_T9.xml (XPath RAWSpinOffer/RSOFFbody/RSOFFitem/price/@currency) [Optional] - nota: <i>Currency referred by the price.</i> (XPath RAWSpinOffer/terms/allowanceCharge/@currency) [Optional] (XPath RAWSpinOffer/terms/allowanceCharge/AC_amount/@currency) [Optional]</p> |
| @CV | <p>coefficient of variation (CV) of a measurement - base type: decimal, (XPath RAWSpinOffer/RSOFFbody/RSOFFitem/yarnSpecs/specValue/@CV) [Optional] (XPath RAWSpinOffer/RSOFFbody/RSOFFitem/yarnMnfrOperation/ yarnMachineSpecs/specValue/@CV) [Optional]</p> |
| @dateForm | <p>format used for the date - base type: string, cod. table: NT29 http://www.ebiz.enea.it/moda-ml/repository/codelist/draft/gc_NT29.xml (XPath RAWSpinOffer/RSOFFbody/RSOFFitem/deliveryDate/@dateForm) [Optional] (XPath RAWSpinOffer/terms/transInfo/delEffectiveDate/@dateForm) [Optional] (XPath RAWSpinOffer/terms/transInfo/despatchDate/@dateForm) [Optional] (XPath RAWSpinOffer/RSOFFbody/RSOFFitem/notBeforeDate/@dateForm) [Optional] (XPath RAWSpinOffer/OFFheader/msgDate/@dateForm) [Optional] (XPath RAWSpinOffer/RSOFFbody/RSOFFitem/yarnMnfrOperation/ refDoc/docDate/@dateForm) [Optional] (XPath RAWSpinOffer/OFFheader/validityEnd/@dateForm) [Optional] (XPath RAWSpinOffer/RSOFFbody/RSOFFitem/rawMnfrOperation/ refDoc/docDate/@dateForm) [Optional] (XPath RAWSpinOffer/OFFheader/refDoc/docDate/@dateForm) [Optional] (XPath RAWSpinOffer/RSOFFbody/RSOFFitem/refDoc/docDate/@dateForm) [Optional] (XPath RAWSpinOffer/OFFheader/validityStart/@dateForm) [Optional]</p> |
| delEffectiveDate | <p>actual delivery date (estimated or occurred in case of receipt docs), it might be different from what agreed between the parties. Format according to one of the patterns indicated by the dateForm attribute: YYYY-MM-DD, YYYY-MM-DD:HH-MM or YYYY-WW. - base type: string, (XPath RAWSpinOffer/terms/transInfo/delEffectiveDate) 0-1</p> |
| deliveryDate | <p>date of delivery of goods, requested or promised in the purchase process, according to one of the patterns YYYY-MM-DD, YYYY-MM-DD:HH-MM or YYYY-WW. - base type: string, (XPath RAWSpinOffer/RSOFFbody/RSOFFitem/deliveryDate) 1-1</p> |
| deliveryPlace | <p>place of delivery of goods, ultimate or related to a given leg - base type: string, max length: 250, (XPath RAWSpinOffer/terms/transInfo/deliveryPlace) 0-1 - note: <i>use to represent addresses with a unique text string</i></p> |
| dept | <p>name or code of a department - base type: string, max length: 40, (XPath RAWSpinOffer/OFFheader/thirdParty/dept) 0-1 (XPath RAWSpinOffer/terms/transInfo/despatchLocation/dept) 0-1 (XPath RAWSpinOffer/RSOFFbody/RSOFFitem/thirdParty/dept) 0-1 (XPath RAWSpinOffer/terms/transInfo/deliveryLocation/dept) 0-1 (XPath RAWSpinOffer/OFFheader/buyer/dept) 0-1 (XPath RAWSpinOffer/terms/trade/tradeLocation/dept) 0-1 (XPath RAWSpinOffer/OFFheader/subContractor/dept) 0-1 (XPath RAWSpinOffer/OFFheader/supplier/dept) 0-1</p> |

| | |
|---------------|--|
| despatchDate | date of despatch of goods, requested or promised in the purchase process, according to one of the patterns YYYY-MM-DD, YYYY-MM-DD:HH-MM or YYYY-WW. - base type: string, (XPath RAWSpinOffer/terms/transInfo/despatchDate) 0-1 |
| despatchPlace | place of despatch of goods, origin or related to a given leg - base type: string, max length: 250, (XPath RAWSpinOffer/terms/transInfo/despatchPlace) 0-1 - note: use to represent addresses with a unique text string |
| docDate | date of issue of the referenced document, according to one of the patterns YYYY-MM-DD, YYYY-MM-DD:HH-MM or YYYY-WW. - base type: string, (XPath RAWSpinOffer/RSOFbody/RSOFitem/refDoc/docDate) 0-1 (XPath RAWSpinOffer/RSOFbody/RSOFitem/rawMnfrOperation/refDoc/docDate) 0-1 (XPath RAWSpinOffer/OFheader/refDoc/docDate) 0-1 (XPath RAWSpinOffer/RSOFbody/RSOFitem/yarnMnfrOperation/refDoc/docDate) 0-1 |
| docID | identification number of the referenced document - base type: string, max length: 80, (XPath RAWSpinOffer/OFheader/docID) 0-1 - note: <i>Its use in HEADER elements is discouraged (use msgID)</i> (XPath RAWSpinOffer/RSOFbody/RSOFitem/rawMnfrOperation/refDoc/docID) 1-2 Best Practice (XPath RAWSpinOffer/RSOFbody/RSOFitem/yarnMnfrOperation/refDoc/docID) 1-2 Best Practice (XPath RAWSpinOffer/RSOFbody/RSOFitem/refDoc/docID) 1-2 Best Practice (XPath RAWSpinOffer/OFheader/refDoc/docID) 1-2 Best Practice |
| @docType | type or class to which the referenced document belongs - base type: string, cod. table: T21 http://www.ebiz.enea.it/moda-ml/repository/codelist/draft/gc_T21.xml (XPath RAWSpinOffer/RSOFbody/RSOFitem/rawMnfrOperation/refDoc/@docType) [Required] (XPath RAWSpinOffer/RSOFbody/RSOFitem/yarnMnfrOperation/refDoc/@docType) [Required] (XPath RAWSpinOffer/OFheader/refDoc/@docType) [Required] (XPath RAWSpinOffer/RSOFbody/RSOFitem/refDoc/@docType) [Required] |
| @email | electronic mail address of the contact person within a Party - base type: string, max length: 250, (XPath RAWSpinOffer/terms/transInfo/deliveryLocation/person/@email) [Optional] (XPath RAWSpinOffer/terms/transInfo/despatchLocation/person/@email) [Optional] (XPath RAWSpinOffer/OFheader/buyer/person/@email) [Optional] (XPath RAWSpinOffer/OFheader/thirdParty/person/@email) [Optional] (XPath RAWSpinOffer/terms/trade/tradeLocation/person/@email) [Optional] (XPath RAWSpinOffer/RSOFbody/RSOFitem/thirdParty/person/@email) [Optional] (XPath RAWSpinOffer/OFheader/supplier/person/@email) [Optional] (XPath RAWSpinOffer/OFheader/subContractor/person/@email) [Optional] |
| @encoding | specifies the decoding algorithm of the binary object - base type: normalizedString, (XPath RAWSpinOffer/OFheader/refDoc/attachment/binaryObject/@encoding) [Optional] (XPath RAWSpinOffer/RSOFbody/RSOFitem/rawMnfrOperation/refDoc/attachment/binaryObject/@encoding) [Optional] (XPath RAWSpinOffer/RSOFbody/RSOFitem/refDoc/attachment/binaryObject/@encoding) [Optional] (XPath RAWSpinOffer/RSOFbody/RSOFitem/yarnMnfrOperation/refDoc/attachment/binaryObject/@encoding) [Optional] |
| encodingCode | the encoding/decoding algorithm used with the external object (example is 'base64Binary') - base type: normalizedString, (XPath RAWSpinOffer/RSOFbody/RSOFitem/refDoc/attachment/externalReference/encodingCode) 0-1 (XPath RAWSpinOffer/RSOFbody/RSOFitem/rawMnfrOperation/refDoc/attachment/externalReference/encodingCode) 0-1 (XPath RAWSpinOffer/RSOFbody/RSOFitem/yarnMnfrOperation/ |

| | |
|---------------|---|
| | <p>refDoc/attachment/externalReference/encodingCode) 0-1 (XPath RAWSpinOffer/OFheader/refDoc/attachment/ externalReference/encodingCode) 0-1</p> |
| experimValue | <p>experimental value of the measurement - base type: decimal, (XPath RAWSpinOffer/RSOFFbody/RSOFFitem/yarnSpecs/experimValue) 0-1</p> |
| @fax | <p>fax number of the contact person within a Party - base type: string, max length: 35, (XPath RAWSpinOffer/OFheader/thirdParty/person/@fax) [Optional] (XPath RAWSpinOffer/OFheader/buyer/person/@fax) [Optional] (XPath RAWSpinOffer/RSOFFbody/RSOFFitem/thirdParty/person/@fax) [Optional] (XPath RAWSpinOffer/terms/trade/tradeLocation/person/@fax) [Optional] (XPath RAWSpinOffer/terms/transInfo/deliveryLocation/ person/@fax) [Optional] (XPath RAWSpinOffer/OFheader/subContractor/person/@fax) [Optional] (XPath RAWSpinOffer/terms/transInfo/despatchLocation/ person/@fax) [Optional] (XPath RAWSpinOffer/OFheader/supplier/person/@fax) [Optional]</p> |
| @fibre | <p>type of fibre used in a textile product - base type: string, cod. table: T19 http://www.ebiz.enea.it/moda-ml/repository/codelist/draft/gc_T19.xml (XPath RAWSpinOffer/RSOFFbody/RSOFFitem/yarnCompos/ percCompos/@fibre) [Required]</p> |
| fileName | <p>unique identifier (name) of the file - base type: string, max length: 255, (XPath RAWSpinOffer/OFheader/refDoc/attachment/fileName) 0-1 (XPath RAWSpinOffer/RSOFFbody/RSOFFitem/rawMnfrOperation/ refDoc/attachment/fileName) 0-1 (XPath RAWSpinOffer/RSOFFbody/RSOFFitem/refDoc/attachment/fileName) 0-1 (XPath RAWSpinOffer/RSOFFbody/RSOFFitem/yarnMnfrOperation/ refDoc/attachment/fileName) 0-1</p> |
| @finDiscount | <p>financial discount rate applied for payment by the date specified - base type: decimal, min inclusive: 0, max inclusive: 100, fraction digits: 2, (XPath RAWSpinOffer/terms/payment/@finDiscount) [Optional]</p> |
| @finSurcharge | <p>financial surcharge rate applied for payment after the date specified - base type: decimal, min inclusive: 0, max inclusive: 100, fraction digits: 2, (XPath RAWSpinOffer/terms/payment/@finSurcharge) [Optional]</p> |
| @format | <p>the format of the binary content (examples xml, pdf, doc,...) - base type: string, (XPath RAWSpinOffer/RSOFFbody/RSOFFitem/refDoc/attachment/ binaryObject/@format) [Optional] (XPath RAWSpinOffer/RSOFFbody/RSOFFitem/rawMnfrOperation/ refDoc/attachment/binaryObject/@format) [Optional] (XPath RAWSpinOffer/RSOFFbody/RSOFFitem/yarnMnfrOperation/ refDoc/attachment/binaryObject/@format) [Optional] (XPath RAWSpinOffer/OFheader/refDoc/attachment/ binaryObject/@format) [Optional]</p> |
| formatCode | <p>the format of the external object (examples xml, pdf, doc,...) - base type: normalizedString, (XPath RAWSpinOffer/OFheader/refDoc/attachment/ externalReference/formatCode) 0-1 (XPath RAWSpinOffer/RSOFFbody/RSOFFitem/refDoc/attachment/ externalReference/formatCode) 0-1 (XPath RAWSpinOffer/RSOFFbody/RSOFFitem/rawMnfrOperation/ refDoc/attachment/externalReference/formatCode) 0-1 (XPath RAWSpinOffer/RSOFFbody/RSOFFitem/yarnMnfrOperation/ refDoc/attachment/externalReference/formatCode) 0-1</p> |
| @geoRefSystem | <p>georeference system adopted for the coordinate (in example wgs84 with decimal degree o degree with minute and seconds) - base type: string, (XPath RAWSpinOffer/terms/transInfo/despatchLocation/ geoCoordinates/@geoRefSystem) [Optional] (XPath RAWSpinOffer/terms/transInfo/deliveryLocation/ geoCoordinates/@geoRefSystem) [Optional]</p> |

| | |
|---------------|---|
| | <p>(XPath RAWSpinOffer/terms/trade/tradeLocation/geoCoordinates/@geoRefSystem) [Optional]</p> <p>(XPath RAWSpinOffer/RSOFFbody/RSOFFitem/thirdParty/geoCoordinates/@geoRefSystem) [Optional]</p> <p>(XPath RAWSpinOffer/OFFheader/subContractor/geoCoordinates/@geoRefSystem) [Optional]</p> <p>(XPath RAWSpinOffer/OFFheader/supplier/geoCoordinates/@geoRefSystem) [Optional]</p> <p>(XPath RAWSpinOffer/OFFheader/thirdParty/geoCoordinates/@geoRefSystem) [Optional]</p> <p>(XPath RAWSpinOffer/OFFheader/buyer/geoCoordinates/@geoRefSystem) [Optional]</p> |
| grossWeight | <p>the gross weight, declared for transport or customs purpose</p> <p>- base type: decimal, min inclusive: 0, fraction digits: 2,</p> <p>(XPath RAWSpinOffer/terms/transInfo/grossWeight) 0-1</p> |
| hashFootprint | <p>footprint obtained by applying an hashing algorithm</p> <p>- base type: string, max length: 80,</p> <p>(XPath RAWSpinOffer/RSOFFbody/RSOFFitem/yarnMnfrOperation/refDoc/attachment/hashFootprint) 0-1</p> <p>(XPath RAWSpinOffer/RSOFFbody/RSOFFitem/rawMnfrOperation/refDoc/attachment/hashFootprint) 0-1</p> <p>(XPath RAWSpinOffer/OFFheader/refDoc/attachment/hashFootprint) 0-1</p> <p>(XPath RAWSpinOffer/RSOFFbody/RSOFFitem/refDoc/attachment/hashFootprint) 0-1</p> |
| @hashMethod | <p>type of used hashing algorithm</p> <p>- base type: string, max length: 80, cod. table: NT333</p> <p>http://www.ebiz.enea.it/moda-ml/repository/codelist/draft/gc_NT333.xml</p> <p>(XPath RAWSpinOffer/RSOFFbody/RSOFFitem/refDoc/attachment/hashFootprint/@hashMethod) [Required]</p> <p>(XPath RAWSpinOffer/RSOFFbody/RSOFFitem/rawMnfrOperation/refDoc/attachment/hashFootprint/@hashMethod) [Required]</p> <p>(XPath RAWSpinOffer/RSOFFbody/RSOFFitem/yarnMnfrOperation/refDoc/attachment/hashFootprint/@hashMethod) [Required]</p> <p>(XPath RAWSpinOffer/OFFheader/refDoc/attachment/hashFootprint/@hashMethod) [Required]</p> |
| id | <p>primary identification code of a Party; it is recommended to use an EORI number (with @numberingOrg= "EO") or the format: nation code (ISO 3166) + national tax code (i.e. VAT identification number) with @numberingOrg= "MF"</p> <p>- base type: string, max length: 15,</p> <p>(XPath RAWSpinOffer/OFFheader/subContractor/id) 1-1</p> <p>(XPath RAWSpinOffer/OFFheader/thirdParty/id) 1-1</p> <p>(XPath RAWSpinOffer/RSOFFbody/RSOFFitem/thirdParty/id) 1-1</p> <p>(XPath RAWSpinOffer/OFFheader/supplier/id) 1-1</p> <p>(XPath RAWSpinOffer/OFFheader/buyer/id) 1-1</p> |
| @idCO | <p>primary identification code of the Party executing the test; it is recommended the format: nation code (ISO 3166) + VAT identification number (11 crt).</p> <p>- base type: string, max length: 15,</p> <p>(XPath RAWSpinOffer/RSOFFbody/RSOFFitem/yarnSpecs/experimValue/@idCO) [Optional]</p> |
| @idQualifier | <p>Qualification of the identifier.</p> <p>- base type: string,</p> <p>(XPath RAWSpinOffer/OFFheader/supplier/additionalIdentifier/@idQualifier) [Optional]</p> <p>- nota: this attribute should be used when the numberingOrg attribute is not enough to declare the type of identifier</p> <p>(XPath RAWSpinOffer/OFFheader/buyer/additionalIdentifier/@idQualifier) [Optional]</p> <p>- nota: this attribute should be used when the numberingOrg attribute is not enough to declare the type of identifier</p> |
| incoTerm | <p>specification of the terms of trade (INCOTERMS)</p> <p>- base type: string, cod. table: T3</p> <p>http://www.ebiz.enea.it/moda-ml/repository/codelist/draft/gc_T3.xml</p> <p>(XPath RAWSpinOffer/terms/trade/incoTerm) 1-1</p> |
| incoTermText | <p>free text specifying the terms of trade (incoterm, location)</p> <p>- base type: string, max length: 250,</p> <p>(XPath RAWSpinOffer/terms/trade/incoTermText) 1-1</p> |
| @isCharge | <p>Indicates if the element to which it refers is a charge (true = charge, false = allowance)</p> <p>- base type: boolean,</p> <p>(XPath RAWSpinOffer/terms/allowanceCharge/@isCharge) [Optional]</p> |

| | |
|-----------|---|
| @isURL | <p>it indicates if the referred element is an URL (true) or not (false)</p> <ul style="list-style-type: none"> - base type: boolean, (XPath RAWSpinOffer/RSOFFbody/RSOFFitem/rawMnfrOperation/refDoc/attachment/externalReference/uri/@isURL) [Optional] [Default= true] - nota: <i>usage of URLs is recommended</i> (XPath RAWSpinOffer/RSOFFbody/RSOFFitem/refDoc/attachment/blockChainReference/uri/@isURL) [Optional] [Default= true] - nota: <i>usage of URLs is recommended</i> (XPath RAWSpinOffer/OFFheader/refDoc/attachment/blockChainReference/uri/@isURL) [Optional] [Default= true] - nota: <i>usage of URLs is recommended</i> (XPath RAWSpinOffer/RSOFFbody/RSOFFitem/refDoc/attachment/externalReference/uri/@isURL) [Optional] [Default= true] - nota: <i>usage of URLs is recommended</i> (XPath RAWSpinOffer/RSOFFbody/RSOFFitem/yarnMnfrOperation/refDoc/attachment/externalReference/uri/@isURL) [Optional] [Default= true] - nota: <i>usage of URLs is recommended</i> (XPath RAWSpinOffer/RSOFFbody/RSOFFitem/yarnMnfrOperation/refDoc/attachment/blockChainReference/uri/@isURL) [Optional] [Default= true] - nota: <i>usage of URLs is recommended</i> (XPath RAWSpinOffer/RSOFFbody/RSOFFitem/rawMnfrOperation/refDoc/attachment/blockChainReference/uri/@isURL) [Optional] [Default= true] - nota: <i>usage of URLs is recommended</i> (XPath RAWSpinOffer/OFFheader/refDoc/attachment/externalReference/uri/@isURL) [Optional] [Default= true] - nota: <i>usage of URLs is recommended</i> |
| itemID | <p>number of the line/item of the referenced document</p> <ul style="list-style-type: none"> - base type: string, max length: 40, (XPath RAWSpinOffer/RSOFFbody/RSOFFitem/refDoc/itemID) 0-1 (XPath RAWSpinOffer/OFFheader/refDoc/itemID) 0-1 (XPath RAWSpinOffer/RSOFFbody/RSOFFitem/rawMnfrOperation/refDoc/itemID) 0-1 (XPath RAWSpinOffer/RSOFFbody/RSOFFitem/yarnMnfrOperation/refDoc/itemID) 0-1 |
| jobName | <p>description of the elementary job</p> <ul style="list-style-type: none"> - base type: string, max length: 40, (XPath RAWSpinOffer/RSOFFbody/RSOFFitem/yarnMnfrOperation/jobName) 1-1 (XPath RAWSpinOffer/RSOFFbody/RSOFFitem/rawMnfrOperation/jobName) 1-1 |
| legalName | <p>legal name</p> <ul style="list-style-type: none"> - base type: string, max length: 250, (XPath RAWSpinOffer/OFFheader/thirdParty/legalName) 0-1 (XPath RAWSpinOffer/RSOFFbody/RSOFFitem/thirdParty/legalName) 0-1 (XPath RAWSpinOffer/OFFheader/supplier/legalName) 0-1 (XPath RAWSpinOffer/OFFheader/subContractor/legalName) 0-1 (XPath RAWSpinOffer/terms/transInfo/despatchLocation/legalName) 0-1 (XPath RAWSpinOffer/OFFheader/buyer/legalName) 0-1 (XPath RAWSpinOffer/terms/transInfo/deliveryLocation/legalName) 0-1 (XPath RAWSpinOffer/terms/trade/tradeLocation/legalName) 0-1 |
| legalRef | <p>legal reference of the duty or tax or fee category</p> <ul style="list-style-type: none"> - base type: string, (XPath RAWSpinOffer/terms/allowanceCharge/dtScheme/legalRef) 0-1 (XPath RAWSpinOffer/RSOFFbody/RSOFFitem/dtScheme/legalRef) 0-1 |
| lineN | <p>number of the line item of the present message (xml document); it is set by the role that produces the document. Usually it is a progressive number, but not always.</p> <ul style="list-style-type: none"> - base type: positiveInteger, min inclusive: 1, max inclusive: 9999, (XPath RAWSpinOffer/RSOFFbody/RSOFFitem/lineN) 1-1 |
| @listName | <p>the name of the list of codes used to make an instance of the element (it might be thought as descriptive element, i.e. 'fabric printing technologies', or not, i.e. "T264")</p> <ul style="list-style-type: none"> - base type: string, max length: 40, (XPath RAWSpinOffer/RSOFFbody/RSOFFitem/rawMnfrOperation/refDoc/season/@listName) [Optional] - nota: <i>this attribute should always be used coupled with "numberingOrg"</i> (XPath RAWSpinOffer/RSOFFbody/RSOFFitem/yarnMnfrOperation/refDoc/season/@listName) [Optional] - nota: <i>this attribute should always be used coupled with "numberingOrg"</i> (XPath RAWSpinOffer/OFFheader/refDoc/season/@listName) [Optional] |

| | |
|-----------------|--|
| | <p>- nota: <i>this attribute should always be used coupled with “numberingOrg”</i> (XPath RAWSpinOffer/OFheader/season/@listName) [Optional]</p> <p>- nota: <i>this attribute should always be used coupled with “numberingOrg”</i> (XPath RAWSpinOffer/terms/allowanceCharge/dtScheme/legalRef/@listName) [Optional]</p> <p>- nota: <i>this attribute should always be used coupled with “numberingOrg”</i> (XPath RAWSpinOffer/RSObody/RSOItem/dtScheme/legalRef/@listName) [Optional]</p> <p>- nota: <i>this attribute should always be used coupled with “numberingOrg”</i> (XPath RAWSpinOffer/RSObody/RSOItem/refDoc/season/@listName) [Optional]</p> <p>- nota: <i>this attribute should always be used coupled with “numberingOrg”</i></p> |
| @listVersion | <p>it specifies the version of the list of codes used to make an instance of the element</p> <p>- base type: string, max length: 6, (XPath RAWSpinOffer/RSObody/RSOItem/yarnMnfrOperation/refDoc/season/@listVersion) [Optional]</p> <p>- nota: <i>this attribute should always be used coupled with “numberingOrg” and “listName”</i> (XPath RAWSpinOffer/RSObody/RSOItem/dtScheme/legalRef/@listVersion) [Optional]</p> <p>- nota: <i>this attribute should always be used coupled with “numberingOrg” and “listName”</i> (XPath RAWSpinOffer/OFheader/refDoc/season/@listVersion) [Optional]</p> <p>- nota: <i>this attribute should always be used coupled with “numberingOrg” and “listName”</i> (XPath RAWSpinOffer/RSObody/RSOItem/rawMnfrOperation/refDoc/season/@listVersion) [Optional]</p> <p>- nota: <i>this attribute should always be used coupled with “numberingOrg” and “listName”</i> (XPath RAWSpinOffer/OFheader/season/@listVersion) [Optional]</p> <p>- nota: <i>this attribute should always be used coupled with “numberingOrg” and “listName”</i> (XPath RAWSpinOffer/terms/allowanceCharge/dtScheme/legalRef/@listVersion) [Optional]</p> <p>- nota: <i>this attribute should always be used coupled with “numberingOrg” and “listName”</i> (XPath RAWSpinOffer/RSObody/RSOItem/refDoc/season/@listVersion) [Optional]</p> <p>- nota: <i>this attribute should always be used coupled with “numberingOrg” and “listName”</i></p> |
| location | <p>specification of a location. It can be represented by an identification code (preferable) or a short text (not recommended). For example a GLN code that requires to assign the value "GLN" to the attribute @LRI.</p> <p>- base type: string, max length: 128, (XPath RAWSpinOffer/terms/transInfo/deliveryLocation/location) 0-1</p> <p>- note: <i>Use this element only to indicate an identification code of this place.</i> (XPath RAWSpinOffer/terms/trade/tradeLocation/location) 0-1</p> <p>- note: <i>Use this element to specify a numeric ID of the location, for example a GLN code (in this case @SchemeID='LRI'='GLN')</i> (XPath RAWSpinOffer/terms/trade/location) 0-1</p> <p>- note: <i>code number of the place to which the INCOTERM applies</i> (XPath RAWSpinOffer/terms/transInfo/despatchLocation/location) 0-1</p> <p>- note: <i>Use this element to specify a numeric ID of the location, for example a GLN code (in this case @SchemeID='GS1' GLN')</i></p> |
| @logo | <p>company logo (URL of the image jpeg or gif). It is recommended that the width of the image does not exceed 640 pixel.</p> <p>- base type: string, max length: 255, (XPath RAWSpinOffer/OFheader/supplier/@logo) [Optional] (XPath RAWSpinOffer/OFheader/buyer/@logo) [Optional]</p> |
| @LRI | <p>issuer of the identifier (or identification system) of a location.</p> <p>- base type: string, cod. table: NT3 http://www.ebiz.enea.it/moda-ml/repository/codelist/draft/gc_NT3.xml (XPath RAWSpinOffer/terms/trade/tradeLocation/location/@LRI) [Optional] (XPath RAWSpinOffer/terms/transInfo/despatchLocation/location/@LRI) [Optional] (XPath RAWSpinOffer/terms/transInfo/deliveryLocation/location/@LRI) [Optional] (XPath RAWSpinOffer/terms/trade/location/@LRI) [Optional]</p> |
| @materialSource | <p>Indicates whether the material is virgin or comes from recycling or reuse processes</p> <p>- base type: string, cod. table: T306 http://www.ebiz.enea.it/moda-ml/repository/codelist/draft/gc_T306.xml</p> |

| | |
|---------------|---|
| | (XPath RAWSpinOffer/RSOFFbody/RSOFFitem/yarnCompos/percCompos/@materialSource) [Optional] |
| @maxQty | maximum product quantity - base type: decimal, min inclusive: 0, fraction digits: 2, (XPath RAWSpinOffer/terms/allowanceCharge/@maxQty) [Optional] - nota: <i>maximum quantity of product for the application of this allowance or charge</i> |
| @method | standard protocol or method employed in a test to evaluate a characteristic or a parameter - base type: string, max length: 80, (XPath RAWSpinOffer/RSOFFbody/RSOFFitem/yarnSpecs/experimValue/@method) [Optional] - nota: <i>we recommend the specification of the method of measure only when different from the one of the MODA-ML coding system</i> (XPath RAWSpinOffer/RSOFFbody/RSOFFitem/yarnSpecs/specValue/@method) [Optional] (XPath RAWSpinOffer/RSOFFbody/RSOFFitem/yarnMnfrOperation/yarnMachineSpecs/specValue/@method) [Optional] |
| @mime | the mime type of the binary object - base type: normalizedString, (XPath RAWSpinOffer/OFFheader/refDoc/attachment/binaryObject/@mime) [Optional] (XPath RAWSpinOffer/RSOFFbody/RSOFFitem/yarnMnfrOperation/refDoc/attachment/binaryObject/@mime) [Optional] (XPath RAWSpinOffer/RSOFFbody/RSOFFitem/refDoc/attachment/binaryObject/@mime) [Optional] (XPath RAWSpinOffer/RSOFFbody/RSOFFitem/rawMnfrOperation/refDoc/attachment/binaryObject/@mime) [Optional] |
| mimeCode | mime type of the external object - base type: normalizedString, (XPath RAWSpinOffer/OFFheader/refDoc/attachment/externalReference/mimeCode) 0-1 Best Practice (XPath RAWSpinOffer/RSOFFbody/RSOFFitem/refDoc/attachment/externalReference/mimeCode) 0-1 Best Practice (XPath RAWSpinOffer/RSOFFbody/RSOFFitem/yarnMnfrOperation/refDoc/attachment/externalReference/mimeCode) 0-1 Best Practice (XPath RAWSpinOffer/RSOFFbody/RSOFFitem/rawMnfrOperation/refDoc/attachment/externalReference/mimeCode) 0-1 Best Practice |
| @minQty | minimum product quantity - base type: decimal, min inclusive: 0, fraction digits: 2, (XPath RAWSpinOffer/terms/allowanceCharge/@minQty) [Optional] - nota: <i>minimum quantity of product for the application of this allowance or charge</i> |
| msgDate | date of issue of the present message (xml document), according to one of the patterns YYYY-MM-DD, YYYY-MM-DD:HH-MM or YYYY-WW. - base type: string, (XPath RAWSpinOffer/OFFheader/msgDate) 1-1 |
| @msgfunction | function performed by the present message with regards to the transmission - base type: string, cod. table: NT18 http://www.ebiz.enea.it/moda-ml/repository/codelist/draft/gc_NT18.xml (XPath RAWSpinOffer/@msgfunction) [Optional] [Default= OR] |
| msgID | key identifier of the business document in the information system of the issuing Party. In case of more despatches of the same business document, it is unchanged. - base type: string, max length: 35, (XPath RAWSpinOffer/OFFheader/msgID) 0-1 |
| msgN | identification number given to the message (xml document) by its issuer. In case of more despatches of the same business document, it changes. - base type: string, max length: 35, (XPath RAWSpinOffer/OFFheader/msgN) 1-1 |
| netWeight | the net weight declared for transport or customs purpose - base type: decimal, min inclusive: 0, fraction digits: 2, (XPath RAWSpinOffer/terms/transInfo/netWeight) 0-1 |
| notBeforeDate | earliest date possible to begin an activity, according to one of the patterns YYYY-MM-DD, YYYY-MM-DD:HH-MM or YYYY-WW. |

| | |
|---------------|---|
| | <p>- base type: string, (XPath RAWSpinOffer/RSOFFbody/RSOFFitem/notBeforeDate) 0-1</p> |
| note | <p>free text or structured (computer processing) note. For note structuring use the attributes "noteLabel" and "codelist"</p> <p>- base type: string, max length: 350, (XPath RAWSpinOffer/RSOFFbody/RSOFFitem/yarnMnfrOperation/note) 0-99 (XPath RAWSpinOffer/RSOFFbody/RSOFFitem/note) 0-99 (XPath RAWSpinOffer/RSOFFbody/RSOFFitem/rawMnfrOperation/note) 0-99 (XPath RAWSpinOffer/terms/allowanceCharge/dtScheme/note) 0-99 (XPath RAWSpinOffer/OFFheader/note) 0-99 (XPath RAWSpinOffer/RSOFFbody/RSOFFitem/dtScheme/note) 0-99</p> |
| @noteLabel | <p>subject qualifier of a note</p> <p>- base type: string, max length: 35, (XPath RAWSpinOffer/RSOFFbody/RSOFFitem/yarnMnfrOperation/note/@noteLabel) [Optional]</p> <p>- nota: <i>must be used to qualify the subject of the note</i> (XPath RAWSpinOffer/OFFheader/note/@noteLabel) [Optional]</p> <p>- nota: <i>must be used to qualify the subject of the note</i> (XPath RAWSpinOffer/RSOFFbody/RSOFFitem/dtScheme/note/@noteLabel) [Optional]</p> <p>- nota: <i>must be used to qualify the subject of the note</i> (XPath RAWSpinOffer/terms/allowanceCharge/dtScheme/note/@noteLabel) [Optional]</p> <p>- nota: <i>must be used to qualify the subject of the note</i> (XPath RAWSpinOffer/RSOFFbody/RSOFFitem/rawMnfrOperation/note/@noteLabel) [Optional]</p> <p>- nota: <i>must be used to qualify the subject of the note</i> (XPath RAWSpinOffer/RSOFFbody/RSOFFitem/note/@noteLabel) [Optional]</p> <p>- nota: <i>must be used to qualify the subject of the note</i></p> |
| @numberingOrg | <p>code specifying the organisation who has created or owns the coding or numbering system</p> <p>- base type: string, cod. table: NT6 http://www.ebiz.enea.it/moda-ml/repository/codelist/draft/gc_NT6.xml (XPath RAWSpinOffer/RSOFFbody/RSOFFitem/dtScheme/legalRef/@numberingOrg) [Optional]</p> <p>- nota: <i>this attribute should be used either single or coupled with "listName" and "listVersion"</i> (XPath RAWSpinOffer/RSOFFbody/RSOFFitem/thirdParty/id/@numberingOrg) [Optional] (XPath RAWSpinOffer/RSOFFbody/RSOFFitem/note/@numberingOrg) [Optional]</p> <p>- nota: <i>must be used to specify the organization that created the list of codes used in "noteLabel"</i> (XPath RAWSpinOffer/OFFheader/thirdParty/id/@numberingOrg) [Optional] (XPath RAWSpinOffer/RSOFFbody/RSOFFitem/yarnMnfrOperation/refDoc/docID/@numberingOrg) [Optional]</p> <p>- nota: <i>here can be specified whose document numbering is used (e.g.: Client, Suppliers, ...)</i> (XPath RAWSpinOffer/OFFheader/supplier/id/@numberingOrg) [Optional] (XPath RAWSpinOffer/RSOFFbody/RSOFFitem/dtScheme/note/@numberingOrg) [Optional]</p> <p>- nota: <i>must be used to specify the organization that created the list of codes used in "noteLabel"</i> (XPath RAWSpinOffer/RSOFFbody/RSOFFitem/yarnMnfrOperation/refDoc/season/@numberingOrg) [Optional]</p> <p>- nota: <i>this attribute should be used either single or coupled with "listName" and "listVersion"</i> (XPath RAWSpinOffer/OFFheader/subContractor/id/@numberingOrg) [Optional] (XPath RAWSpinOffer/OFFheader/note/@numberingOrg) [Optional]</p> <p>- nota: <i>must be used to specify the organization that created the list of codes used in "noteLabel"</i> (XPath RAWSpinOffer/RSOFFbody/RSOFFitem/yarnMnfrOperation/refDoc/attachment/fileName/@numberingOrg) [Optional] (XPath RAWSpinOffer/OFFheader/supplier/additionalIdentifier/@numberingOrg) [Optional]</p> <p>- nota: <i>here the issuer of the identifier must be specified</i> (XPath RAWSpinOffer/RSOFFbody/RSOFFitem/refDoc/attachment/fileName/@numberingOrg) [Optional] (XPath RAWSpinOffer/terms/allowanceCharge/dtScheme/note/@numberingOrg) [Optional]</p> <p>- nota: <i>must be used to specify the organization that created the list of codes used in "noteLabel"</i> (XPath RAWSpinOffer/OFFheader/refDoc/season/@numberingOrg) [Optional]</p> <p>- nota: <i>this attribute should be used either single or coupled with "listName" and "listVersion"</i></p> |

| | |
|-------------|--|
| | <p>(XPath RAWSpinOffer/RSOFFbody/RSOFFitem/rawMnfrOperation/refDoc/docID/@numberingOrg) [Optional]</p> <p>- nota: here can be specified whose document numbering is used (e.g.: Client, Supplier, ..)</p> <p>(XPath RAWSpinOffer/RSOFFbody/RSOFFitem/refDoc/docID/@numberingOrg) [Optional]</p> <p>- nota: here can be specified whose document numbering is used (e.g.: Client, Supplier, ..)</p> <p>(XPath RAWSpinOffer/RSOFFbody/RSOFFitem/yarnMnfrOperation/note/@numberingOrg) [Optional]</p> <p>- nota: must be used to specify the organization that created the list of codes used in "noteLabel"</p> <p>(XPath RAWSpinOffer/OFFheader/refDoc/attachment/fileName/@numberingOrg) [Optional]</p> <p>(XPath RAWSpinOffer/terms/allowanceCharge/dtScheme/legalRef/@numberingOrg) [Optional]</p> <p>- nota: this attribute should be used either single or coupled with "listName" and "listVersion"</p> <p>(XPath RAWSpinOffer/OFFheader/docID/@numberingOrg) [Optional]</p> <p>- nota: here can be specified whose document numbering is used (e.g.: Client, Supplier, ..)</p> <p>(XPath RAWSpinOffer/RSOFFbody/RSOFFitem/rawMnfrOperation/refDoc/attachment/fileName/@numberingOrg) [Optional]</p> <p>(XPath RAWSpinOffer/RSOFFbody/RSOFFitem/rawMnfrOperation/note/@numberingOrg) [Optional]</p> <p>- nota: must be used to specify the organization that created the list of codes used in "noteLabel"</p> <p>(XPath RAWSpinOffer/OFFheader/refDoc/docID/@numberingOrg) [Optional]</p> <p>- nota: here can be specified whose document numbering is used (e.g.: Client, Supplier, ..)</p> <p>(XPath RAWSpinOffer/RSOFFbody/RSOFFitem/rawMnfrOperation/refDoc/season/@numberingOrg) [Optional]</p> <p>- nota: this attribute should be used either single or coupled with "listName" and "listVersion"</p> <p>(XPath RAWSpinOffer/OFFheader/season/@numberingOrg) [Optional]</p> <p>- nota: this attribute should be used either single or coupled with "listName" and "listVersion"</p> <p>(XPath RAWSpinOffer/OFFheader/buyer/id/@numberingOrg) [Optional]</p> <p>(XPath RAWSpinOffer/OFFheader/buyer/additionalIdentifier/@numberingOrg) [Optional]</p> <p>- nota: here the issuer of the identifier must be specified</p> <p>(XPath RAWSpinOffer/RSOFFbody/RSOFFitem/refDoc/season/@numberingOrg) [Optional]</p> <p>- nota: this attribute should be used either single or coupled with "listName" and "listVersion"</p> |
| @part | <p>percent fraction</p> <p>- base type: decimal, min inclusive: 1, max inclusive: 100, fraction digits: 2,</p> <p>(XPath RAWSpinOffer/terms/insPayment/@part) [Required]</p> <p>- nota: here the % value of each installment must be indicated</p> |
| payMode | <p>way or means of payment</p> <p>- base type: string, cod. table: T2</p> <p>http://www.ebiz.enea.it/moda-ml/repository/codelist/draft/gc_T2.xml</p> <p>(XPath RAWSpinOffer/terms/payment/payMode) 0-1</p> <p>(XPath RAWSpinOffer/terms/insPayment/payMode) 0-1</p> |
| payTerm | <p>code specifying the terms or time by which the payment must be done</p> <p>- base type: string, cod. table: T1</p> <p>http://www.ebiz.enea.it/moda-ml/repository/codelist/draft/gc_T1.xml</p> <p>(XPath RAWSpinOffer/terms/insPayment/payTerm) 1-1</p> <p>(XPath RAWSpinOffer/terms/payment/payTerm) 1-1</p> |
| payTermText | <p>free text specifying the terms by which the payment must be done (time/mode or means)</p> <p>- base type: string, max length: 250,</p> <p>(XPath RAWSpinOffer/terms/payment/payTermText) 1-1</p> <p>(XPath RAWSpinOffer/terms/insPayment/payTermText) 1-1</p> |
| pcTolerance | <p>percent deviation tolerated on the value of a measurement (it must have a plus or minus sign)</p> <p>- base type: decimal, min inclusive: 0, max inclusive: 100, total digits: 2,</p> <p>(XPath RAWSpinOffer/RSOFFbody/RSOFFitem/yarnMnfrOperation/yarnMachineSpecs/pcTolerance) 0-2</p> <p>(XPath RAWSpinOffer/RSOFFbody/RSOFFitem/yarnSpecs/pcTolerance) 0-2</p> |

| | |
|-----------------------|---|
| percCompos | <p>fiber percentage in the product composition</p> <p>- base type: decimal, min inclusive: 0, max inclusive: 100, fraction digits: 2, (XPath RAWSpinOffer/RSOFbody/RSOFitem/yarnCompos/percCompos) 1-9</p> <p>- note: <i>fiber % in the product composition</i></p> |
| @percSourcesRenewable | <p>indicates the percentage of renewable sources</p> <p>- base type: decimal, (XPath RAWSpinOffer/RSOFbody/RSOFitem/yarnCompos/percCompos/@percSourcesRenewable) [Optional]</p> <p>- nota: <i>use only for virgin material</i></p> |
| person | <p>name of a person (e.g. contact person within an organization)</p> <p>- base type: string, max length: 40, (XPath RAWSpinOffer/RSOFbody/RSOFitem/thirdParty/person) 0-1 (XPath RAWSpinOffer/OFheader/thirdParty/person) 0-1 (XPath RAWSpinOffer/OFheader/buyer/person) 0-1 (XPath RAWSpinOffer/terms/transInfo/deliveryLocation/person) 0-1 (XPath RAWSpinOffer/terms/transInfo/despatchLocation/person) 0-1 (XPath RAWSpinOffer/OFheader/supplier/person) 0-1 (XPath RAWSpinOffer/OFheader/subContractor/person) 0-1 (XPath RAWSpinOffer/terms/trade/tradeLocation/person) 0-1</p> |
| @phone | <p>phone number of the contact person within a Party</p> <p>- base type: string, max length: 35, (XPath RAWSpinOffer/OFheader/subContractor/person/@phone) [Optional] (XPath RAWSpinOffer/terms/transInfo/despatchLocation/person/@phone) [Optional] (XPath RAWSpinOffer/OFheader/supplier/person/@phone) [Optional] (XPath RAWSpinOffer/OFheader/buyer/person/@phone) [Optional] (XPath RAWSpinOffer/OFheader/thirdParty/person/@phone) [Optional] (XPath RAWSpinOffer/terms/trade/tradeLocation/person/@phone) [Optional] (XPath RAWSpinOffer/RSOFbody/RSOFitem/thirdParty/person/@phone) [Optional] (XPath RAWSpinOffer/terms/transInfo/deliveryLocation/person/@phone) [Optional]</p> |
| postCode | <p>code defining the postal zone</p> <p>- base type: string, max length: 10, (XPath RAWSpinOffer/OFheader/buyer/postCode) 0-1 (XPath RAWSpinOffer/RSOFbody/RSOFitem/thirdParty/postCode) 0-1 (XPath RAWSpinOffer/OFheader/thirdParty/postCode) 0-1 (XPath RAWSpinOffer/terms/trade/tradeLocation/postCode) 0-1 (XPath RAWSpinOffer/terms/transInfo/despatchLocation/postCode) 0-1 (XPath RAWSpinOffer/OFheader/subContractor/postCode) 0-1 (XPath RAWSpinOffer/OFheader/supplier/postCode) 0-1 (XPath RAWSpinOffer/terms/transInfo/deliveryLocation/postCode) 0-1</p> |
| price | <p>unit price of the article, object or service specified</p> <p>- base type: decimal, min inclusive: 0, fraction digits: 4, (XPath RAWSpinOffer/RSOFbody/RSOFitem/price) 1-1</p> |
| @priceQualifier | <p>type of price with reference to discount and taxes</p> <p>- base type: string, cod. table: NT20 http://www.ebiz.enea.it/moda-ml/repository/codelist/draft/gc_NT20.xml (XPath RAWSpinOffer/RSOFbody/RSOFitem/price/@priceQualifier) [Optional] [Default= NET]</p> |
| @progr | <p>progressive number in the sequence</p> <p>- base type: positiveInteger, min inclusive: 1, (XPath RAWSpinOffer/terms/transInfo/@progr) [Optional]</p> <p>- nota: <i>Indicates the position of the leg in a sequence of transport legs. If it is declared it must be in all the transInfo elements.</i></p> |
| @propulsionSystemCode | <p>propulsion system type</p> <p>- base type: string, cod. table: NT324 http://www.ebiz.enea.it/moda-ml/repository/codelist/draft/gc_NT324.xml (XPath RAWSpinOffer/terms/transInfo/transMeans/@propulsionSystemCode) [Optional]</p> <p>- nota: <i>indicates the type of propulsion of the means of transport</i></p> |
| qty | <p>net quantity of the article or object correlated, qualified by the function of the document (ordering, delivering, ..) and by the context</p> <p>- base type: decimal, min inclusive: 0, fraction digits: 2, (XPath RAWSpinOffer/RSOFbody/RSOFitem/qty) 1-2 Best Practice</p> |
| rawJob | <p>operation of a work cycle for raw material</p> <p>- base type: string, cod. table: T200</p> |

| | |
|-----------------------------|---|
| | <p>http://www.ebiz.enea.it/moda-ml/repository/codelist/draft/gc_T200.xml (XPath RAWSpinOffer/RSOFFbody/RSOFFitem/rawMnfrOperation/rawJob) 1-1</p> |
| @recyclingProcessEfficiency | <p>recycling process efficiency rate (percentage by weight). - base type: decimal, min inclusive: 0, max inclusive: 100, (XPath RAWSpinOffer/RSOFFbody/RSOFFitem/yarnCompos/percCompos/@recyclingProcessEfficiency) [Optional] - nota: <i>process efficiency declared by the fibre supplier</i></p> |
| @recyclingProcessMethod | <p>recycling process method - base type: string, cod. table: T307 http://www.ebiz.enea.it/moda-ml/repository/codelist/draft/gc_T307.xml (XPath RAWSpinOffer/RSOFFbody/RSOFFitem/yarnCompos/percCompos/@recyclingProcessMethod) [Optional] - nota: <i>use only for non virgin material</i></p> |
| @role | <p>Third Party role qualifier - base type: string, cod. table: NT2 http://www.ebiz.enea.it/moda-ml/repository/codelist/draft/gc_NT2.xml (XPath RAWSpinOffer/OFFheader/thirdParty/@role) [Required] (XPath RAWSpinOffer/RSOFFbody/RSOFFitem/thirdParty/@role) [Required]</p> |
| routeLength | <p>length of a route - base type: decimal, min inclusive: 0, fraction digits: 2, (XPath RAWSpinOffer/terms/transInfo/routeLength) 0-1</p> |
| @schemeID | <p>identifier of an identification scheme - base type: string, (XPath RAWSpinOffer/RSOFFbody/RSOFFitem/rawMnfrOperation/refDoc/attachment/hashFootprint/@schemeID) [Optional] - nota: <i>specify for which system this hash footprint might be used as identifier (for example HDFS system..)</i> (XPath RAWSpinOffer/OFFheader/refDoc/attachment/hashFootprint/@schemeID) [Optional] - nota: <i>specify for which system this hash footprint might be used as identifier (for example HDFS system..)</i> (XPath RAWSpinOffer/RSOFFbody/RSOFFitem/yarnMnfrOperation/refDoc/attachment/hashFootprint/@schemeID) [Optional] - nota: <i>specify for which system this hash footprint might be used as identifier (for example HDFS system..)</i> (XPath RAWSpinOffer/RSOFFbody/RSOFFitem/refDoc/attachment/hashFootprint/@schemeID) [Optional] - nota: <i>specify for which system this hash footprint might be used as identifier (for example HDFS system..)</i></p> |
| season | <p>sale season; defined as: season (1 crt) + year (4 crt) - season: S/S=1 A/W=2 Spring=3 Summer=4 Autumn=5 Winter=6: for more than four seasons use alphabetic sequence: 1st season=A 2nd season=B etc.etc. - base type: string, max length: 15, (XPath RAWSpinOffer/OFFheader/refDoc/season) 0-1 - note: <i>here indicates the season to which the referenced document belongs</i> (XPath RAWSpinOffer/OFFheader/season) 0-1 (XPath RAWSpinOffer/RSOFFbody/RSOFFitem/rawMnfrOperation/refDoc/season) 0-1 - note: <i>here indicates the season to which the referenced document belongs</i> (XPath RAWSpinOffer/RSOFFbody/RSOFFitem/yarnMnfrOperation/refDoc/season) 0-1 - note: <i>here indicates the season to which the referenced document belongs</i> (XPath RAWSpinOffer/RSOFFbody/RSOFFitem/refDoc/season) 0-1 - note: <i>here indicates the season to which the referenced document belongs</i></p> |
| @sender | <p>qualifier that specifies the Party issuing of the document - base type: boolean, (XPath RAWSpinOffer/OFFheader/subContractor/@sender) [Optional] - nota: <i>This attribute is mandatory when the STYLESHEET must be used</i> (XPath RAWSpinOffer/OFFheader/buyer/@sender) [Optional] - nota: <i>This attribute is mandatory when the STYLESHEET must be used</i> (XPath RAWSpinOffer/OFFheader/supplier/@sender) [Optional] - nota: <i>This attribute is mandatory when the STYLESHEET must be used</i> (XPath RAWSpinOffer/RSOFFbody/RSOFFitem/thirdParty/@sender) [Optional] - nota: <i>This attribute is mandatory when the STYLESHEET must be used</i> (XPath RAWSpinOffer/OFFheader/thirdParty/@sender) [Optional]</p> |

| | |
|--------------------|--|
| | - nota: <i>This attribute is mandatory when the STYLESHEET must be used</i> |
| @source | party who has provided the data - base type: string, cod. table: NT12 http://www.ebiz.enea.it/moda-ml/repository/codelist/draft/gc_NT12.xml (XPath RAWSpinOffer/RSOFFbody/RSOFFitem/yarnSpecs/specValue/@source) [Optional] (XPath RAWSpinOffer/RSOFFbody/RSOFFitem/yarnMnfrOperation/yarnMachineSpecs/specValue/@source) [Optional] |
| specValue | value requested for a property or a parameter that is measured - base type: decimal, (XPath RAWSpinOffer/RSOFFbody/RSOFFitem/yarnSpecs/specValue) 0-1 (XPath RAWSpinOffer/RSOFFbody/RSOFFitem/yarnMnfrOperation/yarnMachineSpecs/specValue) 0-1 |
| street | street and building number identifying a location - base type: string, max length: 80, (XPath RAWSpinOffer/terms/transInfo/despatchLocation/street) 0-1 (XPath RAWSpinOffer/OFFheader/buyer/street) 0-1 (XPath RAWSpinOffer/RSOFFbody/RSOFFitem/thirdParty/street) 0-1 (XPath RAWSpinOffer/terms/transInfo/deliveryLocation/street) 0-1 (XPath RAWSpinOffer/OFFheader/subContractor/street) 0-1 (XPath RAWSpinOffer/OFFheader/thirdParty/street) 0-1 (XPath RAWSpinOffer/terms/trade/tradeLocation/street) 0-1 (XPath RAWSpinOffer/OFFheader/supplier/street) 0-1 |
| subCountry | short name or code of the sub-country entity - base type: string, max length: 9, (XPath RAWSpinOffer/terms/trade/tradeLocation/subCountry) 0-1 (XPath RAWSpinOffer/OFFheader/buyer/subCountry) 0-1 (XPath RAWSpinOffer/OFFheader/subContractor/subCountry) 0-1 (XPath RAWSpinOffer/terms/transInfo/deliveryLocation/subCountry) 0-1 (XPath RAWSpinOffer/RSOFFbody/RSOFFitem/thirdParty/subCountry) 0-1 (XPath RAWSpinOffer/terms/transInfo/despatchLocation/subCountry) 0-1 (XPath RAWSpinOffer/OFFheader/thirdParty/subCountry) 0-1 (XPath RAWSpinOffer/OFFheader/supplier/subCountry) 0-1 |
| subDept | name or code of a department - base type: string, max length: 40, (XPath RAWSpinOffer/OFFheader/subContractor/subDept) 0-1 (XPath RAWSpinOffer/OFFheader/buyer/subDept) 0-1 (XPath RAWSpinOffer/OFFheader/thirdParty/subDept) 0-1 (XPath RAWSpinOffer/OFFheader/supplier/subDept) 0-1 (XPath RAWSpinOffer/terms/transInfo/despatchLocation/subDept) 0-1 (XPath RAWSpinOffer/terms/transInfo/deliveryLocation/subDept) 0-1 (XPath RAWSpinOffer/RSOFFbody/RSOFFitem/thirdParty/subDept) 0-1 (XPath RAWSpinOffer/terms/trade/tradeLocation/subDept) 0-1 |
| taxCategory | duty or tax or fee category - base type: string, cod. table: T62 http://www.ebiz.enea.it/moda-ml/repository/codelist/draft/gc_T62.xml (XPath RAWSpinOffer/terms/allowanceCharge/dtScheme/taxCategory) 0-1 (XPath RAWSpinOffer/RSOFFbody/RSOFFitem/dtScheme/taxCategory) 0-1 |
| taxRate | duty or tax or fee percent rate - base type: string, (XPath RAWSpinOffer/RSOFFbody/RSOFFitem/dtScheme/taxRate) 0-1 (XPath RAWSpinOffer/terms/allowanceCharge/dtScheme/taxRate) 0-1 |
| @taxType | duty or tax or fee type - base type: string, cod. table: T61 http://www.ebiz.enea.it/moda-ml/repository/codelist/draft/gc_T61.xml (XPath RAWSpinOffer/terms/allowanceCharge/dtScheme/@taxType) [Required] (XPath RAWSpinOffer/RSOFFbody/RSOFFitem/dtScheme/@taxType) [Required] |
| tolerance | deviation tolerated on the value of a measurement (it must have a plus or minus sign) - base type: decimal, (XPath RAWSpinOffer/RSOFFbody/RSOFFitem/yarnMnfrOperation/yarnMachineSpecs/tolerance) 0-2 (XPath RAWSpinOffer/RSOFFbody/RSOFFitem/yarnSpecs/tolerance) 0-2 |
| transactionReceipt | transaction receipt on blockchain - base type: string, max length: 80, (XPath RAWSpinOffer/RSOFFbody/RSOFFitem/yarnMnfrOperation/ |

| | |
|--------------------|--|
| | <p>refDoc/attachment/blockChainReference/transactionReceipt) 1-9 (XPath RAWSpinOffer/OFheader/refDoc/attachment/ blockChainReference/transactionReceipt) 1-9 (XPath RAWSpinOffer/RSOFFbody/RSOFFitem/refDoc/attachment/ blockChainReference/transactionReceipt) 1-9 (XPath RAWSpinOffer/RSOFFbody/RSOFFitem/rawMnfrOperation/ refDoc/attachment/blockChainReference/transactionReceipt) 1-9</p> |
| transCondition | <p>special condition of transport or special service requested to the Forwarder - base type: string, cod. table: T38 http://www.ebiz.enea.it/moda-ml/repository/codelist/draft/gc_T38.xml (XPath RAWSpinOffer/terms/transInfo/transCondition) 0-3</p> |
| transConditionText | <p>free text description of the special condition of transport or special service requested to the Forwarder - base type: string, max length: 250, (XPath RAWSpinOffer/terms/transInfo/transConditionText) 0-1</p> |
| transMeans | <p>means of transport, in general or referred to a specific leg - base type: string, cod. table: T40 http://www.ebiz.enea.it/moda-ml/repository/codelist/draft/gc_T40.xml (XPath RAWSpinOffer/terms/transInfo/transMeans) 0-1</p> |
| transMode | <p>way of transport, in general or referred to the specified leg - base type: string, cod. table: T8 http://www.ebiz.enea.it/moda-ml/repository/codelist/draft/gc_T8.xml (XPath RAWSpinOffer/terms/transInfo/transMode) 1-1</p> |
| @transReason | <p>reason for the transport - base type: string, cod. table: NT11 http://www.ebiz.enea.it/moda-ml/repository/codelist/draft/gc_NT11.xml (XPath RAWSpinOffer/terms/transInfo/@transReason) [Optional]</p> |
| @uid | <p>unique element identifier within the xml document - base type: string, (XPath RAWSpinOffer/OFheader/refDoc/attachment/@uid) [Optional] (XPath RAWSpinOffer/RSOFFbody/RSOFFitem/refDoc/attachment/@uid) [Optional] (XPath RAWSpinOffer/RSOFFbody/RSOFFitem/yarnMnfrOperation/ refDoc/attachment/@uid) [Optional] (XPath RAWSpinOffer/RSOFFbody/RSOFFitem/rawMnfrOperation/ refDoc/attachment/@uid) [Optional]</p> |
| @um | <p>specification of the unit of measure - base type: string, cod. table: NT7 http://www.ebiz.enea.it/moda-ml/repository/codelist/draft/gc_NT7.xml (XPath RAWSpinOffer/RSOFFbody/RSOFFitem/yarnSpecs/ pcTolerance/@um) [Optional] - nota: <i>to be used when it has to be soecified if the declared percentage is by weight, v olume, etc...</i> (XPath RAWSpinOffer/RSOFFbody/RSOFFitem/yarnSpecs/tolerance/@um) [Required] (XPath RAWSpinOffer/terms/transInfo/netWeight/@um) [Required] (XPath RAWSpinOffer/RSOFFbody/RSOFFitem/price/@um) [Optional] - nota: <i>Unit of measure of the product to which the price is referred (price per meter)</i> (XPath RAWSpinOffer/terms/allowanceCharge/@um) [Optional] (XPath RAWSpinOffer/OFheader/thirdParty/geoCoordinates/@um) [Optional] [Default= DEGD] - nota: <i>when not specified assume decimal DEGREES</i> (XPath RAWSpinOffer/terms/transInfo/despatchLocation/ geoCoordinates/@um) [Optional] [Default= DEGD] - nota: <i>when not specified assume decimal DEGREES</i> (XPath RAWSpinOffer/OFheader/supplier/geoCoordinates/@um) [Optional] [Default= DEGD] - nota: <i>when not specified assume decimal DEGREES</i> (XPath RAWSpinOffer/terms/transInfo/routeLength/@um) [Required] (XPath RAWSpinOffer/RSOFFbody/RSOFFitem/qty/@um) [Required] (XPath RAWSpinOffer/RSOFFbody/RSOFFitem/thirdParty/ geoCoordinates/@um) [Optional] [Default= DEGD] - nota: <i>when not specified assume decimal DEGREES</i> (XPath RAWSpinOffer/terms/transInfo/grossWeight/@um) [Required] (XPath RAWSpinOffer/OFheader/subContractor/geoCoordinates/@um) [Optional] [Default= DEG D] - nota: <i>when not specified assume decimal DEGREES</i> (XPath RAWSpinOffer/RSOFFbody/RSOFFitem/yarnMnfrOperation/ yarnMachineSpecs/tolerance/@um) [Required] (XPath RAWSpinOffer/RSOFFbody/RSOFFitem/yarnMnfrOperation/</p> |

| | |
|-------------------|--|
| | <p>yarnMachineSpecs/specValue/@um) [Optional] (XPath RAWSpinOffer/OHeader/buyer/geoCoordinates/@um) [Optional] [Default= DEGD] - nota: <i>when not specified assume decimal DEGREES</i> (XPath RAWSpinOffer/terms/trade/tradeLocation/geoCoordinates/@um) [Optional] [Default= DEGD] - nota: <i>when not specified assume decimal DEGREES</i> (XPath RAWSpinOffer/Rsofbody/Rsofitem/yarnMnfrOperation/yarnMachineSpecs/pcTolerance/@um) [Optional] - nota: <i>to be used when it has to be soecified if the declared percentage is by weight, v olume, etc...</i> (XPath RAWSpinOffer/Rsofbody/Rsofitem/yarnSpecs/specValue/@um) [Optional] (XPath RAWSpinOffer/Rsofbody/Rsofitem/yarnSpecs/experimValue/@um) [Optional] (XPath RAWSpinOffer/terms/transInfo/deliveryLocation/geoCoordinates/@um) [Optional] [Default= DEGD] - nota: <i>when not specified assume decimal DEGREES</i></p> |
| uri | <p>Uniform Resource Identifier (URI) that identifies the external object as an Internet resource - base type: normalizedString, (XPath RAWSpinOffer/Rsofbody/Rsofitem/yarnMnfrOperation/refDoc/attachment/blockChainReference/uri) 1-1 - note: <i>reference to the used blockchain (example: url https://etherscan.io/ of ethereum)</i> (XPath RAWSpinOffer/Rsofbody/Rsofitem/refDoc/attachment/externalReference/uri) 1-1 (XPath RAWSpinOffer/OHeader/refDoc/attachment/externalReference/uri) 1-1 (XPath RAWSpinOffer/Rsofbody/Rsofitem/rawMnfrOperation/refDoc/attachment/externalReference/uri) 1-1 (XPath RAWSpinOffer/Rsofbody/Rsofitem/yarnMnfrOperation/refDoc/attachment/externalReference/uri) 1-1 (XPath RAWSpinOffer/Rsofbody/Rsofitem/refDoc/attachment/blockChainReference/uri) 1-1 - note: <i>reference to the used blockchain (example: url https://etherscan.io/ of ethereum)</i> (XPath RAWSpinOffer/OHeader/refDoc/attachment/blockChainReference/uri) 1-1 - note: <i>reference to the used blockchain (example: url https://etherscan.io/ of ethereum)</i> (XPath RAWSpinOffer/Rsofbody/Rsofitem/rawMnfrOperation/refDoc/attachment/blockChainReference/uri) 1-1 - note: <i>reference to the used blockchain (example: url https://etherscan.io/ of ethereum)</i></p> |
| @useProfile | <p>use profile to which the present document if compliant if it was agreed by the parties. It is suggested a URI with reference to the firms or the URL of the profile. - base type: string, (XPath RAWSpinOffer/@useProfile) [Optional]</p> |
| @validationMethod | <p>type of method used to validare the quantity to which it refers. For example, it indicates whether it was measured in the field, estimated indirectly, approved by an expert or taken from the literature - base type: string, cod. table: NT329 http://www.ebiz.enea.it/moda-ml/repository/codelist/draft/gc_NT329.xml (XPath RAWSpinOffer/Rsofbody/Rsofitem/yarnCompos/percCompos/@validationMethod) [Optional]</p> |
| validityEnd | <p>date by which the validity ends, according to one of the patterns YYYY-MM-DD, YYYY-MM-DD:HH-MM or YYYY-WW. - base type: string, (XPath RAWSpinOffer/OHeader/validityEnd) 1-1</p> |
| validityStart | <p>date by which the validity starts, according to one of the patterns YYYY-MM-DD, YYYY-MM-DD:HH-MM or YYYY-WW. - base type: string, (XPath RAWSpinOffer/OHeader/validityStart) 0-1</p> |
| @VAT | <p>VAT rate or code (DEPRECATED, use dtScheme element) - base type: string, cod. table: NT16</p> |

| | |
|--------------------|---|
| | <p>http://www.ebiz.enea.it/moda-ml/repository/codelist/draft/gc_NT16.xml (XPath RAWSpinOffer/RSOFbody/RSOFitem/thirdParty/@VAT) [Optional] (XPath RAWSpinOffer/OFheader/thirdParty/@VAT) [Optional] (XPath RAWSpinOffer/terms/allowanceCharge/@VAT) [Optional] (XPath RAWSpinOffer/RSOFbody/RSOFitem/lineN/@VAT) [Optional] - nota: <i>Deprecated, prefer dtScheme when available.</i></p> |
| @version | <p>Dictionary version from which the instance has been created - base type: string, cod. table: NT100 http://www.ebiz.enea.it/moda-ml/repository/codelist/draft/gc_NT100.xml (XPath RAWSpinOffer/@version) [Optional] [Default= draft]</p> |
| xGeoCoord | <p>geographical coordinate x , corresponding to latitude - base type: decimal, (XPath RAWSpinOffer/OFheader/supplier/geoCoordinates/xGeoCoord) 1-1 (XPath RAWSpinOffer/terms/transInfo/despatchLocation/ geoCoordinates/xGeoCoord) 1-1 (XPath RAWSpinOffer/OFheader/buyer/geoCoordinates/xGeoCoord) 1-1 (XPath RAWSpinOffer/RSOFbody/RSOFitem/thirdParty/ geoCoordinates/xGeoCoord) 1-1 (XPath RAWSpinOffer/OFheader/subContractor/geoCoordinates/xGeoCoord) 1-1 (XPath RAWSpinOffer/terms/trade/tradeLocation/geoCoordinates/xGeoCoord) 1-1 (XPath RAWSpinOffer/OFheader/thirdParty/geoCoordinates/xGeoCoord) 1-1 (XPath RAWSpinOffer/terms/transInfo/deliveryLocation/ geoCoordinates/xGeoCoord) 1-1</p> |
| yarnChar | <p>physical or mechanical parameter used to define a property of a yarn - base type: string, cod. table: T24 http://www.ebiz.enea.it/moda-ml/repository/codelist/draft/gc_T24.xml (XPath RAWSpinOffer/RSOFbody/RSOFitem/yarnSpecs/yarnChar) 1-1</p> |
| yarnCharText | <p>free text describing the physical or mechanical parameter used to define a property of a yarn - base type: string, max length: 250, (XPath RAWSpinOffer/RSOFbody/RSOFitem/yarnSpecs/yarnCharText) 1-1</p> |
| yarnJob | <p>operation of a work cycle for yarn - base type: string, cod. table: T201 http://www.ebiz.enea.it/moda-ml/repository/codelist/draft/gc_T201.xml (XPath RAWSpinOffer/RSOFbody/RSOFitem/yarnMnfrOperation/yarnJob) 1-1</p> |
| yarnJobTech | <p>operation technology for yarn - base type: string, cod. table: T261 http://www.ebiz.enea.it/moda-ml/repository/codelist/draft/gc_T261.xml (XPath RAWSpinOffer/RSOFbody/RSOFitem/yarnMnfrOperation/yarnJobTech) 0-1</p> |
| yarnMachine | <p>machine used in an operation of a work cycle for yarn - base type: string, cod. table: T271 http://www.ebiz.enea.it/moda-ml/repository/codelist/draft/gc_T271.xml (XPath RAWSpinOffer/RSOFbody/RSOFitem/yarnMnfrOperation/yarnMachine) 0-1</p> |
| yarnMachineParam | <p>setting parameter of a machine used in an operation of a work cycle for yarn - base type: string, cod. table: T281 http://www.ebiz.enea.it/moda-ml/repository/codelist/draft/gc_T281.xml (XPath RAWSpinOffer/RSOFbody/RSOFitem/yarnMnfrOperation/ yarnMachineSpecs/yarnMachineParam) 1-1</p> |
| @yarnProcQualifier | <p>type of yarn with reference to the manufacturing process - base type: string, cod. table: NT31 http://www.ebiz.enea.it/moda-ml/repository/codelist/draft/gc_NT31.xml (XPath RAWSpinOffer/@yarnProcQualifier) [Required]</p> |
| yGeoCoord | <p>geographical coordinate y , corresponding to longitude - base type: decimal, (XPath RAWSpinOffer/OFheader/subContractor/geoCoordinates/yGeoCoord) 1-1 (XPath RAWSpinOffer/OFheader/supplier/geoCoordinates/yGeoCoord) 1-1 (XPath RAWSpinOffer/OFheader/thirdParty/geoCoordinates/yGeoCoord) 1-1 (XPath RAWSpinOffer/OFheader/buyer/geoCoordinates/yGeoCoord) 1-1 (XPath RAWSpinOffer/terms/transInfo/despatchLocation/ geoCoordinates/yGeoCoord) 1-1 (XPath RAWSpinOffer/RSOFbody/RSOFitem/thirdParty/ geoCoordinates/yGeoCoord) 1-1 (XPath</p> |

| | |
|-----------|---|
| | <p>RAWSpinOffer/terms/trade/tradeLocation/geoCoordinates/yGeoCoord) 1-1 (XPath RAWSpinOffer/terms/transInfo/deliveryLocation/ geoCoordinates/yGeoCoord) 1-1</p> |
| zGeoCoord | <p>geographical coordinate z , corresponding to altitude - base type: decimal, (XPath RAWSpinOffer/OFheader/buyer/geoCoordinates/zGeoCoord) 0-1 - note: <i>altitude might be omitted</i> (XPath RAWSpinOffer/OFheader/subContractor/geoCoordinates/zGeoCoord) 0-1 - note: <i>altitude might be omitted</i> (XPath RAWSpinOffer/terms/transInfo/deliveryLocation/ geoCoordinates/zGeoCoord) 0-1 - note: <i>altitude might be omitted</i> (XPath RAWSpinOffer/terms/transInfo/despatchLocation/ geoCoordinates/zGeoCoord) 0-1 - note: <i>altitude might be omitted</i> (XPath RAWSpinOffer/RSOFbody/RSOFitem/thirdParty/ geoCoordinates/zGeoCoord) 0-1 - note: <i>altitude might be omitted</i> (XPath RAWSpinOffer/OFheader/supplier/geoCoordinates/zGeoCoord) 0-1 - note: <i>altitude might be omitted</i> (XPath RAWSpinOffer/OFheader/thirdParty/geoCoordinates/zGeoCoord) 0-1 - note: <i>altitude might be omitted</i> (XPath RAWSpinOffer/terms/trade/tradeLocation/geoCoordinates/zGeoCoord) 0-1 - note: <i>altitude might be omitted</i></p> |

2.3 Suggested best practices

**RAWSpinOffer/RSOFbody/RSOFitem/rawMnfrOperation/
refDoc/docID (identification number of the referenced document)**

numberingOrg indicates the role that produced the document identifier (it is allowed to declare two different ones -e.g. customer and supplier - with two docID with different numberingOrg

**RAWSpinOffer/RSOFbody/RSOFitem/yarnMnfrOperation/
refDoc/docID (identification number of the referenced document)**

numberingOrg indicates the role that produced the document identifier (it is allowed to declare two different ones -e.g. customer and supplier - with two docID with different numberingOrg

RAWSpinOffer/RSOFbody/RSOFitem/refDoc/docID (identification number of the referenced document)

numberingOrg indicates the role that produced the document identifier (it is allowed to declare two different ones -e.g. customer and supplier - with two docID with different numberingOrg

RAWSpinOffer/OFheader/refDoc/docID (identification number of the referenced document)

numberingOrg indicates the role that produced the document identifier (it is allowed to declare two different ones -e.g. customer and supplier - with two docID with different numberingOrg

**RAWSpinOffer/OFheader/refDoc/attachment/
externalReference/mimeCode (mime type of the external object)**

Use coding from IANA <http://www.iana.org/assignments/media-types/media-types.xml>

**RAWSpinOffer/RSOFbody/RSOFitem/refDoc/attachment/
externalReference/mimeCode (mime type of the external object)**

Use coding from IANA <http://www.iana.org/assignments/media-types/media-types.xml>

**RAWSpinOffer/RSOFbody/RSOFitem/yarnMnfrOperation/
refDoc/attachment/externalReference/mimeCode (mime type of the external object)**

Use coding from IANA <http://www.iana.org/assignments/media-types/media-types.xml>

**RAWSpinOffer/RSOFbody/RSOFitem/rawMnfrOperation/
refDoc/attachment/externalReference/mimeCode (mime type of the external object)**

Use coding from IANA <http://www.iana.org/assignments/media-types/media-types.xml>

RAWSpinOffer/RSOFbody/RSOFitem/qty (net quantity of the article or object correlated, qualified by the function of the document (ordering, delivering, ..) and by the context)

this element can have two instances only if the units of measure are different

2.4 Enumeration tables

List of enumeration tables used in the XML document. You can find all the tables with the corresponding codes at:
<http://www.ebiz.enea.it/eBIZ/imple/eBIZTCU-draft.asp?lingua=en&pag=6>

NT100 - eBIZ TCFUpstream version
NT11 - transport causal
NT12 - data source
NT16 - VAT rate or code
NT18 - message function
NT2 - third party qualifier
NT20 - price qualifier
NT29 - format of a date
NT3 - issuer of the identifier (or identification system) of a location.
NT31 - yarn family
NT324 - propulsion system type
NT329 - type of validation method of the value
NT333 - type of hashing algorithm
NT5 - action code
NT6 - coding system owner/issuer
NT7 - unit of measure
T1 - terms of payment
T10 - ISO3166 - Country
T19 - fibre type
T2 - Modes of payment
T200 - type of job on raw material
T201 - type of job on yarn
T21 - type of document
T24 - yarn characteristics type
T261 - type of job technology for yarn
T271 - machine type for yarn operation
T281 - parameter type for yarn operation
T3 - terms of delivery - IncoTerms
T306 - material circularity attribute
T307 - recycling process method
T38 - transport conditions
T40 - type of transport means
T41 - type of Allowance or Charge
T61 - duty or tax or fee type
T62 - duty or tax or fee category
T8 - Modes of Transport
T9 - ISO4217 - Currency

(the most relevant tables are detailed in the following Annexes too)

ACKNOWLEDGEMENT



This action is part of the TRICK project, which has received funding from Horizon 2020 research and innovation programme under grant agreement No. 958352 of the European Union.

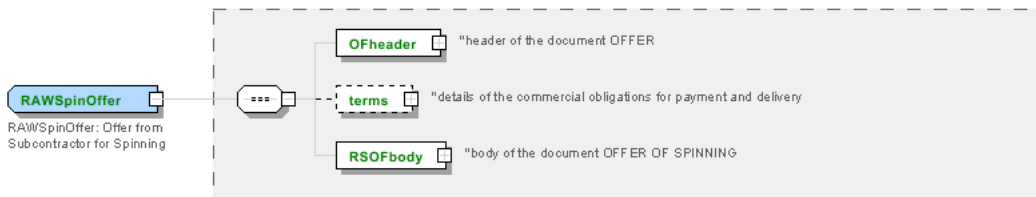
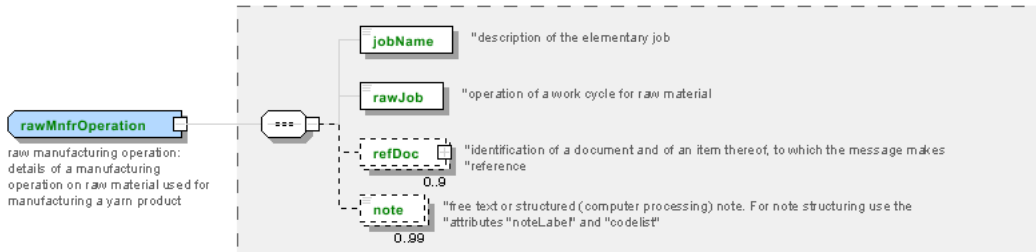
DISCLAIMER

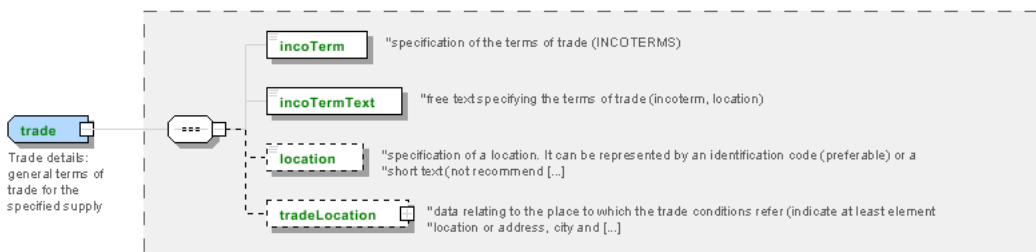
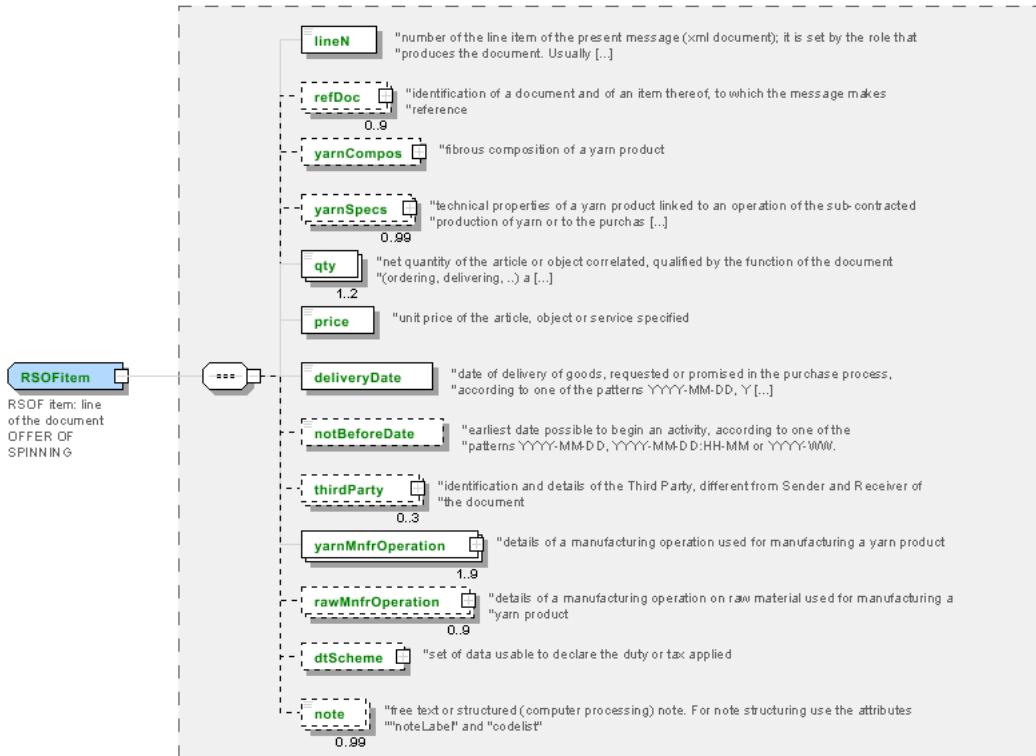
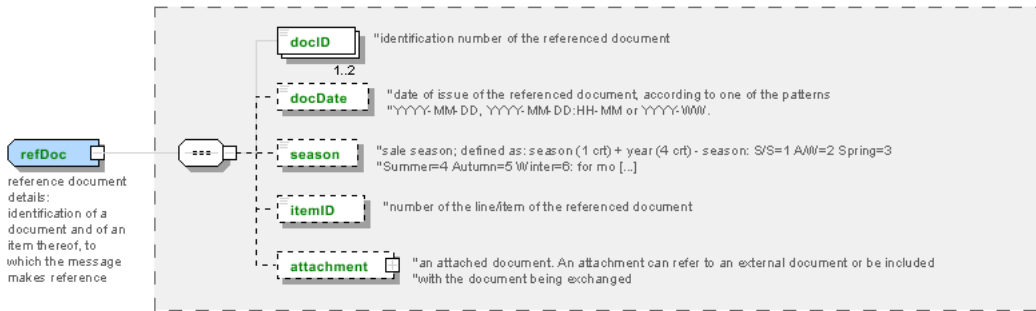
The content of this document represents the views of the authors only and is their sole responsibility; it cannot be considered to reflect the views of the European Commission or any other body of the European Union.

The European Commission does not accept any responsibility for use that may be made of the information it contains.

Annex A

Representative images of the principal complex elements' structure.





Annex B

NT100 - eBIZ TCFUpstream version

dictionary version

Agency name: eBIZ

Decoding table: NT100

File codes list (Generic code): http://www.ebiz.enea.it/moda-ml/repository/codelist/draft/gc_NT100.xml

| Code | Description | Adoption note | Date of insertion |
|--------|-------------|---------------|-------------------|
| 2013-1 | v2013-1 | | 01/07/2013 |
| 2018-1 | v2018-1 | | 04/11/2018 |
| draft | draft | | 08/09/2017 |

NT11 - transport causal

reason for the transport

Agency name: eBIZ

Decoding table: NT11

File codes list (Generic code): http://www.ebiz.enea.it/moda-ml/repository/codelist/draft/gc_NT11.xml

| Code | Description | Adoption note | Date of insertion |
|------|-----------------------|---------------|-------------------|
| FOC | free of charge | | |
| FRW | return from re-works | | |
| FST | return from storage | | |
| FVW | return from view | | |
| FWK | return from works | | |
| IST | in storage | | |
| NWK | return non-worked | | |
| RJC | return from rejection | | |
| SEL | to sell | | |
| STO | to storage | | |
| VEW | to view | | |
| WRK | to works | | |

NT12 - data source

party who has provided the data

Agency name: eBIZ

Decoding table: NT12

File codes list (Generic code): http://www.ebiz.enea.it/moda-ml/repository/codelist/draft/gc_NT12.xml

| Code | Description | Adoption note | Date of insertion |
|------|---------------------|---------------|-------------------|
| AC | internal test | | |
| CO | external test | | |
| CV | test after steaming | | |

NT16 - VAT rate or code

VAT rate or code (DEPRECATED, use dtScheme element)

Decoding table: NT16

File codes list (Generic code): http://www.ebiz.enea.it/moda-ml/repository/codelist/draft/gc_NT16.xml

NT18 - message function

function performed by the present message with regards to the transmission

Agency name: eBIZ

Decoding table: NT18

File codes list (Generic code): http://www.ebiz.enea.it/moda-ml/repository/codelist/draft/gc_NT18.xml

| Code | Description | Adoption note | Date of insertion |
|------|-------------------------------------|---------------|-------------------|
| CA | delete this document | | 01/07/2013 |
| CP | copy | | |
| OR | original | | |
| RC | re-transmission for data correction | | |
| RT | re-transmission | | |

NT2 - third party qualifier

Third Party role qualifier

Agency name: eBIZ

Decoding table: NT2

File codes list (Generic code): http://www.ebiz.enea.it/moda-ml/repository/codelist/draft/gc_NT2.xml

| Code | Description | Adoption note | Date of insertion |
|------|-------------|---------------|-------------------|
| AG | Sales Agent | | |
| AU | Auditor | | 08/04/2019 |
| BU | Buyer | | 13/06/2022 |

| | | | |
|----|--------------------------------------|--|------------|
| CE | Certification authority | | 08/04/2019 |
| CM | Commissioner | | 13/06/2022 |
| CO | Quality Controller | | |
| CU | Customs authority | | 13/06/2022 |
| DC | Response to | | |
| DF | Invoicee | | |
| DI | Copy to (CC) | | 28/10/2014 |
| DM | Consignee | | |
| DP | Consignment address (Delivery Party) | | |
| EX | Expert | | 13/06/2022 |
| IM | Importer | | |
| OR | Originator | | 10/09/2014 |
| SC | Sub contractor | | 10/04/2019 |
| SM | Service/ePlatform manager | | 08/04/2019 |
| SP | Forwarder | | |
| SU | Supplier | | 13/06/2022 |
| TL | Test or analysis laboratory | | 13/06/2022 |
| TX | Tax Representative | | |

NT20 - price qualifier

type of price with reference to discount and taxes

Agency name: eBIZ

Decoding table: NT20

File codes list (Generic code): http://www.ebiz.enea.it/moda-ml/repository/codelist/draft/gc_NT20.xml

| Code | Description | Adoption note | Date of insertion |
|------|-----------------------|---------------|-------------------|
| GET | gross excluding taxes | | |
| GIT | gross including taxes | | |
| NET | net excluding taxes | | |
| NIT | net including taxes | | |

NT29 - format of a date

format used for the date

Agency name: eBIZ

Decoding table: NT29

File codes list (Generic code): http://www.ebiz.enea.it/moda-ml/repository/codelist/draft/gc_NT29.xml

| Code | Description | Adoption note | Date of insertion |
|------|--|---------------|-------------------|
| D | YYYY-MM-DD | | |
| M | YYYY-MM-DD:HH-MM (date and time) | | |
| S | AAAA-MM-GG:HH-MM-SS (date and time with seconds) | | 13/06/2022 |
| W | YYYY-WW | | |

NT3 - issuer of the identifier (or identification system) of a location.

List of possible issuers of the identifier (or identification system) of a location.

Agency name: eBIZ

Decoding table: NT3

File codes list (Generic code): http://www.ebiz.enea.it/moda-ml/repository/codelist/draft/gc_NT3.xml

| Code | Description | Adoption note | Date of insertion |
|------|---------------------------|---|-------------------|
| EN4 | GS1-GLN | obsolete | 01/07/2013 |
| GLN | GS1-GLN | equivalent to EN4 | 25/04/2023 |
| MD | mutually agreed | | |
| NCA | National custom authority | identifier of a bonded warehouse assigned by the custom authority | 19/05/2023 |
| PLA | Platform | internal coding of the involved platform | 14/05/2023 |
| TRI | TRICK | | 14/05/2023 |

NT31 - yarn family

yarn classification according to the manufacturing process

Agency name: eBIZ

Decoding table: NT31

File codes list (Generic code): http://www.ebiz.enea.it/moda-ml/repository/codelist/draft/gc_NT31.xml

| Code | Description | Adoption note | Date of insertion |
|------|-------------|---------------|-------------------|
| CAN | carded | | |
| EXT | extrusion | | |
| FSE | dry-spun | | |
| FUM | wet-spun | | |
| OPE | open end | | |
| PAN | combed | | |
| REG | regenerated | | |
| SMP | half-combed | | |

NT324 - propulsion system type

propulsion system type adopted, for example, by a transport mean

Agency name: eBIZ for TRICK

Decoding table: NT324

File codes list (Generic code): http://www.ebiz.enea.it/moda-ml/repository/codelist/draft/gc_NT324.xml

| Code | Description | Adoption note | Date of insertion |
|-------|---------------------------------------|--------------------|-------------------|
| ALC | Alcohol | | 05/07/2022 |
| BDIE | Bio diesel | | 05/07/2022 |
| BEV | Battery Electric Vehicle | | 05/07/2022 |
| BFUE | Biofuels | biodiesel excluded | 02/09/2022 |
| DIE | Diesel | | 05/07/2022 |
| FCEV | Hydrogen Fuel cell | | 05/07/2022 |
| GAS | GAS | | 05/07/2022 |
| GPL | LPG | | 05/07/2022 |
| HEV | Full hybrid (Hybrid Electric Vehicle) | | 05/07/2022 |
| HUM | Human force | | 05/07/2022 |
| HYB | Hybrid | | 05/07/2022 |
| MHY | Mild hybrid | | 05/07/2022 |
| NUC | Nuclear | | 05/07/2022 |
| PET | Petrol | | 05/07/2022 |
| PHEV | plug-in Hybrid Electric Vehicle | | 05/07/2022 |
| STEAM | Steam | | 05/07/2022 |
| WIND | Wind | | 05/07/2022 |

NT329 - type of validation method of the value

indicates the type of method used to validation and calculate the quantity to which it refers; used to express the data faithfulness

Agency name: eBIZ

Decoding table: NT329

File codes list (Generic code): http://www.ebiz.enea.it/moda-ml/repository/codelist/draft/gc_NT329.xml

| Code | Description | Adoption note | Date of insertion |
|------|---------------------------|---------------|-------------------|
| CER | third party certification | | 11/06/2023 |
| EST | estimate | | 12/05/2023 |
| EXP | confirmed by an expert | | 19/05/2023 |
| LAB | laboratory test | | 11/06/2023 |

| | | | |
|-----|----------------------|--|------------|
| LIT | literature | refer to a literature analysis outcome | 12/05/2023 |
| MON | monitoring | refer to continuous measurement in field | 12/05/2023 |
| REV | confirmed by review | | 11/06/2023 |
| SAM | sampling | refer to a sample measurement in field | 12/05/2023 |
| SUP | supplier declaration | | 11/06/2023 |

NT333 - type of hashing algorithm

type of hashing algorithm

Decoding table: NT333

File codes list (Generic code): http://www.ebiz.enea.it/moda-ml/repository/codelist/draft/gc_NT333.xml

| Code | Description | Adoption note | Date of insertion |
|------------|-------------|---------------|-------------------|
| ADLER32 | ADLER32 | | 26/05/2023 |
| HMAC | HMAC | | 26/05/2023 |
| MD2 | MD2 | | 26/05/2023 |
| MD4 | MD4 | | 26/05/2023 |
| MD5 | MD5 | | 26/05/2023 |
| MDC-2 | MDC-2 | | 26/05/2023 |
| PANAMA | PANAMA | | 26/05/2023 |
| RIPEMD-160 | RIPEMD-160 | | 26/05/2023 |
| SHA-1 | SHA-1 | | 26/05/2023 |
| SHA-2 256 | SHA-2 256 | | 26/05/2023 |
| SHA-2 384 | SHA-2 384 | | 26/05/2023 |
| SHA-2 512 | SHA-2 512 | | 26/05/2023 |
| TIGER | TIGER | | 26/05/2023 |

NT5 - action code

action performed by the present line upon the referenced document line

Agency name: eBIZ

Decoding table: NT5

File codes list (Generic code): http://www.ebiz.enea.it/moda-ml/repository/codelist/draft/gc_NT5.xml

| Code | Description | Adoption note | Date of insertion |
|------|---|---------------|-------------------|
| A | CANCELLED | | |
| C | CONFIRMED | | |
| N | NEW ORDER LINE (created by an order change) | | |

| | | | |
|----|--------------------------|--|--|
| R | PROVISIONAL CONFIRMATION | | |
| S | DEFINITIVE CONFIRMATION | | |
| SA | suspension accepted | | |
| SN | suspension not accepted | | |
| SR | suspension request | | |
| V | AMENDED | | |

NT6 - coding system owner/issuer

code specifying the organisation who has created or owns the registers of the present coding or numbering system

Agency name: eBIZ

Decoding table: NT6

File codes list (Generic code): http://www.ebiz.enea.it/moda-ml/repository/codelist/draft/gc_NT6.xml

| Code | Description | Adoption note | Date of insertion |
|------|---|------------------|-------------------|
| CBR | National customs brokers registry | | 12/06/2023 |
| CL | Customer/buyer | | |
| CO | Quality Controller | | |
| DU | D-U-N-S registry (Data Universal Numbering System) | | 04/05/2023 |
| EB | eBIZ | replaces 'ML' | 18/03/2019 |
| EN | GS1 (ex-EAN International) | | |
| EO | Registro EORI (Economic Operators Registration and Identification number) | | 04/03/2023 |
| ES | e-Stockflow | DEPRECATED | |
| FO | Supplier | | |
| GS | GS1 | | 01/07/2013 |
| MF | national taxation authority (i.e. VAT codes registry) | | |
| ML | Moda-ML | DEPRECATED | |
| PL | Application Platform | | 13/06/2022 |
| REX | Registered Exporter system (REX) | | 19/05/2023 |
| SP | Service Provider | | |
| SU | Enterprise Identification Number UID | Only switzerland | 04/03/2023 |

NT7 - unit of measure

specification of the unit of measure, it is a sub set of table Unit of Measure Code - UN/ECE REC 20 delivered by United Nations Economic Commission for Europe (UN/ECE)

Agency name: eBIZ / UN/ECE

Decoding table: NT7

File codes list (Generic code): http://www.ebiz.enea.it/moda-ml/repository/codelist/draft/gc_NT7.xml

Other link: <http://docs.oasis-open.org/ubl/os-UBL-2.1/cl/gc/default/UnitOfMeasureCode-2.1.gc#>

| Code | Description | Adoption note | Date of insertion |
|-------------|----------------------------------|----------------------|--------------------------|
| CMK | square centimetre | | 20/12/2017 |
| CMQ | cubic centimetre | | 20/12/2017 |
| CMT | centimetre | | |
| CNE | centiNewton | | |
| CO2TON | ton of CO2 | | 10/09/2014 |
| COUPLES | couples | | |
| DAY | day | | 22/08/2022 |
| DEGD | decimal degrees | | 04/07/2022 |
| DEGMS | degrees with minutes and seconds | | 01/07/2022 |
| DMQ | cubic decimetre | | |
| E37 | pixel | | 11/04/2018 |
| GRM | gram | | |
| HUR | hour | | |
| INH | inch | | |
| KGM | kilogram | | |
| KMT | kilometer | | |
| KWH | kilowatthours | | 10/09/2014 |
| LBR | pound | | |
| MCG | microgram | | 23/08/2022 |
| MG | milligram | | 23/08/2022 |
| MIN | minute | | |
| MMK | square millimetre | | 20/12/2017 |
| MONTH | month | | 22/08/2022 |
| MSEC | millisecond (time) | | 22/08/2022 |
| MTK | square metre | | 20/12/2017 |
| MTQ | cubic metre | | |
| MTR | metre | | |
| NMB | numero | | |
| ONZ | ounce | | |
| P1 | percent | | |
| PPM | parts per milion | | |
| PZ | piece | | |
| RPM | rounds per metre | | |
| SEC | second (time) | | 22/08/2022 |
| YEAR | year | | 22/08/2022 |

| | | | |
|-----|------|--|--|
| YRD | yard | | |
|-----|------|--|--|

T1 - terms of payment

code specifying the terms or time by which the payment must be done

Agency name: eBIZ

Decoding table: T1

File codes list (Generic code): http://www.ebiz.enea.it/moda-ml/repository/codelist/draft/gc_T1.xml

| Code | Description | Adoption note | Date of insertion |
|----------------|--|---------------|-------------------|
| ANTICIP | PAYMENT IN ADVANCE | | |
| BLCOLLECT/120D | BILL OF LADING 120 DD | | |
| BLCOLLECT/30D | BILL OF LADING 30 DD | | |
| BLCOLLECT/60D | BILL OF LADING 60 DD | | |
| BLCOLLECT/90D | BILL OF LADING 90 DD | | |
| CASH | PAYMENT ON DELIVERY | | |
| CASHINV | PAYMENT ON RECEIPT OF INVOICE | | |
| CREDOC/0D | DOCUMENTARY CREDIT FOR PAYM. AT SIGHT | | |
| CREDOC/120 | DOCUMENTARY CREDIT FOR PAYM. AT 120 DD | | |
| CREDOC/150 | DOCUMENTARY CREDIT FOR PAYM. AT 150 DD | | |
| CREDOC/180 | DOCUMENTARY CREDIT FOR PAYM. AT 180 DD | | |
| CREDOC/30D | DOCUMENTARY CREDIT FOR PAYM. AT 30 DD | | |
| CREDOC/45D | DOCUMENTARY CREDIT FOR PAYM. AT 45 DD | | |
| CREDOC/60 | DOCUMENTARY CREDIT FOR PAYM. AT 60 DD | | |
| CREDOC/90 | DOCUMENTARY CREDIT FOR PAYM. AT 90 DD | | |
| DEL/10 | PAYMENT AT 10 DD AFTER DELIVERY | | |
| DOCOLLECT/120D | DOCUMENTARY COLLECTION AT 120 DD | | |
| DOCOLLECT/30D | DOCUMENTARY COLLECTION AT 30 DD | | |
| DOCOLLECT/60D | DOCUMENTARY COLLECTION AT 60 DD | | |
| DOCOLLECT/90D | DOCUMENTARY COLLECTION AT 90 DD | | |
| INV/120D | PAYMENT AT 120 DD AFTER RECEIPT OF INVOICE | | |
| INV/150D | PAYMENT AT 150 DD AFTER RECEIPT OF INVOICE | | |
| INV/180D | PAYMENT AT 180 DD AFTER RECEIPT OF INVOICE | | |
| INV/30D | PAYMENT AT 30 DD AFTER RECEIPT OF INVOICE | | |
| INV/45D | PAYMENT AT 45 DD AFTER RECEIPT OF INVOICE | | |
| INV/60D | PAYMENT AT 60 DD AFTER RECEIPT OF INVOICE | | |
| INV/90D | PAYMENT AT 90 DD AFTER RECEIPT OF INVOICE | | |
| INVULTIMO | PAYMENT AT END MONTH RECEIPT INVOICE | | |

| | | | |
|----------------|---|--|--|
| INVULTIMO/10D | PAYMENT 10 DD AFTER END MONTH RECEIPT INVOICE | | |
| INVULTIMO/120D | PAYMENT 120 DD AFTER END MONTH RECEIPT INVOICE | | |
| INVULTIMO/150D | PAYMENT 150 DD AFTER END MONTH RECEIPT INVOICE | | |
| INVULTIMO/180D | PAYMENT 180 DD AFTER END MONTH RECEIPT INVOICE | | |
| INVULTIMO/240D | PAYMENT 240 DD AFTER END MONTH RECEIPT INVOICE | | |
| INVULTIMO/30D | PAYMENT 30 DD AFTER END MONTH RECEIPT INVOICE | | |
| INVULTIMO/45D | PAYMENT 45 DD AFTER END MONTH RECEIPT INVOICE | | |
| INVULTIMO/60D | PAYMENT 60 DD AFTER END MONTH RECEIPT INVOICE | | |
| INVULTIMO/90D | PAYMENT 90 DD AFTER END MONTH RECEIPT INVOICE | | |
| NOPAY | WITHOUT PAYMENT | | |
| RECREDOC/0D | IRREVOC. DOCUMENTARY CREDIT FOR PAYM. AT SIGHT | | |
| RECREDOC/120D | IRREVOC. DOCUMENTARY CREDIT FOR PAYM. AT 120 DD | | |
| RECREDOC/150D | IRREVOC. DOCUMENTARY CREDIT FOR PAYM. AT 150 DD | | |
| RECREDOC/180D | IRREVOC. DOCUMENTARY CREDIT FOR PAYM. AT 180 DD | | |
| RECREDOC/30D | IRREVOC. DOCUMENTARY CREDIT FOR PAYM. AT 30 DD | | |
| RECREDOC/45D | IRREVOC. DOCUMENTARY CREDIT FOR PAYM. AT 45 DD | | |
| RECREDOC/60D | IRREVOC. DOCUMENTARY CREDIT FOR PAYM. AT 60 DD | | |
| RECREDOC/90D | IRREVOC. DOCUMENTARY CREDIT FOR PAYM. AT 90 DD | | |
| ULTIMO | PAYMENT BY END MONTH OF DELIVERY | | |
| ULTIMO/10 | PAYMENT AT 10 DD AFTER END MONTH OF DELIVERY | | |

T10 - ISO3166 - Country

code of the nation

Agency name: ISO

Decoding table: T10

File codes list (Generic code): http://www.ebiz.enea.it/moda-ml/repository/codelist/draft/gc_T10.xml

Table not printed: there are 240 elements, more than the maximum specified for printing: 99.

T19 - fibre type

type of fibre used in a textile product

Agency name: eBIZ

Decoding table: T19

File codes list (Generic code): http://www.ebiz.enea.it/moda-ml/repository/codelist/draft/gc_T19.xml

| Code | Description | Adoption note | Date of insertion |
|------|-------------|---------------|-------------------|
| AB | abaca | | 20/08/2018 |

| | | | |
|----|------------------|--|------------|
| AC | acetate | | |
| AF | other fibres | | |
| AG | alginic fibre | | |
| AL | alfa | | 20/08/2018 |
| AR | aramid | | 25/04/2022 |
| CA | hemp | | |
| CC | coir (coconut) | | 20/08/2018 |
| CL | chlorofibre | | |
| CO | cotton | | |
| CU | cuprous | | |
| EA | elastan | | |
| EF | elastolefin | | 25/04/2022 |
| EL | Elastodiene | | 20/08/2018 |
| EM | elastomultiester | | 25/04/2022 |
| FL | fluorofibre | | |
| GI | broom | | 20/08/2018 |
| GL | textile glass | | |
| HA | hair | | 20/08/2018 |
| HE | henequen | | 20/08/2018 |
| HL | mixed linen | | |
| JU | jute | | |
| KE | kenaf | | 20/08/2018 |
| KP | kapoc | | 20/08/2018 |
| LI | linen | | |
| LY | lyocell | | 20/08/2018 |
| MA | modacrylic | | |
| MD | modal | | |
| ME | metallized | | |
| MG | maguey | | 20/08/2018 |
| MM | melamine | | 25/04/2022 |
| PA | polyamide | | |
| PB | polyureic | | |
| PC | acrylic | | |
| PE | polyethylene | | |
| PI | paper | | 20/08/2018 |
| PL | polyester | | |
| PM | polyimide | | |
| PO | polilactyd | | 25/04/2022 |

| | | | |
|----|---|--|------------|
| PP | polypropylene | | |
| PR | proteic | | |
| PU | polyurethane | | |
| RA | ramie | | 20/08/2018 |
| SE | silk | | |
| SI | sisal | | 20/08/2018 |
| SN | sun | | 20/08/2018 |
| TA | triacetate | | |
| TR | textile residues or unspecified composition | | 20/08/2018 |
| TV | trivinyll | | |
| VI | viscose | | |
| VY | vinylal | | |
| WA | angora | | |
| WB | beaver | | 20/08/2018 |
| WC | cashgora | | |
| WG | vicuna | | |
| WK | camel | | |
| WL | llama | | |
| WM | mohair | | |
| WN | lapin | | 20/08/2018 |
| WO | wool | | |
| WP | alpaca | | |
| WS | cashmere | | |
| WT | Oteer | | 20/08/2018 |
| WU | guanaco | | |
| WV | virgin wool | | |
| WY | yack | | |

T2 - Modes of payment

way or means of payment

Agency name: eBIZ

Decoding table: T2

File codes list (Generic code): http://www.ebiz.enea.it/moda-ml/repository/codelist/draft/gc_T2.xml

| Code | Description | Adoption note | Date of insertion |
|------|--------------------------|---------------|-------------------|
| BB | bank transfer | | |
| IA | collection through Agent | | |

| | | | |
|----|------------------------------|--|--|
| IS | collection through Forwarder | | |
| RB | bank receipt | | |
| RD | remittance | | |
| SW | bank SWIFT | | |
| TR | bank draft | | |

T200 - type of job on raw material

operation of a work cycle for raw material

Agency name: eBIZ

Decoding table: T200

File codes list (Generic code): http://www.ebiz.enea.it/moda-ml/repository/codelist/draft/gc_T200.xml

| Code | Description | Adoption note | Date of insertion |
|------|--------------|---------------|-------------------|
| 01 | dejarrare | | |
| 02 | to wash | | |
| 03 | to dry | | |
| 04 | to mix | | |
| 05 | to comb | | |
| 06 | to cut | | |
| 07 | to tear open | | |
| 08 | to beat | | |
| 09 | to carbonise | | |
| 10 | to dye | | |
| 11 | felting | | |
| 12 | to smoothen | | |
| 13 | vigoreux | | |
| 14 | angra | | |
| 15 | basolan | | |
| 16 | unshrinkable | | |
| 17 | to blend | | |

T201 - type of job on yarn

operation of a work cycle for yarn

Agency name: eBIZ

Decoding table: T201

File codes list (Generic code): http://www.ebiz.enea.it/moda-ml/repository/codelist/draft/gc_T201.xml

| Code | Description | Adoption note | Date of insertion |
|------|------------------------|---------------|-------------------|
| 08 | to re-comb | | |
| 09 | to prepare | | |
| 10 | to card | | |
| 11 | to spin | | |
| 12 | to steam | | |
| 13 | to wind | | |
| 14 | doubling | | |
| 15 | to twist | | |
| 16 | to unwind | | |
| 17 | to singe | | |
| 18 | to raise | | |
| 19 | to reel | | |
| 20 | to re-wind | | |
| 21 | to shrink | | |
| 22 | to coat | | |
| 23 | to garnett | | |
| 24 | to print | | |
| 25 | to dye | | |
| 26 | to boil | | |
| 27 | to scour | | |
| 28 | to dry | | |
| 99 | other, see note if any | | 01/07/2013 |

T21 - type of document

type or class to which the referenced document belongs

Agency name: eBIZ

Decoding table: T21

File codes list (Generic code): http://www.ebiz.enea.it/moda-ml/repository/codelist/draft/gc_T21.xml

| Code | Description | Adoption note | Date of insertion |
|------|------------------------------|---------------|-------------------|
| BIL | Bill of lading | | 07/03/2023 |
| BOR | Blanket order | | 01/02/2018 |
| CAT | Price catalogue - tech sheet | | |
| CEO | Certificate of origin | | 13/04/2018 |
| CER | Certificate | | 13/04/2018 |

| | | | |
|------|------------------------------------|-----------------------------|------------|
| CMR | CMR consignment note | | 07/03/2023 |
| COC | Colour card | | |
| CRN | Credit note | | 08/09/2017 |
| CTO | Checking order | | 01/07/2013 |
| CTR | Contract | | |
| CXF | CxF3 file | | 01/07/2013 |
| DAD | Darn order | | |
| DDT | Delivery note (transport document) | | |
| DEA | Despatch advise | | |
| DER | Despatch request | | |
| DR | Document Request | | 02/12/2014 |
| EAD | Export Accompanying Document | adopted by European customs | 12/05/2023 |
| ECMR | electronic CMR consignment note | | 07/03/2023 |
| ECUS | EXPORT Custom Declaration | | 07/03/2023 |
| FOR | Forecast | | 02/12/2014 |
| GSO | Garment stock offer | | |
| GSX | Garment stock offer change | | |
| ICUS | IMPORT Custom Declaration | | 07/03/2023 |
| INV | Invoice | | |
| KCC | Knitting-Clothing Commission Order | | 02/12/2014 |
| KCI | Garment in Work Inventory Report | | 02/12/2014 |
| LCA | LCA study | | 28/08/2022 |
| LCAD | LCA study dataset | | 28/08/2022 |
| M2M | Made to Measure Production Order | | 02/12/2014 |
| MAS | Master marker | | |
| MCI | Visual merchandising instruction | | 13/04/2018 |
| OCH | Order change | | |
| OFF | Offer | | |
| ORD | Purchase order | | |
| ORP | Order response | | |
| OSR | order status request | | |
| OSS | Offer status | | 02/12/2014 |
| OST | Order status | | |
| OUR | our reference | | |
| PCO | Preferential certificate of origin | | 07/03/2023 |
| PEF | PEF study | | 28/08/2022 |
| PEFD | PEF study dataset | | 28/08/2022 |
| PEFP | PEF environmental profile | | 07/03/2023 |

| | | | |
|-------|---|-----------------------------|------------|
| QR | Quality Report | | 02/12/2014 |
| RAI | Raw Material in Work Inventory Report | | 02/12/2014 |
| RDC | Raw dyeing commission order | | |
| RDH | Raw dyeing order change | | |
| RDR | Raw dyeing order response | | |
| REA | Receiving advise | | |
| REQ | Request for Offer | | |
| RET | Return | | 02/12/2014 |
| RSC | Spinning commission order | | |
| RSH | Spinning order change | | |
| RSR | Spinning order response | | |
| SAD | Single Administrative Document | adopted by European customs | 12/05/2023 |
| SCL | Process sheet | | |
| SDE | Self-declaration | | 07/03/2023 |
| SDS | SDS - Safety data sheet | | 07/03/2023 |
| SLCA | S-LCA Study | | 07/03/2023 |
| SLCAD | S-LCA Study documentation | | 07/03/2023 |
| TFC | Textile dyeing-finishing commission order | | |
| TFX | Textile Dyeing-Finishing Order Change | | 02/12/2014 |
| TPC | Textile printing commission order | | |
| TPX | Textile Printing Order Change | | 02/12/2014 |
| TWI | Textile in work inventory | | |
| VMI | visual merchandising instructions | | 01/02/2018 |
| WAC | Warping commission order | | |
| WAYB | Waybill | | 07/03/2023 |
| WEC | Weaving commission order | | |
| YDC | Yarn dyeing commission order | | |
| YDH | Yarn dyeing order change | | |
| YDR | Yarn dyeing order response | | |
| YTC | Twisting commission order | | |
| YWI | Yarn in work inventory | | |

T24 - yarn characteristics type

physical or mechanical parameter used to define a property of a yarn

Agency name: eBIZ

Decoding table: T24

File codes list (Generic code): http://www.ebiz.enea.it/moda-ml/repository/codelist/draft/gc_T24.xml

| Code | Description | Adoption note | Date of insertion |
|------|--|---------------|-------------------|
| ALL | elongation | | |
| AMIN | minimum yarn elongation | | |
| CV | Coefficient of Variation of count | | |
| DE | colour tolerance (delta E) | | |
| NFIN | number of cases diameter less than X% | | |
| NGRO | number of cases diameter greater than X% | | |
| NOD | standard nub | | |
| NOS | Splicer nub | | |
| PLH | H hairiness | | |
| PLL | pilling | | |
| RES | tensile strength | | |
| RMIN | minimum tensile strength | | |
| RTR | shrinkage | | |
| SLA | fastness to light (ISO 105-B02) | | |
| SLB | fastness to water washing (ISO 105-C06) | | |
| SLC | fastness to dry washing (ISO 105-D01) | | |
| SLD | fastness to water drop (ISO 105-E07) | | |
| SLW | fastness to water (ISO 105-E01) | | |
| SLX | fastness to Xeno light (ISO 105-E01) | | |
| STW | S-twist | | |
| TIN | english count | | |
| TMT | metric count | | |
| TTX | tex count | | |
| ZTW | Z-twist | | |

T261 - type of job technology for yarn

operation technology for yarn

Agency name: eBIZ

Decoding table: T261

File codes list (Generic code): http://www.ebiz.enea.it/moda-ml/repository/codelist/draft/gc_T261.xml

| Code | Description | Adoption note | Date of insertion |
|------|-------------------|---------------|-------------------|
| 01 | standard spinning | | |
| 02 | spinning frames | | |
| 03 | compact spinning | | |

| | | | |
|----|--------------------------|--|------------|
| 04 | pims winding | | |
| 05 | cones winding | | |
| 06 | package dyeing | | |
| 07 | hank dyeing | | |
| 08 | solid dyeing for rifling | | |
| 09 | reactive dyeing | | |
| 10 | direct dyeing | | |
| 11 | natural dyeing | | |
| 12 | heat sensitive dyeing | | |
| 13 | light sensitive dyeing | | |
| 14 | pigments dyeing | | |
| 15 | shaded dyeing | | |
| 16 | tye and dye | | |
| 17 | cloud painting | | |
| 18 | frosted dyeing | | |
| 19 | badly tinted dyeing | | |
| 20 | acid dyeing | | |
| 21 | pre-metallized dyeing | | |
| 22 | dispersed dyeing | | |
| 23 | basic dyeing | | |
| 99 | other, see note if any | | 01/07/2013 |

T271 - machine type for yarn operation

machine used in an operation of a work cycle for yarn

Agency name: eBIZ

Decoding table: T271

File codes list (Generic code): http://www.ebiz.enea.it/moda-ml/repository/codelist/draft/gc_T271.xml

| Code | Description | Adoption note | Date of insertion |
|------|----------------|---------------|-------------------|
| 01 | RIETER | | |
| 02 | ZINZER | | |
| 03 | MURATA | | |
| 04 | SAVIO | | |
| 05 | TEXILMONTAGGIO | | |
| 06 | BIGAGLI | | |
| 07 | GALAN | | |
| 08 | GAUDINO | | |

| | | | |
|----|------------------------|--|------------|
| 99 | other, see note if any | | 01/07/2013 |
|----|------------------------|--|------------|

T281 - parameter type for yarn operation

setting parameter of a machine used in an operation of a work cycle for yarn

Agency name: eBIZ

Decoding table: T281

File codes list (Generic code): http://www.ebiz.enea.it/moda-ml/repository/codelist/draft/gc_T281.xml

| Code | Description | Adoption note | Date of insertion |
|------|----------------|---------------|-------------------|
| 01 | ring diameter | | |
| 02 | package weight | | |
| 03 | yarn clearance | | |

T3 - terms of delivery - Incoterms

specification of the terms of trade (INCOTERMS)

Agency name: Incoterms

Decoding table: T3

File codes list (Generic code): http://www.ebiz.enea.it/moda-ml/repository/codelist/draft/gc_T3.xml

Other link: <https://iccwbo.org/resources-for-business/incoterms-rules/incoterms-2020/#>

| Code | Description | Adoption note | Date of insertion |
|------|--|--|-------------------|
| CFR | COST AND FREIGHT (named port of destination) | | |
| CIF | COST, INSURANCE AND FREIGHT (named port of destination) | | |
| CIP | CARRIAGE AND INSURANCE PAID (named place of destination) | | |
| CP | CARRIAGE PAID (named place of destination) | | |
| DAF | DELIVERED AT FRONTIER (named place) | according to Incoterms® 2010, since 2020 it is OBSOLETE. | 08/12/2017 |
| DAP | Delivered at Place of destination (named place of destination) | according to Incoterms® 2010 | 08/12/2017 |
| DAT | Delivered at Terminal (named place of destination) | according to Incoterms® 2010, since 2020 it is OBSOLETE. | 08/12/2017 |
| DDP | DELIVERED DUTY PAID (named place of destination) | | |
| DDU | DELIVERED DUTY UNPAID (named place of destination) | according to Incoterms® 2010 it is OBSOLETE, use DAP | 08/12/2017 |
| DEQ | DELIVERED EX-QUAY (named port of destination) | according to Incoterms® 2010 it is OBSOLETE | 08/12/2017 |

| | | | |
|---------|---|---|----------------|
| DE S | DELIVERED EX-SHIP (named port of destination) | according to Incoterms® 2010 it is OBSOLETE | 08/12/20 17 |
| DP U | DELIVERED AT PLACE UNLOADED | according to Incoterms® 2020 | 25/04/20 22 |
| EX W | EX WORKS (named place) | | |
| FAS | FREE ALONGSIDE SHIP (named port of shipment) | | |
| FC A | FREE CARRIER (named place) | | |
| FO B | FREE ON BOARD (named port of shipment) | | |

T306 - material circularity attribute

Indicates whether the material is virgin or comes from recycling or reuse processes

Agency name: eBIZ for TRICK

Decoding table: T306

File codes list (Generic code): http://www.ebiz.enea.it/moda-ml/repository/codelist/draft/gc_T306.xml

| Code | Description | Adoption note | Date of insertion |
|----------|--|---|-------------------|
| RE U | Reused material | | 30/08/20 22 |
| SCL | Secondary raw materials | adopt this for any secondary raw material when information about the first or following loop is not available | 22/07/20 22 |
| SCL 1 | Secondary raw materials - first loop | | 22/07/20 22 |
| SCL x | Secondary raw materials - loop following the first one | | 22/07/20 22 |
| VR G | Virgin raw material | adopt this for any virgin raw material when biobased information is not available | 22/07/20 22 |
| VR GB | Virgin raw material - biobased | | 23/03/20 23 |
| VR GN | Virgin raw material - not biobased | | 23/03/20 23 |

T307 - recycling process method

Agency name: eBIZ for TRICK

Decoding table: T307

File codes list (Generic code): http://www.ebiz.enea.it/moda-ml/repository/codelist/draft/gc_T307.xml

| Code | Description | Adoption note | Date of insertion |
|------|----------------------------------|---------------|-------------------|
| CHMD | chemical recycling (dissolution) | | 28/07/2022 |

| | | | |
|------|---------------------------------------|--|------------|
| CHMP | chemical recycling (depolymerization) | | 28/07/2022 |
| ENZ | enzymatic recycling | | 01/09/2022 |
| MEC | mechanical recycling | | 28/07/2022 |
| THE | thermal recycle | | 31/08/2022 |
| THMC | thermo-mechanical recycling | | 01/09/2022 |

T38 - transport conditions

special condition of transport or special service requested to the Forwarder

Decoding table: T38

File codes list (Generic code): http://www.ebiz.enea.it/moda-ml/repository/codelist/draft/gc_T38.xml

| Code | Description | Adoption note | Date of insertion |
|------|--|---------------|-------------------|
| ACC | arrange customs clearance | | |
| CAL | Carrier loads | | |
| CAU | Carrier unloads | | |
| CMR | CMR carnet | | |
| FFN | freight forwarders national conditions | | |
| FLD | special agreement for full loading | | |
| NCC | do not arrange customs clearance | | |
| PPB | packaging paid by Buyer | | |
| PPS | packaging paid by Supplier | | |
| PRO | proof of delivery | | |
| RFR | return container free | | |
| RPC | return container paid by Customer | | |
| RPS | return container paid by Supplier | | |
| SHL | Shipper loads | | |
| SHU | Consignee unloads | | |

T40 - type of transport means

means of transport, in general or referred to a specific leg

Agency name: eBIZ

Decoding table: T40

File codes list (Generic code): http://www.ebiz.enea.it/moda-ml/repository/codelist/draft/gc_T40.xml

| Code | Description | Adoption note | Date of insertion |
|------|-------------|---------------|-------------------|
| AIR | aircraft | | |

| | | | |
|-----|-------|--|--|
| SHP | ship | | |
| TRU | truck | | |
| VAN | van | | |

T41 - type of Allowance or Charge

coded specification of an Allowance or Charge (elaborated from UNECE 4465)

Agency name: eBIZ

Decoding table: T41

File codes list (Generic code): http://www.ebiz.enea.it/moda-ml/repository/codelist/draft/gc_T41.xml

| Code | Description | Adoption note | Date of insertion |
|------|---------------------------------|---------------------|-------------------|
| 1 | Agreed settlement | | 19/08/2018 |
| 10 | Costs for draft | | 19/08/2018 |
| 11 | Bank charges | DEPRECATED, use CBK | 19/08/2018 |
| 12 | Agent commission | | 19/08/2018 |
| 14 | Wrong delivery | | 19/08/2018 |
| 15 | Goods returned to agent | | 19/08/2018 |
| 16 | Goods partly returned | | 19/08/2018 |
| 17 | Transport damage | | 19/08/2018 |
| 19 | Trade discount | | 19/08/2018 |
| 2 | Below specification goods | | 19/08/2018 |
| 20 | Deduction for late delivery | DEPRECATED, use CWB | 19/08/2018 |
| 21 | Advertising costs | | 19/08/2018 |
| 22 | Customs duties | | 19/08/2018 |
| 23 | Telephone and postal costs | | 19/08/2018 |
| 24 | Repair costs | | 19/08/2018 |
| 25 | Attorney fees | | 19/08/2018 |
| 26 | Taxes | | 19/08/2018 |
| 3 | Damaged goods | | 19/08/2018 |
| 30 | Direct payment to seller | | 19/08/2018 |
| 32 | Goods not delivered | | 19/08/2018 |
| 33 | Late delivery | | 19/08/2018 |
| 35 | Goods returned | | 19/08/2018 |
| 36 | Invoice not received | | 19/08/2018 |
| 37 | Credit note to debtor/not to us | | 19/08/2018 |
| 38 | Deducted bonus | | 19/08/2018 |
| 39 | Deducted discount | | 19/08/2018 |

| | | | |
|-----|--|--|------------|
| 4 | Short delivery | | 19/08/2018 |
| 40 | Deducted freight costs | | 19/08/2018 |
| 41 | Deduction against other invoices | | 19/08/2018 |
| 42 | Credit balance(s) | | 19/08/2018 |
| 45 | Debit note to seller | | 19/08/2018 |
| 46 | Discount beyond terms | | 19/08/2018 |
| 48 | Allowance/charge error | | 19/08/2018 |
| 49 | Substitute product | | 19/08/2018 |
| 50 | Terms of sale error | | 19/08/2018 |
| 52 | Wrong invoice | | 19/08/2018 |
| 53 | Duplicate invoice | | 19/08/2018 |
| 54 | Weight error | | 19/08/2018 |
| 55 | Additional charge not authorized | | 19/08/2018 |
| 56 | Incorrect discount | | 19/08/2018 |
| 57 | Price change | | 19/08/2018 |
| 58 | Variation | | 19/08/2018 |
| 59 | Chargeback | | 19/08/2018 |
| 65 | Settlement to agent | | 19/08/2018 |
| 66 | Cash discount | | 19/08/2018 |
| 7 | Payment on account | | 19/08/2018 |
| 70 | Wrong monetary amount resulting from incorrect free goods quantity | | 19/08/2018 |
| 72 | Temporary special promotion | | 19/08/2018 |
| 73 | Difference in tax rate | | 19/08/2018 |
| 74 | Quantity discount | | 19/08/2018 |
| 75 | Promotion discount | | 19/08/2018 |
| 76 | Cancellation deadline passed | | 19/08/2018 |
| 77 | Pricing discount | | 19/08/2018 |
| 78 | Volume discount | | 19/08/2018 |
| 79 | Sundry discount | | 19/08/2018 |
| 8 | Returnable container charge included | | 19/08/2018 |
| 9 | Invoice error | | 19/08/2018 |
| AWA | bonus for works ahead of schedule | | |
| CBK | bank charges | | |
| CCR | servizio di corriere | | |
| CIN | insurance | | |
| CLB | labelling | | |
| CPK | packing | | |
| CSP | special packing | | |

| | | | |
|-----|-----------------------------------|--|--|
| CWB | penalty for works behind schedule | | |
|-----|-----------------------------------|--|--|

T61 - duty or tax or fee type

duty or tax or fee type

Agency name: eBIZ

Decoding table: T61

File codes list (Generic code): http://www.ebiz.enea.it/moda-ml/repository/codelist/draft/gc_T61.xml

| Code | Description | Adoption note | Date of insertion |
|------|-------------------|---------------|-------------------|
| BOL | stamp duty | | 01/07/2013 |
| CUD | customs duty | | 01/07/2013 |
| ENV | environmental tax | | 01/07/2013 |
| FRE | no tax | | 01/07/2013 |
| OTH | other tax charges | | 01/07/2013 |
| VAT | value added tax | | 01/07/2013 |

T62 - duty or tax or fee category

duty or tax or fee category

Agency name: eBIZ

Decoding table: T62

File codes list (Generic code): http://www.ebiz.enea.it/moda-ml/repository/codelist/draft/gc_T62.xml

| Code | Description | Adoption note | Date of insertion |
|------|---------------------------|---------------|-------------------|
| AA | lower than standard rate | | 01/07/2013 |
| E | tax not applicable | | 01/07/2013 |
| H | higher than standard rate | | 01/07/2013 |
| O | outside scope of tax | | 01/07/2013 |
| S | standard rate | | 01/07/2013 |
| Z | zero rate goods | | 01/07/2013 |

T8 - Modes of Transport

way of transport, in general or referred to the specified leg. Derived from UNECE Recommendation 28 (see link)

Agency name: eBIZ

Decoding table: T8

File codes list (Generic code): http://www.ebiz.enea.it/moda-ml/repository/codelist/draft/gc_T8.xml

Other link: <https://tfig.unece.org/contents/recommendation-28.htm#>

| Code | Description | Adoption note | Date of insertion |
|------|------------------------|---|-------------------|
| 1 | MARITIME TRANSPORT | | |
| 10 | Courier | DEPRECATED | 01/07/2013 |
| 2 | RAIL TRANSPORT | | |
| 3 | ROAD TRANSPORT | | |
| 4 | AIR TRANSPORT | | |
| 5 | MAIL | | |
| 6 | MULTIMODAL TRANSPORT | example ship + truck. Not used for custom declarations. | 13/06/2023 |
| 8 | INLAND WATER TRANSPORT | | |
| 9 | MODE UNKNOWN | Includes Own propulsion | 13/06/2023 |

T9 - ISO4217 - Currency

currency code

Agency name: ISO

Decoding table: T9

File codes list (Generic code): http://www.ebiz.enea.it/moda-ml/repository/codelist/draft/gc_T9.xml

Table not printed: there are 205 elements, more than the maximum specified for printing: 99.