



<http://www.ebiz-tcf.eu>

DRAFT

## IMPLEMENTATION GUIDE TRANSACTION "YARN OFFER REQUEST"

Version: draft

Date of release: 26/6/2023

Document code: G073

technical Documentation: <http://www.ebiz.enea.it>

XML Schemas repository: <http://www.ebiz.enea.it/moda-ml/repository/schema/draft/default.asp>

Guides repository: <http://www.ebiz.enea.it/moda-ml/repository/guide/draft/default.asp>

Guide filename: G073-eBIZ-YarnOfferRequest.pdf

## 0. PREMISE

This document contains a proposal for the updating and extension of eBIZ specifications starting from the eBIZ version 2018. Under the name of 'Draft version' it is reported the result of an extensive work of analysis and consultation aimed at developing and maintaining eBIZ specifications.

In particular, the content of this proposal is the result of various activities, mainly those carried out within the framework of the **TRICK project** funded by the European Commission: grant agreement 958352, call H2020-LOW-CARBON-CIRCULAR-INDUSTRIES-2020 / H2020-LCCI-2020-EASME-twostage.

The technical contents are backwards compatible with the latest official published version, with the exclusion of the totally new concepts added explicitly for the version that are thought as incremental evolution of the knowledge base.

## 1. BUSINESS DESCRIPTION

### 1.1 Scope

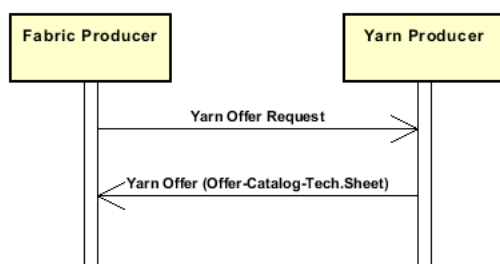
the Fabric or Kintwear Manufacturer sends this enquiry to the Yarn Producer about the kind of yarn he needs, by specifying a selection of manufacturing characteristics and mechanical-physical-chemical properties with the desired values of the ad-hoc parameters.

### 1.2 Generalities

The Fabric or Knitwear Producer sends this enquiry to the Yarn Producer about the kind of yarn he needs, by specifying a selection of manufacturing characteristics and mechanical-physical-chemical properties with the desired values of the ad-hoc parameters.

### 1.3. Possible scenario

Selection of yarns



## 2. IMPLEMENTATION GUIDE

### 2.1 General structure of XML document

All the business data that can be exchanged through this class of documents are shown in the following "document structure", that provides a simplified vision of the Schema.

In particular:

- the two numbers following each element define its "cardinality" (minimum and maximum number of occurrences); the minimum equal zero indicates that the element is optional, the minimum greater than zero indicates that is mandatory;
- the bold character denotes the complex elements (aggregates of simple elements) that were built for the sake of functionality and re-usability of some complex informations sets. The child elements in each parent element are easily spotted as "indented";
- the symbol "@" denotes an attribute of the preceding element; here "the usage indicator (optional, required, ...)" is shown in square brackets.

### Structure

#### YARNOfferRequest

@msgfunction [Optional]

@version [Optional] [Default= draft]

@useProfile [Optional]

#### | RQheader 1-1

| | msgN 1-1

| - choose -

| | msgID 0-1

| - or -

| | docID 0-1

| | @numberingOrg [Optional]

| - end choose -

| | msgDate 1-1

| | @dateForm [Optional]

| | season 0-1

| | @numberingOrg [Optional]

| | @codeList [Optional]

| | @listName [Optional]

| | @listVersion [Optional]

| | validityStart 0-1

| | @dateForm [Optional]

| | validityEnd 1-1

| | @dateForm [Optional]

#### | refDoc 0-9

| | @docType [Required]

| | | docID 1-2

| | | @numberingOrg [Optional]

| | | docDate 0-1

| | | @dateForm [Optional]

| | | season 0-1

| | | @numberingOrg [Optional]

| | | @codeList [Optional]

| | | @listName [Optional]

| | | @listVersion [Optional]

| | | itemID 0-1

#### | | attachment 0-1

| | | @uid [Optional]

| | | | fileName 0-1

| | | | @numberingOrg [Optional]

| | | | binaryObject 0-1

| | | | @format [Optional]

| | | | @mime [Optional]

| | | | @encoding [Optional]

| | | | @characterSet [Optional]

#### | | | externalReference 0-99

| | | | uri 1-1

| | | | @isURL [Optional] [Default= true]

| | | | mimeTypeCode 0-1

| | | | formatCode 0-1

| | | encodingCode 0-1  
| | | characterSetCode 0-1  
| | | hashFootprint 0-1  
| | | @schemeID [Optional]  
| | | @hashMethod [Required]  
| | | **blockChainReference 0-9**  
| | | | uri 1-1  
| | | | @isURL [Optional] [Default= true]  
| | | transactionReceipt 1-9

| **buyer 1-1**

| @logo [Optional]  
| @sender [Optional]  
| | id 1-1  
| | | @numberingOrg [Optional]  
| | additionalIdentifier 0-9  
| | | @numberingOrg [Optional]  
| | | @idQualifier [Optional]  
| | legalName 0-1  
| | dept 0-1  
| | subDept 0-1  
| | person 0-1  
| | | @email [Optional]  
| | | @phone [Optional]  
| | | @fax [Optional]  
| | street 0-1  
| | city 0-1  
| | subCountry 0-1  
| | country 0-1  
| | postCode 0-1  
| | **geoCoordinates 0-1**  
| | | @um [Optional] [Default= DEGD]  
| | | @geoRefSystem [Optional]  
| | | | xGeoCoord 1-1  
| | | | yGeoCoord 1-1  
| | | | zGeoCoord 0-1

- choose -

| **supplier 0-1**

| @logo [Optional]  
| @sender [Optional]  
| | id 1-1  
| | | @numberingOrg [Optional]  
| | additionalIdentifier 0-9  
| | | @numberingOrg [Optional]  
| | | @idQualifier [Optional]  
| | legalName 0-1  
| | dept 0-1  
| | subDept 0-1  
| | person 0-1  
| | | @email [Optional]  
| | | @phone [Optional]  
| | | @fax [Optional]  
| | street 0-1  
| | city 0-1  
| | subCountry 0-1  
| | country 0-1  
| | postCode 0-1  
| | **geoCoordinates 0-1**  
| | | @um [Optional] [Default= DEGD]  
| | | @geoRefSystem [Optional]  
| | | | xGeoCoord 1-1  
| | | | yGeoCoord 1-1  
| | | | zGeoCoord 0-1

- or -

| **subContractor 0-1**

| @sender [Optional]  
| | id 1-1  
| | | @numberingOrg [Optional]  
| | legalName 0-1

```

| | | dept 0-1
| | | subDept 0-1
| | | person 0-1
| | |   @email [Optional]
| | |   @phone [Optional]
| | |   @fax [Optional]
| | | street 0-1
| | | city 0-1
| | | subCountry 0-1
| | | country 0-1
| | | postCode 0-1
| | | geoCoordinates 0-1
| | |   @um [Optional] [Default= DEGD]
| | |   @geoRefSystem [Optional]
| | |     | xGeoCoord 1-1
| | |     | yGeoCoord 1-1
| | |     | zGeoCoord 0-1

```

- end choose -

```

| | thirdParty 0-5
| |   @VAT [Optional]
| |   @role [Required]
| |   @sender [Optional]
| |     | id 1-1
| |     |   @numberingOrg [Optional]
| |     | legalName 0-1
| |     | dept 0-1
| |     | subDept 0-1
| |     | person 0-1
| |     |   @email [Optional]
| |     |   @phone [Optional]
| |     |   @fax [Optional]
| |     | street 0-1
| |     | city 0-1
| |     | subCountry 0-1
| |     | country 0-1
| |     | postCode 0-1
| |     | geoCoordinates 0-1
| |     |   @um [Optional] [Default= DEGD]
| |     |   @geoRefSystem [Optional]
| |     |     | xGeoCoord 1-1
| |     |     | yGeoCoord 1-1
| |     |     | zGeoCoord 0-1
| | note 0-99
| |   @numberingOrg [Optional]
| |   @codeList [Optional]
| |   @noteLabel [Optional]

```

| **terms 0-1**

```

| | payment 0-5
| |   @finDiscount [Optional]
| |   @finSurcharge [Optional]
| |   - choose -
| |     | payTerm 1-1
| |     - or -
| |     | payTermText 1-1
| |     - end choose -
| |     | payMode 0-1
| | insPayment 0-5
| |   @part [Required]
| |   - choose -
| |     | payTerm 1-1
| |     - or -
| |     | payTermText 1-1
| |     - end choose -
| |     | payMode 0-1
| | trade 0-1
| |   - choose -
| |     | incoTermText 1-1

```

```

- or -
| | incoTerm 1-1
- end choose -
- choose -
| | tradeLocation 0-1
| | location 0-1
| | @LRI [Optional]
| | legalName 0-1
| | dept 0-1
| | subDept 0-1
| | person 0-1
| | @email [Optional]
| | @phone [Optional]
| | @fax [Optional]
| | street 0-1
| | city 0-1
| | subCountry 0-1
| | country 0-1
| | postCode 0-1
| | geoCoordinates 0-1
| | @um [Optional] [Default= DEGD]
| | @geoRefSystem [Optional]
| | xGeoCoord 1-1
| | yGeoCoord 1-1
| | zGeoCoord 0-1
- or -
| | location 0-1
| | @LRI [Optional]
- end choose -
| | transInfo 0-5
| | @transReason [Optional]
| | @progr [Optional]
| | transMode 1-1
| | carrier 0-1
- choose -
| | deliveryLocation 0-1
| | location 0-1
| | @LRI [Optional]
| | legalName 0-1
| | dept 0-1
| | subDept 0-1
| | person 0-1
| | @email [Optional]
| | @phone [Optional]
| | @fax [Optional]
| | street 0-1
| | city 0-1
| | subCountry 0-1
| | country 0-1
| | postCode 0-1
| | geoCoordinates 0-1
| | @um [Optional] [Default= DEGD]
| | @geoRefSystem [Optional]
| | xGeoCoord 1-1
| | yGeoCoord 1-1
| | zGeoCoord 0-1
- or -
| | deliveryPlace 0-1
- end choose -
| | grossWeight 0-1
| | @um [Required]
| | netWeight 0-1
| | @um [Required]
| | transMeans 0-1
| | @propulsionSystemCode [Optional]
| | transCondition 0-3
| | transConditionText 0-1
- choose -

```

```

| | | despatchPlace 0-1
| | - or -
| | | despatchLocation 0-1
| | | | location 0-1
| | | | | @LRI [Optional]
| | | | | legalName 0-1
| | | | | dept 0-1
| | | | | subDept 0-1
| | | | | person 0-1
| | | | | @email [Optional]
| | | | | @phone [Optional]
| | | | | @fax [Optional]
| | | | | street 0-1
| | | | | city 0-1
| | | | | subCountry 0-1
| | | | | country 0-1
| | | | | postCode 0-1
| | | | | geoCoordinates 0-1
| | | | | | @um [Optional] [Default= DEGD]
| | | | | | @geoRefSystem [Optional]
| | | | | | | xGeoCoord 1-1
| | | | | | | yGeoCoord 1-1
| | | | | | | zGeoCoord 0-1
| | - end choose -
| | | despatchDate 0-1
| | | | @dateForm [Optional]
| | | | delEffectiveDate 0-1
| | | | | @dateForm [Optional]
| | | | routeLength 0-1
| | | | | @um [Required]
| | | allowanceCharge 0-9
| | | | @um [Optional]
| | | | | @VAT [Optional]
| | | | | @minQty [Optional]
| | | | | @currency [Optional]
| | | | | @maxQty [Optional]
| | | | | @isCharge [Optional]
| | | - choose -
| | | | AC_category 1-1
| | | - or -
| | | | AC_categoryText 1-1
| | | - end choose -
| | | - choose -
| | | | AC_percent 1-1
| | | - or -
| | | | AC_amount 1-1
| | | | | @currency [Optional]
| | | - end choose -
| | | | dtScheme 0-1
| | | | | @taxType [Required]
| | | | | | taxCategory 0-1
| | | | | | taxRate 0-1
| | | | | | legalRef 0-1
| | | | | | @numberingOrg [Optional]
| | | | | | @codeList [Optional]
| | | | | | @listName [Optional]
| | | | | | @listVersion [Optional]
| | | | | | note 0-99
| | | | | | @numberingOrg [Optional]
| | | | | | @codeList [Optional]
| | | | | | @noteLabel [Optional]
| | yarnTecSheet 1-unbounded
| | | refDoc 0-9
| | | | @docType [Required]
| | | | | docID 1-2
| | | | | | @numberingOrg [Optional]
| | | | | docDate 0-1

```

```

| @dateForm [Optional]
| season 0-1
| @numberingOrg [Optional]
| @codeList [Optional]
| @listName [Optional]
| @listVersion [Optional]
| itemID 0-1
| attachment 0-1
| @uid [Optional]
| | fileName 0-1
| | @numberingOrg [Optional]
| | binaryObject 0-1
| | @format [Optional]
| | @mime [Optional]
| | @encoding [Optional]
| | @characterSet [Optional]
| | externalReference 0-99
| | | uri 1-1
| | | @isURL [Optional] [Default= true]
| | | mimeTypeCode 0-1
| | | formatCode 0-1
| | | encodingCode 0-1
| | | characterSetCode 0-1
| | hashFootprint 0-1
| | @schemeID [Optional]
| | @hashMethod [Required]
| | blockChainReference 0-9
| | | uri 1-1
| | | @isURL [Optional] [Default= true]
| | transactionReceipt 1-9
| yarnIdentity 0-1
| yarnNameSupplier 1-1
| yarnNameBuyer 0-1
| tradeMark 0-1
| season 0-1
| @numberingOrg [Optional]
| @codeList [Optional]
| @listName [Optional]
| @listVersion [Optional]
| yarnCompos 0-1
| | percCompos 1-9
| | @fibre [Required]
| | @materialSource [Optional]
| | @recyclingProcessMethod [Optional]
| | @percSourcesRenewable [Optional]
| | @validationMethod [Optional]
| | @recyclingProcessEfficiency [Optional]
| fibrePD 0-9
| @fibre [Required]
| | length 0-1
| | @um [Required]
| | diameter 0-1
| | @um [Optional]
| | country 0-1
| yarnClass 0-1
| yarnKind 0-1
| yarnCount 0-1
| @countSystem [Required]
| @CV [Optional]
| yarnTwist 0-1
| | twistDirection 1-1
| | qty 0-1
| | @um [Required]
| moistRegain 0-1
| yarnCode 0-2
| @numberingOrg [Optional] [Default= CL]
| | art 1-1
| | @numberingOrg [Optional]

```



- | @codeList [Optional]
- | @listName [Optional]
- | @listVersion [Optional]
- | color 0-1
- | @numberingOrg [Optional]
- | @codeList [Optional]
- | @listName [Optional]
- | @listVersion [Optional]
- | added 0-9
- | @numberingOrg [Optional]
- | @addType [Optional]
- | description 0-unbounded
- | @ln [Optional]
- customsStat 0-1
- | @schemeID [Optional] [Default= TARIC]
- yarnComWeight 0-1
- | @um [Required]
- standardPack 0-1
- | @reelType [Optional]
- yarnReelQty 0-1
- | @um [Required]
- minLot 0-1
- | @um [Required]
- minLotExclusive 0-1
- | @um [Required]
- optLot 0-9
- | @um [Optional]
- avgDeliveryDD 0-1
- lotN 0-1
- | @numberingOrg [Optional]
- dyeN 0-1
- | @numberingOrg [Optional]
- price 0-2
- | @um [Optional]
- | @priceQualifier [Optional] [Default= NET]
- | @currency [Optional]
- extendedDescription 0-unbounded
- | @ln [Optional]
- note 0-99
- | @numberingOrg [Optional]
- | @codeList [Optional]
- | @noteLabel [Optional]
- yarnManufacture 0-1**
- | **yarnPly 0-1**
- | | plyWork 1-1
- | | plyN 0-1
- | **yarnJobSeq 0-1**
- | | yarnJob 1-19
- dyeProcess 0-1
- dyeStuff 0-1
- yarnColorFastness 0-99**
- | @colorType [Required]
- | | yarnCFTest 1-1
- | | specValue 1-1
- | | @um [Optional]
- | | @source [Optional]
- | | @method [Optional]
- | | @application [Optional]
- | | @CV [Optional]
- colorCard 0-1**
- | **colorCardItem 1-unbounded**
- | | color 1-2
- | | @numberingOrg [Optional]
- | | @codeList [Optional]
- | | @listName [Optional]
- | | @listVersion [Optional]
- | | **CIELab 0-unbounded**
- | | @illuminant [Optional]

```

| | | | | @standardObserver [Optional]
| | | | | | L 1-1
| | | | | | a 1-1
| | | | | | b 1-1
| | | | | | refDoc 0-1
| | | | | | @docType [Required]
| | | | | | docID 1-2
| | | | | | | @numberingOrg [Optional]
| | | | | | docDate 0-1
| | | | | | | @dateForm [Optional]
| | | | | | season 0-1
| | | | | | | @numberingOrg [Optional]
| | | | | | | @codeList [Optional]
| | | | | | | @listName [Optional]
| | | | | | | @listVersion [Optional]
| | | | | | itemID 0-1
| | | | | | | attachment 0-1
| | | | | | | @uid [Optional]
| | | | | | | | fileName 0-1
| | | | | | | | | @numberingOrg [Optional]
| | | | | | | | binaryObject 0-1
| | | | | | | | | @format [Optional]
| | | | | | | | | @mime [Optional]
| | | | | | | | | @encoding [Optional]
| | | | | | | | | @characterSet [Optional]
| | | | | | | | externalReference 0-99
| | | | | | | | | uri 1-1
| | | | | | | | | | @isURL [Optional] [Default= true]
| | | | | | | | | | mimeTypeCode 0-1
| | | | | | | | | | formatCode 0-1
| | | | | | | | | | encodingCode 0-1
| | | | | | | | | | characterSetCode 0-1
| | | | | | | | | hashFootprint 0-1
| | | | | | | | | | @schemeID [Optional]
| | | | | | | | | | @hashMethod [Required]
| | | | | | | | | blockChainReference 0-9
| | | | | | | | | | uri 1-1
| | | | | | | | | | | @isURL [Optional] [Default= true]
| | | | | | | | | | | transactionReceipt 1-9
| | | | | | | | description 0-unbounded
| | | | | | | | | @ln [Optional]
| | | | | | | note 0-99
| | | | | | | | @numberingOrg [Optional]
| | | | | | | | @codeList [Optional]
| | | | | | | | @noteLabel [Optional]
| | | | | | | yarnQuality 0-1
| | | | | | | | yarnQTest 1-99
| | | | | | | | | yarnQTestType 1-1
| | | | | | | | | | specValue 0-1
| | | | | | | | | | | @um [Optional]
| | | | | | | | | | | @source [Optional]
| | | | | | | | | | | @method [Optional]
| | | | | | | | | | | @application [Optional]
| | | | | | | | | | | @CV [Optional]
| | | | | | | | | | tolerance 0-1
| | | | | | | | | | | @um [Required]
| | | | | | | | | | | pcTolerance 0-1
| | | | | | | | | | | | @um [Optional]
| | | | | | | | | | | | comply 0-1
| | | | | | | | note 0-99
| | | | | | | | | @numberingOrg [Optional]
| | | | | | | | | @codeList [Optional]
| | | | | | | | | @noteLabel [Optional]

```

## 2.2 Detailed description of document elements

Following tables show all elements (complex and simple) used in this document. Description includes: 1) element's information: xml tag, name, brief description, data type and syntax constraints; 2) information about use of the element in a particular position in the document: xpath and possible associated notes.

### 2.2.1 Complex elements (Aggregate Business Information Entities)

Complex elements are those elements whose content is composed of other elements (childs). Complex elements are alphabetically ordered.

|                            |  |
|----------------------------|--|
| <b>allowanceCharge</b>     | Allowances and Charges related to an Order or a contract<br>(XPath YARNOfferRequest/terms/allowanceCharge) 0-9   |
| <b>attachment</b>          | an attached document. An attachment can refer to an external document or be included with the document being exchanged<br>(XPath YARNOfferRequest/yarnTecSheet/refDoc/attachment) 0-1<br>(XPath YARNOfferRequest/RQheader/refDoc/attachment) 0-1<br>(XPath YARNOfferRequest/yarnTecSheet/yarnManufacture/colorCard/colorCardItem/refDoc/attachment) 0-1                    |
| <b>blockChainReference</b> | blockchain reference<br>- base type: string, max length: 80,<br>(XPath YARNOfferRequest/yarnTecSheet/yarnManufacture/colorCard/colorCardItem/refDoc/attachment/blockChainReference) 0-9<br>(XPath YARNOfferRequest/RQheader/refDoc/attachment/blockChainReference) 0-9<br>(XPath YARNOfferRequest/yarnTecSheet/refDoc/attachment/blockChainReference) 0-9                  |
| <b>buyer</b>               | details of the Buyer (party that buys the good or service that is object of the current collaborative process)<br>- base type: Nad,<br>(XPath YARNOfferRequest/RQheader/buyer) 1-1   |
| <b>CIELab</b>              | color point in the CIELab color space<br>(XPath YARNOfferRequest/yarnTecSheet/yarnManufacture/colorCard/colorCardItem/CIELab) 0-unbounded  |
| <b>colorCard</b>           | color card for a textile product<br>(XPath YARNOfferRequest/yarnTecSheet/yarnManufacture/colorCard) 0-1  |
| <b>colorCardItem</b>       | item of the color card<br>(XPath YARNOfferRequest/yarnTecSheet/yarnManufacture/colorCard/colorCardItem) 1-unbounded  |
| <b>deliveryLocation</b>    | data relating to a place of delivery (indicate at least element location or address, city and country)<br>- base type: Nad,<br>(XPath YARNOfferRequest/terms/transInfo/deliveryLocation) 0-1<br>- note: <i>use to represent addresses in a structured way or with geographical coordinates</i>   |
| <b>despatchLocation</b>    | data relating to a place of despatch (indicate at least element location or address, city and country)<br>- base type: Nad,<br>(XPath YARNOfferRequest/terms/transInfo/despatchLocation) 0-1<br>- note: <i>use to represent addresses in a structured way</i>  |
| <b>dtScheme</b>            | set of data usable to declare the duty or tax applied<br>(XPath YARNOfferRequest/terms/allowanceCharge/dtScheme) 0-1   |
| <b>externalReference</b>   | details about an external object, such as a document stored at a remote location<br>(XPath YARNOfferRequest/yarnTecSheet/refDoc/attachment/externalReference) 0-99<br>(XPath YARNOfferRequest/RQheader/refDoc/attachment/externalReference) 0-99<br>(XPath YARNOfferRequest/yarnTecSheet/yarnManufacture/colorCard/colorCardItem/refDoc/attachment/externalReference) 0-99 |
| <b>fibrePD</b>             | physical data of a textile fibre<br>(XPath YARNOfferRequest/yarnTecSheet/yarnIdentity/fibrePD) 0-9   |
| <b>geoCoordinates</b>      | geographical coordinates   |

|                          |   |
|--------------------------|---|
|                          | (XPath YARNOfferRequest/terms/transInfo/deliveryLocation/geoCoordinates) 0-1<br>(XPath YARNOfferRequest/terms/transInfo/despatchLocation/geoCoordinates) 0-1<br>(XPath YARNOfferRequest/RQheader/buyer/geoCoordinates) 0-1<br>(XPath YARNOfferRequest/RQheader/thirdParty/geoCoordinates) 0-1<br>(XPath YARNOfferRequest/terms/trade/tradeLocation/geoCoordinates) 0-1<br>(XPath YARNOfferRequest/RQheader/supplier/geoCoordinates) 0-1<br>(XPath YARNOfferRequest/RQheader/subContractor/geoCoordinates) 0-1 |
| <b>insPayment</b>        | payment details for payment by installments<br>(XPath YARNOfferRequest/terms/insPayment) 0-5<br>- note: <i>excluded the case of offers, this set of data is alternative to payment set and must be iterated for each payment installment</i>  |
| <b>payment</b>           | payment details for payment all in one<br>(XPath YARNOfferRequest/terms/payment) 0-5<br>- note: <i>excluded the case of offers, this set of data is alternative to insPayment, it can be iterated to specify alternative terms of payment (e.g.: 60 days or 30 days with 3% discount)</i>   |
| <b>refDoc</b>            | identification of a document and of an item thereof, to which the message makes reference<br>(XPath YARNOfferRequest/yarnTecSheet/refDoc) 0-9<br>(XPath YARNOfferRequest/yarnTecSheet/yarnManufacture/colorCard/colorCardItem/refDoc) 0-1<br>- note: <i>here the CxF3 file can be referenced</i><br>(XPath YARNOfferRequest/RQheader/refDoc) 0-9  |
| <b>RQheader</b>          | header of the document REQUEST FOR OFFER<br>(XPath YARNOfferRequest/RQheader) 1-1   |
| <b>subContractor</b>     | details of the Sub-contractor<br>- base type: Nad,<br>(XPath YARNOfferRequest/RQheader/subContractor) 0-1<br>- note: <i>At least one out of Supplier and Subcontractor must be indicated.</i>   |
| <b>supplier</b>          | details of the Supplier (party that supplies the good or service that is object of the current collaborative process)<br>- base type: Nad,<br>(XPath YARNOfferRequest/RQheader/supplier) 0-1<br>- note: <i>At least one out of Supplier and Subcontractor must be indicated.</i>  |
| <b>terms</b>             | details of the commercial obligations for payment and delivery<br>(XPath YARNOfferRequest/terms) 0-1  |
| <b>thirdParty</b>        | identification and details of the Third Party, different from Sender and Receiver of the document<br>- base type: Nad,<br>(XPath YARNOfferRequest/RQheader/thirdParty) 0-5<br>- note: <i>In the Offer Request case it might give reference to the Originator of the request.</i>  |
| <b>trade</b>             | general terms of trade for the specified supply<br>(XPath YARNOfferRequest/terms/trade) 0-1   |
| <b>tradeLocation</b>     | data relating to the place to which the trade conditions refer (indicate at least element location or address, city and country)<br>- base type: Nad,<br>(XPath YARNOfferRequest/terms/trade/tradeLocation) 0-1<br>- note: <i>address of the place to which the INCOTERM applies</i>  |
| <b>transInfo</b>         | details of transport: mode, carrier and delivery place<br>(XPath YARNOfferRequest/terms/transInfo) 0-5  |
| <b>yarnCode</b>          | full codification of a yarn product<br>(XPath YARNOfferRequest/yarnTecSheet/yarnIdentity/yarnCode) 0-2  |
| <b>yarnColorFastness</b> | color fastness data for a yarn<br>(XPath YARNOfferRequest/yarnTecSheet/yarnManufacture/yarnColorFastness) 0-99  |
| <b>yarnCompos</b>        | fibrous composition of a yarn product<br>(XPath YARNOfferRequest/yarnTecSheet/yarnIdentity/yarnCompos) 0-1  |
| <b>yarnIdentity</b>      | set of data that univocally identify the yarn article and any classification or commercial  |

|                 |  |
|-----------------|--|
|                 | information<br>(XPath YARNOfferRequest/yarnTecSheet/yarnIdentity) 0-1  |
| yarnJobSeq      | operations undergone in the manufacturing of a yarn<br>(XPath YARNOfferRequest/yarnTecSheet/yarnManufacture/yarnJobSeq) 0-1          |
| yarnManufacture | set of data that specify the construction details of the yarn<br>(XPath YARNOfferRequest/yarnTecSheet/yarnManufacture) 0-1           |
| yarnPly         | plying characteristics of a yarn<br>(XPath YARNOfferRequest/yarnTecSheet/yarnManufacture/yarnPly) 0-1                                |
| yarnQTest       | parameter related to the quality of yarn<br>- base type: string,<br>(XPath YARNOfferRequest/yarnTecSheet/yarnQuality/yarnQTest) 1-99 |
| yarnQuality     | set of data that specify the quality data of the yarn<br>(XPath YARNOfferRequest/yarnTecSheet/yarnQuality) 0-1                       |
| yarnTecSheet    | technical sheet of the yarn<br>(XPath YARNOfferRequest/yarnTecSheet) 1-unbounded   |
| yarnTwist       | twist characteristics of yarn<br>(XPath YARNOfferRequest/yarnTecSheet/yarnIdentity/yarnTwist) 0-1                                    |

## 2.2.2 Simple elements (Basic Business Information Entities)

Simple elements are those elements whose content is characterized by a data type plus a domain of possible values. Simple elements are alphabetically ordered.

|                      |   |
|----------------------|---|
| a                    | "a" dimension of the CIELab color system<br>- base type: decimal,<br>(XPath YARNOfferRequest/yarnTecSheet/yarnManufacture/colorCard/colorCardItem/CIELab/a) 1-1   |
| AC_amount            | amount of an Allowance or Charge<br>- base type: decimal, fraction digits: 2,<br>(XPath YARNOfferRequest/terms/allowanceCharge/AC_amount) 1-1   |
| AC_category          | coded specification of an Allowance or Charge<br>- base type: string, cod. table: T41<br><a href="http://www.ebiz.enea.it/moda-ml/repository/codelist/draft/gc_T41.xml">http://www.ebiz.enea.it/moda-ml/repository/codelist/draft/gc_T41.xml</a><br>(XPath YARNOfferRequest/terms/allowanceCharge/AC_category) 1-1  |
| AC_categoryText      | free text description of an Allowance or Charge<br>- base type: string, max length: 250,<br>(XPath YARNOfferRequest/terms/allowanceCharge/AC_categoryText) 1-1  |
| AC_percent           | amount of an Allowance or Charge as a percentage (always non negative value)<br>- base type: decimal, max inclusive: 100, fraction digits: 2,<br>(XPath YARNOfferRequest/terms/allowanceCharge/AC_percent) 1-1  |
| added                | additional code of the product (complementing the formers)<br>- base type: string, max length: 80,<br>(XPath YARNOfferRequest/yarnTecSheet/yarnIdentity/yarnCode/added) 0-9<br>- note: here an additional codification (see table T44) can be specified   |
| additionalIdentifier | additional identification code of a Party, for example customs registries or others<br>- base type: string, max length: 15,<br>(XPath YARNOfferRequest/RQheader/buyer/additionalIdentifier) 0-9<br>- note: identifiers for example for exports, such as MID (Manufacturer Identification Code), REX (identificatier in Registered Exporter system)<br>(XPath YARNOfferRequest/RQheader/supplier/additionalIdentifier) 0-9<br>- note: identifiers for example for exports, such as MID (Manufacturer Identification Code), REX (identifier in EU Registered Exporter system) |
| @addType             | qualifier of the additional coding of a product<br>- base type: string, cod. table: T44<br><a href="http://www.ebiz.enea.it/moda-ml/repository/codelist/draft/gc_T44.xml">http://www.ebiz.enea.it/moda-ml/repository/codelist/draft/gc_T44.xml</a>  |

|                  |   |
|------------------|---|
|                  | (XPath YARNOfferRequest/yarnTecSheet/yarnIdentity/<br>yarnCode/added/@addType) [Optional]<br>- nota: <i>addType</i> allows the clarification of the meaning of the added element content; it is strongly suggested to use it always.  |
| @application     | force or similar condition (e.g. no. of revolutions) applied in a test as specified within the standard<br>- base type: string, max length: 15,<br>(XPath YARNOfferRequest/yarnTecSheet/yarnQuality/<br>yarnQTest/specValue/@application) [Optional]<br>(XPath YARNOfferRequest/yarnTecSheet/yarnManufacture/<br>yarnColorFastness/specValue/@application) [Optional]   |
| art              | article number of the product<br>- base type: string, max length: 80,<br>(XPath YARNOfferRequest/yarnTecSheet/yarnIdentity/<br>yarnCode/art) 1-1  |
| avgDeliveryDD    | average time (workdays) between order receipt and delivery of an article, specified by the Supplier<br>- base type: duration,<br>(XPath YARNOfferRequest/yarnTecSheet/yarnIdentity/avgDeliveryDD) 0-1   |
| b                | "b" dimension of the CIELab color system<br>- base type: decimal,<br>(XPath YARNOfferRequest/yarnTecSheet/yarnManufacture/<br>colorCard/colorCardItem/CIELab/b) 1-1   |
| binaryObject     | a binary large object containing an attached document, Coding 'base64Binary' is recommended.<br>- base type: base64Binary,<br>(XPath YARNOfferRequest/RQheader/refDoc/attachment/binaryObject) 0-1<br>(XPath YARNOfferRequest/yarnTecSheet/refDoc/attachment/binaryObject) 0-1<br>(XPath YARNOfferRequest/yarnTecSheet/yarnManufacture/<br>colorCard/colorCardItem/refDoc/attachment/binaryObject) 0-1  |
| carrier          | identification of the transport carrier<br>- base type: string, max length: 40,<br>(XPath YARNOfferRequest/terms/transInfo/carrier) 0-1   |
| @characterSet    | the character set of the binary object (examples UTF-8, UTF-16, Windows-1252, ISO-8859-7,..)<br>- base type: normalizedString,<br>(XPath YARNOfferRequest/RQheader/refDoc/attachment/<br>binaryObject/@characterSet) [Optional]<br>(XPath YARNOfferRequest/yarnTecSheet/yarnManufacture/<br>colorCard/colorCardItem/refDoc/attachment/binaryObject/@characterSet) [Optional]<br>(XPath YARNOfferRequest/yarnTecSheet/refDoc/attachment/<br>binaryObject/@characterSet) [Optional]                                   |
| characterSetCode | the character set of an external document (examples UTF-8, UTF-16, Windows-1252, ISO-8859-7,..)<br>- base type: normalizedString,<br>(XPath YARNOfferRequest/RQheader/refDoc/attachment/<br>externalReference/characterSetCode) 0-1<br>(XPath YARNOfferRequest/yarnTecSheet/refDoc/attachment/<br>externalReference/characterSetCode) 0-1<br>(XPath YARNOfferRequest/yarnTecSheet/yarnManufacture/<br>colorCard/colorCardItem/refDoc/attachment/externalReference/characterSetCode) 0-1                             |
| city             | name of the city (town, village)<br>- base type: string, max length: 40,<br>(XPath YARNOfferRequest/terms/transInfo/deliveryLocation/city) 0-1<br>(XPath YARNOfferRequest/terms/trade/tradeLocation/city) 0-1<br>(XPath YARNOfferRequest/RQheader/supplier/city) 0-1<br>(XPath YARNOfferRequest/RQheader/thirdParty/city) 0-1<br>(XPath YARNOfferRequest/terms/transInfo/despatchLocation/city) 0-1<br>(XPath YARNOfferRequest/RQheader/buyer/city) 0-1<br>(XPath YARNOfferRequest/RQheader/subContractor/city) 0-1 |

|                   |   |
|-------------------|---|
| <p>@codeList</p>  | <p>it specifies the URL where the list of codes used to make an instance of the element can be found</p> <ul style="list-style-type: none"> <li>- base type: string, max length: 255,<br/>(XPath YARNOfferRequest/yarnTecSheet/yarnManufacture/note/@codeList) [Optional]</li> <li>- nota: <i>must be used to provide (URL) the list of codes used in "noteLabel"</i><br/>(XPath YARNOfferRequest/terms/allowanceCharge/dtScheme/note/@codeList) [Optional]</li> <li>- nota: <i>must be used to provide (URL) the list of codes used in "noteLabel"</i><br/>(XPath YARNOfferRequest/yarnTecSheet/refDoc/season/@codeList) [Optional]</li> <li>- nota: <i>this attribute should be used either single or coupled with "listName" and "listVersion"</i><br/>(XPath YARNOfferRequest/yarnTecSheet/yarnIdentity/note/@codeList) [Optional]</li> <li>- nota: <i>must be used to provide (URL) the list of codes used in "noteLabel"</i><br/>(XPath YARNOfferRequest/yarnTecSheet/yarnQuality/note/@codeList) [Optional]</li> <li>- nota: <i>must be used to provide (URL) the list of codes used in "noteLabel"</i><br/>(XPath YARNOfferRequest/yarnTecSheet/yarnIdentity/yarnCode/art/@codeList) [Optional]</li> <li>- nota: <i>at least one out of this attribute and "numberingOrg" should be set</i><br/>(XPath YARNOfferRequest/yarnTecSheet/yarnIdentity/season/@codeList) [Optional]</li> <li>- nota: <i>this attribute should be used either single or coupled with "listName" and "listVersion"</i><br/>(XPath YARNOfferRequest/RQheader/note/@codeList) [Optional]</li> <li>- nota: <i>must be used to provide (URL) the list of codes used in "noteLabel"</i><br/>(XPath YARNOfferRequest/yarnTecSheet/yarnIdentity/yarnCode/color/@codeList) [Optional]</li> <li>- nota: <i>this attribute should be used either single or coupled with "listName" and "listVersion"</i><br/>(XPath YARNOfferRequest/yarnTecSheet/yarnManufacture/colorCard/colorCardItem/refDoc/season/@codeList) [Optional]</li> <li>- nota: <i>this attribute should be used either single or coupled with "listName" and "listVersion"</i><br/>(XPath YARNOfferRequest/RQheader/refDoc/season/@codeList) [Optional]</li> <li>- nota: <i>this attribute should be used either single or coupled with "listName" and "listVersion"</i><br/>(XPath YARNOfferRequest/yarnTecSheet/yarnManufacture/colorCard/colorCardItem/color/@codeList) [Optional]</li> <li>- nota: <i>this attribute should be used either single or coupled with "listName" and "listVersion"</i><br/>(XPath YARNOfferRequest/RQheader/season/@codeList) [Optional]</li> <li>- nota: <i>this attribute should be used either single or coupled with "listName" and "listVersion"</i><br/>(XPath YARNOfferRequest/terms/allowanceCharge/dtScheme/legalRef/@codeList) [Optional]</li> </ul> |
| <p>color</p>      | <p>colour number of the product, when not included in the model or fabric code</p> <ul style="list-style-type: none"> <li>- base type: string, max length: 15,<br/>(XPath YARNOfferRequest/yarnTecSheet/yarnIdentity/yarnCode/color) 0-1<br/>(XPath YARNOfferRequest/yarnTecSheet/yarnManufacture/colorCard/colorCardItem/color) 1-2</li> <li>- note: <i>multiple color values allowed if they differ for at least one of the numberingOrg and listName attributes</i></li> </ul>   |
| <p>@colorType</p> | <p>type of color to which a "color fastness" value refers</p> <ul style="list-style-type: none"> <li>- base type: string, cod. table: NT26<br/><a href="http://www.ebiz.enea.it/moda-ml/repository/codelist/draft/gc_NT26.xml">http://www.ebiz.enea.it/moda-ml/repository/codelist/draft/gc_NT26.xml</a><br/>(XPath YARNOfferRequest/yarnTecSheet/yarnManufacture/yarnColorFastness/@colorType) [Required]</li> </ul>   |
| <p>comply</p>     | <p>specifies if the experimental value complies with the standard requirement (target value)</p> <ul style="list-style-type: none"> <li>- base type: boolean,<br/>(XPath YARNOfferRequest/yarnTecSheet/yarnQuality/yarnQTest/comply) 0-1</li> </ul>   |
| <p>country</p>    | <p>code of the nation</p> <ul style="list-style-type: none"> <li>- base type: string, cod. table: T10<br/><a href="http://www.ebiz.enea.it/moda-ml/repository/codelist/draft/gc_T10.xml">http://www.ebiz.enea.it/moda-ml/repository/codelist/draft/gc_T10.xml</a><br/>(XPath YARNOfferRequest/RQheader/subContractor/country) 0-1<br/>(XPath YARNOfferRequest/terms/transInfo/despatchLocation/country) 0-1<br/>(XPath YARNOfferRequest/yarnTecSheet/yarnIdentity/fibrePD/country) 0-1</li> </ul>   |

|                  |  |
|------------------|--|
|                  | <p>(XPath YARNOfferRequest/terms/transInfo/deliveryLocation/country) 0-1<br/> (XPath YARNOfferRequest/RQheader/thirdParty/country) 0-1<br/> (XPath YARNOfferRequest/terms/trade/tradeLocation/country) 0-1<br/> (XPath YARNOfferRequest/RQheader/buyer/country) 0-1<br/> (XPath YARNOfferRequest/RQheader/supplier/country) 0-1</p>  |
| @countSystem     | <p>yarn count system<br/> - base type: string, cod. table: T55<br/> <a href="http://www.ebiz.enea.it/moda-ml/repository/codelist/draft/gc_T55.xml">http://www.ebiz.enea.it/moda-ml/repository/codelist/draft/gc_T55.xml</a><br/> (XPath YARNOfferRequest/yarnTecSheet/yarnIdentity/yarnCount/@countSystem) [Required]</p>  |
| @currency        | <p>currency in which a specified monetary data is expressed<br/> - base type: string, cod. table: T9<br/> <a href="http://www.ebiz.enea.it/moda-ml/repository/codelist/draft/gc_T9.xml">http://www.ebiz.enea.it/moda-ml/repository/codelist/draft/gc_T9.xml</a><br/> (XPath YARNOfferRequest/terms/allowanceCharge/AC_amount/@currency) [Optional]<br/> (XPath YARNOfferRequest/yarnTecSheet/yarnIdentity/price/@currency) [Optional]<br/> - nota: <i>Currency referred by the price.</i><br/> (XPath YARNOfferRequest/terms/allowanceCharge/@currency) [Optional]</p>   |
| customsStat      | <p>statistic code assigned by Customs to a specified product (TARIC code)<br/> - base type: string, max length: 15,<br/> (XPath YARNOfferRequest/yarnTecSheet/yarnIdentity/customsStat) 0-1</p>  |
| @CV              | <p>coefficient of variation (CV) of a measurement<br/> - base type: decimal,<br/> (XPath YARNOfferRequest/yarnTecSheet/yarnManufacture/yarnColorFastness/specValue/@CV) [Optional]<br/> (XPath YARNOfferRequest/yarnTecSheet/yarnQuality/yarnQTest/specValue/@CV) [Optional]<br/> (XPath YARNOfferRequest/yarnTecSheet/yarnIdentity/yarnCount/@CV) [Optional]</p>  |
| @dateForm        | <p>format used for the date<br/> - base type: string, cod. table: NT29<br/> <a href="http://www.ebiz.enea.it/moda-ml/repository/codelist/draft/gc_NT29.xml">http://www.ebiz.enea.it/moda-ml/repository/codelist/draft/gc_NT29.xml</a><br/> (XPath YARNOfferRequest/RQheader/msgDate/@dateForm) [Optional]<br/> (XPath YARNOfferRequest/yarnTecSheet/yarnManufacture/colorCard/colorCardItem/refDoc/docDate/@dateForm) [Optional]<br/> (XPath YARNOfferRequest/RQheader/refDoc/docDate/@dateForm) [Optional]<br/> (XPath YARNOfferRequest/yarnTecSheet/refDoc/docDate/@dateForm) [Optional]<br/> (XPath YARNOfferRequest/RQheader/validityStart/@dateForm) [Optional]<br/> (XPath YARNOfferRequest/RQheader/validityEnd/@dateForm) [Optional]<br/> (XPath YARNOfferRequest/terms/transInfo/despatchDate/@dateForm) [Optional]<br/> (XPath YARNOfferRequest/terms/transInfo/delEffectiveDate/@dateForm) [Optional]</p> |
| delEffectiveDate | <p>actual delivery date (estimated or occurred in case of receipt docs), it might be different from what agreed between the parties. Format according to one of the patterns indicated by the dateForm attribute: YYYY-MM-DD, YYYY-MM-DD:HH-MM or YYYY-WW.<br/> - base type: string,<br/> (XPath YARNOfferRequest/terms/transInfo/delEffectiveDate) 0-1</p>  |
| deliveryPlace    | <p>place of delivery of goods, ultimate or related to a given leg<br/> - base type: string, max length: 250,<br/> (XPath YARNOfferRequest/terms/transInfo/deliveryPlace) 0-1<br/> - note: <i>use to represent addresses with a unique text string</i></p>  |
| dept             | <p>name or code of a department<br/> - base type: string, max length: 40,<br/> (XPath YARNOfferRequest/RQheader/thirdParty/dept) 0-1<br/> (XPath YARNOfferRequest/terms/transInfo/despatchLocation/dept) 0-1<br/> (XPath YARNOfferRequest/terms/transInfo/deliveryLocation/dept) 0-1<br/> (XPath YARNOfferRequest/terms/trade/tradeLocation/dept) 0-1<br/> (XPath YARNOfferRequest/RQheader/supplier/dept) 0-1<br/> (XPath YARNOfferRequest/RQheader/subContractor/dept) 0-1<br/> (XPath YARNOfferRequest/RQheader/buyer/dept) 0-1</p>   |
| description      | <p>free text description. The content of the element must be unique, it might be translated and repeated into more languages (thus no more than one instance for each language).<br/> - base type: string, max length: 250,<br/> (XPath YARNOfferRequest/yarnTecSheet/yarnIdentity/yarnCode/description) 0-unbounded<br/> - note: <i>Product description</i></p>   |



|               |  |
|---------------|--|
|               | (XPath YARNOfferRequest/yarnTecSheet/yarnManufacture/colorCard/colorCardItem/description) 0-unbounded  |
| despatchDate  | date of despatch of goods, requested or promised in the purchase process, according to one of the patterns YYYY-MM-DD, YYYY-MM-DD:HH-MM or YYYY-WW.<br>- base type: string,<br>(XPath YARNOfferRequest/terms/transInfo/despatchDate) 0-1   |
| despatchPlace | place of despatch of goods, origin or related to a given leg<br>- base type: string, max length: 250,<br>(XPath YARNOfferRequest/terms/transInfo/despatchPlace) 0-1<br>- note: <i>use to represent addresses with a unique text string</i>   |
| diameter      | effective diameter of a specified object<br>- base type: decimal, min inclusive: 0, fraction digits: 2,<br>(XPath YARNOfferRequest/yarnTecSheet/yarnIdentity/fibrePD/diameter) 0-1   |
| docDate       | date of issue of the referenced document, according to one of the patterns YYYY-MM-DD, YYYY-MM-DD:HH-MM or YYYY-WW.<br>- base type: string,<br>(XPath YARNOfferRequest/RQheader/refDoc/docDate) 0-1<br>(XPath YARNOfferRequest/yarnTecSheet/yarnManufacture/colorCard/colorCardItem/refDoc/docDate) 0-1<br>(XPath YARNOfferRequest/yarnTecSheet/refDoc/docDate) 0-1  |
| docID         | identification number of the referenced document<br>- base type: string, max length: 80,<br>(XPath YARNOfferRequest/yarnTecSheet/refDoc/docID) 1-2 Best Practice<br>(XPath YARNOfferRequest/yarnTecSheet/yarnManufacture/colorCard/colorCardItem/refDoc/docID) 1-2 Best Practice<br>(XPath YARNOfferRequest/RQheader/refDoc/docID) 1-2 Best Practice<br>(XPath YARNOfferRequest/RQheader/docID) 0-1<br>- note: <i>Its use in HEADER elements is discouraged (use msgID)</i>  |
| @docType      | type or class to which the referenced document belongs<br>- base type: string, cod. table: T21<br><a href="http://www.ebiz.enea.it/moda-ml/repository/codelist/draft/gc_T21.xml">http://www.ebiz.enea.it/moda-ml/repository/codelist/draft/gc_T21.xml</a><br>(XPath YARNOfferRequest/yarnTecSheet/refDoc/@docType) [Required]<br>(XPath YARNOfferRequest/yarnTecSheet/yarnManufacture/colorCard/colorCardItem/refDoc/@docType) [Required]<br>(XPath YARNOfferRequest/RQheader/refDoc/@docType) [Required]  |
| dyeN          | number of the dying batch of a textile product<br>- base type: string, max length: 15,<br>(XPath YARNOfferRequest/yarnTecSheet/yarnIdentity/dyeN) 0-1<br>- note: <i>to be used when the document refers to a specific production batch</i>   |
| dyeProcess    | dye process applied to the fabric<br>- base type: string, cod. table: T15<br><a href="http://www.ebiz.enea.it/moda-ml/repository/codelist/draft/gc_T15.xml">http://www.ebiz.enea.it/moda-ml/repository/codelist/draft/gc_T15.xml</a><br>(XPath YARNOfferRequest/yarnTecSheet/yarnManufacture/dyeProcess) 0-1   |
| dyeStuff      | dye stuff used in the fabric dye process<br>- base type: string, cod. table: T16<br><a href="http://www.ebiz.enea.it/moda-ml/repository/codelist/draft/gc_T16.xml">http://www.ebiz.enea.it/moda-ml/repository/codelist/draft/gc_T16.xml</a><br>(XPath YARNOfferRequest/yarnTecSheet/yarnManufacture/dyeStuff) 0-1  |
| @email        | electronic mail address of the contact person within a Party<br>- base type: string, max length: 250,<br>(XPath YARNOfferRequest/RQheader/supplier/person/@email) [Optional]<br>(XPath YARNOfferRequest/terms/transInfo/deliveryLocation/person/@email) [Optional]<br>(XPath YARNOfferRequest/RQheader/buyer/person/@email) [Optional]<br>(XPath YARNOfferRequest/terms/trade/tradeLocation/person/@email) [Optional]<br>(XPath YARNOfferRequest/terms/transInfo/despatchLocation/person/@email) [Optional]<br>(XPath YARNOfferRequest/RQheader/subContractor/person/@email) [Optional]<br>(XPath YARNOfferRequest/RQheader/thirdParty/person/@email) [Optional] |
| @encoding     | specifies the decoding algorithm of the binary object<br>- base type: normalizedString,<br>(XPath YARNOfferRequest/RQheader/refDoc/attachment/binaryObject/@encoding) [Optional]<br>(XPath YARNOfferRequest/yarnTecSheet/yarnManufacture/  |

|                     |   |
|---------------------|---|
|                     | <p>colorCard/colorCardItem/refDoc/attachment/binaryObject/@encoding) [Optional]</p> <p>(XPath YARNOfferRequest/yarnTecSheet/refDoc/attachment/binaryObject/@encoding) [Optional]</p>  |
| encodingCode        | <p>the encoding/decoding algorithm used with the external object (example is 'base64Binary')</p> <p>- base type: normalizedString,</p> <p>(XPath YARNOfferRequest/yarnTecSheet/refDoc/attachment/externalReference/encodingCode) 0-1</p> <p>(XPath YARNOfferRequest/RQheader/refDoc/attachment/externalReference/encodingCode) 0-1</p> <p>(XPath YARNOfferRequest/yarnTecSheet/yarnManufacture/colorCard/colorCardItem/refDoc/attachment/externalReference/encodingCode) 0-1</p>  |
| extendedDescription | <p>extended free text description. The content of the element must be unique, it might be translated and repeated into more languages (thus no more than one instance for each language). This element might contain HTML code (must be managed as CDATA)</p> <p>- base type: string,</p> <p>(XPath YARNOfferRequest/yarnTecSheet/yarnIdentity/extendedDescription) 0-unbounded</p> <p>- note: <i>Extended product description</i></p>  |
| @fax                | <p>fax number of the contact person within a Party</p> <p>- base type: string, max length: 35,</p> <p>(XPath YARNOfferRequest/terms/trade/tradeLocation/person/@fax) [Optional]</p> <p>(XPath YARNOfferRequest/RQheader/thirdParty/person/@fax) [Optional]</p> <p>(XPath YARNOfferRequest/terms/transInfo/deliveryLocation/person/@fax) [Optional]</p> <p>(XPath YARNOfferRequest/RQheader/buyer/person/@fax) [Optional]</p> <p>(XPath YARNOfferRequest/terms/transInfo/despatchLocation/person/@fax) [Optional]</p> <p>(XPath YARNOfferRequest/RQheader/supplier/person/@fax) [Optional]</p> <p>(XPath YARNOfferRequest/RQheader/subContractor/person/@fax) [Optional]</p> |
| @fibre              | <p>type of fibre used in a textile product</p> <p>- base type: string, cod. table: T19</p> <p><a href="http://www.ebiz.enea.it/moda-ml/repository/codelist/draft/gc_T19.xml">http://www.ebiz.enea.it/moda-ml/repository/codelist/draft/gc_T19.xml</a></p> <p>(XPath YARNOfferRequest/yarnTecSheet/yarnIdentity/yarnCompos/percCompos/@fibre) [Required]</p> <p>(XPath YARNOfferRequest/yarnTecSheet/yarnIdentity/fibrePD/@fibre) [Required]</p>   |
| fileName            | <p>unique identifier (name) of the file</p> <p>- base type: string, max length: 255,</p> <p>(XPath YARNOfferRequest/yarnTecSheet/yarnManufacture/colorCard/colorCardItem/refDoc/attachment/fileName) 0-1</p> <p>(XPath YARNOfferRequest/RQheader/refDoc/attachment/fileName) 0-1</p> <p>(XPath YARNOfferRequest/yarnTecSheet/refDoc/attachment/fileName) 0-1</p>  |
| @finDiscount        | <p>financial discount rate applied for payment by the date specified</p> <p>- base type: decimal, min inclusive: 0, max inclusive: 100, fraction digits: 2,</p> <p>(XPath YARNOfferRequest/terms/payment/@finDiscount) [Optional]</p>   |
| @finSurcharge       | <p>financial surcharge rate applied for payment after the date specified</p> <p>- base type: decimal, min inclusive: 0, max inclusive: 100, fraction digits: 2,</p> <p>(XPath YARNOfferRequest/terms/payment/@finSurcharge) [Optional]</p>  |
| @format             | <p>the format of the binary content (examples xml, pdf, doc,...)</p> <p>- base type: string,</p> <p>(XPath YARNOfferRequest/RQheader/refDoc/attachment/binaryObject/@format) [Optional]</p> <p>(XPath YARNOfferRequest/yarnTecSheet/yarnManufacture/colorCard/colorCardItem/refDoc/attachment/binaryObject/@format) [Optional]</p> <p>(XPath YARNOfferRequest/yarnTecSheet/refDoc/attachment/binaryObject/@format) [Optional]</p>   |
| formatCode          | <p>the format of the external object (examples xml, pdf, doc,...)</p> <p>- base type: normalizedString,</p> <p>(XPath YARNOfferRequest/yarnTecSheet/yarnManufacture/colorCard/colorCardItem/refDoc/attachment/externalReference/formatCode) 0-1</p> <p>(XPath YARNOfferRequest/yarnTecSheet/refDoc/attachment/</p>  |

|               |   |
|---------------|---|
|               | <p>externalReference/formatCode) 0-1<br/>(XPath YARNOfferRequest/RQheader/refDoc/attachment/externalReference/formatCode) 0-1</p>   |
| @geoRefSystem | <p>georeference system adopted for the coordinate (in example wgs84 with decimal degree o degree with minute and seconds)<br/>- base type: string,<br/>(XPath YARNOfferRequest/RQheader/subContractor/geoCoordinates/@geoRefSystem) [Optional]<br/>(XPath YARNOfferRequest/terms/trade/tradeLocation/geoCoordinates/@geoRefSystem) [Optional]<br/>(XPath YARNOfferRequest/RQheader/buyer/geoCoordinates/@geoRefSystem) [Optional]<br/>(XPath YARNOfferRequest/terms/transInfo/deliveryLocation/geoCoordinates/@geoRefSystem) [Optional]<br/>(XPath YARNOfferRequest/RQheader/thirdParty/geoCoordinates/@geoRefSystem) [Optional]<br/>(XPath YARNOfferRequest/terms/transInfo/despatchLocation/geoCoordinates/@geoRefSystem) [Optional]<br/>(XPath YARNOfferRequest/RQheader/supplier/geoCoordinates/@geoRefSystem) [Optional]</p> |
| grossWeight   | <p>the gross weight, declared for transport or customs purpose<br/>- base type: decimal, min inclusive: 0, fraction digits: 2,<br/>(XPath YARNOfferRequest/terms/transInfo/grossWeight) 0-1</p>   |
| hashFootprint | <p>footprint obtained by applying an hashing alorythm<br/>- base type: string, max length: 80,<br/>(XPath YARNOfferRequest/RQheader/refDoc/attachment/hashFootprint) 0-1<br/>(XPath YARNOfferRequest/yarnTecSheet/yarnManufacture/colorCard/colorCardItem/refDoc/attachment/hashFootprint) 0-1<br/>(XPath YARNOfferRequest/yarnTecSheet/refDoc/attachment/hashFootprint) 0-1</p>  |
| @hashMethod   | <p>type of used hashing alorythm<br/>- base type: string, max length: 80, cod. table: NT333<br/><a href="http://www.ebiz.enea.it/moda-ml/repository/codelist/draft/gc_NT333.xml">http://www.ebiz.enea.it/moda-ml/repository/codelist/draft/gc_NT333.xml</a><br/>(XPath YARNOfferRequest/RQheader/refDoc/attachment/hashFootprint/@hashMethod) [Required]<br/>(XPath YARNOfferRequest/yarnTecSheet/refDoc/attachment/hashFootprint/@hashMethod) [Required]<br/>(XPath YARNOfferRequest/yarnTecSheet/yarnManufacture/colorCard/colorCardItem/refDoc/attachment/hashFootprint/@hashMethod) [Required]</p>  |
| id            | <p>primary identification code of a Party; it is recommended to use an EORI number (with @numberingOrg= "EO") or the format: nation code (ISO 3166) + national tax code (i.e. VAT identification number ) with @numberingOrg= "MF"<br/>- base type: string, max length: 15,<br/>(XPath YARNOfferRequest/RQheader/thirdParty/id) 1-1<br/>(XPath YARNOfferRequest/RQheader/supplier/id) 1-1<br/>(XPath YARNOfferRequest/RQheader/subContractor/id) 1-1<br/>(XPath YARNOfferRequest/RQheader/buyer/id) 1-1</p>   |
| @idQualifier  | <p>Qualification of the identifier.<br/>- base type: string,<br/>(XPath YARNOfferRequest/RQheader/supplier/additionalIdentifier/@idQualifier) [Optional]<br/>- nota: this attribute should be used when the numberingOrg attribute is not enough to declare the type of identifier<br/>(XPath YARNOfferRequest/RQheader/buyer/additionalIdentifier/@idQualifier) [Optional]<br/>- nota: this attribute should be used when the numberingOrg attribute is not enough to declare the type of identifier</p>   |
| @illuminant   | <p>CIE light source<br/>- base type: string, cod. table: T59<br/><a href="http://www.ebiz.enea.it/moda-ml/repository/codelist/draft/gc_T59.xml">http://www.ebiz.enea.it/moda-ml/repository/codelist/draft/gc_T59.xml</a><br/>(XPath YARNOfferRequest/yarnTecSheet/yarnManufacture/colorCard/colorCardItem/CIELab/@illuminant) [Optional]</p>  |
| incoTerm      | <p>specification of the terms of trade (INCOTERMS)</p>  |

|              |  |
|--------------|--|
|              | <p>- base type: string, cod. table: T3<br/> <a href="http://www.ebiz.enea.it/moda-ml/repository/codelist/draft/gc_T3.xml">http://www.ebiz.enea.it/moda-ml/repository/codelist/draft/gc_T3.xml</a><br/> (XPath YARNOfferRequest/terms/trade/incoTerm) 1-1</p>   |
| incoTermText | <p>free text specifying the terms of trade (incoterm, location)<br/> - base type: string, max length: 250,<br/> (XPath YARNOfferRequest/terms/trade/incoTermText) 1-1</p>  |
| @isCharge    | <p>Indicates if the element to which it refers is a charge (true = charge, false = allowance)<br/> - base type: boolean,<br/> (XPath YARNOfferRequest/terms/allowanceCharge/@isCharge) [Optional]</p>  |
| @isURL       | <p>it indicates if the referred element is an URL (true) or not (false)<br/> - base type: boolean,<br/> (XPath YARNOfferRequest/yarnTecSheet/refDoc/attachment/blockChainReference/uri/@isURL) [Optional] [Default= true]<br/> - nota: <i>usage of URLs is recommended</i><br/> (XPath YARNOfferRequest/yarnTecSheet/refDoc/attachment/externalReference/uri/@isURL) [Optional] [Default= true]<br/> - nota: <i>usage of URLs is recommended</i><br/> (XPath YARNOfferRequest/RQheader/refDoc/attachment/blockChainReference/uri/@isURL) [Optional] [Default= true]<br/> - nota: <i>usage of URLs is recommended</i><br/> (XPath YARNOfferRequest/yarnTecSheet/yarnManufacture/colorCard/colorCardItem/refDoc/attachment/blockChainReference/uri/@isURL) [Optional] [Default= true]<br/> - nota: <i>usage of URLs is recommended</i><br/> (XPath YARNOfferRequest/RQheader/refDoc/attachment/externalReference/uri/@isURL) [Optional] [Default= true]<br/> - nota: <i>usage of URLs is recommended</i><br/> (XPath YARNOfferRequest/yarnTecSheet/yarnManufacture/colorCard/colorCardItem/refDoc/attachment/externalReference/uri/@isURL) [Optional] [Default= true]<br/> - nota: <i>usage of URLs is recommended</i></p> |
| itemID       | <p>number of the line/item of the referenced document<br/> - base type: string, max length: 40,<br/> (XPath YARNOfferRequest/yarnTecSheet/yarnManufacture/colorCard/colorCardItem/refDoc/itemID) 0-1<br/> (XPath YARNOfferRequest/yarnTecSheet/refDoc/itemID) 0-1<br/> (XPath YARNOfferRequest/RQheader/refDoc/itemID) 0-1</p>   |
| L            | <p>"L" value of the CIELab color system<br/> - base type: decimal, min inclusive: 0,<br/> (XPath YARNOfferRequest/yarnTecSheet/yarnManufacture/colorCard/colorCardItem/CIELab/L) 1-1</p>   |
| legalName    | <p>legal name<br/> - base type: string, max length: 250,<br/> (XPath YARNOfferRequest/terms/transInfo/deliveryLocation/legalName) 0-1<br/> (XPath YARNOfferRequest/RQheader/subContractor/legalName) 0-1<br/> (XPath YARNOfferRequest/RQheader/buyer/legalName) 0-1<br/> (XPath YARNOfferRequest/RQheader/thirdParty/legalName) 0-1<br/> (XPath YARNOfferRequest/terms/trade/tradeLocation/legalName) 0-1<br/> (XPath YARNOfferRequest/terms/transInfo/despatchLocation/legalName) 0-1<br/> (XPath YARNOfferRequest/RQheader/supplier/legalName) 0-1</p>   |
| legalRef     | <p>legal reference of the duty or tax or fee category<br/> - base type: string,<br/> (XPath YARNOfferRequest/terms/allowanceCharge/dtScheme/legalRef) 0-1</p>  |
| length       | <p>effective length of a specified object<br/> - base type: decimal, min inclusive: 0, fraction digits: 2,<br/> (XPath YARNOfferRequest/yarnTecSheet/yarnIdentity/fibrePD/length) 0-1</p>  |
| @listName    | <p>the name of the list of codes used to make an instance of the element (it might be thought as descriptive element, i.e. 'fabric printing technologies', or not, i.e. "T264")<br/> - base type: string, max length: 40,<br/> (XPath YARNOfferRequest/yarnTecSheet/yarnIdentity/yarnCode/color/@listName) [Optional]<br/> - nota: <i>this attribute should always be used coupled with "numberingOrg"</i><br/> (XPath YARNOfferRequest/yarnTecSheet/yarnIdentity/</p>   |

|              |   |
|--------------|---|
|              | <p><b>yarnCode/art/@listName) [Optional]</b></p> <ul style="list-style-type: none"> <li>- nota: <i>this attribute should always be used coupled with “numberingOrg”</i><br/>(XPath YARNOfferRequest/RQheader/season/@listName) [Optional]</li> <li>- nota: <i>this attribute should always be used coupled with “numberingOrg”</i><br/>(XPath YARNOfferRequest/yarnTecSheet/refDoc/season/@listName) [Optional]</li> <li>- nota: <i>this attribute should always be used coupled with “numberingOrg”</i><br/>(XPath YARNOfferRequest/RQheader/refDoc/season/@listName) [Optional]</li> <li>- nota: <i>this attribute should always be used coupled with “numberingOrg”</i><br/>(XPath YARNOfferRequest/yarnTecSheet/yarnManufacture/<br/>colorCard/colorCardItem/refDoc/season/@listName) [Optional]</li> <li>- nota: <i>this attribute should always be used coupled with “numberingOrg”</i><br/>(XPath YARNOfferRequest/terms/allowanceCharge/dtScheme/<br/>legalRef/@listName) [Optional]</li> <li>- nota: <i>this attribute should always be used coupled with “numberingOrg”</i><br/>(XPath YARNOfferRequest/yarnTecSheet/yarnIdentity/season/@listName) [Optional]</li> <li>- nota: <i>this attribute should always be used coupled with “numberingOrg”</i><br/>(XPath YARNOfferRequest/yarnTecSheet/yarnManufacture/<br/>colorCard/colorCardItem/color/@listName) [Optional]</li> <li>- nota: <i>this attribute should always be used coupled with “numberingOrg”</i></li> </ul>   |
| @listVersion | <p>it specifies the version of the list of codes used to make an instance of the element</p> <ul style="list-style-type: none"> <li>- base type: string, max length: 6,<br/>(XPath YARNOfferRequest/yarnTecSheet/yarnManufacture/<br/>colorCard/colorCardItem/color/@listVersion) [Optional]</li> <li>- nota: <i>this attribute should always be used coupled with “numberingOrg” and “listName”</i><br/>(XPath YARNOfferRequest/yarnTecSheet/yarnIdentity/<br/>yarnCode/art/@listVersion) [Optional]</li> <li>- nota: <i>this attribute should always be used coupled with “numberingOrg” and “listName”</i><br/>(XPath YARNOfferRequest/yarnTecSheet/yarnIdentity/season/@listVersion) [Optional]</li> <li>- nota: <i>this attribute should always be used coupled with “numberingOrg” and “listName”</i><br/>(XPath YARNOfferRequest/terms/allowanceCharge/dtScheme/<br/>legalRef/@listVersion) [Optional]</li> <li>- nota: <i>this attribute should always be used coupled with “numberingOrg” and “listName”</i><br/>(XPath YARNOfferRequest/RQheader/season/@listVersion) [Optional]</li> <li>- nota: <i>this attribute should always be used coupled with “numberingOrg” and “listName”</i><br/>(XPath YARNOfferRequest/yarnTecSheet/yarnManufacture/<br/>colorCard/colorCardItem/refDoc/season/@listVersion) [Optional]</li> <li>- nota: <i>this attribute should always be used coupled with “numberingOrg” and “listName”</i><br/>(XPath YARNOfferRequest/yarnTecSheet/yarnIdentity/<br/>yarnCode/color/@listVersion) [Optional]</li> <li>- nota: <i>this attribute should always be used coupled with “numberingOrg” and “listName”</i><br/>(XPath YARNOfferRequest/RQheader/refDoc/season/@listVersion) [Optional]</li> <li>- nota: <i>this attribute should always be used coupled with “numberingOrg” and “listName”</i><br/>(XPath YARNOfferRequest/yarnTecSheet/refDoc/season/@listVersion) [Optional]</li> <li>- nota: <i>this attribute should always be used coupled with “numberingOrg” and “listName”</i></li> </ul> |
| @ln          | <p>Language code.</p> <ul style="list-style-type: none"> <li>- base type: string, cod. table: NT60<br/><a href="http://www.ebiz.enea.it/moda-ml/repository/codelist/draft/gc_NT60.xml">http://www.ebiz.enea.it/moda-ml/repository/codelist/draft/gc_NT60.xml</a><br/>(XPath YARNOfferRequest/yarnTecSheet/yarnManufacture/<br/>colorCard/colorCardItem/description/@ln) [Optional]</li> <li>(XPath YARNOfferRequest/yarnTecSheet/yarnIdentity/<br/>extendedDescription/@ln) [Optional]</li> <li>(XPath YARNOfferRequest/yarnTecSheet/yarnIdentity/<br/>yarnCode/description/@ln) [Optional]</li> </ul>  |
| location     | <p>specification of a location. It can be represented by an identification code (preferable) or a short text (not recommended). For example a GLN code that requires to assign the value "GLN" to the attribute @LRI.</p> <ul style="list-style-type: none"> <li>- base type: string, max length: 128,<br/>(XPath YARNOfferRequest/terms/transInfo/despatchLocation/location) 0-1</li> <li>- note: <i>Use this element to specify a numeric ID of the location, for example a GLN code</i></li> </ul>   |

|                 |  |
|-----------------|--|
|                 | <p>e (in this case @SchemeID='GS1 GLN')</p> <p>(XPath YARNOfferRequest/terms/trade/location) 0-1</p> <p>- note: code number of the place to which the INCOTERM applies</p> <p>(XPath YARNOfferRequest/terms/trade/tradeLocation/location) 0-1</p> <p>- note: Use this element to specify a numeric ID of the location, for example a GLN code (in this case @SchemeID='LRI='GLN')</p> <p>(XPath YARNOfferRequest/terms/transInfo/deliveryLocation/location) 0-1</p> <p>- note: Use this element only to indicate an identification code of this place.</p>   |
| @logo           | <p>company logo (URL of the image jpeg or gif). It is recommended that the width of the image does not exceed 640 pixel.</p> <p>- base type: string, max length: 255,</p> <p>(XPath YARNOfferRequest/RQheader/buyer/@logo) [Optional]</p> <p>(XPath YARNOfferRequest/RQheader/supplier/@logo) [Optional]</p>   |
| lotN            | <p>lot number of a product or batch number of the raw material</p> <p>- base type: string, max length: 15,</p> <p>(XPath YARNOfferRequest/yarnTecSheet/yarnIdentity/lotN) 0-1</p> <p>- note: to be used when the document refers to a specific production batch</p>  |
| @LRI            | <p>issuer of the identifier (or identification system) of a location.</p> <p>- base type: string, cod. table: NT3</p> <p><a href="http://www.ebiz.enea.it/moda-ml/repository/codelist/draft/gc_NT3.xml">http://www.ebiz.enea.it/moda-ml/repository/codelist/draft/gc_NT3.xml</a></p> <p>(XPath YARNOfferRequest/terms/transInfo/deliveryLocation/location/@LRI) [Optional]</p> <p>(XPath YARNOfferRequest/terms/trade/location/@LRI) [Optional]</p> <p>(XPath YARNOfferRequest/terms/trade/tradeLocation/location/@LRI) [Optional]</p> <p>(XPath YARNOfferRequest/terms/transInfo/despatchLocation/location/@LRI) [Optional]</p> |
| @materialSource | <p>Indicates whether the material is virgin or comes from recycling or reuse processes</p> <p>- base type: string, cod. table: T306</p> <p><a href="http://www.ebiz.enea.it/moda-ml/repository/codelist/draft/gc_T306.xml">http://www.ebiz.enea.it/moda-ml/repository/codelist/draft/gc_T306.xml</a></p> <p>(XPath YARNOfferRequest/yarnTecSheet/yarnIdentity/yarnCompos/percCompos/@materialSource) [Optional]</p>  |
| @maxQty         | <p>maximum product quantity</p> <p>- base type: decimal, min inclusive: 0, fraction digits: 2,</p> <p>(XPath YARNOfferRequest/terms/allowanceCharge/@maxQty) [Optional]</p> <p>- nota: maximum quantity of product for the application of this allowance or charge</p>   |
| @method         | <p>standard protocol or method employed in a test to evaluate a characteristic or a parameter</p> <p>- base type: string, max length: 80,</p> <p>(XPath YARNOfferRequest/yarnTecSheet/yarnQuality/yarnQTest/specValue/@method) [Optional]</p> <p>(XPath YARNOfferRequest/yarnTecSheet/yarnManufacture/yarnColorFastness/specValue/@method) [Optional]</p>  |
| @mime           | <p>the mime type of the binary object</p> <p>- base type: normalizedString,</p> <p>(XPath YARNOfferRequest/yarnTecSheet/refDoc/attachment/binaryObject/@mime) [Optional]</p> <p>(XPath YARNOfferRequest/yarnTecSheet/yarnManufacture/colorCard/colorCardItem/refDoc/attachment/binaryObject/@mime) [Optional]</p> <p>(XPath YARNOfferRequest/RQheader/refDoc/attachment/binaryObject/@mime) [Optional]</p>   |
| mimeCode        | <p>mime type of the external object</p> <p>- base type: normalizedString,</p> <p>(XPath YARNOfferRequest/RQheader/refDoc/attachment/externalReference/mimeCode) 0-1 Best Practice</p> <p>(XPath YARNOfferRequest/yarnTecSheet/yarnManufacture/colorCard/colorCardItem/refDoc/attachment/externalReference/mimeCode) 0-1 Best Practice</p> <p>(XPath YARNOfferRequest/yarnTecSheet/refDoc/attachment/externalReference/mimeCode) 0-1 Best Practice</p>  |
| minLot          | <p>minimum order quantity of a product requested by the Supplier</p> <p>- base type: decimal, min inclusive: 0, fraction digits: 2,</p> <p>(XPath YARNOfferRequest/yarnTecSheet/yarnIdentity/minLot) 0-1</p>   |



|                 |  |
|-----------------|--|
| minLotExclusive | minimum order quantity of a product requested by the Supplier for an exclusive color<br>- base type: decimal, min inclusive: 0, fraction digits: 2,<br>(XPath YARNOfferRequest/yarnTecSheet/yarnIdentity/minLotExclusive) 0-1  |
| @minQty         | minimum product quantity<br>- base type: decimal, min inclusive: 0, fraction digits: 2,<br>(XPath YARNOfferRequest/terms/allowanceCharge/@minQty) [Optional]<br>- nota: <i>minimum quantity of product for the application of this allowance or charge</i>   |
| moistRegain     | percent moisture regain by the fibres<br>- base type: decimal,<br>(XPath YARNOfferRequest/yarnTecSheet/yarnIdentity/moistRegain) 0-1   |
| msgDate         | date of issue of the present message (xml document), according to one of the patterns YYYY-MM-DD, YYYY-MM-DD:HH-MM or YYYY-WW.<br>- base type: string,<br>(XPath YARNOfferRequest/RQheader/msgDate) 1-1  |
| @msgfunction    | function performed by the present message with regards to the transmission<br>- base type: string, cod. table: NT18<br><a href="http://www.ebiz.enea.it/moda-ml/repository/codelist/draft/gc_NT18.xml">http://www.ebiz.enea.it/moda-ml/repository/codelist/draft/gc_NT18.xml</a><br>(XPath YARNOfferRequest/@msgfunction) [Optional]   |
| msgID           | key identifier of the business document in the information system of the issuing Party. In case of more despatches of the same business document, it is unchanged.<br>- base type: string, max length: 35,<br>(XPath YARNOfferRequest/RQheader/msgID) 0-1  |
| msgN            | identification number given to the message (xml document) by its issuer. In case of more despatches of the same business document, it changes.<br>- base type: string, max length: 35,<br>(XPath YARNOfferRequest/RQheader/msgN) 1-1   |
| netWeight       | the net weight declared for transport or customs purpose<br>- base type: decimal, min inclusive: 0, fraction digits: 2,<br>(XPath YARNOfferRequest/terms/transInfo/netWeight) 0-1  |
| note            | free text or structured (computer processing) note. For note structuring use the attributes "noteLabel" and "codelist"<br>- base type: string, max length: 350,<br>(XPath YARNOfferRequest/yarnTecSheet/yarnQuality/note) 0-99<br>(XPath YARNOfferRequest/yarnTecSheet/yarnIdentity/note) 0-99<br>(XPath YARNOfferRequest/RQheader/note) 0-99<br>(XPath YARNOfferRequest/yarnTecSheet/yarnManufacture/note) 0-99<br>(XPath YARNOfferRequest/terms/allowanceCharge/dtScheme/note) 0-99  |
| @noteLabel      | subject qualifier of a note<br>- base type: string, max length: 35,<br>(XPath YARNOfferRequest/yarnTecSheet/yarnManufacture/note/@noteLabel) [Optional]<br>- nota: <i>must be used to qualify the subject of the note</i><br>(XPath YARNOfferRequest/yarnTecSheet/yarnIdentity/note/@noteLabel) [Optional]<br>- nota: <i>must be used to qualify the subject of the note</i><br>(XPath YARNOfferRequest/RQheader/note/@noteLabel) [Optional]<br>- nota: <i>must be used to qualify the subject of the note</i><br>(XPath YARNOfferRequest/yarnTecSheet/yarnQuality/note/@noteLabel) [Optional]<br>- nota: <i>must be used to qualify the subject of the note</i><br>(XPath YARNOfferRequest/terms/allowanceCharge/dtScheme/note/@noteLabel) [Optional]<br>- nota: <i>must be used to qualify the subject of the note</i> |
| @numberingOrg   | code specifying the organisation who has created or owns the coding or numbering system<br>- base type: string, cod. table: NT6<br><a href="http://www.ebiz.enea.it/moda-ml/repository/codelist/draft/gc_NT6.xml">http://www.ebiz.enea.it/moda-ml/repository/codelist/draft/gc_NT6.xml</a><br>(XPath YARNOfferRequest/yarnTecSheet/yarnManufacture/colorCard/colorCardItem/color/@numberingOrg) [Optional]<br>- nota: <i>this attribute should be used either single or coupled with "listName" and "listVersion"</i><br>(XPath YARNOfferRequest/yarnTecSheet/yarnManufacture/colorCard/colorCardItem/refDoc/season/@numberingOrg) [Optional]<br>- nota: <i>this attribute should be used either single or coupled with "listName" and "listVersion"</i><br>(XPath YARNOfferRequest/yarnTecSheet/yarnManufacture/        |

|  |   |
|--|---|
|  | <p style="text-align: center;"><b>colorCard/colorCardItem/refDoc/docID/@numberingOrg) [Optional]</b></p> <p>- nota: here can be specified whose document numbering is used (e.g.: Client, Supplier, ..)</p> <p>(XPath YARNOfferRequest/yarnTecSheet/yarnManufacture/note/@numberingOrg) [Optional]</p> <p>- nota: must be used to specify the organization that created the list of codes used in "noteLabel"</p> <p>(XPath YARNOfferRequest/yarnTecSheet/yarnQuality/note/@numberingOrg) [Optional]</p> <p>- nota: must be used to specify the organization that created the list of codes used in "noteLabel"</p> <p>(XPath YARNOfferRequest/RQheader/docID/@numberingOrg) [Optional]</p> <p>- nota: here can be specified whose document numbering is used (e.g.: Client, Supplier, ..)</p> <p>(XPath YARNOfferRequest/yarnTecSheet/yarnManufacture/colorCard/colorCardItem/refDoc/attachment/fileName/@numberingOrg) [Optional]</p> <p>(XPath YARNOfferRequest/RQheader/season/@numberingOrg) [Optional]</p> <p>- nota: this attribute should be used either single or coupled with "listName" and "listVersion"</p> <p>(XPath YARNOfferRequest/yarnTecSheet/yarnIdentity/season/@numberingOrg) [Optional]</p> <p>- nota: this attribute should be used either single or coupled with "listName" and "listVersion"</p> <p>(XPath YARNOfferRequest/yarnTecSheet/yarnIdentity/yarnCode/added/@numberingOrg) [Optional]</p> <p>- nota: this attribute should be used either single or coupled with "listName" and "listVersion"</p> <p>(XPath YARNOfferRequest/yarnTecSheet/yarnIdentity/yarnCode/color/@numberingOrg) [Optional]</p> <p>- nota: this attribute should be used either single or coupled with "listName" and "listVersion"</p> <p>(XPath YARNOfferRequest/yarnTecSheet/yarnIdentity/yarnCode/@numberingOrg) [Optional] [Default= CL]</p> <p>(XPath YARNOfferRequest/yarnTecSheet/yarnIdentity/yarnCode/art/@numberingOrg) [Optional]</p> <p>- nota: this attribute should be used either single or coupled with "listName" and "listVersion"</p> <p>(XPath YARNOfferRequest/RQheader/refDoc/attachment/fileName/@numberingOrg) [Optional]</p> <p>(XPath YARNOfferRequest/RQheader/refDoc/season/@numberingOrg) [Optional]</p> <p>- nota: this attribute should be used either single or coupled with "listName" and "listVersion"</p> <p>(XPath YARNOfferRequest/RQheader/refDoc/docID/@numberingOrg) [Optional]</p> <p>- nota: here can be specified whose document numbering is used (e.g.: Client, Supplier, ..)</p> <p>(XPath YARNOfferRequest/yarnTecSheet/yarnIdentity/note/@numberingOrg) [Optional]</p> <p>- nota: must be used to specify the organization that created the list of codes used in "noteLabel"</p> <p>(XPath YARNOfferRequest/yarnTecSheet/yarnIdentity/lotN/@numberingOrg) [Optional]</p> <p>(XPath YARNOfferRequest/yarnTecSheet/yarnIdentity/dyeN/@numberingOrg) [Optional]</p> <p>(XPath YARNOfferRequest/RQheader/supplier/id/@numberingOrg) [Optional]</p> <p>(XPath YARNOfferRequest/yarnTecSheet/refDoc/season/@numberingOrg) [Optional]</p> <p>- nota: this attribute should be used either single or coupled with "listName" and "listVersion"</p> <p>(XPath YARNOfferRequest/RQheader/buyer/additionalIdentifier/@numberingOrg) [Optional]</p> <p>- nota: here the issuer of the identifier must be specified</p> <p>(XPath YARNOfferRequest/terms/allowanceCharge/dtScheme/note/@numberingOrg) [Optional]</p> <p>- nota: must be used to specify the organization that created the list of codes used in "noteLabel"</p> <p>(XPath YARNOfferRequest/yarnTecSheet/refDoc/docID/@numberingOrg) [Optional]</p> <p>- nota: here can be specified whose document numbering is used (e.g.: Client, Supplier, ..)</p> <p>(XPath YARNOfferRequest/RQheader/subContractor/id/@numberingOrg) [Optional]</p> <p>(XPath YARNOfferRequest/RQheader/supplier/additionalIdentifier/@numberingOrg) [Optional]</p> <p>- nota: here the issuer of the identifier must be specified</p> <p>(XPath YARNOfferRequest/yarnTecSheet/refDoc/attachment/fileName/@numberingOrg) [Optional]</p> <p>(XPath YARNOfferRequest/RQheader/thirdParty/id/@numberingOrg) [Optional]</p> |
|--|---|



|                       |   |
|-----------------------|---|
|                       | <p>(XPath YARNOfferRequest/terms/allowanceCharge/dtScheme/legalRef/@numberingOrg) [Optional]</p> <p>- nota: <i>this attribute should be used either single or coupled with "listName" and "listVersion"</i></p> <p>(XPath YARNOfferRequest/RQheader/note/@numberingOrg) [Optional]</p> <p>- nota: <i>must be used to specify the organization that created the list of codes used in "noteLabel"</i></p> <p>(XPath YARNOfferRequest/RQheader/buyer/id/@numberingOrg) [Optional]</p>   |
| optLot                | <p>optimized quantity for the manufacturing plant</p> <p>- base type: decimal, min inclusive: 0,</p> <p>(XPath YARNOfferRequest/yarnTecSheet/yarnIdentity/optLot) 0-9</p>   |
| @part                 | <p>percent fraction</p> <p>- base type: decimal, min inclusive: 1, max inclusive: 100, fraction digits: 2,</p> <p>(XPath YARNOfferRequest/terms/insPayment/@part) [Required]</p> <p>- nota: <i>here the % value of each installment must be indicated</i></p>   |
| payMode               | <p>way or means of payment</p> <p>- base type: string, cod. table: T2</p> <p><a href="http://www.ebiz.enea.it/moda-ml/repository/codelist/draft/gc_T2.xml">http://www.ebiz.enea.it/moda-ml/repository/codelist/draft/gc_T2.xml</a></p> <p>(XPath YARNOfferRequest/terms/payment/payMode) 0-1</p> <p>(XPath YARNOfferRequest/terms/insPayment/payMode) 0-1</p>   |
| payTerm               | <p>code specifying the terms or time by which the payment must be done</p> <p>- base type: string, cod. table: T1</p> <p><a href="http://www.ebiz.enea.it/moda-ml/repository/codelist/draft/gc_T1.xml">http://www.ebiz.enea.it/moda-ml/repository/codelist/draft/gc_T1.xml</a></p> <p>(XPath YARNOfferRequest/terms/payment/payTerm) 1-1</p> <p>(XPath YARNOfferRequest/terms/insPayment/payTerm) 1-1</p>   |
| payTermText           | <p>free text specifying the terms by which the payment must be done (time/mode or means)</p> <p>- base type: string, max length: 250,</p> <p>(XPath YARNOfferRequest/terms/insPayment/payTermText) 1-1</p> <p>(XPath YARNOfferRequest/terms/payment/payTermText) 1-1</p>  |
| pcTolerance           | <p>percent deviation tolerated on the value of a measurement (it must have a plus or minus sign)</p> <p>- base type: decimal, min inclusive: 0, max inclusive: 100, total digits: 2,</p> <p>(XPath YARNOfferRequest/yarnTecSheet/yarnQuality/yarnQTest/pcTolerance) 0-1</p>   |
| percCompos            | <p>fiber percentage in the product composition</p> <p>- base type: decimal, min inclusive: 0, max inclusive: 100, fraction digits: 2,</p> <p>(XPath YARNOfferRequest/yarnTecSheet/yarnIdentity/yarnCompos/percCompos) 1-9</p> <p>- note: <i>fiber % in the product composition</i></p>  |
| @percSourcesRenewable | <p>indicates the percentage of renewable sources</p> <p>- base type: decimal,</p> <p>(XPath YARNOfferRequest/yarnTecSheet/yarnIdentity/yarnCompos/percCompos/@percSourcesRenewable) [Optional]</p> <p>- nota: <i>use only for virgin material</i></p>   |
| person                | <p>name of a person (e.g. contact person within an organization)</p> <p>- base type: string, max length: 40,</p> <p>(XPath YARNOfferRequest/terms/transInfo/despatchLocation/person) 0-1</p> <p>(XPath YARNOfferRequest/RQheader/supplier/person) 0-1</p> <p>(XPath YARNOfferRequest/RQheader/subContractor/person) 0-1</p> <p>(XPath YARNOfferRequest/RQheader/buyer/person) 0-1</p> <p>(XPath YARNOfferRequest/terms/transInfo/deliveryLocation/person) 0-1</p> <p>(XPath YARNOfferRequest/terms/trade/tradeLocation/person) 0-1</p> <p>(XPath YARNOfferRequest/RQheader/thirdParty/person) 0-1</p> |
| @phone                | <p>phone number of the contact person within a Party</p> <p>- base type: string, max length: 35,</p> <p>(XPath YARNOfferRequest/RQheader/thirdParty/person/@phone) [Optional]</p> <p>(XPath YARNOfferRequest/RQheader/subContractor/person/@phone) [Optional]</p> <p>(XPath YARNOfferRequest/terms/transInfo/despatchLocation/person/@phone) [Optional]</p> <p>(XPath YARNOfferRequest/RQheader/supplier/person/@phone) [Optional]</p> <p>(XPath YARNOfferRequest/terms/transInfo/deliveryLocation/person/@phone) [Optional]</p>  |

|                             |  |
|-----------------------------|--|
|                             | (XPath YARNOfferRequest/RQheader/buyer/person/@phone) [Optional]<br>(XPath YARNOfferRequest/terms/trade/tradeLocation/person/@phone) [Optional]  |
| plyN                        | number of single threads twisted together<br>- base type: positiveInteger,<br>(XPath YARNOfferRequest/yarnTecSheet/yarnManufacture/<br>yarnPly/plyN) 0-1   |
| plyWork                     | kind of yarn's ply<br>- base type: string, cod. table: T56<br><a href="http://www.ebiz.enea.it/moda-ml/repository/codelist/draft/gc_T56.xml">http://www.ebiz.enea.it/moda-ml/repository/codelist/draft/gc_T56.xml</a><br>(XPath YARNOfferRequest/yarnTecSheet/yarnManufacture/<br>yarnPly/plyWork) 1-1   |
| postCode                    | code defining the postal zone<br>- base type: string, max length: 10,<br>(XPath YARNOfferRequest/terms/transInfo/deliveryLocation/postCode) 0-1<br>(XPath YARNOfferRequest/RQheader/thirdParty/postCode) 0-1<br>(XPath YARNOfferRequest/RQheader/buyer/postCode) 0-1<br>(XPath YARNOfferRequest/terms/transInfo/despatchLocation/postCode) 0-1<br>(XPath YARNOfferRequest/RQheader/supplier/postCode) 0-1<br>(XPath YARNOfferRequest/RQheader/subContractor/postCode) 0-1<br>(XPath YARNOfferRequest/terms/trade/tradeLocation/postCode) 0-1 |
| price                       | unit price of the article, object or service specified<br>- base type: decimal, min inclusive: 0, fraction digits: 4,<br>(XPath YARNOfferRequest/yarnTecSheet/yarnIdentity/price) 0-2  |
| @priceQualifier             | type of price with reference to discount and taxes<br>- base type: string, cod. table: NT20<br><a href="http://www.ebiz.enea.it/moda-ml/repository/codelist/draft/gc_NT20.xml">http://www.ebiz.enea.it/moda-ml/repository/codelist/draft/gc_NT20.xml</a><br>(XPath YARNOfferRequest/yarnTecSheet/yarnIdentity/price/@priceQualifier) [Optional] [Default=NET]  |
| @progr                      | progressive number in the sequence<br>- base type: positiveInteger, min inclusive: 1,<br>(XPath YARNOfferRequest/terms/transInfo/@progr) [Optional]<br>- nota: <i>Indicates the position of the leg in a sequence of transport legs. If it is declared it must be in all the transInfo elements.</i>   |
| @propulsionSystemCode       | propulsion system type<br>- base type: string, cod. table: NT324<br><a href="http://www.ebiz.enea.it/moda-ml/repository/codelist/draft/gc_NT324.xml">http://www.ebiz.enea.it/moda-ml/repository/codelist/draft/gc_NT324.xml</a><br>(XPath YARNOfferRequest/terms/transInfo/transMeans/@propulsionSystemCode) [Optional]<br>- nota: <i>indicates the type of propulsion of the means of transport</i>   |
| qty                         | net quantity of the article or object correlated, qualified by the function of the document (ordering, delivering, ..) and by the context<br>- base type: decimal, min inclusive: 0, fraction digits: 2,<br>(XPath YARNOfferRequest/yarnTecSheet/yarnIdentity/<br>yarnTwist/qty) 0-1<br>- note: <i>here the number of turns per meter is specified</i>   |
| @recyclingProcessEfficiency | recycling process efficiency rate (percentage by weight).<br>- base type: decimal, min inclusive: 0, max inclusive: 100,<br>(XPath YARNOfferRequest/yarnTecSheet/yarnIdentity/<br>yarnCompos/percCompos/@recyclingProcessEfficiency) [Optional]<br>- nota: <i>process efficiency declared by the fibre supplier</i>  |
| @recyclingProcessMethod     | recycling process method<br>- base type: string, cod. table: T307<br><a href="http://www.ebiz.enea.it/moda-ml/repository/codelist/draft/gc_T307.xml">http://www.ebiz.enea.it/moda-ml/repository/codelist/draft/gc_T307.xml</a><br>(XPath YARNOfferRequest/yarnTecSheet/yarnIdentity/<br>yarnCompos/percCompos/@recyclingProcessMethod) [Optional]<br>- nota: <i>use only for non virgin material</i>   |
| @reelType                   | type of package used for a yarn product<br>- base type: string, cod. table: T29<br><a href="http://www.ebiz.enea.it/moda-ml/repository/codelist/draft/gc_T29.xml">http://www.ebiz.enea.it/moda-ml/repository/codelist/draft/gc_T29.xml</a><br>(XPath YARNOfferRequest/yarnTecSheet/yarnIdentity/<br>standardPack/@reelType) [Optional]<br>- nota: <i>identifies the kind of unit in the package</i>  |

|                   |   |
|-------------------|---|
| @role             | Third Party role qualifier<br>- base type: string, cod. table: NT2<br><a href="http://www.ebiz.enea.it/moda-ml/repository/codelist/draft/gc_NT2.xml">http://www.ebiz.enea.it/moda-ml/repository/codelist/draft/gc_NT2.xml</a><br>(XPath YARNOfferRequest/RQheader/thirdParty/@role) [Required]  |
| routeLength       | length of a route<br>- base type: decimal, min inclusive: 0, fraction digits: 2,<br>(XPath YARNOfferRequest/terms/transInfo/routeLength) 0-1  |
| @schemeID         | identifier of an identification scheme<br>- base type: string,<br>(XPath YARNOfferRequest/yarnTecSheet/yarnManufacture/colorCard/colorCardItem/refDoc/attachment/hashFootprint/@schemeID) [Optional]<br>- nota: specify for which system this hash footprint might be used as identifier (for example HDFS system..)<br>(XPath YARNOfferRequest/yarnTecSheet/yarnIdentity/customsStat/@schemeID) [Optional] [Default= TARIC]<br>- nota: By default the value is TARIC, other different coding schemes must be indicated<br>(XPath YARNOfferRequest/yarnTecSheet/refDoc/attachment/hashFootprint/@schemeID) [Optional]<br>- nota: specify for which system this hash footprint might be used as identifier (for example HDFS system..)<br>(XPath YARNOfferRequest/RQheader/refDoc/attachment/hashFootprint/@schemeID) [Optional]<br>- nota: specify for which system this hash footprint might be used as identifier (for example HDFS system..) |
| season            | sale season; defined as: season (1 crt) + year (4 crt) - season: S/S=1 AW=2 Spring=3 Summer=4 Autumn=5 Winter=6: for more than four seasons use alphabetic sequence: 1st season=A 2nd season=B etc.etc.<br>- base type: string, max length: 15,<br>(XPath YARNOfferRequest/yarnTecSheet/yarnManufacture/colorCard/colorCardItem/refDoc/season) 0-1<br>- note: here indicates the season to which the referenced document belongs<br>(XPath YARNOfferRequest/yarnTecSheet/refDoc/season) 0-1<br>- note: here indicates the season to which the referenced document belongs<br>(XPath YARNOfferRequest/RQheader/refDoc/season) 0-1<br>- note: here indicates the season to which the referenced document belongs<br>(XPath YARNOfferRequest/yarnTecSheet/yarnIdentity/season) 0-1<br>(XPath YARNOfferRequest/RQheader/season) 0-1   |
| @sender           | qualifier that specifies the Party issuing of the document<br>- base type: boolean,<br>(XPath YARNOfferRequest/RQheader/supplier/@sender) [Optional]<br>- nota: This attribute is mandatory when the STYLESHEET must be used<br>(XPath YARNOfferRequest/RQheader/thirdParty/@sender) [Optional]<br>- nota: This attribute is mandatory when the STYLESHEET must be used<br>(XPath YARNOfferRequest/RQheader/subContractor/@sender) [Optional]<br>- nota: This attribute is mandatory when the STYLESHEET must be used<br>(XPath YARNOfferRequest/RQheader/buyer/@sender) [Optional]<br>- nota: This attribute is mandatory when the STYLESHEET must be used   |
| @source           | party who has provided the data<br>- base type: string, cod. table: NT12<br><a href="http://www.ebiz.enea.it/moda-ml/repository/codelist/draft/gc_NT12.xml">http://www.ebiz.enea.it/moda-ml/repository/codelist/draft/gc_NT12.xml</a><br>(XPath YARNOfferRequest/yarnTecSheet/yarnQuality/yarnQTest/specValue/@source) [Optional]<br>(XPath YARNOfferRequest/yarnTecSheet/yarnManufacture/yarnColorFastness/specValue/@source) [Optional]   |
| specValue         | value requested for a property or a parameter that is measured<br>- base type: decimal,<br>(XPath YARNOfferRequest/yarnTecSheet/yarnManufacture/yarnColorFastness/specValue) 1-1<br>- note: when the test foresees two values (change-staining) the 1st value is change and the 2nd staining, divided by ","<br>(XPath YARNOfferRequest/yarnTecSheet/yarnQuality/yarnQTest/specValue) 0-1   |
| @standardObserver | CIE average chromatic response definition   |

|                    |   |
|--------------------|---|
|                    | <p>- base type: string, cod. table: T60<br/> <a href="http://www.ebiz.enea.it/moda-ml/repository/codelist/draft/gc_T60.xml">http://www.ebiz.enea.it/moda-ml/repository/codelist/draft/gc_T60.xml</a><br/> (XPath YARNOfferRequest/yarnTecSheet/yarnManufacture/<br/> colorCard/colorCardItem/CIELab/@standardObserver) [Optional]</p>   |
| standardPack       | <p>number of unit per standard package<br/> - base type: positiveInteger,<br/> (XPath YARNOfferRequest/yarnTecSheet/yarnIdentity/standardPack) 0-1</p>  |
| street             | <p>street and building number identifying a location<br/> - base type: string, max length: 80,<br/> (XPath YARNOfferRequest/terms/transInfo/deliveryLocation/street) 0-1<br/> (XPath YARNOfferRequest/terms/trade/tradeLocation/street) 0-1<br/> (XPath YARNOfferRequest/RQheader/subContractor/street) 0-1<br/> (XPath YARNOfferRequest/RQheader/thirdParty/street) 0-1<br/> (XPath YARNOfferRequest/RQheader/buyer/street) 0-1<br/> (XPath YARNOfferRequest/terms/transInfo/despatchLocation/street) 0-1<br/> (XPath YARNOfferRequest/RQheader/supplier/street) 0-1</p>                       |
| subCountry         | <p>short name or code of the sub-country entity<br/> - base type: string, max length: 9,<br/> (XPath YARNOfferRequest/terms/transInfo/despatchLocation/subCountry) 0-1<br/> (XPath YARNOfferRequest/RQheader/buyer/subCountry) 0-1<br/> (XPath YARNOfferRequest/terms/trade/tradeLocation/subCountry) 0-1<br/> (XPath YARNOfferRequest/RQheader/subContractor/subCountry) 0-1<br/> (XPath YARNOfferRequest/terms/transInfo/deliveryLocation/subCountry) 0-1<br/> (XPath YARNOfferRequest/RQheader/thirdParty/subCountry) 0-1<br/> (XPath YARNOfferRequest/RQheader/supplier/subCountry) 0-1</p> |
| subDept            | <p>name or code of a department<br/> - base type: string, max length: 40,<br/> (XPath YARNOfferRequest/RQheader/supplier/subDept) 0-1<br/> (XPath YARNOfferRequest/RQheader/subContractor/subDept) 0-1<br/> (XPath YARNOfferRequest/RQheader/buyer/subDept) 0-1<br/> (XPath YARNOfferRequest/terms/trade/tradeLocation/subDept) 0-1<br/> (XPath YARNOfferRequest/terms/transInfo/despatchLocation/subDept) 0-1<br/> (XPath YARNOfferRequest/RQheader/thirdParty/subDept) 0-1<br/> (XPath YARNOfferRequest/terms/transInfo/deliveryLocation/subDept) 0-1</p>                                     |
| taxCategory        | <p>duty or tax or fee category<br/> - base type: string, cod. table: T62<br/> <a href="http://www.ebiz.enea.it/moda-ml/repository/codelist/draft/gc_T62.xml">http://www.ebiz.enea.it/moda-ml/repository/codelist/draft/gc_T62.xml</a><br/> (XPath YARNOfferRequest/terms/allowanceCharge/dtScheme/taxCategory) 0-1</p>  |
| taxRate            | <p>duty or tax or fee percent rate<br/> - base type: string,<br/> (XPath YARNOfferRequest/terms/allowanceCharge/dtScheme/taxRate) 0-1</p>   |
| @taxType           | <p>duty or tax or fee type<br/> - base type: string, cod. table: T61<br/> <a href="http://www.ebiz.enea.it/moda-ml/repository/codelist/draft/gc_T61.xml">http://www.ebiz.enea.it/moda-ml/repository/codelist/draft/gc_T61.xml</a><br/> (XPath YARNOfferRequest/terms/allowanceCharge/dtScheme/@taxType) [Required]</p>  |
| tolerance          | <p>deviation tolerated on the value of a measurement (it must have a plus or minus sign)<br/> - base type: decimal,<br/> (XPath YARNOfferRequest/yarnTecSheet/yarnQuality/<br/> yarnQTest/tolerance) 0-1</p>  |
| tradeMark          | <p>name of the official trademark of a specified product (DEPRECATED, use Brand or Product Line).<br/> - base type: string, max length: 50,<br/> (XPath YARNOfferRequest/yarnTecSheet/yarnIdentity/tradeMark) 0-1</p>   |
| transactionReceipt | <p>transaction receipt on blockchain<br/> - base type: string, max length: 80,<br/> (XPath YARNOfferRequest/yarnTecSheet/yarnManufacture/<br/> colorCard/colorCardItem/refDoc/attachment/blockChainReference/transaction<br/> Receipt) 1-9<br/> (XPath YARNOfferRequest/RQheader/refDoc/attachment/<br/> blockChainReference/transactionReceipt) 1-9<br/> (XPath YARNOfferRequest/yarnTecSheet/refDoc/attachment/<br/> blockChainReference/transactionReceipt) 1-9</p>  |
| transCondition     | <p>special condition of transport or special service requested to the Forwarder</p>   |

|                    |  |
|--------------------|--|
|                    | <p>- base type: string, cod. table: T38<br/> <a href="http://www.ebiz.enea.it/moda-ml/repository/codelist/draft/gc_T38.xml">http://www.ebiz.enea.it/moda-ml/repository/codelist/draft/gc_T38.xml</a><br/> (XPath YARNOfferRequest/terms/transInfo/transCondition) 0-3</p>  |
| transConditionText | <p>free text description of the special condition of transport or special service requested to the Forwarder<br/> - base type: string, max length: 250,<br/> (XPath YARNOfferRequest/terms/transInfo/transConditionText) 0-1</p>   |
| transMeans         | <p>means of transport, in general or referred to a specific leg<br/> - base type: string, cod. table: T40<br/> <a href="http://www.ebiz.enea.it/moda-ml/repository/codelist/draft/gc_T40.xml">http://www.ebiz.enea.it/moda-ml/repository/codelist/draft/gc_T40.xml</a><br/> (XPath YARNOfferRequest/terms/transInfo/transMeans) 0-1</p>  |
| transMode          | <p>way of transport, in general or referred to the specified leg<br/> - base type: string, cod. table: T8<br/> <a href="http://www.ebiz.enea.it/moda-ml/repository/codelist/draft/gc_T8.xml">http://www.ebiz.enea.it/moda-ml/repository/codelist/draft/gc_T8.xml</a><br/> (XPath YARNOfferRequest/terms/transInfo/transMode) 1-1</p>   |
| @transReason       | <p>reason for the transport<br/> - base type: string, cod. table: NT11<br/> <a href="http://www.ebiz.enea.it/moda-ml/repository/codelist/draft/gc_NT11.xml">http://www.ebiz.enea.it/moda-ml/repository/codelist/draft/gc_NT11.xml</a><br/> (XPath YARNOfferRequest/terms/transInfo/@transReason) [Optional]</p>  |
| twistDirection     | <p>direction (S or Z) of the yarn twist<br/> - base type: string,<br/> (XPath YARNOfferRequest/yarnTecSheet/yarnIdentity/yarnTwist/twistDirection) 1-1</p>   |
| @uid               | <p>unique element identifier within the xml document<br/> - base type: string,<br/> (XPath YARNOfferRequest/yarnTecSheet/yarnManufacture/colorCard/colorCardItem/refDoc/attachment/@uid) [Optional]<br/> (XPath YARNOfferRequest/RQheader/refDoc/attachment/@uid) [Optional]<br/> (XPath YARNOfferRequest/yarnTecSheet/refDoc/attachment/@uid) [Optional]</p>  |
| @um                | <p>specification of the unit of measure<br/> - base type: string, cod. table: NT7<br/> <a href="http://www.ebiz.enea.it/moda-ml/repository/codelist/draft/gc_NT7.xml">http://www.ebiz.enea.it/moda-ml/repository/codelist/draft/gc_NT7.xml</a><br/> (XPath YARNOfferRequest/terms/transInfo/netWeight/@um) [Required]<br/> (XPath YARNOfferRequest/RQheader/buyer/geoCoordinates/@um) [Optional] [Default= DEGD]<br/> - nota: <i>when not specified assume decimal DEGREES</i><br/> (XPath YARNOfferRequest/yarnTecSheet/yarnIdentity/yarnTwist/qty/@um) [Required]<br/> (XPath YARNOfferRequest/terms/transInfo/despatchLocation/geoCoordinates/@um) [Optional] [Default= DEGD]<br/> - nota: <i>when not specified assume decimal DEGREES</i><br/> (XPath YARNOfferRequest/terms/transInfo/grossWeight/@um) [Required]<br/> (XPath YARNOfferRequest/yarnTecSheet/yarnIdentity/minLot/@um) [Required]<br/> (XPath YARNOfferRequest/RQheader/thirdParty/geoCoordinates/@um) [Optional] [Default= DEGD]<br/> - nota: <i>when not specified assume decimal DEGREES</i><br/> (XPath YARNOfferRequest/yarnTecSheet/yarnIdentity/yarnComWeight/@um) [Required]<br/> (XPath YARNOfferRequest/yarnTecSheet/yarnIdentity/yarnReelQty/@um) [Required]<br/> (XPath YARNOfferRequest/yarnTecSheet/yarnQuality/yarnQTest/specValue/@um) [Optional]<br/> (XPath YARNOfferRequest/yarnTecSheet/yarnIdentity/fibrePD/length/@um) [Required]<br/> (XPath YARNOfferRequest/yarnTecSheet/yarnQuality/yarnQTest/pcTolerance/@um) [Optional]<br/> - nota: <i>to be used when it has to be soecified if the declared percentage is by weight, v olume, etc...</i><br/> (XPath YARNOfferRequest/yarnTecSheet/yarnQuality/yarnQTest/tolerance/@um) [Required]<br/> (XPath YARNOfferRequest/yarnTecSheet/yarnIdentity/fibrePD/diameter/@um) [Optional]<br/> (XPath YARNOfferRequest/terms/allowanceCharge/@um) [Optional]<br/> (XPath YARNOfferRequest/terms/transInfo/routeLength/@um) [Required]<br/> (XPath YARNOfferRequest/RQheader/supplier/geoCoordinates/@um) [Optional] [Default= DEGD ]</p> |

|                   |   |
|-------------------|---|
|                   | <p>- nota: <i>when not specified assume decimal DEGREES</i><br/>(XPath YARNOfferRequest/RQheader/subContractor/<br/>geoCoordinates/@um) [Optional] [Default= DEGD]</p> <p>- nota: <i>when not specified assume decimal DEGREES</i><br/>(XPath YARNOfferRequest/terms/transInfo/deliveryLocation/<br/>geoCoordinates/@um) [Optional] [Default= DEGD]</p> <p>- nota: <i>when not specified assume decimal DEGREES</i><br/>(XPath YARNOfferRequest/yarnTecSheet/yarnIdentity/optLot/@um) [Optional]<br/>(XPath YARNOfferRequest/yarnTecSheet/yarnIdentity/price/@um) [Optional]</p> <p>- nota: <i>Unit of measure of the product to which the price is referred (price per meter)</i><br/>(XPath YARNOfferRequest/yarnTecSheet/yarnManufacture/<br/>yarnColorFastness/specValue/@um) [Optional]<br/>(XPath YARNOfferRequest/yarnTecSheet/yarnIdentity/<br/>minLotExclusive/@um) [Required]<br/>(XPath YARNOfferRequest/terms/trade/tradeLocation/<br/>geoCoordinates/@um) [Optional] [Default= DEGD]</p> <p>- nota: <i>when not specified assume decimal DEGREES</i></p>   |
| uri               | <p>Uniform Resource Identifier (URI) that identifies the external object as an Internet resource</p> <p>- base type: normalizedString,<br/>(XPath YARNOfferRequest/RQheader/refDoc/attachment/<br/>externalReference/uri) 1-1<br/>(XPath YARNOfferRequest/yarnTecSheet/refDoc/attachment/<br/>externalReference/uri) 1-1<br/>(XPath YARNOfferRequest/yarnTecSheet/yarnManufacture/<br/>colorCard/colorCardItem/refDoc/attachment/blockChainReference/uri) 1-1</p> <p>- note: <i>reference to the used blockchain ( example: url https://etherscan.io/ of ethereum)</i><br/>(XPath YARNOfferRequest/yarnTecSheet/yarnManufacture/<br/>colorCard/colorCardItem/refDoc/attachment/externalReference/uri) 1-1<br/>(XPath YARNOfferRequest/RQheader/refDoc/attachment/<br/>blockChainReference/uri) 1-1</p> <p>- note: <i>reference to the used blockchain ( example: url https://etherscan.io/ of ethereum)</i><br/>(XPath YARNOfferRequest/yarnTecSheet/refDoc/attachment/<br/>blockChainReference/uri) 1-1</p> <p>- note: <i>reference to the used blockchain ( example: url https://etherscan.io/ of ethereum)</i></p> |
| @useProfile       | <p>use profile to which the present document is compliant if it was agreed by the parties. It is suggested a URI with reference to the firms or the URL of the profile.</p> <p>- base type: string,<br/>(XPath YARNOfferRequest/@useProfile) [Optional]</p>   |
| @validationMethod | <p>type of method used to validate the quantity to which it refers. For example, it indicates whether it was measured in the field, estimated indirectly, approved by an expert or taken from the literature</p> <p>- base type: string, cod. table: NT329<br/><a href="http://www.ebiz.enea.it/moda-ml/repository/codelist/draft/gc_NT329.xml">http://www.ebiz.enea.it/moda-ml/repository/codelist/draft/gc_NT329.xml</a><br/>(XPath YARNOfferRequest/yarnTecSheet/yarnIdentity/<br/>yarnCompos/percCompos/@validationMethod) [Optional]</p>   |
| validityEnd       | <p>date by which the validity ends, according to one of the patterns YYYY-MM-DD, YYYY-MM-DD:HH-MM or YYYY-WW.</p> <p>- base type: string,<br/>(XPath YARNOfferRequest/RQheader/validityEnd) 1-1</p>   |
| validityStart     | <p>date by which the validity starts, according to one of the patterns YYYY-MM-DD, YYYY-MM-DD:HH-MM or YYYY-WW.</p> <p>- base type: string,<br/>(XPath YARNOfferRequest/RQheader/validityStart) 0-1</p>   |
| @VAT              | <p>VAT rate or code (DEPRECATED, use dtScheme element)</p> <p>- base type: string, cod. table: NT16<br/><a href="http://www.ebiz.enea.it/moda-ml/repository/codelist/draft/gc_NT16.xml">http://www.ebiz.enea.it/moda-ml/repository/codelist/draft/gc_NT16.xml</a><br/>(XPath YARNOfferRequest/RQheader/thirdParty/@VAT) [Optional]<br/>(XPath YARNOfferRequest/terms/allowanceCharge/@VAT) [Optional]</p>   |
| @version          | <p>Dictionary version from which the instance has been created</p> <p>- base type: string, cod. table: NT100<br/><a href="http://www.ebiz.enea.it/moda-ml/repository/codelist/draft/gc_NT100.xml">http://www.ebiz.enea.it/moda-ml/repository/codelist/draft/gc_NT100.xml</a></p>  |



|                  |  |
|------------------|--|
|                  | (XPath YARNOfferRequest/@version) [Optional] [Default= draft]  |
| xGeoCoord        | geographical coordinate x , corresponding to latitude<br>- base type: decimal,<br>(XPath YARNOfferRequest/terms/trade/tradeLocation/<br>geoCoordinates/xGeoCoord) 1-1<br>(XPath YARNOfferRequest/RQheader/subContractor/<br>geoCoordinates/xGeoCoord) 1-1<br>(XPath YARNOfferRequest/RQheader/supplier/geoCoordinates/xGeoCoord) 1-1<br>(XPath YARNOfferRequest/RQheader/buyer/geoCoordinates/xGeoCoord) 1-1<br>(XPath YARNOfferRequest/terms/transInfo/despatchLocation/<br>geoCoordinates/xGeoCoord) 1-1<br>(XPath<br>YARNOfferRequest/RQheader/thirdParty/geoCoordinates/xGeoCoord) 1-1<br>(XPath YARNOfferRequest/terms/transInfo/deliveryLocation/<br>geoCoordinates/xGeoCoord) 1-1 |
| yarnCFTest       | color fastness test for a yarn<br>- base type: string, cod. table: T57<br><a href="http://www.ebiz.enea.it/moda-ml/repository/codelist/draft/gc_T57.xml">http://www.ebiz.enea.it/moda-ml/repository/codelist/draft/gc_T57.xml</a><br>(XPath YARNOfferRequest/yarnTecSheet/yarnManufacture/<br>yarnColorFastness/yarnCFTest) 1-1  |
| yarnClass        | yarn classification according to the manufacturing process<br>- base type: string, cod. table: NT31<br><a href="http://www.ebiz.enea.it/moda-ml/repository/codelist/draft/gc_NT31.xml">http://www.ebiz.enea.it/moda-ml/repository/codelist/draft/gc_NT31.xml</a><br>(XPath YARNOfferRequest/yarnTecSheet/yarnIdentity/yarnClass) 0-1   |
| yarnComWeight    | dry weight of fibres plus commercial moisture regain<br>- base type: decimal, min inclusive: 0,<br>(XPath YARNOfferRequest/yarnTecSheet/yarnIdentity/yarnComWeight) 0-1  |
| yarnCount        | linear density measure of yarn (count)<br>- base type: string,<br>(XPath YARNOfferRequest/yarnTecSheet/yarnIdentity/yarnCount) 0-1   |
| yarnJob          | operation of a work cycle for yarn<br>- base type: string, cod. table: T201<br><a href="http://www.ebiz.enea.it/moda-ml/repository/codelist/draft/gc_T201.xml">http://www.ebiz.enea.it/moda-ml/repository/codelist/draft/gc_T201.xml</a><br>(XPath YARNOfferRequest/yarnTecSheet/yarnManufacture/<br>yarnJobSeq/yarnJob) 1-19  |
| yarnKind         | general type of yarn<br>- base type: string, cod. table: T54<br><a href="http://www.ebiz.enea.it/moda-ml/repository/codelist/draft/gc_T54.xml">http://www.ebiz.enea.it/moda-ml/repository/codelist/draft/gc_T54.xml</a><br>(XPath YARNOfferRequest/yarnTecSheet/yarnIdentity/yarnKind) 0-1   |
| yarnNameBuyer    | name given to the yarn by the Buyer<br>- base type: string, max length: 250,<br>(XPath YARNOfferRequest/yarnTecSheet/yarnIdentity/yarnNameBuyer) 0-1   |
| yarnNameSupplier | name given to the yarn by the Supplier<br>- base type: string, max length: 250,<br>(XPath YARNOfferRequest/yarnTecSheet/yarnIdentity/yarnNameSupplier) 1-1   |
| yarnQTestType    | Type of test related to a property of a yarn<br>- base type: string, cod. table: T58<br><a href="http://www.ebiz.enea.it/moda-ml/repository/codelist/draft/gc_T58.xml">http://www.ebiz.enea.it/moda-ml/repository/codelist/draft/gc_T58.xml</a><br>(XPath YARNOfferRequest/yarnTecSheet/yarnQuality/<br>yarnQTest/yarnQTestType) 1-1   |
| yarnReelQty      | quantity of yarn (by weight or length) wound upon a bobbin<br>- base type: decimal, min inclusive: 0, fraction digits: 2,<br>(XPath YARNOfferRequest/yarnTecSheet/yarnIdentity/yarnReelQty) 0-1  |
| yGeoCoord        | geographical coordinate y , corresponding to longitude<br>- base type: decimal,<br>(XPath YARNOfferRequest/terms/transInfo/deliveryLocation/<br>geoCoordinates/yGeoCoord) 1-1<br>(XPath YARNOfferRequest/terms/trade/tradeLocation/<br>geoCoordinates/yGeoCoord) 1-1<br>(XPath YARNOfferRequest/RQheader/supplier/geoCoordinates/yGeoCoord) 1-1<br>(XPath<br>YARNOfferRequest/RQheader/thirdParty/geoCoordinates/yGeoCoord) 1-1  |

|           |  |
|-----------|--|
|           | <p>(XPath YARNOfferRequest/RQheader/subContractor/<br/>geoCoordinates/yGeoCoord) 1-1<br/> (XPath YARNOfferRequest/terms/transInfo/despatchLocation/<br/>geoCoordinates/yGeoCoord) 1-1<br/> (XPath YARNOfferRequest/RQheader/buyer/geoCoordinates/yGeoCoord) 1-1</p>  |
| zGeoCoord | <p>geographical coordinate z , corresponding to altitude<br/> - base type: decimal,<br/> (XPath YARNOfferRequest/terms/transInfo/deliveryLocation/<br/>geoCoordinates/zGeoCoord) 0-1<br/> - note: <i>altitude might be omitted</i><br/> (XPath YARNOfferRequest/RQheader/supplier/geoCoordinates/zGeoCoord) 0-1<br/> - note: <i>altitude might be omitted</i><br/> (XPath YARNOfferRequest/terms/transInfo/despatchLocation/<br/>geoCoordinates/zGeoCoord) 0-1<br/> - note: <i>altitude might be omitted</i><br/> (XPath<br/>YARNOfferRequest/RQheader/thirdParty/geoCoordinates/zGeoCoord) 0-1<br/> - note: <i>altitude might be omitted</i><br/> (XPath YARNOfferRequest/RQheader/buyer/geoCoordinates/zGeoCoord) 0-1<br/> - note: <i>altitude might be omitted</i><br/> (XPath YARNOfferRequest/terms/trade/tradeLocation/<br/>geoCoordinates/zGeoCoord) 0-1<br/> - note: <i>altitude might be omitted</i><br/> (XPath YARNOfferRequest/RQheader/subContractor/<br/>geoCoordinates/zGeoCoord) 0-1<br/> - note: <i>altitude might be omitted</i></p> |



## 2.3 Suggested best practices

**YARNOfferRequest/yarnTecSheet/refDoc/docID (identification number of the referenced document)**

numberingOrg indicates the role that produced the document identifier (it is allowed to declare two different ones -e.g. customer and supplier - with two docID with different numberingOrg

**YARNOfferRequest/yarnTecSheet/yarnManufacture/**

**colorCard/colorCardItem/refDoc/docID (identification number of the referenced document)**

numberingOrg indicates the role that produced the document identifier (it is allowed to declare two different ones -e.g. customer and supplier - with two docID with different numberingOrg

**YARNOfferRequest/RQheader/refDoc/docID (identification number of the referenced document)**

numberingOrg indicates the role that produced the document identifier (it is allowed to declare two different ones -e.g. customer and supplier - with two docID with different numberingOrg

**YARNOfferRequest/RQheader/refDoc/attachment/**

**externalReference/mimeCode (mime type of the external object)**

Use coding from IANA <http://www.iana.org/assignments/media-types/media-types.xml>

**YARNOfferRequest/yarnTecSheet/yarnManufacture/**

**colorCard/colorCardItem/refDoc/attachment/externalReference/mimeCode (mime type of the external object)**

Use coding from IANA <http://www.iana.org/assignments/media-types/media-types.xml>

**YARNOfferRequest/yarnTecSheet/refDoc/attachment/**

**externalReference/mimeCode (mime type of the external object)**

Use coding from IANA <http://www.iana.org/assignments/media-types/media-types.xml>

## 2.4 Enumeration tables

List of enumeration tables used in the XML document. You can find all the tables with the corresponding codes at:  
<http://www.ebiz.enea.it/eBIZ/imple/eBIZTCU-draft.asp?lingua=en&pag=6>

NT100 - eBIZ TCFUpstream version  
NT11 - transport causal  
NT12 - data source  
NT16 - VAT rate or code  
NT18 - message function  
NT2 - third party qualifier  
NT20 - price qualifier  
NT26 - color type  
NT29 - format of a date  
NT3 - issuer of the identifier (or identification system) of a location.  
NT31 - yarn family  
NT324 - propulsion system type  
NT329 - type of validation method of the value  
NT333 - type of hashing algorithm  
NT6 - coding system owner/issuer  
NT60 - language, codes from ISO 639-1 (subset)  
NT7 - unit of measure  
T1 - terms of payment  
T10 - ISO3166 - Country  
T15 - dye/print process type  
T16 - dyestuff type  
T19 - fibre type  
T2 - Modes of payment  
T201 - type of job on yarn  
T21 - type of document  
T29 - type of yarn package  
T3 - terms of delivery - IncoTerms  
T306 - material circularity attribute  
T307 - recycling process method  
T38 - transport conditions  
T40 - type of transport means  
T41 - type of Allowance or Charge  
T44 - additional code type  
T54 - kind of yarn  
T55 - count system  
T56 - kind of yarn ply  
T57 - color fastness test for yarn  
T58 - yarn quality parameters  
T59 - CIE illuminant  
T60 - CIE standard observer  
T61 - duty or tax or fee type  
T62 - duty or tax or fee category  
T8 - Modes of Transport  
T9 - ISO4217 - Currency

(the most relevant tables are detailed in the following Annexes too)

## ACKNOWLEDGEMENT



This action is part of the TRICK project, which has received funding from Horizon 2020 research and innovation programme under grant agreement No. 958352 of the European Union.

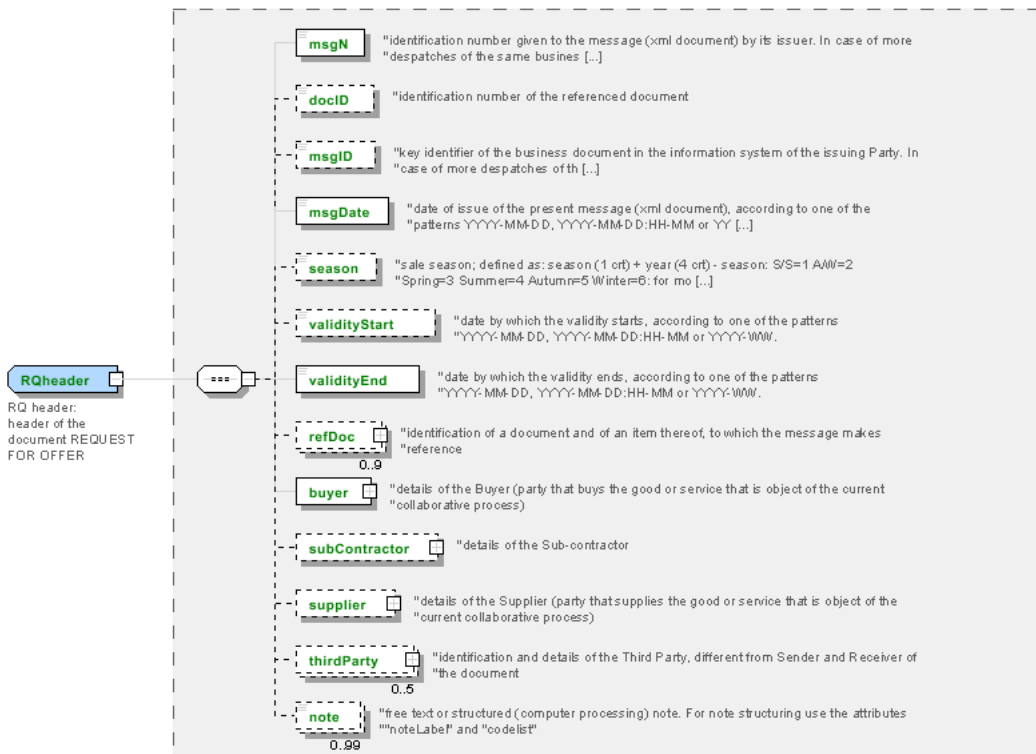
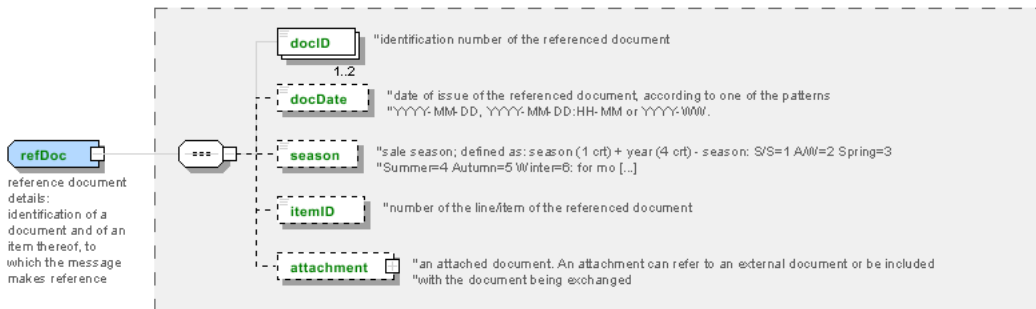
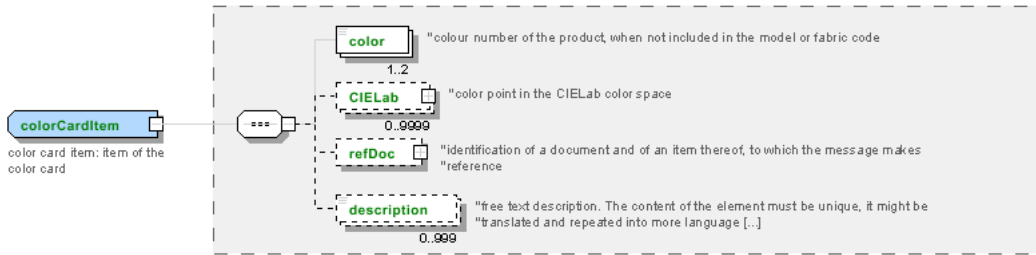
## DISCLAIMER

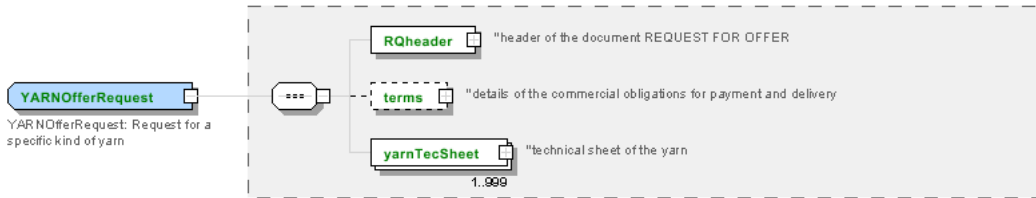
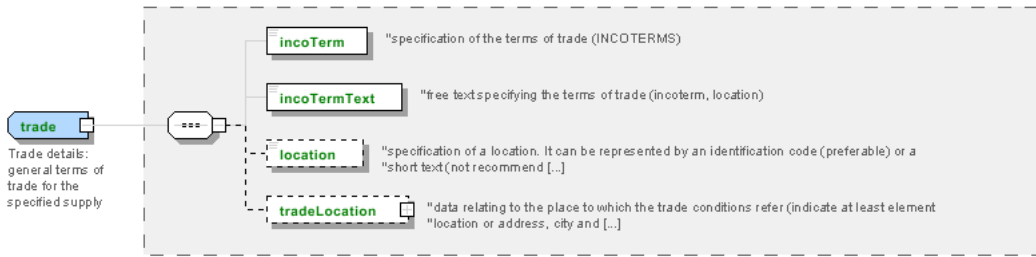
The content of this document represents the views of the authors only and is their sole responsibility; it cannot be considered to reflect the views of the European Commission or any other body of the European Union.

The European Commission does not accept any responsibility for use that may be made of the information it contains.

# Annex A

Representative images of the principal complex elements' structure.







## Annex B

### NT100 - eBIZ TCFUpstream version

dictionary version

Agency name: eBIZ

Decoding table: NT100

File codes list (Generic code): [http://www.ebiz.enea.it/moda-ml/repository/codelist/draft/gc\\_NT100.xml](http://www.ebiz.enea.it/moda-ml/repository/codelist/draft/gc_NT100.xml)

| Code   | Description | Adoption note | Date of insertion |
|--------|-------------|---------------|-------------------|
| 2013-1 | v2013-1     |               | 01/07/2013        |
| 2018-1 | v2018-1     |               | 04/11/2018        |
| draft  | draft       |               | 08/09/2017        |

### NT11 - transport causal

reason for the transport

Agency name: eBIZ

Decoding table: NT11

File codes list (Generic code): [http://www.ebiz.enea.it/moda-ml/repository/codelist/draft/gc\\_NT11.xml](http://www.ebiz.enea.it/moda-ml/repository/codelist/draft/gc_NT11.xml)

| Code | Description           | Adoption note | Date of insertion |
|------|-----------------------|---------------|-------------------|
| FOC  | free of charge        |               |                   |
| FRW  | return from re-works  |               |                   |
| FST  | return from storage   |               |                   |
| FVW  | return from view      |               |                   |
| FWK  | return from works     |               |                   |
| IST  | in storage            |               |                   |
| NWK  | return non-worked     |               |                   |
| RJC  | return from rejection |               |                   |
| SEL  | to sell               |               |                   |
| STO  | to storage            |               |                   |
| VEW  | to view               |               |                   |
| WRK  | to works              |               |                   |

### NT12 - data source

party who has provided the data

Agency name: eBIZ

Decoding table: NT12

File codes list (Generic code): [http://www.ebiz.enea.it/moda-ml/repository/codelist/draft/gc\\_NT12.xml](http://www.ebiz.enea.it/moda-ml/repository/codelist/draft/gc_NT12.xml)

| Code | Description         | Adoption note | Date of insertion |
|------|---------------------|---------------|-------------------|
| AC   | internal test       |               |                   |
| CO   | external test       |               |                   |
| CV   | test after steaming |               |                   |

#### NT16 - VAT rate or code

VAT rate or code ( DEPRECATED, use dtScheme element )

Decoding table: NT16

File codes list (Generic code): [http://www.ebiz.enea.it/moda-ml/repository/codelist/draft/gc\\_NT16.xml](http://www.ebiz.enea.it/moda-ml/repository/codelist/draft/gc_NT16.xml)

#### NT18 - message function

function performed by the present message with regards to the transmission

Agency name: eBIZ

Decoding table: NT18

File codes list (Generic code): [http://www.ebiz.enea.it/moda-ml/repository/codelist/draft/gc\\_NT18.xml](http://www.ebiz.enea.it/moda-ml/repository/codelist/draft/gc_NT18.xml)

| Code | Description                         | Adoption note | Date of insertion |
|------|-------------------------------------|---------------|-------------------|
| CA   | delete this document                |               | 01/07/2013        |
| CP   | copy                                |               |                   |
| OR   | original                            |               |                   |
| RC   | re-transmission for data correction |               |                   |
| RT   | re-transmission                     |               |                   |

#### NT2 - third party qualifier

Third Party role qualifier

Agency name: eBIZ

Decoding table: NT2

File codes list (Generic code): [http://www.ebiz.enea.it/moda-ml/repository/codelist/draft/gc\\_NT2.xml](http://www.ebiz.enea.it/moda-ml/repository/codelist/draft/gc_NT2.xml)

| Code | Description | Adoption note | Date of insertion |
|------|-------------|---------------|-------------------|
| AG   | Sales Agent |               |                   |
| AU   | Auditor     |               | 08/04/2019        |
| BU   | Buyer       |               | 13/06/2022        |



|    |                                      |  |            |
|----|--------------------------------------|--|------------|
| CE | Certification authority              |  | 08/04/2019 |
| CM | Commissioner                         |  | 13/06/2022 |
| CO | Quality Controller                   |  |            |
| CU | Customs authority                    |  | 13/06/2022 |
| DC | Response to                          |  |            |
| DF | Invoicee                             |  |            |
| DI | Copy to (CC)                         |  | 28/10/2014 |
| DM | Consignee                            |  |            |
| DP | Consignment address (Delivery Party) |  |            |
| EX | Expert                               |  | 13/06/2022 |
| IM | Importer                             |  |            |
| OR | Originator                           |  | 10/09/2014 |
| SC | Sub contractor                       |  | 10/04/2019 |
| SM | Service/ePlatform manager            |  | 08/04/2019 |
| SP | Forwarder                            |  |            |
| SU | Supplier                             |  | 13/06/2022 |
| TL | Test or analysis laboratory          |  | 13/06/2022 |
| TX | Tax Representative                   |  |            |

#### NT20 - price qualifier

type of price with reference to discount and taxes

Agency name: eBIZ

Decoding table: NT20

File codes list (Generic code): [http://www.ebiz.enea.it/moda-ml/repository/codelist/draft/gc\\_NT20.xml](http://www.ebiz.enea.it/moda-ml/repository/codelist/draft/gc_NT20.xml)

| Code | Description           | Adoption note | Date of insertion |
|------|-----------------------|---------------|-------------------|
| GET  | gross excluding taxes |               |                   |
| GIT  | gross including taxes |               |                   |
| NET  | net excluding taxes   |               |                   |
| NIT  | net including taxes   |               |                   |

#### NT26 - color type

type of color to which a "color fastness" value refers

Agency name: eBIZ

Decoding table: NT26

File codes list (Generic code): [http://www.ebiz.enea.it/moda-ml/repository/codelist/draft/gc\\_NT26.xml](http://www.ebiz.enea.it/moda-ml/repository/codelist/draft/gc_NT26.xml)

| Code | Description | Adoption note | Date of insertion |
|------|-------------|---------------|-------------------|
| D    | dark        |               |                   |
| L    | light       |               |                   |
| P    | pastel      |               |                   |

### NT29 - format of a date

format used for the date

Agency name: eBIZ

Decoding table: NT29

File codes list (Generic code): [http://www.ebiz.enea.it/moda-ml/repository/codelist/draft/gc\\_NT29.xml](http://www.ebiz.enea.it/moda-ml/repository/codelist/draft/gc_NT29.xml)

| Code | Description                                      | Adoption note | Date of insertion |
|------|--|---------------|-------------------|
| D    | YYYY-MM-DD                                       |               |                   |
| M    | YYYY-MM-DD:HH-MM (date and time)                 |               |                   |
| S    | AAAA-MM-GG:HH-MM-SS (date and time with seconds) |               | 13/06/2022        |
| W    | YYYY-WW  |               |                   |

### NT3 - issuer of the identifier (or identification system) of a location.

List of possible issuers of the identifier (or identification system) of a location.

Agency name: eBIZ

Decoding table: NT3

File codes list (Generic code): [http://www.ebiz.enea.it/moda-ml/repository/codelist/draft/gc\\_NT3.xml](http://www.ebiz.enea.it/moda-ml/repository/codelist/draft/gc_NT3.xml)

| Code | Description               | Adoption note   | Date of insertion |
|------|---------------------------|---|-------------------|
| EN4  | GS1-GLN                   | obsolete  | 01/07/2013        |
| GLN  | GS1-GLN                   | equivalent to EN4   | 25/04/2023        |
| MD   | mutually agreed           |   |                   |
| NCA  | National custom authority | identifier of a bonded warehouse assigned by the custom authority | 19/05/2023        |
| PLA  | Platform                  | internal coding of the involved platform                          | 14/05/2023        |
| TRI  | TRICK                     |   | 14/05/2023        |

### NT31 - yarn family

yarn classification according to the manufacturing process

Agency name: eBIZ

Decoding table: NT31

File codes list (Generic code): [http://www.ebiz.enea.it/moda-ml/repository/codelist/draft/gc\\_NT31.xml](http://www.ebiz.enea.it/moda-ml/repository/codelist/draft/gc_NT31.xml)

| Code | Description | Adoption note | Date of insertion |
|------|-------------|---------------|-------------------|
| CAN  | carded      |               |                   |
| EXT  | extrusion   |               |                   |
| FSE  | dry-spun    |               |                   |
| FUM  | wet-spun    |               |                   |
| OPE  | open end    |               |                   |
| PAN  | combed      |               |                   |
| REG  | regenerated |               |                   |
| SMP  | half-combed |               |                   |

### NT324 - propulsion system type

propulsion system type adopted, for example, by a transport mean

Agency name: eBIZ for TRICK

Decoding table: NT324

File codes list (Generic code): [http://www.ebiz.enea.it/moda-ml/repository/codelist/draft/gc\\_NT324.xml](http://www.ebiz.enea.it/moda-ml/repository/codelist/draft/gc_NT324.xml)

| Code  | Description                           | Adoption note      | Date of insertion |
|-------|---------------------------------------|--------------------|-------------------|
| ALC   | Alcohol                               |                    | 05/07/2022        |
| BDIE  | Bio diesel                            |                    | 05/07/2022        |
| BEV   | Battery Electric Vehicle              |                    | 05/07/2022        |
| BFUE  | Biofuels                              | biodiesel excluded | 02/09/2022        |
| DIE   | Diesel                                |                    | 05/07/2022        |
| FCEV  | Hydrogen Fuel cell                    |                    | 05/07/2022        |
| GAS   | GAS                                   |                    | 05/07/2022        |
| GPL   | LPG                                   |                    | 05/07/2022        |
| HEV   | Full hybrid (Hybrid Electric Vehicle) |                    | 05/07/2022        |
| HUM   | Human force                           |                    | 05/07/2022        |
| HYB   | Hybrid                                |                    | 05/07/2022        |
| MHY   | Mild hybrid                           |                    | 05/07/2022        |
| NUC   | Nuclear                               |                    | 05/07/2022        |
| PET   | Petrol                                |                    | 05/07/2022        |
| PHEV  | plug-in Hybrid Electric Vehicle       |                    | 05/07/2022        |
| STEAM | Steam                                 |                    | 05/07/2022        |
| WIND  | Wind                                  |                    | 05/07/2022        |

### NT329 - type of validation method of the value

indicates the type of method used to validation and calculate the quantity to which it refers; used to express the data faithfulness

Agency name: eBIZ

Decoding table: NT329

File codes list (Generic code): [http://www.ebiz.enea.it/moda-ml/repository/codelist/draft/gc\\_NT329.xml](http://www.ebiz.enea.it/moda-ml/repository/codelist/draft/gc_NT329.xml)

| Code | Description               | Adoption note                            | Date of insertion |
|------|---------------------------|--|-------------------|
| CER  | third party certification |  | 11/06/2023        |
| EST  | estimate                  |  | 12/05/2023        |
| EXP  | confirmed by an expert    |  | 19/05/2023        |
| LAB  | laboratory test           |  | 11/06/2023        |
| LIT  | literature                | refer to a literature analysis outcome   | 12/05/2023        |
| MON  | monitoring                | refer to continuous measurement in field | 12/05/2023        |
| REV  | confirmed by review       |  | 11/06/2023        |
| SAM  | sampling                  | refer to a sample measurement in field   | 12/05/2023        |
| SUP  | supplier declaration      |  | 11/06/2023        |

### NT333 - type of hashing algorithm

type of hashing algorithm

Decoding table: NT333

File codes list (Generic code): [http://www.ebiz.enea.it/moda-ml/repository/codelist/draft/gc\\_NT333.xml](http://www.ebiz.enea.it/moda-ml/repository/codelist/draft/gc_NT333.xml)

| Code       | Description | Adoption note | Date of insertion |
|------------|-------------|---------------|-------------------|
| ADLER32    | ADLER32     |               | 26/05/2023        |
| HMAC       | HMAC        |               | 26/05/2023        |
| MD2        | MD2         |               | 26/05/2023        |
| MD4        | MD4         |               | 26/05/2023        |
| MD5        | MD5         |               | 26/05/2023        |
| MDC-2      | MDC-2       |               | 26/05/2023        |
| PANAMA     | PANAMA      |               | 26/05/2023        |
| RIPEMD-160 | RIPEMD-160  |               | 26/05/2023        |
| SHA-1      | SHA-1       |               | 26/05/2023        |
| SHA-2 256  | SHA-2 256   |               | 26/05/2023        |
| SHA-2 384  | SHA-2 384   |               | 26/05/2023        |
| SHA-2 512  | SHA-2 512   |               | 26/05/2023        |
| TIGER      | TIGER       |               | 26/05/2023        |

**NT6 - coding system owner/issuer**

code specifying the organisation who has created or owns the registers of the present coding or numbering system

Agency name: eBIZ

Decoding table: NT6

File codes list (Generic code): [http://www.ebiz.enea.it/moda-ml/repository/codelist/draft/gc\\_NT6.xml](http://www.ebiz.enea.it/moda-ml/repository/codelist/draft/gc_NT6.xml)

| Code | Description   | Adoption note    | Date of insertion |
|------|---|------------------|-------------------|
| CBR  | National customs brokers registry   |                  | 12/06/2023        |
| CL   | Customer/buyer  |                  |                   |
| CO   | Quality Controller  |                  |                   |
| DU   | D-U-N-S registry (Data Universal Numbering System)                        |                  | 04/05/2023        |
| EB   | eBIZ  | replaces 'ML'    | 18/03/2019        |
| EN   | GS1 ( ex-EAN International )  |                  |                   |
| EO   | Registro EORI (Economic Operators Registration and Identification number) |                  | 04/03/2023        |
| ES   | e-Stockflow   | DEPRECATED       |                   |
| FO   | Supplier  |                  |                   |
| GS   | GS1   |                  | 01/07/2013        |
| MF   | national taxation authority (i.e. VAT codes registry)                     |                  |                   |
| ML   | Moda-ML   | DEPRECATED       |                   |
| PL   | Application Platform  |                  | 13/06/2022        |
| REX  | Registered Exporter system (REX)  |                  | 19/05/2023        |
| SP   | Service Provider  |                  |                   |
| SU   | Enterprise Identification Number UID                                      | Only switzerland | 04/03/2023        |

**NT60 - language, codes from ISO 639-1 (subset)**

Agency name: eBIZ / ISO

Decoding table: NT60

File codes list (Generic code): [http://www.ebiz.enea.it/moda-ml/repository/codelist/draft/gc\\_NT60.xml](http://www.ebiz.enea.it/moda-ml/repository/codelist/draft/gc_NT60.xml)

| Code | Description | Adoption note | Date of insertion |
|------|-------------|---------------|-------------------|
| af   | Afrikaans   |               | 31/01/2019        |
| ar   | Arabic      |               | 31/01/2019        |
| be   | Belarusian  |               | 31/01/2019        |
| bg   | Bulgarian   |               | 31/01/2019        |
| bn   | Bengali     |               | 31/01/2019        |

|    |  |  |            |
|----|--|--|------------|
| bo | Tibetan  |  | 31/01/2019 |
| bs | Bosnian  |  | 31/01/2019 |
| ca | Catalan, Valencian   |  | 31/01/2019 |
| cs | Czech  |  | 31/01/2019 |
| da | Danish   |  | 31/01/2019 |
| de | German   |  | 31/01/2019 |
| el | Greek, Modern (1453-)                                      |  | 31/01/2019 |
| en | English  |  | 31/01/2019 |
| eo | Esperanto  |  | 31/01/2019 |
| es | Spanish, Castilian   |  | 31/01/2019 |
| et | Estonian   |  | 31/01/2019 |
| eu | Basque   |  | 31/01/2019 |
| F  | Female   |  | 15/04/2019 |
| fa | Persian  |  | 31/01/2019 |
| fi | Finnish  |  | 31/01/2019 |
| fr | French   |  | 31/01/2019 |
| ga | Irish  |  | 31/01/2019 |
| gd | Gaelic, Scottish Gaelic                                    |  | 31/01/2019 |
| gn | Guarani  |  | 31/01/2019 |
| he | Hebrew   |  | 31/01/2019 |
| hr | Croatian   |  | 31/01/2019 |
| ht | Haitian, Haitian Creole                                    |  | 31/01/2019 |
| hu | Hungarian  |  | 31/01/2019 |
| hy | Armenian   |  | 31/01/2019 |
| ia | Interlingua (International Auxiliary Language Association) |  | 31/01/2019 |
| id | Indonesian   |  | 31/01/2019 |
| is | Icelandic  |  | 31/01/2019 |
| it | Italian  |  | 31/01/2019 |
| ja | Japanese   |  | 31/01/2019 |
| jv | Javanese   |  | 31/01/2019 |
| ka | Georgian   |  | 31/01/2019 |
| km | Central Khmer  |  | 31/01/2019 |
| ko | Korean   |  | 31/01/2019 |
| ku | Kurdish  |  | 31/01/2019 |
| lb | Luxembourgish, Letzeburgesch                               |  | 31/01/2019 |
| lo | Lao  |  | 31/01/2019 |
| lt | Lithuanian   |  | 31/01/2019 |
| lv | Latvian  |  | 31/01/2019 |

|    |                               |  |            |
|----|-------------------------------|--|------------|
| mg | Malagasy                      |  | 31/01/2019 |
| mk | Macedonian                    |  | 31/01/2019 |
| mn | Mongolian                     |  | 31/01/2019 |
| mt | Maltese                       |  | 31/01/2019 |
| nl | Dutch, Flemish                |  | 31/01/2019 |
| no | Norwegian                     |  | 31/01/2019 |
| pl | Polish                        |  | 31/01/2019 |
| pt | Portuguese                    |  | 31/01/2019 |
| ro | Romanian, Moldavian, Moldovan |  | 31/01/2019 |
| ru | Russian                       |  | 31/01/2019 |
| se | Northern Sami                 |  | 31/01/2019 |
| sk | Slovak                        |  | 31/01/2019 |
| sl | Slovenian                     |  | 31/01/2019 |
| sm | Samoan                        |  | 31/01/2019 |
| so | Somali                        |  | 31/01/2019 |
| sq | Albanian                      |  | 31/01/2019 |
| sr | Serbian                       |  | 31/01/2019 |
| sv | Swedish                       |  | 31/01/2019 |
| sw | Swahili                       |  | 31/01/2019 |
| ta | Tamil                         |  | 31/01/2019 |
| th | Thai                          |  | 31/01/2019 |
| tr | Turkish                       |  | 31/01/2019 |
| uk | Ukrainian                     |  | 31/01/2019 |
| ur | Urdu                          |  | 31/01/2019 |
| uz | Uzbek                         |  | 31/01/2019 |
| vi | Vietnamese                    |  | 31/01/2019 |
| zh | Chinese                       |  | 31/01/2019 |

#### NT7 - unit of measure

specification of the unit of measure, it is a sub set of table Unit of Measure Code - UN/ECE REC 20 delivered by United Nations Economic Commission for Europe (UN/ECE)

Agency name: eBIZ / UN/ECE

Decoding table: NT7

File codes list (Generic code): [http://www.ebiz.enea.it/moda-ml/repository/codelist/draft/gc\\_NT7.xml](http://www.ebiz.enea.it/moda-ml/repository/codelist/draft/gc_NT7.xml)

Other link: <http://docs.oasis-open.org/ubl/os-UBL-2.1/cl/gc/default/UnitOfMeasureCode-2.1.gc#>

| Code | Description       | Adoption note | Date of insertion |
|------|-------------------|---------------|-------------------|
| CMK  | square centimetre |               | 20/12/2017        |

|         |                                  |  |            |
|---------|----------------------------------|--|------------|
| CMQ     | cubic centimetre                 |  | 20/12/2017 |
| CMT     | centimetre                       |  |            |
| CNE     | centiNewton                      |  |            |
| CO2TON  | ton of CO2                       |  | 10/09/2014 |
| COUPLES | couples                          |  |            |
| DAY     | day                              |  | 22/08/2022 |
| DEGD    | decimal degrees                  |  | 04/07/2022 |
| DEGMS   | degrees with minutes and seconds |  | 01/07/2022 |
| DMQ     | cubic decimetre                  |  |            |
| E37     | pixel                            |  | 11/04/2018 |
| GRM     | gram                             |  |            |
| HUR     | hour                             |  |            |
| INH     | inch                             |  |            |
| KGM     | kilogram                         |  |            |
| KMT     | kilometer                        |  |            |
| KWH     | kilowatthours                    |  | 10/09/2014 |
| LBR     | pound                            |  |            |
| MCG     | microgram                        |  | 23/08/2022 |
| MG      | milligram                        |  | 23/08/2022 |
| MIN     | minute                           |  |            |
| MMK     | square millimetre                |  | 20/12/2017 |
| MONTH   | month                            |  | 22/08/2022 |
| MSEC    | millisecond (time)               |  | 22/08/2022 |
| MTK     | square metre                     |  | 20/12/2017 |
| MTQ     | cubic metre                      |  |            |
| MTR     | metre                            |  |            |
| NMB     | numero                           |  |            |
| ONZ     | ounce                            |  |            |
| P1      | percent                          |  |            |
| PPM     | parts per milion                 |  |            |
| PZ      | piece                            |  |            |
| RPM     | rounds per metre                 |  |            |
| SEC     | second (time)                    |  | 22/08/2022 |
| YEAR    | year                             |  | 22/08/2022 |
| YRD     | yard                             |  |            |

**T1 - terms of payment**



code specifying the terms or time by which the payment must be done

Agency name: eBIZ

Decoding table: T1

File codes list (Generic code): [http://www.ebiz.enea.it/moda-ml/repository/codelist/draft/gc\\_T1.xml](http://www.ebiz.enea.it/moda-ml/repository/codelist/draft/gc_T1.xml)

| Code           | Description                                    | Adoption note | Date of insertion |
|----------------|--|---------------|-------------------|
| ANTICIP        | PAYMENT IN ADVANCE                             |               |                   |
| BLCOLLECT/120D | BILL OF LADING 120 DD                          |               |                   |
| BLCOLLECT/30D  | BILL OF LADING 30 DD                           |               |                   |
| BLCOLLECT/60D  | BILL OF LADING 60 DD                           |               |                   |
| BLCOLLECT/90D  | BILL OF LADING 90 DD                           |               |                   |
| CASH           | PAYMENT ON DELIVERY                            |               |                   |
| CASHINV        | PAYMENT ON RECEIPT OF INVOICE                  |               |                   |
| CREDOC/0D      | DOCUMENTARY CREDIT FOR PAYM. AT SIGHT          |               |                   |
| CREDOC/120     | DOCUMENTARY CREDIT FOR PAYM. AT 120 DD         |               |                   |
| CREDOC/150     | DOCUMENTARY CREDIT FOR PAYM. AT 150 DD         |               |                   |
| CREDOC/180     | DOCUMENTARY CREDIT FOR PAYM. AT 180 DD         |               |                   |
| CREDOC/30D     | DOCUMENTARY CREDIT FOR PAYM. AT 30 DD          |               |                   |
| CREDOC/45D     | DOCUMENTARY CREDIT FOR PAYM. AT 45 DD          |               |                   |
| CREDOC/60      | DOCUMENTARY CREDIT FOR PAYM. AT 60 DD          |               |                   |
| CREDOC/90      | DOCUMENTARY CREDIT FOR PAYM. AT 90 DD          |               |                   |
| DEL/10         | PAYMENT AT 10 DD AFTER DELIVERY                |               |                   |
| DOCOLLECT/120D | DOCUMENTARY COLLECTION AT 120 DD               |               |                   |
| DOCOLLECT/30D  | DOCUMENTARY COLLECTION AT 30 DD                |               |                   |
| DOCOLLECT/60D  | DOCUMENTARY COLLECTION AT 60 DD                |               |                   |
| DOCOLLECT/90D  | DOCUMENTARY COLLECTION AT 90 DD                |               |                   |
| INV/120D       | PAYMENT AT 120 DD AFTER RECEIPT OF INVOICE     |               |                   |
| INV/150D       | PAYMENT AT 150 DD AFTER RECEIPT OF INVOICE     |               |                   |
| INV/180D       | PAYMENT AT 180 DD AFTER RECEIPT OF INVOICE     |               |                   |
| INV/30D        | PAYMENT AT 30 DD AFTER RECEIPT OF INVOICE      |               |                   |
| INV/45D        | PAYMENT AT 45 DD AFTER RECEIPT OF INVOICE      |               |                   |
| INV/60D        | PAYMENT AT 60 DD AFTER RECEIPT OF INVOICE      |               |                   |
| INV/90D        | PAYMENT AT 90 DD AFTER RECEIPT OF INVOICE      |               |                   |
| INVULTIMO      | PAYMENT AT END MONTH RECEIPT INVOICE           |               |                   |
| INVULTIMO/10D  | PAYMENT 10 DD AFTER END MONTH RECEIPT INVOICE  |               |                   |
| INVULTIMO/120D | PAYMENT 120 DD AFTER END MONTH RECEIPT INVOICE |               |                   |
| INVULTIMO/150D | PAYMENT 150 DD AFTER END MONTH RECEIPT INVOICE |               |                   |

|                |   |  |  |
|----------------|---|--|--|
| INVULTIMO/180D | PAYMENT 180 DD AFTER END MONTH RECEIPT INVOICE  |  |  |
| INVULTIMO/240D | PAYMENT 240 DD AFTER END MONTH RECEIPT INVOICE  |  |  |
| INVULTIMO/30D  | PAYMENT 30 DD AFTER END MONTH RECEIPT INVOICE   |  |  |
| INVULTIMO/45D  | PAYMENT 45 DD AFTER END MONTH RECEIPT INVOICE   |  |  |
| INVULTIMO/60D  | PAYMENT 60 DD AFTER END MONTH RECEIPT INVOICE   |  |  |
| INVULTIMO/90D  | PAYMENT 90 DD AFTER END MONTH RECEIPT INVOICE   |  |  |
| NOPAY          | WITHOUT PAYMENT                                 |  |  |
| RECREDOC/0D    | IRREVOC. DOCUMENTARY CREDIT FOR PAYM. AT SIGHT  |  |  |
| RECREDOC/120D  | IRREVOC. DOCUMENTARY CREDIT FOR PAYM. AT 120 DD |  |  |
| RECREDOC/150D  | IRREVOC. DOCUMENTARY CREDIT FOR PAYM. AT 150 DD |  |  |
| RECREDOC/180D  | IRREVOC. DOCUMENTARY CREDIT FOR PAYM. AT 180 DD |  |  |
| RECREDOC/30D   | IRREVOC. DOCUMENTARY CREDIT FOR PAYM. AT 30 DD  |  |  |
| RECREDOC/45D   | IRREVOC. DOCUMENTARY CREDIT FOR PAYM. AT 45 DD  |  |  |
| RECREDOC/60D   | IRREVOC. DOCUMENTARY CREDIT FOR PAYM. AT 60 DD  |  |  |
| RECREDOC/90D   | IRREVOC. DOCUMENTARY CREDIT FOR PAYM. AT 90 DD  |  |  |
| ULTIMO         | PAYMENT BY END MONTH OF DELIVERY                |  |  |
| ULTIMO/10      | PAYMENT AT 10 DD AFTER END MONTH OF DELIVERY    |  |  |

#### T10 - ISO3166 - Country

code of the nation

Agency name: ISO

Decoding table: T10

File codes list (Generic code): [http://www.ebiz.enea.it/moda-ml/repository/codelist/draft/gc\\_T10.xml](http://www.ebiz.enea.it/moda-ml/repository/codelist/draft/gc_T10.xml)

Table not printed: there are 240 elements, more than the maximum specified for printing: 99.

#### T15 - dye/print process type

dye process applied to the fabric

Agency name: eBIZ

Decoding table: T15

File codes list (Generic code): [http://www.ebiz.enea.it/moda-ml/repository/codelist/draft/gc\\_T15.xml](http://www.ebiz.enea.it/moda-ml/repository/codelist/draft/gc_T15.xml)

| Code | Description            | Adoption note | Date of insertion |
|------|------------------------|---------------|-------------------|
| CP   | cylinder printing      |               |                   |
| DP   | discharge printing     |               |                   |
| FI   | fibre dyed - spun dyed |               |                   |
| PC   | piece dyed             |               |                   |

|    |                 |  |            |
|----|-----------------|--|------------|
| PR | printing        |  |            |
| SP | screen printing |  |            |
| TP | top dyed        |  | 01/07/2013 |
| YR | yarn dyed       |  |            |

#### T16 - dyestuff type

dye stuff used in the fabric dye process

Agency name: eBIZ

Decoding table: T16

File codes list (Generic code): [http://www.ebiz.enea.it/moda-ml/repository/codelist/draft/gc\\_T16.xml](http://www.ebiz.enea.it/moda-ml/repository/codelist/draft/gc_T16.xml)

| Code | Description            | Adoption note | Date of insertion |
|------|------------------------|---------------|-------------------|
| AC   | chrome acid dyestuff   |               |                   |
| AN   | acid dyestuff          |               |                   |
| CA   | basic dyestuff         |               |                   |
| DI   | direct dyestuff        |               |                   |
| DS   | disperse dyestuff      |               |                   |
| NP   | naphtol dyestuff       |               |                   |
| PI   | pigment                |               | 01/07/2013        |
| PM   | premetallized dyestuff |               |                   |
| RE   | reactive dyestuff      |               |                   |
| SU   | sulfur                 |               | 01/07/2013        |

#### T19 - fibre type

type of fibre used in a textile product

Agency name: eBIZ

Decoding table: T19

File codes list (Generic code): [http://www.ebiz.enea.it/moda-ml/repository/codelist/draft/gc\\_T19.xml](http://www.ebiz.enea.it/moda-ml/repository/codelist/draft/gc_T19.xml)

| Code | Description   | Adoption note | Date of insertion |
|------|---------------|---------------|-------------------|
| AB   | abaca         |               | 20/08/2018        |
| AC   | acetate       |               |                   |
| AF   | other fibres  |               |                   |
| AG   | alginic fibre |               |                   |
| AL   | alfa          |               | 20/08/2018        |
| AR   | aramid        |               | 25/04/2022        |

|    |                  |  |            |
|----|------------------|--|------------|
| CA | hemp             |  |            |
| CC | coir (coconut)   |  | 20/08/2018 |
| CL | chlorofibre      |  |            |
| CO | cotton           |  |            |
| CU | cuprous          |  |            |
| EA | elastan          |  |            |
| EF | elastolefin      |  | 25/04/2022 |
| EL | Elastodiene      |  | 20/08/2018 |
| EM | elastomultiester |  | 25/04/2022 |
| FL | fluorofibre      |  |            |
| GI | broom            |  | 20/08/2018 |
| GL | textile glass    |  |            |
| HA | hair             |  | 20/08/2018 |
| HE | henequen         |  | 20/08/2018 |
| HL | mixed linen      |  |            |
| JU | jute             |  |            |
| KE | kenaf            |  | 20/08/2018 |
| KP | kapoc            |  | 20/08/2018 |
| LI | linen            |  |            |
| LY | lyocell          |  | 20/08/2018 |
| MA | modacrylic       |  |            |
| MD | modal            |  |            |
| ME | metallized       |  |            |
| MG | maguey           |  | 20/08/2018 |
| MM | melamine         |  | 25/04/2022 |
| PA | polyamide        |  |            |
| PB | polyureic        |  |            |
| PC | acrylic          |  |            |
| PE | polyethylene     |  |            |
| PI | paper            |  | 20/08/2018 |
| PL | polyester        |  |            |
| PM | polyimide        |  |            |
| PO | polilactyd       |  | 25/04/2022 |
| PP | polypropylene    |  |            |
| PR | proteic          |  |            |
| PU | polyurethane     |  |            |
| RA | ramie            |  | 20/08/2018 |
| SE | silk             |  |            |

|    |   |  |            |
|----|---|--|------------|
| SI | sisal                                       |  | 20/08/2018 |
| SN | sun   |  | 20/08/2018 |
| TA | triacetate                                  |  |            |
| TR | textile residues or unspecified composition |  | 20/08/2018 |
| TV | trivinyll                                   |  |            |
| VI | viscose                                     |  |            |
| VY | vinylal                                     |  |            |
| WA | angora                                      |  |            |
| WB | beaver                                      |  | 20/08/2018 |
| WC | cashgora                                    |  |            |
| WG | vicuna                                      |  |            |
| WK | camel                                       |  |            |
| WL | llama                                       |  |            |
| WM | mohair                                      |  |            |
| WN | lapin                                       |  | 20/08/2018 |
| WO | wool  |  |            |
| WP | alpaca                                      |  |            |
| WS | cashmere                                    |  |            |
| WT | Oteer                                       |  | 20/08/2018 |
| WU | guanaco                                     |  |            |
| WV | virgin wool                                 |  |            |
| WY | yack  |  |            |

## T2 - Modes of payment

way or means of payment

Agency name: eBIZ

Decoding table: T2

File codes list (Generic code): [http://www.ebiz.enea.it/moda-ml/repository/codelist/draft/gc\\_T2.xml](http://www.ebiz.enea.it/moda-ml/repository/codelist/draft/gc_T2.xml)

| Code | Description                  | Adoption note | Date of insertion |
|------|------------------------------|---------------|-------------------|
| BB   | bank transfer                |               |                   |
| IA   | collection through Agent     |               |                   |
| IS   | collection through Forwarder |               |                   |
| RB   | bank receipt                 |               |                   |
| RD   | remittance                   |               |                   |
| SW   | bank SWIFT                   |               |                   |
| TR   | bank draft                   |               |                   |

**T201 - type of job on yarn**

operation of a work cycle for yarn

Agency name: eBIZ

Decoding table: T201

File codes list (Generic code): [http://www.ebiz.enea.it/moda-ml/repository/codelist/draft/gc\\_T201.xml](http://www.ebiz.enea.it/moda-ml/repository/codelist/draft/gc_T201.xml)

| Code | Description            | Adoption note | Date of insertion |
|------|------------------------|---------------|-------------------|
| 08   | to re-comb             |               |                   |
| 09   | to prepare             |               |                   |
| 10   | to card                |               |                   |
| 11   | to spin                |               |                   |
| 12   | to steam               |               |                   |
| 13   | to wind                |               |                   |
| 14   | doubling               |               |                   |
| 15   | to twist               |               |                   |
| 16   | to unwind              |               |                   |
| 17   | to singe               |               |                   |
| 18   | to raise               |               |                   |
| 19   | to reel                |               |                   |
| 20   | to re-wind             |               |                   |
| 21   | to shrink              |               |                   |
| 22   | to coat                |               |                   |
| 23   | to garnett             |               |                   |
| 24   | to print               |               |                   |
| 25   | to dye                 |               |                   |
| 26   | to boil                |               |                   |
| 27   | to scour               |               |                   |
| 28   | to dry                 |               |                   |
| 99   | other, see note if any |               | 01/07/2013        |

**T21 - type of document**

type or class to which the referenced document belongs

Agency name: eBIZ

Decoding table: T21

File codes list (Generic code): [http://www.ebiz.enea.it/moda-ml/repository/codelist/draft/gc\\_T21.xml](http://www.ebiz.enea.it/moda-ml/repository/codelist/draft/gc_T21.xml)

| <b>Code</b> | <b>Description</b>                 | <b>Adoption note</b>        | <b>Date of insertion</b> |
|-------------|------------------------------------|-----------------------------|--------------------------|
| BIL         | Bill of lading                     |                             | 07/03/2023               |
| BOR         | Blanket order                      |                             | 01/02/2018               |
| CAT         | Price catalogue - tech sheet       |                             |                          |
| CEO         | Certificate of origin              |                             | 13/04/2018               |
| CER         | Certificate                        |                             | 13/04/2018               |
| CMR         | CMR consignment note               |                             | 07/03/2023               |
| COC         | Colour card                        |                             |                          |
| CRN         | Credit note                        |                             | 08/09/2017               |
| CTO         | Checking order                     |                             | 01/07/2013               |
| CTR         | Contract                           |                             |                          |
| CXF         | CxF3 file                          |                             | 01/07/2013               |
| DAD         | Darn order                         |                             |                          |
| DDT         | Delivery note (transport document) |                             |                          |
| DEA         | Despatch advise                    |                             |                          |
| DER         | Despatch request                   |                             |                          |
| DR          | Document Request                   |                             | 02/12/2014               |
| EAD         | Export Accompanying Document       | adopted by European customs | 12/05/2023               |
| ECMR        | electronic CMR consignment note    |                             | 07/03/2023               |
| ECUS        | EXPORT Custom Declaration          |                             | 07/03/2023               |
| FOR         | Forecast                           |                             | 02/12/2014               |
| GSO         | Garment stock offer                |                             |                          |
| GSX         | Garment stock offer change         |                             |                          |
| ICUS        | IMPORT Custom Declaration          |                             | 07/03/2023               |
| INV         | Invoice                            |                             |                          |
| KCC         | Knitting-Clothing Commission Order |                             | 02/12/2014               |
| KCI         | Garment in Work Inventory Report   |                             | 02/12/2014               |
| LCA         | LCA study                          |                             | 28/08/2022               |
| LCAD        | LCA study dataset                  |                             | 28/08/2022               |
| M2M         | Made to Measure Production Order   |                             | 02/12/2014               |
| MAS         | Master marker                      |                             |                          |
| MCI         | Visual merchandising instruction   |                             | 13/04/2018               |
| OCH         | Order change                       |                             |                          |
| OFF         | Offer                              |                             |                          |
| ORD         | Purchase order                     |                             |                          |
| ORP         | Order response                     |                             |                          |
| OSR         | order status request               |                             |                          |

|       |   |                             |            |
|-------|---|-----------------------------|------------|
| OSS   | Offer status                              |                             | 02/12/2014 |
| OST   | Order status                              |                             |            |
| OUR   | our reference                             |                             |            |
| PCO   | Preferential certificate of origin        |                             | 07/03/2023 |
| PEF   | PEF study                                 |                             | 28/08/2022 |
| PEFD  | PEF study dataset                         |                             | 28/08/2022 |
| PEFP  | PEF environmental profile                 |                             | 07/03/2023 |
| QR    | Quality Report                            |                             | 02/12/2014 |
| RAI   | Raw Material in Work Inventory Report     |                             | 02/12/2014 |
| RDC   | Raw dyeing commission order               |                             |            |
| RDH   | Raw dyeing order change                   |                             |            |
| RDR   | Raw dyeing order response                 |                             |            |
| REA   | Receiving advise                          |                             |            |
| REQ   | Request for Offer                         |                             |            |
| RET   | Return                                    |                             | 02/12/2014 |
| RSC   | Spinning commission order                 |                             |            |
| RSH   | Spinning order change                     |                             |            |
| RSR   | Spinning order response                   |                             |            |
| SAD   | Single Administrative Document            | adopted by European customs | 12/05/2023 |
| SCL   | Process sheet                             |                             |            |
| SDE   | Self-declaration                          |                             | 07/03/2023 |
| SDS   | SDS - Safety data sheet                   |                             | 07/03/2023 |
| SLCA  | S-LCA Study                               |                             | 07/03/2023 |
| SLCAD | S-LCA Study documentation                 |                             | 07/03/2023 |
| TFC   | Textile dyeing-finishing commission order |                             |            |
| TFX   | Textile Dyeing-Finishing Order Change     |                             | 02/12/2014 |
| TPC   | Textile printing commission order         |                             |            |
| TPX   | Textile Printing Order Change             |                             | 02/12/2014 |
| TWI   | Textile in work inventory                 |                             |            |
| VMI   | visual merchandising instructions         |                             | 01/02/2018 |
| WAC   | Warping commission order                  |                             |            |
| WAYB  | Waybill                                   |                             | 07/03/2023 |
| WEC   | Weaving commission order                  |                             |            |
| YDC   | Yarn dyeing commission order              |                             |            |
| YDH   | Yarn dyeing order change                  |                             |            |
| YDR   | Yarn dyeing order response                |                             |            |
| YTC   | Twisting commission order                 |                             |            |
| YWI   | Yarn in work inventory                    |                             |            |



### T29 - type of yarn package

type of package (roll-up) used for a yarn product

Agency name: eBIZ

Decoding table: T29

File codes list (Generic code): [http://www.ebiz.enea.it/moda-ml/repository/codelist/draft/gc\\_T29.xml](http://www.ebiz.enea.it/moda-ml/repository/codelist/draft/gc_T29.xml)

| Code | Description | Adoption note | Date of insertion |
|------|-------------|---------------|-------------------|
| CIL  | bobbin      |               |                   |
| CON  | cone        |               |                   |
| HNK  | hank, skein |               | 01/07/2013        |
| MUF  | muff, cake  |               | 01/07/2013        |
| SPL  | spool       |               |                   |
| TUB  | tube        |               |                   |
| XCO  | supercone   |               |                   |

### T3 - terms of delivery - IncoTerms

specification of the terms of trade (INCOTERMS)

Agency name: Incoterms

Decoding table: T3

File codes list (Generic code): [http://www.ebiz.enea.it/moda-ml/repository/codelist/draft/gc\\_T3.xml](http://www.ebiz.enea.it/moda-ml/repository/codelist/draft/gc_T3.xml)

Other link: <https://iccwbo.org/resources-for-business/incoterms-rules/incoterms-2020/#>

| Code | Description  | Adoption note  | Date of insertion |
|------|--|--|-------------------|
| CFR  | COST AND FREIGHT (named port of destination)                   |  |                   |
| CIF  | COST, INSURANCE AND FREIGHT (named port of destination)        |  |                   |
| CIP  | CARRIAGE AND INSURANCE PAID (named place of destination)       |  |                   |
| CPA  | CARRIAGE PAID (named place of destination)                     |  |                   |
| DAF  | DELIVERED AT FRONTIER (named place)                            | according to Incoterms® 2010, since 2020 it is OBSOLETE. | 08/12/2017        |
| DAP  | Delivered at Place of destination (named place of destination) | according to Incoterms® 2010                             | 08/12/2017        |
| DAT  | Delivered at Terminal (named place of destination)             | according to Incoterms® 2010, since 2020 it is OBSOLETE. | 08/12/2017        |
| DDP  | DELIVERED DUTY PAID (named place of destination)               |  |                   |

|         |  |   |            |
|---------|--|---|------------|
| DD<br>U | DELIVERED DUTY UNPAID (named place of destination) | according to Incoterms® 2010 it is OBSOLETE , use DAP | 08/12/2017 |
| DE<br>Q | DELIVERED EX-QUAY (named port of destination)      | according to Incoterms® 2010 it is OBSOLETE           | 08/12/2017 |
| DE<br>S | DELIVERED EX-SHIP (named port of destination)      | according to Incoterms® 2010 it is OBSOLETE           | 08/12/2017 |
| DP<br>U | DELIVERED AT PLACE UNLOADED                        | according to Incoterms® 2020                          | 25/04/2022 |
| EX<br>W | EX WORKS (named place)                             |   |            |
| FAS     | FREE ALONGSIDE SHIP (named port of shipment)       |   |            |
| FC<br>A | FREE CARRIER (named place)                         |   |            |
| FO<br>B | FREE ON BOARD (named port of shipment)             |   |            |

### T306 - material circularity attribute

Indicates whether the material is virgin or comes from recycling or reuse processes

Agency name: eBIZ for TRICK

Decoding table: T306

File codes list (Generic code): [http://www.ebiz.enea.it/moda-ml/repository/codelist/draft/gc\\_T306.xml](http://www.ebiz.enea.it/moda-ml/repository/codelist/draft/gc_T306.xml)

| Code     | Description  | Adoption note   | Date of insertion |
|----------|--|---|-------------------|
| RE<br>U  | Reused material  |   | 30/08/2022        |
| SCL      | Secondary raw materials                                | adopt this for any secondary raw material when information about the first or following loop is not available | 22/07/2022        |
| SCL<br>1 | Secondary raw materials - first loop                   |   | 22/07/2022        |
| SCL<br>x | Secondary raw materials - loop following the first one |   | 22/07/2022        |
| VR<br>G  | Virgin raw material                                    | adopt this for any virgin raw material when biobased information is not available                             | 22/07/2022        |
| VR<br>GB | Virgin raw material - biobased                         |   | 23/03/2023        |
| VR<br>GN | Virgin raw material - not biobased                     |   | 23/03/2023        |

### T307 - recycling process method

Agency name: eBIZ for TRICK

Decoding table: T307

File codes list (Generic code): [http://www.ebiz.enea.it/moda-ml/repository/codelist/draft/gc\\_T307.xml](http://www.ebiz.enea.it/moda-ml/repository/codelist/draft/gc_T307.xml)

| Code | Description                           | Adoption note | Date of insertion |
|------|---------------------------------------|---------------|-------------------|
| CHMD | chemical recycling (dissolution)      |               | 28/07/2022        |
| CHMP | chemical recycling (depolymerization) |               | 28/07/2022        |
| ENZ  | enzymatic recycling                   |               | 01/09/2022        |
| MEC  | mechanical recycling                  |               | 28/07/2022        |
| THE  | thermal recycle                       |               | 31/08/2022        |
| THMC | thermo-mechanical recycling           |               | 01/09/2022        |

### T38 - transport conditions

special condition of transport or special service requested to the Forwarder

Decoding table: T38

File codes list (Generic code): [http://www.ebiz.enea.it/moda-ml/repository/codelist/draft/gc\\_T38.xml](http://www.ebiz.enea.it/moda-ml/repository/codelist/draft/gc_T38.xml)

| Code | Description                            | Adoption note | Date of insertion |
|------|--|---------------|-------------------|
| ACC  | arrange customs clearance              |               |                   |
| CAL  | Carrier loads                          |               |                   |
| CAU  | Carrier unloads                        |               |                   |
| CMR  | CMR carnet                             |               |                   |
| FFN  | freight forwarders national conditions |               |                   |
| FLD  | special agreement for full loading     |               |                   |
| NCC  | do not arrange customs clearance       |               |                   |
| PPB  | packaging paid by Buyer                |               |                   |
| PPS  | packaging paid by Supplier             |               |                   |
| PRO  | proof of delivery                      |               |                   |
| RFR  | return container free                  |               |                   |
| RPC  | return container paid by Customer      |               |                   |
| RPS  | return container paid by Supplier      |               |                   |
| SHL  | Shipper loads                          |               |                   |
| SHU  | Consignee unloads                      |               |                   |

### T40 - type of transport means

means of transport, in general or referred to a specific leg

Agency name: eBIZ

Decoding table: T40

File codes list (Generic code): [http://www.ebiz.enea.it/moda-ml/repository/codelist/draft/gc\\_T40.xml](http://www.ebiz.enea.it/moda-ml/repository/codelist/draft/gc_T40.xml)

| Code | Description | Adoption | Date of |
|------|-------------|----------|---------|
|------|-------------|----------|---------|

|     |          | <b>note</b> | <b>insertion</b> |
|-----|----------|-------------|------------------|
| AIR | aircraft |             |                  |
| SHP | ship     |             |                  |
| TRU | truck    |             |                  |
| VAN | van      |             |                  |

#### **T41 - type of Allowance or Charge**

coded specification of an Allowance or Charge (elaborated from UNECE 4465)

Agency name: eBIZ

Decoding table: T41

File codes list (Generic code): [http://www.ebiz.enea.it/moda-ml/repository/codelist/draft/gc\\_T41.xml](http://www.ebiz.enea.it/moda-ml/repository/codelist/draft/gc_T41.xml)

| <b>Code</b> | <b>Description</b>              | <b>Adoption note</b> | <b>Date of insertion</b> |
|-------------|---------------------------------|----------------------|--------------------------|
| 1           | Agreed settlement               |                      | 19/08/2018               |
| 10          | Costs for draft                 |                      | 19/08/2018               |
| 11          | Bank charges                    | DEPRECATED, use CBK  | 19/08/2018               |
| 12          | Agent commission                |                      | 19/08/2018               |
| 14          | Wrong delivery                  |                      | 19/08/2018               |
| 15          | Goods returned to agent         |                      | 19/08/2018               |
| 16          | Goods partly returned           |                      | 19/08/2018               |
| 17          | Transport damage                |                      | 19/08/2018               |
| 19          | Trade discount                  |                      | 19/08/2018               |
| 2           | Below specification goods       |                      | 19/08/2018               |
| 20          | Deduction for late delivery     | DEPRECATED, use CWB  | 19/08/2018               |
| 21          | Advertising costs               |                      | 19/08/2018               |
| 22          | Customs duties                  |                      | 19/08/2018               |
| 23          | Telephone and postal costs      |                      | 19/08/2018               |
| 24          | Repair costs                    |                      | 19/08/2018               |
| 25          | Attorney fees                   |                      | 19/08/2018               |
| 26          | Taxes                           |                      | 19/08/2018               |
| 3           | Damaged goods                   |                      | 19/08/2018               |
| 30          | Direct payment to seller        |                      | 19/08/2018               |
| 32          | Goods not delivered             |                      | 19/08/2018               |
| 33          | Late delivery                   |                      | 19/08/2018               |
| 35          | Goods returned                  |                      | 19/08/2018               |
| 36          | Invoice not received            |                      | 19/08/2018               |
| 37          | Credit note to debtor/not to us |                      | 19/08/2018               |

|     |  |  |            |
|-----|--|--|------------|
| 38  | Deducted bonus   |  | 19/08/2018 |
| 39  | Deducted discount  |  | 19/08/2018 |
| 4   | Short delivery   |  | 19/08/2018 |
| 40  | Deducted freight costs   |  | 19/08/2018 |
| 41  | Deduction against other invoices                                   |  | 19/08/2018 |
| 42  | Credit balance(s)  |  | 19/08/2018 |
| 45  | Debit note to seller   |  | 19/08/2018 |
| 46  | Discount beyond terms  |  | 19/08/2018 |
| 48  | Allowance/charge error   |  | 19/08/2018 |
| 49  | Substitute product   |  | 19/08/2018 |
| 50  | Terms of sale error  |  | 19/08/2018 |
| 52  | Wrong invoice  |  | 19/08/2018 |
| 53  | Duplicate invoice  |  | 19/08/2018 |
| 54  | Weight error   |  | 19/08/2018 |
| 55  | Additional charge not authorized                                   |  | 19/08/2018 |
| 56  | Incorrect discount   |  | 19/08/2018 |
| 57  | Price change   |  | 19/08/2018 |
| 58  | Variation  |  | 19/08/2018 |
| 59  | Chargeback   |  | 19/08/2018 |
| 65  | Settlement to agent  |  | 19/08/2018 |
| 66  | Cash discount  |  | 19/08/2018 |
| 7   | Payment on account   |  | 19/08/2018 |
| 70  | Wrong monetary amount resulting from incorrect free goods quantity |  | 19/08/2018 |
| 72  | Temporary special promotion  |  | 19/08/2018 |
| 73  | Difference in tax rate   |  | 19/08/2018 |
| 74  | Quantity discount  |  | 19/08/2018 |
| 75  | Promotion discount   |  | 19/08/2018 |
| 76  | Cancellation deadline passed                                       |  | 19/08/2018 |
| 77  | Pricing discount   |  | 19/08/2018 |
| 78  | Volume discount  |  | 19/08/2018 |
| 79  | Sundry discount  |  | 19/08/2018 |
| 8   | Returnable container charge included                               |  | 19/08/2018 |
| 9   | Invoice error  |  | 19/08/2018 |
| AWA | bonus for works ahead of schedule                                  |  |            |
| CBK | bank charges   |  |            |
| CCR | servizio di corriere   |  |            |
| CIN | insurance  |  |            |
| CLB | labelling  |  |            |

|     |                                   |  |  |
|-----|-----------------------------------|--|--|
| CPK | packing                           |  |  |
| CSP | special packing                   |  |  |
| CWB | penalty for works behind schedule |  |  |

#### T44 - additional code type

qualifier of the additional coding of a product

Agency name: eBIZ

Decoding table: T44

File codes list (Generic code): [http://www.ebiz.enea.it/moda-ml/repository/codelist/draft/gc\\_T44.xml](http://www.ebiz.enea.it/moda-ml/repository/codelist/draft/gc_T44.xml)

| Code | Description                 | Adoption note | Date of insertion |
|------|-----------------------------|---------------|-------------------|
| CC   | colour card                 |               |                   |
| CL   | sales collection            |               |                   |
| CO   | company identification code |               | 08/09/2017        |
| DY   | dye number                  |               |                   |
| LT   | lot number                  |               |                   |
| MDI  | Made in                     |               | 08/09/2017        |
| MS   | manufacturing state         |               |                   |
| PKG  | packaging                   |               | 09/09/2014        |
| PL   | product line                |               |                   |
| RGB  | RGB value                   |               |                   |
| SE   | selvedge code               |               |                   |

#### T54 - kind of yarn

general type of yarn

Agency name: eBIZ

Decoding table: T54

File codes list (Generic code): [http://www.ebiz.enea.it/moda-ml/repository/codelist/draft/gc\\_T54.xml](http://www.ebiz.enea.it/moda-ml/repository/codelist/draft/gc_T54.xml)

| Code | Description             | Adoption note | Date of insertion |
|------|-------------------------|---------------|-------------------|
| 01   | Spun yarn (Staple yarn) |               |                   |
| 02   | Worsted                 |               |                   |
| 03   | Woollen                 |               |                   |
| 04   | Carded                  |               | 01/07/2013        |
| 05   | Combed                  |               | 01/07/2013        |
| 06   | Flax-spun               |               | 01/07/2013        |

|    |                                       |  |            |
|----|---------------------------------------|--|------------|
| 07 | Rotor spun                            |  | 01/07/2013 |
| 08 | Air jet spun                          |  | 01/07/2013 |
| 09 | Fancy yarn                            |  | 01/07/2013 |
| 10 | Filament yarn - Flat                  |  | 01/07/2013 |
| 11 | Zero twist                            |  | 01/07/2013 |
| 12 | Twisted                               |  | 01/07/2013 |
| 13 | Crepe                                 |  | 01/07/2013 |
| 14 | Textured yarn                         |  | 01/07/2013 |
| 15 | False Twist, FT (also stretch)        |  | 01/07/2013 |
| 16 | False Twist, Fixed, FTF (also bulked) |  | 01/07/2013 |
| 17 | Air textured                          |  | 01/07/2013 |
| 18 | Elastic yarn (also Elastomeric yarn)  |  | 01/07/2013 |
| 19 | Single covered yarn                   |  | 01/07/2013 |
| 20 | Double covered yarn                   |  | 01/07/2013 |
| 21 | Air covered yarn                      |  | 01/07/2013 |
| 22 | Core-spun                             |  | 01/07/2013 |

#### T55 - count system

yarn count system

Agency name: eBIZ

Decoding table: T55

File codes list (Generic code): [http://www.ebiz.enea.it/moda-ml/repository/codelist/draft/gc\\_T55.xml](http://www.ebiz.enea.it/moda-ml/repository/codelist/draft/gc_T55.xml)

| Code | Description            | Adoption note | Date of insertion |
|------|------------------------|---------------|-------------------|
| DEN  | denier                 |               |                   |
| DTX  | decitex                |               |                   |
| NEC  | english cotton         |               |                   |
| NEJ  | english jute/hemp/flax |               |                   |
| NEW  | english wool           |               |                   |
| NM   | metric                 |               |                   |
| TEX  | tex                    |               |                   |

#### T56 - kind of yarn ply

kind of yarn's ply

Agency name: eBIZ

Decoding table: T56

File codes list (Generic code): [http://www.ebiz.enea.it/moda-ml/repository/codelist/draft/gc\\_T56.xml](http://www.ebiz.enea.it/moda-ml/repository/codelist/draft/gc_T56.xml)

| Code | Description          | Adoption note | Date of insertion |
|------|----------------------|---------------|-------------------|
| CS   | single yarn          |               |                   |
| FA   | fancy yarn           |               | 01/07/2013        |
| RC   | ply combination yarn |               |                   |
| RS   | ply yarn             |               |                   |

### T57 - color fastness test for yarn

color fastness test for a yarn

Decoding table: T57

File codes list (Generic code): [http://www.ebiz.enea.it/moda-ml/repository/codelist/draft/gc\\_T57.xml](http://www.ebiz.enea.it/moda-ml/repository/codelist/draft/gc_T57.xml)

| Code | Description  | Adoption note | Date of insertion |
|------|--|---------------|-------------------|
| 01   | to decatizing (UNI EN ISO 105-E10:98)                        |               | 01/07/2013        |
| 02   | to bleaching: peroxide (UNI EN ISO 105-N02:97)               |               | 01/07/2013        |
| 03   | to bleaching: hypochlorite (UNI EN 20105-N01:97)             |               | 01/07/2013        |
| 04   | to spotting: acid (UNI EN ISO 105-E05:99)                    |               | 01/07/2013        |
| 05   | to spotting: alkali (UNI EN ISO 105-E06:99)                  |               | 01/07/2013        |
| 06   | to mercerizing (UNI EN ISO 105-X04:99)                       |               | 01/07/2013        |
| 07   | to soda boiling (UNI EN ISO 105-X06:99)                      |               | 01/07/2013        |
| 08   | to degumming (UNI EN ISO 105-X08:99)                         |               | 01/07/2013        |
| 09   | to domestic laundering (UNI EN ISO 105-C06:99)               |               | 01/07/2013        |
| 10   | to carbonizing: sulfuric acid (UNI EN ISO 105-X02:98)        |               | 01/07/2013        |
| 11   | to acid chlorination (UNI 5145:88)                           |               | 01/07/2013        |
| 12   | to chlorination: Na dichloroisocyanurate (EN ISO 105-X14:99) |               | 01/07/2013        |
| 13   | to alkaline milling (UNI EN ISO 105-E12:99)                  |               | 01/07/2013        |
| 14   | to acid-felting: mild (UNI EN ISO 105-E14:98)                |               | 01/07/2013        |
| 15   | to dry heat (UNI EN ISO 105-P01:97)                          |               | 01/07/2013        |

### T58 - yarn quality parameters

parameter related to the quality of yarn

Agency name: eBIZ

Decoding table: T58

File codes list (Generic code): [http://www.ebiz.enea.it/moda-ml/repository/codelist/draft/gc\\_T58.xml](http://www.ebiz.enea.it/moda-ml/repository/codelist/draft/gc_T58.xml)

| Code | Description | Adoption | Date of |
|------|-------------|----------|---------|
|------|-------------|----------|---------|



|    |   | <b>note</b> | <b>insertion</b> |
|----|---|-------------|------------------|
| 01 | actual count  |             | 01/07/2013       |
| 02 | elongation % at break (UNI-EN-ISO 2062:97)                      |             | 01/07/2013       |
| 03 | breaking force (UNI-EN-ISO 2062:97)                             |             | 01/07/2013       |
| 04 | tenacity (specific stress) - cN/tex or RKM (UNI-EN-ISO 2062:97) |             | 01/07/2013       |
| 05 | unevenness - CV USTER   |             | 01/07/2013       |
| 06 | unevenness - thick spots  |             | 01/07/2013       |
| 07 | unevenness - thin spots   |             | 01/07/2013       |
| 08 | unevenness - neps   |             | 01/07/2013       |
| 09 | hairiness   |             | 01/07/2013       |
| 10 | pilling (UNI-EN-ISO 12945-01:2002)                              |             | 01/07/2013       |
| 11 | coefficient of friction   |             | 01/07/2013       |
| 12 | delta E CIELab (UNI 8941:87)                                    |             | 01/07/2013       |

### T59 - CIE illuminant

CIE light source

Decoding table: T59

File codes list (Generic code): [http://www.ebiz.enea.it/moda-ml/repository/codelist/draft/gc\\_T59.xml](http://www.ebiz.enea.it/moda-ml/repository/codelist/draft/gc_T59.xml)

| <b>Code</b> | <b>Description</b>                       | <b>Adoption note</b> | <b>Date of insertion</b> |
|-------------|--|----------------------|--------------------------|
| A           | home tungsten CCT 2856K                  |                      | 01/07/2013               |
| C           | daylight CCT 6774K                       |                      | 01/07/2013               |
| D50         | daylight CCT 5003K                       |                      | 01/07/2013               |
| D65         | solar standard CCT 6504K                 |                      | 01/07/2013               |
| F11         | fluorescent narrow band CCT 4000K (TL84) |                      | 01/07/2013               |
| F2          | cold white fluorescent CCT 4230K         |                      | 01/07/2013               |
| F7          | fluorescent broad band CCT 6500K         |                      | 01/07/2013               |

### T60 - CIE standard observer

CIE average chromatic response definition

Decoding table: T60

File codes list (Generic code): [http://www.ebiz.enea.it/moda-ml/repository/codelist/draft/gc\\_T60.xml](http://www.ebiz.enea.it/moda-ml/repository/codelist/draft/gc_T60.xml)

| <b>Code</b> | <b>Description</b> | <b>Adoption note</b> | <b>Date of insertion</b> |
|-------------|--------------------|----------------------|--------------------------|
| 31          | CIE-1931           |                      | 01/07/2013               |
| 64          | CIE-1964           |                      | 01/07/2013               |

### T61 - duty or tax or fee type

duty or tax or fee type

Agency name: eBIZ

Decoding table: T61

File codes list (Generic code): [http://www.ebiz.enea.it/moda-ml/repository/codelist/draft/gc\\_T61.xml](http://www.ebiz.enea.it/moda-ml/repository/codelist/draft/gc_T61.xml)

| Code | Description       | Adoption note | Date of insertion |
|------|-------------------|---------------|-------------------|
| BOL  | stamp duty        |               | 01/07/2013        |
| CUD  | customs duty      |               | 01/07/2013        |
| ENV  | environmental tax |               | 01/07/2013        |
| FRE  | no tax            |               | 01/07/2013        |
| OTH  | other tax charges |               | 01/07/2013        |
| VAT  | value added tax   |               | 01/07/2013        |

### T62 - duty or tax or fee category

duty or tax or fee category

Agency name: eBIZ

Decoding table: T62

File codes list (Generic code): [http://www.ebiz.enea.it/moda-ml/repository/codelist/draft/gc\\_T62.xml](http://www.ebiz.enea.it/moda-ml/repository/codelist/draft/gc_T62.xml)

| Code | Description               | Adoption note | Date of insertion |
|------|---------------------------|---------------|-------------------|
| AA   | lower than standard rate  |               | 01/07/2013        |
| E    | tax not applicable        |               | 01/07/2013        |
| H    | higher than standard rate |               | 01/07/2013        |
| O    | outside scope of tax      |               | 01/07/2013        |
| S    | standard rate             |               | 01/07/2013        |
| Z    | zero rate goods           |               | 01/07/2013        |

### T8 - Modes of Transport

way of transport, in general or referred to the specified leg. Derived from UNECE Recommendation 28 (see link)

Agency name: eBIZ

Decoding table: T8

File codes list (Generic code): [http://www.ebiz.enea.it/moda-ml/repository/codelist/draft/gc\\_T8.xml](http://www.ebiz.enea.it/moda-ml/repository/codelist/draft/gc_T8.xml)

Other link: <https://ftg.unece.org/contents/recommendation-28.htm#>

| Code | Description | Adoption note | Date of insertion |
|------|-------------|---------------|-------------------|
|------|-------------|---------------|-------------------|

|    |                        |   |            |
|----|------------------------|---|------------|
| 1  | MARITIME TRANSPORT     |   |            |
| 10 | Courier                | DEPRECATED  | 01/07/2013 |
| 2  | RAIL TRANSPORT         |   |            |
| 3  | ROAD TRANSPORT         |   |            |
| 4  | AIR TRANSPORT          |   |            |
| 5  | MAIL                   |   |            |
| 6  | MULTIMODAL TRANSPORT   | example ship + truck. Not used for custom declarations. | 13/06/2023 |
| 8  | INLAND WATER TRANSPORT |   |            |
| 9  | MODE UNKNOWN           | Includes Own propulsion                                 | 13/06/2023 |

### T9 - ISO4217 - Currency

currency code

Agency name: ISO

Decoding table: T9

File codes list (Generic code): [http://www.ebiz.enea.it/moda-ml/repository/codelist/draft/gc\\_T9.xml](http://www.ebiz.enea.it/moda-ml/repository/codelist/draft/gc_T9.xml)

Table not printed: there are 205 elements, more than the maximum specified for printing: 99.