



<http://www.ebiz-tcf.eu>

DRAFT

IMPLEMENTATION GUIDE  
TRANSACTION "FASHION MASTER DATA"

Version: draft

Date of release: 26/6/2023

Document code: G078

technical Documentation: <http://www.ebiz.enea.it>

XML Schemas repository: <http://www.ebiz.enea.it/moda-ml/repository/schema/draft/default.asp>

Guides repository: <http://www.ebiz.enea.it/moda-ml/repository/guide/draft/default.asp>

Guide filename: G078-eBIZ-FashionMasterData.pdf

## 0. PREMISE

This document contains a proposal for the updating and extension of eBIZ specifications starting from the eBIZ version 2018. Under the name of 'Draft version' it is reported the result of an extensive work of analysis and consultation aimed at developing and maintaining eBIZ specifications.

In particular, the content of this proposal is the result of various activities, mainly those carried out within the framework of the **TRICK project** funded by the European Commission: grant agreement 958352, call H2020-LOW-CARBON-CIRCULAR-INDUSTRIES-2020 / H2020-LCCI-2020-EASME-twostage.

The technical contents are backwards compatible with the latest official published version, with the exclusion of the totally new concepts added explicitly for the version that are thought as incremental evolution of the knowledge base.

## 1. BUSINESS DESCRIPTION

### 1.1 Scope

The present guide has been issued to assist the companies of the FASHION sector in the implementation of the standard XML document type "FASHION MASTER DATA", providing all the instruction required for its use in any context of e-commerce between Brands, Apparel Producers, subcontractors or logistic or retail organisations. All the rules required for the construction and validation of the document are embedded into the specific XML-Schema, which is detailed in section "Implementation guide".

### 1.2 Generalities

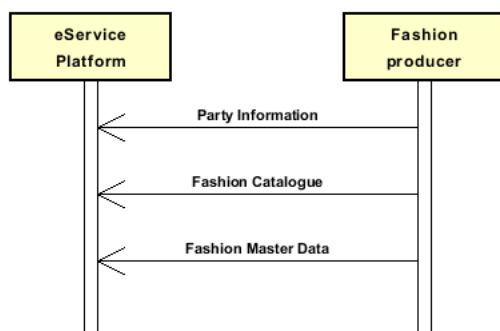
The message can have various uses: for example it can be issued by the Supplier of goods to communicate the technical-logistical characteristics of an article that the Receiver will receive; otherwise it might be issued by the Brand to communicate the technical characteristics of an article to the Subcontractor that he will receive to transform or which he will have to produce.

The sender forwards this document when he has to feed a registry of the characteristics of the goods that will then be treated in some way (sold or stored or processed for example).

The main function of the message is to provide information of various kinds: logistics (dimensions, packaging, handling, stackability), commercial (category, line or group of products), technical (size, treatments, ..), operational ( eg CITES).

### 1.3. Possible scenario

Initial transmission of information to eService





## 2. IMPLEMENTATION GUIDE

### 2.1 General structure of XML document

All the business data that can be exchanged through this class of documents are shown in the following "document structure", that provides a simplified vision of the Schema.

In particular:

- the two numbers following each element define its "cardinality" (minimum and maximum number of occurrences); the minimum equal zero indicates that the element is optional, the minimum greater than zero indicates that is mandatory;
- the bold character denotes the complex elements (aggregates of simple elements) that were built for the sake of functionality and re-usability of some complex informations sets. The child elements in each parent element are easily spotted as "indented";
- the symbol "@" denotes an attribute of the preceding element; here "the usage indicator (optional, required, ...) is shown in square brackets.

### Structure

#### GARMasterData

@msgfunction [Optional] [Default= OR]

@version [Optional] [Default= draft]

@useProfile [Optional]

```
| GMheader 1-1
| | msgN 1-1
| | msgID 1-1
| | msgDate 1-1
| |   @dateForm [Optional]
| | season 0-1
| |   @numberingOrg [Optional]
| |   @codeList [Optional]
| |   @listName [Optional]
| |   @listVersion [Optional]
| | validityStart 0-1
| |   @dateForm [Optional]
| | validityEnd 0-1
| |   @dateForm [Optional]
| | refDoc 0-unbounded
| |   @docType [Required]
| |   docID 1-2
| |     @numberingOrg [Optional]
| |   docDate 0-1
| |     @dateForm [Optional]
| |   season 0-1
| |     @numberingOrg [Optional]
| |     @codeList [Optional]
| |     @listName [Optional]
| |     @listVersion [Optional]
| |   itemID 0-1
| |   attachment 0-1
| |     @uid [Optional]
| |     fileName 0-1
| |       @numberingOrg [Optional]
| |     binaryObject 0-1
| |       @format [Optional]
| |       @mime [Optional]
| |       @encoding [Optional]
| |       @characterSet [Optional]
| |     externalReference 0-99
| |       uri 1-1
| |         @isURL [Optional] [Default= true]
| |       mimeTypeCode 0-1
| |       formatCode 0-1
| |       encodingCode 0-1
| |       characterSetCode 0-1
| |   hashFootprint 0-1
| |     @schemeID [Optional]
| |     @hashMethod [Required]
```

| | | **blockChainReference 0-9**  
| | | uri 1-1  
| | | @isURL [Optional] [Default= true]  
| | | transactionReceipt 1-9

| **senderParty 1-1**

| @role [Optional]  
| @sender [Optional]  
| id 1-1  
| @numberingOrg [Optional]  
| legalName 0-1  
| dept 0-1  
| subDept 0-1  
| person 0-1  
| @email [Optional]  
| @phone [Optional]  
| @fax [Optional]  
| street 0-1  
| city 0-1  
| subCountry 0-1  
| country 0-1  
| postCode 0-1  
| **geoCoordinates 0-1**  
| @um [Optional] [Default= DEGD]  
| @geoRefSystem [Optional]  
| | xGeoCoord 1-1  
| | yGeoCoord 1-1  
| | zGeoCoord 0-1

| **receiverParty 1-1**

| @role [Optional]  
| @sender [Optional]  
| id 1-1  
| @numberingOrg [Optional]  
| legalName 0-1  
| dept 0-1  
| subDept 0-1  
| person 0-1  
| @email [Optional]  
| @phone [Optional]  
| @fax [Optional]  
| street 0-1  
| city 0-1  
| subCountry 0-1  
| country 0-1  
| postCode 0-1  
| **geoCoordinates 0-1**  
| @um [Optional] [Default= DEGD]  
| @geoRefSystem [Optional]  
| | xGeoCoord 1-1  
| | yGeoCoord 1-1  
| | zGeoCoord 0-1

| **thirdParty 0-unbounded**

| @VAT [Optional]  
| @role [Required]  
| @sender [Optional]  
| id 1-1  
| @numberingOrg [Optional]  
| legalName 0-1  
| dept 0-1  
| subDept 0-1  
| person 0-1  
| @email [Optional]  
| @phone [Optional]  
| @fax [Optional]  
| street 0-1  
| city 0-1  
| subCountry 0-1  
| country 0-1  
| postCode 0-1

```

| | | geoCoordinates 0-1
| | |   @um [Optional] [Default= DEGD]
| | |   @geoRefSystem [Optional]
| | |     | xGeoCoord 1-1
| | |     | yGeoCoord 1-1
| | |     | zGeoCoord 0-1
| | | note 0-unbounded
| | |   @numberingOrg [Optional]
| | |   @codeList [Optional]
| | |   @noteLabel [Optional]

```

| **packages 0-99**

```

| | @packageLevel [Optional]
| | - choose -
| | | packageText 1-1
| | - or -
| | | package 1-1
| | - end choose -
| | | packageModelCode 0-1
| | |   @numberingOrg [Optional]
| | | description 0-unbounded
| | | @ln [Optional]

```

| | **packageDim 0-1**

```

| | | length 1-1
| | |   @um [Required]
| | | width 0-1
| | |   @um [Required]
| | | height 0-1
| | |   @um [Required]

```

| | **handlingChar 0-1**

| | - choose -

| | | **yarnPack 0-1**

```

| | | | yarnReel 1-1
| | | |   @reelType [Required]
| | | |   @reelMat [Optional]
| | | |     | yarnReelD 0-1
| | | |     |   @um [Required]
| | | |     | yarnReelH 0-1
| | | |     |   @um [Required]
| | | |     | yarnConeAngle 0-1
| | | |     | yarnReelQty 0-2
| | | |     |   @um [Required]
| | | |     | label 0-1
| | | |     | labelWrit 0-1

```

| | | | **yarnInWrap 0-1**

```

| | | | | yarnReelWrap 1-1
| | | | | label 0-1
| | | | | labelWrit 0-1

```

| | | - choose -

```

| | | | yarnOutWrapText 0-1

```

| | | - or -

```

| | | | yarnOutWrap 0-1

```

| | | - end choose -

| | - or -

| | | **piecePack 0-1**

| | | - choose -

```

| | | | piecePackText 1-1

```

| | | - or -

```

| | | | pieceInnWrap1 1-1

```

```

| | | | pieceInnWrap2 0-1

```

```

| | | | pieceOutWrap 0-1

```

| | | - end choose -

| | - or -

| | | **acsPack 0-1**

| | | - choose -

```

| | | | acsPackCode 1-1

```

```

| | | |   @numberingOrg [Optional]

```

```

| | | |   @codeList [Optional]

```

```

| | | | @listName [Optional]
| | | | @listVersion [Optional]
| | | | - or -
| | | | | acsPackText 1-1
| | | | | - end choose -
| | | | - or -
| | | | | garPack 0-1
| | | | | - choose -
| | | | | | garPackCode 1-1
| | | | | | | @numberingOrg [Optional]
| | | | | | | @codeList [Optional]
| | | | | | | @listName [Optional]
| | | | | | | @listVersion [Optional]
| | | | | | - or -
| | | | | | | garPackText 1-1
| | | | | | | - end choose -
| | | | | | - end choose -
| | | | | | sortableIndicator 0-1
| | | | | | stackabilityLevel 0-1
| | | | | | handlingType 0-1
| | | | | | | @ln [Optional]
| | | | | | volume 0-1
| | | | | | | @um [Required]
| | | | | | netWeight 0-1
| | | | | | | @um [Required]
| | | | | | grossWeight 0-1
| | | | | | | @um [Required]
| | | | | | note 0-99
| | | | | | | @numberingOrg [Optional]
| | | | | | | @codeList [Optional]
| | | | | | | @noteLabel [Optional]
| | | | | itemsPerPackage 0-1
| | | | | | @um [Required]
| | | | | minItemsPerPackage 0-1
| | | | | | @um [Required]
| | | | | fillingCriterion 0-9
| | | | | | @progr [Optional]
| | | | | packageQty 0-1
| | | | | packageN 0-unbounded
| | | | | | @numberingOrg [Optional]
| | | | | | @packageContainerN [Optional]
| | | | | EPCList 0-1
| | | | | | EPC 1-unbounded
| | | | | | | @numberingOrg [Optional]
| | | | | | | @TID [Optional]

```

**GMbody 1-1**

**GMgroup 1-unbounded**

```

| | | | artGroup 0-1
| | | | | @numberingOrg [Optional]
| | | | | @codeList [Optional]
| | | | | @listName [Optional]
| | | | | @listVersion [Optional]
| | | | | artGroupName 0-1
| | | | | description 0-unbounded
| | | | | | @ln [Optional]
| | | | | refDoc 0-9
| | | | | | @docType [Required]
| | | | | | | docID 1-2
| | | | | | | | @numberingOrg [Optional]
| | | | | | | docDate 0-1
| | | | | | | | @dateForm [Optional]
| | | | | | | season 0-1
| | | | | | | | @numberingOrg [Optional]
| | | | | | | | @codeList [Optional]
| | | | | | | | @listName [Optional]
| | | | | | | | @listVersion [Optional]
| | | | | | itemID 0-1

```

```

| attachment 0-1
| @uid [Optional]
|   fileName 0-1
|   @numberingOrg [Optional]
|   binaryObject 0-1
|   @format [Optional]
|   @mime [Optional]
|   @encoding [Optional]
|   @characterSet [Optional]
| externalReference 0-99
|   uri 1-1
|   @isURL [Optional] [Default= true]
|   mimeTypeCode 0-1
|   formatCode 0-1
|   encodingCode 0-1
|   characterSetCode 0-1
|   hashFootprint 0-1
|   @schemeID [Optional]
|   @hashMethod [Required]
| blockChainReference 0-9
|   uri 1-1
|   @isURL [Optional] [Default= true]
|   transactionReceipt 1-9
| GMitem 1-unbounded
| lineN 0-1
| @VAT [Optional]
| lineID 0-1
| refDoc 0-9
| @docType [Required]
|   docID 1-2
|   @numberingOrg [Optional]
|   docDate 0-1
|   @dateForm [Optional]
|   season 0-1
|   @numberingOrg [Optional]
|   @codeList [Optional]
|   @listName [Optional]
|   @listVersion [Optional]
|   itemID 0-1
| attachment 0-1
| @uid [Optional]
|   fileName 0-1
|   @numberingOrg [Optional]
|   binaryObject 0-1
|   @format [Optional]
|   @mime [Optional]
|   @encoding [Optional]
|   @characterSet [Optional]
| externalReference 0-99
|   uri 1-1
|   @isURL [Optional] [Default= true]
|   mimeTypeCode 0-1
|   formatCode 0-1
|   encodingCode 0-1
|   characterSetCode 0-1
|   hashFootprint 0-1
|   @schemeID [Optional]
|   @hashMethod [Required]
| blockChainReference 0-9
|   uri 1-1
|   @isURL [Optional] [Default= true]
|   transactionReceipt 1-9
| brand 0-1
| @numberingOrg [Optional]
| @codeList [Optional]
| @listName [Optional]
| @listVersion [Optional]
| productLine 0-1

```



```

| | | @numberingOrg [Optional]
| | | @codeList [Optional]
| | | @listName [Optional]
| | | @listVersion [Optional]
| | | operationalCode 0-19
| | | @numberingOrg [Optional]
| | | @codeList [Optional]
| | | @listName [Optional]
| | | @listVersion [Optional]
| | | @codeQualifier [Optional]
| | | garmentCategory 0-1
| | | @numberingOrg [Optional]
| | | | artGroup 0-1
| | | | | @numberingOrg [Optional]
| | | | | @codeList [Optional]
| | | | | @listName [Optional]
| | | | | @listVersion [Optional]
| | | | artSubGroup 0-1
| | | | | @numberingOrg [Optional]
| | | | | @codeList [Optional]
| | | | | @listName [Optional]
| | | | | @listVersion [Optional]
| | | | artSex 0-1
| | | | | @numberingOrg [Optional]
| | | | | @codeList [Optional]
| | | | | @listName [Optional]
| | | | | @listVersion [Optional]
| | | | season 0-1
| | | | | @numberingOrg [Optional]
| | | | | @codeList [Optional]
| | | | | @listName [Optional]
| | | | | @listVersion [Optional]
| | | | goodsClassification 0-9
| | | | | macroClass 0-1
| | | | | | @numberingOrg [Optional]
| | | | | | @codeList [Optional]
| | | | | | @listName [Optional]
| | | | | | @listVersion [Optional]
| | | | | class 0-1
| | | | | | @numberingOrg [Optional]
| | | | | | @codeList [Optional]
| | | | | | @listName [Optional]
| | | | | | @listVersion [Optional]
| | | | | subClass 0-1
| | | | | | @numberingOrg [Optional]
| | | | | | @codeList [Optional]
| | | | | | @listName [Optional]
| | | | | | @listVersion [Optional]
| | | | note 0-99
| | | | | @numberingOrg [Optional]
| | | | | @codeList [Optional]
| | | | | @noteLabel [Optional]
| | | | fashionProd 1-1
| | | | | additionalComponentCode 0-9
| | | | | | @numberingOrg [Optional]
| | | | | | @codeList [Optional]
| | | | | | @listName [Optional]
| | | | | | @listVersion [Optional]
| | | | - choose -
| | | | | yarnCode 1-2
| | | | | | @numberingOrg [Optional] [Default= CL]
| | | | | | | art 1-1
| | | | | | | | @numberingOrg [Optional]
| | | | | | | | @codeList [Optional]
| | | | | | | | @listName [Optional]
| | | | | | | | @listVersion [Optional]
| | | | | | | color 0-1
| | | | | | | | @numberingOrg [Optional]

```

| | | | | @codeList [Optional]  
| | | | | @listName [Optional]  
| | | | | @listVersion [Optional]  
| | | | | added 0-9  
| | | | | @numberingOrg [Optional]  
| | | | | @addType [Optional]  
| | | | | description 0-unbounded  
| | | | | @In [Optional]

- or -

| | | | | **texCode 1-2**  
| | | | | @numberingOrg [Optional]  
| | | | | art 1-1  
| | | | | @numberingOrg [Optional]  
| | | | | @codeList [Optional]  
| | | | | @listName [Optional]  
| | | | | @listVersion [Optional]  
| | | | | pattern 0-1  
| | | | | @numberingOrg [Optional]  
| | | | | @codeList [Optional]  
| | | | | @listName [Optional]  
| | | | | @listVersion [Optional]  
| | | | | color 0-1  
| | | | | @numberingOrg [Optional]  
| | | | | @codeList [Optional]  
| | | | | @listName [Optional]  
| | | | | @listVersion [Optional]  
| | | | | added 0-9  
| | | | | @numberingOrg [Optional]  
| | | | | @addType [Optional]  
| | | | | description 0-unbounded  
| | | | | @In [Optional]

- or -

| | | | | **acsCode 1-2**  
| | | | | @numberingOrg [Optional]  
| | | | | art 1-1  
| | | | | @numberingOrg [Optional]  
| | | | | @codeList [Optional]  
| | | | | @listName [Optional]  
| | | | | @listVersion [Optional]  
| | | | | pattern 0-1  
| | | | | @numberingOrg [Optional]  
| | | | | @codeList [Optional]  
| | | | | @listName [Optional]  
| | | | | @listVersion [Optional]  
| | | | | color 0-1  
| | | | | @numberingOrg [Optional]  
| | | | | @codeList [Optional]  
| | | | | @listName [Optional]  
| | | | | @listVersion [Optional]  
| | | | | added 0-9  
| | | | | @numberingOrg [Optional]  
| | | | | @addType [Optional]  
| | | | | description 0-unbounded  
| | | | | @In [Optional]

- or -

| | | | | **garmentPartCode 1-2**  
| | | | | @numberingOrg [Optional]  
| | | | | gPart 1-1  
| | | | | mod 1-1  
| | | | | @numberingOrg [Optional]  
| | | | | @codeList [Optional]  
| | | | | @listName [Optional]  
| | | | | @listVersion [Optional]  
| | | | | fabric 0-1  
| | | | | @numberingOrg [Optional]  
| | | | | @codeList [Optional]  
| | | | | @listName [Optional]  
| | | | | @listVersion [Optional]

```

| | | | | color 0-1
| | | | | @numberingOrg [Optional]
| | | | | @codeList [Optional]
| | | | | @listName [Optional]
| | | | | @listVersion [Optional]
| | | | | added 0-19
| | | | | @numberingOrg [Optional]
| | | | | @addType [Optional]
| | | | | size 0-1
| | | | | @numberingOrg [Optional]
| | | | | @codeList [Optional]
| | | | | @listName [Optional]
| | | | | @listVersion [Optional]
| | | | | description 0-unbounded
| | | | | @ln [Optional]
- or -
| | | | | garmentCode 1-2
| | | | | @numberingOrg [Optional]
- choose -
| | | | | garmentCodeB 1-1
| | | | | @numberingOrg [Optional]
| | | | | mod 1-1
| | | | | @numberingOrg [Optional]
| | | | | @codeList [Optional]
| | | | | @listName [Optional]
| | | | | @listVersion [Optional]
| | | | | fabric 0-1
| | | | | @numberingOrg [Optional]
| | | | | @codeList [Optional]
| | | | | @listName [Optional]
| | | | | @listVersion [Optional]
| | | | | color 0-1
| | | | | @numberingOrg [Optional]
| | | | | @codeList [Optional]
| | | | | @listName [Optional]
| | | | | @listVersion [Optional]
| | | | | garmentVariant 0-9
| | | | | variantType 1-1
| | | | | @numberingOrg [Optional]
| | | | | @codeList [Optional]
| | | | | @listName [Optional]
| | | | | @listVersion [Optional]
| | | | | variantCode 1-1
| | | | | @numberingOrg [Optional]
| | | | | @codeList [Optional]
| | | | | @listName [Optional]
| | | | | @listVersion [Optional]
| | | | | drop 0-1
| | | | | @numberingOrg [Optional]
| | | | | @codeList [Optional]
| | | | | @listName [Optional]
| | | | | @listVersion [Optional]
| | | | | size 0-1
| | | | | @numberingOrg [Optional]
| | | | | @codeList [Optional]
| | | | | @listName [Optional]
| | | | | @listVersion [Optional]
| | | | | artGroup 0-1
| | | | | @numberingOrg [Optional]
| | | | | @codeList [Optional]
| | | | | @listName [Optional]
| | | | | @listVersion [Optional]
| | | | | added 0-9
| | | | | @numberingOrg [Optional]
| | | | | @addType [Optional]
| | | | | description 0-unbounded
| | | | | @ln [Optional]
- or -

```

```

| | | | | garmentCodeA 1-1
| | | | | | art 1-1
| | | | | | | @numberingOrg [Optional]
| | | | | | | @codeList [Optional]
| | | | | | | @listName [Optional]
| | | | | | | @listVersion [Optional]
| | | | | | | description 0-unbounded
| | | | | | | @ln [Optional]
| | | | | - end choose -
| | | | | - end choose -
| | | | | csRange 0-unbounded
| | | | | | @numberingOrg [Optional]
| | | | | | @sizeSystemNat [Optional]
| | | | | | @sizeSystemSeg [Optional]
| | | | | | @sizeSystemBase [Optional]
| | | | | | @sizeSystemID [Optional]
| | | | | | color 0-1
| | | | | | | @numberingOrg [Optional]
| | | | | | | @codeList [Optional]
| | | | | | | @listName [Optional]
| | | | | | | @listVersion [Optional]
| | | | | | garmentVariant 0-9
| | | | | | | variantType 1-1
| | | | | | | | @numberingOrg [Optional]
| | | | | | | | @codeList [Optional]
| | | | | | | | @listName [Optional]
| | | | | | | | @listVersion [Optional]
| | | | | | | variantCode 1-1
| | | | | | | | @numberingOrg [Optional]
| | | | | | | | @codeList [Optional]
| | | | | | | | @listName [Optional]
| | | | | | | | @listVersion [Optional]
| | | | | | drop 0-1
| | | | | | | @numberingOrg [Optional]
| | | | | | | @codeList [Optional]
| | | | | | | @listName [Optional]
| | | | | | | @listVersion [Optional]
| | | | | | sizeMatrix 1-1
| | | | | | | sizeRow 1-99
| | | | | | | | additionalComponentCode 0-9
| | | | | | | | | @numberingOrg [Optional]
| | | | | | | | | @codeList [Optional]
| | | | | | | | | @listName [Optional]
| | | | | | | | | @listVersion [Optional]
| | | | | | | | drop 0-1
| | | | | | | | | @numberingOrg [Optional]
| | | | | | | | | @codeList [Optional]
| | | | | | | | | @listName [Optional]
| | | | | | | | | @listVersion [Optional]
| | | | | | | | size 1-1
| | | | | | | | | @numberingOrg [Optional]
| | | | | | | | | @codeList [Optional]
| | | | | | | | | @listName [Optional]
| | | | | | | | | @listVersion [Optional]
| | | | | | | | qty 0-1
| | | | | | | | | @um [Required]
| | | | | | | | itemsList 0-1
| | | | | | | | | qualityLevel 0-1
| | | | | | | | | | @numberingOrg [Optional]
| | | | | | | | | | @codeList [Optional]
| | | | | | | | | | @listName [Optional]
| | | | | | | | | | @listVersion [Optional]
| | | | | | | | | itemIdentification 1-unbounded
| | | | | | | | | | serialN 1-9
| | | | | | | | | | | @numberingOrg [Optional]
| | | | | | | | | | | @idQualifier [Optional]
| | | | | | note 0-unbounded
| | | | | | | @numberingOrg [Optional]

```

				<ul style="list-style-type: none"> <li>  @codeList [Optional]</li> <li>  @noteLabel [Optional]</li> <li>  <b>thirdParty 0-3</b></li> <li>  @VAT [Optional]</li> <li>  @role [Required]</li> <li>  @sender [Optional]</li> <li>  id 1-1</li> <li>  @numberingOrg [Optional]</li> <li>  legalName 0-1</li> <li>  dept 0-1</li> <li>  subDept 0-1</li> <li>  person 0-1</li> <li>  @email [Optional]</li> <li>  @phone [Optional]</li> <li>  @fax [Optional]</li> <li>  street 0-1</li> <li>  city 0-1</li> <li>  subCountry 0-1</li> <li>  country 0-1</li> <li>  postCode 0-1</li> <li>  <b>geoCoordinates 0-1</b></li> <li>  @um [Optional] [Default= DEGD]</li> <li>  @geoRefSystem [Optional]</li> <li>  xGeoCoord 1-1</li> <li>  yGeoCoord 1-1</li> <li>  zGeoCoord 0-1</li> <li>  <b>composition 0-1</b></li> <li>  <b>garmentCompos 0-1</b></li> <li>  percCompos 1-99</li> <li>  @fibre [Required]</li> <li>  @materialSource [Optional]</li> <li>  @recyclingProcessMethod [Optional]</li> <li>  @percSourcesRenewable [Optional]</li> <li>  @validationMethod [Optional]</li> <li>  @recyclingProcessEfficiency [Optional]</li> <li>  description 0-unbounded</li> <li>  @ln [Optional]</li> <li>  unitOfMeasure 0-99</li> <li>  @numberingOrg [Optional] [Default= EB]</li> <li>  @codeList [Optional] [Default= <a href="http://www.ebiz.enea.it/moda-ml/repository/codelist/v2013-">http://www.ebiz.enea.it/moda-ml/repository/codelist/v2013-</a></li> </ul>
1/gc_NT7.xml]				<ul style="list-style-type: none"> <li>  @listName [Optional] [Default= NT7]</li> <li>  @listVersion [Optional]</li> <li>  @measureQualifier [Optional]</li> <li>  <b>measureConversion 0-99</b></li> <li>  unitOfSourceMeasure 1-1</li> <li>  @numberingOrg [Optional] [Default= EB]</li> <li>  @codeList [Optional] [Default= <a href="http://www.ebiz.enea.it/moda-ml/repository/codelist/v2013-">http://www.ebiz.enea.it/moda-ml/repository/codelist/v2013-</a></li> </ul>
1/gc_NT7.xml]				<ul style="list-style-type: none"> <li>  @listName [Optional] [Default= NT7]</li> <li>  @listVersion [Optional]</li> <li>  @measureQualifier [Optional]</li> <li>  unitOfTargetMeasure 1-1</li> <li>  @numberingOrg [Optional] [Default= EB]</li> <li>  @codeList [Optional] [Default= <a href="http://www.ebiz.enea.it/moda-ml/repository/codelist/v2013-">http://www.ebiz.enea.it/moda-ml/repository/codelist/v2013-</a></li> </ul>
1/gc_NT7.xml]				<ul style="list-style-type: none"> <li>  @listName [Optional] [Default= NT7]</li> <li>  @listVersion [Optional]</li> <li>  @measureQualifier [Optional]</li> <li>  conversionRate 1-1</li> <li>  <b>productDim 0-1</b></li> <li>  length 1-1</li> <li>  @um [Required]</li> <li>  width 0-1</li> <li>  @um [Required]</li> <li>  height 0-1</li> <li>  @um [Required]</li> <li>  <b>handlingChar 0-1</b></li> </ul>

```

- choose -
| | | | | yarnPack 0-1
| | | | | | yarnReel 1-1
| | | | | | | @reelType [Required]
| | | | | | | @reelMat [Optional]
| | | | | | | | yarnReelD 0-1
| | | | | | | | | @um [Required]
| | | | | | | | | yarnReelH 0-1
| | | | | | | | | | @um [Required]
| | | | | | | | | | yarnConeAngle 0-1
| | | | | | | | | | yarnReelQty 0-2
| | | | | | | | | | | @um [Required]
| | | | | | | | | | | label 0-1
| | | | | | | | | | | labelWrit 0-1
| | | | | | | | yarnInWrap 0-1
| | | | | | | | | yarnReelWrap 1-1
| | | | | | | | | | label 0-1
| | | | | | | | | | labelWrit 0-1
- choose -
| | | | | | | yarnOutWrapText 0-1
- or -
| | | | | | | | yarnOutWrap 0-1
- end choose -
- or -
| | | | | | | piecePack 0-1
- choose -
| | | | | | | | piecePackText 1-1
- or -
| | | | | | | | | pieceInnWrap1 1-1
| | | | | | | | | | pieceInnWrap2 0-1
| | | | | | | | | | pieceOutWrap 0-1
- end choose -
- or -
| | | | | | | acsPack 0-1
- choose -
| | | | | | | | acsPackCode 1-1
| | | | | | | | | @numberingOrg [Optional]
| | | | | | | | | | @codeList [Optional]
| | | | | | | | | | @listName [Optional]
| | | | | | | | | | @listVersion [Optional]
- or -
| | | | | | | | | acsPackText 1-1
- end choose -
- or -
| | | | | | | | garPack 0-1
- choose -
| | | | | | | | | garPackCode 1-1
| | | | | | | | | | @numberingOrg [Optional]
| | | | | | | | | | | @codeList [Optional]
| | | | | | | | | | | @listName [Optional]
| | | | | | | | | | | @listVersion [Optional]
- or -
| | | | | | | | | | garPackText 1-1
- end choose -
- end choose -
| | | | | | | | | sortableIndicator 0-1
| | | | | | | | | | stackabilityLevel 0-1
| | | | | | | | | | | handlingType 0-1
| | | | | | | | | | | | @ln [Optional]
| | | | | | | | | | | | volume 0-1
| | | | | | | | | | | | | @um [Required]
| | | | | | | | | | | | | netWeight 0-1
| | | | | | | | | | | | | | @um [Required]
| | | | | | | | | | | | | | grossWeight 0-1
| | | | | | | | | | | | | | | @um [Required]
| | | | | | | | | | | | | | | note 0-99
| | | | | | | | | | | | | | | | @numberingOrg [Optional]
| | | | | | | | | | | | | | | | @codeList [Optional]

```

```

| | | | | @noteLabel [Optional]
| | | | | packages 0-99
| | | | | @packageLevel [Optional]
| | | | | - choose -
| | | | | | packageText 1-1
| | | | | - or -
| | | | | | package 1-1
| | | | | - end choose -
| | | | | | packageModelCode 0-1
| | | | | | @numberingOrg [Optional]
| | | | | | description 0-unbounded
| | | | | | @In [Optional]
| | | | | | packageDim 0-1
| | | | | | | length 1-1
| | | | | | | @um [Required]
| | | | | | | width 0-1
| | | | | | | @um [Required]
| | | | | | | height 0-1
| | | | | | | @um [Required]
| | | | | | handlingChar 0-1
| | | | | - choose -
| | | | | | yarnPack 0-1
| | | | | | | yarnReel 1-1
| | | | | | | | @reelType [Required]
| | | | | | | | @reelMat [Optional]
| | | | | | | | yarnReelID 0-1
| | | | | | | | | @um [Required]
| | | | | | | | yarnReelH 0-1
| | | | | | | | | @um [Required]
| | | | | | | | yarnConeAngle 0-1
| | | | | | | | yarnReelQty 0-2
| | | | | | | | | @um [Required]
| | | | | | | | label 0-1
| | | | | | | | labelWrit 0-1
| | | | | | | yarnInWrap 0-1
| | | | | | | | yarnReelWrap 1-1
| | | | | | | | label 0-1
| | | | | | | | labelWrit 0-1
| | | | | - choose -
| | | | | | yarnOutWrapText 0-1
| | | | | - or -
| | | | | | | yarnOutWrap 0-1
| | | | | - end choose -
| | | | | - or -
| | | | | | | piecePack 0-1
| | | | | - choose -
| | | | | | | piecePackText 1-1
| | | | | - or -
| | | | | | | pieceInnWrap1 1-1
| | | | | | | pieceInnWrap2 0-1
| | | | | | | pieceOutWrap 0-1
| | | | | - end choose -
| | | | | - or -
| | | | | | | acsPack 0-1
| | | | | - choose -
| | | | | | | acsPackCode 1-1
| | | | | | | | @numberingOrg [Optional]
| | | | | | | | @codeList [Optional]
| | | | | | | | @listName [Optional]
| | | | | | | | @listVersion [Optional]
| | | | | - or -
| | | | | | | acsPackText 1-1
| | | | | - end choose -
| | | | | - or -
| | | | | | | garPack 0-1
| | | | | - choose -
| | | | | | | garPackCode 1-1
| | | | | | | | @numberingOrg [Optional]

```

```

| | | | | | | @codeList [Optional]
| | | | | | | @listName [Optional]
| | | | | | | @listVersion [Optional]
| | | | | | | - or -
| | | | | | | | garPackText 1-1
| | | | | | | - end choose -
| | | | | | | - end choose -
| | | | | | | | sortableIndicator 0-1
| | | | | | | | stackabilityLevel 0-1
| | | | | | | | handlingType 0-1
| | | | | | | | @ln [Optional]
| | | | | | | | volume 0-1
| | | | | | | | @um [Required]
| | | | | | | | netWeight 0-1
| | | | | | | | @um [Required]
| | | | | | | | grossWeight 0-1
| | | | | | | | @um [Required]
| | | | | | | | note 0-99
| | | | | | | | @numberingOrg [Optional]
| | | | | | | | @codeList [Optional]
| | | | | | | | @noteLabel [Optional]
| | | | | | | itemsPerPackage 0-1
| | | | | | | @um [Required]
| | | | | | | minItemsPerPackage 0-1
| | | | | | | @um [Required]
| | | | | | | fillingCriterion 0-9
| | | | | | | @progr [Optional]
| | | | | | | packageQty 0-1
| | | | | | | packageN 0-unbounded
| | | | | | | @numberingOrg [Optional]
| | | | | | | @packageContainerN [Optional]
| | | | | | | EPCList 0-1
| | | | | | | | EPC 1-unbounded
| | | | | | | | @numberingOrg [Optional]
| | | | | | | | @TID [Optional]
| | | | | | | extendedDescription 0-unbounded
| | | | | | | @ln [Optional]
| | | | | | | dtScheme 0-1
| | | | | | | @taxType [Required]
| | | | | | | | taxCategory 0-1
| | | | | | | | taxRate 0-1
| | | | | | | | legalRef 0-1
| | | | | | | | @numberingOrg [Optional]
| | | | | | | | @codeList [Optional]
| | | | | | | | @listName [Optional]
| | | | | | | | @listVersion [Optional]
| | | | | | | | note 0-99
| | | | | | | | @numberingOrg [Optional]
| | | | | | | | @codeList [Optional]
| | | | | | | | @noteLabel [Optional]
| | | | | | | note 0-99
| | | | | | | @numberingOrg [Optional]
| | | | | | | @codeList [Optional]
| | | | | | | @noteLabel [Optional]
| | | | | | | packages 0-99
| | | | | | | @packageLevel [Optional]
| | | | | | | - choose -
| | | | | | | | packageText 1-1
| | | | | | | - or -
| | | | | | | | package 1-1
| | | | | | | - end choose -
| | | | | | | packageModelCode 0-1
| | | | | | | @numberingOrg [Optional]
| | | | | | | description 0-unbounded
| | | | | | | @ln [Optional]
| | | | | | | packageDim 0-1
| | | | | | | | length 1-1
| | | | | | | @um [Required]

```



```

| | | | width 0-1
| | | | @um [Required]
| | | | height 0-1
| | | | @um [Required]
| | | | handlingChar 0-1
| | | | - choose -
| | | | | yarnPack 0-1
| | | | | | yarnReel 1-1
| | | | | | | @reelType [Required]
| | | | | | | @reelMat [Optional]
| | | | | | | | yarnReelD 0-1
| | | | | | | | @um [Required]
| | | | | | | | yarnReelH 0-1
| | | | | | | | @um [Required]
| | | | | | | | yarnConeAngle 0-1
| | | | | | | | yarnReelQty 0-2
| | | | | | | | @um [Required]
| | | | | | | | label 0-1
| | | | | | | | labelWrit 0-1
| | | | | | | yarnInWrap 0-1
| | | | | | | | yarnReelWrap 1-1
| | | | | | | | label 0-1
| | | | | | | | labelWrit 0-1
| | | | | | | - choose -
| | | | | | | | yarnOutWrapText 0-1
| | | | | | | - or -
| | | | | | | | yarnOutWrap 0-1
| | | | | | | - end choose -
| | | | | | | - or -
| | | | | | | | piecePack 0-1
| | | | | | | | - choose -
| | | | | | | | | piecePackText 1-1
| | | | | | | | - or -
| | | | | | | | | pieceInnWrap1 1-1
| | | | | | | | | pieceInnWrap2 0-1
| | | | | | | | | pieceOutWrap 0-1
| | | | | | | | - end choose -
| | | | | | | - or -
| | | | | | | | acsPack 0-1
| | | | | | | | - choose -
| | | | | | | | | acsPackCode 1-1
| | | | | | | | | | @numberingOrg [Optional]
| | | | | | | | | | @codeList [Optional]
| | | | | | | | | | @listName [Optional]
| | | | | | | | | | @listVersion [Optional]
| | | | | | | | | - or -
| | | | | | | | | | acsPackText 1-1
| | | | | | | | | - end choose -
| | | | | | | | - or -
| | | | | | | | | garPack 0-1
| | | | | | | | | - choose -
| | | | | | | | | | garPackCode 1-1
| | | | | | | | | | | @numberingOrg [Optional]
| | | | | | | | | | | @codeList [Optional]
| | | | | | | | | | | @listName [Optional]
| | | | | | | | | | | @listVersion [Optional]
| | | | | | | | | | - or -
| | | | | | | | | | | garPackText 1-1
| | | | | | | | | | - end choose -
| | | | | | | | - end choose -
| | | | | | | | | sortableIndicator 0-1
| | | | | | | | | stackabilityLevel 0-1
| | | | | | | | | handlingType 0-1
| | | | | | | | | | @ln [Optional]
| | | | | | | | | volume 0-1
| | | | | | | | | | @um [Required]
| | | | | | | | | netWeight 0-1
| | | | | | | | | | @um [Required]

```

```

| | | | grossWeight 0-1
| | | | @um [Required]
| | | | note 0-99
| | | | @numberingOrg [Optional]
| | | | @codeList [Optional]
| | | | @noteLabel [Optional]
| | | itemsPerPackage 0-1
| | | @um [Required]
| | | minItemsPerPackage 0-1
| | | @um [Required]
| | | fillingCriterion 0-9
| | | @progr [Optional]
| | | packageQty 0-1
| | | packageN 0-unbounded
| | | @numberingOrg [Optional]
| | | @packageContainerN [Optional]
| | | EPCList 0-1
| | | | EPC 1-unbounded
| | | | @numberingOrg [Optional]
| | | | @TID [Optional]
| | note 0-99
| | @numberingOrg [Optional]
| | @codeList [Optional]
| | @noteLabel [Optional]

```

## 2.2 Detailed description of document elements

Following tables show all elements (complex and simple) used in this document. Description includes: 1) element's information: xml tag, name, brief description, data type and syntax constraints; 2) information about use of the element in a particular position in the document: xpath and possible associated notes.

### 2.2.1 Complex elements (Aggregate Business Information Entities)

Complex elements are those elements whose content is composed of other elements (childs). Complex elements are alphabetically ordered.

<b>acsCode</b>	full codification identifying an accessory product usually coupled with garment or other fashion product (XPath GARMasterData/GMbody/GMgroup/GMitem/fashionProd/acsCode) 1-2 - note: <i>this element can have two instances only if the numbering organisations are different</i>
<b>acsPack</b>	type of wrapping or packing of the accessory (XPath GARMasterData/GMbody/GMgroup/packages/handlingChar/acsPack) 0-1 (XPath GARMasterData/GMbody/GMgroup/GMitem/packages/handlingChar/acsPack) 0-1 (XPath GARMasterData/packages/handlingChar/acsPack) 0-1 (XPath GARMasterData/GMbody/GMgroup/GMitem/handlingChar/acsPack) 0-1
<b>attachment</b>	an attached document. An attachment can refer to an external document or be included with the document being exchanged (XPath GARMasterData/GMbody/GMgroup/GMitem/refDoc/attachment) 0-1 (XPath GARMasterData/GMbody/GMgroup/refDoc/attachment) 0-1 (XPath GARMasterData/GMheader/refDoc/attachment) 0-1
<b>blockChainReference</b>	blockchain reference - base type: string, max length: 80, (XPath GARMasterData/GMbody/GMgroup/refDoc/attachment/blockChainReference) 0-9 (XPath GARMasterData/GMheader/refDoc/attachment/blockChainReference) 0-9 (XPath GARMasterData/GMbody/GMgroup/GMitem/refDoc/attachment/blockChainReference) 0-9
<b>composition</b>	Composition of a garment product or of a part of it (XPath GARMasterData/GMbody/GMgroup/GMitem/composition) 0-1
<b>csRange</b>	range of color-size for a fashion article (XPath GARMasterData/GMbody/GMgroup/GMitem/fashionProd/csRange) 0-unbounded
<b>dtScheme</b>	set of data usable to declare the duty or tax applied (XPath GARMasterData/GMbody/GMgroup/GMitem/dtScheme) 0-1
<b>EPCList</b>	list of identifiers used for tracing a physical item with RFID technology (XPath GARMasterData/packages/EPCList) 0-1 - note: <i>this element is DEPRECATED, please use the specific elements</i> (XPath GARMasterData/GMbody/GMgroup/GMitem/packages/EPCList) 0-1 - note: <i>this element is DEPRECATED, please use the specific elements</i> (XPath GARMasterData/GMbody/GMgroup/packages/EPCList) 0-1 - note: <i>this element is DEPRECATED, please use the specific elements</i>
<b>externalReference</b>	details about an external object, such as a document stored at a remote location (XPath GARMasterData/GMheader/refDoc/attachment/externalReference) 0-99 (XPath GARMasterData/GMbody/GMgroup/refDoc/attachment/externalReference) 0-99 (XPath GARMasterData/GMbody/GMgroup/GMitem/refDoc/attachment/externalReference) 0-99
<b>fashionProd</b>	identification of the fashion product or its part (fabric, yarn, accessory, final product or part of it, ...). (XPath GARMasterData/GMbody/GMgroup/GMitem/fashionProd) 1-1
<b>garmentCategory</b>	classification of a garment article (XPath GARMasterData/GMbody/GMgroup/GMitem/garmentCategory) 0-1
<b>garmentCode</b>	codification of the garment product (XPath GARMasterData/GMbody/GMgroup/GMitem/fashionProd/garmentCode) 1-2 - note: <i>this element can have two instances only if the numbering organisations are different</i>

	<i>erent</i>
<b>garmentCodeA</b>	codification of the garment product- type A (XPath <i>GARMasterData/GMbody/GMgroup/GMitem/fashionProd/garmentCode/garmentCodeA</i> ) 1-1 - note: <i>here the barcode EAN-13 or EAN-8 should be specified</i>
<b>garmentCodeB</b>	codification of the garment product - type B (XPath <i>GARMasterData/GMbody/GMgroup/GMitem/fashionProd/garmentCode/garmentCodeB</i> ) 1-1
<b>garmentCompos</b>	Quantitative composition of a garment product (of its part) (XPath <i>GARMasterData/GMbody/GMgroup/GMitem/composition/garmentCompos</i> ) 0-1
<b>garmentPartCode</b>	codification of the component or part of a fashion article (XPath <i>GARMasterData/GMbody/GMgroup/GMitem/fashionProd/garmentPartCode</i> ) 1-2 - note: <i>this element can have two instances only if the numbering organisations are different</i>
<b>garmentVariant</b>	garment product variant (XPath <i>GARMasterData/GMbody/GMgroup/GMitem/fashionProd/garmentCode/garmentCodeB/garmentVariant</i> ) 0-9 (XPath <i>GARMasterData/GMbody/GMgroup/GMitem/fashionProd/csRange/garmentVariant</i> ) 0-9 - note: <i>used only if not already specified in the article code</i>
<b>garPack</b>	the packaging mode of the item or a part of it. (XPath <i>GARMasterData/GMbody/GMgroup/GMitem/handlingChar/garPack</i> ) 0-1 (XPath <i>GARMasterData/packages/handlingChar/garPack</i> ) 0-1 (XPath <i>GARMasterData/GMbody/GMgroup/packages/handlingChar/garPack</i> ) 0-1 (XPath <i>GARMasterData/GMbody/GMgroup/GMitem/packages/handlingChar/garPack</i> ) 0-1
<b>geoCoordinates</b>	geographical coordinates (XPath <i>GARMasterData/GMheader/thirdParty/geoCoordinates</i> ) 0-1 (XPath <i>GARMasterData/GMheader/senderParty/geoCoordinates</i> ) 0-1 (XPath <i>GARMasterData/GMbody/GMgroup/GMitem/thirdParty/geoCoordinates</i> ) 0-1 (XPath <i>GARMasterData/GMheader/receiverParty/geoCoordinates</i> ) 0-1
<b>GMbody</b>	Body of the document Fashion Master Data. (XPath <i>GARMasterData/GMbody</i> ) 1-1
<b>GMgroup</b>	Articles grouping of the fashion products or their parts. (XPath <i>GARMasterData/GMbody/GMgroup</i> ) 1-unbounded
<b>GMheader</b>	Header of the document Fashion Master Data. (XPath <i>GARMasterData/GMheader</i> ) 1-1
<b>GMitem</b>	Details of a fashion product or part or component (i.e. fabric, yarn, accessory). (XPath <i>GARMasterData/GMbody/GMgroup/GMitem</i> ) 1-unbounded
<b>goodsClassification</b>	goods classification of the item. (XPath <i>GARMasterData/GMbody/GMgroup/GMitem/garmentCategory/goodsClassification</i> ) 0-9
<b>handlingChar</b>	features of an item (item or package) useful for its transport and warehouse management. (XPath <i>GARMasterData/GMbody/GMgroup/packages/handlingChar</i> ) 0-1 - note: <i>in this case the characteristics are related to the package.</i> (XPath <i>GARMasterData/GMbody/GMgroup/GMitem/packages/handlingChar</i> ) 0-1 - note: <i>in this case the characteristics are related to the package.</i> (XPath <i>GARMasterData/packages/handlingChar</i> ) 0-1 - note: <i>in this case the characteristics are related to the package.</i> (XPath <i>GARMasterData/GMbody/GMgroup/GMitem/handlingChar</i> ) 0-1 - note: <i>In this case the characteristics are related to the good.</i>
<b>itemIdentification</b>	serial identification of a product unit (XPath <i>GARMasterData/GMbody/GMgroup/GMitem/fashionProd/csRange/sizeMatrix/sizeRow/itemsList/itemIdentification</i> ) 1-unbounded - note: <i>identification of the single product unit contained in the list</i>
<b>itemsList</b>	list of the single product units (XPath <i>GARMasterData/GMbody/GMgroup/GMitem/fashionProd</i>

	<p><b>csRange/sizeMatrix/sizeRow/itemsList) 0-1</b>  - note: <i>the usage in this position is alternative to its usage within the document line element</i></p>
<b>measureConversion</b>	<p>Details to convert two different unit of measure.  (XPath GARMasterData/GMbody/GMgroup/GMitem/measureConversion) 0-99</p>
<b>packageDim</b>	<p>dimensions of a transport package  (XPath GARMasterData/GMbody/GMgroup/packages/packageDim) 0-1  (XPath GARMasterData/packages/packageDim) 0-1  (XPath GARMasterData/GMbody/GMgroup/GMitem/packages/packageDim) 0-1</p>
<b>packages</b>	<p>describes the composition of the transport packaging. Each element corresponds to a type of package: type, quantity, hierarchic level, list of identifiers of the single packages  (XPath GARMasterData/GMbody/GMgroup/GMitem/packages) 0-99  (XPath GARMasterData/packages) 0-99  (XPath GARMasterData/GMbody/GMgroup/packages) 0-99</p>
<b>piecePack</b>	<p>type of wrapping or packing of the fabric pieces  (XPath GARMasterData/GMbody/GMgroup/GMitem/packages/handlingChar/piecePack) 0-1  (XPath GARMasterData/packages/handlingChar/piecePack) 0-1  (XPath GARMasterData/GMbody/GMgroup/packages/handlingChar/piecePack) 0-1  (XPath GARMasterData/GMbody/GMgroup/GMitem/handlingChar/piecePack) 0-1</p>
<b>productDim</b>	<p>Dimensions of an object.  (XPath GARMasterData/GMbody/GMgroup/GMitem/productDim) 0-1</p>
<b>receiverParty</b>	<p>Details of the party receiving the document.  - base type: Nad,  (XPath GARMasterData/GMheader/receiverParty) 1-1</p>
<b>refDoc</b>	<p>identification of a document and of an item thereof, to which the message makes reference  (XPath GARMasterData/GMbody/GMgroup/GMitem/refDoc) 0-9  (XPath GARMasterData/GMheader/refDoc) 0-unbounded  (XPath GARMasterData/GMbody/GMgroup/refDoc) 0-9</p>
<b>senderParty</b>	<p>Details of the party sending the document.  - base type: Nad,  (XPath GARMasterData/GMheader/senderParty) 1-1</p>
<b>sizeMatrix</b>	<p>size matrix of an apparel product  (XPath GARMasterData/GMbody/GMgroup/GMitem/fashionProd/csRange/sizeMatrix) 1-1</p>
<b>sizeRow</b>	<p>size matrix row of an apparel product  (XPath GARMasterData/GMbody/GMgroup/GMitem/fashionProd/csRange/sizeMatrix/sizeRow) 1-99</p>
<b>texCode</b>	<p>full codification of the textile product  (XPath GARMasterData/GMbody/GMgroup/GMitem/fashionProd/texCode) 1-2  - note: <i>this element can have two instances only if the numbering organisations are different</i></p>
<b>thirdParty</b>	<p>identification and details of the Third Party, different from Sender and Receiver of the document  - base type: Nad,  (XPath GARMasterData/GMheader/thirdParty) 0-unbounded  (XPath GARMasterData/GMbody/GMgroup/GMitem/thirdParty) 0-3</p>
<b>yarnCode</b>	<p>full codification of a yarn product  (XPath GARMasterData/GMbody/GMgroup/GMitem/fashionProd/yarnCode) 1-2  - note: <i>this element can have two instances only if the numbering organisations are different</i></p>
<b>yarnInWrap</b>	<p>details specifying the inner wrapping of a yarn product  (XPath GARMasterData/GMbody/GMgroup/GMitem/packages/handlingChar/yarnPack/yarnInWrap) 0-1  (XPath GARMasterData/packages/handlingChar/yarnPack/yarnInWrap) 0-1  (XPath GARMasterData/GMbody/GMgroup/GMitem/handlingChar/yarnPack/yarnInWrap) 0-1  (XPath GARMasterData/GMbody/GMgroup/packages/handlingChar/yarnPack/yarnInWrap) 0-1</p>

<b>yarnPack</b>	<p>details of type of presentation used for the yarn</p> <p>(XPath GARMasterData/GMbody/GMgroup/GMitem/handlingChar/yarnPack) 0-1</p> <p>(XPath GARMasterData/GMbody/GMgroup/GMitem/packages/handlingChar/yarnPack) 0-1</p> <p>(XPath GARMasterData/packages/handlingChar/yarnPack) 0-1</p> <p>(XPath GARMasterData/GMbody/GMgroup/packages/handlingChar/yarnPack) 0-1</p>
<b>yarnReel</b>	<p>details of the packaging of a yarn product (bobbin and reel,...)</p> <p>(XPath GARMasterData/packages/handlingChar/yarnPack/yarnReel) 1-1</p> <p>(XPath GARMasterData/GMbody/GMgroup/GMitem/packages/handlingChar/yarnPack/yarnReel) 1-1</p> <p>(XPath GARMasterData/GMbody/GMgroup/packages/handlingChar/yarnPack/yarnReel) 1-1</p> <p>(XPath GARMasterData/GMbody/GMgroup/GMitem/handlingChar/yarnPack/yarnReel) 1-1</p>

## 2.2.2 Simple elements (Basic Business Information Entities)

Simple elements are those elements whose content is characterized by a data type plus a domain of possible values. Simple elements are alphabetically ordered.

<b>acsPackCode</b>	<p>code specifying the type of wrapping or packing used for the accessory</p> <p>- base type: string,</p> <p>(XPath GARMasterData/GMbody/GMgroup/GMitem/handlingChar/acsPack/acsPackCode) 1-1</p> <p>(XPath GARMasterData/GMbody/GMgroup/packages/handlingChar/acsPack/acsPackCode) 1-1</p> <p>(XPath GARMasterData/packages/handlingChar/acsPack/acsPackCode) 1-1</p> <p>(XPath GARMasterData/GMbody/GMgroup/GMitem/packages/handlingChar/acsPack/acsPackCode) 1-1</p>
<b>acsPackText</b>	<p>free text specifying the type of wrapping or packing used for the accessory</p> <p>- base type: string, max length: 250,</p> <p>(XPath GARMasterData/GMbody/GMgroup/GMitem/handlingChar/acsPack/acsPackText) 1-1</p> <p>(XPath GARMasterData/GMbody/GMgroup/GMitem/packages/handlingChar/acsPack/acsPackText) 1-1</p> <p>(XPath GARMasterData/packages/handlingChar/acsPack/acsPackText) 1-1</p> <p>(XPath GARMasterData/GMbody/GMgroup/packages/handlingChar/acsPack/acsPackText) 1-1</p>
<b>added</b>	<p>additional code of the product (complementing the formers)</p> <p>- base type: string, max length: 80,</p> <p>(XPath GARMasterData/GMbody/GMgroup/GMitem/fashionProd/garmentPartCode/added) 0-19</p> <p>(XPath GARMasterData/GMbody/GMgroup/GMitem/fashionProd/acsCode/added) 0-9</p> <p>- note: here an additional codification (see table T44) can be specified</p> <p>(XPath GARMasterData/GMbody/GMgroup/GMitem/fashionProd/texCode/added) 0-9</p> <p>- note: here an additional codification (see table T44) can be specified</p> <p>(XPath GARMasterData/GMbody/GMgroup/GMitem/fashionProd/garmentCode/garmentCodeB/added) 0-9</p> <p>(XPath GARMasterData/GMbody/GMgroup/GMitem/fashionProd/yarnCode/added) 0-9</p> <p>- note: here an additional codification (see table T44) can be specified</p>
<b>additionalComponentCode</b>	<p>an additional code to identify a fashion product or a part of it (it is a way to codify the item, but it is not one of the codes to identify it). It is not a serial identifier.</p> <p>- base type: string,</p> <p>(XPath GARMasterData/GMbody/GMgroup/GMitem/fashionProd/additionalComponentCode) 0-9</p> <p>- note: If the code is related to the size, the (non serial) unique product code should not be here (use the same element within sizeRow).</p> <p>(XPath GARMasterData/GMbody/GMgroup/GMitem/fashionProd/csRange/sizeMatrix/sizeRow/additionalComponentCode) 0-9</p>
<b>@addType</b>	<p>qualifier of the additional coding of a product</p> <p>- base type: string, cod. table: T44</p> <p><a href="http://www.ebiz.enea.it/moda-ml/repository/codelist/draft/gc_T44.xml">http://www.ebiz.enea.it/moda-ml/repository/codelist/draft/gc_T44.xml</a></p>

	<p>(XPath GARMasterData/GMbody/GMgroup/GMitem/fashionProd/garmentPartCode/added/@addType) [Optional]</p> <p>- nota: addType allows the clarification of the meaning of the added element content; it is strongly suggested to use it always.</p> <p>(XPath GARMasterData/GMbody/GMgroup/GMitem/fashionProd/yarnCode/added/@addType) [Optional]</p> <p>- nota: addType allows the clarification of the meaning of the added element content; it is strongly suggested to use it always.</p> <p>(XPath GARMasterData/GMbody/GMgroup/GMitem/fashionProd/texCode/added/@addType) [Optional]</p> <p>- nota: addType allows the clarification of the meaning of the added element content; it is strongly suggested to use it always.</p> <p>(XPath GARMasterData/GMbody/GMgroup/GMitem/fashionProd/acsCode/added/@addType) [Optional]</p> <p>- nota: addType allows the clarification of the meaning of the added element content; it is strongly suggested to use it always.</p> <p>(XPath GARMasterData/GMbody/GMgroup/GMitem/fashionProd/garmentCode/garmentCodeB/added/@addType) [Optional]</p> <p>- nota: addType allows the clarification of the meaning of the added element content; it is strongly suggested to use it always.</p>
art	<p>article number of the product</p> <p>- base type: string, max length: 80, (XPath GARMasterData/GMbody/GMgroup/GMitem/fashionProd/texCode/art) 1-1</p> <p>- note: can be used either for the base-article (excluding pattern/colour) or for the SKU (XPath GARMasterData/GMbody/GMgroup/GMitem/fashionProd/acsCode/art) 1-1 (XPath GARMasterData/GMbody/GMgroup/GMitem/fashionProd/yarnCode/art) 1-1 (XPath GARMasterData/GMbody/GMgroup/GMitem/fashionProd/garmentCode/garmentCodeA/art) 1-1</p>
artGroup	<p>code identifying a class of products</p> <p>- base type: string, max length: 40, (XPath GARMasterData/GMbody/GMgroup/GMitem/fashionProd/garmentCode/garmentCodeB/artGroup) 0-1 (XPath GARMasterData/GMbody/GMgroup/GMitem/garmentCategory/artGroup) 0-1 (XPath GARMasterData/GMbody/GMgroup/artGroup) 0-1</p>
artGroupName	<p>description of a class of products</p> <p>- base type: string, max length: 80, (XPath GARMasterData/GMbody/GMgroup/artGroupName) 0-1</p>
artSex	<p>code identifying the sex for which a fashion product is intended</p> <p>- base type: string, max length: 15, (XPath GARMasterData/GMbody/GMgroup/GMitem/garmentCategory/artSex) 0-1</p>
artSubGroup	<p>code identifying a sub-class of products</p> <p>- base type: string, max length: 40, (XPath GARMasterData/GMbody/GMgroup/GMitem/garmentCategory/artSubGroup) 0-1</p>
binaryObject	<p>a binary large object containing an attached document, Coding 'base64Binary' is recommended.</p> <p>- base type: base64Binary, (XPath GARMasterData/GMbody/GMgroup/refDoc/attachment/binaryObject) 0-1 (XPath GARMasterData/GMheader/refDoc/attachment/binaryObject) 0-1 (XPath GARMasterData/GMbody/GMgroup/GMitem/refDoc/attachment/binaryObject) 0-1</p>
brand	<p>A brand name.</p> <p>- base type: string, (XPath GARMasterData/GMbody/GMgroup/GMitem/brand) 0-1</p>
@characterSet	<p>the character set of the binary object (examples UTF-8, UTF-16, Windows-1252, ISO-8859-7,..)</p> <p>- base type: normalizedString, (XPath GARMasterData/GMheader/refDoc/attachment/</p>

	<p>binaryObject/@characterSet) [Optional]  (XPath GARMasterData/GMbody/GMgroup/GMitem/refDoc/  attachment/binaryObject/@characterSet) [Optional]  (XPath GARMasterData/GMbody/GMgroup/refDoc/attachment/  binaryObject/@characterSet) [Optional]</p>
characterSetCode	<p>the character set of an external document (examples UTF-8, UTF-16, Windows-1252, ISO-8859-7,...)  - base type: normalizedString,  (XPath GARMasterData/GMbody/GMgroup/GMitem/refDoc/  attachment/externalReference/characterSetCode) 0-1  (XPath GARMasterData/GMbody/GMgroup/refDoc/attachment/  externalReference/characterSetCode) 0-1  (XPath GARMasterData/GMheader/refDoc/attachment/  externalReference/characterSetCode) 0-1</p>
city	<p>name of the city (town, village)  - base type: string, max length: 40,  (XPath GARMasterData/GMheader/receiverParty/city) 0-1  (XPath GARMasterData/GMheader/thirdParty/city) 0-1  (XPath GARMasterData/GMheader/senderParty/city) 0-1  (XPath GARMasterData/GMbody/GMgroup/GMitem/thirdParty/city) 0-1</p>
class	<p>a code indicating the category (macro-class, class or sub-class) of a commodity classification system the article belongs to.  - base type: string,  (XPath GARMasterData/GMbody/GMgroup/GMitem/garmentCategory/goodsClassification/class) 0-1</p>
@codeList	<p>it specifies the URL where the list of codes used to make an instance of the element can be found  - base type: string, max length: 255,  (XPath GARMasterData/GMbody/GMgroup/GMitem/garmentCategory/goodsClassification/macroClass/@codeList) [Optional]  - nota: at least one out of this attribute and "numberingOrg" should be set  (XPath GARMasterData/GMbody/GMgroup/artGroup/@codeList) [Optional]  - nota: at least one out of this attribute and "numberingOrg" should be set  (XPath GARMasterData/GMbody/GMgroup/GMitem/garmentCategory/artSex/@codeList) [Optional]  - nota: at least one out of this attribute and "numberingOrg" should be set  (XPath GARMasterData/packages/handlingChar/note/@codeList) [Optional]  - nota: must be used to provide (URL) the list of codes used in "noteLabel"  (XPath GARMasterData/GMbody/GMgroup/GMitem/garmentCategory/season/@codeList) [Optional]  - nota: this attribute should be used either single or coupled with "listName" and "listVersion"  (XPath GARMasterData/GMbody/GMgroup/GMitem/garmentCategory/artSubGroup/@codeList) [Optional]  - nota: at least one out of this attribute and "numberingOrg" should be set  (XPath GARMasterData/GMbody/GMgroup/refDoc/season/@codeList) [Optional]  - nota: this attribute should be used either single or coupled with "listName" and "listVersion"  (XPath GARMasterData/GMbody/GMgroup/GMitem/productLine/@codeList) [Optional]  - nota: at least one out of this attribute and "numberingOrg" should be set  (XPath GARMasterData/GMbody/GMgroup/GMitem/brand/@codeList) [Optional]  - nota: at least one out of this attribute and "numberingOrg" should be set  (XPath GARMasterData/GMbody/GMgroup/GMitem/refDoc/season/@codeList) [Optional]  - nota: this attribute should be used either single or coupled with "listName" and "listVersion"  (XPath GARMasterData/GMbody/GMgroup/GMitem/operationalCode/@codeList) [Optional]  - nota: at least one out of this attribute and "numberingOrg" should be set  (XPath GARMasterData/GMbody/GMgroup/GMitem/garmentCategory/goodsClassification/class/@codeList) [Optional]</p>



- nota: *at least one out of this attribute and "numberingOrg" should be set*  
(XPath `GARMasterData/GMbody/GMgroup/GMitem/garmentCategory/artGroup/@codeList`) [Optional]

- nota: *at least one out of this attribute and "numberingOrg" should be set*  
(XPath `GARMasterData/GMbody/GMgroup/GMitem/unitOfMeasure/@codeList`) [Optional] [Default= [http://www.ebiz.enea.it/moda-ml/repository/codelist/v2013-1/gc\\_NT7.xml](http://www.ebiz.enea.it/moda-ml/repository/codelist/v2013-1/gc_NT7.xml)]

- nota: *Codes from tabel NT7 are suggested.*  
(XPath `GARMasterData/GMbody/GMgroup/GMitem/fashionProd/note/@codeList`) [Optional]

- nota: *must be used to provide (URL) the list of codes used in "noteLabel"*  
(XPath `GARMasterData/GMbody/GMgroup/GMitem/fashionProd/csRange/sizeMatrix/sizeRow/itemsList/qualityLevel/@codeList`) [Optional]

- nota: *at least one out of this attribute and "numberingOrg" should be set*  
(XPath `GARMasterData/GMbody/GMgroup/GMitem/handlingChar/acsPack/acsPackCode/@codeList`) [Optional]

- nota: *at least one out of this attribute and "numberingOrg" should be set*  
(XPath `GARMasterData/GMbody/GMgroup/GMitem/measureConversion/unitOfTargetMeasure/@codeList`) [Optional] [Default= [http://www.ebiz.enea.it/moda-ml/repository/codelist/v2013-1/gc\\_NT7.xml](http://www.ebiz.enea.it/moda-ml/repository/codelist/v2013-1/gc_NT7.xml)]

- nota: *Codes from tabel NT7 are suggested.*  
(XPath `GARMasterData/GMbody/GMgroup/GMitem/measureConversion/unitOfSourceMeasure/@codeList`) [Optional] [Default= [http://www.ebiz.enea.it/moda-ml/repository/codelist/v2013-1/gc\\_NT7.xml](http://www.ebiz.enea.it/moda-ml/repository/codelist/v2013-1/gc_NT7.xml)]

- nota: *Codes from tabel NT7 are suggested.*  
(XPath `GARMasterData/GMbody/GMgroup/GMitem/fashionProd/csRange/drop/@codeList`) [Optional]  
(XPath `GARMasterData/GMbody/GMgroup/GMitem/fashionProd/csRange/garmentVariant/variantCode/@codeList`) [Optional]

- nota: *at least one out of this attribute and "numberingOrg" should be set*  
(XPath `GARMasterData/GMbody/GMgroup/GMitem/fashionProd/csRange/garmentVariant/variantType/@codeList`) [Optional]

- nota: *always at least one out of this attribute and "numberingOrg" should be set*  
(XPath `GARMasterData/GMbody/GMgroup/GMitem/fashionProd/csRange/sizeMatrix/sizeRow/size/@codeList`) [Optional]  
(XPath `GARMasterData/GMbody/GMgroup/GMitem/fashionProd/csRange/sizeMatrix/sizeRow/drop/@codeList`) [Optional]  
(XPath `GARMasterData/GMbody/GMgroup/GMitem/fashionProd/csRange/sizeMatrix/sizeRow/additionalComponentCode/@codeList`) [Optional]

- nota: *at least one out of this attribute and "numberingOrg" should be set*  
(XPath `GARMasterData/GMbody/GMgroup/packages/handlingChar/acsPack/acsPackCode/@codeList`) [Optional]

- nota: *at least one out of this attribute and "numberingOrg" should be set*  
(XPath `GARMasterData/GMbody/GMgroup/GMitem/note/@codeList`) [Optional]

- nota: *must be used to provide (URL) the list of codes used in "noteLabel"*  
(XPath `GARMasterData/GMbody/GMgroup/GMitem/dtScheme/note/@codeList`) [Optional]

- nota: *must be used to provide (URL) the list of codes used in "noteLabel"*  
(XPath `GARMasterData/GMbody/GMgroup/note/@codeList`) [Optional]

- nota: *must be used to provide (URL) the list of codes used in "noteLabel"*  
(XPath `GARMasterData/GMbody/GMgroup/packages/handlingChar/note/@codeList`) [Optional]

- nota: *must be used to provide (URL) the list of codes used in "noteLabel"*  
(XPath `GARMasterData/GMbody/GMgroup/packages/handlingChar/garPack/garPackCode/@codeList`) [Optional]

- nota: *at least one out of this attribute and "numberingOrg" should be set*  
(XPath `GARMasterData/GMbody/GMgroup/GMitem/packages/handlingChar/acsPack/acsPackCode/@codeList`) [Optional]

- nota: *at least one out of this attribute and "numberingOrg" should be set*  
(XPath `GARMasterData/GMbody/GMgroup/GMitem/handlingChar/note/@codeList`) [Optional]

- nota: *must be used to provide (URL) the list of codes used in "noteLabel"*  
(XPath `GARMasterData/GMbody/GMgroup/GMitem/handlingChar/garPack/garPackCode/@codeList`) [Optional]

- nota: *at least one out of this attribute and "numberingOrg" should be set*  
(XPath `GARMasterData/GMbody/GMgroup/GMitem/dtScheme/legalRef/@codeList`) [Optional]  
(XPath `GARMasterData/GMbody/GMgroup/GMitem/packages/handlingChar/note/@codeList`) [Optional]

- nota: *must be used to provide (URL) the list of codes used in "noteLabel"*

	<p>(XPath GARMasterData/GMbody/GMgroup/GMitem/packages/handlingChar/garPack/garPackCode/@codeList) [Optional]</p> <p>- nota: at least one out of this attribute and "numberingOrg" should be set</p> <p>(XPath GARMasterData/GMbody/GMgroup/GMitem/fashionProd/csRange/color/@codeList) [Optional]</p> <p>- nota: this attribute should be used either single or coupled with "listName" and "listVersion"</p> <p>(XPath GARMasterData/GMbody/GMgroup/GMitem/fashionProd/acsCode/art/@codeList) [Optional]</p> <p>- nota: at least one out of this attribute and "numberingOrg" should be set</p> <p>(XPath GARMasterData/GMbody/GMgroup/GMitem/fashionProd/texCode/color/@codeList) [Optional]</p> <p>- nota: this attribute should be used either single or coupled with "listName" and "listVersion"</p> <p>(XPath GARMasterData/GMbody/GMgroup/GMitem/fashionProd/texCode/pattern/@codeList) [Optional]</p> <p>- nota: at least one out of this attribute and "numberingOrg" should be set</p> <p>(XPath GARMasterData/GMbody/GMgroup/GMitem/fashionProd/garmentPartCode/mod/@codeList) [Optional]</p> <p>- nota: at least one out of this attribute and "numberingOrg" should be set</p> <p>(XPath GARMasterData/GMbody/GMgroup/GMitem/fashionProd/acsCode/color/@codeList) [Optional]</p> <p>- nota: this attribute should be used either single or coupled with "listName" and "listVersion"</p> <p>(XPath GARMasterData/GMbody/GMgroup/GMitem/fashionProd/acsCode/pattern/@codeList) [Optional]</p> <p>- nota: at least one out of this attribute and "numberingOrg" should be set</p> <p>(XPath GARMasterData/GMbody/GMgroup/GMitem/fashionProd/additionalComponentCode/@codeList) [Optional]</p> <p>- nota: at least one out of this attribute and "numberingOrg" should be set</p> <p>(XPath GARMasterData/GMbody/GMgroup/GMitem/garmentCategory/note/@codeList) [Optional]</p> <p>- nota: must be used to provide (URL) the list of codes used in "noteLabel"</p> <p>(XPath GARMasterData/GMbody/GMgroup/GMitem/garmentCategory/goodsClassification/subClass/@codeList) [Optional]</p> <p>- nota: at least one out of this attribute and "numberingOrg" should be set</p> <p>(XPath GARMasterData/GMbody/GMgroup/GMitem/fashionProd/texCode/art/@codeList) [Optional]</p> <p>- nota: at least one out of this attribute and "numberingOrg" should be set</p> <p>(XPath GARMasterData/GMbody/GMgroup/GMitem/fashionProd/yarnCode/color/@codeList) [Optional]</p> <p>- nota: this attribute should be used either single or coupled with "listName" and "listVersion"</p> <p>(XPath GARMasterData/GMbody/GMgroup/GMitem/fashionProd/yarnCode/art/@codeList) [Optional]</p> <p>- nota: at least one out of this attribute and "numberingOrg" should be set</p> <p>(XPath GARMasterData/GMbody/GMgroup/GMitem/fashionProd/garmentCode/garmentCodeB/drop/@codeList) [Optional]</p> <p>(XPath GARMasterData/GMbody/GMgroup/GMitem/fashionProd/garmentCode/garmentCodeB/garmentVariant/variantCode/@codeList) [Optional]</p> <p>- nota: at least one out of this attribute and "numberingOrg" should be set</p> <p>(XPath GARMasterData/GMbody/GMgroup/GMitem/fashionProd/garmentCode/garmentCodeB/garmentVariant/variantType/@codeList) [Optional]</p> <p>- nota: always at least one out of this attribute and "numberingOrg" should be set</p> <p>(XPath GARMasterData/GMbody/GMgroup/GMitem/fashionProd/garmentCode/garmentCodeA/art/@codeList) [Optional]</p> <p>- nota: at least one out of this attribute and "numberingOrg" should be set</p> <p>(XPath GARMasterData/GMbody/GMgroup/GMitem/fashionProd/garmentCode/garmentCodeB/artGroup/@codeList) [Optional]</p> <p>- nota: at least one out of this attribute and "numberingOrg" should be set</p> <p>(XPath GARMasterData/GMbody/GMgroup/GMitem/fashionProd/garmentCode/garmentCodeB/size/@codeList) [Optional]</p> <p>(XPath GARMasterData/GMbody/GMgroup/GMitem/fashionProd/garmentPartCode/size/@codeList) [Optional]</p> <p>(XPath GARMasterData/GMbody/GMgroup/GMitem/fashionProd/garmentPartCode/color/@codeList) [Optional]</p>
--	--

	<p>- nota: <i>this attribute should be used either single or coupled with "listName" and "listVersion"</i>  (XPath GARMasterData/GMbody/GMgroup/GMitem/fashionProd/garmentPartCode/fabric/@codeList) [Optional]</p> <p>- nota: <i>at least one out of this attribute and "numberingOrg" should be set</i>  (XPath GARMasterData/GMbody/GMgroup/GMitem/fashionProd/garmentCode/garmentCodeB/color/@codeList) [Optional]</p> <p>- nota: <i>this attribute should be used either single or coupled with "listName" and "listVersion"</i>  (XPath GARMasterData/GMbody/GMgroup/GMitem/fashionProd/garmentCode/garmentCodeB/fabric/@codeList) [Optional]</p> <p>- nota: <i>at least one out of this attribute and "numberingOrg" should be set</i>  (XPath GARMasterData/GMbody/GMgroup/GMitem/fashionProd/garmentCode/garmentCodeB/mod/@codeList) [Optional]</p> <p>- nota: <i>at least one out of this attribute and "numberingOrg" should be set</i>  (XPath GARMasterData/GMheader/refDoc/season/@codeList) [Optional]</p> <p>- nota: <i>this attribute should be used either single or coupled with "listName" and "listVersion"</i>  (XPath GARMasterData/GMheader/note/@codeList) [Optional]</p> <p>- nota: <i>must be used to provide (URL) the list of codes used in "noteLabel"</i>  (XPath GARMasterData/packages/handlingChar/acsPack/acsPackCode/@codeList) [Optional]</p> <p>- nota: <i>at least one out of this attribute and "numberingOrg" should be set</i>  (XPath GARMasterData/GMheader/season/@codeList) [Optional]</p> <p>- nota: <i>this attribute should be used either single or coupled with "listName" and "listVersion"</i>  (XPath GARMasterData/packages/handlingChar/garPack/garPackCode/@codeList) [Optional]</p> <p>- nota: <i>at least one out of this attribute and "numberingOrg" should be set</i></p>
@codeQualifier	<p>operational code qualifier: it states if the code is related to a project, an event, an initiative, a sales channel, a management type (eg CITES), .....</p> <p>- base type: string, cod. table: NT43  <a href="http://www.ebiz.enea.it/moda-ml/repository/codelist/draft/gc_NT43.xml">http://www.ebiz.enea.it/moda-ml/repository/codelist/draft/gc_NT43.xml</a>  (XPath GARMasterData/GMbody/GMgroup/GMitem/operationalCode/@codeQualifier) [Optional]</p>
color	<p>colour number of the product, when not included in the model or fabric code</p> <p>- base type: string, max length: 15,  (XPath GARMasterData/GMbody/GMgroup/GMitem/fashionProd/garmentPartCode/color) 0-1</p> <p>- note: <i>when a garment component, it should be the code assigned to the garment article</i>  (XPath GARMasterData/GMbody/GMgroup/GMitem/fashionProd/garmentCode/garmentCodeB/color) 0-1  (XPath GARMasterData/GMbody/GMgroup/GMitem/fashionProd/acsCode/color) 0-1  (XPath GARMasterData/GMbody/GMgroup/GMitem/fashionProd/yarnCode/color) 0-1  (XPath GARMasterData/GMbody/GMgroup/GMitem/fashionProd/texCode/color) 0-1  (XPath GARMasterData/GMbody/GMgroup/GMitem/fashionProd/csRange/color) 0-1</p> <p>- note: <i>used only if not already specified in the article code</i></p>
conversionRate	<p>Conversion parameter between two sizes.</p> <p>- base type: decimal,  (XPath GARMasterData/GMbody/GMgroup/GMitem/measureConversion/conversionRate) 1-1</p> <p>- note: <i>Use: (quantity expressed in the source unit of measure) * conversionRate = (quantity expressed in the target unit of measure)</i></p>
country	<p>code of the nation</p> <p>- base type: string, cod. table: T10  <a href="http://www.ebiz.enea.it/moda-ml/repository/codelist/draft/gc_T10.xml">http://www.ebiz.enea.it/moda-ml/repository/codelist/draft/gc_T10.xml</a>  (XPath GARMasterData/GMbody/GMgroup/GMitem/thirdParty/country) 0-1  (XPath GARMasterData/GMheader/thirdParty/country) 0-1  (XPath GARMasterData/GMheader/senderParty/country) 0-1  (XPath GARMasterData/GMheader/receiverParty/country) 0-1</p>

@dateForm	<p>format used for the date</p> <ul style="list-style-type: none"> <li>- base type: string, cod. table: NT29</li> <li><a href="http://www.ebiz.enea.it/moda-ml/repository/codelist/draft/gc_NT29.xml">http://www.ebiz.enea.it/moda-ml/repository/codelist/draft/gc_NT29.xml</a></li> <li>(XPath GARMasterData/GMheader/validityEnd/@dateForm) [Optional]</li> <li>(XPath GARMasterData/GMheader/validityStart/@dateForm) [Optional]</li> <li>(XPath GARMasterData/GMheader/refDoc/docDate/@dateForm) [Optional]</li> <li>(XPath GARMasterData/GMheader/msgDate/@dateForm) [Optional]</li> <li>(XPath GARMasterData/GMbody/GMgroup/GMitem/refDoc/docDate/@dateForm) [Optional]</li> <li>(XPath GARMasterData/GMbody/GMgroup/refDoc/docDate/@dateForm) [Optional]</li> </ul>
dept	<p>name or code of a department</p> <ul style="list-style-type: none"> <li>- base type: string, max length: 40,</li> <li>(XPath GARMasterData/GMheader/receiverParty/dept) 0-1</li> <li>(XPath GARMasterData/GMbody/GMgroup/GMitem/thirdParty/dept) 0-1</li> <li>(XPath GARMasterData/GMheader/thirdParty/dept) 0-1</li> <li>(XPath GARMasterData/GMheader/senderParty/dept) 0-1</li> </ul>
description	<p>free text description. The content of the element must be unique, it might be translated and repeated into more languages (thus no more than one instance for each language).</p> <ul style="list-style-type: none"> <li>- base type: string, max length: 250,</li> <li>(XPath GARMasterData/GMbody/GMgroup/packages/description) 0-unbounded</li> <li>(XPath GARMasterData/GMbody/GMgroup/GMitem/packages/description) 0-unbounded</li> <li>(XPath GARMasterData/GMbody/GMgroup/GMitem/fashionProd/garmentCode/garmentCodeB/description) 0-unbounded</li> <li>- note: <i>Product description</i></li> <li>(XPath GARMasterData/GMbody/GMgroup/GMitem/fashionProd/garmentPartCode/description) 0-unbounded</li> <li>- note: <i>Product part description</i></li> <li>(XPath GARMasterData/GMbody/GMgroup/GMitem/fashionProd/acsCode/description) 0-unbounded</li> <li>- note: <i>Product description</i></li> <li>(XPath GARMasterData/GMbody/GMgroup/GMitem/fashionProd/texCode/description) 0-unbounded</li> <li>- note: <i>Product description</i></li> <li>(XPath GARMasterData/GMbody/GMgroup/GMitem/composition/description) 0-unbounded</li> <li>- note: <i>Free text description of the composition of the product or its part</i></li> <li>(XPath GARMasterData/packages/description) 0-unbounded</li> <li>(XPath GARMasterData/GMbody/GMgroup/GMitem/fashionProd/garmentCode/garmentCodeA/description) 0-unbounded</li> <li>- note: <i>Product description</i></li> <li>(XPath GARMasterData/GMbody/GMgroup/GMitem/fashionProd/yarnCode/description) 0-unbounded</li> <li>- note: <i>Product description</i></li> <li>(XPath GARMasterData/GMbody/GMgroup/description) 0-unbounded</li> <li>- note: <i>group description</i></li> </ul>
docDate	<p>date of issue of the referenced document, according to one of the patterns YYYY-MM-DD, YYYY-MM-DD:HH-MM or YYYY-WW.</p> <ul style="list-style-type: none"> <li>- base type: string,</li> <li>(XPath GARMasterData/GMheader/refDoc/docDate) 0-1</li> <li>(XPath GARMasterData/GMbody/GMgroup/refDoc/docDate) 0-1</li> <li>(XPath GARMasterData/GMbody/GMgroup/GMitem/refDoc/docDate) 0-1</li> </ul>
docID	<p>identification number of the referenced document</p> <ul style="list-style-type: none"> <li>- base type: string, max length: 80,</li> <li>(XPath GARMasterData/GMheader/refDoc/docID) 1-2 Best Practice</li> <li><b>(XPath GARMasterData/GMbody/GMgroup/GMitem/refDoc/docID) 1-2 Best Practice</b></li> <li><b>(XPath GARMasterData/GMbody/GMgroup/refDoc/docID) 1-2 Best Practice</b></li> </ul>
@docType	<p>type or class to which the referenced document belongs</p> <ul style="list-style-type: none"> <li>- base type: string, cod. table: T21</li> <li><a href="http://www.ebiz.enea.it/moda-ml/repository/codelist/draft/gc_T21.xml">http://www.ebiz.enea.it/moda-ml/repository/codelist/draft/gc_T21.xml</a></li> <li>(XPath GARMasterData/GMheader/refDoc/@docType) [Required]</li> <li>(XPath GARMasterData/GMbody/GMgroup/refDoc/@docType) [Required]</li> <li>(XPath GARMasterData/GMbody/GMgroup/GMitem/refDoc/@docType) [Required]</li> </ul>
drop	<p>drop number of the garment</p> <ul style="list-style-type: none"> <li>- base type: string, max length: 15,</li> <li>(XPath GARMasterData/GMbody/GMgroup/GMitem/fashionProd/csRange/sizeMatrix/sizeRow/drop) 0-1</li> <li>- note: <i>DEPRECATED, anyhow it is used only if not already specified in the article code or csRange</i></li> </ul>

	<p>(XPath GARMasterData/GMbody/GMgroup/GMitem/fashionProd/garmentCode/garmentCodeB/drop) 0-1</p> <p>- note: <i>Fill this element if the drop is the same for all the sizes of the model. Otherway specify it within the csRange element</i></p> <p>(XPath GARMasterData/GMbody/GMgroup/GMitem/fashionProd/csRange/drop) 0-1</p> <p>- note: <i>used only if not already specified in the article code</i></p>
@email	<p>electronic mail address of the contact person within a Party</p> <p>- base type: string, max length: 250,</p> <p>(XPath GARMasterData/GMheader/receiverParty/person/@email) [Optional]</p> <p>(XPath GARMasterData/GMheader/senderParty/person/@email) [Optional]</p> <p>(XPath GARMasterData/GMheader/thirdParty/person/@email) [Optional]</p> <p>(XPath GARMasterData/GMbody/GMgroup/GMitem/thirdParty/person/@email) [Optional]</p>
@encoding	<p>specifies the decoding algorithm of the binary object</p> <p>- base type: normalizedString,</p> <p>(XPath GARMasterData/GMbody/GMgroup/GMitem/refDoc/attachment/binaryObject/@encoding) [Optional]</p> <p>(XPath GARMasterData/GMbody/GMgroup/refDoc/attachment/binaryObject/@encoding) [Optional]</p> <p>(XPath GARMasterData/GMheader/refDoc/attachment/binaryObject/@encoding) [Optional]</p>
encodingCode	<p>the encoding/decoding algorithm used with the external object (example is 'base64Binary')</p> <p>- base type: normalizedString,</p> <p>(XPath GARMasterData/GMbody/GMgroup/GMitem/refDoc/attachment/externalReference/encodingCode) 0-1</p> <p>(XPath GARMasterData/GMheader/refDoc/attachment/externalReference/encodingCode) 0-1</p> <p>(XPath GARMasterData/GMbody/GMgroup/refDoc/attachment/externalReference/encodingCode) 0-1</p>
EPC	<p>serial identifier used for tracing a physical item with RFID technology</p> <p>- base type: string,</p> <p>(XPath GARMasterData/packages/EPCList/EPC) 1-unbounded</p> <p>(XPath GARMasterData/GMbody/GMgroup/GMitem/packages/EPCList/EPC) 1-unbounded</p> <p>(XPath GARMasterData/GMbody/GMgroup/packages/EPCList/EPC) 1-unbounded</p>
extendedDescription	<p>extended free text description. The content of the element must be unique, it might be translated and repeated into more languages (thus no more than one instance for each language). This element might contain HTML code (must be managed as CDATA)</p> <p>- base type: string,</p> <p>(XPath GARMasterData/GMbody/GMgroup/GMitem/extendedDescription) 0-unbounded</p> <p>- note: <i>Extended product description</i></p>
fabric	<p>fabric number of the garment</p> <p>- base type: string, max length: 15,</p> <p>(XPath GARMasterData/GMbody/GMgroup/GMitem/fashionProd/garmentCode/garmentCodeB/fabric) 0-1</p> <p>(XPath GARMasterData/GMbody/GMgroup/GMitem/fashionProd/garmentPartCode/fabric) 0-1</p> <p>- note: <i>when a garment component, it should be the code assigned to the garment article</i></p>
@fax	<p>fax number of the contact person within a Party</p> <p>- base type: string, max length: 35,</p> <p>(XPath GARMasterData/GMheader/receiverParty/person/@fax) [Optional]</p> <p>(XPath GARMasterData/GMheader/senderParty/person/@fax) [Optional]</p> <p>(XPath GARMasterData/GMbody/GMgroup/GMitem/thirdParty/person/@fax) [Optional]</p> <p>(XPath GARMasterData/GMheader/thirdParty/person/@fax) [Optional]</p>
@fibre	<p>type of fibre used in a textile product</p> <p>- base type: string, cod. table: T19</p> <p><a href="http://www.ebiz.enea.it/moda-ml/repository/codelist/draft/gc_T19.xml">http://www.ebiz.enea.it/moda-ml/repository/codelist/draft/gc_T19.xml</a></p> <p>(XPath GARMasterData/GMbody/GMgroup/GMitem/composition/garmentCompos/percCompos/@fibre) [Required]</p>

fileName	unique identifier (name) of the file - base type: string, max length: 255, (XPath GARMasterData/GMheader/refDoc/attachment/fileName) 0-1 (XPath GARMasterData/GMbody/GMgroup/refDoc/attachment/fileName) 0-1 (XPath GARMasterData/GMbody/GMgroup/GMitem/refDoc/attachment/fileName) 0-1
fillingCriterion	the assortment criterion to fill the specified kind of package: it states the homogeneity criterion (eg: "model", "color", "size"). - base type: string, cod. table: NT51 <a href="http://www.ebiz.enea.it/moda-ml/repository/codelist/draft/gc_NT51.xml">http://www.ebiz.enea.it/moda-ml/repository/codelist/draft/gc_NT51.xml</a> (XPath GARMasterData/GMbody/GMgroup/packages/fillingCriterion) 0-9 (XPath GARMasterData/packages/fillingCriterion) 0-9 (XPath GARMasterData/GMbody/GMgroup/GMitem/packages/fillingCriterion) 0-9
@format	the format of the binary content (examples xml, pdf, doc,...) - base type: string, (XPath GARMasterData/GMbody/GMgroup/GMitem/refDoc/attachment/binaryObject/@format) [Optional] (XPath GARMasterData/GMheader/refDoc/attachment/binaryObject/@format) [Optional] (XPath GARMasterData/GMbody/GMgroup/refDoc/attachment/binaryObject/@format) [Optional]
formatCode	the format of the external object (examples xml, pdf, doc,...) - base type: normalizedString, (XPath GARMasterData/GMheader/refDoc/attachment/externalReference/formatCode) 0-1 (XPath GARMasterData/GMbody/GMgroup/refDoc/attachment/externalReference/formatCode) 0-1 (XPath GARMasterData/GMbody/GMgroup/GMitem/refDoc/attachment/externalReference/formatCode) 0-1
garPackCode	a code specifying the type of packaging used for the item. - base type: string, (XPath GARMasterData/GMbody/GMgroup/GMitem/packages/handlingChar/garPack/garPackCode) 1-1 (XPath GARMasterData/packages/handlingChar/garPack/garPackCode) 1-1 (XPath GARMasterData/GMbody/GMgroup/GMitem/handlingChar/garPack/garPackCode) 1-1 (XPath GARMasterData/GMbody/GMgroup/packages/handlingChar/garPack/garPackCode) 1-1
garPackText	a free text specifying the type of packaging used for the item. - base type: string, (XPath GARMasterData/packages/handlingChar/garPack/garPackText) 1-1 (XPath GARMasterData/GMbody/GMgroup/GMitem/packages/handlingChar/garPack/garPackText) 1-1 (XPath GARMasterData/GMbody/GMgroup/packages/handlingChar/garPack/garPackText) 1-1 (XPath GARMasterData/GMbody/GMgroup/GMitem/handlingChar/garPack/garPackText) 1-1
@geoRefSystem	georeference system adopted for the coordinate (in example wgs84 with decimal degree o degree with minute and seconds) - base type: string, (XPath GARMasterData/GMheader/senderParty/geoCoordinates/@geoRefSystem) [Optional] (XPath GARMasterData/GMbody/GMgroup/GMitem/thirdParty/geoCoordinates/@geoRefSystem) [Optional] (XPath GARMasterData/GMheader/receiverParty/geoCoordinates/@geoRefSystem) [Optional] (XPath GARMasterData/GMheader/thirdParty/geoCoordinates/@geoRefSystem) [Optional]
gPart	code specifying the type of component or part of a fashion product (sleeve, neck, ...) - base type: string, cod. table: T48 <a href="http://www.ebiz.enea.it/moda-ml/repository/codelist/draft/gc_T48.xml">http://www.ebiz.enea.it/moda-ml/repository/codelist/draft/gc_T48.xml</a> (XPath GARMasterData/GMbody/GMgroup/GMitem/fashionProd/garmentPartCode/gPart) 1-1
grossWeight	the gross weight, declared for transport or customs purpose - base type: decimal, min inclusive: 0, fraction digits: 2, (XPath GARMasterData/GMbody/GMgroup/packages/handlingChar/grossWeight) 0-1

	<p>(XPath GARMasterData/GMbody/GMgroup/GMitem/handlingChar/grossWeight) 0-1  (XPath GARMasterData/GMbody/GMgroup/GMitem/packages/handlingChar/grossWeight) 0-1  (XPath GARMasterData/packages/handlingChar/grossWeight) 0-1</p>
handlingType	<p>information to handle the item (eg "breakable").  - base type: string,  (XPath GARMasterData/GMbody/GMgroup/GMitem/handlingChar/handlingType) 0-1  (XPath GARMasterData/GMbody/GMgroup/packages/handlingChar/handlingType) 0-1  (XPath GARMasterData/GMbody/GMgroup/GMitem/packages/handlingChar/handlingType) 0-1  (XPath GARMasterData/packages/handlingChar/handlingType) 0-1</p>
hashFootprint	<p>footprint obtained by applying an hashing alorythm  - base type: string, max length: 80,  (XPath GARMasterData/GMbody/GMgroup/GMitem/refDoc/attachment/hashFootprint) 0-1  (XPath GARMasterData/GMbody/GMgroup/refDoc/attachment/hashFootprint) 0-1  (XPath GARMasterData/GMheader/refDoc/attachment/hashFootprint) 0-1</p>
@hashMethod	<p>type of used hashing alorythm  - base type: string, max length: 80, cod. table: NT333  <a href="http://www.ebiz.enea.it/moda-ml/repository/codelist/draft/gc_NT333.xml">http://www.ebiz.enea.it/moda-ml/repository/codelist/draft/gc_NT333.xml</a>  (XPath GARMasterData/GMbody/GMgroup/GMitem/refDoc/attachment/hashFootprint/@hashMethod) [Required]  (XPath GARMasterData/GMbody/GMgroup/refDoc/attachment/hashFootprint/@hashMethod) [Required]  (XPath GARMasterData/GMheader/refDoc/attachment/hashFootprint/@hashMethod) [Required]</p>
height	<p>effective height of a specified object  - base type: decimal, min inclusive: 0, fraction digits: 2,  (XPath GARMasterData/GMbody/GMgroup/packages/packageDim/height) 0-1  (XPath GARMasterData/GMbody/GMgroup/GMitem/productDim/height) 0-1  (XPath GARMasterData/packages/packageDim/height) 0-1  (XPath GARMasterData/GMbody/GMgroup/GMitem/packages/packageDim/height) 0-1</p>
id	<p>primary identification code of a Party; it is recommended to use an EORI number (with @numberingOrg= "EO") or the format: nation code (ISO 3166) + national tax code (i.e. VAT identification number ) with @numberingOrg= "MF"  - base type: string, max length: 15,  (XPath GARMasterData/GMheader/thirdParty/id) 1-1  (XPath GARMasterData/GMheader/receiverParty/id) 1-1  (XPath GARMasterData/GMbody/GMgroup/GMitem/thirdParty/id) 1-1  (XPath GARMasterData/GMheader/senderParty/id) 1-1</p>
@idQualifier	<p>Qualification of the identifier.  - base type: string,  (XPath GARMasterData/GMbody/GMgroup/GMitem/fashionProdcsRange/sizeMatrix/sizeRow/itemsList/itemIdentification/serialN/@idQualifier) [Optional]  - nota: <i>this attribute should be used when the numberingOrg attribute is not enough to declare the type of serial identifier</i></p>
@isURL	<p>it indicates if the referred element is an URL (true) or not (false)  - base type: boolean,  (XPath GARMasterData/GMheader/refDoc/attachment/blockChainReference/uri/@isURL) [Optional] [Default= true]  - nota: <i>usage of URLs is recommended</i>  (XPath GARMasterData/GMbody/GMgroup/refDoc/attachment/externalReference/uri/@isURL) [Optional] [Default= true]  - nota: <i>usage of URLs is recommended</i>  (XPath GARMasterData/GMbody/GMgroup/GMitem/refDoc/attachment/externalReference/uri/@isURL) [Optional] [Default= true]  - nota: <i>usage of URLs is recommended</i>  (XPath GARMasterData/GMbody/GMgroup/GMitem/refDoc/attachment/blockChainReference/uri/@isURL) [Optional] [Default= true]  - nota: <i>usage of URLs is recommended</i>  (XPath GARMasterData/GMheader/refDoc/attachment/externalReference/uri/@isURL) [Optional] [Default= true]  - nota: <i>usage of URLs is recommended</i>  (XPath GARMasterData/GMbody/GMgroup/refDoc/attachment/</p>

	<p style="text-align: center;"><b>blockChainReference/uri/@isURL) [Optional] [Default= true]</b></p> <p>- nota: <i>usage of URLs is recommended</i></p>
itemID	<p>number of the line/item of the referenced document</p> <p>- base type: string, max length: 40,  (XPath GARMasterData/GMbody/GMgroup/refDoc/itemID) 0-1  (XPath GARMasterData/GMbody/GMgroup/GMitem/refDoc/itemID) 0-1  (XPath GARMasterData/GMheader/refDoc/itemID) 0-1</p>
itemsPerPackage	<p>the quantity of items that can be contained in a package.</p> <p>- base type: decimal,  (XPath GARMasterData/GMbody/GMgroup/GMitem/packages/itemsPerPackage) 0-1  (XPath GARMasterData/GMbody/GMgroup/packages/itemsPerPackage) 0-1  (XPath GARMasterData/packages/itemsPerPackage) 0-1</p>
label	<p>indicates if the physical object specified has to be labelled</p> <p>- base type: boolean,  (XPath GARMasterData/GMbody/GMgroup/GMitem/packages/handlingChar/yarnPack/yarnReel/label) 0-1  (XPath GARMasterData/GMbody/GMgroup/GMitem/handlingChar/yarnPack/yarnInWrap/label) 0-1  (XPath GARMasterData/GMbody/GMgroup/GMitem/packages/handlingChar/yarnPack/yarnInWrap/label) 0-1  (XPath GARMasterData/GMbody/GMgroup/GMitem/handlingChar/yarnPack/yarnReel/label) 0-1  (XPath GARMasterData/packages/handlingChar/yarnPack/yarnInWrap/label) 0-1  (XPath GARMasterData/GMbody/GMgroup/packages/handlingChar/yarnPack/yarnReel/label) 0-1  (XPath GARMasterData/GMbody/GMgroup/packages/handlingChar/yarnPack/yarnInWrap/label) 0-1  (XPath GARMasterData/packages/handlingChar/yarnPack/yarnReel/label) 0-1</p>
labelWrit	<p>text that must be written on the lable of a specified physical object when its customizati on is required</p> <p>- base type: string, max length: 350,  (XPath GARMasterData/GMbody/GMgroup/packages/handlingChar/yarnPack/yarnReel/labelWrit) 0-1  (XPath GARMasterData/GMbody/GMgroup/packages/handlingChar/yarnPack/yarnInWrap/labelWrit) 0-1  (XPath GARMasterData/GMbody/GMgroup/GMitem/packages/handlingChar/yarnPack/yarnInWrap/labelWrit) 0-1  (XPath GARMasterData/packages/handlingChar/yarnPack/yarnReel/labelWrit) 0-1  (XPath GARMasterData/GMbody/GMgroup/GMitem/handlingChar/yarnPack/yarnInWrap/labelWrit) 0-1  (XPath GARMasterData/packages/handlingChar/yarnPack/yarnInWrap/labelWrit) 0-1  (XPath GARMasterData/GMbody/GMgroup/GMitem/handlingChar/yarnPack/yarnReel/labelWrit) 0-1  (XPath GARMasterData/GMbody/GMgroup/GMitem/packages/handlingChar/yarnPack/yarnReel/labelWrit) 0-1</p>
legalName	<p>legal name</p> <p>- base type: string, max length: 250,  (XPath GARMasterData/GMheader/receiverParty/legalName) 0-1  (XPath GARMasterData/GMheader/thirdParty/legalName) 0-1  (XPath GARMasterData/GMbody/GMgroup/GMitem/thirdParty/legalName) 0-1  (XPath GARMasterData/GMheader/senderParty/legalName) 0-1</p>
legalRef	<p>legal reference of the duty or tax or fee category</p> <p>- base type: string,  (XPath GARMasterData/GMbody/GMgroup/GMitem/dtScheme/legalRef) 0-1</p>
length	<p>effective length of a specified object</p> <p>- base type: decimal, min inclusive: 0, fraction digits: 2,  (XPath GARMasterData/packages/packageDim/length) 1-1  - note: <i>here the maximum dimension must also be specified</i>  (XPath GARMasterData/GMbody/GMgroup/GMitem/packages/packageDim/length) 1-1  - note: <i>here the maximum dimension must also be specified</i>  (XPath GARMasterData/GMbody/GMgroup/GMitem/productDim/length) 1-1</p>



	(XPath GARMasterData/GMbody/GMgroup/packages/packageDim/length) 1-1 - note: here the maximum dimension must also be specified
lineID	unique identifier of the line item of the business document; it is set by the role that produces the document. - base type: string, max length: 30, (XPath GARMasterData/GMbody/GMgroup/GMitem/lineID) 0-1
lineN	number of the line item of the present message (xml document); it is set by the role that produces the document. Usually it is a progressive number, but not always. - base type: positiveInteger, min inclusive: 1, max inclusive: 9999, (XPath GARMasterData/GMbody/GMgroup/GMitem/lineN) 0-1
@listName	the name of the list of codes used to make an instance of the element (it might be thought as descriptive element, i.e. 'fabric printing technologies', or not, i.e. "T264") - base type: string, max length: 40, (XPath GARMasterData/GMbody/GMgroup/GMitem/fashionProd/garmentCode/garmentCodeB/color/@listName) [Optional] - nota: this attribute should always be used coupled with "numberingOrg" (XPath GARMasterData/GMheader/refDoc/season/@listName) [Optional] - nota: this attribute should always be used coupled with "numberingOrg" (XPath GARMasterData/GMbody/GMgroup/GMitem/fashionProd/garmentPartCode/fabric/@listName) [Optional] - nota: this attribute should always be used coupled with "numberingOrg" (XPath GARMasterData/GMbody/GMgroup/GMitem/packages/handlingChar/acsPack/acsPackCode/@listName) [Optional] - nota: this attribute should always be used coupled with "numberingOrg" (XPath GARMasterData/GMbody/GMgroup/artGroup/@listName) [Optional] - nota: this attribute should always be used coupled with "numberingOrg" (XPath GARMasterData/GMbody/GMgroup/refDoc/season/@listName) [Optional] - nota: this attribute should always be used coupled with "numberingOrg" (XPath GARMasterData/GMbody/GMgroup/GMitem/fashionProd/acsCode/color/@listName) [Optional] - nota: this attribute should always be used coupled with "numberingOrg" (XPath GARMasterData/GMbody/GMgroup/GMitem/fashionProd/texCode/color/@listName) [Optional] - nota: this attribute should always be used coupled with "numberingOrg" (XPath GARMasterData/GMbody/GMgroup/GMitem/handlingChar/garPack/garPackCode/@listName) [Optional] - nota: this attribute should always be used coupled with "numberingOrg" (XPath GARMasterData/GMbody/GMgroup/GMitem/fashionProd/garmentCode/garmentCodeB/mod/@listName) [Optional] - nota: this attribute should always be used coupled with "numberingOrg" (XPath GARMasterData/GMbody/GMgroup/GMitem/fashionProd/acsCode/art/@listName) [Optional] - nota: this attribute should always be used coupled with "numberingOrg" (XPath GARMasterData/GMbody/GMgroup/GMitem/fashionProd/acsCode/pattern/@listName) [Optional] - nota: this attribute should always be used coupled with "numberingOrg" (XPath GARMasterData/GMbody/GMgroup/GMitem/fashionProd/garmentPartCode/size/@listName) [Optional] - nota: this attribute should always be used coupled with "numberingOrg" (XPath GARMasterData/GMbody/GMgroup/GMitem/handlingChar/acsPack/acsPackCode/@listName) [Optional] - nota: this attribute should always be used coupled with "numberingOrg" (XPath GARMasterData/GMbody/GMgroup/GMitem/fashionProd/texCode/art/@listName) [Optional] - nota: this attribute should always be used coupled with "numberingOrg" (XPath GARMasterData/GMbody/GMgroup/GMitem/fashionProd/garmentPartCode/mod/@listName) [Optional] - nota: this attribute should always be used coupled with "numberingOrg" (XPath GARMasterData/GMbody/GMgroup/GMitem/fashionProd/csRange/sizeMatrix/sizeRow/itemsList/qualityLevel/@listName) [Optional] - nota: this attribute should always be used coupled with "numberingOrg" (XPath GARMasterData/GMbody/GMgroup/GMitem/fashionProd/garmentPartCode/color/@listName) [Optional] - nota: this attribute should always be used coupled with "numberingOrg" (XPath GARMasterData/GMbody/GMgroup/GMitem/fashionProd/garmentCode/garmentCodeB/fabric/@listName) [Optional] - nota: this attribute should always be used coupled with "numberingOrg" (XPath GARMasterData/GMbody/GMgroup/GMitem/fashionProd/

	<p><b>texCode/pattern/@listName) [Optional]</b>  - nota: <i>this attribute should always be used coupled with “numberingOrg”</i>  (XPath GARMasterData/GMbody/GMgroup/packages/handlingChar/  garPack/garPackCode/@listName) [Optional]</p> <p>- nota: <i>this attribute should always be used coupled with “numberingOrg”</i>  (XPath  GARMasterData/GMbody/GMgroup/GMitem/measureConversion/unitOfSource  Measure/@listName) [Optional] [Default= NT7]  (XPath GARMasterData/packages/handlingChar/garPack/  garPackCode/@listName) [Optional]</p> <p>- nota: <i>this attribute should always be used coupled with “numberingOrg”</i>  (XPath  GARMasterData/GMbody/GMgroup/GMitem/garmentCategory/artSex/@listName)  ) [Optional]</p> <p>- nota: <i>this attribute should always be used coupled with “numberingOrg”</i>  (XPath GARMasterData/GMbody/GMgroup/GMitem/fashionProd/  garmentCode/garmentCodeA/art/@listName) [Optional]</p> <p>- nota: <i>this attribute should always be used coupled with “numberingOrg”</i>  (XPath  GARMasterData/GMbody/GMgroup/GMitem/garmentCategory/season/@listName)  ) [Optional]</p> <p>- nota: <i>this attribute should always be used coupled with “numberingOrg”</i>  (XPath GARMasterData/GMbody/GMgroup/packages/handlingChar/  acsPack/acsPackCode/@listName) [Optional]</p> <p>- nota: <i>this attribute should always be used coupled with “numberingOrg”</i>  (XPath  GARMasterData/GMbody/GMgroup/GMitem/garmentCategory/goodsClassification/  macroClass/@listName) [Optional]</p> <p>- nota: <i>this attribute should always be used coupled with “numberingOrg”</i>  (XPath GARMasterData/GMbody/GMgroup/GMitem/brand/@listName) [Optional]</p> <p>- nota: <i>this attribute should always be used coupled with “numberingOrg”</i>  (XPath GARMasterData/GMbody/GMgroup/GMitem/fashionProd/  csRange/garmentVariant/variantCode/@listName) [Optional]</p> <p>- nota: <i>this attribute should always be used coupled with “numberingOrg”</i>  (XPath GARMasterData/GMbody/GMgroup/GMitem/fashionProd/  csRange/sizeMatrix/sizeRow/size/@listName) [Optional]</p> <p>- nota: <i>this attribute should always be used coupled with “numberingOrg”</i>  (XPath GARMasterData/GMbody/GMgroup/GMitem/fashionProd/  csRange/color/@listName) [Optional]</p> <p>- nota: <i>this attribute should always be used coupled with “numberingOrg”</i>  (XPath  GARMasterData/GMbody/GMgroup/GMitem/garmentCategory/artGroup/@listName)  ) [Optional]</p> <p>- nota: <i>this attribute should always be used coupled with “numberingOrg”</i>  (XPath  GARMasterData/GMbody/GMgroup/GMitem/operationalCode/@listName) [Optional]</p> <p>- nota: <i>this attribute should always be used coupled with “numberingOrg”</i>  (XPath GARMasterData/GMbody/GMgroup/GMitem/fashionProd/  csRange/garmentVariant/variantType/@listName) [Optional]</p> <p>- nota: <i>this attribute should always be used coupled with “numberingOrg”</i>  (XPath GARMasterData/GMbody/GMgroup/GMitem/unitOfMeasure/@listName) [Optional] [Default= NT7]  (XPath  GARMasterData/GMbody/GMgroup/GMitem/garmentCategory/artSubGroup/@listName)  ) [Optional]</p> <p>- nota: <i>this attribute should always be used coupled with “numberingOrg”</i>  (XPath GARMasterData/GMbody/GMgroup/GMitem/fashionProd/  csRange/sizeMatrix/sizeRow/drop/@listName) [Optional]</p> <p>- nota: <i>this attribute should always be used coupled with “numberingOrg”</i>  (XPath GARMasterData/GMbody/GMgroup/GMitem/dtScheme/  legalRef/@listName) [Optional]</p> <p>- nota: <i>this attribute should always be used coupled with “numberingOrg”</i>  (XPath GARMasterData/GMbody/GMgroup/GMitem/productLine/@listName) [Optional]</p> <p>- nota: <i>this attribute should always be used coupled with “numberingOrg”</i>  (XPath GARMasterData/GMbody/GMgroup/GMitem/fashionProd/  csRange/sizeMatrix/sizeRow/additionalComponentCode/@listName) [Optional]</p> <p>- nota: <i>this attribute should always be used coupled with “numberingOrg”</i>  (XPath GARMasterData/GMbody/GMgroup/GMitem/fashionProd/  garmentCode/garmentCodeB/drop/@listName) [Optional]</p>
--	--

	<ul style="list-style-type: none"> <li>- nota: <i>this attribute should always be used coupled with “numberingOrg”</i> (XPath GARMasterData/GMheader/season/@listName) [Optional]</li> <li>- nota: <i>this attribute should always be used coupled with “numberingOrg”</i> (XPath GARMasterData/GMbody/GMgroup/GMitem/refDoc/season/@listName) [Optional]</li> <li>- nota: <i>this attribute should always be used coupled with “numberingOrg”</i> (XPath GARMasterData/GMbody/GMgroup/GMitem/fashionProd/ additionalComponentCode/@listName) [Optional]</li> <li>- nota: <i>this attribute should always be used coupled with “numberingOrg”</i> (XPath GARMasterData/GMbody/GMgroup/GMitem/fashionProd/ garmentCode/garmentCodeB/garmentVariant/variantCode/@listName) [Optional]</li> <li>- nota: <i>this attribute should always be used coupled with “numberingOrg”</i> (XPath GARMasterData/GMbody/GMgroup/GMitem/packages/ handlingChar/garPack/garPackCode/@listName) [Optional]</li> <li>- nota: <i>this attribute should always be used coupled with “numberingOrg”</i> (XPath GARMasterData/packages/handlingChar/acsPack/ acsPackCode/@listName) [Optional]</li> <li>- nota: <i>this attribute should always be used coupled with “numberingOrg”</i> (XPath GARMasterData/GMbody/GMgroup/GMitem/fashionProd/ yarnCode/art/@listName) [Optional]</li> <li>- nota: <i>this attribute should always be used coupled with “numberingOrg”</i> (XPath GARMasterData/GMbody/GMgroup/GMitem/fashionProd/ yarnCode/color/@listName) [Optional]</li> <li>- nota: <i>this attribute should always be used coupled with “numberingOrg”</i> (XPath GARMasterData/GMbody/GMgroup/GMitem/fashionProd/ garmentCode/garmentCodeB/garmentVariant/variantType/@listName) [Optional]</li> <li>- nota: <i>this attribute should always be used coupled with “numberingOrg”</i> (XPath GARMasterData/GMbody/GMgroup/GMitem/fashionProd/ garmentCode/garmentCodeB/artGroup/@listName) [Optional]</li> <li>- nota: <i>this attribute should always be used coupled with “numberingOrg”</i> (XPath GARMasterData/GMbody/GMgroup/GMitem/garmentCategory/goodsClassification/class/@listName) [Optional]</li> <li>- nota: <i>this attribute should always be used coupled with “numberingOrg”</i> (XPath GARMasterData/GMbody/GMgroup/GMitem/measureConversion/unitOfTargetMeasure/@listName) [Optional] [Default= NT7] (XPath GARMasterData/GMbody/GMgroup/GMitem/fashionProd/ garmentCode/garmentCodeB/size/@listName) [Optional]</li> <li>- nota: <i>this attribute should always be used coupled with “numberingOrg”</i> (XPath GARMasterData/GMbody/GMgroup/GMitem/garmentCategory/goodsClassification/subClass/@listName) [Optional]</li> <li>- nota: <i>this attribute should always be used coupled with “numberingOrg”</i> (XPath GARMasterData/GMbody/GMgroup/GMitem/fashionProd/ csRange/drop/@listName) [Optional]</li> <li>- nota: <i>this attribute should always be used coupled with “numberingOrg”</i></li> </ul>
<p>@listVersion</p>	<p>it specifies the version of the list of codes used to make an instance of the element</p> <ul style="list-style-type: none"> <li>- base type: string, max length: 6, (XPath GARMasterData/GMbody/GMgroup/GMitem/fashionProd/ csRange/garmentVariant/variantType/@listVersion) [Optional]</li> <li>- nota: <i>this attribute should always be used coupled with “numberingOrg” and “listName”</i> (XPath GARMasterData/GMbody/GMgroup/GMitem/fashionProd/ csRange/garmentVariant/variantCode/@listVersion) [Optional]</li> <li>- nota: <i>this attribute should always be used coupled with “numberingOrg” and “listName”</i> (XPath GARMasterData/GMbody/GMgroup/GMitem/fashionProd/ garmentPartCode/color/@listVersion) [Optional]</li> <li>- nota: <i>this attribute should always be used coupled with “numberingOrg” and “listName”</i> (XPath GARMasterData/GMbody/GMgroup/GMitem/fashionProd/ csRange/drop/@listVersion) [Optional]</li> <li>- nota: <i>this attribute should always be used coupled with “numberingOrg” and “listName”</i> (XPath GARMasterData/GMbody/GMgroup/GMitem/fashionProd/ csRange/sizeMatrix/sizeRow/additionalComponentCode/@listVersion) [Optional]</li> </ul>

	<p>- nota: <i>this attribute should always be used coupled with “numberingOrg” and “listName”</i>  (XPath GARMasterData/GMbody/GMgroup/GMitem/handlingChar/  garPack/garPackCode/@listVersion) [Optional]</p> <p>- nota: <i>this attribute should always be used coupled with “numberingOrg” and “listName”</i>  (XPath  GARMasterData/GMbody/GMgroup/GMitem/measureConversion/unitOfTarget  Measure/@listVersion) [Optional]  (XPath GARMasterData/GMbody/GMgroup/GMitem/fashionProd/  garmentCode/garmentCodeB/size/@listVersion) [Optional]</p> <p>- nota: <i>this attribute should always be used coupled with “numberingOrg” and “listName”</i>  (XPath GARMasterData/GMbody/GMgroup/GMitem/fashionProd/  garmentCode/garmentCodeB/artGroup/@listVersion) [Optional]</p> <p>- nota: <i>this attribute should always be used coupled with “numberingOrg” and “listName”</i>  (XPath GARMasterData/GMbody/GMgroup/GMitem/handlingChar/  acsPack/acsPackCode/@listVersion) [Optional]</p> <p>- nota: <i>this attribute should always be used coupled with “numberingOrg” and “listName”</i>  (XPath GARMasterData/GMbody/GMgroup/GMitem/fashionProd/  garmentCode/garmentCodeB/drop/@listVersion) [Optional]</p> <p>- nota: <i>this attribute should always be used coupled with “numberingOrg” and “listName”</i>  (XPath GARMasterData/GMbody/GMgroup/GMitem/fashionProd/  garmentCode/garmentCodeB/color/@listVersion) [Optional]</p> <p>- nota: <i>this attribute should always be used coupled with “numberingOrg” and “listName”</i>  (XPath GARMasterData/GMbody/GMgroup/GMitem/fashionProd/  garmentCode/garmentCodeB/garmentVariant/variantType/@listVersion) [Optional]</p> <p>- nota: <i>this attribute should always be used coupled with “numberingOrg” and “listName”</i>  (XPath GARMasterData/GMbody/GMgroup/GMitem/fashionProd/  garmentCode/garmentCodeB/fabric/@listVersion) [Optional]</p> <p>- nota: <i>this attribute should always be used coupled with “numberingOrg” and “listName”</i>  (XPath GARMasterData/GMbody/GMgroup/GMitem/fashionProd/  garmentCode/garmentCodeB/garmentVariant/variantCode/@listVersion) [Optional]</p> <p>- nota: <i>this attribute should always be used coupled with “numberingOrg” and “listName”</i>  (XPath GARMasterData/GMbody/GMgroup/GMitem/fashionProd/  garmentPartCode/size/@listVersion) [Optional]</p> <p>- nota: <i>this attribute should always be used coupled with “numberingOrg” and “listName”</i>  (XPath GARMasterData/GMbody/GMgroup/GMitem/unitOfMeasure/@listVersion) [Optional]  (XPath GARMasterData/GMbody/GMgroup/GMitem/fashionProd/  csRange/sizeMatrix/sizeRow/drop/@listVersion) [Optional]</p> <p>- nota: <i>this attribute should always be used coupled with “numberingOrg” and “listName”</i>  (XPath GARMasterData/GMbody/GMgroup/GMitem/fashionProd/  csRange/color/@listVersion) [Optional]</p> <p>- nota: <i>this attribute should always be used coupled with “numberingOrg” and “listName”</i>  (XPath GARMasterData/GMbody/GMgroup/GMitem/fashionProd/  csRange/sizeMatrix/sizeRow/itemsList/qualityLevel/@listVersion) [Optional]</p> <p>- nota: <i>this attribute should always be used coupled with “numberingOrg” and “listName”</i>  (XPath GARMasterData/GMbody/GMgroup/GMitem/fashionProd/  csRange/sizeMatrix/sizeRow/size/@listVersion) [Optional]</p> <p>- nota: <i>this attribute should always be used coupled with “numberingOrg” and “listName”</i>  (XPath GARMasterData/GMbody/GMgroup/GMitem/fashionProd/  garmentCode/garmentCodeB/mod/@listVersion) [Optional]</p> <p>- nota: <i>this attribute should always be used coupled with “numberingOrg” and “listName”</i>  (XPath GARMasterData/GMbody/GMgroup/GMitem/fashionProd/  garmentCode/garmentCodeA/art/@listVersion) [Optional]</p>
--	--

- nota: *this attribute should always be used coupled with “numberingOrg” and “listName”*  
 (XPath GARMasterData/GMbody/GMgroup/GMitem/measureConversion/unitOfSourceMeasure/@listVersion) [Optional]

- nota: *this attribute should always be used coupled with “numberingOrg” and “listName”*  
 (XPath GARMasterData/GMbody/GMgroup/GMitem/fashionProduct/garmentPartCode/fabric/@listVersion) [Optional]

- nota: *this attribute should always be used coupled with “numberingOrg” and “listName”*  
 (XPath GARMasterData/GMbody/GMgroup/packages/handlingChar/garPack/garPackCode/@listVersion) [Optional]

- nota: *this attribute should always be used coupled with “numberingOrg” and “listName”*  
 (XPath GARMasterData/GMbody/GMgroup/GMitem/fashionProduct/texCode/color/@listVersion) [Optional]

- nota: *this attribute should always be used coupled with “numberingOrg” and “listName”*  
 (XPath GARMasterData/GMbody/GMgroup/GMitem/fashionProduct/texCode/art/@listVersion) [Optional]

- nota: *this attribute should always be used coupled with “numberingOrg” and “listName”*  
 (XPath GARMasterData/GMbody/GMgroup/GMitem/fashionProduct/texCode/pattern/@listVersion) [Optional]

- nota: *this attribute should always be used coupled with “numberingOrg” and “listName”*  
 (XPath GARMasterData/GMbody/GMgroup/GMitem/garmentCategory/goodsClassification/subClass/@listVersion) [Optional]

- nota: *this attribute should always be used coupled with “numberingOrg” and “listName”*  
 (XPath GARMasterData/GMbody/GMgroup/GMitem/garmentCategory/goodsClassification/macroClass/@listVersion) [Optional]

- nota: *this attribute should always be used coupled with “numberingOrg” and “listName”*  
 (XPath GARMasterData/GMbody/GMgroup/packages/handlingChar/acsPack/acsPackCode/@listVersion) [Optional]

- nota: *this attribute should always be used coupled with “numberingOrg” and “listName”*  
 (XPath GARMasterData/GMbody/GMgroup/GMitem/productLine/@listVersion) [Optional]

- nota: *this attribute should always be used coupled with “numberingOrg” and “listName”*  
 (XPath GARMasterData/GMbody/GMgroup/GMitem/garmentCategory/goodsClassification/class/@listVersion) [Optional]

- nota: *this attribute should always be used coupled with “numberingOrg” and “listName”*  
 (XPath GARMasterData/GMbody/GMgroup/GMitem/brand/@listVersion) [Optional]

- nota: *this attribute should always be used coupled with “numberingOrg” and “listName”*  
 (XPath GARMasterData/GMbody/GMgroup/GMitem/fashionProduct/yarnCode/color/@listVersion) [Optional]

- nota: *this attribute should always be used coupled with “numberingOrg” and “listName”*  
 (XPath GARMasterData/GMbody/GMgroup/artGroup/@listVersion) [Optional]

- nota: *this attribute should always be used coupled with “numberingOrg” and “listName”*  
 (XPath GARMasterData/GMbody/GMgroup/GMitem/fashionProduct/yarnCode/art/@listVersion) [Optional]

- nota: *this attribute should always be used coupled with “numberingOrg” and “listName”*  
 (XPath GARMasterData/GMbody/GMgroup/GMitem/packages/handlingChar/acsPack/acsPackCode/@listVersion) [Optional]

- nota: *this attribute should always be used coupled with “numberingOrg” and “listName”*  
 (XPath GARMasterData/GMbody/GMgroup/GMitem/fashionProduct/additionalComponentCode/@listVersion) [Optional]

- nota: *this attribute should always be used coupled with “numberingOrg” and “listName”*  
 (XPath GARMasterData/packages/handlingChar/garPack/

	<p>garPackCode/@listVersion) [Optional]  - nota: <i>this attribute should always be used coupled with “numberingOrg” and “listName”</i>  (XPath GARMasterData/GMheader/refDoc/season/@listVersion) [Optional]  - nota: <i>this attribute should always be used coupled with “numberingOrg” and “listName”</i>  (XPath GARMasterData/GMbody/GMgroup/GMitem/packages/handlingChar/garPack/garPackCode/@listVersion) [Optional]  - nota: <i>this attribute should always be used coupled with “numberingOrg” and “listName”</i>  (XPath GARMasterData/GMbody/GMgroup/GMitem/fashionProd/acsCode/art/@listVersion) [Optional]  - nota: <i>this attribute should always be used coupled with “numberingOrg” and “listName”</i>  (XPath GARMasterData/GMbody/GMgroup/GMitem/operationalCode/@listVersion) [Optional]  - nota: <i>this attribute should always be used coupled with “numberingOrg” and “listName”</i>  (XPath GARMasterData/GMbody/GMgroup/GMitem/dtScheme/legalRef/@listVersion) [Optional]  - nota: <i>this attribute should always be used coupled with “numberingOrg” and “listName”</i>  (XPath GARMasterData/GMbody/GMgroup/GMitem/garmentCategory/artSubGroup/@listVersion) [Optional]  - nota: <i>this attribute should always be used coupled with “numberingOrg” and “listName”</i>  (XPath GARMasterData/GMbody/GMgroup/GMitem/fashionProd/acsCode/color/@listVersion) [Optional]  - nota: <i>this attribute should always be used coupled with “numberingOrg” and “listName”</i>  (XPath GARMasterData/GMbody/GMgroup/GMitem/fashionProd/garmentPartCode/mod/@listVersion) [Optional]  - nota: <i>this attribute should always be used coupled with “numberingOrg” and “listName”</i>  (XPath GARMasterData/GMbody/GMgroup/GMitem/garmentCategory/artGroup/@listVersion) [Optional]  - nota: <i>this attribute should always be used coupled with “numberingOrg” and “listName”</i>  (XPath GARMasterData/GMbody/GMgroup/refDoc/season/@listVersion) [Optional]  - nota: <i>this attribute should always be used coupled with “numberingOrg” and “listName”</i>  (XPath GARMasterData/GMbody/GMgroup/GMitem/refDoc/season/@listVersion) [Optional]  - nota: <i>this attribute should always be used coupled with “numberingOrg” and “listName”</i>  (XPath GARMasterData/GMbody/GMgroup/GMitem/fashionProd/acsCode/pattern/@listVersion) [Optional]  - nota: <i>this attribute should always be used coupled with “numberingOrg” and “listName”</i>  (XPath GARMasterData/packages/handlingChar/acsPack/acsPackCode/@listVersion) [Optional]  - nota: <i>this attribute should always be used coupled with “numberingOrg” and “listName”</i>  (XPath GARMasterData/GMbody/GMgroup/GMitem/garmentCategory/season/@listVersion) [Optional]  - nota: <i>this attribute should always be used coupled with “numberingOrg” and “listName”</i>  (XPath GARMasterData/GMheader/season/@listVersion) [Optional]  - nota: <i>this attribute should always be used coupled with “numberingOrg” and “listName”</i>  (XPath GARMasterData/GMbody/GMgroup/GMitem/garmentCategory/artSex/@listVersion) [Optional]  - nota: <i>this attribute should always be used coupled with “numberingOrg” and “listName”</i></p>
@ln	Language code.

	<p>- base type: string, cod. table: NT60  <a href="http://www.ebiz.enea.it/moda-ml/repository/codelist/draft/gc_NT60.xml">http://www.ebiz.enea.it/moda-ml/repository/codelist/draft/gc_NT60.xml</a>  (XPath GARMasterData/GMbody/GMgroup/GMitem/composition/description/@In) [Optional]  (XPath GARMasterData/GMbody/GMgroup/GMitem/fashionProd/garmentCode/garmentCodeA/description/@In) [Optional]  (XPath GARMasterData/GMbody/GMgroup/packages/handlingChar/handlingType/@In) [Optional]  (XPath GARMasterData/GMbody/GMgroup/GMitem/fashionProd/garmentCode/garmentCodeB/description/@In) [Optional]  (XPath GARMasterData/packages/handlingChar/handlingType/@In) [Optional]  (XPath GARMasterData/GMbody/GMgroup/description/@In) [Optional]  (XPath GARMasterData/GMbody/GMgroup/GMitem/packages/handlingChar/handlingType/@In) [Optional]  (XPath GARMasterData/packages/description/@In) [Optional]  (XPath GARMasterData/GMbody/GMgroup/GMitem/extendedDescription/@In) [Optional]  (XPath GARMasterData/GMbody/GMgroup/GMitem/fashionProd/garmentPartCode/description/@In) [Optional]  (XPath GARMasterData/GMbody/GMgroup/GMitem/packages/description/@In) [Optional]  (XPath GARMasterData/GMbody/GMgroup/GMitem/fashionProd/texCode/description/@In) [Optional]  (XPath GARMasterData/GMbody/GMgroup/packages/description/@In) [Optional]  (XPath GARMasterData/GMbody/GMgroup/GMitem/handlingChar/handlingType/@In) [Optional]  (XPath GARMasterData/GMbody/GMgroup/GMitem/fashionProd/acsCode/description/@In) [Optional]  (XPath GARMasterData/GMbody/GMgroup/GMitem/fashionProd/yarnCode/description/@In) [Optional]</p>
macroClass	<p>a code indicating the category (macro-class, class or sub-class) of a commodity classification system the article belongs to.  - base type: string,  (XPath GARMasterData/GMbody/GMgroup/GMitem/garmentCategory/goodsClassification/macroClass) 0-1</p>
@materialSource	<p>Indicates whether the material is virgin or comes from recycling or reuse processes  - base type: string, cod. table: T306  <a href="http://www.ebiz.enea.it/moda-ml/repository/codelist/draft/gc_T306.xml">http://www.ebiz.enea.it/moda-ml/repository/codelist/draft/gc_T306.xml</a>  (XPath GARMasterData/GMbody/GMgroup/GMitem/composition/garmentCompos/percCompos/@materialSource) [Optional]</p>
@measureQualifier	<p>Unit of measure qualifier.  - base type: string,  (XPath GARMasterData/GMbody/GMgroup/GMitem/measureConversion/unitOfSourceMeasure/@measureQualifier) [Optional]  (XPath GARMasterData/GMbody/GMgroup/GMitem/measureConversion/unitOfTargetMeasure/@measureQualifier) [Optional]  (XPath GARMasterData/GMbody/GMgroup/GMitem/unitOfMeasure/@measureQualifier) [Optional]</p>
@mime	<p>the mime type of the binary object  - base type: normalizedString,  (XPath GARMasterData/GMbody/GMgroup/refDoc/attachment/binaryObject/@mime) [Optional]  (XPath GARMasterData/GMheader/refDoc/attachment/binaryObject/@mime) [Optional]  (XPath GARMasterData/GMbody/GMgroup/GMitem/refDoc/attachment/binaryObject/@mime) [Optional]</p>
mimeCode	<p>mime type of the external object  - base type: normalizedString,  (XPath GARMasterData/GMbody/GMgroup/refDoc/attachment/externalReference/mimeCode) 0-1 Best Practice  (XPath GARMasterData/GMheader/refDoc/attachment/externalReference/mimeCode) 0-1 Best Practice  (XPath GARMasterData/GMbody/GMgroup/GMitem/refDoc/</p>

	<b>attachment/externalReference/mimeType) 0-1</b> Best Practice
minItemsPerPackage	the minimum quantity of items for the specified kind of package. - base type: decimal, min inclusive: 0, (XPath GARMasterData/GMbody/GMgroup/GMitem/packages/minItemsPerPackage) 0-1 (XPath GARMasterData/packages/minItemsPerPackage) 0-1 (XPath GARMasterData/GMbody/GMgroup/packages/minItemsPerPackage) 0-1
mod	model number of the garment - base type: string, max length: 15, (XPath GARMasterData/GMbody/GMgroup/GMitem/fashionProd/garmentCode/garmentCodeB/mod) 1-1 (XPath GARMasterData/GMbody/GMgroup/GMitem/fashionProd/garmentPartCode/mod) 1-1 - note: <i>when a garment component, it should be the code assigned to the garment article</i>
msgDate	date of issue of the present message (xml document), according to one of the patterns YYYY-MM-DD, YYYY-MM-DD:HH-MM or YYYY-WW. - base type: string, (XPath GARMasterData/GMheader/msgDate) 1-1
@msgfunction	function performed by the present message with regards to the transmission - base type: string, cod. table: NT18 <a href="http://www.ebiz.enea.it/moda-ml/repository/codelist/draft/gc_NT18.xml">http://www.ebiz.enea.it/moda-ml/repository/codelist/draft/gc_NT18.xml</a> (XPath GARMasterData/@msgfunction) [Optional] [Default= OR]
msgID	key identifier of the business document in the information system of the issuing Party. In case of more despatches of the same business document, it is unchanged. - base type: string, max length: 35, (XPath GARMasterData/GMheader/msgID) 1-1
msgN	identification number given to the message (xml document) by its issuer. In case of more despatches of the same business document, it changes. - base type: string, max length: 35, (XPath GARMasterData/GMheader/msgN) 1-1
netWeight	the net weight declared for transport or customs purpose - base type: decimal, min inclusive: 0, fraction digits: 2, (XPath GARMasterData/packages/handlingChar/netWeight) 0-1 (XPath GARMasterData/GMbody/GMgroup/GMitem/packages/handlingChar/netWeight) 0-1 (XPath GARMasterData/GMbody/GMgroup/GMitem/handlingChar/netWeight) 0-1 (XPath GARMasterData/GMbody/GMgroup/packages/handlingChar/netWeight) 0-1
note	free text or structured (computer processing) note. For note structuring use the attributes "noteLabel" and "codelist" - base type: string, max length: 350, (XPath GARMasterData/packages/handlingChar/note) 0-99 (XPath GARMasterData/GMbody/GMgroup/GMitem/dtScheme/note) 0-99 (XPath GARMasterData/GMbody/GMgroup/GMitem/handlingChar/note) 0-99 (XPath GARMasterData/GMbody/GMgroup/GMitem/packages/handlingChar/note) 0-99 (XPath GARMasterData/GMbody/GMgroup/packages/handlingChar/note) 0-99 (XPath GARMasterData/GMbody/GMgroup/GMitem/note) 0-99 (XPath GARMasterData/GMbody/GMgroup/GMitem/fashionProd/note) 0-unbounded (XPath GARMasterData/GMbody/GMgroup/GMitem/garmentCategory/note) 0-99 (XPath GARMasterData/GMheader/note) 0-unbounded (XPath GARMasterData/GMbody/GMgroup/note) 0-99 - note: <i>Notes for the group</i>
@noteLabel	subject qualifier of a note - base type: string, max length: 35, (XPath GARMasterData/packages/handlingChar/note/@noteLabel) [Optional] - nota: <i>must be used to qualify the subject of the note</i> (XPath GARMasterData/GMbody/GMgroup/GMitem/dtScheme/note/@noteLabel) [Optional] - nota: <i>must be used to qualify the subject of the note</i> (XPath GARMasterData/GMbody/GMgroup/GMitem/note/@noteLabel) [Optional] - nota: <i>must be used to qualify the subject of the note</i> (XPath GARMasterData/GMbody/GMgroup/GMitem/garmentCategory/note/@noteLabel) [Optional]



	<ul style="list-style-type: none"> <li>- nota: <i>must be used to qualify the subject of the note</i> (XPath GARMasterData/GMbody/GMgroup/GMitem/packages/handlingChar/note/@noteLabel) [Optional]</li> <li>- nota: <i>must be used to qualify the subject of the note</i> (XPath GARMasterData/GMheader/note/@noteLabel) [Optional]</li> <li>- nota: <i>must be used to qualify the subject of the note</i> (XPath GARMasterData/GMbody/GMgroup/GMitem/handlingChar/note/@noteLabel) [Optional]</li> <li>- nota: <i>must be used to qualify the subject of the note</i> (XPath GARMasterData/GMbody/GMgroup/packages/handlingChar/note/@noteLabel) [Optional]</li> <li>- nota: <i>must be used to qualify the subject of the note</i> (XPath GARMasterData/GMbody/GMgroup/note/@noteLabel) [Optional]</li> <li>- nota: <i>must be used to qualify the subject of the note</i> (XPath GARMasterData/GMbody/GMgroup/GMitem/fashionProd/note/@noteLabel) [Optional]</li> <li>- nota: <i>must be used to qualify the subject of the note</i></li> </ul>
@numberingOrg	<p>code specifying the organisation who has created or owns the coding or numbering system</p> <ul style="list-style-type: none"> <li>- base type: string, cod. table: NT6 <a href="http://www.ebiz.enea.it/moda-ml/repository/codelist/draft/gc_NT6.xml">http://www.ebiz.enea.it/moda-ml/repository/codelist/draft/gc_NT6.xml</a> (XPath GARMasterData/GMbody/GMgroup/packages/handlingChar/garPack/garPackCode/@numberingOrg) [Optional]</li> <li>- nota: <i>this attribute should be used either single or coupled with "listName" and "listVersion"</i> (XPath GARMasterData/GMheader/season/@numberingOrg) [Optional]</li> <li>- nota: <i>this attribute should be used either single or coupled with "listName" and "listVersion"</i> (XPath GARMasterData/GMbody/GMgroup/GMitem/fashionProdcRange/sizeMatrix/sizeRow/itemsList/itemIdentification/serialN/@numberingOrg) [Optional]</li> <li>- nota: <i>here the issuer of the serial number must be specified (when different from the Supplier)</i> (XPath GARMasterData/GMbody/GMgroup/packages/handlingChar/acsPack/acsPackCode/@numberingOrg) [Optional]</li> <li>- nota: <i>this attribute should be used either single or coupled with "listName" and "listVersion"</i> (XPath GARMasterData/GMbody/GMgroup/GMitem/fashionProd/note/@numberingOrg) [Optional]</li> <li>- nota: <i>must be used to specify the organization that created the list of codes used in "noteLabel"</i> (XPath GARMasterData/GMbody/GMgroup/GMitem/thirdParty/id/@numberingOrg) [Optional] (XPath GARMasterData/GMbody/GMgroup/GMitem/packages/handlingChar/garPack/garPackCode/@numberingOrg) [Optional]</li> <li>- nota: <i>this attribute should be used either single or coupled with "listName" and "listVersion"</i> (XPath GARMasterData/GMbody/GMgroup/GMitem/packages/handlingChar/acsPack/acsPackCode/@numberingOrg) [Optional]</li> <li>- nota: <i>this attribute should be used either single or coupled with "listName" and "listVersion"</i> (XPath GARMasterData/GMbody/GMgroup/GMitem/handlingChar/acsPack/acsPackCode/@numberingOrg) [Optional]</li> <li>- nota: <i>this attribute should be used either single or coupled with "listName" and "listVersion"</i> (XPath GARMasterData/GMbody/GMgroup/GMitem/packages/handlingChar/note/@numberingOrg) [Optional]</li> <li>- nota: <i>must be used to specify the organization that created the list of codes used in "noteLabel"</i> (XPath GARMasterData/GMheader/senderParty/id/@numberingOrg) [Optional] (XPath GARMasterData/GMheader/refDoc/season/@numberingOrg) [Optional]</li> <li>- nota: <i>this attribute should be used either single or coupled with "listName" and "listVersion"</i> (XPath GARMasterData/GMbody/GMgroup/packages/handlingChar/note/@numberingOrg) [Optional]</li> <li>- nota: <i>must be used to specify the organization that created the list of codes used in "noteLabel"</i> (XPath GARMasterData/GMbody/GMgroup/GMitem/packages/packageModelCode/@numberingOrg) [Optional] (XPath GARMasterData/GMbody/GMgroup/GMitem/handlingChar/note/@numberingOrg) [Optional]</li> </ul>

	<p>- nota: <i>must be used to specify the organization that created the list of codes used in "noteLabel"</i>  (XPath GARMasterData/GMbody/GMgroup/packages/packageN/@numberingOrg) [Optional]  (XPath GARMasterData/GMheader/refDoc/attachment/fileName/@numberingOrg) [Optional]  (XPath GARMasterData/GMbody/GMgroup/GMitem/handlingChar/garPack/garPackCode/@numberingOrg) [Optional]</p> <p>- nota: <i>this attribute should be used either single or coupled with "listName" and "listVersion"</i>  (XPath GARMasterData/GMbody/GMgroup/note/@numberingOrg) [Optional]</p> <p>- nota: <i>must be used to specify the organization that created the list of codes used in "noteLabel"</i>  (XPath GARMasterData/GMbody/GMgroup/GMitem/unitOfMeasure/@numberingOrg) [Optional] [Default= EB]  (XPath GARMasterData/GMheader/refDoc/docID/@numberingOrg) [Optional]</p> <p>- nota: <i>here can be specified whose document numbering is used (e.g.: Client, Supplier, ..)</i>  (XPath GARMasterData/GMbody/GMgroup/packages/packageModelCode/@numberingOrg) [Optional]  (XPath GARMasterData/GMbody/GMgroup/GMitem/note/@numberingOrg) [Optional]</p> <p>- nota: <i>must be used to specify the organization that created the list of codes used in "noteLabel"</i>  (XPath GARMasterData/GMbody/GMgroup/GMitem/dtScheme/note/@numberingOrg) [Optional]</p> <p>- nota: <i>must be used to specify the organization that created the list of codes used in "noteLabel"</i>  (XPath GARMasterData/GMbody/GMgroup/GMitem/measureConversion/unitOfTargetMeasure/@numberingOrg) [Optional] [Default= EB]  (XPath GARMasterData/GMbody/GMgroup/packages/EPClist/EPC/@numberingOrg) [Optional]  (XPath GARMasterData/GMbody/GMgroup/GMitem/packages/packageN/@numberingOrg) [Optional]  (XPath GARMasterData/GMbody/GMgroup/GMitem/measureConversion/unitOfSourceMeasure/@numberingOrg) [Optional] [Default= EB]  (XPath GARMasterData/GMbody/GMgroup/GMitem/dtScheme/legalRef/@numberingOrg) [Optional]</p> <p>- nota: <i>this attribute should be used either single or coupled with "listName" and "listVersion"</i>  (XPath GARMasterData/GMbody/GMgroup/GMitem/packages/EPClist/EPC/@numberingOrg) [Optional]  (XPath GARMasterData/GMbody/GMgroup/GMitem/fashionProd/garmentCode/@numberingOrg) [Optional]  (XPath GARMasterData/GMbody/GMgroup/GMitem/fashionProd/garmentPartCode/size/@numberingOrg) [Optional]</p> <p>- nota: <i>this attribute should be used either single or coupled with "listName" and "listVersion"</i>  (XPath GARMasterData/GMbody/GMgroup/GMitem/fashionProd/garmentPartCode/added/@numberingOrg) [Optional]</p> <p>- nota: <i>this attribute should be used either single or coupled with "listName" and "listVersion"</i>  (XPath GARMasterData/GMbody/GMgroup/GMitem/fashionProd/garmentCode/garmentCodeB/mod/@numberingOrg) [Optional]  (XPath GARMasterData/GMbody/GMgroup/GMitem/fashionProd/garmentCode/garmentCodeB/@numberingOrg) [Optional]  (XPath GARMasterData/GMheader/thirdParty/id/@numberingOrg) [Optional]  (XPath GARMasterData/GMbody/GMgroup/GMitem/fashionProd/garmentPartCode/color/@numberingOrg) [Optional]</p> <p>- nota: <i>this attribute should be used either single or coupled with "listName" and "listVersion"</i>  (XPath GARMasterData/GMbody/GMgroup/GMitem/fashionProd/acsCode/added/@numberingOrg) [Optional]</p> <p>- nota: <i>this attribute should be used either single or coupled with "listName" and "listVersion"</i>  (XPath GARMasterData/GMbody/GMgroup/GMitem/fashionProd/acsCode/color/@numberingOrg) [Optional]</p> <p>- nota: <i>this attribute should be used either single or coupled with "listName" and "listVersion"</i>  (XPath GARMasterData/GMbody/GMgroup/GMitem/fashionProd/acsCode/pattern/@numberingOrg) [Optional]</p> <p>- nota: <i>this attribute should be used either single or coupled with "listName" and "listVersion"</i></p>
--	--

	<p>(XPath GARMasterData/GMbody/GMgroup/GMitem/fashionProd/garmentPartCode/fabric/@numberingOrg) [Optional]</p> <p>- nota: <i>this attribute should be used either single or coupled with "listName" and "listVersion"</i></p> <p>(XPath GARMasterData/GMbody/GMgroup/GMitem/fashionProd/garmentPartCode/mod/@numberingOrg) [Optional]</p> <p>(XPath GARMasterData/GMbody/GMgroup/GMitem/fashionProd/garmentPartCode/@numberingOrg) [Optional]</p> <p>(XPath GARMasterData/GMbody/GMgroup/GMitem/fashionProd/garmentCode/garmentCodeB/fabric/@numberingOrg) [Optional]</p> <p>- nota: <i>this attribute should be used either single or coupled with "listName" and "listVersion"</i></p> <p>(XPath GARMasterData/GMbody/GMgroup/GMitem/refDoc/attachment/fileName/@numberingOrg) [Optional]</p> <p>(XPath GARMasterData/GMbody/GMgroup/GMitem/fashionProd/garmentCode/garmentCodeB/size/@numberingOrg) [Optional]</p> <p>- nota: <i>this attribute should be used either single or coupled with "listName" and "listVersion"</i></p> <p>(XPath GARMasterData/GMbody/GMgroup/GMitem/fashionProd/garmentCode/garmentCodeB/drop/@numberingOrg) [Optional]</p> <p>- nota: <i>this attribute should be used either single or coupled with "listName" and "listVersion"</i></p> <p>(XPath GARMasterData/GMbody/GMgroup/GMitem/fashionProd/garmentCode/garmentCodeA/art/@numberingOrg) [Optional]</p> <p>- nota: <i>this attribute should be used either single or coupled with "listName" and "listVersion"</i></p> <p>(XPath GARMasterData/GMbody/GMgroup/GMitem/fashionProd/garmentCode/garmentCodeB/added/@numberingOrg) [Optional]</p> <p>- nota: <i>this attribute should be used either single or coupled with "listName" and "listVersion"</i></p> <p>(XPath GARMasterData/GMbody/GMgroup/GMitem/fashionProd/garmentCode/garmentCodeB/artGroup/@numberingOrg) [Optional]</p> <p>- nota: <i>this attribute should be used either single or coupled with "listName" and "listVersion"</i></p> <p>(XPath GARMasterData/packages/handlingChar/acsPack/acsPackCode/@numberingOrg) [Optional]</p> <p>- nota: <i>this attribute should be used either single or coupled with "listName" and "listVersion"</i></p> <p>(XPath GARMasterData/GMbody/GMgroup/GMitem/fashionProd/garmentCode/garmentCodeB/garmentVariant/variantType/@numberingOrg) [Optional]</p> <p>- nota: <i>this attribute should be used either single or coupled with "listName" and "listVersion"</i></p> <p>(XPath GARMasterData/packages/EPclist/EPC/@numberingOrg) [Optional]</p> <p>(XPath GARMasterData/GMbody/GMgroup/GMitem/fashionProd/garmentCode/garmentCodeB/color/@numberingOrg) [Optional]</p> <p>- nota: <i>this attribute should be used either single or coupled with "listName" and "listVersion"</i></p> <p>(XPath GARMasterData/GMbody/GMgroup/GMitem/fashionProd/garmentCode/garmentCodeB/garmentVariant/variantCode/@numberingOrg) [Optional]</p> <p>- nota: <i>this attribute should be used either single or coupled with "listName" and "listVersion"</i></p> <p>(XPath GARMasterData/packages/packageN/@numberingOrg) [Optional]</p> <p>(XPath GARMasterData/GMbody/GMgroup/refDoc/season/@numberingOrg) [Optional]</p> <p>- nota: <i>this attribute should be used either single or coupled with "listName" and "listVersion"</i></p> <p>(XPath GARMasterData/GMbody/GMgroup/GMitem/fashionProd/acsCode/art/@numberingOrg) [Optional]</p> <p>- nota: <i>this attribute should be used either single or coupled with "listName" and "listVersion"</i></p> <p>(XPath GARMasterData/GMbody/GMgroup/GMitem/fashionProd/yarnCode/@numberingOrg) [Optional] [Default= CL]</p> <p>(XPath GARMasterData/GMbody/GMgroup/GMitem/garmentCategory/artGroup/@numberingOrg) [Optional]</p> <p>- nota: <i>this attribute should be used either single or coupled with "listName" and "listVersion"</i></p> <p>(XPath GARMasterData/GMbody/GMgroup/GMitem/fashionProd/additionalComponentCode/@numberingOrg) [Optional]</p>
--	--

- nota: *this attribute should be used either single or coupled with "listName" and "listVersion"*  
 (XPath GARMasterData/packages/packageModelCode/@numberingOrg) [Optional]  
 (XPath GARMasterData/GMbody/GMgroup/GMitem/fashionProd/yarnCode/color/@numberingOrg) [Optional]

- nota: *this attribute should be used either single or coupled with "listName" and "listVersion"*  
 (XPath GARMasterData/GMbody/GMgroup/GMitem/fashionProd/yarnCode/art/@numberingOrg) [Optional]

- nota: *this attribute should be used either single or coupled with "listName" and "listVersion"*  
 (XPath GARMasterData/GMbody/GMgroup/GMitem/garmentCategory/artSubGroup/@numberingOrg) [Optional]

- nota: *this attribute should be used either single or coupled with "listName" and "listVersion"*  
 (XPath GARMasterData/GMbody/GMgroup/GMitem/garmentCategory/goodsClassification/class/@numberingOrg) [Optional]

- nota: *this attribute should be used either single or coupled with "listName" and "listVersion"*  
 (XPath GARMasterData/GMbody/GMgroup/GMitem/garmentCategory/season/@numberingOrg) [Optional]

- nota: *this attribute should be used either single or coupled with "listName" and "listVersion"*  
 (XPath GARMasterData/GMbody/GMgroup/GMitem/garmentCategory/goodsClassification/macroClass/@numberingOrg) [Optional]

- nota: *this attribute should be used either single or coupled with "listName" and "listVersion"*  
 (XPath GARMasterData/GMbody/GMgroup/GMitem/garmentCategory/artSex/@numberingOrg) [Optional]

- nota: *this attribute should be used either single or coupled with "listName" and "listVersion"*  
 (XPath GARMasterData/GMbody/GMgroup/GMitem/garmentCategory/note/@numberingOrg) [Optional]

- nota: *must be used to specify the organization that created the list of codes used in "noteLabel"*  
 (XPath GARMasterData/GMbody/GMgroup/GMitem/garmentCategory/goodsClassification/subClass/@numberingOrg) [Optional]

- nota: *this attribute should be used either single or coupled with "listName" and "listVersion"*  
 (XPath GARMasterData/GMbody/GMgroup/GMitem/fashionProd/yarnCode/added/@numberingOrg) [Optional]

- nota: *this attribute should be used either single or coupled with "listName" and "listVersion"*  
 (XPath GARMasterData/GMbody/GMgroup/GMitem/productLine/@numberingOrg) [Optional]

- nota: *this attribute should be used either single or coupled with "listName" and "listVersion"*  
 (XPath GARMasterData/GMbody/GMgroup/GMitem/operationalCode/@numberingOrg) [Optional]

- nota: *this attribute should be used either single or coupled with "listName" and "listVersion"*  
 (XPath GARMasterData/GMbody/GMgroup/GMitem/fashionProd/texCode/added/@numberingOrg) [Optional]

- nota: *this attribute should be used either single or coupled with "listName" and "listVersion"*  
 (XPath GARMasterData/GMbody/GMgroup/GMitem/fashionProd/acsCode/@numberingOrg) [Optional]  
 (XPath GARMasterData/GMbody/GMgroup/GMitem/brand/@numberingOrg) [Optional]

- nota: *this attribute should be used either single or coupled with "listName" and "listVersion"*  
 (XPath GARMasterData/GMbody/GMgroup/refDoc/docID/@numberingOrg) [Optional]  
 - nota: *here can be specified whose document numbering is used (e.g.: Client, Supplier, ..)*

	<p>(XPath GARMasterData/GMheader/note/@numberingOrg) [Optional]  - nota: <i>must be used to specify the organization that created the list of codes used in "noteLabel"</i></p> <p>(XPath GARMasterData/GMbody/GMgroup/GMitem/fashionProd/texCode/pattern/@numberingOrg) [Optional]  - nota: <i>this attribute should be used either single or coupled with "listName" and "listVersion"</i></p> <p>(XPath GARMasterData/GMbody/GMgroup/GMitem/fashionProd/texCode/art/@numberingOrg) [Optional]  - nota: <i>this attribute should be used either single or coupled with "listName" and "listVersion"</i></p> <p>(XPath GARMasterData/GMbody/GMgroup/GMitem/fashionProd/texCode/@numberingOrg) [Optional]  (XPath GARMasterData/GMbody/GMgroup/GMitem/fashionProd/texCode/color/@numberingOrg) [Optional]  - nota: <i>this attribute should be used either single or coupled with "listName" and "listVersion"</i></p> <p>(XPath GARMasterData/GMbody/GMgroup/GMitem/garmentCategory/@numberingOrg) [Optional]  (XPath GARMasterData/GMbody/GMgroup/artGroup/@numberingOrg) [Optional]  - nota: <i>this attribute should be used either single or coupled with "listName" and "listVersion"</i></p> <p>(XPath GARMasterData/GMbody/GMgroup/GMitem/fashionProd/csRange/sizeMatrix/sizeRow/drop/@numberingOrg) [Optional]  - nota: <i>this attribute should be used either single or coupled with "listName" and "listVersion"</i></p> <p>(XPath GARMasterData/GMbody/GMgroup/GMitem/fashionProd/csRange/garmentVariant/variantCode/@numberingOrg) [Optional]  - nota: <i>this attribute should be used either single or coupled with "listName" and "listVersion"</i></p> <p>(XPath GARMasterData/GMbody/GMgroup/GMitem/fashionProd/csRange/garmentVariant/variantType/@numberingOrg) [Optional]  - nota: <i>this attribute should be used either single or coupled with "listName" and "listVersion"</i></p> <p>(XPath GARMasterData/GMbody/GMgroup/GMitem/refDoc/docID/@numberingOrg) [Optional]  - nota: <i>here can be specified whose document numbering is used (e.g.: Client, Supplier, ..)</i></p> <p>(XPath GARMasterData/GMheader/receiverParty/id/@numberingOrg) [Optional]  (XPath GARMasterData/GMbody/GMgroup/GMitem/fashionProd/csRange/drop/@numberingOrg) [Optional]  - nota: <i>this attribute should be used either single or coupled with "listName" and "listVersion"</i></p> <p>(XPath GARMasterData/GMbody/GMgroup/GMitem/fashionProd/csRange/sizeMatrix/sizeRow/additionalComponentCode/@numberingOrg) [Optional]  - nota: <i>this attribute should be used either single or coupled with "listName" and "listVersion"</i></p> <p>(XPath GARMasterData/GMbody/GMgroup/GMitem/refDoc/season/@numberingOrg) [Optional]  - nota: <i>this attribute should be used either single or coupled with "listName" and "listVersion"</i></p> <p>(XPath GARMasterData/GMbody/GMgroup/GMitem/fashionProd/csRange/color/@numberingOrg) [Optional]  - nota: <i>this attribute should be used either single or coupled with "listName" and "listVersion"</i></p> <p>(XPath GARMasterData/GMbody/GMgroup/GMitem/fashionProd/csRange/@numberingOrg) [Optional]  (XPath GARMasterData/GMbody/GMgroup/refDoc/attachment/fileName/@numberingOrg) [Optional]  (XPath GARMasterData/GMbody/GMgroup/GMitem/fashionProd/csRange/sizeMatrix/sizeRow/itemsList/qualityLevel/@numberingOrg) [Optional]  - nota: <i>this attribute should be used either single or coupled with "listName" and "listVersion"</i></p> <p>(XPath GARMasterData/packages/handlingChar/note/@numberingOrg) [Optional]  - nota: <i>must be used to specify the organization that created the list of codes used in "noteLabel"</i></p> <p>(XPath GARMasterData/GMbody/GMgroup/GMitem/fashionProd/csRange/sizeMatrix/sizeRow/size/@numberingOrg) [Optional]  - nota: <i>this attribute should be used either single or coupled with "listName" and "listVersion"</i></p>
--	--

	<p><i>rsion</i>"</p> <p>(XPath GARMasterData/packages/handlingChar/garPack/garPackCode/@numberingOrg) [Optional]</p> <p>- nota: <i>this attribute should be used either single or coupled with "listName" and "listVersion"</i></p>
operationalCode	<p>operational code: it is the code of a project, an event, an initiative, a sales channel, a management type (eg CITES), ... the document, or product, is connected with.</p> <p>- base type: string,</p> <p>(XPath GARMasterData/GMbody/GMgroup/GMitem/operationalCode) 0-19</p>
package	<p>code specifying the type of transport package</p> <p>- base type: string, cod. table: T11</p> <p><a href="http://www.ebiz.enea.it/moda-ml/repository/codelist/draft/gc_T11.xml">http://www.ebiz.enea.it/moda-ml/repository/codelist/draft/gc_T11.xml</a></p> <p>(XPath GARMasterData/GMbody/GMgroup/packages/package) 1-1</p> <p>(XPath GARMasterData/GMbody/GMgroup/GMitem/packages/package) 1-1</p> <p>(XPath GARMasterData/packages/package) 1-1</p>
@packageContainerN	<p>reference usable to indicate the outer package containing this package</p> <p>- base type: string, max length: 40,</p> <p>(XPath GARMasterData/GMbody/GMgroup/GMitem/packages/packageN/@packageContainerN) [Optional]</p> <p>(XPath GARMasterData/GMbody/GMgroup/packages/packageN/@packageContainerN) [Optional]</p> <p>(XPath GARMasterData/packages/packageN/@packageContainerN) [Optional]</p>
@packageLevel	<p>level used to indicate the hierarchical structure of the packages (from outer to inner levels)</p> <p>- base type: positiveInteger, min inclusive: 1, max inclusive: 9,</p> <p>(XPath GARMasterData/GMbody/GMgroup/GMitem/packages/@packageLevel) [Optional]</p> <p>- nota: <i>number fixing the level of the package in the transport structure (from inner to outer). Must either be used for all package types or not be used</i></p> <p>(XPath GARMasterData/GMbody/GMgroup/packages/@packageLevel) [Optional]</p> <p>- nota: <i>number fixing the level of the package in the transport structure (from inner to outer). Must either be used for all package types or not be used</i></p> <p>(XPath GARMasterData/packages/@packageLevel) [Optional]</p> <p>- nota: <i>number fixing the level of the package in the transport structure (from inner to outer). Must either be used for all package types or not be used</i></p>
packageModelCode	<p>a code (eg a barcode) identifying the type of packaging</p> <p>- base type: string,</p> <p>(XPath GARMasterData/packages/packageModelCode) 0-1</p> <p>(XPath GARMasterData/GMbody/GMgroup/packages/packageModelCode) 0-1</p> <p>(XPath GARMasterData/GMbody/GMgroup/GMitem/packages/packageModelCode) 0-1</p>
packageN	<p>serial number used to identify a transport package</p> <p>- base type: string, max length: 40,</p> <p>(XPath GARMasterData/GMbody/GMgroup/packages/packageN) 0-unbounded</p> <p>- note: <i>here the serial no.s of the packages can be identified</i></p> <p>(XPath GARMasterData/packages/packageN) 0-unbounded</p> <p>- note: <i>here the serial no.s of the packages can be identified</i></p> <p>(XPath GARMasterData/GMbody/GMgroup/GMitem/packages/packageN) 0-unbounded</p> <p>- note: <i>here the serial no.s of the packages can be identified</i></p>
packageQty	<p>quantity of the specified transport packages</p> <p>- base type: positiveInteger,</p> <p>(XPath GARMasterData/packages/packageQty) 0-1</p> <p>- note: <i>total for the type of package</i></p> <p>(XPath GARMasterData/GMbody/GMgroup/packages/packageQty) 0-1</p> <p>- note: <i>total for the type of package</i></p> <p>(XPath GARMasterData/GMbody/GMgroup/GMitem/packages/packageQty) 0-1</p> <p>- note: <i>total for the type of package</i></p>
packageText	<p>denomination of the type of transport package (text)</p> <p>- base type: string, max length: 80,</p> <p>(XPath GARMasterData/GMbody/GMgroup/GMitem/packages/packageText) 1-1</p> <p>(XPath GARMasterData/GMbody/GMgroup/packages/packageText) 1-1</p> <p>(XPath GARMasterData/packages/packageText) 1-1</p>
pattern	<p>pattern/design number of the product, when not included in the article code</p> <p>- base type: string, max length: 15,</p> <p>(XPath GARMasterData/GMbody/GMgroup/GMitem/fashionProd/acsCode/pattern) 0-1</p>

	(XPath GARMasterData/GMbody/GMgroup/GMitem/fashionProd/ texCode/pattern) 0-1
percCompos	fiber percentage in the product composition - base type: decimal, min inclusive: 0, max inclusive: 100, fraction digits: 2, (XPath GARMasterData/GMbody/GMgroup/GMitem/composition/ garmentCompos/percCompos) 1-99 - note: <i>fiber % in the product composition</i>
@percSourcesRenewable	indicates the percentage of renewable sources - base type: decimal, (XPath GARMasterData/GMbody/GMgroup/GMitem/composition/ garmentCompos/percCompos/@percSourcesRenewable) [Optional] - nota: <i>use only for virgin material</i>
person	name of a person (e.g. contact person within an organization) - base type: string, max length: 40, (XPath GARMasterData/GMheader/receiverParty/person) 0-1 (XPath GARMasterData/GMbody/GMgroup/GMitem/thirdParty/person) 0-1 (XPath GARMasterData/GMheader/thirdParty/person) 0-1 (XPath GARMasterData/GMheader/senderParty/person) 0-1
@phone	phone number of the contact person within a Party - base type: string, max length: 35, (XPath GARMasterData/GMheader/senderParty/person/@phone) [Optional] (XPath GARMasterData/GMheader/receiverParty/person/@phone) [Optional] (XPath GARMasterData/GMbody/GMgroup/GMitem/thirdParty/ person/@phone) [Optional] (XPath GARMasterData/GMheader/thirdParty/person/@phone) [Optional]
pieceInnWrap1	code specifying the type of inner wrapping/packing used for the fabric piece - base type: string, cod. table: T4 <a href="http://www.ebiz.enea.it/moda-ml/repository/codelist/draft/gc_T4.xml">http://www.ebiz.enea.it/moda-ml/repository/codelist/draft/gc_T4.xml</a> (XPath GARMasterData/GMbody/GMgroup/GMitem/packages/ handlingChar/piecePack/pieceInnWrap1) 1-1 (XPath GARMasterData/GMbody/GMgroup/GMitem/handlingChar/ piecePack/pieceInnWrap1) 1-1 (XPath GARMasterData/packages/handlingChar/piecePack/pieceInnWrap1) 1-1 (XPath GARMasterData/GMbody/GMgroup/packages/handlingChar/ piecePack/pieceInnWrap1) 1-1
pieceInnWrap2	code sub-specifying the type of inner wrapping/packing used for the fabric piece - base type: string, cod. table: T5 <a href="http://www.ebiz.enea.it/moda-ml/repository/codelist/draft/gc_T5.xml">http://www.ebiz.enea.it/moda-ml/repository/codelist/draft/gc_T5.xml</a> (XPath GARMasterData/packages/handlingChar/piecePack/pieceInnWrap2) 0-1 (XPath GARMasterData/GMbody/GMgroup/packages/handlingChar/ piecePack/pieceInnWrap2) 0-1 (XPath GARMasterData/GMbody/GMgroup/GMitem/packages/ handlingChar/piecePack/pieceInnWrap2) 0-1 (XPath GARMasterData/GMbody/GMgroup/GMitem/handlingChar/ piecePack/pieceInnWrap2) 0-1
pieceOutWrap	code specifying the type of outer wrapping or packing used for the fabric piece - base type: string, cod. table: T6 <a href="http://www.ebiz.enea.it/moda-ml/repository/codelist/draft/gc_T6.xml">http://www.ebiz.enea.it/moda-ml/repository/codelist/draft/gc_T6.xml</a> (XPath GARMasterData/GMbody/GMgroup/packages/handlingChar/ piecePack/pieceOutWrap) 0-1 (XPath GARMasterData/GMbody/GMgroup/GMitem/packages/ handlingChar/piecePack/pieceOutWrap) 0-1 (XPath GARMasterData/GMbody/GMgroup/GMitem/handlingChar/ piecePack/pieceOutWrap) 0-1 (XPath GARMasterData/packages/handlingChar/piecePack/pieceOutWrap) 0-1
piecePackText	free text specifying the type of wrapping or packing used for the fabric piece - base type: string, max length: 250, (XPath GARMasterData/packages/handlingChar/piecePack/piecePackText) 1-1 (XPath GARMasterData/GMbody/GMgroup/GMitem/handlingChar/ piecePack/piecePackText) 1-1 (XPath GARMasterData/GMbody/GMgroup/packages/handlingChar/ piecePack/piecePackText) 1-1 (XPath GARMasterData/GMbody/GMgroup/GMitem/packages/ handlingChar/piecePack/piecePackText) 1-1

postCode	code defining the postal zone - base type: string, max length: 10, (XPath GARMasterData/GMbody/GMgroup/GMitem/thirdParty/postCode) 0-1 (XPath GARMasterData/GMheader/receiverParty/postCode) 0-1 (XPath GARMasterData/GMheader/thirdParty/postCode) 0-1 (XPath GARMasterData/GMheader/senderParty/postCode) 0-1
productLine	the product line name of a fashion product. - base type: string, (XPath GARMasterData/GMbody/GMgroup/GMitem/productLine) 0-1
@progr	progressive number in the sequence - base type: positiveInteger, min inclusive: 1, (XPath GARMasterData/GMbody/GMgroup/packages/fillingCriterion/@progr) [Optional] (XPath GARMasterData/GMbody/GMgroup/GMitem/packages/fillingCriterion/@progr) [Optional] (XPath GARMasterData/packages/fillingCriterion/@progr) [Optional]
qty	net quantity of the article or object correlated, qualified by the function of the document (ordering, delivering, ..) and by the context - base type: decimal, min inclusive: 0, fraction digits: 2, (XPath GARMasterData/GMbody/GMgroup/GMitem/fashionProd/csRange/sizeMatrix/sizeRow/qty) 0-1
qualityLevel	the product quality level (first choice, second choice,...). - base type: string, (XPath GARMasterData/GMbody/GMgroup/GMitem/fashionProd/csRange/sizeMatrix/sizeRow/itemsList/qualityLevel) 0-1
@recyclingProcessEfficiency	recycling process efficiency rate (percentage by weight). - base type: decimal, min inclusive: 0, max inclusive: 100, (XPath GARMasterData/GMbody/GMgroup/GMitem/composition/garmentCompos/percCompos/@recyclingProcessEfficiency) [Optional] - nota: <i>process efficiency declared by the fibre supplier</i>
@recyclingProcessMethod	recycling process method - base type: string, cod. table: T307 <a href="http://www.ebiz.enea.it/moda-ml/repository/codelist/draft/gc_T307.xml">http://www.ebiz.enea.it/moda-ml/repository/codelist/draft/gc_T307.xml</a> (XPath GARMasterData/GMbody/GMgroup/GMitem/composition/garmentCompos/percCompos/@recyclingProcessMethod) [Optional] - nota: <i>use only for non virgin material</i>
@reelMat	type of material of which a package for yarn is made - base type: string, cod. table: T30 <a href="http://www.ebiz.enea.it/moda-ml/repository/codelist/draft/gc_T30.xml">http://www.ebiz.enea.it/moda-ml/repository/codelist/draft/gc_T30.xml</a> (XPath GARMasterData/GMbody/GMgroup/packages/handlingChar/yarnPack/yarnReel/@reelMat) [Optional] (XPath GARMasterData/packages/handlingChar/yarnPack/yarnReel/@reelMat) [Optional] (XPath GARMasterData/GMbody/GMgroup/GMitem/handlingChar/yarnPack/yarnReel/@reelMat) [Optional] (XPath GARMasterData/GMbody/GMgroup/GMitem/packages/handlingChar/yarnPack/yarnReel/@reelMat) [Optional]
@reelType	type of package used for a yarn product - base type: string, cod. table: T29 <a href="http://www.ebiz.enea.it/moda-ml/repository/codelist/draft/gc_T29.xml">http://www.ebiz.enea.it/moda-ml/repository/codelist/draft/gc_T29.xml</a> (XPath GARMasterData/packages/handlingChar/yarnPack/yarnReel/@reelType) [Required] (XPath GARMasterData/GMbody/GMgroup/GMitem/packages/handlingChar/yarnPack/yarnReel/@reelType) [Required] (XPath GARMasterData/GMbody/GMgroup/packages/handlingChar/yarnPack/yarnReel/@reelType) [Required] (XPath GARMasterData/GMbody/GMgroup/GMitem/handlingChar/yarnPack/yarnReel/@reelType) [Required]
@role	Third Party role qualifier - base type: string, cod. table: NT2 <a href="http://www.ebiz.enea.it/moda-ml/repository/codelist/draft/gc_NT2.xml">http://www.ebiz.enea.it/moda-ml/repository/codelist/draft/gc_NT2.xml</a> (XPath GARMasterData/GMbody/GMgroup/GMitem/thirdParty/@role) [Required] (XPath GARMasterData/GMheader/senderParty/@role) [Optional]



	<p>- nota: <i>The use of this attribute is mandatory when the element to which it is associated has TRCHHeader as its parent.</i>  (XPath GARMasterData/GMheader/thirdParty/@role) [Required]  (XPath GARMasterData/GMheader/receiverParty/@role) [Optional]</p> <p>- nota: <i>The use of this attribute is mandatory when the element to which it is associated has TRCHHeader as its parent.</i></p>
@schemeID	<p>identifier of an identification scheme  - base type: string,  (XPath GARMasterData/GMbody/GMgroup/GMitem/refDoc/attachment/hashFootprint/@schemeID) [Optional]</p> <p>- nota: <i>specify for which system this hash footprint might be used as identifier (for example HDFS system..)</i>  (XPath GARMasterData/GMheader/refDoc/attachment/hashFootprint/@schemeID) [Optional]</p> <p>- nota: <i>specify for which system this hash footprint might be used as identifier (for example HDFS system..)</i>  (XPath GARMasterData/GMbody/GMgroup/refDoc/attachment/hashFootprint/@schemeID) [Optional]</p> <p>- nota: <i>specify for which system this hash footprint might be used as identifier (for example HDFS system..)</i></p>
season	<p>sale season; defined as: season (1 crt) + year (4 crt) - season: S/S=1 AW=2 Spring=3 Summer=4 Autumn=5 Winter=6: for more than four seasons use alphabetic sequence: 1st season=A 2nd season=B etc.etc.  - base type: string, max length: 15,  (XPath GARMasterData/GMbody/GMgroup/GMitem/refDoc/season) 0-1</p> <p>- note: <i>here indicates the season to which the referenced document belongs</i>  (XPath GARMasterData/GMbody/GMgroup/refDoc/season) 0-1</p> <p>- note: <i>here indicates the season to which the referenced document belongs</i>  (XPath GARMasterData/GMbody/GMgroup/GMitem/garmentCategory/season) 0-1  (XPath GARMasterData/GMheader/season) 0-1  (XPath GARMasterData/GMheader/refDoc/season) 0-1</p> <p>- note: <i>here indicates the season to which the referenced document belongs</i></p>
@sender	<p>qualifier that specifies the Party issuing of the document  - base type: boolean,  (XPath GARMasterData/GMheader/receiverParty/@sender) [Optional]</p> <p>- nota: <i>This attribute is mandatory when the STYLESHEET must be used.</i>  (XPath GARMasterData/GMbody/GMgroup/GMitem/thirdParty/@sender) [Optional]</p> <p>- nota: <i>This attribute is mandatory when the STYLESHEET must be used</i>  (XPath GARMasterData/GMheader/senderParty/@sender) [Optional]</p> <p>- nota: <i>This attribute is mandatory when the STYLESHEET must be used.</i>  (XPath GARMasterData/GMheader/thirdParty/@sender) [Optional]</p> <p>- nota: <i>This attribute is mandatory when the STYLESHEET must be used</i></p>
serialN	<p>serial number used for the identification of a physical unit  - base type: string, max length: 250,  (XPath GARMasterData/GMbody/GMgroup/GMitem/fashionProduct/sizeMatrix/sizeRow/itemsList/itemIdentification/serialN) 1-9 Best Practice</p> <p>- note: <i>multiple values of serialN are allowed for different representations of the serial identifier of the same product unit. Instances of serialN must differ at least for one value of numberingOrg and idQualifier.</i></p>
size	<p>size number of a fashion product (knitwear, clothing, ..)  - base type: string, max length: 15,  (XPath GARMasterData/GMbody/GMgroup/GMitem/fashionProduct/garmentCode/garmentCodeB/size) 0-1  (XPath GARMasterData/GMbody/GMgroup/GMitem/fashionProduct/sizeMatrix/sizeRow/size) 1-1  (XPath GARMasterData/GMbody/GMgroup/GMitem/fashionProduct/garmentPartCode/size) 0-1</p>
@sizeSystemBase	<p>base of the size system  - base type: string, cod. table: T423  <a href="http://www.ebiz.enea.it/moda-ml/repository/codelist/draft/gc_T423.xml">http://www.ebiz.enea.it/moda-ml/repository/codelist/draft/gc_T423.xml</a>  (XPath GARMasterData/GMbody/GMgroup/GMitem/fashionProduct/sizeMatrix/@sizeSystemBase) [Optional]</p>
@sizeSystemID	<p>the identifier of the size system.</p>

	- base type: string, (XPath GARMasterData/GMbody/GMgroup/GMitem/fashionProd/csRange/@sizeSystemID) [Optional]
@sizeSystemNat	nation or agency identifying the size system - base type: string, cod. table: T421 <a href="http://www.ebiz.enea.it/moda-ml/repository/codelist/draft/gc_T421.xml">http://www.ebiz.enea.it/moda-ml/repository/codelist/draft/gc_T421.xml</a> (XPath GARMasterData/GMbody/GMgroup/GMitem/fashionProd/csRange/@sizeSystemNat) [Optional]
@sizeSystemSeg	market segment identifying the size system - base type: string, cod. table: T422 <a href="http://www.ebiz.enea.it/moda-ml/repository/codelist/draft/gc_T422.xml">http://www.ebiz.enea.it/moda-ml/repository/codelist/draft/gc_T422.xml</a> (XPath GARMasterData/GMbody/GMgroup/GMitem/fashionProd/csRange/@sizeSystemSeg) [Optional]
sortableIndicator	It states if the item can be automatically sorted. - base type: boolean, (XPath GARMasterData/GMbody/GMgroup/GMitem/packages/handlingChar/sortableIndicator) 0-1 (XPath GARMasterData/GMbody/GMgroup/packages/handlingChar/sortableIndicator) 0-1 (XPath GARMasterData/GMbody/GMgroup/GMitem/handlingChar/sortableIndicator) 0-1 (XPath GARMasterData/packages/handlingChar/sortableIndicator) 0-1
stackabilityLevel	This value indicates the level at which the item can be stacked. - base type: integer, (XPath GARMasterData/GMbody/GMgroup/GMitem/packages/handlingChar/stackabilityLevel) 0-1 (XPath GARMasterData/GMbody/GMgroup/packages/handlingChar/stackabilityLevel) 0-1 (XPath GARMasterData/GMbody/GMgroup/GMitem/handlingChar/stackabilityLevel) 0-1 (XPath GARMasterData/packages/handlingChar/stackabilityLevel) 0-1
street	street and building number identifying a location - base type: string, max length: 80, (XPath GARMasterData/GMheader/senderParty/street) 0-1 (XPath GARMasterData/GMbody/GMgroup/GMitem/thirdParty/street) 0-1 (XPath GARMasterData/GMheader/receiverParty/street) 0-1 (XPath GARMasterData/GMheader/thirdParty/street) 0-1
subClass	a code indicating the category (macro-class, class or sub-class) of a commodity classification system the article belongs to. - base type: string, (XPath GARMasterData/GMbody/GMgroup/GMitem/garmentCategory/goodsClassification/subClass) 0-1
subCountry	short name or code of the sub-country entity - base type: string, max length: 9, (XPath GARMasterData/GMbody/GMgroup/GMitem/thirdParty/subCountry) 0-1 (XPath GARMasterData/GMheader/thirdParty/subCountry) 0-1 (XPath GARMasterData/GMheader/receiverParty/subCountry) 0-1 (XPath GARMasterData/GMheader/senderParty/subCountry) 0-1
subDept	name or code of a department - base type: string, max length: 40, (XPath GARMasterData/GMheader/senderParty/subDept) 0-1 (XPath GARMasterData/GMheader/receiverParty/subDept) 0-1 (XPath GARMasterData/GMheader/thirdParty/subDept) 0-1 (XPath GARMasterData/GMbody/GMgroup/GMitem/thirdParty/subDept) 0-1
taxCategory	duty or tax or fee category - base type: string, cod. table: T62 <a href="http://www.ebiz.enea.it/moda-ml/repository/codelist/draft/gc_T62.xml">http://www.ebiz.enea.it/moda-ml/repository/codelist/draft/gc_T62.xml</a> (XPath GARMasterData/GMbody/GMgroup/GMitem/dtScheme/taxCategory) 0-1
taxRate	duty or tax or fee percent rate - base type: string, (XPath GARMasterData/GMbody/GMgroup/GMitem/dtScheme/taxRate) 0-1
@taxType	duty or tax or fee type - base type: string, cod. table: T61 <a href="http://www.ebiz.enea.it/moda-ml/repository/codelist/draft/gc_T61.xml">http://www.ebiz.enea.it/moda-ml/repository/codelist/draft/gc_T61.xml</a> (XPath GARMasterData/GMbody/GMgroup/GMitem/dtScheme/@taxType) [Required]

@TID	<p>serial number wired into the RFID chip</p> <p>- base type: string,  (XPath GARMasterData/GMbody/GMgroup/packages/EPClist/EPC/@TID) [Optional]  (XPath GARMasterData/packages/EPClist/EPC/@TID) [Optional]  (XPath GARMasterData/GMbody/GMgroup/GMitem/packages/EPClist/EPC/@TID) [Optional]</p>
transactionReceipt	<p>transaction receipt on blockchain</p> <p>- base type: string, max length: 80,  (XPath GARMasterData/GMbody/GMgroup/GMitem/refDoc/attachment/blockChainReference/transactionReceipt) 1-9  (XPath GARMasterData/GMbody/GMgroup/refDoc/attachment/blockChainReference/transactionReceipt) 1-9  (XPath GARMasterData/GMheader/refDoc/attachment/blockChainReference/transactionReceipt) 1-9</p>
@uid	<p>unique element identifier within the xml document</p> <p>- base type: string,  (XPath GARMasterData/GMheader/refDoc/attachment/@uid) [Optional]  (XPath GARMasterData/GMbody/GMgroup/refDoc/attachment/@uid) [Optional]  (XPath GARMasterData/GMbody/GMgroup/GMitem/refDoc/attachment/@uid) [Optional]</p>
@um	<p>specification of the unit of measure</p> <p>- base type: string, cod. table: NT7  <a href="http://www.ebiz.enea.it/moda-ml/repository/codelist/draft/gc_NT7.xml">http://www.ebiz.enea.it/moda-ml/repository/codelist/draft/gc_NT7.xml</a>  (XPath GARMasterData/GMbody/GMgroup/packages/handlingChar/yarnPack/yarnReel/yarnReelID/@um) [Required]  (XPath GARMasterData/GMbody/GMgroup/packages/handlingChar/yarnPack/yarnReel/yarnReelH/@um) [Required]  (XPath GARMasterData/GMbody/GMgroup/packages/handlingChar/yarnPack/yarnReel/yarnReelQty/@um) [Required]  (XPath GARMasterData/GMbody/GMgroup/packages/packageDim/height/@um) [Required]  (XPath GARMasterData/GMbody/GMgroup/packages/handlingChar/volume/@um) [Required]  (XPath GARMasterData/packages/handlingChar/yarnPack/yarnReel/yarnReelQty/@um) [Required]  (XPath GARMasterData/GMbody/GMgroup/packages/packageDim/length/@um) [Required]  (XPath GARMasterData/GMbody/GMgroup/packages/packageDim/width/@um) [Required]  (XPath GARMasterData/packages/handlingChar/yarnPack/yarnReel/yarnReelH/@um) [Required]  (XPath GARMasterData/packages/handlingChar/grossWeight/@um) [Required]  (XPath GARMasterData/GMbody/GMgroup/GMitem/handlingChar/grossWeight/@um) [Required]  (XPath GARMasterData/GMbody/GMgroup/GMitem/handlingChar/netWeight/@um) [Required]  (XPath GARMasterData/GMbody/GMgroup/GMitem/thirdParty/geoCoordinates/@um) [Optional] [Default= DEGD]  - nota: <i>when not specified assume decimal DEGREES</i>  (XPath GARMasterData/GMbody/GMgroup/GMitem/handlingChar/volume/@um) [Required]  (XPath GARMasterData/GMbody/GMgroup/GMitem/packages/packageDim/height/@um) [Required]  (XPath GARMasterData/GMbody/GMgroup/GMitem/packages/handlingChar/yarnPack/yarnReel/yarnReelID/@um) [Required]  (XPath GARMasterData/GMbody/GMgroup/GMitem/packages/packageDim/width/@um) [Required]  (XPath GARMasterData/GMheader/thirdParty/geoCoordinates/@um) [Optional] [Default= DEGD]  - nota: <i>when not specified assume decimal DEGREES</i>  (XPath GARMasterData/GMbody/GMgroup/GMitem/packages/packageDim/length/@um) [Required]  (XPath GARMasterData/GMbody/GMgroup/GMitem/handlingChar/yarnPack/yarnReel/yarnReelH/@um) [Required]  (XPath GARMasterData/GMbody/GMgroup/packages/minItemsPerPackage/@um) [Required]  (XPath GARMasterData/GMbody/GMgroup/GMitem/handlingChar/yarnPack/yarnReel/yarnReelID/@um) [Required]  (XPath GARMasterData/GMbody/GMgroup/GMitem/productDim/</p>

	<p>width/@um) [Required]  (XPath GARMasterData/GMbody/GMgroup/GMitem/productDim/height/@um) [Required]  (XPath GARMasterData/GMbody/GMgroup/packages/itemsPerPackage/@um) [Required]  (XPath GARMasterData/GMheader/receiverParty/geoCoordinates/@um) [Optional] [Default= DEGD]  - nota: <i>when not specified assume decimal DEGREES</i>  (XPath GARMasterData/packages/itemsPerPackage/@um) [Required]  (XPath GARMasterData/GMbody/GMgroup/GMitem/handlingChar/yarnPack/yarnReel/yarnReelQty/@um) [Required]  (XPath GARMasterData/GMbody/GMgroup/GMitem/productDim/length/@um) [Required]  (XPath GARMasterData/packages/packageDim/width/@um) [Required]  (XPath GARMasterData/GMbody/GMgroup/GMitem/packages/handlingChar/netWeight/@um) [Required]  (XPath GARMasterData/GMbody/GMgroup/GMitem/packages/handlingChar/grossWeight/@um) [Required]  (XPath GARMasterData/packages/packageDim/length/@um) [Required]  (XPath GARMasterData/GMbody/GMgroup/GMitem/fashionProdc/csRange/sizeMatrix/sizeRow/qty/@um) [Required]  (XPath GARMasterData/GMbody/GMgroup/GMitem/packages/handlingChar/volume/@um) [Required]  (XPath GARMasterData/GMbody/GMgroup/packages/handlingChar/netWeight/@um) [Required]  (XPath GARMasterData/packages/handlingChar/yarnPack/yarnReel/yarnReelD/@um) [Required]  (XPath GARMasterData/GMheader/senderParty/geoCoordinates/@um) [Optional] [Default= DEGD]  - nota: <i>when not specified assume decimal DEGREES</i>  (XPath GARMasterData/packages/packageDim/height/@um) [Required]  (XPath GARMasterData/GMbody/GMgroup/GMitem/packages/itemsPerPackage/@um) [Required]  (XPath GARMasterData/GMbody/GMgroup/GMitem/packages/minItemsPerPackage/@um) [Required]  (XPath GARMasterData/packages/handlingChar/netWeight/@um) [Required]  (XPath GARMasterData/packages/handlingChar/volume/@um) [Required]  (XPath GARMasterData/GMbody/GMgroup/GMitem/packages/handlingChar/yarnPack/yarnReel/yarnReelQty/@um) [Required]  (XPath GARMasterData/GMbody/GMgroup/packages/handlingChar/grossWeight/@um) [Required]  (XPath GARMasterData/GMbody/GMgroup/GMitem/packages/handlingChar/yarnPack/yarnReel/yarnReelH/@um) [Required]  (XPath GARMasterData/packages/minItemsPerPackage/@um) [Required]</p>
unitOfMeasure	<p>unit of measure.  - base type: string,  (XPath GARMasterData/GMbody/GMgroup/GMitem/unitOfMeasure) 0-99  - note: <i>Unit of measurement in which the article is expressed. It is possible to indicate more than one distinguishing them with the measureQualifier attribute</i></p>
unitOfSourceMeasure	<p>unit of measure.  - base type: string,  (XPath GARMasterData/GMbody/GMgroup/GMitem/measureConversion/unitOfSourceMeasure) 1-1  - note: <i>Initial unit of measure (source) in which the article is expressed</i></p>
unitOfTargetMeasure	<p>unit of measure.  - base type: string,  (XPath GARMasterData/GMbody/GMgroup/GMitem/measureConversion/unitOfTargetMeasure) 1-1  - note: <i>Unit of measure (target) obtained by applying the conversion parameter (conversionRate). It is a further unit of measurement in which the article can be expressed.</i></p>
uri	<p>Uniform Resource Identifier (URI) that identifies the external object as an Internet resource  - base type: normalizedString,  (XPath GARMasterData/GMheader/refDoc/attachment/</p>

	<p>externalReference/uri) 1-1 (XPath GARMasterData/GMbody/GMgroup/refDoc/attachment/externalReference/uri) 1-1 (XPath GARMasterData/GMbody/GMgroup/refDoc/attachment/blockChainReference/uri) 1-1</p> <p>- note: reference to the used blockchain ( example: url <a href="https://etherscan.io/">https://etherscan.io/</a> of ethereum)</p> <p>(XPath GARMasterData/GMheader/refDoc/attachment/blockChainReference/uri) 1-1</p> <p>- note: reference to the used blockchain ( example: url <a href="https://etherscan.io/">https://etherscan.io/</a> of ethereum)</p> <p>(XPath GARMasterData/GMbody/GMgroup/GMitem/refDoc/attachment/blockChainReference/uri) 1-1</p> <p>- note: reference to the used blockchain ( example: url <a href="https://etherscan.io/">https://etherscan.io/</a> of ethereum)</p> <p>(XPath GARMasterData/GMbody/GMgroup/GMitem/refDoc/attachment/externalReference/uri) 1-1</p>
@useProfile	<p>use profile to which the present document is compliant if it was agreed by the parties. It is suggested a URI with reference to the firms or the URL of the profile.</p> <p>- base type: string, (XPath GARMasterData/@useProfile) [Optional]</p>
@validationMethod	<p>type of method used to validate the quantity to which it refers. For example, it indicates whether it was measured in the field, estimated indirectly, approved by an expert or taken from the literature</p> <p>- base type: string, cod. table: NT329 <a href="http://www.ebiz.enea.it/moda-ml/repository/codelist/draft/gc_NT329.xml">http://www.ebiz.enea.it/moda-ml/repository/codelist/draft/gc_NT329.xml</a> (XPath GARMasterData/GMbody/GMgroup/GMitem/composition/garmentCompos/percCompos/@validationMethod) [Optional]</p>
validityEnd	<p>date by which the validity ends, according to one of the patterns YYYY-MM-DD, YYYY-MM-DD:HH-MM or YYYY-WW.</p> <p>- base type: string, (XPath GARMasterData/GMheader/validityEnd) 0-1</p>
validityStart	<p>date by which the validity starts, according to one of the patterns YYYY-MM-DD, YYYY-MM-DD:HH-MM or YYYY-WW.</p> <p>- base type: string, (XPath GARMasterData/GMheader/validityStart) 0-1</p>
variantCode	<p>Code of variant used for fashion product.</p> <p>- base type: string, (XPath GARMasterData/GMbody/GMgroup/GMitem/fashionProd/garmentCode/garmentCodeB/garmentVariant/variantCode) 1-1 (XPath GARMasterData/GMbody/GMgroup/GMitem/fashionProd/csRange/garmentVariant/variantCode) 1-1</p>
variantType	<p>Type of variant used for fashion product (examples: 'treatment', 'washing type', 'size class',...)</p> <p>- base type: string, (XPath GARMasterData/GMbody/GMgroup/GMitem/fashionProd/garmentCode/garmentCodeB/garmentVariant/variantType) 1-1 (XPath GARMasterData/GMbody/GMgroup/GMitem/fashionProd/csRange/garmentVariant/variantType) 1-1</p>
@VAT	<p>VAT rate or code (DEPRECATED, use dtScheme element)</p> <p>- base type: string, cod. table: NT16 <a href="http://www.ebiz.enea.it/moda-ml/repository/codelist/draft/gc_NT16.xml">http://www.ebiz.enea.it/moda-ml/repository/codelist/draft/gc_NT16.xml</a> (XPath GARMasterData/GMbody/GMgroup/GMitem/thirdParty/@VAT) [Optional] (XPath GARMasterData/GMheader/thirdParty/@VAT) [Optional] (XPath GARMasterData/GMbody/GMgroup/GMitem/lineN/@VAT) [Optional]</p> <p>- nota: <i>Deprecated, prefer dtScheme when available.</i></p>
@version	<p>Dictionary version from which the instance has been created</p> <p>- base type: string, cod. table: NT100 <a href="http://www.ebiz.enea.it/moda-ml/repository/codelist/draft/gc_NT100.xml">http://www.ebiz.enea.it/moda-ml/repository/codelist/draft/gc_NT100.xml</a> (XPath GARMasterData/@version) [Optional] [Default= draft]</p>
volume	<p>effective volume of a specified object</p> <p>- base type: decimal, min inclusive: 0, fraction digits: 2, (XPath GARMasterData/GMbody/GMgroup/GMitem/packages/</p>

	<p>handlingChar/volume) 0-1  (XPath GARMasterData/GMbody/GMgroup/GMitem/handlingChar/volume) 0-1  (XPath GARMasterData/packages/handlingChar/volume) 0-1  (XPath GARMasterData/GMbody/GMgroup/packages/handlingChar/volume) 0-1</p>
width	<p>effective width of a specified object  - base type: decimal, min inclusive: 0, fraction digits: 2,  (XPath GARMasterData/packages/packageDim/width) 0-1  (XPath GARMasterData/GMbody/GMgroup/GMitem/packages/  packageDim/width) 0-1  (XPath GARMasterData/GMbody/GMgroup/GMitem/productDim/width) 0-1  (XPath GARMasterData/GMbody/GMgroup/packages/packageDim/width) 0-1</p>
xGeoCoord	<p>geographical coordinate x , corresponding to latitude  - base type: decimal,  (XPath GARMasterData/GMheader/senderParty/geoCoordinates/xGeoCoord) 1-1  (XPath  GARMasterData/GMheader/receiverParty/geoCoordinates/xGeoCoord) 1-1  (XPath GARMasterData/GMbody/GMgroup/GMitem/thirdParty/  geoCoordinates/xGeoCoord) 1-1  (XPath GARMasterData/GMheader/thirdParty/geoCoordinates/xGeoCoord) 1-1</p>
yarnConeAngle	<p>tapering angle of the cone on which a yarn is reeled  - base type: positiveInteger,  (XPath GARMasterData/GMbody/GMgroup/packages/handlingChar/  yarnPack/yarnReel/yarnConeAngle) 0-1  (XPath GARMasterData/packages/handlingChar/yarnPack/  yarnReel/yarnConeAngle) 0-1  (XPath GARMasterData/GMbody/GMgroup/GMitem/packages/  handlingChar/yarnPack/yarnReel/yarnConeAngle) 0-1  (XPath GARMasterData/GMbody/GMgroup/GMitem/handlingChar/  yarnPack/yarnReel/yarnConeAngle) 0-1</p>
yarnOutWrap	<p>code specifying the type of outer wrapping or packing of a yarn  - base type: string, cod. table: T33  <a href="http://www.ebiz.enea.it/moda-ml/repository/codelist/draft/gc_T33.xml">http://www.ebiz.enea.it/moda-ml/repository/codelist/draft/gc_T33.xml</a>  (XPath GARMasterData/GMbody/GMgroup/GMitem/packages/  handlingChar/yarnPack/yarnOutWrap) 0-1  (XPath GARMasterData/GMbody/GMgroup/GMitem/handlingChar/  yarnPack/yarnOutWrap) 0-1  (XPath GARMasterData/packages/handlingChar/yarnPack/yarnOutWrap) 0-1  (XPath GARMasterData/GMbody/GMgroup/packages/handlingChar/  yarnPack/yarnOutWrap) 0-1</p>
yarnOutWrapText	<p>free text specifying the type of outer wrapping or packing of a yarn  - base type: string, max length: 250,  (XPath GARMasterData/GMbody/GMgroup/GMitem/packages/  handlingChar/yarnPack/yarnOutWrapText) 0-1  (XPath GARMasterData/GMbody/GMgroup/GMitem/handlingChar/  yarnPack/yarnOutWrapText) 0-1  (XPath GARMasterData/GMbody/GMgroup/packages/handlingChar/  yarnPack/yarnOutWrapText) 0-1  (XPath GARMasterData/packages/handlingChar/yarnPack/yarnOutWrapText) 0-1</p>
yarnReelID	<p>diameter of the bobbin used for a yarn product  - base type: decimal, min inclusive: 0, fraction digits: 2,  (XPath GARMasterData/GMbody/GMgroup/packages/handlingChar/  yarnPack/yarnReel/yarnReelID) 0-1  (XPath GARMasterData/GMbody/GMgroup/GMitem/packages/  handlingChar/yarnPack/yarnReel/yarnReelID) 0-1  (XPath GARMasterData/GMbody/GMgroup/GMitem/handlingChar/  yarnPack/yarnReel/yarnReelID) 0-1  (XPath GARMasterData/packages/handlingChar/yarnPack/  yarnReel/yarnReelID) 0-1</p>
yarnReelH	<p>height of the bobbin used a yarn product  - base type: decimal, min inclusive: 0, fraction digits: 2,  (XPath GARMasterData/GMbody/GMgroup/packages/handlingChar/  yarnPack/yarnReel/yarnReelH) 0-1  (XPath GARMasterData/packages/handlingChar/yarnPack/  yarnReel/yarnReelH) 0-1  (XPath GARMasterData/GMbody/GMgroup/GMitem/handlingChar/  yarnPack/yarnReel/yarnReelH) 0-1</p>

	(XPath GARMasterData/GMbody/GMgroup/GMitem/packages/handlingChar/yarnPack/yarnReel/yarnReelH) 0-1
yarnReelQty	<p>quantity of yarn (by weight or length) wound upon a bobbin</p> <p>- base type: decimal, min inclusive: 0, fraction digits: 2,</p> <p>(XPath GARMasterData/GMbody/GMgroup/GMitem/handlingChar/yarnPack/yarnReel/yarnReelQty) 0-2</p> <p>(XPath GARMasterData/packages/handlingChar/yarnPack/yarnReel/yarnReelQty) 0-2</p> <p>(XPath GARMasterData/GMbody/GMgroup/GMitem/packages/handlingChar/yarnPack/yarnReel/yarnReelQty) 0-2</p> <p>(XPath GARMasterData/GMbody/GMgroup/packages/handlingChar/yarnPack/yarnReel/yarnReelQty) 0-2</p>
yarnReelWrap	<p>type of wrapping in which a package of yarn is wrapped</p> <p>- base type: string, cod. table: T32</p> <p><a href="http://www.ebiz.enea.it/moda-ml/repository/codelist/draft/gc_T32.xml">http://www.ebiz.enea.it/moda-ml/repository/codelist/draft/gc_T32.xml</a></p> <p>(XPath GARMasterData/GMbody/GMgroup/GMitem/packages/handlingChar/yarnPack/yarnInWrap/yarnReelWrap) 1-1</p> <p>(XPath GARMasterData/GMbody/GMgroup/GMitem/handlingChar/yarnPack/yarnInWrap/yarnReelWrap) 1-1</p> <p>(XPath GARMasterData/GMbody/GMgroup/packages/handlingChar/yarnPack/yarnInWrap/yarnReelWrap) 1-1</p> <p>(XPath GARMasterData/packages/handlingChar/yarnPack/yarnInWrap/yarnReelWrap) 1-1</p>
yGeoCoord	<p>geographical coordinate y , corresponding to longitude</p> <p>- base type: decimal,</p> <p>(XPath GARMasterData/GMheader/receiverParty/geoCoordinates/yGeoCoord) 1-1</p> <p>(XPath GARMasterData/GMbody/GMgroup/GMitem/thirdParty/geoCoordinates/yGeoCoord) 1-1</p> <p>(XPath GARMasterData/GMheader/senderParty/geoCoordinates/yGeoCoord) 1-1</p> <p>(XPath GARMasterData/GMheader/thirdParty/geoCoordinates/yGeoCoord) 1-1</p>
zGeoCoord	<p>geographical coordinate z , corresponding to altitude</p> <p>- base type: decimal,</p> <p>(XPath GARMasterData/GMheader/senderParty/geoCoordinates/zGeoCoord) 0-1</p> <p>- note: <i>altitude might be omitted</i></p> <p>(XPath GARMasterData/GMheader/thirdParty/geoCoordinates/zGeoCoord) 0-1</p> <p>- note: <i>altitude might be omitted</i></p> <p>(XPath GARMasterData/GMheader/receiverParty/geoCoordinates/zGeoCoord) 0-1</p> <p>- note: <i>altitude might be omitted</i></p> <p>(XPath GARMasterData/GMbody/GMgroup/GMitem/thirdParty/geoCoordinates/zGeoCoord) 0-1</p> <p>- note: <i>altitude might be omitted</i></p>

## 2.3 Suggested best practices

**GARMasterData/GMheader/refDoc/docID (identification number of the referenced document)**

numberingOrg indicates the role that produced the document identifier (it is allowed to declare two different ones -e.g. customer and supplier - with two docID with different numberingOrg

**GARMasterData/GMbody/GMgroup/GMitem/refDoc/docID (identification number of the referenced document)**

numberingOrg indicates the role that produced the document identifier (it is allowed to declare two different ones -e.g. customer and supplier - with two docID with different numberingOrg

**GARMasterData/GMbody/GMgroup/refDoc/docID (identification number of the referenced document)**

numberingOrg indicates the role that produced the document identifier (it is allowed to declare two different ones -e.g. customer and supplier - with two docID with different numberingOrg

**GARMasterData/GMbody/GMgroup/refDoc/attachment/  
externalReference/mimeCode (mime type of the external object)**

Use coding from IANA <http://www.iana.org/assignments/media-types/media-types.xml>

**GARMasterData/GMheader/refDoc/attachment/  
externalReference/mimeCode (mime type of the external object)**

Use coding from IANA <http://www.iana.org/assignments/media-types/media-types.xml>

**GARMasterData/GMbody/GMgroup/GMitem/refDoc/  
attachment/externalReference/mimeCode (mime type of the external object)**

Use coding from IANA <http://www.iana.org/assignments/media-types/media-types.xml>

**GARMasterData/GMbody/GMgroup/GMitem/fashionProd/  
csRange/sizeMatrix/sizeRow/itemsList/itemIdentification/serialN (serial number used for the identification of a physical unit)**

in the case of garment with RFID for anti-counterfeiting, RFID EPCGlobal for logistics and NFC for the customer experience there should be three serial elements with pairs of attributes numberingOrg/idQualifier: "CL"/"RFID", "GS1"/"RFID", "CL"/"NFC".



## 2.4 Enumeration tables

List of enumeration tables used in the XML document. You can find all the tables with the corresponding codes at:  
<http://www.ebiz.enea.it/eBIZ/imple/eBIZTCU-draft.asp?lingua=en&pag=6>

NT100 - eBIZ TCFUpstream version  
NT16 - VAT rate or code  
NT18 - message function  
NT2 - third party qualifier  
NT29 - format of a date  
NT329 - type of validation method of the value  
NT333 - type of hashing algorithm  
NT43 - operational code qualifier  
NT51 - Filling Criterion for Package homogeneity  
NT6 - coding system owner/issuer  
NT60 - language, codes from ISO 639-1 (subset)  
NT7 - unit of measure  
T10 - ISO3166 - Country  
T11 - transport package type  
T19 - fibre type  
T21 - type of document  
T29 - type of yarn package  
T30 - support of yarn package - material  
T306 - material circularity attribute  
T307 - recycling process method  
T32 - yarn reel wrapping type  
T33 - yarn outer packing  
T4 - fabric piece inner packing (wrapping) 1  
T421 - size system: nationality  
T422 - size system: market segment  
T423 - size system: base  
T44 - additional code type  
T48 - garment part type  
T5 - fabric piece inner packing (wrapping) 2  
T6 - fabric piece outer packing  
T61 - duty or tax or fee type  
T62 - duty or tax or fee category

(the most relevant tables are detailed in the following Annexes too)

## ACKNOWLEDGEMENT



This action is part of the TRICK project, which has received funding from Horizon 2020 research and innovation programme under grant agreement No. 958352 of the European Union.

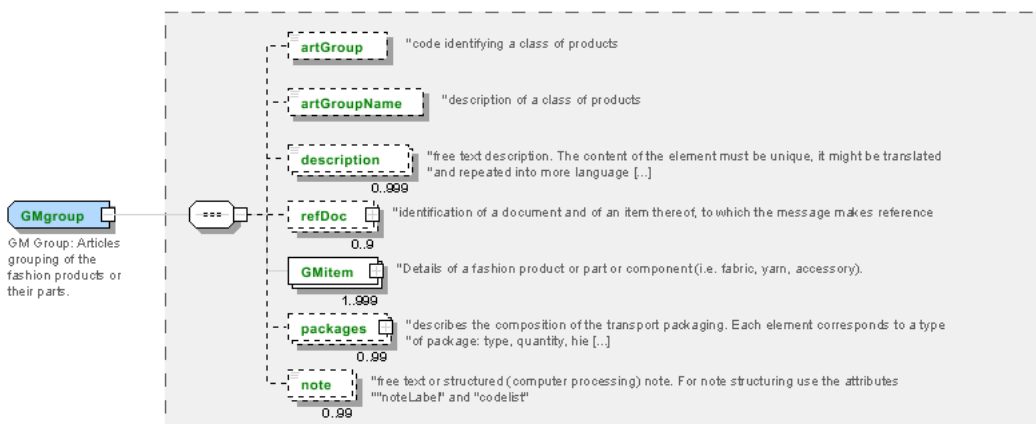
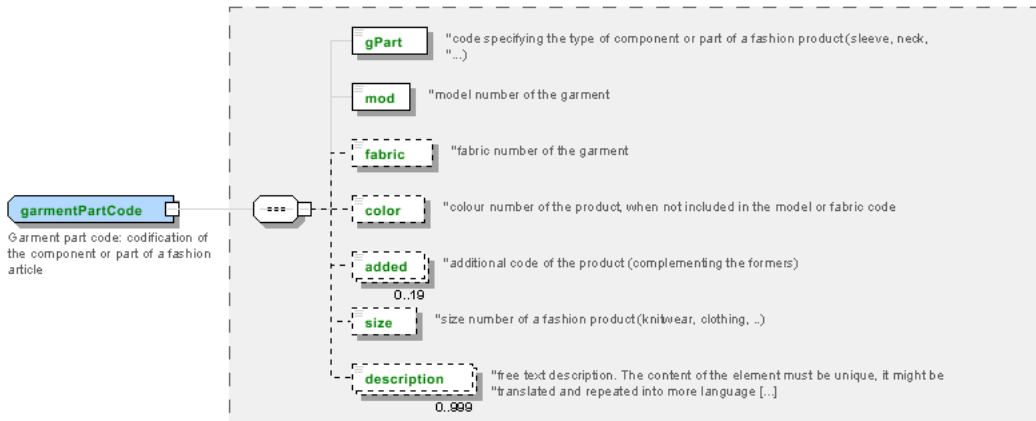
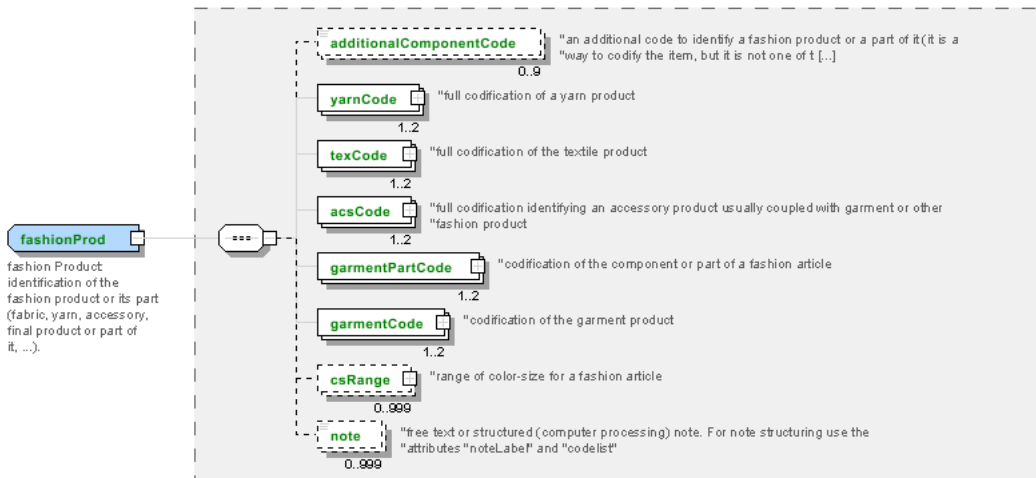
## DISCLAIMER

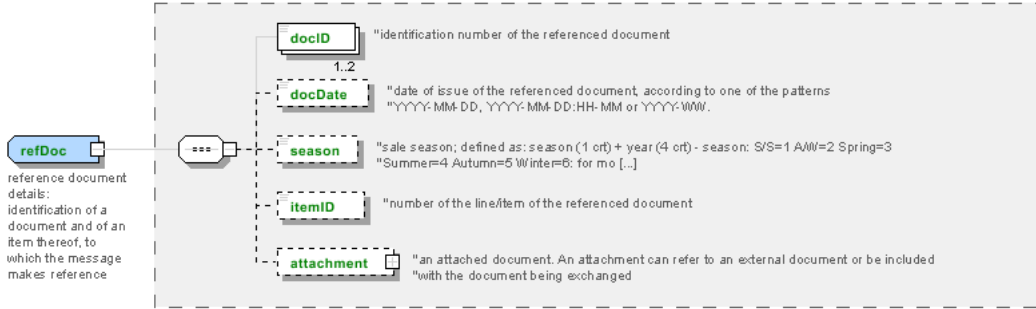
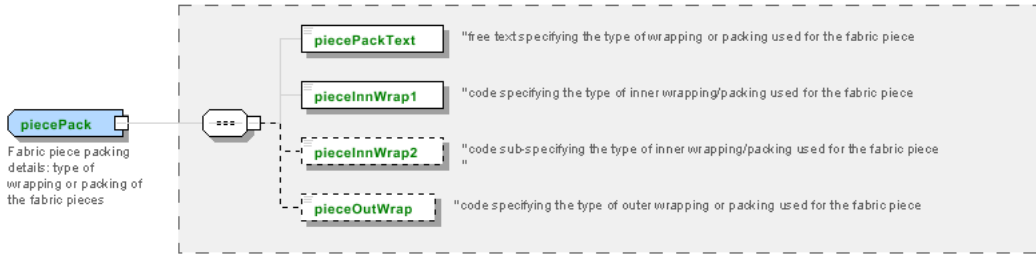
The content of this document represents the views of the authors only and is their sole responsibility; it cannot be considered to reflect the views of the European Commission or any other body of the European Union.

The European Commission does not accept any responsibility for use that may be made of the information it contains.

# Annex A

Representative images of the principal complex elements' structure.







## Annex B

### NT100 - eBIZ TCFUpstream version

dictionary version

Agency name: eBIZ

Decoding table: NT100

File codes list (Generic code): [http://www.ebiz.enea.it/moda-ml/repository/codelist/draft/gc\\_NT100.xml](http://www.ebiz.enea.it/moda-ml/repository/codelist/draft/gc_NT100.xml)

Code	Description	Adoption note	Date of insertion
2013-1	v2013-1		01/07/2013
2018-1	v2018-1		04/11/2018
draft	draft		08/09/2017

### NT16 - VAT rate or code

VAT rate or code ( DEPRECATED, use dtScheme element )

Decoding table: NT16

File codes list (Generic code): [http://www.ebiz.enea.it/moda-ml/repository/codelist/draft/gc\\_NT16.xml](http://www.ebiz.enea.it/moda-ml/repository/codelist/draft/gc_NT16.xml)

### NT18 - message function

function performed by the present message with regards to the transmission

Agency name: eBIZ

Decoding table: NT18

File codes list (Generic code): [http://www.ebiz.enea.it/moda-ml/repository/codelist/draft/gc\\_NT18.xml](http://www.ebiz.enea.it/moda-ml/repository/codelist/draft/gc_NT18.xml)

Code	Description	Adoption note	Date of insertion
CA	delete this document		01/07/2013
CP	copy		
OR	original		
RC	re-transmission for data correction		
RT	re-transmission		

### NT2 - third party qualifier

Third Party role qualifier

Agency name: eBIZ

Decoding table: NT2

File codes list (Generic code): [http://www.ebiz.enea.it/moda-ml/repository/codelist/draft/gc\\_NT2.xml](http://www.ebiz.enea.it/moda-ml/repository/codelist/draft/gc_NT2.xml)

Code	Description	Adoption note	Date of insertion
AG	Sales Agent		
AU	Auditor		08/04/2019
BU	Buyer		13/06/2022
CE	Certification authority		08/04/2019
CM	Commissioner		13/06/2022
CO	Quality Controller		
CU	Customs authority		13/06/2022
DC	Response to		
DF	Invoicee		
DI	Copy to (CC)		28/10/2014
DM	Consignee		
DP	Consignment address (Delivery Party)		
EX	Expert		13/06/2022
IM	Importer		
OR	Originator		10/09/2014
SC	Sub contractor		10/04/2019
SM	Service/ePlatform manager		08/04/2019
SP	Forwarder		
SU	Supplier		13/06/2022
TL	Test or analysis laboratory		13/06/2022
TX	Tax Representative		

#### NT29 - format of a date

format used for the date

Agency name: eBIZ

Decoding table: NT29

File codes list (Generic code): [http://www.ebiz.enea.it/moda-ml/repository/codelist/draft/gc\\_NT29.xml](http://www.ebiz.enea.it/moda-ml/repository/codelist/draft/gc_NT29.xml)

Code	Description	Adoption note	Date of insertion
D	YYYY-MM-DD		
M	YYYY-MM-DD:HH-MM (date and time)		
S	AAAA-MM-GG:HH-MM-SS (date and time with seconds)		13/06/2022
W	YYYY-WW		

### NT329 - type of validation method of the value

indicates the type of method used to validation and calculate the quantity to which it refers; used to express the data faithfulness

Agency name: eBIZ

Decoding table: NT329

File codes list (Generic code): [http://www.ebiz.enea.it/moda-ml/repository/codelist/draft/gc\\_NT329.xml](http://www.ebiz.enea.it/moda-ml/repository/codelist/draft/gc_NT329.xml)

Code	Description	Adoption note	Date of insertion
CER	third party certification		11/06/2023
EST	estimate		12/05/2023
EXP	confirmed by an expert		19/05/2023
LAB	laboratory test		11/06/2023
LIT	literature	refer to a literature analysis outcome	12/05/2023
MON	monitoring	refer to continuous measurement in field	12/05/2023
REV	confirmed by review		11/06/2023
SAM	sampling	refer to a sample measurement in field	12/05/2023
SUP	supplier declaration		11/06/2023

### NT333 - type of hashing algorithm

type of hashing algorithm

Decoding table: NT333

File codes list (Generic code): [http://www.ebiz.enea.it/moda-ml/repository/codelist/draft/gc\\_NT333.xml](http://www.ebiz.enea.it/moda-ml/repository/codelist/draft/gc_NT333.xml)

Code	Description	Adoption note	Date of insertion
ADLER32	ADLER32		26/05/2023
HMAC	HMAC		26/05/2023
MD2	MD2		26/05/2023
MD4	MD4		26/05/2023
MD5	MD5		26/05/2023
MDC-2	MDC-2		26/05/2023
PANAMA	PANAMA		26/05/2023
RIPEMD-160	RIPEMD-160		26/05/2023
SHA-1	SHA-1		26/05/2023
SHA-2 256	SHA-2 256		26/05/2023
SHA-2 384	SHA-2 384		26/05/2023
SHA-2 512	SHA-2 512		26/05/2023
TIGER	TIGER		26/05/2023



### NT43 - operational code qualifier

Agency name: eBIZ

Decoding table: NT43

File codes list (Generic code): [http://www.ebiz.enea.it/moda-ml/repository/codelist/draft/gc\\_NT43.xml](http://www.ebiz.enea.it/moda-ml/repository/codelist/draft/gc_NT43.xml)

Code	Description	Adoption note	Date of insertion
1	event		08/09/2017
2	sales channel		08/09/2017
3	goods management type		08/09/2017
4	special initiative		08/09/2017

### NT51 - Filling Criterion for Package homogeneity

Filling Criterion for Package homogeneity

Agency name: eBIZ

Decoding table: NT51

File codes list (Generic code): [http://www.ebiz.enea.it/moda-ml/repository/codelist/draft/gc\\_NT51.xml](http://www.ebiz.enea.it/moda-ml/repository/codelist/draft/gc_NT51.xml)

Code	Description	Adoption note	Date of insertion
COL	Colour		08/09/2017
MOD	Model		08/09/2017
SIZ	Size		08/09/2017

### NT6 - coding system owner/issuer

code specifying the organisation who has created or owns the registers of the present coding or numbering system

Agency name: eBIZ

Decoding table: NT6

File codes list (Generic code): [http://www.ebiz.enea.it/moda-ml/repository/codelist/draft/gc\\_NT6.xml](http://www.ebiz.enea.it/moda-ml/repository/codelist/draft/gc_NT6.xml)

Code	Description	Adoption note	Date of insertion
CBR	National customs brokers registry		12/06/2023
CL	Customer/buyer		
CO	Quality Controller		
DU	D-U-N-S registry (Data Universal Numbering System)		04/05/2023
EB	eBIZ	replaces 'ML'	18/03/2019

EN	GS1 ( ex-EAN International )		
EO	Registro EORI (Economic Operators Registration and Identification number)		04/03/2023
ES	e-Stockflow	DEPRECATED	
FO	Supplier		
GS	GS1		01/07/2013
MF	national taxation authority (i.e. VAT codes registry)		
ML	Moda-ML	DEPRECATED	
PL	Application Platform		13/06/2022
REX	Registered Exporter system (REX)		19/05/2023
SP	Service Provider		
SU	Enterprise Identification Number UID	Only switzerland	04/03/2023

#### NT60 - language, codes from ISO 639-1 (subset)

Agency name: eBIZ / ISO

Decoding table: NT60

File codes list (Generic code): [http://www.ebiz.enea.it/moda-ml/repository/codelist/draft/gc\\_NT60.xml](http://www.ebiz.enea.it/moda-ml/repository/codelist/draft/gc_NT60.xml)

Code	Description	Adoption note	Date of insertion
af	Afrikaans		31/01/2019
ar	Arabic		31/01/2019
be	Belarusian		31/01/2019
bg	Bulgarian		31/01/2019
bn	Bengali		31/01/2019
bo	Tibetan		31/01/2019
bs	Bosnian		31/01/2019
ca	Catalan, Valencian		31/01/2019
cs	Czech		31/01/2019
da	Danish		31/01/2019
de	German		31/01/2019
el	Greek, Modern (1453-)		31/01/2019
en	English		31/01/2019
eo	Esperanto		31/01/2019
es	Spanish, Castilian		31/01/2019
et	Estonian		31/01/2019
eu	Basque		31/01/2019
F	Female		15/04/2019
fa	Persian		31/01/2019

fi	Finnish		31/01/2019
fr	French		31/01/2019
ga	Irish		31/01/2019
gd	Gaelic, Scottish Gaelic		31/01/2019
gn	Guarani		31/01/2019
he	Hebrew		31/01/2019
hr	Croatian		31/01/2019
ht	Haitian, Haitian Creole		31/01/2019
hu	Hungarian		31/01/2019
hy	Armenian		31/01/2019
ia	Interlingua (International Auxiliary Language Association)		31/01/2019
id	Indonesian		31/01/2019
is	Icelandic		31/01/2019
it	Italian		31/01/2019
ja	Japanese		31/01/2019
jv	Javanese		31/01/2019
ka	Georgian		31/01/2019
km	Central Khmer		31/01/2019
ko	Korean		31/01/2019
ku	Kurdish		31/01/2019
lb	Luxembourgish, Letzeburgesch		31/01/2019
lo	Lao		31/01/2019
lt	Lithuanian		31/01/2019
lv	Latvian		31/01/2019
mg	Malagasy		31/01/2019
mk	Macedonian		31/01/2019
mn	Mongolian		31/01/2019
mt	Maltese		31/01/2019
nl	Dutch, Flemish		31/01/2019
no	Norwegian		31/01/2019
pl	Polish		31/01/2019
pt	Portuguese		31/01/2019
ro	Romanian, Moldavian, Moldovan		31/01/2019
ru	Russian		31/01/2019
se	Northern Sami		31/01/2019
sk	Slovak		31/01/2019
sl	Slovenian		31/01/2019
sm	Samoan		31/01/2019

so	Somali		31/01/2019
sq	Albanian		31/01/2019
sr	Serbian		31/01/2019
sv	Swedish		31/01/2019
sw	Swahili		31/01/2019
ta	Tamil		31/01/2019
th	Thai		31/01/2019
tr	Turkish		31/01/2019
uk	Ukrainian		31/01/2019
ur	Urdu		31/01/2019
uz	Uzbek		31/01/2019
vi	Vietnamese		31/01/2019
zh	Chinese		31/01/2019

#### NT7 - unit of measure

specification of the unit of measure, it is a sub set of table Unit of Measure Code - UN/ECE REC 20 delivered by United Nations Economic Commission for Europe (UN/ECE)

Agency name: eBIZ / UN/ECE

Decoding table: NT7

File codes list (Generic code): [http://www.ebiz.enea.it/moda-ml/repository/codelist/draft/gc\\_NT7.xml](http://www.ebiz.enea.it/moda-ml/repository/codelist/draft/gc_NT7.xml)

Other link: <http://docs.oasis-open.org/ubl/os-UBL-2.1/cl/gc/default/UnitOfMeasureCode-2.1.gc#>

Code	Description	Adoption note	Date of insertion
CMK	square centimetre		20/12/2017
CMQ	cubic centimetre		20/12/2017
CMT	centimetre		
CNE	centiNewton		
CO2TON	ton of CO2		10/09/2014
COUPLES	couples		
DAY	day		22/08/2022
DEGD	decimal degrees		04/07/2022
DEGMS	degrees with minutes and seconds		01/07/2022
DMQ	cubic decimetre		
E37	pixel		11/04/2018
GRM	gram		
HUR	hour		
INH	inch		
KGM	kilogram		

KMT	kilometer		
KWH	kilowatthours		10/09/2014
LBR	pound		
MCG	microgram		23/08/2022
MG	milligram		23/08/2022
MIN	minute		
MMK	square millimetre		20/12/2017
MONTH	month		22/08/2022
MSEC	millisecond (time)		22/08/2022
MTK	square metre		20/12/2017
MTQ	cubic metre		
MTR	metre		
NMB	numero		
ONZ	ounce		
P1	percent		
PPM	parts per milion		
PZ	piece		
RPM	rounds per metre		
SEC	second (time)		22/08/2022
YEAR	year		22/08/2022
YRD	yard		

### T10 - ISO3166 - Country

code of the nation

Agency name: ISO

Decoding table: T10

File codes list (Generic code): [http://www.ebiz.enea.it/moda-ml/repository/codelist/draft/gc\\_T10.xml](http://www.ebiz.enea.it/moda-ml/repository/codelist/draft/gc_T10.xml)

Table not printed: there are 240 elements, more than the maximum specified for printing: 99.

### T11 - transport package type

code specifying the type of package used for transport and delivery (subset of UN/ECE 8053 and UBL TransportEquipmentTypeCode-2.1)

Agency name: eBIZ

Decoding table: T11

File codes list (Generic code): [http://www.ebiz.enea.it/moda-ml/repository/codelist/draft/gc\\_T11.xml](http://www.ebiz.enea.it/moda-ml/repository/codelist/draft/gc_T11.xml)

Other link: <http://docs.oasis-open.org/ubl/os-UBL-2.1/cl/gc/default/TransportEquipmentTypeCode-2.1.gc#>

<b>Code</b>	<b>Description</b>	<b>Adoption note</b>	<b>Date of insertion</b>
4A	box, steel		
4C	box, wood		
4G	Box, fibreboard		01/08/2018
4H	Box, plastic		01/08/2018
5H	Bag, woven plastic		01/08/2018
5L	Bag, textile		01/08/2018
5M	Bag, paper		
AJ	Cone		01/08/2018
BL	Bale, compressed		01/08/2018
BN	Bale, non-compressed		01/08/2018
BX	Box		
CI	Canister		01/08/2018
CL	Coil		01/08/2018
CN	Container, not otherwise specified as transport equipment		01/08/2018
CS	Case		01/08/2018
CT	Carton		01/08/2018
EC	Bag, plastic		01/08/2018
ED	Case, with pallet base		01/08/2018
EE	Case, with pallet base, wooden		01/08/2018
EF	Case, with pallet base, cardboard		01/08/2018
EG	Case, with pallet base, plastic		01/08/2018
EH	Case, with pallet base, metal		01/08/2018
FX	Bag, flexible container		01/08/2018
HN	Hanger		01/08/2018
NE	unpacked		
NF	Unpacked or unpackage, single unit		01/08/2018
NG	Unpacked or unpackage, multiple units		01/08/2018
OA	Pallet, CHEP 40 cm x 60 cm		01/08/2018
OB	Pallet, CHEP 80 cm x 120 cm		01/08/2018
OC	Pallet, CHEP 100 cm x 120 cm		01/08/2018
OD	Pallet, AS 4068-1993		01/08/2018
OE	Pallet, ISO T11		01/08/2018
PE	europallet (80x120)		
PX	pallet		
QS	box, plastic, solid		
RJ	Rack, clothing hanger		01/08/2018

RL	Reel		01/08/2018
SO	Spool		01/08/2018
TU	tube		
XD	bag, plastics film		
XK	bag,paper, multi-wall, water resistant		
ZZ	Mutually defined		01/08/2018

### T19 - fibre type

type of fibre used in a textile product

Agency name: eBIZ

Decoding table: T19

File codes list (Generic code): [http://www.ebiz.enea.it/moda-ml/repository/codelist/draft/gc\\_T19.xml](http://www.ebiz.enea.it/moda-ml/repository/codelist/draft/gc_T19.xml)

Code	Description	Adoption note	Date of insertion
AB	abaca		20/08/2018
AC	acetate		
AF	other fibres		
AG	alginic fibre		
AL	alfa		20/08/2018
AR	aramid		25/04/2022
CA	hemp		
CC	coir (coconut)		20/08/2018
CL	chlorofibre		
CO	cotton		
CU	cuprous		
EA	elastan		
EF	elastolefin		25/04/2022
EL	Elastodiene		20/08/2018
EM	elastomultiester		25/04/2022
FL	fluorofibre		
GI	broom		20/08/2018
GL	textile glass		
HA	hair		20/08/2018
HE	henequen		20/08/2018
HL	mixed linen		
JU	jute		
KE	kenaf		20/08/2018

KP	kapoc		20/08/2018
LI	linen		
LY	lyocell		20/08/2018
MA	modacrylic		
MD	modal		
ME	metallized		
MG	maguey		20/08/2018
MM	melamine		25/04/2022
PA	polyamide		
PB	polyureic		
PC	acrylic		
PE	polyethylene		
PI	paper		20/08/2018
PL	polyester		
PM	polyimide		
PO	polilactyd		25/04/2022
PP	polypropylene		
PR	proteic		
PU	polyurethane		
RA	ramie		20/08/2018
SE	silk		
SI	sisal		20/08/2018
SN	sun		20/08/2018
TA	triacetate		
TR	textile residues or unspecified composition		20/08/2018
TV	trivinyln		
VI	viscose		
VY	vinylal		
WA	angora		
WB	beaver		20/08/2018
WC	cashgora		
WG	vicuna		
WK	camel		
WL	llama		
WM	mohair		
WN	lapin		20/08/2018
WO	wool		
WP	alpaca		



WS	cashmere		
WT	Oteer		20/08/2018
WU	guanaco		
WV	virgin wool		
WY	yack		

## T21 - type of document

type or class to which the referenced document belongs

Agency name: eBIZ

Decoding table: T21

File codes list (Generic code): [http://www.ebiz.enea.it/moda-ml/repository/codelist/draft/gc\\_T21.xml](http://www.ebiz.enea.it/moda-ml/repository/codelist/draft/gc_T21.xml)

Code	Description	Adoption note	Date of insertion
BIL	Bill of lading		07/03/2023
BOR	Blanket order		01/02/2018
CAT	Price catalogue - tech sheet		
CEO	Certificate of origin		13/04/2018
CER	Certificate		13/04/2018
CMR	CMR consignment note		07/03/2023
COC	Colour card		
CRN	Credit note		08/09/2017
CTO	Checking order		01/07/2013
CTR	Contract		
CXF	CxF3 file		01/07/2013
DAD	Darn order		
DDT	Delivery note (transport document)		
DEA	Despatch advise		
DER	Despatch request		
DR	Document Request		02/12/2014
EAD	Export Accompanying Document	adopted by European customs	12/05/2023
ECMR	electronic CMR consignment note		07/03/2023
ECUS	EXPORT Custom Declaration		07/03/2023
FOR	Forecast		02/12/2014
GSO	Garment stock offer		
GSX	Garment stock offer change		
ICUS	IMPORT Custom Declaration		07/03/2023
INV	Invoice		

KCC	Knitting-Clothing Commission Order		02/12/2014
KCI	Garment in Work Inventory Report		02/12/2014
LCA	LCA study		28/08/2022
LCAD	LCA study dataset		28/08/2022
M2M	Made to Measure Production Order		02/12/2014
MAS	Master marker		
MCI	Visual merchandising instruction		13/04/2018
OCH	Order change		
OFF	Offer		
ORD	Purchase order		
ORP	Order response		
OSR	order status request		
OSS	Offer status		02/12/2014
OST	Order status		
OUR	our reference		
PCO	Preferential certificate of origin		07/03/2023
PEF	PEF study		28/08/2022
PEFD	PEF study dataset		28/08/2022
PEFP	PEF environmental profile		07/03/2023
QR	Quality Report		02/12/2014
RAI	Raw Material in Work Inventory Report		02/12/2014
RDC	Raw dyeing commission order		
RDH	Raw dyeing order change		
RDR	Raw dyeing order response		
REA	Receiving advise		
REQ	Request for Offer		
RET	Return		02/12/2014
RSC	Spinning commission order		
RSH	Spinning order change		
RSR	Spinning order response		
SAD	Single Administrative Document	adopted by European customs	12/05/2023
SCL	Process sheet		
SDE	Self-declaration		07/03/2023
SDS	SDS - Safety data sheet		07/03/2023
SLCA	S-LCA Study		07/03/2023
SLCAD	S-LCA Study documentation		07/03/2023
TFC	Textile dyeing-finishing commission order		
TFX	Textile Dyeing-Finishing Order Change		02/12/2014

TPC	Textile printing commission order		
TPX	Textile Printing Order Change		02/12/2014
TWI	Textile in work inventory		
VMI	visual merchandising instructions		01/02/2018
WAC	Warping commission order		
WAYB	Waybill		07/03/2023
WEC	Weaving commission order		
YDC	Yarn dyeing commission order		
YDH	Yarn dyeing order change		
YDR	Yarn dyeing order response		
YTC	Twisting commission order		
YWI	Yarn in work inventory		

### T29 - type of yarn package

type of package (roll-up) used for a yarn product

Agency name: eBIZ

Decoding table: T29

File codes list (Generic code): [http://www.ebiz.enea.it/moda-ml/repository/codelist/draft/gc\\_T29.xml](http://www.ebiz.enea.it/moda-ml/repository/codelist/draft/gc_T29.xml)

Code	Description	Adoption note	Date of insertion
CIL	bobbin		
CON	cone		
HNK	hank, skein		01/07/2013
MUF	muff, cake		01/07/2013
SPL	spool		
TUB	tube		
XCO	supercone		

### T30 - support of yarn package - material

type of material of which a package for yarn is made

Agency name: eBIZ

Decoding table: T30

File codes list (Generic code): [http://www.ebiz.enea.it/moda-ml/repository/codelist/draft/gc\\_T30.xml](http://www.ebiz.enea.it/moda-ml/repository/codelist/draft/gc_T30.xml)

Code	Description	Adoption note	Date of insertion
CA	cartoon		

DY	for soft package dyeing		
MT	metallic		01/07/2013
PL	plastic		

### T306 - material circularity attribute

Indicates whether the material is virgin or comes from recycling or reuse processes

Agency name: eBIZ for TRICK

Decoding table: T306

File codes list (Generic code): [http://www.ebiz.enea.it/moda-ml/repository/codelist/draft/gc\\_T306.xml](http://www.ebiz.enea.it/moda-ml/repository/codelist/draft/gc_T306.xml)

Code	Description	Adoption note	Date of insertion
RE U	Reused material		30/08/2022
SCL	Secondary raw materials	adopt this for any secondary raw material when information about the first or following loop is not available	22/07/2022
SCL 1	Secondary raw materials - first loop		22/07/2022
SCL x	Secondary raw materials - loop following the first one		22/07/2022
VR G	Virgin raw material	adopt this for any virgin raw material when biobased information is not available	22/07/2022
VR GB	Virgin raw material - biobased		23/03/2023
VR GN	Virgin raw material - not biobased		23/03/2023

### T307 - recycling process method

Agency name: eBIZ for TRICK

Decoding table: T307

File codes list (Generic code): [http://www.ebiz.enea.it/moda-ml/repository/codelist/draft/gc\\_T307.xml](http://www.ebiz.enea.it/moda-ml/repository/codelist/draft/gc_T307.xml)

Code	Description	Adoption note	Date of insertion
CHMD	chemical recycling (dissolution)		28/07/2022
CHMP	chemical recycling (depolymerization)		28/07/2022
ENZ	enzymatic recycling		01/09/2022
MEC	mechanical recycling		28/07/2022
THE	thermal recycle		31/08/2022
THMC	thermo-mechanical recycling		01/09/2022

### T32 - yarn reel wrapping type

type of wrapping in which a package of yarn is wrapped

Agency name: eBIZ

Decoding table: T32

File codes list (Generic code): [http://www.ebiz.enea.it/moda-ml/repository/codelist/draft/gc\\_T32.xml](http://www.ebiz.enea.it/moda-ml/repository/codelist/draft/gc_T32.xml)

Code	Description	Adoption note	Date of insertion
XA	without bag		
XB	paper bag		01/07/2013
XD	plastic film bag		

### T33 - yarn outer packing

code specifying the type of outer wrapping or packing of a yarn

Agency name: eBIZ

Decoding table: T33

File codes list (Generic code): [http://www.ebiz.enea.it/moda-ml/repository/codelist/draft/gc\\_T33.xml](http://www.ebiz.enea.it/moda-ml/repository/codelist/draft/gc_T33.xml)

Code	Description	Adoption note	Date of insertion
00			
CB	cartoon box		
CC	cartoon box 18 reels		
CD	cartoon box 36 reels		
XD	plastic film		

### T4 - fabric piece inner packing (wrapping) 1

code specifying the type of inner wrapping/packing used for the fabric piece

Agency name: eBIZ

Decoding table: T4

File codes list (Generic code): [http://www.ebiz.enea.it/moda-ml/repository/codelist/draft/gc\\_T4.xml](http://www.ebiz.enea.it/moda-ml/repository/codelist/draft/gc_T4.xml)

Code	Description	Adoption note	Date of insertion
A	Folded, whole width		
B	Folded, doubled		
C	Folded, tube products		
D	Spoiled, whole width		

E	Spoiled, doubled, pli: left		
F	Spoiled, doubled, pli: right		
G	Rolled, whole width, single item		
H	Rolled, whole width, several items		
I	Rolled, doubled		
J	Rolled, tube products		

#### T421 - size system: nationality

nation or agency identifying the size system

Agency name: eBIZ

Decoding table: T421

File codes list (Generic code): [http://www.ebiz.enea.it/moda-ml/repository/codelist/draft/gc\\_T421.xml](http://www.ebiz.enea.it/moda-ml/repository/codelist/draft/gc_T421.xml)

Code	Description	Adoption note	Date of insertion
DE	Germany		
ES	Spain		
EU	Europe		
FR	France		
IT	Italy		
UK	United Kingdom		
US	USA		
XX	International		

#### T422 - size system: market segment

market segment identifying the size system

Agency name: eBIZ

Decoding table: T422

File codes list (Generic code): [http://www.ebiz.enea.it/moda-ml/repository/codelist/draft/gc\\_T422.xml](http://www.ebiz.enea.it/moda-ml/repository/codelist/draft/gc_T422.xml)

Code	Description	Adoption note	Date of insertion
B	baby		
C	child		
K	kid		
M	man		
U	unisex		
W	woman		

**T423 - size system: base**

base of the size system

Agency name: eBIZ

Decoding table: T423

File codes list (Generic code): [http://www.ebiz.enea.it/moda-ml/repository/codelist/draft/gc\\_T423.xml](http://www.ebiz.enea.it/moda-ml/repository/codelist/draft/gc_T423.xml)

Code	Description	Adoption note	Date of insertion
1	arab numbers		
2	latin numbers		
3	symbols		
4	letters		
H	height		
L	length		
U	unique		
W	weight		

**T44 - additional code type**

qualifier of the additional coding of a product

Agency name: eBIZ

Decoding table: T44

File codes list (Generic code): [http://www.ebiz.enea.it/moda-ml/repository/codelist/draft/gc\\_T44.xml](http://www.ebiz.enea.it/moda-ml/repository/codelist/draft/gc_T44.xml)

Code	Description	Adoption note	Date of insertion
CC	colour card		
CL	sales collection		
CO	company identification code		08/09/2017
DY	dye number		
LT	lot number		
MDI	Made in		08/09/2017
MS	manufacturing state		
PKG	packaging		09/09/2014
PL	product line		
RGB	RGB value		
SE	selvedge code		

## T48 - garment part type

code specifying the type of component or part of a garment (sleeve, neck, ...)

Agency name: eBIZ

Decoding table: T48

File codes list (Generic code): [http://www.ebiz.enea.it/moda-ml/repository/codelist/draft/gc\\_T48.xml](http://www.ebiz.enea.it/moda-ml/repository/codelist/draft/gc_T48.xml)

Code	Description	Adoption note	Date of insertion
BB	bottom back		01/08/2018
BF	bottom fore/front		01/08/2018
CO	collar		01/08/2018
CU	cuff		01/08/2018
DV	fore		
EM	embroidery		01/08/2018
OC	other component		01/08/2018
PO	pocket		01/08/2018
SC	back		
SL	sleeve		01/08/2018
TB	top back		01/08/2018
TF	top fore/front		01/08/2018

## T5 - fabric piece inner packing (wrapping) 2

code specifying the sub-type of inner wrapping/packing used for the fabric piece

Agency name: eBIZ

Decoding table: T5

File codes list (Generic code): [http://www.ebiz.enea.it/moda-ml/repository/codelist/draft/gc\\_T5.xml](http://www.ebiz.enea.it/moda-ml/repository/codelist/draft/gc_T5.xml)

Code	Description	Adoption note	Date of insertion
A	Open		
B	Folded once, not looped		
C	Folded twice, not looped		
H	Folded once, looped		
I	Folded twice, looped		
J	Without inner object, right side inside		
K	On carton or spooling plank, right side inside		
L	On spool (for pressure sensitive products), right side inside		
M	Without inner object, left side inside		



N	On carton or spooling plank, left side inside		
O	On spool (for pressure sensitive products), left side inside		
P	Without inner object, right side inside (deprecated code)		
Q	On carton, right side inside		
R	On wooden stick, right side inside		
S	Without inner object, left side inside (deprecated code)		
T	On carton, left side inside		
U	On wooden stick, left side inside		

### T6 - fabric piece outer packing

code specifying the type of outer wrapping or packing used for the fabric piece

Agency name: eBIZ

Decoding table: T6

File codes list (Generic code): [http://www.ebiz.enea.it/moda-ml/repository/codelist/draft/gc\\_T6.xml](http://www.ebiz.enea.it/moda-ml/repository/codelist/draft/gc_T6.xml)

Code	Description	Adoption note	Date of insertion
0	Not wrapped		
1	Totally wrapped		
2	Wrapped, one side open		
3	Wrapped, both sides open		
4	Wrapped, one side open, with show corner		
5	Wrapped in cartons		
6	Double wrapped		

### T61 - duty or tax or fee type

duty or tax or fee type

Agency name: eBIZ

Decoding table: T61

File codes list (Generic code): [http://www.ebiz.enea.it/moda-ml/repository/codelist/draft/gc\\_T61.xml](http://www.ebiz.enea.it/moda-ml/repository/codelist/draft/gc_T61.xml)

Code	Description	Adoption note	Date of insertion
BOL	stamp duty		01/07/2013
CUD	customs duty		01/07/2013
ENV	environmental tax		01/07/2013
FRE	no tax		01/07/2013
OTH	other tax charges		01/07/2013

VAT	value added tax		01/07/2013
-----	-----------------	--	------------

**T62 - duty or tax or fee category**

duty or tax or fee category

Agency name: eBIZ

Decoding table: T62

File codes list (Generic code): [http://www.ebiz.enea.it/moda-ml/repository/codelist/draft/gc\\_T62.xml](http://www.ebiz.enea.it/moda-ml/repository/codelist/draft/gc_T62.xml)

Code	Description	Adoption note	Date of insertion
AA	lower than standard rate		01/07/2013
E	tax not applicable		01/07/2013
H	higher than standard rate		01/07/2013
O	outside scope of tax		01/07/2013
S	standard rate		01/07/2013
Z	zero rate goods		01/07/2013