



<http://www.moda-ml.org>

IMPLEMENTATION GUIDE
TRANSACTION "TEXTILE ORDER CHANGE"

Version: 2008-1

Date of release: 15/12/2008

Document code: OF077-004

XML Schema repository:<http://www.moda-ml.org/moda-ml/repository/schema/v2008-1/default.asp>

Guides repository:<http://www.moda-ml.org/moda-ml/repository/guide/v2008-1/default.asp>

Guide filename: OF077-004-MODA-ML-TextileOrderChange.pdf

1. BUSINESS DESCRIPTION

1.1 Scope

The present guide has been issued to assist the companies of the Textile-Clothing sector in the implementation of the standard XML document type "Textile ORDER CHANGE", providing all the instructions required for its use in any context of e-commerce between Apparel Producers and Fabric Producers.

All the rules required for the construction and validation of the document are embedded into the specific XML-Schema, which is detailed in section "Implementation guide".

1.2 Generalities

The Apparel Producer sends to the Fabric Producer an Order Change any time he must modify some conditions of his previous Order (eg. to cancel items not delivered in time) or amend errors (eg. invalid prices).

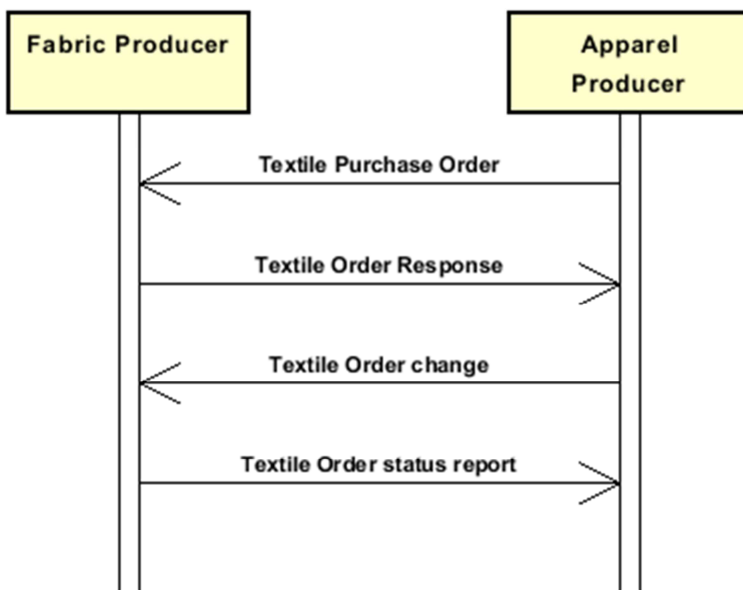
Basic function of the message is to replace an invalid Order with a valid Order, amending:

- suppliable quantities
- dates and places of delivery
- prices

The Order Change can show a number of lines different from the related Purchase Order, when variations/cancellations have occurred so as to create the splitting of an Order Line.

However the sum of the quantities of the lines in the Order Change (confirmed + varied + cancelled) must always equal the sum of the quantities in the original Order.

1.3. Possible scenario



2. IMPLEMENTATION GUIDE

2.1 General structure of XML document

All the business data that can be exchanged through this class of documents are shown in the following "document structure", that provides a simplified vision of the Schema.

In particular:

- the two numbers following each element define its "cardinality" (minimum and maximum number of occurrences); the minimum equal zero indicates that the element is optional, the minimum greater than zero indicates that is mandatory;
- the bold character denotes the complex elements (aggregates of simple elements) that were built for the sake of functionality and re-usability of some complex informations sets. The child elements in each parent element are easily spotted as "indented";
- the symbol "@" denotes an attribute of the preceding element; here "the usage indicator (optional, required, ...) is shown in square brackets.

Structure

TEXOrdChange

@msgfunction [Optional] [Default= OR]

```
| TXheader 1-1
| | msgN 1-1
| | - choose -
| | msgID 0-1
| | - or -
| | docID 0-1
| | @numberingOrg [Optional]
| | - end choose -
| | msgDate 1-1
| | @dateForm [Optional]
| | msgCurrency 0-1
| | otherCurrency 0-9
| | @currencyUseQualifier [Required]
| | refDoc 1-9
| | @docType [Required]
| | | docID 1-2
| | | @numberingOrg [Optional]
| | | docDate 0-1
| | | @dateForm [Optional]
| | | season 0-1
| | | itemID 0-1
| | buyer 1-1
| | @logo [Optional]
| | @sender [Optional]
| | | id 1-1
| | | @numberingOrg [Optional]
| | | legalName 0-1
| | | dept 0-1
| | | person 0-1
| | | @email [Optional]
| | | street 0-1
| | | city 0-1
| | | subCountry 0-1
| | | country 0-1
| | | postCode 0-1
| | supplier 1-1
| | @logo [Optional]
| | @sender [Optional]
| | | id 1-1
```

- | | | @numberingOrg [Optional]
- | | | legalName 0-1
- | | | dept 0-1
- | | | person 0-1
- | | | @email [Optional]
- | | | street 0-1
- | | | city 0-1
- | | | subCountry 0-1
- | | | country 0-1
- | | | postCode 0-1
- | | **thirdParty 0-5**
- | | | @VAT [Optional]
- | | | @role [Required]
- | | | @sender [Optional]
- | | | id 1-1
- | | | | @numberingOrg [Optional]
- | | | | legalName 0-1
- | | | | dept 0-1
- | | | | person 0-1
- | | | | @email [Optional]
- | | | | street 0-1
- | | | | city 0-1
- | | | | subCountry 0-1
- | | | | country 0-1
- | | | | postCode 0-1
- | | note 0-5

- | **terms 0-1**
- | | **payment 0-5**
- | | | @finDiscount [Optional]
- | | | @finSurcharge [Optional]
- | | | - choose -
- | | | | payTerm 1-1
- | | | - or -
- | | | | payTermText 1-1
- | | | - end choose -
- | | | | payMode 0-1
- | | **insPayment 0-5**
- | | | @part [Required]
- | | | - choose -
- | | | | payTerm 1-1
- | | | - or -
- | | | | payTermText 1-1
- | | | - end choose -
- | | | | payMode 0-1
- | | **trade 0-1**
- | | | - choose -
- | | | | incoTermText 1-1
- | | | - or -
- | | | | incoTerm 1-1
- | | | - end choose -
- | | | | location 0-1
- | | | | @LRI [Optional]
- | | **transInfo 0-1**
- | | | @transReason [Optional]
- | | | | transMode 1-1
- | | | | carrier 0-1
- | | | | deliveryPlace 0-1
- | | | | grossWeight 0-1
- | | | | @um [Required]
- | | | | netWeight 0-1

```

| | | @um [Required]
| | | transMeans 0-1
| | | transCondition 0-3
| | | transConditionText 0-1
| | allowanceCharge 0-9
| | @VAT [Optional]
| | - choose -
| | | AC_category 1-1
| | | - or -
| | | AC_categoryText 1-1
| | | - choose -
| | | AC_percent 1-1
| | | - or -
| | | AC_amount 1-1
| | | - end choose -

```

texComInfo 0-1

```

| | @endUse [Optional] [Default= PR]
| | @IC [Optional]
| | @techSheet [Optional]
| | | season 0-1
| | | deliveryDate 0-1
| | | @dateForm [Optional]
| | | specDate 0-1
| | | @dateForm [Optional]
| | | fabricWidth 0-1
| | | @um [Optional] [Default= CMT]
| | | pieceLength 0-1
| | | @um [Optional] [Default= MTR]
| | piecePack 0-1
| | - choose -
| | | piecePackText 1-1
| | | - or -
| | | pieceInnWrap1 1-1
| | | pieceInnWrap2 0-1
| | | pieceOutWrap 0-1
| | | - end choose -

```

TXbody 1-1

```

| | TXitem 1-unbounded
| | @act [Required]
| | | lineN 1-1
| | | refDoc 1-9
| | | @docType [Required]
| | | | docID 1-2
| | | | @numberingOrg [Optional]
| | | | docDate 0-1
| | | | @dateForm [Optional]
| | | | season 0-1
| | | | itemID 0-1
| | | texCode 0-2
| | | @numberingOrg [Optional]
| | | | art 1-1
| | | | @numberingOrg [Optional]
| | | | @codeList [Optional]
| | | | @listName [Optional]
| | | | @listVersion [Optional]
| | | | pattern 0-1
| | | | @numberingOrg [Optional]
| | | | @codeList [Optional]
| | | | @listName [Optional]

```

```

| | | | @listVersion [Optional]
| | | | color 0-1
| | | | @numberingOrg [Optional]
| | | | @codeList [Optional]
| | | | @listName [Optional]
| | | | @listVersion [Optional]
| | | | added 0-9
| | | | @addType [Optional]
| | | | description 0-1
| | | | selvedge 0-1
| | | | | selvedgeText 1-1
| | | | | selvedgeColor 0-1
| | | | fabricTreat 0-1
| | | | | surfaceTreatment 0-1
| | | | | finishCycle 0-1
| | | | | oneLot 0-1
| | | | | metricMark 0-1
| | | | qty 0-2
| | | | @um [Required]
| | | | price 0-1
| | | | @um [Optional]
| | | | @priceQualifier [Optional] [Default= NET]
| | | | comDiscount 0-1
| | | | thirdParty 0-1
| | | | @VAT [Optional]
| | | | @role [Required]
| | | | @sender [Optional]
| | | | | id 1-1
| | | | | @numberingOrg [Optional]
| | | | | legalName 0-1
| | | | | dept 0-1
| | | | | person 0-1
| | | | | @email [Optional]
| | | | | street 0-1
| | | | | city 0-1
| | | | | subCountry 0-1
| | | | | country 0-1
| | | | | postCode 0-1
| | | | texComInfo 0-1
| | | | @endUse [Optional] [Default= PR]
| | | | @IC [Optional]
| | | | @techSheet [Optional]
| | | | | season 0-1
| | | | | deliveryDate 0-1
| | | | | @dateForm [Optional]
| | | | | specDate 0-1
| | | | | @dateForm [Optional]
| | | | | fabricWidth 0-1
| | | | | @um [Optional] [Default= CMT]
| | | | | pieceLength 0-1
| | | | | @um [Optional] [Default= MTR]
| | | | | piecePack 0-1
| | | | | - choose -
| | | | | | piecePackText 1-1
| | | | | - or -
| | | | | | pieceInnWrap1 1-1
| | | | | | pieceInnWrap2 0-1
| | | | | | pieceOutWrap 0-1
| | | | | - end choose -
| | | | note 0-1

```

| **totals 0-1**
| | totQty 0-1
| | @um [Required]
| | goodsAmount 1-1

2.2 Detailed description of document elements

Following tables show all elements (complex and simple) used in this document. Description includes: 1) element's information: xml tag, name, brief description, data type and syntax constraints; 2) information about use of the element in a particular position in the document: xpath and possible associated notes.

2.2.1 Complex elements (Aggregate Business Information Entities)

Complex elements are those elements whose content is composed of other elements (childs).Complex elements are alphabetically ordered.

allowanceCharge	Allowances and Charges related to an Order or a contract (XPath: TEXOrdChange/terms/allowanceCharge) 0-9
buyer	details of the Buyer - base type: , (XPath: TEXOrdChange/TXheader/buyer) 1-1
fabricTreat	informations on the treatments and finishing of fabric (XPath: TEXOrdChange/TXbody/TXitem/fabricTreat) 0-1
insPayment	payment details for payment by installments (XPath: TEXOrdChange/terms/insPayment) 0-5 - note: <i>this set of data is alternative to payment set and must be iterated for each payment installment</i>
payment	payment details for payment all in one (XPath: TEXOrdChange/terms/payment) 0-5 - note: <i>this set of data can be iterated to specify alternative terms of payment (e.g.: 60 days or 30 days with 3% discount)</i>
piecePack	type of wrapping or packing of the fabric pieces (XPath: TEXOrdChange/TXbody/TXitem/texComInfo/piecePack) 0-1 (XPath: TEXOrdChange/texComInfo/piecePack) 0-1
refDoc	identification of a document and of an item thereof, to which the message makes reference (XPath: TEXOrdChange/TXheader/refDoc) 1-9 (XPath: TEXOrdChange/TXbody/TXitem/refDoc) 1-9 - note: <i>must be used to link the document line to the line of another referenced document</i>
selvedge	text and colour related to a fabric selvedge (XPath: TEXOrdChange/TXbody/TXitem/selvedge) 0-1
supplier	details of the Supplier - base type: , (XPath: TEXOrdChange/TXheader/supplier) 1-1
terms	details of the commercial obligations for payment and delivery (XPath: TEXOrdChange/terms) 0-1
texCode	full codification of the textile product (XPath: TEXOrdChange/TXbody/TXitem/texCode) 0-2
texComInfo	miscellaneous trade informations, that can be specified in a textile Order, referred either to the whole document or to the single item (XPath: TEXOrdChange/texComInfo) 0-1 - note: <i>here must be specified those valid for the whole document</i> (XPath: TEXOrdChange/TXbody/TXitem/texComInfo) 0-1 - note: <i>the Supplier can use this data group to confirm the Order terms or to modify them</i>

thirdParty	details of the Third Party, different from Buyer or Supplier - base type: , (XPath: TEXOrdChange/TXheader/thirdParty) 0-5 (XPath: TEXOrdChange/TXbody/TXitem/thirdParty) 0-1
totals	monetary and quantity totals of the Order (XPath: TEXOrdChange/totals) 0-1
trade	general terms of trade for the specified supply (XPath: TEXOrdChange/terms/trade) 0-1
transInfo	details of transport: mode, carrier and delivery place (XPath: TEXOrdChange/terms/transInfo) 0-1
TXbody	body of the document TEXTILES ORDER RESPONSE and CHANGE (XPath: TEXOrdChange/TXbody) 1-1
TXheader	header of the TEXTILES ORDER RESPONSE and TEXTILES ORDER CHANGE (XPath: TEXOrdChange/TXheader) 1-1 - note: <i>the attribute "logo" should be used only in conjunction with Buyer</i>
TXitem	line item of the message TEXTILE ORDER RESPONSE and TEXTILE ORDER CHANGE (XPath: TEXOrdChange/TXbody/TXitem) 1-unbounded

2.2.2 Simple elements (Basic Business Information Entities)

Simple elements are those elements whose content is characterized by a data type plus a domain of possible values. Simple elements are alphabetically ordered.

AC_amount	amount of an Allowance or Charge - base type: decimal, min inclusive: 0, fraction digits: 2, (XPath: TEXOrdChange/terms/allowanceCharge/AC_amount) 1-1
AC_category	coded specification of an Allowance or Charge - base type: string, cod. table: T41 http://www.moda-ml.net/moda-ml/repository/codelist/v2008-1/gc_T41.xml (XPath: TEXOrdChange/terms/allowanceCharge/AC_category) 1-1
AC_categoryText	free text description of an Allowance or Charge - base type: string, max length: 70, (XPath: TEXOrdChange/terms/allowanceCharge/AC_categoryText) 1-1
AC_percent	amount of an Allowance or Charge as a percentage - base type: decimal, min inclusive: 0, max inclusive: 100, fraction digits: 2, (XPath: TEXOrdChange/terms/allowanceCharge/AC_percent) 1-1
@act	action performed by the present line upon the referenced document line - base type: string, cod. table: NT5 http://www.moda-ml.net/moda-ml/repository/codelist/v2008-1/gc_NT5.xml (XPath: TEXOrdChange/TXbody/TXitem/@act) [Required]
added	additional code of the product (complementing the formers) - base type: string, max length: 15, (XPath: TEXOrdChange/TXbody/TXitem/texCode/added) 0-9 - note: <i>here an additional codification (see table T44) can be specified</i>
@addType	qualifier of the additional coding of a product - base type: string, cod. table: T44 http://www.moda-ml.net/moda-ml/repository/codelist/v2008-1/gc_T44.xml (XPath: TEXOrdChange/TXbody/TXitem/texCode/added/@addType) [Optional]
art	article number of the product

	<p>- base type: string, max length: 25, (XPath: TEXOrdChange/TXbody/TXitem/texCode/art) 1-1</p> <p>- note: <i>can be used either for the base-article (excluding pattern/colour) or for the SKU</i></p>
carrier	<p>identification of the transport carrier</p> <p>- base type: string, max length: 40, (XPath: TEXOrdChange/terms/transInfo/carrier) 0-1</p>
city	<p>name of the city (town, village)</p> <p>- base type: string, max length: 40, (XPath: TEXOrdChange/TXbody/TXitem/thirdParty/city) 0-1 (XPath: TEXOrdChange/TXheader/supplier/city) 0-1 (XPath: TEXOrdChange/TXheader/thirdParty/city) 0-1 (XPath: TEXOrdChange/TXheader/buyer/city) 0-1</p>
@codeList	<p>it specifies the URL where the list of codes used to make an instance of the element can be found</p> <p>- base type: string, max length: 255, (XPath: TEXOrdChange/TXbody/TXitem/texCode/color/@codeList) [Optional]</p> <p>- nota: <i>this attribute should be ALTERNATIVE to the others</i> (XPath: TEXOrdChange/TXbody/TXitem/texCode/pattern/@codeList) [Optional]</p> <p>- nota: <i>this attribute should be ALTERNATIVE to the others</i> (XPath: TEXOrdChange/TXbody/TXitem/texCode/art/@codeList) [Optional]</p> <p>- nota: <i>this attribute should be ALTERNATIVE to the others</i></p>
color	<p>colour number of the product, when not included in the model or fabric code</p> <p>- base type: string, max length: 15, (XPath: TEXOrdChange/TXbody/TXitem/texCode/color) 0-1</p>
comDiscount	<p>percent discount applied to the related unit price or amount</p> <p>- base type: decimal, min inclusive: 0, max inclusive: 100, fraction digits: 2, (XPath: TEXOrdChange/TXbody/TXitem/comDiscount) 0-1</p>
country	<p>code of the nation</p> <p>- base type: string, cod. table: T10 http://www.moda-ml.net/moda-ml/repository/codelist/v2008-1/gc_T10.xml (XPath: TEXOrdChange/TXheader/buyer/country) 0-1 (XPath: TEXOrdChange/TXheader/thirdParty/country) 0-1 (XPath: TEXOrdChange/TXheader/supplier/country) 0-1 (XPath: TEXOrdChange/TXbody/TXitem/thirdParty/country) 0-1</p>
@currencyUseQualifier	<p>qualification of another currency used in the document</p> <p>- base type: string, cod. table: NT19 http://www.moda-ml.net/moda-ml/repository/codelist/v2008-1/gc_NT19.xml (XPath: TEXOrdChange/TXheader/otherCurrency/@currencyUseQualifier) [Required]</p>
@dateForm	<p>format used for a date</p> <p>- base type: string, cod. table: NT29 http://www.moda-ml.net/moda-ml/repository/codelist/v2008-1/gc_NT29.xml (XPath: TEXOrdChange/texComInfo/specDate/@dateForm) [Optional] (XPath: TEXOrdChange/TXheader/refDoc/docDate/@dateForm) [Optional] (XPath: TEXOrdChange/TXbody/TXitem/texComInfo/specDate/@dateForm) [Optional] (XPath: TEXOrdChange/TXheader/msgDate/@dateForm) [Optional] (XPath: TEXOrdChange/texComInfo/deliveryDate/@dateForm) [Optional] (XPath: TEXOrdChange/TXbody/TXitem/texComInfo/deliveryDate/@dateForm) [Optional] (XPath: TEXOrdChange/TXbody/TXitem/refDoc/docDate/@dateForm) [Optional]</p>
deliveryDate	<p>date of delivery of goods, requested or promised in the purchase process, according to one of the patterns YYYY-MM-DD, YYYY-MM-DD:HH-MM or YYYY-WW.</p> <p>- base type: string, (XPath: TEXOrdChange/texComInfo/deliveryDate) 0-1 (XPath: TEXOrdChange/TXbody/TXitem/texComInfo/deliveryDate) 0-1</p>

deliveryPlace	place of delivery of goods, ultimate or related to a given leg - base type: string, max length: 40, (XPath: TEXOrdChange/terms/transInfo/deliveryPlace) 0-1
dept	name or code of a contact department within a Party - base type: string, max length: 40, (XPath: TEXOrdChange/TXheader/buyer/dept) 0-1 (XPath: TEXOrdChange/TXbody/TXitem/thirdParty/dept) 0-1 (XPath: TEXOrdChange/TXheader/supplier/dept) 0-1 (XPath: TEXOrdChange/TXheader/thirdParty/dept) 0-1
description	free text description of a product - base type: string, max length: 70, (XPath: TEXOrdChange/TXbody/TXitem/texCode/description) 0-1
docDate	date of issue of the referenced document, according to one of the patterns YYYY-MM-DD, YYYY-MM-DD:HH-MM or YYYY-WW. - base type: string, (XPath: TEXOrdChange/TXbody/TXitem/refDoc/docDate) 0-1 (XPath: TEXOrdChange/TXheader/refDoc/docDate) 0-1
docID	identification number of the referenced document SINCE 2008-1 ITS USE IN THE HEADER IS DISCOURAGED (REPLACED BY) - base type: string, max length: 35, (XPath: TEXOrdChange/TXheader/docID) 0-1 (XPath: TEXOrdChange/TXheader/refDoc/docID) 1-2 (XPath: TEXOrdChange/TXbody/TXitem/refDoc/docID) 1-2
@docType	type or class to which the referenced document belongs - base type: string, cod. table: T21 http://www.moda-ml.net/moda-ml/repository/codelist/v2008-1/gc_T21.xml (XPath: TEXOrdChange/TXheader/refDoc/@docType) [Required] (XPath: TEXOrdChange/TXbody/TXitem/refDoc/@docType) [Required]
@email	electronic mail address of the contact person within a Party - base type: string, max length: 80, (XPath: TEXOrdChange/TXheader/thirdParty/person/@email) [Optional] (XPath: TEXOrdChange/TXbody/TXitem/thirdParty/person/@email) [Optional] (XPath: TEXOrdChange/TXheader/buyer/person/@email) [Optional] (XPath: TEXOrdChange/TXheader/supplier/person/@email) [Optional]
@endUse	specifies the final use of the material - base type: string, cod. table: NT4 http://www.moda-ml.net/moda-ml/repository/codelist/v2008-1/gc_NT4.xml (XPath: TEXOrdChange/TXbody/TXitem/texComInfo/@endUse) [Optional] [Default=PR] (XPath: TEXOrdChange/texComInfo/@endUse) [Optional] [Default= PR]
fabricWidth	width of the fabric as technical specification - base type: decimal, min inclusive: 0, fraction digits: 2, (XPath: TEXOrdChange/TXbody/TXitem/texComInfo/fabricWidth) 0-1 (XPath: TEXOrdChange/texComInfo/fabricWidth) 0-1
@finDiscount	financial discount applied for payment by the date specified - base type: decimal, min inclusive: 0, max inclusive: 100, fraction digits: 2, (XPath: TEXOrdChange/terms/payment/@finDiscount) [Optional]
finishCycle	process of finishing applied to the fabric - base type: string, max length: 40, (XPath: TEXOrdChange/TXbody/TXitem/fabricTreat/finishCycle) 0-1
@finSurcharge	financial surcharge applied for payment after the date specified - base type: decimal, min inclusive: 0, max inclusive: 100, fraction digits: 2, (XPath: TEXOrdChange/terms/payment/@finSurcharge) [Optional]
goodsAmount	total monetary value of the goods and services considered in the message - base type: decimal, min inclusive: 0, fraction digits: 2,

	(XPath: TEXOrdChange/totals/goodsAmount) 1-1
grossWeight	the gross weight of the overall goods supply, declared for transport or customs purpose - base type: decimal, min inclusive: 0, fraction digits: 2, (XPath: TEXOrdChange/terms/transInfo/grossWeight) 0-1
@IC	specifies if the "illustrated confirmation" is needed - base type: boolean, (XPath: TEXOrdChange/TXbody/TXitem/texComInfo/@IC) [Optional] (XPath: TEXOrdChange/texComInfo/@IC) [Optional]
id	primary identification code of a Party; it is recommended the format: nation code (ISO 3166) + VAT identification number (11 crt), with the qualifier "numberingOrg"= MF - base type: string, max length: 15, (XPath: TEXOrdChange/TXheader/thirdParty/id) 1-1 (XPath: TEXOrdChange/TXheader/buyer/id) 1-1 (XPath: TEXOrdChange/TXbody/TXitem/thirdParty/id) 1-1 (XPath: TEXOrdChange/TXheader/supplier/id) 1-1
incoTerm	specification of the terms of trade (INCOTERMS) - base type: string, cod. table: T3 http://www.moda-ml.net/moda-ml/repository/codelist/v2008-1/gc_T3.xml (XPath: TEXOrdChange/terms/trade/incoTerm) 1-1
incoTermText	free text specifying the terms of trade (incoterm, location) - base type: string, max length: 70, (XPath: TEXOrdChange/terms/trade/incoTermText) 1-1
itemID	number of the line/item of the referenced document - base type: string, max length: 6, (XPath: TEXOrdChange/TXbody/TXitem/refDoc/itemID) 0-1 (XPath: TEXOrdChange/TXheader/refDoc/itemID) 0-1
legalName	legal name of a Party - base type: string, max length: 80, (XPath: TEXOrdChange/TXheader/buyer/legalName) 0-1 (XPath: TEXOrdChange/TXheader/supplier/legalName) 0-1 (XPath: TEXOrdChange/TXbody/TXitem/thirdParty/legalName) 0-1 (XPath: TEXOrdChange/TXheader/thirdParty/legalName) 0-1
lineN	number of the line item of the present message (xml document) - base type: positiveInteger, min inclusive: 1, max inclusive: 9999, (XPath: TEXOrdChange/TXbody/TXitem/lineN) 1-1
@listName	it specifies the name of the list of codes used to make an instance of the element - base type: string, max length: 40, (XPath: TEXOrdChange/TXbody/TXitem/texCode/pattern/@listName) [Optional] - nota: <i>this attribute should always be used coupled with "numberingOrg"</i> (XPath: TEXOrdChange/TXbody/TXitem/texCode/color/@listName) [Optional] - nota: <i>this attribute should always be used coupled with "numberingOrg"</i> (XPath: TEXOrdChange/TXbody/TXitem/texCode/art/@listName) [Optional] - nota: <i>this attribute should always be used coupled with "numberingOrg"</i>
@listVersion	it specifies the version of the list of codes used to make an instance of the element - base type: string, max length: 6, (XPath: TEXOrdChange/TXbody/TXitem/texCode/color/@listVersion) [Optional] - nota: <i>this attribute should always be used coupled with "numberingOrg" and "listName"</i> (XPath: TEXOrdChange/TXbody/TXitem/texCode/art/@listVersion) [Optional] - nota: <i>this attribute should always be used coupled with "numberingOrg" and "listName"</i> (XPath: TEXOrdChange/TXbody/TXitem/texCode/pattern/@listVersion) [Optional]

	- nota: <i>this attribute should always be used coupled with “numberingOrg” and “listName”</i>
location	specification of a location - base type: string, max length: 40, (XPath: TEXOrdChange/terms/trade/location) 0-1 - note: <i>place to which the INCOTERM applies</i>
@logo	company logo (URL of the image jpeg or gif). It is recommended that the width of the image does not exceed 640 pixel. - base type: string, max length: 255, (XPath: TEXOrdChange/TXheader/supplier/@logo) [Optional] (XPath: TEXOrdChange/TXheader/buyer/@logo) [Optional]
@LRI	attribute usable to format a string according to a customized User rule (local rule) - base type: string, cod. table: NT3 http://www.moda-ml.net/moda-ml/repository/codelist/v2008-1/gc_NT3.xml (XPath: TEXOrdChange/terms/trade/location/@LRI) [Optional]
metricMark	specifies if the fabric piece must have the matric marks - base type: boolean, (XPath: TEXOrdChange/TXbody/TXitem/fabricTreat/metricMark) 0-1
msgCurrency	currency used to express the monetary amounts of the message - base type: string, cod. table: T9 http://www.moda-ml.net/moda-ml/repository/codelist/v2008-1/gc_T9.xml (XPath: TEXOrdChange/TXheader/msgCurrency) 0-1
msgDate	date of issue of the present message (xml document), according to one of the patterns YYYY-MM-DD, YYYY-MM-DD:HH-MM or YYYY-WW. - base type: string, (XPath: TEXOrdChange/TXheader/msgDate) 1-1
@msgfunction	function performed by the present message with regards to the transmission - base type: string, cod. table: NT18 http://www.moda-ml.net/moda-ml/repository/codelist/v2008-1/gc_NT18.xml (XPath: TEXOrdChange/@msgfunction) [Optional] [Default= OR]
msgID	key identifier of the document in the information system of the issuing Party - base type: string, max length: 35, (XPath: TEXOrdChange/TXheader/msgID) 0-1
msgN	identification number given to the message (xml document) by its issuer - base type: string, max length: 35, (XPath: TEXOrdChange/TXheader/msgN) 1-1
netWeight	the net weight of the overall goods supply, declared for transport or customs purpose - base type: decimal, min inclusive: 0, fraction digits: 2, (XPath: TEXOrdChange/terms/transInfo/netWeight) 0-1
note	free text note - base type: string, max length: 350, (XPath: TEXOrdChange/TXheader/note) 0-5 (XPath: TEXOrdChange/TXbody/TXitem/note) 0-1
@numberingOrg	code specifying the organisation who has created or owns the coding or numbering system - base type: string, cod. table: NT6 http://www.moda-ml.net/moda-ml/repository/codelist/v2008-1/gc_NT6.xml (XPath: TEXOrdChange/TXbody/TXitem/texCode/@numberingOrg) [Optional] (XPath: TEXOrdChange/TXheader/supplier/id/@numberingOrg) [Optional] (XPath: TEXOrdChange/TXbody/TXitem/texCode/art/@numberingOrg) [Optional] - nota: <i>this attribute should be used either single or coupled with “listName” and “listVersion”</i> (XPath: TEXOrdChange/TXheader/buyer/id/@numberingOrg) [Optional]

	<p>(XPath: TEXOrdChange/TXbody/TXitem/thirdParty/id/@numberingOrg) [Optional] (XPath: TEXOrdChange/TXbody/TXitem/texCode/color/@numberingOrg) [Optional] - nota: <i>this attribute should be used either single or coupled with "listName" and "listVersion"</i></p> <p>(XPath: TEXOrdChange/TXbody/TXitem/texCode/pattern/@numberingOrg) [Optional] - nota: <i>this attribute should be used either single or coupled with "listName" and "listVersion"</i></p> <p>(XPath: TEXOrdChange/TXheader/refDoc/docID/@numberingOrg) [Optional] - nota: <i>here can be specified whose document numbering is used (e.g.: Client, Supplier, ..)</i></p> <p>(XPath: TEXOrdChange/TXbody/TXitem/refDoc/docID/@numberingOrg) [Optional] - nota: <i>here can be specified whose document numbering is used (e.g.: Client, Supplier, ..)</i></p> <p>(XPath: TEXOrdChange/TXheader/thirdParty/id/@numberingOrg) [Optional] (XPath: TEXOrdChange/TXheader/docID/@numberingOrg) [Optional] - nota: <i>here can be specified whose document numbering is used (e.g.: Client, Supplier, ..)</i></p>
oneLot	<p>specifies if the order line must be supplied with one production lot - base type: boolean, (XPath: TEXOrdChange/TXbody/TXitem/fabricTreat/oneLot) 0-1</p>
otherCurrency	<p>other currency used in the document - base type: string, cod. table: T9 http://www.moda-ml.net/moda-ml/repository/codelist/v2008-1/gc_T9.xml (XPath: TEXOrdChange/TXheader/otherCurrency) 0-9</p>
@part	<p>percent fraction of a total payment - base type: decimal, min inclusive: 1, max inclusive: 99, fraction digits: 2, (XPath: TEXOrdChange/terms/insPayment/@part) [Required] - nota: <i>here the % value of each installment must be indicated</i></p>
pattern	<p>pattern/design number of the product, when not included in the article code - base type: string, max length: 15, (XPath: TEXOrdChange/TXbody/TXitem/texCode/pattern) 0-1</p>
payMode	<p>way or means of payment - base type: string, cod. table: T2 http://www.moda-ml.net/moda-ml/repository/codelist/v2008-1/gc_T2.xml (XPath: TEXOrdChange/terms/payment/payMode) 0-1 (XPath: TEXOrdChange/terms/insPayment/payMode) 0-1</p>
payTerm	<p>code specifying the terms or time by which the payment must be done - base type: string, cod. table: T1 http://www.moda-ml.net/moda-ml/repository/codelist/v2008-1/gc_T1.xml (XPath: TEXOrdChange/terms/payment/payTerm) 1-1 (XPath: TEXOrdChange/terms/insPayment/payTerm) 1-1</p>
payTermText	<p>free text specifying the terms by which the payment must be done (time/mode or means) - base type: string, max length: 40, (XPath: TEXOrdChange/terms/payment/payTermText) 1-1 (XPath: TEXOrdChange/terms/insPayment/payTermText) 1-1</p>
person	<p>name of the contact person within a Party - base type: string, max length: 40, (XPath: TEXOrdChange/TXheader/supplier/person) 0-1 (XPath: TEXOrdChange/TXbody/TXitem/thirdParty/person) 0-1 (XPath: TEXOrdChange/TXheader/thirdParty/person) 0-1 (XPath: TEXOrdChange/TXheader/buyer/person) 0-1</p>
piecelnnWrap1	<p>code specifying the type of inner wrapping/packing used for the fabric piece - base type: string, cod. table: T4 http://www.moda-ml.net/moda-ml/repository/codelist/v2008-1/gc_T4.xml (XPath: TEXOrdChange/texComInfo/piecePack/piecelnnWrap1) 1-1 (XPath: TEXOrdChange/TXbody/TXitem/texComInfo/piecePack/piecelnnWrap1) 1-1</p>

pieceInnWrap2	code sub-specifying the type of inner wrapping/packing used for the fabric piece - base type: string, cod. table: T5 http://www.moda-ml.net/moda-ml/repository/codelist/v2008-1/gc_T5.xml (XPath: TEXOrdChange/texComInfo/piecePack/pieceInnWrap2) 0-1 (XPath: TEXOrdChange/TXbody/TXitem/texComInfo/piecePack/pieceInnWrap2) 0-1
pieceLength	length of the piece - base type: decimal, min inclusive: 0, fraction digits: 2, (XPath: TEXOrdChange/TXbody/TXitem/texComInfo/pieceLength) 0-1 (XPath: TEXOrdChange/texComInfo/pieceLength) 0-1
pieceOutWrap	code specifying the type of outer wrapping or packing used for the fabric piece - base type: string, cod. table: T6 http://www.moda-ml.net/moda-ml/repository/codelist/v2008-1/gc_T6.xml (XPath: TEXOrdChange/texComInfo/piecePack/pieceOutWrap) 0-1 (XPath: TEXOrdChange/TXbody/TXitem/texComInfo/piecePack/pieceOutWrap) 0-1
piecePackText	free text specifying the type of wrapping or packing used for the fabric piece - base type: string, max length: 40, (XPath: TEXOrdChange/TXbody/TXitem/texComInfo/piecePack/piecePackText) 1-1 (XPath: TEXOrdChange/texComInfo/piecePack/piecePackText) 1-1
postCode	code defining the postal zone - base type: string, max length: 10, (XPath: TEXOrdChange/TXheader/thirdParty/postCode) 0-1 (XPath: TEXOrdChange/TXbody/TXitem/thirdParty/postCode) 0-1 (XPath: TEXOrdChange/TXheader/buyer/postCode) 0-1 (XPath: TEXOrdChange/TXheader/supplier/postCode) 0-1
price	unit price of the article, object or service specified - base type: decimal, min inclusive: 0, fraction digits: 2, (XPath: TEXOrdChange/TXbody/TXitem/price) 0-1
@priceQualifier	type of price with reference to discount and taxes - base type: string, cod. table: NT20 http://www.moda-ml.net/moda-ml/repository/codelist/v2008-1/gc_NT20.xml (XPath: TEXOrdChange/TXbody/TXitem/price/@priceQualifier) [Optional] [Default=NET]
qty	net quantity of the article or object correlated, qualified by the function of the document (ordering, delivering, ...) and by the context - base type: decimal, min inclusive: 0, fraction digits: 2, (XPath: TEXOrdChange/TXbody/TXitem/qty) 0-2
@role	Third Party role qualifier - base type: string, cod. table: NT2 http://www.moda-ml.net/moda-ml/repository/codelist/v2008-1/gc_NT2.xml (XPath: TEXOrdChange/TXbody/TXitem/thirdParty/@role) [Required] (XPath: TEXOrdChange/TXheader/thirdParty/@role) [Required]
season	sale season; defined as: season (1 crt) + year (4 crt) - season: S/S=1 A/W=2 Spring=3 Summer=4 Autumn=5 Winter=6: for more than four seasons use alphabetic sequence: 1st season=A 2nd season=B etc.etc. - base type: string, max length: 15, (XPath: TEXOrdChange/TXbody/TXitem/refDoc/season) 0-1 - note: <i>here indicates the season to which the referenced document belongs</i> (XPath: TEXOrdChange/TXheader/refDoc/season) 0-1 - note: <i>here indicates the season to which the referenced document belongs</i> (XPath: TEXOrdChange/TXbody/TXitem/texComInfo/season) 0-1 (XPath: TEXOrdChange/texComInfo/season) 0-1
selvedgeColor	colour of the text displayed on the selvedge - base type: string, max length: 15, (XPath: TEXOrdChange/TXbody/TXitem/selvedge/selvedgeColor) 0-1

selvedgeText	text to be written on the selvedge - base type: string, max length: 300, (XPath: TEXOrdChange/TXbody/TXitem/selvedge/selvedgeText) 1-1
@sender	qualifier that specifies the Party issuing of the document - base type: boolean, (XPath: TEXOrdChange/TXbody/TXitem/thirdParty/@sender) [Optional] - nota: <i>This attribute is mandatory when the STYLESHEET must be produced</i> (XPath: TEXOrdChange/TXheader/thirdParty/@sender) [Optional] - nota: <i>This attribute is mandatory when the STYLESHEET must be produced</i> (XPath: TEXOrdChange/TXheader/buyer/@sender) [Optional] - nota: <i>This attribute is mandatory when the STYLESHEET must be produced</i> (XPath: TEXOrdChange/TXheader/supplier/@sender) [Optional] - nota: <i>This attribute is mandatory when the STYLESHEET must be produced</i>
specDate	date by which the referenced blanket order must receive full product specifications (e.g.: colour), according to one of the patterns YYYY-MM-DD, YYYY-MM-DD:HH-MM or YYYY-WW. - base type: string, (XPath: TEXOrdChange/TXbody/TXitem/texComInfo/specDate) 0-1 (XPath: TEXOrdChange/texComInfo/specDate) 0-1
street	street and building number identifying a location - base type: string, max length: 80, (XPath: TEXOrdChange/TXheader/supplier/street) 0-1 (XPath: TEXOrdChange/TXheader/thirdParty/street) 0-1 (XPath: TEXOrdChange/TXbody/TXitem/thirdParty/street) 0-1 (XPath: TEXOrdChange/TXheader/buyer/street) 0-1
subCountry	short name or code of the sub-country entity - base type: string, max length: 9, (XPath: TEXOrdChange/TXheader/supplier/subCountry) 0-1 (XPath: TEXOrdChange/TXheader/thirdParty/subCountry) 0-1 (XPath: TEXOrdChange/TXheader/buyer/subCountry) 0-1 (XPath: TEXOrdChange/TXbody/TXitem/thirdParty/subCountry) 0-1
surfaceTreatment	surface treatment applied to the fabric, as end result - base type: string, max length: 40, (XPath: TEXOrdChange/TXbody/TXitem/fabricTreat/surfaceTreatment) 0-1
@techSheet	specifies if the " technical characteristics of fabric" document must provided - base type: boolean, (XPath: TEXOrdChange/texComInfo/@techSheet) [Optional] (XPath: TEXOrdChange/TXbody/TXitem/texComInfo/@techSheet) [Optional]
totQty	total quantity of the articles related to the whole document - base type: decimal, min inclusive: 0, fraction digits: 2, (XPath: TEXOrdChange/totals/totQty) 0-1
transCondition	special condition of transport or special service requested to the Forwarder - base type: string, cod. table: T38 http://www.moda-ml.net/moda-ml/repository/codelist/v2008-1/gc_T38.xml (XPath: TEXOrdChange/terms/transInfo/transCondition) 0-3
transConditionText	free text description of the special condition of transport or special service requested to the Forwarder - base type: string, max length: 100, (XPath: TEXOrdChange/terms/transInfo/transConditionText) 0-1
transMeans	means of transport, in general or referred to a specific leg - base type: string, cod. table: T40 http://www.moda-ml.net/moda-ml/repository/codelist/v2008-1/gc_T40.xml (XPath: TEXOrdChange/terms/transInfo/transMeans) 0-1

transMode	<p>way of transport, in general or referred to the specified leg</p> <p>- base type: string, cod. table: T8</p> <p>http://www.moda-ml.net/moda-ml/repository/codelist/v2008-1/gc_T8.xml</p> <p>(XPath: TEXOrdChange/terms/transInfo/transMode) 1-1</p>
@transReason	<p>reason for the transport</p> <p>- base type: string, cod. table: NT11</p> <p>http://www.moda-ml.net/moda-ml/repository/codelist/v2008-1/gc_NT11.xml</p> <p>(XPath: TEXOrdChange/terms/transInfo/@transReason) [Optional]</p>
@um	<p>specification of the unit of measure</p> <p>- base type: string, cod. table: NT7</p> <p>http://www.moda-ml.net/moda-ml/repository/codelist/v2008-1/gc_NT7.xml</p> <p>(XPath: TEXOrdChange/terms/transInfo/grossWeight/@um) [Required]</p> <p>(XPath: TEXOrdChange/terms/transInfo/netWeight/@um) [Required]</p> <p>(XPath: TEXOrdChange/TXbody/TXitem/price/@um) [Optional]</p> <p>(XPath: TEXOrdChange/texComInfo/fabricWidth/@um) [Optional] [Default= CMT]</p> <p>(XPath: TEXOrdChange/texComInfo/pieceLength/@um) [Optional] [Default= MTR]</p> <p>(XPath: TEXOrdChange/TXbody/TXitem/qty/@um) [Required]</p> <p>(XPath: TEXOrdChange/TXbody/TXitem/texComInfo/pieceLength/@um) [Optional] [Default= MTR]</p> <p>(XPath: TEXOrdChange/totals/totQty/@um) [Required]</p> <p>(XPath: TEXOrdChange/TXbody/TXitem/texComInfo/fabricWidth/@um) [Optional] [Default= CMT]</p>
@VAT	<p>VAT rate or code</p> <p>- base type: string, cod. table: NT16</p> <p>http://www.moda-ml.net/moda-ml/repository/codelist/v2008-1/gc_NT16.xml</p> <p>(XPath: TEXOrdChange/TXbody/TXitem/thirdParty/@VAT) [Optional]</p> <p>(XPath: TEXOrdChange/TXheader/thirdParty/@VAT) [Optional]</p> <p>(XPath: TEXOrdChange/terms/allowanceCharge/@VAT) [Optional]</p>

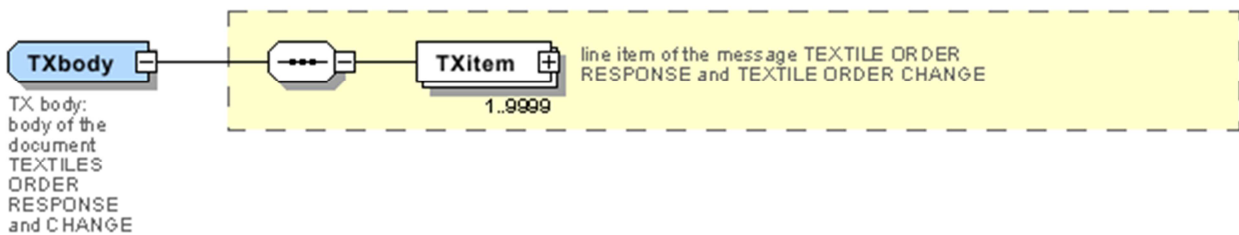
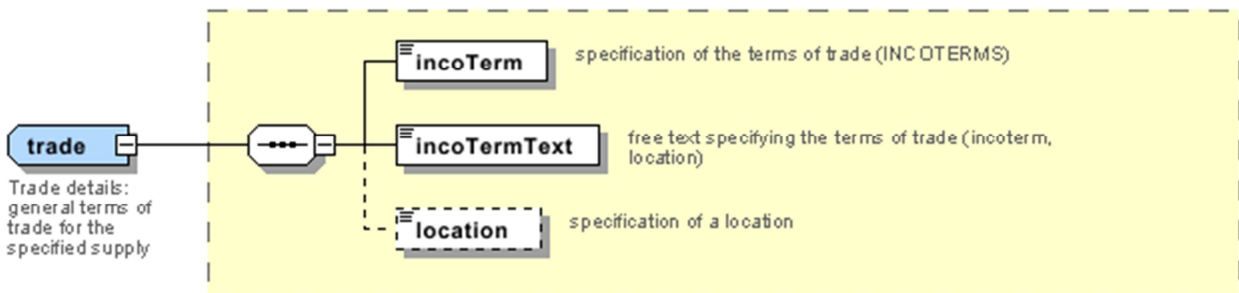
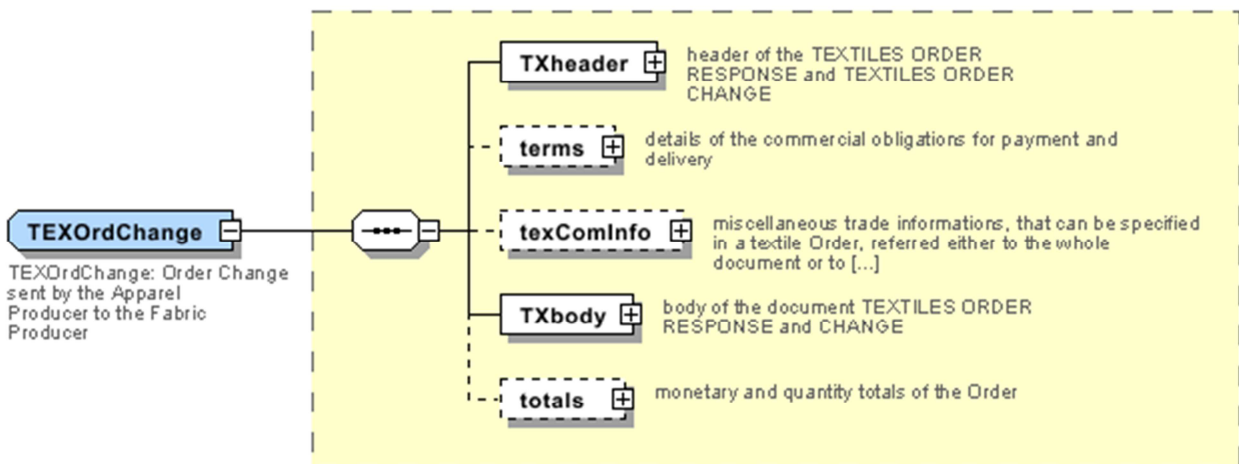
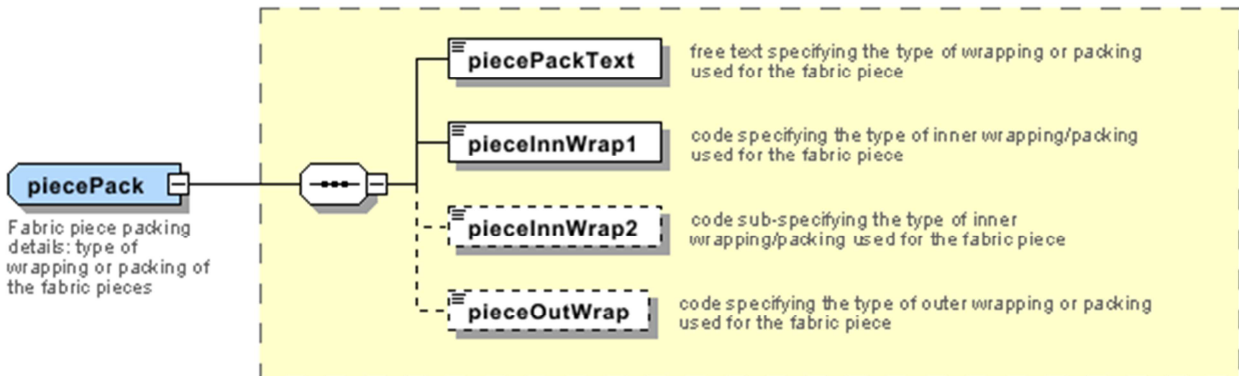
2.3 Enumeration tables

List of enumeration tables used in the XML document. You can find the corresponding codes at:
<http://www.moda-ml.org/moda-ml/imple/moda-ml-2008-1.asp?lingua=en&pag=6>

NT11 - Transport causal
NT16 - VAT rate or code
NT18 - message function
NT19 - currency use qualifier
NT2 - Third party qualifier
NT20 - price qualifier
NT29 - format of a date
NT3 - Data format
NT4 - End use
NT5 - Action code
NT6 - Coding system owner/issuer
NT7 - Unity of measure
T1 - Terms of payment
T10 - ISO3166 - Country
T2 - Modes of payment
T21 - type of document
T3 - Terms of delivery
T38 - transport conditions
T4 - Fabric piece inner packing (wrapping) 1
T40 - type of transport means
T41 - type of Allowance or Charge
T44 - additional code type
T5 - Fabric piece inner packing (wrapping) 2
T6 - Fabric piece outer packing
T8 - Modes of Transport
T9 - ISO4217 - Currency

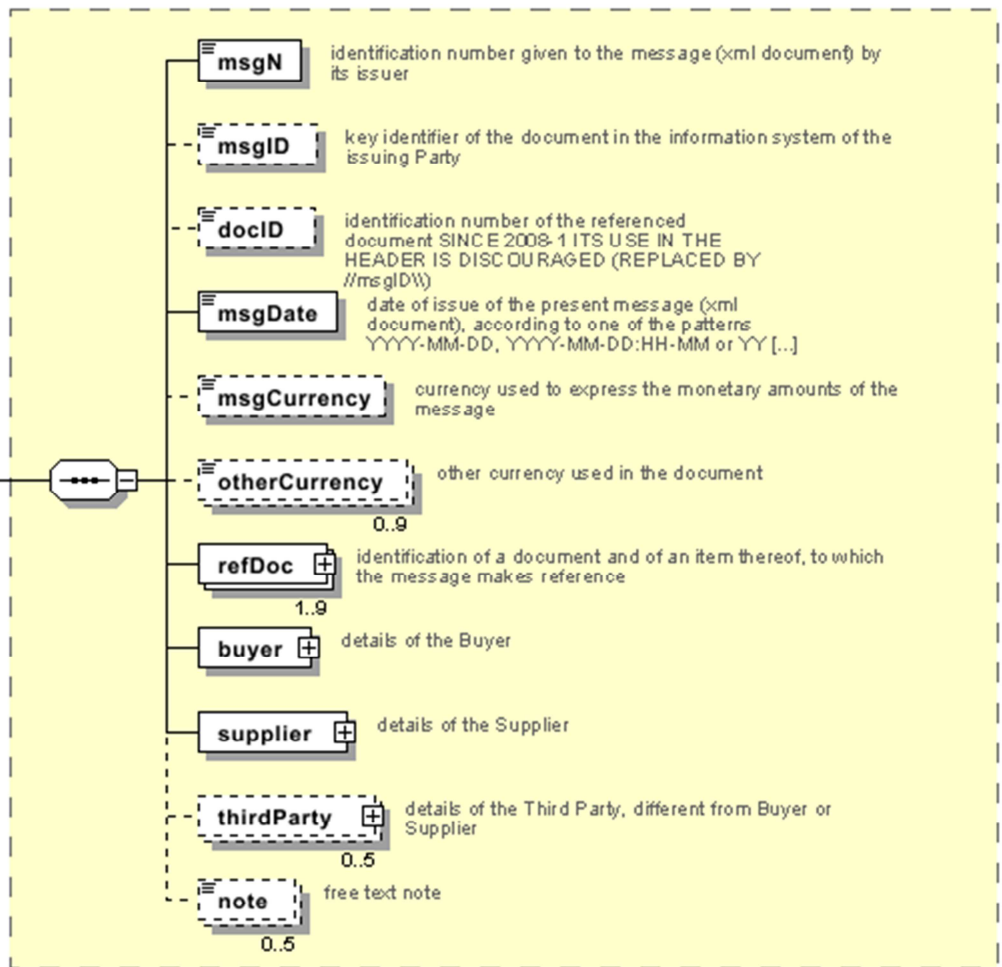
Annex A

Representative images of the principal complex elements' structure.



TXheader

TX header:
header of
the
TEXTILES
ORDER
RESPONSE
and
TEXTILES
ORDER
CHANGE



TXitem
 TX item:
 line item
 of the
 message
 TEXTILE
 ORDER
 RESPONSE
 and
 TEXTILE
 ORDER
 CHANGE

