



<http://www.moda-ml.org>

IMPLEMENTATION GUIDE TRANSACTION "TEXTILE INVOICE"

Version: 2008-1

Date of release: 15/12/2008

Document code: OF077-011

XML Schema repository:<http://www.moda-ml.org/moda-ml/repository/schema/v2008-1/default.asp>

Guides repository:<http://www.moda-ml.org/moda-ml/repository/guide/v2008-1/default.asp>

Guide filename: OF077-011-MODA-ML-TextileInvoice.pdf

1. BUSINESS DESCRIPTION

1.1 Scope

The present guide has been issued to assist the companies of the Textile-Clothing sector in the implementation of the standard XML document type "Textile INVOICE", providing all the instruction required for its use in any context of e-commerce between Apparel Producers and Fabric Producers.

All the rules required for the construction and validation of the document are embedded into the specific XML-Schema, which is detailed in section "Implementation guide".

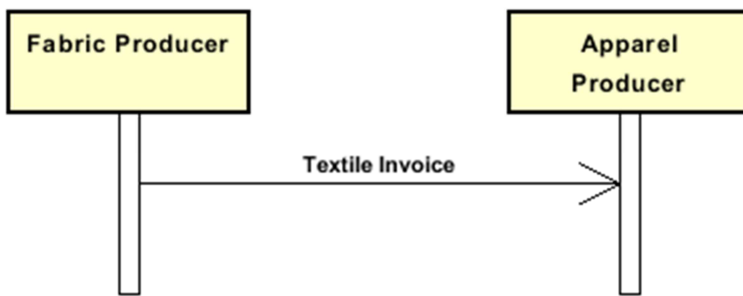
1.2 Generalities

The document "Textile invoice" can be used to debit the Client for any kind of supply or service.

This document can be used to debit standard supply using the option "textItem", and additional goods or services using the option "prodServItem", even in the same invoice.

The use of quantity and unit price is mandatory only with "textItem".

1.3. Possible scenario



2. IMPLEMENTATION GUIDE

2.1 General structure of XML document

All the business data that can be exchanged through this class of documents are shown in the following "document structure", that provides a simplified vision of the Schema.

In particular:

- the two numbers following each element define its "cardinality" (minimum and maximum number of occurrences); the minimum equal zero indicates that the element is optional, the minimum greater than zero indicates that is mandatory;
- the bold character denotes the complex elements (aggregates of simple elements) that were built for the sake of functionality and re-usability of some complex informations sets. The child elements in each parent element are easily spotted as "indented";
- the symbol "@" denotes an attribute of the preceding element; here "the usage indicator (optional, required, ...) is shown in square brackets.

Structure

TEXInvoice

@invoiceType [Optional] [Default= STD]

@msgfunction [Optional] [Default= OR]

| **Tlheader 1-1**

| | msgN 1-1

| - choose -

| | docID 0-1

| | @numberingOrg [Optional]

| - or -

| | msgID 0-1

| - end choose -

| | msgDate 1-1

| | @dateForm [Optional]

| | taxDate 0-1

| | @dateForm [Optional]

| | msgCurrency 0-1

| | otherCurrency 0-9

| | @currencyUseQualifier [Required]

| | **refDoc 0-9**

| | @docType [Required]

| | | docID 1-2

| | | @numberingOrg [Optional]

| | | docDate 0-1

| | | @dateForm [Optional]

| | | season 0-1

| | | itemID 0-1

| | **buyer 1-1**

| | @logo [Optional]

| | @sender [Optional]

| | | id 1-1

| | | @numberingOrg [Optional]

| | | legalName 0-1

| | | dept 0-1

| | | person 0-1

| | | @email [Optional]

| | | street 0-1

| | | city 0-1

| | | subCountry 0-1

| | | country 0-1

| | | postCode 0-1

| | **supplier 1-1**

```

| | @logo [Optional]
| | @sender [Optional]
| | | id 1-1
| | | | @numberingOrg [Optional]
| | | legalName 0-1
| | | dept 0-1
| | | person 0-1
| | | | @email [Optional]
| | | street 0-1
| | | city 0-1
| | | subCountry 0-1
| | | country 0-1
| | | postCode 0-1
| | thirdParty 0-5
| | | @VAT [Optional]
| | | @role [Required]
| | | @sender [Optional]
| | | | id 1-1
| | | | | @numberingOrg [Optional]
| | | | legalName 0-1
| | | | dept 0-1
| | | | person 0-1
| | | | | @email [Optional]
| | | | street 0-1
| | | | city 0-1
| | | | subCountry 0-1
| | | | country 0-1
| | | | postCode 0-1
| | terms 1-1
| | | payment 0-5
| | | | @finDiscount [Optional]
| | | | @finSurcharge [Optional]
| | | | - choose -
| | | | | payTerm 1-1
| | | | | - or -
| | | | | payTermText 1-1
| | | | | - end choose -
| | | | | payMode 0-1
| | | | insPayment 0-5
| | | | | @part [Required]
| | | | | - choose -
| | | | | | payTerm 1-1
| | | | | | - or -
| | | | | | payTermText 1-1
| | | | | | - end choose -
| | | | | | payMode 0-1
| | | | trade 0-1
| | | | | - choose -
| | | | | | incoTermText 1-1
| | | | | | - or -
| | | | | | incoTerm 1-1
| | | | | | - end choose -
| | | | | | location 0-1
| | | | | | | @LRI [Optional]
| | | | transInfo 0-1
| | | | | @transReason [Optional]
| | | | | | transMode 1-1
| | | | | | carrier 0-1
| | | | | | deliveryPlace 0-1
| | | | | | grossWeight 0-1
| | | | | | @um [Required]

```

```

| | | | netWeight 0-1
| | | |   @um [Required]
| | | | transMeans 0-1
| | | | transCondition 0-3
| | | | transConditionText 0-1
| | | | allowanceCharge 0-9
| | | |   @VAT [Optional]
| | | |   - choose -
| | | |     | AC_category 1-1
| | | |     - or -
| | | |     | AC_categoryText 1-1
| | | |     - choose -
| | | |     | AC_percent 1-1
| | | |     - or -
| | | |     | AC_amount 1-1
| | | |     - end choose -
| | | finInfo 0-1
| | |   - choose -
| | |     | iban 1-1
| | |     - or -
| | |     | bankIT 1-1
| | |     |   legalName 0-1
| | |     |   cin 0-1
| | |     |   abi 1-1
| | |     |   cab 1-1
| | |     |   accountN 1-1
| | |     - end choose -
| | |     | swift 0-1
| | | packageQty 0-1
| | | packageN 0-unbounded
| | |   @numberingOrg [Optional]
| | | note 0-5

```

| Ttbody 1-1

```

| | | Tlitem 1-unbounded
| | |   @VAT [Optional]
| | |   @sale [Optional] [Default= 1]
| | |   | lineN 1-1
| | |   | refDoc 0-9
| | |   |   @docType [Required]
| | |   |   | docID 1-2
| | |   |   |   @numberingOrg [Optional]
| | |   |   | docDate 0-1
| | |   |   |   @dateForm [Optional]
| | |   |   | season 0-1
| | |   |   | itemID 0-1
| | |   - choose -
| | |   | texItem 1-1
| | |   |   invCode 1-2
| | |   |   | @numberingOrg [Required]
| | |   |   |   art 1-1
| | |   |   |   | @numberingOrg [Optional]
| | |   |   |   | @codeList [Optional]
| | |   |   |   | @listName [Optional]
| | |   |   |   | @listVersion [Optional]
| | |   |   |   color 0-1
| | |   |   |   | @numberingOrg [Optional]
| | |   |   |   | @codeList [Optional]
| | |   |   |   | @listName [Optional]
| | |   |   |   | @listVersion [Optional]
| | |   |   | added 0-9

```

```

| | | | @addType [Optional]
| | | | description 0-1
| | | | fabricCompos 0-1
| | | | | percCompos 1-9
| | | | | @fibre [Required]
| | | | | customsStat 0-1
| | | | | customsAuth 0-1
| | | | | made 0-1
| | | | | grossQty 0-1
| | | | | @um [Required]
| | | | | grossWeight 0-1
| | | | | @um [Required]
| | | | - or -
| | | | prodServItem 1-1
| | | | | prodServName 1-1
| | | | | prodServ 0-1
| | | | | servMea 0-1
| | | | | note 0-1
| | | | - end choose -
| | | | | qty 0-1
| | | | | @um [Required]
| | | | | price 0-1
| | | | | @um [Optional]
| | | | | @priceQualifier [Optional] [Default= NET]
| | | | | amount 1-1
| | | | | note 0-1

```

```

| Tltotals 1-1
| | totQty 0-1
| | | @um [Required]
| | goodsAmount 1-1
| | comDiscount 0-1
| | goodsAmountDisc 0-1
| | VATinfo 1-9
| | | @VAT [Required]
| | | | taxAmount 1-1
| | | | VATamount 1-1
| | anticipDeduct 0-9
| | | @VAT [Required]
| | | | taxAmount 1-1
| | | | VATamount 0-1
| | msgAmount 1-1
| | msgVATamount 1-1

```

2.2 Detailed description of document elements

Following tables show all elements (complex and simple) used in this document. Description includes: 1) element's information: xml tag, name, brief description, data type and syntax constraints; 2) information about use of the element in a particular position in the document: xpath and possible associated notes.

2.2.1 Complex elements (Aggregate Business Information Entities)

Complex elements are those elements whose content is composed of other elements (childs). Complex elements are alphabetically ordered.

allowanceCharge	Allowances and Charges related to an Order or a contract (XPath: TEXInvoice/TIheader/terms/allowanceCharge) 0-9
anticipDeduct	anticipated amount deducted in the present message (invoice), subdivided into taxable amount and tax (XPath: TEXInvoice/TItotals/anticipDeduct) 0-9
bankIT	Italian bank operations code (XPath: TEXInvoice/TIheader/finInfo/bankIT) 1-1
buyer	details of the Buyer - base type: , (XPath: TEXInvoice/TIheader/buyer) 1-1
fabricCompos	composition of the fabric according to the Directory 97/37/CE (XPath: TEXInvoice/TIbody/TIitem/textItem/fabricCompos) 0-1
finInfo	bank details relevant for the payment: bank coordinates, SWIFT code (XPath: TEXInvoice/TIheader/finInfo) 0-1
insPayment	payment details for payment by installments (XPath: TEXInvoice/TIheader/terms/insPayment) 0-5 - note: <i>this set of data is alternative to payment set and must be iterated for each payment installment</i>
invCode	full codification of a general textile product usable for invoicing (XPath: TEXInvoice/TIbody/TIitem/textItem/invCode) 1-2
payment	payment details for payment all in one (XPath: TEXInvoice/TIheader/terms/payment) 0-5 - note: <i>this set of data can be iterated to specify alternative terms of payment (e.g.: 60 days or 30 days with 3% discount)</i>
prodServItem	line item "textile product" of the document TEXTILES INVOICE, to be used for invoicing services or occasional goods (XPath: TEXInvoice/TIbody/TIitem/prodServItem) 1-1
refDoc	identification of a document and of an item thereof, to which the message makes reference (XPath: TEXInvoice/TIbody/TIitem/refDoc) 0-9 - note: <i>here the line number of the Order specified with "refDoc" can be indicated</i> (XPath: TEXInvoice/TIheader/refDoc) 0-9
supplier	details of the Supplier - base type: , (XPath: TEXInvoice/TIheader/supplier) 1-1
terms	details of the commercial obligations for payment and delivery (XPath: TEXInvoice/TIheader/terms) 1-1 - note: <i>a payment term must always be specified</i>
textItem	line item "textile product" of the document TEXTILES INVOICE, to be used

	for invoicing normal textiles supplies (XPath: TEXInvoice/Tlbody/Tlitem/textItem) 1-1
thirdParty	details of the Third Party, different from Buyer or Supplier - base type: , (XPath: TEXInvoice/Tlheader/thirdParty) 0-5 - note: <i>here the Agent credited of the sale can be identified</i>
Tlbody	body of the document TEXTILES INVOICE (XPath: TEXInvoice/Tlbody) 1-1 - note: <i>this document body has two line types: a)textItem for regular textiles articles b)prodServItem for other goods (stocks, batch rest,..) and services or for anticipations</i>
Tlheader	header of the document TEXTILES INVOICE (XPath: TEXInvoice/Tlheader) 1-1
Tlitem	line item of the document TEXTILES INVOICE (XPath: TEXInvoice/Tlbody/Tlitem) 1-unbounded
Tltotals	details of the monetary and quantity totals of the Invoice (XPath: TEXInvoice/Tltotals) 1-1
trade	general terms of trade for the specified supply (XPath: TEXInvoice/Tlheader/terms/trade) 0-1
transInfo	details of transport: mode, carrier and delivery place (XPath: TEXInvoice/Tlheader/terms/transInfo) 0-1
VATinfo	details related to the VAT application: rate (exemption code); taxable amount; tax amount (XPath: TEXInvoice/Tltotals/VATinfo) 1-9

2.2.2 Simple elements (Basic Business Information Entities)

Simple elements are those elements whose content is characterized by a data type plus a domain of possible values. Simple elements are alphabetically ordered.

abi	ABI code - base type: string, length: 5, (XPath: TEXInvoice/Tlheader/finInfo/bankIT/abi) 1-1
AC_amount	amount of an Allowance or Charge - base type: decimal, min inclusive: 0, fraction digits: 2, (XPath: TEXInvoice/Tlheader/terms/allowanceCharge/AC_amount) 1-1
AC_category	coded specification of an Allowance or Charge - base type: string, cod. table: T41 http://www.moda-ml.net/moda-ml/repository/codelist/v2008-1/gc_T41.xml (XPath: TEXInvoice/Tlheader/terms/allowanceCharge/AC_category) 1-1
AC_categoryText	free text description of an Allowance or Charge - base type: string, max length: 70, (XPath: TEXInvoice/Tlheader/terms/allowanceCharge/AC_categoryText) 1-1
AC_percent	amount of an Allowance or Charge as a percentage - base type: decimal, min inclusive: 0, max inclusive: 100, fraction digits: 2, (XPath: TEXInvoice/Tlheader/terms/allowanceCharge/AC_percent) 1-1
accountN	account number - base type: string, max length: 15, (XPath: TEXInvoice/Tlheader/finInfo/bankIT/accountN) 1-1
added	additional code of the product (complementing the formers)

	- base type: string, max length: 15, (XPath: TEXInvoice/TIbody/TIitem/textItem/invCode/added) 0-9
@addType	qualifier of the additional coding of a product - base type: string, cod. table: T44 http://www.moda-ml.net/moda-ml/repository/codelist/v2008-1/gc_T44.xml (XPath: TEXInvoice/TIbody/TIitem/textItem/invCode/added/@addType) [Optional]
amount	total monetary value of the goods and services considered in the message line (usually net price x quantity) - base type: decimal, min inclusive: 0, fraction digits: 2, (XPath: TEXInvoice/TIbody/TIitem/amount) 1-1
art	article number of the product - base type: string, max length: 25, (XPath: TEXInvoice/TIbody/TIitem/textItem/invCode/art) 1-1
cab	CAB code - base type: string, length: 5, (XPath: TEXInvoice/TIheader/finInfo/bankIT/cab) 1-1
carrier	identification of the transport carrier - base type: string, max length: 40, (XPath: TEXInvoice/TIheader/terms/transInfo/carrier) 0-1
cin	CIN code - base type: string, length: 5, (XPath: TEXInvoice/TIheader/finInfo/bankIT/cin) 0-1
city	name of the city (town, village) - base type: string, max length: 40, (XPath: TEXInvoice/TIheader/supplier/city) 0-1 (XPath: TEXInvoice/TIheader/buyer/city) 0-1 (XPath: TEXInvoice/TIheader/thirdParty/city) 0-1
@codeList	it specifies the URL where the list of codes used to make an instance of the element can be found - base type: string, max length: 255, (XPath: TEXInvoice/TIbody/TIitem/textItem/invCode/color/@codeList) [Optional] - nota: <i>this attribute should be ALTERNATIVE to the others</i> (XPath: TEXInvoice/TIbody/TIitem/textItem/invCode/art/@codeList) [Optional] - nota: <i>this attribute should be ALTERNATIVE to the others</i>
color	colour number of the product, when not included in the model or fabric code - base type: string, max length: 15, (XPath: TEXInvoice/TIbody/TIitem/textItem/invCode/color) 0-1
comDiscount	percent discount applied to the related unit price or amount - base type: decimal, min inclusive: 0, max inclusive: 100, fraction digits: 2, (XPath: TEXInvoice/TItotals/comDiscount) 0-1
country	code of the nation - base type: string, cod. table: T10 http://www.moda-ml.net/moda-ml/repository/codelist/v2008-1/gc_T10.xml (XPath: TEXInvoice/TIheader/supplier/country) 0-1 (XPath: TEXInvoice/TIheader/buyer/country) 0-1 (XPath: TEXInvoice/TIheader/thirdParty/country) 0-1
@currencyUseQualifier	qualification of another currency used in the document - base type: string, cod. table: NT19 http://www.moda-ml.net/moda-ml/repository/codelist/v2008-1/gc_NT19.xml (XPath: TEXInvoice/TIheader/otherCurrency/@currencyUseQualifier) [Required]
customsAuth	number of the customs authorisation for import/export of a specified product - base type: string, max length: 25, (XPath: TEXInvoice/TIbody/TIitem/textItem/customsAuth) 0-1
customsStat	statistic code assigned by Customs to a specified product

	- base type: string, max length: 15, (XPath: TEXInvoice/TIbody/TIitem/textItem/customsStat) 0-1
@dateForm	format used for a date - base type: string, cod. table: NT29 http://www.moda-ml.net/moda-ml/repository/codelist/v2008-1/gc_NT29.xml (XPath: TEXInvoice/TIheader/msgDate/@dateForm) [Optional] (XPath: TEXInvoice/TIheader/refDoc/docDate/@dateForm) [Optional] (XPath: TEXInvoice/TIbody/TIitem/refDoc/docDate/@dateForm) [Optional] (XPath: TEXInvoice/TIheader/taxDate/@dateForm) [Optional]
deliveryPlace	place of delivery of goods, ultimate or related to a given leg - base type: string, max length: 40, (XPath: TEXInvoice/TIheader/terms/transInfo/deliveryPlace) 0-1
dept	name or code of a contact department within a Party - base type: string, max length: 40, (XPath: TEXInvoice/TIheader/thirdParty/dept) 0-1 (XPath: TEXInvoice/TIheader/buyer/dept) 0-1 (XPath: TEXInvoice/TIheader/supplier/dept) 0-1
description	free text description of a product - base type: string, max length: 70, (XPath: TEXInvoice/TIbody/TIitem/textItem/invCode/description) 0-1
docDate	date of issue of the referenced document, according to one of the patterns YYYY-MM-DD, YYYY-MM-DD:HH-MM or YYYY-WW. - base type: string, (XPath: TEXInvoice/TIbody/TIitem/refDoc/docDate) 0-1 (XPath: TEXInvoice/TIheader/refDoc/docDate) 0-1
docID	identification number of the referenced document SINCE 2008-1 ITS USE IN THE HEADER IS DISCOURAGED (REPLACED BY) - base type: string, max length: 35, (XPath: TEXInvoice/TIbody/TIitem/refDoc/docID) 1-2 (XPath: TEXInvoice/TIheader/docID) 0-1 (XPath: TEXInvoice/TIheader/refDoc/docID) 1-2
@docType	type or class to which the referenced document belongs - base type: string, cod. table: T21 http://www.moda-ml.net/moda-ml/repository/codelist/v2008-1/gc_T21.xml (XPath: TEXInvoice/TIbody/TIitem/refDoc/@docType) [Required] (XPath: TEXInvoice/TIheader/refDoc/@docType) [Required]
@email	electronic mail address of the contact person within a Party - base type: string, max length: 80, (XPath: TEXInvoice/TIheader/thirdParty/person/@email) [Optional] (XPath: TEXInvoice/TIheader/buyer/person/@email) [Optional] (XPath: TEXInvoice/TIheader/supplier/person/@email) [Optional]
@fibre	type of fibre used in a textile product - base type: string, cod. table: T19 http://www.moda-ml.net/moda-ml/repository/codelist/v2008-1/gc_T19.xml (XPath: TEXInvoice/TIbody/TIitem/textItem/fabricCompos/percCompos/@fibre) [Required]
@finDiscount	financial discount applied for payment by the date specified - base type: decimal, min inclusive: 0, max inclusive: 100, fraction digits: 2, (XPath: TEXInvoice/TIheader/terms/payment/@finDiscount) [Optional]
@finSurcharge	financial surcharge applied for payment after the date specified - base type: decimal, min inclusive: 0, max inclusive: 100, fraction digits: 2, (XPath: TEXInvoice/TIheader/terms/payment/@finSurcharge) [Optional]
goodsAmount	total monetary value of the goods and services considered in the message - base type: decimal, min inclusive: 0, fraction digits: 2, (XPath: TEXInvoice/TItotals/goodsAmount) 1-1

goodsAmountDisc	total monetary value of the goods and services considered in the message, after the discount has been applied - base type: decimal, min inclusive: 0, fraction digits: 2, (XPath: TEXInvoice/TItotals/goodsAmountDisc) 0-1
grossQty	gross quantity of the article or object specified in the message line - base type: decimal, min inclusive: 0, fraction digits: 2, (XPath: TEXInvoice/TIbody/TIitem/textItem/grossQty) 0-1
grossWeight	the gross weight of the overall goods supply, declared for transport or customs purpose - base type: decimal, min inclusive: 0, fraction digits: 2, (XPath: TEXInvoice/TIbody/TIitem/textItem/grossWeight) 0-1 (XPath: TEXInvoice/TIheader/terms/transInfo/grossWeight) 0-1
iban	international bank and account identifier, used for fund transfer - base type: string, max length: 35, (XPath: TEXInvoice/TIheader/finInfo/iban) 1-1
id	primary identification code of a Party; it is recommended the format: nation code (ISO 3166) + VAT identification number (11 crt), with the qualifier "numberingOrg"= MF - base type: string, max length: 15, (XPath: TEXInvoice/TIheader/thirdParty/id) 1-1 (XPath: TEXInvoice/TIheader/buyer/id) 1-1 (XPath: TEXInvoice/TIheader/supplier/id) 1-1
incoTerm	specification of the terms of trade (INCOTERMS) - base type: string, cod. table: T3 http://www.moda-ml.net/moda-ml/repository/codelist/v2008-1/gc_T3.xml (XPath: TEXInvoice/TIheader/terms/trade/incoTerm) 1-1
incoTermText	free text specifying the terms of trade (incoterm, location) - base type: string, max length: 70, (XPath: TEXInvoice/TIheader/terms/trade/incoTermText) 1-1
@invoiceType	type of Invoice (standard or anticipated) - base type: string, cod. table: T18 http://www.moda-ml.net/moda-ml/repository/codelist/v2008-1/gc_T18.xml (XPath: TEXInvoice/@invoiceType) [Optional] [Default= STD]
itemID	number of the line/item of the referenced document - base type: string, max length: 6, (XPath: TEXInvoice/TIheader/refDoc/itemID) 0-1 (XPath: TEXInvoice/TIbody/TIitem/refDoc/itemID) 0-1
legalName	legal name of a Party - base type: string, max length: 80, (XPath: TEXInvoice/TIheader/supplier/legalName) 0-1 (XPath: TEXInvoice/TIheader/finInfo/bankIT/legalName) 0-1 (XPath: TEXInvoice/TIheader/thirdParty/legalName) 0-1 (XPath: TEXInvoice/TIheader/buyer/legalName) 0-1
lineN	number of the line item of the present message (xml document) - base type: positiveInteger, min inclusive: 1, max inclusive: 9999, (XPath: TEXInvoice/TIbody/TIitem/lineN) 1-1
@listName	it specifies the name of the list of codes used to make an instance of the element - base type: string, max length: 40, (XPath: TEXInvoice/TIbody/TIitem/textItem/invCode/art/@listName) [Optional] - nota: <i>this attribute should always be used coupled with "numberingOrg"</i> (XPath: TEXInvoice/TIbody/TIitem/textItem/invCode/color/@listName) [Optional] - nota: <i>this attribute should always be used coupled with "numberingOrg"</i>
@listVersion	it specifies the version of the list of codes used to make an instance of the element

	<ul style="list-style-type: none"> - base type: string, max length: 6, (XPath: TEXInvoice/TIbody/TIitem/textItem/invCode/color/@listVersion) [Optional] - nota: <i>this attribute should always be used coupled with “numberingOrg” and “listName”</i> (XPath: TEXInvoice/TIbody/TIitem/textItem/invCode/art/@listVersion) [Optional] - nota: <i>this attribute should always be used coupled with “numberingOrg” and “listName”</i>
location	<p>specification of a location</p> <ul style="list-style-type: none"> - base type: string, max length: 40, (XPath: TEXInvoice/TIheader/terms/trade/location) 0-1 - note: <i>place to which the INCOTERM applies</i>
@logo	<p>company logo (URL of the image jpeg or gif). It is recommended that the width of the image does not exceed 640 pixel.</p> <ul style="list-style-type: none"> - base type: string, max length: 255, (XPath: TEXInvoice/TIheader/supplier/@logo) [Optional] (XPath: TEXInvoice/TIheader/buyer/@logo) [Optional]
@LRI	<p>attribute usable to format a string according to a customized User rule (local rule)</p> <ul style="list-style-type: none"> - base type: string, cod. table: NT3 http://www.moda-ml.net/moda-ml/repository/codelist/v2008-1/gc_NT3.xml (XPath: TEXInvoice/TIheader/terms/trade/location/@LRI) [Optional]
made	<p>specifies the country where the product has been manufactured</p> <ul style="list-style-type: none"> - base type: string, cod. table: T10 http://www.moda-ml.net/moda-ml/repository/codelist/v2008-1/gc_T10.xml (XPath: TEXInvoice/TIbody/TIitem/textItem/made) 0-1
msgAmount	<p>total monetary amount of the message</p> <ul style="list-style-type: none"> - base type: decimal, min inclusive: 0, fraction digits: 2, (XPath: TEXInvoice/TItotals/msgAmount) 1-1
msgCurrency	<p>currency used to express the monetary amounts of the message</p> <ul style="list-style-type: none"> - base type: string, cod. table: T9 http://www.moda-ml.net/moda-ml/repository/codelist/v2008-1/gc_T9.xml (XPath: TEXInvoice/TIheader/msgCurrency) 0-1
msgDate	<p>date of issue of the present message (xml document), according to one of the patterns YYYY-MM-DD, YYYY-MM-DD:HH-MM or YYYY-WW.</p> <ul style="list-style-type: none"> - base type: string, (XPath: TEXInvoice/TIheader/msgDate) 1-1
@msgfunction	<p>function performed by the present message with regards to the transmission</p> <ul style="list-style-type: none"> - base type: string, cod. table: NT18 http://www.moda-ml.net/moda-ml/repository/codelist/v2008-1/gc_NT18.xml (XPath: TEXInvoice/@msgfunction) [Optional] [Default= OR]
msgID	<p>key identifier of the document in the information system of the issuing Party</p> <ul style="list-style-type: none"> - base type: string, max length: 35, (XPath: TEXInvoice/TIheader/msgID) 0-1
msgN	<p>identification number given to the message (xml document) by its issuer</p> <ul style="list-style-type: none"> - base type: string, max length: 35, (XPath: TEXInvoice/TIheader/msgN) 1-1
msgVATamount	<p>total payable VAT of an invoice</p> <ul style="list-style-type: none"> - base type: decimal, min inclusive: 0, fraction digits: 2, (XPath: TEXInvoice/TItotals/msgVATamount) 1-1
netWeight	<p>the net weight of the overall goods supply, declared for transport or customs purpose</p> <ul style="list-style-type: none"> - base type: decimal, min inclusive: 0, fraction digits: 2, (XPath: TEXInvoice/TIheader/terms/transInfo/netWeight) 0-1
note	<p>free text note</p>

	<p>- base type: string, max length: 350, (XPath: TEXInvoice/THheader/note) 0-5 (XPath: TEXInvoice/TIbody/TIitem/note) 0-1 (XPath: TEXInvoice/TIbody/TIitem/prodServItem/note) 0-1</p>
@numberingOrg	<p>code specifying the organisation who has created or owns the coding or numbering system</p> <p>- base type: string, cod. table: NT6 http://www.moda-ml.net/moda-ml/repository/codelist/v2008-1/gc_NT6.xml (XPath: TEXInvoice/THheader/docID/@numberingOrg) [Optional]</p> <p>- nota: here can be specified whose document numbering is used (e.g.: Client, Supplier, ..) (XPath: TEXInvoice/THheader/thirdParty/id/@numberingOrg) [Optional] (XPath: TEXInvoice/TIbody/TIitem/invCode/@numberingOrg) [Required] (XPath: TEXInvoice/TIbody/TIitem/textItem/invCode/art/@numberingOrg) [Optional]</p> <p>- nota: this attribute should be used either single or coupled with "listName" and "listVersion" (XPath: TEXInvoice/TIbody/TIitem/textItem/invCode/color/@numberingOrg) [Optional]</p> <p>- nota: this attribute should be used either single or coupled with "listName" and "listVersion" (XPath: TEXInvoice/TIbody/TIitem/refDoc/docID/@numberingOrg) [Optional]</p> <p>- nota: here can be specified whose document numbering is used (e.g.: Client, Supplier, ..) (XPath: TEXInvoice/THheader/supplier/id/@numberingOrg) [Optional] (XPath: TEXInvoice/THheader/packageN/@numberingOrg) [Optional] (XPath: TEXInvoice/THheader/refDoc/docID/@numberingOrg) [Optional]</p> <p>- nota: here can be specified whose document numbering is used (e.g.: Client, Supplier, ..) (XPath: TEXInvoice/THheader/buyer/id/@numberingOrg) [Optional]</p>
otherCurrency	<p>other currency used in the document</p> <p>- base type: string, cod. table: T9 http://www.moda-ml.net/moda-ml/repository/codelist/v2008-1/gc_T9.xml (XPath: TEXInvoice/THheader/otherCurrency) 0-9</p>
packageN	<p>serial number used to identify a transport package</p> <p>- base type: string, max length: 25, (XPath: TEXInvoice/THheader/packageN) 0-unbounded</p> <p>- note: here the packages corresponding to the invoice can be identified</p>
packageQty	<p>quantity of the specified transport packages</p> <p>- base type: positiveInteger, (XPath: TEXInvoice/THheader/packageQty) 0-1</p>
@part	<p>percent fraction of a total payment</p> <p>- base type: decimal, min inclusive: 1, max inclusive: 99, fraction digits: 2, (XPath: TEXInvoice/THheader/terms/insPayment/@part) [Required]</p> <p>- nota: here the % value of each installment must be indicated</p>
payMode	<p>way or means of payment</p> <p>- base type: string, cod. table: T2 http://www.moda-ml.net/moda-ml/repository/codelist/v2008-1/gc_T2.xml (XPath: TEXInvoice/THheader/terms/payment/payMode) 0-1 (XPath: TEXInvoice/THheader/terms/insPayment/payMode) 0-1</p>
payTerm	<p>code specifying the terms or time by which the payment must be done</p> <p>- base type: string, cod. table: T1 http://www.moda-ml.net/moda-ml/repository/codelist/v2008-1/gc_T1.xml (XPath: TEXInvoice/THheader/terms/insPayment/payTerm) 1-1 (XPath: TEXInvoice/THheader/terms/payment/payTerm) 1-1</p>
payTermText	<p>free text specifying the terms by which the payment must be done (time/mode or means)</p> <p>- base type: string, max length: 40, (XPath: TEXInvoice/THheader/terms/insPayment/payTermText) 1-1 (XPath: TEXInvoice/THheader/terms/payment/payTermText) 1-1</p>

percCompos	<p>fiber rate in the product composition</p> <p>- base type: decimal, min inclusive: 0, max inclusive: 100, fraction digits: 2, (XPath: TEXInvoice/TIbody/TIitem/textItem/fabricCompos/percCompos) 1-9</p>
person	<p>name of the contact person within a Party</p> <p>- base type: string, max length: 40, (XPath: TEXInvoice/TIheader/buyer/person) 0-1 (XPath: TEXInvoice/TIheader/supplier/person) 0-1 (XPath: TEXInvoice/TIheader/thirdParty/person) 0-1</p>
postCode	<p>code defining the postal zone</p> <p>- base type: string, max length: 10, (XPath: TEXInvoice/TIheader/supplier/postCode) 0-1 (XPath: TEXInvoice/TIheader/buyer/postCode) 0-1 (XPath: TEXInvoice/TIheader/thirdParty/postCode) 0-1</p>
price	<p>unit price of the article, object or service specified</p> <p>- base type: decimal, min inclusive: 0, fraction digits: 2, (XPath: TEXInvoice/TIbody/TIitem/price) 0-1</p>
@priceQualifier	<p>type of price with reference to discount and taxes</p> <p>- base type: string, cod. table: NT20 http://www.moda-ml.net/moda-ml/repository/codelist/v2008-1/gc_NT20.xml (XPath: TEXInvoice/TIbody/TIitem/price/@priceQualifier) [Optional] [Default= NET]</p>
prodServ	<p>Supplier's code which identifies an accessory product or a service</p> <p>- base type: string, max length: 35, (XPath: TEXInvoice/TIbody/TIitem/prodServItem/prodServ) 0-1</p>
prodServName	<p>description of the product or service that either complements or substitutes its coding</p> <p>- base type: string, max length: 100, (XPath: TEXInvoice/TIbody/TIitem/prodServItem/prodServName) 1-1</p>
qty	<p>net quantity of the article or object correlated, qualified by the function of the document (ordering, delivering, ..) and by the context</p> <p>- base type: decimal, min inclusive: 0, fraction digits: 2, (XPath: TEXInvoice/TIbody/TIitem/qty) 0-1</p>
@role	<p>Third Party role qualifier</p> <p>- base type: string, cod. table: NT2 http://www.moda-ml.net/moda-ml/repository/codelist/v2008-1/gc_NT2.xml (XPath: TEXInvoice/TIheader/thirdParty/@role) [Required]</p>
@sale	<p>indicates whether the item is sold (sale = "1") or omaged (sale = "0")</p> <p>- base type: boolean, (XPath: TEXInvoice/TIbody/TIitem/@sale) [Optional] [Default= 1] - nota: <i>the default value (1) indicates "sale"</i></p>
season	<p>sale season; defined as: season (1 crt) + year (4 crt) - season: S/S=1 A/W=2 Spring=3 Summer=4 Autumn=5 Winter=6: for more than four seasons use alphabetic sequence: 1st season=A 2nd season=B etc.etc.</p> <p>- base type: string, max length: 15, (XPath: TEXInvoice/TIheader/refDoc/season) 0-1 - note: <i>here indicates the season to which the referenced document belongs</i> (XPath: TEXInvoice/TIbody/TIitem/refDoc/season) 0-1 - note: <i>here indicates the season to which the referenced document belongs</i></p>
@sender	<p>qualifier that specifies the Party issuing of the document</p> <p>- base type: boolean, (XPath: TEXInvoice/TIheader/supplier/@sender) [Optional] - nota: <i>This attribute is mandatory when the STYLESHEET must be produced</i> (XPath: TEXInvoice/TIheader/thirdParty/@sender) [Optional] - nota: <i>This attribute is mandatory when the STYLESHEET must be produced</i> (XPath: TEXInvoice/TIheader/buyer/@sender) [Optional]</p>

	- nota: <i>This attribute is mandatory when the STYLESHEET must be produced</i>
servMea	mode used to measure the quantity of service provided (e.g.: weight, volume, time duration,) - base type: string, cod. table: T36 http://www.moda-ml.net/moda-ml/repository/codelist/v2008-1/gc_T36.xml (XPath: <code>TEXInvoice/TIbody/TIitem/prodServItem/servMea</code>) 0-1
street	street and building number identifying a location - base type: string, max length: 80, (XPath: <code>TEXInvoice/TIheader/supplier/street</code>) 0-1 (XPath: <code>TEXInvoice/TIheader/buyer/street</code>) 0-1 (XPath: <code>TEXInvoice/TIheader/thirdParty/street</code>) 0-1
subCountry	short name or code of the sub-country entity - base type: string, max length: 9, (XPath: <code>TEXInvoice/TIheader/thirdParty/subCountry</code>) 0-1 (XPath: <code>TEXInvoice/TIheader/supplier/subCountry</code>) 0-1 (XPath: <code>TEXInvoice/TIheader/buyer/subCountry</code>) 0-1
swift	swift code relevant to thr financial transaction - base type: string, max length: 15, (XPath: <code>TEXInvoice/TIheader/finInfo/swift</code>) 0-1
taxAmount	taxable amount related to the VAT rate or exemption code attributed - base type: decimal, min inclusive: 0, fraction digits: 2, (XPath: <code>TEXInvoice/TItotals/anticipDeduct/taxAmount</code>) 1-1 (XPath: <code>TEXInvoice/TItotals/VATinfo/taxAmount</code>) 1-1
taxDate	date on which the supply of goods or services was made or completed, if preceding the date of the invoice, according to one of the patterns YYYY-MM-DD, YYYY-MM-DD:HH-MM or YYYY-WW. - base type: string, (XPath: <code>TEXInvoice/TIheader/taxDate</code>) 0-1
totQty	total quantity of the articles related to the whole document - base type: decimal, min inclusive: 0, fraction digits: 2, (XPath: <code>TEXInvoice/TItotals/totQty</code>) 0-1
transCondition	special condition of transport or special service requested to the Forwarder - base type: string, cod. table: T38 http://www.moda-ml.net/moda-ml/repository/codelist/v2008-1/gc_T38.xml (XPath: <code>TEXInvoice/TIheader/terms/transInfo/transCondition</code>) 0-3
transConditionText	free text description of the special condition of transport or special service requested to the Forwarder - base type: string, max length: 100, (XPath: <code>TEXInvoice/TIheader/terms/transInfo/transConditionText</code>) 0-1
transMeans	means of transport, in general or referred to a specific leg - base type: string, cod. table: T40 http://www.moda-ml.net/moda-ml/repository/codelist/v2008-1/gc_T40.xml (XPath: <code>TEXInvoice/TIheader/terms/transInfo/transMeans</code>) 0-1
transMode	way of transport, in general or referred to the specified leg - base type: string, cod. table: T8 http://www.moda-ml.net/moda-ml/repository/codelist/v2008-1/gc_T8.xml (XPath: <code>TEXInvoice/TIheader/terms/transInfo/transMode</code>) 1-1
@transReason	reason for the transport - base type: string, cod. table: NT11 http://www.moda-ml.net/moda-ml/repository/codelist/v2008-1/gc_NT11.xml (XPath: <code>TEXInvoice/TIheader/terms/transInfo/@transReason</code>) [Optional]
@um	specification of the unit of measure - base type: string, cod. table: NT7 http://www.moda-ml.net/moda-ml/repository/codelist/v2008-1/gc_NT7.xml

	<p>(XPath: TEXInvoice/TIbody/TIitem/textItem/grossQty/@um) [Required] (XPath: TEXInvoice/TIheader/terms/transInfo/netWeight/@um) [Required] (XPath: TEXInvoice/TIbody/TIitem/textItem/grossWeight/@um) [Required] (XPath: TEXInvoice/TIbody/TIitem/qty/@um) [Required] (XPath: TEXInvoice/TIheader/terms/transInfo/grossWeight/@um) [Required] (XPath: TEXInvoice/TIbody/TIitem/price/@um) [Optional] (XPath: TEXInvoice/TItotals/totQty/@um) [Required]</p>
@VAT	<p>VAT rate or code - base type: string, cod. table: NT16 http://www.moda-ml.net/moda-ml/repository/codelist/v2008-1/gc_NT16.xml (XPath: TEXInvoice/TItotals/anticipDeduct/@VAT) [Required] (XPath: TEXInvoice/TIheader/terms/allowanceCharge/@VAT) [Optional] (XPath: TEXInvoice/TIbody/TIitem/@VAT) [Optional] - nota: <i>VAT rate of the product or service specified in the line</i> (XPath: TEXInvoice/TItotals/VATinfo/@VAT) [Required] (XPath: TEXInvoice/TIheader/thirdParty/@VAT) [Optional]</p>
VATamount	<p>VAT amount forthe specified tax rate - base type: decimal, min inclusive: 0, fraction digits: 2, (XPath: TEXInvoice/TItotals/VATinfo/VATamount) 1-1 (XPath: TEXInvoice/TItotals/anticipDeduct/VATamount) 0-1</p>

2.3 Enumeration tables

List of enumeration tables used in the XML document. You can find the corresponding codes at:
<http://www.moda-ml.org/moda-ml/imple/moda-ml-2008-1.asp?lingua=en&pag=6>

NT11 - Transport causal
NT16 - VAT rate or code
NT18 - message function
NT19 - currency use qualifier
NT2 - Third party qualifier
NT20 - price qualifier
NT29 - format of a date
NT3 - Data format
NT6 - Coding system owner/issuer
NT7 - Unity of measure
T1 - Terms of payment
T10 - ISO3166 - Country
T18 - Invoice type
T19 - fibre type
T2 - Modes of payment
T21 - type of document
T3 - Terms of delivery
T36 - service measure mode
T38 - transport conditions
T40 - type of transport means
T41 - type of Allowance or Charge
T44 - additional code type
T8 - Modes of Transport
T9 - ISO4217 - Currency

Annex A

Representative images of the principal complex elements' structure.

