



<http://www.moda-ml.org>

IMPLEMENTATION GUIDE
TRANSACTION "YARN PURCHASE ORDER"

Version: 2008-1

Date of release: 15/12/2008

Document code: OF077-014

XML Schema repository:<http://www.moda-ml.org/moda-ml/repository/schema/v2008-1/default.asp>

Guides repository:<http://www.moda-ml.org/moda-ml/repository/guide/v2008-1/default.asp>

Guide filename: OF077-014-MODA-ML-YarnPurchaseOrder.pdf

1. BUSINESS DESCRIPTION

1.1 Scope

The present guide has been issued to assist the companies of the Textile-Clothing sector in the implementation of the standard XML document type "YARN PURCHASE ORDER", providing all the instruction required for its use in any context of e-commerce between Yarn Producers and their Customers.

All the rules required for the construction and validation of the document are embedded into the specific XML-Schema, which is detailed in section "Implementation guide".

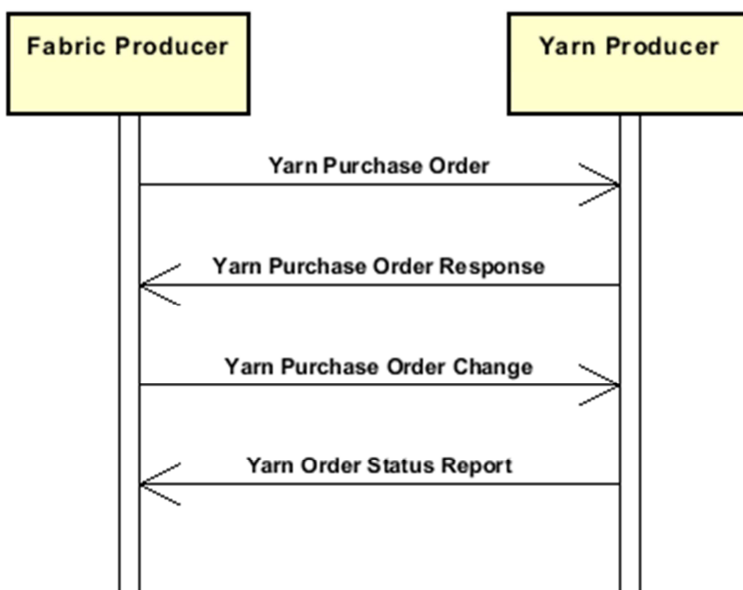
1.2 Generalities

The Purchase Order is issued by a Fabric or Knittwear Producer to procure yarn.

Key elements of this type of Order, besides quantities and delivery dates, are

- 1- the yarn product code, showing article, color and additional coding
- 2- the technical and construction specifications of the yarn product and the possible specification of "special treatments"
- 3- the detailed specifications referring to packing and packaging

1.3. Possible scenario



2. IMPLEMENTATION GUIDE

2.1 General structure of XML document

All the business data that can be exchanged through this class of documents are shown in the following "document structure", that provides a simplified vision of the Schema.

In particular:

- the two numbers following each element define its "cardinality" (minimum and maximum number of occurrences); the minimum equal zero indicates that the element is optional, the minimum greater than zero indicates that is mandatory;
- the bold character denotes the complex elements (aggregates of simple elements) that were built for the sake of functionality and re-usability of some complex informations sets. The child elements in each parent element are easily spotted as "indented";
- the symbol "@" denotes an attribute of the preceding element; here "the usage indicator (optional, required, ...) is shown in square brackets.

Structure

YARNOrder

@Totype [Required]

@msgfunction [Optional] [Default= OR]

| **YHeader 1-1**

| | msgN 1-1

| - choose -

| | msgID 0-1

| - or -

| | docID 0-1

| | @numberingOrg [Optional]

| - end choose -

| | msgDate 1-1

| | @dateForm [Optional]

| | season 0-1

| | msgCurrency 0-1

| | otherCurrency 0-9

| | @currencyUseQualifier [Required]

| | **refDoc 0-9**

| | @docType [Required]

| | | docID 1-2

| | | @numberingOrg [Optional]

| | | docDate 0-1

| | | @dateForm [Optional]

| | | season 0-1

| | | itemID 0-1

| | **buyer 1-1**

| | | @logo [Optional]

| | | @sender [Optional]

| | | | id 1-1

| | | | @numberingOrg [Optional]

| | | | legalName 0-1

| | | | dept 0-1

| | | | person 0-1

| | | | @email [Optional]

| | | | street 0-1

| | | | city 0-1

| | | | subCountry 0-1

| | | | country 0-1

| | | | postCode 0-1

| | **supplier 1-1**

| | | @logo [Optional]

- | | *@sender [Optional]*
- | | | id 1-1
- | | | *@numberingOrg [Optional]*
- | | | legalName 0-1
- | | | dept 0-1
- | | | person 0-1
- | | | *@email [Optional]*
- | | | street 0-1
- | | | city 0-1
- | | | subCountry 0-1
- | | | country 0-1
- | | | postCode 0-1
- | | **thirdParty 0-5**
- | | | *@VAT [Optional]*
- | | | *@role [Required]*
- | | | *@sender [Optional]*
- | | | | id 1-1
- | | | | *@numberingOrg [Optional]*
- | | | | legalName 0-1
- | | | | dept 0-1
- | | | | person 0-1
- | | | | *@email [Optional]*
- | | | | street 0-1
- | | | | city 0-1
- | | | | subCountry 0-1
- | | | | country 0-1
- | | | | postCode 0-1
- | | note 0-5

- | **terms 0-1**
- | | **payment 0-5**
- | | | *@finDiscount [Optional]*
- | | | *@finSurcharge [Optional]*
- | | | - choose -
- | | | | payTerm 1-1
- | | | - or -
- | | | | payTermText 1-1
- | | | - end choose -
- | | | | payMode 0-1
- | | | **insPayment 0-5**
- | | | | *@part [Required]*
- | | | | - choose -
- | | | | | payTerm 1-1
- | | | | - or -
- | | | | | payTermText 1-1
- | | | | - end choose -
- | | | | | payMode 0-1
- | | | **trade 0-1**
- | | | - choose -
- | | | | incoTermText 1-1
- | | | - or -
- | | | | incoTerm 1-1
- | | | - end choose -
- | | | | location 0-1
- | | | | *@LRI [Optional]*
- | | | **transInfo 0-1**
- | | | | *@transReason [Optional]*
- | | | | transMode 1-1
- | | | | carrier 0-1
- | | | | deliveryPlace 0-1
- | | | | grossWeight 0-1

- | | | @um [Required]
- | | | netWeight 0-1
- | | | @um [Required]
- | | | transMeans 0-1
- | | | transCondition 0-3
- | | | transConditionText 0-1
- | | **allowanceCharge 0-9**
- | | | @VAT [Optional]
- | | | - choose -
- | | | | AC_category 1-1
- | | | | - or -
- | | | | AC_categoryText 1-1
- | | | | - choose -
- | | | | AC_percent 1-1
- | | | | - or -
- | | | | AC_amount 1-1
- | | | - end choose -

| **yarnComInfo 0-1**

- | | yarnPay 0-1
- | | | @percCond [Optional]
- | | | deliveryDate 0-1
- | | | @dateForm [Optional]
- | | | specDate 0-1
- | | | @dateForm [Optional]

| | **yarnPack 0-1**

- | | | **yarnReel 1-1**
- | | | | @reelType [Required]
- | | | | @reelMat [Required]
- | | | | | yarnReelD 0-1
- | | | | | @um [Required]
- | | | | | yarnReelH 0-1
- | | | | | @um [Required]
- | | | | | yarnConeAngle 0-1
- | | | | | yarnReelQty 0-2
- | | | | | @um [Required]
- | | | | | label 0-1
- | | | | | labelWrit 0-1
- | | | | **yarnInWrap 0-1**
- | | | | | yarnReelWrap 1-1
- | | | | | label 0-1
- | | | | | labelWrit 0-1

- | | | - choose -
- | | | | yarnOutWrapText 0-1
- | | | | - or -
- | | | | yarnOutWrap 0-1
- | | | - end choose -

| **YObody 1-1**

| | **YOitem 1-unbounded**

- | | | lineN 1-1
- | | | **refDoc 0-9**
- | | | | @docType [Required]
- | | | | | docID 1-2
- | | | | | @numberingOrg [Optional]
- | | | | | docDate 0-1
- | | | | | @dateForm [Optional]
- | | | | | season 0-1
- | | | | | itemID 0-1
- | | | | **yarnCode 1-2**
- | | | | | @numberingOrg [Optional] [Default= CL]

```

| | | | art 1-1
| | | | | @numberingOrg [Optional]
| | | | | @codeList [Optional]
| | | | | @listName [Optional]
| | | | | @listVersion [Optional]
| | | | color 0-1
| | | | | @numberingOrg [Optional]
| | | | | @codeList [Optional]
| | | | | @listName [Optional]
| | | | | @listVersion [Optional]
| | | | added 0-9
| | | | | @addType [Optional]
| | | | description 0-1
| | | | yarnCompos 0-1
| | | | | percCompos 1-9
| | | | | @fibre [Required]
| | | | yarnSpecs 0-9
| | | | - choose -
| | | | | | yarnCharText 1-1
| | | | | - or -
| | | | | | yarnChar 1-1
| | | | | - end choose -
| | | | | | specValue 0-1
| | | | | | | @um [Optional]
| | | | | | | @method [Optional]
| | | | | - choose -
| | | | | | tolerance 0-2
| | | | | | | @um [Required]
| | | | | - or -
| | | | | | pcTolerance 0-2
| | | | | | | @um [Optional]
| | | | | - end choose -
| | | | lotN 0-2
| | | | | @numberingOrg [Optional]
| | | | dyeN 0-2
| | | | | @numberingOrg [Optional]
| | | | yarnTreat 0-1
| | | | qty 1-2
| | | | | @um [Required]
| | | | price 0-1
| | | | | @um [Optional]
| | | | | @priceQualifier [Optional] [Default= NET]
| | | | comDiscount 0-1
| | | | thirdParty 0-1
| | | | | @VAT [Optional]
| | | | | @role [Required]
| | | | | @sender [Optional]
| | | | | | id 1-1
| | | | | | | @numberingOrg [Optional]
| | | | | | legalName 0-1
| | | | | | dept 0-1
| | | | | | person 0-1
| | | | | | | @email [Optional]
| | | | | | street 0-1
| | | | | | city 0-1
| | | | | | subCountry 0-1
| | | | | | country 0-1
| | | | | | postCode 0-1
| | | | yarnComInfo 0-1
| | | | | yarnPay 0-1
| | | | | | @percCond [Optional]

```

```

| | | | deliveryDate 0-1
| | | |   @dateForm [Optional]
| | | | specDate 0-1
| | | |   @dateForm [Optional]
| | | | yarnPack 0-1
| | | |   | yarnReel 1-1
| | | |     | @reelType [Required]
| | | |     | @reelMat [Required]
| | | |     |   yarnReelID 0-1
| | | |     |     @um [Required]
| | | |     |   yarnReelH 0-1
| | | |     |     @um [Required]
| | | |     |   yarnConeAngle 0-1
| | | |     |   yarnReelQty 0-2
| | | |     |     @um [Required]
| | | |     |   label 0-1
| | | |     |   labelWrit 0-1
| | | |     | yarnInWrap 0-1
| | | |     |   yarnReelWrap 1-1
| | | |     |   label 0-1
| | | |     |   labelWrit 0-1
| | | |   - choose -
| | | |     | yarnOutWrapText 0-1
| | | |   - or -
| | | |     | yarnOutWrap 0-1
| | | |   - end choose -
| | | | note 0-1
|
| totals 0-1
| | totQty 0-1
| |   @um [Required]
| | goodsAmount 1-1

```

2.2 Detailed description of document elements

Following tables show all elements (complex and simple) used in this document. Description includes: 1) element's information: xml tag, name, brief description, data type and syntax constraints; 2) information about use of the element in a particular position in the document: xpath and possible associated notes.

2.2.1 Complex elements (Aggregate Business Information Entities)

Complex elements are those elements whose content is composed of other elements (childs). Complex elements are alphabetically ordered.

allowanceCharge	Allowances and Charges related to an Order or a contract (XPath: YARNOOrder/terms/allowanceCharge) 0-9
buyer	details of the Buyer - base type: , (XPath: YARNOOrder/YOheader/buyer) 1-1
insPayment	payment details for payment by installments (XPath: YARNOOrder/terms/insPayment) 0-5 - note: <i>this set of data is alternative to payment set and must be iterated for each payment installment</i>
payment	payment details for payment all in one (XPath: YARNOOrder/terms/payment) 0-5 - note: <i>this set of data can be iterated to specify alternative terms of payment (e.g.: 60 days or 30 days with 3% discount)</i>
refDoc	identification of a document and of an item thereof, to which the message makes reference (XPath: YARNOOrder/YObody/YOitem/refDoc) 0-9 (XPath: YARNOOrder/YOheader/refDoc) 0-9
supplier	details of the Supplier - base type: , (XPath: YARNOOrder/YOheader/supplier) 1-1
terms	details of the commercial obligations for payment and delivery (XPath: YARNOOrder/terms) 0-1
thirdParty	details of the Third Party, different from Buyer or Supplier - base type: , (XPath: YARNOOrder/YObody/YOitem/thirdParty) 0-1 (XPath: YARNOOrder/YOheader/thirdParty) 0-5
totals	monetary and quantity totals of the Order (XPath: YARNOOrder/totals) 0-1
trade	general terms of trade for the specified supply (XPath: YARNOOrder/terms/trade) 0-1
transInfo	details of transport: mode, carrier and delivery place (XPath: YARNOOrder/terms/transInfo) 0-1
yarnCode	full codification of a yarn product (XPath: YARNOOrder/YObody/YOitem/yarnCode) 1-2
yarnComInfo	miscellaneous trade informations, that can be specified in a yarn Order, referred either to the whole document or to the single item (XPath: YARNOOrder/yarnComInfo) 0-1 - note: <i>here must be specified those valid for the whole document</i> (XPath: YARNOOrder/YObody/YOitem/yarnComInfo) 0-1
yarnCompos	fibrous composition of a yarn product

	(XPath: YARNOOrder/YObody/YOitem/yarnCompos) 0-1
yarnInWrap	details specifying the inner wrapping of a yarn product (XPath: YARNOOrder/yarnComInfo/yarnPack/yarnInWrap) 0-1 (XPath: YARNOOrder/YObody/YOitem/yarnComInfo/yarnPack/yarnInWrap) 0-1
yarnPack	details of type of presentation used for the yarn (XPath: YARNOOrder/yarnComInfo/yarnPack) 0-1 (XPath: YARNOOrder/YObody/YOitem/yarnComInfo/yarnPack) 0-1
yarnReel	details of the reeling of a yarn product (bobbin & package) (XPath: YARNOOrder/YObody/YOitem/yarnComInfo/yarnPack/yarnReel) 1-1 (XPath: YARNOOrder/yarnComInfo/yarnPack/yarnReel) 1-1
yarnSpecs	technical characteristics of a yarn product linked to an operation of the sub-contracted production of yarn or to the purchase of yarn (XPath: YARNOOrder/YObody/YOitem/yarnSpecs) 0-9
YObody	body of the document YARN PURCHASE ORDER (XPath: YARNOOrder/YObody) 1-1
YOheader	header of the document YARN PURCHASE ORDER (XPath: YARNOOrder/YOheader) 1-1
YOitem	line of the message YARN PURCHASE ORDER (XPath: YARNOOrder/YObody/YOitem) 1-unbounded

2.2.2 Simple elements (Basic Business Information Entities)

Simple elements are those elements whose content is characterized by a data type plus a domain of possible values. Simple elements are alphabetically ordered.

AC_amount	amount of an Allowance or Charge - base type: decimal, min inclusive: 0, fraction digits: 2, (XPath: YARNOOrder/terms/allowanceCharge/AC_amount) 1-1
AC_category	coded specification of an Allowance or Charge - base type: string, cod. table: T41 http://www.moda-ml.net/moda-ml/repository/codelist/v2008-1/gc_T41.xml (XPath: YARNOOrder/terms/allowanceCharge/AC_category) 1-1
AC_categoryText	free text description of an Allowance or Charge - base type: string, max length: 70, (XPath: YARNOOrder/terms/allowanceCharge/AC_categoryText) 1-1
AC_percent	amount of an Allowance or Charge as a percentage - base type: decimal, min inclusive: 0, max inclusive: 100, fraction digits: 2, (XPath: YARNOOrder/terms/allowanceCharge/AC_percent) 1-1
added	additional code of the product (complementing the formers) - base type: string, max length: 15, (XPath: YARNOOrder/YObody/YOitem/yarnCode/added) 0-9 - note: <i>here an additional codification (see table T44) can be specified</i>
@addType	qualifier of the additional coding of a product - base type: string, cod. table: T44 http://www.moda-ml.net/moda-ml/repository/codelist/v2008-1/gc_T44.xml (XPath: YARNOOrder/YObody/YOitem/yarnCode/added/@addType) [Optional]
art	article number of the product - base type: string, max length: 25, (XPath: YARNOOrder/YObody/YOitem/yarnCode/art) 1-1
carrier	identification of the transport carrier - base type: string, max length: 40,

	(XPath: YARNOOrder/terms/transInfo/carrier) 0-1
city	name of the city (town, village) - base type: string, max length: 40, (XPath: YARNOOrder/YOheader/buyer/city) 0-1 (XPath: YARNOOrder/YOheader/thirdParty/city) 0-1 (XPath: YARNOOrder/YOheader/supplier/city) 0-1 (XPath: YARNOOrder/YObody/YOitem/thirdParty/city) 0-1
@codeList	it specifies the URL where the list of codes used to make an instance of the element can be found - base type: string, max length: 255, (XPath: YARNOOrder/YObody/YOitem/yarnCode/art/@codeList) [Optional] - nota: <i>this attribute should be ALTERNATIVE to the others</i> (XPath: YARNOOrder/YObody/YOitem/yarnCode/color/@codeList) [Optional] - nota: <i>this attribute should be ALTERNATIVE to the others</i>
color	colour number of the product, when not included in the model or fabric code - base type: string, max length: 15, (XPath: YARNOOrder/YObody/YOitem/yarnCode/color) 0-1
comDiscount	percent discount applied to the related unit price or amount - base type: decimal, min inclusive: 0, max inclusive: 100, fraction digits: 2, (XPath: YARNOOrder/YObody/YOitem/comDiscount) 0-1
country	code of the nation - base type: string, cod. table: T10 http://www.moda-ml.net/moda-ml/repository/codelist/v2008-1/gc_T10.xml (XPath: YARNOOrder/YOheader/buyer/country) 0-1 (XPath: YARNOOrder/YObody/YOitem/thirdParty/country) 0-1 (XPath: YARNOOrder/YOheader/supplier/country) 0-1 (XPath: YARNOOrder/YOheader/thirdParty/country) 0-1
@currencyUseQualifier	qualification of another currency used in the document - base type: string, cod. table: NT19 http://www.moda-ml.net/moda-ml/repository/codelist/v2008-1/gc_NT19.xml (XPath: YARNOOrder/YOheader/otherCurrency/@currencyUseQualifier) [Required]
@dateForm	format used for a date - base type: string, cod. table: NT29 http://www.moda-ml.net/moda-ml/repository/codelist/v2008-1/gc_NT29.xml (XPath: YARNOOrder/yarnComInfo/deliveryDate/@dateForm) [Optional] (XPath: YARNOOrder/yarnComInfo/specDate/@dateForm) [Optional] (XPath: YARNOOrder/YObody/YOitem/refDoc/docDate/@dateForm) [Optional] (XPath: YARNOOrder/YObody/YOitem/yarnComInfo/deliveryDate/@dateForm) [Optional] (XPath: YARNOOrder/YObody/YOitem/yarnComInfo/specDate/@dateForm) [Optional] (XPath: YARNOOrder/YOheader/refDoc/docDate/@dateForm) [Optional] (XPath: YARNOOrder/YOheader/msgDate/@dateForm) [Optional]
deliveryDate	date of delivery of goods, requested or promised in the purchase process, according to one of the patterns YYYY-MM-DD, YYYY-MM-DD:HH-MM or YYYY-WW. - base type: string, (XPath: YARNOOrder/YObody/YOitem/yarnComInfo/deliveryDate) 0-1 (XPath: YARNOOrder/yarnComInfo/deliveryDate) 0-1
deliveryPlace	place of delivery of goods, ultimate or related to a given leg - base type: string, max length: 40, (XPath: YARNOOrder/terms/transInfo/deliveryPlace) 0-1
dept	name or code of a contact department within a Party - base type: string, max length: 40, (XPath: YARNOOrder/YOheader/buyer/dept) 0-1 (XPath: YARNOOrder/YObody/YOitem/thirdParty/dept) 0-1 (XPath: YARNOOrder/YOheader/supplier/dept) 0-1 (XPath: YARNOOrder/YOheader/thirdParty/dept) 0-1

description	free text description of a product - base type: string, max length: 70, (XPath: YARNOrder/YObody/YOitem/yarnCode/description) 0-1
docDate	date of issue of the referenced document, according to one of the patterns YYYY-MM-DD, YYYY-MM-DD:HH-MM or YYYY-WW. - base type: string, (XPath: YARNOrder/YOheader/refDoc/docDate) 0-1 (XPath: YARNOrder/YObody/YOitem/refDoc/docDate) 0-1
docID	identification number of the referenced document SINCE 2008-1 ITS USE IN THE HEADER IS DISCOURAGED (REPLACED BY) - base type: string, max length: 35, (XPath: YARNOrder/YObody/YOitem/refDoc/docID) 1-2 (XPath: YARNOrder/YOheader/refDoc/docID) 1-2 (XPath: YARNOrder/YOheader/docID) 0-1
@docType	type or class to which the referenced document belongs - base type: string, cod. table: T21 http://www.moda-ml.net/moda-ml/repository/codelist/v2008-1/gc_T21.xml (XPath: YARNOrder/YOheader/refDoc/@docType) [Required] (XPath: YARNOrder/YObody/YOitem/refDoc/@docType) [Required]
dyeN	number of the dying batch of a textile product - base type: string, max length: 15, (XPath: YARNOrder/YObody/YOitem/dyeN) 0-2 - note: <i>it can be specified by the Buyer in case of stock service</i>
@email	electronic mail address of the contact person within a Party - base type: string, max length: 80, (XPath: YARNOrder/YOheader/supplier/person/@email) [Optional] (XPath: YARNOrder/YOheader/buyer/person/@email) [Optional] (XPath: YARNOrder/YOheader/thirdParty/person/@email) [Optional] (XPath: YARNOrder/YObody/YOitem/thirdParty/person/@email) [Optional]
@fibre	type of fibre used in a textile product - base type: string, cod. table: T19 http://www.moda-ml.net/moda-ml/repository/codelist/v2008-1/gc_T19.xml (XPath: YARNOrder/YObody/YOitem/yarnCompos/percCompos/@fibre) [Required]
@finDiscount	financial discount applied for payment by the date specified - base type: decimal, min inclusive: 0, max inclusive: 100, fraction digits: 2, (XPath: YARNOrder/terms/payment/@finDiscount) [Optional]
@finSurcharge	financial surcharge applied for payment after the date specified - base type: decimal, min inclusive: 0, max inclusive: 100, fraction digits: 2, (XPath: YARNOrder/terms/payment/@finSurcharge) [Optional]
goodsAmount	total monetary value of the goods and services considered in the message - base type: decimal, min inclusive: 0, fraction digits: 2, (XPath: YARNOrder/totals/goodsAmount) 1-1
grossWeight	the gross weight of the overall goods supply, declared for transport or customs purpose - base type: decimal, min inclusive: 0, fraction digits: 2, (XPath: YARNOrder/terms/transInfo/grossWeight) 0-1
id	primary identification code of a Party; it is recommended the format: nation code (ISO 3166) + VAT identification number (11 crt), with the qualifier "numberingOrg"= MF - base type: string, max length: 15, (XPath: YARNOrder/YObody/YOitem/thirdParty/id) 1-1 (XPath: YARNOrder/YOheader/buyer/id) 1-1 (XPath: YARNOrder/YOheader/supplier/id) 1-1 (XPath: YARNOrder/YOheader/thirdParty/id) 1-1
incoTerm	specification of the terms of trade (INCOTERMS)

	<p>- base type: string, cod. table: T3 http://www.moda-ml.net/moda-ml/repository/codelist/v2008-1/gc_T3.xml (XPath: YARNOOrder/terms/trade/incoTerm) 1-1</p>
incoTermText	<p>free text specifying the terms of trade (incoterm, location) - base type: string, max length: 70, (XPath: YARNOOrder/terms/trade/incoTermText) 1-1</p>
itemID	<p>number of the line/item of the referenced document - base type: string, max length: 6, (XPath: YARNOOrder/YOheader/refDoc/itemID) 0-1 (XPath: YARNOOrder/YObody/YOitem/refDoc/itemID) 0-1</p>
label	<p>indicates if the physical object specified has to be labelled - base type: boolean, (XPath: YARNOOrder/yarnComInfo/yarnPack/yarnInWrap/label) 0-1 (XPath: YARNOOrder/YObody/YOitem/yarnComInfo/yarnPack/ yarnReel/label) 0-1 (XPath: YARNOOrder/YObody/YOitem/yarnComInfo/yarnPack/ yarnInWrap/label) 0-1 (XPath: YARNOOrder/yarnComInfo/yarnPack/yarnReel/label) 0-1</p>
labelWrit	<p>text that must be written on the lable of a specified physical object when its customization is required - base type: string, max length: 350, (XPath: YARNOOrder/yarnComInfo/yarnPack/yarnInWrap/labelWrit) 0-1 (XPath: YARNOOrder/yarnComInfo/yarnPack/yarnReel/labelWrit) 0-1 (XPath: YARNOOrder/YObody/YOitem/yarnComInfo/yarnPack/ yarnReel/labelWrit) 0-1 (XPath: YARNOOrder/YObody/YOitem/yarnComInfo/yarnPack/ yarnInWrap/labelWrit) 0-1</p>
legalName	<p>legal name of a Party - base type: string, max length: 80, (XPath: YARNOOrder/YObody/YOitem/thirdParty/legalName) 0-1 (XPath: YARNOOrder/YOheader/buyer/legalName) 0-1 (XPath: YARNOOrder/YOheader/thirdParty/legalName) 0-1 (XPath: YARNOOrder/YOheader/supplier/legalName) 0-1</p>
lineN	<p>number of the line item of the present message (xml document) - base type: positiveInteger, min inclusive: 1, max inclusive: 9999, (XPath: YARNOOrder/YObody/YOitem/lineN) 1-1</p>
@listName	<p>it specifies the name of the list of codes used to make an instance of the element - base type: string, max length: 40, (XPath: YARNOOrder/YObody/YOitem/yarnCode/color/@listName) [Optional] - nota: <i>this attribute should always be used coupled with "numberingOrg"</i> (XPath: YARNOOrder/YObody/YOitem/yarnCode/art/@listName) [Optional] - nota: <i>this attribute should always be used coupled with "numberingOrg"</i></p>
@listVersion	<p>it specifie the version of the list of codes used to make an instance of the element - base type: string, max length: 6, (XPath: YARNOOrder/YObody/YOitem/yarnCode/color/@listVersion) [Optional] - nota: <i>this attribute should always be used coupled with "numberingOrg" and "listName"</i> (XPath: YARNOOrder/YObody/YOitem/yarnCode/art/@listVersion) [Optional] - nota: <i>this attribute should always be used coupled with "numberingOrg" and "listName"</i></p>
location	<p>specification of a location - base type: string, max length: 40, (XPath: YARNOOrder/terms/trade/location) 0-1 - note: <i>place to which the INCOTERM applies</i></p>

@logo	company logo (URL of the image jpeg or gif). It is recommended that the width of the image does not exceed 640 pixel. - base type: string, max length: 255, (XPath: YARNOrder/YOheader/buyer/@logo) [Optional] (XPath: YARNOrder/YOheader/supplier/@logo) [Optional]
lotN	lot number of a product or batch number of the raw material - base type: string, max length: 15, (XPath: YARNOrder/YObody/YOitem/lotN) 0-2 - note: <i>it can be specified by the Buyer in case of stock service</i>
@LRI	attribute usable to format a string according to a customized User rule (local rule) - base type: string, cod. table: NT3 http://www.moda-ml.net/moda-ml/repository/codelist/v2008-1/gc_NT3.xml (XPath: YARNOrder/terms/trade/location/@LRI) [Optional]
@method	standard protocol or method employed in a test to evaluate a characteristic or a parameter - base type: string, max length: 25, (XPath: YARNOrder/YObody/YOitem/yarnSpecs/specValue/@method) [Optional]
msgCurrency	currency used to express the monetary amounts of the message - base type: string, cod. table: T9 http://www.moda-ml.net/moda-ml/repository/codelist/v2008-1/gc_T9.xml (XPath: YARNOrder/YOheader/msgCurrency) 0-1
msgDate	date of issue of the present message (xml document), according to one of the patterns YYYY-MM-DD, YYYY-MM-DD:HH-MM or YYYY-WW. - base type: string, (XPath: YARNOrder/YOheader/msgDate) 1-1
@msgfunction	function performed by the present message with regards to the transmission - base type: string, cod. table: NT18 http://www.moda-ml.net/moda-ml/repository/codelist/v2008-1/gc_NT18.xml (XPath: YARNOrder/@msgfunction) [Optional] [Default= OR]
msgID	key identifier of the document in the information system of the issuing Party - base type: string, max length: 35, (XPath: YARNOrder/YOheader/msgID) 0-1
msgN	identification number given to the message (xml document) by its issuer - base type: string, max length: 35, (XPath: YARNOrder/YOheader/msgN) 1-1
netWeight	the net weight of the overall goods supply, declared for transport or customs purpose - base type: decimal, min inclusive: 0, fraction digits: 2, (XPath: YARNOrder/terms/transInfo/netWeight) 0-1
note	free text note - base type: string, max length: 350, (XPath: YARNOrder/YObody/YOitem/note) 0-1 (XPath: YARNOrder/YOheader/note) 0-5
@numberingOrg	code specifying the organisation who has created or owns the coding or numbering system - base type: string, cod. table: NT6 http://www.moda-ml.net/moda-ml/repository/codelist/v2008-1/gc_NT6.xml (XPath: YARNOrder/YOheader/supplier/id/@numberingOrg) [Optional] (XPath: YARNOrder/YObody/YOitem/yarnCode/@numberingOrg) [Optional] [Default= CL] (XPath: YARNOrder/YObody/YOitem/refDoc/docID/@numberingOrg) [Optional] - nota: <i>here can be specified whose document numbering is used (e.g.: Client, Supplier, ..)</i> (XPath: YARNOrder/YObody/YOitem/yarnCode/art/@numberingOrg) [Optional] - nota: <i>this attribute should be used either single or coupled with "listName"</i>

	<p>and "listVersion" (XPath: YARNOrder/YOheader/buyer/id/@numberingOrg) [Optional] (XPath: YARNOrder/YObody/YOitem/yarnCode/color/@numberingOrg) [Optional] - nota: this attribute should be used either single or coupled with "listName" and "listVersion" (XPath: YARNOrder/YObody/YOitem/thirdParty/id/@numberingOrg) [Optional] (XPath: YARNOrder/YOheader/refDoc/docID/@numberingOrg) [Optional] - nota: here can be specified whose document numbering is used (e.g.: Client, Supplier, ..) (XPath: YARNOrder/YObody/YOitem/lotN/@numberingOrg) [Optional] (XPath: YARNOrder/YOheader/docID/@numberingOrg) [Optional] - nota: here can be specified whose document numbering is used (e.g.: Client, Supplier, ..) (XPath: YARNOrder/YOheader/thirdParty/id/@numberingOrg) [Optional] (XPath: YARNOrder/YObody/YOitem/dyeN/@numberingOrg) [Optional]</p>
otherCurrency	<p>other currency used in the document - base type: string, cod. table: T9 http://www.moda-ml.net/moda-ml/repository/codelist/v2008-1/gc_T9.xml (XPath: YARNOrder/YOheader/otherCurrency) 0-9</p>
@part	<p>percent fraction of a total payment - base type: decimal, min inclusive: 1, max inclusive: 99, fraction digits: 2, (XPath: YARNOrder/terms/insPayment/@part) [Required] - nota: here the % value of each installment must be indicated</p>
payMode	<p>way or means of payment - base type: string, cod. table: T2 http://www.moda-ml.net/moda-ml/repository/codelist/v2008-1/gc_T2.xml (XPath: YARNOrder/terms/payment/payMode) 0-1 (XPath: YARNOrder/terms/insPayment/payMode) 0-1</p>
payTerm	<p>code specifying the terms or time by which the payment must be done - base type: string, cod. table: T1 http://www.moda-ml.net/moda-ml/repository/codelist/v2008-1/gc_T1.xml (XPath: YARNOrder/terms/payment/payTerm) 1-1 (XPath: YARNOrder/terms/insPayment/payTerm) 1-1</p>
payTermText	<p>free text specifying the terms by which the payment must be done (time/mode or means) - base type: string, max length: 40, (XPath: YARNOrder/terms/insPayment/payTermText) 1-1 (XPath: YARNOrder/terms/payment/payTermText) 1-1</p>
pcTolerance	<p>percent deviation tolerated on the value of a measurement (it must have a plus or minus sign) - base type: decimal, min inclusive: 0, max inclusive: 100, total digits: 2, (XPath: YARNOrder/YObody/YOitem/yarnSpecs/pcTolerance) 0-2</p>
percCompos	<p>fiber rate in the product composition - base type: decimal, min inclusive: 0, max inclusive: 100, fraction digits: 2, (XPath: YARNOrder/YObody/YOitem/yarnCompos/percCompos) 1-9</p>
@percCond	<p>percentage of conditioning to be applied to the payment of a yarn supply - base type: decimal, min inclusive: 0, max inclusive: 100, fraction digits: 2, (XPath: YARNOrder/yarnComInfo/yarnPay/@percCond) [Optional] - nota: element to be used only when conditioned payments occur (XPath: YARNOrder/YObody/YOitem/yarnComInfo/yarnPay/@percCond) [Optional] - nota: element to be used only when conditioned payments occur</p>
person	<p>name of the contact person within a Party - base type: string, max length: 40, (XPath: YARNOrder/YOheader/buyer/person) 0-1 (XPath: YARNOrder/YOheader/thirdParty/person) 0-1 (XPath: YARNOrder/YOheader/supplier/person) 0-1 (XPath: YARNOrder/YObody/YOitem/thirdParty/person) 0-1</p>

postCode	code defining the postal zone - base type: string, max length: 10, (XPath: YARNOrder/YObody/YOitem/thirdParty/postCode) 0-1 (XPath: YARNOrder/YOheader/buyer/postCode) 0-1 (XPath: YARNOrder/YOheader/thirdParty/postCode) 0-1 (XPath: YARNOrder/YOheader/supplier/postCode) 0-1
price	unit price of the article, object or service specified - base type: decimal, min inclusive: 0, fraction digits: 2, (XPath: YARNOrder/YObody/YOitem/price) 0-1
@priceQualifier	type of price with reference to discount and taxes - base type: string, cod. table: NT20 http://www.moda-ml.net/moda-ml/repository/codelist/v2008-1/gc_NT20.xml (XPath: YARNOrder/YObody/YOitem/price/@priceQualifier) [Optional] [Default=NET]
qty	net quantity of the article or object correlated, qualified by the function of the document (ordering, delivering, ..) and by the context - base type: decimal, min inclusive: 0, fraction digits: 2, (XPath: YARNOrder/YObody/YOitem/qty) 1-2
@reelMat	type of material of which a bobbin for yarn is made - base type: string, cod. table: T30 http://www.moda-ml.net/moda-ml/repository/codelist/v2008-1/gc_T30.xml (XPath: YARNOrder/YObody/YOitem/yarnComInfo/yarnPack/yarnReel/@reelMat) [Required] (XPath: YARNOrder/yarnComInfo/yarnPack/yarnReel/@reelMat) [Required]
@reelType	type of bobbin used for a yarn product - base type: string, cod. table: T29 http://www.moda-ml.net/moda-ml/repository/codelist/v2008-1/gc_T29.xml (XPath: YARNOrder/YObody/YOitem/yarnComInfo/yarnPack/yarnReel/@reelType) [Required] (XPath: YARNOrder/yarnComInfo/yarnPack/yarnReel/@reelType) [Required]
@role	Third Party role qualifier - base type: string, cod. table: NT2 http://www.moda-ml.net/moda-ml/repository/codelist/v2008-1/gc_NT2.xml (XPath: YARNOrder/YObody/YOitem/thirdParty/@role) [Required] (XPath: YARNOrder/YOheader/thirdParty/@role) [Required]
season	sale season; defined as: season (1 crt) + year (4 crt) - season: S/S=1 A/W=2 Spring=3 Summer=4 Autumn=5 Winter=6: for more than four seasons use alphabetic sequence: 1st season=A 2nd season=B etc.etc. - base type: string, max length: 15, (XPath: YARNOrder/YOheader/season) 0-1 (XPath: YARNOrder/YOheader/refDoc/season) 0-1 - note: here indicates the season to which the referenced document belongs (XPath: YARNOrder/YObody/YOitem/refDoc/season) 0-1 - note: here indicates the season to which the referenced document belongs
@sender	qualifier that specifies the Party issuing of the document - base type: boolean, (XPath: YARNOrder/YOheader/supplier/@sender) [Optional] - nota: This attribute is mandatory when the STYLESHEET must be produced (XPath: YARNOrder/YOheader/thirdParty/@sender) [Optional] - nota: This attribute is mandatory when the STYLESHEET must be produced (XPath: YARNOrder/YOheader/buyer/@sender) [Optional] - nota: This attribute is mandatory when the STYLESHEET must be produced (XPath: YARNOrder/YObody/YOitem/thirdParty/@sender) [Optional] - nota: This attribute is mandatory when the STYLESHEET must be produced

specDate	<p>date by which the referenced blanket order must receive full product specifications (e.g.: colour), according to one of the patterns YYYY-MM-DD, YYYY-MM-DD:HH-MM or YYYY-WW.</p> <p>- base type: string, (XPath: YARNOrder/YObody/YOitem/yarnComInfo/specDate) 0-1 (XPath: YARNOrder/yarnComInfo/specDate) 0-1</p>
specValue	<p>value requested for a characteristics or a parameter that can be measured</p> <p>- base type: decimal, (XPath: YARNOrder/YObody/YOitem/yarnSpecs/specValue) 0-1</p>
street	<p>street and building number identifying a location</p> <p>- base type: string, max length: 80, (XPath: YARNOrder/YObody/YOitem/thirdParty/street) 0-1 (XPath: YARNOrder/YOheader/buyer/street) 0-1 (XPath: YARNOrder/YOheader/thirdParty/street) 0-1 (XPath: YARNOrder/YOheader/supplier/street) 0-1</p>
subCountry	<p>short name or code of the sub-country entity</p> <p>- base type: string, max length: 9, (XPath: YARNOrder/YOheader/buyer/subCountry) 0-1 (XPath: YARNOrder/YObody/YOitem/thirdParty/subCountry) 0-1 (XPath: YARNOrder/YOheader/thirdParty/subCountry) 0-1 (XPath: YARNOrder/YOheader/supplier/subCountry) 0-1</p>
tolerance	<p>deviation tolerated on the value of a measurement (it must have a plus or minus sign)</p> <p>- base type: decimal, (XPath: YARNOrder/YObody/YOitem/yarnSpecs/tolerance) 0-2</p>
totQty	<p>total quantity of the articles related to the whole document</p> <p>- base type: decimal, min inclusive: 0, fraction digits: 2, (XPath: YARNOrder/totals/totQty) 0-1</p>
@TOtype	<p>type of Order</p> <p>- base type: string, cod. table: NT1 http://www.moda-ml.net/moda-ml/repository/codelist/v2008-1/gc_NT1.xml (XPath: YARNOrder/@TOtype) [Required]</p>
transCondition	<p>special condition of transport or special service requested to the Forwarder</p> <p>- base type: string, cod. table: T38 http://www.moda-ml.net/moda-ml/repository/codelist/v2008-1/gc_T38.xml (XPath: YARNOrder/terms/transInfo/transCondition) 0-3</p>
transConditionText	<p>free text description of the special condition of transport or special service requested to the Forwarder</p> <p>- base type: string, max length: 100, (XPath: YARNOrder/terms/transInfo/transConditionText) 0-1</p>
transMeans	<p>means of transport, in general or referred to a specific leg</p> <p>- base type: string, cod. table: T40 http://www.moda-ml.net/moda-ml/repository/codelist/v2008-1/gc_T40.xml (XPath: YARNOrder/terms/transInfo/transMeans) 0-1</p>
transMode	<p>way of transport, in general or referred to the specified leg</p> <p>- base type: string, cod. table: T8 http://www.moda-ml.net/moda-ml/repository/codelist/v2008-1/gc_T8.xml (XPath: YARNOrder/terms/transInfo/transMode) 1-1</p>
@transReason	<p>reason for the transport</p> <p>- base type: string, cod. table: NT11 http://www.moda-ml.net/moda-ml/repository/codelist/v2008-1/gc_NT11.xml (XPath: YARNOrder/terms/transInfo/@transReason) [Optional]</p>
@um	<p>specification of the unit of measure</p> <p>- base type: string, cod. table: NT7 http://www.moda-ml.net/moda-ml/repository/codelist/v2008-1/gc_NT7.xml (XPath: YARNOrder/yarnComInfo/yarnPack/yarnReel/</p>

	<p>yarnReelQty/@um) [Required] (XPath: YARNOrder/terms/transInfo/netWeight/@um) [Required] (XPath: YARNOrder/YObody/YOitem/yarnComInfo/yarnPack/ yarnReel/yarnReelID/@um) [Required] (XPath: YARNOrder/YObody/YOitem/yarnComInfo/yarnPack/ yarnReel/yarnReelH/@um) [Required] (XPath: YARNOrder/YObody/YOitem/yarnComInfo/yarnPack/ yarnReel/yarnReelQty/@um) [Required] (XPath: YARNOrder/YObody/YOitem/yarnSpecs/tolerance/@um) [Required] (XPath: YARNOrder/totals/totQty/@um) [Required] (XPath: YARNOrder/YObody/YOitem/yarnSpecs/specValue/@um) [Optional] (XPath: YARNOrder/YObody/YOitem/yarnSpecs/pcTolerance/@um) [Optional] - nota: to be used when it has to be soecified if the declared percentage is by weight, volume, etc... (XPath: YARNOrder/YObody/YOitem/qty/@um) [Required] (XPath: YARNOrder/YObody/YOitem/price/@um) [Optional] (XPath: YARNOrder/yarnComInfo/yarnPack/yarnReel/yarnReelID/@um) [Required] (XPath: YARNOrder/terms/transInfo/grossWeight/@um) [Required] (XPath: YARNOrder/yarnComInfo/yarnPack/yarnReel/yarnReelH/@um) [Required]</p>
@VAT	<p>VAT rate or code - base type: string, cod. table: NT16 http://www.moda-ml.net/moda-ml/repository/codelist/v2008-1/gc_NT16.xml (XPath: YARNOrder/YOheader/thirdParty/@VAT) [Optional] (XPath: YARNOrder/YObody/YOitem/thirdParty/@VAT) [Optional] (XPath: YARNOrder/terms/allowanceCharge/@VAT) [Optional]</p>
yarnChar	<p>physical or mechanical parameter used to define a characteristics of a yarn - base type: string, cod. table: T24 http://www.moda-ml.net/moda-ml/repository/codelist/v2008-1/gc_T24.xml (XPath: YARNOrder/YObody/YOitem/yarnSpecs/yarnChar) 1-1</p>
yarnCharText	<p>free text describing the physical or mechanical parameter used to define a characteristics of a yarn - base type: string, max length: 40, (XPath: YARNOrder/YObody/YOitem/yarnSpecs/yarnCharText) 1-1</p>
yarnConeAngle	<p>tapering angle of the cone on which a yarn is reeled - base type: positiveInteger, (XPath: YARNOrder/yarnComInfo/yarnPack/yarnReel/yarnConeAngle) 0-1 (XPath: YARNOrder/YObody/YOitem/yarnComInfo/yarnPack/ yarnReel/yarnConeAngle) 0-1</p>
yarnOutWrap	<p>code specifying the type of outer wrapping or packing of a yarn - base type: string, cod. table: T33 http://www.moda-ml.net/moda-ml/repository/codelist/v2008-1/gc_T33.xml (XPath: YARNOrder/yarnComInfo/yarnPack/yarnOutWrap) 0-1 (XPath: YARNOrder/YObody/YOitem/yarnComInfo/yarnPack/yarnOutWrap) 0-1</p>
yarnOutWrapText	<p>free text specifying the type of outer wrapping or packing of a yarn - base type: string, max length: 40, (XPath: YARNOrder/YObody/YOitem/yarnComInfo/yarnPack/yarnOutWrapText) 0-1 (XPath: YARNOrder/yarnComInfo/yarnPack/yarnOutWrapText) 0-1</p>
yarnPay	<p>type of payment to be applied to a yarn supply - base type: string, cod. table: T34 http://www.moda-ml.net/moda-ml/repository/codelist/v2008-1/gc_T34.xml (XPath: YARNOrder/yarnComInfo/yarnPay) 0-1 (XPath: YARNOrder/YObody/YOitem/yarnComInfo/yarnPay) 0-1</p>
yarnReelID	<p>diameter of the bobbin used for a yarn product - base type: decimal, min inclusive: 0, fraction digits: 2, (XPath: YARNOrder/YObody/YOitem/yarnComInfo/yarnPack/ yarnReel/yarnReelID) 0-1 (XPath: YARNOrder/yarnComInfo/yarnPack/yarnReel/yarnReelID) 0-1</p>
yarnReelH	<p>height of the bobbin used a yarn product</p>

	<p>- base type: decimal, min inclusive: 0, fraction digits: 2, (XPath: YARNOrder/yarnComInfo/yarnPack/yarnReel/yarnReelH) 0-1 (XPath: YARNOrder/YObody/YOitem/yarnComInfo/yarnPack/ yarnReel/yarnReelH) 0-1</p>
yarnReelQty	<p>quantity of yarn (by weight or length) wound upon a bobbin - base type: decimal, min inclusive: 0, fraction digits: 2, (XPath: YARNOrder/yarnComInfo/yarnPack/yarnReel/yarnReelQty) 0-2 (XPath: YARNOrder/YObody/YOitem/yarnComInfo/yarnPack/ yarnReel/yarnReelQty) 0-2</p>
yarnReelWrap	<p>type of wrapping in which a reel of yarn is wrapped - base type: string, cod. table: T32 http://www.moda-ml.net/moda-ml/repository/codelist/v2008-1/gc_T32.xml (XPath: YARNOrder/YObody/YOitem/yarnComInfo/yarnPack/ yarnInWrap/yarnReelWrap) 1-1 (XPath: YARNOrder/yarnComInfo/yarnPack/yarnInWrap/yarnReelWrap) 1-1</p>
yarnTreat	<p>informations on the special treatments and finishing of a yarn product - base type: string, cod. table: T35 http://www.moda-ml.net/moda-ml/repository/codelist/v2008-1/gc_T35.xml (XPath: YARNOrder/YObody/YOitem/yarnTreat) 0-1</p>

2.3 Enumeration tables

List of enumeration tables used in the XML document. You can find the corresponding codes at:
<http://www.moda-ml.org/moda-ml/imple/moda-ml-2008-1.asp?lingua=en&pag=6>

NT1 - Order type
NT11 - Transport causal
NT16 - VAT rate or code
NT18 - message function
NT19 - currency use qualifier
NT2 - Third party qualifier
NT20 - price qualifier
NT29 - format of a date
NT3 - Data format
NT6 - Coding system owner/issuer
NT7 - Unity of measure
T1 - Terms of payment
T10 - ISO3166 - Country
T19 - fibre type
T2 - Modes of payment
T21 - type of document
T24 - yarn characteristics type
T29 - type of bobbin
T3 - Terms of delivery
T30 - type of bobbin material
T32 - yarn reel wrapping type
T33 - Yarn outer packing
T34 - yarn payment type
T35 - yarn treatment type
T38 - transport conditions
T40 - type of transport means
T41 - type of Allowance or Charge
T44 - additional code type
T8 - Modes of Transport
T9 - ISO4217 - Currency

Annex A

Representative images of the principal complex elements' structure.

