



<http://www.moda-ml.org>

IMPLEMENTATION GUIDE
TRANSACTION "TEXTILE DYEING-FINISHING ORDER"

Version: 2008-1

Date of release: 15/12/2008

Document code: OF077-017

XML Schema repository:<http://www.moda-ml.org/moda-ml/repository/schema/v2008-1/default.asp>

Guides repository:<http://www.moda-ml.org/moda-ml/repository/guide/v2008-1/default.asp>

Guide filename: OF077-017-MODA-ML-TextileDyeing-finishingOrder.pdf

1. BUSINESS DESCRIPTION

1.1 Scope

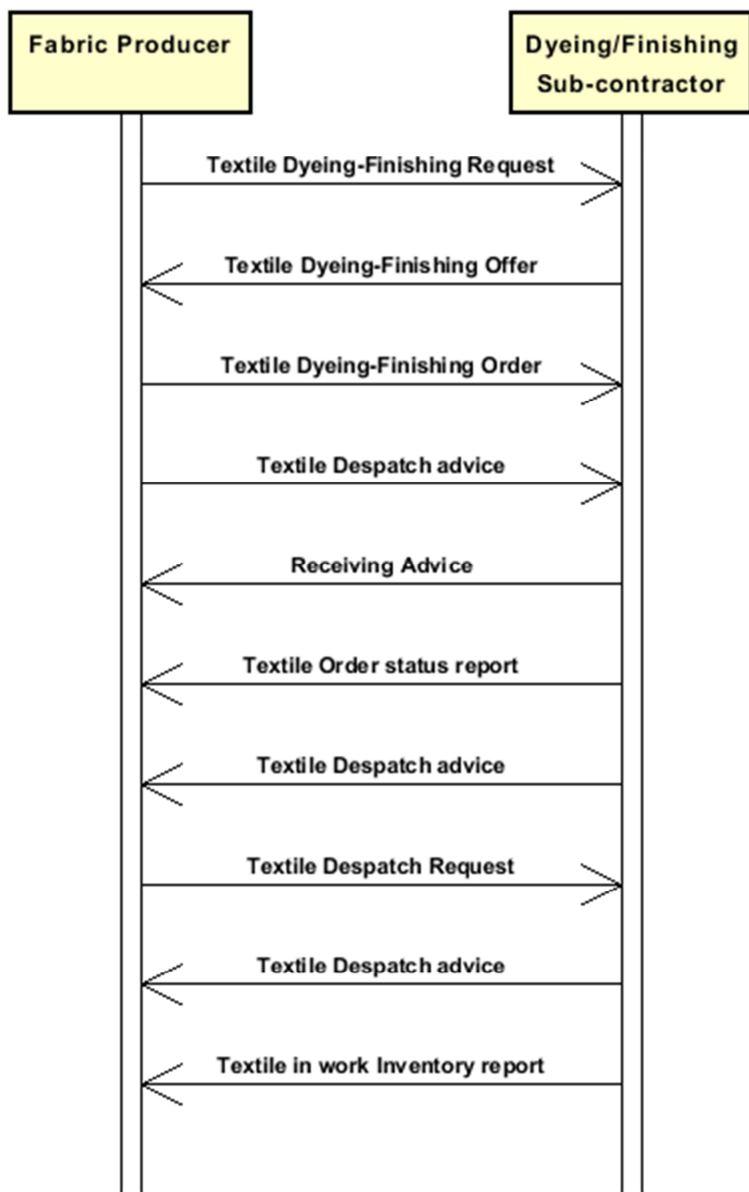
The present guide has been issued to assist the companies of the Textile-Clothing sector in the implementation of the standard XML document type "TEXTILE DYEING-FINISHING ORDER", providing all the instruction required for its use in the context of e-commerce between Fabric Producers and their Subcontractors shown in the enclosed diagram.

All the rules required for the construction and validation of the document are embedded into the specific XML-Schema, which is detailed in section "Implementation guide".

1.2 Generalities

The Textile Dyeing-Finishing Order is issued when a Contractor commits to a Subcontractor a work required to transform a fabric material into something usable for apparel production. This work Order can include one or several operations of the fabric manufacturing cycle specifying their sequence.

1.3. Possible scenario



2. IMPLEMENTATION GUIDE

2.1 General structure of XML document

All the business data that can be exchanged through this class of documents are shown in the following "document structure", that provides a simplified vision of the Schema.

In particular:

- the two numbers following each element define its "cardinality" (minimum and maximum number of occurrences); the minimum equal zero indicates that the element is optional, the minimum greater than zero indicates that is mandatory;
- the bold character denotes the complex elements (aggregates of simple elements) that were built for the sake of functionality and re-usability of some complex informations sets. The child elements in each parent element are easily spotted as "indented";
- the symbol "@" denotes an attribute of the preceding element; here "the usage indicator (optional, required, ...) is shown in square brackets.

Structure

TEXDyFinOrder

@msgfunction [Optional] [Default= OR]

@TFCOtype [Required]

| **TFCOheader 1-1**

| | msgN 1-1

| | - choose -

| | msgID 0-1

| | - or -

| | docID 0-1

| | @numberingOrg [Optional]

| | - end choose -

| | msgDate 1-1

| | @dateForm [Optional]

| | season 0-1

| | msgCurrency 0-1

| | **refDoc 0-9**

| | @docType [Required]

| | | docID 1-2

| | | @numberingOrg [Optional]

| | | docDate 0-1

| | | @dateForm [Optional]

| | | season 0-1

| | | itemID 0-1

| | **buyer 1-1**

| | @logo [Optional]

| | @sender [Optional]

| | | id 1-1

| | | @numberingOrg [Optional]

| | | legalName 0-1

| | | dept 0-1

| | | person 0-1

| | | @email [Optional]

| | | street 0-1

| | | city 0-1

| | | subCountry 0-1

| | | country 0-1

| | | postCode 0-1

| | **subContractor 1-1**

| | @sender [Optional]

| | | id 1-1

| | | @numberingOrg [Optional]

- | | | legalName 0-1
- | | | dept 0-1
- | | | person 0-1
- | | | @email [Optional]
- | | | street 0-1
- | | | city 0-1
- | | | subCountry 0-1
- | | | country 0-1
- | | | postCode 0-1
- | | **thirdParty 0-1**
- | | | @VAT [Optional]
- | | | @role [Required]
- | | | @sender [Optional]
- | | | id 1-1
- | | | @numberingOrg [Optional]
- | | | legalName 0-1
- | | | dept 0-1
- | | | person 0-1
- | | | @email [Optional]
- | | | street 0-1
- | | | city 0-1
- | | | subCountry 0-1
- | | | country 0-1
- | | | postCode 0-1
- | | note 0-1

- | **terms 0-1**
- | | **payment 0-5**
- | | | @finDiscount [Optional]
- | | | @finSurcharge [Optional]
- | | - choose -
- | | | payTerm 1-1
- | | - or -
- | | | payTermText 1-1
- | | - end choose -
- | | | payMode 0-1
- | | **insPayment 0-5**
- | | | @part [Required]
- | | - choose -
- | | | payTerm 1-1
- | | - or -
- | | | payTermText 1-1
- | | - end choose -
- | | | payMode 0-1
- | | **trade 0-1**
- | | - choose -
- | | | incoTermText 1-1
- | | - or -
- | | | incoTerm 1-1
- | | - end choose -
- | | | location 0-1
- | | | @LRI [Optional]
- | | **transInfo 0-1**
- | | | @transReason [Optional]
- | | | transMode 1-1
- | | | carrier 0-1
- | | | deliveryPlace 0-1
- | | | grossWeight 0-1
- | | | @um [Required]
- | | | netWeight 0-1
- | | | @um [Required]

```

| | | transMeans 0-1
| | | transCondition 0-3
| | | transConditionText 0-1
| | allowanceCharge 0-9
| | @VAT [Optional]
| | - choose -
| | | AC_category 1-1
| | | - or -
| | | AC_categoryText 1-1
| | | - choose -
| | | AC_percent 1-1
| | | - or -
| | | AC_amount 1-1
| | | - end choose -

```

TFCObody 1-1

```

| | TFCOitem 1-unbounded
| | @productLevel [Optional] [Default= END]
| | | lineN 1-1
| | | fabricProd 1-1
| | | @CTest [Optional]
| | | | texCode 1-1
| | | | @numberingOrg [Optional]
| | | | | art 1-1
| | | | | @numberingOrg [Optional]
| | | | | @codeList [Optional]
| | | | | @listName [Optional]
| | | | | @listVersion [Optional]
| | | | | pattern 0-1
| | | | | @numberingOrg [Optional]
| | | | | @codeList [Optional]
| | | | | @listName [Optional]
| | | | | @listVersion [Optional]
| | | | | color 0-1
| | | | | @numberingOrg [Optional]
| | | | | @codeList [Optional]
| | | | | @listName [Optional]
| | | | | @listVersion [Optional]
| | | | | added 0-9
| | | | | @addType [Optional]
| | | | | description 0-1
| | | | fabricCompos 0-1
| | | | | percCompos 1-9
| | | | | @fibre [Required]
| | | | fabricWidth 0-1
| | | | | @um [Optional] [Default= CMT]
| | | | fabricSpecs 0-99
| | | | - choose -
| | | | | fabricCharText 1-1
| | | | | - or -
| | | | | fabricChar 1-1
| | | | | - end choose -
| | | | | specValue 0-1
| | | | | @um [Optional]
| | | | | @method [Optional]
| | | | - choose -
| | | | | tolerance 0-2
| | | | | @um [Required]
| | | | - or -
| | | | | pcTolerance 0-2
| | | | | @um [Optional]

```

```

- end choose -
- choose -
| | | | pieceChain 0-99
| | | | serialN 1-1
| | | | @numberingOrg [Optional]
| | | | pieceLength 0-1
| | | | @um [Optional] [Default= MTR]
| | | | pieceWidth 0-1
| | | | @um [Optional] [Default= CMT]
| | | | pieceWeight 0-1
| | | | @um [Optional] [Default= KGM]
| | | | lotN 0-1
| | | | @numberingOrg [Optional]
| | | | dyeN 0-1
| | | | @numberingOrg [Optional]
| | | | packageN 0-1
| | | | @numberingOrg [Optional]
| | | | piecePack 0-1
- choose -
| | | | piecePackText 1-1
- or -
| | | | pieceInnWrap1 1-1
| | | | pieceInnWrap2 0-1
| | | | pieceOutWrap 0-1
- end choose -
| | | | pieceCut 0-99
| | | | serialN 1-1
| | | | @numberingOrg [Optional]
| | | | pieceLength 0-1
| | | | @um [Optional] [Default= MTR]
| | | | pieceWeight 0-1
| | | | @um [Optional] [Default= KGM]
- or -
| | | | piece 0-99
| | | | @endUse [Optional]
| | | | serialN 1-3
| | | | @numberingOrg [Optional]
| | | | totFault 0-1
| | | | pieceStatus 0-1
| | | | pieceLength 0-1
| | | | @um [Optional] [Default= MTR]
| | | | pieceWidth 0-1
| | | | @um [Optional] [Default= CMT]
| | | | pieceCutWidth 0-1
| | | | @um [Optional] [Default= CMT]
| | | | pieceWeight 0-1
| | | | @um [Optional] [Default= KGM]
| | | | pieceWeightM 0-1
| | | | @um [Optional] [Default= GRM]
| | | | pieceAllow 0-1
| | | | @um [Required]
| | | | lotN 0-1
| | | | @numberingOrg [Optional]
| | | | dyeN 0-1
| | | | @numberingOrg [Optional]
| | | | mixMatch 0-1
| | | | @numberingOrg [Optional]
| | | | packageN 0-1
| | | | @numberingOrg [Optional]
| | | | piecePack 0-1
- choose -

```

```

| | | | | piecePackText 1-1
| | | | | - or -
| | | | | pieceInnWrap1 1-1
| | | | | pieceInnWrap2 0-1
| | | | | pieceOutWrap 0-1
| | | | | - end choose -
| | | | | - end choose -
| | | | | | note 0-1
| | | | | qty 1-3
| | | | | @um [Required]
| | | | | price 0-1
| | | | | @um [Optional]
| | | | | @priceQualifier [Optional] [Default= NET]
| | | | | deliveryDate 0-1
| | | | | @dateForm [Optional]
| | | | | thirdParty 0-1
| | | | | @VAT [Optional]
| | | | | @role [Required]
| | | | | @sender [Optional]
| | | | | | id 1-1
| | | | | | @numberingOrg [Optional]
| | | | | | legalName 0-1
| | | | | | dept 0-1
| | | | | | person 0-1
| | | | | | @email [Optional]
| | | | | | street 0-1
| | | | | | city 0-1
| | | | | | subCountry 0-1
| | | | | | country 0-1
| | | | | | postCode 0-1
| | | | | fabricComponent 1-9
| | | | | | texCode 1-1
| | | | | | @numberingOrg [Optional]
| | | | | | | art 1-1
| | | | | | | @numberingOrg [Optional]
| | | | | | | @codeList [Optional]
| | | | | | | @listName [Optional]
| | | | | | | @listVersion [Optional]
| | | | | | | pattern 0-1
| | | | | | | @numberingOrg [Optional]
| | | | | | | @codeList [Optional]
| | | | | | | @listName [Optional]
| | | | | | | @listVersion [Optional]
| | | | | | | color 0-1
| | | | | | | @numberingOrg [Optional]
| | | | | | | @codeList [Optional]
| | | | | | | @listName [Optional]
| | | | | | | @listVersion [Optional]
| | | | | | | added 0-9
| | | | | | | @addType [Optional]
| | | | | | | description 0-1
| | | | | | qty 1-3
| | | | | | @um [Required]
| | | | | | serialN 0-99
| | | | | | @numberingOrg [Optional]
| | | | | | refDoc 0-1
| | | | | | @docType [Required]
| | | | | | | docID 1-2
| | | | | | | @numberingOrg [Optional]
| | | | | | | docDate 0-1
| | | | | | | @dateForm [Optional]

```



```

| | | | | season 0-1
| | | | | itemID 0-1
| | | | | location 0-1
| | | | | @LRI [Optional]
| | | | | note 0-1
| | | | | fabMnfrOperation 1-9
| | | | | - choose -
| | | | | | jobName 1-1
| | | | | - or -
| | | | | | texJob 1-1
| | | | | - end choose -
| | | | | | texJobTech 0-1
| | | | | | refDoc 0-1
| | | | | | @docType [Required]
| | | | | | | docID 1-2
| | | | | | | @numberingOrg [Optional]
| | | | | | | docDate 0-1
| | | | | | | @dateForm [Optional]
| | | | | | | season 0-1
| | | | | | | itemID 0-1
| | | | | | texMachine 0-1
| | | | | | texMachineSpecs 0-9
| | | | | | | texMachineParam 1-1
| | | | | | | specValue 0-1
| | | | | | | @um [Optional]
| | | | | | | @method [Optional]
| | | | | | - choose -
| | | | | | | pcTolerance 0-2
| | | | | | | @um [Optional]
| | | | | | - or -
| | | | | | | tolerance 0-2
| | | | | | | @um [Required]
| | | | | | - end choose -
| | | | | | note 0-1

```

2.2 Detailed description of document elements

Following tables show all elements (complex and simple) used in this document. Description includes: 1) element's information: xml tag, name, brief description, data type and syntax constraints; 2) information about use of the element in a particular position in the document: xpath and possible associated notes.

2.2.1 Complex elements (Aggregate Business Information Entities)

Complex elements are those elements whose content is composed of other elements (childs). Complex elements are alphabetically ordered.

allowanceCharge	Allowances and Charges related to an Order or a contract (XPath: TEXDyFinOrder/terms/allowanceCharge) 0-9
buyer	details of the Buyer - base type: , (XPath: TEXDyFinOrder/TFCOheader/buyer) 1-1
fabMnfrOperation	details of a manufacturing operation used for fabric production (XPath: TEXDyFinOrder/TFCObody/TFCOitem/fabMnfrOperation) 1-9 - note: <i>this block of data can be used to specify either a subcontracted operation or an operation assigned to a shop owned by the issuer of the Manufacturing Order. In this latter case the specifications can be completed with "machine data"</i>
fabricComponent	identification details of a fabric used in a sub-contracted manufacturing operation (XPath: TEXDyFinOrder/TFCObody/TFCOitem/fabricComponent) 1-9
fabricCompos	composition of the fabric according to the Directory 97/37/CE (XPath: TEXDyFinOrder/TFCObody/TFCOitem/fabricProd/fabricCompos) 0-1
fabricProd	manufacturing specifications of the product to be obtained from an operation of the sub-contracted production of fabric (XPath: TEXDyFinOrder/TFCObody/TFCOitem/fabricProd) 1-1
fabricSpecs	technical characteristics of fabric, linked either to an operation of subcontracted production or to the purchase (XPath: TEXDyFinOrder/TFCObody/TFCOitem/fabricProd/fabricSpecs) 0-99
insPayment	payment details for payment by installments (XPath: TEXDyFinOrder/terms/insPayment) 0-5 - note: <i>this set of data is alternative to payment set and must be iterated for each payment installment</i>
payment	payment details for payment all in one (XPath: TEXDyFinOrder/terms/payment) 0-5 - note: <i>this set of data can be iterated to specify alternative terms of payment (e.g.: 60 days or 30 days with 3% discount)</i>
piece	Identification data and measurement of the fabric piece (XPath: TEXDyFinOrder/TFCObody/TFCOitem/fabricProd/piece) 0-99
pieceChain	identification data and measurements of a chain of pieces still to be cut (XPath: TEXDyFinOrder/TFCObody/TFCOitem/fabricProd/pieceChain) 0-99
pieceCut	identification data and measurements of a fabric piece belonging to a chain still to be cut (XPath: TEXDyFinOrder/TFCObody/TFCOitem/fabricProd/pieceChain/pieceCut) 0-99 - note: <i>here the data of the pieces making up the chain should be specified</i>
piecePack	type of wrapping or packing of the fabric pieces

	(XPath: TEXDyFinOrder/TFCObody/TFCOitem/fabricProd/piece/piecePack) 0-1 (XPath: TEXDyFinOrder/TFCObody/TFCOitem/fabricProd/pieceChain/piecePack) 0-1
refDoc	identification of a document and of an item thereof, to which the message makes reference (XPath: TEXDyFinOrder/TFCObody/TFCOitem/fabricComponent/refDoc) 0-1 - note: <i>here the delivery documents can be specified</i> (XPath: TEXDyFinOrder/TFCOheader/refDoc) 0-9 (XPath: TEXDyFinOrder/TFCObody/TFCOitem/fabMnfrOperation/refDoc) 0-1 - note: <i>here a Process Sheet transmitted to the Subcontractor can be referenced</i>
subContractor	details of the Sub-contractor - base type: , (XPath: TEXDyFinOrder/TFCOheader/subContractor) 1-1
terms	details of the commercial obligations for payment and delivery (XPath: TEXDyFinOrder/terms) 0-1
texCode	full codification of the textile product (XPath: TEXDyFinOrder/TFCObody/TFCOitem/fabricComponent/texCode) 1-1 (XPath: TEXDyFinOrder/TFCObody/TFCOitem/fabricProd/texCode) 1-1
texMachineSpecs	technical specifications of a machine used in an operation of a work cycle for fabric (type and settings) (XPath: TEXDyFinOrder/TFCObody/TFCOitem/fabMnfrOperation/texMachineSpecs) 0-9
TFCObody	body of the document TEXTILES DYEING-FINISHING ORDER (XPath: TEXDyFinOrder/TFCObody) 1-1
TFCOheader	header of the document TEXTILE DYEING-FINISHING ORDER (XPath: TEXDyFinOrder/TFCOheader) 1-1
TFCOitem	line item of the document TEXTILE DYEING-FINISHING ORDER (XPath: TEXDyFinOrder/TFCObody/TFCOitem) 1-unbounded
thirdParty	details of the Third Party, different from Buyer or Supplier - base type: , (XPath: TEXDyFinOrder/TFCOheader/thirdParty) 0-1 - note: <i>here the Party to whom the Subcontractor must send the semi-finished products for subsequent operations can be specified</i> (XPath: TEXDyFinOrder/TFCObody/TFCOitem/thirdParty) 0-1 - note: <i>here the Party to whom the Subcontractor must send the semi-finished product for subsequent operations can be specified</i>
trade	general terms of trade for the specified supply (XPath: TEXDyFinOrder/terms/trade) 0-1
transInfo	details of transport: mode, carrier and delivery place (XPath: TEXDyFinOrder/terms/transInfo) 0-1

2.2.2 Simple elements (Basic Business Information Entities)

Simple elements are those elements whose content is characterized by a data type plus a domain of possible values. Simple elements are alphabetically ordered.

AC_amount	amount of an Allowance or Charge - base type: decimal, min inclusive: 0, fraction digits: 2, (XPath: TEXDyFinOrder/terms/allowanceCharge/AC_amount) 1-1
AC_category	coded specification of an Allowance or Charge - base type: string, cod. table: T41

	http://www.moda-ml.net/moda-ml/repository/codelist/v2008-1/gc_T41.xml (XPath: TEXDyFinOrder/terms/allowanceCharge/AC_category) 1-1
AC_categoryText	free text description of an Allowance or Charge - base type: string, max length: 70, (XPath: TEXDyFinOrder/terms/allowanceCharge/AC_categoryText) 1-1
AC_percent	amount of an Allowance or Charge as a percentage - base type: decimal, min inclusive: 0, max inclusive: 100, fraction digits: 2, (XPath: TEXDyFinOrder/terms/allowanceCharge/AC_percent) 1-1
added	additional code of the product (complementing the formers) - base type: string, max length: 15, (XPath: TEXDyFinOrder/TFCObody/TFCOitem/fabricProd/texCode/added) 0-9 - note: <i>here an additional codification (see table T44) can be specified</i> (XPath: TEXDyFinOrder/TFCObody/TFCOitem/fabricComponent/texCode/added) 0-9 - note: <i>here an additional codification (see table T44) can be specified</i>
@addType	qualifier of the additional coding of a product - base type: string, cod. table: T44 http://www.moda-ml.net/moda-ml/repository/codelist/v2008-1/gc_T44.xml (XPath: TEXDyFinOrder/TFCObody/TFCOitem/fabricComponent/texCode/added/@addType) [Optional] (XPath: TEXDyFinOrder/TFCObody/TFCOitem/fabricProd/texCode/added/@addType) [Optional]
art	article number of the product - base type: string, max length: 25, (XPath: TEXDyFinOrder/TFCObody/TFCOitem/fabricProd/texCode/art) 1-1 - note: <i>can be used either for the base-article (excluding pattern/colour) or for the SKU</i> (XPath: TEXDyFinOrder/TFCObody/TFCOitem/fabricComponent/texCode/art) 1-1 - note: <i>can be used either for the base-article (excluding pattern/colour) or for the SKU</i>
carrier	identification of the transport carrier - base type: string, max length: 40, (XPath: TEXDyFinOrder/terms/transInfo/carrier) 0-1
city	name of the city (town, village) - base type: string, max length: 40, (XPath: TEXDyFinOrder/TFCOheader/thirdParty/city) 0-1 (XPath: TEXDyFinOrder/TFCOheader/subContractor/city) 0-1 (XPath: TEXDyFinOrder/TFCOheader/buyer/city) 0-1 (XPath: TEXDyFinOrder/TFCObody/TFCOitem/thirdParty/city) 0-1
@codeList	it specifies the URL where the list of codes used to make an instance of the element can be found - base type: string, max length: 255, (XPath: TEXDyFinOrder/TFCObody/TFCOitem/fabricProd/texCode/art/@codeList) [Optional] - nota: <i>this attribute should be ALTERNATIVE to the others</i> (XPath: TEXDyFinOrder/TFCObody/TFCOitem/fabricComponent/texCode/pattern/@codeList) [Optional] - nota: <i>this attribute should be ALTERNATIVE to the others</i> (XPath: TEXDyFinOrder/TFCObody/TFCOitem/fabricProd/texCode/color/@codeList) [Optional] - nota: <i>this attribute should be ALTERNATIVE to the others</i> (XPath: TEXDyFinOrder/TFCObody/TFCOitem/fabricComponent/texCode/color/@codeList) [Optional] - nota: <i>this attribute should be ALTERNATIVE to the others</i> (XPath: TEXDyFinOrder/TFCObody/TFCOitem/fabricComponent/texCode/art/@codeList) [Optional] - nota: <i>this attribute should be ALTERNATIVE to the others</i>

	(XPath: TEXDyFinOrder/TFCObody/TFCOitem/fabricProd/texCode/pattern/@codeList) [Optional] - nota: <i>this attribute should be ALTERNATIVE to the others</i>
color	colour number of the product, when not included in the model or fabric code - base type: string, max length: 15, (XPath: TEXDyFinOrder/TFCObody/TFCOitem/fabricComponent/texCode/color) 0-1 (XPath: TEXDyFinOrder/TFCObody/TFCOitem/fabricProd/texCode/color) 0-1
country	code of the nation - base type: string, cod. table: T10 http://www.moda-ml.net/moda-ml/repository/codelist/v2008-1/gc_T10.xml (XPath: TEXDyFinOrder/TFCObody/TFCOitem/thirdParty/country) 0-1 (XPath: TEXDyFinOrder/TFCOheader/subContractor/country) 0-1 (XPath: TEXDyFinOrder/TFCOheader/buyer/country) 0-1 (XPath: TEXDyFinOrder/TFCOheader/thirdParty/country) 0-1
@CTest	indicates the need to execute a colour test before the operation - base type: string, cod. table: NT38 http://www.moda-ml.net/moda-ml/repository/codelist/v2008-1/gc_NT38.xml (XPath: TEXDyFinOrder/TFCObody/TFCOitem/fabricProd/@CTest) [Optional]
@dateForm	format used for a date - base type: string, cod. table: NT29 http://www.moda-ml.net/moda-ml/repository/codelist/v2008-1/gc_NT29.xml (XPath: TEXDyFinOrder/TFCObody/TFCOitem/fabricComponent/refDoc/docDate/@dateForm) [Optional] (XPath: TEXDyFinOrder/TFCOheader/refDoc/docDate/@dateForm) [Optional] (XPath: TEXDyFinOrder/TFCOheader/msgDate/@dateForm) [Optional] (XPath: TEXDyFinOrder/TFCObody/TFCOitem/deliveryDate/@dateForm) [Optional] (XPath: TEXDyFinOrder/TFCObody/TFCOitem/fabMnfrOperation/refDoc/docDate/@dateForm) [Optional]
deliveryDate	date of delivery of goods, requested or promised in the purchase process, according to one of the patterns YYYY-MM-DD, YYYY-MM-DD:HH-MM or YYYY-WW. - base type: string, (XPath: TEXDyFinOrder/TFCObody/TFCOitem/deliveryDate) 0-1
deliveryPlace	place of delivery of goods, ultimate or related to a given leg - base type: string, max length: 40, (XPath: TEXDyFinOrder/terms/transInfo/deliveryPlace) 0-1
dept	name or code of a contact department within a Party - base type: string, max length: 40, (XPath: TEXDyFinOrder/TFCObody/TFCOitem/thirdParty/dept) 0-1 (XPath: TEXDyFinOrder/TFCOheader/buyer/dept) 0-1 (XPath: TEXDyFinOrder/TFCOheader/thirdParty/dept) 0-1 (XPath: TEXDyFinOrder/TFCOheader/subContractor/dept) 0-1
description	free text description of a product - base type: string, max length: 70, (XPath: TEXDyFinOrder/TFCObody/TFCOitem/fabricComponent/texCode/description) 0-1 (XPath: TEXDyFinOrder/TFCObody/TFCOitem/fabricProd/texCode/description) 0-1
docDate	date of issue of the referenced document, according to one of the patterns YYYY-MM-DD, YYYY-MM-DD:HH-MM or YYYY-WW. - base type: string, (XPath: TEXDyFinOrder/TFCObody/TFCOitem/fabricComponent/refDoc/docDate) 0-1 (XPath: TEXDyFinOrder/TFCOheader/refDoc/docDate) 0-1 (XPath: TEXDyFinOrder/TFCObody/TFCOitem/fabMnfrOperation/refDoc/docDate) 0-1
docID	identification number of the referenced document SINCE 2008-1 ITS USE

	<p>IN THE HEADER IS DISCOURAGED (REPLACED BY)</p> <ul style="list-style-type: none"> - base type: string, max length: 35, (XPath: TEXDyFinOrder/TFCObody/TFCOitem/fabMnfrOperation/refDoc/docID) 1-2 (XPath: TEXDyFinOrder/TFCOheader/docID) 0-1 (XPath: TEXDyFinOrder/TFCObody/TFCOitem/fabricComponent/refDoc/docID) 1-2 (XPath: TEXDyFinOrder/TFCOheader/refDoc/docID) 1-2
@docType	<p>type or class to which the referenced document belongs</p> <ul style="list-style-type: none"> - base type: string, cod. table: T21 http://www.moda-ml.net/moda-ml/repository/codelist/v2008-1/gc_T21.xml (XPath: TEXDyFinOrder/TFCOheader/refDoc/@docType) [Required] (XPath: TEXDyFinOrder/TFCObody/TFCOitem/fabMnfrOperation/refDoc/@docType) [Required] (XPath: TEXDyFinOrder/TFCObody/TFCOitem/fabricComponent/refDoc/@docType) [Required]
dyeN	<p>number of the dying batch of a textile product</p> <ul style="list-style-type: none"> - base type: string, max length: 15, (XPath: TEXDyFinOrder/TFCObody/TFCOitem/fabricProd/piece/dyeN) 0-1 (XPath: TEXDyFinOrder/TFCObody/TFCOitem/fabricProd/pieceChain/dyeN) 0-1
@email	<p>electronic mail address of the contact person within a Party</p> <ul style="list-style-type: none"> - base type: string, max length: 80, (XPath: TEXDyFinOrder/TFCOheader/buyer/person/@email) [Optional] (XPath: TEXDyFinOrder/TFCObody/TFCOitem/thirdParty/person/@email) [Optional] (XPath: TEXDyFinOrder/TFCOheader/subContractor/person/@email) [Optional] (XPath: TEXDyFinOrder/TFCOheader/thirdParty/person/@email) [Optional]
@endUse	<p>specifies the final use of the material</p> <ul style="list-style-type: none"> - base type: string, cod. table: NT4 http://www.moda-ml.net/moda-ml/repository/codelist/v2008-1/gc_NT4.xml (XPath: TEXDyFinOrder/TFCObody/TFCOitem/fabricProd/piece/@endUse) [Optional]
fabricChar	<p>code of the physical or mechanical parameter used to define a "technical characteristic of the fabric" (see Fabric technical sheet)</p> <ul style="list-style-type: none"> - base type: string, cod. table: T13 http://www.moda-ml.net/moda-ml/repository/codelist/v2008-1/gc_T13.xml (XPath: TEXDyFinOrder/TFCObody/TFCOitem/fabricProd/fabricSpecs/fabricChar) 1-1
fabricCharText	<p>free text describing the physical or mechanical parameter used to define a "technical characteristic of the fabric"</p> <ul style="list-style-type: none"> - base type: string, max length: 40, (XPath: TEXDyFinOrder/TFCObody/TFCOitem/fabricProd/fabricSpecs/fabricCharText) 1-1
fabricWidth	<p>width of the fabric as technical specification</p> <ul style="list-style-type: none"> - base type: decimal, min inclusive: 0, fraction digits: 2, (XPath: TEXDyFinOrder/TFCObody/TFCOitem/fabricProd/fabricWidth) 0-1
@fibre	<p>type of fibre used in a textile product</p> <ul style="list-style-type: none"> - base type: string, cod. table: T19 http://www.moda-ml.net/moda-ml/repository/codelist/v2008-1/gc_T19.xml (XPath: TEXDyFinOrder/TFCObody/TFCOitem/fabricProd/fabricCompos/percCompos/@fibre) [Required]
@finDiscount	<p>financial discount applied for payment by the date specified</p> <ul style="list-style-type: none"> - base type: decimal, min inclusive: 0, max inclusive: 100, fraction digits: 2, (XPath: TEXDyFinOrder/terms/payment/@finDiscount) [Optional]
@finSurcharge	<p>financial surcharge applied for payment after the date specified</p> <ul style="list-style-type: none"> - base type: decimal, min inclusive: 0, max inclusive: 100, fraction digits: 2, (XPath: TEXDyFinOrder/terms/payment/@finSurcharge) [Optional]

grossWeight	<p>the gross weight of the overall goods supply, declared for transport or customs purpose</p> <p>- base type: decimal, min inclusive: 0, fraction digits: 2, (XPath: TEXDyFinOrder/terms/transInfo/grossWeight) 0-1</p>
id	<p>primary identification code of a Party; it is recommended the format: nation code (ISO 3166) + VAT identification number (11 crt), with the qualifier "numberingOrg"= MF</p> <p>- base type: string, max length: 15, (XPath: TEXDyFinOrder/TFCOheader/buyer/id) 1-1 (XPath: TEXDyFinOrder/TFCObody/TFCOitem/thirdParty/id) 1-1 (XPath: TEXDyFinOrder/TFCOheader/subContractor/id) 1-1 (XPath: TEXDyFinOrder/TFCOheader/thirdParty/id) 1-1</p>
incoTerm	<p>specification of the terms of trade (INCOTERMS)</p> <p>- base type: string, cod. table: T3 http://www.moda-ml.net/moda-ml/repository/codelist/v2008-1/gc_T3.xml (XPath: TEXDyFinOrder/terms/trade/incoTerm) 1-1</p>
incoTermText	<p>free text specifying the terms of trade (incoterm, location)</p> <p>- base type: string, max length: 70, (XPath: TEXDyFinOrder/terms/trade/incoTermText) 1-1</p>
itemID	<p>number of the line/item of the referenced document</p> <p>- base type: string, max length: 6, (XPath: TEXDyFinOrder/TFCObody/TFCOitem/fabMnfrOperation/refDoc/itemID) 0-1 (XPath: TEXDyFinOrder/TFCObody/TFCOitem/fabricComponent/refDoc/itemID) 0-1 (XPath: TEXDyFinOrder/TFCOheader/refDoc/itemID) 0-1</p>
jobName	<p>description of the elementary job</p> <p>- base type: string, max length: 40, (XPath: TEXDyFinOrder/TFCObody/TFCOitem/fabMnfrOperation/jobName) 1-1</p>
legalName	<p>legal name of a Party</p> <p>- base type: string, max length: 80, (XPath: TEXDyFinOrder/TFCOheader/thirdParty/legalName) 0-1 (XPath: TEXDyFinOrder/TFCOheader/subContractor/legalName) 0-1 (XPath: TEXDyFinOrder/TFCOheader/buyer/legalName) 0-1 (XPath: TEXDyFinOrder/TFCObody/TFCOitem/thirdParty/legalName) 0-1</p>
lineN	<p>number of the line item of the present message (xml document)</p> <p>- base type: positiveInteger, min inclusive: 1, max inclusive: 9999, (XPath: TEXDyFinOrder/TFCObody/TFCOitem/lineN) 1-1</p>
@listName	<p>it specifies the name of the list of codes used to make an instance of the element</p> <p>- base type: string, max length: 40, (XPath: TEXDyFinOrder/TFCObody/TFCOitem/fabricComponent/texCode/art/@listName) [Optional]</p> <p>- nota: <i>this attribute should always be used coupled with "numberingOrg"</i> (XPath: TEXDyFinOrder/TFCObody/TFCOitem/fabricComponent/texCode/pattern/@listName) [Optional]</p> <p>- nota: <i>this attribute should always be used coupled with "numberingOrg"</i> (XPath: TEXDyFinOrder/TFCObody/TFCOitem/fabricComponent/texCode/color/@listName) [Optional]</p> <p>- nota: <i>this attribute should always be used coupled with "numberingOrg"</i> (XPath: TEXDyFinOrder/TFCObody/TFCOitem/fabricProd/texCode/color/@listName) [Optional]</p> <p>- nota: <i>this attribute should always be used coupled with "numberingOrg"</i> (XPath: TEXDyFinOrder/TFCObody/TFCOitem/fabricProd/texCode/pattern/@listName) [Optional]</p> <p>- nota: <i>this attribute should always be used coupled with "numberingOrg"</i> (XPath: TEXDyFinOrder/TFCObody/TFCOitem/fabricProd/texCode/art/@listName) [Optional]</p>

	- nota: <i>this attribute should always be used coupled with “numberingOrg”</i>
@listVersion	<p>it specifies the version of the list of codes used to make an instance of the element</p> <p>- base type: string, max length: 6, (XPath: TEXDyFinOrder/TFCObody/TFCOitem/fabricProd/texCode/pattern/@listVersion) [Optional]</p> <p>- nota: <i>this attribute should always be used coupled with “numberingOrg” and “listName”</i> (XPath: TEXDyFinOrder/TFCObody/TFCOitem/fabricProd/texCode/color/@listVersion) [Optional]</p> <p>- nota: <i>this attribute should always be used coupled with “numberingOrg” and “listName”</i> (XPath: TEXDyFinOrder/TFCObody/TFCOitem/fabricComponent/texCode/color/@listVersion) [Optional]</p> <p>- nota: <i>this attribute should always be used coupled with “numberingOrg” and “listName”</i> (XPath: TEXDyFinOrder/TFCObody/TFCOitem/fabricComponent/texCode/pattern/@listVersion) [Optional]</p> <p>- nota: <i>this attribute should always be used coupled with “numberingOrg” and “listName”</i> (XPath: TEXDyFinOrder/TFCObody/TFCOitem/fabricComponent/texCode/art/@listVersion) [Optional]</p> <p>- nota: <i>this attribute should always be used coupled with “numberingOrg” and “listName”</i> (XPath: TEXDyFinOrder/TFCObody/TFCOitem/fabricProd/texCode/art/@listVersion) [Optional]</p> <p>- nota: <i>this attribute should always be used coupled with “numberingOrg” and “listName”</i></p>
location	<p>specification of a location</p> <p>- base type: string, max length: 40, (XPath: TEXDyFinOrder/TFCObody/TFCOitem/fabricComponent/location) 0-1</p> <p>- note: <i>it may be used to specify the location where lie the pieces that the Subcontractor must use for the commissioned work operation</i> (XPath: TEXDyFinOrder/terms/trade/location) 0-1</p> <p>- note: <i>place to which the INCOTERM applies</i></p>
@logo	<p>company logo (URL of the image jpeg or gif). It is recommended that the width of the image does not exceed 640 pixel.</p> <p>- base type: string, max length: 255, (XPath: TEXDyFinOrder/TFCOheader/buyer/@logo) [Optional]</p>
lotN	<p>lot number of a product or batch number of the raw material</p> <p>- base type: string, max length: 15, (XPath: TEXDyFinOrder/TFCObody/TFCOitem/fabricProd/piece/lotN) 0-1 (XPath: TEXDyFinOrder/TFCObody/TFCOitem/fabricProd/pieceChain/lotN) 0-1</p>
@LRI	<p>attribute usable to format a string according to a customized User rule (local rule)</p> <p>- base type: string, cod. table: NT3 http://www.moda-ml.net/moda-ml/repository/codelist/v2008-1/gc_NT3.xml (XPath: TEXDyFinOrder/terms/trade/location/@LRI) [Optional] (XPath: TEXDyFinOrder/TFCObody/TFCOitem/fabricComponent/location/@LRI) [Optional]</p>
@method	<p>standard protocol or method employed in a test to evaluate a characteristic or a parameter</p> <p>- base type: string, max length: 25, (XPath: TEXDyFinOrder/TFCObody/TFCOitem/fabricProd/fabricSpecs/specValue/@method) [Optional] (XPath: TEXDyFinOrder/TFCObody/TFCOitem/fabMnfrOperation/texMachineSpecs/specValue/@method) [Optional]</p>

mixMatch	colour hue used for the match of garments - base type: string, max length: 15, (XPath: TEXDyFinOrder/TFCObody/TFCOitem/fabricProd/piece/mixMatch) 0-1
msgCurrency	currency used to express the monetary amounts of the message - base type: string, cod. table: T9 http://www.moda-ml.net/moda-ml/repository/codelist/v2008-1/gc_T9.xml (XPath: TEXDyFinOrder/TFCOheader/msgCurrency) 0-1
msgDate	date of issue of the present message (xml document), according to one of the patterns YYYY-MM-DD, YYYY-MM-DD:HH-MM or YYYY-WW. - base type: string, (XPath: TEXDyFinOrder/TFCOheader/msgDate) 1-1
@msgfunction	function performed by the present message with regards to the transmission - base type: string, cod. table: NT18 http://www.moda-ml.net/moda-ml/repository/codelist/v2008-1/gc_NT18.xml (XPath: TEXDyFinOrder/@msgfunction) [Optional] [Default= OR]
msgID	key identifier of the document in the information system of the issuing Party - base type: string, max length: 35, (XPath: TEXDyFinOrder/TFCOheader/msgID) 0-1
msgN	identification number given to the message (xml document) by its issuer - base type: string, max length: 35, (XPath: TEXDyFinOrder/TFCOheader/msgN) 1-1
netWeight	the net weight of the overall goods supply, declared for transport or customs purpose - base type: decimal, min inclusive: 0, fraction digits: 2, (XPath: TEXDyFinOrder/terms/transInfo/netWeight) 0-1
note	free text note - base type: string, max length: 350, (XPath: TEXDyFinOrder/TFCObody/TFCOitem/fabricProd/note) 0-1 (XPath: TEXDyFinOrder/TFCObody/TFCOitem/fabricComponent/note) 0-1 (XPath: TEXDyFinOrder/TFCObody/TFCOitem/fabMnfrOperation/note) 0-1 (XPath: TEXDyFinOrder/TFCOheader/note) 0-1
@numberingOrg	code specifying the organisation who has created or owns the coding or numbering system - base type: string, cod. table: NT6 http://www.moda-ml.net/moda-ml/repository/codelist/v2008-1/gc_NT6.xml (XPath: TEXDyFinOrder/TFCObody/TFCOitem/fabricProd/pieceChain/pieceCut/serialN/@numberingOrg) [Optional] - nota: <i>here the issuer of the serial number must be specified (when different from the Supplier)</i> (XPath: TEXDyFinOrder/TFCObody/TFCOitem/fabricProd/piece/serialN/@numberingOrg) [Optional] - nota: <i>here the issuer of the serial number must be specified (when different from the Supplier)</i> (XPath: TEXDyFinOrder/TFCOheader/thirdParty/id/@numberingOrg) [Optional] (XPath: TEXDyFinOrder/TFCObody/TFCOitem/fabricComponent/texCode/art/@numberingOrg) [Optional] - nota: <i>this attribute should be used either single or coupled with "listName" and "listVersion"</i> (XPath: TEXDyFinOrder/TFCObody/TFCOitem/fabricComponent/texCode/color/@numberingOrg) [Optional] - nota: <i>this attribute should be used either single or coupled with "listName" and "listVersion"</i> (XPath: TEXDyFinOrder/TFCOheader/subContractor/id/@numberingOrg) [Optional] (XPath: TEXDyFinOrder/TFCObody/TFCOitem/fabricComponent/texCode/pattern/@numberingOrg) [Optional] - nota: <i>this attribute should be used either single or coupled with "listName" and "listVersion"</i> (XPath: TEXDyFinOrder/TFCOheader/buyer/id/@numberingOrg) [Optional]

	<p>(XPath: TEXDyFinOrder/TFCOheader/docID/@numberingOrg) [Optional] - nota: here can be specified whose document numbering is used (e.g.: Client, Supplier, ..)</p> <p>(XPath: TEXDyFinOrder/TFCOheader/refDoc/docID/@numberingOrg) [Optional] - nota: here can be specified whose document numbering is used (e.g.: Client, Supplier, ..)</p> <p>(XPath: TEXDyFinOrder/TFCObody/TFCOitem/thirdParty/id/@numberingOrg) [Optional]</p> <p>(XPath: TEXDyFinOrder/TFCObody/TFCOitem/fabricComponent/texCode/@numberingOrg) [Optional]</p> <p>(XPath: TEXDyFinOrder/TFCObody/TFCOitem/fabricProd/piece/lotN/@numberingOrg) [Optional]</p> <p>(XPath: TEXDyFinOrder/TFCObody/TFCOitem/fabricProd/piece/dyeN/@numberingOrg) [Optional]</p> <p>(XPath: TEXDyFinOrder/TFCObody/TFCOitem/fabricProd/piece/packageN/@numberingOrg) [Optional]</p> <p>(XPath: TEXDyFinOrder/TFCObody/TFCOitem/fabricProd/piece/mixMatch/@numberingOrg) [Optional]</p> <p>(XPath: TEXDyFinOrder/TFCObody/TFCOitem/fabricProd/pieceChain/serialN/@numberingOrg) [Optional] - nota: here the issuer of the serial number must be specified (when different from the Supplier)</p> <p>(XPath: TEXDyFinOrder/TFCObody/TFCOitem/fabricComponent/refDoc/docID/@numberingOrg) [Optional] - nota: here can be specified whose document numbering is used (e.g.: Client, Supplier, ..)</p> <p>(XPath: TEXDyFinOrder/TFCObody/TFCOitem/fabricComponent/serialN/@numberingOrg) [Optional] - nota: here the issuer of the serial number must be specified (when different from the Supplier)</p> <p>(XPath: TEXDyFinOrder/TFCObody/TFCOitem/fabricProd/pieceChain/dyeN/@numberingOrg) [Optional]</p> <p>(XPath: TEXDyFinOrder/TFCObody/TFCOitem/fabricProd/pieceChain/lotN/@numberingOrg) [Optional]</p> <p>(XPath: TEXDyFinOrder/TFCObody/TFCOitem/fabricProd/texCode/color/@numberingOrg) [Optional] - nota: this attribute should be used either single or coupled with "listName" and "listVersion"</p> <p>(XPath: TEXDyFinOrder/TFCObody/TFCOitem/fabricProd/texCode/pattern/@numberingOrg) [Optional] - nota: this attribute should be used either single or coupled with "listName" and "listVersion"</p> <p>(XPath: TEXDyFinOrder/TFCObody/TFCOitem/fabricProd/texCode/art/@numberingOrg) [Optional] - nota: this attribute should be used either single or coupled with "listName" and "listVersion"</p> <p>(XPath: TEXDyFinOrder/TFCObody/TFCOitem/fabMnfrOperation/refDoc/docID/@numberingOrg) [Optional] - nota: here can be specified whose document numbering is used (e.g.: Client, Supplier, ..)</p> <p>(XPath: TEXDyFinOrder/TFCObody/TFCOitem/fabricProd/texCode/@numberingOrg) [Optional]</p> <p>(XPath: TEXDyFinOrder/TFCObody/TFCOitem/fabricProd/pieceChain/packageN/@numberingOrg) [Optional]</p>
packageN	<p>serial number used to identify a transport package - base type: string, max length: 25, (XPath: TEXDyFinOrder/TFCObody/TFCOitem/fabricProd/piece/packageN) 0-1 - note: here the transport package containing the piece can be identified (XPath: TEXDyFinOrder/TFCObody/TFCOitem/fabricProd/pieceChain/packageN) 0-1</p>
@part	<p>percent fraction of a total payment</p>

	<p>- base type: decimal, min inclusive: 1, max inclusive: 99, fraction digits: 2, (XPath: TEXDyFinOrder/terms/insPayment/@part) [Required]</p> <p>- nota: <i>here the % value of each installment must be indicated</i></p>
pattern	<p>pattern/design number of the product, when not included in the article code</p> <p>- base type: string, max length: 15, (XPath: TEXDyFinOrder/TFCObody/TFCOitem/fabricProd/texCode/pattern) 0-1 (XPath: TEXDyFinOrder/TFCObody/TFCOitem/fabricComponent/texCode/pattern) 0-1</p>
payMode	<p>way or means of payment</p> <p>- base type: string, cod. table: T2 http://www.moda-ml.net/moda-ml/repository/codelist/v2008-1/gc_T2.xml (XPath: TEXDyFinOrder/terms/payment/payMode) 0-1 (XPath: TEXDyFinOrder/terms/insPayment/payMode) 0-1</p>
payTerm	<p>code specifying the terms or time by which the payment must be done</p> <p>- base type: string, cod. table: T1 http://www.moda-ml.net/moda-ml/repository/codelist/v2008-1/gc_T1.xml (XPath: TEXDyFinOrder/terms/payment/payTerm) 1-1 (XPath: TEXDyFinOrder/terms/insPayment/payTerm) 1-1</p>
payTermText	<p>free text specifying the terms by which the payment must be done (time/mode or means)</p> <p>- base type: string, max length: 40, (XPath: TEXDyFinOrder/terms/insPayment/payTermText) 1-1 (XPath: TEXDyFinOrder/terms/payment/payTermText) 1-1</p>
pcTolerance	<p>percent deviation tolerated on the value of a measurement (it must have a plus or minus sign)</p> <p>- base type: decimal, min inclusive: 0, max inclusive: 100, total digits: 2, (XPath: TEXDyFinOrder/TFCObody/TFCOitem/fabMnfrOperation/texMachineSpecs/pcTolerance) 0-2 (XPath: TEXDyFinOrder/TFCObody/TFCOitem/fabricProd/fabricSpecs/pcTolerance) 0-2</p>
percCompos	<p>fiber rate in the product composition</p> <p>- base type: decimal, min inclusive: 0, max inclusive: 100, fraction digits: 2, (XPath: TEXDyFinOrder/TFCObody/TFCOitem/fabricProd/fabricCompos/percCompos) 1-9</p>
person	<p>name of the contact person within a Party</p> <p>- base type: string, max length: 40, (XPath: TEXDyFinOrder/TFCOheader/buyer/person) 0-1 (XPath: TEXDyFinOrder/TFCOheader/thirdParty/person) 0-1 (XPath: TEXDyFinOrder/TFCObody/TFCOitem/thirdParty/person) 0-1 (XPath: TEXDyFinOrder/TFCOheader/subContractor/person) 0-1</p>
pieceAllow	<p>allowance required or accorded for the piece</p> <p>- base type: decimal, fraction digits: 2, (XPath: TEXDyFinOrder/TFCObody/TFCOitem/fabricProd/piece/pieceAllow) 0-1</p>
pieceCutWidth	<p>effective usable width of the fabric piece (for garment manufacturing)</p> <p>- base type: decimal, min inclusive: 0, fraction digits: 2, (XPath: TEXDyFinOrder/TFCObody/TFCOitem/fabricProd/piece/pieceCutWidth) 0-1</p>
pieceInnWrap1	<p>code specifying the type of inner wrapping/packing used for the fabric piece</p> <p>- base type: string, cod. table: T4 http://www.moda-ml.net/moda-ml/repository/codelist/v2008-1/gc_T4.xml (XPath: TEXDyFinOrder/TFCObody/TFCOitem/fabricProd/piece/piecePack/pieceInnWrap1) 1-1 (XPath: TEXDyFinOrder/TFCObody/TFCOitem/fabricProd/pieceChain/piecePack/pieceInnWrap1) 1-1</p>
pieceInnWrap2	<p>code sub-specifying the type of inner wrapping/packing used for the fabric piece</p> <p>- base type: string, cod. table: T5</p>

	http://www.moda-ml.net/moda-ml/repository/codelist/v2008-1/gc_T5.xml (XPath: TEXDyFinOrder/TFCObody/TFCOitem/fabricProd/pieceChain/piecePack/pieceInnWrap2) 0-1 (XPath: TEXDyFinOrder/TFCObody/TFCOitem/fabricProd/piece/piecePack/pieceInnWrap2) 0-1
pieceLength	length of the piece - base type: decimal, min inclusive: 0, fraction digits: 2, (XPath: TEXDyFinOrder/TFCObody/TFCOitem/fabricProd/pieceChain/pieceLength) 0-1 (XPath: TEXDyFinOrder/TFCObody/TFCOitem/fabricProd/piece/pieceLength) 0-1 (XPath: TEXDyFinOrder/TFCObody/TFCOitem/fabricProd/pieceChain/pieceCut/pieceLength) 0-1
pieceOutWrap	code specifying the type of outer wrapping or packing used for the fabric piece - base type: string, cod. table: T6 http://www.moda-ml.net/moda-ml/repository/codelist/v2008-1/gc_T6.xml (XPath: TEXDyFinOrder/TFCObody/TFCOitem/fabricProd/pieceChain/piecePack/pieceOutWrap) 0-1 (XPath: TEXDyFinOrder/TFCObody/TFCOitem/fabricProd/piece/piecePack/pieceOutWrap) 0-1
piecePackText	free text specifying the type of wrapping or packing used for the fabric piece - base type: string, max length: 40, (XPath: TEXDyFinOrder/TFCObody/TFCOitem/fabricProd/pieceChain/piecePack/piecePackText) 1-1 (XPath: TEXDyFinOrder/TFCObody/TFCOitem/fabricProd/piece/piecePack/piecePackText) 1-1
pieceStatus	code used to describe the status of a fabric piece after the control - base type: string, cod. table: T52 http://www.moda-ml.net/moda-ml/repository/codelist/v2008-1/gc_T52.xml (XPath: TEXDyFinOrder/TFCObody/TFCOitem/fabricProd/piece/pieceStatus) 0-1
pieceWeight	effective total weight of the fabric piece - base type: decimal, min inclusive: 0, fraction digits: 2, (XPath: TEXDyFinOrder/TFCObody/TFCOitem/fabricProd/pieceChain/pieceWeight) 0-1 (XPath: TEXDyFinOrder/TFCObody/TFCOitem/fabricProd/piece/pieceWeight) 0-1 (XPath: TEXDyFinOrder/TFCObody/TFCOitem/fabricProd/pieceChain/pieceCut/pieceWeight) 0-1
pieceWeightM	effective weight per metre of the fabric piece - base type: decimal, min inclusive: 0, fraction digits: 2, (XPath: TEXDyFinOrder/TFCObody/TFCOitem/fabricProd/piece/pieceWeightM) 0-1
pieceWidth	effective width of the fabric piece - base type: decimal, min inclusive: 0, fraction digits: 2, (XPath: TEXDyFinOrder/TFCObody/TFCOitem/fabricProd/piece/pieceWidth) 0-1 (XPath: TEXDyFinOrder/TFCObody/TFCOitem/fabricProd/pieceChain/pieceWidth) 0-1
postCode	code defining the postal zone - base type: string, max length: 10, (XPath: TEXDyFinOrder/TFCObody/TFCOitem/thirdParty/postCode) 0-1 (XPath: TEXDyFinOrder/TFCOheader/thirdParty/postCode) 0-1 (XPath: TEXDyFinOrder/TFCOheader/subContractor/postCode) 0-1 (XPath: TEXDyFinOrder/TFCOheader/buyer/postCode) 0-1
price	unit price of the article, object or service specified - base type: decimal, min inclusive: 0, fraction digits: 2, (XPath: TEXDyFinOrder/TFCObody/TFCOitem/price) 0-1
@priceQualifier	type of price with reference to discount and taxes - base type: string, cod. table: NT20 http://www.moda-ml.net/moda-ml/repository/codelist/v2008-1/gc_NT20.xml

	(XPath: TEXDyFinOrder/TFCObody/TFCOitem/price/@priceQualifier) [Optional] [Default= NET]
@productLevel	level of the product (end or intermediate) yielded by an operation in a work cycle - base type: string, cod. table: NT22 http://www.moda-ml.net/moda-ml/repository/codelist/v2008-1/gc_NT22.xml (XPath: TEXDyFinOrder/TFCObody/TFCOitem/@productLevel) [Optional] [Default= END] - nota: <i>this qualifier "intermediate" must be used when the product is also a component in an other line of the same Commission Order</i>
qty	net quantity of the article or object correlated, qualified by the function of the document (ordering, delivering, ..) and by the context - base type: decimal, min inclusive: 0, fraction digits: 2, (XPath: TEXDyFinOrder/TFCObody/TFCOitem/fabricComponent/qty) 1-3 - note: <i>here is the code of the component used in the yarn manufacturing operation</i> (XPath: TEXDyFinOrder/TFCObody/TFCOitem/qty) 1-3
@role	Third Party role qualifier - base type: string, cod. table: NT2 http://www.moda-ml.net/moda-ml/repository/codelist/v2008-1/gc_NT2.xml (XPath: TEXDyFinOrder/TFCOheader/thirdParty/@role) [Required] (XPath: TEXDyFinOrder/TFCObody/TFCOitem/thirdParty/@role) [Required]
season	sale season; defined as: season (1 crt) + year (4 crt) - season: S/S=1 A/W=2 Spring=3 Summer=4 Autumn=5 Winter=6: for more than four seasons use alphabetic sequence: 1st season=A 2nd season=B etc.etc. - base type: string, max length: 15, (XPath: TEXDyFinOrder/TFCObody/TFCOitem/fabricComponent/refDoc/season) 0-1 - note: <i>here indicates the season to which the referenced document belongs</i> (XPath: TEXDyFinOrder/TFCObody/TFCOitem/fabMnfrOperation/refDoc/season) 0-1 - note: <i>here indicates the season to which the referenced document belongs</i> (XPath: TEXDyFinOrder/TFCOheader/season) 0-1 (XPath: TEXDyFinOrder/TFCOheader/refDoc/season) 0-1 - note: <i>here indicates the season to which the referenced document belongs</i>
@sender	qualifier that specifies the Party issuing of the document - base type: boolean, (XPath: TEXDyFinOrder/TFCOheader/thirdParty/@sender) [Optional] - nota: <i>This attribute is mandatory when the STYLESHEET must be produced</i> (XPath: TEXDyFinOrder/TFCObody/TFCOitem/thirdParty/@sender) [Optional] - nota: <i>This attribute is mandatory when the STYLESHEET must be produced</i> (XPath: TEXDyFinOrder/TFCOheader/buyer/@sender) [Optional] - nota: <i>This attribute is mandatory when the STYLESHEET must be produced</i> (XPath: TEXDyFinOrder/TFCOheader/subContractor/@sender) [Optional] - nota: <i>This attribute is mandatory when the STYLESHEET must be produced</i>
serialN	serial number used for the identification of a physical unit - base type: string, max length: 15, (XPath: TEXDyFinOrder/TFCObody/TFCOitem/fabricComponent/serialN) 0-99 - note: <i>it may be used to identify the pieces/chains that the Subcontractor must use for the commissioned work</i> (XPath: TEXDyFinOrder/TFCObody/TFCOitem/fabricProd/pieceChain/pieceCut/serialN) 1-1 (XPath: TEXDyFinOrder/TFCObody/TFCOitem/fabricProd/piece/serialN) 1-3 (XPath: TEXDyFinOrder/TFCObody/TFCOitem/fabricProd/pieceChain/serialN) 1-1

specValue	value requested for a characteristics or a parameter that can be measured - base type: decimal, (XPath: TEXDyFinOrder/TFCObody/TFCOitem/fabMnfrOperation/texMachineSpecs/specValue) 0-1 (XPath: TEXDyFinOrder/TFCObody/TFCOitem/fabricProd/fabricSpecs/specValue) 0-1
street	street and building number identifying a location - base type: string, max length: 80, (XPath: TEXDyFinOrder/TFCOheader/thirdParty/street) 0-1 (XPath: TEXDyFinOrder/TFCOheader/subContractor/street) 0-1 (XPath: TEXDyFinOrder/TFCOheader/buyer/street) 0-1 (XPath: TEXDyFinOrder/TFCObody/TFCOitem/thirdParty/street) 0-1
subCountry	short name or code of the sub-country entity - base type: string, max length: 9, (XPath: TEXDyFinOrder/TFCOheader/thirdParty/subCountry) 0-1 (XPath: TEXDyFinOrder/TFCOheader/subContractor/subCountry) 0-1 (XPath: TEXDyFinOrder/TFCOheader/buyer/subCountry) 0-1 (XPath: TEXDyFinOrder/TFCObody/TFCOitem/thirdParty/subCountry) 0-1
texJob	operation of a work cycle for fabric - base type: string, cod. table: T202 http://www.moda-ml.net/moda-ml/repository/codelist/v2008-1/gc_T202.xml (XPath: TEXDyFinOrder/TFCObody/TFCOitem/fabMnfrOperation/texJob) 1-1
texJobTech	operation technology for fabric - base type: string, cod. table: T262 http://www.moda-ml.net/moda-ml/repository/codelist/v2008-1/gc_T262.xml (XPath: TEXDyFinOrder/TFCObody/TFCOitem/fabMnfrOperation/texJobTech) 0-1
texMachine	machine used in an operation of a work cycle for fabric - base type: string, cod. table: T272 http://www.moda-ml.net/moda-ml/repository/codelist/v2008-1/gc_T272.xml (XPath: TEXDyFinOrder/TFCObody/TFCOitem/fabMnfrOperation/texMachine) 0-1
texMachineParam	setting parameter of a machine used in an operation of a work cycle for fabric - base type: string, cod. table: T282 http://www.moda-ml.net/moda-ml/repository/codelist/v2008-1/gc_T282.xml (XPath: TEXDyFinOrder/TFCObody/TFCOitem/fabMnfrOperation/texMachineSpecs/texMachineParam) 1-1
@TFCOtype	type of "Textile Dyeing-Finishing commission order" - base type: string, cod. table: NT24 http://www.moda-ml.net/moda-ml/repository/codelist/v2008-1/gc_NT24.xml (XPath: TEXDyFinOrder/@TFCOtype) [Required]
tolerance	deviation tolerated on the value of a measurement (it must have a plus or minus sign) - base type: decimal, (XPath: TEXDyFinOrder/TFCObody/TFCOitem/fabricProd/fabricSpecs/tolerance) 0-2 (XPath: TEXDyFinOrder/TFCObody/TFCOitem/fabMnfrOperation/texMachineSpecs/tolerance) 0-2
totFault	total number of faults: the 1st/2nd digit count the "Large faults", the 3rd/4th the "Medium faults" and the 5th/6th the "Small faults" - base type: positiveInteger, (XPath: TEXDyFinOrder/TFCObody/TFCOitem/fabricProd/piece/totFault) 0-1
transCondition	special condition of transport or special service requested to the Forwarder - base type: string, cod. table: T38 http://www.moda-ml.net/moda-ml/repository/codelist/v2008-1/gc_T38.xml (XPath: TEXDyFinOrder/terms/transInfo/transCondition) 0-3
transConditionText	free text description of the special condition of transport or special service requested to the Forwarder

	<p>- base type: string, max length: 100, (XPath: TEXDyFinOrder/terms/transInfo/transConditionText) 0-1</p>
transMeans	<p>means of transport, in general or referred to a specific leg - base type: string, cod. table: T40 http://www.moda-ml.net/moda-ml/repository/codelist/v2008-1/gc_T40.xml (XPath: TEXDyFinOrder/terms/transInfo/transMeans) 0-1</p>
transMode	<p>way of transport, in general or referred to the specified leg - base type: string, cod. table: T8 http://www.moda-ml.net/moda-ml/repository/codelist/v2008-1/gc_T8.xml (XPath: TEXDyFinOrder/terms/transInfo/transMode) 1-1</p>
@transReason	<p>reason for the transport - base type: string, cod. table: NT11 http://www.moda-ml.net/moda-ml/repository/codelist/v2008-1/gc_NT11.xml (XPath: TEXDyFinOrder/terms/transInfo/@transReason) [Optional]</p>
@um	<p>specification of the unit of measure - base type: string, cod. table: NT7 http://www.moda-ml.net/moda-ml/repository/codelist/v2008-1/gc_NT7.xml (XPath: TEXDyFinOrder/TFCObody/TFCOitem/fabricProd/piece/pieceLength/@um) [Optional] [Default= MTR] (XPath: TEXDyFinOrder/TFCObody/TFCOitem/fabricProd/piece/pieceWidth/@um) [Optional] [Default= CMT] (XPath: TEXDyFinOrder/TFCObody/TFCOitem/qty/@um) [Required] (XPath: TEXDyFinOrder/TFCObody/TFCOitem/fabricProd/pieceChain/pieceCut/pieceLength/@um) [Optional] [Default= MTR] (XPath: TEXDyFinOrder/TFCObody/TFCOitem/fabricProd/pieceChain/pieceCut/pieceWeight/@um) [Optional] [Default= KGM] (XPath: TEXDyFinOrder/TFCObody/TFCOitem/fabMnfrOperation/texMachineSpecs/pcTolerance/@um) [Optional] - nota: <i>to be used when it has to be soecified if the declared percentage is by weight, volume, etc...</i> (XPath: TEXDyFinOrder/TFCObody/TFCOitem/fabricProd/piece/pieceWeightM/@um) [Optional] [Default= GRM] (XPath: TEXDyFinOrder/TFCObody/TFCOitem/fabMnfrOperation/texMachineSpecs/tolerance/@um) [Required] (XPath: TEXDyFinOrder/TFCObody/TFCOitem/fabricProd/piece/pieceWeight/@um) [Optional] [Default= KGM] (XPath: TEXDyFinOrder/TFCObody/TFCOitem/fabricProd/piece/pieceAllow/@um) [Required] (XPath: TEXDyFinOrder/TFCObody/TFCOitem/fabMnfrOperation/texMachineSpecs/specValue/@um) [Optional] (XPath: TEXDyFinOrder/TFCObody/TFCOitem/fabricProd/piece/pieceCutWidth/@um) [Optional] [Default= CMT] (XPath: TEXDyFinOrder/TFCObody/TFCOitem/fabricComponent/qty/@um) [Required] (XPath: TEXDyFinOrder/TFCObody/TFCOitem/fabricProd/fabricWidth/@um) [Optional] [Default= CMT] (XPath: TEXDyFinOrder/TFCObody/TFCOitem/fabricProd/pieceChain/pieceLength/@um) [Optional] [Default= MTR] (XPath: TEXDyFinOrder/TFCObody/TFCOitem/fabricProd/fabricSpecs/pcTolerance/@um) [Optional] - nota: <i>to be used when it has to be soecified if the declared percentage is by weight, volume, etc...</i> (XPath: TEXDyFinOrder/TFCObody/TFCOitem/fabricProd/fabricSpecs/tolerance/@um) [Required] (XPath: TEXDyFinOrder/TFCObody/TFCOitem/fabricProd/fabricSpecs/specValue/@um) [Optional] (XPath: TEXDyFinOrder/TFCObody/TFCOitem/fabricProd/pieceChain/pieceWidth/@um) [Optional] [Default= CMT] (XPath: TEXDyFinOrder/terms/transInfo/netWeight/@um) [Required] (XPath: TEXDyFinOrder/terms/transInfo/grossWeight/@um) [Required] (XPath: TEXDyFinOrder/TFCObody/TFCOitem/price/@um) [Optional] (XPath: TEXDyFinOrder/TFCObody/TFCOitem/fabricProd/</p>

	pieceChain/pieceWeight/@um) [Optional] [Default= KGM]
@VAT	<p>VAT rate or code</p> <p>- base type: string, cod. table: NT16</p> <p>http://www.moda-ml.net/moda-ml/repository/codelist/v2008-1/gc_NT16.xml</p> <p>(XPath: TEXDyFinOrder/TFCOheader/thirdParty/@VAT) [Optional]</p> <p>(XPath: TEXDyFinOrder/terms/allowanceCharge/@VAT) [Optional]</p> <p>(XPath: TEXDyFinOrder/TFCObody/TFCOitem/thirdParty/@VAT) [Optional]</p>

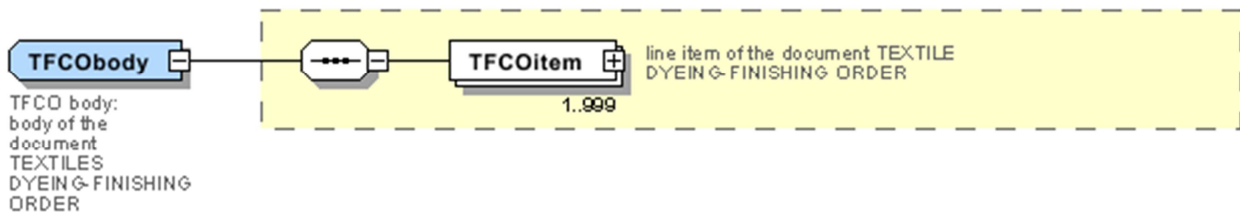
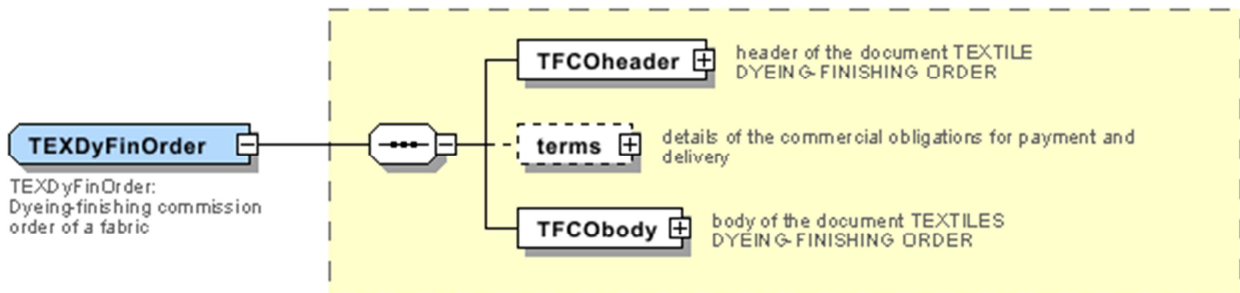
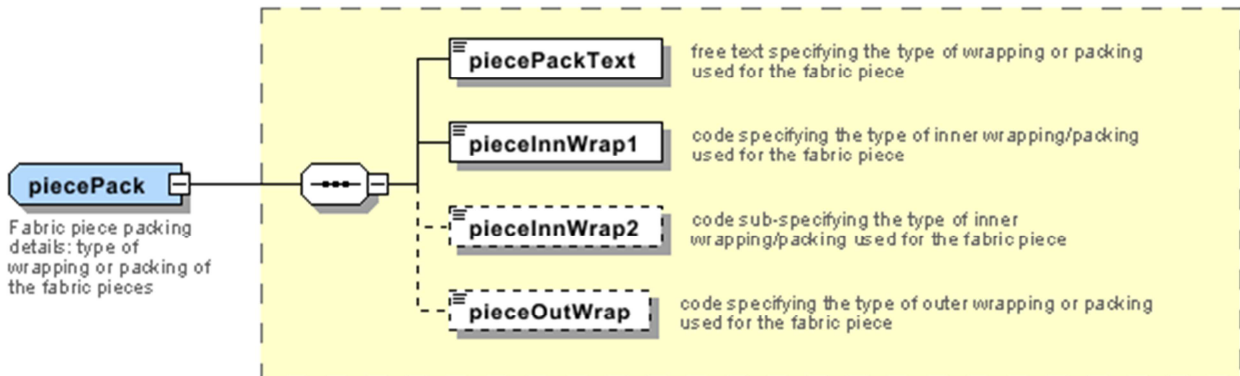
2.3 Enumeration tables

List of enumeration tables used in the XML document. You can find the corresponding codes at:
<http://www.moda-ml.org/moda-ml/imple/moda-ml-2008-1.asp?lingua=en&pag=6>

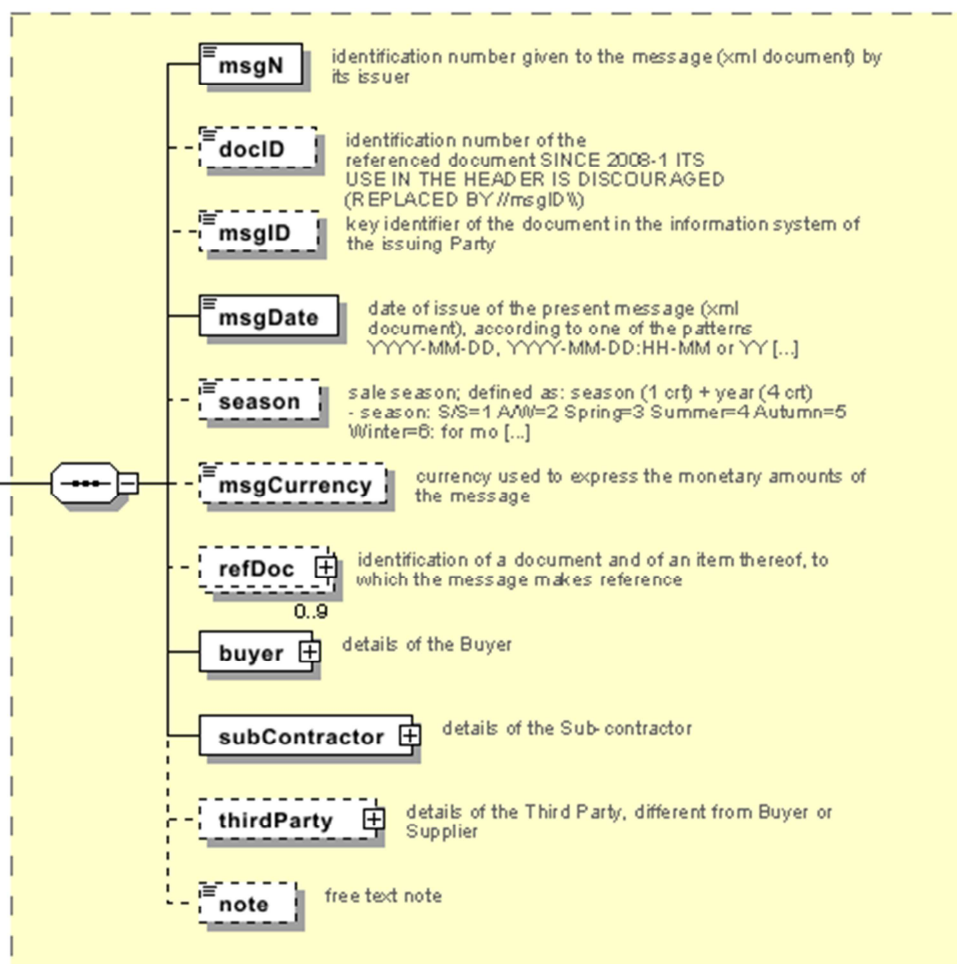
NT11 - Transport causal
NT16 - VAT rate or code
NT18 - message function
NT2 - Third party qualifier
NT20 - price qualifier
NT22 - product type of an operation
NT24 - Textile Dyeing-Finishing Order type
NT29 - format of a date
NT3 - Data format
NT38 - Colour test
NT4 - End use
NT6 - Coding system owner/issuer
NT7 - Unity of measure
T1 - Terms of payment
T10 - ISO3166 - Country
T13 - CFM properties of fabric
T19 - fibre type
T2 - Modes of payment
T202 - type of job on fabric
T21 - type of document
T262 - type of job technology for fabric
T272 - machine type for fabric operation
T282 - parameter type for fabric operation
T3 - Terms of delivery
T38 - transport conditions
T4 - Fabric piece inner packing (wrapping) 1
T40 - type of transport means
T41 - type of Allowance or Charge
T44 - additional code type
T5 - Fabric piece inner packing (wrapping) 2
T52 - fabric piece status
T6 - Fabric piece outer packing
T8 - Modes of Transport
T9 - ISO4217 - Currency

Annex A

Representative images of the principal complex elements' structure.



TFCOheader
 TFCO header:
 header of the
 document
 TEXTILE
 DYEING-FINISHING
 ORDER



TFCOitem
 TFCO item:
 line item of
 the document
 TEXTILE
 DYEING-FINISHING
 ORDER

