



<http://www.moda-ml.org>

IMPLEMENTATION GUIDE
TRANSACTION "WEAVING COMMISSION ORDER"

Version: 2008-1

Date of release: 15/12/2008

Document code: OF077-023

XML Schema repository:<http://www.moda-ml.org/moda-ml/repository/schema/v2008-1/default.asp>

Guides repository:<http://www.moda-ml.org/moda-ml/repository/guide/v2008-1/default.asp>

Guide filename: OF077-023-MODA-ML-WeavingCommissionOrder.pdf

1. BUSINESS DESCRIPTION

1.1 Scope

The present guide has been issued to assist the companies of the Textile-Clothing sector in the implementation of the standard XML document type "WEAVING COMMISSION ORDER", providing all the instruction required for its use in the context of e-commerce between Textile Subcontractors and their Customers shown in the enclosed diagram.

All the rules required for the construction and validation of the document are embedded into the specific XML-Schema, which is detailed in section "Implementation guide".

1.2 Generalities

The Weaving commission order is used by a Fabric Manufacturer to commit to a Subcontractor the weaving of yarn

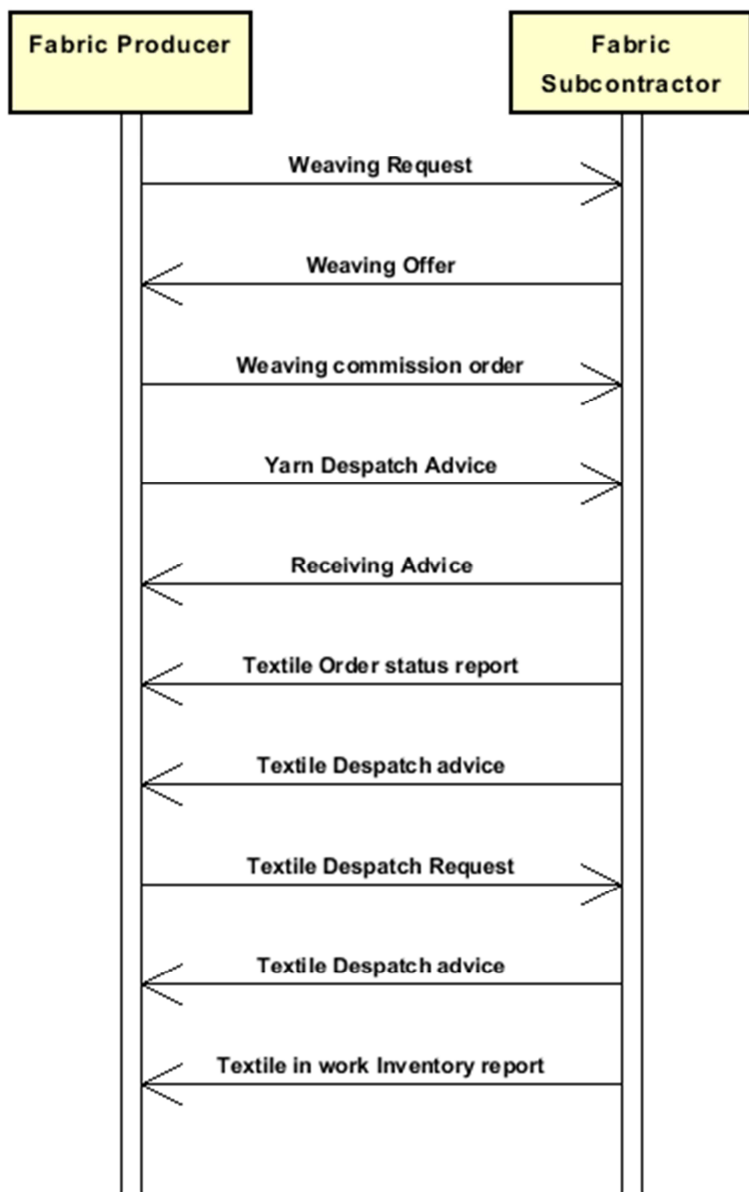
When the Issuer of the Commission requires different manufacturing operations in sequence to different Subcontractors, he can use this document not only as work order but also as a despatch order to send the semi-finished product to a successive Subcontractor

As a general rule, the weaving commission order specifies only the manufacturing technology (if required) and the characteristics of the end product of each operation and specifies the components used to manufacture that product

It must be noted that this end product can be, in turn, a component for a successive manufacturing operation

The definition of any "manufacturing parameters" is left to the Subcontractor; sometimes however these parameters can be specified by the Issuer of the Commission itself, that can define machines and machine parameters in the Commission Order

1.3. Possible scenario



2. IMPLEMENTATION GUIDE

2.1 General structure of XML document

All the business data that can be exchanged through this class of documents are shown in the following "document structure", that provides a simplified vision of the Schema.

In particular:

- the two numbers following each element define its "cardinality" (minimum and maximum number of occurrences); the minimum equal zero indicates that the element is optional, the minimum greater than zero indicates that is mandatory;
- the bold character denotes the complex elements (aggregates of simple elements) that were built for the sake of functionality and re-usability of some complex informations sets. The child elements in each parent element are easily spotted as "indented";
- the symbol "@" denotes an attribute of the preceding element; here "the usage indicator (optional, required, ...) is shown in square brackets.

Structure

TEXWeaveOrder

@msgfunction [Optional] [Default= OR]

| **TWCOheader 1-1**

| | msgN 1-1

| | - choose -

| | msgID 0-1

| | - or -

| | docID 0-1

| | @numberingOrg [Optional]

| | - end choose -

| | msgDate 1-1

| | @dateForm [Optional]

| | season 0-1

| | msgCurrency 0-1

| | **refDoc 0-9**

| | @docType [Required]

| | | docID 1-2

| | | @numberingOrg [Optional]

| | | docDate 0-1

| | | @dateForm [Optional]

| | | season 0-1

| | | itemID 0-1

| | **buyer 1-1**

| | @logo [Optional]

| | @sender [Optional]

| | | id 1-1

| | | @numberingOrg [Optional]

| | | legalName 0-1

| | | dept 0-1

| | | person 0-1

| | | @email [Optional]

| | | street 0-1

| | | city 0-1

| | | subCountry 0-1

| | | country 0-1

| | | postCode 0-1

| | **subContractor 1-1**

| | @sender [Optional]

| | | id 1-1

| | | @numberingOrg [Optional]

| | | legalName 0-1

- | | | dept 0-1
- | | | person 0-1
- | | | @email [Optional]
- | | | street 0-1
- | | | city 0-1
- | | | subCountry 0-1
- | | | country 0-1
- | | | postCode 0-1
- | | **thirdParty 0-1**
- | | | @VAT [Optional]
- | | | @role [Required]
- | | | @sender [Optional]
- | | | id 1-1
- | | | @numberingOrg [Optional]
- | | | legalName 0-1
- | | | dept 0-1
- | | | person 0-1
- | | | @email [Optional]
- | | | street 0-1
- | | | city 0-1
- | | | subCountry 0-1
- | | | country 0-1
- | | | postCode 0-1
- | | note 0-1

| **terms 0-1**

- | | **payment 0-5**
- | | | @finDiscount [Optional]
- | | | @finSurcharge [Optional]
- | | - choose -
- | | | payTerm 1-1
- | | - or -
- | | | payTermText 1-1
- | | - end choose -
- | | | payMode 0-1
- | | **insPayment 0-5**
- | | | @part [Required]
- | | - choose -
- | | | payTerm 1-1
- | | - or -
- | | | payTermText 1-1
- | | - end choose -
- | | | payMode 0-1
- | | **trade 0-1**
- | | - choose -
- | | | incoTermText 1-1
- | | - or -
- | | | incoTerm 1-1
- | | - end choose -
- | | | location 0-1
- | | | @LRI [Optional]
- | | **transInfo 0-1**
- | | | @transReason [Optional]
- | | | transMode 1-1
- | | | carrier 0-1
- | | | deliveryPlace 0-1
- | | | grossWeight 0-1
- | | | @um [Required]
- | | | netWeight 0-1
- | | | @um [Required]
- | | | transMeans 0-1

- | | | transCondition 0-3
- | | | transConditionText 0-1
- | | **allowanceCharge 0-9**
- | | | @VAT [Optional]
- | | | - choose -
- | | | | AC_category 1-1
- | | | | - or -
- | | | | AC_categoryText 1-1
- | | | | - choose -
- | | | | AC_percent 1-1
- | | | | - or -
- | | | | AC_amount 1-1
- | | | - end choose -

| **TWCObody 1-1**

| | **TWCOitem 1-unbounded**

| | | @productLevel [Optional] [Default= END]

| | | | lineN 1-1

| | | | **greyFabricProd 1-1**

| | | | | **texCode 1-1**

| | | | | | @numberingOrg [Optional]

| | | | | | | art 1-1

| | | | | | | | @numberingOrg [Optional]

| | | | | | | | @codeList [Optional]

| | | | | | | | @listName [Optional]

| | | | | | | | @listVersion [Optional]

| | | | | | | pattern 0-1

| | | | | | | | @numberingOrg [Optional]

| | | | | | | | @codeList [Optional]

| | | | | | | | @listName [Optional]

| | | | | | | | @listVersion [Optional]

| | | | | | | color 0-1

| | | | | | | | @numberingOrg [Optional]

| | | | | | | | @codeList [Optional]

| | | | | | | | @listName [Optional]

| | | | | | | | @listVersion [Optional]

| | | | | | | added 0-9

| | | | | | | | @addType [Optional]

| | | | | | | description 0-1

| | | | | **fabricCompos 0-1**

| | | | | | percCompos 1-9

| | | | | | | @fibre [Required]

| | | | | **construction 0-1**

| | | | | | fabricWeightM 1-1

| | | | | | | @um [Optional] [Default= GRM]

| | | | | | fabricWeightM2 0-1

| | | | | | | @um [Optional] [Default= GRM]

| | | | | | fabricWidth 0-1

| | | | | | | @um [Optional] [Default= CMT]

| | | | | | fabricCutWidth 0-1

| | | | | | | @um [Optional] [Default= CMT]

| | | | | | pieceLength 0-1

| | | | | | | @um [Optional] [Default= MTR]

| | | | | | weave 0-1

| | | | | | warpCount 0-9

| | | | | | | @method [Optional] [Default= ISO-2060]

| | | | | | | @fibre [Optional]

| | | | | | weftCount 0-9

| | | | | | | @method [Optional] [Default= ISO-2060]

| | | | | | | @fibre [Optional]

| | | | | | warpEndsN 0-1

```

| | | | weftEndsN 0-1
| | | | bowingWarp 0-1
| | | |   @method [Optional]
| | | | bowingWeft 0-1
| | | |   @method [Optional]
| | | | checksFlaw 0-1
| | | |   @method [Optional]
| | | | weftDev 0-1
| | | |   @method [Optional]
| | | | resin 0-1
| | | | weaveDiagramID 0-1
| | | |   @numberingOrg [Optional]
| | | | fabricSpecs 0-9
| | | | - choose -
| | | | | fabricCharText 1-1
| | | | - or -
| | | | | fabricChar 1-1
| | | | - end choose -
| | | | | specValue 0-1
| | | | |   @um [Optional]
| | | | |   @method [Optional]
| | | | - choose -
| | | | | tolerance 0-2
| | | | |   @um [Required]
| | | | - or -
| | | | | pcTolerance 0-2
| | | | |   @um [Optional]
| | | | - end choose -
| | | | | note 0-1
| | | | qty 1-3
| | | |   @um [Required]
| | | | price 0-1
| | | |   @um [Optional]
| | | |   @priceQualifier [Optional] [Default= NET]
| | | | deliveryDate 0-1
| | | |   @dateForm [Optional]
| | | | thirdParty 0-1
| | | |   @VAT [Optional]
| | | |   @role [Required]
| | | |   @sender [Optional]
| | | | | id 1-1
| | | | |   @numberingOrg [Optional]
| | | | | legalName 0-1
| | | | | dept 0-1
| | | | | person 0-1
| | | | |   @email [Optional]
| | | | | street 0-1
| | | | | city 0-1
| | | | | subCountry 0-1
| | | | | country 0-1
| | | | | postCode 0-1
| | | | yarnComponent 1-99
| | | |   @CQQ [Optional]
| | | | | pcQty 0-1
| | | | |   @um [Optional]
| | | | | yarnCode 1-1
| | | | |   @numberingOrg [Optional] [Default= CL]
| | | | | | art 1-1
| | | | | |   @numberingOrg [Optional]
| | | | | |   @codeList [Optional]
| | | | | |   @listName [Optional]

```

```

| | | | @listVersion [Optional]
| | | | color 0-1
| | | | @numberingOrg [Optional]
| | | | @codeList [Optional]
| | | | @listName [Optional]
| | | | @listVersion [Optional]
| | | | added 0-9
| | | | @addType [Optional]
| | | | description 0-1
| | | | lotN 0-1
| | | | @numberingOrg [Optional]
| | | | dyeN 0-1
| | | | @numberingOrg [Optional]
| | | | qty 1-2
| | | | @um [Required]
| | | | refDoc 0-1
| | | | @docType [Required]
| | | | | docID 1-2
| | | | | @numberingOrg [Optional]
| | | | | docDate 0-1
| | | | | @dateForm [Optional]
| | | | | season 0-1
| | | | | itemID 0-1
| | | | location 0-1
| | | | @LRI [Optional]
| | | | warpLetter 0-1
| | | | weftLetter 0-1
| | | | note 0-1
| | | | warpComponent 0-1
| | | | | warpCode 1-1
| | | | | @numberingOrg [Optional]
| | | | | refDoc 0-1
| | | | | @docType [Required]
| | | | | | docID 1-2
| | | | | | @numberingOrg [Optional]
| | | | | | docDate 0-1
| | | | | | @dateForm [Optional]
| | | | | | season 0-1
| | | | | | itemID 0-1
| | | | fabMnfrOperation 1-9
| | | | - choose -
| | | | | jobName 1-1
| | | | - or -
| | | | | texJob 1-1
| | | | - end choose -
| | | | | texJobTech 0-1
| | | | | refDoc 0-1
| | | | | @docType [Required]
| | | | | | docID 1-2
| | | | | | @numberingOrg [Optional]
| | | | | | docDate 0-1
| | | | | | @dateForm [Optional]
| | | | | | season 0-1
| | | | | | itemID 0-1
| | | | | texMachine 0-1
| | | | | texMachineSpecs 0-9
| | | | | | texMachineParam 1-1
| | | | | | specValue 0-1
| | | | | | @um [Optional]
| | | | | | @method [Optional]
| | | | - choose -

```


| | | | | pcTolerance 0-2
| | | | | @um [Optional]
- or -
| | | | | tolerance 0-2
| | | | | @um [Required]
- end choose -
| | | | | note 0-1

2.2 Detailed description of document elements

Following tables show all elements (complex and simple) used in this document. Description includes: 1) element's information: xml tag, name, brief description, data type and syntax constraints; 2) information about use of the element in a particular position in the document: xpath and possible associated notes.

2.2.1 Complex elements (Aggregate Business Information Entities)

Complex elements are those elements whose content is composed of other elements (childs). Complex elements are alphabetically ordered.

allowanceCharge	Allowances and Charges related to an Order or a contract (XPath: TEXWeaveOrder/terms/allowanceCharge) 0-9
buyer	details of the Buyer - base type: , (XPath: TEXWeaveOrder/TWCOheader/buyer) 1-1
construction	construction data and features included in the technical sheet of the fabric article (XPath: TEXWeaveOrder/TWCObody/TWCOitem/greyFabricProd/construction) 0-1
fabMnfrOperation	details of a manufacturing operation used for fabric production (XPath: TEXWeaveOrder/TWCObody/TWCOitem/fabMnfrOperation) 1-9
fabricCompos	composition of the fabric according to the Directory 97/37/CE (XPath: TEXWeaveOrder/TWCObody/TWCOitem/greyFabricProd/fabricCompos) 0-1
fabricSpecs	technical characteristics of fabric, linked either to an operation of subcontracted production or to the purchase (XPath: TEXWeaveOrder/TWCObody/TWCOitem/greyFabricProd/fabricSpecs) 0-9
greyFabricProd	manufacturing specifications of the grey fabric to be obtained from a weaving commission order (XPath: TEXWeaveOrder/TWCObody/TWCOitem/greyFabricProd) 1-1
insPayment	payment details for payment by installments (XPath: TEXWeaveOrder/terms/insPayment) 0-5 - note: <i>this set of data is alternative to payment set and must be iterated for each payment installment</i>
payment	payment details for payment all in one (XPath: TEXWeaveOrder/terms/payment) 0-5 - note: <i>this set of data can be iterated to specify alternative terms of payment (e.g.: 60 days or 30 days with 3% discount)</i>
refDoc	identification of a document and of an item thereof, to which the message makes reference (XPath: TEXWeaveOrder/TWCObody/TWCOitem/yarnComponent/refDoc) 0-1 - note: <i>here the delivery document can be specified</i> (XPath: TEXWeaveOrder/TWCObody/TWCOitem/warpComponent/refDoc) 0-1 (XPath: TEXWeaveOrder/TWCObody/TWCOitem/fabMnfrOperation/refDoc) 0-1 - note: <i>here a Process Sheet transmitted to the Subcontractor can be referenced</i> (XPath: TEXWeaveOrder/TWCOheader/refDoc) 0-9
subContractor	details of the Sub-contractor - base type: , (XPath: TEXWeaveOrder/TWCOheader/subContractor) 1-1
terms	details of the commercial obligations for payment and delivery (XPath: TEXWeaveOrder/terms) 0-1

texCode	full codification of the textile product (XPath: TEXWeaveOrder/TWCObody/TWCOitem/greyFabricProd/texCode) 1-1
texMachineSpecs	technical specifications of a machine used in an operation of a work cycle for fabric (type and settings) (XPath: TEXWeaveOrder/TWCObody/TWCOitem/fabMnfrOperation/texMachineSpecs) 0-9
thirdParty	details of the Third Party, different from Buyer or Supplier - base type: , (XPath: TEXWeaveOrder/TWCObody/TWCOitem/thirdParty) 0-1 - note: here the Party to whom the Subcontractor must send the semi-finished product for subsequent operations can be specified (XPath: TEXWeaveOrder/TWCOheader/thirdParty) 0-1 - note: here the Party to whom the Subcontractor must send the semi-finished products for subsequent operations can be specified
trade	general terms of trade for the specified supply (XPath: TEXWeaveOrder/terms/trade) 0-1
transInfo	details of transport: mode, carrier and delivery place (XPath: TEXWeaveOrder/terms/transInfo) 0-1
TWCObody	body of the document WEAVING COMMISSION ORDER (XPath: TEXWeaveOrder/TWCObody) 1-1
TWCOheader	header section of the document WEAVING COMMISSION ORDER (XPath: TEXWeaveOrder/TWCOheader) 1-1
TWCOitem	line of the document WEAVING COMMISSION ORDER (XPath: TEXWeaveOrder/TWCObody/TWCOitem) 1-unbounded
warpComponent	identification details of a warp undergoing a weaving operation (XPath: TEXWeaveOrder/TWCObody/TWCOitem/warpComponent) 0-1
yarnCode	full codification of a yarn product (XPath: TEXWeaveOrder/TWCObody/TWCOitem/yarnComponent/yarnCode) 1-1 - note: here is the code of the component used in the yarn manufacturing operation
yarnComponent	identification details of a yarn used in a sub-contracted manufacturing operation (XPath: TEXWeaveOrder/TWCObody/TWCOitem/yarnComponent) 1-99

2.2.2 Simple elements (Basic Business Information Entities)

Simple elements are those elements whose content is characterized by a data type plus a domain of possible values. Simple elements are alphabetically ordered.

AC_amount	amount of an Allowance or Charge - base type: decimal, min inclusive: 0, fraction digits: 2, (XPath: TEXWeaveOrder/terms/allowanceCharge/AC_amount) 1-1
AC_category	coded specification of an Allowance or Charge - base type: string, cod. table: T41 http://www.moda-ml.net/moda-ml/repository/codelist/v2008-1/gc_T41.xml (XPath: TEXWeaveOrder/terms/allowanceCharge/AC_category) 1-1
AC_categoryText	free text description of an Allowance or Charge - base type: string, max length: 70, (XPath: TEXWeaveOrder/terms/allowanceCharge/AC_categoryText) 1-1
AC_percent	amount of an Allowance or Charge as a percentage - base type: decimal, min inclusive: 0, max inclusive: 100, fraction digits: 2,

	(XPath: TEXWeaveOrder/terms/allowanceCharge/AC_percent) 1-1
added	<p>additional code of the product (complementing the formers)</p> <p>- base type: string, max length: 15, (XPath: TEXWeaveOrder/TWCObody/TWCOitem/yarnComponent/yarnCode/added) 0-9</p> <p>- note: <i>here an additional codification (see table T44) can be specified</i> (XPath: TEXWeaveOrder/TWCObody/TWCOitem/greyFabricProd/texCode/added) 0-9</p> <p>- note: <i>here an additional codification (see table T44) can be specified</i></p>
@addType	<p>qualifier of the additional coding of a product</p> <p>- base type: string, cod. table: T44 http://www.moda-ml.net/moda-ml/repository/codelist/v2008-1/gc_T44.xml</p> <p>(XPath: TEXWeaveOrder/TWCObody/TWCOitem/yarnComponent/yarnCode/added/@addType) [Optional] (XPath: TEXWeaveOrder/TWCObody/TWCOitem/greyFabricProd/texCode/added/@addType) [Optional]</p>
art	<p>article number of the product</p> <p>- base type: string, max length: 25, (XPath: TEXWeaveOrder/TWCObody/TWCOitem/yarnComponent/yarnCode/art) 1-1 (XPath: TEXWeaveOrder/TWCObody/TWCOitem/greyFabricProd/texCode/art) 1-1</p> <p>- note: <i>can be used either for the base-article (excluding pattern/colour) or for the SKU</i></p>
bowingWarp	<p>warp bowing</p> <p>- base type: decimal, min inclusive: 0, (XPath: TEXWeaveOrder/TWCObody/TWCOitem/greyFabricProd/construction/bowingWarp) 0-1</p>
bowingWeft	<p>weft bowing</p> <p>- base type: decimal, min inclusive: 0, (XPath: TEXWeaveOrder/TWCObody/TWCOitem/greyFabricProd/construction/bowingWeft) 0-1</p>
carrier	<p>identification of the transport carrier</p> <p>- base type: string, max length: 40, (XPath: TEXWeaveOrder/terms/transInfo/carrier) 0-1</p>
checksFlaw	<p>flaw in checks</p> <p>- base type: decimal, min inclusive: 0, (XPath: TEXWeaveOrder/TWCObody/TWCOitem/greyFabricProd/construction/checksFlaw) 0-1</p>
city	<p>name of the city (town, village)</p> <p>- base type: string, max length: 40, (XPath: TEXWeaveOrder/TWCObody/TWCOitem/thirdParty/city) 0-1 (XPath: TEXWeaveOrder/TWCOheader/buyer/city) 0-1 (XPath: TEXWeaveOrder/TWCOheader/subContractor/city) 0-1 (XPath: TEXWeaveOrder/TWCOheader/thirdParty/city) 0-1</p>
@codeList	<p>it specifies the URL where the list of codes used to make an instance of the element can be found</p> <p>- base type: string, max length: 255, (XPath: TEXWeaveOrder/TWCObody/TWCOitem/greyFabricProd/texCode/art/@codeList) [Optional]</p> <p>- nota: <i>this attribute should be ALTERNATIVE to the others</i> (XPath: TEXWeaveOrder/TWCObody/TWCOitem/greyFabricProd/texCode/color/@codeList) [Optional]</p> <p>- nota: <i>this attribute should be ALTERNATIVE to the others</i> (XPath: TEXWeaveOrder/TWCObody/TWCOitem/greyFabricProd/texCode/pattern/@codeList) [Optional]</p> <p>- nota: <i>this attribute should be ALTERNATIVE to the others</i></p>

	<p>(XPath: TEXWeaveOrder/TWCObody/TWCOitem/yarnComponent/yarnCode/color/@codeList) [Optional]</p> <p>- nota: <i>this attribute should be ALTERNATIVE to the others</i></p> <p>(XPath: TEXWeaveOrder/TWCObody/TWCOitem/yarnComponent/yarnCode/art/@codeList) [Optional]</p> <p>- nota: <i>this attribute should be ALTERNATIVE to the others</i></p>
color	<p>colour number of the product, when not included in the model or fabric code</p> <p>- base type: string, max length: 15,</p> <p>(XPath: TEXWeaveOrder/TWCObody/TWCOitem/greyFabricProd/texCode/color) 0-1</p> <p>(XPath: TEXWeaveOrder/TWCObody/TWCOitem/yarnComponent/yarnCode/color) 0-1</p>
country	<p>code of the nation</p> <p>- base type: string, cod. table: T10</p> <p>http://www.moda-ml.net/moda-ml/repository/codelist/v2008-1/gc_T10.xml</p> <p>(XPath: TEXWeaveOrder/TWCOheader/thirdParty/country) 0-1</p> <p>(XPath: TEXWeaveOrder/TWCOheader/buyer/country) 0-1</p> <p>(XPath: TEXWeaveOrder/TWCObody/TWCOitem/thirdParty/country) 0-1</p> <p>(XPath: TEXWeaveOrder/TWCOheader/subContractor/country) 0-1</p>
@CQQ	<p>specifies if the committed quantity can or can not include the loss in weight</p> <p>- base type: string, cod. table: NT37</p> <p>http://www.moda-ml.net/moda-ml/repository/codelist/v2008-1/gc_NT37.xml</p> <p>(XPath: TEXWeaveOrder/TWCObody/TWCOitem/yarnComponent/@CQQ) [Optional]</p>
@dateForm	<p>format used for a date</p> <p>- base type: string, cod. table: NT29</p> <p>http://www.moda-ml.net/moda-ml/repository/codelist/v2008-1/gc_NT29.xml</p> <p>(XPath: TEXWeaveOrder/TWCOheader/refDoc/docDate/@dateForm) [Optional]</p> <p>(XPath: TEXWeaveOrder/TWCObody/TWCOitem/warpComponent/refDoc/docDate/@dateForm) [Optional]</p> <p>(XPath: TEXWeaveOrder/TWCOheader/msgDate/@dateForm) [Optional]</p> <p>(XPath: TEXWeaveOrder/TWCObody/TWCOitem/fabMnfrOperation/refDoc/docDate/@dateForm) [Optional]</p> <p>(XPath: TEXWeaveOrder/TWCObody/TWCOitem/yarnComponent/refDoc/docDate/@dateForm) [Optional]</p> <p>(XPath: TEXWeaveOrder/TWCObody/TWCOitem/deliveryDate/@dateForm) [Optional]</p>
deliveryDate	<p>date of delivery of goods, requested or promised in the purchase process, according to one of the patterns YYYY-MM-DD, YYYY-MM-DD:HH-MM or YYYY-WW.</p> <p>- base type: string,</p> <p>(XPath: TEXWeaveOrder/TWCObody/TWCOitem/deliveryDate) 0-1</p>
deliveryPlace	<p>place of delivery of goods, ultimate or related to a given leg</p> <p>- base type: string, max length: 40,</p> <p>(XPath: TEXWeaveOrder/terms/transInfo/deliveryPlace) 0-1</p>
dept	<p>name or code of a contact department within a Party</p> <p>- base type: string, max length: 40,</p> <p>(XPath: TEXWeaveOrder/TWCOheader/buyer/dept) 0-1</p> <p>(XPath: TEXWeaveOrder/TWCOheader/thirdParty/dept) 0-1</p> <p>(XPath: TEXWeaveOrder/TWCObody/TWCOitem/thirdParty/dept) 0-1</p> <p>(XPath: TEXWeaveOrder/TWCOheader/subContractor/dept) 0-1</p>
description	<p>free text description of a product</p> <p>- base type: string, max length: 70,</p> <p>(XPath: TEXWeaveOrder/TWCObody/TWCOitem/yarnComponent/yarnCode/description) 0-1</p> <p>(XPath: TEXWeaveOrder/TWCObody/TWCOitem/greyFabricProd/texCode/description) 0-1</p>
docDate	<p>date of issue of the referenced document, according to one of the patterns</p>

	<p>YYYY-MM-DD, YYYY-MM-DD:HH-MM or YYYY-WW.</p> <p>- base type: string, (XPath: TEXWeaveOrder/TWCObody/TWCOitem/yarnComponent/refDoc/docDate) 0-1 (XPath: TEXWeaveOrder/TWCObody/TWCOitem/warpComponent/refDoc/docDate) 0-1 (XPath: TEXWeaveOrder/TWCOheader/refDoc/docDate) 0-1 (XPath: TEXWeaveOrder/TWCObody/TWCOitem/fabMnfrOperation/refDoc/docDate) 0-1</p>
docID	<p>identification number of the referenced document SINCE 2008-1 ITS USE IN THE HEADER IS DISCOURAGED (REPLACED BY)</p> <p>- base type: string, max length: 35, (XPath: TEXWeaveOrder/TWCObody/TWCOitem/fabMnfrOperation/refDoc/docID) 1-2 (XPath: TEXWeaveOrder/TWCOheader/docID) 0-1 (XPath: TEXWeaveOrder/TWCObody/TWCOitem/yarnComponent/refDoc/docID) 1-2 (XPath: TEXWeaveOrder/TWCObody/TWCOitem/warpComponent/refDoc/docID) 1-2 (XPath: TEXWeaveOrder/TWCOheader/refDoc/docID) 1-2</p>
@docType	<p>type or class to which the referenced document belongs</p> <p>- base type: string, cod. table: T21 http://www.moda-ml.net/moda-ml/repository/codelist/v2008-1/gc_T21.xml (XPath: TEXWeaveOrder/TWCOheader/refDoc/@docType) [Required] (XPath: TEXWeaveOrder/TWCObody/TWCOitem/warpComponent/refDoc/@docType) [Required] (XPath: TEXWeaveOrder/TWCObody/TWCOitem/fabMnfrOperation/refDoc/@docType) [Required] (XPath: TEXWeaveOrder/TWCObody/TWCOitem/yarnComponent/refDoc/@docType) [Required]</p>
dyeN	<p>number of the dying batch of a textile product</p> <p>- base type: string, max length: 15, (XPath: TEXWeaveOrder/TWCObody/TWCOitem/yarnComponent/dyeN) 0-1</p>
@email	<p>electronic mail address of the contact person within a Party</p> <p>- base type: string, max length: 80, (XPath: TEXWeaveOrder/TWCOheader/thirdParty/person/@email) [Optional] (XPath: TEXWeaveOrder/TWCOheader/buyer/person/@email) [Optional] (XPath: TEXWeaveOrder/TWCOheader/subContractor/person/@email) [Optional] (XPath: TEXWeaveOrder/TWCObody/TWCOitem/thirdParty/person/@email) [Optional]</p>
fabricChar	<p>code of the physical or mechanical parameter used to define a "technical characteristic of the fabric" (see Fabric technical sheet)</p> <p>- base type: string, cod. table: T13 http://www.moda-ml.net/moda-ml/repository/codelist/v2008-1/gc_T13.xml (XPath: TEXWeaveOrder/TWCObody/TWCOitem/greyFabricProd/fabricSpecs/fabricChar) 1-1</p>
fabricCharText	<p>free text describing the physical or mechanical parameter used to define a "technical characteristic of the fabric"</p> <p>- base type: string, max length: 40, (XPath: TEXWeaveOrder/TWCObody/TWCOitem/greyFabricProd/fabricSpecs/fabricCharText) 1-1</p>
fabricCutWidth	<p>usable width of the fabric (for garments manufacturing) as technical specification</p> <p>- base type: decimal, min inclusive: 0, fraction digits: 2, (XPath: TEXWeaveOrder/TWCObody/TWCOitem/greyFabricProd/construction/fabricCutWidth) 0-1</p>
fabricWeightM	<p>weight per metre of the fabric as technical specification</p> <p>- base type: decimal, min inclusive: 0, fraction digits: 2,</p>

	(XPath: TEXWeaveOrder/TWCObody/TWCOitem/greyFabricProd/construction/fabricWeightM) 1-1
fabricWeightM2	weight per square metre of the fabric as technical specification - base type: decimal, min inclusive: 0, fraction digits: 2, (XPath: TEXWeaveOrder/TWCObody/TWCOitem/greyFabricProd/construction/fabricWeightM2) 0-1
fabricWidth	width of the fabric as technical specification - base type: decimal, min inclusive: 0, fraction digits: 2, (XPath: TEXWeaveOrder/TWCObody/TWCOitem/greyFabricProd/construction/fabricWidth) 0-1
@fibre	type of fibre used in a textile product - base type: string, cod. table: T19 http://www.moda-ml.net/moda-ml/repository/codelist/v2008-1/gc_T19.xml (XPath: TEXWeaveOrder/TWCObody/TWCOitem/greyFabricProd/construction/weftCount/@fibre) [Optional] (XPath: TEXWeaveOrder/TWCObody/TWCOitem/greyFabricProd/construction/warpCount/@fibre) [Optional] (XPath: TEXWeaveOrder/TWCObody/TWCOitem/greyFabricProd/fabricCompos/percCompos/@fibre) [Required]
@finDiscount	financial discount applied for payment by the date specified - base type: decimal, min inclusive: 0, max inclusive: 100, fraction digits: 2, (XPath: TEXWeaveOrder/terms/payment/@finDiscount) [Optional]
@finSurcharge	financial surcharge applied for payment after the date specified - base type: decimal, min inclusive: 0, max inclusive: 100, fraction digits: 2, (XPath: TEXWeaveOrder/terms/payment/@finSurcharge) [Optional]
grossWeight	the gross weight of the overall goods supply, declared for transport or customs purpose - base type: decimal, min inclusive: 0, fraction digits: 2, (XPath: TEXWeaveOrder/terms/transInfo/grossWeight) 0-1
id	primary identification code of a Party; it is recommended the format: nation code (ISO 3166) + VAT identification number (11 crt), with the qualifier "numberingOrg"= MF - base type: string, max length: 15, (XPath: TEXWeaveOrder/TWCOheader/buyer/id) 1-1 (XPath: TEXWeaveOrder/TWCOheader/subContractor/id) 1-1 (XPath: TEXWeaveOrder/TWCObody/TWCOitem/thirdParty/id) 1-1 (XPath: TEXWeaveOrder/TWCOheader/thirdParty/id) 1-1
incoTerm	specification of the terms of trade (INCOTERMS) - base type: string, cod. table: T3 http://www.moda-ml.net/moda-ml/repository/codelist/v2008-1/gc_T3.xml (XPath: TEXWeaveOrder/terms/trade/incoTerm) 1-1
incoTermText	free text specifying the terms of trade (incoterm, location) - base type: string, max length: 70, (XPath: TEXWeaveOrder/terms/trade/incoTermText) 1-1
itemID	number of the line/item of the referenced document - base type: string, max length: 6, (XPath: TEXWeaveOrder/TWCObody/TWCOitem/fabMnfrOperation/refDoc/itemID) 0-1 (XPath: TEXWeaveOrder/TWCObody/TWCOitem/yarnComponent/refDoc/itemID) 0-1 (XPath: TEXWeaveOrder/TWCOheader/refDoc/itemID) 0-1 (XPath: TEXWeaveOrder/TWCObody/TWCOitem/warpComponent/refDoc/itemID) 0-1
jobName	description of the elementary job - base type: string, max length: 40, (XPath: TEXWeaveOrder/TWCObody/TWCOitem/fabMnfrOperation/jobName) 1-1

legalName	<p>legal name of a Party</p> <ul style="list-style-type: none"> - base type: string, max length: 80, (XPath: TEXWeaveOrder/TWCOheader/subContractor/legalName) 0-1 (XPath: TEXWeaveOrder/TWCObody/TWCOitem/thirdParty/legalName) 0-1 (XPath: TEXWeaveOrder/TWCOheader/thirdParty/legalName) 0-1 (XPath: TEXWeaveOrder/TWCOheader/buyer/legalName) 0-1
lineN	<p>number of the line item of the present message (xml document)</p> <ul style="list-style-type: none"> - base type: positiveInteger, min inclusive: 1, max inclusive: 9999, (XPath: TEXWeaveOrder/TWCObody/TWCOitem/lineN) 1-1
@listName	<p>it specifies the name of the list of codes used to make an instance of the element</p> <ul style="list-style-type: none"> - base type: string, max length: 40, (XPath: TEXWeaveOrder/TWCObody/TWCOitem/yarnComponent/yarnCode/color/@listName) [Optional] - nota: <i>this attribute should always be used coupled with “numberingOrg”</i> (XPath: TEXWeaveOrder/TWCObody/TWCOitem/greyFabricProd/texCode/pattern/@listName) [Optional] - nota: <i>this attribute should always be used coupled with “numberingOrg”</i> (XPath: TEXWeaveOrder/TWCObody/TWCOitem/yarnComponent/yarnCode/art/@listName) [Optional] - nota: <i>this attribute should always be used coupled with “numberingOrg”</i> (XPath: TEXWeaveOrder/TWCObody/TWCOitem/greyFabricProd/texCode/art/@listName) [Optional] - nota: <i>this attribute should always be used coupled with “numberingOrg”</i> (XPath: TEXWeaveOrder/TWCObody/TWCOitem/greyFabricProd/texCode/color/@listName) [Optional] - nota: <i>this attribute should always be used coupled with “numberingOrg”</i>
@listVersion	<p>it specifies the version of the list of codes used to make an instance of the element</p> <ul style="list-style-type: none"> - base type: string, max length: 6, (XPath: TEXWeaveOrder/TWCObody/TWCOitem/yarnComponent/yarnCode/color/@listVersion) [Optional] - nota: <i>this attribute should always be used coupled with “numberingOrg” and “listName”</i> (XPath: TEXWeaveOrder/TWCObody/TWCOitem/greyFabricProd/texCode/art/@listVersion) [Optional] - nota: <i>this attribute should always be used coupled with “numberingOrg” and “listName”</i> (XPath: TEXWeaveOrder/TWCObody/TWCOitem/greyFabricProd/texCode/color/@listVersion) [Optional] - nota: <i>this attribute should always be used coupled with “numberingOrg” and “listName”</i> (XPath: TEXWeaveOrder/TWCObody/TWCOitem/greyFabricProd/texCode/pattern/@listVersion) [Optional] - nota: <i>this attribute should always be used coupled with “numberingOrg” and “listName”</i> (XPath: TEXWeaveOrder/TWCObody/TWCOitem/yarnComponent/yarnCode/art/@listVersion) [Optional] - nota: <i>this attribute should always be used coupled with “numberingOrg” and “listName”</i>
location	<p>specification of a location</p> <ul style="list-style-type: none"> - base type: string, max length: 40, (XPath: TEXWeaveOrder/TWCObody/TWCOitem/yarnComponent/location) 0-1 - note: <i>here the storage place of the component can be specified</i> (XPath: TEXWeaveOrder/terms/trade/location) 0-1 - note: <i>place to which the INCOTERM applies</i>
@logo	<p>company logo (URL of the image jpeg or gif). It is recommended that the width of the image does not exceed 640 pixel.</p> <ul style="list-style-type: none"> - base type: string, max length: 255,

	(XPath: TEXWeaveOrder/TWCOheader/buyer/@logo) [Optional]
lotN	lot number of a product or batch number of the raw material - base type: string, max length: 15, (XPath: TEXWeaveOrder/TWCObody/TWCOitem/yarnComponent/lotN) 0-1
@LRI	attribute usable to format a string according to a customized User rule (local rule) - base type: string, cod. table: NT3 http://www.moda-ml.net/moda-ml/repository/codelist/v2008-1/gc_NT3.xml (XPath: TEXWeaveOrder/TWCObody/TWCOitem/yarnComponent/location/@LRI) [Optional] (XPath: TEXWeaveOrder/terms/trade/location/@LRI) [Optional]
@method	standard protocol or method employed in a test to evaluate a characteristic or a parameter - base type: string, max length: 25, (XPath: TEXWeaveOrder/TWCObody/TWCOitem/greyFabricProd/construction/weftCount/@method) [Optional] [Default= ISO-2060] (XPath: TEXWeaveOrder/TWCObody/TWCOitem/greyFabricProd/construction/bowingWarp/@method) [Optional] (XPath: TEXWeaveOrder/TWCObody/TWCOitem/greyFabricProd/construction/bowingWeft/@method) [Optional] (XPath: TEXWeaveOrder/TWCObody/TWCOitem/greyFabricProd/fabricSpecs/specValue/@method) [Optional] (XPath: TEXWeaveOrder/TWCObody/TWCOitem/fabMnfrOperation/texMachineSpecs/specValue/@method) [Optional] (XPath: TEXWeaveOrder/TWCObody/TWCOitem/greyFabricProd/construction/checksFlaw/@method) [Optional] (XPath: TEXWeaveOrder/TWCObody/TWCOitem/greyFabricProd/construction/weftDev/@method) [Optional] (XPath: TEXWeaveOrder/TWCObody/TWCOitem/greyFabricProd/construction/warpCount/@method) [Optional] [Default= ISO-2060]
msgCurrency	currency used to express the monetary amounts of the message - base type: string, cod. table: T9 http://www.moda-ml.net/moda-ml/repository/codelist/v2008-1/gc_T9.xml (XPath: TEXWeaveOrder/TWCOheader/msgCurrency) 0-1
msgDate	date of issue of the present message (xml document), according to one of the patterns YYYY-MM-DD, YYYY-MM-DD:HH-MM or YYYY-WW. - base type: string, (XPath: TEXWeaveOrder/TWCOheader/msgDate) 1-1
@msgfunction	function performed by the present message with regards to the transmission - base type: string, cod. table: NT18 http://www.moda-ml.net/moda-ml/repository/codelist/v2008-1/gc_NT18.xml (XPath: TEXWeaveOrder/@msgfunction) [Optional] [Default= OR]
msgID	key identifier of the document in the information system of the issuing Party - base type: string, max length: 35, (XPath: TEXWeaveOrder/TWCOheader/msgID) 0-1
msgN	identification number given to the message (xml document) by its issuer - base type: string, max length: 35, (XPath: TEXWeaveOrder/TWCOheader/msgN) 1-1
netWeight	the net weight of the overall goods supply, declared for transport or customs purpose - base type: decimal, min inclusive: 0, fraction digits: 2, (XPath: TEXWeaveOrder/terms/transInfo/netWeight) 0-1
note	free text note - base type: string, max length: 350, (XPath: TEXWeaveOrder/TWCObody/TWCOitem/greyFabricProd/note) 0-1 (XPath: TEXWeaveOrder/TWCOheader/note) 0-1 (XPath: TEXWeaveOrder/TWCObody/TWCOitem/yarnComponent/note) 0-1

	(XPath: TEXWeaveOrder/TWCObody/TWCOitem/fabMnfrOperation/note) 0-1
@numberingOrg	<p>code specifying the organisation who has created or owns the coding or numbering system</p> <p>- base type: string, cod. table: NT6 http://www.moda-ml.net/moda-ml/repository/codelist/v2008-1/gc_NT6.xml</p> <p>(XPath: TEXWeaveOrder/TWCOheader/thirdParty/id/@numberingOrg) [Optional] (XPath: TEXWeaveOrder/TWCOheader/refDoc/docID/@numberingOrg) [Optional]</p> <p>- nota: here can be specified whose document numbering is used (e.g.: Client, Supplier, ..)</p> <p>(XPath: TEXWeaveOrder/TWCObody/TWCOitem/warpComponent/refDoc/docID/@numberingOrg) [Optional]</p> <p>- nota: here can be specified whose document numbering is used (e.g.: Client, Supplier, ..)</p> <p>(XPath: TEXWeaveOrder/TWCObody/TWCOitem/yarnComponent/yarnCode/@numberingOrg) [Optional] [Default= CL] (XPath: TEXWeaveOrder/TWCObody/TWCOitem/thirdParty/id/@numberingOrg) [Optional] (XPath: TEXWeaveOrder/TWCObody/TWCOitem/yarnComponent/yarnCode/art/@numberingOrg) [Optional]</p> <p>- nota: this attribute should be used either single or coupled with "listName" and "listVersion"</p> <p>(XPath: TEXWeaveOrder/TWCObody/TWCOitem/yarnComponent/dyeN/@numberingOrg) [Optional] (XPath: TEXWeaveOrder/TWCObody/TWCOitem/yarnComponent/lotN/@numberingOrg) [Optional] (XPath: TEXWeaveOrder/TWCOheader/docID/@numberingOrg) [Optional]</p> <p>- nota: here can be specified whose document numbering is used (e.g.: Client, Supplier, ..)</p> <p>(XPath: TEXWeaveOrder/TWCObody/TWCOitem/yarnComponent/refDoc/docID/@numberingOrg) [Optional]</p> <p>- nota: here can be specified whose document numbering is used (e.g.: Client, Supplier, ..)</p> <p>(XPath: TEXWeaveOrder/TWCOheader/buyer/id/@numberingOrg) [Optional] (XPath: TEXWeaveOrder/TWCObody/TWCOitem/fabMnfrOperation/refDoc/docID/@numberingOrg) [Optional]</p> <p>- nota: here can be specified whose document numbering is used (e.g.: Client, Supplier, ..)</p> <p>(XPath: TEXWeaveOrder/TWCObody/TWCOitem/yarnComponent/yarnCode/color/@numberingOrg) [Optional]</p> <p>- nota: this attribute should be used either single or coupled with "listName" and "listVersion"</p> <p>(XPath: TEXWeaveOrder/TWCOheader/subContractor/id/@numberingOrg) [Optional] (XPath: TEXWeaveOrder/TWCObody/TWCOitem/warpComponent/warpCode/@numberingOrg) [Optional] (XPath: TEXWeaveOrder/TWCObody/TWCOitem/greyFabricProd/weaveDiagramID/@numberingOrg) [Optional] (XPath: TEXWeaveOrder/TWCObody/TWCOitem/greyFabricProd/texCode/pattern/@numberingOrg) [Optional]</p> <p>- nota: this attribute should be used either single or coupled with "listName" and "listVersion"</p> <p>(XPath: TEXWeaveOrder/TWCObody/TWCOitem/greyFabricProd/texCode/art/@numberingOrg) [Optional]</p> <p>- nota: this attribute should be used either single or coupled with "listName" and "listVersion"</p> <p>(XPath: TEXWeaveOrder/TWCObody/TWCOitem/greyFabricProd/texCode/@numberingOrg) [Optional] (XPath: TEXWeaveOrder/TWCObody/TWCOitem/greyFabricProd/texCode/color/@numberingOrg) [Optional]</p> <p>- nota: this attribute should be used either single or coupled with "listName" and "listVersion"</p>

@part	percent fraction of a total payment - base type: decimal, min inclusive: 1, max inclusive: 99, fraction digits: 2, (XPath: TEXWeaveOrder/terms/insPayment/@part) [Required] - nota: <i>here the % value of each installment must be indicated</i>
pattern	pattern/design number of the product, when not included in the article code - base type: string, max length: 15, (XPath: TEXWeaveOrder/TWCObody/TWCOitem/greyFabricProd/texCode/pattern) 0-1
payMode	way or means of payment - base type: string, cod. table: T2 http://www.moda-ml.net/moda-ml/repository/codelist/v2008-1/gc_T2.xml (XPath: TEXWeaveOrder/terms/insPayment/payMode) 0-1 (XPath: TEXWeaveOrder/terms/payment/payMode) 0-1
payTerm	code specifying the terms or time by which the payment must be done - base type: string, cod. table: T1 http://www.moda-ml.net/moda-ml/repository/codelist/v2008-1/gc_T1.xml (XPath: TEXWeaveOrder/terms/insPayment/payTerm) 1-1 (XPath: TEXWeaveOrder/terms/payment/payTerm) 1-1
payTermText	free text specifying the terms by which the payment must be done (time/mode or means) - base type: string, max length: 40, (XPath: TEXWeaveOrder/terms/payment/payTermText) 1-1 (XPath: TEXWeaveOrder/terms/insPayment/payTermText) 1-1
pcQty	percent quantity of a raw material or of a specified component in a fabric or in a yarn - base type: decimal, min inclusive: 0, max inclusive: 100, fraction digits: 2, (XPath: TEXWeaveOrder/TWCObody/TWCOitem/yarnComponent/pcQty) 0-1 - note: <i>percentage of the component in the end product</i>
pcTolerance	percent deviation tolerated on the value of a measurement (it must have a plus or minus sign) - base type: decimal, min inclusive: 0, max inclusive: 100, total digits: 2, (XPath: TEXWeaveOrder/TWCObody/TWCOitem/greyFabricProd/fabricSpecs/pcTolerance) 0-2 (XPath: TEXWeaveOrder/TWCObody/TWCOitem/fabMnfrOperation/texMachineSpecs/pcTolerance) 0-2
percCompos	fiber rate in the product composition - base type: decimal, min inclusive: 0, max inclusive: 100, fraction digits: 2, (XPath: TEXWeaveOrder/TWCObody/TWCOitem/greyFabricProd/fabricCompos/percCompos) 1-9
person	name of the contact person within a Party - base type: string, max length: 40, (XPath: TEXWeaveOrder/TWCOheader/subContractor/person) 0-1 (XPath: TEXWeaveOrder/TWCOheader/buyer/person) 0-1 (XPath: TEXWeaveOrder/TWCObody/TWCOitem/thirdParty/person) 0-1 (XPath: TEXWeaveOrder/TWCOheader/thirdParty/person) 0-1
pieceLength	length of the piece - base type: decimal, min inclusive: 0, fraction digits: 2, (XPath: TEXWeaveOrder/TWCObody/TWCOitem/greyFabricProd/construction/pieceLength) 0-1
postCode	code defining the postal zone - base type: string, max length: 10, (XPath: TEXWeaveOrder/TWCOheader/subContractor/postCode) 0-1 (XPath: TEXWeaveOrder/TWCOheader/buyer/postCode) 0-1 (XPath: TEXWeaveOrder/TWCOheader/thirdParty/postCode) 0-1 (XPath: TEXWeaveOrder/TWCObody/TWCOitem/thirdParty/postCode) 0-1
price	unit price of the article, object or service specified

	- base type: decimal, min inclusive: 0, fraction digits: 2, (XPath: TEXWeaveOrder/TWCObody/TWCOitem/price) 0-1
@priceQualifier	type of price with reference to discount and taxes - base type: string, cod. table: NT20 http://www.moda-ml.net/moda-ml/repository/codelist/v2008-1/gc_NT20.xml (XPath: TEXWeaveOrder/TWCObody/TWCOitem/price/@priceQualifier) [Optional] [Default= NET]
@productLevel	level of the product (end or intermediate) yielded by an operation in a work cycle - base type: string, cod. table: NT22 http://www.moda-ml.net/moda-ml/repository/codelist/v2008-1/gc_NT22.xml (XPath: TEXWeaveOrder/TWCObody/TWCOitem/@productLevel) [Optional] [Default= END] - nota: <i>this qualifier "intermediate" must be used when the product is also a component in an other line of the same Commission Order</i>
qty	net quantity of the article or object correlated, qualified by the function of the document (ordering, delivering, ..) and by the context - base type: decimal, min inclusive: 0, fraction digits: 2, (XPath: TEXWeaveOrder/TWCObody/TWCOitem/qty) 1-3 (XPath: TEXWeaveOrder/TWCObody/TWCOitem/yarnComponent/qty) 1-2 - note: <i>quantity to be consumed in the manufacturing operation</i>
resin	resin (coating) percentage in finished weight - base type: decimal, min inclusive: 0, (XPath: TEXWeaveOrder/TWCObody/TWCOitem/greyFabricProd/construction/resin) 0-1
@role	Third Party role qualifier - base type: string, cod. table: NT2 http://www.moda-ml.net/moda-ml/repository/codelist/v2008-1/gc_NT2.xml (XPath: TEXWeaveOrder/TWCObody/TWCOitem/thirdParty/@role) [Required] (XPath: TEXWeaveOrder/TWCOheader/thirdParty/@role) [Required]
season	sale season; defined as: season (1 crt) + year (4 crt) - season: S/S=1 A/W=2 Spring=3 Summer=4 Autumn=5 Winter=6: for more than four seasons use alphabetic sequence: 1st season=A 2nd season=B etc.etc. - base type: string, max length: 15, (XPath: TEXWeaveOrder/TWCObody/TWCOitem/warpComponent/refDoc/season) 0-1 - note: <i>here indicates the season to which the referenced document belongs</i> (XPath: TEXWeaveOrder/TWCObody/TWCOitem/yarnComponent/refDoc/season) 0-1 - note: <i>here indicates the season to which the referenced document belongs</i> (XPath: TEXWeaveOrder/TWCOheader/season) 0-1 (XPath: TEXWeaveOrder/TWCOheader/refDoc/season) 0-1 - note: <i>here indicates the season to which the referenced document belongs</i> (XPath: TEXWeaveOrder/TWCObody/TWCOitem/fabMnfrOperation/refDoc/season) 0-1 - note: <i>here indicates the season to which the referenced document belongs</i>
@sender	qualifier that specifies the Party issuing of the document - base type: boolean, (XPath: TEXWeaveOrder/TWCOheader/thirdParty/@sender) [Optional] - nota: <i>This attribute is mandatory when the STYLESHEET must be produced</i> (XPath: TEXWeaveOrder/TWCOheader/subContractor/@sender) [Optional] - nota: <i>This attribute is mandatory when the STYLESHEET must be produced</i> (XPath: TEXWeaveOrder/TWCObody/TWCOitem/thirdParty/@sender) [Optional] - nota: <i>This attribute is mandatory when the STYLESHEET must be produced</i> (XPath: TEXWeaveOrder/TWCOheader/buyer/@sender) [Optional] - nota: <i>This attribute is mandatory when the STYLESHEET must be produced</i>

	<i>produced</i>
specValue	value requested for a characteristics or a parameter that can be measured - base type: decimal, (XPath: TEXWeaveOrder/TWCObody/TWCOitem/greyFabricProd/fabricSpecs/specValue) 0-1 (XPath: TEXWeaveOrder/TWCObody/TWCOitem/fabMnfrOperation/texMachineSpecs/specValue) 0-1
street	street and building number identifying a location - base type: string, max length: 80, (XPath: TEXWeaveOrder/TWCOheader/thirdParty/street) 0-1 (XPath: TEXWeaveOrder/TWCOheader/buyer/street) 0-1 (XPath: TEXWeaveOrder/TWCObody/TWCOitem/thirdParty/street) 0-1 (XPath: TEXWeaveOrder/TWCOheader/subContractor/street) 0-1
subCountry	short name or code of the sub-country entity - base type: string, max length: 9, (XPath: TEXWeaveOrder/TWCOheader/subContractor/subCountry) 0-1 (XPath: TEXWeaveOrder/TWCObody/TWCOitem/thirdParty/subCountry) 0-1 (XPath: TEXWeaveOrder/TWCOheader/thirdParty/subCountry) 0-1 (XPath: TEXWeaveOrder/TWCOheader/buyer/subCountry) 0-1
texJob	operation of a work cycle for fabric - base type: string, cod. table: T202 http://www.moda-ml.net/moda-ml/repository/codelist/v2008-1/gc_T202.xml (XPath: TEXWeaveOrder/TWCObody/TWCOitem/fabMnfrOperation/texJob) 1-1
texJobTech	operation technology for fabric - base type: string, cod. table: T262 http://www.moda-ml.net/moda-ml/repository/codelist/v2008-1/gc_T262.xml (XPath: TEXWeaveOrder/TWCObody/TWCOitem/fabMnfrOperation/texJobTech) 0-1
texMachine	machine used in an operation of a work cycle for fabric - base type: string, cod. table: T272 http://www.moda-ml.net/moda-ml/repository/codelist/v2008-1/gc_T272.xml (XPath: TEXWeaveOrder/TWCObody/TWCOitem/fabMnfrOperation/texMachine) 0-1
texMachineParam	setting parameter of a machine used in an operation of a work cycle for fabric - base type: string, cod. table: T282 http://www.moda-ml.net/moda-ml/repository/codelist/v2008-1/gc_T282.xml (XPath: TEXWeaveOrder/TWCObody/TWCOitem/fabMnfrOperation/texMachineSpecs/texMachineParam) 1-1
tolerance	deviation tolerated on the value of a measurement (it must have a plus or minus sign) - base type: decimal, (XPath: TEXWeaveOrder/TWCObody/TWCOitem/fabMnfrOperation/texMachineSpecs/tolerance) 0-2 (XPath: TEXWeaveOrder/TWCObody/TWCOitem/greyFabricProd/fabricSpecs/tolerance) 0-2
transCondition	special condition of transport or special service requested to the Forwarder - base type: string, cod. table: T38 http://www.moda-ml.net/moda-ml/repository/codelist/v2008-1/gc_T38.xml (XPath: TEXWeaveOrder/terms/transInfo/transCondition) 0-3
transConditionText	free text description of the special condition of transport or special service requested to the Forwarder - base type: string, max length: 100, (XPath: TEXWeaveOrder/terms/transInfo/transConditionText) 0-1
transMeans	means of transport, in general or referred to a specific leg - base type: string, cod. table: T40 http://www.moda-ml.net/moda-ml/repository/codelist/v2008-1/gc_T40.xml (XPath: TEXWeaveOrder/terms/transInfo/transMeans) 0-1

transMode	<p>way of transport, in general or referred to the specified leg</p> <p>- base type: string, cod. table: T8 http://www.moda-ml.net/moda-ml/repository/codelist/v2008-1/gc_T8.xml (XPath: TEXWeaveOrder/terms/transInfo/transMode) 1-1</p>
@transReason	<p>reason for the transport</p> <p>- base type: string, cod. table: NT11 http://www.moda-ml.net/moda-ml/repository/codelist/v2008-1/gc_NT11.xml (XPath: TEXWeaveOrder/terms/transInfo/@transReason) [Optional]</p>
@um	<p>specification of the unit of measure</p> <p>- base type: string, cod. table: NT7 http://www.moda-ml.net/moda-ml/repository/codelist/v2008-1/gc_NT7.xml (XPath: TEXWeaveOrder/TWCObody/TWCOitem/fabMnfrOperation/texMachineSpecs/pcTolerance/@um) [Optional]</p> <p>- nota: <i>to be used when it has to be soecified if the declared percentage is by weight, volume, etc...</i> (XPath: TEXWeaveOrder/TWCObody/TWCOitem/qty/@um) [Required] (XPath: TEXWeaveOrder/terms/transInfo/grossWeight/@um) [Required] (XPath: TEXWeaveOrder/TWCObody/TWCOitem/fabMnfrOperation/texMachineSpecs/tolerance/@um) [Required] (XPath: TEXWeaveOrder/TWCObody/TWCOitem/greyFabricProd/fabricSpecs/pcTolerance/@um) [Optional]</p> <p>- nota: <i>to be used when it has to be soecified if the declared percentage is by weight, volume, etc...</i> (XPath: TEXWeaveOrder/TWCObody/TWCOitem/greyFabricProd/fabricSpecs/tolerance/@um) [Required] (XPath: TEXWeaveOrder/TWCObody/TWCOitem/price/@um) [Optional] (XPath: TEXWeaveOrder/TWCObody/TWCOitem/fabMnfrOperation/texMachineSpecs/specValue/@um) [Optional] (XPath: TEXWeaveOrder/TWCObody/TWCOitem/yarnComponent/pcQty/@um) [Optional]</p> <p>- nota: <i>to be used when it has to be soecified if the declared percentage is by weight, volume, etc...</i> (XPath: TEXWeaveOrder/TWCObody/TWCOitem/greyFabricProd/construction/fabricWidth/@um) [Optional] [Default= CMT] (XPath: TEXWeaveOrder/TWCObody/TWCOitem/greyFabricProd/construction/pieceLength/@um) [Optional] [Default= MTR] (XPath: TEXWeaveOrder/terms/transInfo/netWeight/@um) [Required] (XPath: TEXWeaveOrder/TWCObody/TWCOitem/greyFabricProd/construction/fabricCutWidth/@um) [Optional] [Default= CMT] (XPath: TEXWeaveOrder/TWCObody/TWCOitem/greyFabricProd/fabricSpecs/specValue/@um) [Optional] (XPath: TEXWeaveOrder/TWCObody/TWCOitem/greyFabricProd/construction/fabricWeightM/@um) [Optional] [Default= GRM] (XPath: TEXWeaveOrder/TWCObody/TWCOitem/yarnComponent/qty/@um) [Required] (XPath: TEXWeaveOrder/TWCObody/TWCOitem/greyFabricProd/construction/fabricWeightM2/@um) [Optional] [Default= GRM]</p>
@VAT	<p>VAT rate or code</p> <p>- base type: string, cod. table: NT16 http://www.moda-ml.net/moda-ml/repository/codelist/v2008-1/gc_NT16.xml (XPath: TEXWeaveOrder/TWCObody/TWCOitem/thirdParty/@VAT) [Optional] (XPath: TEXWeaveOrder/terms/allowanceCharge/@VAT) [Optional] (XPath: TEXWeaveOrder/TWCOheader/thirdParty/@VAT) [Optional]</p>
warpCode	<p>full identifier of a warp</p> <p>- base type: string, max length: 35, (XPath: TEXWeaveOrder/TWCObody/TWCOitem/warpComponent/warpCode) 1-1</p>
warpCount	<p>measure of thinness of the warp thread</p> <p>- base type: string, max length: 10, (XPath: TEXWeaveOrder/TWCObody/TWCOitem/greyFabricProd/construction/warpCount) 0-9</p>

warpEndsN	number of warp threads in 1 centimetre - base type: decimal, min inclusive: 0, fraction digits: 1, (XPath: TEXWeaveOrder/TWCObody/TWCOitem/greyFabricProd/construction/warpEndsN) 0-1
warpLetter	letter that indicates a specific yarn in the warping formula (diagram) - base type: string, length: 1, (XPath: TEXWeaveOrder/TWCObody/TWCOitem/yarnComponent/warpLetter) 0-1 - note: <i>to be used only in the Warping order</i>
weave	type of weaving used in the manufacturing of fabric - base type: string, cod. table: T17 http://www.moda-ml.net/moda-ml/repository/codelist/v2008-1/gc_T17.xml (XPath: TEXWeaveOrder/TWCObody/TWCOitem/greyFabricProd/construction/weave) 0-1
weaveDiagramID	identification number of a weaving diagram - base type: string, max length: 25, (XPath: TEXWeaveOrder/TWCObody/TWCOitem/greyFabricProd/weaveDiagramID) 0-1
weftCount	measure of thinness of the weft thread - base type: string, max length: 10, (XPath: TEXWeaveOrder/TWCObody/TWCOitem/greyFabricProd/construction/weftCount) 0-9
weftDev	deviation from right angle in weft - base type: decimal, min inclusive: 0, (XPath: TEXWeaveOrder/TWCObody/TWCOitem/greyFabricProd/construction/weftDev) 0-1
weftEndsN	number of weft threads in 1 centimetre - base type: decimal, min inclusive: 0, fraction digits: 1, (XPath: TEXWeaveOrder/TWCObody/TWCOitem/greyFabricProd/construction/weftEndsN) 0-1
weftLetter	letter that indicates a specific yarn in the wefting formula (diagram) - base type: string, length: 1, (XPath: TEXWeaveOrder/TWCObody/TWCOitem/yarnComponent/weftLetter) 0-1 - note: <i>to be used only in the Weaving order</i>

2.3 Enumeration tables

List of enumeration tables used in the XML document. You can find the corresponding codes at:
<http://www.moda-ml.org/moda-ml/imple/moda-ml-2008-1.asp?lingua=en&pag=6>

NT11 - Transport causal
NT16 - VAT rate or code
NT18 - message function
NT2 - Third party qualifier
NT20 - price qualifier
NT22 - product type of an operation
NT29 - format of a date
NT3 - Data format
NT37 - Committed quantity qualifier
NT6 - Coding system owner/issuer
NT7 - Unity of measure
T1 - Terms of payment
T10 - ISO3166 - Country
T13 - CFM properties of fabric
T17 - Weave type
T19 - fibre type
T2 - Modes of payment
T202 - type of job on fabric
T21 - type of document
T262 - type of job technology for fabric
T272 - machine type for fabric operation
T282 - parameter type for fabric operation
T3 - Terms of delivery
T38 - transport conditions
T40 - type of transport means
T41 - type of Allowance or Charge
T44 - additional code type
T8 - Modes of Transport
T9 - ISO4217 - Currency

Annex A

Representative images of the principal complex elements' structure.

