



<http://www.moda-ml.org>

IMPLEMENTATION GUIDE  
TRANSACTION "YARN IN WORK INVENTORY REPORT"

Version: 2008-1

Date of release: 15/12/2008

Document code: OF077-026

XML Schema repository:<http://www.moda-ml.org/moda-ml/repository/schema/v2008-1/default.asp>

Guides repository:<http://www.moda-ml.org/moda-ml/repository/guide/v2008-1/default.asp>

Guide filename: OF077-026-MODA-ML-YarnInWorkInventoryReport.pdf

# 1. BUSINESS DESCRIPTION

## 1.1 Scope

The present guide has been issued to assist the companies of the Textile-Clothing sector in the implementation of the standard XML document type "YARN IN WORK INVENTORY REPORT", providing all the instruction required for its use in the context of e-commerce in the Textile industry, as shown in the enclosed diagrams.

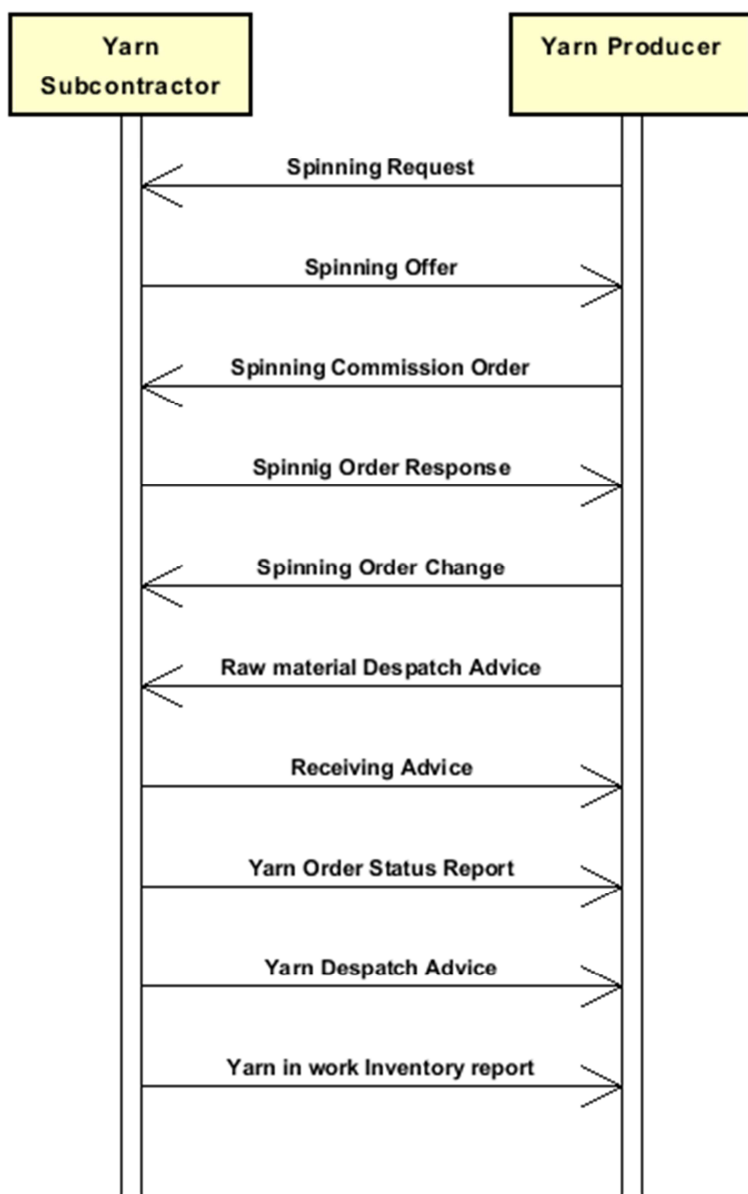
All the rules required for the construction and validation of the document are embedded into the specific XML-Schema, which is detailed in section "Implementation guide".

## 1.2 Generalities

The present document can be used by a Subcontractor to inform his Client (Commission issuer), periodically or on demand, about the quantity of pre-works or in-work Yarn items (Client's property) stocked at the Subcontractor's premises.

This inventory may refer to all the goods of one Commission issuer or just to those related to one Commission order; item quantities may be subdivided by type of stock and physical location.

## 1.3. Possible scenario



## 2. IMPLEMENTATION GUIDE

### 2.1 General structure of XML document

All the business data that can be exchanged through this class of documents are shown in the following "document structure", that provides a simplified vision of the Schema.

In particular:

- the two numbers following each element define its "cardinality" (minimum and maximum number of occurrences); the minimum equal zero indicates that the element is optional, the minimum greater than zero indicates that is mandatory;
- the bold character denotes the complex elements (aggregates of simple elements) that were built for the sake of functionality and re-usability of some complex informations sets. The child elements in each parent element are easily spotted as "indented";
- the symbol "@" denotes an attribute of the preceding element; here "the usage indicator (optional, required, ...) is shown in square brackets.

### Structure

#### YARNWorkInv

@msgfunction [Optional] [Default= OR]

| **YWIheader 1-1**

| | msgN 1-1

| | - choose -

| | msgID 0-1

| | - or -

| | docID 0-1

| | @numberingOrg [Optional]

| | - end choose -

| | msgDate 1-1

| | @dateForm [Optional]

| | inventoryDate 1-1

| | @dateForm [Optional]

| | **refDoc 0-9**

| | @docType [Required]

| | | docID 1-2

| | | @numberingOrg [Optional]

| | | docDate 0-1

| | | @dateForm [Optional]

| | | season 0-1

| | | itemID 0-1

| | **buyer 1-1**

| | @logo [Optional]

| | @sender [Optional]

| | | id 1-1

| | | @numberingOrg [Optional]

| | | legalName 0-1

| | | dept 0-1

| | | person 0-1

| | | @email [Optional]

| | | street 0-1

| | | city 0-1

| | | subCountry 0-1

| | | country 0-1

| | | postCode 0-1

| | **subContractor 1-1**

| | @sender [Optional]

| | | id 1-1

| | | @numberingOrg [Optional]

| | | legalName 0-1

- | dept 0-1
- | person 0-1
- | @email [Optional]
- | street 0-1
- | city 0-1
- | subCountry 0-1
- | country 0-1
- | postCode 0-1
- | note 0-1

**YWlbody 1-1**

**YWIitem 1-unbounded**

| lineN 1-1

**refDoc 0-1**

| @docType [Required]

| docID 1-2

| @numberingOrg [Optional]

| docDate 0-1

| @dateForm [Optional]

| season 0-1

| itemID 0-1

**yarnCode 1-1**

| @numberingOrg [Optional] [Default= CL]

| art 1-1

| @numberingOrg [Optional]

| @codeList [Optional]

| @listName [Optional]

| @listVersion [Optional]

| color 0-1

| @numberingOrg [Optional]

| @codeList [Optional]

| @listName [Optional]

| @listVersion [Optional]

| added 0-9

| @addType [Optional]

| description 0-1

| lotN 0-9

| @numberingOrg [Optional]

| dyeN 0-9

| @numberingOrg [Optional]

**inventory 1-9**

| @invType [Required]

| qty 1-2

| @um [Required]

| location 0-1

| @LRI [Optional]

| serialN 0-99

| @numberingOrg [Optional]

## 2.2 Detailed description of document elements

Following tables show all elements (complex and simple) used in this document. Description includes: 1) element's information: xml tag, name, brief description, data type and syntax constraints; 2) information about use of the element in a particular position in the document: xpath and possible associated notes.

### 2.2.1 Complex elements (Aggregate Business Information Entities)

Complex elements are those elements whose content is composed of other elements (childs).Complex elements are alphabetically ordered.

<b>buyer</b>	details of the Buyer - base type: , (XPath: YARNWorkInv/YWIheader/buyer) 1-1
<b>inventory</b>	details of a stock of goods with reference to the manufacturing process: item quantity per class of stock (XPath: YARNWorkInv/YWIbody/YWIitem/inventory) 1-9
<b>refDoc</b>	identification of a document and of an item thereof, to which the message makes reference (XPath: YARNWorkInv/YWIheader/refDoc) 0-9 (XPath: YARNWorkInv/YWIbody/YWIitem/refDoc) 0-1 - note: <i>through this element the inventory data can be referred to a specific Commission order</i>
<b>subContractor</b>	details of the Sub-contractor - base type: , (XPath: YARNWorkInv/YWIheader/subContractor) 1-1
<b>yarnCode</b>	full codification of a yarn product (XPath: YARNWorkInv/YWIbody/YWIitem/yarnCode) 1-1
<b>YWlbody</b>	body of the document YARN IN WORK INVENTORY REPORT (XPath: YARNWorkInv/YWIbody) 1-1
<b>YWIheader</b>	header of the document YARN IN WORK INVENTORY REPORT (XPath: YARNWorkInv/YWIheader) 1-1
<b>YWIitem</b>	line item of the document YARN IN WORK INVENTORY REPORT (XPath: YARNWorkInv/YWIbody/YWIitem) 1-unbounded

### 2.2.2 Simple elements (Basic Business Information Entities)

Simple elements are those elements whose content is characterized by a data type plus a domain of possible values. Simple elements are alphabetically ordered.

<b>added</b>	additional code of the product (complementing the formers) - base type: string, max length: 15, (XPath: YARNWorkInv/YWIbody/YWIitem/yarnCode/added) 0-9 - note: <i>here an additional codification (see table T44) can be specified</i>
<b>@addType</b>	qualifier of the additional coding of a product - base type: string, cod. table: T44 <a href="http://www.moda-ml.net/moda-ml/repository/codelist/v2008-1/gc_T44.xml">http://www.moda-ml.net/moda-ml/repository/codelist/v2008-1/gc_T44.xml</a> (XPath: YARNWorkInv/YWIbody/YWIitem/yarnCode/added/@addType) [Optional]
<b>art</b>	article number of the product - base type: string, max length: 25, (XPath: YARNWorkInv/YWIbody/YWIitem/yarnCode/art) 1-1

city	name of the city (town, village) - base type: string, max length: 40, (XPath: YARNWorkInv/YWIheader/buyer/city) 0-1 (XPath: YARNWorkInv/YWIheader/subContractor/city) 0-1
@codeList	it specifies the URL where the list of codes used to make an instance of the element can be found - base type: string, max length: 255, (XPath: YARNWorkInv/YWIbody/YWIitem/yarnCode/color/@codeList) [Optional] - nota: <i>this attribute should be ALTERNATIVE to the others</i> (XPath: YARNWorkInv/YWIbody/YWIitem/yarnCode/art/@codeList) [Optional] - nota: <i>this attribute should be ALTERNATIVE to the others</i>
color	colour number of the product, when not included in the model or fabric code - base type: string, max length: 15, (XPath: YARNWorkInv/YWIbody/YWIitem/yarnCode/color) 0-1
country	code of the nation - base type: string, cod. table: T10 <a href="http://www.moda-ml.net/moda-ml/repository/codelist/v2008-1/gc_T10.xml">http://www.moda-ml.net/moda-ml/repository/codelist/v2008-1/gc_T10.xml</a> (XPath: YARNWorkInv/YWIheader/buyer/country) 0-1 (XPath: YARNWorkInv/YWIheader/subContractor/country) 0-1
@dateForm	format used for a date - base type: string, cod. table: NT29 <a href="http://www.moda-ml.net/moda-ml/repository/codelist/v2008-1/gc_NT29.xml">http://www.moda-ml.net/moda-ml/repository/codelist/v2008-1/gc_NT29.xml</a> (XPath: YARNWorkInv/YWIheader/refDoc/docDate/@dateForm) [Optional] (XPath: YARNWorkInv/YWIheader/inventoryDate/@dateForm) [Optional] (XPath: YARNWorkInv/YWIbody/YWIitem/refDoc/docDate/@dateForm) [Optional] (XPath: YARNWorkInv/YWIheader/msgDate/@dateForm) [Optional]
dept	name or code of a contact department within a Party - base type: string, max length: 40, (XPath: YARNWorkInv/YWIheader/buyer/dept) 0-1 (XPath: YARNWorkInv/YWIheader/subContractor/dept) 0-1
description	free text description of a product - base type: string, max length: 70, (XPath: YARNWorkInv/YWIbody/YWIitem/yarnCode/description) 0-1
docDate	date of issue of the referenced document, according to one of the patterns YYYY-MM-DD, YYYY-MM-DD:HH-MM or YYYY-WW. - base type: string, (XPath: YARNWorkInv/YWIheader/refDoc/docDate) 0-1 (XPath: YARNWorkInv/YWIbody/YWIitem/refDoc/docDate) 0-1
docID	identification number of the referenced document SINCE 2008-1 ITS USE IN THE HEADER IS DISCOURAGED (REPLACED BY ) - base type: string, max length: 35, (XPath: YARNWorkInv/YWIheader/docID) 0-1 (XPath: YARNWorkInv/YWIbody/YWIitem/refDoc/docID) 1-2 (XPath: YARNWorkInv/YWIheader/refDoc/docID) 1-2
@docType	type or class to which the referenced document belongs - base type: string, cod. table: T21 <a href="http://www.moda-ml.net/moda-ml/repository/codelist/v2008-1/gc_T21.xml">http://www.moda-ml.net/moda-ml/repository/codelist/v2008-1/gc_T21.xml</a> (XPath: YARNWorkInv/YWIheader/refDoc/@docType) [Required] (XPath: YARNWorkInv/YWIbody/YWIitem/refDoc/@docType) [Required]
dyeN	number of the dying batch of a textile product - base type: string, max length: 15, (XPath: YARNWorkInv/YWIbody/YWIitem/dyeN) 0-9
@email	electronic mail address of the contact person within a Party - base type: string, max length: 80, (XPath: YARNWorkInv/YWIheader/buyer/person/@email) [Optional] (XPath: YARNWorkInv/YWIheader/subContractor/person/@email) [Optional]

id	<p>primary identification code of a Party; it is recommended the format: nation code (ISO 3166) + VAT identification number (11 crt), with the qualifier "numberingOrg"= MF</p> <p>- base type: string, max length: 15,  (XPath: YARNWorkInv/YWIheader/buyer/id) 1-1  (XPath: YARNWorkInv/YWIheader/subContractor/id) 1-1</p>
inventoryDate	<p>date in which the inventory was done, according to one of the patterns YYYY-MM-DD, YYYY-MM-DD:HH-MM or YYYY-WW.</p> <p>- base type: string,  (XPath: YARNWorkInv/YWIheader/inventoryDate) 1-1</p>
@invType	<p>code classifying a stock of goods with reference to the manufacturing process</p> <p>- base type: string, cod. table: T47  <a href="http://www.moda-ml.net/moda-ml/repository/codelist/v2008-1/gc_T47.xml">http://www.moda-ml.net/moda-ml/repository/codelist/v2008-1/gc_T47.xml</a>  (XPath: YARNWorkInv/YWIbody/YWlitem/inventory/@invType) [Required]</p>
itemID	<p>number of the line/item of the referenced document</p> <p>- base type: string, max length: 6,  (XPath: YARNWorkInv/YWIbody/YWlitem/refDoc/itemID) 0-1  (XPath: YARNWorkInv/YWIheader/refDoc/itemID) 0-1</p>
legalName	<p>legal name of a Party</p> <p>- base type: string, max length: 80,  (XPath: YARNWorkInv/YWIheader/subContractor/legalName) 0-1  (XPath: YARNWorkInv/YWIheader/buyer/legalName) 0-1</p>
lineN	<p>number of the line item of the present message (xml document)</p> <p>- base type: positiveInteger, min inclusive: 1, max inclusive: 9999,  (XPath: YARNWorkInv/YWIbody/YWlitem/lineN) 1-1</p>
@listName	<p>it specifies the name of the list of codes used to make an instance of the element</p> <p>- base type: string, max length: 40,  (XPath: YARNWorkInv/YWIbody/YWlitem/yarnCode/color/@listName) [Optional]  - nota: <i>this attribute should always be used coupled with "numberingOrg"</i>  (XPath: YARNWorkInv/YWIbody/YWlitem/yarnCode/art/@listName) [Optional]  - nota: <i>this attribute should always be used coupled with "numberingOrg"</i></p>
@listVersion	<p>it specifies the version of the list of codes used to make an instance of the element</p> <p>- base type: string, max length: 6,  (XPath: YARNWorkInv/YWIbody/YWlitem/yarnCode/art/@listVersion) [Optional]  - nota: <i>this attribute should always be used coupled with "numberingOrg" and "listName"</i>  (XPath: YARNWorkInv/YWIbody/YWlitem/yarnCode/color/@listVersion) [Optional]  - nota: <i>this attribute should always be used coupled with "numberingOrg" and "listName"</i></p>
location	<p>specification of a location</p> <p>- base type: string, max length: 40,  (XPath: YARNWorkInv/YWIbody/YWlitem/inventory/location) 0-1</p>
@logo	<p>company logo (URL of the image jpeg or gif). It is recommended that the width of the image does not exceed 640 pixel.</p> <p>- base type: string, max length: 255,  (XPath: YARNWorkInv/YWIheader/buyer/@logo) [Optional]</p>
lotN	<p>lot number of a product or batch number of the raw material</p> <p>- base type: string, max length: 15,  (XPath: YARNWorkInv/YWIbody/YWlitem/lotN) 0-9</p>
@LRI	<p>attribute usable to format a string according to a customized User rule (local rule)</p> <p>- base type: string, cod. table: NT3</p>



	<a href="http://www.moda-ml.net/moda-ml/repository/codelist/v2008-1/gc_NT3.xml">http://www.moda-ml.net/moda-ml/repository/codelist/v2008-1/gc_NT3.xml</a> (XPath: YARNWorkInv/YWlbody/YWlitem/inventory/location/@LRI) [Optional]
msgDate	date of issue of the present message (xml document), according to one of the patterns YYYY-MM-DD, YYYY-MM-DD:HH-MM or YYYY-WW. - base type: string, (XPath: YARNWorkInv/YWlheader/msgDate) 1-1
@msgfunction	function performed by the present message with regards to the transmission - base type: string, cod. table: NT18 <a href="http://www.moda-ml.net/moda-ml/repository/codelist/v2008-1/gc_NT18.xml">http://www.moda-ml.net/moda-ml/repository/codelist/v2008-1/gc_NT18.xml</a> (XPath: YARNWorkInv/@msgfunction) [Optional] [Default= OR]
msgID	key identifier of the document in the information system of the issuing Party - base type: string, max length: 35, (XPath: YARNWorkInv/YWlheader/msgID) 0-1
msgN	identification number given to the message (xml document) by its issuer - base type: string, max length: 35, (XPath: YARNWorkInv/YWlheader/msgN) 1-1
note	free text note - base type: string, max length: 350, (XPath: YARNWorkInv/YWlheader/note) 0-1
@numberingOrg	code specifying the organisation who has created or owns the coding or numbering system - base type: string, cod. table: NT6 <a href="http://www.moda-ml.net/moda-ml/repository/codelist/v2008-1/gc_NT6.xml">http://www.moda-ml.net/moda-ml/repository/codelist/v2008-1/gc_NT6.xml</a> (XPath: YARNWorkInv/YWlbody/YWlitem/yarnCode/color/@numberingOrg) [Optional] - nota: <i>this attribute should be used either single or coupled with "listName" and "listVersion"</i> (XPath: YARNWorkInv/YWlheader/subContractor/id/@numberingOrg) [Optional] (XPath: YARNWorkInv/YWlbody/YWlitem/lotN/@numberingOrg) [Optional] (XPath: YARNWorkInv/YWlheader/buyer/id/@numberingOrg) [Optional] (XPath: YARNWorkInv/YWlbody/YWlitem/dyeN/@numberingOrg) [Optional] (XPath: YARNWorkInv/YWlheader/docID/@numberingOrg) [Optional] - nota: <i>here can be specified whose document numbering is used (e.g.: Client, Supplier, ..)</i> (XPath: YARNWorkInv/YWlheader/refDoc/docID/@numberingOrg) [Optional] - nota: <i>here can be specified whose document numbering is used (e.g.: Client, Supplier, ..)</i> (XPath: YARNWorkInv/YWlbody/YWlitem/refDoc/docID/@numberingOrg) [Optional] - nota: <i>here can be specified whose document numbering is used (e.g.: Client, Supplier, ..)</i> (XPath: YARNWorkInv/YWlbody/YWlitem/yarnCode/@numberingOrg) [Optional] [Default= CL] (XPath: YARNWorkInv/YWlbody/YWlitem/inventory/serialN/@numberingOrg) [Optional] - nota: <i>here the issuer of the serial number must be specified (when different from the Supplier)</i> (XPath: YARNWorkInv/YWlbody/YWlitem/yarnCode/art/@numberingOrg) [Optional] - nota: <i>this attribute should be used either single or coupled with "listName" and "listVersion"</i>
person	name of the contact person within a Party - base type: string, max length: 40, (XPath: YARNWorkInv/YWlheader/subContractor/person) 0-1 (XPath: YARNWorkInv/YWlheader/buyer/person) 0-1
postCode	code defining the postal zone - base type: string, max length: 10, (XPath: YARNWorkInv/YWlheader/buyer/postCode) 0-1 (XPath: YARNWorkInv/YWlheader/subContractor/postCode) 0-1
qty	net quantity of the article or object correlated, qualified by the function of the

	document (ordering, delivering, ...) and by the context - base type: decimal, min inclusive: 0, fraction digits: 2, (XPath: YARNWorkInv/YWIbody/YWIitem/inventory/qty) 1-2
season	sale season; defined as: season (1 crt) + year (4 crt) - season: S/S=1 A/W=2 Spring=3 Summer=4 Autumn=5 Winter=6: for more than four seasons use alphabetic sequence: 1st season=A 2nd season=B etc.etc. - base type: string, max length: 15, (XPath: YARNWorkInv/YWIheader/refDoc/season) 0-1 - note: here indicates the season to which the referenced document belongs (XPath: YARNWorkInv/YWIbody/YWIitem/refDoc/season) 0-1 - note: here indicates the season to which the referenced document belongs
@sender	qualifier that specifies the Party issuing of the document - base type: boolean, (XPath: YARNWorkInv/YWIheader/buyer/@sender) [Optional] - nota: This attribute is mandatory when the STYLESHEET must be produced (XPath: YARNWorkInv/YWIheader/subContractor/@sender) [Optional] - nota: This attribute is mandatory when the STYLESHEET must be produced
serialN	serial number used for the identification of a physical unit - base type: string, max length: 15, (XPath: YARNWorkInv/YWIbody/YWIitem/inventory/serialN) 0-99
street	street and building number identifying a location - base type: string, max length: 80, (XPath: YARNWorkInv/YWIheader/buyer/street) 0-1 (XPath: YARNWorkInv/YWIheader/subContractor/street) 0-1
subCountry	short name or code of the sub-country entity - base type: string, max length: 9, (XPath: YARNWorkInv/YWIheader/subContractor/subCountry) 0-1 (XPath: YARNWorkInv/YWIheader/buyer/subCountry) 0-1
@um	specification of the unit of measure - base type: string, cod. table: NT7 <a href="http://www.moda-ml.net/moda-ml/repository/codelist/v2008-1/gc_NT7.xml">http://www.moda-ml.net/moda-ml/repository/codelist/v2008-1/gc_NT7.xml</a> (XPath: YARNWorkInv/YWIbody/YWIitem/inventory/qty/@um) [Required]

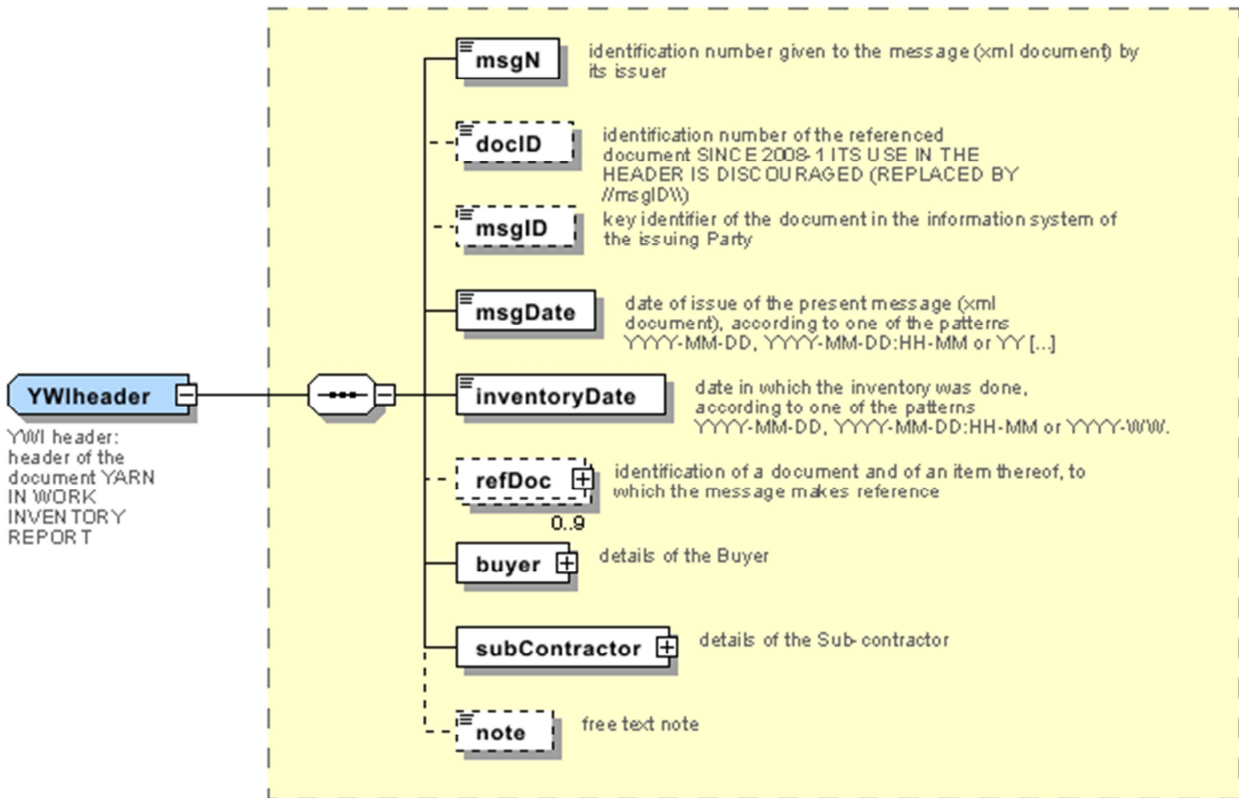
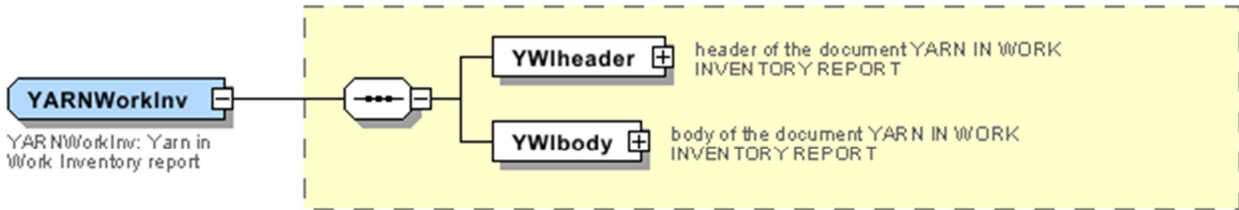
## 2.3 Enumeration tables

List of enumeration tables used in the XML document. You can find the corresponding codes at:  
<http://www.moda-ml.org/moda-ml/imple/moda-ml-2008-1.asp?lingua=en&pag=6>

NT18 - message function  
NT29 - format of a date  
NT3 - Data format  
NT6 - Coding system owner/issuer  
NT7 - Unity of measure  
T10 - ISO3166 - Country  
T21 - type of document  
T44 - additional code type  
T47 - stock type

# Annex A

Representative images of the principal complex elements' structure.



**YWIitem**

YWI item:  
line item of  
the document  
YARN IN WORK  
INVENTORY  
REPORT

