



<http://www.moda-ml.org>

IMPLEMENTATION GUIDE
TRANSACTION "GENERAL PURPOSE REQUEST"

Version: 2008-1

Date of release: 15/12/2008

Document code: T001

XML Schema repository:<http://www.moda-ml.org/moda-ml/repository/schema/v2008-1/default.asp>

Guides repository:<http://www.moda-ml.org/moda-ml/repository/guide/v2008-1/default.asp>

Guide filename: T001-MODA-ML-GeneralPurposeRequest.pdf

1. BUSINESS DESCRIPTION

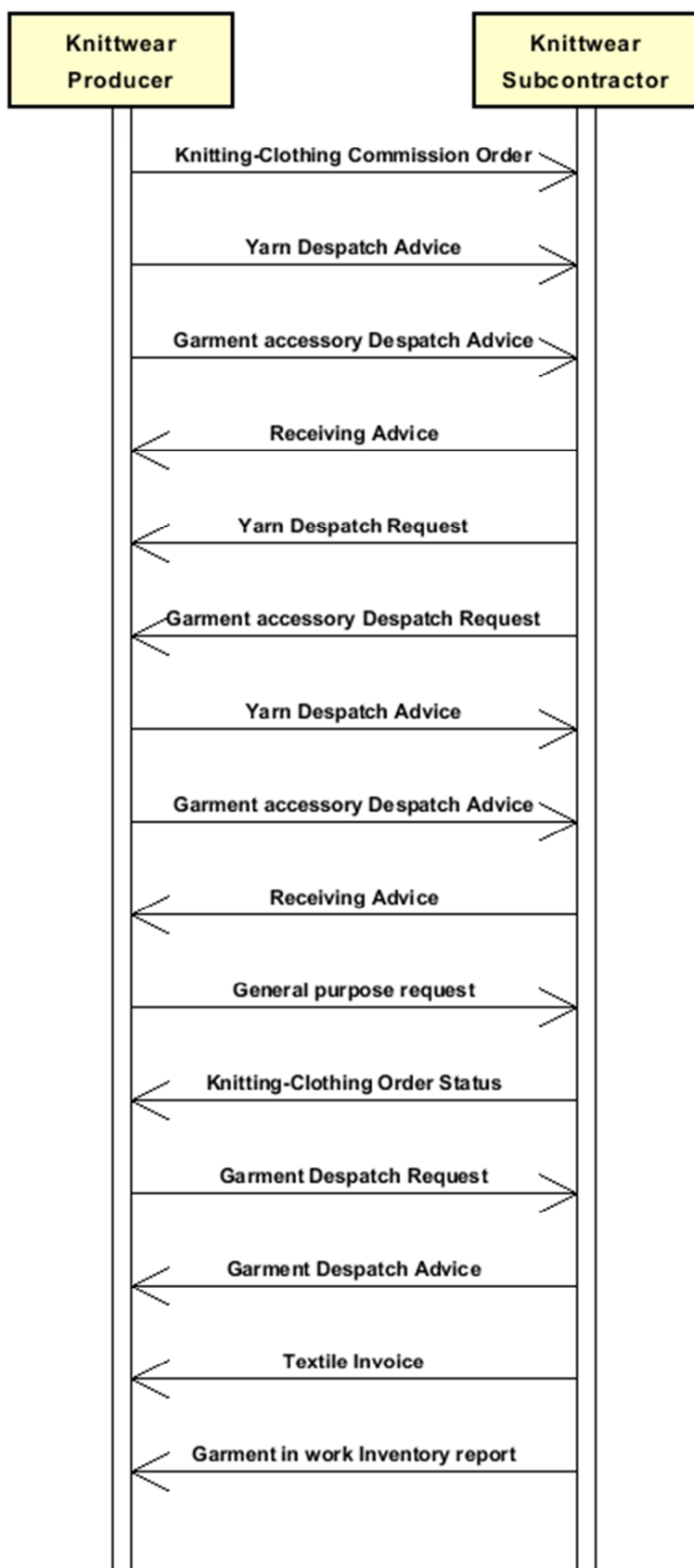
1.1 Scope

This document is used to solicit the sending of a document when this is produced only on request (e.g.: the Order Status)

1.2 Generalities

-

1.3. Possible scenario



2. IMPLEMENTATION GUIDE

2.1 General structure of XML document

All the business data that can be exchanged through this class of documents are shown in the following "document structure", that provides a simplified vision of the Schema.

In particular:

- the two numbers following each element define its "cardinality" (minimum and maximum number of occurrences); the minimum equal zero indicates that the element is optional, the minimum greater than zero indicates that is mandatory;
- the bold character denotes the complex elements (aggregates of simple elements) that were built for the sake of functionality and re-usability of some complex informations sets. The child elements in each parent element are easily spotted as "indented";
- the symbol "@" denotes an attribute of the preceding element; here "the usage indicator (optional, required, ...) is shown in square brackets.

Structure

GPDocRequest

```
| msgN 1-1  
  
| msgDate 1-1  
| @dateForm [Optional]  
  
| buyer 1-1  
| @logo [Optional]  
| @sender [Optional]  
| | id 1-1  
| | @numberingOrg [Optional]  
| | legalName 0-1  
| | dept 0-1  
| | person 0-1  
| | @email [Optional]  
| | street 0-1  
| | city 0-1  
| | subCountry 0-1  
| | country 0-1  
| | postCode 0-1  
  
| supplier 1-1  
| @logo [Optional]  
| @sender [Optional]  
| | id 1-1  
| | @numberingOrg [Optional]  
| | legalName 0-1  
| | dept 0-1  
| | person 0-1  
| | @email [Optional]  
| | street 0-1  
| | city 0-1  
| | subCountry 0-1  
| | country 0-1  
| | postCode 0-1  
  
| requestDocType 1-1  
  
| itemRestrict 0-99  
| | yarnCode 0-2  
| | @numberingOrg [Optional] [Default= CL]
```

| art 1-1
| @numberingOrg [Optional]
| @codeList [Optional]
| @listName [Optional]
| @listVersion [Optional]
| color 0-1
| @numberingOrg [Optional]
| @codeList [Optional]
| @listName [Optional]
| @listVersion [Optional]
| added 0-9
| @addType [Optional]
| description 0-1

texCode 0-2

@numberingOrg [Optional]
| art 1-1
| @numberingOrg [Optional]
| @codeList [Optional]
| @listName [Optional]
| @listVersion [Optional]
| pattern 0-1
| @numberingOrg [Optional]
| @codeList [Optional]
| @listName [Optional]
| @listVersion [Optional]
| color 0-1
| @numberingOrg [Optional]
| @codeList [Optional]
| @listName [Optional]
| @listVersion [Optional]
| added 0-9
| @addType [Optional]
| description 0-1

garmentCode 0-2

@numberingOrg [Optional]
- choose -

garmentCodeB 1-1

@numberingOrg [Optional]
| mod 1-1
| @numberingOrg [Optional]
| @codeList [Optional]
| @listName [Optional]
| @listVersion [Optional]
| fabric 0-1
| @numberingOrg [Optional]
| @codeList [Optional]
| @listName [Optional]
| @listVersion [Optional]
| color 0-1
| @numberingOrg [Optional]
| @codeList [Optional]
| @listName [Optional]
| @listVersion [Optional]
| size 0-1
| @codeList [Optional]
| artGroup 0-1
| @numberingOrg [Optional]
| @codeList [Optional]
| @listName [Optional]
| @listVersion [Optional]
| added 0-9

```
| | | | @addType [Optional]
| | | | description 0-1
- or -
| | | | garmentCodeA 1-1
| | | | art 1-1
| | | | @numberingOrg [Optional]
| | | | @codeList [Optional]
| | | | @listName [Optional]
| | | | @listVersion [Optional]
| | | | description 0-1
- end choose -
```

```
| timeRestrict 0-1
| | validityStart 1-1
| | @dateForm [Optional]
| | validityEnd 1-1
| | @dateForm [Optional]
```

```
| note 0-1
```

2.2 Detailed description of document elements

Following tables show all elements (complex and simple) used in this document. Description includes: 1) element's information: xml tag, name, brief description, data type and syntax constraints; 2) information about use of the element in a particular position in the document: xpath and possible associated notes.

2.2.1 Complex elements (Aggregate Business Information Entities)

Complex elements are those elements whose content is composed of other elements (childs). Complex elements are alphabetically ordered.

buyer	details of the Buyer - base type: , (XPath: GPDocRequest/buyer) 1-1
garmentCode	codification of the garment product (knitwear/clothing) (XPath: GPDocRequest/itemRestrict/garmentCode) 0-2
garmentCodeA	codification of the garment product (knitwear/clothing) - type A (XPath: GPDocRequest/itemRestrict/garmentCode/garmentCodeA) 1-1 - note: <i>here the barcode EAN-13 or EAN-8 should be specified</i>
garmentCodeB	codification of the garment product (knitwear/clothing) - type B (XPath: GPDocRequest/itemRestrict/garmentCode/garmentCodeB) 1-1
itemRestrict	Item restriction to be applied on the document requested, expressed as an article code (XPath: GPDocRequest/itemRestrict) 0-99 - note: <i>in case of use of this item restriction at least one of the child elements must be present</i>
supplier	details of the Supplier - base type: , (XPath: GPDocRequest/supplier) 1-1
texCode	full codification of the textile product (XPath: GPDocRequest/itemRestrict/texCode) 0-2
timeRestrict	time restriction to be applied on the document requested, expressed as a period of validity/application of the document requested (XPath: GPDocRequest/timeRestrict) 0-1
yarnCode	full codification of a yarn product (XPath: GPDocRequest/itemRestrict/yarnCode) 0-2

2.2.2 Simple elements (Basic Business Information Entities)

Simple elements are those elements whose content is characterized by a data type plus a domain of possible values. Simple elements are alphabetically ordered.

added	additional code of the product (complementing the formers) - base type: string, max length: 15, (XPath: GPDocRequest/itemRestrict/texCode/added) 0-9 - note: <i>here an additional codification (see table T44) can be specified</i> (XPath: GPDocRequest/itemRestrict/yarnCode/added) 0-9 - note: <i>here an additional codification (see table T44) can be specified</i> (XPath: GPDocRequest/itemRestrict/garmentCode/garmentCodeB/added) 0-9
@addType	qualifier of the additional coding of a product - base type: string, cod. table: T44

	<p>http://www.moda-ml.net/moda-ml/repository/codelist/v2008-1/gc_T44.xml (XPath: GPDocRequest/itemRestrict/texCode/added/@addType) [Optional] (XPath: GPDocRequest/itemRestrict/garmentCode/garmentCodeB/added/@addType) [Optional] (XPath: GPDocRequest/itemRestrict/yarnCode/added/@addType) [Optional]</p>
art	<p>article number of the product - base type: string, max length: 25, (XPath: GPDocRequest/itemRestrict/garmentCode/garmentCodeA/art) 1-1 (XPath: GPDocRequest/itemRestrict/texCode/art) 1-1 - note: <i>can be used either for the base-article (excluding pattern/colour) or for the SKU</i> (XPath: GPDocRequest/itemRestrict/yarnCode/art) 1-1</p>
artGroup	<p>code identifying a class of products - base type: string, max length: 40, (XPath: GPDocRequest/itemRestrict/garmentCode/garmentCodeB/artGroup) 0-1</p>
city	<p>name of the city (town, village) - base type: string, max length: 40, (XPath: GPDocRequest/supplier/city) 0-1 (XPath: GPDocRequest/buyer/city) 0-1</p>
@codeList	<p>it specifies the URL where the list of codes used to make an instance of the element can be found - base type: string, max length: 255, (XPath: GPDocRequest/itemRestrict/texCode/pattern/@codeList) [Optional] - nota: <i>this attribute should be ALTERNATIVE to the others</i> (XPath: GPDocRequest/itemRestrict/garmentCode/garmentCodeA/art/@codeList) [Optional] - nota: <i>this attribute should be ALTERNATIVE to the others</i> (XPath: GPDocRequest/itemRestrict/garmentCode/garmentCodeB/size/@codeList) [Optional] (XPath: GPDocRequest/itemRestrict/garmentCode/garmentCodeB/mod/@codeList) [Optional] - nota: <i>this attribute should be ALTERNATIVE to the others</i> (XPath: GPDocRequest/itemRestrict/garmentCode/garmentCodeB/artGroup/@codeList) [Optional] - nota: <i>this attribute should be ALTERNATIVE to the others</i> (XPath: GPDocRequest/itemRestrict/texCode/art/@codeList) [Optional] - nota: <i>this attribute should be ALTERNATIVE to the others</i> (XPath: GPDocRequest/itemRestrict/garmentCode/garmentCodeB/color/@codeList) [Optional] - nota: <i>this attribute should be ALTERNATIVE to the others</i> (XPath: GPDocRequest/itemRestrict/garmentCode/garmentCodeB/fabric/@codeList) [Optional] - nota: <i>this attribute should be ALTERNATIVE to the others</i> (XPath: GPDocRequest/itemRestrict/yarnCode/art/@codeList) [Optional] - nota: <i>this attribute should be ALTERNATIVE to the others</i> (XPath: GPDocRequest/itemRestrict/texCode/color/@codeList) [Optional] - nota: <i>this attribute should be ALTERNATIVE to the others</i> (XPath: GPDocRequest/itemRestrict/yarnCode/color/@codeList) [Optional] - nota: <i>this attribute should be ALTERNATIVE to the others</i></p>
color	<p>colour number of the product, when not included in the model or fabric code - base type: string, max length: 15, (XPath: GPDocRequest/itemRestrict/garmentCode/garmentCodeB/color) 0-1 (XPath: GPDocRequest/itemRestrict/texCode/color) 0-1 (XPath: GPDocRequest/itemRestrict/yarnCode/color) 0-1</p>
country	<p>code of the nation - base type: string, cod. table: T10 http://www.moda-ml.net/moda-ml/repository/codelist/v2008-1/gc_T10.xml (XPath: GPDocRequest/buyer/country) 0-1 (XPath: GPDocRequest/supplier/country) 0-1</p>

@dateForm	<p>format used for a date</p> <ul style="list-style-type: none"> - base type: string, cod. table: NT29 http://www.moda-ml.net/moda-ml/repository/codelist/v2008-1/gc_NT29.xml (XPath: GPDocRequest/timeRestrict/validityEnd/@dateForm) [Optional] (XPath: GPDocRequest/timeRestrict/validityStart/@dateForm) [Optional] (XPath: GPDocRequest/msgDate/@dateForm) [Optional]
dept	<p>name or code of a contact department within a Party</p> <ul style="list-style-type: none"> - base type: string, max length: 40, (XPath: GPDocRequest/supplier/dept) 0-1 (XPath: GPDocRequest/buyer/dept) 0-1
description	<p>free text description of a product</p> <ul style="list-style-type: none"> - base type: string, max length: 70, (XPath: GPDocRequest/itemRestrict/texCode/description) 0-1 (XPath: GPDocRequest/itemRestrict/garmentCode/garmentCodeB/description) 0-1 (XPath: GPDocRequest/itemRestrict/yarnCode/description) 0-1 (XPath: GPDocRequest/itemRestrict/garmentCode/garmentCodeA/description) 0-1
@email	<p>electronic mail address of the contact person within a Party</p> <ul style="list-style-type: none"> - base type: string, max length: 80, (XPath: GPDocRequest/supplier/person/@email) [Optional] (XPath: GPDocRequest/buyer/person/@email) [Optional]
fabric	<p>fabric number of the garment</p> <ul style="list-style-type: none"> - base type: string, max length: 15, (XPath: GPDocRequest/itemRestrict/garmentCode/garmentCodeB/fabric) 0-1
id	<p>primary identification code of a Party; it is recommended the format: nation code (ISO 3166) + VAT identification number (11 crt), with the qualifier "numberingOrg"= MF</p> <ul style="list-style-type: none"> - base type: string, max length: 15, (XPath: GPDocRequest/supplier/id) 1-1 (XPath: GPDocRequest/buyer/id) 1-1
legalName	<p>legal name of a Party</p> <ul style="list-style-type: none"> - base type: string, max length: 80, (XPath: GPDocRequest/buyer/legalName) 0-1 (XPath: GPDocRequest/supplier/legalName) 0-1
@listName	<p>it specifies the name of the list of codes used to make an instance of the element</p> <ul style="list-style-type: none"> - base type: string, max length: 40, (XPath: GPDocRequest/itemRestrict/garmentCode/garmentCodeA/art/@listName) [Optional] - nota: <i>this attribute should always be used coupled with "numberingOrg"</i> (XPath: GPDocRequest/itemRestrict/texCode/color/@listName) [Optional] - nota: <i>this attribute should always be used coupled with "numberingOrg"</i> (XPath: GPDocRequest/itemRestrict/garmentCode/garmentCodeB/fabric/@listName) [Optional] - nota: <i>this attribute should always be used coupled with "numberingOrg"</i> (XPath: GPDocRequest/itemRestrict/garmentCode/garmentCodeB/mod/@listName) [Optional] - nota: <i>this attribute should always be used coupled with "numberingOrg"</i> (XPath: GPDocRequest/itemRestrict/garmentCode/garmentCodeB/color/@listName) [Optional] - nota: <i>this attribute should always be used coupled with "numberingOrg"</i> (XPath: GPDocRequest/itemRestrict/texCode/pattern/@listName) [Optional] - nota: <i>this attribute should always be used coupled with "numberingOrg"</i> (XPath: GPDocRequest/itemRestrict/texCode/art/@listName) [Optional] - nota: <i>this attribute should always be used coupled with "numberingOrg"</i> (XPath: GPDocRequest/itemRestrict/garmentCode/garmentCodeB/artGroup/@listName) [Optional] - nota: <i>this attribute should always be used coupled with "numberingOrg"</i> (XPath: GPDocRequest/itemRestrict/yarnCode/art/@listName) [Optional] - nota: <i>this attribute should always be used coupled with "numberingOrg"</i>

	<p>(XPath: GPDocRequest/itemRestrict/yarnCode/color/@listName) [Optional] - nota: <i>this attribute should always be used coupled with “numberingOrg”</i></p>
@listVersion	<p>it specifies the version of the list of codes used to make an instance of the element</p> <ul style="list-style-type: none"> - base type: string, max length: 6, (XPath: GPDocRequest/itemRestrict/garmentCode/garmentCodeB/fabric/@listVersion) [Optional] - nota: <i>this attribute should always be used coupled with “numberingOrg” and “listName”</i> (XPath: GPDocRequest/itemRestrict/garmentCode/garmentCodeA/art/@listVersion) [Optional] - nota: <i>this attribute should always be used coupled with “numberingOrg” and “listName”</i> (XPath: GPDocRequest/itemRestrict/garmentCode/garmentCodeB/mod/@listVersion) [Optional] - nota: <i>this attribute should always be used coupled with “numberingOrg” and “listName”</i> (XPath: GPDocRequest/itemRestrict/texCode/pattern/@listVersion) [Optional] - nota: <i>this attribute should always be used coupled with “numberingOrg” and “listName”</i> (XPath: GPDocRequest/itemRestrict/garmentCode/garmentCodeB/artGroup/@listVersion) [Optional] - nota: <i>this attribute should always be used coupled with “numberingOrg” and “listName”</i> (XPath: GPDocRequest/itemRestrict/texCode/color/@listVersion) [Optional] - nota: <i>this attribute should always be used coupled with “numberingOrg” and “listName”</i> (XPath: GPDocRequest/itemRestrict/texCode/art/@listVersion) [Optional] - nota: <i>this attribute should always be used coupled with “numberingOrg” and “listName”</i> (XPath: GPDocRequest/itemRestrict/yarnCode/color/@listVersion) [Optional] - nota: <i>this attribute should always be used coupled with “numberingOrg” and “listName”</i> (XPath: GPDocRequest/itemRestrict/yarnCode/art/@listVersion) [Optional] - nota: <i>this attribute should always be used coupled with “numberingOrg” and “listName”</i> (XPath: GPDocRequest/itemRestrict/garmentCode/garmentCodeB/color/@listVersion) [Optional] - nota: <i>this attribute should always be used coupled with “numberingOrg” and “listName”</i>
@logo	<p>company logo (URL of the image jpeg or gif). It is recommended that the width of the image does not exceed 640 pixel.</p> <ul style="list-style-type: none"> - base type: string, max length: 255, (XPath: GPDocRequest/supplier/@logo) [Optional] (XPath: GPDocRequest/buyer/@logo) [Optional]
mod	<p>model number of the garment</p> <ul style="list-style-type: none"> - base type: string, max length: 15, (XPath: GPDocRequest/itemRestrict/garmentCode/garmentCodeB/mod) 1-1
msgDate	<p>date of issue of the present message (xml document), according to one of the patterns YYYY-MM-DD, YYYY-MM-DD:HH-MM or YYYY-WW.</p> <ul style="list-style-type: none"> - base type: string, (XPath: GPDocRequest/msgDate) 1-1
msgN	<p>identification number given to the message (xml document) by its issuer</p> <ul style="list-style-type: none"> - base type: string, max length: 35, (XPath: GPDocRequest/msgN) 1-1
note	<p>free text note</p> <ul style="list-style-type: none"> - base type: string, max length: 350, (XPath: GPDocRequest/note) 0-1

@numberingOrg	<p>code specifying the organisation who has created or owns the coding or numbering system</p> <ul style="list-style-type: none"> - base type: string, cod. table: NT6 http://www.moda-ml.net/moda-ml/repository/codelist/v2008-1/gc_NT6.xml (XPath: GPDocRequest/itemRestrict/garmentCode/garmentCodeB/color/@numberingOrg) [Optional] - nota: <i>this attribute should be used either single or coupled with "listName" and "listVersion"</i> (XPath: GPDocRequest/buyer/id/@numberingOrg) [Optional] (XPath: GPDocRequest/itemRestrict/garmentCode/garmentCodeB/artGroup/@numberingOrg) [Optional] - nota: <i>this attribute should be used either single or coupled with "listName" and "listVersion"</i> (XPath: GPDocRequest/itemRestrict/yarnCode/art/@numberingOrg) [Optional] - nota: <i>this attribute should be used either single or coupled with "listName" and "listVersion"</i> (XPath: GPDocRequest/itemRestrict/yarnCode/@numberingOrg) [Optional] [Default= CL] (XPath: GPDocRequest/itemRestrict/texCode/pattern/@numberingOrg) [Optional] - nota: <i>this attribute should be used either single or coupled with "listName" and "listVersion"</i> (XPath: GPDocRequest/itemRestrict/yarnCode/color/@numberingOrg) [Optional] - nota: <i>this attribute should be used either single or coupled with "listName" and "listVersion"</i> (XPath: GPDocRequest/itemRestrict/texCode/@numberingOrg) [Optional] (XPath: GPDocRequest/itemRestrict/texCode/art/@numberingOrg) [Optional] - nota: <i>this attribute should be used either single or coupled with "listName" and "listVersion"</i> (XPath: GPDocRequest/itemRestrict/garmentCode/garmentCodeA/art/@numberingOrg) [Optional] - nota: <i>this attribute should be used either single or coupled with "listName" and "listVersion"</i> (XPath: GPDocRequest/itemRestrict/garmentCode/garmentCodeB/@numberingOrg) [Optional] (XPath: GPDocRequest/itemRestrict/garmentCode/garmentCodeB/mod/@numberingOrg) [Optional] - nota: <i>this attribute should be ALTERNATIVE to the others</i> (XPath: GPDocRequest/itemRestrict/garmentCode/garmentCodeB/fabric/@numberingOrg) [Optional] - nota: <i>this attribute should be used either single or coupled with "listName" and "listVersion"</i> (XPath: GPDocRequest/itemRestrict/texCode/color/@numberingOrg) [Optional] - nota: <i>this attribute should be used either single or coupled with "listName" and "listVersion"</i> (XPath: GPDocRequest/supplier/id/@numberingOrg) [Optional] (XPath: GPDocRequest/itemRestrict/garmentCode/@numberingOrg) [Optional]
pattern	<p>pattern/design number of the product, when not included in the article code</p> <ul style="list-style-type: none"> - base type: string, max length: 15, (XPath: GPDocRequest/itemRestrict/texCode/pattern) 0-1
person	<p>name of the contact person within a Party</p> <ul style="list-style-type: none"> - base type: string, max length: 40, (XPath: GPDocRequest/buyer/person) 0-1 (XPath: GPDocRequest/supplier/person) 0-1
postCode	<p>code defining the postal zone</p> <ul style="list-style-type: none"> - base type: string, max length: 10, (XPath: GPDocRequest/buyer/postCode) 0-1 (XPath: GPDocRequest/supplier/postCode) 0-1
requestDocType	<p>type of document the issue of which is requested by the present Request message</p> <ul style="list-style-type: none"> - base type: string, cod. table: T53 http://www.moda-ml.net/moda-ml/repository/codelist/v2008-1/gc_T53.xml

	(XPath: GPDocRequest/requestDocType) 1-1
@sender	<p>qualifier that specifies the Party issuing of the document</p> <ul style="list-style-type: none"> - base type: boolean, (XPath: GPDocRequest/buyer/@sender) [Optional] - nota: <i>This attribute is mandatory when the STYLESHEET must be produced</i> (XPath: GPDocRequest/supplier/@sender) [Optional] - nota: <i>This attribute is mandatory when the STYLESHEET must be produced</i>
size	<p>size number of a garment product (kintwear/clothing)</p> <ul style="list-style-type: none"> - base type: string, max length: 15, (XPath: GPDocRequest/itemRestrict/garmentCode/garmentCodeB/size) 0-1
street	<p>street and building number identifying a location</p> <ul style="list-style-type: none"> - base type: string, max length: 80, (XPath: GPDocRequest/buyer/street) 0-1 (XPath: GPDocRequest/supplier/street) 0-1
subCountry	<p>short name or code of the sub-country entity</p> <ul style="list-style-type: none"> - base type: string, max length: 9, (XPath: GPDocRequest/supplier/subCountry) 0-1 (XPath: GPDocRequest/buyer/subCountry) 0-1
validityEnd	<p>date by which the validity ends, according to one of the patterns YYYY-MM-DD, YYYY-MM-DD:HH-MM or YYYY-WW.</p> <ul style="list-style-type: none"> - base type: string, (XPath: GPDocRequest/timeRestrict/validityEnd) 1-1
validityStart	<p>date by which the validity starts, according to one of the patterns YYYY-MM-DD, YYYY-MM-DD:HH-MM or YYYY-WW.</p> <ul style="list-style-type: none"> - base type: string, (XPath: GPDocRequest/timeRestrict/validityStart) 1-1

2.3 Enumeration tables

List of enumeration tables used in the XML document. You can find the corresponding codes at:
<http://www.moda-ml.org/moda-ml/imple/moda-ml-2008-1.asp?lingua=en&pag=6>

NT29 - format of a date

NT6 - Coding system owner/issuer

T10 - ISO3166 - Country

T44 - additional code type

T53 - Document type for general purpose request

Annex A

Representative images of the principal complex elements' structure.

