



<http://www.moda-ml.org>

IMPLEMENTATION GUIDE TRANSACTION "TEXTILE ORDER RESPONSE"

Version: 2011-1

Date of release: 18/11/2011

Document code: G002

XML Schema repository:<http://www.moda-ml.org/moda-ml/repository/schema/v2011-1/default.asp>

Guides repository:<http://www.moda-ml.org/moda-ml/repository/guide/v2011-1/default.asp>

Guide filename: G002-MODA-ML-TextileOrderResponse.pdf

1. BUSINESS DESCRIPTION

1.1 Scope

The present guide has been issued to assist the companies of the Textile-Clothing sector in the implementation of the standard XML document type "Textile ORDER RESPONSE ", providing all the instruction required for its use in any context of e-commerce between Apparel Producers and Fabric Producers.

All the rules required for the construction and validation of the document are embedded into the specific XML-Schema, which is detailed in section "Implementation guide".

1.2 Generalities

The message is issued by the Fabric Producer in response to a purchase order.

The Producer must, in any case, return an Order Response for any Order received, where, for each item, he notifies the acceptance as it is (C), the variation (V) or the cancellation (A).

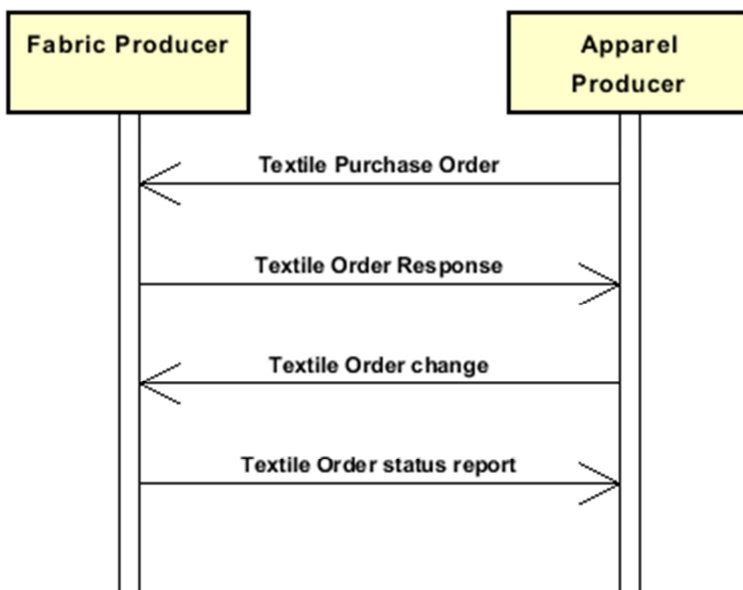
Basic function of the message is to notify acceptance or to request modifications or cancellations concerning:

- 1) suppliable quantities
- 2) dates and places of delivery
- 3) prices

The Order Response can show a number of lines different from the related Purchase Order, when variations/cancellations have occurred so as to create the splitting of an Order Line.

However the sum of the quantities of the lines in the Order Response (accepted + varied + cancelled) must always equal the sum of the quantities in the Order.

1.3. Possible scenario



2. IMPLEMENTATION GUIDE

2.1 General structure of XML document

All the business data that can be exchanged through this class of documents are shown in the following "document structure", that provides a simplified vision of the Schema.

In particular:

- the two numbers following each element define its "cardinality" (minimum and maximum number of occurrences); the minimum equal zero indicates that the element is optional, the minimum greater than zero indicates that is mandatory;
- the bold character denotes the complex elements (aggregates of simple elements) that were built for the sake of functionality and re-usability of some complex informations sets. The child elements in each parent element are easily spotted as "indented";
- the symbol "@" denotes an attribute of the preceding element; here "the usage indicator (optional, required, ...) is shown in square brackets.

Structure

TEXOrdResponse

@msgfunction [Optional] [Default= OR]

TXheader 1-1

msgN 1-1

- choose -

msgID 0-1

- or -

docID 0-1

@numberingOrg [Optional]

- end choose -

msgDate 1-1

@dateForm [Optional]

validityEnd 0-1

@dateForm [Optional]

msgCurrency 0-1

otherCurrency 0-9

@currencyUseQualifier [Required]

refDoc 1-9

@docType [Required]

docID 1-2

@numberingOrg [Optional]

docDate 0-1

@dateForm [Optional]

season 0-1

itemID 0-1

buyer 1-1

@logo [Optional]

@sender [Optional]

id 1-1

@numberingOrg [Optional]

legalName 0-1

dept 0-1

person 0-1

@email [Optional]

@phone [Optional]

@fax [Optional]

street 0-1

city 0-1

subCountry 0-1

country 0-1

postCode 0-1

supplier 1-1

@logo [Optional]
@sender [Optional]
id 1-1
@numberingOrg [Optional]
legalName 0-1
dept 0-1
person 0-1
@email [Optional]
@phone [Optional]
@fax [Optional]
street 0-1
city 0-1
subCountry 0-1
country 0-1
postCode 0-1

thirdParty 0-5

@VAT [Optional]
@role [Required]
@sender [Optional]
id 1-1
@numberingOrg [Optional]
legalName 0-1
dept 0-1
person 0-1
@email [Optional]
@phone [Optional]
@fax [Optional]
street 0-1
city 0-1
subCountry 0-1
country 0-1
postCode 0-1

note 0-5

@numberingOrg [Optional]
@codeList [Optional]
@noteLabel [Optional]

terms 0-1**payment 0-5**

@finDiscount [Optional]
@finSurcharge [Optional]
- choose -
payTerm 1-1
- or -
payTermText 1-1
- end choose -
payMode 0-1

insPayment 0-5

@part [Required]
- choose -
payTerm 1-1
- or -
payTermText 1-1
- end choose -
payMode 0-1

trade 0-1

- choose -
incoTermText 1-1
- or -
incoTerm 1-1

- end choose -
location 0-1
@LRI [Optional]

transInfo 0-1

@transReason [Optional]
transMode 1-1
carrier 0-1
deliveryPlace 0-1
grossWeight 0-1
@um [Required]
netWeight 0-1
@um [Required]
transMeans 0-1
transCondition 0-3
transConditionText 0-1

allowanceCharge 0-9

@VAT [Optional]
- choose -
AC_category 1-1
- or -
AC_categoryText 1-1
- choose -
AC_percent 1-1
- or -
AC_amount 1-1
- end choose -

texComInfo 0-1

@endUse [Optional] [Default= PR]
@IC [Optional]
@techSheet [Optional]
season 0-1
project 0-1
deliveryDate 0-1
@dateForm [Optional]
specDate 0-1
@dateForm [Optional]
fabricWidth 0-1
@um [Optional] [Default= CMT]
pieceLength 0-1
@um [Optional] [Default= MTR]

piecePack 0-1

- choose -
piecePackText 1-1
- or -
pieceInnWrap1 1-1
pieceInnWrap2 0-1
pieceOutWrap 0-1
- end choose -

TXbody 1-1

TXitem 1-unbounded

@act [Required]
lineN 1-1
@VAT [Optional]
refDoc 1-9
@docType [Required]
docID 1-2
@numberingOrg [Optional]
docDate 0-1
@dateForm [Optional]

season 0-1
 itemID 0-1
texCode 0-2
 @numberingOrg [Optional]
 art 1-1
 @numberingOrg [Optional]
 @codeList [Optional]
 @listName [Optional]
 @listVersion [Optional]
 pattern 0-1
 @numberingOrg [Optional]
 @codeList [Optional]
 @listName [Optional]
 @listVersion [Optional]
 color 0-1
 @numberingOrg [Optional]
 @codeList [Optional]
 @listName [Optional]
 @listVersion [Optional]
 added 0-9
 @addType [Optional]
 description 0-1
selvedge 0-1
 selvedgeText 1-1
 selvedgeColor 0-1
fabricTreat 0-1
 surfaceTreatment 0-1
 finishCycle 0-1
 oneLot 0-1
 metricMark 0-1
 qty 0-2
 @um [Required]
 price 0-1
 @um [Optional]
 @priceQualifier [Optional] [Default= NET]
 comDiscount 0-1
thirdParty 0-1
 @VAT [Optional]
 @role [Required]
 @sender [Optional]
 id 1-1
 @numberingOrg [Optional]
 legalName 0-1
 dept 0-1
 person 0-1
 @email [Optional]
 @phone [Optional]
 @fax [Optional]
 street 0-1
 city 0-1
 subCountry 0-1
 country 0-1
 postCode 0-1
texComInfo 0-1
 @endUse [Optional] [Default= PR]
 @IC [Optional]
 @techSheet [Optional]
 season 0-1
 project 0-1
 deliveryDate 0-1
 @dateForm [Optional]

specDate 0-1
@dateForm [Optional]
fabricWidth 0-1
@um [Optional] [Default= CMT]
pieceLength 0-1
@um [Optional] [Default= MTR]

piecePack 0-1

- choose -
piecePackText 1-1
- or -
pieceInnWrap1 1-1
pieceInnWrap2 0-1
pieceOutWrap 0-1
- end choose -

note 0-1

@numberingOrg [Optional]
@codeList [Optional]
@noteLabel [Optional]

totals 0-1

totQty 0-1
@um [Required]
goodsAmount 1-1

2.2 Detailed description of document elements

Following tables show all elements (complex and simple) used in this document. Description includes: 1) element's information: xml tag, name, brief description, data type and syntax constraints; 2) information about use of the element in a particular position in the document: xpath and possible associated notes.

2.2.1 Complex elements (Aggregate Business Information Entities)

Complex elements are those elements whose content is composed of other elements (childs). Complex elements are alphabetically ordered.

| | |
|------------------------|---|
| allowanceCharge | Allowances and Charges related to an Order or a contract (XPath: TEXOrdResponse/terms/allowanceCharge) 0-9 |
| buyer | details of the Buyer - base type: , (XPath: TEXOrdResponse/TXheader/buyer) 1-1 |
| fabricTreat | informations on the treatments and finishing of fabric (XPath: TEXOrdResponse/TXbody/TXitem/fabricTreat) 0-1 |
| insPayment | payment details for payment by installments (XPath: TEXOrdResponse/terms/insPayment) 0-5 - note: <i>this set of data is alternative to payment set and must be iterated for each payment installment</i> |
| payment | payment details for payment all in one (XPath: TEXOrdResponse/terms/payment) 0-5 - note: <i>this set of data can be iterated to specify alternative terms of payment (e.g.: 60 days or 30 days with 3% discount)</i> |
| piecePack | type of wrapping or packing of the fabric pieces (XPath: TEXOrdResponse/texComInfo/piecePack) 0-1 (XPath: TEXOrdResponse/TXbody/TXitem/texComInfo/piecePack) 0-1 |
| refDoc | identification of a document and of an item thereof, to which the message makes reference (XPath: TEXOrdResponse/TXheader/refDoc) 1-9 (XPath: TEXOrdResponse/TXbody/TXitem/refDoc) 1-9 - note: <i>must be used to link the document line to the line of another referenced document</i> |
| selvedge | text and colour related to a fabric selvedge (XPath: TEXOrdResponse/TXbody/TXitem/selvedge) 0-1 |
| supplier | details of the Supplier - base type: , (XPath: TEXOrdResponse/TXheader/supplier) 1-1 |
| terms | details of the commercial obligations for payment and delivery (XPath: TEXOrdResponse/terms) 0-1 - note: <i>the Supplier can use this data group to confirm the Order terms or to modify them</i> |
| texCode | full codification of the textile product (XPath: TEXOrdResponse/TXbody/TXitem/texCode) 0-2 |
| texComInfo | miscellaneous trade informations, that can be specified in a textile Order, referred either to the whole document or to the single item (XPath: TEXOrdResponse/TXbody/TXitem/texComInfo) 0-1 - note: <i>the Supplier can use this data group to confirm the Order terms or to modify them</i> (XPath: TEXOrdResponse/texComInfo) 0-1 |

| | |
|-------------------|---|
| | - note: here must be specified those valid for the whole document. The Supplier can use this data group to confirm the Order terms or to modify them |
| thirdParty | details of the Third Party, different from Buyer or Supplier - base type: , (XPath: TEXOrdResponse/TXheader/thirdParty) 0-5 (XPath: TEXOrdResponse/TXbody/TXitem/thirdParty) 0-1 |
| totals | monetary and quantity totals of the Order (XPath: TEXOrdResponse/totals) 0-1 |
| trade | general terms of trade for the specified supply (XPath: TEXOrdResponse/terms/trade) 0-1 |
| transInfo | details of transport: mode, carrier and delivery place (XPath: TEXOrdResponse/terms/transInfo) 0-1 |
| TXbody | body of the document TEXTILES ORDER RESPONSE and CHANGE (XPath: TEXOrdResponse/TXbody) 1-1 |
| TXheader | header of the TEXTILES ORDER RESPONSE and TEXTILES ORDER CHANGE (XPath: TEXOrdResponse/TXheader) 1-1 - note: the attribute "logo" should be used only in conjunction with Supplier |
| TXitem | line item of the message TEXTILE ORDER RESPONSE and TEXTILE ORDER CHANGE (XPath: TEXOrdResponse/TXbody/TXitem) 1-unbounded |

2.2.2 Simple elements (Basic Business Information Entities)

Simple elements are those elements whose content is characterized by a data type plus a domain of possible values. Simple elements are alphabetically ordered.

| | |
|------------------------|---|
| AC_amount | amount of an Allowance or Charge - base type: decimal, fraction digits: 2, (XPath: TEXOrdResponse/terms/allowanceCharge/AC_amount) 1-1 |
| AC_category | coded specification of an Allowance or Charge - base type: string, cod. table: T41, (XPath: TEXOrdResponse/terms/allowanceCharge/AC_category) 1-1 |
| AC_categoryText | free text description of an Allowance or Charge - base type: string, max length: 70, (XPath: TEXOrdResponse/terms/allowanceCharge/AC_categoryText) 1-1 |
| AC_percent | amount of an Allowance or Charge as a percentage - base type: decimal, max inclusive: 100, fraction digits: 2, (XPath: TEXOrdResponse/terms/allowanceCharge/AC_percent) 1-1 |
| @act | action performed by the present line upon the referenced document line - base type: string, cod. table: NT5, (XPath: TEXOrdResponse/TXbody/TXitem/@act) [Required] |
| added | additional code of the product (complementing the formers) - base type: string, max length: 15, (XPath: TEXOrdResponse/TXbody/TXitem/texCode/added) 0-9 - note: here an additional codification (see table T44) can be specified |
| @addType | qualifier of the additional coding of a product - base type: string, cod. table: T44, (XPath: TEXOrdResponse/TXbody/TXitem/texCode/added/@addType) [Optional] |

| | |
|-----------------------|--|
| art | <p>article number of the product</p> <ul style="list-style-type: none"> - base type: string, max length: 25, (XPath: TEXOrdResponse/TXbody/TXitem/texCode/art) 1-1 - note: <i>can be used either for the base-article (excluding pattern/colour) or for the SKU</i> |
| carrier | <p>identification of the transport carrier</p> <ul style="list-style-type: none"> - base type: string, max length: 40, (XPath: TEXOrdResponse/terms/transInfo/carrier) 0-1 |
| city | <p>name of the city (town, village)</p> <ul style="list-style-type: none"> - base type: string, max length: 40, (XPath: TEXOrdResponse/TXheader/buyer/city) 0-1 (XPath: TEXOrdResponse/TXheader/thirdParty/city) 0-1 (XPath: TEXOrdResponse/TXbody/TXitem/thirdParty/city) 0-1 (XPath: TEXOrdResponse/TXheader/supplier/city) 0-1 |
| @codeList | <p>it specifies the URL where the list of codes used to make an instance of the element can be found</p> <ul style="list-style-type: none"> - base type: string, max length: 255, (XPath: TEXOrdResponse/TXbody/TXitem/note/@codeList) [Optional] - nota: <i>must be used to provide (URL) the list of codes used in "noteLabel"</i> (XPath: TEXOrdResponse/TXheader/note/@codeList) [Optional] - nota: <i>must be used to provide (URL) the list of codes used in "noteLabel"</i> (XPath: TEXOrdResponse/TXbody/TXitem/texCode/art/@codeList) [Optional] - nota: <i>this attribute should be ALTERNATIVE to the others</i> (XPath: TEXOrdResponse/TXbody/TXitem/texCode/color/@codeList) [Optional] - nota: <i>this attribute should be ALTERNATIVE to the others</i> (XPath: TEXOrdResponse/TXbody/TXitem/texCode/pattern/@codeList) [Optional] - nota: <i>this attribute should be ALTERNATIVE to the others</i> |
| color | <p>colour number of the product, when not included in the model or fabric code</p> <ul style="list-style-type: none"> - base type: string, max length: 15, (XPath: TEXOrdResponse/TXbody/TXitem/texCode/color) 0-1 |
| comDiscount | <p>percent discount applied to the related unit price or amount</p> <ul style="list-style-type: none"> - base type: decimal, min inclusive: 0, max inclusive: 100, fraction digits: 2, (XPath: TEXOrdResponse/TXbody/TXitem/comDiscount) 0-1 |
| country | <p>code of the nation</p> <ul style="list-style-type: none"> - base type: string, cod. table: T10, (XPath: TEXOrdResponse/TXheader/thirdParty/country) 0-1 (XPath: TEXOrdResponse/TXbody/TXitem/thirdParty/country) 0-1 (XPath: TEXOrdResponse/TXheader/supplier/country) 0-1 (XPath: TEXOrdResponse/TXheader/buyer/country) 0-1 |
| @currencyUseQualifier | <p>qualification of another currency used in the document</p> <ul style="list-style-type: none"> - base type: string, cod. table: NT19, (XPath: TEXOrdResponse/TXheader/otherCurrency/@currencyUseQualifier) [Required] |
| @dateForm | <p>format used for a date</p> <ul style="list-style-type: none"> - base type: string, cod. table: NT29, (XPath: TEXOrdResponse/TXheader/refDoc/docDate/@dateForm) [Optional] (XPath: TEXOrdResponse/TXbody/TXitem/texComInfo/deliveryDate/@dateForm) [Optional] (XPath: TEXOrdResponse/texComInfo/deliveryDate/@dateForm) [Optional] (XPath: TEXOrdResponse/texComInfo/specDate/@dateForm) [Optional] (XPath: TEXOrdResponse/TXbody/TXitem/texComInfo/specDate/@dateForm) [Optional] (XPath: TEXOrdResponse/TXheader/validityEnd/@dateForm) [Optional] (XPath: TEXOrdResponse/TXbody/TXitem/refDoc/docDate/@dateForm) [Optional] (XPath: TEXOrdResponse/TXheader/msgDate/@dateForm) [Optional] |
| deliveryDate | <p>date of delivery of goods, requested or promised in the purchase process, according to one of the patterns YYYY-MM-DD, YYYY-MM-DD:HH-MM or</p> |

| | |
|---------------|--|
| | YYYY-WW. - base type: string, (XPath: TEXOrdResponse/texComInfo/deliveryDate) 0-1 (XPath: TEXOrdResponse/TXbody/TXitem/texComInfo/deliveryDate) 0-1 |
| deliveryPlace | place of delivery of goods, ultimate or related to a given leg - base type: string, max length: 40, (XPath: TEXOrdResponse/terms/transInfo/deliveryPlace) 0-1 |
| dept | name or code of a contact department within a Party - base type: string, max length: 40, (XPath: TEXOrdResponse/TXheader/thirdParty/dept) 0-1 (XPath: TEXOrdResponse/TXheader/buyer/dept) 0-1 (XPath: TEXOrdResponse/TXbody/TXitem/thirdParty/dept) 0-1 (XPath: TEXOrdResponse/TXheader/supplier/dept) 0-1 |
| description | free text description of a product - base type: string, max length: 70, (XPath: TEXOrdResponse/TXbody/TXitem/texCode/description) 0-1 |
| docDate | date of issue of the referenced document, according to one of the patterns YYYY-MM-DD, YYYY-MM-DD:HH-MM or YYYY-WW. - base type: string, (XPath: TEXOrdResponse/TXheader/refDoc/docDate) 0-1 (XPath: TEXOrdResponse/TXbody/TXitem/refDoc/docDate) 0-1 |
| docID | identification number of the referenced document SINCE 2008-1 ITS USE IN THE HEADER IS DISCOURAGED (REPLACED BY) - base type: string, max length: 35, (XPath: TEXOrdResponse/TXheader/refDoc/docID) 1-2 (XPath: TEXOrdResponse/TXheader/docID) 0-1 (XPath: TEXOrdResponse/TXbody/TXitem/refDoc/docID) 1-2 |
| @docType | type or class to which the referenced document belongs - base type: string, cod. table: T21, (XPath: TEXOrdResponse/TXheader/refDoc/@docType) [Required] (XPath: TEXOrdResponse/TXbody/TXitem/refDoc/@docType) [Required] |
| @email | electronic mail address of the contact person within a Party - base type: string, max length: 80, (XPath: TEXOrdResponse/TXheader/buyer/person/@email) [Optional] (XPath: TEXOrdResponse/TXbody/TXitem/thirdParty/person/@email) [Optional] (XPath: TEXOrdResponse/TXheader/thirdParty/person/@email) [Optional] (XPath: TEXOrdResponse/TXheader/supplier/person/@email) [Optional] |
| @endUse | specifies the final use of the material - base type: string, cod. table: NT4, (XPath: TEXOrdResponse/texComInfo/@endUse) [Optional] [Default= PR] (XPath: TEXOrdResponse/TXbody/TXitem/texComInfo/@endUse) [Optional] [Default= PR] |
| fabricWidth | width of the fabric as technical specification - base type: decimal, min inclusive: 0, fraction digits: 2, (XPath: TEXOrdResponse/texComInfo/fabricWidth) 0-1 (XPath: TEXOrdResponse/TXbody/TXitem/texComInfo/fabricWidth) 0-1 |
| @fax | fax number of the contact person within a Party - base type: string, max length: 35, (XPath: TEXOrdResponse/TXheader/thirdParty/person/@fax) [Optional] (XPath: TEXOrdResponse/TXheader/buyer/person/@fax) [Optional] (XPath: TEXOrdResponse/TXbody/TXitem/thirdParty/person/@fax) [Optional] (XPath: TEXOrdResponse/TXheader/supplier/person/@fax) [Optional] |
| @finDiscount | financial discount applied for payment by the date specified - base type: decimal, min inclusive: 0, max inclusive: 100, fraction digits: 2, (XPath: TEXOrdResponse/terms/payment/@finDiscount) [Optional] |

| | |
|---------------|---|
| finishCycle | process of finishing applied to the fabric - base type: string, max length: 40, (XPath: TEXOrdResponse/TXbody/TXitem/fabricTreat/finishCycle) 0-1 |
| @finSurcharge | financial surcharge applied for payment after the date specified - base type: decimal, min inclusive: 0, max inclusive: 100, fraction digits: 2, (XPath: TEXOrdResponse/terms/payment/@finSurcharge) [Optional] |
| goodsAmount | total monetary value of the goods and services considered in the message - base type: decimal, min inclusive: 0, fraction digits: 2, (XPath: TEXOrdResponse/totals/goodsAmount) 1-1 |
| grossWeight | the gross weight of the overall goods supply, declared for transport or customs purpose - base type: decimal, min inclusive: 0, fraction digits: 2, (XPath: TEXOrdResponse/terms/transInfo/grossWeight) 0-1 |
| @IC | specifies if the "illustrated confirmation" is needed - base type: boolean, (XPath: TEXOrdResponse/texComInfo/@IC) [Optional] (XPath: TEXOrdResponse/TXbody/TXitem/texComInfo/@IC) [Optional] |
| id | primary identification code of a Party; it is recommended the format: nation code (ISO 3166) + VAT identification number (11 crt), with the qualifier "numberingOrg"= MF - base type: string, max length: 15, (XPath: TEXOrdResponse/TXheader/buyer/id) 1-1 (XPath: TEXOrdResponse/TXheader/thirdParty/id) 1-1 (XPath: TEXOrdResponse/TXheader/supplier/id) 1-1 (XPath: TEXOrdResponse/TXbody/TXitem/thirdParty/id) 1-1 |
| incoTerm | specification of the terms of trade (INCOTERMS) - base type: string, cod. table: T3, (XPath: TEXOrdResponse/terms/trade/incoTerm) 1-1 |
| incoTermText | free text specifying the terms of trade (incoterm, location) - base type: string, max length: 70, (XPath: TEXOrdResponse/terms/trade/incoTermText) 1-1 |
| itemID | number of the line/item of the referenced document - base type: string, max length: 6, (XPath: TEXOrdResponse/TXbody/TXitem/refDoc/itemID) 0-1 (XPath: TEXOrdResponse/TXheader/refDoc/itemID) 0-1 |
| legalName | legal name of a Party - base type: string, max length: 80, (XPath: TEXOrdResponse/TXheader/thirdParty/legalName) 0-1 (XPath: TEXOrdResponse/TXheader/supplier/legalName) 0-1 (XPath: TEXOrdResponse/TXbody/TXitem/thirdParty/legalName) 0-1 (XPath: TEXOrdResponse/TXheader/buyer/legalName) 0-1 |
| lineN | number of the line item of the present message (xml document) - base type: positiveInteger, min inclusive: 1, max inclusive: 9999, (XPath: TEXOrdResponse/TXbody/TXitem/lineN) 1-1 |
| @listName | it specifies the name of the list of codes used to make an instance of the element - base type: string, max length: 40, (XPath: TEXOrdResponse/TXbody/TXitem/texCode/color/@listName) [Optional] - nota: <i>this attribute should always be used coupled with "numberingOrg"</i> (XPath: TEXOrdResponse/TXbody/TXitem/texCode/art/@listName) [Optional] - nota: <i>this attribute should always be used coupled with "numberingOrg"</i> (XPath: TEXOrdResponse/TXbody/TXitem/texCode/pattern/@listName) [Optional] - nota: <i>this attribute should always be used coupled with "numberingOrg"</i> |
| @listVersion | it specifies the version of the list of codes used to make an instance of the element |

| | |
|--------------|---|
| | <ul style="list-style-type: none"> - base type: string, max length: 6, (XPath: TEXOrdResponse/TXbody/TXitem/texCode/pattern/@listVersion) [Optional] - nota: <i>this attribute should always be used coupled with "numberingOrg" and "listName"</i> (XPath: TEXOrdResponse/TXbody/TXitem/texCode/art/@listVersion) [Optional] - nota: <i>this attribute should always be used coupled with "numberingOrg" and "listName"</i> (XPath: TEXOrdResponse/TXbody/TXitem/texCode/color/@listVersion) [Optional] - nota: <i>this attribute should always be used coupled with "numberingOrg" and "listName"</i> |
| location | <p>specification of a location</p> <ul style="list-style-type: none"> - base type: string, max length: 40, (XPath: TEXOrdResponse/terms/trade/location) 0-1 - note: <i>place to which the INCOTERM applies</i> |
| @logo | <p>company logo (URL of the image jpeg or gif). It is recommended that the width of the image does not exceed 640 pixel.</p> <ul style="list-style-type: none"> - base type: string, max length: 255, (XPath: TEXOrdResponse/TXheader/supplier/@logo) [Optional] (XPath: TEXOrdResponse/TXheader/buyer/@logo) [Optional] |
| @LRI | <p>attribute usable to format a string according to a customized User rule (local rule)</p> <ul style="list-style-type: none"> - base type: string, cod. table: NT3, (XPath: TEXOrdResponse/terms/trade/location/@LRI) [Optional] |
| metricMark | <p>specifies if the fabric piece must have the matric marks</p> <ul style="list-style-type: none"> - base type: boolean, (XPath: TEXOrdResponse/TXbody/TXitem/fabricTreat/metricMark) 0-1 |
| msgCurrency | <p>currency used to express the monetary amounts of the message</p> <ul style="list-style-type: none"> - base type: string, cod. table: T9, (XPath: TEXOrdResponse/TXheader/msgCurrency) 0-1 |
| msgDate | <p>date of issue of the present message (xml document), according to one of the patterns YYYY-MM-DD, YYYY-MM-DD:HH-MM or YYYY-WW.</p> <ul style="list-style-type: none"> - base type: string, (XPath: TEXOrdResponse/TXheader/msgDate) 1-1 |
| @msgfunction | <p>function performed by the present message with regards to the transmission</p> <ul style="list-style-type: none"> - base type: string, cod. table: NT18, (XPath: TEXOrdResponse/@msgfunction) [Optional] [Default= OR] |
| msgID | <p>key identifier of the document in the information system of the issuing Party</p> <ul style="list-style-type: none"> - base type: string, max length: 35, (XPath: TEXOrdResponse/TXheader/msgID) 0-1 |
| msgN | <p>identification number given to the message (xml document) by its issuer</p> <ul style="list-style-type: none"> - base type: string, max length: 35, (XPath: TEXOrdResponse/TXheader/msgN) 1-1 |
| netWeight | <p>the net weight of the overall goods supply, declared for transport or customs purpose</p> <ul style="list-style-type: none"> - base type: decimal, min inclusive: 0, fraction digits: 2, (XPath: TEXOrdResponse/terms/transInfo/netWeight) 0-1 |
| note | <p>free text or structured (computer processing) note. For note structuring use the attributes "noteLabel" and "codelist"</p> <ul style="list-style-type: none"> - base type: string, max length: 350, (XPath: TEXOrdResponse/TXbody/TXitem/note) 0-1 (XPath: TEXOrdResponse/TXheader/note) 0-5 |
| @noteLabel | <p>subject qualifier of a note</p> <ul style="list-style-type: none"> - base type: string, max length: 35, (XPath: TEXOrdResponse/TXheader/note/@noteLabel) [Optional] |

| | |
|---------------|--|
| | <p>- nota: <i>must be used to qualify the subject of the note</i> (XPath: TEXOrdResponse/TXbody/TXitem/note/@noteLabel) [Optional]</p> <p>- nota: <i>must be used to qualify the subject of the note</i></p> |
| @numberingOrg | <p>code specifying the organisation who has created or owns the coding or numbering system</p> <p>- base type: string, cod. table: NT6, (XPath: TEXOrdResponse/TXheader/refDoc/docID/@numberingOrg) [Optional]</p> <p>- nota: <i>here can be specified whose document numbering is used (e.g.: Client, Supplier, ..)</i> (XPath: TEXOrdResponse/TXbody/TXitem/thirdParty/id/@numberingOrg) [Optional] (XPath: TEXOrdResponse/TXbody/TXitem/refDoc/docID/@numberingOrg) [Optional]</p> <p>- nota: <i>here can be specified whose document numbering is used (e.g.: Client, Supplier, ..)</i> (XPath: TEXOrdResponse/TXheader/supplier/id/@numberingOrg) [Optional] (XPath: TEXOrdResponse/TXheader/buyer/id/@numberingOrg) [Optional] (XPath: TEXOrdResponse/TXbody/TXitem/texCode/pattern/@numberingOrg) [Optional]</p> <p>- nota: <i>this attribute should be used either single or coupled with "listName" and "listVersion"</i> (XPath: TEXOrdResponse/TXbody/TXitem/texCode/art/@numberingOrg) [Optional]</p> <p>- nota: <i>this attribute should be used either single or coupled with "listName" and "listVersion"</i> (XPath: TEXOrdResponse/TXbody/TXitem/texCode/color/@numberingOrg) [Optional]</p> <p>- nota: <i>this attribute should be used either single or coupled with "listName" and "listVersion"</i> (XPath: TEXOrdResponse/TXbody/TXitem/texCode/@numberingOrg) [Optional] (XPath: TEXOrdResponse/TXheader/docID/@numberingOrg) [Optional]</p> <p>- nota: <i>here can be specified whose document numbering is used (e.g.: Client, Supplier, ..)</i> (XPath: TEXOrdResponse/TXheader/note/@numberingOrg) [Optional] (XPath: TEXOrdResponse/TXbody/TXitem/note/@numberingOrg) [Optional] (XPath: TEXOrdResponse/TXheader/thirdParty/id/@numberingOrg) [Optional]</p> |
| oneLot | <p>specifies if the order line must be supplied with one production lot</p> <p>- base type: boolean, (XPath: TEXOrdResponse/TXbody/TXitem/fabricTreat/oneLot) 0-1</p> |
| otherCurrency | <p>other currency used in the document</p> <p>- base type: string, cod. table: T9, (XPath: TEXOrdResponse/TXheader/otherCurrency) 0-9</p> |
| @part | <p>percent fraction of a total payment</p> <p>- base type: decimal, min inclusive: 1, max inclusive: 99, fraction digits: 2, (XPath: TEXOrdResponse/terms/insPayment/@part) [Required]</p> <p>- nota: <i>here the % value of each installment must be indicated</i></p> |
| pattern | <p>pattern/design number of the product, when not included in the article code</p> <p>- base type: string, max length: 15, (XPath: TEXOrdResponse/TXbody/TXitem/texCode/pattern) 0-1</p> |
| payMode | <p>way or means of payment</p> <p>- base type: string, cod. table: T2, (XPath: TEXOrdResponse/terms/insPayment/payMode) 0-1 (XPath: TEXOrdResponse/terms/payment/payMode) 0-1</p> |
| payTerm | <p>code specifying the terms or time by which the payment must be done</p> <p>- base type: string, cod. table: T1, (XPath: TEXOrdResponse/terms/payment/payTerm) 1-1 (XPath: TEXOrdResponse/terms/insPayment/payTerm) 1-1</p> |
| payTermText | <p>free text specifying the terms by which the payment must be done (time/mode or means)</p> <p>- base type: string, max length: 40,</p> |

| | |
|-----------------|---|
| | (XPath: TEXOrdResponse/terms/payment/payTermText) 1-1 (XPath: TEXOrdResponse/terms/insPayment/payTermText) 1-1 |
| person | name of the contact person within a Party - base type: string, max length: 40, (XPath: TEXOrdResponse/TXbody/TXitem/thirdParty/person) 0-1 (XPath: TEXOrdResponse/TXheader/buyer/person) 0-1 (XPath: TEXOrdResponse/TXheader/thirdParty/person) 0-1 (XPath: TEXOrdResponse/TXheader/supplier/person) 0-1 |
| @phone | phone number of the contact person within a Party - base type: string, max length: 35, (XPath: TEXOrdResponse/TXheader/thirdParty/person/@phone) [Optional] (XPath: TEXOrdResponse/TXheader/buyer/person/@phone) [Optional] (XPath: TEXOrdResponse/TXheader/supplier/person/@phone) [Optional] (XPath: TEXOrdResponse/TXbody/TXitem/thirdParty/person/@phone) [Optional] |
| pieceInnWrap1 | code specifying the type of inner wrapping/packing used for the fabric piece - base type: string, cod. table: T4, (XPath: TEXOrdResponse/texComInfo/piecePack/pieceInnWrap1) 1-1 (XPath: TEXOrdResponse/TXbody/TXitem/texComInfo/piecePack/pieceInnWrap1) 1-1 |
| pieceInnWrap2 | code sub-specifying the type of inner wrapping/packing used for the fabric piece - base type: string, cod. table: T5, (XPath: TEXOrdResponse/TXbody/TXitem/texComInfo/piecePack/pieceInnWrap2) 0-1 (XPath: TEXOrdResponse/texComInfo/piecePack/pieceInnWrap2) 0-1 |
| pieceLength | length of the piece - base type: decimal, min inclusive: 0, fraction digits: 2, (XPath: TEXOrdResponse/texComInfo/pieceLength) 0-1 (XPath: TEXOrdResponse/TXbody/TXitem/texComInfo/pieceLength) 0-1 |
| pieceOutWrap | code specifying the type of outer wrapping or packing used for the fabric piece - base type: string, cod. table: T6, (XPath: TEXOrdResponse/TXbody/TXitem/texComInfo/piecePack/pieceOutWrap) 0-1 (XPath: TEXOrdResponse/texComInfo/piecePack/pieceOutWrap) 0-1 |
| piecePackText | free text specifying the type of wrapping or packing used for the fabric piece - base type: string, max length: 40, (XPath: TEXOrdResponse/TXbody/TXitem/texComInfo/piecePack/piecePackText) 1-1 (XPath: TEXOrdResponse/texComInfo/piecePack/piecePackText) 1-1 |
| postCode | code defining the postal zone - base type: string, max length: 10, (XPath: TEXOrdResponse/TXheader/thirdParty/postCode) 0-1 (XPath: TEXOrdResponse/TXbody/TXitem/thirdParty/postCode) 0-1 (XPath: TEXOrdResponse/TXheader/buyer/postCode) 0-1 (XPath: TEXOrdResponse/TXheader/supplier/postCode) 0-1 |
| price | unit price of the article, object or service specified - base type: decimal, min inclusive: 0, fraction digits: 2, (XPath: TEXOrdResponse/TXbody/TXitem/price) 0-1 |
| @priceQualifier | type of price with reference to discount and taxes - base type: string, cod. table: NT20, (XPath: TEXOrdResponse/TXbody/TXitem/price/@priceQualifier) [Optional] [Default= NET] |
| project | code used to assign the items ordered (fabric pieces/accessories) to a specific project of the Client - base type: string, max length: 25, |

| | |
|---------------|---|
| | (XPath: TEXOrdResponse/texComInfo/project) 0-1 (XPath: TEXOrdResponse/TXbody/TXitem/texComInfo/project) 0-1 |
| qty | net quantity of the article or object correlated, qualified by the function of the document (ordering, delivering, ..) and by the context - base type: decimal, min inclusive: 0, fraction digits: 2, (XPath: TEXOrdResponse/TXbody/TXitem/qty) 0-2 |
| @role | Third Party role qualifier - base type: string, cod. table: NT2, (XPath: TEXOrdResponse/TXbody/TXitem/thirdParty/@role) [Required] (XPath: TEXOrdResponse/TXheader/thirdParty/@role) [Required] |
| season | sale season; defined as: season (1 crt) + year (4 crt) - season: S/S=1 A/W=2 Spring=3 Summer=4 Autumn=5 Winter=6: for more than four seasons use alphabetic sequence: 1st season=A 2nd season=B etc.etc. - base type: string, max length: 15, (XPath: TEXOrdResponse/texComInfo/season) 0-1 (XPath: TEXOrdResponse/TXheader/refDoc/season) 0-1 - note: here indicates the season to which the referenced document belongs (XPath: TEXOrdResponse/TXbody/TXitem/texComInfo/season) 0-1 (XPath: TEXOrdResponse/TXbody/TXitem/refDoc/season) 0-1 - note: here indicates the season to which the referenced document belongs |
| selvedgeColor | colour of the text displayed on the selvedge - base type: string, max length: 15, (XPath: TEXOrdResponse/TXbody/TXitem/selvedge/selvedgeColor) 0-1 |
| selvedgeText | text to be written on the selvedge - base type: string, max length: 300, (XPath: TEXOrdResponse/TXbody/TXitem/selvedge/selvedgeText) 1-1 |
| @sender | qualifier that specifies the Party issuing of the document - base type: boolean, (XPath: TEXOrdResponse/TXheader/thirdParty/@sender) [Optional] - nota: This attribute is mandatory when the STYLESHEET must be produced (XPath: TEXOrdResponse/TXbody/TXitem/thirdParty/@sender) [Optional] - nota: This attribute is mandatory when the STYLESHEET must be produced (XPath: TEXOrdResponse/TXheader/supplier/@sender) [Optional] - nota: This attribute is mandatory when the STYLESHEET must be produced (XPath: TEXOrdResponse/TXheader/buyer/@sender) [Optional] - nota: This attribute is mandatory when the STYLESHEET must be produced |
| specDate | date by which the referenced blanket order must receive full product specifications (e.g.: colour), according to one of the patterns YYYY-MM-DD, YYYY-MM-DD:HH-MM or YYYY-WW. - base type: string, (XPath: TEXOrdResponse/TXbody/TXitem/texComInfo/specDate) 0-1 (XPath: TEXOrdResponse/texComInfo/specDate) 0-1 |
| street | street and building number identifying a location - base type: string, max length: 80, (XPath: TEXOrdResponse/TXheader/supplier/street) 0-1 (XPath: TEXOrdResponse/TXbody/TXitem/thirdParty/street) 0-1 (XPath: TEXOrdResponse/TXheader/thirdParty/street) 0-1 (XPath: TEXOrdResponse/TXheader/buyer/street) 0-1 |
| subCountry | short name or code of the sub-country entity - base type: string, max length: 9, (XPath: TEXOrdResponse/TXbody/TXitem/thirdParty/subCountry) 0-1 (XPath: TEXOrdResponse/TXheader/supplier/subCountry) 0-1 (XPath: TEXOrdResponse/TXheader/thirdParty/subCountry) 0-1 |

| | |
|--------------------|---|
| | (XPath: TEXOrdResponse/TXheader/buyer/subCountry) 0-1 |
| surfaceTreatment | surface treatment applied to the fabric, as end result - base type: string, max length: 40, (XPath: TEXOrdResponse/TXbody/TXitem/fabricTreat/surfaceTreatment) 0-1 |
| @techSheet | specifies if the " technical characteristics of fabric" document must provided - base type: boolean, (XPath: TEXOrdResponse/texComInfo/@techSheet) [Optional] (XPath: TEXOrdResponse/TXbody/TXitem/texComInfo/@techSheet) [Optional] |
| totQty | total quantity of the articles related to the whole document - base type: decimal, min inclusive: 0, fraction digits: 2, (XPath: TEXOrdResponse/totals/totQty) 0-1 |
| transCondition | special condition of transport or special service requested to the Forwarder - base type: string, cod. table: T38, (XPath: TEXOrdResponse/terms/transInfo/transCondition) 0-3 |
| transConditionText | free text description of the special condition of transport or special service requested to the Forwarder - base type: string, max length: 100, (XPath: TEXOrdResponse/terms/transInfo/transConditionText) 0-1 |
| transMeans | means of transport, in general or referred to a specific leg - base type: string, cod. table: T40, (XPath: TEXOrdResponse/terms/transInfo/transMeans) 0-1 |
| transMode | way of transport, in general or referred to the specified leg - base type: string, cod. table: T8, (XPath: TEXOrdResponse/terms/transInfo/transMode) 1-1 |
| @transReason | reason for the transport - base type: string, cod. table: NT11, (XPath: TEXOrdResponse/terms/transInfo/@transReason) [Optional] |
| @um | specification of the unit of measure - base type: string, cod. table: NT7, (XPath: TEXOrdResponse/terms/transInfo/grossWeight/@um) [Required] (XPath: TEXOrdResponse/totals/totQty/@um) [Required] (XPath: TEXOrdResponse/texComInfo/pieceLength/@um) [Optional] [Default= MTR] (XPath: TEXOrdResponse/texComInfo/fabricWidth/@um) [Optional] [Default= CMT] (XPath: TEXOrdResponse/TXbody/TXitem/price/@um) [Optional] (XPath: TEXOrdResponse/TXbody/TXitem/qty/@um) [Required] (XPath: TEXOrdResponse/TXbody/TXitem/texComInfo/ fabricWidth/@um) [Optional] [Default= CMT] (XPath: TEXOrdResponse/terms/transInfo/netWeight/@um) [Required] (XPath: TEXOrdResponse/TXbody/TXitem/texComInfo/ pieceLength/@um) [Optional] [Default= MTR] |
| validityEnd | date by which the validity ends, according to one of the patterns YYYY-MM-DD, YYYY-MM-DD:HH-MM or YYYY-WW. - base type: string, (XPath: TEXOrdResponse/TXheader/validityEnd) 0-1 |
| @VAT | VAT rate or code - base type: string, cod. table: NT16, (XPath: TEXOrdResponse/TXbody/TXitem/thirdParty/@VAT) [Optional] (XPath: TEXOrdResponse/terms/allowanceCharge/@VAT) [Optional] (XPath: TEXOrdResponse/TXheader/thirdParty/@VAT) [Optional] (XPath: TEXOrdResponse/TXbody/TXitem/lineN/@VAT) [Optional] |

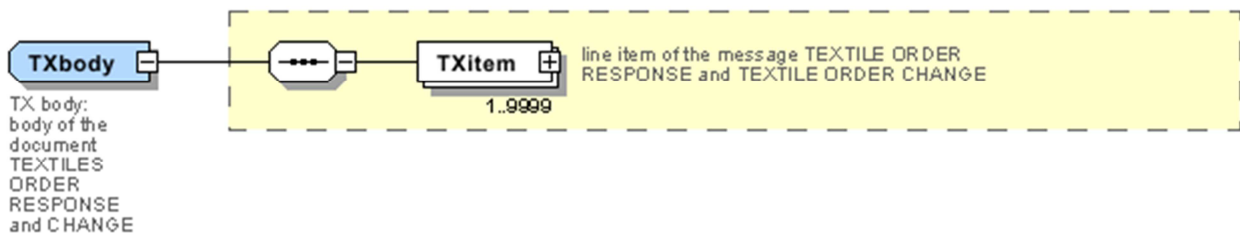
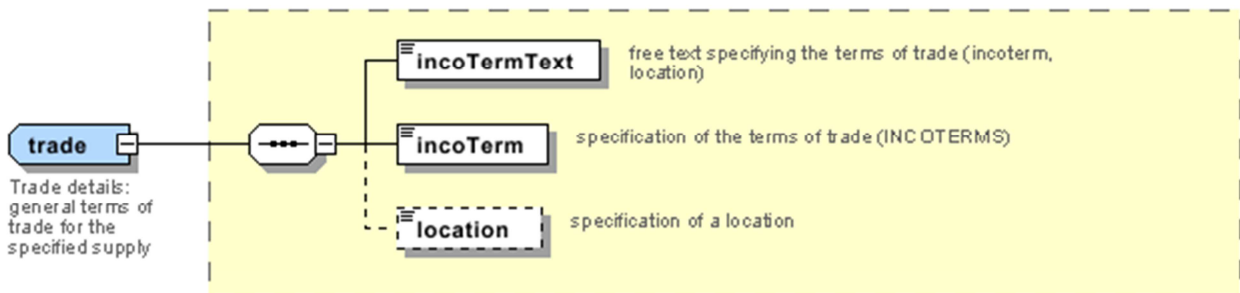
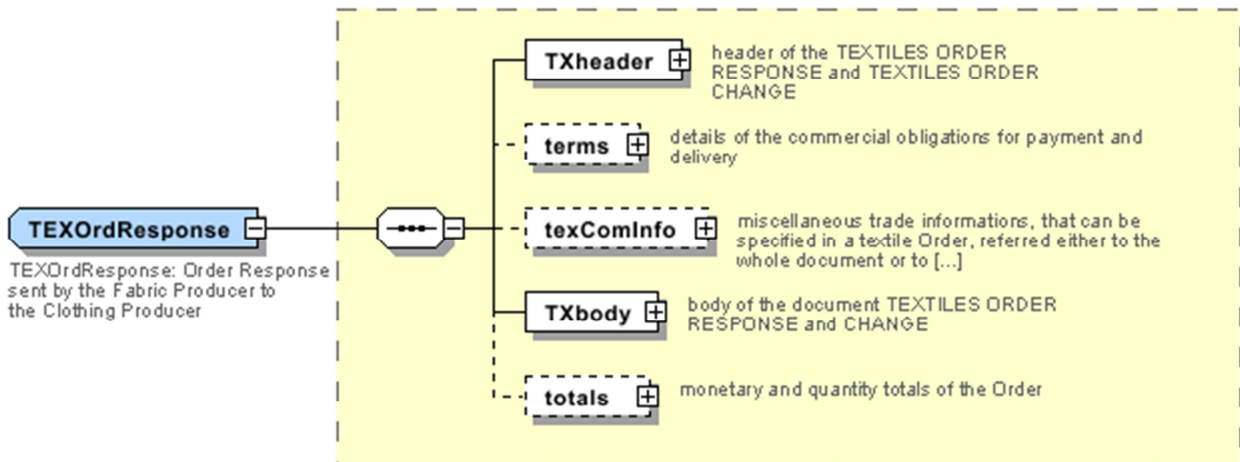
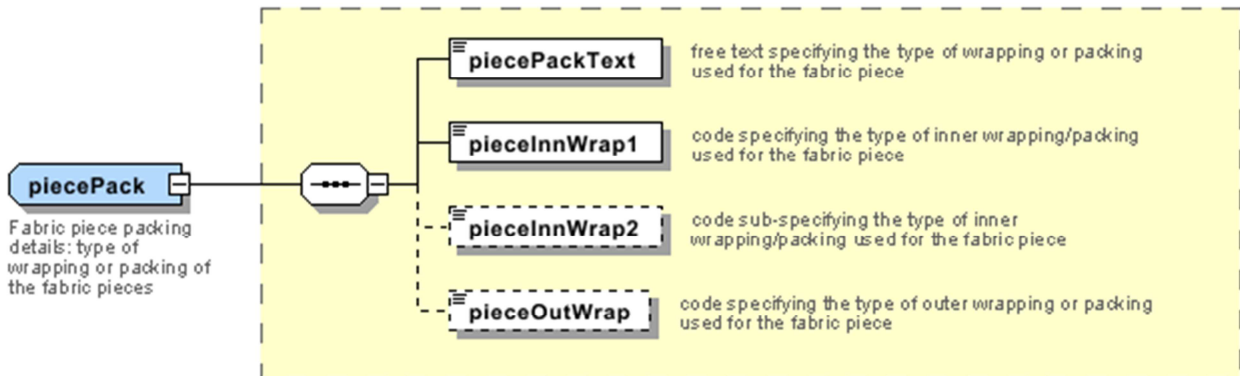
2.3 Enumeration tables

List of enumeration tables used in the XML document. You can find the corresponding codes (only for tables with less than 100 values) in the document `Decoding_Values.pdf`, available at: <http://www.moda-ml.org/moda-ml/repository/guide/v2011-1/>; moreover, all the enumeration tables are available at: <http://www.moda-ml.org/imple/show-codes.asp>.

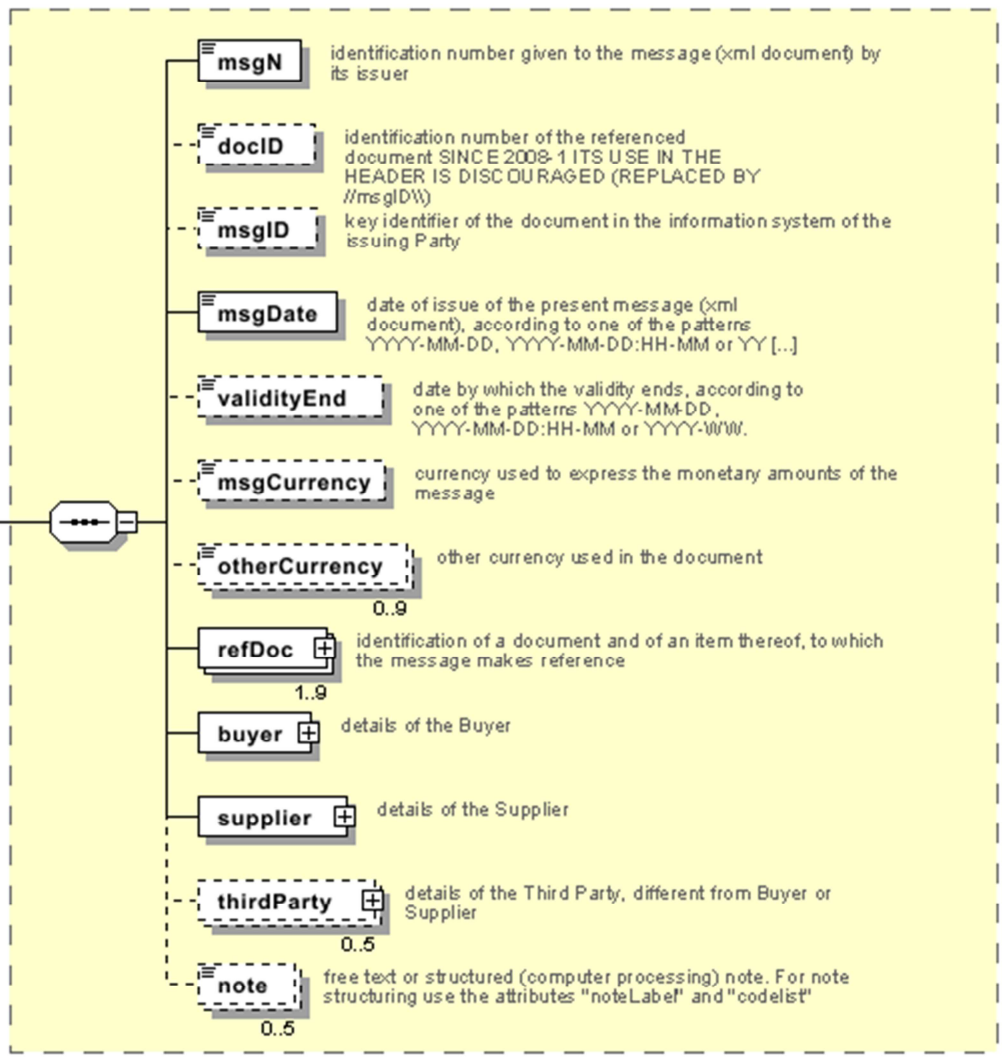
- NT11 - Transport causal
- NT16 - VAT rate or code
- NT18 - message function
- NT19 - currency use qualifier
- NT2 - Third party qualifier
- NT20 - price qualifier
- NT29 - format of a date
- NT3 - Data format
- NT4 - End use
- NT5 - Action code
- NT6 - Coding system owner/issuer
- NT7 - Unity of measure
- T1 - Terms of payment
- T10 - ISO3166 - Country
- T2 - Modes of payment
- T21 - type of document
- T3 - Terms of delivery
- T38 - transport conditions
- T4 - Fabric piece inner packing (wrapping) 1
- T40 - type of transport means
- T41 - type of Allowance or Charge
- T44 - additional code type
- T5 - Fabric piece inner packing (wrapping) 2
- T6 - Fabric piece outer packing
- T8 - Modes of Transport
- T9 - ISO4217 - Currency

Annex A

Representative images of the principal complex elements' structure.



TXheader
 TX header:
 header of
 the
 TEXTILES
 ORDER
 RESPONSE
 and
 TEXTILES
 ORDER
 CHANGE



TXitem
 TX item:
 line item
 of the
 message
 TEXTILE
 ORDER
 RESPONSE
 and
 TEXTILE
 ORDER
 CHANGE

