



<http://www.moda-ml.org>

IMPLEMENTATION GUIDE TRANSACTION "TEXTILE DESPATCH ADVICE"

Version: 2011-1

Date of release: 18/11/2011

Document code: G006

XML Schema repository:<http://www.moda-ml.org/moda-ml/repository/schema/v2011-1/default.asp>

Guides repository:<http://www.moda-ml.org/moda-ml/repository/guide/v2011-1/default.asp>

Guide filename: G006-MODA-ML-TextileDespatchAdvice.pdf

1. BUSINESS DESCRIPTION

1.1 Scope

The present guide has been issued to assist the companies of the Textile-Clothing sector in the implementation of the standard XML document type "Textile DESPATCH ADVISE", providing all the instruction required for its use in any context of e-commerce between Apparel Producers, Fabric Producers and their Subcontractors.

All the rules required for the construction and validation of the document are embedded into the specific XML-Schema, which is detailed in section "Implementation guide".

1.2 Generalities

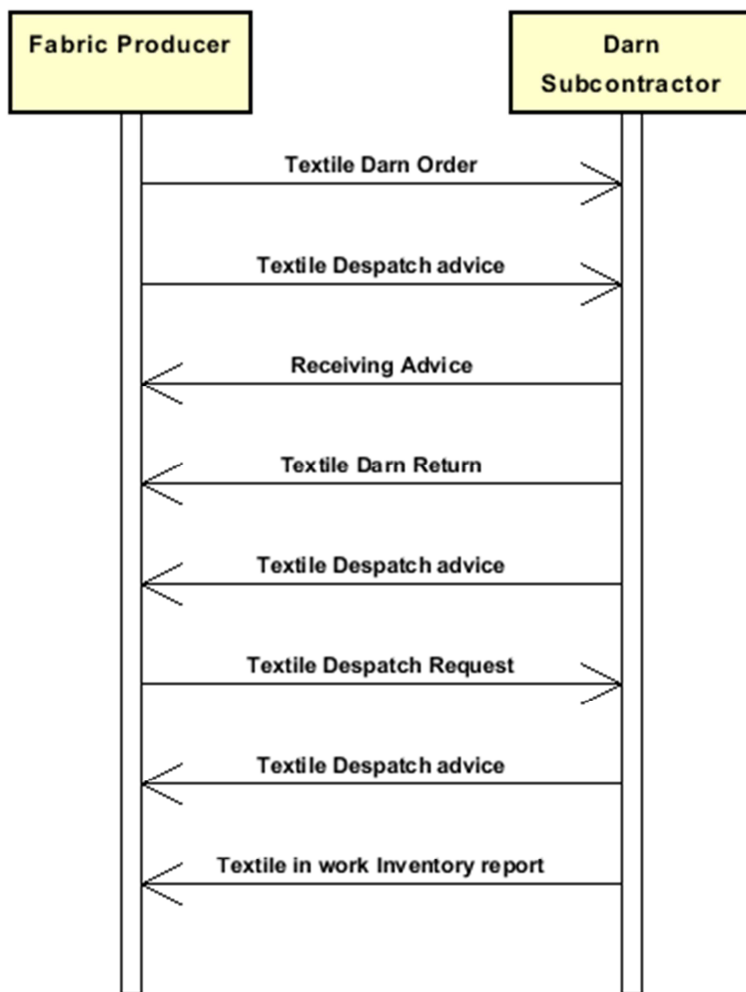
The message is issued to anticipate the details the articles actually despatched. The same message can be used with the client for sale and with the subcontractor for working operation (eg. darn disposition).

This document can be used:

- as a standard despatch advice
- as a pre-despatch notification of the goods that are to be despatched.

Each document item must correspond with a well defined fabric article (article + pattern + color) and must identify the actual pieces that make it up; for each item is possible to reference the Order line that is delivered.

1.3. Possible scenario



2. IMPLEMENTATION GUIDE

2.1 General structure of XML document

All the business data that can be exchanged through this class of documents are shown in the following "document structure", that provides a simplified vision of the Schema.

In particular:

- the two numbers following each element define its "cardinality" (minimum and maximum number of occurrences); the minimum equal zero indicates that the element is optional, the minimum greater than zero indicates that is mandatory;
- the bold character denotes the complex elements (aggregates of simple elements) that were built for the sake of functionality and re-usability of some complex informations sets. The child elements in each parent element are easily spotted as "indented";
- the symbol "@" denotes an attribute of the preceding element; here "the usage indicator (optional, required, ...) is shown in square brackets.

Structure

TEXDesAdvise

@TAtype [Optional] [Default= STD]

@msgfunction [Optional] [Default= OR]

THeader 1-1

msgN 1-1

- choose -

msgID 0-1

- or -

docID 0-1

@numberingOrg [Optional]

- end choose -

msgDate 1-1

@dateForm [Optional]

refDoc 0-9

@docType [Required]

docID 1-2

@numberingOrg [Optional]

docDate 0-1

@dateForm [Optional]

season 0-1

itemID 0-1

buyer 1-1

@logo [Optional]

@sender [Optional]

id 1-1

@numberingOrg [Optional]

legalName 0-1

dept 0-1

person 0-1

@email [Optional]

@phone [Optional]

@fax [Optional]

street 0-1

city 0-1

subCountry 0-1

country 0-1

postCode 0-1

supplier 1-1

@logo [Optional]

@sender [Optional]

id 1-1

@numberingOrg [Optional]
legalName 0-1
dept 0-1
person 0-1
@email [Optional]
@phone [Optional]
@fax [Optional]
street 0-1
city 0-1
subCountry 0-1
country 0-1
postCode 0-1

thirdParty 0-5

@VAT [Optional]
@role [Required]
@sender [Optional]
id 1-1
@numberingOrg [Optional]
legalName 0-1
dept 0-1
person 0-1
@email [Optional]
@phone [Optional]
@fax [Optional]
street 0-1
city 0-1
subCountry 0-1
country 0-1
postCode 0-1

note 0-5

@numberingOrg [Optional]
@codeList [Optional]
@noteLabel [Optional]

trade 0-1

- choose -
incoTermText 1-1
- or -
incoTerm 1-1
- end choose -
location 0-1
@LRI [Optional]

shipInfo 0-1

transInfo 0-5

@transReason [Optional]
transMode 1-1
carrier 0-1
deliveryPlace 0-1
grossWeight 0-1
@um [Required]
netWeight 0-1
@um [Required]
transMeans 0-1
transCondition 0-3
transConditionText 0-1

delEffectiveDate 0-1
@dateForm [Optional]

packages 0-5

@packageLevel [Optional]
- choose -

packageText 1-1
 - or -
 package 1-1
 - end choose -
packageDim 0-1
 length 1-1
 @um [Required]
 width 0-1
 @um [Required]
 height 0-1
 @um [Required]
 packageQty 0-1
 packageN 0-unbounded
 @numberingOrg [Optional]

piecePack 0-1

- choose -
 piecePackText 1-1
 - or -
 pieceInnWrap1 1-1
 pieceInnWrap2 0-1
 pieceOutWrap 0-1
 - end choose -

TAbody 1-1

TAitem 1-unbounded

@extinction [Optional] [Default= 0]
 lineN 1-1
 @VAT [Optional]
refDoc 0-9
 @docType [Required]
 docID 1-2
 @numberingOrg [Optional]
 docDate 0-1
 @dateForm [Optional]
 season 0-1
 itemID 0-1
texCode 1-2
 @numberingOrg [Optional]
 art 1-1
 @numberingOrg [Optional]
 @codeList [Optional]
 @listName [Optional]
 @listVersion [Optional]
 pattern 0-1
 @numberingOrg [Optional]
 @codeList [Optional]
 @listName [Optional]
 @listVersion [Optional]
 color 0-1
 @numberingOrg [Optional]
 @codeList [Optional]
 @listName [Optional]
 @listVersion [Optional]
 added 0-9
 @addType [Optional]
 description 0-1
 qty 1-1
 @um [Required]
piece 1-unbounded
 @endUse [Optional]

serialN 1-3
 @numberingOrg [Optional]
 totFault 0-1
 pieceStatus 0-1
 pieceLength 0-1
 @um [Optional] [Default= MTR]
 pieceWidth 0-1
 @um [Optional] [Default= CMT]
 pieceCutWidth 0-1
 @um [Optional] [Default= CMT]
 pieceWeight 0-1
 @um [Optional] [Default= KGM]
 pieceWeightM 0-1
 @um [Optional] [Default= GRM]
 pieceAllow 0-1
 @um [Required]
 lotN 0-1
 @numberingOrg [Optional]
 dyeN 0-1
 @numberingOrg [Optional]
 mixMatch 0-1
 @numberingOrg [Optional]
 packageN 0-1
 @numberingOrg [Optional]
piecePack 0-1
 - choose -
 piecePackText 1-1
 - or -
 pieceInnWrap1 1-1
 pieceInnWrap2 0-1
 pieceOutWrap 0-1
 - end choose -
 note 0-1
 @numberingOrg [Optional]
 @codeList [Optional]
 @noteLabel [Optional]

2.2 Detailed description of document elements

Following tables show all elements (complex and simple) used in this document. Description includes: 1) element's information: xml tag, name, brief description, data type and syntax constraints; 2) information about use of the element in a particular position in the document: xpath and possible associated notes.

2.2.1 Complex elements (Aggregate Business Information Entities)

Complex elements are those elements whose content is composed of other elements (childs).Complex elements are alphabetically ordered.

buyer	details of the Buyer - base type: , (XPath: TEXDesAdvise/TAheader/buyer) 1-1
packageDim	dimensions of a transport package (XPath: TEXDesAdvise/shipInfo/packages/packageDim) 0-1
packages	details of the transport packages (XPath: TEXDesAdvise/shipInfo/packages) 0-5 - note: <i>this data group must be iterated for each type of package</i>
piece	Identification data and measurement of the fabric piece (XPath: TEXDesAdvise/TAbody/TAitem/piece) 1-unbounded
piecePack	type of wrapping or packing of the fabric pieces (XPath: TEXDesAdvise/TAbody/TAitem/piece/piecePack) 0-1 (XPath: TEXDesAdvise/piecePack) 0-1
refDoc	identification of a document and of an item thereof, to which the message makes reference (XPath: TEXDesAdvise/TAheader/refDoc) 0-9 (XPath: TEXDesAdvise/TAbody/TAitem/refDoc) 0-9 - note: <i>here the number of the order line executed can be identified</i>
shipInfo	miscellaneous informations on transport and transport packages, referred either to the whole document or to the single item (XPath: TEXDesAdvise/shipInfo) 0-1
supplier	details of the Supplier - base type: , (XPath: TEXDesAdvise/TAheader/supplier) 1-1
TAbody	body of the document TEXTILES DESPATCH ADVISE (XPath: TEXDesAdvise/TAbody) 1-1
TAheader	header of the TEXTILES (YARN) DESPATCH ADVISE (XPath: TEXDesAdvise/TAheader) 1-1 - note: <i>the attribute "logo" should be used only in conjunction with Supplier</i>
TAitem	line item of the message TEXTILES DESPATCH ADVISE (XPath: TEXDesAdvise/TAbody/TAitem) 1-unbounded
texCode	full codification of the textile product (XPath: TEXDesAdvise/TAbody/TAitem/texCode) 1-2
thirdParty	details of the Third Party, different from Buyer or Supplier - base type: , (XPath: TEXDesAdvise/TAheader/thirdParty) 0-5 - note: <i>here the Consignee when different from the Client must be specified</i>
trade	general terms of trade for the specified supply (XPath: TEXDesAdvise/trade) 0-1

transInfo	<p>details of transport: mode, carrier and delivery place (XPath: TEXDesAdvise/shipInfo/transInfo) 0-5 - note: <i>this data group can be iterated for each transport leg</i></p>
------------------	--

2.2.2 Simple elements (Basic Business Information Entities)

Simple elements are those elements whose content is characterized by a data type plus a domain of possible values. Simple elements are alphabetically ordered.

added	<p>additional code of the product (complementing the formers) - base type: string, max length: 15, (XPath: TEXDesAdvise/TAbody/TAitem/texCode/added) 0-9 - note: <i>here an additional codification (see table T44) can be specified</i></p>
@addType	<p>qualifier of the additional coding of a product - base type: string, cod. table: T44, (XPath: TEXDesAdvise/TAbody/TAitem/texCode/added/@addType) [Optional]</p>
art	<p>article number of the product - base type: string, max length: 25, (XPath: TEXDesAdvise/TAbody/TAitem/texCode/art) 1-1 - note: <i>can be used either for the base-article (excluding pattern/colour) or for the SKU</i></p>
carrier	<p>identification of the transport carrier - base type: string, max length: 40, (XPath: TEXDesAdvise/shipInfo/transInfo/carrier) 0-1</p>
city	<p>name of the city (town, village) - base type: string, max length: 40, (XPath: TEXDesAdvise/TAheader/buyer/city) 0-1 (XPath: TEXDesAdvise/TAheader/supplier/city) 0-1 (XPath: TEXDesAdvise/TAheader/thirdParty/city) 0-1</p>
@codeList	<p>it specifies the URL where the list of codes used to make an instance of the element can be found - base type: string, max length: 255, (XPath: TEXDesAdvise/TAheader/note/@codeList) [Optional] - nota: <i>must be used to provide (URL) the list of codes used in "noteLabel"</i> (XPath: TEXDesAdvise/TAbody/TAitem/texCode/art/@codeList) [Optional] - nota: <i>this attribute should be ALTERNATIVE to the others</i> (XPath: TEXDesAdvise/TAbody/TAitem/texCode/pattern/@codeList) [Optional] - nota: <i>this attribute should be ALTERNATIVE to the others</i> (XPath: TEXDesAdvise/TAbody/TAitem/texCode/color/@codeList) [Optional] - nota: <i>this attribute should be ALTERNATIVE to the others</i> (XPath: TEXDesAdvise/TAbody/TAitem/note/@codeList) [Optional] - nota: <i>must be used to provide (URL) the list of codes used in "noteLabel"</i></p>
color	<p>colour number of the product, when not included in the model or fabric code - base type: string, max length: 15, (XPath: TEXDesAdvise/TAbody/TAitem/texCode/color) 0-1</p>
country	<p>code of the nation - base type: string, cod. table: T10, (XPath: TEXDesAdvise/TAheader/supplier/country) 0-1 (XPath: TEXDesAdvise/TAheader/buyer/country) 0-1 (XPath: TEXDesAdvise/TAheader/thirdParty/country) 0-1</p>
@dateForm	<p>format used for a date - base type: string, cod. table: NT29, (XPath: TEXDesAdvise/shipInfo/delEffectiveDate/@dateForm) [Optional] (XPath: TEXDesAdvise/TAbody/TAitem/refDoc/docDate/@dateForm) [Optional] (XPath: TEXDesAdvise/TAheader/msgDate/@dateForm) [Optional]</p>

	(XPath: TEXDesAdvise/TAheader/refDoc/docDate/@dateForm) [Optional]
delEffectiveDate	effective date of delivery of goods (declared in Despatch), according to one of the patterns YYYY-MM-DD, YYYY-MM-DD:HH-MM or YYYY-WW. - base type: string, (XPath: TEXDesAdvise/shipInfo/delEffectiveDate) 0-1
deliveryPlace	place of delivery of goods, ultimate or related to a given leg - base type: string, max length: 40, (XPath: TEXDesAdvise/shipInfo/transInfo/deliveryPlace) 0-1
dept	name or code of a contact department within a Party - base type: string, max length: 40, (XPath: TEXDesAdvise/TAheader/buyer/dept) 0-1 (XPath: TEXDesAdvise/TAheader/thirdParty/dept) 0-1 (XPath: TEXDesAdvise/TAheader/supplier/dept) 0-1
description	free text description of a product - base type: string, max length: 70, (XPath: TEXDesAdvise/TAbody/TAitem/texCode/description) 0-1
docDate	date of issue of the referenced document, according to one of the patterns YYYY-MM-DD, YYYY-MM-DD:HH-MM or YYYY-WW. - base type: string, (XPath: TEXDesAdvise/TAbody/TAitem/refDoc/docDate) 0-1 (XPath: TEXDesAdvise/TAheader/refDoc/docDate) 0-1
docID	identification number of the referenced document SINCE 2008-1 ITS USE IN THE HEADER IS DISCOURAGED (REPLACED BY) - base type: string, max length: 35, (XPath: TEXDesAdvise/TAheader/docID) 0-1 (XPath: TEXDesAdvise/TAbody/TAitem/refDoc/docID) 1-2 (XPath: TEXDesAdvise/TAheader/refDoc/docID) 1-2
@docType	type or class to which the referenced document belongs - base type: string, cod. table: T21, (XPath: TEXDesAdvise/TAheader/refDoc/@docType) [Required] (XPath: TEXDesAdvise/TAbody/TAitem/refDoc/@docType) [Required]
dyeN	number of the dying batch of a textile product - base type: string, max length: 15, (XPath: TEXDesAdvise/TAbody/TAitem/piece/dyeN) 0-1
@email	electronic mail address of the contact person within a Party - base type: string, max length: 80, (XPath: TEXDesAdvise/TAheader/thirdParty/person/@email) [Optional] (XPath: TEXDesAdvise/TAheader/supplier/person/@email) [Optional] (XPath: TEXDesAdvise/TAheader/buyer/person/@email) [Optional]
@endUse	specifies the final use of the material - base type: string, cod. table: NT4, (XPath: TEXDesAdvise/TAbody/TAitem/piece/@endUse) [Optional]
@extinction	specified if the referred position (document/line) in is cleared (exhausted) by this line item - base type: boolean, (XPath: TEXDesAdvise/TAbody/TAitem/@extinction) [Optional] [Default= 0]
@fax	fax number of the contact person within a Party - base type: string, max length: 35, (XPath: TEXDesAdvise/TAheader/supplier/person/@fax) [Optional] (XPath: TEXDesAdvise/TAheader/thirdParty/person/@fax) [Optional] (XPath: TEXDesAdvise/TAheader/buyer/person/@fax) [Optional]
grossWeight	the gross weight of the overall goods supply, declared for transport or customs purpose - base type: decimal, min inclusive: 0, fraction digits: 2,

	(XPath: TEXDesAdvise/shiplInfo/transInfo/grossWeight) 0-1
height	effective height of a specified object - base type: decimal, min inclusive: 0, fraction digits: 2, (XPath: TEXDesAdvise/shiplInfo/packages/packageDim/height) 0-1
id	primary identification code of a Party; it is recommended the format: nation code (ISO 3166) + VAT identification number (11 crt), with the qualifier "numberingOrg"= MF - base type: string, max length: 15, (XPath: TEXDesAdvise/TAheader/thirdParty/id) 1-1 (XPath: TEXDesAdvise/TAheader/buyer/id) 1-1 (XPath: TEXDesAdvise/TAheader/supplier/id) 1-1
incoTerm	specification of the terms of trade (INCOTERMS) - base type: string, cod. table: T3, (XPath: TEXDesAdvise/trade/incoTerm) 1-1
incoTermText	free text specifying the terms of trade (incoterm, location) - base type: string, max length: 70, (XPath: TEXDesAdvise/trade/incoTermText) 1-1
itemID	number of the line/item of the referenced document - base type: string, max length: 6, (XPath: TEXDesAdvise/TAheader/refDoc/itemID) 0-1 (XPath: TEXDesAdvise/TAbody/TAitem/refDoc/itemID) 0-1
legalName	legal name of a Party - base type: string, max length: 80, (XPath: TEXDesAdvise/TAheader/thirdParty/legalName) 0-1 (XPath: TEXDesAdvise/TAheader/buyer/legalName) 0-1 (XPath: TEXDesAdvise/TAheader/supplier/legalName) 0-1
length	effective length of a specified object - base type: decimal, min inclusive: 0, fraction digits: 2, (XPath: TEXDesAdvise/shiplInfo/packages/packageDim/length) 1-1 - note: <i>here the maximum dimension must also be specified</i>
lineN	number of the line item of the present message (xml document) - base type: positiveInteger, min inclusive: 1, max inclusive: 9999, (XPath: TEXDesAdvise/TAbody/TAitem/lineN) 1-1
@listName	it specifies the name of the list of codes used to make an instance of the element - base type: string, max length: 40, (XPath: TEXDesAdvise/TAbody/TAitem/texCode/color/@listName) [Optional] - nota: <i>this attribute should always be used coupled with "numberingOrg"</i> (XPath: TEXDesAdvise/TAbody/TAitem/texCode/pattern/@listName) [Optional] - nota: <i>this attribute should always be used coupled with "numberingOrg"</i> (XPath: TEXDesAdvise/TAbody/TAitem/texCode/art/@listName) [Optional] - nota: <i>this attribute should always be used coupled with "numberingOrg"</i>
@listVersion	it specifies the version of the list of codes used to make an instance of the element - base type: string, max length: 6, (XPath: TEXDesAdvise/TAbody/TAitem/texCode/art/@listVersion) [Optional] - nota: <i>this attribute should always be used coupled with "numberingOrg" and "listName"</i> (XPath: TEXDesAdvise/TAbody/TAitem/texCode/pattern/@listVersion) [Optional] - nota: <i>this attribute should always be used coupled with "numberingOrg" and "listName"</i> (XPath: TEXDesAdvise/TAbody/TAitem/texCode/color/@listVersion) [Optional] - nota: <i>this attribute should always be used coupled with "numberingOrg" and "listName"</i>
location	specification of a location

	<ul style="list-style-type: none"> - base type: string, max length: 40, (XPath: <i>TEXDesAdvise/trade/location</i>) 0-1 - note: <i>place to which the INCOTERM applies</i>
@logo	<p>company logo (URL of the image jpeg or gif). It is recommended that the width of the image does not exceed 640 pixel.</p> <ul style="list-style-type: none"> - base type: string, max length: 255, (XPath: <i>TEXDesAdvise/TAheader/supplier/@logo</i>) [Optional] (XPath: <i>TEXDesAdvise/TAheader/buyer/@logo</i>) [Optional]
lotN	<p>lot number of a product or batch number of the raw material</p> <ul style="list-style-type: none"> - base type: string, max length: 15, (XPath: <i>TEXDesAdvise/TAbody/TAitem/piece/lotN</i>) 0-1
@LRI	<p>attribute usable to format a string according to a customized User rule (local rule)</p> <ul style="list-style-type: none"> - base type: string, cod. table: NT3, (XPath: <i>TEXDesAdvise/trade/location/@LRI</i>) [Optional]
mixMatch	<p>colour hue used for the match of garments</p> <ul style="list-style-type: none"> - base type: string, max length: 15, (XPath: <i>TEXDesAdvise/TAbody/TAitem/piece/mixMatch</i>) 0-1
msgDate	<p>date of issue of the present message (xml document), according to one of the patterns YYYY-MM-DD, YYYY-MM-DD:HH-MM or YYYY-WW.</p> <ul style="list-style-type: none"> - base type: string, (XPath: <i>TEXDesAdvise/TAheader/msgDate</i>) 1-1
@msgfunction	<p>function performed by the present message with regards to the transmission</p> <ul style="list-style-type: none"> - base type: string, cod. table: NT18, (XPath: <i>TEXDesAdvise/@msgfunction</i>) [Optional] [Default= OR]
msgID	<p>key identifier of the document in the information system of the issuing Party</p> <ul style="list-style-type: none"> - base type: string, max length: 35, (XPath: <i>TEXDesAdvise/TAheader/msgID</i>) 0-1
msgN	<p>identification number given to the message (xml document) by its issuer</p> <ul style="list-style-type: none"> - base type: string, max length: 35, (XPath: <i>TEXDesAdvise/TAheader/msgN</i>) 1-1
netWeight	<p>the net weight of the overall goods supply, declared for transport or customs purpose</p> <ul style="list-style-type: none"> - base type: decimal, min inclusive: 0, fraction digits: 2, (XPath: <i>TEXDesAdvise/shipInfo/transInfo/netWeight</i>) 0-1
note	<p>free text or structured (computer processing) note. For note structuring use the attributes "noteLabel" and "codelist"</p> <ul style="list-style-type: none"> - base type: string, max length: 350, (XPath: <i>TEXDesAdvise/TAheader/note</i>) 0-5 (XPath: <i>TEXDesAdvise/TAbody/TAitem/note</i>) 0-1
@noteLabel	<p>subject qualifier of a note</p> <ul style="list-style-type: none"> - base type: string, max length: 35, (XPath: <i>TEXDesAdvise/TAheader/note/@noteLabel</i>) [Optional] - nota: <i>must be used to qualify the subject of the note</i> (XPath: <i>TEXDesAdvise/TAbody/TAitem/note/@noteLabel</i>) [Optional] - nota: <i>must be used to qualify the subject of the note</i>
@numberingOrg	<p>code specifying the organisation who has created or owns the coding or numbering system</p> <ul style="list-style-type: none"> - base type: string, cod. table: NT6, (XPath: <i>TEXDesAdvise/TAbody/TAitem/refDoc/docID/@numberingOrg</i>) [Optional] - nota: <i>here can be specified whose document numbering is used (e.g.: Client, Supplier, ..)</i> (XPath: <i>TEXDesAdvise/shipInfo/packages/packageN/@numberingOrg</i>) [Optional] (XPath: <i>TEXDesAdvise/TAheader/thirdParty/id/@numberingOrg</i>) [Optional]

	<p>(XPath: TEXDesAdvise/TABody/TAitem/piece/mixMatch/@numberingOrg) [Optional] (XPath: TEXDesAdvise/TABody/TAitem/piece/packageN/@numberingOrg) [Optional] (XPath: TEXDesAdvise/TABody/TAitem/texCode/color/@numberingOrg) [Optional] - nota: <i>this attribute should be used either single or coupled with "listName" and "listVersion"</i> (XPath: TEXDesAdvise/TAheader/docID/@numberingOrg) [Optional] - nota: <i>here can be specified whose document numbering is used (e.g.: Client, Supplier, ..)</i> (XPath: TEXDesAdvise/TAheader/note/@numberingOrg) [Optional] (XPath: TEXDesAdvise/TAheader/supplier/id/@numberingOrg) [Optional] (XPath: TEXDesAdvise/TAheader/buyer/id/@numberingOrg) [Optional] (XPath: TEXDesAdvise/TABody/TAitem/piece/serialN/@numberingOrg) [Optional] - nota: <i>here the issuer of the serial number must be specified (when different from the Supplier)</i> (XPath: TEXDesAdvise/TABody/TAitem/texCode/art/@numberingOrg) [Optional] - nota: <i>this attribute should be used either single or coupled with "listName" and "listVersion"</i> (XPath: TEXDesAdvise/TABody/TAitem/texCode/@numberingOrg) [Optional] (XPath: TEXDesAdvise/TAheader/refDoc/docID/@numberingOrg) [Optional] - nota: <i>here can be specified whose document numbering is used (e.g.: Client, Supplier, ..)</i> (XPath: TEXDesAdvise/TABody/TAitem/texCode/pattern/@numberingOrg) [Optional] - nota: <i>this attribute should be used either single or coupled with "listName" and "listVersion"</i> (XPath: TEXDesAdvise/TABody/TAitem/piece/dyeN/@numberingOrg) [Optional] (XPath: TEXDesAdvise/TABody/TAitem/note/@numberingOrg) [Optional] (XPath: TEXDesAdvise/TABody/TAitem/piece/lotN/@numberingOrg) [Optional]</p>
package	<p>code specifying the type of package used for transport and delivery - base type: string, cod. table: T11, (XPath: TEXDesAdvise/shipInfo/packages/package) 1-1</p>
@packageLevel	<p>level used to indicate the hierarchical structure of the packages (from outer to inner levels) - base type: positiveInteger, min inclusive: 1, max inclusive: 9, (XPath: TEXDesAdvise/shipInfo/packages/@packageLevel) [Optional] - nota: <i>the hierarchic indication of the packages stucture must either be used for all packages or not be used</i></p>
packageN	<p>serial number used to identify a transport package - base type: string, max length: 25, (XPath: TEXDesAdvise/TABody/TAitem/piece/packageN) 0-1 - note: <i>here the transport package containing the piece can be identified</i> (XPath: TEXDesAdvise/shipInfo/packages/packageN) 0-unbounded - note: <i>here the serial no.s of the packages can be identified</i></p>
packageQty	<p>quantity of the specified transport packages - base type: positiveInteger, (XPath: TEXDesAdvise/shipInfo/packages/packageQty) 0-1 - note: <i>total for the type of package</i></p>
packageText	<p>free text specifying the type of package used for transport and delivery - base type: string, max length: 40, (XPath: TEXDesAdvise/shipInfo/packages/packageText) 1-1</p>
pattern	<p>pattern/design number of the product, when not included in the article code - base type: string, max length: 15, (XPath: TEXDesAdvise/TABody/TAitem/texCode/pattern) 0-1</p>
person	<p>name of the contact person within a Party - base type: string, max length: 40, (XPath: TEXDesAdvise/TAheader/supplier/person) 0-1 (XPath: TEXDesAdvise/TAheader/thirdParty/person) 0-1 (XPath: TEXDesAdvise/TAheader/buyer/person) 0-1</p>

@phone	phone number of the contact person within a Party - base type: string, max length: 35, (XPath: TEXDesAdvise/TAheader/buyer/person/@phone) [Optional] (XPath: TEXDesAdvise/TAheader/thirdParty/person/@phone) [Optional] (XPath: TEXDesAdvise/TAheader/supplier/person/@phone) [Optional]
pieceAllow	allowance required or accorded for the piece - base type: decimal, fraction digits: 2, (XPath: TEXDesAdvise/TAbody/TAitem/piece/pieceAllow) 0-1
pieceCutWidth	effective usable width of the fabric piece (for garment manufacturing) - base type: decimal, min inclusive: 0, fraction digits: 2, (XPath: TEXDesAdvise/TAbody/TAitem/piece/pieceCutWidth) 0-1
pieceInnWrap1	code specifying the type of inner wrapping/packing used for the fabric piece - base type: string, cod. table: T4, (XPath: TEXDesAdvise/TAbody/TAitem/piece/piecePack/pieceInnWrap1) 1-1 (XPath: TEXDesAdvise/piecePack/pieceInnWrap1) 1-1
pieceInnWrap2	code sub-specifying the type of inner wrapping/packing used for the fabric piece - base type: string, cod. table: T5, (XPath: TEXDesAdvise/TAbody/TAitem/piece/piecePack/pieceInnWrap2) 0-1 (XPath: TEXDesAdvise/piecePack/pieceInnWrap2) 0-1
pieceLength	length of the piece - base type: decimal, min inclusive: 0, fraction digits: 2, (XPath: TEXDesAdvise/TAbody/TAitem/piece/pieceLength) 0-1
pieceOutWrap	code specifying the type of outer wrapping or packing used for the fabric piece - base type: string, cod. table: T6, (XPath: TEXDesAdvise/TAbody/TAitem/piece/piecePack/pieceOutWrap) 0-1 (XPath: TEXDesAdvise/piecePack/pieceOutWrap) 0-1
piecePackText	free text specifying the type of wrapping or packing used for the fabric piece - base type: string, max length: 40, (XPath: TEXDesAdvise/TAbody/TAitem/piece/piecePack/piecePackText) 1-1 (XPath: TEXDesAdvise/piecePack/piecePackText) 1-1
pieceStatus	code used to describe the status of a fabric piece after the control - base type: string, cod. table: T52, (XPath: TEXDesAdvise/TAbody/TAitem/piece/pieceStatus) 0-1
pieceWeight	effective total weight of the fabric piece - base type: decimal, min inclusive: 0, fraction digits: 2, (XPath: TEXDesAdvise/TAbody/TAitem/piece/pieceWeight) 0-1
pieceWeightM	effective weight per metre of the fabric piece - base type: decimal, min inclusive: 0, fraction digits: 2, (XPath: TEXDesAdvise/TAbody/TAitem/piece/pieceWeightM) 0-1
pieceWidth	effective width of the fabric piece - base type: decimal, min inclusive: 0, fraction digits: 2, (XPath: TEXDesAdvise/TAbody/TAitem/piece/pieceWidth) 0-1
postCode	code defining the postal zone - base type: string, max length: 10, (XPath: TEXDesAdvise/TAheader/buyer/postCode) 0-1 (XPath: TEXDesAdvise/TAheader/supplier/postCode) 0-1 (XPath: TEXDesAdvise/TAheader/thirdParty/postCode) 0-1
qty	net quantity of the article or object correlated, qualified by the function of the document (ordering, delivering, ..) and by the context - base type: decimal, min inclusive: 0, fraction digits: 2, (XPath: TEXDesAdvise/TAbody/TAitem/qty) 1-1

@role	Third Party role qualifier - base type: string, cod. table: NT2, (XPath: TEXDesAdvise/TAheader/thirdParty/@role) [Required]
season	sale season; defined as: season (1 crt) + year (4 crt) - season: S/S=1 A/W=2 Spring=3 Summer=4 Autumn=5 Winter=6: for more than four seasons use alphabetic sequence: 1st season=A 2nd season=B etc.etc. - base type: string, max length: 15, (XPath: TEXDesAdvise/TAheader/refDoc/season) 0-1 - note: here indicates the season to which the referenced document belongs (XPath: TEXDesAdvise/TAbody/TAitem/refDoc/season) 0-1 - note: here indicates the season to which the referenced document belongs
@sender	qualifier that specifies the Party issuing of the document - base type: boolean, (XPath: TEXDesAdvise/TAheader/buyer/@sender) [Optional] - nota: This attribute is mandatory when the STYLESHEET must be produced (XPath: TEXDesAdvise/TAheader/thirdParty/@sender) [Optional] - nota: This attribute is mandatory when the STYLESHEET must be produced (XPath: TEXDesAdvise/TAheader/supplier/@sender) [Optional] - nota: This attribute is mandatory when the STYLESHEET must be produced
serialN	serial number used for the identification of a physical unit - base type: string, max length: 15, (XPath: TEXDesAdvise/TAbody/TAitem/piece/serialN) 1-3
street	street and building number identifying a location - base type: string, max length: 80, (XPath: TEXDesAdvise/TAheader/buyer/street) 0-1 (XPath: TEXDesAdvise/TAheader/thirdParty/street) 0-1 (XPath: TEXDesAdvise/TAheader/supplier/street) 0-1
subCountry	short name or code of the sub-country entity - base type: string, max length: 9, (XPath: TEXDesAdvise/TAheader/thirdParty/subCountry) 0-1 (XPath: TEXDesAdvise/TAheader/supplier/subCountry) 0-1 (XPath: TEXDesAdvise/TAheader/buyer/subCountry) 0-1
@TAtype	type of Despatch advise - base type: string, cod. table: NT10, (XPath: TEXDesAdvise/@TAtype) [Optional] [Default= STD]
totFault	total number of faults: the 1st/2nd digit count the "Large faults", the 3rd/4th the "Medium faults" and the 5th/6th the "Small faults" - base type: positiveInteger, (XPath: TEXDesAdvise/TAbody/TAitem/piece/totFault) 0-1
transCondition	special condition of transport or special service requested to the Forwarder - base type: string, cod. table: T38, (XPath: TEXDesAdvise/shipInfo/transInfo/transCondition) 0-3
transConditionText	free text description of the special condition of transport or special service requested to the Forwarder - base type: string, max length: 100, (XPath: TEXDesAdvise/shipInfo/transInfo/transConditionText) 0-1
transMeans	means of transport, in general or referred to a specific leg - base type: string, cod. table: T40, (XPath: TEXDesAdvise/shipInfo/transInfo/transMeans) 0-1
transMode	way of transport, in general or referred to the specified leg - base type: string, cod. table: T8, (XPath: TEXDesAdvise/shipInfo/transInfo/transMode) 1-1

@transReason	reason for the transport - base type: string, cod. table: NT11, (XPath: TEXDesAdvise/shipInfo/transInfo/@transReason) [Optional]
@um	specification of the unit of measure - base type: string, cod. table: NT7, (XPath: TEXDesAdvise/TAbody/TAitem/qty/@um) [Required] (XPath: TEXDesAdvise/shipInfo/transInfo/netWeight/@um) [Required] (XPath: TEXDesAdvise/TAbody/TAitem/piece/pieceLength/@um) [Optional] [Default= MTR] (XPath: TEXDesAdvise/shipInfo/packages/packageDim/height/@um) [Required] (XPath: TEXDesAdvise/shipInfo/packages/packageDim/width/@um) [Required] (XPath: TEXDesAdvise/shipInfo/packages/packageDim/length/@um) [Required] (XPath: TEXDesAdvise/TAbody/TAitem/piece/pieceWidth/@um) [Optional] [Default=CMT] (XPath: TEXDesAdvise/TAbody/TAitem/piece/pieceWeight/@um) [Optional] [Default= KGM] (XPath: TEXDesAdvise/TAbody/TAitem/piece/pieceWeightM/@um) [Optional] [Default= GRM] (XPath: TEXDesAdvise/TAbody/TAitem/piece/pieceAllow/@um) [Required] (XPath: TEXDesAdvise/shipInfo/transInfo/grossWeight/@um) [Required] (XPath: TEXDesAdvise/TAbody/TAitem/piece/pieceCutWidth/@um) [Optional] [Default= CMT]
@VAT	VAT rate or code - base type: string, cod. table: NT16, (XPath: TEXDesAdvise/THeader/thirdParty/@VAT) [Optional] (XPath: TEXDesAdvise/TAbody/TAitem/lineN/@VAT) [Optional]
width	effective width of a specified object - base type: decimal, min inclusive: 0, fraction digits: 2, (XPath: TEXDesAdvise/shipInfo/packages/packageDim/width) 0-1

2.3 Enumeration tables

List of enumeration tables used in the XML document. You can find the corresponding codes (only for tables with less than 100 values) in the document `Decoding_Values.pdf`, available at: <http://www.moda-ml.org/moda-ml/repository/guide/v2011-1/>; moreover, all the enumeration tables are available at: <http://www.moda-ml.org/imple/show-codes.asp>.

- NT10 - Despatch advise type
- NT11 - Transport causal
- NT16 - VAT rate or code
- NT18 - message function
- NT2 - Third party qualifier
- NT29 - format of a date
- NT3 - Data format
- NT4 - End use
- NT6 - Coding system owner/issuer
- NT7 - Unity of measure
- T10 - ISO3166 - Country
- T11 - Transport package type
- T21 - type of document
- T3 - Terms of delivery
- T38 - transport conditions
- T4 - Fabric piece inner packing (wrapping) 1
- T40 - type of transport means
- T44 - additional code type
- T5 - Fabric piece inner packing (wrapping) 2
- T52 - fabric piece status
- T6 - Fabric piece outer packing
- T8 - Modes of Transport

Annex A

Representative images of the principal complex elements' structure.

