



<http://www.moda-ml.org>

IMPLEMENTATION GUIDE
TRANSACTION "TEXTILE QUALITY REPORT"

Version: 2011-1

Date of release: 18/11/2011

Document code: G007

XML Schema repository:<http://www.moda-ml.org/moda-ml/repository/schema/v2011-1/default.asp>

Guides repository:<http://www.moda-ml.org/moda-ml/repository/guide/v2011-1/default.asp>

Guide filename: G007-MODA-ML-TextileQualityReport.pdf

1. BUSINESS DESCRIPTION

1.1 Scope

The present guide has been issued to assist the companies of the Textile-Clothing sector in the implementation of the standard XML document type "Textile QUALITY REPORT", providing all the instructions required for its use in any context of e-commerce between Apparel Producers and Fabric Producers.

All the rules required for the construction and validation of the document are embedded into the specific XML-Schema, which is detailed in section "Implementation guide".

1.2 Generalities

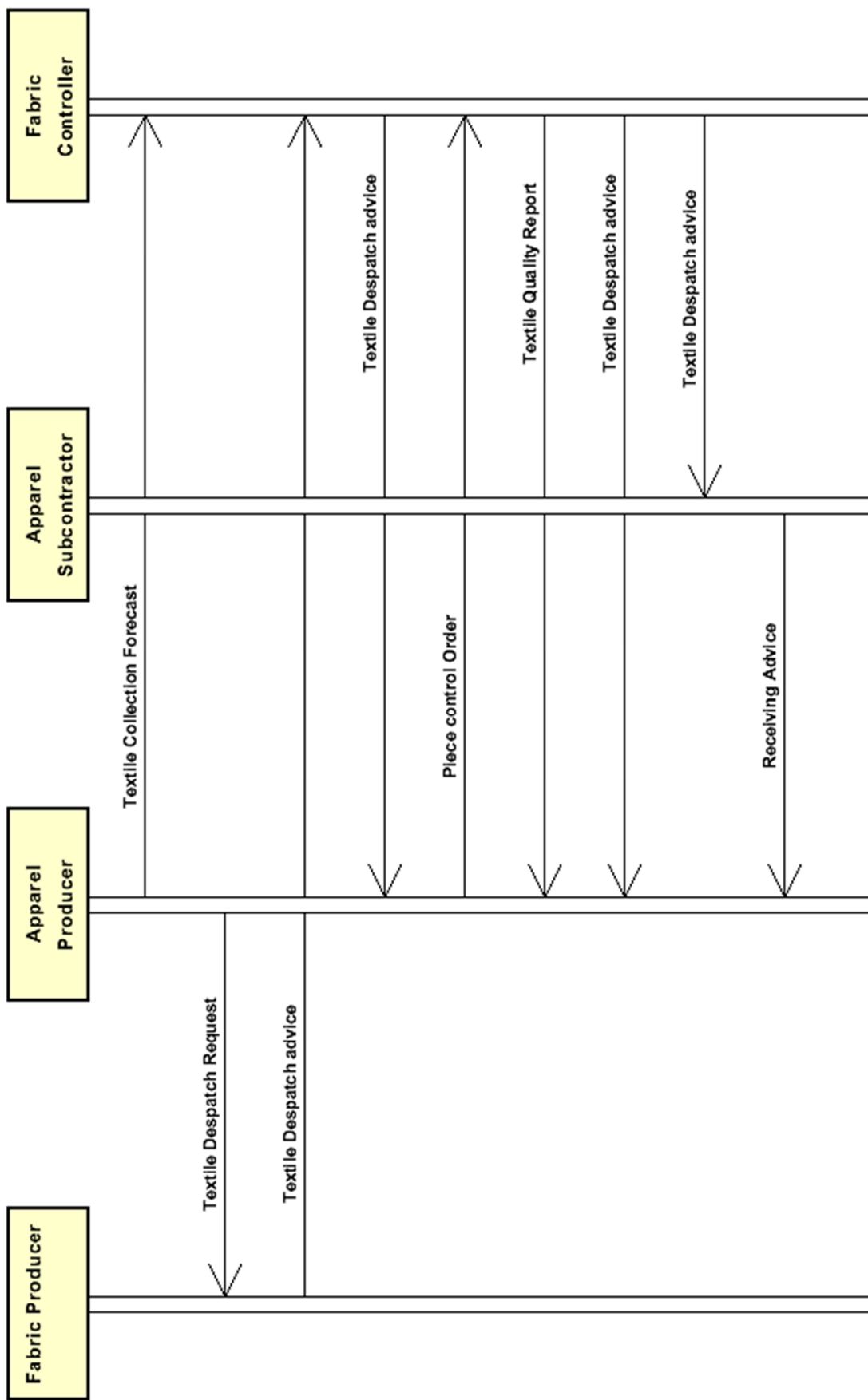
The message is issued either by the Fabric Producer and/or by the Fabric Quality Controller as "quality certificate" of the fabric piece, mainly to anticipate the details on the existence, position and classification of faults in order to accelerate and improve the following apparel manufacturing.

Each document refers either to one piece of fabric, identified by its id. number (TQ type ="S"ingle) or to several pieces belonging to the same shipment (TQ type="M"ultiple) and likewise identified.

The following classes of data can be reported in the document:

- physical dimensions and overall allowance
- fabric faults and their positions
- test value of conformance to specifications and taylorability
- the reporting of the inspection.

1.3. Possible scenario



2. IMPLEMENTATION GUIDE

2.1 General structure of XML document

All the business data that can be exchanged through this class of documents are shown in the following "document structure", that provides a simplified vision of the Schema.

In particular:

- the two numbers following each element define its "cardinality" (minimum and maximum number of occurrences); the minimum equal zero indicates that the element is optional, the minimum greater than zero indicates that is mandatory;
- the bold character denotes the complex elements (aggregates of simple elements) that were built for the sake of functionality and re-usability of some complex informations sets. The child elements in each parent element are easily spotted as "indented";
- the symbol "@" denotes an attribute of the preceding element; here "the usage indicator (optional, required, ...) is shown in square brackets.

Structure

TEXQualityRpt

@TQtype [Optional]

@msgfunction [Optional] [Default= OR]

TQheader 1-1

msgN 1-1

- choose -

msgID 0-1

- or -

docID 0-1

@numberingOrg [Optional]

- end choose -

msgDate 1-1

@dateForm [Optional]

buyer 1-1

@logo [Optional]

@sender [Optional]

id 1-1

@numberingOrg [Optional]

legalName 0-1

dept 0-1

person 0-1

@email [Optional]

@phone [Optional]

@fax [Optional]

street 0-1

city 0-1

subCountry 0-1

country 0-1

postCode 0-1

supplier 1-1

@logo [Optional]

@sender [Optional]

id 1-1

@numberingOrg [Optional]

legalName 0-1

dept 0-1

person 0-1

@email [Optional]

@phone [Optional]

@fax [Optional]

street 0-1

city 0-1
subCountry 0-1
country 0-1
postCode 0-1
thirdParty 0-5
@VAT [Optional]
@role [Required]
@sender [Optional]
id 1-1
@numberingOrg [Optional]
legalName 0-1
dept 0-1
person 0-1
@email [Optional]
@phone [Optional]
@fax [Optional]
street 0-1
city 0-1
subCountry 0-1
country 0-1
postCode 0-1
note 0-9
@numberingOrg [Optional]
@codeList [Optional]
@noteLabel [Optional]

TQbody 1-1

TQitem 1-unbounded

serialN 1-3
@numberingOrg [Optional]
texCode 0-2
@numberingOrg [Optional]
art 1-1
@numberingOrg [Optional]
@codeList [Optional]
@listName [Optional]
@listVersion [Optional]
pattern 0-1
@numberingOrg [Optional]
@codeList [Optional]
@listName [Optional]
@listVersion [Optional]
color 0-1
@numberingOrg [Optional]
@codeList [Optional]
@listName [Optional]
@listVersion [Optional]
added 0-9
@addType [Optional]
description 0-1
refDoc 0-1
@docType [Required]
docID 1-2
@numberingOrg [Optional]
docDate 0-1
@dateForm [Optional]
season 0-1
itemID 0-1
testDate 0-1
@dateForm [Optional]
lotN 0-1

@numberingOrg [Optional]
 dyeN 0-1
 @numberingOrg [Optional]
 mixMatch 0-1
 @numberingOrg [Optional]
pieceMeasures 1-3
 @source [Required]
 pieceLength 0-1
 @um [Optional] [Default= MTR]
 pieceWeight 0-1
 @um [Optional] [Default= KGM]
 pieceCutWidth 0-1
 @um [Optional] [Default= CMT]
 pieceWeightM 0-1
 @um [Optional] [Default= GRM]
 pieceWidth 0-1
 @um [Optional] [Default= CMT]
 pieceAllow 0-1
 @um [Required]
pieceAllowMea 0-2
 @source [Required]
 pieceAllowM 0-1
 @um [Required]
 pieceAllowF 0-1
 @um [Required]
 pieceAllow 1-1
 @um [Required]
pieceMap 1-2
 @source [Required]
 totFault 1-1
 pieceFault 0-99
 @faultRank [Required]
 @faultShape [Optional]
 - choose -
 fabricFaultText 1-1
 - or -
 fabricFault 1-1
 - end choose -
 warpStart 1-1
 @um [Optional] [Default= MTR]
 warpEnd 0-1
 @um [Optional] [Default= MTR]
 weftStart 0-1
 @um [Optional] [Default= CMT]
 weftEnd 0-1
 @um [Optional] [Default= CMT]
 pieceAllow 0-1
 @um [Required]
 note 0-1
 @numberingOrg [Optional]
 @codeList [Optional]
 @noteLabel [Optional]
pieceTestRpt 0-2
 @source [Required]
 fabricTest 1-99
 - choose -
 fabricChar 1-1
 - or -
 fabricCharText 1-1
 - end choose -
 experimValue 0-9

@method [Optional]
@application [Optional]
comply 0-1
note 0-1
@numberingOrg [Optional]
@codeList [Optional]
@noteLabel [Optional]

fabricTaylorability 0-99

taylorabilityChar 1-1
experimValue 0-9
@method [Optional]
@application [Optional]
comply 0-1
note 0-1
@numberingOrg [Optional]
@codeList [Optional]
@noteLabel [Optional]

pieceControlRpt 1-1

pieceControl 0-1
@numberingOrg [Optional]
pieceStatus 0-1
registrationDate 0-1
@dateForm [Optional]
preexaminationDate 0-1
@dateForm [Optional]
inspectionDate 0-1
@dateForm [Optional]
rollUpDate 0-1
@dateForm [Optional]

2.2 Detailed description of document elements

Following tables show all elements (complex and simple) used in this document. Description includes: 1) element's information: xml tag, name, brief description, data type and syntax constraints; 2) information about use of the element in a particular position in the document: xpath and possible associated notes.

2.2.1 Complex elements (Aggregate Business Information Entities)

Complex elements are those elements whose content is composed of other elements (childs). Complex elements are alphabetically ordered.

buyer	details of the Buyer - base type: , (XPath: TEXQualityRpt/TQheader/buyer) 1-1
fabricTaylorability	taylorability data. Include the type and the value of the taylorability parameter (XPath: TEXQualityRpt/TQbody/TQitem/pieceTestRpt/fabricTaylorability) 0-99
fabricTest	details of the test performed on a fabric. Include the parameter evaluated, the experimental value (one or more) and the declaration of conformity (XPath: TEXQualityRpt/TQbody/TQitem/pieceTestRpt/fabricTest) 1-99
pieceAllowMea	allowance measure for a fabric piece (XPath: TEXQualityRpt/TQbody/TQitem/pieceAllowMea) 0-2
pieceControlRpt	report of the control operations executed on a fabric piece (XPath: TEXQualityRpt/TQbody/TQitem/pieceControlRpt) 1-1
pieceFault	classification, position and allowance of the piece faults. The reference point (0,0) for the position is the lower left corner of the piece (selvedge excluded) (XPath: TEXQualityRpt/TQbody/TQitem/pieceMap/pieceFault) 0-99
pieceMap	mapping of the piece faults: type, rank and location (XPath: TEXQualityRpt/TQbody/TQitem/pieceMap) 1-2 - note: <i>this data group can be iterated to compare the values provided by the Supplier with the values obtained by the external Quality Controller</i>
pieceMeasures	basic measurements of the piece; include width, length, weight and allowance. (XPath: TEXQualityRpt/TQbody/TQitem/pieceMeasures) 1-3 - note: <i>this data group can be iterated to compare the values provided by the Supplier with the values obtained by the external Quality Controller</i>
pieceTestRpt	details of the quality test performed on the piece. Includes two sections: test upon the technical characteristics of fabric in general and the taylorability test (XPath: TEXQualityRpt/TQbody/TQitem/pieceTestRpt) 0-2 - note: <i>this data group can be iterated to compare the values provided by the Supplier with the values obtained by the external Quality Controller</i>
refDoc	identification of a document and of an item thereof, to which the message makes reference (XPath: TEXQualityRpt/TQbody/TQitem/refDoc) 0-1 - note: <i>here the number of the Despatch Advise of the piece can be specified</i>
supplier	details of the Supplier - base type: , (XPath: TEXQualityRpt/TQheader/supplier) 1-1
texCode	full codification of the textile product (XPath: TEXQualityRpt/TQbody/TQitem/texCode) 0-2

thirdParty	<p>details of the Third Party, different from Buyer or Supplier</p> <ul style="list-style-type: none"> - base type: , (XPath: <code>TEXQualityRpt/TQheader/thirdParty</code>) 0-5 - note: <i>in this case the only permitted third Party is the Controller (role="CO")</i>
TQbody	<p>body of the document TEXTILES QUALITY REPORT. It contains one TQitem element for each textile quality report.</p> <ul style="list-style-type: none"> (XPath: <code>TEXQualityRpt/TQbody</code>) 1-1 - note: <i>In multiple reports (TQtype="M") this section must contain more than one TQitem.</i>
TQheader	<p>header of the TEXTILES QUALITY REPORT.</p> <ul style="list-style-type: none"> (XPath: <code>TEXQualityRpt/TQheader</code>) 1-1 - note: <i>In the document issued by the Controller (sent to Client and Supplier) the Controller must identify as "third party". the attribute "logo" should be used only in conjunction with Supplier or Quality Controller.</i>
TQitem	<p>line item of the document TEXTILES QUALITY REPORT. It includes 5 sections: identification data-measurements-faults map- test results-inspection report</p> <ul style="list-style-type: none"> (XPath: <code>TEXQualityRpt/TQbody/TQitem</code>) 1-unbounded

2.2.2 Simple elements (Basic Business Information Entities)

Simple elements are those elements whose content is characterized by a data type plus a domain of possible values. Simple elements are alphabetically ordered.

added	<p>additional code of the product (complementing the formers)</p> <ul style="list-style-type: none"> - base type: string, max length: 15, (XPath: <code>TEXQualityRpt/TQbody/TQitem/texCode/added</code>) 0-9 - note: <i>here an additional codification (see table T44) can be specified</i>
@addType	<p>qualifier of the additional coding of a product</p> <ul style="list-style-type: none"> - base type: string, cod. table: T44, (XPath: <code>TEXQualityRpt/TQbody/TQitem/texCode/added/@addType</code>) [Optional]
@application	<p>force or similar condition (e.g. no. of revolutions) applied in a test as specified within the standard</p> <ul style="list-style-type: none"> - base type: string, max length: 15, (XPath: <code>TEXQualityRpt/TQbody/TQitem/pieceTestRpt/fabricTest/experimValue/@application</code>) [Optional] (XPath: <code>TEXQualityRpt/TQbody/TQitem/pieceTestRpt/fabricTaylorability/experimValue/@application</code>) [Optional]
art	<p>article number of the product</p> <ul style="list-style-type: none"> - base type: string, max length: 25, (XPath: <code>TEXQualityRpt/TQbody/TQitem/texCode/art</code>) 1-1 - note: <i>can be used either for the base-article (excluding pattern/colour) or for the SKU</i>
city	<p>name of the city (town, village)</p> <ul style="list-style-type: none"> - base type: string, max length: 40, (XPath: <code>TEXQualityRpt/TQheader/supplier/city</code>) 0-1 (XPath: <code>TEXQualityRpt/TQheader/thirdParty/city</code>) 0-1 (XPath: <code>TEXQualityRpt/TQheader/buyer/city</code>) 0-1
@codeList	<p>it specifies the URL where the list of codes used to make an instance of the element can be found</p> <ul style="list-style-type: none"> - base type: string, max length: 255, (XPath: <code>TEXQualityRpt/TQbody/TQitem/texCode/art/@codeList</code>) [Optional] - nota: <i>this attribute should be ALTERNATIVE to the others</i>

	<p>(XPath: <code>TEXQualityRpt/TQheader/note/@codeList</code>) [Optional] - nota: <i>must be used to provide (URL) the list of codes used in "noteLabel"</i> (XPath: <code>TEXQualityRpt/TQbody/TQitem/pieceMap/pieceFault/note/@codeList</code>) [Optional] - nota: <i>must be used to provide (URL) the list of codes used in "noteLabel"</i> (XPath: <code>TEXQualityRpt/TQbody/TQitem/texCode/pattern/@codeList</code>) [Optional] - nota: <i>this attribute should be ALTERNATIVE to the others</i> (XPath: <code>TEXQualityRpt/TQbody/TQitem/pieceTestRpt/fabricTaylorability/note/@codeList</code>) [Optional] - nota: <i>must be used to provide (URL) the list of codes used in "noteLabel"</i> (XPath: <code>TEXQualityRpt/TQbody/TQitem/texCode/color/@codeList</code>) [Optional] - nota: <i>this attribute should be ALTERNATIVE to the others</i> (XPath: <code>TEXQualityRpt/TQbody/TQitem/pieceTestRpt/fabricTest/note/@codeList</code>) [Optional] - nota: <i>must be used to provide (URL) the list of codes used in "noteLabel"</i></p>
color	<p>colour number of the product, when not included in the model or fabric code - base type: string, max length: 15, (XPath: <code>TEXQualityRpt/TQbody/TQitem/texCode/color</code>) 0-1</p>
comply	<p>specifies if the experimental value complies with the standard requirement (target value) - base type: boolean, (XPath: <code>TEXQualityRpt/TQbody/TQitem/pieceTestRpt/fabricTest/comply</code>) 0-1 (XPath: <code>TEXQualityRpt/TQbody/TQitem/pieceTestRpt/fabricTaylorability/comply</code>) 0-1</p>
country	<p>code of the nation - base type: string, cod. table: T10, (XPath: <code>TEXQualityRpt/TQheader/thirdParty/country</code>) 0-1 (XPath: <code>TEXQualityRpt/TQheader/supplier/country</code>) 0-1 (XPath: <code>TEXQualityRpt/TQheader/buyer/country</code>) 0-1</p>
@dateForm	<p>format used for a date - base type: string, cod. table: NT29, (XPath: <code>TEXQualityRpt/TQbody/TQitem/pieceControlRpt/inspectionDate/@dateForm</code>) [Optional] (XPath: <code>TEXQualityRpt/TQbody/TQitem/pieceControlRpt/rollUpDate/@dateForm</code>) [Optional] (XPath: <code>TEXQualityRpt/TQbody/TQitem/pieceControlRpt/preexaminationDate/@dateForm</code>) [Optional] (XPath: <code>TEXQualityRpt/TQheader/msgDate/@dateForm</code>) [Optional] (XPath: <code>TEXQualityRpt/TQbody/TQitem/pieceControlRpt/registrationDate/@dateForm</code>) [Optional] (XPath: <code>TEXQualityRpt/TQbody/TQitem/refDoc/docDate/@dateForm</code>) [Optional] (XPath: <code>TEXQualityRpt/TQbody/TQitem/testDate/@dateForm</code>) [Optional]</p>
dept	<p>name or code of a contact department within a Party - base type: string, max length: 40, (XPath: <code>TEXQualityRpt/TQheader/buyer/dept</code>) 0-1 (XPath: <code>TEXQualityRpt/TQheader/supplier/dept</code>) 0-1 (XPath: <code>TEXQualityRpt/TQheader/thirdParty/dept</code>) 0-1</p>
description	<p>free text description of a product - base type: string, max length: 70, (XPath: <code>TEXQualityRpt/TQbody/TQitem/texCode/description</code>) 0-1</p>
docDate	<p>date of issue of the referenced document, according to one of the patterns YYYY-MM-DD, YYYY-MM-DD:HH-MM or YYYY-WW. - base type: string, (XPath: <code>TEXQualityRpt/TQbody/TQitem/refDoc/docDate</code>) 0-1</p>
docID	<p>identification number of the referenced document SINCE 2008-1 ITS USE IN THE HEADER IS DISCOURAGED (REPLACED BY) - base type: string, max length: 35,</p>

	(XPath: TEXQualityRpt/TQheader/docID) 0-1 (XPath: TEXQualityRpt/TQbody/TQitem/refDoc/docID) 1-2
@docType	type or class to which the referenced document belongs - base type: string, cod. table: T21, (XPath: TEXQualityRpt/TQbody/TQitem/refDoc/@docType) [Required]
dyeN	number of the dying batch of a textile product - base type: string, max length: 15, (XPath: TEXQualityRpt/TQbody/TQitem/dyeN) 0-1
@email	electronic mail address of the contact person within a Party - base type: string, max length: 80, (XPath: TEXQualityRpt/TQheader/thirdParty/person/@email) [Optional] (XPath: TEXQualityRpt/TQheader/supplier/person/@email) [Optional] (XPath: TEXQualityRpt/TQheader/buyer/person/@email) [Optional]
experimValue	experimental value of the specified measurement - base type: decimal, (XPath: TEXQualityRpt/TQbody/TQitem/pieceTestRpt/ fabricTest/experimValue) 0-9 - note: <i>this data can be iterated to provide repeated instances of the same test</i> (XPath: TEXQualityRpt/TQbody/TQitem/pieceTestRpt/ fabricTaylorability/experimValue) 0-9 - note: <i>in the case of FAST test the attributes "meth" and "applic" should not be used</i>
fabricChar	code of the physical or mechanical parameter used to define a "technical characteristic of the fabric" (see Fabric technical sheet) - base type: string, cod. table: T13, (XPath: TEXQualityRpt/TQbody/TQitem/pieceTestRpt/ fabricTest/fabricChar) 1-1 - note: <i>here the MODA-ML codelist must be used.</i>
fabricCharText	free text describing the physical or mechanical parameter used to define a "technical characteristic of the fabric" - base type: string, max length: 40, (XPath: TEXQualityRpt/TQbody/TQitem/pieceTestRpt/ fabricTest/fabricCharText) 1-1 - note: <i>here the text or the proprietary code mutually agreed must be used</i>
fabricFault	code specifying the type or class of fabric fault - base type: string, cod. table: T12, (XPath: TEXQualityRpt/TQbody/TQitem/pieceMap/pieceFault/fabricFault) 1-1 - note: <i>here the MODA-ML codelist must be used.</i>
fabricFaultText	free text describing the type or class of the fabric fault - base type: string, max length: 40, (XPath: TEXQualityRpt/TQbody/TQitem/pieceMap/pieceFault/fabricFaultText) 1-1 - note: <i>here the text or proprietary code mutually agreed must be used</i>
@faultRank	ranking class of the fabric fault - base type: string, cod. table: NT13, (XPath: TEXQualityRpt/TQbody/TQitem/pieceMap/pieceFault/@faultRank) [Required]
@faultShape	shape classification of the fabric fault - base type: string, cod. table: NT14, (XPath: TEXQualityRpt/TQbody/TQitem/pieceMap/pieceFault/@faultShape) [Optional]
@fax	fax number of the contact person within a Party - base type: string, max length: 35, (XPath: TEXQualityRpt/TQheader/buyer/person/@fax) [Optional] (XPath: TEXQualityRpt/TQheader/supplier/person/@fax) [Optional]

	(XPath: TEXQualityRpt/TQheader/thirdParty/person/@fax) [Optional]
id	primary identification code of a Party; it is recommended the format: nation code (ISO 3166) + VAT identification number (11 crt), with the qualifier "numberingOrg"= MF - base type: string, max length: 15, (XPath: TEXQualityRpt/TQheader/thirdParty/id) 1-1 (XPath: TEXQualityRpt/TQheader/supplier/id) 1-1 (XPath: TEXQualityRpt/TQheader/buyer/id) 1-1
inspectionDate	date of inspection (normally of a fabric piece), according to one of the patterns YYYY-MM-DD, YYYY-MM-DD:HH-MM or YYYY-WW. - base type: string, (XPath: TEXQualityRpt/TQbody/TQitem/pieceControlRpt/inspectionDate) 0-1
itemID	number of the line/item of the referenced document - base type: string, max length: 6, (XPath: TEXQualityRpt/TQbody/TQitem/refDoc/itemID) 0-1
legalName	legal name of a Party - base type: string, max length: 80, (XPath: TEXQualityRpt/TQheader/buyer/legalName) 0-1 (XPath: TEXQualityRpt/TQheader/thirdParty/legalName) 0-1 (XPath: TEXQualityRpt/TQheader/supplier/legalName) 0-1
@listName	it specifies the name of the list of codes used to make an instance of the element - base type: string, max length: 40, (XPath: TEXQualityRpt/TQbody/TQitem/texCode/color/@listName) [Optional] - nota: <i>this attribute should always be used coupled with "numberingOrg"</i> (XPath: TEXQualityRpt/TQbody/TQitem/texCode/pattern/@listName) [Optional] - nota: <i>this attribute should always be used coupled with "numberingOrg"</i> (XPath: TEXQualityRpt/TQbody/TQitem/texCode/art/@listName) [Optional] - nota: <i>this attribute should always be used coupled with "numberingOrg"</i>
@listVersion	it specifies the version of the list of codes used to make an instance of the element - base type: string, max length: 6, (XPath: TEXQualityRpt/TQbody/TQitem/texCode/color/@listVersion) [Optional] - nota: <i>this attribute should always be used coupled with "numberingOrg" and "listName"</i> (XPath: TEXQualityRpt/TQbody/TQitem/texCode/art/@listVersion) [Optional] - nota: <i>this attribute should always be used coupled with "numberingOrg" and "listName"</i> (XPath: TEXQualityRpt/TQbody/TQitem/texCode/pattern/@listVersion) [Optional] - nota: <i>this attribute should always be used coupled with "numberingOrg" and "listName"</i>
@logo	company logo (URL of the image jpeg or gif). It is recommended that the width of the image does not exceed 640 pixel. - base type: string, max length: 255, (XPath: TEXQualityRpt/TQheader/supplier/@logo) [Optional] (XPath: TEXQualityRpt/TQheader/buyer/@logo) [Optional]
lotN	lot number of a product or batch number of the raw material - base type: string, max length: 15, (XPath: TEXQualityRpt/TQbody/TQitem/lotN) 0-1
@method	standard protocol or method employed in a test to evaluate a characteristic or a parameter - base type: string, max length: 25, (XPath: TEXQualityRpt/TQbody/TQitem/pieceTestRpt/fabricTest/experimValue/@method) [Optional] - nota: <i>we recommend the specification of the method of measure only when different from the one of the MODA-ML coding system</i> (XPath: TEXQualityRpt/TQbody/TQitem/pieceTestRpt/

	<p>fabricTaylorability/experimValue/@method [Optional] - nota: <i>we recommend the specification of the method of measure only when different from the one of the MODA-ML coding system</i></p>
mixMatch	<p>colour hue used for the match of garments - base type: string, max length: 15, (XPath: TEXQualityRpt/TQbody/TQitem/mixMatch) 0-1</p>
msgDate	<p>date of issue of the present message (xml document), according to one of the patterns YYYY-MM-DD, YYYY-MM-DD:HH-MM or YYYY-WW. - base type: string, (XPath: TEXQualityRpt/TQheader/msgDate) 1-1</p>
@msgfunction	<p>function performed by the present message with regards to the transmission - base type: string, cod. table: NT18, (XPath: TEXQualityRpt/@msgfunction) [Optional] [Default= OR]</p>
msgID	<p>key identifier of the document in the information system of the issuing Party - base type: string, max length: 35, (XPath: TEXQualityRpt/TQheader/msgID) 0-1</p>
msgN	<p>identification number given to the message (xml document) by its issuer - base type: string, max length: 35, (XPath: TEXQualityRpt/TQheader/msgN) 1-1</p>
note	<p>free text or structured (computer processing) note. For note structuring use the attributes "noteLabel" and "codelist" - base type: string, max length: 350, (XPath: TEXQualityRpt/TQbody/TQitem/pieceTestRpt/fabricTest/note) 0-1 (XPath: TEXQualityRpt/TQheader/note) 0-9 (XPath: TEXQualityRpt/TQbody/TQitem/pieceMap/pieceFault/note) 0-1 (XPath: TEXQualityRpt/TQbody/TQitem/pieceTestRpt/fabricTaylorability/note) 0-1</p>
@noteLabel	<p>subject qualifier of a note - base type: string, max length: 35, (XPath: TEXQualityRpt/TQheader/note/@noteLabel) [Optional] - nota: <i>must be used to qualify the subject of the note</i> (XPath: TEXQualityRpt/TQbody/TQitem/pieceTestRpt/fabricTaylorability/note/@noteLabel) [Optional] - nota: <i>must be used to qualify the subject of the note</i> (XPath: TEXQualityRpt/TQbody/TQitem/pieceMap/pieceFault/note/@noteLabel) [Optional] - nota: <i>must be used to qualify the subject of the note</i> (XPath: TEXQualityRpt/TQbody/TQitem/pieceTestRpt/fabricTest/note/@noteLabel) [Optional] - nota: <i>must be used to qualify the subject of the note</i></p>
@numberingOrg	<p>code specifying the organisation who has created or owns the coding or numbering system - base type: string, cod. table: NT6, (XPath: TEXQualityRpt/TQbody/TQitem/pieceControlRpt/pieceControl/@numberingOrg) [Optional] (XPath: TEXQualityRpt/TQheader/docID/@numberingOrg) [Optional] - nota: <i>here can be specified whose document numbering is used (e.g.: Client, Supplier, ..)</i> (XPath: TEXQualityRpt/TQheader/note/@numberingOrg) [Optional] (XPath: TEXQualityRpt/TQbody/TQitem/pieceTestRpt/fabricTaylorability/note/@numberingOrg) [Optional] (XPath: TEXQualityRpt/TQbody/TQitem/pieceMap/pieceFault/note/@numberingOrg) [Optional] (XPath: TEXQualityRpt/TQheader/supplier/id/@numberingOrg) [Optional] (XPath: TEXQualityRpt/TQbody/TQitem/texCode/art/@numberingOrg) [Optional] - nota: <i>this attribute should be used either single or coupled with "listName"</i></p>

	<p>and "listVersion" (XPath: TEXQualityRpt/TQbody/TQitem/texCode/color/@numberingOrg) [Optional] - nota: <i>this attribute should be used either single or coupled with "listName" and "listVersion"</i> (XPath: TEXQualityRpt/TQbody/TQitem/texCode/pattern/@numberingOrg) [Optional] - nota: <i>this attribute should be used either single or coupled with "listName" and "listVersion"</i> (XPath: TEXQualityRpt/TQbody/TQitem/refDoc/docID/@numberingOrg) [Optional] - nota: <i>here can be specified whose document numbering is used (e.g.: Client, Supplier, ..)</i> (XPath: TEXQualityRpt/TQheader/buyer/id/@numberingOrg) [Optional] (XPath: TEXQualityRpt/TQbody/TQitem/texCode/@numberingOrg) [Optional] (XPath: TEXQualityRpt/TQbody/TQitem/mixMatch/@numberingOrg) [Optional] (XPath: TEXQualityRpt/TQheader/thirdParty/id/@numberingOrg) [Optional] (XPath: TEXQualityRpt/TQbody/TQitem/pieceTestRpt/fabricTest/note/@numberingOrg) [Optional] (XPath: TEXQualityRpt/TQbody/TQitem/lotN/@numberingOrg) [Optional] (XPath: TEXQualityRpt/TQbody/TQitem/serialN/@numberingOrg) [Optional] - nota: <i>here the issuer of the serial number must be specified (when different from the Supplier)</i> (XPath: TEXQualityRpt/TQbody/TQitem/dyeN/@numberingOrg) [Optional]</p>
pattern	<p>pattern/design number of the product, when not included in the article code - base type: string, max length: 15, (XPath: TEXQualityRpt/TQbody/TQitem/texCode/pattern) 0-1</p>
person	<p>name of the contact person within a Party - base type: string, max length: 40, (XPath: TEXQualityRpt/TQheader/thirdParty/person) 0-1 (XPath: TEXQualityRpt/TQheader/supplier/person) 0-1 (XPath: TEXQualityRpt/TQheader/buyer/person) 0-1</p>
@phone	<p>phone number of the contact person within a Party - base type: string, max length: 35, (XPath: TEXQualityRpt/TQheader/thirdParty/person/@phone) [Optional] (XPath: TEXQualityRpt/TQheader/buyer/person/@phone) [Optional] (XPath: TEXQualityRpt/TQheader/supplier/person/@phone) [Optional]</p>
pieceAllow	<p>allowance required or accorded for the piece - base type: decimal, fraction digits: 2, (XPath: TEXQualityRpt/TQbody/TQitem/pieceMap/pieceFault/pieceAllow) 0-1 - note: <i>this is the allowance estimated for the fault by the same "source" responsible for the other measurements</i> (XPath: TEXQualityRpt/TQbody/TQitem/pieceMeasures/pieceAllow) 0-1 (XPath: TEXQualityRpt/TQbody/TQitem/pieceAllowMea/pieceAllow) 1-1</p>
pieceAllowF	<p>allowance required/accorded for fabric faults - base type: decimal, fraction digits: 2, (XPath: TEXQualityRpt/TQbody/TQitem/pieceAllowMea/pieceAllowF) 0-1</p>
pieceAllowM	<p>allowance required/accorded for missing measures - base type: decimal, fraction digits: 2, (XPath: TEXQualityRpt/TQbody/TQitem/pieceAllowMea/pieceAllowM) 0-1</p>
pieceControl	<p>code assigned to a fabric piece to specify the type of control required/performed - base type: string, max length: 7, (XPath: TEXQualityRpt/TQbody/TQitem/pieceControlRpt/pieceControl) 0-1</p>
pieceCutWidth	<p>effective usable width of the fabric piece (for garment manufacturing) - base type: decimal, min inclusive: 0, fraction digits: 2, (XPath: TEXQualityRpt/TQbody/TQitem/pieceMeasures/pieceCutWidth) 0-1</p>
pieceLength	<p>length of the piece - base type: decimal, min inclusive: 0, fraction digits: 2,</p>

	(XPath: TEXQualityRpt/TQbody/TQitem/pieceMeasures/pieceLength) 0-1 - note: <i>effective length of the piece (allowance included)</i>
pieceStatus	code used to describe the status of a fabric piece after the control - base type: string, cod. table: T52, (XPath: TEXQualityRpt/TQbody/TQitem/pieceControlRpt/pieceStatus) 0-1
pieceWeight	effective total weight of the fabric piece - base type: decimal, min inclusive: 0, fraction digits: 2, (XPath: TEXQualityRpt/TQbody/TQitem/pieceMeasures/pieceWeight) 0-1 - note: <i>effective weight of the piece</i>
pieceWeightM	effective weight per metre of the fabric piece - base type: decimal, min inclusive: 0, fraction digits: 2, (XPath: TEXQualityRpt/TQbody/TQitem/pieceMeasures/pieceWeightM) 0-1
pieceWidth	effective width of the fabric piece - base type: decimal, min inclusive: 0, fraction digits: 2, (XPath: TEXQualityRpt/TQbody/TQitem/pieceMeasures/pieceWidth) 0-1 - note: <i>effective width of the piece (selvedge included)</i>
postCode	code defining the postal zone - base type: string, max length: 10, (XPath: TEXQualityRpt/TQheader/supplier/postCode) 0-1 (XPath: TEXQualityRpt/TQheader/buyer/postCode) 0-1 (XPath: TEXQualityRpt/TQheader/thirdParty/postCode) 0-1
preexaminationDate	date of preexamination (normally of a fabric piece), according to one of the patterns YYYY-MM-DD, YYYY-MM-DD:HH-MM or YYYY-WW. - base type: string, (XPath: TEXQualityRpt/TQbody/TQitem/pieceControlRpt/preexaminationDate) 0-1
registrationDate	date of registration (normally of a fabric piece), according to one of the patterns YYYY-MM-DD, YYYY-MM-DD:HH-MM or YYYY-WW. - base type: string, (XPath: TEXQualityRpt/TQbody/TQitem/pieceControlRpt/registrationDate) 0-1
@role	Third Party role qualifier - base type: string, cod. table: NT2, (XPath: TEXQualityRpt/TQheader/thirdParty/@role) [Required]
rollUpDate	date of rolling up (normally of a fabric piece), according to one of the patterns YYYY-MM-DD, YYYY-MM-DD:HH-MM or YYYY-WW. - base type: string, (XPath: TEXQualityRpt/TQbody/TQitem/pieceControlRpt/rollUpDate) 0-1
season	sale season; defined as: season (1 crt) + year (4 crt) - season: S/S=1 A/W=2 Spring=3 Summer=4 Autumn=5 Winter=6: for more than four seasons use alphabetic sequence: 1st season=A 2nd season=B etc.etc. - base type: string, max length: 15, (XPath: TEXQualityRpt/TQbody/TQitem/refDoc/season) 0-1 - note: <i>here indicates the season to which the referenced document belongs</i>
@sender	qualifier that specifies the Party issuing of the document - base type: boolean, (XPath: TEXQualityRpt/TQheader/buyer/@sender) [Optional] - nota: <i>This attribute is mandatory when the STYLESHEET must be produced</i> (XPath: TEXQualityRpt/TQheader/thirdParty/@sender) [Optional] - nota: <i>This attribute is mandatory when the STYLESHEET must be produced</i> (XPath: TEXQualityRpt/TQheader/supplier/@sender) [Optional] - nota: <i>This attribute is mandatory when the STYLESHEET must be produced</i>
serialIN	serial number used for the identification of a physical unit

	<p>- base type: string, max length: 15, (XPath: TEXQualityRpt/TQbody/TQitem/serialN) 1-3 - note: <i>here the serial number of the piece must be reported</i></p>
@source	<p>party who has provided the data - base type: string, cod. table: NT12, (XPath: TEXQualityRpt/TQbody/TQitem/pieceMeasures/@source) [Required] (XPath: TEXQualityRpt/TQbody/TQitem/pieceAllowMea/@source) [Required] (XPath: TEXQualityRpt/TQbody/TQitem/pieceTestRpt/@source) [Required] (XPath: TEXQualityRpt/TQbody/TQitem/pieceMap/@source) [Required]</p>
street	<p>street and building number identifying a location - base type: string, max length: 80, (XPath: TEXQualityRpt/TQheader/thirdParty/street) 0-1 (XPath: TEXQualityRpt/TQheader/supplier/street) 0-1 (XPath: TEXQualityRpt/TQheader/buyer/street) 0-1</p>
subCountry	<p>short name or code of the sub-country entity - base type: string, max length: 9, (XPath: TEXQualityRpt/TQheader/buyer/subCountry) 0-1 (XPath: TEXQualityRpt/TQheader/thirdParty/subCountry) 0-1 (XPath: TEXQualityRpt/TQheader/supplier/subCountry) 0-1</p>
taylorabilityChar	<p>taylorability parameter for fabric - base type: string, cod. table: T14, (XPath: TEXQualityRpt/TQbody/TQitem/pieceTestRpt/fabricTaylorability/taylorabilityChar) 1-1 - note: <i>here the MODA-ML codelist must be used</i></p>
testDate	<p>date on which the quality test of goods has been made, according to one of the patterns YYYY-MM-DD, YYYY-MM-DD:HH-MM or YYYY-WW. - base type: string, (XPath: TEXQualityRpt/TQbody/TQitem/testDate) 0-1</p>
totFault	<p>total number of faults: the 1st/2nd digit count the "Large faults", the 3rd/4th the "Medium faults" and the 5th/6th the "Small faults" - base type: positiveInteger, (XPath: TEXQualityRpt/TQbody/TQitem/pieceMap/totFault) 1-1</p>
@TQtype	<p>type of Textiles quality report - base type: string, cod. table: NT15, (XPath: TEXQualityRpt/@TQtype) [Optional] - nota: <i>this attribute may be used to specify if the report refers to one or to several pieces</i></p>
@um	<p>specification of the unit of measure - base type: string, cod. table: NT7, (XPath: TEXQualityRpt/TQbody/TQitem/pieceAllowMea/pieceAllowM/@um) [Required] (XPath: TEXQualityRpt/TQbody/TQitem/pieceMeasures/pieceAllow/@um) [Required] (XPath: TEXQualityRpt/TQbody/TQitem/pieceAllowMea/pieceAllow/@um) [Required] (XPath: TEXQualityRpt/TQbody/TQitem/pieceAllowMea/pieceAllowF/@um) [Required] (XPath: TEXQualityRpt/TQbody/TQitem/pieceMeasures/pieceWidth/@um) [Optional] [Default= CMT] (XPath: TEXQualityRpt/TQbody/TQitem/pieceMeasures/pieceWeight/@um) [Optional] [Default= KGM] (XPath: TEXQualityRpt/TQbody/TQitem/pieceMeasures/pieceLength/@um) [Optional] [Default= MTR] (XPath: TEXQualityRpt/TQbody/TQitem/pieceMeasures/pieceWeightM/@um) [Optional] [Default= GRM] (XPath: TEXQualityRpt/TQbody/TQitem/pieceMeasures/pieceCutWidth/@um) [Optional] [Default= CMT] (XPath: TEXQualityRpt/TQbody/TQitem/pieceMap/pieceFault/</p>

	<p>warpEnd/@um) [Optional] [Default= MTR] (XPath: TEXQualityRpt/TQbody/TQitem/pieceMap/pieceFault/ weftStart/@um) [Optional] [Default= CMT] (XPath: TEXQualityRpt/TQbody/TQitem/pieceMap/pieceFault/ weftEnd/@um) [Optional] [Default= CMT] (XPath: TEXQualityRpt/TQbody/TQitem/pieceMap/pieceFault/ pieceAllow/@um) [Required] (XPath: TEXQualityRpt/TQbody/TQitem/pieceMap/pieceFault/ warpStart/@um) [Optional] [Default= MTR]</p>
@VAT	<p>VAT rate or code - base type: string, cod. table: NT16, (XPath: TEXQualityRpt/TQheader/thirdParty/@VAT) [Optional]</p>
warpEnd	<p>end point of the fabric fault in the warp direction - base type: decimal, min inclusive: 0, fraction digits: 2, (XPath: TEXQualityRpt/TQbody/TQitem/pieceMap/pieceFault/warpEnd) 0-1</p>
warpStart	<p>start point of the fabric fault in the warp direction - base type: decimal, min inclusive: 0, fraction digits: 2, (XPath: TEXQualityRpt/TQbody/TQitem/pieceMap/pieceFault/warpStart) 1-1</p>
weftEnd	<p>end point of the fabric fault in the weft direction - base type: decimal, min inclusive: 0, fraction digits: 2, (XPath: TEXQualityRpt/TQbody/TQitem/pieceMap/pieceFault/weftEnd) 0-1</p>
weftStart	<p>start point of the fabric fault in the weft direction - base type: decimal, min inclusive: 0, fraction digits: 2, (XPath: TEXQualityRpt/TQbody/TQitem/pieceMap/pieceFault/weftStart) 0-1</p>

2.3 Enumeration tables

List of enumeration tables used in the XML document. You can find the corresponding codes (only for tables with less than 100 values) in the document `Decoding_Values.pdf`, available at: <http://www.moda-ml.org/moda-ml/repository/guide/v2011-1/>; moreover, all the enumeration tables are available at: <http://www.moda-ml.org/imple/show-codes.asp>.

- NT12 - Data source
- NT13 - Fabric fault category
- NT14 - Fabric fault shape
- NT15 - Textiles quality report type
- NT16 - VAT rate or code
- NT18 - message function
- NT2 - Third party qualifier
- NT29 - format of a date
- NT6 - Coding system owner/issuer
- NT7 - Unity of measure
- T10 - ISO3166 - Country
- T12 - Fabric faults
- T13 - CFM properties of fabric
- T14 - FAST tests
- T21 - type of document
- T44 - additional code type
- T52 - fabric piece status

Annex A

Representative images of the principal complex elements' structure.

