



<http://www.moda-ml.org>

IMPLEMENTATION GUIDE  
TRANSACTION "TEXTILE CATALOGUE"

Version: 2011-1

Date of release: 18/11/2011

Document code: G009

XML Schema repository:<http://www.moda-ml.org/moda-ml/repository/schema/v2011-1/default.asp>

Guides repository:<http://www.moda-ml.org/moda-ml/repository/guide/v2011-1/default.asp>

Guide filename: G009-MODA-ML-TextileCatalogue.pdf

# 1. BUSINESS DESCRIPTION

## 1.1 Scope

The present guide has been issued to assist the companies of the Textile-Clothing sector in the implementation of the standard XML document type "Textile CATALOGUE", providing all the instruction required for its use in any context of e-commerce between Apparel Producers and Fabric Producers.

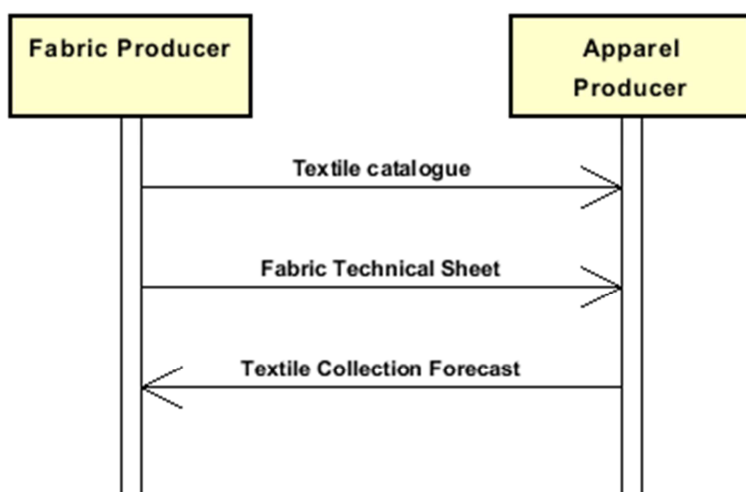
All the rules required for the construction and validation of the document are embedded into the specific XML-Schema, which is detailed in section "Implementation guide".

## 1.2 Generalities

This document is usable less for a sales catalogue than to exchange in advance the product data between the Supplier and the Customer, in order to synchronize their product data-bases.

It lists the articles composing the Fabric Producer's offer (codes, descriptions, prices and sales conditions) and can include some of the technical data (composition, weight and width, construction specifications, ...).

## 1.3. Possible scenario



## 2. IMPLEMENTATION GUIDE

### 2.1 General structure of XML document

All the business data that can be exchanged through this class of documents are shown in the following "document structure", that provides a simplified vision of the Schema.

In particular:

- the two numbers following each element define its "cardinality" (minimum and maximum number of occurrences); the minimum equal zero indicates that the element is optional, the minimum greater than zero indicates that is mandatory;
- the bold character denotes the complex elements (aggregates of simple elements) that were built for the sake of functionality and re-usability of some complex informations sets. The child elements in each parent element are easily spotted as "indented";
- the symbol "@" denotes an attribute of the preceding element; here "the usage indicator (optional, required, ...) is shown in square brackets.

### Structure

#### **TEXCatalog**

*@msgfunction [Optional] [Default= OR]*

#### **THeader 1-1**

msgN 1-1

- choose -

msgID 0-1

- or -

docID 0-1

*@numberingOrg [Optional]*

- end choose -

msgDate 1-1

*@dateForm [Optional]*

msgCurrency 0-1

season 0-1

validityStart 0-1

*@dateForm [Optional]*

validityEnd 0-1

*@dateForm [Optional]*

#### **buyer 0-1**

*@logo [Optional]*

*@sender [Optional]*

id 1-1

*@numberingOrg [Optional]*

legalName 0-1

dept 0-1

person 0-1

*@email [Optional]*

*@phone [Optional]*

*@fax [Optional]*

street 0-1

city 0-1

subCountry 0-1

country 0-1

postCode 0-1

#### **supplier 1-1**

*@logo [Optional]*

*@sender [Optional]*

id 1-1

*@numberingOrg [Optional]*

legalName 0-1

dept 0-1

person 0-1  
@email [Optional]  
@phone [Optional]  
@fax [Optional]  
street 0-1  
city 0-1  
subCountry 0-1  
country 0-1  
postCode 0-1  
note 0-5  
@numberingOrg [Optional]  
@codeList [Optional]  
@noteLabel [Optional]

## **TCbody 1-1**

### **TCgroup 1-unbounded**

artGroup 0-1  
@numberingOrg [Optional]  
@codeList [Optional]  
@listName [Optional]  
@listVersion [Optional]

artGroupName 0-1

### **TCitem 1-unbounded**

lineN 1-1  
@VAT [Optional]  
fabricNameSupplier 0-1  
art 1-1  
@numberingOrg [Optional]  
@codeList [Optional]  
@listName [Optional]  
@listVersion [Optional]

pattern 0-1  
@numberingOrg [Optional]  
@codeList [Optional]  
@listName [Optional]  
@listVersion [Optional]

color 0-99  
@numberingOrg [Optional]  
@codeList [Optional]  
@listName [Optional]  
@listVersion [Optional]

added 0-99  
@addType [Optional]  
catalogPrice 0-9  
@um [Required]  
@minQty [Optional]  
@garmentMarket [Optional]

### **generalChar 0-1**

fabricNameSupplier 1-1  
fabricNameBuyer 0-1  
season 0-1  
tradeMark 0-1  
customsStat 0-1

### **fabricCompos 1-1**

percCompos 1-9  
@fibre [Required]  
dyeProcess 0-1  
dyeStuff 0-1  
careLabel 0-1  
minLot 0-1  
@um [Required]

minLotExclusive 0-1  
@um [Required]  
avgDeliveryDD 0-1  
estFaultiness 0-1  
note 0-5  
@numberingOrg [Optional]  
@codeList [Optional]  
@noteLabel [Optional]

**construction 0-1**

fabricWeightM 1-1  
@um [Optional] [Default= GRM]  
fabricWeightM2 0-1  
@um [Optional] [Default= GRM]  
fabricWidth 0-1  
@um [Optional] [Default= CMT]  
fabricCutWidth 0-1  
@um [Optional] [Default= CMT]  
pieceLength 0-1  
@um [Optional] [Default= MTR]  
weave 0-1  
warpCount 0-9  
@method [Optional] [Default= ISO-2060]  
@fibre [Optional]  
weftCount 0-9  
@method [Optional] [Default= ISO-2060]  
@fibre [Optional]  
warpEndsN 0-1  
weftEndsN 0-1  
bowingWarp 0-1  
@method [Optional]  
bowingWeft 0-1  
@method [Optional]  
checksFlaw 0-1  
@method [Optional]  
weftDev 0-1  
@method [Optional]  
resin 0-1

note 0-1  
@numberingOrg [Optional]  
@codeList [Optional]  
@noteLabel [Optional]

## 2.2 Detailed description of document elements

Following tables show all elements (complex and simple) used in this document. Description includes: 1) element's information: xml tag, name, brief description, data type and syntax constraints; 2) information about use of the element in a particular position in the document: xpath and possible associated notes.

### 2.2.1 Complex elements (Aggregate Business Information Entities)

Complex elements are those elements whose content is composed of other elements (childs).Complex elements are alphabetically ordered.

<b>buyer</b>	details of the Buyer - base type: , (XPath: <a href="#">TEXCatalog/TCheader/buyer</a> ) 0-1
<b>construction</b>	construction data and features included in the technical sheet of the fabric article (XPath: <a href="#">TEXCatalog/TCbody/TCgroup/TCitem/construction</a> ) 0-1
<b>fabricCompos</b>	composition of the fabric according to the Directory 97/37/CE (XPath: <a href="#">TEXCatalog/TCbody/TCgroup/TCitem/generalChar/fabricCompos</a> ) 1-1
<b>generalChar</b>	general data included in the technical sheet of the fabric article (XPath: <a href="#">TEXCatalog/TCbody/TCgroup/TCitem/generalChar</a> ) 0-1
<b>supplier</b>	details of the Supplier - base type: , (XPath: <a href="#">TEXCatalog/TCheader/supplier</a> ) 1-1
<b>TCbody</b>	body of the document TEXTILES CATALOGUE (XPath: <a href="#">TEXCatalog/TCbody</a> ) 1-1
<b>TCgroup</b>	articles grouping of the TEXTILES CATALOGUE (XPath: <a href="#">TEXCatalog/TCbody/TCgroup</a> ) 1-unbounded - note: <i>this level is created to allow articles grouping by families</i>
<b>TCheader</b>	header of the document TEXTILES CATALOGUE (XPath: <a href="#">TEXCatalog/TCheader</a> ) 1-1
<b>TCitem</b>	line item of the message TEXTILES CATALOGUE (XPath: <a href="#">TEXCatalog/TCbody/TCgroup/TCitem</a> ) 1-unbounded

### 2.2.2 Simple elements (Basic Business Information Entities)

Simple elements are those elements whose content is characterized by a data type plus a domain of possible values. Simple elements are alphabetically ordered.

<b>added</b>	additional code of the product (complementing the formers) - base type: string, max length: 15, (XPath: <a href="#">TEXCatalog/TCbody/TCgroup/TCitem/added</a> ) 0-99 - note: <i>this data can be iterated to show the colours available for the article</i>
<b>@addType</b>	qualifier of the additional coding of a product - base type: string, cod. table: T44, (XPath: <a href="#">TEXCatalog/TCbody/TCgroup/TCitem/added/@addType</a> ) [Optional]
<b>art</b>	article number of the product - base type: string, max length: 25, (XPath: <a href="#">TEXCatalog/TCbody/TCgroup/TCitem/art</a> ) 1-1

artGroup	code identifying a class of products - base type: string, max length: 40, (XPath: <a href="#">TEXCatalog/TCbody/TCgroup/artGroup</a> ) 0-1
artGroupName	description of a class of products - base type: string, max length: 70, (XPath: <a href="#">TEXCatalog/TCbody/TCgroup/artGroupName</a> ) 0-1
avgDeliveryDD	average time (workdays) between order receipt and delivery of an article, specified by the Supplier - base type: duration, (XPath: <a href="#">TEXCatalog/TCbody/TCgroup/TCitem/generalChar/avgDeliveryDD</a> ) 0-1
bowingWarp	warp bowing - base type: decimal, min inclusive: 0, (XPath: <a href="#">TEXCatalog/TCbody/TCgroup/TCitem/construction/bowingWarp</a> ) 0-1
bowingWeft	weft bowing - base type: decimal, min inclusive: 0, (XPath: <a href="#">TEXCatalog/TCbody/TCgroup/TCitem/construction/bowingWeft</a> ) 0-1
careLabel	codification of the care instructions printed on the label (ISO 3758) - base type: string, length: 5, (XPath: <a href="#">TEXCatalog/TCbody/TCgroup/TCitem/generalChar/careLabel</a> ) 0-1 - note: code composition: 1st digit=id.symbol umid washing, 2nd=id.s.bleaching, 3rd=id.s. ironing, 4th=id.s. dry washing, 5th=id.s. drying. See ATTACHMENT B.
catalogPrice	price shown in the Supplier's Catalogue - base type: decimal, fraction digits: 2, (XPath: <a href="#">TEXCatalog/TCbody/TCgroup/TCitem/catalogPrice</a> ) 0-9 - note: this data can be iterated when the price depends on the purchased quantity (see attribute "minQty")
checksFlaw	flaw in checks - base type: decimal, min inclusive: 0, (XPath: <a href="#">TEXCatalog/TCbody/TCgroup/TCitem/construction/checksFlaw</a> ) 0-1
city	name of the city (town, village) - base type: string, max length: 40, (XPath: <a href="#">TEXCatalog/THeader/supplier/city</a> ) 0-1 (XPath: <a href="#">TEXCatalog/THeader/buyer/city</a> ) 0-1
@codeList	it specifies the URL where the list of codes used to make an instance of the element can be found - base type: string, max length: 255, (XPath: <a href="#">TEXCatalog/THeader/note/@codeList</a> ) [Optional] - nota: must be used to provide (URL) the list of codes used in "noteLabel" (XPath: <a href="#">TEXCatalog/TCbody/TCgroup/TCitem/color/@codeList</a> ) [Optional] - nota: this attribute should be ALTERNATIVE to the others (XPath: <a href="#">TEXCatalog/TCbody/TCgroup/TCitem/note/@codeList</a> ) [Optional] - nota: must be used to provide (URL) the list of codes used in "noteLabel" (XPath: <a href="#">TEXCatalog/TCbody/TCgroup/TCitem/generalChar/note/@codeList</a> ) [Optional] - nota: must be used to provide (URL) the list of codes used in "noteLabel" (XPath: <a href="#">TEXCatalog/TCbody/TCgroup/artGroup/@codeList</a> ) [Optional] - nota: this attribute should be ALTERNATIVE to the others (XPath: <a href="#">TEXCatalog/TCbody/TCgroup/TCitem/art/@codeList</a> ) [Optional] - nota: this attribute should be ALTERNATIVE to the others (XPath: <a href="#">TEXCatalog/TCbody/TCgroup/TCitem/pattern/@codeList</a> ) [Optional] - nota: this attribute should be ALTERNATIVE to the others
color	colour number of the product, when not included in the model or fabric code - base type: string, max length: 15, (XPath: <a href="#">TEXCatalog/TCbody/TCgroup/TCitem/color</a> ) 0-99 - note: this data can be iterated to show the colours available for the article

country	code of the nation - base type: string, cod. table: T10, (XPath: <a href="#">TEXCatalog/THeader/buyer/country</a> ) 0-1 (XPath: <a href="#">TEXCatalog/THeader/supplier/country</a> ) 0-1
customsStat	statistic code assigned by Customs to a specified product - base type: string, max length: 15, (XPath: <a href="#">TEXCatalog/TCbody/TCgroup/TCitem/generalChar/customsStat</a> ) 0-1
@dateForm	format used for a date - base type: string, cod. table: NT29, (XPath: <a href="#">TEXCatalog/THeader/validityEnd/@dateForm</a> ) [Optional] (XPath: <a href="#">TEXCatalog/THeader/msgDate/@dateForm</a> ) [Optional] (XPath: <a href="#">TEXCatalog/THeader/validityStart/@dateForm</a> ) [Optional]
dept	name or code of a contact department within a Party - base type: string, max length: 40, (XPath: <a href="#">TEXCatalog/THeader/buyer/dept</a> ) 0-1 (XPath: <a href="#">TEXCatalog/THeader/supplier/dept</a> ) 0-1
docID	identification number of the referenced document SINCE 2008-1 ITS USE IN THE HEADER IS DISCOURAGED (REPLACED BY ) - base type: string, max length: 35, (XPath: <a href="#">TEXCatalog/THeader/docID</a> ) 0-1
dyeProcess	dye process applied to the fabric - base type: string, cod. table: T15, (XPath: <a href="#">TEXCatalog/TCbody/TCgroup/TCitem/generalChar/dyeProcess</a> ) 0-1
dyeStuff	dye stuff used in the fabric dye process - base type: string, cod. table: T16, (XPath: <a href="#">TEXCatalog/TCbody/TCgroup/TCitem/generalChar/dyeStuff</a> ) 0-1
@email	electronic mail address of the contact person within a Party - base type: string, max length: 80, (XPath: <a href="#">TEXCatalog/THeader/supplier/person/@email</a> ) [Optional] (XPath: <a href="#">TEXCatalog/THeader/buyer/person/@email</a> ) [Optional]
estFaultiness	percent faultiness of an article, estimated by the Supplier - base type: decimal, min inclusive: 0, max inclusive: 100, fraction digits: 2, (XPath: <a href="#">TEXCatalog/TCbody/TCgroup/TCitem/generalChar/estFaultiness</a> ) 0-1
fabricCutWidth	usable width of the fabric (for garments manufacturing) as technical specification - base type: decimal, min inclusive: 0, fraction digits: 2, (XPath: <a href="#">TEXCatalog/TCbody/TCgroup/TCitem/construction/fabricCutWidth</a> ) 0-1
fabricNameBuyer	name given to the fabric (article/pattern) by the Buyer - base type: string, max length: 70, (XPath: <a href="#">TEXCatalog/TCbody/TCgroup/TCitem/generalChar/fabricNameBuyer</a> ) 0-1
fabricNameSupplier	name given to the fabric (article/pattern) by the Supplier - base type: string, max length: 70, (XPath: <a href="#">TEXCatalog/TCbody/TCgroup/TCitem/fabricNameSupplier</a> ) 0-1 (XPath: <a href="#">TEXCatalog/TCbody/TCgroup/TCitem/generalChar/fabricNameSupplier</a> ) 1-1
fabricWeightM	weight per metre of the fabric as technical specification - base type: decimal, min inclusive: 0, fraction digits: 2, (XPath: <a href="#">TEXCatalog/TCbody/TCgroup/TCitem/construction/fabricWeightM</a> ) 1-1
fabricWeightM2	weight per square metre of the fabric as technical specification - base type: decimal, min inclusive: 0, fraction digits: 2, (XPath: <a href="#">TEXCatalog/TCbody/TCgroup/TCitem/construction/fabricWeightM2</a> ) 0-1
fabricWidth	width of the fabric as technical specification - base type: decimal, min inclusive: 0, fraction digits: 2, (XPath: <a href="#">TEXCatalog/TCbody/TCgroup/TCitem/construction/fabricWidth</a> ) 0-1



@fax	<p>fax number of the contact person within a Party</p> <ul style="list-style-type: none"> <li>- base type: string, max length: 35,</li> <li>(XPath: <a href="#">TEXCatalog/TCheader/supplier/person/@fax</a>) [Optional]</li> <li>(XPath: <a href="#">TEXCatalog/TCheader/buyer/person/@fax</a>) [Optional]</li> </ul>
@fibre	<p>type of fibre used in a textile product</p> <ul style="list-style-type: none"> <li>- base type: string, cod. table: T19,</li> <li>(XPath: <a href="#">TEXCatalog/TCbody/TCgroup/TCitem/construction/warpCount/@fibre</a>) [Optional]</li> <li>(XPath: <a href="#">TEXCatalog/TCbody/TCgroup/TCitem/construction/weftCount/@fibre</a>) [Optional]</li> <li>(XPath: <a href="#">TEXCatalog/TCbody/TCgroup/TCitem/generalChar/fabricCompos/percCompos/@fibre</a>) [Required]</li> </ul>
@garmentMarket	<p>market segment of the garment item</p> <ul style="list-style-type: none"> <li>- base type: string, cod. table: NT34,</li> <li>(XPath: <a href="#">TEXCatalog/TCbody/TCgroup/TCitem/catalogPrice/@garmentMarket</a>) [Optional]</li> </ul>
id	<p>primary identification code of a Party; it is recommended the format: nation code (ISO 3166) + VAT identification number (11 crt), with the qualifier "numberingOrg"= MF</p> <ul style="list-style-type: none"> <li>- base type: string, max length: 15,</li> <li>(XPath: <a href="#">TEXCatalog/TCheader/supplier/id</a>) 1-1</li> <li>(XPath: <a href="#">TEXCatalog/TCheader/buyer/id</a>) 1-1</li> </ul>
legalName	<p>legal name of a Party</p> <ul style="list-style-type: none"> <li>- base type: string, max length: 80,</li> <li>(XPath: <a href="#">TEXCatalog/TCheader/supplier/legalName</a>) 0-1</li> <li>(XPath: <a href="#">TEXCatalog/TCheader/buyer/legalName</a>) 0-1</li> </ul>
lineN	<p>number of the line item of the present message (xml document)</p> <ul style="list-style-type: none"> <li>- base type: positiveInteger, min inclusive: 1, max inclusive: 9999,</li> <li>(XPath: <a href="#">TEXCatalog/TCbody/TCgroup/TCitem/lineN</a>) 1-1</li> </ul>
@listName	<p>it specifies the name of the list of codes used to make an instance of the element</p> <ul style="list-style-type: none"> <li>- base type: string, max length: 40,</li> <li>(XPath: <a href="#">TEXCatalog/TCbody/TCgroup/TCitem/pattern/@listName</a>) [Optional]</li> <li>- nota: <i>this attribute should always be used coupled with "numberingOrg"</i></li> <li>(XPath: <a href="#">TEXCatalog/TCbody/TCgroup/TCitem/art/@listName</a>) [Optional]</li> <li>- nota: <i>this attribute should always be used coupled with "numberingOrg"</i></li> <li>(XPath: <a href="#">TEXCatalog/TCbody/TCgroup/artGroup/@listName</a>) [Optional]</li> <li>- nota: <i>this attribute should always be used coupled with "numberingOrg"</i></li> <li>(XPath: <a href="#">TEXCatalog/TCbody/TCgroup/TCitem/color/@listName</a>) [Optional]</li> <li>- nota: <i>this attribute should always be used coupled with "numberingOrg"</i></li> </ul>
@listVersion	<p>it specifies the version of the list of codes used to make an instance of the element</p> <ul style="list-style-type: none"> <li>- base type: string, max length: 6,</li> <li>(XPath: <a href="#">TEXCatalog/TCbody/TCgroup/TCitem/color/@listVersion</a>) [Optional]</li> <li>- nota: <i>this attribute should always be used coupled with "numberingOrg" and "listName"</i></li> <li>(XPath: <a href="#">TEXCatalog/TCbody/TCgroup/TCitem/pattern/@listVersion</a>) [Optional]</li> <li>- nota: <i>this attribute should always be used coupled with "numberingOrg" and "listName"</i></li> <li>(XPath: <a href="#">TEXCatalog/TCbody/TCgroup/TCitem/art/@listVersion</a>) [Optional]</li> <li>- nota: <i>this attribute should always be used coupled with "numberingOrg" and "listName"</i></li> <li>(XPath: <a href="#">TEXCatalog/TCbody/TCgroup/artGroup/@listVersion</a>) [Optional]</li> <li>- nota: <i>this attribute should always be used coupled with "numberingOrg" and "listName"</i></li> </ul>
@logo	<p>company logo (URL of the image jpeg or gif). It is recommended that the width of the image does not exceed 640 pixel.</p>

	- base type: string, max length: 255, (XPath: <a href="#">TEXCatalog/THeader/supplier/@logo</a> ) [Optional] (XPath: <a href="#">TEXCatalog/THeader/buyer/@logo</a> ) [Optional]
@method	standard protocol or method employed in a test to evaluate a characteristic or a parameter - base type: string, max length: 25, (XPath: <a href="#">TEXCatalog/Tbody/TCgroup/TCitem/construction/bowingWarp/@method</a> ) [Optional] (XPath: <a href="#">TEXCatalog/Tbody/TCgroup/TCitem/construction/weftDev/@method</a> ) [Optional] (XPath: <a href="#">TEXCatalog/Tbody/TCgroup/TCitem/construction/checksFlaw/@method</a> ) [Optional] (XPath: <a href="#">TEXCatalog/Tbody/TCgroup/TCitem/construction/bowingWeft/@method</a> ) [Optional] (XPath: <a href="#">TEXCatalog/Tbody/TCgroup/TCitem/construction/warpCount/@method</a> ) [Optional] [Default= ISO-2060] (XPath: <a href="#">TEXCatalog/Tbody/TCgroup/TCitem/construction/weftCount/@method</a> ) [Optional] [Default= ISO-2060]
minLot	minimum order quantity of a product requested by the Supplier - base type: decimal, min inclusive: 0, fraction digits: 2, (XPath: <a href="#">TEXCatalog/Tbody/TCgroup/TCitem/generalChar/minLot</a> ) 0-1
minLotExclusive	minimum order quantity of a product requested by the Supplier for an exclusive color - base type: decimal, min inclusive: 0, fraction digits: 2, (XPath: <a href="#">TEXCatalog/Tbody/TCgroup/TCitem/generalChar/minLotExclusive</a> ) 0-1
@minQty	minimum quantity required for the application of a given price - base type: decimal, min inclusive: 0, fraction digits: 2, (XPath: <a href="#">TEXCatalog/Tbody/TCgroup/TCitem/catalogPrice/@minQty</a> ) [Optional]
msgCurrency	currency used to express the monetary amounts of the message - base type: string, cod. table: T9, (XPath: <a href="#">TEXCatalog/THeader/msgCurrency</a> ) 0-1
msgDate	date of issue of the present message (xml document), according to one of the patterns YYYY-MM-DD, YYYY-MM-DD:HH-MM or YYYY-WW. - base type: string, (XPath: <a href="#">TEXCatalog/THeader/msgDate</a> ) 1-1
@msgfunction	function performed by the present message with regards to the transmission - base type: string, cod. table: NT18, (XPath: <a href="#">TEXCatalog/@msgfunction</a> ) [Optional] [Default= OR]
msgID	key identifier of the document in the information system of the issuing Party - base type: string, max length: 35, (XPath: <a href="#">TEXCatalog/THeader/msgID</a> ) 0-1
msgN	identification number given to the message (xml document) by its issuer - base type: string, max length: 35, (XPath: <a href="#">TEXCatalog/THeader/msgN</a> ) 1-1
note	free text or structured (computer processing) note. For note structuring use the attributes "noteLabel" and "codelist" - base type: string, max length: 350, (XPath: <a href="#">TEXCatalog/THeader/note</a> ) 0-5 (XPath: <a href="#">TEXCatalog/Tbody/TCgroup/TCitem/generalChar/note</a> ) 0-5 - note: <i>here the charges for sub-optimized quantities or for samples can be specified</i> (XPath: <a href="#">TEXCatalog/Tbody/TCgroup/TCitem/note</a> ) 0-1
@noteLabel	subject qualifier of a note - base type: string, max length: 35, (XPath: <a href="#">TEXCatalog/Tbody/TCgroup/TCitem/generalChar/note/@noteLabel</a> )

	<p>[Optional]</p> <p>- nota: <i>must be used to qualify the subject of the note</i> (XPath: <code>TEXCatalog/TCbody/TCgroup/TCitem/note/@noteLabel</code>) [Optional]</p> <p>- nota: <i>must be used to qualify the subject of the note</i> (XPath: <code>TEXCatalog/THeader/note/@noteLabel</code>) [Optional]</p> <p>- nota: <i>must be used to qualify the subject of the note</i></p>
@numberingOrg	<p>code specifying the organisation who has created or owns the coding or numbering system</p> <p>- base type: string, cod. table: NT6, (XPath: <code>TEXCatalog/THeader/buyer/id/@numberingOrg</code>) [Optional] (XPath: <code>TEXCatalog/TCbody/TCgroup/TCitem/generalChar/note/@numberingOrg</code>) [Optional] (XPath: <code>TEXCatalog/TCbody/TCgroup/TCitem/note/@numberingOrg</code>) [Optional] (XPath: <code>TEXCatalog/THeader/note/@numberingOrg</code>) [Optional] (XPath: <code>TEXCatalog/THeader/docID/@numberingOrg</code>) [Optional]</p> <p>- nota: <i>here can be specified whose document numbering is used (e.g.: Client, Supplier, ..)</i> (XPath: <code>TEXCatalog/TCbody/TCgroup/artGroup/@numberingOrg</code>) [Optional]</p> <p>- nota: <i>this attribute should be used either single or coupled with "listName" and "listVersion"</i> (XPath: <code>TEXCatalog/TCbody/TCgroup/TCitem/pattern/@numberingOrg</code>) [Optional]</p> <p>- nota: <i>this attribute should be used either single or coupled with "listName" and "listVersion"</i> (XPath: <code>TEXCatalog/THeader/supplier/id/@numberingOrg</code>) [Optional] (XPath: <code>TEXCatalog/TCbody/TCgroup/TCitem/color/@numberingOrg</code>) [Optional]</p> <p>- nota: <i>this attribute should be used either single or coupled with "listName" and "listVersion"</i> (XPath: <code>TEXCatalog/TCbody/TCgroup/TCitem/art/@numberingOrg</code>) [Optional]</p> <p>- nota: <i>this attribute should be used either single or coupled with "listName" and "listVersion"</i></p>
pattern	<p>pattern/design number of the product, when not included in the article code</p> <p>- base type: string, max length: 15, (XPath: <code>TEXCatalog/TCbody/TCgroup/TCitem/pattern</code>) 0-1</p>
percCompos	<p>fiber rate in the product composition</p> <p>- base type: decimal, min inclusive: 0, max inclusive: 100, fraction digits: 2, (XPath: <code>TEXCatalog/TCbody/TCgroup/TCitem/generalChar/fabricCompos/percCompos</code>) 1-9</p>
person	<p>name of the contact person within a Party</p> <p>- base type: string, max length: 40, (XPath: <code>TEXCatalog/THeader/buyer/person</code>) 0-1 (XPath: <code>TEXCatalog/THeader/supplier/person</code>) 0-1</p>
@phone	<p>phone number of the contact person within a Party</p> <p>- base type: string, max length: 35, (XPath: <code>TEXCatalog/THeader/supplier/person/@phone</code>) [Optional] (XPath: <code>TEXCatalog/THeader/buyer/person/@phone</code>) [Optional]</p>
pieceLength	<p>length of the piece</p> <p>- base type: decimal, min inclusive: 0, fraction digits: 2, (XPath: <code>TEXCatalog/TCbody/TCgroup/TCitem/construction/pieceLength</code>) 0-1</p>
postCode	<p>code defining the postal zone</p> <p>- base type: string, max length: 10, (XPath: <code>TEXCatalog/THeader/buyer/postCode</code>) 0-1 (XPath: <code>TEXCatalog/THeader/supplier/postCode</code>) 0-1</p>
resin	<p>resin (coating) percentage in finished weight</p> <p>- base type: decimal, min inclusive: 0, (XPath: <code>TEXCatalog/TCbody/TCgroup/TCitem/construction/resin</code>) 0-1</p>
season	<p>sale season; defined as: season (1 crt) + year (4 crt) - season: S/S=1 A/W=2 Spring=3 Summer=4 Autumn=5 Winter=6: for more than four</p>

	<p>seasons use alphabetic sequence: 1st season=A 2nd season=B etc.etc.  - base type: string, max length: 15,  (XPath: <a href="#">TEXCatalog/THeader/season</a>) 0-1  (XPath: <a href="#">TEXCatalog/TCbody/TCgroup/TCitem/generalChar/season</a>) 0-1</p>
@sender	<p>qualifier that specifies the Party issuing of the document  - base type: boolean,  (XPath: <a href="#">TEXCatalog/THeader/buyer/@sender</a>) [Optional]  - nota: <i>This attribute is mandatory when the STYLESHEET must be produced</i>  (XPath: <a href="#">TEXCatalog/THeader/supplier/@sender</a>) [Optional]  - nota: <i>This attribute is mandatory when the STYLESHEET must be produced</i></p>
street	<p>street and building number identifying a location  - base type: string, max length: 80,  (XPath: <a href="#">TEXCatalog/THeader/buyer/street</a>) 0-1  (XPath: <a href="#">TEXCatalog/THeader/supplier/street</a>) 0-1</p>
subCountry	<p>short name or code of the sub-country entity  - base type: string, max length: 9,  (XPath: <a href="#">TEXCatalog/THeader/buyer/subCountry</a>) 0-1  (XPath: <a href="#">TEXCatalog/THeader/supplier/subCountry</a>) 0-1</p>
tradeMark	<p>name of the official trademark of a specified product  - base type: string, max length: 50,  (XPath: <a href="#">TEXCatalog/TCbody/TCgroup/TCitem/generalChar/tradeMark</a>) 0-1</p>
@um	<p>specification of the unit of measure  - base type: string, cod. table: NT7,  (XPath: <a href="#">TEXCatalog/TCbody/TCgroup/TCitem/generalChar/minLotExclusive/@um</a>) [Required]  (XPath: <a href="#">TEXCatalog/TCbody/TCgroup/TCitem/construction/fabricWeightM/@um</a>) [Optional] [Default= GRM]  (XPath: <a href="#">TEXCatalog/TCbody/TCgroup/TCitem/catalogPrice/@um</a>) [Required]  (XPath: <a href="#">TEXCatalog/TCbody/TCgroup/TCitem/generalChar/minLot/@um</a>) [Required]  (XPath: <a href="#">TEXCatalog/TCbody/TCgroup/TCitem/construction/fabricCutWidth/@um</a>) [Optional] [Default= CMT]  (XPath: <a href="#">TEXCatalog/TCbody/TCgroup/TCitem/construction/pieceLength/@um</a>) [Optional] [Default= MTR]  (XPath: <a href="#">TEXCatalog/TCbody/TCgroup/TCitem/construction/fabricWeightM2/@um</a>) [Optional] [Default= GRM]  (XPath: <a href="#">TEXCatalog/TCbody/TCgroup/TCitem/construction/fabricWidth/@um</a>) [Optional] [Default= CMT]</p>
validityEnd	<p>date by which the validity ends, according to one of the patterns YYYY-MM-DD, YYYY-MM-DD:HH-MM or YYYY-WW.  - base type: string,  (XPath: <a href="#">TEXCatalog/THeader/validityEnd</a>) 0-1</p>
validityStart	<p>date by which the validity starts, according to one of the patterns YYYY-MM-DD, YYYY-MM-DD:HH-MM or YYYY-WW.  - base type: string,  (XPath: <a href="#">TEXCatalog/THeader/validityStart</a>) 0-1</p>
@VAT	<p>VAT rate or code  - base type: string, cod. table: NT16,  (XPath: <a href="#">TEXCatalog/TCbody/TCgroup/TCitem/lineN/@VAT</a>) [Optional]</p>
warpCount	<p>measure of thinness of the warp thread  - base type: string, max length: 10,  (XPath: <a href="#">TEXCatalog/TCbody/TCgroup/TCitem/construction/warpCount</a>) 0-9</p>
warpEndsN	<p>number of warp threads in 1 centimetre  - base type: decimal, min inclusive: 0, fraction digits: 1,</p>

	(XPath: <a href="#">TEXCatalog/TCbody/TCgroup/TCitem/construction/warpEndsN</a> ) 0-1
weave	type of weaving used in the manufacturing of fabric - base type: string, cod. table: T17, (XPath: <a href="#">TEXCatalog/TCbody/TCgroup/TCitem/construction/weave</a> ) 0-1
weftCount	measure of thinness of the weft thread - base type: string, max length: 10, (XPath: <a href="#">TEXCatalog/TCbody/TCgroup/TCitem/construction/weftCount</a> ) 0-9
weftDev	deviation from right angle in weft - base type: decimal, min inclusive: 0, (XPath: <a href="#">TEXCatalog/TCbody/TCgroup/TCitem/construction/weftDev</a> ) 0-1
weftEndsN	number of weft threads in 1 centimetre - base type: decimal, min inclusive: 0, fraction digits: 1, (XPath: <a href="#">TEXCatalog/TCbody/TCgroup/TCitem/construction/weftEndsN</a> ) 0-1

## 2.3 Enumeration tables

List of enumeration tables used in the XML document. You can find the corresponding codes (only for tables with less than 100 values) in the document `Decoding_Values.pdf`, available at: <http://www.moda-ml.org/moda-ml/repository/guide/v2011-1/>; moreover, all the enumeration tables are available at: <http://www.moda-ml.org/imple/show-codes.asp>.

NT16 - VAT rate or code  
NT18 - message function  
NT29 - format of a date  
NT34 - garment market segment  
NT6 - Coding system owner/issuer  
NT7 - Unity of measure  
T10 - ISO3166 - Country  
T15 - Fabric dye/print process type  
T16 - Dyestuff type  
T17 - Weave type  
T19 - fibre type  
T44 - additional code type  
T9 - ISO4217 - Currency

# Annex A

Representative images of the principal complex elements' structure.

