



<http://www.moda-ml.org>

## IMPLEMENTATION GUIDE TRANSACTION "YARN PURCHASE ORDER"

Version: 2011-1

Date of release: 18/11/2011

Document code: G014

XML Schema repository:<http://www.moda-ml.org/moda-ml/repository/schema/v2011-1/default.asp>

Guides repository:<http://www.moda-ml.org/moda-ml/repository/guide/v2011-1/default.asp>

Guide filename: G014-MODA-ML-YarnPurchaseOrder.pdf

# 1. BUSINESS DESCRIPTION

## 1.1 Scope

The present guide has been issued to assist the companies of the Textile-Clothing sector in the implementation of the standard XML document type "YARN PURCHASE ORDER", providing all the instruction required for its use in any context of e-commerce between Yarn Producers and their Customers.

All the rules required for the construction and validation of the document are embedded into the specific XML-Schema, which is detailed in section "Implementation guide".

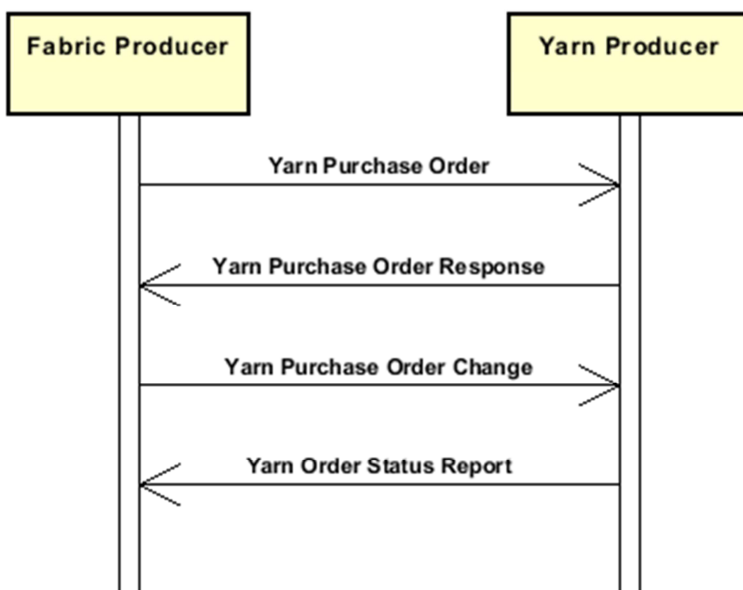
## 1.2 Generalities

The Purchase Order is issued by a Fabric or Knittwear Producer to procure yarn.

Key elements of this type of Order, besides quantities and delivery dates, are

- 1- the yarn product code, showing article, color and additional coding
- 2- the technical and construction specifications of the yarn product and the possible specification of "special treatments"
- 3- the detailed specifications referring to packing and packaging

## 1.3. Possible scenario



## 2. IMPLEMENTATION GUIDE

### 2.1 General structure of XML document

All the business data that can be exchanged through this class of documents are shown in the following "document structure", that provides a simplified vision of the Schema.

In particular:

- the two numbers following each element define its "cardinality" (minimum and maximum number of occurrences); the minimum equal zero indicates that the element is optional, the minimum greater than zero indicates that is mandatory;
- the bold character denotes the complex elements (aggregates of simple elements) that were built for the sake of functionality and re-usability of some complex informations sets. The child elements in each parent element are easily spotted as "indented";
- the symbol "@" denotes an attribute of the preceding element; here "the usage indicator (optional, required, ...) is shown in square brackets.

### Structure

#### **YARNOrder**

*@Totype [Required]*

*@msgfunction [Optional] [Default= OR]*

#### **YHeader 1-1**

msgN 1-1

- choose -

msgID 0-1

- or -

docID 0-1

*@numberingOrg [Optional]*

- end choose -

msgDate 1-1

*@dateForm [Optional]*

season 0-1

msgCurrency 0-1

otherCurrency 0-9

*@currencyUseQualifier [Required]*

#### **refDoc 0-9**

*@docType [Required]*

docID 1-2

*@numberingOrg [Optional]*

docDate 0-1

*@dateForm [Optional]*

season 0-1

itemID 0-1

#### **buyer 1-1**

*@logo [Optional]*

*@sender [Optional]*

id 1-1

*@numberingOrg [Optional]*

legalName 0-1

dept 0-1

person 0-1

*@email [Optional]*

*@phone [Optional]*

*@fax [Optional]*

street 0-1

city 0-1

subCountry 0-1

country 0-1

postCode 0-1

**supplier 1-1**

*@logo [Optional]*  
*@sender [Optional]*  
id 1-1  
*@numberingOrg [Optional]*  
legalName 0-1  
dept 0-1  
person 0-1  
*@email [Optional]*  
*@phone [Optional]*  
*@fax [Optional]*  
street 0-1  
city 0-1  
subCountry 0-1  
country 0-1  
postCode 0-1

**thirdParty 0-5**

*@VAT [Optional]*  
*@role [Required]*  
*@sender [Optional]*  
id 1-1  
*@numberingOrg [Optional]*  
legalName 0-1  
dept 0-1  
person 0-1  
*@email [Optional]*  
*@phone [Optional]*  
*@fax [Optional]*  
street 0-1  
city 0-1  
subCountry 0-1  
country 0-1  
postCode 0-1  
note 0-5  
*@numberingOrg [Optional]*  
*@codeList [Optional]*  
*@noteLabel [Optional]*

**terms 0-1****payment 0-5**

*@finDiscount [Optional]*  
*@finSurcharge [Optional]*  
- choose -  
payTerm 1-1  
- or -  
payTermText 1-1  
- end choose -  
payMode 0-1

**insPayment 0-5**

*@part [Required]*  
- choose -  
payTerm 1-1  
- or -  
payTermText 1-1  
- end choose -  
payMode 0-1

**trade 0-1**

- choose -  
incoTermText 1-1  
- or -  
incoTerm 1-1

- end choose -  
location 0-1  
@LRI [Optional]

**transInfo 0-1**

@transReason [Optional]  
transMode 1-1  
carrier 0-1  
deliveryPlace 0-1  
grossWeight 0-1  
@um [Required]  
netWeight 0-1  
@um [Required]  
transMeans 0-1  
transCondition 0-3  
transConditionText 0-1

**allowanceCharge 0-9**

@VAT [Optional]  
- choose -  
AC\_category 1-1  
- or -  
AC\_categoryText 1-1  
- choose -  
AC\_percent 1-1  
- or -  
AC\_amount 1-1  
- end choose -

**yarnComInfo 0-1**

yarnPay 0-1  
@percCond [Optional]  
deliveryDate 0-1  
@dateForm [Optional]  
specDate 0-1  
@dateForm [Optional]

**yarnPack 0-1**

**yarnReel 1-1**

@reelType [Required]  
@reelMat [Required]  
yarnReelID 0-1  
@um [Required]  
yarnReelH 0-1  
@um [Required]  
yarnConeAngle 0-1  
yarnReelQty 0-2  
@um [Required]  
label 0-1  
labelWrit 0-1

**yarnInWrap 0-1**

yarnReelWrap 1-1  
label 0-1  
labelWrit 0-1  
- choose -  
yarnOutWrapText 0-1  
- or -  
yarnOutWrap 0-1  
- end choose -

**YObody 1-1**

**YOitem 1-unbounded**

lineN 1-1  
@VAT [Optional]

**refDoc 0-9**

*@docType [Required]*  
docID 1-2  
*@numberingOrg [Optional]*  
docDate 0-1  
*@dateForm [Optional]*  
season 0-1  
itemID 0-1

**yarnCode 1-2**

*@numberingOrg [Optional] [Default= CL]*  
art 1-1  
*@numberingOrg [Optional]*  
*@codeList [Optional]*  
*@listName [Optional]*  
*@listVersion [Optional]*  
color 0-1  
*@numberingOrg [Optional]*  
*@codeList [Optional]*  
*@listName [Optional]*  
*@listVersion [Optional]*  
added 0-9  
*@addType [Optional]*  
description 0-1

**yarnCompos 0-1**

percCompos 1-9  
*@fibre [Required]*

**yarnSpecs 0-9**

- choose -  
yarnCharText 1-1  
- or -  
yarnChar 1-1  
- end choose -  
specValue 0-1  
*@um [Optional]*  
*@method [Optional]*  
- choose -  
tolerance 0-2  
*@um [Required]*  
- or -  
pcTolerance 0-2  
*@um [Optional]*  
- end choose -

lotN 0-2

*@numberingOrg [Optional]*

dyeN 0-2

*@numberingOrg [Optional]*

yarnTreat 0-1

qty 1-2

*@um [Required]*

price 0-1

*@um [Optional]*

*@priceQualifier [Optional] [Default= NET]*

comDiscount 0-1

**thirdParty 0-1**

*@VAT [Optional]*

*@role [Required]*

*@sender [Optional]*

id 1-1

*@numberingOrg [Optional]*

legalName 0-1

dept 0-1

person 0-1  
@email [Optional]  
@phone [Optional]  
@fax [Optional]  
street 0-1  
city 0-1  
subCountry 0-1  
country 0-1  
postCode 0-1  
**yarnComInfo 0-1**  
yarnPay 0-1  
@percCond [Optional]  
deliveryDate 0-1  
@dateForm [Optional]  
specDate 0-1  
@dateForm [Optional]  
**yarnPack 0-1**  
  **yarnReel 1-1**  
    @reelType [Required]  
    @reelMat [Required]  
    yarnReelD 0-1  
      @um [Required]  
    yarnReelH 0-1  
      @um [Required]  
    yarnConeAngle 0-1  
    yarnReelQty 0-2  
      @um [Required]  
    label 0-1  
    labelWrit 0-1  
  **yarnInWrap 0-1**  
    yarnReelWrap 1-1  
    label 0-1  
    labelWrit 0-1  
  - choose -  
    yarnOutWrapText 0-1  
  - or -  
    yarnOutWrap 0-1  
  - end choose -  
note 0-1  
@numberingOrg [Optional]  
@codeList [Optional]  
@noteLabel [Optional]  
**totals 0-1**  
totQty 0-1  
@um [Required]  
goodsAmount 1-1

## 2.2 Detailed description of document elements

Following tables show all elements (complex and simple) used in this document. Description includes: 1) element's information: xml tag, name, brief description, data type and syntax constraints; 2) information about use of the element in a particular position in the document: xpath and possible associated notes.

### 2.2.1 Complex elements (Aggregate Business Information Entities)

Complex elements are those elements whose content is composed of other elements (childs). Complex elements are alphabetically ordered.

<b>allowanceCharge</b>	Allowances and Charges related to an Order or a contract (XPath: YARNOrder/terms/allowanceCharge) 0-9
<b>buyer</b>	details of the Buyer - base type: , (XPath: YARNOrder/YOheader/buyer) 1-1
<b>insPayment</b>	payment details for payment by installments (XPath: YARNOrder/terms/insPayment) 0-5 - note: <i>this set of data is alternative to payment set and must be iterated for each payment installment</i>
<b>payment</b>	payment details for payment all in one (XPath: YARNOrder/terms/payment) 0-5 - note: <i>this set of data can be iterated to specify alternative terms of payment (e.g.: 60 days or 30 days with 3% discount)</i>
<b>refDoc</b>	identification of a document and of an item thereof, to which the message makes reference (XPath: YARNOrder/YObody/YOitem/refDoc) 0-9 (XPath: YARNOrder/YOheader/refDoc) 0-9
<b>supplier</b>	details of the Supplier - base type: , (XPath: YARNOrder/YOheader/supplier) 1-1
<b>terms</b>	details of the commercial obligations for payment and delivery (XPath: YARNOrder/terms) 0-1
<b>thirdParty</b>	details of the Third Party, different from Buyer or Supplier - base type: , (XPath: YARNOrder/YOheader/thirdParty) 0-5 (XPath: YARNOrder/YObody/YOitem/thirdParty) 0-1
<b>totals</b>	monetary and quantity totals of the Order (XPath: YARNOrder/totals) 0-1
<b>trade</b>	general terms of trade for the specified supply (XPath: YARNOrder/terms/trade) 0-1
<b>transInfo</b>	details of transport: mode, carrier and delivery place (XPath: YARNOrder/terms/transInfo) 0-1
<b>yarnCode</b>	full codification of a yarn product (XPath: YARNOrder/YObody/YOitem/yarnCode) 1-2
<b>yarnComInfo</b>	miscellaneous trade informations, that can be specified in a yarn Order, referred either to the whole document or to the single item (XPath: YARNOrder/yarnComInfo) 0-1 - note: <i>here must be specified those valid for the whole document</i> (XPath: YARNOrder/YObody/YOitem/yarnComInfo) 0-1
<b>yarnCompos</b>	fibrous composition of a yarn product



	(XPath: YARNOrder/YObody/YOitem/yarnCompos) 0-1
<b>yarnInWrap</b>	details specifying the inner wrapping of a yarn product (XPath: YARNOrder/YObody/YOitem/yarnComInfo/yarnPack/yarnInWrap) 0-1 (XPath: YARNOrder/yarnComInfo/yarnPack/yarnInWrap) 0-1
<b>yarnPack</b>	details of type of presentation used for the yarn (XPath: YARNOrder/YObody/YOitem/yarnComInfo/yarnPack) 0-1 (XPath: YARNOrder/yarnComInfo/yarnPack) 0-1
<b>yarnReel</b>	details of the reeling of a yarn product (bobbin & package) (XPath: YARNOrder/yarnComInfo/yarnPack/yarnReel) 1-1 (XPath: YARNOrder/YObody/YOitem/yarnComInfo/yarnPack/yarnReel) 1-1
<b>yarnSpecs</b>	technical characteristics of a yarn product linked to an operation of the sub-contracted production of yarn or to the purchase of yarn (XPath: YARNOrder/YObody/YOitem/yarnSpecs) 0-9
<b>YObody</b>	body of the document YARN PURCHASE ORDER (XPath: YARNOrder/YObody) 1-1
<b>YOheader</b>	header of the document YARN PURCHASE ORDER (XPath: YARNOrder/YOheader) 1-1
<b>YOitem</b>	line of the message YARN PURCHASE ORDER (XPath: YARNOrder/YObody/YOitem) 1-unbounded

## 2.2.2 Simple elements (Basic Business Information Entities)

Simple elements are those elements whose content is characterized by a data type plus a domain of possible values. Simple elements are alphabetically ordered.

<b>AC_amount</b>	amount of an Allowance or Charge - base type: decimal, fraction digits: 2, (XPath: YARNOrder/terms/allowanceCharge/AC_amount) 1-1
<b>AC_category</b>	coded specification of an Allowance or Charge - base type: string, cod. table: T41, (XPath: YARNOrder/terms/allowanceCharge/AC_category) 1-1
<b>AC_categoryText</b>	free text description of an Allowance or Charge - base type: string, max length: 70, (XPath: YARNOrder/terms/allowanceCharge/AC_categoryText) 1-1
<b>AC_percent</b>	amount of an Allowance or Charge as a percentage - base type: decimal, max inclusive: 100, fraction digits: 2, (XPath: YARNOrder/terms/allowanceCharge/AC_percent) 1-1
<b>added</b>	additional code of the product (complementing the formers) - base type: string, max length: 15, (XPath: YARNOrder/YObody/YOitem/yarnCode/added) 0-9 - note: <i>here an additional codification (see table T44) can be specified</i>
<b>@addType</b>	qualifier of the additional coding of a product - base type: string, cod. table: T44, (XPath: YARNOrder/YObody/YOitem/yarnCode/added/@addType) [Optional]
<b>art</b>	article number of the product - base type: string, max length: 25, (XPath: YARNOrder/YObody/YOitem/yarnCode/art) 1-1
<b>carrier</b>	identification of the transport carrier - base type: string, max length: 40, (XPath: YARNOrder/terms/transInfo/carrier) 0-1

city	name of the city (town, village) - base type: string, max length: 40, (XPath: YARNOrder/YOheader/thirdParty/city) 0-1 (XPath: YARNOrder/YOheader/supplier/city) 0-1 (XPath: YARNOrder/YOheader/buyer/city) 0-1 (XPath: YARNOrder/YObody/YOitem/thirdParty/city) 0-1
@codeList	it specifies the URL where the list of codes used to make an instance of the element can be found - base type: string, max length: 255, (XPath: YARNOrder/YObody/YOitem/yarnCode/art/@codeList) [Optional] - nota: <i>this attribute should be ALTERNATIVE to the others</i> (XPath: YARNOrder/YOheader/note/@codeList) [Optional] - nota: <i>must be used to provide (URL) the list of codes used in "noteLabel"</i> (XPath: YARNOrder/YObody/YOitem/yarnCode/color/@codeList) [Optional] - nota: <i>this attribute should be ALTERNATIVE to the others</i> (XPath: YARNOrder/YObody/YOitem/note/@codeList) [Optional] - nota: <i>must be used to provide (URL) the list of codes used in "noteLabel"</i>
color	colour number of the product, when not included in the model or fabric code - base type: string, max length: 15, (XPath: YARNOrder/YObody/YOitem/yarnCode/color) 0-1
comDiscount	percent discount applied to the related unit price or amount - base type: decimal, min inclusive: 0, max inclusive: 100, fraction digits: 2, (XPath: YARNOrder/YObody/YOitem/comDiscount) 0-1
country	code of the nation - base type: string, cod. table: T10, (XPath: YARNOrder/YOheader/buyer/country) 0-1 (XPath: YARNOrder/YOheader/supplier/country) 0-1 (XPath: YARNOrder/YObody/YOitem/thirdParty/country) 0-1 (XPath: YARNOrder/YOheader/thirdParty/country) 0-1
@currencyUseQualifier	qualification of another currency used in the document - base type: string, cod. table: NT19, (XPath: YARNOrder/YOheader/otherCurrency/@currencyUseQualifier) [Required]
@dateForm	format used for a date - base type: string, cod. table: NT29, (XPath: YARNOrder/YObody/YOitem/yarnComInfo/specDate/@dateForm) [Optional] (XPath: YARNOrder/YOheader/msgDate/@dateForm) [Optional] (XPath: YARNOrder/YObody/YOitem/refDoc/docDate/@dateForm) [Optional] (XPath: YARNOrder/yarnComInfo/deliveryDate/@dateForm) [Optional] (XPath: YARNOrder/YObody/YOitem/yarnComInfo/deliveryDate/@dateForm) [Optional] (XPath: YARNOrder/yarnComInfo/specDate/@dateForm) [Optional] (XPath: YARNOrder/YOheader/refDoc/docDate/@dateForm) [Optional]
deliveryDate	date of delivery of goods, requested or promised in the purchase process, according to one of the patterns YYYY-MM-DD, YYYY-MM-DD:HH-MM or YYYY-WW. - base type: string, (XPath: YARNOrder/yarnComInfo/deliveryDate) 0-1 (XPath: YARNOrder/YObody/YOitem/yarnComInfo/deliveryDate) 0-1
deliveryPlace	place of delivery of goods, ultimate or related to a given leg - base type: string, max length: 40, (XPath: YARNOrder/terms/transInfo/deliveryPlace) 0-1
dept	name or code of a contact department within a Party - base type: string, max length: 40, (XPath: YARNOrder/YOheader/supplier/dept) 0-1 (XPath: YARNOrder/YOheader/buyer/dept) 0-1 (XPath: YARNOrder/YObody/YOitem/thirdParty/dept) 0-1 (XPath: YARNOrder/YOheader/thirdParty/dept) 0-1

description	free text description of a product - base type: string, max length: 70, (XPath: YARNOOrder/YObody/YOitem/yarnCode/description) 0-1
docDate	date of issue of the referenced document, according to one of the patterns YYYY-MM-DD, YYYY-MM-DD:HH-MM or YYYY-WW. - base type: string, (XPath: YARNOOrder/YObody/YOitem/refDoc/docDate) 0-1 (XPath: YARNOOrder/YOheader/refDoc/docDate) 0-1
docID	identification number of the referenced document SINCE 2008-1 ITS USE IN THE HEADER IS DISCOURAGED (REPLACED BY ) - base type: string, max length: 35, (XPath: YARNOOrder/YOheader/refDoc/docID) 1-2 (XPath: YARNOOrder/YOheader/docID) 0-1 (XPath: YARNOOrder/YObody/YOitem/refDoc/docID) 1-2
@docType	type or class to which the referenced document belongs - base type: string, cod. table: T21, (XPath: YARNOOrder/YObody/YOitem/refDoc/@docType) [Required] (XPath: YARNOOrder/YOheader/refDoc/@docType) [Required]
dyeN	number of the dying batch of a textile product - base type: string, max length: 15, (XPath: YARNOOrder/YObody/YOitem/dyeN) 0-2 - note: <i>it can be specified by the Buyer in case of stock service</i>
@email	electronic mail address of the contact person within a Party - base type: string, max length: 80, (XPath: YARNOOrder/YObody/YOitem/thirdParty/person/@email) [Optional] (XPath: YARNOOrder/YOheader/buyer/person/@email) [Optional] (XPath: YARNOOrder/YOheader/thirdParty/person/@email) [Optional] (XPath: YARNOOrder/YOheader/supplier/person/@email) [Optional]
@fax	fax number of the contact person within a Party - base type: string, max length: 35, (XPath: YARNOOrder/YObody/YOitem/thirdParty/person/@fax) [Optional] (XPath: YARNOOrder/YOheader/buyer/person/@fax) [Optional] (XPath: YARNOOrder/YOheader/thirdParty/person/@fax) [Optional] (XPath: YARNOOrder/YOheader/supplier/person/@fax) [Optional]
@fibre	type of fibre used in a textile product - base type: string, cod. table: T19, (XPath: YARNOOrder/YObody/YOitem/yarnCompos/percCompos/@fibre) [Required]
@finDiscount	financial discount applied for payment by the date specified - base type: decimal, min inclusive: 0, max inclusive: 100, fraction digits: 2, (XPath: YARNOOrder/terms/payment/@finDiscount) [Optional]
@finSurcharge	financial surcharge applied for payment after the date specified - base type: decimal, min inclusive: 0, max inclusive: 100, fraction digits: 2, (XPath: YARNOOrder/terms/payment/@finSurcharge) [Optional]
goodsAmount	total monetary value of the goods and services considered in the message - base type: decimal, min inclusive: 0, fraction digits: 2, (XPath: YARNOOrder/totals/goodsAmount) 1-1
grossWeight	the gross weight of the overall goods supply, declared for transport or customs purpose - base type: decimal, min inclusive: 0, fraction digits: 2, (XPath: YARNOOrder/terms/transInfo/grossWeight) 0-1
id	primary identification code of a Party; it is recommended the format: nation code (ISO 3166) + VAT identification number (11 crt), with the qualifier "numberingOrg"= MF - base type: string, max length: 15, (XPath: YARNOOrder/YOheader/buyer/id) 1-1

	(XPath: YARNOOrder/YOheader/supplier/id) 1-1 (XPath: YARNOOrder/YObody/YOitem/thirdParty/id) 1-1 (XPath: YARNOOrder/YOheader/thirdParty/id) 1-1
incoTerm	specification of the terms of trade (INCOTERMS) - base type: string, cod. table: T3, (XPath: YARNOOrder/terms/trade/incoTerm) 1-1
incoTermText	free text specifying the terms of trade (incoterm, location) - base type: string, max length: 70, (XPath: YARNOOrder/terms/trade/incoTermText) 1-1
itemID	number of the line/item of the referenced document - base type: string, max length: 6, (XPath: YARNOOrder/YObody/YOitem/refDoc/itemID) 0-1 (XPath: YARNOOrder/YOheader/refDoc/itemID) 0-1
label	indicates if the physical object specified has to be labelled - base type: boolean, (XPath: YARNOOrder/YObody/YOitem/yarnComInfo/yarnPack/ yarnInWrap/label) 0-1 (XPath: YARNOOrder/yarnComInfo/yarnPack/yarnReel/label) 0-1 (XPath: YARNOOrder/yarnComInfo/yarnPack/yarnInWrap/label) 0-1 (XPath: YARNOOrder/YObody/YOitem/yarnComInfo/yarnPack/ yarnReel/label) 0-1
labelWrit	text that must be written on the lable of a specified physical object when its customization is required - base type: string, max length: 350, (XPath: YARNOOrder/yarnComInfo/yarnPack/yarnReel/labelWrit) 0-1 (XPath: YARNOOrder/yarnComInfo/yarnPack/yarnInWrap/labelWrit) 0-1 (XPath: YARNOOrder/YObody/YOitem/yarnComInfo/yarnPack/ yarnReel/labelWrit) 0-1 (XPath: YARNOOrder/YObody/YOitem/yarnComInfo/yarnPack/ yarnInWrap/labelWrit) 0-1
legalName	legal name of a Party - base type: string, max length: 80, (XPath: YARNOOrder/YObody/YOitem/thirdParty/legalName) 0-1 (XPath: YARNOOrder/YOheader/buyer/legalName) 0-1 (XPath: YARNOOrder/YOheader/thirdParty/legalName) 0-1 (XPath: YARNOOrder/YOheader/supplier/legalName) 0-1
lineN	number of the line item of the present message (xml document) - base type: positiveInteger, min inclusive: 1, max inclusive: 9999, (XPath: YARNOOrder/YObody/YOitem/lineN) 1-1
@listName	it specifies the name of the list of codes used to make an instance of the element - base type: string, max length: 40, (XPath: YARNOOrder/YObody/YOitem/yarnCode/color/@listName) [Optional] - nota: <i>this attribute should always be used coupled with "numberingOrg"</i> (XPath: YARNOOrder/YObody/YOitem/yarnCode/art/@listName) [Optional] - nota: <i>this attribute should always be used coupled with "numberingOrg"</i>
@listVersion	it specifie the version of the list of codes used to make an instance of the element - base type: string, max length: 6, (XPath: YARNOOrder/YObody/YOitem/yarnCode/color/@listVersion) [Optional] - nota: <i>this attribute should always be used coupled with "numberingOrg" and "listName"</i> (XPath: YARNOOrder/YObody/YOitem/yarnCode/art/@listVersion) [Optional] - nota: <i>this attribute should always be used coupled with "numberingOrg" and "listName"</i>
location	specification of a location

	- base type: string, max length: 40, (XPath: YARNOOrder/terms/trade/location) 0-1 - note: <i>place to which the INCOTERM applies</i>
@logo	company logo (URL of the image jpeg or gif). It is recommended that the width of the image does not exceed 640 pixel. - base type: string, max length: 255, (XPath: YARNOOrder/YOheader/buyer/@logo) [Optional] (XPath: YARNOOrder/YOheader/supplier/@logo) [Optional]
lotN	lot number of a product or batch number of the raw material - base type: string, max length: 15, (XPath: YARNOOrder/YObody/YOitem/lotN) 0-2 - note: <i>it can be specified by the Buyer in case of stock service</i>
@LRI	attribute usable to format a string according to a customized User rule (local rule) - base type: string, cod. table: NT3, (XPath: YARNOOrder/terms/trade/location/@LRI) [Optional]
@method	standard protocol or method employed in a test to evaluate a characteristic or a parameter - base type: string, max length: 25, (XPath: YARNOOrder/YObody/YOitem/yarnSpecs/specValue/@method) [Optional]
msgCurrency	currency used to express the monetary amounts of the message - base type: string, cod. table: T9, (XPath: YARNOOrder/YOheader/msgCurrency) 0-1
msgDate	date of issue of the present message (xml document), according to one of the patterns YYYY-MM-DD, YYYY-MM-DD:HH-MM or YYYY-WW. - base type: string, (XPath: YARNOOrder/YOheader/msgDate) 1-1
@msgfunction	function performed by the present message with regards to the transmission - base type: string, cod. table: NT18, (XPath: YARNOOrder/@msgfunction) [Optional] [Default= OR]
msgID	key identifier of the document in the information system of the issuing Party - base type: string, max length: 35, (XPath: YARNOOrder/YOheader/msgID) 0-1
msgN	identification number given to the message (xml document) by its issuer - base type: string, max length: 35, (XPath: YARNOOrder/YOheader/msgN) 1-1
netWeight	the net weight of the overall goods supply, declared for transport or customs purpose - base type: decimal, min inclusive: 0, fraction digits: 2, (XPath: YARNOOrder/terms/transInfo/netWeight) 0-1
note	free text or structured (computer processing) note. For note structuring use the attributes "noteLabel" and "codelist" - base type: string, max length: 350, (XPath: YARNOOrder/YObody/YOitem/note) 0-1 (XPath: YARNOOrder/YOheader/note) 0-5
@noteLabel	subject qualifier of a note - base type: string, max length: 35, (XPath: YARNOOrder/YOheader/note/@noteLabel) [Optional] - nota: <i>must be used to qualify the subject of the note</i> (XPath: YARNOOrder/YObody/YOitem/note/@noteLabel) [Optional] - nota: <i>must be used to qualify the subject of the note</i>
@numberingOrg	code specifying the organisation who has created or owns the coding or numbering system

	<p>- base type: string, cod. table: NT6,  (XPath: YARNOOrder/YObody/YOitem/dyeN/@numberingOrg) [Optional]  (XPath: YARNOOrder/YObody/YOitem/refDoc/docID/@numberingOrg) [Optional]</p> <p>- nota: here can be specified whose document numbering is used (e.g.: Client, Supplier, ..)  (XPath: YARNOOrder/YObody/YOitem/note/@numberingOrg) [Optional]  (XPath: YARNOOrder/YObody/YOitem/lotN/@numberingOrg) [Optional]  (XPath: YARNOOrder/YOheader/supplier/id/@numberingOrg) [Optional]  (XPath: YARNOOrder/YOheader/docID/@numberingOrg) [Optional]</p> <p>- nota: here can be specified whose document numbering is used (e.g.: Client, Supplier, ..)  (XPath: YARNOOrder/YOheader/refDoc/docID/@numberingOrg) [Optional]</p> <p>- nota: here can be specified whose document numbering is used (e.g.: Client, Supplier, ..)  (XPath: YARNOOrder/YOheader/buyer/id/@numberingOrg) [Optional]  (XPath: YARNOOrder/YOheader/thirdParty/id/@numberingOrg) [Optional]  (XPath: YARNOOrder/YObody/YOitem/yarnCode/art/@numberingOrg) [Optional]</p> <p>- nota: this attribute should be used either single or coupled with "listName" and "listVersion"  (XPath: YARNOOrder/YObody/YOitem/yarnCode/@numberingOrg) [Optional]  [Default= CL]  (XPath: YARNOOrder/YObody/YOitem/thirdParty/id/@numberingOrg) [Optional]  (XPath: YARNOOrder/YObody/YOitem/yarnCode/color/@numberingOrg) [Optional]</p> <p>- nota: this attribute should be used either single or coupled with "listName" and "listVersion"  (XPath: YARNOOrder/YOheader/note/@numberingOrg) [Optional]</p>
otherCurrency	<p>other currency used in the document</p> <p>- base type: string, cod. table: T9,  (XPath: YARNOOrder/YOheader/otherCurrency) 0-9</p>
@part	<p>percent fraction of a total payment</p> <p>- base type: decimal, min inclusive: 1, max inclusive: 99, fraction digits: 2,  (XPath: YARNOOrder/terms/insPayment/@part) [Required]</p> <p>- nota: here the % value of each installment must be indicated</p>
payMode	<p>way or means of payment</p> <p>- base type: string, cod. table: T2,  (XPath: YARNOOrder/terms/payment/payMode) 0-1  (XPath: YARNOOrder/terms/insPayment/payMode) 0-1</p>
payTerm	<p>code specifying the terms or time by which the payment must be done</p> <p>- base type: string, cod. table: T1,  (XPath: YARNOOrder/terms/insPayment/payTerm) 1-1  (XPath: YARNOOrder/terms/payment/payTerm) 1-1</p>
payTermText	<p>free text specifying the terms by which the payment must be done (time/mode or means)</p> <p>- base type: string, max length: 40,  (XPath: YARNOOrder/terms/payment/payTermText) 1-1  (XPath: YARNOOrder/terms/insPayment/payTermText) 1-1</p>
pcTolerance	<p>percent deviation tolerated on the value of a measurement (it must have a plus or minus sign)</p> <p>- base type: decimal, min inclusive: 0, max inclusive: 100, total digits: 2,  (XPath: YARNOOrder/YObody/YOitem/yarnSpecs/pcTolerance) 0-2</p>
percCompos	<p>fiber rate in the product composition</p> <p>- base type: decimal, min inclusive: 0, max inclusive: 100, fraction digits: 2,  (XPath: YARNOOrder/YObody/YOitem/yarnCompos/percCompos) 1-9</p>
@percCond	<p>percentage of conditioning to be applied to the payment of a yarn supply</p> <p>- base type: decimal, min inclusive: 0, max inclusive: 100, fraction digits: 2,  (XPath: YARNOOrder/YObody/YOitem/yarnComInfo/yarnPay/@percCond) [Optional]</p> <p>- nota: element to be used only when conditioned payments occur  (XPath: YARNOOrder/yarnComInfo/yarnPay/@percCond) [Optional]</p>



	- nota: <i>element to be used only when conditioned payments occur</i>
person	name of the contact person within a Party - base type: string, max length: 40, (XPath: YARNOrder/YOheader/thirdParty/person) 0-1 (XPath: YARNOrder/YOheader/buyer/person) 0-1 (XPath: YARNOrder/YOheader/supplier/person) 0-1 (XPath: YARNOrder/YObody/YOitem/thirdParty/person) 0-1
@phone	phone number of the contact person within a Party - base type: string, max length: 35, (XPath: YARNOrder/YOheader/buyer/person/@phone) [Optional] (XPath: YARNOrder/YOheader/thirdParty/person/@phone) [Optional] (XPath: YARNOrder/YOheader/supplier/person/@phone) [Optional] (XPath: YARNOrder/YObody/YOitem/thirdParty/person/@phone) [Optional]
postCode	code defining the postal zone - base type: string, max length: 10, (XPath: YARNOrder/YOheader/supplier/postCode) 0-1 (XPath: YARNOrder/YOheader/buyer/postCode) 0-1 (XPath: YARNOrder/YOheader/thirdParty/postCode) 0-1 (XPath: YARNOrder/YObody/YOitem/thirdParty/postCode) 0-1
price	unit price of the article, object or service specified - base type: decimal, min inclusive: 0, fraction digits: 2, (XPath: YARNOrder/YObody/YOitem/price) 0-1
@priceQualifier	type of price with reference to discount and taxes - base type: string, cod. table: NT20, (XPath: YARNOrder/YObody/YOitem/price/@priceQualifier) [Optional] [Default=NET]
qty	net quantity of the article or object correlated, qualified by the function of the document (ordering, delivering, ..) and by the context - base type: decimal, min inclusive: 0, fraction digits: 2, (XPath: YARNOrder/YObody/YOitem/qty) 1-2
@reelMat	type of material of which a bobbin for yarn is made - base type: string, cod. table: T30, (XPath: YARNOrder/yarnComInfo/yarnPack/yarnReel/@reelMat) [Required] (XPath: YARNOrder/YObody/YOitem/yarnComInfo/yarnPack/yarnReel/@reelMat) [Required]
@reelType	type of bobbin used for a yarn product - base type: string, cod. table: T29, (XPath: YARNOrder/YObody/YOitem/yarnComInfo/yarnPack/yarnReel/@reelType) [Required] (XPath: YARNOrder/yarnComInfo/yarnPack/yarnReel/@reelType) [Required]
@role	Third Party role qualifier - base type: string, cod. table: NT2, (XPath: YARNOrder/YObody/YOitem/thirdParty/@role) [Required] (XPath: YARNOrder/YOheader/thirdParty/@role) [Required]
season	sale season; defined as: season (1 crt) + year (4 crt) - season: S/S=1 A/W=2 Spring=3 Summer=4 Autumn=5 Winter=6: for more than four seasons use alphabetic sequence: 1st season=A 2nd season=B etc.etc. - base type: string, max length: 15, (XPath: YARNOrder/YOheader/refDoc/season) 0-1 - note: <i>here indicates the season to which the referenced document belongs</i> (XPath: YARNOrder/YObody/YOitem/refDoc/season) 0-1 - note: <i>here indicates the season to which the referenced document belongs</i> (XPath: YARNOrder/YOheader/season) 0-1
@sender	qualifier that specifies the Party issuing of the document - base type: boolean, (XPath: YARNOrder/YOheader/supplier/@sender) [Optional]

	<p>- nota: <i>This attribute is mandatory when the STYLESHEET must be produced</i> (XPath: YARNOOrder/YOheader/thirdParty/@sender) [Optional]</p> <p>- nota: <i>This attribute is mandatory when the STYLESHEET must be produced</i> (XPath: YARNOOrder/YObody/YOitem/thirdParty/@sender) [Optional]</p> <p>- nota: <i>This attribute is mandatory when the STYLESHEET must be produced</i> (XPath: YARNOOrder/YOheader/buyer/@sender) [Optional]</p> <p>- nota: <i>This attribute is mandatory when the STYLESHEET must be produced</i></p>
specDate	<p>date by which the referenced blanket order must receive full product specifications (e.g.: colour), according to one of the patterns YYYY-MM-DD, YYYY-MM-DD:HH-MM or YYYY-WW.</p> <p>- base type: string, (XPath: YARNOOrder/YObody/YOitem/yarnComInfo/specDate) 0-1 (XPath: YARNOOrder/yarnComInfo/specDate) 0-1</p>
specValue	<p>value requested for a characteristics or a parameter that can be measured</p> <p>- base type: decimal, (XPath: YARNOOrder/YObody/YOitem/yarnSpecs/specValue) 0-1</p>
street	<p>street and building number identifying a location</p> <p>- base type: string, max length: 80, (XPath: YARNOOrder/YOheader/thirdParty/street) 0-1 (XPath: YARNOOrder/YOheader/buyer/street) 0-1 (XPath: YARNOOrder/YObody/YOitem/thirdParty/street) 0-1 (XPath: YARNOOrder/YOheader/supplier/street) 0-1</p>
subCountry	<p>short name or code of the sub-country entity</p> <p>- base type: string, max length: 9, (XPath: YARNOOrder/YObody/YOitem/thirdParty/subCountry) 0-1 (XPath: YARNOOrder/YOheader/buyer/subCountry) 0-1 (XPath: YARNOOrder/YOheader/supplier/subCountry) 0-1 (XPath: YARNOOrder/YOheader/thirdParty/subCountry) 0-1</p>
tolerance	<p>deviation tolerated on the value of a measurement (it must have a plus or minus sign)</p> <p>- base type: decimal, (XPath: YARNOOrder/YObody/YOitem/yarnSpecs/tolerance) 0-2</p>
totQty	<p>total quantity of the articles related to the whole document</p> <p>- base type: decimal, min inclusive: 0, fraction digits: 2, (XPath: YARNOOrder/totals/totQty) 0-1</p>
@TOtype	<p>type of Order</p> <p>- base type: string, cod. table: NT1, (XPath: YARNOOrder/@TOtype) [Required]</p>
transCondition	<p>special condition of transport or special service requested to the Forwarder</p> <p>- base type: string, cod. table: T38, (XPath: YARNOOrder/terms/transInfo/transCondition) 0-3</p>
transConditionText	<p>free text description of the special condition of transport or special service requested to the Forwarder</p> <p>- base type: string, max length: 100, (XPath: YARNOOrder/terms/transInfo/transConditionText) 0-1</p>
transMeans	<p>means of transport, in general or referred to a specific leg</p> <p>- base type: string, cod. table: T40, (XPath: YARNOOrder/terms/transInfo/transMeans) 0-1</p>
transMode	<p>way of transport, in general or referred to the specified leg</p> <p>- base type: string, cod. table: T8, (XPath: YARNOOrder/terms/transInfo/transMode) 1-1</p>



@transReason	reason for the transport - base type: string, cod. table: NT11, (XPath: YARNOrder/terms/transInfo/@transReason) [Optional]
@um	specification of the unit of measure - base type: string, cod. table: NT7, (XPath: YARNOrder/YObody/YOitem/yarnSpecs/specValue/@um) [Optional] (XPath: YARNOrder/yarnComInfo/yarnPack/yarnReel/ yarnReelQty/@um) [Required] (XPath: YARNOrder/YObody/YOitem/yarnComInfo/yarnPack/ yarnReel/yarnReelQty/@um) [Required] (XPath: YARNOrder/YObody/YOitem/price/@um) [Optional] (XPath: YARNOrder/YObody/YOitem/qty/@um) [Required] (XPath: YARNOrder/YObody/YOitem/yarnComInfo/yarnPack/ yarnReel/yarnReelID/@um) [Required] (XPath: YARNOrder/YObody/YOitem/yarnSpecs/pcTolerance/@um) [Optional] - nota: to be used when it has to be soecified if the declared percentage is by weight, volume, etc... (XPath: YARNOrder/YObody/YOitem/yarnComInfo/yarnPack/ yarnReel/yarnReelH/@um) [Required] (XPath: YARNOrder/totals/totQty/@um) [Required] (XPath: YARNOrder/yarnComInfo/yarnPack/yarnReel/yarnReelID/@um) [Required] (XPath: YARNOrder/yarnComInfo/yarnPack/yarnReel/yarnReelH/@um) [Required] (XPath: YARNOrder/YObody/YOitem/yarnSpecs/tolerance/@um) [Required] (XPath: YARNOrder/terms/transInfo/netWeight/@um) [Required] (XPath: YARNOrder/terms/transInfo/grossWeight/@um) [Required]
@VAT	VAT rate or code - base type: string, cod. table: NT16, (XPath: YARNOrder/terms/allowanceCharge/@VAT) [Optional] (XPath: YARNOrder/YObody/YOitem/lineN/@VAT) [Optional] (XPath: YARNOrder/YObody/YOitem/thirdParty/@VAT) [Optional] (XPath: YARNOrder/YOheader/thirdParty/@VAT) [Optional]
yarnChar	physical or mechanical parameter used to define a characteristics of a yarn - base type: string, cod. table: T24, (XPath: YARNOrder/YObody/YOitem/yarnSpecs/yarnChar) 1-1
yarnCharText	free text describing the physical or mechanical parameter used to define a characteristics of a yarn - base type: string, max length: 40, (XPath: YARNOrder/YObody/YOitem/yarnSpecs/yarnCharText) 1-1
yarnConeAngle	tapering angle of the cone on which a yarn is reeled - base type: positiveInteger, (XPath: YARNOrder/YObody/YOitem/yarnComInfo/yarnPack/ yarnReel/yarnConeAngle) 0-1 (XPath: YARNOrder/yarnComInfo/yarnPack/yarnReel/yarnConeAngle) 0-1
yarnOutWrap	code specifying the type of outer wrapping or packing of a yarn - base type: string, cod. table: T33, (XPath: YARNOrder/YObody/YOitem/yarnComInfo/yarnPack/yarnOutWrap) 0-1 (XPath: YARNOrder/yarnComInfo/yarnPack/yarnOutWrap) 0-1
yarnOutWrapText	free text specifying the type of outer wrapping or packing of a yarn - base type: string, max length: 40, (XPath: YARNOrder/YObody/YOitem/yarnComInfo/yarnPack/yarnOutWrapText) 0-1 (XPath: YARNOrder/yarnComInfo/yarnPack/yarnOutWrapText) 0-1
yarnPay	type of payment to be applied to a yarn supply - base type: string, cod. table: T34, (XPath: YARNOrder/yarnComInfo/yarnPay) 0-1 (XPath: YARNOrder/YObody/YOitem/yarnComInfo/yarnPay) 0-1
yarnReelID	diameter of the bobbin used for a yarn product - base type: decimal, min inclusive: 0, fraction digits: 2, (XPath: YARNOrder/yarnComInfo/yarnPack/yarnReel/yarnReelID) 0-1

	(XPath: YARNOrder/YObody/YOitem/yarnComInfo/yarnPack/yarnReel/yarnReelID) 0-1
yarnReelH	height of the bobbin used a yarn product - base type: decimal, min inclusive: 0, fraction digits: 2, (XPath: YARNOrder/YObody/YOitem/yarnComInfo/yarnPack/yarnReel/yarnReelH) 0-1 (XPath: YARNOrder/yarnComInfo/yarnPack/yarnReel/yarnReelH) 0-1
yarnReelQty	quantity of yarn (by weight or length) wound upon a bobbin - base type: decimal, min inclusive: 0, fraction digits: 2, (XPath: YARNOrder/yarnComInfo/yarnPack/yarnReel/yarnReelQty) 0-2 (XPath: YARNOrder/YObody/YOitem/yarnComInfo/yarnPack/yarnReel/yarnReelQty) 0-2
yarnReelWrap	type of wrapping in which a reel of yarn is wrapped - base type: string, cod. table: T32, (XPath: YARNOrder/yarnComInfo/yarnPack/yarnInWrap/yarnReelWrap) 1-1 (XPath: YARNOrder/YObody/YOitem/yarnComInfo/yarnPack/yarnInWrap/yarnReelWrap) 1-1
yarnTreat	informations on the special treatments and finishing of a yarn product - base type: string, cod. table: T35, (XPath: YARNOrder/YObody/YOitem/yarnTreat) 0-1

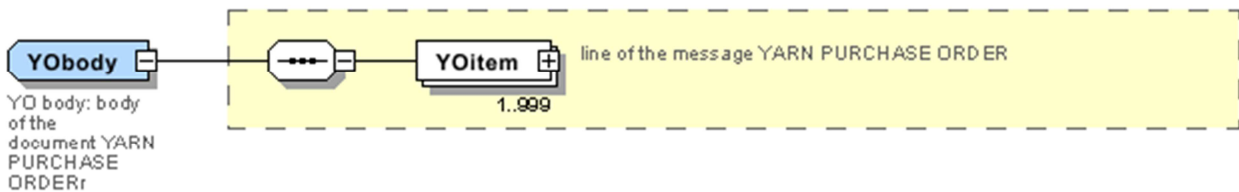
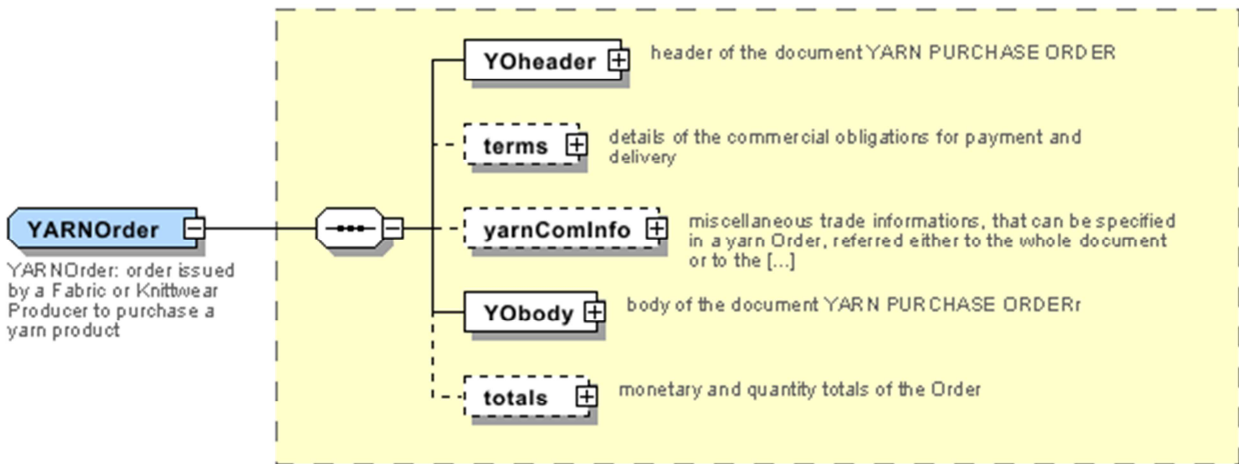
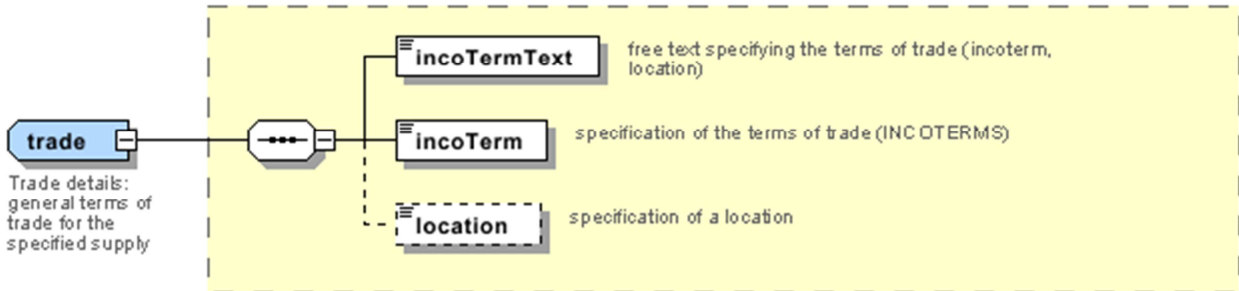
## 2.3 Enumeration tables

List of enumeration tables used in the XML document. You can find the corresponding codes (only for tables with less than 100 values) in the document `Decoding_Values.pdf`, available at: <http://www.moda-ml.org/moda-ml/repository/guide/v2011-1/>; moreover, all the enumeration tables are available at: <http://www.moda-ml.org/imple/show-codes.asp>.

NT1 - Order type  
NT11 - Transport causal  
NT16 - VAT rate or code  
NT18 - message function  
NT19 - currency use qualifier  
NT2 - Third party qualifier  
NT20 - price qualifier  
NT29 - format of a date  
NT3 - Data format  
NT6 - Coding system owner/issuer  
NT7 - Unity of measure  
T1 - Terms of payment  
T10 - ISO3166 - Country  
T19 - fibre type  
T2 - Modes of payment  
T21 - type of document  
T24 - yarn characteristics type  
T29 - type of bobbin  
T3 - Terms of delivery  
T30 - type of bobbin material  
T32 - yarn reel wrapping type  
T33 - Yarn outer packing  
T34 - yarn payment type  
T35 - yarn treatment type  
T38 - transport conditions  
T40 - type of transport means  
T41 - type of Allowance or Charge  
T44 - additional code type  
T8 - Modes of Transport  
T9 - ISO4217 - Currency

# Annex A

Representative images of the principal complex elements' structure.



**YOheader**  
 YO header:  
 header of the  
 document YARN  
 PURCHASE ORDER

