



<http://www.moda-ml.org>

IMPLEMENTATION GUIDE

TRANSACTION "GARMENT KIT DESPATCH REQUEST"

Version: 2011-1

Date of release: 18/11/2011

Document code: G019

XML Schema repository:<http://www.moda-ml.org/moda-ml/repository/schema/v2011-1/default.asp>

Guides repository:<http://www.moda-ml.org/moda-ml/repository/guide/v2011-1/default.asp>

Guide filename: G019-MODA-ML-GarmentKitDespatchRequest.pdf

1. BUSINESS DESCRIPTION

1.1 Scope

The present guide has been issued to assist the companies of the Textile-Clothing sector in the implementation of the standard XML document type "GARMENT KIT DESPATCH REQUEST", providing all the instruction required for its use in any context of e-commerce between Apparel Producers and other actors that will send the kits on their behalf.

All the rules required for the construction and validation of the document are embedded into the specific XML-Schema, which is detailed in section "Implementation guide".

1.2 Generalities

In this scenario, the Fabric Producers agree to send fabrics and accessories ordered by the Apparel Producer to a Logistics Company or directly to the Apparel Subcontractor specified by the Apparel Producer.

The Apparel Producer send a Despatch Request of the "kit" to the Fabric Producer or to the Logistics company so that it can make the "groupage (fabric, buttons, fastners...) and send it to the specified Subcontractor.

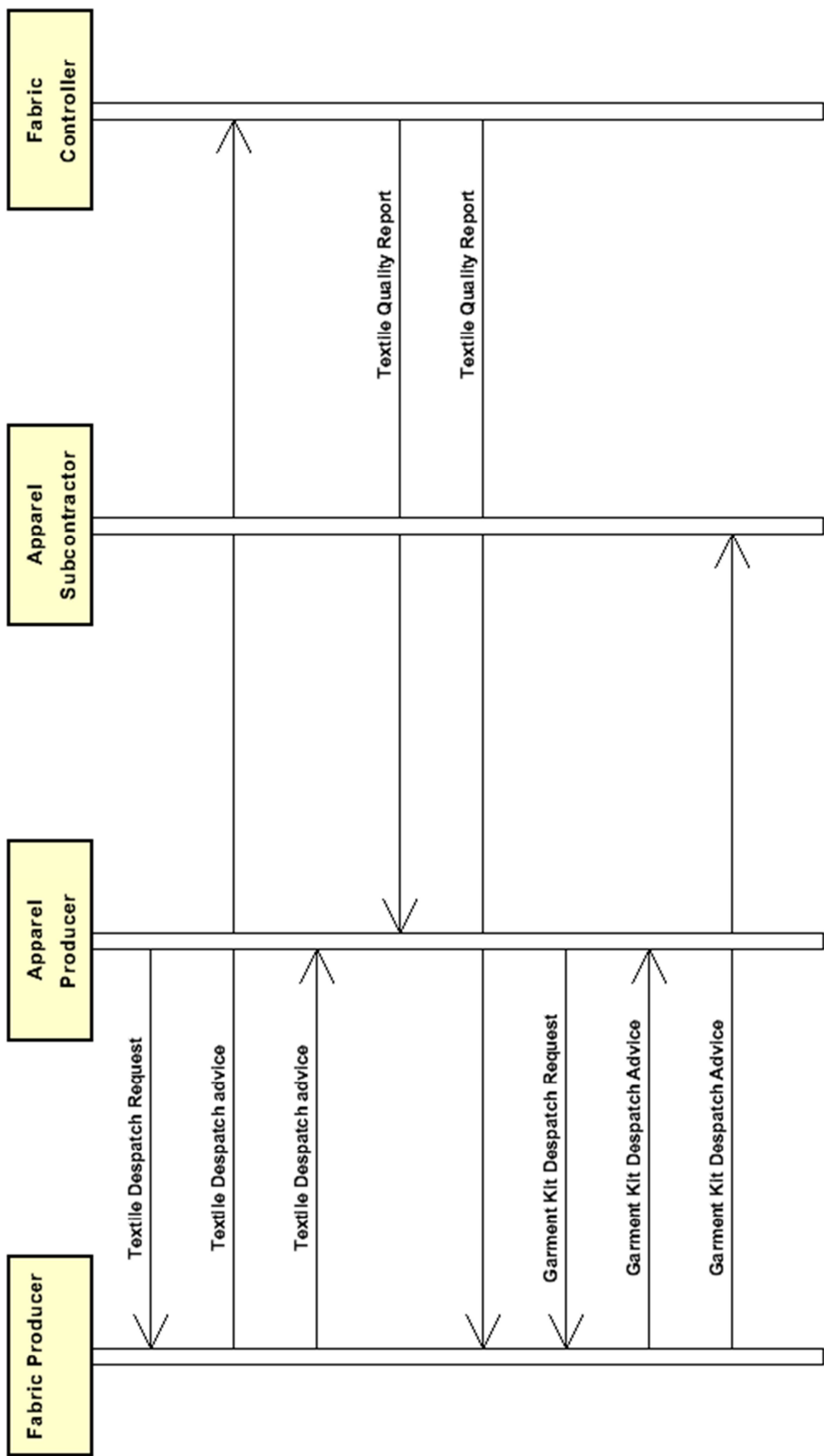
At this point, the Logistics company (or the Fabric Producer acting as) send the Despatch Advise to the Apparel Producer to confirm the shipping; the same document is sent to the Subcontractor to anticipate the information about the material it will receive.

This document is relative to the Despatch Request of the "kit" and can concern one or several Subcontractors.

The basic principles are:

- one line item must correspond to one "kit" and one Subcontractor
- every kit is made of one or more fabrics of which the single pieces can be identified, plus several accessories
- as for the roles: the Apparel Producer is "buyer", the Logistics company is "supplier" and the Subcontractor is "third party"

1.3. Possible scenario



2. IMPLEMENTATION GUIDE

2.1 General structure of XML document

All the business data that can be exchanged through this class of documents are shown in the following "document structure", that provides a simplified vision of the Schema.

In particular:

- the two numbers following each element define its "cardinality" (minimum and maximum number of occurrences); the minimum equal zero indicates that the element is optional, the minimum greater than zero indicates that is mandatory;
- the bold character denotes the complex elements (aggregates of simple elements) that were built for the sake of functionality and re-usability of some complex informations sets. The child elements in each parent element are easily spotted as "indented";
- the symbol "@" denotes an attribute of the preceding element; here "the usage indicator (optional, required, ...) is shown in square brackets.

Structure

TEXKitDesRequest

@TRtype [Optional] [Default= STD]

@msgfunction [Optional] [Default= OR]

TRheader 1-1

msgN 1-1

- choose -

msgID 0-1

- or -

docID 0-1

@numberingOrg [Optional]

- end choose -

msgDate 1-1

@dateForm [Optional]

refDoc 0-9

@docType [Required]

docID 1-2

@numberingOrg [Optional]

docDate 0-1

@dateForm [Optional]

season 0-1

itemID 0-1

buyer 1-1

@logo [Optional]

@sender [Optional]

id 1-1

@numberingOrg [Optional]

legalName 0-1

dept 0-1

person 0-1

@email [Optional]

@phone [Optional]

@fax [Optional]

street 0-1

city 0-1

subCountry 0-1

country 0-1

postCode 0-1

supplier 1-1

@logo [Optional]

@sender [Optional]

id 1-1

@numberingOrg [Optional]
legalName 0-1
dept 0-1
person 0-1
@email [Optional]
@phone [Optional]
@fax [Optional]
street 0-1
city 0-1
subCountry 0-1
country 0-1
postCode 0-1

thirdParty 0-5

@VAT [Optional]
@role [Required]
@sender [Optional]
id 1-1
@numberingOrg [Optional]
legalName 0-1
dept 0-1
person 0-1
@email [Optional]
@phone [Optional]
@fax [Optional]
street 0-1
city 0-1
subCountry 0-1
country 0-1
postCode 0-1

note 0-5

@numberingOrg [Optional]
@codeList [Optional]
@noteLabel [Optional]

TKRbody 1-1

TKRitem 1-unbounded

lineN 1-1
@VAT [Optional]
kitN 1-1
@numberingOrg [Optional]
refDoc 0-9
@docType [Required]
docID 1-2
@numberingOrg [Optional]
docDate 0-1
@dateForm [Optional]
season 0-1
itemID 0-1

kitFabric 0-99

texCode 1-2

@numberingOrg [Optional]
art 1-1
@numberingOrg [Optional]
@codeList [Optional]
@listName [Optional]
@listVersion [Optional]
pattern 0-1
@numberingOrg [Optional]
@codeList [Optional]
@listName [Optional]
@listVersion [Optional]

color 0-1
 @numberingOrg [Optional]
 @codeList [Optional]
 @listName [Optional]
 @listVersion [Optional]
 added 0-9
 @addType [Optional]
 description 0-1
fabricCompos 0-1
 percCompos 1-9
 @fibre [Required]
 qty 1-2
 @um [Required]
 qtyVariance 0-1
 @um [Optional]
 @varReason [Optional]
 mixMatch 0-1
 @numberingOrg [Optional]
piece 0-unbounded
 @endUse [Optional]
 serialN 1-3
 @numberingOrg [Optional]
 totFault 0-1
 pieceStatus 0-1
 pieceLength 0-1
 @um [Optional] [Default= MTR]
 pieceWidth 0-1
 @um [Optional] [Default= CMT]
 pieceCutWidth 0-1
 @um [Optional] [Default= CMT]
 pieceWeight 0-1
 @um [Optional] [Default= KGM]
 pieceWeightM 0-1
 @um [Optional] [Default= GRM]
 pieceAllow 0-1
 @um [Required]
 lotN 0-1
 @numberingOrg [Optional]
 dyeN 0-1
 @numberingOrg [Optional]
 mixMatch 0-1
 @numberingOrg [Optional]
 packageN 0-1
 @numberingOrg [Optional]
piecePack 0-1
 - choose -
 piecePackText 1-1
 - or -
 pieceInnWrap1 1-1
 pieceInnWrap2 0-1
 pieceOutWrap 0-1
 - end choose -
kitAccessory 0-unbounded
acsCode 1-2
 @numberingOrg [Optional]
 art 1-1
 @numberingOrg [Optional]
 @codeList [Optional]
 @listName [Optional]
 @listVersion [Optional]
 pattern 0-1

@numberingOrg [Optional]
@codeList [Optional]
@listName [Optional]
@listVersion [Optional]
color 0-1
@numberingOrg [Optional]
@codeList [Optional]
@listName [Optional]
@listVersion [Optional]
added 0-9
@addType [Optional]
description 0-1
acsName 0-1
qty 1-1
@um [Required]
lotN 0-1
@numberingOrg [Optional]
mixMatch 0-1
@numberingOrg [Optional]
packageN 0-9
@numberingOrg [Optional]
thirdParty 0-1
@VAT [Optional]
@role [Required]
@sender [Optional]
id 1-1
@numberingOrg [Optional]
legalName 0-1
dept 0-1
person 0-1
@email [Optional]
@phone [Optional]
@fax [Optional]
street 0-1
city 0-1
subCountry 0-1
country 0-1
postCode 0-1

2.2 Detailed description of document elements

Following tables show all elements (complex and simple) used in this document. Description includes: 1) element's information: xml tag, name, brief description, data type and syntax constraints; 2) information about use of the element in a particular position in the document: xpath and possible associated notes.

2.2.1 Complex elements (Aggregate Business Information Entities)

Complex elements are those elements whose content is composed of other elements (childs).Complex elements are alphabetically ordered.

acsCode	full codification identifying an accessory product usually coupled with garment (XPath: TEXKitDesRequest/TKRbody/TKRitem/kitAccessory/acsCode) 1-2
buyer	details of the Buyer - base type: , (XPath: TEXKitDesRequest/TRheader/buyer) 1-1
fabricCompos	composition of the fabric according to the Directory 97/37/CE (XPath: TEXKitDesRequest/TKRbody/TKRitem/kitFabric/fabricCompos) 0-1
kitAccessory	details of an accessory included in a garment manufacturing kit (XPath: TEXKitDesRequest/TKRbody/TKRitem/kitAccessory) 0-unbounded
kitFabric	details of a fabric included in a garment manufacturing kit (XPath: TEXKitDesRequest/TKRbody/TKRitem/kitFabric) 0-99
piece	Identification data and measurement of the fabric piece (XPath: TEXKitDesRequest/TKRbody/TKRitem/kitFabric/piece) 0-unbounded
piecePack	type of wrapping or packing of the fabric pieces (XPath: TEXKitDesRequest/TKRbody/TKRitem/kitFabric/piece/piecePack) 0-1
refDoc	identification of a document and of an item thereof, to which the message makes reference (XPath: TEXKitDesRequest/TRheader/refDoc) 0-9 (XPath: TEXKitDesRequest/TKRbody/TKRitem/refDoc) 0-9
supplier	details of the Supplier - base type: , (XPath: TEXKitDesRequest/TRheader/supplier) 1-1
texCode	full codification of the textile product (XPath: TEXKitDesRequest/TKRbody/TKRitem/kitFabric/texCode) 1-2
thirdParty	details of the Third Party, different from Buyer or Supplier - base type: , (XPath: TEXKitDesRequest/TKRbody/TKRitem/thirdParty) 0-1 - note: <i>here the Subcontractor to which the kit must be consigned have to be indicated, when not already specified in the Header</i> (XPath: TEXKitDesRequest/TRheader/thirdParty) 0-5 - note: <i>here the Consignee when different from the Client must be specified</i>
TKRbody	body of the document GARMENT KIT DESPACH REQUEST (XPath: TEXKitDesRequest/TKRbody) 1-1
TKRitem	line item of the document GARMENT KIT DESPACH REQUEST (XPath: TEXKitDesRequest/TKRbody/TKRitem) 1-unbounded
TRheader	header of the TEXTILES DESPACH REQUEST (XPath: TEXKitDesRequest/TRheader) 1-1

2.2.2 Simple elements (Basic Business Information Entities)

Simple elements are those elements whose content is characterized by a data type plus a domain of possible values. Simple elements are alphabetically ordered.

acsName	denomination of an accessory product usually coupled with garment - base type: string, max length: 100, (XPath: TEXKitDesRequest/TKRbody/TKRitem/kitAccessory/acsName) 0-1
added	additional code of the product (complementing the formers) - base type: string, max length: 15, (XPath: TEXKitDesRequest/TKRbody/TKRitem/kitFabric/texCode/added) 0-9 - note: <i>here an additional codification (see table T44) can be specified</i> (XPath: TEXKitDesRequest/TKRbody/TKRitem/kitAccessory/acsCode/added) 0-9 - note: <i>here an additional codification (see table T44) can be specified</i>
@addType	qualifier of the additional coding of a product - base type: string, cod. table: T44, (XPath: TEXKitDesRequest/TKRbody/TKRitem/kitAccessory/acsCode/added/@addType) [Optional] (XPath: TEXKitDesRequest/TKRbody/TKRitem/kitFabric/texCode/added/@addType) [Optional]
art	article number of the product - base type: string, max length: 25, (XPath: TEXKitDesRequest/TKRbody/TKRitem/kitFabric/texCode/art) 1-1 - note: <i>can be used either for the base-article (excluding pattern/colour) or for the SKU</i> (XPath: TEXKitDesRequest/TKRbody/TKRitem/kitAccessory/acsCode/art) 1-1
city	name of the city (town, village) - base type: string, max length: 40, (XPath: TEXKitDesRequest/TRheader/buyer/city) 0-1 (XPath: TEXKitDesRequest/TRheader/thirdParty/city) 0-1 (XPath: TEXKitDesRequest/TRheader/supplier/city) 0-1 (XPath: TEXKitDesRequest/TKRbody/TKRitem/thirdParty/city) 0-1
@codeList	it specifies the URL where the list of codes used to make an instance of the element can be found - base type: string, max length: 255, (XPath: TEXKitDesRequest/TKRbody/TKRitem/kitAccessory/acsCode/art/@codeList) [Optional] - nota: <i>this attribute should be ALTERNATIVE to the others</i> (XPath: TEXKitDesRequest/TKRbody/TKRitem/kitAccessory/acsCode/pattern/@codeList) [Optional] - nota: <i>this attribute should be ALTERNATIVE to the others</i> (XPath: TEXKitDesRequest/TKRbody/TKRitem/kitFabric/texCode/color/@codeList) [Optional] - nota: <i>this attribute should be ALTERNATIVE to the others</i> (XPath: TEXKitDesRequest/TKRbody/TKRitem/kitAccessory/acsCode/color/@codeList) [Optional] - nota: <i>this attribute should be ALTERNATIVE to the others</i> (XPath: TEXKitDesRequest/TKRbody/TKRitem/kitFabric/texCode/art/@codeList) [Optional] - nota: <i>this attribute should be ALTERNATIVE to the others</i> (XPath: TEXKitDesRequest/TRheader/note/@codeList) [Optional] - nota: <i>must be used to provide (URL) the list of codes used in "noteLabel"</i> (XPath: TEXKitDesRequest/TKRbody/TKRitem/kitFabric/texCode/pattern/@codeList) [Optional] - nota: <i>this attribute should be ALTERNATIVE to the others</i>
color	colour number of the product, when not included in the model or fabric code

	- base type: string, max length: 15, (XPath: TEXKitDesRequest/TKRbody/TKRitem/kitFabric/texCode/color) 0-1 (XPath: TEXKitDesRequest/TKRbody/TKRitem/kitAccessory/ acsCode/color) 0-1
country	code of the nation - base type: string, cod. table: T10, (XPath: TEXKitDesRequest/TRheader/buyer/country) 0-1 (XPath: TEXKitDesRequest/TKRbody/TKRitem/thirdParty/country) 0-1 (XPath: TEXKitDesRequest/TRheader/thirdParty/country) 0-1 (XPath: TEXKitDesRequest/TRheader/supplier/country) 0-1
@dateForm	format used for a date - base type: string, cod. table: NT29, (XPath: TEXKitDesRequest/TKRbody/TKRitem/refDoc/docDate/@dateForm) [Optional] (XPath: TEXKitDesRequest/TRheader/msgDate/@dateForm) [Optional] (XPath: TEXKitDesRequest/TRheader/refDoc/docDate/@dateForm) [Optional]
dept	name or code of a contact department within a Party - base type: string, max length: 40, (XPath: TEXKitDesRequest/TRheader/supplier/dept) 0-1 (XPath: TEXKitDesRequest/TRheader/buyer/dept) 0-1 (XPath: TEXKitDesRequest/TRheader/thirdParty/dept) 0-1 (XPath: TEXKitDesRequest/TKRbody/TKRitem/thirdParty/dept) 0-1
description	free text description of a product - base type: string, max length: 70, (XPath: TEXKitDesRequest/TKRbody/TKRitem/kitAccessory/ acsCode/description) 0-1 (XPath: TEXKitDesRequest/TKRbody/TKRitem/kitFabric/texCode/description) 0-1
docDate	date of issue of the referenced document, according to one of the patterns YYYY-MM-DD, YYYY-MM-DD:HH-MM or YYYY-WW. - base type: string, (XPath: TEXKitDesRequest/TRheader/refDoc/docDate) 0-1 (XPath: TEXKitDesRequest/TKRbody/TKRitem/refDoc/docDate) 0-1
docID	identification number of the referenced document SINCE 2008-1 ITS USE IN THE HEADER IS DISCOURAGED (REPLACED BY) - base type: string, max length: 35, (XPath: TEXKitDesRequest/TKRbody/TKRitem/refDoc/docID) 1-2 (XPath: TEXKitDesRequest/TRheader/docID) 0-1 (XPath: TEXKitDesRequest/TRheader/refDoc/docID) 1-2
@docType	type or class to which the referenced document belongs - base type: string, cod. table: T21, (XPath: TEXKitDesRequest/TRheader/refDoc/@docType) [Required] (XPath: TEXKitDesRequest/TKRbody/TKRitem/refDoc/@docType) [Required]
dyeN	number of the dying batch of a textile product - base type: string, max length: 15, (XPath: TEXKitDesRequest/TKRbody/TKRitem/kitFabric/piece/dyeN) 0-1
@email	electronic mail address of the contact person within a Party - base type: string, max length: 80, (XPath: TEXKitDesRequest/TKRbody/TKRitem/thirdParty/person/@email) [Optional] (XPath: TEXKitDesRequest/TRheader/thirdParty/person/@email) [Optional] (XPath: TEXKitDesRequest/TRheader/supplier/person/@email) [Optional] (XPath: TEXKitDesRequest/TRheader/buyer/person/@email) [Optional]
@endUse	specifies the final use of the material - base type: string, cod. table: NT4, (XPath: TEXKitDesRequest/TKRbody/TKRitem/kitFabric/piece/@endUse) [Optional]
@fax	fax number of the contact person within a Party - base type: string, max length: 35,

	(XPath: TEXKitDesRequest/TRheader/thirdParty/person/@fax) [Optional] (XPath: TEXKitDesRequest/TRheader/supplier/person/@fax) [Optional] (XPath: TEXKitDesRequest/TKRbody/TKRitem/thirdParty/person/@fax) [Optional] (XPath: TEXKitDesRequest/TRheader/buyer/person/@fax) [Optional]
@fibre	type of fibre used in a textile product - base type: string, cod. table: T19, (XPath: TEXKitDesRequest/TKRbody/TKRitem/kitFabric/fabricCompos/percCompos/@fibre) [Required]
id	primary identification code of a Party; it is recommended the format: nation code (ISO 3166) + VAT identification number (11 crt), with the qualifier "numberingOrg"= MF - base type: string, max length: 15, (XPath: TEXKitDesRequest/TRheader/thirdParty/id) 1-1 (XPath: TEXKitDesRequest/TRheader/supplier/id) 1-1 (XPath: TEXKitDesRequest/TKRbody/TKRitem/thirdParty/id) 1-1 (XPath: TEXKitDesRequest/TRheader/buyer/id) 1-1
itemID	number of the line/item of the referenced document - base type: string, max length: 6, (XPath: TEXKitDesRequest/TKRbody/TKRitem/refDoc/itemID) 0-1 (XPath: TEXKitDesRequest/TRheader/refDoc/itemID) 0-1
kitN	identification number of a garment manufacturing kit - base type: string, max length: 15, (XPath: TEXKitDesRequest/TKRbody/TKRitem/kitN) 1-1
legalName	legal name of a Party - base type: string, max length: 80, (XPath: TEXKitDesRequest/TRheader/supplier/legalName) 0-1 (XPath: TEXKitDesRequest/TRheader/thirdParty/legalName) 0-1 (XPath: TEXKitDesRequest/TKRbody/TKRitem/thirdParty/legalName) 0-1 (XPath: TEXKitDesRequest/TRheader/buyer/legalName) 0-1
lineN	number of the line item of the present message (xml document) - base type: positiveInteger, min inclusive: 1, max inclusive: 9999, (XPath: TEXKitDesRequest/TKRbody/TKRitem/lineN) 1-1
@listName	it specifies the name of the list of codes used to make an instance of the element - base type: string, max length: 40, (XPath: TEXKitDesRequest/TKRbody/TKRitem/kitFabric/texCode/pattern/@listName) [Optional] - nota: <i>this attribute should always be used coupled with "numberingOrg"</i> (XPath: TEXKitDesRequest/TKRbody/TKRitem/kitAccessory/acsCode/color/@listName) [Optional] - nota: <i>this attribute should always be used coupled with "numberingOrg"</i> (XPath: TEXKitDesRequest/TKRbody/TKRitem/kitFabric/texCode/art/@listName) [Optional] - nota: <i>this attribute should always be used coupled with "numberingOrg"</i> (XPath: TEXKitDesRequest/TKRbody/TKRitem/kitFabric/texCode/color/@listName) [Optional] - nota: <i>this attribute should always be used coupled with "numberingOrg"</i> (XPath: TEXKitDesRequest/TKRbody/TKRitem/kitAccessory/acsCode/pattern/@listName) [Optional] - nota: <i>this attribute should always be used coupled with "numberingOrg"</i> (XPath: TEXKitDesRequest/TKRbody/TKRitem/kitAccessory/acsCode/art/@listName) [Optional] - nota: <i>this attribute should always be used coupled with "numberingOrg"</i>
@listVersion	it specifies the version of the list of codes used to make an instance of the element - base type: string, max length: 6, (XPath: TEXKitDesRequest/TKRbody/TKRitem/kitFabric/texCode/art/@listVersion) [Optional]

	<p>- nota: <i>this attribute should always be used coupled with "numberingOrg" and "listName"</i> (XPath: <code>TEXKitDesRequest/TKRbody/TKRitem/kitAccessory/acsCode/color/@listVersion</code>) [Optional]</p> <p>- nota: <i>this attribute should always be used coupled with "numberingOrg" and "listName"</i> (XPath: <code>TEXKitDesRequest/TKRbody/TKRitem/kitFabric/texCode/pattern/@listVersion</code>) [Optional]</p> <p>- nota: <i>this attribute should always be used coupled with "numberingOrg" and "listName"</i> (XPath: <code>TEXKitDesRequest/TKRbody/TKRitem/kitAccessory/acsCode/pattern/@listVersion</code>) [Optional]</p> <p>- nota: <i>this attribute should always be used coupled with "numberingOrg" and "listName"</i> (XPath: <code>TEXKitDesRequest/TKRbody/TKRitem/kitAccessory/acsCode/art/@listVersion</code>) [Optional]</p> <p>- nota: <i>this attribute should always be used coupled with "numberingOrg" and "listName"</i> (XPath: <code>TEXKitDesRequest/TKRbody/TKRitem/kitFabric/texCode/color/@listVersion</code>) [Optional]</p> <p>- nota: <i>this attribute should always be used coupled with "numberingOrg" and "listName"</i> (XPath: <code>TEXKitDesRequest/TKRbody/TKRitem/kitFabric/texCode/color/@listVersion</code>) [Optional]</p>
@logo	<p>company logo (URL of the image jpeg or gif). It is recommended that the width of the image does not exceed 640 pixel.</p> <p>- base type: string, max length: 255, (XPath: <code>TEXKitDesRequest/TRheader/buyer/@logo</code>) [Optional] (XPath: <code>TEXKitDesRequest/TRheader/supplier/@logo</code>) [Optional]</p>
lotN	<p>lot number of a product or batch number of the raw material</p> <p>- base type: string, max length: 15, (XPath: <code>TEXKitDesRequest/TKRbody/TKRitem/kitAccessory/lotN</code>) 0-1 (XPath: <code>TEXKitDesRequest/TKRbody/TKRitem/kitFabric/piece/lotN</code>) 0-1</p>
mixMatch	<p>colour hue used for the match of garments</p> <p>- base type: string, max length: 15, (XPath: <code>TEXKitDesRequest/TKRbody/TKRitem/kitFabric/mixMatch</code>) 0-1 (XPath: <code>TEXKitDesRequest/TKRbody/TKRitem/kitFabric/piece/mixMatch</code>) 0-1 (XPath: <code>TEXKitDesRequest/TKRbody/TKRitem/kitAccessory/mixMatch</code>) 0-1</p>
msgDate	<p>date of issue of the present message (xml document), according to one of the patterns YYYY-MM-DD, YYYY-MM-DD:HH-MM or YYYY-WW.</p> <p>- base type: string, (XPath: <code>TEXKitDesRequest/TRheader/msgDate</code>) 1-1</p>
@msgfunction	<p>function performed by the present message with regards to the transmission</p> <p>- base type: string, cod. table: NT18, (XPath: <code>TEXKitDesRequest/@msgfunction</code>) [Optional] [Default= OR]</p>
msgID	<p>key identifier of the document in the information system of the issuing Party</p> <p>- base type: string, max length: 35, (XPath: <code>TEXKitDesRequest/TRheader/msgID</code>) 0-1</p>
msgN	<p>identification number given to the message (xml document) by its issuer</p> <p>- base type: string, max length: 35, (XPath: <code>TEXKitDesRequest/TRheader/msgN</code>) 1-1</p>
note	<p>free text or structured (computer processing) note. For note structuring use the attributes "noteLabel" and "odelist"</p> <p>- base type: string, max length: 350, (XPath: <code>TEXKitDesRequest/TRheader/note</code>) 0-5</p>
@noteLabel	<p>subject qualifier of a note</p> <p>- base type: string, max length: 35, (XPath: <code>TEXKitDesRequest/TRheader/note/@noteLabel</code>) [Optional]</p>

	- nota: <i>must be used to qualify the subject of the note</i>
@numberingOrg	<p>code specifying the organisation who has created or owns the coding or numbering system</p> <p>- base type: string, cod. table: NT6, (XPath: <code>TEXKitDesRequest/TKRbody/TKRitem/thirdParty/id/@numberingOrg</code>) [Optional] (XPath: <code>TEXKitDesRequest/TKRbody/TKRitem/kitFabric/piece/lotN/@numberingOrg</code>) [Optional] (XPath: <code>TEXKitDesRequest/TKRbody/TKRitem/kitAccessory/packageN/@numberingOrg</code>) [Optional] (XPath: <code>TEXKitDesRequest/TKRbody/TKRitem/kitAccessory/mixMatch/@numberingOrg</code>) [Optional] (XPath: <code>TEXKitDesRequest/TRheader/refDoc/docID/@numberingOrg</code>) [Optional] - nota: <i>here can be specified whose document numbering is used (e.g.: Client, Supplier, ..)</i> (XPath: <code>TEXKitDesRequest/TRheader/buyer/id/@numberingOrg</code>) [Optional] (XPath: <code>TEXKitDesRequest/TKRbody/TKRitem/kitAccessory/acsCode/art/@numberingOrg</code>) [Optional] - nota: <i>this attribute should be used either single or coupled with "listName" and "listVersion"</i> (XPath: <code>TEXKitDesRequest/TKRbody/TKRitem/kitAccessory/acsCode/pattern/@numberingOrg</code>) [Optional] - nota: <i>this attribute should be used either single or coupled with "listName" and "listVersion"</i> (XPath: <code>TEXKitDesRequest/TKRbody/TKRitem/kitAccessory/acsCode/color/@numberingOrg</code>) [Optional] - nota: <i>this attribute should be used either single or coupled with "listName" and "listVersion"</i> (XPath: <code>TEXKitDesRequest/TRheader/supplier/id/@numberingOrg</code>) [Optional] (XPath: <code>TEXKitDesRequest/TKRbody/TKRitem/kitFabric/piece/dyeN/@numberingOrg</code>) [Optional] (XPath: <code>TEXKitDesRequest/TKRbody/TKRitem/kitAccessory/lotN/@numberingOrg</code>) [Optional] (XPath: <code>TEXKitDesRequest/TKRbody/TKRitem/kitFabric/piece/mixMatch/@numberingOrg</code>) [Optional] (XPath: <code>TEXKitDesRequest/TKRbody/TKRitem/kitAccessory/acsCode/@numberingOrg</code>) [Optional] (XPath: <code>TEXKitDesRequest/TKRbody/TKRitem/kitFabric/piece/packageN/@numberingOrg</code>) [Optional] (XPath: <code>TEXKitDesRequest/TRheader/note/@numberingOrg</code>) [Optional] (XPath: <code>TEXKitDesRequest/TKRbody/TKRitem/kitFabric/texCode/pattern/@numberingOrg</code>) [Optional] - nota: <i>this attribute should be used either single or coupled with "listName" and "listVersion"</i> (XPath: <code>TEXKitDesRequest/TKRbody/TKRitem/kitFabric/texCode/color/@numberingOrg</code>) [Optional] - nota: <i>this attribute should be used either single or coupled with "listName" and "listVersion"</i> (XPath: <code>TEXKitDesRequest/TKRbody/TKRitem/kitFabric/texCode/art/@numberingOrg</code>) [Optional] - nota: <i>this attribute should be used either single or coupled with "listName" and "listVersion"</i> (XPath: <code>TEXKitDesRequest/TRheader/docID/@numberingOrg</code>) [Optional] - nota: <i>here can be specified whose document numbering is used (e.g.: Client, Supplier, ..)</i> (XPath: <code>TEXKitDesRequest/TKRbody/TKRitem/kitFabric/mixMatch/@numberingOrg</code>) [Optional] (XPath: <code>TEXKitDesRequest/TKRbody/TKRitem/kitFabric/piece/serialN/@numberingOrg</code>) [Optional] - nota: <i>here the issuer of the serial number must be specified (when different from the Supplier)</i> (XPath: <code>TEXKitDesRequest/TKRbody/TKRitem/kitFabric/texCode/@numberingOrg</code>) [Optional]</p>

	<p>(XPath: TEXKitDesRequest/TRheader/thirdParty/id/@numberingOrg) [Optional] (XPath: TEXKitDesRequest/TKRbody/TKRitem/kitN/@numberingOrg) [Optional] (XPath: TEXKitDesRequest/TKRbody/TKRitem/refDoc/docID/@numberingOrg) [Optional] - nota: <i>here can be specified whose document numbering is used (e.g.: Client, Supplier, ..)</i></p>
packageN	<p>serial number used to identify a transport package - base type: string, max length: 25, (XPath: TEXKitDesRequest/TKRbody/TKRitem/kitFabric/piece/packageN) 0-1 - note: <i>here the transport package containing the piece can be identified</i> (XPath: TEXKitDesRequest/TKRbody/TKRitem/kitAccessory/packageN) 0-9</p>
pattern	<p>pattern/design number of the product, when not included in the article code - base type: string, max length: 15, (XPath: TEXKitDesRequest/TKRbody/TKRitem/kitAccessory/acsCode/pattern) 0-1 (XPath: TEXKitDesRequest/TKRbody/TKRitem/kitFabric/texCode/pattern) 0-1</p>
percCompos	<p>fiber rate in the product composition - base type: decimal, min inclusive: 0, max inclusive: 100, fraction digits: 2, (XPath: TEXKitDesRequest/TKRbody/TKRitem/kitFabric/fabricCompos/percCompos) 1-9</p>
person	<p>name of the contact person within a Party - base type: string, max length: 40, (XPath: TEXKitDesRequest/TRheader/thirdParty/person) 0-1 (XPath: TEXKitDesRequest/TRheader/buyer/person) 0-1 (XPath: TEXKitDesRequest/TKRbody/TKRitem/thirdParty/person) 0-1 (XPath: TEXKitDesRequest/TRheader/supplier/person) 0-1</p>
@phone	<p>phone number of the contact person within a Party - base type: string, max length: 35, (XPath: TEXKitDesRequest/TRheader/thirdParty/person/@phone) [Optional] (XPath: TEXKitDesRequest/TRheader/buyer/person/@phone) [Optional] (XPath: TEXKitDesRequest/TKRbody/TKRitem/thirdParty/person/@phone) [Optional] (XPath: TEXKitDesRequest/TRheader/supplier/person/@phone) [Optional]</p>
pieceAllow	<p>allowance required or accorded for the piece - base type: decimal, fraction digits: 2, (XPath: TEXKitDesRequest/TKRbody/TKRitem/kitFabric/piece/pieceAllow) 0-1</p>
pieceCutWidth	<p>effective usable width of the fabric piece (for garment manufacturing) - base type: decimal, min inclusive: 0, fraction digits: 2, (XPath: TEXKitDesRequest/TKRbody/TKRitem/kitFabric/piece/pieceCutWidth) 0-1</p>
pieceInnWrap1	<p>code specifying the type of inner wrapping/packing used for the fabric piece - base type: string, cod. table: T4, (XPath: TEXKitDesRequest/TKRbody/TKRitem/kitFabric/piece/piecePack/pieceInnWrap1) 1-1</p>
pieceInnWrap2	<p>code sub-specifying the type of inner wrapping/packing used for the fabric piece - base type: string, cod. table: T5, (XPath: TEXKitDesRequest/TKRbody/TKRitem/kitFabric/piece/piecePack/pieceInnWrap2) 0-1</p>
pieceLength	<p>length of the piece - base type: decimal, min inclusive: 0, fraction digits: 2, (XPath: TEXKitDesRequest/TKRbody/TKRitem/kitFabric/piece/pieceLength) 0-1</p>
pieceOutWrap	<p>code specifying the type of outer wrapping or packing used for the fabric piece - base type: string, cod. table: T6, (XPath: TEXKitDesRequest/TKRbody/TKRitem/kitFabric/piece/piecePack/pieceOutWrap) 0-1</p>

piecePackText	free text specifying the type of wrapping or packing used for the fabric piece - base type: string, max length: 40, (XPath: TEXKitDesRequest/TKRbody/TKRitem/kitFabric/piece/piecePack/piecePackText) 1-1
pieceStatus	code used to describe the status of a fabric piece after the control - base type: string, cod. table: T52, (XPath: TEXKitDesRequest/TKRbody/TKRitem/kitFabric/piece/pieceStatus) 0-1
pieceWeight	effective total weight of the fabric piece - base type: decimal, min inclusive: 0, fraction digits: 2, (XPath: TEXKitDesRequest/TKRbody/TKRitem/kitFabric/piece/pieceWeight) 0-1
pieceWeightM	effective weight per metre of the fabric piece - base type: decimal, min inclusive: 0, fraction digits: 2, (XPath: TEXKitDesRequest/TKRbody/TKRitem/kitFabric/piece/pieceWeightM) 0-1
pieceWidth	effective width of the fabric piece - base type: decimal, min inclusive: 0, fraction digits: 2, (XPath: TEXKitDesRequest/TKRbody/TKRitem/kitFabric/piece/pieceWidth) 0-1
postCode	code defining the postal zone - base type: string, max length: 10, (XPath: TEXKitDesRequest/TRheader/buyer/postCode) 0-1 (XPath: TEXKitDesRequest/TRheader/thirdParty/postCode) 0-1 (XPath: TEXKitDesRequest/TRheader/supplier/postCode) 0-1 (XPath: TEXKitDesRequest/TKRbody/TKRitem/thirdParty/postCode) 0-1
qty	net quantity of the article or object correlated, qualified by the function of the document (ordering, delivering, ..) and by the context - base type: decimal, min inclusive: 0, fraction digits: 2, (XPath: TEXKitDesRequest/TKRbody/TKRitem/kitFabric/qty) 1-2 (XPath: TEXKitDesRequest/TKRbody/TKRitem/kitAccessory/qty) 1-1
qtyVariance	difference between two quantities qualified by the context (e.g.: delivered vs. ordered; received vs. despatched etc..) - base type: decimal, fraction digits: 2, (XPath: TEXKitDesRequest/TKRbody/TKRitem/kitFabric/qtyVariance) 0-1
@role	Third Party role qualifier - base type: string, cod. table: NT2, (XPath: TEXKitDesRequest/TKRbody/TKRitem/thirdParty/@role) [Required] (XPath: TEXKitDesRequest/TRheader/thirdParty/@role) [Required]
season	sale season; defined as: season (1 crt) + year (4 crt) - season: S/S=1 A/W=2 Spring=3 Summer=4 Autumn=5 Winter=6: for more than four seasons use alphabetic sequence: 1st season=A 2nd season=B etc.etc. - base type: string, max length: 15, (XPath: TEXKitDesRequest/TRheader/refDoc/season) 0-1 - note: here indicates the season to which the referenced document belongs (XPath: TEXKitDesRequest/TKRbody/TKRitem/refDoc/season) 0-1 - note: here indicates the season to which the referenced document belongs
@sender	qualifier that specifies the Party issuing of the document - base type: boolean, (XPath: TEXKitDesRequest/TKRbody/TKRitem/thirdParty/@sender) [Optional] - nota: This attribute is mandatory when the STYLESHEET must be produced (XPath: TEXKitDesRequest/TRheader/thirdParty/@sender) [Optional] - nota: This attribute is mandatory when the STYLESHEET must be produced (XPath: TEXKitDesRequest/TRheader/supplier/@sender) [Optional] - nota: This attribute is mandatory when the STYLESHEET must be produced (XPath: TEXKitDesRequest/TRheader/buyer/@sender) [Optional] - nota: This attribute is mandatory when the STYLESHEET must be

	<i>produced</i>
serialN	serial number used for the identification of a physical unit - base type: string, max length: 15, (XPath: TEXKitDesRequest/TKRbody/TKRitem/kitFabric/piece/serialN) 1-3
street	street and building number identifying a location - base type: string, max length: 80, (XPath: TEXKitDesRequest/TRheader/thirdParty/street) 0-1 (XPath: TEXKitDesRequest/TRheader/buyer/street) 0-1 (XPath: TEXKitDesRequest/TKRbody/TKRitem/thirdParty/street) 0-1 (XPath: TEXKitDesRequest/TRheader/supplier/street) 0-1
subCountry	short name or code of the sub-country entity - base type: string, max length: 9, (XPath: TEXKitDesRequest/TRheader/buyer/subCountry) 0-1 (XPath: TEXKitDesRequest/TRheader/supplier/subCountry) 0-1 (XPath: TEXKitDesRequest/TRheader/thirdParty/subCountry) 0-1 (XPath: TEXKitDesRequest/TKRbody/TKRitem/thirdParty/subCountry) 0-1
totFault	total number of faults: the 1st/2nd digit count the "Large faults", the 3rd/4th the "Medium faults" and the 5th/6th the "Small faults" - base type: positiveInteger, (XPath: TEXKitDesRequest/TKRbody/TKRitem/kitFabric/piece/totFault) 0-1
@TRtype	type of Despatch request - base type: string, cod. table: NT9, (XPath: TEXKitDesRequest/@TRtype) [Optional] [Default= STD]
@um	specification of the unit of measure - base type: string, cod. table: NT7, (XPath: TEXKitDesRequest/TKRbody/TKRitem/kitFabric/qty/@um) [Required] (XPath: TEXKitDesRequest/TKRbody/TKRitem/kitFabric/qtyVariance/@um) [Optional] (XPath: TEXKitDesRequest/TKRbody/TKRitem/kitFabric/piece/pieceWeightM/@um) [Optional] [Default= GRM] (XPath: TEXKitDesRequest/TKRbody/TKRitem/kitFabric/piece/pieceWeight/@um) [Optional] [Default= KGM] (XPath: TEXKitDesRequest/TKRbody/TKRitem/kitAccessory/qty/@um) [Required] (XPath: TEXKitDesRequest/TKRbody/TKRitem/kitFabric/piece/pieceAllow/@um) [Required] (XPath: TEXKitDesRequest/TKRbody/TKRitem/kitFabric/piece/pieceLength/@um) [Optional] [Default= MTR] (XPath: TEXKitDesRequest/TKRbody/TKRitem/kitFabric/piece/pieceWidth/@um) [Optional] [Default= CMT] (XPath: TEXKitDesRequest/TKRbody/TKRitem/kitFabric/piece/pieceCutWidth/@um) [Optional] [Default= CMT]
@varReason	reason for the difference between the two quantities specified by the context - base type: string, cod. table: T46, (XPath: TEXKitDesRequest/TKRbody/TKRitem/kitFabric/qtyVariance/@varReason) [Optional]
@VAT	VAT rate or code - base type: string, cod. table: NT16, (XPath: TEXKitDesRequest/TRheader/thirdParty/@VAT) [Optional] (XPath: TEXKitDesRequest/TKRbody/TKRitem/thirdParty/@VAT) [Optional] (XPath: TEXKitDesRequest/TKRbody/TKRitem/lineN/@VAT) [Optional]

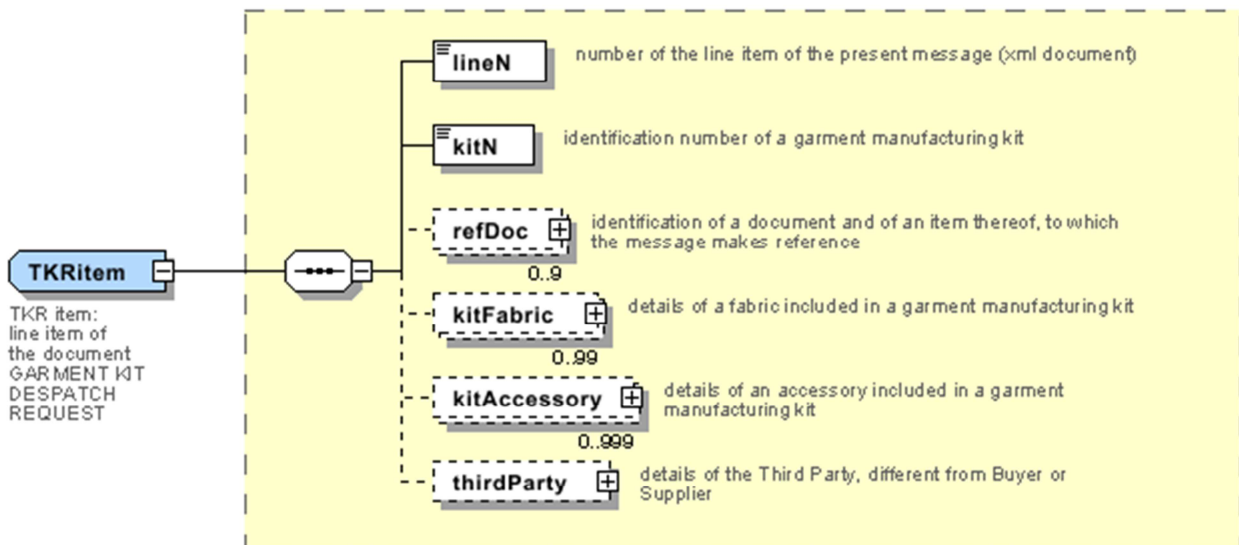
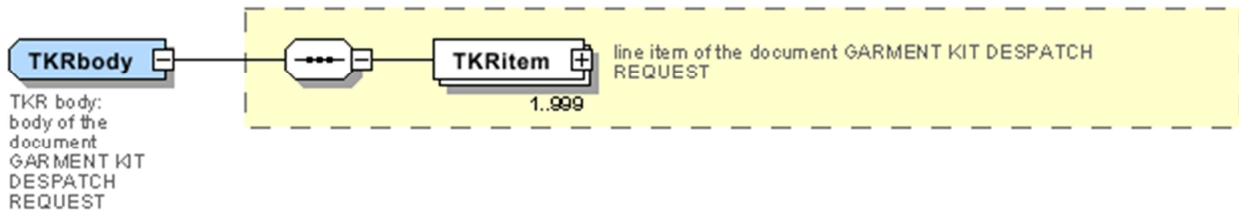
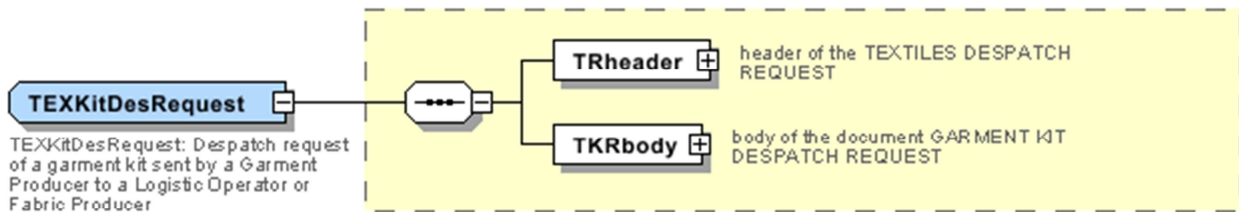
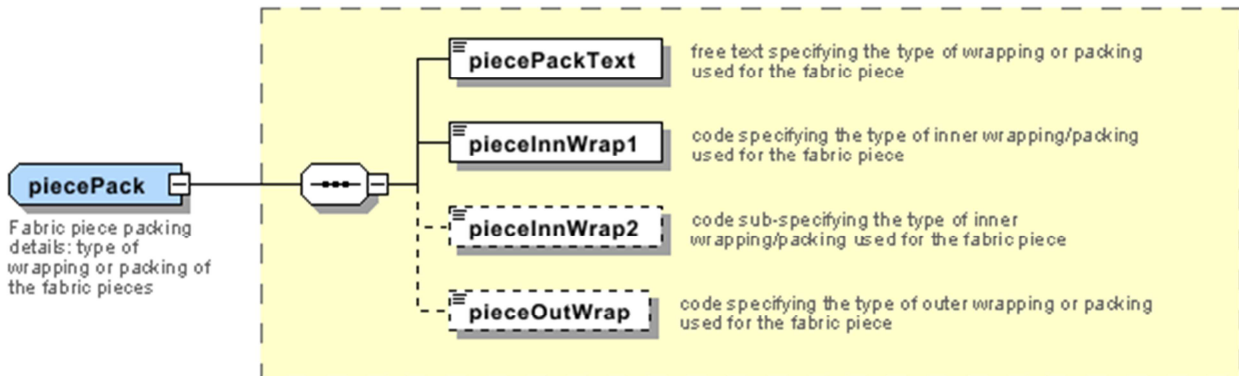
2.3 Enumeration tables

List of enumeration tables used in the XML document. You can find the corresponding codes (only for tables with less than 100 values) in the document `Decoding_Values.pdf`, available at: <http://www.moda-ml.org/moda-ml/repository/guide/v2011-1/>; moreover, all the enumeration tables are available at: <http://www.moda-ml.org/imple/show-codes.asp>.

- NT16 - VAT rate or code
- NT18 - message function
- NT2 - Third party qualifier
- NT29 - format of a date
- NT4 - End use
- NT6 - Coding system owner/issuer
- NT7 - Unity of measure
- NT9 - Despatch request type
- T10 - ISO3166 - Country
- T19 - fibre type
- T21 - type of document
- T4 - Fabric piece inner packing (wrapping) 1
- T44 - additional code type
- T46 - quantity variance reason
- T5 - Fabric piece inner packing (wrapping) 2
- T52 - fabric piece status
- T6 - Fabric piece outer packing

Annex A

Representative images of the principal complex elements' structure.



TRheader
 TR header:
 header of
 the TEXTILES
 DESPATCH
 REQUEST

