



<http://www.moda-ml.org>

IMPLEMENTATION GUIDE
TRANSACTION "GARMENT STOCK OFFER"

Version: 2011-1

Date of release: 18/11/2011

Document code: G029

XML Schema repository:<http://www.moda-ml.org/moda-ml/repository/schema/v2011-1/default.asp>

Guides repository:<http://www.moda-ml.org/moda-ml/repository/guide/v2011-1/default.asp>

Guide filename: G029-MODA-ML-GarmentStockOffer.pdf

1. BUSINESS DESCRIPTION

1.1 Scope

The document Garment Stock Offer can be used for the electronic transmission of stock data from the Trade organisation or the Garment company into the e-Stockflow service.

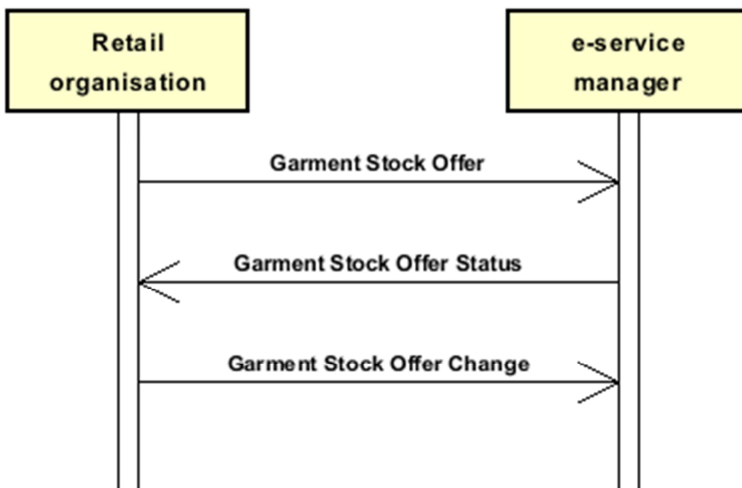
1.2 Generalities

The document is issued by the Trade organisation or the Garment company to create an offer of garment stock through the e-Stockflow service.

Each document line must deal with one stock item in one definite location.

The description of the stock item includes the classification per category and sex and the assortment of color/sizes.

1.3. Possible scenario



2. IMPLEMENTATION GUIDE

2.1 General structure of XML document

All the business data that can be exchanged through this class of documents are shown in the following "document structure", that provides a simplified vision of the Schema.

In particular:

- the two numbers following each element define its "cardinality" (minimum and maximum number of occurrences); the minimum equal zero indicates that the element is optional, the minimum greater than zero indicates that is mandatory;
- the bold character denotes the complex elements (aggregates of simple elements) that were built for the sake of functionality and re-usability of some complex informations sets. The child elements in each parent element are easily spotted as "indented";
- the symbol "@" denotes an attribute of the preceding element; here "the usage indicator (optional, required, ...) is shown in square brackets.

Structure

GARStockOffer

@msgfunction [Optional] [Default= OR]

GSOheader 1-1

msgN 1-1

msgID 0-1

msgDate 1-1

@dateForm [Optional]

refDoc 0-9

@docType [Required]

docID 1-2

@numberingOrg [Optional]

docDate 0-1

@dateForm [Optional]

season 0-1

itemID 0-1

supplier 1-1

@logo [Optional]

@sender [Optional]

id 1-1

@numberingOrg [Optional]

legalName 0-1

dept 0-1

person 0-1

@email [Optional]

@phone [Optional]

@fax [Optional]

street 0-1

city 0-1

subCountry 0-1

country 0-1

postCode 0-1

buyer 0-1

@logo [Optional]

@sender [Optional]

id 1-1

@numberingOrg [Optional]

legalName 0-1

dept 0-1

person 0-1

@email [Optional]

@phone [Optional]

@fax [Optional]
street 0-1
city 0-1
subCountry 0-1
country 0-1
postCode 0-1

GSObody 1-1

GSOitem 1-unbounded

@currency [Required]

lineN 1-1

@VAT [Optional]

garmentCategory 1-1

@numberingOrg [Optional]

artGroup 1-1

@numberingOrg [Optional]

@codeList [Optional]

@listName [Optional]

@listVersion [Optional]

artSubGroup 1-1

@numberingOrg [Optional]

@codeList [Optional]

@listName [Optional]

@listVersion [Optional]

artSex 1-1

@numberingOrg [Optional]

@codeList [Optional]

@listName [Optional]

@listVersion [Optional]

season 0-1

tradeMark 0-1

commerceText 0-1

garmentCode 1-1

@numberingOrg [Optional]

- choose -

garmentCodeB 1-1

@numberingOrg [Optional]

mod 1-1

@numberingOrg [Optional]

@codeList [Optional]

@listName [Optional]

@listVersion [Optional]

fabric 0-1

@numberingOrg [Optional]

@codeList [Optional]

@listName [Optional]

@listVersion [Optional]

color 0-1

@numberingOrg [Optional]

@codeList [Optional]

@listName [Optional]

@listVersion [Optional]

size 0-1

@codeList [Optional]

artGroup 0-1

@numberingOrg [Optional]

@codeList [Optional]

@listName [Optional]

@listVersion [Optional]

added 0-9

@addType [Optional]

description 0-1
- or -
garmentCodeA 1-1
art 1-1
@numberingOrg [Optional]
@codeList [Optional]
@listName [Optional]
@listVersion [Optional]
description 0-1
- end choose -
qty 1-1
@um [Required]
price 1-1
@um [Optional]
@priceQualifier [Optional] [Default= NET]
csRange 1-99
@numberingOrg [Optional]
@sizeSystemNat [Optional]
@sizeSystemSeg [Optional]
@sizeSystemBase [Optional]
color 0-1
@numberingOrg [Optional]
@codeList [Optional]
@listName [Optional]
@listVersion [Optional]
sizeMatrix 1-1
sizeRow 1-99
drop 0-1
@codeList [Optional]
size 1-1
@codeList [Optional]
qty 0-1
@um [Required]
stockAddress 1-1
@numberingOrg [Optional]
city 1-1
subCountry 1-1
country 1-1

2.2 Detailed description of document elements

Following tables show all elements (complex and simple) used in this document. Description includes: 1) element's information: xml tag, name, brief description, data type and syntax constraints; 2) information about use of the element in a particular position in the document: xpath and possible associated notes.

2.2.1 Complex elements (Aggregate Business Information Entities)

Complex elements are those elements whose content is composed of other elements (childs).Complex elements are alphabetically ordered.

buyer	details of the Buyer - base type: , (XPath: GARStockOffer/GSOheader/buyer) 0-1
csRange	range of color-size for a garment article (knitwear/clothing) (XPath: GARStockOffer/GSObody/GSOitem/csRange) 1-99
garmentCategory	classification of a garment article (XPath: GARStockOffer/GSObody/GSOitem/garmentCategory) 1-1
garmentCode	codification of the garment product (knitwear/clothing) (XPath: GARStockOffer/GSObody/GSOitem/garmentCode) 1-1
garmentCodeA	codification of the garment product (knitwear/clothing) - type A (XPath: GARStockOffer/GSObody/GSOitem/garmentCode/garmentCodeA) 1-1 - note: here the barcode EAN-13 or EAN-8 should be specified
garmentCodeB	codification of the garment product (knitwear/clothing) - type B (XPath: GARStockOffer/GSObody/GSOitem/garmentCode/garmentCodeB) 1-1
GSObody	body of the document GARMENT STOCK OFFER (XPath: GARStockOffer/GSObody) 1-1
GSOheader	Header of the document GARMENT STOCK OFFER (XPath: GARStockOffer/GSOheader) 1-1
GSOitem	line item of the document GARMENT STOCK OFFER (XPath: GARStockOffer/GSObody/GSOitem) 1-unbounded
refDoc	identification of a document and of an item thereof, to which the message makes reference (XPath: GARStockOffer/GSOheader/refDoc) 0-9
sizeMatrix	size matrix of an apparel product (knitwear/clothing) (XPath: GARStockOffer/GSObody/GSOitem/csRange/sizeMatrix) 1-1
sizeRow	size matrix row of an apparel product (knitwear/clothing) (XPath: GARStockOffer/GSObody/GSOitem/csRange/sizeMatrix/sizeRow) 1-99
stockAddress	physical location of a stock (XPath: GARStockOffer/GSObody/GSOitem/stockAddress) 1-1
supplier	details of the Supplier - base type: , (XPath: GARStockOffer/GSOheader/supplier) 1-1

2.2.2 Simple elements (Basic Business Information Entities)

Simple elements are those elements whose content is characterized by a data type plus a domain of possible values. Simple elements are alphabetically ordered.

added	<p>additional code of the product (complementing the formers)</p> <p>- base type: string, max length: 15, (XPath: GARStockOffer/GSObody/GSOitem/garmentCode/garmentCodeB/added) 0-9</p>
@addType	<p>qualifier of the additional coding of a product</p> <p>- base type: string, cod. table: T44, (XPath: GARStockOffer/GSObody/GSOitem/garmentCode/garmentCodeB/added/@addType) [Optional]</p>
art	<p>article number of the product</p> <p>- base type: string, max length: 25, (XPath: GARStockOffer/GSObody/GSOitem/garmentCode/garmentCodeA/art) 1-1</p>
artGroup	<p>code identifying a class of products</p> <p>- base type: string, max length: 40, (XPath: GARStockOffer/GSObody/GSOitem/garmentCategory/artGroup) 1-1 (XPath: GARStockOffer/GSObody/GSOitem/garmentCode/garmentCodeB/artGroup) 0-1</p>
artSex	<p>code identifying the sex for which a garment is intended</p> <p>- base type: string, max length: 15, (XPath: GARStockOffer/GSObody/GSOitem/garmentCategory/artSex) 1-1</p>
artSubGroup	<p>code identifying a sub-class of products</p> <p>- base type: string, max length: 40, (XPath: GARStockOffer/GSObody/GSOitem/garmentCategory/artSubGroup) 1-1</p>
city	<p>name of the city (town, village)</p> <p>- base type: string, max length: 40, (XPath: GARStockOffer/GSOheader/supplier/city) 0-1 (XPath: GARStockOffer/GSObody/GSOitem/stockAddress/city) 1-1 (XPath: GARStockOffer/GSOheader/buyer/city) 0-1</p>
@codeList	<p>it specifies the URL where the list of codes used to make an instance of the element can be found</p> <p>- base type: string, max length: 255, (XPath: GARStockOffer/GSObody/GSOitem/garmentCategory/artGroup/@codeList) [Optional]</p> <p>- nota: <i>this attribute should be ALTERNATIVE to the others</i> (XPath: GARStockOffer/GSObody/GSOitem/garmentCode/garmentCodeB/fabric/@codeList) [Optional]</p> <p>- nota: <i>this attribute should be ALTERNATIVE to the others</i> (XPath: GARStockOffer/GSObody/GSOitem/csRange/sizeMatrix/sizeRow/drop/@codeList) [Optional] (XPath: GARStockOffer/GSObody/GSOitem/garmentCode/garmentCodeB/mod/@codeList) [Optional]</p> <p>- nota: <i>this attribute should be ALTERNATIVE to the others</i> (XPath: GARStockOffer/GSObody/GSOitem/garmentCode/garmentCodeA/art/@codeList) [Optional]</p> <p>- nota: <i>this attribute should be ALTERNATIVE to the others</i> (XPath: GARStockOffer/GSObody/GSOitem/garmentCode/garmentCodeB/artGroup/@codeList) [Optional]</p> <p>- nota: <i>this attribute should be ALTERNATIVE to the others</i> (XPath: GARStockOffer/GSObody/GSOitem/garmentCategory/artSex/@codeList) [Optional]</p> <p>- nota: <i>this attribute should be ALTERNATIVE to the others</i> (XPath: GARStockOffer/GSObody/GSOitem/csRange/color/@codeList) [Optional]</p> <p>- nota: <i>this attribute should be ALTERNATIVE to the others</i> (XPath: GARStockOffer/GSObody/GSOitem/garmentCode/garmentCodeB/size/@codeList) [Optional] (XPath: GARStockOffer/GSObody/GSOitem/garmentCategory/artSubGroup/@codeList) [Optional]</p> <p>- nota: <i>this attribute should be ALTERNATIVE to the others</i></p>

	<p>(XPath: GARStockOffer/GSObody/GSOitem/garmentCode/garmentCodeB/color/@codeList) [Optional]</p> <p>- nota: <i>this attribute should be ALTERNATIVE to the others</i></p> <p>(XPath: GARStockOffer/GSObody/GSOitem/csRange/sizeMatrix/sizeRow/size/@codeList) [Optional]</p>
color	<p>colour number of the product, when not included in the model or fabric code</p> <p>- base type: string, max length: 15,</p> <p>(XPath: GARStockOffer/GSObody/GSOitem/csRange/color) 0-1</p> <p>(XPath: GARStockOffer/GSObody/GSOitem/garmentCode/garmentCodeB/color) 0-1</p>
commerceText	<p>text usable for the full commercial description of a product</p> <p>- base type: string, max length: 400,</p> <p>(XPath: GARStockOffer/GSObody/GSOitem/commerceText) 0-1</p>
country	<p>code of the nation</p> <p>- base type: string, cod. table: T10,</p> <p>(XPath: GARStockOffer/GSOheader/supplier/country) 0-1</p> <p>(XPath: GARStockOffer/GSObody/GSOitem/stockAddress/country) 1-1</p> <p>(XPath: GARStockOffer/GSOheader/buyer/country) 0-1</p>
@currency	<p>currency in which a specified monetary data is expressed</p> <p>- base type: string, cod. table: T9,</p> <p>(XPath: GARStockOffer/GSObody/GSOitem/@currency) [Required]</p> <p>- nota: <i>this is the currency of the offer price of the specified stock</i></p>
@dateForm	<p>format used for a date</p> <p>- base type: string, cod. table: NT29,</p> <p>(XPath: GARStockOffer/GSOheader/refDoc/docDate/@dateForm) [Optional]</p> <p>(XPath: GARStockOffer/GSOheader/msgDate/@dateForm) [Optional]</p>
dept	<p>name or code of a contact department within a Party</p> <p>- base type: string, max length: 40,</p> <p>(XPath: GARStockOffer/GSOheader/buyer/dept) 0-1</p> <p>(XPath: GARStockOffer/GSOheader/supplier/dept) 0-1</p>
description	<p>free text description of a product</p> <p>- base type: string, max length: 70,</p> <p>(XPath: GARStockOffer/GSObody/GSOitem/garmentCode/garmentCodeA/description) 0-1</p> <p>(XPath: GARStockOffer/GSObody/GSOitem/garmentCode/garmentCodeB/description) 0-1</p>
docDate	<p>date of issue of the referenced document, according to one of the patterns YYYY-MM-DD, YYYY-MM-DD:HH-MM or YYYY-WW.</p> <p>- base type: string,</p> <p>(XPath: GARStockOffer/GSOheader/refDoc/docDate) 0-1</p>
docID	<p>identification number of the referenced document SINCE 2008-1 ITS USE IN THE HEADER IS DISCOURAGED (REPLACED BY)</p> <p>- base type: string, max length: 35,</p> <p>(XPath: GARStockOffer/GSOheader/refDoc/docID) 1-2</p>
@docType	<p>type or class to which the referenced document belongs</p> <p>- base type: string, cod. table: T21,</p> <p>(XPath: GARStockOffer/GSOheader/refDoc/@docType) [Required]</p>
drop	<p>drop number of the garment</p> <p>- base type: string, max length: 15,</p> <p>(XPath: GARStockOffer/GSObody/GSOitem/csRange/sizeMatrix/sizeRow/drop) 0-1</p>
@email	<p>electronic mail address of the contact person within a Party</p> <p>- base type: string, max length: 80,</p> <p>(XPath: GARStockOffer/GSOheader/supplier/person/@email) [Optional]</p>

	(XPath: GARStockOffer/GSOheader/buyer/person/@email) [Optional]
fabric	fabric number of the garment - base type: string, max length: 15, (XPath: GARStockOffer/GSObody/GSOitem/garmentCode/ garmentCodeB/fabric) 0-1
@fax	fax number of the contact person within a Party - base type: string, max length: 35, (XPath: GARStockOffer/GSOheader/buyer/person/@fax) [Optional] (XPath: GARStockOffer/GSOheader/supplier/person/@fax) [Optional]
id	primary identification code of a Party; it is recommended the format: nation code (ISO 3166) + VAT identification number (11 crt), with the qualifier "numberingOrg"= MF - base type: string, max length: 15, (XPath: GARStockOffer/GSOheader/buyer/id) 1-1 (XPath: GARStockOffer/GSOheader/supplier/id) 1-1
itemID	number of the line/item of the referenced document - base type: string, max length: 6, (XPath: GARStockOffer/GSOheader/refDoc/itemID) 0-1
legalName	legal name of a Party - base type: string, max length: 80, (XPath: GARStockOffer/GSOheader/buyer/legalName) 0-1 (XPath: GARStockOffer/GSOheader/supplier/legalName) 0-1
lineN	number of the line item of the present message (xml document) - base type: positiveInteger, min inclusive: 1, max inclusive: 9999, (XPath: GARStockOffer/GSObody/GSOitem/lineN) 1-1
@listName	it specifies the name of the list of codes used to make an instance of the element - base type: string, max length: 40, (XPath: GARStockOffer/GSObody/GSOitem/garmentCode/ garmentCodeB/mod/@listName) [Optional] - nota: <i>this attribute should always be used coupled with "numberingOrg"</i> (XPath: GARStockOffer/GSObody/GSOitem/garmentCode/ garmentCodeB/fabric/@listName) [Optional] - nota: <i>this attribute should always be used coupled with "numberingOrg"</i> (XPath: GARStockOffer/GSObody/GSOitem/garmentCategory/ artSex/@listName) [Optional] - nota: <i>this attribute should always be used coupled with "numberingOrg"</i> (XPath: GARStockOffer/GSObody/GSOitem/csRange/color/@listName) [Optional] - nota: <i>this attribute should always be used coupled with "numberingOrg"</i> (XPath: GARStockOffer/GSObody/GSOitem/garmentCode/ garmentCodeA/art/@listName) [Optional] - nota: <i>this attribute should always be used coupled with "numberingOrg"</i> (XPath: GARStockOffer/GSObody/GSOitem/garmentCategory/ artSubGroup/@listName) [Optional] - nota: <i>this attribute should always be used coupled with "numberingOrg"</i> (XPath: GARStockOffer/GSObody/GSOitem/garmentCategory/ artGroup/@listName) [Optional] - nota: <i>this attribute should always be used coupled with "numberingOrg"</i> (XPath: GARStockOffer/GSObody/GSOitem/garmentCode/ garmentCodeB/color/@listName) [Optional] - nota: <i>this attribute should always be used coupled with "numberingOrg"</i> (XPath: GARStockOffer/GSObody/GSOitem/garmentCode/ garmentCodeB/artGroup/@listName) [Optional] - nota: <i>this attribute should always be used coupled with "numberingOrg"</i>
@listVersion	it specifies the version of the list of codes used to make an instance of the element - base type: string, max length: 6,

	<p>(XPath: GARStockOffer/GSObody/GSOitem/garmentCode/garmentCodeB/artGroup/@listVersion) [Optional] - nota: <i>this attribute should always be used coupled with “numberingOrg” and “listName”</i></p> <p>(XPath: GARStockOffer/GSObody/GSOitem/garmentCode/garmentCodeB/mod/@listVersion) [Optional] - nota: <i>this attribute should always be used coupled with “numberingOrg” and “listName”</i></p> <p>(XPath: GARStockOffer/GSObody/GSOitem/garmentCode/garmentCodeB/fabric/@listVersion) [Optional] - nota: <i>this attribute should always be used coupled with “numberingOrg” and “listName”</i></p> <p>(XPath: GARStockOffer/GSObody/GSOitem/csRange/color/@listVersion) [Optional] - nota: <i>this attribute should always be used coupled with “numberingOrg” and “listName”</i></p> <p>(XPath: GARStockOffer/GSObody/GSOitem/garmentCode/garmentCodeA/art/@listVersion) [Optional] - nota: <i>this attribute should always be used coupled with “numberingOrg” and “listName”</i></p> <p>(XPath: GARStockOffer/GSObody/GSOitem/garmentCode/garmentCodeB/color/@listVersion) [Optional] - nota: <i>this attribute should always be used coupled with “numberingOrg” and “listName”</i></p> <p>(XPath: GARStockOffer/GSObody/GSOitem/garmentCategory/artSex/@listVersion) [Optional] - nota: <i>this attribute should always be used coupled with “numberingOrg” and “listName”</i></p> <p>(XPath: GARStockOffer/GSObody/GSOitem/garmentCategory/artSubGroup/@listVersion) [Optional] - nota: <i>this attribute should always be used coupled with “numberingOrg” and “listName”</i></p> <p>(XPath: GARStockOffer/GSObody/GSOitem/garmentCategory/artGroup/@listVersion) [Optional] - nota: <i>this attribute should always be used coupled with “numberingOrg” and “listName”</i></p>
@logo	<p>company logo (URL of the image jpeg or gif). It is recommended that the width of the image does not exceed 640 pixel. - base type: string, max length: 255, (XPath: GARStockOffer/GSOheader/supplier/@logo) [Optional] (XPath: GARStockOffer/GSOheader/buyer/@logo) [Optional]</p>
mod	<p>model number of the garment - base type: string, max length: 15, (XPath: GARStockOffer/GSObody/GSOitem/garmentCode/garmentCodeB/mod) 1-1</p>
msgDate	<p>date of issue of the present message (xml document), according to one of the patterns YYYY-MM-DD, YYYY-MM-DD:HH-MM or YYYY-WW. - base type: string, (XPath: GARStockOffer/GSOheader/msgDate) 1-1</p>
@msgfunction	<p>function performed by the present message with regards to the transmission - base type: string, cod. table: NT18, (XPath: GARStockOffer/@msgfunction) [Optional] [Default= OR]</p>
msgID	<p>key identifier of the document in the information system of the issuing Party - base type: string, max length: 35, (XPath: GARStockOffer/GSOheader/msgID) 0-1</p>
msgN	<p>identification number given to the message (xml document) by its issuer - base type: string, max length: 35, (XPath: GARStockOffer/GSOheader/msgN) 1-1</p>
@numberingOrg	<p>code specifying the organisation who has created or owns the coding or</p>

	<p>numbering system</p> <ul style="list-style-type: none"> - base type: string, cod. table: NT6, (XPath: GARStockOffer/GSObody/GSOitem/csRange/color/@numberingOrg) [Optional] - nota: <i>this attribute should be used either single or coupled with "listName" and "listVersion"</i> (XPath: GARStockOffer/GSOheader/supplier/id/@numberingOrg) [Optional] (XPath: GARStockOffer/GSObody/GSOitem/csRange/@numberingOrg) [Optional] (XPath: GARStockOffer/GSOheader/refDoc/docID/@numberingOrg) [Optional] - nota: <i>here can be specified whose document numbering is used (e.g.: Client, Supplier, ..)</i> (XPath: GARStockOffer/GSOheader/buyer/id/@numberingOrg) [Optional] (XPath: GARStockOffer/GSObody/GSOitem/garmentCode/garmentCodeA/art/@numberingOrg) [Optional] - nota: <i>this attribute should be used either single or coupled with "listName" and "listVersion"</i> (XPath: GARStockOffer/GSObody/GSOitem/garmentCategory/@numberingOrg) [Optional] (XPath: GARStockOffer/GSObody/GSOitem/garmentCode/@numberingOrg) [Optional] (XPath: GARStockOffer/GSObody/GSOitem/garmentCode/garmentCodeB/color/@numberingOrg) [Optional] - nota: <i>this attribute should be used either single or coupled with "listName" and "listVersion"</i> (XPath: GARStockOffer/GSObody/GSOitem/garmentCategory/artSex/@numberingOrg) [Optional] - nota: <i>this attribute should be used either single or coupled with "listName" and "listVersion"</i> (XPath: GARStockOffer/GSObody/GSOitem/garmentCode/garmentCodeB/mod/@numberingOrg) [Optional] - nota: <i>this attribute should be ALTERNATIVE to the others</i> (XPath: GARStockOffer/GSObody/GSOitem/garmentCode/garmentCodeB/fabric/@numberingOrg) [Optional] - nota: <i>this attribute should be used either single or coupled with "listName" and "listVersion"</i> (XPath: GARStockOffer/GSObody/GSOitem/garmentCode/garmentCodeB/@numberingOrg) [Optional] (XPath: GARStockOffer/GSObody/GSOitem/garmentCategory/artSubGroup/@numberingOrg) [Optional] - nota: <i>this attribute should be used either single or coupled with "listName" and "listVersion"</i> (XPath: GARStockOffer/GSObody/GSOitem/garmentCode/garmentCodeB/artGroup/@numberingOrg) [Optional] - nota: <i>this attribute should be used either single or coupled with "listName" and "listVersion"</i> (XPath: GARStockOffer/GSObody/GSOitem/garmentCategory/artGroup/@numberingOrg) [Optional] - nota: <i>this attribute should be used either single or coupled with "listName" and "listVersion"</i> (XPath: GARStockOffer/GSObody/GSOitem/stockAddress/@numberingOrg) [Optional] - nota: <i>to be use when city and sub-country are specified with a proprietary code</i>
person	<p>name of the contact person within a Party</p> <ul style="list-style-type: none"> - base type: string, max length: 40, (XPath: GARStockOffer/GSOheader/buyer/person) 0-1 (XPath: GARStockOffer/GSOheader/supplier/person) 0-1
@phone	<p>phone number of the contact person within a Party</p> <ul style="list-style-type: none"> - base type: string, max length: 35, (XPath: GARStockOffer/GSOheader/supplier/person/@phone) [Optional] (XPath: GARStockOffer/GSOheader/buyer/person/@phone) [Optional]

postCode	code defining the postal zone - base type: string, max length: 10, (XPath: GARStockOffer/GSOheader/supplier/postCode) 0-1 (XPath: GARStockOffer/GSOheader/buyer/postCode) 0-1
price	unit price of the article, object or service specified - base type: decimal, min inclusive: 0, fraction digits: 2, (XPath: GARStockOffer/GSObody/GSOitem/price) 1-1
@priceQualifier	type of price with reference to discount and taxes - base type: string, cod. table: NT20, (XPath: GARStockOffer/GSObody/GSOitem/price/@priceQualifier) [Optional] [Default= NET]
qty	net quantity of the article or object correlated, qualified by the function of the document (ordering, delivering, ..) and by the context - base type: decimal, min inclusive: 0, fraction digits: 2, (XPath: GARStockOffer/GSObody/GSOitem/csRange/sizeMatrix/sizeRow/qty) 0-1 (XPath: GARStockOffer/GSObody/GSOitem/qty) 1-1
season	sale season; defined as: season (1 crt) + year (4 crt) - season: S/S=1 A/W=2 Spring=3 Summer=4 Autumn=5 Winter=6: for more than four seasons use alphabetic sequence: 1st season=A 2nd season=B etc.etc. - base type: string, max length: 15, (XPath: GARStockOffer/GSOheader/refDoc/season) 0-1 - note: here indicates the season to which the referenced document belongs (XPath: GARStockOffer/GSObody/GSOitem/garmentCategory/season) 0-1
@sender	qualifier that specifies the Party issuing of the document - base type: boolean, (XPath: GARStockOffer/GSOheader/supplier/@sender) [Optional] - nota: This attribute is mandatory when the STYLESHEET must be produced (XPath: GARStockOffer/GSOheader/buyer/@sender) [Optional] - nota: This attribute is mandatory when the STYLESHEET must be produced
size	size number of a garment product (kintwear/clothing) - base type: string, max length: 15, (XPath: GARStockOffer/GSObody/GSOitem/csRange/sizeMatrix/sizeRow/size) 1-1 (XPath: GARStockOffer/GSObody/GSOitem/garmentCode/garmentCodeB/size) 0-1
@sizeSystemBase	base of the size system - base type: string, cod. table: T423, (XPath: GARStockOffer/GSObody/GSOitem/csRange/@sizeSystemBase) [Optional]
@sizeSystemNat	nation or agency identifying the size system - base type: string, cod. table: T421, (XPath: GARStockOffer/GSObody/GSOitem/csRange/@sizeSystemNat) [Optional]
@sizeSystemSeg	market segment identifying the size system - base type: string, cod. table: T422, (XPath: GARStockOffer/GSObody/GSOitem/csRange/@sizeSystemSeg) [Optional]
street	street and building number identifying a location - base type: string, max length: 80, (XPath: GARStockOffer/GSOheader/buyer/street) 0-1 (XPath: GARStockOffer/GSOheader/supplier/street) 0-1
subCountry	short name or code of the sub-country entity - base type: string, max length: 9, (XPath: GARStockOffer/GSObody/GSOitem/stockAddress/subCountry) 1-1 (XPath: GARStockOffer/GSOheader/buyer/subCountry) 0-1

	(XPath: GARStockOffer/GSOheader/supplier/subCountry) 0-1
tradeMark	name of the official trademark of a specified product - base type: string, max length: 50, (XPath: GARStockOffer/GSObody/GSOitem/tradeMark) 0-1
@um	specification of the unit of measure - base type: string, cod. table: NT7, (XPath: GARStockOffer/GSObody/GSOitem/price/@um) [Optional] (XPath: GARStockOffer/GSObody/GSOitem/csRange/sizeMatrix/ sizeRow/qty/@um) [Required] (XPath: GARStockOffer/GSObody/GSOitem/qty/@um) [Required]
@VAT	VAT rate or code - base type: string, cod. table: NT16, (XPath: GARStockOffer/GSObody/GSOitem/lineN/@VAT) [Optional]

2.3 Enumeration tables

List of enumeration tables used in the XML document. You can find the corresponding codes (only for tables with less than 100 values) in the document `Decoding_Values.pdf`, available at: <http://www.moda-ml.org/moda-ml/repository/guide/v2011-1/>; moreover, all the enumeration tables are available at: <http://www.moda-ml.org/imple/show-codes.asp>.

NT16 - VAT rate or code
NT18 - message function
NT20 - price qualifier
NT29 - format of a date
NT6 - Coding system owner/issuer
NT7 - Unity of measure
T10 - ISO3166 - Country
T21 - type of document
T421 - size system: nationality
T422 - size system: market segment
T423 - size system: base
T44 - additional code type
T9 - ISO4217 - Currency

Annex A

Representative images of the principal complex elements' structure.

