



<http://www.moda-ml.org>

IMPLEMENTATION GUIDE TRANSACTION "KNITTING-CLOTHING ORDER STATUS"

Version: 2011-1

Date of release: 18/11/2011

Document code: G041

XML Schema repository:<http://www.moda-ml.org/moda-ml/repository/schema/v2011-1/default.asp>

Guides repository:<http://www.moda-ml.org/moda-ml/repository/guide/v2011-1/default.asp>

Guide filename: G041-MODA-ML-Knitting-clothingOrderStatus.pdf

1. BUSINESS DESCRIPTION

1.1 Scope

The present guide has been issued to assist the companies of the Apparel (Knitting/Clothing) sector in the implementation of the standard XML document type "KNITTING/CLOTHING ORDER STATUS REPORT", providing all the instruction required for its use in any context of e-commerce between Apparel Producers and their Subcontractors.

All the rules required for the construction and validation of the document are embedded into the specific XML-Schema, which is detailed in section "Implementation guide".

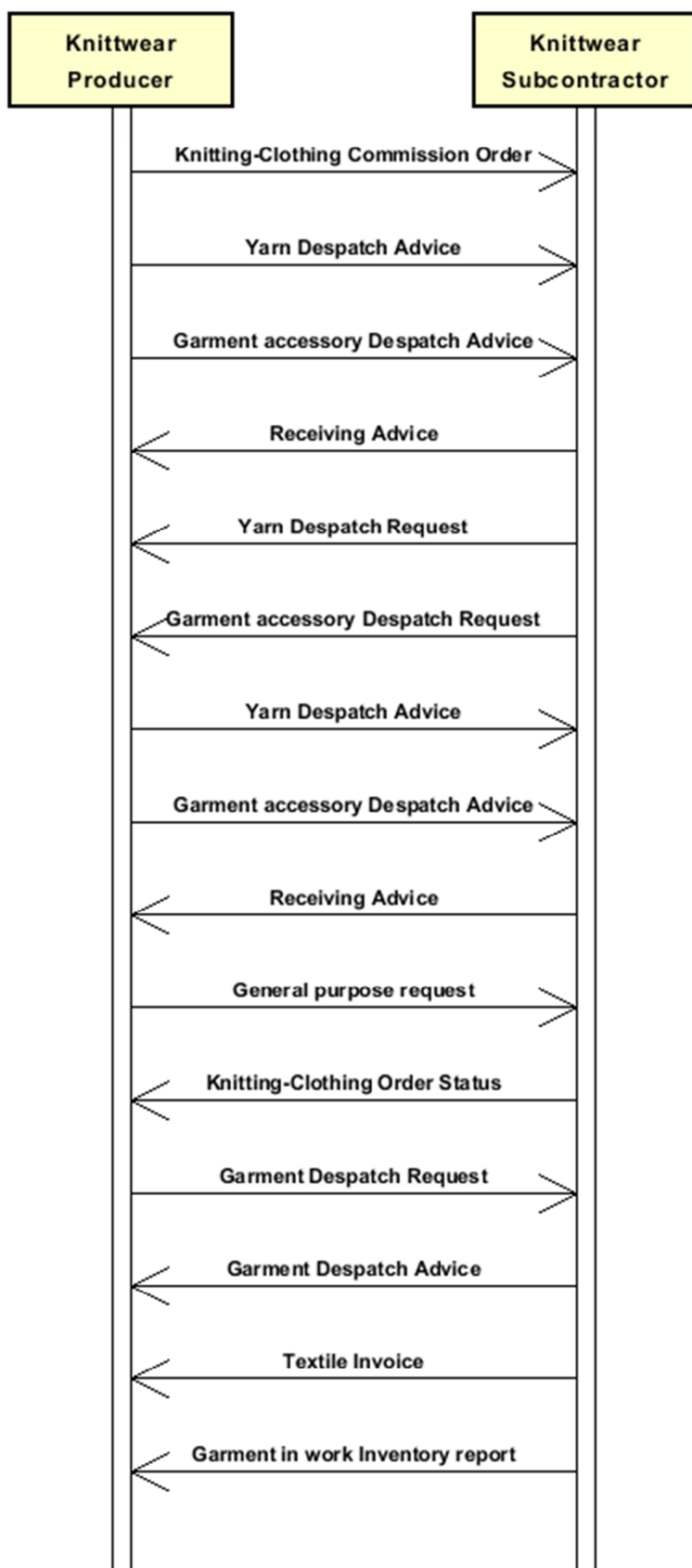
1.2 Generalities

The message is issued by the Subcontractor to report to his Client (Apparel Producer) the status of his Commission Orders and the updated delivery dates, with the possibility of splitting an order line into several consignements.

The message may concern all the articles ordered (Type = H "historic"), all the articles ordered and not yet delivered (type = C "complete") or just the articles in the "ready for shipment" status (type = S "for shipping").

For each article, the status report can be consolidated or partial for each Order line.

1.3. Possible scenario



2. IMPLEMENTATION GUIDE

2.1 General structure of XML document

All the business data that can be exchanged through this class of documents are shown in the following "document structure", that provides a simplified vision of the Schema.

In particular:

- the two numbers following each element define its "cardinality" (minimum and maximum number of occurrences); the minimum equal zero indicates that the element is optional, the minimum greater than zero indicates that is mandatory;
- the bold character denotes the complex elements (aggregates of simple elements) that were built for the sake of functionality and re-usability of some complex informations sets. The child elements in each parent element are easily spotted as "indented";
- the symbol "@" denotes an attribute of the preceding element; here "the usage indicator (optional, required, ...) is shown in square brackets.

Structure

KCOrdStatus

@msgfunction [Optional] [Default= OR]

KCShheader 1-1

msgN 1-1

- choose -

msgID 0-1

- or -

docID 0-1

@numberingOrg [Optional]

- end choose -

msgDate 1-1

@dateForm [Optional]

refDoc 0-9

@docType [Required]

docID 1-2

@numberingOrg [Optional]

docDate 0-1

@dateForm [Optional]

season 0-1

itemID 0-1

buyer 1-1

@logo [Optional]

@sender [Optional]

id 1-1

@numberingOrg [Optional]

legalName 0-1

dept 0-1

person 0-1

@email [Optional]

@phone [Optional]

@fax [Optional]

street 0-1

city 0-1

subCountry 0-1

country 0-1

postCode 0-1

subContractor 1-1

@sender [Optional]

id 1-1

@numberingOrg [Optional]

legalName 0-1

dept 0-1
person 0-1
 @*email* [Optional]
 @*phone* [Optional]
 @*fax* [Optional]
street 0-1
city 0-1
subCountry 0-1
country 0-1
postCode 0-1
note 0-5
 @*numberingOrg* [Optional]
 @*codeList* [Optional]
 @*noteLabel* [Optional]

KCSbody 1-1

KCSitem 1-unbounded

lineN 1-1
 @*VAT* [Optional]
refDoc 0-9
 @*docType* [Required]
 docID 1-2
 @*numberingOrg* [Optional]
 docDate 0-1
 @*dateForm* [Optional]
 season 0-1
 itemID 0-1

garmentCode 1-2

 @*numberingOrg* [Optional]

- choose -

garmentCodeB 1-1

 @*numberingOrg* [Optional]
 mod 1-1
 @*numberingOrg* [Optional]
 @*codeList* [Optional]
 @*listName* [Optional]
 @*listVersion* [Optional]
 fabric 0-1
 @*numberingOrg* [Optional]
 @*codeList* [Optional]
 @*listName* [Optional]
 @*listVersion* [Optional]
 color 0-1
 @*numberingOrg* [Optional]
 @*codeList* [Optional]
 @*listName* [Optional]
 @*listVersion* [Optional]
 size 0-1
 @*codeList* [Optional]
 artGroup 0-1
 @*numberingOrg* [Optional]
 @*codeList* [Optional]
 @*listName* [Optional]
 @*listVersion* [Optional]
 added 0-9
 @*addType* [Optional]
 description 0-1

- or -

garmentCodeA 1-1

 art 1-1
 @*numberingOrg* [Optional]

```

        @codeList [Optional]
        @listName [Optional]
        @listVersion [Optional]
        description 0-1
    - end choose -
csRange 0-99
    @numberingOrg [Optional]
    @sizeSystemNat [Optional]
    @sizeSystemSeg [Optional]
    @sizeSystemBase [Optional]
    color 0-1
        @numberingOrg [Optional]
        @codeList [Optional]
        @listName [Optional]
        @listVersion [Optional]
    sizeMatrix 1-1
        sizeRow 1-99
            drop 0-1
                @codeList [Optional]
            size 1-1
                @codeList [Optional]
            qty 0-1
                @um [Required]
progress 1-99
    qty 1-2
        @um [Required]
    deliveryDate 0-1
        @dateForm [Optional]
    delGrantedDate 0-1
        @dateForm [Optional]
    - choose -
        mfrStatus 0-1
    - or -
        mfrStatusText 0-1
    - end choose -

```

2.2 Detailed description of document elements

Following tables show all elements (complex and simple) used in this document. Description includes: 1) element's information: xml tag, name, brief description, data type and syntax constraints; 2) information about use of the element in a particular position in the document: xpath and possible associated notes.

2.2.1 Complex elements (Aggregate Business Information Entities)

Complex elements are those elements whose content is composed of other elements (childs). Complex elements are alphabetically ordered.

buyer	details of the Buyer - base type: , (XPath: KCOrdStatus/KCShheader/buyer) 1-1
csRange	range of color-size for a garment article (knitwear/clothing) (XPath: KCOrdStatus/KCSbody/KCSitem/csRange) 0-99
garmentCode	codification of the garment product (knitwear/clothing) (XPath: KCOrdStatus/KCSbody/KCSitem/garmentCode) 1-2
garmentCodeA	codification of the garment product (knitwear/clothing) - type A (XPath: KCOrdStatus/KCSbody/KCSitem/garmentCode/garmentCodeA) 1-1 - note: here the barcode EAN-13 or EAN-8 should be specified
garmentCodeB	codification of the garment product (knitwear/clothing) - type B (XPath: KCOrdStatus/KCSbody/KCSitem/garmentCode/garmentCodeB) 1-1
KCSbody	body of the document KNITTING/CLOTHING ORDER STATUS (XPath: KCOrdStatus/KCSbody) 1-1
KCShheader	header of the document KNITTING/CLOTHING ORDER STATUS (XPath: KCOrdStatus/KCShheader) 1-1
KCSitem	line of the document KNITTING/CLOTHING ORDER STATUS (XPath: KCOrdStatus/KCSbody/KCSitem) 1-unbounded
progress	description of the progress of a production lot in a manufacturing process (XPath: KCOrdStatus/KCSbody/KCSitem/progress) 1-99
refDoc	identification of a document and of an item thereof, to which the message makes reference (XPath: KCOrdStatus/KCSbody/KCSitem/refDoc) 0-9 (XPath: KCOrdStatus/KCShheader/refDoc) 0-9
sizeMatrix	size matrix of an apparel product (knitwear/clothing) (XPath: KCOrdStatus/KCSbody/KCSitem/csRange/sizeMatrix) 1-1
sizeRow	size matrix row of an apparel product (knitwear/clothing) (XPath: KCOrdStatus/KCSbody/KCSitem/csRange/sizeMatrix/sizeRow) 1-99
subContractor	details of the Sub-contractor - base type: , (XPath: KCOrdStatus/KCShheader/subContractor) 1-1

2.2.2 Simple elements (Basic Business Information Entities)

Simple elements are those elements whose content is characterized by a data type plus a domain of possible values. Simple elements are alphabetically ordered.

added	additional code of the product (complementing the formers)
--------------	--

	- base type: string, max length: 15, (XPath: KCOrdStatus/KCSbody/KCSitem/garmentCode/ garmentCodeB/added) 0-9
@addType	qualifier of the additional coding of a product - base type: string, cod. table: T44, (XPath: KCOrdStatus/KCSbody/KCSitem/garmentCode/ garmentCodeB/added/@addType) [Optional]
art	article number of the product - base type: string, max length: 25, (XPath: KCOrdStatus/KCSbody/KCSitem/garmentCode/ garmentCodeA/art) 1-1
artGroup	code identifying a class of products - base type: string, max length: 40, (XPath: KCOrdStatus/KCSbody/KCSitem/garmentCode/ garmentCodeB/artGroup) 0-1
city	name of the city (town, village) - base type: string, max length: 40, (XPath: KCOrdStatus/KCSheader/subContractor/city) 0-1 (XPath: KCOrdStatus/KCSheader/buyer/city) 0-1
@codeList	it specifies the URL where the list of codes used to make an instance of the element can be found - base type: string, max length: 255, (XPath: KCOrdStatus/KCSbody/KCSitem/csRange/color/@codeList) [Optional] - nota: <i>this attribute should be ALTERNATIVE to the others</i> (XPath: KCOrdStatus/KCSbody/KCSitem/csRange/sizeMatrix/ sizeRow/drop/@codeList) [Optional] (XPath: KCOrdStatus/KCSbody/KCSitem/csRange/sizeMatrix/ sizeRow/size/@codeList) [Optional] (XPath: KCOrdStatus/KCSbody/KCSitem/garmentCode/ garmentCodeB/mod/@codeList) [Optional] - nota: <i>this attribute should be ALTERNATIVE to the others</i> (XPath: KCOrdStatus/KCSbody/KCSitem/garmentCode/ garmentCodeA/art/@codeList) [Optional] - nota: <i>this attribute should be ALTERNATIVE to the others</i> (XPath: KCOrdStatus/KCSbody/KCSitem/garmentCode/ garmentCodeB/color/@codeList) [Optional] - nota: <i>this attribute should be ALTERNATIVE to the others</i> (XPath: KCOrdStatus/KCSbody/KCSitem/garmentCode/ garmentCodeB/fabric/@codeList) [Optional] - nota: <i>this attribute should be ALTERNATIVE to the others</i> (XPath: KCOrdStatus/KCSheader/note/@codeList) [Optional] - nota: <i>must be used to provide (URL) the list of codes used in "noteLabel"</i> (XPath: KCOrdStatus/KCSbody/KCSitem/garmentCode/ garmentCodeB/size/@codeList) [Optional] (XPath: KCOrdStatus/KCSbody/KCSitem/garmentCode/ garmentCodeB/artGroup/@codeList) [Optional] - nota: <i>this attribute should be ALTERNATIVE to the others</i>
color	colour number of the product, when not included in the model or fabric code - base type: string, max length: 15, (XPath: KCOrdStatus/KCSbody/KCSitem/csRange/color) 0-1 (XPath: KCOrdStatus/KCSbody/KCSitem/garmentCode/ garmentCodeB/color) 0-1
country	code of the nation - base type: string, cod. table: T10, (XPath: KCOrdStatus/KCSheader/subContractor/country) 0-1 (XPath: KCOrdStatus/KCSheader/buyer/country) 0-1
@dateForm	format used for a date

	<p>- base type: string, cod. table: NT29, (XPath: KCOrdStatus/KCSbody/KCSitem/progress/delGrantedDate/@dateForm) [Optional] (XPath: KCOrdStatus/KCSheader/refDoc/docDate/@dateForm) [Optional] (XPath: KCOrdStatus/KCSbody/KCSitem/progress/deliveryDate/@dateForm) [Optional] (XPath: KCOrdStatus/KCSbody/KCSitem/refDoc/docDate/@dateForm) [Optional] (XPath: KCOrdStatus/KCSheader/msgDate/@dateForm) [Optional]</p>
delGrantedDate	<p>effective date of delivery of goods (granted in the Order Status Report); incase of doubt delivery must be understood as the event when the ownership of goods is transferred, according to one of the patterns YYYY-MM-DD, YYYY-MM-DD:HH-MM or YYYY-WW. - base type: string, (XPath: KCOrdStatus/KCSbody/KCSitem/progress/delGrantedDate) 0-1</p>
deliveryDate	<p>date of delivery of goods, requested or promised in the purchase process, according to one of the patterns YYYY-MM-DD, YYYY-MM-DD:HH-MM or YYYY-WW. - base type: string, (XPath: KCOrdStatus/KCSbody/KCSitem/progress/deliveryDate) 0-1</p>
dept	<p>name or code of a contact department within a Party - base type: string, max length: 40, (XPath: KCOrdStatus/KCSheader/subContractor/dept) 0-1 (XPath: KCOrdStatus/KCSheader/buyer/dept) 0-1</p>
description	<p>free text description of a product - base type: string, max length: 70, (XPath: KCOrdStatus/KCSbody/KCSitem/garmentCode/garmentCodeB/description) 0-1 (XPath: KCOrdStatus/KCSbody/KCSitem/garmentCode/garmentCodeA/description) 0-1</p>
docDate	<p>date of issue of the referenced document, according to one of the patterns YYYY-MM-DD, YYYY-MM-DD:HH-MM or YYYY-WW. - base type: string, (XPath: KCOrdStatus/KCSbody/KCSitem/refDoc/docDate) 0-1 (XPath: KCOrdStatus/KCSheader/refDoc/docDate) 0-1</p>
docID	<p>identification number of the referenced document SINCE 2008-1 ITS USE IN THE HEADER IS DISCOURAGED (REPLACED BY) - base type: string, max length: 35, (XPath: KCOrdStatus/KCSheader/refDoc/docID) 1-2 (XPath: KCOrdStatus/KCSbody/KCSitem/refDoc/docID) 1-2 (XPath: KCOrdStatus/KCSheader/docID) 0-1</p>
@docType	<p>type or class to which the referenced document belongs - base type: string, cod. table: T21, (XPath: KCOrdStatus/KCSbody/KCSitem/refDoc/@docType) [Required] (XPath: KCOrdStatus/KCSheader/refDoc/@docType) [Required]</p>
drop	<p>drop number of the garment - base type: string, max length: 15, (XPath: KCOrdStatus/KCSbody/KCSitem/csRange/sizeMatrix/sizeRow/drop) 0-1</p>
@email	<p>electronic mail address of the contact person within a Party - base type: string, max length: 80, (XPath: KCOrdStatus/KCSheader/buyer/person/@email) [Optional] (XPath: KCOrdStatus/KCSheader/subContractor/person/@email) [Optional]</p>
fabric	<p>fabric number of the garment - base type: string, max length: 15, (XPath: KCOrdStatus/KCSbody/KCSitem/garmentCode/</p>

	<p>garmentCodeB/fabric) 0-1</p>
@fax	<p>fax number of the contact person within a Party</p> <ul style="list-style-type: none"> - base type: string, max length: 35, (XPath: KCOrdStatus/KCShheader/buyer/person/@fax) [Optional] (XPath: KCOrdStatus/KCShheader/subContractor/person/@fax) [Optional]
id	<p>primary identification code of a Party; it is recommended the format: nation code (ISO 3166) + VAT identification number (11 crt), with the qualifier "numberingOrg"= MF</p> <ul style="list-style-type: none"> - base type: string, max length: 15, (XPath: KCOrdStatus/KCShheader/subContractor/id) 1-1 (XPath: KCOrdStatus/KCShheader/buyer/id) 1-1
itemID	<p>number of the line/item of the referenced document</p> <ul style="list-style-type: none"> - base type: string, max length: 6, (XPath: KCOrdStatus/KCSbody/KCSitem/refDoc/itemID) 0-1 (XPath: KCOrdStatus/KCShheader/refDoc/itemID) 0-1
legalName	<p>legal name of a Party</p> <ul style="list-style-type: none"> - base type: string, max length: 80, (XPath: KCOrdStatus/KCShheader/buyer/legalName) 0-1 (XPath: KCOrdStatus/KCShheader/subContractor/legalName) 0-1
lineN	<p>number of the line item of the present message (xml document)</p> <ul style="list-style-type: none"> - base type: positiveInteger, min inclusive: 1, max inclusive: 9999, (XPath: KCOrdStatus/KCSbody/KCSitem/lineN) 1-1
@listName	<p>it specifies the name of the list of codes used to make an instance of the element</p> <ul style="list-style-type: none"> - base type: string, max length: 40, (XPath: KCOrdStatus/KCSbody/KCSitem/garmentCode/garmentCodeB/mod/@listName) [Optional] - nota: <i>this attribute should always be used coupled with "numberingOrg"</i> (XPath: KCOrdStatus/KCSbody/KCSitem/garmentCode/garmentCodeA/art/@listName) [Optional] - nota: <i>this attribute should always be used coupled with "numberingOrg"</i> (XPath: KCOrdStatus/KCSbody/KCSitem/csRange/color/@listName) [Optional] - nota: <i>this attribute should always be used coupled with "numberingOrg"</i> (XPath: KCOrdStatus/KCSbody/KCSitem/garmentCode/garmentCodeB/artGroup/@listName) [Optional] - nota: <i>this attribute should always be used coupled with "numberingOrg"</i> (XPath: KCOrdStatus/KCSbody/KCSitem/garmentCode/garmentCodeB/color/@listName) [Optional] - nota: <i>this attribute should always be used coupled with "numberingOrg"</i> (XPath: KCOrdStatus/KCSbody/KCSitem/garmentCode/garmentCodeB/fabric/@listName) [Optional] - nota: <i>this attribute should always be used coupled with "numberingOrg"</i>
@listVersion	<p>it specifies the version of the list of codes used to make an instance of the element</p> <ul style="list-style-type: none"> - base type: string, max length: 6, (XPath: KCOrdStatus/KCSbody/KCSitem/garmentCode/garmentCodeB/artGroup/@listVersion) [Optional] - nota: <i>this attribute should always be used coupled with "numberingOrg" and "listName"</i> (XPath: KCOrdStatus/KCSbody/KCSitem/garmentCode/garmentCodeB/fabric/@listVersion) [Optional] - nota: <i>this attribute should always be used coupled with "numberingOrg" and "listName"</i> (XPath: KCOrdStatus/KCSbody/KCSitem/garmentCode/garmentCodeB/color/@listVersion) [Optional] - nota: <i>this attribute should always be used coupled with "numberingOrg" and "listName"</i> (XPath: KCOrdStatus/KCSbody/KCSitem/garmentCode/

	<p>garmentCodeA/art/@listVersion) [Optional] - nota: <i>this attribute should always be used coupled with “numberingOrg” and “listName”</i> (XPath: KCOrdStatus/KCSbody/KCSitem/csRange/color/@listVersion) [Optional] - nota: <i>this attribute should always be used coupled with “numberingOrg” and “listName”</i> (XPath: KCOrdStatus/KCSbody/KCSitem/garmentCode/garmentCodeB/mod/@listVersion) [Optional] - nota: <i>this attribute should always be used coupled with “numberingOrg” and “listName”</i></p>
@logo	<p>company logo (URL of the image jpeg or gif). It is recommended that the width of the image does not exceed 640 pixel. - base type: string, max length: 255, (XPath: KCOrdStatus/KCSheader/buyer/@logo) [Optional]</p>
mfrStatus	<p>code of the manufacturing stage used to describe the progress in the production cycle - base type: string, cod. table: T7, (XPath: KCOrdStatus/KCSbody/KCSitem/progress/mfrStatus) 0-1</p>
mfrStatusText	<p>free text description of the manufacturing stage used to specify the progress in the production cycle - base type: string, max length: 40, (XPath: KCOrdStatus/KCSbody/KCSitem/progress/mfrStatusText) 0-1</p>
mod	<p>model number of the garment - base type: string, max length: 15, (XPath: KCOrdStatus/KCSbody/KCSitem/garmentCode/garmentCodeB/mod) 1-1</p>
msgDate	<p>date of issue of the present message (xml document), according to one of the patterns YYYY-MM-DD, YYYY-MM-DD:HH-MM or YYYY-WW. - base type: string, (XPath: KCOrdStatus/KCSheader/msgDate) 1-1</p>
@msgfunction	<p>function performed by the present message with regards to the transmission - base type: string, cod. table: NT18, (XPath: KCOrdStatus/@msgfunction) [Optional] [Default= OR]</p>
msgID	<p>key identifier of the document in the information system of the issuing Party - base type: string, max length: 35, (XPath: KCOrdStatus/KCSheader/msgID) 0-1</p>
msgN	<p>identification number given to the message (xml document) by its issuer - base type: string, max length: 35, (XPath: KCOrdStatus/KCSheader/msgN) 1-1</p>
note	<p>free text or structured (computer processing) note. For note structuring use the attributes "noteLabel" and "codelist" - base type: string, max length: 350, (XPath: KCOrdStatus/KCSheader/note) 0-5</p>
@noteLabel	<p>subject qualifier of a note - base type: string, max length: 35, (XPath: KCOrdStatus/KCSheader/note/@noteLabel) [Optional] - nota: <i>must be used to qualify the subject of the note</i></p>
@numberingOrg	<p>code specifying the organisation who has created or owns the coding or numbering system - base type: string, cod. table: NT6, (XPath: KCOrdStatus/KCSbody/KCSitem/garmentCode/garmentCodeA/art/@numberingOrg) [Optional] - nota: <i>this attribute should be used either single or coupled with “listName” and “listVersion”</i> (XPath: KCOrdStatus/KCSbody/KCSitem/csRange/@numberingOrg) [Optional]</p>

	<p>(XPath: KCOrdStatus/KCSbody/KCSitem/csRange/color/@numberingOrg) [Optional] - nota: <i>this attribute should be used either single or coupled with "listName" and "listVersion"</i></p> <p>(XPath: KCOrdStatus/KCSbody/KCSitem/refDoc/docID/@numberingOrg) [Optional] - nota: <i>here can be specified whose document numbering is used (e.g.: Client, Supplier, ..)</i></p> <p>(XPath: KCOrdStatus/KCSheader/refDoc/docID/@numberingOrg) [Optional] - nota: <i>here can be specified whose document numbering is used (e.g.: Client, Supplier, ..)</i></p> <p>(XPath: KCOrdStatus/KCSbody/KCSitem/garmentCode/@numberingOrg) [Optional] (XPath: KCOrdStatus/KCSheader/subContractor/id/@numberingOrg) [Optional] (XPath: KCOrdStatus/KCSheader/note/@numberingOrg) [Optional] (XPath: KCOrdStatus/KCSheader/buyer/id/@numberingOrg) [Optional] (XPath: KCOrdStatus/KCSbody/KCSitem/garmentCode/garmentCodeB/color/@numberingOrg) [Optional] - nota: <i>this attribute should be used either single or coupled with "listName" and "listVersion"</i></p> <p>(XPath: KCOrdStatus/KCSheader/docID/@numberingOrg) [Optional] - nota: <i>here can be specified whose document numbering is used (e.g.: Client, Supplier, ..)</i></p> <p>(XPath: KCOrdStatus/KCSbody/KCSitem/garmentCode/garmentCodeB/artGroup/@numberingOrg) [Optional] - nota: <i>this attribute should be used either single or coupled with "listName" and "listVersion"</i></p> <p>(XPath: KCOrdStatus/KCSbody/KCSitem/garmentCode/garmentCodeB/@numberingOrg) [Optional] (XPath: KCOrdStatus/KCSbody/KCSitem/garmentCode/garmentCodeB/mod/@numberingOrg) [Optional] - nota: <i>this attribute should be ALTERNATIVE to the others</i></p> <p>(XPath: KCOrdStatus/KCSbody/KCSitem/garmentCode/garmentCodeB/fabric/@numberingOrg) [Optional] - nota: <i>this attribute should be used either single or coupled with "listName" and "listVersion"</i></p>
person	name of the contact person within a Party - base type: string, max length: 40, (XPath: KCOrdStatus/KCSheader/subContractor/person) 0-1 (XPath: KCOrdStatus/KCSheader/buyer/person) 0-1
@phone	phone number of the contact person within a Party - base type: string, max length: 35, (XPath: KCOrdStatus/KCSheader/subContractor/person/@phone) [Optional] (XPath: KCOrdStatus/KCSheader/buyer/person/@phone) [Optional]
postCode	code defining the postal zone - base type: string, max length: 10, (XPath: KCOrdStatus/KCSheader/subContractor/postCode) 0-1 (XPath: KCOrdStatus/KCSheader/buyer/postCode) 0-1
qty	net quantity of the article or object correlated, qualified by the function of the document (ordering, delivering, ..) and by the context - base type: decimal, min inclusive: 0, fraction digits: 2, (XPath: KCOrdStatus/KCSbody/KCSitem/progress/qty) 1-2 (XPath: KCOrdStatus/KCSbody/KCSitem/csRange/sizeMatrix/sizeRow/qty) 0-1
season	sale season; defined as: season (1 crt) + year (4 crt) - season: S/S=1 A/W=2 Spring=3 Summer=4 Autumn=5 Winter=6: for more than four seasons use alphabetic sequence: 1st season=A 2nd season=B etc.etc. - base type: string, max length: 15, (XPath: KCOrdStatus/KCSheader/refDoc/season) 0-1 - note: <i>here indicates the season to which the referenced document belongs</i> (XPath: KCOrdStatus/KCSbody/KCSitem/refDoc/season) 0-1 - note: <i>here indicates the season to which the referenced document belongs</i>

@sender	<p>qualifier that specifies the Party issuing of the document</p> <ul style="list-style-type: none"> - base type: boolean, (XPath: KCOrdStatus/KCShheader/subContractor/@sender) [Optional] - nota: <i>This attribute is mandatory when the STYLESHEET must be produced</i> (XPath: KCOrdStatus/KCShheader/buyer/@sender) [Optional] - nota: <i>This attribute is mandatory when the STYLESHEET must be produced</i>
size	<p>size number of a garment product (kintwear/clothing)</p> <ul style="list-style-type: none"> - base type: string, max length: 15, (XPath: KCOrdStatus/KCSbody/KCSitem/garmentCode/garmentCodeB/size) 0-1 (XPath: KCOrdStatus/KCSbody/KCSitem/csRange/sizeMatrix/sizeRow/size) 1-1
@sizeSystemBase	<p>base of the size system</p> <ul style="list-style-type: none"> - base type: string, cod. table: T423, (XPath: KCOrdStatus/KCSbody/KCSitem/csRange/@sizeSystemBase) [Optional]
@sizeSystemNat	<p>nation or agency identifying the size system</p> <ul style="list-style-type: none"> - base type: string, cod. table: T421, (XPath: KCOrdStatus/KCSbody/KCSitem/csRange/@sizeSystemNat) [Optional]
@sizeSystemSeg	<p>market segment identifying the size system</p> <ul style="list-style-type: none"> - base type: string, cod. table: T422, (XPath: KCOrdStatus/KCSbody/KCSitem/csRange/@sizeSystemSeg) [Optional]
street	<p>street and building number identifying a location</p> <ul style="list-style-type: none"> - base type: string, max length: 80, (XPath: KCOrdStatus/KCShheader/buyer/street) 0-1 (XPath: KCOrdStatus/KCShheader/subContractor/street) 0-1
subCountry	<p>short name or code of the sub-country entity</p> <ul style="list-style-type: none"> - base type: string, max length: 9, (XPath: KCOrdStatus/KCShheader/subContractor/subCountry) 0-1 (XPath: KCOrdStatus/KCShheader/buyer/subCountry) 0-1
@um	<p>specification of the unit of measure</p> <ul style="list-style-type: none"> - base type: string, cod. table: NT7, (XPath: KCOrdStatus/KCSbody/KCSitem/progress/qty/@um) [Required] (XPath: KCOrdStatus/KCSbody/KCSitem/csRange/sizeMatrix/sizeRow/qty/@um) [Required]
@VAT	<p>VAT rate or code</p> <ul style="list-style-type: none"> - base type: string, cod. table: NT16, (XPath: KCOrdStatus/KCSbody/KCSitem/lineN/@VAT) [Optional]

2.3 Enumeration tables

List of enumeration tables used in the XML document. You can find the corresponding codes (only for tables with less than 100 values) in the document `Decoding_Values.pdf`, available at: <http://www.moda-ml.org/moda-ml/repository/guide/v2011-1/>; moreover, all the enumeration tables are available at: <http://www.moda-ml.org/imple/show-codes.asp>.

NT16 - VAT rate or code
NT18 - message function
NT29 - format of a date
NT6 - Coding system owner/issuer
NT7 - Unity of measure
T10 - ISO3166 - Country
T21 - type of document
T421 - size system: nationality
T422 - size system: market segment
T423 - size system: base
T44 - additional code type
T7 - Manufacturing status

Annex A

Representative images of the principal complex elements' structure.

