



<http://www.moda-ml.org>

IMPLEMENTATION GUIDE  
TRANSACTION "GARMENT DESPATCH REQUEST"

Version: 2011-1

Date of release: 18/11/2011

Document code: G043

XML Schema repository:<http://www.moda-ml.org/moda-ml/repository/schema/v2011-1/default.asp>

Guides repository:<http://www.moda-ml.org/moda-ml/repository/guide/v2011-1/default.asp>

Guide filename: G043-MODA-ML-GarmentDespatchRequest.pdf

# 1. BUSINESS DESCRIPTION

## 1.1 Scope

The present guide has been issued to assist the companies of the Textile-Clothing sector in the implementation of the standard XML document type "GARMENT DESPATCH REQUEST", providing all the instruction required for its use in any context of e-commerce between Apparel Manufactures and their Clients.

All the rules required for the construction and validation of the document are embedded into the specific XML-Schema, which is detailed in section "Implementation guide".

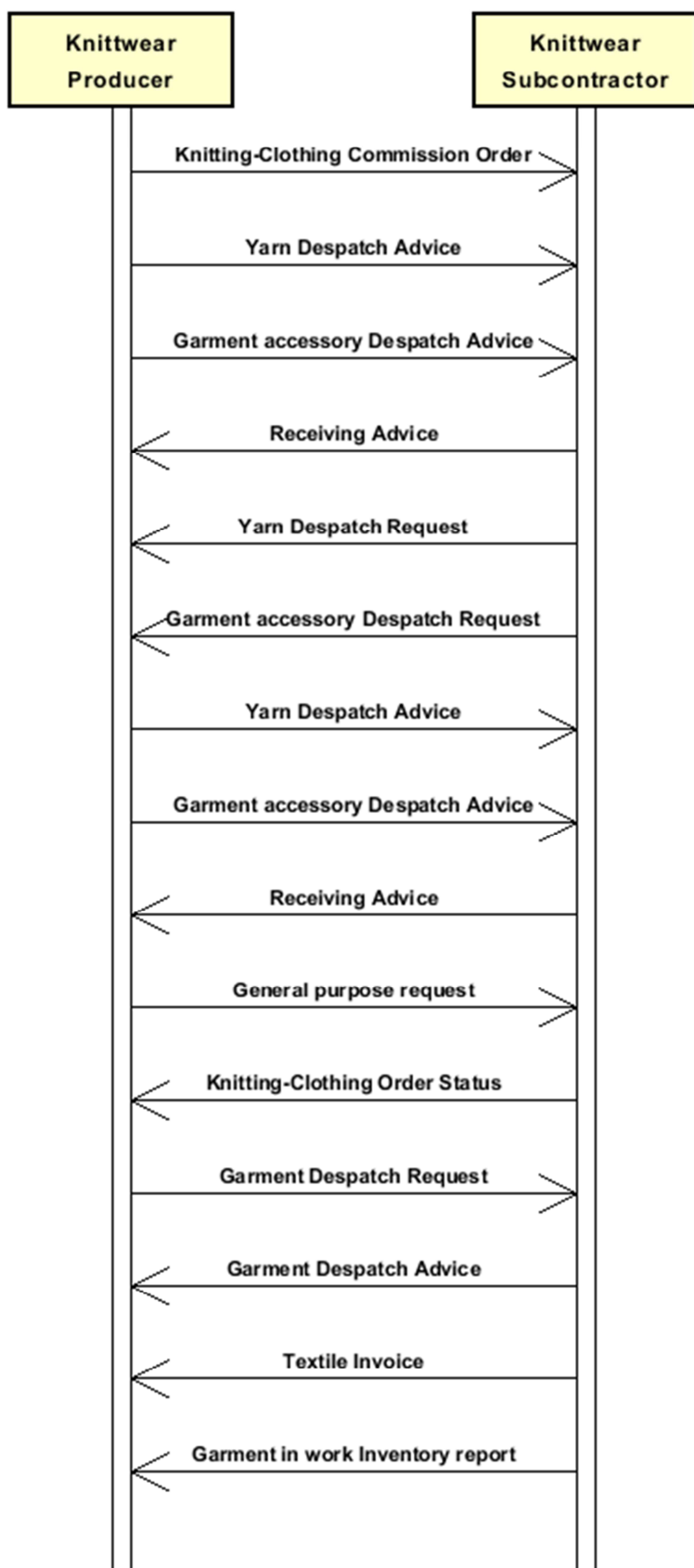
## 1.2 Generalities

The message is issued by the Client to request/plan the delivery of the sendable articulated. The same message can be used from/ to a sub-contractor for commissioned operations.

This document can be used:

- as a standard request
- as a change notification of a previous request .

## 1.3. Possible scenario



## 2. IMPLEMENTATION GUIDE

### 2.1 General structure of XML document

All the business data that can be exchanged through this class of documents are shown in the following "document structure", that provides a simplified vision of the Schema.

In particular:

- the two numbers following each element define its "cardinality" (minimum and maximum number of occurrences); the minimum equal zero indicates that the element is optional, the minimum greater than zero indicates that is mandatory;
- the bold character denotes the complex elements (aggregates of simple elements) that were built for the sake of functionality and re-usability of some complex informations sets. The child elements in each parent element are easily spotted as "indented";
- the symbol "@" denotes an attribute of the preceding element; here "the usage indicator (optional, required, ...) is shown in square brackets.

### Structure

#### **GARDesRequest**

*@TRtype [Optional] [Default= STD]*

*@msgfunction [Optional] [Default= OR]*

#### **GRheader 1-1**

msgN 1-1

- choose -

msgID 0-1

- or -

docID 0-1

*@numberingOrg [Optional]*

- end choose -

msgDate 1-1

*@dateForm [Optional]*

#### **refDoc 0-9**

*@docType [Required]*

docID 1-2

*@numberingOrg [Optional]*

docDate 0-1

*@dateForm [Optional]*

season 0-1

itemID 0-1

#### **buyer 1-1**

*@logo [Optional]*

*@sender [Optional]*

id 1-1

*@numberingOrg [Optional]*

legalName 0-1

dept 0-1

person 0-1

*@email [Optional]*

*@phone [Optional]*

*@fax [Optional]*

street 0-1

city 0-1

subCountry 0-1

country 0-1

postCode 0-1

#### **supplier 1-1**

*@logo [Optional]*

*@sender [Optional]*

id 1-1

*@numberingOrg [Optional]*  
legalName 0-1  
dept 0-1  
person 0-1  
*@email [Optional]*  
*@phone [Optional]*  
*@fax [Optional]*  
street 0-1  
city 0-1  
subCountry 0-1  
country 0-1  
postCode 0-1

**thirdParty 0-1**

*@VAT [Optional]*  
*@role [Required]*  
*@sender [Optional]*  
id 1-1  
*@numberingOrg [Optional]*  
legalName 0-1  
dept 0-1  
person 0-1  
*@email [Optional]*  
*@phone [Optional]*  
*@fax [Optional]*  
street 0-1  
city 0-1  
subCountry 0-1  
country 0-1  
postCode 0-1

note 0-5

*@numberingOrg [Optional]*  
*@codeList [Optional]*  
*@noteLabel [Optional]*

**shipInfo 0-1**

**transInfo 0-5**

*@transReason [Optional]*  
transMode 1-1  
carrier 0-1  
deliveryPlace 0-1  
grossWeight 0-1  
*@um [Required]*  
netWeight 0-1  
*@um [Required]*  
transMeans 0-1  
transCondition 0-3  
transConditionText 0-1

delEffectiveDate 0-1

*@dateForm [Optional]*

**packages 0-5**

*@packageLevel [Optional]*

- choose -  
packageText 1-1  
- or -  
package 1-1  
- end choose -

**packageDim 0-1**

length 1-1  
*@um [Required]*  
width 0-1  
*@um [Required]*

height 0-1  
@um [Required]  
packageQty 0-1  
packageN 0-unbounded  
@numberingOrg [Optional]

**GRbody 1-1**

**GRitem 1-unbounded**

lineN 1-1  
@VAT [Optional]  
**refDoc 0-9**  
@docType [Required]  
docID 1-2  
@numberingOrg [Optional]  
docDate 0-1  
@dateForm [Optional]  
season 0-1  
itemID 0-1

**garmentCode 1-2**

@numberingOrg [Optional]  
- choose -

**garmentCodeB 1-1**

@numberingOrg [Optional]  
mod 1-1  
@numberingOrg [Optional]  
@codeList [Optional]  
@listName [Optional]  
@listVersion [Optional]  
fabric 0-1  
@numberingOrg [Optional]  
@codeList [Optional]  
@listName [Optional]  
@listVersion [Optional]  
color 0-1  
@numberingOrg [Optional]  
@codeList [Optional]  
@listName [Optional]  
@listVersion [Optional]  
size 0-1  
@codeList [Optional]  
artGroup 0-1  
@numberingOrg [Optional]  
@codeList [Optional]  
@listName [Optional]  
@listVersion [Optional]  
added 0-9  
@addType [Optional]  
description 0-1

- or -

**garmentCodeA 1-1**

art 1-1  
@numberingOrg [Optional]  
@codeList [Optional]  
@listName [Optional]  
@listVersion [Optional]  
description 0-1

- end choose -

qty 1-1  
@um [Required]  
**csRange 0-99**  
@numberingOrg [Optional]

@sizeSystemNat [Optional]  
 @sizeSystemSeg [Optional]  
 @sizeSystemBase [Optional]  
 color 0-1  
 @numberingOrg [Optional]  
 @codeList [Optional]  
 @listName [Optional]  
 @listVersion [Optional]  
**sizeMatrix 1-1**  
     **sizeRow 1-99**  
         drop 0-1  
             @codeList [Optional]  
         size 1-1  
             @codeList [Optional]  
         qty 0-1  
             @um [Required]

**thirdParty 0-1**  
 @VAT [Optional]  
 @role [Required]  
 @sender [Optional]  
 id 1-1  
     @numberingOrg [Optional]  
 legalName 0-1  
 dept 0-1  
 person 0-1  
     @email [Optional]  
     @phone [Optional]  
     @fax [Optional]  
 street 0-1  
 city 0-1  
 subCountry 0-1  
 country 0-1  
 postCode 0-1

**shipInfo 0-1**  
     **transInfo 0-5**  
         @transReason [Optional]  
         transMode 1-1  
         carrier 0-1  
         deliveryPlace 0-1  
         grossWeight 0-1  
             @um [Required]  
         netWeight 0-1  
             @um [Required]  
         transMeans 0-1  
         transCondition 0-3  
         transConditionText 0-1  
 delEffectiveDate 0-1  
     @dateForm [Optional]  
     **packages 0-5**  
         @packageLevel [Optional]  
         - choose -  
             packageText 1-1  
         - or -  
             package 1-1  
         - end choose -  
         **packageDim 0-1**  
             length 1-1  
                 @um [Required]  
             width 0-1  
                 @um [Required]  
             height 0-1

*@um [Required]*  
packageQty 0-1  
packageN 0-unbounded  
*@numberingOrg [Optional]*  
note 0-1  
*@numberingOrg [Optional]*  
*@codeList [Optional]*  
*@noteLabel [Optional]*



## 2.2 Detailed description of document elements

Following tables show all elements (complex and simple) used in this document. Description includes: 1) element's information: xml tag, name, brief description, data type and syntax constraints; 2) information about use of the element in a particular position in the document: xpath and possible associated notes.

### 2.2.1 Complex elements (Aggregate Business Information Entities)

Complex elements are those elements whose content is composed of other elements (childs).Complex elements are alphabetically ordered.

<b>buyer</b>	details of the Buyer - base type: , (XPath: GARDesRequest/GRheader/buyer) 1-1
<b>csRange</b>	range of color-size for a garment article (knitwear/clothing) (XPath: GARDesRequest/GRbody/GRitem/csRange) 0-99
<b>garmentCode</b>	codification of the garment product (knitwear/clothing) (XPath: GARDesRequest/GRbody/GRitem/garmentCode) 1-2
<b>garmentCodeA</b>	codification of the garment product (knitwear/clothing) - type A (XPath: GARDesRequest/GRbody/GRitem/garmentCode/garmentCodeA) 1-1 - note: here the barcode EAN-13 or EAN-8 should be specified
<b>garmentCodeB</b>	codification of the garment product (knitwear/clothing) - type B (XPath: GARDesRequest/GRbody/GRitem/garmentCode/garmentCodeB) 1-1
<b>GRbody</b>	body of the "Garment Despatch Request" (XPath: GARDesRequest/GRbody) 1-1
<b>GRheader</b>	header of the "Garment Despatch Request" (XPath: GARDesRequest/GRheader) 1-1
<b>GRitem</b>	line of the "Garment Despatch Request" (XPath: GARDesRequest/GRbody/GRitem) 1-unbounded
<b>packageDim</b>	dimensions of a transport package (XPath: GARDesRequest/shipInfo/packages/packageDim) 0-1 (XPath: GARDesRequest/GRbody/GRitem/shipInfo/packages/packageDim) 0-1
<b>packages</b>	details of the transport packages (XPath: GARDesRequest/GRbody/GRitem/shipInfo/packages) 0-5 - note: this data group must be iterated for each type of package (XPath: GARDesRequest/shipInfo/packages) 0-5 - note: this data group must be iterated for each type of package
<b>refDoc</b>	identification of a document and of an item thereof, to which the message makes reference (XPath: GARDesRequest/GRheader/refDoc) 0-9 (XPath: GARDesRequest/GRbody/GRitem/refDoc) 0-9
<b>shipInfo</b>	miscellaneous informations on transport and transport packages, referred either to the whole document or to the single item (XPath: GARDesRequest/shipInfo) 0-1 (XPath: GARDesRequest/GRbody/GRitem/shipInfo) 0-1
<b>sizeMatrix</b>	size matrix of an apparel product (knitwear/clothing) (XPath: GARDesRequest/GRbody/GRitem/csRange/sizeMatrix) 1-1
<b>sizeRow</b>	size matrix row of an apparel product (knitwear/clothing) (XPath: GARDesRequest/GRbody/GRitem/csRange/sizeMatrix/sizeRow) 1-99
<b>supplier</b>	details of the Supplier

	- base type: , (XPath: GARDesRequest/GRheader/supplier) 1-1
<b>thirdParty</b>	details of the Third Party, different from Buyer or Supplier - base type: , (XPath: GARDesRequest/GRbody/GRitem/thirdParty) 0-1 (XPath: GARDesRequest/GRheader/thirdParty) 0-1
<b>transInfo</b>	details of transport: mode, carrier and delivery place (XPath: GARDesRequest/shipInfo/transInfo) 0-5 - note: <i>this data group can be iterated for each transport leg</i> (XPath: GARDesRequest/GRbody/GRitem/shipInfo/transInfo) 0-5 - note: <i>this data group can be iterated for each transport leg</i>

## 2.2.2 Simple elements (Basic Business Information Entities)

Simple elements are those elements whose content is characterized by a data type plus a domain of possible values. Simple elements are alphabetically ordered.

added	additional code of the product (complementing the formers) - base type: string, max length: 15, (XPath: GARDesRequest/GRbody/GRitem/garmentCode/ garmentCodeB/added) 0-9
@addType	qualifier of the additional coding of a product - base type: string, cod. table: T44, (XPath: GARDesRequest/GRbody/GRitem/garmentCode/ garmentCodeB/added/@addType) [Optional]
art	article number of the product - base type: string, max length: 25, (XPath: GARDesRequest/GRbody/GRitem/garmentCode/ garmentCodeA/art) 1-1
artGroup	code identifying a class of products - base type: string, max length: 40, (XPath: GARDesRequest/GRbody/GRitem/garmentCode/ garmentCodeB/artGroup) 0-1
carrier	identification of the transport carrier - base type: string, max length: 40, (XPath: GARDesRequest/shipInfo/transInfo/carrier) 0-1 (XPath: GARDesRequest/GRbody/GRitem/shipInfo/transInfo/carrier) 0-1
city	name of the city (town, village) - base type: string, max length: 40, (XPath: GARDesRequest/GRheader/supplier/city) 0-1 (XPath: GARDesRequest/GRbody/GRitem/thirdParty/city) 0-1 (XPath: GARDesRequest/GRheader/thirdParty/city) 0-1 (XPath: GARDesRequest/GRheader/buyer/city) 0-1
@codeList	it specifies the URL where the list of codes used to make an instance of the element can be found - base type: string, max length: 255, (XPath: GARDesRequest/GRbody/GRitem/csRange/sizeMatrix/ sizeRow/drop/@codeList) [Optional] (XPath: GARDesRequest/GRbody/GRitem/csRange/color/@codeList) [Optional] - nota: <i>this attribute should be ALTERNATIVE to the others</i> (XPath: GARDesRequest/GRbody/GRitem/csRange/sizeMatrix/ sizeRow/size/@codeList) [Optional] (XPath: GARDesRequest/GRheader/note/@codeList) [Optional] - nota: <i>must be used to provide (URL) the list of codes used in "noteLabel"</i> (XPath: GARDesRequest/GRbody/GRitem/note/@codeList) [Optional]

	<p>- nota: <i>must be used to provide (URL) the list of codes used in "noteLabel"</i> (XPath: GARDesRequest/GRbody/GRitem/garmentCode/garmentCodeB/fabric/@codeList) [Optional]</p> <p>- nota: <i>this attribute should be ALTERNATIVE to the others</i> (XPath: GARDesRequest/GRbody/GRitem/garmentCode/garmentCodeB/artGroup/@codeList) [Optional]</p> <p>- nota: <i>this attribute should be ALTERNATIVE to the others</i> (XPath: GARDesRequest/GRbody/GRitem/garmentCode/garmentCodeB/size/@codeList) [Optional]</p> <p>(XPath: GARDesRequest/GRbody/GRitem/garmentCode/garmentCodeB/color/@codeList) [Optional]</p> <p>- nota: <i>this attribute should be ALTERNATIVE to the others</i> (XPath: GARDesRequest/GRbody/GRitem/garmentCode/garmentCodeB/mod/@codeList) [Optional]</p> <p>- nota: <i>this attribute should be ALTERNATIVE to the others</i> (XPath: GARDesRequest/GRbody/GRitem/garmentCode/garmentCodeA/art/@codeList) [Optional]</p> <p>- nota: <i>this attribute should be ALTERNATIVE to the others</i></p>
color	<p>colour number of the product, when not included in the model or fabric code</p> <p>- base type: string, max length: 15, (XPath: GARDesRequest/GRbody/GRitem/garmentCode/garmentCodeB/color) 0-1 (XPath: GARDesRequest/GRbody/GRitem/csRange/color) 0-1</p>
country	<p>code of the nation</p> <p>- base type: string, cod. table: T10, (XPath: GARDesRequest/GRheader/thirdParty/country) 0-1 (XPath: GARDesRequest/GRheader/supplier/country) 0-1 (XPath: GARDesRequest/GRbody/GRitem/thirdParty/country) 0-1 (XPath: GARDesRequest/GRheader/buyer/country) 0-1</p>
@dateForm	<p>format used for a date</p> <p>- base type: string, cod. table: NT29, (XPath: GARDesRequest/GRbody/GRitem/refDoc/docDate/@dateForm) [Optional] (XPath: GARDesRequest/GRbody/GRitem/shipInfo/delEffectiveDate/@dateForm) [Optional] (XPath: GARDesRequest/shipInfo/delEffectiveDate/@dateForm) [Optional] (XPath: GARDesRequest/GRheader/refDoc/docDate/@dateForm) [Optional] (XPath: GARDesRequest/GRheader/msgDate/@dateForm) [Optional]</p>
delEffectiveDate	<p>effective date of delivery of goods (declared in Despatch), according to one of the patterns YYYY-MM-DD, YYYY-MM-DD:HH-MM or YYYY-WW.</p> <p>- base type: string, (XPath: GARDesRequest/shipInfo/delEffectiveDate) 0-1 (XPath: GARDesRequest/GRbody/GRitem/shipInfo/delEffectiveDate) 0-1</p>
deliveryPlace	<p>place of delivery of goods, ultimate or related to a given leg</p> <p>- base type: string, max length: 40, (XPath: GARDesRequest/GRbody/GRitem/shipInfo/transInfo/deliveryPlace) 0-1 (XPath: GARDesRequest/shipInfo/transInfo/deliveryPlace) 0-1</p>
dept	<p>name or code of a contact department within a Party</p> <p>- base type: string, max length: 40, (XPath: GARDesRequest/GRheader/supplier/dept) 0-1 (XPath: GARDesRequest/GRbody/GRitem/thirdParty/dept) 0-1 (XPath: GARDesRequest/GRheader/buyer/dept) 0-1 (XPath: GARDesRequest/GRheader/thirdParty/dept) 0-1</p>
description	<p>free text description of a product</p> <p>- base type: string, max length: 70, (XPath: GARDesRequest/GRbody/GRitem/garmentCode/garmentCodeA/description) 0-1 (XPath: GARDesRequest/GRbody/GRitem/garmentCode/garmentCodeB/description) 0-1</p>

docDate	date of issue of the referenced document, according to one of the patterns YYYY-MM-DD, YYYY-MM-DD:HH-MM or YYYY-WW. - base type: string, (XPath: GARDesRequest/GRbody/GRitem/refDoc/docDate) 0-1 (XPath: GARDesRequest/GRheader/refDoc/docDate) 0-1
docID	identification number of the referenced document SINCE 2008-1 ITS USE IN THE HEADER IS DISCOURAGED (REPLACED BY ) - base type: string, max length: 35, (XPath: GARDesRequest/GRheader/refDoc/docID) 1-2 (XPath: GARDesRequest/GRbody/GRitem/refDoc/docID) 1-2 (XPath: GARDesRequest/GRheader/docID) 0-1
@docType	type or class to which the referenced document belongs - base type: string, cod. table: T21, (XPath: GARDesRequest/GRheader/refDoc/@docType) [Required] (XPath: GARDesRequest/GRbody/GRitem/refDoc/@docType) [Required]
drop	drop number of the garment - base type: string, max length: 15, (XPath: GARDesRequest/GRbody/GRitem/csRange/sizeMatrix/sizeRow/drop) 0-1
@email	electronic mail address of the contact person within a Party - base type: string, max length: 80, (XPath: GARDesRequest/GRheader/thirdParty/person/@email) [Optional] (XPath: GARDesRequest/GRheader/buyer/person/@email) [Optional] (XPath: GARDesRequest/GRheader/supplier/person/@email) [Optional] (XPath: GARDesRequest/GRbody/GRitem/thirdParty/person/@email) [Optional]
fabric	fabric number of the garment - base type: string, max length: 15, (XPath: GARDesRequest/GRbody/GRitem/garmentCode/garmentCodeB/fabric) 0-1
@fax	fax number of the contact person within a Party - base type: string, max length: 35, (XPath: GARDesRequest/GRheader/supplier/person/@fax) [Optional] (XPath: GARDesRequest/GRheader/buyer/person/@fax) [Optional] (XPath: GARDesRequest/GRbody/GRitem/thirdParty/person/@fax) [Optional] (XPath: GARDesRequest/GRheader/thirdParty/person/@fax) [Optional]
grossWeight	the gross weight of the overall goods supply, declared for transport or customs purpose - base type: decimal, min inclusive: 0, fraction digits: 2, (XPath: GARDesRequest/GRbody/GRitem/shipInfo/transInfo/grossWeight) 0-1 (XPath: GARDesRequest/shipInfo/transInfo/grossWeight) 0-1
height	effective height of a specified object - base type: decimal, min inclusive: 0, fraction digits: 2, (XPath: GARDesRequest/GRbody/GRitem/shipInfo/packages/packageDim/height) 0-1 (XPath: GARDesRequest/shipInfo/packages/packageDim/height) 0-1
id	primary identification code of a Party; it is recommended the format: nation code (ISO 3166) + VAT identification number (11 crt), with the qualifier "numberingOrg"= MF - base type: string, max length: 15, (XPath: GARDesRequest/GRheader/supplier/id) 1-1 (XPath: GARDesRequest/GRheader/thirdParty/id) 1-1 (XPath: GARDesRequest/GRbody/GRitem/thirdParty/id) 1-1 (XPath: GARDesRequest/GRheader/buyer/id) 1-1
itemID	number of the line/item of the referenced document - base type: string, max length: 6, (XPath: GARDesRequest/GRbody/GRitem/refDoc/itemID) 0-1 (XPath: GARDesRequest/GRheader/refDoc/itemID) 0-1

legalName	<p>legal name of a Party</p> <ul style="list-style-type: none"> <li>- base type: string, max length: 80,</li> <li>(XPath: GARDesRequest/GRheader/supplier/legalName) 0-1</li> <li>(XPath: GARDesRequest/GRheader/thirdParty/legalName) 0-1</li> <li>(XPath: GARDesRequest/GRheader/buyer/legalName) 0-1</li> <li>(XPath: GARDesRequest/GRbody/GRitem/thirdParty/legalName) 0-1</li> </ul>
length	<p>effective length of a specified object</p> <ul style="list-style-type: none"> <li>- base type: decimal, min inclusive: 0, fraction digits: 2,</li> <li>(XPath: GARDesRequest/GRbody/GRitem/shipInfo/packages/packageDim/length) 1-1</li> <li>- note: <i>here the maximum dimension must also be specified</i></li> <li>(XPath: GARDesRequest/shipInfo/packages/packageDim/length) 1-1</li> <li>- note: <i>here the maximum dimension must also be specified</i></li> </ul>
lineN	<p>number of the line item of the present message (xml document)</p> <ul style="list-style-type: none"> <li>- base type: positiveInteger, min inclusive: 1, max inclusive: 9999,</li> <li>(XPath: GARDesRequest/GRbody/GRitem/lineN) 1-1</li> </ul>
@listName	<p>it specifies the name of the list of codes used to make an instance of the element</p> <ul style="list-style-type: none"> <li>- base type: string, max length: 40,</li> <li>(XPath: GARDesRequest/GRbody/GRitem/garmentCode/garmentCodeA/art/@listName) [Optional]</li> <li>- nota: <i>this attribute should always be used coupled with "numberingOrg"</i></li> <li>(XPath: GARDesRequest/GRbody/GRitem/csRange/color/@listName) [Optional]</li> <li>- nota: <i>this attribute should always be used coupled with "numberingOrg"</i></li> <li>(XPath: GARDesRequest/GRbody/GRitem/garmentCode/garmentCodeB/fabric/@listName) [Optional]</li> <li>- nota: <i>this attribute should always be used coupled with "numberingOrg"</i></li> <li>(XPath: GARDesRequest/GRbody/GRitem/garmentCode/garmentCodeB/mod/@listName) [Optional]</li> <li>- nota: <i>this attribute should always be used coupled with "numberingOrg"</i></li> <li>(XPath: GARDesRequest/GRbody/GRitem/garmentCode/garmentCodeB/color/@listName) [Optional]</li> <li>- nota: <i>this attribute should always be used coupled with "numberingOrg"</i></li> <li>(XPath: GARDesRequest/GRbody/GRitem/garmentCode/garmentCodeB/artGroup/@listName) [Optional]</li> <li>- nota: <i>this attribute should always be used coupled with "numberingOrg"</i></li> </ul>
@listVersion	<p>it specifies the version of the list of codes used to make an instance of the element</p> <ul style="list-style-type: none"> <li>- base type: string, max length: 6,</li> <li>(XPath: GARDesRequest/GRbody/GRitem/garmentCode/garmentCodeA/art/@listVersion) [Optional]</li> <li>- nota: <i>this attribute should always be used coupled with "numberingOrg" and "listName"</i></li> <li>(XPath: GARDesRequest/GRbody/GRitem/garmentCode/garmentCodeB/artGroup/@listVersion) [Optional]</li> <li>- nota: <i>this attribute should always be used coupled with "numberingOrg" and "listName"</i></li> <li>(XPath: GARDesRequest/GRbody/GRitem/garmentCode/garmentCodeB/mod/@listVersion) [Optional]</li> <li>- nota: <i>this attribute should always be used coupled with "numberingOrg" and "listName"</i></li> <li>(XPath: GARDesRequest/GRbody/GRitem/csRange/color/@listVersion) [Optional]</li> <li>- nota: <i>this attribute should always be used coupled with "numberingOrg" and "listName"</i></li> <li>(XPath: GARDesRequest/GRbody/GRitem/garmentCode/garmentCodeB/color/@listVersion) [Optional]</li> <li>- nota: <i>this attribute should always be used coupled with "numberingOrg" and "listName"</i></li> <li>(XPath: GARDesRequest/GRbody/GRitem/garmentCode/garmentCodeB/fabric/@listVersion) [Optional]</li> </ul>

	- nota: <i>this attribute should always be used coupled with "numberingOrg" and "listName"</i>
@logo	company logo (URL of the image jpeg or gif). It is recommended that the width of the image does not exceed 640 pixel. - base type: string, max length: 255, (XPath: GARDesRequest/GRheader/supplier/@logo) [Optional] (XPath: GARDesRequest/GRheader/buyer/@logo) [Optional]
mod	model number of the garment - base type: string, max length: 15, (XPath: GARDesRequest/GRbody/GRitem/garmentCode/garmentCodeB/mod) 1-1
msgDate	date of issue of the present message (xml document), according to one of the patterns YYYY-MM-DD, YYYY-MM-DD:HH-MM or YYYY-WW. - base type: string, (XPath: GARDesRequest/GRheader/msgDate) 1-1
@msgfunction	function performed by the present message with regards to the transmission - base type: string, cod. table: NT18, (XPath: GARDesRequest/@msgfunction) [Optional] [Default= OR]
msgID	key identifier of the document in the information system of the issuing Party - base type: string, max length: 35, (XPath: GARDesRequest/GRheader/msgID) 0-1
msgN	identification number given to the message (xml document) by its issuer - base type: string, max length: 35, (XPath: GARDesRequest/GRheader/msgN) 1-1
netWeight	the net weight of the overall goods supply, declared for transport or customs purpose - base type: decimal, min inclusive: 0, fraction digits: 2, (XPath: GARDesRequest/shipInfo/transInfo/netWeight) 0-1 (XPath: GARDesRequest/GRbody/GRitem/shipInfo/transInfo/netWeight) 0-1
note	free text or structured (computer processing) note. For note structuring use the attributes "noteLabel" and "codelist" - base type: string, max length: 350, (XPath: GARDesRequest/GRbody/GRitem/note) 0-1 (XPath: GARDesRequest/GRheader/note) 0-5
@noteLabel	subject qualifier of a note - base type: string, max length: 35, (XPath: GARDesRequest/GRbody/GRitem/note/@noteLabel) [Optional] - nota: <i>must be used to qualify the subject of the note</i> (XPath: GARDesRequest/GRheader/note/@noteLabel) [Optional] - nota: <i>must be used to qualify the subject of the note</i>
@numberingOrg	code specifying the organisation who has created or owns the coding or numbering system - base type: string, cod. table: NT6, (XPath: GARDesRequest/GRheader/thirdParty/id/@numberingOrg) [Optional] (XPath: GARDesRequest/GRheader/buyer/id/@numberingOrg) [Optional] (XPath: GARDesRequest/GRheader/docID/@numberingOrg) [Optional] - nota: <i>here can be specified whose document numbering is used (e.g.: Client, Supplier, ..)</i> (XPath: GARDesRequest/GRheader/refDoc/docID/@numberingOrg) [Optional] - nota: <i>here can be specified whose document numbering is used (e.g.: Client, Supplier, ..)</i> (XPath: GARDesRequest/GRheader/note/@numberingOrg) [Optional] (XPath: GARDesRequest/GRbody/GRitem/csRange/@numberingOrg) [Optional] (XPath: GARDesRequest/GRbody/GRitem/garmentCode/garmentCodeA/art/@numberingOrg) [Optional] - nota: <i>this attribute should be used either single or coupled with "listName"</i>

	<p>and "listVersion"  (XPath: GARDesRequest/GRbody/GRitem/garmentCode/  garmentCodeB/artGroup/@numberingOrg) [Optional]  - nota: <i>this attribute should be used either single or coupled with "listName" and "listVersion"</i>  (XPath: GARDesRequest/GRbody/GRitem/csRange/color/@numberingOrg) [Optional]  - nota: <i>this attribute should be used either single or coupled with "listName" and "listVersion"</i>  (XPath: GARDesRequest/GRbody/GRitem/garmentCode/@numberingOrg) [Optional]  (XPath: GARDesRequest/GRbody/GRitem/garmentCode/  garmentCodeB/@numberingOrg) [Optional]  (XPath: GARDesRequest/shipInfo/packages/packageN/@numberingOrg) [Optional]  (XPath: GARDesRequest/GRbody/GRitem/refDoc/docID/@numberingOrg) [Optional]  - nota: <i>here can be specified whose document numbering is used (e.g.: Client, Supplier, ..)</i>  (XPath: GARDesRequest/GRheader/supplier/id/@numberingOrg) [Optional]  (XPath: GARDesRequest/GRbody/GRitem/thirdParty/id/@numberingOrg) [Optional]  (XPath: GARDesRequest/GRbody/GRitem/garmentCode/  garmentCodeB/mod/@numberingOrg) [Optional]  - nota: <i>this attribute should be ALTERNATIVE to the others</i>  (XPath: GARDesRequest/GRbody/GRitem/shipInfo/packages/  packageN/@numberingOrg) [Optional]  (XPath: GARDesRequest/GRbody/GRitem/garmentCode/  garmentCodeB/color/@numberingOrg) [Optional]  - nota: <i>this attribute should be used either single or coupled with "listName" and "listVersion"</i>  (XPath: GARDesRequest/GRbody/GRitem/garmentCode/  garmentCodeB/fabric/@numberingOrg) [Optional]  - nota: <i>this attribute should be used either single or coupled with "listName" and "listVersion"</i>  (XPath: GARDesRequest/GRbody/GRitem/note/@numberingOrg) [Optional]</p>
package	<p>code specifying the type of package used for transport and delivery  - base type: string, cod. table: T11,  (XPath: GARDesRequest/GRbody/GRitem/shipInfo/packages/package) 1-1  (XPath: GARDesRequest/shipInfo/packages/package) 1-1</p>
@packageLevel	<p>level used to indicate the hierarchical structure of the packages (from outer to inner levels)  - base type: positiveInteger, min inclusive: 1, max inclusive: 9,  (XPath: GARDesRequest/shipInfo/packages/@packageLevel) [Optional]  - nota: <i>the hierarchic indication of the packages stucture must either be used for all packages or not be used</i>  (XPath: GARDesRequest/GRbody/GRitem/shipInfo/packages/@packageLevel) [Optional]  - nota: <i>the hierarchic indication of the packages stucture must either be used for all packages or not be used</i></p>
packageN	<p>serial number used to identify a transport package  - base type: string, max length: 25,  (XPath: GARDesRequest/GRbody/GRitem/shipInfo/packages/packageN) 0-unbounded  - note: <i>here the serial no.s of the packages can be identified</i>  (XPath: GARDesRequest/shipInfo/packages/packageN) 0-unbounded  - note: <i>here the serial no.s of the packages can be identified</i></p>
packageQty	<p>quantity of the specified transport packages  - base type: positiveInteger,  (XPath: GARDesRequest/shipInfo/packages/packageQty) 0-1  - note: <i>total for the type of package</i>  (XPath: GARDesRequest/GRbody/GRitem/shipInfo/packages/packageQty) 0-1  - note: <i>total for the type of package</i></p>

packageText	free text specifying the type of package used for transport and delivery - base type: string, max length: 40, (XPath: GARDesRequest/GRbody/GRitem/shipInfo/packages/packageText) 1-1 (XPath: GARDesRequest/shipInfo/packages/packageText) 1-1
person	name of the contact person within a Party - base type: string, max length: 40, (XPath: GARDesRequest/GRheader/thirdParty/person) 0-1 (XPath: GARDesRequest/GRheader/supplier/person) 0-1 (XPath: GARDesRequest/GRheader/buyer/person) 0-1 (XPath: GARDesRequest/GRbody/GRitem/thirdParty/person) 0-1
@phone	phone number of the contact person within a Party - base type: string, max length: 35, (XPath: GARDesRequest/GRheader/supplier/person/@phone) [Optional] (XPath: GARDesRequest/GRheader/thirdParty/person/@phone) [Optional] (XPath: GARDesRequest/GRbody/GRitem/thirdParty/person/@phone) [Optional] (XPath: GARDesRequest/GRheader/buyer/person/@phone) [Optional]
postCode	code defining the postal zone - base type: string, max length: 10, (XPath: GARDesRequest/GRbody/GRitem/thirdParty/postCode) 0-1 (XPath: GARDesRequest/GRheader/supplier/postCode) 0-1 (XPath: GARDesRequest/GRheader/thirdParty/postCode) 0-1 (XPath: GARDesRequest/GRheader/buyer/postCode) 0-1
qty	net quantity of the article or object correlated, qualified by the function of the document (ordering, delivering, ..) and by the context - base type: decimal, min inclusive: 0, fraction digits: 2, (XPath: GARDesRequest/GRbody/GRitem/qty) 1-1 (XPath: GARDesRequest/GRbody/GRitem/csRange/sizeMatrix/sizeRow/qty) 0-1
@role	Third Party role qualifier - base type: string, cod. table: NT2, (XPath: GARDesRequest/GRheader/thirdParty/@role) [Required] (XPath: GARDesRequest/GRbody/GRitem/thirdParty/@role) [Required]
season	sale season; defined as: season (1 crt) + year (4 crt) - season: S/S=1 A/W=2 Spring=3 Summer=4 Autumn=5 Winter=6: for more than four seasons use alphabetic sequence: 1st season=A 2nd season=B etc.etc. - base type: string, max length: 15, (XPath: GARDesRequest/GRbody/GRitem/refDoc/season) 0-1 - note: here indicates the season to which the referenced document belongs (XPath: GARDesRequest/GRheader/refDoc/season) 0-1 - note: here indicates the season to which the referenced document belongs
@sender	qualifier that specifies the Party issuing of the document - base type: boolean, (XPath: GARDesRequest/GRheader/thirdParty/@sender) [Optional] - nota: This attribute is mandatory when the STYLESHEET must be produced (XPath: GARDesRequest/GRheader/buyer/@sender) [Optional] - nota: This attribute is mandatory when the STYLESHEET must be produced (XPath: GARDesRequest/GRheader/supplier/@sender) [Optional] - nota: This attribute is mandatory when the STYLESHEET must be produced (XPath: GARDesRequest/GRbody/GRitem/thirdParty/@sender) [Optional] - nota: This attribute is mandatory when the STYLESHEET must be produced
size	size number of a garment product (kintwear/clothing) - base type: string, max length: 15, (XPath: GARDesRequest/GRbody/GRitem/garmentCode/garmentCodeB/size) 0-1



	(XPath: GARDesRequest/GRbody/GRitem/csRange/sizeMatrix/sizeRow/size) 1-1
@sizeSystemBase	base of the size system - base type: string, cod. table: T423, (XPath: GARDesRequest/GRbody/GRitem/csRange/@sizeSystemBase) [Optional]
@sizeSystemNat	nation or agency identifying the size system - base type: string, cod. table: T421, (XPath: GARDesRequest/GRbody/GRitem/csRange/@sizeSystemNat) [Optional]
@sizeSystemSeg	market segment identifying the size system - base type: string, cod. table: T422, (XPath: GARDesRequest/GRbody/GRitem/csRange/@sizeSystemSeg) [Optional]
street	street and building number identifying a location - base type: string, max length: 80, (XPath: GARDesRequest/GRheader/thirdParty/street) 0-1 (XPath: GARDesRequest/GRheader/supplier/street) 0-1 (XPath: GARDesRequest/GRbody/GRitem/thirdParty/street) 0-1 (XPath: GARDesRequest/GRheader/buyer/street) 0-1
subCountry	short name or code of the sub-country entity - base type: string, max length: 9, (XPath: GARDesRequest/GRheader/thirdParty/subCountry) 0-1 (XPath: GARDesRequest/GRheader/supplier/subCountry) 0-1 (XPath: GARDesRequest/GRbody/GRitem/thirdParty/subCountry) 0-1 (XPath: GARDesRequest/GRheader/buyer/subCountry) 0-1
transCondition	special condition of transport or special service requested to the Forwarder - base type: string, cod. table: T38, (XPath: GARDesRequest/shipInfo/transInfo/transCondition) 0-3 (XPath: GARDesRequest/GRbody/GRitem/shipInfo/transInfo/transCondition) 0-3
transConditionText	free text description of the special condition of transport or special service requested to the Forwarder - base type: string, max length: 100, (XPath: GARDesRequest/GRbody/GRitem/shipInfo/transInfo/transConditionText) 0-1 (XPath: GARDesRequest/shipInfo/transInfo/transConditionText) 0-1
transMeans	means of transport, in general or referred to a specific leg - base type: string, cod. table: T40, (XPath: GARDesRequest/GRbody/GRitem/shipInfo/transInfo/transMeans) 0-1 (XPath: GARDesRequest/shipInfo/transInfo/transMeans) 0-1
transMode	way of transport, in general or referred to the specified leg - base type: string, cod. table: T8, (XPath: GARDesRequest/GRbody/GRitem/shipInfo/transInfo/transMode) 1-1 (XPath: GARDesRequest/shipInfo/transInfo/transMode) 1-1
@transReason	reason for the transport - base type: string, cod. table: NT11, (XPath: GARDesRequest/GRbody/GRitem/shipInfo/transInfo/@transReason) [Optional] (XPath: GARDesRequest/shipInfo/transInfo/@transReason) [Optional]
@TRtype	type of Despatch request - base type: string, cod. table: NT9, (XPath: GARDesRequest/@TRtype) [Optional] [Default= STD]
@um	specification of the unit of measure - base type: string, cod. table: NT7, (XPath: GARDesRequest/GRbody/GRitem/shipInfo/packages/packageDim/height/@um) [Required] (XPath: GARDesRequest/GRbody/GRitem/shipInfo/packages/packageDim/width/@um) [Required]

	<p>(XPath: GARDesRequest/GRbody/GRitem/qty/@um) [Required]  (XPath: GARDesRequest/shipInfo/packages/packageDim/width/@um) [Required]  (XPath: GARDesRequest/shipInfo/packages/packageDim/height/@um) [Required]  (XPath: GARDesRequest/shipInfo/transInfo/netWeight/@um) [Required]  (XPath: GARDesRequest/shipInfo/packages/packageDim/length/@um) [Required]  (XPath: GARDesRequest/GRbody/GRitem/csRange/sizeMatrix/sizeRow/qty/@um) [Required]  (XPath: GARDesRequest/GRbody/GRitem/shipInfo/transInfo/netWeight/@um) [Required]  (XPath: GARDesRequest/GRbody/GRitem/shipInfo/transInfo/grossWeight/@um) [Required]  (XPath: GARDesRequest/GRbody/GRitem/shipInfo/packages/packageDim/length/@um) [Required]  (XPath: GARDesRequest/shipInfo/transInfo/grossWeight/@um) [Required]</p>
@VAT	<p>VAT rate or code  - base type: string, cod. table: NT16,  (XPath: GARDesRequest/GRbody/GRitem/lineN/@VAT) [Optional]  (XPath: GARDesRequest/GRheader/thirdParty/@VAT) [Optional]  (XPath: GARDesRequest/GRbody/GRitem/thirdParty/@VAT) [Optional]</p>
width	<p>effective width of a specified object  - base type: decimal, min inclusive: 0, fraction digits: 2,  (XPath: GARDesRequest/GRbody/GRitem/shipInfo/packages/packageDim/width) 0-1  (XPath: GARDesRequest/shipInfo/packages/packageDim/width) 0-1</p>

## 2.3 Enumeration tables

List of enumeration tables used in the XML document. You can find the corresponding codes (only for tables with less than 100 values) in the document `Decoding_Values.pdf`, available at: <http://www.moda-ml.org/moda-ml/repository/guide/v2011-1/>; moreover, all the enumeration tables are available at: <http://www.moda-ml.org/imple/show-codes.asp>.

- NT11 - Transport causal
- NT16 - VAT rate or code
- NT18 - message function
- NT2 - Third party qualifier
- NT29 - format of a date
- NT6 - Coding system owner/issuer
- NT7 - Unity of measure
- NT9 - Despatch request type
- T10 - ISO3166 - Country
- T11 - Transport package type
- T21 - type of document
- T38 - transport conditions
- T40 - type of transport means
- T421 - size system: nationality
- T422 - size system: market segment
- T423 - size system: base
- T44 - additional code type
- T8 - Modes of Transport

# Annex A

Representative images of the principal complex elements' structure.

