



<http://www.moda-ml.org>

IMPLEMENTATION GUIDE
TRANSACTION "RAW MATERIAL DYEING COMMISSION
ORDER"

Version: 2011-1

Date of release: 18/11/2011

Document code: G046

XML Schema repository:<http://www.moda-ml.org/moda-ml/repository/schema/v2011-1/default.asp>

Guides repository:<http://www.moda-ml.org/moda-ml/repository/guide/v2011-1/default.asp>

Guide filename: G046-MODA-ML-RawMaterialDyeingCommissionOrder.pdf

1. BUSINESS DESCRIPTION

1.1 Scope

The present guide has been issued to assist the companies of the Textile-Clothing sector in the implementation of the standard XML document type "RAW MATERIAL DYEING COMMISSION ORDER", providing all the instruction required for its use in the context of e-commerce between Dyeing Subcontractors and their Customers shown in the enclosed diagram

All the rules required for the construction and validation of the document are embedded into the specific XML-Schema, which is detailed in section "Implementation guide".

1.2 Generalities

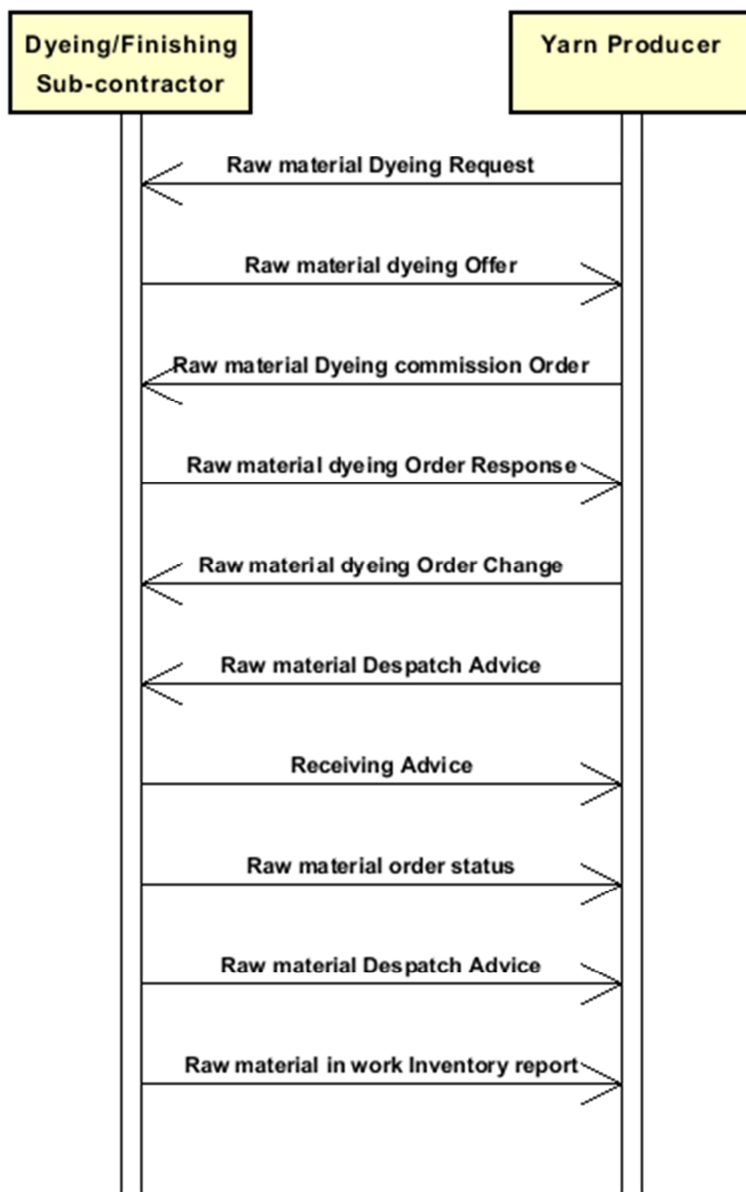
The Raw material Dyeing commission order is used by a Yarn Manufacturer to commit to a Subcontractor the dyeing of a raw material required to transform the material into yarn usable for fabric production. This work order can include one or several operations of the dyeing cycle.

When the Issuer of the Commission requires different manufacturing operations in sequence to different Subcontractors, he can use this document not only as work order but also as a despatch order to send the semi-finished product to a successive Subcontractor

As a general rule, the Raw material dyeing commission order specifies only the characteristics of the end product of each operation and specifies the components used to manufacture that product

It must be noted that this end product can be, in turn, a component for a successive manufacturing operation

1.3. Possible scenario



2. IMPLEMENTATION GUIDE

2.1 General structure of XML document

All the business data that can be exchanged through this class of documents are shown in the following "document structure", that provides a simplified vision of the Schema.

In particular:

- the two numbers following each element define its "cardinality" (minimum and maximum number of occurrences); the minimum equal zero indicates that the element is optional, the minimum greater than zero indicates that is mandatory;
- the bold character denotes the complex elements (aggregates of simple elements) that were built for the sake of functionality and re-usability of some complex informations sets. The child elements in each parent element are easily spotted as "indented";
- the symbol "@" denotes an attribute of the preceding element; here "the usage indicator (optional, required, ...) is shown in square brackets.

Structure

RAWDyeOrder

@msgfunction [Optional] [Default= OR]

RDCOheader 1-1

msgN 1-1

- choose -

msgID 0-1

- or -

docID 0-1

@numberingOrg [Optional]

- end choose -

msgDate 1-1

@dateForm [Optional]

season 0-1

msgCurrency 0-1

refDoc 0-9

@docType [Required]

docID 1-2

@numberingOrg [Optional]

docDate 0-1

@dateForm [Optional]

season 0-1

itemID 0-1

buyer 1-1

@logo [Optional]

@sender [Optional]

id 1-1

@numberingOrg [Optional]

legalName 0-1

dept 0-1

person 0-1

@email [Optional]

@phone [Optional]

@fax [Optional]

street 0-1

city 0-1

subCountry 0-1

country 0-1

postCode 0-1

subContractor 1-1

@sender [Optional]

id 1-1

@numberingOrg [Optional]
legalName 0-1
dept 0-1
person 0-1
@email [Optional]
@phone [Optional]
@fax [Optional]
street 0-1
city 0-1
subCountry 0-1
country 0-1
postCode 0-1

thirdParty 0-1

@VAT [Optional]
@role [Required]
@sender [Optional]
id 1-1
@numberingOrg [Optional]
legalName 0-1
dept 0-1
person 0-1
@email [Optional]
@phone [Optional]
@fax [Optional]
street 0-1
city 0-1
subCountry 0-1
country 0-1
postCode 0-1

note 0-1

@numberingOrg [Optional]
@codeList [Optional]
@noteLabel [Optional]

terms 0-1

payment 0-5

@finDiscount [Optional]
@finSurcharge [Optional]
- choose -
payTerm 1-1
- or -
payTermText 1-1
- end choose -
payMode 0-1

insPayment 0-5

@part [Required]
- choose -
payTerm 1-1
- or -
payTermText 1-1
- end choose -
payMode 0-1

trade 0-1

- choose -
incoTermText 1-1
- or -
incoTerm 1-1
- end choose -
location 0-1
@LRI [Optional]

transInfo 0-1

@transReason [Optional]
transMode 1-1
carrier 0-1
deliveryPlace 0-1
grossWeight 0-1
@um [Required]
netWeight 0-1
@um [Required]
transMeans 0-1
transCondition 0-3
transConditionText 0-1

allowanceCharge 0-9

@VAT [Optional]
- choose -
AC_category 1-1
- or -
AC_categoryText 1-1
- choose -
AC_percent 1-1
- or -
AC_amount 1-1
- end choose -

RDCObody 1-1

RDCOitem 1-unbounded

@productLevel [Optional] [Default= END]
lineN 1-1
@VAT [Optional]
rawProd 1-1
@CTest [Optional]
rawCode 1-1
@numberingOrg [Optional]
art 1-1
@numberingOrg [Optional]
@codeList [Optional]
@listName [Optional]
@listVersion [Optional]
color 0-1
@numberingOrg [Optional]
@codeList [Optional]
@listName [Optional]
@listVersion [Optional]
added 0-9
@addType [Optional]
description 0-1
rawSpecs 0-9
- choose -
rawCharText 1-1
- or -
rawChar 1-1
- end choose -
specValue 0-1
@um [Optional]
@method [Optional]
- choose -
pcTolerance 0-2
@um [Optional]
- or -
tolerance 0-2
@um [Required]
- end choose -

lotN 0-1
 @numberingOrg [Optional]
 dyeN 0-1
 @numberingOrg [Optional]
 note 0-1
 @numberingOrg [Optional]
 @codeList [Optional]
 @noteLabel [Optional]

qty 1-2
 @um [Required]

price 0-1
 @um [Optional]
 @priceQualifier [Optional] [Default= NET]

deliveryDate 0-1
 @dateForm [Optional]

thirdParty 0-1
 @VAT [Optional]
 @role [Required]
 @sender [Optional]

 id 1-1
 @numberingOrg [Optional]

 legalName 0-1

 dept 0-1

 person 0-1
 @email [Optional]
 @phone [Optional]
 @fax [Optional]

 street 0-1

 city 0-1

 subCountry 0-1

 country 0-1

 postCode 0-1

rawComponent 1-9
 @CQQ [Optional]

 pcQty 0-1
 @um [Optional]

rawCode 1-1
 @numberingOrg [Optional]

 art 1-1
 @numberingOrg [Optional]
 @codeList [Optional]
 @listName [Optional]
 @listVersion [Optional]

 color 0-1
 @numberingOrg [Optional]
 @codeList [Optional]
 @listName [Optional]
 @listVersion [Optional]

 added 0-9
 @addType [Optional]

 description 0-1

lotN 0-1
 @numberingOrg [Optional]

dyeN 0-1
 @numberingOrg [Optional]

qty 1-2
 @um [Required]

refDoc 0-1
 @docType [Required]

 docID 1-2
 @numberingOrg [Optional]

docDate 0-1
 @dateForm [Optional]
 season 0-1
 itemID 0-1
 location 0-1
 @LRI [Optional]
 note 0-1
 @numberingOrg [Optional]
 @codeList [Optional]
 @noteLabel [Optional]

rawMnfrOperation 1-9

- choose -
 rawJob 1-1

- or -
 jobName 1-1

- end choose -

refDoc 0-1

 @docType [Required]
 docID 1-2
 @numberingOrg [Optional]
 docDate 0-1
 @dateForm [Optional]
 season 0-1
 itemID 0-1

 note 0-1
 @numberingOrg [Optional]
 @codeList [Optional]
 @noteLabel [Optional]

note 0-1
 @numberingOrg [Optional]
 @codeList [Optional]
 @noteLabel [Optional]

2.2 Detailed description of document elements

Following tables show all elements (complex and simple) used in this document. Description includes: 1) element's information: xml tag, name, brief description, data type and syntax constraints; 2) information about use of the element in a particular position in the document: xpath and possible associated notes.

2.2.1 Complex elements (Aggregate Business Information Entities)

Complex elements are those elements whose content is composed of other elements (childs).Complex elements are alphabetically ordered.

allowanceCharge	Allowances and Charges related to an Order or a contract (XPath: RAWDyeOrder/terms/allowanceCharge) 0-9
buyer	details of the Buyer - base type: , (XPath: RAWDyeOrder/RDCOheader/buyer) 1-1
insPayment	payment details for payment by installments (XPath: RAWDyeOrder/terms/insPayment) 0-5 - note: <i>this set of data is alternative to payment set and must be iterated for each payment installment</i>
payment	payment details for payment all in one (XPath: RAWDyeOrder/terms/payment) 0-5 - note: <i>this set of data can be iterated to specify alternative terms of payment (e.g.: 60 days or 30 days with 3% discount)</i>
rawCode	full codification of a raw material (XPath: RAWDyeOrder/RDCObody/RDCOitem/rawComponent/rawCode) 1-1 (XPath: RAWDyeOrder/RDCObody/RDCOitem/rawProd/rawCode) 1-1
rawComponent	identification details of a raw material used in a sub-contracted manufacturing operation (XPath: RAWDyeOrder/RDCObody/RDCOitem/rawComponent) 1-9
rawMnfrOperation	details of a manufacturing operation on raw material used for manufacturing a yarn product (XPath: RAWDyeOrder/RDCObody/RDCOitem/rawMnfrOperation) 1-9 - note: <i>this block of data can be used to specify either a subcontracted operation or an operation assigned to a shop owned by the issuer of the Manufacturing Order. In this latter case the specifications can be completed with "machine data"</i>
rawProd	manufacturing specifications of the raw product to be obtained from an operation of the sub-contracted production (XPath: RAWDyeOrder/RDCObody/RDCOitem/rawProd) 1-1
rawSpecs	technical characteristics of a raw material linked to an operation of the sub-contracted production of yarn or to the purchas of yarn (XPath: RAWDyeOrder/RDCObody/RDCOitem/rawProd/rawSpecs) 0-9
RDCObody	body of the document RAW MATERIAL DYEING COMMISSION ORDER (XPath: RAWDyeOrder/RDCObody) 1-1
RDCOheader	header of the document RAW MATERIAL DYEING COMMISSION ORDER (XPath: RAWDyeOrder/RDCOheader) 1-1
RDCOitem	line of the document RAW MATERIAL DYEING COMMISSION ORDER (XPath: RAWDyeOrder/RDCObody/RDCOitem) 1-unbounded
refDoc	identification of a document and of an item thereof, to which the message makes reference

	(XPath: RAWDyeOrder/RDCObody/RDCOitem/rawComponent/refDoc) 0-1 (XPath: RAWDyeOrder/RDCObody/RDCOitem/rawMnfrOperation/refDoc) 0-1 (XPath: RAWDyeOrder/RDCOheader/refDoc) 0-9
subContractor	details of the Sub-contractor - base type: , (XPath: RAWDyeOrder/RDCOheader/subContractor) 1-1
terms	details of the commercial obligations for payment and delivery (XPath: RAWDyeOrder/terms) 0-1
thirdParty	details of the Third Party, different from Buyer or Supplier - base type: , (XPath: RAWDyeOrder/RDCOheader/thirdParty) 0-1 - note: here the Party to whom the Subcontractor must send the semi-finished products for subsequent operations can be specified (XPath: RAWDyeOrder/RDCObody/RDCOitem/thirdParty) 0-1 - note: here the Party to whom the Subcontractor must send the semi-finished product for subsequent operations can be specified
trade	general terms of trade for the specified supply (XPath: RAWDyeOrder/terms/trade) 0-1
transInfo	details of transport: mode, carrier and delivery place (XPath: RAWDyeOrder/terms/transInfo) 0-1

2.2.2 Simple elements (Basic Business Information Entities)

Simple elements are those elements whose content is characterized by a data type plus a domain of possible values. Simple elements are alphabetically ordered.

AC_amount	amount of an Allowance or Charge - base type: decimal, fraction digits: 2, (XPath: RAWDyeOrder/terms/allowanceCharge/AC_amount) 1-1
AC_category	coded specification of an Allowance or Charge - base type: string, cod. table: T41, (XPath: RAWDyeOrder/terms/allowanceCharge/AC_category) 1-1
AC_categoryText	free text description of an Allowance or Charge - base type: string, max length: 70, (XPath: RAWDyeOrder/terms/allowanceCharge/AC_categoryText) 1-1
AC_percent	amount of an Allowance or Charge as a percentage - base type: decimal, max inclusive: 100, fraction digits: 2, (XPath: RAWDyeOrder/terms/allowanceCharge/AC_percent) 1-1
added	additional code of the product (complementing the formers) - base type: string, max length: 15, (XPath: RAWDyeOrder/RDCObody/RDCOitem/rawProd/rawCode/added) 0-9 (XPath: RAWDyeOrder/RDCObody/RDCOitem/rawComponent/rawCode/added) 0-9
@addType	qualifier of the additional coding of a product - base type: string, cod. table: T44, (XPath: RAWDyeOrder/RDCObody/RDCOitem/rawProd/rawCode/added/@addType) [Optional] (XPath: RAWDyeOrder/RDCObody/RDCOitem/rawComponent/rawCode/added/@addType) [Optional]
art	article number of the product - base type: string, max length: 25, (XPath: RAWDyeOrder/RDCObody/RDCOitem/rawComponent/rawCode/art) 1-1 (XPath: RAWDyeOrder/RDCObody/RDCOitem/rawProd/rawCode/art) 1-1

carrier	<p>identification of the transport carrier</p> <ul style="list-style-type: none"> - base type: string, max length: 40, <p>(XPath: RAWDyeOrder/terms/transInfo/carrier) 0-1</p>
city	<p>name of the city (town, village)</p> <ul style="list-style-type: none"> - base type: string, max length: 40, <p>(XPath: RAWDyeOrder/RDCOheader/thirdParty/city) 0-1 (XPath: RAWDyeOrder/RDCOheader/subContractor/city) 0-1 (XPath: RAWDyeOrder/RDCOheader/buyer/city) 0-1 (XPath: RAWDyeOrder/RDCObody/RDCOitem/thirdParty/city) 0-1</p>
@codeList	<p>it specifies the URL where the list of codes used to make an instance of the element can be found</p> <ul style="list-style-type: none"> - base type: string, max length: 255, <p>(XPath: RAWDyeOrder/RDCObody/RDCOitem/rawMnfrOperation/note/@codeList) [Optional]</p> <ul style="list-style-type: none"> - nota: <i>must be used to provide (URL) the list of codes used in "noteLabel"</i> (XPath: RAWDyeOrder/RDCOheader/note/@codeList) [Optional] - nota: <i>must be used to provide (URL) the list of codes used in "noteLabel"</i> (XPath: RAWDyeOrder/RDCObody/RDCOitem/rawComponent/note/@codeList) [Optional] - nota: <i>must be used to provide (URL) the list of codes used in "noteLabel"</i> (XPath: RAWDyeOrder/RDCObody/RDCOitem/note/@codeList) [Optional] - nota: <i>must be used to provide (URL) the list of codes used in "noteLabel"</i> (XPath: RAWDyeOrder/RDCObody/RDCOitem/rawProd/rawCode/art/@codeList) [Optional] - nota: <i>this attribute should be ALTERNATIVE to the others</i> (XPath: RAWDyeOrder/RDCObody/RDCOitem/rawProd/note/@codeList) [Optional] - nota: <i>must be used to provide (URL) the list of codes used in "noteLabel"</i> (XPath: RAWDyeOrder/RDCObody/RDCOitem/rawProd/rawCode/color/@codeList) [Optional] - nota: <i>this attribute should be ALTERNATIVE to the others</i> (XPath: RAWDyeOrder/RDCObody/RDCOitem/rawComponent/rawCode/color/@codeList) [Optional] - nota: <i>this attribute should be ALTERNATIVE to the others</i> (XPath: RAWDyeOrder/RDCObody/RDCOitem/rawComponent/rawCode/art/@codeList) [Optional] - nota: <i>this attribute should be ALTERNATIVE to the others</i>
color	<p>colour number of the product, when not included in the model or fabric code</p> <ul style="list-style-type: none"> - base type: string, max length: 15, <p>(XPath: RAWDyeOrder/RDCObody/RDCOitem/rawComponent/rawCode/color) 0-1 (XPath: RAWDyeOrder/RDCObody/RDCOitem/rawProd/rawCode/color) 0-1</p>
country	<p>code of the nation</p> <ul style="list-style-type: none"> - base type: string, cod. table: T10, <p>(XPath: RAWDyeOrder/RDCOheader/buyer/country) 0-1 (XPath: RAWDyeOrder/RDCOheader/thirdParty/country) 0-1 (XPath: RAWDyeOrder/RDCObody/RDCOitem/thirdParty/country) 0-1 (XPath: RAWDyeOrder/RDCOheader/subContractor/country) 0-1</p>
@CQQ	<p>specifies if the committed quantity can or can not include the loss in weight</p> <ul style="list-style-type: none"> - base type: string, cod. table: NT37, <p>(XPath: RAWDyeOrder/RDCObody/RDCOitem/rawComponent/@CQQ) [Optional]</p>
@CTest	<p>indicates the need to execute a colour test before the operation</p> <ul style="list-style-type: none"> - base type: string, cod. table: NT38, <p>(XPath: RAWDyeOrder/RDCObody/RDCOitem/rawProd/@CTest) [Optional]</p>
@dateForm	<p>format used for a date</p> <ul style="list-style-type: none"> - base type: string, cod. table: NT29, <p>(XPath: RAWDyeOrder/RDCObody/RDCOitem/deliveryDate/@dateForm) [Optional] (XPath: RAWDyeOrder/RDCObody/RDCOitem/rawMnfrOperation/refDoc/docDate/@dateForm) [Optional] (XPath: RAWDyeOrder/RDCObody/RDCOitem/rawComponent/refDoc/docDate/@dateForm) [Optional]</p>

	(XPath: RAWDyeOrder/RDCOheader/refDoc/docDate/@dateForm) [Optional] (XPath: RAWDyeOrder/RDCOheader/msgDate/@dateForm) [Optional]
deliveryDate	date of delivery of goods, requested or promised in the purchase process, according to one of the patterns YYYY-MM-DD, YYYY-MM-DD:HH-MM or YYYY-WW. - base type: string, (XPath: RAWDyeOrder/RDCObody/RDCOitem/deliveryDate) 0-1
deliveryPlace	place of delivery of goods, ultimate or related to a given leg - base type: string, max length: 40, (XPath: RAWDyeOrder/terms/transInfo/deliveryPlace) 0-1
dept	name or code of a contact department within a Party - base type: string, max length: 40, (XPath: RAWDyeOrder/RDCOheader/buyer/dept) 0-1 (XPath: RAWDyeOrder/RDCOheader/subContractor/dept) 0-1 (XPath: RAWDyeOrder/RDCOheader/thirdParty/dept) 0-1 (XPath: RAWDyeOrder/RDCObody/RDCOitem/thirdParty/dept) 0-1
description	free text description of a product - base type: string, max length: 70, (XPath: RAWDyeOrder/RDCObody/RDCOitem/rawProd/rawCode/description) 0-1 (XPath: RAWDyeOrder/RDCObody/RDCOitem/rawComponent/rawCode/description) 0-1
docDate	date of issue of the referenced document, according to one of the patterns YYYY-MM-DD, YYYY-MM-DD:HH-MM or YYYY-WW. - base type: string, (XPath: RAWDyeOrder/RDCObody/RDCOitem/rawComponent/refDoc/docDate) 0-1 (XPath: RAWDyeOrder/RDCOheader/refDoc/docDate) 0-1 (XPath: RAWDyeOrder/RDCObody/RDCOitem/rawMnfrOperation/refDoc/docDate) 0-1
docID	identification number of the referenced document SINCE 2008-1 ITS USE IN THE HEADER IS DISCOURAGED (REPLACED BY) - base type: string, max length: 35, (XPath: RAWDyeOrder/RDCOheader/refDoc/docID) 1-2 (XPath: RAWDyeOrder/RDCOheader/docID) 0-1 (XPath: RAWDyeOrder/RDCObody/RDCOitem/rawMnfrOperation/refDoc/docID) 1-2 (XPath: RAWDyeOrder/RDCObody/RDCOitem/rawComponent/refDoc/docID) 1-2
@docType	type or class to which the referenced document belongs - base type: string, cod. table: T21, (XPath: RAWDyeOrder/RDCObody/RDCOitem/rawMnfrOperation/refDoc/@docType) [Required] (XPath: RAWDyeOrder/RDCOheader/refDoc/@docType) [Required] (XPath: RAWDyeOrder/RDCObody/RDCOitem/rawComponent/refDoc/@docType) [Required]
dyeN	number of the dying batch of a textile product - base type: string, max length: 15, (XPath: RAWDyeOrder/RDCObody/RDCOitem/rawComponent/dyeN) 0-1 (XPath: RAWDyeOrder/RDCObody/RDCOitem/rawProd/dyeN) 0-1
@email	electronic mail address of the contact person within a Party - base type: string, max length: 80, (XPath: RAWDyeOrder/RDCOheader/buyer/person/@email) [Optional] (XPath: RAWDyeOrder/RDCObody/RDCOitem/thirdParty/person/@email) [Optional] (XPath: RAWDyeOrder/RDCOheader/thirdParty/person/@email) [Optional] (XPath: RAWDyeOrder/RDCOheader/subContractor/person/@email) [Optional]
@fax	fax number of the contact person within a Party - base type: string, max length: 35, (XPath: RAWDyeOrder/RDCOheader/buyer/person/@fax) [Optional] (XPath: RAWDyeOrder/RDCObody/RDCOitem/thirdParty/person/@fax) [Optional]

	(XPath: RAWDyeOrder/RDCOheader/subContractor/person/@fax) [Optional] (XPath: RAWDyeOrder/RDCOheader/thirdParty/person/@fax) [Optional]
@finDiscount	financial discount applied for payment by the date specified - base type: decimal, min inclusive: 0, max inclusive: 100, fraction digits: 2, (XPath: RAWDyeOrder/terms/payment/@finDiscount) [Optional]
@finSurcharge	financial surcharge applied for payment after the date specified - base type: decimal, min inclusive: 0, max inclusive: 100, fraction digits: 2, (XPath: RAWDyeOrder/terms/payment/@finSurcharge) [Optional]
grossWeight	the gross weight of the overall goods supply, declared for transport or customs purpose - base type: decimal, min inclusive: 0, fraction digits: 2, (XPath: RAWDyeOrder/terms/transInfo/grossWeight) 0-1
id	primary identification code of a Party; it is recommended the format: nation code (ISO 3166) + VAT identification number (11 crt), with the qualifier "numberingOrg"= MF - base type: string, max length: 15, (XPath: RAWDyeOrder/RDCObody/RDCOitem/thirdParty/id) 1-1 (XPath: RAWDyeOrder/RDCOheader/buyer/id) 1-1 (XPath: RAWDyeOrder/RDCOheader/subContractor/id) 1-1 (XPath: RAWDyeOrder/RDCOheader/thirdParty/id) 1-1
incoTerm	specification of the terms of trade (INCOTERMS) - base type: string, cod. table: T3, (XPath: RAWDyeOrder/terms/trade/incoTerm) 1-1
incoTermText	free text specifying the terms of trade (incoterm, location) - base type: string, max length: 70, (XPath: RAWDyeOrder/terms/trade/incoTermText) 1-1
itemID	number of the line/item of the referenced document - base type: string, max length: 6, (XPath: RAWDyeOrder/RDCObody/RDCOitem/rawComponent/refDoc/itemID) 0-1 (XPath: RAWDyeOrder/RDCOheader/refDoc/itemID) 0-1 (XPath: RAWDyeOrder/RDCObody/RDCOitem/rawMnfrOperation/refDoc/itemID) 0-1
jobName	description of the elementary job - base type: string, max length: 40, (XPath: RAWDyeOrder/RDCObody/RDCOitem/rawMnfrOperation/jobName) 1-1
legalName	legal name of a Party - base type: string, max length: 80, (XPath: RAWDyeOrder/RDCObody/RDCOitem/thirdParty/legalName) 0-1 (XPath: RAWDyeOrder/RDCOheader/thirdParty/legalName) 0-1 (XPath: RAWDyeOrder/RDCOheader/subContractor/legalName) 0-1 (XPath: RAWDyeOrder/RDCOheader/buyer/legalName) 0-1
lineN	number of the line item of the present message (xml document) - base type: positiveInteger, min inclusive: 1, max inclusive: 9999, (XPath: RAWDyeOrder/RDCObody/RDCOitem/lineN) 1-1
@listName	it specifies the name of the list of codes used to make an instance of the element - base type: string, max length: 40, (XPath: RAWDyeOrder/RDCObody/RDCOitem/rawProd/rawCode/color/@listName) [Optional] - nota: <i>this attribute should always be used coupled with "numberingOrg"</i> (XPath: RAWDyeOrder/RDCObody/RDCOitem/rawProd/rawCode/art/@listName) [Optional] - nota: <i>this attribute should always be used coupled with "numberingOrg"</i> (XPath: RAWDyeOrder/RDCObody/RDCOitem/rawComponent/rawCode/art/@listName) [Optional] - nota: <i>this attribute should always be used coupled with "numberingOrg"</i>

	<p>(XPath: RAWDyeOrder/RDCObody/RDCOitem/rawComponent/rawCode/color/@listName) [Optional]</p> <p>- nota: <i>this attribute should always be used coupled with “numberingOrg”</i></p>
@listVersion	<p>it specifies the version of the list of codes used to make an instance of the element</p> <p>- base type: string, max length: 6,</p> <p>(XPath: RAWDyeOrder/RDCObody/RDCOitem/rawProd/rawCode/art/@listVersion) [Optional]</p> <p>- nota: <i>this attribute should always be used coupled with “numberingOrg” and “listName”</i></p> <p>(XPath: RAWDyeOrder/RDCObody/RDCOitem/rawComponent/rawCode/art/@listVersion) [Optional]</p> <p>- nota: <i>this attribute should always be used coupled with “numberingOrg” and “listName”</i></p> <p>(XPath: RAWDyeOrder/RDCObody/RDCOitem/rawComponent/rawCode/color/@listVersion) [Optional]</p> <p>- nota: <i>this attribute should always be used coupled with “numberingOrg” and “listName”</i></p> <p>(XPath: RAWDyeOrder/RDCObody/RDCOitem/rawProd/rawCode/color/@listVersion) [Optional]</p> <p>- nota: <i>this attribute should always be used coupled with “numberingOrg” and “listName”</i></p>
location	<p>specification of a location</p> <p>- base type: string, max length: 40,</p> <p>(XPath: RAWDyeOrder/RDCObody/RDCOitem/rawComponent/location) 0-1</p> <p>(XPath: RAWDyeOrder/terms/trade/location) 0-1</p> <p>- note: <i>place to which the INCOTERM applies</i></p>
@logo	<p>company logo (URL of the image jpeg or gif). It is recommended that the width of the image does not exceed 640 pixel.</p> <p>- base type: string, max length: 255,</p> <p>(XPath: RAWDyeOrder/RDCOheader/buyer/@logo) [Optional]</p>
lotN	<p>lot number of a product or batch number of the raw material</p> <p>- base type: string, max length: 15,</p> <p>(XPath: RAWDyeOrder/RDCObody/RDCOitem/rawComponent/lotN) 0-1</p> <p>(XPath: RAWDyeOrder/RDCObody/RDCOitem/rawProd/lotN) 0-1</p>
@LRI	<p>attribute usable to format a string according to a customized User rule (local rule)</p> <p>- base type: string, cod. table: NT3,</p> <p>(XPath: RAWDyeOrder/RDCObody/RDCOitem/rawComponent/location/@LRI) [Optional]</p> <p>(XPath: RAWDyeOrder/terms/trade/location/@LRI) [Optional]</p>
@method	<p>standard protocol or method employed in a test to evaluate a characteristic or a parameter</p> <p>- base type: string, max length: 25,</p> <p>(XPath: RAWDyeOrder/RDCObody/RDCOitem/rawProd/rawSpecs/specValue/@method) [Optional]</p>
msgCurrency	<p>currency used to express the monetary amounts of the message</p> <p>- base type: string, cod. table: T9,</p> <p>(XPath: RAWDyeOrder/RDCOheader/msgCurrency) 0-1</p>
msgDate	<p>date of issue of the present message (xml document), according to one of the patterns YYYY-MM-DD, YYYY-MM-DD:HH-MM or YYYY-WW.</p> <p>- base type: string,</p> <p>(XPath: RAWDyeOrder/RDCOheader/msgDate) 1-1</p>
@msgfunction	<p>function performed by the present message with regards to the transmission</p> <p>- base type: string, cod. table: NT18,</p> <p>(XPath: RAWDyeOrder/@msgfunction) [Optional] [Default= OR]</p>

msgID	key identifier of the document in the information system of the issuing Party - base type: string, max length: 35, (XPath: RAWDyeOrder/RDCOheader/msgID) 0-1
msgN	identification number given to the message (xml document) by its issuer - base type: string, max length: 35, (XPath: RAWDyeOrder/RDCOheader/msgN) 1-1
netWeight	the net weight of the overall goods supply, declared for transport or customs purpose - base type: decimal, min inclusive: 0, fraction digits: 2, (XPath: RAWDyeOrder/terms/transInfo/netWeight) 0-1
note	free text or structured (computer processing) note. For note structuring use the attributes "noteLabel" and "codelist" - base type: string, max length: 350, (XPath: RAWDyeOrder/RDCObody/RDCOitem/note) 0-1 (XPath: RAWDyeOrder/RDCObody/RDCOitem/rawComponent/note) 0-1 (XPath: RAWDyeOrder/RDCObody/RDCOitem/rawProd/note) 0-1 (XPath: RAWDyeOrder/RDCOheader/note) 0-1 (XPath: RAWDyeOrder/RDCObody/RDCOitem/rawMnfrOperation/note) 0-1
@noteLabel	subject qualifier of a note - base type: string, max length: 35, (XPath: RAWDyeOrder/RDCObody/RDCOitem/rawComponent/note/@noteLabel) [Optional] - nota: <i>must be used to qualify the subject of the note</i> (XPath: RAWDyeOrder/RDCObody/RDCOitem/rawMnfrOperation/note/@noteLabel) [Optional] - nota: <i>must be used to qualify the subject of the note</i> (XPath: RAWDyeOrder/RDCObody/RDCOitem/note/@noteLabel) [Optional] - nota: <i>must be used to qualify the subject of the note</i> (XPath: RAWDyeOrder/RDCObody/RDCOitem/rawProd/note/@noteLabel) [Optional] - nota: <i>must be used to qualify the subject of the note</i> (XPath: RAWDyeOrder/RDCOheader/note/@noteLabel) [Optional] - nota: <i>must be used to qualify the subject of the note</i>
@numberingOrg	code specifying the organisation who has created or owns the coding or numbering system - base type: string, cod. table: NT6, (XPath: RAWDyeOrder/RDCObody/RDCOitem/thirdParty/id/@numberingOrg) [Optional] (XPath: RAWDyeOrder/RDCObody/RDCOitem/rawComponent/dyeN/@numberingOrg) [Optional] (XPath: RAWDyeOrder/RDCObody/RDCOitem/rawComponent/rawCode/@numberingOrg) [Optional] (XPath: RAWDyeOrder/RDCObody/RDCOitem/rawComponent/note/@numberingOrg) [Optional] (XPath: RAWDyeOrder/RDCObody/RDCOitem/rawComponent/refDoc/docID/@numberingOrg) [Optional] - nota: <i>here can be specified whose document numbering is used (e.g.: Client, Supplier, ..)</i> (XPath: RAWDyeOrder/RDCObody/RDCOitem/rawComponent/rawCode/art/@numberingOrg) [Optional] - nota: <i>this attribute should be used either single or coupled with "listName" and "listVersion"</i> (XPath: RAWDyeOrder/RDCObody/RDCOitem/rawMnfrOperation/note/@numberingOrg) [Optional] (XPath: RAWDyeOrder/RDCObody/RDCOitem/note/@numberingOrg) [Optional] (XPath: RAWDyeOrder/RDCObody/RDCOitem/rawMnfrOperation/refDoc/docID/@numberingOrg) [Optional] - nota: <i>here can be specified whose document numbering is used (e.g.:</i>

	<p><i>Client, Supplier, ..)</i> (XPath: RAWDyeOrder/RDCObody/RDCOitem/rawComponent/lotN/@numberingOrg) [Optional] (XPath: RAWDyeOrder/RDCObody/RDCOitem/rawComponent/rawCode/color/@numberingOrg) [Optional] - nota: <i>this attribute should be used either single or coupled with "listName" and "listVersion"</i> (XPath: RAWDyeOrder/RDCObody/RDCOitem/rawProd/note/@numberingOrg) [Optional] (XPath: RAWDyeOrder/RDCObody/RDCOitem/rawProd/rawCode/art/@numberingOrg) [Optional] - nota: <i>this attribute should be used either single or coupled with "listName" and "listVersion"</i> (XPath: RAWDyeOrder/RDCObody/RDCOitem/rawProd/rawCode/color/@numberingOrg) [Optional] - nota: <i>this attribute should be used either single or coupled with "listName" and "listVersion"</i> (XPath: RAWDyeOrder/RDCObody/RDCOitem/rawProd/rawCode/@numberingOrg) [Optional] (XPath: RAWDyeOrder/RDCObody/RDCOitem/rawProd/lotN/@numberingOrg) [Optional] (XPath: RAWDyeOrder/RDCObody/RDCOitem/rawProd/dyeN/@numberingOrg) [Optional] (XPath: RAWDyeOrder/RDCOheader/buyer/id/@numberingOrg) [Optional] (XPath: RAWDyeOrder/RDCOheader/refDoc/docID/@numberingOrg) [Optional] - nota: <i>here can be specified whose document numbering is used (e.g.: Client, Supplier, ..)</i> (XPath: RAWDyeOrder/RDCOheader/docID/@numberingOrg) [Optional] - nota: <i>here can be specified whose document numbering is used (e.g.: Client, Supplier, ..)</i> (XPath: RAWDyeOrder/RDCOheader/note/@numberingOrg) [Optional] (XPath: RAWDyeOrder/RDCOheader/thirdParty/id/@numberingOrg) [Optional] (XPath: RAWDyeOrder/RDCOheader/subContractor/id/@numberingOrg) [Optional]</p>
@part	<p>percent fraction of a total payment - base type: decimal, min inclusive: 1, max inclusive: 99, fraction digits: 2, (XPath: RAWDyeOrder/terms/insPayment/@part) [Required] - nota: <i>here the % value of each installment must be indicated</i></p>
payMode	<p>way or means of payment - base type: string, cod. table: T2, (XPath: RAWDyeOrder/terms/payment/payMode) 0-1 (XPath: RAWDyeOrder/terms/insPayment/payMode) 0-1</p>
payTerm	<p>code specifying the terms or time by which the payment must be done - base type: string, cod. table: T1, (XPath: RAWDyeOrder/terms/insPayment/payTerm) 1-1 (XPath: RAWDyeOrder/terms/payment/payTerm) 1-1</p>
payTermText	<p>free text specifying the terms by which the payment must be done (time/mode or means) - base type: string, max length: 40, (XPath: RAWDyeOrder/terms/insPayment/payTermText) 1-1 (XPath: RAWDyeOrder/terms/payment/payTermText) 1-1</p>
pcQty	<p>percent quantity of a raw material or of a specified component in a fabric or in a yarn - base type: decimal, min inclusive: 0, max inclusive: 100, fraction digits: 2, (XPath: RAWDyeOrder/RDCObody/RDCOitem/rawComponent/pcQty) 0-1</p>
pcTolerance	<p>percent deviation tolerated on the value of a measurement (it must have a plus or minus sign) - base type: decimal, min inclusive: 0, max inclusive: 100, total digits: 2, (XPath: RAWDyeOrder/RDCObody/RDCOitem/rawProd/rawSpecs/pcTolerance) 0-2</p>

person	name of the contact person within a Party - base type: string, max length: 40, (XPath: RAWDyeOrder/RDCOheader/buyer/person) 0-1 (XPath: RAWDyeOrder/RDCOheader/thirdParty/person) 0-1 (XPath: RAWDyeOrder/RDCObody/RDCOitem/thirdParty/person) 0-1 (XPath: RAWDyeOrder/RDCOheader/subContractor/person) 0-1
@phone	phone number of the contact person within a Party - base type: string, max length: 35, (XPath: RAWDyeOrder/RDCOheader/thirdParty/person/@phone) [Optional] (XPath: RAWDyeOrder/RDCOheader/subContractor/person/@phone) [Optional] (XPath: RAWDyeOrder/RDCOheader/buyer/person/@phone) [Optional] (XPath: RAWDyeOrder/RDCObody/RDCOitem/thirdParty/person/@phone) [Optional]
postCode	code defining the postal zone - base type: string, max length: 10, (XPath: RAWDyeOrder/RDCOheader/thirdParty/postCode) 0-1 (XPath: RAWDyeOrder/RDCOheader/buyer/postCode) 0-1 (XPath: RAWDyeOrder/RDCObody/RDCOitem/thirdParty/postCode) 0-1 (XPath: RAWDyeOrder/RDCOheader/subContractor/postCode) 0-1
price	unit price of the article, object or service specified - base type: decimal, min inclusive: 0, fraction digits: 2, (XPath: RAWDyeOrder/RDCObody/RDCOitem/price) 0-1
@priceQualifier	type of price with reference to discount and taxes - base type: string, cod. table: NT20, (XPath: RAWDyeOrder/RDCObody/RDCOitem/price/@priceQualifier) [Optional] [Default= NET]
@productLevel	level of the product (end or intermediate) yielded by an operation in a work cycle - base type: string, cod. table: NT22, (XPath: RAWDyeOrder/RDCObody/RDCOitem/@productLevel) [Optional] [Default= END] - nota: <i>this qualifier "intermediate" must be used when the product is also a component in an other line of the same Commission Order</i>
qty	net quantity of the article or object correlated, qualified by the function of the document (ordering, delivering, ..) and by the context - base type: decimal, min inclusive: 0, fraction digits: 2, (XPath: RAWDyeOrder/RDCObody/RDCOitem/qty) 1-2 (XPath: RAWDyeOrder/RDCObody/RDCOitem/rawComponent/qty) 1-2
rawChar	physical or mechanical parameter used to define a characteristics of a raw material - base type: string, cod. table: T22, (XPath: RAWDyeOrder/RDCObody/RDCOitem/rawProd/rawSpecs/rawChar) 1-1
rawCharText	free text describing the physical or mechanical parameter used to define a characteristics of a raw material - base type: string, max length: 40, (XPath: RAWDyeOrder/RDCObody/RDCOitem/rawProd/rawSpecs/rawCharText) 1-1
rawJob	operation of a work cycle for raw material - base type: string, cod. table: T200, (XPath: RAWDyeOrder/RDCObody/RDCOitem/rawMnfrOperation/rawJob) 1-1
@role	Third Party role qualifier - base type: string, cod. table: NT2, (XPath: RAWDyeOrder/RDCObody/RDCOitem/thirdParty/@role) [Required] (XPath: RAWDyeOrder/RDCOheader/thirdParty/@role) [Required]
season	sale season; defined as: season (1 crt) + year (4 crt) - season: S/S=1 A/W=2 Spring=3 Summer=4 Autumn=5 Winter=6: for more than four

	<p>seasons use alphabetic sequence: 1st season=A 2nd season=B etc.etc.</p> <p>- base type: string, max length: 15, (XPath: RAWDyeOrder/RDCOheader/season) 0-1 (XPath: RAWDyeOrder/RDCObody/RDCOitem/rawComponent/refDoc/season) 0-1</p> <p>- note: here indicates the season to which the referenced document belongs (XPath: RAWDyeOrder/RDCObody/RDCOitem/rawMnfrOperation/refDoc/season) 0-1</p> <p>- note: here indicates the season to which the referenced document belongs (XPath: RAWDyeOrder/RDCOheader/refDoc/season) 0-1</p> <p>- note: here indicates the season to which the referenced document belongs</p>
@sender	<p>qualifier that specifies the Party issuing of the document</p> <p>- base type: boolean, (XPath: RAWDyeOrder/RDCOheader/buyer/@sender) [Optional]</p> <p>- nota: This attribute is mandatory when the STYLESHEET must be produced (XPath: RAWDyeOrder/RDCOheader/subContractor/@sender) [Optional]</p> <p>- nota: This attribute is mandatory when the STYLESHEET must be produced (XPath: RAWDyeOrder/RDCObody/RDCOitem/thirdParty/@sender) [Optional]</p> <p>- nota: This attribute is mandatory when the STYLESHEET must be produced (XPath: RAWDyeOrder/RDCOheader/thirdParty/@sender) [Optional]</p> <p>- nota: This attribute is mandatory when the STYLESHEET must be produced</p>
specValue	<p>value requested for a characteristics or a parameter that can be measured</p> <p>- base type: decimal, (XPath: RAWDyeOrder/RDCObody/RDCOitem/rawProd/rawSpecs/specValue) 0-1</p>
street	<p>street and building number identifying a location</p> <p>- base type: string, max length: 80, (XPath: RAWDyeOrder/RDCOheader/subContractor/street) 0-1 (XPath: RAWDyeOrder/RDCOheader/buyer/street) 0-1 (XPath: RAWDyeOrder/RDCObody/RDCOitem/thirdParty/street) 0-1 (XPath: RAWDyeOrder/RDCOheader/thirdParty/street) 0-1</p>
subCountry	<p>short name or code of the sub-country entity</p> <p>- base type: string, max length: 9, (XPath: RAWDyeOrder/RDCOheader/buyer/subCountry) 0-1 (XPath: RAWDyeOrder/RDCOheader/subContractor/subCountry) 0-1 (XPath: RAWDyeOrder/RDCOheader/thirdParty/subCountry) 0-1 (XPath: RAWDyeOrder/RDCObody/RDCOitem/thirdParty/subCountry) 0-1</p>
tolerance	<p>deviation tolerated on the value of a measurement (it must have a plus or minus sign)</p> <p>- base type: decimal, (XPath: RAWDyeOrder/RDCObody/RDCOitem/rawProd/rawSpecs/tolerance) 0-2</p>
transCondition	<p>special condition of transport or special service requested to the Forwarder</p> <p>- base type: string, cod. table: T38, (XPath: RAWDyeOrder/terms/transInfo/transCondition) 0-3</p>
transConditionText	<p>free text description of the special condition of transport or special service requested to the Forwarder</p> <p>- base type: string, max length: 100, (XPath: RAWDyeOrder/terms/transInfo/transConditionText) 0-1</p>
transMeans	<p>means of transport, in general or referred to a specific leg</p> <p>- base type: string, cod. table: T40, (XPath: RAWDyeOrder/terms/transInfo/transMeans) 0-1</p>
transMode	<p>way of transport, in general or referred to the specified leg</p> <p>- base type: string, cod. table: T8, (XPath: RAWDyeOrder/terms/transInfo/transMode) 1-1</p>

@transReason	reason for the transport - base type: string, cod. table: NT11, (XPath: RAWDyeOrder/terms/transInfo/@transReason) [Optional]
@um	specification of the unit of measure - base type: string, cod. table: NT7, (XPath: RAWDyeOrder/RDCObody/RDCOitem/price/@um) [Optional] (XPath: RAWDyeOrder/terms/transInfo/grossWeight/@um) [Required] (XPath: RAWDyeOrder/RDCObody/RDCOitem/rawProd/rawSpecs/ tolerance/@um) [Required] (XPath: RAWDyeOrder/terms/transInfo/netWeight/@um) [Required] (XPath: RAWDyeOrder/RDCObody/RDCOitem/rawProd/rawSpecs/ specValue/@um) [Optional] (XPath: RAWDyeOrder/RDCObody/RDCOitem/rawComponent/pcQty/@um) [Optional] - nota: <i>to be used when it has to be soecified if the declared percentage is by weight, volume, etc...</i> (XPath: RAWDyeOrder/RDCObody/RDCOitem/qty/@um) [Required] (XPath: RAWDyeOrder/RDCObody/RDCOitem/rawProd/rawSpecs/ pcTolerance/@um) [Optional] - nota: <i>to be used when it has to be soecified if the declared percentage is by weight, volume, etc...</i> (XPath: RAWDyeOrder/RDCObody/RDCOitem/rawComponent/qty/@um) [Required]
@VAT	VAT rate or code - base type: string, cod. table: NT16, (XPath: RAWDyeOrder/RDCOheader/thirdParty/@VAT) [Optional] (XPath: RAWDyeOrder/RDCObody/RDCOitem/lineN/@VAT) [Optional] (XPath: RAWDyeOrder/RDCObody/RDCOitem/thirdParty/@VAT) [Optional] (XPath: RAWDyeOrder/terms/allowanceCharge/@VAT) [Optional]

2.3 Enumeration tables

List of enumeration tables used in the XML document. You can find the corresponding codes (only for tables with less than 100 values) in the document `Decoding_Values.pdf`, available at: <http://www.moda-ml.org/moda-ml/repository/guide/v2011-1/>; moreover, all the enumeration tables are available at: <http://www.moda-ml.org/imple/show-codes.asp>.

- NT11 - Transport causal
- NT16 - VAT rate or code
- NT18 - message function
- NT2 - Third party qualifier
- NT20 - price qualifier
- NT22 - product type of an operation
- NT29 - format of a date
- NT3 - Data format
- NT37 - Committed quantity qualifier
- NT38 - Colour test
- NT6 - Coding system owner/issuer
- NT7 - Unity of measure
- T1 - Terms of payment
- T10 - ISO3166 - Country
- T2 - Modes of payment
- T200 - type of job on raw material
- T21 - type of document
- T22 - raw material characteristics type
- T3 - Terms of delivery
- T38 - transport conditions
- T40 - type of transport means
- T41 - type of Allowance or Charge
- T44 - additional code type
- T8 - Modes of Transport
- T9 - ISO4217 - Currency

Annex A

Representative images of the principal complex elements' structure.

