



<http://www.moda-ml.org>

## IMPLEMENTATION GUIDE

### TRANSACTION "TEXTILE DYEING-FINISHING REQUEST"

Version: 2011-1

Date of release: 18/11/2011

Document code: G053

XML Schema repository:<http://www.moda-ml.org/moda-ml/repository/schema/v2011-1/default.asp>

Guides repository:<http://www.moda-ml.org/moda-ml/repository/guide/v2011-1/default.asp>

Guide filename: G053-MODA-ML-TextileDyeing-finishingRequest.pdf

# 1. BUSINESS DESCRIPTION

## 1.1 Scope

The present guide has been issued to assist the companies of the Textile-Clothing sector in the implementation of the standard XML document "TEXTILE DYEING/FINISHING REQUEST", providing all the instruction required for its use in the context of e-commerce between Subcontractors and their Customers shown in the enclosed diagram

All the rules required for the construction and validation of the document are embedded into the specific XML-Schema, which is detailed in section "Implementation guide".

## 1.2 Generalities

The Request is used by a Yarn Manufacturer to request from a Subcontractor an Offer for the dyeing/finishing of fabric.

The Request is structured in four levels:

Macro-type of Work Requested = document root (7 types of Request)

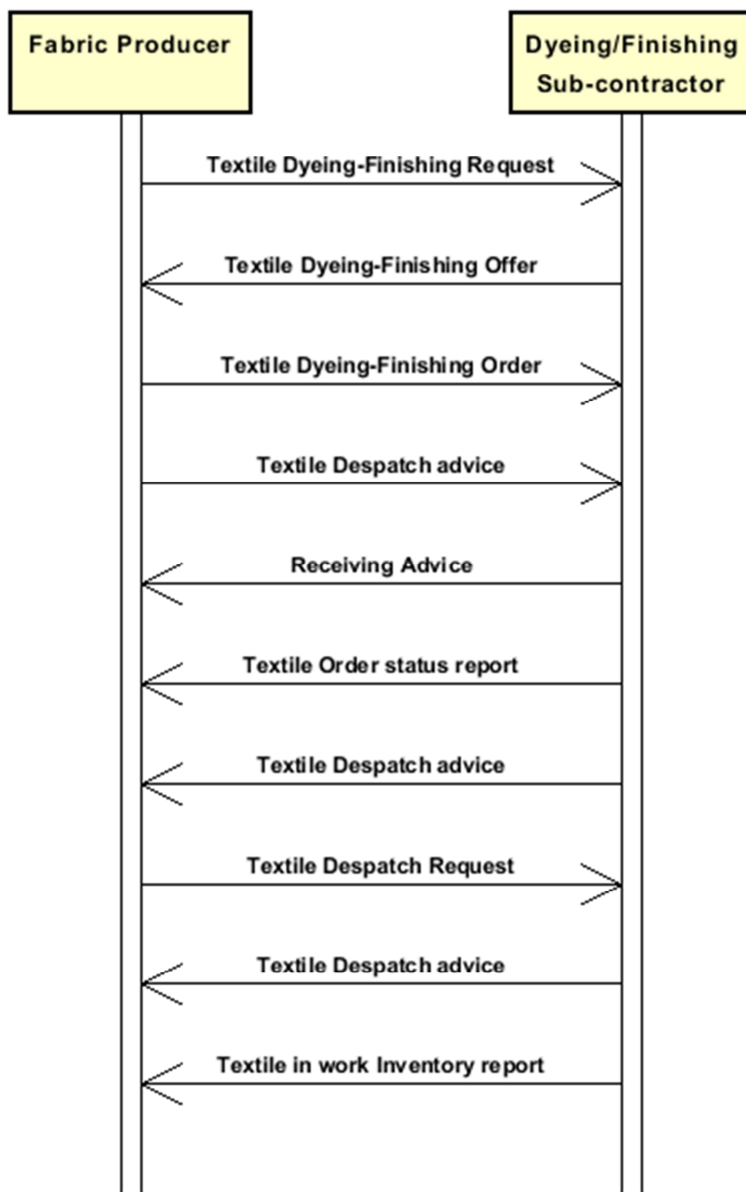
Product Family = document qualifier (type of product with reference to the manufacturing process; e.g.: combed yarn, jacquard weaved fabric, ..)

Product Specifications = "xxxSpecs" (technical characteristics and properties of the product)

Operations requested 0 "XXXMnfrOperation" (details of the works requested)

Quantities, unit measures and prices must be referred to the third level (Line Item)

## 1.3. Possible scenario



## 2. IMPLEMENTATION GUIDE

### 2.1 General structure of XML document

All the business data that can be exchanged through this class of documents are shown in the following "document structure", that provides a simplified vision of the Schema.

In particular:

- the two numbers following each element define its "cardinality" (minimum and maximum number of occurrences); the minimum equal zero indicates that the element is optional, the minimum greater than zero indicates that is mandatory;
- the bold character denotes the complex elements (aggregates of simple elements) that were built for the sake of functionality and re-usability of some complex informations sets. The child elements in each parent element are easily spotted as "indented";
- the symbol "@" denotes an attribute of the preceding element; here "the usage indicator (optional, required, ...) is shown in square brackets.

### Structure

#### **TEXDyFinRequest**

*@msgfunction [Optional] [Default= OR]*

*@fabProcQualifier [Required]*

#### **RQheader 1-1**

msgN 1-1

- choose -

msgID 0-1

- or -

docID 0-1

*@numberingOrg [Optional]*

- end choose -

msgDate 1-1

*@dateForm [Optional]*

season 0-1

validityStart 0-1

*@dateForm [Optional]*

validityEnd 1-1

*@dateForm [Optional]*

#### **refDoc 0-9**

*@docType [Required]*

docID 1-2

*@numberingOrg [Optional]*

docDate 0-1

*@dateForm [Optional]*

season 0-1

itemID 0-1

#### **buyer 1-1**

*@logo [Optional]*

*@sender [Optional]*

id 1-1

*@numberingOrg [Optional]*

legalName 0-1

dept 0-1

person 0-1

*@email [Optional]*

*@phone [Optional]*

*@fax [Optional]*

street 0-1

city 0-1

subCountry 0-1

country 0-1

postCode 0-1  
**subContractor 0-1**  
@sender [Optional]  
id 1-1  
@numberingOrg [Optional]  
legalName 0-1  
dept 0-1  
person 0-1  
@email [Optional]  
@phone [Optional]  
@fax [Optional]  
street 0-1  
city 0-1  
subCountry 0-1  
country 0-1  
postCode 0-1  
note 0-1  
@numberingOrg [Optional]  
@codeList [Optional]  
@noteLabel [Optional]

**terms 0-1**

**payment 0-5**  
@finDiscount [Optional]  
@finSurcharge [Optional]  
- choose -  
payTerm 1-1  
- or -  
payTermText 1-1  
- end choose -  
payMode 0-1

**insPayment 0-5**  
@part [Required]  
- choose -  
payTerm 1-1  
- or -  
payTermText 1-1  
- end choose -  
payMode 0-1

**trade 0-1**  
- choose -  
incoTermText 1-1  
- or -  
incoTerm 1-1  
- end choose -  
location 0-1  
@LRI [Optional]

**transInfo 0-1**  
@transReason [Optional]  
transMode 1-1  
carrier 0-1  
deliveryPlace 0-1  
grossWeight 0-1  
@um [Required]  
netWeight 0-1  
@um [Required]  
transMeans 0-1  
transCondition 0-3  
transConditionText 0-1

**allowanceCharge 0-9**  
@VAT [Optional]

- choose -  
AC\_category 1-1  
- or -  
AC\_categoryText 1-1  
- choose -  
AC\_percent 1-1  
- or -  
AC\_amount 1-1  
- end choose -

**TFRQbody 1-1**

**TFRQitem 1-unbounded**

lineN 1-1  
@VAT [Optional]  
**fabricCompos 0-1**  
percCompos 1-9  
@fibre [Required]  
**fabricSpecs 0-99**  
- choose -  
fabricCharText 1-1  
- or -  
fabricChar 1-1  
- end choose -  
specValue 0-1  
@um [Optional]  
@method [Optional]  
- choose -  
tolerance 0-2  
@um [Required]  
- or -  
pcTolerance 0-2  
@um [Optional]  
- end choose -  
qty 1-3  
@um [Required]  
deliveryDate 1-1  
@dateForm [Optional]  
notBeforeDate 0-1  
@dateForm [Optional]  
**thirdParty 0-1**  
@VAT [Optional]  
@role [Required]  
@sender [Optional]  
id 1-1  
@numberingOrg [Optional]  
legalName 0-1  
dept 0-1  
person 0-1  
@email [Optional]  
@phone [Optional]  
@fax [Optional]  
street 0-1  
city 0-1  
subCountry 0-1  
country 0-1  
postCode 0-1  
**fabMnfrOperation 1-9**  
- choose -  
jobName 1-1  
- or -  
texJob 1-1

- end choose -  
 texJobTech 0-1  
**refDoc 0-1**  
 @docType [Required]  
 docID 1-2  
 @numberingOrg [Optional]  
 docDate 0-1  
 @dateForm [Optional]  
 season 0-1  
 itemID 0-1  
 texMachine 0-1  
**texMachineSpecs 0-9**  
 texMachineParam 1-1  
 specValue 0-1  
 @um [Optional]  
 @method [Optional]  
 - choose -  
 pcTolerance 0-2  
 @um [Optional]  
 - or -  
 tolerance 0-2  
 @um [Required]  
 - end choose -  
 note 0-1  
 @numberingOrg [Optional]  
 @codeList [Optional]  
 @noteLabel [Optional]  
 note 0-1  
 @numberingOrg [Optional]  
 @codeList [Optional]  
 @noteLabel [Optional]

## 2.2 Detailed description of document elements

Following tables show all elements (complex and simple) used in this document. Description includes: 1) element's information: xml tag, name, brief description, data type and syntax constraints; 2) information about use of the element in a particular position in the document: xpath and possible associated notes.

### 2.2.1 Complex elements (Aggregate Business Information Entities)

Complex elements are those elements whose content is composed of other elements (childs). Complex elements are alphabetically ordered.

<b>allowanceCharge</b>	Allowances and Charges related to an Order or a contract (XPath: <a href="#">TEXDyFinRequest/terms/allowanceCharge</a> ) 0-9
<b>buyer</b>	details of the Buyer - base type: , (XPath: <a href="#">TEXDyFinRequest/RQheader/buyer</a> ) 1-1
<b>fabMnfrOperation</b>	details of a manufacturing operation used for fabric production (XPath: <a href="#">TEXDyFinRequest/TFRQbody/TFRQitem/fabMnfrOperation</a> ) 1-9
<b>fabricCompos</b>	composition of the fabric according to the Directory 97/37/CE (XPath: <a href="#">TEXDyFinRequest/TFRQbody/TFRQitem/fabricCompos</a> ) 0-1
<b>fabricSpecs</b>	technical characteristics of fabric, linked either to an operation of subcontracted production or to the purchase (XPath: <a href="#">TEXDyFinRequest/TFRQbody/TFRQitem/fabricSpecs</a> ) 0-99
<b>insPayment</b>	payment details for payment by installments (XPath: <a href="#">TEXDyFinRequest/terms/insPayment</a> ) 0-5 - note: <i>this set of data is alternative to payment set and must be iterated for each payment installment</i>
<b>payment</b>	payment details for payment all in one (XPath: <a href="#">TEXDyFinRequest/terms/payment</a> ) 0-5 - note: <i>this set of data can be iterated to specify alternative terms of payment (e.g.: 60 days or 30 days with 3% discount)</i>
<b>refDoc</b>	identification of a document and of an item thereof, to which the message makes reference (XPath: <a href="#">TEXDyFinRequest/TFRQbody/TFRQitem/fabMnfrOperation/refDoc</a> ) 0-1 - note: <i>here a Process Sheet transmitted to the Subcontractor can be referenced</i> (XPath: <a href="#">TEXDyFinRequest/RQheader/refDoc</a> ) 0-9
<b>RQheader</b>	header of the document REQUEST FOR OFFER (XPath: <a href="#">TEXDyFinRequest/RQheader</a> ) 1-1
<b>subContractor</b>	details of the Sub-contractor - base type: , (XPath: <a href="#">TEXDyFinRequest/RQheader/subContractor</a> ) 0-1 - note: <i>the Supplier could be unknown when the process is managed through a Third Party (Service Centre)</i>
<b>terms</b>	details of the commercial obligations for payment and delivery (XPath: <a href="#">TEXDyFinRequest/terms</a> ) 0-1
<b>texMachineSpecs</b>	technical specifications of a machine used in an operation of a work cycle for fabric (type and settings) (XPath: <a href="#">TEXDyFinRequest/TFRQbody/TFRQitem/fabMnfrOperation/texMachineSpecs</a> ) 0-9
<b>TFRQbody</b>	body of the document REQUEST FOR TEXTILE DYEING/FINISHING



	(XPath: <a href="#">TEXDyFinRequest/TFRQbody</a> ) 1-1
<b>TFRQitem</b>	line of the document REQUEST FOR TEXTILE DYEING/FINISHING (XPath: <a href="#">TEXDyFinRequest/TFRQbody/TFRQitem</a> ) 1-unbounded
<b>thirdParty</b>	details of the Third Party, different from Buyer or Supplier - base type: , (XPath: <a href="#">TEXDyFinRequest/TFRQbody/TFRQitem/thirdParty</a> ) 0-1
<b>trade</b>	general terms of trade for the specified supply (XPath: <a href="#">TEXDyFinRequest/terms/trade</a> ) 0-1
<b>transInfo</b>	details of transport: mode, carrier and delivery place (XPath: <a href="#">TEXDyFinRequest/terms/transInfo</a> ) 0-1

## 2.2.2 Simple elements (Basic Business Information Entities)

Simple elements are those elements whose content is characterized by a data type plus a domain of possible values. Simple elements are alphabetically ordered.

<b>AC_amount</b>	amount of an Allowance or Charge - base type: decimal, fraction digits: 2, (XPath: <a href="#">TEXDyFinRequest/terms/allowanceCharge/AC_amount</a> ) 1-1
<b>AC_category</b>	coded specification of an Allowance or Charge - base type: string, cod. table: T41, (XPath: <a href="#">TEXDyFinRequest/terms/allowanceCharge/AC_category</a> ) 1-1
<b>AC_categoryText</b>	free text description of an Allowance or Charge - base type: string, max length: 70, (XPath: <a href="#">TEXDyFinRequest/terms/allowanceCharge/AC_categoryText</a> ) 1-1
<b>AC_percent</b>	amount of an Allowance or Charge as a percentage - base type: decimal, max inclusive: 100, fraction digits: 2, (XPath: <a href="#">TEXDyFinRequest/terms/allowanceCharge/AC_percent</a> ) 1-1
<b>carrier</b>	identification of the transport carrier - base type: string, max length: 40, (XPath: <a href="#">TEXDyFinRequest/terms/transInfo/carrier</a> ) 0-1
<b>city</b>	name of the city (town, village) - base type: string, max length: 40, (XPath: <a href="#">TEXDyFinRequest/RQheader/subContractor/city</a> ) 0-1 (XPath: <a href="#">TEXDyFinRequest/RQheader/buyer/city</a> ) 0-1 (XPath: <a href="#">TEXDyFinRequest/TFRQbody/TFRQitem/thirdParty/city</a> ) 0-1
<b>@codeList</b>	it specifies the URL where the list of codes used to make an instance of the element can be found - base type: string, max length: 255, (XPath: <a href="#">TEXDyFinRequest/TFRQbody/TFRQitem/note/@codeList</a> ) [Optional] - nota: <i>must be used to provide (URL) the list of codes used in "noteLabel"</i> (XPath: <a href="#">TEXDyFinRequest/RQheader/note/@codeList</a> ) [Optional] - nota: <i>must be used to provide (URL) the list of codes used in "noteLabel"</i> (XPath: <a href="#">TEXDyFinRequest/TFRQbody/TFRQitem/fabMnfrOperation/note/@codeList</a> ) [Optional] - nota: <i>must be used to provide (URL) the list of codes used in "noteLabel"</i>
<b>country</b>	code of the nation - base type: string, cod. table: T10, (XPath: <a href="#">TEXDyFinRequest/RQheader/buyer/country</a> ) 0-1 (XPath: <a href="#">TEXDyFinRequest/RQheader/subContractor/country</a> ) 0-1 (XPath: <a href="#">TEXDyFinRequest/TFRQbody/TFRQitem/thirdParty/country</a> ) 0-1
<b>@dateForm</b>	format used for a date

	<p>- base type: string, cod. table: NT29,  (XPath: TEXDyFinRequest/TFRQbody/TFRQitem/notBeforeDate/@dateForm) [Optional]  (XPath: TEXDyFinRequest/RQheader/validityStart/@dateForm) [Optional]  (XPath: TEXDyFinRequest/RQheader/validityEnd/@dateForm) [Optional]  (XPath: TEXDyFinRequest/TFRQbody/TFRQitem/fabMnfrOperation/refDoc/docDate/@dateForm) [Optional]  (XPath: TEXDyFinRequest/RQheader/msgDate/@dateForm) [Optional]  (XPath: TEXDyFinRequest/TFRQbody/TFRQitem/deliveryDate/@dateForm) [Optional]  (XPath: TEXDyFinRequest/RQheader/refDoc/docDate/@dateForm) [Optional]</p>
deliveryDate	<p>date of delivery of goods, requested or promised in the purchase process, according to one of the patterns YYYY-MM-DD, YYYY-MM-DD:HH-MM or YYYY-WW.  - base type: string,  (XPath: TEXDyFinRequest/TFRQbody/TFRQitem/deliveryDate) 1-1</p>
deliveryPlace	<p>place of delivery of goods, ultimate or related to a given leg  - base type: string, max length: 40,  (XPath: TEXDyFinRequest/terms/transInfo/deliveryPlace) 0-1</p>
dept	<p>name or code of a contact department within a Party  - base type: string, max length: 40,  (XPath: TEXDyFinRequest/RQheader/subContractor/dept) 0-1  (XPath: TEXDyFinRequest/TFRQbody/TFRQitem/thirdParty/dept) 0-1  (XPath: TEXDyFinRequest/RQheader/buyer/dept) 0-1</p>
docDate	<p>date of issue of the referenced document, according to one of the patterns YYYY-MM-DD, YYYY-MM-DD:HH-MM or YYYY-WW.  - base type: string,  (XPath: TEXDyFinRequest/TFRQbody/TFRQitem/fabMnfrOperation/refDoc/docDate) 0-1  (XPath: TEXDyFinRequest/RQheader/refDoc/docDate) 0-1</p>
docID	<p>identification number of the referenced document SINCE 2008-1 ITS USE IN THE HEADER IS DISCOURAGED (REPLACED BY )  - base type: string, max length: 35,  (XPath: TEXDyFinRequest/RQheader/docID) 0-1  (XPath: TEXDyFinRequest/RQheader/refDoc/docID) 1-2  (XPath: TEXDyFinRequest/TFRQbody/TFRQitem/fabMnfrOperation/refDoc/docID) 1-2</p>
@docType	<p>type or class to which the referenced document belongs  - base type: string, cod. table: T21,  (XPath: TEXDyFinRequest/TFRQbody/TFRQitem/fabMnfrOperation/refDoc/@docType) [Required]  (XPath: TEXDyFinRequest/RQheader/refDoc/@docType) [Required]</p>
@email	<p>electronic mail address of the contact person within a Party  - base type: string, max length: 80,  (XPath: TEXDyFinRequest/RQheader/buyer/person/@email) [Optional]  (XPath: TEXDyFinRequest/TFRQbody/TFRQitem/thirdParty/person/@email) [Optional]  (XPath: TEXDyFinRequest/RQheader/subContractor/person/@email) [Optional]</p>
@fabProcQualifier	<p>type of fabric with reference to the manufacturing process  - base type: string, cod. table: NT32,  (XPath: TEXDyFinRequest/@fabProcQualifier) [Required]</p>
fabricChar	<p>code of the physical or mechanical parameter used to define a "technical characteristic of the fabric" (see Fabric technical sheet)  - base type: string, cod. table: T13,  (XPath: TEXDyFinRequest/TFRQbody/TFRQitem/fabricSpecs/fabricChar) 1-1</p>
fabricCharText	<p>free text describing the physical or mechanical parameter used to define a</p>

	"technical characteristic of the fabric" - base type: string, max length: 40, (XPath: TEXDyFinRequest/TFRQbody/TFRQitem/fabricSpecs/fabricCharText) 1-1
@fax	fax number of the contact person within a Party - base type: string, max length: 35, (XPath: TEXDyFinRequest/TFRQbody/TFRQitem/thirdParty/person/@fax) [Optional] (XPath: TEXDyFinRequest/RQheader/subContractor/person/@fax) [Optional] (XPath: TEXDyFinRequest/RQheader/buyer/person/@fax) [Optional]
@fibre	type of fibre used in a textile product - base type: string, cod. table: T19, (XPath: TEXDyFinRequest/TFRQbody/TFRQitem/fabricCompos/percCompos/@fibre) [Required]
@finDiscount	financial discount applied for payment by the date specified - base type: decimal, min inclusive: 0, max inclusive: 100, fraction digits: 2, (XPath: TEXDyFinRequest/terms/payment/@finDiscount) [Optional]
@finSurcharge	financial surcharge applied for payment after the date specified - base type: decimal, min inclusive: 0, max inclusive: 100, fraction digits: 2, (XPath: TEXDyFinRequest/terms/payment/@finSurcharge) [Optional]
grossWeight	the gross weight of the overall goods supply, declared for transport or customs purpose - base type: decimal, min inclusive: 0, fraction digits: 2, (XPath: TEXDyFinRequest/terms/transInfo/grossWeight) 0-1
id	primary identification code of a Party; it is recommended the format: nation code (ISO 3166) + VAT identification number (11 crt), with the qualifier "numberingOrg"= MF - base type: string, max length: 15, (XPath: TEXDyFinRequest/RQheader/buyer/id) 1-1 (XPath: TEXDyFinRequest/RQheader/subContractor/id) 1-1 (XPath: TEXDyFinRequest/TFRQbody/TFRQitem/thirdParty/id) 1-1
incoTerm	specification of the terms of trade (INCOTERMS) - base type: string, cod. table: T3, (XPath: TEXDyFinRequest/terms/trade/incoTerm) 1-1
incoTermText	free text specifying the terms of trade (incoterm, location) - base type: string, max length: 70, (XPath: TEXDyFinRequest/terms/trade/incoTermText) 1-1
itemID	number of the line/item of the referenced document - base type: string, max length: 6, (XPath: TEXDyFinRequest/RQheader/refDoc/itemID) 0-1 (XPath: TEXDyFinRequest/TFRQbody/TFRQitem/fabMnfrOperation/refDoc/itemID) 0-1
jobName	description of the elementary job - base type: string, max length: 40, (XPath: TEXDyFinRequest/TFRQbody/TFRQitem/fabMnfrOperation/jobName) 1-1
legalName	legal name of a Party - base type: string, max length: 80, (XPath: TEXDyFinRequest/TFRQbody/TFRQitem/thirdParty/legalName) 0-1 (XPath: TEXDyFinRequest/RQheader/subContractor/legalName) 0-1 (XPath: TEXDyFinRequest/RQheader/buyer/legalName) 0-1
lineN	number of the line item of the present message (xml document) - base type: positiveInteger, min inclusive: 1, max inclusive: 9999, (XPath: TEXDyFinRequest/TFRQbody/TFRQitem/lineN) 1-1
location	specification of a location - base type: string, max length: 40,

	(XPath: <i>TEXDyFinRequest/terms/trade/location</i> ) 0-1 - note: <i>place to which the INCOTERM applies</i>
@logo	company logo (URL of the image jpeg or gif). It is recommended that the width of the image does not exceed 640 pixel. - base type: string, max length: 255, (XPath: <i>TEXDyFinRequest/RQheader/buyer/@logo</i> ) [Optional]
@LRI	attribute usable to format a string according to a customized User rule (local rule) - base type: string, cod. table: NT3, (XPath: <i>TEXDyFinRequest/terms/trade/location/@LRI</i> ) [Optional]
@method	standard protocol or method employed in a test to evaluate a characteristic or a parameter - base type: string, max length: 25, (XPath: <i>TEXDyFinRequest/TFRQbody/TFRQitem/fabMnfrOperation/texMachineSpecs/specValue/@method</i> ) [Optional] (XPath: <i>TEXDyFinRequest/TFRQbody/TFRQitem/fabricSpecs/specValue/@method</i> ) [Optional]
msgDate	date of issue of the present message (xml document), according to one of the patterns YYYY-MM-DD, YYYY-MM-DD:HH-MM or YYYY-WW. - base type: string, (XPath: <i>TEXDyFinRequest/RQheader/msgDate</i> ) 1-1
@msgfunction	function performed by the present message with regards to the transmission - base type: string, cod. table: NT18, (XPath: <i>TEXDyFinRequest/@msgfunction</i> ) [Optional] [Default= OR]
msgID	key identifier of the document in the information system of the issuing Party - base type: string, max length: 35, (XPath: <i>TEXDyFinRequest/RQheader/msgID</i> ) 0-1
msgN	identification number given to the message (xml document) by its issuer - base type: string, max length: 35, (XPath: <i>TEXDyFinRequest/RQheader/msgN</i> ) 1-1
netWeight	the net weight of the overall goods supply, declared for transport or customs purpose - base type: decimal, min inclusive: 0, fraction digits: 2, (XPath: <i>TEXDyFinRequest/terms/transInfo/netWeight</i> ) 0-1
notBeforeDate	earliest date possible to begin an activity, according to one of the patterns YYYY-MM-DD, YYYY-MM-DD:HH-MM or YYYY-WW. - base type: string, cod. table: NT29, (XPath: <i>TEXDyFinRequest/TFRQbody/TFRQitem/notBeforeDate</i> ) 0-1
note	free text or structured (computer processing) note. For note structuring use the attributes "noteLabel" and "codelist" - base type: string, max length: 350, (XPath: <i>TEXDyFinRequest/TFRQbody/TFRQitem/fabMnfrOperation/note</i> ) 0-1 (XPath: <i>TEXDyFinRequest/RQheader/note</i> ) 0-1 (XPath: <i>TEXDyFinRequest/TFRQbody/TFRQitem/note</i> ) 0-1
@noteLabel	subject qualifier of a note - base type: string, max length: 35, (XPath: <i>TEXDyFinRequest/TFRQbody/TFRQitem/note/@noteLabel</i> ) [Optional] - nota: <i>must be used to qualify the subject of the note</i> (XPath: <i>TEXDyFinRequest/RQheader/note/@noteLabel</i> ) [Optional] - nota: <i>must be used to qualify the subject of the note</i> (XPath: <i>TEXDyFinRequest/TFRQbody/TFRQitem/fabMnfrOperation/note/@noteLabel</i> ) [Optional] - nota: <i>must be used to qualify the subject of the note</i>
@numberingOrg	code specifying the organisation who has created or owns the coding or

	<p>numbering system</p> <ul style="list-style-type: none"> <li>- base type: string, cod. table: NT6, (XPath: TEXDyFinRequest/TFRQbody/TFRQitem/thirdParty/id/@numberingOrg) [Optional] (XPath: TEXDyFinRequest/TFRQbody/TFRQitem/fabMnfrOperation/refDoc/docID/@numberingOrg) [Optional]</li> <li>- nota: here can be specified whose document numbering is used (e.g.: Client, Supplier, ..) (XPath: TEXDyFinRequest/RQheader/buyer/id/@numberingOrg) [Optional] (XPath: TEXDyFinRequest/RQheader/subContractor/id/@numberingOrg) [Optional] (XPath: TEXDyFinRequest/TFRQbody/TFRQitem/note/@numberingOrg) [Optional] (XPath: TEXDyFinRequest/TFRQbody/TFRQitem/fabMnfrOperation/note/@numberingOrg) [Optional] (XPath: TEXDyFinRequest/RQheader/docID/@numberingOrg) [Optional]</li> <li>- nota: here can be specified whose document numbering is used (e.g.: Client, Supplier, ..) (XPath: TEXDyFinRequest/RQheader/note/@numberingOrg) [Optional] (XPath: TEXDyFinRequest/RQheader/refDoc/docID/@numberingOrg) [Optional]</li> <li>- nota: here can be specified whose document numbering is used (e.g.: Client, Supplier, ..)</li> </ul>
@part	<p>percent fraction of a total payment</p> <ul style="list-style-type: none"> <li>- base type: decimal, min inclusive: 1, max inclusive: 99, fraction digits: 2, (XPath: TEXDyFinRequest/terms/insPayment/@part) [Required]</li> <li>- nota: here the % value of each installment must be indicated</li> </ul>
payMode	<p>way or means of payment</p> <ul style="list-style-type: none"> <li>- base type: string, cod. table: T2, (XPath: TEXDyFinRequest/terms/payment/payMode) 0-1 (XPath: TEXDyFinRequest/terms/insPayment/payMode) 0-1</li> </ul>
payTerm	<p>code specifying the terms or time by which the payment must be done</p> <ul style="list-style-type: none"> <li>- base type: string, cod. table: T1, (XPath: TEXDyFinRequest/terms/insPayment/payTerm) 1-1 (XPath: TEXDyFinRequest/terms/payment/payTerm) 1-1</li> </ul>
payTermText	<p>free text specifying the terms by which the payment must be done (time/mode or means)</p> <ul style="list-style-type: none"> <li>- base type: string, max length: 40, (XPath: TEXDyFinRequest/terms/payment/payTermText) 1-1 (XPath: TEXDyFinRequest/terms/insPayment/payTermText) 1-1</li> </ul>
pcTolerance	<p>percent deviation tolerated on the value of a measurement (it must have a plus or minus sign)</p> <ul style="list-style-type: none"> <li>- base type: decimal, min inclusive: 0, max inclusive: 100, total digits: 2, (XPath: TEXDyFinRequest/TFRQbody/TFRQitem/fabMnfrOperation/texMachineSpecs/pcTolerance) 0-2 (XPath: TEXDyFinRequest/TFRQbody/TFRQitem/fabricSpecs/pcTolerance) 0-2</li> </ul>
percCompos	<p>fiber rate in the product composition</p> <ul style="list-style-type: none"> <li>- base type: decimal, min inclusive: 0, max inclusive: 100, fraction digits: 2, (XPath: TEXDyFinRequest/TFRQbody/TFRQitem/fabricCompos/percCompos) 1-9</li> </ul>
person	<p>name of the contact person within a Party</p> <ul style="list-style-type: none"> <li>- base type: string, max length: 40, (XPath: TEXDyFinRequest/RQheader/buyer/person) 0-1 (XPath: TEXDyFinRequest/RQheader/subContractor/person) 0-1 (XPath: TEXDyFinRequest/TFRQbody/TFRQitem/thirdParty/person) 0-1</li> </ul>
@phone	<p>phone number of the contact person within a Party</p> <ul style="list-style-type: none"> <li>- base type: string, max length: 35, (XPath: TEXDyFinRequest/RQheader/buyer/person/@phone) [Optional] (XPath: TEXDyFinRequest/TFRQbody/TFRQitem/thirdParty/person/@phone) [Optional] (XPath: TEXDyFinRequest/RQheader/subContractor/person/@phone) [Optional]</li> </ul>

postCode	code defining the postal zone - base type: string, max length: 10, (XPath: TEXDyFinRequest/RQheader/subContractor/postCode) 0-1 (XPath: TEXDyFinRequest/TFRQbody/TFRQitem/thirdParty/postCode) 0-1 (XPath: TEXDyFinRequest/RQheader/buyer/postCode) 0-1
qty	net quantity of the article or object correlated, qualified by the function of the document (ordering, delivering, ...) and by the context - base type: decimal, min inclusive: 0, fraction digits: 2, (XPath: TEXDyFinRequest/TFRQbody/TFRQitem/qty) 1-3
@role	Third Party role qualifier - base type: string, cod. table: NT2, (XPath: TEXDyFinRequest/TFRQbody/TFRQitem/thirdParty/@role) [Required]
season	sale season; defined as: season (1 crt) + year (4 crt) - season: S/S=1 A/W=2 Spring=3 Summer=4 Autumn=5 Winter=6: for more than four seasons use alphabetic sequence: 1st season=A 2nd season=B etc.etc. - base type: string, max length: 15, (XPath: TEXDyFinRequest/TFRQbody/TFRQitem/fabMnfrOperation/refDoc/season) 0-1 - note: here indicates the season to which the referenced document belongs (XPath: TEXDyFinRequest/RQheader/season) 0-1 (XPath: TEXDyFinRequest/RQheader/refDoc/season) 0-1 - note: here indicates the season to which the referenced document belongs
@sender	qualifier that specifies the Party issuing of the document - base type: boolean, (XPath: TEXDyFinRequest/RQheader/subContractor/@sender) [Optional] - nota: This attribute is mandatory when the STYLESHEET must be produced (XPath: TEXDyFinRequest/TFRQbody/TFRQitem/thirdParty/@sender) [Optional] - nota: This attribute is mandatory when the STYLESHEET must be produced (XPath: TEXDyFinRequest/RQheader/buyer/@sender) [Optional] - nota: This attribute is mandatory when the STYLESHEET must be produced
specValue	value requested for a characteristics or a parameter that can be measured - base type: decimal, (XPath: TEXDyFinRequest/TFRQbody/TFRQitem/fabMnfrOperation/texMachineSpecs/specValue) 0-1 (XPath: TEXDyFinRequest/TFRQbody/TFRQitem/fabricSpecs/specValue) 0-1
street	street and building number identifying a location - base type: string, max length: 80, (XPath: TEXDyFinRequest/RQheader/buyer/street) 0-1 (XPath: TEXDyFinRequest/TFRQbody/TFRQitem/thirdParty/street) 0-1 (XPath: TEXDyFinRequest/RQheader/subContractor/street) 0-1
subCountry	short name or code of the sub-country entity - base type: string, max length: 9, (XPath: TEXDyFinRequest/RQheader/subContractor/subCountry) 0-1 (XPath: TEXDyFinRequest/RQheader/buyer/subCountry) 0-1 (XPath: TEXDyFinRequest/TFRQbody/TFRQitem/thirdParty/subCountry) 0-1
texJob	operation of a work cycle for fabric - base type: string, cod. table: T202, (XPath: TEXDyFinRequest/TFRQbody/TFRQitem/fabMnfrOperation/texJob) 1-1
texJobTech	operation technology for fabric - base type: string, cod. table: T262, (XPath: TEXDyFinRequest/TFRQbody/TFRQitem/fabMnfrOperation/texJobTech) 0-1
texMachine	machine used in an operation of a work cycle for fabric

	- base type: string, cod. table: T272, (XPath: <a href="#">TEXDyFinRequest/TFRQbody/TFRQitem/fabMnfrOperation/texMachine</a> ) 0-1
texMachineParam	setting parameter of a machine used in an operation of a work cycle for fabric - base type: string, cod. table: T282, (XPath: <a href="#">TEXDyFinRequest/TFRQbody/TFRQitem/fabMnfrOperation/texMachineSpecs/texMachineParam</a> ) 1-1
tolerance	deviation tolerated on the value of a measurement (it must have a plus or minus sign) - base type: decimal, (XPath: <a href="#">TEXDyFinRequest/TFRQbody/TFRQitem/fabricSpecs/tolerance</a> ) 0-2 (XPath: <a href="#">TEXDyFinRequest/TFRQbody/TFRQitem/fabMnfrOperation/texMachineSpecs/tolerance</a> ) 0-2
transCondition	special condition of transport or special service requested to the Forwarder - base type: string, cod. table: T38, (XPath: <a href="#">TEXDyFinRequest/terms/transInfo/transCondition</a> ) 0-3
transConditionText	free text description of the special condition of transport or special service requested to the Forwarder - base type: string, max length: 100, (XPath: <a href="#">TEXDyFinRequest/terms/transInfo/transConditionText</a> ) 0-1
transMeans	means of transport, in general or referred to a specific leg - base type: string, cod. table: T40, (XPath: <a href="#">TEXDyFinRequest/terms/transInfo/transMeans</a> ) 0-1
transMode	way of transport, in general or referred to the specified leg - base type: string, cod. table: T8, (XPath: <a href="#">TEXDyFinRequest/terms/transInfo/transMode</a> ) 1-1
@transReason	reason for the transport - base type: string, cod. table: NT11, (XPath: <a href="#">TEXDyFinRequest/terms/transInfo/@transReason</a> ) [Optional]
@um	specification of the unit of measure - base type: string, cod. table: NT7, (XPath: <a href="#">TEXDyFinRequest/terms/transInfo/netWeight/@um</a> ) [Required] (XPath: <a href="#">TEXDyFinRequest/terms/transInfo/grossWeight/@um</a> ) [Required] (XPath: <a href="#">TEXDyFinRequest/TFRQbody/TFRQitem/fabMnfrOperation/texMachineSpecs/tolerance/@um</a> ) [Required] (XPath: <a href="#">TEXDyFinRequest/TFRQbody/TFRQitem/fabMnfrOperation/texMachineSpecs/pcTolerance/@um</a> ) [Optional] - nota: <i>to be used when it has to be soecified if the declared percentage is by weight, volume, etc...</i> (XPath: <a href="#">TEXDyFinRequest/TFRQbody/TFRQitem/fabricSpecs/tolerance/@um</a> ) [Required] (XPath: <a href="#">TEXDyFinRequest/TFRQbody/TFRQitem/fabricSpecs/specValue/@um</a> ) [Optional] (XPath: <a href="#">TEXDyFinRequest/TFRQbody/TFRQitem/qty/@um</a> ) [Required] (XPath: <a href="#">TEXDyFinRequest/TFRQbody/TFRQitem/fabricSpecs/pcTolerance/@um</a> ) [Optional] - nota: <i>to be used when it has to be soecified if the declared percentage is by weight, volume, etc...</i> (XPath: <a href="#">TEXDyFinRequest/TFRQbody/TFRQitem/fabMnfrOperation/texMachineSpecs/specValue/@um</a> ) [Optional]
validityEnd	date by which the validity ends, according to one of the patterns YYYY-MM-DD, YYYY-MM-DD:HH-MM or YYYY-WW. - base type: string, (XPath: <a href="#">TEXDyFinRequest/RQheader/validityEnd</a> ) 1-1
validityStart	date by which the validity starts, according to one of the patterns YYYY-MM-DD, YYYY-MM-DD:HH-MM or YYYY-WW.

	- base type: string, (XPath: TEXDyFinRequest/RQheader/validityStart) 0-1
@VAT	VAT rate or code - base type: string, cod. table: NT16, (XPath: TEXDyFinRequest/TFRQbody/TFRQitem/thirdParty/@VAT) [Optional] (XPath: TEXDyFinRequest/TFRQbody/TFRQitem/lineN/@VAT) [Optional] (XPath: TEXDyFinRequest/terms/allowanceCharge/@VAT) [Optional]



## 2.3 Enumeration tables

List of enumeration tables used in the XML document. You can find the corresponding codes (only for tables with less than 100 values) in the document `Decoding_Values.pdf`, available at: <http://www.moda-ml.org/moda-ml/repository/guide/v2011-1/>; moreover, all the enumeration tables are available at: <http://www.moda-ml.org/imple/show-codes.asp>.

NT11 - Transport causal  
NT16 - VAT rate or code  
NT18 - message function  
NT2 - Third party qualifier  
NT29 - format of a date  
NT3 - Data format  
NT32 - fabric family  
NT6 - Coding system owner/issuer  
NT7 - Unity of measure  
T1 - Terms of payment  
T10 - ISO3166 - Country  
T13 - CFM properties of fabric  
T19 - fibre type  
T2 - Modes of payment  
T202 - type of job on fabric  
T21 - type of document  
T262 - type of job technology for fabric  
T272 - machine type for fabric operation  
T282 - parameter type for fabric operation  
T3 - Terms of delivery  
T38 - transport conditions  
T40 - type of transport means  
T41 - type of Allowance or Charge  
T8 - Modes of Transport

# Annex A

Representative images of the principal complex elements' structure.

