



<http://www.moda-ml.org>

IMPLEMENTATION GUIDE
TRANSACTION "RAW MATERIAL DYEING OFFER"

Version: 2011-1

Date of release: 18/11/2011

Document code: G054

XML Schema repository:<http://www.moda-ml.org/moda-ml/repository/schema/v2011-1/default.asp>

Guides repository:<http://www.moda-ml.org/moda-ml/repository/guide/v2011-1/default.asp>

Guide filename: G054-MODA-ML-RawMaterialDyeingOffer.pdf

1. BUSINESS DESCRIPTION

1.1 Scope

The present guide has been issued to assist the companies of the Textile-Clothing sector in the implementation of the standard XML document type "RAW MATERIAL DYEING OFFER", providing all the instruction required for its use in the context of e-commerce between Subcontractors and their Customers shown in the enclosed diagram

All the rules required for the construction and validation of the document are embedded into the specific XML-Schema, which is detailed in section "Implementation guide".

1.2 Generalities

The Offer is used by a Subcontractor to respond to the Request of a Yarn Manufacturer for the dyeing of a raw material.

The Offer is structured in four levels:

Macro-type of Work offered = document root (7 types of Request)

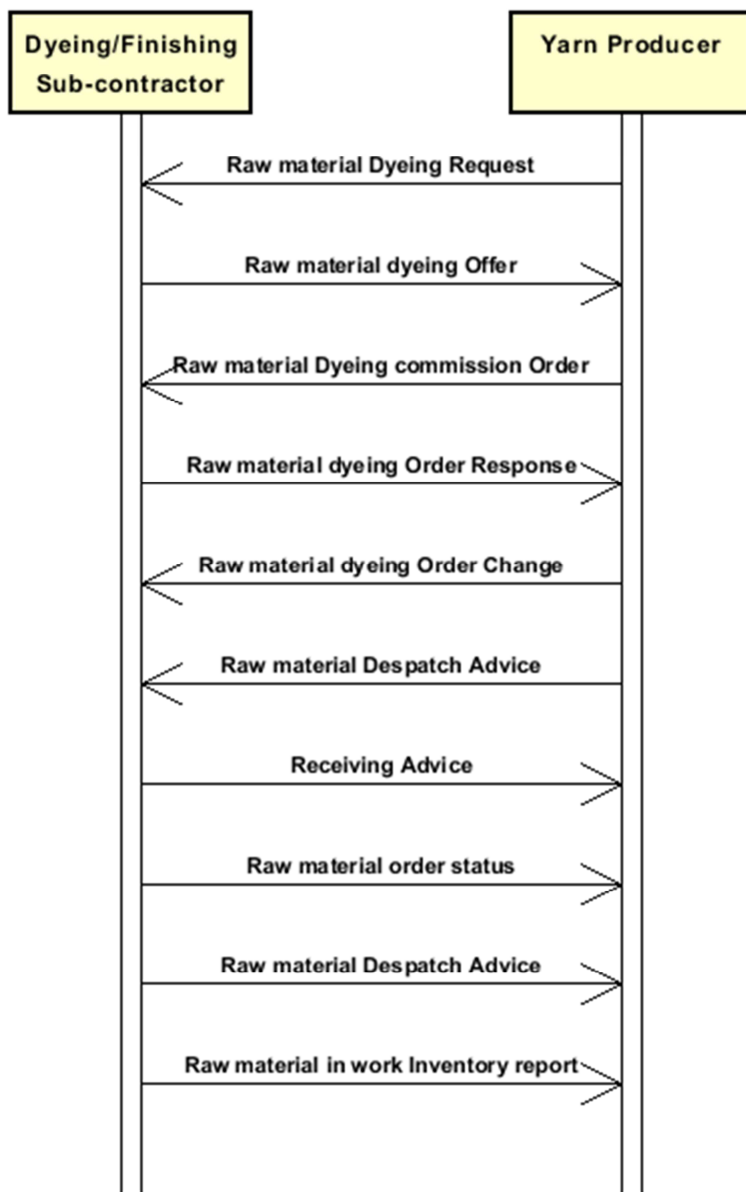
Product Family = document qualifier (type of product with reference to the manufacturing process; e.g.: combed yarn, jacquard weaved fabric, ..)

Product Specifications = "xxxSpecs" (technical characteristics and properties of the product)

Operations offered = "XXXMnfrOperation" (details of the works requested)

Quantities, unit measures and prices must be referred to the third level (Line Item)

1.3. Possible scenario



2. IMPLEMENTATION GUIDE

2.1 General structure of XML document

All the business data that can be exchanged through this class of documents are shown in the following "document structure", that provides a simplified vision of the Schema.

In particular:

- the two numbers following each element define its "cardinality" (minimum and maximum number of occurrences); the minimum equal zero indicates that the element is optional, the minimum greater than zero indicates that is mandatory;
- the bold character denotes the complex elements (aggregates of simple elements) that were built for the sake of functionality and re-usability of some complex informations sets. The child elements in each parent element are easily spotted as "indented";
- the symbol "@" denotes an attribute of the preceding element; here "the usage indicator (optional, required, ...) is shown in square brackets.

Structure

RAWDyeOffer

@msgfunction [Optional] [Default= OR]

@rawProcQualifier [Required]

OFheader 1-1

msgN 1-1

- choose -

msgID 0-1

- or -

docID 0-1

@numberingOrg [Optional]

- end choose -

msgDate 1-1

@dateForm [Optional]

season 0-1

validityStart 0-1

@dateForm [Optional]

validityEnd 1-1

@dateForm [Optional]

refDoc 1-9

@docType [Required]

docID 1-2

@numberingOrg [Optional]

docDate 0-1

@dateForm [Optional]

season 0-1

itemID 0-1

buyer 1-1

@logo [Optional]

@sender [Optional]

id 1-1

@numberingOrg [Optional]

legalName 0-1

dept 0-1

person 0-1

@email [Optional]

@phone [Optional]

@fax [Optional]

street 0-1

city 0-1

subCountry 0-1

country 0-1

postCode 0-1
subContractor 1-1
@sender [Optional]
id 1-1
@numberingOrg [Optional]
legalName 0-1
dept 0-1
person 0-1
@email [Optional]
@phone [Optional]
@fax [Optional]
street 0-1
city 0-1
subCountry 0-1
country 0-1
postCode 0-1
note 0-1
@numberingOrg [Optional]
@codeList [Optional]
@noteLabel [Optional]

terms 0-1

payment 0-5
@finDiscount [Optional]
@finSurcharge [Optional]
- choose -
payTerm 1-1
- or -
payTermText 1-1
- end choose -
payMode 0-1

insPayment 0-5
@part [Required]
- choose -
payTerm 1-1
- or -
payTermText 1-1
- end choose -
payMode 0-1

trade 0-1
- choose -
incoTermText 1-1
- or -
incoTerm 1-1
- end choose -
location 0-1
@LRI [Optional]

transInfo 0-1
@transReason [Optional]
transMode 1-1
carrier 0-1
deliveryPlace 0-1
grossWeight 0-1
@um [Required]
netWeight 0-1
@um [Required]
transMeans 0-1
transCondition 0-3
transConditionText 0-1

allowanceCharge 0-9
@VAT [Optional]

- choose -
- AC_category 1-1
- or -
- AC_categoryText 1-1
- choose -
- AC_percent 1-1
- or -
- AC_amount 1-1
- end choose -

RDOFbody 1-1

RDOFitem 1-unbounded

@act [Required]
 lineN 1-1
 @VAT [Optional]
 refDoc 1-1
 @docType [Required]
 docID 1-2
 @numberingOrg [Optional]
 docDate 0-1
 @dateForm [Optional]
 season 0-1
 itemID 0-1
 rawSpecs 0-9
 - choose -
 rawCharText 1-1
 - or -
 rawChar 1-1
 - end choose -
 specValue 0-1
 @um [Optional]
 @method [Optional]
 - choose -
 pcTolerance 0-2
 @um [Optional]
 - or -
 tolerance 0-2
 @um [Required]
 - end choose -
 qty 1-2
 @um [Required]
 price 1-1
 @um [Optional]
 @priceQualifier [Optional] [Default= NET]
 deliveryDate 1-1
 @dateForm [Optional]
 notBeforeDate 0-1
 @dateForm [Optional]
 thirdParty 0-1
 @VAT [Optional]
 @role [Required]
 @sender [Optional]
 id 1-1
 @numberingOrg [Optional]
 legalName 0-1
 dept 0-1
 person 0-1
 @email [Optional]
 @phone [Optional]
 @fax [Optional]
 street 0-1

city 0-1
subCountry 0-1
country 0-1
postCode 0-1
rawMnfrOperation 1-9
- *choose* -
rawJob 1-1
- *or* -
jobName 1-1
- *end choose* -
refDoc 0-1
@docType [Required]
docID 1-2
@numberingOrg [Optional]
docDate 0-1
@dateForm [Optional]
season 0-1
itemID 0-1
note 0-1
@numberingOrg [Optional]
@codeList [Optional]
@noteLabel [Optional]
note 0-1
@numberingOrg [Optional]
@codeList [Optional]
@noteLabel [Optional]

2.2 Detailed description of document elements

Following tables show all elements (complex and simple) used in this document. Description includes: 1) element's information: xml tag, name, brief description, data type and syntax constraints; 2) information about use of the element in a particular position in the document: xpath and possible associated notes.

2.2.1 Complex elements (Aggregate Business Information Entities)

Complex elements are those elements whose content is composed of other elements (childs).Complex elements are alphabetically ordered.

allowanceCharge	Allowances and Charges related to an Order or a contract (XPath: RAWDyeOffer/terms/allowanceCharge) 0-9
buyer	details of the Buyer - base type: , (XPath: RAWDyeOffer/OFheader/buyer) 1-1
insPayment	payment details for payment by installments (XPath: RAWDyeOffer/terms/insPayment) 0-5 - note: <i>this set of data is alternative to payment set and must be iterated for each payment installment</i>
OFheader	header of the document OFFER (XPath: RAWDyeOffer/OFheader) 1-1
payment	payment details for payment all in one (XPath: RAWDyeOffer/terms/payment) 0-5 - note: <i>this set of data can be iterated to specify alternative terms of payment (e.g.: 60 days or 30 days with 3% discount)</i>
rawMnfrOperation	details of a manufacturing operation on raw material used for manufacturing a yarn product (XPath: RAWDyeOffer/RDOFbody/RDOFitem/rawMnfrOperation) 1-9
rawSpecs	technical characteristics of a raw material linked to an operation of the sub-contracted production of yarn or to the purchas of yarn (XPath: RAWDyeOffer/RDOFbody/RDOFitem/rawSpecs) 0-9
RDOFbody	body of the document OFFER OF DYEING OF RAW MATERIAL (XPath: RAWDyeOffer/RDOFbody) 1-1
RDOFitem	line of the document OFFER OF DYEING OF RAW MATERIAL (XPath: RAWDyeOffer/RDOFbody/RDOFitem) 1-unbounded
refDoc	identification of a document and of an item thereof, to which the message makes reference (XPath: RAWDyeOffer/RDOFbody/RDOFitem/refDoc) 1-1 - note: <i>reference to the line of the corresponding Request for Offer</i> (XPath: RAWDyeOffer/OFheader/refDoc) 1-9 - note: <i>reference to the Request for Offer</i> (XPath: RAWDyeOffer/RDOFbody/RDOFitem/rawMnfrOperation/refDoc) 0-1
subContractor	details of the Sub-contractor - base type: , (XPath: RAWDyeOffer/OFheader/subContractor) 1-1
terms	details of the commercial obligations for payment and delivery (XPath: RAWDyeOffer/terms) 0-1
thirdParty	details of the Third Party, different from Buyer or Supplier - base type: , (XPath: RAWDyeOffer/RDOFbody/RDOFitem/thirdParty) 0-1

trade	general terms of trade for the specified supply (XPath: RAWDyeOffer/terms/trade) 0-1
transInfo	details of transport: mode, carrier and delivery place (XPath: RAWDyeOffer/terms/transInfo) 0-1

2.2.2 Simple elements (Basic Business Information Entities)

Simple elements are those elements whose content is characterized by a data type plus a domain of possible values. Simple elements are alphabetically ordered.

AC_amount	amount of an Allowance or Charge - base type: decimal, fraction digits: 2, (XPath: RAWDyeOffer/terms/allowanceCharge/AC_amount) 1-1
AC_category	coded specification of an Allowance or Charge - base type: string, cod. table: T41, (XPath: RAWDyeOffer/terms/allowanceCharge/AC_category) 1-1
AC_categoryText	free text description of an Allowance or Charge - base type: string, max length: 70, (XPath: RAWDyeOffer/terms/allowanceCharge/AC_categoryText) 1-1
AC_percent	amount of an Allowance or Charge as a percentage - base type: decimal, max inclusive: 100, fraction digits: 2, (XPath: RAWDyeOffer/terms/allowanceCharge/AC_percent) 1-1
@act	action performed by the present line upon the referenced document line - base type: string, cod. table: NT5, (XPath: RAWDyeOffer/RDOFbody/RDOFitem/@act) [Required]
carrier	identification of the transport carrier - base type: string, max length: 40, (XPath: RAWDyeOffer/terms/transInfo/carrier) 0-1
city	name of the city (town, village) - base type: string, max length: 40, (XPath: RAWDyeOffer/OFheader/buyer/city) 0-1 (XPath: RAWDyeOffer/OFheader/subContractor/city) 0-1 (XPath: RAWDyeOffer/RDOFbody/RDOFitem/thirdParty/city) 0-1
@codeList	it specifies the URL where the list of codes used to make an instance of the element can be found - base type: string, max length: 255, (XPath: RAWDyeOffer/OFheader/note/@codeList) [Optional] - nota: <i>must be used to provide (URL) the list of codes used in "noteLabel"</i> (XPath: RAWDyeOffer/RDOFbody/RDOFitem/note/@codeList) [Optional] - nota: <i>must be used to provide (URL) the list of codes used in "noteLabel"</i> (XPath: RAWDyeOffer/RDOFbody/RDOFitem/rawMnfrOperation/note/@codeList) [Optional] - nota: <i>must be used to provide (URL) the list of codes used in "noteLabel"</i>
country	code of the nation - base type: string, cod. table: T10, (XPath: RAWDyeOffer/OFheader/buyer/country) 0-1 (XPath: RAWDyeOffer/RDOFbody/RDOFitem/thirdParty/country) 0-1 (XPath: RAWDyeOffer/OFheader/subContractor/country) 0-1
@dateForm	format used for a date - base type: string, cod. table: NT29, (XPath: RAWDyeOffer/OFheader/msgDate/@dateForm) [Optional] (XPath: RAWDyeOffer/OFheader/validityStart/@dateForm) [Optional] (XPath: RAWDyeOffer/RDOFbody/RDOFitem/notBeforeDate/@dateForm) [Optional]

	(XPath: RAWDyeOffer/RDOFbody/RDOFitem/deliveryDate/@dateForm) [Optional] (XPath: RAWDyeOffer/OFheader/refDoc/docDate/@dateForm) [Optional] (XPath: RAWDyeOffer/RDOFbody/RDOFitem/rawMnfrOperation/ refDoc/docDate/@dateForm) [Optional] (XPath: RAWDyeOffer/RDOFbody/RDOFitem/refDoc/docDate/@dateForm) [Optional] (XPath: RAWDyeOffer/OFheader/validityEnd/@dateForm) [Optional]
deliveryDate	date of delivery of goods, requested or promised in the purchase process, according to one of the patterns YYYY-MM-DD, YYYY-MM-DD:HH-MM or YYYY-WW. - base type: string, (XPath: RAWDyeOffer/RDOFbody/RDOFitem/deliveryDate) 1-1
deliveryPlace	place of delivery of goods, ultimate or related to a given leg - base type: string, max length: 40, (XPath: RAWDyeOffer/terms/transInfo/deliveryPlace) 0-1
dept	name or code of a contact department within a Party - base type: string, max length: 40, (XPath: RAWDyeOffer/OFheader/subContractor/dept) 0-1 (XPath: RAWDyeOffer/OFheader/buyer/dept) 0-1 (XPath: RAWDyeOffer/RDOFbody/RDOFitem/thirdParty/dept) 0-1
docDate	date of issue of the referenced document, according to one of the patterns YYYY-MM-DD, YYYY-MM-DD:HH-MM or YYYY-WW. - base type: string, (XPath: RAWDyeOffer/OFheader/refDoc/docDate) 0-1 (XPath: RAWDyeOffer/RDOFbody/RDOFitem/refDoc/docDate) 0-1 (XPath: RAWDyeOffer/RDOFbody/RDOFitem/rawMnfrOperation/ refDoc/docDate) 0-1
docID	identification number of the referenced document SINCE 2008-1 ITS USE IN THE HEADER IS DISCOURAGED (REPLACED BY) - base type: string, max length: 35, (XPath: RAWDyeOffer/RDOFbody/RDOFitem/rawMnfrOperation/ refDoc/docID) 1-2 (XPath: RAWDyeOffer/RDOFbody/RDOFitem/refDoc/docID) 1-2 (XPath: RAWDyeOffer/OFheader/refDoc/docID) 1-2 (XPath: RAWDyeOffer/OFheader/docID) 0-1
@docType	type or class to which the referenced document belongs - base type: string, cod. table: T21, (XPath: RAWDyeOffer/RDOFbody/RDOFitem/refDoc/@docType) [Required] (XPath: RAWDyeOffer/RDOFbody/RDOFitem/rawMnfrOperation/ refDoc/@docType) [Required] (XPath: RAWDyeOffer/OFheader/refDoc/@docType) [Required]
@email	electronic mail address of the contact person within a Party - base type: string, max length: 80, (XPath: RAWDyeOffer/OFheader/buyer/person/@email) [Optional] (XPath: RAWDyeOffer/RDOFbody/RDOFitem/thirdParty/person/@email) [Optional] (XPath: RAWDyeOffer/OFheader/subContractor/person/@email) [Optional]
@fax	fax number of the contact person within a Party - base type: string, max length: 35, (XPath: RAWDyeOffer/OFheader/subContractor/person/@fax) [Optional] (XPath: RAWDyeOffer/RDOFbody/RDOFitem/thirdParty/person/@fax) [Optional] (XPath: RAWDyeOffer/OFheader/buyer/person/@fax) [Optional]
@finDiscount	financial discount applied for payment by the date specified - base type: decimal, min inclusive: 0, max inclusive: 100, fraction digits: 2, (XPath: RAWDyeOffer/terms/payment/@finDiscount) [Optional]
@finSurcharge	financial surcharge applied for payment after the date specified - base type: decimal, min inclusive: 0, max inclusive: 100, fraction digits: 2, (XPath: RAWDyeOffer/terms/payment/@finSurcharge) [Optional]

grossWeight	the gross weight of the overall goods supply, declared for transport or customs purpose - base type: decimal, min inclusive: 0, fraction digits: 2, (XPath: RAWDyeOffer/terms/transInfo/grossWeight) 0-1
id	primary identification code of a Party; it is recommended the format: nation code (ISO 3166) + VAT identification number (11 crt), with the qualifier "numberingOrg"= MF - base type: string, max length: 15, (XPath: RAWDyeOffer/OFheader/buyer/id) 1-1 (XPath: RAWDyeOffer/RDOFbody/RDOFitem/thirdParty/id) 1-1 (XPath: RAWDyeOffer/OFheader/subContractor/id) 1-1
incoTerm	specification of the terms of trade (INCOTERMS) - base type: string, cod. table: T3, (XPath: RAWDyeOffer/terms/trade/incoTerm) 1-1
incoTermText	free text specifying the terms of trade (incoterm, location) - base type: string, max length: 70, (XPath: RAWDyeOffer/terms/trade/incoTermText) 1-1
itemID	number of the line/item of the referenced document - base type: string, max length: 6, (XPath: RAWDyeOffer/OFheader/refDoc/itemID) 0-1 (XPath: RAWDyeOffer/RDOFbody/RDOFitem/rawMnfrOperation/refDoc/itemID) 0-1 (XPath: RAWDyeOffer/RDOFbody/RDOFitem/refDoc/itemID) 0-1
jobName	description of the elementary job - base type: string, max length: 40, (XPath: RAWDyeOffer/RDOFbody/RDOFitem/rawMnfrOperation/jobName) 1-1
legalName	legal name of a Party - base type: string, max length: 80, (XPath: RAWDyeOffer/OFheader/subContractor/legalName) 0-1 (XPath: RAWDyeOffer/RDOFbody/RDOFitem/thirdParty/legalName) 0-1 (XPath: RAWDyeOffer/OFheader/buyer/legalName) 0-1
lineN	number of the line item of the present message (xml document) - base type: positiveInteger, min inclusive: 1, max inclusive: 9999, (XPath: RAWDyeOffer/RDOFbody/RDOFitem/lineN) 1-1
location	specification of a location - base type: string, max length: 40, (XPath: RAWDyeOffer/terms/trade/location) 0-1 - note: <i>place to which the INCOTERM applies</i>
@logo	company logo (URL of the image jpeg or gif). It is recommended that the width of the image does not exceed 640 pixel. - base type: string, max length: 255, (XPath: RAWDyeOffer/OFheader/buyer/@logo) [Optional]
@LRI	attribute usable to format a string according to a customized User rule (local rule) - base type: string, cod. table: NT3, (XPath: RAWDyeOffer/terms/trade/location/@LRI) [Optional]
@method	standard protocol or method employed in a test to evaluate a characteristic or a parameter - base type: string, max length: 25, (XPath: RAWDyeOffer/RDOFbody/RDOFitem/rawSpecs/specValue/@method) [Optional]
msgDate	date of issue of the present message (xml document), according to one of the patterns YYYY-MM-DD, YYYY-MM-DD:HH-MM or YYYY-WW. - base type: string,

	(XPath: RAWDyeOffer/OFheader/msgDate) 1-1
@msgfunction	function performed by the present message with regards to the transmission - base type: string, cod. table: NT18, (XPath: RAWDyeOffer/@msgfunction) [Optional] [Default= OR]
msgID	key identifier of the document in the information system of the issuing Party - base type: string, max length: 35, (XPath: RAWDyeOffer/OFheader/msgID) 0-1
msgN	identification number given to the message (xml document) by its issuer - base type: string, max length: 35, (XPath: RAWDyeOffer/OFheader/msgN) 1-1
netWeight	the net weight of the overall goods supply, declared for transport or customs purpose - base type: decimal, min inclusive: 0, fraction digits: 2, (XPath: RAWDyeOffer/terms/transInfo/netWeight) 0-1
notBeforeDate	earliest date possible to begin an activity, according to one of the patterns YYYY-MM-DD, YYYY-MM-DD:HH-MM or YYYY-WW. - base type: string, cod. table: NT29, (XPath: RAWDyeOffer/RDOFbody/RDOFitem/notBeforeDate) 0-1
note	free text or structured (computer processing) note. For note structuring use the attributes "noteLabel" and "codelist" - base type: string, max length: 350, (XPath: RAWDyeOffer/RDOFbody/RDOFitem/rawMnfrOperation/note) 0-1 (XPath: RAWDyeOffer/OFheader/note) 0-1 (XPath: RAWDyeOffer/RDOFbody/RDOFitem/note) 0-1
@noteLabel	subject qualifier of a note - base type: string, max length: 35, (XPath: RAWDyeOffer/RDOFbody/RDOFitem/note/@noteLabel) [Optional] - nota: <i>must be used to qualify the subject of the note</i> (XPath: RAWDyeOffer/OFheader/note/@noteLabel) [Optional] - nota: <i>must be used to qualify the subject of the note</i> (XPath: RAWDyeOffer/RDOFbody/RDOFitem/rawMnfrOperation/note/@noteLabel) [Optional] - nota: <i>must be used to qualify the subject of the note</i>
@numberingOrg	code specifying the organisation who has created or owns the coding or numbering system - base type: string, cod. table: NT6, (XPath: RAWDyeOffer/OFheader/refDoc/docID/@numberingOrg) [Optional] - nota: <i>here can be specified whose document numbering is used (e.g.: Client, Supplier, ..)</i> (XPath: RAWDyeOffer/RDOFbody/RDOFitem/thirdParty/id/@numberingOrg) [Optional] (XPath: RAWDyeOffer/RDOFbody/RDOFitem/refDoc/docID/@numberingOrg) [Optional] - nota: <i>here can be specified whose document numbering is used (e.g.: Client, Supplier, ..)</i> (XPath: RAWDyeOffer/OFheader/buyer/id/@numberingOrg) [Optional] (XPath: RAWDyeOffer/RDOFbody/RDOFitem/note/@numberingOrg) [Optional] (XPath: RAWDyeOffer/RDOFbody/RDOFitem/rawMnfrOperation/note/@numberingOrg) [Optional] (XPath: RAWDyeOffer/OFheader/docID/@numberingOrg) [Optional] - nota: <i>here can be specified whose document numbering is used (e.g.: Client, Supplier, ..)</i> (XPath: RAWDyeOffer/OFheader/note/@numberingOrg) [Optional] (XPath: RAWDyeOffer/OFheader/subContractor/id/@numberingOrg) [Optional] (XPath: RAWDyeOffer/RDOFbody/RDOFitem/rawMnfrOperation/refDoc/docID/@numberingOrg) [Optional] - nota: <i>here can be specified whose document numbering is used (e.g.: Client, Supplier, ..)</i>

@part	percent fraction of a total payment - base type: decimal, min inclusive: 1, max inclusive: 99, fraction digits: 2, (XPath: RAWDyeOffer/terms/insPayment/@part) [Required] - nota: <i>here the % value of each installment must be indicated</i>
payMode	way or means of payment - base type: string, cod. table: T2, (XPath: RAWDyeOffer/terms/payment/payMode) 0-1 (XPath: RAWDyeOffer/terms/insPayment/payMode) 0-1
payTerm	code specifying the terms or time by which the payment must be done - base type: string, cod. table: T1, (XPath: RAWDyeOffer/terms/insPayment/payTerm) 1-1 (XPath: RAWDyeOffer/terms/payment/payTerm) 1-1
payTermText	free text specifying the terms by which the payment must be done (time/mode or means) - base type: string, max length: 40, (XPath: RAWDyeOffer/terms/payment/payTermText) 1-1 (XPath: RAWDyeOffer/terms/insPayment/payTermText) 1-1
pcTolerance	percent deviation tolerated on the value of a measurement (it must have a plus or minus sign) - base type: decimal, min inclusive: 0, max inclusive: 100, total digits: 2, (XPath: RAWDyeOffer/RDOFbody/RDOFitem/rawSpecs/pcTolerance) 0-2
person	name of the contact person within a Party - base type: string, max length: 40, (XPath: RAWDyeOffer/OFheader/buyer/person) 0-1 (XPath: RAWDyeOffer/OFheader/subContractor/person) 0-1 (XPath: RAWDyeOffer/RDOFbody/RDOFitem/thirdParty/person) 0-1
@phone	phone number of the contact person within a Party - base type: string, max length: 35, (XPath: RAWDyeOffer/OFheader/buyer/person/@phone) [Optional] (XPath: RAWDyeOffer/RDOFbody/RDOFitem/thirdParty/person/@phone) [Optional] (XPath: RAWDyeOffer/OFheader/subContractor/person/@phone) [Optional]
postCode	code defining the postal zone - base type: string, max length: 10, (XPath: RAWDyeOffer/OFheader/buyer/postCode) 0-1 (XPath: RAWDyeOffer/OFheader/subContractor/postCode) 0-1 (XPath: RAWDyeOffer/RDOFbody/RDOFitem/thirdParty/postCode) 0-1
price	unit price of the article, object or service specified - base type: decimal, min inclusive: 0, fraction digits: 2, (XPath: RAWDyeOffer/RDOFbody/RDOFitem/price) 1-1
@priceQualifier	type of price with reference to discount and taxes - base type: string, cod. table: NT20, (XPath: RAWDyeOffer/RDOFbody/RDOFitem/price/@priceQualifier) [Optional] [Default= NET]
qty	net quantity of the article or object correlated, qualified by the function of the document (ordering, delivering, ..) and by the context - base type: decimal, min inclusive: 0, fraction digits: 2, (XPath: RAWDyeOffer/RDOFbody/RDOFitem/qty) 1-2
rawChar	physical or mechanical parameter used to define a characteristics of a raw material - base type: string, cod. table: T22, (XPath: RAWDyeOffer/RDOFbody/RDOFitem/rawSpecs/rawChar) 1-1
rawCharText	free text describing the physical or mechanical parameter used to define a characteristics of a raw material - base type: string, max length: 40, (XPath: RAWDyeOffer/RDOFbody/RDOFitem/rawSpecs/rawCharText) 1-1

rawJob	operation of a work cycle for raw material - base type: string, cod. table: T200, (XPath: RAWDyeOffer/RDOFbody/RDOFitem/rawMnfrOperation/rawJob) 1-1
@rawProcQualifier	type of raw material with reference to the manufacturing process - base type: string, cod. table: NT30, (XPath: RAWDyeOffer/@rawProcQualifier) [Required]
@role	Third Party role qualifier - base type: string, cod. table: NT2, (XPath: RAWDyeOffer/RDOFbody/RDOFitem/thirdParty/@role) [Required]
season	sale season; defined as: season (1 crt) + year (4 crt) - season: S/S=1 A/W=2 Spring=3 Summer=4 Autumn=5 Winter=6: for more than four seasons use alphabetic sequence: 1st season=A 2nd season=B etc.etc. - base type: string, max length: 15, (XPath: RAWDyeOffer/RDOFbody/RDOFitem/rawMnfrOperation/refDoc/season) 0-1 - note: here indicates the season to which the referenced document belongs (XPath: RAWDyeOffer/OFheader/refDoc/season) 0-1 - note: here indicates the season to which the referenced document belongs (XPath: RAWDyeOffer/OFheader/season) 0-1 (XPath: RAWDyeOffer/RDOFbody/RDOFitem/refDoc/season) 0-1 - note: here indicates the season to which the referenced document belongs
@sender	qualifier that specifies the Party issuing of the document - base type: boolean, (XPath: RAWDyeOffer/RDOFbody/RDOFitem/thirdParty/@sender) [Optional] - nota: This attribute is mandatory when the STYLESHEET must be produced (XPath: RAWDyeOffer/OFheader/subContractor/@sender) [Optional] - nota: This attribute is mandatory when the STYLESHEET must be produced (XPath: RAWDyeOffer/OFheader/buyer/@sender) [Optional] - nota: This attribute is mandatory when the STYLESHEET must be produced
specValue	value requested for a characteristics or a parameter that can be measured - base type: decimal, (XPath: RAWDyeOffer/RDOFbody/RDOFitem/rawSpecs/specValue) 0-1
street	street and building number identifying a location - base type: string, max length: 80, (XPath: RAWDyeOffer/RDOFbody/RDOFitem/thirdParty/street) 0-1 (XPath: RAWDyeOffer/OFheader/buyer/street) 0-1 (XPath: RAWDyeOffer/OFheader/subContractor/street) 0-1
subCountry	short name or code of the sub-country entity - base type: string, max length: 9, (XPath: RAWDyeOffer/OFheader/subContractor/subCountry) 0-1 (XPath: RAWDyeOffer/RDOFbody/RDOFitem/thirdParty/subCountry) 0-1 (XPath: RAWDyeOffer/OFheader/buyer/subCountry) 0-1
tolerance	deviation tolerated on the value of a measurement (it must have a plus or minus sign) - base type: decimal, (XPath: RAWDyeOffer/RDOFbody/RDOFitem/rawSpecs/tolerance) 0-2
transCondition	special condition of transport or special service requested to the Forwarder - base type: string, cod. table: T38, (XPath: RAWDyeOffer/terms/transInfo/transCondition) 0-3
transConditionText	free text description of the special condition of transport or special service requested to the Forwarder - base type: string, max length: 100, (XPath: RAWDyeOffer/terms/transInfo/transConditionText) 0-1

transMeans	means of transport, in general or referred to a specific leg - base type: string, cod. table: T40, (XPath: RAWDyeOffer/terms/transInfo/transMeans) 0-1
transMode	way of transport, in general or referred to the specified leg - base type: string, cod. table: T8, (XPath: RAWDyeOffer/terms/transInfo/transMode) 1-1
@transReason	reason for the transport - base type: string, cod. table: NT11, (XPath: RAWDyeOffer/terms/transInfo/@transReason) [Optional]
@um	specification of the unit of measure - base type: string, cod. table: NT7, (XPath: RAWDyeOffer/terms/transInfo/grossWeight/@um) [Required] (XPath: RAWDyeOffer/terms/transInfo/netWeight/@um) [Required] (XPath: RAWDyeOffer/RDOFbody/RDOFitem/rawSpecs/specValue/@um) [Optional] (XPath: RAWDyeOffer/RDOFbody/RDOFitem/rawSpecs/pcTolerance/@um) [Optional] - nota: <i>to be used when it has to be soecified if the declared percentage is by weight, volume, etc...</i> (XPath: RAWDyeOffer/RDOFbody/RDOFitem/qty/@um) [Required] (XPath: RAWDyeOffer/RDOFbody/RDOFitem/price/@um) [Optional] (XPath: RAWDyeOffer/RDOFbody/RDOFitem/rawSpecs/tolerance/@um) [Required]
validityEnd	date by which the validity ends, according to one of the patterns YYYY-MM-DD, YYYY-MM-DD:HH-MM or YYYY-WW. - base type: string, (XPath: RAWDyeOffer/OFheader/validityEnd) 1-1
validityStart	date by which the validity starts, according to one of the patterns YYYY-MM-DD, YYYY-MM-DD:HH-MM or YYYY-WW. - base type: string, (XPath: RAWDyeOffer/OFheader/validityStart) 0-1
@VAT	VAT rate or code - base type: string, cod. table: NT16, (XPath: RAWDyeOffer/RDOFbody/RDOFitem/thirdParty/@VAT) [Optional] (XPath: RAWDyeOffer/terms/allowanceCharge/@VAT) [Optional] (XPath: RAWDyeOffer/RDOFbody/RDOFitem/lineN/@VAT) [Optional]

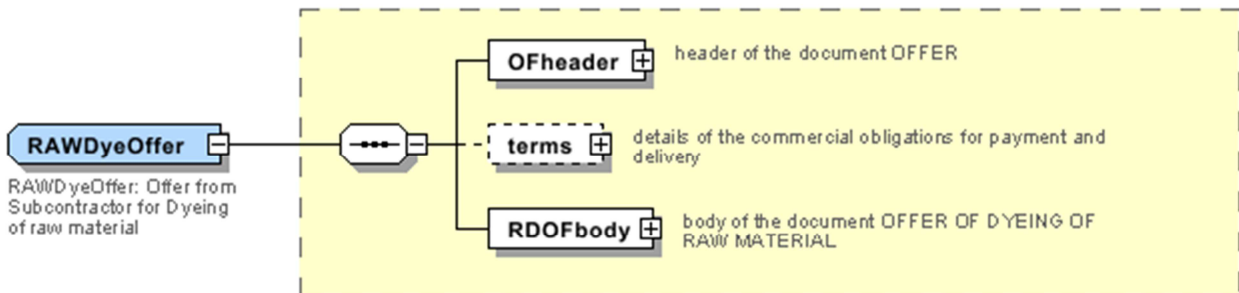
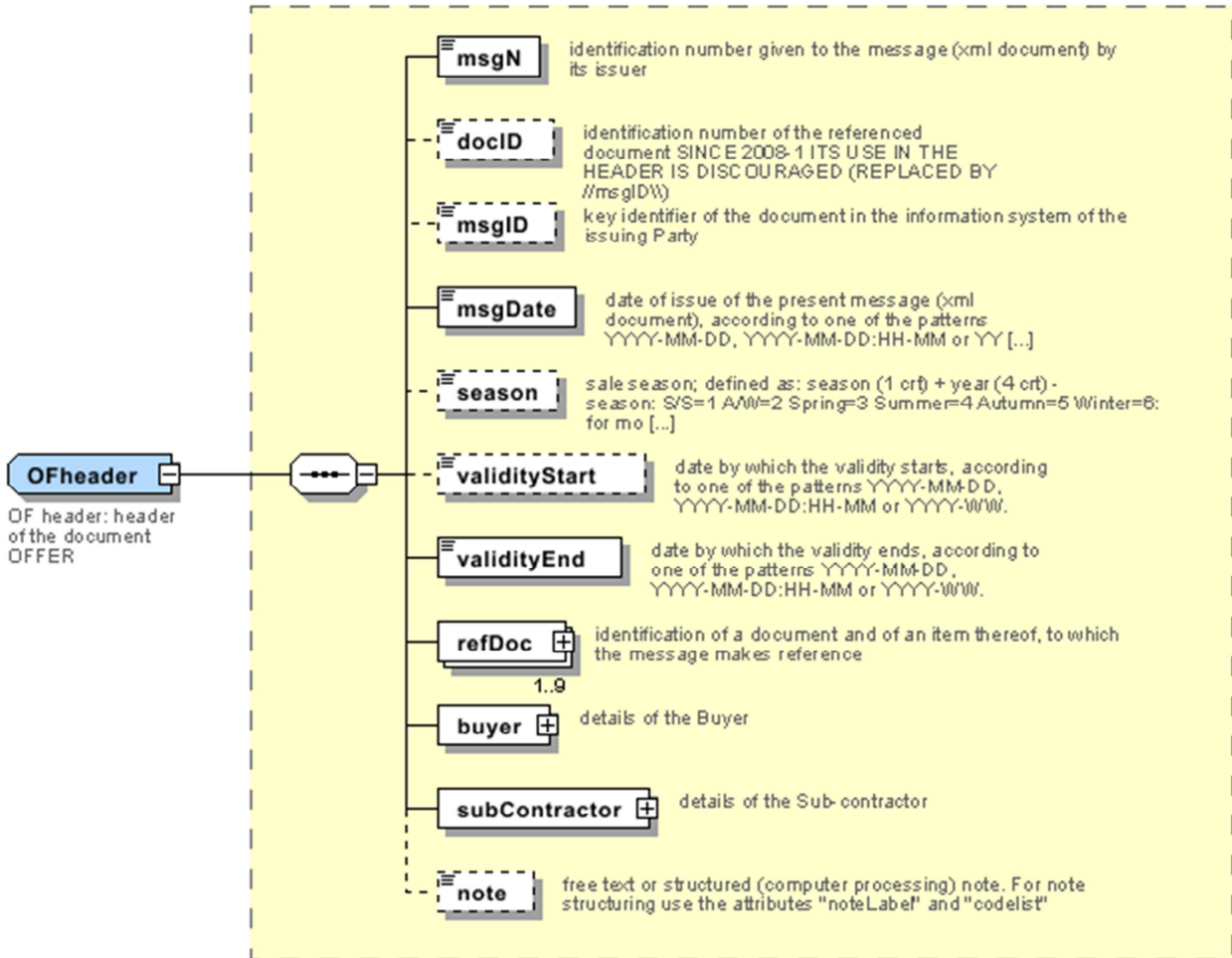
2.3 Enumeration tables

List of enumeration tables used in the XML document. You can find the corresponding codes (only for tables with less than 100 values) in the document `Decoding_Values.pdf`, available at: <http://www.moda-ml.org/moda-ml/repository/guide/v2011-1/>; moreover, all the enumeration tables are available at: <http://www.moda-ml.org/imple/show-codes.asp>.

NT11 - Transport causal
NT16 - VAT rate or code
NT18 - message function
NT2 - Third party qualifier
NT20 - price qualifier
NT29 - format of a date
NT3 - Data format
NT30 - raw material family
NT5 - Action code
NT6 - Coding system owner/issuer
NT7 - Unity of measure
T1 - Terms of payment
T10 - ISO3166 - Country
T2 - Modes of payment
T200 - type of job on raw material
T21 - type of document
T22 - raw material characteristics type
T3 - Terms of delivery
T38 - transport conditions
T40 - type of transport means
T41 - type of Allowance or Charge
T8 - Modes of Transport

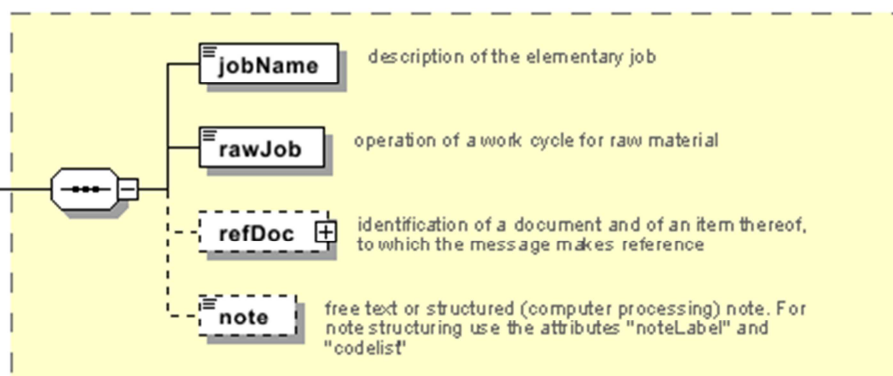
Annex A

Representative images of the principal complex elements' structure.



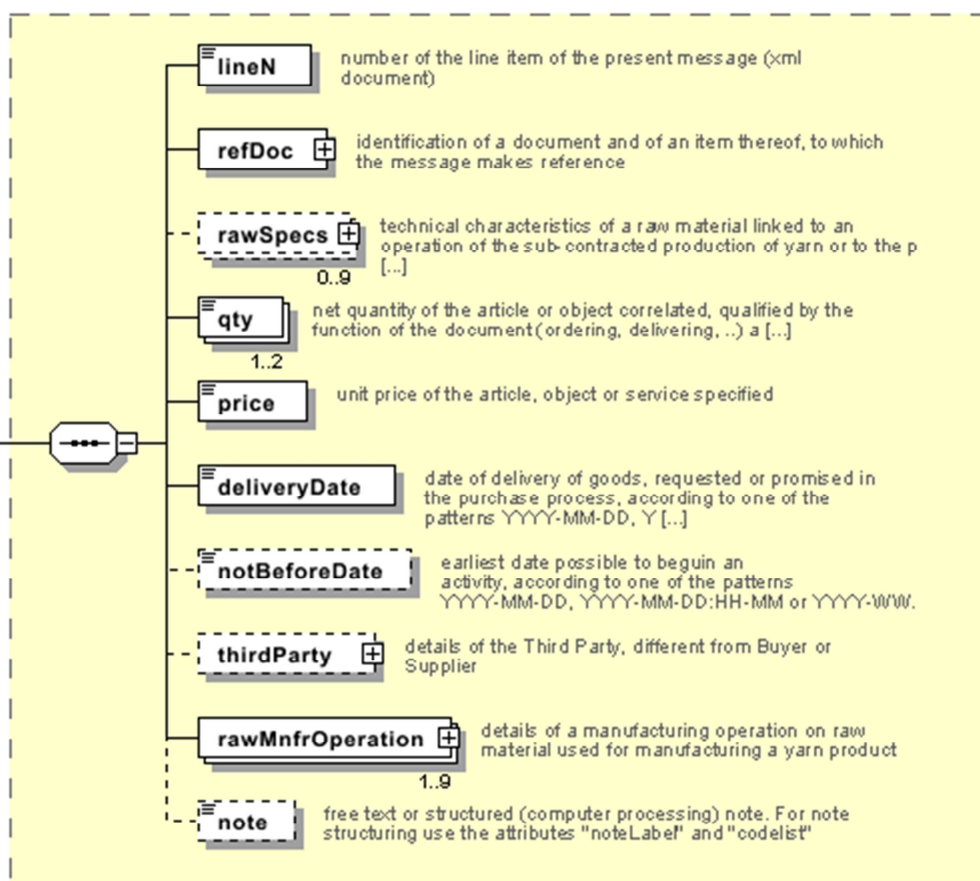
rawMnfrOperation

raw manufacturing operation:
details of a manufacturing
operation on raw material used for
manufacturing a yarn product



RDOFitem

RDOF item:
line of the
document
OFFER OF
DYEING OF RAW
MATERIAL



trade

Trade details:
general terms of
trade for the
specified supply

