



<http://www.moda-ml.org>

IMPLEMENTATION GUIDE  
TRANSACTION "TEXTILE DYEING-FINISHING OFFER"

Version: 2011-1

Date of release: 18/11/2011

Document code: G061

XML Schema repository:<http://www.moda-ml.org/moda-ml/repository/schema/v2011-1/default.asp>

Guides repository:<http://www.moda-ml.org/moda-ml/repository/guide/v2011-1/default.asp>

Guide filename: G061-MODA-ML-TextileDyeing-finishingOffer.pdf

# 1. BUSINESS DESCRIPTION

## 1.1 Scope

The present guide has been issued to assist the companies of the Textile-Clothing sector in the implementation of the standard XML document type "TEXTILE DYEING/FINISHING OFFER", providing all the instruction required for its use in the context of e-commerce between Subcontractors and their Customers shown in the enclosed diagram

All the rules required for the construction and validation of the document are embedded into the specific XML-Schema, which is detailed in section "Implementation guide".

## 1.2 Generalities

The Offer is used by a Subcontractor to respond to the Request of a Fabric Manufacturer for the dyeing/finishing of a fabric.

The Offer is structured in four levels:

Macro-type of Work offered = document root (7 types of Request)

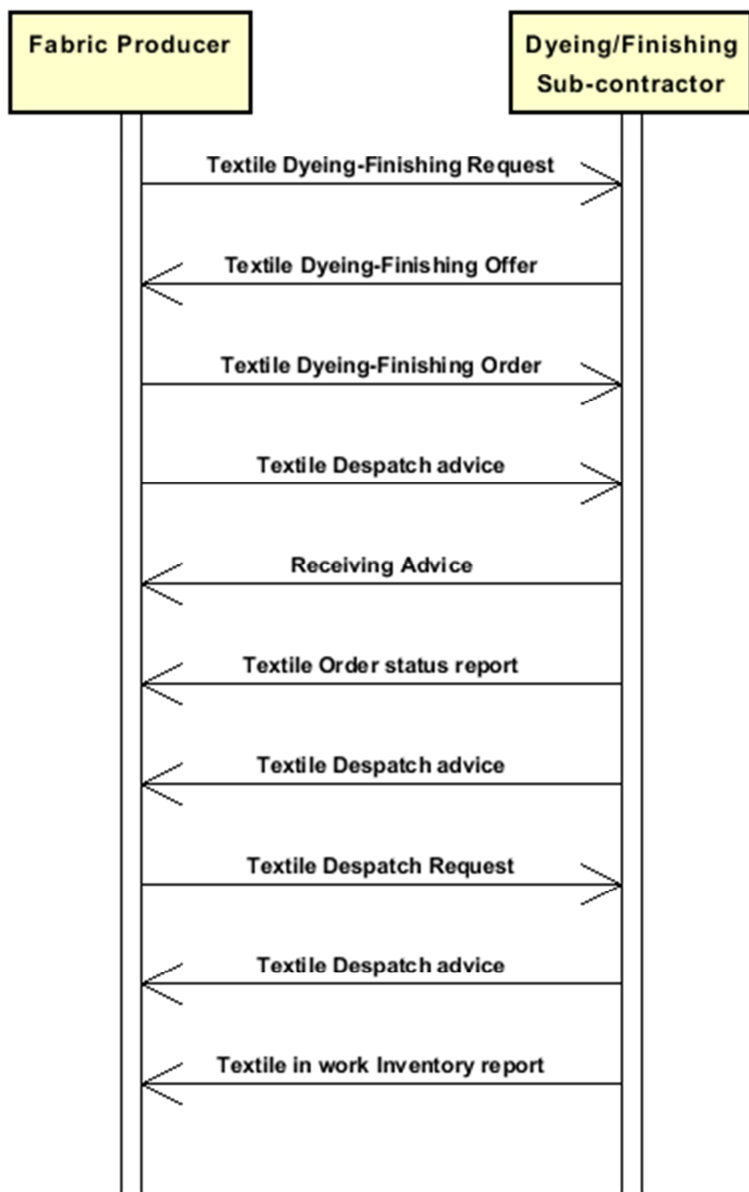
Product Family = document qualifier (type of product with reference to the manufacturing process; e.g.: combed yarn, jacquard weaved fabric, ..)

Product Specifications = "xxxSpecs" (technical characteristics and properties of the product)

Operations offered = "XXXMnfrOperation" (details of the works requested)

Quantities, unit measures and prices must be referred to the third level (Line Item)

## 1.3. Possible scenario



## 2. IMPLEMENTATION GUIDE

### 2.1 General structure of XML document

All the business data that can be exchanged through this class of documents are shown in the following "document structure", that provides a simplified vision of the Schema.

In particular:

- the two numbers following each element define its "cardinality" (minimum and maximum number of occurrences); the minimum equal zero indicates that the element is optional, the minimum greater than zero indicates that is mandatory;
- the bold character denotes the complex elements (aggregates of simple elements) that were built for the sake of functionality and re-usability of some complex informations sets. The child elements in each parent element are easily spotted as "indented";
- the symbol "@" denotes an attribute of the preceding element; here "the usage indicator (optional, required, ...) is shown in square brackets.

### Structure

#### **TEXDyFinOffer**

*@msgfunction [Optional] [Default= OR]*

*@fabProcQualifier [Required]*

##### **OFheader 1-1**

msgN 1-1

- choose -

msgID 0-1

- or -

docID 0-1

*@numberingOrg [Optional]*

- end choose -

msgDate 1-1

*@dateForm [Optional]*

season 0-1

validityStart 0-1

*@dateForm [Optional]*

validityEnd 1-1

*@dateForm [Optional]*

##### **refDoc 1-9**

*@docType [Required]*

docID 1-2

*@numberingOrg [Optional]*

docDate 0-1

*@dateForm [Optional]*

season 0-1

itemID 0-1

##### **buyer 1-1**

*@logo [Optional]*

*@sender [Optional]*

id 1-1

*@numberingOrg [Optional]*

legalName 0-1

dept 0-1

person 0-1

*@email [Optional]*

*@phone [Optional]*

*@fax [Optional]*

street 0-1

city 0-1

subCountry 0-1

country 0-1

postCode 0-1  
**subContractor 1-1**  
@sender [Optional]  
id 1-1  
@numberingOrg [Optional]  
legalName 0-1  
dept 0-1  
person 0-1  
@email [Optional]  
@phone [Optional]  
@fax [Optional]  
street 0-1  
city 0-1  
subCountry 0-1  
country 0-1  
postCode 0-1  
note 0-1  
@numberingOrg [Optional]  
@codeList [Optional]  
@noteLabel [Optional]

**terms 0-1**

**payment 0-5**  
@finDiscount [Optional]  
@finSurcharge [Optional]  
- choose -  
payTerm 1-1  
- or -  
payTermText 1-1  
- end choose -  
payMode 0-1

**insPayment 0-5**  
@part [Required]  
- choose -  
payTerm 1-1  
- or -  
payTermText 1-1  
- end choose -  
payMode 0-1

**trade 0-1**  
- choose -  
incoTermText 1-1  
- or -  
incoTerm 1-1  
- end choose -  
location 0-1  
@LRI [Optional]

**transInfo 0-1**  
@transReason [Optional]  
transMode 1-1  
carrier 0-1  
deliveryPlace 0-1  
grossWeight 0-1  
@um [Required]  
netWeight 0-1  
@um [Required]  
transMeans 0-1  
transCondition 0-3  
transConditionText 0-1

**allowanceCharge 0-9**  
@VAT [Optional]

- *choose* -  
    AC\_category 1-1  
- *or* -  
    AC\_categoryText 1-1  
- *choose* -  
    AC\_percent 1-1  
- *or* -  
    AC\_amount 1-1  
- *end choose* -

**TFOFbody 1-1**

## 2.2 Detailed description of document elements

Following tables show all elements (complex and simple) used in this document. Description includes: 1) element's information: xml tag, name, brief description, data type and syntax constraints; 2) information about use of the element in a particular position in the document: xpath and possible associated notes.

### 2.2.1 Complex elements (Aggregate Business Information Entities)

Complex elements are those elements whose content is composed of other elements (childs).Complex elements are alphabetically ordered.

|                        |  |
|------------------------|--|
| <b>allowanceCharge</b> | Allowances and Charges related to an Order or a contract<br>(XPath: <a href="#">TEXDyFinOffer/terms/allowanceCharge</a> ) 0-9  |
| <b>buyer</b>           | details of the Buyer<br>- base type: ,<br>(XPath: <a href="#">TEXDyFinOffer/OFheader/buyer</a> ) 1-1   |
| <b>insPayment</b>      | payment details for payment by installments<br>(XPath: <a href="#">TEXDyFinOffer/terms/insPayment</a> ) 0-5<br>- note: <i>this set of data is alternative to payment set and must be iterated for each payment installment</i>             |
| <b>OFheader</b>        | header of the document OFFER<br>(XPath: <a href="#">TEXDyFinOffer/OFheader</a> ) 1-1   |
| <b>payment</b>         | payment details for payment all in one<br>(XPath: <a href="#">TEXDyFinOffer/terms/payment</a> ) 0-5<br>- note: <i>this set of data can be iterated to specify alternative terms of payment (e.g.: 60 days or 30 days with 3% discount)</i> |
| <b>refDoc</b>          | identification of a document and of an item thereof, to which the message makes reference<br>(XPath: <a href="#">TEXDyFinOffer/OFheader/refDoc</a> ) 1-9<br>- note: <i>reference to the Request for Offer</i>                              |
| <b>subContractor</b>   | details of the Sub-contractor<br>- base type: ,<br>(XPath: <a href="#">TEXDyFinOffer/OFheader/subContractor</a> ) 1-1  |
| <b>terms</b>           | details of the commercial obligations for payment and delivery<br>(XPath: <a href="#">TEXDyFinOffer/terms</a> ) 0-1  |
| <b>TFOFbody</b>        | body of the document OFFER OF TEXTILE DYEING/FINISHING<br>(XPath: <a href="#">TEXDyFinOffer/TFOFbody</a> ) 1-1   |
| <b>trade</b>           | general terms of trade for the specified supply<br>(XPath: <a href="#">TEXDyFinOffer/terms/trade</a> ) 0-1   |
| <b>transInfo</b>       | details of transport: mode, carrier and delivery place<br>(XPath: <a href="#">TEXDyFinOffer/terms/transInfo</a> ) 0-1  |

### 2.2.2 Simple elements (Basic Business Information Entities)

Simple elements are those elements whose content is characterized by a data type plus a domain of possible values. Simple elements are alphabetically ordered.

|           |  |
|-----------|--|
| AC_amount | amount of an Allowance or Charge<br>- base type: decimal, fraction digits: 2,<br>(XPath: <a href="#">TEXDyFinOffer/terms/allowanceCharge/AC_amount</a> ) 1-1 |
|-----------|--|

|                 |   |
|-----------------|---|
| AC_category     | coded specification of an Allowance or Charge<br>- base type: string, cod. table: T41,<br>(XPath: <a href="#">TEXDyFinOffer/terms/allowanceCharge/AC_category</a> ) 1-1   |
| AC_categoryText | free text description of an Allowance or Charge<br>- base type: string, max length: 70,<br>(XPath: <a href="#">TEXDyFinOffer/terms/allowanceCharge/AC_categoryText</a> ) 1-1  |
| AC_percent      | amount of an Allowance or Charge as a percentage<br>- base type: decimal, max inclusive: 100, fraction digits: 2,<br>(XPath: <a href="#">TEXDyFinOffer/terms/allowanceCharge/AC_percent</a> ) 1-1   |
| carrier         | identification of the transport carrier<br>- base type: string, max length: 40,<br>(XPath: <a href="#">TEXDyFinOffer/terms/transInfo/carrier</a> ) 0-1  |
| city            | name of the city (town, village)<br>- base type: string, max length: 40,<br>(XPath: <a href="#">TEXDyFinOffer/OFheader/buyer/city</a> ) 0-1<br>(XPath: <a href="#">TEXDyFinOffer/OFheader/subContractor/city</a> ) 0-1  |
| @codeList       | it specifies the URL where the list of codes used to make an instance of the element can be found<br>- base type: string, max length: 255,<br>(XPath: <a href="#">TEXDyFinOffer/OFheader/note/@codeList</a> ) [Optional]<br>- nota: <i>must be used to provide (URL) the list of codes used in "noteLabel"</i>  |
| country         | code of the nation<br>- base type: string, cod. table: T10,<br>(XPath: <a href="#">TEXDyFinOffer/OFheader/subContractor/country</a> ) 0-1<br>(XPath: <a href="#">TEXDyFinOffer/OFheader/buyer/country</a> ) 0-1   |
| @dateForm       | format used for a date<br>- base type: string, cod. table: NT29,<br>(XPath: <a href="#">TEXDyFinOffer/OFheader/validityStart/@dateForm</a> ) [Optional]<br>(XPath: <a href="#">TEXDyFinOffer/OFheader/validityEnd/@dateForm</a> ) [Optional]<br>(XPath: <a href="#">TEXDyFinOffer/OFheader/refDoc/docDate/@dateForm</a> ) [Optional]<br>(XPath: <a href="#">TEXDyFinOffer/OFheader/msgDate/@dateForm</a> ) [Optional] |
| deliveryPlace   | place of delivery of goods, ultimate or related to a given leg<br>- base type: string, max length: 40,<br>(XPath: <a href="#">TEXDyFinOffer/terms/transInfo/deliveryPlace</a> ) 0-1   |
| dept            | name or code of a contact department within a Party<br>- base type: string, max length: 40,<br>(XPath: <a href="#">TEXDyFinOffer/OFheader/buyer/dept</a> ) 0-1<br>(XPath: <a href="#">TEXDyFinOffer/OFheader/subContractor/dept</a> ) 0-1   |
| docDate         | date of issue of the referenced document, according to one of the patterns YYYY-MM-DD, YYYY-MM-DD:HH-MM or YYYY-WW.<br>- base type: string,<br>(XPath: <a href="#">TEXDyFinOffer/OFheader/refDoc/docDate</a> ) 0-1  |
| docID           | identification number of the referenced document SINCE 2008-1 ITS USE IN THE HEADER IS DISCOURAGED (REPLACED BY )<br>- base type: string, max length: 35,<br>(XPath: <a href="#">TEXDyFinOffer/OFheader/docID</a> ) 0-1<br>(XPath: <a href="#">TEXDyFinOffer/OFheader/refDoc/docID</a> ) 1-2  |
| @docType        | type or class to which the referenced document belongs<br>- base type: string, cod. table: T21,<br>(XPath: <a href="#">TEXDyFinOffer/OFheader/refDoc/@docType</a> ) [Required]  |
| @email          | electronic mail address of the contact person within a Party<br>- base type: string, max length: 80,<br>(XPath: <a href="#">TEXDyFinOffer/OFheader/subContractor/person/@email</a> ) [Optional]<br>(XPath: <a href="#">TEXDyFinOffer/OFheader/buyer/person/@email</a> ) [Optional]  |



|                   |  |
|-------------------|--|
| @fabProcQualifier | type of fabric with reference to the manufacturing process<br>- base type: string, cod. table: NT32,<br>(XPath: TEXDyFinOffer/@fabProcQualifier) [Required]  |
| @fax              | fax number of the contact person within a Party<br>- base type: string, max length: 35,<br>(XPath: TEXDyFinOffer/OFheader/subContractor/person/@fax) [Optional]<br>(XPath: TEXDyFinOffer/OFheader/buyer/person/@fax) [Optional]  |
| @finDiscount      | financial discount applied for payment by the date specified<br>- base type: decimal, min inclusive: 0, max inclusive: 100, fraction digits: 2,<br>(XPath: TEXDyFinOffer/terms/payment/@finDiscount) [Optional]  |
| @finSurcharge     | financial surcharge applied for payment after the date specified<br>- base type: decimal, min inclusive: 0, max inclusive: 100, fraction digits: 2,<br>(XPath: TEXDyFinOffer/terms/payment/@finSurcharge) [Optional]   |
| grossWeight       | the gross weight of the overall goods supply, declared for transport or customs purpose<br>- base type: decimal, min inclusive: 0, fraction digits: 2,<br>(XPath: TEXDyFinOffer/terms/transInfo/grossWeight) 0-1   |
| id                | primary identification code of a Party; it is recommended the format: nation code (ISO 3166) + VAT identification number (11 crt), with the qualifier "numberingOrg"= MF<br>- base type: string, max length: 15,<br>(XPath: TEXDyFinOffer/OFheader/buyer/id) 1-1<br>(XPath: TEXDyFinOffer/OFheader/subContractor/id) 1-1 |
| incoTerm          | specification of the terms of trade (INCOTERMS)<br>- base type: string, cod. table: T3,<br>(XPath: TEXDyFinOffer/terms/trade/incoTerm) 1-1   |
| incoTermText      | free text specifying the terms of trade (incoterm, location)<br>- base type: string, max length: 70,<br>(XPath: TEXDyFinOffer/terms/trade/incoTermText) 1-1  |
| itemID            | number of the line/item of the referenced document<br>- base type: string, max length: 6,<br>(XPath: TEXDyFinOffer/OFheader/refDoc/itemID) 0-1   |
| legalName         | legal name of a Party<br>- base type: string, max length: 80,<br>(XPath: TEXDyFinOffer/OFheader/buyer/legalName) 0-1<br>(XPath: TEXDyFinOffer/OFheader/subContractor/legalName) 0-1  |
| location          | specification of a location<br>- base type: string, max length: 40,<br>(XPath: TEXDyFinOffer/terms/trade/location) 0-1<br>- note: <i>place to which the INCOTERM applies</i>   |
| @logo             | company logo (URL of the image jpeg or gif). It is recommended that the width of the image does not exceed 640 pixel.<br>- base type: string, max length: 255,<br>(XPath: TEXDyFinOffer/OFheader/buyer/@logo) [Optional]   |
| @LRI              | attribute usable to format a string according to a customized User rule (local rule)<br>- base type: string, cod. table: NT3,<br>(XPath: TEXDyFinOffer/terms/trade/location/@LRI) [Optional]   |
| msgDate           | date of issue of the present message (xml document), according to one of the patterns YYYY-MM-DD, YYYY-MM-DD:HH-MM or YYYY-WW.<br>- base type: string,<br>(XPath: TEXDyFinOffer/OFheader/msgDate) 1-1  |
| @msgfunction      | function performed by the present message with regards to the transmission   |

|               |  |
|---------------|--|
|               | - base type: string, cod. table: NT18,<br>(XPath: TEXDyFinOffer/@msgfunction) [Optional] [Default= OR]   |
| msgID         | key identifier of the document in the information system of the issuing Party<br>- base type: string, max length: 35,<br>(XPath: TEXDyFinOffer/OFheader/msgID) 0-1   |
| msgN          | identification number given to the message (xml document) by its issuer<br>- base type: string, max length: 35,<br>(XPath: TEXDyFinOffer/OFheader/msgN) 1-1  |
| netWeight     | the net weight of the overall goods supply, declared for transport or customs purpose<br>- base type: decimal, min inclusive: 0, fraction digits: 2,<br>(XPath: TEXDyFinOffer/terms/transInfo/netWeight) 0-1   |
| note          | free text or structured (computer processing) note. For note structuring use the attributes "noteLabel" and "codelist"<br>- base type: string, max length: 350,<br>(XPath: TEXDyFinOffer/OFheader/note) 0-1  |
| @noteLabel    | subject qualifier of a note<br>- base type: string, max length: 35,<br>(XPath: TEXDyFinOffer/OFheader/note/@noteLabel) [Optional]<br>- nota: <i>must be used to qualify the subject of the note</i>  |
| @numberingOrg | code specifying the organisation who has created or owns the coding or numbering system<br>- base type: string, cod. table: NT6,<br>(XPath: TEXDyFinOffer/OFheader/docID/@numberingOrg) [Optional]<br>- nota: <i>here can be specified whose document numbering is used (e.g.: Client, Supplier, ..)</i><br>(XPath: TEXDyFinOffer/OFheader/subContractor/id/@numberingOrg) [Optional]<br>(XPath: TEXDyFinOffer/OFheader/buyer/id/@numberingOrg) [Optional]<br>(XPath: TEXDyFinOffer/OFheader/note/@numberingOrg) [Optional]<br>(XPath: TEXDyFinOffer/OFheader/refDoc/docID/@numberingOrg) [Optional]<br>- nota: <i>here can be specified whose document numbering is used (e.g.: Client, Supplier, ..)</i> |
| @part         | percent fraction of a total payment<br>- base type: decimal, min inclusive: 1, max inclusive: 99, fraction digits: 2,<br>(XPath: TEXDyFinOffer/terms/insPayment/@part) [Required]<br>- nota: <i>here the % value of each installment must be indicated</i>   |
| payMode       | way or means of payment<br>- base type: string, cod. table: T2,<br>(XPath: TEXDyFinOffer/terms/insPayment/payMode) 0-1<br>(XPath: TEXDyFinOffer/terms/payment/payMode) 0-1   |
| payTerm       | code specifying the terms or time by which the payment must be done<br>- base type: string, cod. table: T1,<br>(XPath: TEXDyFinOffer/terms/insPayment/payTerm) 1-1<br>(XPath: TEXDyFinOffer/terms/payment/payTerm) 1-1   |
| payTermText   | free text specifying the terms by which the payment must be done (time/mode or means)<br>- base type: string, max length: 40,<br>(XPath: TEXDyFinOffer/terms/insPayment/payTermText) 1-1<br>(XPath: TEXDyFinOffer/terms/payment/payTermText) 1-1   |
| person        | name of the contact person within a Party<br>- base type: string, max length: 40,<br>(XPath: TEXDyFinOffer/OFheader/buyer/person) 0-1<br>(XPath: TEXDyFinOffer/OFheader/subContractor/person) 0-1  |
| @phone        | phone number of the contact person within a Party  |

|                    |  |
|--------------------|--|
|                    | - base type: string, max length: 35,<br>(XPath: TEXDyFinOffer/OFheader/buyer/person/@phone) [Optional]<br>(XPath: TEXDyFinOffer/OFheader/subContractor/person/@phone) [Optional]   |
| postCode           | code defining the postal zone<br>- base type: string, max length: 10,<br>(XPath: TEXDyFinOffer/OFheader/buyer/postCode) 0-1<br>(XPath: TEXDyFinOffer/OFheader/subContractor/postCode) 0-1  |
| season             | sale season; defined as: season (1 crt) + year (4 crt) - season: S/S=1<br>A/W=2 Spring=3 Summer=4 Autumn=5 Winter=6: for more than four<br>seasons use alphabetic sequence: 1st season=A 2nd season=B etc.etc.<br>- base type: string, max length: 15,<br>(XPath: TEXDyFinOffer/OFheader/season) 0-1<br>(XPath: TEXDyFinOffer/OFheader/refDoc/season) 0-1<br>- note: <i>here indicates the season to which the referenced document belongs</i> |
| @sender            | qualifier that specifies the Party issuing of the document<br>- base type: boolean,<br>(XPath: TEXDyFinOffer/OFheader/subContractor/@sender) [Optional]<br>- nota: <i>This attribute is mandatory when the STYLESHEET must be<br/>produced</i><br>(XPath: TEXDyFinOffer/OFheader/buyer/@sender) [Optional]<br>- nota: <i>This attribute is mandatory when the STYLESHEET must be<br/>produced</i>  |
| street             | street and building number identifying a location<br>- base type: string, max length: 80,<br>(XPath: TEXDyFinOffer/OFheader/buyer/street) 0-1<br>(XPath: TEXDyFinOffer/OFheader/subContractor/street) 0-1  |
| subCountry         | short name or code of the sub-country entity<br>- base type: string, max length: 9,<br>(XPath: TEXDyFinOffer/OFheader/subContractor/subCountry) 0-1<br>(XPath: TEXDyFinOffer/OFheader/buyer/subCountry) 0-1  |
| transCondition     | special condition of transport or special service requested to the Forwarder<br>- base type: string, cod. table: T38,<br>(XPath: TEXDyFinOffer/terms/transInfo/transCondition) 0-3   |
| transConditionText | free text description of the special condition of transport or special service<br>requested to the Forwarder<br>- base type: string, max length: 100,<br>(XPath: TEXDyFinOffer/terms/transInfo/transConditionText) 0-1   |
| transMeans         | means of transport, in general or referred to a specific leg<br>- base type: string, cod. table: T40,<br>(XPath: TEXDyFinOffer/terms/transInfo/transMeans) 0-1   |
| transMode          | way of transport, in general or referred to the specified leg<br>- base type: string, cod. table: T8,<br>(XPath: TEXDyFinOffer/terms/transInfo/transMode) 1-1  |
| @transReason       | reason for the transport<br>- base type: string, cod. table: NT11,<br>(XPath: TEXDyFinOffer/terms/transInfo/@transReason) [Optional]   |
| @um                | specification of the unit of measure<br>- base type: string, cod. table: NT7,<br>(XPath: TEXDyFinOffer/terms/transInfo/grossWeight/@um) [Required]<br>(XPath: TEXDyFinOffer/terms/transInfo/netWeight/@um) [Required]  |
| validityEnd        | date by which the validity ends, according to one of the patterns YYYY-MM-<br>DD, YYYY-MM-DD:HH-MM or YYYY-WW.<br>- base type: string,<br>(XPath: TEXDyFinOffer/OFheader/validityEnd) 1-1  |

|               |   |
|---------------|---|
| validityStart | date by which the validity starts, according to one of the patterns YYYY-MM-DD, YYYY-MM-DD:HH-MM or YYYY-WW.<br>- base type: string,<br>(XPath: <i>TEXDyFinOffer/OFheader/validityStart</i> ) 0-1 |
| @VAT          | VAT rate or code<br>- base type: string, cod. table: NT16,<br>(XPath: <i>TEXDyFinOffer/terms/allowanceCharge/@VAT</i> ) [Optional]  |

## 2.3 Enumeration tables

List of enumeration tables used in the XML document. You can find the corresponding codes (only for tables with less than 100 values) in the document `Decoding_Values.pdf`, available at: <http://www.moda-ml.org/moda-ml/repository/guide/v2011-1/>; moreover, all the enumeration tables are available at: <http://www.moda-ml.org/imple/show-codes.asp>.

- NT11 - Transport causal
- NT16 - VAT rate or code
- NT18 - message function
- NT29 - format of a date
- NT3 - Data format
- NT32 - fabric family
- NT6 - Coding system owner/issuer
- NT7 - Unity of measure
- T1 - Terms of payment
- T10 - ISO3166 - Country
- T2 - Modes of payment
- T21 - type of document
- T3 - Terms of delivery
- T38 - transport conditions
- T40 - type of transport means
- T41 - type of Allowance or Charge
- T8 - Modes of Transport

# Annex A

Representative images of the principal complex elements' structure.

