



<http://www.moda-ml.org>

IMPLEMENTATION GUIDE
TRANSACTION "PIECE CONTROL ORDER"

Version: 2011-1

Date of release: 18/11/2011

Document code: G062

XML Schema repository:<http://www.moda-ml.org/moda-ml/repository/schema/v2011-1/default.asp>

Guides repository:<http://www.moda-ml.org/moda-ml/repository/guide/v2011-1/default.asp>

Guide filename: G062-MODA-ML-PieceControlOrder.pdf

1. BUSINESS DESCRIPTION

1.1 Scope

The present guide has been issued to assist the companies of the Textile-Clothing sector in the implementation of the standard XML document type "PIECE CONTROL ORDER", providing all the instruction required for its use in any context of e-commerce between Fabric Buyers and Textile Controllers.

All the rules required for the construction and validation of the document are embedded into the specific XML-Schema, which is detailed in section "Implementation guide".

1.2 Generalities

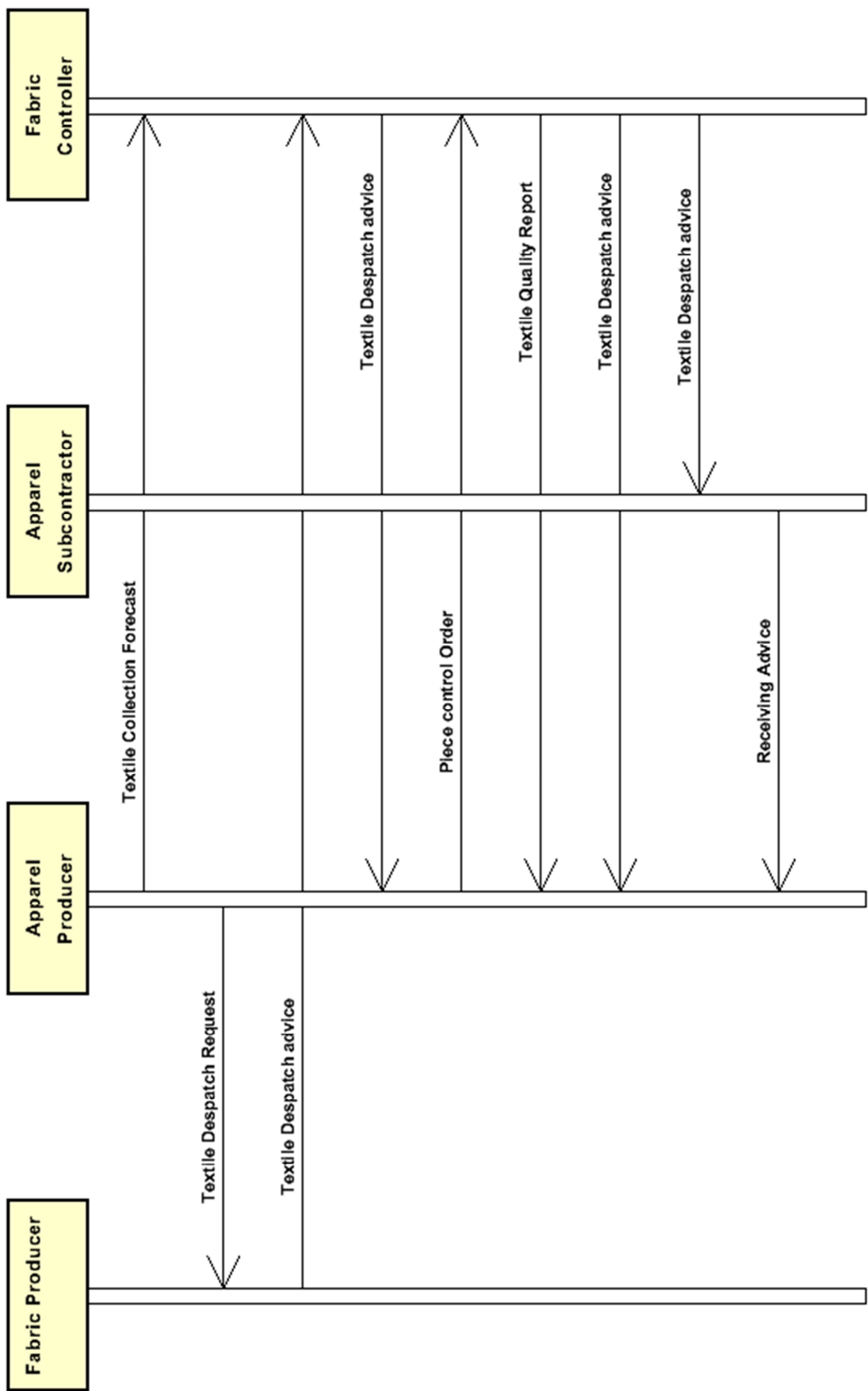
The document "Piece Control Orderr" is used by the Fabric Buyer to specify the type of inspection and accessory treatments requested for each fabric piece.

The Order can refer to one or more pieces and can be used either in conjunction with the "Textile Despatch Advise" (1 DA : 1 Order) or independently.

In the first instance the reference to the Despatch Advise must be given in the Header; in the second each piece can have at item level its reference to the document with which it was registered by the Controller.

Each line item refers to one fabric piece and indicates the inspection code and the ultimate receiver of the piece.

1.3. Possible scenario



2. IMPLEMENTATION GUIDE

2.1 General structure of XML document

All the business data that can be exchanged through this class of documents are shown in the following "document structure", that provides a simplified vision of the Schema.

In particular:

- the two numbers following each element define its "cardinality" (minimum and maximum number of occurrences); the minimum equal zero indicates that the element is optional, the minimum greater than zero indicates that is mandatory;
- the bold character denotes the complex elements (aggregates of simple elements) that were built for the sake of functionality and re-usability of some complex informations sets. The child elements in each parent element are easily spotted as "indented";
- the symbol "@" denotes an attribute of the preceding element; here "the usage indicator (optional, required, ...) is shown in square brackets.

Structure

TEXControlOrder

@msgfunction [Optional] [Default= OR]

PCOheader 1-1

msgN 1-1

- choose -

msgID 0-1

- or -

docID 0-1

@numberingOrg [Optional]

- end choose -

msgDate 1-1

@dateForm [Optional]

buyer 1-1

@logo [Optional]

@sender [Optional]

id 1-1

@numberingOrg [Optional]

legalName 0-1

dept 0-1

person 0-1

@email [Optional]

@phone [Optional]

@fax [Optional]

street 0-1

city 0-1

subCountry 0-1

country 0-1

postCode 0-1

supplier 1-1

@logo [Optional]

@sender [Optional]

id 1-1

@numberingOrg [Optional]

legalName 0-1

dept 0-1

person 0-1

@email [Optional]

@phone [Optional]

@fax [Optional]

street 0-1

city 0-1

subCountry 0-1
country 0-1
postCode 0-1
thirdParty 0-5
@VAT [Optional]
@role [Required]
@sender [Optional]
id 1-1
@numberingOrg [Optional]
legalName 0-1
dept 0-1
person 0-1
@email [Optional]
@phone [Optional]
@fax [Optional]
street 0-1
city 0-1
subCountry 0-1
country 0-1
postCode 0-1
note 0-1
@numberingOrg [Optional]
@codeList [Optional]
@noteLabel [Optional]

PCObody 1-1

PCOitem 1-unbounded

serialN 1-3
@numberingOrg [Optional]
texCode 0-2
@numberingOrg [Optional]
art 1-1
@numberingOrg [Optional]
@codeList [Optional]
@listName [Optional]
@listVersion [Optional]
pattern 0-1
@numberingOrg [Optional]
@codeList [Optional]
@listName [Optional]
@listVersion [Optional]
color 0-1
@numberingOrg [Optional]
@codeList [Optional]
@listName [Optional]
@listVersion [Optional]
added 0-9
@addType [Optional]
description 0-1
refDoc 0-5
@docType [Required]
docID 1-2
@numberingOrg [Optional]
docDate 0-1
@dateForm [Optional]
season 0-1
itemID 0-1
pieceControl 1-1
@numberingOrg [Optional]
thirdParty 0-1
@VAT [Optional]

@role [Required]
@sender [Optional]
id 1-1
 @numberingOrg [Optional]
legalName 0-1
dept 0-1
person 0-1
 @email [Optional]
 @phone [Optional]
 @fax [Optional]
street 0-1
city 0-1
subCountry 0-1
country 0-1
postCode 0-1
note 0-1
 @numberingOrg [Optional]
 @codeList [Optional]
 @noteLabel [Optional]

2.2 Detailed description of document elements

Following tables show all elements (complex and simple) used in this document. Description includes: 1) element's information: xml tag, name, brief description, data type and syntax constraints; 2) information about use of the element in a particular position in the document: xpath and possible associated notes.

2.2.1 Complex elements (Aggregate Business Information Entities)

Complex elements are those elements whose content is composed of other elements (childs). Complex elements are alphabetically ordered.

buyer	details of the Buyer - base type: , (XPath: <code>TEXControlOrder/PCOheader/buyer</code>) 1-1
PCObody	body of the document PIECE CONTROL ORDER (XPath: <code>TEXControlOrder/PCObody</code>) 1-1
PCOheader	header of the document PIECE CONTROL ORDER (XPath: <code>TEXControlOrder/PCOheader</code>) 1-1
PCOitem	line item of the document PIECE CONTROL ORDER (XPath: <code>TEXControlOrder/PCObody/PCOitem</code>) 1-unbounded
refDoc	identification of a document and of an item thereof, to which the message makes reference (XPath: <code>TEXControlOrder/PCObody/PCOitem/refDoc</code>) 0-5
supplier	details of the Supplier - base type: , (XPath: <code>TEXControlOrder/PCOheader/supplier</code>) 1-1
texCode	full codification of the textile product (XPath: <code>TEXControlOrder/PCObody/PCOitem/texCode</code>) 0-2
thirdParty	details of the Third Party, different from Buyer or Supplier - base type: , (XPath: <code>TEXControlOrder/PCOheader/thirdParty</code>) 0-5 (XPath: <code>TEXControlOrder/PCObody/PCOitem/thirdParty</code>) 0-1 - note: <i>here the receiver of the fabric piece after the inspection can be specified</i>

2.2.2 Simple elements (Basic Business Information Entities)

Simple elements are those elements whose content is characterized by a data type plus a domain of possible values. Simple elements are alphabetically ordered.

added	additional code of the product (complementing the formers) - base type: string, max length: 15, (XPath: <code>TEXControlOrder/PCObody/PCOitem/texCode/added</code>) 0-9 - note: <i>here an additional codification (see table T44) can be specified</i>
@addType	qualifier of the additional coding of a product - base type: string, cod. table: T44, (XPath: <code>TEXControlOrder/PCObody/PCOitem/texCode/added/@addType</code>) [Optional]
art	article number of the product - base type: string, max length: 25, (XPath: <code>TEXControlOrder/PCObody/PCOitem/texCode/art</code>) 1-1 - note: <i>can be used either for the base-article (excluding pattern/colour) or</i>

	<i>for the SKU</i>
city	name of the city (town, village) - base type: string, max length: 40, (XPath: TEXControlOrder/PCObody/PCOitem/thirdParty/city) 0-1 (XPath: TEXControlOrder/PCOheader/supplier/city) 0-1 (XPath: TEXControlOrder/PCOheader/buyer/city) 0-1 (XPath: TEXControlOrder/PCOheader/thirdParty/city) 0-1
@codeList	it specifies the URL where the list of codes used to make an instance of the element can be found - base type: string, max length: 255, (XPath: TEXControlOrder/PCObody/PCOitem/note/@codeList) [Optional] - nota: <i>must be used to provide (URL) the list of codes used in "noteLabel"</i> (XPath: TEXControlOrder/PCObody/PCOitem/texCode/pattern/@codeList) [Optional] - nota: <i>this attribute should be ALTERNATIVE to the others</i> (XPath: TEXControlOrder/PCOheader/note/@codeList) [Optional] - nota: <i>must be used to provide (URL) the list of codes used in "noteLabel"</i> (XPath: TEXControlOrder/PCObody/PCOitem/texCode/color/@codeList) [Optional] - nota: <i>this attribute should be ALTERNATIVE to the others</i> (XPath: TEXControlOrder/PCObody/PCOitem/texCode/art/@codeList) [Optional] - nota: <i>this attribute should be ALTERNATIVE to the others</i>
color	colour number of the product, when not included in the model or fabric code - base type: string, max length: 15, (XPath: TEXControlOrder/PCObody/PCOitem/texCode/color) 0-1
country	code of the nation - base type: string, cod. table: T10, (XPath: TEXControlOrder/PCOheader/buyer/country) 0-1 (XPath: TEXControlOrder/PCObody/PCOitem/thirdParty/country) 0-1 (XPath: TEXControlOrder/PCOheader/thirdParty/country) 0-1 (XPath: TEXControlOrder/PCOheader/supplier/country) 0-1
@dateForm	format used for a date - base type: string, cod. table: NT29, (XPath: TEXControlOrder/PCObody/PCOitem/refDoc/docDate/@dateForm) [Optional] (XPath: TEXControlOrder/PCOheader/msgDate/@dateForm) [Optional]
dept	name or code of a contact department within a Party - base type: string, max length: 40, (XPath: TEXControlOrder/PCObody/PCOitem/thirdParty/dept) 0-1 (XPath: TEXControlOrder/PCOheader/thirdParty/dept) 0-1 (XPath: TEXControlOrder/PCOheader/buyer/dept) 0-1 (XPath: TEXControlOrder/PCOheader/supplier/dept) 0-1
description	free text description of a product - base type: string, max length: 70, (XPath: TEXControlOrder/PCObody/PCOitem/texCode/description) 0-1
docDate	date of issue of the referenced document, according to one of the patterns YYYY-MM-DD, YYYY-MM-DD:HH-MM or YYYY-WW. - base type: string, (XPath: TEXControlOrder/PCObody/PCOitem/refDoc/docDate) 0-1
docID	identification number of the referenced document SINCE 2008-1 ITS USE IN THE HEADER IS DISCOURAGED (REPLACED BY) - base type: string, max length: 35, (XPath: TEXControlOrder/PCObody/PCOitem/refDoc/docID) 1-2 (XPath: TEXControlOrder/PCOheader/docID) 0-1
@docType	type or class to which the referenced document belongs - base type: string, cod. table: T21, (XPath: TEXControlOrder/PCObody/PCOitem/refDoc/@docType) [Required]

@email	<p>electronic mail address of the contact person within a Party</p> <ul style="list-style-type: none"> - base type: string, max length: 80, (XPath: TEXControlOrder/PCOheader/buyer/person/@email) [Optional] (XPath: TEXControlOrder/PCObody/PCOitem/thirdParty/person/@email) [Optional] (XPath: TEXControlOrder/PCOheader/thirdParty/person/@email) [Optional] (XPath: TEXControlOrder/PCOheader/supplier/person/@email) [Optional]
@fax	<p>fax number of the contact person within a Party</p> <ul style="list-style-type: none"> - base type: string, max length: 35, (XPath: TEXControlOrder/PCObody/PCOitem/thirdParty/person/@fax) [Optional] (XPath: TEXControlOrder/PCOheader/supplier/person/@fax) [Optional] (XPath: TEXControlOrder/PCOheader/thirdParty/person/@fax) [Optional] (XPath: TEXControlOrder/PCOheader/buyer/person/@fax) [Optional]
id	<p>primary identification code of a Party; it is recommended the format: nation code (ISO 3166) + VAT identification number (11 crt), with the qualifier "numberingOrg"= MF</p> <ul style="list-style-type: none"> - base type: string, max length: 15, (XPath: TEXControlOrder/PCObody/PCOitem/thirdParty/id) 1-1 (XPath: TEXControlOrder/PCOheader/buyer/id) 1-1 (XPath: TEXControlOrder/PCOheader/thirdParty/id) 1-1 (XPath: TEXControlOrder/PCOheader/supplier/id) 1-1
itemID	<p>number of the line/item of the referenced document</p> <ul style="list-style-type: none"> - base type: string, max length: 6, (XPath: TEXControlOrder/PCObody/PCOitem/refDoc/itemID) 0-1
legalName	<p>legal name of a Party</p> <ul style="list-style-type: none"> - base type: string, max length: 80, (XPath: TEXControlOrder/PCOheader/buyer/legalName) 0-1 (XPath: TEXControlOrder/PCOheader/supplier/legalName) 0-1 (XPath: TEXControlOrder/PCOheader/thirdParty/legalName) 0-1 (XPath: TEXControlOrder/PCObody/PCOitem/thirdParty/legalName) 0-1
@listName	<p>it specifies the name of the list of codes used to make an instance of the element</p> <ul style="list-style-type: none"> - base type: string, max length: 40, (XPath: TEXControlOrder/PCObody/PCOitem/texCode/pattern/@listName) [Optional] - nota: <i>this attribute should always be used coupled with "numberingOrg"</i> (XPath: TEXControlOrder/PCObody/PCOitem/texCode/art/@listName) [Optional] - nota: <i>this attribute should always be used coupled with "numberingOrg"</i> (XPath: TEXControlOrder/PCObody/PCOitem/texCode/color/@listName) [Optional] - nota: <i>this attribute should always be used coupled with "numberingOrg"</i>
@listVersion	<p>it specifies the version of the list of codes used to make an instance of the element</p> <ul style="list-style-type: none"> - base type: string, max length: 6, (XPath: TEXControlOrder/PCObody/PCOitem/texCode/art/@listVersion) [Optional] - nota: <i>this attribute should always be used coupled with "numberingOrg" and "listName"</i> (XPath: TEXControlOrder/PCObody/PCOitem/texCode/pattern/@listVersion) [Optional] - nota: <i>this attribute should always be used coupled with "numberingOrg" and "listName"</i> (XPath: TEXControlOrder/PCObody/PCOitem/texCode/color/@listVersion) [Optional] - nota: <i>this attribute should always be used coupled with "numberingOrg" and "listName"</i>
@logo	<p>company logo (URL of the image jpeg or gif). It is recommended that the width of the image does not exceed 640 pixel.</p> <ul style="list-style-type: none"> - base type: string, max length: 255, (XPath: TEXControlOrder/PCOheader/buyer/@logo) [Optional] (XPath: TEXControlOrder/PCOheader/supplier/@logo) [Optional]

msgDate	<p>date of issue of the present message (xml document), according to one of the patterns YYYY-MM-DD, YYYY-MM-DD:HH-MM or YYYY-WW.</p> <p>- base type: string, (XPath: TEXControlOrder/PCOheader/msgDate) 1-1</p>
@msgfunction	<p>function performed by the present message with regards to the transmission</p> <p>- base type: string, cod. table: NT18, (XPath: TEXControlOrder/@msgfunction) [Optional] [Default= OR]</p>
msgID	<p>key identifier of the document in the information system of the issuing Party</p> <p>- base type: string, max length: 35, (XPath: TEXControlOrder/PCOheader/msgID) 0-1</p>
msgN	<p>identification number given to the message (xml document) by its issuer</p> <p>- base type: string, max length: 35, (XPath: TEXControlOrder/PCOheader/msgN) 1-1</p>
note	<p>free text or structured (computer processing) note. For note structuring use the attributes "noteLabel" and "codelist"</p> <p>- base type: string, max length: 350, (XPath: TEXControlOrder/PCObody/PCOitem/note) 0-1 (XPath: TEXControlOrder/PCOheader/note) 0-1</p>
@noteLabel	<p>subject qualifier of a note</p> <p>- base type: string, max length: 35, (XPath: TEXControlOrder/PCObody/PCOitem/note/@noteLabel) [Optional] - nota: <i>must be used to qualify the subject of the note</i> (XPath: TEXControlOrder/PCOheader/note/@noteLabel) [Optional] - nota: <i>must be used to qualify the subject of the note</i></p>
@numberingOrg	<p>code specifying the organisation who has created or owns the coding or numbering system</p> <p>- base type: string, cod. table: NT6, (XPath: TEXControlOrder/PCObody/PCOitem/note/@numberingOrg) [Optional] (XPath: TEXControlOrder/PCOheader/supplier/id/@numberingOrg) [Optional] (XPath: TEXControlOrder/PCObody/PCOitem/texCode/color/@numberingOrg) [Optional] - nota: <i>this attribute should be used either single or coupled with "listName" and "listVersion"</i> (XPath: TEXControlOrder/PCObody/PCOitem/pieceControl/@numberingOrg) [Optional] (XPath: TEXControlOrder/PCObody/PCOitem/refDoc/docID/@numberingOrg) [Optional] - nota: <i>here can be specified whose document numbering is used (e.g.: Client, Supplier, ..)</i> (XPath: TEXControlOrder/PCOheader/buyer/id/@numberingOrg) [Optional] (XPath: TEXControlOrder/PCOheader/thirdParty/id/@numberingOrg) [Optional] (XPath: TEXControlOrder/PCOheader/docID/@numberingOrg) [Optional] - nota: <i>here can be specified whose document numbering is used (e.g.: Client, Supplier, ..)</i> (XPath: TEXControlOrder/PCObody/PCOitem/texCode/@numberingOrg) [Optional] (XPath: TEXControlOrder/PCObody/PCOitem/texCode/art/@numberingOrg) [Optional] - nota: <i>this attribute should be used either single or coupled with "listName" and "listVersion"</i> (XPath: TEXControlOrder/PCObody/PCOitem/serialN/@numberingOrg) [Optional] - nota: <i>here the issuer of the serial number must be specified (when different from the Supplier)</i> (XPath: TEXControlOrder/PCObody/PCOitem/thirdParty/id/@numberingOrg) [Optional] (XPath: TEXControlOrder/PCOheader/note/@numberingOrg) [Optional] (XPath: TEXControlOrder/PCObody/PCOitem/texCode/pattern/@numberingOrg) [Optional] - nota: <i>this attribute should be used either single or coupled with "listName" and "listVersion"</i></p>

pattern	<p>pattern/design number of the product, when not included in the article code</p> <p>- base type: string, max length: 15, (XPath: TEXControlOrder/PCObody/PCOitem/texCode/pattern) 0-1</p>
person	<p>name of the contact person within a Party</p> <p>- base type: string, max length: 40, (XPath: TEXControlOrder/PCOheader/supplier/person) 0-1 (XPath: TEXControlOrder/PCOheader/buyer/person) 0-1 (XPath: TEXControlOrder/PCOheader/thirdParty/person) 0-1 (XPath: TEXControlOrder/PCObody/PCOitem/thirdParty/person) 0-1</p>
@phone	<p>phone number of the contact person within a Party</p> <p>- base type: string, max length: 35, (XPath: TEXControlOrder/PCObody/PCOitem/thirdParty/person/@phone) [Optional] (XPath: TEXControlOrder/PCOheader/thirdParty/person/@phone) [Optional] (XPath: TEXControlOrder/PCOheader/buyer/person/@phone) [Optional] (XPath: TEXControlOrder/PCOheader/supplier/person/@phone) [Optional]</p>
pieceControl	<p>code assigned to a fabric piece to specify the type of control required/performed</p> <p>- base type: string, max length: 7, (XPath: TEXControlOrder/PCObody/PCOitem/pieceControl) 1-1</p>
postCode	<p>code defining the postal zone</p> <p>- base type: string, max length: 10, (XPath: TEXControlOrder/PCOheader/buyer/postCode) 0-1 (XPath: TEXControlOrder/PCObody/PCOitem/thirdParty/postCode) 0-1 (XPath: TEXControlOrder/PCOheader/thirdParty/postCode) 0-1 (XPath: TEXControlOrder/PCOheader/supplier/postCode) 0-1</p>
@role	<p>Third Party role qualifier</p> <p>- base type: string, cod. table: NT2, (XPath: TEXControlOrder/PCOheader/thirdParty/@role) [Required] (XPath: TEXControlOrder/PCObody/PCOitem/thirdParty/@role) [Required]</p>
season	<p>sale season; defined as: season (1 crt) + year (4 crt) - season: S/S=1 A/W=2 Spring=3 Summer=4 Autumn=5 Winter=6: for more than four seasons use alphabetic sequence: 1st season=A 2nd season=B etc.etc.</p> <p>- base type: string, max length: 15, (XPath: TEXControlOrder/PCObody/PCOitem/refDoc/season) 0-1</p> <p>- note: <i>here indicates the season to which the referenced document belongs</i></p>
@sender	<p>qualifier that specifies the Party issuing of the document</p> <p>- base type: boolean, (XPath: TEXControlOrder/PCOheader/thirdParty/@sender) [Optional]</p> <p>- nota: <i>This attribute is mandatory when the STYLESHEET must be produced</i> (XPath: TEXControlOrder/PCOheader/buyer/@sender) [Optional]</p> <p>- nota: <i>This attribute is mandatory when the STYLESHEET must be produced</i> (XPath: TEXControlOrder/PCOheader/supplier/@sender) [Optional]</p> <p>- nota: <i>This attribute is mandatory when the STYLESHEET must be produced</i> (XPath: TEXControlOrder/PCObody/PCOitem/thirdParty/@sender) [Optional]</p> <p>- nota: <i>This attribute is mandatory when the STYLESHEET must be produced</i></p>
serialN	<p>serial number used for the identification of a physical unit</p> <p>- base type: string, max length: 15, (XPath: TEXControlOrder/PCObody/PCOitem/serialN) 1-3</p>
street	<p>street and building number identifying a location</p> <p>- base type: string, max length: 80, (XPath: TEXControlOrder/PCOheader/thirdParty/street) 0-1 (XPath: TEXControlOrder/PCObody/PCOitem/thirdParty/street) 0-1 (XPath: TEXControlOrder/PCOheader/supplier/street) 0-1</p>

	(XPath: <code>TEXControlOrder/PCOheader/buyer/street</code>) 0-1
subCountry	<p>short name or code of the sub-country entity</p> <p>- base type: string, max length: 9,</p> <p>(XPath: <code>TEXControlOrder/PCOheader/supplier/subCountry</code>) 0-1</p> <p>(XPath: <code>TEXControlOrder/PCOheader/thirdParty/subCountry</code>) 0-1</p> <p>(XPath: <code>TEXControlOrder/PCOheader/buyer/subCountry</code>) 0-1</p> <p>(XPath: <code>TEXControlOrder/PCObody/PCOitem/thirdParty/subCountry</code>) 0-1</p>
@VAT	<p>VAT rate or code</p> <p>- base type: string, cod. table: NT16,</p> <p>(XPath: <code>TEXControlOrder/PCOheader/thirdParty/@VAT</code>) [Optional]</p> <p>(XPath: <code>TEXControlOrder/PCObody/PCOitem/thirdParty/@VAT</code>) [Optional]</p>

2.3 Enumeration tables

List of enumeration tables used in the XML document. You can find the corresponding codes (only for tables with less than 100 values) in the document `Decoding_Values.pdf`, available at: <http://www.moda-ml.org/moda-ml/repository/guide/v2011-1/>; moreover, all the enumeration tables are available at: <http://www.moda-ml.org/imple/show-codes.asp>.

NT16 - VAT rate or code
NT18 - message function
NT2 - Third party qualifier
NT29 - format of a date
NT6 - Coding system owner/issuer
T10 - ISO3166 - Country
T21 - type of document
T44 - additional code type

Annex A

Representative images of the principal complex elements' structure.

