



<http://www.moda-ml.org>

## IMPLEMENTATION GUIDE TRANSACTION "GARMENT STOCK OFFER STATUS"

Version: 2011-1

Date of release: 18/11/2011

Document code: G063

XML Schema repository:<http://www.moda-ml.org/moda-ml/repository/schema/v2011-1/default.asp>

Guides repository:<http://www.moda-ml.org/moda-ml/repository/guide/v2011-1/default.asp>

Guide filename: G063-MODA-ML-GarmentStockOfferStatus.pdf

# 1. BUSINESS DESCRIPTION

## 1.1 Scope

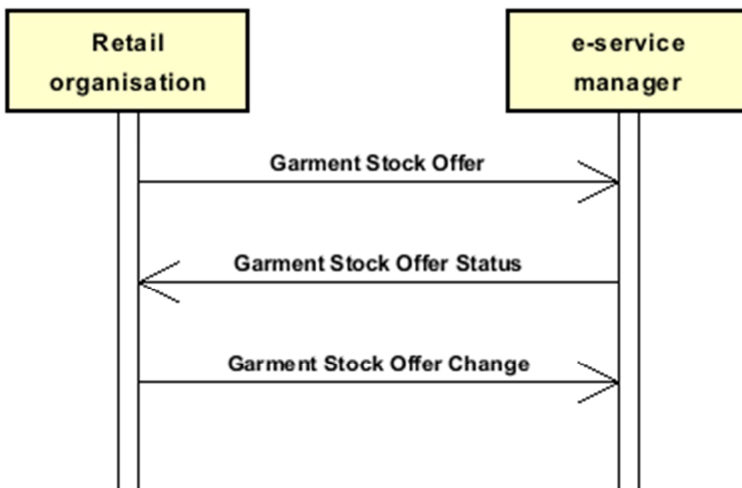
The document Garment Stock Offer Status can be used as Response to the Offer, notifying the Client of the loading and of the status of the Offer (. dealing, sold, withdrawn, ..etc..).

## 1.2 Generalities

The document is issued by the e-Stockflow Service Provider to respond to an Offer of garment stock or to notify the status of the Offer.

Each document line must refer to one line of a former "Stock Offer", of which is notified either the loading or the following development of the dealing

## 1.3. Possible scenario



## 2. IMPLEMENTATION GUIDE

### 2.1 General structure of XML document

All the business data that can be exchanged through this class of documents are shown in the following "document structure", that provides a simplified vision of the Schema.

In particular:

- the two numbers following each element define its "cardinality" (minimum and maximum number of occurrences); the minimum equal zero indicates that the element is optional, the minimum greater than zero indicates that is mandatory;
- the bold character denotes the complex elements (aggregates of simple elements) that were built for the sake of functionality and re-usability of some complex informations sets. The child elements in each parent element are easily spotted as "indented";
- the symbol "@" denotes an attribute of the preceding element; here "the usage indicator (optional, required, ...) is shown in square brackets.

### Structure

#### **GARStockStat**

*@msgfunction [Optional] [Default= OR]*

##### **GSOheader 1-1**

msgN 1-1

msgID 0-1

msgDate 1-1

*@dateForm [Optional]*

##### **refDoc 0-9**

*@docType [Required]*

docID 1-2

*@numberingOrg [Optional]*

docDate 0-1

*@dateForm [Optional]*

season 0-1

itemID 0-1

##### **supplier 1-1**

*@logo [Optional]*

*@sender [Optional]*

id 1-1

*@numberingOrg [Optional]*

legalName 0-1

dept 0-1

person 0-1

*@email [Optional]*

*@phone [Optional]*

*@fax [Optional]*

street 0-1

city 0-1

subCountry 0-1

country 0-1

postCode 0-1

##### **buyer 0-1**

*@logo [Optional]*

*@sender [Optional]*

id 1-1

*@numberingOrg [Optional]*

legalName 0-1

dept 0-1

person 0-1

*@email [Optional]*

*@phone [Optional]*

*@fax [Optional]*  
street 0-1  
city 0-1  
subCountry 0-1  
country 0-1  
postCode 0-1

**GSSbody 1-1**

**GSSitem 1-unbounded**

*@offerStat [Required]*  
*@offerStatReason [Optional]*  
lineN 1-1  
*@VAT [Optional]*  
eStockN 1-1  
*@numberingOrg [Optional]*

**refDoc 0-1**

*@docType [Required]*  
docID 1-2  
*@numberingOrg [Optional]*  
docDate 0-1  
*@dateForm [Optional]*  
season 0-1  
itemID 0-1

**garmentCategory 0-1**

*@numberingOrg [Optional]*  
artGroup 1-1  
*@numberingOrg [Optional]*  
*@codeList [Optional]*  
*@listName [Optional]*  
*@listVersion [Optional]*  
artSubGroup 1-1  
*@numberingOrg [Optional]*  
*@codeList [Optional]*  
*@listName [Optional]*  
*@listVersion [Optional]*  
artSex 1-1  
*@numberingOrg [Optional]*  
*@codeList [Optional]*  
*@listName [Optional]*  
*@listVersion [Optional]*  
season 0-1

tradeMark 0-1

commerceText 0-1

**garmentCode 0-1**

*@numberingOrg [Optional]*  
- choose -

**garmentCodeB 1-1**

*@numberingOrg [Optional]*  
mod 1-1  
*@numberingOrg [Optional]*  
*@codeList [Optional]*  
*@listName [Optional]*  
*@listVersion [Optional]*  
fabric 0-1  
*@numberingOrg [Optional]*  
*@codeList [Optional]*  
*@listName [Optional]*  
*@listVersion [Optional]*  
color 0-1  
*@numberingOrg [Optional]*  
*@codeList [Optional]*

@listName [Optional]  
 @listVersion [Optional]  
 size 0-1  
 @codeList [Optional]  
 artGroup 0-1  
 @numberingOrg [Optional]  
 @codeList [Optional]  
 @listName [Optional]  
 @listVersion [Optional]  
 added 0-9  
 @addType [Optional]  
 description 0-1  
 - or -  
**garmentCodeA 1-1**  
 art 1-1  
 @numberingOrg [Optional]  
 @codeList [Optional]  
 @listName [Optional]  
 @listVersion [Optional]  
 description 0-1  
 - end choose -  
 qty 0-1  
 @um [Required]  
 price 0-1  
 @um [Optional]  
 @priceQualifier [Optional] [Default= NET]  
**csRange 0-99**  
 @numberingOrg [Optional]  
 @sizeSystemNat [Optional]  
 @sizeSystemSeg [Optional]  
 @sizeSystemBase [Optional]  
 color 0-1  
 @numberingOrg [Optional]  
 @codeList [Optional]  
 @listName [Optional]  
 @listVersion [Optional]  
**sizeMatrix 1-1**  
**sizeRow 1-99**  
 drop 0-1  
 @codeList [Optional]  
 size 1-1  
 @codeList [Optional]  
 qty 0-1  
 @um [Required]  
**stockAddress 0-1**  
 @numberingOrg [Optional]  
 city 1-1  
 subCountry 1-1  
 country 1-1  
 note 0-1  
 @numberingOrg [Optional]  
 @codeList [Optional]  
 @noteLabel [Optional]

## 2.2 Detailed description of document elements

Following tables show all elements (complex and simple) used in this document. Description includes: 1) element's information: xml tag, name, brief description, data type and syntax constraints; 2) information about use of the element in a particular position in the document: xpath and possible associated notes.

### 2.2.1 Complex elements (Aggregate Business Information Entities)

Complex elements are those elements whose content is composed of other elements (childs).Complex elements are alphabetically ordered.

<b>buyer</b>	details of the Buyer - base type: , (XPath: GARStockStat/GSOheader/buyer) 0-1
<b>csRange</b>	range of color-size for a garment article (knitwear/clothing) (XPath: GARStockStat/GSSbody/GSSitem/csRange) 0-99
<b>garmentCategory</b>	classification of a garment article (XPath: GARStockStat/GSSbody/GSSitem/garmentCategory) 0-1
<b>garmentCode</b>	codification of the garment product (knitwear/clothing) (XPath: GARStockStat/GSSbody/GSSitem/garmentCode) 0-1
<b>garmentCodeA</b>	codification of the garment product (knitwear/clothing) - type A (XPath: GARStockStat/GSSbody/GSSitem/garmentCode/garmentCodeA) 1-1 - note: <i>here the barcode EAN-13 or EAN-8 should be specified</i>
<b>garmentCodeB</b>	codification of the garment product (knitwear/clothing) - type B (XPath: GARStockStat/GSSbody/GSSitem/garmentCode/garmentCodeB) 1-1
<b>GSOheader</b>	Header of the document GARMENT STOCK OFFER (XPath: GARStockStat/GSOheader) 1-1
<b>GSSbody</b>	body of the document GARMENT STOCK OFFER STATUS (XPath: GARStockStat/GSSbody) 1-1
<b>GSSitem</b>	line item of the document GARMENT STOCK OFFER STATUS (XPath: GARStockStat/GSSbody/GSSitem) 1-unbounded
<b>refDoc</b>	identification of a document and of an item thereof, to which the message makes reference (XPath: GARStockStat/GSSbody/GSSitem/refDoc) 0-1 (XPath: GARStockStat/GSOheader/refDoc) 0-9
<b>sizeMatrix</b>	size matrix of an apparel product (knitwear/clothing) (XPath: GARStockStat/GSSbody/GSSitem/csRange/sizeMatrix) 1-1
<b>sizeRow</b>	size matrix row of an apparel product (knitwear/clothing) (XPath: GARStockStat/GSSbody/GSSitem/csRange/sizeMatrix/sizeRow) 1-99
<b>stockAddress</b>	physical location of a stock (XPath: GARStockStat/GSSbody/GSSitem/stockAddress) 0-1
<b>supplier</b>	details of the Supplier - base type: , (XPath: GARStockStat/GSOheader/supplier) 1-1

### 2.2.2 Simple elements (Basic Business Information Entities)

Simple elements are those elements whose content is characterized by a data type plus a domain of possible values. Simple elements are alphabetically ordered.

added	additional code of the product (complementing the formers) - base type: string, max length: 15, (XPath: GARStockStat/GSSbody/GSSitem/garmentCode/ garmentCodeB/added) 0-9
@addType	qualifier of the additional coding of a product - base type: string, cod. table: T44, (XPath: GARStockStat/GSSbody/GSSitem/garmentCode/ garmentCodeB/added/@addType) [Optional]
art	article number of the product - base type: string, max length: 25, (XPath: GARStockStat/GSSbody/GSSitem/garmentCode/ garmentCodeA/art) 1-1
artGroup	code identifying a class of products - base type: string, max length: 40, (XPath: GARStockStat/GSSbody/GSSitem/garmentCategory/artGroup) 1-1 (XPath: GARStockStat/GSSbody/GSSitem/garmentCode/ garmentCodeB/artGroup) 0-1
artSex	code identifying the sex for which a garment is intended - base type: string, max length: 15, (XPath: GARStockStat/GSSbody/GSSitem/garmentCategory/artSex) 1-1
artSubGroup	code identifying a sub-class of products - base type: string, max length: 40, (XPath: GARStockStat/GSSbody/GSSitem/garmentCategory/artSubGroup) 1-1
city	name of the city (town, village) - base type: string, max length: 40, (XPath: GARStockStat/GSOheader/supplier/city) 0-1 (XPath: GARStockStat/GSSbody/GSSitem/stockAddress/city) 1-1 (XPath: GARStockStat/GSOheader/buyer/city) 0-1
@codeList	it specifies the URL where the list of codes used to make an instance of the element can be found - base type: string, max length: 255, (XPath: GARStockStat/GSSbody/GSSitem/garmentCode/ garmentCodeB/fabric/@codeList) [Optional] - nota: <i>this attribute should be ALTERNATIVE to the others</i> (XPath: GARStockStat/GSSbody/GSSitem/garmentCode/ garmentCodeB/mod/@codeList) [Optional] - nota: <i>this attribute should be ALTERNATIVE to the others</i> (XPath: GARStockStat/GSSbody/GSSitem/csRange/sizeMatrix/ sizeRow/drop/@codeList) [Optional] (XPath: GARStockStat/GSSbody/GSSitem/garmentCode/ garmentCodeB/color/@codeList) [Optional] - nota: <i>this attribute should be ALTERNATIVE to the others</i> (XPath: GARStockStat/GSSbody/GSSitem/garmentCode/ garmentCodeB/artGroup/@codeList) [Optional] - nota: <i>this attribute should be ALTERNATIVE to the others</i> (XPath: GARStockStat/GSSbody/GSSitem/csRange/color/@codeList) [Optional] - nota: <i>this attribute should be ALTERNATIVE to the others</i> (XPath: GARStockStat/GSSbody/GSSitem/garmentCategory/ artGroup/@codeList) [Optional] - nota: <i>this attribute should be ALTERNATIVE to the others</i> (XPath: GARStockStat/GSSbody/GSSitem/garmentCategory/ artSubGroup/@codeList) [Optional] - nota: <i>this attribute should be ALTERNATIVE to the others</i> (XPath: GARStockStat/GSSbody/GSSitem/garmentCode/ garmentCodeB/size/@codeList) [Optional] (XPath: GARStockStat/GSSbody/GSSitem/garmentCategory/ artSex/@codeList) [Optional]

	<p>- nota: <i>this attribute should be ALTERNATIVE to the others</i>  (XPath: GARStockStat/GSSbody/GSSitem/note/@codeList) [Optional]</p> <p>- nota: <i>must be used to provide (URL) the list of codes used in "noteLabel"</i>  (XPath: GARStockStat/GSSbody/GSSitem/csRange/sizeMatrix/sizeRow/size/@codeList) [Optional]</p> <p>(XPath: GARStockStat/GSSbody/GSSitem/garmentCode/garmentCodeA/art/@codeList) [Optional]</p> <p>- nota: <i>this attribute should be ALTERNATIVE to the others</i></p>
color	<p>colour number of the product, when not included in the model or fabric code</p> <p>- base type: string, max length: 15,  (XPath: GARStockStat/GSSbody/GSSitem/csRange/color) 0-1  (XPath: GARStockStat/GSSbody/GSSitem/garmentCode/garmentCodeB/color) 0-1</p>
commerceText	<p>text usable for the full commercial description of a product</p> <p>- base type: string, max length: 400,  (XPath: GARStockStat/GSSbody/GSSitem/commerceText) 0-1</p>
country	<p>code of the nation</p> <p>- base type: string, cod. table: T10,  (XPath: GARStockStat/GSOheader/buyer/country) 0-1  (XPath: GARStockStat/GSSbody/GSSitem/stockAddress/country) 1-1  (XPath: GARStockStat/GSOheader/supplier/country) 0-1</p>
@dateForm	<p>format used for a date</p> <p>- base type: string, cod. table: NT29,  (XPath: GARStockStat/GSOheader/refDoc/docDate/@dateForm) [Optional]  (XPath: GARStockStat/GSSbody/GSSitem/refDoc/docDate/@dateForm) [Optional]  (XPath: GARStockStat/GSOheader/msgDate/@dateForm) [Optional]</p>
dept	<p>name or code of a contact department within a Party</p> <p>- base type: string, max length: 40,  (XPath: GARStockStat/GSOheader/supplier/dept) 0-1  (XPath: GARStockStat/GSOheader/buyer/dept) 0-1</p>
description	<p>free text description of a product</p> <p>- base type: string, max length: 70,  (XPath: GARStockStat/GSSbody/GSSitem/garmentCode/garmentCodeA/description) 0-1  (XPath: GARStockStat/GSSbody/GSSitem/garmentCode/garmentCodeB/description) 0-1</p>
docDate	<p>date of issue of the referenced document, according to one of the patterns YYYY-MM-DD, YYYY-MM-DD:HH-MM or YYYY-WW.</p> <p>- base type: string,  (XPath: GARStockStat/GSSbody/GSSitem/refDoc/docDate) 0-1  (XPath: GARStockStat/GSOheader/refDoc/docDate) 0-1</p>
docID	<p>identification number of the referenced document SINCE 2008-1 ITS USE IN THE HEADER IS DISCOURAGED (REPLACED BY )</p> <p>- base type: string, max length: 35,  (XPath: GARStockStat/GSSbody/GSSitem/refDoc/docID) 1-2  (XPath: GARStockStat/GSOheader/refDoc/docID) 1-2</p>
@docType	<p>type or class to which the referenced document belongs</p> <p>- base type: string, cod. table: T21,  (XPath: GARStockStat/GSOheader/refDoc/@docType) [Required]  (XPath: GARStockStat/GSSbody/GSSitem/refDoc/@docType) [Required]</p>
drop	<p>drop number of the garment</p> <p>- base type: string, max length: 15,  (XPath: GARStockStat/GSSbody/GSSitem/csRange/sizeMatrix/sizeRow/drop) 0-1</p>
@email	<p>electronic mail address of the contact person within a Party</p>



	<p>- base type: string, max length: 80,  (XPath: GARStockStat/GSOheader/buyer/person/@email) [Optional]  (XPath: GARStockStat/GSOheader/supplier/person/@email) [Optional]</p>
eStockN	<p>offer identifier assigned by the e-stock service provider  - base type: string, max length: 15,  (XPath: GARStockStat/GSSbody/GSSitem/eStockN) 1-1</p>
fabric	<p>fabric number of the garment  - base type: string, max length: 15,  (XPath: GARStockStat/GSSbody/GSSitem/garmentCode/  garmentCodeB/fabric) 0-1</p>
@fax	<p>fax number of the contact person within a Party  - base type: string, max length: 35,  (XPath: GARStockStat/GSOheader/supplier/person/@fax) [Optional]  (XPath: GARStockStat/GSOheader/buyer/person/@fax) [Optional]</p>
id	<p>primary identification code of a Party; it is recommended the format: nation code (ISO 3166) + VAT identification number (11 crt), with the qualifier "numberingOrg"= MF  - base type: string, max length: 15,  (XPath: GARStockStat/GSOheader/buyer/id) 1-1  (XPath: GARStockStat/GSOheader/supplier/id) 1-1</p>
itemID	<p>number of the line/item of the referenced document  - base type: string, max length: 6,  (XPath: GARStockStat/GSSbody/GSSitem/refDoc/itemID) 0-1  (XPath: GARStockStat/GSOheader/refDoc/itemID) 0-1</p>
legalName	<p>legal name of a Party  - base type: string, max length: 80,  (XPath: GARStockStat/GSOheader/supplier/legalName) 0-1  (XPath: GARStockStat/GSOheader/buyer/legalName) 0-1</p>
lineN	<p>number of the line item of the present message (xml document)  - base type: positiveInteger, min inclusive: 1, max inclusive: 9999,  (XPath: GARStockStat/GSSbody/GSSitem/lineN) 1-1</p>
@listName	<p>it specifies the name of the list of codes used to make an instance of the element  - base type: string, max length: 40,  (XPath: GARStockStat/GSSbody/GSSitem/garmentCategory/  artSex/@listName) [Optional]  - nota: <i>this attribute should always be used coupled with "numberingOrg"</i>  (XPath: GARStockStat/GSSbody/GSSitem/garmentCode/  garmentCodeA/art/@listName) [Optional]  - nota: <i>this attribute should always be used coupled with "numberingOrg"</i>  (XPath: GARStockStat/GSSbody/GSSitem/garmentCode/  garmentCodeB/fabric/@listName) [Optional]  - nota: <i>this attribute should always be used coupled with "numberingOrg"</i>  (XPath: GARStockStat/GSSbody/GSSitem/csRange/color/@listName) [Optional]  - nota: <i>this attribute should always be used coupled with "numberingOrg"</i>  (XPath: GARStockStat/GSSbody/GSSitem/garmentCode/  garmentCodeB/mod/@listName) [Optional]  - nota: <i>this attribute should always be used coupled with "numberingOrg"</i>  (XPath: GARStockStat/GSSbody/GSSitem/garmentCategory/  artSubGroup/@listName) [Optional]  - nota: <i>this attribute should always be used coupled with "numberingOrg"</i>  (XPath: GARStockStat/GSSbody/GSSitem/garmentCode/  garmentCodeB/color/@listName) [Optional]  - nota: <i>this attribute should always be used coupled with "numberingOrg"</i>  (XPath: GARStockStat/GSSbody/GSSitem/garmentCategory/  artGroup/@listName) [Optional]  - nota: <i>this attribute should always be used coupled with "numberingOrg"</i></p>

	<p>(XPath: GARStockStat/GSSbody/GSSitem/garmentCode/garmentCodeB/artGroup/@listName) [Optional]</p> <p>- nota: <i>this attribute should always be used coupled with “numberingOrg”</i></p>
@listVersion	<p>it specifies the version of the list of codes used to make an instance of the element</p> <p>- base type: string, max length: 6,</p> <p>(XPath: GARStockStat/GSSbody/GSSitem/csRange/color/@listVersion) [Optional]</p> <p>- nota: <i>this attribute should always be used coupled with “numberingOrg” and “listName”</i></p> <p>(XPath: GARStockStat/GSSbody/GSSitem/garmentCode/garmentCodeB/mod/@listVersion) [Optional]</p> <p>- nota: <i>this attribute should always be used coupled with “numberingOrg” and “listName”</i></p> <p>(XPath: GARStockStat/GSSbody/GSSitem/garmentCode/garmentCodeB/artGroup/@listVersion) [Optional]</p> <p>- nota: <i>this attribute should always be used coupled with “numberingOrg” and “listName”</i></p> <p>(XPath: GARStockStat/GSSbody/GSSitem/garmentCategory/artSubGroup/@listVersion) [Optional]</p> <p>- nota: <i>this attribute should always be used coupled with “numberingOrg” and “listName”</i></p> <p>(XPath: GARStockStat/GSSbody/GSSitem/garmentCategory/artSex/@listVersion) [Optional]</p> <p>- nota: <i>this attribute should always be used coupled with “numberingOrg” and “listName”</i></p> <p>(XPath: GARStockStat/GSSbody/GSSitem/garmentCategory/artGroup/@listVersion) [Optional]</p> <p>- nota: <i>this attribute should always be used coupled with “numberingOrg” and “listName”</i></p> <p>(XPath: GARStockStat/GSSbody/GSSitem/garmentCode/garmentCodeB/fabric/@listVersion) [Optional]</p> <p>- nota: <i>this attribute should always be used coupled with “numberingOrg” and “listName”</i></p> <p>(XPath: GARStockStat/GSSbody/GSSitem/garmentCode/garmentCodeA/art/@listVersion) [Optional]</p> <p>- nota: <i>this attribute should always be used coupled with “numberingOrg” and “listName”</i></p> <p>(XPath: GARStockStat/GSSbody/GSSitem/garmentCode/garmentCodeB/color/@listVersion) [Optional]</p> <p>- nota: <i>this attribute should always be used coupled with “numberingOrg” and “listName”</i></p>
@logo	<p>company logo (URL of the image jpeg or gif). It is recommended that the width of the image does not exceed 640 pixel.</p> <p>- base type: string, max length: 255,</p> <p>(XPath: GARStockStat/GSOheader/buyer/@logo) [Optional]</p> <p>(XPath: GARStockStat/GSOheader/supplier/@logo) [Optional]</p>
mod	<p>model number of the garment</p> <p>- base type: string, max length: 15,</p> <p>(XPath: GARStockStat/GSSbody/GSSitem/garmentCode/garmentCodeB/mod) 1-1</p>
msgDate	<p>date of issue of the present message (xml document), according to one of the patterns YYYY-MM-DD, YYYY-MM-DD:HH-MM or YYYY-WW.</p> <p>- base type: string,</p> <p>(XPath: GARStockStat/GSOheader/msgDate) 1-1</p>
@msgfunction	<p>function performed by the present message with regards to the transmission</p> <p>- base type: string, cod. table: NT18,</p> <p>(XPath: GARStockStat/@msgfunction) [Optional] [Default= OR]</p>
msgID	<p>key identifier of the document in the information system of the issuing Party</p>

	- base type: string, max length: 35, (XPath: GARStockStat/GSOheader/msgID) 0-1
msgN	identification number given to the message (xml document) by its issuer - base type: string, max length: 35, (XPath: GARStockStat/GSOheader/msgN) 1-1
note	free text or structured (computer processing) note. For note structuring use the attributes "noteLabel" and "codelist" - base type: string, max length: 350, (XPath: GARStockStat/GSSbody/GSSitem/note) 0-1 - note: <i>here the offer status reason can be described</i>
@noteLabel	subject qualifier of a note - base type: string, max length: 35, (XPath: GARStockStat/GSSbody/GSSitem/note/@noteLabel) [Optional] - nota: <i>must be used to qualify the subject of the note</i>
@numberingOrg	code specifying the organisation who has created or owns the coding or numbering system - base type: string, cod. table: NT6, (XPath: GARStockStat/GSSbody/GSSitem/garmentCode/garmentCodeB/artGroup/@numberingOrg) [Optional] - nota: <i>this attribute should be used either single or coupled with "listName" and "listVersion"</i> (XPath: GARStockStat/GSSbody/GSSitem/stockAddress/@numberingOrg) [Optional] - nota: <i>to be use when city and sub-country are specified with a proprietary code</i> (XPath: GARStockStat/GSSbody/GSSitem/note/@numberingOrg) [Optional] (XPath: GARStockStat/GSSbody/GSSitem/csRange/color/@numberingOrg) [Optional] - nota: <i>this attribute should be used either single or coupled with "listName" and "listVersion"</i> (XPath: GARStockStat/GSSbody/GSSitem/garmentCode/garmentCodeA/art/@numberingOrg) [Optional] - nota: <i>this attribute should be used either single or coupled with "listName" and "listVersion"</i> (XPath: GARStockStat/GSSbody/GSSitem/csRange/@numberingOrg) [Optional] (XPath: GARStockStat/GSSbody/GSSitem/garmentCategory/artGroup/@numberingOrg) [Optional] - nota: <i>this attribute should be used either single or coupled with "listName" and "listVersion"</i> (XPath: GARStockStat/GSSbody/GSSitem/garmentCategory/artSubGroup/@numberingOrg) [Optional] - nota: <i>this attribute should be used either single or coupled with "listName" and "listVersion"</i> (XPath: GARStockStat/GSSbody/GSSitem/garmentCategory/artSex/@numberingOrg) [Optional] - nota: <i>this attribute should be used either single or coupled with "listName" and "listVersion"</i> (XPath: GARStockStat/GSSbody/GSSitem/garmentCategory/@numberingOrg) [Optional] (XPath: GARStockStat/GSOheader/supplier/id/@numberingOrg) [Optional] (XPath: GARStockStat/GSSbody/GSSitem/eStockN/@numberingOrg) [Optional] (XPath: GARStockStat/GSSbody/GSSitem/refDoc/docID/@numberingOrg) [Optional] - nota: <i>here can be specified whose document numbering is used (e.g.: Client, Supplier, ..)</i> (XPath: GARStockStat/GSSbody/GSSitem/garmentCode/garmentCodeB/fabric/@numberingOrg) [Optional] - nota: <i>this attribute should be used either single or coupled with "listName" and "listVersion"</i> (XPath: GARStockStat/GSSbody/GSSitem/garmentCode/

	<p><a href="#">garmentCodeB/mod/@numberingOrg</a> [Optional]  - nota: <i>this attribute should be ALTERNATIVE to the others</i>  (XPath: <a href="#">GARStockStat/GSSbody/GSSitem/garmentCode/garmentCodeB/color/@numberingOrg</a>) [Optional]  - nota: <i>this attribute should be used either single or coupled with "listName" and "listVersion"</i>  (XPath: <a href="#">GARStockStat/GSOheader/buyer/id/@numberingOrg</a>) [Optional]  (XPath: <a href="#">GARStockStat/GSSbody/GSSitem/garmentCode/@numberingOrg</a>) [Optional]  (XPath: <a href="#">GARStockStat/GSOheader/refDoc/docID/@numberingOrg</a>) [Optional]  - nota: <i>here can be specified whose document numbering is used (e.g.: Client, Supplier, ..)</i>  (XPath: <a href="#">GARStockStat/GSSbody/GSSitem/garmentCode/garmentCodeB/@numberingOrg</a>) [Optional]</p>
@offerStat	<p>status of the offer in the e-stock  - base type: string, cod. table: NT35,  (XPath: <a href="#">GARStockStat/GSSbody/GSSitem/@offerStat</a>) [Required]</p>
@offerStatReason	<p>status reason of the offer in the e-stock  - base type: string, cod. table: NT36,  (XPath: <a href="#">GARStockStat/GSSbody/GSSitem/@offerStatReason</a>) [Optional]</p>
person	<p>name of the contact person within a Party  - base type: string, max length: 40,  (XPath: <a href="#">GARStockStat/GSOheader/buyer/person</a>) 0-1  (XPath: <a href="#">GARStockStat/GSOheader/supplier/person</a>) 0-1</p>
@phone	<p>phone number of the contact person within a Party  - base type: string, max length: 35,  (XPath: <a href="#">GARStockStat/GSOheader/buyer/person/@phone</a>) [Optional]  (XPath: <a href="#">GARStockStat/GSOheader/supplier/person/@phone</a>) [Optional]</p>
postCode	<p>code defining the postal zone  - base type: string, max length: 10,  (XPath: <a href="#">GARStockStat/GSOheader/supplier/postCode</a>) 0-1  (XPath: <a href="#">GARStockStat/GSOheader/buyer/postCode</a>) 0-1</p>
price	<p>unit price of the article, object or service specified  - base type: decimal, min inclusive: 0, fraction digits: 2,  (XPath: <a href="#">GARStockStat/GSSbody/GSSitem/price</a>) 0-1</p>
@priceQualifier	<p>type of price with reference to discount and taxes  - base type: string, cod. table: NT20,  (XPath: <a href="#">GARStockStat/GSSbody/GSSitem/price/@priceQualifier</a>) [Optional]  [Default= NET]</p>
qty	<p>net quantity of the article or object correlated, qualified by the function of the document (ordering, delivering, ...) and by the context  - base type: decimal, min inclusive: 0, fraction digits: 2,  (XPath: <a href="#">GARStockStat/GSSbody/GSSitem/qty</a>) 0-1  (XPath: <a href="#">GARStockStat/GSSbody/GSSitem/csRange/sizeMatrix/sizeRow/qty</a>) 0-1</p>
season	<p>sale season; defined as: season (1 crt) + year (4 crt) - season: S/S=1 A/W=2 Spring=3 Summer=4 Autumn=5 Winter=6: for more than four seasons use alphabetic sequence: 1st season=A 2nd season=B etc.etc.  - base type: string, max length: 15,  (XPath: <a href="#">GARStockStat/GSSbody/GSSitem/refDoc/season</a>) 0-1  - note: <i>here indicates the season to which the referenced document belongs</i>  (XPath: <a href="#">GARStockStat/GSSbody/GSSitem/garmentCategory/season</a>) 0-1  (XPath: <a href="#">GARStockStat/GSOheader/refDoc/season</a>) 0-1  - note: <i>here indicates the season to which the referenced document belongs</i></p>
@sender	<p>qualifier that specifies the Party issuing of the document  - base type: boolean,</p>

	<p>(XPath: GARStockStat/GSOheader/buyer/@sender) [Optional]  - nota: This attribute is mandatory when the STYLESHEET must be produced</p> <p>(XPath: GARStockStat/GSOheader/supplier/@sender) [Optional]  - nota: This attribute is mandatory when the STYLESHEET must be produced</p>
size	<p>size number of a garment product (kintwear/clothing)  - base type: string, max length: 15,  (XPath: GARStockStat/GSSbody/GSSitem/csRange/sizeMatrix/sizeRow/size) 1-1  (XPath: GARStockStat/GSSbody/GSSitem/garmentCode/garmentCodeB/size) 0-1</p>
@sizeSystemBase	<p>base of the size system  - base type: string, cod. table: T423,  (XPath: GARStockStat/GSSbody/GSSitem/csRange/@sizeSystemBase) [Optional]</p>
@sizeSystemNat	<p>nation or agency identifying the size system  - base type: string, cod. table: T421,  (XPath: GARStockStat/GSSbody/GSSitem/csRange/@sizeSystemNat) [Optional]</p>
@sizeSystemSeg	<p>market segment identifying the size system  - base type: string, cod. table: T422,  (XPath: GARStockStat/GSSbody/GSSitem/csRange/@sizeSystemSeg) [Optional]</p>
street	<p>street and building number identifying a location  - base type: string, max length: 80,  (XPath: GARStockStat/GSOheader/supplier/street) 0-1  (XPath: GARStockStat/GSOheader/buyer/street) 0-1</p>
subCountry	<p>short name or code of the sub-country entity  - base type: string, max length: 9,  (XPath: GARStockStat/GSSbody/GSSitem/stockAddress/subCountry) 1-1  (XPath: GARStockStat/GSOheader/buyer/subCountry) 0-1  (XPath: GARStockStat/GSOheader/supplier/subCountry) 0-1</p>
tradeMark	<p>name of the official trademark of a specified product  - base type: string, max length: 50,  (XPath: GARStockStat/GSSbody/GSSitem/tradeMark) 0-1</p>
@um	<p>specification of the unit of measure  - base type: string, cod. table: NT7,  (XPath: GARStockStat/GSSbody/GSSitem/qty/@um) [Required]  (XPath: GARStockStat/GSSbody/GSSitem/price/@um) [Optional]  (XPath: GARStockStat/GSSbody/GSSitem/csRange/sizeMatrix/sizeRow/qty/@um) [Required]</p>
@VAT	<p>VAT rate or code  - base type: string, cod. table: NT16,  (XPath: GARStockStat/GSSbody/GSSitem/lineN/@VAT) [Optional]</p>

## 2.3 Enumeration tables

List of enumeration tables used in the XML document. You can find the corresponding codes (only for tables with less than 100 values) in the document `Decoding_Values.pdf`, available at: <http://www.moda-ml.org/moda-ml/repository/guide/v2011-1/>; moreover, all the enumeration tables are available at: <http://www.moda-ml.org/imple/show-codes.asp>.

NT16 - VAT rate or code  
NT18 - message function  
NT20 - price qualifier  
NT29 - format of a date  
NT35 - stock offer status  
NT36 - stock offer status reason  
NT6 - Coding system owner/issuer  
NT7 - Unity of measure  
T10 - ISO3166 - Country  
T21 - type of document  
T421 - size system: nationality  
T422 - size system: market segment  
T423 - size system: base  
T44 - additional code type

# Annex A

Representative images of the principal complex elements' structure.

