



<http://www.moda-ml.org>

IMPLEMENTATION GUIDE TRANSACTION "TEXTILE QUALITY REPORT"

Version: 2013-1

Date of release: 18/11/2011

Document code: G007

XML Schema repository:<http://www.moda-ml.org/moda-ml/repository/schema/v2013-1/default.asp>

Guides repository:<http://www.moda-ml.org/moda-ml/repository/guide/v2013-1/default.asp>

Guide filename: G007-MODA-ML-TextileQualityReport.pdf

1. BUSINESS DESCRIPTION

1.1 Scope

The present guide has been issued to assist the companies of the Textile-Clothing sector in the implementation of the standard XML document type "Textile QUALITY REPORT", providing all the instructions required for its use in any context of e-commerce between Apparel Producers and Fabric Producers.

All the rules required for the construction and validation of the document are embedded into the specific XML-Schema, which is detailed in section "Implementation guide".

1.2 Generalities

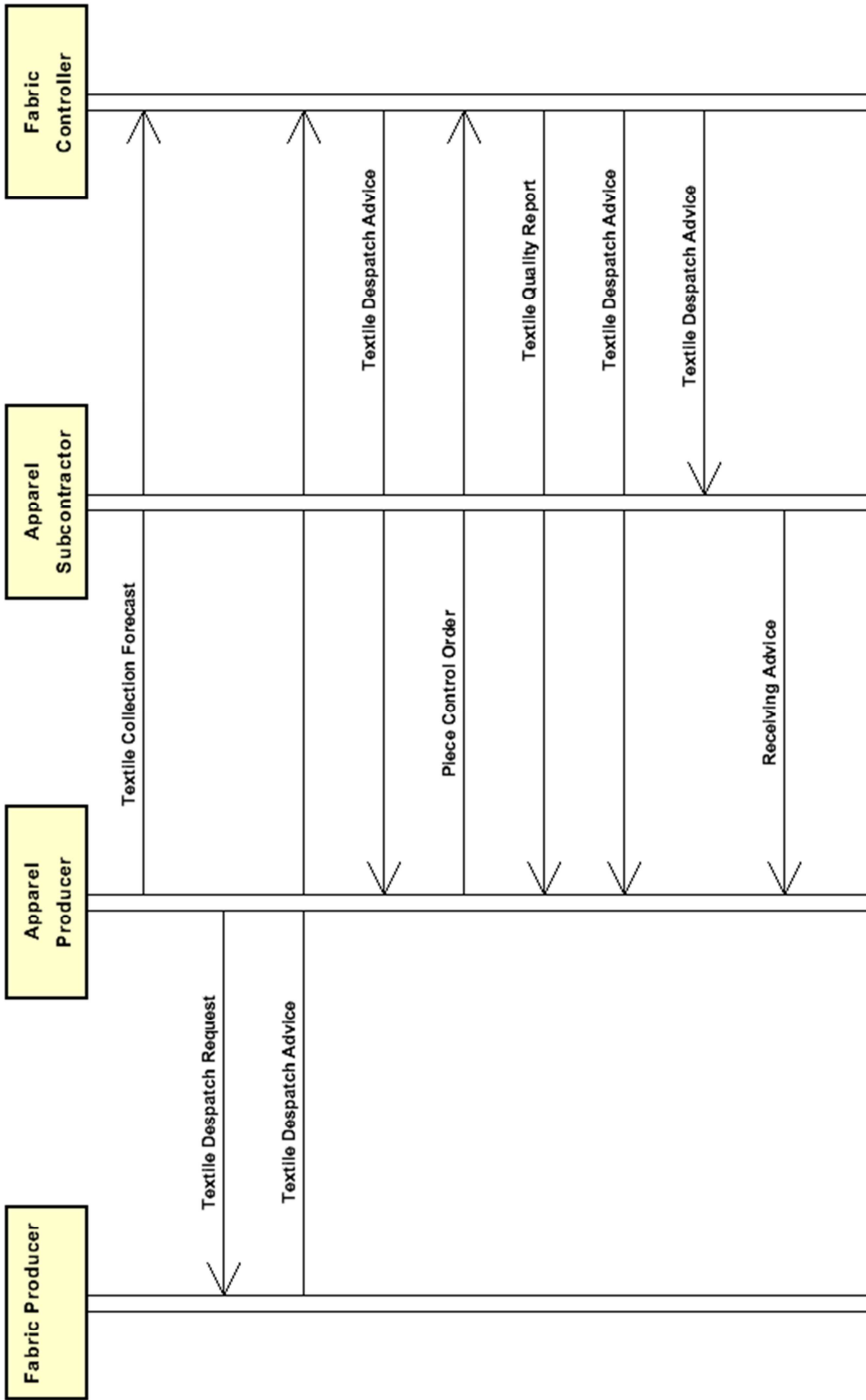
The message is issued either by the Fabric Producer and/or by the Fabric Quality Controller as "quality certificate" of the fabric piece, mainly to anticipate the details on the existence, position and classification of faults in order to accelerate and improve the following apparel manufacturing.

Each document refers either to one piece of fabric, identified by its id. number (TQ type ="S"ingle) or to several pieces belonging to the same shipment (TQ type="M"ultiple) and likewise identified.

The following classes of data can be reported in the document:

- physical dimensions and overall allowance
- fabric faults and their positions
- test value of conformance to specifications and taylorability
- the reporting of the inspection.

1.3. Possible scenario



2. IMPLEMENTATION GUIDE

2.1 General structure of XML document

All the business data that can be exchanged through this class of documents are shown in the following "document structure", that provides a simplified vision of the Schema.

In particular:

- the two numbers following each element define its "cardinality" (minimum and maximum number of occurrences); the minimum equal zero indicates that the element is optional, the minimum greater than zero indicates that is mandatory;
- the bold character denotes the complex elements (aggregates of simple elements) that were built for the sake of functionality and re-usability of some complex informations sets. The child elements in each parent element are easily spotted as "indented";
- the symbol "@" denotes an attribute of the preceding element; here "the usage indicator (optional, required, ...)" is shown in square brackets.

Structure

TEXQualityRpt

@TQtype [Optional]

@msgfunction [Optional] [Default= OR]

@version [Optional] [Default= 2013-1]

@useProfile [Optional]

| **TQheader 1-1**

| | msgN 1-1

| | - choose -

| | | msgID 0-1

| | - or -

| | | docID 0-1

| | | *@numberingOrg [Optional]*

| | - end choose -

| | msgDate 1-1

| | *@dateForm [Optional]*

| | **buyer 1-1**

| | | *@logo [Optional]*

| | | *@sender [Optional]*

| | | | id 1-1

| | | | *@numberingOrg [Optional]*

| | | | legalName 0-1

| | | | dept 0-1

| | | | person 0-1

| | | | *@email [Optional]*

| | | | *@phone [Optional]*

| | | | *@fax [Optional]*

| | | | street 0-1

| | | | city 0-1

| | | | subCountry 0-1

| | | | country 0-1

| | | | postCode 0-1

| | | **supplier 1-1**

| | | | *@logo [Optional]*

| | | | *@sender [Optional]*

| | | | | id 1-1

| | | | | *@numberingOrg [Optional]*

| | | | | legalName 0-1

| | | | | dept 0-1

| | | | | person 0-1

- | | | @email [Optional]
- | | | @phone [Optional]
- | | | @fax [Optional]
- | | | street 0-1
- | | | city 0-1
- | | | subCountry 0-1
- | | | country 0-1
- | | | postCode 0-1
- | | **thirdParty 0-5**
- | | | @VAT [Optional]
- | | | @role [Required]
- | | | @sender [Optional]
- | | | id 1-1
- | | | | @numberingOrg [Optional]
- | | | | legalName 0-1
- | | | | dept 0-1
- | | | | person 0-1
- | | | | | @email [Optional]
- | | | | | @phone [Optional]
- | | | | | @fax [Optional]
- | | | | | street 0-1
- | | | | | city 0-1
- | | | | | subCountry 0-1
- | | | | | country 0-1
- | | | | | postCode 0-1
- | | | note 0-19
- | | | @numberingOrg [Optional]
- | | | @codeList [Optional]
- | | | @noteLabel [Optional]

TQbody 1-1

- | | **TQitem 1-unbounded**
- | | | serialN 1-3
- | | | | @numberingOrg [Optional]
- | | | **texCode 0-2**
- | | | | @numberingOrg [Optional]
- | | | | | art 1-1
- | | | | | | @numberingOrg [Optional]
- | | | | | | @codeList [Optional]
- | | | | | | @listName [Optional]
- | | | | | | @listVersion [Optional]
- | | | | | pattern 0-1
- | | | | | | @numberingOrg [Optional]
- | | | | | | @codeList [Optional]
- | | | | | | @listName [Optional]
- | | | | | | @listVersion [Optional]
- | | | | | color 0-1
- | | | | | | @numberingOrg [Optional]
- | | | | | | @codeList [Optional]
- | | | | | | @listName [Optional]
- | | | | | | @listVersion [Optional]
- | | | | | added 0-9
- | | | | | | @numberingOrg [Optional]
- | | | | | | @addType [Optional]
- | | | | | description 0-1
- | | | **refDoc 0-1**
- | | | | @docType [Required]
- | | | | | docID 1-2
- | | | | | | @numberingOrg [Optional]
- | | | | | docDate 0-1
- | | | | | | @dateForm [Optional]

```

| | | | season 0-1
| | | | itemID 0-1
| | | | testDate 0-1
| | | | @dateForm [Optional]
| | | | lotN 0-1
| | | | @numberingOrg [Optional]
| | | | dyeN 0-1
| | | | @numberingOrg [Optional]
| | | | mixMatch 0-1
| | | | @numberingOrg [Optional]
| | | | pieceMeasures 1-3
| | | | @source [Required]
| | | | | pieceLength 0-1
| | | | | @um [Optional] [Default= MTR]
| | | | | pieceWeight 0-1
| | | | | @um [Optional] [Default= KGM]
| | | | | pieceCutWidth 0-1
| | | | | @um [Optional] [Default= CMT]
| | | | | pieceWeightM 0-1
| | | | | @um [Optional] [Default= GRM]
| | | | | pieceWidth 0-1
| | | | | @um [Optional] [Default= CMT]
| | | | | pieceAllow 0-1
| | | | | @um [Required]
| | | | | pieceAllowMea 0-2
| | | | | @source [Required]
| | | | | | pieceAllowM 0-1
| | | | | | @um [Required]
| | | | | | pieceAllowF 0-1
| | | | | | @um [Required]
| | | | | | pieceAllow 1-1
| | | | | | @um [Required]
| | | | | pieceMap 1-2
| | | | | @source [Required]
| | | | | | totFault 1-1
| | | | | | pieceFault 0-99
| | | | | | @faultRank [Required]
| | | | | | @faultShape [Optional]
| | | | | - choose -
| | | | | | fabricFaultText 1-1
| | | | | - or -
| | | | | | fabricFault 1-1
| | | | | - end choose -
| | | | | | warpStart 1-1
| | | | | | @um [Optional] [Default= MTR]
| | | | | | warpEnd 0-1
| | | | | | @um [Optional] [Default= MTR]
| | | | | | weftStart 0-1
| | | | | | @um [Optional] [Default= CMT]
| | | | | | weftEnd 0-1
| | | | | | @um [Optional] [Default= CMT]
| | | | | | pieceAllow 0-1
| | | | | | @um [Required]
| | | | | | note 0-19
| | | | | | @numberingOrg [Optional]
| | | | | | @codeList [Optional]
| | | | | | @noteLabel [Optional]
| | | | | pieceTestRpt 0-2
| | | | | @source [Required]
| | | | | | fabricTest 1-99
| | | | | - choose -

```

```

| | | | fabricChar 1-1
| | | | - or -
| | | | fabricCharText 1-1
| | | | - end choose -
| | | | experimValue 0-9
| | | | | @um [Optional]
| | | | | @method [Optional]
| | | | | @application [Optional]
| | | | | @idCO [Optional]
| | | | | comply 0-1
| | | | | note 0-19
| | | | | @numberingOrg [Optional]
| | | | | @codeList [Optional]
| | | | | @noteLabel [Optional]
| | | | | fabricTaylorability 0-99
| | | | | taylorabilityChar 1-1
| | | | | experimValue 0-9
| | | | | | @um [Optional]
| | | | | | @method [Optional]
| | | | | | @application [Optional]
| | | | | | @idCO [Optional]
| | | | | | comply 0-1
| | | | | | note 0-19
| | | | | | @numberingOrg [Optional]
| | | | | | @codeList [Optional]
| | | | | | @noteLabel [Optional]
| | | | | pieceControlRpt 1-1
| | | | | pieceControl 0-1
| | | | | | @numberingOrg [Optional]
| | | | | | pieceStatus 0-1
| | | | | | registrationDate 0-1
| | | | | | | @dateForm [Optional]
| | | | | | | preexaminationDate 0-1
| | | | | | | | @dateForm [Optional]
| | | | | | | inspectionDate 0-1
| | | | | | | | @dateForm [Optional]
| | | | | | | rollUpDate 0-1
| | | | | | | | @dateForm [Optional]

```

2.2 Detailed description of document elements

Following tables show all elements (complex and simple) used in this document. Description includes: 1) element's information: xml tag, name, brief description, data type and syntax constraints; 2) information about use of the element in a particular position in the document: xpath and possible associated notes.

2.2.1 Complex elements (Aggregate Business Information Entities)

Complex elements are those elements whose content is composed of other elements (childs).Complex elements are alphabetically ordered.

| | |
|----------------------------|---|
| buyer | details of the Buyer - base type: Nad, (XPath: TEXQualityRpt/TQheader/buyer) 1-1 |
| fabricTaylorability | taylorability data. Include the type and the value of the taylorability parameter (XPath: TEXQualityRpt/TQbody/TQitem/pieceTestRpt/fabricTaylorability) 0-99 |
| fabricTest | details of the test performed on a fabric. Include the parameter evaluated, the experimental value (one or more) and the declaration of conformity (XPath: TEXQualityRpt/TQbody/TQitem/pieceTestRpt/fabricTest) 1-99 |
| pieceAllowMea | allowance measure for a fabric piece (XPath: TEXQualityRpt/TQbody/TQitem/pieceAllowMea) 0-2 |
| pieceControlRpt | report of the control operations executed on a fabric piece (XPath: TEXQualityRpt/TQbody/TQitem/pieceControlRpt) 1-1 |
| pieceFault | classification, position and allowance of the piece faults. The reference point (0,0) for the position is the lower left corner of the piece (selvedge excluded) (XPath: TEXQualityRpt/TQbody/TQitem/pieceMap/pieceFault) 0-99 |
| pieceMap | mapping of the piece faults: type, rank and location (XPath: TEXQualityRpt/TQbody/TQitem/pieceMap) 1-2 - note: <i>this data group can be iterated to compare the values provided by the Supplier with the values obtained by the external Quality Controller</i> |
| pieceMeasures | basic measurements of the piece; include width, length, weight and allowance. (XPath: TEXQualityRpt/TQbody/TQitem/pieceMeasures) 1-3 - note: <i>this data group can be iterated to compare the values provided by the Supplier with the values obtained by the external Quality Controller</i> |
| pieceTestRpt | details of the quality test performed on the piece. Includes two sections: test upon the technical characteristics of fabric in general and the taylorability test (XPath: TEXQualityRpt/TQbody/TQitem/pieceTestRpt) 0-2 - note: <i>this data group can be iterated to compare the values provided by the Supplier with the values obtained by the external Quality Controller</i> |
| refDoc | identification of a document and of an item thereof, to which |

| | |
|-------------------|--|
| | the message makes reference (XPath: TEXQualityRpt/TQbody/TQitem/refDoc) 0-1 - note: here the number of the Despatch Advise of the piece can be specified |
| supplier | details of the Supplier - base type: Nad, (XPath: TEXQualityRpt/TQheader/supplier) 1-1 |
| texCode | full codification of the textile product (XPath: TEXQualityRpt/TQbody/TQitem/texCode) 0-2 |
| thirdParty | details of the Third Party, different from Buyer or Supplier - base type: Nad, (XPath: TEXQualityRpt/TQheader/thirdParty) 0-5 - note: in this case the only permitted third Party is the Controller (role="CO") |
| TQbody | body of the document TEXTILES QUALITY REPORT. It contains one TQitem element for each textile quality report. (XPath: TEXQualityRpt/TQbody) 1-1 - note: In multiple reports (TQtype="M") this section must contain more than one TQitem. |
| TQheader | header of the TEXTILES QUALITY REPORT. (XPath: TEXQualityRpt/TQheader) 1-1 - note: In the document issued by the Controller (sent to Client and Supplier) the Controller must identify as "third party". the attribute "logo" should be used only in conjunction with Supplier or Quality Controller. |
| TQitem | line item of the document TEXTILES QUALITY REPORT. It includes 5 sections: identification data-measurements-faults map- test results-inspection report (XPath: TEXQualityRpt/TQbody/TQitem) 1-unbounded |

2.2.2 Simple elements (Basic Business Information Entities)

Simple elements are those elements whose content is characterized by a data type plus a domain of possible values. Simple elements are alphabetically ordered.

| | |
|---------------------|--|
| added | additional code of the product (complementing the formers) - base type: string, max length: 15, (XPath: TEXQualityRpt/TQbody/TQitem/texCode/added) 0-9 - note: here an additional codification (see table T44) can be specified |
| @addType | qualifier of the additional coding of a product - base type: string, cod. table: T44 http://www.moda-ml.net/moda-ml/repository/codelist/v2013-1/gc_T44.xml (XPath: TEXQualityRpt/TQbody/TQitem/texCode/added/@addType) [Optional] |
| @application | force or similar condition (e.g. no. of revolutions) applied in a test as specified within the standard - base type: string, max length: 15, (XPath: TEXQualityRpt/TQbody/TQitem/pieceTestRpt/fabricTest/experimValue/@application) [Optional] (XPath: TEXQualityRpt/TQbody/TQitem/pieceTestRpt/fabricTaylorability/experimValue/@application) [Optional] |
| art | article number of the product |

| | |
|-----------|---|
| | <ul style="list-style-type: none"> - base type: string, max length: 25, (XPath: TEXQualityRpt/TQbody/TQitem/texCode/art) 1-1 - note: <i>can be used either for the base-article (excluding pattern/colour) or for the SKU</i> |
| city | <ul style="list-style-type: none"> name of the city (town, village) - base type: string, max length: 40, (XPath: TEXQualityRpt/TQheader/supplier/city) 0-1 (XPath: TEXQualityRpt/TQheader/thirdParty/city) 0-1 (XPath: TEXQualityRpt/TQheader/buyer/city) 0-1 |
| @codeList | <ul style="list-style-type: none"> it specifies the URL where the list of codes used to make an instance of the element can be found - base type: string, max length: 255, (XPath: TEXQualityRpt/TQbody/TQitem/texCode/art/@codeList) [Optional] - nota: <i>this attribute should be ALTERNATIVE to the others</i> (XPath: TEXQualityRpt/TQbody/TQitem/texCode/pattern/@codeList) [Optional] - nota: <i>this attribute should be ALTERNATIVE to the others</i> (XPath: TEXQualityRpt/TQbody/TQitem/texCode/color/@codeList) [Optional] - nota: <i>this attribute should be ALTERNATIVE to the others</i> (XPath: TEXQualityRpt/TQbody/TQitem/pieceTestRpt/fabricTest/note/@codeList) [Optional] - nota: <i>must be used to provide (URL) the list of codes used in "noteLabel"</i> (XPath: TEXQualityRpt/TQbody/TQitem/pieceTestRpt/fabricTaylorability/note/@codeList) [Optional] - nota: <i>must be used to provide (URL) the list of codes used in "noteLabel"</i> (XPath: TEXQualityRpt/TQheader/note/@codeList) [Optional] - nota: <i>must be used to provide (URL) the list of codes used in "noteLabel"</i> (XPath: TEXQualityRpt/TQbody/TQitem/pieceMap/pieceFault/note/@codeList) [Optional] - nota: <i>must be used to provide (URL) the list of codes used in "noteLabel"</i> |
| color | <ul style="list-style-type: none"> colour number of the product, when not included in the model or fabric code - base type: string, max length: 15, (XPath: TEXQualityRpt/TQbody/TQitem/texCode/color) 0-1 |
| comply | <ul style="list-style-type: none"> specifies if the experimental value complies with the standard requirement (target value) - base type: boolean, (XPath: TEXQualityRpt/TQbody/TQitem/pieceTestRpt/fabricTaylorability/comply) 0-1 (XPath: TEXQualityRpt/TQbody/TQitem/pieceTestRpt/fabricTest/comply) 0-1 |
| country | <ul style="list-style-type: none"> code of the nation - base type: string, cod. table: T10 http://www.moda-ml.net/moda-ml/repository/codelist/v2013-1/gc_T10.xml (XPath: TEXQualityRpt/TQheader/thirdParty/country) 0-1 (XPath: TEXQualityRpt/TQheader/supplier/country) 0-1 (XPath: TEXQualityRpt/TQheader/buyer/country) 0-1 |
| @dateForm | <ul style="list-style-type: none"> format used for the date - base type: string, cod. table: NT29 http://www.moda-ml.net/moda-ml/repository/codelist/v2013-1/gc_NT29.xml (XPath: TEXQualityRpt/TQbody/TQitem/pieceControlRpt/registrationDate/@dateForm) [Optional] (XPath: TEXQualityRpt/TQheader/msgDate/@dateForm) [Optional] |

| | |
|--------------|--|
| | <p>(XPath: TEXQualityRpt/TQbody/TQitem/pieceControlRpt/preexaminationDate/@dateForm) [Optional]</p> <p>(XPath: TEXQualityRpt/TQbody/TQitem/pieceControlRpt/rollUpDate/@dateForm) [Optional]</p> <p>(XPath: TEXQualityRpt/TQbody/TQitem/pieceControlRpt/inspectionDate/@dateForm) [Optional]</p> <p>(XPath: TEXQualityRpt/TQbody/TQitem/refDoc/docDate/@dateForm) [Optional]</p> <p>(XPath: TEXQualityRpt/TQbody/TQitem/testDate/@dateForm) [Optional]</p> |
| dept | <p>name or code of a contact department within a Party</p> <p>- base type: string, max length: 40,</p> <p>(XPath: TEXQualityRpt/TQheader/supplier/dept) 0-1</p> <p>(XPath: TEXQualityRpt/TQheader/thirdParty/dept) 0-1</p> <p>(XPath: TEXQualityRpt/TQheader/buyer/dept) 0-1</p> |
| description | <p>free text description of a product</p> <p>- base type: string, max length: 70,</p> <p>(XPath: TEXQualityRpt/TQbody/TQitem/texCode/description) 0-1</p> |
| docDate | <p>date of issue of the referenced document, according to one of the patterns YYYY-MM-DD, YYYY-MM-DD:HH-MM or YYYY-WW.</p> <p>- base type: string,</p> <p>(XPath: TEXQualityRpt/TQbody/TQitem/refDoc/docDate) 0-1</p> |
| docID | <p>identification number of the referenced document SINCE 2008-1 ITS USE IN THE HEADER IS DISCOURAGED (REPLACED BY msgID)</p> <p>- base type: string, max length: 80,</p> <p>(XPath: TEXQualityRpt/TQbody/TQitem/refDoc/docID) 1-2</p> <p>(XPath: TEXQualityRpt/TQheader/docID) 0-1</p> |
| @docType | <p>type or class to which the referenced document belongs</p> <p>- base type: string, cod. table: T21</p> <p>http://www.moda-ml.net/moda-ml/repository/codelist/v2013-1/gc_T21.xml</p> <p>(XPath: TEXQualityRpt/TQbody/TQitem/refDoc/@docType) [Required]</p> |
| dyeN | <p>number of the dying batch of a textile product</p> <p>- base type: string, max length: 15,</p> <p>(XPath: TEXQualityRpt/TQbody/TQitem/dyeN) 0-1</p> |
| @email | <p>electronic mail address of the contact person within a Party</p> <p>- base type: string, max length: 80,</p> <p>(XPath: TEXQualityRpt/TQheader/buyer/person/@email) [Optional]</p> <p>(XPath: TEXQualityRpt/TQheader/supplier/person/@email) [Optional]</p> <p>(XPath: TEXQualityRpt/TQheader/thirdParty/person/@email) [Optional]</p> |
| experimValue | <p>experimental value of the measurement</p> <p>- base type: decimal,</p> <p>(XPath: TEXQualityRpt/TQbody/TQitem/pieceTestRpt/fabricTaylorability/experimValue) 0-9</p> <p>- note: <i>in the case of FAST test the attributes "meth" and "applic" should not be used</i></p> <p>(XPath: TEXQualityRpt/TQbody/TQitem/pieceTestRpt/fabricTest/experimValue) 0-9</p> <p>- note: <i>this data can be iterated to provide repeated instances of the same test</i></p> |
| fabricChar | <p>code of the physical or mechanical parameter used to define a "technical characteristic of the fabric" (see Fabric technical sheet)</p> <p>- base type: string, cod. table: T13</p> |

| | |
|-----------------|---|
| | <p>http://www.moda-ml.net/moda-ml/repository/codelist/v2013-1/gc_T13.xml (XPath: TEXQualityRpt/TQbody/TQitem/pieceTestRpt/fabricTest/fabricChar) 1-1 - note: <i>here the MODA-ML codelist must be used.</i></p> |
| fabricCharText | <p>free text describing the physical or mechanical parameter used to define a "technical characteristic of the fabric" - base type: string, max length: 40, (XPath: TEXQualityRpt/TQbody/TQitem/pieceTestRpt/fabricTest/fabricCharText) 1-1 - note: <i>here the text or the proprietary code mutually agreed must be used</i></p> |
| fabricFault | <p>code specifying the type or class of fabric fault - base type: string, cod. table: T12 http://www.moda-ml.net/moda-ml/repository/codelist/v2013-1/gc_T12.xml (XPath: TEXQualityRpt/TQbody/TQitem/pieceMap/pieceFault/fabricFault) 1-1 - note: <i>here the MODA-ML codelist must be used.</i></p> |
| fabricFaultText | <p>free text describing the type or class of the fabric fault - base type: string, max length: 40, (XPath: TEXQualityRpt/TQbody/TQitem/pieceMap/pieceFault/fabricFaultText) 1-1 - note: <i>here the text or proprietary code mutually agreed must be used</i></p> |
| @faultRank | <p>ranking class of the fabric fault - base type: string, cod. table: NT13 http://www.moda-ml.net/moda-ml/repository/codelist/v2013-1/gc_NT13.xml (XPath: TEXQualityRpt/TQbody/TQitem/pieceMap/pieceFault/@faultRank) [Required]</p> |
| @faultShape | <p>shape classification of the fabric fault - base type: string, cod. table: NT14 http://www.moda-ml.net/moda-ml/repository/codelist/v2013-1/gc_NT14.xml (XPath: TEXQualityRpt/TQbody/TQitem/pieceMap/pieceFault/@faultShape) [Optional]</p> |
| @fax | <p>fax number of the contact person within a Party - base type: string, max length: 35, (XPath: TEXQualityRpt/TQheader/buyer/person/@fax) [Optional] (XPath: TEXQualityRpt/TQheader/supplier/person/@fax) [Optional] (XPath: TEXQualityRpt/TQheader/thirdParty/person/@fax) [Optional]</p> |
| id | <p>primary identification code of a Party; it is recommended the format: nation code (ISO 3166) + VAT identification number (11 crt), with the qualifier "numberingOrg"= MF - base type: string, max length: 15, (XPath: TEXQualityRpt/TQheader/supplier/id) 1-1 (XPath: TEXQualityRpt/TQheader/thirdParty/id) 1-1 (XPath: TEXQualityRpt/TQheader/buyer/id) 1-1</p> |
| @idCO | <p>primary identification code of the Party executing the test; it is recommended the format: nation code (ISO 3166) + VAT identification number (11 crt). - base type: string, max length: 15, (XPath: TEXQualityRpt/TQbody/TQitem/pieceTestRpt/fabricTest/experimValue/@idCO) [Optional] (XPath: TEXQualityRpt/TQbody/TQitem/pieceTestRpt/fabricTaylorability/experimValue/@idCO) [Optional]</p> |
| inspectionDate | <p>date of inspection (normally of a fabric piece), according to one of the patterns YYYY-MM-DD, YYYY-MM-DD:HH-MM or</p> |

| | |
|--------------|---|
| | <p>YYYY-WW. - base type: string, (XPath: TEXQualityRpt/TQbody/TQitem/pieceControlRpt/inspectionDate) 0-1</p> |
| itemID | <p>number of the line/item of the referenced document - base type: string, max length: 6, (XPath: TEXQualityRpt/TQbody/TQitem/refDoc/itemID) 0-1</p> |
| legalName | <p>legal name of a Party - base type: string, max length: 80, (XPath: TEXQualityRpt/TQheader/supplier/legalName) 0-1 (XPath: TEXQualityRpt/TQheader/thirdParty/legalName) 0-1 (XPath: TEXQualityRpt/TQheader/buyer/legalName) 0-1</p> |
| @listName | <p>it specifies the name of the list of codes used to make an instance of the element - base type: string, max length: 40, (XPath: TEXQualityRpt/TQbody/TQitem/texCode/color/@listName) [Optional] - nota: <i>this attribute should always be used coupled with "numberingOrg"</i> (XPath: TEXQualityRpt/TQbody/TQitem/texCode/pattern/@listName) [Optional] - nota: <i>this attribute should always be used coupled with "numberingOrg"</i> (XPath: TEXQualityRpt/TQbody/TQitem/texCode/art/@listName) [Optional] - nota: <i>this attribute should always be used coupled with "numberingOrg"</i></p> |
| @listVersion | <p>it specifies the version of the list of codes used to make an instance of the element - base type: string, max length: 6, (XPath: TEXQualityRpt/TQbody/TQitem/texCode/color/@listVersion) [Optional] - nota: <i>this attribute should always be used coupled with "numberingOrg" and "listName"</i> (XPath: TEXQualityRpt/TQbody/TQitem/texCode/art/@listVersion) [Optional] - nota: <i>this attribute should always be used coupled with "numberingOrg" and "listName"</i> (XPath: TEXQualityRpt/TQbody/TQitem/texCode/pattern/@listVersion) [Optional] - nota: <i>this attribute should always be used coupled with "numberingOrg" and "listName"</i></p> |
| @logo | <p>company logo (URL of the image jpeg or gif). It is recommended that the width of the image does not exceed 640 pixel. - base type: string, max length: 255, (XPath: TEXQualityRpt/TQheader/buyer/@logo) [Optional] (XPath: TEXQualityRpt/TQheader/supplier/@logo) [Optional]</p> |
| lotN | <p>lot number of a product or batch number of the raw material - base type: string, max length: 15, (XPath: TEXQualityRpt/TQbody/TQitem/lotN) 0-1</p> |
| @method | <p>standard protocol or method employed in a test to evaluate a characteristic or a parameter - base type: string, max length: 25, (XPath: TEXQualityRpt/TQbody/TQitem/pieceTestRpt/fabricTaylorability/experimValue/@method) [Optional] - nota: <i>we recommend the specification of the method of</i></p> |

| | |
|---------------|--|
| | <p><i>measure only when different from the one of the MODA-ML coding system</i></p> <p>(XPath: TEXQualityRpt/TQbody/TQitem/pieceTestRpt/fabricTest/experim/Value/@method) [Optional]</p> <p>- nota: <i>we recommend the specification of the method of measure only when different from the one of the MODA-ML coding system</i></p> |
| mixMatch | <p>colour hue used for the match of garments</p> <p>- base type: string, max length: 15,</p> <p>(XPath: TEXQualityRpt/TQbody/TQitem/mixMatch) 0-1</p> |
| msgDate | <p>date of issue of the present message (xml document), according to one of the patterns YYYY-MM-DD, YYYY-MM-DD:HH-MM or YYYY-WW.</p> <p>- base type: string,</p> <p>(XPath: TEXQualityRpt/TQheader/msgDate) 1-1</p> |
| @msgfunction | <p>function performed by the present message with regards to the transmission</p> <p>- base type: string, cod. table: NT18</p> <p>http://www.moda-ml.net/moda-ml/repository/codelist/v2013-1/gc_NT18.xml</p> <p>(XPath: TEXQualityRpt/@msgfunction) [Optional] [Default= OR]</p> |
| msgID | <p>key identifier of the document in the information system of the issuing Party</p> <p>- base type: string, max length: 35,</p> <p>(XPath: TEXQualityRpt/TQheader/msgID) 0-1</p> |
| msgN | <p>identification number given to the message (xml document) by its issuer</p> <p>- base type: string, max length: 35,</p> <p>(XPath: TEXQualityRpt/TQheader/msgN) 1-1</p> |
| note | <p>free text or structured (computer processing) note. For note structuring use the attributes "noteLabel" and "codelist"</p> <p>- base type: string, max length: 350,</p> <p>(XPath: TEXQualityRpt/TQheader/note) 0-19</p> <p>(XPath: TEXQualityRpt/TQbody/TQitem/pieceTestRpt/fabricTaylorability/note) 0-19</p> <p>(XPath: TEXQualityRpt/TQbody/TQitem/pieceMap/pieceFault/note) 0-19</p> <p>(XPath: TEXQualityRpt/TQbody/TQitem/pieceTestRpt/fabricTest/note) 0-19</p> |
| @noteLabel | <p>subject qualifier of a note</p> <p>- base type: string, max length: 35,</p> <p>(XPath: TEXQualityRpt/TQbody/TQitem/pieceMap/pieceFault/note/@noteLabel) [Optional]</p> <p>- nota: <i>must be used to qualify the subject of the note</i></p> <p>(XPath: TEXQualityRpt/TQbody/TQitem/pieceTestRpt/fabricTest/note/@noteLabel) [Optional]</p> <p>- nota: <i>must be used to qualify the subject of the note</i></p> <p>(XPath: TEXQualityRpt/TQheader/note/@noteLabel) [Optional]</p> <p>- nota: <i>must be used to qualify the subject of the note</i></p> <p>(XPath: TEXQualityRpt/TQbody/TQitem/pieceTestRpt/fabricTaylorability/note/@noteLabel) [Optional]</p> <p>- nota: <i>must be used to qualify the subject of the note</i></p> |
| @numberingOrg | <p>code specifying the organisation who has created or owns the coding or numbering system</p> <p>- base type: string, cod. table: NT6</p> <p>http://www.moda-ml.net/moda-ml/repository/codelist/v2013-1/gc_NT6.xml</p> <p>(XPath: TEXQualityRpt/TQbody/TQitem/pieceMap/pieceFault/note/@numberingOrg) [Optional]</p> |

| | |
|---------|---|
| | <p>(XPath: TEXQualityRpt/TQbody/TQitem/pieceTestRpt/fabricTaylorability/note/@numberingOrg) [Optional]</p> <p>(XPath: TEXQualityRpt/TQbody/TQitem/pieceControlRpt/pieceControl/@numberingOrg) [Optional]</p> <p>(XPath: TEXQualityRpt/TQheader/docID/@numberingOrg) [Optional]</p> <p>- nota: <i>here can be specified whose document numbering is used (e.g.: Client, Supplier, ..)</i></p> <p>(XPath: TEXQualityRpt/TQbody/TQitem/pieceTestRpt/fabricTest/note/@numberingOrg) [Optional]</p> <p>(XPath: TEXQualityRpt/TQbody/TQitem/texCode/color/@numberingOrg) [Optional]</p> <p>- nota: <i>this attribute should be used either single or coupled with "listName" and "listVersion"</i></p> <p>(XPath: TEXQualityRpt/TQheader/supplier/id/@numberingOrg) [Optional]</p> <p>(XPath: TEXQualityRpt/TQbody/TQitem/texCode/added/@numberingOrg) [Optional]</p> <p>(XPath: TEXQualityRpt/TQheader/note/@numberingOrg) [Optional]</p> <p>(XPath: TEXQualityRpt/TQbody/TQitem/texCode/@numberingOrg) [Optional]</p> <p>(XPath: TEXQualityRpt/TQbody/TQitem/texCode/art/@numberingOrg) [Optional]</p> <p>- nota: <i>this attribute should be used either single or coupled with "listName" and "listVersion"</i></p> <p>(XPath: TEXQualityRpt/TQbody/TQitem/texCode/pattern/@numberingOrg) [Optional]</p> <p>- nota: <i>this attribute should be used either single or coupled with "listName" and "listVersion"</i></p> <p>(XPath: TEXQualityRpt/TQbody/TQitem/serialN/@numberingOrg) [Optional]</p> <p>- nota: <i>here the issuer of the serial number must be specified (when different from the Supplier)</i></p> <p>(XPath: TEXQualityRpt/TQbody/TQitem/lotN/@numberingOrg) [Optional]</p> <p>(XPath: TEXQualityRpt/TQheader/buyer/id/@numberingOrg) [Optional]</p> <p>(XPath: TEXQualityRpt/TQbody/TQitem/mixMatch/@numberingOrg) [Optional]</p> <p>(XPath: TEXQualityRpt/TQbody/TQitem/dyeN/@numberingOrg) [Optional]</p> <p>(XPath: TEXQualityRpt/TQbody/TQitem/refDoc/docID/@numberingOrg) [Optional]</p> <p>- nota: <i>here can be specified whose document numbering is used (e.g.: Client, Supplier, ..)</i></p> <p>(XPath: TEXQualityRpt/TQheader/thirdParty/id/@numberingOrg) [Optional]</p> |
| pattern | <p>pattern/design number of the product, when not included in the article code</p> <p>- base type: string, max length: 15,</p> <p>(XPath: TEXQualityRpt/TQbody/TQitem/texCode/pattern) 0-1</p> |
| person | <p>name of the contact person within a Party</p> <p>- base type: string, max length: 40,</p> <p>(XPath: TEXQualityRpt/TQheader/buyer/person) 0-1</p> <p>(XPath: TEXQualityRpt/TQheader/thirdParty/person) 0-1</p> <p>(XPath: TEXQualityRpt/TQheader/supplier/person) 0-1</p> |
| @phone | <p>phone number of the contact person within a Party</p> <p>- base type: string, max length: 35,</p> <p>(XPath: TEXQualityRpt/TQheader/buyer/person/@phone) [Optional]</p> |

| | |
|---------------|---|
| | (XPath: TEXQualityRpt/TQheader/thirdParty/person/@phone) [Optional] (XPath: TEXQualityRpt/TQheader/supplier/person/@phone) [Optional] |
| pieceAllow | allowance required or accorded for the piece - base type: decimal, fraction digits: 2, (XPath: TEXQualityRpt/TQbody/TQitem/pieceMeasures/pieceAllow) 0-1 (XPath: TEXQualityRpt/TQbody/TQitem/pieceAllowMea/pieceAllow) 1-1 (XPath: TEXQualityRpt/TQbody/TQitem/pieceMap/pieceFault/pieceAllow) 0-1 - note: <i>this is the allowance estimated for the fault by the same "source" responsible for the other measurements</i> |
| pieceAllowF | allowance required/accorded for fabric faults - base type: decimal, fraction digits: 2, (XPath: TEXQualityRpt/TQbody/TQitem/pieceAllowMea/pieceAllowF) 0-1 |
| pieceAllowM | allowance required/accorded for missing measures - base type: decimal, fraction digits: 2, (XPath: TEXQualityRpt/TQbody/TQitem/pieceAllowMea/pieceAllowM) 0-1 |
| pieceControl | code assigned to a fabric piece to specify the type of control required/performed - base type: string, max length: 7, (XPath: TEXQualityRpt/TQbody/TQitem/pieceControlRpt/pieceControl) 0-1 |
| pieceCutWidth | effective usable width of the fabric piece (for garment manufacturing) - base type: decimal, min inclusive: 0, fraction digits: 2, (XPath: TEXQualityRpt/TQbody/TQitem/pieceMeasures/pieceCutWidth) 0-1 |
| pieceLength | length of the piece - base type: decimal, min inclusive: 0, fraction digits: 2, (XPath: TEXQualityRpt/TQbody/TQitem/pieceMeasures/pieceLength) 0-1 - note: <i>effective length of the piece (allowance included)</i> |
| pieceStatus | code used to describe the status of a fabric piece after the control - base type: string, cod. table: T52 http://www.moda-ml.net/moda-ml/repository/codelist/v2013-1/gc_T52.xml (XPath: TEXQualityRpt/TQbody/TQitem/pieceControlRpt/pieceStatus) 0-1 |
| pieceWeight | effective total weight of the fabric piece - base type: decimal, min inclusive: 0, fraction digits: 2, (XPath: TEXQualityRpt/TQbody/TQitem/pieceMeasures/pieceWeight) 0-1 - note: <i>effective weight of the piece</i> |
| pieceWeightM | effective weight per metre of the fabric piece - base type: decimal, min inclusive: 0, fraction digits: 2, (XPath: TEXQualityRpt/TQbody/TQitem/pieceMeasures/pieceWeightM) 0-1 |
| pieceWidth | effective width of the fabric piece - base type: decimal, min inclusive: 0, fraction digits: 2, (XPath: TEXQualityRpt/TQbody/TQitem/pieceMeasures/pieceWidth) 0-1 - note: <i>effective width of the piece (selvedge included)</i> |

| | |
|--------------------|---|
| postCode | code defining the postal zone - base type: string, max length: 10, (XPath: TEXQualityRpt/TQheader/buyer/postCode) 0-1 (XPath: TEXQualityRpt/TQheader/thirdParty/postCode) 0-1 (XPath: TEXQualityRpt/TQheader/supplier/postCode) 0-1 |
| preexaminationDate | date of preexamination (normally of a fabric piece), according to one of the patterns YYYY-MM-DD, YYYY-MM-DD:HH-MM or YYYY-WW. - base type: string, (XPath: TEXQualityRpt/TQbody/TQitem/pieceControlRpt/preexaminationDate) 0-1 |
| registrationDate | date of registration (normally of a fabric piece), according to one of the patterns YYYY-MM-DD, YYYY-MM-DD:HH-MM or YYYY-WW. - base type: string, (XPath: TEXQualityRpt/TQbody/TQitem/pieceControlRpt/registrationDate) 0-1 |
| @role | Third Party role qualifier - base type: string, cod. table: NT2 http://www.moda-ml.net/moda-ml/repository/codelist/v2013-1/gc_NT2.xml (XPath: TEXQualityRpt/TQheader/thirdParty/@role) [Required] |
| rollUpDate | date of rolling up (normally of a fabric piece), according to one of the patterns YYYY-MM-DD, YYYY-MM-DD:HH-MM or YYYY-WW. - base type: string, (XPath: TEXQualityRpt/TQbody/TQitem/pieceControlRpt/rollUpDate) 0-1 |
| season | sale season; defined as: season (1 crt) + year (4 crt) - season: S/S=1 A/W=2 Spring=3 Summer=4 Autumn=5 Winter=6: for more than four seasons use alphabetic sequence: 1st season=A 2nd season=B etc.etc. - base type: string, max length: 15, (XPath: TEXQualityRpt/TQbody/TQitem/refDoc/season) 0-1 - note: here indicates the season to which the referenced document belongs |
| @sender | qualifier that specifies the Party issuing of the document - base type: boolean, (XPath: TEXQualityRpt/TQheader/supplier/@sender) [Optional] - nota: This attribute is mandatory when the STYLESHEET must be produced (XPath: TEXQualityRpt/TQheader/thirdParty/@sender) [Optional] - nota: This attribute is mandatory when the STYLESHEET must be produced (XPath: TEXQualityRpt/TQheader/buyer/@sender) [Optional] - nota: This attribute is mandatory when the STYLESHEET must be produced |
| serialN | serial number used for the identification of a physical unit - base type: string, max length: 15, (XPath: TEXQualityRpt/TQbody/TQitem/serialN) 1-3 - note: here the serial number of the piece must be reported |
| @source | party who has provided the data - base type: string, cod. table: NT12 http://www.moda-ml.net/moda-ml/repository/codelist/v2013-1/gc_NT12.xml (XPath: TEXQualityRpt/TQbody/TQitem/pieceMap/@source) [Required] (XPath: TEXQualityRpt/TQbody/TQitem/pieceMeasures/@source) [Required] |

| | |
|-------------------|--|
| | (XPath: TEXQualityRpt/TQbody/TQitem/pieceAllowMea/@source) [Required] (XPath: TEXQualityRpt/TQbody/TQitem/pieceTestRpt/@source) [Required] |
| street | street and building number identifying a location - base type: string, max length: 80, (XPath: TEXQualityRpt/TQheader/buyer/street) 0-1 (XPath: TEXQualityRpt/TQheader/supplier/street) 0-1 (XPath: TEXQualityRpt/TQheader/thirdParty/street) 0-1 |
| subCountry | short name or code of the sub-country entity - base type: string, max length: 9, (XPath: TEXQualityRpt/TQheader/buyer/subCountry) 0-1 (XPath: TEXQualityRpt/TQheader/supplier/subCountry) 0-1 (XPath: TEXQualityRpt/TQheader/thirdParty/subCountry) 0-1 |
| taylorabilityChar | taylorability parameter for fabric - base type: string, cod. table: T14 http://www.moda-ml.net/moda-ml/repository/codelist/v2013-1/gc_T14.xml (XPath: TEXQualityRpt/TQbody/TQitem/pieceTestRpt/fabricTaylorability/taylorabilityChar) 1-1 - note: <i>here the MODA-ML codelist must be used</i> |
| testDate | date on which the quality test of goods has been made, according to one of the patterns YYYY-MM-DD, YYYY-MM-DD:HH-MM or YYYY-WW. - base type: string, (XPath: TEXQualityRpt/TQbody/TQitem/testDate) 0-1 |
| totFault | total number of faults: the 1st/2nd digit count the "Large faults", the 3rd/4th the "Medium faults" and the 5th/6th the "Small faults" - base type: positiveInteger, (XPath: TEXQualityRpt/TQbody/TQitem/pieceMap/totFault) 1-1 |
| @TQtype | type of Textiles quality report - base type: string, cod. table: NT15 http://www.moda-ml.net/moda-ml/repository/codelist/v2013-1/gc_NT15.xml (XPath: TEXQualityRpt/@TQtype) [Optional] - nota: <i>this attribute may be used to specify if the report refers to one or to several pieces</i> |
| @um | specification of the unit of measure - base type: string, cod. table: NT7 http://www.moda-ml.net/moda-ml/repository/codelist/v2013-1/gc_NT7.xml (XPath: TEXQualityRpt/TQbody/TQitem/pieceTestRpt/fabricTaylorability/experimValue/@um) [Optional] (XPath: TEXQualityRpt/TQbody/TQitem/pieceAllowMea/pieceAllowM/@um) [Required] (XPath: TEXQualityRpt/TQbody/TQitem/pieceMeasures/pieceAllow/@um) [Required] (XPath: TEXQualityRpt/TQbody/TQitem/pieceAllowMea/pieceAllow/@um) [Required] (XPath: TEXQualityRpt/TQbody/TQitem/pieceAllowMea/pieceAllowF/@um) [Required] (XPath: TEXQualityRpt/TQbody/TQitem/pieceMeasures/pieceWidth/@um) [Optional] [Default= CMT] (XPath: TEXQualityRpt/TQbody/TQitem/pieceMeasures/pieceWeight/@um) [Optional] [Default= KGM] (XPath: TEXQualityRpt/TQbody/TQitem/pieceMeasures/pieceLength/@um) [Optional] [Default= MTR] (XPath: TEXQualityRpt/TQbody/TQitem/pieceMeasures/pieceWeightM/@um) [Optional] [Default= GRM] (XPath: TEXQualityRpt/TQbody/TQitem/pieceMeasures/pieceCutWidth/@um) [Optional] [Default= CMT] |

| | |
|-------------|---|
| | <p>(XPath: TEXQualityRpt/TQbody/TQitem/pieceMap/pieceFault/warpEnd/@um) [Optional] [Default= MTR]</p> <p>(XPath: TEXQualityRpt/TQbody/TQitem/pieceMap/pieceFault/weftEnd/@um) [Optional] [Default= CMT]</p> <p>(XPath: TEXQualityRpt/TQbody/TQitem/pieceMap/pieceFault/weftStart/@um) [Optional] [Default= CMT]</p> <p>(XPath: TEXQualityRpt/TQbody/TQitem/pieceTestRpt/fabricTest/experimValue/@um) [Optional]</p> <p>(XPath: TEXQualityRpt/TQbody/TQitem/pieceMap/pieceFault/warpStart/@um) [Optional] [Default= MTR]</p> <p>(XPath: TEXQualityRpt/TQbody/TQitem/pieceMap/pieceFault/pieceAllow/@um) [Required]</p> |
| @useProfile | <p>use profile to which the present document is compliant if it was agreed by the parties. It is suggested a URI with reference to the firms or the URL of the profile.</p> <p>- base type: string,</p> <p>(XPath: TEXQualityRpt/@useProfile) [Optional]</p> |
| @VAT | <p>VAT rate or code (deprecated, use dtScheme element)</p> <p>- base type: string, cod. table: NT16</p> <p>http://www.moda-ml.net/moda-ml/repository/codelist/v2013-1/gc_NT16.xml</p> <p>(XPath: TEXQualityRpt/TQheader/thirdParty/@VAT) [Optional]</p> |
| @version | <p>Dictionary version from which the instance has been created</p> <p>- base type: string, cod. table: NT100</p> <p>http://www.moda-ml.net/moda-ml/repository/codelist/v2013-1/gc_NT100.xml</p> <p>(XPath: TEXQualityRpt/@version) [Optional] [Default= 2013-1]</p> |
| warpEnd | <p>end point of the fabric fault in the warp direction</p> <p>- base type: decimal, min inclusive: 0, fraction digits: 2,</p> <p>(XPath: TEXQualityRpt/TQbody/TQitem/pieceMap/pieceFault/warpEnd) 0-1</p> |
| warpStart | <p>start point of the fabric fault in the warp direction</p> <p>- base type: decimal, min inclusive: 0, fraction digits: 2,</p> <p>(XPath: TEXQualityRpt/TQbody/TQitem/pieceMap/pieceFault/warpStart) 1-1</p> |
| weftEnd | <p>end point of the fabric fault in the weft direction</p> <p>- base type: decimal, min inclusive: 0, fraction digits: 2,</p> <p>(XPath: TEXQualityRpt/TQbody/TQitem/pieceMap/pieceFault/weftEnd) 0-1</p> |
| weftStart | <p>start point of the fabric fault in the weft direction</p> <p>- base type: decimal, min inclusive: 0, fraction digits: 2,</p> <p>(XPath: TEXQualityRpt/TQbody/TQitem/pieceMap/pieceFault/weftStart) 0-1</p> |

2.3 Enumeration tables

List of enumeration tables used in the XML document. You can find the corresponding codes at: <http://www.moda-ml.org/moda-ml/imple/moda-ml-2013-1.asp?lingua=en&pag=6>

NT100 - eBIZ Moda-ML version
NT12 - data source
NT13 - fabric fault category
NT14 - fabric fault shape
NT15 - Textiles Quality Report type
NT16 - VAT rate or code
NT18 - message function
NT2 - third party qualifier
NT29 - format of a date
NT6 - coding system owner/issuer
NT7 - unity of measure
T10 - ISO3166 - Country
T12 - fabric faults
T13 - CFM properties of fabric
T14 - FAST tests
T21 - type of document
T44 - additional code type
T52 - fabric piece status

Annex A

Representative images of the principal complex elements' structure.

