



<http://www.moda-ml.org>

## IMPLEMENTATION GUIDE TRANSACTION "TEXTILE INVOICE"

Version: 2013-1

Date of release: 26/03/2013

Document code: G011

XML Schema repository:<http://www.moda-ml.org/moda-ml/repository/schema/v2013-1/default.asp>

Guides repository:<http://www.moda-ml.org/moda-ml/repository/guide/v2013-1/default.asp>

Guide filename: G011-MODA-ML-TextileInvoice.pdf

# 1. BUSINESS DESCRIPTION

## 1.1 Scope

The present guide has been issued to assist the companies of the Textile-Clothing sector in the implementation of the standard XML document type "Textile INVOICE", providing all the instruction required for its use in any context of e-commerce between Apparel Producers and Fabric Producers.

All the rules required for the construction and validation of the document are embedded into the specific XML-Schema, which is detailed in section "Implementation guide".

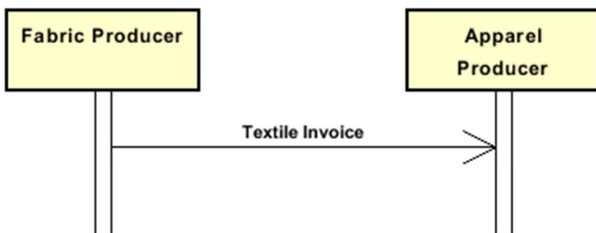
## 1.2 Generalities

The document "Textile invoice" can be used to debit the Client for any kind of supply or service.

This document can be used to debit standard supply using the option "texItem", and additional goods or services using the option "prodServItem", even in the same invoice.

The use of quantity and unit price is mandatory only with "texItem".

## 1.3. Possible scenario



## 2. IMPLEMENTATION GUIDE

### 2.1 General structure of XML document

All the business data that can be exchanged through this class of documents are shown in the following "document structure", that provides a simplified vision of the Schema.

In particular:

- the two numbers following each element define its "cardinality" (minimum and maximum number of occurrences); the minimum equal zero indicates that the element is optional, the minimum greater than zero indicates that is mandatory;
- the bold character denotes the complex elements (aggregates of simple elements) that were built for the sake of functionality and re-usability of some complex informations sets. The child elements in each parent element are easily spotted as "indented";
- the symbol "@" denotes an attribute of the preceding element; here "the usage indicator (optional, required, ...)" is shown in square brackets.

### Structure

#### **TEXInvoice**

```
@invoiceType [Optional] [Default= STD]
@msgfunction [Optional] [Default= OR]
@version [Optional] [Default= 2013-1]
@useProfile [Optional]
| Tlheader 1-1
| | msgN 1-1
| | - choose -
| | | docID 0-1
| | | @numberingOrg [Optional]
| | | - or -
| | | msgID 0-1
| | | - end choose -
| | | msgDate 1-1
| | | | @dateForm [Optional]
| | | taxDate 0-1
| | | | @dateForm [Optional]
| | | msgCurrency 0-1
| | | otherCurrency 0-9
| | | | @currencyUseQualifier [Required]
| | | refDoc 0-9
| | | | @docType [Required]
| | | | | docID 1-2
| | | | | | @numberingOrg [Optional]
| | | | | docDate 0-1
| | | | | | @dateForm [Optional]
| | | | | season 0-1
| | | | | itemID 0-1
| | | buyer 1-1
| | | | @logo [Optional]
| | | | @sender [Optional]
| | | | | id 1-1
| | | | | | @numberingOrg [Optional]
| | | | | legalName 0-1
| | | | | dept 0-1
| | | | | person 0-1
| | | | | | @email [Optional]
| | | | | | @phone [Optional]
| | | | | | @fax [Optional]
```

```

| | | street 0-1
| | | city 0-1
| | | subCountry 0-1
| | | country 0-1
| | | postCode 0-1
| | supplier 1-1
| | | @logo [Optional]
| | | @sender [Optional]
| | | | id 1-1
| | | | | @numberingOrg [Optional]
| | | | legalName 0-1
| | | | dept 0-1
| | | | person 0-1
| | | | | @email [Optional]
| | | | | @phone [Optional]
| | | | | @fax [Optional]
| | | | street 0-1
| | | | city 0-1
| | | | subCountry 0-1
| | | | country 0-1
| | | | postCode 0-1
| | thirdParty 0-5
| | | @VAT [Optional]
| | | @role [Required]
| | | @sender [Optional]
| | | | id 1-1
| | | | | @numberingOrg [Optional]
| | | | legalName 0-1
| | | | dept 0-1
| | | | person 0-1
| | | | | @email [Optional]
| | | | | @phone [Optional]
| | | | | @fax [Optional]
| | | | street 0-1
| | | | city 0-1
| | | | subCountry 0-1
| | | | country 0-1
| | | | postCode 0-1
| | terms 1-1
| | | payment 0-5
| | | | @finDiscount [Optional]
| | | | @finSurcharge [Optional]
| | | | - choose -
| | | | | payTerm 1-1
| | | | | - or -
| | | | | payTermText 1-1
| | | | | - end choose -
| | | | | payMode 0-1
| | | | insPayment 0-5
| | | | | @part [Required]
| | | | | - choose -
| | | | | | payTerm 1-1
| | | | | | - or -
| | | | | | payTermText 1-1
| | | | | | - end choose -
| | | | | | payMode 0-1
| | | | trade 0-1
| | | | | - choose -
| | | | | | incoTermText 1-1
| | | | | | - or -
| | | | | | incoTerm 1-1

```

```

- end choose -
| | | | location 0-1
| | | | @LRI [Optional]
| | | | transInfo 0-1
| | | | @transReason [Optional]
| | | | transMode 1-1
| | | | carrier 0-1
| | | | deliveryPlace 0-1
| | | | grossWeight 0-1
| | | | @um [Required]
| | | | netWeight 0-1
| | | | @um [Required]
| | | | transMeans 0-1
| | | | transCondition 0-3
| | | | transConditionText 0-1
| | | | allowanceCharge 0-9
| | | | @VAT [Optional]
- choose -
| | | | AC_category 1-1
- or -
| | | | AC_categoryText 1-1
- choose -
| | | | AC_percent 1-1
- or -
| | | | AC_amount 1-1
- end choose -
| | | | dtScheme 0-1
| | | | @taxType [Required]
| | | | taxCategory 0-1
| | | | taxRate 0-1
| | | | legalRef 0-1
| | | | @codeList [Required]
| | | | note 0-19
| | | | @numberingOrg [Optional]
| | | | @codeList [Optional]
| | | | @noteLabel [Optional]
| | finInfo 0-1
- choose -
| | | iban 1-1
- or -
| | | bankIT 1-1
| | | legalName 0-1
| | | cin 0-1
| | | abi 1-1
| | | cab 1-1
| | | accountN 1-1
- end choose -
| | | swift 0-1
| | packageQty 0-1
| | packageN 0-unbounded
| | @numberingOrg [Optional]
| | @packageContainerN [Optional]
| | note 0-19
| | @numberingOrg [Optional]
| | @codeList [Optional]
| | @noteLabel [Optional]
| Tlbody 1-1
| | Tlitem 1-unbounded
| | @VAT [Optional]
| | @sale [Optional] [Default= 1]

```

```

| lineN 1-1
| @VAT [Optional]
| refDoc 0-9
| @docType [Required]
|   docID 1-2
|   @numberingOrg [Optional]
|   docDate 0-1
|   @dateForm [Optional]
|   season 0-1
|   itemID 0-1
- choose -
| prodServItem 1-1
|   prodServName 1-1
|   prodServ 0-1
|   servMea 0-1
|   note 0-19
|   @numberingOrg [Optional]
|   @codeList [Optional]
|   @noteLabel [Optional]
- or -
| texItem 1-1
|   invCode 1-2
|   @numberingOrg [Required]
|   @percCond [Optional]
|   art 1-1
|   @numberingOrg [Optional]
|   @codeList [Optional]
|   @listName [Optional]
|   @listVersion [Optional]
|   color 0-1
|   @numberingOrg [Optional]
|   @codeList [Optional]
|   @listName [Optional]
|   @listVersion [Optional]
|   added 0-9
|   @numberingOrg [Optional]
|   @addType [Optional]
|   description 0-1
|   fabricCompos 0-1
|   percCompos 1-9
|   @fibre [Required]
|   customsStat 0-1
|   customsAuth 0-1
|   made 0-1
|   grossQty 0-1
|   @um [Required]
|   grossWeight 0-1
|   @um [Required]
- end choose -
| qty 0-1
| @um [Required]
| price 0-1
| @um [Optional]
| @priceQualifier [Optional] [Default= NET]
| amount 1-1
| dtScheme 0-1
| @taxType [Required]
|   taxCategory 0-1
|   taxRate 0-1
|   legalRef 0-1
|   @codeList [Required]

```

```

| | | | note 0-19
| | | | @numberingOrg [Optional]
| | | | @codeList [Optional]
| | | | @noteLabel [Optional]
| | | | note 0-19
| | | | @numberingOrg [Optional]
| | | | @codeList [Optional]
| | | | @noteLabel [Optional]

```

**Tltotals 1-1**

```

| | totQty 0-1
| | @um [Required]
| | goodsAmount 1-1
| | comDiscount 0-1
| | goodsAmountDisc 0-1
| | VATinfo 0-9
| | @VAT [Optional]
| | | dtScheme 0-1
| | | @taxType [Required]
| | | | taxCategory 0-1
| | | | taxRate 0-1
| | | | legalRef 0-1
| | | | @codeList [Required]
| | | | note 0-19
| | | | @numberingOrg [Optional]
| | | | @codeList [Optional]
| | | | @noteLabel [Optional]
| | | taxAmount 1-1
| | | VATamount 0-1
| | anticipDeduct 0-9
| | @VAT [Required]
| | | taxAmount 1-1
| | | VATamount 0-1
| | | dtScheme 0-1
| | | @taxType [Required]
| | | | taxCategory 0-1
| | | | taxRate 0-1
| | | | legalRef 0-1
| | | | @codeList [Required]
| | | | note 0-19
| | | | @numberingOrg [Optional]
| | | | @codeList [Optional]
| | | | @noteLabel [Optional]
| | msgAmount 1-1
| | msgVATamount 1-1

```

## 2.2 Detailed description of document elements

Following tables show all elements (complex and simple) used in this document. Description includes: 1) element's information: xml tag, name, brief description, data type and syntax constraints; 2) information about use of the element in a particular position in the document: xpath and possible associated notes.

### 2.2.1 Complex elements (Aggregate Business Information Entities)

Complex elements are those elements whose content is composed of other elements (childs).Complex elements are alphabetically ordered.

<b>allowanceCharge</b>	Allowances and Charges related to an Order or a contract (XPath: <a href="#">TEXInvoice/TIheader/terms/allowanceCharge</a> ) 0-9
<b>anticipDeduct</b>	anticipated amount deducted in the present message (invoice), subdivided into taxable amount and tax (XPath: <a href="#">TEXInvoice/TItotals/anticipDeduct</a> ) 0-9
<b>bankIT</b>	Italian bank operations code (XPath: <a href="#">TEXInvoice/TIheader/finInfo/bankIT</a> ) 1-1
<b>buyer</b>	details of the Buyer - base type: Nad, (XPath: <a href="#">TEXInvoice/TIheader/buyer</a> ) 1-1
<b>dtScheme</b>	set of data usable to declare the duty or tax applied (XPath: <a href="#">TEXInvoice/TIheader/terms/allowanceCharge/dtScheme</a> ) 0-1 (XPath: <a href="#">TEXInvoice/TIbody/TIitem/dtScheme</a> ) 0-1 - note: <i>recommended alternative to the attribute @VAT</i> (XPath: <a href="#">TEXInvoice/TItotals/VATinfo/dtScheme</a> ) 0-1 - note: <i>these data are alternative to the attribute @VAT and preferable; they must be used whenever tax or duty other than VAT</i> (XPath: <a href="#">TEXInvoice/TItotals/anticipDeduct/dtScheme</a> ) 0-1
<b>fabricCompos</b>	composition of the fabric according to the Directory 97/37/CE (XPath: <a href="#">TEXInvoice/TIbody/TIitem/textItem/fabricCompos</a> ) 0-1
<b>finInfo</b>	bank details relevant for the payment: bank coordinates, SWIFT code (XPath: <a href="#">TEXInvoice/TIheader/finInfo</a> ) 0-1
<b>insPayment</b>	payment details for payment by installments (XPath: <a href="#">TEXInvoice/TIheader/terms/insPayment</a> ) 0-5 - note: <i>excluded the case of offers, this set of data is alternative to payment set and must be iterated for each payment installment</i>
<b>invCode</b>	full codification of a general textile product usable for invoicing (XPath: <a href="#">TEXInvoice/TIbody/TIitem/textItem/invCode</a> ) 1-2
<b>payment</b>	payment details for payment all in one (XPath: <a href="#">TEXInvoice/TIheader/terms/payment</a> ) 0-5 - note: <i>excluded the case of offers, this set of data is alternative to insPayment, it can be iterated to specify alternative terms of payment (e.g.: 60 days or 30 days with 3% discount)</i>



<b>prodServItem</b>	line item "textile product" of the document TEXTILES INVOICE, to be used for invoicing services or occasional goods (XPath: <a href="#">TEXInvoice/Tlbody/Tlitem/prodServItem</a> ) 1-1
<b>refDoc</b>	identification of a document and of an item thereof, to which the message makes reference (XPath: <a href="#">TEXInvoice/Tlheader/refDoc</a> ) 0-9 (XPath: <a href="#">TEXInvoice/Tlbody/Tlitem/refDoc</a> ) 0-9 - note: <i>here the line number of the Order specified with "refDoc" can be indicated</i>
<b>supplier</b>	details of the Supplier - base type: Nad, (XPath: <a href="#">TEXInvoice/Tlheader/supplier</a> ) 1-1
<b>terms</b>	details of the commercial obligations for payment and delivery (XPath: <a href="#">TEXInvoice/Tlheader/terms</a> ) 1-1 - note: <i>a payment term must always be specified</i>
<b>texItem</b>	line item "textile product" of the document TEXTILES INVOICE, to be used for invoicing normal textiles supplies (XPath: <a href="#">TEXInvoice/Tlbody/Tlitem/texItem</a> ) 1-1
<b>thirdParty</b>	details of the Third Party, different from Buyer or Supplier - base type: Nad, (XPath: <a href="#">TEXInvoice/Tlheader/thirdParty</a> ) 0-5 - note: <i>here the Agent credited of the sale can be identified</i>
<b>Tlbody</b>	body of the document TEXTILES INVOICE (XPath: <a href="#">TEXInvoice/Tlbody</a> ) 1-1 - note: <i>this document body has two line types: a)texItem for regular textiles articles b)prodServItem for other goods (stocks, batch rest,..) and services or for anticipations</i>
<b>Tlheader</b>	header of the document TEXTILES INVOICE (XPath: <a href="#">TEXInvoice/Tlheader</a> ) 1-1
<b>Tlitem</b>	line item of the document TEXTILES INVOICE (XPath: <a href="#">TEXInvoice/Tlbody/Tlitem</a> ) 1-unbounded
<b>Tltotals</b>	details of the monetary and quantity totals of the Invoice (XPath: <a href="#">TEXInvoice/Tltotals</a> ) 1-1
<b>trade</b>	general terms of trade for the specified supply (XPath: <a href="#">TEXInvoice/Tlheader/terms/trade</a> ) 0-1
<b>transInfo</b>	details of transport: mode, carrier and delivery place (XPath: <a href="#">TEXInvoice/Tlheader/terms/transInfo</a> ) 0-1
<b>VATinfo</b>	details related to the duty or tax (VAT or other) application: rate (exemption code); taxable amount; tax amount (XPath: <a href="#">TEXInvoice/Tltotals/VATinfo</a> ) 0-9

## 2.2.2 Simple elements (Basic Business Information Entities)

Simple elements are those elements whose content is characterized by a data type plus a domain of possible values. Simple elements are alphabetically ordered.

<b>abi</b>	ABI code - base type: string, length: 5, (XPath: <a href="#">TEXInvoice/Tlheader/finInfo/bankIT/abi</a> ) 1-1
------------	---

AC_amount	amount of an Allowance or Charge - base type: decimal, fraction digits: 2, (XPath: <a href="#">TEXInvoice/TIheader/terms/allowanceCharge/AC_amount</a> ) 1-1
AC_category	coded specification of an Allowance or Charge - base type: string, cod. table: T41 <a href="http://www.moda-ml.net/moda-ml/repository/codelist/v2013-1/gc_T41.xml">http://www.moda-ml.net/moda-ml/repository/codelist/v2013-1/gc_T41.xml</a> (XPath: <a href="#">TEXInvoice/TIheader/terms/allowanceCharge/AC_category</a> ) 1-1
AC_categoryText	free text description of an Allowance or Charge - base type: string, max length: 70, (XPath: <a href="#">TEXInvoice/TIheader/terms/allowanceCharge/AC_categoryText</a> ) 1-1
AC_percent	amount of an Allowance or Charge as a percentage - base type: decimal, max inclusive: 100, fraction digits: 2, (XPath: <a href="#">TEXInvoice/TIheader/terms/allowanceCharge/AC_percent</a> ) 1-1
accountN	account number - base type: string, max length: 15, (XPath: <a href="#">TEXInvoice/TIheader/finInfo/bankIT/accountN</a> ) 1-1
added	additional code of the product (complementing the formers) - base type: string, max length: 15, (XPath: <a href="#">TEXInvoice/TIbody/TIitem/textItem/invCode/added</a> ) 0-9
@addType	qualifier of the additional coding of a product - base type: string, cod. table: T44 <a href="http://www.moda-ml.net/moda-ml/repository/codelist/v2013-1/gc_T44.xml">http://www.moda-ml.net/moda-ml/repository/codelist/v2013-1/gc_T44.xml</a> (XPath: <a href="#">TEXInvoice/TIbody/TIitem/textItem/invCode/added/@addType</a> ) [Optional]
amount	total monetary value of the goods and services considered in the message line (usually net price x quantity) - base type: decimal, min inclusive: 0, fraction digits: 2, (XPath: <a href="#">TEXInvoice/TIbody/TIitem/amount</a> ) 1-1
art	article number of the product - base type: string, max length: 25, (XPath: <a href="#">TEXInvoice/TIbody/TIitem/textItem/invCode/art</a> ) 1-1
cab	CAB code - base type: string, length: 5, (XPath: <a href="#">TEXInvoice/TIheader/finInfo/bankIT/cab</a> ) 1-1
carrier	identification of the transport carrier - base type: string, max length: 40, (XPath: <a href="#">TEXInvoice/TIheader/terms/transInfo/carrier</a> ) 0-1
cin	CIN code - base type: string, length: 5, (XPath: <a href="#">TEXInvoice/TIheader/finInfo/bankIT/cin</a> ) 0-1
city	name of the city (town, village) - base type: string, max length: 40, (XPath: <a href="#">TEXInvoice/TIheader/thirdParty/city</a> ) 0-1 (XPath: <a href="#">TEXInvoice/TIheader/buyer/city</a> ) 0-1 (XPath: <a href="#">TEXInvoice/TIheader/supplier/city</a> ) 0-1
@codeList	it specifies the URL where the list of codes used to make an instance of the element can be found - base type: string, max length: 255, (XPath: <a href="#">TEXInvoice/TIheader/note/@codeList</a> ) [Optional]

	<p>- nota: <i>must be used to provide (URL) the list of codes used in "noteLabel"</i> (XPath: <code>TEXInvoice/TIbody/TIitem/textItem/invCode/color/@codeList</code>) [Optional]</p> <p>- nota: <i>this attribute should be ALTERNATIVE to the others</i> (XPath: <code>TEXInvoice/TIheader/terms/allowanceCharge/dtScheme/legalRef/@codeList</code>) [Required]</p> <p>(XPath: <code>TEXInvoice/TIbody/TIitem/prodServItem/note/@codeList</code>) [Optional]</p> <p>- nota: <i>must be used to provide (URL) the list of codes used in "noteLabel"</i> (XPath: <code>TEXInvoice/TIbody/TIitem/textItem/invCode/art/@codeList</code>) [Optional]</p> <p>- nota: <i>this attribute should be ALTERNATIVE to the others</i> (XPath: <code>TEXInvoice/TIheader/terms/allowanceCharge/dtScheme/note/@codeList</code>) [Optional]</p> <p>- nota: <i>must be used to provide (URL) the list of codes used in "noteLabel"</i> (XPath: <code>TEXInvoice/TIbody/TIitem/note/@codeList</code>) [Optional]</p> <p>- nota: <i>must be used to provide (URL) the list of codes used in "noteLabel"</i> (XPath: <code>TEXInvoice/TItotals/VATinfo/dtScheme/legalRef/@codeList</code>) [Required]</p> <p>(XPath: <code>TEXInvoice/TItotals/anticipDeduct/dtScheme/note/@codeList</code>) [Optional]</p> <p>- nota: <i>must be used to provide (URL) the list of codes used in "noteLabel"</i> (XPath: <code>TEXInvoice/TIbody/TIitem/dtScheme/legalRef/@codeList</code>) [Required]</p> <p>(XPath: <code>TEXInvoice/TItotals/VATinfo/dtScheme/note/@codeList</code>) [Optional]</p> <p>- nota: <i>must be used to provide (URL) the list of codes used in "noteLabel"</i> (XPath: <code>TEXInvoice/TIbody/TIitem/dtScheme/note/@codeList</code>) [Optional]</p> <p>- nota: <i>must be used to provide (URL) the list of codes used in "noteLabel"</i> (XPath: <code>TEXInvoice/TItotals/anticipDeduct/dtScheme/legalRef/@codeList</code>) [Required]</p>
color	<p>colour number of the product, when not included in the model or fabric code</p> <p>- base type: string, max length: 15, (XPath: <code>TEXInvoice/TIbody/TIitem/textItem/invCode/color</code>) 0-1</p>
comDiscount	<p>percent discount applied to the related unit price or amount</p> <p>- base type: decimal, min inclusive: 0, max inclusive: 100, fraction digits: 2, (XPath: <code>TEXInvoice/TItotals/comDiscount</code>) 0-1</p>
country	<p>code of the nation</p> <p>- base type: string, cod. table: T10 <a href="http://www.moda-ml.net/moda-ml/repository/codelist/v2013-1/gc_T10.xml">http://www.moda-ml.net/moda-ml/repository/codelist/v2013-1/gc_T10.xml</a> (XPath: <code>TEXInvoice/TIheader/buyer/country</code>) 0-1 (XPath: <code>TEXInvoice/TIheader/supplier/country</code>) 0-1 (XPath: <code>TEXInvoice/TIheader/thirdParty/country</code>) 0-1</p>
@currencyUseQualifier	<p>qualification of another currency used in the document</p> <p>- base type: string, cod. table: NT19 <a href="http://www.moda-ml.net/moda-ml/repository/codelist/v2013-1/gc_NT19.xml">http://www.moda-ml.net/moda-ml/repository/codelist/v2013-1/gc_NT19.xml</a> (XPath: <code>TEXInvoice/TIheader/otherCurrency/@currencyUseQualifier</code>) [Required]</p>
customsAuth	<p>number of the customs authorisation for import/export of a specified product</p>

	- base type: string, max length: 25, (XPath: <a href="#">TEXInvoice/TIbody/TIitem/textItem/customsAuth</a> ) 0-1
customsStat	statistic code assigned by Customs to a specified product - base type: string, max length: 15, (XPath: <a href="#">TEXInvoice/TIbody/TIitem/textItem/customsStat</a> ) 0-1
@dateForm	format used for the date - base type: string, cod. table: NT29 <a href="http://www.moda-ml.net/moda-ml/repository/codelist/v2013-1/gc_NT29.xml">http://www.moda-ml.net/moda-ml/repository/codelist/v2013-1/gc_NT29.xml</a> (XPath: <a href="#">TEXInvoice/TIbody/TIitem/refDoc/docDate/@dateForm</a> ) [Optional] (XPath: <a href="#">TEXInvoice/TIheader/refDoc/docDate/@dateForm</a> ) [Optional] (XPath: <a href="#">TEXInvoice/TIheader/taxDate/@dateForm</a> ) [Optional] (XPath: <a href="#">TEXInvoice/TIheader/msgDate/@dateForm</a> ) [Optional]
deliveryPlace	place of delivery of goods, ultimate or related to a given leg - base type: string, max length: 40, (XPath: <a href="#">TEXInvoice/TIheader/terms/transInfo/deliveryPlace</a> ) 0-1
dept	name or code of a contact department within a Party - base type: string, max length: 40, (XPath: <a href="#">TEXInvoice/TIheader/buyer/dept</a> ) 0-1 (XPath: <a href="#">TEXInvoice/TIheader/supplier/dept</a> ) 0-1 (XPath: <a href="#">TEXInvoice/TIheader/thirdParty/dept</a> ) 0-1
description	free text description of a product - base type: string, max length: 70, (XPath: <a href="#">TEXInvoice/TIbody/TIitem/textItem/invCode/description</a> ) 0-1
docDate	date of issue of the referenced document, according to one of the patterns YYYY-MM-DD, YYYY-MM-DD:HH-MM or YYYY-WW. - base type: string, (XPath: <a href="#">TEXInvoice/TIbody/TIitem/refDoc/docDate</a> ) 0-1 (XPath: <a href="#">TEXInvoice/TIheader/refDoc/docDate</a> ) 0-1
docID	identification number of the referenced document SINCE 2008-1 ITS USE IN THE HEADER IS DISCOURAGED (REPLACED BY msgID) - base type: string, max length: 80, (XPath: <a href="#">TEXInvoice/TIheader/refDoc/docID</a> ) 1-2 (XPath: <a href="#">TEXInvoice/TIheader/docID</a> ) 0-1 (XPath: <a href="#">TEXInvoice/TIbody/TIitem/refDoc/docID</a> ) 1-2
@docType	type or class to which the referenced document belongs - base type: string, cod. table: T21 <a href="http://www.moda-ml.net/moda-ml/repository/codelist/v2013-1/gc_T21.xml">http://www.moda-ml.net/moda-ml/repository/codelist/v2013-1/gc_T21.xml</a> (XPath: <a href="#">TEXInvoice/TIheader/refDoc/@docType</a> ) [Required] (XPath: <a href="#">TEXInvoice/TIbody/TIitem/refDoc/@docType</a> ) [Required]
@email	electronic mail address of the contact person within a Party - base type: string, max length: 80, (XPath: <a href="#">TEXInvoice/TIheader/thirdParty/person/@email</a> ) [Optional] (XPath: <a href="#">TEXInvoice/TIheader/supplier/person/@email</a> ) [Optional] (XPath: <a href="#">TEXInvoice/TIheader/buyer/person/@email</a> ) [Optional]
@fax	fax number of the contact person within a Party - base type: string, max length: 35, (XPath: <a href="#">TEXInvoice/TIheader/thirdParty/person/@fax</a> ) [Optional] (XPath: <a href="#">TEXInvoice/TIheader/buyer/person/@fax</a> ) [Optional] (XPath: <a href="#">TEXInvoice/TIheader/supplier/person/@fax</a> ) [Optional]
@fibre	type of fibre used in a textile product - base type: string, cod. table: T19 <a href="http://www.moda-ml.net/moda-ml/repository/codelist/v2013-1/gc_T19.xml">http://www.moda-ml.net/moda-ml/repository/codelist/v2013-1/gc_T19.xml</a> (XPath: <a href="#">TEXInvoice/TIbody/TIitem/textItem/fabricCompos/</a>

	<b>percCompos/@fibre) [Required]</b>
<b>@finDiscount</b>	financial discount applied for payment by the date specified - base type: decimal, min inclusive: 0, max inclusive: 100, fraction digits: 2, (XPath: <a href="#">TEXInvoice/TIheader/terms/payment/@finDiscount</a> ) [Optional]
<b>@finSurcharge</b>	financial surcharge applied for payment after the date specified - base type: decimal, min inclusive: 0, max inclusive: 100, fraction digits: 2, (XPath: <a href="#">TEXInvoice/TIheader/terms/payment/@finSurcharge</a> ) [Optional]
<b>goodsAmount</b>	total monetary value of the goods and services considered in the message - base type: decimal, min inclusive: 0, fraction digits: 2, (XPath: <a href="#">TEXInvoice/TItotals/goodsAmount</a> ) 1-1
<b>goodsAmountDisc</b>	total monetary value of the goods and services considered in the message, after the discount has been applied - base type: decimal, min inclusive: 0, fraction digits: 2, (XPath: <a href="#">TEXInvoice/TItotals/goodsAmountDisc</a> ) 0-1
<b>grossQty</b>	gross quantity of the article or object specified in the message line - base type: decimal, min inclusive: 0, fraction digits: 2, (XPath: <a href="#">TEXInvoice/TIbody/TIitem/textItem/grossQty</a> ) 0-1
<b>grossWeight</b>	the gross weight of the overall goods supply, declared for transport or customs purpose - base type: decimal, min inclusive: 0, fraction digits: 2, (XPath: <a href="#">TEXInvoice/TIheader/terms/transInfo/grossWeight</a> ) 0-1 (XPath: <a href="#">TEXInvoice/TIbody/TIitem/textItem/grossWeight</a> ) 0-1
<b>iban</b>	international bank and account identifier, used for fund transfer - base type: string, max length: 35, (XPath: <a href="#">TEXInvoice/TIheader/finInfo/iban</a> ) 1-1
<b>id</b>	primary identification code of a Party; it is recommended the format: nation code (ISO 3166) + VAT identification number (11 crt), with the qualifier "numberingOrg"= MF - base type: string, max length: 15, (XPath: <a href="#">TEXInvoice/TIheader/thirdParty/id</a> ) 1-1 (XPath: <a href="#">TEXInvoice/TIheader/buyer/id</a> ) 1-1 (XPath: <a href="#">TEXInvoice/TIheader/supplier/id</a> ) 1-1
<b>incoTerm</b>	specification of the terms of trade (INCOTERMS) - base type: string, cod. table: T3 <a href="http://www.moda-ml.net/moda-ml/repository/codelist/v2013-1/gc_T3.xml">http://www.moda-ml.net/moda-ml/repository/codelist/v2013-1/gc_T3.xml</a> (XPath: <a href="#">TEXInvoice/TIheader/terms/trade/incoTerm</a> ) 1-1
<b>incoTermText</b>	free text specifying the terms of trade (incoterm, location) - base type: string, max length: 70, (XPath: <a href="#">TEXInvoice/TIheader/terms/trade/incoTermText</a> ) 1-1
<b>@invoiceType</b>	type of Invoice (standard or anticipated) - base type: string, cod. table: T18 <a href="http://www.moda-ml.net/moda-ml/repository/codelist/v2013-1/gc_T18.xml">http://www.moda-ml.net/moda-ml/repository/codelist/v2013-1/gc_T18.xml</a> (XPath: <a href="#">TEXInvoice/@invoiceType</a> ) [Optional] [Default= STD]
<b>itemID</b>	number of the line/item of the referenced document - base type: string, max length: 6, (XPath: <a href="#">TEXInvoice/TIheader/refDoc/itemID</a> ) 0-1 (XPath: <a href="#">TEXInvoice/TIbody/TIitem/refDoc/itemID</a> ) 0-1
<b>legalName</b>	legal name of a Party

	<p>- base type: string, max length: 80,  (XPath: TEXInvoice/TIheader/finInfo/bankIT/legalName) 0-1  (XPath: TEXInvoice/TIheader/thirdParty/legalName) 0-1  (XPath: TEXInvoice/TIheader/supplier/legalName) 0-1  (XPath: TEXInvoice/TIheader/buyer/legalName) 0-1</p>
legalRef	<p>legal reference of the duty or tax or fee category  - base type: string,  (XPath: TEXInvoice/TItotals/anticipDeduct/dtScheme/legalRef) 0-1  (XPath: TEXInvoice/TIbody/TIitem/dtScheme/legalRef) 0-1  (XPath:  TEXInvoice/TIheader/terms/allowanceCharge/dtScheme/legalRef) 0-1  (XPath: TEXInvoice/TItotals/VATinfo/dtScheme/legalRef) 0-1</p>
lineN	<p>number of the line item of the present message (xml document)  - base type: positiveInteger, min inclusive: 1, max inclusive: 9999,  (XPath: TEXInvoice/TIbody/TIitem/lineN) 1-1</p>
@listName	<p>it specifies the name of the list of codes used to make an instance of the element  - base type: string, max length: 40,  (XPath: TEXInvoice/TIbody/TIitem/textItem/invCode/color/@listName) [Optional]  - nota: <i>this attribute should always be used coupled with "numberingOrg"</i>  (XPath: TEXInvoice/TIbody/TIitem/textItem/invCode/art/@listName) [Optional]  - nota: <i>this attribute should always be used coupled with "numberingOrg"</i></p>
@listVersion	<p>it specifies the version of the list of codes used to make an instance of the element  - base type: string, max length: 6,  (XPath: TEXInvoice/TIbody/TIitem/textItem/invCode/art/@listVersion) [Optional]  - nota: <i>this attribute should always be used coupled with "numberingOrg" and "listName"</i>  (XPath: TEXInvoice/TIbody/TIitem/textItem/invCode/color/@listVersion) [Optional]  - nota: <i>this attribute should always be used coupled with "numberingOrg" and "listName"</i></p>
location	<p>specification of a location  - base type: string, max length: 40,  (XPath: TEXInvoice/TIheader/terms/trade/location) 0-1  - note: <i>place to which the INCOTERM applies</i></p>
@logo	<p>company logo (URL of the image jpeg or gif). It is recommended that the width of the image does not exceed 640 pixel.  - base type: string, max length: 255,  (XPath: TEXInvoice/TIheader/buyer/@logo) [Optional]  (XPath: TEXInvoice/TIheader/supplier/@logo) [Optional]</p>
@LRI	<p>attribute usable to format a string according to a customized User rule (local rule)  - base type: string, cod. table: NT3  <a href="http://www.moda-ml.net/moda-ml/repository/codelist/v2013-1/gc_NT3.xml">http://www.moda-ml.net/moda-ml/repository/codelist/v2013-1/gc_NT3.xml</a>  (XPath: TEXInvoice/TIheader/terms/trade/location/@LRI) [Optional]</p>
made	<p>specifies the country where the product has been manufactured  - base type: string, cod. table: T10</p>

	<a href="http://www.moda-ml.net/moda-ml/repository/codelist/v2013-1/gc_T10.xml">http://www.moda-ml.net/moda-ml/repository/codelist/v2013-1/gc_T10.xml</a> (XPath: <a href="#">TEXInvoice/TIbody/TIitem/textItem/made</a> ) 0-1
msgAmount	total monetary amount of the message - base type: decimal, min inclusive: 0, fraction digits: 2, (XPath: <a href="#">TEXInvoice/ITotals/msgAmount</a> ) 1-1
msgCurrency	currency used to express the monetary amounts of the message - base type: string, cod. table: T9 <a href="http://www.moda-ml.net/moda-ml/repository/codelist/v2013-1/gc_T9.xml">http://www.moda-ml.net/moda-ml/repository/codelist/v2013-1/gc_T9.xml</a> (XPath: <a href="#">TEXInvoice/TIheader/msgCurrency</a> ) 0-1
msgDate	date of issue of the present message (xml document), according to one of the patterns YYYY-MM-DD, YYYY-MM-DD:HH-MM or YYYY-WW. - base type: string, (XPath: <a href="#">TEXInvoice/TIheader/msgDate</a> ) 1-1
@msgfunction	function performed by the present message with regards to the transmission - base type: string, cod. table: NT18 <a href="http://www.moda-ml.net/moda-ml/repository/codelist/v2013-1/gc_NT18.xml">http://www.moda-ml.net/moda-ml/repository/codelist/v2013-1/gc_NT18.xml</a> (XPath: <a href="#">TEXInvoice/@msgfunction</a> ) [Optional] [Default= OR]
msgID	key identifier of the document in the information system of the issuing Party - base type: string, max length: 35, (XPath: <a href="#">TEXInvoice/TIheader/msgID</a> ) 0-1
msgN	identification number given to the message (xml document) by its issuer - base type: string, max length: 35, (XPath: <a href="#">TEXInvoice/TIheader/msgN</a> ) 1-1
msgVATamount	total payable VAT of an invoice - base type: decimal, min inclusive: 0, fraction digits: 2, (XPath: <a href="#">TEXInvoice/ITotals/msgVATamount</a> ) 1-1
netWeight	the net weight of the overall goods supply, declared for transport or customs purpose - base type: decimal, min inclusive: 0, fraction digits: 2, (XPath: <a href="#">TEXInvoice/TIheader/terms/transInfo/netWeight</a> ) 0-1
note	free text or structured (computer processing) note. For note structuring use the attributes "noteLabel" and "codelist" - base type: string, max length: 350, (XPath: <a href="#">TEXInvoice/ITotals/VATinfo/dtScheme/note</a> ) 0-19 (XPath: <a href="#">TEXInvoice/TIheader/terms/allowanceCharge/dtScheme/note</a> ) 0-19 (XPath: <a href="#">TEXInvoice/TIbody/TIitem/dtScheme/note</a> ) 0-19 (XPath: <a href="#">TEXInvoice/TIbody/TIitem/note</a> ) 0-19 (XPath: <a href="#">TEXInvoice/TIbody/TIitem/prodServItem/note</a> ) 0-19 (XPath: <a href="#">TEXInvoice/ITotals/anticipDeduct/dtScheme/note</a> ) 0-19 (XPath: <a href="#">TEXInvoice/TIheader/note</a> ) 0-19
@noteLabel	subject qualifier of a note - base type: string, max length: 35, (XPath: <a href="#">TEXInvoice/ITotals/anticipDeduct/dtScheme/note/@noteLabel</a> ) [Optional] - nota: <i>must be used to qualify the subject of the note</i> (XPath: <a href="#">TEXInvoice/TIbody/TIitem/prodServItem/note/@noteLabel</a> ) [Optional] - nota: <i>must be used to qualify the subject of the note</i> (XPath: <a href="#">TEXInvoice/ITotals/VATinfo/dtScheme/note/@noteLabel</a> ) [Optional]

	<ul style="list-style-type: none"> <li>- nota: <i>must be used to qualify the subject of the note</i> (XPath: <code>TEXInvoice/TIbody/TIitem/dtScheme/note/@noteLabel</code>) [Optional]</li> <li>- nota: <i>must be used to qualify the subject of the note</i> (XPath: <code>TEXInvoice/TIbody/TIitem/note/@noteLabel</code>) [Optional]</li> <li>- nota: <i>must be used to qualify the subject of the note</i> (XPath: <code>TEXInvoice/TIheader/terms/allowanceCharge/dtScheme/note/@noteLabel</code>) [Optional]</li> <li>- nota: <i>must be used to qualify the subject of the note</i> (XPath: <code>TEXInvoice/TIheader/note/@noteLabel</code>) [Optional]</li> <li>- nota: <i>must be used to qualify the subject of the note</i></li> </ul>
@numberingOrg	<p>code specifying the organisation who has created or owns the coding or numbering system</p> <ul style="list-style-type: none"> <li>- base type: string, cod. table: NT6 <a href="http://www.moda-ml.net/moda-ml/repository/codelist/v2013-1/gc_NT6.xml">http://www.moda-ml.net/moda-ml/repository/codelist/v2013-1/gc_NT6.xml</a> (XPath: <code>TEXInvoice/TIheader/thirdParty/id/@numberingOrg</code>) [Optional] (XPath: <code>TEXInvoice/TIbody/TIitem/textItem/invCode/color/@numberingOrg</code>) [Optional]</li> <li>- nota: <i>this attribute should be used either single or coupled with "listName" and "listVersion"</i> (XPath: <code>TEXInvoice/TIbody/TIitem/textItem/invCode/art/@numberingOrg</code>) [Optional]</li> <li>- nota: <i>this attribute should be used either single or coupled with "listName" and "listVersion"</i> (XPath: <code>TEXInvoice/TIbody/TIitem/textItem/invCode/@numberingOrg</code>) [Required] (XPath: <code>TEXInvoice/TItotals/VATinfo/dtScheme/note/@numberingOrg</code>) [Optional] (XPath: <code>TEXInvoice/TIheader/refDoc/docID/@numberingOrg</code>) [Optional]</li> <li>- nota: <i>here can be specified whose document numbering is used (e.g.: Client, Supplier, ..)</i> (XPath: <code>TEXInvoice/TItotals/anticipDeduct/dtScheme/note/@numberingOrg</code>) [Optional] (XPath: <code>TEXInvoice/TIheader/docID/@numberingOrg</code>) [Optional]</li> <li>- nota: <i>here can be specified whose document numbering is used (e.g.: Client, Supplier, ..)</i> (XPath: <code>TEXInvoice/TIheader/buyer/id/@numberingOrg</code>) [Optional] (XPath: <code>TEXInvoice/TIheader/supplier/id/@numberingOrg</code>) [Optional] (XPath: <code>TEXInvoice/TIbody/TIitem/textItem/invCode/added/@numberingOrg</code>) [Optional] (XPath: <code>TEXInvoice/TIbody/TIitem/note/@numberingOrg</code>) [Optional] (XPath: <code>TEXInvoice/TIbody/TIitem/dtScheme/note/@numberingOrg</code>) [Optional] (XPath: <code>TEXInvoice/TIheader/packageN/@numberingOrg</code>) [Optional] (XPath: <code>TEXInvoice/TIheader/note/@numberingOrg</code>) [Optional] (XPath: <code>TEXInvoice/TIbody/TIitem/refDoc/docID/@numberingOrg</code>) [Optional]</li> <li>- nota: <i>here can be specified whose document numbering is used (e.g.: Client, Supplier, ..)</i> (XPath: <code>TEXInvoice/TIbody/TIitem/prodServItem/note/@numberingOrg</code>) [Optional] (XPath: <code>TEXInvoice/TIheader/terms/allowanceCharge/dtScheme/note/@numberingOrg</code>) [Optional]</li> </ul>
otherCurrency	<p>other currency used in the document</p> <ul style="list-style-type: none"> <li>- base type: string, cod. table: T9 <a href="http://www.moda-ml.net/moda-ml/repository/codelist/v2013-1/gc_T9.xml">http://www.moda-ml.net/moda-ml/repository/codelist/v2013-1/gc_T9.xml</a></li> </ul>



	(XPath: <a href="#">TEXInvoice/THheader/otherCurrency</a> ) 0-9
@packageContainerN	reference usable to indicate the outer package containing this package - base type: string, max length: 25, (XPath: <a href="#">TEXInvoice/THheader/packageN/@packageContainerN</a> ) [Optional]
packageN	serial number used to identify a transport package - base type: string, max length: 25, (XPath: <a href="#">TEXInvoice/THheader/packageN</a> ) 0-unbounded - note: <i>here the packages corresponding to the invoice can be identified</i>
packageQty	quantity of the specified transport packages - base type: positiveInteger, (XPath: <a href="#">TEXInvoice/THheader/packageQty</a> ) 0-1
@part	percent fraction of a total payment - base type: decimal, min inclusive: 1, max inclusive: 99, fraction digits: 2, (XPath: <a href="#">TEXInvoice/THheader/terms/insPayment/@part</a> ) [Required] - nota: <i>here the % value of each installment must be indicated</i>
payMode	way or means of payment - base type: string, cod. table: T2 <a href="http://www.moda-ml.net/moda-ml/repository/codelist/v2013-1/gc_T2.xml">http://www.moda-ml.net/moda-ml/repository/codelist/v2013-1/gc_T2.xml</a> (XPath: <a href="#">TEXInvoice/THheader/terms/insPayment/payMode</a> ) 0-1 (XPath: <a href="#">TEXInvoice/THheader/terms/payment/payMode</a> ) 0-1
payTerm	code specifying the terms or time by which the payment must be done - base type: string, cod. table: T1 <a href="http://www.moda-ml.net/moda-ml/repository/codelist/v2013-1/gc_T1.xml">http://www.moda-ml.net/moda-ml/repository/codelist/v2013-1/gc_T1.xml</a> (XPath: <a href="#">TEXInvoice/THheader/terms/insPayment/payTerm</a> ) 1-1 (XPath: <a href="#">TEXInvoice/THheader/terms/payment/payTerm</a> ) 1-1
payTermText	free text specifying the terms by which the payment must be done (time/mode or means) - base type: string, max length: 40, (XPath: <a href="#">TEXInvoice/THheader/terms/payment/payTermText</a> ) 1-1 (XPath: <a href="#">TEXInvoice/THheader/terms/insPayment/payTermText</a> ) 1-1
percCompos	fiber rate in the product composition - base type: decimal, min inclusive: 0, max inclusive: 100, fraction digits: 2, (XPath: <a href="#">TEXInvoice/TIbody/TIitem/textItem/fabricCompos/percCompos</a> ) 1-9
@percCond	percentage of conditioning to be applied to the payment of a yarn supply - base type: decimal, min inclusive: 0, max inclusive: 100, fraction digits: 2, (XPath: <a href="#">TEXInvoice/TIbody/TIitem/textItem/invCode/@percCond</a> ) [Optional]
person	name of the contact person within a Party - base type: string, max length: 40, (XPath: <a href="#">TEXInvoice/THheader/buyer/person</a> ) 0-1 (XPath: <a href="#">TEXInvoice/THheader/thirdParty/person</a> ) 0-1 (XPath: <a href="#">TEXInvoice/THheader/supplier/person</a> ) 0-1
@phone	phone number of the contact person within a Party - base type: string, max length: 35, (XPath: <a href="#">TEXInvoice/THheader/thirdParty/person/@phone</a> ) [Optional] (XPath: <a href="#">TEXInvoice/THheader/buyer/person/@phone</a> ) [Optional] (XPath: <a href="#">TEXInvoice/THheader/supplier/person/@phone</a> ) [Optional]

postCode	code defining the postal zone - base type: string, max length: 10, (XPath: <a href="#">TEXInvoice/TIheader/supplier/postCode</a> ) 0-1 (XPath: <a href="#">TEXInvoice/TIheader/thirdParty/postCode</a> ) 0-1 (XPath: <a href="#">TEXInvoice/TIheader/buyer/postCode</a> ) 0-1
price	unit price of the article, object or service specified - base type: decimal, min inclusive: 0, fraction digits: 2, (XPath: <a href="#">TEXInvoice/TIbody/TIitem/price</a> ) 0-1
@priceQualifier	type of price with reference to discount and taxes - base type: string, cod. table: NT20 <a href="http://www.moda-ml.net/moda-ml/repository/codelist/v2013-1/gc_NT20.xml">http://www.moda-ml.net/moda-ml/repository/codelist/v2013-1/gc_NT20.xml</a> (XPath: <a href="#">TEXInvoice/TIbody/TIitem/price/@priceQualifier</a> ) [Optional] [Default= NET]
prodServ	Supplier's code which identifies an accessory product or a service - base type: string, max length: 35, (XPath: <a href="#">TEXInvoice/TIbody/TIitem/prodServItem/prodServ</a> ) 0-1
prodServName	description of the product or service that either complements or substitutes its coding - base type: string, max length: 100, (XPath: <a href="#">TEXInvoice/TIbody/TIitem/prodServItem/prodServName</a> ) 1-1
qty	net quantity of the article or object correlated, qualified by the function of the document (ordering, delivering, ..) and by the context - base type: decimal, min inclusive: 0, fraction digits: 2, (XPath: <a href="#">TEXInvoice/TIbody/TIitem/qty</a> ) 0-1
@role	Third Party role qualifier - base type: string, cod. table: NT2 <a href="http://www.moda-ml.net/moda-ml/repository/codelist/v2013-1/gc_NT2.xml">http://www.moda-ml.net/moda-ml/repository/codelist/v2013-1/gc_NT2.xml</a> (XPath: <a href="#">TEXInvoice/TIheader/thirdParty/@role</a> ) [Required]
@sale	indicates whether the item is sold (sale = "1") or omaged (sale = "0") - base type: boolean, (XPath: <a href="#">TEXInvoice/TIbody/TIitem/@sale</a> ) [Optional] [Default= 1] - nota: <i>the default value (1) indicates "sale"</i>
season	sale season; defined as: season (1 crt) + year (4 crt) - season: S/S=1 A/W=2 Spring=3 Summer=4 Autumn=5 Winter=6: for more than four seasons use alphabetic sequence: 1st season=A 2nd season=B etc.etc. - base type: string, max length: 15, (XPath: <a href="#">TEXInvoice/TIheader/refDoc/season</a> ) 0-1 - note: <i>here indicates the season to which the referenced document belongs</i> (XPath: <a href="#">TEXInvoice/TIbody/TIitem/refDoc/season</a> ) 0-1 - note: <i>here indicates the season to which the referenced document belongs</i>
@sender	qualifier that specifies the Party issuing of the document - base type: boolean, (XPath: <a href="#">TEXInvoice/TIheader/supplier/@sender</a> ) [Optional] - nota: <i>This attribute is mandatory when the STYLESHEET must be produced</i> (XPath: <a href="#">TEXInvoice/TIheader/thirdParty/@sender</a> ) [Optional] - nota: <i>This attribute is mandatory when the STYLESHEET must be produced</i> (XPath: <a href="#">TEXInvoice/TIheader/buyer/@sender</a> ) [Optional] - nota: <i>This attribute is mandatory when the STYLESHEET must be produced</i>

servMea	<p>mode used to measure the quantity of service provided (e.g.: weight, volume, time duration, ....)</p> <p>- base type: string, cod. table: T36  <a href="http://www.moda-ml.net/moda-ml/repository/codelist/v2013-1/gc_T36.xml">http://www.moda-ml.net/moda-ml/repository/codelist/v2013-1/gc_T36.xml</a>  (XPath: <a href="#">TEXInvoice/TLbody/TItem/prodServItem/servMea</a>) 0-1</p>
street	<p>street and building number identifying a location</p> <p>- base type: string, max length: 80,  (XPath: <a href="#">TEXInvoice/TLheader/thirdParty/street</a>) 0-1  (XPath: <a href="#">TEXInvoice/TLheader/buyer/street</a>) 0-1  (XPath: <a href="#">TEXInvoice/TLheader/supplier/street</a>) 0-1</p>
subCountry	<p>short name or code of the sub-country entity</p> <p>- base type: string, max length: 9,  (XPath: <a href="#">TEXInvoice/TLheader/thirdParty/subCountry</a>) 0-1  (XPath: <a href="#">TEXInvoice/TLheader/buyer/subCountry</a>) 0-1  (XPath: <a href="#">TEXInvoice/TLheader/supplier/subCountry</a>) 0-1</p>
swift	<p>swift code relevant to thr financial transaction</p> <p>- base type: string, max length: 15,  (XPath: <a href="#">TEXInvoice/TLheader/finInfo/swift</a>) 0-1</p>
taxAmount	<p>taxable amount related to the VAT rate or exemption code attributed</p> <p>- base type: decimal, min inclusive: 0, fraction digits: 2,  (XPath: <a href="#">TEXInvoice/TLtotals/VATinfo/taxAmount</a>) 1-1  (XPath: <a href="#">TEXInvoice/TLtotals/anticipDeduct/taxAmount</a>) 1-1</p>
taxCategory	<p>duty or tax or fee category</p> <p>- base type: string, cod. table: T62  <a href="http://www.moda-ml.net/moda-ml/repository/codelist/v2013-1/gc_T62.xml">http://www.moda-ml.net/moda-ml/repository/codelist/v2013-1/gc_T62.xml</a>  (XPath:  <a href="#">TEXInvoice/TLheader/terms/allowanceCharge/dtScheme/taxCategory</a>) 0-1  (XPath: <a href="#">TEXInvoice/TLtotals/anticipDeduct/dtScheme/taxCategory</a>) 0-1  (XPath: <a href="#">TEXInvoice/TLtotals/VATinfo/dtScheme/taxCategory</a>) 0-1  (XPath: <a href="#">TEXInvoice/TLbody/TItem/dtScheme/taxCategory</a>) 0-1</p>
taxDate	<p>date on which the supply of goods or services was made or completed, if preceding the date of the invoice, according to one of the patterns YYYY-MM-DD, YYYY-MM-DD:HH-MM or YYYY-WW.</p> <p>- base type: string,  (XPath: <a href="#">TEXInvoice/TLheader/taxDate</a>) 0-1</p>
taxRate	<p>duty or tax or fee percent rate</p> <p>- base type: string,  (XPath: <a href="#">TEXInvoice/TLtotals/VATinfo/dtScheme/taxRate</a>) 0-1  (XPath: <a href="#">TEXInvoice/TLtotals/anticipDeduct/dtScheme/taxRate</a>) 0-1  (XPath: <a href="#">TEXInvoice/TLbody/TItem/dtScheme/taxRate</a>) 0-1  (XPath:  <a href="#">TEXInvoice/TLheader/terms/allowanceCharge/dtScheme/taxRate</a>) 0-1</p>
@taxType	<p>duty or tax or fee type</p> <p>- base type: string, cod. table: T61  <a href="http://www.moda-ml.net/moda-ml/repository/codelist/v2013-1/gc_T61.xml">http://www.moda-ml.net/moda-ml/repository/codelist/v2013-1/gc_T61.xml</a>  (XPath:  <a href="#">TEXInvoice/TLheader/terms/allowanceCharge/dtScheme/@taxType</a>) [Required]  (XPath: <a href="#">TEXInvoice/TLtotals/anticipDeduct/dtScheme/@taxType</a>) [Required]  (XPath: <a href="#">TEXInvoice/TLtotals/VATinfo/dtScheme/@taxType</a>) [Required]  (XPath: <a href="#">TEXInvoice/TLbody/TItem/dtScheme/@taxType</a>) [Required]</p>
totQty	<p>total quantity of the articles related to the whole document</p>

	- base type: decimal, min inclusive: 0, fraction digits: 2, (XPath: <a href="#">TEXInvoice/TItotals/totQty</a> ) 0-1
transCondition	special condition of transport or special service requested to the Forwarder - base type: string, cod. table: T38 <a href="http://www.moda-ml.net/moda-ml/repository/codelist/v2013-1/gc_T38.xml">http://www.moda-ml.net/moda-ml/repository/codelist/v2013-1/gc_T38.xml</a> (XPath: <a href="#">TEXInvoice/TIheader/terms/transInfo/transCondition</a> ) 0-3
transConditionText	free text description of the special condition of transport or special service requested to the Forwarder - base type: string, max length: 100, (XPath: <a href="#">TEXInvoice/TIheader/terms/transInfo/transConditionText</a> ) 0-1
transMeans	means of transport, in general or referred to a specific leg - base type: string, cod. table: T40 <a href="http://www.moda-ml.net/moda-ml/repository/codelist/v2013-1/gc_T40.xml">http://www.moda-ml.net/moda-ml/repository/codelist/v2013-1/gc_T40.xml</a> (XPath: <a href="#">TEXInvoice/TIheader/terms/transInfo/transMeans</a> ) 0-1
transMode	way of transport, in general or referred to the specified leg - base type: string, cod. table: T8 <a href="http://www.moda-ml.net/moda-ml/repository/codelist/v2013-1/gc_T8.xml">http://www.moda-ml.net/moda-ml/repository/codelist/v2013-1/gc_T8.xml</a> (XPath: <a href="#">TEXInvoice/TIheader/terms/transInfo/transMode</a> ) 1-1
@transReason	reason for the transport - base type: string, cod. table: NT11 <a href="http://www.moda-ml.net/moda-ml/repository/codelist/v2013-1/gc_NT11.xml">http://www.moda-ml.net/moda-ml/repository/codelist/v2013-1/gc_NT11.xml</a> (XPath: <a href="#">TEXInvoice/TIheader/terms/transInfo/@transReason</a> ) [Optional]
@um	specification of the unit of measure - base type: string, cod. table: NT7 <a href="http://www.moda-ml.net/moda-ml/repository/codelist/v2013-1/gc_NT7.xml">http://www.moda-ml.net/moda-ml/repository/codelist/v2013-1/gc_NT7.xml</a> (XPath: <a href="#">TEXInvoice/TIbody/TIitem/price/@um</a> ) [Optional] - nota: <i>Unit of measure of the product to which the price is referred (price per meter)</i> (XPath: <a href="#">TEXInvoice/TIbody/TIitem/qty/@um</a> ) [Required] (XPath: <a href="#">TEXInvoice/TIheader/terms/transInfo/grossWeight/@um</a> ) [Required] (XPath: <a href="#">TEXInvoice/TIbody/TIitem/textItem/grossWeight/@um</a> ) [Required] (XPath: <a href="#">TEXInvoice/TIbody/TIitem/textItem/grossQty/@um</a> ) [Required] (XPath: <a href="#">TEXInvoice/TItotals/totQty/@um</a> ) [Required] (XPath: <a href="#">TEXInvoice/TIheader/terms/transInfo/netWeight/@um</a> ) [Required]
@useProfile	use profile to which the present document is compliant if it was agreed by the parties. It is suggested a URI with reference to the firms or the URL of the profile. - base type: string, (XPath: <a href="#">TEXInvoice/@useProfile</a> ) [Optional]
@VAT	VAT rate or code ( deprecated, use dtScheme element ) - base type: string, cod. table: NT16 <a href="http://www.moda-ml.net/moda-ml/repository/codelist/v2013-1/gc_NT16.xml">http://www.moda-ml.net/moda-ml/repository/codelist/v2013-1/gc_NT16.xml</a> (XPath: <a href="#">TEXInvoice/TIbody/TIitem/lineN/@VAT</a> ) [Optional] (XPath: <a href="#">TEXInvoice/TIheader/thirdParty/@VAT</a> ) [Optional] (XPath: <a href="#">TEXInvoice/TItotals/VATinfo/@VAT</a> ) [Optional] (XPath: <a href="#">TEXInvoice/TIheader/terms/allowanceCharge/@VAT</a> ) [Optional] (XPath: <a href="#">TEXInvoice/TIbody/TIitem/@VAT</a> ) [Optional] - nota: <i>VAT rate of the product or service specified in the line</i> (XPath: <a href="#">TEXInvoice/TItotals/anticipDeduct/@VAT</a> ) [Required]
VATamount	duty or tax amount for the specified tax rate - base type: decimal, min inclusive: 0, fraction digits: 2, (XPath: <a href="#">TEXInvoice/TItotals/VATinfo/VATamount</a> ) 0-1 - note: <i>when tax or duty other than VAT is the amount of the</i>

	<i>tax</i> (XPath: TEXInvoice/Tltotals/anticipDeduct/VATamount) 0-1
@version	Dictionary version from which the instance has been created - base type: string, cod. table: NT100 <a href="http://www.moda-ml.net/moda-ml/repository/codelist/v2013-1/gc_NT100.xml">http://www.moda-ml.net/moda-ml/repository/codelist/v2013-1/gc_NT100.xml</a> (XPath: TEXInvoice/@version) [Optional] [Default= 2013-1]

## 2.3 Enumeration tables

List of enumeration tables used in the XML document. You can find the corresponding codes at: <http://www.moda-ml.org/moda-ml/imple/moda-ml-2013-1.asp?lingua=en&pag=6>

NT100 - eBIZ Moda-ML version  
NT11 - transport causal  
NT16 - VAT rate or code  
NT18 - message function  
NT19 - currency use qualifier  
NT2 - third party qualifier  
NT20 - price qualifier  
NT29 - format of a date  
NT3 - data format  
NT6 - coding system owner/issuer  
NT7 - unity of measure  
T1 - terms of payment  
T10 - ISO3166 - Country  
T18 - Invoice type  
T19 - fibre type  
T2 - Modes of payment  
T21 - type of document  
T3 - terms of delivery  
T36 - service measure mode  
T38 - transport conditions  
T40 - type of transport means  
T41 - type of Allowance or Charge  
T44 - additional code type  
T61 - duty or tax or fee type  
T62 - duty or tax or fee category  
T8 - Modes of Transport  
T9 - ISO4217 - Currency

# Annex A

Representative images of the principal complex elements' structure.

