



<http://www.moda-ml.org>

## IMPLEMENTATION GUIDE TRANSACTION "TEXTILE DARNING RETURN"

Version: 2013-1

Date of release: 18/11/2011

Document code: G013

XML Schema repository:<http://www.moda-ml.org/moda-ml/repository/schema/v2013-1/default.asp>

Guides repository:<http://www.moda-ml.org/moda-ml/repository/guide/v2013-1/default.asp>

Guide filename: G013-MODA-ML-TextileDarningReturn.pdf

# 1. BUSINESS DESCRIPTION

## 1.1 Scope

The present guide has been issued to assist the companies of the Textile-Clothing sector in the implementation of the standard XML document type "Textile DARN RETURN", providing all the instruction required for its use in any context of e-commerce between Fabric Producers and Darn Subcontractors.

All the rules required for the construction and validation of the document are embedded into the specific XML-Schema, which is detailed in section "Implementation guide".

## 1.2 Generalities

The document "Textile Darn Return" is used by the Darn Subcontractor to specify the darning operations performed on each fabric piece and possibly the worktimes invoiced.

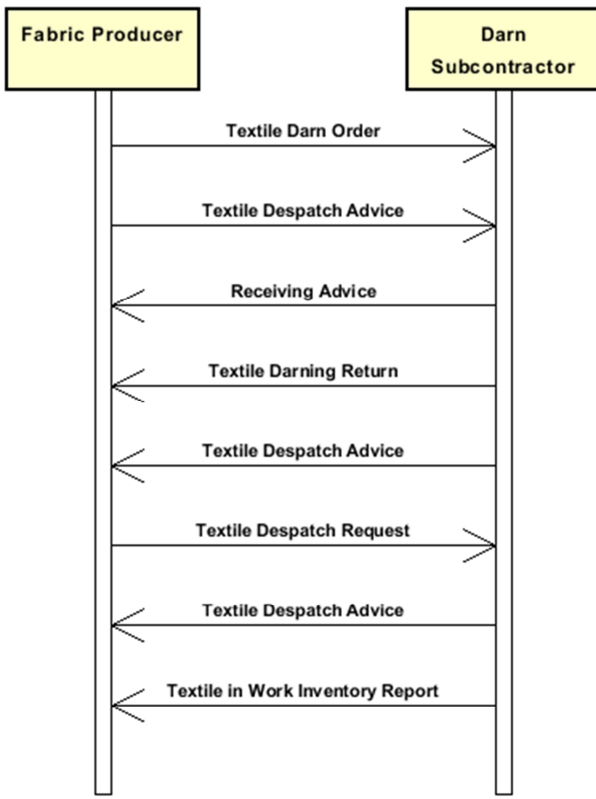
The document can refer to one or more pieces and can be used either in conjunction with the "Textile Despatch Advise" (1 DA : 1 Return) or independently.

In the first instance the reference to the Despatch Advise must be given in the Header; in the second each piece can have at item level its reference to the transport document with which was returned to the Client.

EACH ITEM CONTAINS A JOB REPORTING FOR ONE OR MORE PIECES OF THE SAME TEXTILE ARTICLE.

The Job cost reporting can be calculated from a metre rate or from an hourly rate times a given operation time or from a combination of both.

## 1.3. Possible scenario



## 2. IMPLEMENTATION GUIDE

### 2.1 General structure of XML document

All the business data that can be exchanged through this class of documents are shown in the following "document structure", that provides a simplified vision of the Schema.

In particular:

- the two numbers following each element define its "cardinality" (minimum and maximum number of occurrences); the minimum equal zero indicates that the element is optional, the minimum greater than zero indicates that is mandatory;
- the bold character denotes the complex elements (aggregates of simple elements) that were built for the sake of functionality and re-usability of some complex informations sets. The child elements in each parent element are easily spotted as "indented";
- the symbol "@" denotes an attribute of the preceding element; here "the usage indicator (optional, required, ...)" is shown in square brackets.

### Structure

#### **TEXDarnReturn**

*@msgfunction [Optional] [Default= OR]*

*@version [Optional] [Default= 2013-1]*

*@useProfile [Optional]*

| **DRheader 1-1**

| | msgN 1-1

| | - choose -

| | msgID 0-1

| | - or -

| | docID 0-1

| | *@numberingOrg [Optional]*

| | - end choose -

| | msgDate 1-1

| | *@dateForm [Optional]*

| | **refDoc 0-9**

| | *@docType [Required]*

| | | docID 1-2

| | | *@numberingOrg [Optional]*

| | | docDate 0-1

| | | *@dateForm [Optional]*

| | | season 0-1

| | | itemID 0-1

| | **buyer 1-1**

| | *@logo [Optional]*

| | *@sender [Optional]*

| | | id 1-1

| | | *@numberingOrg [Optional]*

| | | legalName 0-1

| | | dept 0-1

| | | person 0-1

| | | *@email [Optional]*

| | | *@phone [Optional]*

| | | *@fax [Optional]*

| | | street 0-1

| | | city 0-1

| | | subCountry 0-1

| | | country 0-1

| | | postCode 0-1

| | **subContractor 1-1**

| | *@sender [Optional]*  
| | id 1-1  
| | *@numberingOrg [Optional]*  
| | legalName 0-1  
| | dept 0-1  
| | person 0-1  
| | *@email [Optional]*  
| | *@phone [Optional]*  
| | *@fax [Optional]*  
| | street 0-1  
| | city 0-1  
| | subCountry 0-1  
| | country 0-1  
| | postCode 0-1

| | **thirdParty 0-1**

| | *@VAT [Optional]*  
| | *@role [Required]*  
| | *@sender [Optional]*  
| | id 1-1  
| | *@numberingOrg [Optional]*  
| | legalName 0-1  
| | dept 0-1  
| | person 0-1  
| | *@email [Optional]*  
| | *@phone [Optional]*  
| | *@fax [Optional]*  
| | street 0-1  
| | city 0-1  
| | subCountry 0-1  
| | country 0-1  
| | postCode 0-1

| | note 0-19

| | *@numberingOrg [Optional]*  
| | *@codeList [Optional]*  
| | *@noteLabel [Optional]*

| **DRbody 1-1**

| | **DRitem 1-unbounded**

| | *@transReason [Optional]*  
| | lineN 1-1  
| | *@VAT [Optional]*  
| | **texCode 0-1**  
| | *@numberingOrg [Optional]*  
| | art 1-1  
| | *@numberingOrg [Optional]*  
| | *@codeList [Optional]*  
| | *@listName [Optional]*  
| | *@listVersion [Optional]*  
| | pattern 0-1  
| | *@numberingOrg [Optional]*  
| | *@codeList [Optional]*  
| | *@listName [Optional]*  
| | *@listVersion [Optional]*  
| | color 0-1  
| | *@numberingOrg [Optional]*  
| | *@codeList [Optional]*  
| | *@listName [Optional]*  
| | *@listVersion [Optional]*  
| | added 0-9  
| | *@numberingOrg [Optional]*  
| | *@addType [Optional]*

```

| | | | description 0-1
| | | | qty 1-1
| | | | @um [Required]
- choose -
| | | | pieceChain 1-1
| | | | | serialN 1-1
| | | | | @numberingOrg [Optional]
| | | | | pieceLength 0-1
| | | | | @um [Optional] [Default= MTR]
| | | | | pieceWidth 0-1
| | | | | @um [Optional] [Default= CMT]
| | | | | pieceWeight 0-1
| | | | | @um [Optional] [Default= KGM]
| | | | | lotN 0-1
| | | | | @numberingOrg [Optional]
| | | | | dyeN 0-1
| | | | | @numberingOrg [Optional]
| | | | | packageN 0-1
| | | | | @numberingOrg [Optional]
| | | | | @packageContainerN [Optional]
| | | | | piecePack 0-1
| | | | | - choose -
| | | | | | piecePackText 1-1
| | | | | | - or -
| | | | | | | pieceInnWrap1 1-1
| | | | | | | pieceInnWrap2 0-1
| | | | | | | pieceOutWrap 0-1
| | | | | | - end choose -
| | | | | pieceCut 0-99
| | | | | | serialN 1-1
| | | | | | @numberingOrg [Optional]
| | | | | | pieceLength 0-1
| | | | | | @um [Optional] [Default= MTR]
| | | | | | pieceWeight 0-1
| | | | | | @um [Optional] [Default= KGM]
- or -
| | | | piece 1-1
| | | | | @endUse [Optional]
| | | | | serialN 1-3
| | | | | @numberingOrg [Optional]
| | | | | EPC 0-1
| | | | | @numberingOrg [Optional]
| | | | | @TID [Optional]
| | | | | totFault 0-1
| | | | | pieceStatus 0-1
| | | | | pieceLength 0-1
| | | | | @um [Optional] [Default= MTR]
| | | | | pieceWidth 0-1
| | | | | @um [Optional] [Default= CMT]
| | | | | pieceCutWidth 0-1
| | | | | @um [Optional] [Default= CMT]
| | | | | pieceWeight 0-1
| | | | | @um [Optional] [Default= KGM]
| | | | | pieceWeightM 0-1
| | | | | @um [Optional] [Default= GRM]
| | | | | pieceAllow 0-1
| | | | | @um [Required]
| | | | | lotN 0-1
| | | | | @numberingOrg [Optional]
| | | | | dyeN 0-1
| | | | | @numberingOrg [Optional]

```

```

| | | | mixMatch 0-1
| | | | | @numberingOrg [Optional]
| | | | packageN 0-1
| | | | | @numberingOrg [Optional]
| | | | | @packageContainerN [Optional]
| | | | | piecePack 0-1
| | | | | - choose -
| | | | | | piecePackText 1-1
| | | | | | - or -
| | | | | | pieceInnWrap1 1-1
| | | | | | pieceInnWrap2 0-1
| | | | | | pieceOutWrap 0-1
| | | | | - end choose -
| | | | - end choose -
| | | | | pieceMap 0-1
| | | | | @source [Required]
| | | | | | totFault 1-1
| | | | | | | pieceFault 0-99
| | | | | | | @faultRank [Required]
| | | | | | | @faultShape [Optional]
| | | | | | | - choose -
| | | | | | | | fabricFaultText 1-1
| | | | | | | | - or -
| | | | | | | | fabricFault 1-1
| | | | | | | - end choose -
| | | | | | | | warpStart 1-1
| | | | | | | | | @um [Optional] [Default= MTR]
| | | | | | | | warpEnd 0-1
| | | | | | | | | @um [Optional] [Default= MTR]
| | | | | | | | weftStart 0-1
| | | | | | | | | @um [Optional] [Default= CMT]
| | | | | | | | weftEnd 0-1
| | | | | | | | | @um [Optional] [Default= CMT]
| | | | | | | | pieceAllow 0-1
| | | | | | | | | @um [Required]
| | | | | | | | note 0-19
| | | | | | | | | @numberingOrg [Optional]
| | | | | | | | | @codeList [Optional]
| | | | | | | | | @noteLabel [Optional]
| | | | | | refDoc 0-1
| | | | | | @docType [Required]
| | | | | | | docID 1-2
| | | | | | | | @numberingOrg [Optional]
| | | | | | | docDate 0-1
| | | | | | | | @dateForm [Optional]
| | | | | | | season 0-1
| | | | | | | itemID 0-1
| | | | | | darnJobReport 0-9
| | | | | | | job 1-1
| | | | | | | jobTime 0-1
| | | | | | | jobTimeBasis 0-1
| | | | | | | | @um [Required]
| | | | | | | | darnJobPrice 0-2
| | | | | | | | | jobPrice 0-1
| | | | | | | | | priceBasis 0-1
| | | | | | | | | @um [Required]
| | | | | | note 0-19
| | | | | | | @numberingOrg [Optional]
| | | | | | | @codeList [Optional]
| | | | | | | @noteLabel [Optional]

```

| **MOtotals 0-1**  
| | totQty 2-2  
| | @um [Required]



## 2.2 Detailed description of document elements

Following tables show all elements (complex and simple) used in this document. Description includes: 1) element's information: xml tag, name, brief description, data type and syntax constraints; 2) information about use of the element in a particular position in the document: xpath and possible associated notes.

### 2.2.1 Complex elements (Aggregate Business Information Entities)

Complex elements are those elements whose content is composed of other elements (childs).Complex elements are alphabetically ordered.

<b>buyer</b>	details of the Buyer - base type: Nad, (XPath: <a href="#">TEXDarnReturn/DRheader/buyer</a> ) 1-1
<b>darnJobPrice</b>	pricing of a darn work (XPath: <a href="#">TEXDarnReturn/DRbody/DRitem/darnJobReport/darnJobPrice</a> ) 0-2
<b>darnJobReport</b>	job report for the execution of a darn work (XPath: <a href="#">TEXDarnReturn/DRbody/DRitem/darnJobReport</a> ) 0-9 - note: <i>here is the job report for the fabric pieces identified by its serial number (serialN)</i>
<b>DRbody</b>	body of the document TEXTILES DARN RETURN (XPath: <a href="#">TEXDarnReturn/DRbody</a> ) 1-1
<b>DRheader</b>	header of the TEXTILES DARN RETURN (XPath: <a href="#">TEXDarnReturn/DRheader</a> ) 1-1
<b>DRitem</b>	line item of the document TEXTILES DARN RETURN (XPath: <a href="#">TEXDarnReturn/DRbody/DRitem</a> ) 1-unbounded
<b>MOtotals</b>	monetary and quantity totals of the Order (XPath: <a href="#">TEXDarnReturn/MOtals</a> ) 0-1
<b>piece</b>	Identification data and measurement of the fabric piece (XPath: <a href="#">TEXDarnReturn/DRbody/DRitem/piece</a> ) 1-1
<b>pieceChain</b>	identification data and measurements of a chain of pieces still to be cut (XPath: <a href="#">TEXDarnReturn/DRbody/DRitem/pieceChain</a> ) 1-1
<b>pieceCut</b>	identification data and measurements of a fabric piece belonging to a chain still to be cut (XPath: <a href="#">TEXDarnReturn/DRbody/DRitem/pieceChain/pieceCut</a> ) 0-99 - note: <i>here the data of the pieces making up the chain should be specified</i>
<b>pieceFault</b>	classification, position and allowance of the piece faults. The reference point (0,0) for the position is the lower left corner of the piece (selvedge excluded) (XPath: <a href="#">TEXDarnReturn/DRbody/DRitem/pieceMap/pieceFault</a> ) 0-99
<b>pieceMap</b>	mapping of the piece faults: type, rank and location (XPath: <a href="#">TEXDarnReturn/DRbody/DRitem/pieceMap</a> ) 0-1
<b>piecePack</b>	type of wrapping or packing of the fabric pieces (XPath: <a href="#">TEXDarnReturn/DRbody/DRitem/piece/piecePack</a> ) 0-1

	(XPath: <a href="#">TEXDarnReturn/DRbody/DRitem/pieceChain/piecePack</a> ) 0-1
<b>refDoc</b>	identification of a document and of an item thereof, to which the message makes reference (XPath: <a href="#">TEXDarnReturn/DRbody/DRitem/refDoc</a> ) 0-1 - note: <i>here the transport document can be identified</i> (XPath: <a href="#">TEXDarnReturn/DRheader/refDoc</a> ) 0-9
<b>subContractor</b>	details of the Sub-contractor - base type: Nad, (XPath: <a href="#">TEXDarnReturn/DRheader/subContractor</a> ) 1-1
<b>texCode</b>	full codification of the textile product (XPath: <a href="#">TEXDarnReturn/DRbody/DRitem/texCode</a> ) 0-1
<b>thirdParty</b>	details of the Third Party, different from Buyer or Supplier - base type: Nad, (XPath: <a href="#">TEXDarnReturn/DRheader/thirdParty</a> ) 0-1 - note: <i>it can be used to specify the Party to whom the subcontractor has sent the goods (role="DM")</i>

## 2.2.2 Simple elements (Basic Business Information Entities)

Simple elements are those elements whose content is characterized by a data type plus a domain of possible values. Simple elements are alphabetically ordered.

<b>added</b>	additional code of the product (complementing the formers) - base type: string, max length: 15, (XPath: <a href="#">TEXDarnReturn/DRbody/DRitem/texCode/added</a> ) 0-9 - note: <i>here an additional codification (see table T44) can be specified</i>
<b>@addType</b>	qualifier of the additional coding of a product - base type: string, cod. table: T44 <a href="http://www.moda-ml.net/moda-ml/repository/codelist/v2013-1/gc_T44.xml">http://www.moda-ml.net/moda-ml/repository/codelist/v2013-1/gc_T44.xml</a> (XPath: <a href="#">TEXDarnReturn/DRbody/DRitem/texCode/added/@addType</a> ) [Optional]
<b>art</b>	article number of the product - base type: string, max length: 25, (XPath: <a href="#">TEXDarnReturn/DRbody/DRitem/texCode/art</a> ) 1-1 - note: <i>can be used either for the base-article (excluding pattern/colour) or for the SKU</i>
<b>city</b>	name of the city (town, village) - base type: string, max length: 40, (XPath: <a href="#">TEXDarnReturn/DRheader/thirdParty/city</a> ) 0-1 (XPath: <a href="#">TEXDarnReturn/DRheader/subContractor/city</a> ) 0-1 (XPath: <a href="#">TEXDarnReturn/DRheader/buyer/city</a> ) 0-1
<b>@codeList</b>	it specifies the URL where the list of codes used to make an instance of the element can be found - base type: string, max length: 255, (XPath: <a href="#">TEXDarnReturn/DRbody/DRitem/texCode/art/@codeList</a> ) [Optional] - nota: <i>this attribute should be ALTERNATIVE to the others</i> (XPath: <a href="#">TEXDarnReturn/DRbody/DRitem/note/@codeList</a> ) [Optional] - nota: <i>must be used to provide (URL) the list of codes used in "noteLabel"</i> (XPath: <a href="#">TEXDarnReturn/DRbody/DRitem/texCode/pattern/@codeList</a> ) [Optional] - nota: <i>this attribute should be ALTERNATIVE to the others</i> (XPath: <a href="#">TEXDarnReturn/DRheader/note/@codeList</a> ) [Optional] - nota: <i>must be used to provide (URL) the list of codes used in</i>

	<p>"noteLabel"  (XPath: TEXDarnReturn/DRbody/DRitem/texCode/color/@codeList) [Optional]  - nota: <i>this attribute should be ALTERNATIVE to the others</i>  (XPath: TEXDarnReturn/DRbody/DRitem/pieceMap/pieceFault/note/@codeList) [Optional]  - nota: <i>must be used to provide (URL) the list of codes used in "noteLabel"</i></p>
color	<p>colour number of the product, when not included in the model or fabric code  - base type: string, max length: 15,  (XPath: TEXDarnReturn/DRbody/DRitem/texCode/color) 0-1</p>
country	<p>code of the nation  - base type: string, cod. table: T10  <a href="http://www.moda-ml.net/moda-ml/repository/codelist/v2013-1/gc_T10.xml">http://www.moda-ml.net/moda-ml/repository/codelist/v2013-1/gc_T10.xml</a>  (XPath: TEXDarnReturn/DRheader/thirdParty/country) 0-1  (XPath: TEXDarnReturn/DRheader/subContractor/country) 0-1  (XPath: TEXDarnReturn/DRheader/buyer/country) 0-1</p>
@dateForm	<p>format used for the date  - base type: string, cod. table: NT29  <a href="http://www.moda-ml.net/moda-ml/repository/codelist/v2013-1/gc_NT29.xml">http://www.moda-ml.net/moda-ml/repository/codelist/v2013-1/gc_NT29.xml</a>  (XPath: TEXDarnReturn/DRbody/DRitem/refDoc/docDate/@dateForm) [Optional]  (XPath: TEXDarnReturn/DRheader/msgDate/@dateForm) [Optional]  (XPath: TEXDarnReturn/DRheader/refDoc/docDate/@dateForm) [Optional]</p>
dept	<p>name or code of a contact department within a Party  - base type: string, max length: 40,  (XPath: TEXDarnReturn/DRheader/buyer/dept) 0-1  (XPath: TEXDarnReturn/DRheader/thirdParty/dept) 0-1  (XPath: TEXDarnReturn/DRheader/subContractor/dept) 0-1</p>
description	<p>free text description of a product  - base type: string, max length: 70,  (XPath: TEXDarnReturn/DRbody/DRitem/texCode/description) 0-1</p>
docDate	<p>date of issue of the referenced document, according to one of the patterns YYYY-MM-DD, YYYY-MM-DD:HH-MM or YYYY-WW.  - base type: string,  (XPath: TEXDarnReturn/DRbody/DRitem/refDoc/docDate) 0-1  (XPath: TEXDarnReturn/DRheader/refDoc/docDate) 0-1</p>
docID	<p>identification number of the referenced document SINCE 2008-1 ITS USE IN THE HEADER IS DISCOURAGED (REPLACED BY msgID)  - base type: string, max length: 80,  (XPath: TEXDarnReturn/DRheader/refDoc/docID) 1-2  (XPath: TEXDarnReturn/DRheader/docID) 0-1  (XPath: TEXDarnReturn/DRbody/DRitem/refDoc/docID) 1-2</p>
@docType	<p>type or class to which the referenced document belongs  - base type: string, cod. table: T21  <a href="http://www.moda-ml.net/moda-ml/repository/codelist/v2013-1/gc_T21.xml">http://www.moda-ml.net/moda-ml/repository/codelist/v2013-1/gc_T21.xml</a>  (XPath: TEXDarnReturn/DRbody/DRitem/refDoc/@docType) [Required]  (XPath: TEXDarnReturn/DRheader/refDoc/@docType) [Required]</p>
dyeN	<p>number of the dying batch of a textile product  - base type: string, max length: 15,  (XPath: TEXDarnReturn/DRbody/DRitem/piece/dyeN) 0-1  (XPath: TEXDarnReturn/DRbody/DRitem/pieceChain/dyeN) 0-1</p>
@email	<p>electronic mail address of the contact person within a Party  - base type: string, max length: 80,  (XPath: TEXDarnReturn/DRheader/buyer/person/@email) [Optional]  (XPath: TEXDarnReturn/DRheader/subContractor/person/@email) [Optional]  (XPath: TEXDarnReturn/DRheader/thirdParty/person/@email) [Optional]</p>

@endUse	<p>specifies the final use of the fabric</p> <ul style="list-style-type: none"> <li>- base type: string, cod. table: NT4</li> </ul> <p><a href="http://www.moda-ml.net/moda-ml/repository/codelist/v2013-1/gc_NT4.xml">http://www.moda-ml.net/moda-ml/repository/codelist/v2013-1/gc_NT4.xml</a>  (XPath: <code>TEXDarnReturn/DRbody/DRitem/piece/@endUse</code>) [Optional]</p>
EPC	<p>identifier used for tracing a physical item with RFID technology</p> <ul style="list-style-type: none"> <li>- base type: string,</li> </ul> <p>(XPath: <code>TEXDarnReturn/DRbody/DRitem/piece/EPC</code>) 0-1</p>
fabricFault	<p>code specifying the type or class of fabric fault</p> <ul style="list-style-type: none"> <li>- base type: string, cod. table: T12</li> </ul> <p><a href="http://www.moda-ml.net/moda-ml/repository/codelist/v2013-1/gc_T12.xml">http://www.moda-ml.net/moda-ml/repository/codelist/v2013-1/gc_T12.xml</a>  (XPath: <code>TEXDarnReturn/DRbody/DRitem/pieceMap/pieceFault/fabricFault</code>) 1-1</p> <ul style="list-style-type: none"> <li>- note: <i>here the MODA-ML codelist must be used.</i></li> </ul>
fabricFaultText	<p>free text describing the type or class of the fabric fault</p> <ul style="list-style-type: none"> <li>- base type: string, max length: 40,</li> </ul> <p>(XPath: <code>TEXDarnReturn/DRbody/DRitem/pieceMap/pieceFault/fabricFaultText</code>) 1-1</p> <ul style="list-style-type: none"> <li>- note: <i>here the text or proprietary code mutually agreed must be used</i></li> </ul>
@faultRank	<p>ranking class of the fabric fault</p> <ul style="list-style-type: none"> <li>- base type: string, cod. table: NT13</li> </ul> <p><a href="http://www.moda-ml.net/moda-ml/repository/codelist/v2013-1/gc_NT13.xml">http://www.moda-ml.net/moda-ml/repository/codelist/v2013-1/gc_NT13.xml</a>  (XPath: <code>TEXDarnReturn/DRbody/DRitem/pieceMap/pieceFault/@faultRank</code>) [Required]</p>
@faultShape	<p>shape classification of the fabric fault</p> <ul style="list-style-type: none"> <li>- base type: string, cod. table: NT14</li> </ul> <p><a href="http://www.moda-ml.net/moda-ml/repository/codelist/v2013-1/gc_NT14.xml">http://www.moda-ml.net/moda-ml/repository/codelist/v2013-1/gc_NT14.xml</a>  (XPath: <code>TEXDarnReturn/DRbody/DRitem/pieceMap/pieceFault/@faultShape</code>) [Optional]</p>
@fax	<p>fax number of the contact person within a Party</p> <ul style="list-style-type: none"> <li>- base type: string, max length: 35,</li> </ul> <p>(XPath: <code>TEXDarnReturn/DRheader/subContractor/person/@fax</code>) [Optional]  (XPath: <code>TEXDarnReturn/DRheader/buyer/person/@fax</code>) [Optional]  (XPath: <code>TEXDarnReturn/DRheader/thirdParty/person/@fax</code>) [Optional]</p>
id	<p>primary identification code of a Party; it is recommended the format: nation code (ISO 3166) + VAT identification number (11 crt), with the qualifier "numberingOrg"= MF</p> <ul style="list-style-type: none"> <li>- base type: string, max length: 15,</li> </ul> <p>(XPath: <code>TEXDarnReturn/DRheader/buyer/id</code>) 1-1  (XPath: <code>TEXDarnReturn/DRheader/thirdParty/id</code>) 1-1  (XPath: <code>TEXDarnReturn/DRheader/subContractor/id</code>) 1-1</p>
itemID	<p>number of the line/item of the referenced document</p> <ul style="list-style-type: none"> <li>- base type: string, max length: 6,</li> </ul> <p>(XPath: <code>TEXDarnReturn/DRbody/DRitem/refDoc/itemID</code>) 0-1  (XPath: <code>TEXDarnReturn/DRheader/refDoc/itemID</code>) 0-1</p>
job	<p>element of a work cycle</p> <ul style="list-style-type: none"> <li>- base type: string, cod. table: T20</li> </ul> <p><a href="http://www.moda-ml.net/moda-ml/repository/codelist/v2013-1/gc_T20.xml">http://www.moda-ml.net/moda-ml/repository/codelist/v2013-1/gc_T20.xml</a>  (XPath: <code>TEXDarnReturn/DRbody/DRitem/darnJobReport/job</code>) 1-1</p>
jobPrice	<p>price of a hired job operation</p> <ul style="list-style-type: none"> <li>- base type: decimal, min inclusive: 0, fraction digits: 4,</li> </ul> <p>(XPath: <code>TEXDarnReturn/DRbody/DRitem/darnJobReport/darnJobPrice/jobPrice</code>) 0-1</p>
jobTime	<p>worktime of the elementary operation of a work cycle in hours and minutes (nnnHnnM)</p> <ul style="list-style-type: none"> <li>- base type: duration,</li> </ul> <p>(XPath: <code>TEXDarnReturn/DRbody/DRitem/darnJobReport/jobTime</code>) 0-1</p>
jobTimeBasis	<p>reference basis for the time of an operation (e.g.: 1 metre, 50 metres,</p>

	<p>30 kilos, etc...)</p> <ul style="list-style-type: none"> <li>- base type: positiveInteger, min inclusive: 1, (XPath: <a href="#">TEXDarnReturn/DRbody/DRitem/darnJobReport/jobTimeBasis</a>) 0-1</li> <li>- note: <i>this element must not be used when the time (jobTime) is a forfeit</i></li> </ul>
legalName	<p>legal name of a Party</p> <ul style="list-style-type: none"> <li>- base type: string, max length: 80, (XPath: <a href="#">TEXDarnReturn/DRheader/buyer/legalName</a>) 0-1 (XPath: <a href="#">TEXDarnReturn/DRheader/thirdParty/legalName</a>) 0-1 (XPath: <a href="#">TEXDarnReturn/DRheader/subContractor/legalName</a>) 0-1</li> </ul>
lineN	<p>number of the line item of the present message (xml document)</p> <ul style="list-style-type: none"> <li>- base type: positiveInteger, min inclusive: 1, max inclusive: 9999, (XPath: <a href="#">TEXDarnReturn/DRbody/DRitem/lineN</a>) 1-1</li> </ul>
@listName	<p>it specifies the name of the list of codes used to make an instance of the element</p> <ul style="list-style-type: none"> <li>- base type: string, max length: 40, (XPath: <a href="#">TEXDarnReturn/DRbody/DRitem/texCode/pattern/@listName</a>) [Optional]</li> <li>- nota: <i>this attribute should always be used coupled with "numberingOrg"</i> (XPath: <a href="#">TEXDarnReturn/DRbody/DRitem/texCode/art/@listName</a>) [Optional]</li> <li>- nota: <i>this attribute should always be used coupled with "numberingOrg"</i> (XPath: <a href="#">TEXDarnReturn/DRbody/DRitem/texCode/color/@listName</a>) [Optional]</li> <li>- nota: <i>this attribute should always be used coupled with "numberingOrg"</i></li> </ul>
@listVersion	<p>it specifies the version of the list of codes used to make an instance of the element</p> <ul style="list-style-type: none"> <li>- base type: string, max length: 6, (XPath: <a href="#">TEXDarnReturn/DRbody/DRitem/texCode/color/@listVersion</a>) [Optional]</li> <li>- nota: <i>this attribute should always be used coupled with "numberingOrg" and "listName"</i> (XPath: <a href="#">TEXDarnReturn/DRbody/DRitem/texCode/pattern/@listVersion</a>) [Optional]</li> <li>- nota: <i>this attribute should always be used coupled with "numberingOrg" and "listName"</i> (XPath: <a href="#">TEXDarnReturn/DRbody/DRitem/texCode/art/@listVersion</a>) [Optional]</li> <li>- nota: <i>this attribute should always be used coupled with "numberingOrg" and "listName"</i></li> </ul>
@logo	<p>company logo (URL of the image jpeg or gif). It is recommended that the width of the image does not exceed 640 pixel.</p> <ul style="list-style-type: none"> <li>- base type: string, max length: 255, (XPath: <a href="#">TEXDarnReturn/DRheader/buyer/@logo</a>) [Optional]</li> </ul>
lotN	<p>lot number of a product or batch number of the raw material</p> <ul style="list-style-type: none"> <li>- base type: string, max length: 15, (XPath: <a href="#">TEXDarnReturn/DRbody/DRitem/piece/lotN</a>) 0-1 (XPath: <a href="#">TEXDarnReturn/DRbody/DRitem/pieceChain/lotN</a>) 0-1</li> </ul>
mixMatch	<p>colour hue used for the match of garments</p> <ul style="list-style-type: none"> <li>- base type: string, max length: 15, (XPath: <a href="#">TEXDarnReturn/DRbody/DRitem/piece/mixMatch</a>) 0-1</li> </ul>
msgDate	<p>date of issue of the present message (xml document), according to one of the patterns YYYY-MM-DD, YYYY-MM-DD:HH-MM or YYYY-WW.</p> <ul style="list-style-type: none"> <li>- base type: string, (XPath: <a href="#">TEXDarnReturn/DRheader/msgDate</a>) 1-1</li> </ul>
@msgfunction	<p>function performed by the present message with regards to the</p>

	<p>transmission</p> <ul style="list-style-type: none"> <li>- base type: string, cod. table: NT18</li> <li><a href="http://www.moda-ml.net/moda-ml/repository/codelist/v2013-1/gc_NT18.xml">http://www.moda-ml.net/moda-ml/repository/codelist/v2013-1/gc_NT18.xml</a></li> <li>(XPath: <code>TEXDarnReturn/@msgfunction</code>) [Optional] [Default= OR]</li> </ul>
msgID	<p>key identifier of the document in the information system of the issuing Party</p> <ul style="list-style-type: none"> <li>- base type: string, max length: 35,</li> <li>(XPath: <code>TEXDarnReturn/DRheader/msgID</code>) 0-1</li> </ul>
msgN	<p>identification number given to the message (xml document) by its issuer</p> <ul style="list-style-type: none"> <li>- base type: string, max length: 35,</li> <li>(XPath: <code>TEXDarnReturn/DRheader/msgN</code>) 1-1</li> </ul>
note	<p>free text or structured (computer processing) note. For note structuring use the attributes "noteLabel" and "codelist"</p> <ul style="list-style-type: none"> <li>- base type: string, max length: 350,</li> <li>(XPath: <code>TEXDarnReturn/DRbody/DRitem/note</code>) 0-19</li> <li>(XPath: <code>TEXDarnReturn/DRbody/DRitem/pieceMap/pieceFault/note</code>) 0-19</li> <li>(XPath: <code>TEXDarnReturn/DRheader/note</code>) 0-19</li> </ul>
@noteLabel	<p>subject qualifier of a note</p> <ul style="list-style-type: none"> <li>- base type: string, max length: 35,</li> <li>(XPath: <code>TEXDarnReturn/DRbody/DRitem/note/@noteLabel</code>) [Optional]</li> <li>- nota: <i>must be used to qualify the subject of the note</i></li> <li>(XPath: <code>TEXDarnReturn/DRheader/note/@noteLabel</code>) [Optional]</li> <li>- nota: <i>must be used to qualify the subject of the note</i></li> <li>(XPath: <code>TEXDarnReturn/DRbody/DRitem/pieceMap/pieceFault/note/@noteLabel</code>) [Optional]</li> <li>- nota: <i>must be used to qualify the subject of the note</i></li> </ul>
@numberingOrg	<p>code specifying the organisation who has created or owns the coding or numbering system</p> <ul style="list-style-type: none"> <li>- base type: string, cod. table: NT6</li> <li><a href="http://www.moda-ml.net/moda-ml/repository/codelist/v2013-1/gc_NT6.xml">http://www.moda-ml.net/moda-ml/repository/codelist/v2013-1/gc_NT6.xml</a></li> <li>(XPath: <code>TEXDarnReturn/DRheader/docID/@numberingOrg</code>) [Optional]</li> <li>- nota: <i>here can be specified whose document numbering is used (e.g.: Client, Supplier, ..)</i></li> <li>(XPath: <code>TEXDarnReturn/DRbody/DRitem/pieceChain/packageN/@numberingOrg</code>) [Optional]</li> <li>(XPath: <code>TEXDarnReturn/DRbody/DRitem/pieceChain/lotN/@numberingOrg</code>) [Optional]</li> <li>(XPath: <code>TEXDarnReturn/DRheader/thirdParty/id/@numberingOrg</code>) [Optional]</li> <li>(XPath: <code>TEXDarnReturn/DRbody/DRitem/pieceChain/dyeN/@numberingOrg</code>) [Optional]</li> <li>(XPath: <code>TEXDarnReturn/DRbody/DRitem/pieceChain/pieceCut/serialN/@numberingOrg</code>) [Optional]</li> <li>- nota: <i>here the issuer of the serial number must be specified (when different from the Supplier)</i></li> <li>(XPath: <code>TEXDarnReturn/DRbody/DRitem/piece/mixMatch/@numberingOrg</code>) [Optional]</li> <li>(XPath: <code>TEXDarnReturn/DRbody/DRitem/piece/packageN/@numberingOrg</code>) [Optional]</li> <li>(XPath: <code>TEXDarnReturn/DRbody/DRitem/piece/serialN/@numberingOrg</code>) [Optional]</li> <li>- nota: <i>here the issuer of the serial number must be specified (when different from the Supplier)</i></li> <li>(XPath: <code>TEXDarnReturn/DRbody/DRitem/piece/lotN/@numberingOrg</code>) [Optional]</li> <li>(XPath: <code>TEXDarnReturn/DRbody/DRitem/piece/EPC/@numberingOrg</code>) [Optional]</li> <li>(XPath: <code>TEXDarnReturn/DRheader/subContractor/id/@numberingOrg</code>) [Optional]</li> <li>(XPath: <code>TEXDarnReturn/DRbody/DRitem/note/@numberingOrg</code>) [Optional]</li> </ul>

	<p>(XPath: TEXDarnReturn/DRheader/refDoc/docID/@numberingOrg) [Optional]  - nota: here can be specified whose document numbering is used (e.g.: Client, Supplier, ..)</p> <p>(XPath: TEXDarnReturn/DRheader/note/@numberingOrg) [Optional]  (XPath: TEXDarnReturn/DRbody/DRitem/texCode/added/@numberingOrg) [Optional]  (XPath: TEXDarnReturn/DRbody/DRitem/texCode/color/@numberingOrg) [Optional]  - nota: this attribute should be used either single or coupled with "listName" and "listVersion"</p> <p>(XPath: TEXDarnReturn/DRheader/buyer/id/@numberingOrg) [Optional]  (XPath: TEXDarnReturn/DRbody/DRitem/texCode/pattern/@numberingOrg) [Optional]  - nota: this attribute should be used either single or coupled with "listName" and "listVersion"</p> <p>(XPath: TEXDarnReturn/DRbody/DRitem/texCode/@numberingOrg) [Optional]  (XPath: TEXDarnReturn/DRbody/DRitem/texCode/art/@numberingOrg) [Optional]  - nota: this attribute should be used either single or coupled with "listName" and "listVersion"</p> <p>(XPath: TEXDarnReturn/DRbody/DRitem/pieceChain/serialN/@numberingOrg) [Optional]  - nota: here the issuer of the serial number must be specified (when different from the Supplier)</p> <p>(XPath: TEXDarnReturn/DRbody/DRitem/piece/dyeN/@numberingOrg) [Optional]  (XPath: TEXDarnReturn/DRbody/DRitem/refDoc/docID/@numberingOrg) [Optional]  - nota: here can be specified whose document numbering is used (e.g.: Client, Supplier, ..)</p> <p>(XPath: TEXDarnReturn/DRbody/DRitem/pieceMap/pieceFault/note/@numberingOrg) [Optional]</p>
@packageContainerN	<p>reference usable to indicate the outer package containing this package  - base type: string, max length: 25,  (XPath: TEXDarnReturn/DRbody/DRitem/piece/packageN/@packageContainerN) [Optional]  (XPath: TEXDarnReturn/DRbody/DRitem/pieceChain/packageN/@packageContainerN) [Optional]</p>
packageN	<p>serial number used to identify a transport package  - base type: string, max length: 25,  (XPath: TEXDarnReturn/DRbody/DRitem/piece/packageN) 0-1  - note: here the transport package containing the piece can be identified  (XPath: TEXDarnReturn/DRbody/DRitem/pieceChain/packageN) 0-1</p>
pattern	<p>pattern/design number of the product, when not included in the article code  - base type: string, max length: 15,  (XPath: TEXDarnReturn/DRbody/DRitem/texCode/pattern) 0-1</p>
person	<p>name of the contact person within a Party  - base type: string, max length: 40,  (XPath: TEXDarnReturn/DRheader/subContractor/person) 0-1  (XPath: TEXDarnReturn/DRheader/buyer/person) 0-1  (XPath: TEXDarnReturn/DRheader/thirdParty/person) 0-1</p>
@phone	<p>phone number of the contact person within a Party  - base type: string, max length: 35,  (XPath: TEXDarnReturn/DRheader/thirdParty/person/@phone) [Optional]  (XPath: TEXDarnReturn/DRheader/subContractor/person/@phone) [Optional]  (XPath: TEXDarnReturn/DRheader/buyer/person/@phone) [Optional]</p>

pieceAllow	<p>allowance required or accorded for the piece</p> <ul style="list-style-type: none"> <li>- base type: decimal, fraction digits: 2, (XPath: <a href="#">TEXDarnReturn/DRbody/DRitem/piece/pieceAllow</a>) 0-1 (XPath: <a href="#">TEXDarnReturn/DRbody/DRitem/pieceMap/pieceFault/pieceAllow</a>) 0-1</li> <li>- note: <i>this is the allowance estimated for the fault by the same "source" responsible for the other measurements</i></li> </ul>
pieceCutWidth	<p>effective usable width of the fabric piece (for garment manufacturing)</p> <ul style="list-style-type: none"> <li>- base type: decimal, min inclusive: 0, fraction digits: 2, (XPath: <a href="#">TEXDarnReturn/DRbody/DRitem/piece/pieceCutWidth</a>) 0-1</li> </ul>
pieceInnWrap1	<p>code specifying the type of inner wrapping/packing used for the fabric piece</p> <ul style="list-style-type: none"> <li>- base type: string, cod. table: T4 <a href="http://www.moda-ml.net/moda-ml/repository/codelist/v2013-1/gc_T4.xml">http://www.moda-ml.net/moda-ml/repository/codelist/v2013-1/gc_T4.xml</a> (XPath: <a href="#">TEXDarnReturn/DRbody/DRitem/piece/piecePack/pieceInnWrap1</a>) 1-1 (XPath: <a href="#">TEXDarnReturn/DRbody/DRitem/pieceChain/piecePack/pieceInnWrap1</a>) 1-1</li> </ul>
pieceInnWrap2	<p>code sub-specifying the type of inner wrapping/packing used for the fabric piece</p> <ul style="list-style-type: none"> <li>- base type: string, cod. table: T5 <a href="http://www.moda-ml.net/moda-ml/repository/codelist/v2013-1/gc_T5.xml">http://www.moda-ml.net/moda-ml/repository/codelist/v2013-1/gc_T5.xml</a> (XPath: <a href="#">TEXDarnReturn/DRbody/DRitem/piece/piecePack/pieceInnWrap2</a>) 0-1 (XPath: <a href="#">TEXDarnReturn/DRbody/DRitem/pieceChain/piecePack/pieceInnWrap2</a>) 0-1</li> </ul>
pieceLength	<p>length of the piece</p> <ul style="list-style-type: none"> <li>- base type: decimal, min inclusive: 0, fraction digits: 2, (XPath: <a href="#">TEXDarnReturn/DRbody/DRitem/pieceChain/pieceLength</a>) 0-1 (XPath: <a href="#">TEXDarnReturn/DRbody/DRitem/pieceChain/pieceCut/pieceLength</a>) 0-1 (XPath: <a href="#">TEXDarnReturn/DRbody/DRitem/piece/pieceLength</a>) 0-1</li> </ul>
pieceOutWrap	<p>code specifying the type of outer wrapping or packing used for the fabric piece</p> <ul style="list-style-type: none"> <li>- base type: string, cod. table: T6 <a href="http://www.moda-ml.net/moda-ml/repository/codelist/v2013-1/gc_T6.xml">http://www.moda-ml.net/moda-ml/repository/codelist/v2013-1/gc_T6.xml</a> (XPath: <a href="#">TEXDarnReturn/DRbody/DRitem/piece/piecePack/pieceOutWrap</a>) 0-1 (XPath: <a href="#">TEXDarnReturn/DRbody/DRitem/pieceChain/piecePack/pieceOutWrap</a>) 0-1</li> </ul>
piecePackText	<p>free text specifying the type of wrapping or packing used for the fabric piece</p> <ul style="list-style-type: none"> <li>- base type: string, max length: 40, (XPath: <a href="#">TEXDarnReturn/DRbody/DRitem/piece/piecePack/piecePackText</a>) 1-1 (XPath: <a href="#">TEXDarnReturn/DRbody/DRitem/pieceChain/piecePack/piecePackText</a>) 1-1</li> </ul>
pieceStatus	<p>code used to describe the status of a fabric piece after the control</p> <ul style="list-style-type: none"> <li>- base type: string, cod. table: T52 <a href="http://www.moda-ml.net/moda-ml/repository/codelist/v2013-1/gc_T52.xml">http://www.moda-ml.net/moda-ml/repository/codelist/v2013-1/gc_T52.xml</a> (XPath: <a href="#">TEXDarnReturn/DRbody/DRitem/piece/pieceStatus</a>) 0-1</li> </ul>
pieceWeight	<p>effective total weight of the fabric piece</p> <ul style="list-style-type: none"> <li>- base type: decimal, min inclusive: 0, fraction digits: 2, (XPath: <a href="#">TEXDarnReturn/DRbody/DRitem/pieceChain/pieceWeight</a>) 0-1 (XPath: <a href="#">TEXDarnReturn/DRbody/DRitem/piece/pieceWeight</a>) 0-1 (XPath: <a href="#">TEXDarnReturn/DRbody/DRitem/pieceChain/pieceCut/pieceWeight</a>) 0-1</li> </ul>
pieceWeightM	<p>effective weight per metre of the fabric piece</p> <ul style="list-style-type: none"> <li>- base type: decimal, min inclusive: 0, fraction digits: 2, (XPath: <a href="#">TEXDarnReturn/DRbody/DRitem/piece/pieceWeightM</a>) 0-1</li> </ul>
pieceWidth	<p>effective width of the fabric piece</p> <ul style="list-style-type: none"> <li>- base type: decimal, min inclusive: 0, fraction digits: 2,</li> </ul>



	(XPath: TEXDarnReturn/DRbody/DRitem/piece/pieceWidth) 0-1 (XPath: TEXDarnReturn/DRbody/DRitem/pieceChain/pieceWidth) 0-1
postCode	code defining the postal zone - base type: string, max length: 10, (XPath: TEXDarnReturn/DRheader/subContractor/postCode) 0-1 (XPath: TEXDarnReturn/DRheader/thirdParty/postCode) 0-1 (XPath: TEXDarnReturn/DRheader/buyer/postCode) 0-1
priceBasis	reference basis for the price (e.g.: 1 metre, 1 hour, 1 minute, etc...) - base type: positiveInteger, min inclusive: 1, (XPath: TEXDarnReturn/DRbody/DRitem/darnJobReport/ darnJobPrice/priceBasis) 0-1 - note: <i>this element must not be used when the price (jobPrice) is a forfeit</i>
qty	net quantity of the article or object correlated, qualified by the function of the document (ordering, delivering, ..) and by the context - base type: decimal, min inclusive: 0, fraction digits: 2, (XPath: TEXDarnReturn/DRbody/DRitem/qty) 1-1
@role	Third Party role qualifier - base type: string, cod. table: NT2 <a href="http://www.moda-ml.net/moda-ml/repository/codelist/v2013-1/gc_NT2.xml">http://www.moda-ml.net/moda-ml/repository/codelist/v2013-1/gc_NT2.xml</a> (XPath: TEXDarnReturn/DRheader/thirdParty/@role) [Required]
season	sale season; defined as: season (1 crt) + year (4 crt) - season: S/S=1 A/W=2 Spring=3 Summer=4 Autumn=5 Winter=6: for more than four seasons use alphabetic sequence: 1st season=A 2nd season=B etc.etc. - base type: string, max length: 15, (XPath: TEXDarnReturn/DRheader/refDoc/season) 0-1 - note: <i>here indicates the season to which the referenced document belongs</i> (XPath: TEXDarnReturn/DRbody/DRitem/refDoc/season) 0-1 - note: <i>here indicates the season to which the referenced document belongs</i>
@sender	qualifier that specifies the Party issuing of the document - base type: boolean, (XPath: TEXDarnReturn/DRheader/subContractor/@sender) [Optional] - nota: <i>This attribute is mandatory when the STYLESHEET must be produced</i> (XPath: TEXDarnReturn/DRheader/thirdParty/@sender) [Optional] - nota: <i>This attribute is mandatory when the STYLESHEET must be produced</i> (XPath: TEXDarnReturn/DRheader/buyer/@sender) [Optional] - nota: <i>This attribute is mandatory when the STYLESHEET must be produced</i>
serialN	serial number used for the identification of a physical unit - base type: string, max length: 15, (XPath: TEXDarnReturn/DRbody/DRitem/pieceChain/serialN) 1-1 (XPath: TEXDarnReturn/DRbody/DRitem/pieceChain/pieceCut/serialN) 1-1 (XPath: TEXDarnReturn/DRbody/DRitem/piece/serialN) 1-3
@source	party who has provided the data - base type: string, cod. table: NT12 <a href="http://www.moda-ml.net/moda-ml/repository/codelist/v2013-1/gc_NT12.xml">http://www.moda-ml.net/moda-ml/repository/codelist/v2013-1/gc_NT12.xml</a> (XPath: TEXDarnReturn/DRbody/DRitem/pieceMap/@source) [Required]
street	street and building number identifying a location - base type: string, max length: 80, (XPath: TEXDarnReturn/DRheader/thirdParty/street) 0-1 (XPath: TEXDarnReturn/DRheader/subContractor/street) 0-1 (XPath: TEXDarnReturn/DRheader/buyer/street) 0-1

subCountry	<p>short name or code of the sub-country entity</p> <ul style="list-style-type: none"> <li>- base type: string, max length: 9,</li> <li>(XPath: TEXDarnReturn/DRheader/thirdParty/subCountry) 0-1</li> <li>(XPath: TEXDarnReturn/DRheader/subContractor/subCountry) 0-1</li> <li>(XPath: TEXDarnReturn/DRheader/buyer/subCountry) 0-1</li> </ul>
@TID	<p>serial number wired into the RFID chip</p> <ul style="list-style-type: none"> <li>- base type: string,</li> <li>(XPath: TEXDarnReturn/DRbody/DRitem/piece/EPC/@TID) [Optional]</li> </ul>
totFault	<p>total number of faults: the 1st/2nd digit count the "Large faults", the 3rd/4th the "Medium faults" and the 5th/6th the "Small faults"</p> <ul style="list-style-type: none"> <li>- base type: positiveInteger,</li> <li>(XPath: TEXDarnReturn/DRbody/DRitem/pieceMap/totFault) 1-1</li> <li>(XPath: TEXDarnReturn/DRbody/DRitem/piece/totFault) 0-1</li> </ul>
totQty	<p>total quantity of the articles related to the whole document</p> <ul style="list-style-type: none"> <li>- base type: decimal, min inclusive: 0, fraction digits: 2,</li> <li>(XPath: TEXDarnReturn/MOtotals/totQty) 2-2</li> <li>- note: <i>used to specify the number of pieces (um="PZ") and the quantity of metres (um="MTR") relative to the document</i></li> </ul>
@transReason	<p>reason for the transport</p> <ul style="list-style-type: none"> <li>- base type: string, cod. table: NT11</li> <li><a href="http://www.moda-ml.net/moda-ml/repository/codelist/v2013-1/gc_NT11.xml">http://www.moda-ml.net/moda-ml/repository/codelist/v2013-1/gc_NT11.xml</a></li> <li>(XPath: TEXDarnReturn/DRbody/DRitem/@transReason) [Optional]</li> </ul>
@um	<p>specification of the unit of measure</p> <ul style="list-style-type: none"> <li>- base type: string, cod. table: NT7</li> <li><a href="http://www.moda-ml.net/moda-ml/repository/codelist/v2013-1/gc_NT7.xml">http://www.moda-ml.net/moda-ml/repository/codelist/v2013-1/gc_NT7.xml</a></li> <li>(XPath: TEXDarnReturn/DRbody/DRitem/piece/pieceWidth/@um) [Optional] [Default= CMT]</li> <li>(XPath: TEXDarnReturn/DRbody/DRitem/darnJobReport/jobTimeBasis/@um) [Required]</li> <li>(XPath: TEXDarnReturn/DRbody/DRitem/piece/pieceCutWidth/@um) [Optional] [Default= CMT]</li> <li>(XPath: TEXDarnReturn/DRbody/DRitem/piece/pieceLength/@um) [Optional] [Default= MTR]</li> <li>(XPath: TEXDarnReturn/DRbody/DRitem/pieceMap/pieceFault/warpEnd/@um) [Optional] [Default= MTR]</li> <li>(XPath: TEXDarnReturn/DRbody/DRitem/pieceChain/pieceWidth/@um) [Optional] [Default= CMT]</li> <li>(XPath: TEXDarnReturn/DRbody/DRitem/pieceChain/pieceWeight/@um) [Optional] [Default= KGM]</li> <li>(XPath: TEXDarnReturn/DRbody/DRitem/piece/pieceWeightM/@um) [Optional] [Default= GRM]</li> <li>(XPath: TEXDarnReturn/DRbody/DRitem/piece/pieceAllow/@um) [Required]</li> <li>(XPath: TEXDarnReturn/DRbody/DRitem/piece/pieceWeight/@um) [Optional] [Default= KGM]</li> <li>(XPath: TEXDarnReturn/MOtotals/totQty/@um) [Required]</li> <li>(XPath: TEXDarnReturn/DRbody/DRitem/darnJobReport/darnJobPrice/priceBasis/@um) [Required]</li> <li>(XPath: TEXDarnReturn/DRbody/DRitem/pieceMap/pieceFault/weftEnd/@um) [Optional] [Default= CMT]</li> <li>(XPath: TEXDarnReturn/DRbody/DRitem/pieceMap/pieceFault/warpStart/@um) [Optional] [Default= MTR]</li> <li>(XPath: TEXDarnReturn/DRbody/DRitem/pieceChain/pieceCut/pieceWeight/@um) [Optional] [Default= KGM]</li> <li>(XPath: TEXDarnReturn/DRbody/DRitem/qty/@um) [Required]</li> <li>(XPath: TEXDarnReturn/DRbody/DRitem/pieceMap/pieceFault/pieceAllow/@um) [Required]</li> <li>(XPath: TEXDarnReturn/DRbody/DRitem/pieceChain/pieceLength/@um) [Optional] [Default= MTR]</li> <li>(XPath: TEXDarnReturn/DRbody/DRitem/pieceChain/pieceCut/pieceLength/@um) [Optional] [Default= MTR]</li> <li>(XPath: TEXDarnReturn/DRbody/DRitem/pieceMap/pieceFault/weftStart/@um) [Optional] [Default= CMT]</li> </ul>

@useProfile	use profile to which the present document is compliant if it was agreed by the parties. It is suggested a URI with reference to the firms or the URL of the profile. - base type: string, (XPath: TEXDarnReturn/@useProfile) [Optional]
@VAT	VAT rate or code ( deprecated, use dtScheme element ) - base type: string, cod. table: NT16 <a href="http://www.moda-ml.net/moda-ml/repository/codelist/v2013-1/gc_NT16.xml">http://www.moda-ml.net/moda-ml/repository/codelist/v2013-1/gc_NT16.xml</a> (XPath: TEXDarnReturn/DRheader/thirdParty/@VAT) [Optional] (XPath: TEXDarnReturn/DRbody/DRitem/lineN/@VAT) [Optional]
@version	Dictionary version from which the instance has been created - base type: string, cod. table: NT100 <a href="http://www.moda-ml.net/moda-ml/repository/codelist/v2013-1/gc_NT100.xml">http://www.moda-ml.net/moda-ml/repository/codelist/v2013-1/gc_NT100.xml</a> (XPath: TEXDarnReturn/@version) [Optional] [Default= 2013-1]
warpEnd	end point of the fabric fault in the warp direction - base type: decimal, min inclusive: 0, fraction digits: 2, (XPath: TEXDarnReturn/DRbody/DRitem/pieceMap/pieceFault/warpEnd) 0-1
warpStart	start point of the fabric fault in the warp direction - base type: decimal, min inclusive: 0, fraction digits: 2, (XPath: TEXDarnReturn/DRbody/DRitem/pieceMap/pieceFault/warpStart) 1-1
weftEnd	end point of the fabric fault in the weft direction - base type: decimal, min inclusive: 0, fraction digits: 2, (XPath: TEXDarnReturn/DRbody/DRitem/pieceMap/pieceFault/weftEnd) 0-1
weftStart	start point of the fabric fault in the weft direction - base type: decimal, min inclusive: 0, fraction digits: 2, (XPath: TEXDarnReturn/DRbody/DRitem/pieceMap/pieceFault/weftStart) 0-1

## 2.3 Enumeration tables

List of enumeration tables used in the XML document. You can find the corresponding codes at: <http://www.moda-ml.org/moda-ml/imple/moda-ml-2013-1.asp?lingua=en&pag=6>

NT100 - eBIZ Moda-ML version  
NT11 - transport causal  
NT12 - data source  
NT13 - fabric fault category  
NT14 - fabric fault shape  
NT16 - VAT rate or code  
NT18 - message function  
NT2 - third party qualifier  
NT29 - format of a date  
NT4 - end use  
NT6 - coding system owner/issuer  
NT7 - unity of measure  
T10 - ISO3166 - Country  
T12 - fabric faults  
T20 - type of darning operation  
T21 - type of document  
T4 - fabric piece inner packing (wrapping) 1  
T44 - additional code type  
T5 - fabric piece inner packing (wrapping) 2  
T52 - fabric piece status  
T6 - fabric piece outer packing

# Annex A

Representative images of the principal complex elements' structure.

