



<http://www.moda-ml.org>

IMPLEMENTATION GUIDE TRANSACTION "RECEIVING ADVICE"

Version: 2013-1

Date of release: 18/11/2011

Document code: G025

XML Schema repository:<http://www.moda-ml.org/moda-ml/repository/schema/v2013-1/default.asp>

Guides repository:<http://www.moda-ml.org/moda-ml/repository/guide/v2013-1/default.asp>

Guide filename: G025-MODA-ML-ReceivingAdvice.pdf

1. BUSINESS DESCRIPTION

1.1 Scope

The present guide has been issued to assist the companies of the Textile-Clothing sector in the implementation of the standard XML document type "RECEIVING ADVISE", providing all the instruction required for its use in the context of e-commerce in the Textile industry, as shown in the enclosed diagrams.

All the rules required for the construction and validation of the document are embedded into the specific XML-Schema, which is detailed in section "Implementation guide".

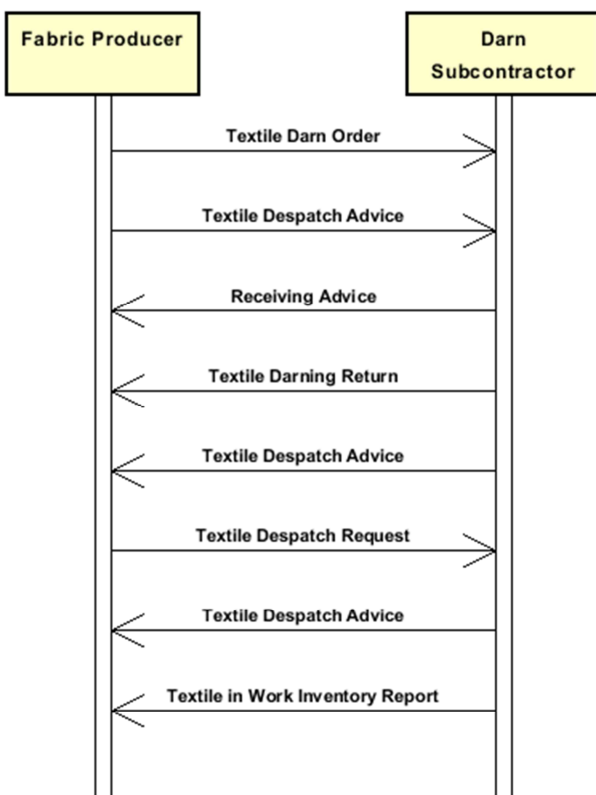
1.2 Generalities

The Receiving Advise can be used by the Receiver of goods (purchased or received for commissioned works) either to confirm the regular receipt of goods or to notify discrepancies between what was declared by the Sender and what was received and accepted.

The present document must always be used in coupling with the Despatch Advise document.

It is recommended to issue one Receiving Advise against one Despatch Advise

1.3. Possible scenario



2. IMPLEMENTATION GUIDE

2.1 General structure of XML document

All the business data that can be exchanged through this class of documents are shown in the following "document structure", that provides a simplified vision of the Schema.

In particular:

- the two numbers following each element define its "cardinality" (minimum and maximum number of occurrences); the minimum equal zero indicates that the element is optional, the minimum greater than zero indicates that is mandatory;
- the bold character denotes the complex elements (aggregates of simple elements) that were built for the sake of functionality and re-usability of some complex informations sets. The child elements in each parent element are easily spotted as "indented";
- the symbol "@" denotes an attribute of the preceding element; here "the usage indicator (optional, required, ...)" is shown in square brackets.

Structure

TEXRecAdvise

@msgfunction [Optional] [Default= OR]

@version [Optional] [Default= 2013-1]

@useProfile [Optional]

| **TRHeader 1-1**

| | msgN 1-1

| | - choose -

| | msgID 0-1

| | - or -

| | docID 0-1

| | *@numberingOrg [Optional]*

| | - end choose -

| | msgDate 1-1

| | *@dateForm [Optional]*

| | **refDoc 0-1**

| | *@docType [Required]*

| | | docID 1-2

| | | *@numberingOrg [Optional]*

| | | docDate 0-1

| | | *@dateForm [Optional]*

| | | season 0-1

| | | itemID 0-1

| | **buyer 1-1**

| | *@logo [Optional]*

| | *@sender [Optional]*

| | | id 1-1

| | | *@numberingOrg [Optional]*

| | | legalName 0-1

| | | dept 0-1

| | | person 0-1

| | | *@email [Optional]*

| | | *@phone [Optional]*

| | | *@fax [Optional]*

| | | street 0-1

| | | city 0-1

| | | subCountry 0-1

| | | country 0-1

| | | postCode 0-1

| | - choose -

subContractor 1-1

@sender [Optional]
id 1-1
@numberingOrg [Optional]
legalName 0-1
dept 0-1
person 0-1
@email [Optional]
@phone [Optional]
@fax [Optional]
street 0-1
city 0-1
subCountry 0-1
country 0-1
postCode 0-1

- or -

supplier 1-1

@logo [Optional]
@sender [Optional]
id 1-1
@numberingOrg [Optional]
legalName 0-1
dept 0-1
person 0-1
@email [Optional]
@phone [Optional]
@fax [Optional]
street 0-1
city 0-1
subCountry 0-1
country 0-1
postCode 0-1

- end choose -

note 0-19
@numberingOrg [Optional]
@codeList [Optional]
@noteLabel [Optional]

TRABody 1-1

TRAitem 1-unbounded

lineN 1-1
@VAT [Optional]
refDoc 1-1
@docType [Required]
docID 1-2
@numberingOrg [Optional]
docDate 0-1
@dateForm [Optional]
season 0-1
itemID 0-1
qty 1-1
@um [Required]
acceptQty 1-1
@um [Required]
qtyVariance 0-9
@um [Optional]
@varReason [Optional]
note 0-19
@numberingOrg [Optional]
@codeList [Optional]
@noteLabel [Optional]

2.2 Detailed description of document elements

Following tables show all elements (complex and simple) used in this document. Description includes: 1) element's information: xml tag, name, brief description, data type and syntax constraints; 2) information about use of the element in a particular position in the document: xpath and possible associated notes.

2.2.1 Complex elements (Aggregate Business Information Entities)

Complex elements are those elements whose content is composed of other elements (childs).Complex elements are alphabetically ordered.

buyer	details of the Buyer - base type: Nad, (XPath: TEXRecAdvise/TRAheader/buyer) 1-1
refDoc	identification of a document and of an item thereof, to which the message makes reference (XPath: TEXRecAdvise/TRAheader/refDoc) 0-1 (XPath: TEXRecAdvise/TRAbody/TRAitem/refDoc) 1-1
subContractor	details of the Sub-contractor - base type: Nad, (XPath: TEXRecAdvise/TRAheader/subContractor) 1-1
supplier	details of the Supplier - base type: Nad, (XPath: TEXRecAdvise/TRAheader/supplier) 1-1
TRAbody	body of the document "Receiving Advise" (XPath: TEXRecAdvise/TRAbody) 1-1
TRAheader	header of the document "Receiving Advise" (XPath: TEXRecAdvise/TRAheader) 1-1
TRAitem	line item of the document "Receiving Advise" (XPath: TEXRecAdvise/TRAbody/TRAitem) 1-unbounded

2.2.2 Simple elements (Basic Business Information Entities)

Simple elements are those elements whose content is characterized by a data type plus a domain of possible values. Simple elements are alphabetically ordered.

acceptQty	net quantity of a product received and accepted by the Receiving Party - base type: decimal, min inclusive: 0, fraction digits: 2, (XPath: TEXRecAdvise/TRAbody/TRAitem/acceptQty) 1-1
city	name of the city (town, village) - base type: string, max length: 40, (XPath: TEXRecAdvise/TRAheader/buyer/city) 0-1 (XPath: TEXRecAdvise/TRAheader/supplier/city) 0-1 (XPath: TEXRecAdvise/TRAheader/subContractor/city) 0-1
@codeList	it specifies the URL where the list of codes used to make an instance of the element can be found - base type: string, max length: 255, (XPath: TEXRecAdvise/TRAheader/note/@codeList) [Optional]

	<p>- nota: <i>must be used to provide (URL) the list of codes used in "noteLabel"</i> (XPath: TEXRecAdvise/TRABody/TRAitem/note/@codeList) [Optional]</p> <p>- nota: <i>must be used to provide (URL) the list of codes used in "noteLabel"</i></p>
country	<p>code of the nation - base type: string, cod. table: T10 http://www.moda-ml.net/moda-ml/repository/codelist/v2013-1/gc_T10.xml (XPath: TEXRecAdvise/TRAheader/supplier/country) 0-1 (XPath: TEXRecAdvise/TRAheader/subContractor/country) 0-1 (XPath: TEXRecAdvise/TRAheader/buyer/country) 0-1</p>
@dateForm	<p>format used for the date - base type: string, cod. table: NT29 http://www.moda-ml.net/moda-ml/repository/codelist/v2013-1/gc_NT29.xml (XPath: TEXRecAdvise/TRAheader/refDoc/docDate/@dateForm) [Optional] (XPath: TEXRecAdvise/TRAheader/msgDate/@dateForm) [Optional] (XPath: TEXRecAdvise/TRABody/TRAitem/refDoc/docDate/@dateForm) [Optional]</p>
dept	<p>name or code of a contact department within a Party - base type: string, max length: 40, (XPath: TEXRecAdvise/TRAheader/buyer/dept) 0-1 (XPath: TEXRecAdvise/TRAheader/supplier/dept) 0-1 (XPath: TEXRecAdvise/TRAheader/subContractor/dept) 0-1</p>
docDate	<p>date of issue of the referenced document, according to one of the patterns YYYY-MM-DD, YYYY-MM-DD:HH-MM or YYYY-WW. - base type: string, (XPath: TEXRecAdvise/TRAheader/refDoc/docDate) 0-1 (XPath: TEXRecAdvise/TRABody/TRAitem/refDoc/docDate) 0-1</p>
docID	<p>identification number of the referenced document SINCE 2008-1 ITS USE IN THE HEADER IS DISCOURAGED (REPLACED BY msgID) - base type: string, max length: 80, (XPath: TEXRecAdvise/TRABody/TRAitem/refDoc/docID) 1-2 (XPath: TEXRecAdvise/TRAheader/refDoc/docID) 1-2 (XPath: TEXRecAdvise/TRAheader/docID) 0-1</p>
@docType	<p>type or class to which the referenced document belongs - base type: string, cod. table: T21 http://www.moda-ml.net/moda-ml/repository/codelist/v2013-1/gc_T21.xml (XPath: TEXRecAdvise/TRAheader/refDoc/@docType) [Required] (XPath: TEXRecAdvise/TRABody/TRAitem/refDoc/@docType) [Required]</p>
@email	<p>electronic mail address of the contact person within a Party - base type: string, max length: 80, (XPath: TEXRecAdvise/TRAheader/subContractor/person/@email) [Optional] (XPath: TEXRecAdvise/TRAheader/supplier/person/@email) [Optional] (XPath: TEXRecAdvise/TRAheader/buyer/person/@email) [Optional]</p>
@fax	<p>fax number of the contact person within a Party - base type: string, max length: 35, (XPath: TEXRecAdvise/TRAheader/supplier/person/@fax) [Optional] (XPath: TEXRecAdvise/TRAheader/subContractor/person/@fax)</p>

	[Optional] (XPath: TEXRecAdvise/TRAheader/buyer/person/@fax) [Optional]
id	primary identification code of a Party; it is recommended the format: nation code (ISO 3166) + VAT identification number (11 crt), with the qualifier "numberingOrg"= MF - base type: string, max length: 15, (XPath: TEXRecAdvise/TRAheader/supplier/id) 1-1 (XPath: TEXRecAdvise/TRAheader/buyer/id) 1-1 (XPath: TEXRecAdvise/TRAheader/subContractor/id) 1-1
itemID	number of the line/item of the referenced document - base type: string, max length: 6, (XPath: TEXRecAdvise/TRAheader/refDoc/itemID) 0-1 (XPath: TEXRecAdvise/TRAbody/TRAitem/refDoc/itemID) 0-1
legalName	legal name of a Party - base type: string, max length: 80, (XPath: TEXRecAdvise/TRAheader/supplier/legalName) 0-1 (XPath: TEXRecAdvise/TRAheader/subContractor/legalName) 0-1 (XPath: TEXRecAdvise/TRAheader/buyer/legalName) 0-1
lineN	number of the line item of the present message (xml document) - base type: positiveInteger, min inclusive: 1, max inclusive: 9999, (XPath: TEXRecAdvise/TRAbody/TRAitem/lineN) 1-1
@logo	company logo (URL of the image jpeg or gif). It is recommended that the width of the image does not exceed 640 pixel. - base type: string, max length: 255, (XPath: TEXRecAdvise/TRAheader/supplier/@logo) [Optional] (XPath: TEXRecAdvise/TRAheader/buyer/@logo) [Optional]
msgDate	date of issue of the present message (xml document), according to one of the patterns YYYY-MM-DD, YYYY-MM-DD:HH-MM or YYYY-WW. - base type: string, (XPath: TEXRecAdvise/TRAheader/msgDate) 1-1
@msgfunction	function performed by the present message with regards to the transmission - base type: string, cod. table: NT18 http://www.moda-ml.net/moda-ml/repository/codelist/v2013-1/gc_NT18.xml (XPath: TEXRecAdvise/@msgfunction) [Optional] [Default= OR]
msgID	key identifier of the document in the information system of the issuing Party - base type: string, max length: 35, (XPath: TEXRecAdvise/TRAheader/msgID) 0-1
msgN	identification number given to the message (xml document) by its issuer - base type: string, max length: 35, (XPath: TEXRecAdvise/TRAheader/msgN) 1-1
note	free text or structured (computer processing) note. For note structuring use the attributes "noteLabel" and "codelist" - base type: string, max length: 350, (XPath: TEXRecAdvise/TRAheader/note) 0-19 (XPath: TEXRecAdvise/TRAbody/TRAitem/note) 0-19
@noteLabel	subject qualifier of a note - base type: string, max length: 35, (XPath: TEXRecAdvise/TRAbody/TRAitem/note/@noteLabel)

	<p>[Optional] - nota: <i>must be used to qualify the subject of the note</i> (XPath: TEXRecAdvise/TRAheader/note/@noteLabel) [Optional] - nota: <i>must be used to qualify the subject of the note</i></p>
@numberingOrg	<p>code specifying the organisation who has created or owns the coding or numbering system - base type: string, cod. table: NT6 http://www.moda-ml.net/moda-ml/repository/codelist/v2013-1/gc_NT6.xml (XPath: TEXRecAdvise/TRAheader/buyer/id/@numberingOrg) [Optional] (XPath: TEXRecAdvise/TRAheader/subContractor/id/@numberingOrg) [Optional] (XPath: TEXRecAdvise/TRAheader/refDoc/docID/@numberingOrg) [Optional] - nota: <i>here can be specified whose document numbering is used (e.g.: Client, Supplier, ..)</i> (XPath: TEXRecAdvise/TRAheader/supplier/id/@numberingOrg) [Optional] (XPath: TEXRecAdvise/TRAheader/docID/@numberingOrg) [Optional] - nota: <i>here can be specified whose document numbering is used (e.g.: Client, Supplier, ..)</i> (XPath: TEXRecAdvise/TRAbody/TRAitem/note/@numberingOrg) [Optional] (XPath: TEXRecAdvise/TRAbody/TRAitem/refDoc/docID/@numberingOrg) [Optional] - nota: <i>here can be specified whose document numbering is used (e.g.: Client, Supplier, ..)</i> (XPath: TEXRecAdvise/TRAheader/note/@numberingOrg) [Optional]</p>
person	<p>name of the contact person within a Party - base type: string, max length: 40, (XPath: TEXRecAdvise/TRAheader/supplier/person) 0-1 (XPath: TEXRecAdvise/TRAheader/buyer/person) 0-1 (XPath: TEXRecAdvise/TRAheader/subContractor/person) 0-1</p>
@phone	<p>phone number of the contact person within a Party - base type: string, max length: 35, (XPath: TEXRecAdvise/TRAheader/subContractor/person/@phone) [Optional] (XPath: TEXRecAdvise/TRAheader/buyer/person/@phone) [Optional] (XPath: TEXRecAdvise/TRAheader/supplier/person/@phone) [Optional]</p>
postCode	<p>code defining the postal zone - base type: string, max length: 10, (XPath: TEXRecAdvise/TRAheader/buyer/postCode) 0-1 (XPath: TEXRecAdvise/TRAheader/supplier/postCode) 0-1 (XPath: TEXRecAdvise/TRAheader/subContractor/postCode) 0-1</p>
qty	<p>net quantity of the article or object correlated, qualified by the function of the document (ordering, delivering, ..) and by the context - base type: decimal, min inclusive: 0, fraction digits: 2, (XPath: TEXRecAdvise/TRAbody/TRAitem/qty) 1-1 - note: <i>here is the quantity specified in the above referenced sender's document/line item (refDoc)</i></p>
qtyVariance	<p>difference between two quantities qualified by the context</p>

	<p>(e.g.: delivered vs. ordered; received vs. despatched etc..)</p> <p>- base type: decimal, fraction digits: 2, (XPath: TEXRecAdvise/TRABody/TRAItem/qtyVariance) 0-9</p> <p>- note: <i>here is the difference between the item quantity declared by the sender Party (Despatch Advise) and that received and accepted by the receiving Party</i></p>
season	<p>sale season; defined as: season (1 crt) + year (4 crt) - season: S/S=1 A/W=2 Spring=3 Summer=4 Autumn=5 Winter=6: for more than four seasons use alphabetic sequence: 1st season=A 2nd season=B etc.etc.</p> <p>- base type: string, max length: 15, (XPath: TEXRecAdvise/TRABody/TRAItem/refDoc/season) 0-1</p> <p>- note: <i>here indicates the season to which the referenced document belongs</i> (XPath: TEXRecAdvise/TRAheader/refDoc/season) 0-1</p> <p>- note: <i>here indicates the season to which the referenced document belongs</i></p>
@sender	<p>qualifier that specifies the Party issuing of the document</p> <p>- base type: boolean, (XPath: TEXRecAdvise/TRAheader/subContractor/@sender) [Optional]</p> <p>- nota: <i>This attribute is mandatory when the STYLESHEET must be produced</i> (XPath: TEXRecAdvise/TRAheader/supplier/@sender) [Optional]</p> <p>- nota: <i>This attribute is mandatory when the STYLESHEET must be produced</i> (XPath: TEXRecAdvise/TRAheader/buyer/@sender) [Optional]</p> <p>- nota: <i>This attribute is mandatory when the STYLESHEET must be produced</i></p>
street	<p>street and building number identifying a location</p> <p>- base type: string, max length: 80, (XPath: TEXRecAdvise/TRAheader/subContractor/street) 0-1 (XPath: TEXRecAdvise/TRAheader/supplier/street) 0-1 (XPath: TEXRecAdvise/TRAheader/buyer/street) 0-1</p>
subCountry	<p>short name or code of the sub-country entity</p> <p>- base type: string, max length: 9, (XPath: TEXRecAdvise/TRAheader/buyer/subCountry) 0-1 (XPath: TEXRecAdvise/TRAheader/subContractor/subCountry) 0-1 (XPath: TEXRecAdvise/TRAheader/supplier/subCountry) 0-1</p>
@um	<p>specification of the unit of measure</p> <p>- base type: string, cod. table: NT7 http://www.moda-ml.net/moda-ml/repository/codelist/v2013-1/gc_NT7.xml (XPath: TEXRecAdvise/TRABody/TRAItem/qtyVariance/@um) [Optional] (XPath: TEXRecAdvise/TRABody/TRAItem/acceptQty/@um) [Required] (XPath: TEXRecAdvise/TRABody/TRAItem/qty/@um) [Required]</p>
@useProfile	<p>use profile to which the present document is compliant if it was agreed by the parties. It is suggested a URI with reference to the firms or the URL of the profile.</p> <p>- base type: string, (XPath: TEXRecAdvise/@useProfile) [Optional]</p>
@varReason	<p>reason for the difference between the two quantities specified by the context</p> <p>- base type: string, cod. table: T46 http://www.moda-ml.net/moda-ml/repository/codelist/v2013-1/gc_T46.xml (XPath: TEXRecAdvise/TRABody/TRAItem/qtyVariance/@varReason) [Optional]</p>

@VAT	VAT rate or code (deprecated, use dtScheme element) - base type: string, cod. table: NT16 http://www.moda-ml.net/moda-ml/repository/codelist/v2013-1/gc_NT16.xml (XPath: TEXRecAdvise/TRAbody/TRAitem/lineN/@VAT) [Optional]
@version	Dictionary version from which the instance has been created - base type: string, cod. table: NT100 http://www.moda-ml.net/moda-ml/repository/codelist/v2013-1/gc_NT100.xml (XPath: TEXRecAdvise/@version) [Optional] [Default= 2013-1]

2.3 Enumeration tables

List of enumeration tables used in the XML document. You can find the corresponding codes at: <http://www.moda-ml.org/moda-ml/imple/moda-ml-2013-1.asp?lingua=en&pag=6>

NT100 - eBIZ Moda-ML version
NT16 - VAT rate or code
NT18 - message function
NT29 - format of a date
NT6 - coding system owner/issuer
NT7 - unity of measure
T10 - ISO3166 - Country
T21 - type of document
T46 - quantity variance reason

Annex A

Representative images of the principal complex elements' structure.

