



<http://www.moda-ml.org>

IMPLEMENTATION GUIDE  
TRANSACTION "GARMENT DESPATCH ADVICE"

Version: 2013-1

Date of release: 18/11/2011

Document code: G028

XML Schema repository:<http://www.moda-ml.org/moda-ml/repository/schema/v2013-1/default.asp>

Guides repository:<http://www.moda-ml.org/moda-ml/repository/guide/v2013-1/default.asp>

Guide filename: G028-MODA-ML-GarmentDespatchAdvice.pdf

# 1. BUSINESS DESCRIPTION

## 1.1 Scope

The present guide has been issued to assist the companies of the Textile-Clothing sector in the implementation of the standard XML document type "GARMENT DESPATCH ADVISE", providing all the instruction required for its use in any context of e-commerce between Apparel Manufactures and their Clients.

All the rules required for the construction and validation of the document are embedded into the specific XML-Schema, which is detailed in section "Implementation guide".

## 1.2 Generalities

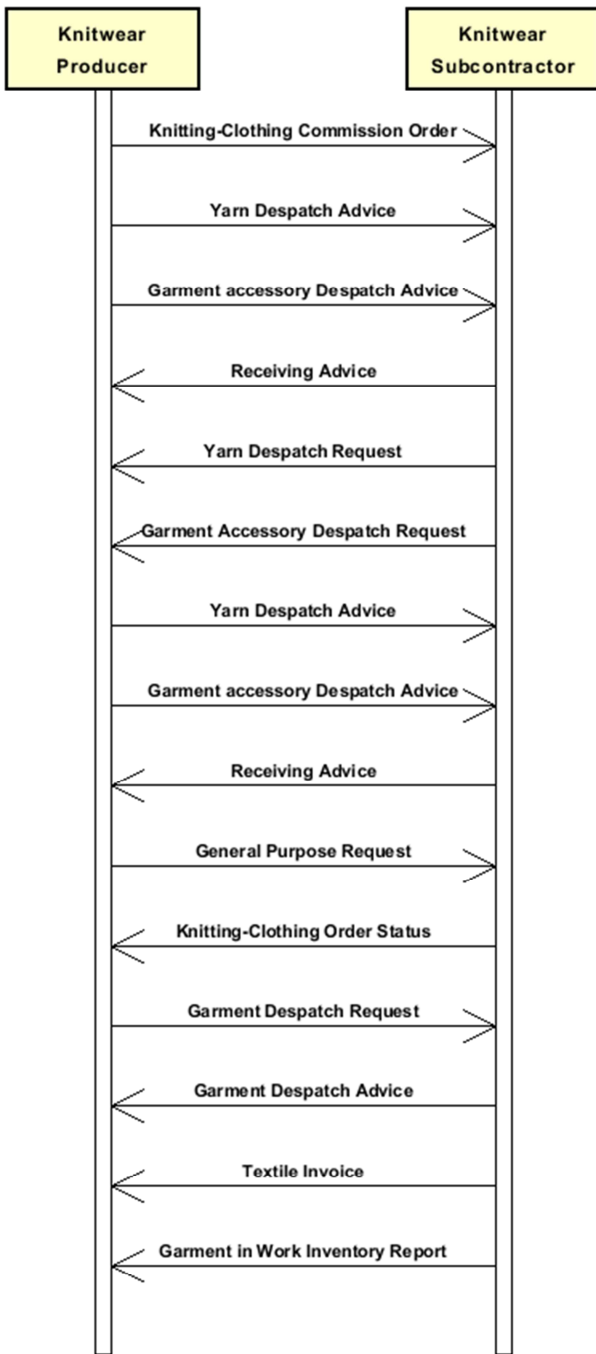
The message is issued by the Clothing Manufacturer to anticipate the details the articles actually despatched. The same message can be used from/ to a sub-contractor for commissioned operations.

This document can be used:

- as a standard despatch advice
- as a pre-despatch notification of the goods that are to be despatched.

Each document item must correspond with a well defined garment article (SKU); for each item is possible to reference the Order line that is delivered.

## 1.3. Possible scenario



## 2. IMPLEMENTATION GUIDE

### 2.1 General structure of XML document

All the business data that can be exchanged through this class of documents are shown in the following "document structure", that provides a simplified vision of the Schema.

In particular:

- the two numbers following each element define its "cardinality" (minimum and maximum number of occurrences); the minimum equal zero indicates that the element is optional, the minimum greater than zero indicates that is mandatory;
- the bold character denotes the complex elements (aggregates of simple elements) that were built for the sake of functionality and re-usability of some complex informations sets. The child elements in each parent element are easily spotted as "indented";
- the symbol "@" denotes an attribute of the preceding element; here "the usage indicator (optional, required, ...)" is shown in square brackets.

### Structure

#### **GARDesAdvise**

```
@TAtype [Optional] [Default= STD]
@msgfunction [Optional] [Default= OR]
@version [Optional] [Default= 2013-1]
@useProfile [Optional]
| GA_header 1-1
| | msgN 1-1
| | - choose -
| | | msgID 0-1
| | | - or -
| | | docID 0-1
| | | @numberingOrg [Optional]
| | - end choose -
| | msgDate 1-1
| | @dateForm [Optional]
| | refDoc 0-9
| | @docType [Required]
| | | docID 1-2
| | | @numberingOrg [Optional]
| | | docDate 0-1
| | | @dateForm [Optional]
| | | season 0-1
| | | itemID 0-1
| | buyer 1-1
| | @logo [Optional]
| | @sender [Optional]
| | | id 1-1
| | | @numberingOrg [Optional]
| | | legalName 0-1
| | | dept 0-1
| | | person 0-1
| | | @email [Optional]
| | | @phone [Optional]
| | | @fax [Optional]
| | | street 0-1
| | | city 0-1
| | | subCountry 0-1
| | | country 0-1
| | | postCode 0-1
```

**supplier 1-1**

*@logo [Optional]*  
*@sender [Optional]*  
id 1-1  
*@numberingOrg [Optional]*  
legalName 0-1  
dept 0-1  
person 0-1  
*@email [Optional]*  
*@phone [Optional]*  
*@fax [Optional]*  
street 0-1  
city 0-1  
subCountry 0-1  
country 0-1  
postCode 0-1

**thirdParty 0-1**

*@VAT [Optional]*  
*@role [Required]*  
*@sender [Optional]*  
id 1-1  
*@numberingOrg [Optional]*  
legalName 0-1  
dept 0-1  
person 0-1  
*@email [Optional]*  
*@phone [Optional]*  
*@fax [Optional]*  
street 0-1  
city 0-1  
subCountry 0-1  
country 0-1  
postCode 0-1  
note 0-19  
*@numberingOrg [Optional]*  
*@codeList [Optional]*  
*@noteLabel [Optional]*

**trade 0-1**

- choose -  
| incoTermText 1-1  
- or -  
| incoTerm 1-1  
- end choose -  
| location 0-1  
| *@LRI [Optional]*

**shipInfo 0-1**

**transInfo 0-5**

*@transReason [Optional]*  
transMode 1-1  
carrier 0-1  
deliveryPlace 0-1  
grossWeight 0-1  
*@um [Required]*  
netWeight 0-1  
*@um [Required]*  
transMeans 0-1  
transCondition 0-3  
transConditionText 0-1  
delEffectiveDate 0-1

```

| | @dateForm [Optional]
| | packages 0-99
| | @packageLevel [Optional]
| | - choose -
| | | packageText 1-1
| | - or -
| | | package 1-1
| | - end choose -
| | | packageDim 0-1
| | | | length 1-1
| | | | @um [Required]
| | | | width 0-1
| | | | @um [Required]
| | | | height 0-1
| | | | @um [Required]
| | | packageQty 0-1
| | | packageN 0-unbounded
| | | @numberingOrg [Optional]
| | | @packageContainerN [Optional]
| | | EPCList 0-1
| | | | EPC 1-unbounded
| | | | @numberingOrg [Optional]
| | | | @TID [Optional]

```

**GA\_body 1-1**

```

| | GA_item 1-unbounded
| | @extinction [Optional] [Default= 0]
| | | lineN 1-1
| | | @VAT [Optional]
| | | refDoc 0-9
| | | | @docType [Required]
| | | | | docID 1-2
| | | | | @numberingOrg [Optional]
| | | | | docDate 0-1
| | | | | @dateForm [Optional]
| | | | | season 0-1
| | | | | itemID 0-1
| | | garmentCode 1-2
| | | | @numberingOrg [Optional]
| | | - choose -
| | | | garmentCodeB 1-1
| | | | | @numberingOrg [Optional]
| | | | | | mod 1-1
| | | | | | | @numberingOrg [Optional]
| | | | | | | @codeList [Optional]
| | | | | | | @listName [Optional]
| | | | | | | @listVersion [Optional]
| | | | | | fabric 0-1
| | | | | | | @numberingOrg [Optional]
| | | | | | | @codeList [Optional]
| | | | | | | @listName [Optional]
| | | | | | | @listVersion [Optional]
| | | | | | color 0-1
| | | | | | | @numberingOrg [Optional]
| | | | | | | @codeList [Optional]
| | | | | | | @listName [Optional]
| | | | | | | @listVersion [Optional]
| | | | | | size 0-1
| | | | | | | @codeList [Optional]
| | | | | | artGroup 0-1
| | | | | | @numberingOrg [Optional]

```

```

| | | | | @codeList [Optional]
| | | | | @listName [Optional]
| | | | | @listVersion [Optional]
| | | | | added 0-9
| | | | | @numberingOrg [Optional]
| | | | | @addType [Optional]
| | | | | description 0-1
| | | | |
| | | | | - or -
| | | | | garmentCodeA 1-1
| | | | | | art 1-1
| | | | | | @numberingOrg [Optional]
| | | | | | @codeList [Optional]
| | | | | | @listName [Optional]
| | | | | | @listVersion [Optional]
| | | | | | description 0-1
| | | | |
| | | | | - end choose -
| | | | | qty 1-1
| | | | | @um [Required]
| | | | | csRange 0-99
| | | | | | @numberingOrg [Optional]
| | | | | | @sizeSystemNat [Optional]
| | | | | | @sizeSystemSeg [Optional]
| | | | | | @sizeSystemBase [Optional]
| | | | | | color 0-1
| | | | | | @numberingOrg [Optional]
| | | | | | @codeList [Optional]
| | | | | | @listName [Optional]
| | | | | | @listVersion [Optional]
| | | | | | sizeMatrix 1-1
| | | | | | | sizeRow 1-99
| | | | | | | | drop 0-1
| | | | | | | | @codeList [Optional]
| | | | | | | | size 1-1
| | | | | | | | @codeList [Optional]
| | | | | | | | qty 0-1
| | | | | | | | @um [Required]
| | | | | |
| | | | | EPC 0-unbounded
| | | | | @numberingOrg [Optional]
| | | | | @TID [Optional]
| | | | | note 0-19
| | | | | @numberingOrg [Optional]
| | | | | @codeList [Optional]
| | | | | @noteLabel [Optional]

```

## 2.2 Detailed description of document elements

Following tables show all elements (complex and simple) used in this document. Description includes: 1) element's information: xml tag, name, brief description, data type and syntax constraints; 2) information about use of the element in a particular position in the document: xpath and possible associated notes.

### 2.2.1 Complex elements (Aggregate Business Information Entities)

Complex elements are those elements whose content is composed of other elements (childs).Complex elements are alphabetically ordered.

<b>buyer</b>	details of the Buyer - base type: Nad, (XPath: GARDesAdvise/GA_header/buyer) 1-1
<b>csRange</b>	range of color-size for a garment article (knitwear/clothing) (XPath: GARDesAdvise/GA_body/GA_item/csRange) 0-99
<b>EPCList</b>	list of identifiers used for tracing a physical item with RFID technology (XPath: GARDesAdvise/shipInfo/packages/EPCList) 0-1 - note: <i>here the RFID tags of the packages can be identified</i>
<b>GA_body</b>	body of the document "Apparel Despatch Advise" (XPath: GARDesAdvise/GA_body) 1-1
<b>GA_header</b>	header of the "Garment Despatch Advise" (XPath: GARDesAdvise/GA_header) 1-1
<b>GA_item</b>	line item of the document "Apparel Despatch Advise" (XPath: GARDesAdvise/GA_body/GA_item) 1-unbounded
<b>garmentCode</b>	codification of the garment product (knitwear/clothing) (XPath: GARDesAdvise/GA_body/GA_item/garmentCode) 1-2
<b>garmentCodeA</b>	codification of the garment product (knitwear/clothing) - type A (XPath: GARDesAdvise/GA_body/GA_item/garmentCode/garmentCodeA) 1-1 - note: <i>here the barcode EAN-13 or EAN-8 should be specified</i>
<b>garmentCodeB</b>	codification of the garment product (knitwear/clothing) - type B (XPath: GARDesAdvise/GA_body/GA_item/garmentCode/garmentCodeB) 1-1
<b>packageDim</b>	dimensions of a transport package (XPath: GARDesAdvise/shipInfo/packages/packageDim) 0-1
<b>packages</b>	describes the composition of the transport packaging. Each element corresponds to a type of package: type, quantity, hierarchic level, list of identifiers of the single packages (XPath: GARDesAdvise/shipInfo/packages) 0-99 - note: <i>this data group must be iterated for each type of package</i>
<b>refDoc</b>	identification of a document and of an item thereof, to which the message makes reference



	(XPath: GARDesAdvise/GA_header/refDoc) 0-9 (XPath: GARDesAdvise/GA_body/GA_item/refDoc) 0-9
<b>shipInfo</b>	miscellaneous informations on transport and transport packages, referred either to the whole document or to the single item (XPath: GARDesAdvise/shipInfo) 0-1
<b>sizeMatrix</b>	size matrix of an apparel product (knitwear/clothing) (XPath: GARDesAdvise/GA_body/GA_item/csRange/sizeMatrix) 1-1
<b>sizeRow</b>	size matrix row of an apparel product (knitwear/clothing) (XPath: GARDesAdvise/GA_body/GA_item/csRange/sizeMatrix/sizeRow) 1-99
<b>supplier</b>	details of the Supplier - base type: Nad, (XPath: GARDesAdvise/GA_header/supplier) 1-1
<b>thirdParty</b>	details of the Third Party, different from Buyer or Supplier - base type: Nad, (XPath: GARDesAdvise/GA_header/thirdParty) 0-1
<b>trade</b>	general terms of trade for the specified supply (XPath: GARDesAdvise/trade) 0-1
<b>transInfo</b>	details of transport: mode, carrier and delivery place (XPath: GARDesAdvise/shipInfo/transInfo) 0-5 - note: <i>this data group can be iterated for each transport leg</i>

## 2.2.2 Simple elements (Basic Business Information Entities)

Simple elements are those elements whose content is characterized by a data type plus a domain of possible values. Simple elements are alphabetically ordered.

added	additional code of the product (complementing the formers) - base type: string, max length: 15, (XPath: GARDesAdvise/GA_body/GA_item/garmentCode/garmentCodeB/added) 0-9
@addType	qualifier of the additional coding of a product - base type: string, cod. table: T44 <a href="http://www.moda-ml.net/moda-ml/repository/codelist/v2013-1/gc_T44.xml">http://www.moda-ml.net/moda-ml/repository/codelist/v2013-1/gc_T44.xml</a> (XPath: GARDesAdvise/GA_body/GA_item/garmentCode/garmentCodeB/added/@addType) [Optional]
art	article number of the product - base type: string, max length: 25, (XPath: GARDesAdvise/GA_body/GA_item/garmentCode/garmentCodeA/art) 1-1
artGroup	code identifying a class of products - base type: string, max length: 40, (XPath: GARDesAdvise/GA_body/GA_item/garmentCode/garmentCodeB/artGroup) 0-1
carrier	identification of the transport carrier - base type: string, max length: 40, (XPath: GARDesAdvise/shipInfo/transInfo/carrier) 0-1
city	name of the city (town, village) - base type: string, max length: 40,

	<p>(XPath: GARDesAdvise/GA_header/supplier/city) 0-1  (XPath: GARDesAdvise/GA_header/buyer/city) 0-1  (XPath: GARDesAdvise/GA_header/thirdParty/city) 0-1</p>
@codeList	<p>it specifies the URL where the list of codes used to make an instance of the element can be found</p> <ul style="list-style-type: none"> <li>- base type: string, max length: 255,  (XPath: GARDesAdvise/GA_body/GA_item/garmentCode/garmentCodeB/color/@codeList) [Optional]</li> <li>- nota: <i>this attribute should be ALTERNATIVE to the others</i>  (XPath: GARDesAdvise/GA_body/GA_item/note/@codeList) [Optional]</li> <li>- nota: <i>must be used to provide (URL) the list of codes used in "noteLabel"</i>  (XPath: GARDesAdvise/GA_body/GA_item/garmentCode/garmentCodeB/size/@codeList) [Optional]</li> <li>(XPath: GARDesAdvise/GA_body/GA_item/garmentCode/garmentCodeB/fabric/@codeList) [Optional]</li> <li>- nota: <i>this attribute should be ALTERNATIVE to the others</i>  (XPath: GARDesAdvise/GA_body/GA_item/garmentCode/garmentCodeB/artGroup/@codeList) [Optional]</li> <li>- nota: <i>this attribute should be ALTERNATIVE to the others</i>  (XPath: GARDesAdvise/GA_body/GA_item/garmentCode/garmentCodeB/mod/@codeList) [Optional]</li> <li>- nota: <i>this attribute should be ALTERNATIVE to the others</i>  (XPath: GARDesAdvise/GA_body/GA_item/csRange/sizeMatrix/sizeRow/drop/@codeList) [Optional]</li> <li>(XPath: GARDesAdvise/GA_body/GA_item/csRange/sizeMatrix/sizeRow/size/@codeList) [Optional]</li> <li>(XPath: GARDesAdvise/GA_body/GA_item/csRange/color/@codeList) [Optional]</li> <li>- nota: <i>this attribute should be ALTERNATIVE to the others</i>  (XPath: GARDesAdvise/GA_header/note/@codeList) [Optional]</li> <li>- nota: <i>must be used to provide (URL) the list of codes used in "noteLabel"</i>  (XPath: GARDesAdvise/GA_body/GA_item/garmentCode/garmentCodeA/art/@codeList) [Optional]</li> <li>- nota: <i>this attribute should be ALTERNATIVE to the others</i></li> </ul>
color	<p>colour number of the product, when not included in the model or fabric code</p> <ul style="list-style-type: none"> <li>- base type: string, max length: 15,  (XPath: GARDesAdvise/GA_body/GA_item/csRange/color) 0-1  (XPath: GARDesAdvise/GA_body/GA_item/garmentCode/garmentCodeB/color) 0-1</li> </ul>
country	<p>code of the nation</p> <ul style="list-style-type: none"> <li>- base type: string, cod. table: T10  <a href="http://www.moda-ml.net/moda-ml/repository/codelist/v2013-1/gc_T10.xml">http://www.moda-ml.net/moda-ml/repository/codelist/v2013-1/gc_T10.xml</a>  (XPath: GARDesAdvise/GA_header/supplier/country) 0-1  (XPath: GARDesAdvise/GA_header/thirdParty/country) 0-1  (XPath: GARDesAdvise/GA_header/buyer/country) 0-1</li> </ul>
@dateForm	<p>format used for the date</p> <ul style="list-style-type: none"> <li>- base type: string, cod. table: NT29  <a href="http://www.moda-ml.net/moda-ml/repository/codelist/v2013-1/gc_NT29.xml">http://www.moda-ml.net/moda-ml/repository/codelist/v2013-1/gc_NT29.xml</a>  (XPath: GARDesAdvise/GA_header/refDoc/docDate/@dateForm) [Optional]</li> <li>(XPath: GARDesAdvise/shipInfo/delEffectiveDate/@dateForm) [Optional]</li> <li>(XPath: GARDesAdvise/GA_header/msgDate/@dateForm) [Optional]</li> <li>(XPath: GARDesAdvise/GA_body/GA_item/refDoc/docDate/@dateForm) [Optional]</li> </ul>

delEffectiveDate	effective date of delivery of goods (declared in Despatch), according to one of the patterns YYYY-MM-DD, YYYY-MM-DD:HH-MM or YYYY-WW. - base type: string, (XPath: GARDesAdvise/shipInfo/delEffectiveDate) 0-1
deliveryPlace	place of delivery of goods, ultimate or related to a given leg - base type: string, max length: 40, (XPath: GARDesAdvise/shipInfo/transInfo/deliveryPlace) 0-1
dept	name or code of a contact department within a Party - base type: string, max length: 40, (XPath: GARDesAdvise/GA_header/thirdParty/dept) 0-1 (XPath: GARDesAdvise/GA_header/supplier/dept) 0-1 (XPath: GARDesAdvise/GA_header/buyer/dept) 0-1
description	free text description of a product - base type: string, max length: 70, (XPath: GARDesAdvise/GA_body/GA_item/garmentCode/garmentCodeA/description) 0-1 (XPath: GARDesAdvise/GA_body/GA_item/garmentCode/garmentCodeB/description) 0-1
docDate	date of issue of the referenced document, according to one of the patterns YYYY-MM-DD, YYYY-MM-DD:HH-MM or YYYY-WW. - base type: string, (XPath: GARDesAdvise/GA_header/refDoc/docDate) 0-1 (XPath: GARDesAdvise/GA_body/GA_item/refDoc/docDate) 0-1
docID	identification number of the referenced document SINCE 2008-1 ITS USE IN THE HEADER IS DISCOURAGED (REPLACED BY msgID) - base type: string, max length: 80, (XPath: GARDesAdvise/GA_body/GA_item/refDoc/docID) 1-2 (XPath: GARDesAdvise/GA_header/docID) 0-1 (XPath: GARDesAdvise/GA_header/refDoc/docID) 1-2
@docType	type or class to which the referenced document belongs - base type: string, cod. table: T21 <a href="http://www.moda-ml.net/moda-ml/repository/codelist/v2013-1/gc_T21.xml">http://www.moda-ml.net/moda-ml/repository/codelist/v2013-1/gc_T21.xml</a> (XPath: GARDesAdvise/GA_body/GA_item/refDoc/@docType) [Required] (XPath: GARDesAdvise/GA_header/refDoc/@docType) [Required]
drop	drop number of the garment - base type: string, max length: 15, (XPath: GARDesAdvise/GA_body/GA_item/csRange/sizeMatrix/sizeRow/drop) 0-1
@email	electronic mail address of the contact person within a Party - base type: string, max length: 80, (XPath: GARDesAdvise/GA_header/supplier/person/@email) [Optional] (XPath: GARDesAdvise/GA_header/buyer/person/@email) [Optional] (XPath: GARDesAdvise/GA_header/thirdParty/person/@email) [Optional]
EPC	identifier used for tracing a physical item with RFID technology - base type: string, (XPath: GARDesAdvise/GA_body/GA_item/EPC) 0-unbounded (XPath: GARDesAdvise/shipInfo/packages/EPCList/EPC) 1-unbounded
@extinction	specified if the referred position (document/line) in is cleared

	(exhausted) by this line item. Value: 0 = not exhausted; 1 = exhausted) - base type: boolean, (XPath: GARDesAdvise/GA_body/GA_item/@extinction) [Optional] [Default= 0]
fabric	fabric number of the garment - base type: string, max length: 15, (XPath: GARDesAdvise/GA_body/GA_item/garmentCode/garmentCodeB/fabric) 0-1
@fax	fax number of the contact person within a Party - base type: string, max length: 35, (XPath: GARDesAdvise/GA_header/buyer/person/@fax) [Optional] (XPath: GARDesAdvise/GA_header/supplier/person/@fax) [Optional] (XPath: GARDesAdvise/GA_header/thirdParty/person/@fax) [Optional]
grossWeight	the gross weight of the overall goods supply, declared for transport or customs purpose - base type: decimal, min inclusive: 0, fraction digits: 2, (XPath: GARDesAdvise/shipInfo/transInfo/grossWeight) 0-1
height	effective height of a specified object - base type: decimal, min inclusive: 0, fraction digits: 2, (XPath: GARDesAdvise/shipInfo/packages/packageDim/height) 0-1
id	primary identification code of a Party; it is recommended the format: nation code (ISO 3166) + VAT identification number (11 crt), with the qualifier "numberingOrg"= MF - base type: string, max length: 15, (XPath: GARDesAdvise/GA_header/thirdParty/id) 1-1 (XPath: GARDesAdvise/GA_header/buyer/id) 1-1 (XPath: GARDesAdvise/GA_header/supplier/id) 1-1
incoTerm	specification of the terms of trade (INCOTERMS) - base type: string, cod. table: T3 <a href="http://www.moda-ml.net/moda-ml/repository/codelist/v2013-1/gc_T3.xml">http://www.moda-ml.net/moda-ml/repository/codelist/v2013-1/gc_T3.xml</a> (XPath: GARDesAdvise/trade/incoTerm) 1-1
incoTermText	free text specifying the terms of trade (incoterm, location) - base type: string, max length: 70, (XPath: GARDesAdvise/trade/incoTermText) 1-1
itemID	number of the line/item of the referenced document - base type: string, max length: 6, (XPath: GARDesAdvise/GA_header/refDoc/itemID) 0-1 (XPath: GARDesAdvise/GA_body/GA_item/refDoc/itemID) 0-1
legalName	legal name of a Party - base type: string, max length: 80, (XPath: GARDesAdvise/GA_header/thirdParty/legalName) 0-1 (XPath: GARDesAdvise/GA_header/buyer/legalName) 0-1 (XPath: GARDesAdvise/GA_header/supplier/legalName) 0-1
length	effective length of a specified object - base type: decimal, min inclusive: 0, fraction digits: 2, (XPath: GARDesAdvise/shipInfo/packages/packageDim/length) 1-1 - note: <i>here the maximum dimension must also be specified</i>
lineN	number of the line item of the present message (xml document) - base type: positiveInteger, min inclusive: 1, max inclusive: 9999, (XPath: GARDesAdvise/GA_body/GA_item/lineN) 1-1

<p>@listName</p>	<p>it specifies the name of the list of codes used to make an instance of the element</p> <ul style="list-style-type: none"> <li>- base type: string, max length: 40, (XPath: GARDesAdvise/GA_body/GA_item/garmentCode/garmentCodeB/mod/@listName) [Optional]</li> <li>- nota: <i>this attribute should always be used coupled with "numberingOrg"</i> (XPath: GARDesAdvise/GA_body/GA_item/garmentCode/garmentCodeB/color/@listName) [Optional]</li> <li>- nota: <i>this attribute should always be used coupled with "numberingOrg"</i> (XPath: GARDesAdvise/GA_body/GA_item/garmentCode/garmentCodeA/art/@listName) [Optional]</li> <li>- nota: <i>this attribute should always be used coupled with "numberingOrg"</i> (XPath: GARDesAdvise/GA_body/GA_item/csRange/color/@listName) [Optional]</li> <li>- nota: <i>this attribute should always be used coupled with "numberingOrg"</i> (XPath: GARDesAdvise/GA_body/GA_item/garmentCode/garmentCodeB/fabric/@listName) [Optional]</li> <li>- nota: <i>this attribute should always be used coupled with "numberingOrg"</i> (XPath: GARDesAdvise/GA_body/GA_item/garmentCode/garmentCodeB/artGroup/@listName) [Optional]</li> <li>- nota: <i>this attribute should always be used coupled with "numberingOrg"</i></li> </ul>
<p>@listVersion</p>	<p>it specifies the version of the list of codes used to make an instance of the element</p> <ul style="list-style-type: none"> <li>- base type: string, max length: 6, (XPath: GARDesAdvise/GA_body/GA_item/garmentCode/garmentCodeB/color/@listVersion) [Optional]</li> <li>- nota: <i>this attribute should always be used coupled with "numberingOrg" and "listName"</i> (XPath: GARDesAdvise/GA_body/GA_item/csRange/color/@listVersion) [Optional]</li> <li>- nota: <i>this attribute should always be used coupled with "numberingOrg" and "listName"</i> (XPath: GARDesAdvise/GA_body/GA_item/garmentCode/garmentCodeB/artGroup/@listVersion) [Optional]</li> <li>- nota: <i>this attribute should always be used coupled with "numberingOrg" and "listName"</i> (XPath: GARDesAdvise/GA_body/GA_item/garmentCode/garmentCodeB/fabric/@listVersion) [Optional]</li> <li>- nota: <i>this attribute should always be used coupled with "numberingOrg" and "listName"</i> (XPath: GARDesAdvise/GA_body/GA_item/garmentCode/garmentCodeB/mod/@listVersion) [Optional]</li> <li>- nota: <i>this attribute should always be used coupled with "numberingOrg" and "listName"</i> (XPath: GARDesAdvise/GA_body/GA_item/garmentCode/garmentCodeA/art/@listVersion) [Optional]</li> <li>- nota: <i>this attribute should always be used coupled with "numberingOrg" and "listName"</i></li> </ul>
<p>location</p>	<p>specification of a location</p> <ul style="list-style-type: none"> <li>- base type: string, max length: 40, (XPath: GARDesAdvise/trade/location) 0-1</li> <li>- note: <i>place to which the INCOTERM applies</i></li> </ul>
<p>@logo</p>	<p>company logo (URL of the image jpeg or gif). It is</p>

	<p>recommended that the width of the image does not exceed 640 pixel.</p> <p>- base type: string, max length: 255,  (XPath: GARDesAdvise/GA_header/supplier/@logo) [Optional]  (XPath: GARDesAdvise/GA_header/buyer/@logo) [Optional]</p>
@LRI	<p>attribute usable to format a string according to a customized User rule (local rule)</p> <p>- base type: string, cod. table: NT3  <a href="http://www.moda-ml.net/moda-ml/repository/codelist/v2013-1/gc_NT3.xml">http://www.moda-ml.net/moda-ml/repository/codelist/v2013-1/gc_NT3.xml</a>  (XPath: GARDesAdvise/trade/location/@LRI) [Optional]</p>
mod	<p>model number of the garment</p> <p>- base type: string, max length: 15,  (XPath: GARDesAdvise/GA_body/GA_item/garmentCode/garmentCodeB/mod) 1-1</p>
msgDate	<p>date of issue of the present message (xml document), according to one of the patterns YYYY-MM-DD, YYYY-MM-DD:HH-MM or YYYY-WW.</p> <p>- base type: string,  (XPath: GARDesAdvise/GA_header/msgDate) 1-1</p>
@msgfunction	<p>function performed by the present message with regards to the transmission</p> <p>- base type: string, cod. table: NT18  <a href="http://www.moda-ml.net/moda-ml/repository/codelist/v2013-1/gc_NT18.xml">http://www.moda-ml.net/moda-ml/repository/codelist/v2013-1/gc_NT18.xml</a>  (XPath: GARDesAdvise/@msgfunction) [Optional] [Default= OR]</p>
msgID	<p>key identifier of the document in the information system of the issuing Party</p> <p>- base type: string, max length: 35,  (XPath: GARDesAdvise/GA_header/msgID) 0-1</p>
msgN	<p>identification number given to the message (xml document) by its issuer</p> <p>- base type: string, max length: 35,  (XPath: GARDesAdvise/GA_header/msgN) 1-1</p>
netWeight	<p>the net weight of the overall goods supply, declared for transport or customs purpose</p> <p>- base type: decimal, min inclusive: 0, fraction digits: 2,  (XPath: GARDesAdvise/shipInfo/transInfo/netWeight) 0-1</p>
note	<p>free text or structured (computer processing) note. For note structuring use the attributes "noteLabel" and "codelist"</p> <p>- base type: string, max length: 350,  (XPath: GARDesAdvise/GA_header/note) 0-19  (XPath: GARDesAdvise/GA_body/GA_item/note) 0-19</p>
@noteLabel	<p>subject qualifier of a note</p> <p>- base type: string, max length: 35,  (XPath: GARDesAdvise/GA_body/GA_item/note/@noteLabel) [Optional]  - nota: <i>must be used to qualify the subject of the note</i>  (XPath: GARDesAdvise/GA_header/note/@noteLabel) [Optional]  - nota: <i>must be used to qualify the subject of the note</i></p>
@numberingOrg	<p>code specifying the organisation who has created or owns the coding or numbering system</p> <p>- base type: string, cod. table: NT6  <a href="http://www.moda-ml.net/moda-ml/repository/codelist/v2013-1/gc_NT6.xml">http://www.moda-ml.net/moda-ml/repository/codelist/v2013-1/gc_NT6.xml</a>  (XPath: GARDesAdvise/GA_header/buyer/id/@numberingOrg) [Optional]  (XPath: GARDesAdvise/GA_body/GA_item/garmentCode/garmentCodeB/fabric/@numberingOrg) [Optional]</p>

	<p>- nota: <i>this attribute should be used either single or coupled with "listName" and "listVersion"</i>  (XPath: GARDesAdvise/GA_body/GA_item/garmentCode/@numberingOrg) [Optional]  (XPath: GARDesAdvise/GA_body/GA_item/garmentCode/garmentCodeB/mod/@numberingOrg) [Optional]</p> <p>- nota: <i>this attribute should be ALTERNATIVE to the others</i>  (XPath: GARDesAdvise/GA_header/thirdParty/id/@numberingOrg) [Optional]  (XPath: GARDesAdvise/GA_header/note/@numberingOrg) [Optional]  (XPath: GARDesAdvise/GA_body/GA_item/garmentCode/garmentCodeA/art/@numberingOrg) [Optional]</p> <p>- nota: <i>this attribute should be used either single or coupled with "listName" and "listVersion"</i>  (XPath: GARDesAdvise/GA_body/GA_item/garmentCode/garmentCodeB/@numberingOrg) [Optional]  (XPath: GARDesAdvise/GA_header/refDoc/docID/@numberingOrg) [Optional]</p> <p>- nota: <i>here can be specified whose document numbering is used (e.g.: Client, Supplier, ..)</i>  (XPath: GARDesAdvise/GA_body/GA_item/garmentCode/garmentCodeB/artGroup/@numberingOrg) [Optional]</p> <p>- nota: <i>this attribute should be used either single or coupled with "listName" and "listVersion"</i>  (XPath: GARDesAdvise/shipInfo/packages/EPClist/EPC/@numberingOrg) [Optional]  (XPath: GARDesAdvise/GA_body/GA_item/EPC/@numberingOrg) [Optional]  (XPath: GARDesAdvise/GA_header/supplier/id/@numberingOrg) [Optional]  (XPath: GARDesAdvise/GA_body/GA_item/garmentCode/garmentCodeB/color/@numberingOrg) [Optional]</p> <p>- nota: <i>this attribute should be used either single or coupled with "listName" and "listVersion"</i>  (XPath: GARDesAdvise/shipInfo/packages/packageN/@numberingOrg) [Optional]  (XPath: GARDesAdvise/GA_body/GA_item/refDoc/docID/@numberingOrg) [Optional]</p> <p>- nota: <i>here can be specified whose document numbering is used (e.g.: Client, Supplier, ..)</i>  (XPath: GARDesAdvise/GA_body/GA_item/csRange/color/@numberingOrg) [Optional]</p> <p>- nota: <i>this attribute should be used either single or coupled with "listName" and "listVersion"</i>  (XPath: GARDesAdvise/GA_body/GA_item/csRange/@numberingOrg) [Optional]  (XPath: GARDesAdvise/GA_body/GA_item/note/@numberingOrg) [Optional]  (XPath: GARDesAdvise/GA_header/docID/@numberingOrg) [Optional]</p> <p>- nota: <i>here can be specified whose document numbering is used (e.g.: Client, Supplier, ..)</i>  (XPath: GARDesAdvise/GA_body/GA_item/garmentCode/garmentCodeB/added/@numberingOrg) [Optional]</p>
package	<p>code specifying the type of package used for transport and delivery  - base type: string, cod. table: T11</p>



	<a href="http://www.moda-ml.net/moda-ml/repository/codelist/v2013-1/gc_T11.xml">http://www.moda-ml.net/moda-ml/repository/codelist/v2013-1/gc_T11.xml</a> (XPath: GARDesAdvise/shipInfo/packages/package) 1-1
@packageContainerN	reference usable to indicate the outer package containing this package - base type: string, max length: 25, (XPath: GARDesAdvise/shipInfo/packages/packageN/@packageContainerN) [Optional]
@packageLevel	level used to indicate the hierarchical structure of the packages (from outer to inner levels) - base type: positiveInteger, min inclusive: 1, max inclusive: 9, (XPath: GARDesAdvise/shipInfo/packages/@packageLevel) [Optional] - nota: <i>number fixing the level of the package in the transport structure (from inner to outer). Must either be used for all package types or not be used</i>
packageN	serial number used to identify a transport package - base type: string, max length: 25, (XPath: GARDesAdvise/shipInfo/packages/packageN) 0-unbounded - note: <i>here the serial no.s of the packages can be identified</i>
packageQty	quantity of the specified transport packages - base type: positiveInteger, (XPath: GARDesAdvise/shipInfo/packages/packageQty) 0-1 - note: <i>total for the type of package</i>
packageText	free text specifying the type of package used for transport and delivery - base type: string, max length: 40, (XPath: GARDesAdvise/shipInfo/packages/packageText) 1-1
person	name of the contact person within a Party - base type: string, max length: 40, (XPath: GARDesAdvise/GA_header/supplier/person) 0-1 (XPath: GARDesAdvise/GA_header/buyer/person) 0-1 (XPath: GARDesAdvise/GA_header/thirdParty/person) 0-1
@phone	phone number of the contact person within a Party - base type: string, max length: 35, (XPath: GARDesAdvise/GA_header/thirdParty/person/@phone) [Optional] (XPath: GARDesAdvise/GA_header/supplier/person/@phone) [Optional] (XPath: GARDesAdvise/GA_header/buyer/person/@phone) [Optional]
postCode	code defining the postal zone - base type: string, max length: 10, (XPath: GARDesAdvise/GA_header/thirdParty/postCode) 0-1 (XPath: GARDesAdvise/GA_header/buyer/postCode) 0-1 (XPath: GARDesAdvise/GA_header/supplier/postCode) 0-1
qty	net quantity of the article or object correlated, qualified by the function of the document (ordering, delivering, ..) and by the context - base type: decimal, min inclusive: 0, fraction digits: 2, (XPath: GARDesAdvise/GA_body/GA_item/csRange/sizeMatrix/sizeRow/qty) 0-1 (XPath: GARDesAdvise/GA_body/GA_item/qty) 1-1
@role	Third Party role qualifier - base type: string, cod. table: NT2 <a href="http://www.moda-ml.net/moda-ml/repository/codelist/v2013-1/gc_NT2.xml">http://www.moda-ml.net/moda-ml/repository/codelist/v2013-1/gc_NT2.xml</a> (XPath: GARDesAdvise/GA_header/thirdParty/@role) [Required]



season	<p>sale season; defined as: season (1 crt) + year (4 crt) - season: S/S=1 A/W=2 Spring=3 Summer=4 Autumn=5 Winter=6: for more than four seasons use alphabetic sequence: 1st season=A 2nd season=B etc.etc.</p> <p>- base type: string, max length: 15, (XPath: GARDesAdvise/GA_header/refDoc/season) 0-1</p> <p>- note: here indicates the season to which the referenced document belongs (XPath: GARDesAdvise/GA_body/GA_item/refDoc/season) 0-1</p> <p>- note: here indicates the season to which the referenced document belongs</p>
@sender	<p>qualifier that specifies the Party issuing of the document</p> <p>- base type: boolean, (XPath: GARDesAdvise/GA_header/supplier/@sender) [Optional]</p> <p>- nota: This attribute is mandatory when the STYLESHEET must be produced (XPath: GARDesAdvise/GA_header/thirdParty/@sender) [Optional]</p> <p>- nota: This attribute is mandatory when the STYLESHEET must be produced (XPath: GARDesAdvise/GA_header/buyer/@sender) [Optional]</p> <p>- nota: This attribute is mandatory when the STYLESHEET must be produced</p>
size	<p>size number of a garment product (kintwear/clothing)</p> <p>- base type: string, max length: 15, (XPath: GARDesAdvise/GA_body/GA_item/garmentCode/garmentCodeB/size) 0-1 (XPath: GARDesAdvise/GA_body/GA_item/csRange/sizeMatrix/sizeRow/size) 1-1</p>
@sizeSystemBase	<p>base of the size system</p> <p>- base type: string, cod. table: T423 <a href="http://www.moda-ml.net/moda-ml/repository/codelist/v2013-1/gc_T423.xml">http://www.moda-ml.net/moda-ml/repository/codelist/v2013-1/gc_T423.xml</a> (XPath: GARDesAdvise/GA_body/GA_item/csRange/@sizeSystemBase) [Optional]</p>
@sizeSystemNat	<p>nation or agency identifying the size system</p> <p>- base type: string, cod. table: T421 <a href="http://www.moda-ml.net/moda-ml/repository/codelist/v2013-1/gc_T421.xml">http://www.moda-ml.net/moda-ml/repository/codelist/v2013-1/gc_T421.xml</a> (XPath: GARDesAdvise/GA_body/GA_item/csRange/@sizeSystemNat) [Optional]</p>
@sizeSystemSeg	<p>market segment identifying the size system</p> <p>- base type: string, cod. table: T422 <a href="http://www.moda-ml.net/moda-ml/repository/codelist/v2013-1/gc_T422.xml">http://www.moda-ml.net/moda-ml/repository/codelist/v2013-1/gc_T422.xml</a> (XPath: GARDesAdvise/GA_body/GA_item/csRange/@sizeSystemSeg) [Optional]</p>
street	<p>street and building number identifying a location</p> <p>- base type: string, max length: 80, (XPath: GARDesAdvise/GA_header/thirdParty/street) 0-1 (XPath: GARDesAdvise/GA_header/buyer/street) 0-1 (XPath: GARDesAdvise/GA_header/supplier/street) 0-1</p>
subCountry	<p>short name or code of the sub-country entity</p> <p>- base type: string, max length: 9, (XPath: GARDesAdvise/GA_header/buyer/subCountry) 0-1 (XPath: GARDesAdvise/GA_header/supplier/subCountry) 0-1 (XPath: GARDesAdvise/GA_header/thirdParty/subCountry) 0-1</p>
@TAtype	<p>type of Despatch advise</p> <p>- base type: string, cod. table: NT10</p>

	<a href="http://www.moda-ml.net/moda-ml/repository/codelist/v2013-1/gc_NT10.xml">http://www.moda-ml.net/moda-ml/repository/codelist/v2013-1/gc_NT10.xml</a> (XPath: GARDesAdvise/@TAtype) [Optional] [Default= STD]
@TID	serial number wired into the RFID chip - base type: string, (XPath: GARDesAdvise/shipInfo/packages/EPCList/EPC/@TID) [Optional] (XPath: GARDesAdvise/GA_body/GA_item/EPC/@TID) [Optional]
transCondition	special condition of transport or special service requested to the Forwarder - base type: string, cod. table: T38 <a href="http://www.moda-ml.net/moda-ml/repository/codelist/v2013-1/gc_T38.xml">http://www.moda-ml.net/moda-ml/repository/codelist/v2013-1/gc_T38.xml</a> (XPath: GARDesAdvise/shipInfo/transInfo/transCondition) 0-3
transConditionText	free text description of the special condition of transport or special service requested to the Forwarder - base type: string, max length: 100, (XPath: GARDesAdvise/shipInfo/transInfo/transConditionText) 0-1
transMeans	means of transport, in general or referred to a specific leg - base type: string, cod. table: T40 <a href="http://www.moda-ml.net/moda-ml/repository/codelist/v2013-1/gc_T40.xml">http://www.moda-ml.net/moda-ml/repository/codelist/v2013-1/gc_T40.xml</a> (XPath: GARDesAdvise/shipInfo/transInfo/transMeans) 0-1
transMode	way of transport, in general or referred to the specified leg - base type: string, cod. table: T8 <a href="http://www.moda-ml.net/moda-ml/repository/codelist/v2013-1/gc_T8.xml">http://www.moda-ml.net/moda-ml/repository/codelist/v2013-1/gc_T8.xml</a> (XPath: GARDesAdvise/shipInfo/transInfo/transMode) 1-1
@transReason	reason for the transport - base type: string, cod. table: NT11 <a href="http://www.moda-ml.net/moda-ml/repository/codelist/v2013-1/gc_NT11.xml">http://www.moda-ml.net/moda-ml/repository/codelist/v2013-1/gc_NT11.xml</a> (XPath: GARDesAdvise/shipInfo/transInfo/@transReason) [Optional]
@um	specification of the unit of measure - base type: string, cod. table: NT7 <a href="http://www.moda-ml.net/moda-ml/repository/codelist/v2013-1/gc_NT7.xml">http://www.moda-ml.net/moda-ml/repository/codelist/v2013-1/gc_NT7.xml</a> (XPath: GARDesAdvise/GA_body/GA_item/qty/@um) [Required] (XPath: GARDesAdvise/GA_body/GA_item/csRange/sizeMatrix/sizeRow/qty/@um) [Required] (XPath: GARDesAdvise/shipInfo/transInfo/netWeight/@um) [Required] (XPath: GARDesAdvise/shipInfo/transInfo/grossWeight/@um) [Required] (XPath: GARDesAdvise/shipInfo/packages/packageDim/width/@um) [Required] (XPath: GARDesAdvise/shipInfo/packages/packageDim/height/@um) [Required] (XPath: GARDesAdvise/shipInfo/packages/packageDim/length/@um) [Required]
@useProfile	use profile to which the present document is compliant if it was agreed by the parties. It is suggested a URI with reference to the firms or the URL of the profile. - base type: string, (XPath: GARDesAdvise/@useProfile) [Optional]
@VAT	VAT rate or code ( deprecated, use dtScheme element ) - base type: string, cod. table: NT16 <a href="http://www.moda-ml.net/moda-ml/repository/codelist/v2013-1/gc_NT16.xml">http://www.moda-ml.net/moda-ml/repository/codelist/v2013-1/gc_NT16.xml</a> (XPath: GARDesAdvise/GA_body/GA_item/lineN/@VAT) [Optional] (XPath: GARDesAdvise/GA_header/thirdParty/@VAT) [Optional]
@version	Dictionary version from which the instance has been created - base type: string, cod. table: NT100

	<a href="http://www.moda-ml.net/moda-ml/repository/codelist/v2013-1/gc_NT100.xml">http://www.moda-ml.net/moda-ml/repository/codelist/v2013-1/gc_NT100.xml</a> (XPath: GARDesAdvise/@version) [Optional] [Default= 2013-1]
width	effective width of a specified object - base type: decimal, min inclusive: 0, fraction digits: 2, (XPath: GARDesAdvise/shipInfo/packages/packageDim/width) 0-1

## 2.3 Enumeration tables

List of enumeration tables used in the XML document. You can find the corresponding codes at: <http://www.moda-ml.org/moda-ml/imple/moda-ml-2013-1.asp?lingua=en&pag=6>

NT10 - Despatch Advise type  
NT100 - eBIZ Moda-ML version  
NT11 - transport causal  
NT16 - VAT rate or code  
NT18 - message function  
NT2 - third party qualifier  
NT29 - format of a date  
NT3 - data format  
NT6 - coding system owner/issuer  
NT7 - unity of measure  
T10 - ISO3166 - Country  
T11 - transport package type  
T21 - type of document  
T3 - terms of delivery  
T38 - transport conditions  
T40 - type of transport means  
T421 - size system: nationality  
T422 - size system: market segment  
T423 - size system: base  
T44 - additional code type  
T8 - Modes of Transport

# Annex A

Representative images of the principal complex elements' structure.

