



<http://www.moda-ml.org>

IMPLEMENTATION GUIDE  
TRANSACTION "GARMENT ACCESSORY  
PURCHASE ORDER CHANGE"

Version: 2013-1

Date of release: 18/11/2011

Document code: G036

XML Schema repository:<http://www.moda-ml.org/moda-ml/repository/schema/v2013-1/default.asp>

Guides repository:<http://www.moda-ml.org/moda-ml/repository/guide/v2013-1/default.asp>

Guide filename: G036-MODA-ML-GarmentAccessoryPurchaseOrderChange.pdf

# 1. BUSINESS DESCRIPTION

## 1.1 Scope

The present guide has been issued to assist the companies of the Textile-Clothing sector in the implementation of the standard XML document type "GARMENT ACCESSORY PURCHASE ORDER CHANGE", providing all the instruction required for its use in any context of e-commerce between Apparel or Fabric Producers and Garment Accessory Producers (Suppliers).

All the rules required for the construction and validation of the document are embedded into the specific XML-Schema, which is detailed in section "Implementation guide".

## 1.2 Generalities

The Apparel or the Fabric Producer sends an Order Change any time he must modify some conditions of his previous Order (eg. to cancel items not delivered in time) or amend errors (eg. invalid prices).

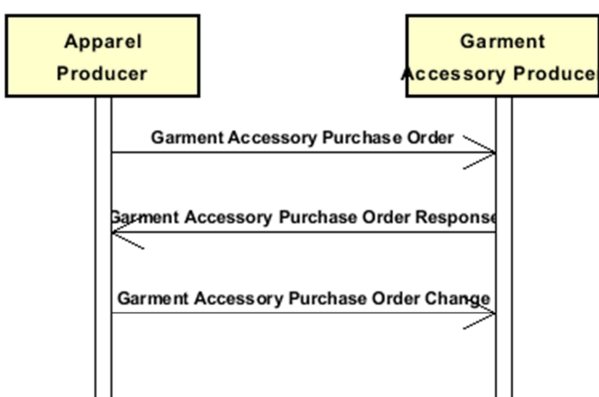
Basic function of the message is to replace an invalid Order with a valid Order, amending:

- suppliable quantities
- dates and places of delivery
- prices

The Order Change can show a number of lines different from the related Purchase Order, when variations/cancellations have occurred so as to create the splitting of an Order Line.

However the sum of the quantities of the lines in the Order Change (confirmed + varied + cancelled) must always equal the sum of the quantities in the original Order.

## 1.3. Possible scenario



## 2. IMPLEMENTATION GUIDE

### 2.1 General structure of XML document

All the business data that can be exchanged through this class of documents are shown in the following "document structure", that provides a simplified vision of the Schema.

In particular:

- the two numbers following each element define its "cardinality" (minimum and maximum number of occurrences); the minimum equal zero indicates that the element is optional, the minimum greater than zero indicates that is mandatory;
- the bold character denotes the complex elements (aggregates of simple elements) that were built for the sake of functionality and re-usability of some complex informations sets. The child elements in each parent element are easily spotted as "indented";
- the symbol "@" denotes an attribute of the preceding element; here "the usage indicator (optional, required, ...)" is shown in square brackets.

### Structure

#### ACSOrdChange

```
@Totype [Optional]
@msgfunction [Optional] [Default= OR]
@version [Optional] [Default= 2013-1]
@useProfile [Optional]
| TXheader 1-1
| | msgN 1-1
| | - choose -
| | | msgID 0-1
| | | - or -
| | | docID 0-1
| | | @numberingOrg [Optional]
| | - end choose -
| | | msgDate 1-1
| | | @dateForm [Optional]
| | | validityEnd 0-1
| | | @dateForm [Optional]
| | | msgCurrency 0-1
| | | otherCurrency 0-9
| | | @currencyUseQualifier [Required]
| | refDoc 1-9
| | | @docType [Required]
| | | | docID 1-2
| | | | @numberingOrg [Optional]
| | | | docDate 0-1
| | | | @dateForm [Optional]
| | | | season 0-1
| | | | itemID 0-1
| | buyer 1-1
| | | @logo [Optional]
| | | @sender [Optional]
| | | | id 1-1
| | | | @numberingOrg [Optional]
| | | | legalName 0-1
| | | | dept 0-1
| | | | person 0-1
| | | | @email [Optional]
| | | | @phone [Optional]
| | | | @fax [Optional]
```

- | street 0-1
- | city 0-1
- | subCountry 0-1
- | country 0-1
- | postCode 0-1
- | **supplier 1-1**
- | @logo [Optional]
- | @sender [Optional]
- | id 1-1
- | @numberingOrg [Optional]
- | legalName 0-1
- | dept 0-1
- | person 0-1
- | @email [Optional]
- | @phone [Optional]
- | @fax [Optional]
- | street 0-1
- | city 0-1
- | subCountry 0-1
- | country 0-1
- | postCode 0-1
- | **thirdParty 0-5**
- | @VAT [Optional]
- | @role [Required]
- | @sender [Optional]
- | id 1-1
- | @numberingOrg [Optional]
- | legalName 0-1
- | dept 0-1
- | person 0-1
- | @email [Optional]
- | @phone [Optional]
- | @fax [Optional]
- | street 0-1
- | city 0-1
- | subCountry 0-1
- | country 0-1
- | postCode 0-1
- | note 0-19
- | @numberingOrg [Optional]
- | @codeList [Optional]
- | @noteLabel [Optional]

| **terms 0-1**

- | **payment 0-5**
- | @finDiscount [Optional]
- | @finSurcharge [Optional]
- choose -
- | payTerm 1-1
- or -
- | payTermText 1-1
- end choose -
- | payMode 0-1
- | **insPayment 0-5**
- | @part [Required]
- choose -
- | payTerm 1-1
- or -
- | payTermText 1-1
- end choose -
- | payMode 0-1

**trade 0-1**  
 - choose -  
 | incoTermText 1-1  
 - or -  
 | incoTerm 1-1  
 - end choose -  
 | location 0-1  
 | @LRI [Optional]  
**transInfo 0-1**  
 @transReason [Optional]  
 | transMode 1-1  
 | carrier 0-1  
 | deliveryPlace 0-1  
 | grossWeight 0-1  
 | @um [Required]  
 | netWeight 0-1  
 | @um [Required]  
 | transMeans 0-1  
 | transCondition 0-3  
 | transConditionText 0-1  
**allowanceCharge 0-9**  
 @VAT [Optional]  
 - choose -  
 | AC\_category 1-1  
 - or -  
 | AC\_categoryText 1-1  
 - choose -  
 | AC\_percent 1-1  
 - or -  
 | AC\_amount 1-1  
 - end choose -  
**dtScheme 0-1**  
 @taxType [Required]  
 | taxCategory 0-1  
 | taxRate 0-1  
 | legalRef 0-1  
 | @codeList [Required]  
 | note 0-19  
 | @numberingOrg [Optional]  
 | @codeList [Optional]  
 | @noteLabel [Optional]

**acsComInfo 0-1**  
 | season 0-1  
 | collection 0-1  
 | project 0-1  
 | deliveryDate 0-1  
 | @dateForm [Optional]  
 | specDate 0-1  
 | @dateForm [Optional]  
**acsPack 0-1**  
 - choose -  
 | acsPackCode 1-1  
 - or -  
 | acsPackText 1-1  
 - end choose -

**AXbody 1-1**  
**AXitem 1-unbounded**  
 @act [Required]  
 | lineN 1-1

| @VAT [Optional]  
 | **refDoc 1-9**  
 | @docType [Required]  
 | | docID 1-2  
 | | | @numberingOrg [Optional]  
 | | docDate 0-1  
 | | | @dateForm [Optional]  
 | | season 0-1  
 | | itemID 0-1  
 | **acsCode 0-2**  
 | @numberingOrg [Optional]  
 | | art 1-1  
 | | | @numberingOrg [Optional]  
 | | | @codeList [Optional]  
 | | | @listName [Optional]  
 | | | @listVersion [Optional]  
 | | pattern 0-1  
 | | | @numberingOrg [Optional]  
 | | | @codeList [Optional]  
 | | | @listName [Optional]  
 | | | @listVersion [Optional]  
 | | color 0-1  
 | | | @numberingOrg [Optional]  
 | | | @codeList [Optional]  
 | | | @listName [Optional]  
 | | | @listVersion [Optional]  
 | | added 0-9  
 | | | @numberingOrg [Optional]  
 | | | @addType [Optional]  
 | | description 0-1  
 | qty 0-2  
 | @um [Required]  
 | price 0-1  
 | @um [Optional]  
 | @priceQualifier [Optional] [Default= NET]  
 | comDiscount 0-1  
 | **thirdParty 0-1**  
 | @VAT [Optional]  
 | @role [Required]  
 | @sender [Optional]  
 | | id 1-1  
 | | | @numberingOrg [Optional]  
 | | legalName 0-1  
 | | dept 0-1  
 | | person 0-1  
 | | | @email [Optional]  
 | | | @phone [Optional]  
 | | | @fax [Optional]  
 | | street 0-1  
 | | city 0-1  
 | | subCountry 0-1  
 | | country 0-1  
 | | postCode 0-1  
 | **acsComInfo 0-1**  
 | | season 0-1  
 | | collection 0-1  
 | | project 0-1  
 | | deliveryDate 0-1  
 | | | @dateForm [Optional]  
 | | specDate 0-1  
 | | | @dateForm [Optional]

```

| | | | acsPack 0-1
| | | |   - choose -
| | | | |   | acsPackCode 1-1
| | | | |   | - or -
| | | | |   | acsPackText 1-1
| | | | |   | - end choose -
| | | | finInfo 0-1
| | | |   - choose -
| | | | |   | iban 1-1
| | | | |   | - or -
| | | | |   | bankIT 1-1
| | | | |   | | legalName 0-1
| | | | |   | | cin 0-1
| | | | |   | | abi 1-1
| | | | |   | | cab 1-1
| | | | |   | | accountN 1-1
| | | | |   | - end choose -
| | | | |   | swift 0-1
| | | | |   | note 0-19
| | | | |   | @numberingOrg [Optional]
| | | | |   | @codeList [Optional]
| | | | |   | @noteLabel [Optional]

| totals 0-1
| | totQty 0-1
| | @um [Required]
| | goodsAmount 1-1

```

## 2.2 Detailed description of document elements

Following tables show all elements (complex and simple) used in this document. Description includes: 1) element's information: xml tag, name, brief description, data type and syntax constraints; 2) information about use of the element in a particular position in the document: xpath and possible associated notes.

### 2.2.1 Complex elements (Aggregate Business Information Entities)

Complex elements are those elements whose content is composed of other elements (childs).Complex elements are alphabetically ordered.

<b>acsCode</b>	full codification identifying an accessory product usually coupled with garment (XPath: ACSOrdChange/AXbody/AXitem/acsCode) 0-2
<b>acsComInfo</b>	miscellaneous trade informations, that can be specified in a garment accessories Order, referred either to the whole document or to the single item (XPath: ACSOrdChange/AXbody/AXitem/acsComInfo) 0-1 (XPath: ACSOrdChange/acsComInfo) 0-1
<b>acsPack</b>	type of wrapping or packing of the garment accessory (XPath: ACSOrdChange/AXbody/AXitem/acsComInfo/acsPack) 0-1 (XPath: ACSOrdChange/acsComInfo/acsPack) 0-1
<b>allowanceCharge</b>	Allowances and Charges related to an Order or a contract (XPath: ACSOrdChange/terms/allowanceCharge) 0-9
<b>AXbody</b>	body of the document GARMENT ACCESSORY ORDER RESPONSE and CHANGE (XPath: ACSOrdChange/AXbody) 1-1
<b>AXitem</b>	line item of the message GARMENT ACCESSORY ORDER RESPONSE and ORDER CHANGE (XPath: ACSOrdChange/AXbody/AXitem) 1-unbounded
<b>bankIT</b>	Italian bank operations code (XPath: ACSOrdChange/AXbody/AXitem/finInfo/bankIT) 1-1
<b>buyer</b>	details of the Buyer - base type: Nad, (XPath: ACSOrdChange/TXheader/buyer) 1-1
<b>dtScheme</b>	set of data usable to declare the duty or tax applied (XPath: ACSOrdChange/terms/allowanceCharge/dtScheme) 0-1
<b>finInfo</b>	bank details relevant for the payment: bank coordinates, SWIFT code (XPath: ACSOrdChange/AXbody/AXitem/finInfo) 0-1
<b>insPayment</b>	payment details for payment by installments (XPath: ACSOrdChange/terms/insPayment) 0-5 - note: <i>excluded the case of offers, this set of data is alternative to payment set and must be iterated for each payment installment</i>
<b>payment</b>	payment details for payment all in one (XPath: ACSOrdChange/terms/payment) 0-5 - note: <i>excluded the case of offers, this set of data is alternative to insPayment, it can be iterated to specify</i>



	<i>alternative terms of payment (e.g.: 60 days or 30 days with 3% discount)</i>
<b>refDoc</b>	identification of a document and of an item thereof, to which the message makes reference (XPath: ACSOrdChange/TXheader/refDoc) 1-9 (XPath: ACSOrdChange/AXbody/AXitem/refDoc) 1-9
<b>supplier</b>	details of the Supplier - base type: Nad, (XPath: ACSOrdChange/TXheader/supplier) 1-1
<b>terms</b>	details of the commercial obligations for payment and delivery (XPath: ACSOrdChange/terms) 0-1
<b>thirdParty</b>	details of the Third Party, different from Buyer or Supplier - base type: Nad, (XPath: ACSOrdChange/AXbody/AXitem/thirdParty) 0-1 (XPath: ACSOrdChange/TXheader/thirdParty) 0-5
<b>totals</b>	monetary and quantity totals of the Order (XPath: ACSOrdChange/totals) 0-1
<b>trade</b>	general terms of trade for the specified supply (XPath: ACSOrdChange/terms/trade) 0-1
<b>transInfo</b>	details of transport: mode, carrier and delivery place (XPath: ACSOrdChange/terms/transInfo) 0-1
<b>TXheader</b>	header of the TEXTILES ORDER RESPONSE and TEXTILES ORDER CHANGE (XPath: ACSOrdChange/TXheader) 1-1

## 2.2.2 Simple elements (Basic Business Information Entities)

Simple elements are those elements whose content is characterized by a data type plus a domain of possible values. Simple elements are alphabetically ordered.

<b>abi</b>	ABI code - base type: string, length: 5, (XPath: ACSOrdChange/AXbody/AXitem/finInfo/bankIT/abi) 1-1
<b>AC_amount</b>	amount of an Allowance or Charge - base type: decimal, fraction digits: 2, (XPath: ACSOrdChange/terms/allowanceCharge/AC_amount) 1-1
<b>AC_category</b>	coded specification of an Allowance or Charge - base type: string, cod. table: T41 <a href="http://www.moda-ml.net/moda-ml/repository/codelist/v2013-1/gc_T41.xml">http://www.moda-ml.net/moda-ml/repository/codelist/v2013-1/gc_T41.xml</a> (XPath: ACSOrdChange/terms/allowanceCharge/AC_category) 1-1
<b>AC_categoryText</b>	free text description of an Allowance or Charge - base type: string, max length: 70, (XPath: ACSOrdChange/terms/allowanceCharge/AC_categoryText) 1-1
<b>AC_percent</b>	amount of an Allowance or Charge as a percentage - base type: decimal, max inclusive: 100, fraction digits: 2, (XPath: ACSOrdChange/terms/allowanceCharge/AC_percent) 1-1
<b>accountN</b>	account number - base type: string, max length: 15, (XPath: ACSOrdChange/AXbody/AXitem/finInfo/bankIT/accountN) 1-1

acsPackCode	code specifying the type of wrapping or packing used for the garment accessory - base type: string, (XPath: ACSOrdChange/AXbody/AXitem/acsComInfo/acsPack/acsPackCode) 1-1 (XPath: ACSOrdChange/acsComInfo/acsPack/acsPackCode) 1-1
acsPackText	free text specifying the type of wrapping or packing used for the garment accessory - base type: string, max length: 40, (XPath: ACSOrdChange/AXbody/AXitem/acsComInfo/acsPack/acsPackText) 1-1 (XPath: ACSOrdChange/acsComInfo/acsPack/acsPackText) 1-1
@act	action performed by the present line upon the referenced document line - base type: string, cod. table: NT5 <a href="http://www.moda-ml.net/moda-ml/repository/codelist/v2013-1/gc_NT5.xml">http://www.moda-ml.net/moda-ml/repository/codelist/v2013-1/gc_NT5.xml</a> (XPath: ACSOrdChange/AXbody/AXitem/@act) [Required]
added	additional code of the product (complementing the formers) - base type: string, max length: 15, (XPath: ACSOrdChange/AXbody/AXitem/acsCode/added) 0-9 - note: <i>here an additional codification (see table T44) can be specified</i>
@addType	qualifier of the additional coding of a product - base type: string, cod. table: T44 <a href="http://www.moda-ml.net/moda-ml/repository/codelist/v2013-1/gc_T44.xml">http://www.moda-ml.net/moda-ml/repository/codelist/v2013-1/gc_T44.xml</a> (XPath: ACSOrdChange/AXbody/AXitem/acsCode/added/@addType) [Optional]
art	article number of the product - base type: string, max length: 25, (XPath: ACSOrdChange/AXbody/AXitem/acsCode/art) 1-1
cab	CAB code - base type: string, length: 5, (XPath: ACSOrdChange/AXbody/AXitem/finInfo/bankIT/cab) 1-1
carrier	identification of the transport carrier - base type: string, max length: 40, (XPath: ACSOrdChange/terms/transInfo/carrier) 0-1
cin	CIN code - base type: string, length: 5, (XPath: ACSOrdChange/AXbody/AXitem/finInfo/bankIT/cin) 0-1
city	name of the city (town, village) - base type: string, max length: 40, (XPath: ACSOrdChange/AXbody/AXitem/thirdParty/city) 0-1 (XPath: ACSOrdChange/TXheader/buyer/city) 0-1 (XPath: ACSOrdChange/TXheader/supplier/city) 0-1 (XPath: ACSOrdChange/TXheader/thirdParty/city) 0-1
@codeList	it specifies the URL where the list of codes used to make an instance of the element can be found - base type: string, max length: 255, (XPath: ACSOrdChange/terms/allowanceCharge/dtScheme/note/@codeList) [Optional] - nota: <i>must be used to provide (URL) the list of codes used in "noteLabel"</i> (XPath: ACSOrdChange/terms/allowanceCharge/dtScheme/legalRef/@codeList) [Required] (XPath: ACSOrdChange/TXheader/note/@codeList) [Optional] - nota: <i>must be used to provide (URL) the list of codes used in</i>

	<p><i>"noteLabel"</i>  (XPath: ACSOrdChange/AXbody/AXitem/acsCode/art/@codeList) [Optional]  - nota: <i>this attribute should be ALTERNATIVE to the others</i>  (XPath: ACSOrdChange/AXbody/AXitem/acsCode/pattern/@codeList) [Optional]  - nota: <i>this attribute should be ALTERNATIVE to the others</i>  (XPath: ACSOrdChange/AXbody/AXitem/note/@codeList) [Optional]  - nota: <i>must be used to provide (URL) the list of codes used in "noteLabel"</i>  (XPath: ACSOrdChange/AXbody/AXitem/acsCode/color/@codeList) [Optional]  - nota: <i>this attribute should be ALTERNATIVE to the others</i></p>
collection	<p>identifier of a clothing collection  - base type: string, max length: 250,  (XPath: ACSOrdChange/AXbody/AXitem/acsComInfo/collection) 0-1  (XPath: ACSOrdChange/acsComInfo/collection) 0-1</p>
color	<p>colour number of the product, when not included in the model or fabric code  - base type: string, max length: 15,  (XPath: ACSOrdChange/AXbody/AXitem/acsCode/color) 0-1</p>
comDiscount	<p>percent discount applied to the related unit price or amount  - base type: decimal, min inclusive: 0, max inclusive: 100, fraction digits: 2,  (XPath: ACSOrdChange/AXbody/AXitem/comDiscount) 0-1</p>
country	<p>code of the nation  - base type: string, cod. table: T10  <a href="http://www.moda-ml.net/moda-ml/repository/codelist/v2013-1/gc_T10.xml">http://www.moda-ml.net/moda-ml/repository/codelist/v2013-1/gc_T10.xml</a>  (XPath: ACSOrdChange/TXheader/thirdParty/country) 0-1  (XPath: ACSOrdChange/TXheader/buyer/country) 0-1  (XPath: ACSOrdChange/AXbody/AXitem/thirdParty/country) 0-1  (XPath: ACSOrdChange/TXheader/supplier/country) 0-1</p>
@currencyUseQualifier	<p>qualification of another currency used in the document  - base type: string, cod. table: NT19  <a href="http://www.moda-ml.net/moda-ml/repository/codelist/v2013-1/gc_NT19.xml">http://www.moda-ml.net/moda-ml/repository/codelist/v2013-1/gc_NT19.xml</a>  (XPath: ACSOrdChange/TXheader/otherCurrency/@currencyUseQualifier) [Required]</p>
@dateForm	<p>format used for the date  - base type: string, cod. table: NT29  <a href="http://www.moda-ml.net/moda-ml/repository/codelist/v2013-1/gc_NT29.xml">http://www.moda-ml.net/moda-ml/repository/codelist/v2013-1/gc_NT29.xml</a>  (XPath: ACSOrdChange/TXheader/refDoc/docDate/@dateForm) [Optional]  (XPath: ACSOrdChange/AXbody/AXitem/refDoc/docDate/@dateForm) [Optional]  (XPath: ACSOrdChange/AXbody/AXitem/acsComInfo/deliveryDate/@dateForm) [Optional]  (XPath: ACSOrdChange/acsComInfo/specDate/@dateForm) [Optional]  (XPath: ACSOrdChange/acsComInfo/deliveryDate/@dateForm) [Optional]  (XPath: ACSOrdChange/TXheader/msgDate/@dateForm) [Optional]  (XPath: ACSOrdChange/TXheader/validityEnd/@dateForm) [Optional]  (XPath: ACSOrdChange/AXbody/AXitem/acsComInfo/specDate/@dateForm) [Optional]</p>
deliveryDate	<p>date of delivery of goods, requested or promised in the purchase process, according to one of the patterns YYYY-MM-DD, YYYY-MM-DD:HH-MM or YYYY-WW.  - base type: string,  (XPath: ACSOrdChange/acsComInfo/deliveryDate) 0-1</p>

	(XPath: ACSOrdChange/AXbody/AXitem/acsComInfo/deliveryDate) 0-1
deliveryPlace	place of delivery of goods, ultimate or related to a given leg - base type: string, max length: 40, (XPath: ACSOrdChange/terms/transInfo/deliveryPlace) 0-1
dept	name or code of a contact department within a Party - base type: string, max length: 40, (XPath: ACSOrdChange/TXheader/thirdParty/dept) 0-1 (XPath: ACSOrdChange/TXheader/buyer/dept) 0-1 (XPath: ACSOrdChange/TXheader/supplier/dept) 0-1 (XPath: ACSOrdChange/AXbody/AXitem/thirdParty/dept) 0-1
description	free text description of a product - base type: string, max length: 70, (XPath: ACSOrdChange/AXbody/AXitem/acsCode/description) 0-1
docDate	date of issue of the referenced document, according to one of the patterns YYYY-MM-DD, YYYY-MM-DD:HH-MM or YYYY-WW. - base type: string, (XPath: ACSOrdChange/AXbody/AXitem/refDoc/docDate) 0-1 (XPath: ACSOrdChange/TXheader/refDoc/docDate) 0-1
docID	identification number of the referenced document SINCE 2008-1 ITS USE IN THE HEADER IS DISCOURAGED (REPLACED BY msgID) - base type: string, max length: 80, (XPath: ACSOrdChange/TXheader/docID) 0-1 (XPath: ACSOrdChange/AXbody/AXitem/refDoc/docID) 1-2 (XPath: ACSOrdChange/TXheader/refDoc/docID) 1-2
@docType	type or class to which the referenced document belongs - base type: string, cod. table: T21 <a href="http://www.moda-ml.net/moda-ml/repository/codelist/v2013-1/gc_T21.xml">http://www.moda-ml.net/moda-ml/repository/codelist/v2013-1/gc_T21.xml</a> (XPath: ACSOrdChange/AXbody/AXitem/refDoc/@docType) [Required] (XPath: ACSOrdChange/TXheader/refDoc/@docType) [Required]
@email	electronic mail address of the contact person within a Party - base type: string, max length: 80, (XPath: ACSOrdChange/TXheader/supplier/person/@email) [Optional] (XPath: ACSOrdChange/TXheader/thirdParty/person/@email) [Optional] (XPath: ACSOrdChange/TXheader/buyer/person/@email) [Optional] (XPath: ACSOrdChange/AXbody/AXitem/thirdParty/person/@email) [Optional]
@fax	fax number of the contact person within a Party - base type: string, max length: 35, (XPath: ACSOrdChange/TXheader/buyer/person/@fax) [Optional] (XPath: ACSOrdChange/TXheader/thirdParty/person/@fax) [Optional] (XPath: ACSOrdChange/TXheader/supplier/person/@fax) [Optional] (XPath: ACSOrdChange/AXbody/AXitem/thirdParty/person/@fax) [Optional]
@finDiscount	financial discount applied for payment by the date specified - base type: decimal, min inclusive: 0, max inclusive: 100, fraction digits: 2, (XPath: ACSOrdChange/terms/payment/@finDiscount) [Optional]
@finSurcharge	financial surcharge applied for payment after the date specified - base type: decimal, min inclusive: 0, max inclusive: 100, fraction digits: 2, (XPath: ACSOrdChange/terms/payment/@finSurcharge) [Optional]
goodsAmount	total monetary value of the goods and services considered in the message - base type: decimal, min inclusive: 0, fraction digits: 2, (XPath: ACSOrdChange/totals/goodsAmount) 1-1

grossWeight	the gross weight of the overall goods supply, declared for transport or customs purpose - base type: decimal, min inclusive: 0, fraction digits: 2, (XPath: ACSOrdChange/terms/transInfo/grossWeight) 0-1
iban	international bank and account identifier, used for fund transfer - base type: string, max length: 35, (XPath: ACSOrdChange/AXbody/AXitem/finInfo/iban) 1-1
id	primary identification code of a Party; it is recommended the format: nation code (ISO 3166) + VAT identification number (11 crt), with the qualifier "numberingOrg"= MF - base type: string, max length: 15, (XPath: ACSOrdChange/AXbody/AXitem/thirdParty/id) 1-1 (XPath: ACSOrdChange/TXheader/supplier/id) 1-1 (XPath: ACSOrdChange/TXheader/thirdParty/id) 1-1 (XPath: ACSOrdChange/TXheader/buyer/id) 1-1
incoTerm	specification of the terms of trade (INCOTERMS) - base type: string, cod. table: T3 <a href="http://www.moda-ml.net/moda-ml/repository/codelist/v2013-1/gc_T3.xml">http://www.moda-ml.net/moda-ml/repository/codelist/v2013-1/gc_T3.xml</a> (XPath: ACSOrdChange/terms/trade/incoTerm) 1-1
incoTermText	free text specifying the terms of trade (incoterm, location) - base type: string, max length: 70, (XPath: ACSOrdChange/terms/trade/incoTermText) 1-1
itemID	number of the line/item of the referenced document - base type: string, max length: 6, (XPath: ACSOrdChange/AXbody/AXitem/refDoc/itemID) 0-1 (XPath: ACSOrdChange/TXheader/refDoc/itemID) 0-1
legalName	legal name of a Party - base type: string, max length: 80, (XPath: ACSOrdChange/TXheader/buyer/legalName) 0-1 (XPath: ACSOrdChange/AXbody/AXitem/finInfo/bankIT/legalName) 0-1 (XPath: ACSOrdChange/TXheader/supplier/legalName) 0-1 (XPath: ACSOrdChange/TXheader/thirdParty/legalName) 0-1 (XPath: ACSOrdChange/AXbody/AXitem/thirdParty/legalName) 0-1
legalRef	legal reference of the duty or tax or fee category - base type: string, (XPath: ACSOrdChange/terms/allowanceCharge/dtScheme/legalRef) 0-1
lineN	number of the line item of the present message (xml document) - base type: positiveInteger, min inclusive: 1, max inclusive: 9999, (XPath: ACSOrdChange/AXbody/AXitem/lineN) 1-1
@listName	it specifies the name of the list of codes used to make an instance of the element - base type: string, max length: 40, (XPath: ACSOrdChange/AXbody/AXitem/acsCode/art/@listName) [Optional] - nota: <i>this attribute should always be used coupled with "numberingOrg"</i> (XPath: ACSOrdChange/AXbody/AXitem/acsCode/color/@listName) [Optional] - nota: <i>this attribute should always be used coupled with "numberingOrg"</i> (XPath: ACSOrdChange/AXbody/AXitem/acsCode/pattern/@listName) [Optional] - nota: <i>this attribute should always be used coupled with "numberingOrg"</i>
@listVersion	it specifies the version of the list of codes used to make an instance of the element

	<ul style="list-style-type: none"> <li>- base type: string, max length: 6, (XPath: ACSOrdChange/AXbody/AXitem/acsCode/color/@listVersion) [Optional]</li> <li>- nota: <i>this attribute should always be used coupled with "numberingOrg" and "listName"</i> (XPath: ACSOrdChange/AXbody/AXitem/acsCode/art/@listVersion) [Optional]</li> <li>- nota: <i>this attribute should always be used coupled with "numberingOrg" and "listName"</i> (XPath: ACSOrdChange/AXbody/AXitem/acsCode/pattern/@listVersion) [Optional]</li> <li>- nota: <i>this attribute should always be used coupled with "numberingOrg" and "listName"</i></li> </ul>
location	<p>specification of a location</p> <ul style="list-style-type: none"> <li>- base type: string, max length: 40, (XPath: ACSOrdChange/terms/trade/location) 0-1</li> <li>- note: <i>place to which the INCOTERM applies</i></li> </ul>
@logo	<p>company logo (URL of the image jpeg or gif). It is recommended that the width of the image does not exceed 640 pixel.</p> <ul style="list-style-type: none"> <li>- base type: string, max length: 255, (XPath: ACSOrdChange/TXheader/buyer/@logo) [Optional]</li> <li>(XPath: ACSOrdChange/TXheader/supplier/@logo) [Optional]</li> </ul>
@LRI	<p>attribute usable to format a string according to a customized User rule (local rule)</p> <ul style="list-style-type: none"> <li>- base type: string, cod. table: NT3 <a href="http://www.moda-ml.net/moda-ml/repository/codelist/v2013-1/gc_NT3.xml">http://www.moda-ml.net/moda-ml/repository/codelist/v2013-1/gc_NT3.xml</a></li> <li>(XPath: ACSOrdChange/terms/trade/location/@LRI) [Optional]</li> </ul>
msgCurrency	<p>currency used to express the monetary amounts of the message</p> <ul style="list-style-type: none"> <li>- base type: string, cod. table: T9 <a href="http://www.moda-ml.net/moda-ml/repository/codelist/v2013-1/gc_T9.xml">http://www.moda-ml.net/moda-ml/repository/codelist/v2013-1/gc_T9.xml</a></li> <li>(XPath: ACSOrdChange/TXheader/msgCurrency) 0-1</li> </ul>
msgDate	<p>date of issue of the present message (xml document), according to one of the patterns YYYY-MM-DD, YYYY-MM-DD:HH-MM or YYYY-WW.</p> <ul style="list-style-type: none"> <li>- base type: string, (XPath: ACSOrdChange/TXheader/msgDate) 1-1</li> </ul>
@msgfunction	<p>function performed by the present message with regards to the transmission</p> <ul style="list-style-type: none"> <li>- base type: string, cod. table: NT18 <a href="http://www.moda-ml.net/moda-ml/repository/codelist/v2013-1/gc_NT18.xml">http://www.moda-ml.net/moda-ml/repository/codelist/v2013-1/gc_NT18.xml</a></li> <li>(XPath: ACSOrdChange/@msgfunction) [Optional] [Default= OR]</li> </ul>
msgID	<p>key identifier of the document in the information system of the issuing Party</p> <ul style="list-style-type: none"> <li>- base type: string, max length: 35, (XPath: ACSOrdChange/TXheader/msgID) 0-1</li> </ul>
msgN	<p>identification number given to the message (xml document) by its issuer</p> <ul style="list-style-type: none"> <li>- base type: string, max length: 35, (XPath: ACSOrdChange/TXheader/msgN) 1-1</li> </ul>
netWeight	<p>the net weight of the overall goods supply, declared for transport or customs purpose</p> <ul style="list-style-type: none"> <li>- base type: decimal, min inclusive: 0, fraction digits: 2, (XPath: ACSOrdChange/terms/transInfo/netWeight) 0-1</li> </ul>
note	<p>free text or structured (computer processing) note. For note structuring use the attributes "noteLabel" and "codelist"</p> <ul style="list-style-type: none"> <li>- base type: string, max length: 350,</li> </ul>

	<p>(XPath: ACSOrdChange/AXbody/AXitem/note) 0-19  (XPath: ACSOrdChange/terms/allowanceCharge/dtScheme/note) 0-19  (XPath: ACSOrdChange/TXheader/note) 0-19</p>
@noteLabel	<p>subject qualifier of a note  - base type: string, max length: 35,  (XPath: ACSOrdChange/AXbody/AXitem/note/@noteLabel) [Optional]  - nota: <i>must be used to qualify the subject of the note</i>  (XPath: ACSOrdChange/terms/allowanceCharge/dtScheme/note/@noteLabel) [Optional]  - nota: <i>must be used to qualify the subject of the note</i>  (XPath: ACSOrdChange/TXheader/note/@noteLabel) [Optional]  - nota: <i>must be used to qualify the subject of the note</i></p>
@numberingOrg	<p>code specifying the organisation who has created or owns the coding or numbering system  - base type: string, cod. table: NT6  <a href="http://www.moda-ml.net/moda-ml/repository/codelist/v2013-1/gc_NT6.xml">http://www.moda-ml.net/moda-ml/repository/codelist/v2013-1/gc_NT6.xml</a>  (XPath: ACSOrdChange/AXbody/AXitem/acsCode/art/@numberingOrg) [Optional]  - nota: <i>this attribute should be used either single or coupled with "listName" and "listVersion"</i>  (XPath: ACSOrdChange/AXbody/AXitem/acsCode/pattern/@numberingOrg) [Optional]  - nota: <i>this attribute should be used either single or coupled with "listName" and "listVersion"</i>  (XPath: ACSOrdChange/AXbody/AXitem/acsCode/@numberingOrg) [Optional]  (XPath: ACSOrdChange/AXbody/AXitem/refDoc/docID/@numberingOrg) [Optional]  - nota: <i>here can be specified whose document numbering is used (e.g.: Client, Supplier, ..)</i>  (XPath: ACSOrdChange/TXheader/docID/@numberingOrg) [Optional]  - nota: <i>here can be specified whose document numbering is used (e.g.: Client, Supplier, ..)</i>  (XPath: ACSOrdChange/TXheader/buyer/id/@numberingOrg) [Optional]  (XPath: ACSOrdChange/AXbody/AXitem/thirdParty/id/@numberingOrg) [Optional]  (XPath: ACSOrdChange/TXheader/refDoc/docID/@numberingOrg) [Optional]  - nota: <i>here can be specified whose document numbering is used (e.g.: Client, Supplier, ..)</i>  (XPath: ACSOrdChange/TXheader/thirdParty/id/@numberingOrg) [Optional]  (XPath: ACSOrdChange/TXheader/note/@numberingOrg) [Optional]  (XPath: ACSOrdChange/AXbody/AXitem/acsCode/color/@numberingOrg) [Optional]  - nota: <i>this attribute should be used either single or coupled with "listName" and "listVersion"</i>  (XPath: ACSOrdChange/TXheader/supplier/id/@numberingOrg) [Optional]  (XPath: ACSOrdChange/AXbody/AXitem/acsCode/added/@numberingOrg) [Optional]  (XPath: ACSOrdChange/terms/allowanceCharge/dtScheme/note/@numberingOrg) [Optional]  (XPath: ACSOrdChange/AXbody/AXitem/note/@numberingOrg) [Optional]</p>
otherCurrency	<p>other currency used in the document  - base type: string, cod. table: T9  <a href="http://www.moda-ml.net/moda-ml/repository/codelist/v2013-1/gc_T9.xml">http://www.moda-ml.net/moda-ml/repository/codelist/v2013-1/gc_T9.xml</a>  (XPath: ACSOrdChange/TXheader/otherCurrency) 0-9</p>
@part	<p>percent fraction of a total payment</p>

	<p>- base type: decimal, min inclusive: 1, max inclusive: 99, fraction digits: 2, (XPath: ACSOrdChange/terms/insPayment/@part) [Required] - nota: <i>here the % value of each installment must be indicated</i></p>
pattern	<p>pattern/design number of the product, when not included in the article code - base type: string, max length: 15, (XPath: ACSOrdChange/AXbody/AXitem/acsCode/pattern) 0-1</p>
payMode	<p>way or means of payment - base type: string, cod. table: T2 <a href="http://www.moda-ml.net/moda-ml/repository/codelist/v2013-1/gc_T2.xml">http://www.moda-ml.net/moda-ml/repository/codelist/v2013-1/gc_T2.xml</a> (XPath: ACSOrdChange/terms/payment/payMode) 0-1 (XPath: ACSOrdChange/terms/insPayment/payMode) 0-1</p>
payTerm	<p>code specifying the terms or time by which the payment must be done - base type: string, cod. table: T1 <a href="http://www.moda-ml.net/moda-ml/repository/codelist/v2013-1/gc_T1.xml">http://www.moda-ml.net/moda-ml/repository/codelist/v2013-1/gc_T1.xml</a> (XPath: ACSOrdChange/terms/payment/payTerm) 1-1 (XPath: ACSOrdChange/terms/insPayment/payTerm) 1-1</p>
payTermText	<p>free text specifying the terms by which the payment must be done (time/mode or means) - base type: string, max length: 40, (XPath: ACSOrdChange/terms/payment/payTermText) 1-1 (XPath: ACSOrdChange/terms/insPayment/payTermText) 1-1</p>
person	<p>name of the contact person within a Party - base type: string, max length: 40, (XPath: ACSOrdChange/TXheader/buyer/person) 0-1 (XPath: ACSOrdChange/TXheader/thirdParty/person) 0-1 (XPath: ACSOrdChange/AXbody/AXitem/thirdParty/person) 0-1 (XPath: ACSOrdChange/TXheader/supplier/person) 0-1</p>
@phone	<p>phone number of the contact person within a Party - base type: string, max length: 35, (XPath: ACSOrdChange/TXheader/thirdParty/person/@phone) [Optional] (XPath: ACSOrdChange/TXheader/supplier/person/@phone) [Optional] (XPath: ACSOrdChange/TXheader/buyer/person/@phone) [Optional] (XPath: ACSOrdChange/AXbody/AXitem/thirdParty/person/@phone) [Optional]</p>
postCode	<p>code defining the postal zone - base type: string, max length: 10, (XPath: ACSOrdChange/AXbody/AXitem/thirdParty/postCode) 0-1 (XPath: ACSOrdChange/TXheader/supplier/postCode) 0-1 (XPath: ACSOrdChange/TXheader/buyer/postCode) 0-1 (XPath: ACSOrdChange/TXheader/thirdParty/postCode) 0-1</p>
price	<p>unit price of the article, object or service specified - base type: decimal, min inclusive: 0, fraction digits: 2, (XPath: ACSOrdChange/AXbody/AXitem/price) 0-1</p>
@priceQualifier	<p>type of price with reference to discount and taxes - base type: string, cod. table: NT20 <a href="http://www.moda-ml.net/moda-ml/repository/codelist/v2013-1/gc_NT20.xml">http://www.moda-ml.net/moda-ml/repository/codelist/v2013-1/gc_NT20.xml</a> (XPath: ACSOrdChange/AXbody/AXitem/price/@priceQualifier) [Optional] [Default= NET]</p>
project	<p>code used to assign the items ordered (fabric pieces/accessories) to a specific project of the Client - base type: string, max length: 25, (XPath: ACSOrdChange/AXbody/AXitem/acsComInfo/project) 0-1 (XPath: ACSOrdChange/acsComInfo/project) 0-1</p>



qty	<p>net quantity of the article or object correlated, qualified by the function of the document (ordering, delivering, ..) and by the context</p> <p>- base type: decimal, min inclusive: 0, fraction digits: 2, (XPath: ACSOrdChange/AXbody/AXitem/qty) 0-2</p>
@role	<p>Third Party role qualifier</p> <p>- base type: string, cod. table: NT2 <a href="http://www.moda-ml.net/moda-ml/repository/codelist/v2013-1/gc_NT2.xml">http://www.moda-ml.net/moda-ml/repository/codelist/v2013-1/gc_NT2.xml</a> (XPath: ACSOrdChange/AXbody/AXitem/thirdParty/@role) [Required] (XPath: ACSOrdChange/TXheader/thirdParty/@role) [Required]</p>
season	<p>sale season; defined as: season (1 crt) + year (4 crt) - season: S/S=1 A/W=2 Spring=3 Summer=4 Autumn=5 Winter=6: for more than four seasons use alphabetic sequence: 1st season=A 2nd season=B etc.etc.</p> <p>- base type: string, max length: 15, (XPath: ACSOrdChange/AXbody/AXitem/acsComInfo/season) 0-1 (XPath: ACSOrdChange/TXheader/refDoc/season) 0-1</p> <p>- note: here indicates the season to which the referenced document belongs (XPath: ACSOrdChange/AXbody/AXitem/refDoc/season) 0-1</p> <p>- note: here indicates the season to which the referenced document belongs (XPath: ACSOrdChange/acsComInfo/season) 0-1</p>
@sender	<p>qualifier that specifies the Party issuing of the document</p> <p>- base type: boolean, (XPath: ACSOrdChange/TXheader/supplier/@sender) [Optional]</p> <p>- nota: This attribute is mandatory when the STYLESHEET must be produced (XPath: ACSOrdChange/TXheader/thirdParty/@sender) [Optional]</p> <p>- nota: This attribute is mandatory when the STYLESHEET must be produced (XPath: ACSOrdChange/TXheader/buyer/@sender) [Optional]</p> <p>- nota: This attribute is mandatory when the STYLESHEET must be produced (XPath: ACSOrdChange/AXbody/AXitem/thirdParty/@sender) [Optional]</p> <p>- nota: This attribute is mandatory when the STYLESHEET must be produced</p>
specDate	<p>date by which the referenced blanket order must receive full product specifications (e.g.: colour), according to one of the patterns YYYY-MM-DD, YYYY-MM-DD:HH-MM or YYYY-WW.</p> <p>- base type: string, (XPath: ACSOrdChange/AXbody/AXitem/acsComInfo/specDate) 0-1 (XPath: ACSOrdChange/acsComInfo/specDate) 0-1</p>
street	<p>street and building number identifying a location</p> <p>- base type: string, max length: 80, (XPath: ACSOrdChange/TXheader/buyer/street) 0-1 (XPath: ACSOrdChange/TXheader/thirdParty/street) 0-1 (XPath: ACSOrdChange/TXheader/supplier/street) 0-1 (XPath: ACSOrdChange/AXbody/AXitem/thirdParty/street) 0-1</p>
subCountry	<p>short name or code of the sub-country entity</p> <p>- base type: string, max length: 9, (XPath: ACSOrdChange/AXbody/AXitem/thirdParty/subCountry) 0-1 (XPath: ACSOrdChange/TXheader/thirdParty/subCountry) 0-1 (XPath: ACSOrdChange/TXheader/supplier/subCountry) 0-1 (XPath: ACSOrdChange/TXheader/buyer/subCountry) 0-1</p>
swift	<p>swift code relevant to thr financial transaction</p> <p>- base type: string, max length: 15, (XPath: ACSOrdChange/AXbody/AXitem/finInfo/swift) 0-1</p>

taxCategory	duty or tax or fee category - base type: string, cod. table: T62 <a href="http://www.moda-ml.net/moda-ml/repository/codelist/v2013-1/gc_T62.xml">http://www.moda-ml.net/moda-ml/repository/codelist/v2013-1/gc_T62.xml</a> (XPath: ACSOrdChange/terms/allowanceCharge/dtScheme/taxCategory) 0-1
taxRate	duty or tax or fee percent rate - base type: string, (XPath: ACSOrdChange/terms/allowanceCharge/dtScheme/taxRate) 0-1
@taxType	duty or tax or fee type - base type: string, cod. table: T61 <a href="http://www.moda-ml.net/moda-ml/repository/codelist/v2013-1/gc_T61.xml">http://www.moda-ml.net/moda-ml/repository/codelist/v2013-1/gc_T61.xml</a> (XPath: ACSOrdChange/terms/allowanceCharge/dtScheme/@taxType) [Required]
totQty	total quantity of the articles related to the whole document - base type: decimal, min inclusive: 0, fraction digits: 2, (XPath: ACSOrdChange/totals/totQty) 0-1
@TOtype	type of Order - base type: string, cod. table: NT1 <a href="http://www.moda-ml.net/moda-ml/repository/codelist/v2013-1/gc_NT1.xml">http://www.moda-ml.net/moda-ml/repository/codelist/v2013-1/gc_NT1.xml</a> (XPath: ACSOrdChange/@TOtype) [Optional]
transCondition	special condition of transport or special service requested to the Forwarder - base type: string, cod. table: T38 <a href="http://www.moda-ml.net/moda-ml/repository/codelist/v2013-1/gc_T38.xml">http://www.moda-ml.net/moda-ml/repository/codelist/v2013-1/gc_T38.xml</a> (XPath: ACSOrdChange/terms/transInfo/transCondition) 0-3
transConditionText	free text description of the special condition of transport or special service requested to the Forwarder - base type: string, max length: 100, (XPath: ACSOrdChange/terms/transInfo/transConditionText) 0-1
transMeans	means of transport, in general or referred to a specific leg - base type: string, cod. table: T40 <a href="http://www.moda-ml.net/moda-ml/repository/codelist/v2013-1/gc_T40.xml">http://www.moda-ml.net/moda-ml/repository/codelist/v2013-1/gc_T40.xml</a> (XPath: ACSOrdChange/terms/transInfo/transMeans) 0-1
transMode	way of transport, in general or referred to the specified leg - base type: string, cod. table: T8 <a href="http://www.moda-ml.net/moda-ml/repository/codelist/v2013-1/gc_T8.xml">http://www.moda-ml.net/moda-ml/repository/codelist/v2013-1/gc_T8.xml</a> (XPath: ACSOrdChange/terms/transInfo/transMode) 1-1
@transReason	reason for the transport - base type: string, cod. table: NT11 <a href="http://www.moda-ml.net/moda-ml/repository/codelist/v2013-1/gc_NT11.xml">http://www.moda-ml.net/moda-ml/repository/codelist/v2013-1/gc_NT11.xml</a> (XPath: ACSOrdChange/terms/transInfo/@transReason) [Optional]
@um	specification of the unit of measure - base type: string, cod. table: NT7 <a href="http://www.moda-ml.net/moda-ml/repository/codelist/v2013-1/gc_NT7.xml">http://www.moda-ml.net/moda-ml/repository/codelist/v2013-1/gc_NT7.xml</a> (XPath: ACSOrdChange/totals/totQty/@um) [Required] (XPath: ACSOrdChange/terms/transInfo/grossWeight/@um) [Required] (XPath: ACSOrdChange/terms/transInfo/netWeight/@um) [Required] (XPath: ACSOrdChange/AXbody/AXitem/qty/@um) [Required] (XPath: ACSOrdChange/AXbody/AXitem/price/@um) [Optional] - nota: <i>Unit of measure of the product to which the price is referred (price per meter)</i>
@useProfile	use profile to which the present document is compliant if it was agreed by the parties. It is suggested a URI with reference to the firms or the URL of the profile. - base type: string, (XPath: ACSOrdChange/@useProfile) [Optional]

validityEnd	<p>date by which the validity ends, according to one of the patterns YYYY-MM-DD, YYYY-MM-DD:HH-MM or YYYY-WW.</p> <p>- base type: string, (XPath: ACSOrdChange/TXheader/validityEnd) 0-1</p>
@VAT	<p>VAT rate or code ( deprecated, use dtScheme element )</p> <p>- base type: string, cod. table: NT16 <a href="http://www.moda-ml.net/moda-ml/repository/codelist/v2013-1/gc_NT16.xml">http://www.moda-ml.net/moda-ml/repository/codelist/v2013-1/gc_NT16.xml</a></p> <p>(XPath: ACSOrdChange/AXbody/AXitem/thirdParty/@VAT) [Optional] (XPath: ACSOrdChange/AXbody/AXitem/lineN/@VAT) [Optional] (XPath: ACSOrdChange/TXheader/thirdParty/@VAT) [Optional] (XPath: ACSOrdChange/terms/allowanceCharge/@VAT) [Optional]</p>
@version	<p>Dictionary version from which the instance has been created</p> <p>- base type: string, cod. table: NT100 <a href="http://www.moda-ml.net/moda-ml/repository/codelist/v2013-1/gc_NT100.xml">http://www.moda-ml.net/moda-ml/repository/codelist/v2013-1/gc_NT100.xml</a></p> <p>(XPath: ACSOrdChange/@version) [Optional] [Default= 2013-1]</p>

## 2.3 Enumeration tables

List of enumeration tables used in the XML document. You can find the corresponding codes at: <http://www.moda-ml.org/moda-ml/imple/moda-ml-2013-1.asp?lingua=en&pag=6>

NT1 - Order type  
NT100 - eBIZ Moda-ML version  
NT11 - transport causal  
NT16 - VAT rate or code  
NT18 - message function  
NT19 - currency use qualifier  
NT2 - third party qualifier  
NT20 - price qualifier  
NT29 - format of a date  
NT3 - data format  
NT5 - action code  
NT6 - coding system owner/issuer  
NT7 - unity of measure  
T1 - terms of payment  
T10 - ISO3166 - Country  
T2 - Modes of payment  
T21 - type of document  
T3 - terms of delivery  
T38 - transport conditions  
T40 - type of transport means  
T41 - type of Allowance or Charge  
T44 - additional code type  
T61 - duty or tax or fee type  
T62 - duty or tax or fee category  
T8 - Modes of Transport  
T9 - ISO4217 - Currency

# Annex A

Representative images of the principal complex elements' structure.

