



<http://www.moda-ml.org>

## IMPLEMENTATION GUIDE TRANSACTION "TWISTING REQUEST"

Version: 2013-1

Date of release: 18/11/2011

Document code: G049

XML Schema repository:<http://www.moda-ml.org/moda-ml/repository/schema/v2013-1/default.asp>

Guides repository:<http://www.moda-ml.org/moda-ml/repository/guide/v2013-1/default.asp>

Guide filename: G049-MODA-ML-TwistingRequest.pdf

# 1. BUSINESS DESCRIPTION

## 1.1 Scope

The present guide has been issued to assist the companies of the Textile-Clothing sector in the implementation of the standard XML document "TWISTING REQUEST", providing all the instruction required for its use in the context of e-commerce between Subcontractors and their Customers shown in the enclosed diagram

All the rules required for the construction and validation of the document are embedded into the specific XML-Schema, which is detailed in section "Implementation guide".

## 1.2 Generalities

The Request is used by a Yarn Producer to request from a Subcontractor an Offer for the twisting of a yarn.

The Request is structured in four levels:

Macro-type of Work Requested = document root (7 types of Request)

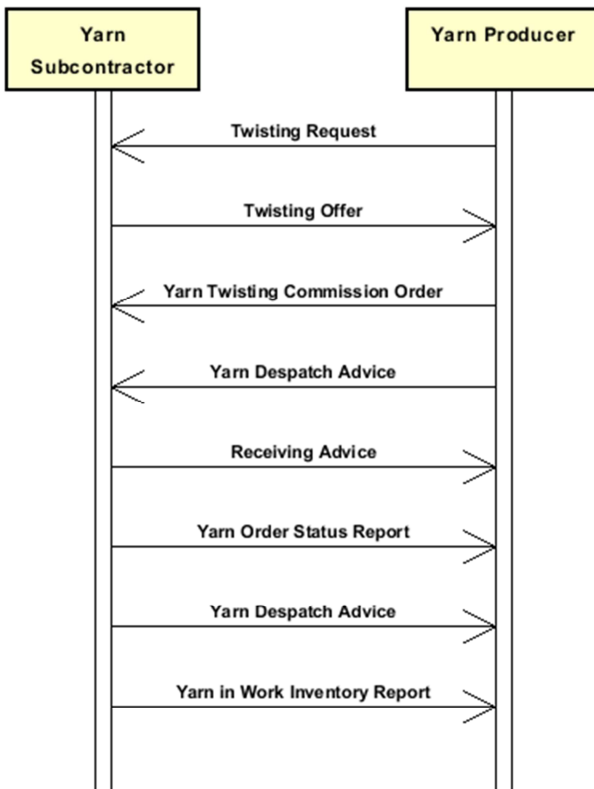
Product Family = document qualifier (type of product with reference to the manufacturing process; e.g.: combed yarn, jacquard weaved fabric, ..)

Product Specifications = "xxxSpecs" (technical characteristics and properties of the product)

Operations requested 0 "XXXMnfrOperation" (details of the works requested)

Quantities, unit measures and prices must be referred to the third level (Line Item)

## 1.3. Possible scenario





## 2. IMPLEMENTATION GUIDE

### 2.1 General structure of XML document

All the business data that can be exchanged through this class of documents are shown in the following "document structure", that provides a simplified vision of the Schema.

In particular:

- the two numbers following each element define its "cardinality" (minimum and maximum number of occurrences); the minimum equal zero indicates that the element is optional, the minimum greater than zero indicates that is mandatory;
- the bold character denotes the complex elements (aggregates of simple elements) that were built for the sake of functionality and re-usability of some complex informations sets. The child elements in each parent element are easily spotted as "indented";
- the symbol "@" denotes an attribute of the preceding element; here "the usage indicator (optional, required, ...)" is shown in square brackets.

### Structure

#### **YARNTwistRequest**

*@msgfunction [Optional] [Default= OR]*

*@yarnProcQualifier [Required]*

*@version [Optional] [Default= 2013-1]*

*@useProfile [Optional]*

| **RQheader 1-1**

| | msgN 1-1

| | - choose -

| | msgID 0-1

| | - or -

| | docID 0-1

| | *@numberingOrg [Optional]*

| | - end choose -

| | msgDate 1-1

| | *@dateForm [Optional]*

| | season 0-1

| | validityStart 0-1

| | *@dateForm [Optional]*

| | validityEnd 1-1

| | *@dateForm [Optional]*

| | **refDoc 0-9**

| | *@docType [Required]*

| | | docID 1-2

| | | *@numberingOrg [Optional]*

| | | docDate 0-1

| | | *@dateForm [Optional]*

| | | season 0-1

| | | itemID 0-1

| | **buyer 1-1**

| | | *@logo [Optional]*

| | | *@sender [Optional]*

| | | id 1-1

| | | *@numberingOrg [Optional]*

| | | legalName 0-1

| | | dept 0-1

| | | person 0-1

| | | *@email [Optional]*

| | | *@phone [Optional]*

| | | *@fax [Optional]*

```

| | | street 0-1
| | | city 0-1
| | | subCountry 0-1
| | | country 0-1
| | | postCode 0-1
| - choose -
| | supplier 1-1
| | @logo [Optional]
| | @sender [Optional]
| | | id 1-1
| | | @numberingOrg [Optional]
| | | legalName 0-1
| | | dept 0-1
| | | person 0-1
| | | @email [Optional]
| | | @phone [Optional]
| | | @fax [Optional]
| | | street 0-1
| | | city 0-1
| | | subCountry 0-1
| | | country 0-1
| | | postCode 0-1
| - or -
| | subContractor 1-1
| | @sender [Optional]
| | | id 1-1
| | | @numberingOrg [Optional]
| | | legalName 0-1
| | | dept 0-1
| | | person 0-1
| | | @email [Optional]
| | | @phone [Optional]
| | | @fax [Optional]
| | | street 0-1
| | | city 0-1
| | | subCountry 0-1
| | | country 0-1
| | | postCode 0-1
| - end choose -
| | note 0-19
| | @numberingOrg [Optional]
| | @codeList [Optional]
| | @noteLabel [Optional]

```

```

| terms 0-1
| | payment 0-5
| | @finDiscount [Optional]
| | @finSurcharge [Optional]
| | - choose -
| | | payTerm 1-1
| | | - or -
| | | payTermText 1-1
| | | - end choose -
| | | payMode 0-1
| | insPayment 0-5
| | @part [Required]
| | - choose -
| | | payTerm 1-1
| | | - or -
| | | payTermText 1-1
| | | - end choose -

```

```

| | | payMode 0-1
| | trade 0-1
| | - choose -
| | | incoTermText 1-1
| | - or -
| | | incoTerm 1-1
| | - end choose -
| | | location 0-1
| | | @LRI [Optional]
| | transInfo 0-1
| | @transReason [Optional]
| | | transMode 1-1
| | | carrier 0-1
| | | deliveryPlace 0-1
| | | grossWeight 0-1
| | | @um [Required]
| | | netWeight 0-1
| | | @um [Required]
| | | transMeans 0-1
| | | transCondition 0-3
| | | transConditionText 0-1
| | allowanceCharge 0-9
| | @VAT [Optional]
| | - choose -
| | | AC_category 1-1
| | - or -
| | | AC_categoryText 1-1
| | - choose -
| | | AC_percent 1-1
| | - or -
| | | AC_amount 1-1
| | - end choose -
| | | dtScheme 0-1
| | | @taxType [Required]
| | | | taxCategory 0-1
| | | | taxRate 0-1
| | | | legalRef 0-1
| | | | @codeList [Required]
| | | | note 0-19
| | | | @numberingOrg [Optional]
| | | | @codeList [Optional]
| | | | @noteLabel [Optional]

```

```

| YTRQbody 1-1
| | YTRQitem 1-unbounded
| | | lineN 1-1
| | | @VAT [Optional]
| | | yarnCompos 0-1
| | | | percCompos 1-9
| | | | @fibre [Required]
| | | yarnSpecs 0-9
| | | - choose -
| | | | yarnCharText 1-1
| | | - or -
| | | | yarnChar 1-1
| | | - end choose -
| | | | experimValue 0-1
| | | | @um [Optional]
| | | | @method [Optional]
| | | | @application [Optional]
| | | | @idCO [Optional]

```

```

| | | | specValue 0-1
| | | | | @um [Optional]
| | | | | @source [Optional]
| | | | | @method [Optional]
| | | | | @application [Optional]
| | | | | @CV [Optional]
| | | | - choose -
| | | | | tolerance 0-2
| | | | | | @um [Required]
| | | | - or -
| | | | | pcTolerance 0-2
| | | | | | @um [Optional]
| | | | - end choose -
| | | | qty 1-2
| | | | | @um [Required]
| | | | | deliveryDate 1-1
| | | | | | @dateForm [Optional]
| | | | | notBeforeDate 0-1
| | | | | | @dateForm [Optional]
| | | | | thirdParty 0-1
| | | | | | @VAT [Optional]
| | | | | | @role [Required]
| | | | | | @sender [Optional]
| | | | | | | id 1-1
| | | | | | | | @numberingOrg [Optional]
| | | | | | | legalName 0-1
| | | | | | | dept 0-1
| | | | | | | person 0-1
| | | | | | | | @email [Optional]
| | | | | | | | @phone [Optional]
| | | | | | | | @fax [Optional]
| | | | | | | street 0-1
| | | | | | | city 0-1
| | | | | | | subCountry 0-1
| | | | | | | country 0-1
| | | | | | | postCode 0-1
| | | | | yarnMnfrOperation 1-9
| | | | | - choose -
| | | | | | jobName 1-1
| | | | | - or -
| | | | | | yarnJob 1-1
| | | | | - end choose -
| | | | | | yarnJobTech 0-1
| | | | | | refDoc 0-1
| | | | | | | @docType [Required]
| | | | | | | | docID 1-2
| | | | | | | | | @numberingOrg [Optional]
| | | | | | | | docDate 0-1
| | | | | | | | | @dateForm [Optional]
| | | | | | | | season 0-1
| | | | | | | | itemID 0-1
| | | | | | yarnMachine 0-1
| | | | | | yarnMachineSpecs 0-9
| | | | | | | yarnMachineParam 1-1
| | | | | | | | specValue 0-1
| | | | | | | | | @um [Optional]
| | | | | | | | | @source [Optional]
| | | | | | | | | @method [Optional]
| | | | | | | | | @application [Optional]
| | | | | | | | | @CV [Optional]
| | | | | - choose -

```

```

| | | | tolerance 0-2
| | | | @um [Required]
| | | | - or -
| | | | pcTolerance 0-2
| | | | @um [Optional]
| | | | - end choose -
| | | | note 0-19
| | | | @numberingOrg [Optional]
| | | | @codeList [Optional]
| | | | @noteLabel [Optional]
| | | | note 0-19
| | | | @numberingOrg [Optional]
| | | | @codeList [Optional]
| | | | @noteLabel [Optional]

```



## 2.2 Detailed description of document elements

Following tables show all elements (complex and simple) used in this document. Description includes: 1) element's information: xml tag, name, brief description, data type and syntax constraints; 2) information about use of the element in a particular position in the document: xpath and possible associated notes.

### 2.2.1 Complex elements (Aggregate Business Information Entities)

Complex elements are those elements whose content is composed of other elements (childs). Complex elements are alphabetically ordered.

<b>allowanceCharge</b>	Allowances and Charges related to an Order or a contract (XPath: <a href="#">YARNTwistRequest/terms/allowanceCharge</a> ) 0-9
<b>buyer</b>	details of the Buyer - base type: Nad, (XPath: <a href="#">YARNTwistRequest/RQheader/buyer</a> ) 1-1
<b>dtScheme</b>	set of data usable to declare the duty or tax applied (XPath: <a href="#">YARNTwistRequest/terms/allowanceCharge/dtScheme</a> ) 0-1
<b>insPayment</b>	payment details for payment by installments (XPath: <a href="#">YARNTwistRequest/terms/insPayment</a> ) 0-5 - note: <i>excluded the case of offers, this set of data is alternative to payment set and must be iterated for each payment installment</i>
<b>payment</b>	payment details for payment all in one (XPath: <a href="#">YARNTwistRequest/terms/payment</a> ) 0-5 - note: <i>excluded the case of offers, this set of data is alternative to insPayment, it can be iterated to specify alternative terms of payment (e.g.: 60 days or 30 days with 3% discount)</i>
<b>refDoc</b>	identification of a document and of an item thereof, to which the message makes reference (XPath: <a href="#">YARNTwistRequest/YTRQbody/YTRQitem/yarnMnfrOperation/refDoc</a> ) 0-1 - note: <i>here a Process Sheet transmitted to the Subcontractor can be referenced</i> (XPath: <a href="#">YARNTwistRequest/RQheader/refDoc</a> ) 0-9
<b>RQheader</b>	header of the document REQUEST FOR OFFER (XPath: <a href="#">YARNTwistRequest/RQheader</a> ) 1-1
<b>subContractor</b>	details of the Sub-contractor - base type: Nad, (XPath: <a href="#">YARNTwistRequest/RQheader/subContractor</a> ) 1-1
<b>supplier</b>	details of the Supplier - base type: Nad, (XPath: <a href="#">YARNTwistRequest/RQheader/supplier</a> ) 1-1
<b>terms</b>	details of the commercial obligations for payment and delivery (XPath: <a href="#">YARNTwistRequest/terms</a> ) 0-1
<b>thirdParty</b>	details of the Third Party, different from Buyer or Supplier - base type: Nad, (XPath: <a href="#">YARNTwistRequest/YTRQbody/YTRQitem/thirdParty</a> ) 0-1
<b>trade</b>	general terms of trade for the specified supply (XPath: <a href="#">YARNTwistRequest/terms/trade</a> ) 0-1
<b>transInfo</b>	details of transport: mode, carrier and delivery place

	(XPath: YARNTwistRequest/terms/transInfo) 0-1
<b>yarnCompos</b>	fibrous composition of a yarn product (XPath: YARNTwistRequest/YTRQbody/YTRQitem/yarnCompos) 0-1
<b>yarnMachineSpecs</b>	technical specifications of a machine used in an operation of a work cycle for yarn (type and settings) (XPath: YARNTwistRequest/YTRQbody/YTRQitem/yarnMnfrOperation/yarnMachineSpecs) 0-9
<b>yarnMnfrOperation</b>	details of a manufacturing operation used for manufacturing a yarn product (XPath: YARNTwistRequest/YTRQbody/YTRQitem/yarnMnfrOperation) 1-9
<b>yarnSpecs</b>	technical properties of a yarn product linked to an operation of the sub-contracted production of yarn or to the purchas of yarn (XPath: YARNTwistRequest/YTRQbody/YTRQitem/yarnSpecs) 0-9
<b>YTRQbody</b>	body of the document REQUEST FOR TWISTING (XPath: YARNTwistRequest/YTRQbody) 1-1
<b>YTRQitem</b>	line of the document REQUEST FOR TWISTING (XPath: YARNTwistRequest/YTRQbody/YTRQitem) 1-unbounded

## 2.2.2 Simple elements (Basic Business Information Entities)

Simple elements are those elements whose content is characterized by a data type plus a domain of possible values. Simple elements are alphabetically ordered.

<b>AC_amount</b>	amount of an Allowance or Charge - base type: decimal, fraction digits: 2, (XPath: YARNTwistRequest/terms/allowanceCharge/AC_amount) 1-1
<b>AC_category</b>	coded specification of an Allowance or Charge - base type: string, cod. table: T41 <a href="http://www.moda-ml.net/moda-ml/repository/codelist/v2013-1/gc_T41.xml">http://www.moda-ml.net/moda-ml/repository/codelist/v2013-1/gc_T41.xml</a> (XPath: YARNTwistRequest/terms/allowanceCharge/AC_category) 1-1
<b>AC_categoryText</b>	free text description of an Allowance or Charge - base type: string, max length: 70, (XPath: YARNTwistRequest/terms/allowanceCharge/AC_categoryText) 1-1
<b>AC_percent</b>	amount of an Allowance or Charge as a percentage - base type: decimal, max inclusive: 100, fraction digits: 2, (XPath: YARNTwistRequest/terms/allowanceCharge/AC_percent) 1-1
<b>@application</b>	force or similar condition (e.g. no. of revolutions) applied in a test as specified within the standard - base type: string, max length: 15, (XPath: YARNTwistRequest/YTRQbody/YTRQitem/yarnMnfrOperation/yarnMachineSpecs/specValue/@application) [Optional] (XPath: YARNTwistRequest/YTRQbody/YTRQitem/yarnSpecs/experimValue/@application) [Optional] (XPath: YARNTwistRequest/YTRQbody/YTRQitem/yarnSpecs/specValue/@application) [Optional]
<b>carrier</b>	identification of the transport carrier - base type: string, max length: 40, (XPath: YARNTwistRequest/terms/transInfo/carrier) 0-1
<b>city</b>	name of the city (town, village) - base type: string, max length: 40, (XPath: YARNTwistRequest/YTRQbody/YTRQitem/thirdParty/city) 0-1 (XPath: YARNTwistRequest/RQheader/subContractor/city) 0-1

	(XPath: YARNTwistRequest/RQheader/supplier/city) 0-1 (XPath: YARNTwistRequest/RQheader/buyer/city) 0-1
@codeList	it specifies the URL where the list of codes used to make an instance of the element can be found - base type: string, max length: 255, (XPath: YARNTwistRequest/terms/allowanceCharge/dtScheme/legalRef/@codeList) [Required] (XPath: YARNTwistRequest/terms/allowanceCharge/dtScheme/note/@codeList) [Optional] - nota: <i>must be used to provide (URL) the list of codes used in "noteLabel"</i> (XPath: YARNTwistRequest/YTRQbody/YTRQitem/note/@codeList) [Optional] - nota: <i>must be used to provide (URL) the list of codes used in "noteLabel"</i> (XPath: YARNTwistRequest/RQheader/note/@codeList) [Optional] - nota: <i>must be used to provide (URL) the list of codes used in "noteLabel"</i> (XPath: YARNTwistRequest/YTRQbody/YTRQitem/yarnMnfrOperation/note/@codeList) [Optional] - nota: <i>must be used to provide (URL) the list of codes used in "noteLabel"</i>
country	code of the nation - base type: string, cod. table: T10 <a href="http://www.moda-ml.net/moda-ml/repository/codelist/v2013-1/gc_T10.xml">http://www.moda-ml.net/moda-ml/repository/codelist/v2013-1/gc_T10.xml</a> (XPath: YARNTwistRequest/RQheader/supplier/country) 0-1 (XPath: YARNTwistRequest/RQheader/subContractor/country) 0-1 (XPath: YARNTwistRequest/YTRQbody/YTRQitem/thirdParty/country) 0-1 (XPath: YARNTwistRequest/RQheader/buyer/country) 0-1
@CV	coefficient of variation (CV) of a measurement - base type: decimal, (XPath: YARNTwistRequest/YTRQbody/YTRQitem/yarnSpecs/specValue/@CV) [Optional] (XPath: YARNTwistRequest/YTRQbody/YTRQitem/yarnMnfrOperation/yarnMachineSpecs/specValue/@CV) [Optional]
@dateForm	format used for the date - base type: string, cod. table: NT29 <a href="http://www.moda-ml.net/moda-ml/repository/codelist/v2013-1/gc_NT29.xml">http://www.moda-ml.net/moda-ml/repository/codelist/v2013-1/gc_NT29.xml</a> (XPath: YARNTwistRequest/RQheader/msgDate/@dateForm) [Optional] (XPath: YARNTwistRequest/RQheader/validityEnd/@dateForm) [Optional] (XPath: YARNTwistRequest/RQheader/validityStart/@dateForm) [Optional] (XPath: YARNTwistRequest/YTRQbody/YTRQitem/notBeforeDate/@dateForm) [Optional] (XPath: YARNTwistRequest/YTRQbody/YTRQitem/deliveryDate/@dateForm) [Optional] (XPath: YARNTwistRequest/RQheader/refDoc/docDate/@dateForm) [Optional] (XPath: YARNTwistRequest/YTRQbody/YTRQitem/yarnMnfrOperation/refDoc/docDate/@dateForm) [Optional]
deliveryDate	date of delivery of goods, requested or promised in the purchase process, according to one of the patterns YYYY-MM-DD, YYYY-MM-DD:HH-MM or YYYY-WW. - base type: string, (XPath: YARNTwistRequest/YTRQbody/YTRQitem/deliveryDate) 1-1
deliveryPlace	place of delivery of goods, ultimate or related to a given leg - base type: string, max length: 40, (XPath: YARNTwistRequest/terms/transInfo/deliveryPlace) 0-1
dept	name or code of a contact department within a Party - base type: string, max length: 40, (XPath: YARNTwistRequest/RQheader/buyer/dept) 0-1 (XPath: YARNTwistRequest/RQheader/subContractor/dept) 0-1 (XPath: YARNTwistRequest/RQheader/supplier/dept) 0-1 (XPath: YARNTwistRequest/YTRQbody/YTRQitem/thirdParty/dept) 0-1
docDate	date of issue of the referenced document, according to one of the patterns YYYY-MM-DD, YYYY-MM-DD:HH-MM or YYYY-WW. - base type: string, (XPath: YARNTwistRequest/RQheader/refDoc/docDate) 0-1 (XPath: YARNTwistRequest/YTRQbody/YTRQitem/yarnMnfrOperation/refDoc/docDate/@dateForm) [Optional]

	YARNTwistRequest/YTRQbody/YTRQitem/yarnMnfrOperation/refDoc/docDate) 0-1
docID	<p>identification number of the referenced document SINCE 2008-1 ITS USE IN THE HEADER IS DISCOURAGED (REPLACED BY msgID)</p> <p>- base type: string, max length: 80,  (XPath: YARNTwistRequest/RQheader/refDoc/docID) 1-2  (XPath: YARNTwistRequest/RQheader/docID) 0-1  (XPath: YARNTwistRequest/YTRQbody/YTRQitem/yarnMnfrOperation/refDoc/docID) 1-2</p>
@docType	<p>type or class to which the referenced document belongs</p> <p>- base type: string, cod. table: T21  <a href="http://www.moda-ml.net/moda-ml/repository/codelist/v2013-1/gc_T21.xml">http://www.moda-ml.net/moda-ml/repository/codelist/v2013-1/gc_T21.xml</a>  (XPath: YARNTwistRequest/YTRQbody/YTRQitem/yarnMnfrOperation/refDoc/@docType) [Required]  (XPath: YARNTwistRequest/RQheader/refDoc/@docType) [Required]</p>
@email	<p>electronic mail address of the contact person within a Party</p> <p>- base type: string, max length: 80,  (XPath: YARNTwistRequest/RQheader/buyer/person/@email) [Optional]  (XPath: YARNTwistRequest/YTRQbody/YTRQitem/thirdParty/person/@email) [Optional]  (XPath: YARNTwistRequest/RQheader/supplier/person/@email) [Optional]  (XPath: YARNTwistRequest/RQheader/subContractor/person/@email) [Optional]</p>
experimValue	<p>experimental value of the measurement</p> <p>- base type: decimal,  (XPath: YARNTwistRequest/YTRQbody/YTRQitem/yarnSpecs/experimValue) 0-1</p>
@fax	<p>fax number of the contact person within a Party</p> <p>- base type: string, max length: 35,  (XPath: YARNTwistRequest/RQheader/supplier/person/@fax) [Optional]  (XPath: YARNTwistRequest/RQheader/subContractor/person/@fax) [Optional]  (XPath: YARNTwistRequest/YTRQbody/YTRQitem/thirdParty/person/@fax) [Optional]  (XPath: YARNTwistRequest/RQheader/buyer/person/@fax) [Optional]</p>
@fibre	<p>type of fibre used in a textile product</p> <p>- base type: string, cod. table: T19  <a href="http://www.moda-ml.net/moda-ml/repository/codelist/v2013-1/gc_T19.xml">http://www.moda-ml.net/moda-ml/repository/codelist/v2013-1/gc_T19.xml</a>  (XPath: YARNTwistRequest/YTRQbody/YTRQitem/yarnCompos/percCompos/@fibre) [Required]</p>
@finDiscount	<p>financial discount applied for payment by the date specified</p> <p>- base type: decimal, min inclusive: 0, max inclusive: 100, fraction digits: 2,  (XPath: YARNTwistRequest/terms/payment/@finDiscount) [Optional]</p>
@finSurcharge	<p>financial surcharge applied for payment after the date specified</p> <p>- base type: decimal, min inclusive: 0, max inclusive: 100, fraction digits: 2,  (XPath: YARNTwistRequest/terms/payment/@finSurcharge) [Optional]</p>
grossWeight	<p>the gross weight of the overall goods supply, declared for transport or customs purpose</p> <p>- base type: decimal, min inclusive: 0, fraction digits: 2,  (XPath: YARNTwistRequest/terms/transInfo/grossWeight) 0-1</p>
id	<p>primary identification code of a Party; it is recommended the format: nation code (ISO 3166) + VAT identification number (11 crt), with the qualifier "numberingOrg"= MF</p> <p>- base type: string, max length: 15,  (XPath: YARNTwistRequest/YTRQbody/YTRQitem/thirdParty/id) 1-1  (XPath: YARNTwistRequest/RQheader/supplier/id) 1-1  (XPath: YARNTwistRequest/RQheader/subContractor/id) 1-1  (XPath: YARNTwistRequest/RQheader/buyer/id) 1-1</p>
@idCO	<p>primary identification code of the Party executing the test; it is recommended the format: nation code (ISO 3166) + VAT identification number (11 crt).</p> <p>- base type: string, max length: 15,  (XPath: YARNTwistRequest/YTRQbody/YTRQitem/yarnSpecs/</p>

	<b>experimValue/@idCO</b> [Optional]
incoTerm	specification of the terms of trade (INCOTERMS) - base type: string, cod. table: T3 <a href="http://www.moda-ml.net/moda-ml/repository/codelist/v2013-1/gc_T3.xml">http://www.moda-ml.net/moda-ml/repository/codelist/v2013-1/gc_T3.xml</a> (XPath: YARNTwistRequest/terms/trade/incoTerm) 1-1
incoTermText	free text specifying the terms of trade (incoterm, location) - base type: string, max length: 70, (XPath: YARNTwistRequest/terms/trade/incoTermText) 1-1
itemID	number of the line/item of the referenced document - base type: string, max length: 6, (XPath: YARNTwistRequest/RQheader/refDoc/itemID) 0-1 (XPath: YARNTwistRequest/YTRQbody/YTRQitem/yarnMnfrOperation/refDoc/itemID) 0-1
jobName	description of the elementary job - base type: string, max length: 40, (XPath: YARNTwistRequest/YTRQbody/YTRQitem/yarnMnfrOperation/jobName) 1-1
legalName	legal name of a Party - base type: string, max length: 80, (XPath: YARNTwistRequest/YTRQbody/YTRQitem/thirdParty/legalName) 0-1 (XPath: YARNTwistRequest/RQheader/supplier/legalName) 0-1 (XPath: YARNTwistRequest/RQheader/buyer/legalName) 0-1 (XPath: YARNTwistRequest/RQheader/subContractor/legalName) 0-1
legalRef	legal reference of the duty or tax or fee category - base type: string, (XPath: YARNTwistRequest/terms/allowanceCharge/dtScheme/legalRef) 0-1
lineN	number of the line item of the present message (xml document) - base type: positiveInteger, min inclusive: 1, max inclusive: 9999, (XPath: YARNTwistRequest/YTRQbody/YTRQitem/lineN) 1-1
location	specification of a location - base type: string, max length: 40, (XPath: YARNTwistRequest/terms/trade/location) 0-1 - note: <i>place to which the INCOTERM applies</i>
@logo	company logo (URL of the image jpeg or gif). It is recommended that the width of the image does not exceed 640 pixel. - base type: string, max length: 255, (XPath: YARNTwistRequest/RQheader/supplier/@logo) [Optional] (XPath: YARNTwistRequest/RQheader/buyer/@logo) [Optional]
@LRI	attribute usable to format a string according to a customized User rule (local rule) - base type: string, cod. table: NT3 <a href="http://www.moda-ml.net/moda-ml/repository/codelist/v2013-1/gc_NT3.xml">http://www.moda-ml.net/moda-ml/repository/codelist/v2013-1/gc_NT3.xml</a> (XPath: YARNTwistRequest/terms/trade/location/@LRI) [Optional]
@method	standard protocol or method employed in a test to evaluate a characteristic or a parameter - base type: string, max length: 25, (XPath: YARNTwistRequest/YTRQbody/YTRQitem/yarnMnfrOperation/yarnMachineSpecs/specValue/@method) [Optional] (XPath: YARNTwistRequest/YTRQbody/YTRQitem/yarnSpecs/experimValue/@method) [Optional] - nota: <i>we recommend the specification of the method of measure only when different from the one of the MODA-ML coding system</i> (XPath: YARNTwistRequest/YTRQbody/YTRQitem/yarnSpecs/specValue/@method) [Optional]
msgDate	date of issue of the present message (xml document), according to one of the patterns YYYY-MM-DD:HH-MM or YYYY-WW.

	- base type: string, (XPath: YARNTwistRequest/RQheader/msgDate) 1-1
@msgfunction	function performed by the present message with regards to the transmission - base type: string, cod. table: NT18 <a href="http://www.moda-ml.net/moda-ml/repository/codelist/v2013-1/gc_NT18.xml">http://www.moda-ml.net/moda-ml/repository/codelist/v2013-1/gc_NT18.xml</a> (XPath: YARNTwistRequest/@msgfunction) [Optional] [Default= OR]
msgID	key identifier of the document in the information system of the issuing Party - base type: string, max length: 35, (XPath: YARNTwistRequest/RQheader/msgID) 0-1
msgN	identification number given to the message (xml document) by its issuer - base type: string, max length: 35, (XPath: YARNTwistRequest/RQheader/msgN) 1-1
netWeight	the net weight of the overall goods supply, declared for transport or customs purpose - base type: decimal, min inclusive: 0, fraction digits: 2, (XPath: YARNTwistRequest/terms/transInfo/netWeight) 0-1
notBeforeDate	earliest date possible to begin an activity, according to one of the patterns YYYY-MM-DD, YYYY-MM-DD:HH-MM or YYYY-WW. - base type: string, (XPath: YARNTwistRequest/YTRQbody/YTRQitem/notBeforeDate) 0-1
note	free text or structured (computer processing) note. For note structuring use the attributes "noteLabel" and "codelist" - base type: string, max length: 350, (XPath: YARNTwistRequest/RQheader/note) 0-19 (XPath: YARNTwistRequest/YTRQbody/YTRQitem/note) 0-19 (XPath: YARNTwistRequest/terms/allowanceCharge/dtScheme/note) 0-19 (XPath: YARNTwistRequest/YTRQbody/YTRQitem/yarnMnfrOperation/note) 0-19
@noteLabel	subject qualifier of a note - base type: string, max length: 35, (XPath: YARNTwistRequest/YTRQbody/YTRQitem/yarnMnfrOperation/note/@noteLabel) [Optional] - nota: <i>must be used to qualify the subject of the note</i> (XPath: YARNTwistRequest/RQheader/note/@noteLabel) [Optional] - nota: <i>must be used to qualify the subject of the note</i> (XPath: YARNTwistRequest/terms/allowanceCharge/dtScheme/note/@noteLabel) [Optional] - nota: <i>must be used to qualify the subject of the note</i> (XPath: YARNTwistRequest/YTRQbody/YTRQitem/note/@noteLabel) [Optional] - nota: <i>must be used to qualify the subject of the note</i>
@numberingOrg	code specifying the organisation who has created or owns the coding or numbering system - base type: string, cod. table: NT6 <a href="http://www.moda-ml.net/moda-ml/repository/codelist/v2013-1/gc_NT6.xml">http://www.moda-ml.net/moda-ml/repository/codelist/v2013-1/gc_NT6.xml</a> (XPath: YARNTwistRequest/YTRQbody/YTRQitem/note/@numberingOrg) [Optional] (XPath: YARNTwistRequest/RQheader/note/@numberingOrg) [Optional] (XPath: YARNTwistRequest/RQheader/docID/@numberingOrg) [Optional] - nota: <i>here can be specified whose document numbering is used (e.g.: Client, Supplier, ..)</i> (XPath: YARNTwistRequest/RQheader/supplier/id/@numberingOrg) [Optional] (XPath: YARNTwistRequest/terms/allowanceCharge/dtScheme/note/@numberingOrg) [Optional] (XPath: YARNTwistRequest/RQheader/subContractor/id/@numberingOrg) [Optional] (XPath: YARNTwistRequest/RQheader/refDoc/docID/@numberingOrg) [Optional] - nota: <i>here can be specified whose document numbering is used (e.g.: Client, Supplier, ..)</i> (XPath: YARNTwistRequest/YTRQbody/YTRQitem/yarnMnfrOperation/refDoc/docID/@numberingOrg) [Optional] - nota: <i>here can be specified whose document numbering is used (e.g.: Client, Supplier, ..)</i> (XPath: YARNTwistRequest/YTRQbody/YTRQitem/thirdParty/id/@numberingOrg) [Optional] (XPath: YARNTwistRequest/RQheader/buyer/id/@numberingOrg) [Optional] (XPath: YARNTwistRequest/RQheader/buyer/id/@numberingOrg) [Optional]

	YARNTwistRequest/YTRQbody/YTRQitem/yarnMnfrOperation/note/@numberingOrg) [Optional]
@part	percent fraction of a total payment - base type: decimal, min inclusive: 1, max inclusive: 99, fraction digits: 2, (XPath: YARNTwistRequest/terms/insPayment/@part) [Required] - nota: <i>here the % value of each installment must be indicated</i>
payMode	way or means of payment - base type: string, cod. table: T2 <a href="http://www.moda-ml.net/moda-ml/repository/codelist/v2013-1/gc_T2.xml">http://www.moda-ml.net/moda-ml/repository/codelist/v2013-1/gc_T2.xml</a> (XPath: YARNTwistRequest/terms/payment/payMode) 0-1 (XPath: YARNTwistRequest/terms/insPayment/payMode) 0-1
payTerm	code specifying the terms or time by which the payment must be done - base type: string, cod. table: T1 <a href="http://www.moda-ml.net/moda-ml/repository/codelist/v2013-1/gc_T1.xml">http://www.moda-ml.net/moda-ml/repository/codelist/v2013-1/gc_T1.xml</a> (XPath: YARNTwistRequest/terms/insPayment/payTerm) 1-1 (XPath: YARNTwistRequest/terms/payment/payTerm) 1-1
payTermText	free text specifying the terms by which the payment must be done (time/mode or means) - base type: string, max length: 40, (XPath: YARNTwistRequest/terms/payment/payTermText) 1-1 (XPath: YARNTwistRequest/terms/insPayment/payTermText) 1-1
pcTolerance	percent deviation tolerated on the value of a measurement (it must have a plus or minus sign) - base type: decimal, min inclusive: 0, max inclusive: 100, total digits: 2, (XPath: YARNTwistRequest/YTRQbody/YTRQitem/yarnSpecs/pcTolerance) 0-2 (XPath: YARNTwistRequest/YTRQbody/YTRQitem/yarnMnfrOperation/yarnMachineSpecs/pcTolerance) 0-2
percCompos	fiber rate in the product composition - base type: decimal, min inclusive: 0, max inclusive: 100, fraction digits: 2, (XPath: YARNTwistRequest/YTRQbody/YTRQitem/yarnCompos/percCompos) 1-9
person	name of the contact person within a Party - base type: string, max length: 40, (XPath: YARNTwistRequest/RQheader/supplier/person) 0-1 (XPath: YARNTwistRequest/RQheader/subContractor/person) 0-1 (XPath: YARNTwistRequest/RQheader/buyer/person) 0-1 (XPath: YARNTwistRequest/YTRQbody/YTRQitem/thirdParty/person) 0-1
@phone	phone number of the contact person within a Party - base type: string, max length: 35, (XPath: YARNTwistRequest/YTRQbody/YTRQitem/thirdParty/person/@phone) [Optional] (XPath: YARNTwistRequest/RQheader/supplier/person/@phone) [Optional] (XPath: YARNTwistRequest/RQheader/buyer/person/@phone) [Optional] (XPath: YARNTwistRequest/RQheader/subContractor/person/@phone) [Optional]
postCode	code defining the postal zone - base type: string, max length: 10, (XPath: YARNTwistRequest/RQheader/supplier/postCode) 0-1 (XPath: YARNTwistRequest/YTRQbody/YTRQitem/thirdParty/postCode) 0-1 (XPath: YARNTwistRequest/RQheader/buyer/postCode) 0-1 (XPath: YARNTwistRequest/RQheader/subContractor/postCode) 0-1
qty	net quantity of the article or object correlated, qualified by the function of the document (ordering, delivering, ..) and by the context - base type: decimal, min inclusive: 0, fraction digits: 2, (XPath: YARNTwistRequest/YTRQbody/YTRQitem/qty) 1-2
@role	Third Party role qualifier - base type: string, cod. table: NT2 <a href="http://www.moda-ml.net/moda-ml/repository/codelist/v2013-1/gc_NT2.xml">http://www.moda-ml.net/moda-ml/repository/codelist/v2013-1/gc_NT2.xml</a> (XPath: YARNTwistRequest/YTRQbody/YTRQitem/thirdParty/@role) [Required]
season	sale season; defined as: season (1 crt) + year (4 crt) - season: S/S=1 A/W=2 Spring=3 Summer=4 Autumn=5 Winter=6: for more than four seasons use alphabetic sequence: 1st season=A 2nd season=B

	<p>etc.etc.</p> <ul style="list-style-type: none"> <li>- base type: string, max length: 15, (XPath: YARNTwistRequest/RQheader/refDoc/season) 0-1</li> <li>- note: <i>here indicates the season to which the referenced document belongs</i> (XPath: YARNTwistRequest/RQheader/season) 0-1 (XPath: YARNTwistRequest/YTRQbody/YTRQitem/yarnMnfrOperation/refDoc/season) 0-1</li> <li>- note: <i>here indicates the season to which the referenced document belongs</i></li> </ul>
@sender	<p>qualifier that specifies the Party issuing of the document</p> <ul style="list-style-type: none"> <li>- base type: boolean, (XPath: YARNTwistRequest/YTRQbody/YTRQitem/thirdParty/@sender) [Optional]</li> <li>- nota: <i>This attribute is mandatory when the STYLESHEET must be produced</i> (XPath: YARNTwistRequest/RQheader/subContractor/@sender) [Optional]</li> <li>- nota: <i>This attribute is mandatory when the STYLESHEET must be produced</i> (XPath: YARNTwistRequest/RQheader/supplier/@sender) [Optional]</li> <li>- nota: <i>This attribute is mandatory when the STYLESHEET must be produced</i> (XPath: YARNTwistRequest/RQheader/buyer/@sender) [Optional]</li> <li>- nota: <i>This attribute is mandatory when the STYLESHEET must be produced</i></li> </ul>
@source	<p>party who has provided the data</p> <ul style="list-style-type: none"> <li>- base type: string, cod. table: NT12 <a href="http://www.moda-ml.net/moda-ml/repository/codelist/v2013-1/gc_NT12.xml">http://www.moda-ml.net/moda-ml/repository/codelist/v2013-1/gc_NT12.xml</a> (XPath: YARNTwistRequest/YTRQbody/YTRQitem/yarnSpecs/specValue/@source) [Optional]</li> <li>(XPath: YARNTwistRequest/YTRQbody/YTRQitem/yarnMnfrOperation/yarnMachineSpecs/specValue/@source) [Optional]</li> </ul>
specValue	<p>value requested for a property or a parameter that is measured</p> <ul style="list-style-type: none"> <li>- base type: decimal, (XPath: YARNTwistRequest/YTRQbody/YTRQitem/yarnMnfrOperation/yarnMachineSpecs/specValue) 0-1 (XPath: YARNTwistRequest/YTRQbody/YTRQitem/yarnSpecs/specValue) 0-1</li> </ul>
street	<p>street and building number identifying a location</p> <ul style="list-style-type: none"> <li>- base type: string, max length: 80, (XPath: YARNTwistRequest/YTRQbody/YTRQitem/thirdParty/street) 0-1 (XPath: YARNTwistRequest/RQheader/subContractor/street) 0-1 (XPath: YARNTwistRequest/RQheader/supplier/street) 0-1 (XPath: YARNTwistRequest/RQheader/buyer/street) 0-1</li> </ul>
subCountry	<p>short name or code of the sub-country entity</p> <ul style="list-style-type: none"> <li>- base type: string, max length: 9, (XPath: YARNTwistRequest/YTRQbody/YTRQitem/thirdParty/subCountry) 0-1 (XPath: YARNTwistRequest/RQheader/supplier/subCountry) 0-1 (XPath: YARNTwistRequest/RQheader/buyer/subCountry) 0-1 (XPath: YARNTwistRequest/RQheader/subContractor/subCountry) 0-1</li> </ul>
taxCategory	<p>duty or tax or fee category</p> <ul style="list-style-type: none"> <li>- base type: string, cod. table: T62 <a href="http://www.moda-ml.net/moda-ml/repository/codelist/v2013-1/gc_T62.xml">http://www.moda-ml.net/moda-ml/repository/codelist/v2013-1/gc_T62.xml</a> (XPath: YARNTwistRequest/terms/allowanceCharge/dtScheme/taxCategory) 0-1</li> </ul>
taxRate	<p>duty or tax or fee percent rate</p> <ul style="list-style-type: none"> <li>- base type: string, (XPath: YARNTwistRequest/terms/allowanceCharge/dtScheme/taxRate) 0-1</li> </ul>
@taxType	<p>duty or tax or fee type</p> <ul style="list-style-type: none"> <li>- base type: string, cod. table: T61 <a href="http://www.moda-ml.net/moda-ml/repository/codelist/v2013-1/gc_T61.xml">http://www.moda-ml.net/moda-ml/repository/codelist/v2013-1/gc_T61.xml</a> (XPath: YARNTwistRequest/terms/allowanceCharge/dtScheme/@taxType) [Required]</li> </ul>
tolerance	<p>deviation tolerated on the value of a measurement (it must have a plus or minus sign)</p> <ul style="list-style-type: none"> <li>- base type: decimal, (XPath: YARNTwistRequest/YTRQbody/YTRQitem/yarnMnfrOperation/yarnMachineSpecs/tolerance) 0-2</li> </ul>



	(XPath: YARNTwistRequest/YTRQbody/YTRQitem/yarnSpecs/tolerance) 0-2
transCondition	special condition of transport or special service requested to the Forwarder - base type: string, cod. table: T38 <a href="http://www.moda-ml.net/moda-ml/repository/codelist/v2013-1/gc_T38.xml">http://www.moda-ml.net/moda-ml/repository/codelist/v2013-1/gc_T38.xml</a> (XPath: YARNTwistRequest/terms/transInfo/transCondition) 0-3
transConditionText	free text description of the special condition of transport or special service requested to the Forwarder - base type: string, max length: 100, (XPath: YARNTwistRequest/terms/transInfo/transConditionText) 0-1
transMeans	means of transport, in general or referred to a specific leg - base type: string, cod. table: T40 <a href="http://www.moda-ml.net/moda-ml/repository/codelist/v2013-1/gc_T40.xml">http://www.moda-ml.net/moda-ml/repository/codelist/v2013-1/gc_T40.xml</a> (XPath: YARNTwistRequest/terms/transInfo/transMeans) 0-1
transMode	way of transport, in general or referred to the specified leg - base type: string, cod. table: T8 <a href="http://www.moda-ml.net/moda-ml/repository/codelist/v2013-1/gc_T8.xml">http://www.moda-ml.net/moda-ml/repository/codelist/v2013-1/gc_T8.xml</a> (XPath: YARNTwistRequest/terms/transInfo/transMode) 1-1
@transReason	reason for the transport - base type: string, cod. table: NT11 <a href="http://www.moda-ml.net/moda-ml/repository/codelist/v2013-1/gc_NT11.xml">http://www.moda-ml.net/moda-ml/repository/codelist/v2013-1/gc_NT11.xml</a> (XPath: YARNTwistRequest/terms/transInfo/@transReason) [Optional]
@um	specification of the unit of measure - base type: string, cod. table: NT7 <a href="http://www.moda-ml.net/moda-ml/repository/codelist/v2013-1/gc_NT7.xml">http://www.moda-ml.net/moda-ml/repository/codelist/v2013-1/gc_NT7.xml</a> (XPath: YARNTwistRequest/YTRQbody/YTRQitem/yarnMnfrOperation/yarnMachineSpecs/pcTolerance/@um) [Optional] - nota: <i>to be used when it has to be soecified if the declared percentage is by weight, volume, etc...</i> (XPath: YARNTwistRequest/YTRQbody/YTRQitem/yarnMnfrOperation/yarnMachineSpecs/tolerance/@um) [Required] (XPath: YARNTwistRequest/YTRQbody/YTRQitem/yarnMnfrOperation/yarnMachineSpecs/specValue/@um) [Optional] (XPath: YARNTwistRequest/YTRQbody/YTRQitem/yarnSpecs/ specValue/@um) [Optional] (XPath: YARNTwistRequest/YTRQbody/YTRQitem/yarnSpecs/ tolerance/@um) [Required] (XPath: YARNTwistRequest/YTRQbody/YTRQitem/yarnSpecs/ pcTolerance/@um) [Optional] - nota: <i>to be used when it has to be soecified if the declared percentage is by weight, volume, etc...</i> (XPath: YARNTwistRequest/terms/transInfo/netWeight/@um) [Required] (XPath: YARNTwistRequest/terms/transInfo/grossWeight/@um) [Required] (XPath: YARNTwistRequest/YTRQbody/YTRQitem/yarnSpecs/ experimValue/@um) [Optional] (XPath: YARNTwistRequest/YTRQbody/YTRQitem/qty/@um) [Required]
@useProfile	use profile to which the present document if compliant if it was agreed by the parties. It is suggested URI with reference to the firms or the URL of the profile. - base type: string, (XPath: YARNTwistRequest/@useProfile) [Optional]
validityEnd	date by which the validity ends, according to one of the patterns YYYY-MM-DD, YYYY-MM-DD:HH-M or YYYY-WW. - base type: string, (XPath: YARNTwistRequest/RQheader/validityEnd) 1-1
validityStart	date by which the validity starts, according to one of the patterns YYYY-MM-DD, YYYY-MM-DD:HH-M or YYYY-WW. - base type: string, (XPath: YARNTwistRequest/RQheader/validityStart) 0-1

@VAT	VAT rate or code ( deprecated, use dtScheme element ) - base type: string, cod. table: NT16 <a href="http://www.moda-ml.net/moda-ml/repository/codelist/v2013-1/gc_NT16.xml">http://www.moda-ml.net/moda-ml/repository/codelist/v2013-1/gc_NT16.xml</a> (XPath: YARNTwistRequest/YTRQbody/YTRQitem/lineN/@VAT) [Optional] (XPath: YARNTwistRequest/terms/allowanceCharge/@VAT) [Optional] (XPath: YARNTwistRequest/YTRQbody/YTRQitem/thirdParty/@VAT) [Optional]
@version	Dictionary version from which the instance has been created - base type: string, cod. table: NT100 <a href="http://www.moda-ml.net/moda-ml/repository/codelist/v2013-1/gc_NT100.xml">http://www.moda-ml.net/moda-ml/repository/codelist/v2013-1/gc_NT100.xml</a> (XPath: YARNTwistRequest/@version) [Optional] [Default= 2013-1]
yarnChar	physical or mechanical parameter used to define a property of a yarn - base type: string, cod. table: T24 <a href="http://www.moda-ml.net/moda-ml/repository/codelist/v2013-1/gc_T24.xml">http://www.moda-ml.net/moda-ml/repository/codelist/v2013-1/gc_T24.xml</a> (XPath: YARNTwistRequest/YTRQbody/YTRQitem/yarnSpecs/yarnChar) 1-1
yarnCharText	free text describing the physical or mechanical parameter used to define a property of a yarn - base type: string, max length: 40, (XPath: YARNTwistRequest/YTRQbody/YTRQitem/yarnSpecs/yarnCharText) 1-1
yarnJob	operation of a work cycle for yarn - base type: string, cod. table: T201 <a href="http://www.moda-ml.net/moda-ml/repository/codelist/v2013-1/gc_T201.xml">http://www.moda-ml.net/moda-ml/repository/codelist/v2013-1/gc_T201.xml</a> (XPath: YARNTwistRequest/YTRQbody/YTRQitem/yarnMnfrOperation/yarnJob) 1-1
yarnJobTech	operation technology for yarn - base type: string, cod. table: T261 <a href="http://www.moda-ml.net/moda-ml/repository/codelist/v2013-1/gc_T261.xml">http://www.moda-ml.net/moda-ml/repository/codelist/v2013-1/gc_T261.xml</a> (XPath: YARNTwistRequest/YTRQbody/YTRQitem/yarnMnfrOperation/yarnJobTech) 0-1
yarnMachine	machine used in an operation of a work cycle for yarn - base type: string, cod. table: T271 <a href="http://www.moda-ml.net/moda-ml/repository/codelist/v2013-1/gc_T271.xml">http://www.moda-ml.net/moda-ml/repository/codelist/v2013-1/gc_T271.xml</a> (XPath: YARNTwistRequest/YTRQbody/YTRQitem/yarnMnfrOperation/yarnMachine) 0-1
yarnMachineParam	setting parameter of a machine used in an operation of a work cycle for yarn - base type: string, cod. table: T281 <a href="http://www.moda-ml.net/moda-ml/repository/codelist/v2013-1/gc_T281.xml">http://www.moda-ml.net/moda-ml/repository/codelist/v2013-1/gc_T281.xml</a> (XPath: YARNTwistRequest/YTRQbody/YTRQitem/yarnMnfrOperation/yarnMachineSpecs/yarnMachineParam)
@yarnProcQualifier	type of yarn with reference to the manufacturing process - base type: string, cod. table: NT31 <a href="http://www.moda-ml.net/moda-ml/repository/codelist/v2013-1/gc_NT31.xml">http://www.moda-ml.net/moda-ml/repository/codelist/v2013-1/gc_NT31.xml</a> (XPath: YARNTwistRequest/@yarnProcQualifier) [Required]

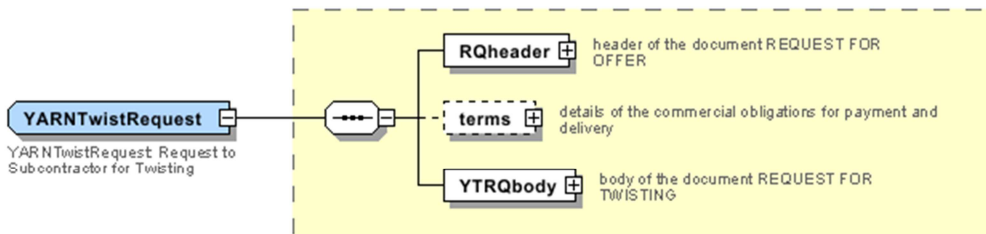
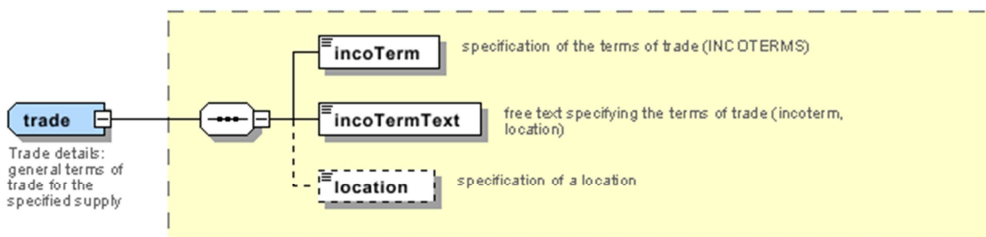
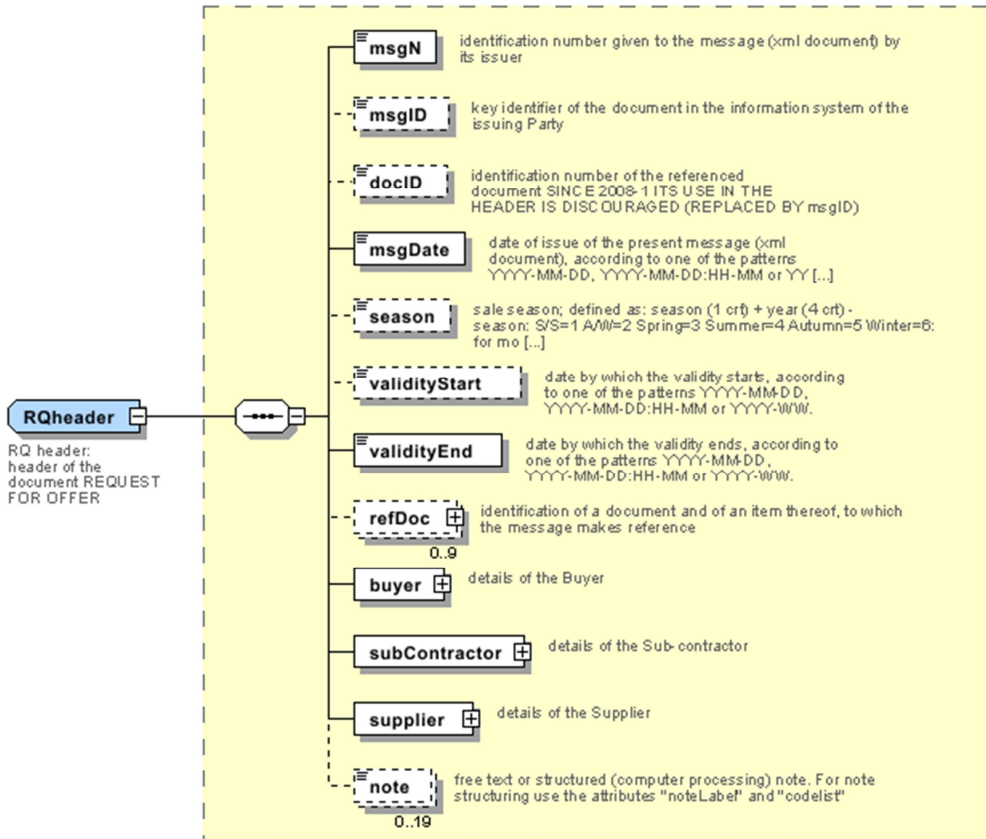
## 2.3 Enumeration tables

List of enumeration tables used in the XML document. You can find the corresponding codes at: <http://www.moda-ml.org/moda-ml/imple/moda-ml-2013-1.asp?lingua=en&pag=6>

NT100 - eBIZ Moda-ML version  
NT11 - transport causal  
NT12 - data source  
NT16 - VAT rate or code  
NT18 - message function  
NT2 - third party qualifier  
NT29 - format of a date  
NT3 - data format  
NT31 - yarn family  
NT6 - coding system owner/issuer  
NT7 - unity of measure  
T1 - terms of payment  
T10 - ISO3166 - Country  
T19 - fibre type  
T2 - Modes of payment  
T201 - type of job on yarn  
T21 - type of document  
T24 - yarn characteristics type  
T261 - type of job technology for yarn  
T271 - machine type for yarn operation  
T281 - parameter type for yarn operation  
T3 - terms of delivery  
T38 - transport conditions  
T40 - type of transport means  
T41 - type of Allowance or Charge  
T61 - duty or tax or fee type  
T62 - duty or tax or fee category  
T8 - Modes of Transport

# Annex A

Representative images of the principal complex elements' structure.



**YTRQItem**  
 YTRQ item:  
 line of the  
 document  
 REQUEST FOR  
 TWISTING

