



<http://www.moda-ml.org>

IMPLEMENTATION GUIDE TRANSACTION "TWISTING OFFER"

Version: 2013-1

Date of release: 18/11/2011

Document code: G057

XML Schema repository:<http://www.moda-ml.org/moda-ml/repository/schema/v2013-1/default.asp>

Guides repository:<http://www.moda-ml.org/moda-ml/repository/guide/v2013-1/default.asp>

Guide filename: G057-MODA-ML-TwistingOffer.pdf

1. BUSINESS DESCRIPTION

1.1 Scope

The present guide has been issued to assist the companies of the Textile-Clothing sector in the implementation of the standard XML document type "TWISTING OFFER", providing all the instruction required for its use in the context of e-commerce between Subcontractors and their Customers shown in the enclosed diagram

All the rules required for the construction and validation of the document are embedded into the specific XML-Schema, which is detailed in section "Implementation guide".

1.2 Generalities

The Offer is used by a Subcontractor to respond to the Request of a Yarn Producer for the twisting of a yarn.

The Offer is structured in four levels:

Macro-type of Work offered = document root (7 types of Request)

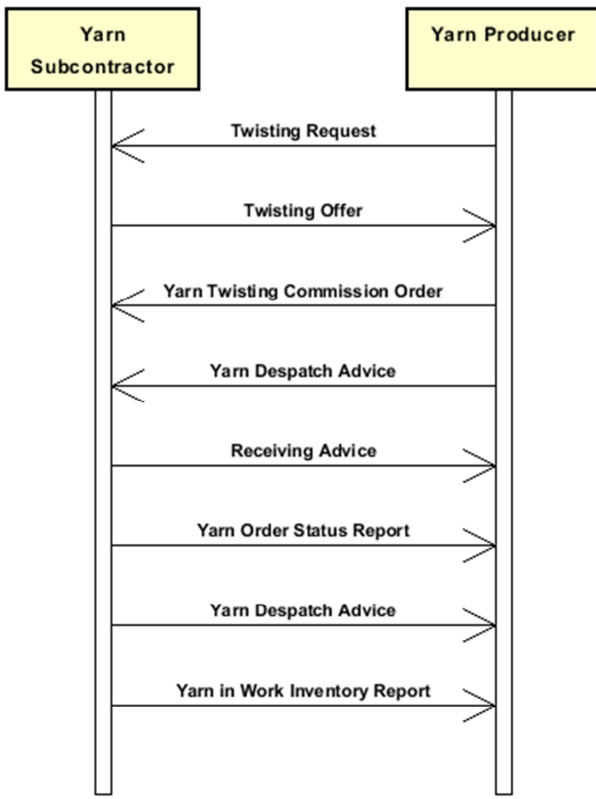
Product Family = document qualifier (type of product with reference to the manufacturing process; e.g.: combed yarn, jacquard weaved fabric, ..)

Product Specifications = "xxxSpecs" (technical characteristics and properties of the product)

Operations offered = "XXXMnfrOperation" (details of the works requested)

Quantities, unit measures and prices must be referred to the third level (Line Item)

1.3. Possible scenario



2. IMPLEMENTATION GUIDE

2.1 General structure of XML document

All the business data that can be exchanged through this class of documents are shown in the following "document structure", that provides a simplified vision of the Schema.

In particular:

- the two numbers following each element define its "cardinality" (minimum and maximum number of occurrences); the minimum equal zero indicates that the element is optional, the minimum greater than zero indicates that is mandatory;
- the bold character denotes the complex elements (aggregates of simple elements) that were built for the sake of functionality and re-usability of some complex informations sets. The child elements in each parent element are easily spotted as "indented";
- the symbol "@" denotes an attribute of the preceding element; here "the usage indicator (optional, required, ...)" is shown in square brackets.

Structure

YARNTwistOffer

@msgfunction [Optional] [Default= OR]

@yarnProcQualifier [Required]

@version [Optional] [Default= 2013-1]

@useProfile [Optional]

| **OFheader 1-1**

| | msgN 1-1

| - choose -

| | msgID 0-1

| - or -

| | docID 0-1

| | *@numberingOrg [Optional]*

| - end choose -

| | msgDate 1-1

| | *@dateForm [Optional]*

| | season 0-1

| | validityStart 0-1

| | *@dateForm [Optional]*

| | validityEnd 1-1

| | *@dateForm [Optional]*

| | **refDoc 1-9**

| | *@docType [Required]*

| | | docID 1-2

| | | *@numberingOrg [Optional]*

| | | docDate 0-1

| | | *@dateForm [Optional]*

| | | season 0-1

| | | itemID 0-1

| | **buyer 1-1**

| | | *@logo [Optional]*

| | | *@sender [Optional]*

| | | id 1-1

| | | *@numberingOrg [Optional]*

| | | legalName 0-1

| | | dept 0-1

| | | person 0-1

| | | *@email [Optional]*

| | | *@phone [Optional]*

| | | *@fax [Optional]*

| | | street 0-1
| | | city 0-1
| | | subCountry 0-1
| | | country 0-1
| | | postCode 0-1
- choose -
| | **supplier 1-1**
| | @logo [Optional]
| | @sender [Optional]
| | | id 1-1
| | | @numberingOrg [Optional]
| | | legalName 0-1
| | | dept 0-1
| | | person 0-1
| | | @email [Optional]
| | | @phone [Optional]
| | | @fax [Optional]
| | | street 0-1
| | | city 0-1
| | | subCountry 0-1
| | | country 0-1
| | | postCode 0-1

- or -

| | **subContractor 1-1**
| | @sender [Optional]
| | | id 1-1
| | | @numberingOrg [Optional]
| | | legalName 0-1
| | | dept 0-1
| | | person 0-1
| | | @email [Optional]
| | | @phone [Optional]
| | | @fax [Optional]
| | | street 0-1
| | | city 0-1
| | | subCountry 0-1
| | | country 0-1
| | | postCode 0-1

- end choose -

| | note 0-19
| | @numberingOrg [Optional]
| | @codeList [Optional]
| | @noteLabel [Optional]

| **terms 0-1**

| | **payment 0-5**
| | @finDiscount [Optional]
| | @finSurcharge [Optional]

- choose -

| | | payTerm 1-1

- or -

| | | payTermText 1-1

- end choose -

| | | payMode 0-1

| | **insPayment 0-5**

| | @part [Required]

- choose -

| | | payTerm 1-1

- or -

| | | payTermText 1-1

- end choose -

```

| | | payMode 0-1
| | trade 0-1
| | - choose -
| | | incoTermText 1-1
| | - or -
| | | incoTerm 1-1
| | - end choose -
| | | location 0-1
| | | @LRI [Optional]
| | transInfo 0-1
| | @transReason [Optional]
| | | transMode 1-1
| | | carrier 0-1
| | | deliveryPlace 0-1
| | | grossWeight 0-1
| | | @um [Required]
| | | netWeight 0-1
| | | @um [Required]
| | | transMeans 0-1
| | | transCondition 0-3
| | | transConditionText 0-1
| | allowanceCharge 0-9
| | @VAT [Optional]
| | - choose -
| | | AC_category 1-1
| | - or -
| | | AC_categoryText 1-1
| | - choose -
| | | AC_percent 1-1
| | - or -
| | | AC_amount 1-1
| | - end choose -
| | | dtScheme 0-1
| | | @taxType [Required]
| | | | taxCategory 0-1
| | | | taxRate 0-1
| | | | legalRef 0-1
| | | | @codeList [Required]
| | | | note 0-19
| | | | @numberingOrg [Optional]
| | | | @codeList [Optional]
| | | | @noteLabel [Optional]

```

```

| YTOFbody 1-1
| | YTOFitem 1-unbounded
| | @act [Required]
| | | lineN 1-1
| | | @VAT [Optional]
| | | refDoc 1-1
| | | @docType [Required]
| | | | docID 1-2
| | | | @numberingOrg [Optional]
| | | | docDate 0-1
| | | | @dateForm [Optional]
| | | | season 0-1
| | | | itemID 0-1
| | | yarnCompos 0-1
| | | | percCompos 1-9
| | | | @fibre [Required]
| | | yarnSpecs 0-9
| | | - choose -

```

```

| | | | yarnCharText 1-1
| | | | - or -
| | | | | yarnChar 1-1
| | | | | - end choose -
| | | | | experimValue 0-1
| | | | | | @um [Optional]
| | | | | | @method [Optional]
| | | | | | @application [Optional]
| | | | | | @idCO [Optional]
| | | | | specValue 0-1
| | | | | | @um [Optional]
| | | | | | @source [Optional]
| | | | | | @method [Optional]
| | | | | | @application [Optional]
| | | | | | @CV [Optional]
| | | | | - choose -
| | | | | | tolerance 0-2
| | | | | | | @um [Required]
| | | | | - or -
| | | | | | pcTolerance 0-2
| | | | | | | @um [Optional]
| | | | | - end choose -
| | | | | qty 1-2
| | | | | | @um [Required]
| | | | | price 1-1
| | | | | | @um [Optional]
| | | | | | @priceQualifier [Optional] [Default= NET]
| | | | | deliveryDate 1-1
| | | | | | @dateForm [Optional]
| | | | | notBeforeDate 0-1
| | | | | | @dateForm [Optional]
| | | | | thirdParty 0-1
| | | | | | @VAT [Optional]
| | | | | | @role [Required]
| | | | | | @sender [Optional]
| | | | | | id 1-1
| | | | | | | @numberingOrg [Optional]
| | | | | | legalName 0-1
| | | | | | dept 0-1
| | | | | | person 0-1
| | | | | | | @email [Optional]
| | | | | | | @phone [Optional]
| | | | | | | @fax [Optional]
| | | | | | street 0-1
| | | | | | city 0-1
| | | | | | subCountry 0-1
| | | | | | country 0-1
| | | | | | postCode 0-1
| | | | | yarnMnfrOperation 1-9
| | | | | - choose -
| | | | | | | jobName 1-1
| | | | | | - or -
| | | | | | | yarnJob 1-1
| | | | | | - end choose -
| | | | | | | yarnJobTech 0-1
| | | | | | | refDoc 0-1
| | | | | | | | @docType [Required]
| | | | | | | | | docID 1-2
| | | | | | | | | | @numberingOrg [Optional]
| | | | | | | | | docDate 0-1
| | | | | | | | | @dateForm [Optional]

```

```

| | | | season 0-1
| | | | itemID 0-1
| | | | yarnMachine 0-1
| | | | yarnMachineSpecs 0-9
| | | |   yarnMachineParam 1-1
| | | |   specValue 0-1
| | | |   @um [Optional]
| | | |   @source [Optional]
| | | |   @method [Optional]
| | | |   @application [Optional]
| | | |   @CV [Optional]
| | | | - choose -
| | | |   tolerance 0-2
| | | |   @um [Required]
| | | | - or -
| | | |   pcTolerance 0-2
| | | |   @um [Optional]
| | | | - end choose -
| | | | note 0-19
| | | |   @numberingOrg [Optional]
| | | |   @codeList [Optional]
| | | |   @noteLabel [Optional]
| | | | note 0-19
| | | |   @numberingOrg [Optional]
| | | |   @codeList [Optional]
| | | |   @noteLabel [Optional]

```


2.2 Detailed description of document elements

Following tables show all elements (complex and simple) used in this document. Description includes: 1) element's information: xml tag, name, brief description, data type and syntax constraints; 2) information about use of the element in a particular position in the document: xpath and possible associated notes.

2.2.1 Complex elements (Aggregate Business Information Entities)

Complex elements are those elements whose content is composed of other elements (childs).Complex elements are alphabetically ordered.

allowanceCharge	Allowances and Charges related to an Order or a contract (XPath: YARNTwistOffer/terms/allowanceCharge) 0-9
buyer	details of the Buyer - base type: Nad, (XPath: YARNTwistOffer/OFheader/buyer) 1-1
dtScheme	set of data usable to declare the duty or tax applied (XPath: YARNTwistOffer/terms/allowanceCharge/dtScheme) 0-1
insPayment	payment details for payment by installments (XPath: YARNTwistOffer/terms/insPayment) 0-5 - note: <i>excluded the case of offers, this set of data is alternative to payment set and must be iterated for each payment installment</i>
OFheader	header of the document OFFER (XPath: YARNTwistOffer/OFheader) 1-1
payment	payment details for payment all in one (XPath: YARNTwistOffer/terms/payment) 0-5 - note: <i>excluded the case of offers, this set of data is alternative to insPayment, it can be iterated to specify alternative terms of payment (e.g.: 60 days or 30 days with 3% discount)</i>
refDoc	identification of a document and of an item thereof, to which the message makes reference (XPath: YARNTwistOffer/YTOFbody/YTOFitem/yarnMnfrOperation/refDoc) 0-1 - note: <i>here a Process Sheet transmitted to the Subcontractor can be referenced</i> (XPath: YARNTwistOffer/OFheader/refDoc) 1-9 - note: <i>reference to the Request for Offer</i> (XPath: YARNTwistOffer/YTOFbody/YTOFitem/refDoc) 1-1 - note: <i>reference to the line of the corresponding Request for Offer</i>
subContractor	details of the Sub-contractor - base type: Nad, (XPath: YARNTwistOffer/OFheader/subContractor) 1-1
supplier	details of the Supplier - base type: Nad, (XPath: YARNTwistOffer/OFheader/supplier) 1-1
terms	details of the commercial obligations for payment and delivery (XPath: YARNTwistOffer/terms) 0-1
thirdParty	details of the Third Party, different from Buyer or Supplier - base type: Nad, (XPath: YARNTwistOffer/YTOFbody/YTOFitem/thirdParty) 0-1
trade	general terms of trade for the specified supply

	(XPath: YARNTwistOffer/terms/trade) 0-1
transInfo	details of transport: mode, carrier and delivery place (XPath: YARNTwistOffer/terms/transInfo) 0-1
yarnCompos	fibrous composition of a yarn product (XPath: YARNTwistOffer/YTOFbody/YTOFitem/yarnCompos) 0-1
yarnMachineSpecs	technical specifications of a machine used in an operation of a work cycle for yarn (type and settings) (XPath: YARNTwistOffer/YTOFbody/YTOFitem/yarnMnfrOperation/yarnMachineSpecs) 0-9
yarnMnfrOperation	details of a manufacturing operation used for manufacturing a yarn product (XPath: YARNTwistOffer/YTOFbody/YTOFitem/yarnMnfrOperation) 1-9
yarnSpecs	technical properties of a yarn product linked to an operation of the sub-contracted production of yarn or to the purchase of yarn (XPath: YARNTwistOffer/YTOFbody/YTOFitem/yarnSpecs) 0-9
YTOFbody	body of the document OFFER OF TWISTING (XPath: YARNTwistOffer/YTOFbody) 1-1
YTOFitem	line of the document OFFER OF TWISTING (XPath: YARNTwistOffer/YTOFbody/YTOFitem) 1-unbounded

2.2.2 Simple elements (Basic Business Information Entities)

Simple elements are those elements whose content is characterized by a data type plus a domain of possible values. Simple elements are alphabetically ordered.

AC_amount	amount of an Allowance or Charge - base type: decimal, fraction digits: 2, (XPath: YARNTwistOffer/terms/allowanceCharge/AC_amount) 1-1
AC_category	coded specification of an Allowance or Charge - base type: string, cod. table: T41 http://www.moda-ml.net/moda-ml/repository/codelist/v2013-1/gc_T41.xml (XPath: YARNTwistOffer/terms/allowanceCharge/AC_category) 1-1
AC_categoryText	free text description of an Allowance or Charge - base type: string, max length: 70, (XPath: YARNTwistOffer/terms/allowanceCharge/AC_categoryText) 1-1
AC_percent	amount of an Allowance or Charge as a percentage - base type: decimal, max inclusive: 100, fraction digits: 2, (XPath: YARNTwistOffer/terms/allowanceCharge/AC_percent) 1-1
@act	action performed by the present line upon the referenced document line - base type: string, cod. table: NT5 http://www.moda-ml.net/moda-ml/repository/codelist/v2013-1/gc_NT5.xml (XPath: YARNTwistOffer/YTOFbody/YTOFitem/@act) [Required]
@application	force or similar condition (e.g. no. of revolutions) applied in a test as specified within the standard - base type: string, max length: 15, (XPath: YARNTwistOffer/YTOFbody/YTOFitem/yarnSpecs/experimValue/@application) [Optional] (XPath: YARNTwistOffer/YTOFbody/YTOFitem/yarnMnfrOperation/yarnMachineSpecs/specValue/@application) [Optional] (XPath: YARNTwistOffer/YTOFbody/YTOFitem/yarnSpecs/

	specValue/@application) [Optional]
carrier	identification of the transport carrier - base type: string, max length: 40, (XPath: YARNTwistOffer/terms/transInfo/carrier) 0-1
city	name of the city (town, village) - base type: string, max length: 40, (XPath: YARNTwistOffer/OFheader/subContractor/city) 0-1 (XPath: YARNTwistOffer/OFheader/supplier/city) 0-1 (XPath: YARNTwistOffer/OFheader/buyer/city) 0-1 (XPath: YARNTwistOffer/YTOFbody/YTOFitem/thirdParty/city) 0-1
@codeList	it specifies the URL where the list of codes used to make an instance of the element can be found - base type: string, max length: 255, (XPath: YARNTwistOffer/terms/allowanceCharge/dtScheme/legalRef/@codeList) [Required] (XPath: YARNTwistOffer/terms/allowanceCharge/dtScheme/note/@codeList) [Optional] - nota: must be used to provide (URL) the list of codes used in "noteLabel" (XPath: YARNTwistOffer/OFheader/note/@codeList) [Optional] - nota: must be used to provide (URL) the list of codes used in "noteLabel" (XPath: YARNTwistOffer/YTOFbody/YTOFitem/yarnMnfrOperation/note/@codeList) [Optional] - nota: must be used to provide (URL) the list of codes used in "noteLabel" (XPath: YARNTwistOffer/YTOFbody/YTOFitem/note/@codeList) [Optional] - nota: must be used to provide (URL) the list of codes used in "noteLabel"
country	code of the nation - base type: string, cod. table: T10 http://www.moda-ml.net/moda-ml/repository/codelist/v2013-1/gc_T10.xml (XPath: YARNTwistOffer/OFheader/supplier/country) 0-1 (XPath: YARNTwistOffer/OFheader/buyer/country) 0-1 (XPath: YARNTwistOffer/OFheader/subContractor/country) 0-1 (XPath: YARNTwistOffer/YTOFbody/YTOFitem/thirdParty/country) 0-1
@CV	coefficient of variation (CV) of a measurement - base type: decimal, (XPath: YARNTwistOffer/YTOFbody/YTOFitem/yarnSpecs/specValue/@CV) [Optional] (XPath: YARNTwistOffer/YTOFbody/YTOFitem/yarnMnfrOperation/yarnMachineSpecs/specValue/@CV) [Optional]
@dateForm	format used for the date - base type: string, cod. table: NT29 http://www.moda-ml.net/moda-ml/repository/codelist/v2013-1/gc_NT29.xml (XPath: YARNTwistOffer/OFheader/validityEnd/@dateForm) [Optional] (XPath: YARNTwistOffer/YTOFbody/YTOFitem/notBeforeDate/@dateForm) [Optional] (XPath: YARNTwistOffer/OFheader/validityStart/@dateForm) [Optional] (XPath: YARNTwistOffer/YTOFbody/YTOFitem/yarnMnfrOperation/refDoc/docDate/@dateForm) [Optional] (XPath: YARNTwistOffer/YTOFbody/YTOFitem/refDoc/docDate/@dateForm) [Optional] (XPath: YARNTwistOffer/OFheader/refDoc/docDate/@dateForm) [Optional] (XPath: YARNTwistOffer/OFheader/msgDate/@dateForm) [Optional] (XPath: YARNTwistOffer/YTOFbody/YTOFitem/deliveryDate/@dateForm)

	[Optional]
deliveryDate	date of delivery of goods, requested or promised in the purchase process, according to one of the patterns YYYY-MM-DD, YYYY-MM-DD:HH-MM or YYYY-WW. - base type: string, (XPath: YARNTwistOffer/YTOFbody/YTOFitem/deliveryDate) 1-1
deliveryPlace	place of delivery of goods, ultimate or related to a given leg - base type: string, max length: 40, (XPath: YARNTwistOffer/terms/transInfo/deliveryPlace) 0-1
dept	name or code of a contact department within a Party - base type: string, max length: 40, (XPath: YARNTwistOffer/OFheader/buyer/dept) 0-1 (XPath: YARNTwistOffer/OFheader/supplier/dept) 0-1 (XPath: YARNTwistOffer/OFheader/subContractor/dept) 0-1 (XPath: YARNTwistOffer/YTOFbody/YTOFitem/thirdParty/dept) 0-1
docDate	date of issue of the referenced document, according to one of the patterns YYYY-MM-DD, YYYY-MM-DD:HH-MM or YYYY-WW. - base type: string, (XPath: YARNTwistOffer/YTOFbody/YTOFitem/refDoc/docDate) 0-1 (XPath: YARNTwistOffer/YTOFbody/YTOFitem/yarnMnfrOperation/refDoc/docDate) 0-1 (XPath: YARNTwistOffer/OFheader/refDoc/docDate) 0-1
docID	identification number of the referenced document SINCE 2008-1 ITS USE IN THE HEADER IS DISCOURAGED (REPLACED BY msgID) - base type: string, max length: 80, (XPath: YARNTwistOffer/OFheader/refDoc/docID) 1-2 (XPath: YARNTwistOffer/YTOFbody/YTOFitem/yarnMnfrOperation/refDoc/docID) 1-2 (XPath: YARNTwistOffer/YTOFbody/YTOFitem/refDoc/docID) 1-2 (XPath: YARNTwistOffer/OFheader/docID) 0-1
@docType	type or class to which the referenced document belongs - base type: string, cod. table: T21 http://www.moda-ml.net/moda-ml/repository/codelist/v2013-1/gc_T21.xml (XPath: YARNTwistOffer/OFheader/refDoc/@docType) [Required] (XPath: YARNTwistOffer/YTOFbody/YTOFitem/refDoc/@docType) [Required] (XPath: YARNTwistOffer/YTOFbody/YTOFitem/yarnMnfrOperation/refDoc/@docType) [Required]
@email	electronic mail address of the contact person within a Party - base type: string, max length: 80, (XPath: YARNTwistOffer/YTOFbody/YTOFitem/thirdParty/person/@email) [Optional] (XPath: YARNTwistOffer/OFheader/supplier/person/@email) [Optional] (XPath: YARNTwistOffer/OFheader/subContractor/person/@email) [Optional] (XPath: YARNTwistOffer/OFheader/buyer/person/@email) [Optional]
experimValue	experimental value of the measurement - base type: decimal, (XPath: YARNTwistOffer/YTOFbody/YTOFitem/yarnSpecs/experimValue) 0-1
@fax	fax number of the contact person within a Party - base type: string, max length: 35, (XPath: YARNTwistOffer/OFheader/supplier/person/@fax) [Optional] (XPath: YARNTwistOffer/YTOFbody/YTOFitem/thirdParty/person/@fax) [Optional] (XPath: YARNTwistOffer/OFheader/buyer/person/@fax) [Optional] (XPath: YARNTwistOffer/OFheader/subContractor/person/@fax) [Optional]

@fibre	<p>type of fibre used in a textile product</p> <p>- base type: string, cod. table: T19 http://www.moda-ml.net/moda-ml/repository/codelist/v2013-1/gc_T19.xml (XPath: YARNTwistOffer/YTOFbody/YTOFitem/yarnCompos/percCompos/@fibre) [Required]</p>
@finDiscount	<p>financial discount applied for payment by the date specified</p> <p>- base type: decimal, min inclusive: 0, max inclusive: 100, fraction digits: 2, (XPath: YARNTwistOffer/terms/payment/@finDiscount) [Optional]</p>
@finSurcharge	<p>financial surcharge applied for payment after the date specified</p> <p>- base type: decimal, min inclusive: 0, max inclusive: 100, fraction digits: 2, (XPath: YARNTwistOffer/terms/payment/@finSurcharge) [Optional]</p>
grossWeight	<p>the gross weight of the overall goods supply, declared for transport or customs purpose</p> <p>- base type: decimal, min inclusive: 0, fraction digits: 2, (XPath: YARNTwistOffer/terms/transInfo/grossWeight) 0-1</p>
id	<p>primary identification code of a Party; it is recommended the format: nation code (ISO 3166) + VAT identification number (11 crt), with the qualifier "numberingOrg"= MF</p> <p>- base type: string, max length: 15, (XPath: YARNTwistOffer/OFheader/buyer/id) 1-1 (XPath: YARNTwistOffer/OFheader/supplier/id) 1-1 (XPath: YARNTwistOffer/OFheader/subContractor/id) 1-1 (XPath: YARNTwistOffer/YTOFbody/YTOFitem/thirdParty/id) 1-1</p>
@idCO	<p>primary identification code of the Party executing the test; it is recommended the format: nation code (ISO 3166) + VAT identification number (11 crt).</p> <p>- base type: string, max length: 15, (XPath: YARNTwistOffer/YTOFbody/YTOFitem/yarnSpecs/experimValue/@idCO) [Optional]</p>
incoTerm	<p>specification of the terms of trade (INCOTERMS)</p> <p>- base type: string, cod. table: T3 http://www.moda-ml.net/moda-ml/repository/codelist/v2013-1/gc_T3.xml (XPath: YARNTwistOffer/terms/trade/incoTerm) 1-1</p>
incoTermText	<p>free text specifying the terms of trade (incoterm, location)</p> <p>- base type: string, max length: 70, (XPath: YARNTwistOffer/terms/trade/incoTermText) 1-1</p>
itemID	<p>number of the line/item of the referenced document</p> <p>- base type: string, max length: 6, (XPath: YARNTwistOffer/YTOFbody/YTOFitem/yarnMnfrOperation/refDoc/itemID) 0-1 (XPath: YARNTwistOffer/OFheader/refDoc/itemID) 0-1 (XPath: YARNTwistOffer/YTOFbody/YTOFitem/refDoc/itemID) 0-1</p>
jobName	<p>description of the elementary job</p> <p>- base type: string, max length: 40, (XPath: YARNTwistOffer/YTOFbody/YTOFitem/yarnMnfrOperation/jobName) 1-1</p>
legalName	<p>legal name of a Party</p> <p>- base type: string, max length: 80, (XPath: YARNTwistOffer/OFheader/subContractor/legalName) 0-1 (XPath: YARNTwistOffer/OFheader/supplier/legalName) 0-1 (XPath: YARNTwistOffer/OFheader/buyer/legalName) 0-1 (XPath: YARNTwistOffer/YTOFbody/YTOFitem/thirdParty/legalName) 0-1</p>
legalRef	<p>legal reference of the duty or tax or fee category</p> <p>- base type: string,</p>

	(XPath: YARNTwistOffer/terms/allowanceCharge/dtScheme/legalRef) 0-1
lineN	number of the line item of the present message (xml document) - base type: positiveInteger, min inclusive: 1, max inclusive: 9999, (XPath: YARNTwistOffer/YTOFbody/YTOFitem/lineN) 1-1
location	specification of a location - base type: string, max length: 40, (XPath: YARNTwistOffer/terms/trade/location) 0-1 - note: <i>place to which the INCOTERM applies</i>
@logo	company logo (URL of the image jpeg or gif). It is recommended that the width of the image does not exceed 640 pixel. - base type: string, max length: 255, (XPath: YARNTwistOffer/OFheader/supplier/@logo) [Optional] (XPath: YARNTwistOffer/OFheader/buyer/@logo) [Optional]
@LRI	attribute usable to format a string according to a customized User rule (local rule) - base type: string, cod. table: NT3 http://www.moda-ml.net/moda-ml/repository/codelist/v2013-1/gc_NT3.xml (XPath: YARNTwistOffer/terms/trade/location/@LRI) [Optional]
@method	standard protocol or method employed in a test to evaluate a characteristic or a parameter - base type: string, max length: 25, (XPath: YARNTwistOffer/YTOFbody/YTOFitem/yarnSpecs/specValue/@method) [Optional] (XPath: YARNTwistOffer/YTOFbody/YTOFitem/yarnSpecs/experimValue/@method) [Optional] - note: <i>we recommend the specification of the method of measure only when different from the one of the MODA-ML coding system</i> (XPath: YARNTwistOffer/YTOFbody/YTOFitem/yarnMnfrOperation/yarnMachineSpecs/specValue/@method) [Optional]
msgDate	date of issue of the present message (xml document), according to one of the patterns YYYY-MM-DD, YYYY-MM-DD:HH-MM or YYYY-WW. - base type: string, (XPath: YARNTwistOffer/OFheader/msgDate) 1-1
@msgfunction	function performed by the present message with regards to the transmission - base type: string, cod. table: NT18 http://www.moda-ml.net/moda-ml/repository/codelist/v2013-1/gc_NT18.xml (XPath: YARNTwistOffer/@msgfunction) [Optional] [Default= OR]
msgID	key identifier of the document in the information system of the issuing Party - base type: string, max length: 35, (XPath: YARNTwistOffer/OFheader/msgID) 0-1
msgN	identification number given to the message (xml document) by its issuer - base type: string, max length: 35, (XPath: YARNTwistOffer/OFheader/msgN) 1-1
netWeight	the net weight of the overall goods supply, declared for transport or customs purpose - base type: decimal, min inclusive: 0, fraction digits: 2, (XPath: YARNTwistOffer/terms/transInfo/netWeight) 0-1
notBeforeDate	earliest date possible to begin an activity, according to one of the patterns YYYY-MM-DD, YYYY-MM-DD:HH-MM or YYYY-WW. - base type: string, (XPath: YARNTwistOffer/YTOFbody/YTOFitem/notBeforeDate) 0-1

note	<p>free text or structured (computer processing) note. For note structuring use the attributes "noteLabel" and "codelist"</p> <ul style="list-style-type: none"> - base type: string, max length: 350, (XPath: YARNTwistOffer/terms/allowanceCharge/dtScheme/note) 0-19 (XPath: YARNTwistOffer/YTOFbody/YTOFitem/note) 0-19 (XPath: YARNTwistOffer/YTOFbody/YTOFitem/yarnMnfrOperation/note) 0-19 (XPath: YARNTwistOffer/OFheader/note) 0-19
@noteLabel	<p>subject qualifier of a note</p> <ul style="list-style-type: none"> - base type: string, max length: 35, (XPath: YARNTwistOffer/terms/allowanceCharge/dtScheme/note/@noteLabel) [Optional] - nota: <i>must be used to qualify the subject of the note</i> (XPath: YARNTwistOffer/OFheader/note/@noteLabel) [Optional] - nota: <i>must be used to qualify the subject of the note</i> (XPath: YARNTwistOffer/YTOFbody/YTOFitem/note/@noteLabel) [Optional] - nota: <i>must be used to qualify the subject of the note</i> (XPath: YARNTwistOffer/YTOFbody/YTOFitem/yarnMnfrOperation/note/@noteLabel) [Optional] - nota: <i>must be used to qualify the subject of the note</i>
@numberingOrg	<p>code specifying the organisation who has created or owns the coding or numbering system</p> <ul style="list-style-type: none"> - base type: string, cod. table: NT6 http://www.moda-ml.net/moda-ml/repository/codelist/v2013-1/gc_NT6.xml (XPath: YARNTwistOffer/YTOFbody/YTOFitem/yarnMnfrOperation/refDoc/docID/@numberingOrg) [Optional] - nota: <i>here can be specified whose document numbering is used (e.g.: Client, Supplier, ..)</i> (XPath: YARNTwistOffer/YTOFbody/YTOFitem/yarnMnfrOperation/note/@numberingOrg) [Optional] (XPath: YARNTwistOffer/YTOFbody/YTOFitem/thirdParty/id/@numberingOrg) [Optional] (XPath: YARNTwistOffer/YTOFbody/YTOFitem/refDoc/docID/@numberingOrg) [Optional] - nota: <i>here can be specified whose document numbering is used (e.g.: Client, Supplier, ..)</i> (XPath: YARNTwistOffer/YTOFbody/YTOFitem/note/@numberingOrg) [Optional] (XPath: YARNTwistOffer/OFheader/subContractor/id/@numberingOrg) [Optional] (XPath: YARNTwistOffer/OFheader/note/@numberingOrg) [Optional] (XPath: YARNTwistOffer/OFheader/refDoc/docID/@numberingOrg) [Optional] - nota: <i>here can be specified whose document numbering is used (e.g.: Client, Supplier, ..)</i> (XPath: YARNTwistOffer/OFheader/supplier/id/@numberingOrg) [Optional] (XPath: YARNTwistOffer/OFheader/buyer/id/@numberingOrg) [Optional] (XPath: YARNTwistOffer/OFheader/docID/@numberingOrg) [Optional] - nota: <i>here can be specified whose document numbering is used (e.g.: Client, Supplier, ..)</i> (XPath: YARNTwistOffer/terms/allowanceCharge/dtScheme/note/@numberingOrg) [Optional]
@part	<p>percent fraction of a total payment</p> <ul style="list-style-type: none"> - base type: decimal, min inclusive: 1, max inclusive: 99, fraction digits: 2, (XPath: YARNTwistOffer/terms/insPayment/@part) [Required] - nota: <i>here the % value of each installment must be indicated</i>

payMode	<p>way or means of payment</p> <p>- base type: string, cod. table: T2 http://www.moda-ml.net/moda-ml/repository/codelist/v2013-1/gc_T2.xml (XPath: YARNTwistOffer/terms/insPayment/payMode) 0-1 (XPath: YARNTwistOffer/terms/payment/payMode) 0-1</p>
payTerm	<p>code specifying the terms or time by which the payment must be done</p> <p>- base type: string, cod. table: T1 http://www.moda-ml.net/moda-ml/repository/codelist/v2013-1/gc_T1.xml (XPath: YARNTwistOffer/terms/payment/payTerm) 1-1 (XPath: YARNTwistOffer/terms/insPayment/payTerm) 1-1</p>
payTermText	<p>free text specifying the terms by which the payment must be done (time/mode or means)</p> <p>- base type: string, max length: 40, (XPath: YARNTwistOffer/terms/payment/payTermText) 1-1 (XPath: YARNTwistOffer/terms/insPayment/payTermText) 1-1</p>
pcTolerance	<p>percent deviation tolerated on the value of a measurement (it must have a plus or minus sign)</p> <p>- base type: decimal, min inclusive: 0, max inclusive: 100, total digits: 2, (XPath: YARNTwistOffer/YTOFbody/YTOFitem/yarnMnfrOperation/yarnMachineSpecs/pcTolerance) 0-2 (XPath: YARNTwistOffer/YTOFbody/YTOFitem/yarnSpecs/pcTolerance) 0-2</p>
percCompos	<p>fiber rate in the product composition</p> <p>- base type: decimal, min inclusive: 0, max inclusive: 100, fraction digits: 2, (XPath: YARNTwistOffer/YTOFbody/YTOFitem/yarnCompos/percCompos) 1-9</p>
person	<p>name of the contact person within a Party</p> <p>- base type: string, max length: 40, (XPath: YARNTwistOffer/OFheader/buyer/person) 0-1 (XPath: YARNTwistOffer/OFheader/supplier/person) 0-1 (XPath: YARNTwistOffer/OFheader/subContractor/person) 0-1 (XPath: YARNTwistOffer/YTOFbody/YTOFitem/thirdParty/person) 0-1</p>
@phone	<p>phone number of the contact person within a Party</p> <p>- base type: string, max length: 35, (XPath: YARNTwistOffer/YTOFbody/YTOFitem/thirdParty/person/@phone) [Optional] (XPath: YARNTwistOffer/OFheader/supplier/person/@phone) [Optional] (XPath: YARNTwistOffer/OFheader/subContractor/person/@phone) [Optional] (XPath: YARNTwistOffer/OFheader/buyer/person/@phone) [Optional]</p>
postCode	<p>code defining the postal zone</p> <p>- base type: string, max length: 10, (XPath: YARNTwistOffer/OFheader/supplier/postCode) 0-1 (XPath: YARNTwistOffer/OFheader/subContractor/postCode) 0-1 (XPath: YARNTwistOffer/YTOFbody/YTOFitem/thirdParty/postCode) 0-1 (XPath: YARNTwistOffer/OFheader/buyer/postCode) 0-1</p>
price	<p>unit price of the article, object or service specified</p> <p>- base type: decimal, min inclusive: 0, fraction digits: 2, (XPath: YARNTwistOffer/YTOFbody/YTOFitem/price) 1-1</p>
@priceQualifier	<p>type of price with reference to discount and taxes</p> <p>- base type: string, cod. table: NT20 http://www.moda-ml.net/moda-ml/repository/codelist/v2013-1/gc_NT20.xml (XPath: YARNTwistOffer/YTOFbody/YTOFitem/price/@priceQualifier) [Optional] [Default= NET]</p>

qty	<p>net quantity of the article or object correlated, qualified by the function of the document (ordering, delivering, ..) and by the context</p> <p>- base type: decimal, min inclusive: 0, fraction digits: 2, (XPath: YARNTwistOffer/YTOFbody/YTOFitem/qty) 1-2</p>
@role	<p>Third Party role qualifier</p> <p>- base type: string, cod. table: NT2 http://www.moda-ml.net/moda-ml/repository/codelist/v2013-1/gc_NT2.xml (XPath: YARNTwistOffer/YTOFbody/YTOFitem/thirdParty/@role) [Required]</p>
season	<p>sale season; defined as: season (1 crt) + year (4 crt) - season: S/S=1 A/W=2 Spring=3 Summer=4 Autumn=5 Winter=6: for more than four seasons use alphabetic sequence: 1st season=A 2nd season=B etc.etc.</p> <p>- base type: string, max length: 15, (XPath: YARNTwistOffer/YTOFbody/YTOFitem/yarnMnfrOperation/refDoc/season) 0-1</p> <p>- note: here indicates the season to which the referenced document belongs (XPath: YARNTwistOffer/YTOFbody/YTOFitem/refDoc/season) 0-1</p> <p>- note: here indicates the season to which the referenced document belongs (XPath: YARNTwistOffer/OFheader/refDoc/season) 0-1</p> <p>- note: here indicates the season to which the referenced document belongs (XPath: YARNTwistOffer/OFheader/season) 0-1</p>
@sender	<p>qualifier that specifies the Party issuing of the document</p> <p>- base type: boolean, (XPath: YARNTwistOffer/OFheader/supplier/@sender) [Optional]</p> <p>- nota: This attribute is mandatory when the STYLESHEET must be produced (XPath: YARNTwistOffer/OFheader/subContractor/@sender) [Optional]</p> <p>- nota: This attribute is mandatory when the STYLESHEET must be produced (XPath: YARNTwistOffer/OFheader/buyer/@sender) [Optional]</p> <p>- nota: This attribute is mandatory when the STYLESHEET must be produced (XPath: YARNTwistOffer/YTOFbody/YTOFitem/thirdParty/@sender) [Optional]</p> <p>- nota: This attribute is mandatory when the STYLESHEET must be produced</p>
@source	<p>party who has provided the data</p> <p>- base type: string, cod. table: NT12 http://www.moda-ml.net/moda-ml/repository/codelist/v2013-1/gc_NT12.xml (XPath: YARNTwistOffer/YTOFbody/YTOFitem/yarnMnfrOperation/yarnMachineSpecs/specValue/@source) [Optional] (XPath: YARNTwistOffer/YTOFbody/YTOFitem/yarnSpecs/specValue/@source) [Optional]</p>
specValue	<p>value requested for a property or a parameter that is measured</p> <p>- base type: decimal, (XPath: YARNTwistOffer/YTOFbody/YTOFitem/yarnSpecs/specValue) 0-1 (XPath: YARNTwistOffer/YTOFbody/YTOFitem/yarnMnfrOperation/yarnMachineSpecs/specValue) 0-1</p>
street	<p>street and building number identifying a location</p> <p>- base type: string, max length: 80, (XPath: YARNTwistOffer/OFheader/supplier/street) 0-1 (XPath: YARNTwistOffer/OFheader/buyer/street) 0-1 (XPath: YARNTwistOffer/YTOFbody/YTOFitem/thirdParty/street) 0-1 (XPath: YARNTwistOffer/OFheader/subContractor/street) 0-1</p>

subCountry	<p>short name or code of the sub-country entity</p> <ul style="list-style-type: none"> - base type: string, max length: 9, <p>(XPath: YARNTwistOffer/YTOFbody/YTOFitem/thirdParty/subCountry) 0-1 (XPath: YARNTwistOffer/OFheader/supplier/subCountry) 0-1 (XPath: YARNTwistOffer/OFheader/subContractor/subCountry) 0-1 (XPath: YARNTwistOffer/OFheader/buyer/subCountry) 0-1</p>
taxCategory	<p>duty or tax or fee category</p> <ul style="list-style-type: none"> - base type: string, cod. table: T62 <p>http://www.moda-ml.net/moda-ml/repository/codelist/v2013-1/gc_T62.xml (XPath: YARNTwistOffer/terms/allowanceCharge/dtScheme/taxCategory) 0-1</p>
taxRate	<p>duty or tax or fee percent rate</p> <ul style="list-style-type: none"> - base type: string, <p>(XPath: YARNTwistOffer/terms/allowanceCharge/dtScheme/taxRate) 0-1</p>
@taxType	<p>duty or tax or fee type</p> <ul style="list-style-type: none"> - base type: string, cod. table: T61 <p>http://www.moda-ml.net/moda-ml/repository/codelist/v2013-1/gc_T61.xml (XPath: YARNTwistOffer/terms/allowanceCharge/dtScheme/@taxType) [Required]</p>
tolerance	<p>deviation tolerated on the value of a measurement (it must have a plus or minus sign)</p> <ul style="list-style-type: none"> - base type: decimal, <p>(XPath: YARNTwistOffer/YTOFbody/YTOFitem/yarnMnfrOperation/yarnMachineSpecs/tolerance) 0-2 (XPath: YARNTwistOffer/YTOFbody/YTOFitem/yarnSpecs/tolerance) 0-2</p>
transCondition	<p>special condition of transport or special service requested to the Forwarder</p> <ul style="list-style-type: none"> - base type: string, cod. table: T38 <p>http://www.moda-ml.net/moda-ml/repository/codelist/v2013-1/gc_T38.xml (XPath: YARNTwistOffer/terms/transInfo/transCondition) 0-3</p>
transConditionText	<p>free text description of the special condition of transport or special service requested to the Forwarder</p> <ul style="list-style-type: none"> - base type: string, max length: 100, <p>(XPath: YARNTwistOffer/terms/transInfo/transConditionText) 0-1</p>
transMeans	<p>means of transport, in general or referred to a specific leg</p> <ul style="list-style-type: none"> - base type: string, cod. table: T40 <p>http://www.moda-ml.net/moda-ml/repository/codelist/v2013-1/gc_T40.xml (XPath: YARNTwistOffer/terms/transInfo/transMeans) 0-1</p>
transMode	<p>way of transport, in general or referred to the specified leg</p> <ul style="list-style-type: none"> - base type: string, cod. table: T8 <p>http://www.moda-ml.net/moda-ml/repository/codelist/v2013-1/gc_T8.xml (XPath: YARNTwistOffer/terms/transInfo/transMode) 1-1</p>
@transReason	<p>reason for the transport</p> <ul style="list-style-type: none"> - base type: string, cod. table: NT11 <p>http://www.moda-ml.net/moda-ml/repository/codelist/v2013-1/gc_NT11.xml (XPath: YARNTwistOffer/terms/transInfo/@transReason) [Optional]</p>
@um	<p>specification of the unit of measure</p> <ul style="list-style-type: none"> - base type: string, cod. table: NT7 <p>http://www.moda-ml.net/moda-ml/repository/codelist/v2013-1/gc_NT7.xml (XPath: YARNTwistOffer/YTOFbody/YTOFitem/yarnSpecs/specValue/@um) [Optional] (XPath: YARNTwistOffer/YTOFbody/YTOFitem/yarnMnfrOperation/yarnMachineSpecs/tolerance/@um) [Required] (XPath: YARNTwistOffer/YTOFbody/YTOFitem/yarnMnfrOperation/yarnMachineSpecs/specValue/@um) [Optional] (XPath: YARNTwistOffer/YTOFbody/YTOFitem/price/@um) [Optional]</p> <p>- nota: <i>Unit of measure of the product to which the price is referred (price per meter)</i></p>

	<p>(XPath: YARNTwistOffer/terms/transInfo/netWeight/@um) [Required] (XPath: YARNTwistOffer/YTOFbody/YTOFitem/yarnSpecs/experimValue/@um) [Optional] (XPath: YARNTwistOffer/terms/transInfo/grossWeight/@um) [Required] (XPath: YARNTwistOffer/YTOFbody/YTOFitem/yarnMnfrOperation/yarnMachineSpecs/pcTolerance/@um) [Optional] - nota: to be used when it has to be soecified if the declared percentage is by weight, volume, etc... (XPath: YARNTwistOffer/YTOFbody/YTOFitem/yarnSpecs/tolerance/@um) [Required] (XPath: YARNTwistOffer/YTOFbody/YTOFitem/yarnSpecs/pcTolerance/@um) [Optional] - nota: to be used when it has to be soecified if the declared percentage is by weight, volume, etc... (XPath: YARNTwistOffer/YTOFbody/YTOFitem/qty/@um) [Required]</p>
@useProfile	<p>use profile to which the present document if compliant if it was agreed by the parties. It is suggested a URI with reference to the firms or the URL of the profile. - base type: string, (XPath: YARNTwistOffer/@useProfile) [Optional]</p>
validityEnd	<p>date by which the validity ends, according to one of the patterns YYYY-MM-DD, YYYY-MM-DD:HH-MM or YYYY-WW. - base type: string, (XPath: YARNTwistOffer/OFheader/validityEnd) 1-1</p>
validityStart	<p>date by which the validity starts, according to one of the patterns YYYY-MM-DD, YYYY-MM-DD:HH-MM or YYYY-WW. - base type: string, (XPath: YARNTwistOffer/OFheader/validityStart) 0-1</p>
@VAT	<p>VAT rate or code (deprecated, use dtScheme element) - base type: string, cod. table: NT16 http://www.moda-ml.net/moda-ml/repository/codelist/v2013-1/gc_NT16.xml (XPath: YARNTwistOffer/terms/allowanceCharge/@VAT) [Optional] (XPath: YARNTwistOffer/YTOFbody/YTOFitem/lineN/@VAT) [Optional] (XPath: YARNTwistOffer/YTOFbody/YTOFitem/thirdParty/@VAT) [Optional]</p>
@version	<p>Dictionary version from which the instance has been created - base type: string, cod. table: NT100 http://www.moda-ml.net/moda-ml/repository/codelist/v2013-1/gc_NT100.xml (XPath: YARNTwistOffer/@version) [Optional] [Default= 2013-1]</p>
yarnChar	<p>physical or mechanical parameter used to define a property of a yarn - base type: string, cod. table: T24 http://www.moda-ml.net/moda-ml/repository/codelist/v2013-1/gc_T24.xml (XPath: YARNTwistOffer/YTOFbody/YTOFitem/yarnSpecs/yarnChar) 1-1</p>
yarnCharText	<p>free text describing the physical or mechanical parameter used to define a property of a yarn - base type: string, max length: 40, (XPath: YARNTwistOffer/YTOFbody/YTOFitem/yarnSpecs/yarnCharText) 1-1</p>
yarnJob	<p>operation of a work cycle for yarn - base type: string, cod. table: T201 http://www.moda-ml.net/moda-ml/repository/codelist/v2013-1/gc_T201.xml (XPath: YARNTwistOffer/YTOFbody/YTOFitem/yarnMnfrOperation/yarnJob) 1-1</p>
yarnJobTech	<p>operation technology for yarn - base type: string, cod. table: T261 http://www.moda-ml.net/moda-ml/repository/codelist/v2013-1/gc_T261.xml (XPath:</p>

	YARNTwistOffer/YTOFbody/YTOFitem/yarnMnfrOperation/yarnJobTech) 0-1
yarnMachine	machine used in an operation of a work cycle for yarn - base type: string, cod. table: T271 http://www.moda-ml.net/moda-ml/repository/codelist/v2013-1/gc_T271.xml (XPath: YARNTwistOffer/YTOFbody/YTOFitem/yarnMnfrOperation/yarnMachine) 0-1
yarnMachineParam	setting parameter of a machine used in an operation of a work cycle for yarn - base type: string, cod. table: T281 http://www.moda-ml.net/moda-ml/repository/codelist/v2013-1/gc_T281.xml (XPath: YARNTwistOffer/YTOFbody/YTOFitem/yarnMnfrOperation/yarnMachineSpecs/yarnMachineParam) 1-1
@yarnProcQualifier	type of yarn with reference to the manufacturing process - base type: string, cod. table: NT31 http://www.moda-ml.net/moda-ml/repository/codelist/v2013-1/gc_NT31.xml (XPath: YARNTwistOffer/@yarnProcQualifier) [Required]

2.3 Enumeration tables

List of enumeration tables used in the XML document. You can find the corresponding codes at: <http://www.moda-ml.org/moda-ml/imple/moda-ml-2013-1.asp?lingua=en&pag=6>

NT100 - eBIZ Moda-ML version

NT11 - transport causal

NT12 - data source

NT16 - VAT rate or code

NT18 - message function

NT2 - third party qualifier

NT20 - price qualifier

NT29 - format of a date

NT3 - data format

NT31 - yarn family

NT5 - action code

NT6 - coding system owner/issuer

NT7 - unity of measure

T1 - terms of payment

T10 - ISO3166 - Country

T19 - fibre type

T2 - Modes of payment

T201 - type of job on yarn

T21 - type of document

T24 - yarn characteristics type

T261 - type of job technology for yarn

T271 - machine type for yarn operation

T281 - parameter type for yarn operation

T3 - terms of delivery

T38 - transport conditions

T40 - type of transport means

T41 - type of Allowance or Charge

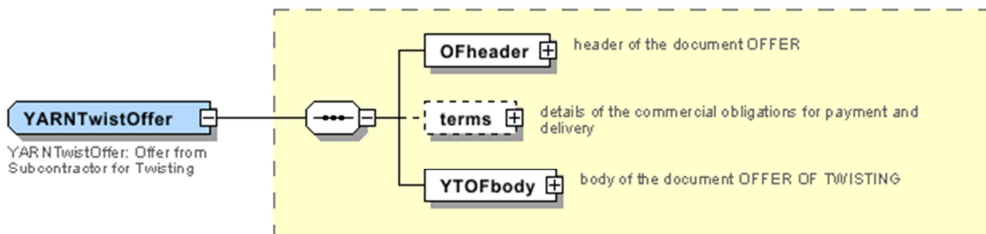
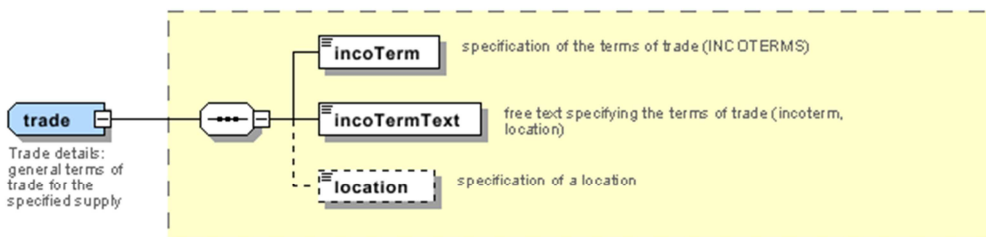
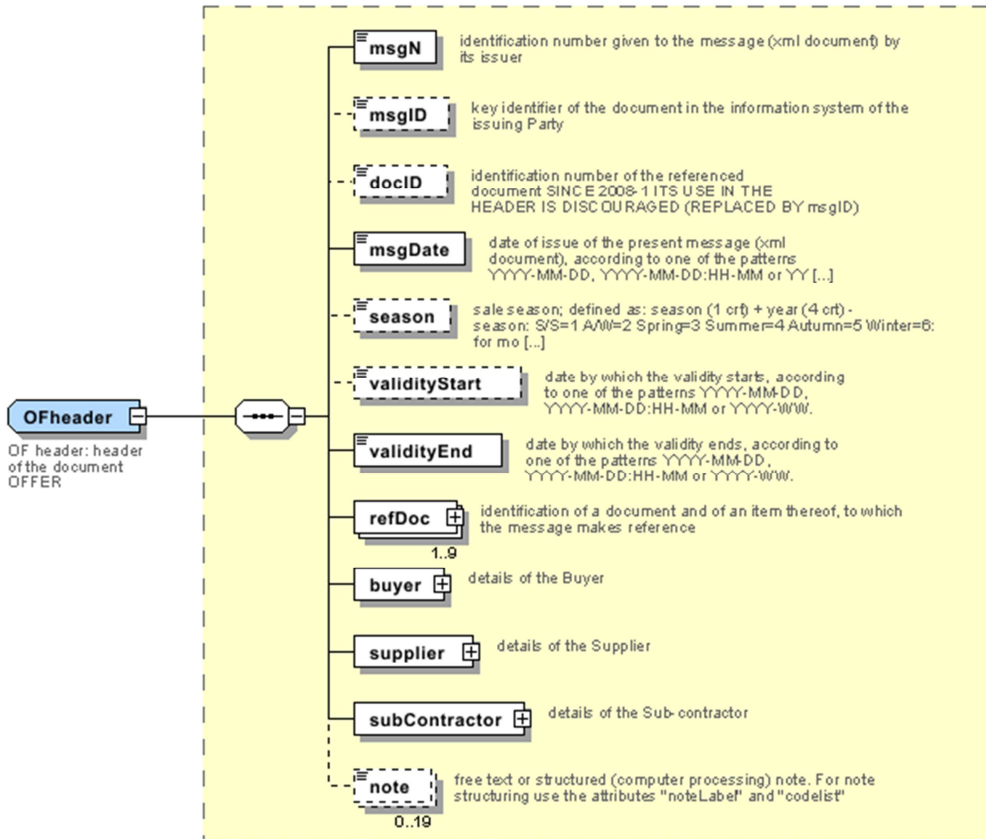
T61 - duty or tax or fee type

T62 - duty or tax or fee category

T8 - Modes of Transport

Annex A

Representative images of the principal complex elements' structure.



YTOFItem
 YTOF item: line
 of the document
 OFFER OF
 TWISTING

