



<http://www.moda-ml.org>

## IMPLEMENTATION GUIDE TRANSACTION "WEAVING OFFER"

Version: 2013-1

Date of release: 18/11/2011

Document code: G060

XML Schema repository:<http://www.moda-ml.org/moda-ml/repository/schema/v2013-1/default.asp>

Guides repository:<http://www.moda-ml.org/moda-ml/repository/guide/v2013-1/default.asp>

Guide filename: G060-MODA-ML-WeavingOffer.pdf

# 1. BUSINESS DESCRIPTION

## 1.1 Scope

The present guide has been issued to assist the companies of the Textile-Clothing sector in the implementation of the standard XML document type "WEAVING OFFER", providing all the instruction required for its use in the context of e-commerce between Subcontractors and their Customers shown in the enclosed diagram

All the rules required for the construction and validation of the document are embedded into the specific XML-Schema, which is detailed in section "Implementation guide".

## 1.2 Generalities

The Offer is used by a Subcontractor to respond to the Request of a Fabric Producer for the weaving of a yarn.

The Offer is structured in four levels:

Macro-type of Work offered = document root (7 types of Request)

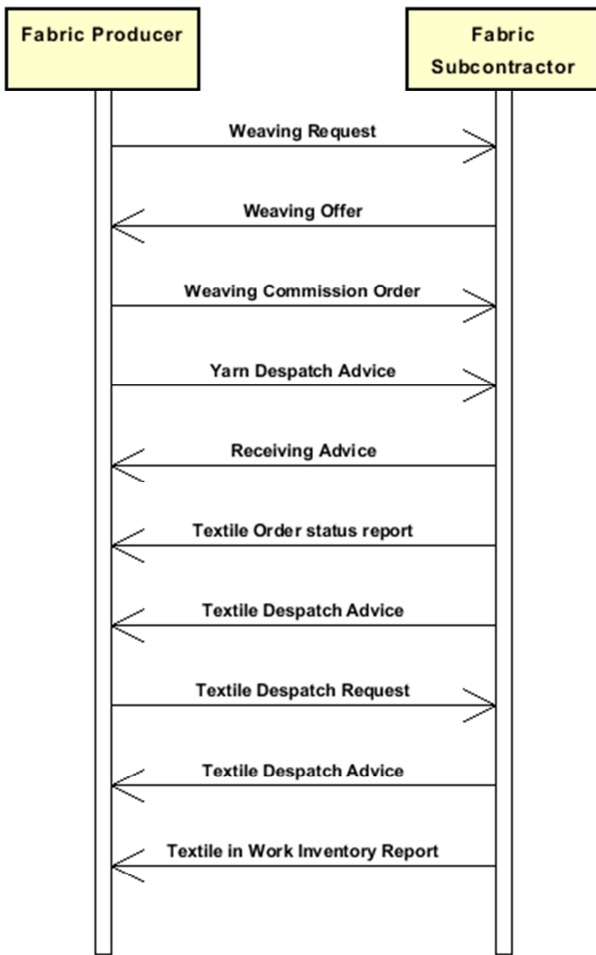
Product Family = document qualifier (type of product with reference to the manufacturing process; e.g.: combed yarn, jacquard weaved fabric, ..)

Product Specifications = "xxxSpecs" (technical characteristics and properties of the product)

Operations offered = "XXXMnfrOperation" (details of the works requested)

Quantities, unit measures and prices must be referred to the third level (Line Item)

## 1.3. Possible scenario



## 2. IMPLEMENTATION GUIDE

### 2.1 General structure of XML document

All the business data that can be exchanged through this class of documents are shown in the following "document structure", that provides a simplified vision of the Schema.

In particular:

- the two numbers following each element define its "cardinality" (minimum and maximum number of occurrences); the minimum equal zero indicates that the element is optional, the minimum greater than zero indicates that is mandatory;
- the bold character denotes the complex elements (aggregates of simple elements) that were built for the sake of functionality and re-usability of some complex informations sets. The child elements in each parent element are easily spotted as "indented";
- the symbol "@" denotes an attribute of the preceding element; here "the usage indicator (optional, required, ...)" is shown in square brackets.

### Structure

#### TEXWeaveOffer

@msgfunction [Optional] [Default= OR]

@fabProcQualifier [Required]

@version [Optional] [Default= 2013-1]

@useProfile [Optional]

| **OFheader 1-1**

| | msgN 1-1

| | - choose -

| | | msgID 0-1

| | | - or -

| | | docID 0-1

| | | @numberingOrg [Optional]

| | - end choose -

| | msgDate 1-1

| | | @dateForm [Optional]

| | season 0-1

| | validityStart 0-1

| | | @dateForm [Optional]

| | validityEnd 1-1

| | | @dateForm [Optional]

| | **refDoc 1-9**

| | | @docType [Required]

| | | | docID 1-2

| | | | @numberingOrg [Optional]

| | | | docDate 0-1

| | | | @dateForm [Optional]

| | | | season 0-1

| | | | itemID 0-1

| | **buyer 1-1**

| | | @logo [Optional]

| | | @sender [Optional]

| | | | id 1-1

| | | | @numberingOrg [Optional]

| | | | legalName 0-1

| | | | dept 0-1

| | | | person 0-1

| | | | @email [Optional]

| | | | @phone [Optional]

| | | | @fax [Optional]

```

| | | street 0-1
| | | city 0-1
| | | subCountry 0-1
| | | country 0-1
| | | postCode 0-1
| - choose -
| | supplier 1-1
| | @logo [Optional]
| | @sender [Optional]
| | | id 1-1
| | | @numberingOrg [Optional]
| | | legalName 0-1
| | | dept 0-1
| | | person 0-1
| | | @email [Optional]
| | | @phone [Optional]
| | | @fax [Optional]
| | | street 0-1
| | | city 0-1
| | | subCountry 0-1
| | | country 0-1
| | | postCode 0-1
| - or -
| | subContractor 1-1
| | @sender [Optional]
| | | id 1-1
| | | @numberingOrg [Optional]
| | | legalName 0-1
| | | dept 0-1
| | | person 0-1
| | | @email [Optional]
| | | @phone [Optional]
| | | @fax [Optional]
| | | street 0-1
| | | city 0-1
| | | subCountry 0-1
| | | country 0-1
| | | postCode 0-1
| - end choose -
| | note 0-19
| | @numberingOrg [Optional]
| | @codeList [Optional]
| | @noteLabel [Optional]

```

```

| terms 0-1
| | payment 0-5
| | @finDiscount [Optional]
| | @finSurcharge [Optional]
| | - choose -
| | | payTerm 1-1
| | | - or -
| | | payTermText 1-1
| | | - end choose -
| | | payMode 0-1
| | insPayment 0-5
| | @part [Required]
| | - choose -
| | | payTerm 1-1
| | | - or -
| | | payTermText 1-1
| | | - end choose -

```

| | | payMode 0-1  
 | | **trade 0-1**  
 | | - choose -  
 | | | incoTermText 1-1  
 | | - or -  
 | | | incoTerm 1-1  
 | | - end choose -  
 | | | location 0-1  
 | | | @LRI [Optional]  
 | | **transInfo 0-1**  
 | | @transReason [Optional]  
 | | | transMode 1-1  
 | | | carrier 0-1  
 | | | deliveryPlace 0-1  
 | | | grossWeight 0-1  
 | | | @um [Required]  
 | | | netWeight 0-1  
 | | | @um [Required]  
 | | | transMeans 0-1  
 | | | transCondition 0-3  
 | | | transConditionText 0-1  
 | | **allowanceCharge 0-9**  
 | | @VAT [Optional]  
 | | - choose -  
 | | | AC\_category 1-1  
 | | - or -  
 | | | AC\_categoryText 1-1  
 | | - choose -  
 | | | AC\_percent 1-1  
 | | - or -  
 | | | AC\_amount 1-1  
 | | - end choose -  
 | | | **dtScheme 0-1**  
 | | | @taxType [Required]  
 | | | | taxCategory 0-1  
 | | | | taxRate 0-1  
 | | | | legalRef 0-1  
 | | | | @codeList [Required]  
 | | | | note 0-19  
 | | | | @numberingOrg [Optional]  
 | | | | @codeList [Optional]  
 | | | | @noteLabel [Optional]

| **TWOFbody 1-1**  
 | | **TWOFitem 1-unbounded**  
 | | @act [Required]  
 | | | lineN 1-1  
 | | | @VAT [Optional]  
 | | | **refDoc 1-1**  
 | | | @docType [Required]  
 | | | | docID 1-2  
 | | | | @numberingOrg [Optional]  
 | | | | docDate 0-1  
 | | | | @dateForm [Optional]  
 | | | | season 0-1  
 | | | | itemID 0-1  
 | | | **fabricCompos 0-1**  
 | | | | percCompos 1-9  
 | | | | @fibre [Required]  
 | | | **construction 0-1**  
 | | | | fabricWeightM 1-1

```

| | | | @um [Optional] [Default= GRM]
| | | | fabricWeightM2 0-1
| | | | @um [Optional] [Default= GRM]
| | | | fabricWidth 0-1
| | | | @um [Optional] [Default= CMT]
| | | | fabricCutWidth 0-1
| | | | @um [Optional] [Default= CMT]
| | | | pieceLength 0-1
| | | | @um [Optional] [Default= MTR]
| | | | weave 0-1
| | | | warpCount 0-9
| | | | @method [Optional] [Default= ISO-2060]
| | | | @fibre [Optional]
| | | | weftCount 0-9
| | | | @method [Optional] [Default= ISO-2060]
| | | | @fibre [Optional]
| | | | warpEndsN 0-1
| | | | weftEndsN 0-1
| | | | bowingWarp 0-1
| | | | @method [Optional]
| | | | bowingWeft 0-1
| | | | @method [Optional]
| | | | checksFlaw 0-1
| | | | @method [Optional]
| | | | weftDev 0-1
| | | | @method [Optional]
| | | | resin 0-1
| | | | fabricSpecs 0-9
| | | | - choose -
| | | | | fabricCharText 1-1
| | | | - or -
| | | | | fabricChar 1-1
| | | | - end choose -
| | | | | specValue 0-1
| | | | | @um [Optional]
| | | | | @source [Optional]
| | | | | @method [Optional]
| | | | | @application [Optional]
| | | | | @CV [Optional]
| | | | - choose -
| | | | | tolerance 0-2
| | | | | @um [Required]
| | | | - or -
| | | | | pcTolerance 0-2
| | | | | @um [Optional]
| | | | - end choose -
| | | | qty 1-2
| | | | @um [Required]
| | | | price 1-1
| | | | @um [Optional]
| | | | @priceQualifier [Optional] [Default= NET]
| | | | deliveryDate 1-1
| | | | @dateForm [Optional]
| | | | notBeforeDate 0-1
| | | | @dateForm [Optional]
| | | | thirdParty 0-1
| | | | @VAT [Optional]
| | | | @role [Required]
| | | | @sender [Optional]
| | | | | id 1-1
| | | | | @numberingOrg [Optional]

```

```

| | | | legalName 0-1
| | | | dept 0-1
| | | | person 0-1
| | | |   @email [Optional]
| | | |   @phone [Optional]
| | | |   @fax [Optional]
| | | | street 0-1
| | | | city 0-1
| | | | subCountry 0-1
| | | | country 0-1
| | | | postCode 0-1
| | | | fabMnfrOperation 1-9
| | | | - choose -
| | | |   | jobName 1-1
| | | | - or -
| | | |   | texJob 1-1
| | | | - end choose -
| | | |   | texJobTech 0-9
| | | |   | refDoc 0-1
| | | |   |   @docType [Required]
| | | |   |     docID 1-2
| | | |   |     @numberingOrg [Optional]
| | | |   |     docDate 0-1
| | | |   |     @dateForm [Optional]
| | | |   |     season 0-1
| | | |   |     itemID 0-1
| | | |   | texMachine 0-1
| | | |   | texMachineSpecs 0-9
| | | |   |   texMachineParam 1-1
| | | |   |   specValue 0-1
| | | |   |   @um [Optional]
| | | |   |   @source [Optional]
| | | |   |   @method [Optional]
| | | |   |   @application [Optional]
| | | |   |   @CV [Optional]
| | | |   - choose -
| | | |   | pcTolerance 0-2
| | | |   | @um [Optional]
| | | |   - or -
| | | |   | tolerance 0-2
| | | |   | @um [Required]
| | | |   - end choose -
| | | |   | note 0-19
| | | |   |   @numberingOrg [Optional]
| | | |   |   @codeList [Optional]
| | | |   |   @noteLabel [Optional]
| | | | note 0-19
| | | | @numberingOrg [Optional]
| | | | @codeList [Optional]
| | | | @noteLabel [Optional]

```



## 2.2 Detailed description of document elements

Following tables show all elements (complex and simple) used in this document. Description includes: 1) element's information: xml tag, name, brief description, data type and syntax constraints; 2) information about use of the element in a particular position in the document: xpath and possible associated notes.

### 2.2.1 Complex elements (Aggregate Business Information Entities)

Complex elements are those elements whose content is composed of other elements (childs).Complex elements are alphabetically ordered.

<b>allowanceCharge</b>	Allowances and Charges related to an Order or a contract (XPath: <a href="#">TEXWeaveOffer/terms/allowanceCharge</a> ) 0-9
<b>buyer</b>	details of the Buyer - base type: Nad, (XPath: <a href="#">TEXWeaveOffer/OFheader/buyer</a> ) 1-1
<b>construction</b>	construction data and features included in the technical sheet of the fabric article (XPath: <a href="#">TEXWeaveOffer/TWOFbody/TWOFitem/construction</a> ) 0-1
<b>dtScheme</b>	set of data usable to declare the duty or tax applied (XPath: <a href="#">TEXWeaveOffer/terms/allowanceCharge/dtScheme</a> ) 0-1
<b>fabMnfrOperation</b>	details of a manufacturing operation used for fabric production (XPath: <a href="#">TEXWeaveOffer/TWOFbody/TWOFitem/fabMnfrOperation</a> ) 1-9
<b>fabricCompos</b>	composition of the fabric according to the Directory 97/37/CE (XPath: <a href="#">TEXWeaveOffer/TWOFbody/TWOFitem/fabricCompos</a> ) 0-1
<b>fabricSpecs</b>	technical characteristics of fabric, linked either to an operation of subcontracted production or to the purchase (XPath: <a href="#">TEXWeaveOffer/TWOFbody/TWOFitem/fabricSpecs</a> ) 0-9
<b>insPayment</b>	payment details for payment by installments (XPath: <a href="#">TEXWeaveOffer/terms/insPayment</a> ) 0-5 - note: <i>excluded the case of offers, this set of data is alternative to payment set and must be iterated for each payment installment</i>
<b>OFheader</b>	header of the document OFFER (XPath: <a href="#">TEXWeaveOffer/OFheader</a> ) 1-1
<b>payment</b>	payment details for payment all in one (XPath: <a href="#">TEXWeaveOffer/terms/payment</a> ) 0-5 - note: <i>excluded the case of offers, this set of data is alternative to insPayment, it can be iterated to specify alternative terms of payment (e.g.: 60 days or 30 days with 3% discount)</i>
<b>refDoc</b>	identification of a document and of an item thereof, to which the message makes reference (XPath: <a href="#">TEXWeaveOffer/TWOFbody/TWOFitem/refDoc</a> ) 1-1 - note: <i>reference to the line of the corresponding Request for Offer</i> (XPath: <a href="#">TEXWeaveOffer/OFheader/refDoc</a> ) 1-9 - note: <i>reference to the Request for Offer</i> (XPath: <a href="#">TEXWeaveOffer/TWOFbody/TWOFitem/fabMnfrOperation/refDoc</a> ) 0-1 - note: <i>here a Process Sheet transmitted to the Subcontractor can be referenced</i>
<b>subContractor</b>	details of the Sub-contractor

	- base type: Nad, (XPath: TEXWeaveOffer/OFheader/subContractor) 1-1
<b>supplier</b>	details of the Supplier - base type: Nad, (XPath: TEXWeaveOffer/OFheader/supplier) 1-1
<b>terms</b>	details of the commercial obligations for payment and delivery (XPath: TEXWeaveOffer/terms) 0-1
<b>texMachineSpecs</b>	technical specifications of a machine used in an operation of a work cycle for fabric (type and settings) (XPath: TEXWeaveOffer/TWOFbody/TWOFitem/fabMnfrOperation/texMachineSpecs) 0-9
<b>thirdParty</b>	details of the Third Party, different from Buyer or Supplier - base type: Nad, (XPath: TEXWeaveOffer/TWOFbody/TWOFitem/thirdParty) 0-1
<b>trade</b>	general terms of trade for the specified supply (XPath: TEXWeaveOffer/terms/trade) 0-1
<b>transInfo</b>	details of transport: mode, carrier and delivery place (XPath: TEXWeaveOffer/terms/transInfo) 0-1
<b>TWOFbody</b>	body of the document OFFER OF WEAVING (XPath: TEXWeaveOffer/TWOFbody) 1-1
<b>TWOFitem</b>	line of the document OFFER OF WEAVING (XPath: TEXWeaveOffer/TWOFbody/TWOFitem) 1-unbounded

## 2.2.2 Simple elements (Basic Business Information Entities)

Simple elements are those elements whose content is characterized by a data type plus a domain of possible values. Simple elements are alphabetically ordered.

<b>AC_amount</b>	amount of an Allowance or Charge - base type: decimal, fraction digits: 2, (XPath: TEXWeaveOffer/terms/allowanceCharge/AC_amount) 1-1
<b>AC_category</b>	coded specification of an Allowance or Charge - base type: string, cod. table: T41 <a href="http://www.moda-ml.net/moda-ml/repository/codelist/v2013-1/gc_T41.xml">http://www.moda-ml.net/moda-ml/repository/codelist/v2013-1/gc_T41.xml</a> (XPath: TEXWeaveOffer/terms/allowanceCharge/AC_category) 1-1
<b>AC_categoryText</b>	free text description of an Allowance or Charge - base type: string, max length: 70, (XPath: TEXWeaveOffer/terms/allowanceCharge/AC_categoryText) 1-1
<b>AC_percent</b>	amount of an Allowance or Charge as a percentage - base type: decimal, max inclusive: 100, fraction digits: 2, (XPath: TEXWeaveOffer/terms/allowanceCharge/AC_percent) 1-1
<b>@act</b>	action performed by the present line upon the referenced document line - base type: string, cod. table: NT5 <a href="http://www.moda-ml.net/moda-ml/repository/codelist/v2013-1/gc_NT5.xml">http://www.moda-ml.net/moda-ml/repository/codelist/v2013-1/gc_NT5.xml</a> (XPath: TEXWeaveOffer/TWOFbody/TWOFitem/@act) [Required]
<b>@application</b>	force or similar condition (e.g. no. of revolutions) applied in a test as specified within the standard - base type: string, max length: 15, (XPath: TEXWeaveOffer/TWOFbody/TWOFitem/fabricSpecs/

	<p>specValue/@application) [Optional]  (XPath: TEXWeaveOffer/TWOFbody/TWOFitem/fabMnfrOperation/  texMachineSpecs/specValue/@application) [Optional]</p>
bowingWarp	<p>warp bowing  - base type: decimal, min inclusive: 0,  (XPath: TEXWeaveOffer/TWOFbody/TWOFitem/construction/bowingWarp) 0-1</p>
bowingWeft	<p>weft bowing  - base type: decimal, min inclusive: 0,  (XPath: TEXWeaveOffer/TWOFbody/TWOFitem/construction/bowingWeft)  0-1</p>
carrier	<p>identification of the transport carrier  - base type: string, max length: 40,  (XPath: TEXWeaveOffer/terms/transInfo/carrier) 0-1</p>
checksFlaw	<p>flaw in checks  - base type: decimal, min inclusive: 0,  (XPath: TEXWeaveOffer/TWOFbody/TWOFitem/construction/checksFlaw)  0-1</p>
city	<p>name of the city (town, village)  - base type: string, max length: 40,  (XPath: TEXWeaveOffer/OFheader/supplier/city) 0-1  (XPath: TEXWeaveOffer/OFheader/buyer/city) 0-1  (XPath: TEXWeaveOffer/TWOFbody/TWOFitem/thirdParty/city) 0-1  (XPath: TEXWeaveOffer/OFheader/subContractor/city) 0-1</p>
@codeList	<p>it specifies the URL where the list of codes used to make an  instance of the element can be found  - base type: string, max length: 255,  (XPath: TEXWeaveOffer/OFheader/note/@codeList) [Optional]  - nota: <i>must be used to provide (URL) the list of codes used in  "noteLabel"</i>  (XPath: TEXWeaveOffer/TWOFbody/TWOFitem/fabMnfrOperation/  note/@codeList) [Optional]  - nota: <i>must be used to provide (URL) the list of codes used in  "noteLabel"</i>  (XPath: TEXWeaveOffer/TWOFbody/TWOFitem/note/@codeList)  [Optional]  - nota: <i>must be used to provide (URL) the list of codes used in  "noteLabel"</i>  (XPath: TEXWeaveOffer/terms/allowanceCharge/dtScheme/  legalRef/@codeList) [Required]  (XPath:  TEXWeaveOffer/terms/allowanceCharge/dtScheme/note/@codeList)  [Optional]  - nota: <i>must be used to provide (URL) the list of codes used in  "noteLabel"</i></p>
country	<p>code of the nation  - base type: string, cod. table: T10  <a href="http://www.moda-ml.net/moda-ml/repository/codelist/v2013-1/gc_T10.xml">http://www.moda-ml.net/moda-ml/repository/codelist/v2013-1/gc_T10.xml</a>  (XPath: TEXWeaveOffer/TWOFbody/TWOFitem/thirdParty/country) 0-1  (XPath: TEXWeaveOffer/OFheader/subContractor/country) 0-1  (XPath: TEXWeaveOffer/OFheader/supplier/country) 0-1  (XPath: TEXWeaveOffer/OFheader/buyer/country) 0-1</p>
@CV	<p>coefficient of variation (CV) of a measurement  - base type: decimal,  (XPath: TEXWeaveOffer/TWOFbody/TWOFitem/fabMnfrOperation/  texMachineSpecs/specValue/@CV) [Optional]  (XPath: TEXWeaveOffer/TWOFbody/TWOFitem/fabricSpecs/  specValue/@CV) [Optional]</p>

<b>@dateForm</b>	<p>format used for the date</p> <p>- base type: string, cod. table: NT29  <a href="http://www.moda-ml.net/moda-ml/repository/codelist/v2013-1/gc_NT29.xml">http://www.moda-ml.net/moda-ml/repository/codelist/v2013-1/gc_NT29.xml</a>  (XPath: TEXWeaveOffer/OFheader/validityStart/@dateForm) [Optional]  (XPath: TEXWeaveOffer/OFheader/msgDate/@dateForm) [Optional]  (XPath: TEXWeaveOffer/TWOfbody/TWOfitem/deliveryDate/@dateForm) [Optional]  (XPath: TEXWeaveOffer/TWOfbody/TWOfitem/notBeforeDate/@dateForm) [Optional]  (XPath: TEXWeaveOffer/OFheader/validityEnd/@dateForm) [Optional]  (XPath: TEXWeaveOffer/TWOfbody/TWOfitem/refDoc/docDate/@dateForm) [Optional]  (XPath: TEXWeaveOffer/OFheader/refDoc/docDate/@dateForm) [Optional]  (XPath: TEXWeaveOffer/TWOfbody/TWOfitem/fabMnfrOperation/refDoc/docDate/@dateForm) [Optional]</p>
<b>deliveryDate</b>	<p>date of delivery of goods, requested or promised in the purchase process, according to one of the patterns YYYY-MM-DD, YYYY-MM-DD:HH-MM or YYYY-WW.</p> <p>- base type: string,  (XPath: TEXWeaveOffer/TWOfbody/TWOfitem/deliveryDate) 1-1</p>
<b>deliveryPlace</b>	<p>place of delivery of goods, ultimate or related to a given leg</p> <p>- base type: string, max length: 40,  (XPath: TEXWeaveOffer/terms/transInfo/deliveryPlace) 0-1</p>
<b>dept</b>	<p>name or code of a contact department within a Party</p> <p>- base type: string, max length: 40,  (XPath: TEXWeaveOffer/OFheader/subContractor/dept) 0-1  (XPath: TEXWeaveOffer/OFheader/buyer/dept) 0-1  (XPath: TEXWeaveOffer/TWOfbody/TWOfitem/thirdParty/dept) 0-1  (XPath: TEXWeaveOffer/OFheader/supplier/dept) 0-1</p>
<b>docDate</b>	<p>date of issue of the referenced document, according to one of the patterns YYYY-MM-DD, YYYY-MM-DD:HH-MM or YYYY-WW.</p> <p>- base type: string,  (XPath: TEXWeaveOffer/TWOfbody/TWOfitem/refDoc/docDate) 0-1  (XPath: TEXWeaveOffer/OFheader/refDoc/docDate) 0-1  (XPath: TEXWeaveOffer/TWOfbody/TWOfitem/fabMnfrOperation/refDoc/docDate) 0-1</p>
<b>docID</b>	<p>identification number of the referenced document SINCE 2008-1 ITS USE IN THE HEADER IS DISCOURAGED (REPLACED BY msgID)</p> <p>- base type: string, max length: 80,  (XPath: TEXWeaveOffer/TWOfbody/TWOfitem/fabMnfrOperation/refDoc/docID) 1-2  (XPath: TEXWeaveOffer/OFheader/refDoc/docID) 1-2  (XPath: TEXWeaveOffer/TWOfbody/TWOfitem/refDoc/docID) 1-2  (XPath: TEXWeaveOffer/OFheader/docID) 0-1</p>
<b>@docType</b>	<p>type or class to which the referenced document belongs</p> <p>- base type: string, cod. table: T21  <a href="http://www.moda-ml.net/moda-ml/repository/codelist/v2013-1/gc_T21.xml">http://www.moda-ml.net/moda-ml/repository/codelist/v2013-1/gc_T21.xml</a>  (XPath: TEXWeaveOffer/TWOfbody/TWOfitem/refDoc/@docType) [Required]  (XPath: TEXWeaveOffer/OFheader/refDoc/@docType) [Required]  (XPath: TEXWeaveOffer/TWOfbody/TWOfitem/fabMnfrOperation/refDoc/@docType) [Required]</p>
<b>@email</b>	<p>electronic mail address of the contact person within a Party</p> <p>- base type: string, max length: 80,  (XPath:</p>

	<p>TEXWeaveOffer/TWOFbody/TWOFitem/thirdParty/person/@email) [Optional]  (XPath: TEXWeaveOffer/OFheader/buyer/person/@email) [Optional]  (XPath: TEXWeaveOffer/OFheader/subContractor/person/@email) [Optional]  (XPath: TEXWeaveOffer/OFheader/supplier/person/@email) [Optional]</p>
@fabProcQualifier	<p>type of fabric with reference to the manufacturing process  - base type: string, cod. table: NT32  <a href="http://www.moda-ml.net/moda-ml/repository/codelist/v2013-1/gc_NT32.xml">http://www.moda-ml.net/moda-ml/repository/codelist/v2013-1/gc_NT32.xml</a>  (XPath: TEXWeaveOffer/@fabProcQualifier) [Required]</p>
fabricChar	<p>code of the physical or mechanical parameter used to define a "technical characteristic of the fabric" (see Fabric technical sheet)  - base type: string, cod. table: T13  <a href="http://www.moda-ml.net/moda-ml/repository/codelist/v2013-1/gc_T13.xml">http://www.moda-ml.net/moda-ml/repository/codelist/v2013-1/gc_T13.xml</a>  (XPath: TEXWeaveOffer/TWOFbody/TWOFitem/fabricSpecs/fabricChar) 1-1</p>
fabricCharText	<p>free text describing the physical or mechanical parameter used to define a "technical characteristic of the fabric"  - base type: string, max length: 40,  (XPath: TEXWeaveOffer/TWOFbody/TWOFitem/fabricSpecs/fabricCharText) 1-1</p>
fabricCutWidth	<p>usable width of the fabric (for garments manufacturing) as technical specification  - base type: decimal, min inclusive: 0, fraction digits: 2,  (XPath: TEXWeaveOffer/TWOFbody/TWOFitem/construction/fabricCutWidth) 0-1</p>
fabricWeightM	<p>weight per metre of the fabric as technical specification  - base type: decimal, min inclusive: 0, fraction digits: 2,  (XPath: TEXWeaveOffer/TWOFbody/TWOFitem/construction/fabricWeightM) 1-1</p>
fabricWeightM2	<p>weight per square metre of the fabric as technical specification  - base type: decimal, min inclusive: 0, fraction digits: 2,  (XPath: TEXWeaveOffer/TWOFbody/TWOFitem/construction/fabricWeightM2) 0-1</p>
fabricWidth	<p>width of the fabric as technical specification  - base type: decimal, min inclusive: 0, fraction digits: 2,  (XPath: TEXWeaveOffer/TWOFbody/TWOFitem/construction/fabricWidth) 0-1</p>
@fax	<p>fax number of the contact person within a Party  - base type: string, max length: 35,  (XPath: TEXWeaveOffer/OFheader/supplier/person/@fax) [Optional]  (XPath: TEXWeaveOffer/TWOFbody/TWOFitem/thirdParty/person/@fax) [Optional]  (XPath: TEXWeaveOffer/OFheader/buyer/person/@fax) [Optional]  (XPath: TEXWeaveOffer/OFheader/subContractor/person/@fax) [Optional]</p>
@fibre	<p>type of fibre used in a textile product  - base type: string, cod. table: T19  <a href="http://www.moda-ml.net/moda-ml/repository/codelist/v2013-1/gc_T19.xml">http://www.moda-ml.net/moda-ml/repository/codelist/v2013-1/gc_T19.xml</a>  (XPath: TEXWeaveOffer/TWOFbody/TWOFitem/fabricCompos/percCompos/@fibre) [Required]  (XPath: TEXWeaveOffer/TWOFbody/TWOFitem/construction/weftCount/@fibre) [Optional]  (XPath: TEXWeaveOffer/TWOFbody/TWOFitem/construction/warpCount/@fibre) [Optional]</p>
@finDiscount	<p>financial discount applied for payment by the date specified  - base type: decimal, min inclusive: 0, max inclusive: 100, fraction digits: 2,</p>

	(XPath: <a href="#">TEXWeaveOffer/terms/payment/@finDiscount</a> ) [Optional]
@finSurcharge	financial surcharge applied for payment after the date specified - base type: decimal, min inclusive: 0, max inclusive: 100, fraction digits: 2, (XPath: <a href="#">TEXWeaveOffer/terms/payment/@finSurcharge</a> ) [Optional]
grossWeight	the gross weight of the overall goods supply, declared for transport or customs purpose - base type: decimal, min inclusive: 0, fraction digits: 2, (XPath: <a href="#">TEXWeaveOffer/terms/transInfo/grossWeight</a> ) 0-1
id	primary identification code of a Party; it is recommended the format: nation code (ISO 3166) + VAT identification number (11 crt), with the qualifier "numberingOrg"= MF - base type: string, max length: 15, (XPath: <a href="#">TEXWeaveOffer/TWOFbody/TWOFitem/thirdParty/id</a> ) 1-1 (XPath: <a href="#">TEXWeaveOffer/OFheader/subContractor/id</a> ) 1-1 (XPath: <a href="#">TEXWeaveOffer/OFheader/supplier/id</a> ) 1-1 (XPath: <a href="#">TEXWeaveOffer/OFheader/buyer/id</a> ) 1-1
incoTerm	specification of the terms of trade (INCOTERMS) - base type: string, cod. table: T3 <a href="http://www.moda-ml.net/moda-ml/repository/codelist/v2013-1/gc_T3.xml">http://www.moda-ml.net/moda-ml/repository/codelist/v2013-1/gc_T3.xml</a> (XPath: <a href="#">TEXWeaveOffer/terms/trade/incoTerm</a> ) 1-1
incoTermText	free text specifying the terms of trade (incoterm, location) - base type: string, max length: 70, (XPath: <a href="#">TEXWeaveOffer/terms/trade/incoTermText</a> ) 1-1
itemID	number of the line/item of the referenced document - base type: string, max length: 6, (XPath: <a href="#">TEXWeaveOffer/TWOFbody/TWOFitem/refDoc/itemID</a> ) 0-1 (XPath: <a href="#">TEXWeaveOffer/OFheader/refDoc/itemID</a> ) 0-1 (XPath: <a href="#">TEXWeaveOffer/TWOFbody/TWOFitem/fabMnfrOperation/refDoc/itemID</a> ) 0-1
jobName	description of the elementary job - base type: string, max length: 40, (XPath: <a href="#">TEXWeaveOffer/TWOFbody/TWOFitem/fabMnfrOperation/jobName</a> ) 1-1
legalName	legal name of a Party - base type: string, max length: 80, (XPath: <a href="#">TEXWeaveOffer/TWOFbody/TWOFitem/thirdParty/legalName</a> ) 0-1 (XPath: <a href="#">TEXWeaveOffer/OFheader/supplier/legalName</a> ) 0-1 (XPath: <a href="#">TEXWeaveOffer/OFheader/subContractor/legalName</a> ) 0-1 (XPath: <a href="#">TEXWeaveOffer/OFheader/buyer/legalName</a> ) 0-1
legalRef	legal reference of the duty or tax or fee category - base type: string, (XPath: <a href="#">TEXWeaveOffer/terms/allowanceCharge/dtScheme/legalRef</a> ) 0-1
lineN	number of the line item of the present message (xml document) - base type: positiveInteger, min inclusive: 1, max inclusive: 9999, (XPath: <a href="#">TEXWeaveOffer/TWOFbody/TWOFitem/lineN</a> ) 1-1
location	specification of a location - base type: string, max length: 40, (XPath: <a href="#">TEXWeaveOffer/terms/trade/location</a> ) 0-1 - note: <i>place to which the INCOTERM applies</i>
@logo	company logo (URL of the image jpeg or gif). It is recommended that the width of the image does not exceed 640 pixel. - base type: string, max length: 255, (XPath: <a href="#">TEXWeaveOffer/OFheader/supplier/@logo</a> ) [Optional] (XPath: <a href="#">TEXWeaveOffer/OFheader/buyer/@logo</a> ) [Optional]

@LRI	attribute usable to format a string according to a customized User rule (local rule) - base type: string, cod. table: NT3 <a href="http://www.moda-ml.net/moda-ml/repository/codelist/v2013-1/gc_NT3.xml">http://www.moda-ml.net/moda-ml/repository/codelist/v2013-1/gc_NT3.xml</a> (XPath: <a href="#">TEXWeaveOffer/terms/trade/location/@LRI</a> ) [Optional]
@method	standard protocol or method employed in a test to evaluate a characteristic or a parameter - base type: string, max length: 25, (XPath: <a href="#">TEXWeaveOffer/TWOFbody/TWOFitem/construction/weftDev/@method</a> ) [Optional] (XPath: <a href="#">TEXWeaveOffer/TWOFbody/TWOFitem/construction/checksFlaw/@method</a> ) [Optional] (XPath: <a href="#">TEXWeaveOffer/TWOFbody/TWOFitem/fabMnfrOperation/texMachineSpecs/specValue/@method</a> ) [Optional] (XPath: <a href="#">TEXWeaveOffer/TWOFbody/TWOFitem/fabricSpecs/specValue/@method</a> ) [Optional] (XPath: <a href="#">TEXWeaveOffer/TWOFbody/TWOFitem/construction/weftCount/@method</a> ) [Optional] [Default= ISO-2060] (XPath: <a href="#">TEXWeaveOffer/TWOFbody/TWOFitem/construction/warpCount/@method</a> ) [Optional] [Default= ISO-2060] (XPath: <a href="#">TEXWeaveOffer/TWOFbody/TWOFitem/construction/bowingWeft/@method</a> ) [Optional] (XPath: <a href="#">TEXWeaveOffer/TWOFbody/TWOFitem/construction/bowingWarp/@method</a> ) [Optional]
msgDate	date of issue of the present message (xml document), according to one of the patterns YYYY-MM-DD, YYYY-MM-DD:HH-MM or YYYY-WW. - base type: string, (XPath: <a href="#">TEXWeaveOffer/OFheader/msgDate</a> ) 1-1
@msgfunction	function performed by the present message with regards to the transmission - base type: string, cod. table: NT18 <a href="http://www.moda-ml.net/moda-ml/repository/codelist/v2013-1/gc_NT18.xml">http://www.moda-ml.net/moda-ml/repository/codelist/v2013-1/gc_NT18.xml</a> (XPath: <a href="#">TEXWeaveOffer/@msgfunction</a> ) [Optional] [Default= OR]
msgID	key identifier of the document in the information system of the issuing Party - base type: string, max length: 35, (XPath: <a href="#">TEXWeaveOffer/OFheader/msgID</a> ) 0-1
msgN	identification number given to the message (xml document) by its issuer - base type: string, max length: 35, (XPath: <a href="#">TEXWeaveOffer/OFheader/msgN</a> ) 1-1
netWeight	the net weight of the overall goods supply, declared for transport or customs purpose - base type: decimal, min inclusive: 0, fraction digits: 2, (XPath: <a href="#">TEXWeaveOffer/terms/transInfo/netWeight</a> ) 0-1
notBeforeDate	earliest date possible to begin an activity, according to one of the patterns YYYY-MM-DD, YYYY-MM-DD:HH-MM or YYYY-WW. - base type: string, (XPath: <a href="#">TEXWeaveOffer/TWOFbody/TWOFitem/notBeforeDate</a> ) 0-1
note	free text or structured (computer processing) note. For note structuring use the attributes "noteLabel" and "codelist" - base type: string, max length: 350, (XPath: <a href="#">TEXWeaveOffer/TWOFbody/TWOFitem/note</a> ) 0-19 (XPath: <a href="#">TEXWeaveOffer/OFheader/note</a> ) 0-19 (XPath: <a href="#">TEXWeaveOffer/TWOFbody/TWOFitem/fabMnfrOperation/note</a> ) 0-19 (XPath: <a href="#">TEXWeaveOffer/terms/allowanceCharge/dtScheme/note</a> ) 0-19

<p>@noteLabel</p>	<p>subject qualifier of a note</p> <ul style="list-style-type: none"> <li>- base type: string, max length: 35, (XPath: <a href="#">TEXWeaveOffer/TWOFbody/TWOFitem/note/@noteLabel</a>) [Optional]</li> <li>- nota: <i>must be used to qualify the subject of the note</i> (XPath: <a href="#">TEXWeaveOffer/terms/allowanceCharge/dtScheme/note/@noteLabel</a>) [Optional]</li> <li>- nota: <i>must be used to qualify the subject of the note</i> (XPath: <a href="#">TEXWeaveOffer/TWOFbody/TWOFitem/fabMnfrOperation/note/@noteLabel</a>) [Optional]</li> <li>- nota: <i>must be used to qualify the subject of the note</i> (XPath: <a href="#">TEXWeaveOffer/OFheader/note/@noteLabel</a>) [Optional]</li> <li>- nota: <i>must be used to qualify the subject of the note</i></li> </ul>
<p>@numberingOrg</p>	<p>code specifying the organisation who has created or owns the coding or numbering system</p> <ul style="list-style-type: none"> <li>- base type: string, cod. table: NT6 <a href="http://www.moda-ml.net/moda-ml/repository/codelist/v2013-1/gc_NT6.xml">http://www.moda-ml.net/moda-ml/repository/codelist/v2013-1/gc_NT6.xml</a> (XPath: <a href="#">TEXWeaveOffer/TWOFbody/TWOFitem/fabMnfrOperation/note/@numberingOrg</a>) [Optional]</li> <li>(XPath: <a href="#">TEXWeaveOffer/TWOFbody/TWOFitem/fabMnfrOperation/refDoc/docID/@numberingOrg</a>) [Optional]</li> <li>- nota: <i>here can be specified whose document numbering is used (e.g.: Client, Supplier, ..)</i> (XPath: <a href="#">TEXWeaveOffer/TWOFbody/TWOFitem/refDoc/docID/@numberingOrg</a>) [Optional]</li> <li>- nota: <i>here can be specified whose document numbering is used (e.g.: Client, Supplier, ..)</i> (XPath: <a href="#">TEXWeaveOffer/terms/allowanceCharge/dtScheme/note/@numberingOrg</a>) [Optional]</li> <li>(XPath: <a href="#">TEXWeaveOffer/OFheader/subContractor/id/@numberingOrg</a>) [Optional]</li> <li>(XPath: <a href="#">TEXWeaveOffer/TWOFbody/TWOFitem/thirdParty/id/@numberingOrg</a>) [Optional]</li> <li>(XPath: <a href="#">TEXWeaveOffer/OFheader/docID/@numberingOrg</a>) [Optional]</li> <li>- nota: <i>here can be specified whose document numbering is used (e.g.: Client, Supplier, ..)</i> (XPath: <a href="#">TEXWeaveOffer/OFheader/buyer/id/@numberingOrg</a>) [Optional]</li> <li>(XPath: <a href="#">TEXWeaveOffer/OFheader/supplier/id/@numberingOrg</a>) [Optional]</li> <li>(XPath: <a href="#">TEXWeaveOffer/OFheader/refDoc/docID/@numberingOrg</a>) [Optional]</li> <li>- nota: <i>here can be specified whose document numbering is used (e.g.: Client, Supplier, ..)</i> (XPath: <a href="#">TEXWeaveOffer/TWOFbody/TWOFitem/note/@numberingOrg</a>) [Optional]</li> <li>(XPath: <a href="#">TEXWeaveOffer/OFheader/note/@numberingOrg</a>) [Optional]</li> </ul>
<p>@part</p>	<p>percent fraction of a total payment</p> <ul style="list-style-type: none"> <li>- base type: decimal, min inclusive: 1, max inclusive: 99, fraction digits: 2, (XPath: <a href="#">TEXWeaveOffer/terms/insPayment/@part</a>) [Required]</li> <li>- nota: <i>here the % value of each installment must be indicated</i></li> </ul>
<p>payMode</p>	<p>way or means of payment</p> <ul style="list-style-type: none"> <li>- base type: string, cod. table: T2 <a href="http://www.moda-ml.net/moda-ml/repository/codelist/v2013-1/gc_T2.xml">http://www.moda-ml.net/moda-ml/repository/codelist/v2013-1/gc_T2.xml</a> (XPath: <a href="#">TEXWeaveOffer/terms/payment/payMode</a>) 0-1 (XPath: <a href="#">TEXWeaveOffer/terms/insPayment/payMode</a>) 0-1</li> </ul>
<p>payTerm</p>	<p>code specifying the terms or time by which the payment must be done</p> <ul style="list-style-type: none"> <li>- base type: string, cod. table: T1</li> </ul>



	<a href="http://www.moda-ml.net/moda-ml/repository/codelist/v2013-1/gc_T1.xml">http://www.moda-ml.net/moda-ml/repository/codelist/v2013-1/gc_T1.xml</a> (XPath: <a href="#">TEXWeaveOffer/terms/insPayment/payTerm</a> ) 1-1 (XPath: <a href="#">TEXWeaveOffer/terms/payment/payTerm</a> ) 1-1
payTermText	free text specifying the terms by which the payment must be done (time/mode or means) - base type: string, max length: 40, (XPath: <a href="#">TEXWeaveOffer/terms/insPayment/payTermText</a> ) 1-1 (XPath: <a href="#">TEXWeaveOffer/terms/payment/payTermText</a> ) 1-1
pcTolerance	percent deviation tolerated on the value of a measurement (it must have a plus or minus sign) - base type: decimal, min inclusive: 0, max inclusive: 100, total digits: 2, (XPath: <a href="#">TEXWeaveOffer/TWOFbody/TWOFitem/fabricSpecs/pcTolerance</a> ) 0-2 (XPath: <a href="#">TEXWeaveOffer/TWOFbody/TWOFitem/fabMnfrOperation/texMachineSpecs/pcTolerance</a> ) 0-2
percCompos	fiber rate in the product composition - base type: decimal, min inclusive: 0, max inclusive: 100, fraction digits: 2, (XPath: <a href="#">TEXWeaveOffer/TWOFbody/TWOFitem/fabricCompos/percCompos</a> ) 1-9
person	name of the contact person within a Party - base type: string, max length: 40, (XPath: <a href="#">TEXWeaveOffer/TWOFbody/TWOFitem/thirdParty/person</a> ) 0-1 (XPath: <a href="#">TEXWeaveOffer/OFheader/buyer/person</a> ) 0-1 (XPath: <a href="#">TEXWeaveOffer/OFheader/supplier/person</a> ) 0-1 (XPath: <a href="#">TEXWeaveOffer/OFheader/subContractor/person</a> ) 0-1
@phone	phone number of the contact person within a Party - base type: string, max length: 35, (XPath: <a href="#">TEXWeaveOffer/OFheader/subContractor/person/@phone</a> ) [Optional] (XPath: <a href="#">TEXWeaveOffer/OFheader/buyer/person/@phone</a> ) [Optional] (XPath: <a href="#">TEXWeaveOffer/TWOFbody/TWOFitem/thirdParty/person/@phone</a> ) [Optional] (XPath: <a href="#">TEXWeaveOffer/OFheader/supplier/person/@phone</a> ) [Optional]
pieceLength	length of the piece - base type: decimal, min inclusive: 0, fraction digits: 2, (XPath: <a href="#">TEXWeaveOffer/TWOFbody/TWOFitem/construction/pieceLength</a> ) 0-1
postCode	code defining the postal zone - base type: string, max length: 10, (XPath: <a href="#">TEXWeaveOffer/OFheader/supplier/postCode</a> ) 0-1 (XPath: <a href="#">TEXWeaveOffer/TWOFbody/TWOFitem/thirdParty/postCode</a> ) 0-1 (XPath: <a href="#">TEXWeaveOffer/OFheader/buyer/postCode</a> ) 0-1 (XPath: <a href="#">TEXWeaveOffer/OFheader/subContractor/postCode</a> ) 0-1
price	unit price of the article, object or service specified - base type: decimal, min inclusive: 0, fraction digits: 2, (XPath: <a href="#">TEXWeaveOffer/TWOFbody/TWOFitem/price</a> ) 1-1
@priceQualifier	type of price with reference to discount and taxes - base type: string, cod. table: NT20 <a href="http://www.moda-ml.net/moda-ml/repository/codelist/v2013-1/gc_NT20.xml">http://www.moda-ml.net/moda-ml/repository/codelist/v2013-1/gc_NT20.xml</a> (XPath: <a href="#">TEXWeaveOffer/TWOFbody/TWOFitem/price/@priceQualifier</a> ) [Optional] [Default= NET]
qty	net quantity of the article or object correlated, qualified by the function of the document (ordering, delivering, ..) and by the context

	- base type: decimal, min inclusive: 0, fraction digits: 2, (XPath: <a href="#">TEXWeaveOffer/TWOFbody/TWOFitem/qty</a> ) 1-2
resin	resin (coating) percentage in finished weight - base type: decimal, min inclusive: 0, (XPath: <a href="#">TEXWeaveOffer/TWOFbody/TWOFitem/construction/resin</a> ) 0-1
@role	Third Party role qualifier - base type: string, cod. table: NT2 <a href="http://www.moda-ml.net/moda-ml/repository/codelist/v2013-1/gc_NT2.xml">http://www.moda-ml.net/moda-ml/repository/codelist/v2013-1/gc_NT2.xml</a> (XPath: <a href="#">TEXWeaveOffer/TWOFbody/TWOFitem/thirdParty/@role</a> ) [Required]
season	sale season; defined as: season (1 crt) + year (4 crt) - season: S/S=1 A/W=2 Spring=3 Summer=4 Autumn=5 Winter=6: for more than four seasons use alphabetic sequence: 1st season=A 2nd season=B etc.etc. - base type: string, max length: 15, (XPath: <a href="#">TEXWeaveOffer/TWOFbody/TWOFitem/fabMnfrOperation/refDoc/season</a> ) 0-1 - note: <i>here indicates the season to which the referenced document belongs</i> (XPath: <a href="#">TEXWeaveOffer/OFheader/refDoc/season</a> ) 0-1 - note: <i>here indicates the season to which the referenced document belongs</i> (XPath: <a href="#">TEXWeaveOffer/OFheader/season</a> ) 0-1 (XPath: <a href="#">TEXWeaveOffer/TWOFbody/TWOFitem/refDoc/season</a> ) 0-1 - note: <i>here indicates the season to which the referenced document belongs</i>
@sender	qualifier that specifies the Party issuing of the document - base type: boolean, (XPath: <a href="#">TEXWeaveOffer/OFheader/subContractor/@sender</a> ) [Optional] - nota: <i>This attribute is mandatory when the STYLESHEET must be produced</i> (XPath: <a href="#">TEXWeaveOffer/OFheader/buyer/@sender</a> ) [Optional] - nota: <i>This attribute is mandatory when the STYLESHEET must be produced</i> (XPath: <a href="#">TEXWeaveOffer/TWOFbody/TWOFitem/thirdParty/@sender</a> ) [Optional] - nota: <i>This attribute is mandatory when the STYLESHEET must be produced</i> (XPath: <a href="#">TEXWeaveOffer/OFheader/supplier/@sender</a> ) [Optional] - nota: <i>This attribute is mandatory when the STYLESHEET must be produced</i>
@source	party who has provided the data - base type: string, cod. table: NT12 <a href="http://www.moda-ml.net/moda-ml/repository/codelist/v2013-1/gc_NT12.xml">http://www.moda-ml.net/moda-ml/repository/codelist/v2013-1/gc_NT12.xml</a> (XPath: <a href="#">TEXWeaveOffer/TWOFbody/TWOFitem/fabMnfrOperation/texMachineSpecs/specValue/@source</a> ) [Optional] (XPath: <a href="#">TEXWeaveOffer/TWOFbody/TWOFitem/fabricSpecs/specValue/@source</a> ) [Optional]
specValue	value requested for a property or a parameter that is measured - base type: decimal, (XPath: <a href="#">TEXWeaveOffer/TWOFbody/TWOFitem/fabMnfrOperation/texMachineSpecs/specValue</a> ) 0-1 (XPath: <a href="#">TEXWeaveOffer/TWOFbody/TWOFitem/fabricSpecs/specValue</a> ) 0-1
street	street and building number identifying a location - base type: string, max length: 80, (XPath: <a href="#">TEXWeaveOffer/OFheader/subContractor/street</a> ) 0-1 (XPath: <a href="#">TEXWeaveOffer/OFheader/buyer/street</a> ) 0-1 (XPath: <a href="#">TEXWeaveOffer/OFheader/supplier/street</a> ) 0-1

	(XPath: <a href="#">TEXWeaveOffer/TWOFbody/TWOFitem/thirdParty/street</a> ) 0-1
subCountry	short name or code of the sub-country entity - base type: string, max length: 9, (XPath: <a href="#">TEXWeaveOffer/OFheader/supplier/subCountry</a> ) 0-1 (XPath: <a href="#">TEXWeaveOffer/TWOFbody/TWOFitem/thirdParty/subCountry</a> ) 0-1 (XPath: <a href="#">TEXWeaveOffer/OFheader/buyer/subCountry</a> ) 0-1 (XPath: <a href="#">TEXWeaveOffer/OFheader/subContractor/subCountry</a> ) 0-1
taxCategory	duty or tax or fee category - base type: string, cod. table: T62 <a href="http://www.moda-ml.net/moda-ml/repository/codelist/v2013-1/gc_T62.xml">http://www.moda-ml.net/moda-ml/repository/codelist/v2013-1/gc_T62.xml</a> (XPath: <a href="#">TEXWeaveOffer/terms/allowanceCharge/dtScheme/taxCategory</a> ) 0-1
taxRate	duty or tax or fee percent rate - base type: string, (XPath: <a href="#">TEXWeaveOffer/terms/allowanceCharge/dtScheme/taxRate</a> ) 0-1
@taxType	duty or tax or fee type - base type: string, cod. table: T61 <a href="http://www.moda-ml.net/moda-ml/repository/codelist/v2013-1/gc_T61.xml">http://www.moda-ml.net/moda-ml/repository/codelist/v2013-1/gc_T61.xml</a> (XPath: <a href="#">TEXWeaveOffer/terms/allowanceCharge/dtScheme/@taxType</a> ) [Required]
texJob	operation of a work cycle for fabric - base type: string, cod. table: T202 <a href="http://www.moda-ml.net/moda-ml/repository/codelist/v2013-1/gc_T202.xml">http://www.moda-ml.net/moda-ml/repository/codelist/v2013-1/gc_T202.xml</a> (XPath: <a href="#">TEXWeaveOffer/TWOFbody/TWOFitem/fabMnfrOperation/texJob</a> ) 1-1
texJobTech	operation technology for fabric - base type: string, cod. table: T262 <a href="http://www.moda-ml.net/moda-ml/repository/codelist/v2013-1/gc_T262.xml">http://www.moda-ml.net/moda-ml/repository/codelist/v2013-1/gc_T262.xml</a> (XPath: <a href="#">TEXWeaveOffer/TWOFbody/TWOFitem/fabMnfrOperation/texJobTech</a> ) 0-9
texMachine	machine used in an operation of a work cycle for fabric - base type: string, cod. table: T272 <a href="http://www.moda-ml.net/moda-ml/repository/codelist/v2013-1/gc_T272.xml">http://www.moda-ml.net/moda-ml/repository/codelist/v2013-1/gc_T272.xml</a> (XPath: <a href="#">TEXWeaveOffer/TWOFbody/TWOFitem/fabMnfrOperation/texMachine</a> ) 0-1
texMachineParam	setting parameter of a machine used in an operation of a work cycle for fabric - base type: string, cod. table: T282 <a href="http://www.moda-ml.net/moda-ml/repository/codelist/v2013-1/gc_T282.xml">http://www.moda-ml.net/moda-ml/repository/codelist/v2013-1/gc_T282.xml</a> (XPath: <a href="#">TEXWeaveOffer/TWOFbody/TWOFitem/fabMnfrOperation/texMachineSpecs/texMachineParam</a> ) 1-1
tolerance	deviation tolerated on the value of a measurement (it must have a plus or minus sign) - base type: decimal, (XPath: <a href="#">TEXWeaveOffer/TWOFbody/TWOFitem/fabricSpecs/tolerance</a> ) 0-2 (XPath: <a href="#">TEXWeaveOffer/TWOFbody/TWOFitem/fabMnfrOperation/texMachineSpecs/tolerance</a> ) 0-2
transCondition	special condition of transport or special service requested to the Forwarder - base type: string, cod. table: T38 <a href="http://www.moda-ml.net/moda-ml/repository/codelist/v2013-1/gc_T38.xml">http://www.moda-ml.net/moda-ml/repository/codelist/v2013-1/gc_T38.xml</a> (XPath: <a href="#">TEXWeaveOffer/terms/transInfo/transCondition</a> ) 0-3
transConditionText	free text description of the special condition of transport or special

	<p>service requested to the Forwarder</p> <p>- base type: string, max length: 100, (XPath: <a href="#">TEXWeaveOffer/terms/transInfo/transConditionText</a>) 0-1</p>
transMeans	<p>means of transport, in general or referred to a specific leg</p> <p>- base type: string, cod. table: T40 <a href="http://www.moda-ml.net/moda-ml/repository/codelist/v2013-1/gc_T40.xml">http://www.moda-ml.net/moda-ml/repository/codelist/v2013-1/gc_T40.xml</a> (XPath: <a href="#">TEXWeaveOffer/terms/transInfo/transMeans</a>) 0-1</p>
transMode	<p>way of transport, in general or referred to the specified leg</p> <p>- base type: string, cod. table: T8 <a href="http://www.moda-ml.net/moda-ml/repository/codelist/v2013-1/gc_T8.xml">http://www.moda-ml.net/moda-ml/repository/codelist/v2013-1/gc_T8.xml</a> (XPath: <a href="#">TEXWeaveOffer/terms/transInfo/transMode</a>) 1-1</p>
@transReason	<p>reason for the transport</p> <p>- base type: string, cod. table: NT11 <a href="http://www.moda-ml.net/moda-ml/repository/codelist/v2013-1/gc_NT11.xml">http://www.moda-ml.net/moda-ml/repository/codelist/v2013-1/gc_NT11.xml</a> (XPath: <a href="#">TEXWeaveOffer/terms/transInfo/@transReason</a>) [Optional]</p>
@um	<p>specification of the unit of measure</p> <p>- base type: string, cod. table: NT7 <a href="http://www.moda-ml.net/moda-ml/repository/codelist/v2013-1/gc_NT7.xml">http://www.moda-ml.net/moda-ml/repository/codelist/v2013-1/gc_NT7.xml</a></p> <p>(XPath: <a href="#">TEXWeaveOffer/TWOFbody/TWOFitem/fabMnfrOperation/texMachineSpecs/tolerance/@um</a>) [Required]</p> <p>(XPath: <a href="#">TEXWeaveOffer/TWOFbody/TWOFitem/fabMnfrOperation/texMachineSpecs/specValue/@um</a>) [Optional]</p> <p>(XPath: <a href="#">TEXWeaveOffer/TWOFbody/TWOFitem/fabMnfrOperation/texMachineSpecs/pcTolerance/@um</a>) [Optional]</p> <p>- nota: <i>to be used when it has to be soecified if the declared percentage is by weight, volume, etc...</i></p> <p>(XPath: <a href="#">TEXWeaveOffer/TWOFbody/TWOFitem/construction/fabricCutWidth/@um</a>) [Optional] [Default= CMT]</p> <p>(XPath: <a href="#">TEXWeaveOffer/terms/transInfo/netWeight/@um</a>) [Required]</p> <p>(XPath: <a href="#">TEXWeaveOffer/TWOFbody/TWOFitem/fabricSpecs/specValue/@um</a>) [Optional]</p> <p>(XPath: <a href="#">TEXWeaveOffer/TWOFbody/TWOFitem/construction/fabricWeightM2/@um</a>) [Optional] [Default= GRM]</p> <p>(XPath: <a href="#">TEXWeaveOffer/TWOFbody/TWOFitem/construction/fabricWeightM/@um</a>) [Optional] [Default= GRM]</p> <p>(XPath: <a href="#">TEXWeaveOffer/TWOFbody/TWOFitem/construction/fabricWidth/@um</a>) [Optional] [Default= CMT]</p> <p>(XPath: <a href="#">TEXWeaveOffer/terms/transInfo/grossWeight/@um</a>) [Required]</p> <p>(XPath: <a href="#">TEXWeaveOffer/TWOFbody/TWOFitem/qty/@um</a>) [Required]</p> <p>(XPath: <a href="#">TEXWeaveOffer/TWOFbody/TWOFitem/price/@um</a>) [Optional]</p> <p>- nota: <i>Unit of measure of the product to which the price is referred (price per meter)</i></p> <p>(XPath: <a href="#">TEXWeaveOffer/TWOFbody/TWOFitem/construction/pieceLength/@um</a>) [Optional] [Default= MTR]</p> <p>(XPath: <a href="#">TEXWeaveOffer/TWOFbody/TWOFitem/fabricSpecs/tolerance/@um</a>) [Required]</p> <p>(XPath: <a href="#">TEXWeaveOffer/TWOFbody/TWOFitem/fabricSpecs/pcTolerance/@um</a>) [Optional]</p> <p>- nota: <i>to be used when it has to be soecified if the declared percentage is by weight, volume, etc...</i></p>
@useProfile	<p>use profile to which the present document if compliant if it was agreed by the parties. It is suggested a URI with reference to the firms or the URL of the profile.</p> <p>- base type: string, (XPath: <a href="#">TEXWeaveOffer/@useProfile</a>) [Optional]</p>
validityEnd	<p>date by which the validity ends, according to one of the patterns YYYY-MM-DD, YYYY-MM-DD:HH-MM or YYYY-WW.</p> <p>- base type: string, (XPath: <a href="#">TEXWeaveOffer/OFheader/validityEnd</a>) 1-1</p>

validityStart	date by which the validity starts, according to one of the patterns YYYY-MM-DD, YYYY-MM-DD:HH-MM or YYYY-WW. - base type: string, (XPath: <a href="#">TEXWeaveOffer/OFheader/validityStart</a> ) 0-1
@VAT	VAT rate or code ( deprecated, use dtScheme element ) - base type: string, cod. table: NT16 <a href="http://www.moda-ml.net/moda-ml/repository/codelist/v2013-1/gc_NT16.xml">http://www.moda-ml.net/moda-ml/repository/codelist/v2013-1/gc_NT16.xml</a> (XPath: <a href="#">TEXWeaveOffer/TWOFbody/TWOFitem/thirdParty/@VAT</a> ) [Optional] (XPath: <a href="#">TEXWeaveOffer/TWOFbody/TWOFitem/lineN/@VAT</a> ) [Optional] (XPath: <a href="#">TEXWeaveOffer/terms/allowanceCharge/@VAT</a> ) [Optional]
@version	Dictionary version from which the instance has been created - base type: string, cod. table: NT100 <a href="http://www.moda-ml.net/moda-ml/repository/codelist/v2013-1/gc_NT100.xml">http://www.moda-ml.net/moda-ml/repository/codelist/v2013-1/gc_NT100.xml</a> (XPath: <a href="#">TEXWeaveOffer/@version</a> ) [Optional] [Default= 2013-1]
warpCount	measure of thinness of the warp thread - base type: string, max length: 10, (XPath: <a href="#">TEXWeaveOffer/TWOFbody/TWOFitem/construction/warpCount</a> ) 0-9
warpEndsN	number of warp threads in 1 centimetre - base type: decimal, min inclusive: 0, fraction digits: 1, (XPath: <a href="#">TEXWeaveOffer/TWOFbody/TWOFitem/construction/warpEndsN</a> ) 0-1
weave	type of weaving used in the manufacturing of fabric - base type: string, cod. table: T17 <a href="http://www.moda-ml.net/moda-ml/repository/codelist/v2013-1/gc_T17.xml">http://www.moda-ml.net/moda-ml/repository/codelist/v2013-1/gc_T17.xml</a> (XPath: <a href="#">TEXWeaveOffer/TWOFbody/TWOFitem/construction/weave</a> ) 0-1
weftCount	measure of thinness of the weft thread - base type: string, max length: 10, (XPath: <a href="#">TEXWeaveOffer/TWOFbody/TWOFitem/construction/weftCount</a> ) 0-9
weftDev	deviation from right angle in weft - base type: decimal, min inclusive: 0, (XPath: <a href="#">TEXWeaveOffer/TWOFbody/TWOFitem/construction/weftDev</a> ) 0-1
weftEndsN	number of weft threads in 1 centimetre - base type: decimal, min inclusive: 0, fraction digits: 1, (XPath: <a href="#">TEXWeaveOffer/TWOFbody/TWOFitem/construction/weftEndsN</a> ) 0-1

## 2.3 Enumeration tables

List of enumeration tables used in the XML document. You can find the corresponding codes at: <http://www.moda-ml.org/moda-ml/imple/moda-ml-2013-1.asp?lingua=en&pag=6>

NT100 - eBIZ Moda-ML version  
NT11 - transport causal  
NT12 - data source  
NT16 - VAT rate or code  
NT18 - message function  
NT2 - third party qualifier  
NT20 - price qualifier  
NT29 - format of a date  
NT3 - data format  
NT32 - fabric family  
NT5 - action code  
NT6 - coding system owner/issuer  
NT7 - unity of measure  
T1 - terms of payment  
T10 - ISO3166 - Country  
T13 - CFM properties of fabric  
T17 - weave type  
T19 - fibre type  
T2 - Modes of payment  
T202 - type of job on fabric  
T21 - type of document  
T262 - type of job technology for fabric  
T272 - machine type for fabric operation  
T282 - parameter type for fabric operation  
T3 - terms of delivery  
T38 - transport conditions  
T40 - type of transport means  
T41 - type of Allowance or Charge  
T61 - duty or tax or fee type  
T62 - duty or tax or fee category  
T8 - Modes of Transport

# Annex A

Representative images of the principal complex elements' structure.

