



<http://www.moda-ml.org>

IMPLEMENTATION GUIDE TRANSACTION "YARN OFFER REQUEST"

Version: 2013-1

Date of release: 25/03/2013

Document code: G073

XML Schema repository:<http://www.moda-ml.org/moda-ml/repository/schema/v2013-1/default.asp>

Guides repository:<http://www.moda-ml.org/moda-ml/repository/guide/v2013-1/default.asp>

Guide filename: G073-MODA-ML-YarnOfferRequest.pdf

1. BUSINESS DESCRIPTION

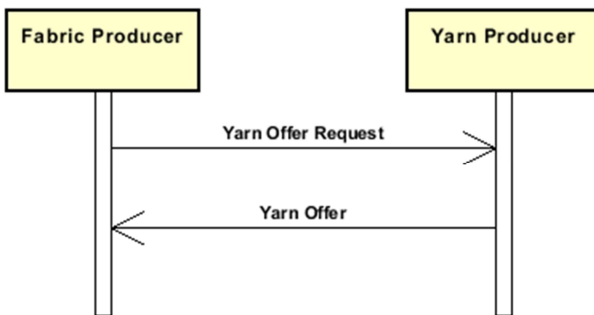
1.1 Scope

the Fabric or Kintwear Manufacturer sends this enquiry to the Yarn Producer about the kind of yarn he needs, by specifying a selection of manufacturing characteristics and mechanical-physical-chemical properties with the desired values of the ad-hoc parameters.

1.2 Generalities

The Fabric or Knitwear Producer sends this enquiry to the Yarn Producer about the kind of yarn he needs, by specifying a selection of manufacturing characteristics and mechanical-physical-chemical properties with the desired values of the ad-hoc parameters.

1.3. Possible scenario



2. IMPLEMENTATION GUIDE

2.1 General structure of XML document

All the business data that can be exchanged through this class of documents are shown in the following "document structure", that provides a simplified vision of the Schema.

In particular:

- the two numbers following each element define its "cardinality" (minimum and maximum number of occurrences); the minimum equal zero indicates that the element is optional, the minimum greater than zero indicates that is mandatory;
- the bold character denotes the complex elements (aggregates of simple elements) that were built for the sake of functionality and re-usability of some complex informations sets. The child elements in each parent element are easily spotted as "indented";
- the symbol "@" denotes an attribute of the preceding element; here "the usage indicator (optional, required, ...)" is shown in square brackets.

Structure

YARNOfferRequest

@msgfunction [Optional]

@version [Optional] [Default= 2013-1]

@useProfile [Optional]

| **RQheader 1-1**

| | msgN 1-1

| | - choose -

| | msgID 0-1

| | - or -

| | docID 0-1

| | *@numberingOrg [Optional]*

| | - end choose -

| | msgDate 1-1

| | *@dateForm [Optional]*

| | season 0-1

| | validityStart 0-1

| | *@dateForm [Optional]*

| | validityEnd 1-1

| | *@dateForm [Optional]*

| | **refDoc 0-9**

| | *@docType [Required]*

| | | docID 1-2

| | | *@numberingOrg [Optional]*

| | | docDate 0-1

| | | *@dateForm [Optional]*

| | | season 0-1

| | | itemID 0-1

| | **buyer 1-1**

| | *@logo [Optional]*

| | *@sender [Optional]*

| | | id 1-1

| | | *@numberingOrg [Optional]*

| | | legalName 0-1

| | | dept 0-1

| | | person 0-1

| | | *@email [Optional]*

| | | *@phone [Optional]*

| | | *@fax [Optional]*

| | | street 0-1

- | | | city 0-1
- | | | subCountry 0-1
- | | | country 0-1
- | | | postCode 0-1
- choose -
- | | **supplier 1-1**
- | | | @logo [Optional]
- | | | @sender [Optional]
- | | | | id 1-1
- | | | | | @numberingOrg [Optional]
- | | | | legalName 0-1
- | | | | dept 0-1
- | | | | person 0-1
- | | | | | @email [Optional]
- | | | | | @phone [Optional]
- | | | | | @fax [Optional]
- | | | | street 0-1
- | | | | city 0-1
- | | | | subCountry 0-1
- | | | | country 0-1
- | | | | postCode 0-1

- or -

- | | **subContractor 1-1**
- | | | @sender [Optional]
- | | | | id 1-1
- | | | | | @numberingOrg [Optional]
- | | | | legalName 0-1
- | | | | dept 0-1
- | | | | person 0-1
- | | | | | @email [Optional]
- | | | | | @phone [Optional]
- | | | | | @fax [Optional]
- | | | | street 0-1
- | | | | city 0-1
- | | | | subCountry 0-1
- | | | | country 0-1
- | | | | postCode 0-1

- end choose -

- | | note 0-19
- | | | @numberingOrg [Optional]
- | | | @codeList [Optional]
- | | | @noteLabel [Optional]

| **terms 0-1**

- | | **payment 0-5**
- | | | @finDiscount [Optional]
- | | | @finSurcharge [Optional]

- choose -

- | | | payTerm 1-1
- or -
- | | | payTermText 1-1
- end choose -

- | | | payMode 0-1

- | | **insPayment 0-5**
- | | | @part [Required]

- choose -

- | | | payTerm 1-1
- or -
- | | | payTermText 1-1
- end choose -

- | | | payMode 0-1

- | | **trade 0-1**
- | | | - choose -
- | | | | incoTermText 1-1
- | | | - or -
- | | | | incoTerm 1-1
- | | | - end choose -
- | | | | location 0-1
- | | | | @LRI [Optional]
- | | **transInfo 0-1**
- | | | @transReason [Optional]
- | | | | transMode 1-1
- | | | | carrier 0-1
- | | | | deliveryPlace 0-1
- | | | | grossWeight 0-1
- | | | | @um [Required]
- | | | | netWeight 0-1
- | | | | @um [Required]
- | | | | transMeans 0-1
- | | | | transCondition 0-3
- | | | | transConditionText 0-1
- | | **allowanceCharge 0-9**
- | | | @VAT [Optional]
- | | | - choose -
- | | | | AC_category 1-1
- | | | - or -
- | | | | AC_categoryText 1-1
- | | | - choose -
- | | | | AC_percent 1-1
- | | | - or -
- | | | | AC_amount 1-1
- | | | - end choose -
- | | | | **dtScheme 0-1**
- | | | | | @taxType [Required]
- | | | | | taxCategory 0-1
- | | | | | taxRate 0-1
- | | | | | legalRef 0-1
- | | | | | @codeList [Required]
- | | | | | note 0-19
- | | | | | @numberingOrg [Optional]
- | | | | | @codeList [Optional]
- | | | | | @noteLabel [Optional]

- | **yarnTecSheet 1-99**
- | | **yarnIdentity 0-1**
- | | | yarnNameSupplier 1-1
- | | | yarnNameBuyer 0-1
- | | | tradeMark 0-1
- | | | season 0-1
- | | | **yarnCompos 0-1**
- | | | | percCompos 1-9
- | | | | @fibre [Required]
- | | | **fibresPD 0-9**
- | | | | @fibre [Required]
- | | | | length 0-1
- | | | | @um [Required]
- | | | | diameter 0-1
- | | | | @um [Optional]
- | | | | country 0-1
- | | | yarnClass 0-1
- | | | yarnKind 0-1
- | | | yarnCount 0-1

- | @countSystem [Required]
- | @CV [Optional]
- | **yarnTwist 0-1**
 - | twistDirection 1-1
 - | qty 0-1
 - | @um [Required]
- | moistRegain 0-1
- | **yarnCode 0-2**
 - | @numberingOrg [Optional] [Default= CL]
 - | art 1-1
 - | @numberingOrg [Optional]
 - | @codeList [Optional]
 - | @listName [Optional]
 - | @listVersion [Optional]
 - | color 0-1
 - | @numberingOrg [Optional]
 - | @codeList [Optional]
 - | @listName [Optional]
 - | @listVersion [Optional]
 - | added 0-9
 - | @numberingOrg [Optional]
 - | @addType [Optional]
 - | description 0-1
- | customsStat 0-1
- | yarnComWeight 0-1
- | @um [Required]
- | standardPack 0-1
- | @reelType [Optional]
- | yarnReelQty 0-1
- | @um [Required]
- | minLot 0-1
- | @um [Required]
- | minLotExclusive 0-1
- | @um [Required]
- | optLot 0-9
- | @um [Optional]
- | avgDeliveryDD 0-1
- | lotN 0-1
- | @numberingOrg [Optional]
- | dyeN 0-1
- | @numberingOrg [Optional]
- | price 0-2
- | @um [Optional]
- | @priceQualifier [Optional] [Default= NET]
- | **yarnManufacture 0-1**
 - | **yarnPly 0-1**
 - | plyWork 1-1
 - | plyN 0-1
 - | **yarnJobSeq 0-1**
 - | yarnJob 1-19
 - | dyeProcess 0-1
 - | dyeStuff 0-1
 - | **yarnColorFastness 0-99**
 - | @colorType [Required]
 - | yarnCFTest 1-1
 - | specValue 1-1
 - | @um [Optional]
 - | @source [Optional]
 - | @method [Optional]
 - | @application [Optional]
 - | @CV [Optional]

colorCard 0-1

colorCardItem 1-unbounded

color 1-1
@numberingOrg [Optional]
@codeList [Optional]
@listName [Optional]
@listVersion [Optional]
CIELab 0-unbounded
@illuminant [Optional]
@standardObserver [Optional]

L 1-1
a 1-1
b 1-1

refDoc 0-1

@docType [Required]
docID 1-2
@numberingOrg [Optional]
docDate 0-1
@dateForm [Optional]
season 0-1
itemID 0-1
description 0-1

yarnQuality 0-1

yarnQTest 1-19

yarnQTestType 0-0
specValue 0-1
@um [Optional]
@source [Optional]
@method [Optional]
@application [Optional]
@CV [Optional]
tolerance 0-1
@um [Required]
pcTolerance 0-1
@um [Optional]
comply 0-1

2.2 Detailed description of document elements

Following tables show all elements (complex and simple) used in this document. Description includes: 1) element's information: xml tag, name, brief description, data type and syntax constraints; 2) information about use of the element in a particular position in the document: xpath and possible associated notes.

2.2.1 Complex elements (Aggregate Business Information Entities)

Complex elements are those elements whose content is composed of other elements (childs).Complex elements are alphabetically ordered.

allowanceCharge	Allowances and Charges related to an Order or a contract (XPath: YARNOfferRequest/terms/allowanceCharge) 0-9
buyer	details of the Buyer - base type: Nad, (XPath: YARNOfferRequest/RQheader/buyer) 1-1
CIELab	color point in the CIELab color space (XPath: YARNOfferRequest/yarnTecSheet/yarnManufacture/colorCard/colorCardItem/CIELab) 0-unbounded
colorCard	color card for a textile product (XPath: YARNOfferRequest/yarnTecSheet/yarnManufacture/colorCard) 0-1
colorCardItem	item of the color card (XPath: YARNOfferRequest/yarnTecSheet/yarnManufacture/colorCard/colorCardItem) 1-unbounded
dtScheme	set of data usable to declare the duty or tax applied (XPath: YARNOfferRequest/terms/allowanceCharge/dtScheme) 0-1
fibrePD	physical data of a textile fibre (XPath: YARNOfferRequest/yarnTecSheet/yarnIdentity/fibrePD) 0-9
insPayment	payment details for payment by installments (XPath: YARNOfferRequest/terms/insPayment) 0-5 - note: <i>excluded the case of offers, this set of data is alternative to payment set and must be iterated for each payment installment</i>
payment	payment details for payment all in one (XPath: YARNOfferRequest/terms/payment) 0-5 - note: <i>excluded the case of offers, this set of data is alternative to insPayment, it can be iterated to specify alternative terms of payment (e.g.: 60 days or 30 days with 3% discount)</i>
refDoc	identification of a document and of an item thereof, to which the message makes reference (XPath: YARNOfferRequest/RQheader/refDoc) 0-9 (XPath: YARNOfferRequest/yarnTecSheet/yarnManufacture/colorCard/colorCardItem/refDoc) 0-1 - note: <i>here the CxF3 file can be referenced</i>
RQheader	header of the document REQUEST FOR OFFER (XPath: YARNOfferRequest/RQheader) 1-1
subContractor	details of the Sub-contractor - base type: Nad, (XPath: YARNOfferRequest/RQheader/subContractor) 1-1

supplier	details of the Supplier - base type: Nad, (XPath: YARNOfferRequest/RQheader/supplier) 1-1
terms	details of the commercial obligations for payment and delivery (XPath: YARNOfferRequest/terms) 0-1
trade	general terms of trade for the specified supply (XPath: YARNOfferRequest/terms/trade) 0-1
transInfo	details of transport: mode, carrier and delivery place (XPath: YARNOfferRequest/terms/transInfo) 0-1
yarnCode	full codification of a yarn product (XPath: YARNOfferRequest/yarnTecSheet/yarnIdentity/yarnCode) 0-2
yarnColorFastness	color fastness data for a yarn (XPath: YARNOfferRequest/yarnTecSheet/yarnManufacture/yarnColorFastness) 0-99
yarnCompos	fibrous composition of a yarn product (XPath: YARNOfferRequest/yarnTecSheet/yarnIdentity/yarnCompos) 0-1
yarnIdentity	set of data that univocally identify the yarn article and any classification or commercial information (XPath: YARNOfferRequest/yarnTecSheet/yarnIdentity) 0-1
yarnJobSeq	operations undergone in the manufacturing of a yarn (XPath: YARNOfferRequest/yarnTecSheet/yarnManufacture/yarnJobSeq) 0-1
yarnManufacture	set of data that specify the construction details of the yarn (XPath: YARNOfferRequest/yarnTecSheet/yarnManufacture) 0-1
yarnPly	plying characteristics of a yarn (XPath: YARNOfferRequest/yarnTecSheet/yarnManufacture/yarnPly) 0-1
yarnQTest	parameter related to the quality of yarn - base type: string, (XPath: YARNOfferRequest/yarnTecSheet/yarnQuality/yarnQTest) 1-19
yarnQuality	set of data that specify the quality data of the yarn (XPath: YARNOfferRequest/yarnTecSheet/yarnQuality) 0-1
yarnTecSheet	technical sheet of the yarn (XPath: YARNOfferRequest/yarnTecSheet) 1-99
yarnTwist	twist characteristics of yarn (XPath: YARNOfferRequest/yarnTecSheet/yarnIdentity/yarnTwist) 0-1

2.2.2 Simple elements (Basic Business Information Entities)

Simple elements are those elements whose content is characterized by a data type plus a domain of possible values. Simple elements are alphabetically ordered.

a	"a" dimension of the CIE Lab color system - base type: decimal, (XPath: YARNOfferRequest/yarnTecSheet/yarnManufacture/colorCard/colorCardItem/CIE Lab/a) 1-1
AC_amount	amount of an Allowance or Charge - base type: decimal, fraction digits: 2,

	(XPath: YARNOfferRequest/terms/allowanceCharge/AC_amount) 1-1
AC_category	coded specification of an Allowance or Charge - base type: string, cod. table: T41 http://www.moda-ml.net/moda-ml/repository/codelist/v2013-1/gc_T41.xml (XPath: YARNOfferRequest/terms/allowanceCharge/AC_category) 1-1
AC_categoryText	free text description of an Allowance or Charge - base type: string, max length: 70, (XPath: YARNOfferRequest/terms/allowanceCharge/AC_categoryText) 1-1
AC_percent	amount of an Allowance or Charge as a percentage - base type: decimal, max inclusive: 100, fraction digits: 2, (XPath: YARNOfferRequest/terms/allowanceCharge/AC_percent) 1-1
added	additional code of the product (complementing the formers) - base type: string, max length: 15, (XPath: YARNOfferRequest/yarnTecSheet/yarnIdentity/ yarnCode/added) 0-9 - note: <i>here an additional codification (see table T44) can be specified</i>
@addType	qualifier of the additional coding of a product - base type: string, cod. table: T44 http://www.moda-ml.net/moda-ml/repository/codelist/v2013-1/gc_T44.xml (XPath: YARNOfferRequest/yarnTecSheet/yarnIdentity/ yarnCode/added/@addType) [Optional]
@application	force or similar condition (e.g. no. of revolutions) applied in a test as specified within the standard - base type: string, max length: 15, (XPath: YARNOfferRequest/yarnTecSheet/yarnManufacture/ yarnColorFastness/specValue/@application) [Optional] (XPath: YARNOfferRequest/yarnTecSheet/yarnQuality/ yarnQTest/specValue/@application) [Optional]
art	article number of the product - base type: string, max length: 25, (XPath: YARNOfferRequest/yarnTecSheet/yarnIdentity/ yarnCode/art) 1-1
avgDeliveryDD	average time (workdays) between order receipt and delivery of an article, specified by the Supplier - base type: duration, (XPath: YARNOfferRequest/yarnTecSheet/yarnIdentity/avgDeliveryDD) 0-1
b	"b" dimension of the CIELab color system - base type: decimal, (XPath: YARNOfferRequest/yarnTecSheet/yarnManufacture/ colorCard/colorCardItem/CIELab/b) 1-1
carrier	identification of the transport carrier - base type: string, max length: 40, (XPath: YARNOfferRequest/terms/transInfo/carrier) 0-1
city	name of the city (town, village) - base type: string, max length: 40, (XPath: YARNOfferRequest/RQheader/buyer/city) 0-1 (XPath: YARNOfferRequest/RQheader/supplier/city) 0-1 (XPath: YARNOfferRequest/RQheader/subContractor/city) 0-1
@codeList	it specifies the URL where the list of codes used to make an instance of the element can be found - base type: string, max length: 255, (XPath: YARNOfferRequest/terms/allowanceCharge/dtScheme/

	<p>note/@codeList [Optional]</p> <p>- nota: <i>must be used to provide (URL) the list of codes used in "noteLabel"</i></p> <p>(XPath: YARNOfferRequest/yarnTecSheet/yarnIdentity/yarnCode/color/@codeList) [Optional]</p> <p>- nota: <i>this attribute should be ALTERNATIVE to the others</i></p> <p>(XPath: YARNOfferRequest/yarnTecSheet/yarnIdentity/yarnCode/art/@codeList) [Optional]</p> <p>- nota: <i>this attribute should be ALTERNATIVE to the others</i></p> <p>(XPath: YARNOfferRequest/yarnTecSheet/yarnManufacture/colorCard/colorCardItem/color/@codeList) [Optional]</p> <p>- nota: <i>this attribute should be ALTERNATIVE to the others</i></p> <p>(XPath: YARNOfferRequest/terms/allowanceCharge/dtScheme/legalRef/@codeList) [Required]</p> <p>(XPath: YARNOfferRequest/RQheader/note/@codeList) [Optional]</p> <p>- nota: <i>must be used to provide (URL) the list of codes used in "noteLabel"</i></p>
color	<p>colour number of the product, when not included in the model or fabric code</p> <p>- base type: string, max length: 15,</p> <p>(XPath: YARNOfferRequest/yarnTecSheet/yarnManufacture/colorCard/colorCardItem/color) 1-1</p> <p>(XPath: YARNOfferRequest/yarnTecSheet/yarnIdentity/yarnCode/color) 0-1</p>
@colorType	<p>type of color to which a "color fastness" value refers</p> <p>- base type: string, cod. table: NT26</p> <p>http://www.moda-ml.net/moda-ml/repository/codelist/v2013-1/gc_NT26.xml</p> <p>(XPath: YARNOfferRequest/yarnTecSheet/yarnManufacture/yarnColorFastness/@colorType) [Required]</p>
comply	<p>specifies if the experimental value complies with the standard requirement (target value)</p> <p>- base type: boolean,</p> <p>(XPath: YARNOfferRequest/yarnTecSheet/yarnQuality/yarnQTest/comply) 0-1</p>
country	<p>code of the nation</p> <p>- base type: string, cod. table: T10</p> <p>http://www.moda-ml.net/moda-ml/repository/codelist/v2013-1/gc_T10.xml</p> <p>(XPath: YARNOfferRequest/RQheader/buyer/country) 0-1</p> <p>(XPath: YARNOfferRequest/yarnTecSheet/yarnIdentity/fibrePD/country) 0-1</p> <p>(XPath: YARNOfferRequest/RQheader/supplier/country) 0-1</p> <p>(XPath: YARNOfferRequest/RQheader/subContractor/country) 0-1</p>
@countSystem	<p>yarn count system</p> <p>- base type: string, cod. table: T55</p> <p>http://www.moda-ml.net/moda-ml/repository/codelist/v2013-1/gc_T55.xml</p> <p>(XPath: YARNOfferRequest/yarnTecSheet/yarnIdentity/yarnCount/@countSystem) [Required]</p>
customsStat	<p>statistic code assigned by Customs to a specified product</p> <p>- base type: string, max length: 15,</p> <p>(XPath: YARNOfferRequest/yarnTecSheet/yarnIdentity/customsStat) 0-1</p>
@CV	<p>coefficient of variation (CV) of a measurement</p> <p>- base type: decimal,</p> <p>(XPath: YARNOfferRequest/yarnTecSheet/yarnIdentity/yarnCount/@CV) [Optional]</p> <p>(XPath: YARNOfferRequest/yarnTecSheet/yarnManufacture/yarnColorFastness/specValue/@CV) [Optional]</p> <p>(XPath: YARNOfferRequest/yarnTecSheet/yarnQuality/yarnQTest/specValue/@CV) [Optional]</p>

@dateForm	<p>format used for the date</p> <p>- base type: string, cod. table: NT29 http://www.moda-ml.net/moda-ml/repository/codelist/v2013-1/gc_NT29.xml (XPath: YARNOfferRequest/yarnTecSheet/yarnManufacture/colorCard/colorCardItem/refDoc/docDate/@dateForm) [Optional] (XPath: YARNOfferRequest/RQheader/refDoc/docDate/@dateForm) [Optional] (XPath: YARNOfferRequest/RQheader/msgDate/@dateForm) [Optional] (XPath: YARNOfferRequest/RQheader/validityStart/@dateForm) [Optional] (XPath: YARNOfferRequest/RQheader/validityEnd/@dateForm) [Optional]</p>
deliveryPlace	<p>place of delivery of goods, ultimate or related to a given leg</p> <p>- base type: string, max length: 40, (XPath: YARNOfferRequest/terms/transInfo/deliveryPlace) 0-1</p>
dept	<p>name or code of a contact department within a Party</p> <p>- base type: string, max length: 40, (XPath: YARNOfferRequest/RQheader/subContractor/dept) 0-1 (XPath: YARNOfferRequest/RQheader/supplier/dept) 0-1 (XPath: YARNOfferRequest/RQheader/buyer/dept) 0-1</p>
description	<p>free text description of a product</p> <p>- base type: string, max length: 70, (XPath: YARNOfferRequest/yarnTecSheet/yarnIdentity/yarnCode/description) 0-1 (XPath: YARNOfferRequest/yarnTecSheet/yarnManufacture/colorCard/colorCardItem/description) 0-1</p>
diameter	<p>effective diameter of a specified object</p> <p>- base type: decimal, min inclusive: 0, fraction digits: 2, (XPath: YARNOfferRequest/yarnTecSheet/yarnIdentity/fibrePD/diameter) 0-1</p>
docDate	<p>date of issue of the referenced document, according to one of the patterns YYYY-MM-DD, YYYY-MM-DD:HH-MM or YYYY-WW.</p> <p>- base type: string, (XPath: YARNOfferRequest/yarnTecSheet/yarnManufacture/colorCard/colorCardItem/refDoc/docDate) 0-1 (XPath: YARNOfferRequest/RQheader/refDoc/docDate) 0-1</p>
docID	<p>identification number of the referenced document SINCE 2008-1 ITS USE IN THE HEADER IS DISCOURAGED (REPLACED BY msgID)</p> <p>- base type: string, max length: 80, (XPath: YARNOfferRequest/RQheader/docID) 0-1 (XPath: YARNOfferRequest/yarnTecSheet/yarnManufacture/colorCard/colorCardItem/refDoc/docID) 1-2 (XPath: YARNOfferRequest/RQheader/refDoc/docID) 1-2</p>
@docType	<p>type or class to which the referenced document belongs</p> <p>- base type: string, cod. table: T21 http://www.moda-ml.net/moda-ml/repository/codelist/v2013-1/gc_T21.xml (XPath: YARNOfferRequest/yarnTecSheet/yarnManufacture/colorCard/colorCardItem/refDoc/@docType) [Required] (XPath: YARNOfferRequest/RQheader/refDoc/@docType) [Required]</p>
dyeN	<p>number of the dying batch of a textile product</p> <p>- base type: string, max length: 15, (XPath: YARNOfferRequest/yarnTecSheet/yarnIdentity/dyeN) 0-1 - note: <i>to be used when the document refers to a specific production batch</i></p>

dyeProcess	dye process applied to the fabric - base type: string, cod. table: T15 http://www.moda-ml.net/moda-ml/repository/codelist/v2013-1/gc_T15.xml (XPath: YARNOfferRequest/yarnTecSheet/yarnManufacture/dyeProcess) 0-1
dyeStuff	dye stuff used in the fabric dye process - base type: string, cod. table: T16 http://www.moda-ml.net/moda-ml/repository/codelist/v2013-1/gc_T16.xml (XPath: YARNOfferRequest/yarnTecSheet/yarnManufacture/dyeStuff) 0-1
@email	electronic mail address of the contact person within a Party - base type: string, max length: 80, (XPath: YARNOfferRequest/RQheader/buyer/person/@email) [Optional] (XPath: YARNOfferRequest/RQheader/subContractor/person/@email) [Optional] (XPath: YARNOfferRequest/RQheader/supplier/person/@email) [Optional]
@fax	fax number of the contact person within a Party - base type: string, max length: 35, (XPath: YARNOfferRequest/RQheader/subContractor/person/@fax) [Optional] (XPath: YARNOfferRequest/RQheader/supplier/person/@fax) [Optional] (XPath: YARNOfferRequest/RQheader/buyer/person/@fax) [Optional]
@fibre	type of fibre used in a textile product - base type: string, cod. table: T19 http://www.moda-ml.net/moda-ml/repository/codelist/v2013-1/gc_T19.xml (XPath: YARNOfferRequest/yarnTecSheet/yarnIdentity/fibrePD/@fibre) [Required] (XPath: YARNOfferRequest/yarnTecSheet/yarnIdentity/yarnCompos/percCompos/@fibre) [Required]
@finDiscount	financial discount applied for payment by the date specified - base type: decimal, min inclusive: 0, max inclusive: 100, fraction digits: 2, (XPath: YARNOfferRequest/terms/payment/@finDiscount) [Optional]
@finSurcharge	financial surcharge applied for payment after the date specified - base type: decimal, min inclusive: 0, max inclusive: 100, fraction digits: 2, (XPath: YARNOfferRequest/terms/payment/@finSurcharge) [Optional]
grossWeight	the gross weight of the overall goods supply, declared for transport or customs purpose - base type: decimal, min inclusive: 0, fraction digits: 2, (XPath: YARNOfferRequest/terms/transInfo/grossWeight) 0-1
id	primary identification code of a Party; it is recommended the format: nation code (ISO 3166) + VAT identification number (11 crt), with the qualifier "numberingOrg"= MF - base type: string, max length: 15, (XPath: YARNOfferRequest/RQheader/buyer/id) 1-1 (XPath: YARNOfferRequest/RQheader/subContractor/id) 1-1 (XPath: YARNOfferRequest/RQheader/supplier/id) 1-1
@illuminant	CIE light source - base type: string, cod. table: T59 http://www.moda-ml.net/moda-ml/repository/codelist/v2013-1/gc_T59.xml (XPath: YARNOfferRequest/yarnTecSheet/yarnManufacture/colorCard/colorCardItem/CIELab/@illuminant) [Optional]

incoTerm	specification of the terms of trade (INCOTERMS) - base type: string, cod. table: T3 http://www.moda-ml.net/moda-ml/repository/codelist/v2013-1/gc_T3.xml (XPath: YARNOfferRequest/terms/trade/incoTerm) 1-1
incoTermText	free text specifying the terms of trade (incoterm, location) - base type: string, max length: 70, (XPath: YARNOfferRequest/terms/trade/incoTermText) 1-1
itemID	number of the line/item of the referenced document - base type: string, max length: 6, (XPath: YARNOfferRequest/yarnTecSheet/yarnManufacture/colorCard/colorCardItem/refDoc/itemID) 0-1 (XPath: YARNOfferRequest/RQheader/refDoc/itemID) 0-1
L	"L" value of the CIELab color system - base type: decimal, min inclusive: 0, (XPath: YARNOfferRequest/yarnTecSheet/yarnManufacture/colorCard/colorCardItem/CIELab/L) 1-1
legalName	legal name of a Party - base type: string, max length: 80, (XPath: YARNOfferRequest/RQheader/supplier/legalName) 0-1 (XPath: YARNOfferRequest/RQheader/subContractor/legalName) 0-1 (XPath: YARNOfferRequest/RQheader/buyer/legalName) 0-1
legalRef	legal reference of the duty or tax or fee category - base type: string, (XPath: YARNOfferRequest/terms/allowanceCharge/dtScheme/legalRef) 0-1
length	effective length of a specified object - base type: decimal, min inclusive: 0, fraction digits: 2, (XPath: YARNOfferRequest/yarnTecSheet/yarnIdentity/fibrePD/length) 0-1
@listName	it specifies the name of the list of codes used to make an instance of the element - base type: string, max length: 40, (XPath: YARNOfferRequest/yarnTecSheet/yarnManufacture/colorCard/colorCardItem/color/@listName) [Optional] - nota: <i>this attribute should always be used coupled with "numberingOrg"</i> (XPath: YARNOfferRequest/yarnTecSheet/yarnIdentity/yarnCode/color/@listName) [Optional] - nota: <i>this attribute should always be used coupled with "numberingOrg"</i> (XPath: YARNOfferRequest/yarnTecSheet/yarnIdentity/yarnCode/art/@listName) [Optional] - nota: <i>this attribute should always be used coupled with "numberingOrg"</i>
@listVersion	it specifies the version of the list of codes used to make an instance of the element - base type: string, max length: 6, (XPath: YARNOfferRequest/yarnTecSheet/yarnIdentity/yarnCode/art/@listVersion) [Optional] - nota: <i>this attribute should always be used coupled with "numberingOrg" and "listName"</i> (XPath: YARNOfferRequest/yarnTecSheet/yarnManufacture/colorCard/colorCardItem/color/@listVersion) [Optional] - nota: <i>this attribute should always be used coupled with "numberingOrg" and "listName"</i> (XPath: YARNOfferRequest/yarnTecSheet/yarnIdentity/yarnCode/color/@listVersion) [Optional]

	- nota: <i>this attribute should always be used coupled with "numberingOrg" and "listName"</i>
location	specification of a location - base type: string, max length: 40, (XPath: YARNOfferRequest/terms/trade/location) 0-1 - note: <i>place to which the INCOTERM applies</i>
@logo	company logo (URL of the image jpeg or gif). It is recommended that the width of the image does not exceed 640 pixel. - base type: string, max length: 255, (XPath: YARNOfferRequest/RQheader/buyer/@logo) [Optional] (XPath: YARNOfferRequest/RQheader/supplier/@logo) [Optional]
lotN	lot number of a product or batch number of the raw material - base type: string, max length: 15, (XPath: YARNOfferRequest/yarnTecSheet/yarnIdentity/lotN) 0-1 - note: <i>to be used when the document refers to a specific production batch</i>
@LRI	attribute usable to format a string according to a customized User rule (local rule) - base type: string, cod. table: NT3 http://www.moda-ml.net/moda-ml/repository/codelist/v2013-1/gc_NT3.xml (XPath: YARNOfferRequest/terms/trade/location/@LRI) [Optional]
@method	standard protocol or method employed in a test to evaluate a characteristic or a parameter - base type: string, max length: 25, (XPath: YARNOfferRequest/yarnTecSheet/yarnQuality/yarnQTest/specValue/@method) [Optional] (XPath: YARNOfferRequest/yarnTecSheet/yarnManufacture/yarnColorFastness/specValue/@method) [Optional]
minLot	minimum order quantity of a product requested by the Supplier - base type: decimal, min inclusive: 0, fraction digits: 2, (XPath: YARNOfferRequest/yarnTecSheet/yarnIdentity/minLot) 0-1
minLotExclusive	minimum order quantity of a product requested by the Supplier for an exclusive color - base type: decimal, min inclusive: 0, fraction digits: 2, (XPath: YARNOfferRequest/yarnTecSheet/yarnIdentity/minLotExclusive) 0-1
moistRegain	percent moisture regain by the fibres - base type: decimal, (XPath: YARNOfferRequest/yarnTecSheet/yarnIdentity/moistRegain) 0-1
msgDate	date of issue of the present message (xml document), according to one of the patterns YYYY-MM-DD, YYYY-MM-DD:HH-MM or YYYY-WW. - base type: string, (XPath: YARNOfferRequest/RQheader/msgDate) 1-1
@msgfunction	function performed by the present message with regards to the transmission - base type: string, cod. table: NT18 http://www.moda-ml.net/moda-ml/repository/codelist/v2013-1/gc_NT18.xml (XPath: YARNOfferRequest/@msgfunction) [Optional]
msgID	key identifier of the document in the information system of the issuing Party - base type: string, max length: 35, (XPath: YARNOfferRequest/RQheader/msgID) 0-1

msgN	<p>identification number given to the message (xml document) by its issuer</p> <p>- base type: string, max length: 35, (XPath: YARNOfferRequest/RQheader/msgN) 1-1</p>
netWeight	<p>the net weight of the overall goods supply, declared for transport or customs purpose</p> <p>- base type: decimal, min inclusive: 0, fraction digits: 2, (XPath: YARNOfferRequest/terms/transInfo/netWeight) 0-1</p>
note	<p>free text or structured (computer processing) note. For note structuring use the attributes "noteLabel" and "codelist"</p> <p>- base type: string, max length: 350, (XPath: YARNOfferRequest/terms/allowanceCharge/dtScheme/note) 0-19 (XPath: YARNOfferRequest/RQheader/note) 0-19</p>
@noteLabel	<p>subject qualifier of a note</p> <p>- base type: string, max length: 35, (XPath: YARNOfferRequest/terms/allowanceCharge/dtScheme/note/@noteLabel) [Optional]</p> <p>- nota: <i>must be used to qualify the subject of the note</i> (XPath: YARNOfferRequest/RQheader/note/@noteLabel) [Optional]</p> <p>- nota: <i>must be used to qualify the subject of the note</i></p>
@numberingOrg	<p>code specifying the organisation who has created or owns the coding or numbering system</p> <p>- base type: string, cod. table: NT6 http://www.moda-ml.net/moda-ml/repository/codelist/v2013-1/gc_NT6.xml</p> <p>(XPath: YARNOfferRequest/yarnTecSheet/yarnIdentity/yarnCode/added/@numberingOrg) [Optional] (XPath: YARNOfferRequest/yarnTecSheet/yarnIdentity/yarnCode/color/@numberingOrg) [Optional]</p> <p>- nota: <i>this attribute should be used either single or coupled with "listName" and "listVersion"</i> (XPath: YARNOfferRequest/yarnTecSheet/yarnIdentity/dyeN/@numberingOrg) [Optional] (XPath: YARNOfferRequest/RQheader/refDoc/docID/@numberingOrg) [Optional]</p> <p>- nota: <i>here can be specified whose document numbering is used (e.g.: Client, Supplier, ..)</i> (XPath: YARNOfferRequest/yarnTecSheet/yarnIdentity/yarnCode/@numberingOrg) [Optional] [Default= CL] (XPath: YARNOfferRequest/yarnTecSheet/yarnIdentity/yarnCode/art/@numberingOrg) [Optional]</p> <p>- nota: <i>this attribute should be used either single or coupled with "listName" and "listVersion"</i> (XPath: YARNOfferRequest/yarnTecSheet/yarnIdentity/lotN/@numberingOrg) [Optional] (XPath: YARNOfferRequest/yarnTecSheet/yarnManufacture/colorCard/colorCardItem/refDoc/docID/@numberingOrg) [Optional]</p> <p>- nota: <i>here can be specified whose document numbering is used (e.g.: Client, Supplier, ..)</i> (XPath: YARNOfferRequest/RQheader/docID/@numberingOrg) [Optional]</p> <p>- nota: <i>here can be specified whose document numbering is used (e.g.: Client, Supplier, ..)</i> (XPath: YARNOfferRequest/terms/allowanceCharge/dtScheme/note/@numberingOrg) [Optional] (XPath: YARNOfferRequest/RQheader/subContractor/id/@numberingOrg)</p>

	<p>[Optional] (XPath: YARNOfferRequest/RQheader/note/@numberingOrg) [Optional] (XPath: YARNOfferRequest/RQheader/supplier/id/@numberingOrg) [Optional] (XPath: YARNOfferRequest/RQheader/buyer/id/@numberingOrg) [Optional] (XPath: YARNOfferRequest/yarnTecSheet/yarnManufacture/ colorCard/colorCardItem/color/@numberingOrg) [Optional] - nota: <i>this attribute should be used either single or coupled with "listName" and "listVersion"</i></p>
optLot	<p>optimized quantity for the manufacturing plant - base type: decimal, min inclusive: 0, (XPath: YARNOfferRequest/yarnTecSheet/yarnIdentity/optLot) 0-9</p>
@part	<p>percent fraction of a total payment - base type: decimal, min inclusive: 1, max inclusive: 99, fraction digits: 2, (XPath: YARNOfferRequest/terms/insPayment/@part) [Required] - nota: <i>here the % value of each installment must be indicated</i></p>
payMode	<p>way or means of payment - base type: string, cod. table: T2 http://www.moda-ml.net/moda-ml/repository/codelist/v2013-1/gc_T2.xml (XPath: YARNOfferRequest/terms/insPayment/payMode) 0-1 (XPath: YARNOfferRequest/terms/payment/payMode) 0-1</p>
payTerm	<p>code specifying the terms or time by which the payment must be done - base type: string, cod. table: T1 http://www.moda-ml.net/moda-ml/repository/codelist/v2013-1/gc_T1.xml (XPath: YARNOfferRequest/terms/payment/payTerm) 1-1 (XPath: YARNOfferRequest/terms/insPayment/payTerm) 1-1</p>
payTermText	<p>free text specifying the terms by which the payment must be done (time/mode or means) - base type: string, max length: 40, (XPath: YARNOfferRequest/terms/payment/payTermText) 1-1 (XPath: YARNOfferRequest/terms/insPayment/payTermText) 1-1</p>
pcTolerance	<p>percent deviation tolerated on the value of a measurement (it must have a plus or minus sign) - base type: decimal, min inclusive: 0, max inclusive: 100, total digits: 2, (XPath: YARNOfferRequest/yarnTecSheet/yarnQuality/ yarnQTest/pcTolerance) 0-1</p>
percCompos	<p>fiber rate in the product composition - base type: decimal, min inclusive: 0, max inclusive: 100, fraction digits: 2, (XPath: YARNOfferRequest/yarnTecSheet/yarnIdentity/ yarnCompos/percCompos) 1-9</p>
person	<p>name of the contact person within a Party - base type: string, max length: 40, (XPath: YARNOfferRequest/RQheader/buyer/person) 0-1 (XPath: YARNOfferRequest/RQheader/subContractor/person) 0-1 (XPath: YARNOfferRequest/RQheader/supplier/person) 0-1</p>
@phone	<p>phone number of the contact person within a Party - base type: string, max length: 35, (XPath: YARNOfferRequest/RQheader/subContractor/person/@phone) [Optional] (XPath: YARNOfferRequest/RQheader/supplier/person/@phone) [Optional]</p>

	(XPath: YARNOfferRequest/RQheader/buyer/person/@phone) [Optional]
plyN	number of single threads twisted together - base type: positiveInteger, (XPath: YARNOfferRequest/yarnTecSheet/yarnManufacture/ yarnPly/plyN) 0-1
plyWork	kind of yarn's ply - base type: string, cod. table: T56 http://www.moda-ml.net/moda-ml/repository/codelist/v2013-1/gc_T56.xml (XPath: YARNOfferRequest/yarnTecSheet/yarnManufacture/ yarnPly/plyWork) 1-1
postCode	code defining the postal zone - base type: string, max length: 10, (XPath: YARNOfferRequest/RQheader/supplier/postCode) 0-1 (XPath: YARNOfferRequest/RQheader/subContractor/postCode) 0-1 (XPath: YARNOfferRequest/RQheader/buyer/postCode) 0-1
price	unit price of the article, object or service specified - base type: decimal, min inclusive: 0, fraction digits: 2, (XPath: YARNOfferRequest/yarnTecSheet/yarnIdentity/price) 0-2
@priceQualifier	type of price with reference to discount and taxes - base type: string, cod. table: NT20 http://www.moda-ml.net/moda-ml/repository/codelist/v2013-1/gc_NT20.xml (XPath: YARNOfferRequest/yarnTecSheet/yarnIdentity/price/@priceQualifier) [Optional] [Default= NET]
qty	net quantity of the article or object correlated, qualified by the function of the document (ordering, delivering, ..) and by the context - base type: decimal, min inclusive: 0, fraction digits: 2, (XPath: YARNOfferRequest/yarnTecSheet/yarnIdentity/ yarnTwist/qty) 0-1 - note: <i>here the number of turns per meter is specified</i>
@reelType	type of package used for a yarn product - base type: string, cod. table: T29 http://www.moda-ml.net/moda-ml/repository/codelist/v2013-1/gc_T29.xml (XPath: YARNOfferRequest/yarnTecSheet/yarnIdentity/ standardPack/@reelType) [Optional] - nota: <i>identifies the kind of unit in the package</i>
season	sale season; defined as: season (1 crt) + year (4 crt) - season: S/S=1 A/W=2 Spring=3 Summer=4 Autumn=5 Winter=6: for more than four seasons use alphabetic sequence: 1st season=A 2nd season=B etc.etc. - base type: string, max length: 15, (XPath: YARNOfferRequest/RQheader/refDoc/season) 0-1 - note: <i>here indicates the season to which the referenced document belongs</i> (XPath: YARNOfferRequest/yarnTecSheet/yarnManufacture/ colorCard/colorCardItem/refDoc/season) 0-1 - note: <i>here indicates the season to which the referenced document belongs</i> (XPath: YARNOfferRequest/yarnTecSheet/yarnIdentity/season) 0-1 (XPath: YARNOfferRequest/RQheader/season) 0-1
@sender	qualifier that specifies the Party issuing of the document - base type: boolean, (XPath: YARNOfferRequest/RQheader/buyer/@sender) [Optional] - nota: <i>This attribute is mandatory when the STYLESHEET must be produced</i>

	<p>(XPath: YARNOfferRequest/RQheader/supplier/@sender) [Optional] - nota: <i>This attribute is mandatory when the STYLESHEET must be produced</i></p> <p>(XPath: YARNOfferRequest/RQheader/subContractor/@sender) [Optional] - nota: <i>This attribute is mandatory when the STYLESHEET must be produced</i></p>
@source	<p>party who has provided the data - base type: string, cod. table: NT12 http://www.moda-ml.net/moda-ml/repository/codelist/v2013-1/gc_NT12.xml (XPath: YARNOfferRequest/yarnTecSheet/yarnQuality/yarnQTest/specValue/@source) [Optional] (XPath: YARNOfferRequest/yarnTecSheet/yarnManufacture/yarnColorFastness/specValue/@source) [Optional]</p>
specValue	<p>value requested for a property or a parameter that is measured - base type: decimal, (XPath: YARNOfferRequest/yarnTecSheet/yarnManufacture/yarnColorFastness/specValue) 1-1 - note: <i>when the test forsees two values (change-staining) the 1st value is change and the 2nd staining, divided by ","</i> (XPath: YARNOfferRequest/yarnTecSheet/yarnQuality/yarnQTest/specValue) 0-1</p>
@standardObserver	<p>CIE average chromatic response definition - base type: string, cod. table: T60 http://www.moda-ml.net/moda-ml/repository/codelist/v2013-1/gc_T60.xml (XPath: YARNOfferRequest/yarnTecSheet/yarnManufacture/colorCard/colorCardItem/CIELab/@standardObserver) [Optional]</p>
standardPack	<p>number of unit per standard package - base type: positiveInteger, (XPath: YARNOfferRequest/yarnTecSheet/yarnIdentity/standardPack) 0-1</p>
street	<p>street and building number identifying a location - base type: string, max length: 80, (XPath: YARNOfferRequest/RQheader/subContractor/street) 0-1 (XPath: YARNOfferRequest/RQheader/supplier/street) 0-1 (XPath: YARNOfferRequest/RQheader/buyer/street) 0-1</p>
subCountry	<p>short name or code of the sub-country entity - base type: string, max length: 9, (XPath: YARNOfferRequest/RQheader/supplier/subCountry) 0-1 (XPath: YARNOfferRequest/RQheader/buyer/subCountry) 0-1 (XPath: YARNOfferRequest/RQheader/subContractor/subCountry) 0-1</p>
taxCategory	<p>duty or tax or fee category - base type: string, cod. table: T62 http://www.moda-ml.net/moda-ml/repository/codelist/v2013-1/gc_T62.xml (XPath: YARNOfferRequest/terms/allowanceCharge/dtScheme/taxCategory) 0-1</p>
taxRate	<p>duty or tax or fee percent rate - base type: string, (XPath: YARNOfferRequest/terms/allowanceCharge/dtScheme/taxRate) 0-1</p>
@taxType	<p>duty or tax or fee type - base type: string, cod. table: T61 http://www.moda-ml.net/moda-ml/repository/codelist/v2013-1/gc_T61.xml (XPath: YARNOfferRequest/terms/allowanceCharge/dtScheme/@taxType) [Required]</p>

tolerance	deviation tolerated on the value of a measurement (it must have a plus or minus sign) - base type: decimal, (XPath: YARNOfferRequest/yarnTecSheet/yarnQuality/yarnQTest/tolerance) 0-1
tradeMark	name of the official trademark of a specified product - base type: string, max length: 50, (XPath: YARNOfferRequest/yarnTecSheet/yarnIdentity/tradeMark) 0-1
transCondition	special condition of transport or special service requested to the Forwarder - base type: string, cod. table: T38 http://www.moda-ml.net/moda-ml/repository/codelist/v2013-1/gc_T38.xml (XPath: YARNOfferRequest/terms/transInfo/transCondition) 0-3
transConditionText	free text description of the special condition of transport or special service requested to the Forwarder - base type: string, max length: 100, (XPath: YARNOfferRequest/terms/transInfo/transConditionText) 0-1
transMeans	means of transport, in general or referred to a specific leg - base type: string, cod. table: T40 http://www.moda-ml.net/moda-ml/repository/codelist/v2013-1/gc_T40.xml (XPath: YARNOfferRequest/terms/transInfo/transMeans) 0-1
transMode	way of transport, in general or referred to the specified leg - base type: string, cod. table: T8 http://www.moda-ml.net/moda-ml/repository/codelist/v2013-1/gc_T8.xml (XPath: YARNOfferRequest/terms/transInfo/transMode) 1-1
@transReason	reason for the transport - base type: string, cod. table: NT11 http://www.moda-ml.net/moda-ml/repository/codelist/v2013-1/gc_NT11.xml (XPath: YARNOfferRequest/terms/transInfo/@transReason) [Optional]
twistDirection	direction (S or Z) of the yarn twist - base type: string, (XPath: YARNOfferRequest/yarnTecSheet/yarnIdentity/yarnTwist/twistDirection) 1-1
@um	specification of the unit of measure - base type: string, cod. table: NT7 http://www.moda-ml.net/moda-ml/repository/codelist/v2013-1/gc_NT7.xml (XPath: YARNOfferRequest/terms/transInfo/netWeight/@um) [Required] (XPath: YARNOfferRequest/terms/transInfo/grossWeight/@um) [Required] (XPath: YARNOfferRequest/yarnTecSheet/yarnIdentity/optLot/@um) [Optional] (XPath: YARNOfferRequest/yarnTecSheet/yarnIdentity/yarnTwist/qty/@um) [Required] (XPath: YARNOfferRequest/yarnTecSheet/yarnIdentity/yarnComWeight/@um) [Required] (XPath: YARNOfferRequest/yarnTecSheet/yarnIdentity/price/@um) [Optional] - nota: <i>Unit of measure of the product to which the price is referred (price per meter)</i> (XPath: YARNOfferRequest/yarnTecSheet/yarnQuality/yarnQTest/tolerance/@um) [Required] (XPath: YARNOfferRequest/yarnTecSheet/yarnIdentity/yarnReelQty/@um) [Required] (XPath: YARNOfferRequest/yarnTecSheet/yarnQuality/yarnQTest/specValue/@um) [Optional] (XPath: YARNOfferRequest/yarnTecSheet/yarnIdentity/minLot/@um) [Required] (XPath: YARNOfferRequest/yarnTecSheet/yarnIdentity/

	<p> fibrePD/diameter/@um [Optional] (XPath: YARNOfferRequest/yarnTecSheet/yarnManufacture/yarnColorFastness/specValue/@um) [Optional] (XPath: YARNOfferRequest/yarnTecSheet/yarnQuality/yarnQTest/pcTolerance/@um) [Optional] - nota: <i>to be used when it has to be soecified if the declared percentage is by weight, volume, etc...</i> (XPath: YARNOfferRequest/yarnTecSheet/yarnIdentity/fibrePD/length/@um) [Required] (XPath: YARNOfferRequest/yarnTecSheet/yarnIdentity/minLotExclusive/@um) [Required] </p>
@useProfile	<p> use profile to which the present document if compliant if it was agreed by the parties. It is suggested a URI with reference to the firms or the URL of the profile. - base type: string, (XPath: YARNOfferRequest/@useProfile) [Optional] </p>
validityEnd	<p> date by which the validity ends, according to one of the patterns YYYY-MM-DD, YYYY-MM-DD:HH-MM or YYYY-WW. - base type: string, (XPath: YARNOfferRequest/RQheader/validityEnd) 1-1 </p>
validityStart	<p> date by which the validity starts, according to one of the patterns YYYY-MM-DD, YYYY-MM-DD:HH-MM or YYYY-WW. - base type: string, (XPath: YARNOfferRequest/RQheader/validityStart) 0-1 </p>
@VAT	<p> VAT rate or code (deprecated, use dtScheme element) - base type: string, cod. table: NT16 http://www.moda-ml.net/moda-ml/repository/codelist/v2013-1/gc_NT16.xml (XPath: YARNOfferRequest/terms/allowanceCharge/@VAT) [Optional] </p>
@version	<p> Dictionary version from which the instance has been created - base type: string, cod. table: NT100 http://www.moda-ml.net/moda-ml/repository/codelist/v2013-1/gc_NT100.xml (XPath: YARNOfferRequest/@version) [Optional] [Default= 2013-1] </p>
yarnCFTest	<p> color fastness test for a yarn - base type: string, cod. table: T57 http://www.moda-ml.net/moda-ml/repository/codelist/v2013-1/gc_T57.xml (XPath: YARNOfferRequest/yarnTecSheet/yarnManufacture/yarnColorFastness/yarnCFTest) 1-1 </p>
yarnClass	<p> yarn classification according to the manufacturing process - base type: string, cod. table: NT31 http://www.moda-ml.net/moda-ml/repository/codelist/v2013-1/gc_NT31.xml (XPath: YARNOfferRequest/yarnTecSheet/yarnIdentity/yarnClass) 0-1 </p>
yarnComWeight	<p> dry weight of fibres plus commercial moisture regain - base type: decimal, min inclusive: 0, (XPath: YARNOfferRequest/yarnTecSheet/yarnIdentity/yarnComWeight) 0-1 </p>
yarnCount	<p> linear density measure of yarn (count) - base type: string, (XPath: YARNOfferRequest/yarnTecSheet/yarnIdentity/yarnCount) 0-1 </p>
yarnJob	<p> operation of a work cycle for yarn - base type: string, cod. table: T201 http://www.moda-ml.net/moda-ml/repository/codelist/v2013-1/gc_T201.xml (XPath: YARNOfferRequest/yarnTecSheet/yarnManufacture/yarnJobSeq/yarnJob) 1-19 </p>
yarnKind	<p> general type of yarn - base type: string, cod. table: T54 http://www.moda-ml.net/moda-ml/repository/codelist/v2013-1/gc_T54.xml </p>

	(XPath: YARNOfferRequest/yarnTecSheet/yarnIdentity/yarnKind) 0-1
yarnNameBuyer	name given to the yarn by the Buyer - base type: string, max length: 70, (XPath: YARNOfferRequest/yarnTecSheet/yarnIdentity/yarnNameBuyer) 0-1
yarnNameSupplier	name given to the yarn by the Supplier - base type: string, max length: 70, (XPath: YARNOfferRequest/yarnTecSheet/yarnIdentity/yarnNameSupplier) 1-1
yarnQTestType	Type of test related to a property of a yarn - base type: string, cod. table: T58 http://www.moda-ml.net/moda-ml/repository/codelist/v2013-1/gc_T58.xml (XPath: YARNOfferRequest/yarnTecSheet/yarnQuality/yarnQTest/yarnQTestType) 0-0
yarnReelQty	quantity of yarn (by weight or length) wound upon a bobbin - base type: decimal, min inclusive: 0, fraction digits: 2, (XPath: YARNOfferRequest/yarnTecSheet/yarnIdentity/yarnReelQty) 0-1

2.3 Enumeration tables

List of enumeration tables used in the XML document. You can find the corresponding codes at: <http://www.moda-ml.org/moda-ml/imple/moda-ml-2013-1.asp?lingua=en&pag=6>

NT100 - eBIZ Moda-ML version
NT11 - transport causal
NT12 - data source
NT16 - VAT rate or code
NT18 - message function
NT20 - price qualifier
NT26 - color type
NT29 - format of a date
NT3 - data format
NT31 - yarn family
NT6 - coding system owner/issuer
NT7 - unity of measure
T1 - terms of payment
T10 - ISO3166 - Country
T15 - dye/print process type
T16 - dyestuff type
T19 - fibre type
T2 - Modes of payment
T201 - type of job on yarn
T21 - type of document
T29 - type of yarn package
T3 - terms of delivery
T38 - transport conditions
T40 - type of transport means
T41 - type of Allowance or Charge
T44 - additional code type
T54 - kind of yarn
T55 - count system
T56 - kind of yarn ply
T57 - color fastness test for yarn
T58 - yarn quality parameters
T59 - CIE illuminant
T60 - CIE standard observer
T61 - duty or tax or fee type
T62 - duty or tax or fee category
T8 - Modes of Transport

Annex A

Representative images of the principal complex elements' structure.

