



<http://www.ebiz-tcf.eu>

DRAFT

**IMPLEMENTATION GUIDE
TRANSACTION "TWISTING OFFER"**

Version: draft

Date of release: 17/5/2019

Document code: G057

technical Documentation: <http://www.ebiz.enea.it>

XML Schemas repository: <http://www.ebiz.enea.it/moda-ml/repository/schema/draft/default.asp>

Guides repository: <http://www.ebiz.enea.it/moda-ml/repository/guide/draft/default.asp>

Guide filename: G057-eBIZ-TwistingOffer.pdf

0. PREMISE

This document contains a proposal for the updating and extension of eBIZ specifications starting from the eBIZ version released as CEN CWA 16667 in 2013. Under the name of 'Draft version' it is reported the result of an extensive work of analysis and consultation aimed at developing and maintaining eBIZ specifications.

In particular, the content of this proposal is the result of various activities, mainly those carried out within the framework of the **eBIZ 4.0 project** funded by the European Commission, call COS-DESIGN-2015-3-06, topic COS-2015-DESIGN-2.

The technical contents are backwards compatible with the latest official published version.

1. BUSINESS DESCRIPTION

1.1 Scope

The present guide has been issued to assist the companies of the Textile-Clothing sector in the implementation of the standard XML document type "TWISTING OFFER", providing all the instruction required for its use in the context of e-commerce between Subcontractors and their Customers shown in the enclosed diagram

All the rules required for the construction and validation of the document are embedded into the specific XML-Schema, which is detailed in section "Implementation guide".

1.2 Generalities

The Offer is used by a Subcontractor to respond to the Request of a Yarn Producer for the twisting of a yarn. The Offer is structured in four levels:

Macro-type of Work offered = document root (7 types of Request)

Product Family = document qualifier (type of product with reference to the manufacturing process; e.g.: combed yarn, jacquard weaved fabric, ..)

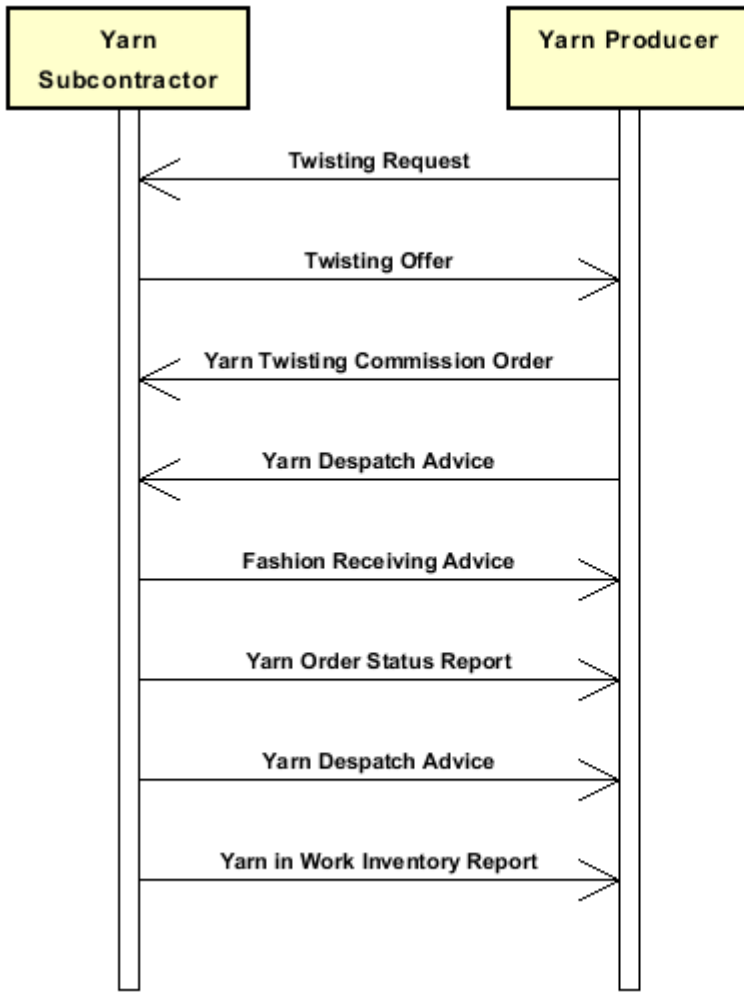
Product Specifications = "xxxSpecs" (technical characteristics and properties of the product)

Operations offered = "XXXMnfrOperation" (details of the works requested)

Quantities, unit measures and prices must be referred to the third level (Line Item)

1.3. Possible scenario

Subcontracted yarn twisting



2. IMPLEMENTATION GUIDE

2.1 General structure of XML document

All the business data that can be exchanged through this class of documents are shown in the following "document structure", that provides a simplified vision of the Schema.

In particular:

- the two numbers following each element define its "cardinality" (minimum and maximum number of occurrences); the minimum equal zero indicates that the element is optional, the minimum greater than zero indicates that is mandatory;
- the bold character denotes the complex elements (aggregates of simple elements) that were built for the sake of functionality and re-usability of some complex informations sets. The child elements in each parent element are easily spotted as "indented";
- the symbol "@" denotes an attribute of the preceding element; here "the usage indicator (optional, required, ...)" is shown in square brackets.

Structure

YARNTwistOffer

```
@msgfunction [Optional] [Default= OR]
@yarnProcQualifier [Required]
@version [Optional] [Default= draft]
@useProfile [Optional]
| OFheader 1-1
| | msgN 1-1
| | - choose -
| | msgID 0-1
| | - or -
| | docID 0-1
| | @numberingOrg [Optional]
| | - end choose -
| | msgDate 1-1
| | @dateForm [Optional]
| | season 0-1
| | @numberingOrg [Optional]
| | @codeList [Optional]
| | @listName [Optional]
| | @listVersion [Optional]
| | validityStart 0-1
| | @dateForm [Optional]
| | validityEnd 1-1
| | @dateForm [Optional]
| | refDoc 1-9
| | @docType [Required]
| | | docID 1-2
| | | @numberingOrg [Optional]
| | | docDate 0-1
| | | @dateForm [Optional]
| | | season 0-1
| | | @numberingOrg [Optional]
| | | @codeList [Optional]
| | | @listName [Optional]
| | | @listVersion [Optional]
| | | itemID 0-1
| | | attachment 0-1
| | | @uid [Optional]
| | | | fileName 0-1
| | | | @numberingOrg [Optional]
| | | | binaryObject 0-1
```

- | | | @format [Optional]
- | | | @mime [Optional]
- | | | @encoding [Optional]
- | | | @characterSet [Optional]
- | | | **externalReference 0-99**
- | | | | uri 1-1
- | | | | | @isURL [Optional] [Default= true]
- | | | | | mimeTypeCode 0-1
- | | | | | formatCode 0-1
- | | | | | encodingCode 0-1
- | | | | | characterSetCode 0-1

buyer 1-1

- | | @logo [Optional]
- | | @sender [Optional]
- | | | id 1-1
- | | | | @numberingOrg [Optional]
- | | | additionalIdentifier 0-9
- | | | | @numberingOrg [Optional]
- | | | | @idQualifier [Optional]
- | | | legalName 0-1
- | | | dept 0-1
- | | | subDept 0-1
- | | | person 0-1
- | | | | @email [Optional]
- | | | | @phone [Optional]
- | | | | @fax [Optional]
- | | | street 0-1
- | | | city 0-1
- | | | subCountry 0-1
- | | | country 0-1
- | | | postCode 0-1

- choose -

supplier 0-1

- | | @logo [Optional]
- | | @sender [Optional]
- | | | id 1-1
- | | | | @numberingOrg [Optional]
- | | | additionalIdentifier 0-9
- | | | | @numberingOrg [Optional]
- | | | | @idQualifier [Optional]
- | | | legalName 0-1
- | | | dept 0-1
- | | | subDept 0-1
- | | | person 0-1
- | | | | @email [Optional]
- | | | | @phone [Optional]
- | | | | @fax [Optional]
- | | | street 0-1
- | | | city 0-1
- | | | subCountry 0-1
- | | | country 0-1
- | | | postCode 0-1

- or -

subContractor 0-1

- | | @sender [Optional]
- | | | id 1-1
- | | | | @numberingOrg [Optional]
- | | | legalName 0-1
- | | | dept 0-1
- | | | subDept 0-1
- | | | person 0-1

```

| | | @email [Optional]
| | | @phone [Optional]
| | | @fax [Optional]
| | | street 0-1
| | | city 0-1
| | | subCountry 0-1
| | | country 0-1
| | | postCode 0-1
| - end choose -
| | thirdParty 0-2
| | | @VAT [Optional]
| | | @role [Required]
| | | @sender [Optional]
| | | | id 1-1
| | | | | @numberingOrg [Optional]
| | | | | legalName 0-1
| | | | | dept 0-1
| | | | | subDept 0-1
| | | | | person 0-1
| | | | | | @email [Optional]
| | | | | | @phone [Optional]
| | | | | | @fax [Optional]
| | | | | street 0-1
| | | | | city 0-1
| | | | | subCountry 0-1
| | | | | country 0-1
| | | | | postCode 0-1
| | | note 0-99
| | | | @numberingOrg [Optional]
| | | | @codeList [Optional]
| | | | @noteLabel [Optional]

```

| **terms 0-1**

```

| | | payment 0-5
| | | | @finDiscount [Optional]
| | | | @finSurcharge [Optional]
| | | - choose -
| | | | payTerm 1-1
| | | - or -
| | | | payTermText 1-1
| | | - end choose -
| | | | payMode 0-1
| | | insPayment 0-5
| | | | @part [Required]
| | | - choose -
| | | | payTerm 1-1
| | | - or -
| | | | payTermText 1-1
| | | - end choose -
| | | | payMode 0-1
| | | trade 0-1
| | | - choose -
| | | | incoTermText 1-1
| | | - or -
| | | | incoTerm 1-1
| | | - end choose -
| | | | location 0-1
| | | | | @LRI [Optional]
| | | transInfo 0-5
| | | | @transReason [Optional]
| | | | @progr [Optional]

```

- | | | transMode 1-1
- | | | carrier 0-1
- | | | deliveryPlace 0-1
- | | | grossWeight 0-1
- | | | @um [Required]
- | | | netWeight 0-1
- | | | @um [Required]
- | | | transMeans 0-1
- | | | transCondition 0-3
- | | | transConditionText 0-1
- | | | despatchPlace 0-1
- | | | despatchDate 0-1
- | | | @dateForm [Optional]
- | | | delEffectiveDate 0-1
- | | | @dateForm [Optional]
- | | | **allowanceCharge 0-9**
- | | | @um [Optional]
- | | | @VAT [Optional]
- | | | @minQty [Optional]
- | | | @currency [Optional]
- | | | @maxQty [Optional]
- | | | - choose -
- | | | | AC_category 1-1
- | | | - or -
- | | | | AC_categoryText 1-1
- | | | - end choose -
- | | | - choose -
- | | | | AC_percent 1-1
- | | | - or -
- | | | | AC_amount 1-1
- | | | - end choose -
- | | | **dtScheme 0-1**
- | | | @taxType [Required]
- | | | | taxCategory 0-1
- | | | | taxRate 0-1
- | | | | legalRef 0-1
- | | | | @codeList [Required]
- | | | | note 0-99
- | | | | @numberingOrg [Optional]
- | | | | @codeList [Optional]
- | | | | @noteLabel [Optional]

| **YTOFbody 1-1**

- | | **YTOFitem 1-unbounded**
- | | @act [Required]
- | | | lineN 1-1
- | | | @VAT [Optional]
- | | | **refDoc 1-1**
- | | | @docType [Required]
- | | | | docID 1-2
- | | | | @numberingOrg [Optional]
- | | | | docDate 0-1
- | | | | @dateForm [Optional]
- | | | | season 0-1
- | | | | @numberingOrg [Optional]
- | | | | @codeList [Optional]
- | | | | @listName [Optional]
- | | | | @listVersion [Optional]
- | | | | itemID 0-1
- | | | **attachment 0-1**
- | | | @uid [Optional]

```

| | | | | fileName 0-1
| | | | |   @numberingOrg [Optional]
| | | | | binaryObject 0-1
| | | | |   @format [Optional]
| | | | |   @mime [Optional]
| | | | |   @encoding [Optional]
| | | | |   @characterSet [Optional]
| | | | | externalReference 0-99
| | | | |   uri 1-1
| | | | |     @isURL [Optional] [Default= true]
| | | | |   mimeTypeCode 0-1
| | | | |   formatCode 0-1
| | | | |   encodingCode 0-1
| | | | |   characterSetCode 0-1
| | | | | yarnCompos 0-1
| | | | |   percCompos 1-9
| | | | |     @fibre [Required]
| | | | | yarnSpecs 0-9
| | | | | - choose -
| | | | |   | yarnCharText 1-1
| | | | | - or -
| | | | |   | yarnChar 1-1
| | | | | - end choose -
| | | | |   | experimValue 0-1
| | | | |     @um [Optional]
| | | | |     @method [Optional]
| | | | |     @application [Optional]
| | | | |     @idCO [Optional]
| | | | |   | specValue 0-1
| | | | |     @um [Optional]
| | | | |     @source [Optional]
| | | | |     @method [Optional]
| | | | |     @application [Optional]
| | | | |     @CV [Optional]
| | | | | - choose -
| | | | |   | tolerance 0-2
| | | | |     @um [Required]
| | | | | - or -
| | | | |   | pcTolerance 0-2
| | | | |     @um [Optional]
| | | | | - end choose -
| | | | | qty 1-2
| | | | |   @um [Required]
| | | | | price 1-1
| | | | |   @um [Optional]
| | | | |   @priceQualifier [Optional] [Default= NET]
| | | | |   @currency [Optional]
| | | | | deliveryDate 1-1
| | | | |   @dateForm [Optional]
| | | | | notBeforeDate 0-1
| | | | |   @dateForm [Optional]
| | | | | thirdParty 0-1
| | | | |   @VAT [Optional]
| | | | |   @role [Required]
| | | | |   @sender [Optional]
| | | | |     id 1-1
| | | | |       @numberingOrg [Optional]
| | | | |     legalName 0-1
| | | | |     dept 0-1
| | | | |     subDept 0-1
| | | | |     person 0-1

```



```

| | | | @email [Optional]
| | | | @phone [Optional]
| | | | @fax [Optional]
| | | | street 0-1
| | | | city 0-1
| | | | subCountry 0-1
| | | | country 0-1
| | | | postCode 0-1
| | | | yarnMnfrOperation 1-9
| | | | - choose -
| | | | | jobName 1-1
| | | | - or -
| | | | | yarnJob 1-1
| | | | - end choose -
| | | | | yarnJobTech 0-1
| | | | | refDoc 0-1
| | | | | @docType [Required]
| | | | | | docID 1-2
| | | | | | | @numberingOrg [Optional]
| | | | | | docDate 0-1
| | | | | | | @dateForm [Optional]
| | | | | | season 0-1
| | | | | | | @numberingOrg [Optional]
| | | | | | | @codeList [Optional]
| | | | | | | @listName [Optional]
| | | | | | | @listVersion [Optional]
| | | | | | itemID 0-1
| | | | | | attachment 0-1
| | | | | | | @uid [Optional]
| | | | | | | | fileName 0-1
| | | | | | | | | @numberingOrg [Optional]
| | | | | | | | binaryObject 0-1
| | | | | | | | | @format [Optional]
| | | | | | | | | @mime [Optional]
| | | | | | | | | @encoding [Optional]
| | | | | | | | | @characterSet [Optional]
| | | | | | | externalReference 0-99
| | | | | | | | uri 1-1
| | | | | | | | | @isURL [Optional] [Default= true]
| | | | | | | | | mimeTypeCode 0-1
| | | | | | | | | formatCode 0-1
| | | | | | | | | encodingCode 0-1
| | | | | | | | | characterSetCode 0-1
| | | | | yarnMachine 0-1
| | | | | yarnMachineSpecs 0-9
| | | | | | yarnMachineParam 1-1
| | | | | | | specValue 0-1
| | | | | | | | @um [Optional]
| | | | | | | | @source [Optional]
| | | | | | | | @method [Optional]
| | | | | | | | @application [Optional]
| | | | | | | | @CV [Optional]
| | | | | - choose -
| | | | | | tolerance 0-2
| | | | | | | @um [Required]
| | | | | - or -
| | | | | | pcTolerance 0-2
| | | | | | | @um [Optional]
| | | | | - end choose -
| | | | | note 0-99
| | | | | | @numberingOrg [Optional]

```

				@codeList [Optional]
				@noteLabel [Optional]
			dtScheme 0-1	
			@taxType [Required]	
			taxCategory 0-1	
			taxRate 0-1	
			legalRef 0-1	
			@codeList [Required]	
			note 0-99	
			@numberingOrg [Optional]	
			@codeList [Optional]	
			@noteLabel [Optional]	
			note 0-99	
			@numberingOrg [Optional]	
			@codeList [Optional]	
			@noteLabel [Optional]	

2.2 Detailed description of document elements

Following tables show all elements (complex and simple) used in this document. Description includes: 1) element's information: xml tag, name, brief description, data type and syntax constraints; 2) information about use of the element in a particular position in the document: xpath and possible associated notes.

2.2.1 Complex elements (Aggregate Business Information Entities)

Complex elements are those elements whose content is composed of other elements (childs). Complex elements are alphabetically ordered.

allowanceCharge	Allowances and Charges related to an Order or a contract (XPath YARNTwistOffer/terms/allowanceCharge) 0-9
attachment	an attached document. An attachment can refer to an external document or be included with the document being exchanged (XPath YARNTwistOffer/YTOFbody/YTOFitem/yarnMnfrOperation/refDoc/attachment) 0-1 (XPath YARNTwistOffer/OFheader/refDoc/attachment) 0-1 (XPath YARNTwistOffer/YTOFbody/YTOFitem/refDoc/attachment) 0-1
buyer	details of the Buyer (party that buys the good or service that is object of the current collaborative process) - base type: Nad, (XPath YARNTwistOffer/OFheader/buyer) 1-1
dtScheme	set of data usable to declare the duty or tax applied (XPath YARNTwistOffer/YTOFbody/YTOFitem/dtScheme) 0-1 - note: <i>recommended alternative to the attribute @VAT</i> (XPath YARNTwistOffer/terms/allowanceCharge/dtScheme) 0-1
externalReference	details about an external object, such as a document stored at a remote location (XPath YARNTwistOffer/OFheader/refDoc/attachment/externalReference) 0-99 (XPath YARNTwistOffer/YTOFbody/YTOFitem/refDoc/attachment/externalReference) 0-99 (XPath YARNTwistOffer/YTOFbody/YTOFitem/yarnMnfrOperation/refDoc/attachment/externalReference) 0-99
insPayment	payment details for payment by installments (XPath YARNTwistOffer/terms/insPayment) 0-5 - note: <i>excluded the case of offers, this set of data is alternative to payment set and must be iterated for each payment installment</i>
OFheader	header of the document OFFER (XPath YARNTwistOffer/OFheader) 1-1
payment	payment details for payment all in one (XPath YARNTwistOffer/terms/payment) 0-5 - note: <i>excluded the case of offers, this set of data is alternative to insPayment, it can be iterated to specify alternative terms of payment (e.g.: 60 days or 30 days with 3% discount)</i>
refDoc	identification of a document and of an item thereof, to which the message makes reference (XPath YARNTwistOffer/OFheader/refDoc) 1-9 - note: <i>reference to the Request for Offer</i> (XPath YARNTwistOffer/YTOFbody/YTOFitem/refDoc) 1-1 - note: <i>reference to the line of the corresponding Request for Offer</i> (XPath YARNTwistOffer/YTOFbody/YTOFitem/yarnMnfrOperation/refDoc) 0-1 - note: <i>here a Process Sheet transmitted to the Subcontractor can be referenced</i>

subContractor	details of the Sub-contractor - base type: Nad, (XPath YARNTwistOffer/OFheader/subContractor) 0-1 - note: <i>At least one out of Supplier and Subcontractor must be indicated.</i>
supplier	details of the Supplier (party that supplies the good or service that is object of the current collaborative process) - base type: Nad, (XPath YARNTwistOffer/OFheader/supplier) 0-1 - note: <i>At least one out of Supplier and Subcontractor must be indicated.</i>
terms	details of the commercial obligations for payment and delivery (XPath YARNTwistOffer/terms) 0-1
thirdParty	details of the Third Party, different from Buyer or Supplier - base type: Nad, (XPath YARNTwistOffer/OFheader/thirdParty) 0-2 - note: <i>In the Offer case it might give reference to the Originator of the request.</i> (XPath YARNTwistOffer/YTOFbody/YTOFitem/thirdParty) 0-1
trade	general terms of trade for the specified supply (XPath YARNTwistOffer/terms/trade) 0-1
transInfo	details of transport: mode, carrier and delivery place (XPath YARNTwistOffer/terms/transInfo) 0-5
yarnCompos	fibrous composition of a yarn product (XPath YARNTwistOffer/YTOFbody/YTOFitem/yarnCompos) 0-1
yarnMachineSpecs	technical specifications of a machine used in an operation of a work cycle for yarn (type and settings) (XPath YARNTwistOffer/YTOFbody/YTOFitem/yarnMnfrOperation/yarnMachineSpecs) 0-9
yarnMnfrOperation	details of a manufacturing operation used for manufacturing a yarn product (XPath YARNTwistOffer/YTOFbody/YTOFitem/yarnMnfrOperation) 1-9
yarnSpecs	technical properties of a yarn product linked to an operation of the subcontracted production of yarn or to the purchase of yarn (XPath YARNTwistOffer/YTOFbody/YTOFitem/yarnSpecs) 0-9
YTOFbody	body of the document OFFER OF TWISTING (XPath YARNTwistOffer/YTOFbody) 1-1
YTOFitem	line of the document OFFER OF TWISTING (XPath YARNTwistOffer/YTOFbody/YTOFitem) 1-unbounded

2.2.2 Simple elements (Basic Business Information Entities)

Simple elements are those elements whose content is characterized by a data type plus a domain of possible values. Simple elements are alphabetically ordered.

AC_amount	amount of an Allowance or Charge - base type: decimal, fraction digits: 2, (XPath YARNTwistOffer/terms/allowanceCharge/AC_amount) 1-1
AC_category	coded specification of an Allowance or Charge - base type: string, cod. table: T41 http://www.ebiz.enea.it/moda-ml/repository/codelist/draft/gc_T41.xml (XPath YARNTwistOffer/terms/allowanceCharge/AC_category) 1-1
AC_categoryText	free text description of an Allowance or Charge - base type: string, max length: 250,

	(XPath YARNTwistOffer/terms/allowanceCharge/AC_categoryText) 1-1
AC_percent	amount of an Allowance or Charge as a percentage - base type: decimal, max inclusive: 100, fraction digits: 2, (XPath YARNTwistOffer/terms/allowanceCharge/AC_percent) 1-1
@act	status that the current line assigns to the line addressed in the reference document; if it is already canceled it maintains the status. - base type: string, cod. table: NT5 http://www.ebiz.enea.it/moda-ml/repository/codelist/draft/gc_NT5.xml (XPath YARNTwistOffer/YTOFbody/YTOFitem/@act) [Required]
additionalIdentifier	additional identification code of a Party, for example customs registries or others - base type: string, max length: 15, (XPath YARNTwistOffer/OFheader/supplier/additionalIdentifier) 0-9 - note: <i>identifiers for example for exports, such as MID (Manufacturer Identification Code), EORI (E.O.R.I. - Economic Operator Registration and Identification)</i> (XPath YARNTwistOffer/OFheader/buyer/additionalIdentifier) 0-9 - note: <i>identifiers for example for exports, such as MID (Manufacturer Identification Code), EORI (E.O.R.I. - Economic Operator Registration and Identification)</i>
@application	force or similar condition (e.g. no. of revolutions) applied in a test as specified within the standard - base type: string, max length: 15, (XPath YARNTwistOffer/YTOFbody/YTOFitem/yarnSpecs/specValue/@application) [Optional] (XPath YARNTwistOffer/YTOFbody/YTOFitem/yarnMnfrOperation/yarnMachineSpecs/specValue/@application) [Optional] (XPath YARNTwistOffer/YTOFbody/YTOFitem/yarnSpecs/experimValue/@application) [Optional]
binaryObject	a binary large object containing an attached document - base type: base64Binary, (XPath YARNTwistOffer/YTOFbody/YTOFitem/refDoc/attachment/binaryObject) 0-1 (XPath YARNTwistOffer/YTOFbody/YTOFitem/yarnMnfrOperation/refDoc/attachment/binaryObject) 0-1 (XPath YARNTwistOffer/OFheader/refDoc/attachment/binaryObject) 0-1
carrier	identification of the transport carrier - base type: string, max length: 40, (XPath YARNTwistOffer/terms/transInfo/carrier) 0-1
@characterSet	the character set of the binary object if the mime type is text - base type: normalizedString, (XPath YARNTwistOffer/YTOFbody/YTOFitem/yarnMnfrOperation/refDoc/attachment/binaryObject/@characterSet) [Optional] (XPath YARNTwistOffer/YTOFbody/YTOFitem/refDoc/attachment/binaryObject/@characterSet) [Optional] (XPath YARNTwistOffer/OFheader/refDoc/attachment/binaryObject/@characterSet) [Optional]
characterSetCode	the character set of an external document - base type: normalizedString, (XPath YARNTwistOffer/YTOFbody/YTOFitem/yarnMnfrOperation/refDoc/attachment/externalReference/characterSetCode) 0-1 (XPath YARNTwistOffer/OFheader/refDoc/attachment/externalReference/characterSetCode) 0-1 (XPath YARNTwistOffer/YTOFbody/YTOFitem/refDoc/attachment/externalReference/characterSetCode) 0-1
city	name of the city (town, village) - base type: string, max length: 40, (XPath YARNTwistOffer/OFheader/thirdParty/city) 0-1 (XPath YARNTwistOffer/OFheader/supplier/city) 0-1

	<p>(XPath YARNTwistOffer/YTOFbody/YTOFitem/thirdParty/city) 0-1 (XPath YARNTwistOffer/OFheader/buyer/city) 0-1 (XPath YARNTwistOffer/OFheader/subContractor/city) 0-1</p>
@codeList	<p>it specifies the URL where the list of codes used to make an instance of the element can be found</p> <ul style="list-style-type: none"> - base type: string, max length: 255, (XPath YARNTwistOffer/terms/allowanceCharge/dtScheme/legalRef/@codeList) [Required] (XPath YARNTwistOffer/OFheader/note/@codeList) [Optional] - nota: <i>must be used to provide (URL) the list of codes used in "noteLabel"</i> (XPath YARNTwistOffer/terms/allowanceCharge/dtScheme/note/@codeList) [Optional] - nota: <i>must be used to provide (URL) the list of codes used in "noteLabel"</i> (XPath YARNTwistOffer/YTOFbody/YTOFitem/note/@codeList) [Optional] - nota: <i>must be used to provide (URL) the list of codes used in "noteLabel"</i> (XPath YARNTwistOffer/YTOFbody/YTOFitem/dtScheme/legalRef/@codeList) [Required] (XPath YARNTwistOffer/YTOFbody/YTOFitem/yarnMnfrOperation/refDoc/season/@codeList) [Optional] (XPath YARNTwistOffer/OFheader/season/@codeList) [Optional] (XPath YARNTwistOffer/OFheader/refDoc/season/@codeList) [Optional] (XPath YARNTwistOffer/YTOFbody/YTOFitem/refDoc/season/@codeList) [Optional] (XPath YARNTwistOffer/YTOFbody/YTOFitem/yarnMnfrOperation/note/@codeList) [Optional] - nota: <i>must be used to provide (URL) the list of codes used in "noteLabel"</i> (XPath YARNTwistOffer/YTOFbody/YTOFitem/dtScheme/note/@codeList) [Optional] - nota: <i>must be used to provide (URL) the list of codes used in "noteLabel"</i>
country	<p>code of the nation</p> <ul style="list-style-type: none"> - base type: string, cod. table: T10 http://www.ebiz.enea.it/moda-ml/repository/codelist/draft/gc_T10.xml (XPath YARNTwistOffer/YTOFbody/YTOFitem/thirdParty/country) 0-1 (XPath YARNTwistOffer/OFheader/supplier/country) 0-1 (XPath YARNTwistOffer/OFheader/subContractor/country) 0-1 (XPath YARNTwistOffer/OFheader/thirdParty/country) 0-1 (XPath YARNTwistOffer/OFheader/buyer/country) 0-1
@currency	<p>currency in which a specified monetary data is expressed</p> <ul style="list-style-type: none"> - base type: string, cod. table: T9 http://www.ebiz.enea.it/moda-ml/repository/codelist/draft/gc_T9.xml (XPath YARNTwistOffer/YTOFbody/YTOFitem/price/@currency) [Optional] - nota: <i>Currency referred by the price.</i> (XPath YARNTwistOffer/terms/allowanceCharge/@currency) [Optional]
@CV	<p>coefficient of variation (CV) of a measurement</p> <ul style="list-style-type: none"> - base type: decimal, (XPath YARNTwistOffer/YTOFbody/YTOFitem/yarnSpecs/specValue/@CV) [Optional] (XPath YARNTwistOffer/YTOFbody/YTOFitem/yarnMnfrOperation/yarnMachineSpecs/specValue/@CV) [Optional]
@dateForm	<p>format used for the date</p> <ul style="list-style-type: none"> - base type: string, cod. table: NT29 http://www.ebiz.enea.it/moda-ml/repository/codelist/draft/gc_NT29.xml (XPath YARNTwistOffer/OFheader/validityEnd/@dateForm) [Optional] (XPath YARNTwistOffer/OFheader/msgDate/@dateForm) [Optional] (XPath YARNTwistOffer/OFheader/validityStart/@dateForm) [Optional] (XPath YARNTwistOffer/YTOFbody/YTOFitem/yarnMnfrOperation/refDoc/docDate/@dateForm) [Optional] (XPath YARNTwistOffer/YTOFbody/YTOFitem/notBeforeDate/@dateForm) [Optional] (XPath YARNTwistOffer/terms/transInfo/delEffectiveDate/@dateForm) [Optional] (XPath YARNTwistOffer/terms/transInfo/despatchDate/@dateForm) [Optional] (XPath YARNTwistOffer/YTOFbody/YTOFitem/refDoc/docDate/@dateForm) [Optional]

	(XPath YARNTwistOffer/YTOFbody/YTOFitem/deliveryDate/@dateForm) [Optional] (XPath YARNTwistOffer/OFheader/refDoc/docDate/@dateForm) [Optional]
delEffectiveDate	effective date of delivery of goods (declared in Despatch), according to one of the patterns YYYY-MM-DD, YYYY-MM-DD:HH-MM or YYYY-WW. - base type: string, (XPath YARNTwistOffer/terms/transInfo/delEffectiveDate) 0-1
deliveryDate	date of delivery of goods, requested or promised in the purchase process, according to one of the patterns YYYY-MM-DD, YYYY-MM-DD:HH-MM or YY YY-WW. - base type: string, (XPath YARNTwistOffer/YTOFbody/YTOFitem/deliveryDate) 1-1
deliveryPlace	place of delivery of goods, ultimate or related to a given leg - base type: string, max length: 250, (XPath YARNTwistOffer/terms/transInfo/deliveryPlace) 0-1
dept	name or code of a contact department within a Party - base type: string, max length: 40, (XPath YARNTwistOffer/YTOFbody/YTOFitem/thirdParty/dept) 0-1 (XPath YARNTwistOffer/OFheader/buyer/dept) 0-1 (XPath YARNTwistOffer/OFheader/subContractor/dept) 0-1 (XPath YARNTwistOffer/OFheader/thirdParty/dept) 0-1 (XPath YARNTwistOffer/OFheader/supplier/dept) 0-1
despatchDate	date of despatch of goods, requested or promised in the purchase process, according to one of the patterns YYYY-MM-DD, YYYY-MM-DD:HH-MM or Y YY-WW. - base type: string, (XPath YARNTwistOffer/terms/transInfo/despatchDate) 0-1
despatchPlace	place of despatch of goods, origin or related to a given leg - base type: string, max length: 250, (XPath YARNTwistOffer/terms/transInfo/despatchPlace) 0-1
docDate	date of issue of the referenced document, according to one of the patterns Y YY-MM-DD, YYYY-MM-DD:HH-MM or YYYY-WW. - base type: string, (XPath YARNTwistOffer/YTOFbody/YTOFitem/yarnMnfrOperation/refDoc/docDate) 0-1 (XPath YARNTwistOffer/YTOFbody/YTOFitem/refDoc/docDate) 0-1 (XPath YARNTwistOffer/OFheader/refDoc/docDate) 0-1
docID	identification number of the referenced document SINCE 2008-1 ITS USE I N THE HEADER IS DISCOURAGED (REPLACED BY msgID) - base type: string, max length: 80, (XPath YARNTwistOffer/YTOFbody/YTOFitem/refDoc/docID) 1-2 (XPath YARNTwistOffer/YTOFbody/YTOFitem/yarnMnfrOperation/refDoc/docID) 1-2 (XPath YARNTwistOffer/OFheader/refDoc/docID) 1-2 (XPath YARNTwistOffer/OFheader/docID) 0-1
@docType	type or class to which the referenced document belongs - base type: string, cod. table: T21 http://www.ebiz.enea.it/moda-ml/repository/codelist/draft/gc_T21.xml (XPath YARNTwistOffer/OFheader/refDoc/@docType) [Required] (XPath YARNTwistOffer/YTOFbody/YTOFitem/yarnMnfrOperation/refDoc/@docType) [Required] (XPath YARNTwistOffer/YTOFbody/YTOFitem/refDoc/@docType) [Required]
@email	electronic mail address of the contact person within a Party - base type: string, max length: 250, (XPath YARNTwistOffer/YTOFbody/YTOFitem/thirdParty/person/@email) [Optional] (XPath YARNTwistOffer/OFheader/buyer/person/@email) [Optional] (XPath YARNTwistOffer/OFheader/subContractor/person/@email) [Optional] (XPath YARNTwistOffer/OFheader/supplier/person/@email) [Optional]

	(XPath YARNTwistOffer/OFheader/thirdParty/person/@email) [Optional]
@encoding	specifies the decoding algorithm of the binary object - base type: normalizedString, (XPath YARNTwistOffer/OFheader/refDoc/attachment/binaryObject/@encoding) [Optional] (XPath YARNTwistOffer/YTOFbody/YTOFitem/refDoc/attachment/binaryObject/@encoding) [Optional] (XPath YARNTwistOffer/YTOFbody/YTOFitem/yarnMnfrOperation/refDoc/attachment/binaryObject/@encoding) [Optional]
encodingCode	the encoding/decoding algorithm used with the external object - base type: normalizedString, (XPath YARNTwistOffer/YTOFbody/YTOFitem/refDoc/attachment/externalReference/encodingCode) 0-1 (XPath YARNTwistOffer/OFheader/refDoc/attachment/externalReference/encodingCode) 0-1 (XPath YARNTwistOffer/YTOFbody/YTOFitem/yarnMnfrOperation/refDoc/attachment/externalReference/encodingCode) 0-1
experimValue	experimental value of the measurement - base type: decimal, (XPath YARNTwistOffer/YTOFbody/YTOFitem/yarnSpecs/experimValue) 0-1
@fax	fax number of the contact person within a Party - base type: string, max length: 35, (XPath YARNTwistOffer/YTOFbody/YTOFitem/thirdParty/person/@fax) [Optional] (XPath YARNTwistOffer/OFheader/subContractor/person/@fax) [Optional] (XPath YARNTwistOffer/OFheader/buyer/person/@fax) [Optional] (XPath YARNTwistOffer/OFheader/thirdParty/person/@fax) [Optional] (XPath YARNTwistOffer/OFheader/supplier/person/@fax) [Optional]
@fibre	type of fibre used in a textile product - base type: string, cod. table: T19 http://www.ebiz.enea.it/moda-ml/repository/codelist/draft/gc_T19.xml (XPath YARNTwistOffer/YTOFbody/YTOFitem/yarnCompos/percCompos/@fibre) [Required]
fileName	unique identifier (name) of the file - base type: string, max length: 255, (XPath YARNTwistOffer/OFheader/refDoc/attachment/fileName) 0-1 (XPath YARNTwistOffer/YTOFbody/YTOFitem/yarnMnfrOperation/refDoc/attachment/fileName) 0-1 (XPath YARNTwistOffer/YTOFbody/YTOFitem/refDoc/attachment/fileName) 0-1
@finDiscount	financial discount rate applied for payment by the date specified - base type: decimal, min inclusive: 0, max inclusive: 100, fraction digits: 2, (XPath YARNTwistOffer/terms/payment/@finDiscount) [Optional]
@finSurcharge	financial surcharge rate applied for payment after the date specified - base type: decimal, min inclusive: 0, max inclusive: 100, fraction digits: 2, (XPath YARNTwistOffer/terms/payment/@finSurcharge) [Optional]
@format	the format of the binary content - base type: string, (XPath YARNTwistOffer/YTOFbody/YTOFitem/yarnMnfrOperation/refDoc/attachment/binaryObject/@format) [Optional] (XPath YARNTwistOffer/OFheader/refDoc/attachment/binaryObject/@format) [Optional] (XPath YARNTwistOffer/YTOFbody/YTOFitem/refDoc/attachment/binaryObject/@format) [Optional]
formatCode	the format of the external object - base type: normalizedString, (XPath YARNTwistOffer/YTOFbody/YTOFitem/refDoc/attachment/externalReference/formatCode) 0-1 (XPath YARNTwistOffer/OFheader/refDoc/attachment/externalReference/formatCode) 0-1

	(XPath YARNTwistOffer/YTOFbody/YTOFitem/yarnMnfrOperation/refDoc/attachment/externalReference/formatCode) 0-1
grossWeight	the gross weight, declared for transport or customs purpose - base type: decimal, min inclusive: 0, fraction digits: 2, (XPath YARNTwistOffer/terms/transInfo/grossWeight) 0-1
id	primary identification code of a Party; it is recommended the format: nation code (ISO 3166) + VAT identification number (11 crt), with the qualifier "numberingOrg"= MF - base type: string, max length: 15, (XPath YARNTwistOffer/OFheader/supplier/id) 1-1 (XPath YARNTwistOffer/YTOFbody/YTOFitem/thirdParty/id) 1-1 (XPath YARNTwistOffer/OFheader/subContractor/id) 1-1 (XPath YARNTwistOffer/OFheader/thirdParty/id) 1-1 (XPath YARNTwistOffer/OFheader/buyer/id) 1-1
@idCO	primary identification code of the Party executing the test; it is recommended the format: nation code (ISO 3166) + VAT identification number (11 crt). - base type: string, max length: 15, (XPath YARNTwistOffer/YTOFbody/YTOFitem/yarnSpecs/experimValue/@idCO) [Optional]
@idQualifier	Qualification of the identifier. - base type: string, (XPath YARNTwistOffer/OFheader/supplier/additionalIdentifier/@idQualifier) [Optional] - nota: <i>this attribute should be used when the numberingOrg attribute is not enough to declare the type of identifier</i> (XPath YARNTwistOffer/OFheader/buyer/additionalIdentifier/@idQualifier) [Optional] - nota: <i>this attribute should be used when the numberingOrg attribute is not enough to declare the type of identifier</i>
incoTerm	specification of the terms of trade (INCOTERMS) - base type: string, cod. table: T3 http://www.ebiz.enea.it/moda-ml/repository/codelist/draft/gc_T3.xml (XPath YARNTwistOffer/terms/trade/incoTerm) 1-1
incoTermText	free text specifying the terms of trade (incoterm, location) - base type: string, max length: 250, (XPath YARNTwistOffer/terms/trade/incoTermText) 1-1
@isURL	it indicates if the referred element is an URL (true) or not (false) - base type: boolean, (XPath YARNTwistOffer/YTOFbody/YTOFitem/yarnMnfrOperation/refDoc/attachment/externalReference/uri/@isURL) [Optional] [Default= true] - nota: <i>usage of URLs is recommended</i> (XPath YARNTwistOffer/YTOFbody/YTOFitem/refDoc/attachment/externalReference/uri/@isURL) [Optional] [Default= true] - nota: <i>usage of URLs is recommended</i> (XPath YARNTwistOffer/OFheader/refDoc/attachment/externalReference/uri/@isURL) [Optional] [Default= true] - nota: <i>usage of URLs is recommended</i>
itemID	number of the line/item of the referenced document - base type: string, max length: 6, (XPath YARNTwistOffer/OFheader/refDoc/itemID) 0-1 (XPath YARNTwistOffer/YTOFbody/YTOFitem/yarnMnfrOperation/refDoc/itemID) 0-1 (XPath YARNTwistOffer/YTOFbody/YTOFitem/refDoc/itemID) 0-1
jobName	description of the elementary job - base type: string, max length: 40, (XPath YARNTwistOffer/YTOFbody/YTOFitem/yarnMnfrOperation/jobName) 1-1

legalName	<p>legal name of a Party</p> <p>- base type: string, max length: 250, (XPath YARNTwistOffer/YTOFbody/YTOFitem/thirdParty/legalName) 0-1 (XPath YARNTwistOffer/OFheader/buyer/legalName) 0-1 (XPath YARNTwistOffer/OFheader/thirdParty/legalName) 0-1 (XPath YARNTwistOffer/OFheader/supplier/legalName) 0-1 (XPath YARNTwistOffer/OFheader/subContractor/legalName) 0-1</p>
legalRef	<p>legal reference of the duty or tax or fee category</p> <p>- base type: string, (XPath YARNTwistOffer/YTOFbody/YTOFitem/dtScheme/legalRef) 0-1 (XPath YARNTwistOffer/terms/allowanceCharge/dtScheme/legalRef) 0-1</p>
lineN	<p>number of the line item of the present message (xml document); it is set by the role that produces the document. Usually it is a progressive number, but not always.</p> <p>- base type: positiveInteger, min inclusive: 1, max inclusive: 9999, (XPath YARNTwistOffer/YTOFbody/YTOFitem/lineN) 1-1</p>
@listName	<p>the name of the list of codes used to make an instance of the element (it might be thought as descriptive element, i.e. 'fabric printing technologies', or not, i.e. "T264")</p> <p>- base type: string, max length: 40, (XPath YARNTwistOffer/OFheader/refDoc/season/@listName) [Optional] (XPath YARNTwistOffer/YTOFbody/YTOFitem/yarnMnfrOperation/refDoc/season/@listName) [Optional] (XPath YARNTwistOffer/YTOFbody/YTOFitem/refDoc/season/@listName) [Optional] (XPath YARNTwistOffer/OFheader/season/@listName) [Optional]</p>
@listVersion	<p>it specifies the version of the list of codes used to make an instance of the element</p> <p>- base type: string, max length: 6, (XPath YARNTwistOffer/YTOFbody/YTOFitem/refDoc/season/@listVersion) [Optional] (XPath YARNTwistOffer/OFheader/refDoc/season/@listVersion) [Optional] (XPath YARNTwistOffer/OFheader/season/@listVersion) [Optional] (XPath YARNTwistOffer/YTOFbody/YTOFitem/yarnMnfrOperation/refDoc/season/@listVersion) [Optional]</p>
location	<p>specification of a location</p> <p>- base type: string, max length: 40, (XPath YARNTwistOffer/terms/trade/location) 0-1 - note: <i>place to which the INCOTERM applies</i></p>
@logo	<p>company logo (URL of the image jpeg or gif). It is recommended that the width of the image does not exceed 640 pixel.</p> <p>- base type: string, max length: 255, (XPath YARNTwistOffer/OFheader/supplier/@logo) [Optional] (XPath YARNTwistOffer/OFheader/buyer/@logo) [Optional]</p>
@LRI	<p>attribute usable to format a string according to a customized User rule (local rule)</p> <p>- base type: string, cod. table: NT3 http://www.ebiz.enea.it/moda-ml/repository/codelist/draft/gc_NT3.xml (XPath YARNTwistOffer/terms/trade/location/@LRI) [Optional]</p>
@maxQty	<p>maximum product quantity</p> <p>- base type: decimal, min inclusive: 0, fraction digits: 2, (XPath YARNTwistOffer/terms/allowanceCharge/@maxQty) [Optional] - note: <i>maximum quantity of product for the application of this allowance or charge</i></p>
@method	<p>standard protocol or method employed in a test to evaluate a characteristic or a parameter</p> <p>- base type: string, max length: 80,</p>

	<p>(XPath YARNTwistOffer/YTOFbody/YTOFitem/yarnMnfrOperation/yarnMachineSpecs/specValue/@method) [Optional]</p> <p>(XPath YARNTwistOffer/YTOFbody/YTOFitem/yarnSpecs/experimValue/@method) [Optional]</p> <p>- nota: we recommend the specification of the method of measure only when different from the one of the MODA-ML coding system</p> <p>(XPath YARNTwistOffer/YTOFbody/YTOFitem/yarnSpecs/specValue/@method) [Optional]</p>
@mime	<p>the mime type of the binary object</p> <p>- base type: normalizedString,</p> <p>(XPath YARNTwistOffer/YTOFbody/YTOFitem/refDoc/attachment/binaryObject/@mime) [Optional]</p> <p>(XPath YARNTwistOffer/YTOFbody/YTOFitem/yarnMnfrOperation/refDoc/attachment/binaryObject/@mime) [Optional]</p> <p>(XPath YARNTwistOffer/OFheader/refDoc/attachment/binaryObject/@mime) [Optional]</p>
mimeCode	<p>mime type of the external object</p> <p>- base type: normalizedString,</p> <p>(XPath YARNTwistOffer/YTOFbody/YTOFitem/refDoc/attachment/externalReference/mimeCode) 0-1</p> <p>(XPath YARNTwistOffer/YTOFbody/YTOFitem/yarnMnfrOperation/refDoc/attachment/externalReference/mimeCode) 0-1</p> <p>(XPath YARNTwistOffer/OFheader/refDoc/attachment/externalReference/mimeCode) 0-1</p>
@minQty	<p>minimum product quantity</p> <p>- base type: decimal, min inclusive: 0, fraction digits: 2,</p> <p>(XPath YARNTwistOffer/terms/allowanceCharge/@minQty) [Optional]</p> <p>- nota: minimum quantity of product for the application of this allowance or charge</p>
msgDate	<p>date of issue of the present message (xml document), according to one of the patterns YYYY-MM-DD, YYYY-MM-DD:HH-MM or YYYY-WW.</p> <p>- base type: string,</p> <p>(XPath YARNTwistOffer/OFheader/msgDate) 1-1</p>
@msgfunction	<p>function performed by the present message with regards to the transmission</p> <p>- base type: string, cod. table: NT18</p> <p>http://www.ebiz.enea.it/moda-ml/repository/codelist/draft/gc_NT18.xml</p> <p>(XPath YARNTwistOffer/@msgfunction) [Optional] [Default= OR]</p>
msgID	<p>key identifier of the business document in the information system of the issuing Party. In case of more despatches of the same business document, it is unchanged.</p> <p>- base type: string, max length: 35,</p> <p>(XPath YARNTwistOffer/OFheader/msgID) 0-1</p>
msgN	<p>identification number given to the message (xml document) by its issuer. In case of more despatches of the same business document, it changes.</p> <p>- base type: string, max length: 35,</p> <p>(XPath YARNTwistOffer/OFheader/msgN) 1-1</p>
netWeight	<p>the net weight declared for transport or customs purpose</p> <p>- base type: decimal, min inclusive: 0, fraction digits: 2,</p> <p>(XPath YARNTwistOffer/terms/transInfo/netWeight) 0-1</p>
notBeforeDate	<p>earliest date possible to begin an activity, according to one of the patterns YYYY-MM-DD, YYYY-MM-DD:HH-MM or YYYY-WW.</p> <p>- base type: string,</p> <p>(XPath YARNTwistOffer/YTOFbody/YTOFitem/notBeforeDate) 0-1</p>
note	<p>free text or structured (computer processing) note. For note structuring use the attributes "noteLabel" and "codelist"</p> <p>- base type: string, max length: 350,</p> <p>(XPath YARNTwistOffer/terms/allowanceCharge/dtScheme/note) 0-99</p>

	<p>(XPath YARNTwistOffer/YTOFbody/YTOFitem/note) 0-99 (XPath YARNTwistOffer/YTOFbody/YTOFitem/yarnMnfrOperation/note) 0-99 (XPath YARNTwistOffer/OFheader/note) 0-99 (XPath YARNTwistOffer/YTOFbody/YTOFitem/dtScheme/note) 0-99</p>
@noteLabel	<p>subject qualifier of a note - base type: string, max length: 35, (XPath YARNTwistOffer/OFheader/note/@noteLabel) [Optional] - nota: <i>must be used to qualify the subject of the note</i> (XPath YARNTwistOffer/terms/allowanceCharge/dtScheme/note/@noteLabel) [Optional] - nota: <i>must be used to qualify the subject of the note</i> (XPath YARNTwistOffer/YTOFbody/YTOFitem/dtScheme/note/@noteLabel) [Optional] - nota: <i>must be used to qualify the subject of the note</i> (XPath YARNTwistOffer/YTOFbody/YTOFitem/yarnMnfrOperation/note/@noteLabel) [Optional] - nota: <i>must be used to qualify the subject of the note</i> (XPath YARNTwistOffer/YTOFbody/YTOFitem/note/@noteLabel) [Optional] - nota: <i>must be used to qualify the subject of the note</i></p>
@numberingOrg	<p>code specifying the organisation who has created or owns the coding or numbering system - base type: string, cod. table: NT6 http://www.ebiz.enea.it/moda-ml/repository/codelist/draft/gc_NT6.xml (XPath YARNTwistOffer/OFheader/thirdParty/id/@numberingOrg) [Optional] (XPath YARNTwistOffer/YTOFbody/YTOFitem/yarnMnfrOperation/note/@numberingOrg) [Optional] (XPath YARNTwistOffer/OFheader/season/@numberingOrg) [Optional] (XPath YARNTwistOffer/YTOFbody/YTOFitem/yarnMnfrOperation/refDoc/attachment/fileName/@numberingOrg) [Optional] (XPath YARNTwistOffer/YTOFbody/YTOFitem/dtScheme/note/@numberingOrg) [Optional] (XPath YARNTwistOffer/OFheader/refDoc/attachment/fileName/@numberingOrg) [Optional] (XPath YARNTwistOffer/OFheader/docID/@numberingOrg) [Optional] - nota: <i>here can be specified whose document numbering is used (e.g.: Client, Supplier, ..)</i> (XPath YARNTwistOffer/OFheader/supplier/additionalIdentifier/@numberingOrg) [Optional] - nota: <i>here the issuer of the identifier must be specified</i> (XPath YARNTwistOffer/terms/allowanceCharge/dtScheme/note/@numberingOrg) [Optional] (XPath YARNTwistOffer/YTOFbody/YTOFitem/thirdParty/id/@numberingOrg) [Optional] (XPath YARNTwistOffer/OFheader/note/@numberingOrg) [Optional] (XPath YARNTwistOffer/OFheader/refDoc/docID/@numberingOrg) [Optional] - nota: <i>here can be specified whose document numbering is used (e.g.: Client, Supplier, ..)</i> (XPath YARNTwistOffer/OFheader/supplier/id/@numberingOrg) [Optional] (XPath YARNTwistOffer/YTOFbody/YTOFitem/note/@numberingOrg) [Optional] (XPath YARNTwistOffer/YTOFbody/YTOFitem/yarnMnfrOperation/refDoc/season/@numberingOrg) [Optional] (XPath YARNTwistOffer/YTOFbody/YTOFitem/refDoc/season/@numberingOrg) [Optional] (XPath YARNTwistOffer/OFheader/refDoc/season/@numberingOrg) [Optional] (XPath YARNTwistOffer/YTOFbody/YTOFitem/yarnMnfrOperation/refDoc/docID/@numberingOrg) [Optional] - nota: <i>here can be specified whose document numbering is used (e.g.: Client, Supplier, ..)</i> (XPath YARNTwistOffer/OFheader/subContractor/id/@numberingOrg) [Optional] (XPath YARNTwistOffer/YTOFbody/YTOFitem/refDoc/attachment/fileName/@numberingOrg) [Optional] (XPath YARNTwistOffer/OFheader/buyer/id/@numberingOrg) [Optional] (XPath YARNTwistOffer/OFheader/buyer/additionalIdentifier/@numberingOrg) [Optional]</p>

	<p>- nota: <i>here the issuer of the identifier must be specified</i> (XPath YARNTwistOffer/YTOFbody/YTOFitem/refDoc/docID/@numberingOrg) [Optional]</p> <p>- nota: <i>here can be specified whose document numbering is used (e.g.: Client, Supplier, ..)</i></p>
@part	<p>percent fraction of a total payment</p> <p>- base type: decimal, min inclusive: 1, max inclusive: 99, fraction digits: 2, (XPath YARNTwistOffer/terms/insPayment/@part) [Required]</p> <p>- nota: <i>here the % value of each installment must be indicated</i></p>
payMode	<p>way or means of payment</p> <p>- base type: string, cod. table: T2 http://www.ebiz.enea.it/moda-ml/repository/codelist/draft/gc_T2.xml (XPath YARNTwistOffer/terms/payment/payMode) 0-1 (XPath YARNTwistOffer/terms/insPayment/payMode) 0-1</p>
payTerm	<p>code specifying the terms or time by which the payment must be done</p> <p>- base type: string, cod. table: T1 http://www.ebiz.enea.it/moda-ml/repository/codelist/draft/gc_T1.xml (XPath YARNTwistOffer/terms/insPayment/payTerm) 1-1 (XPath YARNTwistOffer/terms/payment/payTerm) 1-1</p>
payTermText	<p>free text specifying the terms by which the payment must be done (time/mode or means)</p> <p>- base type: string, max length: 250, (XPath YARNTwistOffer/terms/insPayment/payTermText) 1-1 (XPath YARNTwistOffer/terms/payment/payTermText) 1-1</p>
pcTolerance	<p>percent deviation tolerated on the value of a measurement (it must have a plus or minus sign)</p> <p>- base type: decimal, min inclusive: 0, max inclusive: 100, total digits: 2, (XPath YARNTwistOffer/YTOFbody/YTOFitem/yarnMnfrOperation/yarnMachineSpecs/pcTolerance) 0-2 (XPath YARNTwistOffer/YTOFbody/YTOFitem/yarnSpecs/pcTolerance) 0-2</p>
percCompos	<p>fiber rate in the product composition</p> <p>- base type: decimal, min inclusive: 0, max inclusive: 100, fraction digits: 2, (XPath YARNTwistOffer/YTOFbody/YTOFitem/yarnCompos/percCompos) 1-9</p>
person	<p>name of the contact person within a Party</p> <p>- base type: string, max length: 40, (XPath YARNTwistOffer/OFheader/buyer/person) 0-1 (XPath YARNTwistOffer/YTOFbody/YTOFitem/thirdParty/person) 0-1 (XPath YARNTwistOffer/OFheader/subContractor/person) 0-1 (XPath YARNTwistOffer/OFheader/supplier/person) 0-1 (XPath YARNTwistOffer/OFheader/thirdParty/person) 0-1</p>
@phone	<p>phone number of the contact person within a Party</p> <p>- base type: string, max length: 35, (XPath YARNTwistOffer/OFheader/subContractor/person/@phone) [Optional] (XPath YARNTwistOffer/YTOFbody/YTOFitem/thirdParty/person/@phone) [Optional] (XPath YARNTwistOffer/OFheader/thirdParty/person/@phone) [Optional] (XPath YARNTwistOffer/OFheader/supplier/person/@phone) [Optional] (XPath YARNTwistOffer/OFheader/buyer/person/@phone) [Optional]</p>
postCode	<p>code defining the postal zone</p> <p>- base type: string, max length: 10, (XPath YARNTwistOffer/OFheader/subContractor/postCode) 0-1 (XPath YARNTwistOffer/OFheader/thirdParty/postCode) 0-1 (XPath YARNTwistOffer/YTOFbody/YTOFitem/thirdParty/postCode) 0-1 (XPath YARNTwistOffer/OFheader/supplier/postCode) 0-1 (XPath YARNTwistOffer/OFheader/buyer/postCode) 0-1</p>
price	<p>unit price of the article, object or service specified</p> <p>- base type: decimal, min inclusive: 0, fraction digits: 4, (XPath YARNTwistOffer/YTOFbody/YTOFitem/price) 1-1</p>

@priceQualifier	<p>type of price with reference to discount and taxes</p> <ul style="list-style-type: none"> - base type: string, cod. table: NT20 http://www.ebiz.enea.it/moda-ml/repository/codelist/draft/gc_NT20.xml (XPath YARNTwistOffer/YTOFbody/YTOFitem/price/@priceQualifier) [Optional] [Default= NET]
@progr	<p>progressive number in the sequence</p> <ul style="list-style-type: none"> - base type: positiveInteger, min inclusive: 1, (XPath YARNTwistOffer/terms/transInfo/@progr) [Optional] - nota: <i>Indicates the position of the leg in a sequence of transport legs.</i>
qty	<p>net quantity of the article or object correlated, qualified by the function of the document (ordering, delivering, ..) and by the context</p> <ul style="list-style-type: none"> - base type: decimal, min inclusive: 0, fraction digits: 2, (XPath YARNTwistOffer/YTOFbody/YTOFitem/qty) 1-2 <hr/> <p>AAAA-WARNING! - text not AVAILABLE n. 245 - In=en</p>
@role	<p>Third Party role qualifier</p> <ul style="list-style-type: none"> - base type: string, cod. table: NT2 http://www.ebiz.enea.it/moda-ml/repository/codelist/draft/gc_NT2.xml (XPath YARNTwistOffer/OFheader/thirdParty/@role) [Required] (XPath YARNTwistOffer/YTOFbody/YTOFitem/thirdParty/@role) [Required]
season	<p>sale season; defined as: season (1 crt) + year (4 crt) - season: S/S=1 A/W=2 Spring=3 Summer=4 Autumn=5 Winter=6: for more than four seasons use alphabetic sequence: 1st season=A 2nd season=B etc.etc.</p> <ul style="list-style-type: none"> - base type: string, max length: 15, (XPath YARNTwistOffer/YTOFbody/YTOFitem/yarnMnfrOperation/refDoc/season) 0-1 - note: <i>here indicates the season to which the referenced document belongs</i> (XPath YARNTwistOffer/OFheader/refDoc/season) 0-1 - note: <i>here indicates the season to which the referenced document belongs</i> (XPath YARNTwistOffer/YTOFbody/YTOFitem/refDoc/season) 0-1 - note: <i>here indicates the season to which the referenced document belongs</i> (XPath YARNTwistOffer/OFheader/season) 0-1
@sender	<p>qualifier that specifies the Party issuing of the document</p> <ul style="list-style-type: none"> - base type: boolean, (XPath YARNTwistOffer/OFheader/supplier/@sender) [Optional] - nota: <i>This attribute is mandatory when the STYLESHEET must be used</i> (XPath YARNTwistOffer/OFheader/subContractor/@sender) [Optional] - nota: <i>This attribute is mandatory when the STYLESHEET must be used</i> (XPath YARNTwistOffer/YTOFbody/YTOFitem/thirdParty/@sender) [Optional] - nota: <i>This attribute is mandatory when the STYLESHEET must be used</i> (XPath YARNTwistOffer/OFheader/thirdParty/@sender) [Optional] - nota: <i>This attribute is mandatory when the STYLESHEET must be used</i> (XPath YARNTwistOffer/OFheader/buyer/@sender) [Optional] - nota: <i>This attribute is mandatory when the STYLESHEET must be used</i>
@source	<p>party who has provided the data</p> <ul style="list-style-type: none"> - base type: string, cod. table: NT12 http://www.ebiz.enea.it/moda-ml/repository/codelist/draft/gc_NT12.xml (XPath YARNTwistOffer/YTOFbody/YTOFitem/yarnSpecs/specValue/@source) [Optional] (XPath YARNTwistOffer/YTOFbody/YTOFitem/yarnMnfrOperation/yarnMachineSpecs/specValue/@source) [Optional]
specValue	<p>value requested for a property or a parameter that is measured</p> <ul style="list-style-type: none"> - base type: decimal, (XPath YARNTwistOffer/YTOFbody/YTOFitem/yarnSpecs/specValue) 0-1 (XPath YARNTwistOffer/YTOFbody/YTOFitem/yarnMnfrOperation/yarnMachineSpecs/specValue) 0-1
street	<p>street and building number identifying a location</p> <ul style="list-style-type: none"> - base type: string, max length: 80, (XPath YARNTwistOffer/OFheader/thirdParty/street) 0-1

	(XPath YARNTwistOffer/OFheader/buyer/street) 0-1 (XPath YARNTwistOffer/OFheader/supplier/street) 0-1 (XPath YARNTwistOffer/YTOFbody/YTOFitem/thirdParty/street) 0-1 (XPath YARNTwistOffer/OFheader/subContractor/street) 0-1
subCountry	short name or code of the sub-country entity - base type: string, max length: 9, (XPath YARNTwistOffer/OFheader/buyer/subCountry) 0-1 (XPath YARNTwistOffer/OFheader/thirdParty/subCountry) 0-1 (XPath YARNTwistOffer/YTOFbody/YTOFitem/thirdParty/subCountry) 0-1 (XPath YARNTwistOffer/OFheader/subContractor/subCountry) 0-1 (XPath YARNTwistOffer/OFheader/supplier/subCountry) 0-1
subDept	name or code of a contact department within a Party - base type: string, max length: 40, (XPath YARNTwistOffer/OFheader/subContractor/subDept) 0-1 (XPath YARNTwistOffer/OFheader/thirdParty/subDept) 0-1 (XPath YARNTwistOffer/OFheader/buyer/subDept) 0-1 (XPath YARNTwistOffer/YTOFbody/YTOFitem/thirdParty/subDept) 0-1 (XPath YARNTwistOffer/OFheader/supplier/subDept) 0-1
taxCategory	duty or tax or fee category - base type: string, cod. table: T62 http://www.ebiz.enea.it/moda-ml/repository/codelist/draft/gc_T62.xml (XPath YARNTwistOffer/YTOFbody/YTOFitem/dtScheme/taxCategory) 0-1 (XPath YARNTwistOffer/terms/allowanceCharge/dtScheme/taxCategory) 0-1
taxRate	duty or tax or fee percent rate - base type: string, (XPath YARNTwistOffer/YTOFbody/YTOFitem/dtScheme/taxRate) 0-1 (XPath YARNTwistOffer/terms/allowanceCharge/dtScheme/taxRate) 0-1
@taxType	duty or tax or fee type - base type: string, cod. table: T61 http://www.ebiz.enea.it/moda-ml/repository/codelist/draft/gc_T61.xml (XPath YARNTwistOffer/terms/allowanceCharge/dtScheme/@taxType) [Required] (XPath YARNTwistOffer/YTOFbody/YTOFitem/dtScheme/@taxType) [Required]
tolerance	deviation tolerated on the value of a measurement (it must have a plus or minus sign) - base type: decimal, (XPath YARNTwistOffer/YTOFbody/YTOFitem/yarnSpecs/tolerance) 0-2 (XPath YARNTwistOffer/YTOFbody/YTOFitem/yarnMnfrOperation/yarnMachineSpecs/tolerance) 0-2
transCondition	special condition of transport or special service requested to the Forwarder - base type: string, cod. table: T38 http://www.ebiz.enea.it/moda-ml/repository/codelist/draft/gc_T38.xml (XPath YARNTwistOffer/terms/transInfo/transCondition) 0-3
transConditionText	free text description of the special condition of transport or special service requested to the Forwarder - base type: string, max length: 250, (XPath YARNTwistOffer/terms/transInfo/transConditionText) 0-1
transMeans	means of transport, in general or referred to a specific leg - base type: string, cod. table: T40 http://www.ebiz.enea.it/moda-ml/repository/codelist/draft/gc_T40.xml (XPath YARNTwistOffer/terms/transInfo/transMeans) 0-1
transMode	way of transport, in general or referred to the specified leg - base type: string, cod. table: T8 http://www.ebiz.enea.it/moda-ml/repository/codelist/draft/gc_T8.xml (XPath YARNTwistOffer/terms/transInfo/transMode) 1-1
@transReason	reason for the transport - base type: string, cod. table: NT11 http://www.ebiz.enea.it/moda-ml/repository/codelist/draft/gc_NT11.xml

	(XPath YARNTwistOffer/terms/transInfo/@transReason) [Optional]
@uid	unique element identifier within the xml document - base type: string, (XPath YARNTwistOffer/OFheader/refDoc/attachment/@uid) [Optional] (XPath YARNTwistOffer/YTOFbody/YTOFitem/yarnMnfrOperation/refDoc/attachment/@uid) [Optional] (XPath YARNTwistOffer/YTOFbody/YTOFitem/refDoc/attachment/@uid) [Optional]
@um	specification of the unit of measure - base type: string, cod. table: NT7 http://www.ebiz.enea.it/moda-ml/repository/codelist/draft/gc_NT7.xml (XPath YARNTwistOffer/YTOFbody/YTOFitem/yarnMnfrOperation/yarnMachineSpecs/pcTolerance/@um) [Optional] - nota: <i>to be used when it has to be soecified if the declared percentage is b y weight, volume, etc...</i> (XPath YARNTwistOffer/YTOFbody/YTOFitem/yarnMnfrOperation/yarnMachineSpecs/tolerance/@um) [Required] (XPath YARNTwistOffer/YTOFbody/YTOFitem/yarnMnfrOperation/yarnMachineSpecs/specValue/@um) [Optional] (XPath YARNTwistOffer/YTOFbody/YTOFitem/yarnSpecs/experimValue/@um) [Optional] (XPath YARNTwistOffer/YTOFbody/YTOFitem/yarnSpecs/specValue/@um) [Optional] (XPath YARNTwistOffer/YTOFbody/YTOFitem/yarnSpecs/tolerance/@um) [Required] (XPath YARNTwistOffer/terms/transInfo/grossWeight/@um) [Required] (XPath YARNTwistOffer/terms/transInfo/netWeight/@um) [Required] (XPath YARNTwistOffer/terms/allowanceCharge/@um) [Optional] (XPath YARNTwistOffer/YTOFbody/YTOFitem/yarnSpecs/pcTolerance/@um) [Optional] - nota: <i>to be used when it has to be soecified if the declared percentage is b y weight, volume, etc...</i> (XPath YARNTwistOffer/YTOFbody/YTOFitem/price/@um) [Optional] - nota: <i>Unit of measure of the product to which the price is referred (price pe r meter)</i> (XPath YARNTwistOffer/YTOFbody/YTOFitem/qty/@um) [Required]
uri	Uniform Resource Identifier (URI) that identifies the external object as an Internet resource - base type: normalizedString, (XPath YARNTwistOffer/YTOFbody/YTOFitem/refDoc/attachment/externalReference/uri) 1-1 (XPath YARNTwistOffer/YTOFbody/YTOFitem/yarnMnfrOperation/refDoc/attachment/externalReference/uri) 1-1 (XPath YARNTwistOffer/OFheader/refDoc/attachment/externalReference/uri) 1-1
@useProfile	use profile to which the present document if compliant if it was agreed by th e parties. It is suggested a URI with reference to the firms or the URL of the profile. - base type: string, (XPath YARNTwistOffer/@useProfile) [Optional]
validityEnd	date by which the validity ends, according to one of the patterns YYYY-MM-DD, YYYY-MM-DD:HH-MM or YYYY-WW. - base type: string, (XPath YARNTwistOffer/OFheader/validityEnd) 1-1
validityStart	date by which the validity starts, according to one of the patterns YYYY-MM-DD, YYYY-MM-DD:HH-MM or YYYY-WW. - base type: string, (XPath YARNTwistOffer/OFheader/validityStart) 0-1
@VAT	VAT rate or code (DEPRECATED, use dtScheme element) - base type: string, cod. table: NT16 http://www.ebiz.enea.it/moda-ml/repository/codelist/draft/gc_NT16.xml

	<p>(XPath YARNTwistOffer/YTOFbody/YTOFitem/lineN/@VAT) [Optional] - nota: <i>Deprecated, prefer dtScheme when available.</i> (XPath YARNTwistOffer/YTOFbody/YTOFitem/thirdParty/@VAT) [Optional] (XPath YARNTwistOffer/terms/allowanceCharge/@VAT) [Optional] (XPath YARNTwistOffer/OFheader/thirdParty/@VAT) [Optional]</p>
@version	<p>Dictionary version from which the instance has been created - base type: string, cod. table: NT100 http://www.ebiz.enea.it/moda-ml/repository/codelist/draft/gc_NT100.xml (XPath YARNTwistOffer/@version) [Optional] [Default= draft]</p>
yarnChar	<p>physical or mechanical parameter used to define a property of a yarn - base type: string, cod. table: T24 http://www.ebiz.enea.it/moda-ml/repository/codelist/draft/gc_T24.xml (XPath YARNTwistOffer/YTOFbody/YTOFitem/yarnSpecs/yarnChar) 1-1</p>
yarnCharText	<p>free text describing the physical or mechanical parameter used to define a property of a yarn - base type: string, max length: 250, (XPath YARNTwistOffer/YTOFbody/YTOFitem/yarnSpecs/yarnCharText) 1-1</p>
yarnJob	<p>operation of a work cycle for yarn - base type: string, cod. table: T201 http://www.ebiz.enea.it/moda-ml/repository/codelist/draft/gc_T201.xml (XPath YARNTwistOffer/YTOFbody/YTOFitem/yarnMnfrOperation/yarnJob) 1-1</p>
yarnJobTech	<p>operation technology for yarn - base type: string, cod. table: T261 http://www.ebiz.enea.it/moda-ml/repository/codelist/draft/gc_T261.xml (XPath YARNTwistOffer/YTOFbody/YTOFitem/yarnMnfrOperation/yarnJobTech) 0-1</p>
yarnMachine	<p>machine used in an operation of a work cycle for yarn - base type: string, cod. table: T271 http://www.ebiz.enea.it/moda-ml/repository/codelist/draft/gc_T271.xml (XPath YARNTwistOffer/YTOFbody/YTOFitem/yarnMnfrOperation/yarnMachine) 0-1</p>
yarnMachineParam	<p>setting parameter of a machine used in an operation of a work cycle for yarn - base type: string, cod. table: T281 http://www.ebiz.enea.it/moda-ml/repository/codelist/draft/gc_T281.xml (XPath YARNTwistOffer/YTOFbody/YTOFitem/yarnMnfrOperation/yarnMachineSpecs/yarnMachineParam) 1-1</p>
@yarnProcQualifier	<p>type of yarn with reference to the manufacturing process - base type: string, cod. table: NT31 http://www.ebiz.enea.it/moda-ml/repository/codelist/draft/gc_NT31.xml (XPath YARNTwistOffer/@yarnProcQualifier) [Required]</p>

2.3 Suggested best practices

YARNTwistOffer/YTOFbody/YTOFitem/qty (net quantity of the article or object correlated, qualified by the function of the document (ordering, delivering, ..) and by the context)

this element can have two instances only if the units of measure are different

2.4 Enumeration tables

List of enumeration tables used in the XML document. You can find the corresponding codes at:
<http://www.ebiz-tcf.eu/moda-ml/imple/moda-ml-draft.asp?lingua=en&pag=6>

NT100 - eBIZ TCFUpstream version
NT11 - transport causal
NT12 - data source
NT16 - VAT rate or code
NT18 - message function
NT2 - third party qualifier
NT20 - price qualifier
NT29 - format of a date
NT3 - data format
NT31 - yarn family
NT5 - action code
NT6 - coding system owner/issuer
NT7 - unit of measure
T1 - terms of payment
T10 - ISO3166 - Country
T19 - fibre type
T2 - Modes of payment
T201 - type of job on yarn
T21 - type of document
T24 - yarn characteristics type
T261 - type of job technology for yarn
T271 - machine type for yarn operation
T281 - parameter type for yarn operation
T3 - terms of delivery
T38 - transport conditions
T40 - type of transport means
T41 - type of Allowance or Charge
T61 - duty or tax or fee type
T62 - duty or tax or fee category
T8 - Modes of Transport
T9 - ISO4217 - Currency

ACKNOWLEDGEMENT



This action is part of the eBIZ-4.0 project, which has received funding from the European Union's COSME Programme (2014 - 2020).

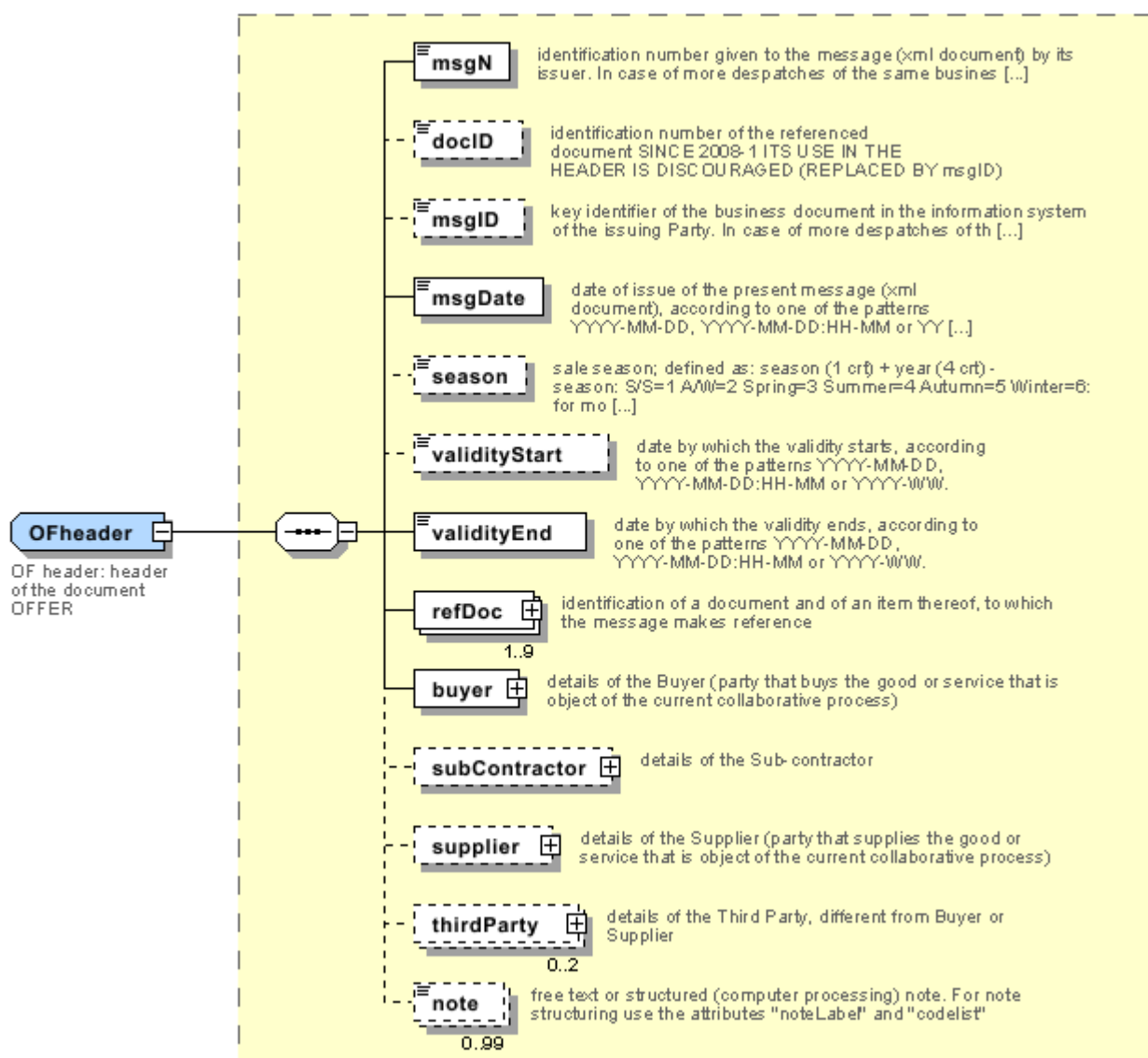
DISCLAIMER

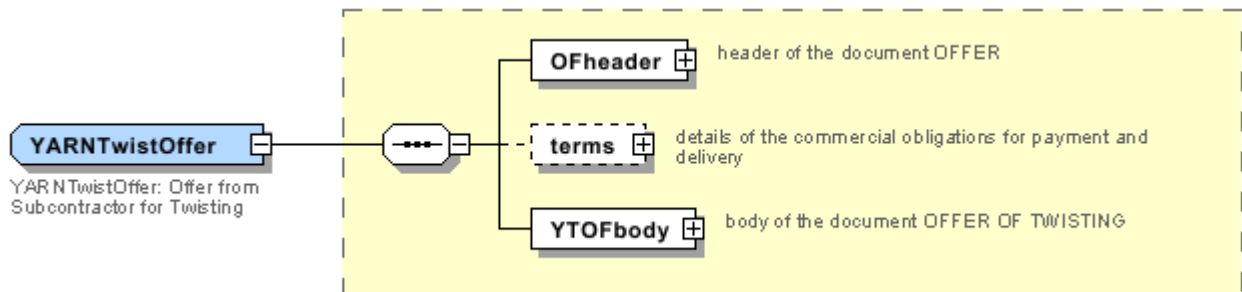
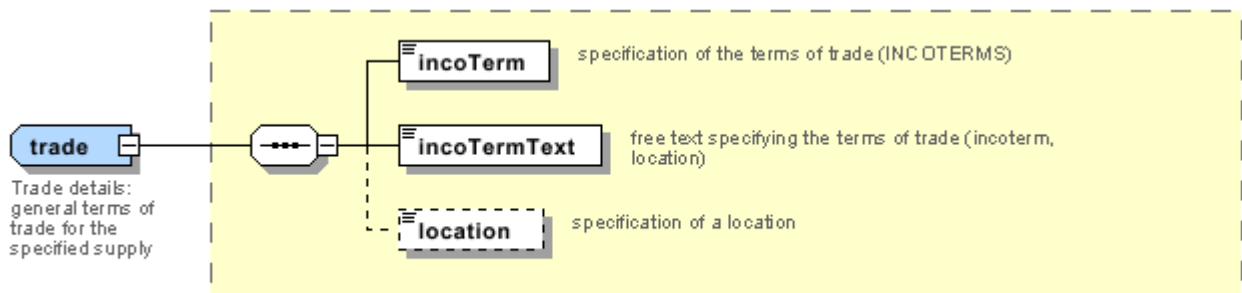
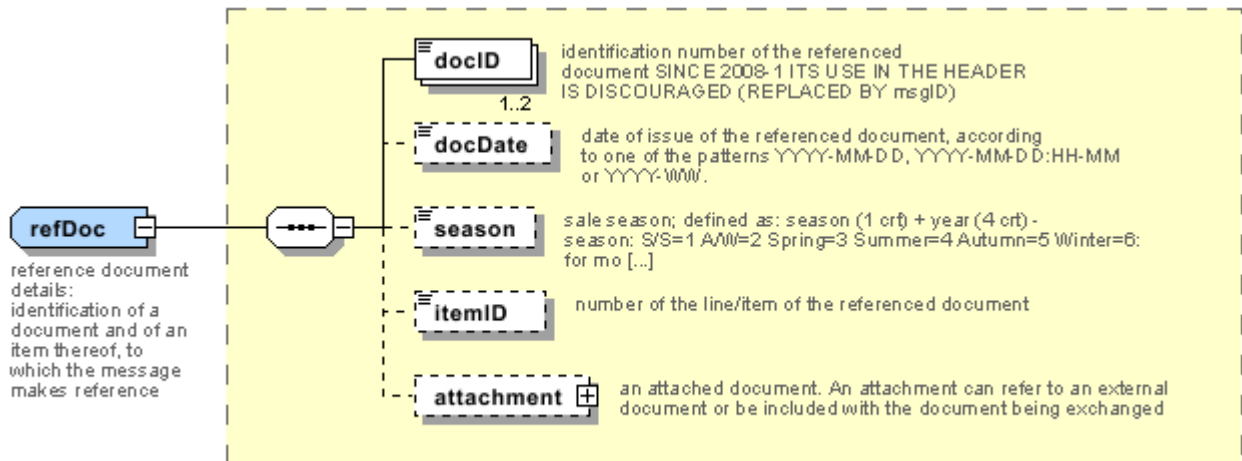
The content of this document represents the views of the authors only and is their sole responsibility; it cannot be considered to reflect the views of the European Commission and/or the Executive Agency for Small and Medium-sized Enterprises (EASME) or any other body of the European Union.

The European Commission and the Agency do not accept any responsibility for use that may be made of the information it contains.

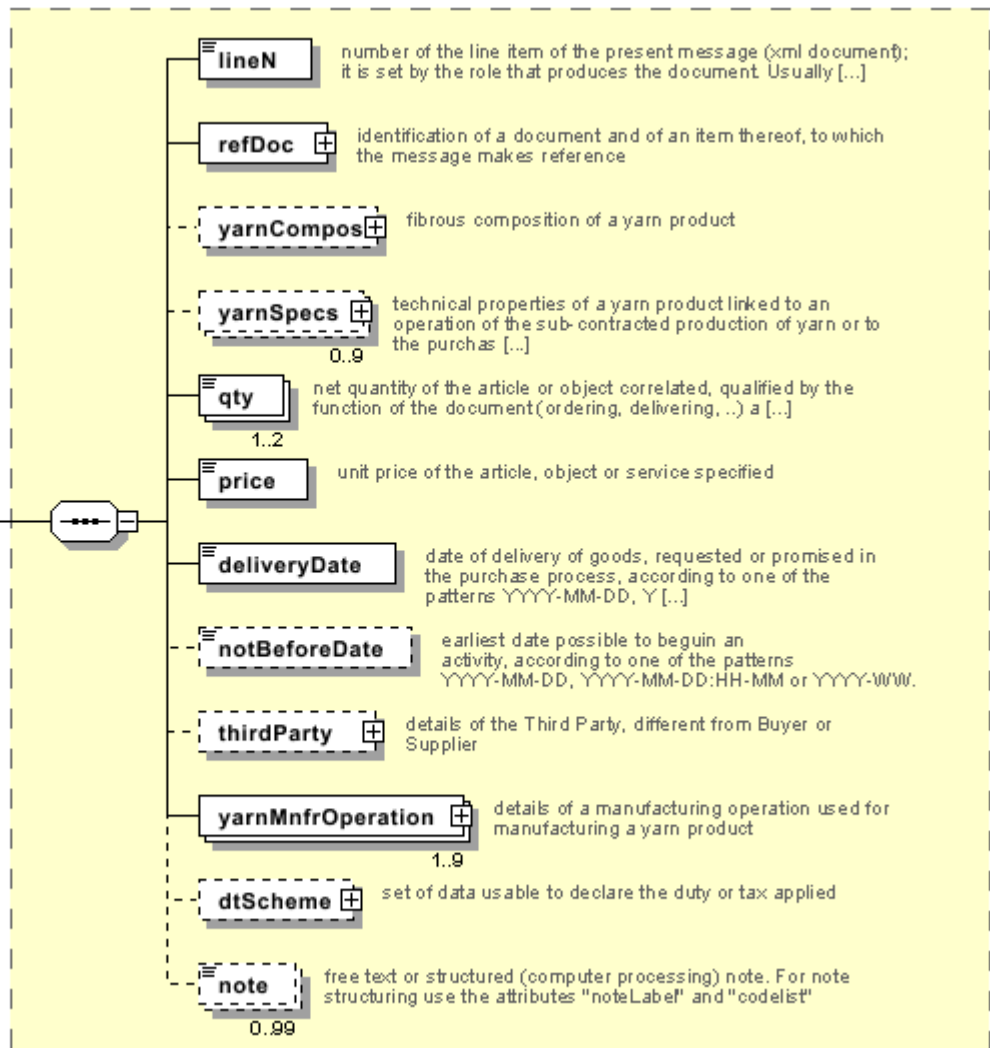
Annex A

Representative images of the principal complex elements' structure.





YTOFitem
 YTOF item: line of the document
 OFFER OF TWISTING



Annex B

NT100 - eBIZ TCFUpstream version

dictionary version

Agency name: eBIZ

tabella cod.: NT100

File codes list (Generic code): http://www.ebiz.enea.it/moda-ml/repository/codelist/draft/gc_NT100.xml

Code	Description	Adoption note	Date of insertion
2013-1	v2013-1		01/07/2013
2018-1	v2018-1		04/11/2018
draft	draft		08/09/2017

NT11 - transport causal

reason for the transport

Agency name: eBIZ

tabella cod.: NT11

File codes list (Generic code): http://www.ebiz.enea.it/moda-ml/repository/codelist/draft/gc_NT11.xml

Code	Description	Adoption note	Date of insertion
FOC	free of charge		
FRW	return from re-works		
FST	return from storage		
FWW	return from view		
FWK	return from works		
IST	in storage		
NWK	return non-worked		
RJC	return from rejection		
SEL	to sell		
STO	to storage		
VEW	to view		
WRK	to works		

NT12 - data source

party who has provided the data

Agency name: eBIZ

tabella cod.: NT12

File codes list (Generic code): http://www.ebiz.enea.it/moda-ml/repository/codelist/draft/gc_NT12.xml

Code	Description	Adoption note	Date of insertion
AC	internal test		
CO	external test		
CV	test after steaming		

NT16 - VAT rate or code

VAT rate or code (DEPRECATED, use dtScheme element)

tabella cod.: NT16

File codes list (Generic code): http://www.ebiz.enea.it/moda-ml/repository/codelist/draft/gc_NT16.xml

NT18 - message function

function performed by the present message with regards to the transmission

Agency name: eBIZ

tabella cod.: NT18

File codes list (Generic code): http://www.ebiz.enea.it/moda-ml/repository/codelist/draft/gc_NT18.xml

Code	Description	Adoption note	Date of insertion
CA	delete this document		01/07/2013
CP	copy		
OR	original		
RC	re-transmission for data correction		
RT	re-transmission		

NT2 - third party qualifier

Third Party role qualifier

Agency name: eBIZ

tabella cod.: NT2

File codes list (Generic code): http://www.ebiz.enea.it/moda-ml/repository/codelist/draft/gc_NT2.xml

Code	Description	Adoption note	Date of insertion
AG	Sales Agent		
CO	Quality Controller		
DC	Response to		
DF	Invoicee		
DI	Copy to (CC)		28/10/2014
DM	Consignee		
DP	Consignment address (Delivery Party)		
IM	Importer		
OR	Originator		10/09/2014
SP	Forwarder		
TX	Tax Representative		

NT20 - price qualifier

type of price with reference to discount and taxes

Agency name: eBIZ

tabella cod.: NT20

File codes list (Generic code): http://www.ebiz.enea.it/moda-ml/repository/codelist/draft/gc_NT20.xml

Code	Description	Adoption note	Date of insertion
GET	gross excluding taxes		
GIT	gross including taxes		
NET	net excluding taxes		
NIT	net including taxes		

NT29 - format of a date

format used for the date

Agency name: eBIZ

tabella cod.: NT29

File codes list (Generic code): http://www.ebiz.enea.it/moda-ml/repository/codelist/draft/gc_NT29.xml

Code	Description	Adoption note	Date of insertion
D	YYYY-MM-DD		
M	YYYY-MM-DD:HH-MM		
W	YYYY-WW		

NT3 - data format

format of a string according to a customized User rule (local rule)

Agency name: eBIZ

tabella cod.: NT3

File codes list (Generic code): http://www.ebiz.enea.it/moda-ml/repository/codelist/draft/gc_NT3.xml

Code	Description	Adoption note	Date of insertion
EN4	GS1-GLN		01/07/2013
MD	mutually agreed		

NT31 - yarn family

yarn classification according to the manufacturing process

Agency name: eBIZ

tabella cod.: NT31

File codes list (Generic code): http://www.ebiz.enea.it/moda-ml/repository/codelist/draft/gc_NT31.xml

Code	Description	Adoption note	Date of insertion
CAN	carded		
EXT	extrusion		
FSE	dry-spun		
FUM	wet-spun		
OPE	open end		
PAN	combed		
REG	rigenerated		
SMP	half-combed		

NT5 - action code

action performed by the present line upon the referenced document line

Agency name: eBIZ

tabella cod.: NT5

File codes list (Generic code): http://www.ebiz.enea.it/moda-ml/repository/codelist/draft/gc_NT5.xml

Code	Description	Adoption note	Date of insertion
A	CANCELLED		
C	CONFIRMED		
N	NEW ORDER LINE (created by an order change)		
R	PROVISIONAL CONFIRMATION		
S	DEFINITIVE CONFIRMATION		
SA	suspension accepted		
SN	suspension not accepted		
SR	suspension request		
V	AMENDED		

NT6 - coding system owner/issuer

code specifying the organisation who has created or owns the coding or numbering system

Agency name: eBIZ

tabella cod.: NT6

File codes list (Generic code): http://www.ebiz.enea.it/moda-ml/repository/codelist/draft/gc_NT6.xml

Code	Description	Adoption note	Date of insertion
CL	Customer/buyer		
CO	Quality Controller		
EN	GS1 (ex-EAN International)		
ES	e-Stockflow		
FO	Supplier		
GS	GS1		01/07/2013
MF	VAT identifier		
ML	Moda-ML		
SP	Service Provider		

NT7 - unit of measure

specification of the unit of measure, it is a sub set of table Unit of Measure Code - UN/ECE REC 20 delivered by United Nations Economic Commission for Europe (UN/ECE)

Agency name: eBIZ / UN/ECE

tabella cod.: NT7

File codes list (Generic code): http://www.ebiz.enea.it/moda-ml/repository/codelist/draft/gc_NT7.xml

Other link: <http://docs.oasis-open.org/ubl/os-UBL-2.1/cl/gc/default/UnitOfMeasureCode-2.1.gc#>

Code	Description	Adoption note	Date of insertion
CMK	square centimetre		20/12/2017
CMQ	cubic centimetre		20/12/2017
CMT	centimetre		
CNE	centiNewton		
CO2TON	ton of CO2		10/09/2014
COUPLES	couples		
DMQ	cubic decimetre		
E37	pixel		11/04/2018
GRM	gram		
HUR	hour		
INH	inch		
KGM	kilogram		
KMT	kilometer		
KWH	kilowatthours		10/09/2014
LBR	pound		
MIN	minute		
MMK	centimetre		20/12/2017
MMK	square millimetre		20/12/2017
MTK	square metre		20/12/2017
MTQ	cubic metre		
MTR	metre		
NMB	numero		
ONZ	ounce		
P1	percent		
PPM	parts per milion		
PZ	piece		
RPM	rounds per metre		
YRD	yard		

T1 - terms of payment

code specifying the terms or time by which the payment must be done

Agency name: eBIZ

tabella cod.: T1

File codes list (Generic code): http://www.ebiz.enea.it/moda-ml/repository/codelist/draft/gc_T1.xml

Code	Description	Adoption note	Date of insertion
ANTICIP	PAYMENT IN ADVANCE		
BLCOLLECT/120D	BILL OF LADING 120 DD		
BLCOLLECT/30D	BILL OF LADING 30 DD		
BLCOLLECT/60D	BILL OF LADING 60 DD		
BLCOLLECT/90D	BILL OF LADING 90 DD		
CASH	PAYMENT ON DELIVERY		
CASHINV	PAYMENT ON RECEIPT OF INVOICE		
CREDOC/0D	DOCUMENTARY CREDIT FOR PAYM. AT SIGHT		
CREDOC/120	DOCUMENTARY CREDIT FOR PAYM. AT 120 DD		
CREDOC/150	DOCUMENTARY CREDIT FOR PAYM. AT 150 DD		
CREDOC/180	DOCUMENTARY CREDIT FOR PAYM. AT 180 DD		
CREDOC/30D	DOCUMENTARY CREDIT FOR PAYM. AT 30 DD		
CREDOC/45D	DOCUMENTARY CREDIT FOR PAYM. AT 45 DD		
CREDOC/60	DOCUMENTARY CREDIT FOR PAYM. AT 60 DD		
CREDOC/90	DOCUMENTARY CREDIT FOR PAYM. AT 90 DD		
DEL/10	PAYMENT AT 10 DD AFTER DELIVERY		
DOCOLLECT/120D	DOCUMENTARY COLLECTION AT 120 DD		
DOCOLLECT/30D	DOCUMENTARY COLLECTION AT 30 DD		
DOCOLLECT/60D	DOCUMENTARY COLLECTION AT 60 DD		
DOCOLLECT/90D	DOCUMENTARY COLLECTION AT 90 DD		
INV/120D	PAYMENT AT 120 DD AFTER RECEIPT OF INVOICE		
INV/150D	PAYMENT AT 150 DD AFTER RECEIPT OF INVOICE		
INV/180D	PAYMENT AT 180 DD AFTER RECEIPT OF INVOICE		
INV/30D	PAYMENT AT 30 DD AFTER RECEIPT OF INVOICE		
INV/45D	PAYMENT AT 45 DD AFTER RECEIPT OF INVOICE		
INV/60D	PAYMENT AT 60 DD AFTER RECEIPT OF INVOICE		
INV/90D	PAYMENT AT 90 DD AFTER RECEIPT OF INVOICE		

INVULTIMO	PAYMENT AT END MONTH RECEIPT INVOICE		
INVULTIMO/10D	PAYMENT 10 DD AFTER END MONTH RECEIPT INVOICE		
INVULTIMO/120D	PAYMENT 120 DD AFTER END MONTH RECEIPT INVOICE		
INVULTIMO/150D	PAYMENT 150 DD AFTER END MONTH RECEIPT INVOICE		
INVULTIMO/180D	PAYMENT 180 DD AFTER END MONTH RECEIPT INVOICE		
INVULTIMO/240D	PAYMENT 240 DD AFTER END MONTH RECEIPT INVOICE		
INVULTIMO/30D	PAYMENT 30 DD AFTER END MONTH RECEIPT INVOICE		
INVULTIMO/45D	PAYMENT 45 DD AFTER END MONTH RECEIPT INVOICE		
INVULTIMO/60D	PAYMENT 60 DD AFTER END MONTH RECEIPT INVOICE		
INVULTIMO/90D	PAYMENT 90 DD AFTER END MONTH RECEIPT INVOICE		
NOPAY	WITHOUT PAYMENT		
RECREDOC/0D	IRREVOC. DOCUMENTARY CREDIT FOR PAYM. AT SIGHT		
RECREDOC/120D	IRREVOC. DOCUMENTARY CREDIT FOR PAYM. AT 120 DD		
RECREDOC/150D	IRREVOC. DOCUMENTARY CREDIT FOR PAYM. AT 150 DD		
RECREDOC/180D	IRREVOC. DOCUMENTARY CREDIT FOR PAYM. AT 180 DD		
RECREDOC/30D	IRREVOC. DOCUMENTARY CREDIT FOR PAYM. AT 30 DD		
RECREDOC/45D	IRREVOC. DOCUMENTARY CREDIT FOR PAYM. AT 45 DD		
RECREDOC/60D	IRREVOC. DOCUMENTARY CREDIT FOR PAYM. AT 60 DD		
RECREDOC/90D	IRREVOC. DOCUMENTARY CREDIT FOR PAYM. AT 90 DD		
ULTIMO	PAYMENT BY END MONTH OF DELIVERY		
ULTIMO/10	PAYMENT AT 10 DD AFTER END MONTH OF DELIVERY		

T10 - ISO3166 - Country

code of the nation

Agency name: ISO

tabella cod.: T10

File codes list (Generic code): http://www.ebiz.enea.it/moda-ml/repository/codelist/draft/gc_T10.xml

Table not printed: there are 239 elements, more than the maximum specified for printing: 99.

T19 - fibre type

type of fibre used in a textile product

Agency name: eBIZ

tabella cod.: T19

File codes list (Generic code): http://www.ebiz.enea.it/moda-ml/repository/codelist/draft/gc_T19.xml

Code	Description	Adoption note	Date of insertion
AB	abaca		20/08/2018
AC	acetate		
AF	other fibres		
AG	alginic fibre		
AL	alfa		20/08/2018
CA	hemp		
CC	coir (coconut)		20/08/2018
CL	chlorofibre		
CO	cotton		
CU	cuprous		
EA	elastan		
EL	Elastodiene		20/08/2018
FL	fluorofibre		
GI	broom		20/08/2018
GL	textile glass		
HA	hair		20/08/2018
HE	henequen		20/08/2018
HL	mixed linen		
HL	cotton linen union		20/08/2018
JU	jute		
KE	kenaf		20/08/2018
KP	kapoc		20/08/2018
LI	linen		
LY	lyocell		20/08/2018
MA	modacrylic		
MD	modal		
ME	metallized		
MG	maguey		20/08/2018
PA	polyamide		
PB	polyureic		
PC	acrylic		
PE	polyethylene		

PI	paper		20/08/2018
PL	polyester		
PM	polyimide		
PP	polypropylene		
PR	proteic		
PU	polyurethane		
RA	mamie		20/08/2018
SE	silk		
SI	sisal		20/08/2018
SN	sun		20/08/2018
TA	triacetate		
TR	textile residues or unspecified composition		20/08/2018
TV	trivinyll		
VI	viscose		
VY	vinylal		
WA	angora		
WB	beaver		20/08/2018
WC	cashgora		
WG	vicuna		
WK	camel		
WL	llama		
WM	mohair		
WN	lapin		20/08/2018
WO	wool		
WP	alpaca		
WS	cashmere		
WT	Oteer		20/08/2018
WU	guanaco		
WV	virgin wool		
WY	yack		

T2 - Modes of payment

way or means of payment

Agency name: eBIZ

tabella cod.: T2

File codes list (Generic code): http://www.ebiz.enea.it/moda-ml/repository/codelist/draft/gc_T2.xml

Code	Description	Adoption note	Date of insertion
BB	bank transfer		
IA	collection through Agent		
IS	collection through Forwarder		
RB	bank receipt		
RD	remittance		
SW	bank SWIFT		
TR	bank draft		

T201 - type of job on yarn

operation of a work cycle for yarn

Agency name: eBIZ

tabella cod.: T201

File codes list (Generic code): http://www.ebiz.enea.it/moda-ml/repository/codelist/draft/gc_T201.xml

Code	Description	Adoption note	Date of insertion
08	to re-comb		
09	to prepare		
10	to card		
11	to spin		
12	to steam		
13	to wind		
14	doubling		
15	to twist		
16	to unwind		
17	to singe		
18	to raise		
19	to reel		
20	to re-wind		
21	to shrink		
22	to coat		
23	to garnett		

24	to print		
25	to dye		
26	to boil		
27	to scour		
28	to dry		
99	other, see note if any		01/07/2013

T21 - type of document

type or class to which the referenced document belongs

Agency name: eBIZ

tabella cod.: T21

File codes list (Generic code): http://www.ebiz.enea.it/moda-ml/repository/codelist/draft/gc_T21.xml

Code	Description	Adoption note	Date of insertion
BOR	blanket order		01/02/2018
CAT	Price catalogue - tech sheet		
CEO	Certificate of origin		13/04/2018
CER	Certificate		13/04/2018
COC	colour card		
CRN	Credit note		08/09/2017
CTO	Checking order		01/07/2013
CTR	Contract		
CXF	CxF3 file		01/07/2013
DAD	Darn order		
DDT	ddt		
DEA	Despatch advise		
DER	Despatch request		
DR	Document Request		02/12/2014
FOR	Forecast		02/12/2014
GSO	Garment stock offer		
GSX	Garment stock offer change		
INV	Invoice		
KCC	Knitting-Clothing Commission Order		02/12/2014
KCI	Garment in Work Inventory Report		02/12/2014
M2M	Made to Measure Production Order		02/12/2014

MAS	Master marker		
MCI	Visual merchandising instruction		13/04/2018
OCH	Order change		
OFF	Offer		
ORD	Purchase order		
ORP	Order response		
OSR	order status request		
OSS	Offer status		02/12/2014
OST	Order status		
OUR	our reference		
QR	Quality Report		02/12/2014
RAI	Raw Material in Work Inventory Report		02/12/2014
RDC	Raw dyeing commission order		
RDH	Raw dyeing order change		
RDR	Raw dyeing order response		
REA	Receiving advise		
REQ	Request for Offer		
RET	Return		02/12/2014
RSC	Spinning commission order		
RSH	Spinning order change		
RSR	Spinning order response		
SCL	process sheet		
TFC	Textile dyeing-finishing commission order		
TFX	Textile Dyeing-Finishing Order Change		02/12/2014
TPC	Textile printing commission order		
TPX	Textile Printing Order Change		02/12/2014
TWI	Textile in work inventory		
VMI	visual merchandising instructions		01/02/2018
WAC	Warping commission order		
WEC	Weaving commission order		
YDC	Yarn dyeing commission order		
YDH	Yarn dyeing order change		
YDR	Yarn dyeing order response		
YTC	Twisting commission order		
YWI	Yarn in work inventory		

T24 - yarn characteristics type

physical or mechanical parameter used to define a property of a yarn

Agency name: eBIZ

tabella cod.: T24

File codes list (Generic code): http://www.ebiz.enea.it/moda-ml/repository/codelist/draft/gc_T24.xml

Code	Description	Adoption note	Date of insertion
ALL	elongation		
AMIN	minimum yarn elongation		
CV	CV		
DE	delta E		
NFIN	number of cases diameter less than X%		
NGRO	number of cases diameter greater than X%		
NOD	standard nub		
NOS	Splicer nub		
PLH	H hairiness		
PLL	pilling		
RES	tensile strength		
RMIN	minimum tensile strength		
RTR	shrinkage		
SLA	fastness to light (ISO 105-B02)		
SLB	fastness to water washing (ISO 105-C06)		
SLC	fastness to dry washing (ISO 105-D01)		
SLD	fastness to water drop (ISO 105-E07)		
SLW	fastness to water (ISO 105-E01)		
SLX	fastness to Xeno light (ISO 105-E01)		
STW	S-twist		
TIN	english count		
TMT	metric count		
TTX	tex count		
ZTW	Z-twist		

T261 - type of job technology for yarn

operation technology for yarn

Agency name: eBIZ

tabella cod.: T261

File codes list (Generic code): http://www.ebiz.enea.it/moda-ml/repository/codelist/draft/gc_T261.xml

Code	Description	Adoption note	Date of insertion
01	standard spinning		
02	spinning frames		
03	compact spinning		
04	pims winding		
05	cones winding		
06	package dyeing		
07	hank dyeing		
08			
09	reactive dyeing		
10	direct dyeing		
11	natural dyeing		
12	heat sensitive dyeing		
13	light sensitive dyeing		
14	pigments dyeing		
15	shaded dyeing		
16	tye and dye		
17			
18			
19			
20	acid dyeing		
21	pre-metallized dyeing		
22			
23	basic dyeing		
99	other, see note if any		01/07/2013

T271 - machine type for yarn operation

machine used in an operation of a work cycle for yarn

Agency name: eBIZ

tabella cod.: T271

File codes list (Generic code): http://www.ebiz.enea.it/moda-ml/repository/codelist/draft/gc_T271.xml

Code	Description	Adoption note	Date of insertion
01	RIETER		
02	ZINZER		
03	MURATA		
04	SAVIO		
05	TEXILMONTAGGIO		
06	BIGAGLI		
07	GALAN		
08	GAUDINO		
99	other, see note if any		01/07/2013

T281 - parameter type for yarn operation

setting parameter of a machine used in an operation of a work cycle for yarn

Agency name: eBIZ

tabella cod.: T281

File codes list (Generic code): http://www.ebiz.enea.it/moda-ml/repository/codelist/draft/gc_T281.xml

Code	Description	Adoption note	Date of insertion
01	ring diameter		
02	package weight		
03	yarn clearance		

T3 - terms of delivery

specification of the terms of trade (INCOTERMS)

Agency name: Incoterms

tabella cod.: T3

File codes list (Generic code): http://www.ebiz.enea.it/moda-ml/repository/codelist/draft/gc_T3.xml

Code	Description	Adoption note	Date of insertion
CF R	COST AND FREIGHT (named port of destination)		

CIF	COST, INSURANCE AND FREIGHT (named port of destination)		
CIP	CARRIAGE AND INSURANCE PAID (named place of destination)		
CP T	CARRIAGE PAID (named place of destination)		
DA F	DELIVERED AT FRONTIER (named place)	according to Incoterms® 2010 it is obsolete	08/12/2017
DA P	Delivered at Place of destination (named place of destination)	according to Incoterms® 2010	08/12/2017
DA T	Delivered at Terminal (named place of destination)	according to Incoterms® 2010	08/12/2017
DD P	DELIVERED DUTY PAID (named place of destination)		
DD U	DELIVERED DUTY UNPAID (named place of destination)	according to Incoterms® 2010 it is obsolete, use DAP	08/12/2017
DE Q	DELIVERED EX-QUAY (named port of destination)	according to Incoterms® 2010 it is obsolete	08/12/2017
DE S	DELIVERED EX-SHIP (named port of destination)	according to Incoterms® 2010 it is obsolete	08/12/2017
EX W	EX WORKS (named place)		
FA S	FREE ALONGSIDE SHIP (named port of shipment)		
FC A	FREE CARRIER (named place)		
FO B	FREE ON BOARD (named port of shipment)		

T38 - transport conditions

special condition of transport or special service requested to the Forwarder

tabella cod.: T38

File codes list (Generic code): http://www.ebiz.enea.it/moda-ml/repository/codelist/draft/gc_T38.xml

Code	Description	Adoption note	Date of insertion
ACC	arrange customs clearance		
CAL	Carrier loads		
CAU	Carrier unloads		
CMR	CMR carnet		
FFN	freight forwarders national conditions		
FLD	special agreement for full loading		

NCC	do not arrange customs clearance		
PPB	packaging paid by Buyer		
PPS	packaging paid by Supplier		
PRO	proof of delivery		
RFR	return container free		
RPC	return container paid by Customer		
RPS	return container paid by Supplier		
SHL	Shipper loads		
SHU	Consignee unloads		

T40 - type of transport means

means of transport, in general or referred to a specific leg

Agency name: eBIZ

tabella cod.: T40

File codes list (Generic code): http://www.ebiz.enea.it/moda-ml/repository/codelist/draft/gc_T40.xml

Code	Description	Adoption note	Date of insertion
AIR	aircraft		
SHP	ship		
TRU	truck		
VAN	van		

T41 - type of Allowance or Charge

coded specification of an Allowance or Charge (elaborated from UNECE 4465)

Agency name: eBIZ

tabella cod.: T41

File codes list (Generic code): http://www.ebiz.enea.it/moda-ml/repository/codelist/draft/gc_T41.xml

Code	Description	Adoption note	Date of insertion
1	Agreed settlement		19/08/2018
10	Costs for draft		19/08/2018
11	Bank charges	DEPRECATED, use C BK	19/08/2018

12	Agent commission		19/08/2018
14	Wrong delivery		19/08/2018
15	Goods returned to agent		19/08/2018
16	Goods partly returned		19/08/2018
17	Transport damage		19/08/2018
19	Trade discount		19/08/2018
2	Below specification goods		19/08/2018
20	Deduction for late delivery	DEPRECATED, use C WB	19/08/2018
21	Advertising costs		19/08/2018
22	Customs duties		19/08/2018
23	Telephone and postal costs		19/08/2018
24	Repair costs		19/08/2018
25	Attorney fees		19/08/2018
26	Taxes		19/08/2018
3	Damaged goods		19/08/2018
30	Direct payment to seller		19/08/2018
32	Goods not delivered		19/08/2018
33	Late delivery		19/08/2018
35	Goods returned		19/08/2018
36	Invoice not received		19/08/2018
37	Credit note to debtor/not to us		19/08/2018
38	Deducted bonus		19/08/2018

39	Deducted discount		19/08/2018
4	Short delivery		19/08/2018
40	Deducted freight costs		19/08/2018
41	Deduction against other invoices		19/08/2018
42	Credit balance(s)		19/08/2018
45	Debit note to seller		19/08/2018
46	Discount beyond terms		19/08/2018
48	Allowance/charge error		19/08/2018
49	Substitute product		19/08/2018
50	Terms of sale error		19/08/2018
52	Wrong invoice		19/08/2018
53	Duplicate invoice		19/08/2018
54	Weight error		19/08/2018
55	Additional charge not authorized		19/08/2018
56	Incorrect discount		19/08/2018
57	Price change		19/08/2018
58	Variation		19/08/2018
59	Chargeback		19/08/2018
65	Settlement to agent		19/08/2018
66	Cash discount		19/08/2018
7	Payment on account		19/08/2018
70	Wrong monetary amount resulting from incorrect free goods quantity		19/08/2018

72	Temporary special promotion		19/08/2018
73	Difference in tax rate		19/08/2018
74	Quantity discount		19/08/2018
75	Promotion discount		19/08/2018
76	Cancellation deadline passed		19/08/2018
77	Pricing discount		19/08/2018
78	Volume discount		19/08/2018
79	Sundry discount		19/08/2018
8	Returnable container charge included		19/08/2018
9	Invoice error		19/08/2018
AW A	bonus for works ahead of schedule		
CBK	bank charges		
CCR	servizio di corriere		
CIN	insurance		
CLB	labelling		
CPK	packing		
CSP	special packing		
CW B	penalty for works behind schedule		

T61 - duty or tax or fee type

duty or tax or fee type

Agency name: eBIZ

tabella cod.: T61

File codes list (Generic code): http://www.ebiz.enea.it/moda-ml/repository/codelist/draft/gc_T61.xml

Code	Description	Adoption note	Date of insertion
BOL	stamp duty		01/07/2013
CUD	customs duty		01/07/2013

ENV	environmental tax		01/07/2013
FRE	no tax		01/07/2013
OTH	other tax charges		01/07/2013
VAT	value added tax		01/07/2013

T62 - duty or tax or fee category

duty or tax or fee category

Agency name: eBIZ

tabella cod.: T62

File codes list (Generic code): http://www.ebiz.enea.it/moda-ml/repository/codelist/draft/gc_T62.xml

Code	Description	Adoption note	Date of insertion
AA	lower than standard rate		01/07/2013
E	tax not applicable		01/07/2013
H	higher than standard rate		01/07/2013
O	outside scope of tax		01/07/2013
S	standard rate		01/07/2013
Z	zero rate goods		01/07/2013

T8 - Modes of Transport

way of transport, in general or referred to the specified leg

Agency name: eBIZ

tabella cod.: T8

File codes list (Generic code): http://www.ebiz.enea.it/moda-ml/repository/codelist/draft/gc_T8.xml

Code	Description	Adoption note	Date of insertion
1	MARITIME TRANSPORT		
10	Courier		01/07/2013
2	RAIL TRANSPORT		
3	ROAD TRANSPORT		
4	AIR TRANSPORT		
5	MAIL		
6	AIR + SHIP TRANSPORT		
8	INLAND WATER TRANSPORT		

9	MODE UNKNOWN		
---	--------------	--	--

T9 - ISO4217 - Currency

currency code

Agency name: ISO

tabella cod.: T9

File codes list (Generic code): http://www.ebiz.enea.it/moda-ml/repository/codelist/draft/gc_T9.xml

Table not printed: there are 205 elements, more than the maximum specified for printing: 99.