



<http://www.ebiz-tcf.eu>

IMPLEMENTATION GUIDE

includes COMPARISON BETWEEN CURRENT and LAST
PREVIOUSLY RELEASED VERSION

TRANSACTION "TEXTILE ORDER CHANGE"

Version: v2018-1

Date of release: 18/7/2019

Document code: G004rv

technical Documentation: <http://www.ebiz.enea.it>

XML Schemas repository: <http://www.ebiz.enea.it/moda-ml/repository/schema/v2018-1/default.asp>

Guides repository: <http://www.ebiz.enea.it/moda-ml/repository/guide/v2018-1/default.asp>

Guide filename: G004rv-eBIZ-TextileOrderChange.pdf

1. BUSINESS DESCRIPTION

1.1 Scope

The present guide has been issued to assist the companies of the Textile-Clothing sector in the implementation of the standard XML document type "Textile ORDER CHANGE", providing all the instruction required for its use in any context of e-commerce between Apparel Producers and Fabric Producers.

All the rules required for the construction and validation of the document are embedded into the specific XML-Schema, which is detailed in section "Implementation guide".

1.2 Generalities

The Apparel Producer sends to the Fabric Producer an Order Change any time he must modify some conditions of his previous Order (eg. to cancel items not delivered in time) or amend errors (eg. invalid prices).

Basic function of the message is to replace an invalid Order with a valid Order, amending:

- suppliable quantities
- dates and places of delivery
- prices

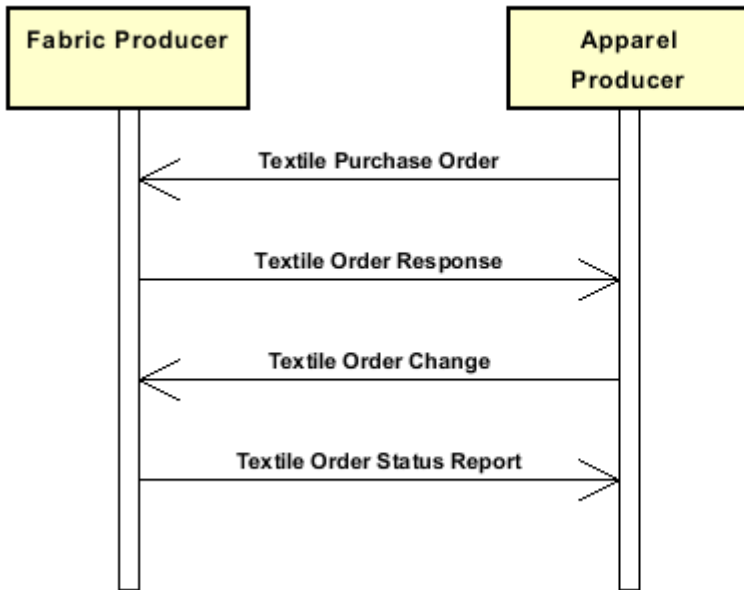
The Order Change can show a number of lines different from the related Purchase Order, when variations/cancellations have occurred so as to create the splitting of an Order Line.

However the sum of the quantities of the lines in the Order Change (confirmed + varied + cancelled) must always not less than the sum of the quantities in the original Order.

When the quantity is change the original line must be splitted and the confimed amount and canceled amount should be explicated through the 'act' flag.

1.3. Possible scenario

Purchase of fabrics



1.4. Best practices

Usage example: Initial Order ORD-1

lineN	act	refDOC	any type of article code	qty	deliveryDate
1	-	CAT-1	Art-111	100	20-1-2017
2	-	CAT-1	Art-222	200	20-1-2017
2	-	CAT-1	Art-333	300	20-1-2017
2	-	CAT-1	Art-444	400	20-1-2017

Changed Order CHORD-2

lineN	act	refDOC	any type of article code	qty	deliveryDate
1	C	ORD-1, line1	Art-111	100	20-1-2017
2	C	ORD-1, line2	Art-222	60	20-1-2017
3	A	ORD-1, line2	Art-222	40	20-1-2017
4	C	ORD-1, line3	Art-333	300	20-1-2017
5	V	ORD-1, line4	Art-444	400	12-2-2017

2. IMPLEMENTATION GUIDE

2.1 General structure of XML document

All the business data that can be exchanged through this class of documents are shown in the following "document structure", that provides a simplified vision of the Schema.

In particular:

- the two numbers following each element define its "cardinality" (minimum and maximum number of occurrences); the minimum equal zero indicates that the element is optional, the minimum greater than zero indicates that is mandatory;
- the bold character denotes the complex elements (aggregates of simple elements) that were built for the sake of functionality and re-usability of some complex informations sets. The child elements in each parent element are easily spotted as "indented";
- the symbol "@" denotes an attribute of the preceding element; here "the usage indicator (optional, required, ...)" is shown in square brackets.

Legenda

- N: new element
- U: updated properties
- P: changes in children
- p: is a changed child
- A: changes in attributes
- a: is a new or changed attribute
- *: is a subtype

Structure

TEXOrdChange

@Totype [Optional]

@msgfunction [Optional] [Default= OR]

@version [Optional] [Default= 2018-1]

@useProfile [Optional]

```
| TXheader 1-1 (P)
| | msgN 1-1
| | - choose -
| | msgID 0-1
| | - or -
| | docID 0-1
| | @numberingOrg [Optional]
| | - end choose -
| | msgDate 1-1
| | @dateForm [Optional]
| | validityEnd 0-1
| | @dateForm [Optional]
| | msgCurrency 0-1
| | otherCurrency 0-9 (A)
| | @currencyUseQualifier [Required]
| | @exchangeRate [Optional] (N)
| | refDoc 1-9 (P)
| | @docType [Required]
| | | docID 1-2 (p)
| | | @numberingOrg [Optional]
| | | docDate 0-1
| | | @dateForm [Optional]
| | | season 0-1 (A)
| | | @numberingOrg [Optional] (a)
| | | @codeList [Optional] (a)
```

| @listName [Optional] (a)
 | @listVersion [Optional] (a)
 | itemID 0-1 (U)
 | **attachment 0-1** (N)
 | @uid [Optional]
 | | fileName 0-1 (N)
 | | @numberingOrg [Optional] (a)
 | | binaryObject 0-1 (N)
 | | @format [Optional] (N)
 | | @mime [Optional] (N)
 | | @encoding [Optional] (N)
 | | @characterSet [Optional] (N)
 | | **externalReference 0-99** (N)
 | | | uri 1-1 (N)
 | | | @isURL [Optional] [Default= true] (Na)
 | | | mimeTypeCode 0-1 (N)
 | | | formatCode 0-1 (N)
 | | | encodingCode 0-1 (N)
 | | | characterSetCode 0-1 (N)

| **buyer 1-1** (AP)

| @logo [Optional]
 | @sender [Optional] (a*)
 | | id 1-1 (p)
 | | @numberingOrg [Optional]
 | | additionalIdentifier 0-9 (N)
 | | @numberingOrg [Optional] (a)
 | | @idQualifier [Optional] (Na)
 | | legalName 0-1 (U)
 | | dept 0-1
 | | subDept 0-1 (N)
 | | person 0-1
 | | @email [Optional]
 | | @phone [Optional]
 | | @fax [Optional]
 | | street 0-1
 | | city 0-1
 | | subCountry 0-1
 | | country 0-1
 | | postCode 0-1

| **supplier 1-1** (AP)

| @logo [Optional]
 | @sender [Optional] (a*)
 | | id 1-1
 | | @numberingOrg [Optional]
 | | additionalIdentifier 0-9 (N)
 | | @numberingOrg [Optional] (a)
 | | @idQualifier [Optional] (Na)
 | | legalName 0-1 (U)
 | | dept 0-1
 | | subDept 0-1 (N)
 | | person 0-1
 | | @email [Optional]
 | | @phone [Optional]
 | | @fax [Optional]
 | | street 0-1
 | | city 0-1
 | | subCountry 0-1
 | | country 0-1
 | | postCode 0-1

| **thirdParty 0-5** (AP)

| @VAT [Optional]

```

| | @role [Required]
| | @sender [Optional] (a*)
| | | id 1-1
| | | | @numberingOrg [Optional]
| | | | legalName 0-1 (U)
| | | | dept 0-1
| | | | subDept 0-1 (N)
| | | | person 0-1
| | | | | @email [Optional]
| | | | | @phone [Optional]
| | | | | @fax [Optional]
| | | | street 0-1
| | | | city 0-1
| | | | subCountry 0-1
| | | | country 0-1
| | | | postCode 0-1
| | | note 0-99
| | | @numberingOrg [Optional]
| | | @codeList [Optional]
| | | @noteLabel [Optional]
| |
| | terms 0-1 (P)
| | | payment 0-5
| | | | @finDiscount [Optional]
| | | | @finSurcharge [Optional]
| | | | - choose -
| | | | | payTerm 1-1
| | | | | - or -
| | | | | payTermText 1-1 (U)
| | | | | - end choose -
| | | | | payMode 0-1
| | | | insPayment 0-5
| | | | | @part [Required]
| | | | | - choose -
| | | | | | payTerm 1-1
| | | | | | - or -
| | | | | | payTermText 1-1 (U)
| | | | | | - end choose -
| | | | | | payMode 0-1
| | | | trade 0-1
| | | | | - choose -
| | | | | | incoTermText 1-1 (U)
| | | | | | - or -
| | | | | | incoTerm 1-1
| | | | | | - end choose -
| | | | | | location 0-1
| | | | | | | @LRI [Optional]
| | | | transInfo 0-5 (pAP)
| | | | | @transReason [Optional]
| | | | | @progr [Optional] (N)
| | | | | | transMode 1-1
| | | | | | carrier 0-1
| | | | | | deliveryPlace 0-1 (U)
| | | | | | grossWeight 0-1
| | | | | | | @um [Required]
| | | | | | netWeight 0-1
| | | | | | | @um [Required]
| | | | | | transMeans 0-1
| | | | | | transCondition 0-3
| | | | | | transConditionText 0-1 (U)
| | | | | | despatchPlace 0-1 (N)

```

| | | despatchDate 0-1 (N)
 | | | @dateForm [Optional] (a)
 | | | delEffectiveDate 0-1 (p)
 | | | @dateForm [Optional]
 | | **allowanceCharge 0-9 (A)**
 | | | @um [Optional] (a)
 | | | @VAT [Optional]
 | | | @minQty [Optional] (a)
 | | | @currency [Optional] (a)
 | | | @maxQty [Optional] (N)
 | | | @isCharge [Optional] (N)
 | | | - choose -
 | | | | AC_category 1-1
 | | | - or -
 | | | | AC_categoryText 1-1 (U)
 | | | - end choose -
 | | | - choose -
 | | | | AC_percent 1-1
 | | | - or -
 | | | | AC_amount 1-1 (A)
 | | | | @currency [Optional] (a)
 | | | - end choose -
 | | | **dtScheme 0-1 (P)**
 | | | | @taxType [Required]
 | | | | taxCategory 0-1
 | | | | taxRate 0-1
 | | | | legalRef 0-1 (A)
 | | | | @numberingOrg [Optional]
 | | | | @codeList [Optional]
 | | | | @listName [Optional]
 | | | | @listVersion [Optional]
 | | | | note 0-99
 | | | | @numberingOrg [Optional]
 | | | | @codeList [Optional]
 | | | | @noteLabel [Optional]

| | **texComInfo 0-1 (P)**
 | | | @endUse [Optional] [Default= PR]
 | | | @IC [Optional]
 | | | @techSheet [Optional]
 | | | season 0-1 (A)
 | | | | @numberingOrg [Optional] (a)
 | | | | @codeList [Optional] (a)
 | | | | @listName [Optional] (a)
 | | | | @listVersion [Optional] (a)
 | | | brand 0-1 (N)
 | | | | @numberingOrg [Optional] (a)
 | | | | @codeList [Optional] (a)
 | | | | @listName [Optional] (a)
 | | | | @listVersion [Optional] (a)
 | | | productLine 0-1 (N)
 | | | | @numberingOrg [Optional] (a)
 | | | | @codeList [Optional] (a)
 | | | | @listName [Optional] (a)
 | | | | @listVersion [Optional] (a)
 | | | project 0-1 (U)
 | | | operationalCode 0-19 (N)
 | | | | @numberingOrg [Optional] (a)
 | | | | @codeList [Optional] (a)
 | | | | @listName [Optional] (a)
 | | | | @listVersion [Optional] (a)

| | @codeQualifier [Optional] (Na)
 | | deliveryDate 0-1
 | | @dateForm [Optional]
 | | specDate 0-1
 | | @dateForm [Optional]
 | | fabricWidth 0-1
 | | @um [Optional] [Default= CMT]
 | | pieceLength 0-1
 | | @um [Optional] [Default= MTR]
 | | **piecePack 0-1**
 | | - choose -
 | | | piecePackText 1-1 (U)
 | | - or -
 | | | piecelnnWrap1 1-1
 | | | piecelnnWrap2 0-1
 | | | pieceOutWrap 0-1
 | | - end choose -
 | | note 0-99 (p)
 | | @numberingOrg [Optional]
 | | @codeList [Optional]
 | | @noteLabel [Optional]

| **TXbody 1-1**

| | **TXitem 1-unbounded** (P)
 | | @act [Required]
 | | | lineN 1-1
 | | | @VAT [Optional]
 | | | **refDoc 1-9** (P)
 | | | @docType [Required]
 | | | | docID 1-2 (p)
 | | | | @numberingOrg [Optional]
 | | | | docDate 0-1
 | | | | @dateForm [Optional]
 | | | | season 0-1 (A)
 | | | | @numberingOrg [Optional] (a)
 | | | | @codeList [Optional] (a)
 | | | | @listName [Optional] (a)
 | | | | @listVersion [Optional] (a)
 | | | | itemID 0-1 (U)
 | | | | **attachment 0-1** (N)
 | | | | | @uid [Optional]
 | | | | | | fileName 0-1 (N)
 | | | | | | @numberingOrg [Optional]
 | | | | | | binaryObject 0-1 (N)
 | | | | | | @format [Optional] (N)
 | | | | | | @mime [Optional] (N)
 | | | | | | @encoding [Optional] (N)
 | | | | | | @characterSet [Optional] (N)
 | | | | | **externalReference 0-99** (N)
 | | | | | | uri 1-1 (N)
 | | | | | | @isURL [Optional] [Default= true] (Na)
 | | | | | | mimeTypeCode 0-1 (N)
 | | | | | | formatCode 0-1 (N)
 | | | | | | encodingCode 0-1 (N)
 | | | | | | characterSetCode 0-1 (N)
 | | | | **texCode 0-2** (P)
 | | | | @numberingOrg [Optional]
 | | | | | art 1-1 (U)
 | | | | | @numberingOrg [Optional]
 | | | | | @codeList [Optional]
 | | | | | @listName [Optional]

| @listVersion [Optional]
 | pattern 0-1
 | @numberingOrg [Optional]
 | @codeList [Optional]
 | @listName [Optional]
 | @listVersion [Optional]
 | color 0-1
 | @numberingOrg [Optional]
 | @codeList [Optional]
 | @listName [Optional]
 | @listVersion [Optional]
 | added 0-9
 | @numberingOrg [Optional]
 | @addType [Optional]
 | description 0-unbounded (pAU)
 | @ln [Optional] (N)

selvedge 0-1

| selvedgeText 1-1
 | selvedgeColor 0-1

fabricTreat 0-1

| surfaceTreatment 0-1
 | finishCycle 0-1
 | oneLot 0-1
 | metricMark 0-1

qty 0-2
 @um [Required]
 price 0-1 (AU)
 @um [Optional]
 @priceQualifier [Optional] [Default= NET]
 @currency [Optional] (a)
 comDiscount 0-1

thirdParty 0-3 (AP)

@VAT [Optional]
 @role [Required]
 @sender [Optional] (a*)

| id 1-1
 | @numberingOrg [Optional]
 | legalName 0-1 (U)
 | dept 0-1
 | subDept 0-1 (N)
 | person 0-1
 | @email [Optional]
 | @phone [Optional]
 | @fax [Optional]
 | street 0-1
 | city 0-1
 | subCountry 0-1
 | country 0-1
 | postCode 0-1

texComInfo 0-1 (P)

@endUse [Optional] [Default= PR]
 @IC [Optional]
 @techSheet [Optional]

| season 0-1 (A)
 | @numberingOrg [Optional] (a)
 | @codeList [Optional] (a)
 | @listName [Optional] (a)
 | @listVersion [Optional] (a)
 | brand 0-1 (N)
 | @numberingOrg [Optional] (a)
 | @codeList [Optional] (a)

			@listName [Optional] (a)
			@listVersion [Optional] (a)
			productLine 0-1 (N)
			@numberingOrg [Optional] (a)
			@codeList [Optional] (a)
			@listName [Optional] (a)
			@listVersion [Optional] (a)
			project 0-1 (U)
			operationalCode 0-19 (N)
			@numberingOrg [Optional] (a)
			@codeList [Optional] (a)
			@listName [Optional] (a)
			@listVersion [Optional] (a)
			@codeQualifier [Optional] (Na)
			deliveryDate 0-1
			@dateForm [Optional]
			specDate 0-1
			@dateForm [Optional]
			fabricWidth 0-1
			@um [Optional] [Default= CMT]
			pieceLength 0-1
			@um [Optional] [Default= MTR]
			piecePack 0-1
			- choose -
			piecePackText 1-1 (U)
			- or -
			pieceInnWrap1 1-1
			pieceInnWrap2 0-1
			pieceOutWrap 0-1
			- end choose -
			note 0-99 (p)
			@numberingOrg [Optional]
			@codeList [Optional]
			@noteLabel [Optional]
			dtScheme 0-1 (pP)
			@taxType [Required]
			taxCategory 0-1
			taxRate 0-1
			legalRef 0-1 (A)
			@numberingOrg [Optional] (a)
			@codeList [Optional] (a)
			@listName [Optional] (a)
			@listVersion [Optional] (a)
			note 0-99
			@numberingOrg [Optional]
			@codeList [Optional]
			@noteLabel [Optional]
			note 0-99
			@numberingOrg [Optional]
			@codeList [Optional]
			@noteLabel [Optional]
			totals 0-1
			totQty 0-1
			@um [Required]
			goodsAmount 1-1 (A)
			@currency [Optional] (a)

2.2 Detailed description of document elements

Following tables show all elements (complex and simple) used in this document. Description includes: 1) element's information: xml tag, name, brief description, data type and syntax constraints; 2) information about use of the element in a particular position in the document: xpath and possible associated notes.

2.2.1 Complex elements (Aggregate Business Information Entities)

Complex elements are those elements whose content is composed of other elements (childs). Complex elements are alphabetically ordered.

allowanceCharge	Allowances and Charges related to an Order or a contract (XPath TEXOrdChange/terms/allowanceCharge) 0-9 (A)
attachment	an attached document. An attachment can refer to an external document or be included with the document being exchanged (XPath TEXOrdChange/TXheader/refDoc/attachment) 0-1 (N) (XPath TEXOrdChange/TXbody/TXitem/refDoc/attachment) 0-1 (N)
buyer	details of the Buyer (party that buys the good or service that is object of the current collaborative process) - base type: Nad, (XPath TEXOrdChange/TXheader/buyer) 1-1 (AP)
dtScheme	set of data usable to declare the duty or tax applied (XPath TEXOrdChange/terms/allowanceCharge/dtScheme) 0-1 (P) (XPath TEXOrdChange/TXbody/TXitem/dtScheme) 0-1 (pP) - note: <i>recommended alternative to the attribute @VAT</i>
externalReference	details about an external object, such as a document stored at a remote location (XPath TEXOrdChange/TXbody/TXitem/refDoc/attachment/externalReference) 0-99 (N) (XPath TEXOrdChange/TXheader/refDoc/attachment/externalReference) 0-99 (N)
fabricTreat	information on the treatments and finishing of fabric (XPath TEXOrdChange/TXbody/TXitem/fabricTreat) 0-1
insPayment	payment details for payment by installments (XPath TEXOrdChange/terms/insPayment) 0-5 - note: <i>excluded the case of offers, this set of data is alternative to payment set and must be iterated for each payment installment</i>
payment	payment details for payment all in one (XPath TEXOrdChange/terms/payment) 0-5 - note: <i>excluded the case of offers, this set of data is alternative to insPayment, it can be iterated to specify alternative terms of payment (e.g.: 60 days or 30 days with 3% discount)</i>
piecePack	type of wrapping or packing of the fabric pieces (XPath TEXOrdChange/TXbody/TXitem/texComInfo/piecePack) 0-1 (XPath TEXOrdChange/texComInfo/piecePack) 0-1
refDoc	identification of a document and of an item thereof, to which the message makes reference (XPath TEXOrdChange/TXbody/TXitem/refDoc) 1-9 (P) - note: <i>Use to link the line of the present document to the line of the order, use refDoc element; numberingOrg indicates the role that produced the document and such reference, customer or supplier (both might be reported through two instances of refDoc)</i> (XPath TEXOrdChange/TXheader/refDoc) 1-9 (P) - note: <i>At least one occurrence should contain a reference to the order it responds to (for example docType=ORD or OCH or BOR)</i>

selvedge	text and colour related to a fabric selvedge (XPath TEXOrdChange/TXbody/TXitem/selvedge) 0-1
supplier	details of the Supplier (party that supplies the good or service that is object of the current collaborative process) - base type: Nad, (XPath TEXOrdChange/TXheader/supplier) 1-1 (AP)
terms	details of the commercial obligations for payment and delivery (XPath TEXOrdChange/terms) 0-1 (P)
texCode	full codification of the textile product (XPath TEXOrdChange/TXbody/TXitem/texCode) 0-2 (P)
texComInfo	miscellaneous trade information, that can be specified in a textile Order, referred either to the whole document or to the single item (XPath TEXOrdChange/texComInfo) 0-1 (P) - note: <i>here must be specified those valid for the whole document</i> (XPath TEXOrdChange/TXbody/TXitem/texComInfo) 0-1 (P) - note: <i>the Supplier can use this data group to confirm the Order terms or to modify them</i>
thirdParty	details of the Third Party, different from Sender and Receiver of the document - base type: Nad, (XPath TEXOrdChange/TXheader/thirdParty) 0-5 (AP) (XPath TEXOrdChange/TXbody/TXitem/thirdParty) 0-3 (AP)
totals	monetary and quantity totals of the Order (XPath TEXOrdChange/totals) 0-1
trade	general terms of trade for the specified supply (XPath TEXOrdChange/terms/trade) 0-1
transInfo	details of transport: mode, carrier and delivery place (XPath TEXOrdChange/terms/transInfo) 0-5 (pAP)
TXbody	body of the document TEXTILES ORDER RESPONSE and CHANGE (XPath TEXOrdChange/TXbody) 1-1
TXheader	header of the TEXTILES ORDER RESPONSE and TEXTILES ORDER CHANGE (XPath TEXOrdChange/TXheader) 1-1 (P) - note: <i>the attribute "logo" should be used only in conjunction with Buyer</i>
TXitem	line item of the message TEXTILE ORDER RESPONSE and TEXTILE ORDER CHANGE (XPath TEXOrdChange/TXbody/TXitem) 1-unbounded (P)

2.2.2 Simple elements (Basic Business Information Entities)

Simple elements are those elements whose content is characterized by a data type plus a domain of possible values. Simple elements are alphabetically ordered.

AC_amount	amount of an Allowance or Charge - base type: decimal, fraction digits: 2, (XPath TEXOrdChange/terms/allowanceCharge/AC_amount) 1-1 (A)
AC_category	coded specification of an Allowance or Charge - base type: string, cod. table: T41 http://www.ebiz.enea.it/moda-ml/repository/codelist/v2018-1/gc_T41.xml (XPath TEXOrdChange/terms/allowanceCharge/AC_category) 1-1

AC_categoryText	free text description of an Allowance or Charge - base type: string, max length: 250, (XPath TEXOrdChange/terms/allowanceCharge/AC_categoryText) 1-1 (U)
AC_percent	amount of an Allowance or Charge as a percentage (always non negative value) - base type: decimal, max inclusive: 100, fraction digits: 2, (XPath TEXOrdChange/terms/allowanceCharge/AC_percent) 1-1
@act	status that the current line assigns to the line addressed in the reference document; if it is already canceled it maintains the status. - base type: string, cod. table: NT5 http://www.ebiz.enea.it/moda-ml/repository/codelist/v2018-1/gc_NT5.xml (XPath TEXOrdChange/TXbody/TXitem/@act) [Required]
added	additional code of the product (complementing the formers) - base type: string, max length: 80, (XPath TEXOrdChange/TXbody/TXitem/texCode/added) 0-9 - note: <i>here an additional codification (see table T44) can be specified</i>
additionalIdentifier	additional identification code of a Party, for example customs registries or others - base type: string, max length: 15, (XPath TEXOrdChange/TXheader/buyer/additionalIdentifier) 0-9 (N) - note: <i>identifiers for example for exports, such as MID (Manufacturer Identification Code), EORI (E.O.R.I. - Economic Operator Registration and Identification)</i> (XPath TEXOrdChange/TXheader/supplier/additionalIdentifier) 0-9 (N) - note: <i>identifiers for example for exports, such as MID (Manufacturer Identification Code), EORI (E.O.R.I. - Economic Operator Registration and Identification)</i>
@addType	qualifier of the additional coding of a product - base type: string, cod. table: T44 http://www.ebiz.enea.it/moda-ml/repository/codelist/v2018-1/gc_T44.xml (XPath TEXOrdChange/TXbody/TXitem/texCode/added/@addType) [Optional] - nota: <i>addType allows the clarification of the meaning of the added element content; it is strongly suggested to use it always.</i>
art	article number of the product - base type: string, max length: 80, (XPath TEXOrdChange/TXbody/TXitem/texCode/art) 1-1 (U) - note: <i>can be used either for the base-article (excluding pattern/colour) or for the SKU</i>
binaryObject	a binary large object containing an attached document, Coding 'base64Binary' is recommended. - base type: base64Binary, (XPath TEXOrdChange/TXheader/refDoc/attachment/binaryObject) 0-1 (N) (XPath TEXOrdChange/TXbody/TXitem/refDoc/attachment/binaryObject) 0-1 (N)
brand	A brand name. - base type: string, (XPath TEXOrdChange/texComInfo/brand) 0-1 (N) (XPath TEXOrdChange/TXbody/TXitem/texComInfo/brand) 0-1 (N)
carrier	identification of the transport carrier - base type: string, max length: 40, (XPath TEXOrdChange/terms/transInfo/carrier) 0-1
@characterSet	the character set of the binary object (examples UTF-8, UTF-16, Windows-1252, ISO-8859-7,...) - base type: normalizedString, (XPath TEXOrdChange/TXheader/refDoc/attachment/binaryObject/@characterSet) [Optional] (N)

	(XPath TEXOrdChange/TXbody/TXitem/refDoc/attachment/binaryObject/@characterSet) [Optional] (N)
characterSetCode	<p>the character set of an external document (examples UTF-8, UTF-16, Windows-1252, ISO-8859-7,..)</p> <p>- base type: normalizedString,</p> <p>(XPath TEXOrdChange/TXbody/TXitem/refDoc/attachment/externalReference/characterSetCode) 0-1 (N)</p> <p>(XPath TEXOrdChange/TXheader/refDoc/attachment/externalReference/characterSetCode) 0-1 (N)</p>
city	<p>name of the city (town, village)</p> <p>- base type: string, max length: 40,</p> <p>(XPath TEXOrdChange/TXheader/thirdParty/city) 0-1</p> <p>(XPath TEXOrdChange/TXheader/buyer/city) 0-1</p> <p>(XPath TEXOrdChange/TXheader/supplier/city) 0-1</p> <p>(XPath TEXOrdChange/TXbody/TXitem/thirdParty/city) 0-1</p>
@codeList	<p>it specifies the URL where the list of codes used to make an instance of the element can be found</p> <p>- base type: string, max length: 255,</p> <p>(XPath TEXOrdChange/texComInfo/brand/@codeList) [Optional] (a)</p> <p>- nota: <i>at least one out of this attribute and "numberingOrg" should be set</i></p> <p>(XPath TEXOrdChange/TXbody/TXitem/dtScheme/legalRef/@codeList) [Optional] (a)</p> <p>(XPath TEXOrdChange/TXbody/TXitem/texComInfo/season/@codeList) [Optional] (a)</p> <p>- nota: <i>this attribute should be used either single or coupled with "listName" and "listVersion"</i></p> <p>(XPath TEXOrdChange/texComInfo/note/@codeList) [Optional]</p> <p>- nota: <i>must be used to provide (URL) the list of codes used in "noteLabel"</i></p> <p>(XPath TEXOrdChange/texComInfo/productLine/@codeList) [Optional] (a)</p> <p>- nota: <i>at least one out of this attribute and "numberingOrg" should be set</i></p> <p>(XPath TEXOrdChange/TXbody/TXitem/refDoc/season/@codeList) [Optional] (a)</p> <p>- nota: <i>this attribute should be used either single or coupled with "listName" and "listVersion"</i></p> <p>(XPath TEXOrdChange/TXbody/TXitem/texComInfo/operationalCode/@codeList) [Optional] (a)</p> <p>- nota: <i>at least one out of this attribute and "numberingOrg" should be set</i></p> <p>(XPath TEXOrdChange/TXbody/TXitem/texComInfo/note/@codeList) [Optional]</p> <p>- nota: <i>must be used to provide (URL) the list of codes used in "noteLabel"</i></p> <p>(XPath TEXOrdChange/TXbody/TXitem/texCode/color/@codeList) [Optional]</p> <p>- nota: <i>this attribute should be used either single or coupled with "listName" and "listVersion"</i></p> <p>(XPath TEXOrdChange/texComInfo/season/@codeList) [Optional] (a)</p> <p>- nota: <i>this attribute should be used either single or coupled with "listName" and "listVersion"</i></p> <p>(XPath TEXOrdChange/TXbody/TXitem/texCode/pattern/@codeList) [Optional]</p> <p>- nota: <i>at least one out of this attribute and "numberingOrg" should be set</i></p> <p>(XPath TEXOrdChange/terms/allowanceCharge/dtScheme/legalRef/@codeList) [Optional]</p> <p>(XPath TEXOrdChange/TXbody/TXitem/texCode/art/@codeList) [Optional]</p> <p>- nota: <i>at least one out of this attribute and "numberingOrg" should be set</i></p> <p>(XPath TEXOrdChange/TXheader/note/@codeList) [Optional]</p> <p>- nota: <i>must be used to provide (URL) the list of codes used in "noteLabel"</i></p> <p>(XPath TEXOrdChange/TXbody/TXitem/dtScheme/note/@codeList) [Optional]</p> <p>- nota: <i>must be used to provide (URL) the list of codes used in "noteLabel"</i></p> <p>(XPath TEXOrdChange/TXheader/refDoc/season/@codeList) [Optional] (a)</p> <p>- nota: <i>this attribute should be used either single or coupled with "listName" and "listVersion"</i></p> <p>(XPath TEXOrdChange/TXbody/TXitem/texComInfo/productLine/@codeList) [Optional] (a)</p> <p>- nota: <i>at least one out of this attribute and "numberingOrg" should be set</i></p> <p>(XPath TEXOrdChange/TXbody/TXitem/texComInfo/brand/@codeList) [Optional] (a)</p>

	<p>- nota: <i>at least one out of this attribute and "numberingOrg" should be set</i> (XPath TEXOrdChange/terms/allowanceCharge/dtScheme/note/@codeList) [Optional]</p> <p>- nota: <i>must be used to provide (URL) the list of codes used in "noteLabel"</i> (XPath TEXOrdChange/TXbody/TXitem/note/@codeList) [Optional]</p> <p>- nota: <i>must be used to provide (URL) the list of codes used in "noteLabel"</i> (XPath TEXOrdChange/texComInfo/operationalCode/@codeList) [Optional] (a)</p> <p>- nota: <i>at least one out of this attribute and "numberingOrg" should be set</i></p>
@codeQualifier	<p>operational code qualifier: it states if the code is related to a project, an event, an initiative, a sales channel, a management type (eg CITES),</p> <p>- base type: string, cod. table: NT43 http://www.ebiz.enea.it/moda-ml/repository/codelist/v2018-1/gc_NT43.xml (XPath TEXOrdChange/texComInfo/operationalCode/@codeQualifier) [Optional] (Na)</p> <p>(XPath TEXOrdChange/TXbody/TXitem/texComInfo/operationalCode/@codeQualifier) [Optional] (Na)</p>
color	<p>colour number of the product, when not included in the model or fabric code</p> <p>- base type: string, max length: 15, (XPath TEXOrdChange/TXbody/TXitem/texCode/color) 0-1</p>
comDiscount	<p>percent discount applied to the related unit price or amount</p> <p>- base type: decimal, min inclusive: 0, max inclusive: 100, fraction digits: 2, (XPath TEXOrdChange/TXbody/TXitem/comDiscount) 0-1</p>
country	<p>code of the nation</p> <p>- base type: string, cod. table: T10 http://www.ebiz.enea.it/moda-ml/repository/codelist/v2018-1/gc_T10.xml (XPath TEXOrdChange/TXheader/supplier/country) 0-1 (XPath TEXOrdChange/TXheader/buyer/country) 0-1 (XPath TEXOrdChange/TXheader/thirdParty/country) 0-1 (XPath TEXOrdChange/TXbody/TXitem/thirdParty/country) 0-1</p>
@currency	<p>currency in which a specified monetary data is expressed</p> <p>- base type: string, cod. table: T9 http://www.ebiz.enea.it/moda-ml/repository/codelist/v2018-1/gc_T9.xml (XPath TEXOrdChange/terms/allowanceCharge/@currency) [Optional] (a) (XPath TEXOrdChange/terms/allowanceCharge/AC_amount/@currency) [Optional] (a) (XPath TEXOrdChange/totals/goodsAmount/@currency) [Optional] (a) (XPath TEXOrdChange/TXbody/TXitem/price/@currency) [Optional] (a)</p> <p>- nota: <i>Currency referred by the price.</i></p>
@currencyUseQualifier	<p>qualification of another currency used in the document</p> <p>- base type: string, cod. table: NT19 http://www.ebiz.enea.it/moda-ml/repository/codelist/v2018-1/gc_NT19.xml (XPath TEXOrdChange/TXheader/otherCurrency/@currencyUseQualifier) [Required]</p>
@dateForm	<p>format used for the date</p> <p>- base type: string, cod. table: NT29 http://www.ebiz.enea.it/moda-ml/repository/codelist/v2018-1/gc_NT29.xml (XPath TEXOrdChange/TXheader/msgDate/@dateForm) [Optional] (XPath TEXOrdChange/TXheader/validityEnd/@dateForm) [Optional] (XPath TEXOrdChange/TXbody/TXitem/texComInfo/deliveryDate/@dateForm) [Optional] (XPath TEXOrdChange/TXbody/TXitem/refDoc/docDate/@dateForm) [Optional] (XPath TEXOrdChange/texComInfo/specDate/@dateForm) [Optional] (XPath TEXOrdChange/terms/transInfo/despatchDate/@dateForm) [Optional] (a) (XPath TEXOrdChange/TXbody/TXitem/texComInfo/specDate/@dateForm) [Optional] (XPath TEXOrdChange/texComInfo/deliveryDate/@dateForm) [Optional] (XPath TEXOrdChange/TXheader/refDoc/docDate/@dateForm) [Optional] (XPath TEXOrdChange/terms/transInfo/delEffectiveDate/@dateForm) [Optional]</p>

delEffectiveDate	effective date of delivery of goods (declared in Despatch), according to one of the patterns YYYY-MM-DD, YYYY-MM-DD:HH-MM or YYYY-WW. - base type: string, (XPath TEXOrdChange/terms/transInfo/delEffectiveDate) 0-1 (p)
deliveryDate	date of delivery of goods, requested or promised in the purchase process, according to one of the patterns YYYY-MM-DD, YYYY-MM-DD:HH-MM or YY YY-WW. - base type: string, (XPath TEXOrdChange/texComInfo/deliveryDate) 0-1 (XPath TEXOrdChange/TXbody/TXitem/texComInfo/deliveryDate) 0-1
deliveryPlace	place of delivery of goods, ultimate or related to a given leg - base type: string, max length: 250, (XPath TEXOrdChange/terms/transInfo/deliveryPlace) 0-1 (U)
dept	name or code of a contact department within a Party - base type: string, max length: 40, (XPath TEXOrdChange/TXbody/TXitem/thirdParty/dept) 0-1 (XPath TEXOrdChange/TXheader/supplier/dept) 0-1 (XPath TEXOrdChange/TXheader/thirdParty/dept) 0-1 (XPath TEXOrdChange/TXheader/buyer/dept) 0-1
description	free text description. The content of the element must be unique, it might be translated and repeated into more languages (thus no more than one instance for each language). - base type: string, max length: 250, (XPath TEXOrdChange/TXbody/TXitem/texCode/description) 0-unbounded (pAU) - note: <i>Product description</i>
despatchDate	date of despatch of goods, requested or promised in the purchase process, according to one of the patterns YYYY-MM-DD, YYYY-MM-DD:HH-MM or Y YYY-WW. - base type: string, (XPath TEXOrdChange/terms/transInfo/despatchDate) 0-1 (N)
despatchPlace	place of despatch of goods, origin or related to a given leg - base type: string, max length: 250, (XPath TEXOrdChange/terms/transInfo/despatchPlace) 0-1 (N)
docDate	date of issue of the referenced document, according to one of the patterns Y YYY-MM-DD, YYYY-MM-DD:HH-MM or YYYY-WW. - base type: string, (XPath TEXOrdChange/TXheader/refDoc/docDate) 0-1 (XPath TEXOrdChange/TXbody/TXitem/refDoc/docDate) 0-1
docID	identification number of the referenced document SINCE 2008-1 ITS USE I N THE HEADER IS DISCOURAGED (REPLACED BY msgID) - base type: string, max length: 80, (XPath TEXOrdChange/TXbody/TXitem/refDoc/docID) 1-2 (p) <hr/> AAAA-WARNING! - text not AVAILABLE n. 245 - In=en (XPath TEXOrdChange/TXheader/refDoc/docID) 1-2 (p) <hr/> AAAA-WARNING! - text not AVAILABLE n. 245 - In=en (XPath TEXOrdChange/TXheader/docID) 0-1
@docType	type or class to which the referenced document belongs - base type: string, cod. table: T21 http://www.ebiz.enea.it/moda-ml/repository/codelist/v2018-1/gc_T21.xml (XPath TEXOrdChange/TXheader/refDoc/@docType) [Required] (XPath TEXOrdChange/TXbody/TXitem/refDoc/@docType) [Required]
@email	electronic mail address of the contact person within a Party - base type: string, max length: 250, (XPath TEXOrdChange/TXheader/buyer/person/@email) [Optional] (XPath TEXOrdChange/TXheader/supplier/person/@email) [Optional]

	(XPath TEXOrdChange/TXheader/thirdParty/person/@email) [Optional] (XPath TEXOrdChange/TXbody/TXitem/thirdParty/person/@email) [Optional]
@encoding	specifies the decoding algorithm of the binary object - base type: normalizedString, (XPath TEXOrdChange/TXbody/TXitem/refDoc/attachment/binaryObject/@encoding) [Optional] (N) (XPath TEXOrdChange/TXheader/refDoc/attachment/binaryObject/@encoding) [Optional] (N)
encodingCode	the encoding/decoding algorithm used with the external object (example is 'base64Binary') - base type: normalizedString, (XPath TEXOrdChange/TXheader/refDoc/attachment/externalReference/encodingCode) 0-1 (N) (XPath TEXOrdChange/TXbody/TXitem/refDoc/attachment/externalReference/encodingCode) 0-1 (N)
@endUse	specifies the final use of the fabric - base type: string, cod. table: NT4 http://www.ebiz.enea.it/moda-ml/repository/codelist/v2018-1/gc_NT4.xml (XPath TEXOrdChange/TXbody/TXitem/texComInfo/@endUse) [Optional] [Default=PR] (XPath TEXOrdChange/texComInfo/@endUse) [Optional] [Default= PR]
@exchangeRate	Currency exchange rate - base type: decimal, min inclusive: 0, (XPath TEXOrdChange/TXheader/otherCurrency/@exchangeRate) [Optional] (N) - nota: <i>Set the exchange rate of this currency to be applied on the message currency (msgCurrecy) to obtain the final value in this currency.</i>
fabricWidth	width of the fabric as technical specification - base type: decimal, min inclusive: 0, fraction digits: 2, (XPath TEXOrdChange/TXbody/TXitem/texComInfo/fabricWidth) 0-1 (XPath TEXOrdChange/texComInfo/fabricWidth) 0-1
@fax	fax number of the contact person within a Party - base type: string, max length: 35, (XPath TEXOrdChange/TXheader/thirdParty/person/@fax) [Optional] (XPath TEXOrdChange/TXheader/buyer/person/@fax) [Optional] (XPath TEXOrdChange/TXbody/TXitem/thirdParty/person/@fax) [Optional] (XPath TEXOrdChange/TXheader/supplier/person/@fax) [Optional]
fileName	unique identifier (name) of the file - base type: string, max length: 255, (XPath TEXOrdChange/TXheader/refDoc/attachment/fileName) 0-1 (N) (XPath TEXOrdChange/TXbody/TXitem/refDoc/attachment/fileName) 0-1 (N)
@finDiscount	financial discount rate applied for payment by the date specified - base type: decimal, min inclusive: 0, max inclusive: 100, fraction digits: 2, (XPath TEXOrdChange/terms/payment/@finDiscount) [Optional]
finishCycle	process of finishing applied to the fabric - base type: string, max length: 40, (XPath TEXOrdChange/TXbody/TXitem/fabricTreat/finishCycle) 0-1
@finSurcharge	financial surcharge rate applied for payment after the date specified - base type: decimal, min inclusive: 0, max inclusive: 100, fraction digits: 2, (XPath TEXOrdChange/terms/payment/@finSurcharge) [Optional]
@format	the format of the binary content (examples xml, pdf, doc,...) - base type: string, (XPath TEXOrdChange/TXbody/TXitem/refDoc/attachment/binaryObject/@format) [Optional] (N) (XPath TEXOrdChange/TXheader/refDoc/attachment/binaryObject/@format) [Optional] (N)

formatCode	<p>the format of the external object (examples xml, pdf, doc,...)</p> <p>- base type: normalizedString, (XPath TEXOrdChange/TXheader/refDoc/attachment/externalReference/formatCode) 0-1 (N) (XPath TEXOrdChange/TXbody/TXitem/refDoc/attachment/externalReference/formatCode) 0-1 (N)</p>
goodsAmount	<p>total monetary value of the goods and services considered in the message</p> <p>- base type: decimal, min inclusive: 0, fraction digits: 2, (XPath TEXOrdChange/totals/goodsAmount) 1-1 (A)</p>
grossWeight	<p>the gross weight, declared for transport or customs purpose</p> <p>- base type: decimal, min inclusive: 0, fraction digits: 2, (XPath TEXOrdChange/terms/transInfo/grossWeight) 0-1</p>
@IC	<p>specifies if the "illustrated confirmation" is needed</p> <p>- base type: boolean, (XPath TEXOrdChange/texComInfo/@IC) [Optional] (XPath TEXOrdChange/TXbody/TXitem/texComInfo/@IC) [Optional]</p>
id	<p>primary identification code of a Party; it is recommended the format: nation code (ISO 3166) + VAT identification number (11 crt), with the qualifier "numberingOrg"= MF</p> <p>- base type: string, max length: 15, (XPath TEXOrdChange/TXheader/thirdParty/id) 1-1 (XPath TEXOrdChange/TXheader/supplier/id) 1-1 (XPath TEXOrdChange/TXbody/TXitem/thirdParty/id) 1-1 (XPath TEXOrdChange/TXheader/buyer/id) 1-1 (p)</p>
@idQualifier	<p>Qualification of the identifier.</p> <p>- base type: string, (XPath TEXOrdChange/TXheader/supplier/additionalIdentifier/@idQualifier) [Optional] (Na) - nota: <i>this attribute should be used when the numberingOrg attribute is not enough to declare the type of identifier</i> (XPath TEXOrdChange/TXheader/buyer/additionalIdentifier/@idQualifier) [Optional] (Na) - nota: <i>this attribute should be used when the numberingOrg attribute is not enough to declare the type of identifier</i></p>
incoTerm	<p>specification of the terms of trade (INCOTERMS)</p> <p>- base type: string, cod. table: T3 http://www.ebiz.enea.it/moda-ml/repository/codelist/v2018-1/gc_T3.xml (XPath TEXOrdChange/terms/trade/incoTerm) 1-1</p>
incoTermText	<p>free text specifying the terms of trade (incoterm, location)</p> <p>- base type: string, max length: 250, (XPath TEXOrdChange/terms/trade/incoTermText) 1-1 (U)</p>
@isCharge	<p>Indicates if the element to which it refers is a charge (true = charge, false = allowance)</p> <p>- base type: boolean, min length: 0, (XPath TEXOrdChange/terms/allowanceCharge/@isCharge) [Optional] (N)</p>
@isURL	<p>it indicates if the referred element is an URL (true) or not (false)</p> <p>- base type: boolean, (XPath TEXOrdChange/TXbody/TXitem/refDoc/attachment/externalReference/uri/@isURL) [Optional] [Default= true] (Na) - nota: <i>usage of URLs is recommended</i> (XPath TEXOrdChange/TXheader/refDoc/attachment/externalReference/uri/@isURL) [Optional] [Default= true] (Na) - nota: <i>usage of URLs is recommended</i></p>
itemID	<p>number of the line/item of the referenced document</p> <p>- base type: string, max length: 40, (XPath TEXOrdChange/TXbody/TXitem/refDoc/itemID) 0-1 (U)</p>

	(XPath TEXOrdChange/TXheader/refDoc/itemID) 0-1 (U)
legalName	<p>legal name of a Party</p> <p>- base type: string, max length: 250,</p> <p>(XPath TEXOrdChange/TXheader/thirdParty/legalName) 0-1 (U)</p> <p>(XPath TEXOrdChange/TXheader/supplier/legalName) 0-1 (U)</p> <p>(XPath TEXOrdChange/TXheader/buyer/legalName) 0-1 (U)</p> <p>(XPath TEXOrdChange/TXbody/TXitem/thirdParty/legalName) 0-1 (U)</p>
legalRef	<p>legal reference of the duty or tax or fee category</p> <p>- base type: string,</p> <p>(XPath TEXOrdChange/terms/allowanceCharge/dtScheme/legalRef) 0-1 (A)</p> <p>(XPath TEXOrdChange/TXbody/TXitem/dtScheme/legalRef) 0-1 (A)</p>
lineN	<p>number of the line item of the present message (xml document); it is set by the role that produces the document. Usually it is a progressive number, but not always.</p> <p>- base type: positiveInteger, min inclusive: 1, max inclusive: 9999,</p> <p>(XPath TEXOrdChange/TXbody/TXitem/lineN) 1-1</p>
@listName	<p>the name of the list of codes used to make an instance of the element (it might be thought as descriptive element, i.e. 'fabric printing technologies', or not, i.e. "T264")</p> <p>- base type: string, max length: 40,</p> <p>(XPath TEXOrdChange/texComInfo/productLine/@listName) [Optional] (a)</p> <p>- nota: <i>this attribute should always be used coupled with "numberingOrg"</i></p> <p>(XPath TEXOrdChange/texComInfo/operationalCode/@listName) [Optional] (a)</p> <p>- nota: <i>this attribute should always be used coupled with "numberingOrg"</i></p> <p>(XPath TEXOrdChange/TXbody/TXitem/texComInfo/productLine/@listName) [Optional] (a)</p> <p>- nota: <i>this attribute should always be used coupled with "numberingOrg"</i></p> <p>(XPath TEXOrdChange/texComInfo/season/@listName) [Optional] (a)</p> <p>- nota: <i>this attribute should always be used coupled with "numberingOrg"</i></p> <p>(XPath TEXOrdChange/TXbody/TXitem/texComInfo/season/@listName) [Optional] (a)</p> <p>- nota: <i>this attribute should always be used coupled with "numberingOrg"</i></p> <p>(XPath TEXOrdChange/texComInfo/brand/@listName) [Optional] (a)</p> <p>- nota: <i>this attribute should always be used coupled with "numberingOrg"</i></p> <p>(XPath TEXOrdChange/TXbody/TXitem/dtScheme/legalRef/@listName) [Optional] (a)</p> <p>- nota: <i>this attribute should always be used coupled with "numberingOrg"</i></p> <p>(XPath TEXOrdChange/terms/allowanceCharge/dtScheme/legalRef/@listName) [Optional]</p> <p>- nota: <i>this attribute should always be used coupled with "numberingOrg"</i></p> <p>(XPath TEXOrdChange/TXbody/TXitem/texComInfo/brand/@listName) [Optional] (a)</p> <p>- nota: <i>this attribute should always be used coupled with "numberingOrg"</i></p> <p>(XPath TEXOrdChange/TXbody/TXitem/texCode/art/@listName) [Optional]</p> <p>- nota: <i>this attribute should always be used coupled with "numberingOrg"</i></p> <p>(XPath TEXOrdChange/TXbody/TXitem/texComInfo/operationalCode/@listName) [Optional] (a)</p> <p>- nota: <i>this attribute should always be used coupled with "numberingOrg"</i></p> <p>(XPath TEXOrdChange/TXheader/refDoc/season/@listName) [Optional] (a)</p> <p>- nota: <i>this attribute should always be used coupled with "numberingOrg"</i></p> <p>(XPath TEXOrdChange/TXbody/TXitem/texCode/pattern/@listName) [Optional]</p> <p>- nota: <i>this attribute should always be used coupled with "numberingOrg"</i></p> <p>(XPath TEXOrdChange/TXbody/TXitem/texCode/color/@listName) [Optional]</p> <p>- nota: <i>this attribute should always be used coupled with "numberingOrg"</i></p> <p>(XPath TEXOrdChange/TXbody/TXitem/refDoc/season/@listName) [Optional] (a)</p> <p>- nota: <i>this attribute should always be used coupled with "numberingOrg"</i></p>
@listVersion	<p>it specifies the version of the list of codes used to make an instance of the element</p> <p>- base type: string, max length: 6,</p> <p>(XPath TEXOrdChange/TXbody/TXitem/texComInfo/brand/@listVersion) [Optional] (a)</p>

	<p>- nota: <i>this attribute should always be used coupled with “numberingOrg” and “listName”</i> (XPath TEXOrdChange/TXbody/TXitem/texComInfo/productLine/@listVersion) [Optional] (a)</p> <p>- nota: <i>this attribute should always be used coupled with “numberingOrg” and “listName”</i> (XPath TEXOrdChange/texComInfo/productLine/@listVersion) [Optional] (a)</p> <p>- nota: <i>this attribute should always be used coupled with “numberingOrg” and “listName”</i> (XPath TEXOrdChange/TXbody/TXitem/refDoc/season/@listVersion) [Optional] (a)</p> <p>- nota: <i>this attribute should always be used coupled with “numberingOrg” and “listName”</i> (XPath TEXOrdChange/texComInfo/operationalCode/@listVersion) [Optional] (a)</p> <p>- nota: <i>this attribute should always be used coupled with “numberingOrg” and “listName”</i> (XPath TEXOrdChange/TXbody/TXitem/texComInfo/season/@listVersion) [Optional] (a)</p> <p>- nota: <i>this attribute should always be used coupled with “numberingOrg” and “listName”</i> (XPath TEXOrdChange/TXbody/TXitem/texCode/color/@listVersion) [Optional]</p> <p>- nota: <i>this attribute should always be used coupled with “numberingOrg” and “listName”</i> (XPath TEXOrdChange/TXbody/TXitem/texCode/art/@listVersion) [Optional]</p> <p>- nota: <i>this attribute should always be used coupled with “numberingOrg” and “listName”</i> (XPath TEXOrdChange/texComInfo/season/@listVersion) [Optional] (a)</p> <p>- nota: <i>this attribute should always be used coupled with “numberingOrg” and “listName”</i> (XPath TEXOrdChange/TXbody/TXitem/texCode/pattern/@listVersion) [Optional]</p> <p>- nota: <i>this attribute should always be used coupled with “numberingOrg” and “listName”</i> (XPath TEXOrdChange/terms/allowanceCharge/dtScheme/legalRef/@listVersion) [Optional]</p> <p>- nota: <i>this attribute should always be used coupled with “numberingOrg” and “listName”</i> (XPath TEXOrdChange/texComInfo/brand/@listVersion) [Optional] (a)</p> <p>- nota: <i>this attribute should always be used coupled with “numberingOrg” and “listName”</i> (XPath TEXOrdChange/TXbody/TXitem/texComInfo/operationalCode/@listVersion) [Optional] (a)</p> <p>- nota: <i>this attribute should always be used coupled with “numberingOrg” and “listName”</i> (XPath TEXOrdChange/TXbody/TXitem/dtScheme/legalRef/@listVersion) [Optional] (a)</p> <p>- nota: <i>this attribute should always be used coupled with “numberingOrg” and “listName”</i> (XPath TEXOrdChange/TXheader/refDoc/season/@listVersion) [Optional] (a)</p> <p>- nota: <i>this attribute should always be used coupled with “numberingOrg” and “listName”</i></p>
@ln	<p>Language code. - base type: string, cod. table: NT60 http://www.ebiz.enea.it/moda-ml/repository/codelist/v2018-1/gc_NT60.xml (XPath TEXOrdChange/TXbody/TXitem/texCode/description/@ln) [Optional] (N)</p>
location	<p>specification of a location - base type: string, max length: 40, (XPath TEXOrdChange/terms/trade/location) 0-1 - note: <i>place to which the INCOTERM applies</i></p>
@logo	<p>company logo (URL of the image jpeg or gif). It is recommended that the width of the image does not exceed 640 pixel. - base type: string, max length: 255,</p>

	(XPath TEXOrdChange/TXheader/buyer/@logo) [Optional] (XPath TEXOrdChange/TXheader/supplier/@logo) [Optional]
@LRI	attribute usable to format a string according to a customized User rule (local rule) - base type: string, cod. table: NT3 http://www.ebiz.enea.it/moda-ml/repository/codelist/v2018-1/gc_NT3.xml (XPath TEXOrdChange/terms/trade/location/@LRI) [Optional]
@maxQty	maximum product quantity - base type: decimal, min inclusive: 0, fraction digits: 2, (XPath TEXOrdChange/terms/allowanceCharge/@maxQty) [Optional] (N) - nota: <i>maximum quantity of product for the application of this allowance or charge</i>
metricMark	specifies if the fabric piece must have the matric marks - base type: boolean, (XPath TEXOrdChange/TXbody/TXitem/fabricTreat/metricMark) 0-1
@mime	the mime type of the binary object - base type: normalizedString, (XPath TEXOrdChange/TXheader/refDoc/attachment/binaryObject/@mime) [Optional] (N) (XPath TEXOrdChange/TXbody/TXitem/refDoc/attachment/binaryObject/@mime) [Optional] (N)
mimeCode	mime type of the external object - base type: normalizedString, (XPath TEXOrdChange/TXheader/refDoc/attachment/externalReference/mimeCode) 0-1 (N) <hr/> AAAA-WARNING! - text not AVAILABLE n. 245 - In=en (XPath TEXOrdChange/TXbody/TXitem/refDoc/attachment/externalReference/mimeCode) 0-1 (N) <hr/> AAAA-WARNING! - text not AVAILABLE n. 245 - In=en
@minQty	minimum product quantity - base type: decimal, min inclusive: 0, fraction digits: 2, (XPath TEXOrdChange/terms/allowanceCharge/@minQty) [Optional] (a) - nota: <i>minimum quantity of product for the application of this allowance or charge</i>
msgCurrency	currency used to express the monetary amounts of the message - base type: string, cod. table: T9 http://www.ebiz.enea.it/moda-ml/repository/codelist/v2018-1/gc_T9.xml (XPath TEXOrdChange/TXheader/msgCurrency) 0-1
msgDate	date of issue of the present message (xml document), according to one of the patterns YYYY-MM-DD, YYYY-MM-DD:HH-MM or YYYY-WW. - base type: string, (XPath TEXOrdChange/TXheader/msgDate) 1-1
@msgfunction	function performed by the present message with regards to the transmission - base type: string, cod. table: NT18 http://www.ebiz.enea.it/moda-ml/repository/codelist/v2018-1/gc_NT18.xml (XPath TEXOrdChange/@msgfunction) [Optional] [Default= OR]
msgID	key identifier of the business document in the information system of the issuing Party. In case of more despatches of the same business document, it is unchanged. - base type: string, max length: 35, (XPath TEXOrdChange/TXheader/msgID) 0-1
msgN	identification number given to the message (xml document) by its issuer. In case of more despatches of the same business document, it changes. - base type: string, max length: 35, (XPath TEXOrdChange/TXheader/msgN) 1-1

netWeight	<p>the net weight declared for transport or customs purpose</p> <ul style="list-style-type: none"> - base type: decimal, min inclusive: 0, fraction digits: 2, <p>(XPath TEXOrdChange/terms/transInfo/netWeight) 0-1</p>
note	<p>free text or structured (computer processing) note. For note structuring use the attributes "noteLabel" and "codelist"</p> <ul style="list-style-type: none"> - base type: string, max length: 350, <p>(XPath TEXOrdChange/TXbody/TXitem/dtScheme/note) 0-99 (XPath TEXOrdChange/texComInfo/note) 0-99 (p) (XPath TEXOrdChange/terms/allowanceCharge/dtScheme/note) 0-99 (XPath TEXOrdChange/TXbody/TXitem/note) 0-99 (XPath TEXOrdChange/TXbody/TXitem/texComInfo/note) 0-99 (p) (XPath TEXOrdChange/TXheader/note) 0-99</p>
@noteLabel	<p>subject qualifier of a note</p> <ul style="list-style-type: none"> - base type: string, max length: 35, <p>(XPath TEXOrdChange/TXbody/TXitem/note/@noteLabel) [Optional]</p> <ul style="list-style-type: none"> - nota: <i>must be used to qualify the subject of the note</i> <p>(XPath TEXOrdChange/texComInfo/note/@noteLabel) [Optional]</p> <ul style="list-style-type: none"> - nota: <i>must be used to qualify the subject of the note</i> <p>(XPath TEXOrdChange/TXbody/TXitem/texComInfo/note/@noteLabel) [Optional]</p> <ul style="list-style-type: none"> - nota: <i>must be used to qualify the subject of the note</i> <p>(XPath TEXOrdChange/TXheader/note/@noteLabel) [Optional]</p> <ul style="list-style-type: none"> - nota: <i>must be used to qualify the subject of the note</i> <p>(XPath TEXOrdChange/terms/allowanceCharge/dtScheme/note/@noteLabel) [Optional]</p> <ul style="list-style-type: none"> - nota: <i>must be used to qualify the subject of the note</i> <p>(XPath TEXOrdChange/TXbody/TXitem/dtScheme/note/@noteLabel) [Optional]</p> <ul style="list-style-type: none"> - nota: <i>must be used to qualify the subject of the note</i>
@numberingOrg	<p>code specifying the organisation who has created or owns the coding or numbering system</p> <ul style="list-style-type: none"> - base type: string, cod. table: NT6 <p>http://www.ebiz.enea.it/moda-ml/repository/codelist/v2018-1/gc_NT6.xml</p> <p>(XPath TEXOrdChange/TXbody/TXitem/texCode/color/@numberingOrg) [Optional]</p> <ul style="list-style-type: none"> - nota: <i>this attribute should be used either single or coupled with "listName" and "listVersion"</i> <p>(XPath TEXOrdChange/TXheader/supplier/additionalIdentifier/@numberingOrg) [Optional] (a)</p> <ul style="list-style-type: none"> - nota: <i>here the issuer of the identifier must be specified</i> <p>(XPath TEXOrdChange/TXbody/TXitem/dtScheme/legalRef/@numberingOrg) [Optional] (a)</p> <ul style="list-style-type: none"> - nota: <i>this attribute should be used either single or coupled with "listName" and "listVersion"</i> <p>(XPath TEXOrdChange/TXbody/TXitem/texCode/art/@numberingOrg) [Optional]</p> <ul style="list-style-type: none"> - nota: <i>this attribute should be used either single or coupled with "listName" and "listVersion"</i> <p>(XPath TEXOrdChange/TXbody/TXitem/texComInfo/note/@numberingOrg) [Optional]</p> <ul style="list-style-type: none"> - nota: <i>must be used to specify the organization that created the list of codes used in "noteLabel"</i> <p>(XPath TEXOrdChange/TXheader/thirdParty/id/@numberingOrg) [Optional]</p> <p>(XPath TEXOrdChange/TXbody/TXitem/texCode/pattern/@numberingOrg) [Optional]</p> <ul style="list-style-type: none"> - nota: <i>this attribute should be used either single or coupled with "listName" and "listVersion"</i> <p>(XPath TEXOrdChange/TXheader/refDoc/docID/@numberingOrg) [Optional]</p> <ul style="list-style-type: none"> - nota: <i>here can be specified whose document numbering is used (e.g.: Client, Supplier, ..)</i> <p>(XPath TEXOrdChange/TXbody/TXitem/texComInfo/season/@numberingOrg) [Optional] (a)</p> <ul style="list-style-type: none"> - nota: <i>this attribute should be used either single or coupled with "listName" and "listVersion"</i> <p>(XPath TEXOrdChange/TXbody/TXitem/thirdParty/id/@numberingOrg) [Optional]</p>

(XPath TEXOrdChange/TXheader/refDoc/season/@numberingOrg) [Optional] (a)
- nota: *this attribute should be used either single or coupled with "listName" and "listVersion"*

(XPath TEXOrdChange/TXbody/TXitem/note/@numberingOrg) [Optional]
- nota: *must be used to specify the organization that created the list of codes used in "noteLabel"*

(XPath TEXOrdChange/TXheader/refDoc/attachment/fileName/@numberingOrg) [Optional] (a)
(XPath TEXOrdChange/TXheader/buyer/id/@numberingOrg) [Optional]
(XPath TEXOrdChange/TXbody/TXitem/dtScheme/note/@numberingOrg) [Optional]
- nota: *must be used to specify the organization that created the list of codes used in "noteLabel"*

(XPath TEXOrdChange/TXbody/TXitem/texCode/added/@numberingOrg) [Optional]
- nota: *this attribute should be used either single or coupled with "listName" and "listVersion"*

(XPath TEXOrdChange/TXheader/supplier/id/@numberingOrg) [Optional]
(XPath TEXOrdChange/TXheader/docID/@numberingOrg) [Optional]
- nota: *here can be specified whose document numbering is used (e.g.: Client, Supplier, ..)*

(XPath TEXOrdChange/TXheader/buyer/additionalIdentifier/@numberingOrg) [Optional] (a)
- nota: *here the issuer of the identifier must be specified*

(XPath TEXOrdChange/TXbody/TXitem/texComInfo/brand/@numberingOrg) [Optional] (a)
- nota: *this attribute should be used either single or coupled with "listName" and "listVersion"*

(XPath TEXOrdChange/TXbody/TXitem/texCode/@numberingOrg) [Optional]
(XPath TEXOrdChange/TXbody/TXitem/refDoc/docID/@numberingOrg) [Optional]
- nota: *here can be specified whose document numbering is used (e.g.: Client, Supplier, ..)*

(XPath TEXOrdChange/terms/allowanceCharge/dtScheme/note/@numberingOrg) [Optional]
- nota: *must be used to specify the organization that created the list of codes used in "noteLabel"*

(XPath TEXOrdChange/TXbody/TXitem/texComInfo/operationalCode/@numberingOrg) [Optional] (a)
- nota: *this attribute should be used either single or coupled with "listName" and "listVersion"*

(XPath TEXOrdChange/TXbody/TXitem/refDoc/attachment/fileName/@numberingOrg) [Optional]
(XPath TEXOrdChange/TXbody/TXitem/refDoc/season/@numberingOrg) [Optional] (a)
- nota: *this attribute should be used either single or coupled with "listName" and "listVersion"*

(XPath TEXOrdChange/terms/allowanceCharge/dtScheme/legalRef/@numberingOrg) [Optional]
- nota: *this attribute should be used either single or coupled with "listName" and "listVersion"*

(XPath TEXOrdChange/texComInfo/note/@numberingOrg) [Optional]
- nota: *must be used to specify the organization that created the list of codes used in "noteLabel"*

(XPath TEXOrdChange/texComInfo/operationalCode/@numberingOrg) [Optional] (a)
- nota: *this attribute should be used either single or coupled with "listName" and "listVersion"*

(XPath TEXOrdChange/TXbody/TXitem/texComInfo/productLine/@numberingOrg) [Optional] (a)
- nota: *this attribute should be used either single or coupled with "listName" and "listVersion"*

(XPath TEXOrdChange/texComInfo/season/@numberingOrg) [Optional] (a)
- nota: *this attribute should be used either single or coupled with "listName" and "listVersion"*

(XPath TEXOrdChange/texComInfo/brand/@numberingOrg) [Optional] (a)

	<p>- nota: <i>this attribute should be used either single or coupled with "listName" and "listVersion"</i> (XPath TEXOrdChange/texComInfo/productLine/@numberingOrg) [Optional] (a)</p> <p>- nota: <i>this attribute should be used either single or coupled with "listName" and "listVersion"</i> (XPath TEXOrdChange/TXheader/note/@numberingOrg) [Optional]</p> <p>- nota: <i>must be used to specify the organization that created the list of codes used in "noteLabel"</i></p>
oneLot	<p>specifies if the order line must be supplied with one production lot</p> <p>- base type: boolean, (XPath TEXOrdChange/TXbody/TXitem/fabricTreat/oneLot) 0-1</p>
operationalCode	<p>operational code: it is the code of a project, an event, an initiative, a sales channel, a management type (eg CITES), ... the document, or product, is connected with.</p> <p>- base type: string, (XPath TEXOrdChange/TXbody/TXitem/texComInfo/operationalCode) 0-19 (N) (XPath TEXOrdChange/texComInfo/operationalCode) 0-19 (N)</p>
otherCurrency	<p>other currency used in the document</p> <p>- base type: string, cod. table: T9 http://www.ebiz.enea.it/moda-ml/repository/codelist/v2018-1/gc_T9.xml (XPath TEXOrdChange/TXheader/otherCurrency) 0-9 (A)</p>
@part	<p>percent fraction of a total payment</p> <p>- base type: decimal, min inclusive: 1, max inclusive: 99, fraction digits: 2, (XPath TEXOrdChange/terms/insPayment/@part) [Required]</p> <p>- nota: <i>here the % value of each installment must be indicated</i></p>
pattern	<p>pattern/design number of the product, when not included in the article code</p> <p>- base type: string, max length: 15, (XPath TEXOrdChange/TXbody/TXitem/texCode/pattern) 0-1</p>
payMode	<p>way or means of payment</p> <p>- base type: string, cod. table: T2 http://www.ebiz.enea.it/moda-ml/repository/codelist/v2018-1/gc_T2.xml (XPath TEXOrdChange/terms/insPayment/payMode) 0-1 (XPath TEXOrdChange/terms/payment/payMode) 0-1</p>
payTerm	<p>code specifying the terms or time by which the payment must be done</p> <p>- base type: string, cod. table: T1 http://www.ebiz.enea.it/moda-ml/repository/codelist/v2018-1/gc_T1.xml (XPath TEXOrdChange/terms/insPayment/payTerm) 1-1 (XPath TEXOrdChange/terms/payment/payTerm) 1-1</p>
payTermText	<p>free text specifying the terms by which the payment must be done (time/mode or means)</p> <p>- base type: string, max length: 250, (XPath TEXOrdChange/terms/payment/payTermText) 1-1 (U) (XPath TEXOrdChange/terms/insPayment/payTermText) 1-1 (U)</p>
person	<p>name of the contact person within a Party</p> <p>- base type: string, max length: 40, (XPath TEXOrdChange/TXheader/supplier/person) 0-1 (XPath TEXOrdChange/TXheader/thirdParty/person) 0-1 (XPath TEXOrdChange/TXbody/TXitem/thirdParty/person) 0-1 (XPath TEXOrdChange/TXheader/buyer/person) 0-1</p>
@phone	<p>phone number of the contact person within a Party</p> <p>- base type: string, max length: 35, (XPath TEXOrdChange/TXheader/thirdParty/person/@phone) [Optional] (XPath TEXOrdChange/TXheader/supplier/person/@phone) [Optional] (XPath TEXOrdChange/TXbody/TXitem/thirdParty/person/@phone) [Optional] (XPath TEXOrdChange/TXheader/buyer/person/@phone) [Optional]</p>

pieceInnWrap1	code specifying the type of inner wrapping/packing used for the fabric piece - base type: string, cod. table: T4 http://www.ebiz.enea.it/moda-ml/repository/codelist/v2018-1/gc_T4.xml (XPath TEXOrdChange/TXbody/TXitem/texComInfo/piecePack/pieceInnWrap1) 1-1 (XPath TEXOrdChange/texComInfo/piecePack/pieceInnWrap1) 1-1
pieceInnWrap2	code sub-specifying the type of inner wrapping/packing used for the fabric piece - base type: string, cod. table: T5 http://www.ebiz.enea.it/moda-ml/repository/codelist/v2018-1/gc_T5.xml (XPath TEXOrdChange/TXbody/TXitem/texComInfo/piecePack/pieceInnWrap2) 0-1 (XPath TEXOrdChange/texComInfo/piecePack/pieceInnWrap2) 0-1
pieceLength	length of the piece - base type: decimal, min inclusive: 0, fraction digits: 2, (XPath TEXOrdChange/TXbody/TXitem/texComInfo/pieceLength) 0-1 (XPath TEXOrdChange/texComInfo/pieceLength) 0-1
pieceOutWrap	code specifying the type of outer wrapping or packing used for the fabric piece - base type: string, cod. table: T6 http://www.ebiz.enea.it/moda-ml/repository/codelist/v2018-1/gc_T6.xml (XPath TEXOrdChange/texComInfo/piecePack/pieceOutWrap) 0-1 (XPath TEXOrdChange/TXbody/TXitem/texComInfo/piecePack/pieceOutWrap) 0-1
piecePackText	free text specifying the type of wrapping or packing used for the fabric piece - base type: string, max length: 250, (XPath TEXOrdChange/TXbody/TXitem/texComInfo/piecePack/piecePackText) 1-1 (U) (XPath TEXOrdChange/texComInfo/piecePack/piecePackText) 1-1 (U)
postCode	code defining the postal zone - base type: string, max length: 10, (XPath TEXOrdChange/TXheader/supplier/postCode) 0-1 (XPath TEXOrdChange/TXheader/buyer/postCode) 0-1 (XPath TEXOrdChange/TXheader/thirdParty/postCode) 0-1 (XPath TEXOrdChange/TXbody/TXitem/thirdParty/postCode) 0-1
price	unit price of the article, object or service specified - base type: decimal, min inclusive: 0, fraction digits: 4, (XPath TEXOrdChange/TXbody/TXitem/price) 0-1 (AU)
@priceQualifier	type of price with reference to discount and taxes - base type: string, cod. table: NT20 http://www.ebiz.enea.it/moda-ml/repository/codelist/v2018-1/gc_NT20.xml (XPath TEXOrdChange/TXbody/TXitem/price/@priceQualifier) [Optional] [Default= NET]
productLine	the product line name of a fashion product. - base type: string, (XPath TEXOrdChange/TXbody/TXitem/texComInfo/productLine) 0-1 (N) (XPath TEXOrdChange/texComInfo/productLine) 0-1 (N)
@progr	progressive number in the sequence - base type: positiveInteger, min inclusive: 1, (XPath TEXOrdChange/terms/transInfo/@progr) [Optional] (N) - nota: <i>Indicates the position of the leg in a sequence of transport legs. If it is declared it must be in all the transInfo elements.</i>
project	code used to assign the items ordered (fabric pieces, accessories, garments ...) to a specific project of the Client - base type: string, max length: 40, (XPath TEXOrdChange/TXbody/TXitem/texComInfo/project) 0-1 (U) (XPath TEXOrdChange/texComInfo/project) 0-1 (U)

qty	<p>net quantity of the article or object correlated, qualified by the function of the document (ordering, delivering, ..) and by the context</p> <p>- base type: decimal, min inclusive: 0, fraction digits: 2, (XPath TEXOrdChange/TXbody/TXitem/qty) 0-2</p> <hr/> <p>AAAA-WARNING! - text not AVAILABLE n. 245 - In=en</p>
@role	<p>Third Party role qualifier</p> <p>- base type: string, cod. table: NT2 http://www.ebiz.enea.it/moda-ml/repository/codelist/v2018-1/gc_NT2.xml (XPath TEXOrdChange/TXheader/thirdParty/@role) [Required] (XPath TEXOrdChange/TXbody/TXitem/thirdParty/@role) [Required]</p>
season	<p>sale season; defined as: season (1 crt) + year (4 crt) - season: S/S=1 A/W=2 Spring=3 Summer=4 Autumn=5 Winter=6: for more than four seasons use alphabetic sequence: 1st season=A 2nd season=B etc.etc.</p> <p>- base type: string, max length: 15, (XPath TEXOrdChange/TXheader/refDoc/season) 0-1 (A)</p> <p>- note: <i>here indicates the season to which the referenced document belongs</i> (XPath TEXOrdChange/texComInfo/season) 0-1 (A) (XPath TEXOrdChange/TXbody/TXitem/refDoc/season) 0-1 (A)</p> <p>- note: <i>here indicates the season to which the referenced document belongs</i> (XPath TEXOrdChange/TXbody/TXitem/texComInfo/season) 0-1 (A)</p>
selvedgeColor	<p>colour of the text displayed on the selvedge</p> <p>- base type: string, max length: 15, (XPath TEXOrdChange/TXbody/TXitem/selvedge/selvedgeColor) 0-1</p>
selvedgeText	<p>text to be written on the selvedge</p> <p>- base type: string, max length: 300, (XPath TEXOrdChange/TXbody/TXitem/selvedge/selvedgeText) 1-1</p>
@sender	<p>qualifier that specifies the Party issuing of the document</p> <p>- base type: boolean, (XPath TEXOrdChange/TXbody/TXitem/thirdParty/@sender) [Optional] (a*)</p> <p>- nota: <i>This attribute is mandatory when the STYLESHEET must be used</i> (XPath TEXOrdChange/TXheader/buyer/@sender) [Optional] (a*)</p> <p>- nota: <i>This attribute is mandatory when the STYLESHEET must be used</i> (XPath TEXOrdChange/TXheader/supplier/@sender) [Optional] (a*)</p> <p>- nota: <i>This attribute is mandatory when the STYLESHEET must be used</i> (XPath TEXOrdChange/TXheader/thirdParty/@sender) [Optional] (a*)</p> <p>- nota: <i>This attribute is mandatory when the STYLESHEET must be used</i></p>
specDate	<p>date by which the referenced blanket order must receive full product specific ations (e.g.: colour), according to one of the patterns YYYY-MM-DD, YYYY-MM-DD:HH-MM or YYYY-WW.</p> <p>- base type: string, (XPath TEXOrdChange/texComInfo/specDate) 0-1 (XPath TEXOrdChange/TXbody/TXitem/texComInfo/specDate) 0-1</p>
street	<p>street and building number identifying a location</p> <p>- base type: string, max length: 80, (XPath TEXOrdChange/TXheader/supplier/street) 0-1 (XPath TEXOrdChange/TXheader/buyer/street) 0-1 (XPath TEXOrdChange/TXbody/TXitem/thirdParty/street) 0-1 (XPath TEXOrdChange/TXheader/thirdParty/street) 0-1</p>
subCountry	<p>short name or code of the sub-country entity</p> <p>- base type: string, max length: 9, (XPath TEXOrdChange/TXheader/buyer/subCountry) 0-1 (XPath TEXOrdChange/TXheader/thirdParty/subCountry) 0-1 (XPath TEXOrdChange/TXbody/TXitem/thirdParty/subCountry) 0-1 (XPath TEXOrdChange/TXheader/supplier/subCountry) 0-1</p>
subDept	<p>name or code of a contact department within a Party</p> <p>- base type: string, max length: 40, (XPath TEXOrdChange/TXheader/supplier/subDept) 0-1 (N)</p>

	(XPath TEXOrdChange/TXbody/TXitem/thirdParty/subDept) 0-1 (N) (XPath TEXOrdChange/TXheader/thirdParty/subDept) 0-1 (N) (XPath TEXOrdChange/TXheader/buyer/subDept) 0-1 (N)
surfaceTreatment	surface treatment applied to the fabric, as end result - base type: string, max length: 40, (XPath TEXOrdChange/TXbody/TXitem/fabricTreat/surfaceTreatment) 0-1
taxCategory	duty or tax or fee category - base type: string, cod. table: T62 http://www.ebiz.enea.it/moda-ml/repository/codelist/v2018-1/gc_T62.xml (XPath TEXOrdChange/TXbody/TXitem/dtScheme/taxCategory) 0-1 (XPath TEXOrdChange/terms/allowanceCharge/dtScheme/taxCategory) 0-1
taxRate	duty or tax or fee percent rate - base type: string, (XPath TEXOrdChange/terms/allowanceCharge/dtScheme/taxRate) 0-1 (XPath TEXOrdChange/TXbody/TXitem/dtScheme/taxRate) 0-1
@taxType	duty or tax or fee type - base type: string, cod. table: T61 http://www.ebiz.enea.it/moda-ml/repository/codelist/v2018-1/gc_T61.xml (XPath TEXOrdChange/terms/allowanceCharge/dtScheme/@taxType) [Required] (XPath TEXOrdChange/TXbody/TXitem/dtScheme/@taxType) [Required]
@techSheet	specifies if the " technical characteristics of fabric" document must provided - base type: boolean, (XPath TEXOrdChange/texComInfo/@techSheet) [Optional] (XPath TEXOrdChange/TXbody/TXitem/texComInfo/@techSheet) [Optional]
totQty	total quantity of the articles related to the whole document - base type: decimal, min inclusive: 0, fraction digits: 2, (XPath TEXOrdChange/totals/totQty) 0-1
@TOtype	type of Order - base type: string, cod. table: NT1 http://www.ebiz.enea.it/moda-ml/repository/codelist/v2018-1/gc_NT1.xml (XPath TEXOrdChange/@TOtype) [Optional]
transCondition	special condition of transport or special service requested to the Forwarder - base type: string, cod. table: T38 http://www.ebiz.enea.it/moda-ml/repository/codelist/v2018-1/gc_T38.xml (XPath TEXOrdChange/terms/transInfo/transCondition) 0-3
transConditionText	free text description of the special condition of transport or special service requested to the Forwarder - base type: string, max length: 250, (XPath TEXOrdChange/terms/transInfo/transConditionText) 0-1 (U)
transMeans	means of transport, in general or referred to a specific leg - base type: string, cod. table: T40 http://www.ebiz.enea.it/moda-ml/repository/codelist/v2018-1/gc_T40.xml (XPath TEXOrdChange/terms/transInfo/transMeans) 0-1
transMode	way of transport, in general or referred to the specified leg - base type: string, cod. table: T8 http://www.ebiz.enea.it/moda-ml/repository/codelist/v2018-1/gc_T8.xml (XPath TEXOrdChange/terms/transInfo/transMode) 1-1
@transReason	reason for the transport - base type: string, cod. table: NT11 http://www.ebiz.enea.it/moda-ml/repository/codelist/v2018-1/gc_NT11.xml (XPath TEXOrdChange/terms/transInfo/@transReason) [Optional]
@uid	unique element identifier within the xml document - base type: string, (XPath TEXOrdChange/TXheader/refDoc/attachment/@uid) [Optional] (XPath TEXOrdChange/TXbody/TXitem/refDoc/attachment/@uid) [Optional]

@um	<p>specification of the unit of measure</p> <p>- base type: string, cod. table: NT7 http://www.ebiz.enea.it/moda-ml/repository/codelist/v2018-1/gc_NT7.xml (XPath TEXOrdChange/totals/totQty/@um) [Required] (XPath TEXOrdChange/texComInfo/fabricWidth/@um) [Optional] [Default= CMT] (XPath TEXOrdChange/terms/allowanceCharge/@um) [Optional] (a) (XPath TEXOrdChange/texComInfo/pieceLength/@um) [Optional] [Default= MTR] (XPath TEXOrdChange/TXbody/TXitem/price/@um) [Optional]</p> <p>- nota: <i>Unit of measure of the product to which the price is referred (price per meter)</i></p> (XPath TEXOrdChange/TXbody/TXitem/qty/@um) [Required] (XPath TEXOrdChange/TXbody/TXitem/texComInfo/pieceLength/@um) [Optional] [Default= MTR] (XPath TEXOrdChange/terms/transInfo/netWeight/@um) [Required] (XPath TEXOrdChange/TXbody/TXitem/texComInfo/fabricWidth/@um) [Optional] [Default= CMT] (XPath TEXOrdChange/terms/transInfo/grossWeight/@um) [Required]
uri	<p>Uniform Resource Identifier (URI) that identifies the external object as an Internet resource</p> <p>- base type: normalizedString, (XPath TEXOrdChange/TXbody/TXitem/refDoc/attachment/externalReference/uri) 1-1 (N) (XPath TEXOrdChange/TXheader/refDoc/attachment/externalReference/uri) 1-1 (N)</p>
@useProfile	<p>use profile to which the present document is compliant if it was agreed by the parties. It is suggested a URI with reference to the firms or the URL of the profile.</p> <p>- base type: string, (XPath TEXOrdChange/@useProfile) [Optional]</p>
validityEnd	<p>date by which the validity ends, according to one of the patterns YYYY-MM-DD, YYYY-MM-DD:HH-MM or YYYY-WW.</p> <p>- base type: string, (XPath TEXOrdChange/TXheader/validityEnd) 0-1</p>
@VAT	<p>VAT rate or code (DEPRECATED, use dtScheme element)</p> <p>- base type: string, cod. table: NT16 http://www.ebiz.enea.it/moda-ml/repository/codelist/v2018-1/gc_NT16.xml (XPath TEXOrdChange/TXheader/thirdParty/@VAT) [Optional] (XPath TEXOrdChange/TXbody/TXitem/thirdParty/@VAT) [Optional] (XPath TEXOrdChange/TXbody/TXitem/lineN/@VAT) [Optional]</p> <p>- nota: <i>Deprecated, prefer dtScheme when available.</i> (XPath TEXOrdChange/terms/allowanceCharge/@VAT) [Optional]</p>
@version	<p>Dictionary version from which the instance has been created</p> <p>- base type: string, cod. table: NT100 http://www.ebiz.enea.it/moda-ml/repository/codelist/v2018-1/gc_NT100.xml (XPath TEXOrdChange/@version) [Optional] [Default= 2018-1]</p>

2.3 Suggested best practices

TEXOrdChange/TXbody/TXitem/refDoc/docID (identification number of the referenced document SINCE 2008-1 ITS USE IN THE HEADER IS DISCOURAGED (REPLACED BY msgID))

numberingOrg indicates the role that produced the document identifier (it is allowed to declare two different ones -e.g. customer and supplier - with two docID with different numberingOrg

TEXOrdChange/TXheader/refDoc/docID (identification number of the referenced document SINCE 2008-1 ITS USE IN THE HEADER IS DISCOURAGED (REPLACED BY msgID))

numberingOrg indicates the role that produced the document identifier (it is allowed to declare two different ones -e.g. customer and supplier - with two docID with different numberingOrg

TEXOrdChange/TXheader/refDoc/attachment/

externalReference/mimeType (mime type of the external object)

Use coding from IANA <http://www.iana.org/assignments/media-types/media-types.xml>

TEXOrdChange/TXbody/TXitem/refDoc/attachment/

externalReference/mimeType (mime type of the external object)

Use coding from IANA <http://www.iana.org/assignments/media-types/media-types.xml>

TEXOrdChange/TXbody/TXitem/qty (net quantity of the article or object correlated, qualified by the function of the document (ordering, delivering, ..) and by the context)

this element can have two instances only if the units of measure are different

2.4 Enumeration tables

List of enumeration tables used in the XML document. You can find the corresponding codes at:
<http://www.ebiz-tcf.eu/moda-ml/imple/moda-ml-2018-1.asp?lingua=en&pag=6>

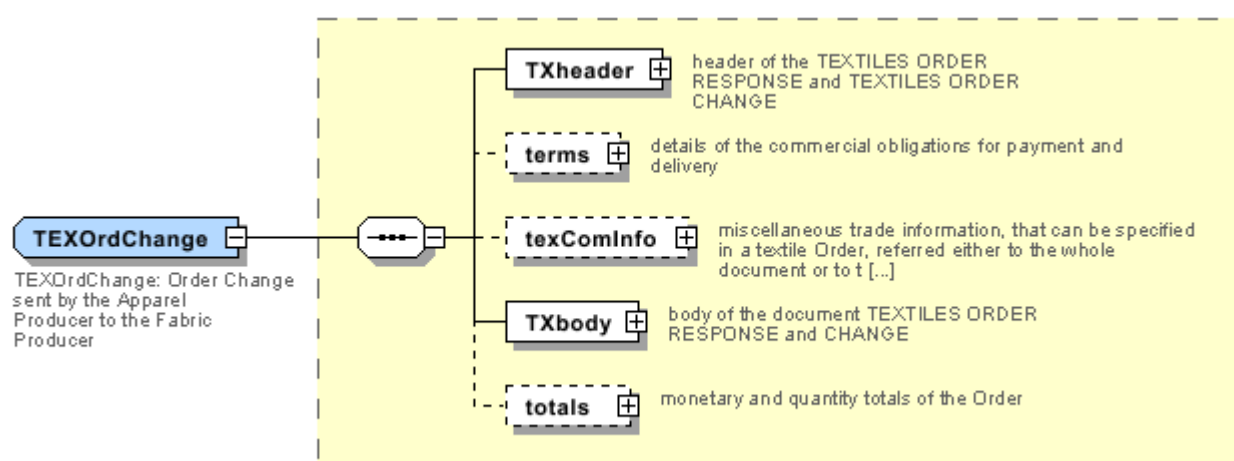
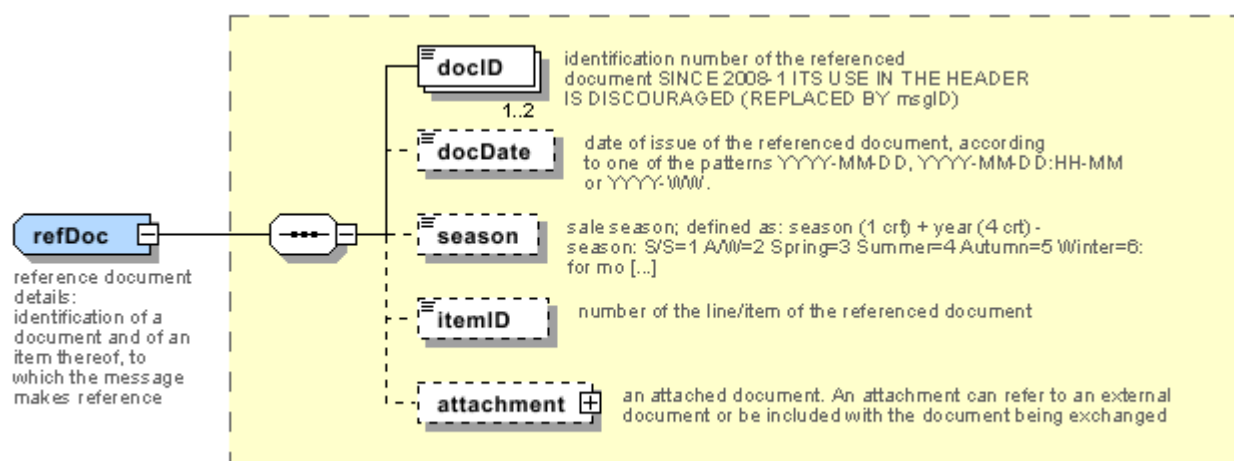
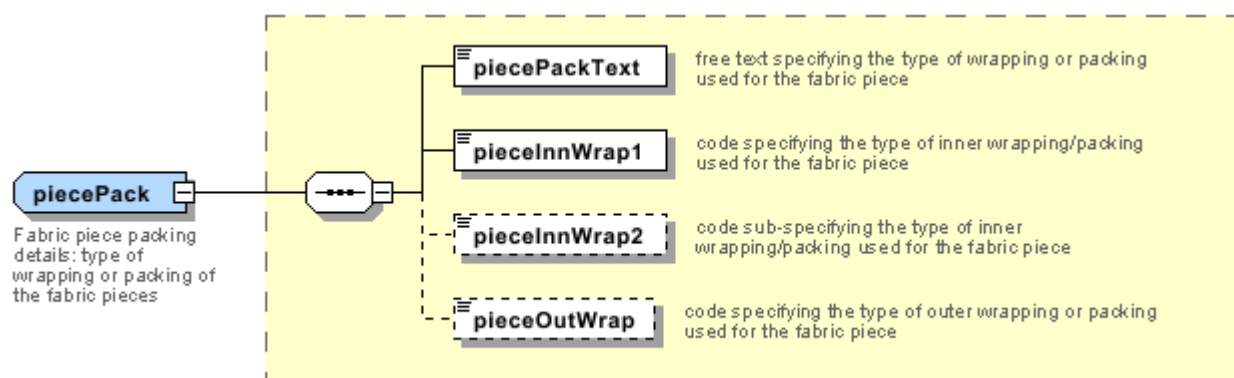
Legenda

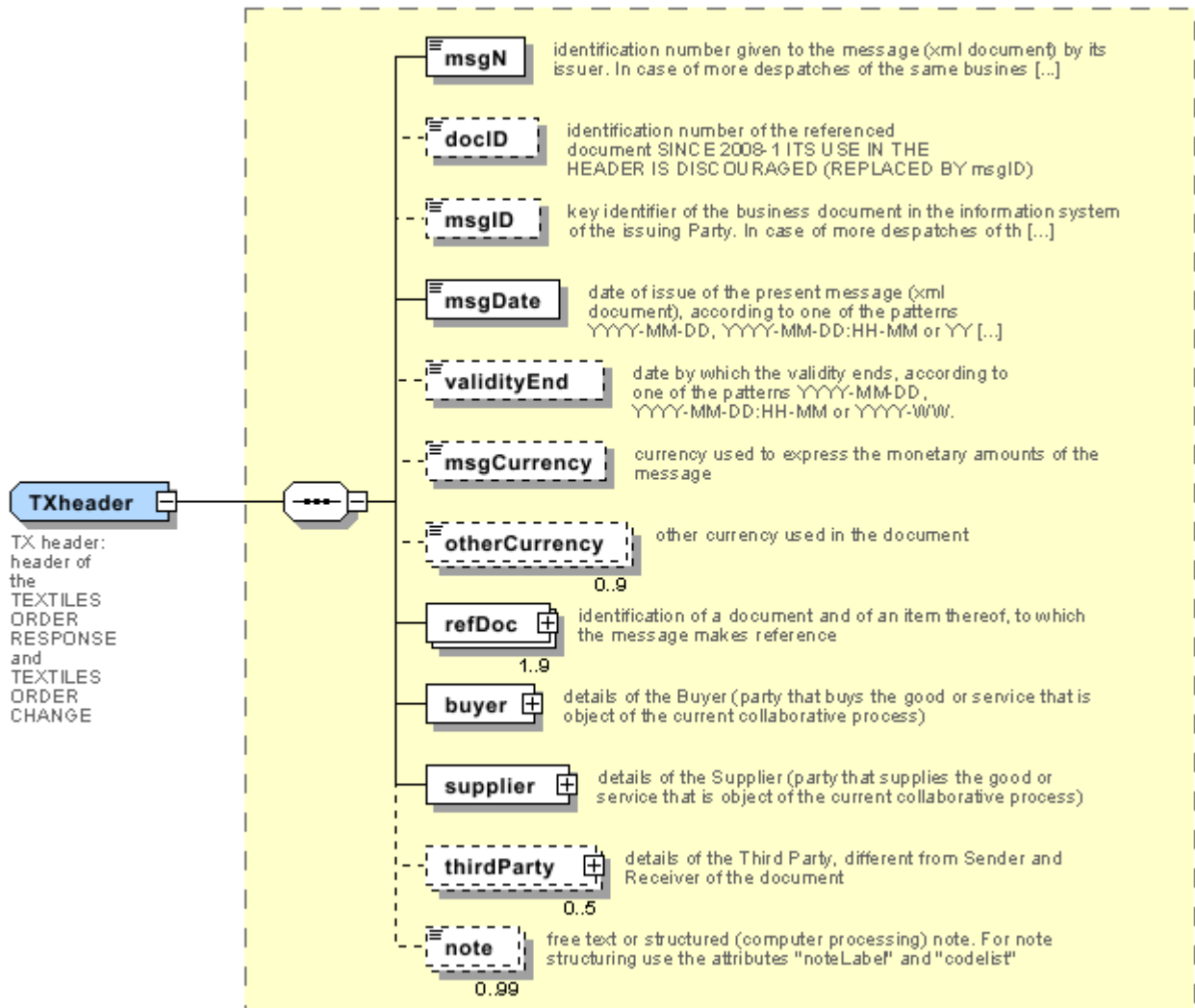
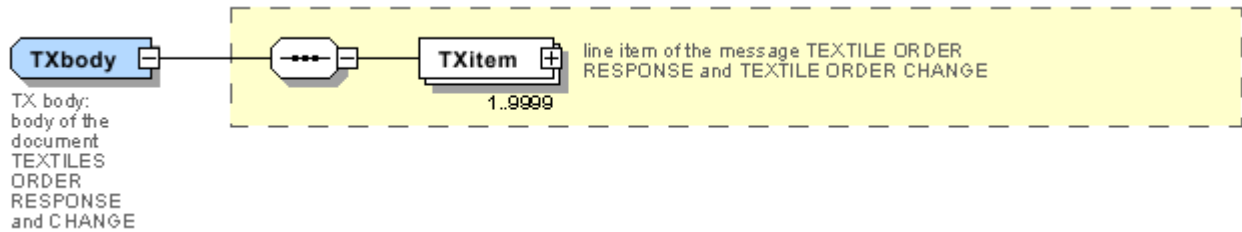
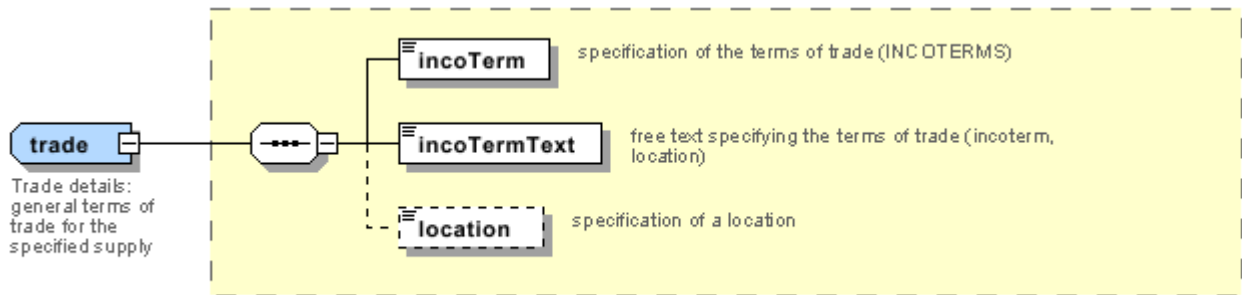
- N: new table
- U: updated properties

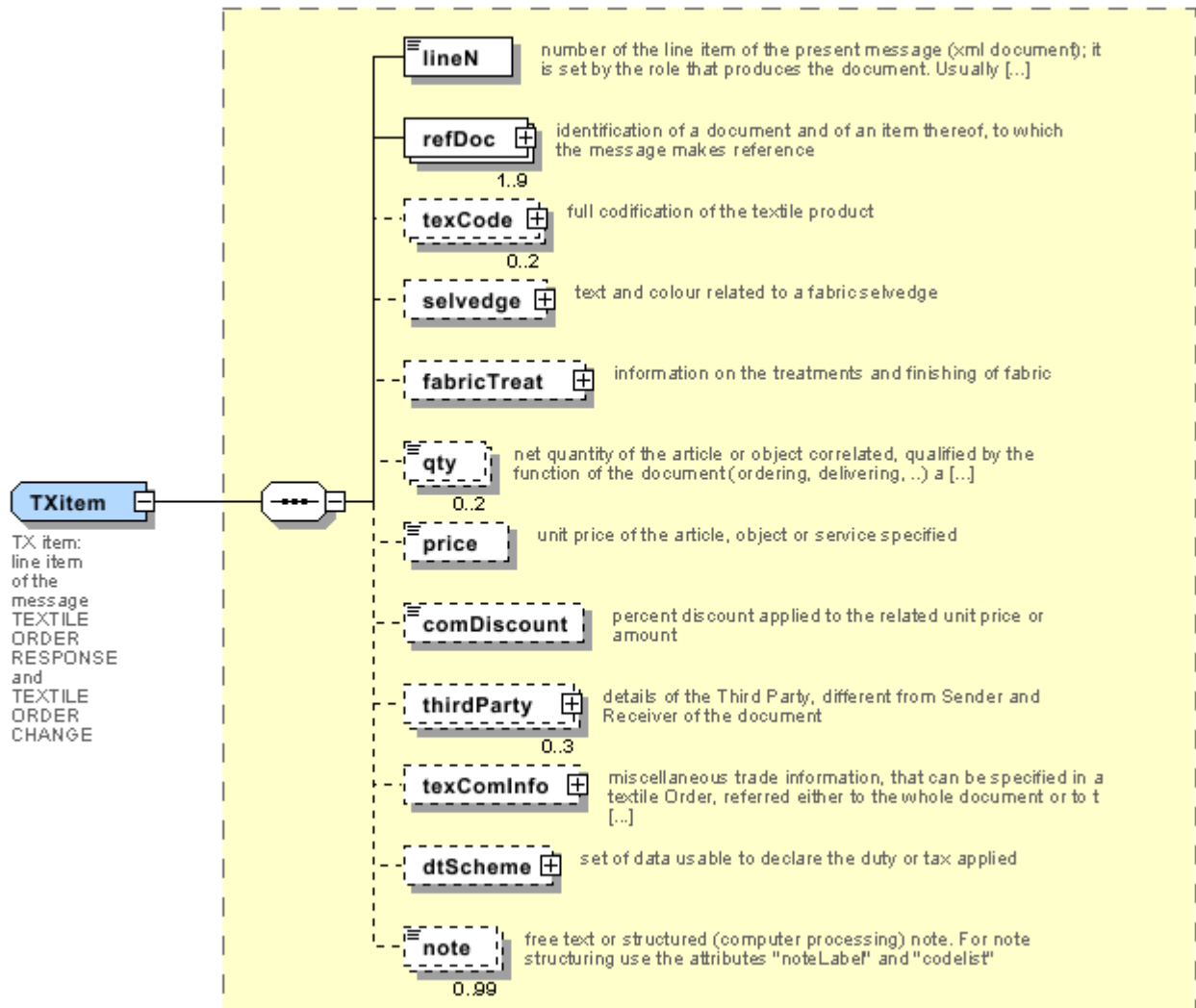
NT1 - Order type
NT100 - eBIZ TCFUpstream version
NT11 - transport causal
NT16 - VAT rate or code
NT18 - message function
NT19 - currency use qualifier
NT2 - third party qualifier
NT20 - price qualifier
NT29 - format of a date
NT3 - data format
NT4 - end use
NT43 - operational code qualifier (N)
NT5 - action code
NT6 - coding system owner/issuer
NT60 - language, codes from ISO 639-1 (subset) (N)
NT7 - unit of measure (U)
T1 - terms of payment
T10 - ISO3166 - Country
T2 - Modes of payment
T21 - type of document
T3 - terms of delivery
T38 - transport conditions
T4 - fabric piece inner packing (wrapping) 1
T40 - type of transport means
T41 - type of Allowance or Charge
T44 - additional code type
T5 - fabric piece inner packing (wrapping) 2
T6 - fabric piece outer packing
T61 - duty or tax or fee type
T62 - duty or tax or fee category
T8 - Modes of Transport
T9 - ISO4217 - Currency

Annex A

Representative images of the principal complex elements' structure.







Annex B

NT1 - Order type

type of Order

Agency name: eBIZ

tabella cod.: NT1

File codes list (Generic code): http://www.ebiz.enea.it/moda-ml/repository/codelist/v2018-1/gc_NT1.xml

Code	Description	Adoption note	Version status	Date of insertion
A	blanket	the order is open without a concrete delivery of product; it establishes an amount of goods to be produced in a future	(U)	
D	call-off	orders an amount of goods to be delivered (and invoiced and produced if necessary); it is important that it is clear that this amount should be subtracted from the amount of the blanket order referred in the refDoc element	(U)	
P	reservation			
STD	standard			

NT100 - eBIZ TCFUpstream version

dictionary version

Agency name: eBIZ

tabella cod.: NT100

File codes list (Generic code): http://www.ebiz.enea.it/moda-ml/repository/codelist/v2018-1/gc_NT100.xml

Code	Description	Adoption note	Version status	Date of insertion
2013-1	v2013-1			01/07/2013
2018-1	v2018-1		(N)	04/11/2018
draft	draft		(N)	08/09/2017

NT11 - transport causal

reason for the transport

Agency name: eBIZ

tabella cod.: NT11

File codes list (Generic code): http://www.ebiz.enea.it/moda-ml/repository/codelist/v2018-1/gc_NT11.xml

Code	Description	Adoption note	Version status	Date of insertion
FOC	free of charge			
FRW	return from re-works			
FST	return from storage			
FVW	return from view			
FWK	return from works			
IST	in storage			
NWK	return non-worked			
RJC	return from rejection			
SEL	to sell			
STO	to storage			
VEW	to view			
WRK	to works			

NT16 - VAT rate or code

VAT rate or code (DEPRECATED, use dtScheme element)

tabella cod.: NT16

File codes list (Generic code): http://www.ebiz.enea.it/moda-ml/repository/codelist/v2018-1/gc_NT16.xml

NT18 - message function

function performed by the present message with regards to the transmission

Agency name: eBIZ

tabella cod.: NT18

File codes list (Generic code): http://www.ebiz.enea.it/moda-ml/repository/codelist/v2018-1/gc_NT18.xml

Code	Description	Adoption note	Version status	Date of insertion
CA	delete this document			01/07/2013
CP	copy			
OR	original			
RC	re-transmission for data correction			
RT	re-transmission			

NT19 - currency use qualifier

qualification of another currency used in the document

Agency name: eBIZ

tabella cod.: NT19

File codes list (Generic code): http://www.ebiz.enea.it/moda-ml/repository/codelist/v2018-1/gc_NT19.xml

Code	Description	Adoption note	Version status	Date of insertion
CAT	pricelist currency			
INV	invoicing currency			
ORD	order currency			
PAY	payment currency			
SAL	sales currency			

NT2 - third party qualifier

Third Party role qualifier

Agency name: eBIZ

tabella cod.: NT2

File codes list (Generic code): http://www.ebiz.enea.it/moda-ml/repository/codelist/v2018-1/gc_NT2.xml

Code	Description	Adoption note	Version status	Date of insertion
AG	Sales Agent			
AU	Auditor		(N)	08/04/2019
CE	Certification authority		(N)	08/04/2019
CO	Quality Controller			
DC	Response to			
DF	Invoicee			
DI	Copy to (CC)			28/10/2014
DM	Consignee			
DP	Consignment address (Delivery Party)			
IM	Importer			
OR	Originator			10/09/2014
SC	Sub contractor		(N)	10/04/2019
SM	Service/ePlatform manager		(N)	08/04/2019

SP	Forwarder			
TX	Tax Representative			

NT20 - price qualifier

type of price with reference to discount and taxes

Agency name: eBIZ

tabella cod.: NT20

File codes list (Generic code): http://www.ebiz.enea.it/moda-ml/repository/codelist/v2018-1/gc_NT20.xml

Code	Description	Adoption note	Version status	Date of insertion
GET	gross excluding taxes			
GIT	gross including taxes			
NET	net excluding taxes			
NIT	net including taxes			

NT29 - format of a date

format used for the date

Agency name: eBIZ

tabella cod.: NT29

File codes list (Generic code): http://www.ebiz.enea.it/moda-ml/repository/codelist/v2018-1/gc_NT29.xml

Code	Description	Adoption note	Version status	Date of insertion
D	YYYY-MM-DD			
M	YYYY-MM-DD:HH-MM			
W	YYYY-WW			

NT3 - data format

format of a string according to a customized User rule (local rule)

Agency name: eBIZ

tabella cod.: NT3

File codes list (Generic code): http://www.ebiz.enea.it/moda-ml/repository/codelist/v2018-1/gc_NT3.xml

Code	Description	Adoption note	Version status	Date of insertion
------	-------------	---------------	----------------	-------------------

EN4	GS1-GLN			01/07/2013
MD	mutually agreed			

NT4 - end use

specifies the final use of the product

Agency name: eBIZ

tabella cod.: NT4

File codes list (Generic code): http://www.ebiz.enea.it/moda-ml/repository/codelist/v2018-1/gc_NT4.xml

Code	Description	Adoption note	Version status	Date of insertion
PC	test piece			
PR	production			
SA	Sample		(N)	10/09/2014
SC	samples card			
TI	patch			
TP	(test cut)			

NT43 - operational code qualifier (N)

Agency name: eBIZ

tabella cod.: NT43

File codes list (Generic code): http://www.ebiz.enea.it/moda-ml/repository/codelist/v2018-1/gc_NT43.xml

Code	Description	Adoption note	Version status	Date of insertion
1	event		(N)	08/09/2017
2	sales channel		(N)	08/09/2017
3	goods management type		(N)	08/09/2017
4	special initiative		(N)	08/09/2017

NT5 - action code

action performed by the present line upon the referenced document line

Agency name: eBIZ

tabella cod.: NT5

File codes list (Generic code): http://www.ebiz.enea.it/moda-ml/repository/codelist/v2018-1/gc_NT5.xml

Code	Description	Adoption note	Version status	Date of insertion
A	CANCELLED			
C	CONFIRMED			
N	NEW ORDER LINE (created by an order change)			
R	PROVISIONAL CONFIRMATION			
S	DEFINITIVE CONFIRMATION			
SA	suspension accepted			
SN	suspension not accepted			
SR	suspension request			
V	AMENDED			

NT6 - coding system owner/issuer

code specifying the organisation who has created or owns the coding or numbering system

Agency name: eBIZ

tabella cod.: NT6

File codes list (Generic code): http://www.ebiz.enea.it/moda-ml/repository/codelist/v2018-1/gc_NT6.xml

Code	Description	Adoption note	Version status	Date of insertion
CL	Customer/buyer			
CO	Quality Controller			
EB	eBIZ	replaces 'ML'	(N)	18/03/2019
EN	GS1 (ex-EAN International)			
ES	e-Stockflow			
FO	Supplier			
GS	GS1			01/07/2013
MF	VAT identifier		(U)	
ML	Moda-ML	DEPRECATED	(U)	
SP	Service Provider			

NT60 - language, codes from ISO 639-1 (subset) (N)

Agency name: eBIZ / ISO

tabella cod.: NT60

File codes list (Generic code): http://www.ebiz.enea.it/moda-ml/repository/codelist/v2018-1/gc_NT60.xml

Code	Description	Adoption note	Version status	Date of insertion
af	Afrikaans		(N)	31/01/2019
ar	Arabic		(N)	31/01/2019
be	Belarusian		(N)	31/01/2019
bg	Bulgarian		(N)	31/01/2019
bn	Bengali		(N)	31/01/2019
bo	Tibetan		(N)	31/01/2019
bs	Bosnian		(N)	31/01/2019
ca	Catalan, Valencian		(N)	31/01/2019
cs	Czech		(N)	31/01/2019
da	Danish		(N)	31/01/2019
de	German		(N)	31/01/2019
el	Greek, Modern (1453-)		(N)	31/01/2019
en	English		(N)	31/01/2019
eo	Esperanto		(N)	31/01/2019
es	Spanish, Castilian		(N)	31/01/2019
et	Estonian		(N)	31/01/2019
eu	Basque		(N)	31/01/2019
F	Female		(N)	15/04/2019
fa	Persian		(N)	31/01/2019
fi	Finnish		(N)	31/01/2019
fr	French		(N)	31/01/2019
ga	Irish		(N)	31/01/2019
gd	Gaelic, Scottish Gaelic		(N)	31/01/2019
gn	Guarani		(N)	31/01/2019
he	Hebrew		(N)	31/01/2019
hr	Croatian		(N)	31/01/2019
ht	Haitian, Haitian Creole		(N)	31/01/2019
hu	Hungarian		(N)	31/01/2019
hy	Armenian		(N)	31/01/2019
ia	Interlingua (International Auxiliary Language Association)		(N)	31/01/2019
id	Indonesian		(N)	31/01/2019
is	Icelandic		(N)	31/01/2019

it	Italian		(N)	31/01/2019
ja	Japanese		(N)	31/01/2019
jv	Javanese		(N)	31/01/2019
ka	Georgian		(N)	31/01/2019
km	Central Khmer		(N)	31/01/2019
ko	Korean		(N)	31/01/2019
ku	Kurdish		(N)	31/01/2019
lb	Luxembourgish, Letzeburgesch		(N)	31/01/2019
lo	Lao		(N)	31/01/2019
lt	Lithuanian		(N)	31/01/2019
lv	Latvian		(N)	31/01/2019
mg	Malagasy		(N)	31/01/2019
mk	Macedonian		(N)	31/01/2019
mn	Mongolian		(N)	31/01/2019
mt	Maltese		(N)	31/01/2019
nl	Dutch, Flemish		(N)	31/01/2019
no	Norwegian		(N)	31/01/2019
pl	Polish		(N)	31/01/2019
pt	Portuguese		(N)	31/01/2019
ro	Romanian, Moldavian, Moldovan		(N)	31/01/2019
ru	Russian		(N)	31/01/2019
se	Northern Sami		(N)	31/01/2019
sk	Slovak		(N)	31/01/2019
sl	Slovenian		(N)	31/01/2019
sm	Samoan		(N)	31/01/2019
so	Somali		(N)	31/01/2019
sq	Albanian		(N)	31/01/2019
sr	Serbian		(N)	31/01/2019
sv	Swedish		(N)	31/01/2019
sw	Swahili		(N)	31/01/2019
ta	Tamil		(N)	31/01/2019
th	Thai		(N)	31/01/2019
tr	Turkish		(N)	31/01/2019
uk	Ukrainian		(N)	31/01/2019
ur	Urdu		(N)	31/01/2019

uz	Uzbek		(N)	31/01/2019
vi	Vietnamese		(N)	31/01/2019
zh	Chinese		(N)	31/01/2019

NT7 - unit of measure (U)

specification of the unit of measure, it is a sub set of table Unit of Measure Code - UN/ECE REC 20 delivered by United Nations Economic Commission for Europe (UN/ECE)

Agency name: eBIZ / UN/ECE

tabella cod.: NT7

File codes list (Generic code): http://www.ebiz.enea.it/moda-ml/repository/codelist/v2018-1/gc_NT7.xml

Other link: <http://docs.oasis-open.org/ubl/os-UBL-2.1/cl/gc/default/UnitOfMeasureCode-2.1.gc#>

Code	Description	Adoption note	Version status	Date of insertion
CMK	square centimetre		(N)	20/12/2017
CMQ	cubic centimetre		(N)	20/12/2017
CMT	centimetre			
CNE	centiNewton			
CO2TON	ton of CO2		(N)	10/09/2014
COUPLES	couples			
DMQ	cubic decimetre			
E37	pixel		(N)	11/04/2018
GRM	gram			
HUR	hour			
INH	inch			
KGM	kilogram			
KMT	kilometer			
KWH	kilowatthours		(N)	10/09/2014
LBR	pound			
MIN	minute			
MMK	square millimetre		(N)	20/12/2017
MTK	square metre		(N)	20/12/2017
MTQ	cubic metre			
MTR	metre			
NMB	numero			
ONZ	ounce			

P1	percent			
PPM	parts per million			
PZ	piece		(U)	
RPM	rounds per metre			
YRD	yard			

T1 - terms of payment

code specifying the terms or time by which the payment must be done

Agency name: eBIZ

tabella cod.: T1

File codes list (Generic code): http://www.ebiz.enea.it/moda-ml/repository/codelist/v2018-1/gc_T1.xml

Code	Description	Adoption note	Version status	Date of insertion
ANTICIP	PAYMENT IN ADVANCE			
BLCOLLECT/120D	BILL OF LADING 120 DD			
BLCOLLECT/30D	BILL OF LADING 30 DD			
BLCOLLECT/60D	BILL OF LADING 60 DD			
BLCOLLECT/90D	BILL OF LADING 90 DD			
CASH	PAYMENT ON DELIVERY			
CASHINV	PAYMENT ON RECEIPT OF INVOICE			
CREDOC/0D	DOCUMENTARY CREDIT FOR PAYM. AT SIGHT			
CREDOC/120	DOCUMENTARY CREDIT FOR PAYM. AT 120 DD			
CREDOC/150	DOCUMENTARY CREDIT FOR PAYM. AT 150 DD			
CREDOC/180	DOCUMENTARY CREDIT FOR PAYM. AT 180 DD			
CREDOC/30D	DOCUMENTARY CREDIT FOR PAYM. AT 30 DD			
CREDOC/45D	DOCUMENTARY CREDIT FOR PAYM. AT 45 DD			
CREDOC/60	DOCUMENTARY CREDIT FOR PAYM. AT 60 DD			
CREDOC/90	DOCUMENTARY CREDIT FOR PAYM. AT 90 DD			
DEL/10	PAYMENT AT 10 DD AFTER DELIVERY			
DOCOLLECT/120D	DOCUMENTARY COLLECTION AT 120 DD			
DOCOLLECT/30D	DOCUMENTARY COLLECTION AT 30 DD			
DOCOLLECT/60D	DOCUMENTARY COLLECTION AT 60 DD			

DOCOLLECT/90D	DOCUMENTARY COLLECTION AT 90 DD			
INV/120D	PAYMENT AT 120 DD AFTER RECEIPT OF INVOICE			
INV/150D	PAYMENT AT 150 DD AFTER RECEIPT OF INVOICE			
INV/180D	PAYMENT AT 180 DD AFTER RECEIPT OF INVOICE			
INV/30D	PAYMENT AT 30 DD AFTER RECEIPT OF INVOICE			
INV/45D	PAYMENT AT 45 DD AFTER RECEIPT OF INVOICE			
INV/60D	PAYMENT AT 60 DD AFTER RECEIPT OF INVOICE			
INV/90D	PAYMENT AT 90 DD AFTER RECEIPT OF INVOICE			
INVULTIMO	PAYMENT AT END MONTH RECEIPT INVOICE			
INVULTIMO/10D	PAYMENT 10 DD AFTER END MONTH RECEIPT INVOICE			
INVULTIMO/120D	PAYMENT 120 DD AFTER END MONTH RECEIPT INVOICE			
INVULTIMO/150D	PAYMENT 150 DD AFTER END MONTH RECEIPT INVOICE			
INVULTIMO/180D	PAYMENT 180 DD AFTER END MONTH RECEIPT INVOICE			
INVULTIMO/240D	PAYMENT 240 DD AFTER END MONTH RECEIPT INVOICE			
INVULTIMO/30D	PAYMENT 30 DD AFTER END MONTH RECEIPT INVOICE			
INVULTIMO/45D	PAYMENT 45 DD AFTER END MONTH RECEIPT INVOICE			
INVULTIMO/60D	PAYMENT 60 DD AFTER END MONTH RECEIPT INVOICE			
INVULTIMO/90D	PAYMENT 90 DD AFTER END MONTH RECEIPT INVOICE			
NOPAY	WITHOUT PAYMENT			
RECREDOC/0D	IRREVOC. DOCUMENTARY CREDIT FOR PAYM. AT SIGHT			
RECREDOC/120D	IRREVOC. DOCUMENTARY CREDIT FOR PAYM. AT 120 DD			
RECREDOC/150D	IRREVOC. DOCUMENTARY CREDIT FOR PAYM. AT 150 DD			
RECREDOC/180D	IRREVOC. DOCUMENTARY CREDIT FOR PAYM. AT 180 DD			
RECREDOC/30D	IRREVOC. DOCUMENTARY CREDIT FOR PAYM. AT 30 DD			
RECREDOC/45D	IRREVOC. DOCUMENTARY CREDIT FOR PAYM. AT 45 DD			

RECREDOC/60D	IRREVOC. DOCUMENTARY CREDIT FOR PAYM. AT 60 DD			
RECREDOC/90D	IRREVOC. DOCUMENTARY CREDIT FOR PAYM. AT 90 DD			
ULTIMO	PAYMENT BY END MONTH OF DELIVERY			
ULTIMO/10	PAYMENT AT 10 DD AFTER END MONTH OF DELIVERY			

T10 - ISO3166 - Country

code of the nation

Agency name: ISO

tabella cod.: T10

File codes list (Generic code): http://www.ebiz.enea.it/moda-ml/repository/codelist/v2018-1/gc_T10.xml

Table not printed: there are 239 elements, more than the maximum specified for printing: 99.

T2 - Modes of payment

way or means of payment

Agency name: eBIZ

tabella cod.: T2

File codes list (Generic code): http://www.ebiz.enea.it/moda-ml/repository/codelist/v2018-1/gc_T2.xml

Code	Description	Adoption note	Version status	Date of insertion
BB	bank transfer			
IA	collection through Agent			
IS	collection through Forwarder			
RB	bank receipt			
RD	remittance			
SW	bank SWIFT			
TR	bank draft			

T21 - type of document

type or class to which the referenced document belongs

Agency name: eBIZ

tabella cod.: T21

File codes list (Generic code): http://www.ebiz.enea.it/moda-ml/repository/codelist/v2018-1/gc_T21.xml

Code	Description	Adoption note	Version status	Date of insertion
BOR	blanket order		(N)	01/02/2018
CAT	Price catalogue - tech sheet			
CEO	Certificate of origin		(N)	13/04/2018
CER	Certificate		(N)	13/04/2018
COC	colour card			
CRN	Credit note			08/09/2017
CTO	Checking order			01/07/2013
CTR	Contract		(U)	
CXF	CxF3 file			01/07/2013
DAD	Darn order			
DDT	ddt			
DEA	Despatch advise			
DER	Despatch request			
DR	Document Request			02/12/2014
FOR	Forecast			02/12/2014
GSO	Garment stock offer			
GSX	Garment stock offer change			
INV	Invoice			
KCC	Knitting-Clothing Commission Order			02/12/2014
KCI	Garment in Work Inventory Report			02/12/2014
M2M	Made to Measure Production Order			02/12/2014
MAS	Master marker			
MCI	Visual merchandising instruction		(N)	13/04/2018
OCH	Order change			
OFF	Offer			
ORD	Purchase order			
ORP	Order response			
OSR	order status request			
OSS	Offer status			02/12/2014
OST	Order status			
OUR	our reference			
QR	Quality Report			02/12/2014

RAI	Raw Material in Work Inventory Report			02/12/2014
RDC	Raw dyeing commission order			
RDH	Raw dyeing order change			
RDR	Raw dyeing order response			
REA	Receiving advise			
REQ	Request for Offer			
RET	Return			02/12/2014
RSC	Spinning commission order			
RSH	Spinning order change			
RSR	Spinning order response			
SCL	process sheet			
TFC	Textile dyeing-finishing commission order			
TFX	Textile Dyeing-Finishing Order Change			02/12/2014
TPC	Textile printing commission order			
TPX	Textile Printing Order Change			02/12/2014
TWI	Textile in work inventory			
VMI	visual merchandising instructions		(N)	01/02/2018
WAC	Warping commission order			
WEC	Weaving commission order			
YDC	Yarn dyeing commission order			
YDH	Yarn dyeing order change			
YDR	Yarn dyeing order response			
YTC	Twisting commission order			
YWI	Yarn in work inventory			

T3 - terms of delivery

specification of the terms of trade (INCOTERMS)

Agency name: Incoterms

tabella cod.: T3

File codes list (Generic code): http://www.ebiz.enea.it/moda-ml/repository/codelist/v2018-1/gc_T3.xml

Cod e	Description	Adoption note	Versi on statu s	Date of insertio n
CF R	COST AND FREIGHT (named port of destination)			

CIF	COST, INSURANCE AND FREIGHT (named port of destination)			
CIP	CARRIAGE AND INSURANCE PAID (named place of destination)			
CP T	CARRIAGE PAID (named place of destination)			
DA F	DELIVERED AT FRONTIER (named place)	according to Incoterms® 2010 it is obsolete		08/12/2017
DA P	Delivered at Place of destination (named place of destination)	according to Incoterms® 2010		08/12/2017
DA T	Delivered at Terminal (named place of destination)	according to Incoterms® 2010		08/12/2017
DD P	DELIVERED DUTY PAID (named place of destination)			
DD U	DELIVERED DUTY UNPAID (named place of destination)	according to Incoterms® 2010 it is obsolete, use DAP		08/12/2017
DE Q	DELIVERED EX-QUAY (named port of destination)	according to Incoterms® 2010 it is obsolete		08/12/2017
DE S	DELIVERED EX-SHIP (named port of destination)	according to Incoterms® 2010 it is obsolete		08/12/2017
EX W	EX WORKS (named place)			
FA S	FREE ALONGSIDE SHIP (named port of shipment)			
FC A	FREE CARRIER (named place)			
FO B	FREE ON BOARD (named port of shipment)			

T38 - transport conditions

special condition of transport or special service requested to the Forwarder

tabella cod.: T38

File codes list (Generic code): http://www.ebiz.enea.it/moda-ml/repository/codelist/v2018-1/gc_T38.xml

Code	Description	Adoption note	Version status	Date of insertion
ACC	arrange customs clearance			
CAL	Carrier loads			
CAU	Carrier unloads			
CMR	CMR carnet			
FFN	freight forwarders national conditions			
FLD	special agreement for full loading			

NCC	do not arrange customs clearance			
PPB	packaging paid by Buyer			
PPS	packaging paid by Supplier			
PRO	proof of delivery			
RFR	return container free			
RPC	return container paid by Customer			
RPS	return container paid by Supplier			
SHL	Shipper loads			
SHU	Consignee unloads			

T4 - fabric piece inner packing (wrapping) 1

code specifying the type of inner wrapping/packing used for the fabric piece

Agency name: eBIZ

tabella cod.: T4

File codes list (Generic code): http://www.ebiz.enea.it/moda-ml/repository/codelist/v2018-1/gc_T4.xml

Code	Description	Adoption note	Version status	Date of insertion
A	Folded, whole width			
B	Folded, doubled			
C	Folded, tube products			
D	Spooled, whole width			
E	Spooled, doubled, pli: left			
F	Spooled, doubled, pli: right			
G	Rolled, whole width, single item			
H	Rolled, whole width, several items			
I	Rolled, doubled			
J	Rolled, tube products			

T40 - type of transport means

means of transport, in general or referred to a specific leg

Agency name: eBIZ

tabella cod.: T40

File codes list (Generic code): http://www.ebiz.enea.it/moda-ml/repository/codelist/v2018-1/gc_T40.xml

Code	Description	Adoption note	Version status	Date of insertion
AIR	aircraft			
SHP	ship			
TRU	truck			
VAN	van			

T41 - type of Allowance or Charge

coded specification of an Allowance or Charge (elaborated from UNECE 4465)

Agency name: eBIZ

tabella cod.: T41

File codes list (Generic code): http://www.ebiz.enea.it/moda-ml/repository/codelist/v2018-1/gc_T41.xml

Code	Description	Adoption note	Version status	Date of insertion
1	Agreed settlement		(N)	19/08/2018
10	Costs for draft		(N)	19/08/2018
11	Bank charges	DEPRECATED, use CBK	(N)	19/08/2018
12	Agent commission		(N)	19/08/2018
14	Wrong delivery		(N)	19/08/2018
15	Goods returned to agent		(N)	19/08/2018
16	Goods partly returned		(N)	19/08/2018
17	Transport damage		(N)	19/08/2018
19	Trade discount		(N)	19/08/2018
2	Below specification goods		(N)	19/08/2018
20	Deduction for late delivery	DEPRECATED, use CWB	(N)	19/08/2018
21	Advertising costs		(N)	19/08/2018
22	Customs duties		(N)	19/08/2018

23	Telephone and postal costs		(N)	19/08/2018
24	Repair costs		(N)	19/08/2018
25	Attorney fees		(N)	19/08/2018
26	Taxes		(N)	19/08/2018
3	Damaged goods		(N)	19/08/2018
30	Direct payment to seller		(N)	19/08/2018
32	Goods not delivered		(N)	19/08/2018
33	Late delivery		(N)	19/08/2018
35	Goods returned		(N)	19/08/2018
36	Invoice not received		(N)	19/08/2018
37	Credit note to debtor/not to us		(N)	19/08/2018
38	Deducted bonus		(N)	19/08/2018
39	Deducted discount		(N)	19/08/2018
4	Short delivery		(N)	19/08/2018
40	Deducted freight costs		(N)	19/08/2018
41	Deduction against other invoices		(N)	19/08/2018
42	Credit balance(s)		(N)	19/08/2018
45	Debit note to seller		(N)	19/08/2018
46	Discount beyond terms		(N)	19/08/2018
48	Allowance/charge error		(N)	19/08/2018
49	Substitute product		(N)	19/08/2018
50	Terms of sale error		(N)	19/08/2018

52	Wrong invoice		(N)	19/08/2018
53	Duplicate invoice		(N)	19/08/2018
54	Weight error		(N)	19/08/2018
55	Additional charge not authorized		(N)	19/08/2018
56	Incorrect discount		(N)	19/08/2018
57	Price change		(N)	19/08/2018
58	Variation		(N)	19/08/2018
59	Chargeback		(N)	19/08/2018
65	Settlement to agent		(N)	19/08/2018
66	Cash discount		(N)	19/08/2018
7	Payment on account		(N)	19/08/2018
70	Wrong monetary amount resulting from incorrect free goods quantity		(N)	19/08/2018
72	Temporary special promotion		(N)	19/08/2018
73	Difference in tax rate		(N)	19/08/2018
74	Quantity discount		(N)	19/08/2018
75	Promotion discount		(N)	19/08/2018
76	Cancellation deadline passed		(N)	19/08/2018
77	Pricing discount		(N)	19/08/2018
78	Volume discount		(N)	19/08/2018
79	Sundry discount		(N)	19/08/2018
8	Returnable container charge included		(N)	19/08/2018
9	Invoice error		(N)	19/08/2018

AW A	bonus for works ahead of schedule			
CBK	bank charges			
CC R	servizio di corriere			
CIN	insurance			
CLB	labelling			
CPK	packing			
CSP	special packing			
CW B	penalty for works behind schedule			

T44 - additional code type

qualifier of the additional coding of a product

Agency name: eBIZ

tabella cod.: T44

File codes list (Generic code): http://www.ebiz.enea.it/moda-ml/repository/codelist/v2018-1/gc_T44.xml

Code	Description	Adoption note	Version status	Date of insertion
CC	colour card			
CL	sales collection			
CO	company identification code		(N)	08/09/2017
DY	dye number			
LT	lot number			
MDI	Made in			08/09/2017
MS	manufacturing state			
PKG	packaging			09/09/2014
PL	product line			
RGB	RGB value			
SE	selvedge code			

T5 - fabric piece inner packing (wrapping) 2

code specifying the sub-type of inner wrapping/packing used for the fabric piece

Agency name: eBIZ

tabella cod.: T5

File codes list (Generic code): http://www.ebiz.enea.it/moda-ml/repository/codelist/v2018-1/gc_T5.xml

Code	Description	Adoption note	Version status	Date of insertion
A	Open			
B	Folded once, not looped			
C	Folded twice, not looped			
H	Folded once, looped			
I	Folded twice, looped			
J	Without inner object, right side inside			
K	On carton or spooling plank, right side inside			
L	On spool (for pressure sensitive products), right side inside			
M	Without inner object, left side inside			
N	On carton or spooling plank, left side inside			
O	On spool (for pressure sensitive products), left side inside			
P	Without inner object, right side inside (deprecated code)			
Q	On carton, right side inside			
R	On wooden stick, right side inside			
S	Without inner object, left side inside (deprecated code)			
T	On carton, left side inside			
U	On wooden stick, left side inside			

T6 - fabric piece outer packing

code specifying the type of outer wrapping or packing used for the fabric piece

Agency name: eBIZ

tabella cod.: T6

File codes list (Generic code): http://www.ebiz.enea.it/moda-ml/repository/codelist/v2018-1/gc_T6.xml

Code	Description	Adoption note	Version status	Date of insertion
0	Not wrapped			
1	Totally wrapped			
2	Wrapped, one side open			
3	Wrapped, both sides open			
4	Wrapped, one side open, with show corner			
5	Wrapped in cartons			

6	Double wrapped			
---	----------------	--	--	--

T61 - duty or tax or fee type

duty or tax or fee type

Agency name: eBIZ

tabella cod.: T61

File codes list (Generic code): http://www.ebiz.enea.it/moda-ml/repository/codelist/v2018-1/gc_T61.xml

Code	Description	Adoption note	Version status	Date of insertion
BOL	stamp duty			01/07/2013
CUD	customs duty			01/07/2013
ENV	environmental tax			01/07/2013
FRE	no tax			01/07/2013
OTH	other tax charges			01/07/2013
VAT	value added tax			01/07/2013

T62 - duty or tax or fee category

duty or tax or fee category

Agency name: eBIZ

tabella cod.: T62

File codes list (Generic code): http://www.ebiz.enea.it/moda-ml/repository/codelist/v2018-1/gc_T62.xml

Code	Description	Adoption note	Version status	Date of insertion
AA	lower than standard rate			01/07/2013
E	tax not applicable			01/07/2013
H	higher than standard rate			01/07/2013
O	outside scope of tax			01/07/2013
S	standard rate			01/07/2013
Z	zero rate goods			01/07/2013

T8 - Modes of Transport

way of transport, in general or referred to the specified leg

Agency name: eBIZ

tabella cod.: T8

File codes list (Generic code): http://www.ebiz.enea.it/moda-ml/repository/codelist/v2018-1/gc_T8.xml

Code	Description	Adoption note	Version status	Date of insertion
1	MARITIME TRANSPORT			
10	Courier			01/07/2013
2	RAIL TRANSPORT			
3	ROAD TRANSPORT			
4	AIR TRANSPORT			
5	MAIL			
6	AIR + SHIP TRANSPORT			
8	INLAND WATER TRANSPORT			
9	MODE UNKNOWN			

T9 - ISO4217 - Currency

currency code

Agency name: ISO

tabella cod.: T9

File codes list (Generic code): http://www.ebiz.enea.it/moda-ml/repository/codelist/v2018-1/gc_T9.xml

Table not printed: there are 205 elements, more than the maximum specified for printing: 99.

Annex C

New or changed elements towards previous version

Changes or added elements (changes in description excluded; changes in aggregation notes and best practice included): 120

Test Type	Tag	Status	Item type	Changes related to
Attribute	AC_amount	NEW	AC amount	Has NEW attribute: data currency
Element(E)	AC_categoryText	UPDATED	AC category text	Property: Length_Max Old value: 70 New value: 250
Attribute	additionalIdentifier	NEW	Additional Party Identifier	Has NEW attribute: numbering organisation code
Attribute	additionalIdentifier	NEW	Additional Party Identifier	Has NEW attribute: id Qualifier
Element(I)	additionalIdentifier	NEW	Additional Party Identifier	
Attribute	allowanceCharge	NEW	Allowance and Charge	Has NEW attribute: is Charge
Attribute	allowanceCharge	NEW	Allowance and Charge	Has NEW attribute: maximum quantity
Attribute	allowanceCharge	NEW	Allowance and Charge	Has NEW attribute: minimum quantity
Attribute	allowanceCharge	NEW	Allowance and Charge	Has NEW attribute: data currency
Attribute	allowanceCharge	NEW	Allowance and Charge	Has NEW attribute: unit of measure code
Element(E)	art	UPDATED	article identifier	Property: Length_Max Old value: 25 New value: 80
Attribute	art	UPDATED	article identifier	Its attribute: code list reference Property: Aggregation Note_English Old value: <i>this attribute should be ALTERNATIVE to the others</i> New value: <i>at least one out of this attribute and "numberingOrg" should be set</i>

Element(l)	attachment	NEW	attachment	
Child	attachment	NEW	attachment	Has NEW child of: file name
Child	attachment	NEW	attachment	Has NEW child of: external reference
Child	attachment	NEW	attachment	Has NEW child of: binary object
Attribute	binaryObject	NEW	binary object	Has NEW attribute: encoding
Attribute	binaryObject	NEW	binary object	Has NEW attribute: mime
Attribute	binaryObject	NEW	binary object	Has NEW attribute: format
Attribute	binaryObject	NEW	binary object	Has NEW attribute: character set
Element(l)	binaryObject	NEW	binary object	
Attribute	brand	NEW	Brand	Has NEW attribute: code list version
Element(l)	brand	NEW	Brand	
Attribute	brand	NEW	Brand	Has NEW attribute: numbering organisation code
Attribute	brand	NEW	Brand	Has NEW attribute: code list reference
Attribute	brand	NEW	Brand	Has NEW attribute: code list name
Child	buyer	NEW	Buyer (*)	Has NEW child of: Party identifier
Child	buyer	NEW	Buyer (*)	Has NEW child of: Additional Party Identifier
Attribute	buyer	NEW	Buyer (*)	Has NEW attribute: sender Party qualifier
Element(l)	characterSetCode	NEW	character set code	
Element(l)	characterSet	NEW	character set	
Element(l)	codeQualifier	NEW	code qualifier	
Element(E)	deliveryPlace	UPDATE	delivery place	Property: Length_Max Old value: 40 New value: 250
Attribute	description	NEW	description	Has NEW attribute: In

Element(E)	description	UPDATE	description	Property: Length_Max Old value: 70 New value: 250
Attribute	despatchDate	NEW	despatch date	Has NEW attribute: date format
Element(I)	despatchDate	NEW	despatch date	
Element(I)	despatchPlace	NEW	despatch place	
Element(E)	email	UPDATE	e-mail	Property: Length_Max Old value: 80 New value: 250
Element(I)	encodingCode	NEW	encoding code	
Element(I)	encoding	NEW	encoding	
Element(I)	exchangeRate	NEW	exchange rate	
Child	externalReference	NEW	external reference	Has NEW child of: uri
Child	externalReference	NEW	external reference	Has NEW child of: format code
Child	externalReference	NEW	external reference	Has NEW child of: character set code
Child	externalReference	NEW	external reference	Has NEW child of: mime code
Child	externalReference	NEW	external reference	Has NEW child of: encoding code
Element(I)	externalReference	NEW	external reference	
Child	texComInfo	NEW	Fabric commercial information	Has NEW child of: product line
Child	texComInfo	NEW	Fabric commercial information	Has NEW child of: general note
Child	texComInfo	NEW	Fabric commercial information	Has NEW child of: operational code
Child	texComInfo	NEW	Fabric commercial information	Has NEW child of: Brand

Element(E)	piecePackText	UPDATE	fabric piece packing text	Property: Length_Max Old value: 40 New value: 250
Attribute	fileName	NEW	file name	Has NEW attribute: numbering organisation code
Element(l)	fileName	NEW	file name	
Element(l)	formatCode	NEW	format code	
Element(l)	format	NEW	format	
Attribute	note	UPDATE	general note	Its attribute: numbering organisation code Property: Aggregation Note_English Old value: New value: <i>must be used to specify the organization that created the list of codes used in "noteLabel"</i>
Attribute	goodsAmount	NEW	goods total amount	Has NEW attribute: data currency
Element(l)	idQualifier	NEW	id Qualifier	
Element(l)	isCharge	NEW	is Charge	
Element(l)	isURL	NEW	is URL	
Element(E)	legalName	UPDATE	Legal name	Property: Length_Max Old value: 80 New value: 250
Element(E)	itemID	UPDATE	line item number	Property: Length_Max Old value: 6 New value: 40
Attribute	lineN	UPDATE	line number	Its attribute: VAT rate Property: Aggregation Note_English Old value: New value: <i>Deprecated, prefer dtScheme when available.</i>
Element(l)	ln	NEW	ln	
Element(l)	maxQty	NEW	maximum quantity	
Element(l)	mimeCode	NEW	mime code	
Element(l)	mime	NEW	mime	
Attribute	operationalCode	NEW	operational code	Has NEW attribute: numbering organisation code

Attrib	operationalCode	NEW	operational code	Has NEW attribute: code list reference
Attrib	operationalCode	NEW	operational code	Has NEW attribute: code qualifier
Attrib	operationalCode	NEW	operational code	Has NEW attribute: code list version
Attrib	operationalCode	NEW	operational code	Has NEW attribute: code list name
Elem(l)	operationalCode	NEW	operational code	
Attrib	otherCurrency	NEW	other currency code	Has NEW attribute: exchange rate
Attrib	productLine	NEW	product line	Has NEW attribute: code list name
Attrib	productLine	NEW	product line	Has NEW attribute: numbering organisation code
Attrib	productLine	NEW	product line	Has NEW attribute: code list reference
Attrib	productLine	NEW	product line	Has NEW attribute: code list version
Elem(l)	productLine	NEW	product line	
Elem(l)	progr	NEW	progressive number	
Elem(E)	project	UPDATE	project identifier	Property: Length_Max Old value: 25 New value: 40
Child	refDoc	NEW	reference document details	Has NEW child of: attachment
Child	refDoc	UPDATE	reference document details	relationship with child: document identifier Property: BestPractice_English Old value: New value: <i>numberingOrg indicates the role that produced the document identifier (it is allowed to declare two different ones -e.g. customer and supplier - with two docID with different numberingOrg</i>
Attrib	season	NEW	season identifier	Has NEW attribute: code list reference
Attrib	season	NEW	season identifier	Has NEW attribute: numbering organisation code
Attrib	season	NEW	season identifier	Has NEW attribute: code list name

Attrib	season	NEW	season identifier	Has NEW attribute: code list version
Elem(I)	subDept	NEW	department identifier	
Child	supplier	NEW	Supplier (*)	Has NEW child of: Party identifier
Child	supplier	NEW	Supplier (*)	Has NEW child of: Additional Party Identifier
Attrib	supplier	NEW	Supplier (*)	Has NEW attribute: sender Party qualifier
Attrib	legalRef	NEW	tax legal reference	Has NEW attribute: code list name
Attrib	legalRef	NEW	tax legal reference	Has NEW attribute: numbering organisation code
Attrib	legalRef	NEW	tax legal reference	Has NEW attribute: code list version
Attrib	legalRef	UPDATED	tax legal reference	Its attribute: code list reference Property: Use Old value: <i>Required</i> New value: <i>Optional</i>
Child	dtScheme	UPDATED	tax scheme	relationship with child: general note Property: Cardmax Old value: 19 New value: 99
Elem(E)	payTermText	UPDATED	terms of payment text	Property: Length_Max Old value: 40 New value: 250
Elem(E)	incotermsText	UPDATED	terms of trade text	Property: Length_Max Old value: 70 New value: 250
Child	texCode	UPDATED	Textiles product code	relationship with child: description Property: Aggregation Note_English Old value: New value: <i>Product description</i>
Child	texCode	UPDATED	Textiles product code	relationship with child: description Property: Cardmax Old value: 1 New value: 999
Child	thirdParty	NEW	Third Party (*)	Has NEW child of: Party identifier
Attrib	thirdParty	NEW	Third Party (*)	Has NEW attribute: sender Party qualifier

Child	terms	UPDATED	Trade conditions	relationship with child: Transport information Property: Cardmax Old value: 1 New value: 5
Element(E)	transCondition Text	UPDATED	transport condition - text	Property: Length_Max Old value: 100 New value: 250
Child	transInfo	NEW	Transport information	Has NEW child of: despatch place
Child	transInfo	NEW	Transport information	Has NEW child of: despatch date
Child	transInfo	NEW	Transport information	Has NEW child of: effective delivery date
Attribute	transInfo	NEW	Transport information	Has NEW attribute: progressive number
Child	TXheader	UPDATED	TX header	relationship with child: reference document details Property: Aggregation Note_English Old value: New value: <i>At least one occurrence should contain a reference to the order it responds to (for example docType=ORD or OCH or BOR)</i>
Child	TXheader	UPDATED	TX header	relationship with child: general note Property: Cardmax Old value: 19 New value: 99
Child	TXitem	NEW	TX item	Has NEW child of: tax scheme
Child	TXitem	UPDATED	TX item	relationship with child: Third Party Property: Cardmax Old value: 1 New value: 3
Child	TXitem	UPDATED	TX item	relationship with child: product quantity Property: BestPractice_English Old value: New value: <i>this element can have two instances only if the units of measure are different</i>
Child	TXitem	UPDATED	TX item	relationship with child: general note Property: Cardmax Old value: 19 New value: 99

Attrib	price	NEW	unit price amount	Has NEW attribute: data currency
Element(E)	price	UPDATED	unit price amount	Property: Digits_Dec Old value: 2 New value: 4
Attrib	uri	NEW	uri	Has NEW attribute: is URL
Element(l)	uri	NEW	uri	

Annex D

New or changed tables and codes towards previous version

Changes or added items (changes in CodeListAgencyName excluded; changes in adoption notes and code description included): 164

Test Type	Status	Table code	Table description	Code	Change description
Code	UPDATE	N1		A (the order is open without a concrete delivery of product; it establishes an amount of goods to be produced in a future)	adoption_note Old value: New value: <i>the order is open without a concrete delivery of product; it establishes an amount of goods to be produced in a future</i>
Code	UPDATE	N1		D (orders an amount of goods to be delivered (and invoiced and produced if necessary); it is important that it is clear that this amount should be subtracted from the amount of the blanket order referred in the refDoc element)	adoption_note Old value: New value: <i>orders an amount of goods to be delivered (and invoiced and produced if necessary); it is important that it is clear that this amount should be subtracted from the amount of the blanket order referred in the refDoc element</i>
Table	UPDATE	N10	eBIZ TCFUpstream version		Description_English Old value: <i>eBIZ Moda-ML version</i> New value: <i>eBIZ TCFUpstream version</i>
Code	NEW	N100		2018-1 (v2018-1)	
Code	NEW	N100		draft (draft)	
Table	UPDATE	N16	VAT rate or code		Generalities Old value: <i>VAT rate or code (deprecated , use dtScheme element)</i> New value: <i>VAT rate or code (DEPRECATED, use dtScheme element)</i>
Code	NEW	N2		AU (Auditor)	
Code	NEW	N2		CE (Certification authority)	

C o d e	NE W	N T 2		SC (Sub contractor)	
C o d e	NE W	N T 2		SM (Service/ePlatform manager)	
C o d e	NE W	N T 4		SA (Sample)	
T a b l e	UP DA TE D	N T 4	end use		Generalities Old value: <i>specifies the final use of the fabric</i> New value: <i>specifies the final use of the product</i>
T a b l e	NE W	N T 43	operatio nal code qualifier		
C o d e	NE W	N T 43		1 (event)	
C o d e	NE W	N T 43		2 (sales channel)	
C o d e	NE W	N T 43		3 (goods management type)	
C o d e	NE W	N T 43		4 (special initiative)	
C o d e	NE W	N T 6		EB (eBIZ)	
C o d e	UP DA TE D	N T 6		ML (DEPRECATED)	adoption_note Old value: New value: <i>DEPRECATED</i>
T a b l e	NE W	N T 60	languag e, codes from IS O 639-1 (subset)		

C o d e	NE W	N T 60		<i>F</i> (Female)	
C o d e	NE W	N T 60		<i>af</i> (Afrikaans)	
C o d e	NE W	N T 60		<i>ar</i> (Arabic)	
C o d e	NE W	N T 60		<i>be</i> (Belarusian)	
C o d e	NE W	N T 60		<i>bg</i> (Bulgarian)	
C o d e	NE W	N T 60		<i>bn</i> (Bengali)	
C o d e	NE W	N T 60		<i>bo</i> (Tibetan)	
C o d e	NE W	N T 60		<i>bs</i> (Bosnian)	
C o d e	NE W	N T 60		<i>ca</i> (Catalan, Valencian)	
C o d e	NE W	N T 60		<i>cs</i> (Czech)	
C o d e	NE W	N T 60		<i>da</i> (Danish)	
C o d e	NE W	N T 60		<i>de</i> (German)	
C o d e	NE W	N T 60		<i>el</i> (Greek, Modern (1453-))	

C o d e	NE W	N T 60		<i>en</i> (English)	
C o d e	NE W	N T 60		<i>eo</i> (Esperanto)	
C o d e	NE W	N T 60		<i>es</i> (Spanish, Castilian)	
C o d e	NE W	N T 60		<i>et</i> (Estonian)	
C o d e	NE W	N T 60		<i>eu</i> (Basque)	
C o d e	NE W	N T 60		<i>fa</i> (Persian)	
C o d e	NE W	N T 60		<i>fi</i> (Finnish)	
C o d e	NE W	N T 60		<i>fr</i> (French)	
C o d e	NE W	N T 60		<i>ga</i> (Irish)	
C o d e	NE W	N T 60		<i>gd</i> (Gaelic, Scottish Gaelic)	
C o d e	NE W	N T 60		<i>gn</i> (Guarani)	
C o d e	NE W	N T 60		<i>he</i> (Hebrew)	
C o d e	NE W	N T 60		<i>hr</i> (Croatian)	

C o d e	NE W	N T 60		<i>ht</i> (Haitian, Haitian Creole)	
C o d e	NE W	N T 60		<i>hu</i> (Hungarian)	
C o d e	NE W	N T 60		<i>hy</i> (Armenian)	
C o d e	NE W	N T 60		<i>ia</i> (Interlingua (International Auxiliary Language Association))	
C o d e	NE W	N T 60		<i>id</i> (Indonesian)	
C o d e	NE W	N T 60		<i>is</i> (Icelandic)	
C o d e	NE W	N T 60		<i>it</i> (Italian)	
C o d e	NE W	N T 60		<i>ja</i> (Japanese)	
C o d e	NE W	N T 60		<i>ju</i> (Javanese)	
C o d e	NE W	N T 60		<i>ka</i> (Georgian)	
C o d e	NE W	N T 60		<i>km</i> (Central Khmer)	
C o d e	NE W	N T 60		<i>ko</i> (Korean)	
C o d e	NE W	N T 60		<i>ku</i> (Kurdish)	

C o d e	NE W	N T 60		<i>lb</i> (Luxembourgish, Letzeburgesch)	
C o d e	NE W	N T 60		<i>lo</i> (Lao)	
C o d e	NE W	N T 60		<i>lt</i> (Lithuanian)	
C o d e	NE W	N T 60		<i>lv</i> (Latvian)	
C o d e	NE W	N T 60		<i>mg</i> (Malagasy)	
C o d e	NE W	N T 60		<i>mk</i> (Macedonian)	
C o d e	NE W	N T 60		<i>mn</i> (Mongolian)	
C o d e	NE W	N T 60		<i>mt</i> (Maltese)	
C o d e	NE W	N T 60		<i>nl</i> (Dutch, Flemish)	
C o d e	NE W	N T 60		<i>no</i> (Norwegian)	
C o d e	NE W	N T 60		<i>pl</i> (Polish)	
C o d e	NE W	N T 60		<i>pt</i> (Portuguese)	
C o d e	NE W	N T 60		<i>ro</i> (Romanian, Moldavian, Moldovan)	

C o d e	NE W	N T 60		<i>ru</i> (Russian)	
C o d e	NE W	N T 60		<i>se</i> (Northern Sami)	
C o d e	NE W	N T 60		<i>sk</i> (Slovak)	
C o d e	NE W	N T 60		<i>sl</i> (Slovenian)	
C o d e	NE W	N T 60		<i>sm</i> (Samoan)	
C o d e	NE W	N T 60		<i>so</i> (Somali)	
C o d e	NE W	N T 60		<i>sq</i> (Albanian)	
C o d e	NE W	N T 60		<i>sr</i> (Serbian)	
C o d e	NE W	N T 60		<i>sv</i> (Swedish)	
C o d e	NE W	N T 60		<i>sw</i> (Swahili)	
C o d e	NE W	N T 60		<i>ta</i> (Tamil)	
C o d e	NE W	N T 60		<i>th</i> (Thai)	
C o d e	NE W	N T 60		<i>tr</i> (Turkish)	

C o d e	NE W	N T 60		<i>uk</i> (Ukrainian)	
C o d e	NE W	N T 60		<i>ur</i> (Urdu)	
C o d e	NE W	N T 60		<i>uz</i> (Uzbek)	
C o d e	NE W	N T 60		<i>vi</i> (Vietnamese)	
C o d e	NE W	N T 60		<i>zh</i> (Chinese)	
C o d e	NE W	N T 7		<i>CMK</i> (square centimetre)	
C o d e	NE W	N T 7		<i>CMQ</i> (cubic centimetre)	
C o d e	NE W	N T 7		<i>E37</i> (pixel)	
C o d e	NE W	N T 7		<i>KWH</i> (kilowatthours)	
C o d e	NE W	N T 7		<i>MMK</i> (square millimetre)	
C o d e	NE W	N T 7		<i>MTK</i> (square metre)	
C o d e	NE W	N T 7		<i>CO2TON</i> (ton of CO2)	
T a b l e	UP DA TE D	N T 7	unit of m easure		OtherExternalReferenceURL Old value: New value: http://docs.oasis-open.org/u

					<i>bl/os-UBL-2.1/cl/gc/default/UnitOfMeasureCode-2.1.gc#</i>
T a b l e	UP DA TE D	N T 7	unit of m easure		Description_English Old value: <i>unity of measure</i> New value: <i>unit of measure</i>
C o d e	NE W	T 21		<i>BOR</i> (blanket order)	
C o d e	NE W	T 21		<i>CEO</i> (Certificate of origin)	
C o d e	NE W	T 21		<i>CER</i> (Certificate)	
C o d e	UP DA TE D	T 21		<i>CTR</i> (Contract)	Text_English Old value: <i>contract</i> New value: <i>Contract</i>
C o d e	NE W	T 21		<i>MCI</i> (Visual merchandising instruction)	
C o d e	NE W	T 21		<i>VMI</i> (visual merchandising instructions)	
C o d e	NE W	T 41		<i>1</i> (Agreed settlement)	
C o d e	NE W	T 41		<i>2</i> (Below specification goods)	
C o d e	NE W	T 41		<i>3</i> (Damaged goods)	
C o d e	NE W	T 41		<i>4</i> (Short delivery)	
C o d e	NE W	T 41		<i>7</i> (Payment on account)	
C o	NE W	T 41		<i>8</i> (Returnable container charge included)	

d e					
C o d e	NE W	T 41		9 (Invoice error)	
C o d e	NE W	T 41		10 (Costs for draft)	
C o d e	NE W	T 41		11 (Bank charges)	
C o d e	NE W	T 41		12 (Agent commission)	
C o d e	NE W	T 41		14 (Wrong delivery)	
C o d e	NE W	T 41		15 (Goods returned to agent)	
C o d e	NE W	T 41		16 (Goods partly returned)	
C o d e	NE W	T 41		17 (Transport damage)	
C o d e	NE W	T 41		19 (Trade discount)	
C o d e	NE W	T 41		20 (Deduction for late delivery)	
C o d e	NE W	T 41		21 (Advertising costs)	
C o d e	NE W	T 41		22 (Customs duties)	
C o	NE W	T 41		23 (Telephone and postal costs)	

d e					
C o d e	NE W	T 41		24 (Repair costs)	
C o d e	NE W	T 41		25 (Attorney fees)	
C o d e	NE W	T 41		26 (Taxes)	
C o d e	NE W	T 41		30 (Direct payment to seller)	
C o d e	NE W	T 41		32 (Goods not delivered)	
C o d e	NE W	T 41		33 (Late delivery)	
C o d e	NE W	T 41		35 (Goods returned)	
C o d e	NE W	T 41		36 (Invoice not received)	
C o d e	NE W	T 41		37 (Credit note to debtor/not to us)	
C o d e	NE W	T 41		38 (Deducted bonus)	
C o d e	NE W	T 41		39 (Deducted discount)	
C o d e	NE W	T 41		40 (Deducted freight costs)	
C o	NE W	T 41		41 (Deduction against other invoices)	

d e					
C o d e	NE W	T 41		42 (Credit balance(s))	
C o d e	NE W	T 41		45 (Debit note to seller)	
C o d e	NE W	T 41		46 (Discount beyond terms)	
C o d e	NE W	T 41		48 (Allowance/charge error)	
C o d e	NE W	T 41		49 (Substitute product)	
C o d e	NE W	T 41		50 (Terms of sale error)	
C o d e	NE W	T 41		52 (Wrong invoice)	
C o d e	NE W	T 41		53 (Duplicate invoice)	
C o d e	NE W	T 41		54 (Weight error)	
C o d e	NE W	T 41		55 (Additional charge not authorized)	
C o d e	NE W	T 41		56 (Incorrect discount)	
C o d e	NE W	T 41		57 (Price change)	
C o	NE W	T 41		58 (Variation)	

d e					
C o d e	NE W	T 41		59 (Chargeback)	
C o d e	NE W	T 41		65 (Settlement to agent)	
C o d e	NE W	T 41		66 (Cash discount)	
C o d e	NE W	T 41		70 (Wrong monetary amount resulting from incorrect free goods quantity)	
C o d e	NE W	T 41		72 (Temporary special promotion)	
C o d e	NE W	T 41		73 (Difference in tax rate)	
C o d e	NE W	T 41		74 (Quantity discount)	
C o d e	NE W	T 41		75 (Promotion discount)	
C o d e	NE W	T 41		76 (Cancellation deadline passed)	
C o d e	NE W	T 41		77 (Pricing discount)	
C o d e	NE W	T 41		78 (Volume discount)	
C o d e	NE W	T 41		79 (Sundry discount)	
T a	UP DA	T 41	type of Allowan		Generalities Old value: <i>coded specification of an Allo</i>

bl e	TE D		ce or Ch arge		<i>wance or Charge</i> New value: <i>coded specification of an Allowance or Charge (elaborated from UNE CE 4465)</i>
C o d e	NE W	T 44		CO (company identification code)	