



<http://www.ebiz-tcf.eu>

## IMPLEMENTATION GUIDE

includes COMPARISON BETWEEN CURRENT and LAST  
PREVIOUSLY RELEASED VERSION

TRANSACTION "TEXTILE PRINTING COMMISSION ORDER"

Version: v2018-1

Date of release: 18/7/2019

Document code: G024rv

technical Documentation: <http://www.ebiz.enea.it>

XML Schemas repository: <http://www.ebiz.enea.it/moda-ml/repository/schema/v2018-1/default.asp>

Guides repository: <http://www.ebiz.enea.it/moda-ml/repository/guide/v2018-1/default.asp>

Guide filename: G024rv-eBIZ-TextilePrintingCommissionOrder.pdf

# 1. BUSINESS DESCRIPTION

## 1.1 Scope

The present guide has been issued to assist the companies of the Textile-Clothing sector in the implementation of the standard XML document type "TEXTILE PRINTING COMMISSION ORDER", providing all the instruction required for its use in the context of e-commerce between Textile Subcontractors and their Customers shown in the enclosed diagram.

All the rules required for the construction and validation of the document are embedded into the specific XML-Schema, which is detailed in section "Implementation guide".

## 1.2 Generalities

The Printing commission order is used by a Fabric Producer to commit to a Subcontractor the printing of fabric.

When the Issuer of the Commission requires different manufacturing operations in sequence to different Subcontractors, he can use this document not only as work order but also as a despatch order to send the semi-finished product to a successive Subcontractor

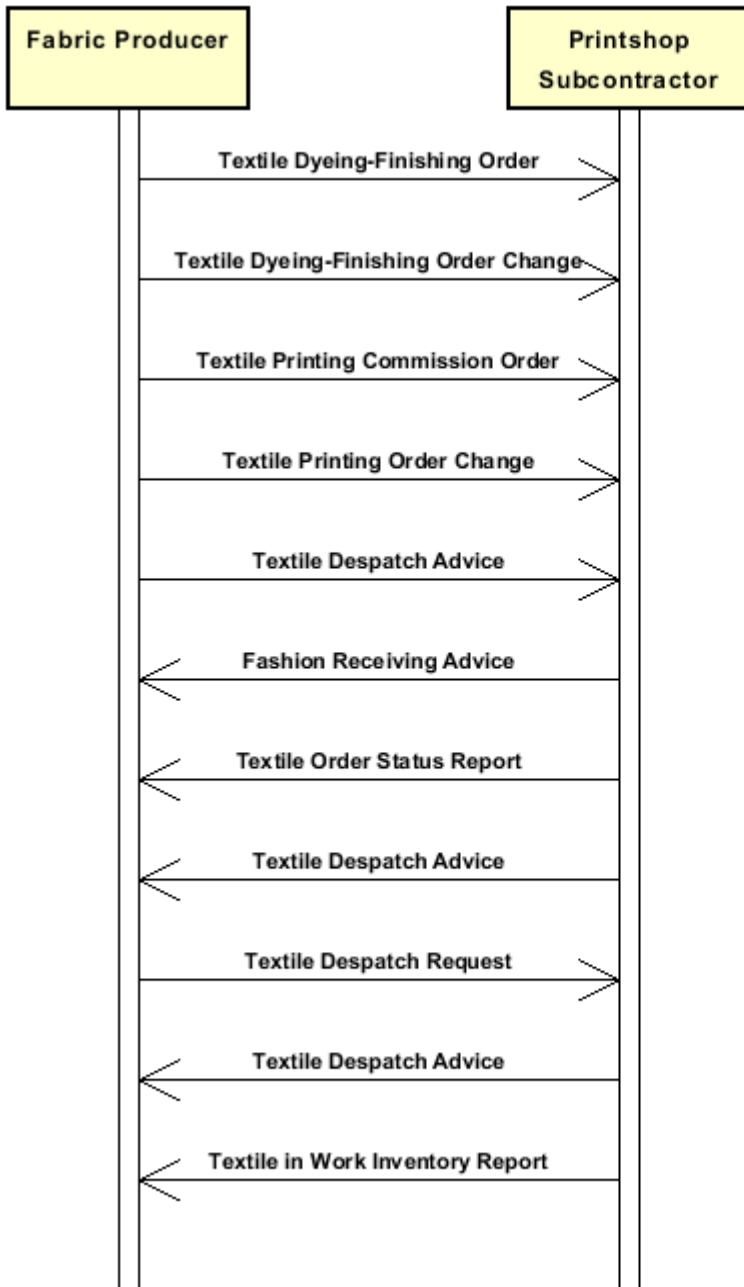
As a general rule, the Printing commission order specifies only the manufacturing technology (if required) and the characteristics of the end product of each operation and specifies the components used to manufacture that product

It must be noted that this end product can be, in turn, a component for a successive manufacturing operation

The definition of any "manufacturing parameters" is left to the Subcontractor; sometimes however these parameters can be specified by the Issuer of the Commission itself, that can define machines and machine parameters in the Commission Order

## 1.3. Possible scenario

Subcontracted fabric printing



#### 1.4. Best practices

Textile Dyeing-Finishing Order can be used instead of Textile Printing Order when printing is associated to dyeing-finishing operations and these are prevalent.

## 2. IMPLEMENTATION GUIDE

### 2.1 General structure of XML document

All the business data that can be exchanged through this class of documents are shown in the following "document structure", that provides a simplified vision of the Schema.

In particular:

- the two numbers following each element define its "cardinality" (minimum and maximum number of occurrences); the minimum equal zero indicates that the element is optional, the minimum greater than zero indicates that is mandatory;
- the bold character denotes the complex elements (aggregates of simple elements) that were built for the sake of functionality and re-usability of some complex informations sets. The child elements in each parent element are easily spotted as "indented";
- the symbol "@" denotes an attribute of the preceding element; here "the usage indicator (optional, required, ...)" is shown in square brackets.

#### Legenda

- N: new element
- U: updated properties
- P: changes in children
- p: is a changed child
- A: changes in attributes
- a: is a new or changed attribute
- \*: is a subtype

### Structure

#### TEXPrintOrder

*@msgfunction [Optional] [Default= OR]*

*@version [Optional] [Default= 2018-1]*

*@useProfile [Optional]*

```
| TPCHeader 1-1 (P)
| | msgN 1-1
| | - choose -
| | msgID 0-1
| | - or -
| | docID 0-1
| | @numberingOrg [Optional]
| | - end choose -
| | msgDate 1-1
| | @dateForm [Optional]
| | season 0-1 (A)
| | @numberingOrg [Optional] (a)
| | @codeList [Optional] (a)
| | @listName [Optional] (a)
| | @listVersion [Optional] (a)
| | msgCurrency 0-1
| | refDoc 0-9 (P)
| | @docType [Required]
| | | docID 1-2 (p)
| | | @numberingOrg [Optional]
| | | docDate 0-1
| | | @dateForm [Optional]
| | | season 0-1 (A)
| | | @numberingOrg [Optional] (a)
| | | @codeList [Optional] (a)
| | | @listName [Optional] (a)
```

- | | | *@listVersion [Optional] (a)*
- | | | itemID 0-1 (U)
- | | | **attachment 0-1 (N)**
- | | | *@uid [Optional]*
  - | | | | fileName 0-1 (N)
  - | | | | *@numberingOrg [Optional]*
  - | | | | binaryObject 0-1 (N)
  - | | | | *@format [Optional] (N)*
  - | | | | *@mime [Optional] (N)*
  - | | | | *@encoding [Optional] (N)*
  - | | | | *@characterSet [Optional] (N)*
- | | | **externalReference 0-99 (N)**
  - | | | | uri 1-1 (N)
  - | | | | *@isURL [Optional] [Default= true] (Na)*
  - | | | | mimeTypeCode 0-1 (N)
  - | | | | formatCode 0-1 (N)
  - | | | | encodingCode 0-1 (N)
  - | | | | characterSetCode 0-1 (N)
- | | | **buyer 1-1 (AP)**
- | | | *@logo [Optional]*
- | | | *@sender [Optional] (a\*)*
  - | | | | id 1-1 (p)
  - | | | | *@numberingOrg [Optional]*
  - | | | | additionalIdentifier 0-9 (N)
  - | | | | *@numberingOrg [Optional] (a)*
  - | | | | *@idQualifier [Optional] (Na)*
  - | | | | legalName 0-1 (U)
  - | | | | dept 0-1
  - | | | | subDept 0-1 (N)
  - | | | | person 0-1
  - | | | | *@email [Optional]*
  - | | | | *@phone [Optional]*
  - | | | | *@fax [Optional]*
  - | | | | street 0-1
  - | | | | city 0-1
  - | | | | subCountry 0-1
  - | | | | country 0-1
  - | | | | postCode 0-1
- | | | **subContractor 1-1 (AP)**
- | | | *@sender [Optional] (a\*)*
  - | | | | id 1-1
  - | | | | *@numberingOrg [Optional]*
  - | | | | legalName 0-1 (U)
  - | | | | dept 0-1
  - | | | | subDept 0-1 (N)
  - | | | | person 0-1
  - | | | | *@email [Optional]*
  - | | | | *@phone [Optional]*
  - | | | | *@fax [Optional]*
  - | | | | street 0-1
  - | | | | city 0-1
  - | | | | subCountry 0-1
  - | | | | country 0-1
  - | | | | postCode 0-1
- | | | **thirdParty 0-5 (AP)**
- | | | *@VAT [Optional]*
- | | | *@role [Required]*
- | | | *@sender [Optional] (a\*)*
  - | | | | id 1-1
  - | | | | *@numberingOrg [Optional]*
  - | | | | legalName 0-1 (U)

- | | | dept 0-1
- | | | subDept 0-1 (N)
- | | | person 0-1
- | | | @email [Optional]
- | | | @phone [Optional]
- | | | @fax [Optional]
- | | | street 0-1
- | | | city 0-1
- | | | subCountry 0-1
- | | | country 0-1
- | | | postCode 0-1
- | | note 0-99
- | | @numberingOrg [Optional]
- | | @codeList [Optional]
- | | @noteLabel [Optional]

| **terms 0-1 (P)**

- | | **payment 0-5**
- | | | @finDiscount [Optional]
- | | | @finSurcharge [Optional]
- | | | - choose -
- | | | | payTerm 1-1
- | | | | - or -
- | | | | payTermText 1-1 (U)
- | | | | - end choose -
- | | | | payMode 0-1

- | | **insPayment 0-5**
- | | | @part [Required]
- | | | - choose -
- | | | | payTerm 1-1
- | | | | - or -
- | | | | payTermText 1-1 (U)
- | | | | - end choose -
- | | | | payMode 0-1

- | | **trade 0-1**
- | | | - choose -
- | | | | incoTermText 1-1 (U)
- | | | | - or -
- | | | | incoTerm 1-1
- | | | | - end choose -
- | | | | location 0-1
- | | | | @LRI [Optional]

- | | **transInfo 0-5 (pAP)**
- | | | @transReason [Optional]
- | | | @progr [Optional] (N)
- | | | | transMode 1-1
- | | | | carrier 0-1
- | | | | deliveryPlace 0-1 (U)
- | | | | grossWeight 0-1
- | | | | @um [Required]
- | | | | netWeight 0-1
- | | | | @um [Required]
- | | | | transMeans 0-1
- | | | | transCondition 0-3
- | | | | transConditionText 0-1 (U)
- | | | | despatchPlace 0-1 (N)
- | | | | despatchDate 0-1 (N)
- | | | | @dateForm [Optional] (a)
- | | | | delEffectiveDate 0-1 (p)
- | | | | @dateForm [Optional]

- | | **allowanceCharge 0-9 (A)**

```

| | @um [Optional] (a)
| | @VAT [Optional]
| | @minQty [Optional] (a)
| | @currency [Optional] (a)
| | @maxQty [Optional] (N)
| | @isCharge [Optional] (N)
| | - choose -
| | | AC_category 1-1
| | - or -
| | | AC_categoryText 1-1 (U)
| | - end choose -
| | - choose -
| | | AC_percent 1-1
| | - or -
| | | AC_amount 1-1 (A)
| | | @currency [Optional] (a)
| | - end choose -
| | | dtScheme 0-1 (P)
| | | @taxType [Required]
| | | taxCategory 0-1
| | | taxRate 0-1
| | | legalRef 0-1 (A)
| | | @numberingOrg [Optional]
| | | @codeList [Optional]
| | | @listName [Optional]
| | | @listVersion [Optional]
| | | note 0-99
| | | @numberingOrg [Optional]
| | | @codeList [Optional]
| | | @noteLabel [Optional]

```

#### TPCObody 1-1

```

| | TPCOitem 1-unbounded (P)
| | @productLevel [Optional] [Default= END]
| | lineN 1-1
| | @VAT [Optional]
| | fabricProd 1-1 (P)
| | @CTest [Optional]
| | | texCode 1-1 (P)
| | | @numberingOrg [Optional]
| | | | art 1-1 (U)
| | | | @numberingOrg [Optional]
| | | | @codeList [Optional]
| | | | @listName [Optional]
| | | | @listVersion [Optional]
| | | | pattern 0-1
| | | | @numberingOrg [Optional]
| | | | @codeList [Optional]
| | | | @listName [Optional]
| | | | @listVersion [Optional]
| | | | color 0-1
| | | | @numberingOrg [Optional]
| | | | @codeList [Optional]
| | | | @listName [Optional]
| | | | @listVersion [Optional]
| | | | added 0-9
| | | | @numberingOrg [Optional]
| | | | @addType [Optional]
| | | | description 0-unbounded (pAU)
| | | | @ln [Optional] (N)
| | | fabricCompos 0-1

```

```

| | | | | percCompos 1-9
| | | | | @fibre [Required]
| | | | | fabricWidth 0-1
| | | | | @um [Optional] [Default= CMT]
| | | | | fabricSpecs 0-99
| | | | | - choose -
| | | | | | fabricCharText 1-1 (U)
| | | | | - or -
| | | | | | fabricChar 1-1
| | | | | - end choose -
| | | | | | specValue 0-1
| | | | | | @um [Optional]
| | | | | | @source [Optional]
| | | | | | @method [Optional]
| | | | | | @application [Optional]
| | | | | | @CV [Optional]
| | | | | - choose -
| | | | | | tolerance 0-2
| | | | | | @um [Required]
| | | | | - or -
| | | | | | pcTolerance 0-2
| | | | | | @um [Optional]
| | | | | - end choose -
| | | | | - choose -
| | | | | | pieceChain 0-99 (P)
| | | | | | serialN 1-9 (AU)
| | | | | | @numberingOrg [Optional]
| | | | | | @idQualifier [Optional] (N)
| | | | | | pieceLength 0-1
| | | | | | @um [Optional] [Default= MTR]
| | | | | | pieceWidth 0-1
| | | | | | @um [Optional] [Default= CMT]
| | | | | | pieceWeight 0-1
| | | | | | @um [Optional] [Default= KGM]
| | | | | | lotN 0-1
| | | | | | @numberingOrg [Optional]
| | | | | | dyeN 0-1
| | | | | | @numberingOrg [Optional]
| | | | | | packageN 0-1 (U)
| | | | | | @numberingOrg [Optional]
| | | | | | @packageContainerN [Optional]
| | | | | | piecePack 0-1
| | | | | - choose -
| | | | | | piecePackText 1-1 (U)
| | | | | - or -
| | | | | | pieceInnWrap1 1-1
| | | | | | pieceInnWrap2 0-1
| | | | | | pieceOutWrap 0-1
| | | | | - end choose -
| | | | | | pieceCut 0-99 (P)
| | | | | | serialN 1-9 (AU)
| | | | | | @numberingOrg [Optional]
| | | | | | @idQualifier [Optional] (N)
| | | | | | pieceLength 0-1
| | | | | | @um [Optional] [Default= MTR]
| | | | | | pieceWeight 0-1
| | | | | | @um [Optional] [Default= KGM]
| | | | | - or -
| | | | | | piece 0-99 (P)
| | | | | | @endUse [Optional]
| | | | | | serialN 0-9 (AU)

```



```

| | | | @numberingOrg [Optional]
| | | | @idQualifier [Optional] (N)
| | | | EPC 0-1
| | | | @numberingOrg [Optional]
| | | | @TID [Optional]
| | | | totFault 0-1
| | | | pieceStatus 0-1
| | | | pieceLength 0-1
| | | | @um [Optional] [Default= MTR]
| | | | pieceWidth 0-1
| | | | @um [Optional] [Default= CMT]
| | | | pieceCutWidth 0-1
| | | | @um [Optional] [Default= CMT]
| | | | pieceWeight 0-1
| | | | @um [Optional] [Default= KGM]
| | | | pieceWeightM 0-1
| | | | @um [Optional] [Default= GRM]
| | | | grossWeight 0-1 (p)
| | | | @um [Required]
| | | | pieceAllow 0-1
| | | | @um [Required]
| | | | lotN 0-2 (p)
| | | | @numberingOrg [Optional]
| | | | dyeN 0-1
| | | | @numberingOrg [Optional]
| | | | mixMatch 0-1
| | | | @numberingOrg [Optional]
| | | | packageN 0-1 (U)
| | | | @numberingOrg [Optional]
| | | | @packageContainerN [Optional]
| | | | piecePack 0-1
| | | | - choose -
| | | | | piecePackText 1-1 (U)
| | | | - or -
| | | | | pieceInnWrap1 1-1
| | | | | pieceInnWrap2 0-1
| | | | | pieceOutWrap 0-1
| | | | - end choose -
| | | | - end choose -
| | | | note 0-99
| | | | @numberingOrg [Optional]
| | | | @codeList [Optional]
| | | | @noteLabel [Optional]
| | | | qty 1-3
| | | | @um [Required]
| | | | price 0-1 (AU)
| | | | @um [Optional]
| | | | @priceQualifier [Optional] [Default= NET]
| | | | @currency [Optional] (a)
| | | | deliveryDate 0-1
| | | | @dateForm [Optional]
| | | | thirdParty 0-3 (AP)
| | | | @VAT [Optional]
| | | | @role [Required]
| | | | @sender [Optional] (a*)
| | | | | id 1-1
| | | | | @numberingOrg [Optional]
| | | | | legalName 0-1 (U)
| | | | | dept 0-1
| | | | | subDept 0-1 (N)
| | | | | person 0-1

```

```

| | | @email [Optional]
| | | @phone [Optional]
| | | @fax [Optional]
| | | street 0-1
| | | city 0-1
| | | subCountry 0-1
| | | country 0-1
| | | postCode 0-1
| | fabricComponent 1-9 (P)
| | | texCode 1-1 (P)
| | | | @numberingOrg [Optional]
| | | | | art 1-1 (U)
| | | | | @numberingOrg [Optional]
| | | | | @codeList [Optional]
| | | | | @listName [Optional]
| | | | | @listVersion [Optional]
| | | | | pattern 0-1
| | | | | @numberingOrg [Optional]
| | | | | @codeList [Optional]
| | | | | @listName [Optional]
| | | | | @listVersion [Optional]
| | | | | color 0-1
| | | | | @numberingOrg [Optional]
| | | | | @codeList [Optional]
| | | | | @listName [Optional]
| | | | | @listVersion [Optional]
| | | | | added 0-9
| | | | | @numberingOrg [Optional]
| | | | | @addType [Optional]
| | | | | description 0-unbounded (AU)
| | | | | @ln [Optional] (N)
| | | qty 1-3
| | | | @um [Required]
| | - choose -
| | | serialN 0-unbounded (AU)
| | | | @numberingOrg [Optional]
| | | | @idQualifier [Optional] (N)
| | - or -
| | | itemsList 0-unbounded (N)
| | | | qualityLevel 0-1 (N)
| | | | | @numberingOrg [Optional] (a)
| | | | | @codeList [Optional] (a)
| | | | | @listName [Optional] (a)
| | | | | @listVersion [Optional] (a)
| | | | | itemIdentification 1-unbounded (N)
| | | | | | serialN 1-9 (AU)
| | | | | | @numberingOrg [Optional]
| | | | | | @idQualifier [Optional] (N)
| | - end choose -
| | | refDoc 0-9 (P)
| | | | @docType [Required]
| | | | | docID 1-2
| | | | | @numberingOrg [Optional]
| | | | | docDate 0-1
| | | | | @dateForm [Optional]
| | | | | season 0-1 (A)
| | | | | @numberingOrg [Optional] (a)
| | | | | @codeList [Optional] (a)
| | | | | @listName [Optional] (a)
| | | | | @listVersion [Optional] (a)
| | | itemID 0-1 (U)

```

```

| | | | attachment 0-1 (N)
| | | | @uid [Optional]
| | | | | fileName 0-1 (N)
| | | | | @numberingOrg [Optional] (a)
| | | | | binaryObject 0-1 (N)
| | | | | @format [Optional] (Na)
| | | | | @mime [Optional] (Na)
| | | | | @encoding [Optional] (Na)
| | | | | @characterSet [Optional] (Na)
| | | | | externalReference 0-99 (N)
| | | | | | uri 1-1 (N)
| | | | | | @isURL [Optional] [Default= true] (Na)
| | | | | | mimeTypeCode 0-1 (N)
| | | | | | formatCode 0-1 (N)
| | | | | | encodingCode 0-1 (N)
| | | | | | characterSetCode 0-1 (N)
| | | | location 0-1
| | | | @LRI [Optional]
| | | | note 0-99
| | | | @numberingOrg [Optional]
| | | | @codeList [Optional]
| | | | @noteLabel [Optional]
| | | | fabPrintOperation 1-9 (P)
| | | | | fabPrintTech 1-1
| | | | | dyeStuff 0-1
| | | | | fabPrintSpecs 0-9
| | | | | - choose -
| | | | | | fabPrintCharText 1-1 (U)
| | | | | | - or -
| | | | | | | fabPrintChar 1-1
| | | | | | - end choose -
| | | | | | | specValue 0-1
| | | | | | | @um [Optional]
| | | | | | | @source [Optional]
| | | | | | | @method [Optional]
| | | | | | | @application [Optional]
| | | | | | | @CV [Optional]
| | | | | groundColor 0-9
| | | | | @numberingOrg [Optional]
| | | | | @screenN [Required]
| | | | | refDoc 0-9 (P)
| | | | | @docType [Required]
| | | | | | docID 1-2
| | | | | | @numberingOrg [Optional]
| | | | | | docDate 0-1
| | | | | | @dateForm [Optional]
| | | | | | season 0-1 (A)
| | | | | | @numberingOrg [Optional] (a)
| | | | | | @codeList [Optional] (a)
| | | | | | @listName [Optional] (a)
| | | | | | @listVersion [Optional] (a)
| | | | | | itemID 0-1 (U)
| | | | | | attachment 0-1 (N)
| | | | | | @uid [Optional]
| | | | | | | fileName 0-1 (N)
| | | | | | | @numberingOrg [Optional] (a)
| | | | | | | binaryObject 0-1 (N)
| | | | | | | @format [Optional] (Na)
| | | | | | | @mime [Optional] (Na)
| | | | | | | @encoding [Optional] (Na)
| | | | | | | @characterSet [Optional] (Na)

```

|  |  |  |  |  |  |
|--|--|--|--|--|--|
|  |  |  |  |  | <b>externalReference 0-99</b> (N)      |
|  |  |  |  |  | uri 1-1 (N)                            |
|  |  |  |  |  | @isURL [Optional] [Default= true] (Na) |
|  |  |  |  |  | mimeCode 0-1 (N)                       |
|  |  |  |  |  | formatCode 0-1 (N)                     |
|  |  |  |  |  | encodingCode 0-1 (N)                   |
|  |  |  |  |  | characterSetCode 0-1 (N)               |
|  |  |  |  |  | note 0-99                              |
|  |  |  |  |  | @numberingOrg [Optional]               |
|  |  |  |  |  | @codeList [Optional]                   |
|  |  |  |  |  | @noteLabel [Optional]                  |
|  |  |  |  |  | <b>dtScheme 0-1</b> (P)                |
|  |  |  |  |  | @taxType [Required]                    |
|  |  |  |  |  | taxCategory 0-1                        |
|  |  |  |  |  | taxRate 0-1                            |
|  |  |  |  |  | legalRef 0-1 (A)                       |
|  |  |  |  |  | @numberingOrg [Optional] (a)           |
|  |  |  |  |  | @codeList [Optional] (a)               |
|  |  |  |  |  | @listName [Optional] (a)               |
|  |  |  |  |  | @listVersion [Optional] (a)            |
|  |  |  |  |  | note 0-99                              |
|  |  |  |  |  | @numberingOrg [Optional]               |
|  |  |  |  |  | @codeList [Optional]                   |
|  |  |  |  |  | @noteLabel [Optional]                  |

## 2.2 Detailed description of document elements

Following tables show all elements (complex and simple) used in this document. Description includes: 1) element's information: xml tag, name, brief description, data type and syntax constraints; 2) information about use of the element in a particular position in the document: xpath and possible associated notes.

### 2.2.1 Complex elements (Aggregate Business Information Entities)

Complex elements are those elements whose content is composed of other elements (childs). Complex elements are alphabetically ordered.

|                          |  |
|--------------------------|--|
| <b>allowanceCharge</b>   | Allowances and Charges related to an Order or a contract<br>(XPath <a href="#">TEXPrintOrder/terms/allowanceCharge</a> ) 0-9 (A)   |
| <b>attachment</b>        | an attached document. An attachment can refer to an external document or be included with the document being exchanged<br>(XPath <a href="#">TEXPrintOrder/TPCObody/TPCOitem/fabPrintOperation/refDoc/attachment</a> ) 0-1 (N)<br>(XPath <a href="#">TEXPrintOrder/TPCObody/TPCOitem/fabricComponent/refDoc/attachment</a> ) 0-1 (N)<br>(XPath <a href="#">TEXPrintOrder/TPCOheader/refDoc/attachment</a> ) 0-1 (N)                    |
| <b>buyer</b>             | details of the Buyer (party that buys the good or service that is object of the current collaborative process)<br>- base type: Nad,<br>(XPath <a href="#">TEXPrintOrder/TPCOheader/buyer</a> ) 1-1 (AP)  |
| <b>dtScheme</b>          | set of data usable to declare the duty or tax applied<br>(XPath <a href="#">TEXPrintOrder/TPCObody/TPCOitem/dtScheme</a> ) 0-1 (P)<br>(XPath <a href="#">TEXPrintOrder/terms/allowanceCharge/dtScheme</a> ) 0-1 (P)  |
| <b>externalReference</b> | details about an external object, such as a document stored at a remote location<br>(XPath <a href="#">TEXPrintOrder/TPCObody/TPCOitem/fabPrintOperation/refDoc/attachment/externalReference</a> ) 0-99 (N)<br>(XPath <a href="#">TEXPrintOrder/TPCObody/TPCOitem/fabricComponent/refDoc/attachment/externalReference</a> ) 0-99 (N)<br>(XPath <a href="#">TEXPrintOrder/TPCOheader/refDoc/attachment/externalReference</a> ) 0-99 (N) |
| <b>fabPrintOperation</b> | details of a fabric printing operation<br>(XPath <a href="#">TEXPrintOrder/TPCObody/TPCOitem/fabPrintOperation</a> ) 1-9 (P)   |
| <b>fabPrintSpecs</b>     | technical specifications of a fabric printing operation<br>(XPath <a href="#">TEXPrintOrder/TPCObody/TPCOitem/fabPrintOperation/fabPrintSpecs</a> ) 0-9  |
| <b>fabricComponent</b>   | identification details of a fabric used in a sub-contracted manufacturing operation<br>(XPath <a href="#">TEXPrintOrder/TPCObody/TPCOitem/fabricComponent</a> ) 1-9 (P)  |
| <b>fabricCompos</b>      | composition of the fabric according to the Directory 97/37/CE<br>(XPath <a href="#">TEXPrintOrder/TPCObody/TPCOitem/fabricProd/fabricCompos</a> ) 0-1  |
| <b>fabricProd</b>        | manufacturing specifications of the product to be obtained from an operation of the sub-contracted production of fabric<br>(XPath <a href="#">TEXPrintOrder/TPCObody/TPCOitem/fabricProd</a> ) 1-1 (P)   |
| <b>fabricSpecs</b>       | technical characteristics of fabric, linked either to an operation of subcontracted production or to the purchase<br>(XPath <a href="#">TEXPrintOrder/TPCObody/TPCOitem/fabricProd/fabricSpecs</a> ) 0-99  |
| <b>insPayment</b>        | payment details for payment by installments<br>(XPath <a href="#">TEXPrintOrder/terms/insPayment</a> ) 0-5<br>- note: <i>excluded the case of offers, this set of data is alternative to payment set and must be iterated for each payment installment</i>   |

|                           |   |
|---------------------------|---|
| <b>itemIdentification</b> | serial identification of a product unit<br>(XPath <a href="#">TEXPrintOrder/TPCObody/TPCOitem/fabricComponent/itemsList/itemIdentification</a> ) 1-unbounded (N)<br>- note: <i>identification of the single product unit contained in the list</i>  |
| <b>itemsList</b>          | list of the single product units<br>(XPath <a href="#">TEXPrintOrder/TPCObody/TPCOitem/fabricComponent/itemsList</a> ) 0-unbounded (N)<br>- note: <i>it may be used to identify the pieces/chains that the Subcontractor must use for the commissioned work with multiple serial Ids for each one</i>   |
| <b>payment</b>            | payment details for payment all in one<br>(XPath <a href="#">TEXPrintOrder/terms/payment</a> ) 0-5<br>- note: <i>excluded the case of offers, this set of data is alternative to insPayment, it can be iterated to specify alternative terms of payment (e.g.: 60 days or 30 days with 3% discount)</i>   |
| <b>piece</b>              | Identification data and measurement of the fabric piece.<br>(XPath <a href="#">TEXPrintOrder/TPCObody/TPCOitem/fabricProd/piece</a> ) 0-99 (P)  |
| <b>pieceChain</b>         | identification data and measurements of a chain of pieces still to be cut<br>(XPath <a href="#">TEXPrintOrder/TPCObody/TPCOitem/fabricProd/pieceChain</a> ) 0-99 (P)  |
| <b>pieceCut</b>           | identification data and measurements of a fabric piece belonging to a chain still to be cut<br>(XPath <a href="#">TEXPrintOrder/TPCObody/TPCOitem/fabricProd/pieceChain/pieceCut</a> ) 0-99 (P)<br>- note: <i>here the data of the pieces making up the chain should be specified</i>   |
| <b>piecePack</b>          | type of wrapping or packing of the fabric pieces<br>(XPath <a href="#">TEXPrintOrder/TPCObody/TPCOitem/fabricProd/pieceChain/piecePack</a> ) 0-1<br>(XPath <a href="#">TEXPrintOrder/TPCObody/TPCOitem/fabricProd/piece/piecePack</a> ) 0-1   |
| <b>refDoc</b>             | identification of a document and of an item thereof, to which the message makes reference<br>(XPath <a href="#">TEXPrintOrder/TPCOheader/refDoc</a> ) 0-9 (P)<br>(XPath <a href="#">TEXPrintOrder/TPCObody/TPCOitem/fabPrintOperation/refDoc</a> ) 0-9 (P)<br>(XPath <a href="#">TEXPrintOrder/TPCObody/TPCOitem/fabricComponent/refDoc</a> ) 0-9 (P)<br>- note: <i>here the delivery documents can be specified</i>  |
| <b>subContractor</b>      | details of the Sub-contractor<br>- base type: Nad,<br>(XPath <a href="#">TEXPrintOrder/TPCOheader/subContractor</a> ) 1-1 (AP)  |
| <b>terms</b>              | details of the commercial obligations for payment and delivery<br>(XPath <a href="#">TEXPrintOrder/terms</a> ) 0-1 (P)  |
| <b>texCode</b>            | full codification of the textile product<br>(XPath <a href="#">TEXPrintOrder/TPCObody/TPCOitem/fabricComponent/texCode</a> ) 1-1 (P)<br>(XPath <a href="#">TEXPrintOrder/TPCObody/TPCOitem/fabricProd/texCode</a> ) 1-1 (P)   |
| <b>thirdParty</b>         | details of the Third Party, different from Sender and Receiver of the document<br>- base type: Nad,<br>(XPath <a href="#">TEXPrintOrder/TPCOheader/thirdParty</a> ) 0-5 (AP)<br>- note: <i>here the Party to whom the Subcontractor must send the semi-finished products for subsequent operations can be specified</i><br>(XPath <a href="#">TEXPrintOrder/TPCObody/TPCOitem/thirdParty</a> ) 0-3 (AP)<br>- note: <i>here the Party to whom the Subcontractor must send the semi-finished product for subsequent operations can be specified</i> |
| <b>TPCObody</b>           | body of the document TEXTILE PRINTING COMMISSION ORDER<br>(XPath <a href="#">TEXPrintOrder/TPCObody</a> ) 1-1   |
| <b>TPCOheader</b>         | header of the document TEXTILE PRINTING COMMISSION ORDER<br>(XPath <a href="#">TEXPrintOrder/TPCOheader</a> ) 1-1 (P)   |

|                  |  |
|------------------|--|
| <b>TPCOitem</b>  | line of the document TEXTILE PRINTING COMMISSION ORDER<br>(XPath <a href="#">TEXPrintOrder/TPCObody/TPCOitem</a> ) 1-unbounded (P) |
| <b>trade</b>     | general terms of trade for the specified supply<br>(XPath <a href="#">TEXPrintOrder/terms/trade</a> ) 0-1                          |
| <b>transInfo</b> | details of transport: mode, carrier and delivery place<br>(XPath <a href="#">TEXPrintOrder/terms/transInfo</a> ) 0-5 (pAP)         |

## 2.2.2 Simple elements (Basic Business Information Entities)

Simple elements are those elements whose content is characterized by a data type plus a domain of possible values. Simple elements are alphabetically ordered.

|                      |   |
|----------------------|---|
| AC_amount            | amount of an Allowance or Charge<br>- base type: decimal, fraction digits: 2,<br>(XPath <a href="#">TEXPrintOrder/terms/allowanceCharge/AC_amount</a> ) 1-1 (A)   |
| AC_category          | coded specification of an Allowance or Charge<br>- base type: string, cod. table: T41<br><a href="http://www.ebiz.enea.it/moda-ml/repository/codelist/v2018-1/gc_T41.xml">http://www.ebiz.enea.it/moda-ml/repository/codelist/v2018-1/gc_T41.xml</a><br>(XPath <a href="#">TEXPrintOrder/terms/allowanceCharge/AC_category</a> ) 1-1  |
| AC_categoryText      | free text description of an Allowance or Charge<br>- base type: string, max length: 250,<br>(XPath <a href="#">TEXPrintOrder/terms/allowanceCharge/AC_categoryText</a> ) 1-1 (U)  |
| AC_percent           | amount of an Allowance or Charge as a percentage (always non negative value)<br>- base type: decimal, max inclusive: 100, fraction digits: 2,<br>(XPath <a href="#">TEXPrintOrder/terms/allowanceCharge/AC_percent</a> ) 1-1  |
| added                | additional code of the product (complementing the formers)<br>- base type: string, max length: 80,<br>(XPath <a href="#">TEXPrintOrder/TPCObody/TPCOitem/fabricComponent/texCode/added</a> ) 0-9<br>- note: <i>here an additional codification (see table T44) can be specified</i><br>(XPath <a href="#">TEXPrintOrder/TPCObody/TPCOitem/fabricProd/texCode/added</a> ) 0-9<br>- note: <i>here an additional codification (see table T44) can be specified</i>   |
| additionalIdentifier | additional identification code of a Party, for example customs registries or others<br>- base type: string, max length: 15,<br>(XPath <a href="#">TEXPrintOrder/TPCOheader/buyer/additionalIdentifier</a> ) 0-9 (N)<br>- note: <i>identifiers for example for exports, such as MID (Manufacturer Identification Code), EORI (E.O.R.I. - Economic Operator Registration and Identification)</i>  |
| @addType             | qualifier of the additional coding of a product<br>- base type: string, cod. table: T44<br><a href="http://www.ebiz.enea.it/moda-ml/repository/codelist/v2018-1/gc_T44.xml">http://www.ebiz.enea.it/moda-ml/repository/codelist/v2018-1/gc_T44.xml</a><br>(XPath <a href="#">TEXPrintOrder/TPCObody/TPCOitem/fabricProd/texCode/added/@addType</a> ) [Optional]<br>- nota: <i>addType allows the clarification of the meaning of the added element content; it is strongly suggested to use it always.</i><br>(XPath <a href="#">TEXPrintOrder/TPCObody/TPCOitem/fabricComponent/texCode/added/@addType</a> ) [Optional]<br>- nota: <i>addType allows the clarification of the meaning of the added element content; it is strongly suggested to use it always.</i> |
| @application         | force or similar condition (e.g. no. of revolutions) applied in a test as specified within the standard<br>- base type: string, max length: 15,   |

|                  |   |
|------------------|---|
|                  | <p>(XPath TEXPrintOrder/TPCObody/TPCOitem/fabPrintOperation/fabPrintSpecs/specValue/@application) [Optional]</p> <p>(XPath TEXPrintOrder/TPCObody/TPCOitem/fabricProd/fabricSpecs/specValue/@application) [Optional]</p>  |
| art              | <p>article number of the product</p> <p>- base type: string, max length: 80,</p> <p>(XPath TEXPrintOrder/TPCObody/TPCOitem/fabricComponent/texCode/art) 1-1 (U)</p> <p>- note: <i>can be used either for the base-article (excluding pattern/colour) or for the SKU</i></p> <p>(XPath TEXPrintOrder/TPCObody/TPCOitem/fabricProd/texCode/art) 1-1 (U)</p> <p>- note: <i>can be used either for the base-article (excluding pattern/colour) or for the SKU</i></p>   |
| binaryObject     | <p>a binary large object containing an attached document, Coding 'base64Binary' is recommended.</p> <p>- base type: base64Binary,</p> <p>(XPath TEXPrintOrder/TPCObody/TPCOitem/fabricComponent/refDoc/attachment/binaryObject) 0-1 (N)</p> <p>(XPath TEXPrintOrder/TPCOheader/refDoc/attachment/binaryObject) 0-1 (N)</p> <p>(XPath TEXPrintOrder/TPCObody/TPCOitem/fabPrintOperation/refDoc/attachment/binaryObject) 0-1 (N)</p>  |
| carrier          | <p>identification of the transport carrier</p> <p>- base type: string, max length: 40,</p> <p>(XPath TEXPrintOrder/terms/transInfo/carrier) 0-1</p>   |
| @characterSet    | <p>the character set of the binary object (examples UTF-8, UTF-16, Windows-1252, ISO-8859-7,...)</p> <p>- base type: normalizedString,</p> <p>(XPath TEXPrintOrder/TPCObody/TPCOitem/fabPrintOperation/refDoc/attachment/binaryObject/@characterSet) [Optional] (Na)</p> <p>(XPath TEXPrintOrder/TPCOheader/refDoc/attachment/binaryObject/@characterSet) [Optional] (N)</p> <p>(XPath TEXPrintOrder/TPCObody/TPCOitem/fabricComponent/refDoc/attachment/binaryObject/@characterSet) [Optional] (Na)</p>  |
| characterSetCode | <p>the character set of an external document (examples UTF-8, UTF-16, Windows-1252, ISO-8859-7,...)</p> <p>- base type: normalizedString,</p> <p>(XPath TEXPrintOrder/TPCObody/TPCOitem/fabricComponent/refDoc/attachment/externalReference/characterSetCode) 0-1 (N)</p> <p>(XPath TEXPrintOrder/TPCObody/TPCOitem/fabPrintOperation/refDoc/attachment/externalReference/characterSetCode) 0-1 (N)</p> <p>(XPath TEXPrintOrder/TPCOheader/refDoc/attachment/externalReference/characterSetCode) 0-1 (N)</p>  |
| city             | <p>name of the city (town, village)</p> <p>- base type: string, max length: 40,</p> <p>(XPath TEXPrintOrder/TPCOheader/subContractor/city) 0-1</p> <p>(XPath TEXPrintOrder/TPCObody/TPCOitem/thirdParty/city) 0-1</p> <p>(XPath TEXPrintOrder/TPCOheader/buyer/city) 0-1</p> <p>(XPath TEXPrintOrder/TPCOheader/thirdParty/city) 0-1</p>  |
| @codeList        | <p>it specifies the URL where the list of codes used to make an instance of the element can be found</p> <p>- base type: string, max length: 255,</p> <p>(XPath TEXPrintOrder/TPCObody/TPCOitem/fabricComponent/note/@codeList) [Optional]</p> <p>- nota: <i>must be used to provide (URL) the list of codes used in "noteLabel"</i></p> <p>(XPath TEXPrintOrder/TPCOheader/note/@codeList) [Optional]</p> <p>- nota: <i>must be used to provide (URL) the list of codes used in "noteLabel"</i></p> <p>(XPath TEXPrintOrder/TPCObody/TPCOitem/fabricProd/texCode/art/@codeList) [Optional]</p> <p>- nota: <i>at least one out of this attribute and "numberingOrg" should be set</i></p> |



|         |  |
|---------|--|
|         | <p>(XPath <code>TEXPrintOrder/TPCObody/TPCOitem/fabricComponent/texCode/art/@codeList</code>) [Optional]</p> <p>- nota: <i>at least one out of this attribute and "numberingOrg" should be set</i></p> <p>(XPath <code>TEXPrintOrder/TPCObody/TPCOitem/fabricProd/texCode/pattern/@codeList</code>) [Optional]</p> <p>- nota: <i>at least one out of this attribute and "numberingOrg" should be set</i></p> <p>(XPath <code>TEXPrintOrder/TPCObody/TPCOitem/fabricProd/note/@codeList</code>) [Optional]</p> <p>- nota: <i>must be used to provide (URL) the list of codes used in "noteLabel"</i></p> <p>(XPath <code>TEXPrintOrder/TPCObody/TPCOitem/fabricProd/texCode/color/@codeList</code>) [Optional]</p> <p>- nota: <i>this attribute should be used either single or coupled with "listName" and "listVersion"</i></p> <p>(XPath <code>TEXPrintOrder/TPCObody/TPCOitem/fabricComponent/texCode/pattern/@codeList</code>) [Optional]</p> <p>- nota: <i>at least one out of this attribute and "numberingOrg" should be set</i></p> <p>(XPath <code>TEXPrintOrder/TPCObody/TPCOitem/fabricComponent/itemsList/qualityLevel/@codeList</code>) [Optional] (a)</p> <p>- nota: <i>at least one out of this attribute and "numberingOrg" should be set</i></p> <p>(XPath <code>TEXPrintOrder/TPCObody/TPCOitem/fabricComponent/refDoc/season/@codeList</code>) [Optional] (a)</p> <p>- nota: <i>this attribute should be used either single or coupled with "listName" and "listVersion"</i></p> <p>(XPath <code>TEXPrintOrder/TPCObody/TPCOitem/fabricComponent/texCode/color/@codeList</code>) [Optional]</p> <p>- nota: <i>this attribute should be used either single or coupled with "listName" and "listVersion"</i></p> <p>(XPath <code>TEXPrintOrder/terms/allowanceCharge/dtScheme/note/@codeList</code>) [Optional]</p> <p>- nota: <i>must be used to provide (URL) the list of codes used in "noteLabel"</i></p> <p>(XPath <code>TEXPrintOrder/terms/allowanceCharge/dtScheme/legalRef/@codeList</code>) [Optional]</p> <p>(XPath <code>TEXPrintOrder/TPCObody/TPCOitem/fabPrintOperation/refDoc/season/@codeList</code>) [Optional] (a)</p> <p>- nota: <i>this attribute should be used either single or coupled with "listName" and "listVersion"</i></p> <p>(XPath <code>TEXPrintOrder/TPCOheader/refDoc/season/@codeList</code>) [Optional] (a)</p> <p>- nota: <i>this attribute should be used either single or coupled with "listName" and "listVersion"</i></p> <p>(XPath <code>TEXPrintOrder/TPCObody/TPCOitem/dtScheme/legalRef/@codeList</code>) [Optional] (a)</p> <p>(XPath <code>TEXPrintOrder/TPCObody/TPCOitem/fabPrintOperation/note/@codeList</code>) [Optional]</p> <p>- nota: <i>must be used to provide (URL) the list of codes used in "noteLabel"</i></p> <p>(XPath <code>TEXPrintOrder/TPCObody/TPCOitem/dtScheme/note/@codeList</code>) [Optional]</p> <p>- nota: <i>must be used to provide (URL) the list of codes used in "noteLabel"</i></p> <p>(XPath <code>TEXPrintOrder/TPCOheader/season/@codeList</code>) [Optional] (a)</p> <p>- nota: <i>this attribute should be used either single or coupled with "listName" and "listVersion"</i></p> |
| color   | <p>colour number of the product, when not included in the model or fabric code</p> <p>- base type: string, max length: 15,</p> <p>(XPath <code>TEXPrintOrder/TPCObody/TPCOitem/fabricComponent/texCode/color</code>) 0-1</p> <p>(XPath <code>TEXPrintOrder/TPCObody/TPCOitem/fabricProd/texCode/color</code>) 0-1</p>  |
| country | <p>code of the nation</p> <p>- base type: string, cod. table: T10</p> <p><a href="http://www.ebiz.enea.it/moda-ml/repository/codelist/v2018-1/gc_T10.xml">http://www.ebiz.enea.it/moda-ml/repository/codelist/v2018-1/gc_T10.xml</a></p> <p>(XPath <code>TEXPrintOrder/TPCOheader/thirdParty/country</code>) 0-1</p> <p>(XPath <code>TEXPrintOrder/TPCOheader/subContractor/country</code>) 0-1</p> <p>(XPath <code>TEXPrintOrder/TPCObody/TPCOitem/thirdParty/country</code>) 0-1</p> <p>(XPath <code>TEXPrintOrder/TPCOheader/buyer/country</code>) 0-1</p>  |
| @CTest  | <p>indicates the need to execute a colour test before the operation</p> <p>- base type: string, cod. table: NT38</p> <p><a href="http://www.ebiz.enea.it/moda-ml/repository/codelist/v2018-1/gc_NT38.xml">http://www.ebiz.enea.it/moda-ml/repository/codelist/v2018-1/gc_NT38.xml</a></p>  |

|                  |   |
|------------------|---|
|                  | (XPath <a href="#">TEXPrintOrder/TPCObody/TPCOitem/fabricProd/@CTest</a> ) [Optional]   |
| @currency        | <p>currency in which a specified monetary data is expressed</p> <p>- base type: string, cod. table: T9<br/> <a href="http://www.ebiz.enea.it/moda-ml/repository/codelist/v2018-1/gc_T9.xml">http://www.ebiz.enea.it/moda-ml/repository/codelist/v2018-1/gc_T9.xml</a><br/> (XPath <a href="#">TEXPrintOrder/terms/allowanceCharge/@currency</a>) [Optional] (a)<br/> (XPath <a href="#">TEXPrintOrder/terms/allowanceCharge/AC_amount/@currency</a>) [Optional] (a)<br/> (XPath <a href="#">TEXPrintOrder/TPCObody/TPCOitem/price/@currency</a>) [Optional] (a)</p> <p>- nota: <i>Currency referred by the price.</i></p>   |
| @CV              | <p>coefficient of variation (CV) of a measurement</p> <p>- base type: decimal,<br/> (XPath <a href="#">TEXPrintOrder/TPCObody/TPCOitem/fabricProd/fabricSpecs/specValue/@CV</a>) [Optional]<br/> (XPath <a href="#">TEXPrintOrder/TPCObody/TPCOitem/fabPrintOperation/fabPrintSpecs/specValue/@CV</a>) [Optional]</p>   |
| @dateForm        | <p>format used for the date</p> <p>- base type: string, cod. table: NT29<br/> <a href="http://www.ebiz.enea.it/moda-ml/repository/codelist/v2018-1/gc_NT29.xml">http://www.ebiz.enea.it/moda-ml/repository/codelist/v2018-1/gc_NT29.xml</a><br/> (XPath <a href="#">TEXPrintOrder/TPCOheader/msgDate/@dateForm</a>) [Optional]<br/> (XPath <a href="#">TEXPrintOrder/TPCObody/TPCOitem/fabPrintOperation/refDoc/docDate/@dateForm</a>) [Optional]<br/> (XPath <a href="#">TEXPrintOrder/TPCOheader/refDoc/docDate/@dateForm</a>) [Optional]<br/> (XPath <a href="#">TEXPrintOrder/TPCObody/TPCOitem/fabricComponent/refDoc/docDate/@dateForm</a>) [Optional]<br/> (XPath <a href="#">TEXPrintOrder/terms/transInfo/delEffectiveDate/@dateForm</a>) [Optional]<br/> (XPath <a href="#">TEXPrintOrder/TPCObody/TPCOitem/deliveryDate/@dateForm</a>) [Optional]<br/> (XPath <a href="#">TEXPrintOrder/terms/transInfo/despatchDate/@dateForm</a>) [Optional] (a)</p> |
| delEffectiveDate | <p>effective date of delivery of goods (declared in Despatch), according to one of the patterns YYYY-MM-DD, YYYY-MM-DD:HH-MM or YYYY-WW.</p> <p>- base type: string,<br/> (XPath <a href="#">TEXPrintOrder/terms/transInfo/delEffectiveDate</a>) 0-1 (p)</p>  |
| deliveryDate     | <p>date of delivery of goods, requested or promised in the purchase process, according to one of the patterns YYYY-MM-DD, YYYY-MM-DD:HH-MM or YY YY-WW.</p> <p>- base type: string,<br/> (XPath <a href="#">TEXPrintOrder/TPCObody/TPCOitem/deliveryDate</a>) 0-1</p>   |
| deliveryPlace    | <p>place of delivery of goods, ultimate or related to a given leg</p> <p>- base type: string, max length: 250,<br/> (XPath <a href="#">TEXPrintOrder/terms/transInfo/deliveryPlace</a>) 0-1 (U)</p>   |
| dept             | <p>name or code of a contact department within a Party</p> <p>- base type: string, max length: 40,<br/> (XPath <a href="#">TEXPrintOrder/TPCOheader/buyer/dept</a>) 0-1<br/> (XPath <a href="#">TEXPrintOrder/TPCOheader/thirdParty/dept</a>) 0-1<br/> (XPath <a href="#">TEXPrintOrder/TPCOheader/subContractor/dept</a>) 0-1<br/> (XPath <a href="#">TEXPrintOrder/TPCObody/TPCOitem/thirdParty/dept</a>) 0-1</p>   |
| description      | <p>free text description. The content of the element must be unique, it might be translated and repeated into more languages (thus no more than one instance for each language).</p> <p>- base type: string, max length: 250,<br/> (XPath <a href="#">TEXPrintOrder/TPCObody/TPCOitem/fabricComponent/texCode/description</a>) 0-unbounded (AU)</p> <p>- note: <i>Product description</i><br/> (XPath <a href="#">TEXPrintOrder/TPCObody/TPCOitem/fabricProd/texCode/description</a>) 0-unbounded (pAU)</p> <p>- note: <i>Product description</i></p>   |
| despatchDate     | <p>date of despatch of goods, requested or promised in the purchase process, according to one of the patterns YYYY-MM-DD, YYYY-MM-DD:HH-MM or Y</p>   |

|               |   |
|---------------|---|
|               | <p>YYY-WW.<br/> - base type: string,<br/> (XPath TEXPrintOrder/terms/transInfo/despatchDate) 0-1 (N)</p>  |
| despatchPlace | <p>place of despatch of goods, origin or related to a given leg<br/> - base type: string, max length: 250,<br/> (XPath TEXPrintOrder/terms/transInfo/despatchPlace) 0-1 (N)</p>   |
| docDate       | <p>date of issue of the referenced document, according to one of the patterns Y<br/> YYY-MM-DD, YYYY-MM-DD:HH-MM or YYYY-WW.<br/> - base type: string,<br/> (XPath TEXPrintOrder/TPCObody/TPCOitem/fabPrintOperation/<br/> refDoc/docDate) 0-1<br/> (XPath TEXPrintOrder/TPCObody/TPCOitem/fabricComponent/<br/> refDoc/docDate) 0-1<br/> (XPath TEXPrintOrder/TPCOheader/refDoc/docDate) 0-1</p>   |
| docID         | <p>identification number of the referenced document SINCE 2008-1 ITS USE I<br/> N THE HEADER IS DISCOURAGED (REPLACED BY msgID)<br/> - base type: string, max length: 80,<br/> (XPath TEXPrintOrder/TPCObody/TPCOitem/fabPrintOperation/<br/> refDoc/docID) 1-2</p> <hr/> <p>AAAA-WARNING! - text not AVAILABLE n. 245 - In=en<br/> (XPath TEXPrintOrder/TPCOheader/docID) 0-1<br/> (XPath TEXPrintOrder/TPCObody/TPCOitem/fabricComponent/<br/> refDoc/docID) 1-2</p> <hr/> <p>AAAA-WARNING! - text not AVAILABLE n. 245 - In=en<br/> (XPath TEXPrintOrder/TPCOheader/refDoc/docID) 1-2 (p)</p> <hr/> <p>AAAA-WARNING! - text not AVAILABLE n. 245 - In=en</p> |
| @docType      | <p>type or class to which the referenced document belongs<br/> - base type: string, cod. table: T21<br/> <a href="http://www.ebiz.enea.it/moda-ml/repository/codelist/v2018-1/gc_T21.xml">http://www.ebiz.enea.it/moda-ml/repository/codelist/v2018-1/gc_T21.xml</a><br/> (XPath TEXPrintOrder/TPCObody/TPCOitem/fabricComponent/<br/> refDoc/@docType) [Required]<br/> (XPath TEXPrintOrder/TPCObody/TPCOitem/fabPrintOperation/<br/> refDoc/@docType) [Required]<br/> (XPath TEXPrintOrder/TPCOheader/refDoc/@docType) [Required]</p>   |
| dyeN          | <p>number of the dying batch of a textile product<br/> - base type: string, max length: 15,<br/> (XPath TEXPrintOrder/TPCObody/TPCOitem/fabricProd/piece/dyeN) 0-1<br/> (XPath TEXPrintOrder/TPCObody/TPCOitem/fabricProd/<br/> pieceChain/dyeN) 0-1</p>  |
| dyeStuff      | <p>dye stuff used in the fabric dye process<br/> - base type: string, cod. table: T16<br/> <a href="http://www.ebiz.enea.it/moda-ml/repository/codelist/v2018-1/gc_T16.xml">http://www.ebiz.enea.it/moda-ml/repository/codelist/v2018-1/gc_T16.xml</a><br/> (XPath TEXPrintOrder/TPCObody/TPCOitem/fabPrintOperation/dyeStuff) 0-1</p>  |
| @email        | <p>electronic mail address of the contact person within a Party<br/> - base type: string, max length: 250,<br/> (XPath TEXPrintOrder/TPCOheader/subContractor/person/@email) [Optional]<br/> (XPath TEXPrintOrder/TPCOheader/buyer/person/@email) [Optional]<br/> (XPath TEXPrintOrder/TPCObody/TPCOitem/thirdParty/person/@email) [Optional]<br/> (XPath TEXPrintOrder/TPCOheader/thirdParty/person/@email) [Optional]</p>   |
| @encoding     | <p>specifies the decoding algorithm of the binary object<br/> - base type: normalizedString,<br/> (XPath TEXPrintOrder/TPCObody/TPCOitem/fabricComponent/<br/> refDoc/attachment/binaryObject/@encoding) [Optional] (Na)<br/> (XPath TEXPrintOrder/TPCObody/TPCOitem/fabPrintOperation/<br/> refDoc/attachment/binaryObject/@encoding) [Optional] (Na)<br/> (XPath TEXPrintOrder/TPCOheader/refDoc/attachment/<br/> binaryObject/@encoding) [Optional] (N)</p>  |

|                  |   |
|------------------|---|
| encodingCode     | <p>the encoding/decoding algorithm used with the external object (example is 'base64Binary')</p> <p>- base type: normalizedString,</p> <p>(XPath TEXPrintOrder/TPCOheader/refDoc/attachment/externalReference/encodingCode) 0-1 (N)</p> <p>(XPath TEXPrintOrder/TPCObody/TPCOitem/fabricComponent/refDoc/attachment/externalReference/encodingCode) 0-1 (N)</p> <p>(XPath TEXPrintOrder/TPCObody/TPCOitem/fabPrintOperation/refDoc/attachment/externalReference/encodingCode) 0-1 (N)</p> |
| @endUse          | <p>specifies the final use of the fabric</p> <p>- base type: string, cod. table: NT4</p> <p><a href="http://www.ebiz.enea.it/moda-ml/repository/codelist/v2018-1/gc_NT4.xml">http://www.ebiz.enea.it/moda-ml/repository/codelist/v2018-1/gc_NT4.xml</a></p> <p>(XPath TEXPrintOrder/TPCObody/TPCOitem/fabricProd/piece/@endUse) [Optional]</p>  |
| EPC              | <p>serial identifier used for tracing a physical item with RFID technology</p> <p>- base type: string,</p> <p>(XPath TEXPrintOrder/TPCObody/TPCOitem/fabricProd/piece/EPC) 0-1</p> <p>- note: <i>the use of this element is DEPRECATED, use the appropriate elements (serialN)</i></p>  |
| fabPrintChar     | <p>code specifying a characteristic or parameter of the fabric printing</p> <p>- base type: string, cod. table: T45</p> <p><a href="http://www.ebiz.enea.it/moda-ml/repository/codelist/v2018-1/gc_T45.xml">http://www.ebiz.enea.it/moda-ml/repository/codelist/v2018-1/gc_T45.xml</a></p> <p>(XPath TEXPrintOrder/TPCObody/TPCOitem/fabPrintOperation/fabPrintSpecs/fabPrintChar) 1-1</p>  |
| fabPrintCharText | <p>free text describing a characteristic or parameter of the fabric printing</p> <p>- base type: string, max length: 250,</p> <p>(XPath TEXPrintOrder/TPCObody/TPCOitem/fabPrintOperation/fabPrintSpecs/fabPrintCharText) 1-1 (U)</p>   |
| fabPrintTech     | <p>operation technology used for fabric printing</p> <p>- base type: string, cod. table: T264</p> <p><a href="http://www.ebiz.enea.it/moda-ml/repository/codelist/v2018-1/gc_T264.xml">http://www.ebiz.enea.it/moda-ml/repository/codelist/v2018-1/gc_T264.xml</a></p> <p>(XPath TEXPrintOrder/TPCObody/TPCOitem/fabPrintOperation/fabPrintTech) 1-1</p>  |
| fabricChar       | <p>code of the physical or mechanical parameter used to define a "technical characteristic of the fabric" (see Fabric technical sheet)</p> <p>- base type: string, cod. table: T13</p> <p><a href="http://www.ebiz.enea.it/moda-ml/repository/codelist/v2018-1/gc_T13.xml">http://www.ebiz.enea.it/moda-ml/repository/codelist/v2018-1/gc_T13.xml</a></p> <p>(XPath TEXPrintOrder/TPCObody/TPCOitem/fabricProd/fabricSpecs/fabricChar) 1-1</p>  |
| fabricCharText   | <p>free text describing the physical or mechanical parameter used to define a "technical characteristic of the fabric"</p> <p>- base type: string, max length: 80,</p> <p>(XPath TEXPrintOrder/TPCObody/TPCOitem/fabricProd/fabricSpecs/fabricCharText) 1-1 (U)</p>   |
| fabricWidth      | <p>width of the fabric as technical specification</p> <p>- base type: decimal, min inclusive: 0, fraction digits: 2,</p> <p>(XPath TEXPrintOrder/TPCObody/TPCOitem/fabricProd/fabricWidth) 0-1</p>  |
| @fax             | <p>fax number of the contact person within a Party</p> <p>- base type: string, max length: 35,</p> <p>(XPath TEXPrintOrder/TPCObody/TPCOitem/thirdParty/person/@fax) [Optional]</p> <p>(XPath TEXPrintOrder/TPCOheader/subContractor/person/@fax) [Optional]</p> <p>(XPath TEXPrintOrder/TPCOheader/thirdParty/person/@fax) [Optional]</p> <p>(XPath TEXPrintOrder/TPCOheader/buyer/person/@fax) [Optional]</p>   |
| @fibre           | <p>type of fibre used in a textile product</p> <p>- base type: string, cod. table: T19</p> <p><a href="http://www.ebiz.enea.it/moda-ml/repository/codelist/v2018-1/gc_T19.xml">http://www.ebiz.enea.it/moda-ml/repository/codelist/v2018-1/gc_T19.xml</a></p> <p>(XPath TEXPrintOrder/TPCObody/TPCOitem/fabricProd/fabricCompos/percCompos/@fibre) [Required]</p>   |

|               |  |
|---------------|--|
| fileName      | <p>unique identifier (name) of the file</p> <p>- base type: string, max length: 255,</p> <p>(XPath <code>TEXPrintOrder/TPCOheader/refDoc/attachment/fileName</code>) 0-1 (N)</p> <p>(XPath <code>TEXPrintOrder/TPCObody/TPCOitem/fabricComponent/refDoc/attachment/fileName</code>) 0-1 (N)</p> <p>(XPath <code>TEXPrintOrder/TPCObody/TPCOitem/fabPrintOperation/refDoc/attachment/fileName</code>) 0-1 (N)</p>   |
| @finDiscount  | <p>financial discount rate applied for payment by the date specified</p> <p>- base type: decimal, min inclusive: 0, max inclusive: 100, fraction digits: 2,</p> <p>(XPath <code>TEXPrintOrder/terms/payment/@finDiscount</code>) [Optional]</p>  |
| @finSurcharge | <p>financial surcharge rate applied for payment after the date specified</p> <p>- base type: decimal, min inclusive: 0, max inclusive: 100, fraction digits: 2,</p> <p>(XPath <code>TEXPrintOrder/terms/payment/@finSurcharge</code>) [Optional]</p>   |
| @format       | <p>the format of the binary content (examples xml, pdf, doc,...)</p> <p>- base type: string,</p> <p>(XPath <code>TEXPrintOrder/TPCObody/TPCOitem/fabricComponent/refDoc/attachment/binaryObject/@format</code>) [Optional] (Na)</p> <p>(XPath <code>TEXPrintOrder/TPCOheader/refDoc/attachment/binaryObject/@format</code>) [Optional] (N)</p> <p>(XPath <code>TEXPrintOrder/TPCObody/TPCOitem/fabPrintOperation/refDoc/attachment/binaryObject/@format</code>) [Optional] (Na)</p>  |
| formatCode    | <p>the format of the external object (examples xml, pdf, doc,...)</p> <p>- base type: normalizedString,</p> <p>(XPath <code>TEXPrintOrder/TPCObody/TPCOitem/fabPrintOperation/refDoc/attachment/externalReference/formatCode</code>) 0-1 (N)</p> <p>(XPath <code>TEXPrintOrder/TPCOheader/refDoc/attachment/externalReference/formatCode</code>) 0-1 (N)</p> <p>(XPath <code>TEXPrintOrder/TPCObody/TPCOitem/fabricComponent/refDoc/attachment/externalReference/formatCode</code>) 0-1 (N)</p>  |
| grossWeight   | <p>the gross weight, declared for transport or customs purpose</p> <p>- base type: decimal, min inclusive: 0, fraction digits: 2,</p> <p>(XPath <code>TEXPrintOrder/TPCObody/TPCOitem/fabricProd/piece/grossWeight</code>) 0-1 (p)</p> <p>- note: <i>gross Weight is related to the weight of the piece after packing.</i></p> <p>(XPath <code>TEXPrintOrder/terms/transInfo/grossWeight</code>) 0-1</p>   |
| groundColor   | <p>ground colour related to a printing screen</p> <p>- base type: string, max length: 15,</p> <p>(XPath <code>TEXPrintOrder/TPCObody/TPCOitem/fabPrintOperation/groundColor</code>) 0-9</p>  |
| id            | <p>primary identification code of a Party; it is recommended the format: nation code (ISO 3166) + VAT identification number (11 crt), with the qualifier "numberingOrg"= MF</p> <p>- base type: string, max length: 15,</p> <p>(XPath <code>TEXPrintOrder/TPCObody/TPCOitem/thirdParty/id</code>) 1-1</p> <p>(XPath <code>TEXPrintOrder/TPCOheader/thirdParty/id</code>) 1-1</p> <p>(XPath <code>TEXPrintOrder/TPCOheader/subContractor/id</code>) 1-1</p> <p>(XPath <code>TEXPrintOrder/TPCOheader/buyer/id</code>) 1-1 (p)</p>   |
| @idQualifier  | <p>Qualification of the identifier.</p> <p>- base type: string,</p> <p>(XPath <code>TEXPrintOrder/TPCObody/TPCOitem/fabricComponent/itemsList/itemIdentification/serialN/@idQualifier</code>) [Optional] (N)</p> <p>- nota: <i>this attribute should be used when the numberingOrg attribute is not enough to declare the type of serial identifier</i></p> <p>(XPath <code>TEXPrintOrder/TPCObody/TPCOitem/fabricProd/piece/serialN/@idQualifier</code>) [Optional] (N)</p> <p>- nota: <i>this attribute should be used when the numberingOrg attribute is not enough to declare the type of serial identifier</i></p> <p>(XPath <code>TEXPrintOrder/TPCOheader/buyer/additionalIdentifier/@idQualifier</code>) [Optional] (Na)</p> |

|              |  |
|--------------|--|
|              | <p>- nota: <i>this attribute should be used when the numberingOrg attribute is not enough to declare the type of identifier</i><br/> (XPath TEXPrintOrder/TPCObody/TPCOitem/fabricProd/pieceChain/pieceCut/serialN/@idQualifier) [Optional] (N)</p> <p>- nota: <i>this attribute should be used when the numberingOrg attribute is not enough to declare the type of serial identifier</i><br/> (XPath TEXPrintOrder/TPCObody/TPCOitem/fabricComponent/serialN/@idQualifier) [Optional] (N)</p> <p>- nota: <i>this attribute should be used when the numberingOrg attribute is not enough to declare the type of serial identifier</i><br/> (XPath TEXPrintOrder/TPCObody/TPCOitem/fabricProd/pieceChain/serialN/@idQualifier) [Optional] (N)</p> <p>- nota: <i>this attribute should be used when the numberingOrg attribute is not enough to declare the type of serial identifier</i></p> |
| incoTerm     | <p>specification of the terms of trade (INCOTERMS)<br/> - base type: string, cod. table: T3<br/> <a href="http://www.ebiz.enea.it/moda-ml/repository/codelist/v2018-1/gc_T3.xml">http://www.ebiz.enea.it/moda-ml/repository/codelist/v2018-1/gc_T3.xml</a><br/> (XPath TEXPrintOrder/terms/trade/incoTerm) 1-1</p>   |
| incoTermText | <p>free text specifying the terms of trade (incoterm, location)<br/> - base type: string, max length: 250,<br/> (XPath TEXPrintOrder/terms/trade/incoTermText) 1-1 (U)</p>   |
| @isCharge    | <p>Indicates if the element to which it refers is a charge (true = charge, false = allowance)<br/> - base type: boolean, min length: 0,<br/> (XPath TEXPrintOrder/terms/allowanceCharge/@isCharge) [Optional] (N)</p>  |
| @isURL       | <p>it indicates if the referred element is an URL (true) or not (false)<br/> - base type: boolean,<br/> (XPath TEXPrintOrder/TPCOheader/refDoc/attachment/externalReference/uri/@isURL) [Optional] [Default= true] (Na)</p> <p>- nota: <i>usage of URLs is recommended</i><br/> (XPath TEXPrintOrder/TPCObody/TPCOitem/fabPrintOperation/refDoc/attachment/externalReference/uri/@isURL) [Optional] [Default= true] (Na)</p> <p>- nota: <i>usage of URLs is recommended</i><br/> (XPath TEXPrintOrder/TPCObody/TPCOitem/fabricComponent/refDoc/attachment/externalReference/uri/@isURL) [Optional] [Default= true] (Na)</p> <p>- nota: <i>usage of URLs is recommended</i></p>   |
| itemID       | <p>number of the line/item of the referenced document<br/> - base type: string, max length: 40,<br/> (XPath TEXPrintOrder/TPCOheader/refDoc/itemID) 0-1 (U)<br/> (XPath TEXPrintOrder/TPCObody/TPCOitem/fabPrintOperation/refDoc/itemID) 0-1 (U)<br/> (XPath TEXPrintOrder/TPCObody/TPCOitem/fabricComponent/refDoc/itemID) 0-1 (U)</p>  |
| legalName    | <p>legal name of a Party<br/> - base type: string, max length: 250,<br/> (XPath TEXPrintOrder/TPCOheader/subContractor/legalName) 0-1 (U)<br/> (XPath TEXPrintOrder/TPCObody/TPCOitem/thirdParty/legalName) 0-1 (U)<br/> (XPath TEXPrintOrder/TPCOheader/thirdParty/legalName) 0-1 (U)<br/> (XPath TEXPrintOrder/TPCOheader/buyer/legalName) 0-1 (U)</p>   |
| legalRef     | <p>legal reference of the duty or tax or fee category<br/> - base type: string,<br/> (XPath TEXPrintOrder/TPCObody/TPCOitem/dtScheme/legalRef) 0-1 (A)<br/> (XPath TEXPrintOrder/terms/allowanceCharge/dtScheme/legalRef) 0-1 (A)</p>  |
| lineN        | <p>number of the line item of the present message (xml document); it is set by the role that produces the document. Usually it is a progressive number, but</p>  |

|                     |   |
|---------------------|---|
|                     | <p>not always.</p> <ul style="list-style-type: none"> <li>- base type: positiveInteger, min inclusive: 1, max inclusive: 9999, (XPath TEXPrintOrder/TPCObody/TPCOitem/lineN) 1-1</li> </ul>   |
| <p>@listName</p>    | <p>the name of the list of codes used to make an instance of the element (it might be thought as descriptive element, i.e. 'fabric printing technologies', or not, i.e. "T264")</p> <ul style="list-style-type: none"> <li>- base type: string, max length: 40, (XPath TEXPrintOrder/TPCObody/TPCOitem/dtScheme/legalRef/@listName) [Optional] (a)</li> <li>- nota: <i>this attribute should always be used coupled with "numberingOrg"</i> (XPath TEXPrintOrder/TPCObody/TPCOitem/fabPrintOperation/refDoc/season/@listName) [Optional] (a)</li> <li>- nota: <i>this attribute should always be used coupled with "numberingOrg"</i> (XPath TEXPrintOrder/TPCOheader/refDoc/season/@listName) [Optional] (a)</li> <li>- nota: <i>this attribute should always be used coupled with "numberingOrg"</i> (XPath TEXPrintOrder/TPCObody/TPCOitem/fabricProd/texCode/art/@listName) [Optional]</li> <li>- nota: <i>this attribute should always be used coupled with "numberingOrg"</i> (XPath TEXPrintOrder/TPCObody/TPCOitem/fabricComponent/texCode/art/@listName) [Optional]</li> <li>- nota: <i>this attribute should always be used coupled with "numberingOrg"</i> (XPath TEXPrintOrder/terms/allowanceCharge/dtScheme/legalRef/@listName) [Optional]</li> <li>- nota: <i>this attribute should always be used coupled with "numberingOrg"</i> (XPath TEXPrintOrder/TPCObody/TPCOitem/fabricComponent/texCode/color/@listName) [Optional]</li> <li>- nota: <i>this attribute should always be used coupled with "numberingOrg"</i> (XPath TEXPrintOrder/TPCObody/TPCOitem/fabricComponent/texCode/pattern/@listName) [Optional]</li> <li>- nota: <i>this attribute should always be used coupled with "numberingOrg"</i> (XPath TEXPrintOrder/TPCObody/TPCOitem/fabricComponent/itemsList/qualityLevel/@listName) [Optional] (a)</li> <li>- nota: <i>this attribute should always be used coupled with "numberingOrg"</i> (XPath TEXPrintOrder/TPCObody/TPCOitem/fabricComponent/refDoc/season/@listName) [Optional] (a)</li> <li>- nota: <i>this attribute should always be used coupled with "numberingOrg"</i> (XPath TEXPrintOrder/TPCOheader/season/@listName) [Optional] (a)</li> <li>- nota: <i>this attribute should always be used coupled with "numberingOrg"</i> (XPath TEXPrintOrder/TPCObody/TPCOitem/fabricProd/texCode/color/@listName) [Optional]</li> <li>- nota: <i>this attribute should always be used coupled with "numberingOrg"</i> (XPath TEXPrintOrder/TPCObody/TPCOitem/fabricProd/texCode/pattern/@listName) [Optional]</li> <li>- nota: <i>this attribute should always be used coupled with "numberingOrg"</i></li> </ul> |
| <p>@listVersion</p> | <p>it specifies the version of the list of codes used to make an instance of the element</p> <ul style="list-style-type: none"> <li>- base type: string, max length: 6, (XPath TEXPrintOrder/TPCObody/TPCOitem/fabricComponent/texCode/color/@listVersion) [Optional]</li> <li>- nota: <i>this attribute should always be used coupled with "numberingOrg" and "listName"</i> (XPath TEXPrintOrder/TPCObody/TPCOitem/fabricComponent/refDoc/season/@listVersion) [Optional] (a)</li> <li>- nota: <i>this attribute should always be used coupled with "numberingOrg" and "listName"</i> (XPath TEXPrintOrder/TPCObody/TPCOitem/fabricComponent/itemsList/qualityLevel/@listVersion) [Optional] (a)</li> <li>- nota: <i>this attribute should always be used coupled with "numberingOrg" and "listName"</i> (XPath TEXPrintOrder/TPCObody/TPCOitem/fabPrintOperation/refDoc/season/@listVersion) [Optional] (a)</li> <li>- nota: <i>this attribute should always be used coupled with "numberingOrg" and "listName"</i></li> </ul>   |

|          |  |
|----------|--|
|          | <p>(XPath TEXPrintOrder/TPCObody/TPCOitem/dtScheme/legalRef/@listVersion) [Optional] (a)</p> <p>- nota: <i>this attribute should always be used coupled with “numberingOrg” and “listName”</i></p> <p>(XPath TEXPrintOrder/TPCObody/TPCOitem/fabricProd/texCode/color/@listVersion) [Optional]</p> <p>- nota: <i>this attribute should always be used coupled with “numberingOrg” and “listName”</i></p> <p>(XPath TEXPrintOrder/TPCOheader/refDoc/season/@listVersion) [Optional] (a)</p> <p>- nota: <i>this attribute should always be used coupled with “numberingOrg” and “listName”</i></p> <p>(XPath TEXPrintOrder/TPCObody/TPCOitem/fabricProd/texCode/pattern/@listVersion) [Optional]</p> <p>- nota: <i>this attribute should always be used coupled with “numberingOrg” and “listName”</i></p> <p>(XPath TEXPrintOrder/TPCObody/TPCOitem/fabricProd/texCode/art/@listVersion) [Optional]</p> <p>- nota: <i>this attribute should always be used coupled with “numberingOrg” and “listName”</i></p> <p>(XPath TEXPrintOrder/TPCOheader/season/@listVersion) [Optional] (a)</p> <p>- nota: <i>this attribute should always be used coupled with “numberingOrg” and “listName”</i></p> <p>(XPath TEXPrintOrder/TPCObody/TPCOitem/fabricComponent/texCode/pattern/@listVersion) [Optional]</p> <p>- nota: <i>this attribute should always be used coupled with “numberingOrg” and “listName”</i></p> <p>(XPath TEXPrintOrder/terms/allowanceCharge/dtScheme/legalRef/@listVersion) [Optional]</p> <p>- nota: <i>this attribute should always be used coupled with “numberingOrg” and “listName”</i></p> <p>(XPath TEXPrintOrder/TPCObody/TPCOitem/fabricComponent/texCode/art/@listVersion) [Optional]</p> <p>- nota: <i>this attribute should always be used coupled with “numberingOrg” and “listName”</i></p> |
| @ln      | <p>Language code.</p> <p>- base type: string, cod. table: NT60</p> <p><a href="http://www.ebiz.enea.it/moda-ml/repository/codelist/v2018-1/gc_NT60.xml">http://www.ebiz.enea.it/moda-ml/repository/codelist/v2018-1/gc_NT60.xml</a></p> <p>(XPath TEXPrintOrder/TPCObody/TPCOitem/fabricProd/texCode/description/@ln) [Optional] (N)</p> <p>(XPath TEXPrintOrder/TPCObody/TPCOitem/fabricComponent/texCode/description/@ln) [Optional] (N)</p>   |
| location | <p>specification of a location</p> <p>- base type: string, max length: 40,</p> <p>(XPath TEXPrintOrder/TPCObody/TPCOitem/fabricComponent/location) 0-1</p> <p>- note: <i>it may be used to specify the location where lie the pieces that the Subcontractor must use for the commissioned work operation</i></p> <p>(XPath TEXPrintOrder/terms/trade/location) 0-1</p> <p>- note: <i>place to which the INCOTERM applies</i></p>   |
| @logo    | <p>company logo (URL of the image jpeg or gif). It is recommended that the width of the image does not exceed 640 pixel.</p> <p>- base type: string, max length: 255,</p> <p>(XPath TEXPrintOrder/TPCOheader/buyer/@logo) [Optional]</p>   |
| lotN     | <p>lot number of a product or batch number of the raw material</p> <p>- base type: string, max length: 15,</p> <p>(XPath TEXPrintOrder/TPCObody/TPCOitem/fabricProd/piece/lotN) 0-2 (p)</p> <p>- note: <i>The lotN instances must differ by value of the numberingOrg attribute</i></p> <p>(XPath TEXPrintOrder/TPCObody/TPCOitem/fabricProd/pieceChain/lotN) 0-1</p>  |
| @LRI     | <p>attribute usable to format a string according to a customized User rule (local rule)</p>  |



|              |   |
|--------------|---|
|              | <p>- base type: string, cod. table: NT3<br/> <a href="http://www.ebiz.enea.it/moda-ml/repository/codelist/v2018-1/gc_NT3.xml">http://www.ebiz.enea.it/moda-ml/repository/codelist/v2018-1/gc_NT3.xml</a><br/> (XPath TEXPrintOrder/TPCObody/TPCOitem/fabricComponent/location/@LRI) [Optional]<br/> (XPath TEXPrintOrder/terms/trade/location/@LRI) [Optional]</p>  |
| @maxQty      | <p>maximum product quantity<br/> - base type: decimal, min inclusive: 0, fraction digits: 2,<br/> (XPath TEXPrintOrder/terms/allowanceCharge/@maxQty) [Optional] (N)<br/> - nota: <i>maximum quantity of product for the application of this allowance or charge</i></p>  |
| @method      | <p>standard protocol or method employed in a test to evaluate a characteristic or a parameter<br/> - base type: string, max length: 80,<br/> (XPath TEXPrintOrder/TPCObody/TPCOitem/fabricProd/fabricSpecs/specValue/@method) [Optional]<br/> (XPath TEXPrintOrder/TPCObody/TPCOitem/fabPrintOperation/fabPrintSpecs/specValue/@method) [Optional]</p>  |
| @mime        | <p>the mime type of the binary object<br/> - base type: normalizedString,<br/> (XPath TEXPrintOrder/TPCOheader/refDoc/attachment/binaryObject/@mime) [Optional] (N)<br/> (XPath TEXPrintOrder/TPCObody/TPCOitem/fabPrintOperation/refDoc/attachment/binaryObject/@mime) [Optional] (Na)<br/> (XPath TEXPrintOrder/TPCObody/TPCOitem/fabricComponent/refDoc/attachment/binaryObject/@mime) [Optional] (Na)</p>   |
| mimeCode     | <p>mime type of the external object<br/> - base type: normalizedString,<br/> (XPath TEXPrintOrder/TPCObody/TPCOitem/fabricComponent/refDoc/attachment/externalReference/mimeCode) 0-1 (N)</p> <hr/> <p>AAAA-WARNING! - text not AVAILABLE n. 245 - In=en<br/> (XPath TEXPrintOrder/TPCObody/TPCOitem/fabPrintOperation/refDoc/attachment/externalReference/mimeCode) 0-1 (N)</p> <hr/> <p>AAAA-WARNING! - text not AVAILABLE n. 245 - In=en<br/> (XPath TEXPrintOrder/TPCOheader/refDoc/attachment/externalReference/mimeCode) 0-1 (N)</p> <hr/> <p>AAAA-WARNING! - text not AVAILABLE n. 245 - In=en</p> |
| @minQty      | <p>minimum product quantity<br/> - base type: decimal, min inclusive: 0, fraction digits: 2,<br/> (XPath TEXPrintOrder/terms/allowanceCharge/@minQty) [Optional] (a)<br/> - nota: <i>minimum quantity of product for the application of this allowance or charge</i></p>  |
| mixMatch     | <p>colour hue used for the match of garments<br/> - base type: string, max length: 15,<br/> (XPath TEXPrintOrder/TPCObody/TPCOitem/fabricProd/piece/mixMatch) 0-1</p>   |
| msgCurrency  | <p>currency used to express the monetary amounts of the message<br/> - base type: string, cod. table: T9<br/> <a href="http://www.ebiz.enea.it/moda-ml/repository/codelist/v2018-1/gc_T9.xml">http://www.ebiz.enea.it/moda-ml/repository/codelist/v2018-1/gc_T9.xml</a><br/> (XPath TEXPrintOrder/TPCOheader/msgCurrency) 0-1</p>   |
| msgDate      | <p>date of issue of the present message (xml document), according to one of the patterns YYYY-MM-DD, YYYY-MM-DD:HH-MM or YYYY-WW.<br/> - base type: string,<br/> (XPath TEXPrintOrder/TPCOheader/msgDate) 1-1</p>   |
| @msgfunction | <p>function performed by the present message with regards to the transmission<br/> - base type: string, cod. table: NT18<br/> <a href="http://www.ebiz.enea.it/moda-ml/repository/codelist/v2018-1/gc_NT18.xml">http://www.ebiz.enea.it/moda-ml/repository/codelist/v2018-1/gc_NT18.xml</a><br/> (XPath TEXPrintOrder/@msgfunction) [Optional] [Default= OR]</p>  |

|               |   |
|---------------|---|
| msgID         | <p>key identifier of the business document in the information system of the issuing Party. In case of more despatches of the same business document, it is unchanged.</p> <p>- base type: string, max length: 35,<br/>(XPath TEXPrintOrder/TPCOheader/msgID) 0-1</p>  |
| msgN          | <p>identification number given to the message (xml document) by its issuer. In case of more despatches of the same business document, it changes.</p> <p>- base type: string, max length: 35,<br/>(XPath TEXPrintOrder/TPCOheader/msgN) 1-1</p>   |
| netWeight     | <p>the net weight declared for transport or customs purpose</p> <p>- base type: decimal, min inclusive: 0, fraction digits: 2,<br/>(XPath TEXPrintOrder/terms/transInfo/netWeight) 0-1</p>  |
| note          | <p>free text or structured (computer processing) note. For note structuring use the attributes "noteLabel" and "codelist"</p> <p>- base type: string, max length: 350,<br/>(XPath TEXPrintOrder/TPCObody/TPCOitem/fabricComponent/note) 0-99<br/>(XPath TEXPrintOrder/TPCOheader/note) 0-99<br/>(XPath TEXPrintOrder/terms/allowanceCharge/dtScheme/note) 0-99<br/>(XPath TEXPrintOrder/TPCObody/TPCOitem/fabPrintOperation/note) 0-99<br/>(XPath TEXPrintOrder/TPCObody/TPCOitem/dtScheme/note) 0-99<br/>(XPath TEXPrintOrder/TPCObody/TPCOitem/fabricProd/note) 0-99</p>  |
| @noteLabel    | <p>subject qualifier of a note</p> <p>- base type: string, max length: 35,<br/>(XPath TEXPrintOrder/TPCObody/TPCOitem/dtScheme/note/@noteLabel) [Optional]</p> <p>- nota: <i>must be used to qualify the subject of the note</i><br/>(XPath TEXPrintOrder/TPCObody/TPCOitem/fabPrintOperation/note/@noteLabel) [Optional]</p> <p>- nota: <i>must be used to qualify the subject of the note</i><br/>(XPath TEXPrintOrder/TPCOheader/note/@noteLabel) [Optional]</p> <p>- nota: <i>must be used to qualify the subject of the note</i><br/>(XPath TEXPrintOrder/TPCObody/TPCOitem/fabricProd/note/@noteLabel) [Optional]</p> <p>- nota: <i>must be used to qualify the subject of the note</i><br/>(XPath TEXPrintOrder/TPCObody/TPCOitem/fabricComponent/note/@noteLabel) [Optional]</p> <p>- nota: <i>must be used to qualify the subject of the note</i><br/>(XPath TEXPrintOrder/terms/allowanceCharge/dtScheme/note/@noteLabel) [Optional]</p> <p>- nota: <i>must be used to qualify the subject of the note</i></p>  |
| @numberingOrg | <p>code specifying the organisation who has created or owns the coding or numbering system</p> <p>- base type: string, cod. table: NT6<br/><a href="http://www.ebiz.enea.it/moda-ml/repository/codelist/v2018-1/gc_NT6.xml">http://www.ebiz.enea.it/moda-ml/repository/codelist/v2018-1/gc_NT6.xml</a><br/>(XPath TEXPrintOrder/TPCObody/TPCOitem/fabricComponent/serialN/@numberingOrg) [Optional]</p> <p>- nota: <i>here the issuer of the serial number must be specified (when different from the Supplier)</i><br/>(XPath TEXPrintOrder/TPCObody/TPCOitem/fabricComponent/texCode/@numberingOrg) [Optional]<br/>(XPath TEXPrintOrder/TPCObody/TPCOitem/fabricProd/note/@numberingOrg) [Optional]</p> <p>- nota: <i>must be used to specify the organization that created the list of codes used in "noteLabel"</i><br/>(XPath TEXPrintOrder/TPCObody/TPCOitem/fabPrintOperation/note/@numberingOrg) [Optional]</p> <p>- nota: <i>must be used to specify the organization that created the list of codes used in "noteLabel"</i><br/>(XPath TEXPrintOrder/TPCObody/TPCOitem/fabricComponent/itemsList/qualityLevel/@numberingOrg) [Optional] (a)</p> |

- nota: *this attribute should be used either single or coupled with "listName" and "listVersion"*  
(XPath TEXPrintOrder/TPCObody/TPCOitem/fabricComponent/  
texCode/art/@numberingOrg) [Optional]

- nota: *this attribute should be used either single or coupled with "listName" and "listVersion"*  
(XPath TEXPrintOrder/TPCOheader/refDoc/season/@numberingOrg) [Optional] (a)

- nota: *this attribute should be used either single or coupled with "listName" and "listVersion"*  
(XPath TEXPrintOrder/TPCObody/TPCOitem/fabricComponent/  
texCode/color/@numberingOrg) [Optional]

- nota: *this attribute should be used either single or coupled with "listName" and "listVersion"*  
(XPath TEXPrintOrder/TPCObody/TPCOitem/fabricProd/  
texCode/pattern/@numberingOrg) [Optional]

- nota: *this attribute should be used either single or coupled with "listName" and "listVersion"*  
(XPath TEXPrintOrder/TPCObody/TPCOitem/fabricProd/  
texCode/art/@numberingOrg) [Optional]

- nota: *this attribute should be used either single or coupled with "listName" and "listVersion"*  
(XPath TEXPrintOrder/TPCObody/TPCOitem/fabricComponent/  
texCode/pattern/@numberingOrg) [Optional]

- nota: *this attribute should be used either single or coupled with "listName" and "listVersion"*  
(XPath TEXPrintOrder/TPCObody/TPCOitem/thirdParty/id/@numberingOrg) [Optional]

(XPath TEXPrintOrder/terms/allowanceCharge/dtScheme/  
legalRef/@numberingOrg) [Optional]

- nota: *this attribute should be used either single or coupled with "listName" and "listVersion"*  
(XPath TEXPrintOrder/TPCOheader/refDoc/docID/@numberingOrg) [Optional]

- nota: *here can be specified whose document numbering is used (e.g.: Client, Supplier, ..)*  
(XPath TEXPrintOrder/TPCObody/TPCOitem/fabricProd/  
texCode/color/@numberingOrg) [Optional]

- nota: *this attribute should be used either single or coupled with "listName" and "listVersion"*  
(XPath TEXPrintOrder/TPCObody/TPCOitem/fabricComponent/  
texCode/added/@numberingOrg) [Optional]

- nota: *this attribute should be used either single or coupled with "listName" and "listVersion"*  
(XPath TEXPrintOrder/terms/allowanceCharge/dtScheme/note/@numberingOrg) [Optional]

- nota: *must be used to specify the organization that created the list of codes used in "noteLabel"*  
(XPath TEXPrintOrder/TPCOheader/season/@numberingOrg) [Optional] (a)

- nota: *this attribute should be used either single or coupled with "listName" and "listVersion"*  
(XPath TEXPrintOrder/TPCObody/TPCOitem/fabricProd/  
texCode/added/@numberingOrg) [Optional]

- nota: *this attribute should be used either single or coupled with "listName" and "listVersion"*  
(XPath TEXPrintOrder/TPCObody/TPCOitem/fabricProd/texCode/@numberingOrg) [Optional]

(XPath TEXPrintOrder/TPCOheader/refDoc/attachment/  
fileName/@numberingOrg) [Optional]

(XPath TEXPrintOrder/TPCObody/TPCOitem/dtScheme/note/@numberingOrg) [Optional]

- nota: *must be used to specify the organization that created the list of codes used in "noteLabel"*  
(XPath TEXPrintOrder/TPCOheader/subContractor/id/@numberingOrg) [Optional]

(XPath TEXPrintOrder/TPCObody/TPCOitem/fabPrintOperation/  
groundColor/@numberingOrg) [Optional]

|  |  |
|--|--|
|  | <p>(XPath TEXPrintOrder/TPCObody/TPCOitem/fabPrintOperation/refDoc/attachment/fileName/@numberingOrg) [Optional] (a)</p> <p>(XPath TEXPrintOrder/TPCObody/TPCOitem/fabricComponent/note/@numberingOrg) [Optional]</p> <p>- nota: <i>must be used to specify the organization that created the list of codes used in "noteLabel"</i></p> <p>(XPath TEXPrintOrder/TPCObody/TPCOitem/fabricProd/piece/EPC/@numberingOrg) [Optional]</p> <p>(XPath TEXPrintOrder/TPCObody/TPCOitem/fabricProd/piece/serialN/@numberingOrg) [Optional]</p> <p>- nota: <i>here the issuer of the serial number must be specified (when different from the Supplier)</i></p> <p>(XPath TEXPrintOrder/TPCObody/TPCOitem/fabricProd/pieceChain/pieceCut/serialN/@numberingOrg) [Optional]</p> <p>- nota: <i>here the issuer of the serial number must be specified (when different from the Supplier)</i></p> <p>(XPath TEXPrintOrder/TPCOheader/buyer/id/@numberingOrg) [Optional]</p> <p>(XPath TEXPrintOrder/TPCObody/TPCOitem/fabricProd/pieceChain/dyeN/@numberingOrg) [Optional]</p> <p>(XPath TEXPrintOrder/TPCObody/TPCOitem/fabricProd/pieceChain/packageN/@numberingOrg) [Optional]</p> <p>(XPath TEXPrintOrder/TPCOheader/buyer/additionalIdentifier/@numberingOrg) [Optional] (a)</p> <p>- nota: <i>here the issuer of the identifier must be specified</i></p> <p>(XPath TEXPrintOrder/TPCObody/TPCOitem/fabPrintOperation/refDoc/docID/@numberingOrg) [Optional]</p> <p>- nota: <i>here can be specified whose document numbering is used (e.g.: Client, Supplier, ..)</i></p> <p>(XPath TEXPrintOrder/TPCObody/TPCOitem/fabricProd/pieceChain/lotN/@numberingOrg) [Optional]</p> <p>(XPath TEXPrintOrder/TPCObody/TPCOitem/fabPrintOperation/refDoc/season/@numberingOrg) [Optional] (a)</p> <p>- nota: <i>this attribute should be used either single or coupled with "listName" and "listVersion"</i></p> <p>(XPath TEXPrintOrder/TPCOheader/thirdParty/id/@numberingOrg) [Optional]</p> <p>(XPath TEXPrintOrder/TPCObody/TPCOitem/fabricProd/piece/mixMatch/@numberingOrg) [Optional]</p> <p>(XPath TEXPrintOrder/TPCObody/TPCOitem/fabricProd/piece/dyeN/@numberingOrg) [Optional]</p> <p>(XPath TEXPrintOrder/TPCObody/TPCOitem/fabricProd/pieceChain/serialN/@numberingOrg) [Optional]</p> <p>- nota: <i>here the issuer of the serial number must be specified (when different from the Supplier)</i></p> <p>(XPath TEXPrintOrder/TPCObody/TPCOitem/fabricComponent/itemsList/itemIdentification/serialN/@numberingOrg) [Optional]</p> <p>- nota: <i>here the issuer of the serial number must be specified (when different from the Supplier)</i></p> <p>(XPath TEXPrintOrder/TPCObody/TPCOitem/fabricComponent/refDoc/docID/@numberingOrg) [Optional]</p> <p>- nota: <i>here can be specified whose document numbering is used (e.g.: Client, Supplier, ..)</i></p> <p>(XPath TEXPrintOrder/TPCObody/TPCOitem/fabricProd/piece/packageN/@numberingOrg) [Optional]</p> <p>(XPath TEXPrintOrder/TPCObody/TPCOitem/fabricProd/piece/lotN/@numberingOrg) [Optional]</p> <p>(XPath TEXPrintOrder/TPCOheader/docID/@numberingOrg) [Optional]</p> <p>- nota: <i>here can be specified whose document numbering is used (e.g.: Client, Supplier, ..)</i></p> <p>(XPath TEXPrintOrder/TPCOheader/note/@numberingOrg) [Optional]</p> <p>- nota: <i>must be used to specify the organization that created the list of codes used in "noteLabel"</i></p> <p>(XPath TEXPrintOrder/TPCObody/TPCOitem/fabricComponent/refDoc/attachment/fileName/@numberingOrg) [Optional] (a)</p> |
|--|--|

|                    |   |
|--------------------|---|
|                    | <p>(XPath <code>TEXPrintOrder/TPCObody/TPCOitem/fabricComponent/refDoc/season/@numberingOrg</code>) [Optional] (a)</p> <p>- nota: <i>this attribute should be used either single or coupled with "listName" and "listVersion"</i></p> <p>(XPath <code>TEXPrintOrder/TPCObody/TPCOitem/dtScheme/legalRef/@numberingOrg</code>) [Optional] (a)</p> <p>- nota: <i>this attribute should be used either single or coupled with "listName" and "listVersion"</i></p> |
| @packageContainerN | <p>reference usable to indicate the outer package containing this package</p> <p>- base type: string, max length: 40,</p> <p>(XPath <code>TEXPrintOrder/TPCObody/TPCOitem/fabricProd/piece/packageN/@packageContainerN</code>) [Optional]</p> <p>(XPath <code>TEXPrintOrder/TPCObody/TPCOitem/fabricProd/pieceChain/packageN/@packageContainerN</code>) [Optional]</p>  |
| packageN           | <p>serial number used to identify a transport package</p> <p>- base type: string, max length: 40,</p> <p>(XPath <code>TEXPrintOrder/TPCObody/TPCOitem/fabricProd/pieceChain/packageN</code>) 0-1 (U)</p> <p>(XPath <code>TEXPrintOrder/TPCObody/TPCOitem/fabricProd/piece/packageN</code>) 0-1 (U)</p> <p>- note: <i>here the transport package containing the piece can be identified</i></p>  |
| @part              | <p>percent fraction of a total payment</p> <p>- base type: decimal, min inclusive: 1, max inclusive: 99, fraction digits: 2,</p> <p>(XPath <code>TEXPrintOrder/terms/insPayment/@part</code>) [Required]</p> <p>- nota: <i>here the % value of each installment must be indicated</i></p>   |
| pattern            | <p>pattern/design number of the product, when not included in the article code</p> <p>- base type: string, max length: 15,</p> <p>(XPath <code>TEXPrintOrder/TPCObody/TPCOitem/fabricComponent/texCode/pattern</code>) 0-1</p> <p>(XPath <code>TEXPrintOrder/TPCObody/TPCOitem/fabricProd/texCode/pattern</code>) 0-1</p>   |
| payMode            | <p>way or means of payment</p> <p>- base type: string, cod. table: T2</p> <p><a href="http://www.ebiz.enea.it/moda-ml/repository/codelist/v2018-1/gc_T2.xml">http://www.ebiz.enea.it/moda-ml/repository/codelist/v2018-1/gc_T2.xml</a></p> <p>(XPath <code>TEXPrintOrder/terms/insPayment/payMode</code>) 0-1</p> <p>(XPath <code>TEXPrintOrder/terms/payment/payMode</code>) 0-1</p>   |
| payTerm            | <p>code specifying the terms or time by which the payment must be done</p> <p>- base type: string, cod. table: T1</p> <p><a href="http://www.ebiz.enea.it/moda-ml/repository/codelist/v2018-1/gc_T1.xml">http://www.ebiz.enea.it/moda-ml/repository/codelist/v2018-1/gc_T1.xml</a></p> <p>(XPath <code>TEXPrintOrder/terms/payment/payTerm</code>) 1-1</p> <p>(XPath <code>TEXPrintOrder/terms/insPayment/payTerm</code>) 1-1</p>                               |
| payTermText        | <p>free text specifying the terms by which the payment must be done (time/mode or means)</p> <p>- base type: string, max length: 250,</p> <p>(XPath <code>TEXPrintOrder/terms/insPayment/payTermText</code>) 1-1 (U)</p> <p>(XPath <code>TEXPrintOrder/terms/payment/payTermText</code>) 1-1 (U)</p>  |
| pcTolerance        | <p>percent deviation tolerated on the value of a measurement (it must have a plus or minus sign)</p> <p>- base type: decimal, min inclusive: 0, max inclusive: 100, total digits: 2,</p> <p>(XPath <code>TEXPrintOrder/TPCObody/TPCOitem/fabricProd/fabricSpecs/pcTolerance</code>) 0-2</p>   |
| percCompos         | <p>fiber rate in the product composition</p> <p>- base type: decimal, min inclusive: 0, max inclusive: 100, fraction digits: 2,</p> <p>(XPath <code>TEXPrintOrder/TPCObody/TPCOitem/fabricProd/fabricCompos/percCompos</code>) 1-9</p>  |
| person             | <p>name of the contact person within a Party</p> <p>- base type: string, max length: 40,</p> <p>(XPath <code>TEXPrintOrder/TPCOheader/thirdParty/person</code>) 0-1</p> <p>(XPath <code>TEXPrintOrder/TPCOheader/subContractor/person</code>) 0-1</p>   |

|               |   |
|---------------|---|
|               | (XPath TEXPrintOrder/TPCObody/TPCOitem/thirdParty/person) 0-1<br>(XPath TEXPrintOrder/TPCOheader/buyer/person) 0-1  |
| @phone        | phone number of the contact person within a Party<br>- base type: string, max length: 35,<br>(XPath TEXPrintOrder/TPCOheader/buyer/person/@phone) [Optional]<br>(XPath TEXPrintOrder/TPCOheader/subContractor/person/@phone) [Optional]<br>(XPath TEXPrintOrder/TPCObody/TPCOitem/thirdParty/person/@phone) [Optional]<br>(XPath TEXPrintOrder/TPCOheader/thirdParty/person/@phone) [Optional]  |
| pieceAllow    | allowance required or accorded for the piece<br>- base type: decimal, fraction digits: 2,<br>(XPath TEXPrintOrder/TPCObody/TPCOitem/fabricProd/piece/pieceAllow) 0-1  |
| pieceCutWidth | effective usable width of the fabric piece (for garment manufacturing)<br>- base type: decimal, min inclusive: 0, fraction digits: 2,<br>(XPath TEXPrintOrder/TPCObody/TPCOitem/fabricProd/piece/pieceCutWidth) 0-1   |
| pieceInnWrap1 | code specifying the type of inner wrapping/packing used for the fabric piece<br>- base type: string, cod. table: T4<br><a href="http://www.ebiz.enea.it/moda-ml/repository/codelist/v2018-1/gc_T4.xml">http://www.ebiz.enea.it/moda-ml/repository/codelist/v2018-1/gc_T4.xml</a><br>(XPath TEXPrintOrder/TPCObody/TPCOitem/fabricProd/pieceChain/piecePack/pieceInnWrap1) 1-1<br>(XPath TEXPrintOrder/TPCObody/TPCOitem/fabricProd/piece/piecePack/pieceInnWrap1) 1-1     |
| pieceInnWrap2 | code sub-specifying the type of inner wrapping/packing used for the fabric piece<br>- base type: string, cod. table: T5<br><a href="http://www.ebiz.enea.it/moda-ml/repository/codelist/v2018-1/gc_T5.xml">http://www.ebiz.enea.it/moda-ml/repository/codelist/v2018-1/gc_T5.xml</a><br>(XPath TEXPrintOrder/TPCObody/TPCOitem/fabricProd/pieceChain/piecePack/pieceInnWrap2) 0-1<br>(XPath TEXPrintOrder/TPCObody/TPCOitem/fabricProd/piece/piecePack/pieceInnWrap2) 0-1 |
| pieceLength   | length of the piece<br>- base type: decimal, min inclusive: 0, fraction digits: 2,<br>(XPath TEXPrintOrder/TPCObody/TPCOitem/fabricProd/pieceChain/pieceCut/pieceLength) 0-1<br>(XPath TEXPrintOrder/TPCObody/TPCOitem/fabricProd/pieceChain/pieceLength) 0-1<br>(XPath TEXPrintOrder/TPCObody/TPCOitem/fabricProd/piece/pieceLength) 0-1   |
| pieceOutWrap  | code specifying the type of outer wrapping or packing used for the fabric piece<br>- base type: string, cod. table: T6<br><a href="http://www.ebiz.enea.it/moda-ml/repository/codelist/v2018-1/gc_T6.xml">http://www.ebiz.enea.it/moda-ml/repository/codelist/v2018-1/gc_T6.xml</a><br>(XPath TEXPrintOrder/TPCObody/TPCOitem/fabricProd/piece/piecePack/pieceOutWrap) 0-1<br>(XPath TEXPrintOrder/TPCObody/TPCOitem/fabricProd/pieceChain/piecePack/pieceOutWrap) 0-1    |
| piecePackText | free text specifying the type of wrapping or packing used for the fabric piece<br>- base type: string, max length: 250,<br>(XPath TEXPrintOrder/TPCObody/TPCOitem/fabricProd/piece/piecePack/piecePackText) 1-1 (U)<br>(XPath TEXPrintOrder/TPCObody/TPCOitem/fabricProd/pieceChain/piecePack/piecePackText) 1-1 (U)  |
| pieceStatus   | code used to describe the status of a fabric piece after the control<br>- base type: string, cod. table: T52<br><a href="http://www.ebiz.enea.it/moda-ml/repository/codelist/v2018-1/gc_T52.xml">http://www.ebiz.enea.it/moda-ml/repository/codelist/v2018-1/gc_T52.xml</a><br>(XPath TEXPrintOrder/TPCObody/TPCOitem/fabricProd/piece/pieceStatus) 0-1   |
| pieceWeight   | effective total weight of the fabric piece<br>- base type: decimal, min inclusive: 0, fraction digits: 2,<br>(XPath TEXPrintOrder/TPCObody/TPCOitem/fabricProd/pieceChain/pieceWeight) 0-1  |

|                 |  |
|-----------------|--|
|                 | <p>(XPath <a href="#">TEXPrintOrder/TPCObody/TPCOitem/fabricProd/pieceChain/pieceCut/pieceWeight</a>) 0-1<br/> (XPath <a href="#">TEXPrintOrder/TPCObody/TPCOitem/fabricProd/piece/pieceWeight</a>) 0-1<br/> - note: <i>It is the net weight of the piece.</i></p>   |
| pieceWeightM    | <p>effective weight per metre of the fabric piece<br/> - base type: decimal, min inclusive: 0, fraction digits: 2,<br/> (XPath <a href="#">TEXPrintOrder/TPCObody/TPCOitem/fabricProd/piece/pieceWeightM</a>) 0-1</p>  |
| pieceWidth      | <p>effective width of the fabric piece<br/> - base type: decimal, min inclusive: 0, fraction digits: 2,<br/> (XPath <a href="#">TEXPrintOrder/TPCObody/TPCOitem/fabricProd/piece/pieceWidth</a>) 0-1<br/> (XPath <a href="#">TEXPrintOrder/TPCObody/TPCOitem/fabricProd/pieceChain/pieceWidth</a>) 0-1</p>   |
| postCode        | <p>code defining the postal zone<br/> - base type: string, max length: 10,<br/> (XPath <a href="#">TEXPrintOrder/TPCOheader/buyer/postCode</a>) 0-1<br/> (XPath <a href="#">TEXPrintOrder/TPCObody/TPCOitem/thirdParty/postCode</a>) 0-1<br/> (XPath <a href="#">TEXPrintOrder/TPCOheader/thirdParty/postCode</a>) 0-1<br/> (XPath <a href="#">TEXPrintOrder/TPCOheader/subContractor/postCode</a>) 0-1</p>  |
| price           | <p>unit price of the article, object or service specified<br/> - base type: decimal, min inclusive: 0, fraction digits: 4,<br/> (XPath <a href="#">TEXPrintOrder/TPCObody/TPCOitem/price</a>) 0-1 (AU)</p>   |
| @priceQualifier | <p>type of price with reference to discount and taxes<br/> - base type: string, cod. table: NT20<br/> <a href="http://www.ebiz.enea.it/moda-ml/repository/codelist/v2018-1/gc_NT20.xml">http://www.ebiz.enea.it/moda-ml/repository/codelist/v2018-1/gc_NT20.xml</a><br/> (XPath <a href="#">TEXPrintOrder/TPCObody/TPCOitem/price/@priceQualifier</a>) [Optional] [Default= NET]</p>   |
| @productLevel   | <p>level of the product (end or intermediate) yielded by an operation in a work cycle<br/> - base type: string, cod. table: NT22<br/> <a href="http://www.ebiz.enea.it/moda-ml/repository/codelist/v2018-1/gc_NT22.xml">http://www.ebiz.enea.it/moda-ml/repository/codelist/v2018-1/gc_NT22.xml</a><br/> (XPath <a href="#">TEXPrintOrder/TPCObody/TPCOitem/@productLevel</a>) [Optional] [Default= END]<br/> - nota: <i>this qualifier "intermediate" must be used when the product is also a component in an other line of the same Commission Order</i></p> |
| @progr          | <p>progressive number in the sequence<br/> - base type: positiveInteger, min inclusive: 1,<br/> (XPath <a href="#">TEXPrintOrder/terms/transInfo/@progr</a>) [Optional] (N)<br/> - nota: <i>Indicates the position of the leg in a sequence of transport legs. If it is declared it must be in all the transInfo elements.</i></p>   |
| qty             | <p>net quantity of the article or object correlated, qualified by the function of the document (ordering, delivering, ..) and by the context<br/> - base type: decimal, min inclusive: 0, fraction digits: 2,<br/> (XPath <a href="#">TEXPrintOrder/TPCObody/TPCOitem/fabricComponent/qty</a>) 1-3<br/> - note: <i>quantity to be consumed in the transformation. This element can have more instances only if the units of measure are different</i><br/> (XPath <a href="#">TEXPrintOrder/TPCObody/TPCOitem/qty</a>) 1-3</p>                                 |
| qualityLevel    | <p>the product quality level (first choice, second choice,...).<br/> - base type: string,<br/> (XPath <a href="#">TEXPrintOrder/TPCObody/TPCOitem/fabricComponent/itemsList/qualityLevel</a>) 0-1 (N)</p>  |
| @role           | <p>Third Party role qualifier<br/> - base type: string, cod. table: NT2<br/> <a href="http://www.ebiz.enea.it/moda-ml/repository/codelist/v2018-1/gc_NT2.xml">http://www.ebiz.enea.it/moda-ml/repository/codelist/v2018-1/gc_NT2.xml</a><br/> (XPath <a href="#">TEXPrintOrder/TPCObody/TPCOitem/thirdParty/@role</a>) [Required]<br/> (XPath <a href="#">TEXPrintOrder/TPCOheader/thirdParty/@role</a>) [Required]</p>  |

|          |   |
|----------|---|
| @screenN | <p>identification number of a printing screen</p> <ul style="list-style-type: none"> <li>- base type: positiveInteger,</li> </ul> <p>(XPath TEXPrintOrder/TPCObody/TPCOitem/fabPrintOperation/groundColor/@screenN) [Required]</p>  |
| season   | <p>sale season; defined as: season (1 crt) + year (4 crt) - season: S/S=1 A/W=2 Spring=3 Summer=4 Autumn=5 Winter=6: for more than four seasons use alphabetic sequence: 1st season=A 2nd season=B etc.etc.</p> <ul style="list-style-type: none"> <li>- base type: string, max length: 15,</li> </ul> <p>(XPath TEXPrintOrder/TPCObody/TPCOitem/fabricComponent/refDoc/season) 0-1 (A)</p> <ul style="list-style-type: none"> <li>- note: here indicates the season to which the referenced document belongs</li> </ul> <p>(XPath TEXPrintOrder/TPCOheader/season) 0-1 (A)</p> <p>(XPath TEXPrintOrder/TPCOheader/refDoc/season) 0-1 (A)</p> <ul style="list-style-type: none"> <li>- note: here indicates the season to which the referenced document belongs</li> </ul> <p>(XPath TEXPrintOrder/TPCObody/TPCOitem/fabPrintOperation/refDoc/season) 0-1 (A)</p> <ul style="list-style-type: none"> <li>- note: here indicates the season to which the referenced document belongs</li> </ul>  |
| @sender  | <p>qualifier that specifies the Party issuing of the document</p> <ul style="list-style-type: none"> <li>- base type: boolean,</li> </ul> <p>(XPath TEXPrintOrder/TPCObody/TPCOitem/thirdParty/@sender) [Optional] (a*)</p> <ul style="list-style-type: none"> <li>- nota: This attribute is mandatory when the STYLESHEET must be used</li> </ul> <p>(XPath TEXPrintOrder/TPCOheader/subContractor/@sender) [Optional] (a*)</p> <ul style="list-style-type: none"> <li>- nota: This attribute is mandatory when the STYLESHEET must be used</li> </ul> <p>(XPath TEXPrintOrder/TPCOheader/buyer/@sender) [Optional] (a*)</p> <ul style="list-style-type: none"> <li>- nota: This attribute is mandatory when the STYLESHEET must be used</li> </ul> <p>(XPath TEXPrintOrder/TPCOheader/thirdParty/@sender) [Optional] (a*)</p> <ul style="list-style-type: none"> <li>- nota: This attribute is mandatory when the STYLESHEET must be used</li> </ul>  |
| serialN  | <p>serial number used for the identification of a physical unit</p> <ul style="list-style-type: none"> <li>- base type: string, max length: 250,</li> </ul> <p>(XPath TEXPrintOrder/TPCObody/TPCOitem/fabricProd/pieceChain/pieceCut/serialN) 1-9 (AU)</p> <ul style="list-style-type: none"> <li>- note: multiple values of serialN are allowed in order to provide different representations of the serial identifier of the same piece. Different instances of serialN must differ at least for one value of idQualifier or numberingOrg</li> </ul> <p>(XPath TEXPrintOrder/TPCObody/TPCOitem/fabricProd/pieceChain/serialN) 1-9 (AU)</p> <ul style="list-style-type: none"> <li>- note: multiple values of serialN are allowed in order to provide different representations of the serial identifier of the same piece chain. Different instances of serialN must differ at least for one value of idQualifier or numberingOrg</li> </ul> <p>g</p> <p>(XPath TEXPrintOrder/TPCObody/TPCOitem/fabricComponent/itemsList/itemIdentification/serialN) 1-9 (AU)</p> <hr/> <p><b>AAAA-WARNING! - text not AVAILABLE n. 245 - In=en</b></p> <ul style="list-style-type: none"> <li>- note: multiple values of serialN are allowed for different representations of the serial identifier of the same product unit. Instances of serialN must differ at least for one value of numberingOrg and idQualifier.</li> </ul> <p>(XPath TEXPrintOrder/TPCObody/TPCOitem/fabricProd/piece/serialN) 0-9 (AU)</p> <hr/> <p><b>AAAA-WARNING! - text not AVAILABLE n. 245 - In=en</b></p> <ul style="list-style-type: none"> <li>- note: multiple values of serialN are allowed for different representations of the serial identifier of the same piece. Instances of serialN must differ at least for one value of numberingOrg and idQualifier.</li> </ul> <p>(XPath TEXPrintOrder/TPCObody/TPCOitem/fabricComponent/serialN) 0-unbounded (AU)</p> <ul style="list-style-type: none"> <li>- note: it may be used to identify the pieces/chains that the Subcontractor must use for the commissioned work</li> </ul> |
| @source  | <p>party who has provided the data</p> <ul style="list-style-type: none"> <li>- base type: string, cod. table: NT12</li> </ul> <p><a href="http://www.ebiz.enea.it/moda-ml/repository/codelist/v2018-1/gc_NT12.xml">http://www.ebiz.enea.it/moda-ml/repository/codelist/v2018-1/gc_NT12.xml</a></p> <p>(XPath TEXPrintOrder/TPCObody/TPCOitem/fabPrintOperation/fabPrintSpecs/specValue/@source) [Optional]</p> <p>(XPath TEXPrintOrder/TPCObody/TPCOitem/fabricProd/fabricSpecs/specValue/@source) [Optional]</p>  |



|                |  |
|----------------|--|
| specValue      | value requested for a property or a parameter that is measured<br>- base type: decimal,<br>(XPath TEXPrintOrder/TPCObody/TPCOitem/fabPrintOperation/<br>fabPrintSpecs/specValue) 0-1<br>(XPath TEXPrintOrder/TPCObody/TPCOitem/fabricProd/<br>fabricSpecs/specValue) 0-1   |
| street         | street and building number identifying a location<br>- base type: string, max length: 80,<br>(XPath TEXPrintOrder/TPCOheader/subContractor/street) 0-1<br>(XPath TEXPrintOrder/TPCOheader/buyer/street) 0-1<br>(XPath TEXPrintOrder/TPCObody/TPCOitem/thirdParty/street) 0-1<br>(XPath TEXPrintOrder/TPCOheader/thirdParty/street) 0-1   |
| subCountry     | short name or code of the sub-country entity<br>- base type: string, max length: 9,<br>(XPath TEXPrintOrder/TPCOheader/buyer/subCountry) 0-1<br>(XPath TEXPrintOrder/TPCOheader/thirdParty/subCountry) 0-1<br>(XPath TEXPrintOrder/TPCOheader/subContractor/subCountry) 0-1<br>(XPath TEXPrintOrder/TPCObody/TPCOitem/thirdParty/subCountry) 0-1                                   |
| subDept        | name or code of a contact department within a Party<br>- base type: string, max length: 40,<br>(XPath TEXPrintOrder/TPCOheader/subContractor/subDept) 0-1 (N)<br>(XPath TEXPrintOrder/TPCObody/TPCOitem/thirdParty/subDept) 0-1 (N)<br>(XPath TEXPrintOrder/TPCOheader/thirdParty/subDept) 0-1 (N)<br>(XPath TEXPrintOrder/TPCOheader/buyer/subDept) 0-1 (N)                       |
| taxCategory    | duty or tax or fee category<br>- base type: string, cod. table: T62<br><a href="http://www.ebiz.enea.it/moda-ml/repository/codelist/v2018-1/gc_T62.xml">http://www.ebiz.enea.it/moda-ml/repository/codelist/v2018-1/gc_T62.xml</a><br>(XPath TEXPrintOrder/terms/allowanceCharge/dtScheme/taxCategory) 0-1<br>(XPath TEXPrintOrder/TPCObody/TPCOitem/dtScheme/taxCategory) 0-1     |
| taxRate        | duty or tax or fee percent rate<br>- base type: string,<br>(XPath TEXPrintOrder/terms/allowanceCharge/dtScheme/taxRate) 0-1<br>(XPath TEXPrintOrder/TPCObody/TPCOitem/dtScheme/taxRate) 0-1  |
| @taxType       | duty or tax or fee type<br>- base type: string, cod. table: T61<br><a href="http://www.ebiz.enea.it/moda-ml/repository/codelist/v2018-1/gc_T61.xml">http://www.ebiz.enea.it/moda-ml/repository/codelist/v2018-1/gc_T61.xml</a><br>(XPath TEXPrintOrder/TPCObody/TPCOitem/dtScheme/@taxType) [Required]<br>(XPath TEXPrintOrder/terms/allowanceCharge/dtScheme/@taxType) [Required] |
| @TID           | serial number wired into the RFID chip<br>- base type: string,<br>(XPath TEXPrintOrder/TPCObody/TPCOitem/fabricProd/<br>piece/EPC/@TID) [Optional]   |
| tolerance      | deviation tolerated on the value of a measurement (it must have a plus or minus sign)<br>- base type: decimal,<br>(XPath TEXPrintOrder/TPCObody/TPCOitem/fabricProd/<br>fabricSpecs/tolerance) 0-2   |
| totFault       | total number of faults: the 1st/2nd digit count the "Large faults", the 3rd/4th the "Medium faults" and the 5th/6th the "Small faults"<br>- base type: positiveInteger,<br>(XPath TEXPrintOrder/TPCObody/TPCOitem/fabricProd/piece/totFault) 0-1   |
| transCondition | special condition of transport or special service requested to the Forwarder<br>- base type: string, cod. table: T38<br><a href="http://www.ebiz.enea.it/moda-ml/repository/codelist/v2018-1/gc_T38.xml">http://www.ebiz.enea.it/moda-ml/repository/codelist/v2018-1/gc_T38.xml</a><br>(XPath TEXPrintOrder/terms/transInfo/transCondition) 0-3                                    |

|                    |  |
|--------------------|--|
| transConditionText | free text description of the special condition of transport or special service requested to the Forwarder<br>- base type: string, max length: 250,<br>(XPath <a href="#">TEXPrintOrder/terms/transInfo/transConditionText</a> ) 0-1 (U)  |
| transMeans         | means of transport, in general or referred to a specific leg<br>- base type: string, cod. table: T40<br><a href="http://www.ebiz.enea.it/moda-ml/repository/codelist/v2018-1/gc_T40.xml">http://www.ebiz.enea.it/moda-ml/repository/codelist/v2018-1/gc_T40.xml</a><br>(XPath <a href="#">TEXPrintOrder/terms/transInfo/transMeans</a> ) 0-1   |
| transMode          | way of transport, in general or referred to the specified leg<br>- base type: string, cod. table: T8<br><a href="http://www.ebiz.enea.it/moda-ml/repository/codelist/v2018-1/gc_T8.xml">http://www.ebiz.enea.it/moda-ml/repository/codelist/v2018-1/gc_T8.xml</a><br>(XPath <a href="#">TEXPrintOrder/terms/transInfo/transMode</a> ) 1-1  |
| @transReason       | reason for the transport<br>- base type: string, cod. table: NT11<br><a href="http://www.ebiz.enea.it/moda-ml/repository/codelist/v2018-1/gc_NT11.xml">http://www.ebiz.enea.it/moda-ml/repository/codelist/v2018-1/gc_NT11.xml</a><br>(XPath <a href="#">TEXPrintOrder/terms/transInfo/@transReason</a> ) [Optional]   |
| @uid               | unique element identifier within the xml document<br>- base type: string,<br>(XPath <a href="#">TEXPrintOrder/TPCOheader/refDoc/attachment/@uid</a> ) [Optional]<br>(XPath <a href="#">TEXPrintOrder/TPCObody/TPCOitem/fabricComponent/refDoc/attachment/@uid</a> ) [Optional]<br>(XPath <a href="#">TEXPrintOrder/TPCObody/TPCOitem/fabPrintOperation/refDoc/attachment/@uid</a> ) [Optional]   |
| @um                | specification of the unit of measure<br>- base type: string, cod. table: NT7<br><a href="http://www.ebiz.enea.it/moda-ml/repository/codelist/v2018-1/gc_NT7.xml">http://www.ebiz.enea.it/moda-ml/repository/codelist/v2018-1/gc_NT7.xml</a><br>(XPath <a href="#">TEXPrintOrder/TPCObody/TPCOitem/fabricProd/piece/grossWeight/@um</a> ) [Required]<br>(XPath <a href="#">TEXPrintOrder/TPCObody/TPCOitem/fabricProd/pieceChain/pieceLength/@um</a> ) [Optional] [Default= MTR]<br>(XPath <a href="#">TEXPrintOrder/TPCObody/TPCOitem/fabricProd/piece/pieceWeightM/@um</a> ) [Optional] [Default= GRM]<br>(XPath <a href="#">TEXPrintOrder/TPCObody/TPCOitem/fabricProd/piece/pieceAllow/@um</a> ) [Required]<br>(XPath <a href="#">TEXPrintOrder/TPCObody/TPCOitem/price/@um</a> ) [Optional]<br>- nota: <i>Unit of measure of the product to which the price is referred (price per meter)</i><br>(XPath <a href="#">TEXPrintOrder/TPCObody/TPCOitem/qty/@um</a> ) [Required]<br>(XPath <a href="#">TEXPrintOrder/TPCObody/TPCOitem/fabricProd/fabricSpecs/pcTolerance/@um</a> ) [Optional]<br>- nota: <i>to be used when it has to be soecified if the declared percentage is by weight, volume, etc...</i><br>(XPath <a href="#">TEXPrintOrder/TPCObody/TPCOitem/fabricProd/piece/pieceWeight/@um</a> ) [Optional] [Default= KGM]<br>(XPath <a href="#">TEXPrintOrder/TPCObody/TPCOitem/fabricProd/pieceChain/pieceWeight/@um</a> ) [Optional] [Default= KGM]<br>(XPath <a href="#">TEXPrintOrder/TPCObody/TPCOitem/fabricProd/pieceChain/pieceCut/pieceWeight/@um</a> ) [Optional] [Default= KGM]<br>(XPath <a href="#">TEXPrintOrder/TPCObody/TPCOitem/fabricProd/pieceChain/pieceCut/pieceLength/@um</a> ) [Optional] [Default= MTR]<br>(XPath <a href="#">TEXPrintOrder/TPCObody/TPCOitem/fabricProd/pieceChain/pieceWidth/@um</a> ) [Optional] [Default= CMT]<br>(XPath <a href="#">TEXPrintOrder/TPCObody/TPCOitem/fabricProd/piece/pieceCutWidth/@um</a> ) [Optional] [Default= CMT]<br>(XPath <a href="#">TEXPrintOrder/TPCObody/TPCOitem/fabricProd/piece/pieceWidth/@um</a> ) [Optional] [Default= CMT]<br>(XPath <a href="#">TEXPrintOrder/TPCObody/TPCOitem/fabricProd/piece/pieceLength/@um</a> ) [Optional] [Default= MTR]<br>(XPath <a href="#">TEXPrintOrder/TPCObody/TPCOitem/fabricComponent/qty/@um</a> ) [Required]<br>(XPath <a href="#">TEXPrintOrder/terms/allowanceCharge/@um</a> ) [Optional] (a)<br>(XPath <a href="#">TEXPrintOrder/terms/transInfo/netWeight/@um</a> ) [Required] |

|             |   |
|-------------|---|
|             | <p>(XPath TEXPrintOrder/TPCObody/TPCOitem/fabPrintOperation/fabPrintSpecs/specValue/@um) [Optional]</p> <p>(XPath TEXPrintOrder/terms/transInfo/grossWeight/@um) [Required]</p> <p>(XPath TEXPrintOrder/TPCObody/TPCOitem/fabricProd/fabricSpecs/specValue/@um) [Optional]</p> <p>(XPath TEXPrintOrder/TPCObody/TPCOitem/fabricProd/fabricWidth/@um) [Optional] [Default= CMT]</p> <p>(XPath TEXPrintOrder/TPCObody/TPCOitem/fabricProd/fabricSpecs/tolerance/@um) [Required]</p>   |
| uri         | <p>Uniform Resource Identifier (URI) that identifies the external object as an Internet resource</p> <p>- base type: normalizedString,</p> <p>(XPath TEXPrintOrder/TPCObody/TPCOitem/fabricComponent/refDoc/attachment/externalReference/uri) 1-1 (N)</p> <p>(XPath TEXPrintOrder/TPCObody/TPCOitem/fabPrintOperation/refDoc/attachment/externalReference/uri) 1-1 (N)</p> <p>(XPath TEXPrintOrder/TPCOheader/refDoc/attachment/externalReference/uri) 1-1 (N)</p>  |
| @useProfile | <p>use profile to which the present document is compliant if it was agreed by the parties. It is suggested a URI with reference to the firm or the URL of the profile.</p> <p>- base type: string,</p> <p>(XPath TEXPrintOrder/@useProfile) [Optional]</p>  |
| @VAT        | <p>VAT rate or code (DEPRECATED, use dtScheme element)</p> <p>- base type: string, cod. table: NT16</p> <p><a href="http://www.ebiz.enea.it/moda-ml/repository/codelist/v2018-1/gc_NT16.xml">http://www.ebiz.enea.it/moda-ml/repository/codelist/v2018-1/gc_NT16.xml</a></p> <p>(XPath TEXPrintOrder/TPCObody/TPCOitem/lineN/@VAT) [Optional]</p> <p>- nota: <i>Deprecated, prefer dtScheme when available.</i></p> <p>(XPath TEXPrintOrder/terms/allowanceCharge/@VAT) [Optional]</p> <p>(XPath TEXPrintOrder/TPCOheader/thirdParty/@VAT) [Optional]</p> <p>(XPath TEXPrintOrder/TPCObody/TPCOitem/thirdParty/@VAT) [Optional]</p> |
| @version    | <p>Dictionary version from which the instance has been created</p> <p>- base type: string, cod. table: NT100</p> <p><a href="http://www.ebiz.enea.it/moda-ml/repository/codelist/v2018-1/gc_NT100.xml">http://www.ebiz.enea.it/moda-ml/repository/codelist/v2018-1/gc_NT100.xml</a></p> <p>(XPath TEXPrintOrder/@version) [Optional] [Default= 2018-1]</p>  |

## 2.3 Suggested best practices

### **TEXPrintOrder/TPCObody/TPCOitem/fabPrintOperation/**

**refDoc/docID (identification number of the referenced document SINCE 2008-1 ITS USE IN THE HEADER IS DISCOURAGED (REPLACED BY msgID))**

numberingOrg indicates the role that produced the document identifier (it is allowed to declare two different ones -e.g. customer and supplier - with two docID with different numberingOrg

### **TEXPrintOrder/TPCObody/TPCOitem/fabricComponent/**

**refDoc/docID (identification number of the referenced document SINCE 2008-1 ITS USE IN THE HEADER IS DISCOURAGED (REPLACED BY msgID))**

numberingOrg indicates the role that produced the document identifier (it is allowed to declare two different ones -e.g. customer and supplier - with two docID with different numberingOrg

### **TEXPrintOrder/TPCOheader/refDoc/docID (identification number of the referenced document SINCE 2008-1 ITS USE IN THE HEADER IS DISCOURAGED (REPLACED BY msgID))**

numberingOrg indicates the role that produced the document identifier (it is allowed to declare two different ones -e.g. customer and supplier - with two docID with different numberingOrg

### **TEXPrintOrder/TPCObody/TPCOitem/fabricComponent/**

**refDoc/attachment/externalReference/mimeType (mime type of the external object)**

Use coding from IANA <http://www.iana.org/assignments/media-types/media-types.xml>

### **TEXPrintOrder/TPCObody/TPCOitem/fabPrintOperation/**

**refDoc/attachment/externalReference/mimeType (mime type of the external object)**

Use coding from IANA <http://www.iana.org/assignments/media-types/media-types.xml>

### **TEXPrintOrder/TPCOheader/refDoc/attachment/**

**externalReference/mimeType (mime type of the external object)**

Use coding from IANA <http://www.iana.org/assignments/media-types/media-types.xml>

### **TEXPrintOrder/TPCObody/TPCOitem/fabricComponent/**

**itemsList/itemIdentification/serialN (serial number used for the identification of a physical unit)**

in the case of garment with RFID for anti-counterfeiting, RFID EPCGlobal for logistics and NFC for the customer experience there should be three serial elements with pairs of attributes numberingOrg/idQualifier: "CL"/"RFID", "GS1"/"RFID", "CL"/"NFC".

### **TEXPrintOrder/TPCObody/TPCOitem/fabricProd/piece/serialN (serial number used for the identification of a physical unit)**

This element might contain also codes for RFID devices.

## 2.4 Enumeration tables

List of enumeration tables used in the XML document. You can find the corresponding codes at:  
<http://www.ebiz-tcf.eu/moda-ml/imple/moda-ml-2018-1.asp?lingua=en&pag=6>

### Legenda

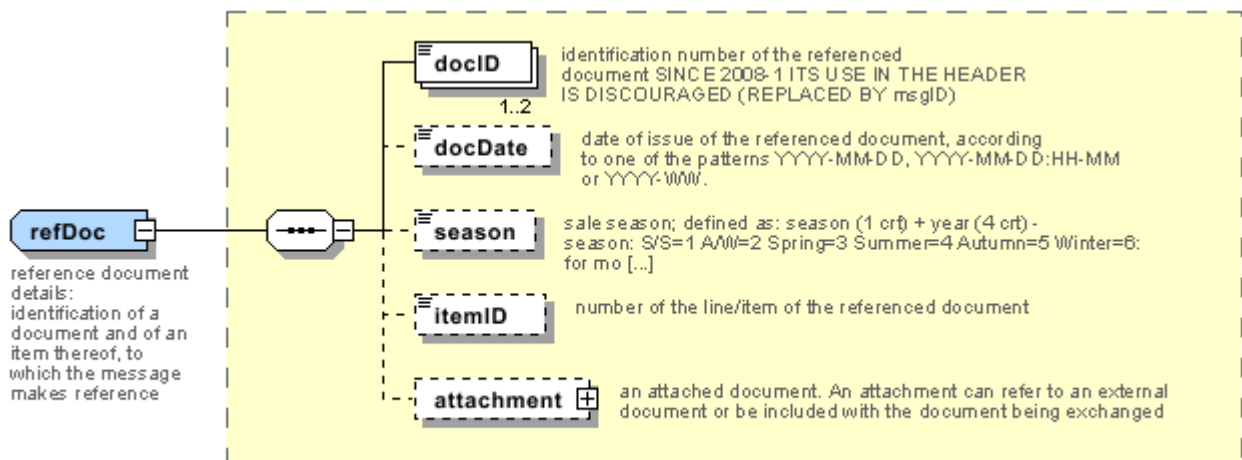
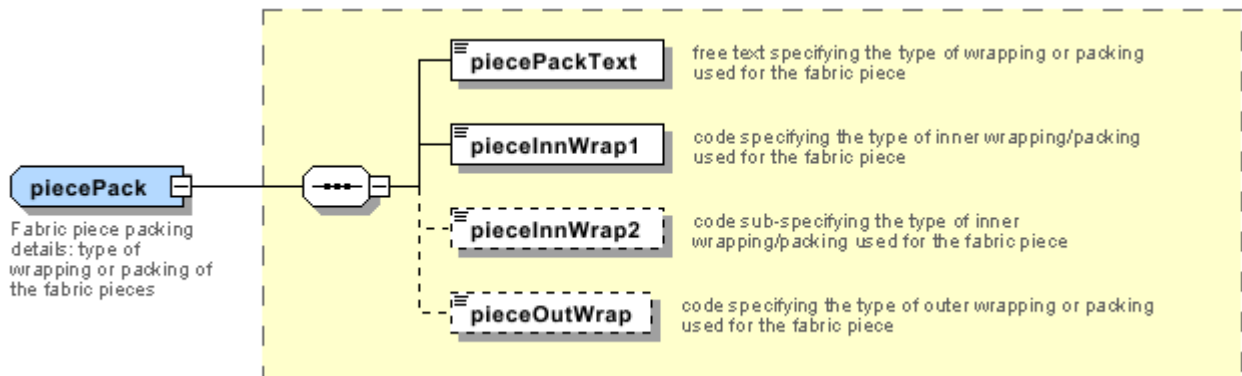
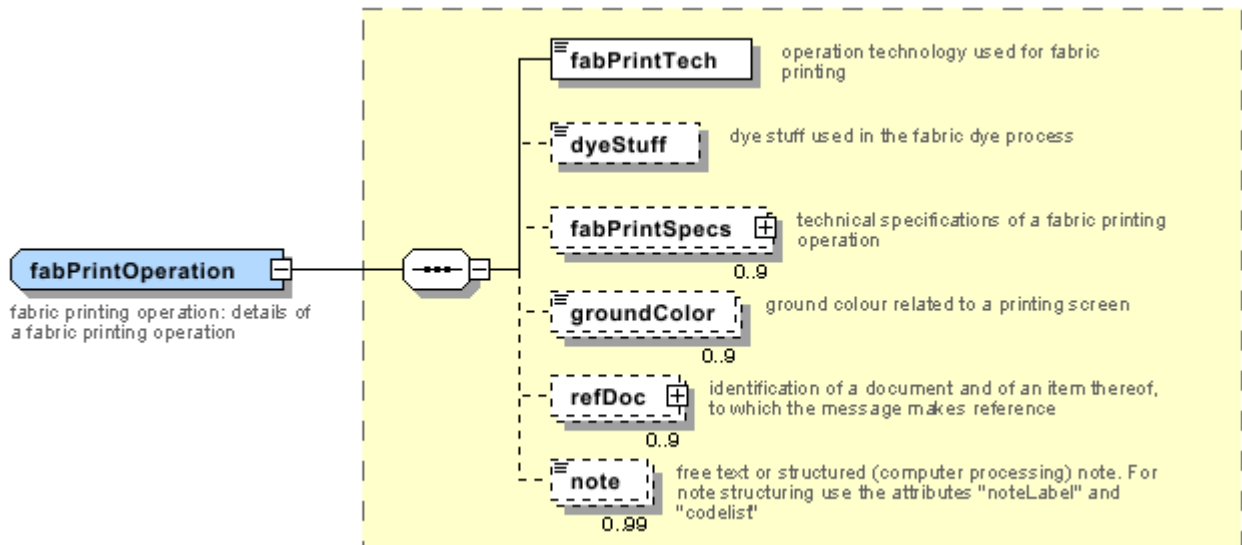
- N: new table
- U: updated properties

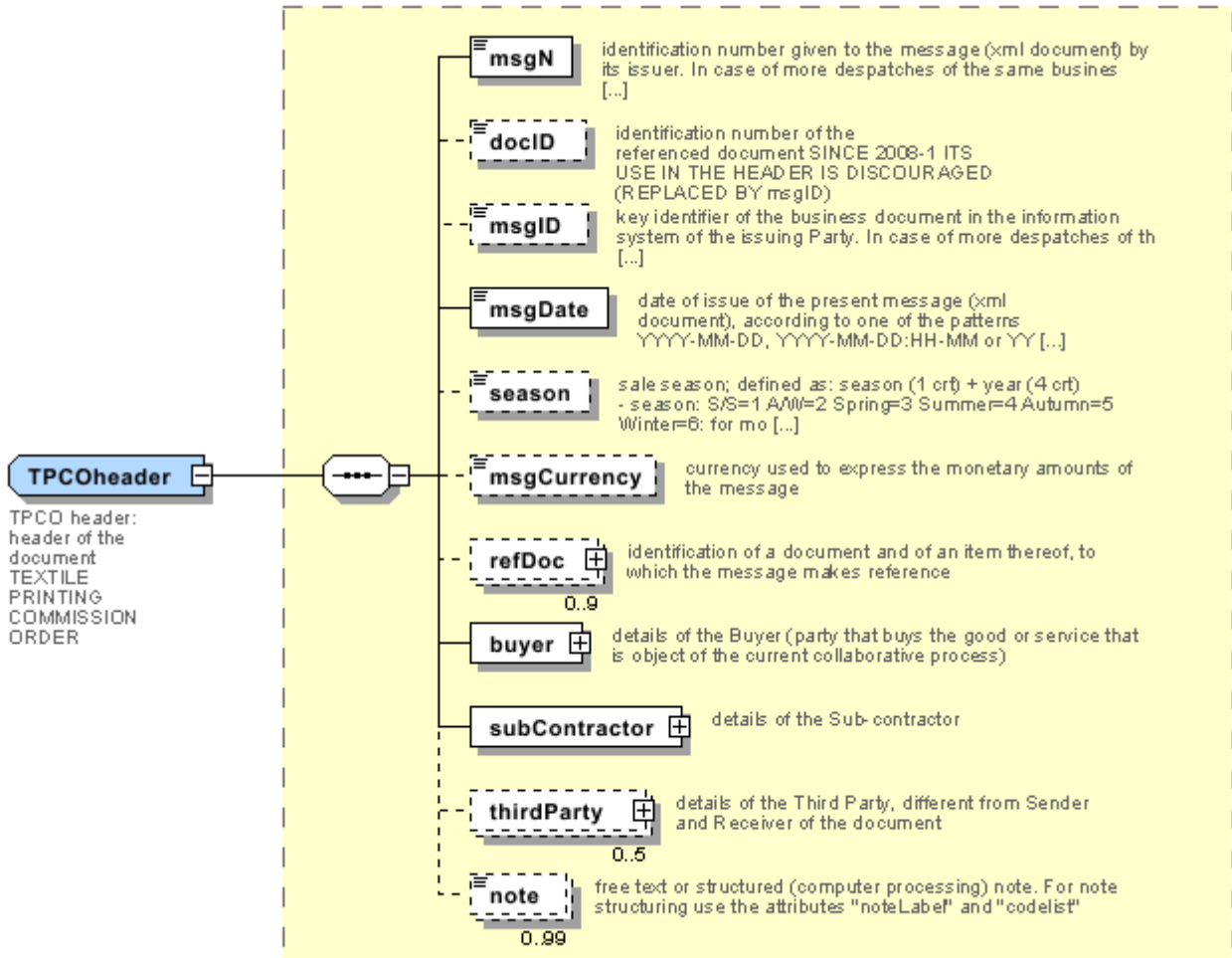
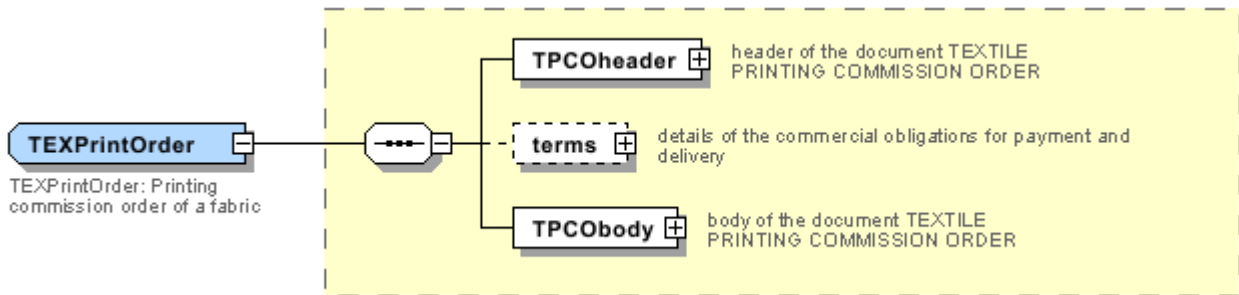
NT100 - eBIZ TCFUpstream version  
NT11 - transport causal  
NT12 - data source  
NT16 - VAT rate or code  
NT18 - message function  
NT2 - third party qualifier  
NT20 - price qualifier  
NT22 - product type of an operation  
NT29 - format of a date  
NT3 - data format  
NT38 - colour test  
NT4 - end use  
NT6 - coding system owner/issuer  
NT60 - language, codes from ISO 639-1 (subset) (N)  
NT7 - unit of measure (U)  
T1 - terms of payment  
T10 - ISO3166 - Country  
T13 - CFM properties of fabric  
T16 - dyestuff type  
T19 - fibre type  
T2 - Modes of payment  
T21 - type of document  
T264 - fabric printing technology  
T3 - terms of delivery  
T38 - transport conditions  
T4 - fabric piece inner packing (wrapping) 1  
T40 - type of transport means  
T41 - type of Allowance or Charge  
T44 - additional code type  
T45 - fabric print parameter type  
T5 - fabric piece inner packing (wrapping) 2  
T52 - fabric piece status  
T6 - fabric piece outer packing  
T61 - duty or tax or fee type  
T62 - duty or tax or fee category  
T8 - Modes of Transport  
T9 - ISO4217 - Currency



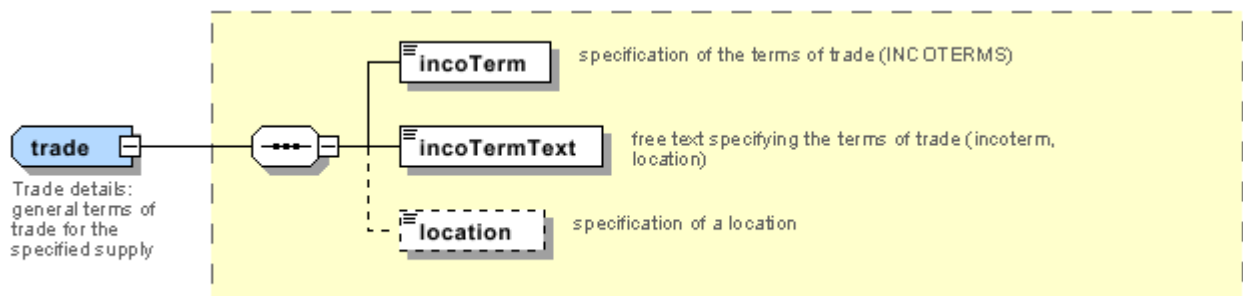
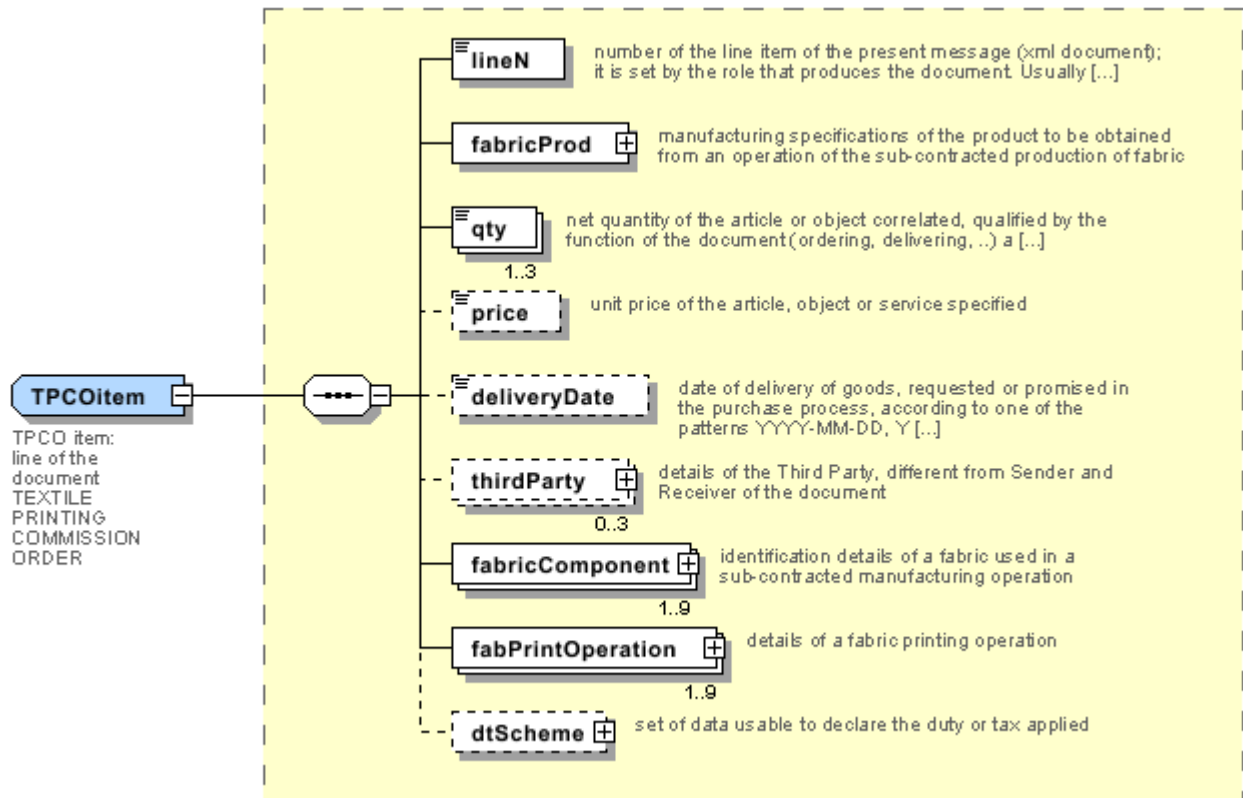
# Annex A

Representative images of the principal complex elements' structure.











## Annex B

### NT100 - eBIZ TCFUpstream version

dictionary version

Agency name: eBIZ

tabella cod.: NT100

File codes list (Generic code): [http://www.ebiz.enea.it/moda-ml/repository/codelist/v2018-1/gc\\_NT100.xml](http://www.ebiz.enea.it/moda-ml/repository/codelist/v2018-1/gc_NT100.xml)

| Code   | Description | Adoption note | Version status | Date of insertion |
|--------|-------------|---------------|----------------|-------------------|
| 2013-1 | v2013-1     |               |                | 01/07/2013        |
| 2018-1 | v2018-1     |               | (N)            | 04/11/2018        |
| draft  | draft       |               | (N)            | 08/09/2017        |

### NT11 - transport causal

reason for the transport

Agency name: eBIZ

tabella cod.: NT11

File codes list (Generic code): [http://www.ebiz.enea.it/moda-ml/repository/codelist/v2018-1/gc\\_NT11.xml](http://www.ebiz.enea.it/moda-ml/repository/codelist/v2018-1/gc_NT11.xml)

| Code | Description           | Adoption note | Version status | Date of insertion |
|------|-----------------------|---------------|----------------|-------------------|
| FOC  | free of charge        |               |                |                   |
| FRW  | return from re-works  |               |                |                   |
| FST  | return from storage   |               |                |                   |
| FWW  | return from view      |               |                |                   |
| FWK  | return from works     |               |                |                   |
| IST  | in storage            |               |                |                   |
| NWK  | return non-worked     |               |                |                   |
| RJC  | return from rejection |               |                |                   |
| SEL  | to sell               |               |                |                   |
| STO  | to storage            |               |                |                   |
| VEW  | to view               |               |                |                   |
| WRK  | to works              |               |                |                   |

### NT12 - data source

party who has provided the data

Agency name: eBIZ

tabella cod.: NT12

File codes list (Generic code): [http://www.ebiz.enea.it/moda-ml/repository/codelist/v2018-1/gc\\_NT12.xml](http://www.ebiz.enea.it/moda-ml/repository/codelist/v2018-1/gc_NT12.xml)

| Code | Description         | Adoption note | Version status | Date of insertion |
|------|---------------------|---------------|----------------|-------------------|
| AC   | internal test       |               |                |                   |
| CO   | external test       |               |                |                   |
| CV   | test after steaming |               |                |                   |

### NT16 - VAT rate or code

VAT rate or code ( DEPRECATED, use dtScheme element )

tabella cod.: NT16

File codes list (Generic code): [http://www.ebiz.enea.it/moda-ml/repository/codelist/v2018-1/gc\\_NT16.xml](http://www.ebiz.enea.it/moda-ml/repository/codelist/v2018-1/gc_NT16.xml)

### NT18 - message function

function performed by the present message with regards to the transmission

Agency name: eBIZ

tabella cod.: NT18

File codes list (Generic code): [http://www.ebiz.enea.it/moda-ml/repository/codelist/v2018-1/gc\\_NT18.xml](http://www.ebiz.enea.it/moda-ml/repository/codelist/v2018-1/gc_NT18.xml)

| Code | Description                         | Adoption note | Version status | Date of insertion |
|------|-------------------------------------|---------------|----------------|-------------------|
| CA   | delete this document                |               |                | 01/07/2013        |
| CP   | copy                                |               |                |                   |
| OR   | original                            |               |                |                   |
| RC   | re-transmission for data correction |               |                |                   |
| RT   | re-transmission                     |               |                |                   |

### NT2 - third party qualifier

Third Party role qualifier

Agency name: eBIZ

tabella cod.: NT2

File codes list (Generic code): [http://www.ebiz.enea.it/moda-ml/repository/codelist/v2018-1/gc\\_NT2.xml](http://www.ebiz.enea.it/moda-ml/repository/codelist/v2018-1/gc_NT2.xml)

| Code | Description                          | Adoption note | Version status | Date of insertion |
|------|--------------------------------------|---------------|----------------|-------------------|
| AG   | Sales Agent                          |               |                |                   |
| AU   | Auditor                              |               | (N)            | 08/04/2019        |
| CE   | Certification authority              |               | (N)            | 08/04/2019        |
| CO   | Quality Controller                   |               |                |                   |
| DC   | Response to                          |               |                |                   |
| DF   | Invoicee                             |               |                |                   |
| DI   | Copy to (CC)                         |               |                | 28/10/2014        |
| DM   | Consignee                            |               |                |                   |
| DP   | Consignment address (Delivery Party) |               |                |                   |
| IM   | Importer                             |               |                |                   |
| OR   | Originator                           |               |                | 10/09/2014        |
| SC   | Sub contractor                       |               | (N)            | 10/04/2019        |
| SM   | Service/ePlatform manager            |               | (N)            | 08/04/2019        |
| SP   | Forwarder                            |               |                |                   |
| TX   | Tax Representative                   |               |                |                   |

### NT20 - price qualifier

type of price with reference to discount and taxes

Agency name: eBIZ

tabella cod.: NT20

File codes list (Generic code): [http://www.ebiz.enea.it/moda-ml/repository/codelist/v2018-1/gc\\_NT20.xml](http://www.ebiz.enea.it/moda-ml/repository/codelist/v2018-1/gc_NT20.xml)

| Code | Description           | Adoption note | Version status | Date of insertion |
|------|-----------------------|---------------|----------------|-------------------|
| GET  | gross excluding taxes |               |                |                   |
| GIT  | gross including taxes |               |                |                   |
| NET  | net excluding taxes   |               |                |                   |
| NIT  | net including taxes   |               |                |                   |

### NT22 - product type of an operation

level of the product (end or intermediate) yielded by an operation in a work cycle

Agency name: eBIZ

tabella cod.: NT22

File codes list (Generic code): [http://www.ebiz.enea.it/moda-ml/repository/codelist/v2018-1/gc\\_NT22.xml](http://www.ebiz.enea.it/moda-ml/repository/codelist/v2018-1/gc_NT22.xml)

| Code | Description  | Adoption note | Version status | Date of insertion |
|------|--------------|---------------|----------------|-------------------|
| END  | end-product  |               |                |                   |
| INT  | intermediate |               |                |                   |

### NT29 - format of a date

format used for the date

Agency name: eBIZ

tabella cod.: NT29

File codes list (Generic code): [http://www.ebiz.enea.it/moda-ml/repository/codelist/v2018-1/gc\\_NT29.xml](http://www.ebiz.enea.it/moda-ml/repository/codelist/v2018-1/gc_NT29.xml)

| Code | Description      | Adoption note | Version status | Date of insertion |
|------|------------------|---------------|----------------|-------------------|
| D    | YYYY-MM-DD       |               |                |                   |
| M    | YYYY-MM-DD:HH-MM |               |                |                   |
| W    | YYYY-WW          |               |                |                   |

### NT3 - data format

format of a string according to a customized User rule (local rule)

Agency name: eBIZ

tabella cod.: NT3

File codes list (Generic code): [http://www.ebiz.enea.it/moda-ml/repository/codelist/v2018-1/gc\\_NT3.xml](http://www.ebiz.enea.it/moda-ml/repository/codelist/v2018-1/gc_NT3.xml)

| Code | Description     | Adoption note | Version status | Date of insertion |
|------|-----------------|---------------|----------------|-------------------|
| EN4  | GS1-GLN         |               |                | 01/07/2013        |
| MD   | mutually agreed |               |                |                   |

### NT38 - colour test

specification of colour test before the operation

tabella cod.: NT38

File codes list (Generic code): [http://www.ebiz.enea.it/moda-ml/repository/codelist/v2018-1/gc\\_NT38.xml](http://www.ebiz.enea.it/moda-ml/repository/codelist/v2018-1/gc_NT38.xml)

| Code | Description      | Adoption note | Version status | Date of insertion |
|------|------------------|---------------|----------------|-------------------|
| 1    | only colour test |               |                |                   |
| 2    | with colour test |               |                |                   |

#### NT4 - end use

specifies the final use of the product

Agency name: eBIZ

tabella cod.: NT4

File codes list (Generic code): [http://www.ebiz.enea.it/moda-ml/repository/codelist/v2018-1/gc\\_NT4.xml](http://www.ebiz.enea.it/moda-ml/repository/codelist/v2018-1/gc_NT4.xml)

| Code | Description  | Adoption note | Version status | Date of insertion |
|------|--------------|---------------|----------------|-------------------|
| PC   | test piece   |               |                |                   |
| PR   | production   |               |                |                   |
| SA   | Sample       |               | (N)            | 10/09/2014        |
| SC   | samples card |               |                |                   |
| TI   | patch        |               |                |                   |
| TP   | (test cut)   |               |                |                   |

#### NT6 - coding system owner/issuer

code specifying the organisation who has created or owns the coding or numbering system

Agency name: eBIZ

tabella cod.: NT6

File codes list (Generic code): [http://www.ebiz.enea.it/moda-ml/repository/codelist/v2018-1/gc\\_NT6.xml](http://www.ebiz.enea.it/moda-ml/repository/codelist/v2018-1/gc_NT6.xml)

| Code | Description                  | Adoption note | Version status | Date of insertion |
|------|------------------------------|---------------|----------------|-------------------|
| CL   | Customer/buyer               |               |                |                   |
| CO   | Quality Controller           |               |                |                   |
| EB   | eBIZ                         | replaces 'ML' | (N)            | 18/03/2019        |
| EN   | GS1 ( ex-EAN International ) |               |                |                   |
| ES   | e-Stockflow                  |               |                |                   |
| FO   | Supplier                     |               |                |                   |
| GS   | GS1                          |               |                | 01/07/2013        |
| MF   | VAT identifier               |               | (U)            |                   |

|    |                  |            |     |  |
|----|------------------|------------|-----|--|
| ML | Moda-ML          | DEPRECATED | (U) |  |
| SP | Service Provider |            |     |  |

**NT60 - language, codes from ISO 639-1 (subset) (N)**

Agency name: eBIZ / ISO

tabella cod.: NT60

File codes list (Generic code): [http://www.ebiz.enea.it/moda-ml/repository/codelist/v2018-1/gc\\_NT60.xml](http://www.ebiz.enea.it/moda-ml/repository/codelist/v2018-1/gc_NT60.xml)

| Code | Description             | Adoption note | Version status | Date of insertion |
|------|-------------------------|---------------|----------------|-------------------|
| af   | Afrikaans               |               | (N)            | 31/01/2019        |
| ar   | Arabic                  |               | (N)            | 31/01/2019        |
| be   | Belarusian              |               | (N)            | 31/01/2019        |
| bg   | Bulgarian               |               | (N)            | 31/01/2019        |
| bn   | Bengali                 |               | (N)            | 31/01/2019        |
| bo   | Tibetan                 |               | (N)            | 31/01/2019        |
| bs   | Bosnian                 |               | (N)            | 31/01/2019        |
| ca   | Catalan, Valencian      |               | (N)            | 31/01/2019        |
| cs   | Czech                   |               | (N)            | 31/01/2019        |
| da   | Danish                  |               | (N)            | 31/01/2019        |
| de   | German                  |               | (N)            | 31/01/2019        |
| el   | Greek, Modern (1453-)   |               | (N)            | 31/01/2019        |
| en   | English                 |               | (N)            | 31/01/2019        |
| eo   | Esperanto               |               | (N)            | 31/01/2019        |
| es   | Spanish, Castilian      |               | (N)            | 31/01/2019        |
| et   | Estonian                |               | (N)            | 31/01/2019        |
| eu   | Basque                  |               | (N)            | 31/01/2019        |
| F    | Female                  |               | (N)            | 15/04/2019        |
| fa   | Persian                 |               | (N)            | 31/01/2019        |
| fi   | Finnish                 |               | (N)            | 31/01/2019        |
| fr   | French                  |               | (N)            | 31/01/2019        |
| ga   | Irish                   |               | (N)            | 31/01/2019        |
| gd   | Gaelic, Scottish Gaelic |               | (N)            | 31/01/2019        |
| gn   | Guarani                 |               | (N)            | 31/01/2019        |
| he   | Hebrew                  |               | (N)            | 31/01/2019        |
| hr   | Croatian                |               | (N)            | 31/01/2019        |



|    |  |  |     |            |
|----|--|--|-----|------------|
| ht | Haitian, Haitian Creole                                    |  | (N) | 31/01/2019 |
| hu | Hungarian  |  | (N) | 31/01/2019 |
| hy | Armenian   |  | (N) | 31/01/2019 |
| ia | Interlingua (International Auxiliary Language Association) |  | (N) | 31/01/2019 |
| id | Indonesian   |  | (N) | 31/01/2019 |
| is | Icelandic  |  | (N) | 31/01/2019 |
| it | Italian  |  | (N) | 31/01/2019 |
| ja | Japanese   |  | (N) | 31/01/2019 |
| jv | Javanese   |  | (N) | 31/01/2019 |
| ka | Georgian   |  | (N) | 31/01/2019 |
| km | Central Khmer  |  | (N) | 31/01/2019 |
| ko | Korean   |  | (N) | 31/01/2019 |
| ku | Kurdish  |  | (N) | 31/01/2019 |
| lb | Luxembourgish, Letzeburgesch                               |  | (N) | 31/01/2019 |
| lo | Lao  |  | (N) | 31/01/2019 |
| lt | Lithuanian   |  | (N) | 31/01/2019 |
| lv | Latvian  |  | (N) | 31/01/2019 |
| mg | Malagasy   |  | (N) | 31/01/2019 |
| mk | Macedonian   |  | (N) | 31/01/2019 |
| mn | Mongolian  |  | (N) | 31/01/2019 |
| mt | Maltese  |  | (N) | 31/01/2019 |
| nl | Dutch, Flemish   |  | (N) | 31/01/2019 |
| no | Norwegian  |  | (N) | 31/01/2019 |
| pl | Polish   |  | (N) | 31/01/2019 |
| pt | Portuguese   |  | (N) | 31/01/2019 |
| ro | Romanian, Moldavian, Moldovan                              |  | (N) | 31/01/2019 |
| ru | Russian  |  | (N) | 31/01/2019 |
| se | Northern Sami  |  | (N) | 31/01/2019 |
| sk | Slovak   |  | (N) | 31/01/2019 |
| sl | Slovenian  |  | (N) | 31/01/2019 |
| sm | Samoan   |  | (N) | 31/01/2019 |
| so | Somali   |  | (N) | 31/01/2019 |
| sq | Albanian   |  | (N) | 31/01/2019 |
| sr | Serbian  |  | (N) | 31/01/2019 |
| sv | Swedish  |  | (N) | 31/01/2019 |

|    |            |  |     |            |
|----|------------|--|-----|------------|
| sw | Swahili    |  | (N) | 31/01/2019 |
| ta | Tamil      |  | (N) | 31/01/2019 |
| th | Thai       |  | (N) | 31/01/2019 |
| tr | Turkish    |  | (N) | 31/01/2019 |
| uk | Ukrainian  |  | (N) | 31/01/2019 |
| ur | Urdu       |  | (N) | 31/01/2019 |
| uz | Uzbek      |  | (N) | 31/01/2019 |
| vi | Vietnamese |  | (N) | 31/01/2019 |
| zh | Chinese    |  | (N) | 31/01/2019 |

### NT7 - unit of measure (U)

specification of the unit of measure, it is a sub set of table Unit of Measure Code - UN/ECE REC 20 delivered by United Nations Economic Commission for Europe (UN/ECE)

Agency name: eBIZ / UN/ECE

tabella cod.: NT7

File codes list (Generic code): [http://www.ebiz.enea.it/moda-ml/repository/codelist/v2018-1/gc\\_NT7.xml](http://www.ebiz.enea.it/moda-ml/repository/codelist/v2018-1/gc_NT7.xml)

Other link: <http://docs.oasis-open.org/ubl/os-UBL-2.1/cl/gc/default/UnitOfMeasureCode-2.1.gc#>

| Code    | Description       | Adoption note | Version status | Date of insertion |
|---------|-------------------|---------------|----------------|-------------------|
| CMK     | square centimetre |               | (N)            | 20/12/2017        |
| CMQ     | cubic centimetre  |               | (N)            | 20/12/2017        |
| CMT     | centimetre        |               |                |                   |
| CNE     | centiNewton       |               |                |                   |
| CO2TON  | ton of CO2        |               | (N)            | 10/09/2014        |
| COUPLES | couples           |               |                |                   |
| DMQ     | cubic decimetre   |               |                |                   |
| E37     | pixel             |               | (N)            | 11/04/2018        |
| GRM     | gram              |               |                |                   |
| HUR     | hour              |               |                |                   |
| INH     | inch              |               |                |                   |
| KGM     | kilogram          |               |                |                   |
| KMT     | kilometer         |               |                |                   |
| KWH     | kilowatthours     |               | (N)            | 10/09/2014        |
| LBR     | pound             |               |                |                   |
| MIN     | minute            |               |                |                   |

|     |                   |  |     |            |
|-----|-------------------|--|-----|------------|
| MMK | square millimetre |  | (N) | 20/12/2017 |
| MTK | square metre      |  | (N) | 20/12/2017 |
| MTQ | cubic metre       |  |     |            |
| MTR | metre             |  |     |            |
| NMB | numero            |  |     |            |
| ONZ | ounce             |  |     |            |
| P1  | percent           |  |     |            |
| PPM | parts per milion  |  |     |            |
| PZ  | piece             |  | (U) |            |
| RPM | rounds per metre  |  |     |            |
| YRD | yard              |  |     |            |

### T1 - terms of payment

code specifying the terms or time by which the payment must be done

Agency name: eBIZ

tabella cod.: T1

File codes list (Generic code): [http://www.ebiz.enea.it/moda-ml/repository/codelist/v2018-1/gc\\_T1.xml](http://www.ebiz.enea.it/moda-ml/repository/codelist/v2018-1/gc_T1.xml)

| Code           | Description                            | Adoption note | Version status | Date of insertion |
|----------------|--|---------------|----------------|-------------------|
| ANTICIP        | PAYMENT IN ADVANCE                     |               |                |                   |
| BLCOLLECT/120D | BILL OF LADING 120 DD                  |               |                |                   |
| BLCOLLECT/30D  | BILL OF LADING 30 DD                   |               |                |                   |
| BLCOLLECT/60D  | BILL OF LADING 60 DD                   |               |                |                   |
| BLCOLLECT/90D  | BILL OF LADING 90 DD                   |               |                |                   |
| CASH           | PAYMENT ON DELIVERY                    |               |                |                   |
| CASHINV        | PAYMENT ON RECEIPT OF INVOICE          |               |                |                   |
| CREDOC/0D      | DOCUMENTARY CREDIT FOR PAYM. AT SIGHT  |               |                |                   |
| CREDOC/120     | DOCUMENTARY CREDIT FOR PAYM. AT 120 DD |               |                |                   |
| CREDOC/150     | DOCUMENTARY CREDIT FOR PAYM. AT 150 DD |               |                |                   |
| CREDOC/180     | DOCUMENTARY CREDIT FOR PAYM. AT 180 DD |               |                |                   |
| CREDOC/30D     | DOCUMENTARY CREDIT FOR PAYM. AT 30 DD  |               |                |                   |
| CREDOC/45D     | DOCUMENTARY CREDIT FOR PAYM. AT 45 DD  |               |                |                   |
| CREDOC/60      | DOCUMENTARY CREDIT FOR PAYM. AT 60 DD  |               |                |                   |

|                |   |  |  |  |
|----------------|---|--|--|--|
| CREDOC/90      | DOCUMENTARY CREDIT FOR PAYM. AT 90 DD           |  |  |  |
| DEL/10         | PAYMENT AT 10 DD AFTER DELIVERY                 |  |  |  |
| DOCOLLECT/120D | DOCUMENTARY COLLECTION AT 120 DD                |  |  |  |
| DOCOLLECT/30D  | DOCUMENTARY COLLECTION AT 30 DD                 |  |  |  |
| DOCOLLECT/60D  | DOCUMENTARY COLLECTION AT 60 DD                 |  |  |  |
| DOCOLLECT/90D  | DOCUMENTARY COLLECTION AT 90 DD                 |  |  |  |
| INV/120D       | PAYMENT AT 120 DD AFTER RECEIPT OF INVOICE      |  |  |  |
| INV/150D       | PAYMENT AT 150 DD AFTER RECEIPT OF INVOICE      |  |  |  |
| INV/180D       | PAYMENT AT 180 DD AFTER RECEIPT OF INVOICE      |  |  |  |
| INV/30D        | PAYMENT AT 30 DD AFTER RECEIPT OF INVOICE       |  |  |  |
| INV/45D        | PAYMENT AT 45 DD AFTER RECEIPT OF INVOICE       |  |  |  |
| INV/60D        | PAYMENT AT 60 DD AFTER RECEIPT OF INVOICE       |  |  |  |
| INV/90D        | PAYMENT AT 90 DD AFTER RECEIPT OF INVOICE       |  |  |  |
| INVULTIMO      | PAYMENT AT END MONTH RECEIPT INVOICE            |  |  |  |
| INVULTIMO/10D  | PAYMENT 10 DD AFTER END MONTH RECEIPT INVOICE   |  |  |  |
| INVULTIMO/120D | PAYMENT 120 DD AFTER END MONTH RECEIPT INVOICE  |  |  |  |
| INVULTIMO/150D | PAYMENT 150 DD AFTER END MONTH RECEIPT INVOICE  |  |  |  |
| INVULTIMO/180D | PAYMENT 180 DD AFTER END MONTH RECEIPT INVOICE  |  |  |  |
| INVULTIMO/240D | PAYMENT 240 DD AFTER END MONTH RECEIPT INVOICE  |  |  |  |
| INVULTIMO/30D  | PAYMENT 30 DD AFTER END MONTH RECEIPT INVOICE   |  |  |  |
| INVULTIMO/45D  | PAYMENT 45 DD AFTER END MONTH RECEIPT INVOICE   |  |  |  |
| INVULTIMO/60D  | PAYMENT 60 DD AFTER END MONTH RECEIPT INVOICE   |  |  |  |
| INVULTIMO/90D  | PAYMENT 90 DD AFTER END MONTH RECEIPT INVOICE   |  |  |  |
| NOPAY          | WITHOUT PAYMENT                                 |  |  |  |
| RECREDOC/0D    | IRREVOC. DOCUMENTARY CREDIT FOR PAYM. AT SIGHT  |  |  |  |
| RECREDOC/120D  | IRREVOC. DOCUMENTARY CREDIT FOR PAYM. AT 120 DD |  |  |  |

|               |   |  |  |  |
|---------------|---|--|--|--|
| RECREDOC/150D | IRREVOC. DOCUMENTARY CREDIT FOR PAYM. AT 150 DD |  |  |  |
| RECREDOC/180D | IRREVOC. DOCUMENTARY CREDIT FOR PAYM. AT 180 DD |  |  |  |
| RECREDOC/30D  | IRREVOC. DOCUMENTARY CREDIT FOR PAYM. AT 30 DD  |  |  |  |
| RECREDOC/45D  | IRREVOC. DOCUMENTARY CREDIT FOR PAYM. AT 45 DD  |  |  |  |
| RECREDOC/60D  | IRREVOC. DOCUMENTARY CREDIT FOR PAYM. AT 60 DD  |  |  |  |
| RECREDOC/90D  | IRREVOC. DOCUMENTARY CREDIT FOR PAYM. AT 90 DD  |  |  |  |
| ULTIMO        | PAYMENT BY END MONTH OF DELIVERY                |  |  |  |
| ULTIMO/10     | PAYMENT AT 10 DD AFTER END MONTH OF DELIVERY    |  |  |  |

### T10 - ISO3166 - Country

code of the nation

Agency name: ISO

tabella cod.: T10

File codes list (Generic code): [http://www.ebiz.enea.it/moda-ml/repository/codelist/v2018-1/gc\\_T10.xml](http://www.ebiz.enea.it/moda-ml/repository/codelist/v2018-1/gc_T10.xml)

Table not printed: there are 239 elements, more than the maximum specified for printing: 99.

### T13 - CFM properties of fabric

code of the physical or mechanical parameter used to define a "technical characteristic of the fabric" (see Fabric technical sheet)

tabella cod.: T13

File codes list (Generic code): [http://www.ebiz.enea.it/moda-ml/repository/codelist/v2018-1/gc\\_T13.xml](http://www.ebiz.enea.it/moda-ml/repository/codelist/v2018-1/gc_T13.xml)

| Code | Description                           | Adoption note | Version status | Date of insertion |
|------|---------------------------------------|---------------|----------------|-------------------|
| CMA  | resistance to pilling (UNI.E.1512434) |               |                |                   |
| CMB  | seam slippage - warp ( NFG7117)       |               |                |                   |
| CMC  | seam slippage - weft ( NFG7117)       |               |                |                   |
| CMD  | breaking strength - warp (ISO 1394-1) |               |                |                   |
| CME  | breaking strength - weft (ISO 1394-1) |               |                |                   |
| CMF  | resistance to abrasion (EN 12947)     |               |                |                   |
| CMH  | tear strength (ISO 9290)              |               |                |                   |

|     |  |  |  |  |
|-----|--|--|--|--|
| CMI | crease recovery (ISO 9867)                                     |  |  |  |
| CMJ | elongation - warp (BS 4294/68)                                 |  |  |  |
| CMK | elongation - weft (BS 4294/68)                                 |  |  |  |
| CML | tear resistance - warp   |  |  |  |
| CMM | tear resistance - weft   |  |  |  |
| CMN | resistance to bending  |  |  |  |
| CMP | spray test   |  |  |  |
| SLA | colour fastness to light (ISO 105-B02)                         |  |  |  |
| SLB | colour fastness to washing (ISO 105-C06)                       |  |  |  |
| SLC | colour fastness to dry cleaning (ISO 105-D01)                  |  |  |  |
| SLD | colour fastness to spotting water (ISO 105-E07)                |  |  |  |
| SLG | colour fastness to alkaline perspiration (ISO 105-E04)         |  |  |  |
| SLH | colour fastness to acid perspiration (ISO 105-E04)             |  |  |  |
| SLI | colour fastness to dry rubbing (ISO 105-X12)                   |  |  |  |
| SLJ | colour fastness to wet rubbing (ISO 105-X12)                   |  |  |  |
| SLK | colour fastness to dry ironing (ISO 105-X11)                   |  |  |  |
| SLM | colour fastness to wet ironing (ISO 105-X11)                   |  |  |  |
| SLW | colour fastness to water (ISO 105-E01)                         |  |  |  |
| SLX | colour fastness to Xeno-light                                  |  |  |  |
| SLZ | colour fastness to rubbing org. Solv. (ISO 105-D02)            |  |  |  |
| STA | dimensional stability to steaming press - length (DIN 53894-2) |  |  |  |
| STB | dimensional stability to steaming press - width (DIN 53894-2)  |  |  |  |
| STC | dimensional stability to washing - length (ISO 5077+6330)      |  |  |  |
| STD | dimensional stability to washing - width (ISO 5077+6330)       |  |  |  |
| STE | dimensional stability to dry cleaning - length (ISO 3175)      |  |  |  |
| STF | dimensional stability to dry cleaning - width (ISO 3175)       |  |  |  |

## T16 - dyestuff type

dye stuff used in the fabric dye process

Agency name: eBIZ

tabella cod.: T16

File codes list (Generic code): [http://www.ebiz.enea.it/moda-ml/repository/codelist/v2018-1/gc\\_T16.xml](http://www.ebiz.enea.it/moda-ml/repository/codelist/v2018-1/gc_T16.xml)

| Code | Description          | Adoption note | Version status | Date of insertion |
|------|----------------------|---------------|----------------|-------------------|
| AC   | chrome acid dyestuff |               |                |                   |

|    |                        |  |  |            |
|----|------------------------|--|--|------------|
| AN | acid dyestuff          |  |  |            |
| CA | basic dyestuff         |  |  |            |
| DI | direct dyestuff        |  |  |            |
| DS | disperse dyestuff      |  |  |            |
| NP | naphtol dyestuff       |  |  |            |
| PI | pigment                |  |  | 01/07/2013 |
| PM | premetallized dyestuff |  |  |            |
| RE | reactive dyestuff      |  |  |            |
| SU | sulfur                 |  |  | 01/07/2013 |

### T19 - fibre type

type of fibre used in a textile product

Agency name: eBIZ

tabella cod.: T19

File codes list (Generic code): [http://www.ebiz.enea.it/moda-ml/repository/codelist/v2018-1/gc\\_T19.xml](http://www.ebiz.enea.it/moda-ml/repository/codelist/v2018-1/gc_T19.xml)

| Code | Description    | Adoption note | Version status | Date of insertion |
|------|----------------|---------------|----------------|-------------------|
| AB   | abaca          |               |                | 20/08/2018        |
| AC   | acetate        |               |                |                   |
| AF   | other fibres   |               |                |                   |
| AG   | alginic fibre  |               |                |                   |
| AL   | alfa           |               |                | 20/08/2018        |
| CA   | hemp           |               |                |                   |
| CC   | coir (coconut) |               |                | 20/08/2018        |
| CL   | chlorofibre    |               |                |                   |
| CO   | cotton         |               |                |                   |
| CU   | cuprous        |               |                |                   |
| EA   | elastan        |               |                |                   |
| EL   | Elastodiene    |               |                | 20/08/2018        |
| FL   | fluorofibre    |               |                |                   |
| GI   | broom          |               |                | 20/08/2018        |
| GL   | textile glass  |               |                |                   |
| HA   | hair           |               |                | 20/08/2018        |
| HE   | henequen       |               |                | 20/08/2018        |
| HL   | mixed linen    |               |                |                   |

|    |   |  |  |            |
|----|---|--|--|------------|
| HL | cotton linen union                          |  |  | 20/08/2018 |
| JU | jute  |  |  |            |
| KE | kenaf                                       |  |  | 20/08/2018 |
| KP | kapoc                                       |  |  | 20/08/2018 |
| LI | linen                                       |  |  |            |
| LY | lyocell                                     |  |  | 20/08/2018 |
| MA | modacrylic                                  |  |  |            |
| MD | modal                                       |  |  |            |
| ME | metallized                                  |  |  |            |
| MG | maguey                                      |  |  | 20/08/2018 |
| PA | polyamide                                   |  |  |            |
| PB | polyureic                                   |  |  |            |
| PC | acrylic                                     |  |  |            |
| PE | polyethylene                                |  |  |            |
| PI | paper                                       |  |  | 20/08/2018 |
| PL | polyester                                   |  |  |            |
| PM | polyimide                                   |  |  |            |
| PP | polypropylene                               |  |  |            |
| PR | proteic                                     |  |  |            |
| PU | polyurethane                                |  |  |            |
| RA | mamie                                       |  |  | 20/08/2018 |
| SE | silk  |  |  |            |
| SI | sisal                                       |  |  | 20/08/2018 |
| SN | sun   |  |  | 20/08/2018 |
| TA | triacetate                                  |  |  |            |
| TR | textile residues or unspecified composition |  |  | 20/08/2018 |
| TV | trivinyll                                   |  |  |            |
| VI | viscose                                     |  |  |            |
| VY | vinylal                                     |  |  |            |
| WA | angora                                      |  |  |            |
| WB | beaver                                      |  |  | 20/08/2018 |
| WC | cashgora                                    |  |  |            |
| WG | vicuna                                      |  |  |            |
| WK | camel                                       |  |  |            |
| WL | llama                                       |  |  |            |



|    |             |  |  |            |
|----|-------------|--|--|------------|
| WM | mohair      |  |  |            |
| WN | lapin       |  |  | 20/08/2018 |
| WO | wool        |  |  |            |
| WP | alpaca      |  |  |            |
| WS | cashmere    |  |  |            |
| WT | Oteer       |  |  | 20/08/2018 |
| WU | guanaco     |  |  |            |
| WV | virgin wool |  |  |            |
| WY | yack        |  |  |            |

## T2 - Modes of payment

way or means of payment

Agency name: eBIZ

tabella cod.: T2

File codes list (Generic code): [http://www.ebiz.enea.it/moda-ml/repository/codelist/v2018-1/gc\\_T2.xml](http://www.ebiz.enea.it/moda-ml/repository/codelist/v2018-1/gc_T2.xml)

| Code | Description                  | Adoption note | Version status | Date of insertion |
|------|------------------------------|---------------|----------------|-------------------|
| BB   | bank transfer                |               |                |                   |
| IA   | collection through Agent     |               |                |                   |
| IS   | collection through Forwarder |               |                |                   |
| RB   | bank receipt                 |               |                |                   |
| RD   | remittance                   |               |                |                   |
| SW   | bank SWIFT                   |               |                |                   |
| TR   | bank draft                   |               |                |                   |

## T21 - type of document

type or class to which the referenced document belongs

Agency name: eBIZ

tabella cod.: T21

File codes list (Generic code): [http://www.ebiz.enea.it/moda-ml/repository/codelist/v2018-1/gc\\_T21.xml](http://www.ebiz.enea.it/moda-ml/repository/codelist/v2018-1/gc_T21.xml)

| Code | Description                  | Adoption note | Version status | Date of insertion |
|------|------------------------------|---------------|----------------|-------------------|
| BOR  | blanket order                |               | (N)            | 01/02/2018        |
| CAT  | Price catalogue - tech sheet |               |                |                   |

|     |                                       |  |     |            |
|-----|---------------------------------------|--|-----|------------|
| CEO | Certificate of origin                 |  | (N) | 13/04/2018 |
| CER | Certificate                           |  | (N) | 13/04/2018 |
| COC | colour card                           |  |     |            |
| CRN | Credit note                           |  |     | 08/09/2017 |
| CTO | Checking order                        |  |     | 01/07/2013 |
| CTR | Contract                              |  | (U) |            |
| CXF | CxF3 file                             |  |     | 01/07/2013 |
| DAD | Darn order                            |  |     |            |
| DDT | ddt                                   |  |     |            |
| DEA | Despatch advise                       |  |     |            |
| DER | Despatch request                      |  |     |            |
| DR  | Document Request                      |  |     | 02/12/2014 |
| FOR | Forecast                              |  |     | 02/12/2014 |
| GSO | Garment stock offer                   |  |     |            |
| GSX | Garment stock offer change            |  |     |            |
| INV | Invoice                               |  |     |            |
| KCC | Knitting-Clothing Commission Order    |  |     | 02/12/2014 |
| KCI | Garment in Work Inventory Report      |  |     | 02/12/2014 |
| M2M | Made to Measure Production Order      |  |     | 02/12/2014 |
| MAS | Master marker                         |  |     |            |
| MCI | Visual merchandising instruction      |  | (N) | 13/04/2018 |
| OCH | Order change                          |  |     |            |
| OFF | Offer                                 |  |     |            |
| ORD | Purchase order                        |  |     |            |
| ORP | Order response                        |  |     |            |
| OSR | order status request                  |  |     |            |
| OSS | Offer status                          |  |     | 02/12/2014 |
| OST | Order status                          |  |     |            |
| OUR | our reference                         |  |     |            |
| QR  | Quality Report                        |  |     | 02/12/2014 |
| RAI | Raw Material in Work Inventory Report |  |     | 02/12/2014 |
| RDC | Raw dyeing commission order           |  |     |            |
| RDH | Raw dyeing order change               |  |     |            |
| RDR | Raw dyeing order response             |  |     |            |
| REA | Receiving advise                      |  |     |            |

|     |   |  |     |            |
|-----|---|--|-----|------------|
| REQ | Request for Offer                         |  |     |            |
| RET | Return                                    |  |     | 02/12/2014 |
| RSC | Spinning commission order                 |  |     |            |
| RSH | Spinning order change                     |  |     |            |
| RSR | Spinning order response                   |  |     |            |
| SCL | process sheet                             |  |     |            |
| TFC | Textile dyeing-finishing commission order |  |     |            |
| TFX | Textile Dyeing-Finishing Order Change     |  |     | 02/12/2014 |
| TPC | Textile printing commission order         |  |     |            |
| TPX | Textile Printing Order Change             |  |     | 02/12/2014 |
| TWI | Textile in work inventory                 |  |     |            |
| VMI | visual merchandising instructions         |  | (N) | 01/02/2018 |
| WAC | Warping commission order                  |  |     |            |
| WEC | Weaving commission order                  |  |     |            |
| YDC | Yarn dyeing commission order              |  |     |            |
| YDH | Yarn dyeing order change                  |  |     |            |
| YDR | Yarn dyeing order response                |  |     |            |
| YTC | Twisting commission order                 |  |     |            |
| YWI | Yarn in work inventory                    |  |     |            |

## T264 - fabric printing technology

operation technology used for fabric printing

Agency name: eBIZ

tabella cod.: T264

File codes list (Generic code): [http://www.ebiz.enea.it/moda-ml/repository/codelist/v2018-1/gc\\_T264.xml](http://www.ebiz.enea.it/moda-ml/repository/codelist/v2018-1/gc_T264.xml)

| Code | Description        | Adoption note | Version status | Date of insertion |
|------|--------------------|---------------|----------------|-------------------|
| BL   | block printing     |               |                |                   |
| DE   | devoré printing    |               |                |                   |
| DI   | discharge printing |               |                |                   |
| FC   | flock printing     |               |                |                   |
| FL   | flat printing      |               |                |                   |
| HA   | hand printing      |               |                |                   |
| IJ   | inkjet printing    |               |                | 01/07/2013        |
| RE   | resist printing    |               |                |                   |

|    |                        |  |  |  |
|----|------------------------|--|--|--|
| RO | roller printing        |  |  |  |
| RS | rotary screen printing |  |  |  |
| SC | screen printing        |  |  |  |
| TR | transfer printing      |  |  |  |

### T3 - terms of delivery

specification of the terms of trade (INCOTERMS)

Agency name: Incoterms

tabella cod.: T3

File codes list (Generic code): [http://www.ebiz.enea.it/moda-ml/repository/codelist/v2018-1/gc\\_T3.xml](http://www.ebiz.enea.it/moda-ml/repository/codelist/v2018-1/gc_T3.xml)

| <b>Cod e</b> | <b>Description</b>   | <b>Adoption note</b>                                 | <b>Versi on statu s</b> | <b>Date of insertio n</b> |
|--------------|--|--|-------------------------|---------------------------|
| CF R         | COST AND FREIGHT (named port of destination)                   |  |                         |                           |
| CIF          | COST, INSURANCE AND FREIGHT (named port of destination)        |  |                         |                           |
| CIP          | CARRIAGE AND INSURANCE PAID (named place of destination)       |  |                         |                           |
| CP T         | CARRIAGE PAID (named place of destination)                     |  |                         |                           |
| DA F         | DELIVERED AT FRONTIER (named place)                            | according to Incoterms® 2010 it is obsolete          |                         | 08/12/2017                |
| DA P         | Delivered at Place of destination (named place of destination) | according to Incoterms® 2010                         |                         | 08/12/2017                |
| DA T         | Delivered at Terminal (named place of destination)             | according to Incoterms® 2010                         |                         | 08/12/2017                |
| DD P         | DELIVERED DUTY PAID (named place of destination)               |  |                         |                           |
| DD U         | DELIVERED DUTY UNPAID (named place of destination)             | according to Incoterms® 2010 it is obsolete, use DAP |                         | 08/12/2017                |
| DE Q         | DELIVERED EX-QUAY (named port of destination)                  | according to Incoterms® 2010 it is obsolete          |                         | 08/12/2017                |
| DE S         | DELIVERED EX-SHIP (named port of destination)                  | according to Incoterms® 2010 it is obsolete          |                         | 08/12/2017                |
| EX W         | EX WORKS (named place)   |  |                         |                           |
| FA S         | FREE ALONGSIDE SHIP (named port of shipment)                   |  |                         |                           |

|         |  |  |  |  |
|---------|--|--|--|--|
| FC<br>A | FREE CARRIER (named place)             |  |  |  |
| FO<br>B | FREE ON BOARD (named port of shipment) |  |  |  |

### T38 - transport conditions

special condition of transport or special service requested to the Forwarder

tabella cod.: T38

File codes list (Generic code): [http://www.ebiz.enea.it/moda-ml/repository/codelist/v2018-1/gc\\_T38.xml](http://www.ebiz.enea.it/moda-ml/repository/codelist/v2018-1/gc_T38.xml)

| Code | Description                            | Adoption note | Version status | Date of insertion |
|------|--|---------------|----------------|-------------------|
| ACC  | arrange customs clearance              |               |                |                   |
| CAL  | Carrier loads                          |               |                |                   |
| CAU  | Carrier unloads                        |               |                |                   |
| CMR  | CMR carnet                             |               |                |                   |
| FFN  | freight forwarders national conditions |               |                |                   |
| FLD  | special agreement for full loading     |               |                |                   |
| NCC  | do not arrange customs clearance       |               |                |                   |
| PPB  | packaging paid by Buyer                |               |                |                   |
| PPS  | packaging paid by Supplier             |               |                |                   |
| PRO  | proof of delivery                      |               |                |                   |
| RFR  | return container free                  |               |                |                   |
| RPC  | return container paid by Customer      |               |                |                   |
| RPS  | return container paid by Supplier      |               |                |                   |
| SHL  | Shipper loads                          |               |                |                   |
| SHU  | Consignee unloads                      |               |                |                   |

### T4 - fabric piece inner packing (wrapping) 1

code specifying the type of inner wrapping/packing used for the fabric piece

Agency name: eBIZ

tabella cod.: T4

File codes list (Generic code): [http://www.ebiz.enea.it/moda-ml/repository/codelist/v2018-1/gc\\_T4.xml](http://www.ebiz.enea.it/moda-ml/repository/codelist/v2018-1/gc_T4.xml)

| Code | Description         | Adoption note | Version status | Date of insertion |
|------|---------------------|---------------|----------------|-------------------|
| A    | Folded, whole width |               |                |                   |

|   |                                    |  |  |  |
|---|------------------------------------|--|--|--|
| B | Folded, doubled                    |  |  |  |
| C | Folded, tube products              |  |  |  |
| D | Spoiled, whole width               |  |  |  |
| E | Spoiled, doubled, pli: left        |  |  |  |
| F | Spoiled, doubled, pli: right       |  |  |  |
| G | Rolled, whole width, single item   |  |  |  |
| H | Rolled, whole width, several items |  |  |  |
| I | Rolled, doubled                    |  |  |  |
| J | Rolled, tube products              |  |  |  |

#### T40 - type of transport means

means of transport, in general or referred to a specific leg

Agency name: eBIZ

tabella cod.: T40

File codes list (Generic code): [http://www.ebiz.enea.it/moda-ml/repository/codelist/v2018-1/gc\\_T40.xml](http://www.ebiz.enea.it/moda-ml/repository/codelist/v2018-1/gc_T40.xml)

| Code | Description | Adoption note | Version status | Date of insertion |
|------|-------------|---------------|----------------|-------------------|
| AIR  | aircraft    |               |                |                   |
| SHP  | ship        |               |                |                   |
| TRU  | truck       |               |                |                   |
| VAN  | van         |               |                |                   |

#### T41 - type of Allowance or Charge

coded specification of an Allowance or Charge (elaborated from UNECE 4465)

Agency name: eBIZ

tabella cod.: T41

File codes list (Generic code): [http://www.ebiz.enea.it/moda-ml/repository/codelist/v2018-1/gc\\_T41.xml](http://www.ebiz.enea.it/moda-ml/repository/codelist/v2018-1/gc_T41.xml)

| Code | Description       | Adoption note | Version status | Date of insertion |
|------|-------------------|---------------|----------------|-------------------|
| 1    | Agreed settlement |               | (N)            | 19/08/2018        |
| 10   | Costs for draft   |               | (N)            | 19/08/2018        |

|    |                                 |                        |     |                |
|----|---------------------------------|------------------------|-----|----------------|
| 11 | Bank charges                    | DEPRECATED, use<br>CBK | (N) | 19/08/20<br>18 |
| 12 | Agent commission                |                        | (N) | 19/08/20<br>18 |
| 14 | Wrong delivery                  |                        | (N) | 19/08/20<br>18 |
| 15 | Goods returned to agent         |                        | (N) | 19/08/20<br>18 |
| 16 | Goods partly returned           |                        | (N) | 19/08/20<br>18 |
| 17 | Transport damage                |                        | (N) | 19/08/20<br>18 |
| 19 | Trade discount                  |                        | (N) | 19/08/20<br>18 |
| 2  | Below specification goods       |                        | (N) | 19/08/20<br>18 |
| 20 | Deduction for late delivery     | DEPRECATED, use<br>CWB | (N) | 19/08/20<br>18 |
| 21 | Advertising costs               |                        | (N) | 19/08/20<br>18 |
| 22 | Customs duties                  |                        | (N) | 19/08/20<br>18 |
| 23 | Telephone and postal costs      |                        | (N) | 19/08/20<br>18 |
| 24 | Repair costs                    |                        | (N) | 19/08/20<br>18 |
| 25 | Attorney fees                   |                        | (N) | 19/08/20<br>18 |
| 26 | Taxes                           |                        | (N) | 19/08/20<br>18 |
| 3  | Damaged goods                   |                        | (N) | 19/08/20<br>18 |
| 30 | Direct payment to seller        |                        | (N) | 19/08/20<br>18 |
| 32 | Goods not delivered             |                        | (N) | 19/08/20<br>18 |
| 33 | Late delivery                   |                        | (N) | 19/08/20<br>18 |
| 35 | Goods returned                  |                        | (N) | 19/08/20<br>18 |
| 36 | Invoice not received            |                        | (N) | 19/08/20<br>18 |
| 37 | Credit note to debtor/not to us |                        | (N) | 19/08/20<br>18 |

|    |                                  |  |     |            |
|----|----------------------------------|--|-----|------------|
| 38 | Deducted bonus                   |  | (N) | 19/08/2018 |
| 39 | Deducted discount                |  | (N) | 19/08/2018 |
| 4  | Short delivery                   |  | (N) | 19/08/2018 |
| 40 | Deducted freight costs           |  | (N) | 19/08/2018 |
| 41 | Deduction against other invoices |  | (N) | 19/08/2018 |
| 42 | Credit balance(s)                |  | (N) | 19/08/2018 |
| 45 | Debit note to seller             |  | (N) | 19/08/2018 |
| 46 | Discount beyond terms            |  | (N) | 19/08/2018 |
| 48 | Allowance/charge error           |  | (N) | 19/08/2018 |
| 49 | Substitute product               |  | (N) | 19/08/2018 |
| 50 | Terms of sale error              |  | (N) | 19/08/2018 |
| 52 | Wrong invoice                    |  | (N) | 19/08/2018 |
| 53 | Duplicate invoice                |  | (N) | 19/08/2018 |
| 54 | Weight error                     |  | (N) | 19/08/2018 |
| 55 | Additional charge not authorized |  | (N) | 19/08/2018 |
| 56 | Incorrect discount               |  | (N) | 19/08/2018 |
| 57 | Price change                     |  | (N) | 19/08/2018 |
| 58 | Variation                        |  | (N) | 19/08/2018 |
| 59 | Chargeback                       |  | (N) | 19/08/2018 |
| 65 | Settlement to agent              |  | (N) | 19/08/2018 |
| 66 | Cash discount                    |  | (N) | 19/08/2018 |
| 7  | Payment on account               |  | (N) | 19/08/2018 |



|     |  |  |     |            |
|-----|--|--|-----|------------|
| 70  | Wrong monetary amount resulting from incorrect free goods quantity |  | (N) | 19/08/2018 |
| 72  | Temporary special promotion  |  | (N) | 19/08/2018 |
| 73  | Difference in tax rate   |  | (N) | 19/08/2018 |
| 74  | Quantity discount  |  | (N) | 19/08/2018 |
| 75  | Promotion discount   |  | (N) | 19/08/2018 |
| 76  | Cancellation deadline passed                                       |  | (N) | 19/08/2018 |
| 77  | Pricing discount   |  | (N) | 19/08/2018 |
| 78  | Volume discount  |  | (N) | 19/08/2018 |
| 79  | Sundry discount  |  | (N) | 19/08/2018 |
| 8   | Returnable container charge included                               |  | (N) | 19/08/2018 |
| 9   | Invoice error  |  | (N) | 19/08/2018 |
| AWA | bonus for works ahead of schedule                                  |  |     |            |
| CBK | bank charges   |  |     |            |
| CCR | servizio di corriere   |  |     |            |
| CIN | insurance  |  |     |            |
| CLB | labelling  |  |     |            |
| CPK | packing  |  |     |            |
| CSP | special packing  |  |     |            |
| CWB | penalty for works behind schedule                                  |  |     |            |

#### T44 - additional code type

qualifier of the additional coding of a product

Agency name: eBIZ

tabella cod.: T44

File codes list (Generic code): [http://www.ebiz.enea.it/moda-ml/repository/codelist/v2018-1/gc\\_T44.xml](http://www.ebiz.enea.it/moda-ml/repository/codelist/v2018-1/gc_T44.xml)

| Code | Description                 | Adoption note | Version status | Date of insertion |
|------|-----------------------------|---------------|----------------|-------------------|
| CC   | colour card                 |               |                |                   |
| CL   | sales collection            |               |                |                   |
| CO   | company identification code |               | (N)            | 08/09/2017        |
| DY   | dye number                  |               |                |                   |
| LT   | lot number                  |               |                |                   |
| MDI  | Made in                     |               |                | 08/09/2017        |
| MS   | manufacturing state         |               |                |                   |
| PKG  | packaging                   |               |                | 09/09/2014        |
| PL   | product line                |               |                |                   |
| RGB  | RGB value                   |               |                |                   |
| SE   | selvedge code               |               |                |                   |

#### T45 - fabric print parameter type

code specifying a characteristic or parameter of the fabric printing

Agency name: eBIZ

tabella cod.: T45

File codes list (Generic code): [http://www.ebiz.enea.it/moda-ml/repository/codelist/v2018-1/gc\\_T45.xml](http://www.ebiz.enea.it/moda-ml/repository/codelist/v2018-1/gc_T45.xml)

| Code | Description       | Adoption note | Version status | Date of insertion |
|------|-------------------|---------------|----------------|-------------------|
| NC   | number of colours |               |                |                   |
| RL   | repeat length     |               |                |                   |
| RW   | repeat width      |               |                |                   |

#### T5 - fabric piece inner packing (wrapping) 2

code specifying the sub-type of inner wrapping/packing used for the fabric piece

Agency name: eBIZ

tabella cod.: T5

File codes list (Generic code): [http://www.ebiz.enea.it/moda-ml/repository/codelist/v2018-1/gc\\_T5.xml](http://www.ebiz.enea.it/moda-ml/repository/codelist/v2018-1/gc_T5.xml)

| Code | Description             | Adoption note | Version status | Date of insertion |
|------|-------------------------|---------------|----------------|-------------------|
| A    | Open                    |               |                |                   |
| B    | Folded once, not looped |               |                |                   |

|   |   |  |  |  |
|---|---|--|--|--|
| C | Folded twice, not looped                                      |  |  |  |
| H | Folded once, looped   |  |  |  |
| I | Folded twice, looped  |  |  |  |
| J | Without inner object, right side inside                       |  |  |  |
| K | On carton or spooling plank, right side inside                |  |  |  |
| L | On spool (for pressure sensitive products), right side inside |  |  |  |
| M | Without inner object, left side inside                        |  |  |  |
| N | On carton or spooling plank, left side inside                 |  |  |  |
| O | On spool (for pressure sensitive products), left side inside  |  |  |  |
| P | Without inner object, right side inside (deprecated code)     |  |  |  |
| Q | On carton, right side inside                                  |  |  |  |
| R | On wooden stick, right side inside                            |  |  |  |
| S | Without inner object, left side inside (deprecated code)      |  |  |  |
| T | On carton, left side inside                                   |  |  |  |
| U | On wooden stick, left side inside                             |  |  |  |

### T52 - fabric piece status

code used to describe the status of a fabric piece with reference to the control

Agency name: eBIZ

tabella cod.: T52

File codes list (Generic code): [http://www.ebiz.enea.it/moda-ml/repository/codelist/v2018-1/gc\\_T52.xml](http://www.ebiz.enea.it/moda-ml/repository/codelist/v2018-1/gc_T52.xml)

| Code | Description              | Adoption note | Version status | Date of insertion |
|------|--------------------------|---------------|----------------|-------------------|
| 0    | first registration       |               |                |                   |
| C    | registration from return |               |                |                   |
| F    | stopped                  |               |                |                   |
| H    | handling                 |               |                |                   |
| R    | returned                 |               |                |                   |
| S    | held                     |               |                |                   |
| T    | deliverable              |               |                |                   |

### T6 - fabric piece outer packing

code specifying the type of outer wrapping or packing used for the fabric piece

Agency name: eBIZ

tabella cod.: T6

File codes list (Generic code): [http://www.ebiz.enea.it/moda-ml/repository/codelist/v2018-1/gc\\_T6.xml](http://www.ebiz.enea.it/moda-ml/repository/codelist/v2018-1/gc_T6.xml)

| Code | Description                              | Adoption note | Version status | Date of insertion |
|------|--|---------------|----------------|-------------------|
| 0    | Not wrapped                              |               |                |                   |
| 1    | Totally wrapped                          |               |                |                   |
| 2    | Wrapped, one side open                   |               |                |                   |
| 3    | Wrapped, both sides open                 |               |                |                   |
| 4    | Wrapped, one side open, with show corner |               |                |                   |
| 5    | Wrapped in cartons                       |               |                |                   |
| 6    | Double wrapped                           |               |                |                   |

### T61 - duty or tax or fee type

duty or tax or fee type

Agency name: eBIZ

tabella cod.: T61

File codes list (Generic code): [http://www.ebiz.enea.it/moda-ml/repository/codelist/v2018-1/gc\\_T61.xml](http://www.ebiz.enea.it/moda-ml/repository/codelist/v2018-1/gc_T61.xml)

| Code | Description       | Adoption note | Version status | Date of insertion |
|------|-------------------|---------------|----------------|-------------------|
| BOL  | stamp duty        |               |                | 01/07/2013        |
| CUD  | customs duty      |               |                | 01/07/2013        |
| ENV  | environmental tax |               |                | 01/07/2013        |
| FRE  | no tax            |               |                | 01/07/2013        |
| OTH  | other tax charges |               |                | 01/07/2013        |
| VAT  | value added tax   |               |                | 01/07/2013        |

### T62 - duty or tax or fee category

duty or tax or fee category

Agency name: eBIZ

tabella cod.: T62

File codes list (Generic code): [http://www.ebiz.enea.it/moda-ml/repository/codelist/v2018-1/gc\\_T62.xml](http://www.ebiz.enea.it/moda-ml/repository/codelist/v2018-1/gc_T62.xml)

| Code | Description | Adoption note | Version status | Date of insertion |
|------|-------------|---------------|----------------|-------------------|
|------|-------------|---------------|----------------|-------------------|

|    |                           |  |  |            |
|----|---------------------------|--|--|------------|
| AA | lower than standard rate  |  |  | 01/07/2013 |
| E  | tax not applicable        |  |  | 01/07/2013 |
| H  | higher than standard rate |  |  | 01/07/2013 |
| O  | outside scope of tax      |  |  | 01/07/2013 |
| S  | standard rate             |  |  | 01/07/2013 |
| Z  | zero rate goods           |  |  | 01/07/2013 |

### T8 - Modes of Transport

way of transport, in general or referred to the specified leg

Agency name: eBIZ

tabella cod.: T8

File codes list (Generic code): [http://www.ebiz.enea.it/moda-ml/repository/codelist/v2018-1/gc\\_T8.xml](http://www.ebiz.enea.it/moda-ml/repository/codelist/v2018-1/gc_T8.xml)

| Code | Description            | Adoption note | Version status | Date of insertion |
|------|------------------------|---------------|----------------|-------------------|
| 1    | MARITIME TRANSPORT     |               |                |                   |
| 10   | Courier                |               |                | 01/07/2013        |
| 2    | RAIL TRANSPORT         |               |                |                   |
| 3    | ROAD TRANSPORT         |               |                |                   |
| 4    | AIR TRANSPORT          |               |                |                   |
| 5    | MAIL                   |               |                |                   |
| 6    | AIR + SHIP TRANSPORT   |               |                |                   |
| 8    | INLAND WATER TRANSPORT |               |                |                   |
| 9    | MODE UNKNOWN           |               |                |                   |

### T9 - ISO4217 - Currency

currency code

Agency name: ISO

tabella cod.: T9

File codes list (Generic code): [http://www.ebiz.enea.it/moda-ml/repository/codelist/v2018-1/gc\\_T9.xml](http://www.ebiz.enea.it/moda-ml/repository/codelist/v2018-1/gc_T9.xml)

Table not printed: there are 205 elements, more than the maximum specified for printing: 99.

## Annex C

### New or changed elements towards previous version

Changes or added elements (changes in description excluded; changes in aggregation notes and best practice included): 132

| Test Type  | Tag                  | Status  | Item type                   | Changes related to  |
|------------|----------------------|---------|-----------------------------|---|
| Attribute  | AC_amount            | NEW     | AC amount                   | Has NEW attribute: data currency  |
| Element(E) | AC_categoryText      | UPDATED | AC category text            | Property: Length_Max<br>Old value: 70<br>New value: 250   |
| Attribute  | additionalIdentifier | NEW     | Additional Party Identifier | Has NEW attribute: numbering organisation code  |
| Attribute  | additionalIdentifier | NEW     | Additional Party Identifier | Has NEW attribute: id Qualifier   |
| Element(I) | additionalIdentifier | NEW     | Additional Party Identifier |   |
| Attribute  | allowanceCharge      | NEW     | Allowance and Charge        | Has NEW attribute: is Charge  |
| Attribute  | allowanceCharge      | NEW     | Allowance and Charge        | Has NEW attribute: maximum quantity   |
| Attribute  | allowanceCharge      | NEW     | Allowance and Charge        | Has NEW attribute: minimum quantity   |
| Attribute  | allowanceCharge      | NEW     | Allowance and Charge        | Has NEW attribute: data currency  |
| Attribute  | allowanceCharge      | NEW     | Allowance and Charge        | Has NEW attribute: unit of measure code   |
| Element(E) | art                  | UPDATED | article identifier          | Property: Length_Max<br>Old value: 25<br>New value: 80  |
| Attribute  | art                  | UPDATED | article identifier          | Its attribute: code list reference<br><br>Property: Aggregation Note_English<br>Old value: <i>this attribute should be ALTERNATIVE to the others</i><br>New value: <i>at least one out of this attribute and "numberingOrg" should be set</i> |

|            |                   |        |                     |   |
|------------|-------------------|--------|---------------------|---|
| Element()  | attachment        | NEW    | attachment          |   |
| Child      | attachment        | NEW    | attachment          | Has NEW child of: file name   |
| Child      | attachment        | NEW    | attachment          | Has NEW child of: external reference  |
| Child      | attachment        | NEW    | attachment          | Has NEW child of: binary object   |
| Attribute  | binary Object     | NEW    | binary object       | Has NEW attribute: encoding   |
| Attribute  | binary Object     | NEW    | binary object       | Has NEW attribute: mime   |
| Attribute  | binary Object     | NEW    | binary object       | Has NEW attribute: format   |
| Attribute  | binary Object     | NEW    | binary object       | Has NEW attribute: character set  |
| Element()  | binary Object     | NEW    | binary object       |   |
| Child      | buyer             | NEW    | Buyer (*)           | Has NEW child of: Party identifier  |
| Child      | buyer             | NEW    | Buyer (*)           | Has NEW child of: Additional Party Identifier   |
| Attribute  | buyer             | NEW    | Buyer (*)           | Has NEW attribute: sender Party qualifier   |
| Child      | pieceCut          | UPDATE | Chained piece data  | relationship with child: serial number<br><br>Property: Cardmax<br>Old value: 1<br>New value: 9   |
| Child      | pieceCut          | UPDATE | Chained piece data  | relationship with child: serial number<br><br>Property: Aggregation Note_English<br>Old value:<br>New value: <i>multiple values of serialN are allowed in order to provide different representations of the serial identifier of the same piece. Different instances of serialN must differ at least for one value of idQualifier or numberingOrg</i> |
| Element()  | characterSetCode  | NEW    | character set code  |   |
| Element()  | characterSet      | NEW    | character set       |   |
| Element(E) | packageContainerN | UPDATE | container reference | Property: Length_Max<br>Old value: 25<br>New value: 40  |

|            |                     |         |                            |   |
|------------|---------------------|---------|----------------------------|---|
| Element(E) | deliveryPlace       | UPDATED | delivery place             | Property: Length_Max<br>Old value: 40<br>New value: 250 |
| Attribute  | description         | NEW     | description                | Has NEW attribute:<br>In                                |
| Element(E) | description         | UPDATED | description                | Property: Length_Max<br>Old value: 70<br>New value: 250 |
| Attribute  | despatchDate        | NEW     | despatch date              | Has NEW attribute:<br>date format                       |
| Element(I) | despatchDate        | NEW     | despatch date              |   |
| Element(I) | despatchPlace       | NEW     | despatch place             |   |
| Element(E) | email               | UPDATED | e-mail                     | Property: Length_Max<br>Old value: 80<br>New value: 250 |
| Element(I) | encodingCode        | NEW     | encoding code              |   |
| Element(I) | encoding            | NEW     | encoding                   |   |
| Child      | externalReference   | NEW     | external reference         | Has NEW child of:<br>uri                                |
| Child      | externalReference   | NEW     | external reference         | Has NEW child of:<br>format code                        |
| Child      | externalReference   | NEW     | external reference         | Has NEW child of:<br>character set code                 |
| Child      | externalReference   | NEW     | external reference         | Has NEW child of:<br>mime code                          |
| Child      | externalReference   | NEW     | external reference         | Has NEW child of:<br>encoding code                      |
| Element(I) | externalReference   | NEW     | external reference         |   |
| Element(E) | fabricCharacterText | UPDATED | fabric characteristic text | Property: Length_Max<br>Old value: 40<br>New value: 80  |
| Child      | fabricComponent     | NEW     | fabric component           | Has NEW child of:<br>items list                         |



|       |                 |         |                   |   |
|-------|-----------------|---------|-------------------|---|
| Child | fabricComponent | UPDATED | fabric component  | relationship with child:<br>general note<br><br>Property: Cardmax<br>Old value: 19<br>New value: 99   |
| Child | fabricComponent | UPDATED | fabric component  | relationship with child:<br>location identifier<br><br>Property: Aggregation Note_English<br>Old value: <i>it may be used to specify the location where lie the pieces that the Subcontractor must use for the commissioned work operation</i><br>New value: <i>it may be used to specify the location where lie the pieces that the Subcontractor must use for the commissioned work operation</i> |
| Child | fabricComponent | UPDATED | fabric component  | relationship with child:<br>serial number<br><br>Property: Grp_pos<br>Old value: 0<br>New value: 1  |
| Child | fabricComponent | UPDATED | fabric component  | relationship with child:<br>serial number<br><br>Property: Gruppo<br>Old value: 0<br>New value: -1  |
| Child | fabricComponent | UPDATED | fabric component  | relationship with child:<br>serial number<br><br>Property: Cardmax<br>Old value: 99<br>New value: 999   |
| Child | fabricComponent | UPDATED | fabric component  | relationship with child:<br>product quantity<br><br>Property: Aggregation Note_English<br>Old value: <i>here is the code of the component used in the yarn manufacturing operation</i><br>New value: <i>quantity to be consumed in the transformation. This element can have more instances only if the units of measure are different</i>  |
| Child | fabricComponent | UPDATED | fabric component  | relationship with child:<br>reference document details<br><br>Property: Cardmax<br>Old value: 1<br>New value: 9   |
| Child | piece           | NEW     | Fabric piece data | Has NEW child of:<br>gross weight measure   |
| Child | piece           | UPDATED | Fabric piece data | relationship with child:<br>serial number<br><br>Property: Cardmax<br>Old value: 3<br>New value: 9  |

|            |                   |         |                           |   |
|------------|-------------------|---------|---------------------------|---|
| Child      | piece             | UPDATED | Fabric piece data         | relationship with child:<br>serial number<br><br>Property: Cardmin<br>Old value: 1<br>New value: 0  |
| Child      | piece             | UPDATED | Fabric piece data         | relationship with child:<br>serial number<br><br>Property: BestPractice_English<br>Old value:<br>New value: <i>This element might contain also codes for RFID devices.</i>  |
| Child      | piece             | UPDATED | Fabric piece data         | relationship with child:<br>manufacture lot identifier<br><br>Property: Cardmax<br>Old value: 1<br>New value: 2   |
| Child      | piece             | UPDATED | Fabric piece data         | relationship with child:<br>manufacture lot identifier<br><br>Property: Aggregation Note_English<br>Old value:<br>New value: <i>The lotN instances must differ by value of the numberingOrg attribute</i>   |
| Child      | piece             | UPDATED | Fabric piece data         | relationship with child:<br>piece weight measure<br><br>Property: Aggregation Note_English<br>Old value:<br>New value: <i>It is the net weight of the piece.</i>  |
| Child      | piece             | UPDATED | Fabric piece data         | relationship with child:<br>electronic product code<br><br>Property: Aggregation Note_English<br>Old value:<br>New value: <i>the use of this element is DEPRECATED, use the appropriate elements (serialN)</i>  |
| Child      | piece             | UPDATED | Fabric piece data         | relationship with child:<br>serial number<br><br>Property: Aggregation Note_English<br>Old value: <i>More than one serialN is accepted only if the numbering organizations are different (and the piece is the same)</i><br>New value: <i>multiple values of serialN are allowed for different representations of the serial identifier of the same piece. Instances of serialN must differ at least for one value of numberingOrg and idQualifier.</i> |
| Element(E) | piecePackText     | UPDATED | fabric piece packing text | Property: Length_Max<br>Old value: 40<br>New value: 250   |
| Child      | fabPrintOperation | UPDATED | fabric printing operation | relationship with child:<br>general note<br><br>Property: Cardmax   |

|            |                    |         |                                |  |
|------------|--------------------|---------|--------------------------------|--|
|            |                    |         |                                | Old value: 19<br>New value: 99   |
| Child      | fabPrintOperation  | UPDATED | fabric printing operation      | relationship with child:<br>reference document details<br><br>Property: Cardmax<br>Old value: 1<br>New value: 9  |
| Element(E) | fabPrintCharText   | UPDATED | fabric printing parameter text | Property: Length_Max<br>Old value: 70<br>New value: 250  |
| Child      | fabricProduct      | UPDATED | fabric product                 | relationship with child:<br>general note<br><br>Property: Cardmax<br>Old value: 19<br>New value: 99  |
| Attribute  | fileName           | NEW     | file name                      | Has NEW attribute:<br>numbering organisation code  |
| Element(l) | fileName           | NEW     | file name                      |  |
| Element(l) | formatCode         | NEW     | format code                    |  |
| Element(l) | format             | NEW     | format                         |  |
| Attribute  | note               | UPDATED | general note                   | Its attribute:<br>numbering organisation code<br><br>Property: Aggregation Note_English<br>Old value:<br>New value: <i>must be used to specify the organization that created the list of codes used in "noteLabel"</i> |
| Element(l) | idQualifier        | NEW     | id Qualifier                   |  |
| Element(l) | isCharge           | NEW     | is Charge                      |  |
| Element(l) | isURL              | NEW     | is URL                         |  |
| Child      | itemIdentification | NEW     | item identification            | Has NEW child of:<br>serial number   |
| Element(l) | itemIdentification | NEW     | item identification            |  |

|            |             |        |                    |  |
|------------|-------------|--------|--------------------|--|
| Child      | itemsList   | NEW    | items list         | Has NEW child of:<br>quality level   |
| Child      | itemsList   | NEW    | items list         | Has NEW child of:<br>item identification   |
| Element()  | itemsList   | NEW    | items list         |  |
| Element(E) | legalName   | UPDATE | Legal name         | Property: Length_Max<br>Old value: 80<br>New value: 250  |
| Element(E) | itemID      | UPDATE | line item number   | Property: Length_Max<br>Old value: 6<br>New value: 40  |
| Attribute  | lineN       | UPDATE | line number        | Its attribute:<br>VAT rate<br><br>Property: Aggregation Note_English<br>Old value:<br>New value: <i>Deprecated, prefer dtScheme when available.</i>  |
| Element()  | ln          | NEW    | ln                 |  |
| Element()  | maxQty      | NEW    | maximum quantity   |  |
| Element()  | mimeCode    | NEW    | mime code          |  |
| Element()  | mime        | NEW    | mime               |  |
| Element(E) | packageName | UPDATE | package number     | Property: Length_Max<br>Old value: 25<br>New value: 40   |
| Child      | pieceChain  | UPDATE | piece chain        | relationship with child:<br>serial number<br><br>Property: Aggregation Note_English<br>Old value:<br>New value: <i>multiple values of serialN are allowed in order to provide different representations of the serial identifier of the same piece chain. Different instances of serialN must differ at least for one value of idQualifier or numberingOrg</i> |
| Child      | pieceChain  | UPDATE | piece chain        | relationship with child:<br>serial number<br><br>Property: Cardmax<br>Old value: 1<br>New value: 9   |
| Element()  | progr       | NEW    | progressive number |  |

|                 |                       |                 |                                  |  |
|-----------------|-----------------------|-----------------|----------------------------------|--|
| Attr<br>ib      | quality<br>Level      | NE<br>W         | quality lev<br>el                | Has NEW attribute:<br>numbering organisation code  |
| Attr<br>ib      | quality<br>Level      | NE<br>W         | quality lev<br>el                | Has NEW attribute:<br>code list reference  |
| Attr<br>ib      | quality<br>Level      | NE<br>W         | quality lev<br>el                | Has NEW attribute:<br>code list version  |
| Attr<br>ib      | quality<br>Level      | NE<br>W         | quality lev<br>el                | Has NEW attribute:<br>code list name   |
| Ele<br>m(I<br>) | quality<br>Level      | NE<br>W         | quality lev<br>el                |  |
| Chi<br>ld       | refDoc                | NE<br>W         | reference<br>document<br>details | Has NEW child of:<br>attachment  |
| Chi<br>ld       | refDoc                | UPD<br>ATE<br>D | reference<br>document<br>details | relationship with child:<br>document identifier<br><br>Property: BestPractice_English<br>Old value:<br>New value: <i>numberingOrg</i> indicates the role that produced the document i<br>dentifier (it is allowed to declare two different ones -e.g. customer and sup<br>plier - with two docID with different numberingOrg |
| Attr<br>ib      | season                | NE<br>W         | season id<br>entifier            | Has NEW attribute:<br>code list reference  |
| Attr<br>ib      | season                | NE<br>W         | season id<br>entifier            | Has NEW attribute:<br>numbering organisation code  |
| Attr<br>ib      | season                | NE<br>W         | season id<br>entifier            | Has NEW attribute:<br>code list name   |
| Attr<br>ib      | season                | NE<br>W         | season id<br>entifier            | Has NEW attribute:<br>code list version  |
| Attr<br>ib      | serialN               | NE<br>W         | serial nu<br>mber                | Has NEW attribute:<br>id Qualifier   |
| Ele<br>m(<br>E) | serialN               | UPD<br>ATE<br>D | serial nu<br>mber                | Property: Length_Max<br>Old value: 15<br>New value: 250  |
| Chi<br>ld       | subCo<br>ntracto<br>r | NE<br>W         | Sub-contr<br>actor (*)           | Has NEW child of:<br>Party identifier  |
| Attr<br>ib      | subCo<br>ntracto<br>r | NE<br>W         | Sub-contr<br>actor (*)           | Has NEW attribute:<br>sender Party qualifier   |
| Ele<br>m(I<br>) | subDe<br>pt           | NE<br>W         | departme<br>nt identifi<br>er    |  |
| Attr<br>ib      | legalR<br>ef          | NE<br>W         | tax legal r<br>eference          | Has NEW attribute:<br>code list name   |
| Attr<br>ib      | legalR<br>ef          | NE<br>W         | tax legal r<br>eference          | Has NEW attribute:<br>numbering organisation code  |

|                 |                  |                 |                                |  |
|-----------------|------------------|-----------------|--------------------------------|--|
| Attr<br>ib      | legalR<br>ef     | NE<br>W         | tax legal r<br>eference        | Has NEW attribute:<br>code list version  |
| Attr<br>ib      | legalR<br>ef     | UPD<br>ATE<br>D | tax legal r<br>eference        | Its attribute:<br>code list reference<br><br>Property: Use<br>Old value: <i>Required</i><br>New value: <i>Optional</i>                   |
| Chi<br>ld       | dtSche<br>me     | UPD<br>ATE<br>D | tax sche<br>me                 | relationship with child:<br>general note<br><br>Property: Cardmax<br>Old value: 19<br>New value: 99                                      |
| Ele<br>m(<br>E) | payTer<br>mText  | UPD<br>ATE<br>D | terms of p<br>ayment te<br>xt  | Property: Length_Max<br>Old value: 40<br>New value: 250  |
| Ele<br>m(<br>E) | incoTe<br>rmText | UPD<br>ATE<br>D | terms of tr<br>ade text        | Property: Length_Max<br>Old value: 70<br>New value: 250  |
| Ele<br>m(<br>E) | metho<br>d       | UPD<br>ATE<br>D | test meth<br>od identifi<br>er | Property: Length_Max<br>Old value: 25<br>New value: 80   |
| Chi<br>ld       | texCod<br>e      | UPD<br>ATE<br>D | Textiles p<br>roduct co<br>de  | relationship with child:<br>description<br><br>Property: Aggregation Note_English<br>Old value:<br>New value: <i>Product description</i> |
| Chi<br>ld       | texCod<br>e      | UPD<br>ATE<br>D | Textiles p<br>roduct co<br>de  | relationship with child:<br>description<br><br>Property: Cardmax<br>Old value: 1<br>New value: 999                                       |
| Chi<br>ld       | thirdPa<br>rty   | NE<br>W         | Third Part<br>y (*)            | Has NEW child of:<br>Party identifier  |
| Attr<br>ib      | thirdPa<br>rty   | NE<br>W         | Third Part<br>y (*)            | Has NEW attribute:<br>sender Party qualifier   |
| Chi<br>ld       | TPCO<br>header   | UPD<br>ATE<br>D | TPCO he<br>ader                | relationship with child:<br>general note<br><br>Property: Cardmax<br>Old value: 19<br>New value: 99                                      |
| Chi<br>ld       | TPCO<br>header   | UPD<br>ATE<br>D | TPCO he<br>ader                | relationship with child:<br>Third Party<br><br>Property: Cardmax<br>Old value: 1<br>New value: 5   |

|            |                    |        |                            |  |
|------------|--------------------|--------|----------------------------|--|
| Child      | TPCOitem           | UPDATE | TPCO item                  | relationship with child:<br>Third Party<br><br>Property: Cardmax<br>Old value: 1<br>New value: 3           |
| Child      | terms              | UPDATE | Trade conditions           | relationship with child:<br>Transport information<br><br>Property: Cardmax<br>Old value: 1<br>New value: 5 |
| Element(E) | transConditionText | UPDATE | transport condition - text | Property: Length_Max<br>Old value: 100<br>New value: 250   |
| Child      | transInfo          | NEW    | Transport information      | Has NEW child of:<br>despatch place  |
| Child      | transInfo          | NEW    | Transport information      | Has NEW child of:<br>despatch date   |
| Child      | transInfo          | NEW    | Transport information      | Has NEW child of:<br>effective delivery date   |
| Attribute  | transInfo          | NEW    | Transport information      | Has NEW attribute:<br>progressive number   |
| Attribute  | price              | NEW    | unit price amount          | Has NEW attribute:<br>data currency  |
| Element(E) | price              | UPDATE | unit price amount          | Property: Digits_Dec<br>Old value: 2<br>New value: 4   |
| Attribute  | uri                | NEW    | uri                        | Has NEW attribute:<br>is URL   |
| Element(I) | uri                | NEW    | uri                        |  |

## Annex D

### New or changed tables and codes towards previous version

Changes or added items (changes in CodeListAgencyName excluded; changes in adoption notes and code description included): 157

| Test Type | Status  | Table code | Table description                       | Code                              | Change description   |
|-----------|---------|------------|---|-----------------------------------|--|
| Table     | UPDATED | NT100      | eBIZ TCFUpstream version                |                                   | Description_English<br>Old value: <i>eBIZ Moda-ML version</i><br>New value: <i>eBIZ TCFUpstream version</i>  |
| Code      | NEW     | NT100      |   | 2018-1<br>(v2018-1)               |  |
| Code      | NEW     | NT100      |   | draft<br>(draft)                  |  |
| Table     | UPDATED | NT16       | VAT rate or code                        |                                   | Generalities<br>Old value: <i>VAT rate or code ( deprecated, use dtScheme element )</i><br>New value: <i>VAT rate or code ( DEPRECATED, use dtScheme element )</i> |
| Code      | NEW     | NT2        |   | AU<br>(Auditor)                   |  |
| Code      | NEW     | NT2        |   | CE<br>(Certification authority)   |  |
| Code      | NEW     | NT2        |   | SC<br>(Sub contractor)            |  |
| Code      | NEW     | NT2        |   | SM<br>(Service/ePlatform manager) |  |
| Code      | NEW     | NT4        |   | SA<br>(Sample)                    |  |
| Table     | UPDATED | NT4        | end use                                 |                                   | Generalities<br>Old value: <i>specifies the final use of the fabric</i><br>New value: <i>specifies the final use of the product</i>                                |
| Code      | NEW     | NT6        |   | EB<br>(eBIZ)                      |  |
| Code      | UPDATED | NT6        |   | ML<br>(DEPRECATED)                | adoption_note<br>Old value:<br>New value: <i>DEPRECATED</i>  |
| Table     | NEW     | NT60       | language, codes from ISO 639-1 (subset) |                                   |  |



|          |     |          |  |                                      |  |
|----------|-----|----------|--|--------------------------------------|--|
| Co<br>de | NEW | NT<br>60 |  | <i>F</i><br>(Female)                 |  |
| Co<br>de | NEW | NT<br>60 |  | <i>af</i><br>(Afrikaans)             |  |
| Co<br>de | NEW | NT<br>60 |  | <i>ar</i><br>(Arabic)                |  |
| Co<br>de | NEW | NT<br>60 |  | <i>be</i><br>(Belarusian)            |  |
| Co<br>de | NEW | NT<br>60 |  | <i>bg</i><br>(Bulgarian)             |  |
| Co<br>de | NEW | NT<br>60 |  | <i>bn</i><br>(Bengali)               |  |
| Co<br>de | NEW | NT<br>60 |  | <i>bo</i><br>(Tibetan)               |  |
| Co<br>de | NEW | NT<br>60 |  | <i>bs</i><br>(Bosnian)               |  |
| Co<br>de | NEW | NT<br>60 |  | <i>ca</i><br>(Catalan, Valencian)    |  |
| Co<br>de | NEW | NT<br>60 |  | <i>cs</i><br>(Czech)                 |  |
| Co<br>de | NEW | NT<br>60 |  | <i>da</i><br>(Danish)                |  |
| Co<br>de | NEW | NT<br>60 |  | <i>de</i><br>(German)                |  |
| Co<br>de | NEW | NT<br>60 |  | <i>el</i><br>(Greek, Modern (1453-)) |  |
| Co<br>de | NEW | NT<br>60 |  | <i>en</i><br>(English)               |  |
| Co<br>de | NEW | NT<br>60 |  | <i>eo</i><br>(Esperanto)             |  |
| Co<br>de | NEW | NT<br>60 |  | <i>es</i><br>(Spanish, Castilian)    |  |
| Co<br>de | NEW | NT<br>60 |  | <i>et</i><br>(Estonian)              |  |
| Co<br>de | NEW | NT<br>60 |  | <i>eu</i><br>(Basque)                |  |
| Co<br>de | NEW | NT<br>60 |  | <i>fa</i><br>(Persian)               |  |
| Co<br>de | NEW | NT<br>60 |  | <i>fi</i><br>(Finnish)               |  |
| Co<br>de | NEW | NT<br>60 |  | <i>fr</i><br>(French)                |  |
| Co<br>de | NEW | NT<br>60 |  | <i>ga</i><br>(Irish)                 |  |

|          |     |          |  |   |  |
|----------|-----|----------|--|---|--|
| Co<br>de | NEW | NT<br>60 |  | <i>gd</i><br>(Gaelic, Scottish Gaelic)  |  |
| Co<br>de | NEW | NT<br>60 |  | <i>gn</i><br>(Guarani)  |  |
| Co<br>de | NEW | NT<br>60 |  | <i>he</i><br>(Hebrew)   |  |
| Co<br>de | NEW | NT<br>60 |  | <i>hr</i><br>(Croatian)   |  |
| Co<br>de | NEW | NT<br>60 |  | <i>ht</i><br>(Haitian, Haitian Creole)  |  |
| Co<br>de | NEW | NT<br>60 |  | <i>hu</i><br>(Hungarian)  |  |
| Co<br>de | NEW | NT<br>60 |  | <i>hy</i><br>(Armenian)   |  |
| Co<br>de | NEW | NT<br>60 |  | <i>ia</i><br>(Interlingua (International Au<br>xiliary Language Association<br>)) |  |
| Co<br>de | NEW | NT<br>60 |  | <i>id</i><br>(Indonesian)   |  |
| Co<br>de | NEW | NT<br>60 |  | <i>is</i><br>(Icelandic)  |  |
| Co<br>de | NEW | NT<br>60 |  | <i>it</i><br>(Italian)  |  |
| Co<br>de | NEW | NT<br>60 |  | <i>ja</i><br>(Japanese)   |  |
| Co<br>de | NEW | NT<br>60 |  | <i>ju</i><br>(Javanese)   |  |
| Co<br>de | NEW | NT<br>60 |  | <i>ka</i><br>(Georgian)   |  |
| Co<br>de | NEW | NT<br>60 |  | <i>km</i><br>(Central Khmer)  |  |
| Co<br>de | NEW | NT<br>60 |  | <i>ko</i><br>(Korean)   |  |
| Co<br>de | NEW | NT<br>60 |  | <i>ku</i><br>(Kurdish)  |  |
| Co<br>de | NEW | NT<br>60 |  | <i>lb</i><br>(Luxembourgish, Letzeburge<br>sch)                                   |  |
| Co<br>de | NEW | NT<br>60 |  | <i>lo</i><br>(Lao)  |  |
| Co<br>de | NEW | NT<br>60 |  | <i>lt</i><br>(Lithuanian)   |  |
| Co<br>de | NEW | NT<br>60 |  | <i>lv</i><br>(Latvian)  |  |

|          |     |          |  |  |  |
|----------|-----|----------|--|--|--|
| Co<br>de | NEW | NT<br>60 |  | <i>mg</i><br>(Malagasy)                          |  |
| Co<br>de | NEW | NT<br>60 |  | <i>mk</i><br>(Macedonian)                        |  |
| Co<br>de | NEW | NT<br>60 |  | <i>mn</i><br>(Mongolian)                         |  |
| Co<br>de | NEW | NT<br>60 |  | <i>mt</i><br>(Maltese)                           |  |
| Co<br>de | NEW | NT<br>60 |  | <i>nl</i><br>(Dutch, Flemish)                    |  |
| Co<br>de | NEW | NT<br>60 |  | <i>no</i><br>(Norwegian)                         |  |
| Co<br>de | NEW | NT<br>60 |  | <i>pl</i><br>(Polish)                            |  |
| Co<br>de | NEW | NT<br>60 |  | <i>pt</i><br>(Portuguese)                        |  |
| Co<br>de | NEW | NT<br>60 |  | <i>ro</i><br>(Romanian, Moldavian, Mold<br>ovan) |  |
| Co<br>de | NEW | NT<br>60 |  | <i>ru</i><br>(Russian)                           |  |
| Co<br>de | NEW | NT<br>60 |  | <i>se</i><br>(Northern Sami)                     |  |
| Co<br>de | NEW | NT<br>60 |  | <i>sk</i><br>(Slovak)                            |  |
| Co<br>de | NEW | NT<br>60 |  | <i>sl</i><br>(Slovenian)                         |  |
| Co<br>de | NEW | NT<br>60 |  | <i>sm</i><br>(Samoan)                            |  |
| Co<br>de | NEW | NT<br>60 |  | <i>so</i><br>(Somali)                            |  |
| Co<br>de | NEW | NT<br>60 |  | <i>sq</i><br>(Albanian)                          |  |
| Co<br>de | NEW | NT<br>60 |  | <i>sr</i><br>(Serbian)                           |  |
| Co<br>de | NEW | NT<br>60 |  | <i>sv</i><br>(Swedish)                           |  |
| Co<br>de | NEW | NT<br>60 |  | <i>sw</i><br>(Swahili)                           |  |
| Co<br>de | NEW | NT<br>60 |  | <i>ta</i><br>(Tamil)                             |  |
| Co<br>de | NEW | NT<br>60 |  | <i>th</i><br>(Thai)                              |  |
| Co<br>de | NEW | NT<br>60 |  | <i>tr</i><br>(Turkish)                           |  |

|       |                 |       |                 |   |  |
|-------|-----------------|-------|-----------------|---|--|
| Co de | NEW             | NT 60 |                 | <i>uk</i><br>(Ukrainian)                          |  |
| Co de | NEW             | NT 60 |                 | <i>ur</i><br>(Urdu)                               |  |
| Co de | NEW             | NT 60 |                 | <i>uz</i><br>(Uzbek)                              |  |
| Co de | NEW             | NT 60 |                 | <i>vi</i><br>(Vietnamese)                         |  |
| Co de | NEW             | NT 60 |                 | <i>zh</i><br>(Chinese)                            |  |
| Co de | NEW             | NT 7  |                 | <i>CMK</i><br>(square centimetre)                 |  |
| Co de | NEW             | NT 7  |                 | <i>CMQ</i><br>(cubic centimetre)                  |  |
| Co de | NEW             | NT 7  |                 | <i>E37</i><br>(pixel)                             |  |
| Co de | NEW             | NT 7  |                 | <i>KWH</i><br>(kilowatthours)                     |  |
| Co de | NEW             | NT 7  |                 | <i>MMK</i><br>(square millimetre)                 |  |
| Co de | NEW             | NT 7  |                 | <i>MTK</i><br>(square metre)                      |  |
| Co de | NEW             | NT 7  |                 | <i>CO2TON</i><br>(ton of CO2)                     |  |
| Table | UPD<br>ATE<br>D | NT 7  | unit of measure |   | OtherExternalReferenceURL<br>Old value:<br>New value: <a href="http://docs.oasis-open.org/ubl/os-UBL-2.1/cl/gc/default/UnitOfMeasureCode-2.1.gc#">#http://docs.oasis-open.org/ubl/os-UBL-2.1/cl/gc/default/UnitOfMeasureCode-2.1.gc#</a> |
| Table | UPD<br>ATE<br>D | NT 7  | unit of measure |   | Description_English<br>Old value: <i>unity of measure</i><br>New value: <i>unit of measure</i>   |
| Co de | NEW             | T2 1  |                 | <i>BOR</i><br>(blanket order)                     |  |
| Co de | NEW             | T2 1  |                 | <i>CEO</i><br>(Certificate of origin)             |  |
| Co de | NEW             | T2 1  |                 | <i>CER</i><br>(Certificate)                       |  |
| Co de | UPD<br>ATE<br>D | T2 1  |                 | <i>CTR</i><br>(Contract)                          | Text_English<br>Old value: <i>contract</i><br>New value: <i>Contract</i>   |
| Co de | NEW             | T2 1  |                 | <i>MCI</i><br>(Visual merchandising instruction)  |  |
| Co de | NEW             | T2 1  |                 | <i>VMI</i><br>(visual merchandising instructions) |  |

|       |     |         |  |   |  |
|-------|-----|---------|--|---|--|
| Co de | NEW | T4<br>1 |  | 1<br>(Agreed settlement)                    |  |
| Co de | NEW | T4<br>1 |  | 2<br>(Below specification goods)            |  |
| Co de | NEW | T4<br>1 |  | 3<br>(Damaged goods)                        |  |
| Co de | NEW | T4<br>1 |  | 4<br>(Short delivery)                       |  |
| Co de | NEW | T4<br>1 |  | 7<br>(Payment on account)                   |  |
| Co de | NEW | T4<br>1 |  | 8<br>(Returnable container charge included) |  |
| Co de | NEW | T4<br>1 |  | 9<br>(Invoice error)                        |  |
| Co de | NEW | T4<br>1 |  | 10<br>(Costs for draft)                     |  |
| Co de | NEW | T4<br>1 |  | 11<br>(Bank charges)                        |  |
| Co de | NEW | T4<br>1 |  | 12<br>(Agent commission)                    |  |
| Co de | NEW | T4<br>1 |  | 14<br>(Wrong delivery)                      |  |
| Co de | NEW | T4<br>1 |  | 15<br>(Goods returned to agent)             |  |
| Co de | NEW | T4<br>1 |  | 16<br>(Goods partly returned)               |  |
| Co de | NEW | T4<br>1 |  | 17<br>(Transport damage)                    |  |
| Co de | NEW | T4<br>1 |  | 19<br>(Trade discount)                      |  |
| Co de | NEW | T4<br>1 |  | 20<br>(Deduction for late delivery)         |  |
| Co de | NEW | T4<br>1 |  | 21<br>(Advertising costs)                   |  |
| Co de | NEW | T4<br>1 |  | 22<br>(Customs duties)                      |  |
| Co de | NEW | T4<br>1 |  | 23<br>(Telephone and postal costs)          |  |
| Co de | NEW | T4<br>1 |  | 24<br>(Repair costs)                        |  |
| Co de | NEW | T4<br>1 |  | 25<br>(Attorney fees)                       |  |
| Co de | NEW | T4<br>1 |  | 26<br>(Taxes)                               |  |

|          |     |         |  |  |  |
|----------|-----|---------|--|--|--|
| Co<br>de | NEW | T4<br>1 |  | 30<br>(Direct payment to seller)         |  |
| Co<br>de | NEW | T4<br>1 |  | 32<br>(Goods not delivered)              |  |
| Co<br>de | NEW | T4<br>1 |  | 33<br>(Late delivery)                    |  |
| Co<br>de | NEW | T4<br>1 |  | 35<br>(Goods returned)                   |  |
| Co<br>de | NEW | T4<br>1 |  | 36<br>(Invoice not received)             |  |
| Co<br>de | NEW | T4<br>1 |  | 37<br>(Credit note to debtor/not to us)  |  |
| Co<br>de | NEW | T4<br>1 |  | 38<br>(Deducted bonus)                   |  |
| Co<br>de | NEW | T4<br>1 |  | 39<br>(Deducted discount)                |  |
| Co<br>de | NEW | T4<br>1 |  | 40<br>(Deducted freight costs)           |  |
| Co<br>de | NEW | T4<br>1 |  | 41<br>(Deduction against other invoices) |  |
| Co<br>de | NEW | T4<br>1 |  | 42<br>(Credit balance(s))                |  |
| Co<br>de | NEW | T4<br>1 |  | 45<br>(Debit note to seller)             |  |
| Co<br>de | NEW | T4<br>1 |  | 46<br>(Discount beyond terms)            |  |
| Co<br>de | NEW | T4<br>1 |  | 48<br>(Allowance/charge error)           |  |
| Co<br>de | NEW | T4<br>1 |  | 49<br>(Substitute product)               |  |
| Co<br>de | NEW | T4<br>1 |  | 50<br>(Terms of sale error)              |  |
| Co<br>de | NEW | T4<br>1 |  | 52<br>(Wrong invoice)                    |  |
| Co<br>de | NEW | T4<br>1 |  | 53<br>(Duplicate invoice)                |  |
| Co<br>de | NEW | T4<br>1 |  | 54<br>(Weight error)                     |  |
| Co<br>de | NEW | T4<br>1 |  | 55<br>(Additional charge not authorized) |  |
| Co<br>de | NEW | T4<br>1 |  | 56<br>(Incorrect discount)               |  |

|       |        |         |                             |  |   |
|-------|--------|---------|-----------------------------|--|---|
| Code  | NEW    | T4<br>1 |                             | 57<br>(Price change)   |   |
| Code  | NEW    | T4<br>1 |                             | 58<br>(Variation)  |   |
| Code  | NEW    | T4<br>1 |                             | 59<br>(Chargeback)   |   |
| Code  | NEW    | T4<br>1 |                             | 65<br>(Settlement to agent)  |   |
| Code  | NEW    | T4<br>1 |                             | 66<br>(Cash discount)  |   |
| Code  | NEW    | T4<br>1 |                             | 70<br>(Wrong monetary amount resulting from incorrect free goods quantity) |   |
| Code  | NEW    | T4<br>1 |                             | 72<br>(Temporary special promotion)  |   |
| Code  | NEW    | T4<br>1 |                             | 73<br>(Difference in tax rate)   |   |
| Code  | NEW    | T4<br>1 |                             | 74<br>(Quantity discount)  |   |
| Code  | NEW    | T4<br>1 |                             | 75<br>(Promotion discount)   |   |
| Code  | NEW    | T4<br>1 |                             | 76<br>(Cancellation deadline passed)                                       |   |
| Code  | NEW    | T4<br>1 |                             | 77<br>(Pricing discount)   |   |
| Code  | NEW    | T4<br>1 |                             | 78<br>(Volume discount)  |   |
| Code  | NEW    | T4<br>1 |                             | 79<br>(Sundry discount)  |   |
| Table | UPDATE | T4<br>1 | type of Allowance or Charge |  | Generalities<br>Old value: <i>coded specification of an Allowance or Charge</i><br>New value: <i>coded specification of an Allowance or Charge (elaborated from UNECE 4465)</i> |
| Code  | NEW    | T4<br>4 |                             | CO<br>(company identification code)  |   |