



<http://www.moda-ml.org>

IMPLEMENTATION GUIDE
TRANSACTION "TEXTILE CATALOGUE"

Version: 2013-1

Date of release: 18/11/2011

Document code: G009

XML Schema repository:<http://www.moda-ml.org/moda-ml/repository/schema/v2013-1/default.asp>

Guides repository:<http://www.moda-ml.org/moda-ml/repository/guide/v2013-1/default.asp>

Guide filename: G009-MODA-ML-TextileCatalogue.pdf

1. BUSINESS DESCRIPTION

1.1 Scope

The present guide has been issued to assist the companies of the Textile-Clothing sector in the implementation of the standard XML document type "Textile CATALOGUE", providing all the instruction required for its use in any context of e-commerce between Apparel Producers and Fabric Producers.

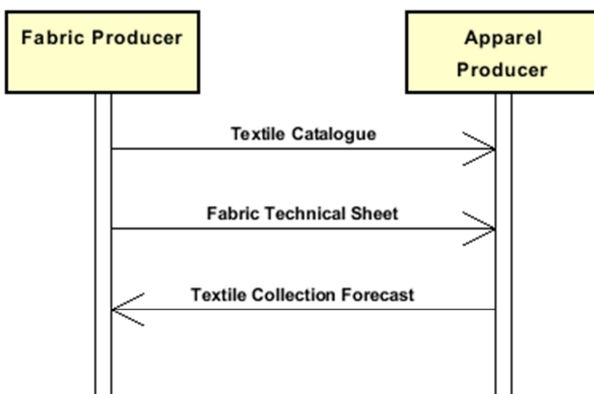
All the rules required for the construction and validation of the document are embedded into the specific XML-Schema, which is detailed in section "Implementation guide".

1.2 Generalities

This document is usable less for a sales catalogue than to exchange in advance the product data between the Supplier and the Customer, in order to synchronize their product data-bases.

It lists the articles composing the Fabric Producer's offer (codes, descriptions, prices and sales conditions) and can include some of the technical data (composition, weight and width, construction specifications, ...).

1.3. Possible scenario



2. IMPLEMENTATION GUIDE

2.1 General structure of XML document

All the business data that can be exchanged through this class of documents are shown in the following "document structure", that provides a simplified vision of the Schema.

In particular:

- the two numbers following each element define its "cardinality" (minimum and maximum number of occurrences); the minimum equal zero indicates that the element is optional, the minimum greater than zero indicates that is mandatory;
- the bold character denotes the complex elements (aggregates of simple elements) that were built for the sake of functionality and re-usability of some complex informations sets. The child elements in each parent element are easily spotted as "indented";
- the symbol "@" denotes an attribute of the preceding element; here "the usage indicator (optional, required, ...)" is shown in square brackets.

Structure

TEXCatalog

@msgfunction [Optional] [Default= OR]

@version [Optional] [Default= 2013-1]

@useProfile [Optional]

| **TCHheader 1-1**

| | msgN 1-1

| | - choose -

| | msgID 0-1

| | - or -

| | docID 0-1

| | *@numberingOrg [Optional]*

| | - end choose -

| | msgDate 1-1

| | *@dateForm [Optional]*

| | msgCurrency 0-1

| | season 0-1

| | validityStart 0-1

| | *@dateForm [Optional]*

| | validityEnd 0-1

| | *@dateForm [Optional]*

| | **buyer 0-1**

| | *@logo [Optional]*

| | *@sender [Optional]*

| | | id 1-1

| | | *@numberingOrg [Optional]*

| | | legalName 0-1

| | | dept 0-1

| | | person 0-1

| | | *@email [Optional]*

| | | *@phone [Optional]*

| | | *@fax [Optional]*

| | | street 0-1

| | | city 0-1

| | | subCountry 0-1

| | | country 0-1

| | | postCode 0-1

| | **supplier 1-1**

| | *@logo [Optional]*

| | *@sender [Optional]*

- | id 1-1
- | | @numberingOrg [Optional]
- | legalName 0-1
- | dept 0-1
- | person 0-1
- | | @email [Optional]
- | | @phone [Optional]
- | | @fax [Optional]
- | street 0-1
- | city 0-1
- | subCountry 0-1
- | country 0-1
- | postCode 0-1
- | note 0-19
- | | @numberingOrg [Optional]
- | | @codeList [Optional]
- | | @noteLabel [Optional]

| **TCbody 1-1**

| | **TCgroup 1-unbounded**

- | | artGroup 0-1
- | | | @numberingOrg [Optional]
- | | | @codeList [Optional]
- | | | @listName [Optional]
- | | | @listVersion [Optional]
- | | artGroupName 0-1

| | **TCitem 1-unbounded**

- | | | lineN 1-1
- | | | | @VAT [Optional]
- | | | fabricNameSupplier 0-1
- | | | art 1-1
- | | | | @numberingOrg [Optional]
- | | | | @codeList [Optional]
- | | | | @listName [Optional]
- | | | | @listVersion [Optional]
- | | | pattern 0-1
- | | | | @numberingOrg [Optional]
- | | | | @codeList [Optional]
- | | | | @listName [Optional]
- | | | | @listVersion [Optional]
- | | | color 0-99
- | | | | @numberingOrg [Optional]
- | | | | @codeList [Optional]
- | | | | @listName [Optional]
- | | | | @listVersion [Optional]
- | | | added 0-99
- | | | | @numberingOrg [Optional]
- | | | | @addType [Optional]
- | | | catalogPrice 0-9
- | | | | @um [Required]
- | | | | @minQty [Optional]
- | | | | @garmentMarket [Optional]

| | **generalChar 0-1**

- | | | fabricNameSupplier 1-1
- | | | fabricNameBuyer 0-1
- | | | season 0-1
- | | | tradeMark 0-1
- | | | customsStat 0-1

| | **fabricCompos 1-1**

- | | | percCompos 1-9
- | | | | @fibre [Required]

dyeProcess 0-1
dyeStuff 0-1
careLabel 0-1
minLot 0-1
@um [Required]
minLotExclusive 0-1
@um [Required]
avgDeliveryDD 0-1
estFaultiness 0-1
note 0-19
@numberingOrg [Optional]
@codeList [Optional]
@noteLabel [Optional]

construction 0-1

fabricWeightM 1-1
@um [Optional] [Default= GRM]
fabricWeightM2 0-1
@um [Optional] [Default= GRM]
fabricWidth 0-1
@um [Optional] [Default= CMT]
fabricCutWidth 0-1
@um [Optional] [Default= CMT]
pieceLength 0-1
@um [Optional] [Default= MTR]
weave 0-1
warpCount 0-9
@method [Optional] [Default= ISO-2060]
@fibre [Optional]
weftCount 0-9
@method [Optional] [Default= ISO-2060]
@fibre [Optional]
warpEndsN 0-1
weftEndsN 0-1
bowingWarp 0-1
@method [Optional]
bowingWeft 0-1
@method [Optional]
checksFlaw 0-1
@method [Optional]
weftDev 0-1
@method [Optional]
resin 0-1

note 0-19
@numberingOrg [Optional]
@codeList [Optional]
@noteLabel [Optional]

2.2 Detailed description of document elements

Following tables show all elements (complex and simple) used in this document. Description includes: 1) element's information: xml tag, name, brief description, data type and syntax constraints; 2) information about use of the element in a particular position in the document: xpath and possible associated notes.

2.2.1 Complex elements (Aggregate Business Information Entities)

Complex elements are those elements whose content is composed of other elements (childs).Complex elements are alphabetically ordered.

buyer	details of the Buyer - base type: Nad, (XPath: TEXCatalog/TCheader/buyer) 0-1
construction	construction data and features included in the technical sheet of the fabric article (XPath: TEXCatalog/TCbody/TCgroup/TCitem/construction) 0-1
fabricCompos	composition of the fabric according to the Directory 97/37/CE (XPath: TEXCatalog/TCbody/TCgroup/TCitem/generalChar/fabricCompos) 1-1
generalChar	general data included in the technical sheet of the fabric article (XPath: TEXCatalog/TCbody/TCgroup/TCitem/generalChar) 0-1
supplier	details of the Supplier - base type: Nad, (XPath: TEXCatalog/TCheader/supplier) 1-1
TCbody	body of the document TEXTILES CATALOGUE (XPath: TEXCatalog/TCbody) 1-1
TCgroup	articles grouping of the TEXTILES CATALOGUE (XPath: TEXCatalog/TCbody/TCgroup) 1-unbounded - note: <i>this level is created to allow articles grouping by families</i>
TCheader	header of the document TEXTILES CATALOGUE (XPath: TEXCatalog/TCheader) 1-1
TCitem	line item of the message TEXTILES CATALOGUE (XPath: TEXCatalog/TCbody/TCgroup/TCitem) 1-unbounded

2.2.2 Simple elements (Basic Business Information Entities)

Simple elements are those elements whose content is characterized by a data type plus a domain of possible values. Simple elements are alphabetically ordered.

added	additional code of the product (complementing the formers) - base type: string, max length: 15, (XPath: TEXCatalog/TCbody/TCgroup/TCitem/added) 0-99 - note: <i>this data can be iterated to show a number of features available for the article</i>
--------------	--

@addType	<p>qualifier of the additional coding of a product</p> <ul style="list-style-type: none"> - base type: string, cod. table: T44 http://www.moda-ml.net/moda-ml/repository/codelist/v2013-1/gc_T44.xml (XPath: <code>TEXCatalog/TCbody/TCgroup/TCitem/added/@addType</code>) [Optional]
art	<p>article number of the product</p> <ul style="list-style-type: none"> - base type: string, max length: 25, (XPath: <code>TEXCatalog/TCbody/TCgroup/TCitem/art</code>) 1-1
artGroup	<p>code identifying a class of products</p> <ul style="list-style-type: none"> - base type: string, max length: 40, (XPath: <code>TEXCatalog/TCbody/TCgroup/artGroup</code>) 0-1
artGroupName	<p>description of a class of products</p> <ul style="list-style-type: none"> - base type: string, max length: 70, (XPath: <code>TEXCatalog/TCbody/TCgroup/artGroupName</code>) 0-1
avgDeliveryDD	<p>average time (workdays) between order receipt and delivery of an article, specified by the Supplier</p> <ul style="list-style-type: none"> - base type: duration, (XPath: <code>TEXCatalog/TCbody/TCgroup/TCitem/generalChar/avgDeliveryDD</code>) 0-1
bowingWarp	<p>warp bowing</p> <ul style="list-style-type: none"> - base type: decimal, min inclusive: 0, (XPath: <code>TEXCatalog/TCbody/TCgroup/TCitem/construction/bowingWarp</code>) 0-1
bowingWeft	<p>weft bowing</p> <ul style="list-style-type: none"> - base type: decimal, min inclusive: 0, (XPath: <code>TEXCatalog/TCbody/TCgroup/TCitem/construction/bowingWeft</code>) 0-1
careLabel	<p>codification of the care instructions printed on the label (ISO 3758)</p> <ul style="list-style-type: none"> - base type: string, length: 5, (XPath: <code>TEXCatalog/TCbody/TCgroup/TCitem/generalChar/careLabel</code>) 0-1 - note: <i>code composition: 1st digit=id.symbol umid washing, 2nd=id.s.bleaching, 3rd=id.s. ironing, 4th=id.s. dry washing, 5th=id.s. drying. See ATTACHMENT B.</i>
catalogPrice	<p>price shown in the Supplier's Catalogue</p> <ul style="list-style-type: none"> - base type: decimal, fraction digits: 2, (XPath: <code>TEXCatalog/TCbody/TCgroup/TCitem/catalogPrice</code>) 0-9 - note: <i>this data can be iterated when the price depends on the purchased quantity (see attribute "minQty")</i>
checksFlaw	<p>flaw in checks</p> <ul style="list-style-type: none"> - base type: decimal, min inclusive: 0, (XPath: <code>TEXCatalog/TCbody/TCgroup/TCitem/construction/checksFlaw</code>) 0-1
city	<p>name of the city (town, village)</p> <ul style="list-style-type: none"> - base type: string, max length: 40, (XPath: <code>TEXCatalog/TCHheader/buyer/city</code>) 0-1 (XPath: <code>TEXCatalog/TCHheader/supplier/city</code>) 0-1
@codeList	<p>it specifies the URL where the list of codes used to make an instance of the element can be found</p> <ul style="list-style-type: none"> - base type: string, max length: 255, (XPath: <code>TEXCatalog/TCbody/TCgroup/artGroup/@codeList</code>) [Optional] - nota: <i>this attribute should be ALTERNATIVE to the others</i> (XPath: <code>TEXCatalog/TCbody/TCgroup/TCitem/generalChar/note/@codeList</code>) [Optional] - nota: <i>must be used to provide (URL) the list of codes used in</i>

	<p>"noteLabel" (XPath: TEXCatalog/TCHheader/note/@codeList) [Optional] - nota: <i>must be used to provide (URL) the list of codes used in "noteLabel"</i> (XPath: TEXCatalog/TCbody/TCgroup/TCitem/pattern/@codeList) [Optional] - nota: <i>this attribute should be ALTERNATIVE to the others</i> (XPath: TEXCatalog/TCbody/TCgroup/TCitem/art/@codeList) [Optional] - nota: <i>this attribute should be ALTERNATIVE to the others</i> (XPath: TEXCatalog/TCbody/TCgroup/TCitem/note/@codeList) [Optional] - nota: <i>must be used to provide (URL) the list of codes used in "noteLabel"</i> (XPath: TEXCatalog/TCbody/TCgroup/TCitem/color/@codeList) [Optional] - nota: <i>this attribute should be ALTERNATIVE to the others</i></p>
color	<p>colour number of the product, when not included in the model or fabric code - base type: string, max length: 15, (XPath: TEXCatalog/TCbody/TCgroup/TCitem/color) 0-99 - note: <i>this data can be iterated to show the colours available for the article</i></p>
country	<p>code of the nation - base type: string, cod. table: T10 http://www.moda-ml.net/moda-ml/repository/codelist/v2013-1/gc_T10.xml (XPath: TEXCatalog/TCHheader/supplier/country) 0-1 (XPath: TEXCatalog/TCHheader/buyer/country) 0-1</p>
customsStat	<p>statistic code assigned by Customs to a specified product - base type: string, max length: 15, (XPath: TEXCatalog/TCbody/TCgroup/TCitem/generalChar/customsStat) 0-1</p>
@dateForm	<p>format used for the date - base type: string, cod. table: NT29 http://www.moda-ml.net/moda-ml/repository/codelist/v2013-1/gc_NT29.xml (XPath: TEXCatalog/TCHheader/validityStart/@dateForm) [Optional] (XPath: TEXCatalog/TCHheader/validityEnd/@dateForm) [Optional] (XPath: TEXCatalog/TCHheader/msgDate/@dateForm) [Optional]</p>
dept	<p>name or code of a contact department within a Party - base type: string, max length: 40, (XPath: TEXCatalog/TCHheader/supplier/dept) 0-1 (XPath: TEXCatalog/TCHheader/buyer/dept) 0-1</p>
docID	<p>identification number of the referenced document SINCE 2008-1 ITS USE IN THE HEADER IS DISCOURAGED (REPLACED BY msgID) - base type: string, max length: 80, (XPath: TEXCatalog/TCHheader/docID) 0-1</p>
dyeProcess	<p>dye process applied to the fabric - base type: string, cod. table: T15 http://www.moda-ml.net/moda-ml/repository/codelist/v2013-1/gc_T15.xml (XPath: TEXCatalog/TCbody/TCgroup/TCitem/generalChar/dyeProcess) 0-1</p>
dyeStuff	<p>dye stuff used in the fabric dye process - base type: string, cod. table: T16 http://www.moda-ml.net/moda-ml/repository/codelist/v2013-1/gc_T16.xml (XPath: TEXCatalog/TCbody/TCgroup/TCitem/generalChar/dyeStuff) 0-1</p>
@email	<p>electronic mail address of the contact person within a Party - base type: string, max length: 80, (XPath: TEXCatalog/TCHheader/buyer/person/@email) [Optional] (XPath: TEXCatalog/TCHheader/supplier/person/@email) [Optional]</p>

estFaultiness	percent faultiness of an article, estimated by the Supplier - base type: decimal, min inclusive: 0, max inclusive: 100, fraction digits: 2, (XPath: TEXCatalog/TCbody/TCgroup/TCitem/generalChar/estFaultiness) 0-1
fabricCutWidth	usable width of the fabric (for garments manufacturing) as technical specification - base type: decimal, min inclusive: 0, fraction digits: 2, (XPath: TEXCatalog/TCbody/TCgroup/TCitem/construction/fabricCutWidth) 0-1
fabricNameBuyer	name given to the fabric (article/pattern) by the Buyer - base type: string, max length: 70, (XPath: TEXCatalog/TCbody/TCgroup/TCitem/generalChar/fabricNameBuyer) 0-1 - note: <i>Do not specify this information when generalChar is obtained in TCItem; specify it at the TCitem level.</i>
fabricNameSupplier	name given to the fabric (article/pattern) by the Supplier - base type: string, max length: 70, (XPath: TEXCatalog/TCbody/TCgroup/TCitem/generalChar/fabricNameSupplier) 1-1 - note: <i>Do not specify this information when generalChar is obtained in TCItem; specify it at the TCitem level.</i> (XPath: TEXCatalog/TCbody/TCgroup/TCitem/fabricNameSupplier) 0-1
fabricWeightM	weight per metre of the fabric as technical specification - base type: decimal, min inclusive: 0, fraction digits: 2, (XPath: TEXCatalog/TCbody/TCgroup/TCitem/construction/fabricWeightM) 1-1
fabricWeightM2	weight per square metre of the fabric as technical specification - base type: decimal, min inclusive: 0, fraction digits: 2, (XPath: TEXCatalog/TCbody/TCgroup/TCitem/construction/fabricWeightM2) 0-1
fabricWidth	width of the fabric as technical specification - base type: decimal, min inclusive: 0, fraction digits: 2, (XPath: TEXCatalog/TCbody/TCgroup/TCitem/construction/fabricWidth) 0-1
@fax	fax number of the contact person within a Party - base type: string, max length: 35, (XPath: TEXCatalog/THeader/buyer/person/@fax) [Optional] (XPath: TEXCatalog/THeader/supplier/person/@fax) [Optional]
@fibre	type of fibre used in a textile product - base type: string, cod. table: T19 http://www.moda-ml.net/moda-ml/repository/codelist/v2013-1/gc_T19.xml (XPath: TEXCatalog/TCbody/TCgroup/TCitem/construction/warpCount/@fibre) [Optional] (XPath: TEXCatalog/TCbody/TCgroup/TCitem/construction/weftCount/@fibre) [Optional] (XPath: TEXCatalog/TCbody/TCgroup/TCitem/generalChar/fabricCompos/percCompos/@fibre) [Required]
@garmentMarket	market segment of the garment item - base type: string, cod. table: NT34 http://www.moda-ml.net/moda-ml/repository/codelist/v2013-1/gc_NT34.xml (XPath: TEXCatalog/TCbody/TCgroup/TCitem/catalogPrice/@garmentMarket) [Optional]
id	primary identification code of a Party; it is recommended the format: nation code (ISO 3166) + VAT identification number (11

	<p>crt), with the qualifier "numberingOrg"= MF</p> <ul style="list-style-type: none"> - base type: string, max length: 15, <p>(XPath: TEXCatalog/THeader/buyer/id) 1-1 (XPath: TEXCatalog/THeader/supplier/id) 1-1</p>
legalName	<p>legal name of a Party</p> <ul style="list-style-type: none"> - base type: string, max length: 80, <p>(XPath: TEXCatalog/THeader/buyer/legalName) 0-1 (XPath: TEXCatalog/THeader/supplier/legalName) 0-1</p>
lineN	<p>number of the line item of the present message (xml document)</p> <ul style="list-style-type: none"> - base type: positiveInteger, min inclusive: 1, max inclusive: 9999, <p>(XPath: TEXCatalog/TCbody/TCgroup/TCitem/lineN) 1-1</p>
@listName	<p>it specifies the name of the list of codes used to make an instance of the element</p> <ul style="list-style-type: none"> - base type: string, max length: 40, <p>(XPath: TEXCatalog/TCbody/TCgroup/TCitem/color/@listName) [Optional]</p> <ul style="list-style-type: none"> - nota: <i>this attribute should always be used coupled with "numberingOrg"</i> <p>(XPath: TEXCatalog/TCbody/TCgroup/TCitem/pattern/@listName) [Optional]</p> <ul style="list-style-type: none"> - nota: <i>this attribute should always be used coupled with "numberingOrg"</i> <p>(XPath: TEXCatalog/TCbody/TCgroup/TCitem/art/@listName) [Optional]</p> <ul style="list-style-type: none"> - nota: <i>this attribute should always be used coupled with "numberingOrg"</i> <p>(XPath: TEXCatalog/TCbody/TCgroup/artGroup/@listName) [Optional]</p> <ul style="list-style-type: none"> - nota: <i>this attribute should always be used coupled with "numberingOrg"</i>
@listVersion	<p>it specifies the version of the list of codes used to make an instance of the element</p> <ul style="list-style-type: none"> - base type: string, max length: 6, <p>(XPath: TEXCatalog/TCbody/TCgroup/artGroup/@listVersion) [Optional]</p> <ul style="list-style-type: none"> - nota: <i>this attribute should always be used coupled with "numberingOrg" and "listName"</i> <p>(XPath: TEXCatalog/TCbody/TCgroup/TCitem/pattern/@listVersion) [Optional]</p> <ul style="list-style-type: none"> - nota: <i>this attribute should always be used coupled with "numberingOrg" and "listName"</i> <p>(XPath: TEXCatalog/TCbody/TCgroup/TCitem/color/@listVersion) [Optional]</p> <ul style="list-style-type: none"> - nota: <i>this attribute should always be used coupled with "numberingOrg" and "listName"</i> <p>(XPath: TEXCatalog/TCbody/TCgroup/TCitem/art/@listVersion) [Optional]</p> <ul style="list-style-type: none"> - nota: <i>this attribute should always be used coupled with "numberingOrg" and "listName"</i>
@logo	<p>company logo (URL of the image jpeg or gif). It is recommended that the width of the image does not exceed 640 pixel.</p> <ul style="list-style-type: none"> - base type: string, max length: 255, <p>(XPath: TEXCatalog/THeader/buyer/@logo) [Optional] (XPath: TEXCatalog/THeader/supplier/@logo) [Optional]</p>
@method	<p>standard protocol or method employed in a test to evaluate a characteristic or a parameter</p> <ul style="list-style-type: none"> - base type: string, max length: 25, <p>(XPath: TEXCatalog/TCbody/TCgroup/TCitem/construction/warpCount/@method) [Optional] [Default= ISO-2060] (XPath: TEXCatalog/TCbody/TCgroup/TCitem/construction/weftDev/@method) [Optional] (XPath: TEXCatalog/TCbody/TCgroup/TCitem/construction/bowingWarp/@method) [Optional]</p>

	<p>(XPath: TEXCatalog/TCbody/TCgroup/TCitem/construction/bowingWeft/@method) [Optional]</p> <p>(XPath: TEXCatalog/TCbody/TCgroup/TCitem/construction/weftCount/@method) [Optional] [Default= ISO-2060]</p> <p>(XPath: TEXCatalog/TCbody/TCgroup/TCitem/construction/checksFlaw/@method) [Optional]</p>
minLot	<p>minimum order quantity of a product requested by the Supplier</p> <p>- base type: decimal, min inclusive: 0, fraction digits: 2,</p> <p>(XPath: TEXCatalog/TCbody/TCgroup/TCitem/generalChar/minLot) 0-1</p>
minLotExclusive	<p>minimum order quantity of a product requested by the Supplier for an exclusive color</p> <p>- base type: decimal, min inclusive: 0, fraction digits: 2,</p> <p>(XPath: TEXCatalog/TCbody/TCgroup/TCitem/generalChar/minLotExclusive) 0-1</p>
@minQty	<p>minimum quantity required for the application of a given price</p> <p>- base type: decimal, min inclusive: 0, fraction digits: 2,</p> <p>(XPath: TEXCatalog/TCbody/TCgroup/TCitem/catalogPrice/@minQty) [Optional]</p>
msgCurrency	<p>currency used to express the monetary amounts of the message</p> <p>- base type: string, cod. table: T9</p> <p>http://www.moda-ml.net/moda-ml/repository/codelist/v2013-1/gc_T9.xml</p> <p>(XPath: TEXCatalog/TCheader/msgCurrency) 0-1</p>
msgDate	<p>date of issue of the present message (xml document), according to one of the patterns YYYY-MM-DD, YYYY-MM-DD:HH-MM or YYYY-WW.</p> <p>- base type: string,</p> <p>(XPath: TEXCatalog/TCheader/msgDate) 1-1</p>
@msgfunction	<p>function performed by the present message with regards to the transmission</p> <p>- base type: string, cod. table: NT18</p> <p>http://www.moda-ml.net/moda-ml/repository/codelist/v2013-1/gc_NT18.xml</p> <p>(XPath: TEXCatalog/@msgfunction) [Optional] [Default= OR]</p>
msgID	<p>key identifier of the document in the information system of the issuing Party</p> <p>- base type: string, max length: 35,</p> <p>(XPath: TEXCatalog/TCheader/msgID) 0-1</p>
msgN	<p>identification number given to the message (xml document) by its issuer</p> <p>- base type: string, max length: 35,</p> <p>(XPath: TEXCatalog/TCheader/msgN) 1-1</p>
note	<p>free text or structured (computer processing) note. For note structuring use the attributes "noteLabel" and "codelist"</p> <p>- base type: string, max length: 350,</p> <p>(XPath: TEXCatalog/TCbody/TCgroup/TCitem/generalChar/note) 0-19</p> <p>- note: <i>here the charges for sub-optimized quantities or for samples can be specified</i></p> <p>(XPath: TEXCatalog/TCheader/note) 0-19</p> <p>(XPath: TEXCatalog/TCbody/TCgroup/TCitem/note) 0-19</p>
@noteLabel	<p>subject qualifier of a note</p> <p>- base type: string, max length: 35,</p> <p>(XPath: TEXCatalog/TCbody/TCgroup/TCitem/note/@noteLabel) [Optional]</p> <p>- nota: <i>must be used to qualify the subject of the note</i></p> <p>(XPath: TEXCatalog/TCheader/note/@noteLabel) [Optional]</p> <p>- nota: <i>must be used to qualify the subject of the note</i></p> <p>(XPath: TEXCatalog/TCbody/TCgroup/TCitem/note/@noteLabel) [Optional]</p>

	<p>TEXCatalog/TCbody/TCgroup/TCitem/generalChar/note/@noteLabel) [Optional] - nota: <i>must be used to qualify the subject of the note</i></p>
@numberingOrg	<p>code specifying the organisation who has created or owns the coding or numbering system - base type: string, cod. table: NT6 http://www.moda-ml.net/moda-ml/repository/codelist/v2013-1/gc_NT6.xml (XPath: TEXCatalog/TCbody/TCgroup/TCitem/generalChar/note/@numberingOrg) [Optional] (XPath: TEXCatalog/TCbody/TCgroup/TCitem/note/@numberingOrg) [Optional] (XPath: TEXCatalog/TCbody/TCgroup/TCitem/pattern/@numberingOrg) [Optional] - nota: <i>this attribute should be used either single or coupled with "listName" and "listVersion"</i> (XPath: TEXCatalog/THeader/supplier/id/@numberingOrg) [Optional] (XPath: TEXCatalog/TCbody/TCgroup/TCitem/color/@numberingOrg) [Optional] - nota: <i>this attribute should be used either single or coupled with "listName" and "listVersion"</i> (XPath: TEXCatalog/THeader/note/@numberingOrg) [Optional] (XPath: TEXCatalog/TCbody/TCgroup/artGroup/@numberingOrg) [Optional] - nota: <i>this attribute should be used either single or coupled with "listName" and "listVersion"</i> (XPath: TEXCatalog/TCbody/TCgroup/TCitem/art/@numberingOrg) [Optional] - nota: <i>this attribute should be used either single or coupled with "listName" and "listVersion"</i> (XPath: TEXCatalog/THeader/buyer/id/@numberingOrg) [Optional] (XPath: TEXCatalog/THeader/docID/@numberingOrg) [Optional] - nota: <i>here can be specified whose document numbering is used (e.g.: Client, Supplier, ..)</i> (XPath: TEXCatalog/TCbody/TCgroup/TCitem/added/@numberingOrg) [Optional]</p>
pattern	<p>pattern/design number of the product, when not included in the article code - base type: string, max length: 15, (XPath: TEXCatalog/TCbody/TCgroup/TCitem/pattern) 0-1</p>
percCompos	<p>fiber rate in the product composition - base type: decimal, min inclusive: 0, max inclusive: 100, fraction digits: 2, (XPath: TEXCatalog/TCbody/TCgroup/TCitem/generalChar/fabricCompos/percCompos) 1-9</p>
person	<p>name of the contact person within a Party - base type: string, max length: 40, (XPath: TEXCatalog/THeader/supplier/person) 0-1 (XPath: TEXCatalog/THeader/buyer/person) 0-1</p>
@phone	<p>phone number of the contact person within a Party - base type: string, max length: 35, (XPath: TEXCatalog/THeader/supplier/person/@phone) [Optional] (XPath: TEXCatalog/THeader/buyer/person/@phone) [Optional]</p>
pieceLength	<p>length of the piece - base type: decimal, min inclusive: 0, fraction digits: 2, (XPath: TEXCatalog/TCbody/TCgroup/TCitem/construction/pieceLength) 0-1</p>
postCode	<p>code defining the postal zone - base type: string, max length: 10,</p>

	(XPath: TEXCatalog/THeader/supplier/postCode) 0-1 (XPath: TEXCatalog/THeader/buyer/postCode) 0-1
resin	resin (coating) percentage in finished weight - base type: decimal, min inclusive: 0, (XPath: TEXCatalog/Tbody/TCgroup/TCitem/construction/resin) 0-1
season	sale season; defined as: season (1 crt) + year (4 crt) - season: S/S=1 A/W=2 Spring=3 Summer=4 Autumn=5 Winter=6: for more than four seasons use alphabetic sequence: 1st season=A 2nd season=B etc.etc. - base type: string, max length: 15, (XPath: TEXCatalog/THeader/season) 0-1 (XPath: TEXCatalog/Tbody/TCgroup/TCitem/generalChar/season) 0-1
@sender	qualifier that specifies the Party issuing of the document - base type: boolean, (XPath: TEXCatalog/THeader/buyer/@sender) [Optional] - nota: <i>This attribute is mandatory when the STYLESHEET must be produced</i> (XPath: TEXCatalog/THeader/supplier/@sender) [Optional] - nota: <i>This attribute is mandatory when the STYLESHEET must be produced</i>
street	street and building number identifying a location - base type: string, max length: 80, (XPath: TEXCatalog/THeader/supplier/street) 0-1 (XPath: TEXCatalog/THeader/buyer/street) 0-1
subCountry	short name or code of the sub-country entity - base type: string, max length: 9, (XPath: TEXCatalog/THeader/buyer/subCountry) 0-1 (XPath: TEXCatalog/THeader/supplier/subCountry) 0-1
tradeMark	name of the official trademark of a specified product - base type: string, max length: 50, (XPath: TEXCatalog/Tbody/TCgroup/TCitem/generalChar/tradeMark) 0-1
@um	specification of the unit of measure - base type: string, cod. table: NT7 http://www.moda-ml.net/moda-ml/repository/codelist/v2013-1/gc_NT7.xml (XPath: TEXCatalog/Tbody/TCgroup/TCitem/catalogPrice/@um) [Required] (XPath: TEXCatalog/Tbody/TCgroup/TCitem/construction/fabricCutWidth/@um) [Optional] [Default= CMT] (XPath: TEXCatalog/Tbody/TCgroup/TCitem/generalChar/minLot/@um) [Required] (XPath: TEXCatalog/Tbody/TCgroup/TCitem/construction/fabricWeightM/@um) [Optional] [Default= GRM] (XPath: TEXCatalog/Tbody/TCgroup/TCitem/construction/fabricWeightM2/@um) [Optional] [Default= GRM] (XPath: TEXCatalog/Tbody/TCgroup/TCitem/construction/fabricWidth/@um) [Optional] [Default= CMT] (XPath: TEXCatalog/Tbody/TCgroup/TCitem/construction/pieceLength/@um) [Optional] [Default= MTR] (XPath: TEXCatalog/Tbody/TCgroup/TCitem/generalChar/minLotExclusive/@um) [Required]
@useProfile	use profile to which the present document is compliant if it was agreed by the parties. It is suggested a URI with reference to the firms or the URL of the profile. - base type: string, (XPath: TEXCatalog/@useProfile) [Optional]
validityEnd	date by which the validity ends, according to one of the patterns

	YYYY-MM-DD, YYYY-MM-DD:HH-MM or YYYY-WW. - base type: string, (XPath: TEXCatalog/TCheader/validityEnd) 0-1
validityStart	date by which the validity starts, according to one of the patterns YYYY-MM-DD, YYYY-MM-DD:HH-MM or YYYY-WW. - base type: string, (XPath: TEXCatalog/TCheader/validityStart) 0-1
@VAT	VAT rate or code (deprecated, use dtScheme element) - base type: string, cod. table: NT16 http://www.moda-ml.net/moda-ml/repository/codelist/v2013-1/gc_NT16.xml (XPath: TEXCatalog/TCbody/TCgroup/TCitem/lineN/@VAT) [Optional]
@version	Dictionary version from which the instance has been created - base type: string, cod. table: NT100 http://www.moda-ml.net/moda-ml/repository/codelist/v2013-1/gc_NT100.xml (XPath: TEXCatalog/@version) [Optional] [Default= 2013-1]
warpCount	measure of thinness of the warp thread - base type: string, max length: 10, (XPath: TEXCatalog/TCbody/TCgroup/TCitem/construction/warpCount) 0-9
warpEndsN	number of warp threads in 1 centimetre - base type: decimal, min inclusive: 0, fraction digits: 1, (XPath: TEXCatalog/TCbody/TCgroup/TCitem/construction/warpEndsN) 0-1
weave	type of weaving used in the manufacturing of fabric - base type: string, cod. table: T17 http://www.moda-ml.net/moda-ml/repository/codelist/v2013-1/gc_T17.xml (XPath: TEXCatalog/TCbody/TCgroup/TCitem/construction/weave) 0-1
weftCount	measure of thinness of the weft thread - base type: string, max length: 10, (XPath: TEXCatalog/TCbody/TCgroup/TCitem/construction/weftCount) 0-9
weftDev	deviation from right angle in weft - base type: decimal, min inclusive: 0, (XPath: TEXCatalog/TCbody/TCgroup/TCitem/construction/weftDev) 0-1
weftEndsN	number of weft threads in 1 centimetre - base type: decimal, min inclusive: 0, fraction digits: 1, (XPath: TEXCatalog/TCbody/TCgroup/TCitem/construction/weftEndsN) 0-1

2.3 Enumeration tables

List of enumeration tables used in the XML document. You can find the corresponding codes at: <http://www.moda-ml.org/moda-ml/imple/moda-ml-2013-1.asp?lingua=en&pag=6>

NT100 - eBIZ Moda-ML version
NT16 - VAT rate or code
NT18 - message function
NT29 - format of a date
NT34 - garment market segment
NT6 - coding system owner/issuer
NT7 - unity of measure
T10 - ISO3166 - Country
T15 - dye/print process type
T16 - dyestuff type
T17 - weave type
T19 - fibre type
T44 - additional code type
T9 - ISO4217 - Currency

Annex A

Representative images of the principal complex elements' structure.

