



<http://www.moda-ml.org>

IMPLEMENTATION GUIDE
TRANSACTION "TEXTILE COLLECTION
FORECAST"

Version: 2013-1

Date of release: 18/11/2011

Document code: G010

XML Schema repository:<http://www.moda-ml.org/moda-ml/repository/schema/v2013-1/default.asp>

Guides repository:<http://www.moda-ml.org/moda-ml/repository/guide/v2013-1/default.asp>

Guide filename: G010-MODA-ML-TextileCollectionForecast.pdf

1. BUSINESS DESCRIPTION

1.1 Scope

The present guide has been issued to assist the companies of the Textile-Clothing sector in the implementation of the standard XML document type "Textile COLLECTION FORECAST", providing all the instruction required for its use in any context of e-commerce between Apparel Producers and Fabric Producers.

All the rules required for the construction and validation of the document are embedded into the specific XML-Schema, which is detailed in section "Implementation guide".

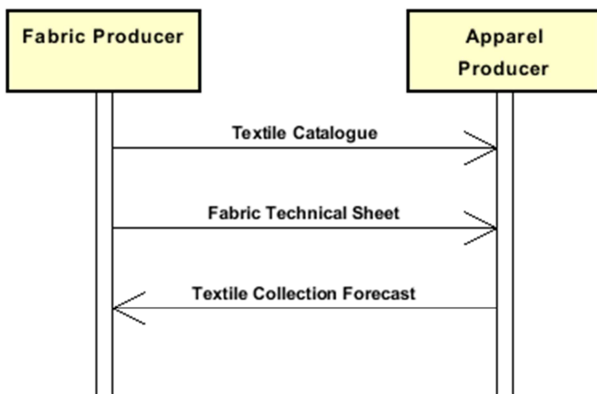
1.2 Generalities

The document "Textile Collection Forecast" is used to notify to the Fabric Producer the articles of his Offer that are considered for future acquisition or use in the Season Collection. The same document can also be used by the Client to request the Fabric Technical Sheet and/or notify his article code to the Producer.

Each article notified must be identified at SKU level by the Supplier's code. An estimated quantity can be supplied only for information.

In some business scenarios this message may be used to notify the Textile Controller about the fabric articles he will inspect in the season

1.3. Possible scenario



2. IMPLEMENTATION GUIDE

2.1 General structure of XML document

All the business data that can be exchanged through this class of documents are shown in the following "document structure", that provides a simplified vision of the Schema.

In particular:

- the two numbers following each element define its "cardinality" (minimum and maximum number of occurrences); the minimum equal zero indicates that the element is optional, the minimum greater than zero indicates that is mandatory;
- the bold character denotes the complex elements (aggregates of simple elements) that were built for the sake of functionality and re-usability of some complex informations sets. The child elements in each parent element are easily spotted as "indented";
- the symbol "@" denotes an attribute of the preceding element; here "the usage indicator (optional, required, ...)" is shown in square brackets.

Structure

TEXCollection

@TNtype [Required]

@msgfunction [Optional] [Default= OR]

@version [Optional] [Default= 2013-1]

@useProfile [Optional]

| **TNheader 1-1**

| | msgN 1-1

| - choose -

| | msgID 0-1

| - or -

| | docID 0-1

| | @numberingOrg [Optional]

| - end choose -

| | msgDate 1-1

| | @dateForm [Optional]

| | season 0-1

| | **refDoc 0-1**

| | @docType [Required]

| | | docID 1-2

| | | @numberingOrg [Optional]

| | | docDate 0-1

| | | @dateForm [Optional]

| | | season 0-1

| | | itemID 0-1

| | **buyer 1-1**

| | @logo [Optional]

| | @sender [Optional]

| | | id 1-1

| | | @numberingOrg [Optional]

| | | legalName 0-1

| | | dept 0-1

| | | person 0-1

| | | @email [Optional]

| | | @phone [Optional]

| | | @fax [Optional]

| | | street 0-1

| | | city 0-1

| | | subCountry 0-1

| | | country 0-1

- | postCode 0-1
- | **supplier 1-1**
- | @logo [Optional]
- | @sender [Optional]
- | id 1-1
- | @numberingOrg [Optional]
- | legalName 0-1
- | dept 0-1
- | person 0-1
- | @email [Optional]
- | @phone [Optional]
- | @fax [Optional]
- | street 0-1
- | city 0-1
- | subCountry 0-1
- | country 0-1
- | postCode 0-1
- | **thirdParty 0-1**
- | @VAT [Optional]
- | @role [Required]
- | @sender [Optional]
- | id 1-1
- | @numberingOrg [Optional]
- | legalName 0-1
- | dept 0-1
- | person 0-1
- | @email [Optional]
- | @phone [Optional]
- | @fax [Optional]
- | street 0-1
- | city 0-1
- | subCountry 0-1
- | country 0-1
- | postCode 0-1
- | note 0-19
- | @numberingOrg [Optional]
- | @codeList [Optional]
- | @noteLabel [Optional]

TNbody 1-1

- | **TNitem 1-unbounded**
- | @techSheet [Optional]
- | lineN 1-1
- | @VAT [Optional]
- | **texCode 1-2**
- | @numberingOrg [Optional]
- | art 1-1
- | @numberingOrg [Optional]
- | @codeList [Optional]
- | @listName [Optional]
- | @listVersion [Optional]
- | pattern 0-1
- | @numberingOrg [Optional]
- | @codeList [Optional]
- | @listName [Optional]
- | @listVersion [Optional]
- | color 0-1
- | @numberingOrg [Optional]
- | @codeList [Optional]
- | @listName [Optional]
- | @listVersion [Optional]

| | | | added 0-9
| | | | @numberingOrg [Optional]
| | | | @addType [Optional]
| | | | description 0-1
| | | | qty 0-1
| | | | @um [Required]
| | | | season 0-1
| | | | **fabricCompos 0-1**
| | | | | percCompos 1-9
| | | | | @fibre [Required]
| | | | fabricWeightM 0-1
| | | | @um [Optional] [Default= GRM]
| | | | fabricWidth 0-1
| | | | @um [Optional] [Default= CMT]

2.2 Detailed description of document elements

Following tables show all elements (complex and simple) used in this document. Description includes: 1) element's information: xml tag, name, brief description, data type and syntax constraints; 2) information about use of the element in a particular position in the document: xpath and possible associated notes.

2.2.1 Complex elements (Aggregate Business Information Entities)

Complex elements are those elements whose content is composed of other elements (childs).Complex elements are alphabetically ordered.

| | |
|---------------------|---|
| buyer | details of the Buyer - base type: Nad, (XPath: TEXCollection/TNheader/buyer) 1-1 |
| fabricCompos | composition of the fabric according to the Directory 97/37/CE (XPath: TEXCollection/TNbody/TNitem/fabricCompos) 0-1 |
| refDoc | identification of a document and of an item thereof, to which the message makes reference (XPath: TEXCollection/TNheader/refDoc) 0-1 - note: <i>here the referenced price catalogue can be specified</i> |
| supplier | details of the Supplier - base type: Nad, (XPath: TEXCollection/TNheader/supplier) 1-1 |
| texCode | full codification of the textile product (XPath: TEXCollection/TNbody/TNitem/texCode) 1-2 - note: <i>the article must be identified with the supplier's code; the buyer's code can be added</i> |
| thirdParty | details of the Third Party, different from Buyer or Supplier - base type: Nad, (XPath: TEXCollection/TNheader/thirdParty) 0-1 |
| TNbody | body of the document TEXTILES COLLECTION FORECAST (XPath: TEXCollection/TNbody) 1-1 |
| TNheader | header of the document TEXTILES COLLECTION FORECAST (XPath: TEXCollection/TNheader) 1-1 |
| TNitem | line item of the document TEXTILES COLLECTION FORECAST (XPath: TEXCollection/TNbody/TNitem) 1-unbounded |

2.2.2 Simple elements (Basic Business Information Entities)

Simple elements are those elements whose content is characterized by a data type plus a domain of possible values. Simple elements are alphabetically ordered.

| | |
|--------------|---|
| added | additional code of the product (complementing the formers) - base type: string, max length: 15, (XPath: TEXCollection/TNbody/TNitem/texCode/added) 0-9 |
|--------------|---|

| | |
|-------------|---|
| | - note: here an additional codification (see table T44) can be specified |
| @addType | qualifier of the additional coding of a product - base type: string, cod. table: T44 http://www.moda-ml.net/moda-ml/repository/codelist/v2013-1/gc_T44.xml (XPath: <code>TEXCollection/TNbody/TNitem/texCode/added/@addType</code>) [Optional] |
| art | article number of the product - base type: string, max length: 25, (XPath: <code>TEXCollection/TNbody/TNitem/texCode/art</code>) 1-1 - note: can be used either for the base-article (excluding pattern/colour) or for the SKU |
| city | name of the city (town, village) - base type: string, max length: 40, (XPath: <code>TEXCollection/TNheader/thirdParty/city</code>) 0-1 (XPath: <code>TEXCollection/TNheader/supplier/city</code>) 0-1 (XPath: <code>TEXCollection/TNheader/buyer/city</code>) 0-1 |
| @codeList | it specifies the URL where the list of codes used to make an instance of the element can be found - base type: string, max length: 255, (XPath: <code>TEXCollection/TNheader/note/@codeList</code>) [Optional] - nota: must be used to provide (URL) the list of codes used in "noteLabel" (XPath: <code>TEXCollection/TNbody/TNitem/texCode/color/@codeList</code>) [Optional] - nota: this attribute should be ALTERNATIVE to the others (XPath: <code>TEXCollection/TNbody/TNitem/texCode/art/@codeList</code>) [Optional] - nota: this attribute should be ALTERNATIVE to the others (XPath: <code>TEXCollection/TNbody/TNitem/texCode/pattern/@codeList</code>) [Optional] - nota: this attribute should be ALTERNATIVE to the others |
| color | colour number of the product, when not included in the model or fabric code - base type: string, max length: 15, (XPath: <code>TEXCollection/TNbody/TNitem/texCode/color</code>) 0-1 |
| country | code of the nation - base type: string, cod. table: T10 http://www.moda-ml.net/moda-ml/repository/codelist/v2013-1/gc_T10.xml (XPath: <code>TEXCollection/TNheader/supplier/country</code>) 0-1 (XPath: <code>TEXCollection/TNheader/thirdParty/country</code>) 0-1 (XPath: <code>TEXCollection/TNheader/buyer/country</code>) 0-1 |
| @dateForm | format used for the date - base type: string, cod. table: NT29 http://www.moda-ml.net/moda-ml/repository/codelist/v2013-1/gc_NT29.xml (XPath: <code>TEXCollection/TNheader/msgDate/@dateForm</code>) [Optional] (XPath: <code>TEXCollection/TNheader/refDoc/docDate/@dateForm</code>) [Optional] |
| dept | name or code of a contact department within a Party - base type: string, max length: 40, (XPath: <code>TEXCollection/TNheader/thirdParty/dept</code>) 0-1 (XPath: <code>TEXCollection/TNheader/buyer/dept</code>) 0-1 (XPath: <code>TEXCollection/TNheader/supplier/dept</code>) 0-1 |
| description | free text description of a product - base type: string, max length: 70, (XPath: <code>TEXCollection/TNbody/TNitem/texCode/description</code>) 0-1 |

| | |
|---------------|---|
| docDate | date of issue of the referenced document, according to one of the patterns YYYY-MM-DD, YYYY-MM-DD:HH-MM or YYYY-WW. - base type: string, (XPath: TEXCollection/TNheader/refDoc/docDate) 0-1 |
| docID | identification number of the referenced document SINCE 2008-1 ITS USE IN THE HEADER IS DISCOURAGED (REPLACED BY msgID) - base type: string, max length: 80, (XPath: TEXCollection/TNheader/docID) 0-1 (XPath: TEXCollection/TNheader/refDoc/docID) 1-2 |
| @docType | type or class to which the referenced document belongs - base type: string, cod. table: T21 http://www.moda-ml.net/moda-ml/repository/codelist/v2013-1/gc_T21.xml (XPath: TEXCollection/TNheader/refDoc/@docType) [Required] |
| @email | electronic mail address of the contact person within a Party - base type: string, max length: 80, (XPath: TEXCollection/TNheader/thirdParty/person/@email) [Optional] (XPath: TEXCollection/TNheader/supplier/person/@email) [Optional] (XPath: TEXCollection/TNheader/buyer/person/@email) [Optional] |
| fabricWeightM | weight per metre of the fabric as technical specification - base type: decimal, min inclusive: 0, fraction digits: 2, (XPath: TEXCollection/TNbody/TNitem/fabricWeightM) 0-1 |
| fabricWidth | width of the fabric as technical specification - base type: decimal, min inclusive: 0, fraction digits: 2, (XPath: TEXCollection/TNbody/TNitem/fabricWidth) 0-1 |
| @fax | fax number of the contact person within a Party - base type: string, max length: 35, (XPath: TEXCollection/TNheader/buyer/person/@fax) [Optional] (XPath: TEXCollection/TNheader/thirdParty/person/@fax) [Optional] (XPath: TEXCollection/TNheader/supplier/person/@fax) [Optional] |
| @fibre | type of fibre used in a textile product - base type: string, cod. table: T19 http://www.moda-ml.net/moda-ml/repository/codelist/v2013-1/gc_T19.xml (XPath: TEXCollection/TNbody/TNitem/fabricCompos/percCompos/@fibre) [Required] |
| id | primary identification code of a Party; it is recommended the format: nation code (ISO 3166) + VAT identification number (11 crt), with the qualifier "numberingOrg"= MF - base type: string, max length: 15, (XPath: TEXCollection/TNheader/thirdParty/id) 1-1 (XPath: TEXCollection/TNheader/supplier/id) 1-1 (XPath: TEXCollection/TNheader/buyer/id) 1-1 |
| itemID | number of the line/item of the referenced document - base type: string, max length: 6, (XPath: TEXCollection/TNheader/refDoc/itemID) 0-1 |
| legalName | legal name of a Party - base type: string, max length: 80, (XPath: TEXCollection/TNheader/thirdParty/legalName) 0-1 (XPath: TEXCollection/TNheader/buyer/legalName) 0-1 (XPath: TEXCollection/TNheader/supplier/legalName) 0-1 |
| lineN | number of the line item of the present message (xml document) |

| | |
|--------------|--|
| | <p>- base type: positiveInteger, min inclusive: 1, max inclusive: 9999, (XPath: TEXCollection/TNbody/TNitem/lineN) 1-1</p> |
| @listName | <p>it specifies the name of the list of codes used to make an instance of the element</p> <p>- base type: string, max length: 40, (XPath: TEXCollection/TNbody/TNitem/texCode/color/@listName) [Optional]</p> <p>- nota: <i>this attribute should always be used coupled with "numberingOrg"</i> (XPath: TEXCollection/TNbody/TNitem/texCode/pattern/@listName) [Optional]</p> <p>- nota: <i>this attribute should always be used coupled with "numberingOrg"</i> (XPath: TEXCollection/TNbody/TNitem/texCode/art/@listName) [Optional]</p> <p>- nota: <i>this attribute should always be used coupled with "numberingOrg"</i></p> |
| @listVersion | <p>it specifies the version of the list of codes used to make an instance of the element</p> <p>- base type: string, max length: 6, (XPath: TEXCollection/TNbody/TNitem/texCode/color/@listVersion) [Optional]</p> <p>- nota: <i>this attribute should always be used coupled with "numberingOrg" and "listName"</i> (XPath: TEXCollection/TNbody/TNitem/texCode/pattern/@listVersion) [Optional]</p> <p>- nota: <i>this attribute should always be used coupled with "numberingOrg" and "listName"</i> (XPath: TEXCollection/TNbody/TNitem/texCode/art/@listVersion) [Optional]</p> <p>- nota: <i>this attribute should always be used coupled with "numberingOrg" and "listName"</i></p> |
| @logo | <p>company logo (URL of the image jpeg or gif). It is recommended that the width of the image does not exceed 640 pixel.</p> <p>- base type: string, max length: 255, (XPath: TEXCollection/TNheader/buyer/@logo) [Optional] (XPath: TEXCollection/TNheader/supplier/@logo) [Optional]</p> |
| msgDate | <p>date of issue of the present message (xml document), according to one of the patterns YYYY-MM-DD, YYYY-MM-DD:HH-MM or YYYY-WW.</p> <p>- base type: string, (XPath: TEXCollection/TNheader/msgDate) 1-1</p> |
| @msgfunction | <p>function performed by the present message with regards to the transmission</p> <p>- base type: string, cod. table: NT18 http://www.moda-ml.net/moda-ml/repository/codelist/v2013-1/gc_NT18.xml (XPath: TEXCollection/@msgfunction) [Optional] [Default= OR]</p> |
| msgID | <p>key identifier of the document in the information system of the issuing Party</p> <p>- base type: string, max length: 35, (XPath: TEXCollection/TNheader/msgID) 0-1</p> |
| msgN | <p>identification number given to the message (xml document) by its issuer</p> |

| | |
|---------------|--|
| | - base type: string, max length: 35, (XPath: TEXCollection/TNheader/msgN) 1-1 |
| note | free text or structured (computer processing) note. For note structuring use the attributes "noteLabel" and "codelist" - base type: string, max length: 350, (XPath: TEXCollection/TNheader/note) 0-19 |
| @noteLabel | subject qualifier of a note - base type: string, max length: 35, (XPath: TEXCollection/TNheader/note/@noteLabel) [Optional] - nota: <i>must be used to qualify the subject of the note</i> |
| @numberingOrg | code specifying the organisation who has created or owns the coding or numbering system - base type: string, cod. table: NT6 http://www.moda-ml.net/moda-ml/repository/codelist/v2013-1/gc_NT6.xml (XPath: TEXCollection/TNheader/note/@numberingOrg) [Optional] (XPath: TEXCollection/TNheader/docID/@numberingOrg) [Optional] - nota: <i>here can be specified whose document numbering is used (e.g.: Client, Supplier, ..)</i> (XPath: TEXCollection/TNbody/TNitem/texCode/added/@numberingOrg) [Optional] (XPath: TEXCollection/TNheader/buyer/id/@numberingOrg) [Optional] (XPath: TEXCollection/TNheader/refDoc/docID/@numberingOrg) [Optional] - nota: <i>here can be specified whose document numbering is used (e.g.: Client, Supplier, ..)</i> (XPath: TEXCollection/TNbody/TNitem/texCode/pattern/@numberingOrg) [Optional] - nota: <i>this attribute should be used either single or coupled with "listName" and "listVersion"</i> (XPath: TEXCollection/TNheader/thirdParty/id/@numberingOrg) [Optional] (XPath: TEXCollection/TNbody/TNitem/texCode/@numberingOrg) [Optional] (XPath: TEXCollection/TNbody/TNitem/texCode/color/@numberingOrg) [Optional] - nota: <i>this attribute should be used either single or coupled with "listName" and "listVersion"</i> (XPath: TEXCollection/TNheader/supplier/id/@numberingOrg) [Optional] (XPath: TEXCollection/TNbody/TNitem/texCode/art/@numberingOrg) [Optional] - nota: <i>this attribute should be used either single or coupled with "listName" and "listVersion"</i> |
| pattern | pattern/design number of the product, when not included in the article code - base type: string, max length: 15, (XPath: TEXCollection/TNbody/TNitem/texCode/pattern) 0-1 |
| percCompos | fiber rate in the product composition - base type: decimal, min inclusive: 0, max inclusive: 100, fraction digits: 2, (XPath: TEXCollection/TNbody/TNitem/fabricCompos/percCompos) 1-9 |
| person | name of the contact person within a Party - base type: string, max length: 40, |

| | |
|------------|--|
| | (XPath: TEXCollection/TNheader/thirdParty/person) 0-1 (XPath: TEXCollection/TNheader/supplier/person) 0-1 (XPath: TEXCollection/TNheader/buyer/person) 0-1 |
| @phone | phone number of the contact person within a Party - base type: string, max length: 35, (XPath: TEXCollection/TNheader/buyer/person/@phone) [Optional] (XPath: TEXCollection/TNheader/supplier/person/@phone) [Optional] (XPath: TEXCollection/TNheader/thirdParty/person/@phone) [Optional] |
| postCode | code defining the postal zone - base type: string, max length: 10, (XPath: TEXCollection/TNheader/thirdParty/postCode) 0-1 (XPath: TEXCollection/TNheader/supplier/postCode) 0-1 (XPath: TEXCollection/TNheader/buyer/postCode) 0-1 |
| qty | net quantity of the article or object correlated, qualified by the function of the document (ordering, delivering, ..) and by the context - base type: decimal, min inclusive: 0, fraction digits: 2, (XPath: TEXCollection/TNbody/TNitem/qty) 0-1 - note: <i>here is always an estimated quantity; only the order will report a reliable value</i> |
| @role | Third Party role qualifier - base type: string, cod. table: NT2 http://www.moda-ml.net/moda-ml/repository/codelist/v2013-1/gc_NT2.xml (XPath: TEXCollection/TNheader/thirdParty/@role) [Required] |
| season | sale season; defined as: season (1 crt) + year (4 crt) - season: S/S=1 A/W=2 Spring=3 Summer=4 Autumn=5 Winter=6: for more than four seasons use alphabetic sequence: 1st season=A 2nd season=B etc.etc. - base type: string, max length: 15, (XPath: TEXCollection/TNbody/TNitem/season) 0-1 (XPath: TEXCollection/TNheader/season) 0-1 (XPath: TEXCollection/TNheader/refDoc/season) 0-1 - note: <i>here indicates the season to which the referenced document belongs</i> |
| @sender | qualifier that specifies the Party issuing of the document - base type: boolean, (XPath: TEXCollection/TNheader/buyer/@sender) [Optional] - nota: <i>This attribute is mandatory when the STYLESHEET must be produced</i> (XPath: TEXCollection/TNheader/supplier/@sender) [Optional] - nota: <i>This attribute is mandatory when the STYLESHEET must be produced</i> (XPath: TEXCollection/TNheader/thirdParty/@sender) [Optional] - nota: <i>This attribute is mandatory when the STYLESHEET must be produced</i> |
| street | street and building number identifying a location - base type: string, max length: 80, (XPath: TEXCollection/TNheader/thirdParty/street) 0-1 (XPath: TEXCollection/TNheader/supplier/street) 0-1 (XPath: TEXCollection/TNheader/buyer/street) 0-1 |
| subCountry | short name or code of the sub-country entity - base type: string, max length: 9, (XPath: TEXCollection/TNheader/buyer/subCountry) 0-1 (XPath: TEXCollection/TNheader/thirdParty/subCountry) 0-1 (XPath: TEXCollection/TNheader/supplier/subCountry) 0-1 |

| | |
|-------------|---|
| @techSheet | <p>specifies if the " technical characteristics of fabric" document must provided</p> <p>- base type: boolean, (XPath: TEXCollection/TNbody/TNitem/@techSheet) [Optional]</p> |
| @TNtype | <p>type of Textiles Collection Forecast</p> <p>- base type: string, cod. table: NT17 http://www.moda-ml.net/moda-ml/repository/codelist/v2013-1/gc_NT17.xml (XPath: TEXCollection/@TNtype) [Required]</p> |
| @um | <p>specification of the unit of measure</p> <p>- base type: string, cod. table: NT7 http://www.moda-ml.net/moda-ml/repository/codelist/v2013-1/gc_NT7.xml (XPath: TEXCollection/TNbody/TNitem/fabricWeightM/@um) [Optional] [Default= GRM] (XPath: TEXCollection/TNbody/TNitem/qty/@um) [Required] (XPath: TEXCollection/TNbody/TNitem/fabricWidth/@um) [Optional] [Default= CMT]</p> |
| @useProfile | <p>use profile to which the present document if compliant if it was agreed by the parties. It is suggested a URI with reference to the firms or the URL of the profile.</p> <p>- base type: string, (XPath: TEXCollection/@useProfile) [Optional]</p> |
| @VAT | <p>VAT rate or code (deprecated, use dtScheme element)</p> <p>- base type: string, cod. table: NT16 http://www.moda-ml.net/moda-ml/repository/codelist/v2013-1/gc_NT16.xml (XPath: TEXCollection/TNheader/thirdParty/@VAT) [Optional] (XPath: TEXCollection/TNbody/TNitem/lineN/@VAT) [Optional]</p> |
| @version | <p>Dictionary version from which the instance has been created</p> <p>- base type: string, cod. table: NT100 http://www.moda-ml.net/moda-ml/repository/codelist/v2013-1/gc_NT100.xml (XPath: TEXCollection/@version) [Optional] [Default= 2013-1]</p> |

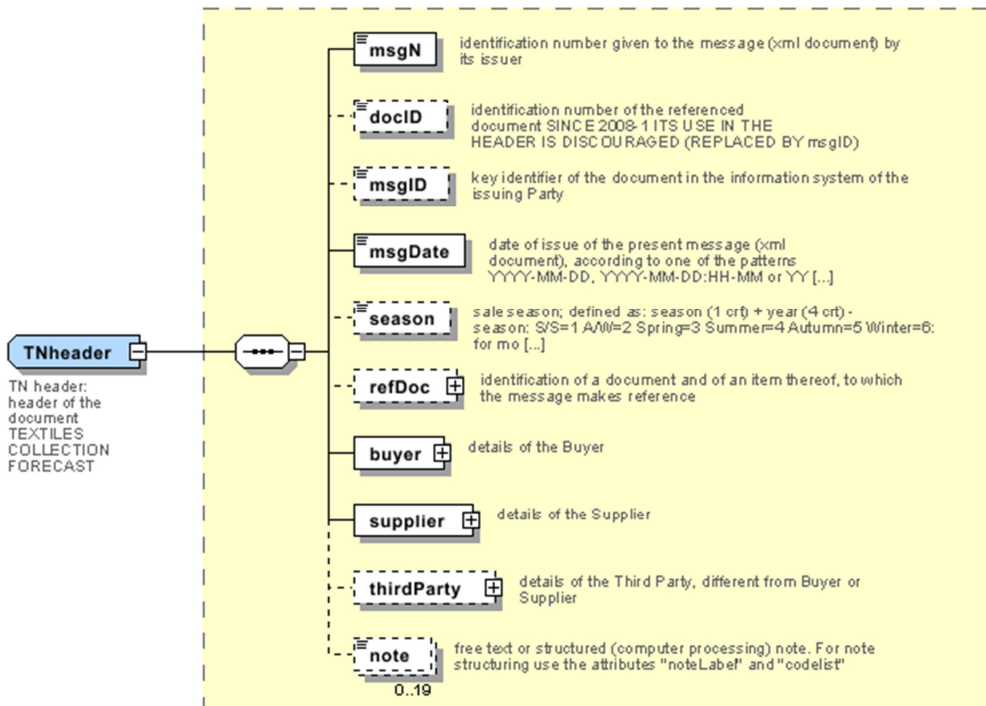
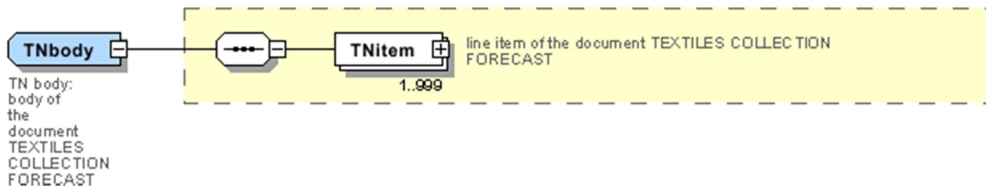
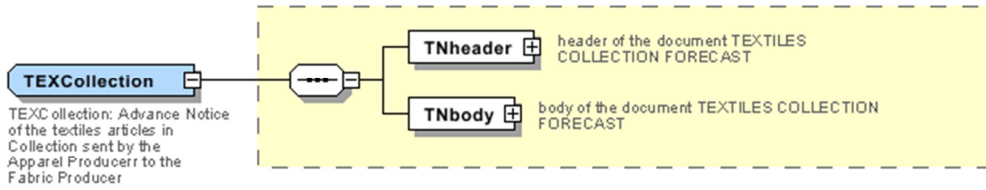
2.3 Enumeration tables

List of enumeration tables used in the XML document. You can find the corresponding codes at: <http://www.moda-ml.org/moda-ml/imple/moda-ml-2013-1.asp?lingua=en&pag=6>

NT100 - eBIZ Moda-ML version
NT16 - VAT rate or code
NT17 - textiles collection status
NT18 - message function
NT2 - third party qualifier
NT29 - format of a date
NT6 - coding system owner/issuer
NT7 - unity of measure
T10 - ISO3166 - Country
T19 - fibre type
T21 - type of document
T44 - additional code type

Annex A

Representative images of the principal complex elements' structure.



TNitem
 TN item:
 line item
 of the
 document
 TEXTILES
 COLLECTION
 FORECAST

