



<http://www.moda-ml.org>

IMPLEMENTATION GUIDE  
TRANSACTION "YARN TWISTING COMMISSION  
ORDER"

Version: 2013-1

Date of release: 18/11/2011

Document code: G020

XML Schema repository:<http://www.moda-ml.org/moda-ml/repository/schema/v2013-1/default.asp>

Guides repository:<http://www.moda-ml.org/moda-ml/repository/guide/v2013-1/default.asp>

Guide filename: G020-MODA-ML-YarnTwistingCommissionOrder.pdf

# 1. BUSINESS DESCRIPTION

## 1.1 Scope

The present guide has been issued to assist the companies of the Textile-Clothing sector in the implementation of the standard XML document type "TWISTING COMMISSION ORDER", providing all the instruction required for its use in the context of e-commerce between Yarn Subcontractors and their Customers shown in the enclosed diagram.

All the rules required for the construction and validation of the document are embedded into the specific XML-Schema, which is detailed in section "Implementation guide".

## 1.2 Generalities

The Twisting Commission Order is used by a Yarn Producer to commit to a Subcontractor the twisting of yarn required to transform the material into yarn usable for fabric production. This work Order can include one or several operations of the twisting cycle.

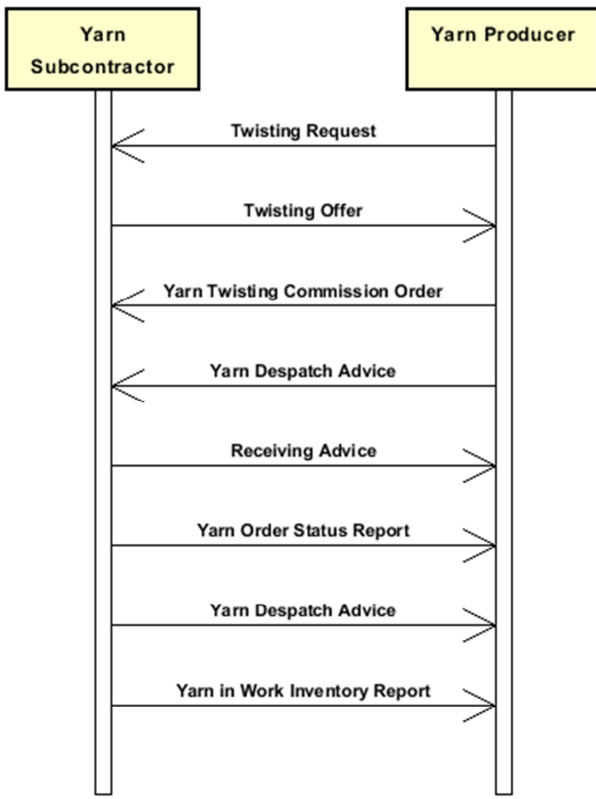
When the Issuer of the Commission requires different manufacturing operations in sequence to different Subcontractors, he can use this document not only as work order but also as a despatch order to send the semi-finished product to a successive Subcontractor

As a general rule, the Twisting Commission Order specifies only the manufacturing technology (if required) and the characteristics of the end product of each operation and specifies the components used to manufacture that product

It must be noted that this end product can be, in turn, a component for a successive manufacturing operation

The definition of any "manufacturing parameters" is left to the Subcontractor; sometimes however these parameters can be specified by the Issuer of the Commission itself, that can define machines and machine parameters in the Commission Order

## 1.3. Possible scenario



## 2. IMPLEMENTATION GUIDE

### 2.1 General structure of XML document

All the business data that can be exchanged through this class of documents are shown in the following "document structure", that provides a simplified vision of the Schema.

In particular:

- the two numbers following each element define its "cardinality" (minimum and maximum number of occurrences); the minimum equal zero indicates that the element is optional, the minimum greater than zero indicates that is mandatory;
- the bold character denotes the complex elements (aggregates of simple elements) that were built for the sake of functionality and re-usability of some complex informations sets. The child elements in each parent element are easily spotted as "indented";
- the symbol "@" denotes an attribute of the preceding element; here "the usage indicator (optional, required, ...)" is shown in square brackets.

### Structure

#### YARNTwistOrder

*@msgfunction [Optional] [Default= OR]*

*@version [Optional] [Default= 2013-1]*

*@useProfile [Optional]*

| **YTCOheader 1-1**

| | msgN 1-1

| | - choose -

| | | msgID 0-1

| | | - or -

| | | docID 0-1

| | | *@numberingOrg [Optional]*

| | - end choose -

| | msgDate 1-1

| | *@dateForm [Optional]*

| | season 0-1

| | msgCurrency 0-1

| | **refDoc 0-9**

| | *@docType [Required]*

| | | docID 1-2

| | | *@numberingOrg [Optional]*

| | | docDate 0-1

| | | *@dateForm [Optional]*

| | | season 0-1

| | | itemID 0-1

| | **buyer 1-1**

| | *@logo [Optional]*

| | *@sender [Optional]*

| | | id 1-1

| | | *@numberingOrg [Optional]*

| | | legalName 0-1

| | | dept 0-1

| | | person 0-1

| | | *@email [Optional]*

| | | *@phone [Optional]*

| | | *@fax [Optional]*

| | | street 0-1

| | | city 0-1

| | | subCountry 0-1

| | | country 0-1

- | | postCode 0-1
- | | **subContractor 1-1**
- | | @sender [Optional]
- | | id 1-1
- | | @numberingOrg [Optional]
- | | legalName 0-1
- | | dept 0-1
- | | person 0-1
- | | @email [Optional]
- | | @phone [Optional]
- | | @fax [Optional]
- | | street 0-1
- | | city 0-1
- | | subCountry 0-1
- | | country 0-1
- | | postCode 0-1
- | | **thirdParty 0-1**
- | | @VAT [Optional]
- | | @role [Required]
- | | @sender [Optional]
- | | id 1-1
- | | @numberingOrg [Optional]
- | | legalName 0-1
- | | dept 0-1
- | | person 0-1
- | | @email [Optional]
- | | @phone [Optional]
- | | @fax [Optional]
- | | street 0-1
- | | city 0-1
- | | subCountry 0-1
- | | country 0-1
- | | postCode 0-1
- | | note 0-19
- | | @numberingOrg [Optional]
- | | @codeList [Optional]
- | | @noteLabel [Optional]

| **terms 0-1**

- | | **payment 0-5**
- | | @finDiscount [Optional]
- | | @finSurcharge [Optional]
- | | - choose -
- | | | payTerm 1-1
- | | - or -
- | | | payTermText 1-1
- | | - end choose -
- | | | payMode 0-1
- | | **insPayment 0-5**
- | | @part [Required]
- | | - choose -
- | | | payTerm 1-1
- | | - or -
- | | | payTermText 1-1
- | | - end choose -
- | | | payMode 0-1
- | | **trade 0-1**
- | | - choose -
- | | | incoTermText 1-1
- | | - or -
- | | | incoTerm 1-1

```

- end choose -
| | location 0-1
| | @LRI [Optional]
| | transInfo 0-1
| | @transReason [Optional]
| | | transMode 1-1
| | | carrier 0-1
| | | deliveryPlace 0-1
| | | grossWeight 0-1
| | | @um [Required]
| | | netWeight 0-1
| | | @um [Required]
| | | transMeans 0-1
| | | transCondition 0-3
| | | transConditionText 0-1
| | allowanceCharge 0-9
| | @VAT [Optional]
| | - choose -
| | | AC_category 1-1
| | - or -
| | | AC_categoryText 1-1
| | - choose -
| | | AC_percent 1-1
| | - or -
| | | AC_amount 1-1
| | - end choose -
| | | dtScheme 0-1
| | | @taxType [Required]
| | | | taxCategory 0-1
| | | | taxRate 0-1
| | | | legalRef 0-1
| | | | @codeList [Required]
| | | | note 0-19
| | | | @numberingOrg [Optional]
| | | | @codeList [Optional]
| | | | @noteLabel [Optional]
| | YTCObody 1-1
| | | YTCOitem 1-unbounded
| | | @productLevel [Optional] [Default= END]
| | | | lineN 1-1
| | | | @VAT [Optional]
| | | | yarnProd 1-1
| | | | @CTest [Optional]
| | | | | yarnCode 1-1
| | | | | @numberingOrg [Optional] [Default= CL]
| | | | | | art 1-1
| | | | | | @numberingOrg [Optional]
| | | | | | @codeList [Optional]
| | | | | | @listName [Optional]
| | | | | | @listVersion [Optional]
| | | | | | color 0-1
| | | | | | @numberingOrg [Optional]
| | | | | | @codeList [Optional]
| | | | | | @listName [Optional]
| | | | | | @listVersion [Optional]
| | | | | | added 0-9
| | | | | | @numberingOrg [Optional]
| | | | | | @addType [Optional]
| | | | | | description 0-1
| | | | | yarnCompos 0-1

```

```

| | | | | percCompos 1-9
| | | | | @fibre [Required]
| | | | | yarnSpecs 0-9
| | | | | - choose -
| | | | | | yarnCharText 1-1
| | | | | - or -
| | | | | | yarnChar 1-1
| | | | | - end choose -
| | | | | | experimValue 0-1
| | | | | | @um [Optional]
| | | | | | @method [Optional]
| | | | | | @application [Optional]
| | | | | | @idCO [Optional]
| | | | | | specValue 0-1
| | | | | | @um [Optional]
| | | | | | @source [Optional]
| | | | | | @method [Optional]
| | | | | | @application [Optional]
| | | | | | @CV [Optional]
| | | | | - choose -
| | | | | | tolerance 0-2
| | | | | | @um [Required]
| | | | | - or -
| | | | | | pcTolerance 0-2
| | | | | | @um [Optional]
| | | | | - end choose -
| | | | | | colorCardItem 0-1
| | | | | | color 1-1
| | | | | | @numberingOrg [Optional]
| | | | | | @codeList [Optional]
| | | | | | @listName [Optional]
| | | | | | @listVersion [Optional]
| | | | | | CIELab 0-unbounded
| | | | | | @illuminant [Optional]
| | | | | | @standardObserver [Optional]
| | | | | | | L 1-1
| | | | | | | a 1-1
| | | | | | | b 1-1
| | | | | | refDoc 0-1
| | | | | | @docType [Required]
| | | | | | | docID 1-2
| | | | | | | @numberingOrg [Optional]
| | | | | | | docDate 0-1
| | | | | | | @dateForm [Optional]
| | | | | | | season 0-1
| | | | | | | itemID 0-1
| | | | | | description 0-1
| | | | | lotN 0-1
| | | | | @numberingOrg [Optional]
| | | | | dyeN 0-1
| | | | | @numberingOrg [Optional]
| | | | | | yarnPack 0-1
| | | | | | | yarnReel 1-1
| | | | | | | @reelType [Required]
| | | | | | | @reelMat [Optional]
| | | | | | | | yarnReelID 0-1
| | | | | | | | @um [Required]
| | | | | | | | yarnReelH 0-1
| | | | | | | | @um [Required]
| | | | | | | | yarnConeAngle 0-1
| | | | | | | | yarnReelQty 0-2

```

```

| | | | | @um [Required]
| | | | | label 0-1
| | | | | labelWrit 0-1
| | | | | yarnInWrap 0-1
| | | | | | yarnReelWrap 1-1
| | | | | | label 0-1
| | | | | | labelWrit 0-1
| | | | | - choose -
| | | | | | yarnOutWrapText 0-1
| | | | | - or -
| | | | | | yarnOutWrap 0-1
| | | | | - end choose -
| | | | | note 0-19
| | | | | | @numberingOrg [Optional]
| | | | | | @codeList [Optional]
| | | | | | @noteLabel [Optional]
| | | | | qty 1-2
| | | | | | @um [Required]
| | | | | price 0-1
| | | | | | @um [Optional]
| | | | | | @priceQualifier [Optional] [Default= NET]
| | | | | deliveryDate 0-1
| | | | | | @dateForm [Optional]
| | | | | thirdParty 0-1
| | | | | | @VAT [Optional]
| | | | | | @role [Required]
| | | | | | @sender [Optional]
| | | | | | id 1-1
| | | | | | | @numberingOrg [Optional]
| | | | | | legalName 0-1
| | | | | | dept 0-1
| | | | | | person 0-1
| | | | | | | @email [Optional]
| | | | | | | @phone [Optional]
| | | | | | | @fax [Optional]
| | | | | | street 0-1
| | | | | | city 0-1
| | | | | | subCountry 0-1
| | | | | | country 0-1
| | | | | | postCode 0-1
| | | | | yarnComponent 1-9
| | | | | | @CQQ [Optional]
| | | | | | pcQty 0-1
| | | | | | | @um [Optional]
| | | | | | yarnCode 1-1
| | | | | | | @numberingOrg [Optional] [Default= CL]
| | | | | | | | art 1-1
| | | | | | | | | @numberingOrg [Optional]
| | | | | | | | | @codeList [Optional]
| | | | | | | | | @listName [Optional]
| | | | | | | | | @listVersion [Optional]
| | | | | | | | color 0-1
| | | | | | | | | @numberingOrg [Optional]
| | | | | | | | | @codeList [Optional]
| | | | | | | | | @listName [Optional]
| | | | | | | | | @listVersion [Optional]
| | | | | | | | added 0-9
| | | | | | | | | @numberingOrg [Optional]
| | | | | | | | | @addType [Optional]
| | | | | | | | description 0-1
| | | | | lotN 0-1

```



```

| | | | @numberingOrg [Optional]
| | | | dyeN 0-1
| | | | @numberingOrg [Optional]
| | | | qty 1-2
| | | | @um [Required]
| | | | refDoc 0-1
| | | | @docType [Required]
| | | | | docID 1-2
| | | | | @numberingOrg [Optional]
| | | | | docDate 0-1
| | | | | @dateForm [Optional]
| | | | | season 0-1
| | | | | itemID 0-1
| | | | location 0-1
| | | | @LRI [Optional]
| | | | warpLetter 0-1
| | | | weftLetter 0-1
| | | | note 0-19
| | | | @numberingOrg [Optional]
| | | | @codeList [Optional]
| | | | @noteLabel [Optional]
| | | | yarnMnfrOperation 1-9
| | | | - choose -
| | | | | jobName 1-1
| | | | - or -
| | | | | yarnJob 1-1
| | | | - end choose -
| | | | | yarnJobTech 0-1
| | | | | refDoc 0-1
| | | | | @docType [Required]
| | | | | | docID 1-2
| | | | | | @numberingOrg [Optional]
| | | | | | docDate 0-1
| | | | | | @dateForm [Optional]
| | | | | | season 0-1
| | | | | | itemID 0-1
| | | | | yarnMachine 0-1
| | | | | yarnMachineSpecs 0-9
| | | | | | yarnMachineParam 1-1
| | | | | | specValue 0-1
| | | | | | @um [Optional]
| | | | | | @source [Optional]
| | | | | | @method [Optional]
| | | | | | @application [Optional]
| | | | | | @CV [Optional]
| | | | | - choose -
| | | | | | tolerance 0-2
| | | | | | @um [Required]
| | | | | - or -
| | | | | | pcTolerance 0-2
| | | | | | @um [Optional]
| | | | | - end choose -
| | | | | note 0-19
| | | | | @numberingOrg [Optional]
| | | | | @codeList [Optional]
| | | | | @noteLabel [Optional]
| | | | | dtScheme 0-1
| | | | | @taxType [Required]
| | | | | taxCategory 0-1
| | | | | taxRate 0-1
| | | | | legalRef 0-1

```

				@codeList [Required]
				note 0-19
				@numberingOrg [Optional]
				@codeList [Optional]
				@noteLabel [Optional]

## 2.2 Detailed description of document elements

Following tables show all elements (complex and simple) used in this document. Description includes: 1) element's information: xml tag, name, brief description, data type and syntax constraints; 2) information about use of the element in a particular position in the document: xpath and possible associated notes.

### 2.2.1 Complex elements (Aggregate Business Information Entities)

Complex elements are those elements whose content is composed of other elements (childs).Complex elements are alphabetically ordered.

<b>allowanceCharge</b>	Allowances and Charges related to an Order or a contract (XPath: YARNTwistOrder/terms/allowanceCharge) 0-9
<b>buyer</b>	details of the Buyer - base type: Nad, (XPath: YARNTwistOrder/YTCOheader/buyer) 1-1
<b>CIELab</b>	color point in the CIELab color space (XPath: YARNTwistOrder/YTCObody/YTCOitem/yarnProd/colorCardItem/CIELab) 0-unbounded
<b>colorCardItem</b>	item of the color card (XPath: YARNTwistOrder/YTCObody/YTCOitem/yarnProd/colorCardItem) 0-1
<b>dtScheme</b>	set of data usable to declare the duty or tax applied (XPath: YARNTwistOrder/YTCObody/YTCOitem/dtScheme) 0-1 (XPath: YARNTwistOrder/terms/allowanceCharge/dtScheme) 0-1
<b>insPayment</b>	payment details for payment by installments (XPath: YARNTwistOrder/terms/insPayment) 0-5 - note: <i>excluded the case of offers, this set of data is alternative to payment set and must be iterated for each payment installment</i>
<b>payment</b>	payment details for payment all in one (XPath: YARNTwistOrder/terms/payment) 0-5 - note: <i>excluded the case of offers, this set of data is alternative to insPayment, it can be iterated to specify alternative terms of payment (e.g.: 60 days or 30 days with 3% discount)</i>
<b>refDoc</b>	identification of a document and of an item thereof, to which the message makes reference (XPath: YARNTwistOrder/YTCOheader/refDoc) 0-9 (XPath: YARNTwistOrder/YTCObody/YTCOitem/yarnMnfrOperation/refDoc) 0-1 - note: <i>here a Process Sheet transmitted to the Subcontractor can be referenced</i> (XPath: YARNTwistOrder/YTCObody/YTCOitem/yarnProd/colorCardItem/refDoc) 0-1 - note: <i>here the CxF3 file can be referenced</i> (XPath: YARNTwistOrder/YTCObody/YTCOitem/yarnComponent/refDoc) 0-1 - note: <i>here the delivery document can be specified</i>
<b>subContractor</b>	details of the Sub-contractor - base type: Nad, (XPath: YARNTwistOrder/YTCOheader/subContractor) 1-1
<b>terms</b>	details of the commercial obligations for payment and delivery (XPath: YARNTwistOrder/terms) 0-1
<b>thirdParty</b>	details of the Third Party, different from Buyer or Supplier

	<ul style="list-style-type: none"> <li>- base type: Nad, (XPath: YARNTwistOrder/YTCOheader/thirdParty) 0-1</li> <li>- note: here the Party to whom the Subcontractor must send the semi-finished products for subsequent operations can be specified (XPath: YARNTwistOrder/YTCObody/YTCOitem/thirdParty) 0-1</li> <li>- note: here the Party to whom the Subcontractor must send the semi-finished product for subsequent operations can be specified</li> </ul>
<b>trade</b>	<p>general terms of trade for the specified supply (XPath: YARNTwistOrder/terms/trade) 0-1</p>
<b>transInfo</b>	<p>details of transport: mode, carrier and delivery place (XPath: YARNTwistOrder/terms/transInfo) 0-1</p>
<b>yarnCode</b>	<p>full codification of a yarn product (XPath: YARNTwistOrder/YTCObody/YTCOitem/yarnComponent/yarnCode) 1-1</p> <ul style="list-style-type: none"> <li>- note: here is the code of the component used in the yarn manufacturing operation (XPath: YARNTwistOrder/YTCObody/YTCOitem/yarnProd/yarnCode) 1-1</li> <li>- note: also intermediate products must be virtually codified</li> </ul>
<b>yarnComponent</b>	<p>identification details of a yarn used in a sub-contracted manufacturing operation (XPath: YARNTwistOrder/YTCObody/YTCOitem/yarnComponent) 1-9</p>
<b>yarnCompos</b>	<p>fibrous composition of a yarn product (XPath: YARNTwistOrder/YTCObody/YTCOitem/yarnProd/yarnCompos) 0-1</p>
<b>yarnInWrap</b>	<p>details specifying the inner wrapping of a yarn product (XPath: YARNTwistOrder/YTCObody/YTCOitem/yarnProd/yarnPack/yarnInWrap) 0-1</p>
<b>yarnMachineSpecs</b>	<p>technical specifications of a machine used in an operation of a work cycle for yarn (type and settings) (XPath: YARNTwistOrder/YTCObody/YTCOitem/yarnMnfrOperation/yarnMachineSpecs) 0-9</p>
<b>yarnMnfrOperation</b>	<p>details of a manufacturing operation used for manufacturing a yarn product (XPath: YARNTwistOrder/YTCObody/YTCOitem/yarnMnfrOperation) 1-9</p> <ul style="list-style-type: none"> <li>- note: this block of data can be used to specify either a subcontracted operation or an operation assigned to a shop owned by the issuer of the Manufacturing Order. In this latter case the specifications can be completed with "machine data"</li> </ul>
<b>yarnPack</b>	<p>details of type of presentation used for the yarn (XPath: YARNTwistOrder/YTCObody/YTCOitem/yarnProd/yarnPack) 0-1</p>
<b>yarnProd</b>	<p>manufacturing specifications of the product to be obtained from an operation of the sub-contracted production of a yarn (XPath: YARNTwistOrder/YTCObody/YTCOitem/yarnProd) 1-1</p>
<b>yarnReel</b>	<p>details of the packaging of a yarn product (bobbin &amp; reel,...) (XPath: YARNTwistOrder/YTCObody/YTCOitem/yarnProd/yarnPack/yarnReel) 1-1</p>
<b>yarnSpecs</b>	<p>technical properties of a yarn product linked to an operation of the sub-contracted production of yarn or to the purchase of yarn (XPath: YARNTwistOrder/YTCObody/YTCOitem/yarnProd/yarnSpecs) 0-9</p> <ul style="list-style-type: none"> <li>- note: here are the specifications referred to the article identified with</li> </ul>
<b>YTCObody</b>	<p>body of the document TWISTING COMMISSION ORDER (XPath: YARNTwistOrder/YTCObody) 1-1</p>
<b>YTCOheader</b>	<p>header of the document TWISTING COMMISSION ORDER (XPath: YARNTwistOrder/YTCOheader) 1-1</p>

<b>YTCOitem</b>	line of the document TWISTING COMMISSION ORDER (XPath: YARNTwistOrder/YTCObody/YTCOitem) 1-unbounded
-----------------	---

## 2.2.2 Simple elements (Basic Business Information Entities)

Simple elements are those elements whose content is characterized by a data type plus a domain of possible values. Simple elements are alphabetically ordered.

a	"a" dimension of the CIE Lab color system - base type: decimal, (XPath: YARNTwistOrder/YTCObody/YTCOitem/yarnProd/ colorCardItem/CIE Lab/a) 1-1
AC_amount	amount of an Allowance or Charge - base type: decimal, fraction digits: 2, (XPath: YARNTwistOrder/terms/allowanceCharge/AC_amount) 1-1
AC_category	coded specification of an Allowance or Charge - base type: string, cod. table: T41 <a href="http://www.moda-ml.net/moda-ml/repository/codelist/v2013-1/gc_T41.xml">http://www.moda-ml.net/moda-ml/repository/codelist/v2013-1/gc_T41.xml</a> (XPath: YARNTwistOrder/terms/allowanceCharge/AC_category) 1-1
AC_categoryText	free text description of an Allowance or Charge - base type: string, max length: 70, (XPath: YARNTwistOrder/terms/allowanceCharge/AC_categoryText) 1-1
AC_percent	amount of an Allowance or Charge as a percentage - base type: decimal, max inclusive: 100, fraction digits: 2, (XPath: YARNTwistOrder/terms/allowanceCharge/AC_percent) 1-1
added	additional code of the product (complementing the formers) - base type: string, max length: 15, (XPath: YARNTwistOrder/YTCObody/YTCOitem/yarnComponent/ yarnCode/added) 0-9 - note: <i>here an additional codification (see table T44) can be specified</i> (XPath: YARNTwistOrder/YTCObody/YTCOitem/yarnProd/yarnCode/added) 0-9 - note: <i>here an additional codification (see table T44) can be specified</i>
@addType	qualifier of the additional coding of a product - base type: string, cod. table: T44 <a href="http://www.moda-ml.net/moda-ml/repository/codelist/v2013-1/gc_T44.xml">http://www.moda-ml.net/moda-ml/repository/codelist/v2013-1/gc_T44.xml</a> (XPath: YARNTwistOrder/YTCObody/YTCOitem/yarnComponent/ yarnCode/added/@addType) [Optional] (XPath: YARNTwistOrder/YTCObody/YTCOitem/yarnProd/ yarnCode/added/@addType) [Optional]
@application	force or similar condition (e.g. no. of revolutions) applied in a test as specified within the standard - base type: string, max length: 15, (XPath: YARNTwistOrder/YTCObody/YTCOitem/yarnProd/ yarnSpecs/specValue/@application) [Optional] (XPath: YARNTwistOrder/YTCObody/YTCOitem/yarnMnfrOperation/ yarnMachineSpecs/specValue/@application) [Optional] (XPath: YARNTwistOrder/YTCObody/YTCOitem/yarnProd/ yarnSpecs/experimValue/@application) [Optional]
art	article number of the product - base type: string, max length: 25, (XPath: YARNTwistOrder/YTCObody/YTCOitem/yarnComponent/ yarnCode/art) 1-1 (XPath: YARNTwistOrder/YTCObody/YTCOitem/yarnProd/yarnCode/art) 1-1

b	"b" dimension of the CIE Lab color system - base type: decimal, (XPath: YARNTwistOrder/YTCObody/YTCOitem/yarnProd/ colorCardItem/CIE Lab/b) 1-1
carrier	identification of the transport carrier - base type: string, max length: 40, (XPath: YARNTwistOrder/terms/transInfo/carrier) 0-1
city	name of the city (town, village) - base type: string, max length: 40, (XPath: YARNTwistOrder/YTCOheader/subContractor/city) 0-1 (XPath: YARNTwistOrder/YTCOheader/thirdParty/city) 0-1 (XPath: YARNTwistOrder/YTCOheader/buyer/city) 0-1 (XPath: YARNTwistOrder/YTCObody/YTCOitem/thirdParty/city) 0-1
@codeList	it specifies the URL where the list of codes used to make an instance of the element can be found - base type: string, max length: 255, (XPath: YARNTwistOrder/YTCObody/YTCOitem/yarnComponent/ note/@codeList) [Optional] - nota: <i>must be used to provide (URL) the list of codes used in "noteLabel"</i> (XPath: YARNTwistOrder/YTCObody/YTCOitem/yarnProd/ yarnCode/color/@codeList) [Optional] - nota: <i>this attribute should be ALTERNATIVE to the others</i> (XPath: YARNTwistOrder/terms/allowanceCharge/dtScheme/note/@codeList) [Optional] - nota: <i>must be used to provide (URL) the list of codes used in "noteLabel"</i> (XPath: YARNTwistOrder/YTCObody/YTCOitem/yarnProd/ yarnCode/art/@codeList) [Optional] - nota: <i>this attribute should be ALTERNATIVE to the others</i> (XPath: YARNTwistOrder/YTCObody/YTCOitem/yarnProd/note/@codeList) [Optional] - nota: <i>must be used to provide (URL) the list of codes used in "noteLabel"</i> (XPath: YARNTwistOrder/YTCOheader/note/@codeList) [Optional] - nota: <i>must be used to provide (URL) the list of codes used in "noteLabel"</i> (XPath: YARNTwistOrder/YTCObody/YTCOitem/dtScheme/note/@codeList) [Optional] - nota: <i>must be used to provide (URL) the list of codes used in "noteLabel"</i> (XPath: YARNTwistOrder/terms/allowanceCharge/dtScheme/ legalRef/@codeList) [Required] (XPath: YARNTwistOrder/YTCObody/YTCOitem/yarnComponent/ yarnCode/art/@codeList) [Optional] - nota: <i>this attribute should be ALTERNATIVE to the others</i> (XPath: YARNTwistOrder/YTCObody/YTCOitem/yarnMnfrOperation/ note/@codeList) [Optional] - nota: <i>must be used to provide (URL) the list of codes used in "noteLabel"</i> (XPath: YARNTwistOrder/YTCObody/YTCOitem/dtScheme/legalRef/@codeList) [Required] (XPath: YARNTwistOrder/YTCObody/YTCOitem/yarnProd/ colorCardItem/color/@codeList) [Optional] - nota: <i>this attribute should be ALTERNATIVE to the others</i> (XPath: YARNTwistOrder/YTCObody/YTCOitem/yarnComponent/ yarnCode/color/@codeList) [Optional] - nota: <i>this attribute should be ALTERNATIVE to the others</i>
color	colour number of the product, when not included in the model or fabric code

	<p>- base type: string, max length: 15,  (XPath: YARNTwistOrder/YTCObody/YTCOitem/yarnProd/colorCardItem/color) 1-1  (XPath: YARNTwistOrder/YTCObody/YTCOitem/yarnComponent/yarnCode/color) 0-1  (XPath: YARNTwistOrder/YTCObody/YTCOitem/yarnProd/yarnCode/color) 0-1</p>
country	<p>code of the nation  - base type: string, cod. table: T10  <a href="http://www.moda-ml.net/moda-ml/repository/codelist/v2013-1/gc_T10.xml">http://www.moda-ml.net/moda-ml/repository/codelist/v2013-1/gc_T10.xml</a>  (XPath: YARNTwistOrder/YTCOheader/subContractor/country) 0-1  (XPath: YARNTwistOrder/YTCObody/YTCOitem/thirdParty/country) 0-1  (XPath: YARNTwistOrder/YTCOheader/buyer/country) 0-1  (XPath: YARNTwistOrder/YTCOheader/thirdParty/country) 0-1</p>
@CQQ	<p>specifies if the committed quantity can or can not include the loss in weight  - base type: string, cod. table: NT37  <a href="http://www.moda-ml.net/moda-ml/repository/codelist/v2013-1/gc_NT37.xml">http://www.moda-ml.net/moda-ml/repository/codelist/v2013-1/gc_NT37.xml</a>  (XPath: YARNTwistOrder/YTCObody/YTCOitem/yarnComponent/@CQQ) [Optional]</p>
@CTest	<p>indicates the need to execute a colour test before the operation  - base type: string, cod. table: NT38  <a href="http://www.moda-ml.net/moda-ml/repository/codelist/v2013-1/gc_NT38.xml">http://www.moda-ml.net/moda-ml/repository/codelist/v2013-1/gc_NT38.xml</a>  (XPath: YARNTwistOrder/YTCObody/YTCOitem/yarnProd/@CTest) [Optional]</p>
@CV	<p>coefficient of variation (CV) of a measurement  - base type: decimal,  (XPath: YARNTwistOrder/YTCObody/YTCOitem/yarnProd/yarnSpecs/specValue/@CV) [Optional]  (XPath: YARNTwistOrder/YTCObody/YTCOitem/yarnMnfrOperation/yarnMachineSpecs/specValue/@CV) [Optional]</p>
@dateForm	<p>format used for the date  - base type: string, cod. table: NT29  <a href="http://www.moda-ml.net/moda-ml/repository/codelist/v2013-1/gc_NT29.xml">http://www.moda-ml.net/moda-ml/repository/codelist/v2013-1/gc_NT29.xml</a>  (XPath: YARNTwistOrder/YTCObody/YTCOitem/yarnComponent/refDoc/docDate/@dateForm) [Optional]  (XPath: YARNTwistOrder/YTCObody/YTCOitem/yarnProd/colorCardItem/refDoc/docDate/@dateForm) [Optional]  (XPath: YARNTwistOrder/YTCObody/YTCOitem/deliveryDate/@dateForm) [Optional]  (XPath: YARNTwistOrder/YTCOheader/refDoc/docDate/@dateForm) [Optional]  (XPath: YARNTwistOrder/YTCObody/YTCOitem/yarnMnfrOperation/refDoc/docDate/@dateForm) [Optional]  (XPath: YARNTwistOrder/YTCOheader/msgDate/@dateForm) [Optional]</p>
deliveryDate	<p>date of delivery of goods, requested or promised in the purchase process, according to one of the patterns YYYY-MM-DD, YYYY-MM-DD:HH-MM or YYYY-WW.  - base type: string,  (XPath: YARNTwistOrder/YTCObody/YTCOitem/deliveryDate) 0-1</p>
deliveryPlace	<p>place of delivery of goods, ultimate or related to a given leg  - base type: string, max length: 40,  (XPath: YARNTwistOrder/terms/transInfo/deliveryPlace) 0-1</p>
dept	<p>name or code of a contact department within a Party  - base type: string, max length: 40,  (XPath: YARNTwistOrder/YTCOheader/subContractor/dept) 0-1  (XPath: YARNTwistOrder/YTCObody/YTCOitem/thirdParty/dept) 0-1  (XPath: YARNTwistOrder/YTCOheader/thirdParty/dept) 0-1  (XPath: YARNTwistOrder/YTCOheader/buyer/dept) 0-1</p>
description	<p>free text description of a product</p>

	<p>- base type: string, max length: 70, (XPath: YARNTwistOrder/YTCObody/YTCOitem/yarnComponent/ yarnCode/description) 0-1 (XPath: YARNTwistOrder/YTCObody/YTCOitem/yarnProd/yarnCode/description) 0-1 (XPath: YARNTwistOrder/YTCObody/YTCOitem/yarnProd/ colorCardItem/description) 0-1</p>
docDate	<p>date of issue of the referenced document, according to one of the patterns YYYY-MM-DD, YYYY-MM-DD:HH-MM or YYYY-WW. - base type: string, (XPath: YARNTwistOrder/YTCObody/YTCOitem/yarnMnfrOperation/ refDoc/docDate) 0-1 (XPath: YARNTwistOrder/YTCOheader/refDoc/docDate) 0-1 (XPath: YARNTwistOrder/YTCObody/YTCOitem/yarnComponent/ refDoc/docDate) 0-1 (XPath: YARNTwistOrder/YTCObody/YTCOitem/yarnProd/ colorCardItem/refDoc/docDate) 0-1</p>
docID	<p>identification number of the referenced document SINCE 2008-1 ITS USE IN THE HEADER IS DISCOURAGED (REPLACED BY msgID) - base type: string, max length: 80, (XPath: YARNTwistOrder/YTCObody/YTCOitem/yarnComponent/ refDoc/docID) 1-2 (XPath: YARNTwistOrder/YTCOheader/docID) 0-1 (XPath: YARNTwistOrder/YTCObody/YTCOitem/yarnMnfrOperation/ refDoc/docID) 1-2 (XPath: YARNTwistOrder/YTCOheader/refDoc/docID) 1-2 (XPath: YARNTwistOrder/YTCObody/YTCOitem/yarnProd/ colorCardItem/refDoc/docID) 1-2</p>
@docType	<p>type or class to which the referenced document belongs - base type: string, cod. table: T21 <a href="http://www.moda-ml.net/moda-ml/repository/codelist/v2013-1/gc_T21.xml">http://www.moda-ml.net/moda-ml/repository/codelist/v2013-1/gc_T21.xml</a> (XPath: YARNTwistOrder/YTCOheader/refDoc/@docType) [Required] (XPath: YARNTwistOrder/YTCObody/YTCOitem/yarnComponent/ refDoc/@docType) [Required] (XPath: YARNTwistOrder/YTCObody/YTCOitem/yarnProd/ colorCardItem/refDoc/@docType) [Required] (XPath: YARNTwistOrder/YTCObody/YTCOitem/yarnMnfrOperation/ refDoc/@docType) [Required]</p>
dyeN	<p>number of the dying batch of a textile product - base type: string, max length: 15, (XPath: YARNTwistOrder/YTCObody/YTCOitem/yarnProd/dyeN) 0-1 - note: <i>identifier that the Subcontractor is requested to assign to the present dyeing bath - to be used only in the Dyeing Order</i> (XPath: YARNTwistOrder/YTCObody/YTCOitem/yarnComponent/dyeN) 0-1</p>
@email	<p>electronic mail address of the contact person within a Party - base type: string, max length: 80, (XPath: YARNTwistOrder/YTCObody/YTCOitem/thirdParty/person/@email) [Optional] (XPath: YARNTwistOrder/YTCOheader/buyer/person/@email) [Optional] (XPath: YARNTwistOrder/YTCOheader/thirdParty/person/@email) [Optional] (XPath: YARNTwistOrder/YTCOheader/subContractor/person/@email) [Optional]</p>
experimValue	<p>experimental value of the measurement - base type: decimal, (XPath: YARNTwistOrder/YTCObody/YTCOitem/yarnProd/ yarnSpecs/experimValue) 0-1</p>
@fax	<p>fax number of the contact person within a Party - base type: string, max length: 35, (XPath: YARNTwistOrder/YTCOheader/subContractor/person/@fax) [Optional]</p>



	(XPath: YARNTwistOrder/YTCOheader/buyer/person/@fax) [Optional] (XPath: YARNTwistOrder/YTCOheader/thirdParty/person/@fax) [Optional] (XPath: YARNTwistOrder/YTCObody/YTCOitem/thirdParty/person/@fax) [Optional]
@fibre	type of fibre used in a textile product - base type: string, cod. table: T19 <a href="http://www.moda-ml.net/moda-ml/repository/codelist/v2013-1/gc_T19.xml">http://www.moda-ml.net/moda-ml/repository/codelist/v2013-1/gc_T19.xml</a> (XPath: YARNTwistOrder/YTCObody/YTCOitem/yarnProd/yarnCompos/percCompos/@fibre) [Required]
@finDiscount	financial discount applied for payment by the date specified - base type: decimal, min inclusive: 0, max inclusive: 100, fraction digits: 2, (XPath: YARNTwistOrder/terms/payment/@finDiscount) [Optional]
@finSurcharge	financial surcharge applied for payment after the date specified - base type: decimal, min inclusive: 0, max inclusive: 100, fraction digits: 2, (XPath: YARNTwistOrder/terms/payment/@finSurcharge) [Optional]
grossWeight	the gross weight of the overall goods supply, declared for transport or customs purpose - base type: decimal, min inclusive: 0, fraction digits: 2, (XPath: YARNTwistOrder/terms/transInfo/grossWeight) 0-1
id	primary identification code of a Party; it is recommended the format: nation code (ISO 3166) + VAT identification number (11 crt), with the qualifier "numberingOrg"= MF - base type: string, max length: 15, (XPath: YARNTwistOrder/YTCOheader/buyer/id) 1-1 (XPath: YARNTwistOrder/YTCOheader/subContractor/id) 1-1 (XPath: YARNTwistOrder/YTCOheader/thirdParty/id) 1-1 (XPath: YARNTwistOrder/YTCObody/YTCOitem/thirdParty/id) 1-1
@idCO	primary identification code of the Party executing the test; it is recommended the format: nation code (ISO 3166) + VAT identification number (11 crt). - base type: string, max length: 15, (XPath: YARNTwistOrder/YTCObody/YTCOitem/yarnProd/yarnSpecs/experimValue/@idCO) [Optional]
@illuminant	CIE light source - base type: string, cod. table: T59 <a href="http://www.moda-ml.net/moda-ml/repository/codelist/v2013-1/gc_T59.xml">http://www.moda-ml.net/moda-ml/repository/codelist/v2013-1/gc_T59.xml</a> (XPath: YARNTwistOrder/YTCObody/YTCOitem/yarnProd/colorCardItem/CIELab/@illuminant) [Optional]
incoTerm	specification of the terms of trade (INCOTERMS) - base type: string, cod. table: T3 <a href="http://www.moda-ml.net/moda-ml/repository/codelist/v2013-1/gc_T3.xml">http://www.moda-ml.net/moda-ml/repository/codelist/v2013-1/gc_T3.xml</a> (XPath: YARNTwistOrder/terms/trade/incoTerm) 1-1
incoTermText	free text specifying the terms of trade (incoterm, location) - base type: string, max length: 70, (XPath: YARNTwistOrder/terms/trade/incoTermText) 1-1
itemID	number of the line/item of the referenced document - base type: string, max length: 6, (XPath: YARNTwistOrder/YTCObody/YTCOitem/yarnMnfrOperation/refDoc/itemID) 0-1 (XPath: YARNTwistOrder/YTCObody/YTCOitem/yarnProd/colorCardItem/refDoc/itemID) 0-1 (XPath: YARNTwistOrder/YTCObody/YTCOitem/yarnComponent/refDoc/itemID) 0-1 (XPath: YARNTwistOrder/YTCOheader/refDoc/itemID) 0-1

jobName	description of the elementary job - base type: string, max length: 40, (XPath: YARNTwistOrder/YTCObody/YTCOitem/yarnMnfrOperation/jobName) 1-1
L	"L" value of the CIELab color system - base type: decimal, min inclusive: 0, (XPath: YARNTwistOrder/YTCObody/YTCOitem/yarnProd/colorCardItem/CIELab/L) 1-1
label	indicates if the physical object specified has to be labelled - base type: boolean, (XPath: YARNTwistOrder/YTCObody/YTCOitem/yarnProd/yarnPack/yarnReel/label) 0-1 (XPath: YARNTwistOrder/YTCObody/YTCOitem/yarnProd/yarnPack/yarnInWrap/label) 0-1
labelWrit	text that must be written on the lable of a specified physical object when its customization is required - base type: string, max length: 350, (XPath: YARNTwistOrder/YTCObody/YTCOitem/yarnProd/yarnPack/yarnReel/labelWrit) 0-1 (XPath: YARNTwistOrder/YTCObody/YTCOitem/yarnProd/yarnPack/yarnInWrap/labelWrit) 0-1
legalName	legal name of a Party - base type: string, max length: 80, (XPath: YARNTwistOrder/YTCObody/YTCOitem/thirdParty/legalName) 0-1 (XPath: YARNTwistOrder/YTCOheader/subContractor/legalName) 0-1 (XPath: YARNTwistOrder/YTCOheader/thirdParty/legalName) 0-1 (XPath: YARNTwistOrder/YTCOheader/buyer/legalName) 0-1
legalRef	legal reference of the duty or tax or fee category - base type: string, (XPath: YARNTwistOrder/terms/allowanceCharge/dtScheme/legalRef) 0-1 (XPath: YARNTwistOrder/YTCObody/YTCOitem/dtScheme/legalRef) 0-1
lineN	number of the line item of the present message (xml document) - base type: positiveInteger, min inclusive: 1, max inclusive: 9999, (XPath: YARNTwistOrder/YTCObody/YTCOitem/lineN) 1-1
@listName	it specifies the name of the list of codes used to make an instance of the element - base type: string, max length: 40, (XPath: YARNTwistOrder/YTCObody/YTCOitem/yarnComponent/yarnCode/color/@listName) [Optional] - nota: <i>this attribute should always be used coupled with "numberingOrg"</i> (XPath: YARNTwistOrder/YTCObody/YTCOitem/yarnProd/colorCardItem/color/@listName) [Optional] - nota: <i>this attribute should always be used coupled with "numberingOrg"</i> (XPath: YARNTwistOrder/YTCObody/YTCOitem/yarnProd/yarnCode/color/@listName) [Optional] - nota: <i>this attribute should always be used coupled with "numberingOrg"</i> (XPath: YARNTwistOrder/YTCObody/YTCOitem/yarnProd/yarnCode/art/@listName) [Optional] - nota: <i>this attribute should always be used coupled with "numberingOrg"</i> (XPath: YARNTwistOrder/YTCObody/YTCOitem/yarnComponent/yarnCode/art/@listName) [Optional] - nota: <i>this attribute should always be used coupled with "numberingOrg"</i>

@listVersion	<p>it specifies the version of the list of codes used to make an instance of the element</p> <ul style="list-style-type: none"> <li>- base type: string, max length: 6, (XPath: YARNTwistOrder/YTCObody/YTCOitem/yarnProd/colorCardItem/color/@listVersion) [Optional]</li> <li>- nota: <i>this attribute should always be used coupled with "numberingOrg" and "listName"</i> (XPath: YARNTwistOrder/YTCObody/YTCOitem/yarnComponent/yarnCode/art/@listVersion) [Optional]</li> <li>- nota: <i>this attribute should always be used coupled with "numberingOrg" and "listName"</i> (XPath: YARNTwistOrder/YTCObody/YTCOitem/yarnComponent/yarnCode/color/@listVersion) [Optional]</li> <li>- nota: <i>this attribute should always be used coupled with "numberingOrg" and "listName"</i> (XPath: YARNTwistOrder/YTCObody/YTCOitem/yarnProd/yarnCode/color/@listVersion) [Optional]</li> <li>- nota: <i>this attribute should always be used coupled with "numberingOrg" and "listName"</i> (XPath: YARNTwistOrder/YTCObody/YTCOitem/yarnProd/yarnCode/art/@listVersion) [Optional]</li> <li>- nota: <i>this attribute should always be used coupled with "numberingOrg" and "listName"</i></li> </ul>
location	<p>specification of a location</p> <ul style="list-style-type: none"> <li>- base type: string, max length: 40, (XPath: YARNTwistOrder/YTCObody/YTCOitem/yarnComponent/location) 0-1</li> <li>- note: <i>here the storage place of the component can be specified</i> (XPath: YARNTwistOrder/terms/trade/location) 0-1</li> <li>- note: <i>place to which the INCOTERM applies</i></li> </ul>
@logo	<p>company logo (URL of the image jpeg or gif). It is recommended that the width of the image does not exceed 640 pixel.</p> <ul style="list-style-type: none"> <li>- base type: string, max length: 255, (XPath: YARNTwistOrder/YTCOheader/buyer/@logo) [Optional]</li> </ul>
lotN	<p>lot number of a product or batch number of the raw material</p> <ul style="list-style-type: none"> <li>- base type: string, max length: 15, (XPath: YARNTwistOrder/YTCObody/YTCOitem/yarnComponent/lotN) 0-1 (XPath: YARNTwistOrder/YTCObody/YTCOitem/yarnProd/lotN) 0-1</li> <li>- note: <i>identifier that the Subcontractor is requested to assign to the present production lot</i></li> </ul>
@LRI	<p>attribute usable to format a string according to a customized User rule (local rule)</p> <ul style="list-style-type: none"> <li>- base type: string, cod. table: NT3 <a href="http://www.moda-ml.net/moda-ml/repository/codelist/v2013-1/gc_NT3.xml">http://www.moda-ml.net/moda-ml/repository/codelist/v2013-1/gc_NT3.xml</a></li> <li>(XPath: YARNTwistOrder/YTCObody/YTCOitem/yarnComponent/location/@LRI) [Optional]</li> <li>(XPath: YARNTwistOrder/terms/trade/location/@LRI) [Optional]</li> </ul>
@method	<p>standard protocol or method employed in a test to evaluate a characteristic or a parameter</p> <ul style="list-style-type: none"> <li>- base type: string, max length: 25, (XPath: YARNTwistOrder/YTCObody/YTCOitem/yarnProd/yarnSpecs/specValue/@method) [Optional]</li> <li>(XPath: YARNTwistOrder/YTCObody/YTCOitem/yarnMnfrOperation/yarnMachineSpecs/specValue/@method) [Optional]</li> <li>(XPath: YARNTwistOrder/YTCObody/YTCOitem/yarnProd/yarnSpecs/experimValue/@method) [Optional]</li> <li>- nota: <i>we recommend the specification of the method of measure only when different from the one of the MODA-ML coding system</i></li> </ul>
msgCurrency	<p>currency used to express the monetary amounts of the message</p>

	<p>- base type: string, cod. table: T9  <a href="http://www.moda-ml.net/moda-ml/repository/codelist/v2013-1/gc_T9.xml">http://www.moda-ml.net/moda-ml/repository/codelist/v2013-1/gc_T9.xml</a>  (XPath: YARNTwistOrder/YTCOheader/msgCurrency) 0-1</p>
msgDate	<p>date of issue of the present message (xml document), according to one of the patterns YYYY-MM-DD, YYYY-MM-DD:HH-MM or YYYY-WW.  - base type: string,  (XPath: YARNTwistOrder/YTCOheader/msgDate) 1-1</p>
@msgfunction	<p>function performed by the present message with regards to the transmission  - base type: string, cod. table: NT18  <a href="http://www.moda-ml.net/moda-ml/repository/codelist/v2013-1/gc_NT18.xml">http://www.moda-ml.net/moda-ml/repository/codelist/v2013-1/gc_NT18.xml</a>  (XPath: YARNTwistOrder/@msgfunction) [Optional] [Default= OR]</p>
msgID	<p>key identifier of the document in the information system of the issuing Party  - base type: string, max length: 35,  (XPath: YARNTwistOrder/YTCOheader/msgID) 0-1</p>
msgN	<p>identification number given to the message (xml document) by its issuer  - base type: string, max length: 35,  (XPath: YARNTwistOrder/YTCOheader/msgN) 1-1</p>
netWeight	<p>the net weight of the overall goods supply, declared for transport or customs purpose  - base type: decimal, min inclusive: 0, fraction digits: 2,  (XPath: YARNTwistOrder/terms/transInfo/netWeight) 0-1</p>
note	<p>free text or structured (computer processing) note. For note structuring use the attributes "noteLabel" and "codelist"  - base type: string, max length: 350,  (XPath: YARNTwistOrder/terms/allowanceCharge/dtScheme/note) 0-19  (XPath: YARNTwistOrder/YTCObody/YTCOitem/dtScheme/note) 0-19  (XPath: YARNTwistOrder/YTCObody/YTCOitem/yarnProd/note) 0-19  (XPath: YARNTwistOrder/YTCOheader/note) 0-19  (XPath: YARNTwistOrder/YTCObody/YTCOitem/yarnMnfrOperation/note) 0-19  (XPath: YARNTwistOrder/YTCObody/YTCOitem/yarnComponent/note) 0-19</p>
@noteLabel	<p>subject qualifier of a note  - base type: string, max length: 35,  (XPath: YARNTwistOrder/YTCObody/YTCOitem/yarnMnfrOperation/note/@noteLabel) [Optional]  - nota: <i>must be used to qualify the subject of the note</i>  (XPath: YARNTwistOrder/YTCObody/YTCOitem/yarnProd/note/@noteLabel) [Optional]  - nota: <i>must be used to qualify the subject of the note</i>  (XPath: YARNTwistOrder/YTCOheader/note/@noteLabel) [Optional]  - nota: <i>must be used to qualify the subject of the note</i>  (XPath: YARNTwistOrder/YTCObody/YTCOitem/yarnComponent/note/@noteLabel) [Optional]  - nota: <i>must be used to qualify the subject of the note</i>  (XPath: YARNTwistOrder/YTCObody/YTCOitem/dtScheme/note/@noteLabel) [Optional]  - nota: <i>must be used to qualify the subject of the note</i>  (XPath: YARNTwistOrder/terms/allowanceCharge/dtScheme/note/@noteLabel) [Optional]  - nota: <i>must be used to qualify the subject of the note</i></p>
@numberingOrg	<p>code specifying the organisation who has created or owns the coding or numbering system  - base type: string, cod. table: NT6  <a href="http://www.moda-ml.net/moda-ml/repository/codelist/v2013-1/gc_NT6.xml">http://www.moda-ml.net/moda-ml/repository/codelist/v2013-1/gc_NT6.xml</a>  (XPath: YARNTwistOrder/YTCObody/YTCOitem/yarnComponent/yarnCode/added/@numberingOrg) [Optional]</p>

(XPath: YARNTwistOrder/YTCObody/YTCOitem/thirdParty/id/@numberingOrg) [Optional]

(XPath: YARNTwistOrder/YTCObody/YTCOitem/yarnMnfrOperation/refDoc/docID/@numberingOrg) [Optional]

- nota: *here can be specified whose document numbering is used (e.g.: Client, Supplier, ..)*

(XPath: YARNTwistOrder/YTCOheader/subContractor/id/@numberingOrg) [Optional]

(XPath: YARNTwistOrder/YTCObody/YTCOitem/yarnComponent/yarnCode/@numberingOrg) [Optional] [Default= CL]

(XPath: YARNTwistOrder/YTCObody/YTCOitem/yarnComponent/note/@numberingOrg) [Optional]

(XPath: YARNTwistOrder/YTCOheader/buyer/id/@numberingOrg) [Optional]

(XPath: YARNTwistOrder/YTCObody/YTCOitem/yarnComponent/yarnCode/color/@numberingOrg) [Optional]

- nota: *this attribute should be used either single or coupled with "listName" and "listVersion"*

(XPath: YARNTwistOrder/YTCOheader/note/@numberingOrg) [Optional]

(XPath: YARNTwistOrder/YTCOheader/thirdParty/id/@numberingOrg) [Optional]

(XPath: YARNTwistOrder/YTCObody/YTCOitem/yarnComponent/yarnCode/art/@numberingOrg) [Optional]

- nota: *this attribute should be used either single or coupled with "listName" and "listVersion"*

(XPath: YARNTwistOrder/YTCObody/YTCOitem/yarnProd/note/@numberingOrg) [Optional]

(XPath: YARNTwistOrder/YTCObody/YTCOitem/yarnProd/lotN/@numberingOrg) [Optional]

(XPath: YARNTwistOrder/YTCObody/YTCOitem/yarnProd/yarnCode/art/@numberingOrg) [Optional]

- nota: *this attribute should be used either single or coupled with "listName" and "listVersion"*

(XPath: YARNTwistOrder/YTCObody/YTCOitem/yarnProd/dyeN/@numberingOrg) [Optional]

(XPath: YARNTwistOrder/YTCObody/YTCOitem/yarnProd/yarnCode/color/@numberingOrg) [Optional]

- nota: *this attribute should be used either single or coupled with "listName" and "listVersion"*

(XPath: YARNTwistOrder/YTCOheader/docID/@numberingOrg) [Optional]

- nota: *here can be specified whose document numbering is used (e.g.: Client, Supplier, ..)*

(XPath: YARNTwistOrder/YTCObody/YTCOitem/yarnProd/colorCardItem/refDoc/docID/@numberingOrg) [Optional]

- nota: *here can be specified whose document numbering is used (e.g.: Client, Supplier, ..)*

(XPath: YARNTwistOrder/terms/allowanceCharge/dtScheme/note/@numberingOrg) [Optional]

(XPath: YARNTwistOrder/YTCObody/YTCOitem/yarnProd/yarnCode/@numberingOrg) [Optional] [Default= CL]

(XPath: YARNTwistOrder/YTCObody/YTCOitem/yarnComponent/refDoc/docID/@numberingOrg) [Optional]

- nota: *here can be specified whose document numbering is used (e.g.: Client, Supplier, ..)*

(XPath: YARNTwistOrder/YTCObody/YTCOitem/yarnComponent/dyeN/@numberingOrg) [Optional]

(XPath: YARNTwistOrder/YTCOheader/refDoc/docID/@numberingOrg) [Optional]

- nota: *here can be specified whose document numbering is used (e.g.: Client, Supplier, ..)*

(XPath: YARNTwistOrder/YTCObody/YTCOitem/yarnComponent/

	<p>lotN/@numberingOrg) [Optional]  (XPath: YARNTwistOrder/YTCObody/YTCOitem/dtScheme/note/@numberingOrg) [Optional]  (XPath: YARNTwistOrder/YTCObody/YTCOitem/yarnMnfrOperation/note/@numberingOrg) [Optional]  (XPath: YARNTwistOrder/YTCObody/YTCOitem/yarnProd/yarnCode/added/@numberingOrg) [Optional]  (XPath: YARNTwistOrder/YTCObody/YTCOitem/yarnProd/colorCardItem/color/@numberingOrg) [Optional]  - nota: <i>this attribute should be used either single or coupled with "listName" and "listVersion"</i></p>
@part	<p>percent fraction of a total payment  - base type: decimal, min inclusive: 1, max inclusive: 99, fraction digits: 2,  (XPath: YARNTwistOrder/terms/insPayment/@part) [Required]  - nota: <i>here the % value of each installment must be indicated</i></p>
payMode	<p>way or means of payment  - base type: string, cod. table: T2  <a href="http://www.moda-ml.net/moda-ml/repository/codelist/v2013-1/gc_T2.xml">http://www.moda-ml.net/moda-ml/repository/codelist/v2013-1/gc_T2.xml</a>  (XPath: YARNTwistOrder/terms/payment/payMode) 0-1  (XPath: YARNTwistOrder/terms/insPayment/payMode) 0-1</p>
payTerm	<p>code specifying the terms or time by which the payment must be done  - base type: string, cod. table: T1  <a href="http://www.moda-ml.net/moda-ml/repository/codelist/v2013-1/gc_T1.xml">http://www.moda-ml.net/moda-ml/repository/codelist/v2013-1/gc_T1.xml</a>  (XPath: YARNTwistOrder/terms/insPayment/payTerm) 1-1  (XPath: YARNTwistOrder/terms/payment/payTerm) 1-1</p>
payTermText	<p>free text specifying the terms by which the payment must be done (time/mode or means)  - base type: string, max length: 40,  (XPath: YARNTwistOrder/terms/payment/payTermText) 1-1  (XPath: YARNTwistOrder/terms/insPayment/payTermText) 1-1</p>
pcQty	<p>percent quantity of a raw material or of a specified component in a fabric or in a yarn  - base type: decimal, min inclusive: 0, max inclusive: 100, fraction digits: 2,  (XPath: YARNTwistOrder/YTCObody/YTCOitem/yarnComponent/pcQty) 0-1  - note: <i>percentage of the component in the end product</i></p>
pcTolerance	<p>percent deviation tolerated on the value of a measurement (it must have a plus or minus sign)  - base type: decimal, min inclusive: 0, max inclusive: 100, total digits: 2,  (XPath: YARNTwistOrder/YTCObody/YTCOitem/yarnProd/yarnSpecs/pcTolerance) 0-2  (XPath: YARNTwistOrder/YTCObody/YTCOitem/yarnMnfrOperation/yarnMachineSpecs/pcTolerance) 0-2</p>
percCompos	<p>fiber rate in the product composition  - base type: decimal, min inclusive: 0, max inclusive: 100, fraction digits: 2,  (XPath: YARNTwistOrder/YTCObody/YTCOitem/yarnProd/yarnCompos/percCompos) 1-9</p>
person	<p>name of the contact person within a Party  - base type: string, max length: 40,  (XPath: YARNTwistOrder/YTCOheader/buyer/person) 0-1  (XPath: YARNTwistOrder/YTCObody/YTCOitem/thirdParty/person) 0-1  (XPath: YARNTwistOrder/YTCOheader/subContractor/person) 0-1  (XPath: YARNTwistOrder/YTCOheader/thirdParty/person) 0-1</p>
@phone	<p>phone number of the contact person within a Party</p>

	<p>- base type: string, max length: 35,  (XPath: YARNTwistOrder/YTCOheader/subContractor/person/@phone) [Optional]  (XPath: YARNTwistOrder/YTCObody/YTCOitem/thirdParty/person/@phone) [Optional]  (XPath: YARNTwistOrder/YTCOheader/buyer/person/@phone) [Optional]  (XPath: YARNTwistOrder/YTCOheader/thirdParty/person/@phone) [Optional]</p>
postCode	<p>code defining the postal zone  - base type: string, max length: 10,  (XPath: YARNTwistOrder/YTCObody/YTCOitem/thirdParty/postCode) 0-1  (XPath: YARNTwistOrder/YTCOheader/subContractor/postCode) 0-1  (XPath: YARNTwistOrder/YTCOheader/buyer/postCode) 0-1  (XPath: YARNTwistOrder/YTCOheader/thirdParty/postCode) 0-1</p>
price	<p>unit price of the article, object or service specified  - base type: decimal, min inclusive: 0, fraction digits: 2,  (XPath: YARNTwistOrder/YTCObody/YTCOitem/price) 0-1</p>
@priceQualifier	<p>type of price with reference to discount and taxes  - base type: string, cod. table: NT20  <a href="http://www.moda-ml.net/moda-ml/repository/codelist/v2013-1/gc_NT20.xml">http://www.moda-ml.net/moda-ml/repository/codelist/v2013-1/gc_NT20.xml</a>  (XPath: YARNTwistOrder/YTCObody/YTCOitem/price/@priceQualifier) [Optional] [Default= NET]</p>
@productLevel	<p>level of the product (end or intermediate) yielded by an operation in a work cycle  - base type: string, cod. table: NT22  <a href="http://www.moda-ml.net/moda-ml/repository/codelist/v2013-1/gc_NT22.xml">http://www.moda-ml.net/moda-ml/repository/codelist/v2013-1/gc_NT22.xml</a>  (XPath: YARNTwistOrder/YTCObody/YTCOitem/@productLevel) [Optional] [Default= END]  - nota: <i>this qualifier "intermediate" must be used when the product is also a component in an other line of the same Commission Order</i></p>
qty	<p>net quantity of the article or object correlated, qualified by the function of the document (ordering, delivering, ..) and by the context  - base type: decimal, min inclusive: 0, fraction digits: 2,  (XPath: YARNTwistOrder/YTCObody/YTCOitem/yarnComponent/qty) 1-2  - note: <i>quantity to be consumed in the manufacturing operation</i>  (XPath: YARNTwistOrder/YTCObody/YTCOitem/qty) 1-2</p>
@reelMat	<p>type of material of which a package for yarn is made  - base type: string, cod. table: T30  <a href="http://www.moda-ml.net/moda-ml/repository/codelist/v2013-1/gc_T30.xml">http://www.moda-ml.net/moda-ml/repository/codelist/v2013-1/gc_T30.xml</a>  (XPath: YARNTwistOrder/YTCObody/YTCOitem/yarnProd/yarnPack/yarnReel/@reelMat) [Optional]</p>
@reelType	<p>type of package used for a yarn product  - base type: string, cod. table: T29  <a href="http://www.moda-ml.net/moda-ml/repository/codelist/v2013-1/gc_T29.xml">http://www.moda-ml.net/moda-ml/repository/codelist/v2013-1/gc_T29.xml</a>  (XPath: YARNTwistOrder/YTCObody/YTCOitem/yarnProd/yarnPack/yarnReel/@reelType) [Required]</p>
@role	<p>Third Party role qualifier  - base type: string, cod. table: NT2  <a href="http://www.moda-ml.net/moda-ml/repository/codelist/v2013-1/gc_NT2.xml">http://www.moda-ml.net/moda-ml/repository/codelist/v2013-1/gc_NT2.xml</a>  (XPath: YARNTwistOrder/YTCObody/YTCOitem/thirdParty/@role) [Required]  (XPath: YARNTwistOrder/YTCOheader/thirdParty/@role) [Required]</p>
season	<p>sale season; defined as: season (1 crt) + year (4 crt) - season: S/S=1 A/W=2 Spring=3 Summer=4 Autumn=5 Winter=6: for more than four seasons use alphabetic sequence: 1st season=A 2nd season=B etc.etc.  - base type: string, max length: 15,  (XPath: YARNTwistOrder/YTCObody/YTCOitem/yarnProd/colorCardItem/refDoc/season) 0-1  - note: <i>here indicates the season to which the referenced document</i></p>

	<p><i>belongs</i>  (XPath: YARNTwistOrder/YTCObody/YTCOitem/yarnComponent/  refDoc/season) 0-1  - note: <i>here indicates the season to which the referenced document belongs</i>  (XPath: YARNTwistOrder/YTCOheader/season) 0-1  (XPath: YARNTwistOrder/YTCOheader/refDoc/season) 0-1  - note: <i>here indicates the season to which the referenced document belongs</i>  (XPath: YARNTwistOrder/YTCObody/YTCOitem/yarnMnfrOperation/  refDoc/season) 0-1  - note: <i>here indicates the season to which the referenced document belongs</i></p>
@sender	<p>qualifier that specifies the Party issuing of the document  - base type: boolean,  (XPath: YARNTwistOrder/YTCObody/YTCOitem/thirdParty/@sender) [Optional]  - nota: <i>This attribute is mandatory when the STYLESHEET must be produced</i>  (XPath: YARNTwistOrder/YTCOheader/subContractor/@sender) [Optional]  - nota: <i>This attribute is mandatory when the STYLESHEET must be produced</i>  (XPath: YARNTwistOrder/YTCOheader/thirdParty/@sender) [Optional]  - nota: <i>This attribute is mandatory when the STYLESHEET must be produced</i>  (XPath: YARNTwistOrder/YTCOheader/buyer/@sender) [Optional]  - nota: <i>This attribute is mandatory when the STYLESHEET must be produced</i></p>
@source	<p>party who has provided the data  - base type: string, cod. table: NT12  <a href="http://www.moda-ml.net/moda-ml/repository/codelist/v2013-1/gc_NT12.xml">http://www.moda-ml.net/moda-ml/repository/codelist/v2013-1/gc_NT12.xml</a>  (XPath: YARNTwistOrder/YTCObody/YTCOitem/yarnMnfrOperation/  yarnMachineSpecs/specValue/@source) [Optional]  (XPath: YARNTwistOrder/YTCObody/YTCOitem/yarnProd/  yarnSpecs/specValue/@source) [Optional]</p>
specValue	<p>value requested for a property or a parameter that is measured  - base type: decimal,  (XPath: YARNTwistOrder/YTCObody/YTCOitem/yarnProd/  yarnSpecs/specValue) 0-1  (XPath: YARNTwistOrder/YTCObody/YTCOitem/yarnMnfrOperation/  yarnMachineSpecs/specValue) 0-1</p>
@standardObserver	<p>CIE average chromatic response definition  - base type: string, cod. table: T60  <a href="http://www.moda-ml.net/moda-ml/repository/codelist/v2013-1/gc_T60.xml">http://www.moda-ml.net/moda-ml/repository/codelist/v2013-1/gc_T60.xml</a>  (XPath: YARNTwistOrder/YTCObody/YTCOitem/yarnProd/  colorCardItem/CIELab/@standardObserver) [Optional]</p>
street	<p>street and building number identifying a location  - base type: string, max length: 80,  (XPath: YARNTwistOrder/YTCObody/YTCOitem/thirdParty/street) 0-1  (XPath: YARNTwistOrder/YTCOheader/subContractor/street) 0-1  (XPath: YARNTwistOrder/YTCOheader/thirdParty/street) 0-1  (XPath: YARNTwistOrder/YTCOheader/buyer/street) 0-1</p>
subCountry	<p>short name or code of the sub-country entity  - base type: string, max length: 9,  (XPath: YARNTwistOrder/YTCObody/YTCOitem/thirdParty/subCountry) 0-1  (XPath: YARNTwistOrder/YTCOheader/subContractor/subCountry) 0-1  (XPath: YARNTwistOrder/YTCOheader/buyer/subCountry) 0-1  (XPath: YARNTwistOrder/YTCOheader/thirdParty/subCountry) 0-1</p>
taxCategory	<p>duty or tax or fee category</p>



	<p>- base type: string, cod. table: T62  <a href="http://www.moda-ml.net/moda-ml/repository/codelist/v2013-1/gc_T62.xml">http://www.moda-ml.net/moda-ml/repository/codelist/v2013-1/gc_T62.xml</a>  (XPath: YARNTwistOrder/YTCObody/YTCOitem/dtScheme/taxCategory) 0-1  (XPath: YARNTwistOrder/terms/allowanceCharge/dtScheme/taxCategory) 0-1</p>
taxRate	<p>duty or tax or fee percent rate  - base type: string,  (XPath: YARNTwistOrder/terms/allowanceCharge/dtScheme/taxRate) 0-1  (XPath: YARNTwistOrder/YTCObody/YTCOitem/dtScheme/taxRate) 0-1</p>
@taxType	<p>duty or tax or fee type  - base type: string, cod. table: T61  <a href="http://www.moda-ml.net/moda-ml/repository/codelist/v2013-1/gc_T61.xml">http://www.moda-ml.net/moda-ml/repository/codelist/v2013-1/gc_T61.xml</a>  (XPath: YARNTwistOrder/terms/allowanceCharge/dtScheme/@taxType) [Required]  (XPath: YARNTwistOrder/YTCObody/YTCOitem/dtScheme/@taxType) [Required]</p>
tolerance	<p>deviation tolerated on the value of a measurement (it must have a plus or minus sign)  - base type: decimal,  (XPath: YARNTwistOrder/YTCObody/YTCOitem/yarnMnfrOperation/yarnMachineSpecs/tolerance) 0-2  (XPath: YARNTwistOrder/YTCObody/YTCOitem/yarnProd/yarnSpecs/tolerance) 0-2</p>
transCondition	<p>special condition of transport or special service requested to the Forwarder  - base type: string, cod. table: T38  <a href="http://www.moda-ml.net/moda-ml/repository/codelist/v2013-1/gc_T38.xml">http://www.moda-ml.net/moda-ml/repository/codelist/v2013-1/gc_T38.xml</a>  (XPath: YARNTwistOrder/terms/transInfo/transCondition) 0-3</p>
transConditionText	<p>free text description of the special condition of transport or special service requested to the Forwarder  - base type: string, max length: 100,  (XPath: YARNTwistOrder/terms/transInfo/transConditionText) 0-1</p>
transMeans	<p>means of transport, in general or referred to a specific leg  - base type: string, cod. table: T40  <a href="http://www.moda-ml.net/moda-ml/repository/codelist/v2013-1/gc_T40.xml">http://www.moda-ml.net/moda-ml/repository/codelist/v2013-1/gc_T40.xml</a>  (XPath: YARNTwistOrder/terms/transInfo/transMeans) 0-1</p>
transMode	<p>way of transport, in general or referred to the specified leg  - base type: string, cod. table: T8  <a href="http://www.moda-ml.net/moda-ml/repository/codelist/v2013-1/gc_T8.xml">http://www.moda-ml.net/moda-ml/repository/codelist/v2013-1/gc_T8.xml</a>  (XPath: YARNTwistOrder/terms/transInfo/transMode) 1-1</p>
@transReason	<p>reason for the transport  - base type: string, cod. table: NT11  <a href="http://www.moda-ml.net/moda-ml/repository/codelist/v2013-1/gc_NT11.xml">http://www.moda-ml.net/moda-ml/repository/codelist/v2013-1/gc_NT11.xml</a>  (XPath: YARNTwistOrder/terms/transInfo/@transReason) [Optional]</p>
@um	<p>specification of the unit of measure  - base type: string, cod. table: NT7  <a href="http://www.moda-ml.net/moda-ml/repository/codelist/v2013-1/gc_NT7.xml">http://www.moda-ml.net/moda-ml/repository/codelist/v2013-1/gc_NT7.xml</a>  (XPath: YARNTwistOrder/YTCObody/YTCOitem/yarnProd/yarnSpecs/tolerance/@um) [Required]  (XPath: YARNTwistOrder/YTCObody/YTCOitem/yarnMnfrOperation/yarnMachineSpecs/specValue/@um) [Optional]  (XPath: YARNTwistOrder/YTCObody/YTCOitem/yarnProd/yarnPack/yarnReel/yarnReelD/@um) [Required]  (XPath: YARNTwistOrder/YTCObody/YTCOitem/yarnProd/yarnSpecs/pcTolerance/@um) [Optional]  - nota: <i>to be used when it has to be soecified if the declared percentage is by weight, volume, etc...</i>  (XPath: YARNTwistOrder/YTCObody/YTCOitem/yarnMnfrOperation/yarnMachineSpecs/pcTolerance/@um) [Optional]</p>

	<p>- nota: <i>to be used when it has to be soecified if the declared percentage is by weight, volume, etc...</i>  (XPath: YARNTwistOrder/terms/transInfo/netWeight/@um) [Required]  (XPath: YARNTwistOrder/terms/transInfo/grossWeight/@um) [Required]  (XPath: YARNTwistOrder/YTCObody/YTCOitem/yarnProd/yarnSpecs/specValue/@um) [Optional]  (XPath: YARNTwistOrder/YTCObody/YTCOitem/yarnMnfrOperation/yarnMachineSpecs/tolerance/@um) [Required]  (XPath: YARNTwistOrder/YTCObody/YTCOitem/yarnProd/yarnSpecs/experimValue/@um) [Optional]  (XPath: YARNTwistOrder/YTCObody/YTCOitem/yarnComponent/qty/@um) [Required]  (XPath: YARNTwistOrder/YTCObody/YTCOitem/yarnProd/yarnPack/yarnReel/yarnReelQty/@um) [Required]  (XPath: YARNTwistOrder/YTCObody/YTCOitem/yarnComponent/pcQty/@um) [Optional]</p> <p>- nota: <i>to be used when it has to be soecified if the declared percentage is by weight, volume, etc...</i>  (XPath: YARNTwistOrder/YTCObody/YTCOitem/price/@um) [Optional]</p> <p>- nota: <i>Unit of measure of the product to which the price is referred (price per meter)</i>  (XPath: YARNTwistOrder/YTCObody/YTCOitem/qty/@um) [Required]  (XPath: YARNTwistOrder/YTCObody/YTCOitem/yarnProd/yarnPack/yarnReel/yarnReelH/@um) [Required]</p>
@useProfile	<p>use profile to which the present document is compliant if it was agreed by the parties. It is suggested a URI with reference to the firms or the URL of the profile.  - base type: string,  (XPath: YARNTwistOrder/@useProfile) [Optional]</p>
@VAT	<p>VAT rate or code ( deprecated, use dtScheme element )  - base type: string, cod. table: NT16  <a href="http://www.moda-ml.net/moda-ml/repository/codelist/v2013-1/gc_NT16.xml">http://www.moda-ml.net/moda-ml/repository/codelist/v2013-1/gc_NT16.xml</a>  (XPath: YARNTwistOrder/YTCObody/YTCOitem/thirdParty/@VAT) [Optional]  (XPath: YARNTwistOrder/terms/allowanceCharge/@VAT) [Optional]  (XPath: YARNTwistOrder/YTCObody/YTCOitem/lineN/@VAT) [Optional]  (XPath: YARNTwistOrder/YTCOheader/thirdParty/@VAT) [Optional]</p>
@version	<p>Dictionary version from which the instance has been created  - base type: string, cod. table: NT100  <a href="http://www.moda-ml.net/moda-ml/repository/codelist/v2013-1/gc_NT100.xml">http://www.moda-ml.net/moda-ml/repository/codelist/v2013-1/gc_NT100.xml</a>  (XPath: YARNTwistOrder/@version) [Optional] [Default= 2013-1]</p>
warpLetter	<p>letter that indicates a specific yarn in the warping formula (diagram)  - base type: string, length: 1,  (XPath: YARNTwistOrder/YTCObody/YTCOitem/yarnComponent/warpLetter) 0-1  - note: <i>to be used only in the Warping order</i></p>
weftLetter	<p>letter that indicates a specific yarn in the wefting formula (diagram)  - base type: string, length: 1,  (XPath: YARNTwistOrder/YTCObody/YTCOitem/yarnComponent/weftLetter) 0-1  - note: <i>to be used only in the Weaving order</i></p>
yarnChar	<p>physical or mechanical parameter used to define a property of a yarn  - base type: string, cod. table: T24  <a href="http://www.moda-ml.net/moda-ml/repository/codelist/v2013-1/gc_T24.xml">http://www.moda-ml.net/moda-ml/repository/codelist/v2013-1/gc_T24.xml</a>  (XPath: YARNTwistOrder/YTCObody/YTCOitem/yarnProd/yarnSpecs/yarnChar) 1-1</p>
yarnCharText	<p>free text describing the physical or mechanical parameter used to define a property of a yarn  - base type: string, max length: 40,  (XPath: YARNTwistOrder/YTCObody/YTCOitem/yarnProd/</p>

	<b>yarnSpecs/yarnCharText) 1-1</b>
yarnConeAngle	tapering angle of the cone on which a yarn is reeled - base type: positiveInteger, (XPath: YARNTwistOrder/YTCObody/YTCOitem/yarnProd/ yarnPack/yarnReel/yarnConeAngle) 0-1
yarnJob	operation of a work cycle for yarn - base type: string, cod. table: T201 <a href="http://www.moda-ml.net/moda-ml/repository/codelist/v2013-1/gc_T201.xml">http://www.moda-ml.net/moda-ml/repository/codelist/v2013-1/gc_T201.xml</a> (XPath: YARNTwistOrder/YTCObody/YTCOitem/yarnMnfrOperation/yarnJob) 1-1
yarnJobTech	operation technology for yarn - base type: string, cod. table: T261 <a href="http://www.moda-ml.net/moda-ml/repository/codelist/v2013-1/gc_T261.xml">http://www.moda-ml.net/moda-ml/repository/codelist/v2013-1/gc_T261.xml</a> (XPath: YARNTwistOrder/YTCObody/YTCOitem/yarnMnfrOperation/yarnJobTech) 0-1
yarnMachine	machine used in an operation of a work cycle for yarn - base type: string, cod. table: T271 <a href="http://www.moda-ml.net/moda-ml/repository/codelist/v2013-1/gc_T271.xml">http://www.moda-ml.net/moda-ml/repository/codelist/v2013-1/gc_T271.xml</a> (XPath: YARNTwistOrder/YTCObody/YTCOitem/yarnMnfrOperation/yarnMachine) 0-1
yarnMachineParam	setting parameter of a machine used in an operation of a work cycle for yarn - base type: string, cod. table: T281 <a href="http://www.moda-ml.net/moda-ml/repository/codelist/v2013-1/gc_T281.xml">http://www.moda-ml.net/moda-ml/repository/codelist/v2013-1/gc_T281.xml</a> (XPath: YARNTwistOrder/YTCObody/YTCOitem/yarnMnfrOperation/ yarnMachineSpecs/yarnMachineParam) 1-1
yarnOutWrap	code specifying the type of outer wrapping or packing of a yarn - base type: string, cod. table: T33 <a href="http://www.moda-ml.net/moda-ml/repository/codelist/v2013-1/gc_T33.xml">http://www.moda-ml.net/moda-ml/repository/codelist/v2013-1/gc_T33.xml</a> (XPath: YARNTwistOrder/YTCObody/YTCOitem/yarnProd/yarnPack/yarnOutWrap) 0-1
yarnOutWrapText	free text specifying the type of outer wrapping or packing of a yarn - base type: string, max length: 40, (XPath: YARNTwistOrder/YTCObody/YTCOitem/yarnProd/yarnPack/yarnOutWrapText) 0-1
yarnReelD	diameter of the bobbin used for a yarn product - base type: decimal, min inclusive: 0, fraction digits: 2, (XPath: YARNTwistOrder/YTCObody/YTCOitem/yarnProd/ yarnPack/yarnReel/yarnReelD) 0-1
yarnReelH	height of the bobbin used a yarn product - base type: decimal, min inclusive: 0, fraction digits: 2, (XPath: YARNTwistOrder/YTCObody/YTCOitem/yarnProd/ yarnPack/yarnReel/yarnReelH) 0-1
yarnReelQty	quantity of yarn (by weight or length) wound upon a bobbin - base type: decimal, min inclusive: 0, fraction digits: 2, (XPath: YARNTwistOrder/YTCObody/YTCOitem/yarnProd/ yarnPack/yarnReel/yarnReelQty) 0-2
yarnReelWrap	type of wrapping in which a package of yarn is wrapped - base type: string, cod. table: T32 <a href="http://www.moda-ml.net/moda-ml/repository/codelist/v2013-1/gc_T32.xml">http://www.moda-ml.net/moda-ml/repository/codelist/v2013-1/gc_T32.xml</a> (XPath: YARNTwistOrder/YTCObody/YTCOitem/yarnProd/ yarnPack/yarnInWrap/yarnReelWrap) 1-1

## 2.3 Enumeration tables

List of enumeration tables used in the XML document. You can find the corresponding codes at: <http://www.moda-ml.org/moda-ml/imple/moda-ml-2013-1.asp?lingua=en&pag=6>

NT100 - eBIZ Moda-ML version

NT11 - transport causal

NT12 - data source

NT16 - VAT rate or code

NT18 - message function

NT2 - third party qualifier

NT20 - price qualifier

NT22 - product type of an operation

NT29 - format of a date

NT3 - data format

NT37 - committed quantity qualifier

NT38 - colour test

NT6 - coding system owner/issuer

NT7 - unity of measure

T1 - terms of payment

T10 - ISO3166 - Country

T19 - fibre type

T2 - Modes of payment

T201 - type of job on yarn

T21 - type of document

T24 - yarn characteristics type

T261 - type of job technology for yarn

T271 - machine type for yarn operation

T281 - parameter type for yarn operation

T29 - type of yarn package

T3 - terms of delivery

T30 - support of yarn package - material

T32 - yarn reel wrapping type

T33 - yarn outer packing

T38 - transport conditions

T40 - type of transport means

T41 - type of Allowance or Charge

T44 - additional code type

T59 - CIE illuminant

T60 - CIE standard observer

T61 - duty or tax or fee type

T62 - duty or tax or fee category

T8 - Modes of Transport

T9 - ISO4217 - Currency

# Annex A

Representative images of the principal complex elements' structure.

