



<http://www.moda-ml.org>

IMPLEMENTATION GUIDE  
TRANSACTION "GENERAL PURPOSE REQUEST"

Version: 2013-1

Date of release: 18/11/2011

Document code: G039

XML Schema repository:<http://www.moda-ml.org/moda-ml/repository/schema/v2013-1/default.asp>

Guides repository:<http://www.moda-ml.org/moda-ml/repository/guide/v2013-1/default.asp>

Guide filename: G039-MODA-ML-GeneralPurposeRequest.pdf

# 1. BUSINESS DESCRIPTION

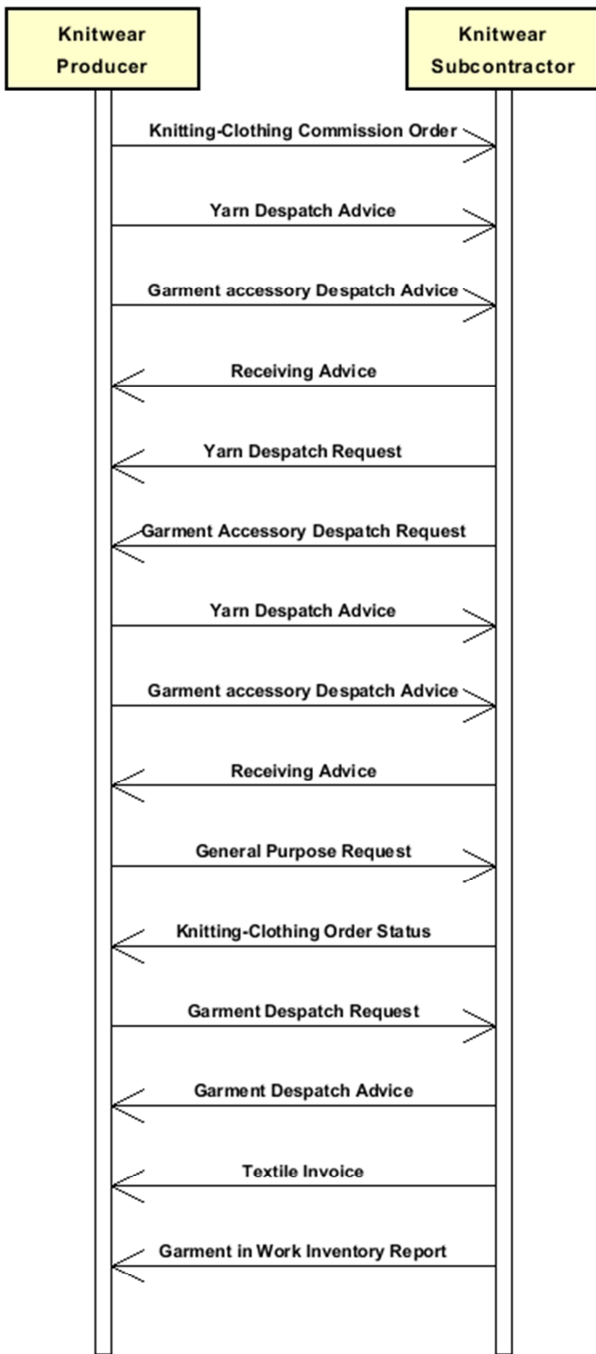
## 1.1 Scope

This document is used to solicit the sending of a document when this is produced only on request (e.g.: the Order Status)

## 1.2 Generalities

-

## 1.3. Possible scenario



## 2. IMPLEMENTATION GUIDE

### 2.1 General structure of XML document

All the business data that can be exchanged through this class of documents are shown in the following "document structure", that provides a simplified vision of the Schema.

In particular:

- the two numbers following each element define its "cardinality" (minimum and maximum number of occurrences); the minimum equal zero indicates that the element is optional, the minimum greater than zero indicates that is mandatory;
- the bold character denotes the complex elements (aggregates of simple elements) that were built for the sake of functionality and re-usability of some complex informations sets. The child elements in each parent element are easily spotted as "indented";
- the symbol "@" denotes an attribute of the preceding element; here "the usage indicator (optional, required, ...)" is shown in square brackets.

### Structure

#### **GPDocRequest**

*@version [Optional] [Default= 2013-1]*

*@useProfile [Optional]*

| msgN 1-1

| msgDate 1-1

| *@dateForm [Optional]*

#### | **refDoc 0-9**

| *@docType [Required]*

| | docID 1-2

| | *@numberingOrg [Optional]*

| | docDate 0-1

| | *@dateForm [Optional]*

| | season 0-1

| | itemID 0-1

#### | **buyer 1-1**

| *@logo [Optional]*

| *@sender [Optional]*

| | id 1-1

| | *@numberingOrg [Optional]*

| | legalName 0-1

| | dept 0-1

| | person 0-1

| | *@email [Optional]*

| | *@phone [Optional]*

| | *@fax [Optional]*

| | street 0-1

| | city 0-1

| | subCountry 0-1

| | country 0-1

| | postCode 0-1

#### | **supplier 1-1**

| *@logo [Optional]*

| *@sender [Optional]*

| | id 1-1

| | *@numberingOrg [Optional]*

| legalName 0-1  
| dept 0-1  
| person 0-1  
| @email [Optional]  
| @phone [Optional]  
| @fax [Optional]  
| street 0-1  
| city 0-1  
| subCountry 0-1  
| country 0-1  
| postCode 0-1

| requestDocType 1-1

| **itemRestrict 0-99**

| id 0-1  
| @numberingOrg [Optional]  
| legalName 0-1  
| season 0-1  
- choose -

| **garmentCode 0-2**  
| @numberingOrg [Optional]  
- choose -

| | **garmentCodeB 1-1**  
| | @numberingOrg [Optional]  
| | mod 1-1  
| | @numberingOrg [Optional]  
| | @codeList [Optional]  
| | @listName [Optional]  
| | @listVersion [Optional]  
| | fabric 0-1  
| | @numberingOrg [Optional]  
| | @codeList [Optional]  
| | @listName [Optional]  
| | @listVersion [Optional]  
| | color 0-1  
| | @numberingOrg [Optional]  
| | @codeList [Optional]  
| | @listName [Optional]  
| | @listVersion [Optional]  
| | size 0-1  
| | @codeList [Optional]  
| | artGroup 0-1  
| | @numberingOrg [Optional]  
| | @codeList [Optional]  
| | @listName [Optional]  
| | @listVersion [Optional]  
| | added 0-9  
| | @numberingOrg [Optional]  
| | @addType [Optional]  
| | description 0-1

- or -

| | **garmentCodeA 1-1**  
| | art 1-1  
| | @numberingOrg [Optional]  
| | @codeList [Optional]  
| | @listName [Optional]  
| | @listVersion [Optional]  
| | description 0-1

- end choose -

- or -

| **texCode 0-2**

| @numberingOrg [Optional]  
| art 1-1  
| @numberingOrg [Optional]  
| @codeList [Optional]  
| @listName [Optional]  
| @listVersion [Optional]  
| pattern 0-1  
| @numberingOrg [Optional]  
| @codeList [Optional]  
| @listName [Optional]  
| @listVersion [Optional]  
| color 0-1  
| @numberingOrg [Optional]  
| @codeList [Optional]  
| @listName [Optional]  
| @listVersion [Optional]  
| added 0-9  
| @numberingOrg [Optional]  
| @addType [Optional]  
| description 0-1

- or -

| **yarnCode 0-2**

| @numberingOrg [Optional] [Default= CL]  
| art 1-1  
| @numberingOrg [Optional]  
| @codeList [Optional]  
| @listName [Optional]  
| @listVersion [Optional]  
| color 0-1  
| @numberingOrg [Optional]  
| @codeList [Optional]  
| @listName [Optional]  
| @listVersion [Optional]  
| added 0-9  
| @numberingOrg [Optional]  
| @addType [Optional]  
| description 0-1

- end choose -

| **timeRestrict 0-1**

| validityStart 0-1  
| @dateForm [Optional]  
| validityEnd 0-1  
| @dateForm [Optional]

| note 0-19

| @numberingOrg [Optional]  
| @codeList [Optional]  
| @noteLabel [Optional]

## 2.2 Detailed description of document elements

Following tables show all elements (complex and simple) used in this document. Description includes: 1) element's information: xml tag, name, brief description, data type and syntax constraints; 2) information about use of the element in a particular position in the document: xpath and possible associated notes.

### 2.2.1 Complex elements (Aggregate Business Information Entities)

Complex elements are those elements whose content is composed of other elements (childs).Complex elements are alphabetically ordered.

<b>buyer</b>	details of the Buyer - base type: Nad, (XPath: GPDocRequest/buyer) 1-1
<b>garmentCode</b>	codification of the garment product (knitwear/clothing) (XPath: GPDocRequest/itemRestrict/garmentCode) 0-2
<b>garmentCodeA</b>	codification of the garment product (knitwear/clothing) - type A (XPath: GPDocRequest/itemRestrict/garmentCode/garmentCodeA) 1-1 - note: here the barcode EAN-13 or EAN-8 should be specified
<b>garmentCodeB</b>	codification of the garment product (knitwear/clothing) - type B (XPath: GPDocRequest/itemRestrict/garmentCode/garmentCodeB) 1-1
<b>itemRestrict</b>	Item restriction to be applied on the document requested, expressed as an article code or a Party code (XPath: GPDocRequest/itemRestrict) 0-99 - note: in case of use of this item restriction at least one of the child elements must be present
<b>refDoc</b>	identification of a document and of an item thereof, to which the message makes reference (XPath: GPDocRequest/refDoc) 0-9
<b>supplier</b>	details of the Supplier - base type: Nad, (XPath: GPDocRequest/supplier) 1-1
<b>texCode</b>	full codification of the textile product (XPath: GPDocRequest/itemRestrict/texCode) 0-2
<b>timeRestrict</b>	time restriction to be applied on the document requested, expressed asa period of validity/application of the document requested (XPath: GPDocRequest/timeRestrict) 0-1
<b>yarnCode</b>	full codification of a yarn product (XPath: GPDocRequest/itemRestrict/yarnCode) 0-2

### 2.2.2 Simple elements (Basic Business Information Entities)

Simple elements are those elements whose content is characterized by a data type

plus a domain of possible values. Simple elements are alphabetically ordered.

added	<p>additional code of the product (complementing the formers)</p> <ul style="list-style-type: none"> <li>- base type: string, max length: 15, (XPath: <a href="#">GPDocRequest/itemRestrict/yarnCode/added</a>) 0-9</li> <li>- note: <i>here an additional codification (see table T44) can be specified</i> (XPath: <a href="#">GPDocRequest/itemRestrict/garmentCode/garmentCodeB/added</a>) 0-9</li> <li>(XPath: <a href="#">GPDocRequest/itemRestrict/texCode/added</a>) 0-9</li> <li>- note: <i>here an additional codification (see table T44) can be specified</i></li> </ul>
@addType	<p>qualifier of the additional coding of a product</p> <ul style="list-style-type: none"> <li>- base type: string, cod. table: T44 <a href="http://www.moda-ml.net/moda-ml/repository/codelist/v2013-1/gc_T44.xml">http://www.moda-ml.net/moda-ml/repository/codelist/v2013-1/gc_T44.xml</a></li> <li>(XPath: <a href="#">GPDocRequest/itemRestrict/garmentCode/garmentCodeB/added/@addType</a>) [Optional]</li> <li>(XPath: <a href="#">GPDocRequest/itemRestrict/yarnCode/added/@addType</a>) [Optional]</li> <li>(XPath: <a href="#">GPDocRequest/itemRestrict/texCode/added/@addType</a>) [Optional]</li> </ul>
art	<p>article number of the product</p> <ul style="list-style-type: none"> <li>- base type: string, max length: 25, (XPath: <a href="#">GPDocRequest/itemRestrict/garmentCode/garmentCodeA/art</a>) 1-1</li> <li>(XPath: <a href="#">GPDocRequest/itemRestrict/yarnCode/art</a>) 1-1</li> <li>(XPath: <a href="#">GPDocRequest/itemRestrict/texCode/art</a>) 1-1</li> <li>- note: <i>can be used either for the base-article (excluding pattern/colour) or for the SKU</i></li> </ul>
artGroup	<p>code identifying a class of products</p> <ul style="list-style-type: none"> <li>- base type: string, max length: 40, (XPath: <a href="#">GPDocRequest/itemRestrict/garmentCode/garmentCodeB/artGroup</a>) 0-1</li> </ul>
city	<p>name of the city (town, village)</p> <ul style="list-style-type: none"> <li>- base type: string, max length: 40, (XPath: <a href="#">GPDocRequest/buyer/city</a>) 0-1</li> <li>(XPath: <a href="#">GPDocRequest/supplier/city</a>) 0-1</li> </ul>
@codeList	<p>it specifies the URL where the list of codes used to make an instance of the element can be found</p> <ul style="list-style-type: none"> <li>- base type: string, max length: 255, (XPath: <a href="#">GPDocRequest/itemRestrict/garmentCode/garmentCodeB/color/@codeList</a>) [Optional]</li> <li>- nota: <i>this attribute should be ALTERNATIVE to the others</i> (XPath: <a href="#">GPDocRequest/itemRestrict/garmentCode/garmentCodeB/mod/@codeList</a>) [Optional]</li> <li>- nota: <i>this attribute should be ALTERNATIVE to the others</i> (XPath: <a href="#">GPDocRequest/itemRestrict/garmentCode/garmentCodeB/fabric/@codeList</a>) [Optional]</li> <li>- nota: <i>this attribute should be ALTERNATIVE to the others</i> (XPath: <a href="#">GPDocRequest/itemRestrict/yarnCode/art/@codeList</a>) [Optional]</li> <li>- nota: <i>this attribute should be ALTERNATIVE to the others</i> (XPath: <a href="#">GPDocRequest/itemRestrict/texCode/color/@codeList</a>) [Optional]</li> <li>- nota: <i>this attribute should be ALTERNATIVE to the others</i> (XPath: <a href="#">GPDocRequest/note/@codeList</a>) [Optional]</li> <li>- nota: <i>must be used to provide (URL) the list of codes used in "noteLabel"</i> (XPath: <a href="#">GPDocRequest/itemRestrict/yarnCode/color/@codeList</a>) [Optional]</li> <li>- nota: <i>this attribute should be ALTERNATIVE to the others</i> (XPath: <a href="#">GPDocRequest/itemRestrict/texCode/pattern/@codeList</a>) [Optional]</li> <li>- nota: <i>this attribute should be ALTERNATIVE to the others</i> (XPath: <a href="#">GPDocRequest/itemRestrict/garmentCode/garmentCodeB/artGroup/@codeList</a>) [Optional]</li> </ul>



	<p>- nota: <i>this attribute should be ALTERNATIVE to the others</i> (XPath: GPDocRequest/itemRestrict/garmentCode/garmentCodeB/size/@codeList) [Optional] (XPath: GPDocRequest/itemRestrict/texCode/art/@codeList) [Optional]</p> <p>- nota: <i>this attribute should be ALTERNATIVE to the others</i> (XPath: GPDocRequest/itemRestrict/garmentCode/garmentCodeA/art/@codeList) [Optional]</p> <p>- nota: <i>this attribute should be ALTERNATIVE to the others</i></p>
color	<p>colour number of the product, when not included in the model or fabric code</p> <p>- base type: string, max length: 15, (XPath: GPDocRequest/itemRestrict/texCode/color) 0-1 (XPath: GPDocRequest/itemRestrict/yarnCode/color) 0-1 (XPath: GPDocRequest/itemRestrict/garmentCode/garmentCodeB/color) 0-1</p>
country	<p>code of the nation</p> <p>- base type: string, cod. table: T10 <a href="http://www.moda-ml.net/moda-ml/repository/codelist/v2013-1/gc_T10.xml">http://www.moda-ml.net/moda-ml/repository/codelist/v2013-1/gc_T10.xml</a> (XPath: GPDocRequest/supplier/country) 0-1 (XPath: GPDocRequest/buyer/country) 0-1</p>
@dateForm	<p>format used for the date</p> <p>- base type: string, cod. table: NT29 <a href="http://www.moda-ml.net/moda-ml/repository/codelist/v2013-1/gc_NT29.xml">http://www.moda-ml.net/moda-ml/repository/codelist/v2013-1/gc_NT29.xml</a> (XPath: GPDocRequest/timeRestrict/validityStart/@dateForm) [Optional] (XPath: GPDocRequest/refDoc/docDate/@dateForm) [Optional] (XPath: GPDocRequest/msgDate/@dateForm) [Optional] (XPath: GPDocRequest/timeRestrict/validityEnd/@dateForm) [Optional]</p>
dept	<p>name or code of a contact department within a Party</p> <p>- base type: string, max length: 40, (XPath: GPDocRequest/buyer/dept) 0-1 (XPath: GPDocRequest/supplier/dept) 0-1</p>
description	<p>free text description of a product</p> <p>- base type: string, max length: 70, (XPath: GPDocRequest/itemRestrict/garmentCode/garmentCodeA/description) 0-1 (XPath: GPDocRequest/itemRestrict/garmentCode/garmentCodeB/description) 0-1 (XPath: GPDocRequest/itemRestrict/texCode/description) 0-1 (XPath: GPDocRequest/itemRestrict/yarnCode/description) 0-1</p>
docDate	<p>date of issue of the referenced document, according to one of the patterns YYYY-MM-DD, YYYY-MM-DD:HH-MM or YYYY-WW.</p> <p>- base type: string, (XPath: GPDocRequest/refDoc/docDate) 0-1</p>
docID	<p>identification number of the referenced document SINCE 2008-1 ITS USE IN THE HEADER IS DISCOURAGED (REPLACED BY msgID)</p> <p>- base type: string, max length: 80, (XPath: GPDocRequest/refDoc/docID) 1-2</p>
@docType	<p>type or class to which the referenced document belongs</p> <p>- base type: string, cod. table: T21 <a href="http://www.moda-ml.net/moda-ml/repository/codelist/v2013-1/gc_T21.xml">http://www.moda-ml.net/moda-ml/repository/codelist/v2013-1/gc_T21.xml</a> (XPath: GPDocRequest/refDoc/@docType) [Required]</p>
@email	<p>electronic mail address of the contact person within a Party</p> <p>- base type: string, max length: 80, (XPath: GPDocRequest/supplier/person/@email) [Optional] (XPath: GPDocRequest/buyer/person/@email) [Optional]</p>
fabric	<p>fabric number of the garment</p> <p>- base type: string, max length: 15,</p>

	(XPath: GPDocRequest/itemRestrict/garmentCode/garmentCodeB/fabric) 0-1
@fax	fax number of the contact person within a Party - base type: string, max length: 35, (XPath: GPDocRequest/buyer/person/@fax) [Optional] (XPath: GPDocRequest/supplier/person/@fax) [Optional]
id	primary identification code of a Party; it is recommended the format: nation code (ISO 3166) + VAT identification number (11 crt), with the qualifier "numberingOrg"= MF - base type: string, max length: 15, (XPath: GPDocRequest/buyer/id) 1-1 (XPath: GPDocRequest/itemRestrict/id) 0-1 (XPath: GPDocRequest/supplier/id) 1-1
itemID	number of the line/item of the referenced document - base type: string, max length: 6, (XPath: GPDocRequest/refDoc/itemID) 0-1
legalName	legal name of a Party - base type: string, max length: 80, (XPath: GPDocRequest/itemRestrict/legalName) 0-1 (XPath: GPDocRequest/supplier/legalName) 0-1 (XPath: GPDocRequest/buyer/legalName) 0-1
@listName	it specifies the name of the list of codes used to make an instance of the element - base type: string, max length: 40, (XPath: GPDocRequest/itemRestrict/garmentCode/garmentCodeA/art/@listName) [Optional] - nota: <i>this attribute should always be used coupled with "numberingOrg"</i> (XPath: GPDocRequest/itemRestrict/texCode/color/@listName) [Optional] - nota: <i>this attribute should always be used coupled with "numberingOrg"</i> (XPath: GPDocRequest/itemRestrict/texCode/pattern/@listName) [Optional] - nota: <i>this attribute should always be used coupled with "numberingOrg"</i> (XPath: GPDocRequest/itemRestrict/texCode/art/@listName) [Optional] - nota: <i>this attribute should always be used coupled with "numberingOrg"</i> (XPath: GPDocRequest/itemRestrict/garmentCode/garmentCodeB/artGroup/@listName) [Optional] - nota: <i>this attribute should always be used coupled with "numberingOrg"</i> (XPath: GPDocRequest/itemRestrict/garmentCode/garmentCodeB/fabric/@listName) [Optional] - nota: <i>this attribute should always be used coupled with "numberingOrg"</i> (XPath: GPDocRequest/itemRestrict/garmentCode/garmentCodeB/mod/@listName) [Optional] - nota: <i>this attribute should always be used coupled with "numberingOrg"</i> (XPath: GPDocRequest/itemRestrict/yarnCode/color/@listName) [Optional] - nota: <i>this attribute should always be used coupled with "numberingOrg"</i> (XPath: GPDocRequest/itemRestrict/yarnCode/art/@listName) [Optional] - nota: <i>this attribute should always be used coupled with "numberingOrg"</i> (XPath: GPDocRequest/itemRestrict/garmentCode/garmentCodeB/color/@listName) [Optional] - nota: <i>this attribute should always be used coupled with "numberingOrg"</i>

@listVersion	<p>it specifies the version of the list of codes used to make an instance of the element</p> <ul style="list-style-type: none"> <li>- base type: string, max length: 6, (XPath: GPDocRequest/itemRestrict/yarnCode/color/@listVersion) [Optional]</li> <li>- nota: <i>this attribute should always be used coupled with "numberingOrg" and "listName"</i> (XPath: GPDocRequest/itemRestrict/texCode/color/@listVersion) [Optional]</li> <li>- nota: <i>this attribute should always be used coupled with "numberingOrg" and "listName"</i> (XPath: GPDocRequest/itemRestrict/garmentCode/garmentCodeB/color/@listVersion) [Optional]</li> <li>- nota: <i>this attribute should always be used coupled with "numberingOrg" and "listName"</i> (XPath: GPDocRequest/itemRestrict/texCode/art/@listVersion) [Optional]</li> <li>- nota: <i>this attribute should always be used coupled with "numberingOrg" and "listName"</i> (XPath: GPDocRequest/itemRestrict/garmentCode/garmentCodeA/art/@listVersion) [Optional]</li> <li>- nota: <i>this attribute should always be used coupled with "numberingOrg" and "listName"</i> (XPath: GPDocRequest/itemRestrict/garmentCode/garmentCodeB/mod/@listVersion) [Optional]</li> <li>- nota: <i>this attribute should always be used coupled with "numberingOrg" and "listName"</i> (XPath: GPDocRequest/itemRestrict/garmentCode/garmentCodeB/fabric/@listVersion) [Optional]</li> <li>- nota: <i>this attribute should always be used coupled with "numberingOrg" and "listName"</i> (XPath: GPDocRequest/itemRestrict/texCode/pattern/@listVersion) [Optional]</li> <li>- nota: <i>this attribute should always be used coupled with "numberingOrg" and "listName"</i> (XPath: GPDocRequest/itemRestrict/yarnCode/art/@listVersion) [Optional]</li> <li>- nota: <i>this attribute should always be used coupled with "numberingOrg" and "listName"</i> (XPath: GPDocRequest/itemRestrict/garmentCode/garmentCodeB/artGroup/@listVersion) [Optional]</li> <li>- nota: <i>this attribute should always be used coupled with "numberingOrg" and "listName"</i></li> </ul>
@logo	<p>company logo (URL of the image jpeg or gif). It is recommended that the width of the image does not exceed 640 pixel.</p> <ul style="list-style-type: none"> <li>- base type: string, max length: 255, (XPath: GPDocRequest/buyer/@logo) [Optional]</li> <li>(XPath: GPDocRequest/supplier/@logo) [Optional]</li> </ul>
mod	<p>model number of the garment</p> <ul style="list-style-type: none"> <li>- base type: string, max length: 15, (XPath: GPDocRequest/itemRestrict/garmentCode/garmentCodeB/mod) 1-1</li> </ul>
msgDate	<p>date of issue of the present message (xml document), according to one of the patterns YYYY-MM-DD, YYYY-MM-DD:HH-MM or YYYY-WW.</p> <ul style="list-style-type: none"> <li>- base type: string, (XPath: GPDocRequest/msgDate) 1-1</li> </ul>
msgN	<p>identification number given to the message (xml document) by its issuer</p> <ul style="list-style-type: none"> <li>- base type: string, max length: 35, (XPath: GPDocRequest/msgN) 1-1</li> </ul>
note	<p>free text or structured (computer processing) note. For note structuring use the attributes "noteLabel" and "codelist"</p>

	<p>- base type: string, max length: 350, (XPath: GPDocRequest/note) 0-19</p>
@noteLabel	<p>subject qualifier of a note - base type: string, max length: 35, (XPath: GPDocRequest/note/@noteLabel) [Optional] - nota: <i>must be used to qualify the subject of the note</i></p>
@numberingOrg	<p>code specifying the organisation who has created or owns the coding or numbering system - base type: string, cod. table: NT6 <a href="http://www.moda-ml.net/moda-ml/repository/codelist/v2013-1/gc_NT6.xml">http://www.moda-ml.net/moda-ml/repository/codelist/v2013-1/gc_NT6.xml</a> (XPath: GPDocRequest/note/@numberingOrg) [Optional] (XPath: GPDocRequest/refDoc/docID/@numberingOrg) [Optional] - nota: <i>here can be specified whose document numbering is used (e.g.: Client, Supplier, ..)</i> (XPath: GPDocRequest/itemRestrict/yarnCode/@numberingOrg) [Optional] [Default= CL] (XPath: GPDocRequest/itemRestrict/yarnCode/art/@numberingOrg) [Optional] - nota: <i>this attribute should be used either single or coupled with "listName" and "listVersion"</i> (XPath: GPDocRequest/itemRestrict/yarnCode/color/@numberingOrg) [Optional] - nota: <i>this attribute should be used either single or coupled with "listName" and "listVersion"</i> (XPath: GPDocRequest/itemRestrict/texCode/color/@numberingOrg) [Optional] - nota: <i>this attribute should be used either single or coupled with "listName" and "listVersion"</i> (XPath: GPDocRequest/itemRestrict/yarnCode/added/@numberingOrg) [Optional] (XPath: GPDocRequest/itemRestrict/texCode/added/@numberingOrg) [Optional] (XPath: GPDocRequest/itemRestrict/garmentCode/garmentCodeB/mod/@numberingOrg) [Optional] - nota: <i>this attribute should be ALTERNATIVE to the others</i> (XPath: GPDocRequest/itemRestrict/garmentCode/garmentCodeB/added/@numberingOrg) [Optional] (XPath: GPDocRequest/itemRestrict/garmentCode/garmentCodeB/color/@numberingOrg) [Optional] - nota: <i>this attribute should be used either single or coupled with "listName" and "listVersion"</i> (XPath: GPDocRequest/itemRestrict/garmentCode/garmentCodeB/artGroup/@numberingOrg) [Optional] - nota: <i>this attribute should be used either single or coupled with "listName" and "listVersion"</i> (XPath: GPDocRequest/itemRestrict/id/@numberingOrg) [Optional] (XPath: GPDocRequest/itemRestrict/garmentCode/@numberingOrg) [Optional] (XPath: GPDocRequest/supplier/id/@numberingOrg) [Optional] (XPath: GPDocRequest/itemRestrict/garmentCode/garmentCodeA/art/@numberingOrg) [Optional] - nota: <i>this attribute should be used either single or coupled with "listName" and "listVersion"</i> (XPath: GPDocRequest/itemRestrict/garmentCode/garmentCodeB/fabric/@numberingOrg) [Optional] - nota: <i>this attribute should be used either single or coupled with "listName" and "listVersion"</i> (XPath: GPDocRequest/itemRestrict/texCode/art/@numberingOrg) [Optional] - nota: <i>this attribute should be used either single or coupled with "listName" and "listVersion"</i> (XPath: GPDocRequest/itemRestrict/texCode/pattern/@numberingOrg) [Optional]</p>

	<p>- nota: <i>this attribute should be used either single or coupled with "listName" and "listVersion"</i></p> <p>(XPath: GPDocRequest/buyer/id/@numberingOrg) [Optional]  (XPath: GPDocRequest/itemRestrict/texCode/@numberingOrg) [Optional]  (XPath: GPDocRequest/itemRestrict/garmentCode/garmentCodeB/@numberingOrg) [Optional]</p>
pattern	<p>pattern/design number of the product, when not included in the article code</p> <p>- base type: string, max length: 15,  (XPath: GPDocRequest/itemRestrict/texCode/pattern) 0-1</p>
person	<p>name of the contact person within a Party</p> <p>- base type: string, max length: 40,  (XPath: GPDocRequest/supplier/person) 0-1  (XPath: GPDocRequest/buyer/person) 0-1</p>
@phone	<p>phone number of the contact person within a Party</p> <p>- base type: string, max length: 35,  (XPath: GPDocRequest/supplier/person/@phone) [Optional]  (XPath: GPDocRequest/buyer/person/@phone) [Optional]</p>
postCode	<p>code defining the postal zone</p> <p>- base type: string, max length: 10,  (XPath: GPDocRequest/supplier/postCode) 0-1  (XPath: GPDocRequest/buyer/postCode) 0-1</p>
requestDocType	<p>type of document the issue of which is requested by the present Request message</p> <p>- base type: string, cod. table: T21  <a href="http://www.moda-ml.net/moda-ml/repository/codelist/v2013-1/gc_T21.xml">http://www.moda-ml.net/moda-ml/repository/codelist/v2013-1/gc_T21.xml</a>  (XPath: GPDocRequest/requestDocType) 1-1</p>
season	<p>sale season; defined as: season (1 crt) + year (4 crt) - season: S/S=1 A/W=2 Spring=3 Summer=4 Autumn=5 Winter=6: for more than four seasons use alphabetic sequence: 1st season=A 2nd season=B etc.etc.</p> <p>- base type: string, max length: 15,  (XPath: GPDocRequest/refDoc/season) 0-1</p> <p>- note: <i>here indicates the season to which the referenced document belongs</i>  (XPath: GPDocRequest/itemRestrict/season) 0-1</p>
@sender	<p>qualifier that specifies the Party issuing of the document</p> <p>- base type: boolean,  (XPath: GPDocRequest/buyer/@sender) [Optional]</p> <p>- nota: <i>This attribute is mandatory when the STYLESHEET must be produced</i>  (XPath: GPDocRequest/supplier/@sender) [Optional]</p> <p>- nota: <i>This attribute is mandatory when the STYLESHEET must be produced</i></p>
size	<p>size number of a garment product (kintwear/clothing)</p> <p>- base type: string, max length: 15,  (XPath: GPDocRequest/itemRestrict/garmentCode/garmentCodeB/size) 0-1</p>
street	<p>street and building number identifying a location</p> <p>- base type: string, max length: 80,  (XPath: GPDocRequest/supplier/street) 0-1  (XPath: GPDocRequest/buyer/street) 0-1</p>
subCountry	<p>short name or code of the sub-country entity</p> <p>- base type: string, max length: 9,  (XPath: GPDocRequest/buyer/subCountry) 0-1  (XPath: GPDocRequest/supplier/subCountry) 0-1</p>

<i>@useProfile</i>	<p>use profile to which the present document is compliant if it was agreed by the parties. It is suggested a URI with reference to the firms or the URL of the profile.</p> <p>- base type: string,  (XPath: <a href="#">GPDocRequest/@useProfile</a>) [Optional]</p>
validityEnd	<p>date by which the validity ends, according to one of the patterns YYYY-MM-DD, YYYY-MM-DD:HH-MM or YYYY-WW.</p> <p>- base type: string,  (XPath: <a href="#">GPDocRequest/timeRestrict/validityEnd</a>) 0-1</p>
validityStart	<p>date by which the validity starts, according to one of the patterns YYYY-MM-DD, YYYY-MM-DD:HH-MM or YYYY-WW.</p> <p>- base type: string,  (XPath: <a href="#">GPDocRequest/timeRestrict/validityStart</a>) 0-1</p>
<i>@version</i>	<p>Dictionary version from which the instance has been created</p> <p>- base type: string, cod. table: NT100  <a href="http://www.moda-ml.net/moda-ml/repository/codelist/v2013-1/gc_NT100.xml">http://www.moda-ml.net/moda-ml/repository/codelist/v2013-1/gc_NT100.xml</a>  (XPath: <a href="#">GPDocRequest/@version</a>) [Optional] [Default= 2013-1]</p>

## 2.3 Enumeration tables

List of enumeration tables used in the XML document. You can find the corresponding codes at: <http://www.moda-ml.org/moda-ml/imple/moda-ml-2013-1.asp?lingua=en&pag=6>

NT100 - eBIZ Moda-ML version  
NT29 - format of a date  
NT6 - coding system owner/issuer  
T10 - ISO3166 - Country  
T21 - type of document  
T44 - additional code type

# Annex A

Representative images of the principal complex elements' structure.

