



<http://www.moda-ml.org>

IMPLEMENTATION GUIDE
TRANSACTION "GARMENT IN WORK
INVENTORY REPORT"

Version: 2013-1

Date of release: 18/11/2011

Document code: G044

XML Schema repository:<http://www.moda-ml.org/moda-ml/repository/schema/v2013-1/default.asp>

Guides repository:<http://www.moda-ml.org/moda-ml/repository/guide/v2013-1/default.asp>

Guide filename: G044-MODA-ML-GarmentInWorkInventoryReport.pdf

1. BUSINESS DESCRIPTION

1.1 Scope

The present guide has been issued to assist the companies of the Textile-Clothing sector in the implementation of the standard XML document type "GARMENT IN WORK INVENTORY REPORT", providing all the instruction required for its use in the context of e-commerce in the Textile industry, as shown in the enclosed diagrams.

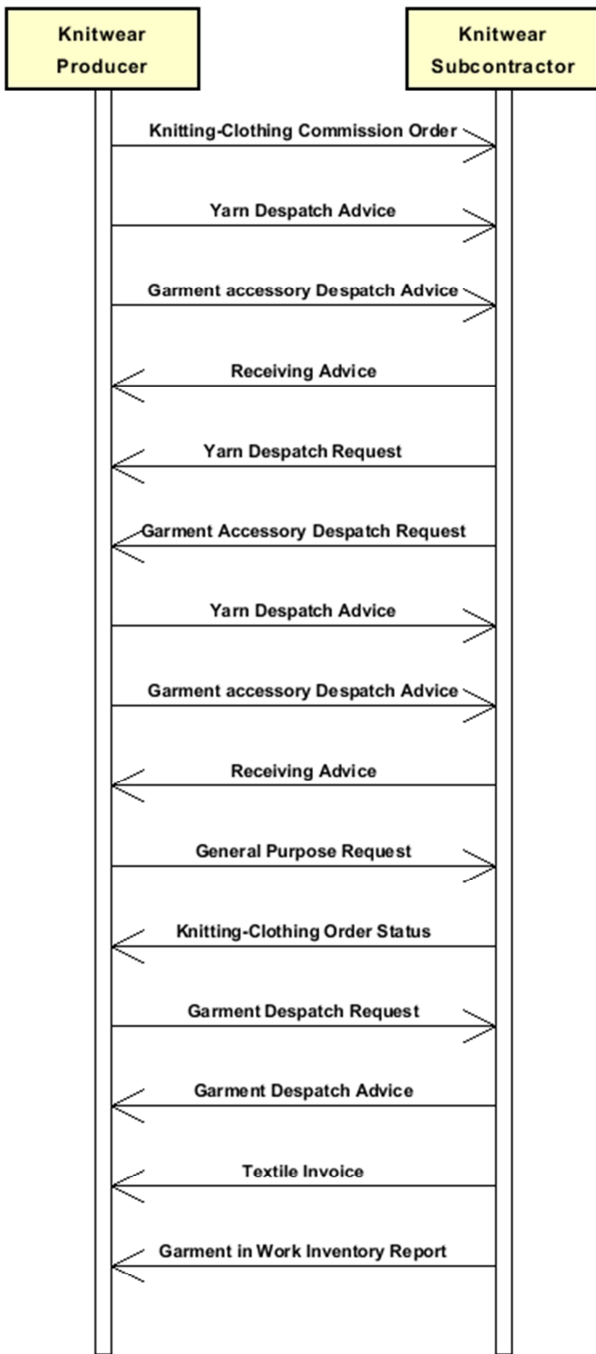
All the rules required for the construction and validation of the document are embedded into the specific XML-Schema, which is detailed in section "Implementation guide".

1.2 Generalities

The present document can be used by a Knitwear or Clothing Subcontractor to inform his Client (Commission issuer), periodically or on demand, about the quantity of pre-works or in-work Textile items (Client's property) stocked at the Subcontractor's premises.

This inventory may refer to all the goods of one Commission issuer or just to those related to one Commission order; item quantities may be subdivided by type of stock and physical location.

1.3. Possible scenario



2. IMPLEMENTATION GUIDE

2.1 General structure of XML document

All the business data that can be exchanged through this class of documents are shown in the following "document structure", that provides a simplified vision of the Schema.

In particular:

- the two numbers following each element define its "cardinality" (minimum and maximum number of occurrences); the minimum equal zero indicates that the element is optional, the minimum greater than zero indicates that is mandatory;
- the bold character denotes the complex elements (aggregates of simple elements) that were built for the sake of functionality and re-usability of some complex informations sets. The child elements in each parent element are easily spotted as "indented";
- the symbol "@" denotes an attribute of the preceding element; here "the usage indicator (optional, required, ...)" is shown in square brackets.

Structure

GARWorkInv

@msgfunction [Optional] [Default= OR]

@version [Optional] [Default= 2013-1]

@useProfile [Optional]

| **GWlheader 1-1**

| | msgN 1-1

| | - choose -

| | msgID 0-1

| | - or -

| | docID 0-1

| | *@numberingOrg [Optional]*

| | - end choose -

| | msgDate 1-1

| | *@dateForm [Optional]*

| | inventoryDate 1-1

| | *@dateForm [Optional]*

| | **refDoc 0-9**

| | *@docType [Required]*

| | | docID 1-2

| | | *@numberingOrg [Optional]*

| | | docDate 0-1

| | | *@dateForm [Optional]*

| | | season 0-1

| | | itemID 0-1

| | **buyer 1-1**

| | *@logo [Optional]*

| | *@sender [Optional]*

| | | id 1-1

| | | *@numberingOrg [Optional]*

| | | legalName 0-1

| | | dept 0-1

| | | person 0-1

| | | *@email [Optional]*

| | | *@phone [Optional]*

| | | *@fax [Optional]*

| | | street 0-1

| | | city 0-1

| | | subCountry 0-1

| | | country 0-1

- | | postCode 0-1
- | | **subContractor 1-1**
- | | @sender [Optional]
- | | id 1-1
- | | @numberingOrg [Optional]
- | | legalName 0-1
- | | dept 0-1
- | | person 0-1
- | | @email [Optional]
- | | @phone [Optional]
- | | @fax [Optional]
- | | street 0-1
- | | city 0-1
- | | subCountry 0-1
- | | country 0-1
- | | postCode 0-1
- | | note 0-19
- | | @numberingOrg [Optional]
- | | @codeList [Optional]
- | | @noteLabel [Optional]

| **GWlbody 1-1**

| | **GWlitem 1-unbounded**

- | | lineN 1-1
- | | @VAT [Optional]
- | | **refDoc 0-1**
- | | @docType [Required]
- | | docID 1-2
- | | @numberingOrg [Optional]
- | | docDate 0-1
- | | @dateForm [Optional]
- | | season 0-1
- | | itemID 0-1

| | - choose -

- | | | **garmentPartCode 1-1**
- | | | @numberingOrg [Optional]
- | | | gPart 1-1
- | | | mod 1-1
- | | | @numberingOrg [Optional]
- | | | @codeList [Optional]
- | | | @listName [Optional]
- | | | @listVersion [Optional]
- | | | fabric 0-1
- | | | @numberingOrg [Optional]
- | | | @codeList [Optional]
- | | | @listName [Optional]
- | | | @listVersion [Optional]
- | | | color 0-1
- | | | @numberingOrg [Optional]
- | | | @codeList [Optional]
- | | | @listName [Optional]
- | | | @listVersion [Optional]
- | | | size 0-1
- | | | @codeList [Optional]
- | | | description 0-1

| | - or -

- | | | **garmentCode 1-1**
- | | | @numberingOrg [Optional]

| | | - choose -

- | | | | **garmentCodeB 1-1**
- | | | | @numberingOrg [Optional]

```

| | | | mod 1-1
| | | |   @numberingOrg [Optional]
| | | |   @codeList [Optional]
| | | |   @listName [Optional]
| | | |   @listVersion [Optional]
| | | | fabric 0-1
| | | |   @numberingOrg [Optional]
| | | |   @codeList [Optional]
| | | |   @listName [Optional]
| | | |   @listVersion [Optional]
| | | | color 0-1
| | | |   @numberingOrg [Optional]
| | | |   @codeList [Optional]
| | | |   @listName [Optional]
| | | |   @listVersion [Optional]
| | | | size 0-1
| | | |   @codeList [Optional]
| | | | artGroup 0-1
| | | |   @numberingOrg [Optional]
| | | |   @codeList [Optional]
| | | |   @listName [Optional]
| | | |   @listVersion [Optional]
| | | | added 0-9
| | | |   @numberingOrg [Optional]
| | | |   @addType [Optional]
| | | | description 0-1
| | | |
| | | | - or -
| | | | | garmentCodeA 1-1
| | | | |   art 1-1
| | | | |     @numberingOrg [Optional]
| | | | |     @codeList [Optional]
| | | | |     @listName [Optional]
| | | | |     @listVersion [Optional]
| | | | |   description 0-1
| | | | |
| | | | | - end choose -
| | | | | - end choose -
| | | | | inventory 1-9
| | | | |   @invType [Required]
| | | | |   qty 1-2
| | | | |     @um [Required]
| | | | |   location 0-1
| | | | |     @LRI [Optional]
| | | | |   serialN 0-unbounded
| | | | |     @numberingOrg [Optional]
| | | | |   EPCList 0-1
| | | | |     EPC 1-unbounded
| | | | |       @numberingOrg [Optional]
| | | | |       @TID [Optional]
| | | | |   note 0-19
| | | | |     @numberingOrg [Optional]
| | | | |     @codeList [Optional]
| | | | |     @noteLabel [Optional]

```

2.2 Detailed description of document elements

Following tables show all elements (complex and simple) used in this document. Description includes: 1) element's information: xml tag, name, brief description, data type and syntax constraints; 2) information about use of the element in a particular position in the document: xpath and possible associated notes.

2.2.1 Complex elements (Aggregate Business Information Entities)

Complex elements are those elements whose content is composed of other elements (childs).Complex elements are alphabetically ordered.

buyer	details of the Buyer - base type: Nad, (XPath: GARWorkInv/GWIheader/buyer) 1-1
EPCList	list of identifiers used for tracing a physical item with RFID technology (XPath: GARWorkInv/GWlbody/GWlitem/inventory/EPCList) 0-1
garmentCode	codification of the garment product (knitwear/clothing) (XPath: GARWorkInv/GWlbody/GWlitem/garmentCode) 1-1
garmentCodeA	codification of the garment product (knitwear/clothing) - type A (XPath: GARWorkInv/GWlbody/GWlitem/garmentCode/garmentCodeA) 1-1 - note: <i>here the barcode EAN-13 or EAN-8 should be specified</i>
garmentCodeB	codification of the garment product (knitwear/clothing) - type B (XPath: GARWorkInv/GWlbody/GWlitem/garmentCode/garmentCodeB) 1-1
garmentPartCode	codification of the component or part of a garment article (knitwear or clothing) (XPath: GARWorkInv/GWlbody/GWlitem/garmentPartCode) 1-1
GWlbody	body of the document GARMENT IN WORK INVENTORY REPORT (XPath: GARWorkInv/GWlbody) 1-1
GWlheader	header of the document GARMENT IN WORK INVENTORY REPORT (XPath: GARWorkInv/GWIheader) 1-1
GWlitem	line item of the document GARMENT IN WORK INVENTORY REPORT (XPath: GARWorkInv/GWlbody/GWlitem) 1-unbounded
inventory	details of a stock of goods with reference to the manufacturing process: item quantity per class of stock (XPath: GARWorkInv/GWlbody/GWlitem/inventory) 1-9
refDoc	identification of a document and of an item thereof, to which the message makes reference (XPath: GARWorkInv/GWIheader/refDoc) 0-9 (XPath: GARWorkInv/GWlbody/GWlitem/refDoc) 0-1

subContractor	details of the Sub-contractor - base type: Nad, (XPath: GARWorkInv/GWlheader/subContractor) 1-1
----------------------	---

2.2.2 Simple elements (Basic Business Information Entities)

Simple elements are those elements whose content is characterized by a data type plus a domain of possible values. Simple elements are alphabetically ordered.

added	additional code of the product (complementing the formers) - base type: string, max length: 15, (XPath: GARWorkInv/GWlbody/GWlitem/garmentCode/garmentCodeB/added) 0-9
@addType	qualifier of the additional coding of a product - base type: string, cod. table: T44 http://www.moda-ml.net/moda-ml/repository/codelist/v2013-1/gc_T44.xml (XPath: GARWorkInv/GWlbody/GWlitem/garmentCode/garmentCodeB/added/@addType) [Optional]
art	article number of the product - base type: string, max length: 25, (XPath: GARWorkInv/GWlbody/GWlitem/garmentCode/garmentCodeA/art) 1-1
artGroup	code identifying a class of products - base type: string, max length: 40, (XPath: GARWorkInv/GWlbody/GWlitem/garmentCode/garmentCodeB/artGroup) 0-1
city	name of the city (town, village) - base type: string, max length: 40, (XPath: GARWorkInv/GWlheader/buyer/city) 0-1 (XPath: GARWorkInv/GWlheader/subContractor/city) 0-1
@codeList	it specifies the URL where the list of codes used to make an instance of the element can be found - base type: string, max length: 255, (XPath: GARWorkInv/GWlbody/GWlitem/garmentCode/garmentCodeB/mod/@codeList) [Optional] - nota: <i>this attribute should be ALTERNATIVE to the others</i> (XPath: GARWorkInv/GWlbody/GWlitem/garmentCode/garmentCodeA/art/@codeList) [Optional] - nota: <i>this attribute should be ALTERNATIVE to the others</i> (XPath: GARWorkInv/GWlbody/GWlitem/garmentCode/garmentCodeB/fabric/@codeList) [Optional] - nota: <i>this attribute should be ALTERNATIVE to the others</i> (XPath: GARWorkInv/GWlbody/GWlitem/garmentCode/garmentCodeB/color/@codeList) [Optional] - nota: <i>this attribute should be ALTERNATIVE to the others</i> (XPath: GARWorkInv/GWlbody/GWlitem/garmentCode/garmentCodeB/size/@codeList) [Optional] (XPath: GARWorkInv/GWlbody/GWlitem/garmentPartCode/size/@codeList) [Optional] (XPath: GARWorkInv/GWlbody/GWlitem/garmentPartCode/color/@codeList) [Optional] - nota: <i>this attribute should be ALTERNATIVE to the others</i> (XPath: GARWorkInv/GWlheader/note/@codeList) [Optional] - nota: <i>must be used to provide (URL) the list of codes used in "noteLabel"</i> (XPath: GARWorkInv/GWlbody/GWlitem/garmentPartCode/fabric/@codeList) [Optional] - nota: <i>this attribute should be ALTERNATIVE to the others</i>

	<p>(XPath: GARWorkInv/GWlbody/GWlitem/garmentPartCode/mod/@codeList) [Optional] - nota: <i>this attribute should be ALTERNATIVE to the others</i> (XPath: GARWorkInv/GWlbody/GWlitem/garmentCode/garmentCodeB/artGroup/@codeList) [Optional] - nota: <i>this attribute should be ALTERNATIVE to the others</i> (XPath: GARWorkInv/GWlbody/GWlitem/note/@codeList) [Optional] - nota: <i>must be used to provide (URL) the list of codes used in "noteLabel"</i></p>
color	<p>colour number of the product, when not included in the model or fabric code - base type: string, max length: 15, (XPath: GARWorkInv/GWlbody/GWlitem/garmentPartCode/color) 0-1 - note: <i>when a garment component, it should be the code assigned to the garment article</i> (XPath: GARWorkInv/GWlbody/GWlitem/garmentCode/garmentCodeB/color) 0-1</p>
country	<p>code of the nation - base type: string, cod. table: T10 http://www.moda-ml.net/moda-ml/repository/codelist/v2013-1/gc_T10.xml (XPath: GARWorkInv/GWlheader/buyer/country) 0-1 (XPath: GARWorkInv/GWlheader/subContractor/country) 0-1</p>
@dateForm	<p>format used for the date - base type: string, cod. table: NT29 http://www.moda-ml.net/moda-ml/repository/codelist/v2013-1/gc_NT29.xml (XPath: GARWorkInv/GWlheader/inventoryDate/@dateForm) [Optional] (XPath: GARWorkInv/GWlbody/GWlitem/refDoc/docDate/@dateForm) [Optional] (XPath: GARWorkInv/GWlheader/msgDate/@dateForm) [Optional] (XPath: GARWorkInv/GWlheader/refDoc/docDate/@dateForm) [Optional]</p>
dept	<p>name or code of a contact department within a Party - base type: string, max length: 40, (XPath: GARWorkInv/GWlheader/subContractor/dept) 0-1 (XPath: GARWorkInv/GWlheader/buyer/dept) 0-1</p>
description	<p>free text description of a product - base type: string, max length: 70, (XPath: GARWorkInv/GWlbody/GWlitem/garmentCode/garmentCodeA/description) 0-1 (XPath: GARWorkInv/GWlbody/GWlitem/garmentCode/garmentCodeB/description) 0-1 (XPath: GARWorkInv/GWlbody/GWlitem/garmentPartCode/description) 0-1</p>
docDate	<p>date of issue of the referenced document, according to one of the patterns YYYY-MM-DD, YYYY-MM-DD:HH-MM or YYYY-WW. - base type: string, (XPath: GARWorkInv/GWlbody/GWlitem/refDoc/docDate) 0-1 (XPath: GARWorkInv/GWlheader/refDoc/docDate) 0-1</p>
docID	<p>identification number of the referenced document SINCE 2008-1 ITS USE IN THE HEADER IS DISCOURAGED (REPLACED BY msgID) - base type: string, max length: 80, (XPath: GARWorkInv/GWlbody/GWlitem/refDoc/docID) 1-2 (XPath: GARWorkInv/GWlheader/docID) 0-1 (XPath: GARWorkInv/GWlheader/refDoc/docID) 1-2</p>
@docType	<p>type or class to which the referenced document belongs - base type: string, cod. table: T21 http://www.moda-ml.net/moda-ml/repository/codelist/v2013-1/gc_T21.xml (XPath: GARWorkInv/GWlheader/refDoc/@docType) [Required] (XPath: GARWorkInv/GWlbody/GWlitem/refDoc/@docType) [Required]</p>
@email	<p>electronic mail address of the contact person within a Party - base type: string, max length: 80, (XPath: GARWorkInv/GWlheader/subContractor/person/@email) [Optional] (XPath: GARWorkInv/GWlheader/buyer/person/@email) [Optional]</p>

EPC	<p>identifier used for tracing a physical item with RFID technology</p> <p>- base type: string, (XPath: GARWorkInv/GWlbody/GWlitem/inventory/EPCList/EPC) 1-unbounded</p>
fabric	<p>fabric number of the garment</p> <p>- base type: string, max length: 15, (XPath: GARWorkInv/GWlbody/GWlitem/garmentCode/garmentCodeB/fabric) 0-1 (XPath: GARWorkInv/GWlbody/GWlitem/garmentPartCode/fabric) 0-1</p> <p>- note: <i>when a garment component, it should be the code assigned to the garment article</i></p>
@fax	<p>fax number of the contact person within a Party</p> <p>- base type: string, max length: 35, (XPath: GARWorkInv/GWlheader/buyer/person/@fax) [Optional] (XPath: GARWorkInv/GWlheader/subContractor/person/@fax) [Optional]</p>
gPart	<p>code specifying the type of component or part of a garment (sleeve, neck, ...)</p> <p>- base type: string, cod. table: T48 http://www.moda-ml.net/moda-ml/repository/codelist/v2013-1/gc_T48.xml (XPath: GARWorkInv/GWlbody/GWlitem/garmentPartCode/gPart) 1-1</p>
id	<p>primary identification code of a Party; it is recommended the format: nation code (ISO 3166) + VAT identification number (11 crt), with the qualifier "numberingOrg"= MF</p> <p>- base type: string, max length: 15, (XPath: GARWorkInv/GWlheader/subContractor/id) 1-1 (XPath: GARWorkInv/GWlheader/buyer/id) 1-1</p>
inventoryDate	<p>date in which the inventory was done, according to one of the patterns YYYY-MM-DD, YYYY-MM-DD:HH-MM or YYYY-WW.</p> <p>- base type: string, (XPath: GARWorkInv/GWlheader/inventoryDate) 1-1</p>
@invType	<p>code classifying a stock of goods with reference to the manufacturing process</p> <p>- base type: string, cod. table: T47 http://www.moda-ml.net/moda-ml/repository/codelist/v2013-1/gc_T47.xml (XPath: GARWorkInv/GWlbody/GWlitem/inventory/@invType) [Required]</p>
itemID	<p>number of the line/item of the referenced document</p> <p>- base type: string, max length: 6, (XPath: GARWorkInv/GWlbody/GWlitem/refDoc/itemID) 0-1 (XPath: GARWorkInv/GWlheader/refDoc/itemID) 0-1</p>
legalName	<p>legal name of a Party</p> <p>- base type: string, max length: 80, (XPath: GARWorkInv/GWlheader/subContractor/legalName) 0-1 (XPath: GARWorkInv/GWlheader/buyer/legalName) 0-1</p>
lineN	<p>number of the line item of the present message (xml document)</p> <p>- base type: positiveInteger, min inclusive: 1, max inclusive: 9999, (XPath: GARWorkInv/GWlbody/GWlitem/lineN) 1-1</p>
@listName	<p>it specifies the name of the list of codes used to make an instance of the element</p> <p>- base type: string, max length: 40, (XPath: GARWorkInv/GWlbody/GWlitem/garmentCode/garmentCodeB/color/@listName) [Optional]</p> <p>- nota: <i>this attribute should always be used coupled with "numberingOrg"</i> (XPath: GARWorkInv/GWlbody/GWlitem/garmentPartCode/mod/@listName) [Optional]</p> <p>- nota: <i>this attribute should always be used coupled with "numberingOrg"</i> (XPath: GARWorkInv/GWlbody/GWlitem/garmentPartCode/color/@listName) [Optional]</p> <p>- nota: <i>this attribute should always be used coupled with "numberingOrg"</i> (XPath: GARWorkInv/GWlbody/GWlitem/garmentPartCode/fabric/@listName) [Optional]</p> <p>- nota: <i>this attribute should always be used coupled with "numberingOrg"</i> (XPath: GARWorkInv/GWlbody/GWlitem/garmentCode/garmentCodeB/mod/@listName) [Optional]</p> <p>- nota: <i>this attribute should always be used coupled with "numberingOrg"</i></p>

	<p>(XPath: GARWorkInv/GWlbody/GWlitem/garmentCode/garmentCodeB/fabric/@listName) [Optional] - nota: <i>this attribute should always be used coupled with “numberingOrg”</i></p> <p>(XPath: GARWorkInv/GWlbody/GWlitem/garmentCode/garmentCodeB/artGroup/@listName) [Optional] - nota: <i>this attribute should always be used coupled with “numberingOrg”</i></p> <p>(XPath: GARWorkInv/GWlbody/GWlitem/garmentCode/garmentCodeA/art/@listName) [Optional] - nota: <i>this attribute should always be used coupled with “numberingOrg”</i></p>
@listVersion	<p>it specifies the version of the list of codes used to make an instance of the element - base type: string, max length: 6, (XPath: GARWorkInv/GWlbody/GWlitem/garmentCode/garmentCodeA/art/@listVersion) [Optional] - nota: <i>this attribute should always be used coupled with “numberingOrg” and “listName”</i></p> <p>(XPath: GARWorkInv/GWlbody/GWlitem/garmentCode/garmentCodeB/mod/@listVersion) [Optional] - nota: <i>this attribute should always be used coupled with “numberingOrg” and “listName”</i></p> <p>(XPath: GARWorkInv/GWlbody/GWlitem/garmentPartCode/color/@listVersion) [Optional] - nota: <i>this attribute should always be used coupled with “numberingOrg” and “listName”</i></p> <p>(XPath: GARWorkInv/GWlbody/GWlitem/garmentCode/garmentCodeB/artGroup/@listVersion) [Optional] - nota: <i>this attribute should always be used coupled with “numberingOrg” and “listName”</i></p> <p>(XPath: GARWorkInv/GWlbody/GWlitem/garmentCode/garmentCodeB/color/@listVersion) [Optional] - nota: <i>this attribute should always be used coupled with “numberingOrg” and “listName”</i></p> <p>(XPath: GARWorkInv/GWlbody/GWlitem/garmentPartCode/mod/@listVersion) [Optional] - nota: <i>this attribute should always be used coupled with “numberingOrg” and “listName”</i></p> <p>(XPath: GARWorkInv/GWlbody/GWlitem/garmentPartCode/fabric/@listVersion) [Optional] - nota: <i>this attribute should always be used coupled with “numberingOrg” and “listName”</i></p> <p>(XPath: GARWorkInv/GWlbody/GWlitem/garmentCode/garmentCodeB/fabric/@listVersion) [Optional] - nota: <i>this attribute should always be used coupled with “numberingOrg” and “listName”</i></p>
location	<p>specification of a location - base type: string, max length: 40, (XPath: GARWorkInv/GWlbody/GWlitem/inventory/location) 0-1</p>
@logo	<p>company logo (URL of the image jpeg or gif). It is recommended that the width of the image does not exceed 640 pixel. - base type: string, max length: 255, (XPath: GARWorkInv/GWlheader/buyer/@logo) [Optional]</p>
@LRI	<p>attribute usable to format a string according to a customized User rule (local rule) - base type: string, cod. table: NT3 http://www.moda-ml.net/moda-ml/repository/codelist/v2013-1/gc_NT3.xml (XPath: GARWorkInv/GWlbody/GWlitem/inventory/location/@LRI) [Optional]</p>
mod	<p>model number of the garment - base type: string, max length: 15, (XPath: GARWorkInv/GWlbody/GWlitem/garmentCode/garmentCodeB/mod) 1-1 (XPath: GARWorkInv/GWlbody/GWlitem/garmentPartCode/mod) 1-1 - note: <i>when a garment component, it should be the code assigned to the garment article</i></p>
msgDate	<p>date of issue of the present message (xml document), according to one of the patterns YYYY-MM-DD, YYYY-MM-DD:HH-MM or YYYY-WW. - base type: string, (XPath: GARWorkInv/GWlheader/msgDate) 1-1</p>

@msgfunction	function performed by the present message with regards to the transmission - base type: string, cod. table: NT18 http://www.moda-ml.net/moda-ml/repository/codelist/v2013-1/gc_NT18.xml (XPath: GARWorkInv/@msgfunction) [Optional] [Default= OR]
msgID	key identifier of the document in the information system of the issuing Party - base type: string, max length: 35, (XPath: GARWorkInv/GWlheader/msgID) 0-1
msgN	identification number given to the message (xml document) by its issuer - base type: string, max length: 35, (XPath: GARWorkInv/GWlheader/msgN) 1-1
note	free text or structured (computer processing) note. For note structuring use the attributes "noteLabel" and "codelist" - base type: string, max length: 350, (XPath: GARWorkInv/GWlbody/GWlitem/note) 0-19 (XPath: GARWorkInv/GWlheader/note) 0-19
@noteLabel	subject qualifier of a note - base type: string, max length: 35, (XPath: GARWorkInv/GWlbody/GWlitem/note/@noteLabel) [Optional] - nota: <i>must be used to qualify the subject of the note</i> (XPath: GARWorkInv/GWlheader/note/@noteLabel) [Optional] - nota: <i>must be used to qualify the subject of the note</i>
@numberingOrg	code specifying the organisation who has created or owns the coding or numbering system - base type: string, cod. table: NT6 http://www.moda-ml.net/moda-ml/repository/codelist/v2013-1/gc_NT6.xml (XPath: GARWorkInv/GWlheader/subContractor/id/@numberingOrg) [Optional] (XPath: GARWorkInv/GWlbody/GWlitem/garmentCode/@numberingOrg) [Optional] (XPath: GARWorkInv/GWlbody/GWlitem/garmentCode/garmentCodeB/artGroup/@numberingOrg) [Optional] - nota: <i>this attribute should be used either single or coupled with "listName" and "listVersion"</i> (XPath: GARWorkInv/GWlbody/GWlitem/inventory/serialN/@numberingOrg) [Optional] - nota: <i>here the issuer of the serial number must be specified (when different from the Supplier)</i> (XPath: GARWorkInv/GWlbody/GWlitem/garmentPartCode/color/@numberingOrg) [Optional] - nota: <i>this attribute should be used either single or coupled with "listName" and "listVersion"</i> (XPath: GARWorkInv/GWlbody/GWlitem/garmentCode/garmentCodeA/art/@numberingOrg) [Optional] - nota: <i>this attribute should be used either single or coupled with "listName" and "listVersion"</i> (XPath: GARWorkInv/GWlheader/refDoc/docID/@numberingOrg) [Optional] - nota: <i>here can be specified whose document numbering is used (e.g.: Client, Supplier, ..)</i> (XPath: GARWorkInv/GWlbody/GWlitem/garmentCode/garmentCodeB/added/@numberingOrg) [Optional] (XPath: GARWorkInv/GWlheader/buyer/id/@numberingOrg) [Optional] (XPath: GARWorkInv/GWlheader/docID/@numberingOrg) [Optional] - nota: <i>here can be specified whose document numbering is used (e.g.: Client, Supplier, ..)</i> (XPath: GARWorkInv/GWlbody/GWlitem/garmentCode/garmentCodeB/fabric/@numberingOrg) [Optional] - nota: <i>this attribute should be used either single or coupled with "listName" and "listVersion"</i> (XPath: GARWorkInv/GWlbody/GWlitem/refDoc/docID/@numberingOrg) [Optional] - nota: <i>here can be specified whose document numbering is used (e.g.: Client, Supplier, ..)</i>

	<p>..)</p> <p>(XPath: GARWorkInv/GWlbody/GWlitem/note/@numberingOrg) [Optional]</p> <p>(XPath: GARWorkInv/GWlbody/GWlitem/garmentPartCode/mod/@numberingOrg) [Optional]</p> <p>- nota: <i>this attribute should be ALTERNATIVE to the others</i></p> <p>(XPath: GARWorkInv/GWlbody/GWlitem/garmentPartCode/@numberingOrg) [Optional]</p> <p>(XPath: GARWorkInv/GWlbody/GWlitem/garmentCode/garmentCodeB/mod/@numberingOrg) [Optional]</p> <p>- nota: <i>this attribute should be ALTERNATIVE to the others</i></p> <p>(XPath: GARWorkInv/GWlheader/note/@numberingOrg) [Optional]</p> <p>(XPath: GARWorkInv/GWlbody/GWlitem/inventory/EPCList/EPC/@numberingOrg) [Optional]</p> <p>(XPath: GARWorkInv/GWlbody/GWlitem/garmentCode/garmentCodeB/@numberingOrg) [Optional]</p> <p>(XPath: GARWorkInv/GWlbody/GWlitem/garmentPartCode/fabric/@numberingOrg) [Optional]</p> <p>- nota: <i>this attribute should be used either single or coupled with "listName" and "listVersion"</i></p> <p>(XPath: GARWorkInv/GWlbody/GWlitem/garmentCode/garmentCodeB/color/@numberingOrg) [Optional]</p> <p>- nota: <i>this attribute should be used either single or coupled with "listName" and "listVersion"</i></p>
person	<p>name of the contact person within a Party</p> <p>- base type: string, max length: 40,</p> <p>(XPath: GARWorkInv/GWlheader/buyer/person) 0-1</p> <p>(XPath: GARWorkInv/GWlheader/subContractor/person) 0-1</p>
@phone	<p>phone number of the contact person within a Party</p> <p>- base type: string, max length: 35,</p> <p>(XPath: GARWorkInv/GWlheader/subContractor/person/@phone) [Optional]</p> <p>(XPath: GARWorkInv/GWlheader/buyer/person/@phone) [Optional]</p>
postCode	<p>code defining the postal zone</p> <p>- base type: string, max length: 10,</p> <p>(XPath: GARWorkInv/GWlheader/subContractor/postCode) 0-1</p> <p>(XPath: GARWorkInv/GWlheader/buyer/postCode) 0-1</p>
qty	<p>net quantity of the article or object correlated, qualified by the function of the document (ordering, delivering, ..) and by the context</p> <p>- base type: decimal, min inclusive: 0, fraction digits: 2,</p> <p>(XPath: GARWorkInv/GWlbody/GWlitem/inventory/qty) 1-2</p>
season	<p>sale season; defined as: season (1 crt) + year (4 crt) - season: S/S=1 A/W=2 Spring=3 Summer=4 Autumn=5 Winter=6: for more than four seasons use alphabetic sequence: 1st season=A 2nd season=B etc.etc.</p> <p>- base type: string, max length: 15,</p> <p>(XPath: GARWorkInv/GWlbody/GWlitem/refDoc/season) 0-1</p> <p>- note: <i>here indicates the season to which the referenced document belongs</i></p> <p>(XPath: GARWorkInv/GWlheader/refDoc/season) 0-1</p> <p>- note: <i>here indicates the season to which the referenced document belongs</i></p>
@sender	<p>qualifier that specifies the Party issuing of the document</p> <p>- base type: boolean,</p> <p>(XPath: GARWorkInv/GWlheader/subContractor/@sender) [Optional]</p> <p>- nota: <i>This attribute is mandatory when the STYLESHEET must be produced</i></p> <p>(XPath: GARWorkInv/GWlheader/buyer/@sender) [Optional]</p> <p>- nota: <i>This attribute is mandatory when the STYLESHEET must be produced</i></p>
serialN	<p>serial number used for the identification of a physical unit</p> <p>- base type: string, max length: 15,</p> <p>(XPath: GARWorkInv/GWlbody/GWlitem/inventory/serialN) 0-unbounded</p>
size	<p>size number of a garment product (kintwear/clothing)</p> <p>- base type: string, max length: 15,</p> <p>(XPath: </p>

	<p style="text-align: center;">GARWorkInv/GWlbody/GWlitem/garmentCode/garmentCodeB/size) 0-1 (XPath: GARWorkInv/GWlbody/GWlitem/garmentPartCode/size) 0-1</p>
street	<p>street and building number identifying a location - base type: string, max length: 80, (XPath: GARWorkInv/GWlheader/buyer/street) 0-1 (XPath: GARWorkInv/GWlheader/subContractor/street) 0-1</p>
subCountry	<p>short name or code of the sub-country entity - base type: string, max length: 9, (XPath: GARWorkInv/GWlheader/buyer/subCountry) 0-1 (XPath: GARWorkInv/GWlheader/subContractor/subCountry) 0-1</p>
@TID	<p>serial number wired into the RFID chip - base type: string, (XPath: GARWorkInv/GWlbody/GWlitem/inventory/EPClist/EPC/@TID) [Optional]</p>
@um	<p>specification of the unit of measure - base type: string, cod. table: NT7 http://www.moda-ml.net/moda-ml/repository/codelist/v2013-1/gc_NT7.xml (XPath: GARWorkInv/GWlbody/GWlitem/inventory/qty/@um) [Required]</p>
@useProfile	<p>use profile to which the present document is compliant if it was agreed by the parties. It is suggested a URI with reference to the firms or the URL of the profile. - base type: string, (XPath: GARWorkInv/@useProfile) [Optional]</p>
@VAT	<p>VAT rate or code (deprecated, use dtScheme element) - base type: string, cod. table: NT16 http://www.moda-ml.net/moda-ml/repository/codelist/v2013-1/gc_NT16.xml (XPath: GARWorkInv/GWlbody/GWlitem/lineN/@VAT) [Optional]</p>
@version	<p>Dictionary version from which the instance has been created - base type: string, cod. table: NT100 http://www.moda-ml.net/moda-ml/repository/codelist/v2013-1/gc_NT100.xml (XPath: GARWorkInv/@version) [Optional] [Default= 2013-1]</p>

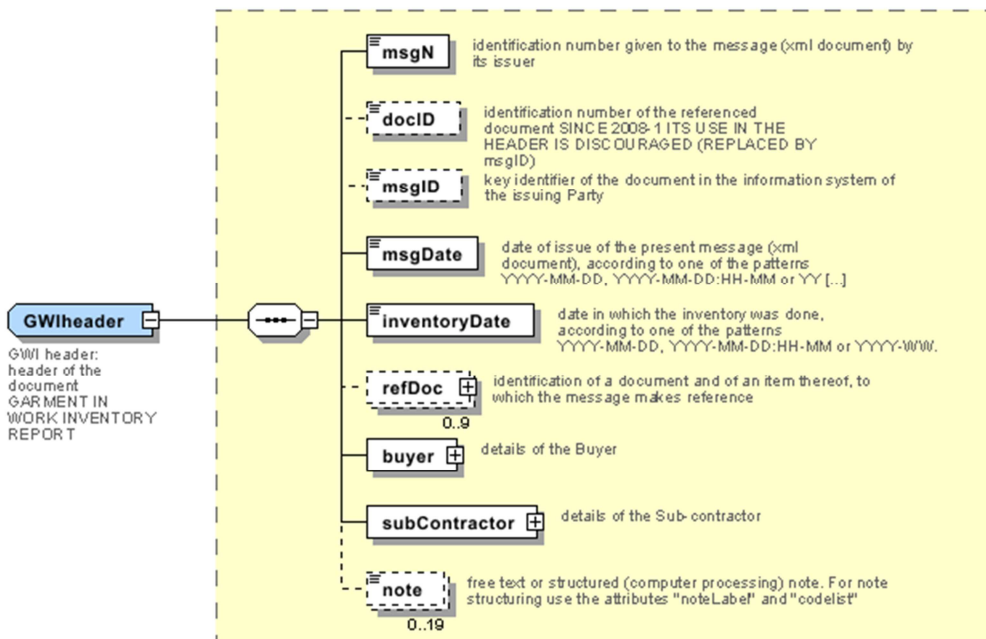
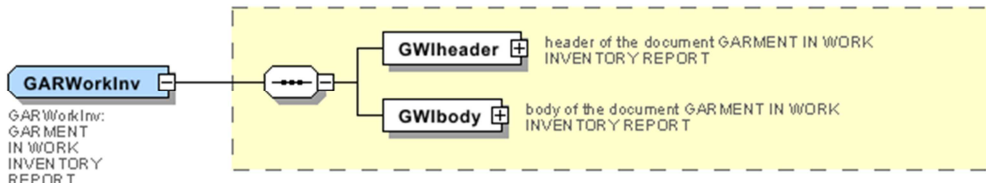
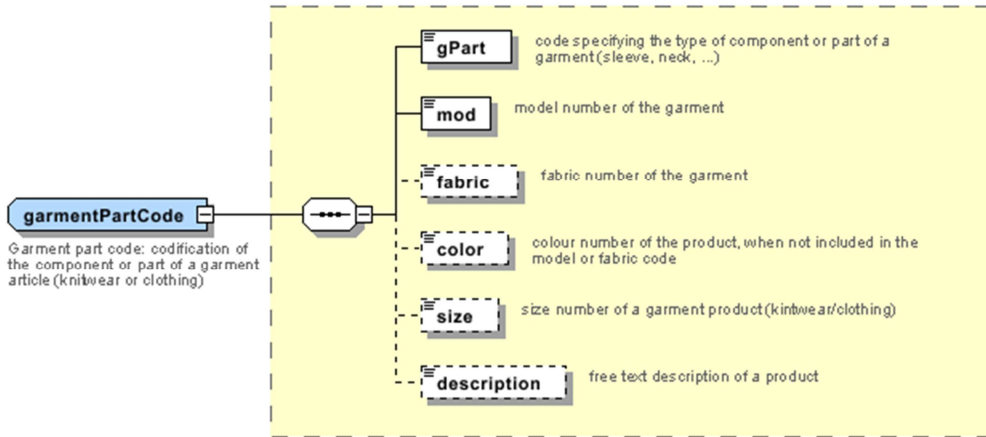
2.3 Enumeration tables

List of enumeration tables used in the XML document. You can find the corresponding codes at: <http://www.moda-ml.org/moda-ml/imple/moda-ml-2013-1.asp?lingua=en&pag=6>

NT100 - eBIZ Moda-ML version
NT16 - VAT rate or code
NT18 - message function
NT29 - format of a date
NT3 - data format
NT6 - coding system owner/issuer
NT7 - unity of measure
T10 - ISO3166 - Country
T21 - type of document
T44 - additional code type
T47 - stock type
T48 - garment part type

Annex A

Representative images of the principal complex elements' structure.



GWItem
 GWI item:
 line item of
 the document
 GARMENT IN
 WORK
 INVENTORY
 REPORT

